

工程指示 / 要求簡箋 ENGINEER INSTRUCTIONS(E.I.)


工程指示編號:	EI- 8543	修改版本:	-
	HK-2029		
工程編號:	J 853	工程名稱:	延坪道
收件人:	生系統	發件人:	Joe Chan
工程項目:	Feature Wall 地盤用鋁板 (House A圍牆位置)	日期:	11/11/2024

<input type="checkbox"/> 原合約工程包	<input type="checkbox"/> 原合約工程加 / 減賬 QT-	<input type="checkbox"/> 新工程報價 QT-
---------------------------------	--	------------------------------------

信件批核號碼/圖紙參考編號:	批核模具圖紙編號:
客戶指示附件:	管理內部批簽署:

<input type="checkbox"/> 初步鋁料 B.M.	<input type="checkbox"/> 加工拆圖, 然後生產	<input type="checkbox"/> 尺寸表
<input type="checkbox"/> 正式鋁料 B.M.	<input type="checkbox"/> 技術上資料/指示	<input type="checkbox"/> 報價
<input type="checkbox"/> 配件 B.M.	<input type="checkbox"/> 樣辦或貨品說明書	<input type="checkbox"/> 分判合約
<input type="checkbox"/> 其他:		

內容: 請依附件資料, 生產鋁板, 送地盤


(附 CAD 檔)

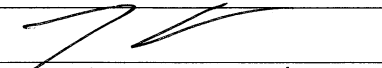


完成上列要求日期: 30/11/2024

國內

<input type="checkbox"/> 生產技術總監	<input type="checkbox"/> 連附件	<input type="checkbox"/> 技術部	<input type="checkbox"/> 連附件	<input type="checkbox"/> 生產部	<input type="checkbox"/> 連附件
<input type="checkbox"/> 採購部	<input type="checkbox"/> 連附件	<input checked="" type="checkbox"/> 生產統籌部	<input checked="" type="checkbox"/> 連附件	<input type="checkbox"/> 報關組	<input type="checkbox"/> 連附件
<input type="checkbox"/> 質檢部	<input type="checkbox"/> 連附件	<input type="checkbox"/> 會計部	<input type="checkbox"/> 連附件	<input type="checkbox"/> 機械設計部	<input type="checkbox"/> 連附件
<input type="checkbox"/> 香港辦	<input type="checkbox"/> 連附件	<input type="checkbox"/> 其他:			

香港

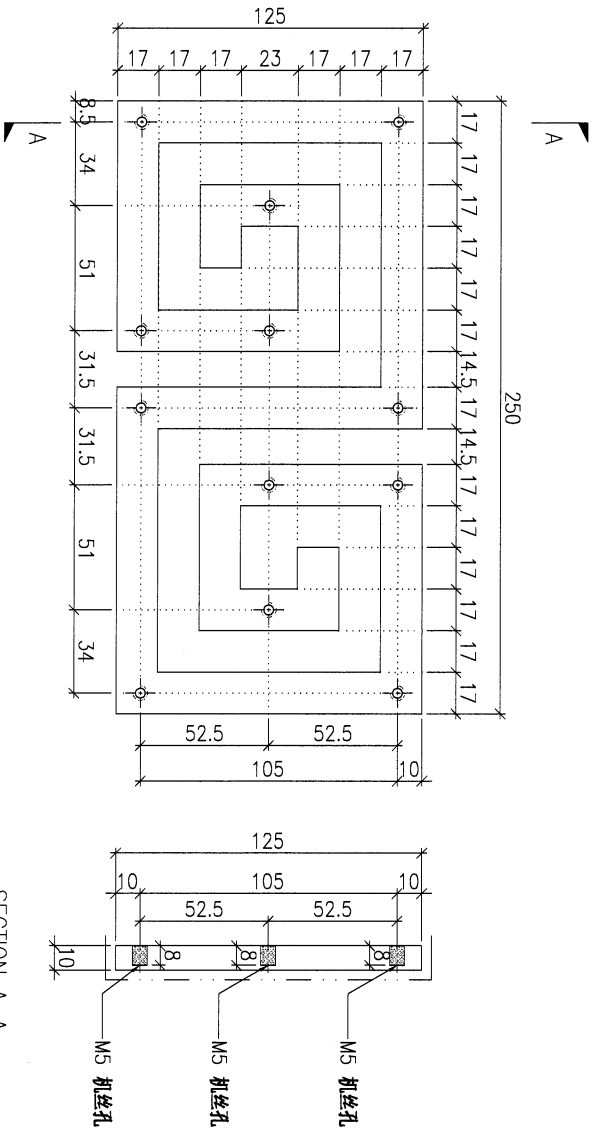
<input type="checkbox"/> 行政部	<input type="checkbox"/> 連附件	<input type="checkbox"/> 會計部	<input type="checkbox"/> 連附件	<input type="checkbox"/> 統籌部	<input type="checkbox"/> 連附件	<input type="checkbox"/> 工程部	<input type="checkbox"/> 連附件
<input type="checkbox"/> 採購部	<input type="checkbox"/> 連附件	<input type="checkbox"/> QS部	<input type="checkbox"/> 連附件	<input checked="" type="checkbox"/> 地盤管理	<input checked="" type="checkbox"/> 連附件	<input type="checkbox"/> 維修部	<input type="checkbox"/> 連附件

*發件人簽署:		*組別成員批核簽署:	
傳遞編號:	HK2029/24	項目經理簽署:	

美特鋁質有限公司 MTD Aluminium Fabricator Ltd.		工程號: J-853	計算: Ming	日期: 2024.11.07	送呈: JOE								
HouseA 鋁板B.M.表 (part9)		地盤名稱: 延坪路 <td>接封:</td> <td>日期:</td> <td>副本:</td>	接封:	日期:	副本:								
項目類別: 特征牆(2区) <td>批准:</td> <td>日期:</td> <td></td> <td></td>		批准:	日期:										
編號:	修改版次:	A/C Code:	總V.F.:	233.390	總重量: 2200.10								
序號	修改內容	鋁板圖號	鋁板名稱	顏色	實用	後備	總數	總重量	233.390		總V.F.	備註	
									平方	平方米			
1		P2-AP-N910	10mm厚鋁板	EC-DG-D334232-ZD1 (SS-01)	560	0	560	474.250	0.031	17.500	0.031	17.500	工廠用
2		P2-AP-N910A	10mm厚鋁板	EC-DG-D334232-ZD1 (SS-01)	2	0	2	0.678	0.013	0.025	0.013	0.025	工廠用
3		P2-AP-N910AR	10mm厚鋁板	EC-DG-D334232-ZD1 (SS-01)	2	0	2	0.678	0.013	0.025	0.013	0.025	工廠用
4		P2-AP-N911	3mm厚鋁板	EC-DG-D334232-ZD1 (SS-01)	1	0	1	4.421	0.544	0.544	0.544	0.544	地盤用
5		P2-AP-N912	3mm厚鋁板	EC-DG-D334232-ZD1 (SS-01)	6	0	6	35.686	0.732	4.389	0.732	4.389	地盤用
6		P2-AP-N913	3mm厚鋁板	EC-DG-D334232-ZD1 (SS-01)	16	0	16	102.110	0.785	12.560	0.785	12.560	地盤用
7		P2-AP-N914	3mm厚鋁板	EC-DG-D334232-ZD1 (SS-01)	4	0	4	25.814	0.794	3.175	0.794	3.175	地盤用
8		P2-AP-N915	3mm厚鋁板	EC-DG-D334232-ZD1 (SS-01)	4	0	4	25.814	0.794	3.175	0.794	3.175	地盤用
9		P2-AP-N916	3mm厚鋁板	EC-DG-D334232-ZD1 (SS-01)	1	0	1	5.754	0.708	0.708	0.708	0.708	地盤用
10		P2-AP-N916R	3mm厚鋁板	EC-DG-D334232-ZD1 (SS-01)	1	0	1	5.754	0.708	0.708	0.708	0.708	地盤用
11		P2-AP-N917	3mm厚鋁板	EC-DG-D334232-ZD1 (SS-01)	2	0	2	9.716	0.598	1.195	0.598	1.195	地盤用
12		P2-AP-N917R	3mm厚鋁板	EC-DG-D334232-ZD1 (SS-01)	2	0	2	9.716	0.598	1.195	0.598	1.195	地盤用
13		P2-AP-N918	3mm厚鋁板	EC-DG-D334232-ZD1 (SS-01)	16	0	16	107.320	0.825	13.200	0.825	13.200	地盤用
14		P2-AP-N919	3mm厚鋁板	EC-DG-D334232-ZD1 (SS-01)	4	0	4	27.131	0.834	3.337	0.834	3.337	地盤用
15		P2-AP-N919R	3mm厚鋁板	EC-DG-D334232-ZD1 (SS-01)	4	0	4	27.131	0.834	3.337	0.834	3.337	地盤用
16		P2-AP-N920	3mm厚鋁板	EC-DG-D334232-ZD1 (SS-01)	1	0	1	6.048	0.744	0.744	0.744	0.744	地盤用
17		P2-AP-N920R	3mm厚鋁板	EC-DG-D334232-ZD1 (SS-01)	1	0	1	6.048	0.744	0.744	0.744	0.744	地盤用
18		P2-AP-N921	3mm厚鋁板	EC-DG-D334232-ZD1 (SS-01)	2	0	2	10.212	0.628	1.256	0.628	1.256	地盤用
19		P2-AP-N921R	3mm厚鋁板	EC-DG-D334232-ZD1 (SS-01)	2	0	2	10.212	0.628	1.256	0.628	1.256	地盤用
20		P2-AP-N922	3mm厚鋁板	TTC108369FXLJTA-3(SS-03)	26	0	26	246.824	1.168	30.360	1.168	30.360	地盤用
21		P2-AP-N925	3mm厚鋁板	EC-DG-D334232-ZD1 (SS-01)	15	0	15	108.536	0.890	13.350	0.890	13.350	地盤用
22		P2-AP-N926	3mm厚鋁板	EC-DG-D334232-ZD1 (SS-01)	3	0	3	21.707	0.890	2.670	0.890	2.670	地盤用
23		P2-AP-N927	3mm厚鋁板	EC-DG-D334232-ZD1 (SS-01)	3	0	3	31.097	1.275	3.825	1.275	3.825	地盤用
24		P2-AP-N928	3mm厚鋁板	EC-DG-D334232-ZD1 (SS-01)	15	0	15	228.576	1.874	28.115	1.874	28.115	地盤用
25		P2-AP-N929	3mm厚鋁板	EC-DG-D334232-ZD1 (SS-01)	3	0	3	45.715	1.874	5.623	1.874	5.623	地盤用
26		P2-AP-N930	3mm厚鋁板	EC-DG-D334232-ZD1 (SS-01)	3	0	3	45.715	1.874	5.623	1.874	5.623	地盤用
27		P2-AP-N931	3mm厚鋁板	EC-DG-D334232-ZD1 (SS-01)	18	0	18	122.428	0.837	15.059	0.837	15.059	地盤用
28		P2-AP-N932	3mm厚鋁板	EC-DG-D334232-ZD1 (SS-01)	2	0	2	12.266	0.754	1.509	0.754	1.509	地盤用
29		P2-AP-N933	3mm厚鋁板	EC-DG-D334232-ZD1 (SS-01)	2	0	2	12.266	0.754	1.509	0.754	1.509	地盤用
30		P2-AP-N934	3mm厚鋁板	EC-DG-D334232-ZD1 (SS-01)	1	0	1	4.318	0.531	0.531	0.531	0.531	地盤用

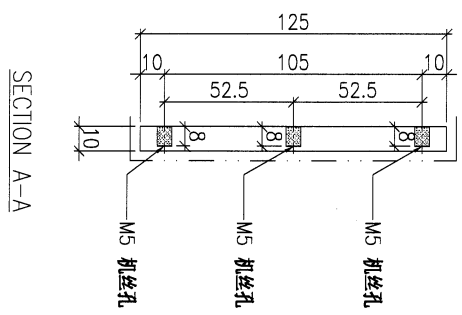
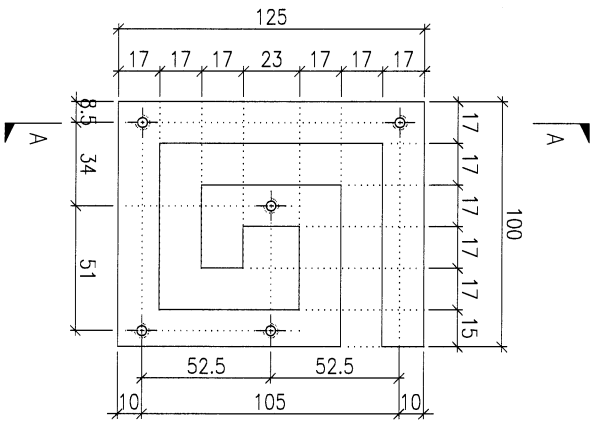
美特鋁質有限公司 MIDI Aluminium Fabricator Ltd.		工程號: 1-853	計算: Ming	日期: 2024.11.07	送呈: JOE								
HouseA 鋁板B.M.表 (part9)		地盤名稱: 廷坪路	核對:	日期:	副本:								
項目類別: 特徵牆(2区) <th>批准:</th> <th>日期:</th> <td colspan="2"></td>		批准:	日期:										
BM編號:	修改版次:	A/C Code:	總V.F.:	233.390									
序號	修改內容	鋁板圖號	鋁板名稱	顏色	實用	後備	總數	總重量	233.390		總重量: 2200.10	備註	
									單件展開面積	總展開面積			單件V.F.
									平方米	平方米			
31		P2-AP-N934R	3mm/厚鋁板	EC-DG-D334232-ZD1 (SS-01)	1	0	1	4.318	0.531	0.531	0.531	0.531	地盤用
32		P2-AP-N935	3mm/厚鋁板	EC-DG-D334232-ZD1 (SS-01)	1	0	1	8.139	1.001	1.001	1.001	1.001	地盤用
33		P2-AP-N935R	3mm/厚鋁板	EC-DG-D334232-ZD1 (SS-01)	1	0	1	8.139	1.001	1.001	1.001	1.001	地盤用
34		P2-AP-N936	3mm/厚鋁板	EC-DG-D334232-ZD1 (SS-01)	18	0	18	159.808	1.092	19.657	1.092	19.657	地盤用
35		P2-AP-N937	3mm/厚鋁板	EC-DG-D334232-ZD1 (SS-01)	2	0	2	16.011	0.985	1.969	0.985	1.969	地盤用
36		P2-AP-N938	3mm/厚鋁板	EC-DG-D334232-ZD1 (SS-01)	2	0	2	16.011	0.985	1.969	0.985	1.969	地盤用
37		P2-AP-N939	3mm/厚鋁板	EC-DG-D334232-ZD1 (SS-01)	1	0	1	5.636	0.693	0.693	0.693	0.693	地盤用
38		P2-AP-N939R	3mm/厚鋁板	EC-DG-D334232-ZD1 (SS-01)	1	0	1	5.636	0.693	0.693	0.693	0.693	地盤用
39		P2-AP-N940	3mm/厚鋁板	EC-DG-D334232-ZD1 (SS-01)	1	0	1	10.624	1.307	1.307	1.307	1.307	地盤用
40		P2-AP-N940R	3mm/厚鋁板	EC-DG-D334232-ZD1 (SS-01)	1	0	1	10.624	1.307	1.307	1.307	1.307	地盤用
41		P2-AP-N941	3mm/厚鋁板	EC-DG-D334232-ZD1 (SS-01)	11	0	11	81.240	0.908	9.993	0.908	9.993	地盤用
42		P2-AP-N942	3mm/厚鋁板	EC-DG-D334232-ZD1 (SS-01)	6	0	6	33.049	0.678	4.065	0.678	4.065	地盤用
43		P2-AP-N943	3mm/厚鋁板	EC-DG-D334232-ZD1 (SS-01)	5	0	5	36.636	0.901	4.506	0.901	4.506	地盤用
44		P2-AP-N944	1.5mm/厚鋁板	EC-DG-D334232-ZD1 (SS-01)	86	0	86	30.283	0.087	7.450	0.087	7.450	地盤用
總計:					0	0	859	2200	36	233	36	233	

PROJECT				MATERIAL				COATING				COLOUR		MARK. NO.		QTY.	
YIN PING ROAD KOWLOON FEATURE WALL (PHASE 2)				10mm ALUM. PLATE				PVF2				EC-DG-D334232-ZD1(SS-01)		-		-	
REV.	ORDER DATE BY	PART NUMBER	Dim. A	Dim. B	Dim. C	Dim. D	Dim. E	Dim. F	Dim. G	Dim. H	QTY.	Inv. Code	ASSEMBLE ON PARTS				
-		P2-AP-N910	-	-	-	-	-	-	-	-	560						
													<b>注: 工厂用</b>				



DWG. NO.		REV.		SCALE		DATE		DRAWN BY		APPROVED BY	
P2-AP-N910		-		-		05-11-2024		-		-	

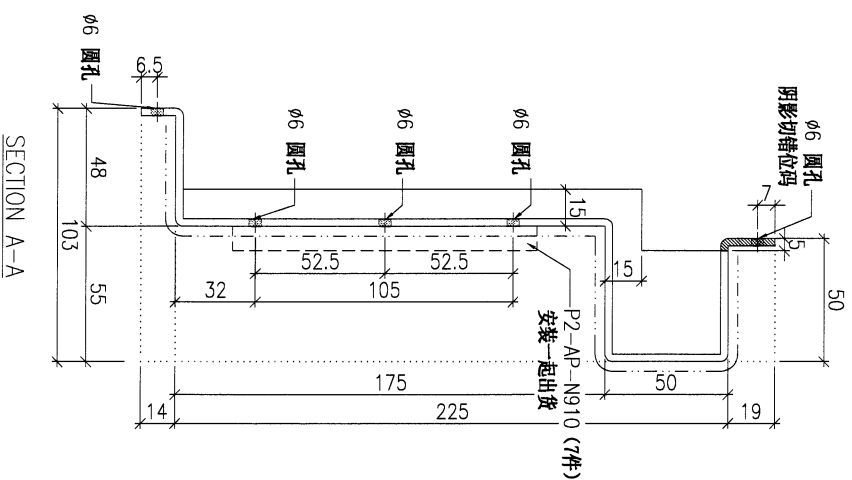
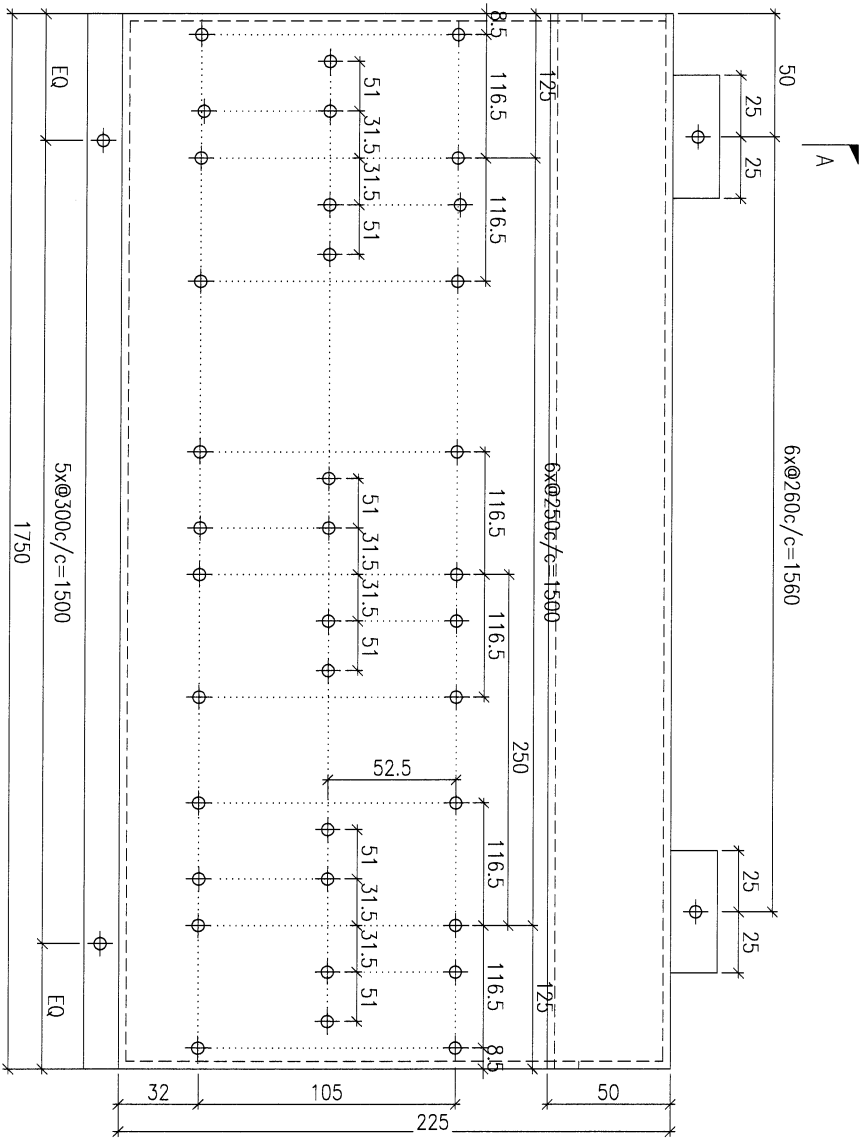
PROJECT				YIN PING ROAD KOWLOON FEATURE WALL (PHASE 2)				MATERIAL				10mm ALUM. PLATE				COATING				PVF2				COLOUR				EC-DG-D334232-ZD1(SS-01)				MARK. NO.				QTY.																							
REV. / CHECKED / DATE				PART NUMBER				Dim. A				Dim. B				Dim. C				Dim. D				Dim. E				Dim. F				Dim. G				Dim. H				QTY.				Inv. Code				ASSEMBLE ON PARTS				注: 工厂用							
-				P2-AP-N910A				-				-				-				-				-				-				-				-				2				-				-				-				-			
-				P2-AP-N910AR				-				-				-				-				-				-				-				-				-				2				-				-				-			



DWG. NO.		P2-AP-N910A		REV.		-		SCALE		-		DATE		05-11-2024		DRAWN BY		-		APPROVED BY		-	
----------	--	-------------	--	------	--	---	--	-------	--	---	--	------	--	------------	--	----------	--	---	--	-------------	--	---	--



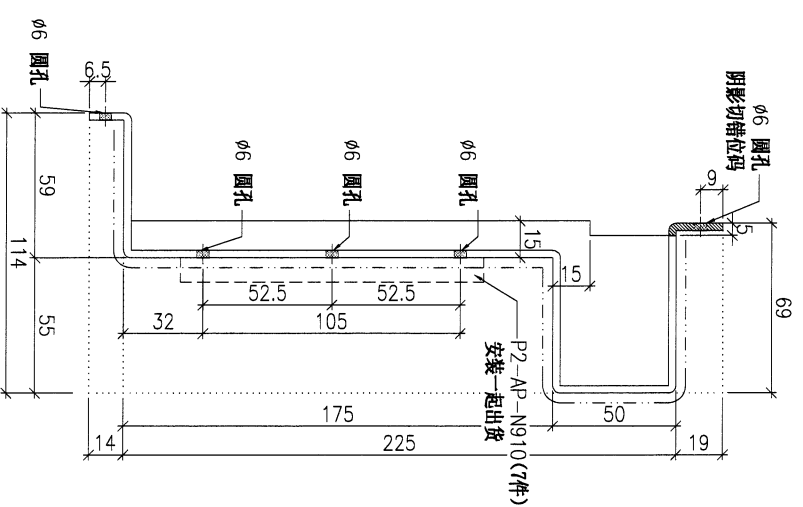
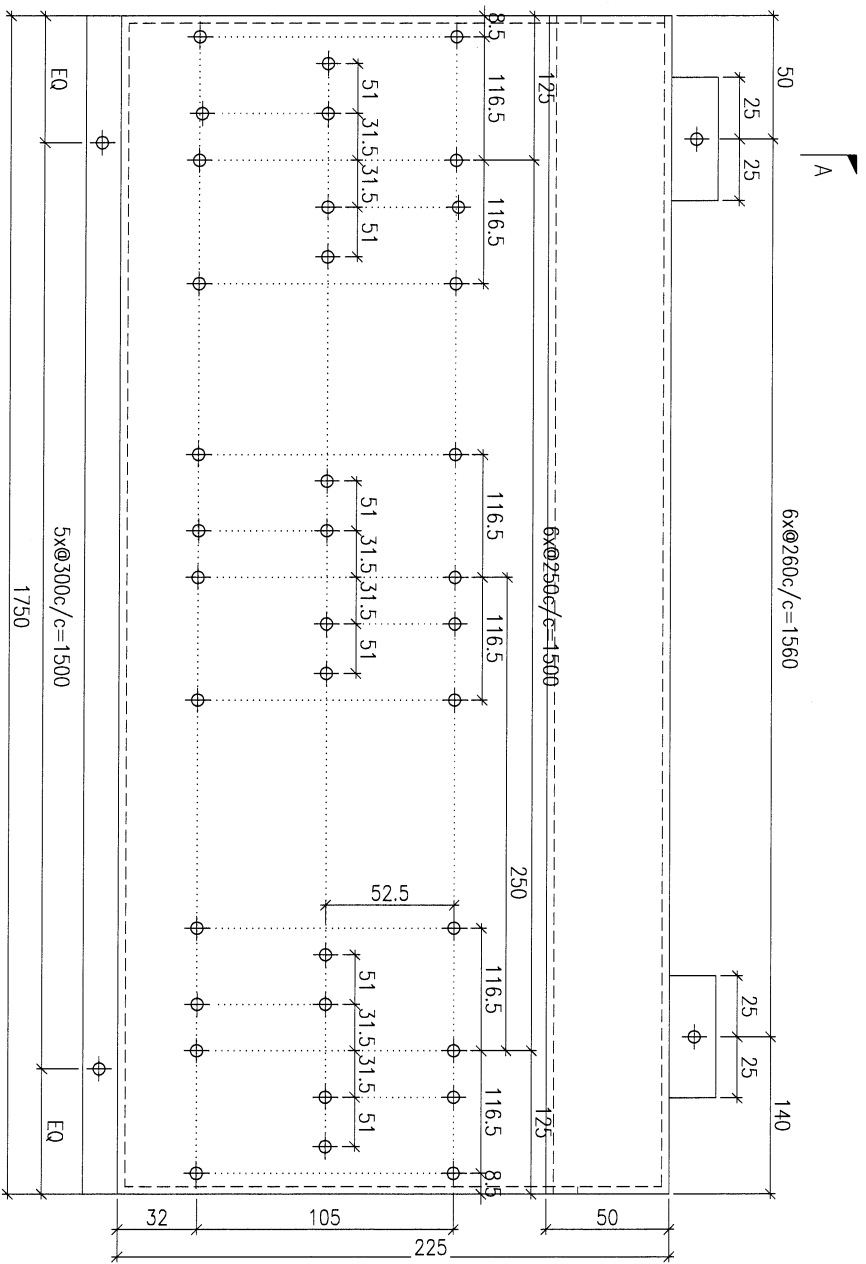
PROJECT				YIN PING ROAD KOWLOON FEATURE WALL (PHASE 2)				MATERIAL				3mm ALUM. CLADDING				COATING				PVF2				COLOUR				EC-DG-0334232-ZD1(SS-01)				MARK. NO.				-				QTY.				-			
REV. ORDERED BY		PART NUMBER		Dim. A		Dim. B		Dim. C		Dim. D		Dim. E		Dim. F		Dim. G		Dim. H		QTY.		Inv. Code		ASSEMBLE ON PARTS				-				-															
-		P2-AP-N912		-		-		-		-		-		-		-		-		6		-		-				-				-															
<b>注：地盤用</b>																																															



DWG. NO.		P2-AP-N912		REV.		-		SCALE		-		DATE		05-11-2024		DRAWN BY		-		APPROVED BY		-	
----------	--	------------	--	------	--	---	--	-------	--	---	--	------	--	------------	--	----------	--	---	--	-------------	--	---	--

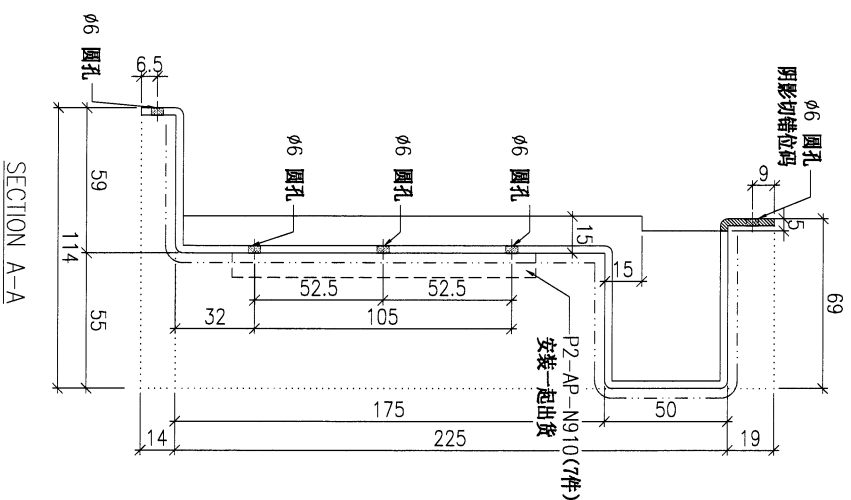
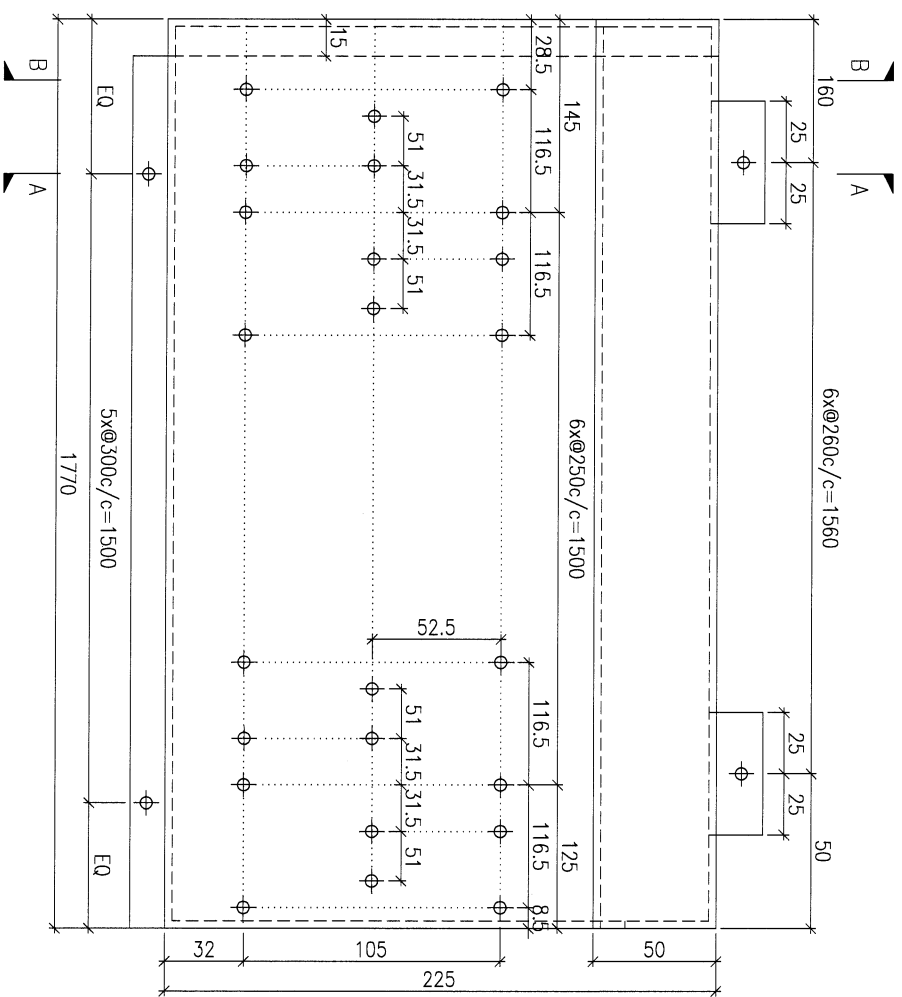
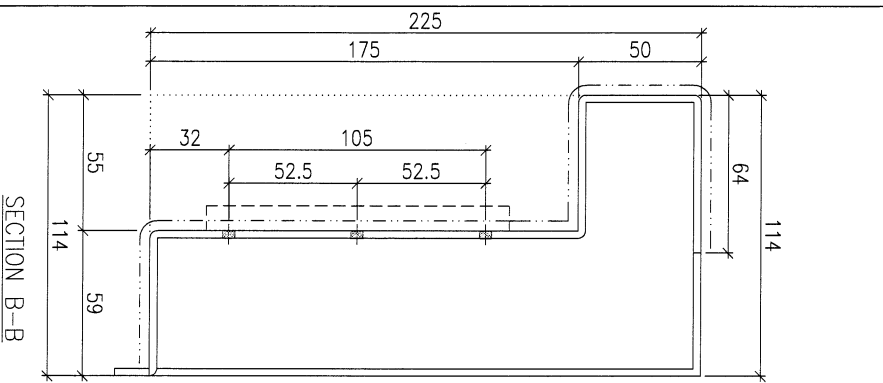
PROJECT				YIN PING ROAD KOWLOON FEATURE WALL (PHASE 2)				MATERIAL				3mm ALUM. CLADDING				COATING				PVF2				COLOUR				EC-DG-D334232-ZD1(SS-01)				MARK. NO.				QTY.															
PART NUMBER				Dim. A				Dim. B				Dim. C				Dim. D				Dim. E				Dim. F				Dim. G				Dim. H				QTY.				Inv. Code				ASSEMBLE ON PARTS				QTY.			
P2-AP-N913				-				-				-				-				-				-				-				16																			
CHECKED DWG BY				-				-				-				-				-				-				-				-				-				-				-				-			

注：地盤用



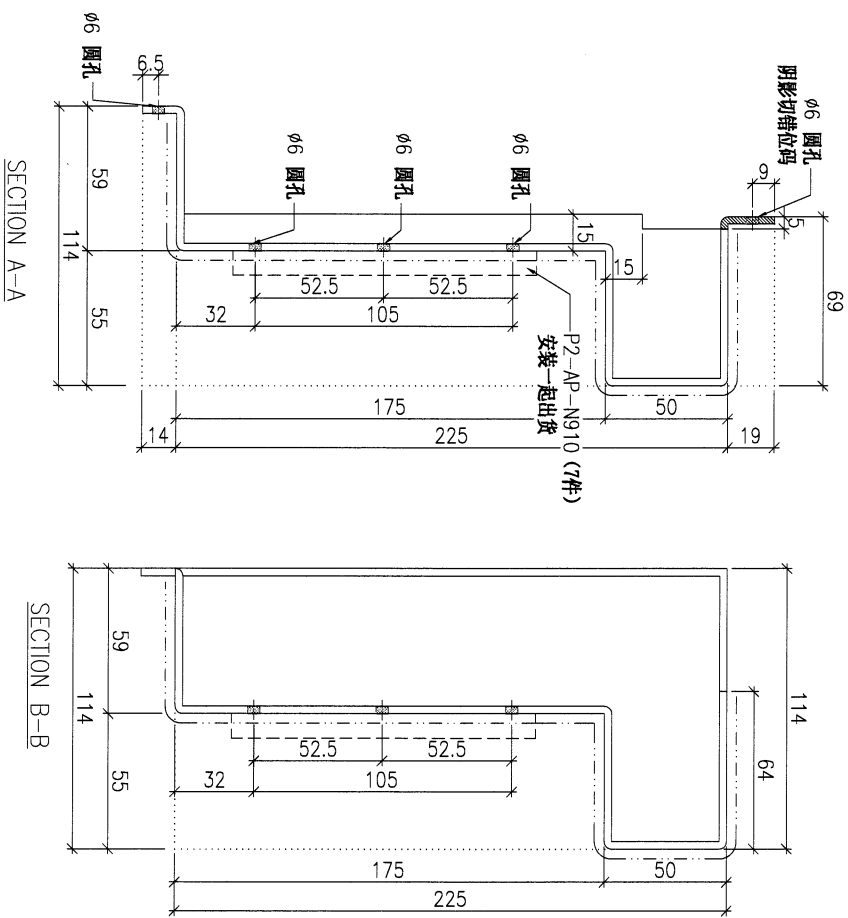
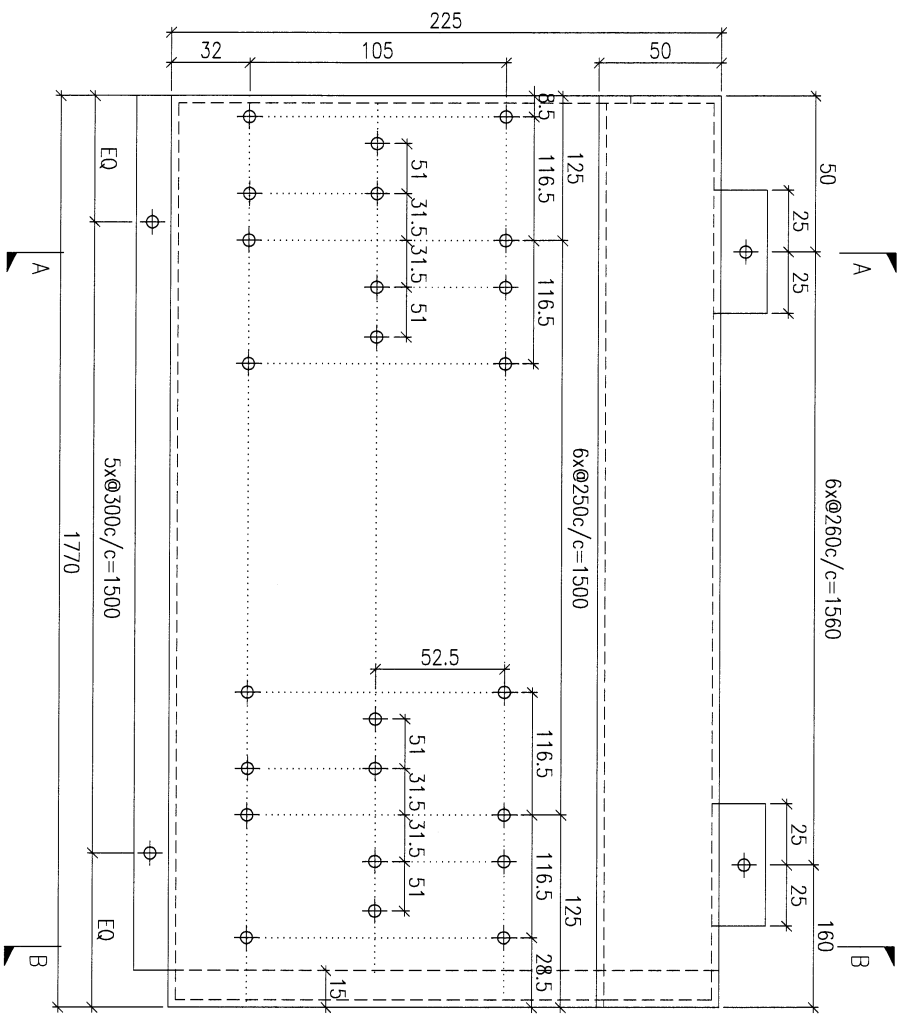
DWG. NO.		P2-AP-N913		REV.		-		SCALE		-		DATE		05-11-2024		DRAWN BY		-		APPROVED BY		-	
----------	--	------------	--	------	--	---	--	-------	--	---	--	------	--	------------	--	----------	--	---	--	-------------	--	---	--

PROJECT				MATERIAL				COATING				COLOUR		MARK. NO.		QTY.			
YIN PING ROAD KOWLOON FEATURE WALL (PHASE 2)				3mm ALUM. CLADDING				PVF2				EC-DG-D334232-ZD1(SS-01)		-		-			
CHECKED DWG BY		PART NUMBER		Dim. A		Dim. B		Dim. C		Dim. D		Dim. E		Dim. F		Dim. G		Dim. H	
-		P2-AP-N914		-		-		-		-		-		-		-		-	
								QTY. 4				Inv. Code		ASSEMBLE ON PARTS					
<b>注：地盤用</b>																			



DWG. NO.		REV.		SCALE		DATE		DRAWN BY		APPROVED BY	
P2-AP-N914		-		-		05-11-2024		-		-	

PROJECT				MATERIAL				COATING				COLOUR		MARK. NO.		QTY.	
YIN PING ROAD KOWLOON FEATURE WALL (PHASE 2)				3mm ALUM. CLADDING				PVF2				EC-DG-D34232-ZD1(SS-01)		-		-	
REV.	CHECKED	PART NUMBER	Dim. A	Dim. B	Dim. C	Dim. D	Dim. E	Dim. F	Dim. G	Dim. H	QTY.	Inv. Code	ASSEMBLE ON PARTS				
-	HW BY	P2-AP-N915	-	-	-	-	-	-	-	-	4	-	注：地盤用				



DWG. NO.		REV.		SCALE		DATE		DRAWN BY		APPROVED BY	
P2-AP-N915		-		-		05-11-2024		-		-	

PROJECT  
YIN PING ROAD KOWLOON  
FEATURE WALL (PHASE 2)

MATERIAL  
3mm ALUM. CLADDING

COATING  
PVF2

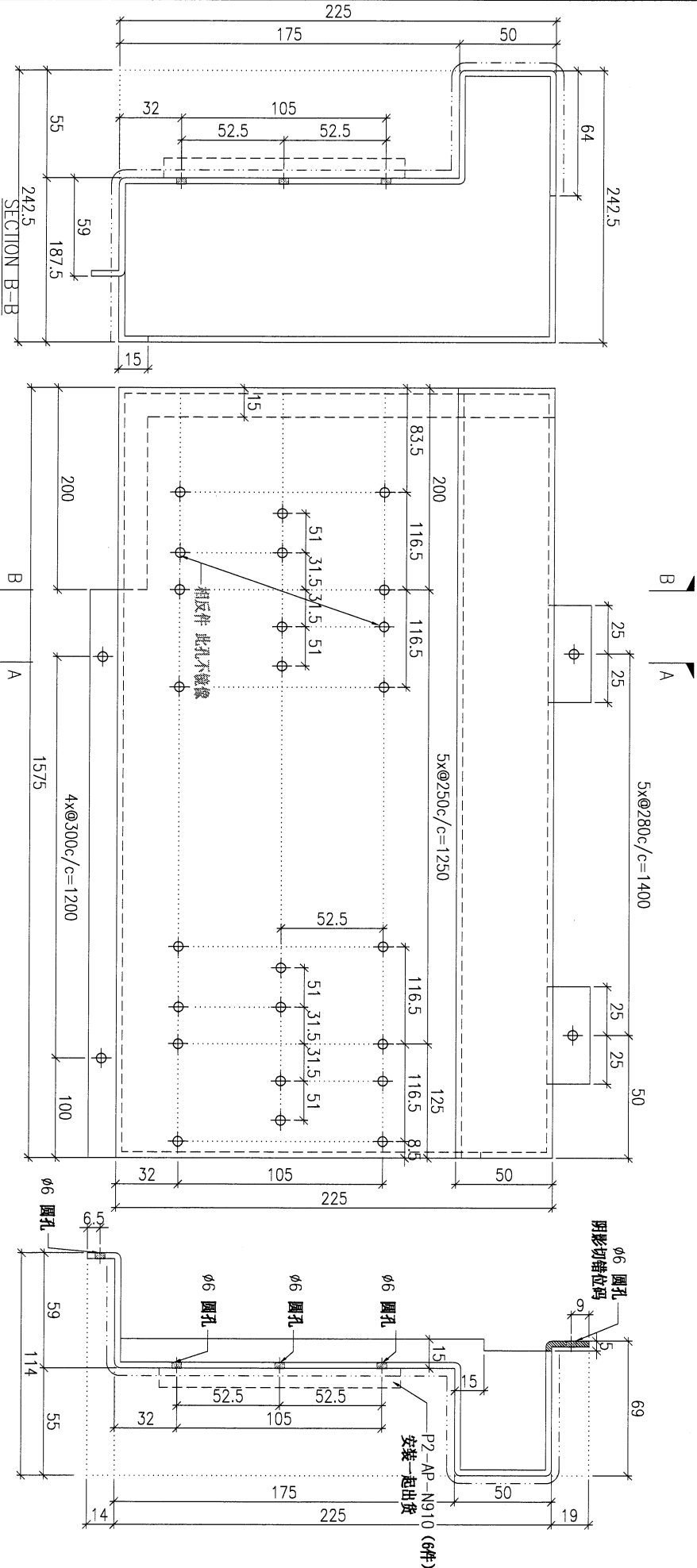
COLOUR  
EC-DG-D34232-ZD1(SS-011)

MARK. NO.  
-

QTY.  
-

CHKD BY	PART NUMBER	Dim. A	Dim. B	Dim. C	Dim. D	Dim. E	Dim. F	Dim. G	Dim. H	QTY.	Inv. Code	ASSEMBLE ON PARTS
-	P2-AP-N916	-	-	-	-	-	-	-	-	1	-	注: 如图加工
-	P2-AP-N916R	-	-	-	-	-	-	-	-	1	-	注: 相反加工

注: 地盘用



SECTION A-A

SECTION B-B

DWG. NO.

P2-AP-N916

REV.

SCALE

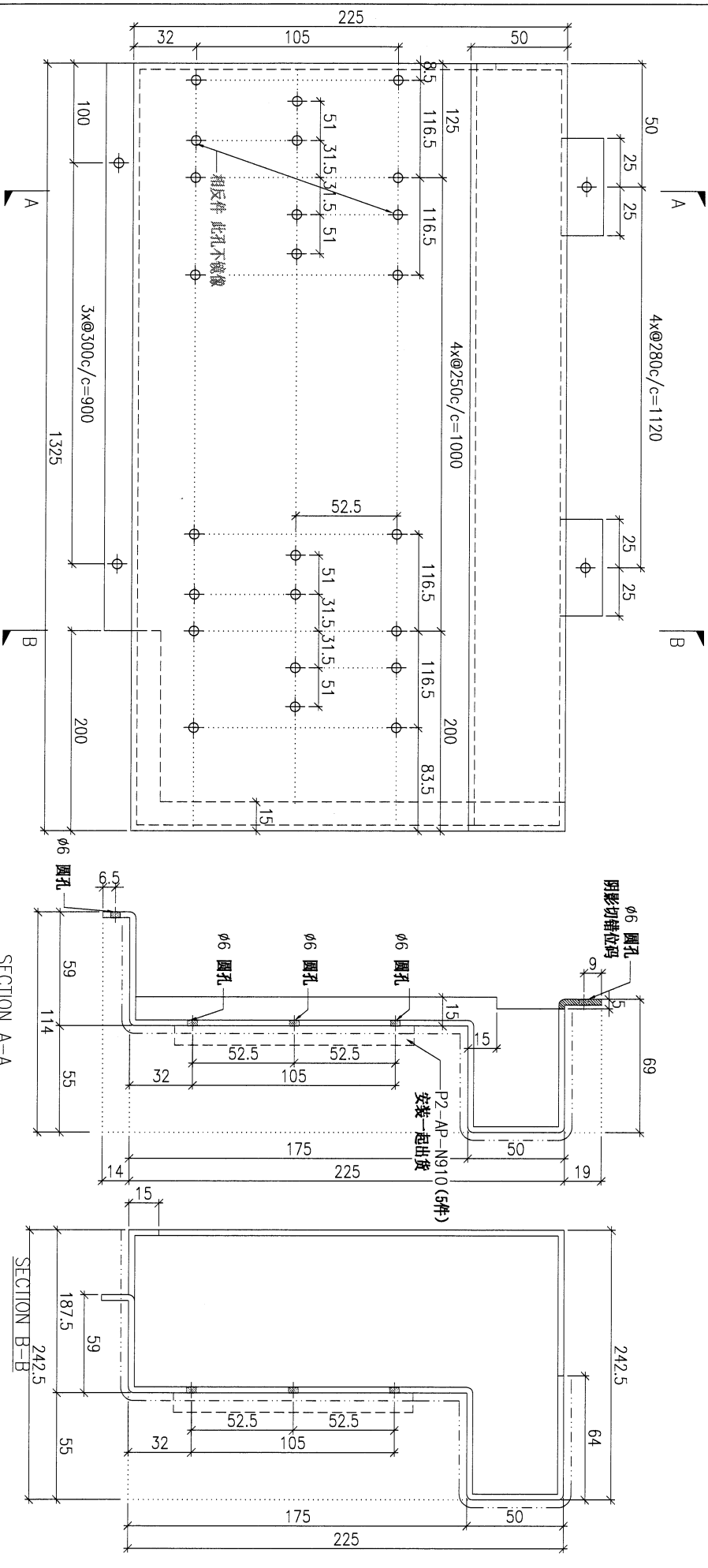
DATE  
05-11-2024

DRAWN BY

APPROVED BY

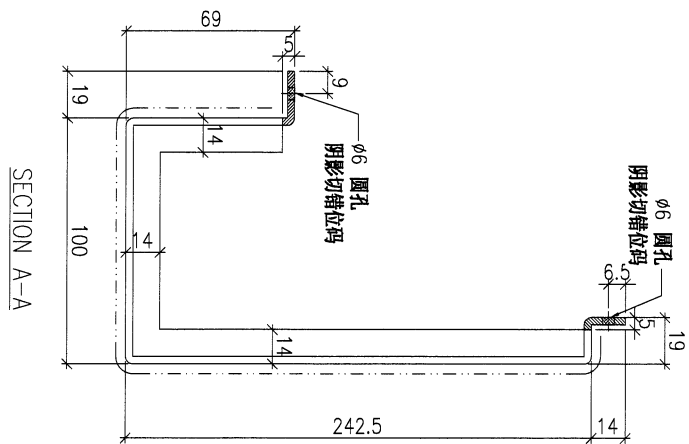
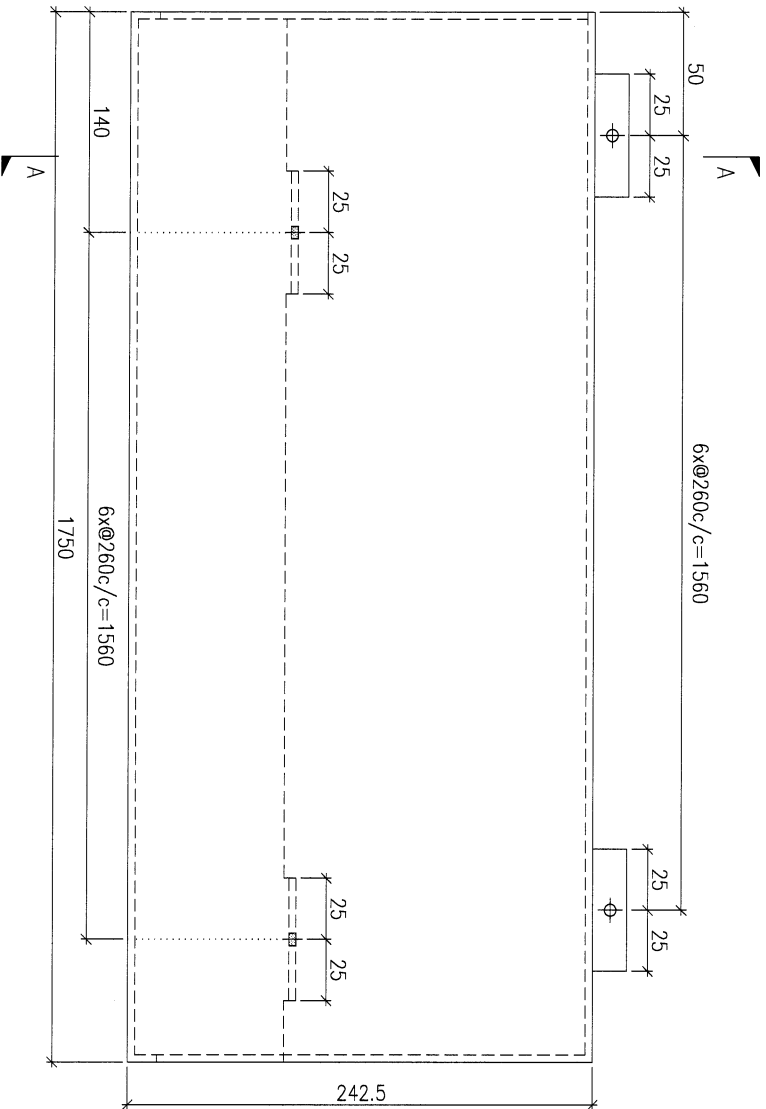
PROJECT				YIN PING ROAD KOWLOON FEATURE WALL (PHASE 2)				MATERIAL				3mm ALUM. CLADDING				COATING				PVF2				COLOUR				EC-DG-D34232-ZD1(SS-01)				MARK. NO.				QTY.																											
CHECKED HW BY				PART NUMBER				Dim. A				Dim. B				Dim. C				Dim. D				Dim. E				Dim. F				Dim. G				Dim. H				QTY.				Inv. Code				ASSEMBLE ON PARTS				注: 地盘用											
-				P2-AP-N917				-				-				-				-				-				-				-				-				2				-				-				-				-							
-				P2-AP-N917R				-				-				-				-				-				-				-				-				-				2				-				-				-				-			

注: 地盘用



DWG. NO.		P2-AP-N917		REV.		SCALE		DATE		DRAWN BY		APPROVED BY	
-		-		-		-		05-11-2024		-		-	

PROJECT				YIN PING ROAD KOWLOON FEATURE WALL (PHASE 2)				MATERIAL				3mm ALUM. CLADDING		COATING		PVF2		COLOUR		EC-DG-D34232-ZD1(SS-01)		MARK. NO.		-		QTY.		-	
CHKD	CHKD	PART NUMBER	Dim. A	Dim. B	Dim. C	Dim. D	Dim. E	Dim. F	Dim. G	Dim. H	QTY.	Inv. Code	ASSEMBLE ON PARTS				注: 地盤用												
-	CHK BY	P2-AP-N918	-	-	-	-	-	-	-	-	16	-																	



DWG. NO.		P2-AP-N918		REV.		-		SCALE		-		DATE		05-11-2024		DRAWN BY		-		APPROVED BY		-	
----------	--	------------	--	------	--	---	--	-------	--	---	--	------	--	------------	--	----------	--	---	--	-------------	--	---	--

PROJECT: YIN PING ROAD KOWLOON FEATURE WALL (PHASE 2)

MATERIAL: 3mm ALUM. CLADDING

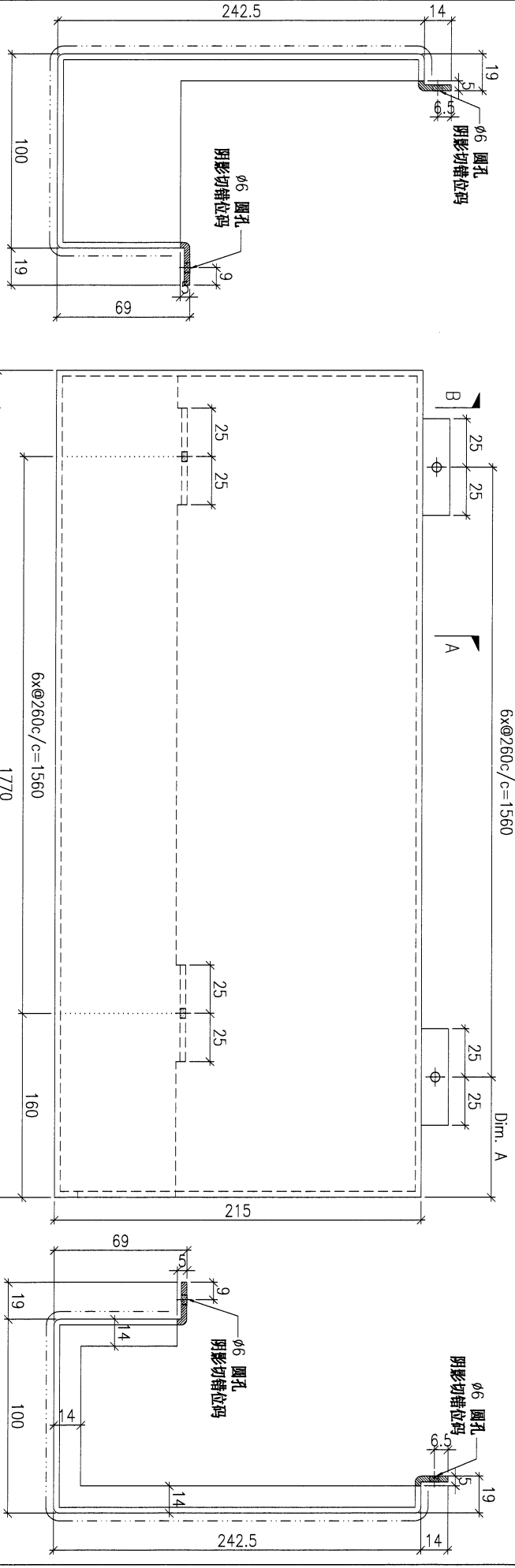
COATING: PVF2

COLOUR: EC-DG-D334232-ZD1(SS-01)

MARK. NO.:

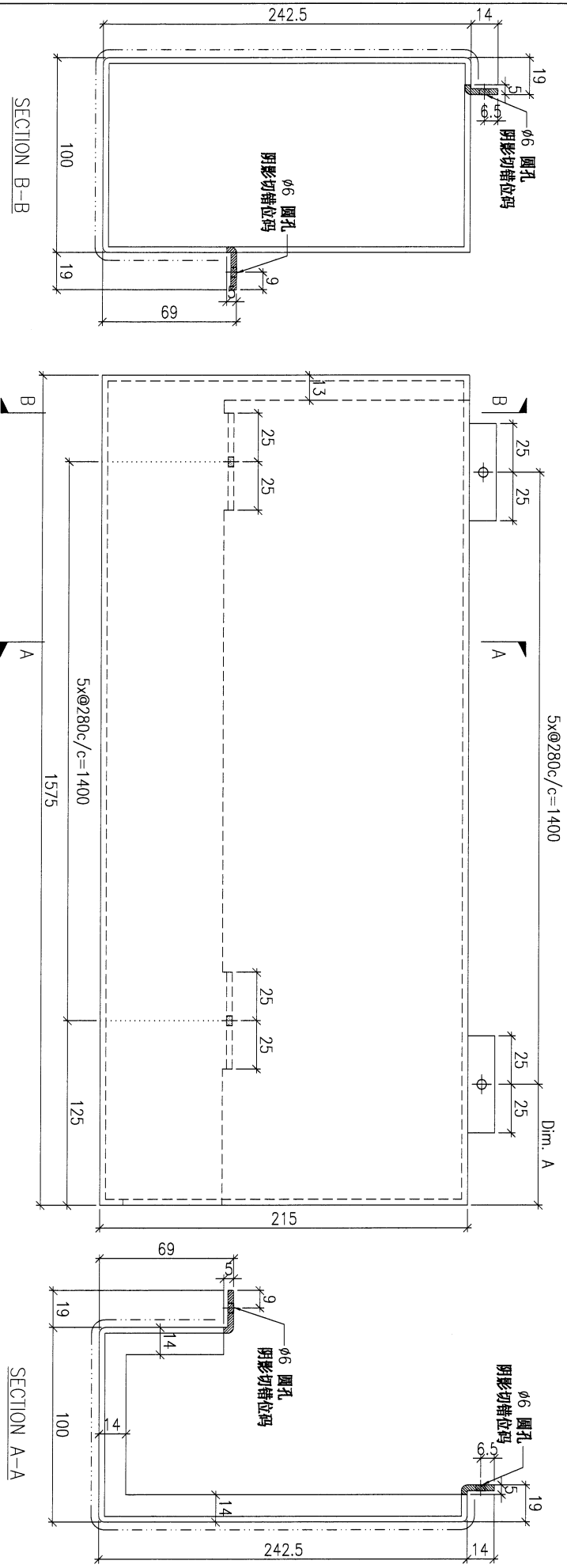
QTY.:

CHECKED DWG BY	PART NUMBER	Dim. A	Dim. B	Dim. C	Dim. D	Dim. E	Dim. F	Dim. G	Dim. H	QTY.	Inv. Code	ASSEMBLE ON PARTS	注: 地盘用
-	P2-AP-N919	50	-	-	-	-	-	-	-	4	-	-	注: 如图加工
-	P2-AP-N919R	160	-	-	-	-	-	-	-	4	-	-	注: 相反加工



DWG. NO.	REV.	SCALE	DATE	DRAWN BY	APPROVED BY
P2-AP-N919	-	-	05-11-2024	-	-

PROJECT				MATERIAL				COATING		COLOUR	MARK. NO.	QTY.
YIN PING ROAD KOWLOON FEATURE WALL (PHASE 2)				3mm ALUM. CLADDING				PVF2		EC-DG-D34232-ZD1(SS-011)	-	-
REV.	PART NUMBER	Dim. A	Dim. B	Dim. C	Dim. D	Dim. E	Dim. F	Dim. G	Dim. H	QTY.	Inv. Code	ASSEMBLE ON PARTS  <b>注: 地盤用</b>
Checked Sht. By	P2-AP-N920	50	-	-	-	-	-	-	-	1		
-	P2-AP-N920R	125	-	-	-	-	-	-	-	1		



DWG. NO.	REV.	SCALE	DATE	DRAWN BY	APPROVED BY
P2-AP-N920	-	-	05-11-2024	-	-

PROJECT  
YIN PING ROAD KOWLOON  
FEATURE WALL (PHASE 2)

MATERIAL  
3mm ALUM. CLADDING

COATING  
PVF2

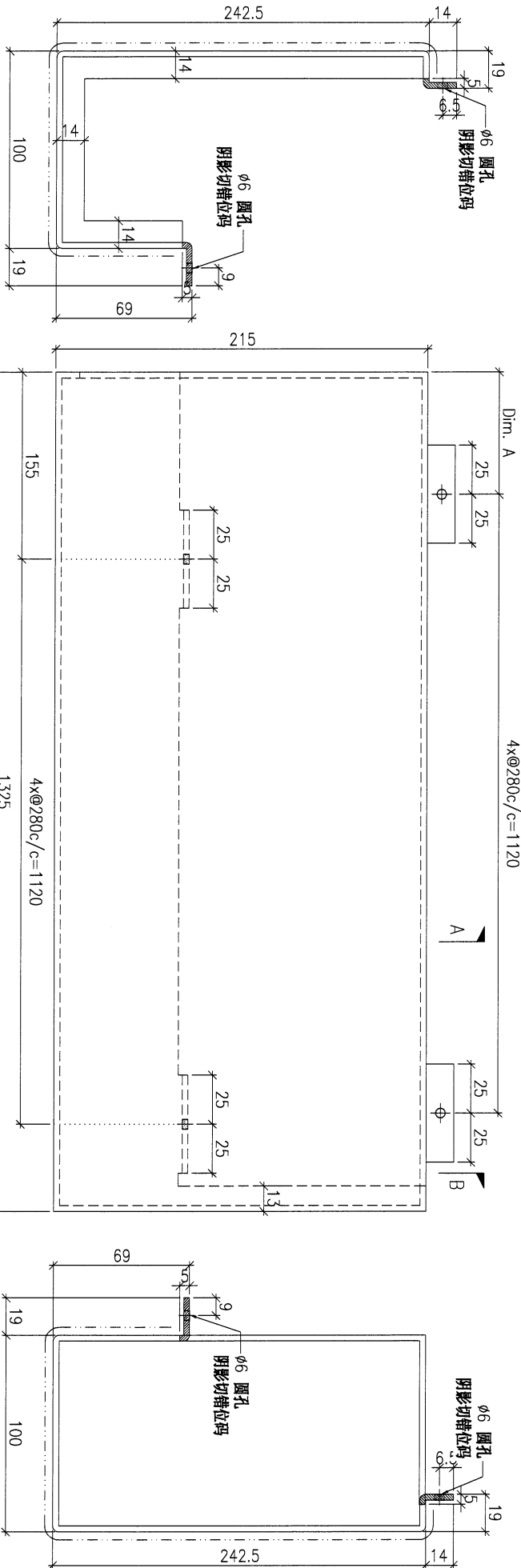
COLOUR  
EC-DG-D334232-ZD1(SS-01)

MARK. NO.  
-

QTY.  
-

REV.	CHECKED DWG BY	PART NUMBER	Dim. A	Dim. B	Dim. C	Dim. D	Dim. E	Dim. F	Dim. G	Dim. H	QTY.	Inv. Code	ASSEMBLE ON PARTS	注: 地盤用
-		P2-AP-N921	50	-	-	-	-	-	-	-	2			注: 如图加工
-		P2-AP-N921R	155	-	-	-	-	-	-	-	2			注: 相反加工

注: 地盤复尺



DWG. NO.

P2-AP-N921

REV.

SCALE

DATE  
05-11-2024

DRAWN BY

APPROVED BY

PROJECT  
YIN PING ROAD KOWLOON  
FEATURE WALL (PHASE 2)

MATERIAL  
3mm ALUM. CLADDING

COATING  
PVF2

COLOUR  
TUC106699FXLJBA-3(SS-03)

MARK. NO.  
-

QTY.  
-

CHECKED BY  
P2-AP-N922

Dim. A

Dim. B

Dim. C

Dim. D

Dim. E

Dim. F

Dim. G

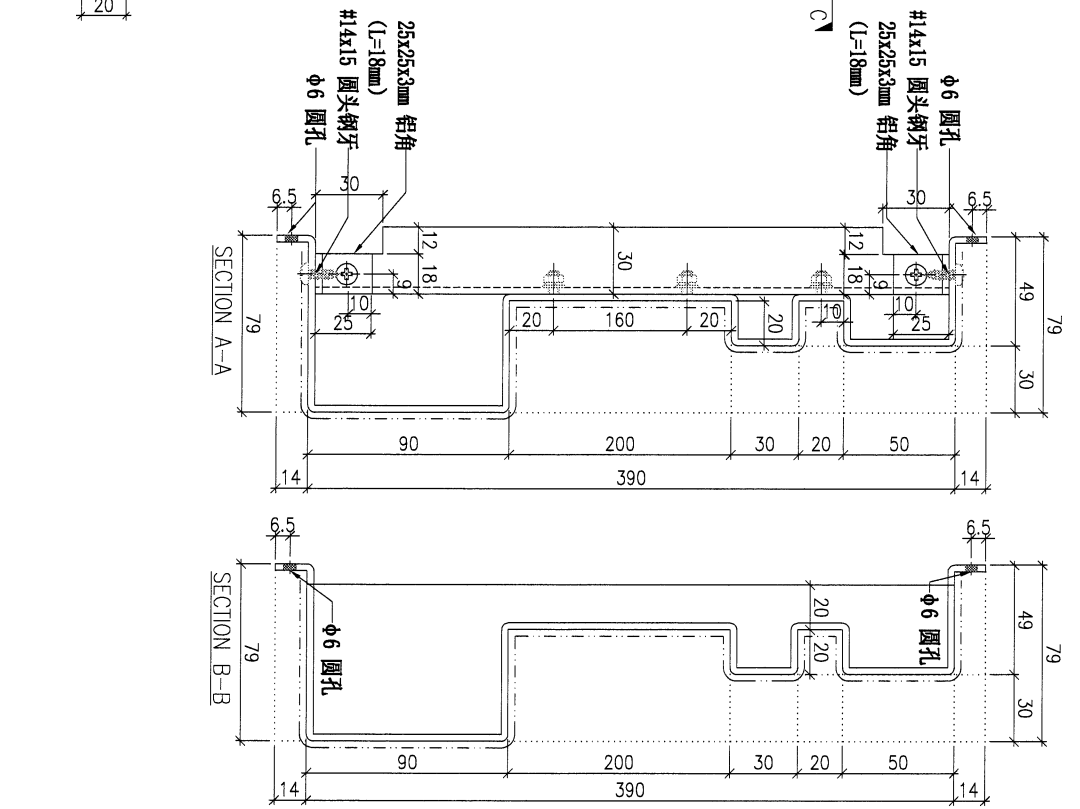
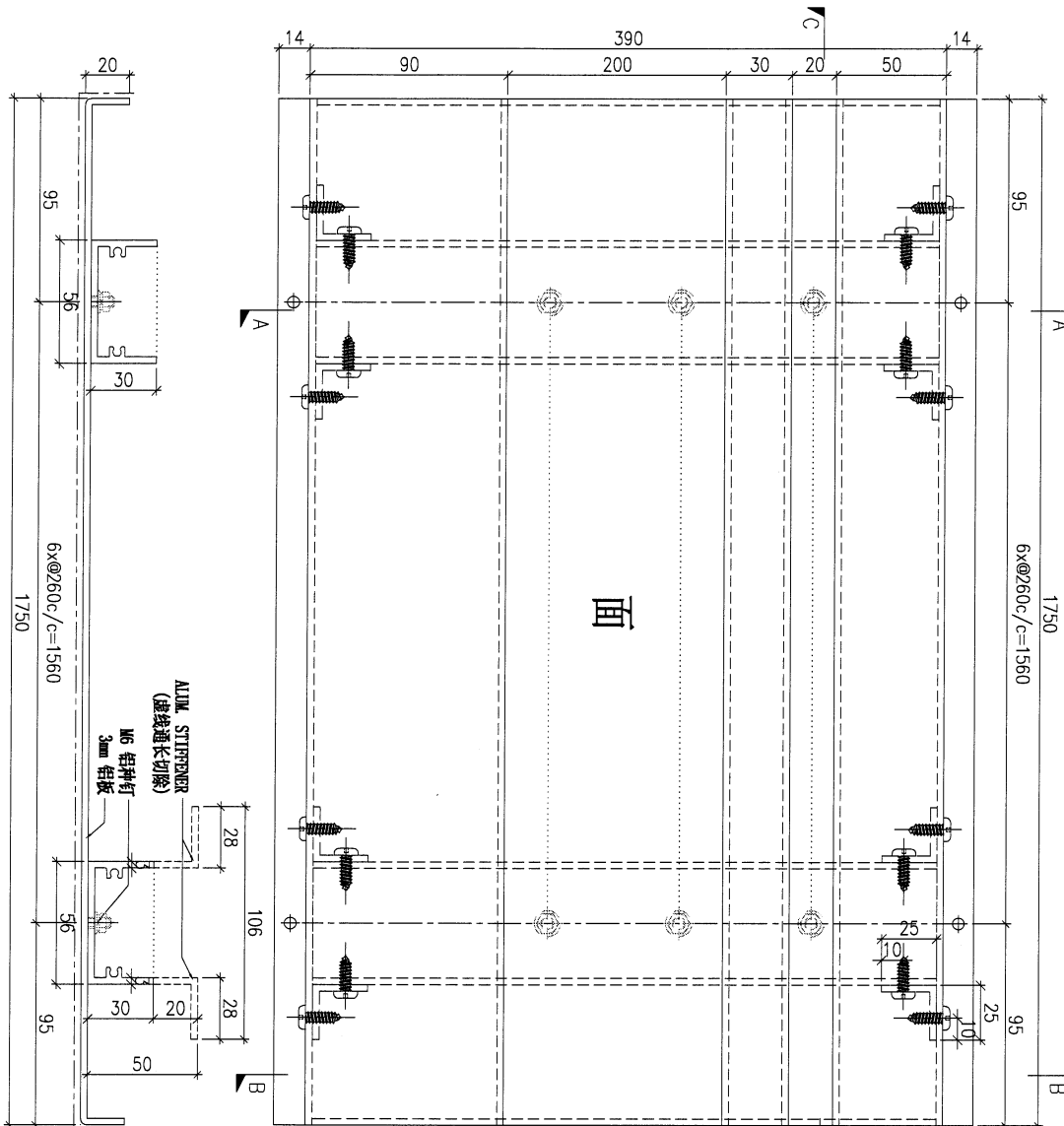
Dim. H

QTY.

Inv. Code

ASSEMBLE ON PARTS

注: 地盤用



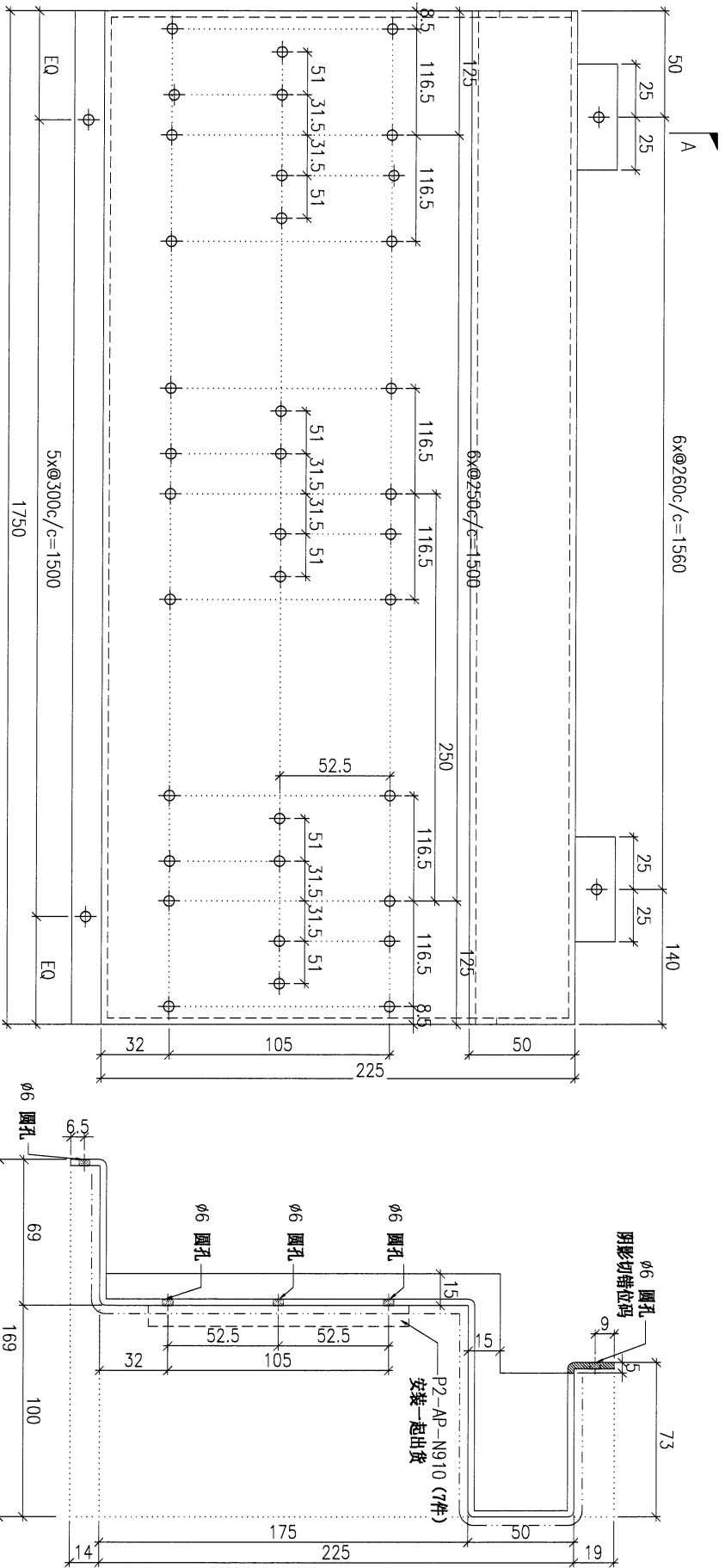
SECTION C-C

SECTION A-A

SECTION B-B

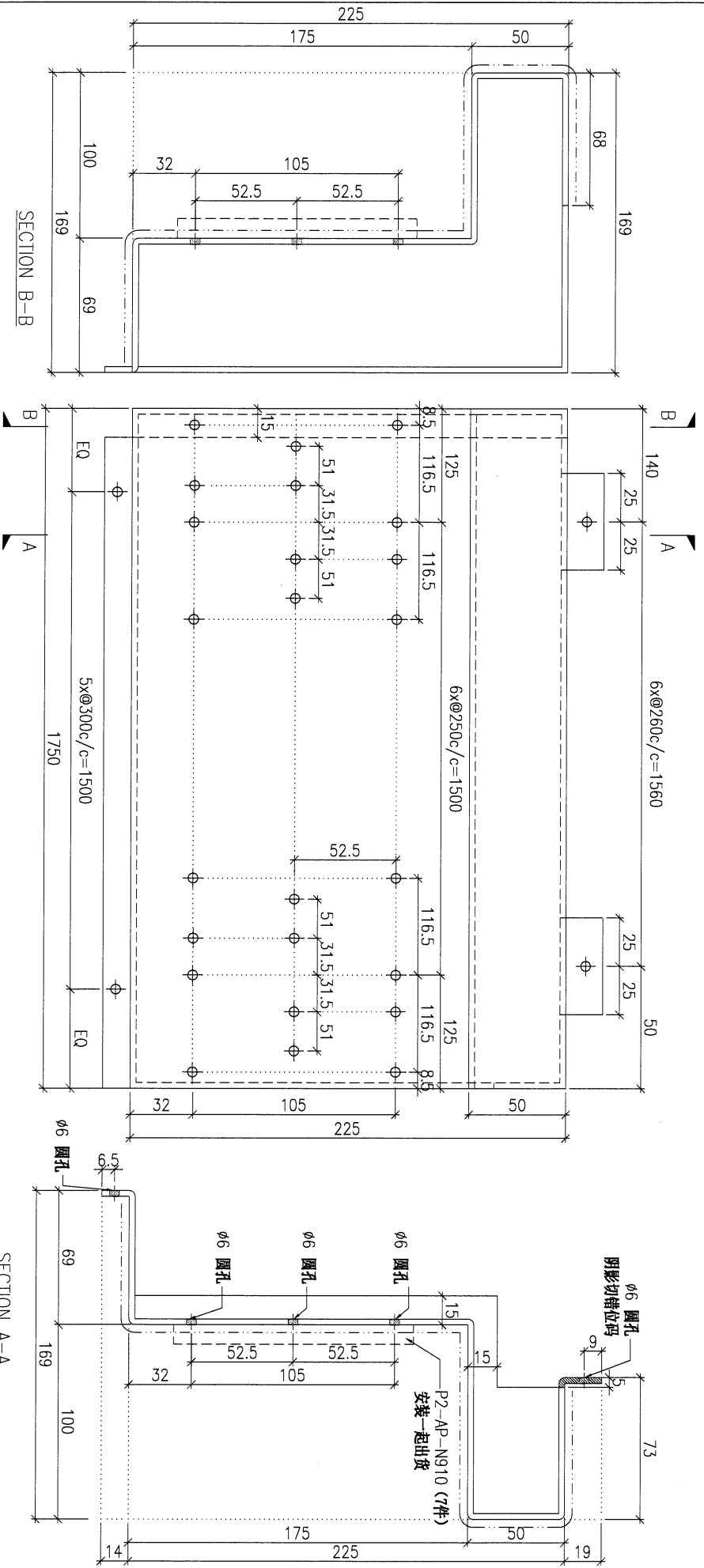
DWG. NO.	P2-AP-N922	REV.	-	SCALE	-	DATE	05-11-2024	DRAWN BY	-	APPROVED BY	-
----------	------------	------	---	-------	---	------	------------	----------	---	-------------	---

PROJECT				MATERIAL				COATING		COLOUR		MARK. NO.	QTY.
YIN PING ROAD KOWLOON FEATURE WALL (PHASE 2)				3mm ALUM. CLADDING				PVF2		EC-DG-D34232-ZD1(SS-01)		-	-
REV.	PART NUMBER	Dim. A	Dim. B	Dim. C	Dim. D	Dim. E	Dim. F	Dim. G	Dim. H	QTY.	Inv. Code	ASSEMBLY ON PARTS	
-	P2-AP-N925	-	-	-	-	-	-	-	-	15	-	注: 地盤用	



DWG. NO.		REV.		SCALE		DATE		DRAWN BY		APPROVED BY	
P2-AP-N925		-		-		05-11-2024		-		-	

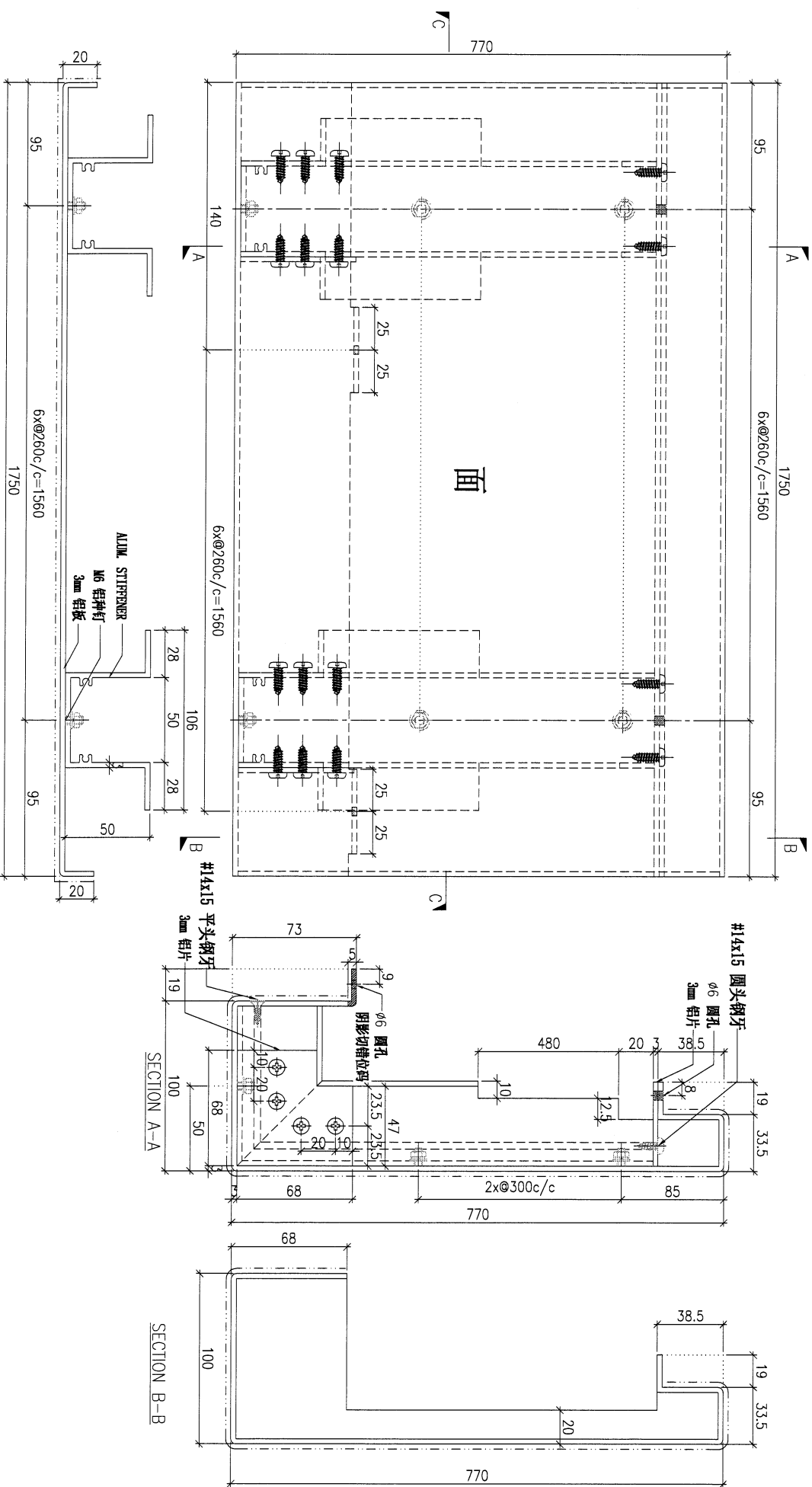
PROJECT				MATERIAL				COATING		COLOUR		MARK. NO.		QTY.	
YIN PING ROAD KOWLOON FEATURE WALL (PHASE 2)				3mm ALUM. CLADDING				PVF2		EC-DG-D34232-ZD1(SS-01)		-		-	
REL. CHECKED DATE BY	PART NUMBER	Dim. A	Dim. B	Dim. C	Dim. D	Dim. E	Dim. F	Dim. G	Dim. H	QTY.	Inv. Code	ASSEMBLE ON PARTS			
-	P2-AP-N926	-	-	-	-	-	-	-	-	3					
													<b>注：地盤用</b>		



DWG. NO.		REV.		SCALE		DATE		DRAWN BY		APPROVED BY	
P2-AP-N926		-		-		05-11-2024		-		-	



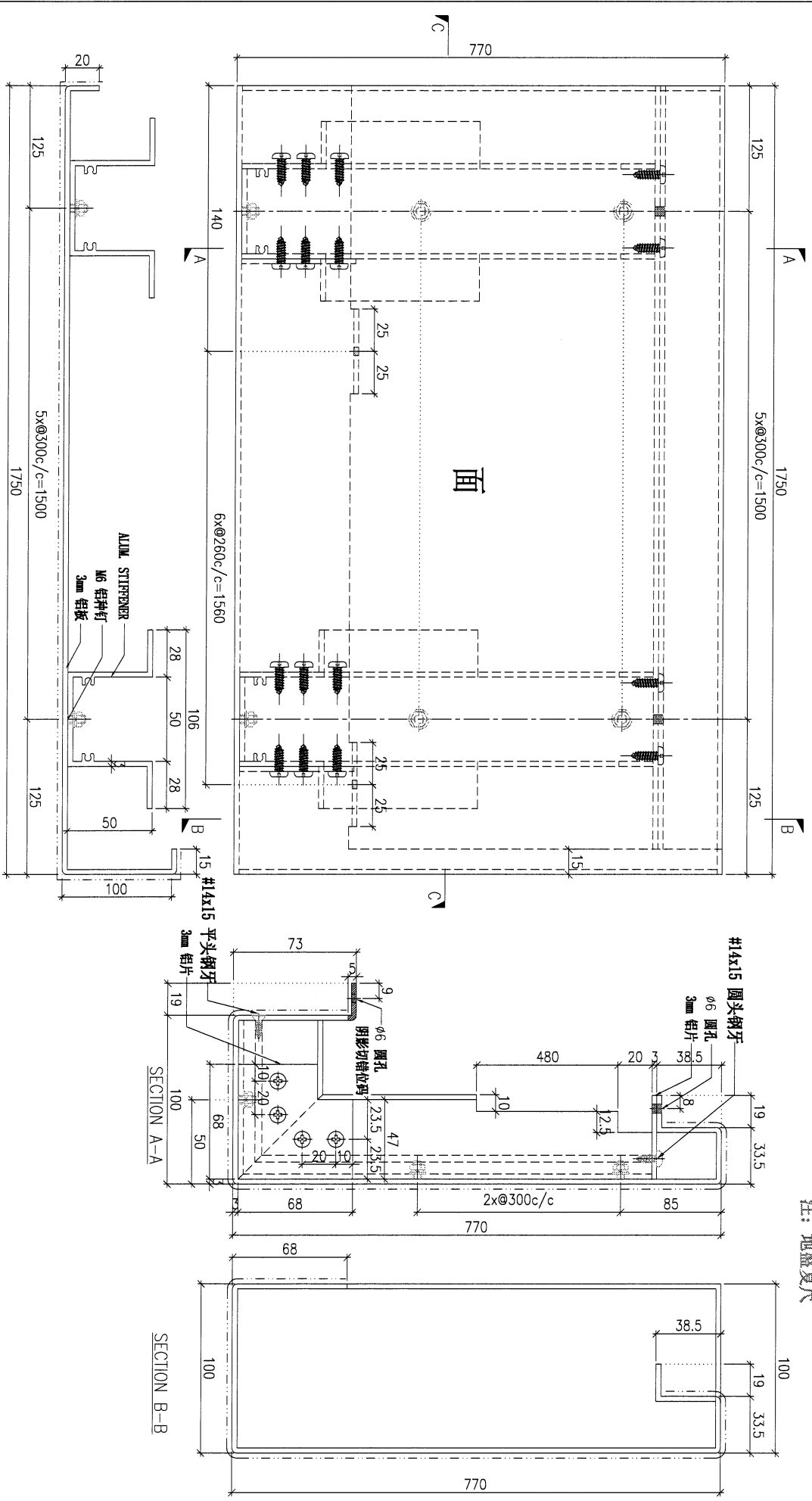
PROJECT				MATERIAL				COATING				COLOUR		MARK. NO.		QTY.	
YIN PING ROAD KOWLOON FEATURE WALL (PHASE 2)				3mm ALUM. CLADDING				PVF2				EC-DG-D34232-ZD1(SS-01)		-		-	
REV. CHK BY	PART NUMBER	Dim. A	Dim. B	Dim. C	Dim. D	Dim. E	Dim. F	Dim. G	Dim. H	QTY.	Inv. Code	ASSEMBLE ON PARTS					
-	P2-AP-N928	-	-	-	-	-	-	-	-	15	-						
<b>注: 地盤用</b>																	



DWG. NO.		REV.		SCALE		DATE		DRAWN BY		APPROVED BY	
P2-AP-N928		-		-		05-11-2024		-		-	

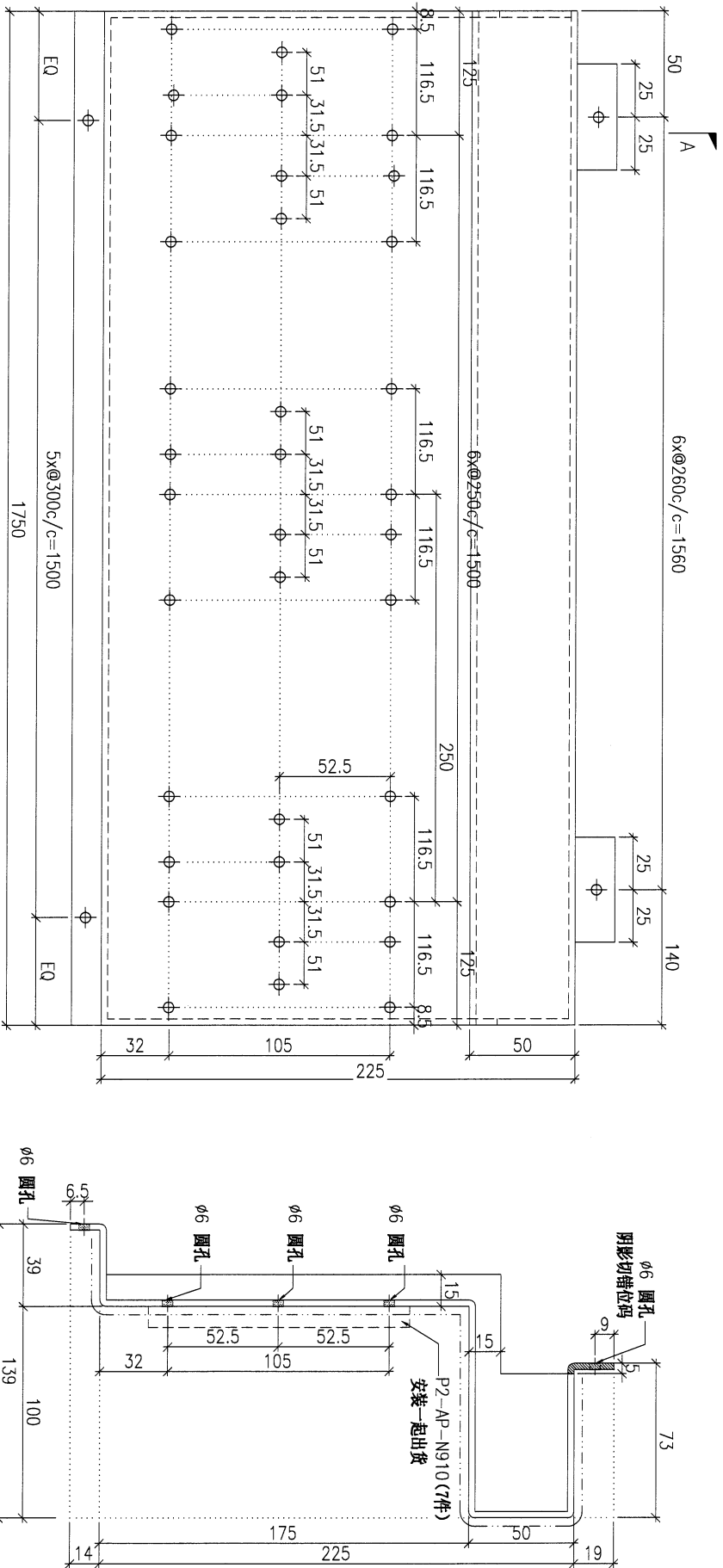


PROJECT				MATERIAL				COATING		COLOUR		MARK. NO.		QTY.	
YIN PING ROAD KOWLOON FEATURE WALL (PHASE 2)				3mm ALUM. CLADDING				PVF2		EC-DG-D334232-ZD1(SS-011)		-		-	
CHKD DWG BY	PART NUMBER	Dim. A	Dim. B	Dim. C	Dim. D	Dim. E	Dim. F	Dim. G	Dim. H	QTY.	Inv. Code	ASSEMBLY ON PARTS		注: 地盤用	
-	P2-AP-N930	-	-	-	-	-	-	-	-	3	-				



DWG. NO.		REV.		SCALE		DATE		DRAWN BY		APPROVED BY	
P2-AP-N930		-		-		05-11-2024		-		-	

PROJECT				YIN PING ROAD KOWLOON FEATURE WALL (PHASE 2)				MATERIAL				3mm ALUM. CLADDING				COATING				PVF2				COLOUR				FC-DG-D34232-ZD1(SS-01)				MARK. NO.				QTY.			
REV. CHECKED		PART NUMBER		Dim. A		Dim. B		Dim. C		Dim. D		Dim. E		Dim. F		Dim. G		Dim. H		QTY.		Inv. Code		ASSEMBLY ON PARTS				QTY.											
-		P2-AP-N931		-		-		-		-		-		-		-		-		18								-											
<b>注：地盤用</b>																																							



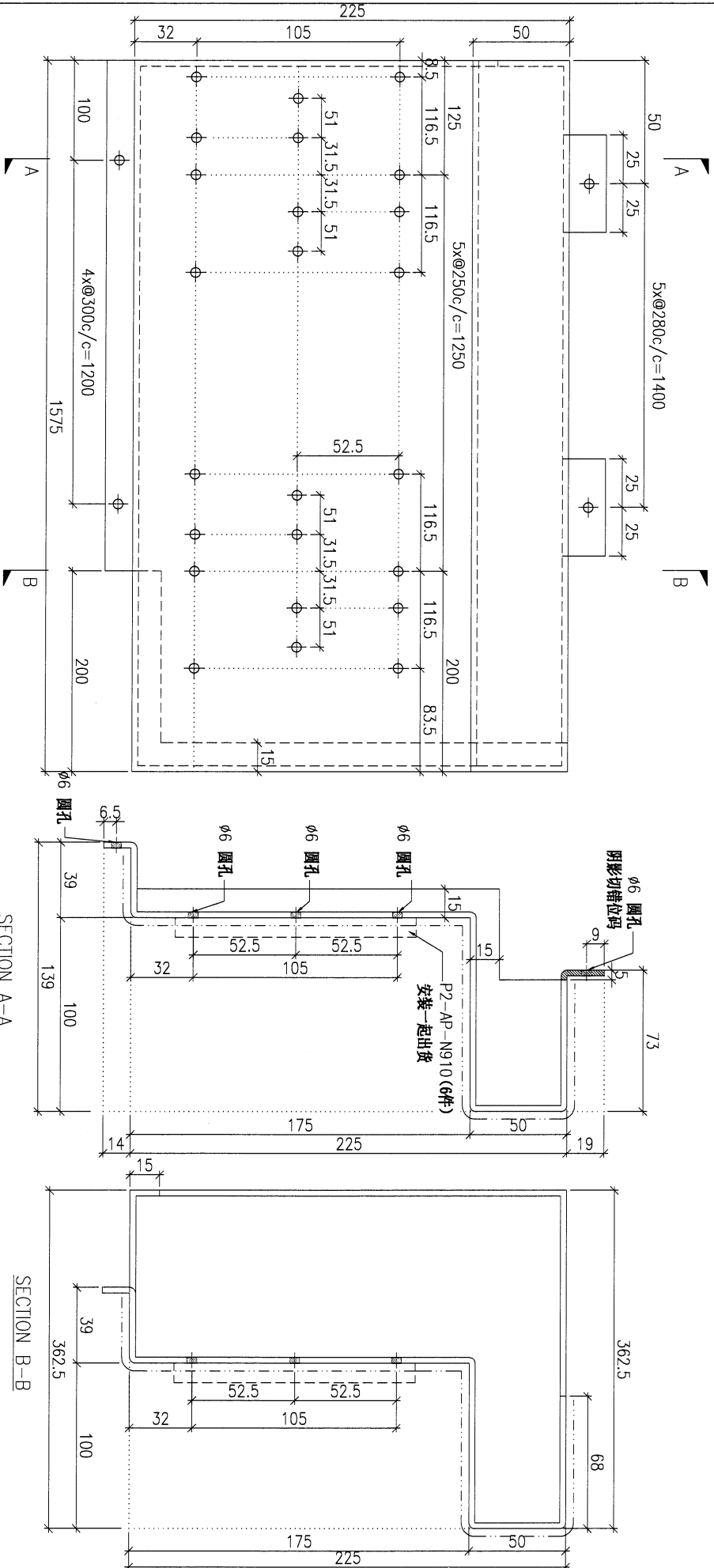
SECTION A-A

DWG. NO.		P2-AP-N931		REV.		SCALE		DATE		DRAWN BY		APPROVED BY	
								05-11-2024					



PROJECT				MATERIAL				COATING		COLOUR		MARK. NO.	QTY.
YIN PING ROAD KOWLOON FEATURE WALL (PHASE 2)				3mm ALUM. CLADDING				PVF2		EG-DG-D334232-ZD1(SS-01)		-	-
REV.	CHECKED DATE BY	PART NUMBER	Dim. A	Dim. B	Dim. C	Dim. D	Dim. E	Dim. F	Dim. G	Dim. H	QTY.	Inv. Code	ASSEMBLY ON PARTS
-		P2-AP-N933	-	-	-	-	-	-	-	-	2		注: 地盤用

注: 地盤复尺



SECTION A-A

SECTION B-B

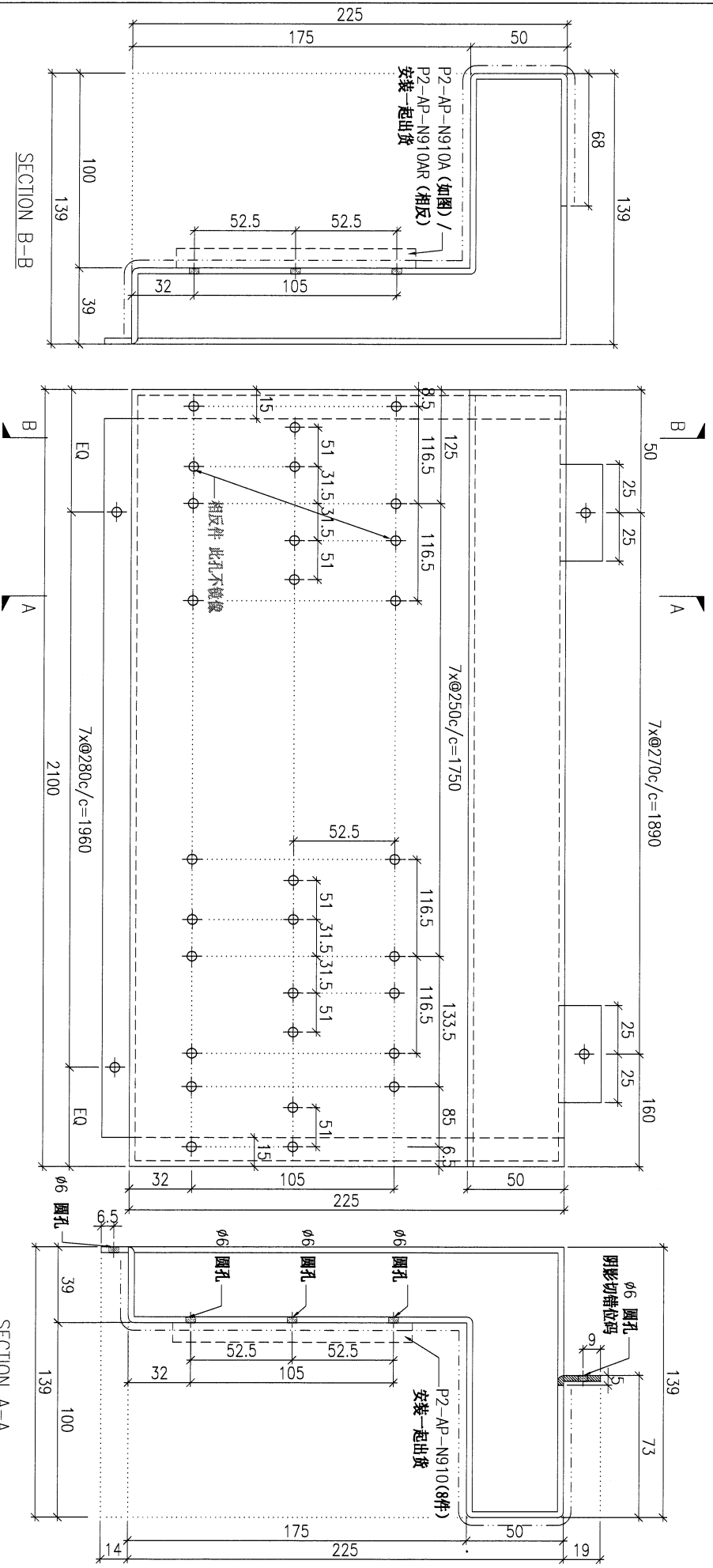
DWG. NO.		REV.		SCALE		DATE		DRAWN BY		APPROVED BY	
P2-AP-N933		-		-		05-11-2024		-		-	



PROJECT				MATERIAL				COATING				COLOUR		MARK: NO.		QTY.	
YIN PING ROAD KOWLOON FEATURE WALL (PHASE 2)				3mm ALUM. CLADDING				PVF2				EC-DG-D334232-ZD1(SS-01)		-		-	
REV.	CHECKED DATE BY	PART NUMBER	Dim. A	Dim. B	Dim. C	Dim. D	Dim. E	Dim. F	Dim. G	Dim. H	QTY.	Inv. Code	ASSEMBLE ON PARTS				
-	-	P2-AP-N935	-	-	-	-	-	-	-	-	1	-	注: 如图加工				
-	-	P2-AP-N935R	-	-	-	-	-	-	-	-	1	-	注: 相反加工				

注: 地盤复尺

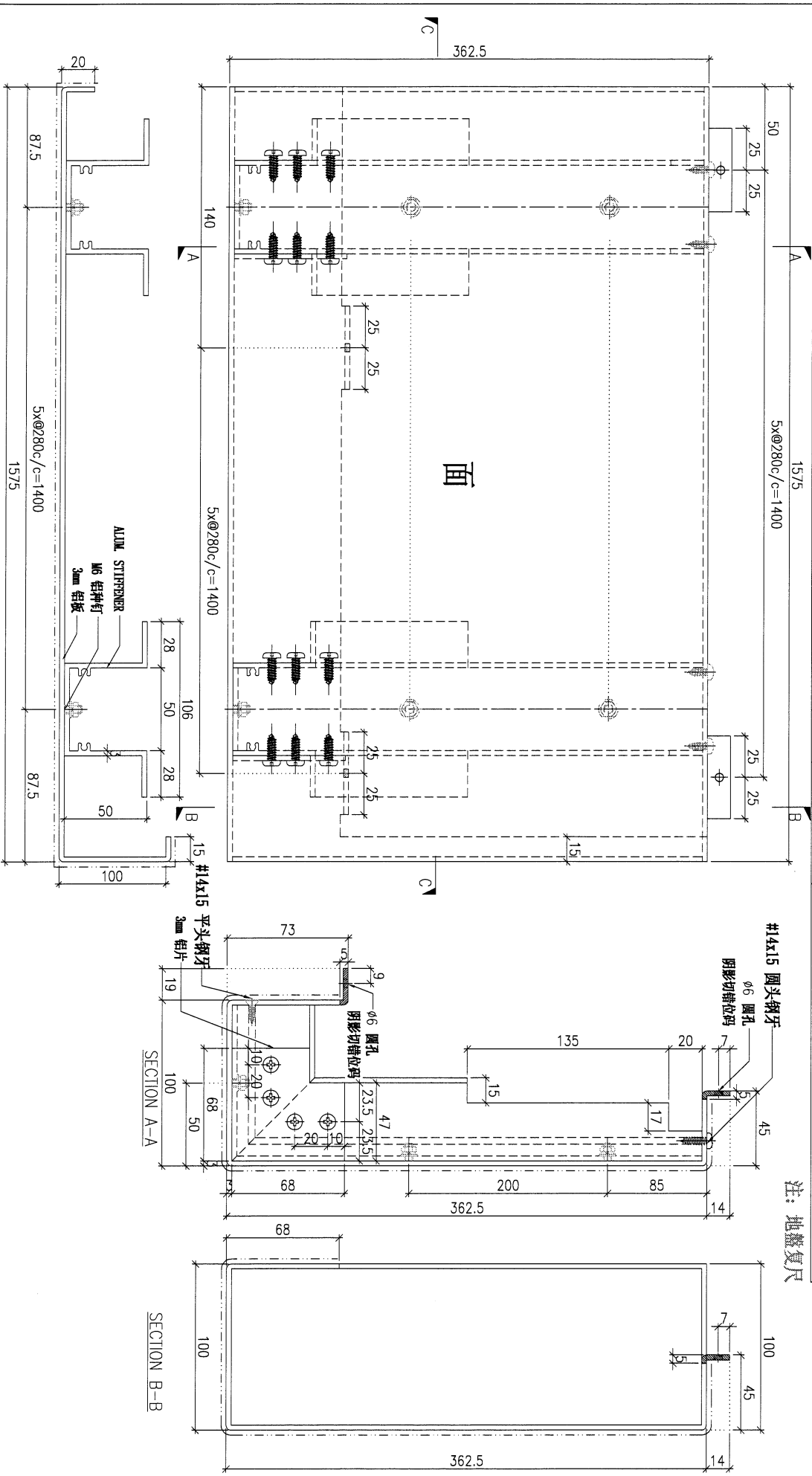
注: 地盤用



DWG. NO.		REV.		SCALE		DATE		DRAWN BY		APPROVED BY	
P2-AP-N935		-		-		05-11-2024		-		-	



PROJECT				MATERIAL				COATING				COLOUR		MARK. NO.		QTY.	
YIN PING ROAD KOWLOON FEATURE WALL (PHASE 2)				3mm ALUM. CLADDING				PVF2				EC-DG-D334232-ZD1(SS-01)		-		-	
REV.	DESIGNED BY	PART NUMBER	Dim. A	Dim. B	Dim. C	Dim. D	Dim. E	Dim. F	Dim. G	Dim. H	QTY.	Inv. Code	ASSEMBLE ON PARTS				
-		P2-AP-N937	-	-	-	-	-	-	-	-	2						
<b>注: 地盤用</b>																	



DWG. NO.		REV.		SCALE		DATE		DRAWN BY		APPROVED BY	
P2-AP-N937		-		-		05-11-2024		-		-	





PROJECT  
YIN PING ROAD KOWLOON  
FEATURE WALL (PHASE 2)

MATERIAL  
3mm ALUM. CLADDING

COATING  
PVF2

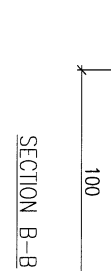
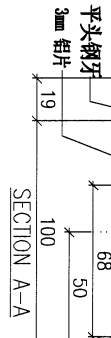
COLOUR  
EC-DG-D334232-ZD1(SS-01)

MARK. NO.  
-

QTY.  
-

REV.	CHANGED BAR BY	PART NUMBER	Dim. A	Dim. B	Dim. C	Dim. D	Dim. E	Dim. F	Dim. G	Dim. H	QTY.	Inv. Code	ASSEMBLY ON PARTS
-	-	P2-AP-N940	50	-	-	-	-	-	-	-	1	-	注: 如图加工
-	-	P2-AP-N940R	160	-	-	-	-	-	-	-	1	-	注: 相反加工

注: 地盤用

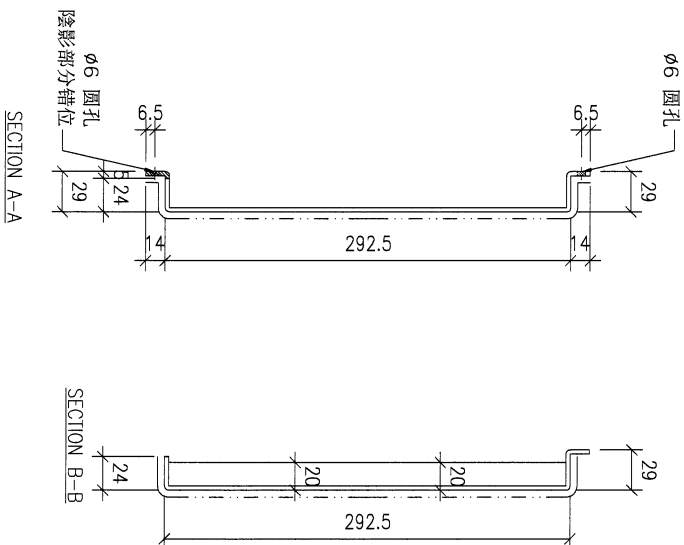
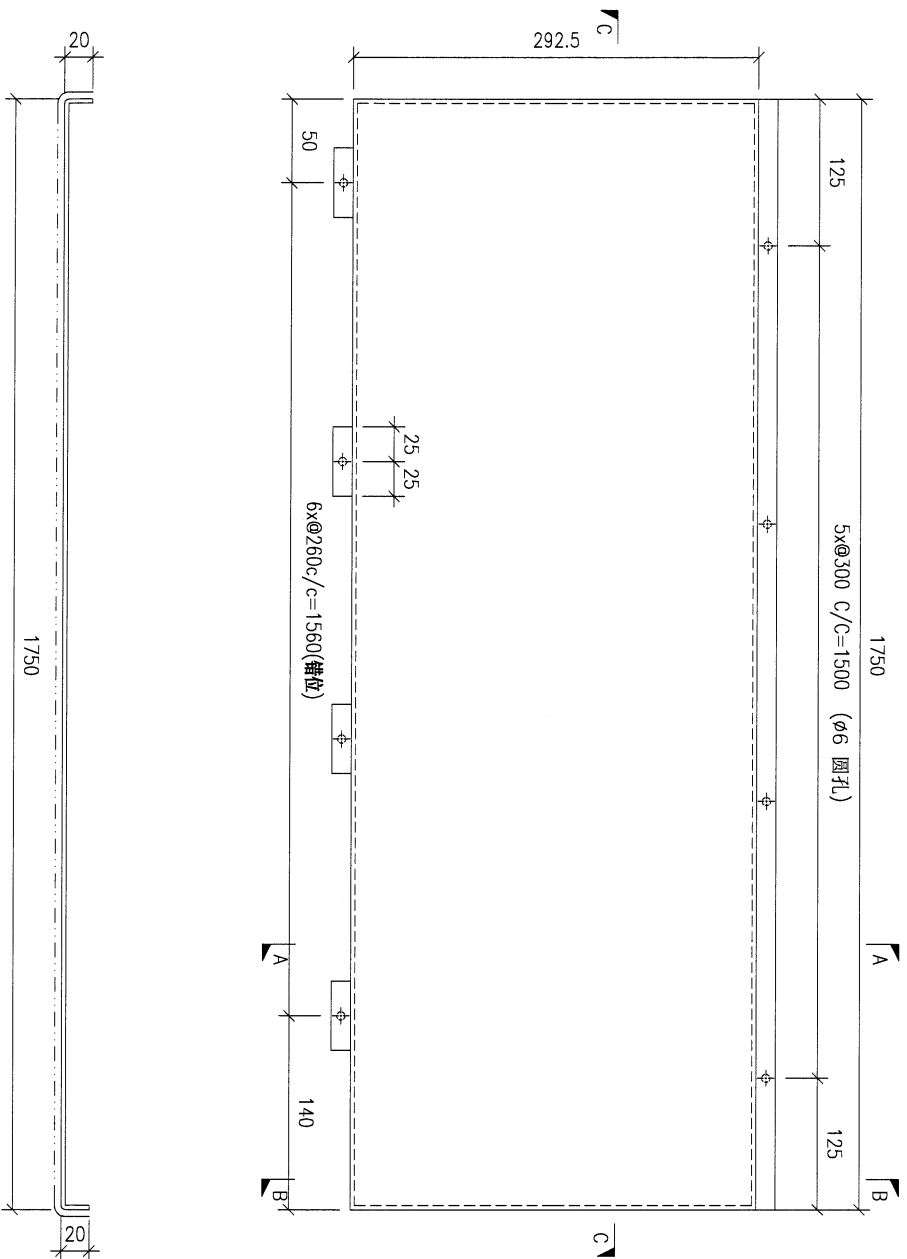


SECTION C-C

DWG. NO.	P2-AP-N940	REV.	-	SCALE	-	DATE	05-11-2024	DRAWN BY	-	APPROVED BY	-
----------	------------	------	---	-------	---	------	------------	----------	---	-------------	---



PROJECT				YIN PING ROAD KOWLOON FEATURE WALL (PHASE 2)				MATERIAL				3mm ALUM. CLADDING				COATING				PVF2				COLOUR				EC-DG-D334232-ZD1(SS-01)				MARK. NO.				-				QTY.				-			
REV.	CHANGED BY	PART NUMBER	Dim. A	Dim. B	Dim. C	Dim. D	Dim. E	Dim. F	Dim. G	Dim. H	QTY.	Inv. Code	ASSEMBLE ON PARTS																																		
-		P2-AP-N942	-	-	-	-	-	-	-	-	6																																				
																注: 地盤用																															



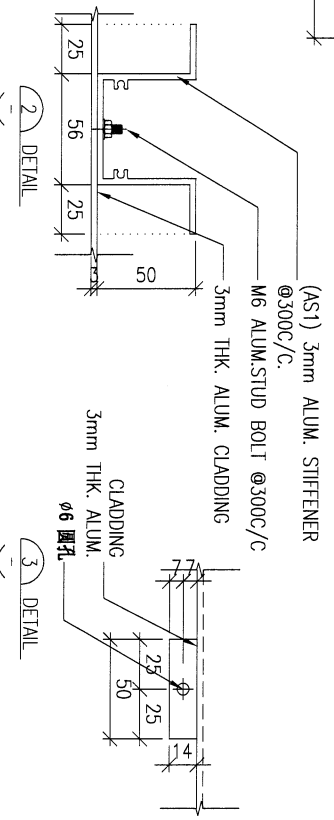
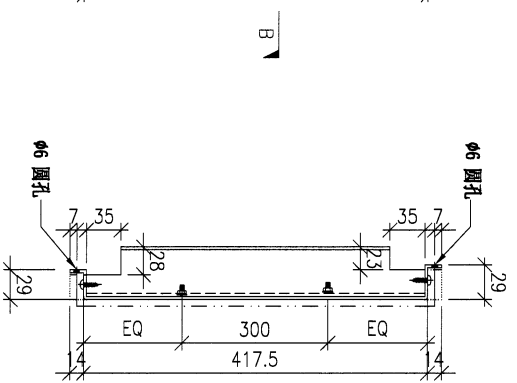
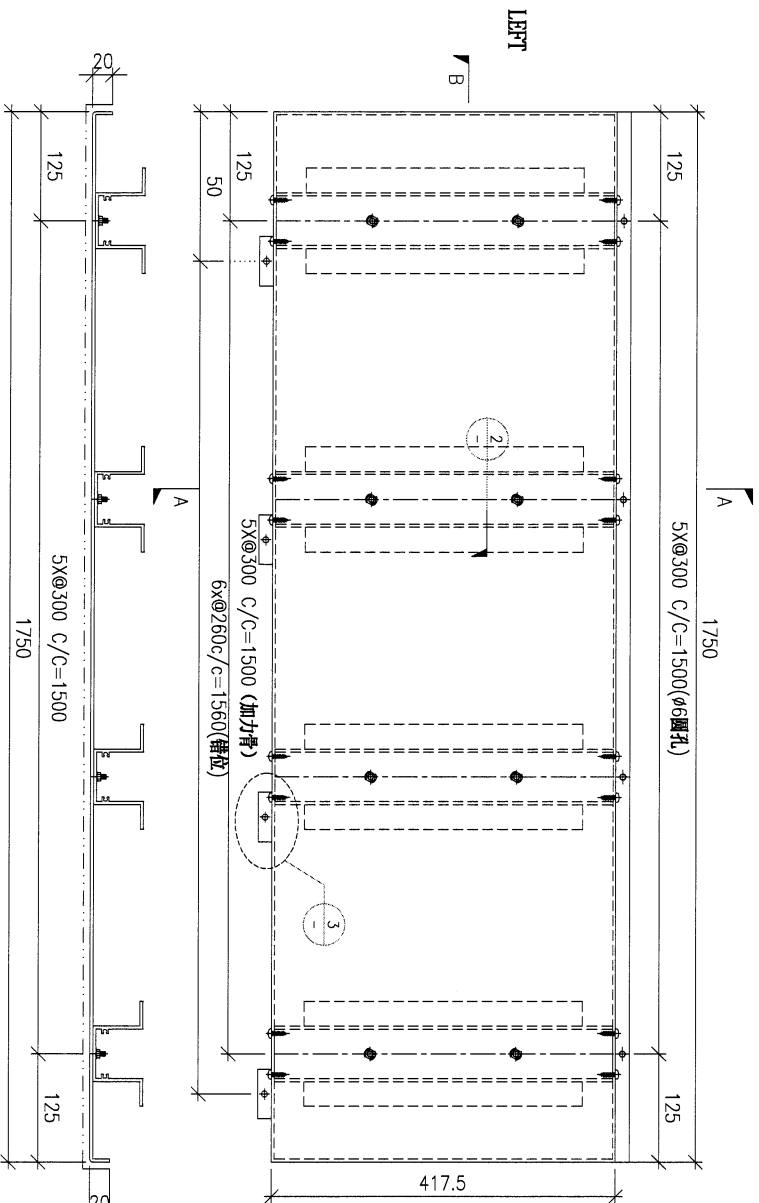
SECTION C-C

SECTION A-A

SECTION B-B

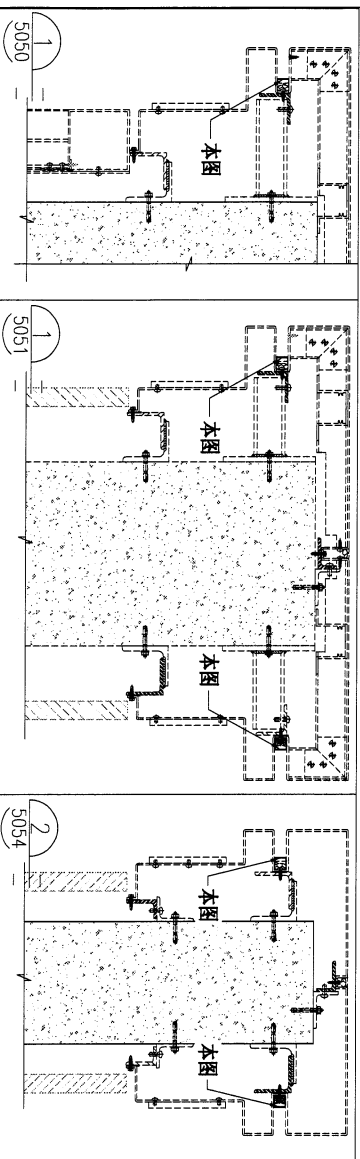
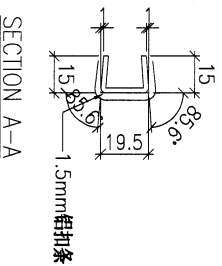
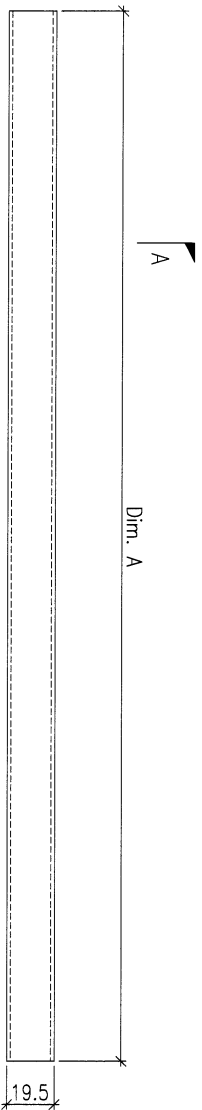
DWG. NO.		P2-AP-N942		REV.		-		SCALE		-		DATE		11-07-2024		DRAWN BY		-		APPROVED BY		-	
----------	--	------------	--	------	--	---	--	-------	--	---	--	------	--	------------	--	----------	--	---	--	-------------	--	---	--

PROJECT				YIN PING ROAD KOWLOON FEATURE WALL (PHASE 2)				MATERIAL				COATING				COLOUR		MARK. NO.		QTY.	
3mm ALUM. CLADDING				PVF2				EC-DG-D334232-ZD1(SS-01)		ASSEMBLE ON PARTS											
REV.	CHANGED BY	PART NUMBER	Dim. A	Dim. B	Dim. C	Dim. D	Dim. E	Dim. F	Dim. G	Dim. H	QTY.	Inv. Code									
-		P2-AP-N943	-	-	-	-	-	-	-	-	5										
													<b>注：地盘用</b>								



DWG. NO.	REV.	SCALE	DATE	DRAWN BY	APPROVED BY
P2-AP-N943	-	-	15-06-2023		

PROJECT				MATERIAL				COATING				COLOUR		MARK. NO.		QTY.	
YIN PING ROAD KOWLOON FEATURE WALL (PHASE 2)				1.5mm ALUM. CLADDING				PVF2				EC-DG-D334232-ZD1(SS-01)		-		-	
REV.	CHANGED BY	PART NUMBER	Dim. A	Dim. B	Dim. C	Dim. D	Dim. E	Dim. F	Dim. G	Dim. H	QTY.	Inv. Code	ASSEMBLE ON PARTS				
-		P2-AP-N944	1750	-	-						86						
													注：地盤用				

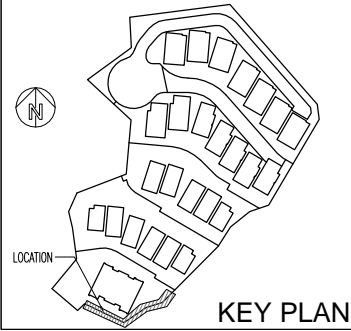


DWG. NO.		REV.		SCALE		DATE		DRAWN BY		APPROVED BY	
P2-AP-N944		-		-		22-03-2023		-		-	

DWG NO.: J853-SD-FW-3037a

FEATURE WALL 铝板派位图 (part9)

B.D. REF :



CLIENT :

SHIMAO GROUP HOLDINGS LIMITED

ARCHITECT :

WONG TUNG & PARTNERS LIMITED ARCHITECTS & PLANNERS



MAIN CONTRACTOR :

協興建築有限公司 HIP HING CONSTRUCTION CO LTD

STRUCTURAL ENGINEER :

CMA C M WONG & ASSOCIATES LTD 黃志明建築工程師有限公司

FACADE CONSULTANT :



NOTE :

1. ALL DIMENSIONS ARE IN mm.
2. ALL ELEVATIONS ARE VIEWED FROM OUTSIDE.
3. ALL DIMENSIONS TO BE VERIFIED ON SITE BEFORE FABRICATION.

LEGEND :

- (X1) -- DETAIL MARK NO.
- (X001) -- REFER SHEET NO.

1. F.F.L. -- FINISHED FLOOR LEVEL
2. S.F.L. -- STRUCTURAL FLOOR LEVEL
3. (R) -- REVERSED DETAIL

NO.	DATE	REVISED	BY

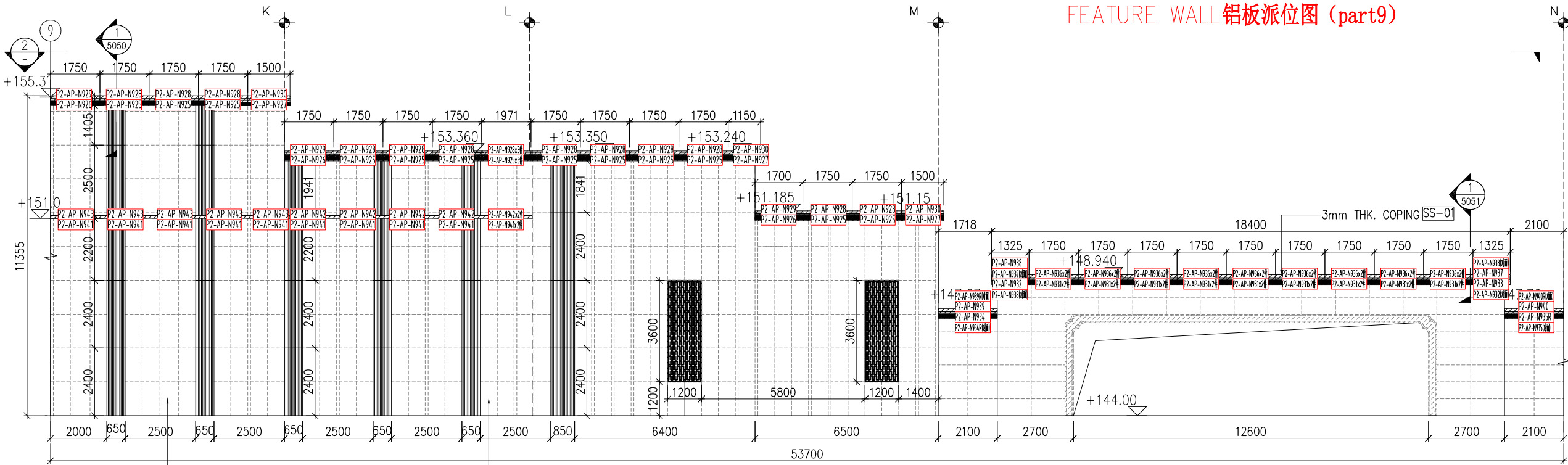
JOB NO. : J-853  
 PROJECT : PROPOSED RESIDENTIAL DEVELOPMENT AT N.K.I.L. 6542 YIN PING ROAD KOWLOON

TITLE : PARTIAL ELEVATION & PLAN OF FEATURE WALL (PHASE 2)

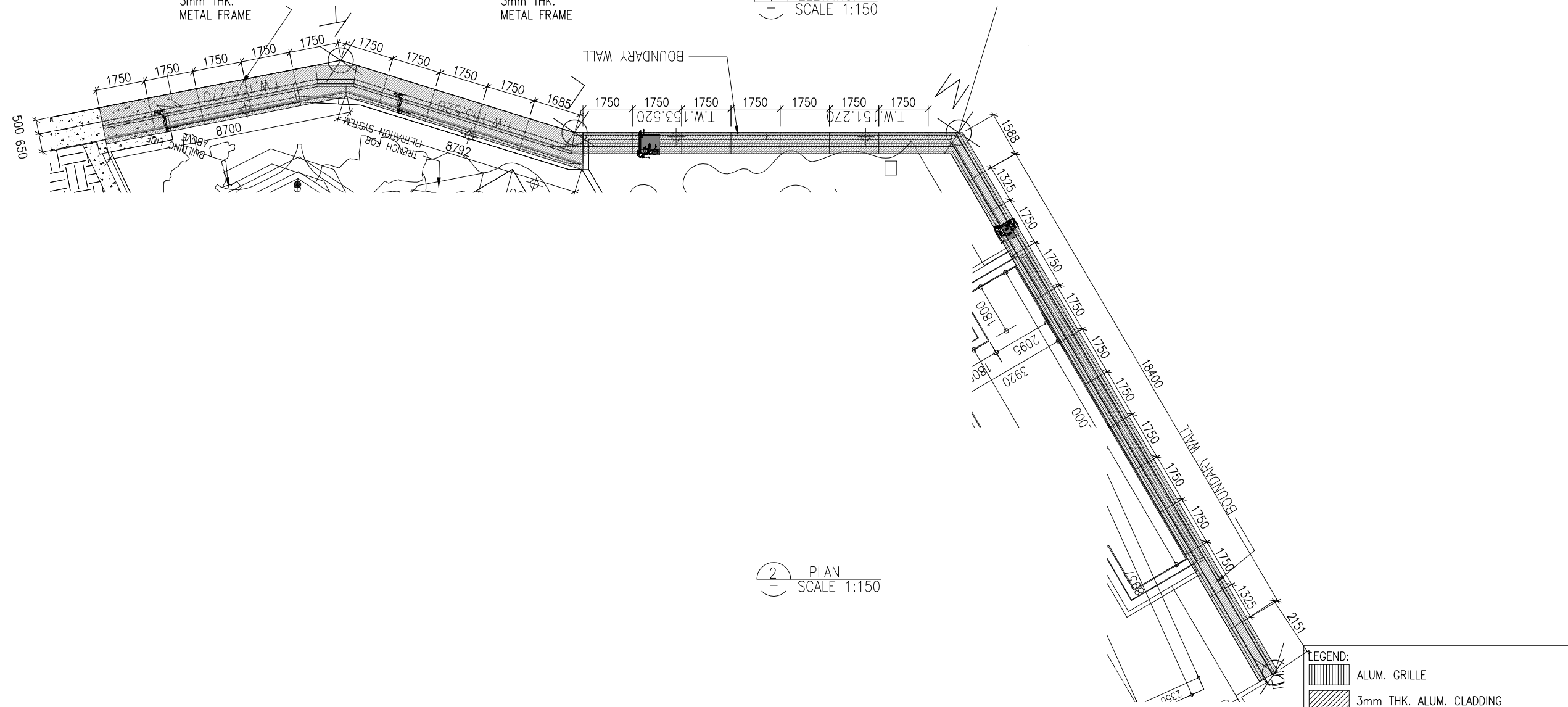
DATE : 20-Sep-24 SCALE : 1:150 (A3)  
 DRAWN BY : LHR CHECKED BY :

美特鋁質有限公司  
 MIDI ALUMINIUM FABRICATOR LTD.  
 Units 6-8, Sunray Industrial Centre, 1/F  
 610 Cha Kwo Ling Road, Kowloon  
 Tel: 23489211-4 Fax: (852) 27727666

DWG NO. : J853-SD-FW-3037A REV. : -



1 ELEVATION SCALE 1:150

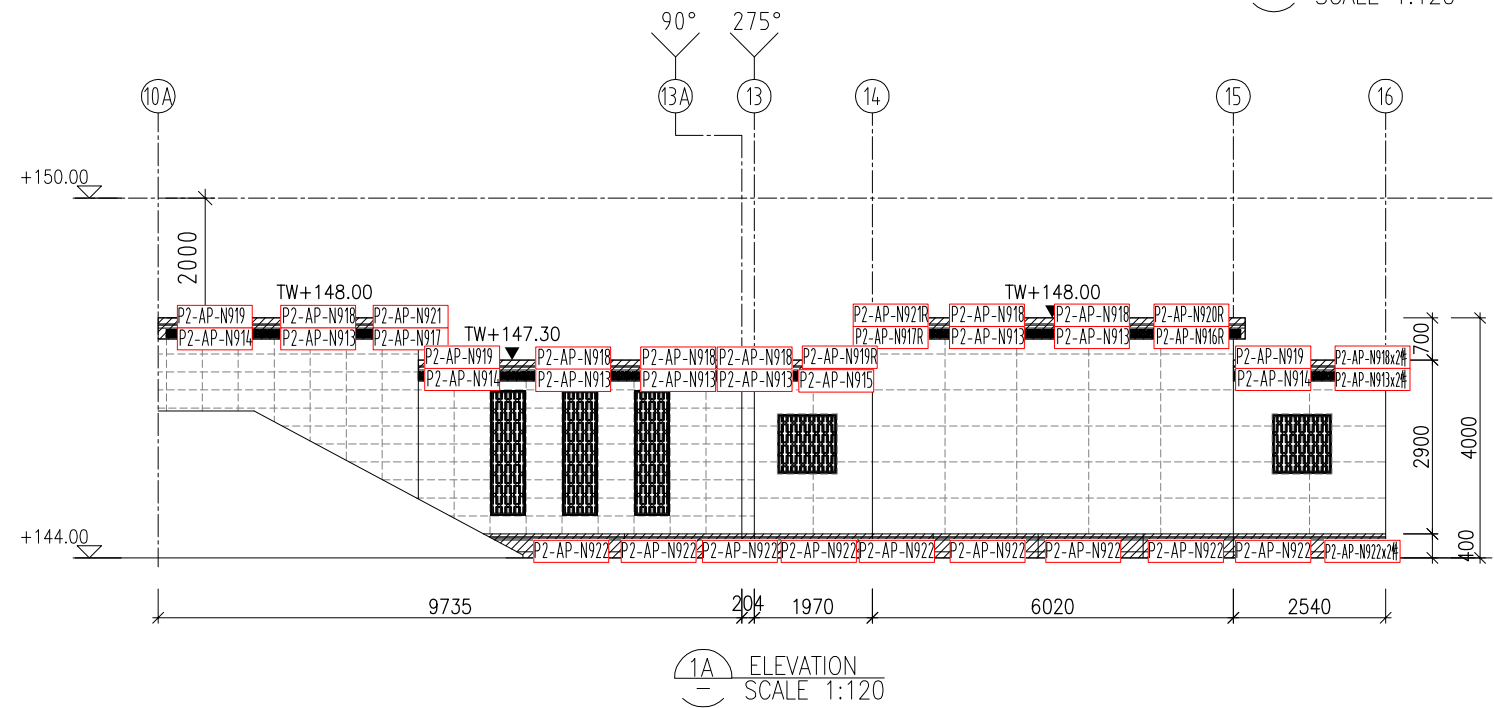
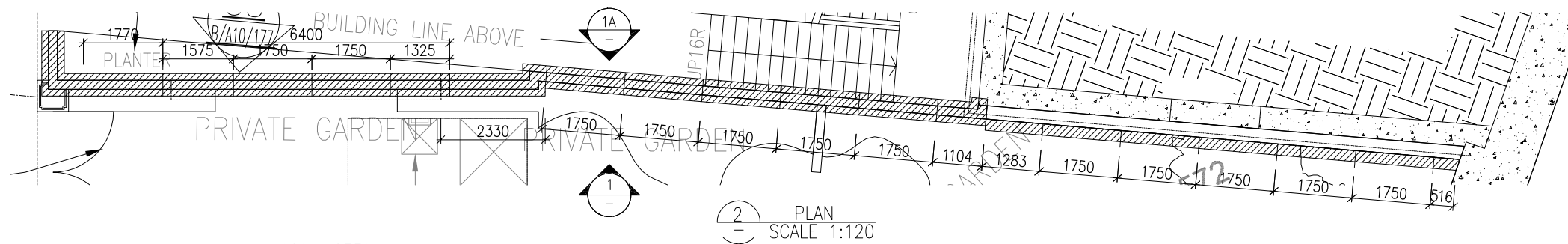
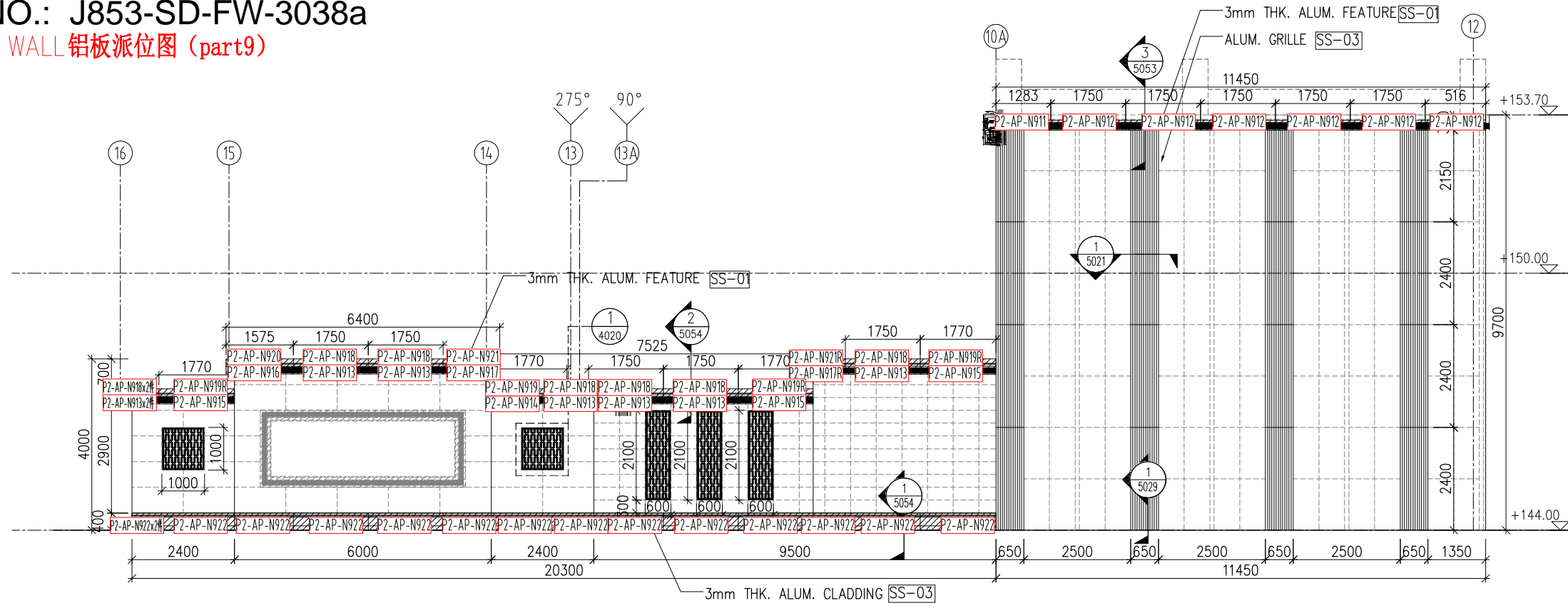


2 PLAN SCALE 1:150

LEGEND:  
 ALUM. GRILLE  
 3mm THK. ALUM. CLADDING

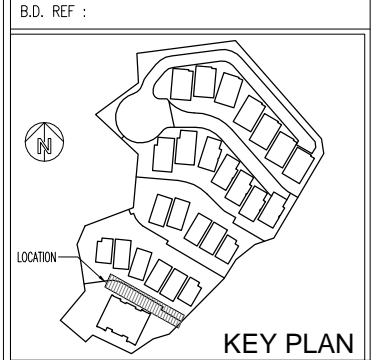
DWG NO.: J853-SD-FW-3038a

FEATURE WALL 铝板派位图 (part9)



LEGEND:

	ALUM. GRILLE
	3mm THK. ALUM. CLADDING



CLIENT : SHIMAO GROUP HOLDINGS LIMITED

ARCHITECT : WONG TUNG & PARTNERS LIMITED ARCHITECTS & PLANNERS

MAIN CONTRACTOR : 協興建築有限公司 HIP HING CONSTRUCTION CO LTD

STRUCTURAL ENGINEER : CMA C M WONG & ASSOCIATES LTD 黃志明建築工程師有限公司

FACADE CONSULTANT : MEINHARDT

NOTE :

- ALL DIMENSIONS ARE IN mm.
- ALL ELEVATIONS ARE VIEWED FROM OUTSIDE.
- ALL DIMENSIONS TO BE VERIFIED ON SITE BEFORE FABRICATION.

LEGEND :

(X1) — DETAIL MARK NO.  
(X001) — REFER SHEET NO.

- F.F.L. — FINISHED FLOOR LEVEL
- S.F.L. — STRUCTURAL FLOOR LEVEL
- (R) — REVERSED DETAIL

NO.	DATE	REVISED	BY

JOB NO. : J-853  
PROJECT : PROPOSED RESIDENTIAL DEVELOPMENT AT N.K.I.L. 6542 YIN PING ROAD KOWLOON

TITLE : PARTIAL ELEVATION & PLAN OF FEATURE WALL (PHASE 2)

DATE : 20-Sep-24 SCALE : 1:120 (A3)  
DRAWN BY : LHR CHECKED BY :

美特鋁質有限公司  
MIDI ALUMINUM FABRICATOR LTD.  
Units 6-8, Sunray Industrial Centre, 1/F  
610 Cha Kwo Ling Road, Kowloon  
Tel: 23469211-4 Fax: (852) 27727666

DWG NO. : J853-SD-FW-3038A REV. : -