

工程指示 / 要求簡箋 ENGINEER INSTRUCTIONS(E.I.)

工程指示編號:	EI- 8460	修改版本:	-
	HK-1895		
工程編號:	J 853	工程名稱:	延坪道
收件人:	生統	發件人:	Joe Chan
工程項目:	Feature Wall 構梯位 地盤用鋁板	日期:	18/10/2024

<input type="checkbox"/> 原合約工程包	<input type="checkbox"/> 原合約工程加 / 減賬 QT-	<input type="checkbox"/> 新工程報價 QT-
---------------------------------	--	------------------------------------

信件批核號碼/圖紙參考編號:	批核模具圖紙編號:
客戶指示附件:	管理內部批簽署:

<input type="checkbox"/> 初步鋁料 B.M.	<input type="checkbox"/> 加工拆圖, 然後生產	<input type="checkbox"/> 尺寸表
<input type="checkbox"/> 正式鋁料 B.M.	<input type="checkbox"/> 技術上資料/指示	<input type="checkbox"/> 報價
<input type="checkbox"/> 配件 B.M.	<input type="checkbox"/> 樣辦或貨品說明書	<input type="checkbox"/> 分判合約
<input type="checkbox"/> 其他:		

內容: 請依附件資料, 生產鋁板, 送地盤。  
- 請按派位圖分批包裝 (派位圖 3012 - 批, 3019 - 批, 3026 - 批...)

完成上列要求日期: 30/10/2024

國內

<input type="checkbox"/> 生產技術總監	<input type="checkbox"/> 連附件	<input type="checkbox"/> 技術部	<input type="checkbox"/> 連附件	<input type="checkbox"/> 生產部	<input type="checkbox"/> 連附件
<input type="checkbox"/> 採購部	<input type="checkbox"/> 連附件	<input checked="" type="checkbox"/> 生產統籌部	<input checked="" type="checkbox"/> 連附件	<input type="checkbox"/> 報關組	<input type="checkbox"/> 連附件
<input type="checkbox"/> 質檢部	<input type="checkbox"/> 連附件	<input type="checkbox"/> 會計部	<input type="checkbox"/> 連附件	<input type="checkbox"/> 機械設計部	<input type="checkbox"/> 連附件
<input type="checkbox"/> 香港辦	<input type="checkbox"/> 連附件	<input type="checkbox"/> 其他:			

香港

<input type="checkbox"/> 行政部	<input type="checkbox"/> 連附件	<input type="checkbox"/> 會計部	<input type="checkbox"/> 連附件	<input type="checkbox"/> 統籌部	<input type="checkbox"/> 連附件	<input type="checkbox"/> 工程部	<input type="checkbox"/> 連附件
<input type="checkbox"/> 採購部	<input type="checkbox"/> 連附件	<input type="checkbox"/> QS部	<input type="checkbox"/> 連附件	<input checked="" type="checkbox"/> 地盤管理	<input checked="" type="checkbox"/> 連附件	<input type="checkbox"/> 維修部	<input type="checkbox"/> 連附件

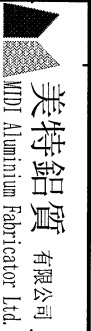
*發件人簽署:		*組別成員批核簽署:	
傳遞編號:	HK1895/24	項目經理簽署:	

工程號:	J-853	計算:	ming	日期:	2024.10.16	送呈:	JOE
地盤名稱:	延坪路	核對:		日期:		副本:	
項目類別:	特征牆(2區)	批准:		日期:			

序號	修改內容	鋁板圖號	鋁板名稱	顏色	實用	後備	總數	總重量	112.140		總重量:	911.70	圖紙編號
									總V.F.:	總展開面積			
1		FW-T101	3mm/厚鋁板	EC-DG-D334232-ZD1 (SS-01)	2	0	2	13.385	0.823	1.646	0.823	1.646	
2		FW-T102	3mm/厚鋁板	EC-DG-D334232-ZD1 (SS-01)	4	0	4	25.790	0.793	3.172	0.793	3.172	
3		FW-T103	3mm/厚鋁板	EC-DG-D334232-ZD1 (SS-01)	1	0	1	6.693	0.823	0.823	0.823	0.823	
4		FW-T104	3mm/厚鋁板	EC-DG-D334232-ZD1 (SS-01)	9	0	9	58.027	0.793	7.137	0.793	7.137	
5		FW-T105	3mm/厚鋁板	EC-DG-D334232-ZD1 (SS-01)	1	0	1	6.693	0.823	0.823	0.823	0.823	
6		FW-T106	3mm/厚鋁板	EC-DG-D334232-ZD1 (SS-01)	1	0	1	6.693	0.823	0.823	0.823	0.823	
7		FW-T107	3mm/厚鋁板	EC-DG-D334232-ZD1 (SS-01)	4	0	4	25.790	0.793	3.172	0.793	3.172	
8		FW-T108	3mm/厚鋁板	EC-DG-D334232-ZD1 (SS-01)	1	0	1	6.693	0.823	0.823	0.823	0.823	
9		FW-T109	3mm/厚鋁板	EC-DG-D334232-ZD1 (SS-01)	1	0	1	6.447	0.793	0.793	0.793	0.793	
10		FW-T110	3mm/厚鋁板	EC-DG-D334232-ZD1 (SS-01)	1	0	1	6.447	0.793	0.793	0.793	0.793	
11		FW-T111	3mm/厚鋁板	EC-DG-D334232-ZD1 (SS-01)	1	0	1	3.322	0.409	0.409	0.409	0.409	
12		FW-T112	3mm/厚鋁板	EC-DG-D334232-ZD1 (SS-01)	1	0	1	8.108	0.997	0.997	0.997	0.997	
13		FW-T113	3mm/厚鋁板	EC-DG-D334232-ZD1 (SS-01)	1	0	1	6.447	0.793	0.793	0.793	0.793	
14		FW-T114	3mm/厚鋁板	EC-DG-D334232-ZD1 (SS-01)	1	0	1	6.447	0.793	0.793	0.793	0.793	
15		FW-T115	3mm/厚鋁板	EC-DG-D334232-ZD1 (SS-01)	1	0	1	8.743	1.075	1.075	1.075	1.075	
16		FW-T301	3mm/厚鋁板	EC-DG-D334232-ZD1 (SS-01)	2	0	2	13.189	0.811	1.622	0.811	1.622	
17		FW-T302	3mm/厚鋁板	EC-DG-D334232-ZD1 (SS-01)	4	0	4	25.397	0.781	3.124	0.781	3.124	
18		FW-T303	3mm/厚鋁板	EC-DG-D334232-ZD1 (SS-01)	1	0	1	6.595	0.811	0.811	0.811	0.811	
19		FW-T510	3mm/厚鋁板	EC-DG-D334232-ZD1 (SS-01)	6	0	6	24.880	0.510	3.060	0.510	3.060	
20		FW-T610	3mm/厚鋁板	EC-DG-D334232-ZD1 (SS-01)	6	0	6	15.248	0.313	1.876	0.313	1.876	
21		FW-T710	3mm/厚鋁板	EC-DG-D334232-ZD1 (SS-01)	6	0	6	24.663	0.506	3.034	0.506	3.034	
22		FW-T511	3mm/厚鋁板	EC-DG-D334232-ZD1 (SS-01)	3	0	3	12.440	0.510	1.530	0.510	1.530	
23		FW-T611	3mm/厚鋁板	EC-DG-D334232-ZD1 (SS-01)	3	0	3	7.624	0.313	0.938	0.313	0.938	

工程號:	J-853	計算:	ming	日期:	2024.10.16	送呈:	JOE
地盤名稱:	延坪路	核對:		日期:		副本:	
項目類別:	特征牆(2区)	批准:		日期:			

序號	修改內容	鋁板圖號	鋁板名稱	顏色	實用	後備	總數	總重量	112.140		總重量:	911.70	圖紙編號
									單件展開面積	總展開面積			
BM編號:													
修改版本:													
A/C Code:													
24		FW-T711	3mm厚鋁板	EC-DG-D334232-ZD1 (SS-01)	3	0	3	12.332	0.506	1.517	0.506	1.517	
25		FW-T512	3mm厚鋁板	EC-DG-D334232-ZD1 (SS-01)	4	0	4	16.587	0.510	2.040	0.510	2.040	
26		FW-T612	3mm厚鋁板	EC-DG-D334232-ZD1 (SS-01)	4	0	4	10.221	0.314	1.257	0.314	1.257	
27		FW-T712	3mm厚鋁板	EC-DG-D334232-ZD1 (SS-01)	4	0	4	26.150	0.804	3.217	0.804	3.217	
28		FW-T513	3mm厚鋁板	EC-DG-D334232-ZD1 (SS-01)	1	0	1	4.147	0.510	0.510	0.510	0.510	
29		FW-T613	3mm厚鋁板	EC-DG-D334232-ZD1 (SS-01)	1	0	1	2.555	0.314	0.314	0.314	0.314	
30		FW-T713	3mm厚鋁板	EC-DG-D334232-ZD1 (SS-01)	1	0	1	6.538	0.804	0.804	0.804	0.804	
31		FW-T514	3mm厚鋁板	EC-DG-D334232-ZD1 (SS-01)	1	0	1	4.147	0.510	0.510	0.510	0.510	
32		FW-T614	3mm厚鋁板	EC-DG-D334232-ZD1 (SS-01)	1	0	1	2.555	0.314	0.314	0.314	0.314	
33		FW-T714	3mm厚鋁板	EC-DG-D334232-ZD1 (SS-01)	1	0	1	6.538	0.804	0.804	0.804	0.804	
34		FW-T515	3mm厚鋁板	EC-DG-D334232-ZD1 (SS-01)	7	0	7	45.763	0.804	5.629	0.804	5.629	
35		FW-T615	3mm厚鋁板	EC-DG-D334232-ZD1 (SS-01)	7	0	7	17.887	0.314	2.200	0.314	2.200	
36		FW-T715	3mm厚鋁板	EC-DG-D334232-ZD1 (SS-01)	7	0	7	29.027	0.510	3.570	0.510	3.570	
37		FW-T516	3mm厚鋁板	EC-DG-D334232-ZD1 (SS-01)	2	0	2	13.075	0.804	1.608	0.804	1.608	
38		FW-T616	3mm厚鋁板	EC-DG-D334232-ZD1 (SS-01)	2	0	2	5.110	0.314	0.629	0.314	0.629	
39		FW-T716	3mm厚鋁板	EC-DG-D334232-ZD1 (SS-01)	2	0	2	8.293	0.510	1.020	0.510	1.020	
40		FW-T517	3mm厚鋁板	EC-DG-D334232-ZD1 (SS-01)	3	0	3	12.440	0.510	1.530	0.510	1.530	
41		FW-T617	3mm厚鋁板	EC-DG-D334232-ZD1 (SS-01)	3	0	3	7.666	0.314	0.943	0.314	0.943	
42		FW-T717	3mm厚鋁板	EC-DG-D334232-ZD1 (SS-01)	3	0	3	12.440	0.510	1.530	0.510	1.530	
43		FW-T518	3mm厚鋁板	EC-DG-D334232-ZD1 (SS-01)	5	0	5	20.733	0.510	2.550	0.510	2.550	
44		FW-T618	3mm厚鋁板	EC-DG-D334232-ZD1 (SS-01)	5	0	5	12.776	0.314	1.571	0.314	1.571	
45		FW-T718	3mm厚鋁板	EC-DG-D334232-ZD1 (SS-01)	5	0	5	20.733	0.510	2.550	0.510	2.550	
46		FW-T519	3mm厚鋁板	EC-DG-D334232-ZD1 (SS-01)	10	0	10	81.588	1.004	10.035	1.004	10.035	
47		FW-T520	3mm厚鋁板	EC-DG-D334232-ZD1 (SS-01)	16	0	16	130.542	1.004	16.057	1.004	16.057	
48		FW-T521	3mm厚鋁板	EC-DG-D334232-ZD1 (SS-01)	2	0	2	16.318	1.004	2.007	1.004	2.007	

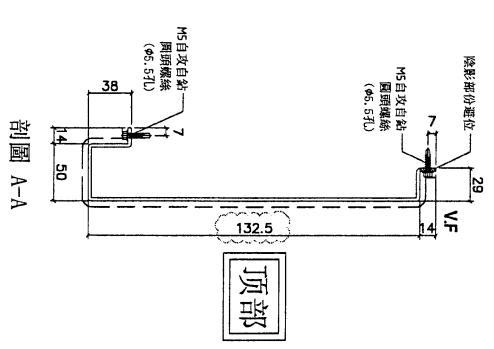
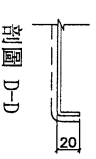
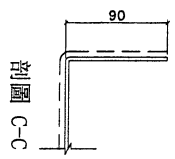
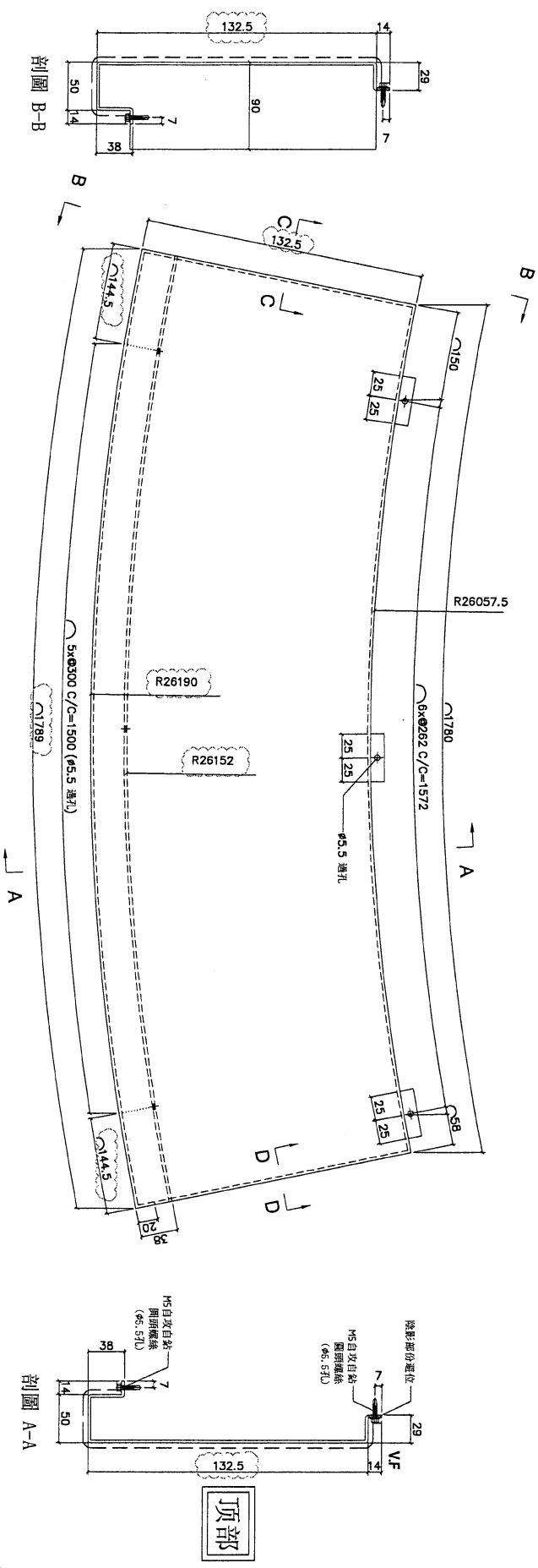


美特鋁質 有限公司  
MTD Aluminium Fabricator Ltd.

工程號:	J-853	計算:	ming	日期:	2024.10.16	送呈:	JOE
地盤名稱:	延坪路	核對:		日期:		副本:	
項目類別:	特征牆(2区)	批准:		日期:			

序號	修改內容	鋁板圖號	鋁板名稱	顏色	實用	後備	總數	總重量	112.140		總重量:	911.70	圖紙編號
									單件展開面積	總展開面積			
49		FW-T522	3mm/厚鋁板	EC-DG-D334232-ZD1 (SS-01)	3	0	3	24.477	1.004	3.011	1.004	3.011	
50		FW-T523	3mm/厚鋁板	EC-DG-D334232-ZD1 (SS-01)	1	0	1	10.822	1.331	1.331	1.331	1.331	
51		FW-T524	3mm/厚鋁板	EC-DG-D334232-ZD1 (SS-01)	1	0	1	8.159	1.004	1.004	1.004	1.004	
52		FW-T525	3mm/厚鋁板	EC-DG-D334232-ZD1 (SS-01)	1	0	1	8.159	1.004	1.004	1.004	1.004	
53		FW-T526	3mm/厚鋁板	EC-DG-D334232-ZD1 (SS-01)	1	0	1	8.159	1.004	1.004	1.004	1.004	
總計:					168	0	168	912	36	112	36	112	

PROJECT		YIN PING ROAD KOWLOON FEATURE WALL (PHASE 2)				MATERIAL		3mm铝板		COATING		PVF2		COLOUR		EC-DG-D334232-ZD1(SS-01)		MARK. NO.		QTY.		
REV.	CHANGED	PART NUMBER	Dim. A	Dim. B	Dim. C	Dim. D	Dim. E	Dim. F	Dim. G	Dim. H	QTY.	Inv. Code	ASSEMBLE ON PARTS									
-	REV. BY	FW-1101	-	-	-	-	-	-	-	-	2		注：用于B区域									



DWG. NO.		FW-1101		REV.		A		SCALE		DATE		06-07-2024		DRAWN BY		APPROVED BY	
----------	--	---------	--	------	--	---	--	-------	--	------	--	------------	--	----------	--	-------------	--

地盤用  
用A3紙打印

PROJECT: YIN PING ROAD KOWLOON FEATURE WALL (PHASE 2)

MATERIAL: 3mm鋁板

COATING: PVF2

COLOUR: EC-DG-D334232-ZD1(SS-01)

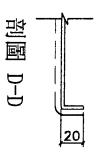
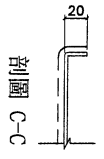
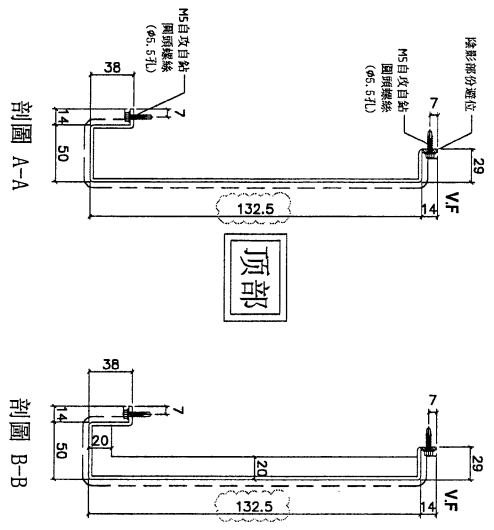
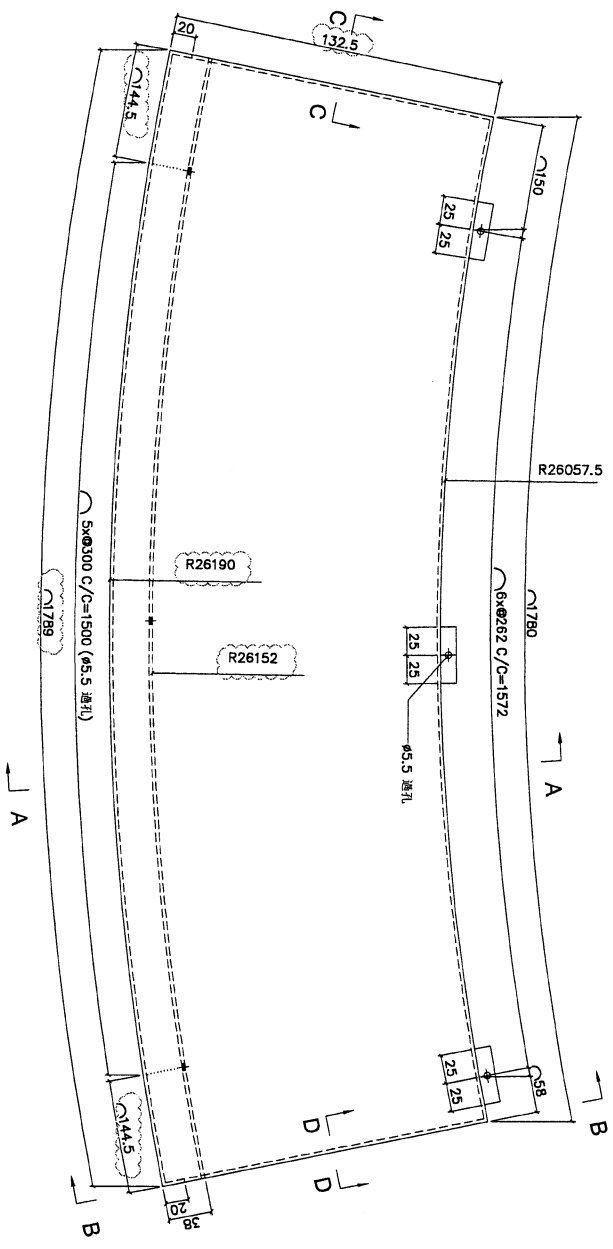
MARK. NO.:

QTY.:

REV. / CHECKED / DATE	PART NUMBER	Dim. A	Dim. B	Dim. C	Dim. D	Dim. E	Dim. F	Dim. G	Dim. H	QTY.	Inv. Code	ASSEMBLY ON PARTS
-	FW-1102	-	-	-	-	-	-	-	-	4		註：用于B區域

地盤用

用A3紙打印



DWG. NO. FW-1102

REV. A

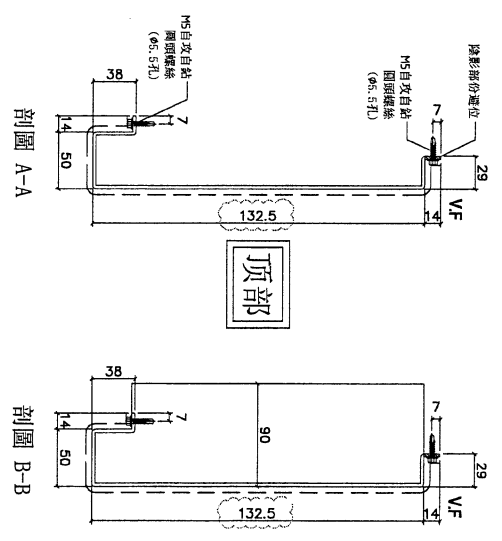
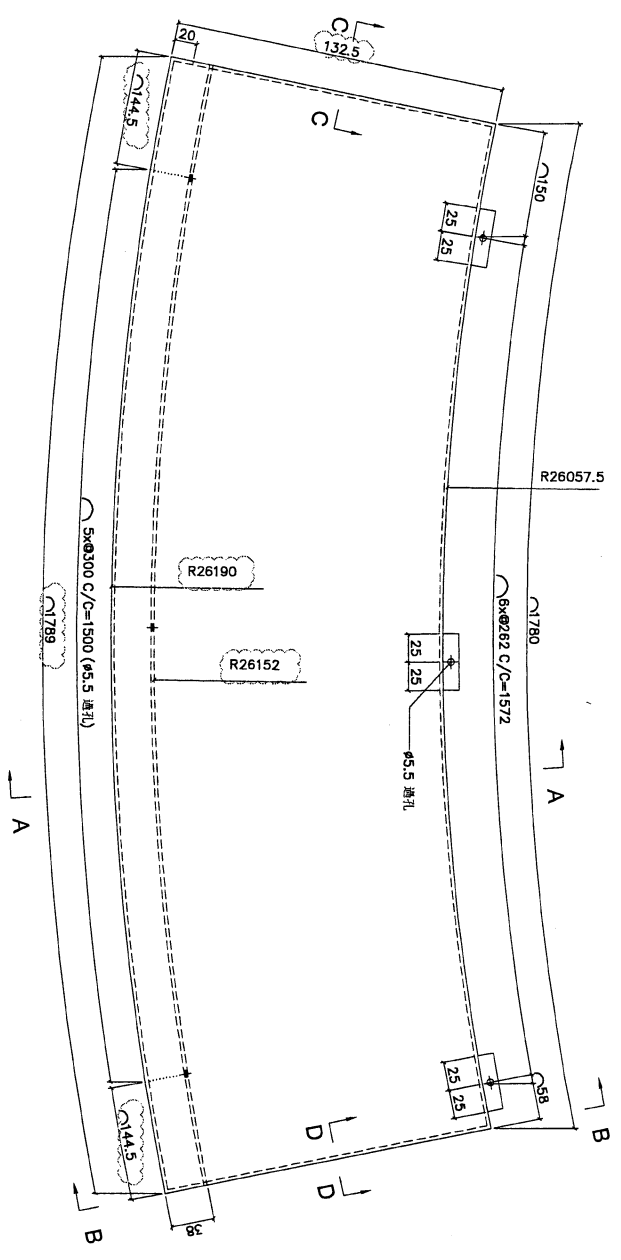
SCALE -

DATE 06-07-2024

DRAWN BY

APPROVED BY

PROJECT				MATERIAL				COATING				COLOUR				MARK. NO.		QTY.	
YIN PING ROAD KOWLOON FEATURE WALL (PHASE 2)				3mm鋁板				PVF2				EC-DG-D334232-ZD1(SS-01)				-		-	
REV.	CHANGED DATE BY	PART NUMBER	Dim. A	Dim. B	Dim. C	Dim. D	Dim. E	Dim. F	Dim. G	Dim. H	QTY.	Inv. Code	ASSEMBLE ON PARTS						
-		FW-T103	-	-	-	-	-	-	-	-	1		註：用于B区域				地盤用		
用A3紙打印																			



DWG. NO.	REV.	SCALE	DATE	DRAWN BY	APPROVED BY
FW-T103	A	-	06-07-2024	-	-

PROJECT  
YIN PING ROAD KOWLOON  
FEATURE WALL (PHASE 2)

MATERIAL  
3mm铝板

COATING  
PVF2

COLOUR  
EC-DG-D334232-ZD1(SS-01)

MARK. NO.

QTY.

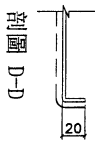
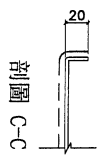
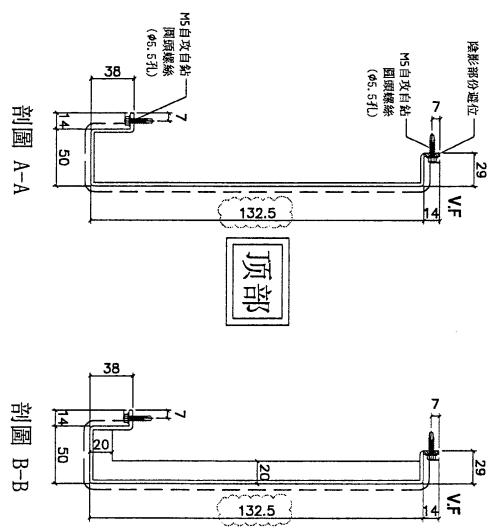
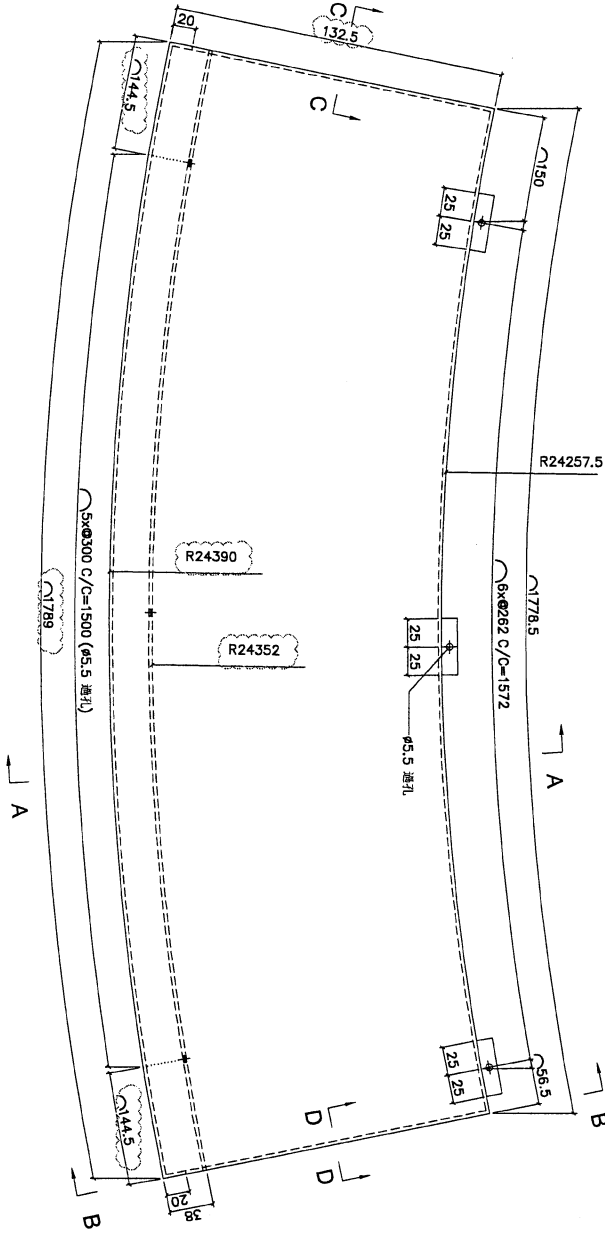
REV.	CHANGED DATE BY	PART NUMBER	Dim. A	Dim. B	Dim. C	Dim. D	Dim. E	Dim. F	Dim. G	Dim. H	QTY.	Inv. Code
-		FW-1104	-	-	-	-	-	-	-	-	9	

ASSEMBLE ON PARTS

注：用于B区域

地盘用

用A3纸打印



DWG. NO.	FW-1104	REV.	A	SCALE	-	DATE	06-07-2024	DRAWN BY	-	APPROVED BY	-
----------	---------	------	---	-------	---	------	------------	----------	---	-------------	---



PROJECT  
YIN PING ROAD KOWLOON  
FEATURE WALL (PHASE 2)

MATERIAL  
3mm铝板

COATING  
PVF2

COLOUR  
EC-DG-D334232-ZD1(SS-01)

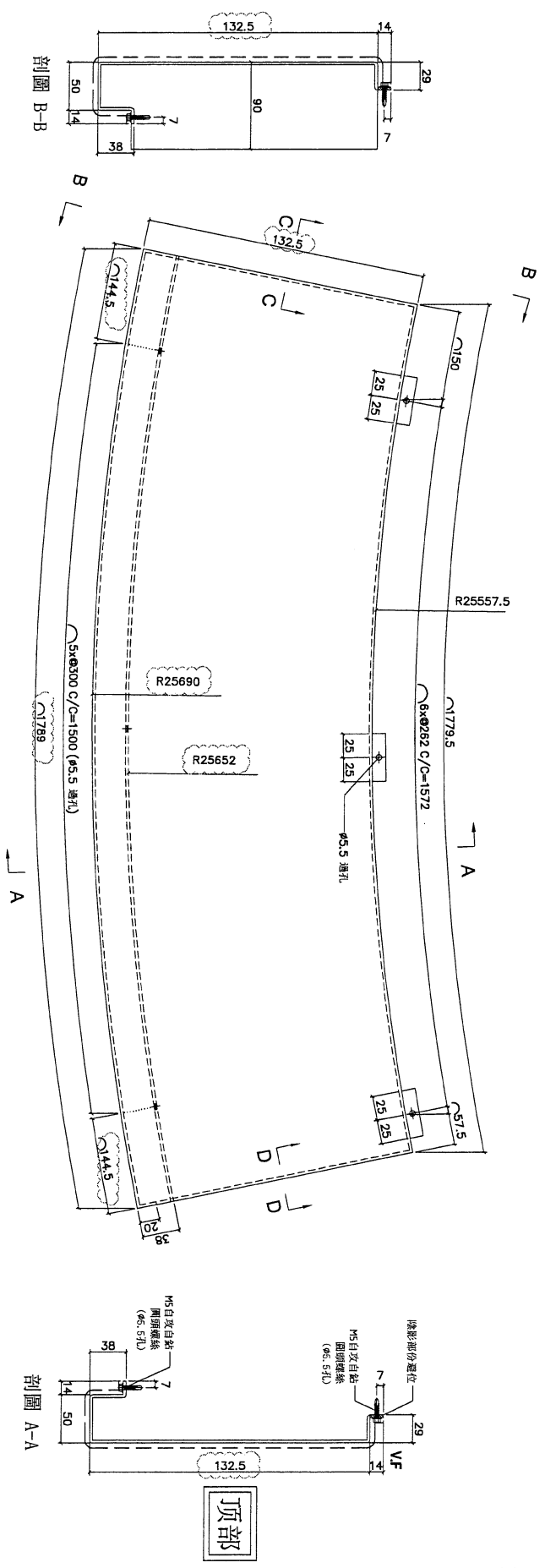
MARK. NO.  
-

QTY.  
-

REV. / 更改 NO. / 号	PART NUMBER	Dim. A	Dim. B	Dim. C	Dim. D	Dim. E	Dim. F	Dim. G	Dim. H	QTY.	Inv. Code
-	FW-1106	-	-	-	-	-	-	-	-	1	-

ASSEMBLE ON PARTS  
注：用于A区域

地盘用  
用A3纸打印



DWG. NO.	REV.	SCALE	DATE	DRAWN BY	APPROVED BY
FW-1106	A	-	06-07-2024	-	-

PROJECT: YIN PING ROAD KOWLOON FEATURE WALL (PHASE 2)

MATERIAL: 3mm鋁板

COATING: PVF2

COLOUR: EC-DG-D334232-2D1(SS-01)

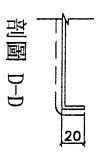
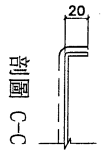
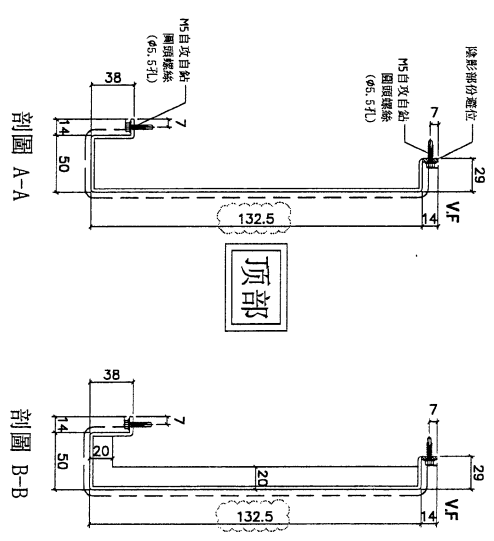
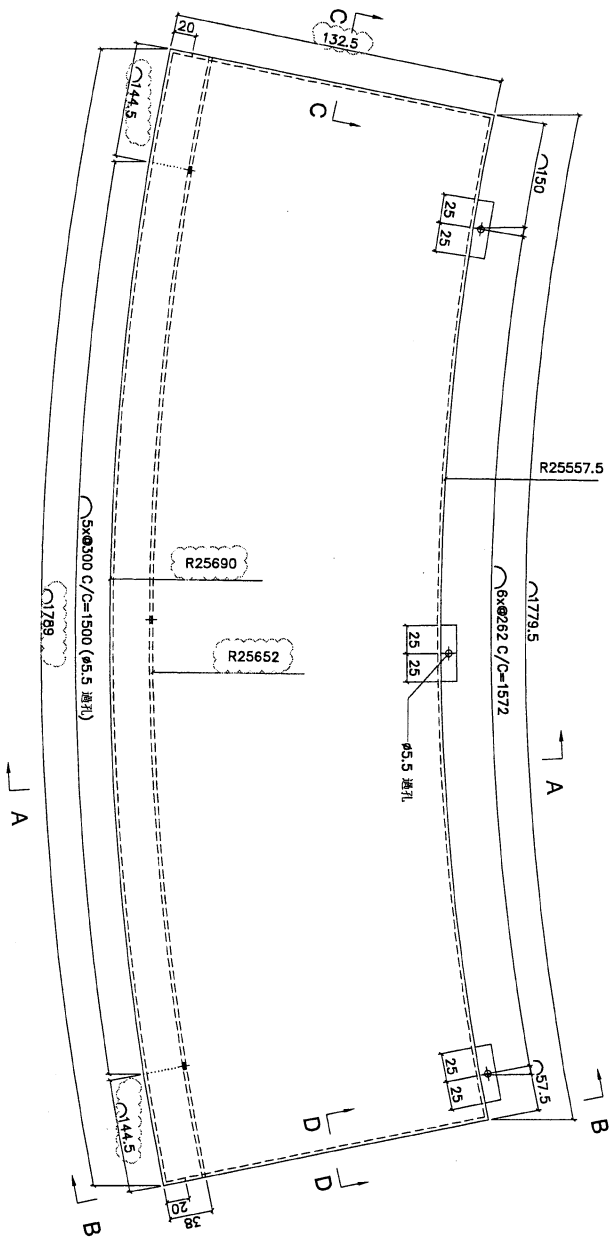
MARK. NO.:

QTY.:

REV. / CHECKED / DATE BY	PART NUMBER	Dim. A	Dim. B	Dim. C	Dim. D	Dim. E	Dim. F	Dim. G	Dim. H	QTY.	Inv. Code	ASSEMBLE ON PARTS
-	FW-1107	-	-	-	-	-	-	-	-	4		注：用于A区域

地盤用

用A3紙打印



DWG. NO.: FW-1107

REV. A

SCALE: -

DATE: 06-07-2024

DRAWN BY:

APPROVED BY:

PROJECT  
YIN PING ROAD KOWLOON  
FEATURE WALL (PHASE 2)

MATERIAL  
3mm铝板

COATING  
PVF2

COLOUR  
EC-DG-D334232-ZD1(SS-01)

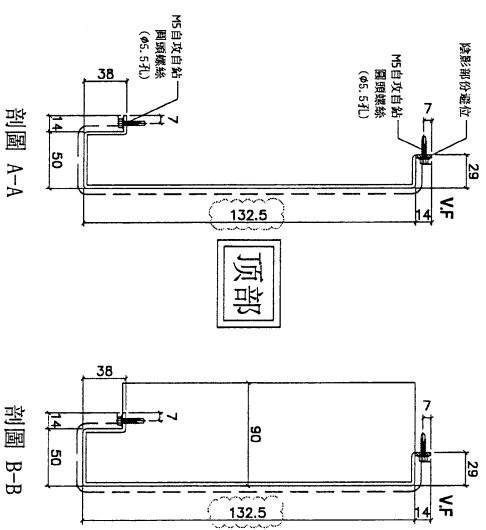
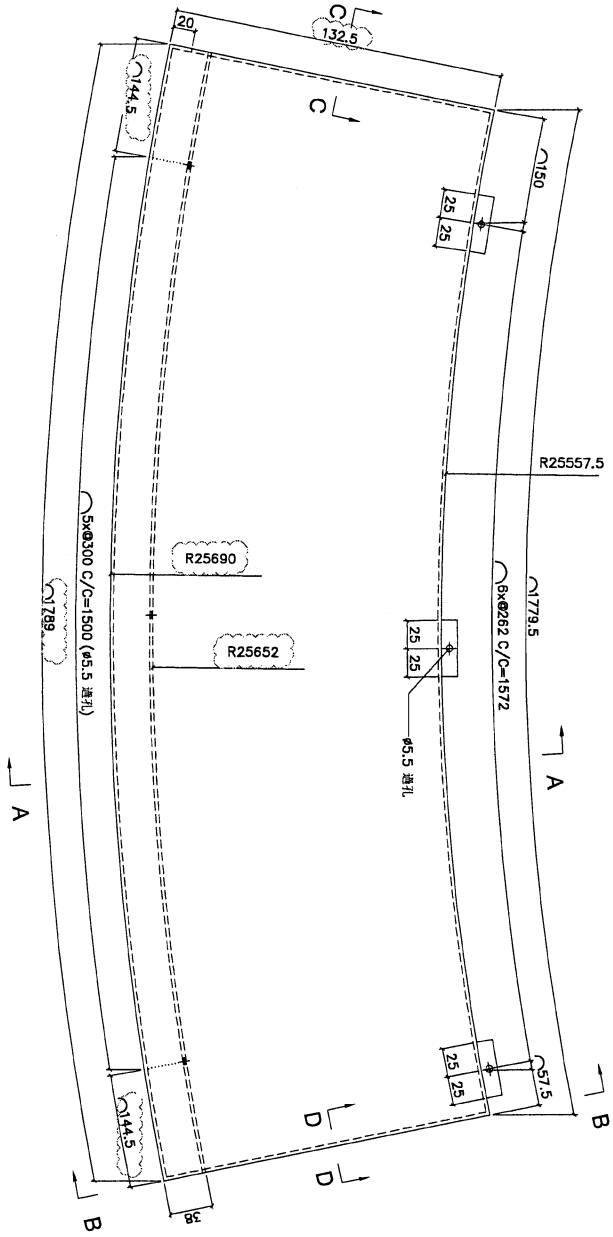
MARK. NO.  
-

QTY.  
-

REV. OR CHKD BY	PART NUMBER	Dim. A	Dim. B	Dim. C	Dim. D	Dim. E	Dim. F	Dim. G	Dim. H	QTY.	Inv. Code	ASSEMBLE ON PARTS
-	FW-T108	-	-	-	-	-	-	-	-	1	-	ASSEMBLE ON PARTS

地盤用

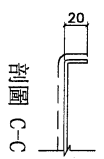
用A3紙打印



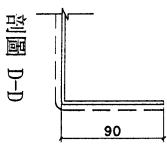
頂部

剖面 A-A

剖面 B-B



剖面 C-C



剖面 D-D

DWG. NO.	FW-T108	REV.	A	SCALE	-	DATE	06-07-2024	DRAWN BY	-	APPROVED BY	-
----------	---------	------	---	-------	---	------	------------	----------	---	-------------	---

PROJECT  
YIN PING ROAD KOWLOON  
FEATURE WALL (PHASE 2)

MATERIAL  
3mm鋁板

COATING  
PVF2

COLOUR  
EC-DG-D334232-ZD1(SS-01)

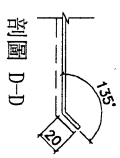
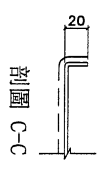
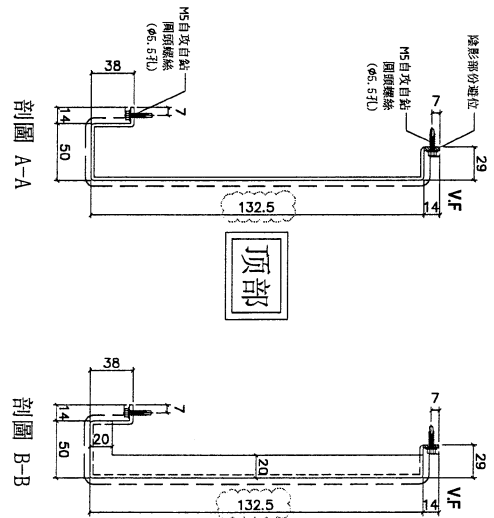
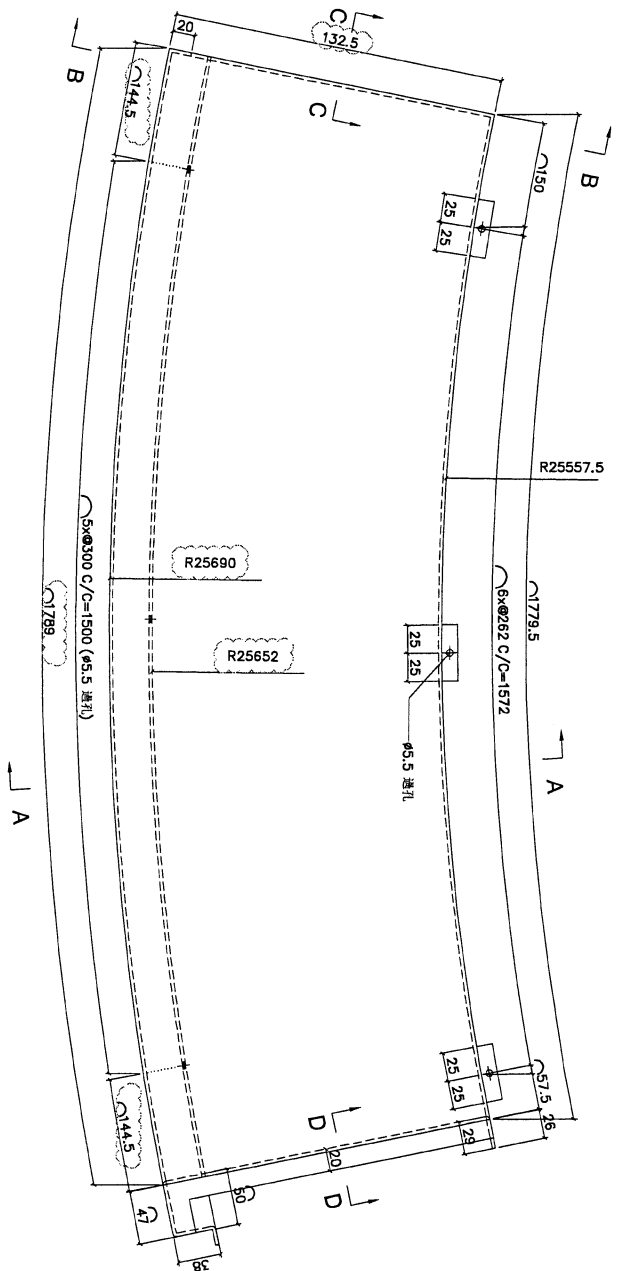
MARK. NO.

QTY.

REV. / SHEET NO. / REV. BY	PART NUMBER	Dim. A	Dim. B	Dim. C	Dim. D	Dim. E	Dim. F	Dim. G	Dim. H	QTY.	Inv. Code	ASSEMBLY ON PARTS
-	FW-1109	-	-	-	-	-	-	-	-	1	-	註：用于A區域

地盤用

用A3紙打印



DWG. NO.	FW-1109	REV.	A	SCALE	-	DATE	06-07-2024	DRAWN BY	-	APPROVED BY	-
----------	---------	------	---	-------	---	------	------------	----------	---	-------------	---

PROJECT  
YIN PING ROAD KOWLOON  
FEATURE WALL (PHASE 2)

MATERIAL  
3mm鋁板

COATING  
PVF2

COLOUR  
EC-DG-D334232-ZD1(SS-01)

MARK. NO.  
-

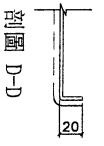
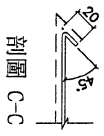
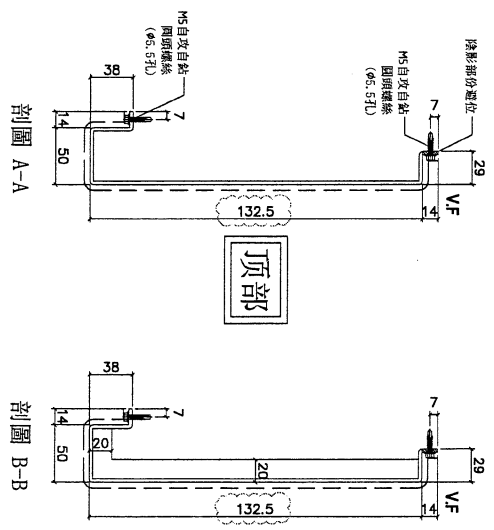
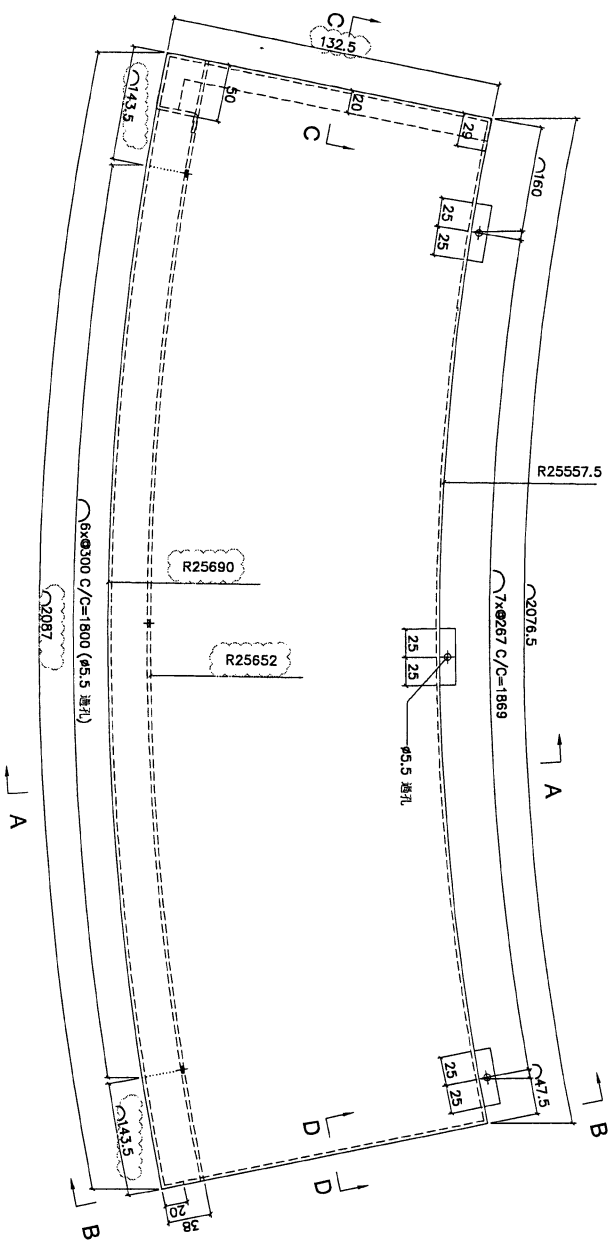
QTY.  
-

REV.	CHECKED DATE	PART NUMBER	Dim. A	Dim. B	Dim. C	Dim. D	Dim. E	Dim. F	Dim. G	Dim. H	QTY.	Inv. Code
-		FW-T110	-	-	-	-	-	-	-	-	1	

ASSEMBLE ON PARTS  
注：用于A区域

地盤用

用A3紙打印



DWG. NO.	FW-T110	REV.	A	SCALE	-	DATE	06-07-2024	DRAWN BY	-	APPROVED BY	-
----------	---------	------	---	-------	---	------	------------	----------	---	-------------	---

PROJECT: YIN PING ROAD KOWLOON FEATURE WALL (PHASE 2)

MATERIAL: 3mm鋁板

COATING: PVF2

COLOUR: EC-DG-D334232-ZD1(SS-01)

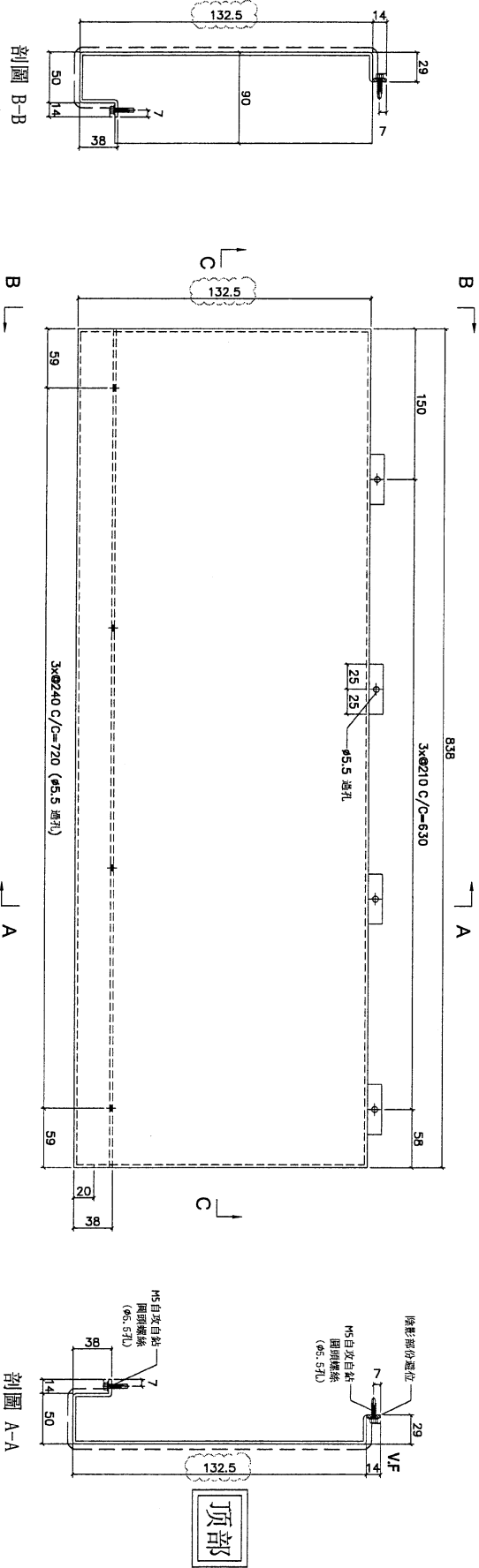
MARK. NO.:

QTY.:

REV. NO. OR BY	PART NUMBER	Dim. A	Dim. B	Dim. C	Dim. D	Dim. E	Dim. F	Dim. G	Dim. H	QTY.	Inv. Code	ASSEMBLE ON PARTS
-	FW-T111	-	-	-	-	-	-	-	-	1		ASSEMBLE ON PARTS

地盤用

用A3紙打印



DWG. NO.	FW-T111	REV. A	SCALE	DATE	06-07-2024	DRAWN BY	APPROVED BY
----------	---------	--------	-------	------	------------	----------	-------------



PROJECT YIN PING ROAD KOWLOON  
FEATURE WALL (PHASE 2)

MATERIAL 3mm鋁板

COATING PVF2

COLOUR EC-DG-D334232-ZD1(SS-01)

MARK. NO. -

QTY. -

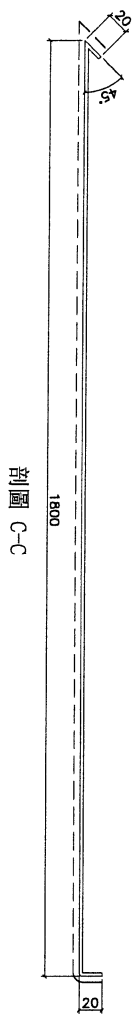
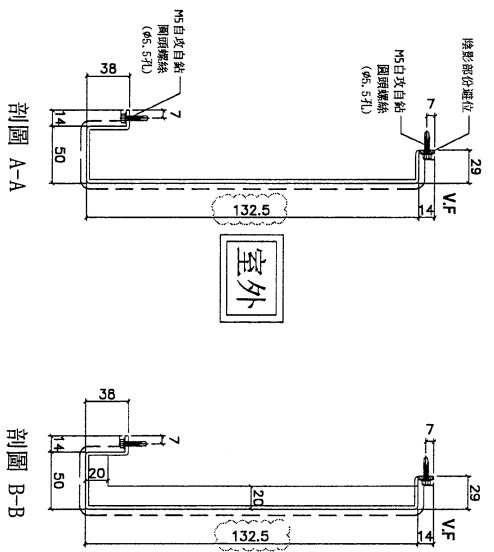
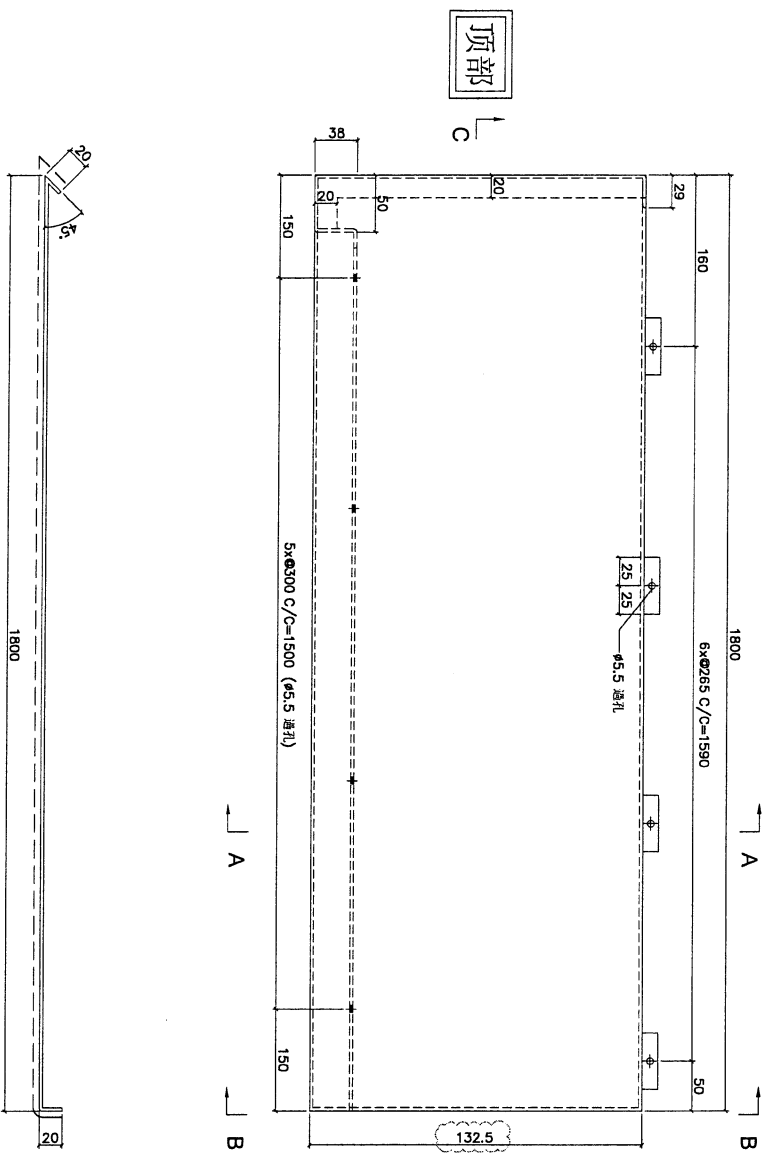
REV. / CHANGED BY / DT	PART NUMBER	Dim. A	Dim. B	Dim. C	Dim. D	Dim. E	Dim. F	Dim. G	Dim. H	QTY.	Inv. Code
-	FW-1113	-	-	-	-	-	-	-	-	1	-

ASSEMBLE ON PARTS

注：用于 A 区域

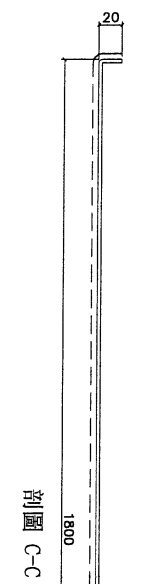
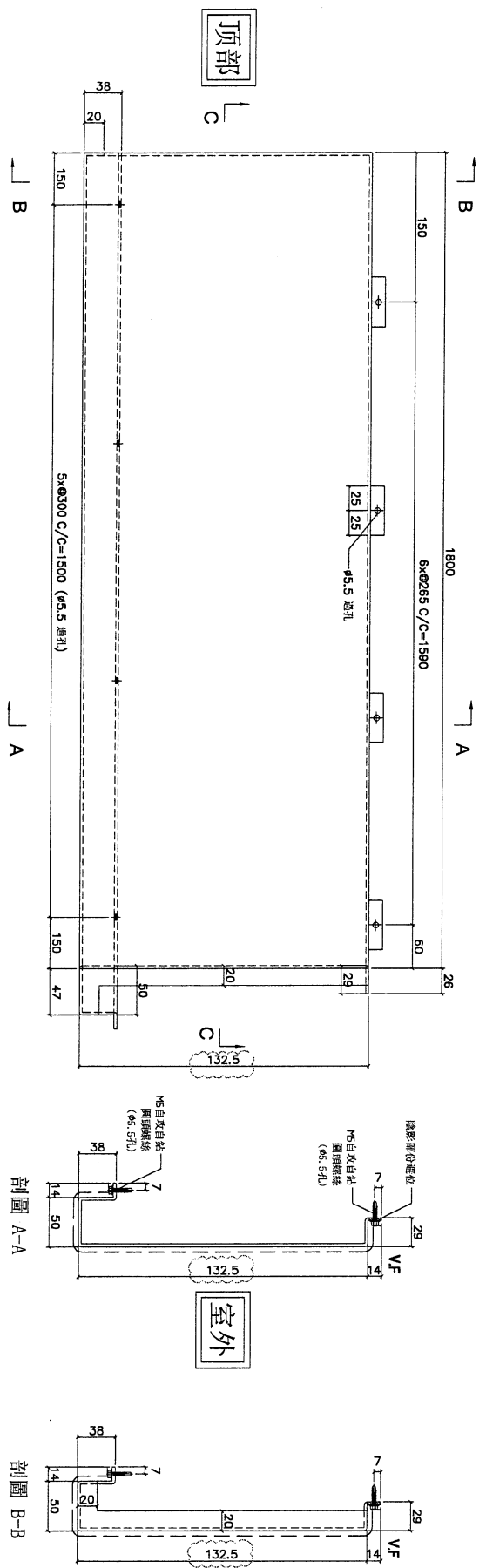
地盤用

用A3紙打印



DWG. NO.	FW-1113	REV.	A	SCALE	-	DATE	06-07-2024	DRAWN BY	-	APPROVED BY	-
----------	---------	------	---	-------	---	------	------------	----------	---	-------------	---

PROJECT				MATERIAL				COATING		COLOUR		MARK. NO.		QTY.	
YIN PING ROAD KOWLOON FEATURE WALL (PHASE 2)				3mm铝板				PVF2		EC-DG-D334232-ZD1(SS-01)		-		-	
REV.	DATE	PART NUMBER	Dim. A	Dim. B	Dim. C	Dim. D	Dim. E	Dim. F	Dim. G	Dim. H	QTY.	Inv. Code	ASSEMBLE ON PARTS		
-		FW-T114	-	-	-	-	-	-	-	-	1		注: 用于 A 区域		
												地盤用		用A3紙打印	



DWG. NO.		REV.		SCALE		DATE		DRAWN BY		APPROVED BY	
FW-T114		A		-		06-07-2024		-		-	

PROJECT  
YIN PING ROAD KOWLOON  
FEATURE WALL (PHASE 2)

MATERIAL  
3mm鋁板

COATING  
PVF2

COLOUR  
EC-DG-D334232-ZD1 (SS-01)

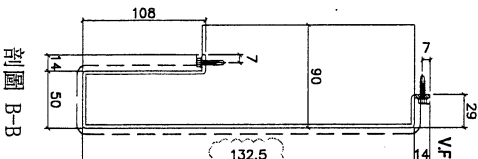
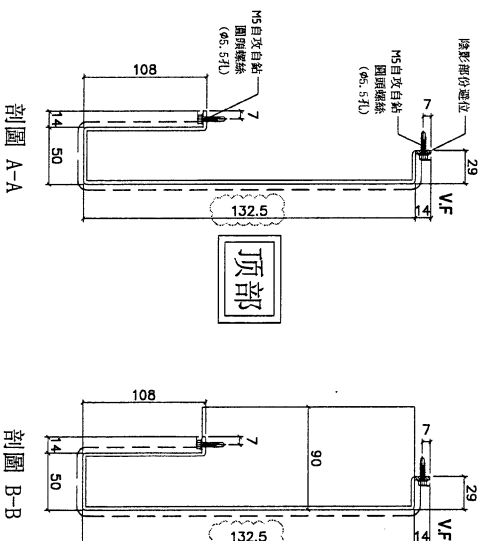
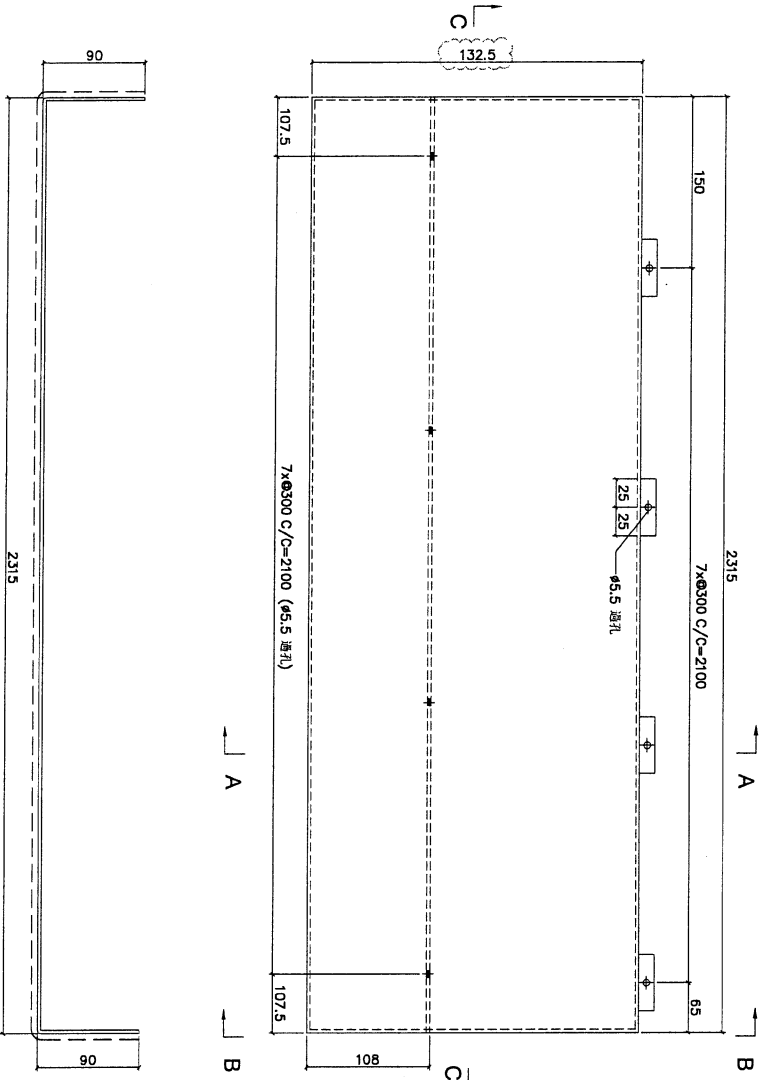
MARK. NO.  
-

QTY.  
-

REV.	DESCRIBED DATE BY	PART NUMBER	Dim. A	Dim. B	Dim. C	Dim. D	Dim. E	Dim. F	Dim. G	Dim. H	QTY.	Inv. Code	ASSEMBLY ON PARTS
-		FW-T115	-	-	-	-	-	-	-	-	1		注：用于B区板

地盤用

用A3紙打印



剖面 C-C

剖面 A-A

剖面 B-B

DWG. NO.	FW-T115	REV.	A	SCALE	-	DATE	06-07-2024	DRAWN BY	-	APPROVED BY	-
----------	---------	------	---	-------	---	------	------------	----------	---	-------------	---



PROJECT  
YIN PING ROAD KOWLOON  
FEATURE WALL (PHASE 2)

MATERIAL  
3mm鋁板

COATING  
PVF2

COLOUR  
EC-DG-D334232-ZD1(SS-01)

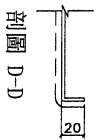
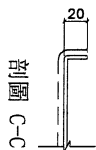
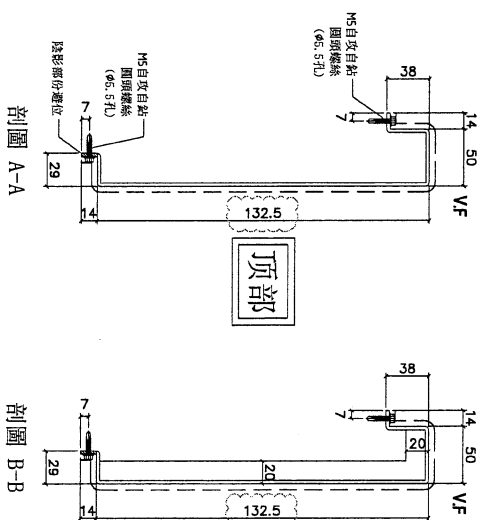
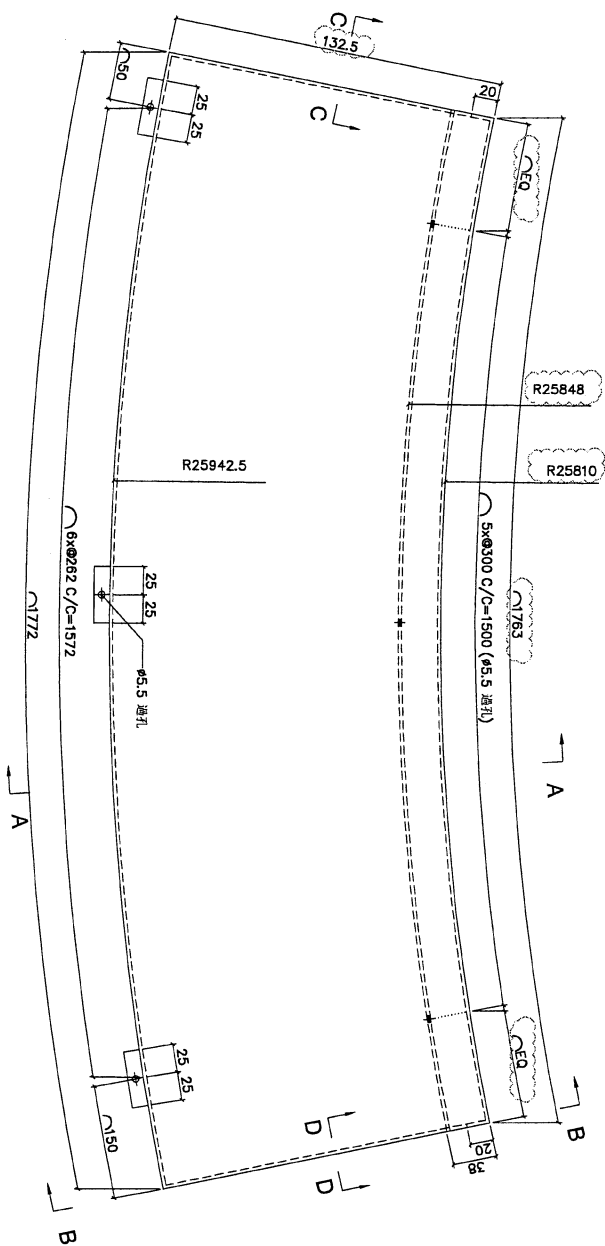
MARK. NO.  
-

QTY.  
-

REV.	REASON BY	PART NUMBER	Dim. A	Dim. B	Dim. C	Dim. D	Dim. E	Dim. F	Dim. G	Dim. H	QTY.	Inv. Code	ASSEMBLE ON PARTS
-		FW-1302	-	-	-	-	-	-	-	-	4		注：用手印區域

地盤用

用A3紙打印



DWG. NO.

FW-1302

REV. A

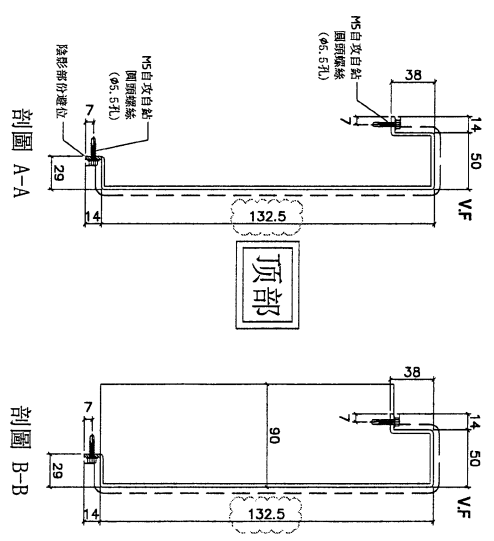
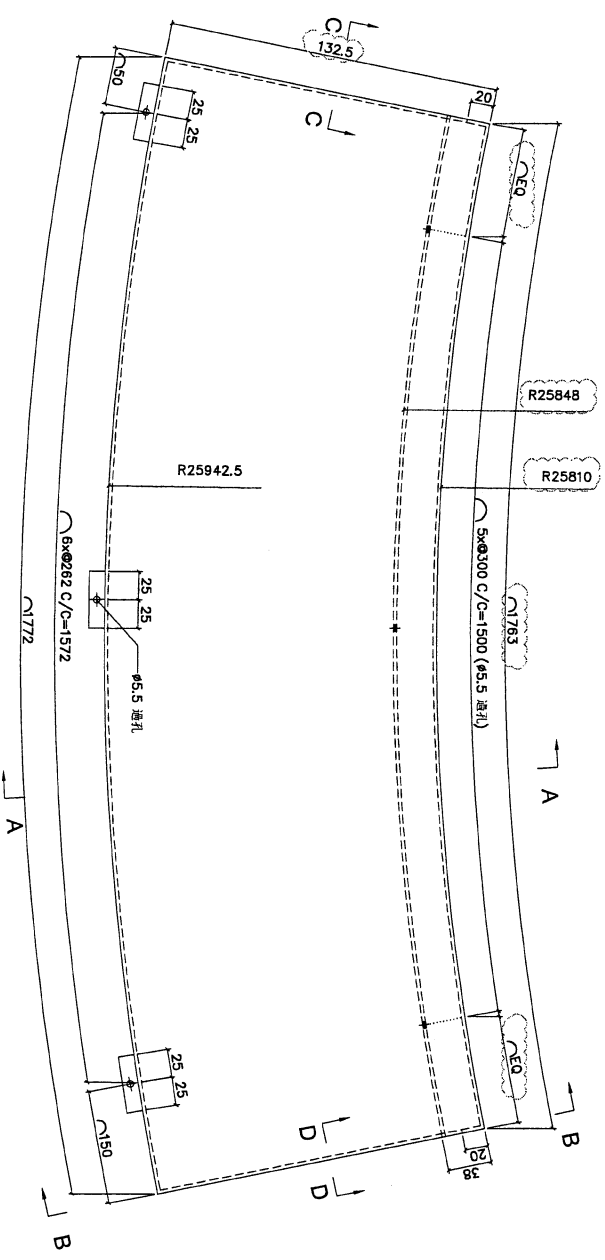
SCALE -

DATE 06-07-2024

DRAWN BY -

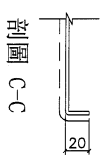
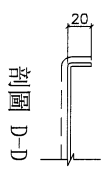
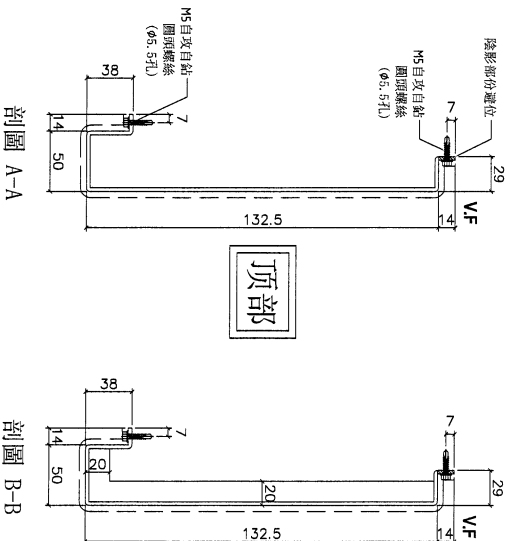
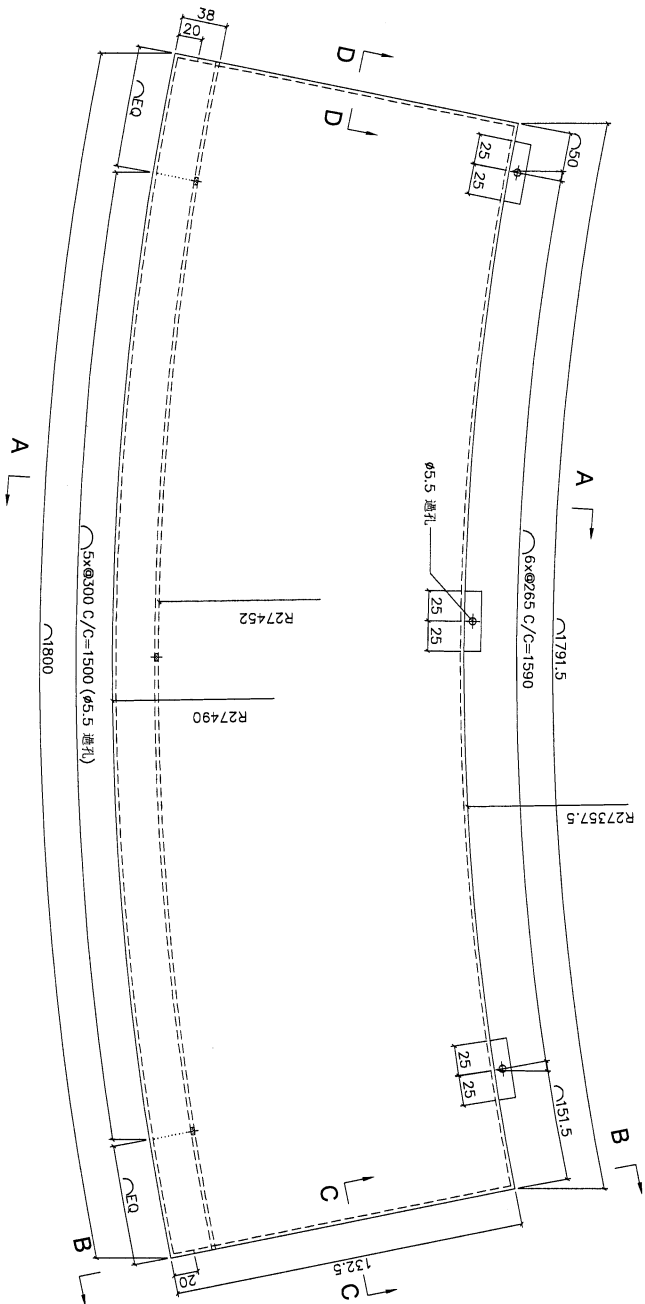
APPROVED BY -

PROJECT				MATERIAL				COATING				COLOUR		MARK. NO.	QTY.
YIN PING ROAD KOWLOON FEATURE WALL (PHASE 2)				3mm鋁板				PVF2				EC-DG-D334232-ZD1(SS-01)		-	-
REV.	CHANGED DATE BY	PART NUMBER	Dim. A	Dim. B	Dim. C	Dim. D	Dim. E	Dim. F	Dim. G	Dim. H	QTY.	Inv. Code	ASSEMBLE ON PARTS		
-		FW-1303	-	-	-	-	-	-	-	-	1		注：用于B区域		
												地盤用		用A3紙打印	



DWG. NO.	REV.	SCALE	DATE	DRAWN BY	APPROVED BY
FW-1303	A	-	06-07-2024	-	-

PROJECT				MATERIAL				COATING				COLOUR		MARK. NO.		QTY.	
YIN PING ROAD KOWLOON FEATURE WALL (PHASE 2)				3mm 铝板				PVF2				EC-DG-D334232-ZD1(SS-01)		-		-	
REV.	CHECKED DWG BY	PART NUMBER	Dim. A	Dim. B	Dim. C	Dim. D	Dim. E	Dim. F	Dim. G	Dim. H	QTY.	Inv. Code	ASSEMBLE ON PARTS				
-		FW-1510	-	-	-	-	-	-	-	-	6		注: 用于 A 区域楼梯位				
												地盤用		用A3紙打印			



DWG. NO.	FW-1510	REV.	-	SCALE	-	DATE	06-07-2024	DRAWN BY	-	APPROVED BY	-
----------	---------	------	---	-------	---	------	------------	----------	---	-------------	---

PROJECT YIN PING ROAD KOWLOON  
FEATURE WALL (PHASE 2)

MATERIAL 3mm铝板

COATING PVF2

COLOUR EC-DG-D334232-ZD1(SS-01)

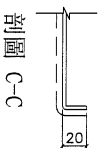
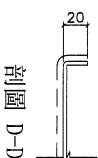
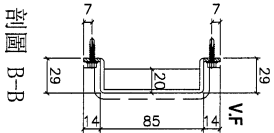
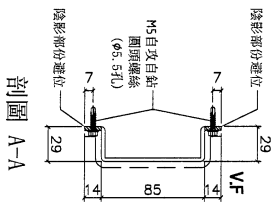
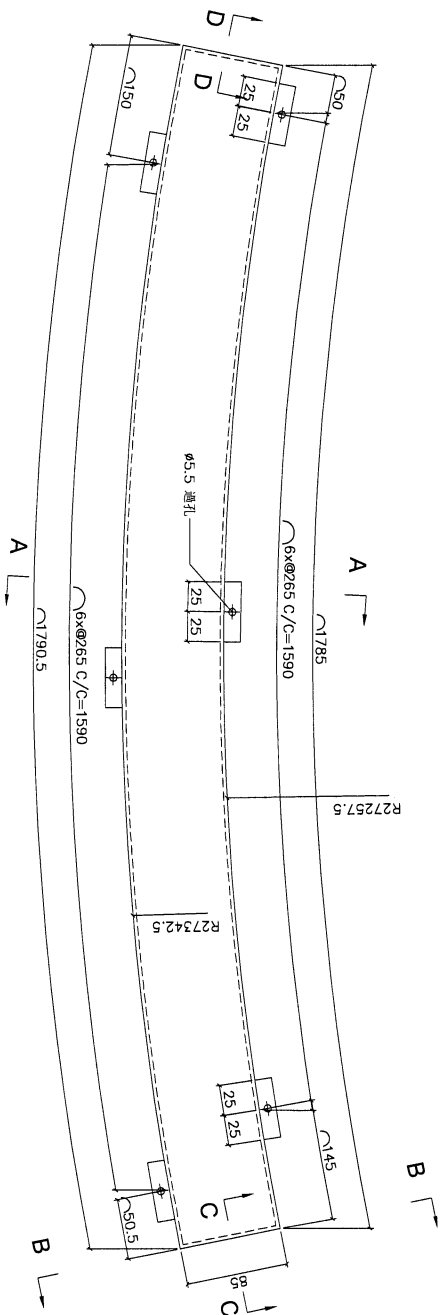
MARK. NO. -

QTY. -

CHECKED DWG. NO.	PART NUMBER	Dim. A	Dim. B	Dim. C	Dim. D	Dim. E	Dim. F	Dim. G	Dim. H	QTY.	Inv. Code	ASSEMBLE ON PARTS
-	FW-T610	-	-	-	-	-	-	-	-	6	-	注: 用于 A 区域楼梯位

地盘用

用A3纸打印



DWG. NO.

FW-T610

REV.

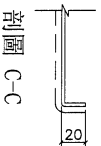
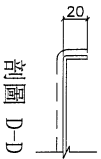
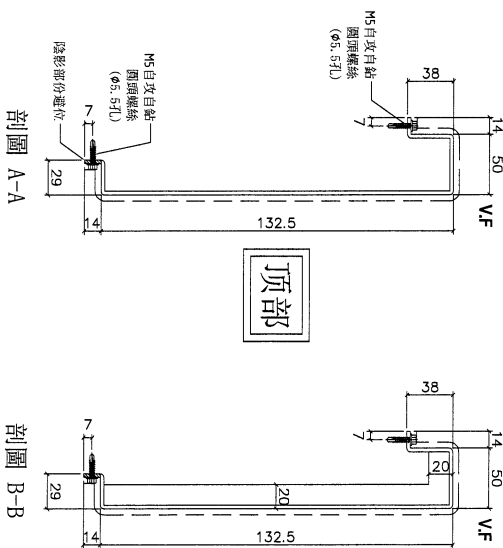
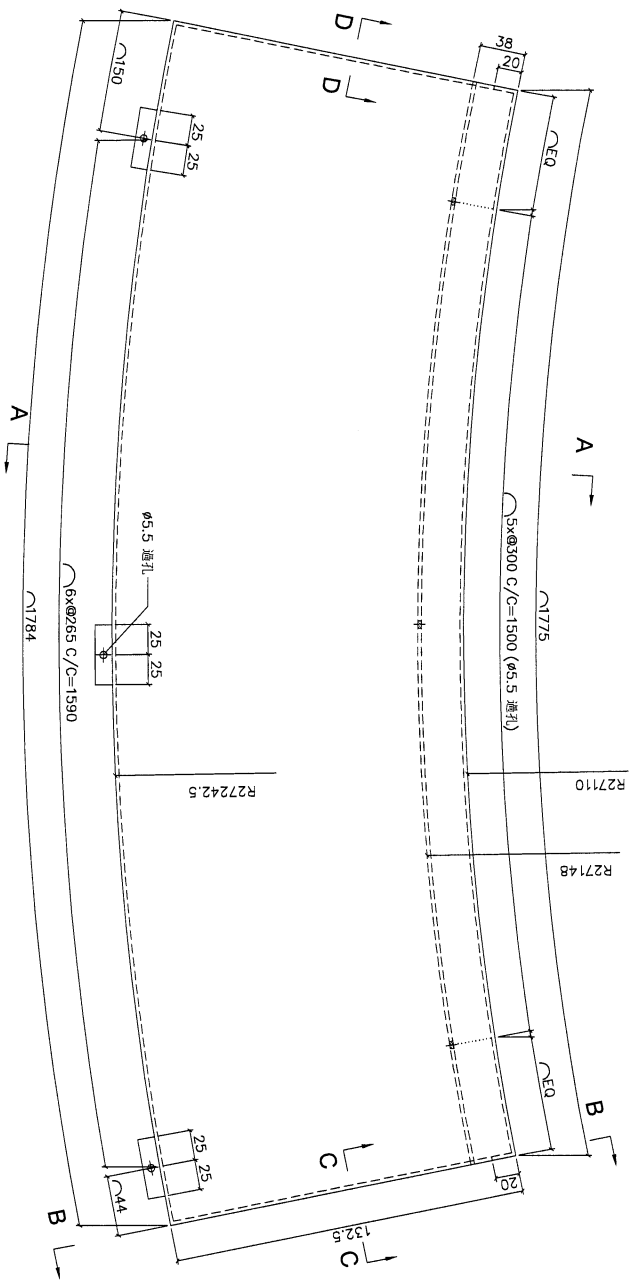
SCALE

DATE 06-07-2024

DRAWN BY

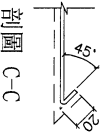
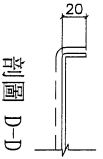
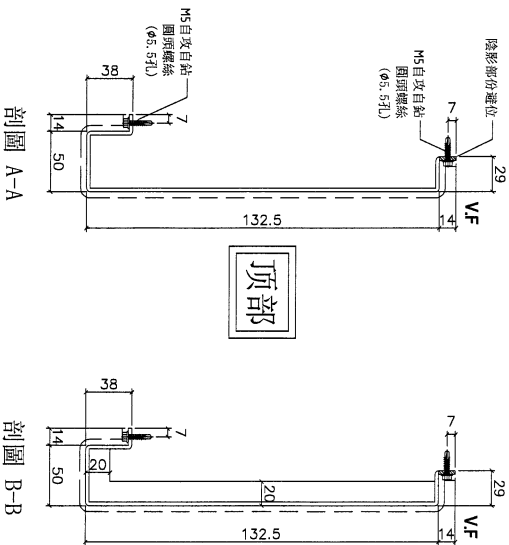
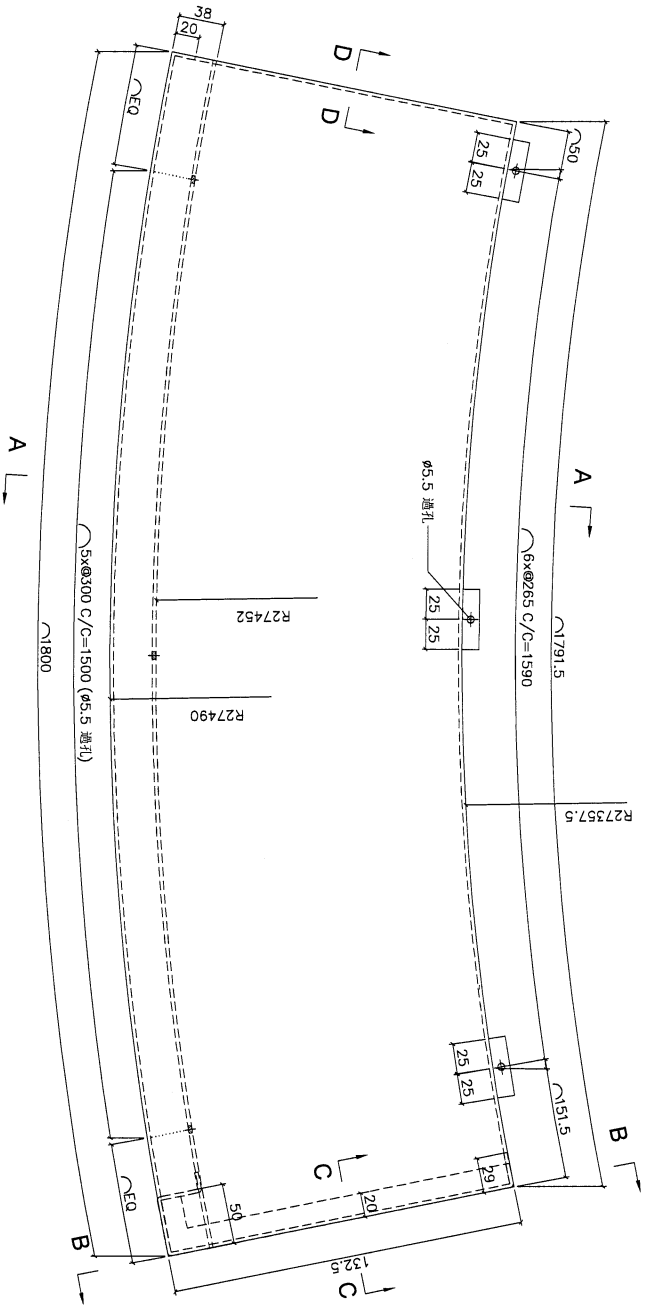
APPROVED BY

PROJECT				MATERIAL				COATING				COLOUR		MARK. NO.		QTY.	
YIN PING ROAD KOWLOON FEATURE WALL (PHASE 2)				3mm铝板				PVF2				EC-DG-D34232-ZD11 (SS-011)		-		-	
REV.	PART NUMBER	Dim. A	Dim. B	Dim. C	Dim. D	Dim. E	Dim. F	Dim. G	Dim. H	QTY.	Inv. Code	ASSEMBLE ON PARTS					
—	FW-T710	—	—	—	—	—	—	—	—	6	—	注：用于 A 区域楼梯位					
CHECKED DWG BY												ASSEMBLE ON PARTS					
												地盤用					
												用A3紙打印					



DWG. NO.		REV.		SCALE		DATE		DRAWN BY		APPROVED BY	
FW-T710		-		-		06-07-2024		-		-	

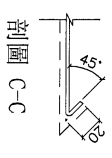
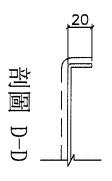
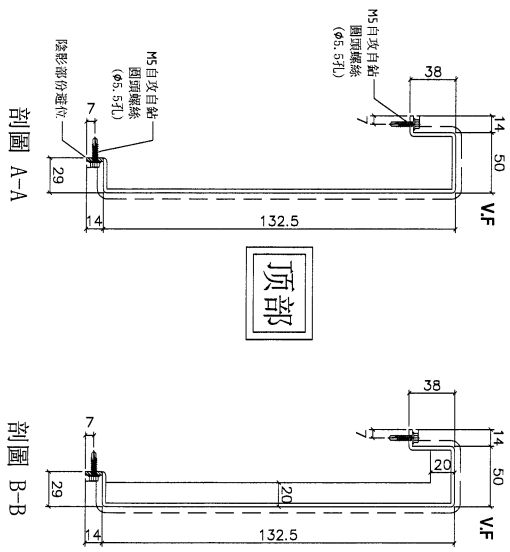
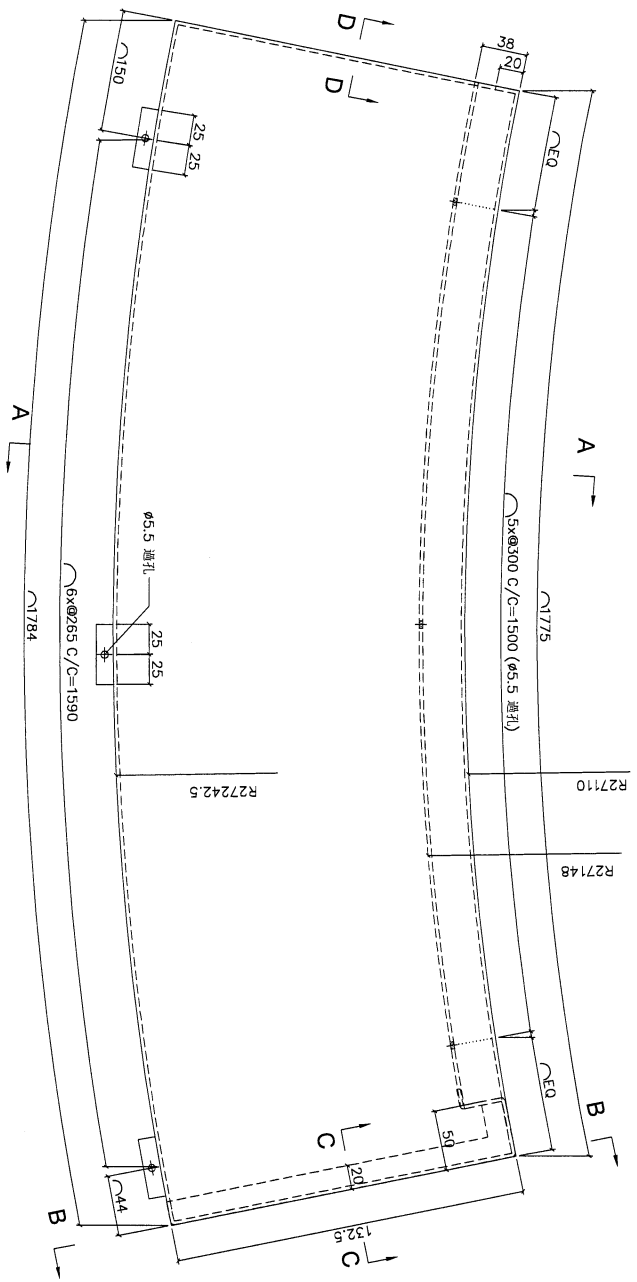
PROJECT				MATERIAL				COATING				COLOUR		MARK. NO.		QTY.	
YIN PING ROAD KOWLOON FEATURE WALL (PHASE 2)				3mm铝板				PVF2				EC-DG-D34232-ZD1(SS-01)		-		-	
REV.	CHECKED PART BY	PART NUMBER	Dim. A	Dim. B	Dim. C	Dim. D	Dim. E	Dim. F	Dim. G	Dim. H	QTY.	Inv. Code	ASSEMBLE ON PARTS				
-		FW-T511	-	-	-	-	-	-	-	-	3		注: 用于 A 区域楼梯位				
												地盤用		用A3紙打印			



DWG. NO.	FW-T511	REV.	-	SCALE	-	DATE	06-07-2024	DRAWN BY	-	APPROVED BY	-
----------	---------	------	---	-------	---	------	------------	----------	---	-------------	---



PROJECT				MATERIAL				COATING				COLOUR		MARK. NO.		QTY.			
YIN PING ROAD KOWLOON FEATURE WALL (PHASE 2)				3mm铝板				PVF2				EC-DG-D334232-ZD1(SS-01)		-		-			
CHECKED DWG BY		PART NUMBER		Dim. A		Dim. B		Dim. C		Dim. D		Dim. E		Dim. F		Dim. G		Dim. H	
-		FW-T711		-		-		-		-		-		-		-		-	
				QTY.				Inv. Code				ASSEMBLE ON PARTS							
				3								注: 用于 A 区域楼梯位							
<div style="display: flex; justify-content: space-between; width: 100%;"> <span>地盤用</span> <span>用A3紙打印</span> </div>																			



DWG. NO.		REV.		SCALE		DATE		DRAWN BY		APPROVED BY	
FW-T711		-		-		06-07-2024		-		-	

PROJECT  
YIN PING ROAD KOWLOON  
FEATURE WALL (PHASE 2)

MATERIAL  
3mm铝板

COATING  
PVF2

COLOUR  
EC-DG-D334232-ZD11 (SS-011)

MARK. NO.  
-

QTY.  
-

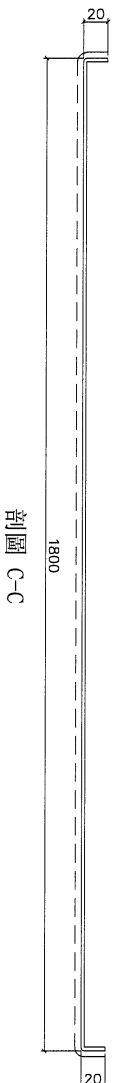
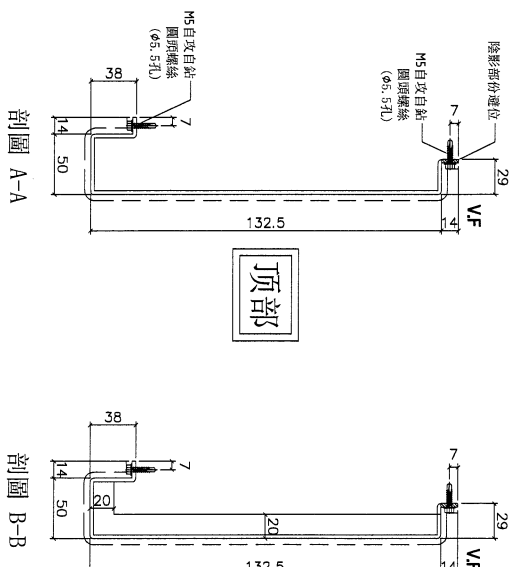
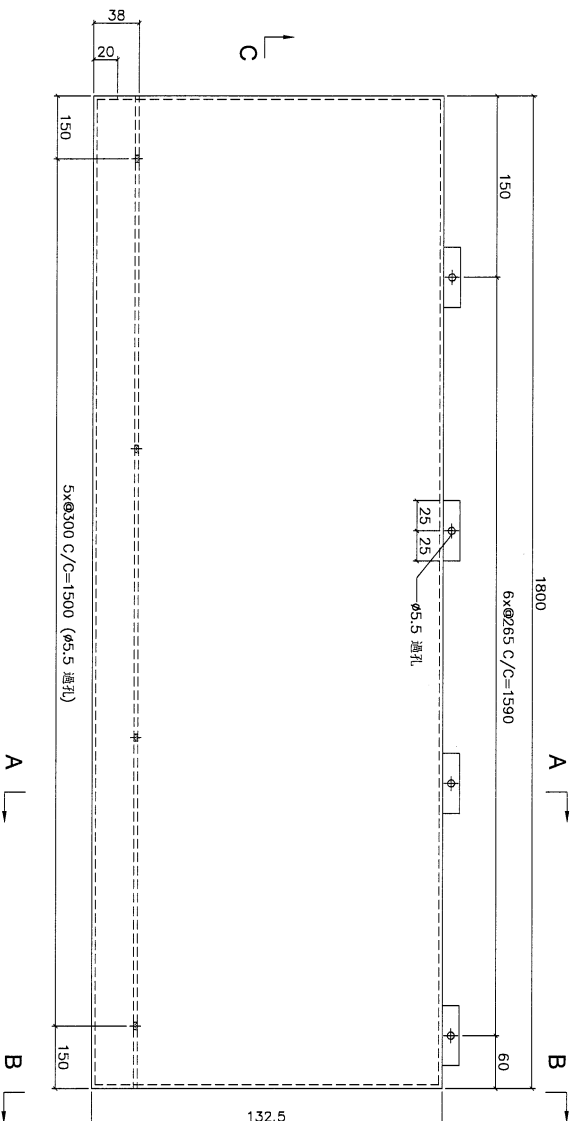
CHECKED DATE BY	PART NUMBER	Dim. A	Dim. B	Dim. C	Dim. D	Dim. E	Dim. F	Dim. G	Dim. H	QTY.	Inv. Code
-	FW-T512	-	-	-	-	-	-	-	-	4	-

ASSEMBLE ON PARTS

注：用于 B 区域楼梯位

地盘用

用A3纸打印



剖面 C-C

剖面 A-A

剖面 B-B

DWG. NO.

FW-T512

REV.

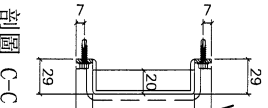
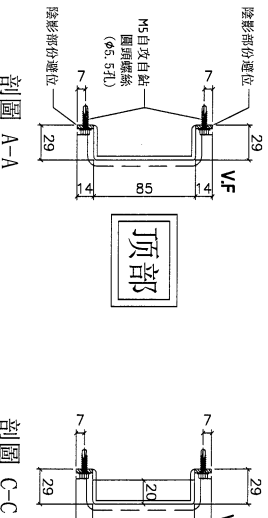
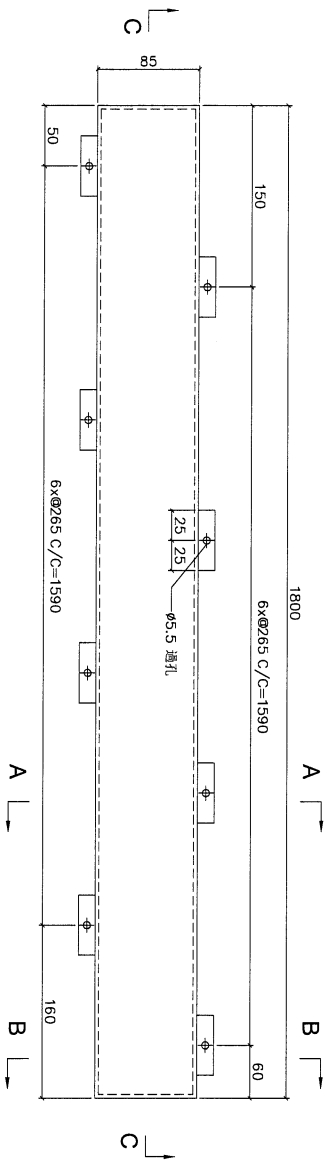
SCALE

DATE  
06-07-2024

DRAWN BY

APPROVED BY

PROJECT				YIN PING ROAD KOWLOON FEATURE WALL (PHASE 2)				MATERIAL				3mm铝板				COATING				PVF2				COLOUR				EC-DG-D34232-ZD1(SS-01)				MARK. NO.				-				QTY.				-			
REL.	CHECKED DWG BY	PART NUMBER	Dim. A	Dim. B	Dim. C	Dim. D	Dim. E	Dim. F	Dim. G	Dim. H	QTY.	Inv. Code	ASSEMBLE ON PARTS																																		
-		FW-T612	-	-	-	-	-	-	-	-	4		注: 用于 B 区域模板位																																		
												地盤用												用A3紙打印																							



DWG. NO.		FW-T612		REV.		-		SCALE		-		DATE		06-07-2024		DRAWN BY		-		APPROVED BY		-	
----------	--	---------	--	------	--	---	--	-------	--	---	--	------	--	------------	--	----------	--	---	--	-------------	--	---	--

PROJECT  
YIN PING ROAD KOWLOON  
FEATURE WALL (PHASE 2)

MATERIAL  
3mm铝板

COATING  
PVF2

COLOUR  
EC-DG-D34232-ZD1(SS-01)

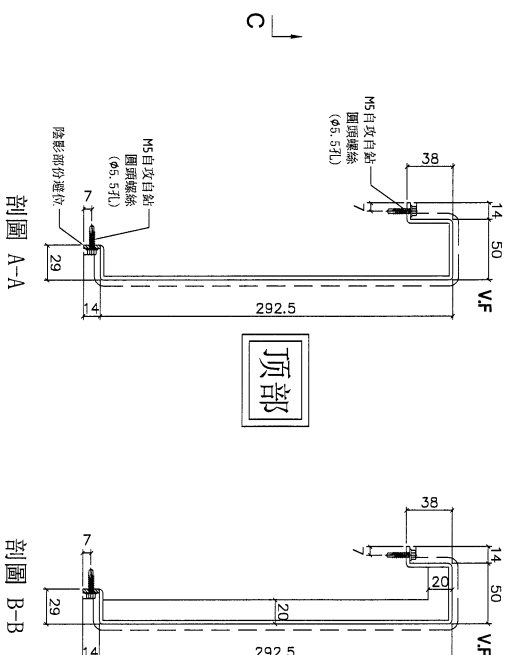
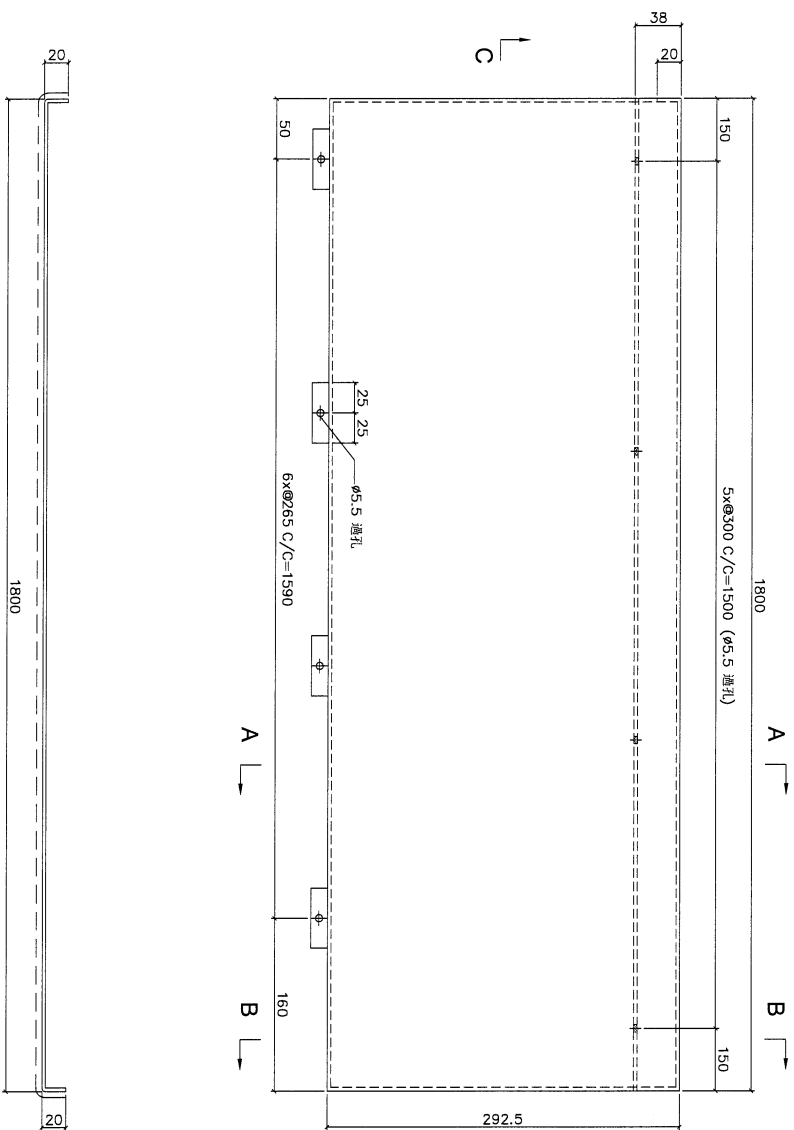
MARK. NO.  
-

QTY.  
-

REV.	CHECKED PART BY	PART NUMBER	Dim. A	Dim. B	Dim. C	Dim. D	Dim. E	Dim. F	Dim. G	Dim. H	QTY.	Inv. Code	ASSEMBLE ON PARTS	MARK. NO.	QTY.
-		FW-T712	-	-	-	-	-	-	-	-	4		注: 用于 B 区域操作位	-	-

地盤用

用A3紙打印



剖面 C-C

剖面 A-A

剖面 B-B

顶部

DWG. NO.

FW-T712

REV.

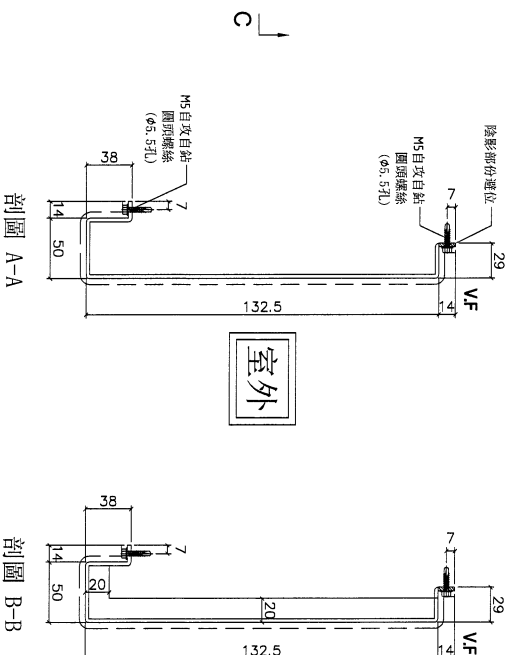
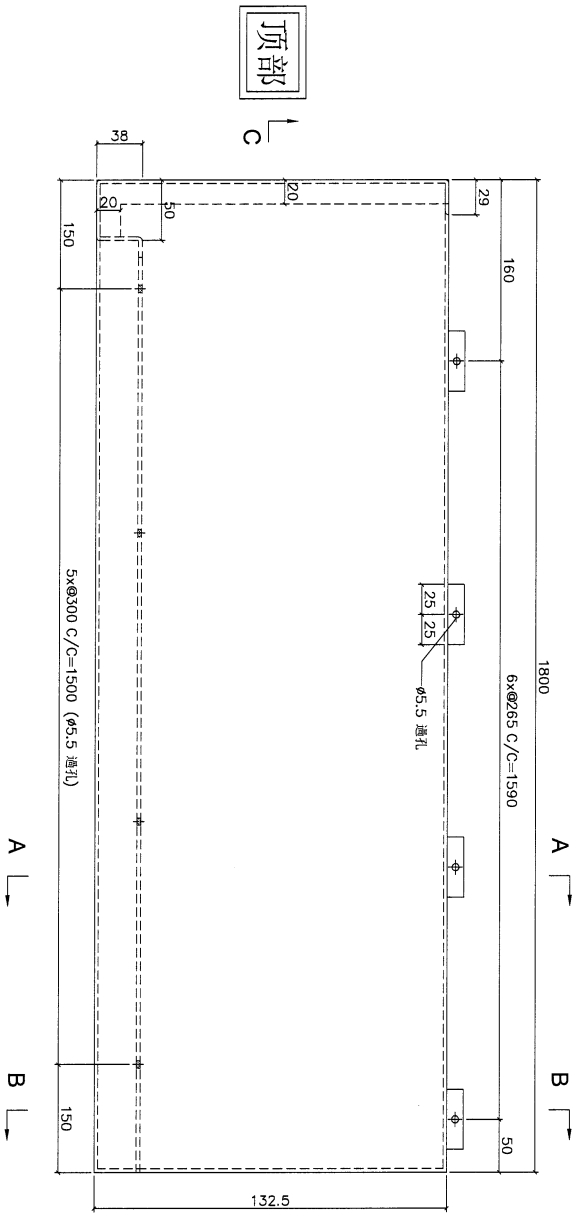
SCALE

DATE  
06-07-2024

DRAWN BY

APPROVED BY

PROJECT				MATERIAL				COATING				COLOUR		MARK. NO.		QTY.	
YIN PING ROAD KOWLOON FEATURE WALL (PHASE 2)				3mm铝板				PVF2				EC-DG-D334232-ZD1(SS-01)		-		-	
REV.	CHECKED DATE BY	PART NUMBER	Dim. A	Dim. B	Dim. C	Dim. D	Dim. E	Dim. F	Dim. G	Dim. H	QTY.	Inv. Code	ASSEMBLE ON PARTS				
-		FW-1513	-	-	-	-	-	-	-	-	1		注: 用于 B 区域楼梯位				
												地盤用		用A3紙打印			



剖面 C-C

剖面 A-A

剖面 B-B

DWG. NO.

FW-1513

REV.

SCALE

DATE  
06-07-2024

DRAWN BY

APPROVED BY

PROJECT  
YIN PING ROAD KOWLOON  
FEATURE WALL (PHASE 2)

MATERIAL  
3mm铝板

COATING  
PVF2

COLOUR  
EG-DG-D334232-ZD1(SS-011)

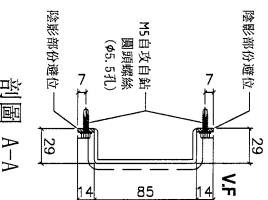
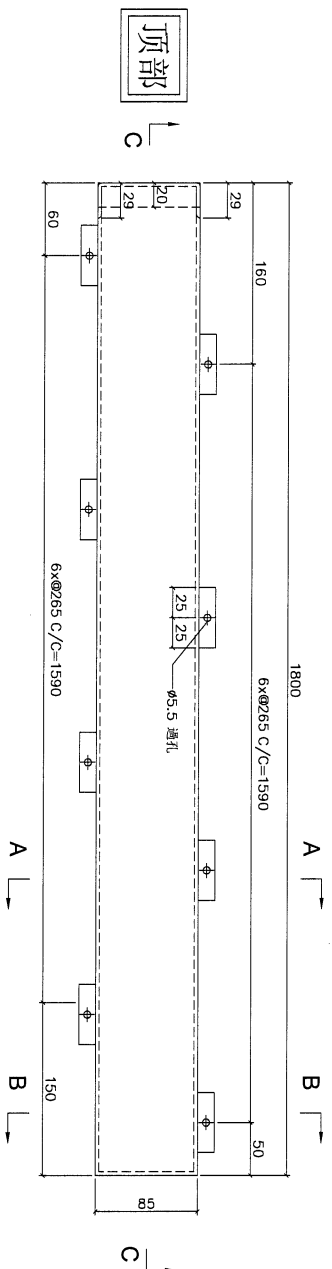
MARK. NO.  
-

QTY.  
-

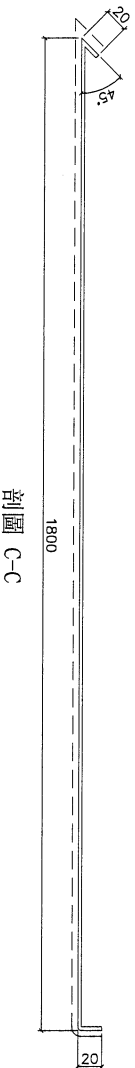
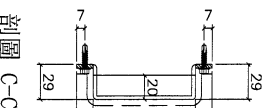
REV.	CHECKED DATE BY	PART NUMBER	Dim. A	Dim. B	Dim. C	Dim. D	Dim. E	Dim. F	Dim. G	Dim. H	QTY.	Inv. Code	ASSEMBLE ON PARTS	MARK. NO.	QTY.
-		FW-1613	-	-	-	-	-	-	-	-	1		注：用于B区域楼梯位	-	-

地盤用

用A3紙打印



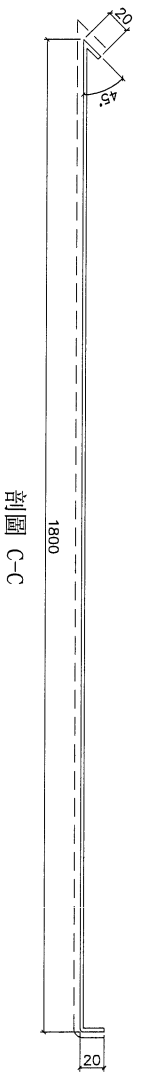
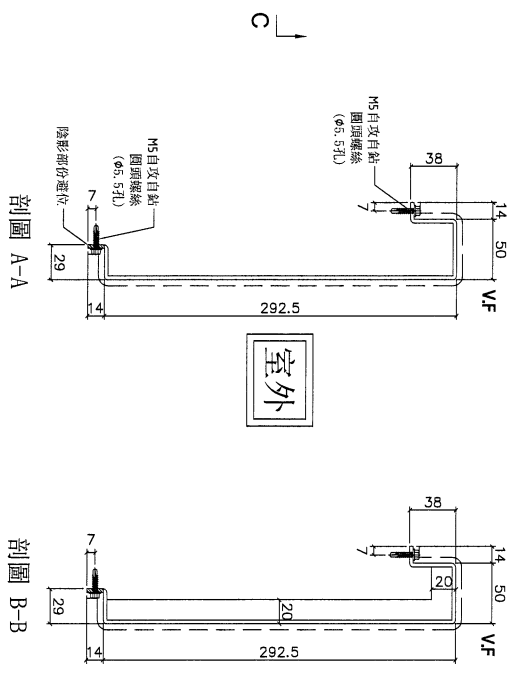
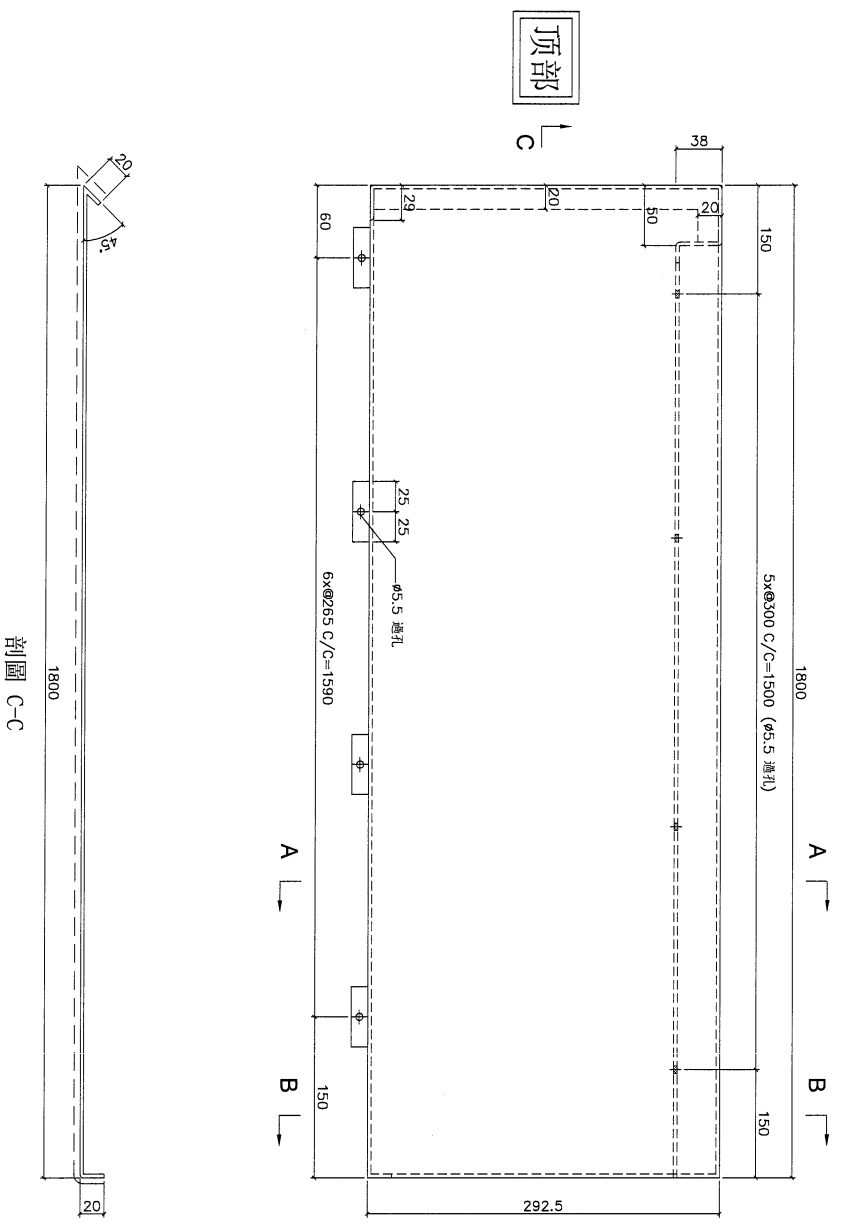
室外



剖面 C-C

DWG. NO.	FW-1613	REV.	-	SCALE	-	DATE	06-07-2024	DRAWN BY	-	APPROVED BY	-
----------	---------	------	---	-------	---	------	------------	----------	---	-------------	---

PROJECT				MATERIAL				COATING				COLOUR				MARK. NO.		QTY.	
YIN PING ROAD KOWLOON FEATURE WALL (PHASE 2)				3mm铝板				PVF2				EC-DG-D334232-ZD1(SS-011)				-		-	
CHKD DWG BY	PART NUMBER	Dim. A	Dim. B	Dim. C	Dim. D	Dim. E	Dim. F	Dim. G	Dim. H	QTY.	Inv. Code	ASSEMBLE ON PARTS							
-	FW-T713	-	-	-	-	-	-	-	-	1	-	注：用于B区域楼梯位							
												地盤用		用A3紙打印					



DWG. NO.	REV.	SCALE	DATE	DRAWN BY	APPROVED BY
FW-T713	-	-	06-07-2024	-	-

PROJECT  
YIN PING ROAD KOWLOON  
FEATURE WALL (PHASE 2)

MATERIAL  
3mm铝板

COATING  
PVF2

COLOUR  
EC-DG-D334232-ZD1 (SS-011)

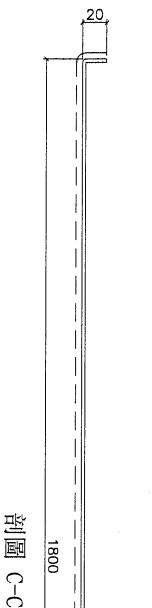
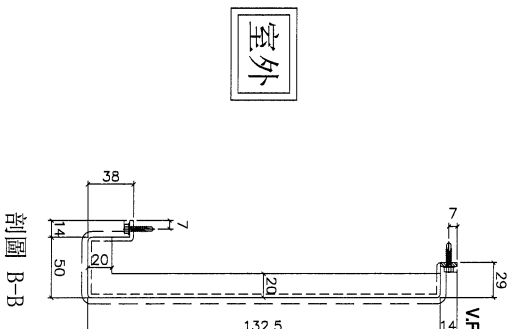
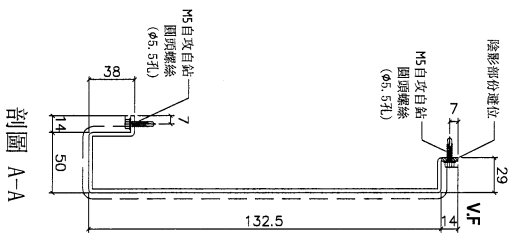
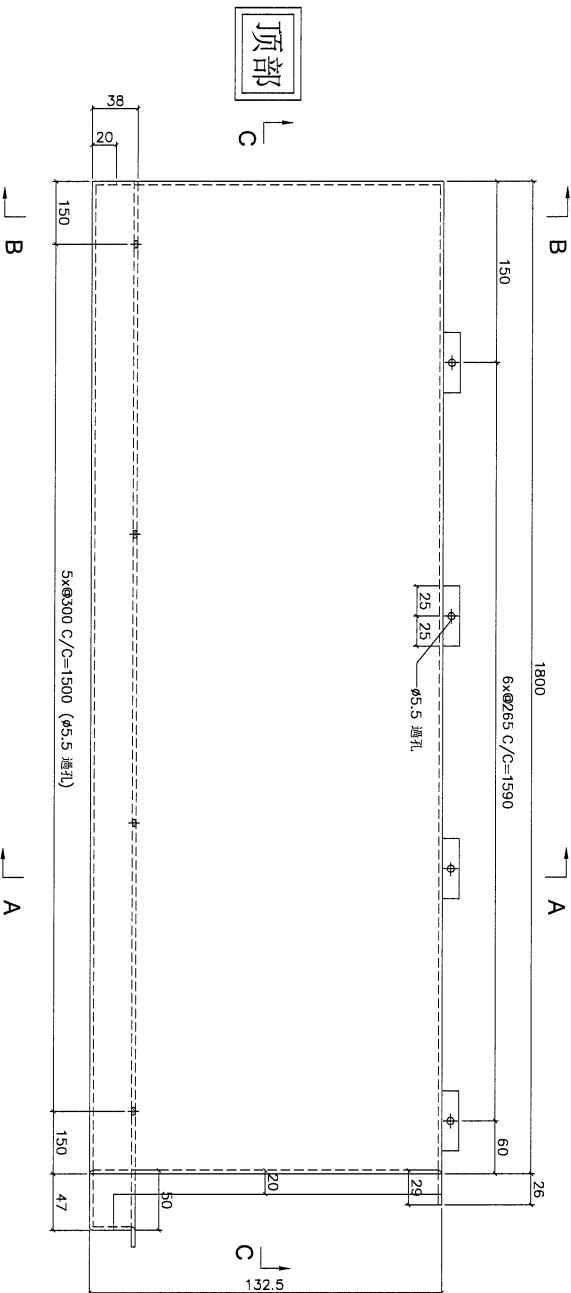
MARK. NO.  
-

QTY.  
-

CHKD DATE	CHKD BY	PART NUMBER	Dim. A	Dim. B	Dim. C	Dim. D	Dim. E	Dim. F	Dim. G	Dim. H	QTY.	Inv. Code	ASSEMBLE ON PARTS	MARK. NO.	QTY.
-	-	FW-T514	-	-	-	-	-	-	-	-	1	-	注: 用于 B 区域	-	-

地盤用

用A3紙打印



剖面 C-C

剖面 A-A

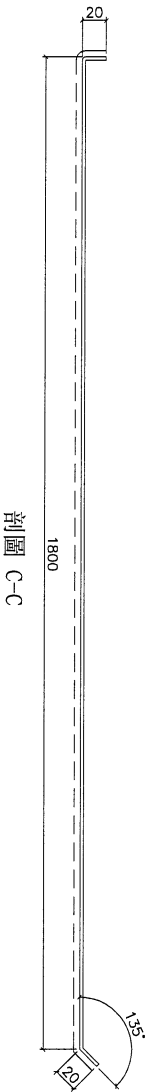
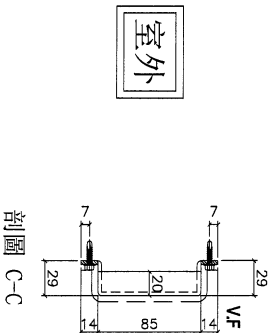
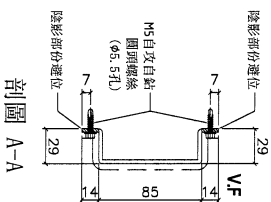
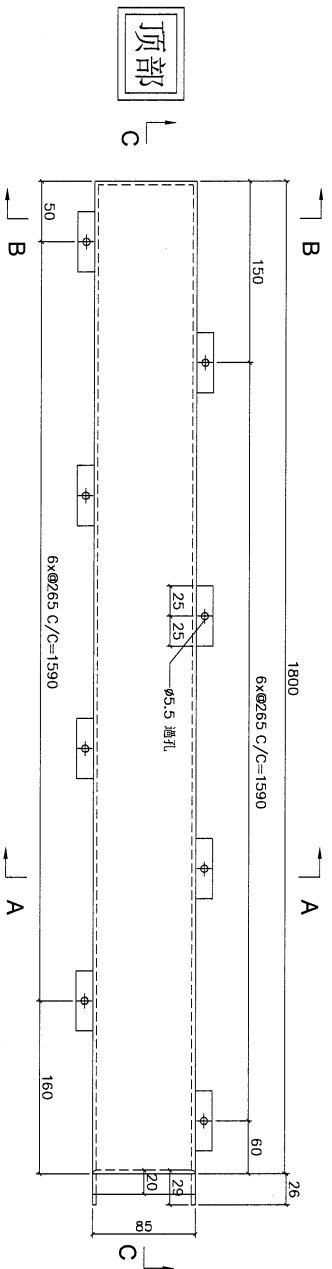
剖面 B-B

顶部

室外

DWG. NO.	FW-T514	REV.	-	SCALE	-	DATE	06-07-2024	DRAWN BY	-	APPROVED BY	-
----------	---------	------	---	-------	---	------	------------	----------	---	-------------	---

PROJECT				MATERIAL				COATING				COLOUR		MARK. NO.		QTY.	
YIN PING ROAD KOWLOON FEATURE WALL (PHASE 2)				3mm鋁板				PVF2				EC-DG-D34232-ZD1(SS-011)		-		-	
REV.	CHECKED DATE BY	PART NUMBER	Dim. A	Dim. B	Dim. C	Dim. D	Dim. E	Dim. F	Dim. G	Dim. H	QTY.	Inv. Code	ASSEMBLE ON PARTS				
-		FW-T614	-	-	-	-	-	-	-	-	1		注: 用于 B 区域				
												地盤用		用A3紙打印			



DWG. NO.		REV.		SCALE		DATE		DRAWN BY		APPROVED BY	
FW-T614		-		-		06-07-2024		-		-	

PROJECT  
YIN PING ROAD KOWLOON  
FEATURE WALL (PHASE 2)

MATERIAL  
3mm铝板

COATING  
PVF2

COLOUR  
EC-DG-D34232-ZD1 (SS-01)

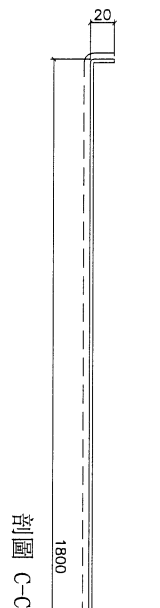
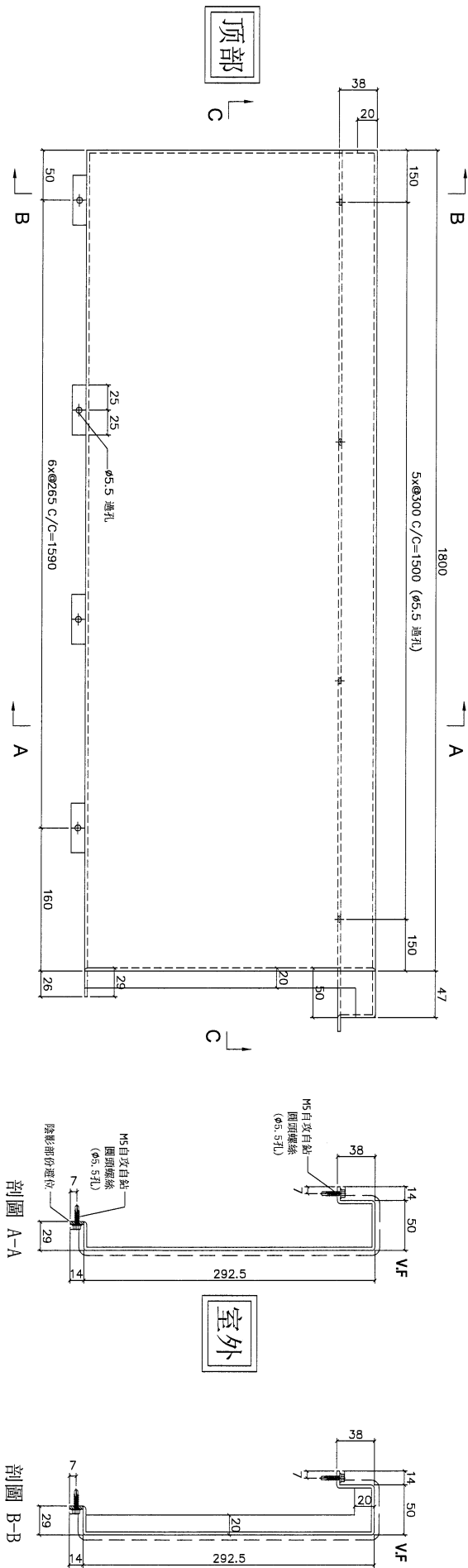
MARK. NO.  
-

QTY.  
-

CHECKED DATE BY	PART NUMBER	Dim. A	Dim. B	Dim. C	Dim. D	Dim. E	Dim. F	Dim. G	Dim. H	QTY.	Inv. Code	ASSEMBLE ON PARTS
-	FW-T714	-	-	-	-	-	-	-	-	1	-	注: 用于 B 区域

地盤用

用A3紙打印



DWG. NO.	FW-T714	REV.	-	SCALE	-	DATE	06-07-2024	DRAWN BY	-	APPROVED BY	-
----------	---------	------	---	-------	---	------	------------	----------	---	-------------	---

PROJECT  
YIN PING ROAD KOWLOON  
FEATURE WALL (PHASE 2)

MATERIAL  
3mm铝板

COATING  
PVF2

COLOUR  
EC-DG-D34232-ZD11 (SS-011)

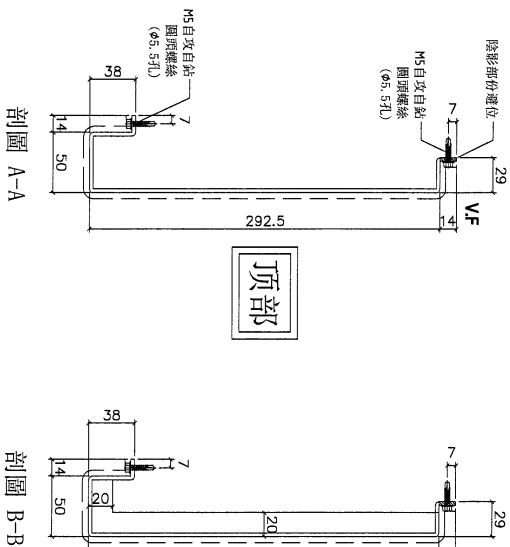
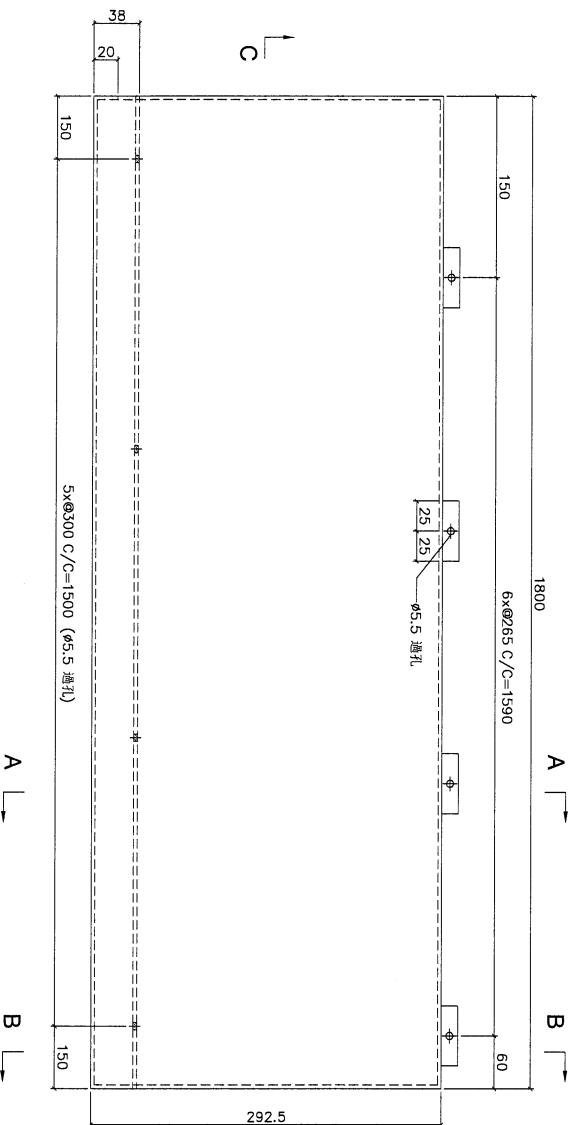
MARK. NO.  
-

QTY.  
-

Checked Rev. by	PART NUMBER	Dim. A	Dim. B	Dim. C	Dim. D	Dim. E	Dim. F	Dim. G	Dim. H	QTY.	Inv. Code	ASSEMBLE ON PARTS
-	FW-T515	-	-	-	-	-	-	-	-	7	-	注：用于 C 区域3件，D 区域4件

地盘用

用A3纸打印



剖面 C-C

剖面 A-A

剖面 B-B

顶部

DWG. NO.

FW-T515

REV.

-

SCALE

-

DATE

06-07-2024

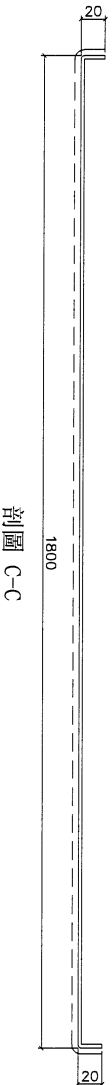
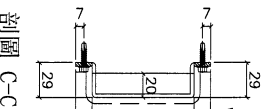
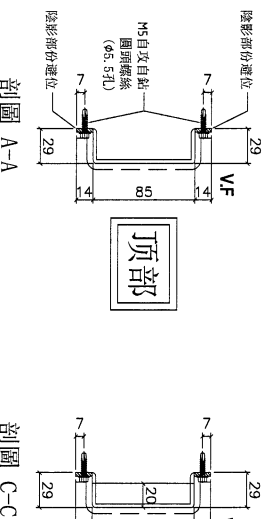
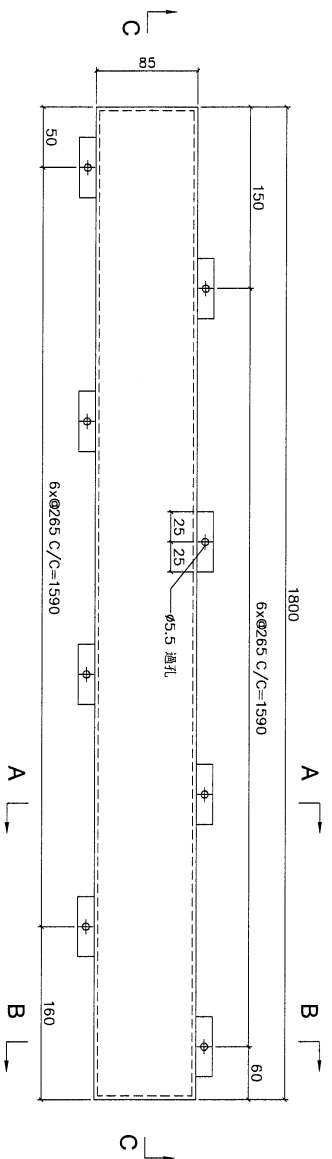
DRAWN BY

-

APPROVED BY

-

PROJECT				MATERIAL				COATING				COLOUR				MARK. NO.		QTY.	
YIN PING ROAD KOWLOON FEATURE WALL (PHASE 2)				3mm铝板				PVF2				EC-DG-D334232-ZD1(SS-01)				-		-	
REV.	CHECKED DATE BY	PART NUMBER	Dim. A	Dim. B	Dim. C	Dim. D	Dim. E	Dim. F	Dim. G	Dim. H	QTY.	Inv. Code	ASSEMBLE ON PARTS						
-		FW-T615	-	-	-	-	-	-	-	-	7		注：用于 C 区域3件，D 区域4件						
												地盤用		用A3紙打印					



DWG. NO.		REV.		SCALE		DATE		DRAWN BY		APPROVED BY	
FW-T615		-		-		06-07-2024		-		-	

PROJECT  
YIN PING ROAD KOWLOON  
FEATURE WALL (PHASE 2)

MATERIAL  
3mm铝板

COATING  
PVF2

COLOUR  
EG-DG-D334232-ZD1(SS-01)

MARK. NO.  
-

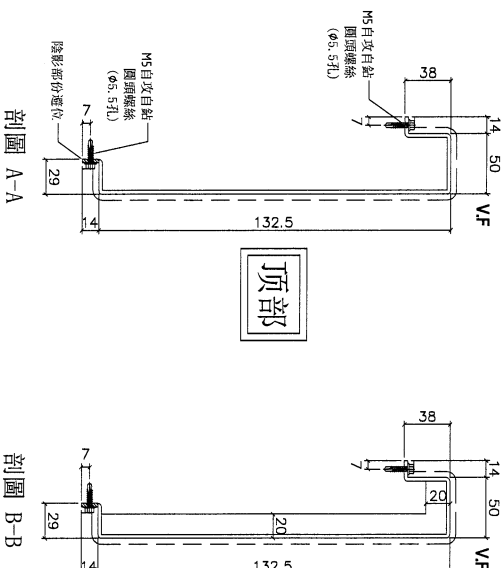
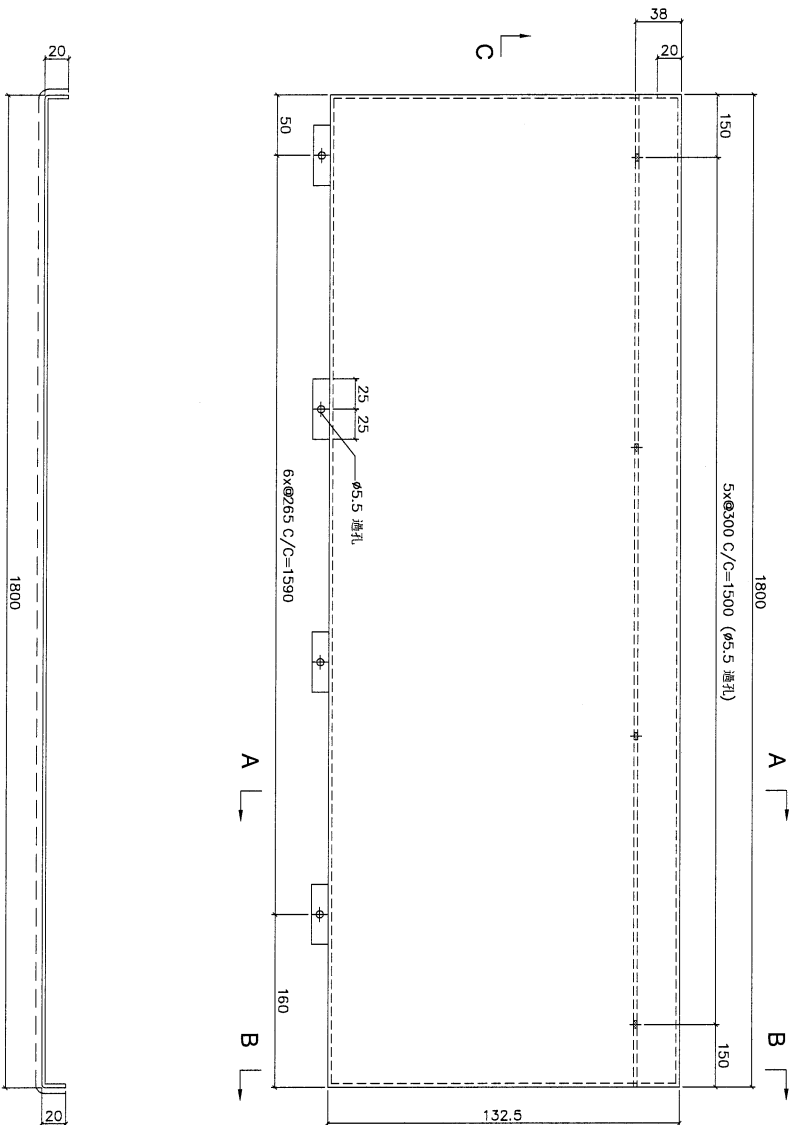
QTY.  
-

REV.	CHECKED DATE BY	PART NUMBER	Dim. A	Dim. B	Dim. C	Dim. D	Dim. E	Dim. F	Dim. G	Dim. H	QTY.	Inv. Code
-		FW-1715	-	-	-	-	-	-	-	-	7	

ASSEMBLE ON PARTS  
注：用于 C 区域3件，D 区域4件

地盤用

用A3紙打印



剖面 C-C

剖面 A-A

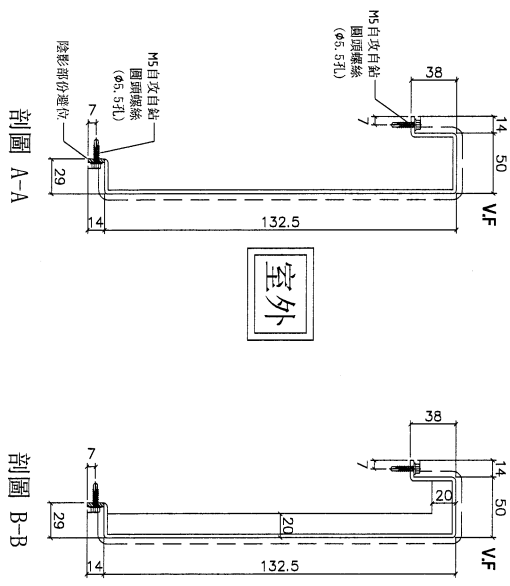
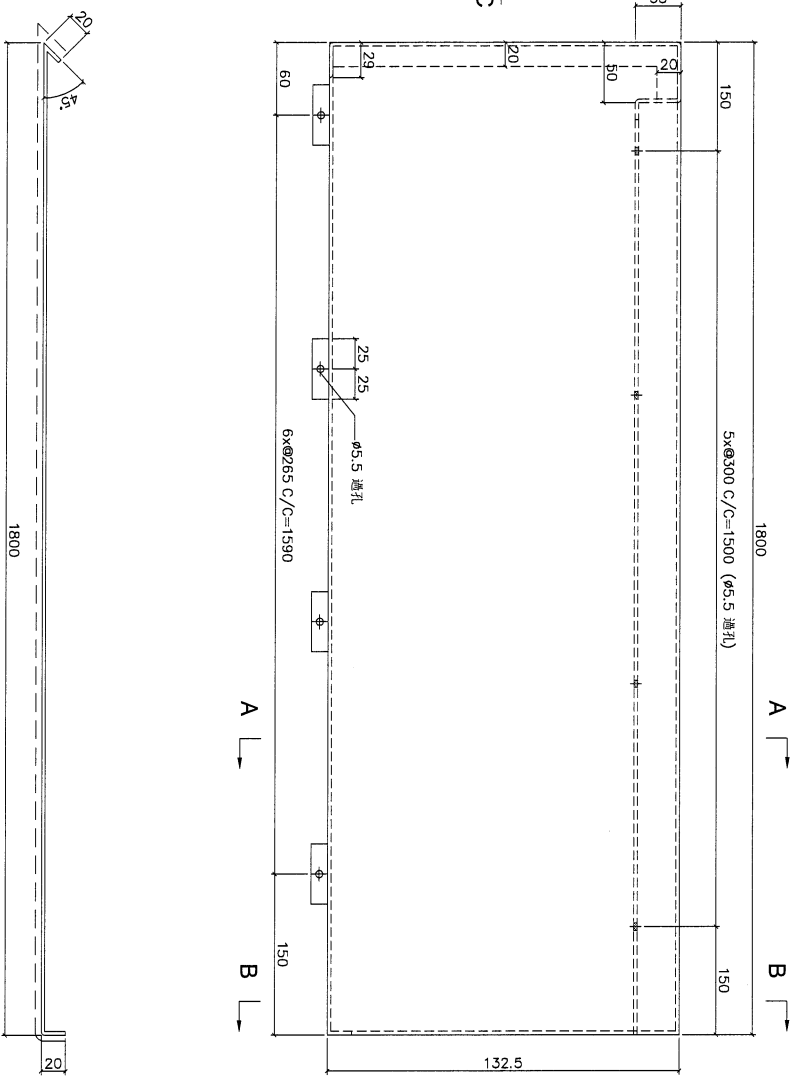
剖面 B-B

DWG. NO.	FW-1715	REV.	-	SCALE	-	DATE	06-07-2024	DRAWN BY	-	APPROVED BY	-
----------	---------	------	---	-------	---	------	------------	----------	---	-------------	---





PROJECT				MATERIAL				COATING				COLOUR				MARK. NO.		QTY.	
YIN PING ROAD KOWLOON FEATURE WALL (PHASE 2)				3mm铝板				PVF2				EC-DG-D334232-ZD1(SS-01)				-		-	
REV.	CHECKED DATE BY	PART NUMBER	Dim. A	Dim. B	Dim. C	Dim. D	Dim. E	Dim. F	Dim. G	Dim. H	QTY.	Inv. Code	ASSEMBLE ON PARTS						
-	FW-1716	-	-	-	-	-	-	-	-	-	2	-	注：用于 C 区域1件，D 区域1件						
													地盤用		用A3紙打印				



剖面 C-C

剖面 A-A

剖面 B-B

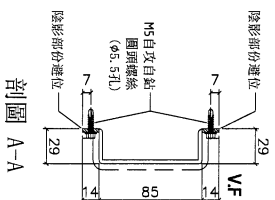
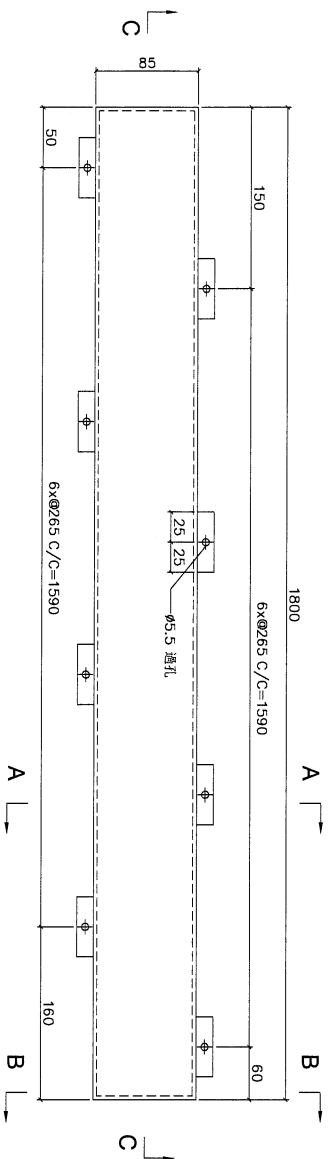
顶部

室外

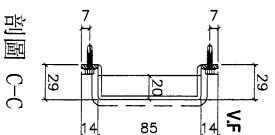
DWG. NO.	FW-1716	REV.	-	SCALE	-	DATE	06-07-2024	DRAWN BY	-	APPROVED BY	-
----------	---------	------	---	-------	---	------	------------	----------	---	-------------	---



PROJECT				YIN PING ROAD KOWLOON FEATURE WALL (PHASE 2)				MATERIAL				3mm铝板				COATING				PVF2				COLOUR				EC-DG-D334232-ZD1(SS-01)				MARK. NO.				-				QTY.				-			
CHECKED BY		PART NUMBER		Dim. A		Dim. B		Dim. C		Dim. D		Dim. E		Dim. F		Dim. G		Dim. H		QTY.		Inv. Code		ASSEMBLE ON PARTS				-				-															
-		FW-T617		-		-		-		-		-		-		-		-		3		-		注：用于 B 区域1件； A 区域2件				-				-															
地盤用																								用A3紙打印																							



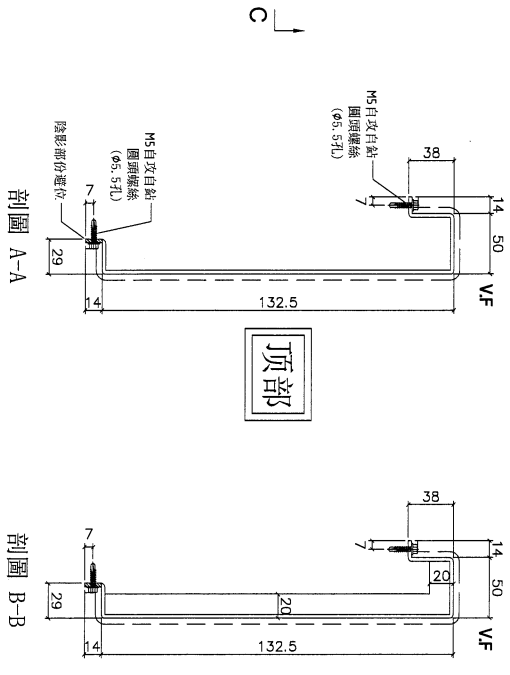
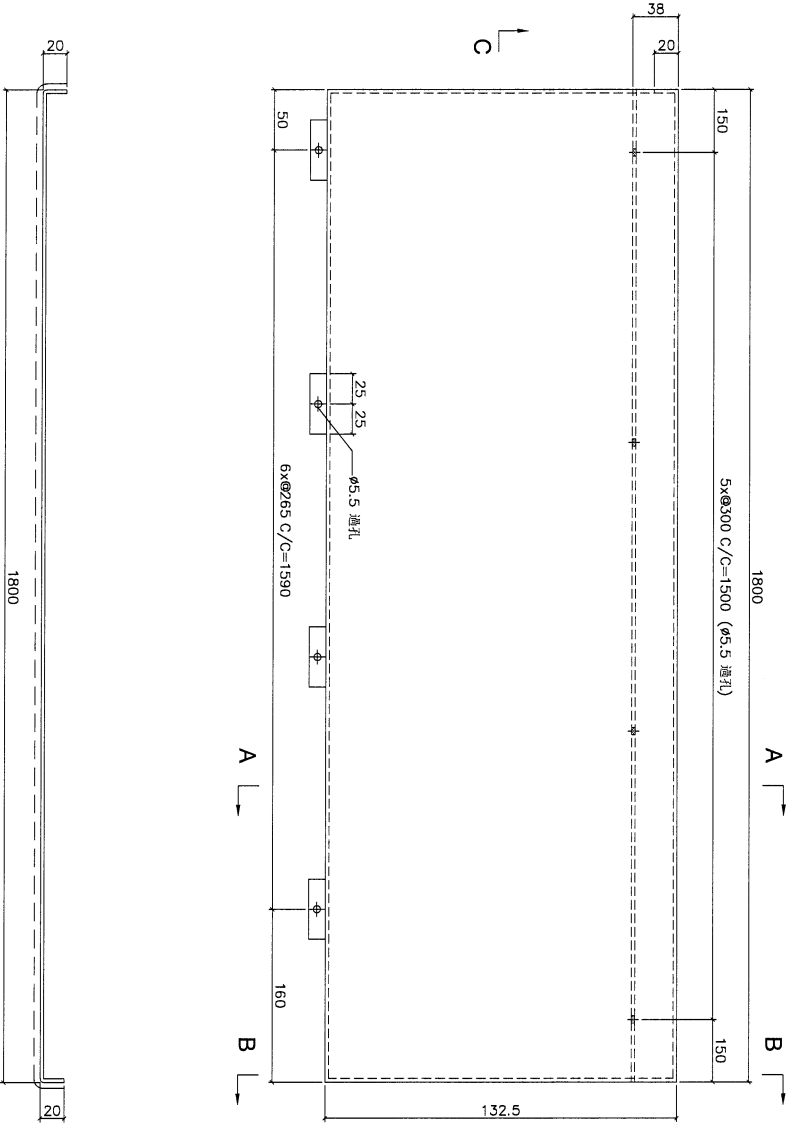
顶部



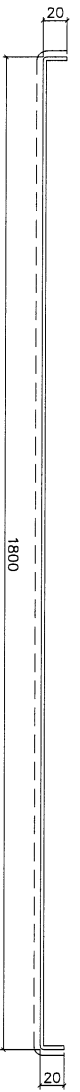
剖面 C-C

DWG. NO.		FW-T617		REV.		-		SCALE		-		DATE		06-07-2024		DRAWN BY		-		APPROVED BY		-	
----------	--	---------	--	------	--	---	--	-------	--	---	--	------	--	------------	--	----------	--	---	--	-------------	--	---	--

PROJECT				MATERIAL				COATING				COLOUR		MARK. NO.		QTY.	
YIN PING ROAD KOWLOON FEATURE WALL (PHASE 2)				3mm铝板				PVF2				EC-DG-D334232-ZD1(SS-01)		-		-	
REV.	CHECKED BY	PART NUMBER	Dim. A	Dim. B	Dim. C	Dim. D	Dim. E	Dim. F	Dim. G	Dim. H	QTY.	Inv. Code	ASSEMBLE ON PARTS				
-		FW-T717	-	-	-	-	-	-	-	-	3		注: 用于 B 区域1件, A 区域2件				
												地盤用		用A3紙打印			

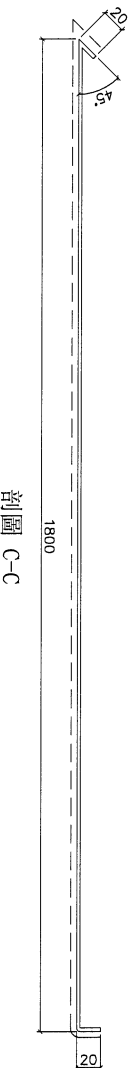
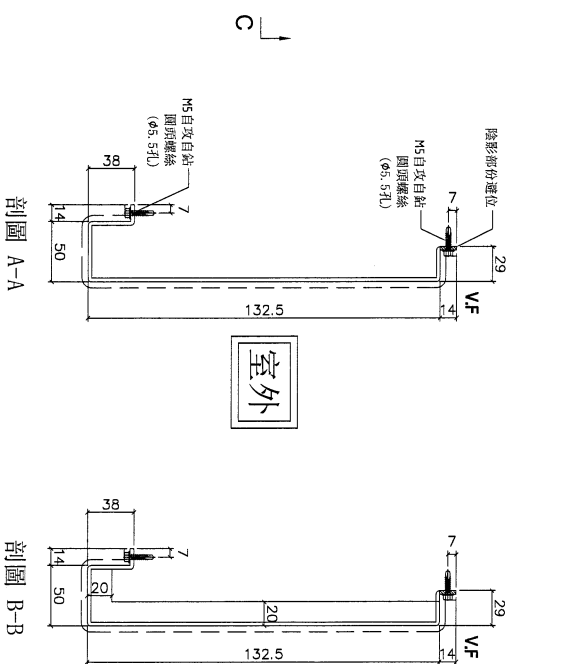
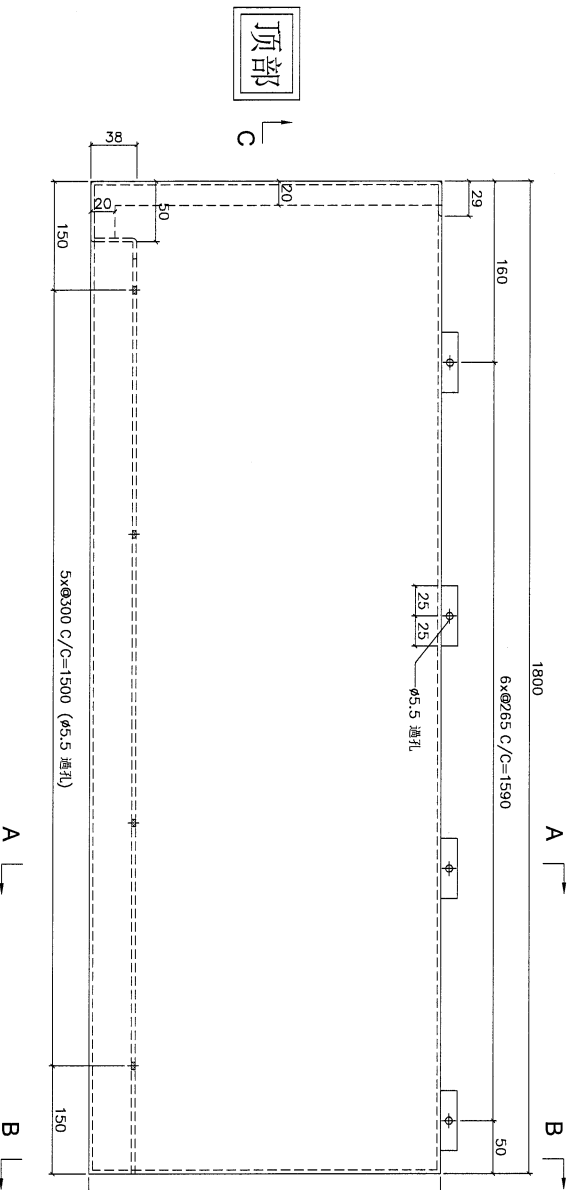


剖面 C-C



DWG. NO.		REV.		SCALE		DATE		DRAWN BY		APPROVED BY	
FW-T717		-		-		06-07-2024		-		-	

PROJECT				MATERIAL				COATING				COLOUR		MARK. NO.		QTY.	
YIN PING ROAD KOWLOON FEATURE WALL (PHASE 2)				3mm铝板				PVF2				EC-DG-D34232-ZD1 (SS-01)		-		-	
REV.	CHECKED DATE BY	PART NUMBER	Dim. A	Dim. B	Dim. C	Dim. D	Dim. E	Dim. F	Dim. G	Dim. H	QTY.	Inv. Code	ASSEMBLE ON PARTS				
-		FW-T518	-	-	-	-	-	-	-	-	5		注: 用于 B 区域2件, A 区域3件				
												地盤用		用A3紙打印			



顶部

室外

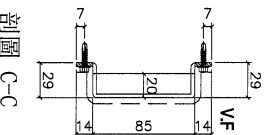
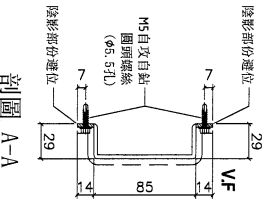
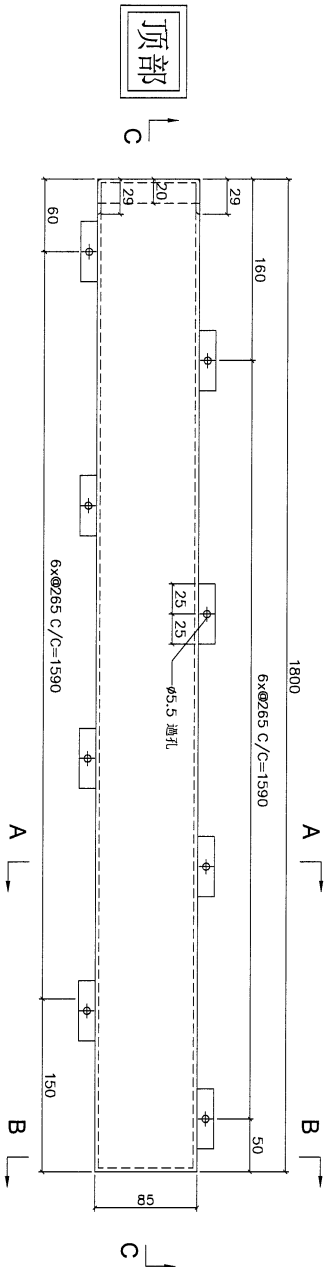
剖面 A-A

剖面 B-B

剖面 C-C

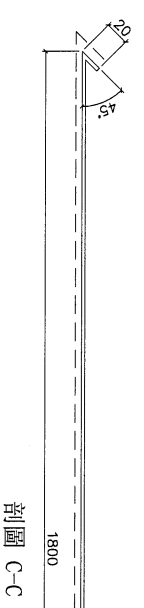
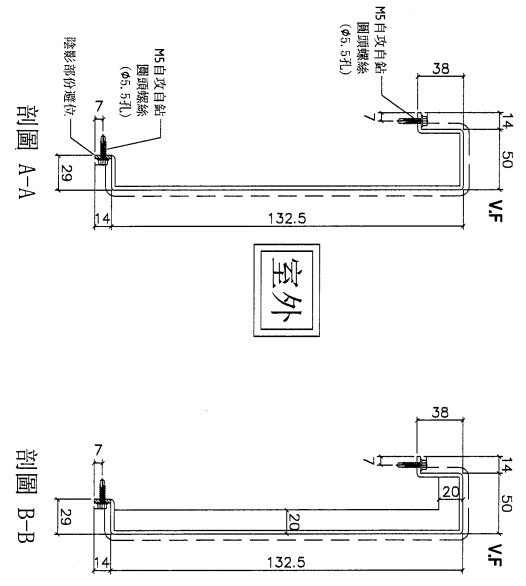
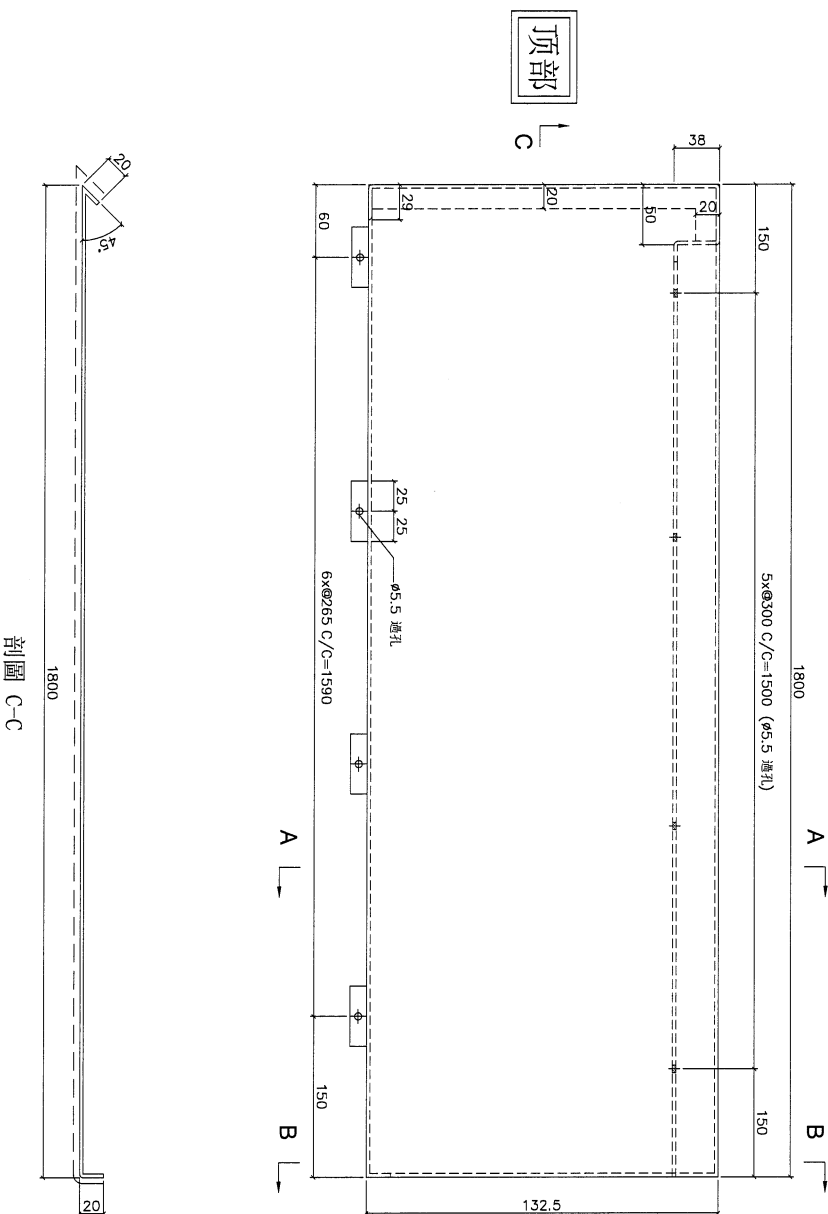
DWG. NO.		REV.		SCALE		DATE		DRAWN BY		APPROVED BY	
FW-T518		-		-		06-07-2024		-		-	

PROJECT				MATERIAL				COATING				COLOUR				MARK. NO.		QTY.	
YIN PING ROAD KOWLOON FEATURE WALL (PHASE 2)				3mm铝板				PVF2				EC-DG-D334232-ZD1(SS-01)				-		-	
REV.	CHANGED BY	PART NUMBER	Dim. A	Dim. B	Dim. C	Dim. D	Dim. E	Dim. F	Dim. G	Dim. H	QTY.	Inv. Code	ASSEMBLE ON PARTS						
-		FW-T618	-	-	-	-	-	-	-	-	5		注: 用于 B 区域2件, A 区域3件						
												地盤用		用A3紙打印					



DWG. NO.		REV.		SCALE		DATE		DRAWN BY		APPROVED BY	
FW-T618		-		-		06-07-2024		-		-	

PROJECT				MATERIAL				COATING				COLOUR		MARK. NO.		QTY.	
YIN PING ROAD KOWLOON FEATURE WALL (PHASE 2)				3mm铝板				PVF2				EC-DG-D34232-ZD1(SS-01)		-		-	
REV.	CHECKED HW BY	PART NUMBER	Dim. A	Dim. B	Dim. C	Dim. D	Dim. E	Dim. F	Dim. G	Dim. H	QTY.	Inv. Code	ASSEMBLE ON PARTS				
-		FW-T718	-	-	-	-	-	-	-	-	5		注: 用于 B 区域2件, A 区域3件				
												地盤用		用A3紙打印			



DWG. NO.		REV.		SCALE		DATE		DRAWN BY		APPROVED BY	
FW-T718		-		-		06-07-2024		-		-	

PROJECT  
YIN PING ROAD KOWLOON  
FEATURE WALL (PHASE 2)

MATERIAL  
3mm铝板

COATING  
PVF2

COLOUR  
EC-DG-D334232-ZD1(SS-01)

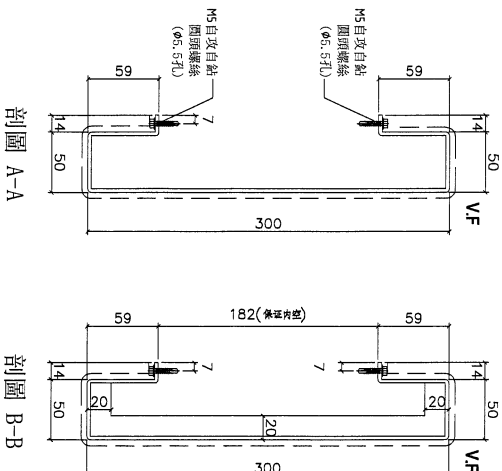
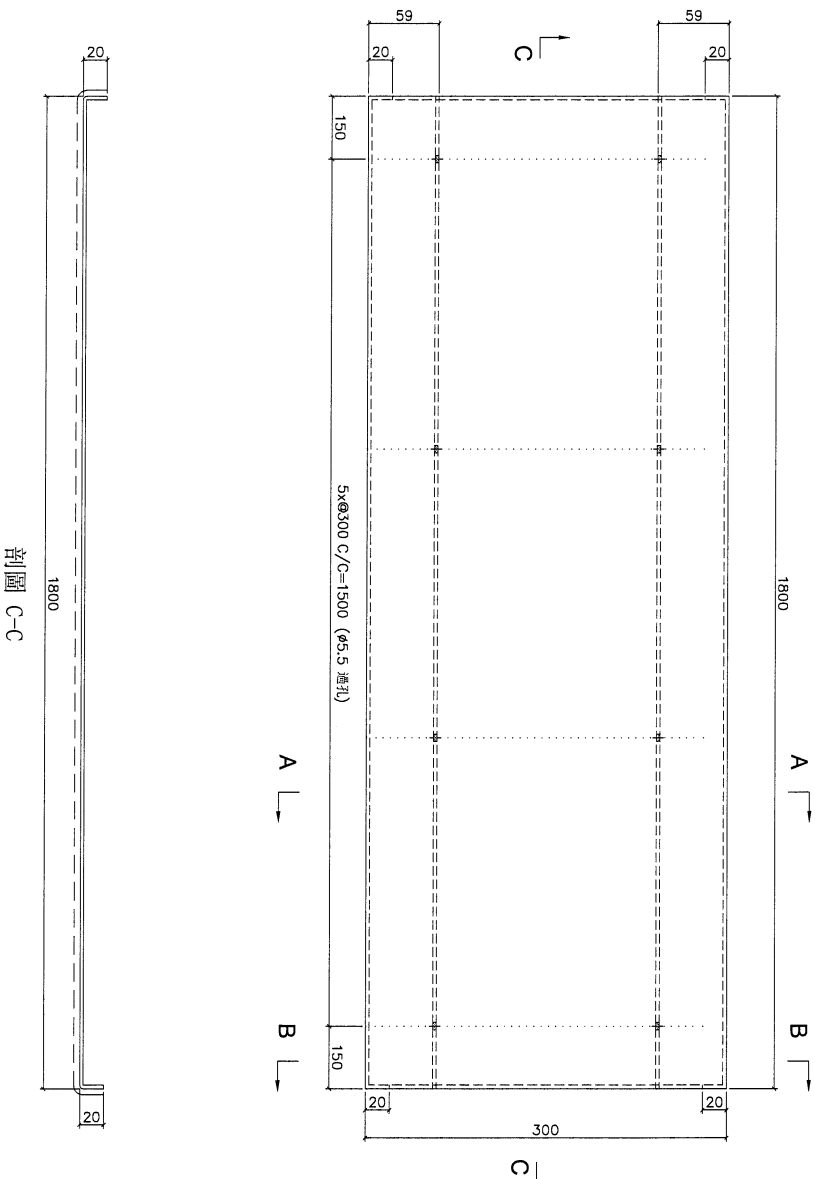
MARK. NO.

QTY.

REV.	CHECKED BY	PART NUMBER	Dim. A	Dim. B	Dim. C	Dim. D	Dim. E	Dim. F	Dim. G	Dim. H	QTY.	Inv. Code	ASSEMBLE ON PARTS
-		FW-1519	-	-	-	-	-	-	-	-	10		注: 用于 A 区域3件, B 区域1件, C 区域3件, D 区域3件

地盤用

用A3紙打印



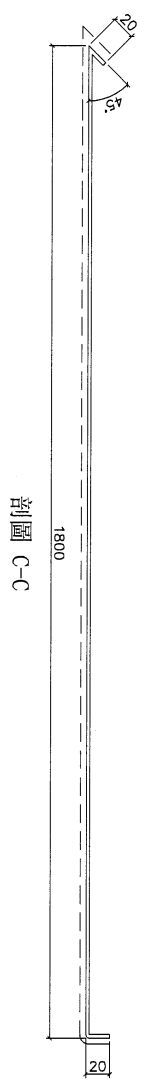
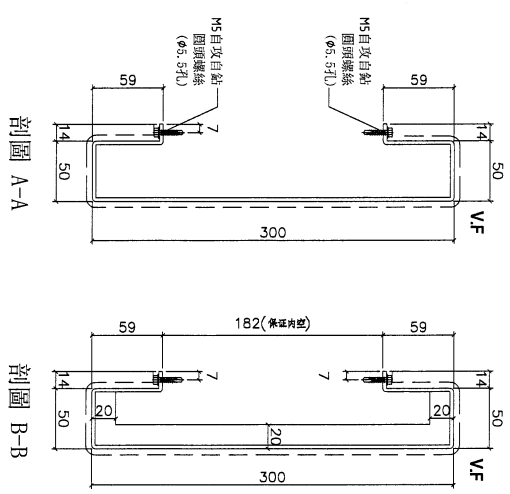
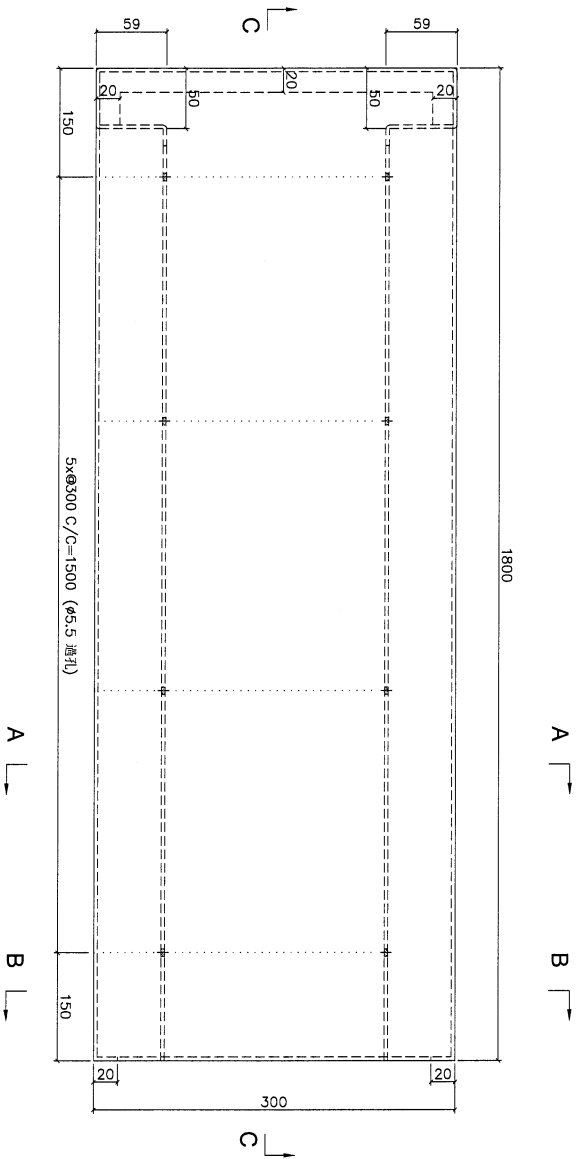
剖面 C-C

剖面 A-A

剖面 B-B

DWG. NO.	FW-1519	REV.	-	SCALE	-	DATE	06-07-2024	DRAWN BY	-	APPROVED BY	-
----------	---------	------	---	-------	---	------	------------	----------	---	-------------	---

PROJECT				MATERIAL				COATING				COLOUR				MARK. NO.		QTY.	
YIN PING ROAD KOWLOON FEATURE WALL (PHASE 2)				3mm铝板				PVF2				EC-DG-D334232-ZD1(SS-01)				-		-	
REV.	Checked By	PART NUMBER	Dim. A	Dim. B	Dim. C	Dim. D	Dim. E	Dim. F	Dim. G	Dim. H	QTY.	Inv. Code	ASSEMBLE ON PARTS						
-		FW-T520	-	-	-	-	-	-	-	-	16		注: 用于 A 区域3件, B 区域3件, C 区域4件, D 区域4件						
													地盤用						
													用A3紙打印						



剖面 C-C

剖面 A-A

剖面 B-B

DWG. NO.	FW-T520	REV.	-	SCALE	-	DATE	06-07-2024	DRAWN BY	-	APPROVED BY	-
----------	---------	------	---	-------	---	------	------------	----------	---	-------------	---

PROJECT  
YIN PING ROAD KOWLOON  
FEATURE WALL (PHASE 2)

MATERIAL  
3mm铝板

COATING  
PVF2

COLOUR  
EC-DG-D334232-ZD1(SS-01)

MARK. NO.  
-

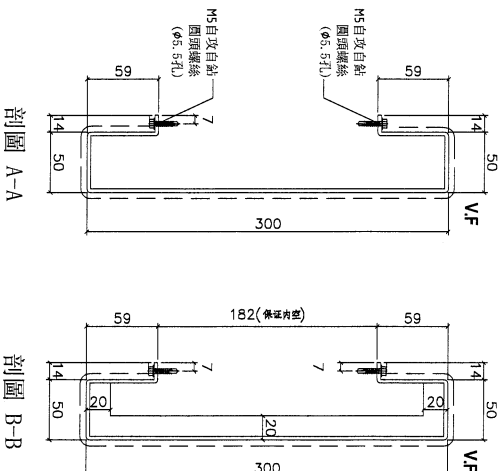
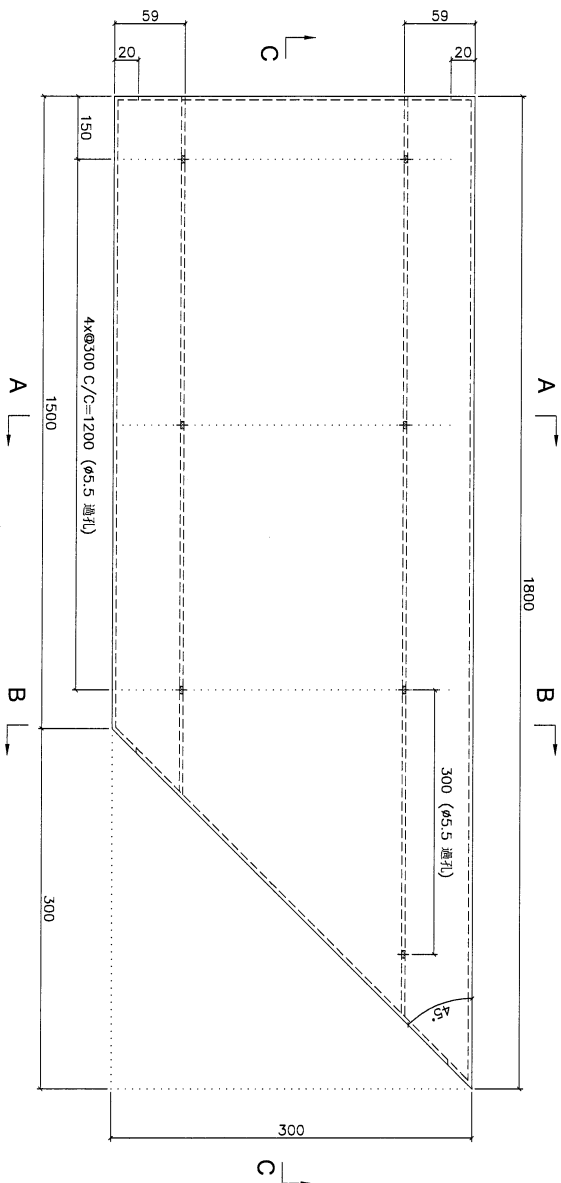
QTY.  
-

REV.	CHECKED DATE BY	PART NUMBER	Dim. A	Dim. B	Dim. C	Dim. D	Dim. E	Dim. F	Dim. G	Dim. H	QTY.	Inv. Code
-		FW-T521	-	-	-	-	-	-	-	-	2	

ASSEMBLE ON PARTS  
注: 用于 C 区域零件, D 区域零件

地盤用

用A3紙打印



剖面 C-C

DWG. NO.

FW-T521

REV.

SCALE

DATE  
06-07-2024

DRAWN BY

APPROVED BY

PROJECT  
YIN PING ROAD KOWLOON  
FEATURE WALL (PHASE 2)

MATERIAL  
3mm铝板

COATING  
PVF2

COLOUR  
EG-DG-D334232-ZD1(SS-011)

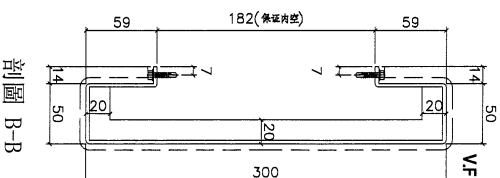
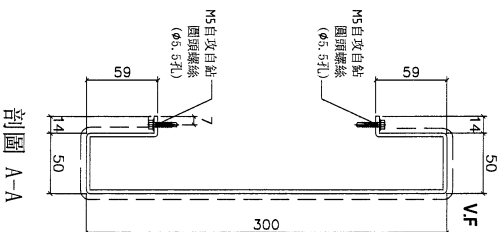
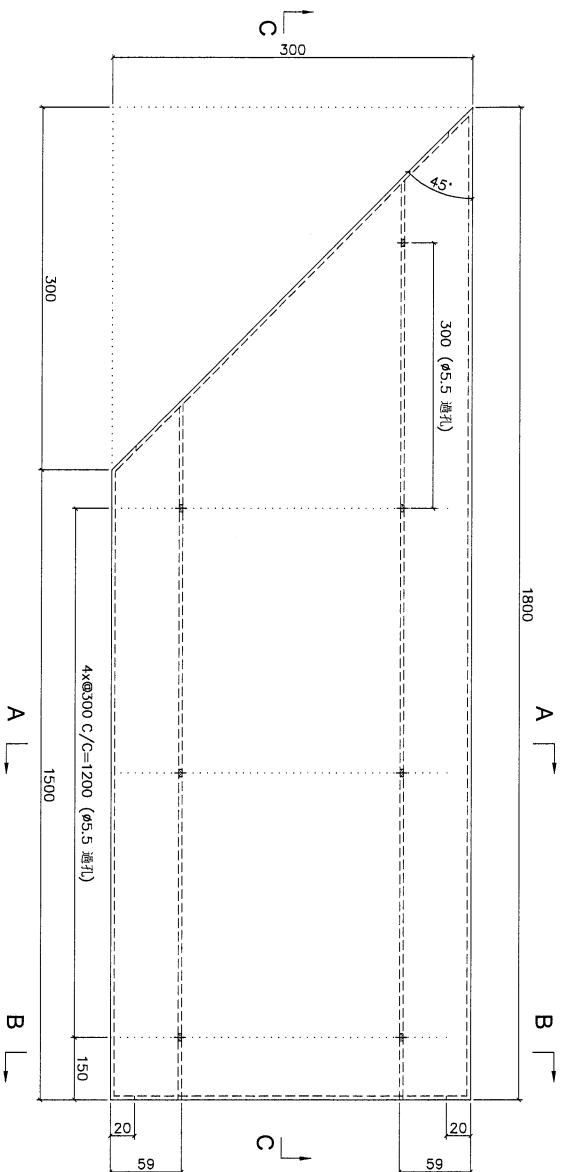
MARK. NO.  
-

QTY.  
-

REV.	CHECKED DATE BY	PART NUMBER	Dim. A	Dim. B	Dim. C	Dim. D	Dim. E	Dim. F	Dim. G	Dim. H	QTY.	Inv. Code	ASSEMBLE ON PARTS	MARK. NO.	QTY.
-		FW-T522	-	-	-	-	-	-	-	-	3		注: 用于 C 区域1件, D 区域1件, B 区域1件.	-	-

地盤用

用A3紙打印



剖面 C-C



DWG. NO.

FW-T522

REV.

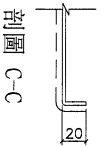
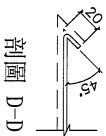
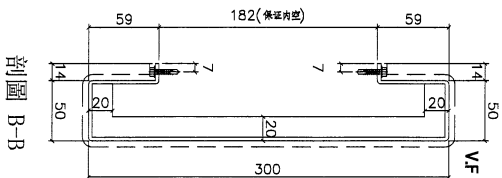
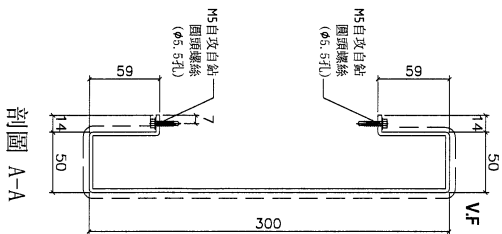
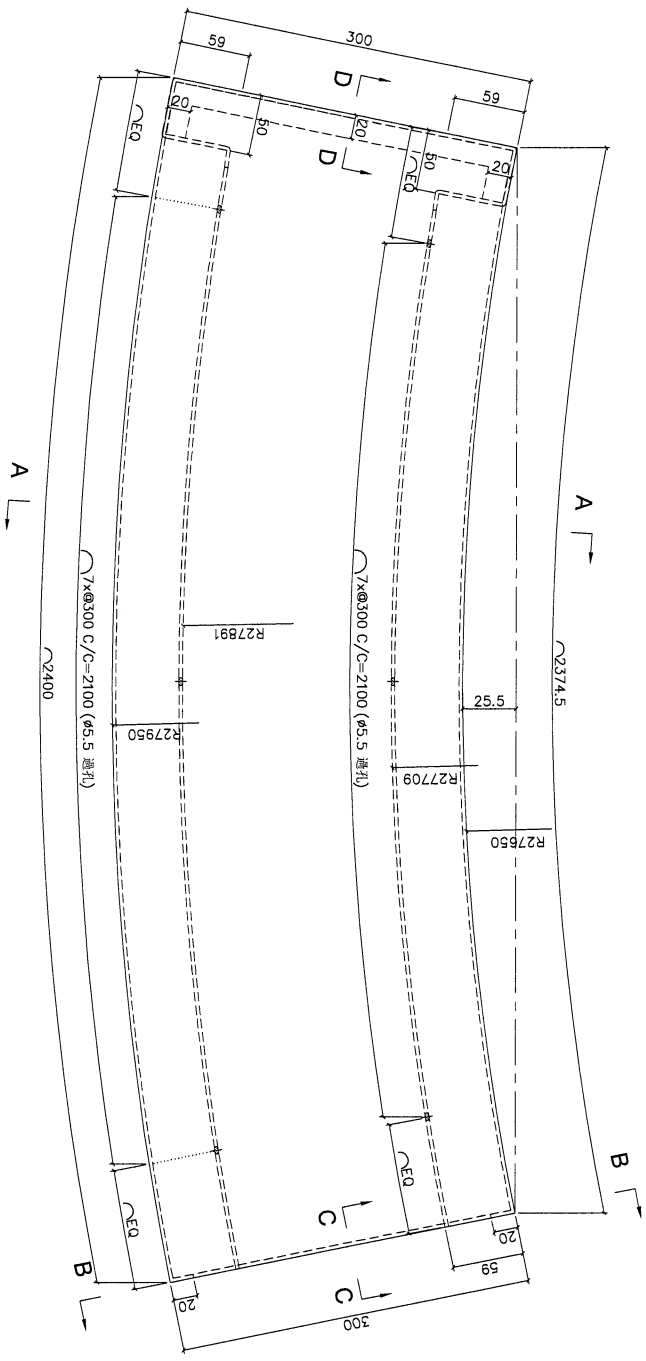
SCALE

DATE  
06-07-2024

DRAWN BY

APPROVED BY

PROJECT				MATERIAL				COATING				COLOUR		MARK. NO.		QTY.	
YIN PING ROAD KOWLOON FEATURE WALL (PHASE 2)				3mm铝板				PVF2				EC-DG-D334232-ZD1(SS-01)		-		-	
REV.	CHECKED BY	PART NUMBER	Dim. A	Dim. B	Dim. C	Dim. D	Dim. E	Dim. F	Dim. G	Dim. H	QTY.	Inv. Code	ASSEMBLE ON PARTS				
-	-	FW-1523	-	-	-	-	-	-	-	-	1	-	注: 用于 B 区域				
												地盤用		用A3紙打印			



DWG. NO.		REV.		SCALE		DATE		DRAWN BY		APPROVED BY	
FW-1523		-		-		06-07-2024		-		-	

PROJECT  
YIN PING ROAD KOWLOON  
FEATURE WALL (PHASE 2)

MATERIAL  
3mm铝板

COATING  
PVF2

COLOUR  
EG-DG-D334232-ZD1(SS-01)

MARK. NO.  
-

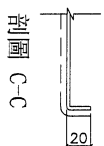
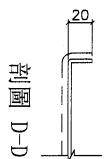
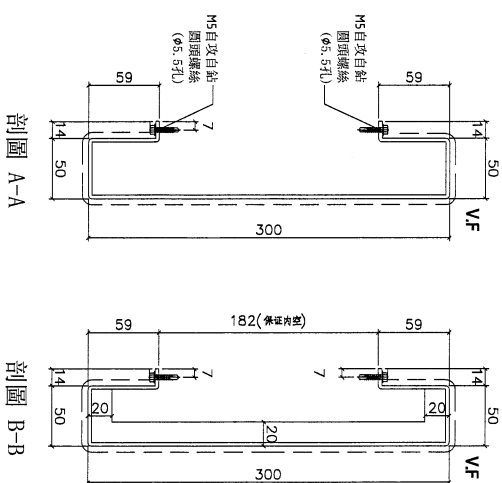
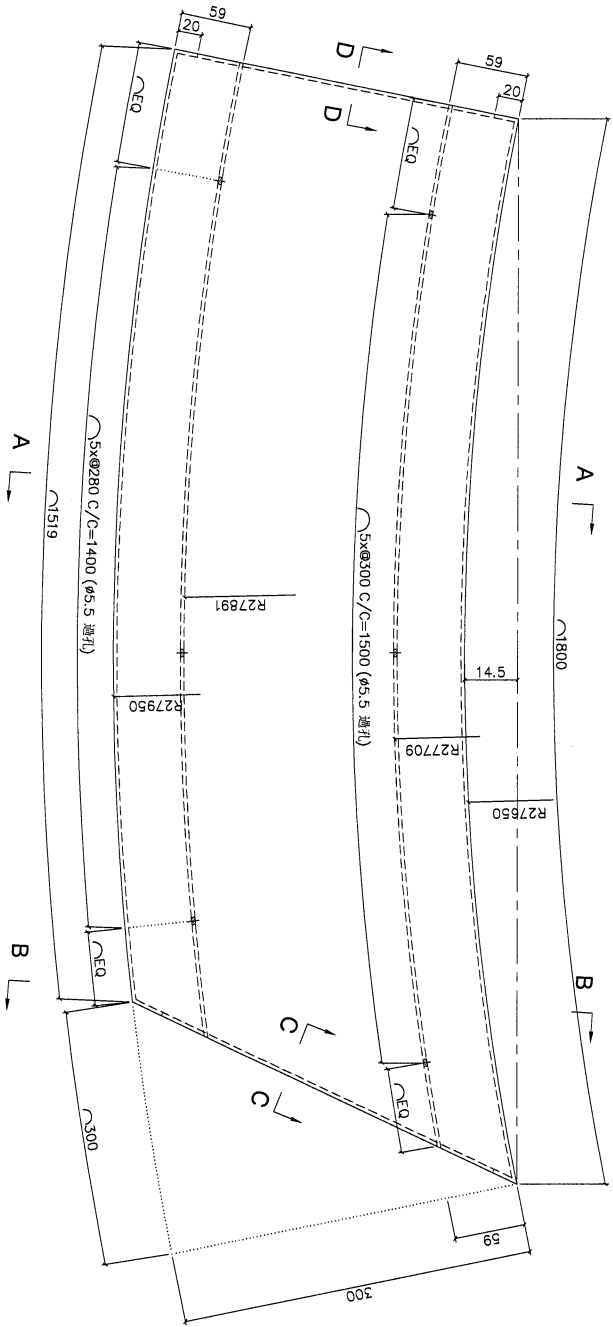
QTY.  
-

REV.	CHECKED BY	PART NUMBER	Dim. A	Dim. B	Dim. C	Dim. D	Dim. E	Dim. F	Dim. G	Dim. H	QTY.	Inv. Code
-		FW-T524	-	-	-	-	-	-	-	-	1	

ASSEMBLE ON PARTS  
注：用于 B 区域

地盤用

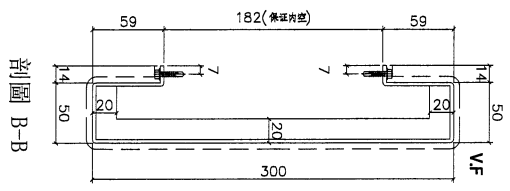
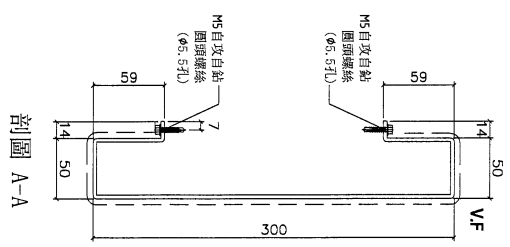
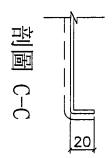
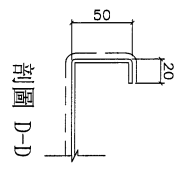
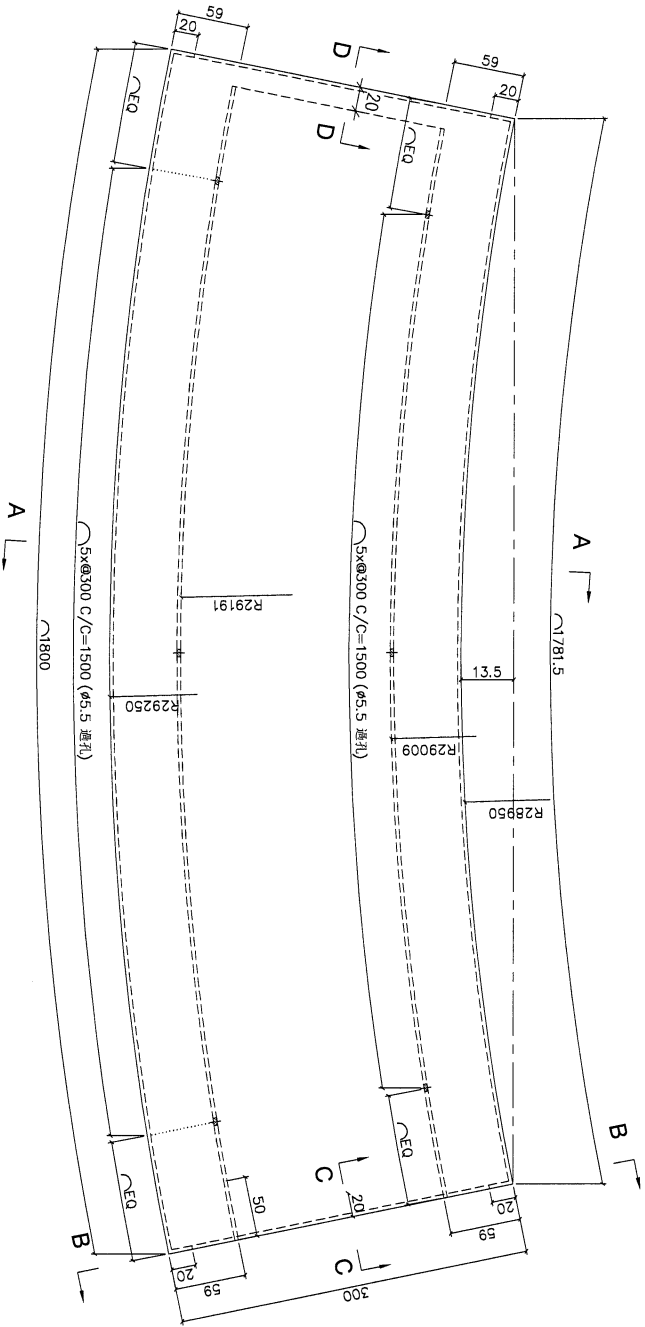
用A3紙打印



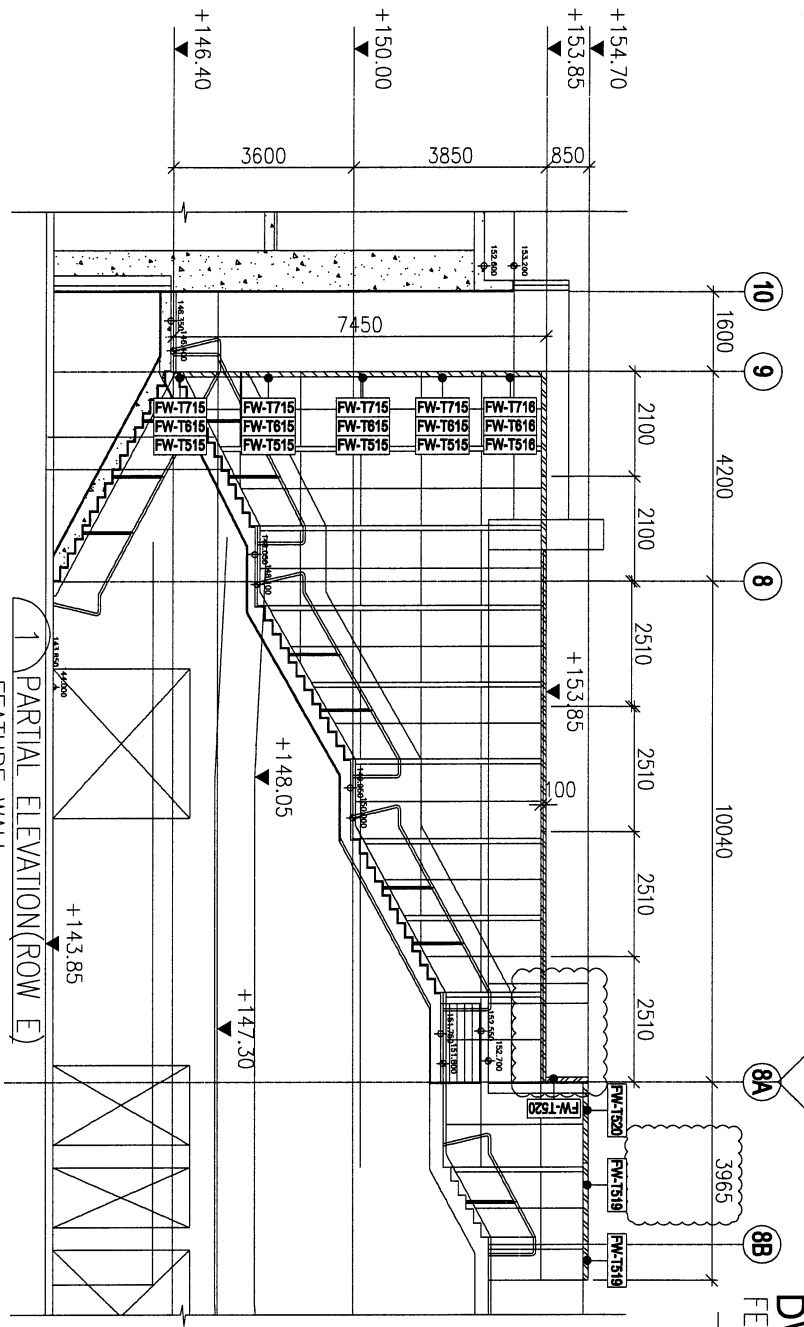
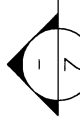
DWG. NO.	FW-T524	REV.	-	SCALE	-	DATE	06-07-2024	DRAWN BY	-	APPROVED BY	-
----------	---------	------	---	-------	---	------	------------	----------	---	-------------	---



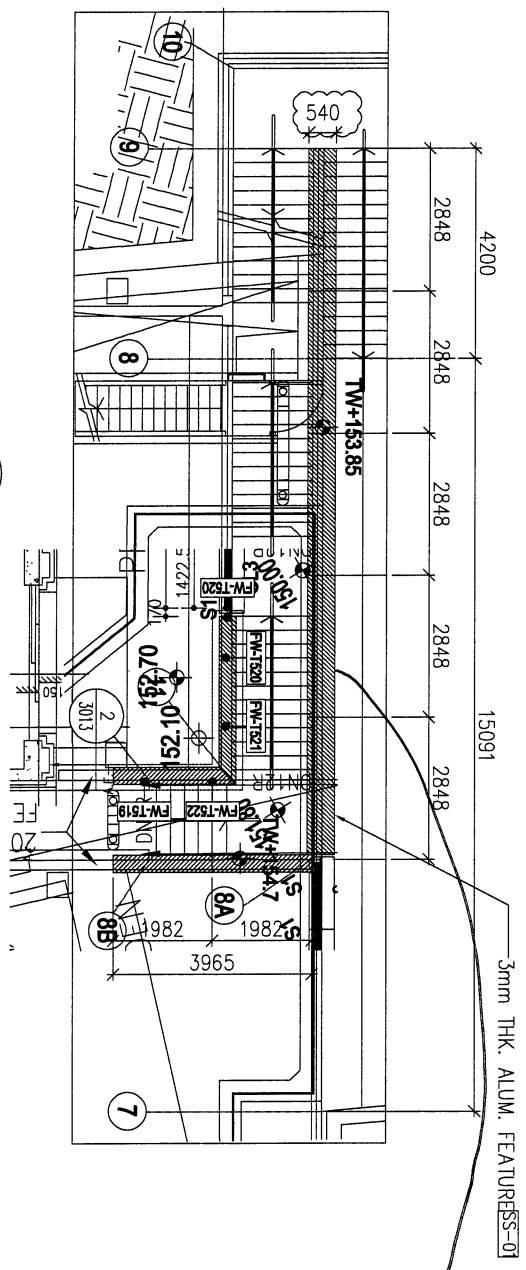
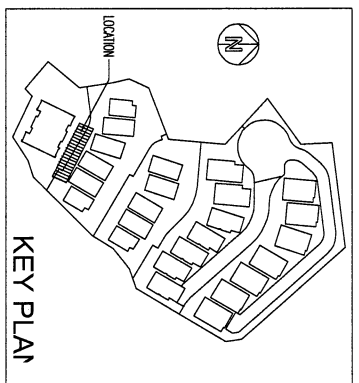
PROJECT				MATERIAL				COATING				COLOUR		MARK. NO.		QTY.	
YIN PING ROAD KOWLOON FEATURE WALL (PHASE 2)				3mm铝板				PVF2				EC-DG-D334232-ZD1 (SS-01)		-		-	
REV.	CHANGED DATE BY	PART NUMBER	Dim. A	Dim. B	Dim. C	Dim. D	Dim. E	Dim. F	Dim. G	Dim. H	QTY.	Inv. Code	ASSEMBLE ON PARTS				
-		FW-1526	-	-	-	-	-	-	-	-	1	-	注：用于 A 区域				
												地盤用		用A3紙打印			



DWG. NO.		REV.		SCALE		DATE		DRAWN BY		APPROVED BY	
FW-1526		-		-		06-07-2024		-		-	

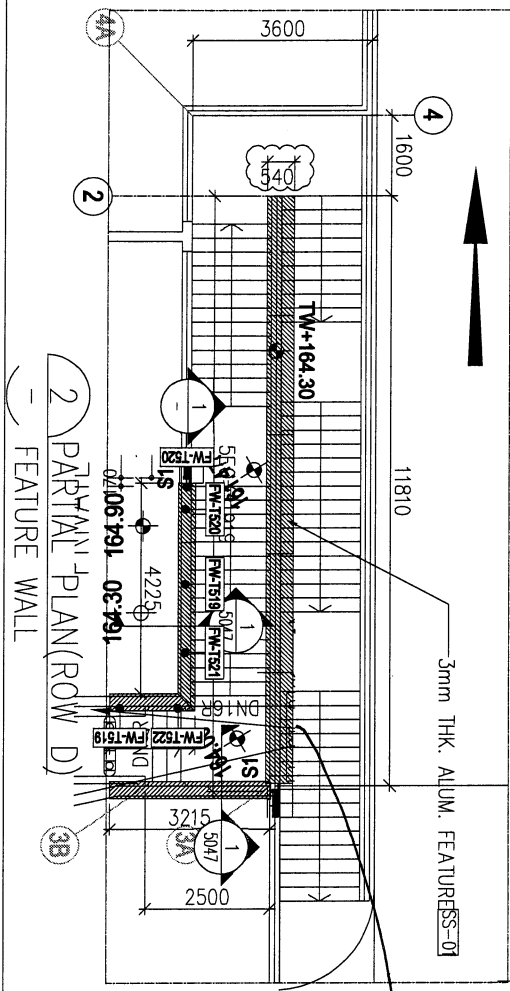
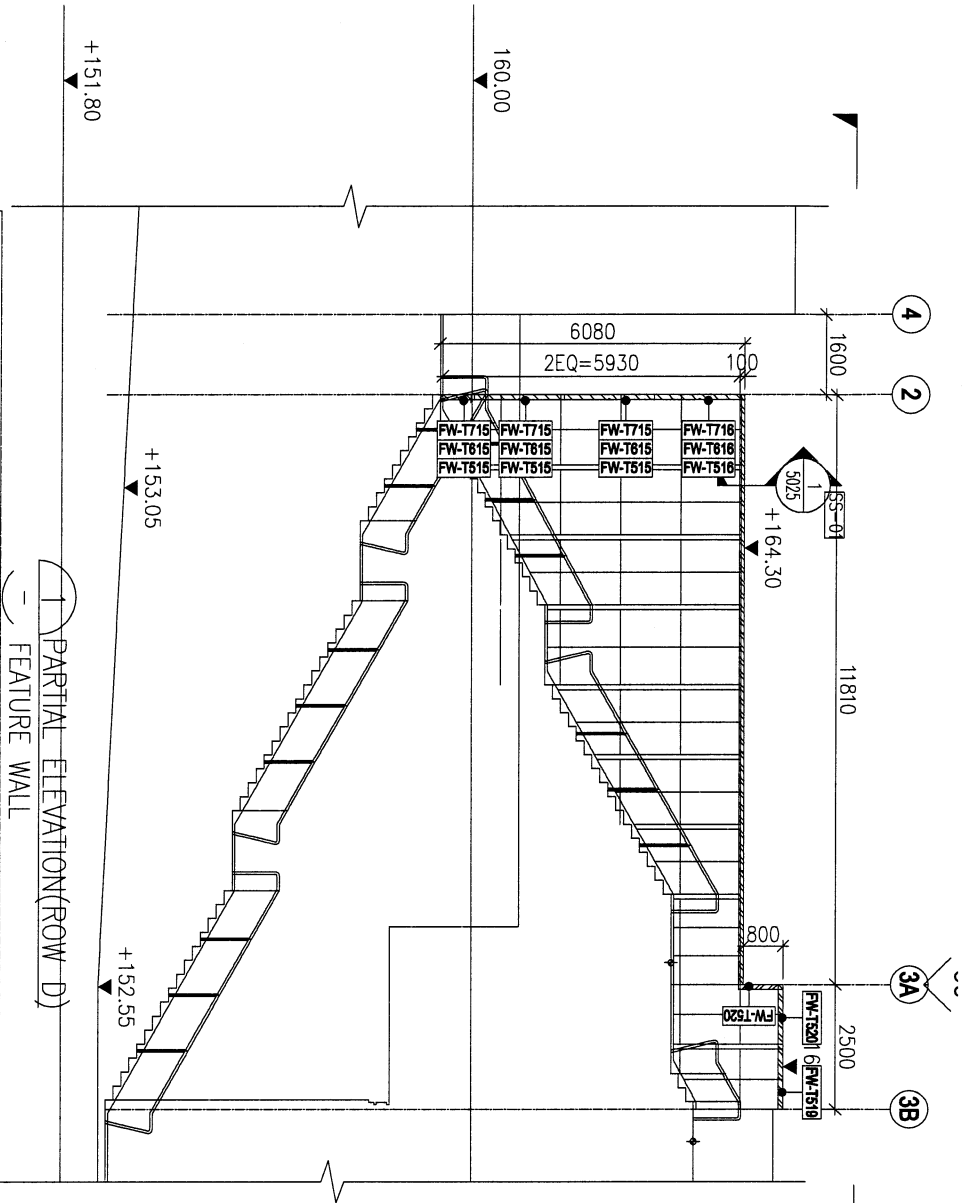
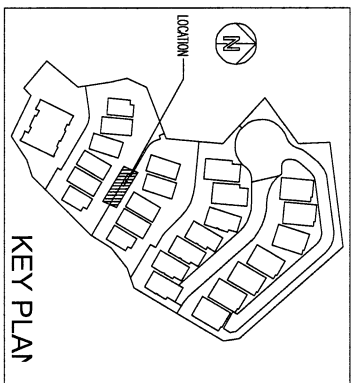


1 PARTIAL ELEVATION (ROW E)  
 FEATURE WALL

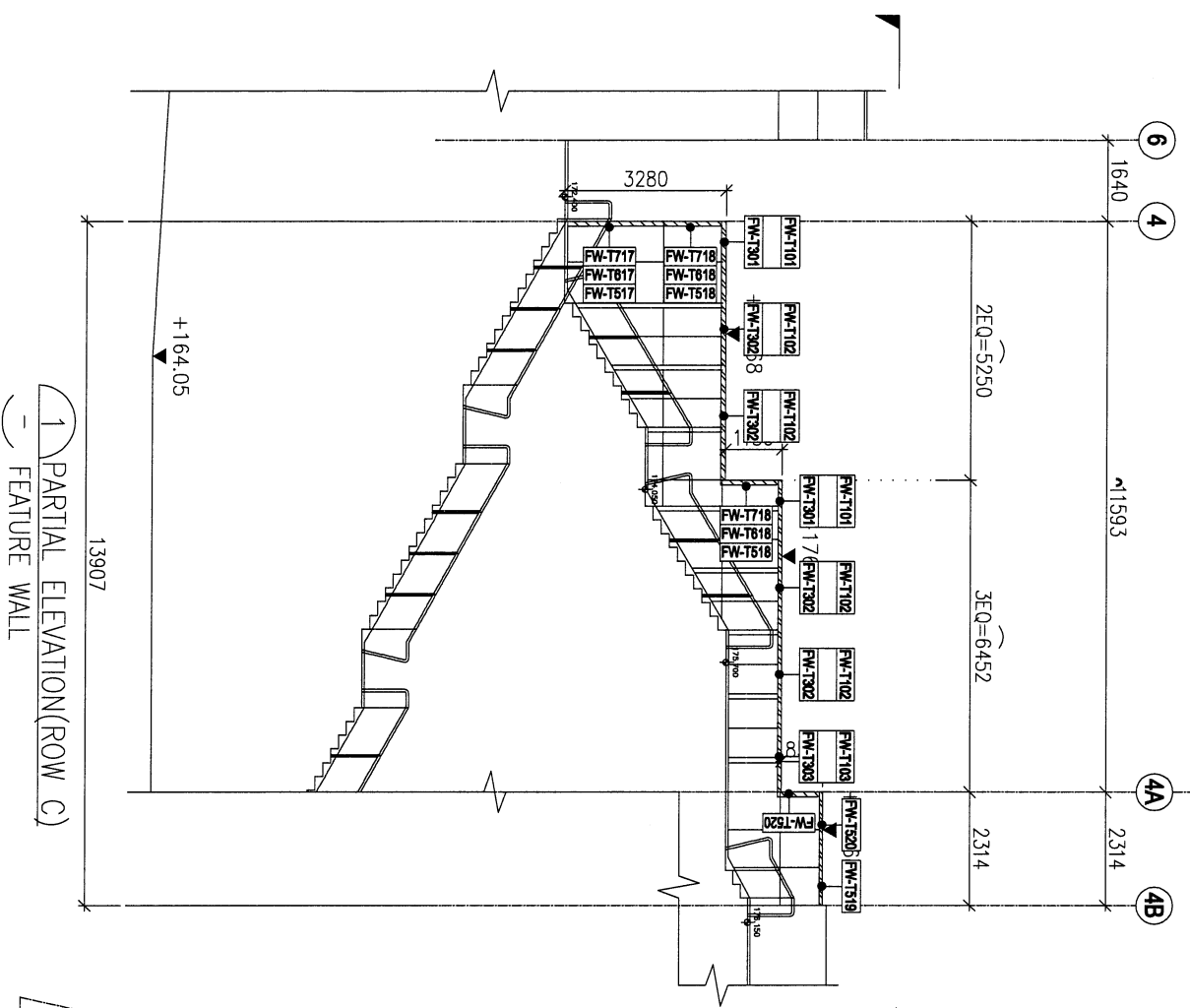


2 PARTIAL PLAN (ROW E)  
 FEATURE WALL

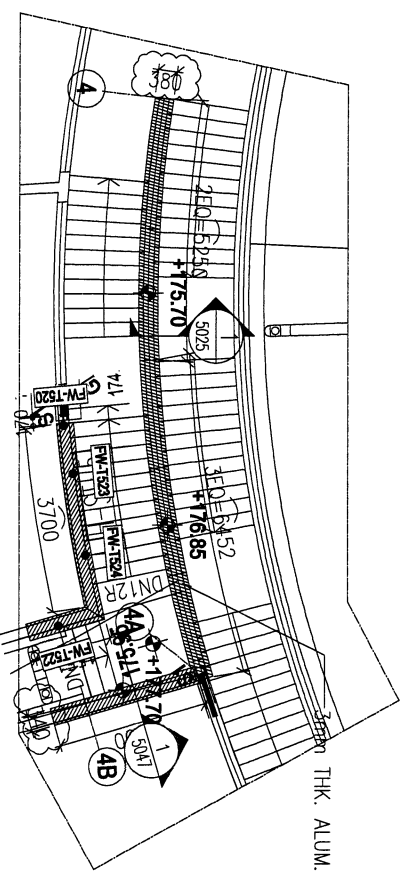
EI8092 (立面3011)



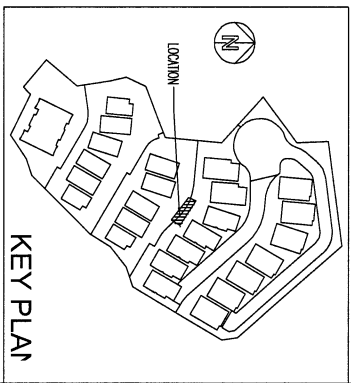
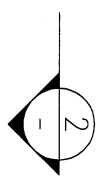
EI8093 (立面 3014)



1 PARTIAL ELEVATION(ROW C)  
 FEATURE WALL

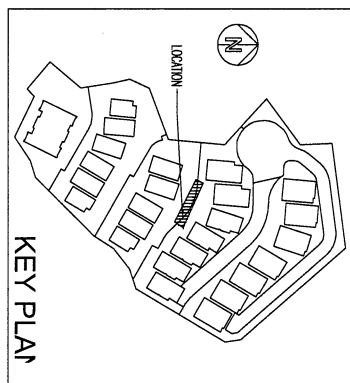
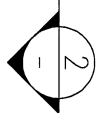
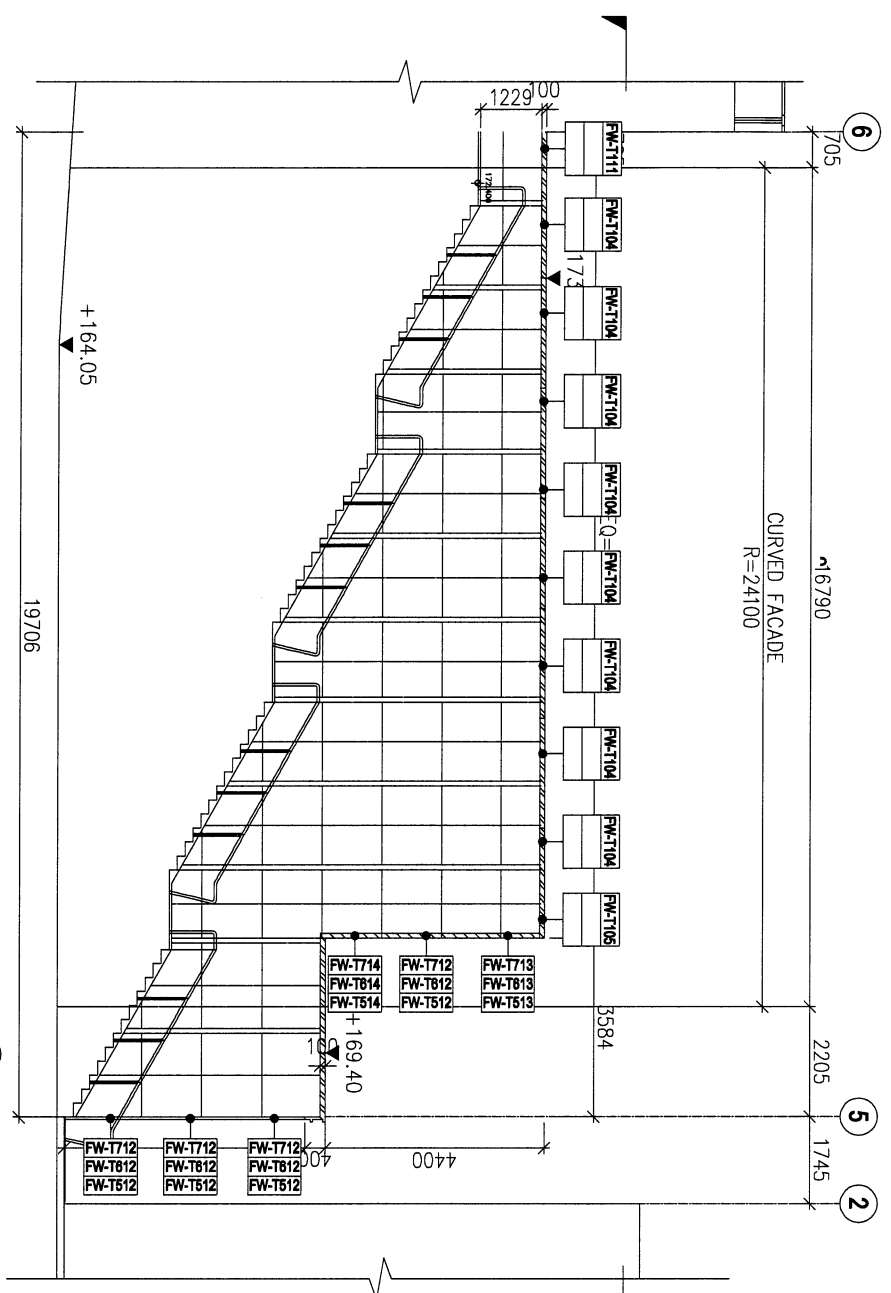


2 PARTIAL PLAN(ROW C)  
 FEATURE WALL

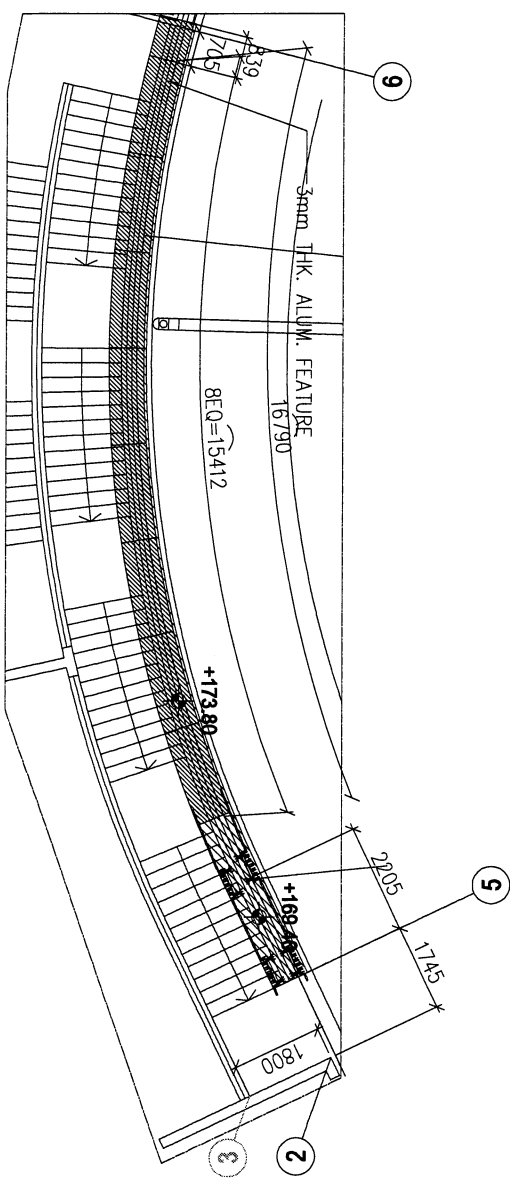


KEY PLAN

3280 THK. ALUM. FEATURESS-01



1 PARTIAL ELEVATION (ROW C)  
 - FEATURE WALL



2 PARTIAL PLAN (ROW C)  
 - FEATURE WALL

