



工程指示 / 要求簡箋 ENGINEER INSTRUCTIONS(E.I.)

工程指示編號:	EI- 8076	修改版本:	-
	HK- 1345		
工程編號:	J 853	工程名稱:	延坪道 (第2期)
收件人:	生統/	發件人:	Jingo
工程項目:	Feature wall 飾線 鋁板加工圖廠用	日期:	18/7/2024

Part 7

<input type="checkbox"/> 原合約工程包	<input type="checkbox"/> 原合約工程加 / 減賬 QT-	<input type="checkbox"/> 新工程報價 QT-
---------------------------------	--	------------------------------------

信件批核號碼/圖紙參考編號:	批核模具圖紙編號:
客戶指示附件:	管理內部批簽署:

<input type="checkbox"/> 初步鋁料 B.M.	<input type="checkbox"/> 加工拆圖, 然後生產	<input type="checkbox"/> 尺寸表
<input type="checkbox"/> 正式鋁料 B.M.	<input type="checkbox"/> 技術上資料/指示	<input type="checkbox"/> 報價
<input type="checkbox"/> 配件 B.M.	<input type="checkbox"/> 樣辦或貨品說明書	<input type="checkbox"/> 分判合約
<input type="checkbox"/> 其他:		

內容:

完成上列要求日期: 5/8/2024

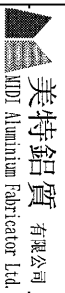
國內

<input type="checkbox"/> 生產技術總監	<input type="checkbox"/> 連附件	<input type="checkbox"/> 技術部	<input type="checkbox"/> 連附件	<input type="checkbox"/> 生產部	<input type="checkbox"/> 連附件
<input type="checkbox"/> 採購部	<input type="checkbox"/> 連附件	<input checked="" type="checkbox"/> 生產統籌部	<input checked="" type="checkbox"/> 連附件	<input type="checkbox"/> 報關組	<input type="checkbox"/> 連附件
<input type="checkbox"/> 質檢部	<input type="checkbox"/> 連附件	<input type="checkbox"/> 會計部	<input type="checkbox"/> 連附件	<input type="checkbox"/> 機械設計部	<input type="checkbox"/> 連附件
<input type="checkbox"/> 香港辦	<input type="checkbox"/> 連附件	<input type="checkbox"/> 其他:			

香港

<input type="checkbox"/> 行政部	<input type="checkbox"/> 連附件	<input type="checkbox"/> 會計部	<input type="checkbox"/> 連附件	<input type="checkbox"/> 統籌部	<input type="checkbox"/> 連附件	<input type="checkbox"/> 工程部	<input type="checkbox"/> 連附件
<input type="checkbox"/> 採購部	<input type="checkbox"/> 連附件	<input type="checkbox"/> QS部	<input type="checkbox"/> 連附件	<input type="checkbox"/> 地盤管理	<input type="checkbox"/> 連附件	<input type="checkbox"/> 維修部	<input type="checkbox"/> 連附件

*發件人簽署:	*組別成員批核簽署:
傳遞編號:	項目經理簽署:



美特鋁質有限公司
MTD Aluminum Fabricator Ltd.

工程號: 1-853
地盤名稱: 延坪路

計算: ming
核對:

日期:

日期:

2024.07.18

送呈: 副本:

JOE

廠用鋁板B.M.表 (part. 7)

項目類別: 修改板次:

特征號(區):

批准:

日期:

總V.M.:

315.225

總重量: 4113.68

B.M.編號:

修改板次:

A/C Code:

日期:

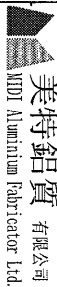
總V.M.:

總重量:

315.225

4113.68

序號	修改內容	鋁板圖號	鋁板名稱	顏色	實用	後備	總數	總重量	315.225		總重量:	4113.68	圖紙編號
									單件展開面積	總展開面積			
									平方米	平方米			
1		FKP-D-M04	2mm厚鋁板	TUC10669FXLJBA-3 (SS-03)	980	0	980	53.116	0.010	9.800	0.010	9.800	
2		P2-AP-D01	3mm厚鋁板	格化	295	0	295	4.797	0.002	0.590	0.000	0.000	
3		P2-AP-D02A	3mm厚鋁板	EC-DG-D334232-ZD1 (SS-01)	1	0	1	15.076	1.854	1.854	1.854	1.854	
4		P2-AP-D02B	3mm厚鋁板	EC-DG-D334232-ZD1 (SS-01)	3	0	3	28.465	1.167	3.501	1.167	3.501	
5		P2-AP-D02C	3mm厚鋁板	EC-DG-D334232-ZD1 (SS-01)	3	0	3	9.004	0.369	1.108	0.369	1.108	
6		P2-AP-D02D	3mm厚鋁板	EC-DG-D334232-ZD1 (SS-01)	6	0	6	75.114	1.540	9.239	1.540	9.239	
7		P2-AP-D02E	3mm厚鋁板	EC-DG-D334232-ZD1 (SS-01)	4	0	4	42.207	1.298	5.191	1.298	5.191	
8		P2-AP-D02F	3mm厚鋁板	EC-DG-D334232-ZD1 (SS-01)	3	0	3	38.195	1.566	4.698	1.566	4.698	
9		P2-AP-D03A	3mm厚鋁板	EC-DG-D334232-ZD1 (SS-01)	15	0	15	191.333	1.569	23.534	1.569	23.534	
10		P2-AP-D03B	3mm厚鋁板	EC-DG-D334232-ZD1 (SS-01)	16	0	16	204.088	1.569	25.103	1.569	25.103	
11		P2-AP-D04A	3mm厚鋁板	EC-DG-D334232-ZD1 (SS-01)	2	0	2	25.841	1.589	3.178	1.589	3.178	
12		P2-AP-D04B	3mm厚鋁板	EC-DG-D334232-ZD1 (SS-01)	3	0	3	27.595	1.131	3.394	1.131	3.394	
13		P2-AP-D04C	3mm厚鋁板	EC-DG-D334232-ZD1 (SS-01)	3	0	3	18.025	0.739	2.217	0.739	2.217	
14		P2-AP-D05A	3mm厚鋁板	EC-DG-D334232-ZD1 (SS-01)	1	0	1	14.888	1.831	1.831	1.831	1.831	
15		P2-AP-D05B	3mm厚鋁板	EC-DG-D334232-ZD1 (SS-01)	6	0	6	79.755	1.635	9.810	1.635	9.810	
16		P2-AP-D05C	3mm厚鋁板	EC-DG-D334232-ZD1 (SS-01)	2	0	2	14.356	0.883	1.766	0.883	1.766	
17		P2-AP-D05D	3mm厚鋁板	EC-DG-D334232-ZD1 (SS-01)	11	0	11	146.218	1.635	17.985	1.635	17.985	
18		P2-AP-D06A	3mm厚鋁板	EC-DG-D334232-ZD1 (SS-01)	11	0	11	204.674	2.289	25.175	2.289	25.175	
19		P2-AP-D06B	3mm厚鋁板	EC-DG-D334232-ZD1 (SS-01)	1	0	1	19.382	2.384	2.384	2.384	2.384	
20		P2-AP-D07	3mm厚鋁板	EC-DG-D334232-ZD1 (SS-01)	1	0	1	14.678	1.805	1.805	1.805	1.805	
21		P2-AP-D08	3mm厚鋁板	EC-DG-D334232-ZD1 (SS-01)	1	0	1	15.325	1.885	1.885	1.885	1.885	
22		P2-AP-D09G	3mm厚鋁板	EC-DG-D334232-ZD1 (SS-01)	1	0	1	9.648	1.187	1.187	1.187	1.187	
23		P2-AP-D09H	3mm厚鋁板	EC-DG-D334232-ZD1 (SS-01)	2	0	2	34.809	2.141	4.282	2.141	4.282	
24		P2-AP-D09J	3mm厚鋁板	EC-DG-D334232-ZD1 (SS-01)	3	0	3	75.505	3.096	9.287	3.096	9.287	
25		P2-AP-D10A	3mm厚鋁板	EC-DG-D334232-ZD1 (SS-01)	1	0	1	22.105	2.719	2.719	2.719	2.719	
26		P2-AP-D10B	3mm厚鋁板	EC-DG-D334232-ZD1 (SS-01)	1	0	1	20.941	2.576	2.576	2.576	2.576	
27		WG-LB31	20mm厚鋁板	EC-DG-D334232-ZD1 (SS-01)	13	0	13	909.734	1.291	16.785	2.582	33.570	
28		WG-LB32	20mm厚鋁板	EC-DG-D334232-ZD1 (SS-01)	13	0	13	468.897	0.665	8.651	1.331	17.302	
29		WG-LB33	20mm厚鋁板	EC-DG-D334232-ZD1 (SS-01)	10	0	10	699.796	1.291	12.911	2.582	25.823	

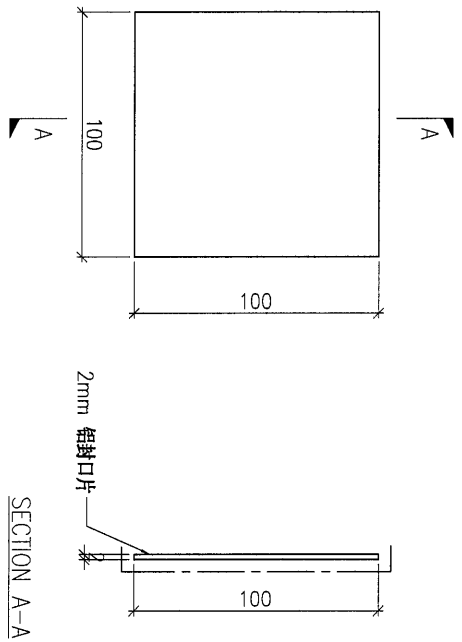
 美特鋁質 有限公司 MIDI Aluminum Fabricator Ltd.		工程號: J-853 地盤名稱: 延坪路 項目類別: 特征牆(區) 修改版次:	計算: ming 核對: 批准:	日期: 日期: 日期:	2024.07.18			送呈: 副本:	JOE				
廠用鋁板B.M.表 (part. 7)		A/C Code:		總V.F.: 315.225		總重量: 4113.68							
序號	修改內容	鋁板圖號	鋁板名稱	顏色	實用	後備	總數	總重量	315.225		總重量:	圖紙編號	
									單件展開面積	總展開面積			單件V.F.
									平方米	平方米	平方米		
30		WG-LB34	20mm厚鋁板	EG-DG-D334232-ZD1 (SS-01)	10	0	10	360.690	0.665	6.655	1.331	13.310	
31		FKP-D-M100L	2mm厚鋁板	EG-DG-D334232-ZD1 (SS-01)	30	0	30	0.407	0.003	0.075	0.003	0.075	
32		FKP-D-M100R	2mm厚鋁板	EG-DG-D334232-ZD1 (SS-01)	30	0	30	0.407	0.003	0.075	0.003	0.075	
33		P2-AP-DX31	3mm厚鋁板	EG-DG-D334232-ZD1 (SS-01)	30	0	30	190.373	1.171	35.124	1.171	35.124	
34		P2-AP-X35	3mm厚鋁板	EG-DG-D334232-ZD1 (SS-01)	25	0	25	76.209	0.562	14.061	0.562	14.061	
35		FKP-D-M112	2mm厚鋁板	EG-DG-D334232-ZD1 (SS-01)	50	0	50	2.033	0.008	0.375	0.008	0.375	
總計:					1587	0	1587	4114	46	271	50	315	

PROJECT: YIN PING ROAD KOWLOON
 FEATURE WALL (PHASE 2)

REV.	DATE BY	PART NUMBER	Dim. A	Dim. B	Dim. C	Dim. D	Dim. E	Dim. F	Dim. G	Dim. H	QTY.	Inv. Code	ASSEMBLE ON PARTS	MARK. NO.	QTY.
-		FKP-D-M04	-	-	-	-	-	-	-	-	980			-	-

MATERIAL: 2mm 鋁封口片
 COATING: PVF2
 COLOUR: TUC106699FXLJBA-3(SS-03)
 QTY.: -

注: 工厂用



DWG. NO.	FKP-D-M04	REV.	-	SCALE	-	DATE	22-03-2023	DRAWN BY	-	APPROVED BY	-
----------	-----------	------	---	-------	---	------	------------	----------	---	-------------	---

PROJECT: YIN PING ROAD KOWLOON
 FEATURE WALL (PHASE 2)

MATERIAL: 3mm 铝板

COATING: 铬化

COLOUR: -

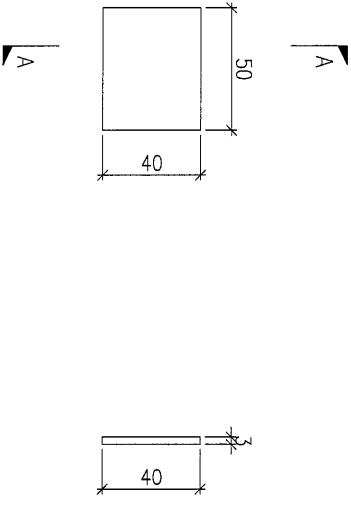
MARK. NO.: -

QTY: -

ASSEMBLE ON PARTS

注: 工厂用

REV. / PREPARED / DRAWN BY	PART NUMBER	Dim. A	Dim. B	Dim. C	Dim. D	Dim. E	Dim. F	Dim. G	Dim. H	QTY.	Inv. Code
-	P2-AP-001	-	-	-						295	



SECTION A-A

DWG. NO.	REV.	SCALE	DATE	DRAWN BY	APPROVED BY
P2-AP-001	-	-	10-07-2024	-	-

PROJECT
YIN PING ROAD KOWLOON
FEATURE WALL (PHASE 2)

MATERIAL
3mm 铝板

COATING
PVF2

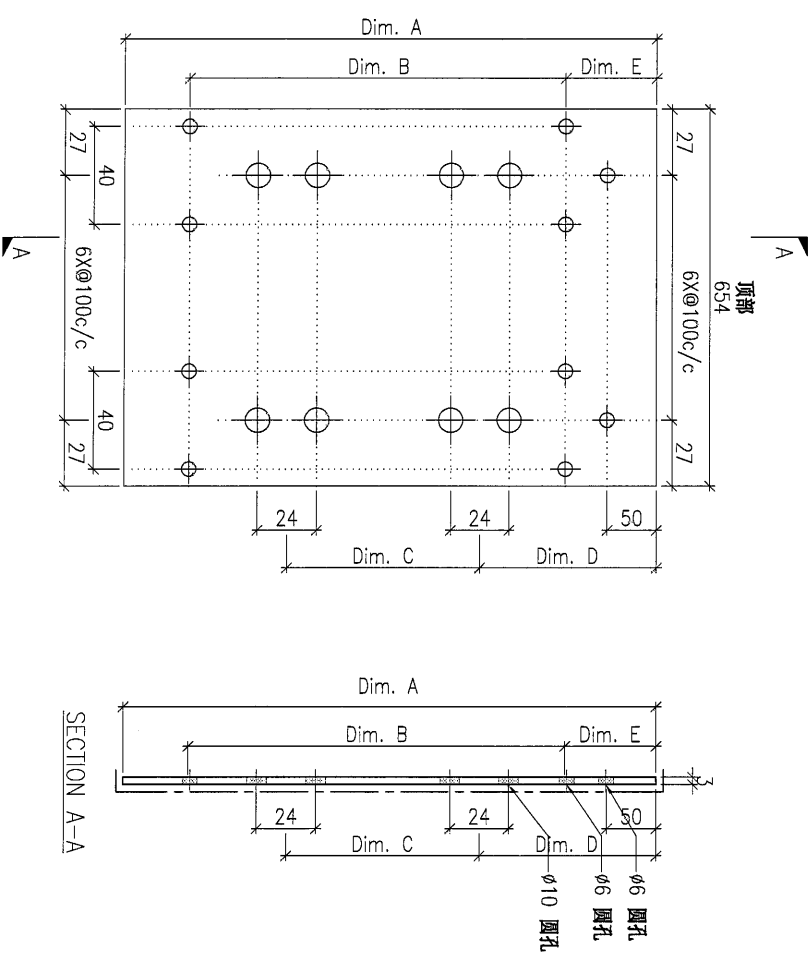
COLOUR
EC-DG-D334232-ZD1 (SS-011)

MARK. NO.
-

QTY.
-

checked date by	PART NUMBER	Dim. A	Dim. B	Dim. C	Dim. D	Dim. E	Dim. F	Dim. G	Dim. H	QTY.	Inv. Code	ASSEMBLE ON PARTS
-	P2-AP-D02A	2835.5	9X@235/c	3X@150/c	230	170				1		
-	P2-AP-D02B	1784.5	5X@300/c	2X@50/c	290	190				3		
-	P2-AP-D02C	564.5	2X@190/c	1X@250/c	190	160				3		
-	P2-AP-D02D	2354.5	7X@300/c	3X@50/c	230	150				6		
-	P2-AP-D02E	1984.5	6X@300/c	2X@150/c	230	150				4		
-	P2-AP-D02F	2394.5	8X@270/c	3X@50/c	245	150				3		

注：工厂用



DWG. NO. P2-AP-002

REV. -

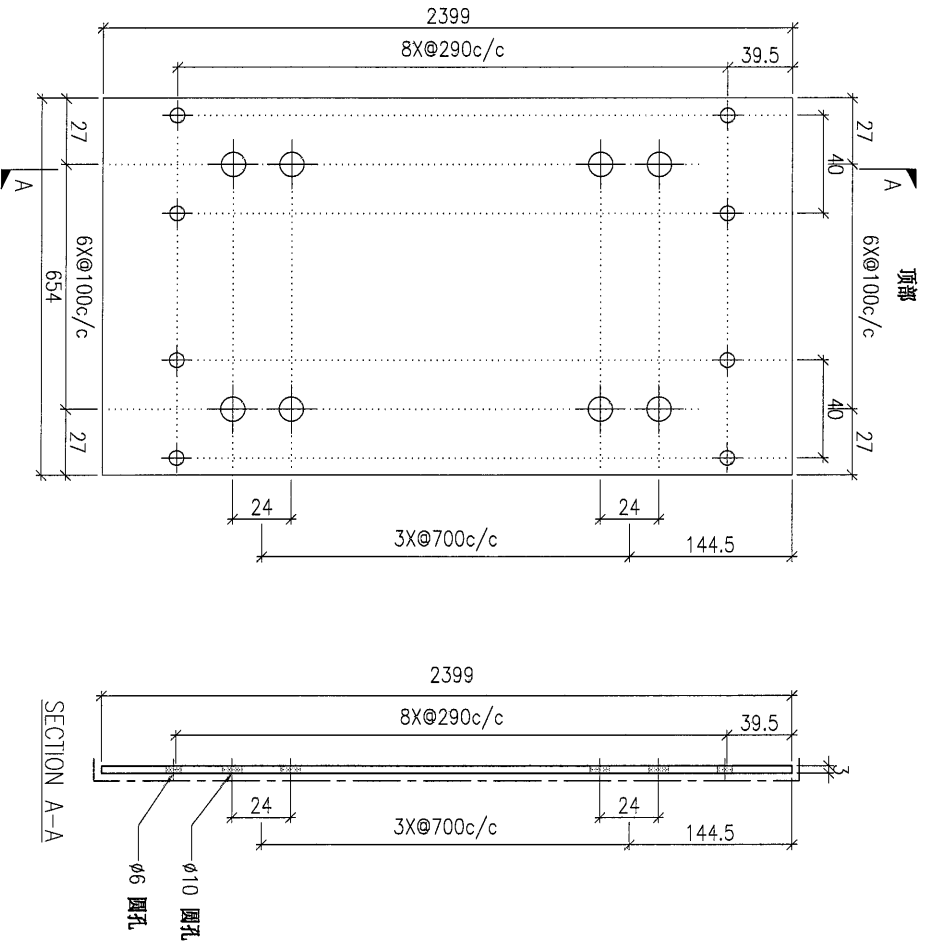
SCALE -

DATE 10-07-2024

DRAWN BY -

APPROVED BY -

PROJECT				MATERIAL				COATING		COLOUR		MARK. NO.	QTY.
YIN PING ROAD KOWLOON FEATURE WALL (PHASE 2)				3mm 铝板				PVF2		EC-DG-D334232-ZD1(SS-011)		-	-
REV. ORDERED DATE BY	PART NUMBER	Dim. A	Dim. B	Dim. C	Dim. D	Dim. E	Dim. F	Dim. G	Dim. H	QTY.	Inv. Code	ASSEMBLE ON PARTS	
-	P2-AP-003A	124.5	-	-	-	-	-	-	-	15	-	注: 工厂用	
-	P2-AP-003B	144.5	-	-	-	-	-	-	-	16	-		



DWG. NO.		REV.		SCALE		DATE		DRAWN BY		APPROVED BY	
P2-AP-003		-		-		10-07-2024		-		-	

PROJECT
YIN PING ROAD KOWLOON
FEATURE WALL (PHASE 2)

MATERIAL
3mm 铝板

COATING
PVF2

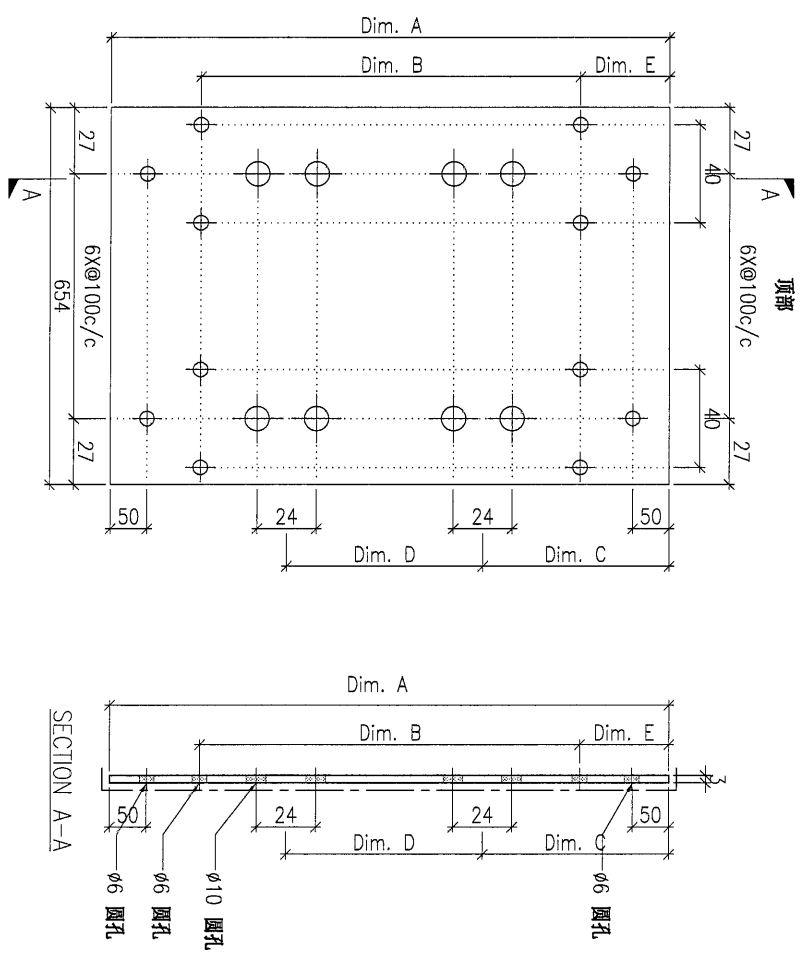
COLOUR
EC-DG-D334232-ZD1(SS-01)

MARK. NO.
-

QTY.
-

REV.	CHANGED PART BY	PART NUMBER	Dim. A	Dim. B	Dim. C	Dim. D	Dim. E	Dim. F	Dim. G	Dim. H	QTY.	Inv. Code
-		P2-AP-D04A	2430	8X@260c/c	230	3X@50c/c	160				2	
-		P2-AP-D04B	1730	5X@280c/c	230	2X@50c/c	170				3	
-		P2-AP-D04C	1130	3X@270c/c	230	1X@50c/c	160				3	

注：工厂用



DWG. NO. P2-AP-D04 REV. - SCALE - DATE 10-07-2024 DRAWN BY - APPROVED BY -

PROJECT
YIN PING ROAD KOWLOON
FEATURE WALL (PHASE 2)

MATERIAL
3mm 铝板

COATING
PVF2

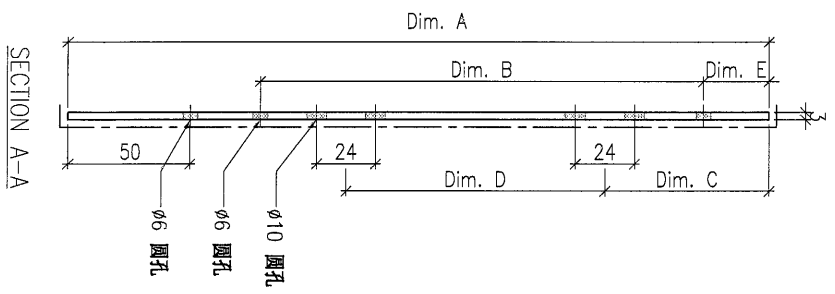
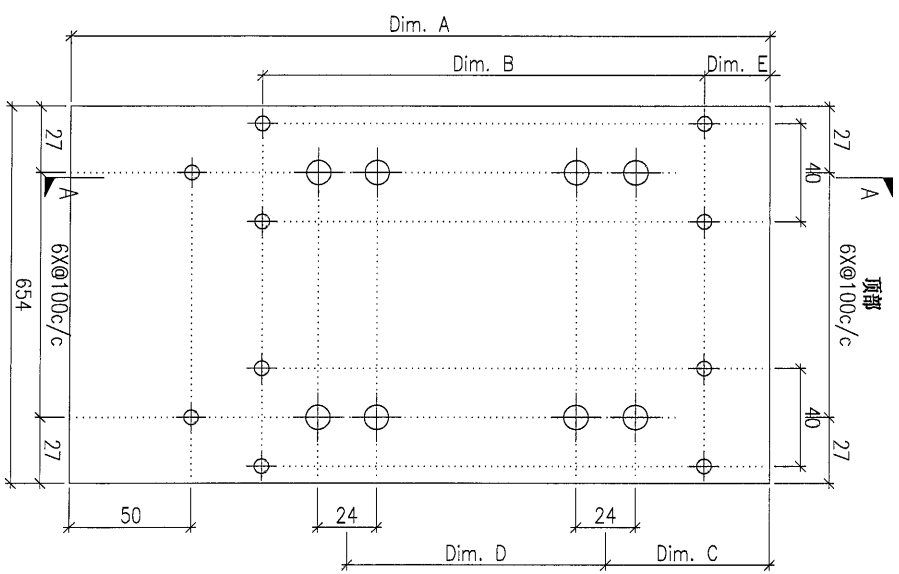
COLOUR
EC-DG-D334232-ZD1(SS-011)

MARK. NO.
-

QTY.
-

REV.	CHECKED DATE BY	PART NUMBER	Dim. A	Dim. B	Dim. C	Dim. D	Dim. E	Dim. F	Dim. G	Dim. H	QTY.	Inv. Code
-		P2-AP-D05A	2800	9X@300/c	219.5	3X@750/c	50				1	
-		P2-AP-D05B	2500	8X@280/c	124	3X@550/c	80				6	
-		P2-AP-D05C	1350	4X@280/c	189	1X@750/c	50				2	
-		P2-AP-D05D	2500	8X@280/c	189	3X@550/c	50				11	

注: 工厂用



DWG. NO.	REV.	SCALE	DATE	DRAWN BY	APPROVED BY
P2-AP-D05	-	-	10-07-2024	-	-

PROJECT
YIN PING ROAD KOWLOON
FEATURE WALL (PHASE 2)

MATERIAL
3mm 铝板

COATING
PVF2

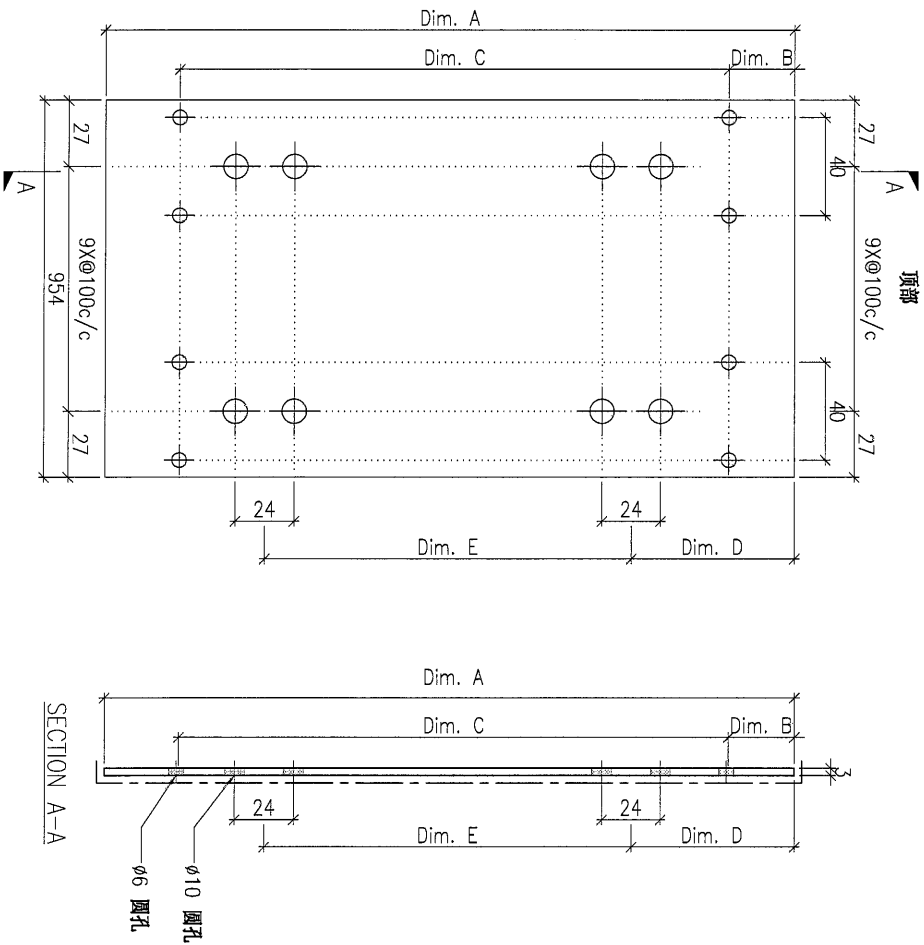
COLOUR
EG-DG-D334232-ZD1(SS-01)

MARK. NO.
-

QTY.
-

注: 工厂用

REV.	CHANGED DATE BY	PART NUMBER	Dim. A	Dim. B	Dim. C	Dim. D	Dim. E	Dim. F	Dim. G	Dim. H	QTY.	Inv. Code
-		P2-AP-D06A	2399	39.5	8X@290c/c	144.5	3X@700c/c				11	
-		P2-AP-D06B	2499	89.5	8X@290c/c	194.5	3X@700c/c				1	



DWG. NO.

P2-AP-D06

REV.

SCALE

DATE
10-07-2024

DRAWN BY

APPROVED BY

PROJECT
YIN PING ROAD KOWLOON
FEATURE WALL (PHASE 2)

MATERIAL
3mm 铝板

COATING
PVF2

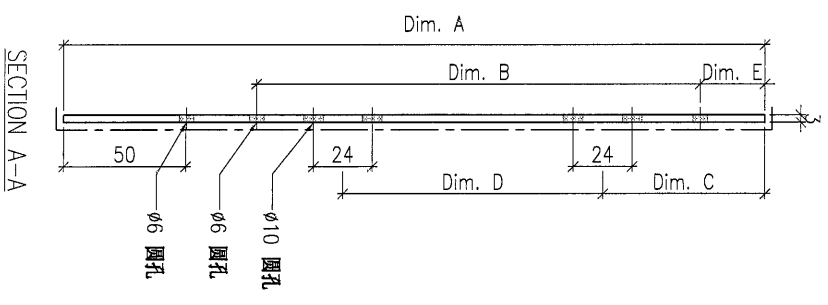
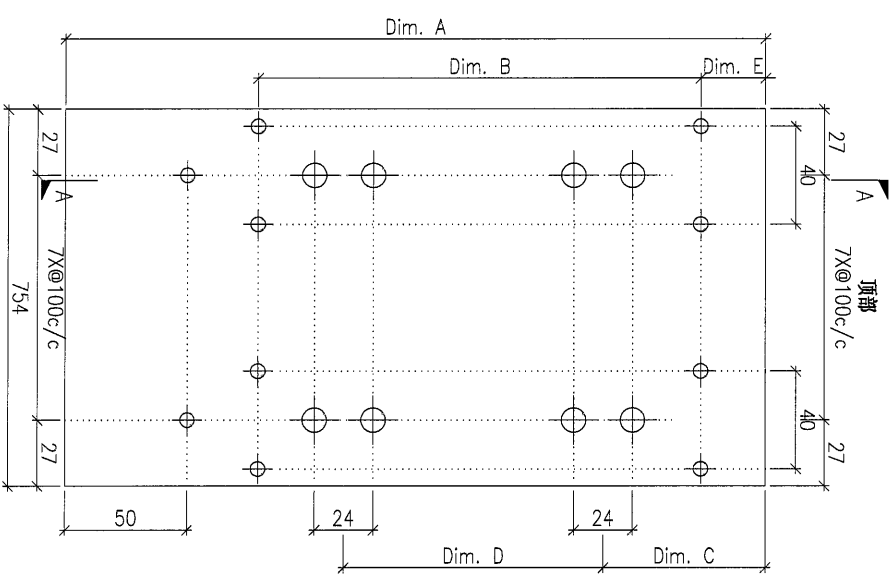
COLOUR
EC-DG-D334232-ZD1 (SS-01)

MARK. NO.
-

QTY.
-

注：工厂用

REV.	CHECKED DATE BY	PART NUMBER	Dim. A	Dim. B	Dim. C	Dim. D	Dim. E	Dim. F	Dim. G	Dim. H	QTY.	Inv. Code
-		P2-AP-008	2500	8X@280c/c	189	3X@550c/c	50				1	



DWG. NO.	P2-AP-008	REV.	-	SCALE	-	DATE	10-07-2024	DRAWN BY	-	APPROVED BY	-
----------	-----------	------	---	-------	---	------	------------	----------	---	-------------	---

PROJECT
YIN PING ROAD KOWLOON
FEATURE WALL (PHASE 2)

MATERIAL
3mm 铝板

COATING
PVF2

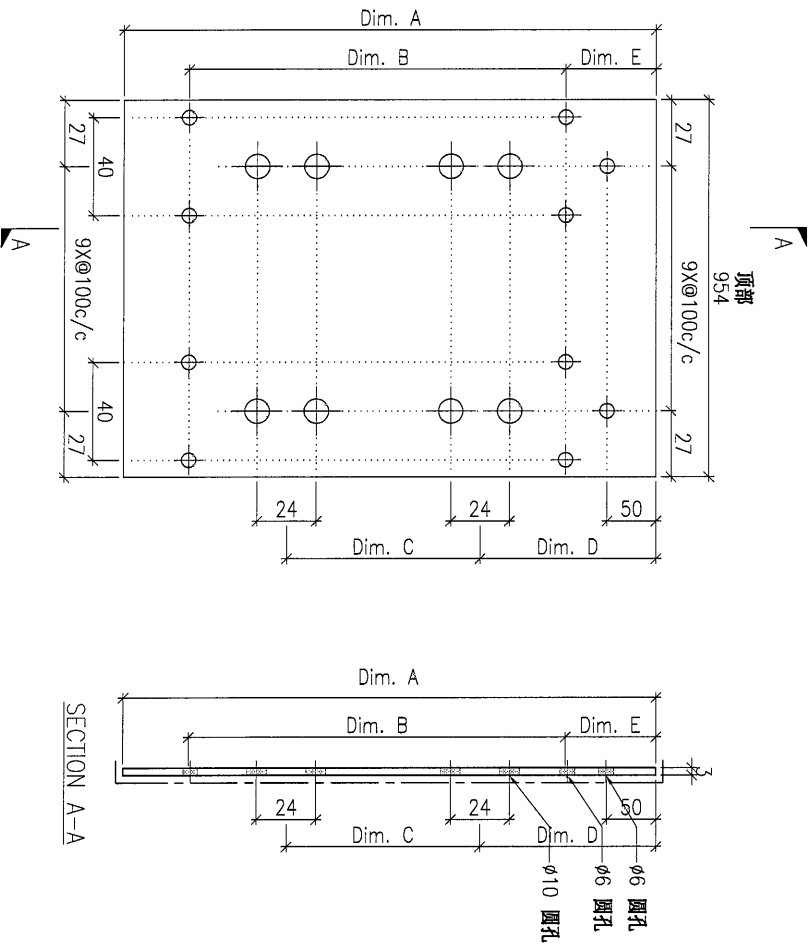
COLOUR
EG-DG-D334232-ZD1(SS-01)

MARK. NO.
-

QTY.
-

注: 工厂用

REV. / PART BY	PART NUMBER	Dim. A	Dim. B	Dim. C	Dim. D	Dim. E	Dim. F	Dim. G	Dim. H	QTY.	Inv. Code
-	P2-AP-D09G	1244	4X@250c/c	1X@750c/c	290	150				1	
-	P2-AP-D09H	2244	7X@290c/c	3X@600c/c	290	150				2	
-	P2-AP-D09J	3245	10X@300c/c	4X@700c/c	290	150				3	



DWG. NO. P2-AP-D09	REV. -	SCALE -	DATE 10-07-2024	DRAWN BY -	APPROVED BY -
-----------------------	-----------	------------	--------------------	---------------	------------------

PROJECT
YIN PING ROAD KOWLOON
FEATURE WALL (PHASE 2)

MATERIAL
20mm 铝板

COATING
PVF2

COLOUR
EC-DG-D334232-ZD1(SS-01)

MARK. NO.
-

QTY.
-

REV.	CHECKED BY	PART NUMBER	Dim. A	Dim. B	Dim. C	Dim. D	Dim. E	Dim. F	Dim. G	Dim. H	QTY.	Inv. Code	ASSEMBLE ON PARTS

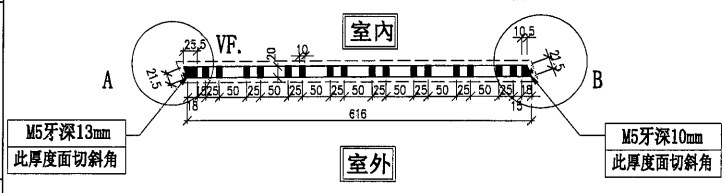
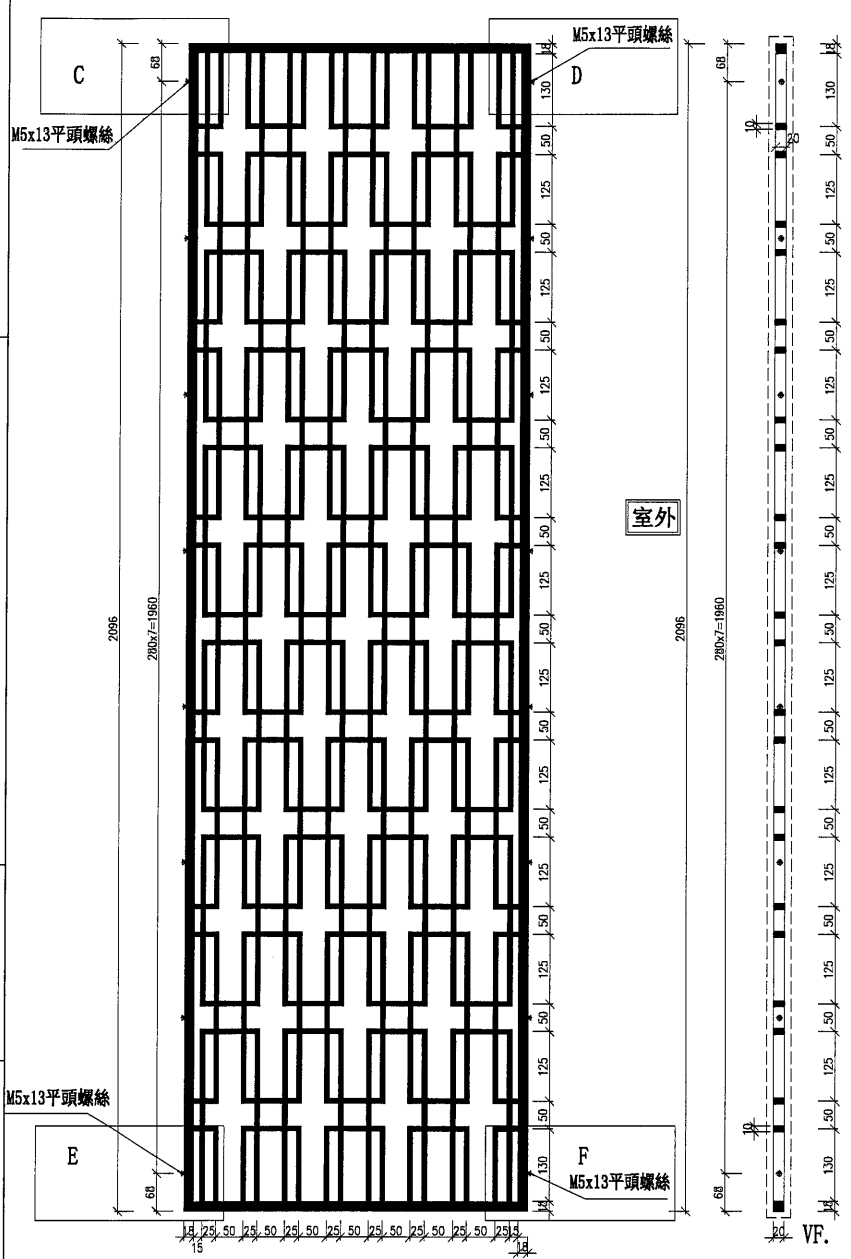
廠用

加工未完，見下頁

- ①已附帶CAD檔
- ②此文件以CAD檔為準
- ③請發CAD檔給鍍金使用
- ④黑色保留；白色避位
- ⑤兩邊斜邊厚度有斜切面

室內

室外



物料編號	數量	樓層	區域位置
WG-LB31	13		用於 D 區
合計:	13		

注：工厂用

DWG. NO. WG-LB31(1)
REV. -
SCALE -
DATE 08-07-2024
DRAWN BY -
APPROVED BY -

PROJECT
YIN PING ROAD KOWLOON
FEATURE WALL (PHASE 2)

MATERIAL
20mm 铝板

COATING
PVF2

COLOUR
EC-DG-D34232-2D1(SS-01)

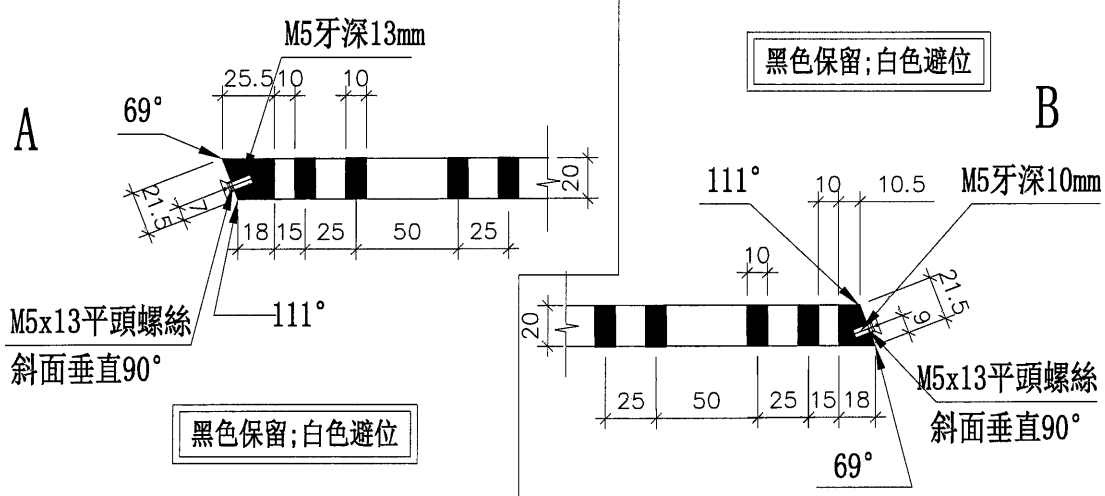
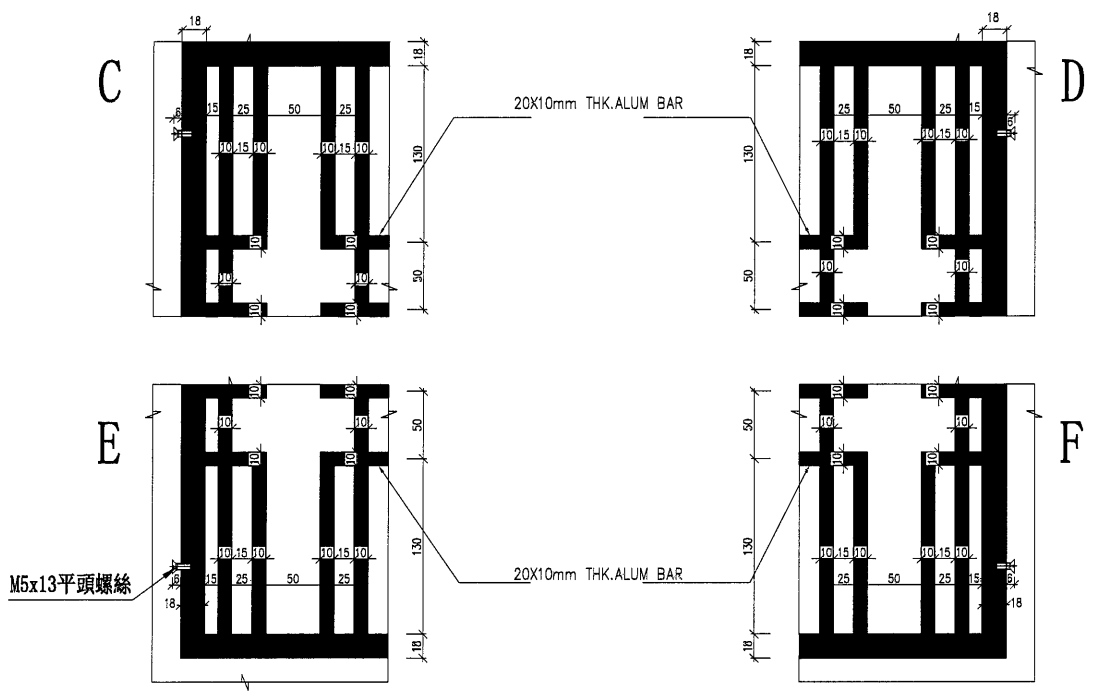
MARK. NO.
-

QTY.
-

REV.	CHECKED DATE BY	PART NUMBER	Dim. A	Dim. B	Dim. C	Dim. D	Dim. E	Dim. F	Dim. G	Dim. H	QTY.	Inv. Code	ASSEMBLY ON PARTS

注：工厂用

加工未完，見上頁



DWG. NO. WG-LB31(2)	REV. -	SCALE -	DATE 08-07-2024	DRAWN BY -	APPROVED BY -
------------------------	-----------	------------	--------------------	---------------	------------------

PROJECT
YIN PING ROAD KOWLOON
FEATURE WALL (PHASE 2)

MATERIAL
20mm 鋁板

COATING
PVF2

COLOUR
EC-DG-D334232-ZD1(SS-01)

MARK. NO.
-

QTY.
-

REV. / PART NUMBER

Dim. A

Dim. B

Dim. C

Dim. D

Dim. E

Dim. F

Dim. G

Dim. H

QTY.

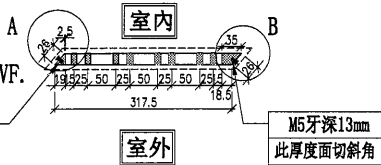
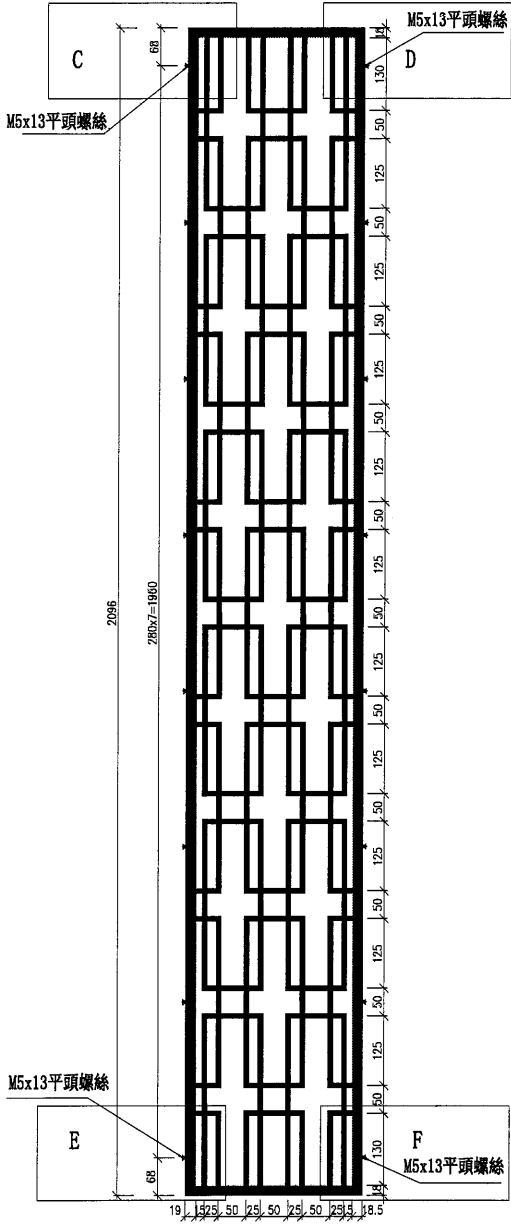
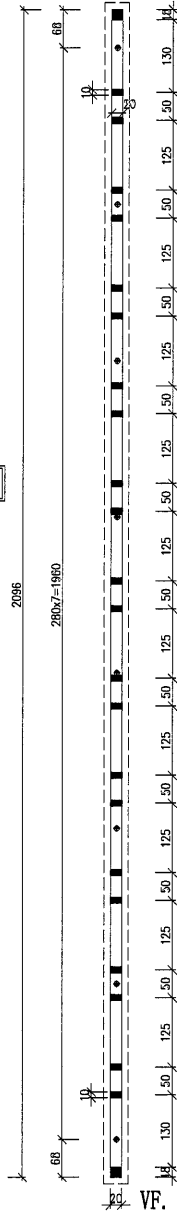
Inv. Code

ASSEMBLE ON PARTS

廠用

加工未完，見下頁

- ① 已附帶CAD檔
- ② 此文件以CAD檔為準
- ③ 請發CAD檔給鍍金使用
- ④ 黑色保留；白色避位
- ⑤ 兩邊斜邊厚度有斜切面



物料編號	數量	樓層	區域位置
WG-LB32	13		用於 D 區
合計:	13		

注：工厂用

DWG. NO.

WG-LB32(1)

REV.

SCALE

DATE
08-07-2024

DRAWN BY

APPROVED BY

PROJECT
YIN PING ROAD KOWLOON
FEATURE WALL (PHASE 2)

MATERIAL
20mm 鋁板

COATING
PVF2

COLOUR
EC-DG-D334232-ZD1(SS-01)

MARK. NO.
-

QTY.
-

REV.
CHECKED
DATE BY

PART NUMBER

Dim. A

Dim. B

Dim. C

Dim. D

Dim. E

Dim. F

Dim. G

Dim. H

QTY.

Inv. Code

ASSEMBLE ON PARTS

注: 工厂用

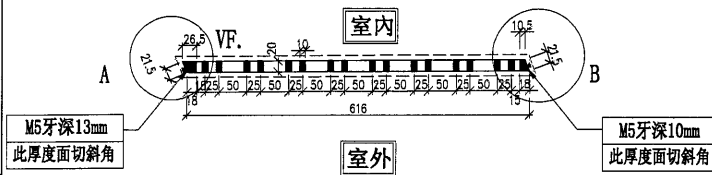
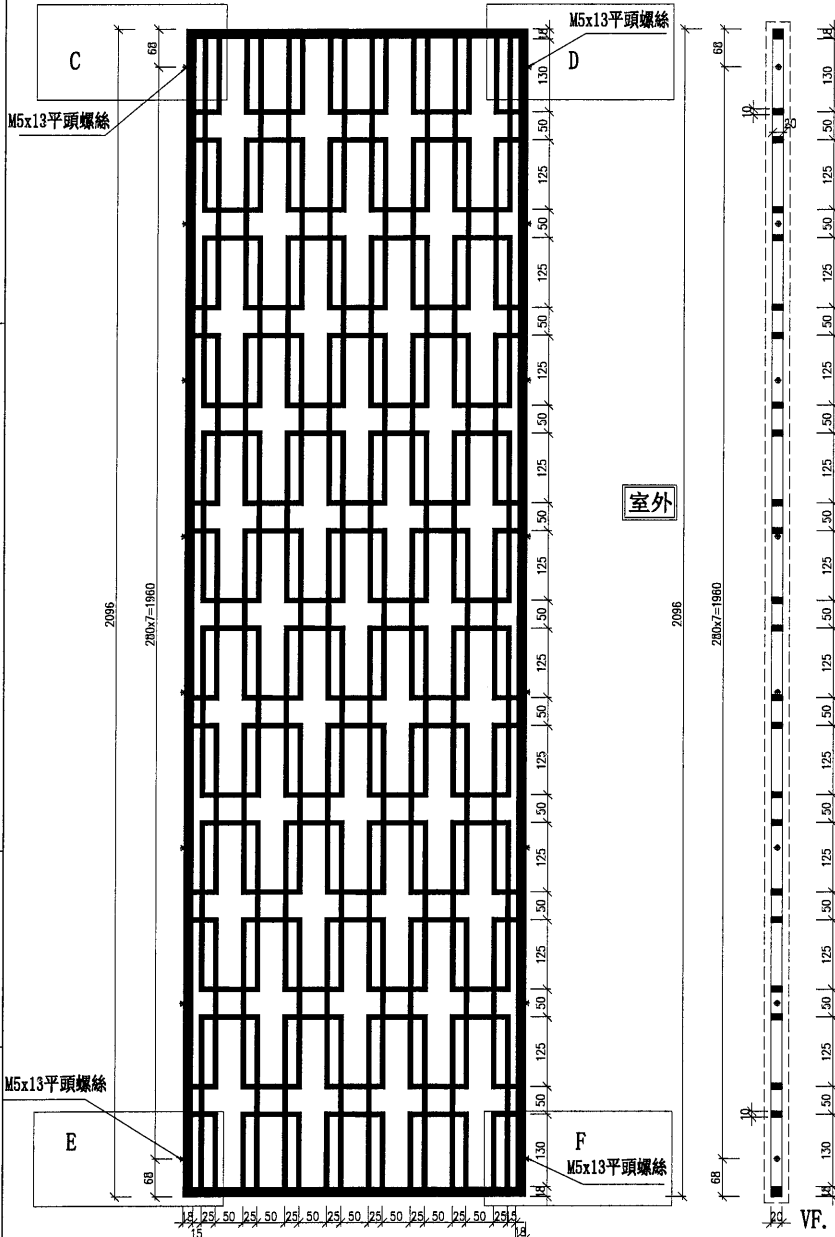
廠用

加工未完, 見下頁

- ① 已附帶CAD檔
- ② 此文件以CAD檔為準
- ③ 請發CAD檔給鋁金使用
- ④ 黑色保留; 白色避位
- ⑤ 兩邊斜邊厚度有斜切面

室內

室外



物料編號	數量	樓層	區域位置
WG-LB33	10		用於 D 區
合計:	10		

DWG. NO.

WG-LB33(1)

REV.

SCALE

DATE
08-07-2024

DRAWN BY

APPROVED BY

PROJECT
YIN PING ROAD KOWLOON
FEATURE WALL (PHASE 2)

MATERIAL
20mm 铝板

COATING
PVF2

COLOUR
EC-DG-D334232-ZD1(SS-01)

MARK. NO.
-

QTY.
-

REV.

PART NUMBER

Dim. A

Dim. B

Dim. C

Dim. D

Dim. E

Dim. F

Dim. G

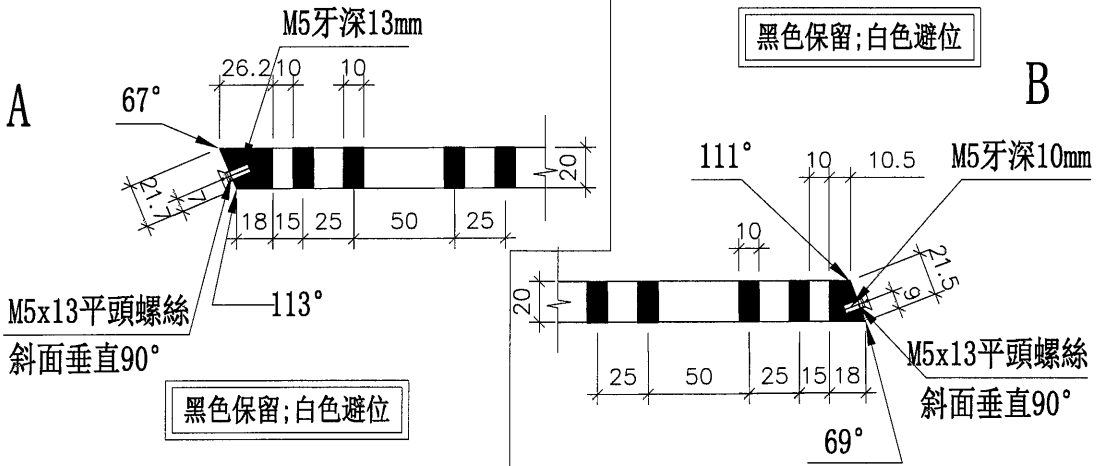
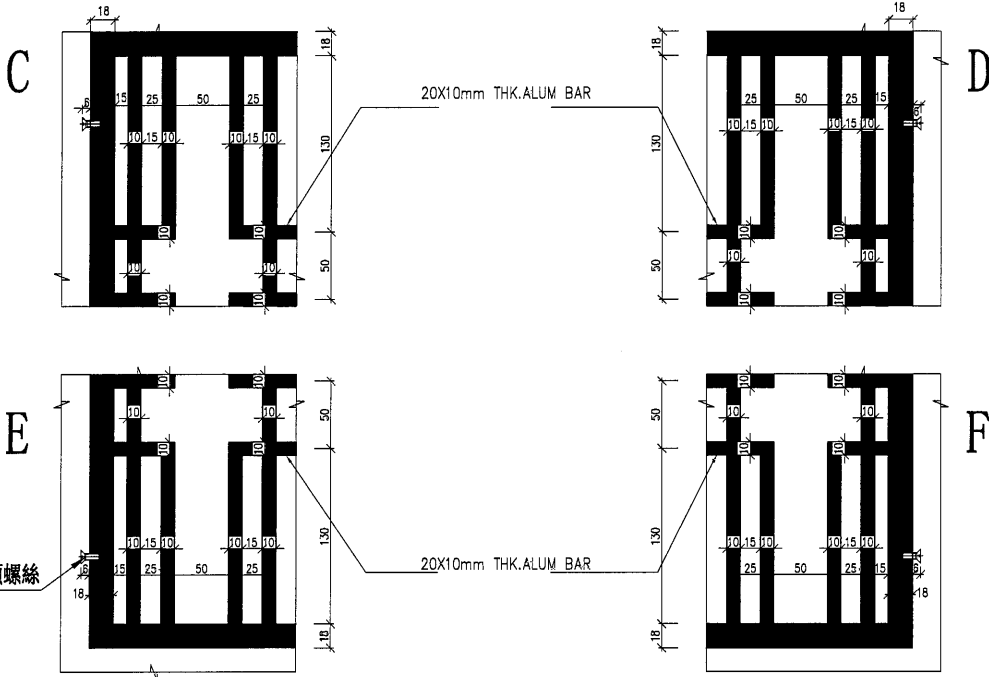
Dim. H

QTY.

Inv. Code

ASSEMBLE ON PARTS

加工未完，見上頁



注: 工厂用

DWG. NO.

WG-LB33(2)

REV.

SCALE

DATE
08-07-2024

DRAWN BY

APPROVED BY

PROJECT: YIN PING ROAD KOWLOON FEATURE WALL (PHASE 2)

MATERIAL: 20mm 铝板

COATING: PVF2

COLOUR: EC-DG-D334232-ZD1(SS-01)

MARK. NO.:

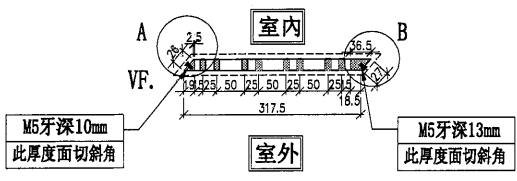
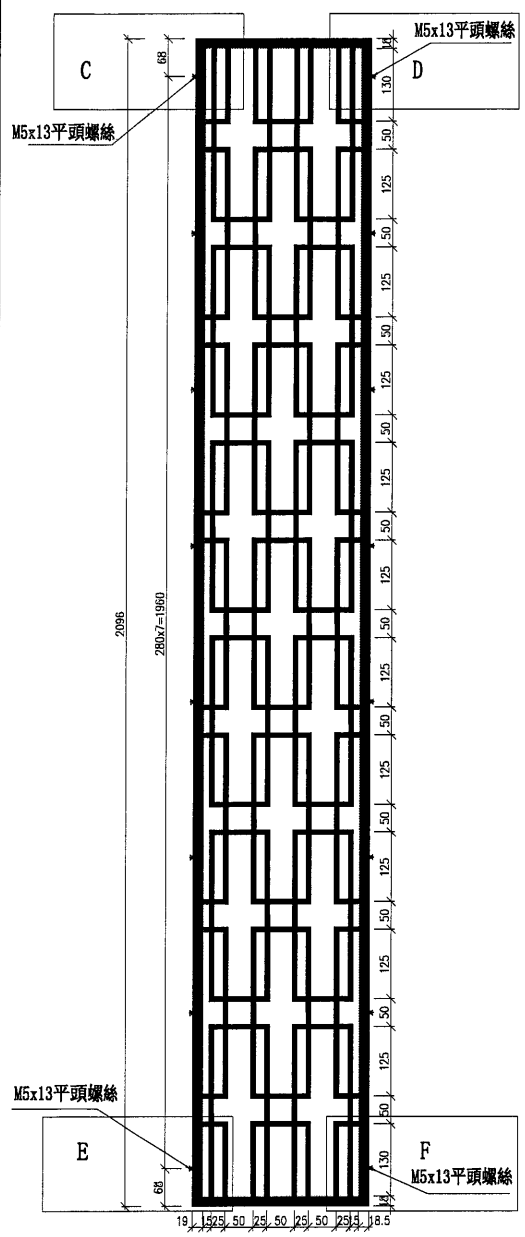
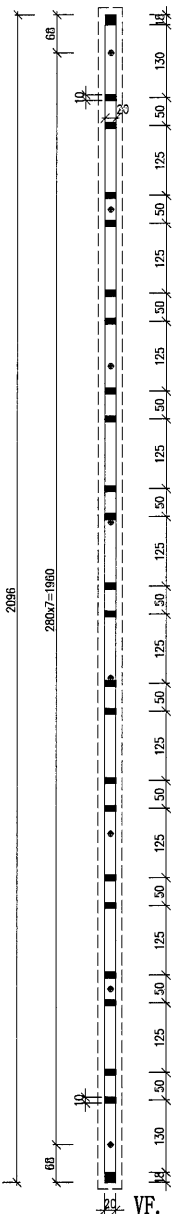
QTY.:

REV.	CHANGED BY	PART NUMBER	Dim. A	Dim. B	Dim. C	Dim. D	Dim. E	Dim. F	Dim. G	Dim. H	QTY.	Inv. Code

廠用

加工未完，見下頁

- ①已附帶CAD檔
- ②此文件以CAD檔為準
- ③請發CAD檔給鍍金使用
- ④黑色保留；白色避位
- ⑤兩邊斜邊厚度有斜切面



物料編號	數量	樓層	區域位置
WG-LB34	10		用於 D 區
合計:	10		

注: 工厂用

DWG. NO. WG-LB34(1)

REV. -

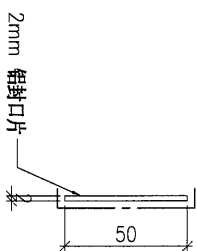
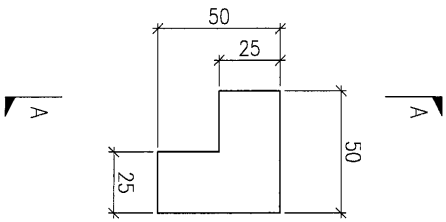
SCALE -

DATE 08-07-2024

DRAWN BY -

APPROVED BY -

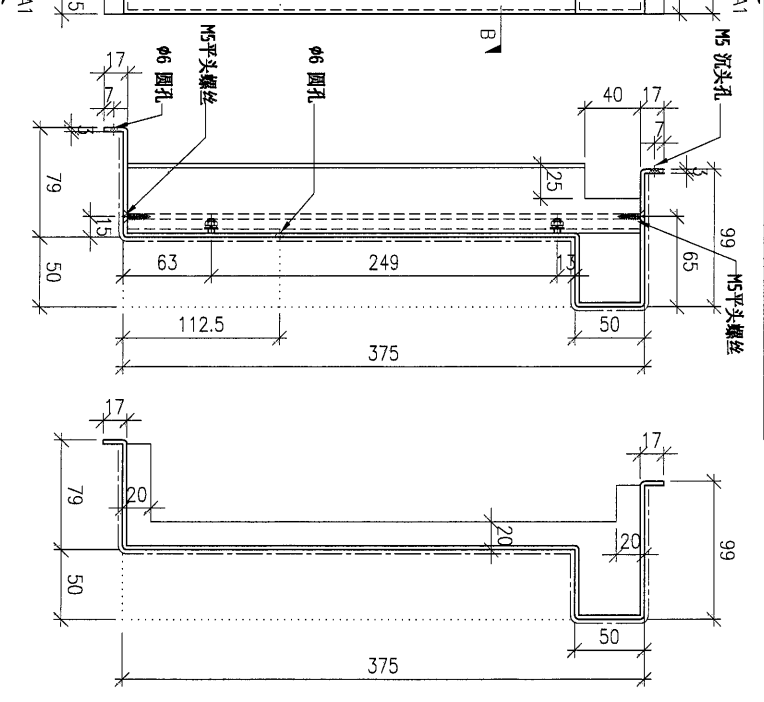
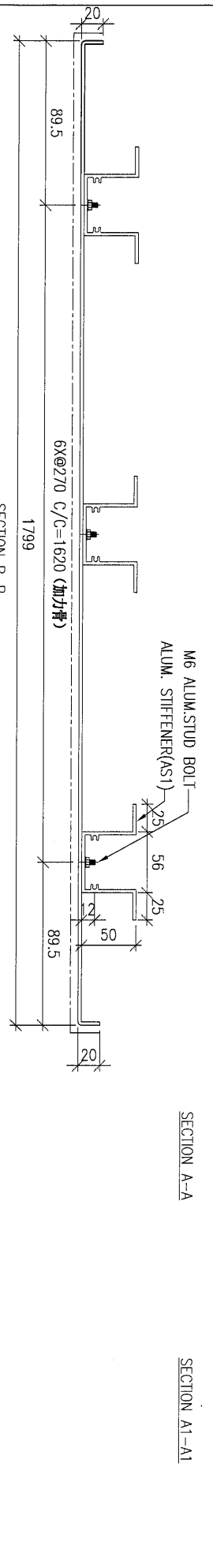
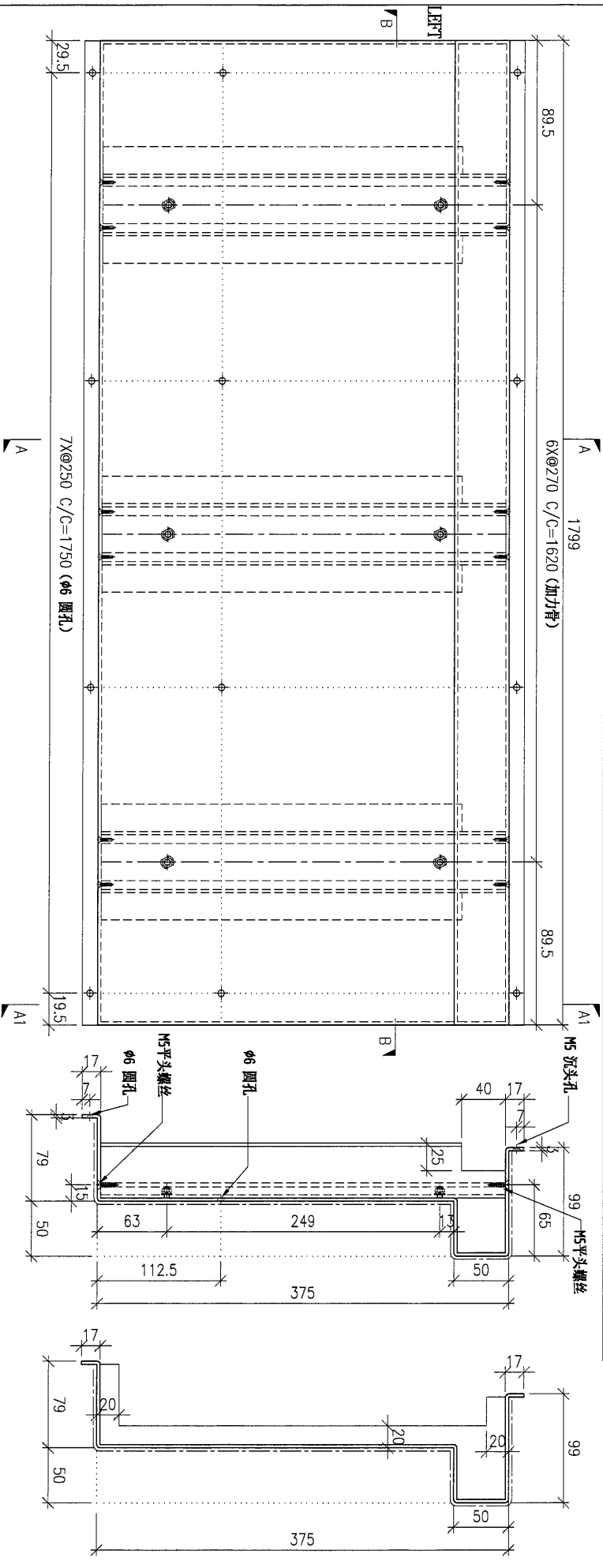
PROJECT				MATERIAL				COATING				COLOUR				MARK. NO.		QTY.	
YIN PING ROAD KOWLOON FEATURE WALL (PHASE 2)				2mm 铝封口片				PVF2				EC-DG-D334232-ZD1(SS-01)				-		-	
REV.	REVISION	PART NUMBER	Dim. A	Dim. B	Dim. C	Dim. D	Dim. E	Dim. F	Dim. G	Dim. H	QTY.	Inv. Code	ASSEMBLE ON PARTS				注: 工厂用		
-		FKP-D-M100L	-	-	-	-	-	-	-	-	30		注: 如图加工						
-		FKP-D-M100R	-	-	-	-	-	-	-	-	30		注: 相反加工						



SECTION A-A

DWG. NO.		REV.		SCALE		DATE		DRAWN BY		APPROVED BY	
FKP-D-M100		-		-		13-04-2024		-		-	

PROJECT				MATERIAL				COATING				COLOUR		MARK. NO.		QTY.	
YIN PING ROAD KOWLOON FEATURE WALL (PHASE 2)				3mm铝板				PVF2				EC-DG-D334232-ZD1(SS-01)		-		-	
REV.	CHECKED DATE	PART NUMBER	Dim. A	Dim. B	Dim. C	Dim. D	Dim. E	Dim. F	Dim. G	Dim. H	QTY.	Inv. Code	ASSEMBLE ON PARTS				
-	-	P2-AP-DX31	-	-	-	-	-	-	-	-	30	-	注: 工厂用				



DWG. NO.		REV.		SCALE		DATE		DRAWN BY		APPROVED BY	
P2-AP-DX31		-		-		13-04-2024		-		-	

PROJECT
YIN PING ROAD KOWLOON
FEATURE WALL (PHASE 2)

MATERIAL
3mm 铝板

COATING
PVF2

COLOUR
EC-DG-D334232-ZD1(SS-01)

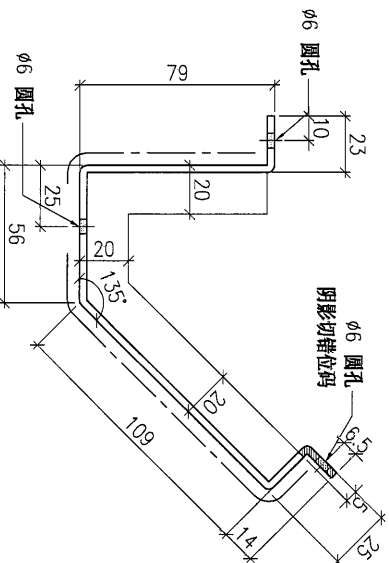
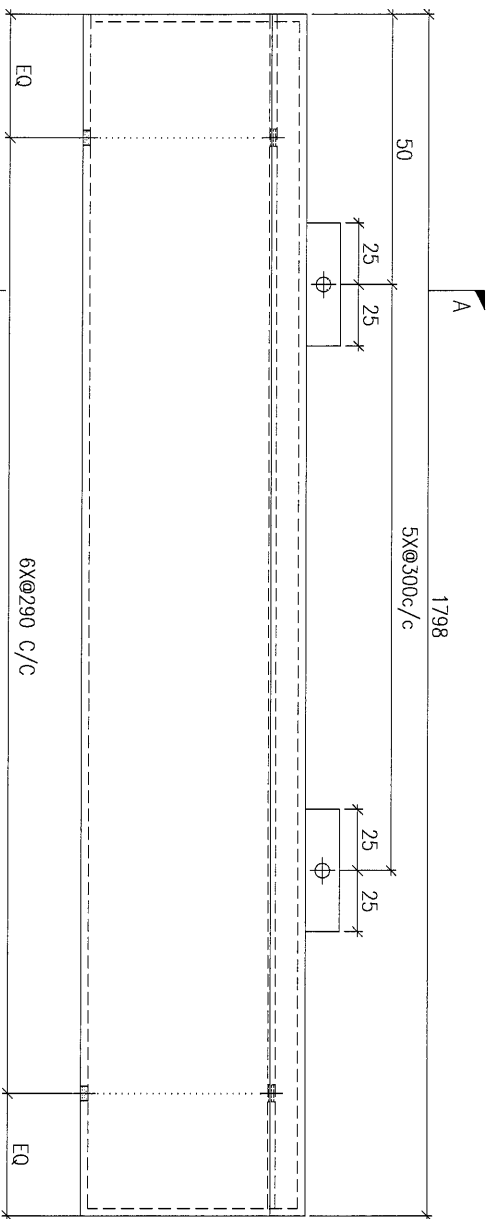
MARK. NO.
-

QTY.
-

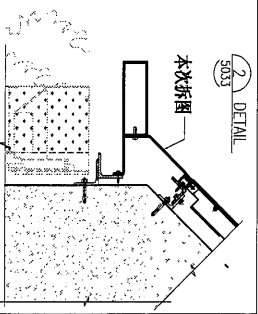
ASSEMBLE ON PARTS

注: 工厂用

REV.	CHANGED BY	PART NUMBER	Dim. A	Dim. B	Dim. C	Dim. D	Dim. E	Dim. F	Dim. G	Dim. H	QTY.	Inv. Code
-		P2-AP-X35	-	-	-	-	-	-	-	-	25	-



SECTION A-A



DWG. NO.

P2-AP-X35

REV.

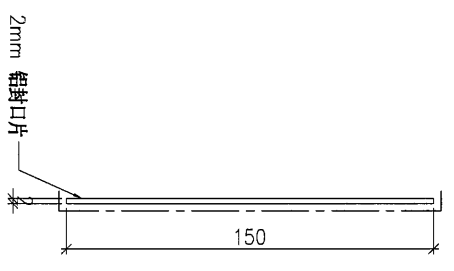
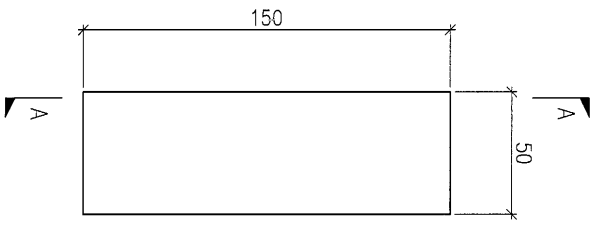
SCALE

DATE
13-04-2024

DRAWN BY

APPROVED BY

PROJECT				YIN PING ROAD KOWLOON FEATURE WALL (PHASE 2)				MATERIAL				2mm 铝封口片				COATING				PVF2				COLOUR				EC-DG-D334232-ZD1(SS-01)				MARK. NO.				QTY.																							
REV.				CHECKED DATE				PART NUMBER				Dim. A				Dim. B				Dim. C				Dim. D				Dim. E				Dim. F				Dim. G				Dim. H				QTY.				Inv. Code				ASSEMBLE ON PARTS				注: 工厂用			
-				FKP-D-M112				-				-				-				-				-				-				-				-				50																			



SECTION A-A

DWG. NO.		FKP-D-M112		REV.		-		SCALE		-		DATE		13-04-2024		DRAWN BY		-		APPROVED BY		-	
----------	--	------------	--	------	--	---	--	-------	--	---	--	------	--	------------	--	----------	--	---	--	-------------	--	---	--