



工程指示 / 要求簡箋 ENGINEER INSTRUCTIONS(E.I.)

工程指示編號:	EI- 8044	修改版本:	-
	HK- 1296		
工程編號:	J 853	工程名稱:	延坪道 (第2期)
收件人:	生統/	發件人:	Jingo
工程項目:	Feature Wall 飾線 鋁板加工圖工廠 part 6	日期:	11/7/2024

<input type="checkbox"/> 原合約工程包	<input type="checkbox"/> 原合約工程加 / 減脹 QT-	<input type="checkbox"/> 新工程報價 QT-
---------------------------------	--	------------------------------------

信件批核號碼/圖紙參考編號:	批核模具圖紙編號:
客戶指示附件:	管理內部批簽署:

<input type="checkbox"/> 初步鋁料 B.M.	<input type="checkbox"/> 加工拆圖, 然後生產	<input type="checkbox"/> 尺寸表
<input type="checkbox"/> 正式鋁料 B.M.	<input type="checkbox"/> 技術上資料/指示	<input type="checkbox"/> 報價
<input type="checkbox"/> 配件 B.M.	<input type="checkbox"/> 樣辦或貨品說明書	<input type="checkbox"/> 分判合約
<input type="checkbox"/> 其他:		

內容:

完成上列要求日期: 25/7/2024

國內

<input type="checkbox"/> 生產技術總監	<input type="checkbox"/> 連附件	<input type="checkbox"/> 技術部	<input type="checkbox"/> 連附件	<input type="checkbox"/> 生產部	<input type="checkbox"/> 連附件
<input type="checkbox"/> 採購部	<input type="checkbox"/> 連附件	<input checked="" type="checkbox"/> 生產統籌部	<input checked="" type="checkbox"/> 連附件	<input type="checkbox"/> 報關組	<input type="checkbox"/> 連附件
<input type="checkbox"/> 質檢部	<input type="checkbox"/> 連附件	<input type="checkbox"/> 會計部	<input type="checkbox"/> 連附件	<input type="checkbox"/> 機械設計部	<input type="checkbox"/> 連附件
<input type="checkbox"/> 香港辦	<input type="checkbox"/> 連附件	<input type="checkbox"/> 其他:			

香港

<input type="checkbox"/> 行政部	<input type="checkbox"/> 連附件	<input type="checkbox"/> 會計部	<input type="checkbox"/> 連附件	<input type="checkbox"/> 統籌部	<input type="checkbox"/> 連附件	<input type="checkbox"/> 工程部	<input type="checkbox"/> 連附件
<input type="checkbox"/> 採購部	<input type="checkbox"/> 連附件	<input type="checkbox"/> QS部	<input type="checkbox"/> 連附件	<input type="checkbox"/> 地盤管理	<input type="checkbox"/> 連附件	<input type="checkbox"/> 維修部	<input type="checkbox"/> 連附件

*發件人簽署:	*組別成員批核簽署:
傳遞編號:	項目經理簽署:

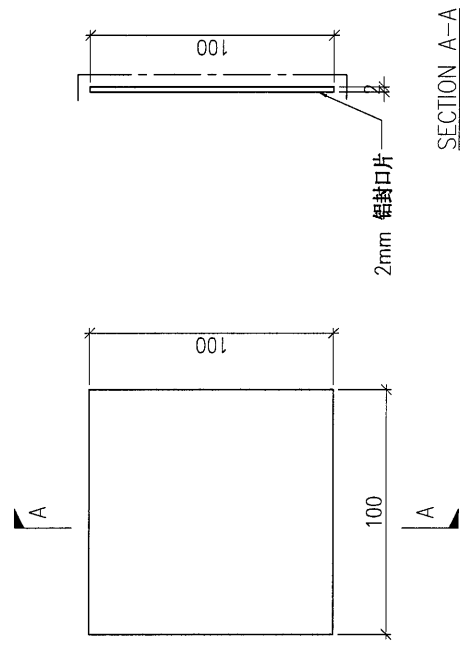
美特鋁質 MIDI Aluminium Fabricator Ltd.		工程號: 地盤名稱:	J-853 延坪路	計算: 核對:	ming	日期:	2024.07.10		送呈:	JOE	
廠用鋁板B.M.表 (part. 6)		項目類別:	特征牆(2区)	批准:		日期:			副本:		
修改內容		修改版次:		A/C Code:		總V.F.:	398.094	總重量:	4903.14		
序號	鋁板圖號	鋁板名稱	顏色	實用	後備	總數	總重量	總展開面積	單件V.F.	圖紙編號	
							平方米	平方米	平方米		
1	FKP-C-M04	2mm厚鋁板	TUC106699FXLJBA-3 (SS-03)	2270	0	2270	123.034	0.010	22.700	0.010	22.700
2	P2-AP-C01	3mm厚鋁板	鍍化	320	0	320	5.203	0.002	0.640	0.000	0.000
3	P2-AP-C02A	3mm厚鋁板	EC-DG-D334232-ZD1 (SS-01)	6	0	6	76.390	1.566	9.396	1.566	9.396
4	P2-AP-C02B	3mm厚鋁板	EC-DG-D334232-ZD1 (SS-01)	3	0	3	29.262	1.200	3.599	1.200	3.599
5	P2-AP-C02C	3mm厚鋁板	EC-DG-D334232-ZD1 (SS-01)	1	0	1	17.198	2.115	2.115	2.115	2.115
6	P2-AP-C02D	3mm厚鋁板	EC-DG-D334232-ZD1 (SS-01)	7	0	7	75.722	1.331	9.314	1.331	9.314
7	P2-AP-C02E	3mm厚鋁板	EC-DG-D334232-ZD1 (SS-01)	1	0	1	12.678	1.559	1.559	1.559	1.559
8	P2-AP-C02F	3mm厚鋁板	EC-DG-D334232-ZD1 (SS-01)	2	0	2	30.142	1.854	3.708	1.854	3.708
9	P2-AP-C02G	3mm厚鋁板	EC-DG-D334232-ZD1 (SS-01)	4	0	4	51.777	1.592	6.369	1.592	6.369
10	P2-AP-C02H	3mm厚鋁板	EC-DG-D334232-ZD1 (SS-01)	2	0	2	19.194	1.180	2.361	1.180	2.361
11	P2-AP-C02J	3mm厚鋁板	EC-DG-D334232-ZD1 (SS-01)	3	0	3	14.436	0.592	1.776	0.592	1.776
12	P2-AP-C02K	3mm厚鋁板	EC-DG-D334232-ZD1 (SS-01)	4	0	4	26.255	0.807	3.229	0.807	3.229
13	P2-AP-C02L	3mm厚鋁板	EC-DG-D334232-ZD1 (SS-01)	2	0	2	26.000	1.599	3.198	1.599	3.198
14	P2-AP-C02M	3mm厚鋁板	EC-DG-D334232-ZD1 (SS-01)	2	0	2	26.319	1.619	3.237	1.619	3.237
15	P2-AP-C02N	3mm厚鋁板	EC-DG-D334232-ZD1 (SS-01)	2	0	2	11.538	0.710	1.419	0.710	1.419
16	P2-AP-C02P	3mm厚鋁板	EC-DG-D334232-ZD1 (SS-01)	3	0	3	39.957	1.638	4.915	1.638	4.915
17	P2-AP-C03	3mm厚鋁板	EC-DG-D334232-ZD1 (SS-01)	37	0	37	471.955	1.569	58.051	1.569	58.051
18	P2-AP-C04A	3mm厚鋁板	EC-DG-D334232-ZD1 (SS-01)	5	0	5	66.662	1.640	8.200	1.640	8.200
19	P2-AP-C04B	3mm厚鋁板	EC-DG-D334232-ZD1 (SS-01)	3	0	3	25.546	1.047	3.142	1.047	3.142
20	P2-AP-C04C	3mm厚鋁板	EC-DG-D334232-ZD1 (SS-01)	2	0	2	25.309	1.557	3.113	1.557	3.113
21	P2-AP-C04D	3mm厚鋁板	EC-DG-D334232-ZD1 (SS-01)	1	0	1	10.528	1.295	1.295	1.295	1.295
22	P2-AP-C04E	3mm厚鋁板	EC-DG-D334232-ZD1 (SS-01)	4	0	4	43.281	1.331	5.324	1.331	5.324
23	P2-AP-C04F	3mm厚鋁板	EC-DG-D334232-ZD1 (SS-01)	2	0	2	10.900	0.670	1.341	0.670	1.341
24	P2-AP-C04G	3mm厚鋁板	EC-DG-D334232-ZD1 (SS-01)	3	0	3	21.295	0.873	2.619	0.873	2.619
25	P2-AP-C04H	3mm厚鋁板	EC-DG-D334232-ZD1 (SS-01)	2	0	2	23.448	1.442	2.884	1.442	2.884
26	P2-AP-C04J	3mm厚鋁板	EC-DG-D334232-ZD1 (SS-01)	2	0	2	24.618	1.514	3.028	1.514	3.028
27	P2-AP-C04K	3mm厚鋁板	EC-DG-D334232-ZD1 (SS-01)	2	0	2	32.381	1.991	3.983	1.991	3.983
28	P2-AP-C05A	3mm厚鋁板	EC-DG-D334232-ZD1 (SS-01)	8	0	8	123.355	1.897	15.173	1.897	15.173
29	P2-AP-C05B	3mm厚鋁板	EC-DG-D334232-ZD1 (SS-01)	3	0	3	28.712	1.177	3.532	1.177	3.532

美特鋁質 MIDI Aluminium Fabricator Ltd.		工程號: J-853	計算: ming	日期:	2024.07.10		送呈:	JOE			
廠用鋁板B.M.表 (part. 6)		地盤名稱: 延坪路 <td>核對:</td> <td>日期:</td> <td colspan="2"></td> <td>副本:</td> <td></td>	核對:	日期:			副本:				
項目類別: 特征牆(2区) <td>批准:</td> <td></td> <td>日期:</td> <td colspan="2"></td> <td></td> <td></td>		批准:		日期:							
修改版次:		A/C Code:	顏色	實用	後備	總數	總重量	總展開面積	總重量: 4903.14	圖紙編號	
序號	修改內容	鋁板圖號	鋁板名稱	實用	後備	總數	總重量	總展開面積	單件V.F.	圖紙編號	
30		P2-AP-C05C	3mm厚鋁板	1	0	1	15.834	1.948	1.948	1.948	
31		P2-AP-C05D	3mm厚鋁板	3	0	3	39.447	1.617	4.852	4.852	
32		P2-AP-C05E	3mm厚鋁板	1	0	1	8.544	1.051	1.051	1.051	
33		P2-AP-C05F	3mm厚鋁板	6	0	6	79.755	1.635	9.810	9.810	
34		P2-AP-C05G	3mm厚鋁板	9	0	9	50.724	0.693	6.239	6.239	
35		P2-AP-C05H	3mm厚鋁板	9	0	9	131.596	1.799	16.187	16.187	
36		P2-AP-C06	3mm厚鋁板	1	0	1	15.414	1.896	1.896	1.896	
37		P2-AP-C07	3mm厚鋁板	1	0	1	13.332	1.640	1.640	1.640	
38		P2-AP-C08	3mm厚鋁板	1	0	1	11.294	1.389	1.389	1.389	
39		P2-AP-C09	3mm厚鋁板	1	0	1	14.438	1.776	1.776	1.776	
40		P2-AP-C10	3mm厚鋁板	1	0	1	12.439	1.530	1.530	1.530	
41		P2-AP-H01	3mm厚鋁板	78	0	78	1.268	0.002	0.156	0.000	
42		P2-AP-H02A	3mm厚鋁板	7	0	7	87.223	1.533	10.729	10.729	
43		P2-AP-H02B	3mm厚鋁板	2	0	2	15.999	0.984	1.968	0.984	
44		P2-AP-H02C	3mm厚鋁板	1	0	1	12.253	1.507	1.507	1.507	
45		P2-AP-H02D	3mm厚鋁板	6	0	6	74.475	1.527	9.161	9.161	
46		P2-AP-H03	3mm厚鋁板	9	0	9	114.800	1.569	14.121	14.121	
47		P2-AP-H04	3mm厚鋁板	4	0	4	32.317	0.994	3.975	0.994	
48		P2-AP-H05	3mm厚鋁板	1	0	1	13.851	1.704	1.704	1.704	
49		WG-LB21	20mm厚鋁板	24	0	24	1679.510	1.291	30.987	2.582	
50		WG-LB22	20mm厚鋁板	24	0	24	865.656	0.665	15.972	1.331	
51		FKP-C-M100L	2mm厚鋁板	19	0	19	0.257	0.003	0.048	0.003	
52		FKP-C-M100R	2mm厚鋁板	19	0	19	0.257	0.003	0.048	0.003	
53		FKP-C-M101	2mm厚鋁板	2	0	2	0.059	0.005	0.011	0.005	
54		P2-AP-C31	3mm厚鋁板	18	0	18	114.224	1.171	21.075	1.171	
55		P2-AP-C32	3mm厚鋁板	1	0	1	5.075	0.936	0.936	0.936	
				總計:		2955	4903	68	352	70	398

PROJECT		YIN PING ROAD KOWLOON FEATURE WALL (PHASE 2)										MATERIAL		COATING		COLOUR		MARK. NO.		QTY.	
		2mm 铝封口片										PVF2		TUC106699FXLJBA-3(SS-03)		-		-			

REV.	CHANGED BY	PART NUMBER	Dim. A	Dim. B	Dim. C	Dim. D	Dim. E	Dim. F	Dim. G	Dim. H	QTY.	Inv. Code	ASSEMBLE ON PARTS								
-		FKP-C-M04	-	-	-						2270										

注: 工厂用



DWG. NO.		FKP-C-M04		REV.		-		SCALE		-		DATE		22-03-2023		DRAWN BY		-		APPROVED BY	
----------	--	-----------	--	------	--	---	--	-------	--	---	--	------	--	------------	--	----------	--	---	--	-------------	--

PROJECT YIN PING ROAD KOWLOON FEATURE WALL (PHASE 2)

REV.	ORDERED PART BY	Dim. A	Dim. B	Dim. C	Dim. D	Dim. E	Dim. F	Dim. G	Dim. H	QTY.	Inv. Code	COATING	COLOUR	MARK. NO.	QTY.
-	P2-AP-C01	-	-	-	-	-	-	-	-	320		ASSEMBLE ON PARTS	-	-	-

注: 工厂用



SECTION A-A

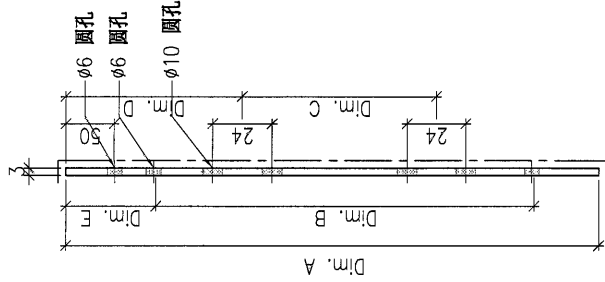
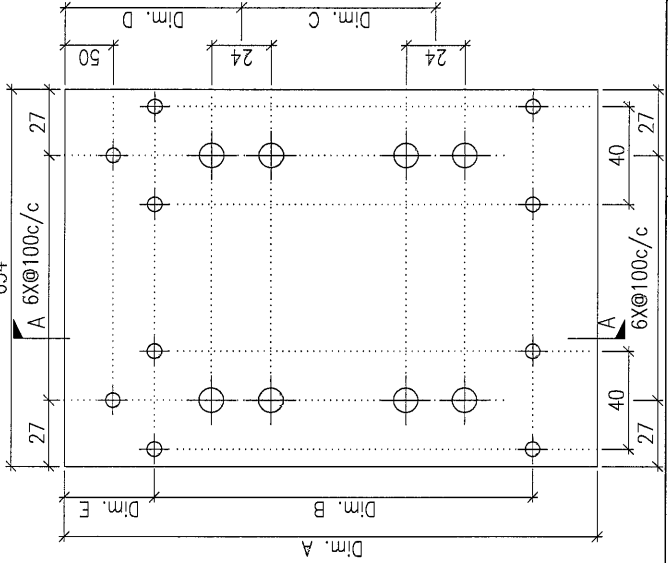
DWG. NO.	REV.	SCALE	DATE	DRAWN BY	APPROVED BY
P2-AP-C01	-	-	10-07-2024	-	-

PROJECT YIN PING ROAD KOWLOON FEATURE WALL (PHASE 2)

REV.	CHANGED PART NO.	PART NUMBER	Dim. A	Dim. B	Dim. C	Dim. D	Dim. E	Dim. F	Dim. G	Dim. H	QTY.	Inv. Code	COLOUR	MARK. NO.	QTY.
-		P2-AP-C02A	2394.5	8X@270c/c 3X@650c/c	245	150					6		EC-DG-D334232-ZD1(SS-01)	-	-
-		P2-AP-C02B	1834.5	6X@265c/c 2X@700c/c	280	150					3		ASSEMBLE ON PARTS	-	-
-		P2-AP-C02C	3234.5	1X@265c/c 4X@700c/c	280	225					1			-	-
-		P2-AP-C02D	2034.5	6X@300c/c 2X@750c/c	230	160					7			-	-
-		P2-AP-C02E	2384.5	8X@270c/c 3X@650c/c	230	150					1			-	-
-		P2-AP-C02F	2834.5	10X@260c/c 3X@750c/c	280	150					2			-	-
-		P2-AP-C02G	2434.5	8X@275c/c 3X@650c/c	280	150					4			-	-
-		P2-AP-C02H	1805	5X@300c/c 2X@750c/c	190	150					2			-	-
-		P2-AP-C02J	905	2X@300c/c 1X@600c/c	190	150					3			-	-
-		P2-AP-C02K	1234.5	4X@250c/c 1X@750c/c	190	150					4			-	-
-		P2-AP-C02L	2445	8X@280c/c 3X@700c/c	190	150					2			-	-
-		P2-AP-C02M	2475	8X@280c/c 3X@700c/c	190	150					2			-	-
-		P2-AP-C02N	1085	3X@300c/c 1X@700c/c	190	150					2			-	-
-		P2-AP-C02P	2505	8X@280c/c 3X@700c/c	190	150					3			-	-

注: 工厂用

顶部
654



SECTION A-A

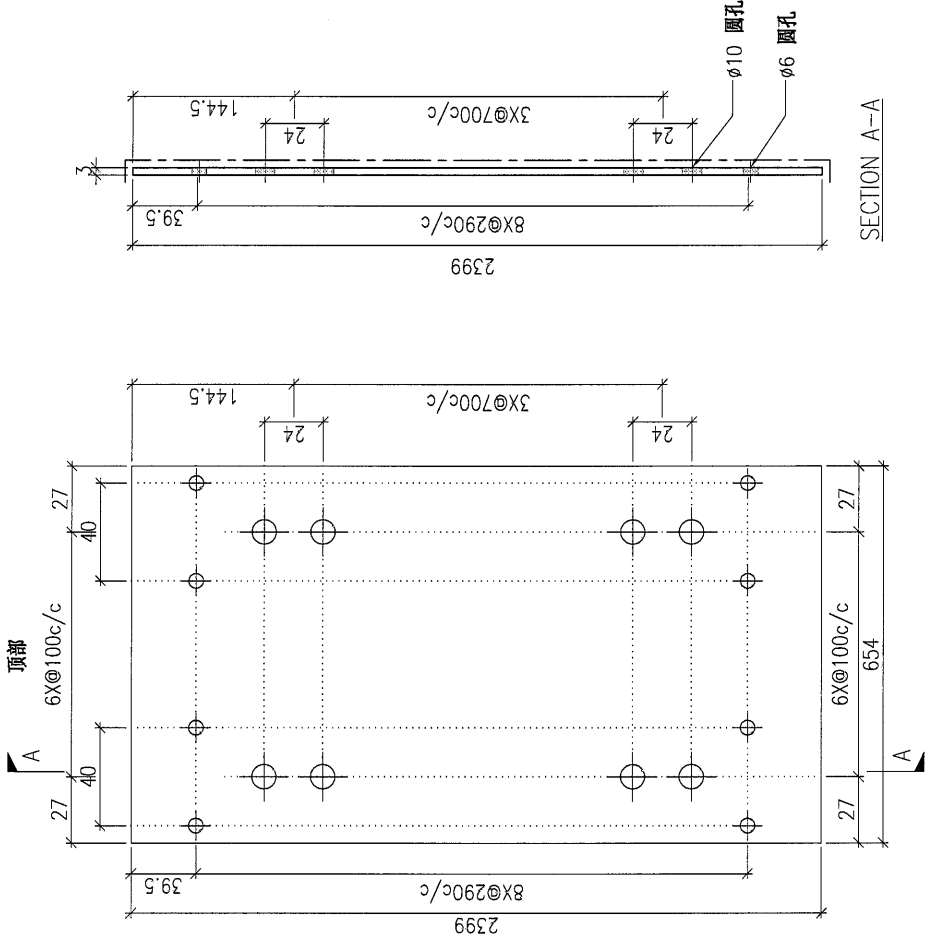
DWG. NO.	P2-AP-C02	SCALE	-	DATE	10-07-2024	DRAWN BY	-	APPROVED BY	-
----------	-----------	-------	---	------	------------	----------	---	-------------	---

PROJECT: YIN PING ROAD KOWLOON FEATURE WALL (PHASE 2)

REV.	CHANGED	PART NUMBER	Dim. A	Dim. B	Dim. C	Dim. D	Dim. E	Dim. F	Dim. G	Dim. H	QTY.	Inv. Code	COATING	COLOUR	MARK. NO.	QTY.
-		P2-AP-C03	-	-	-	-	-	-	-	-	37		PVF2	EC-DG-D334232-ZD1(SS-01)	-	-

ASSEMBLE ON PARTS

注: 工厂用



DWG. NO.	REV.	SCALE	DATE	DRAWN BY	APPROVED BY
P2-AP-C03	-	-	10-07-2024	-	-

PROJECT: YIN PING ROAD KOWLOON FEATURE WALL (PHASE 2)

MATERIAL: 3mm 铝板

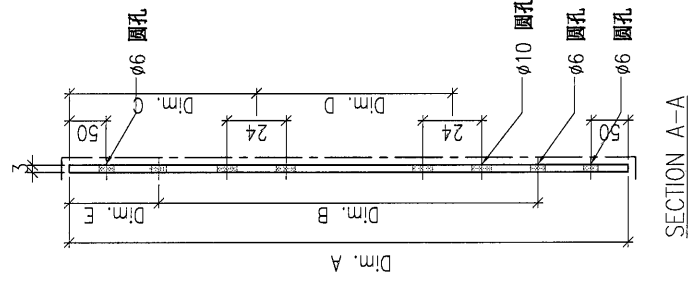
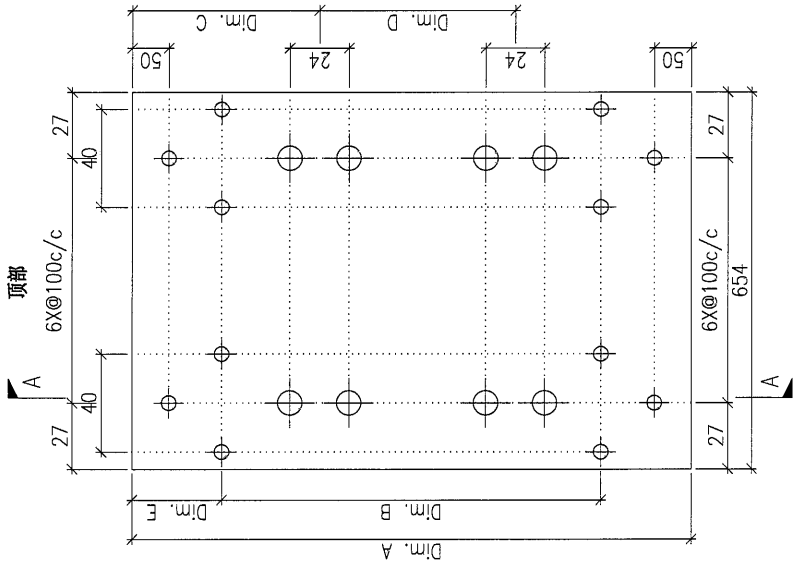
COATING: PVF2

COLOUR: EC-DG-D334232-ZD1(SS-01)

MARK. NO.:

QTY.:

REV.	REV. NO.	PART NUMBER	Dim. A	Dim. B	Dim. C	Dim. D	Dim. E	Dim. F	Dim. G	Dim. H	QTY.	Inv. Code	ASSEMBLE ON PARTS	工厂用
-		P2-AP-C04A	2507.5	7X@300c/c	290	3X@50c/c	200				5			
-		P2-AP-C04B	1601.5	5X@260c/c	244.5	3X@60c/c	150				3			
-		P2-AP-C04C	2380	8X@260c/c	230	3X@50c/c	150				2			
-		P2-AP-C04D	1980	5X@300c/c	230	2X@750c/c	190				1			
-		P2-AP-C04E	2035	6X@285c/c	230	2X@750c/c	160				4			
-		P2-AP-C04F	1025	2X@300c/c	190	1X@60c/c	150				2			
-		P2-AP-C04G	1335	3X@300c/c	190	2X@450c/c	150				3			
-		P2-AP-C04H	2205	7X@270c/c	190	3X@60c/c	150				2			
-		P2-AP-C04J	2315	7X@280c/c	190	3X@60c/c	150				2			
-		P2-AP-C04K	3045	9X@300c/c	190	4X@650c/c	150				2			



DWG. NO. P2-AP-C04

SCALE: -

DATE: 10-07-2024

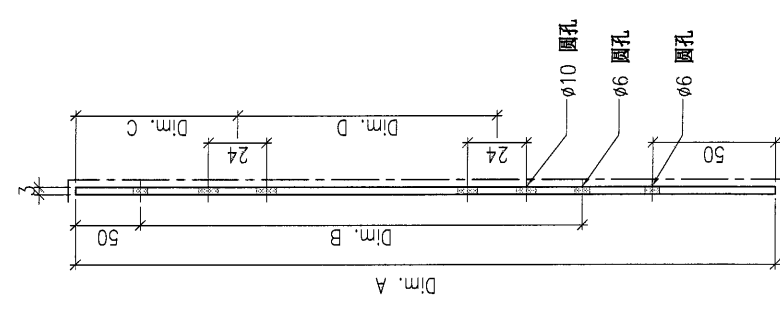
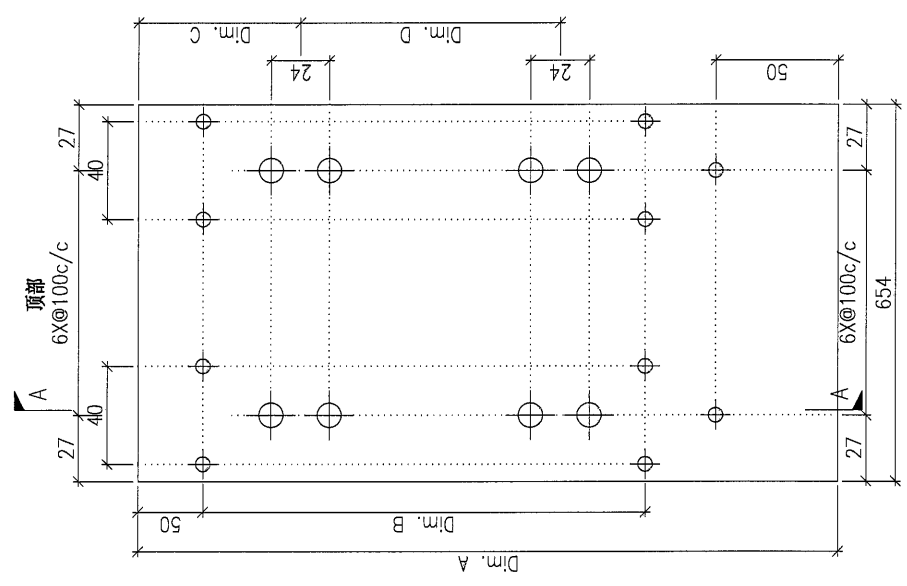
APPROVED BY: -

DRAWN BY: -

PROJECT: YIN PING ROAD KOWLOON FEATURE WALL (PHASE 2)

REV.	REVISED DATE	PART NUMBER	Dim. A	Dim. B	Dim. C	Dim. D	Dim. E	Dim. F	Dim. G	Dim. H	QTY.	Inv. Code	COLOUR	MARK. NO.	QTY.
-		P2-AP-C05A	2900	9X@300c/c	244.5	4X@600c/c					8		EC-DG-D334232-ZD1(SS-01)	-	-
-		P2-AP-C05B	1800	5X@300c/c	144.5	2X@700c/c					3				
-		P2-AP-C05C	2978	9X@300c/c	244.5	3X@750c/c					1				
-		P2-AP-C05D	2473	8X@270c/c	149.5	3X@650c/c					3				
-		P2-AP-C05E	1607	5X@280c/c	249.5	2X@550c/c					1				
-		P2-AP-C05F	2500	8X@270c/c	144.5	3X@650c/c					6				
-		P2-AP-C05G	1060	3X@270c/c	144.5	1X@600c/c					9				
-		P2-AP-C05H	2750	9X@280c/c	294.5	3X@750c/c					9				

注: 工厂用



SECTION A-A

DWG. NO.	P2-AP-C05	SCALE	-	DATE	10-07-2024	DRAWN BY	-	APPROVED BY	-
----------	-----------	-------	---	------	------------	----------	---	-------------	---

PROJECT YIN PING ROAD KOWLOON FEATURE WALL (PHASE 2)

REV.	Dim. A	Dim. B	Dim. C	Dim. D	Dim. E	Dim. F	Dim. G	Dim. H	QTY.	Inv. Code
-	2507.57	7X@300c/c	290	3X@50c/c	200				1	

MATERIAL 3mm 铝板

COATING PVF2

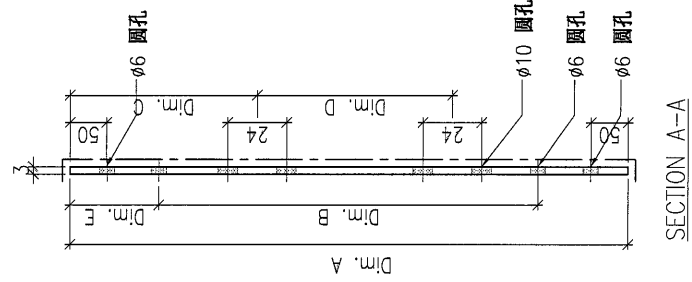
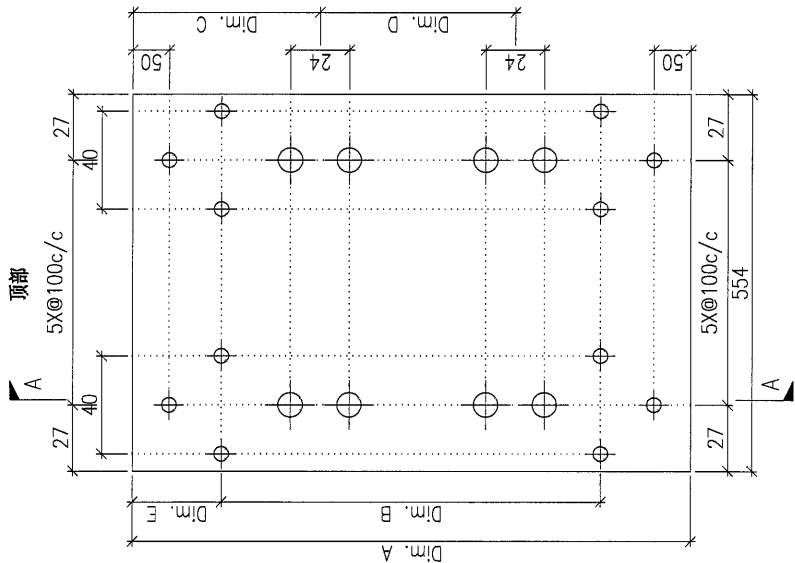
COLOUR EC-DG-D334232-ZD1(SS-01)

MARK. NO. -

QTY. -

ASSEMBLE ON PARTS

注: 工厂用

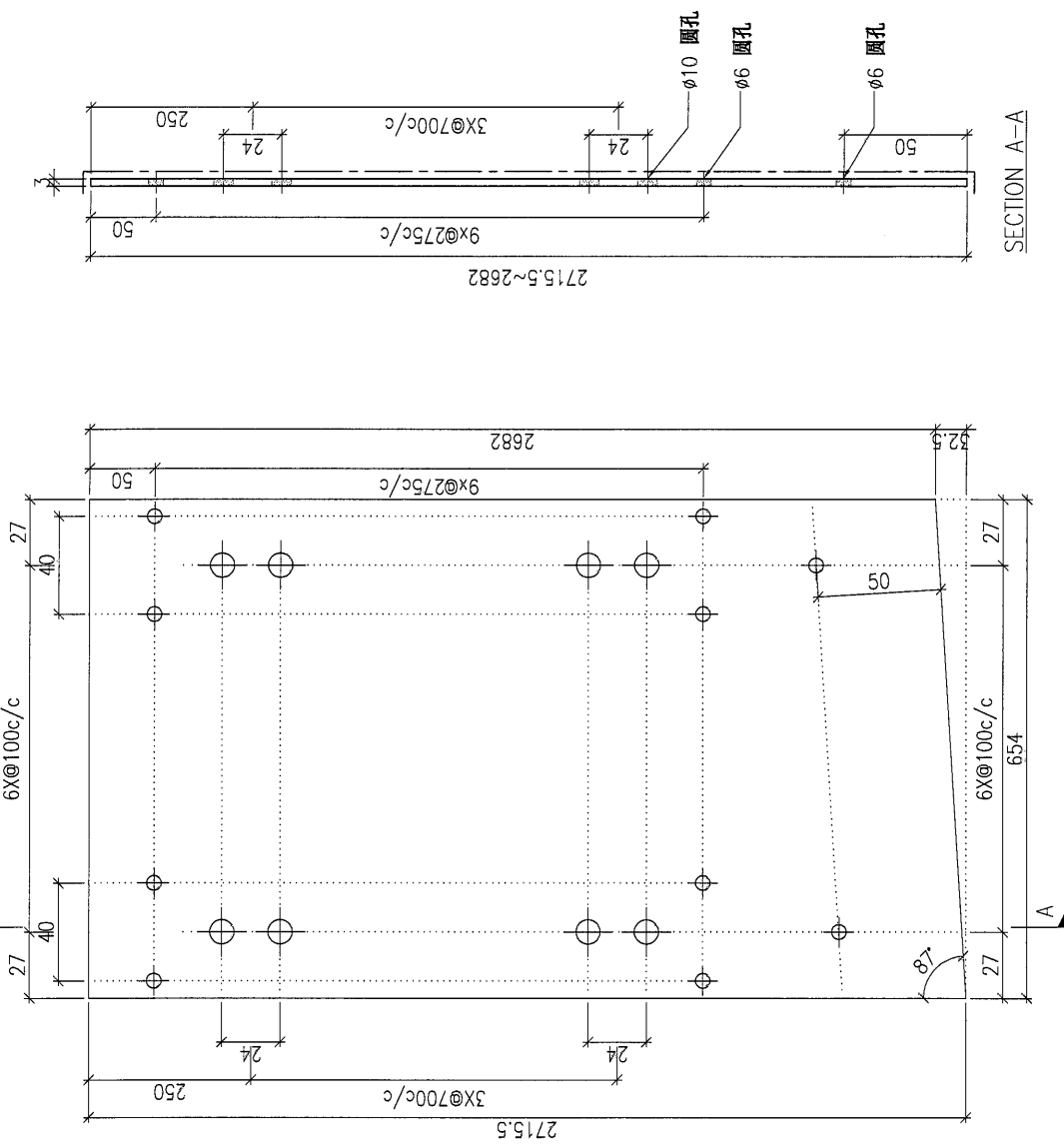


DWG. NO. P2-AP-C08	REV. -	SCALE -	DATE 10-07-2024	DRAWN BY -	APPROVED BY -
--------------------	--------	---------	-----------------	------------	---------------

PROJECT: YIN PING ROAD KOWLOON FEATURE WALL (PHASE 2)

REV.	ORDERED DATE BY	PART NUMBER	Dim. A	Dim. B	Dim. C	Dim. D	Dim. E	Dim. F	Dim. G	Dim. H	QTY.	Inv. Code	COATING	MATERIAL	3mm 铝板	COLOUR	EC-DG-D334232-ZD1(SS-01)	MARK. NO.	QTY.	
-		P2-AP-C09	-	-	-	-	-	-	-	-	1									

注: 工厂用
注: 工地复尺

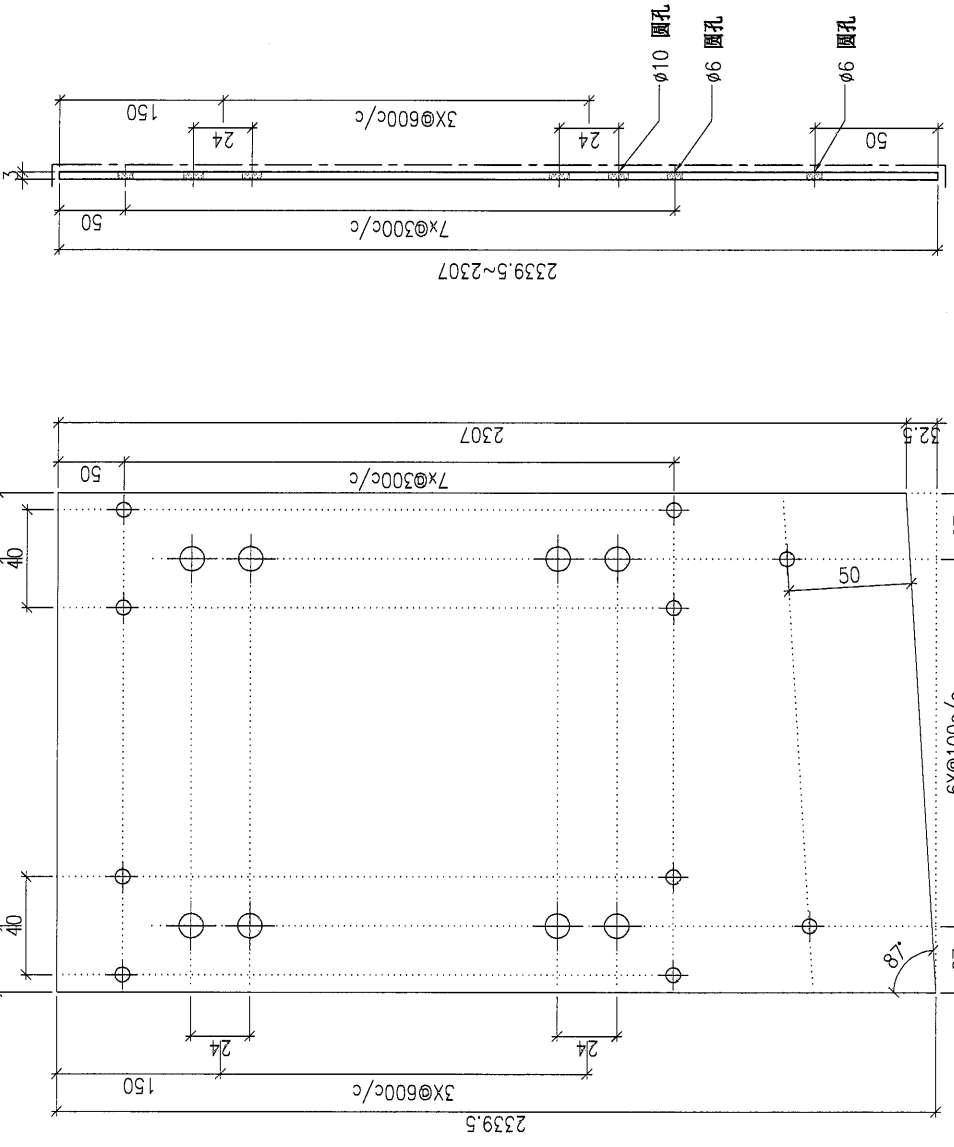


DWG. NO.	P2-AP-C09	REV.	-	SCALE	-	DATE	13-04-2024	DRAWN BY	-	APPROVED BY	-
----------	-----------	------	---	-------	---	------	------------	----------	---	-------------	---

PROJECT: YIN PING ROAD KOWLOON FEATURE WALL (PHASE 2)

MARK. NO.	COLOUR	COATING	MATERIAL	QTY.
-	EC-DG-D334232-ZD1(SS-01)	PVF2	3mm 铝板	-
QTY.	ASSEMBLE ON PARTS	Inv. Code		
		QTY.		
		Dim. H		
		Dim. G		
		Dim. F		
		Dim. E		
		Dim. D		
		Dim. C		
		Dim. B		
		Dim. A		
REV.	PART NUMBER			
-	P2-AP-C10			

注: 工厂用
注: 工地复尺



SECTION A-A

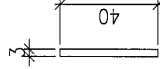
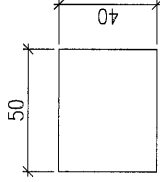
DWG. NO.	REV.	SCALE	DATE	DRAWN BY	APPROVED BY
P2-AP-C10	-	-	13-04-2024	-	-

PROJECT YIN PING ROAD KOWLOON FEATURE WALL (PHASE 2)

REV.	DESCRIPTION	Dim. A	Dim. B	Dim. C	Dim. D	Dim. E	Dim. F	Dim. G	Dim. H	QTY.	Inv. Code	COLOUR	MARK. NO.	QTY.
--	P2-AP-H01	--	--	--	--	--	--	--	--	78		ASSEMBLE ON PARTS	--	--

注: 工厂用

A



A

SECTION A-A

DWG. NO.	REV.	SCALE	DATE	DRAWN BY	APPROVED BY
P2-AP-H01	--	--	08-07-2024	--	--

PROJECT: YIN PING ROAD KOWLOON FEATURE WALL (PHASE 2)

MATERIAL: 3mm 铝板

COATING: PVF2

COLOUR: EC-DG-D334232-ZD1(SS-01)

MARK. NO.:

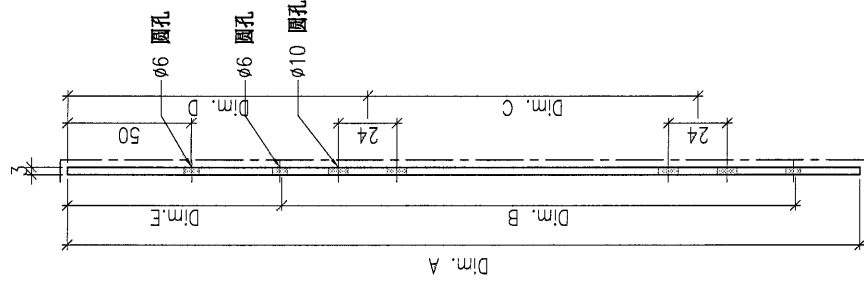
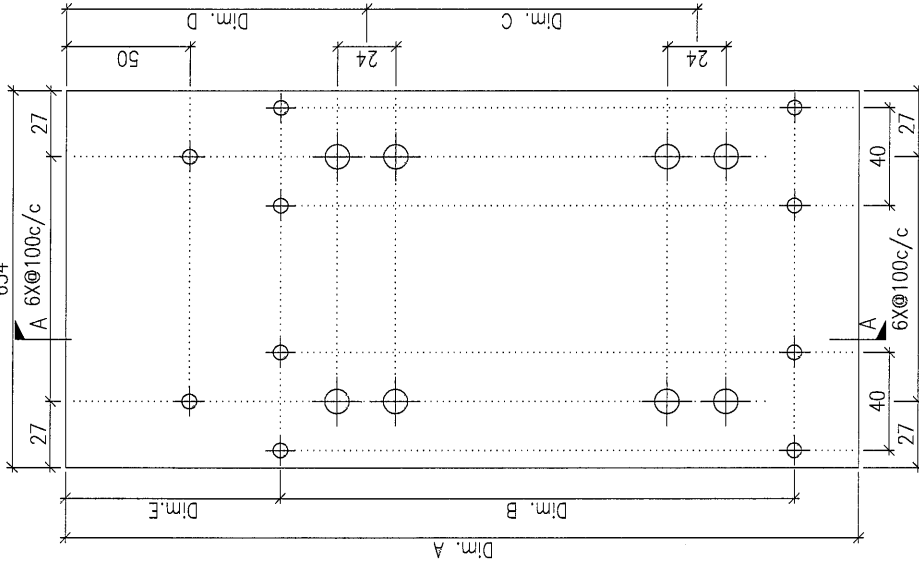
QTY.:

ASSEMBLE ON PARTS

注: 工厂用

REV.	CHECKED BY	PART NUMBER	Dim. A	Dim. B	Dim. C	Dim. D	Dim. E	Dim. F	Dim. G	Dim. H	QTY.	Inv. Code
-		P2-AP-H02A	2343.5	8X@280c/d	3X@650c/d	289	150				7	
-		P2-AP-H02B	1504.5	5X@280c/d	2X@550c/d	280	155				2	
-		P2-AP-H02C	2304.5	8X@275c/d	3X@650c/d	280	150				1	
-		P2-AP-H02D	2334.5	8X@280c/d	3X@650c/d	280	150				6	

顶部
654



SECTION A-A

DWG. NO. P2-AP-H02

REV.:

SCALE:

DATE: 08-07-2024

DRAWN BY:

APPROVED BY:

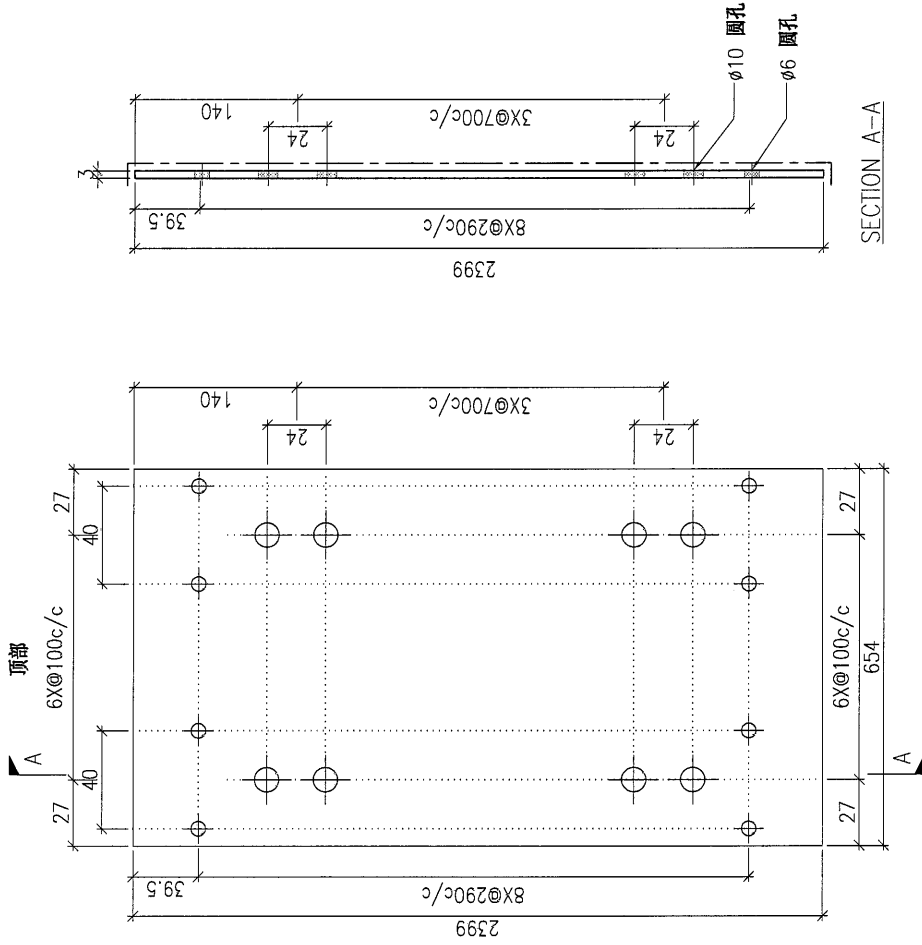
PROJECT: YIN PING ROAD KOWLOON FEATURE WALL (PHASE 2)

MARK. NO.	COLOUR	COATING	MATERIAL	QTY.	Inv. Code	QTY.	Dim. H	Dim. G	Dim. F	Dim. E	Dim. D	Dim. C	Dim. B	Dim. A	PART NUMBER	Checked Date	REV.
-	EC-DG-D334232-ZD1(SS-01)	PVF2	3mm 铝板	9											P2-AP-H03		

ASSEMBLE ON PARTS

QTY. -

注: 工厂用



DWG. NO.	REV.	SCALE	DATE	DRAWN BY	APPROVED BY
P2-AP-H03	-	-	08-07-2024	-	-

PROJECT: YIN PING ROAD KOWLOON FEATURE WALL (PHASE 2)

MATERIAL: 3mm 铝板

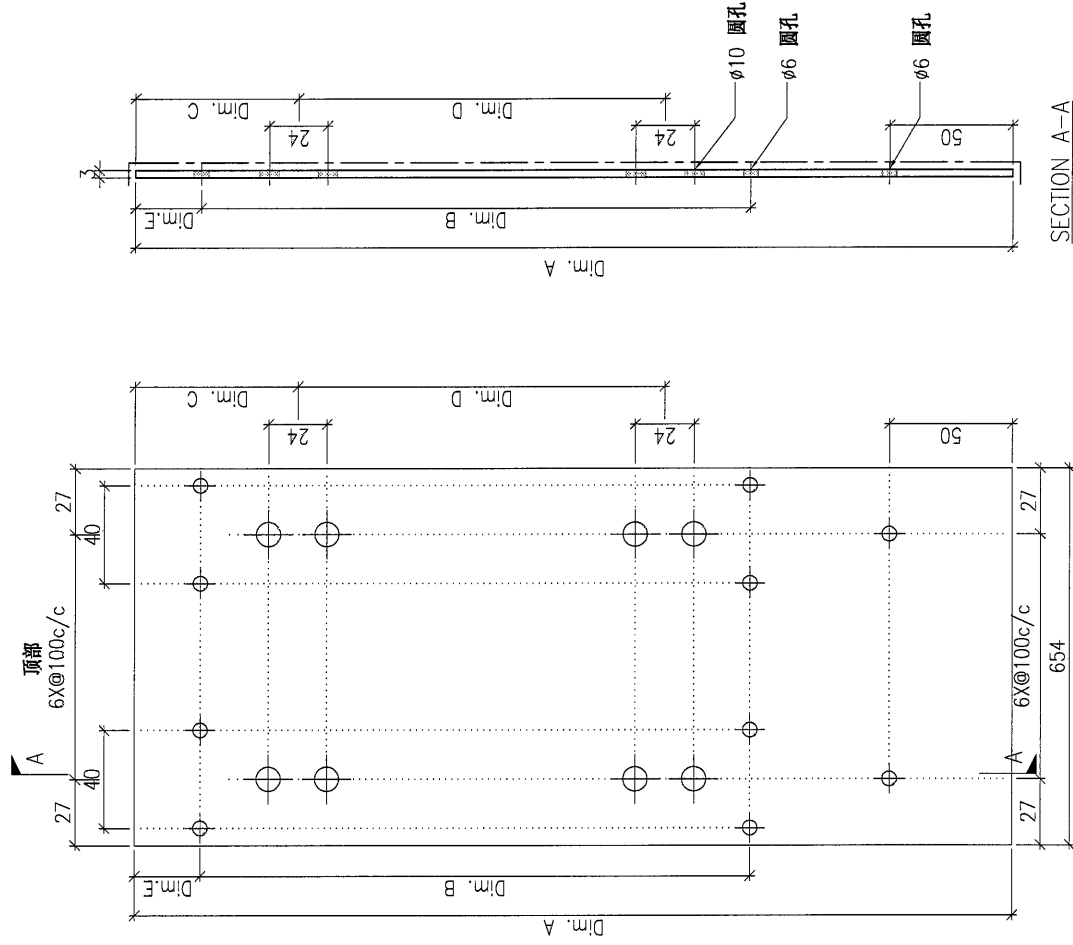
COATING: PVF2

COLOUR: EC-DG-D334232-ZD1 (SS-01)

MARK. NO.:

QTY.:

REV.	CHKD BY	PART NUMBER	Dim. A	Dim. B	Dim. C	Dim. D	Dim. E	Dim. F	Dim. G	Dim. H	QTY.	Inv. Code
-		P2-AP-H04	1519.4	5X@260c/c	244.5	1X@50c/c	59.5				4	



DWG. NO. P2-AP-H04

REV.:

SCALE:

DATE 13-04-2024

DRAWN BY:

APPROVED BY:

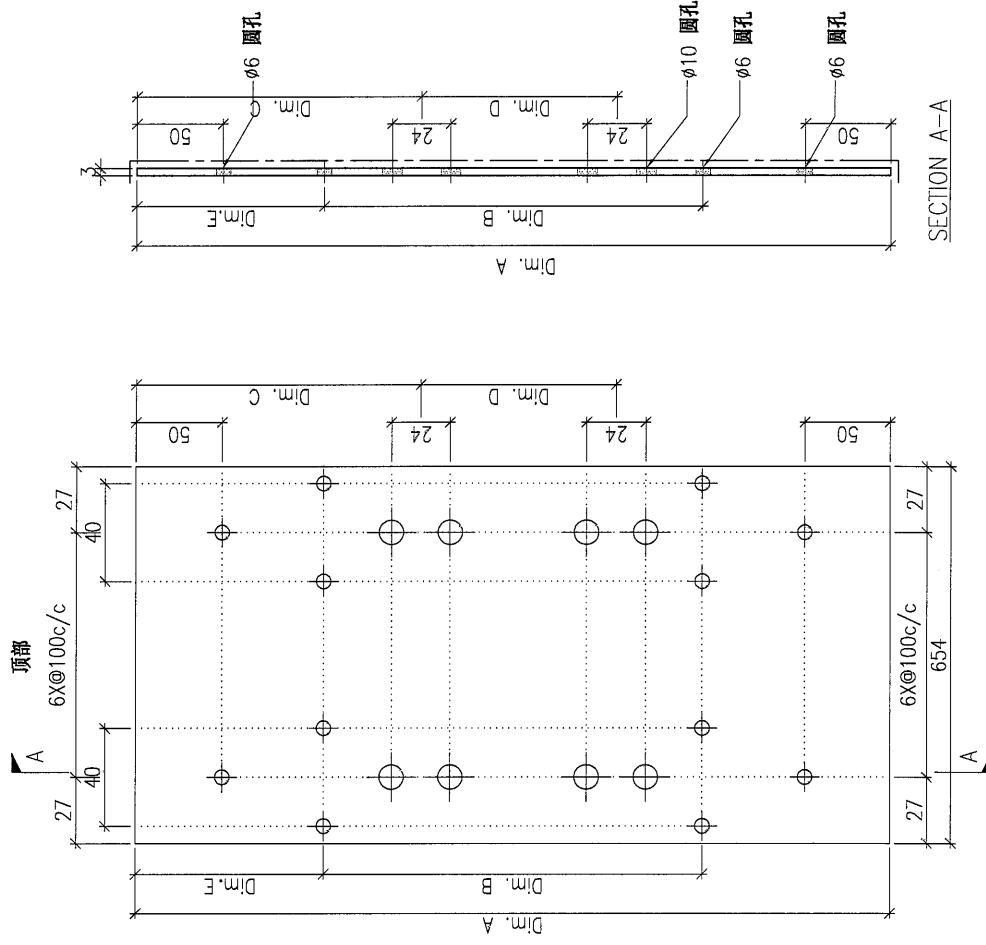
注: 工厂用

PROJECT: YIN PING ROAD KOWLOON FEATURE WALL (PHASE 2)

REV.	CHECKED BY	PART NUMBER	Dim. A	Dim. B	Dim. C	Dim. D	Dim. E	Dim. F	Dim. G	Dim. H	QTY.	Inv. Code	COLOUR	MARK. NO.	QTY.
-		P2-AP-H05	2605	8X@275c/c	280	3X@650c/c	170				1		PVF2	EC-DG-D334232-ZD1(SS-01)	-

ASSEMBLE ON PARTS

注: 工厂用



DWG. NO.	REV.	SCALE	DATE	DRAWN BY	APPROVED BY
P2-AP-H05	-	-	08-07-2024	-	-

PROJECT: YIN PING ROAD KOWLOON FEATURE WALL (PHASE 2) MATERIAL: 20mm 铝板 COATING: PVF2

MARK. NO.: EC-DG-D334232-ZD1(SS-01) QTY.:

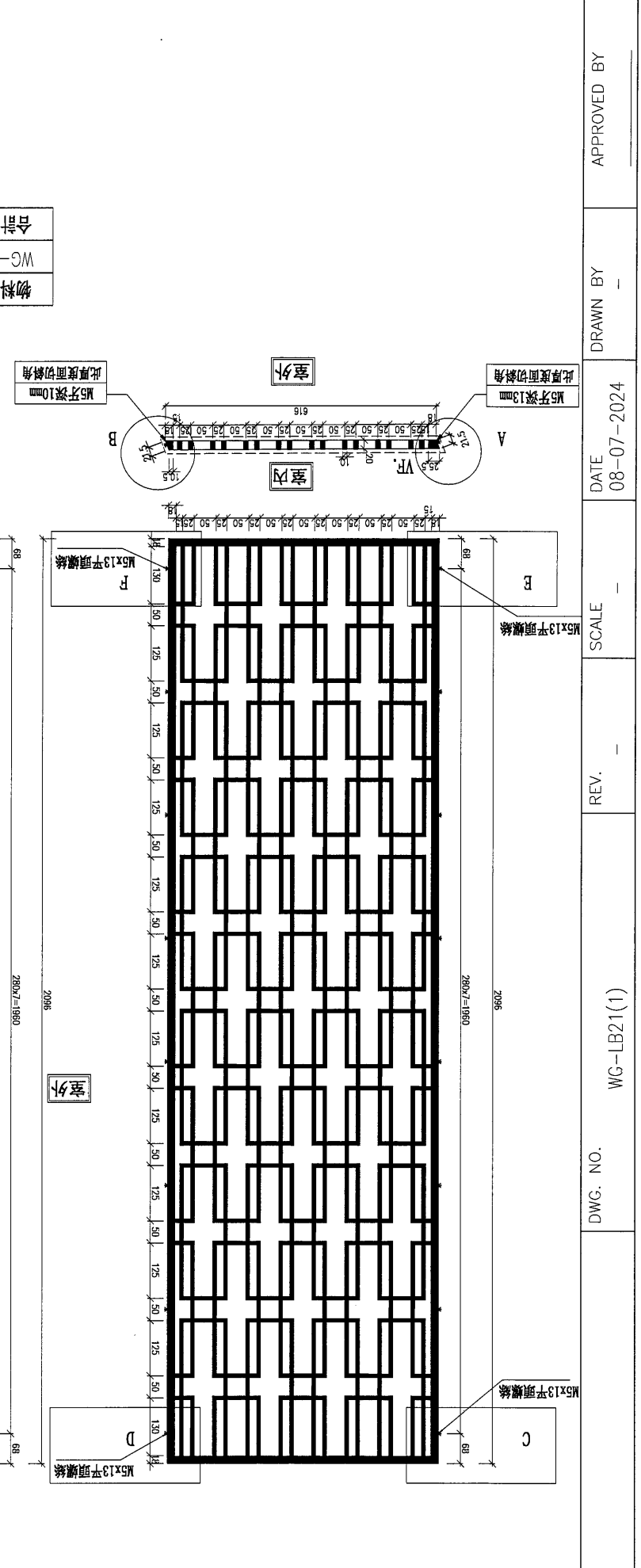
ASSEMBLE ON PARTS

REV.	CHECKED	DATE	PART NUMBER	Dim. A	Dim. B	Dim. C	Dim. D	Dim. E	Dim. F	Dim. G	Dim. H	QTY.	Inv. Code

工厂用

页码: 1/2, 共2页

物料编号	数量	用途	备注
WG-LB21	24	用于C面	合计: 24



DWG. NO.: WG-LB21(1) DATE: 08-07-2024 SCALE: REV. APPROVED BY: DRAWN BY: APPROVED BY:

PROJECT: YIN PING ROAD KOWLOON FEATURE WALL (PHASE 2)

MATERIAL: 20mm 铝板

COATING: PVF2

COLOUR: EC-DG-D334232-ZD1(SS-01)

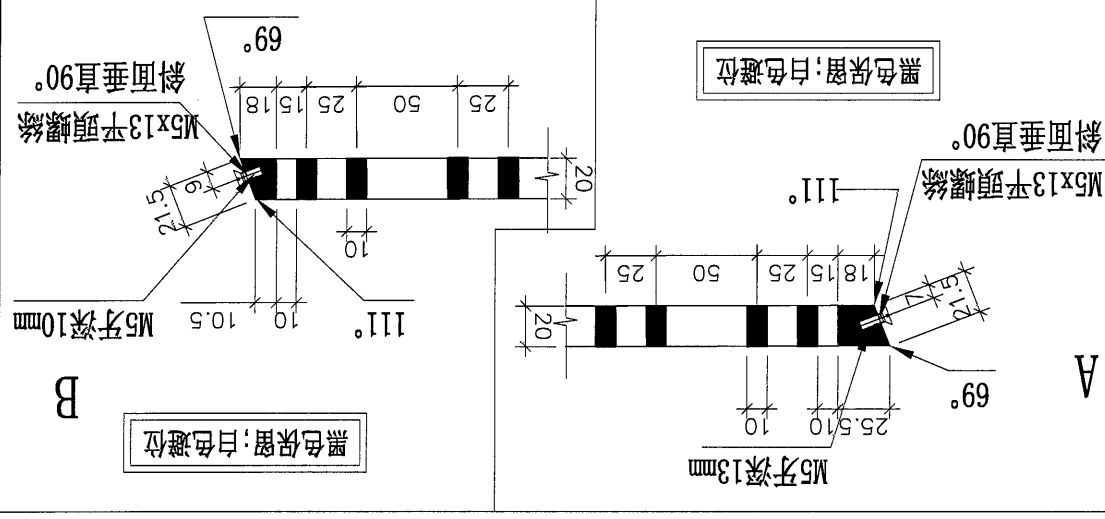
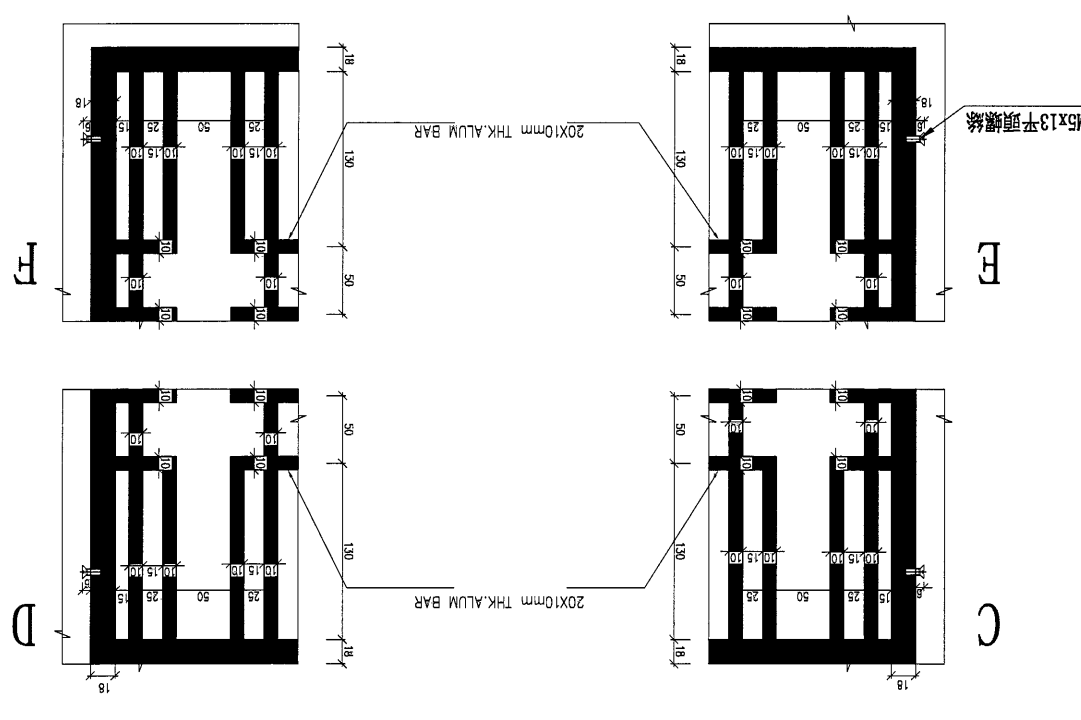
MARK. NO.:

QTY.:

REV.	CHECKED BY	PART NUMBER	Dim. A	Dim. B	Dim. C	Dim. D	Dim. E	Dim. F	Dim. G	Dim. H	QTY.	Inv. Code

注: 工厂用

页码: 2/2, 共2页



DWG. NO.	REV.	SCALE	DATE	DRAWN BY	APPROVED BY
WG-LB21(2)	-	-	08-07-2024	-	-

PROJECT: YIN PING ROAD KOWLOON FEATURE WALL (PHASE 2) MATERIAL: 20mm 铝板 COATING: PVF2 COLOUR: EC-DG-D334232-ZD1(SS-01) MARK. NO. - QTY. -

REV.	CHECKED DATE	PART NUMBER	Dim. A	Dim. B	Dim. C	Dim. D	Dim. E	Dim. F	Dim. G	Dim. H	QTY.	Inv. Code	ASSEMBLE ON PARTS

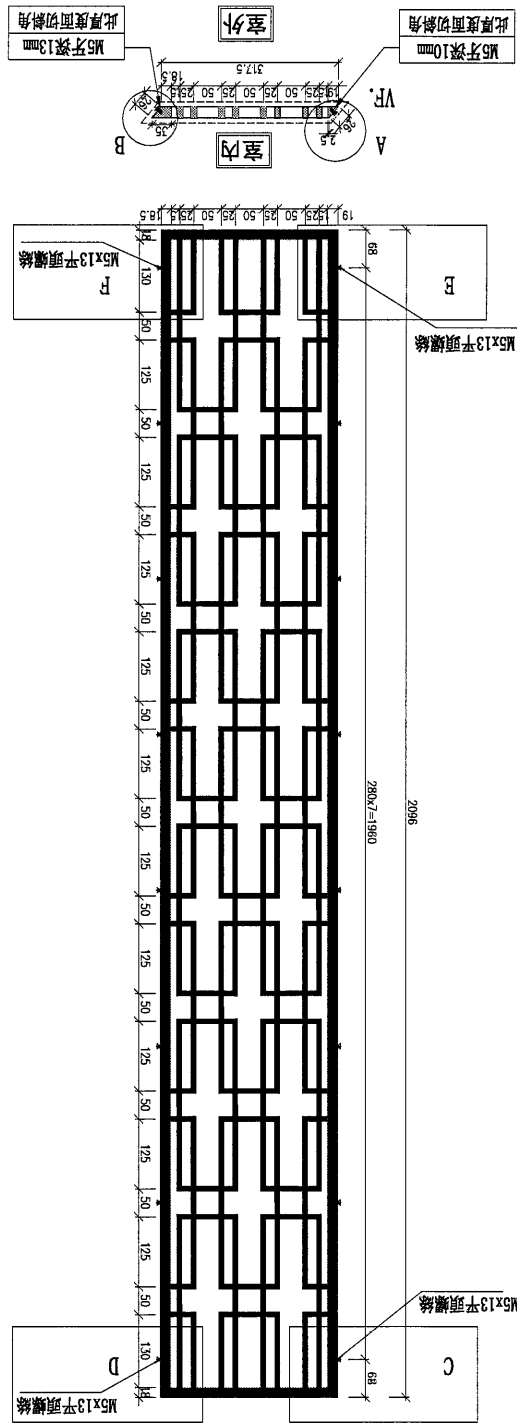
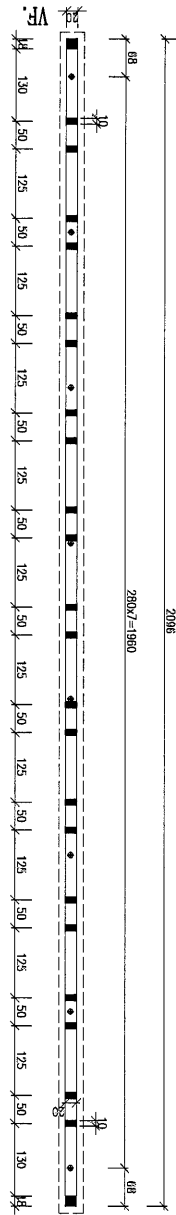
物料编号	数量	规格	用途
WG-LB22	24	24	用夹C固
	24		
合计:			

注: 工厂用

页码: 1/2, 共2页

- ① 已附带CAD图
- ② 此文件以CAD格式存储
- ③ 请按CAD图格式使用
- ④ 颜色参照: 白色镀锌
- ⑤ 图例按标准图例有按切面

加工标准, 见下列

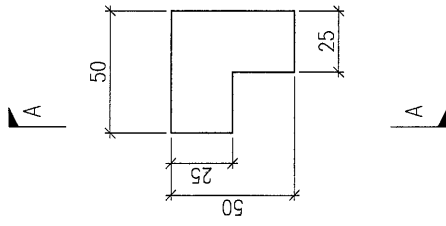


DWG. NO.	REV.	SCALE	DATE	DRAWN BY	APPROVED BY
WG-LB22(1)	-	-	08-07-2024	-	-

PROJECT: YIN PING ROAD KOWLOON FEATURE WALL (PHASE 2)

REV.	CHANGED DATE BY	PART NUMBER	Dim. A	Dim. B	Dim. C	Dim. D	Dim. E	Dim. F	Dim. G	Dim. H	QTY.	Inv. Code	COATING	COLOUR	MARK. NO.	QTY.
-		FKP-C-M100L	-	-	-	-	-	-	-	-	19		PVF2	EC-DG-D334232-ZD1(SS-01)	-	-
-		FKP-C-M100R	-	-	-	-	-	-	-	-	19					

ASSEMBLE ON PARTS
 注: 如图加工
 注: 相反加工
 注: 工厂用



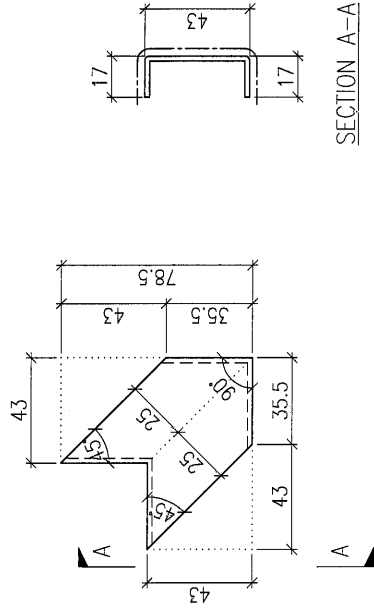
DWG. NO.	FKP-C-M100	REV.	-	SCALE	-	DATE	13-04-2024	DRAWN BY	-	APPROVED BY	-
----------	------------	------	---	-------	---	------	------------	----------	---	-------------	---

PROJECT YIN PING ROAD KOWLOON FEATURE WALL (PHASE 2)

REV.	CHECKED DATE BY	PART NUMBER	Dim. A	Dim. B	Dim. C	Dim. D	Dim. E	Dim. F	Dim. G	Dim. H	QTY.	Inv. Code	COATING	COLOUR	MARK. NO.	QTY.
-		FKP-C-M101	-	-	-	-	-	-	-	-	2		PVF2	EC-DG-D334232-ZD1(SS-01)	-	-

ASSEMBLE ON PARTS

注: 工厂用



SECTION A-A

DWG. NO.	REV.	SCALE	DATE	DRAWN BY	APPROVED BY
FKP-C-M101	-	-	13-04-2024	-	-

PROJECT: YIN PING ROAD KOWLOON FEATURE WALL (PHASE 2)

MATERIAL: 3mm鋁板

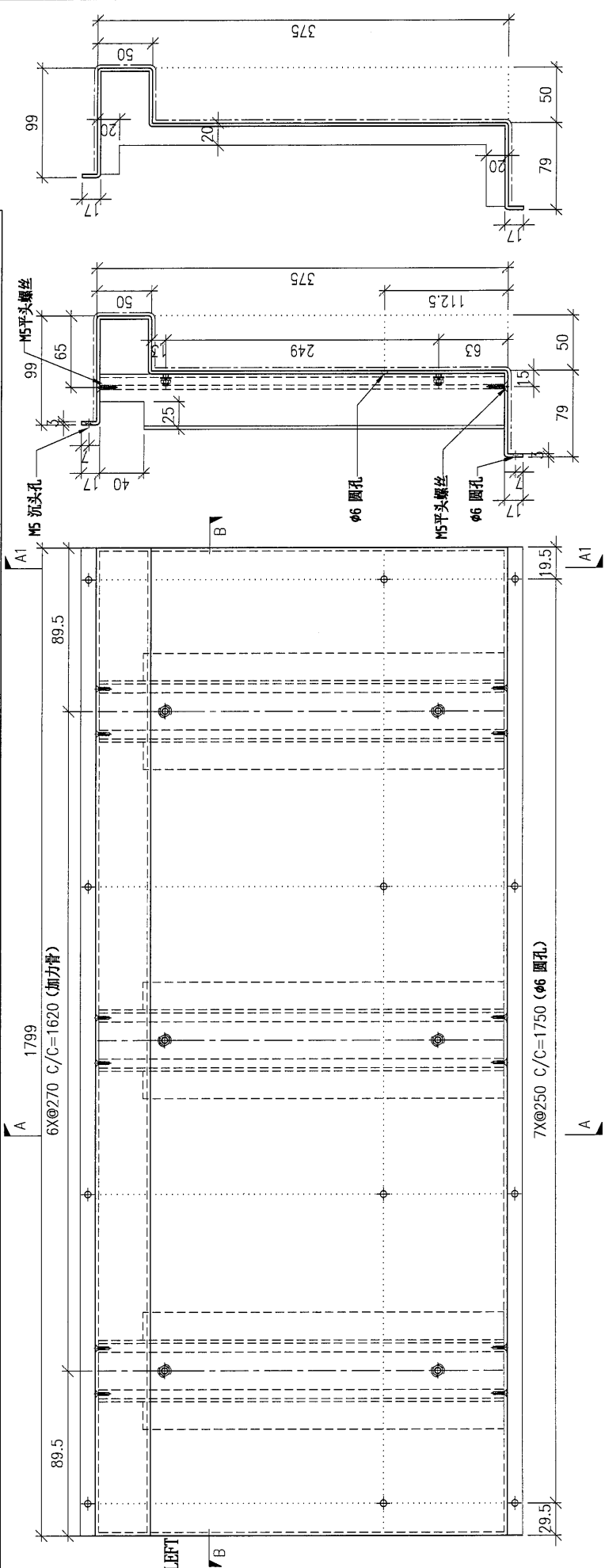
COATING: PVF2

COLOUR: EC-DG-D334232-ZD1(SS-01)

MARK. NO.:

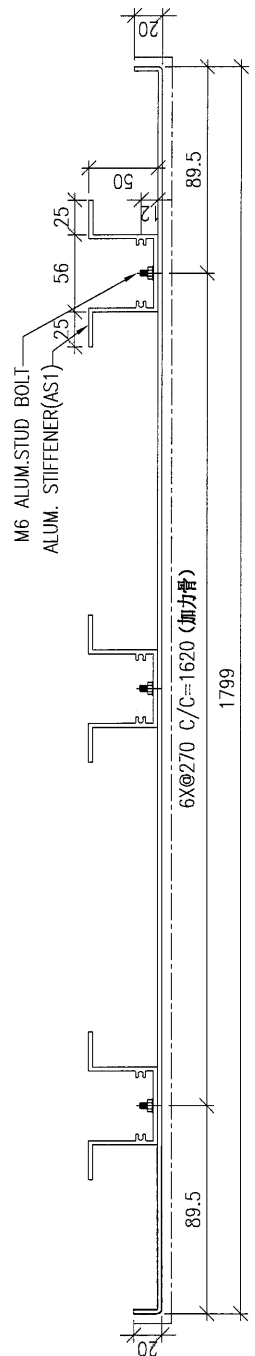
QTY.:

REV.	CHECKED DATE	PART NUMBER	Dim. A	Dim. B	Dim. C	Dim. D	Dim. E	Dim. F	Dim. G	Dim. H	QTY.	Inv. Code	ASSEMBLE ON PARTS	工厂用
-		P2-AP-C31	-	-	-	-	-	-	-	-	18			



SECTION A1-A1

SECTION A-A



SECTION B-B

DWG. NO.:	P2-AP-C31	REV.:	-	SCALE:	-	DATE:	13-04-2024	DRAWN BY:	-	APPROVED BY:	-
-----------	-----------	-------	---	--------	---	-------	------------	-----------	---	--------------	---

