



工程指示 / 要求簡箋 ENGINEER INSTRUCTIONS(E.I.)

工程指示編號:	EI- 7993	修改版本:	-
	HK- 1241		
工程編號:	J 853	工程名稱:	延坪道 (第2期)
收件人:	生統/	發件人:	Jingo
工程項目:	Feature wall 飾線 鋁板大模加工圖地盤用 part 2	日期:	4/7/2024

<input type="checkbox"/> 原合約工程包	<input type="checkbox"/> 原合約工程加 / 減脹 QT-	<input type="checkbox"/> 新工程報價 QT-
---------------------------------	--	------------------------------------

信件批核號碼/圖紙參考編號:	批核模具圖紙編號:
客戶指示附件:	管理內部批簽署:

<input type="checkbox"/> 初步鋁料 B.M.	<input type="checkbox"/> 加工拆圖, 然後生產	<input type="checkbox"/> 尺寸表
<input type="checkbox"/> 正式鋁料 B.M.	<input type="checkbox"/> 技術上資料/指示	<input type="checkbox"/> 報價
<input type="checkbox"/> 配件 B.M.	<input type="checkbox"/> 樣辦或貨品說明書	<input type="checkbox"/> 分判合約
<input type="checkbox"/> 其他:		

內容:
按期出貨

按分區表包裝 (包括之前的 E17918)

完成上列要求日期: 19/7/2024

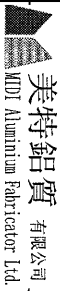
國內

<input type="checkbox"/> 生產技術總監	<input type="checkbox"/> 連附件	<input type="checkbox"/> 技術部	<input type="checkbox"/> 連附件	<input type="checkbox"/> 生產部	<input type="checkbox"/> 連附件
<input type="checkbox"/> 採購部	<input type="checkbox"/> 連附件	<input checked="" type="checkbox"/> 生產統籌部	<input checked="" type="checkbox"/> 連附件	<input type="checkbox"/> 報關組	<input type="checkbox"/> 連附件
<input type="checkbox"/> 質檢部	<input type="checkbox"/> 連附件	<input type="checkbox"/> 會計部	<input type="checkbox"/> 連附件	<input type="checkbox"/> 機械設計部	<input type="checkbox"/> 連附件
<input type="checkbox"/> 香港辦	<input type="checkbox"/> 連附件	<input type="checkbox"/> 其他:			

香港

<input type="checkbox"/> 行政部	<input type="checkbox"/> 連附件	<input type="checkbox"/> 會計部	<input type="checkbox"/> 連附件	<input type="checkbox"/> 統籌部	<input type="checkbox"/> 連附件	<input type="checkbox"/> 工程部	<input type="checkbox"/> 連附件
<input type="checkbox"/> 採購部	<input type="checkbox"/> 連附件	<input type="checkbox"/> QS部	<input type="checkbox"/> 連附件	<input checked="" type="checkbox"/> 地盤管理	<input checked="" type="checkbox"/> 連附件	<input type="checkbox"/> 維修部	<input type="checkbox"/> 連附件

*發件人簽署:	*組別成員批核簽署:
傳遞編號:	項目經理簽署:



美特鋁質有限公司
Mei Te Aluminum Fabricator Ltd

工程號: J-S53

地盤名稱: 延坪路

項目類別: 特征牆(2区)

計算: ming

核對:

日期:

2024.07.02

日期:

送呈: 副本:

IOE

地盤用鋁板B.M.表 (part2)

修改版次:

批准:

日期:

223.848

總重量:

1819.88

圖紙編號

B.M.編號:

鋁板名稱

A/C Code:

總V.F.:

單件展開面積

總展開面積

單件V.F.

總V.F.

序號

修改內容

鋁板圖號

顏色

實用

後備

總數

總重量

單件展開面積

總展開面積

單件V.F.

總V.F.

圖紙編號

序號	修改內容	鋁板圖號	鋁板名稱	顏色	實用	後備	總數	總重量	223.848		單件V.F.	總V.F.	圖紙編號
									單件展開面積	總展開面積			
									平方米	平方米			
1		FW-A50	3mm厚鋁板	EC-DG-D334232-ZD1 (SS-01)	26	0	26	160.961	0.761	19.798	0.761	19.798	
2		FW-B50	3mm厚鋁板	EC-DG-D334232-ZD1 (SS-01)	39	0	39	241.441	0.761	29.698	0.761	29.698	
3		FW-A51	3mm厚鋁板	EC-DG-D334232-ZD1 (SS-01)	31	0	31	88.927	0.353	10.938	0.353	10.938	
4		FW-B51	3mm厚鋁板	EC-DG-D334232-ZD1 (SS-01)	39	0	39	111.876	0.353	13.761	0.353	13.761	
5		FW-A52	3mm厚鋁板	EC-DG-D334232-ZD1 (SS-01)	26	0	26	37.292	0.176	4.587	0.176	4.587	
6		FW-B52	3mm厚鋁板	EC-DG-D334232-ZD1 (SS-01)	39	0	39	55.938	0.176	6.880	0.176	6.880	
7		FW-A53	3mm厚鋁板	EC-DG-D334232-ZD1 (SS-01)	5	0	5	12.547	0.309	1.543	0.309	1.543	
8		FW-A54	3mm厚鋁板	EC-DG-D334232-ZD1 (SS-01)	5	0	5	38.891	0.957	4.784	0.957	4.784	
9		FW-A55L	3mm厚鋁板	EC-DG-D334232-ZD1 (SS-01)	2	0	2	2.899	0.178	0.357	0.178	0.357	
10		FW-A55R	3mm厚鋁板	EC-DG-D334232-ZD1 (SS-01)	2	0	2	2.899	0.178	0.357	0.178	0.357	
11		FW-B55L	3mm厚鋁板	EC-DG-D334232-ZD1 (SS-01)	3	0	3	4.349	0.178	0.535	0.178	0.535	
12		FW-B55R	3mm厚鋁板	EC-DG-D334232-ZD1 (SS-01)	3	0	3	4.349	0.178	0.535	0.178	0.535	
13		FW-A56	3mm厚鋁板	EC-DG-D334232-ZD1 (SS-01)	3	0	3	18.287	0.750	2.249	0.750	2.249	
14		FW-A57	3mm厚鋁板	EC-DG-D334232-ZD1 (SS-01)	3	0	3	8.690	0.356	1.069	0.356	1.069	
15		FW-A58	3mm厚鋁板	EC-DG-D334232-ZD1 (SS-01)	3	0	3	4.277	0.175	0.526	0.175	0.526	
16		FW-A59	3mm厚鋁板	EC-DG-D334232-ZD1 (SS-01)	5	0	5	31.970	0.786	3.932	0.786	3.932	
17		FW-A60	3mm厚鋁板	EC-DG-D334232-ZD1 (SS-01)	5	0	5	14.472	0.356	1.780	0.356	1.780	
18		FW-A61	3mm厚鋁板	EC-DG-D334232-ZD1 (SS-01)	5	0	5	7.526	0.185	0.926	0.185	0.926	
19		FW-B62	3mm厚鋁板	EC-DG-D334232-ZD1 (SS-01)	3	0	3	19.620	0.804	2.413	0.804	2.413	
20		FW-B63	3mm厚鋁板	EC-DG-D334232-ZD1 (SS-01)	3	0	3	8.722	0.358	1.073	0.358	1.073	
21		FW-B64	3mm厚鋁板	EC-DG-D334232-ZD1 (SS-01)	3	0	3	4.684	0.192	0.576	0.192	0.576	
22		FW-A70	3mm厚鋁板	EC-DG-D334232-ZD1 (SS-01)	26	0	26	179.097	0.847	22.029	0.847	22.029	
23		FW-B70	3mm厚鋁板	EC-DG-D334232-ZD1 (SS-01)	39	0	39	268.645	0.847	33.044	0.847	33.044	
24		FW-A71	3mm厚鋁板	EC-DG-D334232-ZD1 (SS-01)	26	0	26	74.584	0.353	9.174	0.353	9.174	
25		FW-B71	3mm厚鋁板	EC-DG-D334232-ZD1 (SS-01)	39	0	39	111.876	0.353	13.761	0.353	13.761	
26		FW-A72	3mm厚鋁板	EC-DG-D334232-ZD1 (SS-01)	31	0	31	44.464	0.176	5.469	0.176	5.469	
27		FW-B72	3mm厚鋁板	EC-DG-D334232-ZD1 (SS-01)	39	0	39	55.938	0.176	6.880	0.176	6.880	

美特鋁質 有限公司 MIDI Aluminium Fabricator Ltd.		工程號: J-853	項目類別: 廷坪路	計算: ming	日期: 2024.07.02	送呈: JOE							
地盤用鋁板B.M.表 (part2)		地盤名稱: 廷坪路	特征牆(2区)	核對: 批准:	日期:	副本:							
序號	修改內容	鋁板圖號	鋁板名稱	顏色	實用	後備	總數	總重量	單件展開面積 平方米	總展開面積 平方米	單件V.F. 平方米	總V.F. 平方米	圖紙編號
28		FW-A73	3mm厚鋁板	EC-DG-D334232-ZD1 (SS-01)	5	0	5	19.719	0.485	2.425	0.485	2.425	
29		FW-A74	3mm厚鋁板	EC-DG-D334232-ZD1 (SS-01)	5	0	5	43.273	1.065	5.323	1.065	5.323	
30		FW-A75L	3mm厚鋁板	EC-DG-D334232-ZD1 (SS-01)	2	0	2	3.110	0.191	0.382	0.191	0.382	
31		FW-A75R	3mm厚鋁板	EC-DG-D334232-ZD1 (SS-01)	2	0	2	3.110	0.191	0.382	0.191	0.382	
32		FW-B75L	3mm厚鋁板	EC-DG-D334232-ZD1 (SS-01)	3	0	3	4.665	0.191	0.574	0.191	0.574	
33		FW-B75R	3mm厚鋁板	EC-DG-D334232-ZD1 (SS-01)	3	0	3	4.665	0.191	0.574	0.191	0.574	
34		FW-A76	3mm厚鋁板	EC-DG-D334232-ZD1 (SS-01)	3	0	3	20.347	0.834	2.503	0.834	2.503	
35		FW-A77	3mm厚鋁板	EC-DG-D334232-ZD1 (SS-01)	3	0	3	8.690	0.356	1.069	0.356	1.069	
36		FW-A78	3mm厚鋁板	EC-DG-D334232-ZD1 (SS-01)	3	0	3	4.277	0.175	0.526	0.175	0.526	
37		FW-A79	3mm厚鋁板	EC-DG-D334232-ZD1 (SS-01)	5	0	5	35.572	0.875	4.375	0.875	4.375	
38		FW-A80	3mm厚鋁板	EC-DG-D334232-ZD1 (SS-01)	5	0	5	14.472	0.356	1.780	0.356	1.780	
39		FW-A81	3mm厚鋁板	EC-DG-D334232-ZD1 (SS-01)	5	0	5	7.526	0.185	0.926	0.185	0.926	
40		FW-B82	3mm厚鋁板	EC-DG-D334232-ZD1 (SS-01)	3	0	3	21.831	0.895	2.685	0.895	2.685	
41		FW-B83	3mm厚鋁板	EC-DG-D334232-ZD1 (SS-01)	3	0	3	8.722	0.358	1.073	0.358	1.073	
42		FW-B84	3mm厚鋁板	EC-DG-D334232-ZD1 (SS-01)	3	0	3	4.684	0.192	0.576	0.192	0.576	
總計:					506	0	506	1820	18	224	18	224	

PROJECT
YIN PING ROAD KOWLOON
FEATURE WALL (PHASE 2)

MATERIAL
3mm鋁板

COATING
PVF2

COLOUR
EC-DG-D334232-ZD1 (SS-01)

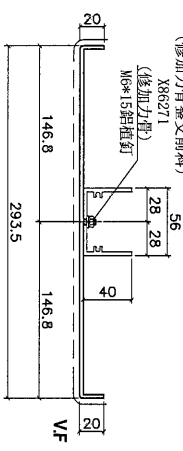
MARK. NO.
-

QTY.
-

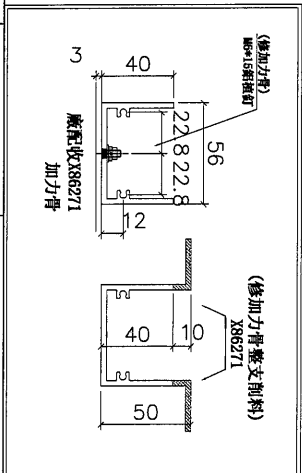
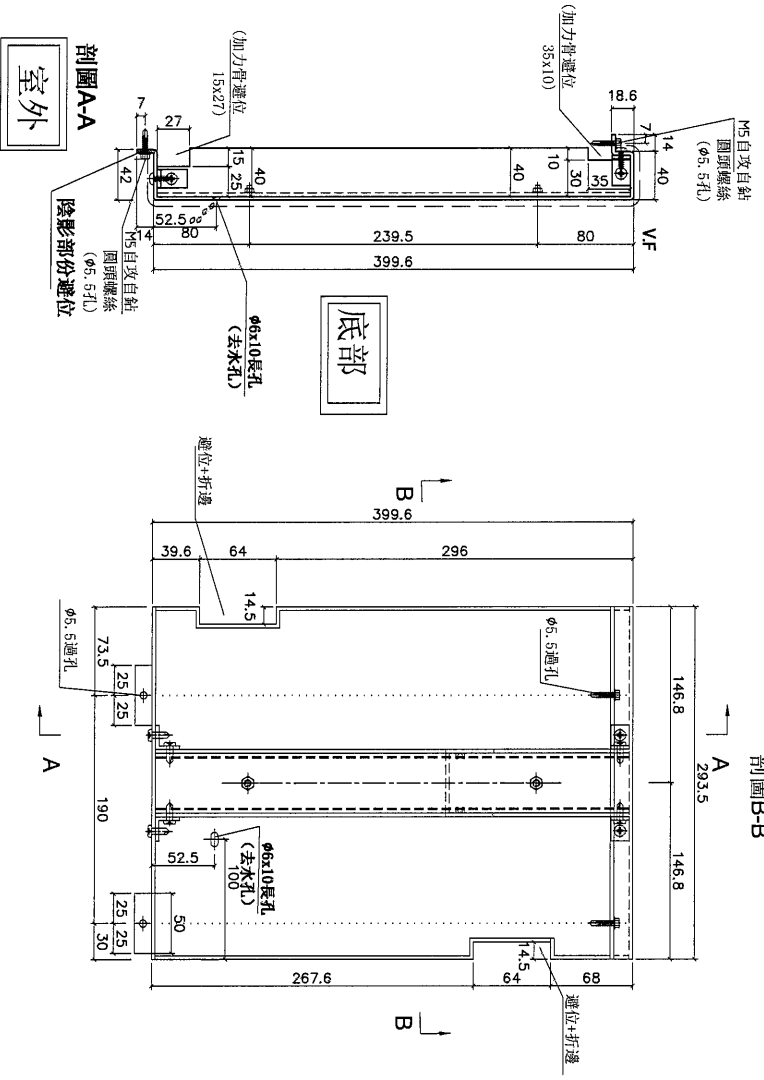
REV.	CHECKED BY	PART NUMBER	Dim. A	Dim. B	Dim. C	Dim. D	Dim. E	Dim. F	Dim. G	Dim. H	QTY.	Inv. Code	ASSEMBLE ON PARTS
-		FW-A52	-	-	-	-	-	-	-	-	26		
-		FW-B52	-	-	-	-	-	-	-	-	39		

地盤用

用A3紙打印



剖圖B-B



DWG. NO. FW-AB52
REV. -
SCALE -
DATE 17-04-2024
DRAWN BY -
APPROVED BY -

PROJECT
YIN PING ROAD KOWLOON
FEATURE WALL (PHASE 2)

MATERIAL
3mm鋁板

COATING
PVF2

COLOUR
EG-DG-D334232-ZD1(SS-01)

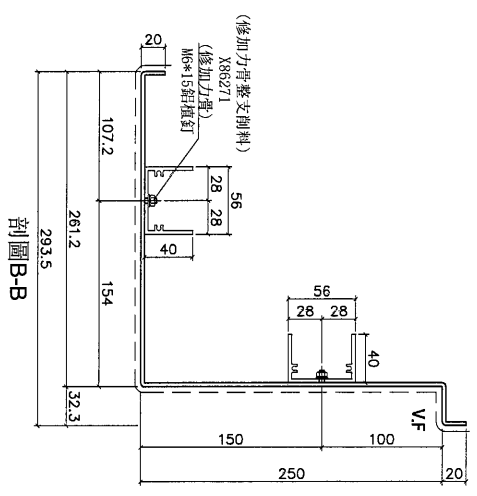
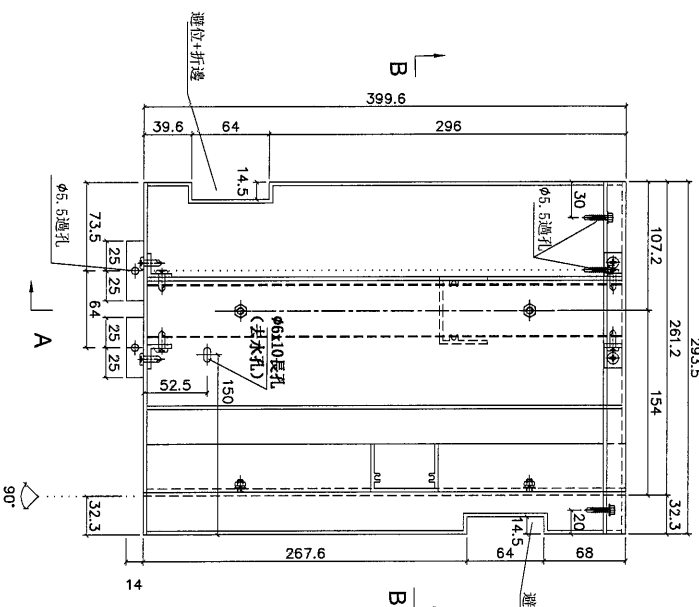
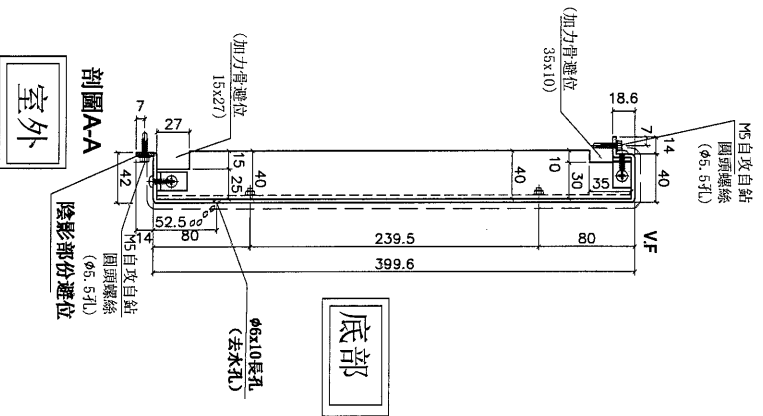
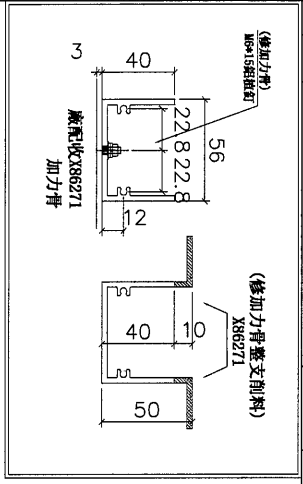
MARK. NO.
-

QTY.
-

REV.	CHANGED BY	PART NUMBER	Dim. A	Dim. B	Dim. C	Dim. D	Dim. E	Dim. F	Dim. G	Dim. H	QTY.	Inv. Code	ASSEMBLE ON PARTS
-		FW-A53	-	-	-	-	-	-	-	-	5		

地盤用

用A3紙打印



90°

剖面A-A
室外

底部

剖面B-B

DWG. NO.

FW-A53

REV.

SCALE

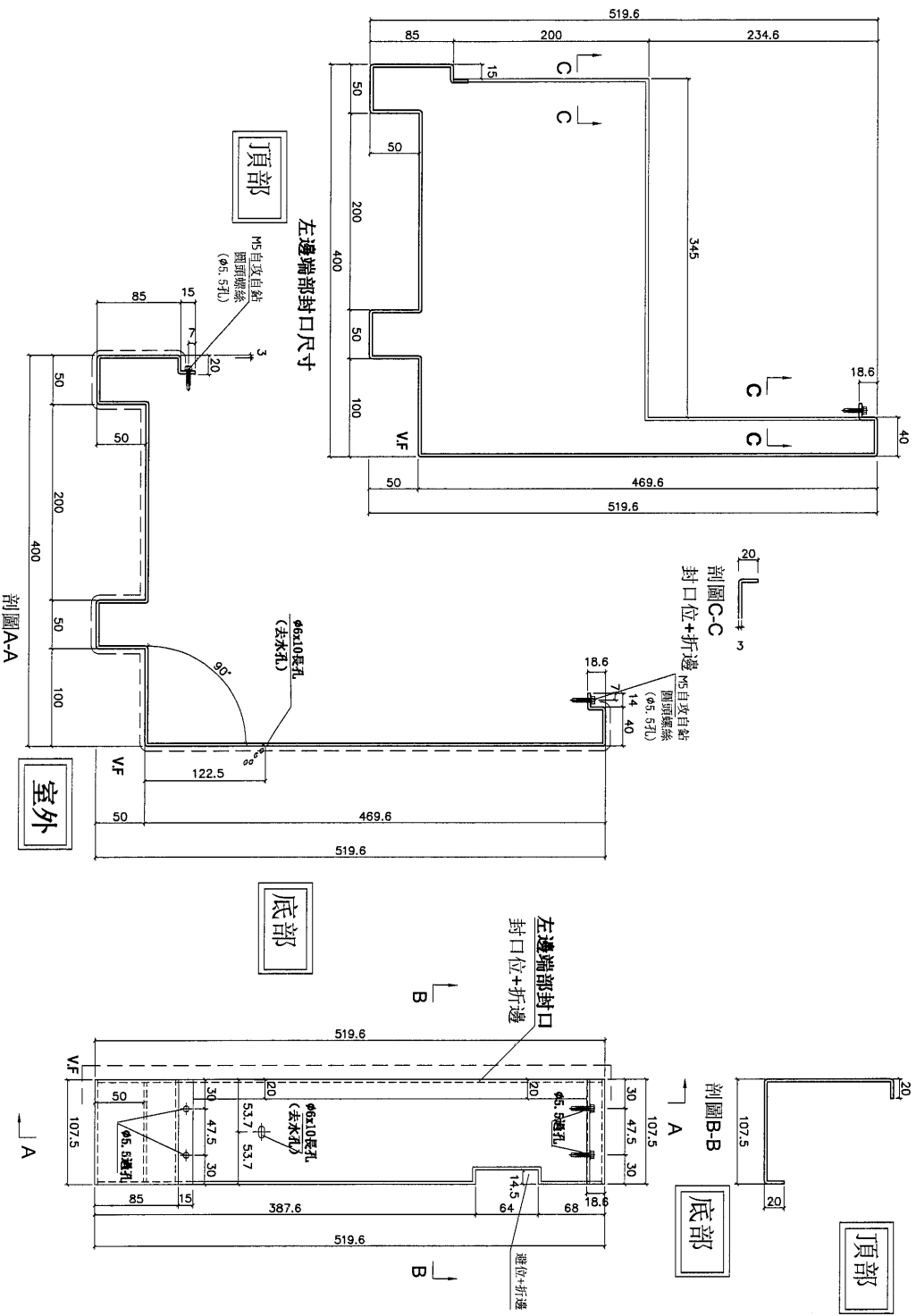
DATE
17-04-2024

DRAWN BY

APPROVED BY

PROJECT				MATERIAL				COATING				COLOUR		MARK. NO.		QTY.	
YIN PING ROAD KOWLOON FEATURE WALL (PHASE 2)				3mm铝板				PVF2				EC-DG-D334232-ZD1(SS-01)		-		-	
REV.	CHANGED DATE	PART NUMBER	Dim. A	Dim. B	Dim. C	Dim. D	Dim. E	Dim. F	Dim. G	Dim. H	QTY.	Inv. Code	ASSEMBLE ON PARTS				
-		FW-AS5L	-	-	-	-	-	-	-	-	2		注: 如圖加工				
-		FW-AS5R	-	-	-	-	-	-	-	-	2		注: 相反加工				
-		FW-B55L	-	-	-	-	-	-	-	-	3		注: 如圖加工				
-		FW-B55R	-	-	-	-	-	-	-	-	3		注: 相反加工				

地盤用
用A3紙打印



DWG. NO.		REV.		SCALE		DATE		DRAWN BY		APPROVED BY	
FW-AB55		-		-		17-04-2024		-		-	

PROJECT
YIN PING ROAD KOWLOON
FEATURE WALL (PHASE 2)

MATERIAL
3mm鋁板

COATING
PVF2

COLOUR
EC-DG-D334232-ZD1(SS-01)

MARK. NO.
-

QTY.
-

PART NUMBER
FW-A60

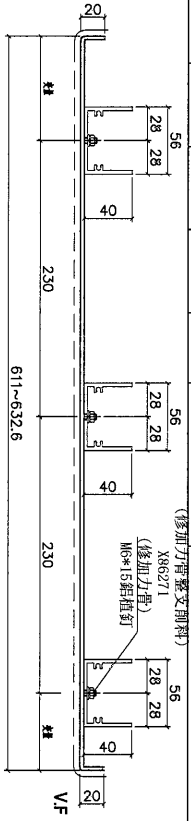
Dim. A Dim. B Dim. C Dim. D Dim. E Dim. F Dim. G Dim. H

QTY.
5

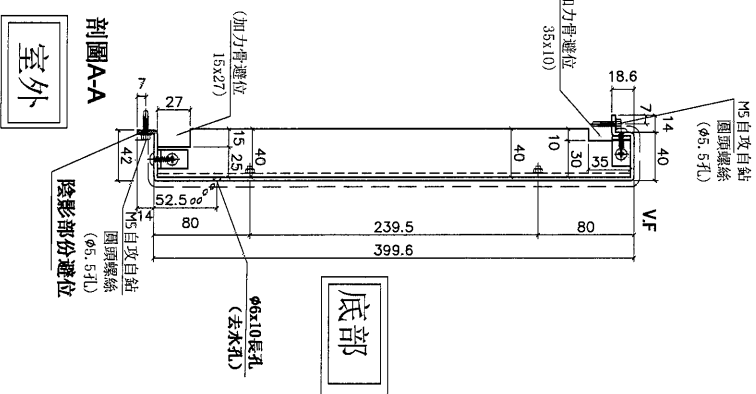
Inv. Code
ASSEMBLE ON PARTS

地盤用

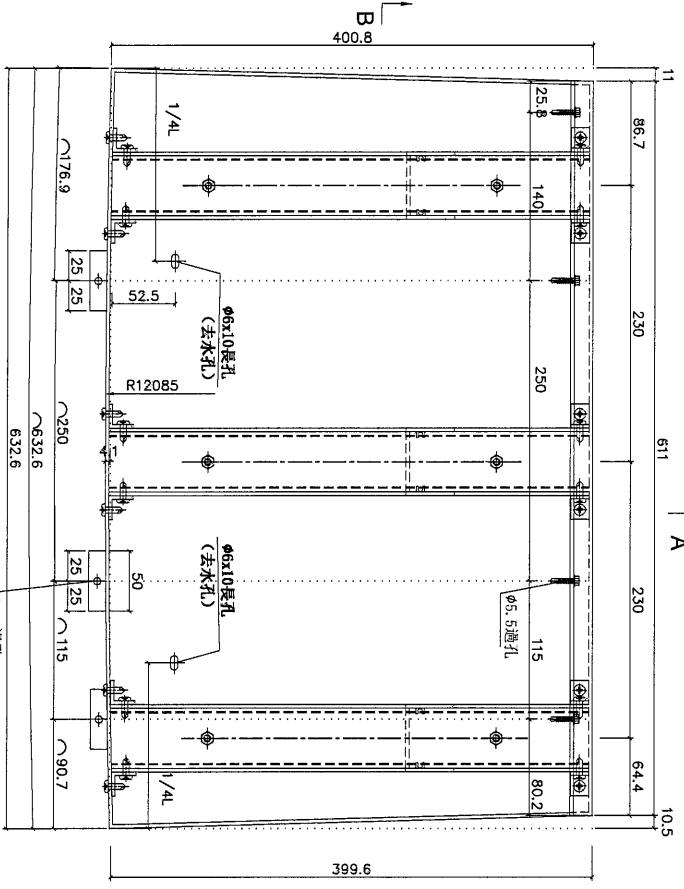
用A3紙打印



剖面B-B

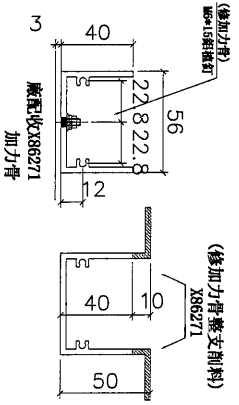


底部



剖面A-A

室外



DWG. NO.

FW-A60

REV.

SCALE

DATE
17-04-2024

DRAWN BY

APPROVED BY

PROJECT
YIN PING ROAD KOWLOON
FEATURE WALL (PHASE 2)

MATERIAL
3mm鋁板

COATING
PVF2

COLOUR
EC-DG-D334232-ZD1(SS-01)

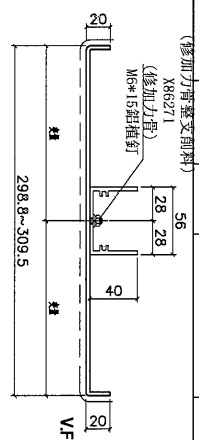
MARK. NO.
-

QTY.
-

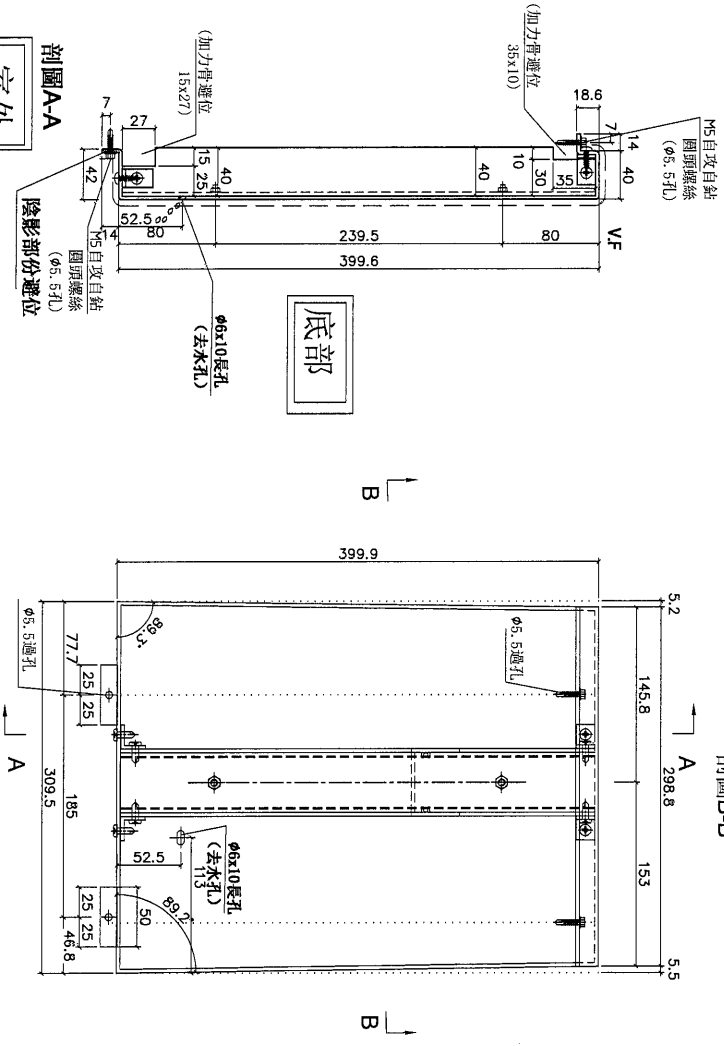
REV.	CHANGED DATE BY	PART NUMBER	Dim. A	Dim. B	Dim. C	Dim. D	Dim. E	Dim. F	Dim. G	Dim. H	QTY.	Inv. Code	ASSEMBLE ON PARTS
-		FW-A61	-	-	-	-	-	-	-	5			

地盤用

用A3紙打印

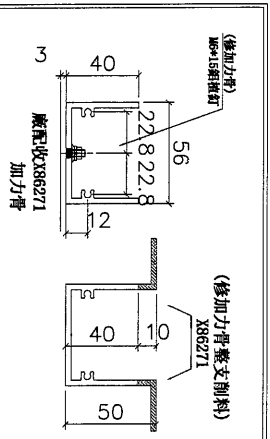


剖圖B-B



底部

剖圖A-A
室外

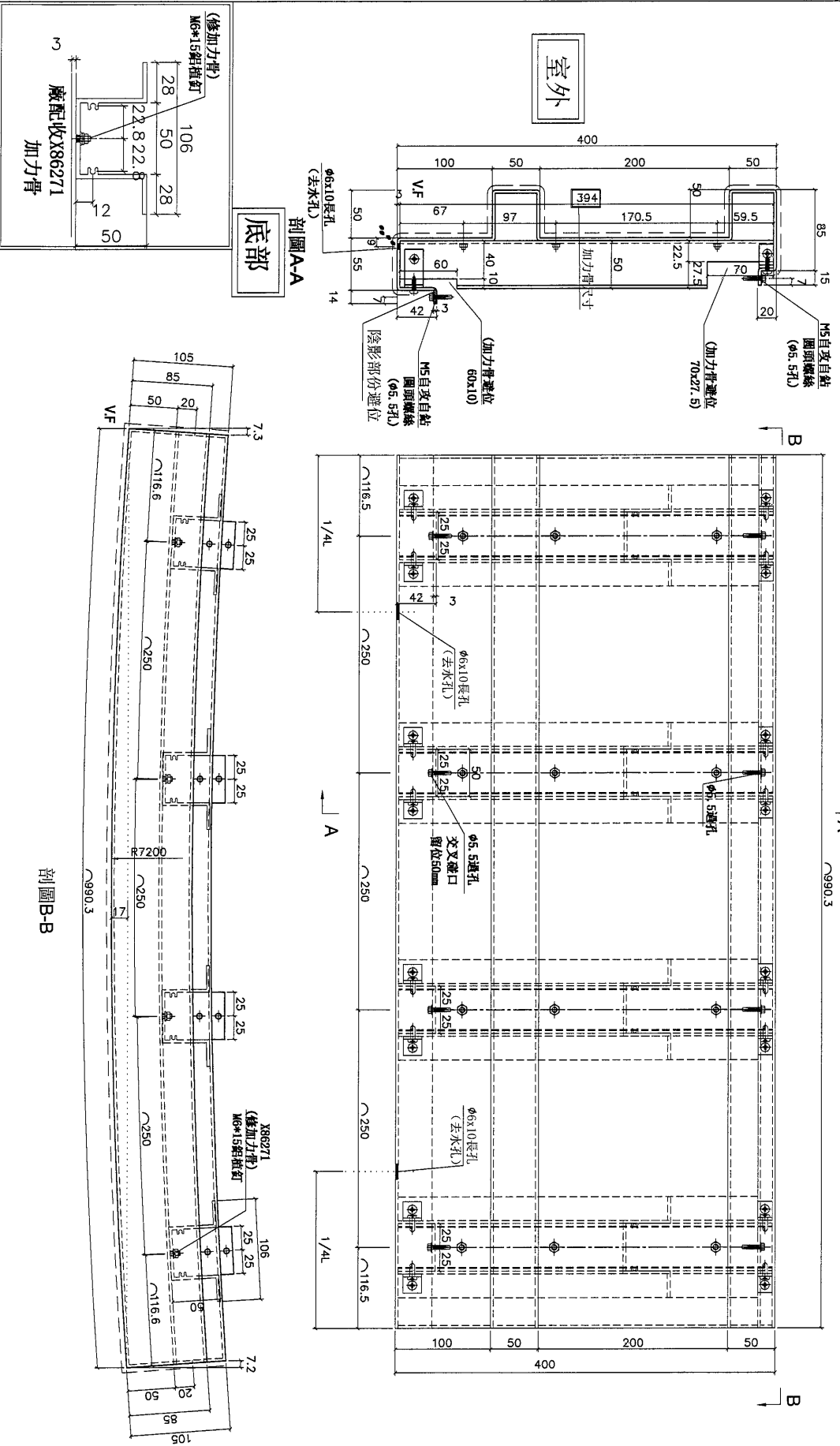


DWG. NO. FW-A61
REV. -
SCALE -
DATE 17-04-2024
DRAWN BY -
APPROVED BY -

PROJECT		YIN PING ROAD KOWLOON FEATURE WALL (PHASE 2)				MATERIAL		3mm鋁板		COATING		PVF2		COLOUR		EC-DG-D334232-ZD1(SS-01)		MARK. NO.		-		QTY.		-		
REV.	CHGCD BAR BY	PART NUMBER	Dim. A	Dim. B	Dim. C	Dim. D	Dim. E	Dim. F	Dim. G	Dim. H	QTY.	Inv. Code	ASSEMBLE ON PARIS													
-		FW-B62	-	-	-	-	-	-	-	-	3															

地盤用

用A3紙打印

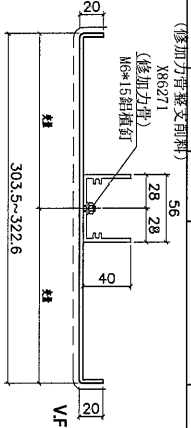


DWG. NO.		FW-B62		REV.		SCALE		DATE		DRAWN BY		APPROVED BY	
----------	--	--------	--	------	--	-------	--	------	--	----------	--	-------------	--

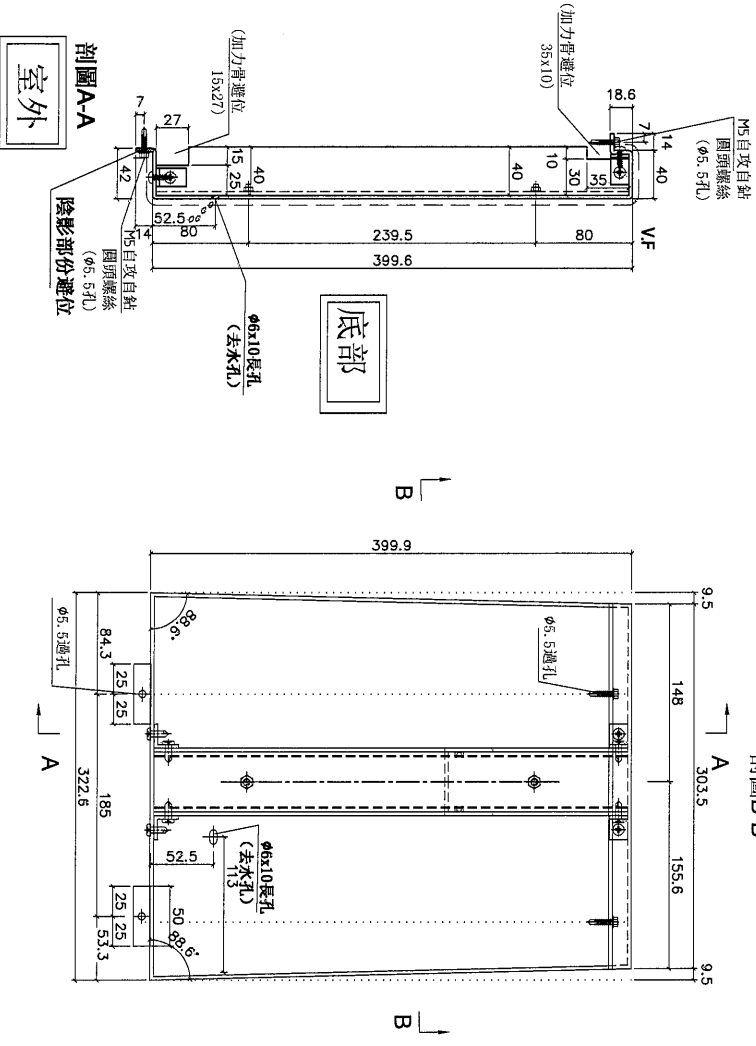
PROJECT		YIN PING ROAD KOWLOON FEATURE WALL (PHASE 2)					MATERIAL		3mm铝板			COATING		PVF2		COLOUR		EC-DG-D334232-ZD1(SS-01)		MARK. NO.		-		QTY.		-	
REV.	CHECKED DATE	PART NUMBER	Dim. A	Dim. B	Dim. C	Dim. D	Dim. E	Dim. F	Dim. G	Dim. H	QTY.	Inv. Code	ASSEMBLE ON PARTS				ASSEMBLE ON PARTS										
-		FW-B64	-	-	-	-	-	-	-	-	3																

地盤用

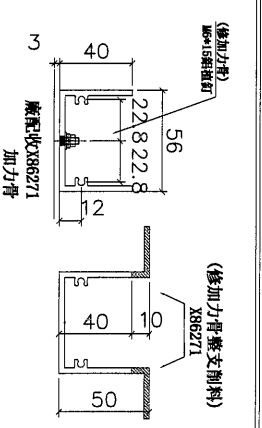
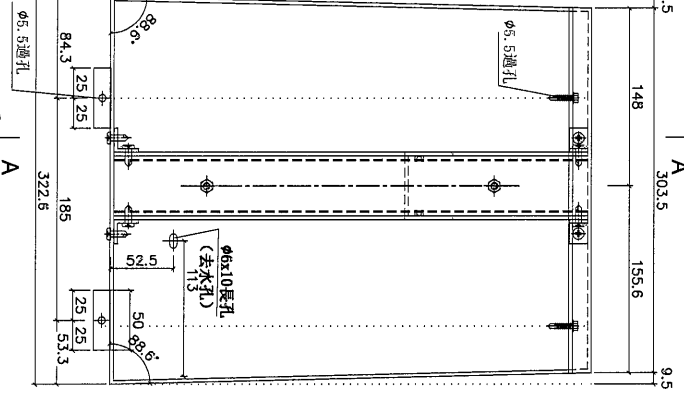
用A3紙打印



剖面B-B



底部

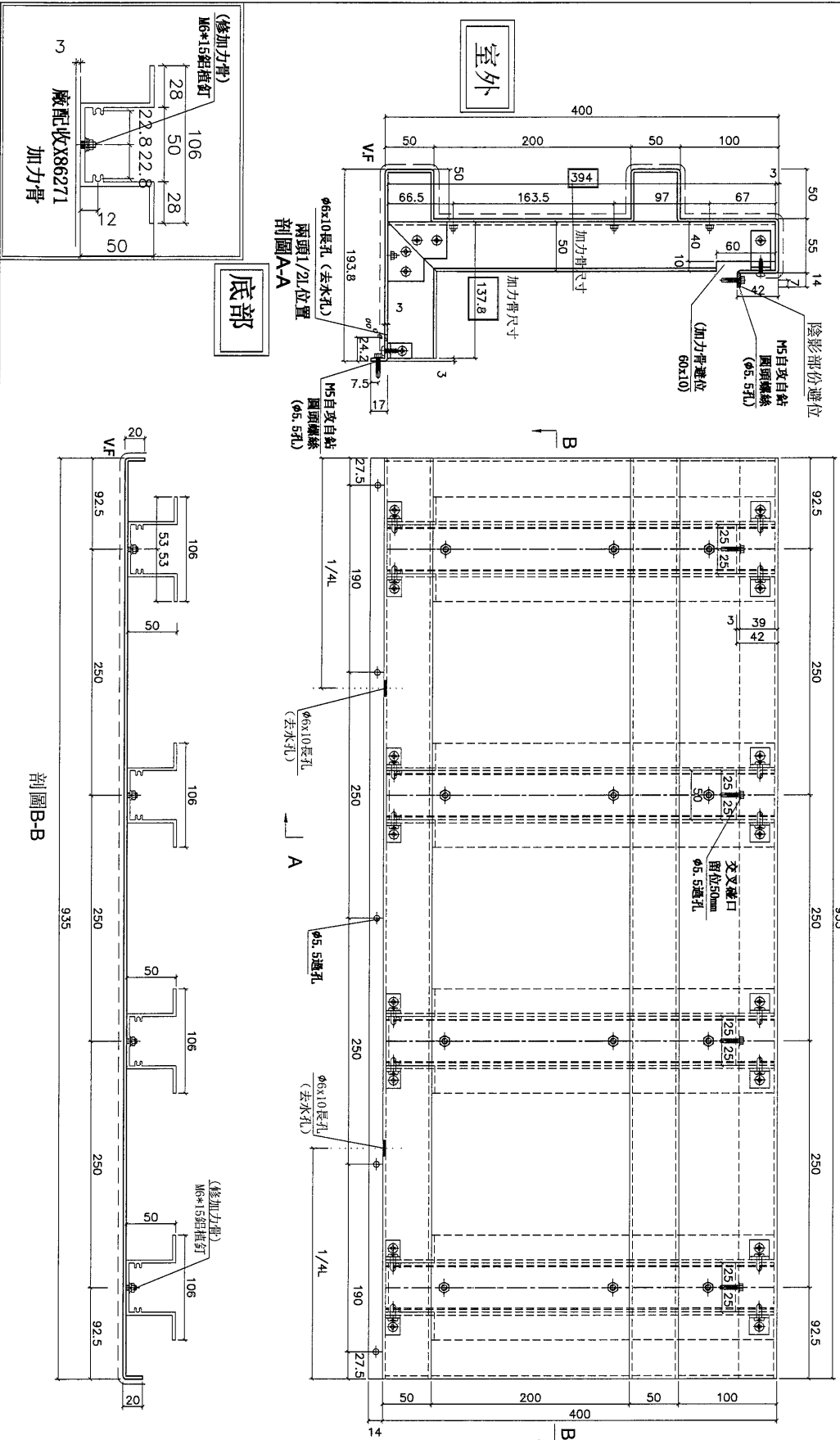


DWG. NO.		FW-B64		REV.		SCALE		DATE		DRAWN BY		APPROVED BY	
								17-04-2024					

PROJECT				MATERIAL				COATING				COLOUR				MARK. NO.		QTY.	
YIN PING ROAD KOWLOON FEATURE WALL (PHASE 2)				3mm鋁板				PVF2				EC-DG-D334232-ZD1(SS-01)				-		-	
CHKD BY	PART NUMBER	Dim. A	Dim. B	Dim. C	Dim. D	Dim. E	Dim. F	Dim. G	Dim. H	QTY.	Inv. Code	ASSEMBLE ON PARTS				-		-	
FW-A70										26									
FW-B70										39									

地盤用

用A3紙打印

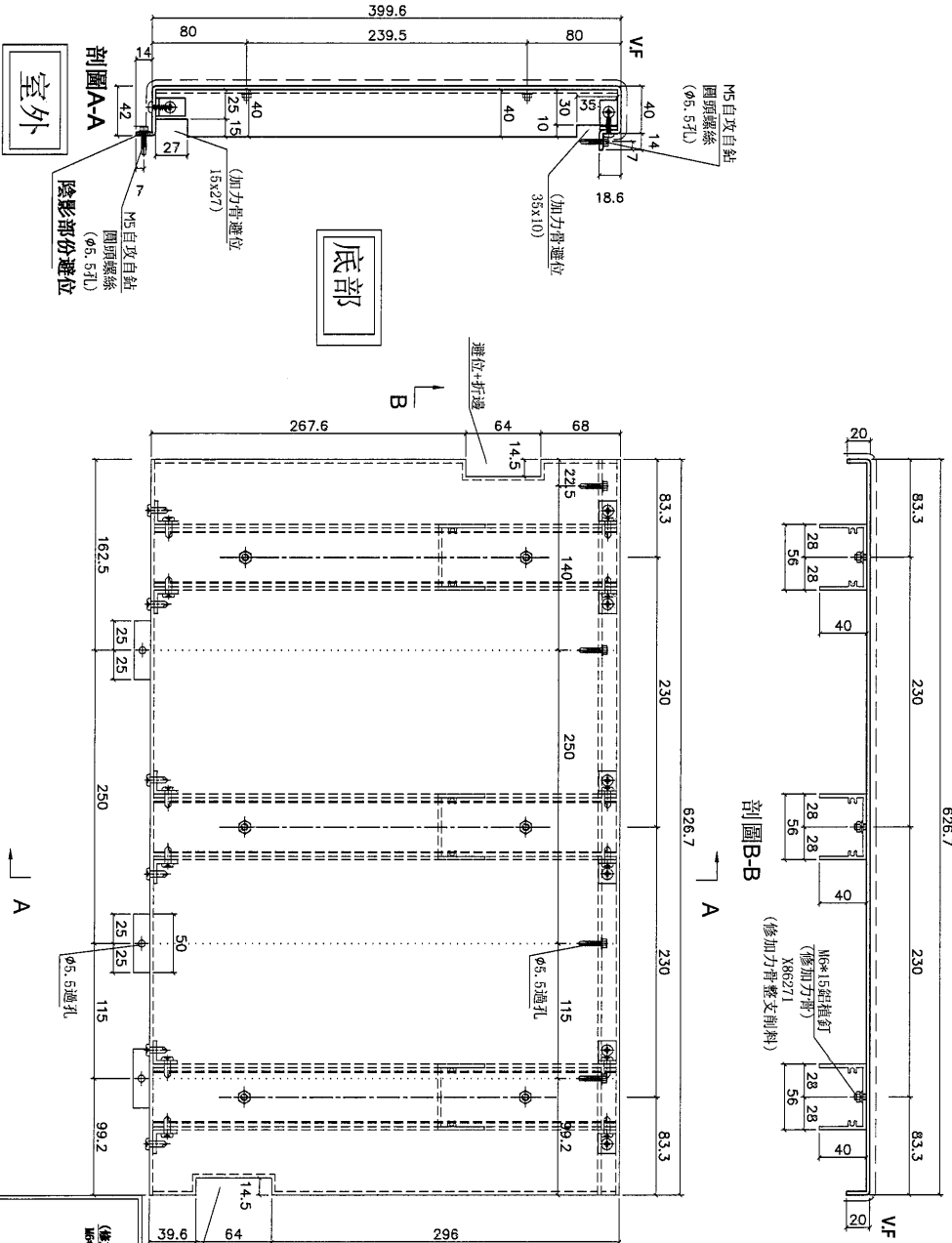


DWG. NO.		REV.		SCALE		DATE		DRAWN BY		APPROVED BY	
FW-AB70		-		-		17-04-2024		-		-	

PROJECT				MATERIAL				COATING				COLOUR		MARK. NO.		QTY.	
YIN PING ROAD KOWLOON FEATURE WALL (PHASE 2)				3mm鋁板				PVF2				EC-DG-D334232-ZD1(SS-01)		-		-	
REV.	CHANGED BY	PART NUMBER	Dim. A	Dim. B	Dim. C	Dim. D	Dim. E	Dim. F	Dim. G	Dim. H	QTY.	Inv. Code	ASSEMBLE ON PARTS				
-	-	FW-A71	-	-	-	-	-	-	-	-	26	-	-				
-	-	FW-B71	-	-	-	-	-	-	-	-	39	-	-				

地盤用

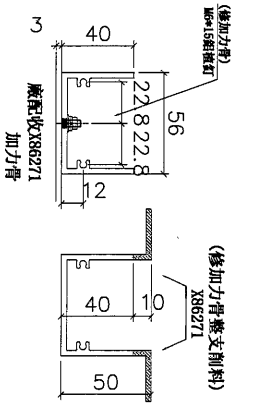
用A3紙打印



室外

底部

剖面B-B



DWG. NO.

FW-AB71

REV.

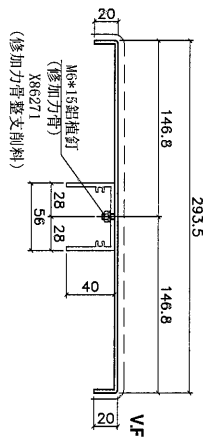
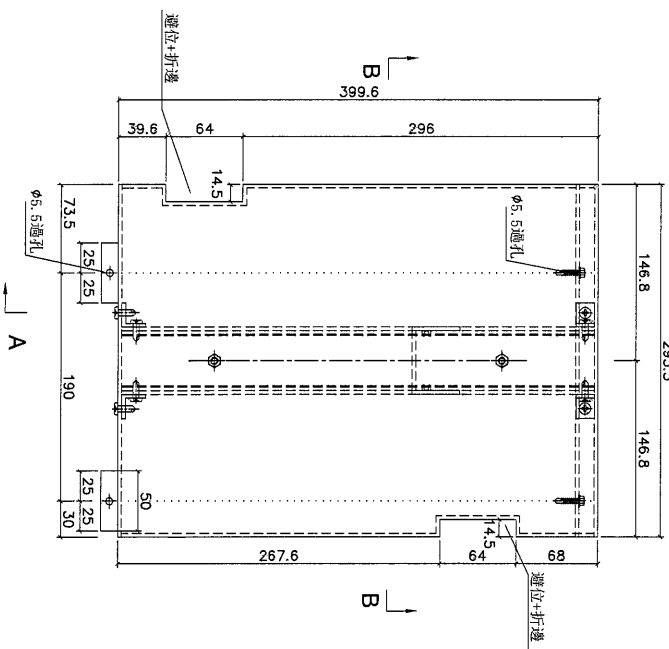
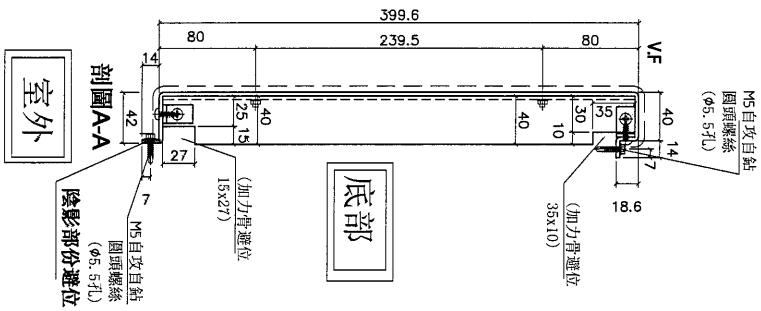
SCALE

DATE
17-04-2024

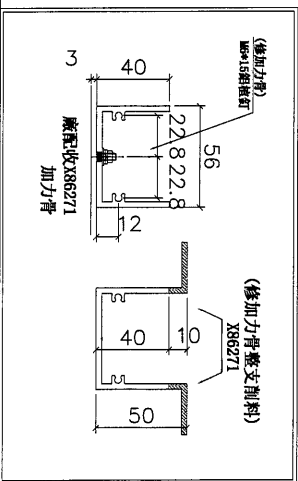
DRAWN BY

APPROVED BY

PROJECT				MATERIAL				COATING				COLOUR		MARK. NO.		QTY.	
YIN PING ROAD KOWLOON FEATURE WALL (PHASE 2)				3mm鋁板				PVF2				EC-DG-D334232-ZD1(SS-01)		-		-	
REV.	CHG/D BAR BY	PART NUMBER	Dim. A	Dim. B	Dim. C	Dim. D	Dim. E	Dim. F	Dim. G	Dim. H	QTY.	Inv. Code	ASSEMBLE ON PARTS				
-		FW-A72	-	-	-	-	-	-	-	-	31		地盤用				
-		FW-B72	-	-	-	-	-	-	-	-	39		用A3紙打印				



剖面B-B



DWG. NO.

FW-AB72

REV.

SCALE

DATE
17-04-2024

DRAWN BY

APPROVED BY

PROJECT
YIN PING ROAD KOWLOON
FEATURE WALL (PHASE 2)

MATERIAL
3mm鋁板

COATING
PVF2

COLOUR
EC-DG-D334232-ZD1(SS-01)

MARK. NO.
-

QTY.
-

REV. CHECKED
DATE BY

PART NUMBER
FW-A74

Dim. A

Dim. B

Dim. C

Dim. D

Dim. E

Dim. F

Dim. G

Dim. H

QTY.
5

Inv. Code

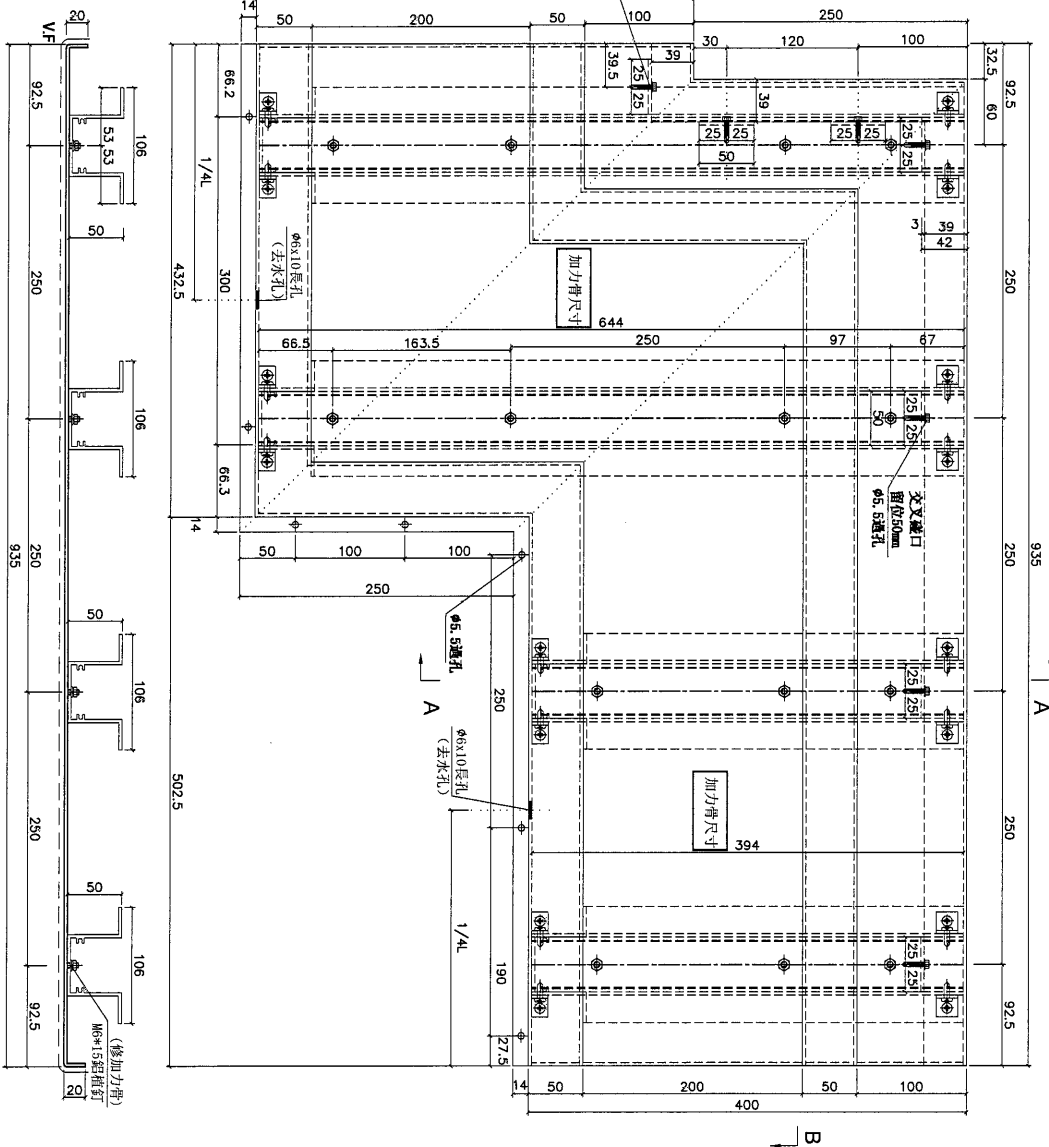
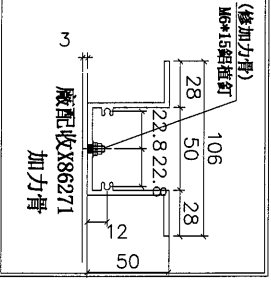
ASSEMBLE ON PARTS

地盤用

用A3紙打印

室外

底部



剖面B-B

DWG. NO.

FW-A74

REV.

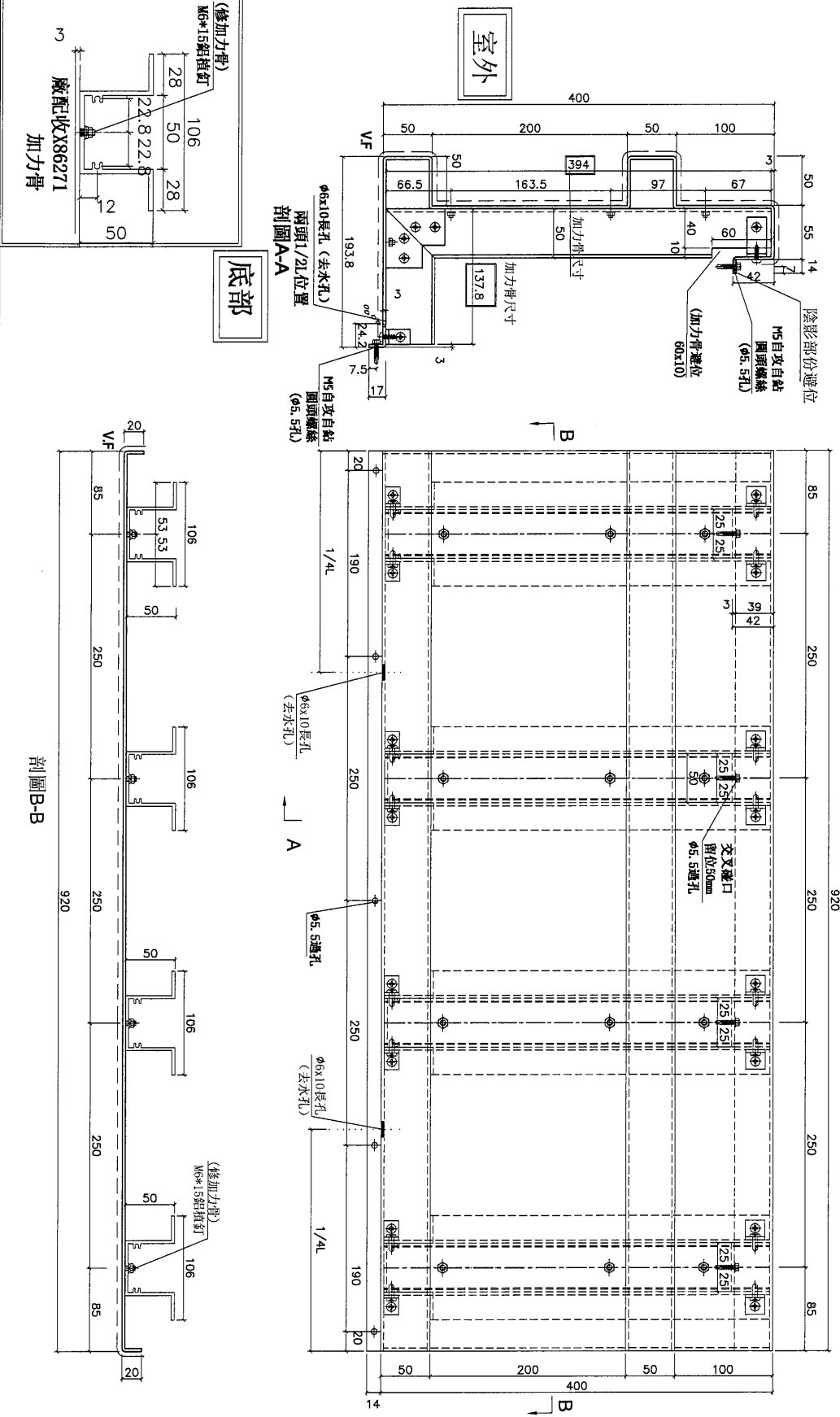
SCALE

DATE
17-04-2024

DRAWN BY

APPROVED BY

PROJECT				MATERIAL				COATING		COLOUR		MARK. NO.		QTY.	
YIN PING ROAD KOWLOON FEATURE WALL (PHASE 2)				3mm鋁板				PVF2		EG-DG-D334232-ZD1(SS-01)		-		-	
REV.	CHECKED DWG BY	PART NUMBER	Dim. A	Dim. B	Dim. C	Dim. D	Dim. E	Dim. F	Dim. G	Dim. H	QTY.	Inv. Code	ASSEMBLE ON PARTS		
-		FW-A76	-	-	-	-	-	-	-	-	3		地盤用		
													用A3紙打印		

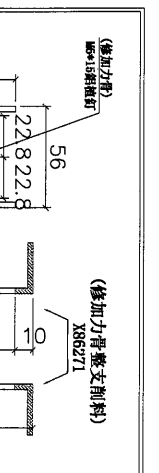
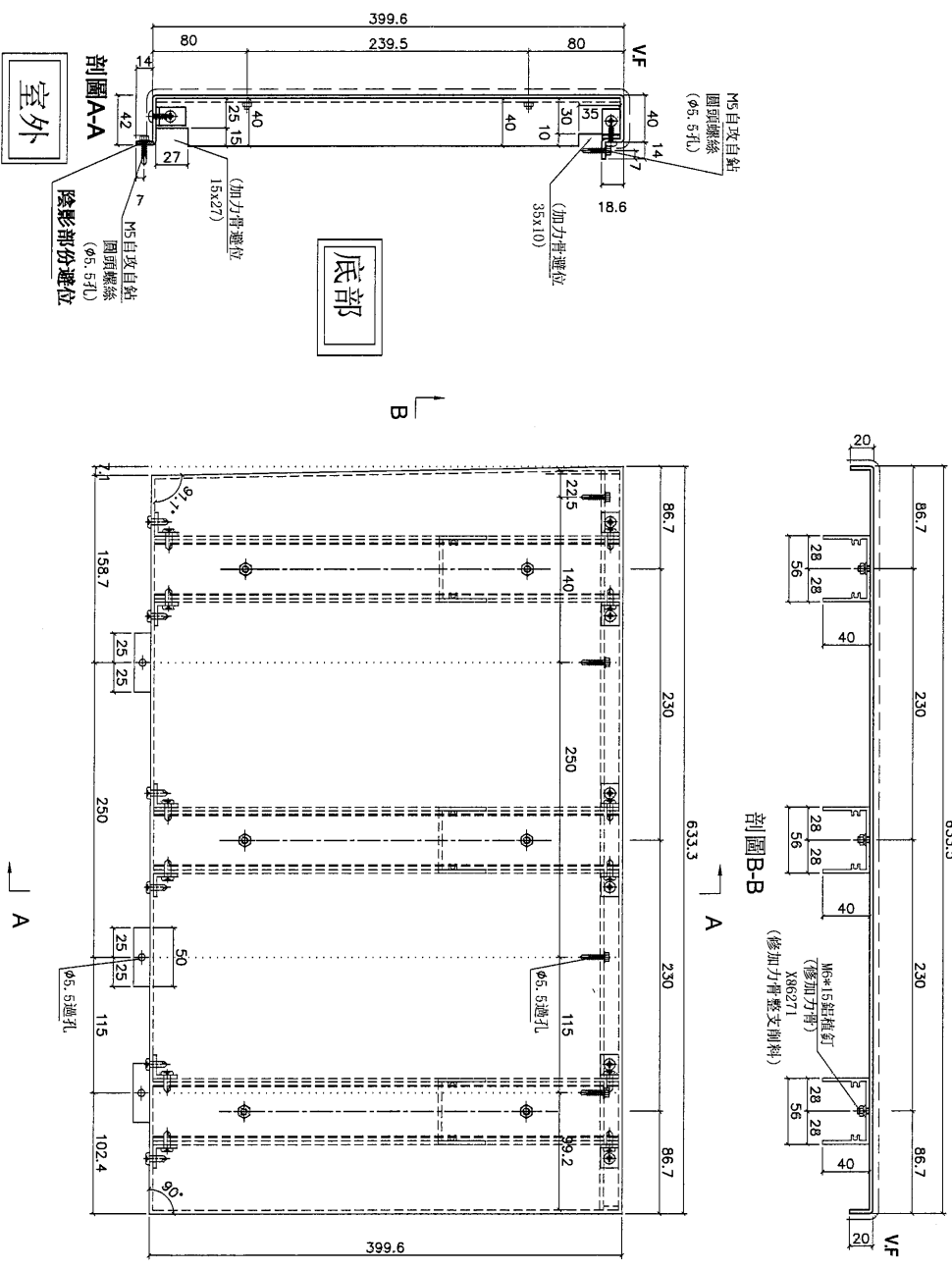


DWG. NO.		REV.		SCALE		DATE		DRAWN BY		APPROVED BY	
FW-A76		-		-		17-04-2024		-		-	

PROJECT				MATERIAL				COATING				COLOUR				MARK. NO.		QTY.	
YIN PING ROAD KOWLOON FEATURE WALL (PHASE 2)				3mm鋁板				PVF2				EC-DG-D334232-ZD1(SS-01)				-		-	
REV.	DATE	PART NUMBER	Dim. A	Dim. B	Dim. C	Dim. D	Dim. E	Dim. F	Dim. G	Dim. H	QTY.	Inv. Code	ASSEMBLE ON PARTS						
-		FW-A77	-	-	-	-	-	-	-	-	3								

地盤用

用A3紙打印



DWG. NO.		REV.		SCALE		DATE		DRAWN BY		APPROVED BY	
FW-A77		-		-		17-04-2024		-		-	

PROJECT
YIN PING ROAD KOWLOON
FEATURE WALL (PHASE 2)

MATERIAL

3mm铝板

COATING

PVF2

COLOUR

EG-DG-D334232-ZD1(SS-01)

MARK. NO.

-

QTY.

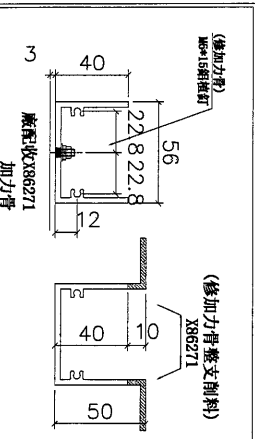
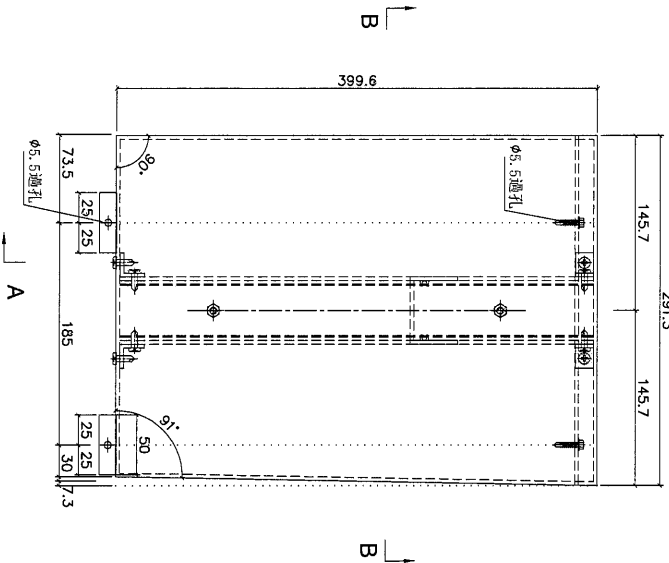
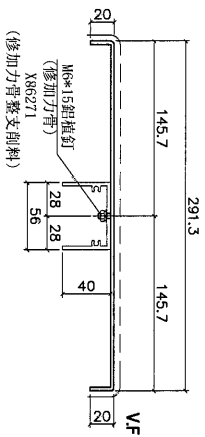
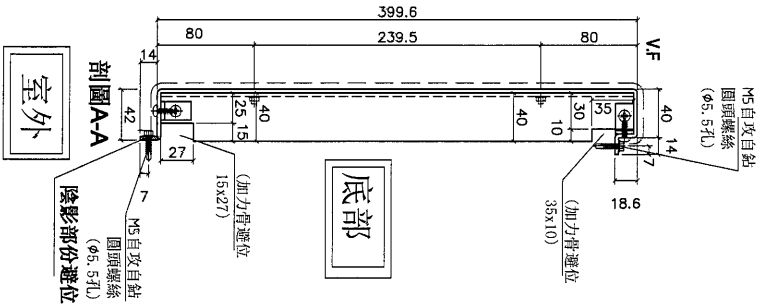
-

ASSEMBLE ON PARTS

地盤用

用A3紙打印

REV. / CHANGED BY	PART NUMBER	Dim. A	Dim. B	Dim. C	Dim. D	Dim. E	Dim. F	Dim. G	Dim. H	QTY.	Inv. Code
-	FW-A78	-	-	-	-	-	-	-	-	3	



DWG. NO.

FW-A78

REV.

-

SCALE

-

DATE

17-04-2024

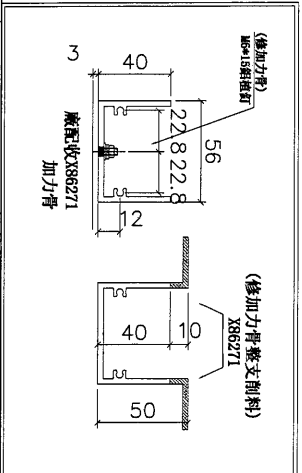
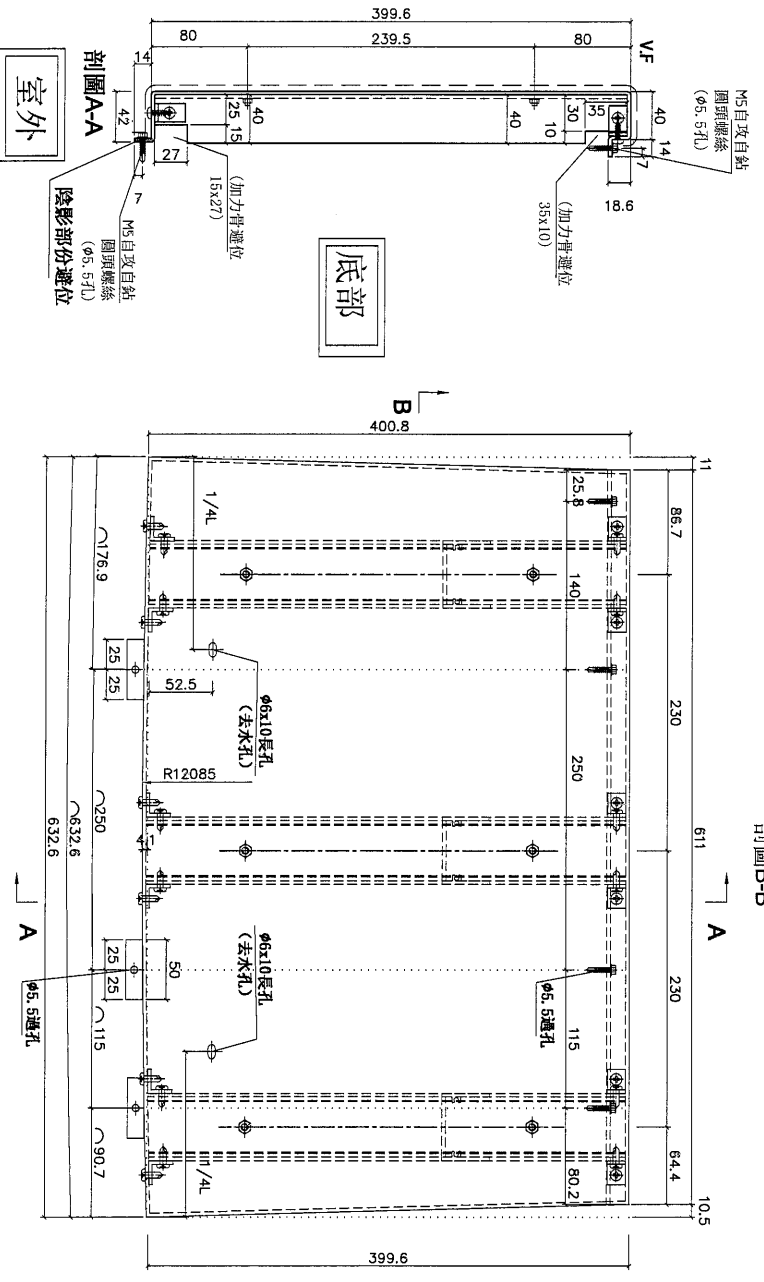
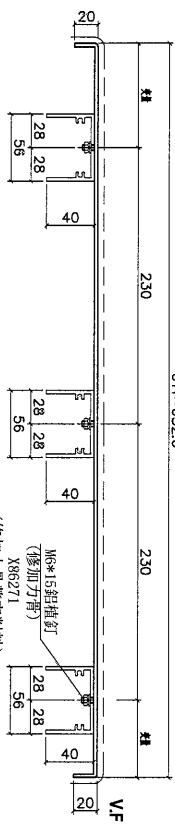
DRAWN BY

-

APPROVED BY

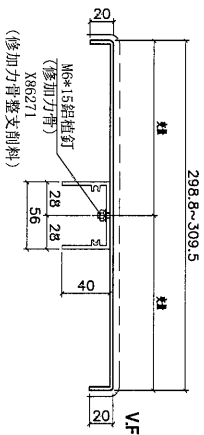
-

PROJECT		YIN PING ROAD KOWLOON FEATURE WALL (PHASE 2)				MATERIAL		3mm鋁板		COATING		PVF2		COLOUR		EC-DG-D334232-ZD1(SS-01)		MARK. NO.		-		QTY.		-	
REV.	CHANGED BY	PART NUMBER	Dim. A	Dim. B	Dim. C	Dim. D	Dim. E	Dim. F	Dim. G	Dim. H	QTY.	Inv. Code	ASSEMBLE ON PARTS												
-		FW-A80	-	-	-	-	-	-	-	-	5														
												地盤用													
												用A3紙打印													

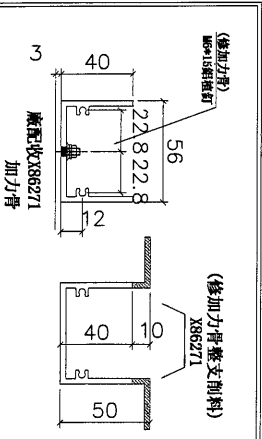
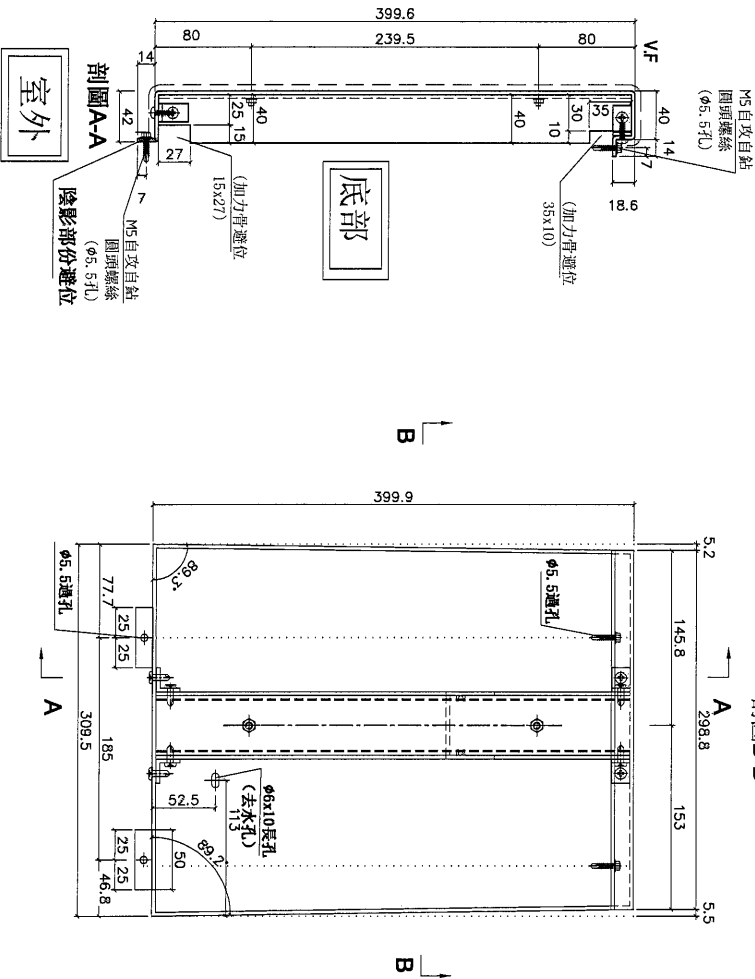


DWG. NO.		FW-A80		REV.		SCALE		DATE		DRAWN BY		APPROVED BY	
								17-04-2024					

PROJECT		YIN PING ROAD KOWLOON FEATURE WALL (PHASE 2)				MATERIAL		3mm鋁板		COATING		PVF2		COLOUR		EC-DG-D334232-ZD1(SS-01)		MARK. NO.		-		QTY.		-	
CHKD BY	FW-A81	PART NUMBER	Dim. A	Dim. B	Dim. C	Dim. D	Dim. E	Dim. F	Dim. G	Dim. H	QTY.	Inv. Code	ASSEMBLE ON PARTS												
													地盤用												
													用A3紙打印												



剖圖B-B

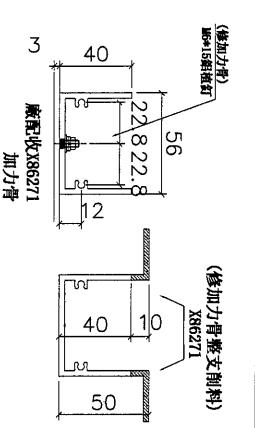
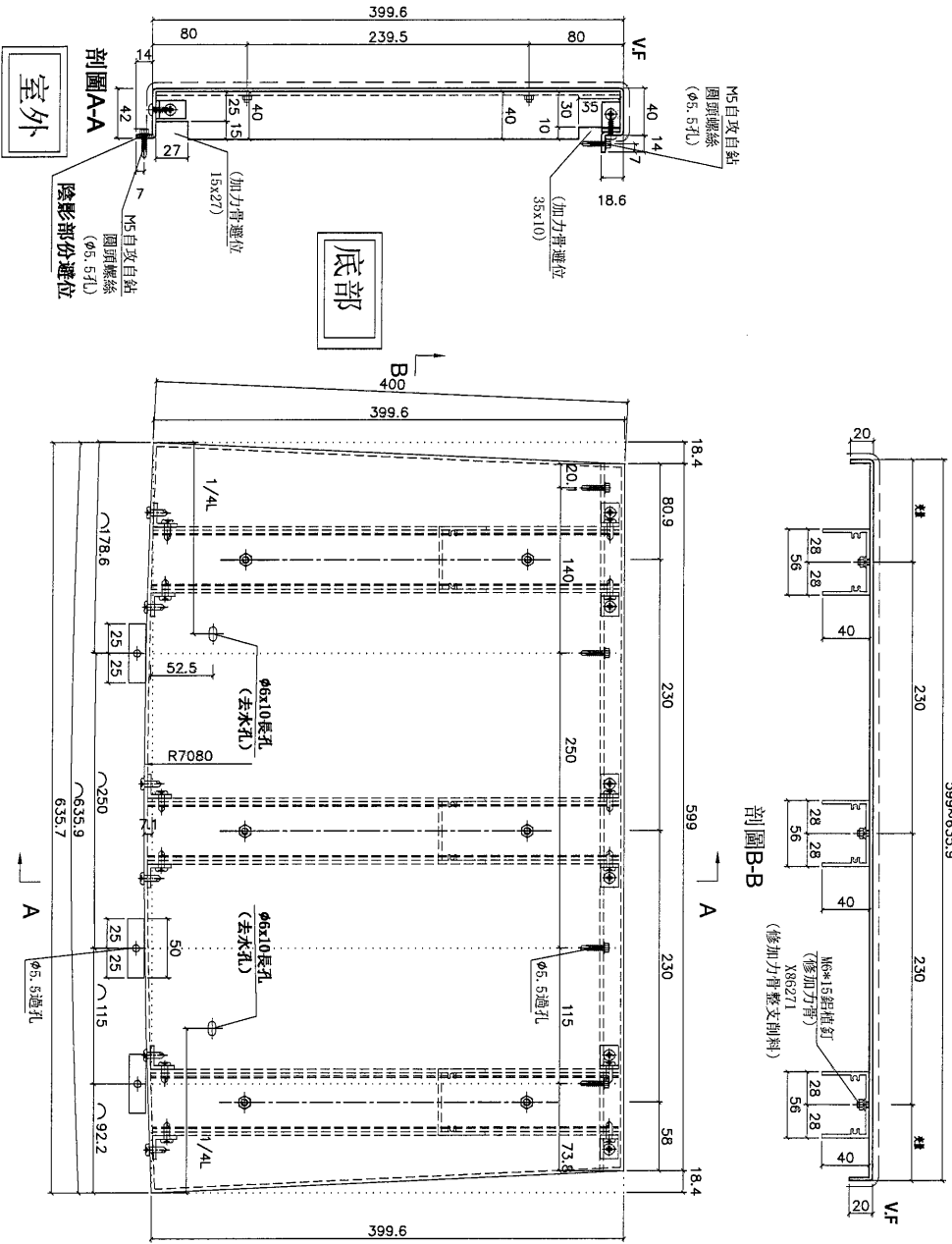


DWG. NO.	FW-A81	REV.	SCALE	DATE	DRAWN BY	APPROVED BY
----------	--------	------	-------	------	----------	-------------

PROJECT				MATERIAL				COATING				COLOUR				MARK. NO.		QTY.	
YIN PING ROAD KOWLOON FEATURE WALL (PHASE 2)				3mm鋁板				PVF2				EC-DG-D334232-ZD1(SS-01)				-		-	
REV.	CHECKED DATE	PART NUMBER	Dim. A	Dim. B	Dim. C	Dim. D	Dim. E	Dim. F	Dim. G	Dim. H	QTY.	Inv. Code	ASSEMBLE ON PARTS						
-		FW-B83	-	-	-	-	-	-	-	-	3								

地盤用

用A3紙打印



DWG. NO.

FW-B83

REV.

SCALE

DATE
17-04-2024

DRAWN BY

APPROVED BY

PROJECT
YIN PING ROAD KOWLOON
FEATURE WALL (PHASE 2)

MATERIAL
3mm 铝板

COATING
PVF2

COLOUR
EC-DG-D334232-ZD1(SS-01)

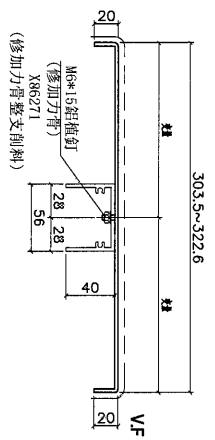
MARK. NO.
-

QTY.
-

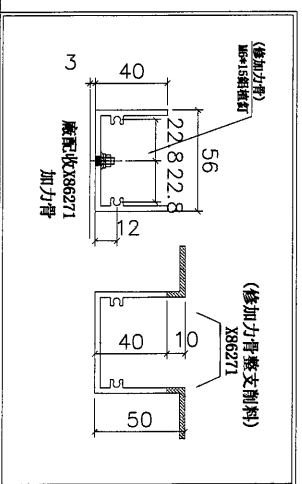
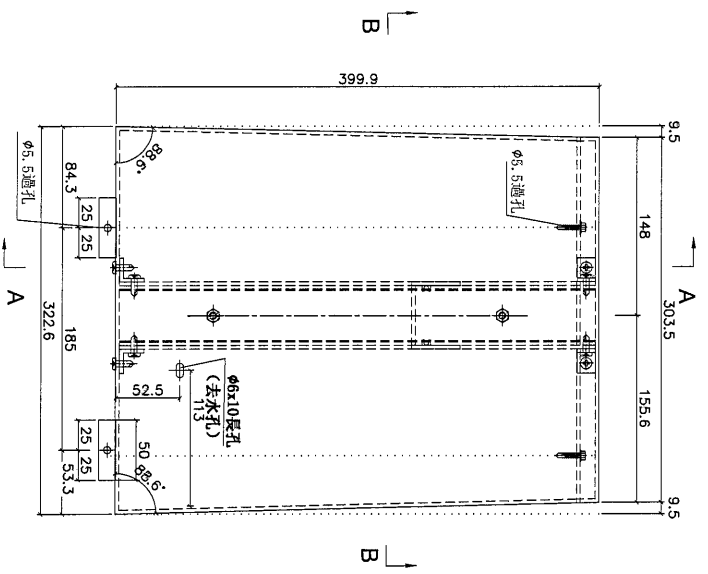
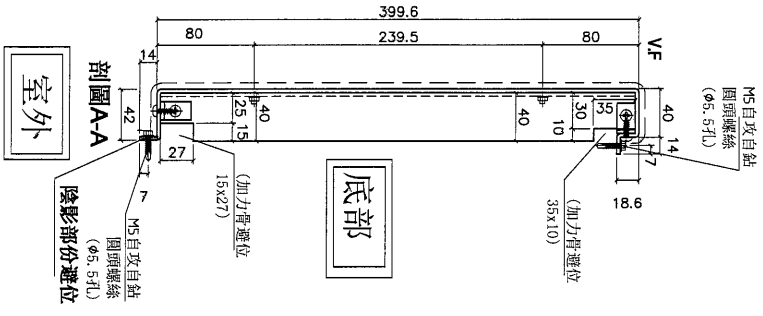
REV. (CHECKED / DRAWN BY)	PART NUMBER	Dim. A	Dim. B	Dim. C	Dim. D	Dim. E	Dim. F	Dim. G	Dim. H	QTY.	Inv. Code	ASSEMBLE ON PARTS
-	FW-B84	-	-	-	-	-	-	-	-	3		

地盤用

用A3紙打印

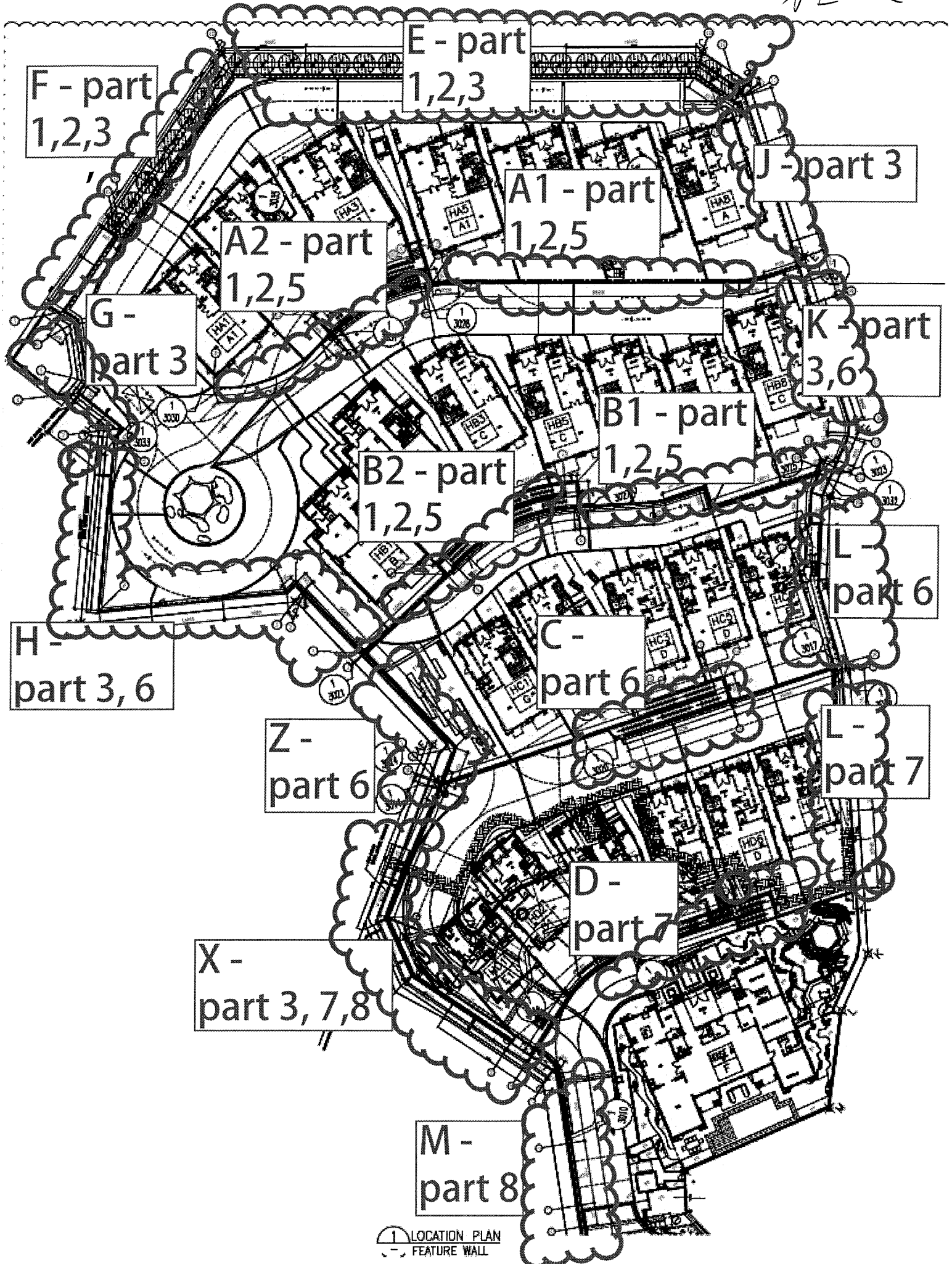


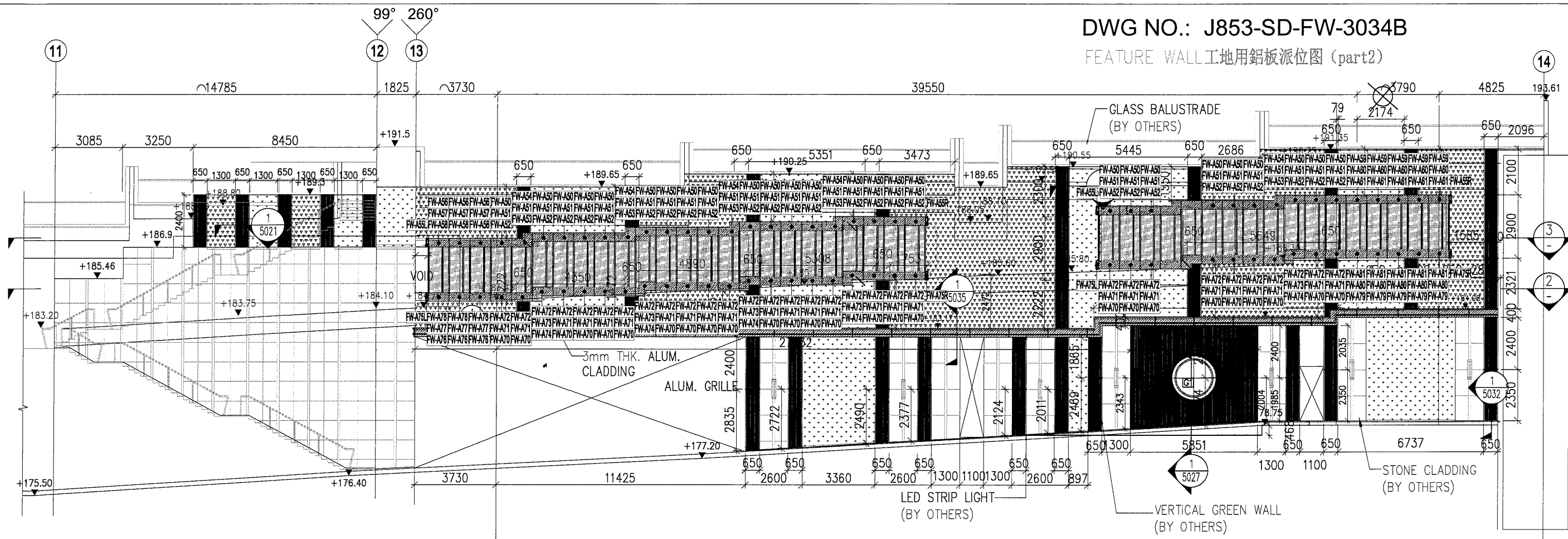
剖面B-B



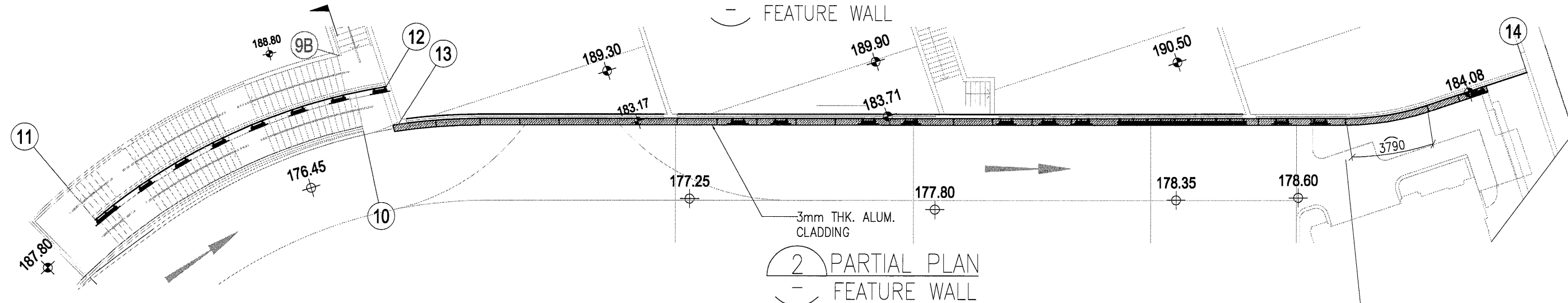
DWG. NO. FW-B84
REV. -
SCALE -
DATE 17-04-2024
DRAWN BY -
APPROVED BY -

分區表

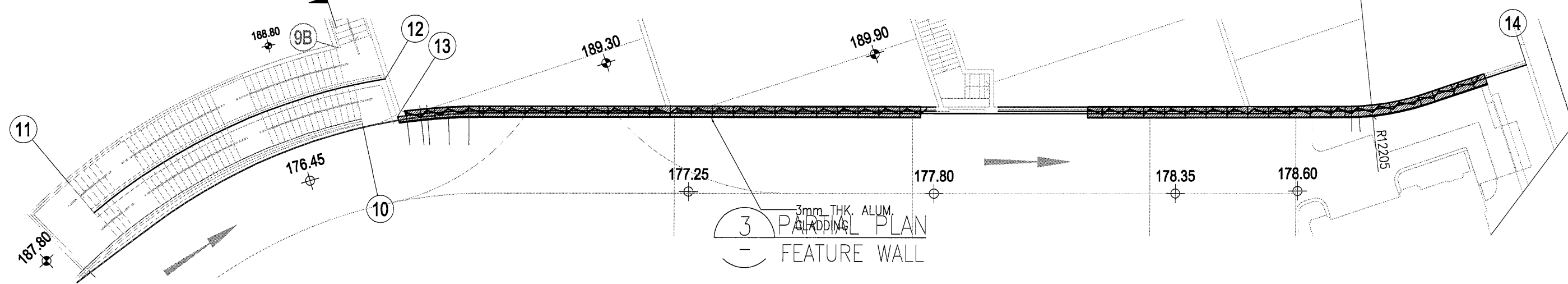




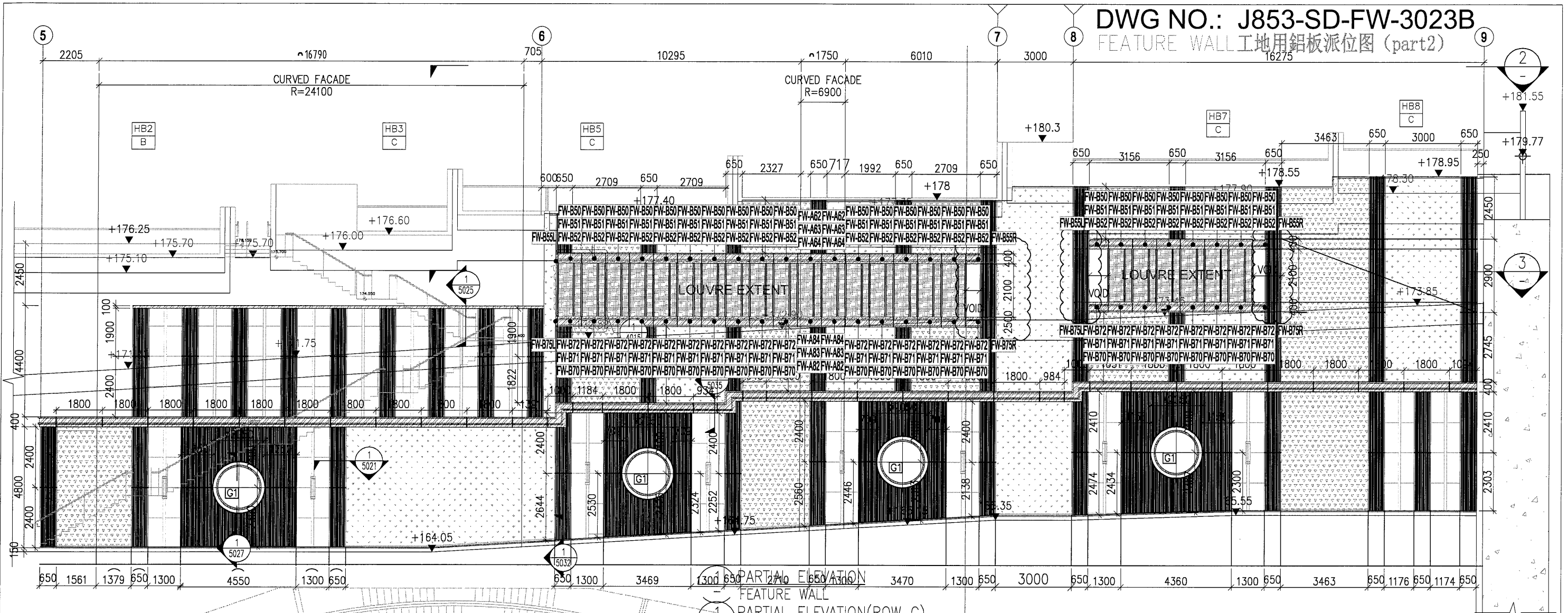
1 PARTIAL ELEVATION - FEATURE WALL



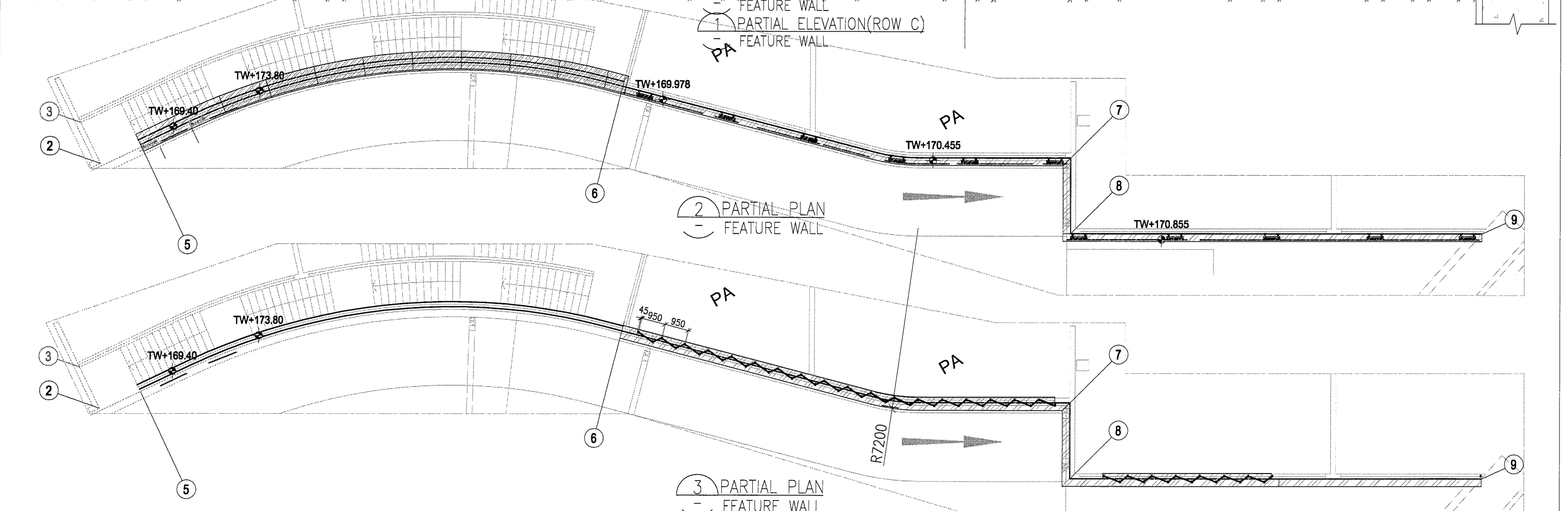
2 PARTIAL PLAN - FEATURE WALL



3 PARTIAL PLAN - FEATURE WALL



1 PARTIAL ELEVATION
FEATURE WALL
PARTIAL ELEVATION (ROW C)
FEATURE WALL



2 PARTIAL PLAN
FEATURE WALL

3 PARTIAL PLAN
FEATURE WALL

DWG NO.: J853-SD-FW-3021B

FEATURE WALL 工地用铝板派位图 (part2)

