



工程指示 / 要求簡箋 ENGINEER INSTRUCTIONS (E.I.)

工程指示編號:	EI- 7717	修改版本:	-
	HK-		
工程編號:	J 853	工程名稱:	延坪道 (第2期)
收件人:	Maggie Lor	發件人:	Jingo
工程項目:	House A 後裝門窗固定	日期:	7/5/2024
ROW E	鐵碼 紫色		

<input type="checkbox"/> 原合約工程包	<input type="checkbox"/> 原合約工程加 / 減脹 QT-	<input type="checkbox"/> 新工程報價 QT-
---------------------------------	--	------------------------------------

信件批核號碼/圖紙參考編號:	批核模具圖紙編號:
客戶指示附件:	管理內部批簽署:

<input type="checkbox"/> 初步鋁料 B.M.	<input type="checkbox"/> 加工拆圖, 然後生產	<input type="checkbox"/> 尺寸表
<input type="checkbox"/> 正式鋁料 B.M.	<input type="checkbox"/> 技術上資料/指示	<input type="checkbox"/> 報價
<input type="checkbox"/> 配件 B.M.	<input type="checkbox"/> 樣辦或貨品說明書	<input type="checkbox"/> 分判合約
<input type="checkbox"/> 其他:		

內容: 完成後送地盤  
廠驗焊 = Fillet weld 10% 磁粉, 100% 目視  
報告名 = Insitu window for house.

完成上列要求日期: 8/5/2024

國內

<input type="checkbox"/> 生產技術總監	<input type="checkbox"/> 連附件	<input type="checkbox"/> 技術部	<input type="checkbox"/> 連附件	<input type="checkbox"/> 生產部	<input type="checkbox"/> 連附件
<input type="checkbox"/> 採購部	<input type="checkbox"/> 連附件	<input type="checkbox"/> 生產統籌部	<input type="checkbox"/> 連附件	<input type="checkbox"/> 報關組	<input type="checkbox"/> 連附件
<input type="checkbox"/> 質檢部	<input type="checkbox"/> 連附件	<input type="checkbox"/> 會計部	<input type="checkbox"/> 連附件	<input type="checkbox"/> 機械設計部	<input type="checkbox"/> 連附件
<input type="checkbox"/> 香港辦	<input type="checkbox"/> 連附件	<input type="checkbox"/> 其他:			

香港

<input type="checkbox"/> 行政部	<input type="checkbox"/> 連附件	<input type="checkbox"/> 會計部	<input type="checkbox"/> 連附件	<input type="checkbox"/> 統籌部	<input type="checkbox"/> 連附件	<input type="checkbox"/> 工程部	<input type="checkbox"/> 連附件
<input checked="" type="checkbox"/> 採購部	<input checked="" type="checkbox"/> 連附件	<input type="checkbox"/> QS部	<input type="checkbox"/> 連附件	<input checked="" type="checkbox"/> 地盤管理	<input checked="" type="checkbox"/> 連附件	<input type="checkbox"/> 維修部	<input type="checkbox"/> 連附件

*發件人簽署:	*組別成員批核簽署:
傳遞編號:	項目經理簽署:

**圖則登記表**  
DRAWING REGISTER

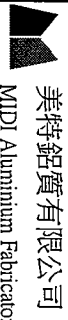
接收日期 Receiving Date (適用於客戶圖則)		年							
		月							
		日							
工程名稱 Project Title: 延平道二期 House A排後裝門窗固定鐵碼(地盤用)		年	24						
工程編號 Project No: J-853		月	5						
分發予 Distributed To		日	7						
		年							
		月							
		日							
			修訂編號 Revision No.						
圖則編號 Drg. No.	圖則名稱 Drawing Title								
BK1	鐵件拆圖	1	-						
BK1-3	鐵件拆圖	2	-						
BK1-4	鐵件拆圖	3	-						
BK5-2	鐵件拆圖	4	-						
BK5-2b	鐵件拆圖	5	-						
BK5-3	鐵件拆圖	6	-						
BK5-4	鐵件拆圖	7	-						
BK5-4R	鐵件拆圖	8	-						
BK5-5	鐵件拆圖	9	-						
J853-SD-HIW-2601	鐵件位置圖	10	-						
J853-SD-HIW-2602	鐵件位置圖	11	-						
J853-SD-HIW-2603	鐵件位置圖	12	-						
J853-SD-HIW-2605	鐵件位置圖	13	-						
J853-SD-HIW-2606	鐵件位置圖	14	-						
J853-SD-HIW-2607	鐵件位置圖	15	-						
J853-SD-HIW-2608	鐵件位置圖	16	-						
J853-SD-HIW-2610	鐵件位置圖	17	-						
J853-SD-HIW-2611	鐵件位置圖	18	-						
J853-SD-HIW-2612	鐵件位置圖	19	-						
J853-SD-HIW-2615	鐵件位置圖	20	-						
J853-SD-HIW-2616	鐵件位置圖	21	-						
J853-SD-HIW-2620	鐵件位置圖	22	-						

J853-House A排後裝門窗固定鐵碼（地盤用）後裝窗地盤用固定鐵碼分棟數量統計表

工程：J853-延平道二期House A排後裝門窗固定鐵碼

日期：2024.5.7

序号	物料編號	配件名稱	屋仔号码			总数量	备注
			Facade : House A	1/F	G/F		
1	BK1	鐵件拆圖		0	7	7	
2	BK1-3	鐵件拆圖		6	2	8	
3	BK1-4	鐵件拆圖		0	8	8	
4	BK5-2	鐵件拆圖		2	2	4	
5	BK5-2b	鐵件拆圖		2	2	4	
6	BK5-3	鐵件拆圖		0	1	1	
7	BK5-4	鐵件拆圖		4	0	4	
8	BK5-4R	鐵件拆圖		4	0	4	
9	BK5-5	鐵件拆圖		1	0	1	
合计：				19	22	41	



美特鋁質有限公司  
MIDI Aluminium Fabricator

工程號：J-853

計算：劉龍浩

日期：2024.4.30

送呈：胡哥

地盤名稱：延平道二期

核對：謝永林

日期：2024.5.7

副本：

地盤用鐵件B.M.表

項目類別：House A排後裝門窗固定鐵碼(地盤用)

批准：

日期：

總重量：239.87 KG

A/C Code：

此BM依據拆圖資料計算

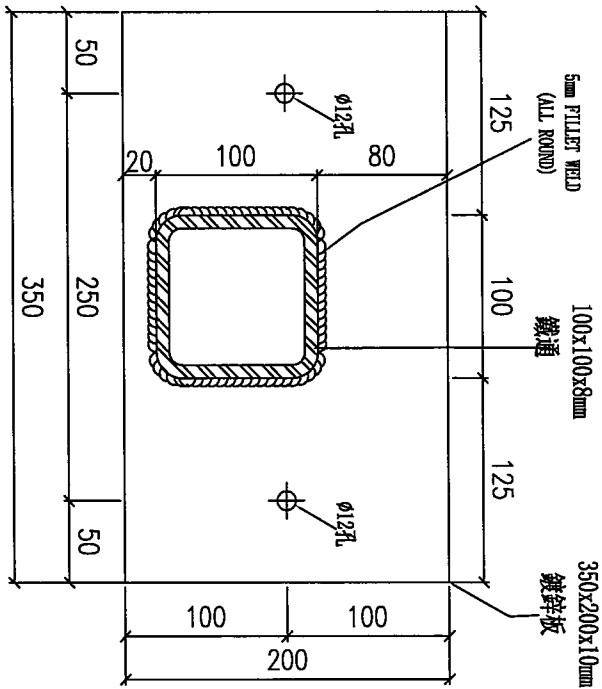
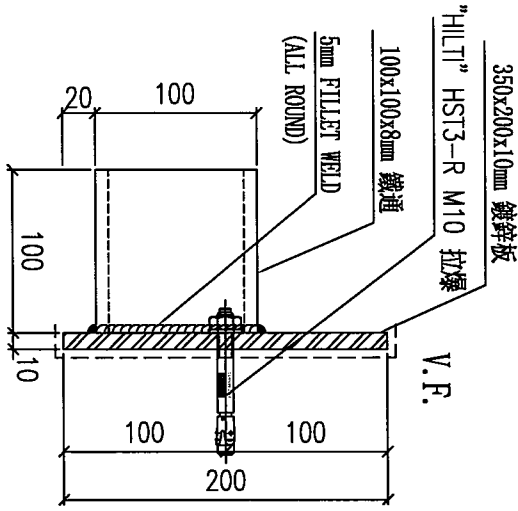
序號	修改標示	物料編號	配件名稱	顏色	實用	後備	總數	單位	單件重量	總重量	備注
								件	KG	KG	
1		BK1	鐵件拆圖	熱浸鋅/涂瀝青油	7	0	7	件	7.677	53.737	
2		BK1-3	鐵件拆圖	熱浸鋅/涂瀝青油	8	0	8	件	6.625	53.003	
3		BK1-4	鐵件拆圖	熱浸鋅/涂瀝青油	8	0	8	件	6.625	53.003	
4		BK5-2	鐵件拆圖	熱浸鋅/涂瀝青油	4	0	4	件	3.587	14.350	
5		BK5-2b	鐵件拆圖	熱浸鋅/涂瀝青油	4	0	4	件	3.587	14.350	
6		BK5-3	鐵件拆圖	熱浸鋅/涂瀝青油	1	0	1	件	4.024	4.024	
7		BK5-4	鐵件拆圖	熱浸鋅/涂瀝青油	4	0	4	件	5.423	21.691	
8		BK5-4R	鐵件拆圖	熱浸鋅/涂瀝青油	4	0	4	件	5.423	21.691	
9		BK5-5	鐵件拆圖	熱浸鋅/涂瀝青油	1	0	1	件	4.024	4.024	
					合計：		41	件	合計：	239.87	



美特鋁質有限公司  
MIDI Aluminium Fabricator Ltd.

工程號 J-853 地盤 延平道二期

地盤用



物料編號	數量	樓層	施工圖位置	使用窗號	MIRROR	Facade
BK1	1	G/F	J853-SD-HIW-2601	WF.01F		house A
BK1	1	G/F	J853-SD-HIW-2601	WF.09F	MIRROR	house A
BK1	1	G/F	J853-SD-HIW-2602	WF.04F		house A
BK1	1	G/F	J853-SD-HIW-2602	WF.06F		house A
BK1	1	G/F	J853-SD-HIW-2603	WF.05F		house A
BK1	1	G/F	J853-SD-HIW-2606	WF.14F		house A
BK1	1	G/F	J853-SD-HIW-2620	WF.18F		house A
合計	7					

名稱	鐵件拆圖	制圖	劉龍浩	2024. 3. 18	修改		
材料	100x100x8mm鐵通/350x200x10mm鐵板	復核	謝永林	2024. 3. 25	日期		
顏色	熱浸鋅/塗瀝青油	批准			圖號	BK1	

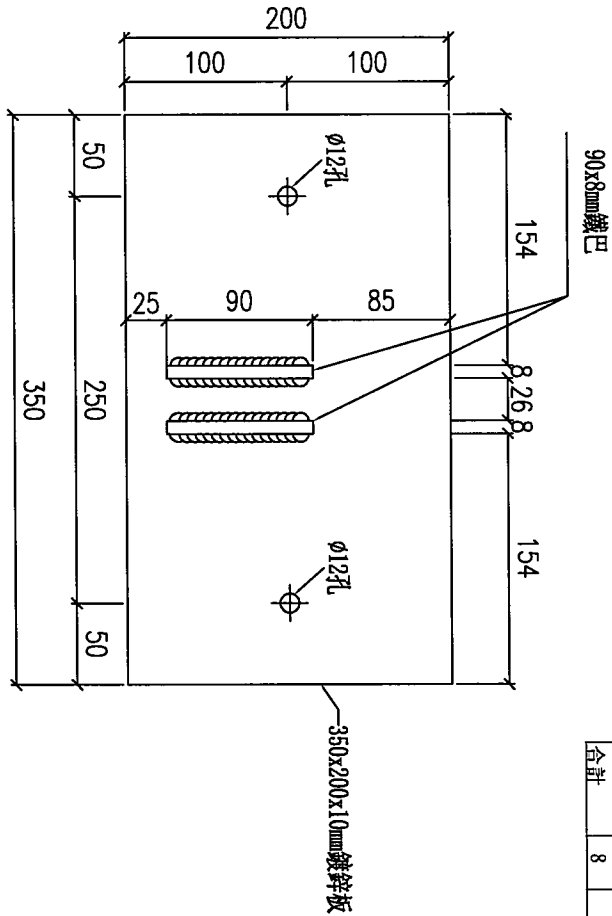
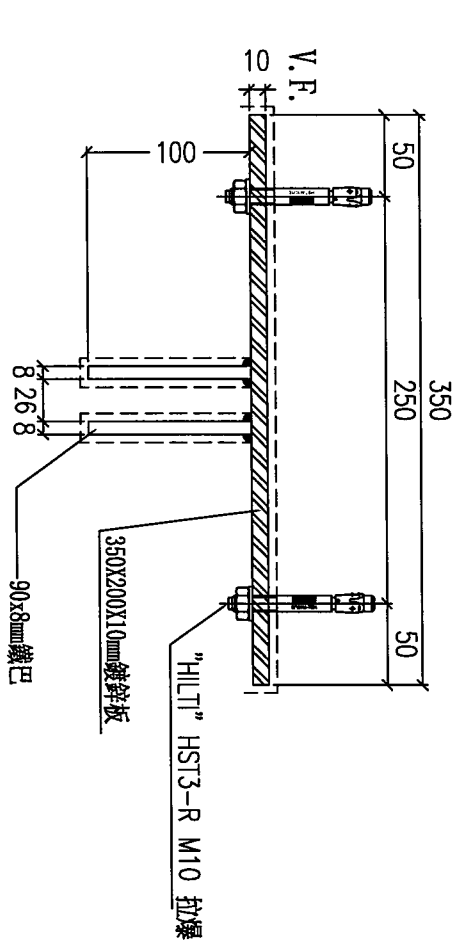


工程號

J-853

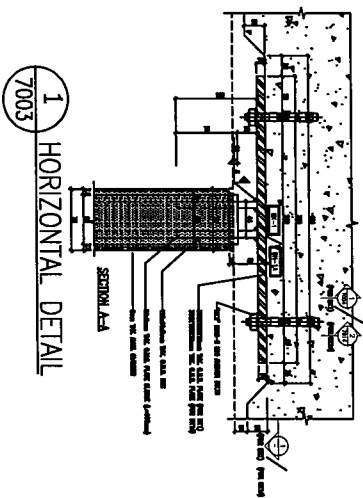
地盤

延平道二期



物料編號	數量	樓層	施工圖位置	使用窗號	MIRROR	Facade
BK1-3	2	G/F	J853-SD-HIW-2607	WF.16F		house A
BK1-3	1	I/F	J853-SD-HIW-2610	WF.23F		house A
BK1-3	1	I/F	J853-SD-HIW-2610	WF.27F	MIRROR	house A
BK1-3	1	I/F	J853-SD-HIW-2615	WF.31F		house A
BK1-3	1	I/F	J853-SD-HIW-2615	WF.37F	MIRROR	house A
BK1-3	2	I/F	J853-SD-HIW-2616	WF.33F		house A
合計	8					

安裝示意圖



名稱

鐵件拆圖

制圖

劉龍浩

2024. 3. 18

修改

材料

90x8mm鐵巴/350x200x10mm鐵板

復核

謝永林

2024. 3. 23

日期

顏色

熱浸鋅/塗瀝青油

批准

圖號

BK1-3



美特鋁質有限公司  
MIDI Aluminium Fabricator Ltd.

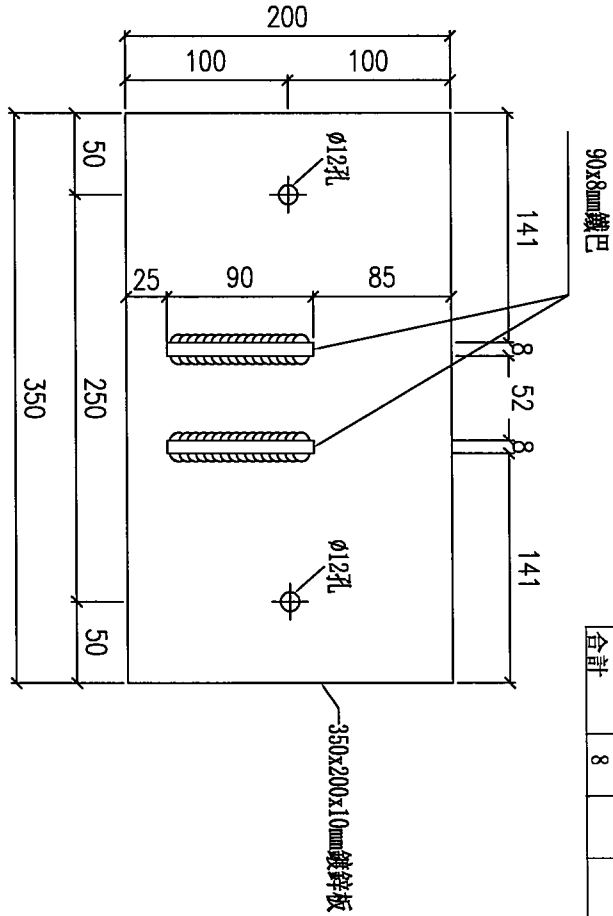
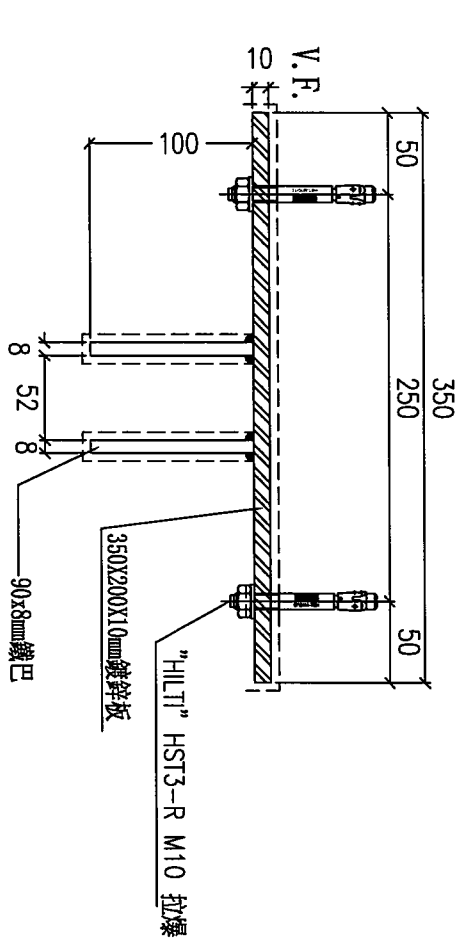
工程號

J-853

地盤

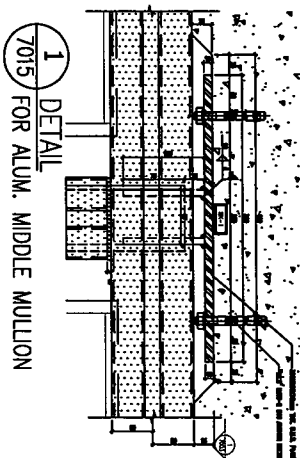
延平道二期

地盤用



物料編號	數量	樓層	施工圖位置	使用窗號	MIRROR	Facade
BK1-3	1	G/F	1853-SD-HW-2601	WF.01F		house A
BK1-3	1	G/F	1853-SD-HW-2601	WF.09F	MIRROR	house A
BK1-3	2	G/F	1853-SD-HW-2606	WF.14F		house A
BK1-3	2	G/F	1853-SD-HW-2608	WF.19F		house A
BK1-3	2	G/F	1853-SD-HW-2620	WF.18F		house A
合計	8					

安裝示意圖



名稱

鐵件拆圖

制圖

劉龍浩

2024. 3. 18

修改

材料

90x8mm鐵巴/350x200x10mm鐵板

復核

謝永林

2024. 3. 23

日期

顏色

熱浸鋅/塗瀝青油

批准

圖號

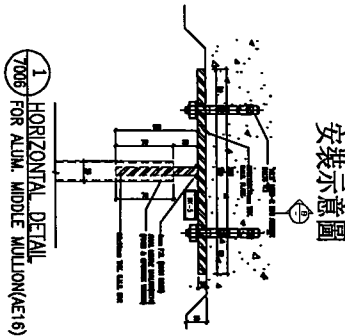
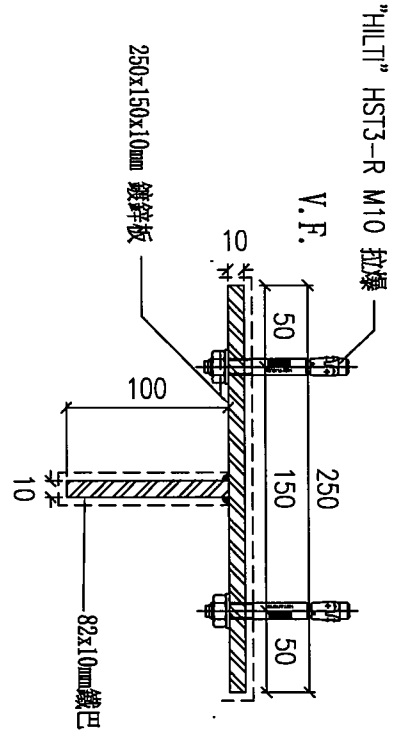
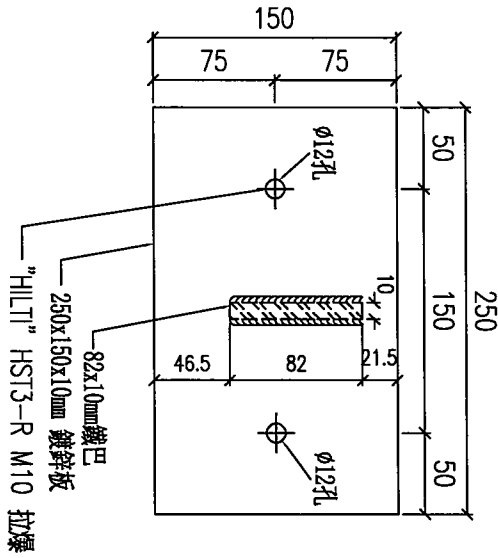
BK1-4



美特鋁質有限公司  
MIDI Aluminium Fabricator Ltd.

工程號 J-853 地盤 延平道二期

物料編號	數量	樓層	施工圖位置	使用窗號	MIRROR	Facade
BK5-2	2	G/F	J853-SD-HIW-2605	WF.12F		house A
BK5-2	1	1/F	J853-SD-HIW-2611	WF.24F		house A
BK5-2	1	1/F	J853-SD-HIW-2611	WF.26F	MIRROR	house A
合計	4					



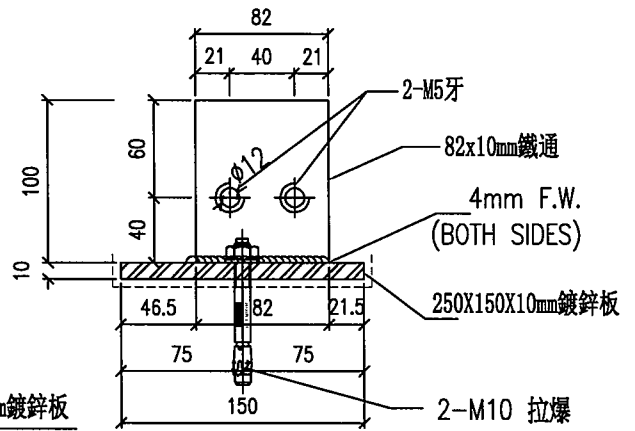
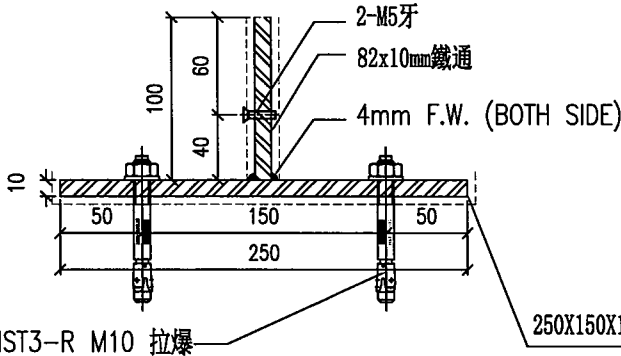
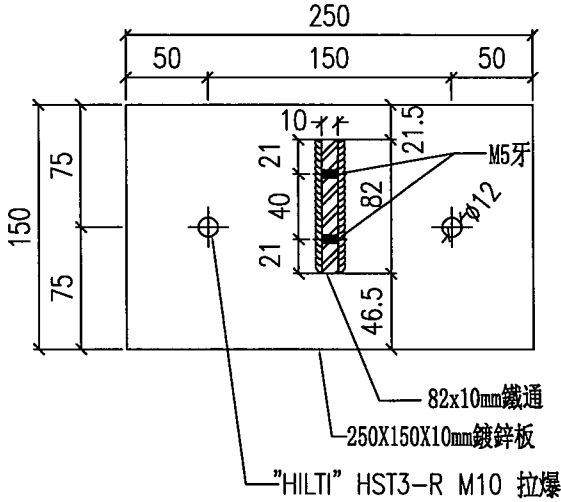
名稱	鐵件拆圖	制圖	劉龍浩	2024. 3. 18	修改	
材料	82x10mm鐵巴/250x150x10mm鐵板	復核	謝永林	2024. 3. 25	日期	
顏色	熱浸鋅/塗瀝青油	批准			圖號	BK5-2



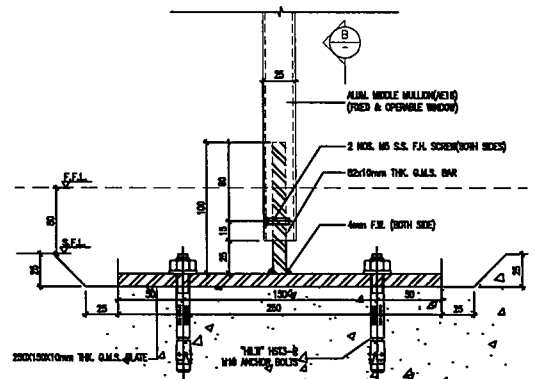
美特鋁質有限公司  
MIDI Aluminium Fabricator Ltd.

物料編號	數量	樓層	施工圖位置	使用窗號	MIRROR	Facade
BK5-2b	2	G/F	J853-SD-HIW-2605	WF.12F		HOUSE A
BK5-2b	1	1/F	J853-SD-HIW-2611	WF.24F		HOUSE A
BK5-2b	1	1/F	J853-SD-HIW-2611	WF.26F	MIRROR	HOUSE A
合計:	4					

工程號 J-853 地盤 延平道二期



### 安裝示意圖



2 VERTICAL DETAIL  
7006 For Transom Of Openable Window

名稱	鐵件拆圖	制圖	劉龍浩	2024. 4. 1	修改		
材料	82x10鐵通/250x150x10mm鐵板	復核	謝永林	2024. 4. 5	日期		
顏色	熱浸鋅/塗瀝青油	批准			圖號	BK5-2b	



美特鋁質有限公司  
MIDI Aluminium Fabricator Ltd.

工程號

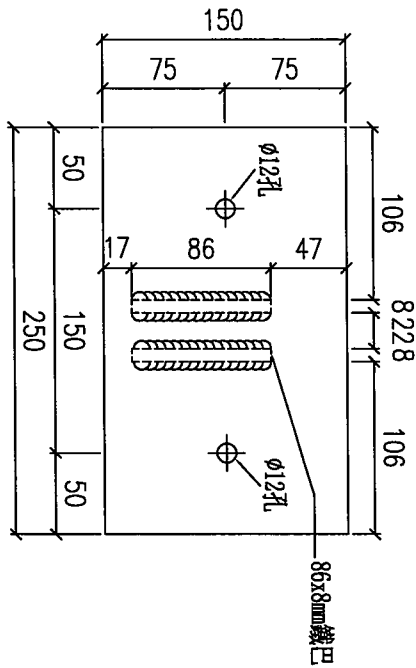
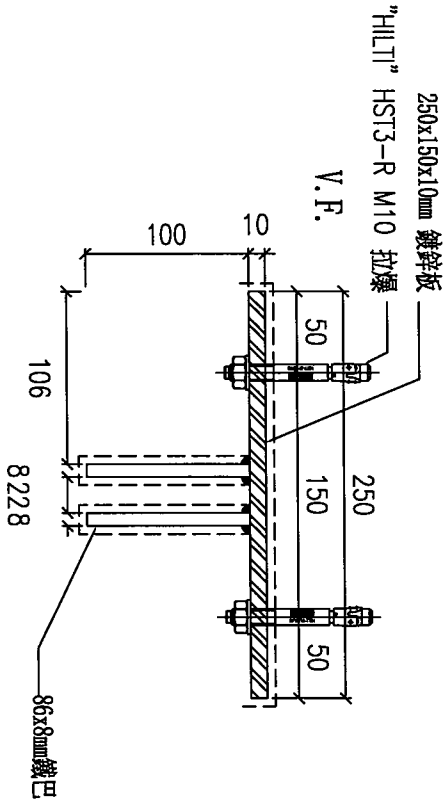
J-853

地盤

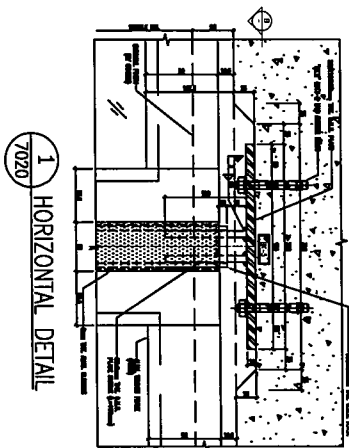
延平道二期

地盤用

物料編號	數量	樓層	施工圖位置	使用窗號	MIRROR	Facade
BK5-3	1	G/F	J853-SD-HW-2612	WF.25F		house A
合計	1					



安裝示意圖



名稱	鐵件拆圖	制圖	劉龍浩	2024. 3. 18	修改		
材料	86x8mm鐵巴/250x150x10mm鐵板	復核	謝永林	2024. 3. 25	日期		
顏色	熱浸鋅/塗瀝青油	批准			圖號	BK5-3	



美特鋁質有限公司  
MIDI Aluminium Fabricator Ltd.

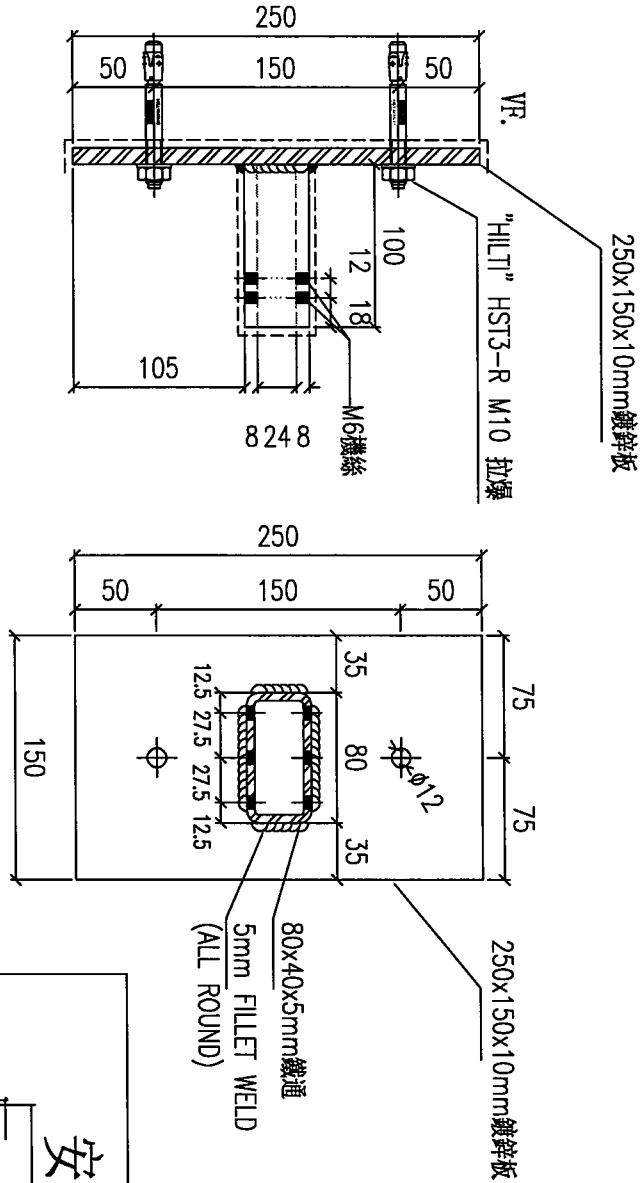
工程號

J-853

地盤

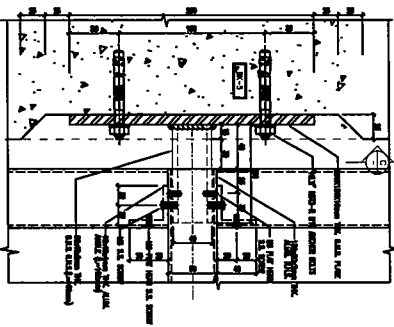
延平道二期

地盤用



物料編號	數量	樓層	施工圖位置	使用窗號	MIRROR	Facade
BK5-4	1	1/F	1853-SD-HIW-2610	WF.23F		HOUSE A
BK5-4	1	1/F	1853-SD-HIW-2610	WF.27F	MIRROR	HOUSE A
BK5-4	1	1/F	1853-SD-HIW-2615	WF.31F		HOUSE A
BK5-4	1	1/F	1853-SD-HIW-2615	WF.37F	MIRROR	HOUSE A
合計:	4					

安裝示意圖



1 HORIZONTAL DETAIL  
7018

名稱	鐵件拆圖	制圖	劉龍浩	2024. 4. 02	修改	
材料	80x40x5鐵通/250x150x10mm鐵板	復核	謝永林	2024. 4. 11	日期	
顏色	熱浸鋅/塗瀝青油	批准			圖號	BK5-4



美特鋁質有限公司  
MIDI Aluminium Fabricator Ltd.

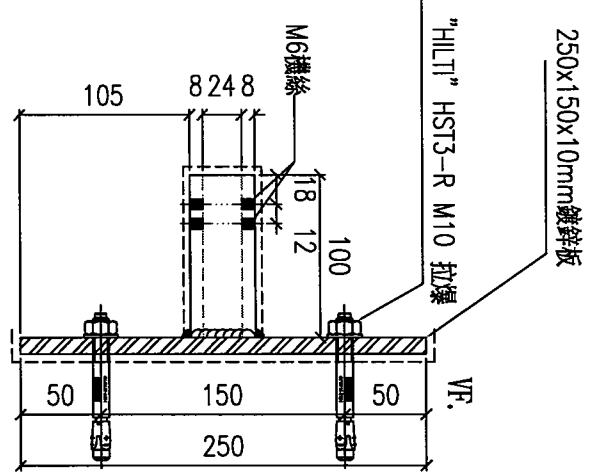
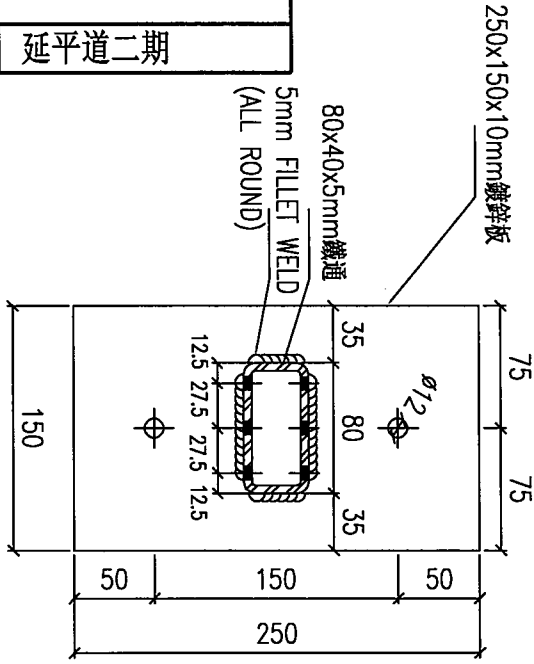
工程號

J-853

地盤

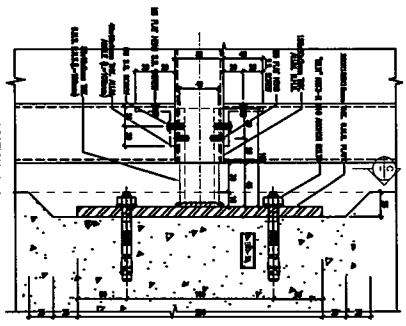
延平道二期

地盤用



物料編號	數量	樓層	施工圖位置	使用窗號	MIRROR	Facade
BK5-4R	1	1/F	1853-SD-HIW-2610	WF.23F		HOUSE A
BK5-4R	1	1/F	1853-SD-HIW-2610	WF.27F	MIRROR	HOUSE A
BK5-4R	1	1/F	1853-SD-HIW-2615	WF.31F		HOUSE A
BK5-4R	1	1/F	1853-SD-HIW-2615	WF.37F	MIRROR	HOUSE A
合計:	4					

安裝示意圖



名稱	鐵件拆圖	制圖	劉龍浩	2024. 4. 02	修改	
材料	80x40x5mm鐵通/250x150x10mm鐵板	復核	謝永林	2024. 4. 11	日期	
顏色	熱浸鋅/塗瀝青油	批准			圖號	BK5-4R



美特鋁質有限公司  
MIDI Aluminium Fabricator Ltd.

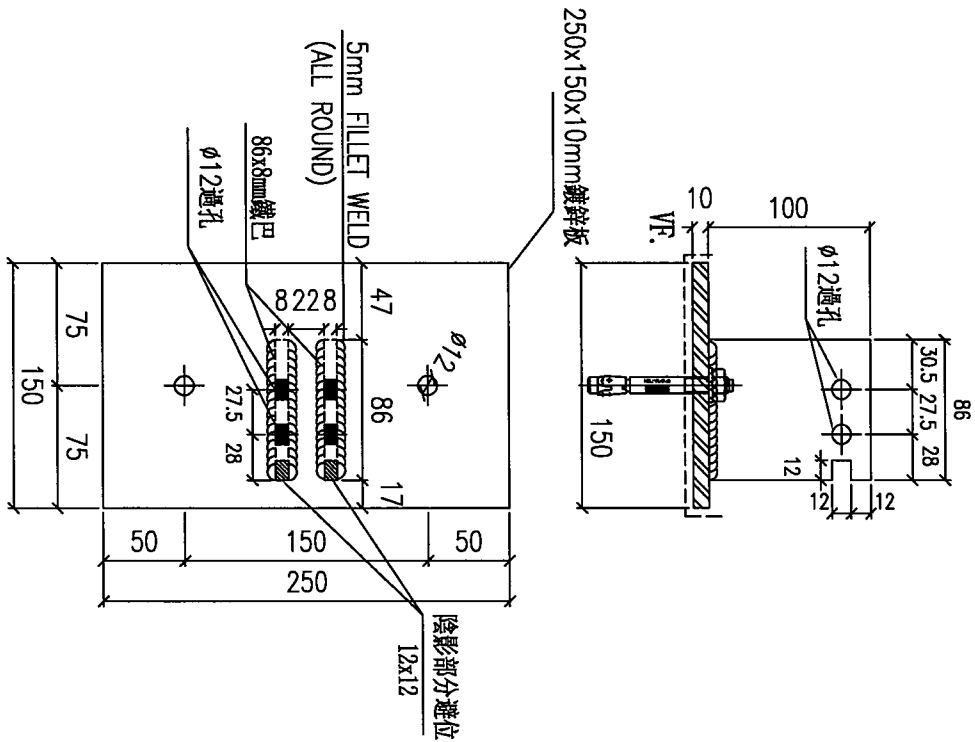
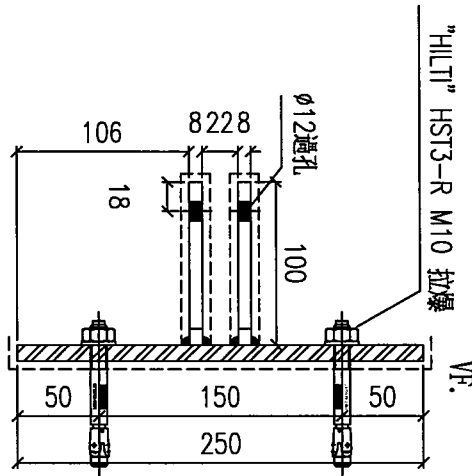
工程號

J-853

地盤

延平道二期

地盤用



物料編號	數量	樓層	施工圖位置	使用窗號	MIRROR	Facade
BK5-5	1	1/F	J853-SD-HIW-2612	WF.25F		
合計:	1					

名稱

鐵件拆圖

制圖

劉龍浩

2024. 4. 02

修改

材料

86x8mm鐵巴/250x150x10mm鐵板

復核

謝永林

2024. 4. 13

日期

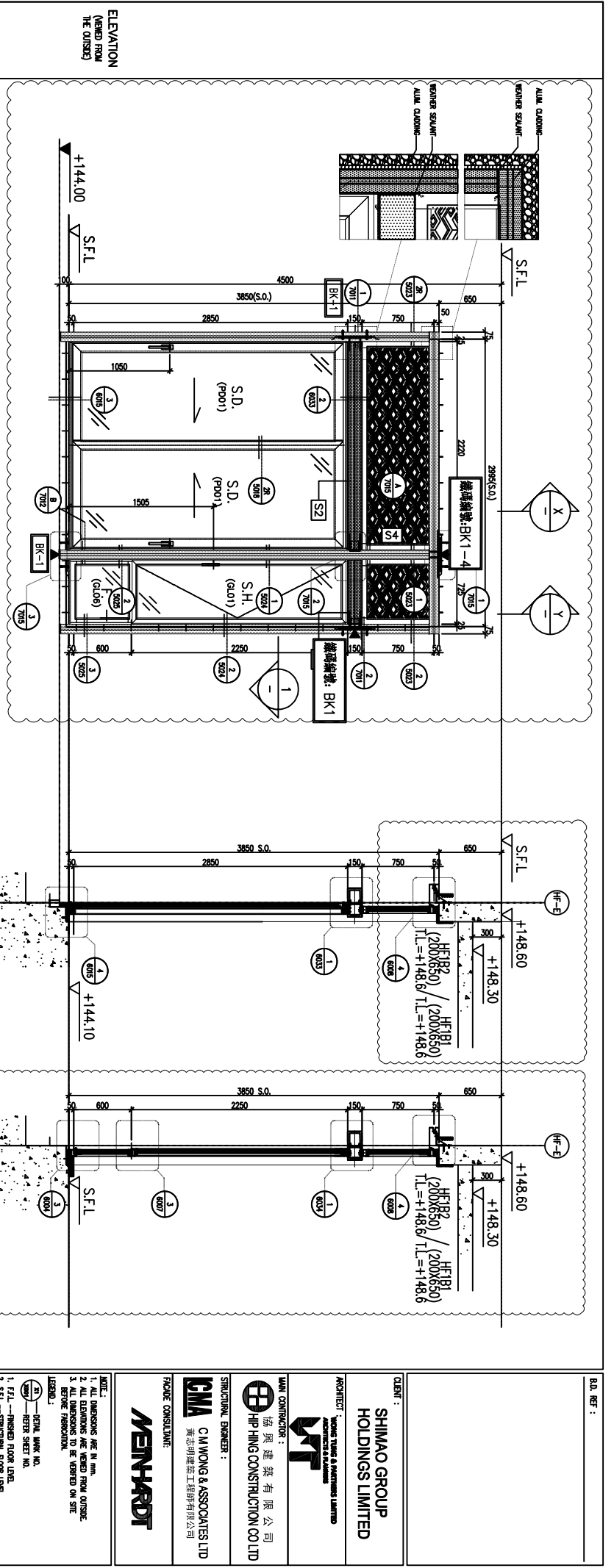
顏色

熱浸鋅/塗瀝青油

批准

圖號

BK5-5



WINDOW MARK	<b>F</b>	MIRROR
LOCATION	HOUSE TYPE F - G/F ENSUITE 2	HOUSE TYPE F - G/F DINING (HANDED)
MATERIALS	AL1	AL1
GLAZING	PD01, GL01, GL06	PD01, GL01, GL06
QUANTITY	1 NO. (HOUSE NO. HOUSE A)	1 NO. (HOUSE NO. HOUSE A)
HANDLES	2 NOS. OF "SCHUCO" HANDLE & 1 NO. HANDLE - MODEL NO. 2017-D2A	2 NOS. OF "SCHUCO" HANDLE & 1 NO. HANDLE - MODEL NO. 2017-D2A

GLAZING AREA	6.23	m <sup>2</sup>
OPENABLE AREA	3.82	m <sup>2</sup>
FREE AREA	-	%

LEGEND:	3mm THK ALUM. CLADDING
BK-1	300x300x10mm THK. GLASS. PANE / M ZONE "H" - INSET-TO INTO ANCHOR BOLTS
BK-2	300x300x10mm THK. GLASS. PANE / M ZONE "H" - INSET-TO INTO ANCHOR BOLTS
BK-3	300x300x10mm THK. GLASS. PANE / M ZONE "H" - INSET-TO INTO ANCHOR BOLTS
BK-4	300x300x10mm THK. GLASS. PANE / M ZONE "H" - INSET-TO INTO ANCHOR BOLTS
BK-5	300x300x10mm THK. GLASS. PANE / M ZONE "H" - INSET-TO INTO ANCHOR BOLTS
BK-6	300x300x10mm THK. GLASS. PANE / M ZONE "H" - INSET-TO INTO ANCHOR BOLTS
BK-7	400x300x10mm THK. GLASS. PANE / M ZONE "H" - INSET-TO INTO ANCHOR BOLTS

DATE:	30-MAR-23	SCALE:	1:40 (A3)												
DRAWN BY:	Ashing	CHECKED BY:													
TITLE:	IN-SITU ALUM. WINDOW SCHEDULE FOR HOUSE TYPE F														
PROJECT:	PROPOSED RESIDENTIAL DEVELOPMENT AT K.I.L.L. 6542 TIN HING ROAD KOWLOON														
JOB NO.:	J-653														
REV:	<table border="1"> <tr> <th>NO.</th> <th>DATE</th> <th>DESCRIPTION</th> </tr> <tr> <td>A</td> <td>04/09/2023</td> <td>GENERAL REVISED</td> </tr> <tr> <td>B</td> <td>13/11/2023</td> <td>GENERAL REVISED</td> </tr> <tr> <td>C</td> <td>15/03/2024</td> <td>REVISION SUBJECT TO ARCH'S COMMENT</td> </tr> </table>			NO.	DATE	DESCRIPTION	A	04/09/2023	GENERAL REVISED	B	13/11/2023	GENERAL REVISED	C	15/03/2024	REVISION SUBJECT TO ARCH'S COMMENT
NO.	DATE	DESCRIPTION													
A	04/09/2023	GENERAL REVISED													
B	13/11/2023	GENERAL REVISED													
C	15/03/2024	REVISION SUBJECT TO ARCH'S COMMENT													

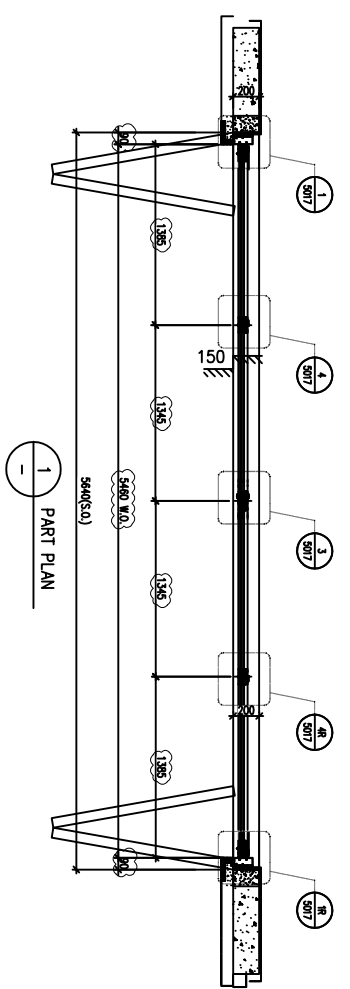
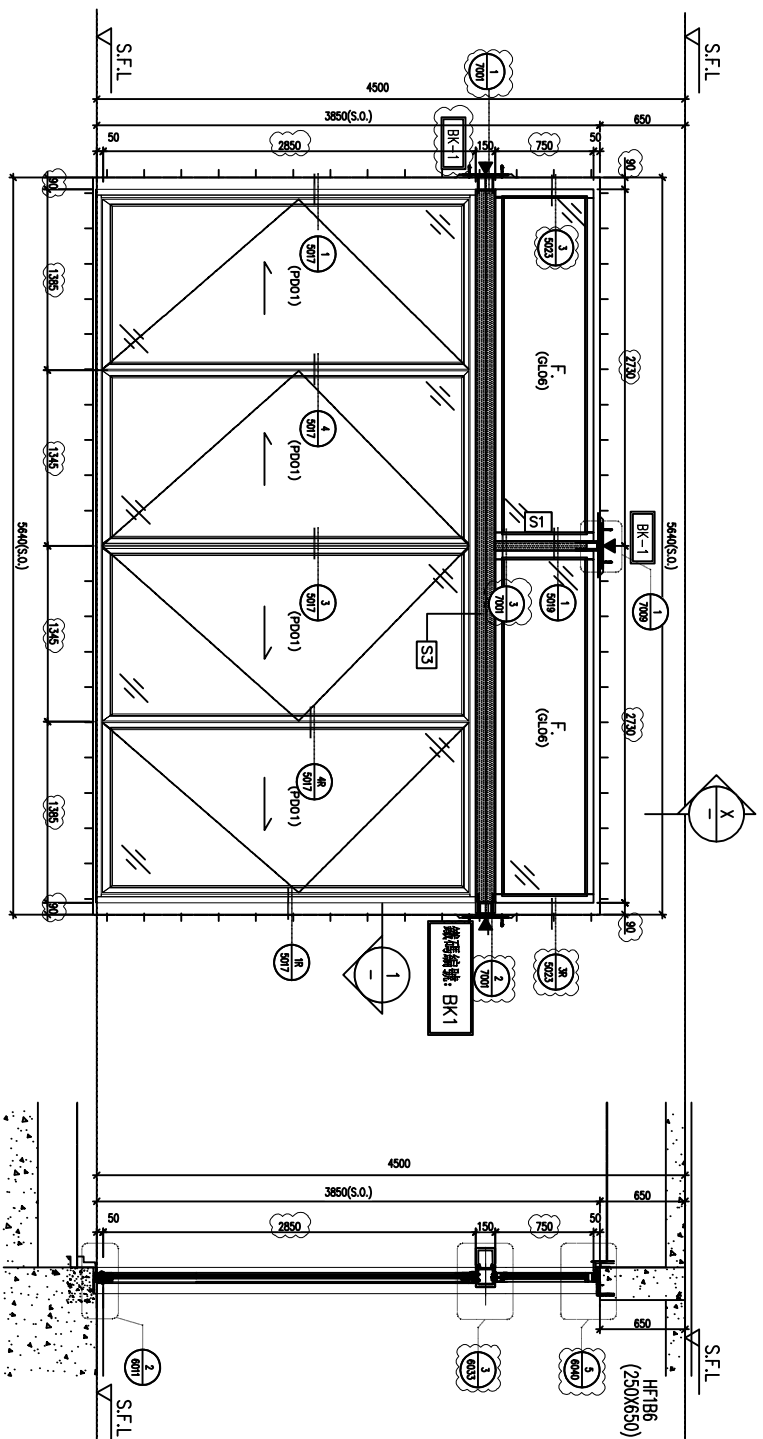
  

CLIENT:	SHIMAO GROUP HOLDINGS LIMITED
ARCHITECT:	WONG TUNG & PARTNERS LIMITED
MAIN CONTRACTOR:	協興建築有限公司 HIP HING CONSTRUCTION CO LTD
STRUCTURAL ENGINEER:	C M WONG & ASSOCIATES LTD 黃志明建築工程師有限公司
FAÇADE CONSULTANT:	MEYHARDT

NOTE:	<ol style="list-style-type: none"> <li>ALL DIMENSIONS ARE IN MM.</li> <li>ALL DIMENSIONS ARE MEASD FROM CURSE.</li> <li>ALL DIMENSIONS TO BE VERIFIED ON SITE BEFORE FABRICATION.</li> </ol>
LEGEND:	<ol style="list-style-type: none"> <li>— DETAIL MARK NO.</li> <li>— REFER SHEET NO.</li> <li>1, 1.1, 1.2 — FINISHED FLOOR LEVEL</li> <li>2, 2.1, 2.2 — STRUCTURE FLOOR LEVEL</li> <li>3, 3.1, 3.2 — FINISH LOCATION</li> <li>4, 4.1, 4.2 — FINISH LOCATION</li> <li>5. GLASS LEGEND</li> <li>6. GL01 — 12mm HC 151mm AIR SPACED DOUBLE GLAZING WITH 12mm CLEAR TREATED GLASS BY THE GLAZER</li> <li>6.01 — 12mm HC 151mm AIR SPACED DOUBLE GLAZING WITH 12mm CLEAR TREATED GLASS BY THE GLAZER</li> <li>6.02 — 12mm HC 151mm AIR SPACED DOUBLE GLAZING WITH 12mm CLEAR TREATED GLASS BY THE GLAZER</li> <li>7. S1] 200x300x10mm THK. GLASS. PANE</li> <li>S2] 200x300x10mm THK. GLASS. PANE</li> <li>S3] 200x300x10mm THK. GLASS. PANE</li> <li>S4] 200x300x10mm THK. GLASS. PANE</li> <li>S5] 200x300x10mm THK. GLASS. PANE</li> <li>S6] 200x300x10mm THK. GLASS. PANE</li> <li>S7] 200x300x10mm THK. GLASS. PANE</li> <li>S8] 200x300x10mm THK. GLASS. PANE</li> <li>S9] 200x300x10mm THK. GLASS. PANE</li> <li>S10] 200x300x10mm THK. GLASS. PANE</li> <li>S11] 200x300x10mm THK. GLASS. PANE</li> <li>S12] 200x300x10mm THK. GLASS. PANE</li> <li>S13] 200x300x10mm THK. GLASS. PANE</li> <li>S14] 200x300x10mm THK. GLASS. PANE</li> <li>S15] 200x300x10mm THK. GLASS. PANE</li> <li>S16] 200x300x10mm THK. GLASS. PANE</li> <li>S17] 200x300x10mm THK. GLASS. PANE</li> <li>S18] 200x300x10mm THK. GLASS. PANE</li> <li>S19] 200x300x10mm THK. GLASS. PANE</li> <li>S20] 200x300x10mm THK. GLASS. PANE</li> <li>S21] 200x300x10mm THK. GLASS. PANE</li> <li>S22] 200x300x10mm THK. GLASS. PANE</li> <li>S23] 200x300x10mm THK. GLASS. PANE</li> <li>S24] 200x300x10mm THK. GLASS. PANE</li> <li>S25] 200x300x10mm THK. GLASS. PANE</li> <li>S26] 200x300x10mm THK. GLASS. PANE</li> <li>S27] 200x300x10mm THK. GLASS. PANE</li> <li>S28] 200x300x10mm THK. GLASS. PANE</li> <li>S29] 200x300x10mm THK. GLASS. PANE</li> <li>S30] 200x300x10mm THK. GLASS. PANE</li> <li>S31] 200x300x10mm THK. GLASS. PANE</li> <li>S32] 200x300x10mm THK. GLASS. PANE</li> <li>S33] 200x300x10mm THK. GLASS. PANE</li> <li>S34] 200x300x10mm THK. GLASS. PANE</li> <li>S35] 200x300x10mm THK. GLASS. PANE</li> <li>S36] 200x300x10mm THK. GLASS. PANE</li> <li>S37] 200x300x10mm THK. GLASS. PANE</li> <li>S38] 200x300x10mm THK. GLASS. PANE</li> <li>S39] 200x300x10mm THK. GLASS. PANE</li> <li>S40] 200x300x10mm THK. GLASS. PANE</li> <li>S41] 200x300x10mm THK. GLASS. PANE</li> <li>S42] 200x300x10mm THK. GLASS. PANE</li> <li>S43] 200x300x10mm THK. GLASS. PANE</li> <li>S44] 200x300x10mm THK. GLASS. PANE</li> <li>S45] 200x300x10mm THK. GLASS. PANE</li> <li>S46] 200x300x10mm THK. GLASS. PANE</li> <li>S47] 200x300x10mm THK. GLASS. PANE</li> <li>S48] 200x300x10mm THK. GLASS. PANE</li> <li>S49] 200x300x10mm THK. GLASS. PANE</li> <li>S50] 200x300x10mm THK. GLASS. PANE</li> <li>S51] 200x300x10mm THK. GLASS. PANE</li> <li>S52] 200x300x10mm THK. GLASS. PANE</li> <li>S53] 200x300x10mm THK. GLASS. PANE</li> <li>S54] 200x300x10mm THK. GLASS. PANE</li> <li>S55] 200x300x10mm THK. GLASS. PANE</li> <li>S56] 200x300x10mm THK. GLASS. PANE</li> <li>S57] 200x300x10mm THK. GLASS. PANE</li> <li>S58] 200x300x10mm THK. GLASS. PANE</li> <li>S59] 200x300x10mm THK. GLASS. PANE</li> <li>S60] 200x300x10mm THK. GLASS. PANE</li> <li>S61] 200x300x10mm THK. GLASS. PANE</li> <li>S62] 200x300x10mm THK. GLASS. PANE</li> <li>S63] 200x300x10mm THK. GLASS. PANE</li> <li>S64] 200x300x10mm THK. GLASS. PANE</li> <li>S65] 200x300x10mm THK. GLASS. PANE</li> <li>S66] 200x300x10mm THK. GLASS. PANE</li> <li>S67] 200x300x10mm THK. GLASS. PANE</li> <li>S68] 200x300x10mm THK. GLASS. PANE</li> <li>S69] 200x300x10mm THK. GLASS. PANE</li> <li>S70] 200x300x10mm THK. GLASS. PANE</li> <li>S71] 200x300x10mm THK. GLASS. PANE</li> <li>S72] 200x300x10mm THK. GLASS. PANE</li> <li>S73] 200x300x10mm THK. GLASS. PANE</li> <li>S74] 200x300x10mm THK. GLASS. PANE</li> <li>S75] 200x300x10mm THK. GLASS. PANE</li> <li>S76] 200x300x10mm THK. GLASS. PANE</li> <li>S77] 200x300x10mm THK. GLASS. PANE</li> <li>S78] 200x300x10mm THK. GLASS. PANE</li> <li>S79] 200x300x10mm THK. GLASS. PANE</li> <li>S80] 200x300x10mm THK. GLASS. PANE</li> <li>S81] 200x300x10mm THK. GLASS. PANE</li> <li>S82] 200x300x10mm THK. GLASS. PANE</li> <li>S83] 200x300x10mm THK. GLASS. PANE</li> <li>S84] 200x300x10mm THK. GLASS. PANE</li> <li>S85] 200x300x10mm THK. GLASS. PANE</li> <li>S86] 200x300x10mm THK. GLASS. PANE</li> <li>S87] 200x300x10mm THK. GLASS. PANE</li> <li>S88] 200x300x10mm THK. GLASS. PANE</li> <li>S89] 200x300x10mm THK. GLASS. PANE</li> <li>S90] 200x300x10mm THK. GLASS. PANE</li> <li>S91] 200x300x10mm THK. GLASS. PANE</li> <li>S92] 200x300x10mm THK. GLASS. PANE</li> <li>S93] 200x300x10mm THK. GLASS. PANE</li> <li>S94] 200x300x10mm THK. GLASS. PANE</li> <li>S95] 200x300x10mm THK. GLASS. PANE</li> <li>S96] 200x300x10mm THK. GLASS. PANE</li> <li>S97] 200x300x10mm THK. GLASS. PANE</li> <li>S98] 200x300x10mm THK. GLASS. PANE</li> <li>S99] 200x300x10mm THK. GLASS. PANE</li> <li>S100] 200x300x10mm THK. GLASS. PANE</li> </ol>





STONE CLADDING FINISH

PROVIDED	
GLAZING AREA	16.07 m <sup>2</sup>
OPENABLE AREA	13.92 m <sup>2</sup>
FREE AREA	- %

LEGEND	DESCRIPTION
BK-1	3mm THK ALUM. CLADDING
BK-2	300x300x10mm THK. GLASS PLATE / M
BK-3	200x200x10mm THK. GLASS PLATE / M
BK-4	200x200x10mm THK. GLASS PLATE / M
BK-5	200x200x10mm THK. GLASS PLATE / M
BK-6	200x200x10mm THK. GLASS PLATE / M
BK-7	200x200x10mm THK. GLASS PLATE / M

WINDOW MARK	W-1
LOCATION	HOUSE TYPE F - G/F LIVING
MATERIALS	AL1
GLAZING	G106, P001
QUANTITY	1 No. (HOUSE NO. HOUSE A)
HANDLES	2 NOS. OF "SCHUCO" HANDLE - MODEL NO. 247224

ELEVATION (VIEWED FROM THE CURSE)

B.O. REF :

CLIENT : SHIMAO GROUP HOLDINGS LIMITED

MAIN CONTRACTOR : 協興建築有限公司  
HIP HING CONSTRUCTION CO LTD

STRUCTURAL ENGINEER : C M WONG & ASSOCIATES LTD  
黃志明建築工程師有限公司

FACE CONSULTANT : MENHARDT

NOTE: DIMENSIONS ARE IN MM.  
1. ALL DIMENSIONS ARE MEASURED FROM CURSE.  
2. ALL DIMENSIONS TO BE VERIFIED ON SITE BEFORE FABRICATION.  
LEGEND:  
① - DETAIL MARK NO.  
② - REFER SHEET NO.  
③ - FINISHED FLOOR LEVEL  
④ - STRUCTURE FLOOR LEVEL  
⑤ - FINISH FLOOR LEVEL  
⑥ - FINISH LOCATION  
⑦ - FINISH LOCATION  
⑧ - FINISH LOCATION  
⑨ - FINISH LOCATION  
⑩ - FINISH LOCATION  
⑪ - FINISH LOCATION  
⑫ - FINISH LOCATION  
⑬ - FINISH LOCATION  
⑭ - FINISH LOCATION  
⑮ - FINISH LOCATION  
⑯ - FINISH LOCATION  
⑰ - FINISH LOCATION  
⑱ - FINISH LOCATION  
⑲ - FINISH LOCATION  
⑳ - FINISH LOCATION  
㉑ - FINISH LOCATION  
㉒ - FINISH LOCATION  
㉓ - FINISH LOCATION  
㉔ - FINISH LOCATION  
㉕ - FINISH LOCATION  
㉖ - FINISH LOCATION  
㉗ - FINISH LOCATION  
㉘ - FINISH LOCATION  
㉙ - FINISH LOCATION  
㉚ - FINISH LOCATION  
㉛ - FINISH LOCATION  
㉜ - FINISH LOCATION  
㉝ - FINISH LOCATION  
㉞ - FINISH LOCATION  
㉟ - FINISH LOCATION  
㊱ - FINISH LOCATION  
㊲ - FINISH LOCATION  
㊳ - FINISH LOCATION  
㊴ - FINISH LOCATION  
㊵ - FINISH LOCATION  
㊶ - FINISH LOCATION  
㊷ - FINISH LOCATION  
㊸ - FINISH LOCATION  
㊹ - FINISH LOCATION  
㊺ - FINISH LOCATION  
㊻ - FINISH LOCATION  
㊼ - FINISH LOCATION  
㊽ - FINISH LOCATION  
㊾ - FINISH LOCATION  
㊿ - FINISH LOCATION













B.O. REF :

CLIENT : SHIMAO GROUP HOLDINGS LIMITED

PROJECT : WANG TAI & PARTNERS LIMITED  
MAIN CONTRACTOR : 協興建築有限公司  
HIP HING CONSTRUCTION CO LTD

STRUCTURAL ENGINEER : C M WONG & ASSOCIATES LTD  
黃志明建築工程師有限公司

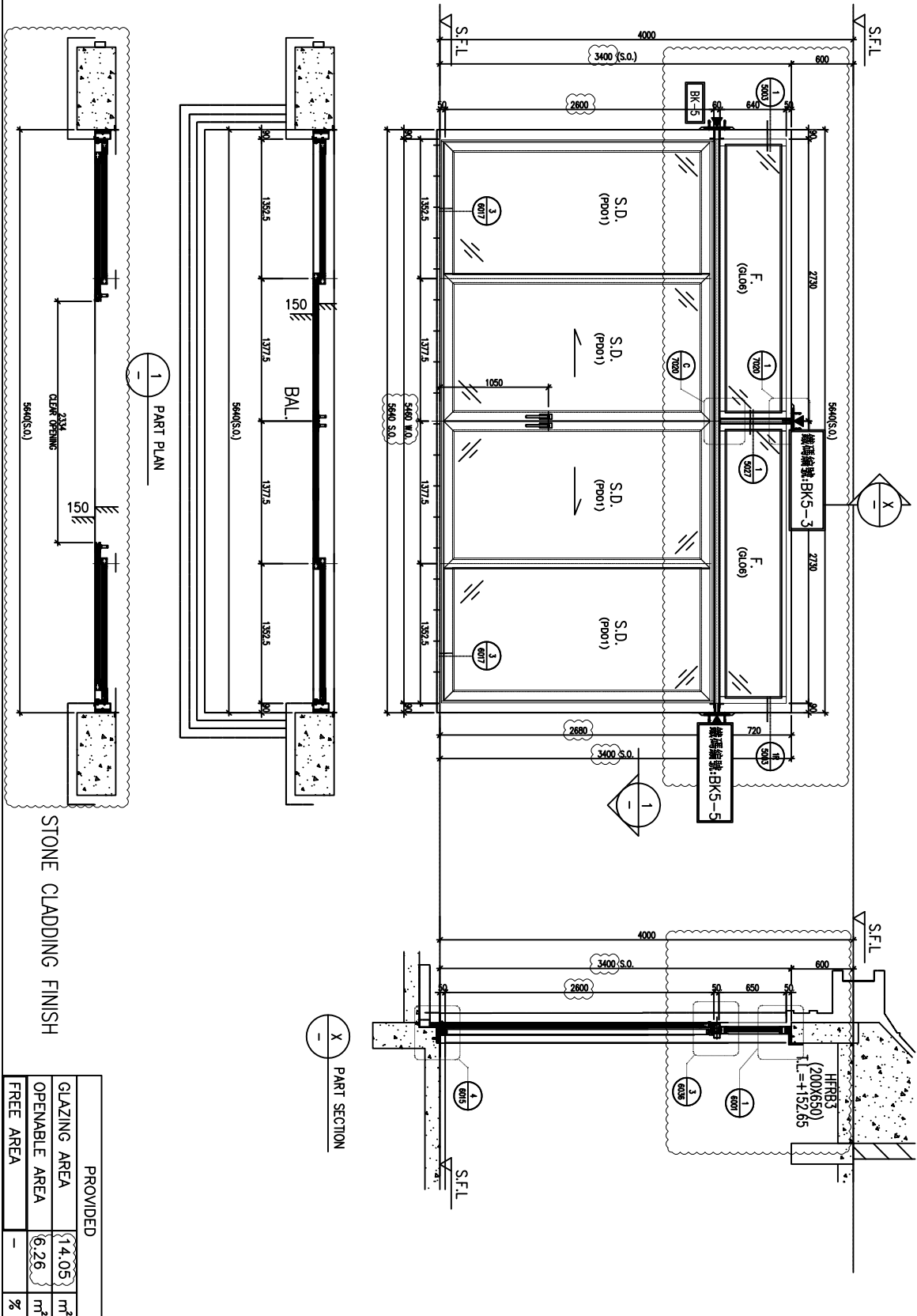
FAÇADE CONSULTANT :

MEYHARDT

NOTE : DIMENSIONS ARE IN mm.  
1. ALL DIMENSIONS ARE MEASD FROM OUTSIDE.  
2. ALL DIMENSIONS TO BE VERIFIED ON SITE BEFORE FABRICATION.

LEGEND :

- 1. F.F.L. - FINISHED FLOOR LEVEL
- 2. S.F.L. - FINISHED FLOOR LEVEL
- 3. - FINISH LOCATION
- 4. - FINISH LOCATION
- 5. GLASS LEGEND
- 6. GL01 - 12mm HC, 115mm AIR GAP, 12mm TP THE GLAZ. GL02 - 12mm HC, 12mm CLEAR THERMO GLASS TP THE GLAZ. GL03 - 12mm HC, 12mm AIR GAP, 12mm TP THE GLAZ.
- 7. S1] - 200x200mm THE GLAZ. F.H.S.
- 8. S2] - 200x200mm THE GLAZ. F.H.S.
- 9. S3] - 200x200mm THE GLAZ. F.H.S.
- 10. S4] - 200x200mm THE GLAZ. F.H.S.
- 11. S5] - 200x200mm THE GLAZ. F.H.S.
- 12. S6] - 200x200mm THE GLAZ. F.H.S.
- 13. S7] - 200x200mm THE GLAZ. F.H.S.
- 14. S8] - 200x200mm THE GLAZ. F.H.S.
- 15. S9] - 200x200mm THE GLAZ. F.H.S.
- 16. S10] - 200x200mm THE GLAZ. F.H.S.
- 17. S11] - 200x200mm THE GLAZ. F.H.S.
- 18. S12] - 200x200mm THE GLAZ. F.H.S.
- 19. S13] - 200x200mm THE GLAZ. F.H.S.
- 20. S14] - 200x200mm THE GLAZ. F.H.S.
- 21. S15] - 200x200mm THE GLAZ. F.H.S.
- 22. S16] - 200x200mm THE GLAZ. F.H.S.
- 23. S17] - 200x200mm THE GLAZ. F.H.S.
- 24. S18] - 200x200mm THE GLAZ. F.H.S.
- 25. S19] - 200x200mm THE GLAZ. F.H.S.
- 26. S20] - 200x200mm THE GLAZ. F.H.S.
- 27. S21] - 200x200mm THE GLAZ. F.H.S.
- 28. S22] - 200x200mm THE GLAZ. F.H.S.
- 29. S23] - 200x200mm THE GLAZ. F.H.S.
- 30. S24] - 200x200mm THE GLAZ. F.H.S.
- 31. S25] - 200x200mm THE GLAZ. F.H.S.
- 32. S26] - 200x200mm THE GLAZ. F.H.S.
- 33. S27] - 200x200mm THE GLAZ. F.H.S.
- 34. S28] - 200x200mm THE GLAZ. F.H.S.
- 35. S29] - 200x200mm THE GLAZ. F.H.S.
- 36. S30] - 200x200mm THE GLAZ. F.H.S.
- 37. S31] - 200x200mm THE GLAZ. F.H.S.
- 38. S32] - 200x200mm THE GLAZ. F.H.S.
- 39. S33] - 200x200mm THE GLAZ. F.H.S.
- 40. S34] - 200x200mm THE GLAZ. F.H.S.
- 41. S35] - 200x200mm THE GLAZ. F.H.S.
- 42. S36] - 200x200mm THE GLAZ. F.H.S.
- 43. S37] - 200x200mm THE GLAZ. F.H.S.
- 44. S38] - 200x200mm THE GLAZ. F.H.S.
- 45. S39] - 200x200mm THE GLAZ. F.H.S.
- 46. S40] - 200x200mm THE GLAZ. F.H.S.
- 47. S41] - 200x200mm THE GLAZ. F.H.S.
- 48. S42] - 200x200mm THE GLAZ. F.H.S.
- 49. S43] - 200x200mm THE GLAZ. F.H.S.
- 50. S44] - 200x200mm THE GLAZ. F.H.S.
- 51. S45] - 200x200mm THE GLAZ. F.H.S.
- 52. S46] - 200x200mm THE GLAZ. F.H.S.
- 53. S47] - 200x200mm THE GLAZ. F.H.S.
- 54. S48] - 200x200mm THE GLAZ. F.H.S.
- 55. S49] - 200x200mm THE GLAZ. F.H.S.
- 56. S50] - 200x200mm THE GLAZ. F.H.S.
- 57. S51] - 200x200mm THE GLAZ. F.H.S.
- 58. S52] - 200x200mm THE GLAZ. F.H.S.
- 59. S53] - 200x200mm THE GLAZ. F.H.S.
- 60. S54] - 200x200mm THE GLAZ. F.H.S.
- 61. S55] - 200x200mm THE GLAZ. F.H.S.
- 62. S56] - 200x200mm THE GLAZ. F.H.S.
- 63. S57] - 200x200mm THE GLAZ. F.H.S.
- 64. S58] - 200x200mm THE GLAZ. F.H.S.
- 65. S59] - 200x200mm THE GLAZ. F.H.S.
- 66. S60] - 200x200mm THE GLAZ. F.H.S.
- 67. S61] - 200x200mm THE GLAZ. F.H.S.
- 68. S62] - 200x200mm THE GLAZ. F.H.S.
- 69. S63] - 200x200mm THE GLAZ. F.H.S.
- 70. S64] - 200x200mm THE GLAZ. F.H.S.
- 71. S65] - 200x200mm THE GLAZ. F.H.S.
- 72. S66] - 200x200mm THE GLAZ. F.H.S.
- 73. S67] - 200x200mm THE GLAZ. F.H.S.
- 74. S68] - 200x200mm THE GLAZ. F.H.S.
- 75. S69] - 200x200mm THE GLAZ. F.H.S.
- 76. S70] - 200x200mm THE GLAZ. F.H.S.
- 77. S71] - 200x200mm THE GLAZ. F.H.S.
- 78. S72] - 200x200mm THE GLAZ. F.H.S.
- 79. S73] - 200x200mm THE GLAZ. F.H.S.
- 80. S74] - 200x200mm THE GLAZ. F.H.S.
- 81. S75] - 200x200mm THE GLAZ. F.H.S.
- 82. S76] - 200x200mm THE GLAZ. F.H.S.
- 83. S77] - 200x200mm THE GLAZ. F.H.S.
- 84. S78] - 200x200mm THE GLAZ. F.H.S.
- 85. S79] - 200x200mm THE GLAZ. F.H.S.
- 86. S80] - 200x200mm THE GLAZ. F.H.S.
- 87. S81] - 200x200mm THE GLAZ. F.H.S.
- 88. S82] - 200x200mm THE GLAZ. F.H.S.
- 89. S83] - 200x200mm THE GLAZ. F.H.S.
- 90. S84] - 200x200mm THE GLAZ. F.H.S.
- 91. S85] - 200x200mm THE GLAZ. F.H.S.
- 92. S86] - 200x200mm THE GLAZ. F.H.S.
- 93. S87] - 200x200mm THE GLAZ. F.H.S.
- 94. S88] - 200x200mm THE GLAZ. F.H.S.
- 95. S89] - 200x200mm THE GLAZ. F.H.S.
- 96. S90] - 200x200mm THE GLAZ. F.H.S.
- 97. S91] - 200x200mm THE GLAZ. F.H.S.
- 98. S92] - 200x200mm THE GLAZ. F.H.S.
- 99. S93] - 200x200mm THE GLAZ. F.H.S.
- 100. S94] - 200x200mm THE GLAZ. F.H.S.
- 101. S95] - 200x200mm THE GLAZ. F.H.S.
- 102. S96] - 200x200mm THE GLAZ. F.H.S.
- 103. S97] - 200x200mm THE GLAZ. F.H.S.
- 104. S98] - 200x200mm THE GLAZ. F.H.S.
- 105. S99] - 200x200mm THE GLAZ. F.H.S.
- 106. S100] - 200x200mm THE GLAZ. F.H.S.



PROVIDED

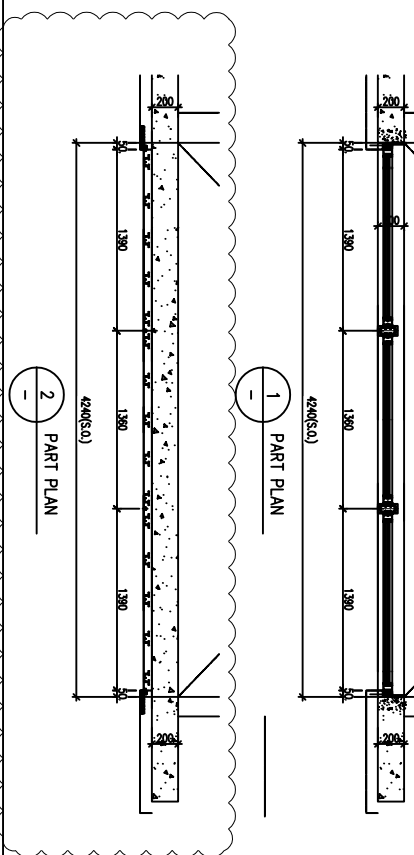
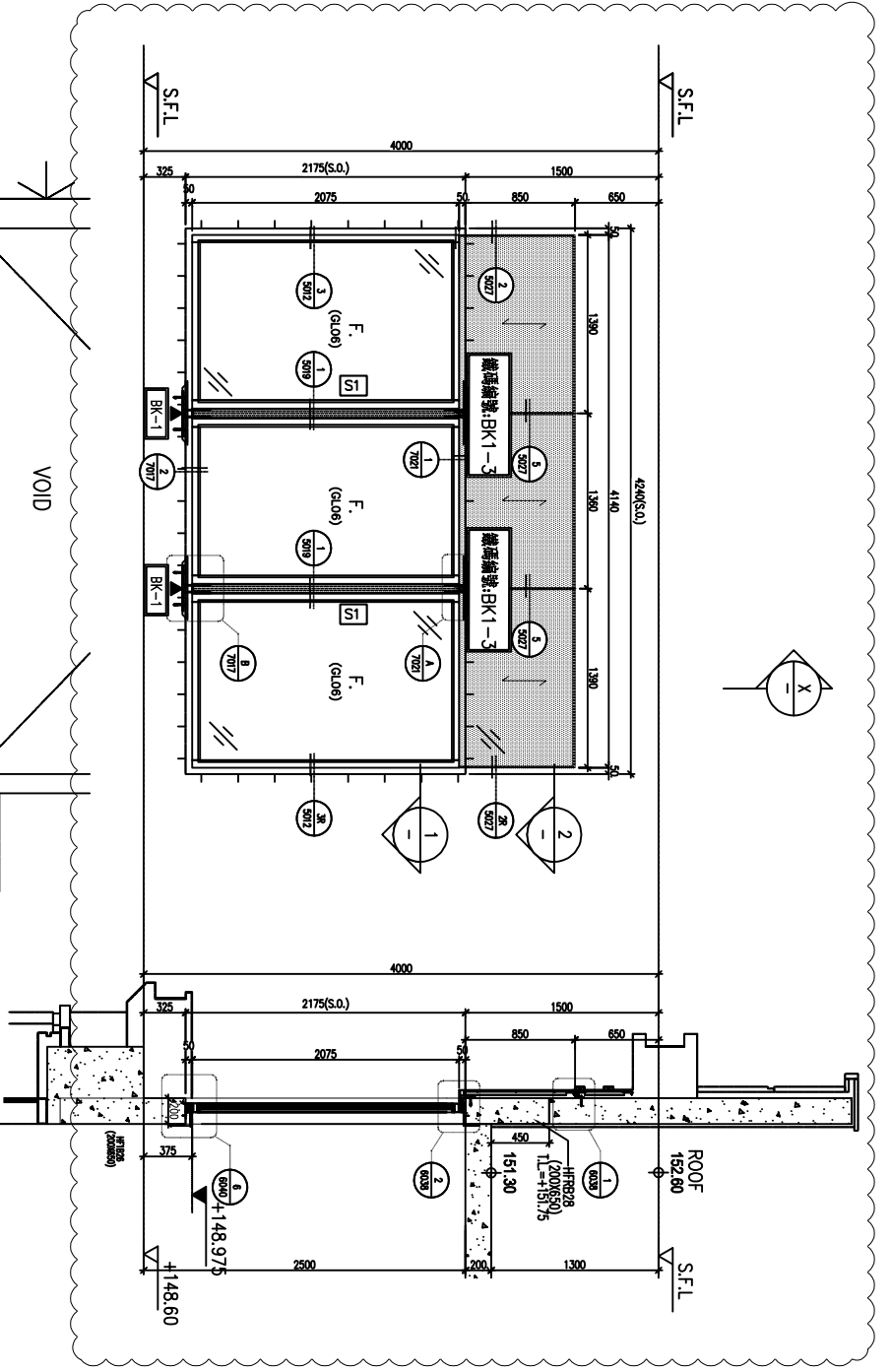
GLAZING AREA	14.05	m <sup>2</sup>
OPENABLE AREA	6.26	m <sup>2</sup>
FREE AREA	-	%

STONE CLADDING FINISH

WINDOW MARK	1-7
LOCATION	HOUSE TYPE F - 1/F MASTER ENSUITE
MATERIALS	AL1
GLAZING	PD01, GLO6
QUANTITY	1 No. (HOUSE NO. HOUSE A)
HANDLES	2 NOS. OF "SCHUCO" HANDLE - MODEL NO. 247224



ELEVATION  
(VIEWED FROM  
THE CURSE)



STONE CLADDING FINISH

PROVIDED	
GLAZING AREA	7.06 m <sup>2</sup>
OPENABLE AREA	- m <sup>2</sup>
FREE AREA	%

LEGEND:	3mm THK ALUM. CLADDING
BK-1	300x300x10mm THK. GLASS. PLATE / M Zone "H1" HST-R INTO ANCHOR BOLTS
BK-2	300x300x10mm THK. GLASS. PLATE / M Zone "H2" HST-R INTO ANCHOR BOLTS
BK-3	300x300x10mm THK. GLASS. PLATE / M Zone "H3" HST-R INTO ANCHOR BOLTS
BK-4	300x300x10mm THK. GLASS. PLATE / M Zone "H4" HST-R INTO ANCHOR BOLTS
BK-5	300x300x10mm THK. GLASS. PLATE / M Zone "H5" HST-R INTO ANCHOR BOLTS
BK-6	300x300x10mm THK. GLASS. PLATE / M Zone "H6" HST-R INTO ANCHOR BOLTS
BK-7	300x300x10mm THK. GLASS. PLATE / M Zone "H7" HST-R INTO ANCHOR BOLTS

DATE: 30-MAR-23	SCALE: 1:40 (A3)
DRAWN BY: Aching	CHECKED BY:
<b>TITLE:</b> IN-SITU ALUM. WINDOW SCHEDULE FOR HOUSE TYPE F	
<b>PROJECT:</b> PROPOSED RESIDENTIAL DEVELOPMENT AT N.K.I.L.D. 6542 TIN PING ROAD KOWLOON	
<b>JOB NO.:</b> J-553	<b>DATE:</b> 13/03/2024 (REVISION SUBJECT TO ARCH'S COMMENT)
<b>DATE:</b> 04/09/2023 (GENERAL REVISION)	<b>DATE:</b> 04/09/2023 (GENERAL REVISION)

**CLIENT:**  
 SHIMAO GROUP HOLDINGS LIMITED

**ARCHITECT:**  
 WONG TUNG & PARTNERS LIMITED

**MAIN CONTRACTOR:**  
 協興建築有限公司  
 HIP HING CONSTRUCTION CO LTD

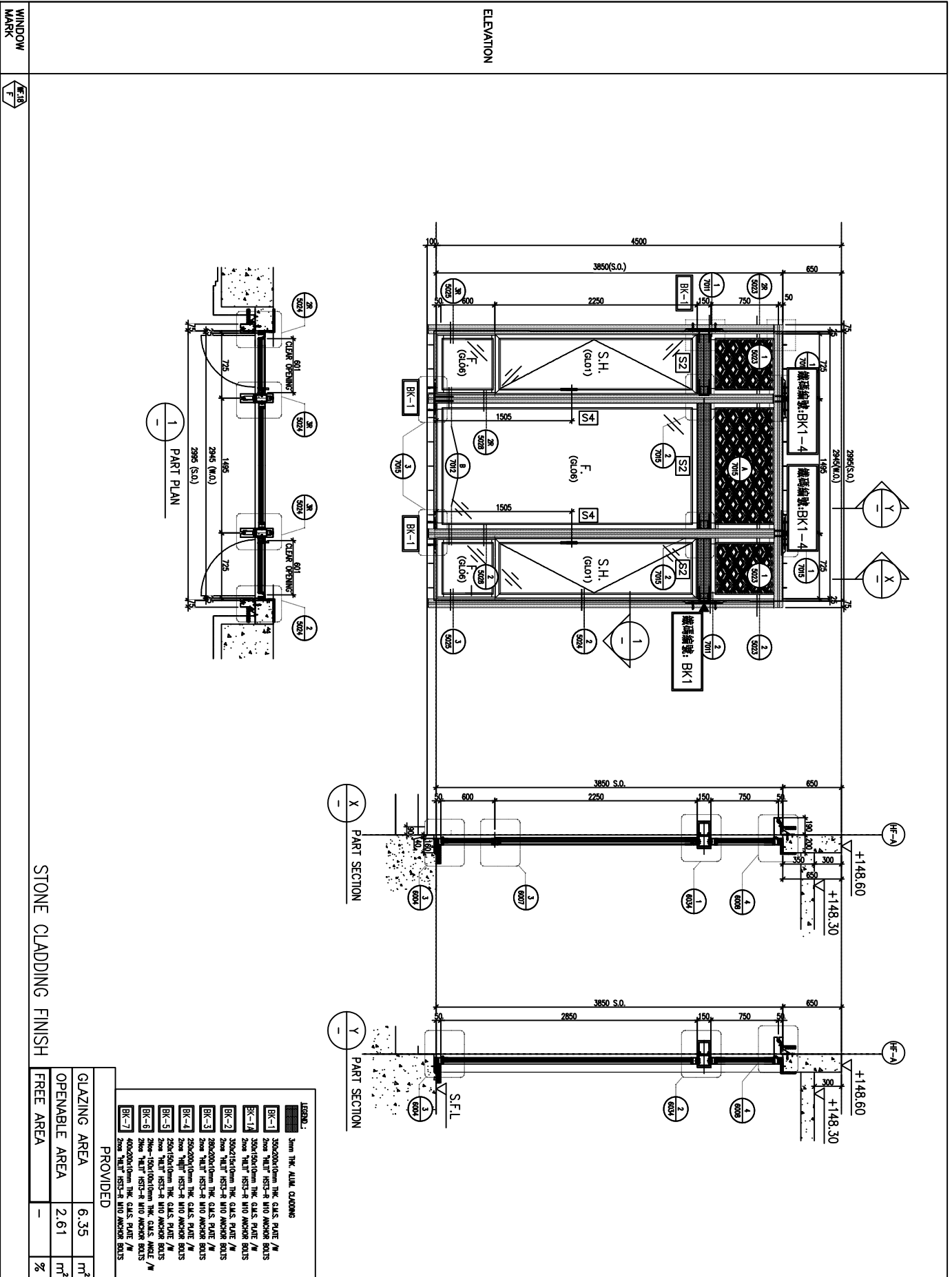
**STRUCTURAL ENGINEER:**  
 C M WONG & ASSOCIATES LTD  
 黃志明建築工程師有限公司

**FAÇADE CONSULTANT:**  
 MENHARDT

**BO. REF.:**

WINDOW MARK	1-7
LOCATION	HOUSE TYPE F - 1/F STAIRCASE
MATERIALS	ALU
GLAZING	GL06
QUANTITY	1 No. (HOUSE NO. HOUSE A)
HANDLES	-

WINDOW MARK	HOUSE TYPE F - G/F STUDY ROOM
LOCATION	AL1
MATERIALS	PD01, GL01, GL06
QUANTITY	1 No. (HOUSE NO. HOUSE A)
HANDLES	2 NOS. OF HANDLE - MODEL NO. 2017-D2A



STONE CLADDING FINISH

PROVIDED	
GLAZING AREA	6.35 m <sup>2</sup>
OPENABLE AREA	2.61 m <sup>2</sup>
FREE AREA	%

LEGEND:

- BK-1 3mm THK ALUM. CLADDING
- BK-2 300x300x10mm THK. GLASS PLATE / M
- BK-3 200x150x10mm THK. GLASS PLATE / M
- BK-4 200x150x10mm THK. GLASS PLATE / M
- BK-5 200x150x10mm THK. GLASS PLATE / M
- BK-6 200x150x10mm THK. GLASS PLATE / M
- BK-7 400x200x10mm THK. GLASS PLATE / M

B.O. REF: -

CLIENT: SHIMAO GROUP HOLDINGS LIMITED

ARCHITECT: WONG TUNG & PARTNERS LIMITED

MAIN CONTRACTOR: 協興建築有限公司  
HIP HING CONSTRUCTION CO LTD

STRUCTURAL ENGINEER: C M WONG & ASSOCIATES LTD  
黃志明建築工程師有限公司

FAÇADE CONSULTANT: MENHARDT

DATE: 15/03/2024  
JOB NO.: J-653  
PROJECT: PROPOSED RESIDENTIAL DEVELOPMENT AT N.K.I.L. 6542 TIN PING ROAD KOWLOON

DATE: 30-MAR-23 SCALE: 1:40 (A3)  
DRAWN BY: Aching CHECKED BY:

1. ALL DIMENSIONS ARE IN MM.  
2. ALL DIMENSIONS ARE ROUNDED UP TO NEAREST 5MM.  
3. ALL DIMENSIONS TO BE VERIFIED ON SITE BEFORE FABRICATION.

LEGEND:  
- DETAIL MARK NO.  
- REFER SHEET NO.  
1. F.F.L. - FINISHED FLOOR LEVEL  
2. S.F.L. - FINISHED FLOOR LEVEL  
3. - FINISHED FLOOR LEVEL  
4. - FINISH LOCATION  
5. GLASS LEGEND  
6. GL01 - 12mm HS 415mm DR. EQUIPMENT TP THK. GLASS  
GL02 - 12mm HS 415mm DR. EQUIPMENT TP THK. GLASS  
GL03 - 12mm HS 415mm DR. EQUIPMENT TP THK. GLASS  
GL04 - 12mm HS 415mm DR. EQUIPMENT TP THK. GLASS  
GL05 - 12mm HS 415mm DR. EQUIPMENT TP THK. GLASS  
GL06 - 12mm HS 415mm DR. EQUIPMENT TP THK. GLASS  
GL07 - 12mm HS 415mm DR. EQUIPMENT TP THK. GLASS  
GL08 - 12mm HS 415mm DR. EQUIPMENT TP THK. GLASS  
GL09 - 12mm HS 415mm DR. EQUIPMENT TP THK. GLASS  
GL10 - 12mm HS 415mm DR. EQUIPMENT TP THK. GLASS  
GL11 - 12mm HS 415mm DR. EQUIPMENT TP THK. GLASS  
GL12 - 12mm HS 415mm DR. EQUIPMENT TP THK. GLASS  
GL13 - 12mm HS 415mm DR. EQUIPMENT TP THK. GLASS  
GL14 - 12mm HS 415mm DR. EQUIPMENT TP THK. GLASS  
GL15 - 12mm HS 415mm DR. EQUIPMENT TP THK. GLASS  
GL16 - 12mm HS 415mm DR. EQUIPMENT TP THK. GLASS  
GL17 - 12mm HS 415mm DR. EQUIPMENT TP THK. GLASS  
GL18 - 12mm HS 415mm DR. EQUIPMENT TP THK. GLASS  
GL19 - 12mm HS 415mm DR. EQUIPMENT TP THK. GLASS  
GL20 - 12mm HS 415mm DR. EQUIPMENT TP THK. GLASS  
GL21 - 12mm HS 415mm DR. EQUIPMENT TP THK. GLASS  
GL22 - 12mm HS 415mm DR. EQUIPMENT TP THK. GLASS  
GL23 - 12mm HS 415mm DR. EQUIPMENT TP THK. GLASS  
GL24 - 12mm HS 415mm DR. EQUIPMENT TP THK. GLASS  
GL25 - 12mm HS 415mm DR. EQUIPMENT TP THK. GLASS  
GL26 - 12mm HS 415mm DR. EQUIPMENT TP THK. GLASS  
GL27 - 12mm HS 415mm DR. EQUIPMENT TP THK. GLASS  
GL28 - 12mm HS 415mm DR. EQUIPMENT TP THK. GLASS  
GL29 - 12mm HS 415mm DR. EQUIPMENT TP THK. GLASS  
GL30 - 12mm HS 415mm DR. EQUIPMENT TP THK. GLASS  
GL31 - 12mm HS 415mm DR. EQUIPMENT TP THK. GLASS  
GL32 - 12mm HS 415mm DR. EQUIPMENT TP THK. GLASS  
GL33 - 12mm HS 415mm DR. EQUIPMENT TP THK. GLASS  
GL34 - 12mm HS 415mm DR. EQUIPMENT TP THK. GLASS  
GL35 - 12mm HS 415mm DR. EQUIPMENT TP THK. GLASS  
GL36 - 12mm HS 415mm DR. EQUIPMENT TP THK. GLASS  
GL37 - 12mm HS 415mm DR. EQUIPMENT TP THK. GLASS  
GL38 - 12mm HS 415mm DR. EQUIPMENT TP THK. GLASS  
GL39 - 12mm HS 415mm DR. EQUIPMENT TP THK. GLASS  
GL40 - 12mm HS 415mm DR. EQUIPMENT TP THK. GLASS  
GL41 - 12mm HS 415mm DR. EQUIPMENT TP THK. GLASS  
GL42 - 12mm HS 415mm DR. EQUIPMENT TP THK. GLASS  
GL43 - 12mm HS 415mm DR. EQUIPMENT TP THK. GLASS  
GL44 - 12mm HS 415mm DR. EQUIPMENT TP THK. GLASS  
GL45 - 12mm HS 415mm DR. EQUIPMENT TP THK. GLASS  
GL46 - 12mm HS 415mm DR. EQUIPMENT TP THK. GLASS  
GL47 - 12mm HS 415mm DR. EQUIPMENT TP THK. GLASS  
GL48 - 12mm HS 415mm DR. EQUIPMENT TP THK. GLASS  
GL49 - 12mm HS 415mm DR. EQUIPMENT TP THK. GLASS  
GL50 - 12mm HS 415mm DR. EQUIPMENT TP THK. GLASS  
GL51 - 12mm HS 415mm DR. EQUIPMENT TP THK. GLASS  
GL52 - 12mm HS 415mm DR. EQUIPMENT TP THK. GLASS  
GL53 - 12mm HS 415mm DR. EQUIPMENT TP THK. GLASS  
GL54 - 12mm HS 415mm DR. EQUIPMENT TP THK. GLASS  
GL55 - 12mm HS 415mm DR. EQUIPMENT TP THK. GLASS  
GL56 - 12mm HS 415mm DR. EQUIPMENT TP THK. GLASS  
GL57 - 12mm HS 415mm DR. EQUIPMENT TP THK. GLASS  
GL58 - 12mm HS 415mm DR. EQUIPMENT TP THK. GLASS  
GL59 - 12mm HS 415mm DR. EQUIPMENT TP THK. GLASS  
GL60 - 12mm HS 415mm DR. EQUIPMENT TP THK. GLASS  
GL61 - 12mm HS 415mm DR. EQUIPMENT TP THK. GLASS  
GL62 - 12mm HS 415mm DR. EQUIPMENT TP THK. GLASS  
GL63 - 12mm HS 415mm DR. EQUIPMENT TP THK. GLASS  
GL64 - 12mm HS 415mm DR. EQUIPMENT TP THK. GLASS  
GL65 - 12mm HS 415mm DR. EQUIPMENT TP THK. GLASS  
GL66 - 12mm HS 415mm DR. EQUIPMENT TP THK. GLASS  
GL67 - 12mm HS 415mm DR. EQUIPMENT TP THK. GLASS  
GL68 - 12mm HS 415mm DR. EQUIPMENT TP THK. GLASS  
GL69 - 12mm HS 415mm DR. EQUIPMENT TP THK. GLASS  
GL70 - 12mm HS 415mm DR. EQUIPMENT TP THK. GLASS  
GL71 - 12mm HS 415mm DR. EQUIPMENT TP THK. GLASS  
GL72 - 12mm HS 415mm DR. EQUIPMENT TP THK. GLASS  
GL73 - 12mm HS 415mm DR. EQUIPMENT TP THK. GLASS  
GL74 - 12mm HS 415mm DR. EQUIPMENT TP THK. GLASS  
GL75 - 12mm HS 415mm DR. EQUIPMENT TP THK. GLASS  
GL76 - 12mm HS 415mm DR. EQUIPMENT TP THK. GLASS  
GL77 - 12mm HS 415mm DR. EQUIPMENT TP THK. GLASS  
GL78 - 12mm HS 415mm DR. EQUIPMENT TP THK. GLASS  
GL79 - 12mm HS 415mm DR. EQUIPMENT TP THK. GLASS  
GL80 - 12mm HS 415mm DR. EQUIPMENT TP THK. GLASS  
GL81 - 12mm HS 415mm DR. EQUIPMENT TP THK. GLASS  
GL82 - 12mm HS 415mm DR. EQUIPMENT TP THK. GLASS  
GL83 - 12mm HS 415mm DR. EQUIPMENT TP THK. GLASS  
GL84 - 12mm HS 415mm DR. EQUIPMENT TP THK. GLASS  
GL85 - 12mm HS 415mm DR. EQUIPMENT TP THK. GLASS  
GL86 - 12mm HS 415mm DR. EQUIPMENT TP THK. GLASS  
GL87 - 12mm HS 415mm DR. EQUIPMENT TP THK. GLASS  
GL88 - 12mm HS 415mm DR. EQUIPMENT TP THK. GLASS  
GL89 - 12mm HS 415mm DR. EQUIPMENT TP THK. GLASS  
GL90 - 12mm HS 415mm DR. EQUIPMENT TP THK. GLASS  
GL91 - 12mm HS 415mm DR. EQUIPMENT TP THK. GLASS  
GL92 - 12mm HS 415mm DR. EQUIPMENT TP THK. GLASS  
GL93 - 12mm HS 415mm DR. EQUIPMENT TP THK. GLASS  
GL94 - 12mm HS 415mm DR. EQUIPMENT TP THK. GLASS  
GL95 - 12mm HS 415mm DR. EQUIPMENT TP THK. GLASS  
GL96 - 12mm HS 415mm DR. EQUIPMENT TP THK. GLASS  
GL97 - 12mm HS 415mm DR. EQUIPMENT TP THK. GLASS  
GL98 - 12mm HS 415mm DR. EQUIPMENT TP THK. GLASS  
GL99 - 12mm HS 415mm DR. EQUIPMENT TP THK. GLASS  
GL100 - 12mm HS 415mm DR. EQUIPMENT TP THK. GLASS

WONG TUNG & PARTNERS LIMITED  
17/F, One One One Road, Kowloon  
Tel: (852) 27779666  
Fax: (852) 27779666  
Email: info@wongtung.com.hk  
www.wongtung.com.hk