

工程指示 / 要求簡箋 ENGINEER INSTRUCTIONS (E.I.)

工程指示編號:	EI- 7657	修改版本:	-
	HK- 0709		
工程編號:	J 853	工程名稱:	延坪道 (第2期)
收件人:	生統/	發件人:	Jingo
工程項目:	飾線 Feature Wall 地盤 用鋁板加工圖	日期:	10/4/2024

<input type="checkbox"/> 原合約工程包	<input type="checkbox"/> 原合約工程加 / 減賬 QT-	<input type="checkbox"/> 新工程報價 QT-
---------------------------------	--	------------------------------------

信件批核號碼/圖紙參考編號:	批核模具圖紙編號:
客戶指示附件:	管理內部批簽署:

<input type="checkbox"/> 初步鋁料 B.M.	<input type="checkbox"/> 加工拆圖, 然後生產	<input type="checkbox"/> 尺寸表
<input type="checkbox"/> 正式鋁料 B.M.	<input type="checkbox"/> 技術上資料/指示	<input type="checkbox"/> 報價
<input type="checkbox"/> 配件 B.M.	<input type="checkbox"/> 樣辦或貨品說明書	<input type="checkbox"/> 分判合約
<input type="checkbox"/> 其他:		

內容: 請按圖生產
地盤需復尺(參照內圖)

完成上列要求日期: 3/5/2024

國內

<input type="checkbox"/> 生產技術總監	<input type="checkbox"/> 連附件	<input type="checkbox"/> 技術部	<input type="checkbox"/> 連附件	<input type="checkbox"/> 生產部	<input type="checkbox"/> 連附件
<input type="checkbox"/> 採購部	<input type="checkbox"/> 連附件	<input checked="" type="checkbox"/> 生產統籌部	<input checked="" type="checkbox"/> 連附件	<input type="checkbox"/> 報關組	<input type="checkbox"/> 連附件
<input type="checkbox"/> 質檢部	<input type="checkbox"/> 連附件	<input type="checkbox"/> 會計部	<input type="checkbox"/> 連附件	<input type="checkbox"/> 機械設計部	<input type="checkbox"/> 連附件
<input type="checkbox"/> 香港辦	<input type="checkbox"/> 連附件	<input type="checkbox"/> 其他:			

香港

<input type="checkbox"/> 行政部	<input type="checkbox"/> 連附件	<input type="checkbox"/> 會計部	<input type="checkbox"/> 連附件	<input type="checkbox"/> 統籌部	<input type="checkbox"/> 連附件	<input type="checkbox"/> 工程部	<input type="checkbox"/> 連附件
<input type="checkbox"/> 採購部	<input type="checkbox"/> 連附件	<input type="checkbox"/> QS部	<input type="checkbox"/> 連附件	<input checked="" type="checkbox"/> 地盤管理	<input checked="" type="checkbox"/> 連附件	<input type="checkbox"/> 維修部	<input type="checkbox"/> 連附件

*發件人簽署:	*組別成員批核簽署:
傳遞編號:	項目經理簽署:

地盤用鋁板B.M.表

工程號:	J-853	計算:	ming	日期:	2024.04.17	送呈:	JOE
地盤名稱:	廷坪路	核對:		日期:		副本:	
項目類別:	特征牆(2區)	批准:		日期:			

BM編號:	修改版次:	A/C Code:	總V.F.:	556.599	總重量:	4525.15
-------	-------	-----------	--------	---------	------	---------

序號	修改內容	鋁板圖號	鋁板名稱	顏色	實用	後備	總數	總重量	單件展開面積		單件V.F.	總V.F.	圖紙編號
									平方米	平方米			
1		P2-AP-EF40	3mm厚鋁板	EC-DG-D334232-ZD1 (SS-01)	100	0	100	1205.895	1.483	148.327	1.483	148.327	
2		P2-AP-EF41	3mm厚鋁板	EC-DG-D334232-ZD1 (SS-01)	50	0	50	927.957	2.283	114.140	2.283	114.140	
3		P2-AP-EF42A	3mm厚鋁板	EC-DG-D334232-ZD1 (SS-01)	2	0	2	25.456	1.566	3.131	1.566	3.131	
4		P2-AP-EF42B	3mm厚鋁板	EC-DG-D334232-ZD1 (SS-01)	8	0	8	49.338	0.759	6.069	0.759	6.069	
5		P2-AP-EF42C	3mm厚鋁板	EC-DG-D334232-ZD1 (SS-01)	4	0	4	48.288	1.485	5.940	1.485	5.940	
6		P2-AP-EF43A	3mm厚鋁板	EC-DG-D334232-ZD1 (SS-01)	1	0	1	19.589	2.409	2.409	2.409	2.409	
7		P2-AP-EF43B	3mm厚鋁板	EC-DG-D334232-ZD1 (SS-01)	4	0	4	37.966	1.167	4.670	1.167	4.670	
8		P2-AP-EF43C	3mm厚鋁板	EC-DG-D334232-ZD1 (SS-01)	2	0	2	37.159	2.285	4.571	2.285	4.571	
9		P2-AP-EF44A	3mm厚鋁板	EC-DG-D334232-ZD1 (SS-01)	2	0	2	24.131	1.484	2.968	1.484	2.968	
10		P2-AP-EF44B	3mm厚鋁板	EC-DG-D334232-ZD1 (SS-01)	2	0	2	16.166	0.994	1.988	0.994	1.988	
11		P2-AP-EF45A	3mm厚鋁板	EC-DG-D334232-ZD1 (SS-01)	1	0	1	18.569	2.284	2.284	2.284	2.284	
12		P2-AP-EF45B	3mm厚鋁板	EC-DG-D334232-ZD1 (SS-01)	1	0	1	12.440	1.530	1.530	1.530	1.530	
13		P2-AP-EF46A	3mm厚鋁板	EC-DG-D334232-ZD1 (SS-01)	2	0	2	34.760	2.138	4.275	2.138	4.275	
14		P2-AP-EF46B	3mm厚鋁板	EC-DG-D334232-ZD1 (SS-01)	2	0	2	25.784	1.586	3.172	1.586	3.172	
15		P2-AP-EF46C	3mm厚鋁板	EC-DG-D334232-ZD1 (SS-01)	2	0	2	31.151	1.916	3.832	1.916	3.832	
16		P2-AP-EF47A	3mm厚鋁板	EC-DG-D334232-ZD1 (SS-01)	1	0	1	26.748	3.290	3.290	3.290	3.290	
17		P2-AP-EF47B	3mm厚鋁板	EC-DG-D334232-ZD1 (SS-01)	1	0	1	19.842	2.441	2.441	2.441	2.441	
18		P2-AP-EF47C	3mm厚鋁板	EC-DG-D334232-ZD1 (SS-01)	1	0	1	23.971	2.949	2.949	2.949	2.949	
19		P2-AP-A50	3mm厚鋁板	EC-DG-D334232-ZD1 (SS-01)	27	0	27	209.686	0.955	25.792	0.955	25.792	
20		P2-AP-B50	3mm厚鋁板	EC-DG-D334232-ZD1 (SS-01)	37	0	37	287.348	0.955	35.344	0.955	35.344	
21		P2-AP-A51	3mm厚鋁板	EC-DG-D334232-ZD1 (SS-01)	27	0	27	106.547	0.485	13.105	0.485	13.105	
22		P2-AP-B51	3mm厚鋁板	EC-DG-D334232-ZD1 (SS-01)	37	0	37	146.008	0.485	17.959	0.485	17.959	

地盤用鋁板B.M.表

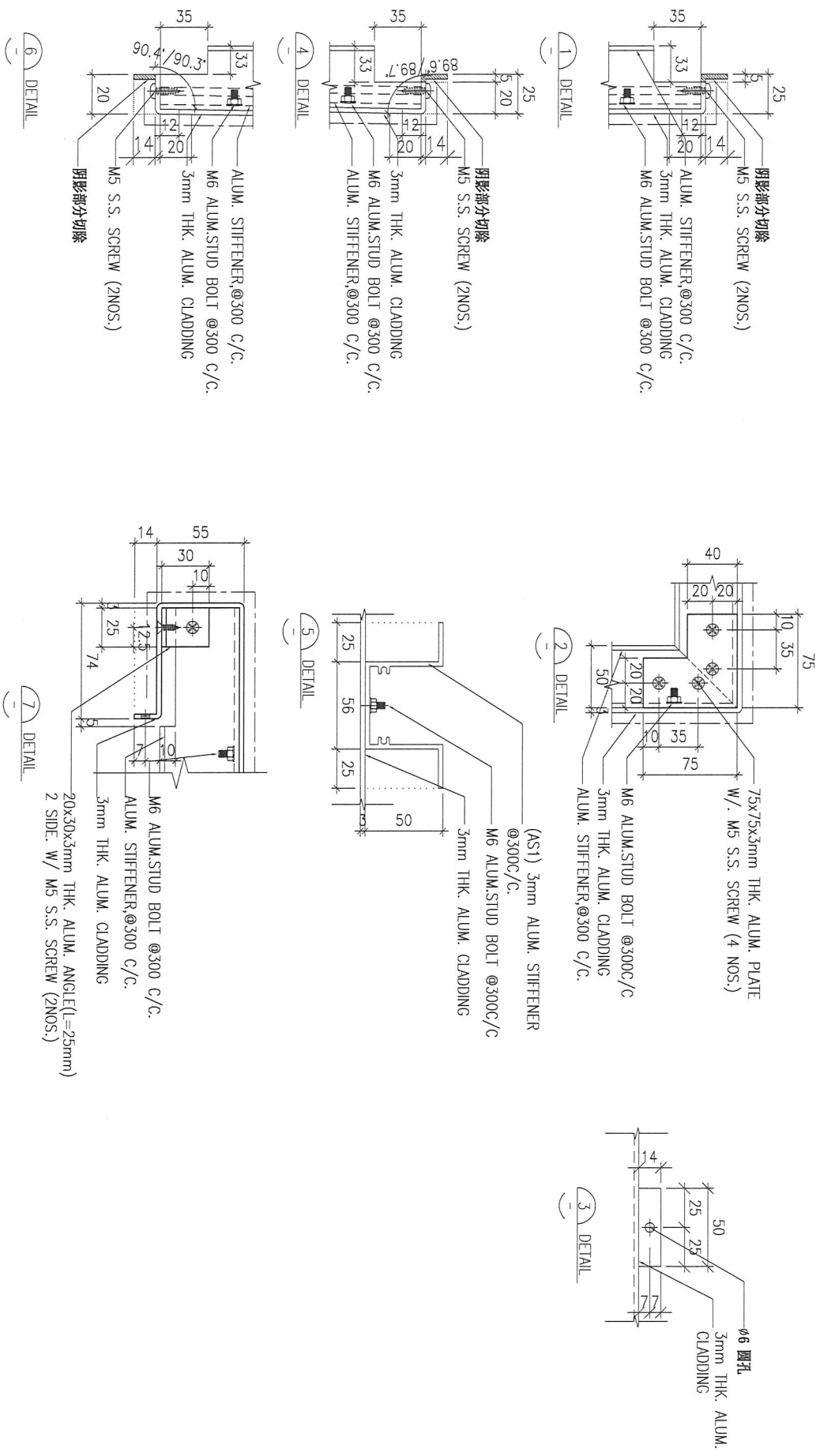
工程號:	J-853	計算:	ming	日期:	2024.04.17		送呈:	JOE
地盤名稱:	延坪路	接對:		日期:			副本:	
項目類別:	特征牆(2区)	批准:		日期:				
BM編號:		修改版本:	A/C Code:	總V.F.:	556.599		總重量:	4525.15

序號	修改內容	鋁板圖號	鋁板名稱	顏色	實用	後備	總數	總重量	556.599		總重量:	4525.15	圖紙編號
									單件展開面積	總展開面積			
									平方米		平方米		
23		P2-AP-A52	3mm厚鋁板	EC-DG-D334232-ZD1 (SS-01)	27	0	27	179.965	0.820	22.136	0.820	22.136	
24		P2-AP-B52	3mm厚鋁板	EC-DG-D334232-ZD1 (SS-01)	37	0	37	246.618	0.820	30.334	0.820	30.334	
25		P2-AP-A53	3mm厚鋁板	EC-DG-D334232-ZD1 (SS-01)	27	0	27	91.444	0.417	11.248	0.417	11.248	
26		P2-AP-B53	3mm厚鋁板	EC-DG-D334232-ZD1 (SS-01)	37	0	37	125.313	0.417	15.414	0.417	15.414	
27		P2-AP-A54	3mm厚鋁板	EC-DG-D334232-ZD1 (SS-01)	1	0	1	8.064	0.992	0.992	0.992	0.992	
28		P2-AP-B54	3mm厚鋁板	EC-DG-D334232-ZD1 (SS-01)	3	0	3	24.193	0.992	2.976	0.992	2.976	
29		P2-AP-A55	3mm厚鋁板	EC-DG-D334232-ZD1 (SS-01)	1	0	1	6.921	0.851	0.851	0.851	0.851	
30		P2-AP-B55	3mm厚鋁板	EC-DG-D334232-ZD1 (SS-01)	3	0	3	20.764	0.851	2.554	0.851	2.554	
31		P2-AP-A56A	3mm厚鋁板	EC-DG-D334232-ZD1 (SS-01)	6	0	6	137.657	2.822	16.932	2.822	16.932	
32		P2-AP-A57A	3mm厚鋁板	EC-DG-D334232-ZD1 (SS-01)	6	0	6	118.145	2.422	14.532	2.422	14.532	
33		P2-AP-A58	3mm厚鋁板	EC-DG-D334232-ZD1 (SS-01)	3	0	3	23.539	0.965	2.895	0.965	2.895	
34		P2-AP-A59	3mm厚鋁板	EC-DG-D334232-ZD1 (SS-01)	3	0	3	11.839	0.485	1.456	0.485	1.456	
35		P2-AP-A60	3mm厚鋁板	EC-DG-D334232-ZD1 (SS-01)	3	0	3	20.203	0.828	2.485	0.828	2.485	
36		P2-AP-A61	3mm厚鋁板	EC-DG-D334232-ZD1 (SS-01)	3	0	3	10.160	0.417	1.250	0.417	1.250	
37		P2-AP-A62	3mm厚鋁板	EC-DG-D334232-ZD1 (SS-01)	1	0	1	8.145	1.002	1.002	1.002	1.002	
38		P2-AP-A63	3mm厚鋁板	EC-DG-D334232-ZD1 (SS-01)	1	0	1	6.990	0.860	0.860	0.860	0.860	
39		P2-AP-A64	3mm厚鋁板	EC-DG-D334232-ZD1 (SS-01)	5	0	5	39.519	0.972	4.861	0.972	4.861	
40		P2-AP-A65	3mm厚鋁板	EC-DG-D334232-ZD1 (SS-01)	4	0	4	16.702	0.514	2.054	0.514	2.054	
41		P2-AP-A66	3mm厚鋁板	EC-DG-D334232-ZD1 (SS-01)	5	0	5	33.918	0.834	4.172	0.834	4.172	
42		P2-AP-A67	3mm厚鋁板	EC-DG-D334232-ZD1 (SS-01)	4	0	4	14.335	0.441	1.763	0.441	1.763	
43		P2-AP-B68	3mm厚鋁板	EC-DG-D334232-ZD1 (SS-01)	2	0	2	16.014	0.985	1.970	0.985	1.970	
44		P2-AP-B69	3mm厚鋁板	EC-DG-D334232-ZD1 (SS-01)	2	0	2	8.695	0.535	1.070	0.535	1.070	

地盤用鋁板B.M.表

BM編號:		修改版次:	A/C Code:	總V.F.:		556.599		總重量:		4525.15			
工程號:	J-853	計算:	ming	日期:	2024.04.17		送呈:	JOE					
地盤名稱:	延坪路	核對:		日期:			副本:						
項目類別:	特征牆(2區)	批准:		日期:									
序號	修改內容	鋁板圖號	鋁板名稱	顏色	實用	後備	總數	總重量	單件展開面積	總展開面積	單件V.F.	總V.F.	圖紙編號
45		P2-AP-B70	3mm/厚鋁板	EC-DG-D334232-ZD1 (SS-01)	2	0	2	13.744	0.845	1.691	0.845	1.691	
46		P2-AP-B71	3mm/厚鋁板	EC-DG-D334232-ZD1 (SS-01)	2	0	2	7.463	0.459	0.918	0.459	0.918	
總計:					502	0	502	4525	58	557	58	557	

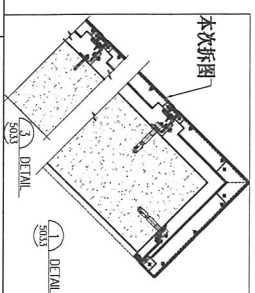
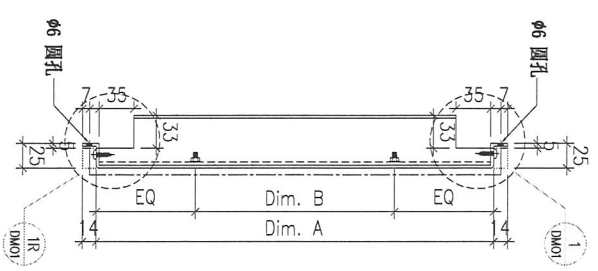
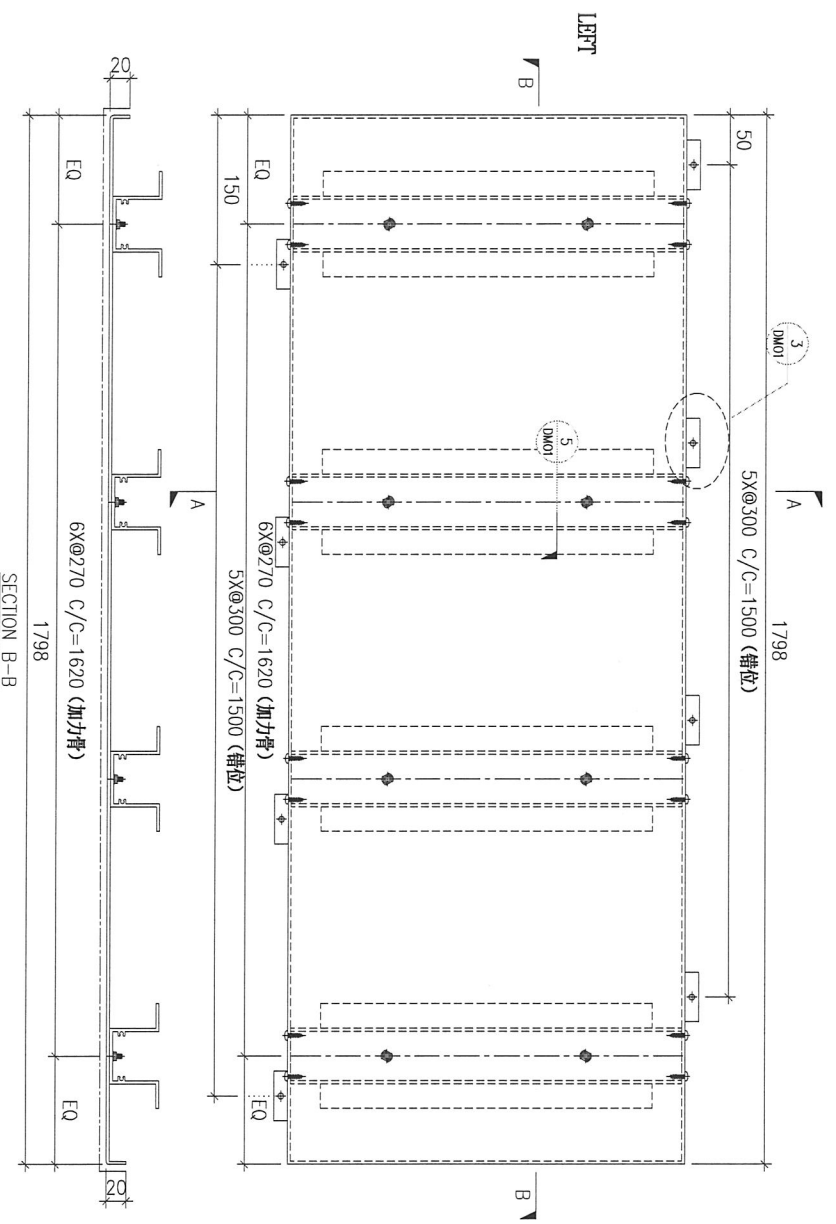
PROJECT		YIN PING ROAD KOWLOON FEATURE WALL (PHASE 2)				MATERIAL		COATING		COLOUR		MARK. NO.		QTY.					
PART NUMBER		Dim. A		Dim. B		Dim. C		Dim. D		Dim. E		Dim. F		Dim. G		Dim. H		QTY.	
CHECKED DATE BY		Dim. A		Dim. B		Dim. C		Dim. D		Dim. E		Dim. F		Dim. G		Dim. H		QTY.	
REV.		Dim. A		Dim. B		Dim. C		Dim. D		Dim. E		Dim. F		Dim. G		Dim. H		QTY.	
PART NUMBER		Dim. A		Dim. B		Dim. C		Dim. D		Dim. E		Dim. F		Dim. G		Dim. H		QTY.	
Dim. A		Dim. B		Dim. C		Dim. D		Dim. E		Dim. F		Dim. G		Dim. H		QTY.		ASSEMBLE ON PARTS	
Dim. B		Dim. C		Dim. D		Dim. E		Dim. F		Dim. G		Dim. H		QTY.		ASSEMBLE ON PARTS		-	
Dim. C		Dim. D		Dim. E		Dim. F		Dim. G		Dim. H		QTY.		ASSEMBLE ON PARTS		-		-	
Dim. D		Dim. E		Dim. F		Dim. G		Dim. H		QTY.		ASSEMBLE ON PARTS		-		-		-	
Dim. E		Dim. F		Dim. G		Dim. H		QTY.		ASSEMBLE ON PARTS		-		-		-		-	
Dim. F		Dim. G		Dim. H		QTY.		ASSEMBLE ON PARTS		-		-		-		-		-	
Dim. G		Dim. H		QTY.		ASSEMBLE ON PARTS		-		-		-		-		-		-	
Dim. H		QTY.		ASSEMBLE ON PARTS		-		-		-		-		-		-		-	
QTY.		ASSEMBLE ON PARTS		-		-		-		-		-		-		-		-	



DWG. NO.		DM01		REV.		SCALE		DATE		DRAWN BY		APPROVED BY	
REV.		SCALE		DATE		DRAWN BY		APPROVED BY		DATE		APPROVED BY	
DM01		-		17-04-2024		-		-		-		-	

PROJECT YIN PING ROAD KOWLOON FEATURE WALL (PHASE 2)				MATERIAL 3mm铝板				COATING PVF2		COLOUR EG-DG-D334232-ZD1(SS-011)		MARK. NO. -	QTY. -
REV. CHK BY	PART NUMBER	Dim. A	Dim. B	Dim. C	Dim. D	Dim. E	Dim. F	Dim. G	Dim. H	QTY.	Inv. Code	ASSEMBLE ON PARTS	
-	P2-AP-EF40	729	2x500c/c	-	-	-	-	-	-	100	-	注: 用于 区 区域	
												注: 地盤用	

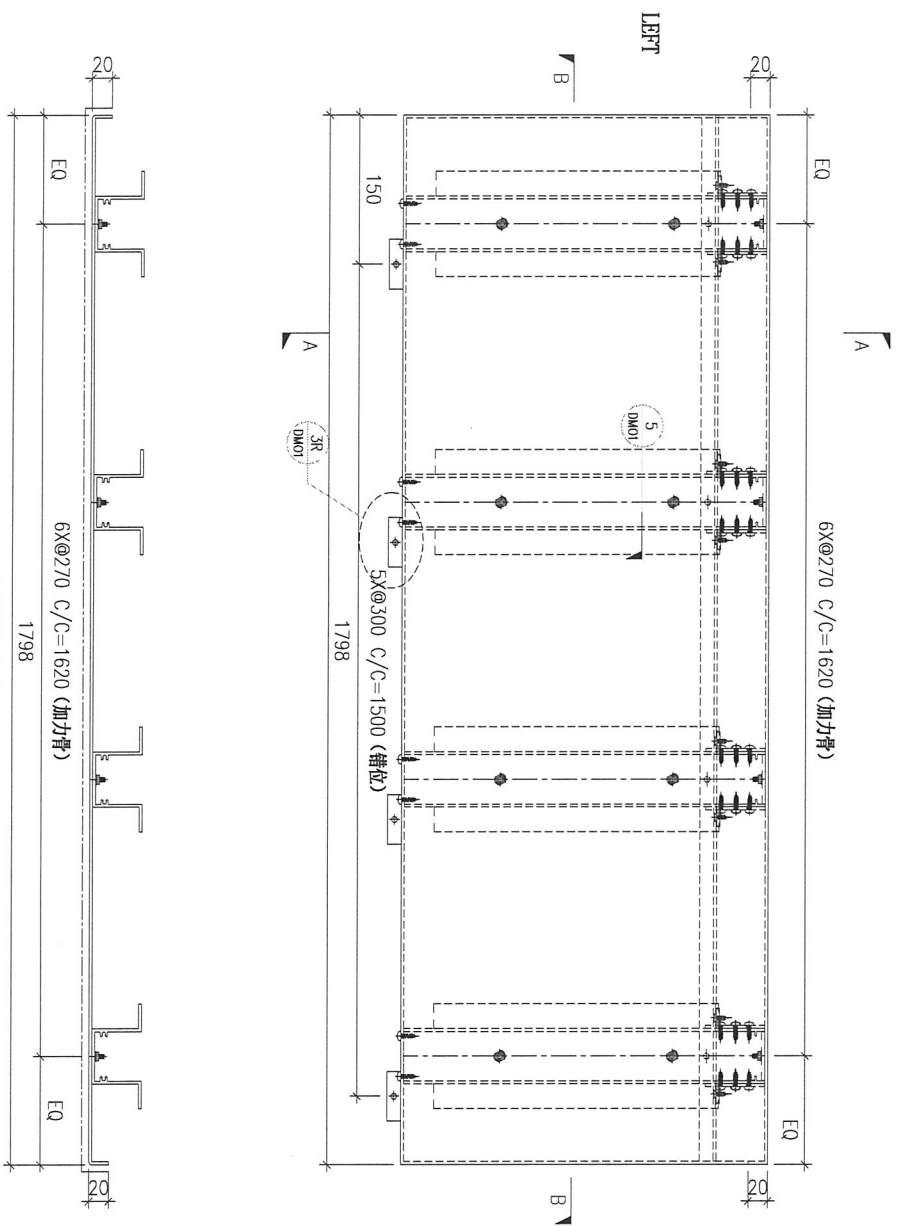
注: 工地复尺



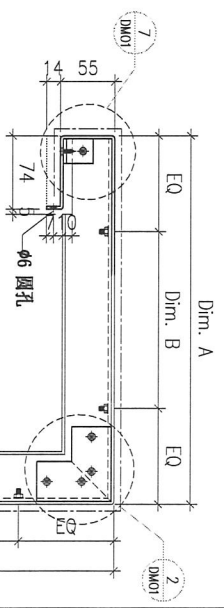
DWG. NO.	P2-AP-EF40	REV.	-	SCALE	-	DATE	17-04-2024	DRAWN BY	-	APPROVED BY	-
----------	------------	------	---	-------	---	------	------------	----------	---	-------------	---

PROJECT		YIN PING ROAD KOWLOON FEATURE WALL (PHASE 2)				MATERIAL		3mm铝板				COATING		PVF2		COLOUR		EC-DG-D334232-ZD1(SS-01)		MARK. NO.		-		QTY.		-	
REV.	CHECKED BY	PART NUMBER	Dim. A	Dim. B	Dim. C	Dim. D	Dim. E	Dim. F	Dim. G	Dim. H	QTY.	Inv. Code	ASSEMBLE ON PARTS		注: 用于 距 区域		注: 地盤用										
-		P2-AP-EF41	810	2@300/c	-						50																

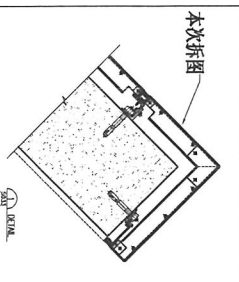
注: 工地复尺



SECTION B-B



SECTION A-A



本次拆图

DWG. NO.		P2-AP-EF41		REV.		SCALE		DATE		DRAWN BY		APPROVED BY	
								17-04-2024					

PROJECT
YIN PING ROAD KOWLOON
FEATURE WALL (PHASE 2)

MATERIAL
3mm铝板

COATING
PVF2

COLOUR
EG-DG-D334232-ZD1(SS-011)

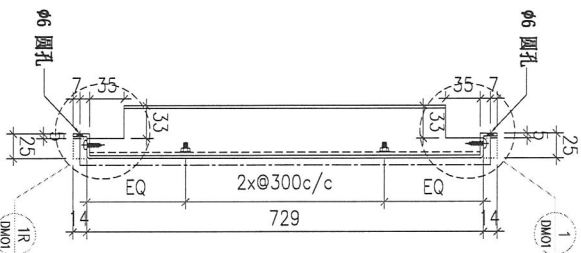
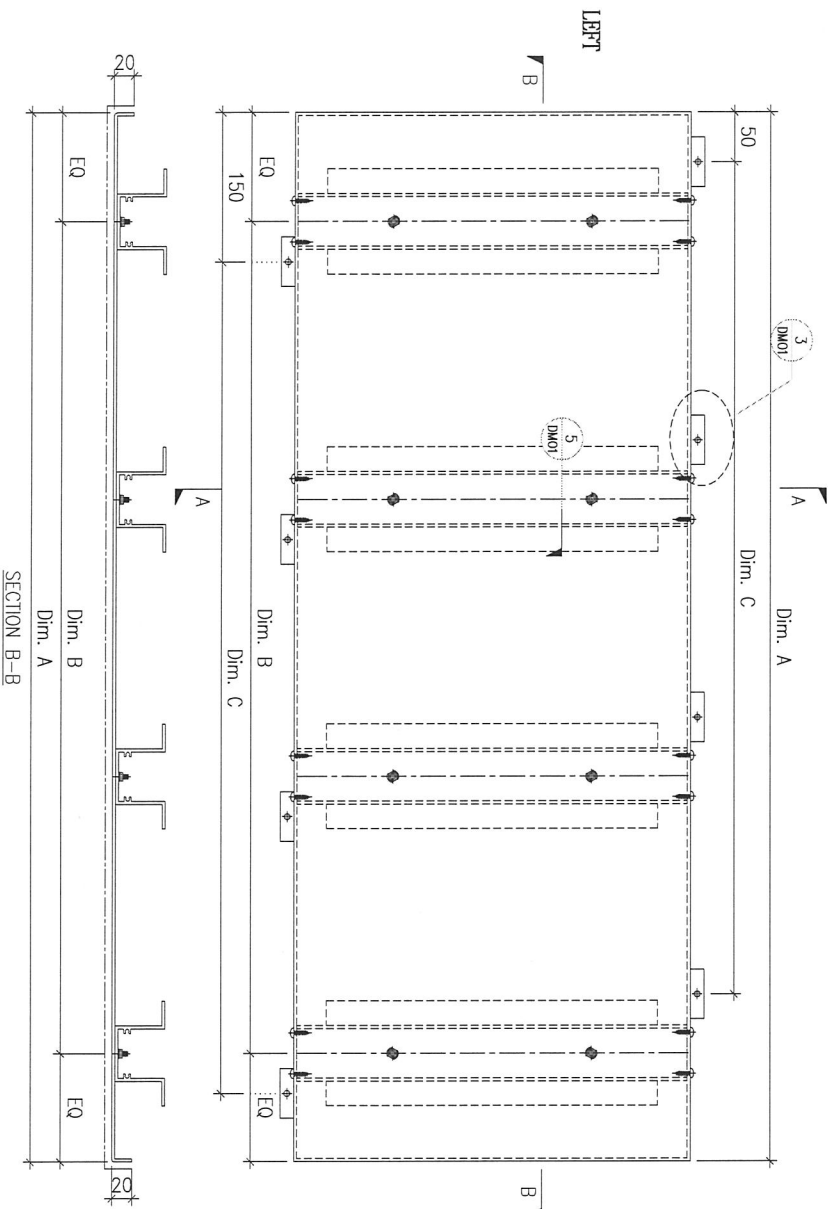
MARK. NO.
-

QTY.
-

CHECKED DATE BY	PART NUMBER	Dim. A	Dim. B	Dim. C	Dim. D	Dim. E	Dim. F	Dim. G	Dim. H	QTY.	Inv. Code	ASSEMBLE ON PARTS
-	P2-AP-EF42A	1900	6x@280c/c	6x@280c/c						2		注: 用于 区区域
-	P2-AP-EF42B	900	3x@250c/c	2x@300c/d						8		注: 用于 区区域
-	P2-AP-EF42C	1800	6x@270c/c	5x@300c/d						4		注: 用于 区区域

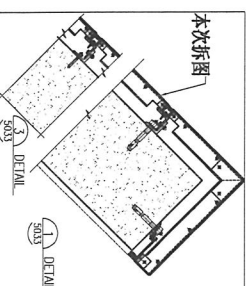
注: 地盘用

注: 工地调节



SECTION B-B

SECTION A-A



DWG. NO.

P2-AP-EF42

REV.

-

SCALE

-

DATE

17-04-2024

DRAWN BY

-

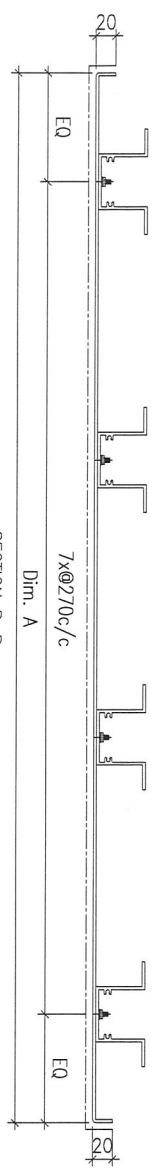
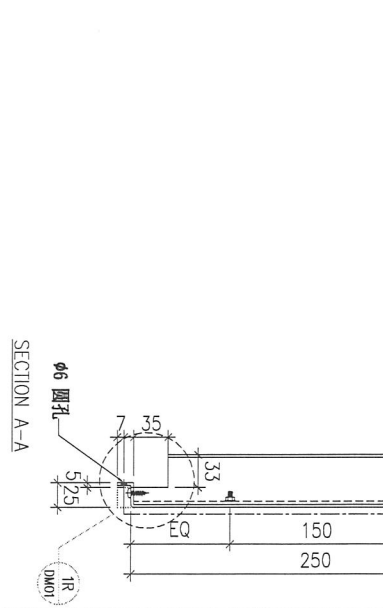
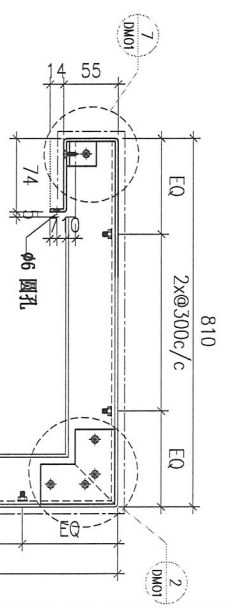
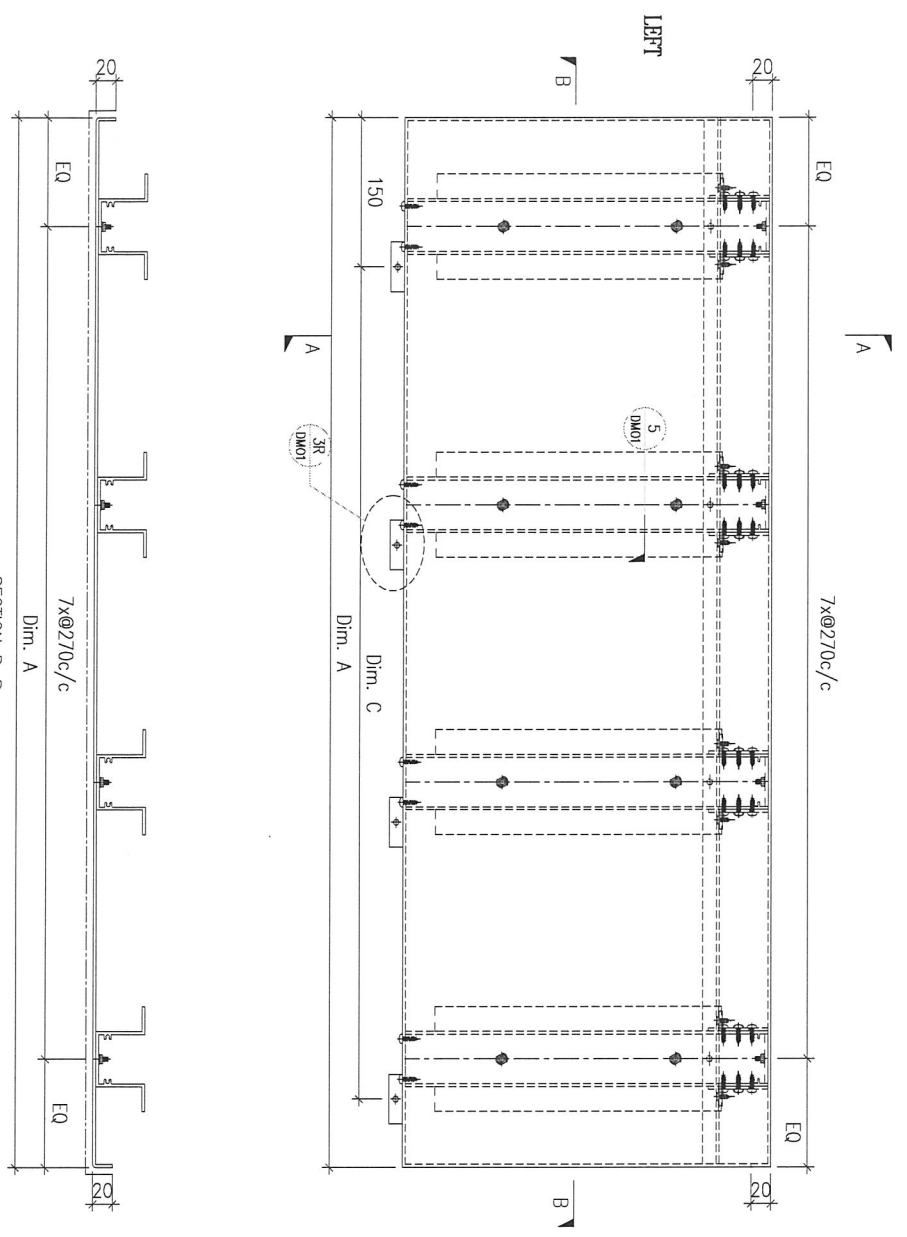
APPROVED BY

-

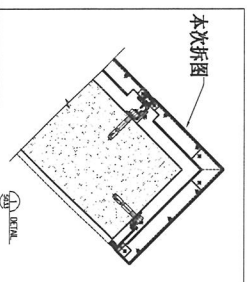
PROJECT		YIN PING ROAD KOWLOON FEATURE WALL (PHASE 2)				MATERIAL		3mm铝板		COATING		PVF2		COLOUR		EC-DG-D334232-ZD1(SS-01)		MARK. NO.		-		QTY.		-	
REV.	CHECKED BAR BY	PART NUMBER	Dim. A	Dim. B	Dim. C	Dim. D	Dim. E	Dim. F	Dim. G	Dim. H	QTY.	Inv. Code	ASSEMBLE ON PARTS												
-	-	P2-AP-EF43A	1900	6x@280c/c	6x@280c/c						1		注: 用于 距 区域												
-	-	P2-AP-EF43B	900	3x@250c/c	2x@300c/c						4		注: 用于 距 区域												
-	-	P2-AP-EF43C	1800	6x@270c/c	5x@300c/c						2		注: 用于 距 区域												

注: 工地需带

注: 地盤用



SECTION B-B



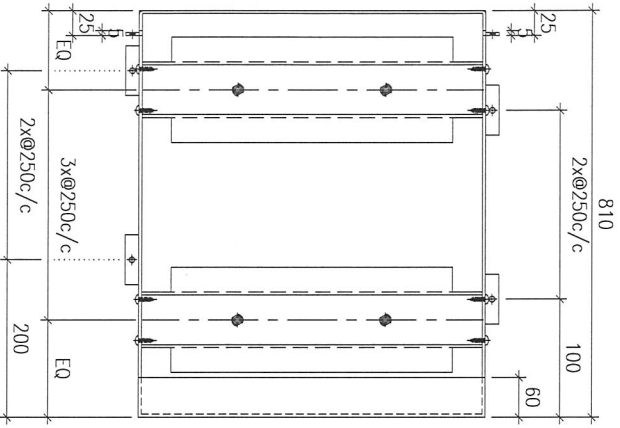
SECTION A-A

本次拆图

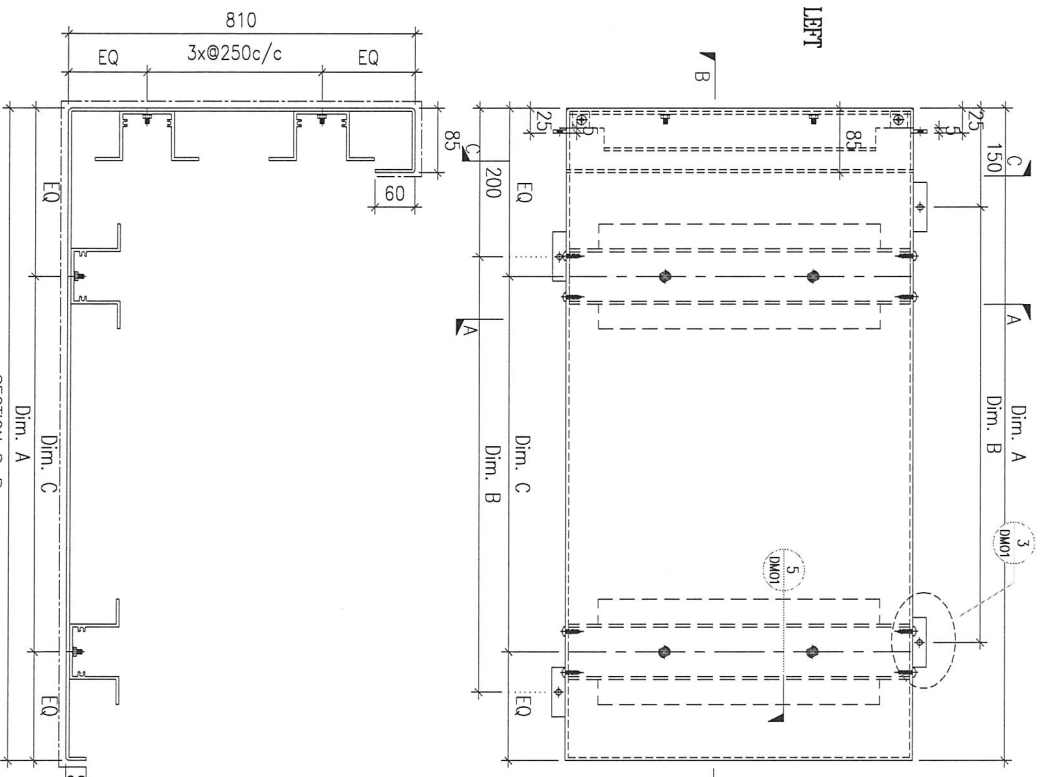


DWG. NO.	P2-AP-EF43	REV.	-	SCALE	-	DATE	17-04-2024	DRAWN BY	-	APPROVED BY	-
----------	------------	------	---	-------	---	------	------------	----------	---	-------------	---

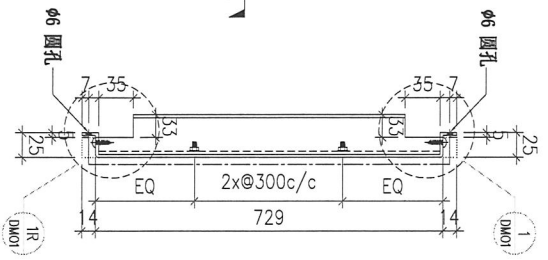
PROJECT				MATERIAL				COATING				COLOUR		MARK. NO.		QTY.	
YIN PING ROAD KOWLOON FEATURE WALL (PHASE 2)				3mm铝板				PVF2				EC-DG-D334232-ZD1(SS-01)		-		-	
REV.	PART NUMBER	Dim. A	Dim. B	Dim. C	Dim. D	Dim. E	Dim. F	Dim. G	Dim. H	QTY.	Inv. Code	ASSEMBLE ON PARTS					
-	P2-AP-EF44A	1799	5x@300c/c	6x@270c/c	-	-	-	-	-	2	-	注: 用于 EQ 区域					
-	P2-AP-EF44B	1192	3x@300c/c	4x@260c/c	-	-	-	-	-	2	-	注: 用于 EQ 区域					
												注: 地盤用					



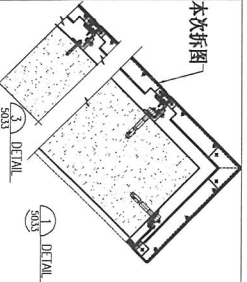
SECTION C-C



SECTION A-A



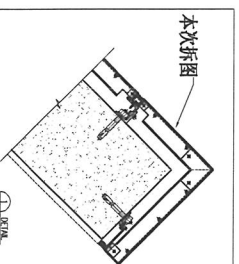
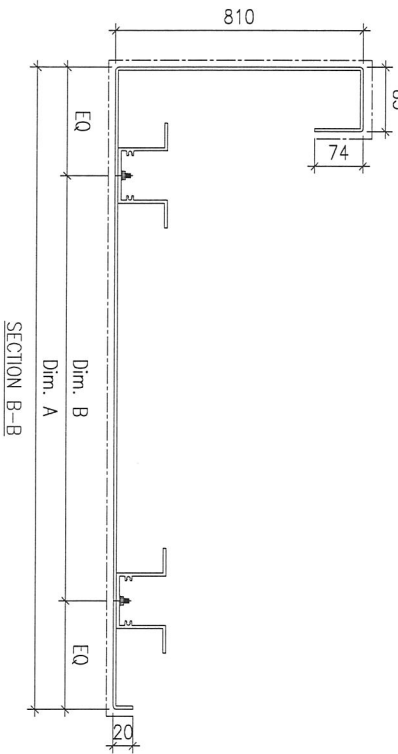
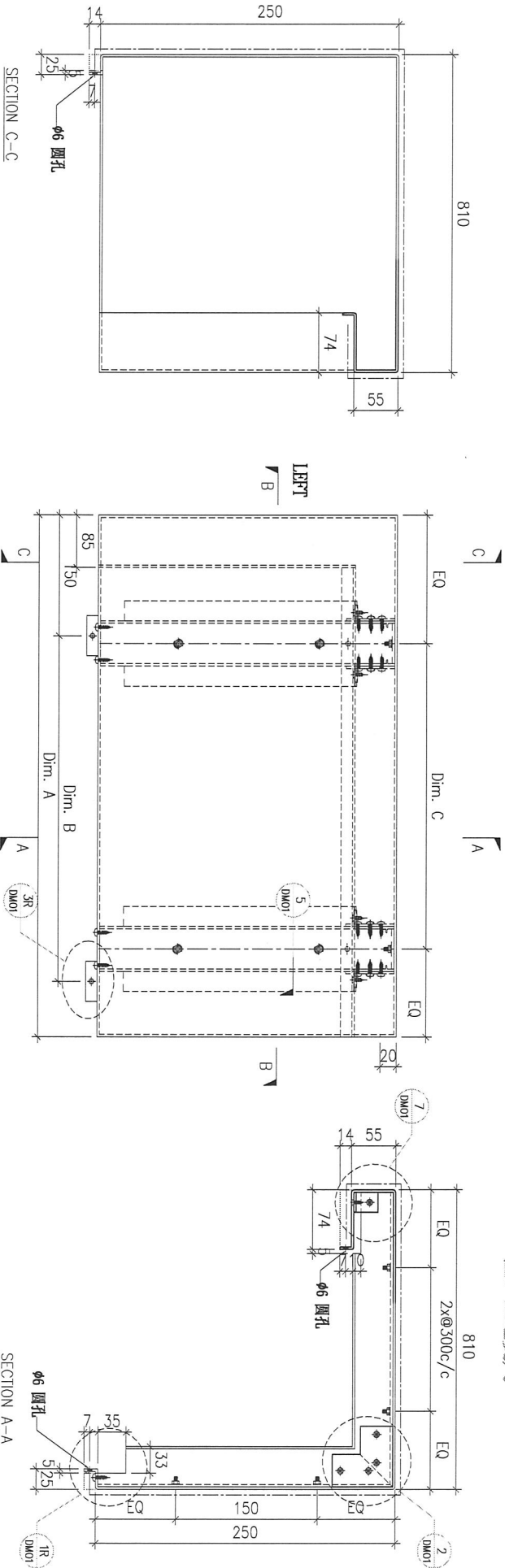
注: 工地复尺



DWG. NO.		REV.		SCALE		DATE		DRAWN BY		APPROVED BY	
P2-AP-EF44		-		-		17-04-2024		-		-	

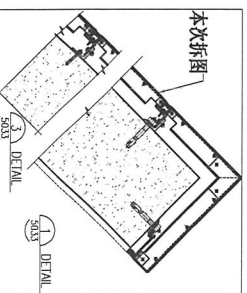
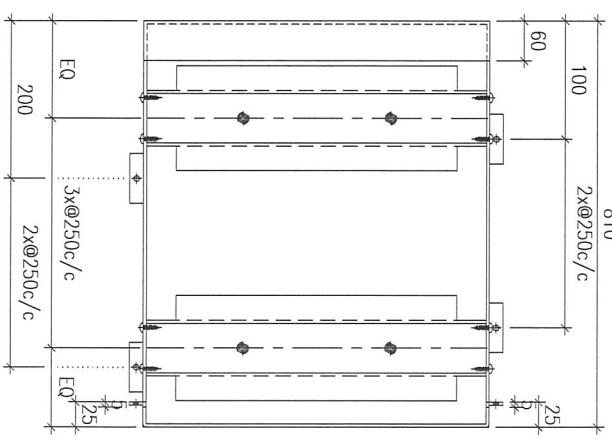
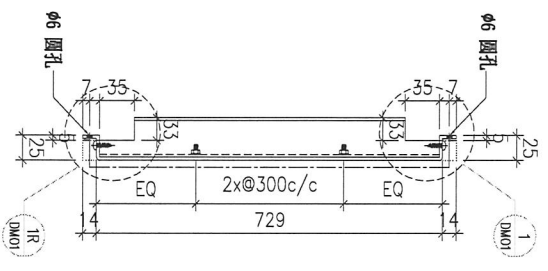
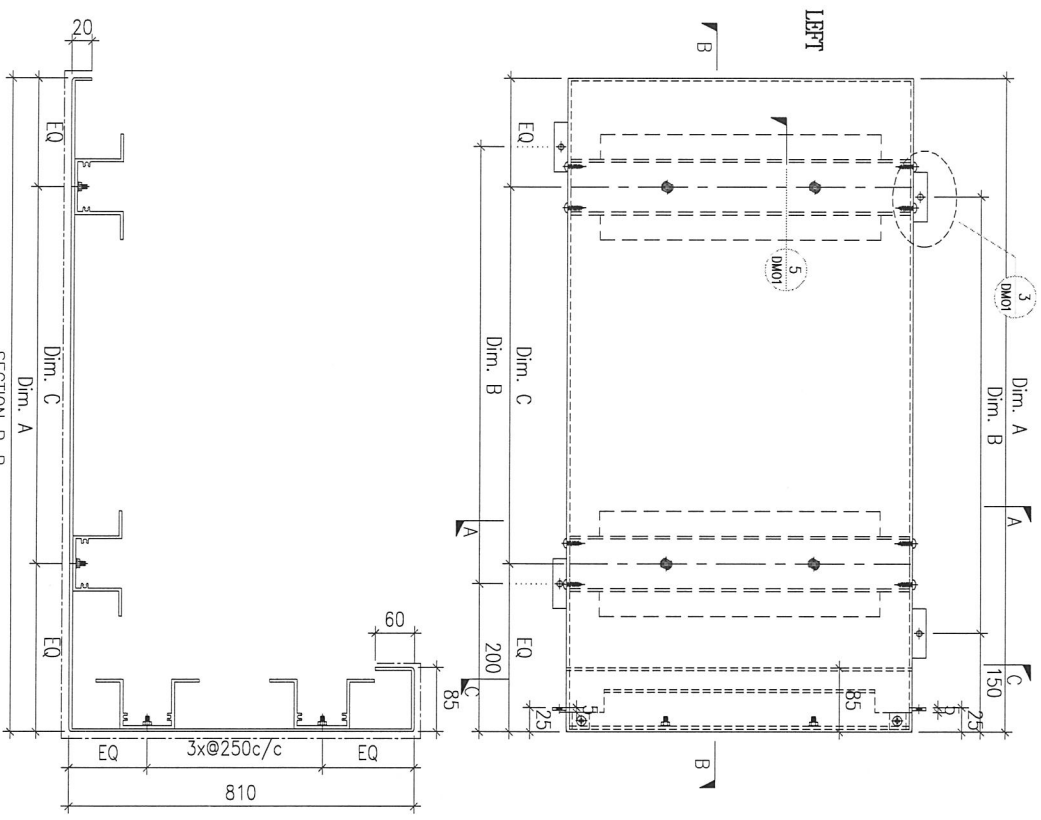
PROJECT YIN PING ROAD KOWLOON FEATURE WALL (PHASE 2)				MATERIAL 3mm铝板				COATING PVF2		COLOUR EC-DG-D334232-ZD1(SS-01)		MARK. NO. -	QTY. -	
REV.	CHECKED DATE BY	PART NUMBER	Dim. A	Dim. B	Dim. C	Dim. D	Dim. E	Dim. F	Dim. G	Dim. H	QTY.	Inv. Code	ASSEMBLE ON PARTS	注: 地盤用
-	-	P2-AP-EF45A	1799	5x@300c/c	6x@270c/c	-	-	-	-	-	1	-	-	注: 用于 IR 区域
-	-	P2-AP-EF45B	1192	3x@300c/c	4x@260c/c	-	-	-	-	-	1	-	-	注: 用于 IR 区域

注: 工地复尺



DWG. NO. P2-AP-EF45		REV. -		SCALE -		DATE 17-04-2024		DRAWN BY -		APPROVED BY -	
------------------------	--	-----------	--	------------	--	--------------------	--	---------------	--	------------------	--

PROJECT				YIN PING ROAD KOWLOON FEATURE WALL (PHASE 2)				MATERIAL				3mm铝板				COATING				PVF2				COLOUR				EC-DG-D334232-ZD1(SS-01)				MARK. NO.				-				QTY.				-			
CHECKED		PART NUMBER		Dim. A		Dim. B		Dim. C		Dim. D		Dim. E		Dim. F		Dim. G		Dim. H		QTY.		Inv. Code		ASSEMBLE ON PARTS				注: 地盤用																			
REV.		P2-AP-EF46A		1799		5x@300c/c		6x@270c/c		-		-		-		-		-		2		-		注: 用于 ER 区域				-																			
-		P2-AP-EF46B		1115		3x@280c/c		3x@300c/c		-		-		-		-		-		2		-		注: 用于 ER 区域				-																			
-		P2-AP-EF46C		1524		4x@300c/c		5x@260c/c		-		-		-		-		-		2		-		注: 用于 ER 区域				-																			



DWG. NO.		P2-AP-EF46		REV.		-		SCALE		-		DATE		17-04-2024		DRAWN BY		-		APPROVED BY		-	
----------	--	------------	--	------	--	---	--	-------	--	---	--	------	--	------------	--	----------	--	---	--	-------------	--	---	--

PROJECT
YIN PING ROAD KOWLOON
FEATURE WALL (PHASE 2)

MATERIAL
3mm铝板

COATING
PVF2

COLOUR
EC-DG-D334232-ZD1(SS-01)

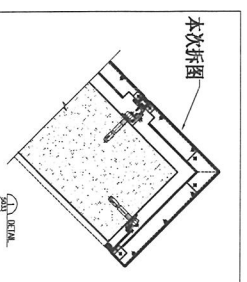
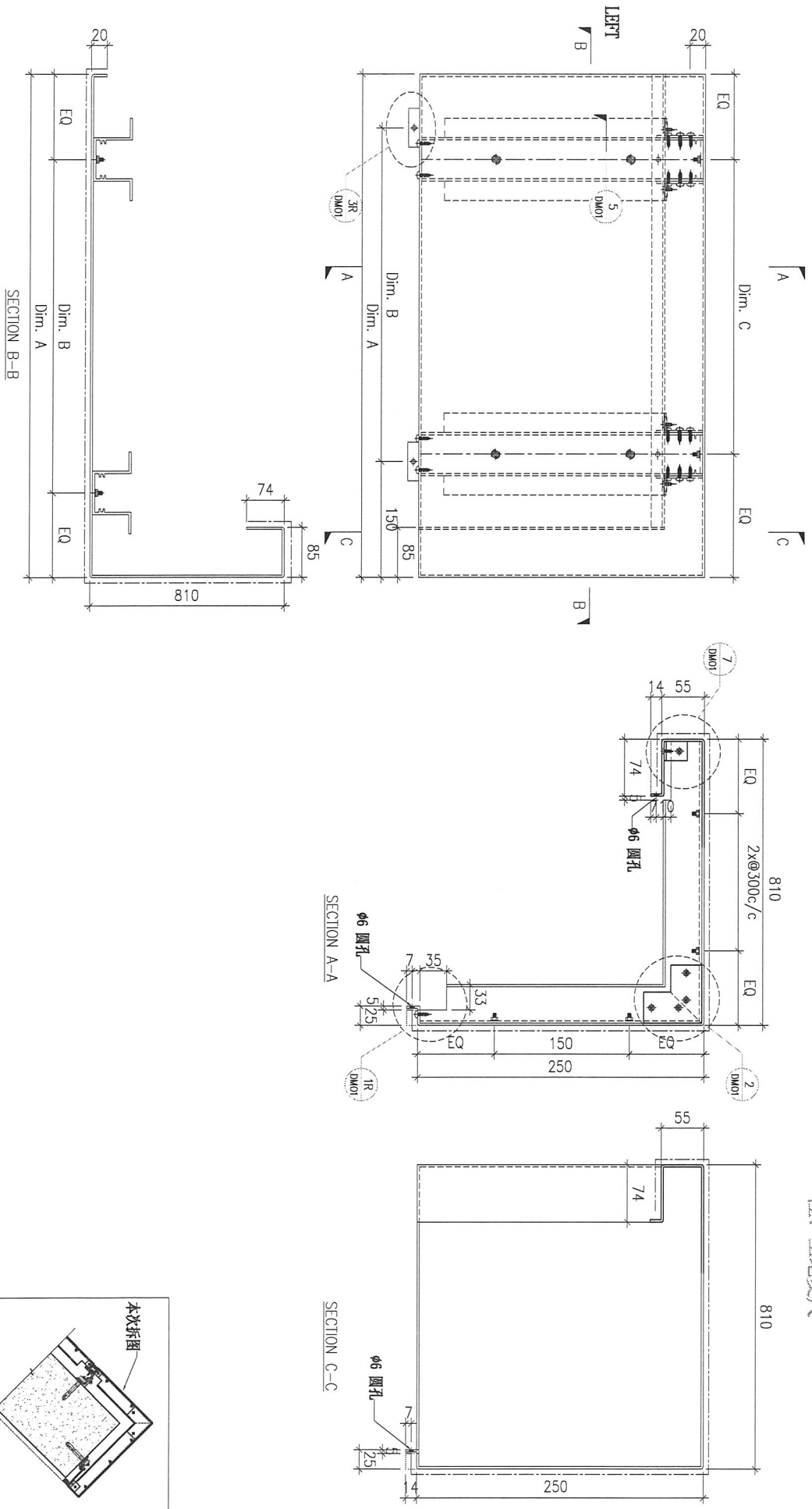
MARK. NO.
-

QTY.
-

REV. OR DATE	PART NUMBER	Dim. A	Dim. B	Dim. C	Dim. D	Dim. E	Dim. F	Dim. G	Dim. H	QTY.	Inv. Code	ASSEMBLE ON PARTS
-	P2-AP-EF47A	1799	5x@300c/c	6x@270c/c	-	-	-	-	-	1	-	注: 用于 BR 区域
-	P2-AP-EF47B	1115	5x@280c/c	3x@300c/c	-	-	-	-	-	1	-	注: 用于 BR 区域
-	P2-AP-EF47C	1524	4x@300c/c	5x@260c/c	-	-	-	-	-	1	-	注: 用于 BR 区域

注: 地盤用

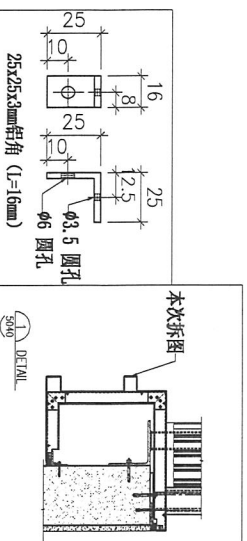
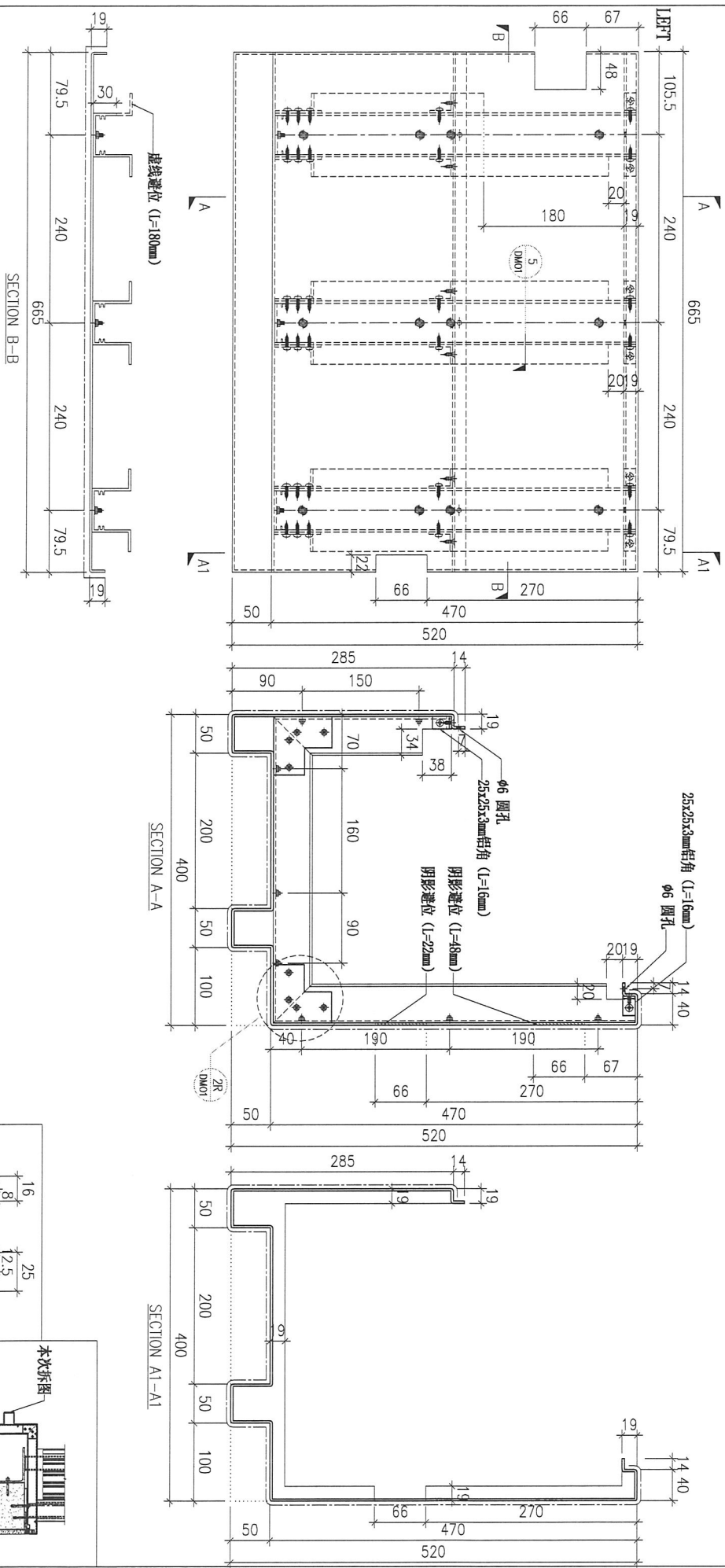
注: 工地复尺



DWG. NO.	REV.	SCALE	DATE	DRAWN BY	APPROVED BY
P2-AP-EF47	-	-	17-04-2024	-	-

PROJECT				MATERIAL				COATING				COLOUR		MARK. NO.		QTY.	
YIN PING ROAD KOWLOON FEATURE WALL (PHASE 2)				3mm铝板				PVF2				EC-DG-D334232-ZD1(SS-01)		-		-	
REV.	CHANGED DATE	PART NUMBER	Dim. A	Dim. B	Dim. C	Dim. D	Dim. E	Dim. F	Dim. G	Dim. H	QTY.	Inv. Code	ASSEMBLE ON PARTS				
-		P2-AP-A54	-	-	-	-	-	-	-	-	1		注: 用于 A 区域				
-		P2-AP-B54	-	-	-	-	-	-	-	-	3		注: 用于 B 区域				
													注: 地盤用				

注: 工地复尺



DWG. NO.		REV.		SCALE		DATE		DRAWN BY		APPROVED BY	
P2-AP-54		-		-		17-04-2024		-		-	

PROJECT
YIN PING ROAD KOWLOON
FEATURE WALL (PHASE 2)

MATERIAL
3mm铝板

COATING
PVF2

COLOUR
EC-DG-D334232-ZD1(SS-01)

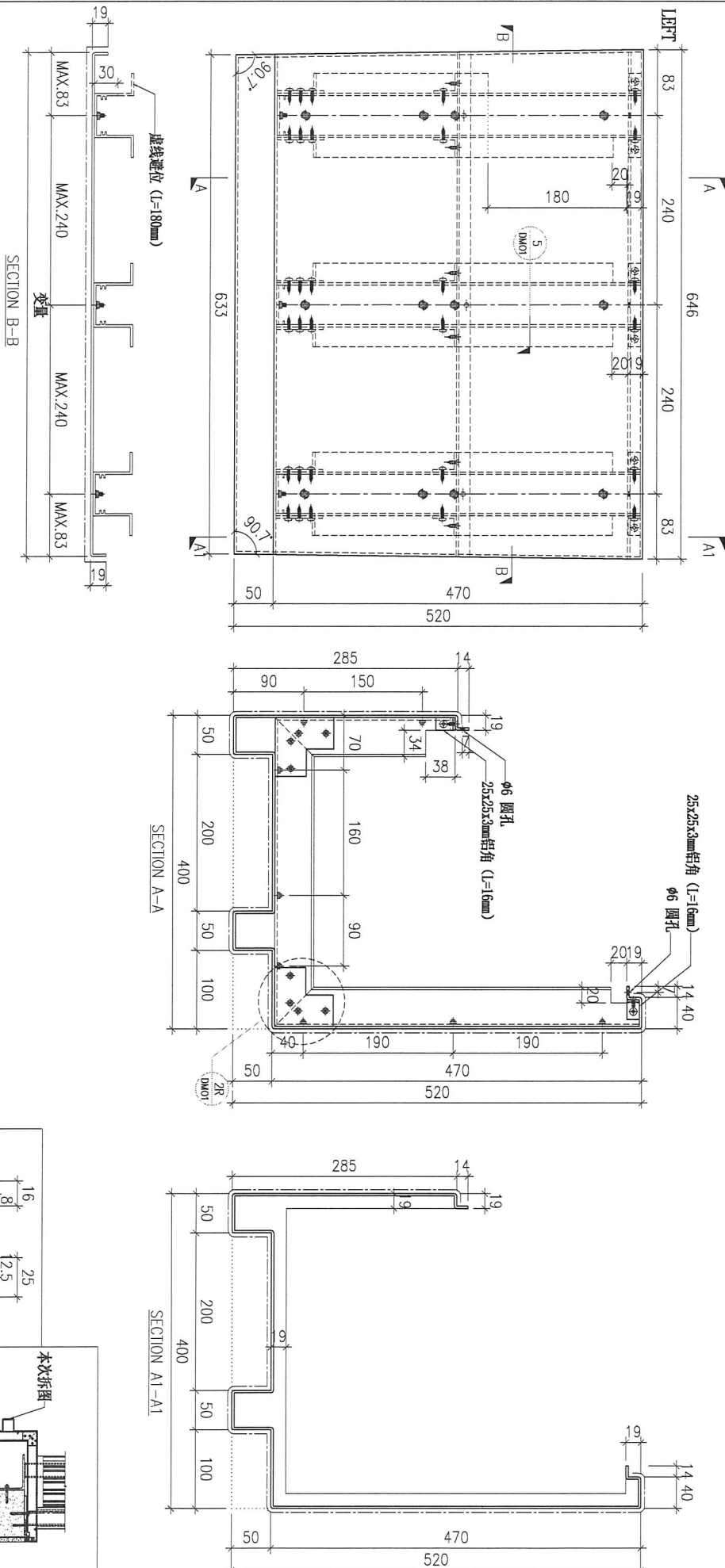
MARK. NO.
-

QTY.
-

REV.	CHKD BY	DATE	PART NUMBER	Dim. A	Dim. B	Dim. C	Dim. D	Dim. E	Dim. F	Dim. G	Dim. H	QTY.	Inv. Code	ASSEMBLE ON PARTS
-			P2-AP-A58	-	-	-	-	-	-	-	-	3		注: 用于 A 区域

注: 地盤用

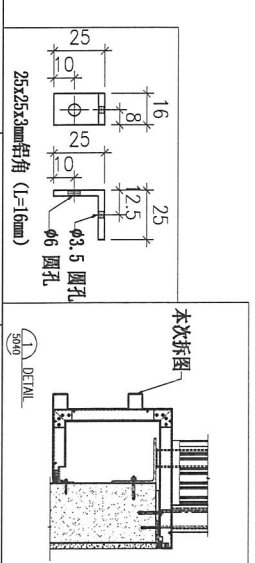
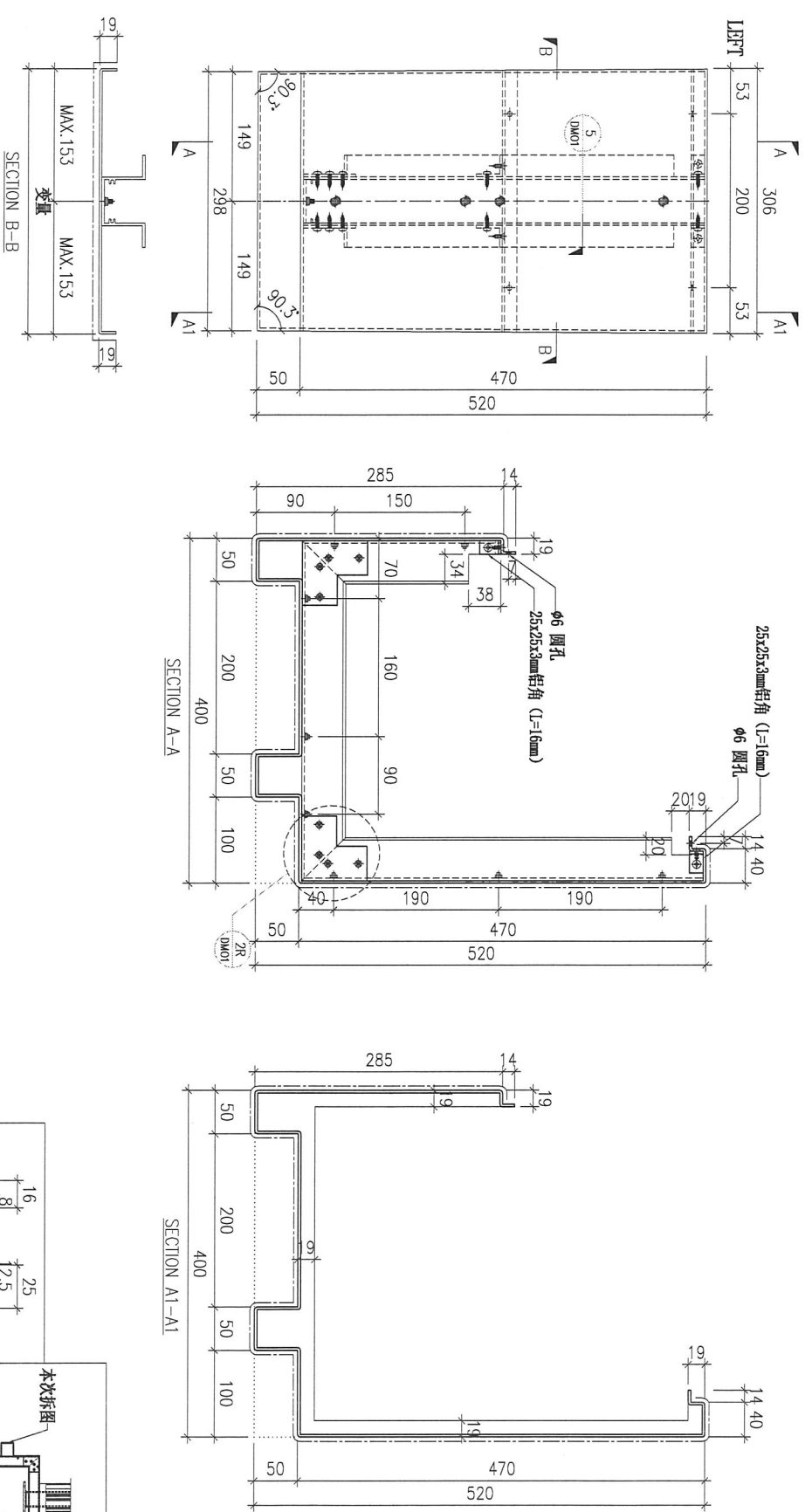
注: 工地复尺



DWG. NO.	P2-AP-58
REV.	-
SCALE	-
DATE	17-04-2024
DRAWN BY	-
APPROVED BY	-

PROJECT				YIN PING ROAD KOWLOON FEATURE WALL (PHASE 2)				MATERIAL				COATING				COLOUR				MARK. NO.				QTY.			
P2-AP-A59				3mm铝板				PVF2				EC-DG-D334232-ZD1(SS-01)				-				-							
REV.	ORDERED BY	PART NUMBER	Dim. A	Dim. B	Dim. C	Dim. D	Dim. E	Dim. F	Dim. G	Dim. H	QTY.	Inv. Code	ASSEMBLE ON PARTS				-										
-	-	-	-	-	-	-	-	-	-	-	3	-	注: 用于 A 区域				注: 地盤用										

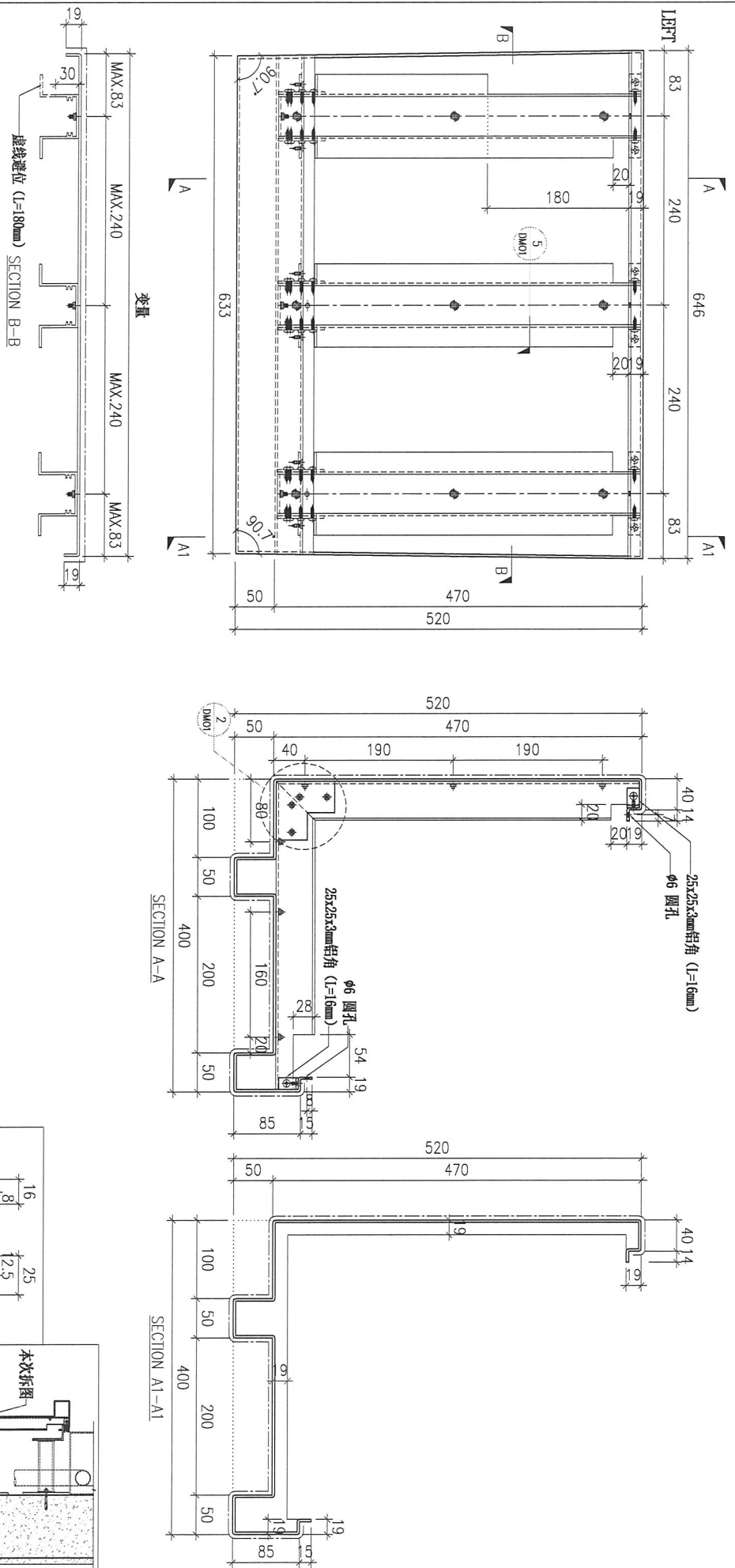
注: 工地复尺



DWG. NO.		REV.		SCALE		DATE		DRAWN BY		APPROVED BY	
P2-AP-59		-		-		17-04-2024		-		-	

PROJECT YIN PING ROAD KOWLOON FEATURE WALL (PHASE 2)				MATERIAL 3mm铝板				COATING PVF2				COLOUR EC-DG-D334232-ZD1(SS-01)		MARK. NO. -		QTY. -	
REV. CHKD BY	PART NUMBER	Dim. A	Dim. B	Dim. C	Dim. D	Dim. E	Dim. F	Dim. G	Dim. H	QTY.	Inv. Code	ASSEMBLE ON PARTS					
-	P2-AP-A60	-	-	-	-	-	-	-	-	3	-	注: 用于 A 区域					
												注: 地盤用					

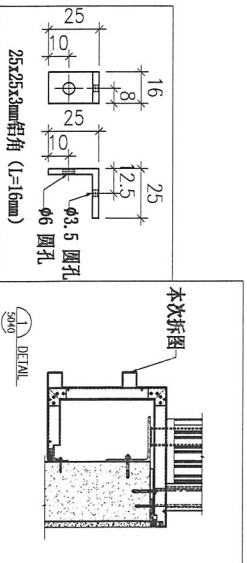
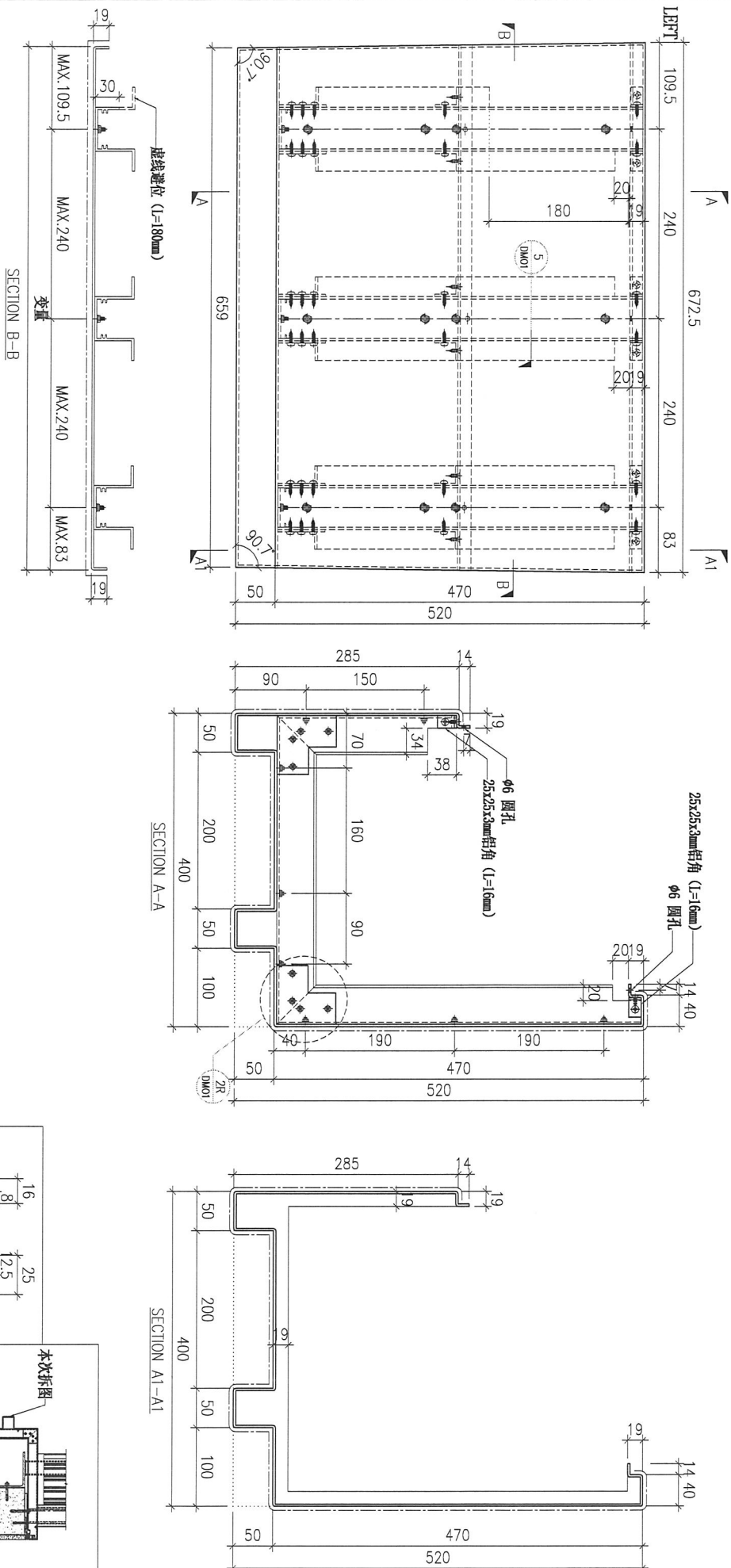
注: 工地复尺



DWG. NO. P2-AP-60		REV. -		SCALE -		DATE 17-04-2024		DRAWN BY -		APPROVED BY -	
----------------------	--	-----------	--	------------	--	--------------------	--	---------------	--	------------------	--

PROJECT				MATERIAL				COATING				COLOUR		MARK. NO.		QTY.	
YIN PING ROAD KOWLOON FEATURE WALL (PHASE 2)				3mm铝板				PVF2				EC-DG-D334232-ZD1(SS-01)		-		-	
REV.	ORDERED DATE BY	PART NUMBER	Dim. A	Dim. B	Dim. C	Dim. D	Dim. E	Dim. F	Dim. G	Dim. H	QTY.	Inv. Code	ASSEMBLE ON PARTS				
-		P2-AP-A62	-	-	-	-	-	-	-	-	1		注: 用于 A 区域				
													注: 地盤用				

注: 工地复尺



DWG. NO.		REV.		SCALE		DATE		DRAWN BY		APPROVED BY	
P2-AP-62		-		-		17-04-2024		-		-	

PROJECT
YIN PING ROAD KOWLOON
FEATURE WALL (PHASE 2)

MATERIAL
3mm铝板

COATING
PVF2

COLOUR
EC-DG-D334232-ZD1(SS-01)

MARK. NO.
-

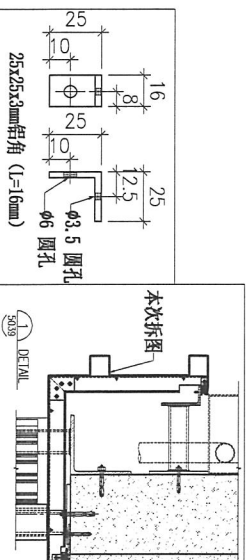
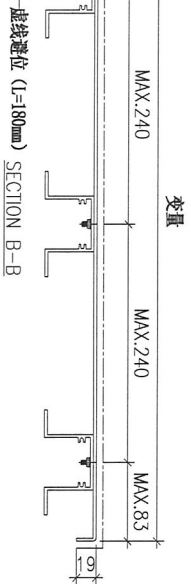
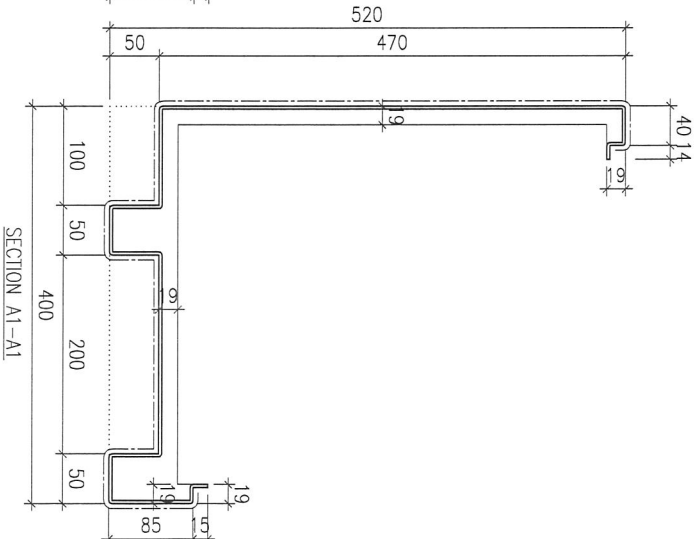
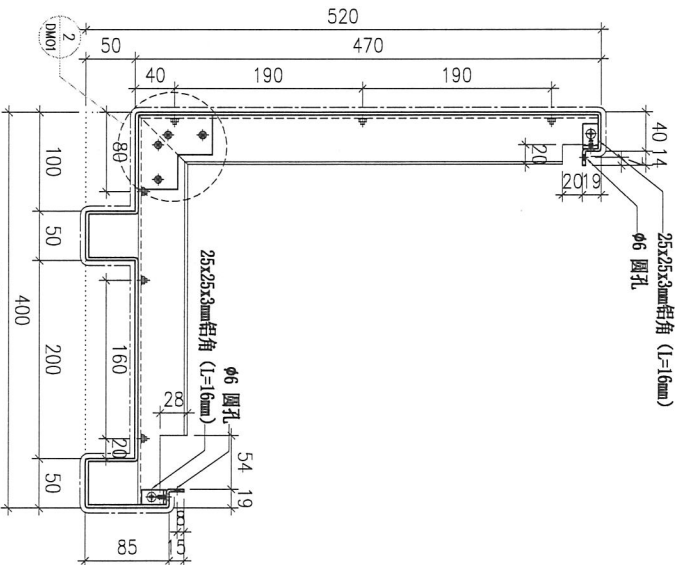
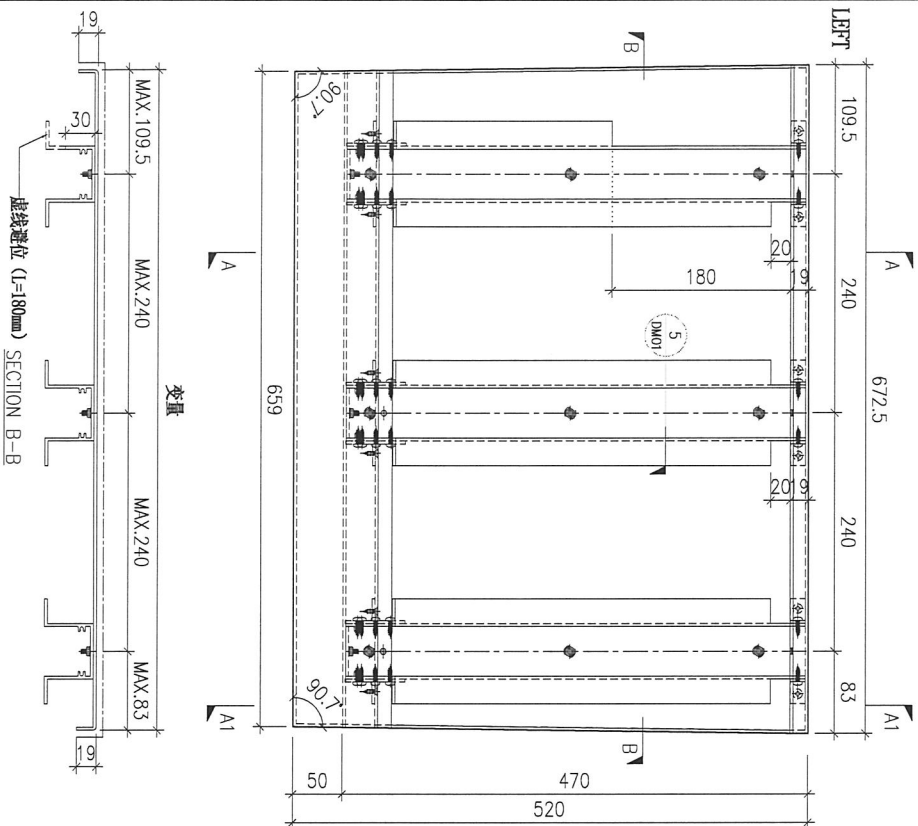
QTY.
-

REV.	CHANGED DATE BY	PART NUMBER	Dim. A	Dim. B	Dim. C	Dim. D	Dim. E	Dim. F	Dim. G	Dim. H	QTY.	Inv. Code
-		P2-AP-A63	-	-	-	-	-	-	-	-	1	

ASSEMBLE ON PARTS
注: 用于 A 区域

注: 地盘用

注: 工地复尺



DWG. NO.

P2-AP-63

REV.

SCALE

DATE
17-04-2024

DRAWN BY

APPROVED BY

PROJECT
YIN PING ROAD KOWLOON
FEATURE WALL (PHASE 2)

MATERIAL
3mm铝板

COATING
PVF2

COLOUR
EC-DG-0334232-ZD1(SS-01)

MARK. NO.
-

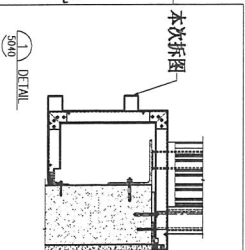
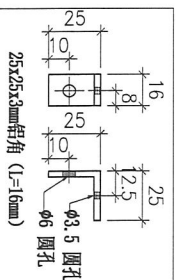
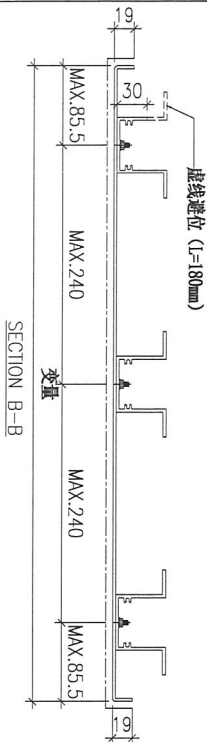
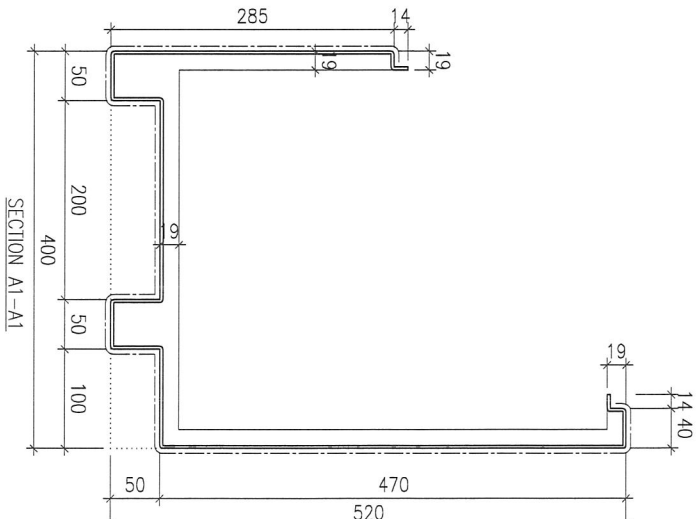
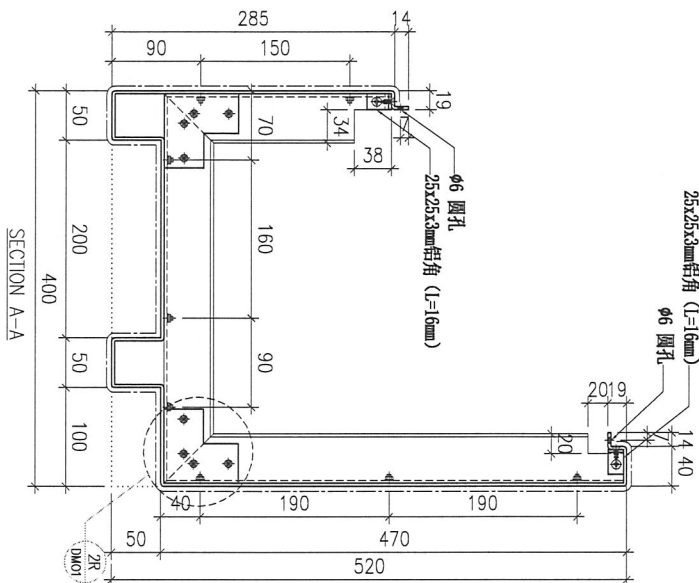
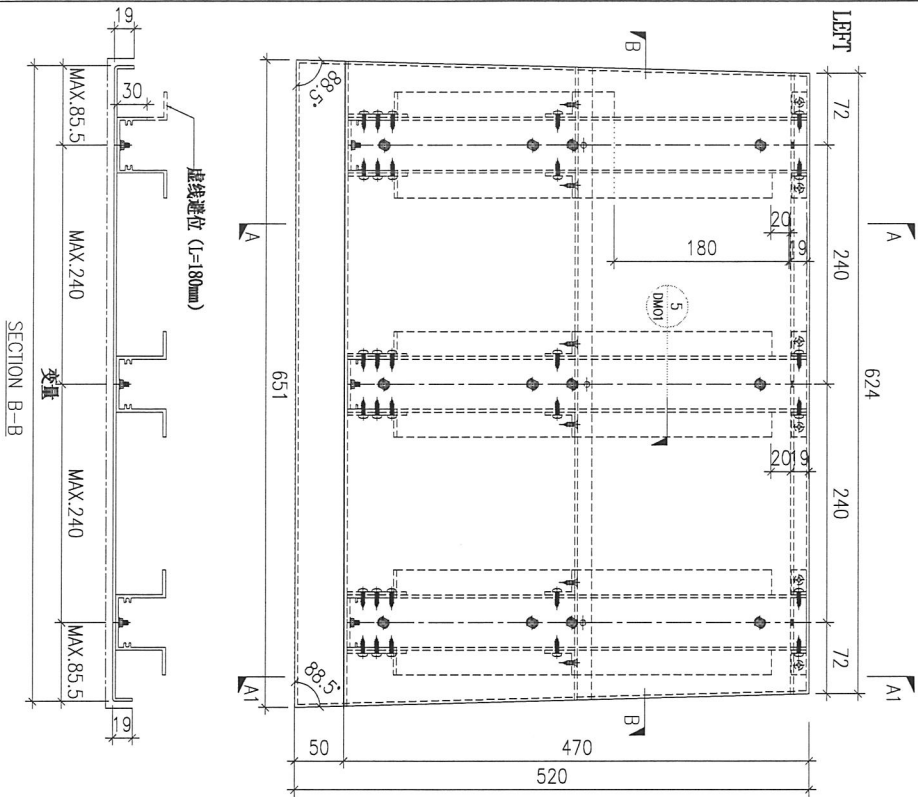
QTY.
-

REV.	CHANGED BY	PART NUMBER	Dim. A	Dim. B	Dim. C	Dim. D	Dim. E	Dim. F	Dim. G	Dim. H	QTY.	Inv. Code
-		P2-AP-A64	-	-	-	-	-	-	-	-	5	

ASSEMBLE ON PARTS
注: 用于 A 区域

注: 地盤用

注: 工地复尺



DWG. NO.	P2-AP-64	REV.	-	SCALE	-	DATE	17-04-2024	DRAWN BY	-	APPROVED BY	-
----------	----------	------	---	-------	---	------	------------	----------	---	-------------	---

PROJECT
YIN PING ROAD KOWLOON
FEATURE WALL (PHASE 2)

MATERIAL
3mm铝板

COATING
PVF2

COLOUR
EC-DG-D334232-ZD1(SS-01)

MARK. NO.
-

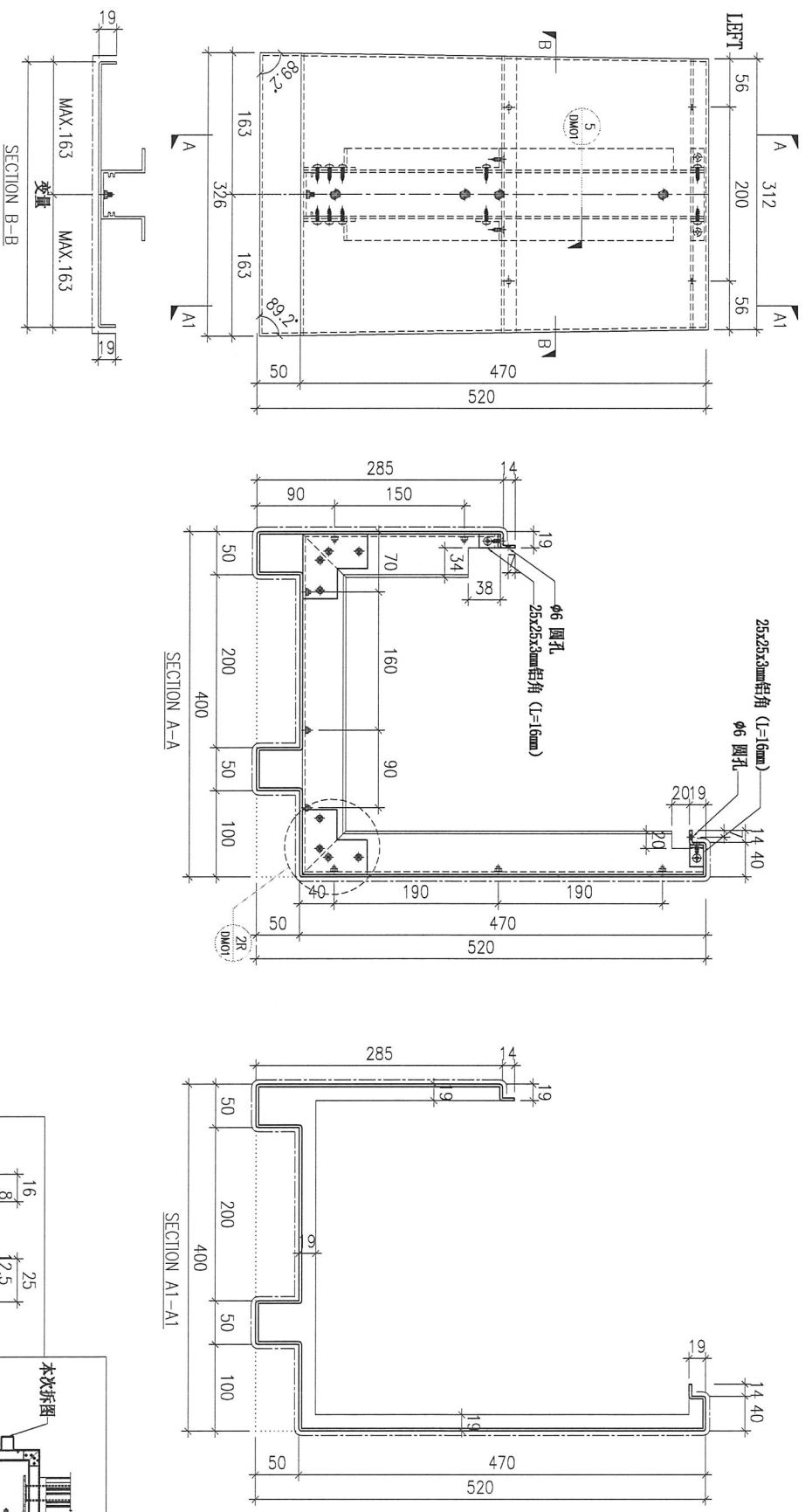
QTY.
-

REV.	CHANGED BY	PART NUMBER	Dim. A	Dim. B	Dim. C	Dim. D	Dim. E	Dim. F	Dim. G	Dim. H	QTY.	Inv. Code
-		P2-AP-A65	-	-	-	-	-	-	-	-	4	

ASSEMBLE ON PARTS
注: 用于 A 区域

注: 地盘用

注: 工地复尺



DWG. NO.

P2-AP-65

REV.

SCALE

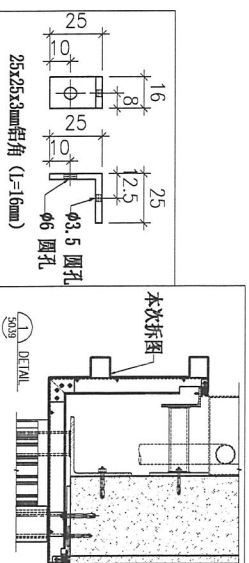
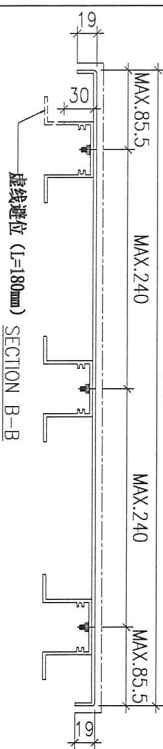
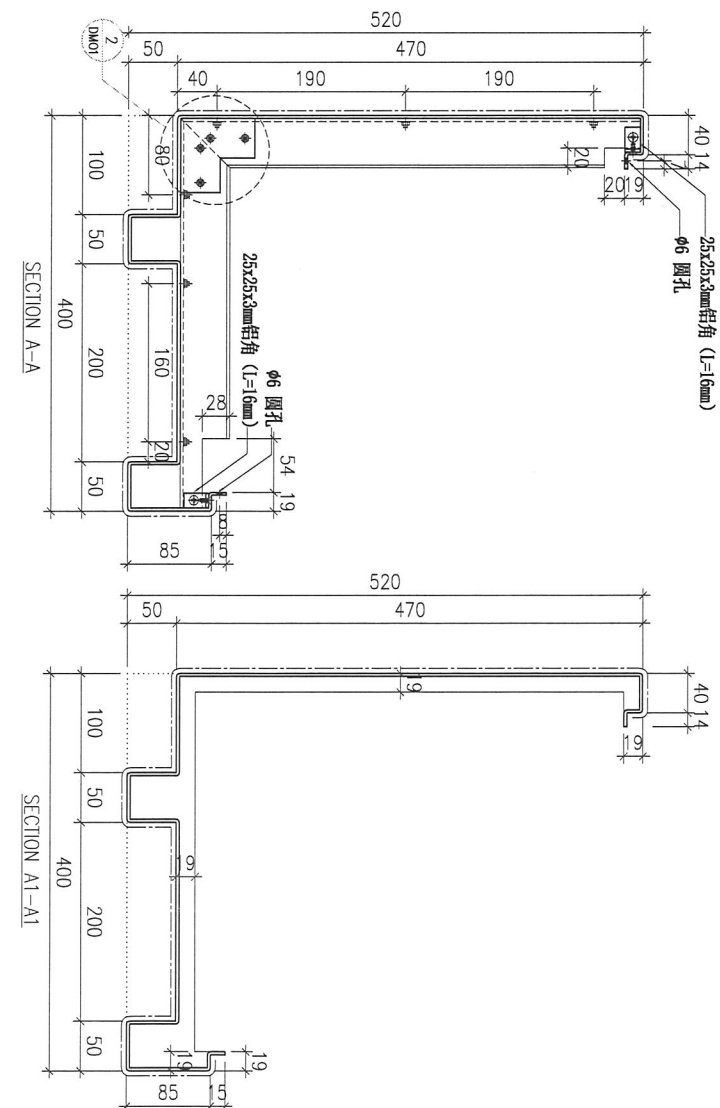
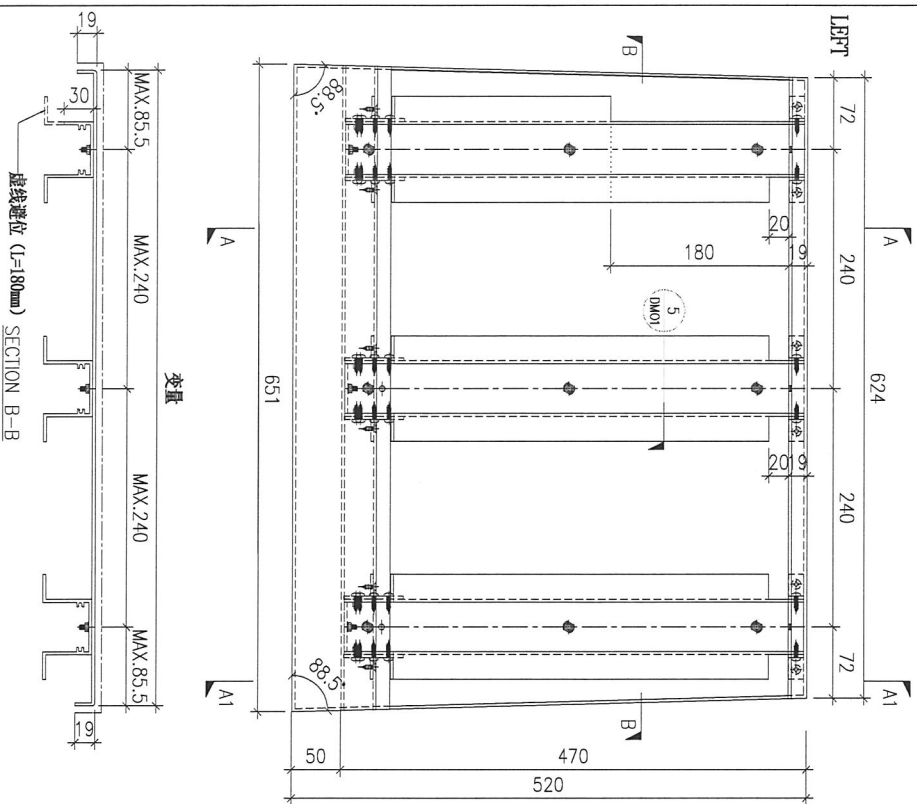
DATE
17-04-2024

DRAWN BY

APPROVED BY

PROJECT				MATERIAL				COATING				COLOUR		MARK. NO.		QTY.	
YIN PING ROAD KOWLOON FEATURE WALL (PHASE 2)				3mm铝板				PVF2				EC-DG-D334232-ZD1(SS-01)		-		-	
REV.	CHECKED DATE BY	PART NUMBER	Dim. A	Dim. B	Dim. C	Dim. D	Dim. E	Dim. F	Dim. G	Dim. H	QTY.	Inv. Code	ASSEMBLE ON PARTS				
-		P2-AP-A66	-	-	-	-	-	-	-	-	5		注: 用于 A 区域				
													注: 地盤用				

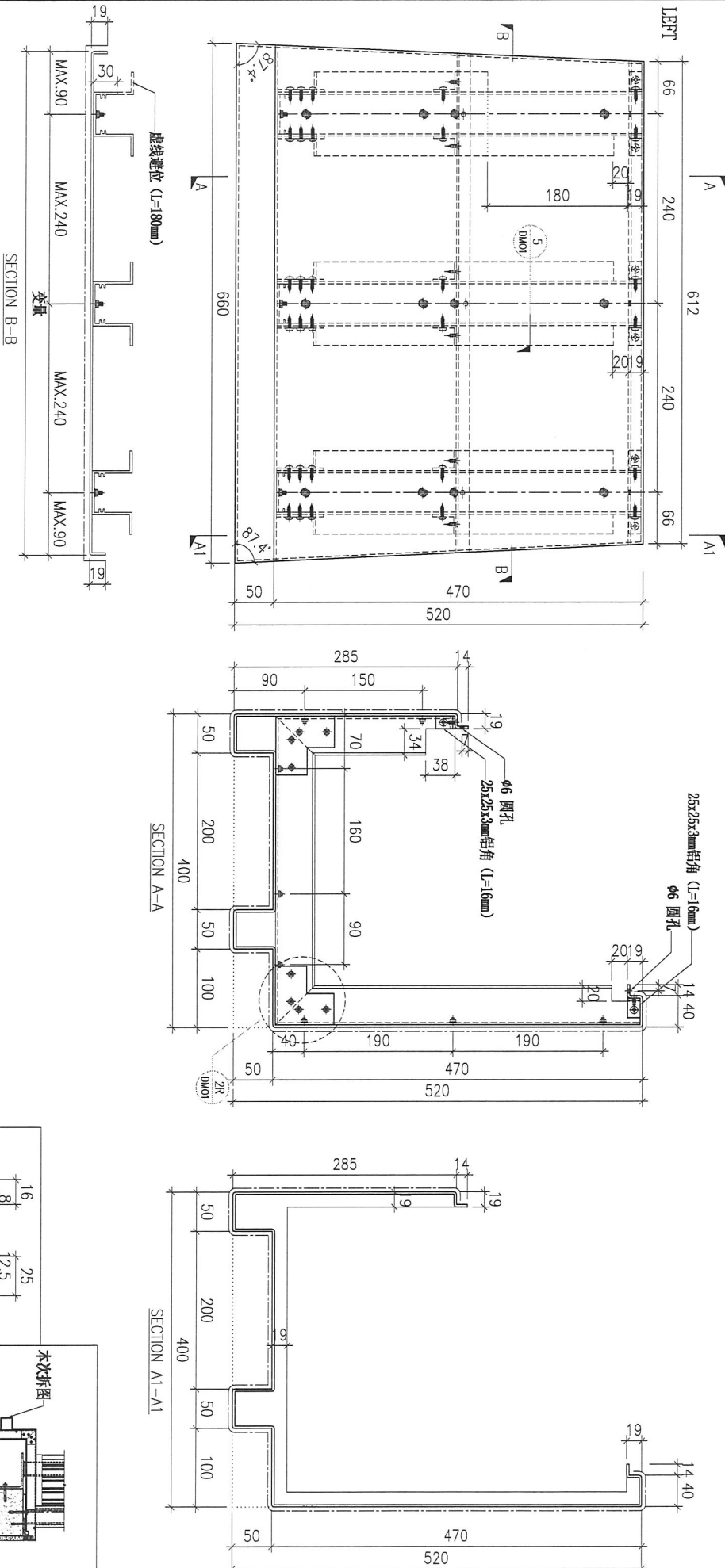
注: 工地复尺



DWG. NO.		REV.		SCALE		DATE		DRAWN BY		APPROVED BY	
P2-AP-66		-		-		17-04-2024		-		-	

PROJECT				MATERIAL				COATING				COLOUR		MARK. NO.		QTY.	
YIN PING ROAD KOWLOON FEATURE WALL (PHASE 2)				3mm铝板				PVF2				EC-DG-D334232-ZD1(SS-01)		-		-	
REV.	CHANGED DATE BY	PART NUMBER	Dim. A	Dim. B	Dim. C	Dim. D	Dim. E	Dim. F	Dim. G	Dim. H	QTY.	Inv. Code	ASSEMBLE ON PARTS				
-		P2-AP-B68	-	-	-	-	-	-	-	-	2		注: 用于 B 区域				
													注: 地盤用				

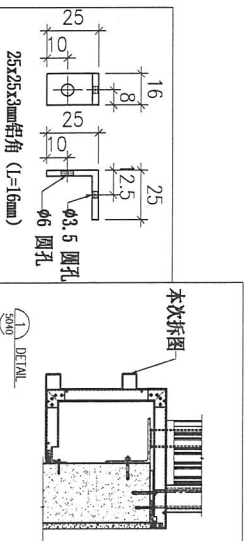
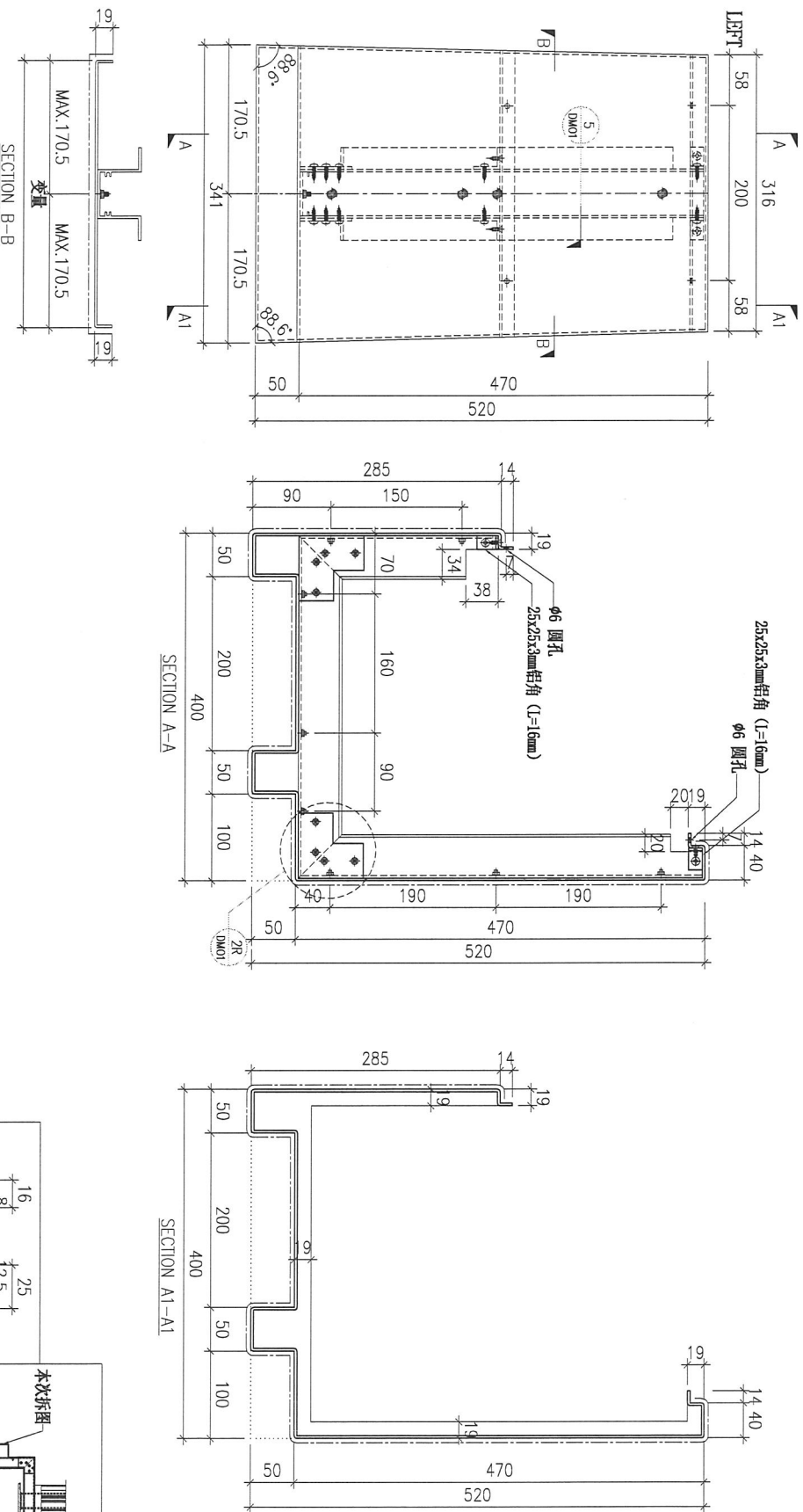
注: 工地复尺



DWG. NO.		REV.		SCALE		DATE		DRAWN BY		APPROVED BY	
P2-AP-68		-		-		17-04-2024		-		-	

PROJECT				MATERIAL				COATING				COLOUR		MARK. NO.		QTY.	
YIN PING ROAD KOMUOON FEATURE WALL (PHASE 2)				3mm铝板				PVF2				EC-DG-D334232-ZD1(SS-01)		-		-	
REV.	CHECKED DATE BY	PART NUMBER	Dim. A	Dim. B	Dim. C	Dim. D	Dim. E	Dim. F	Dim. G	Dim. H	QTY.	Inv. Code	ASSEMBLE ON PARTS 注: 用于 B 区域				
-		P2-AP-669	-	-	-	-	-	-	-	-	2						
													注: 地盤用				

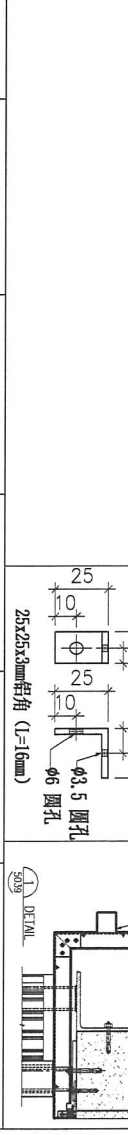
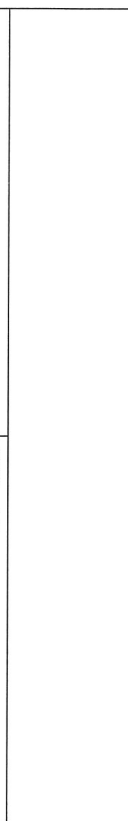
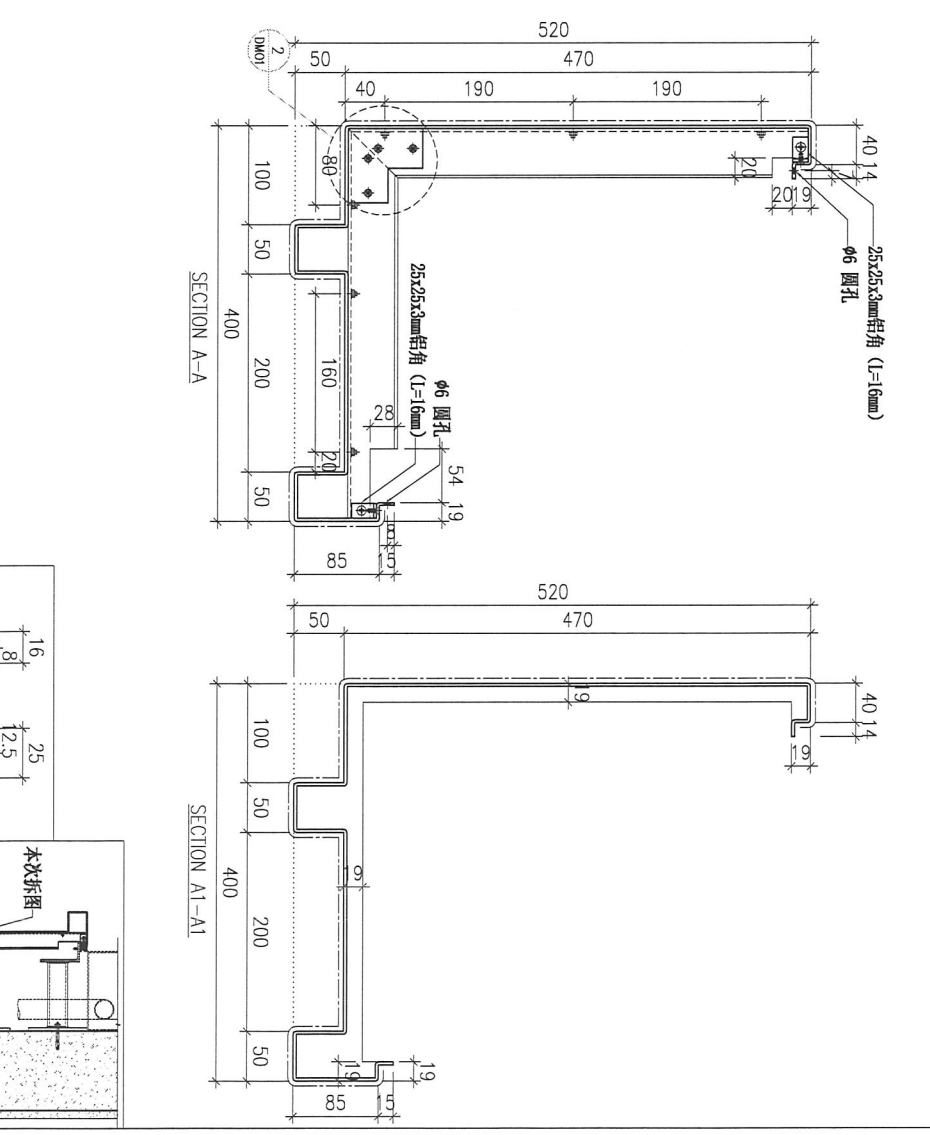
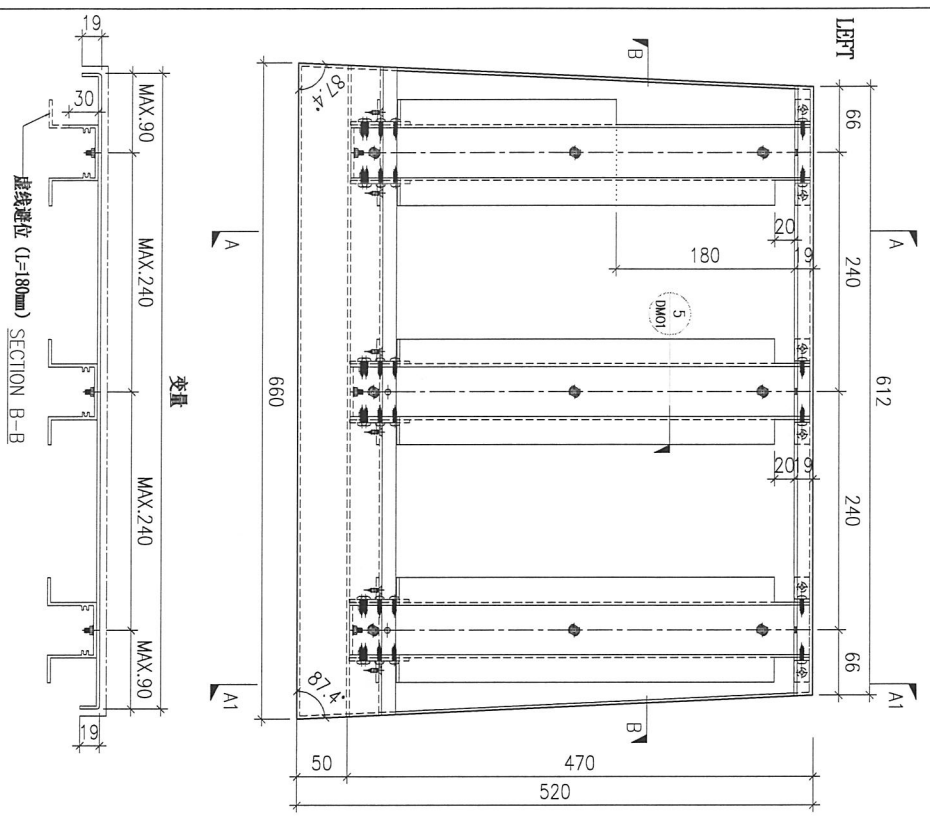
注: 工地复尺



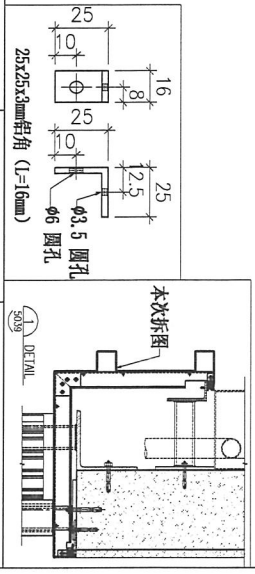
DWG. NO.		REV.		SCALE		DATE		DRAWN BY		APPROVED BY	
P2-AP-69		-		-		17-04-2024		-		-	

PROJECT				MATERIAL				COATING				COLOUR		MARK. NO.		QTY.	
YIN PING ROAD KOWLOON FEATURE WALL (PHASE 2)				3mm铝板				PVF2				EC-DG-D334232-ZD1(SS-01)		-		-	
REV.	CHECKED BY	PART NUMBER	Dim. A	Dim. B	Dim. C	Dim. D	Dim. E	Dim. F	Dim. G	Dim. H	QTY.	Inv. Code	ASSEMBLE ON PARTS				
-		P2-AP-B70	-	-	-	-	-	-	-	-	2		注: 用于 B 区域				
													注: 地盤用				

注: 工地复尺

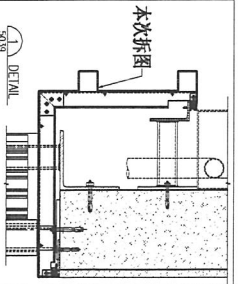
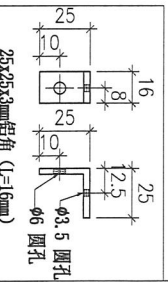
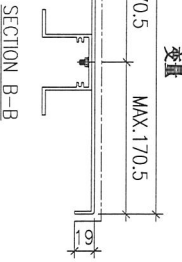
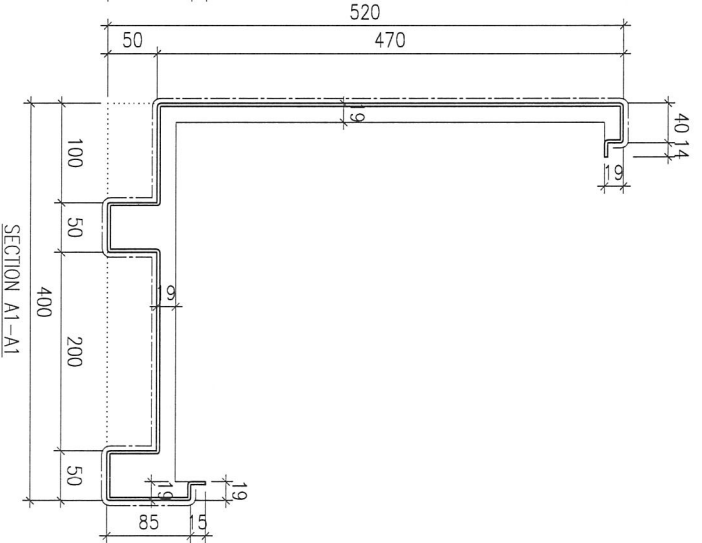
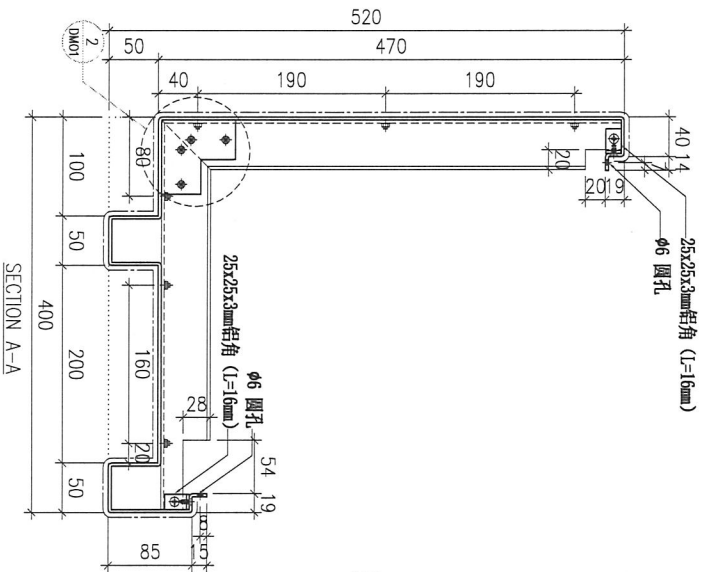
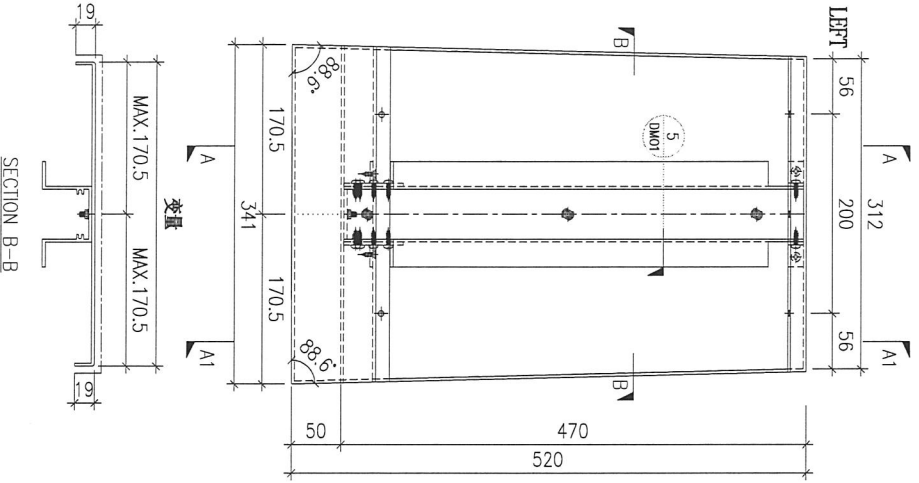


DWG. NO.		REV.		SCALE		DATE		DRAWN BY		APPROVED BY	
P2-AP-70		-		-		17-04-2024		-		-	



PROJECT				MATERIAL				COATING				COLOUR		MARK. NO.		QTY.	
YIN PING ROAD KOWLOON FEATURE WALL (PHASE 2)				3mm铝板				PVF2				EC-DG-D334232-ZD1(SS-01)		-		-	
REV.	CHECKED DATE BY	PART NUMBER	Dim. A	Dim. B	Dim. C	Dim. D	Dim. E	Dim. F	Dim. G	Dim. H	QTY.	Inv. Code	ASSEMBLE ON PARTS 注: 用于 B 区域				
-		P2-AP-B71	-	-	-	-	-	-	-	-	2						
													注: 地盤用				

注: 工地复尺



DWG. NO.

P2-AP-71

REV.

-

SCALE

-

DATE

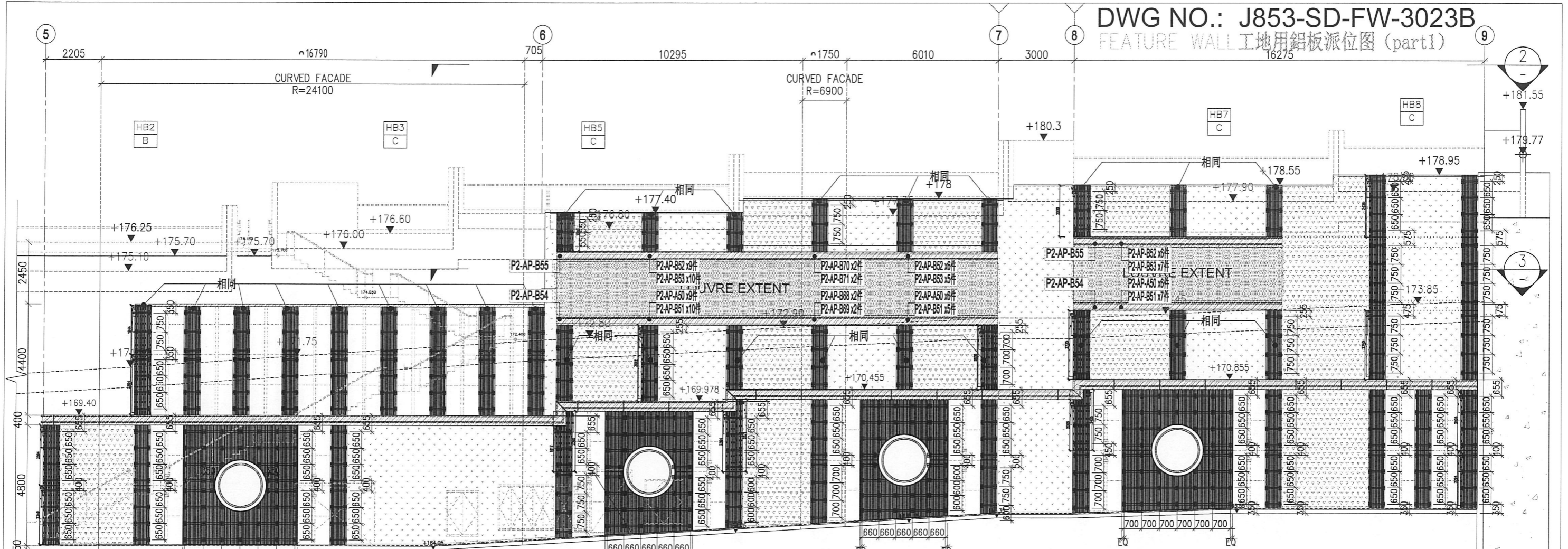
17-04-2024

DRAWN BY

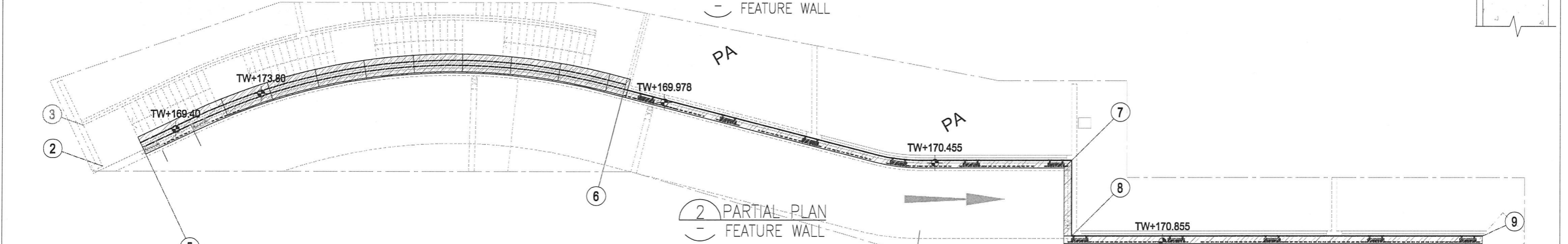
-

APPROVED BY

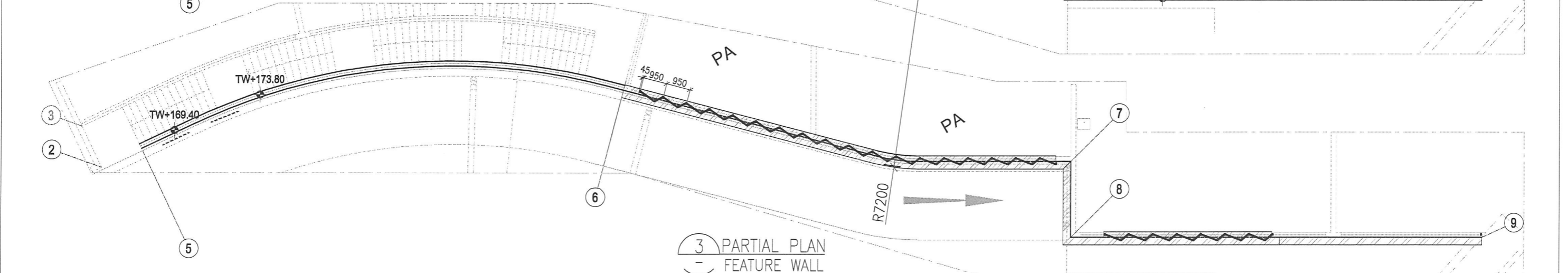
-



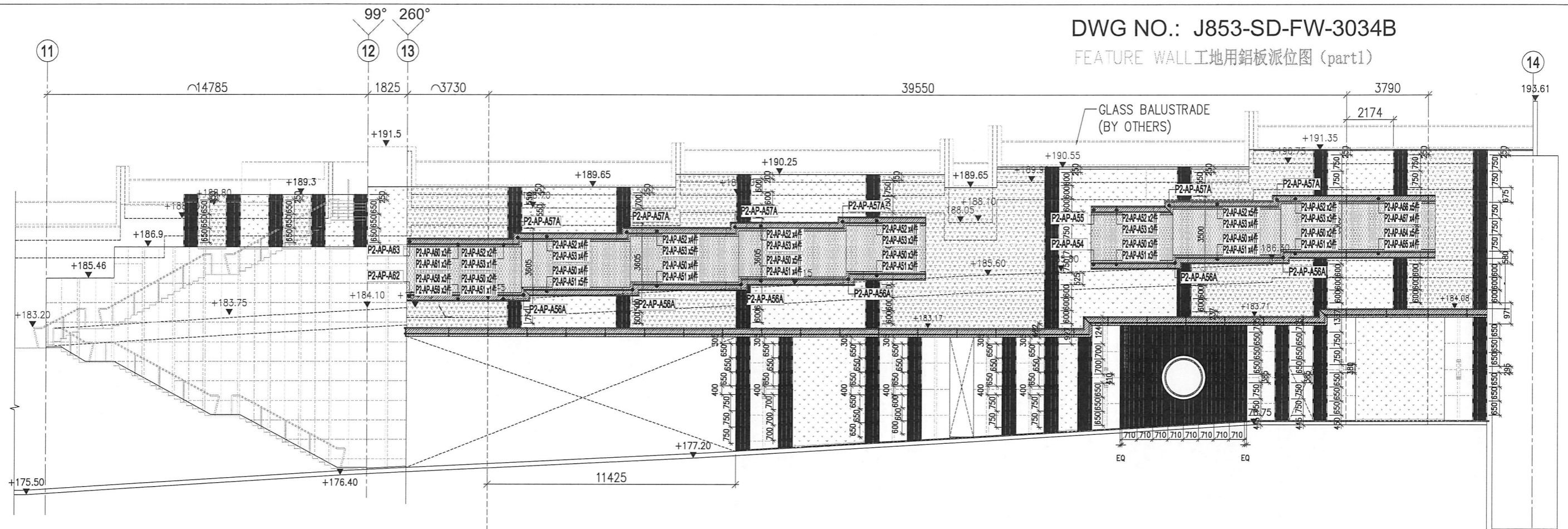
1 PARTIAL ELEVATION
- FEATURE WALL



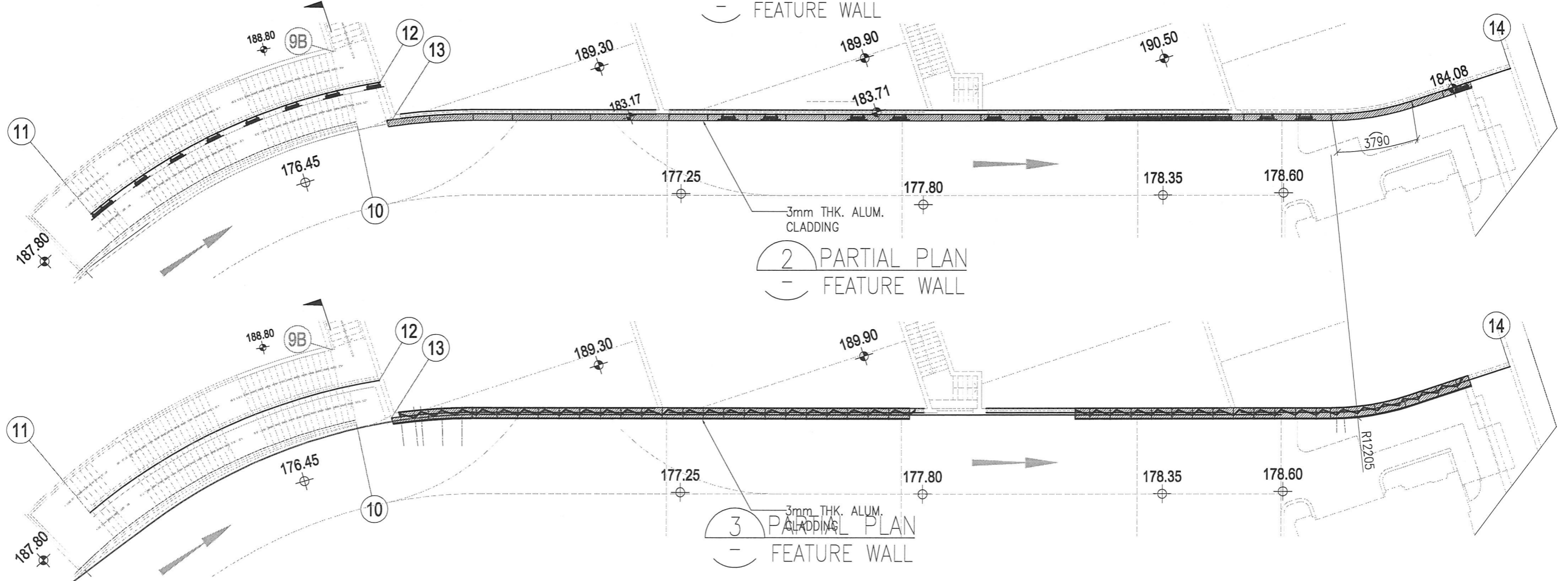
2 PARTIAL PLAN
- FEATURE WALL



3 PARTIAL PLAN
- FEATURE WALL



1 PARTIAL ELEVATION
- FEATURE WALL



2 PARTIAL PLAN
- FEATURE WALL

3 PARTIAL PLAN
- FEATURE WALL

