



工程指示 / 要求簡箋 ENGINEER INSTRUCTIONS (E.I.)

工程指示編號:	EI- 7656	修改版本:	-
	HK- 0708		
工程編號:	J 853	工程名稱:	延坪道 (第2期)
收件人:	生統/	發件人:	Jingo
工程項目:	飾線 Feature wall 工廠用鋁板加工圖	日期:	18/4/2024

<input type="checkbox"/> 原合約工程包	<input type="checkbox"/> 原合約工程加 / 減脹 QT-	<input type="checkbox"/> 新工程報價 QT-
---------------------------------	--	------------------------------------

信件批核號碼/圖紙參考編號:	批核模具圖紙編號:
客戶指示附件:	管理內部批簽署:

<input type="checkbox"/> 初步鋁料 B.M.	<input type="checkbox"/> 加工拆圖, 然後生產	<input type="checkbox"/> 尺寸表
<input type="checkbox"/> 正式鋁料 B.M.	<input type="checkbox"/> 技術上資料/指示	<input type="checkbox"/> 報價
<input type="checkbox"/> 配件 B.M.	<input type="checkbox"/> 樣辦或貨品說明書	<input type="checkbox"/> 分判合約
<input type="checkbox"/> 其他:		

內容: 請按圖生產

地盤需覆尺 (參照內圖)

完成上列要求日期: 3/5/2024

國內

<input type="checkbox"/> 生產技術總監	<input type="checkbox"/> 連附件	<input type="checkbox"/> 技術部	<input type="checkbox"/> 連附件	<input type="checkbox"/> 生產部	<input type="checkbox"/> 連附件
<input type="checkbox"/> 採購部	<input type="checkbox"/> 連附件	<input checked="" type="checkbox"/> 生產統籌部	<input checked="" type="checkbox"/> 連附件	<input type="checkbox"/> 報關組	<input type="checkbox"/> 連附件
<input type="checkbox"/> 質檢部	<input type="checkbox"/> 連附件	<input type="checkbox"/> 會計部	<input type="checkbox"/> 連附件	<input type="checkbox"/> 機械設計部	<input type="checkbox"/> 連附件
<input type="checkbox"/> 香港辦	<input type="checkbox"/> 連附件	<input type="checkbox"/> 其他:			

香港

<input type="checkbox"/> 行政部	<input type="checkbox"/> 連附件	<input type="checkbox"/> 會計部	<input type="checkbox"/> 連附件	<input type="checkbox"/> 統籌部	<input type="checkbox"/> 連附件	<input type="checkbox"/> 工程部	<input type="checkbox"/> 連附件
<input type="checkbox"/> 採購部	<input type="checkbox"/> 連附件	<input type="checkbox"/> QS部	<input type="checkbox"/> 連附件	<input checked="" type="checkbox"/> 地盤管理	<input checked="" type="checkbox"/> 連附件	<input type="checkbox"/> 維修部	<input type="checkbox"/> 連附件

*發件人簽署:	*組別成員批核簽署:
傳遞編號:	項目經理簽署:

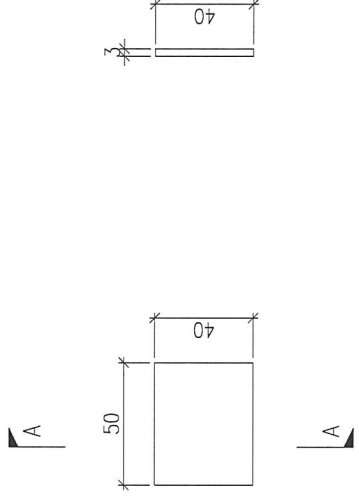
美特鋁質有限公司 MIDI Aluminium Fabricator Ltd.		工程號: 地盤名稱:	J-853 廷坪路	計算: 核對:	ming	日期:	2024.04.13			送呈: 副本:	JOE	
項目類別:		特征牆(2区)		批准:	日期:		366.295			總重量: 2973.51		
BM編號:		修改版次:		A/C Code:	總V.F.:		總展開面積 平方米			總V.F. 平方米		
序號	修改內容	鋁板圖號	鋁板名稱	顏色	實用	後備	總數	總重量	單件展開面積 平方米	單件V.F.	總V.F.	圖紙編號
1		P2-AP-A01	3mm厚鋁板	鉻化	70	0	70	1.138	0.002	0.000	0.000	0.000
2		P2-AP-A02A	3mm厚鋁板	EC-DG-D334232-ZD1 (SS-01)	8	0	8	101.874	1.566	1.566	1.566	12.531
3		P2-AP-A02B	3mm厚鋁板	EC-DG-D334232-ZD1 (SS-01)	1	0	1	10.794	1.328	1.328	1.328	1.328
4		P2-AP-A02C	3mm厚鋁板	EC-DG-D334232-ZD1 (SS-01)	1	0	1	9.884	1.216	1.216	1.216	1.216
5		P2-AP-A02D	3mm厚鋁板	EC-DG-D334232-ZD1 (SS-01)	1	0	1	12.144	1.494	1.494	1.494	1.494
6		P2-AP-A02E	3mm厚鋁板	EC-DG-D334232-ZD1 (SS-01)	1	0	1	11.086	1.364	1.364	1.364	1.364
7		P2-AP-A02F	3mm厚鋁板	EC-DG-D334232-ZD1 (SS-01)	1	0	1	14.138	1.739	1.739	1.739	1.739
8		P2-AP-A03A	3mm厚鋁板	EC-DG-D334232-ZD1 (SS-01)	2	0	2	24.990	1.537	1.537	1.537	3.074
9		P2-AP-A03B	3mm厚鋁板	EC-DG-D334232-ZD1 (SS-01)	1	0	1	11.783	1.449	1.449	1.449	1.449
10		P2-AP-A03C	3mm厚鋁板	EC-DG-D334232-ZD1 (SS-01)	1	0	1	12.314	1.515	1.515	1.515	1.515
11		P2-AP-A04	3mm厚鋁板	EC-DG-D334232-ZD1 (SS-01)	1	0	1	10.554	1.298	1.298	1.298	1.298
12		P2-AP-A05A	3mm厚鋁板	EC-DG-D334232-ZD1 (SS-01)	1	0	1	12.293	1.512	1.512	1.512	1.512
13		P2-AP-A05B	3mm厚鋁板	EC-DG-D334232-ZD1 (SS-01)	1	0	1	11.671	1.436	1.436	1.436	1.436
14		P2-AP-A05D	3mm厚鋁板	EC-DG-D334232-ZD1 (SS-01)	1	0	1	11.761	1.447	1.447	1.447	1.447
15		P2-AP-A05E	3mm厚鋁板	EC-DG-D334232-ZD1 (SS-01)	1	0	1	9.103	1.120	1.120	1.120	1.120
16		P2-AP-A05F	3mm厚鋁板	EC-DG-D334232-ZD1 (SS-01)	1	0	1	7.773	0.956	0.956	0.956	0.956
17		P2-AP-A05G	3mm厚鋁板	EC-DG-D334232-ZD1 (SS-01)	1	0	1	6.444	0.793	0.793	0.793	0.793
18		P2-AP-A05H	3mm厚鋁板	EC-DG-D334232-ZD1 (SS-01)	5	0	5	55.696	1.370	1.370	1.370	6.851
19		P2-AP-A05J	3mm厚鋁板	EC-DG-D334232-ZD1 (SS-01)	6	0	6	49.289	1.010	1.010	1.010	6.063
20		P2-AP-A05K	3mm厚鋁板	EC-DG-D334232-ZD1 (SS-01)	1	0	1	10.342	1.272	1.272	1.272	1.272
21		P2-AP-A05L	3mm厚鋁板	EC-DG-D334232-ZD1 (SS-01)	5	0	5	63.804	1.570	1.570	1.570	7.848
22		P2-AP-A06A	3mm厚鋁板	EC-DG-D334232-ZD1 (SS-01)	1	0	1	9.810	1.207	1.207	1.207	1.207

美特鋁質有限公司 MIDI Aluminium Fabricator Ltd.		工程號: J-853	計算:	ming	日期:	2024.04.13			送呈:	JOE		
地盤名稱: 廷坪路		核對:			日期:				副本:			
項目類別: 特征牆(2区)		批准:			日期:							
BM編號:		修改版次:	A/C Code:	顏色	實用	後備	總數	總重量	單件展開面積	總展開面積	單件V.F.	總V.F.
序號	修改內容	鋁板圖號	鋁板名稱	顏色	實用	後備	總數	總重量	平方米	平方米	平方米	平方米
23		P2-AP-A06C	3mm厚鋁板	EC-DG-D334232-ZD1 (SS-01)	1	0	1	10.076	1.239	1.239	1.239	1.239
24		P2-AP-A06D	3mm厚鋁板	EC-DG-D334232-ZD1 (SS-01)	1	0	1	11.405	1.403	1.403	1.403	1.403
25		P2-AP-A06E	3mm厚鋁板	EC-DG-D334232-ZD1 (SS-01)	1	0	1	13.170	1.620	1.620	1.620	1.620
26		P2-AP-A07	3mm厚鋁板	EC-DG-D334232-ZD1 (SS-01)	1	0	1	12.904	1.587	1.587	1.587	1.587
27		P2-AP-A08	3mm厚鋁板	EC-DG-D334232-ZD1 (SS-01)	1	0	1	10.432	1.283	1.283	1.283	1.283
28		P2-AP-A09	3mm厚鋁板	EC-DG-D334232-ZD1 (SS-01)	4	0	4	61.656	1.896	7.584	1.896	7.584
29		P2-AP-A10	3mm厚鋁板	EC-DG-D334232-ZD1 (SS-01)	1	0	1	15.074	1.854	1.854	1.854	1.854
30		P2-AP-A11	3mm厚鋁板	EC-DG-D334232-ZD1 (SS-01)	1	0	1	14.468	1.780	1.780	1.780	1.780
31		P2-AP-A12	3mm厚鋁板	EC-DG-D334232-ZD1 (SS-01)	1	0	1	13.239	1.628	1.628	1.628	1.628
32		P2-AP-A13	3mm厚鋁板	EC-DG-D334232-ZD1 (SS-01)	1	0	1	12.633	1.554	1.554	1.554	1.554
33		P2-AP-A14	3mm厚鋁板	EC-DG-D334232-ZD1 (SS-01)	1	0	1	11.293	1.389	1.389	1.389	1.389
34		P2-AP-A15	3mm厚鋁板	EC-DG-D334232-ZD1 (SS-01)	1	0	1	10.687	1.315	1.315	1.315	1.315
35		P2-AP-A16	3mm厚鋁板	EC-DG-D334232-ZD1 (SS-01)	1	0	1	13.059	1.606	1.606	1.606	1.606
36		P2-AP-A17	3mm厚鋁板	EC-DG-D334232-ZD1 (SS-01)	1	0	1	14.165	1.742	1.742	1.742	1.742
37		FKB-M100L	2mm厚鋁板	EC-DG-D334232-ZD1 (SS-01)	105	0	105	1.423	0.003	0.263	0.003	0.263
38		FKB-M100R	2mm厚鋁板	EC-DG-D334232-ZD1 (SS-01)	105	0	105	1.423	0.003	0.263	0.003	0.263
39		FKB-M101L	2mm厚鋁板	EC-DG-D334232-ZD1 (SS-01)	12	0	12	0.163	0.003	0.030	0.003	0.030
40		FKB-M101R	2mm厚鋁板	EC-DG-D334232-ZD1 (SS-01)	12	0	12	0.163	0.003	0.030	0.003	0.030
41		FKB-M102	2mm厚鋁板	EC-DG-D334232-ZD1 (SS-01)	122	0	122	4.959	0.008	0.915	0.008	0.915
42		P2-AP-31	3mm厚鋁板	EC-DG-D334232-ZD1 (SS-01)	94	0	94	1029.598	1.347	126.642	1.347	126.642
43		P2-AP-32A	3mm厚鋁板	EC-DG-D334232-ZD1 (SS-01)	1	0	1	6.931	0.852	0.852	0.852	0.852
44		P2-AP-32B	3mm厚鋁板	EC-DG-D334232-ZD1 (SS-01)	1	0	1	7.795	0.959	0.959	0.959	0.959

美特鋁質有限公司 MIDI Aluminium Fabricator Ltd.		工程號: 地盤名稱:	J-853 廷坪路	計算: 核對:	ming	日期:	2024.04.13			送呈: 副本:	JOE	
項目類別:		特征牆(2区)		批准:		日期:						
BM編號:		修改版次:		A/C Code:		總V.F.:	366.295			總重量:	2973.51	
序號	修改內容	鋁板圖號	鋁板名稱	顏色	實用	後備	總數	總重量	總展開面積		圖紙編號	
									單件展開面積	總展開面積		單件V.F.
									平方米		平方米	
45		P2-AP-32C	3mm厚鋁板	EC-DG-D334232-ZD1 (SS-01)	1	0	1	5.340	0.657	0.657	0.657	0.657
46		P2-AP-32D	3mm厚鋁板	EC-DG-D334232-ZD1 (SS-01)	1	0	1	7.235	0.890	0.890	0.890	0.890
47		P2-AP-32E	3mm厚鋁板	EC-DG-D334232-ZD1 (SS-01)	5	0	5	48.777	1.200	6.000	1.200	6.000
48		P2-AP-32F	3mm厚鋁板	EC-DG-D334232-ZD1 (SS-01)	1	0	1	8.188	1.007	1.007	1.007	1.007
49		P2-AP-33A	3mm厚鋁板	EC-DG-D334232-ZD1 (SS-01)	1	0	1	8.844	1.088	1.088	1.088	1.088
50		P2-AP-33B	3mm厚鋁板	EC-DG-D334232-ZD1 (SS-01)	1	0	1	7.944	0.977	0.977	0.977	0.977
51		P2-AP-33C	3mm厚鋁板	EC-DG-D334232-ZD1 (SS-01)	1	0	1	9.100	1.119	1.119	1.119	1.119
52		P2-AP-33D	3mm厚鋁板	EC-DG-D334232-ZD1 (SS-01)	1	0	1	13.605	1.673	1.673	1.673	1.673
53		P2-AP-34A	3mm厚鋁板	EC-DG-D334232-ZD1 (SS-01)	1	0	1	8.134	1.001	1.001	1.001	1.001
54		P2-AP-34B	3mm厚鋁板	EC-DG-D334232-ZD1 (SS-01)	1	0	1	13.158	1.618	1.618	1.618	1.618
55		P2-AP-34C	3mm厚鋁板	EC-DG-D334232-ZD1 (SS-01)	1	0	1	13.325	1.639	1.639	1.639	1.639
56		P2-AP-34D	3mm厚鋁板	EC-DG-D334232-ZD1 (SS-01)	1	0	1	8.927	1.098	1.098	1.098	1.098
57		P2-AP-34E	3mm厚鋁板	EC-DG-D334232-ZD1 (SS-01)	1	0	1	10.184	1.253	1.253	1.253	1.253
58		P2-AP-34F	3mm厚鋁板	EC-DG-D334232-ZD1 (SS-01)	1	0	1	12.622	1.552	1.552	1.552	1.552
59		P2-AP-35	3mm厚鋁板	EC-DG-D334232-ZD1 (SS-01)	61	0	61	278.925	0.562	34.308	0.562	34.308
60		P2-AP-B01	3mm厚鋁板	鍍化	95	0	95	0.000	0.000	0.000	0.002	0.190
61		P2-AP-B02A	3mm厚鋁板	EC-DG-D334232-ZD1 (SS-01)	5	0	5	63.671	1.566	7.832	1.566	7.832
62		P2-AP-B02B	3mm厚鋁板	EC-DG-D334232-ZD1 (SS-01)	4	0	4	51.150	1.573	6.291	1.573	6.291
63		P2-AP-B02C	3mm厚鋁板	EC-DG-D334232-ZD1 (SS-01)	9	0	9	93.074	1.272	11.448	1.272	11.448
64		P2-AP-B02D	3mm厚鋁板	EC-DG-D334232-ZD1 (SS-01)	2	0	2	25.894	1.592	3.185	1.592	3.185
65		P2-AP-B03A	3mm厚鋁板	EC-DG-D334232-ZD1 (SS-01)	3	0	3	37.485	1.537	4.611	1.537	4.611
66		P2-AP-B03B	3mm厚鋁板	EC-DG-D334232-ZD1 (SS-01)	4	0	4	48.789	1.500	6.001	1.500	6.001



PROJECT		YIN PING ROAD KOWLOON FEATURE WALL (PHASE 2)										MATERIAL		3mm 铝板		COATING		铬化		COLOUR		-		MARK. NO.		-		QTY.		-	
REV.	CHECKED DATE	PART NUMBER	Dim. A	Dim. B	Dim. C	Dim. D	Dim. E	Dim. F	Dim. G	Dim. H	QTY.	Inv. Code	ASSEMBLE ON PARTS																		
-		P2-AP-A01	-	-	-						70																				
注: 工厂用																															



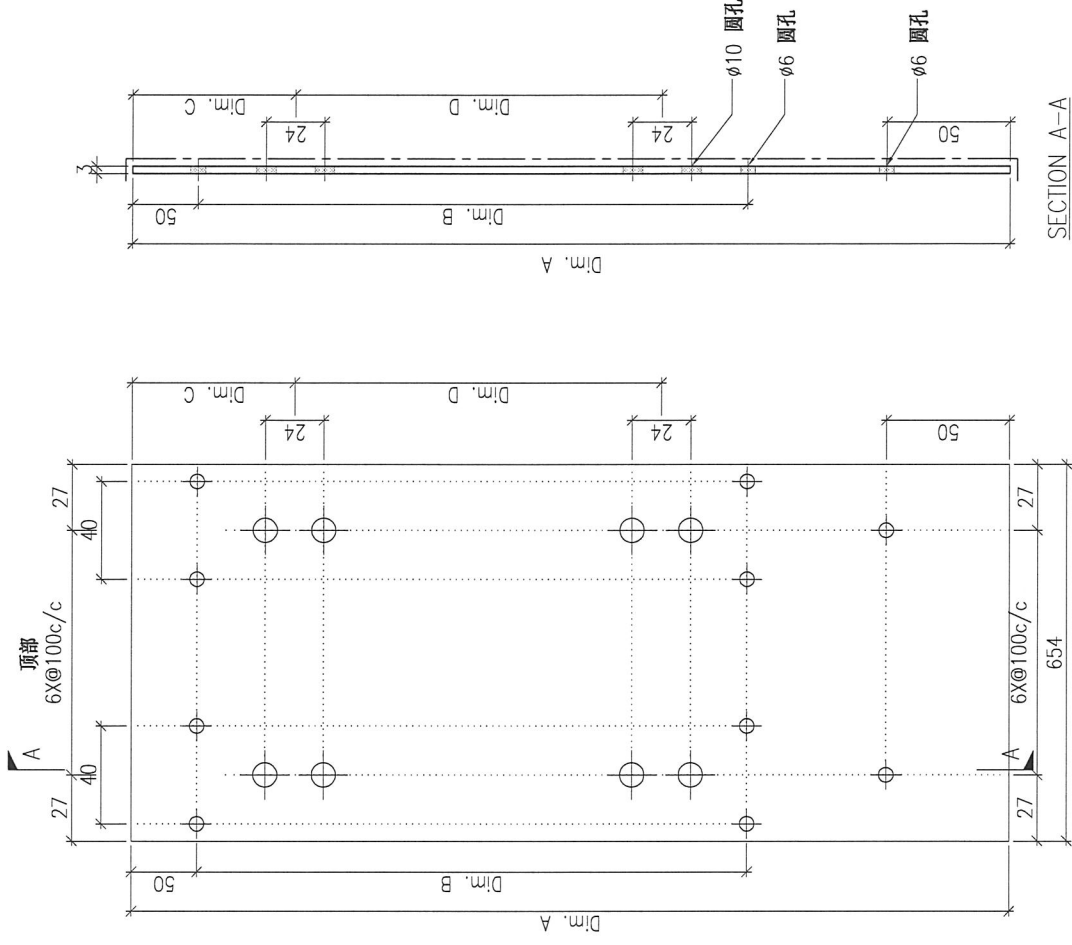
SECTION A-A

DWG. NO.	P2-AP-A01	REV.	-	SCALE	-	DATE	13-04-2024	DRAWN BY	-	APPROVED BY	-
----------	-----------	------	---	-------	---	------	------------	----------	---	-------------	---



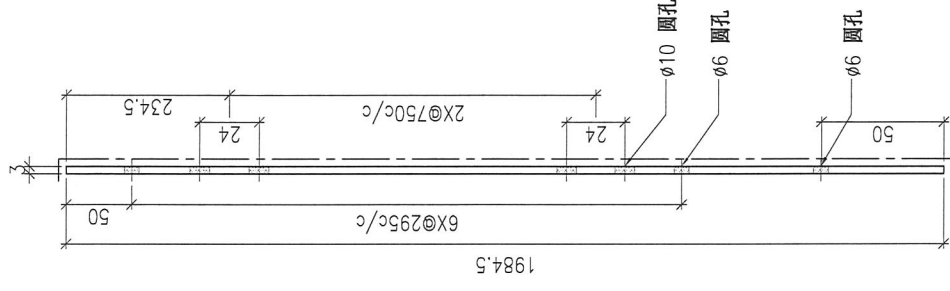
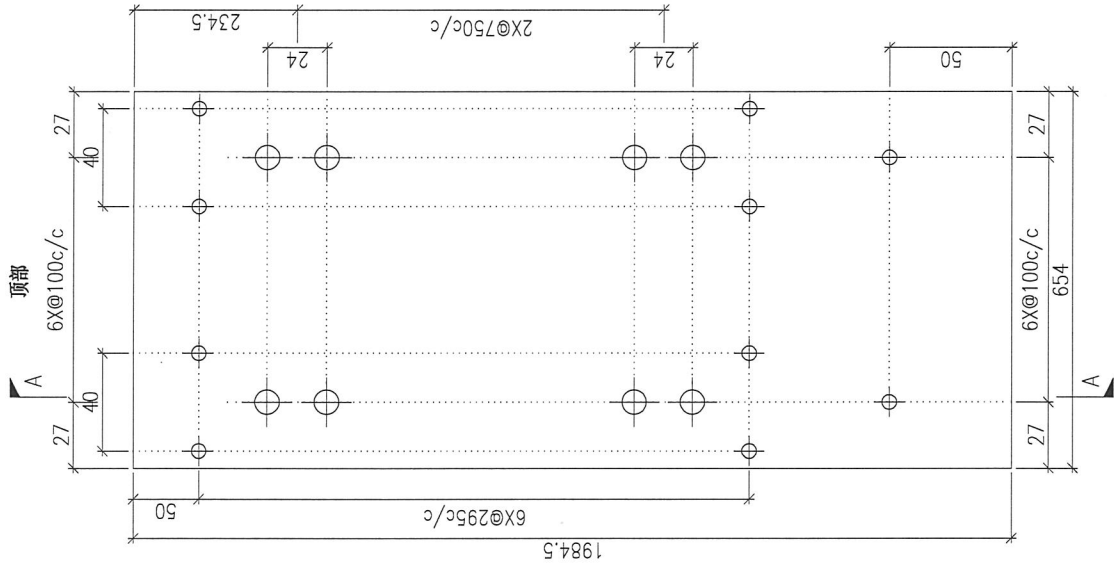
PROJECT		YIN PING ROAD KOWLOON FEATURE WALL (PHASE 2)				MATERIAL				3mm 铝板		COATING		PVF2		COLOUR		EC-DG-D334232-ZD1 (SS-01)		MARK. NO.		-		QTY.		-	
CHKD BY		PART NUMBER	Dim. A	Dim. B	Dim. C	Dim. D	Dim. E	Dim. F	Dim. G	Dim. H	QTY.	Inv. Code	ASSEMBLE ON PARTS														
-		P2-AP-A03A	2349.5	7X@300c/c	144.5	3X@50c/c					2																
-		P2-AP-A03B	2216.5	7X@290c/c	199.5	3X@600c/c					1																
-		P2-AP-A03C	2316	7X@300c/c	249.5	3X@600c/c					1																

注: 工厂用



DWG. NO.	P2-AP-A03	REV.	-	SCALE	-	DATE	13-04-2024	DRAWN BY	-	APPROVED BY	-
----------	-----------	------	---	-------	---	------	------------	----------	---	-------------	---

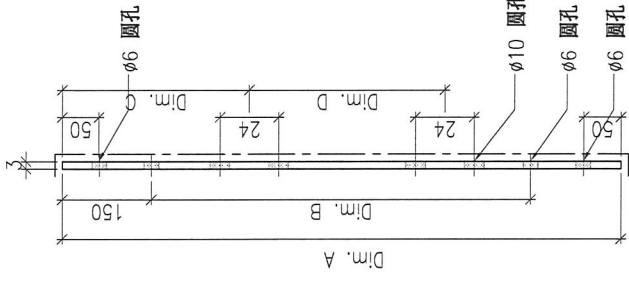
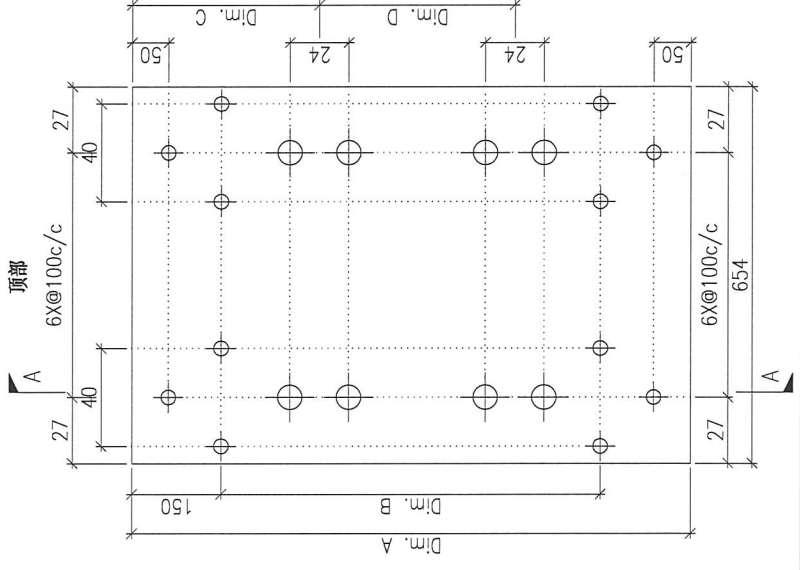
PROJECT		YIN PING ROAD KOWLOON FEATURE WALL (PHASE 2)				MATERIAL				3mm 铝板				COATING		PVF2		COLOUR		EC-DG-D334232-ZD1(SS-01)		MARK. NO.		-		QTY.		-	
CHKD BY		PART NUMBER	Dim. A	Dim. B	Dim. C	Dim. D	Dim. E	Dim. F	Dim. G	Dim. H	QTY.	Inv. Code	ASSEMBLE ON PARTS																
		P2-AP-A04	-	-	-						1		注: 工厂用																



SECTION A-A

DWG. NO.	P2-AP-A04	REV.	-	SCALE	-	DATE	13-04-2024	DRAWN BY	-	APPROVED BY	-
----------	-----------	------	---	-------	---	------	------------	----------	---	-------------	---

PROJECT		MATERIAL										COLOUR	MARK. NO.	QTY.	
YIN PING ROAD KOWLOON FEATURE WALL (PHASE 2)		3mm 铝板										EC-DG-D334232-ZD1(SS-01)	-	-	
REV.	CHECKED DATE	PART NUMBER	Dim. A	Dim. B	Dim. C	Dim. D	Dim. E	Dim. F	Dim. G	Dim. H	QTY.	Inv. Code	ASSEMBLE ON PARTS		
-	-	P2-AP-A05A	2311.5	7X@280c/c	245	3X@600c/c	-	-	-	-	1	-	注: 工厂用		
-	-	P2-AP-A05B	2180	6X@300c/c	180	3X@600c/c	-	-	-	-	1	-			
-	-	P2-AP-A05C	-	-	-	-	-	-	-	-	-	-			
-	-	P2-AP-A05D	2212	7X@270c/c	195	3X@600c/c	-	-	-	-	1	-			
-	-	P2-AP-A05E	1712	5X@270c/c	245	2X@600c/c	-	-	-	-	1	-			
-	-	P2-AP-A05F	1462	4X@285c/c	245	2X@500c/c	-	-	-	-	1	-			
-	-	P2-AP-A05G	1212	3X@300c/c	245	1X@750c/c	-	-	-	-	1	-			
-	-	P2-AP-A05H	2080	6X@295c/c	230	2X@750c/c	-	-	-	-	5	-			
-	-	P2-AP-A05J	1530	4X@285c/c	230	2X@550c/c	-	-	-	-	6	-			
-	-	P2-AP-A05K	1930	6X@258c/c	230	2X@750c/c	-	-	-	-	1	-			
-	-	P2-AP-A05L	2400	7X@300c/c	245	3X@650c/c	-	-	-	-	5	-			



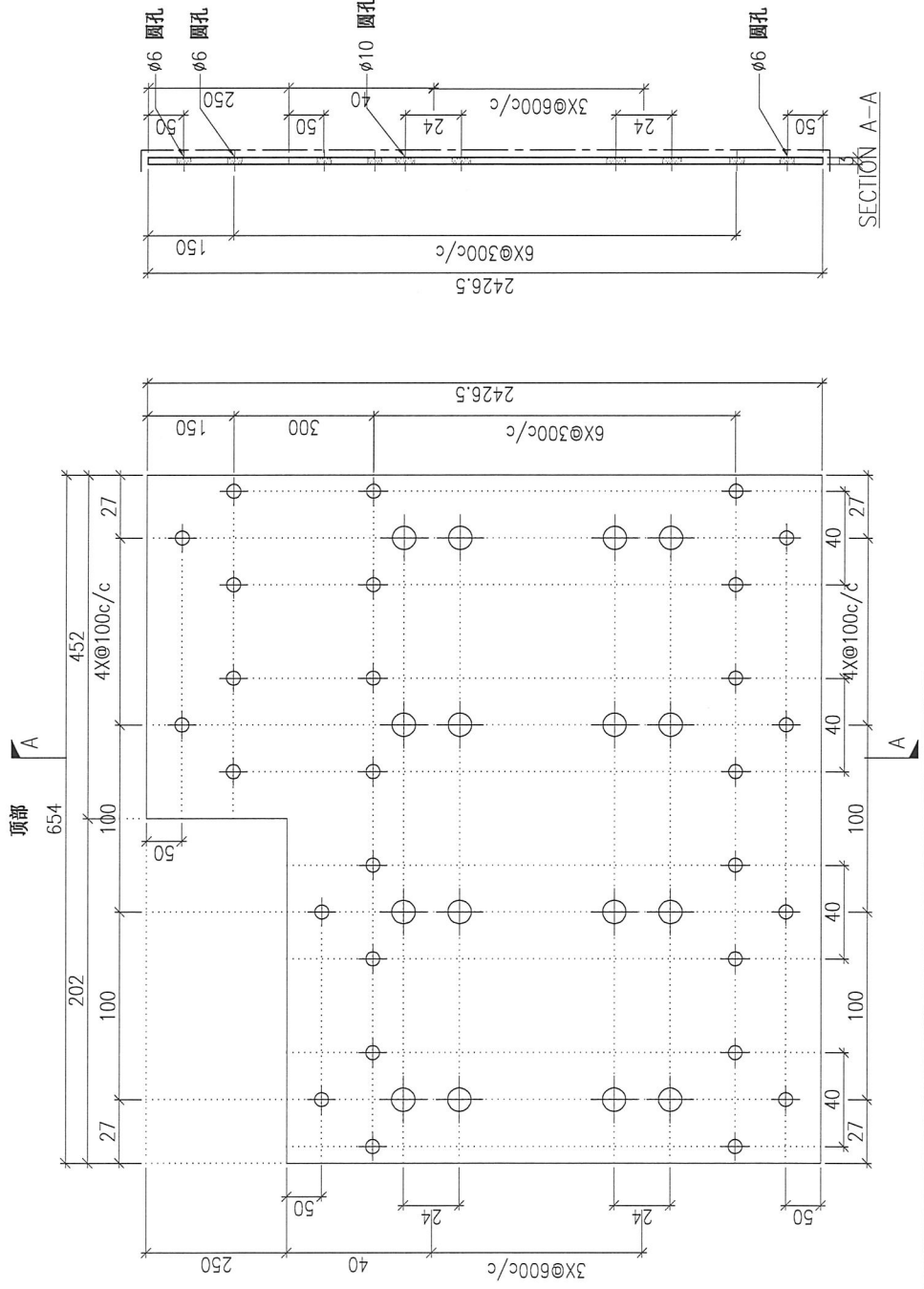
SECTION A-A

DWG. NO.	P2-AP-A05	REV.	-	SCALE	-	DATE	13-04-2024	DRAWN BY	-	APPROVED BY	-
----------	-----------	------	---	-------	---	------	------------	----------	---	-------------	---



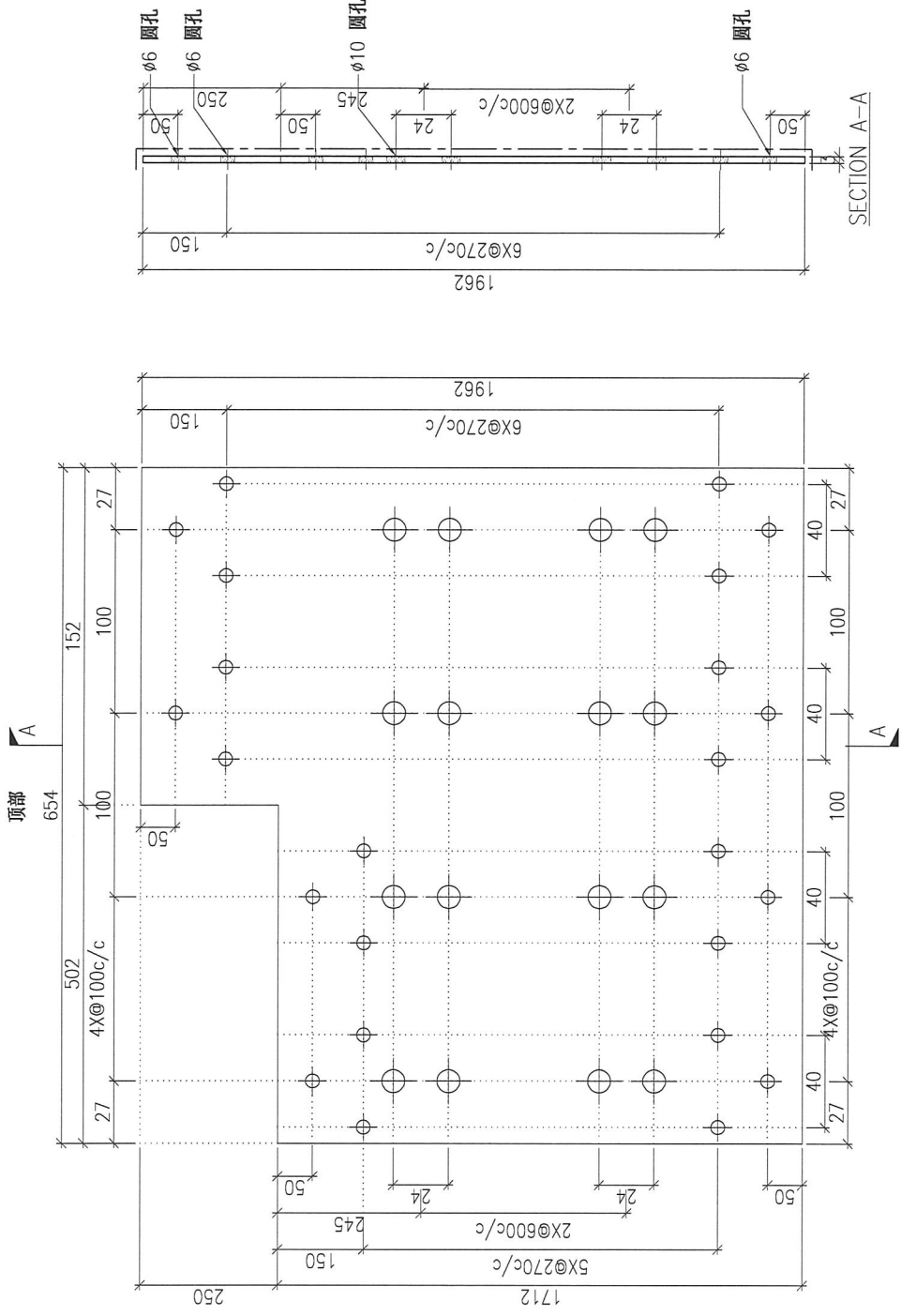
PROJECT		MATERIAL										COLOUR		MARK. NO.		QTY.	
YIN PING ROAD KOWLOON FEATURE WALL (PHASE 2)		3mm 铝板										EC-DG-D334232-ZD1(SS-01)		-		-	
REV.	CHECKED BY	PART NUMBER	Dim. A	Dim. B	Dim. C	Dim. D	Dim. E	Dim. F	Dim. G	Dim. H	QTY.	Inv. Code	ASSEMBLE ON PARTS				
-		P2-AP-A07	-	-	-	-	-	-	-	-	1		注: 工厂用				

ASSEMBLE ON PARTS												
注: 工厂用												



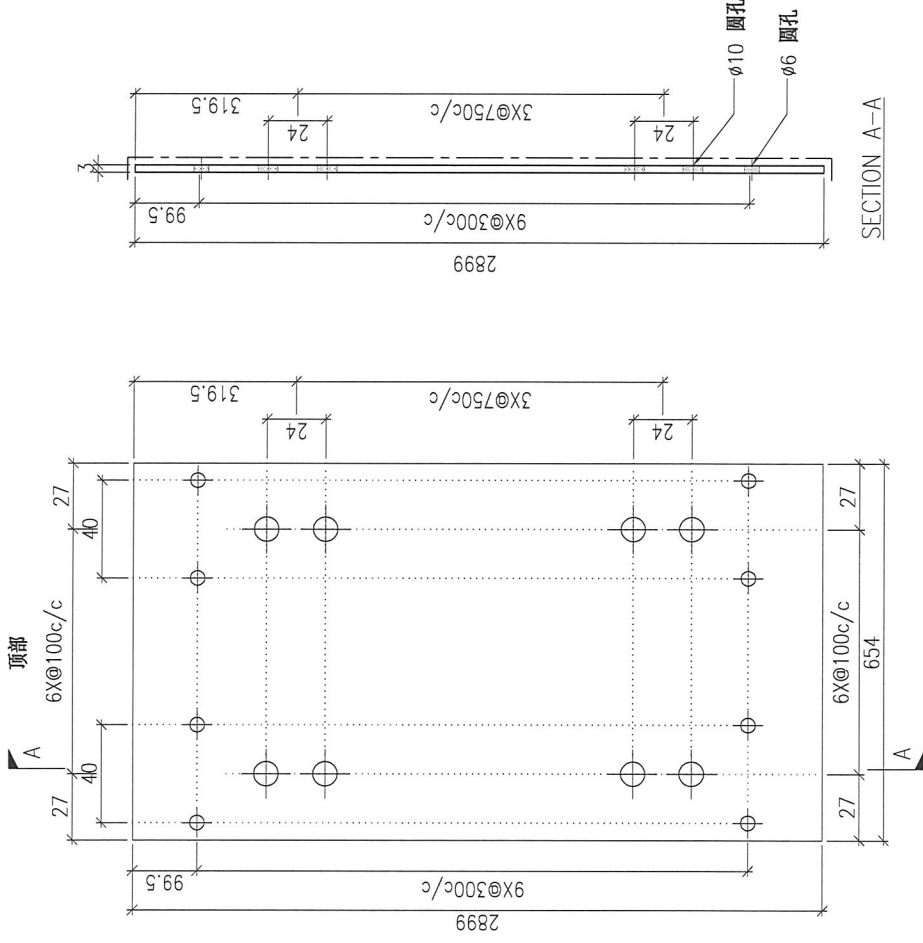
DWG. NO.		P2-AP-A07		REV.		SCALE		DATE		DRAWN BY		APPROVED BY	
				-		-		13-04-2024		-		-	

PROJECT		YIN PING ROAD KOWLOON FEATURE WALL (PHASE 2)				MATERIAL				3mm 铝板				COATING		PVF2		COLOUR		EC-DG-D334232-ZD1(SS-01)		MARK. NO.		-		QTY.		-	
REV.	CHECKED DATE BY	PART NUMBER	Dim. A	Dim. B	Dim. C	Dim. D	Dim. E	Dim. F	Dim. G	Dim. H	QTY.	Inv. Code	ASSEMBLE ON PARTS																
-		P2-AP-A08	-	-	-	-	-	-	-	-	1		注: 工厂用																



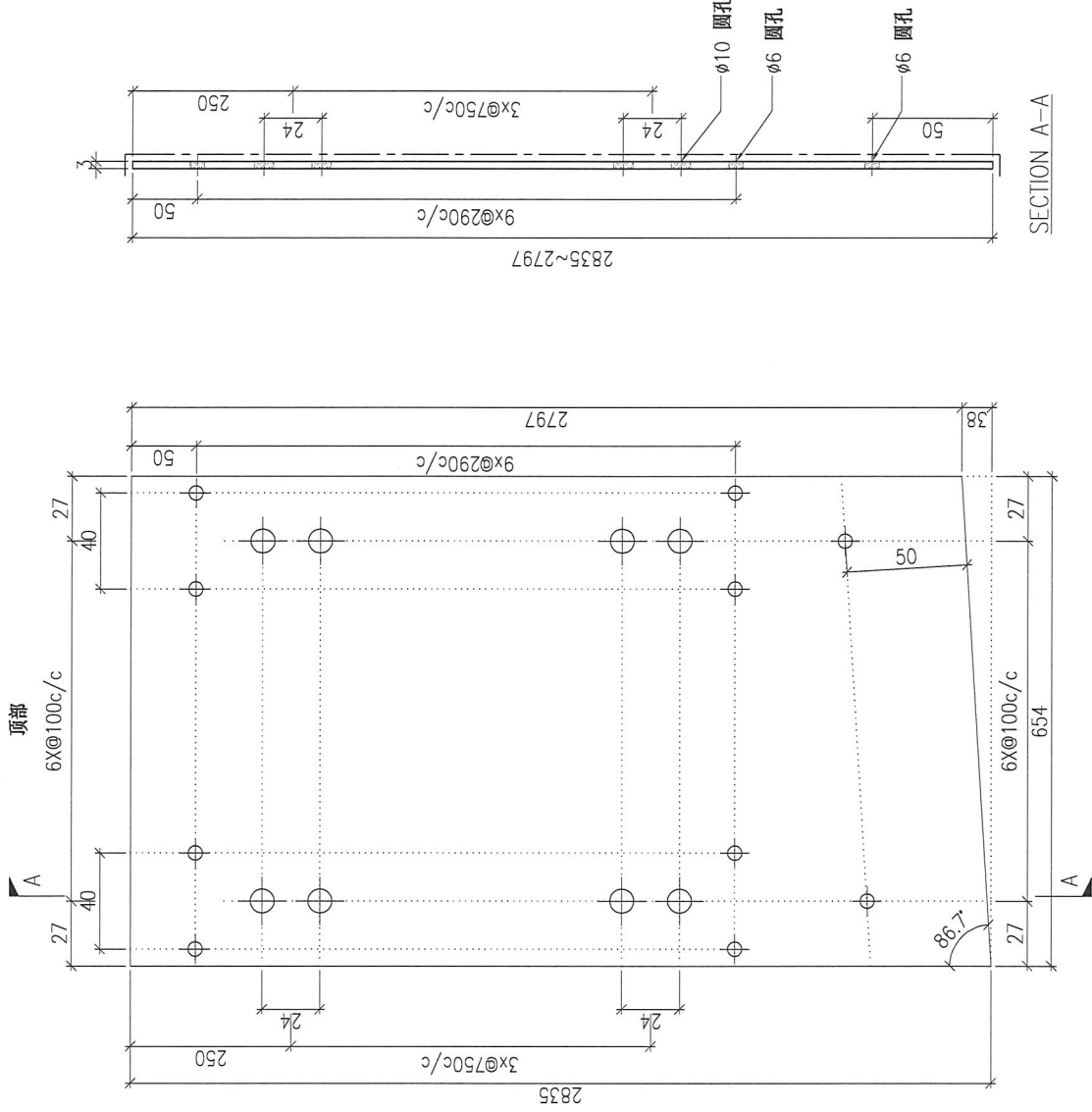
DWG. NO.		P2-AP-A08		REV.		-		SCALE		-		DATE		13-04-2024		DRAWN BY		-		APPROVED BY		-	
----------	--	-----------	--	------	--	---	--	-------	--	---	--	------	--	------------	--	----------	--	---	--	-------------	--	---	--

PROJECT		YIN PING ROAD KOWLOON FEATURE WALL (PHASE 2)						MATERIAL				3mm 铝板		COATING		PVF2		COLOUR		EC-DG-D334232-ZD1(SS-01)		MARK. NO.		-		QTY.		-	
CHKD BY		PART NUMBER	Dim. A	Dim. B	Dim. C	Dim. D	Dim. E	Dim. F	Dim. G	Dim. H	QTY.	Inv. Code	ASSEMBLE ON PARTS																
		P2-AP-A09	-	-	-						4		注: 工厂用																



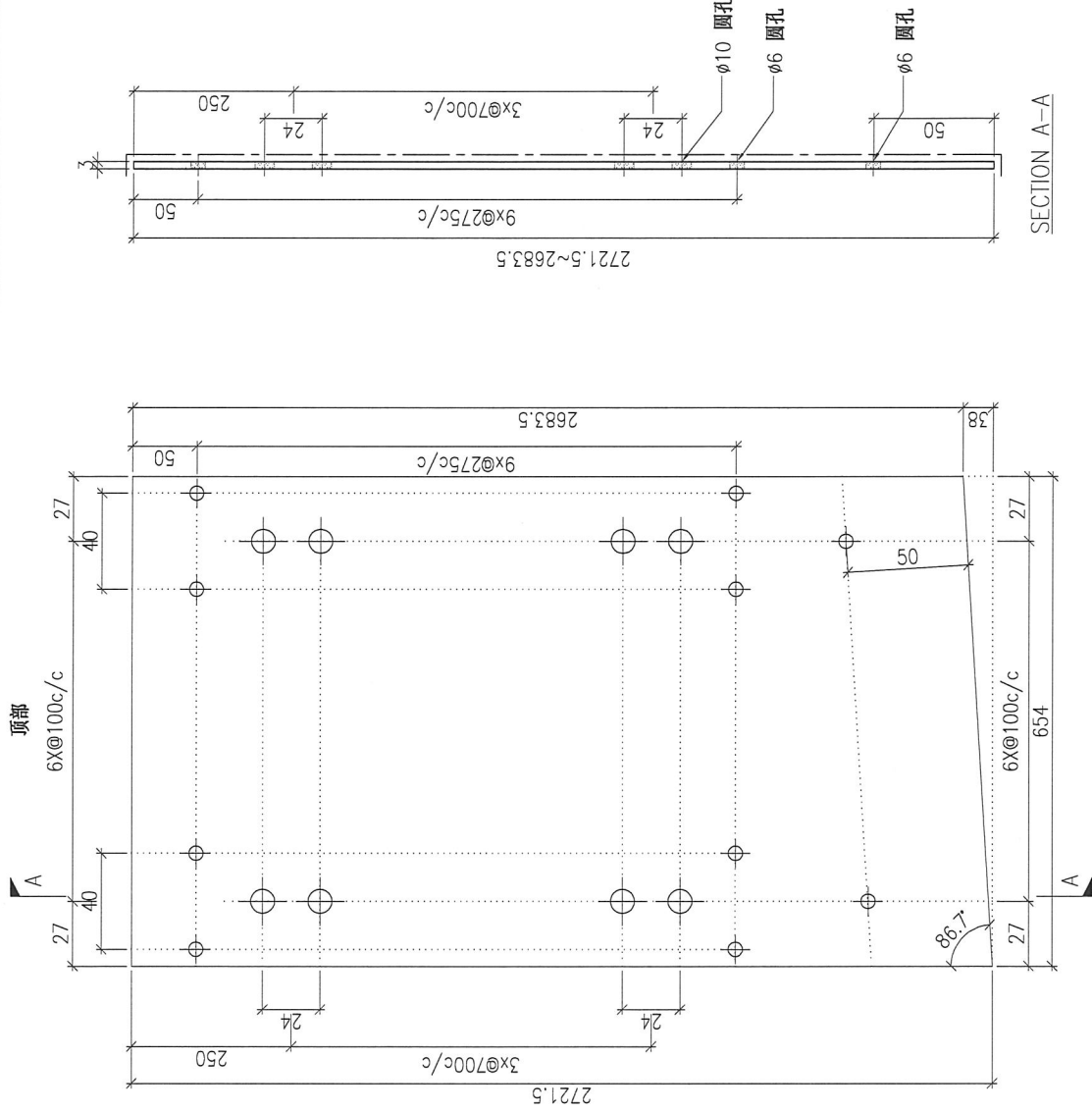
DWG. NO.	P2-AP-A09	REV.	-	SCALE	-	DATE	13-04-2024	DRAWN BY	-	APPROVED BY	-
----------	-----------	------	---	-------	---	------	------------	----------	---	-------------	---

PROJECT		YIN PING ROAD KOWLOON FEATURE WALL (PHASE 2)				MATERIAL				3mm 铝板				COATING		PVF2		COLOUR		EC-DG-D334232-ZD1(SS-01)		MARK. NO.		-		QTY.		-	
REV.	CHECKED DWG BY	PART NUMBER	Dim. A	Dim. B	Dim. C	Dim. D	Dim. E	Dim. F	Dim. G	Dim. H	QTY.	Inv. Code	ASSEMBLE ON PARTS																
-		P2-AP-A10	-	-	-	-	-	-	-	-	1																		
														注: 工厂用															
														注: 工地复尺															



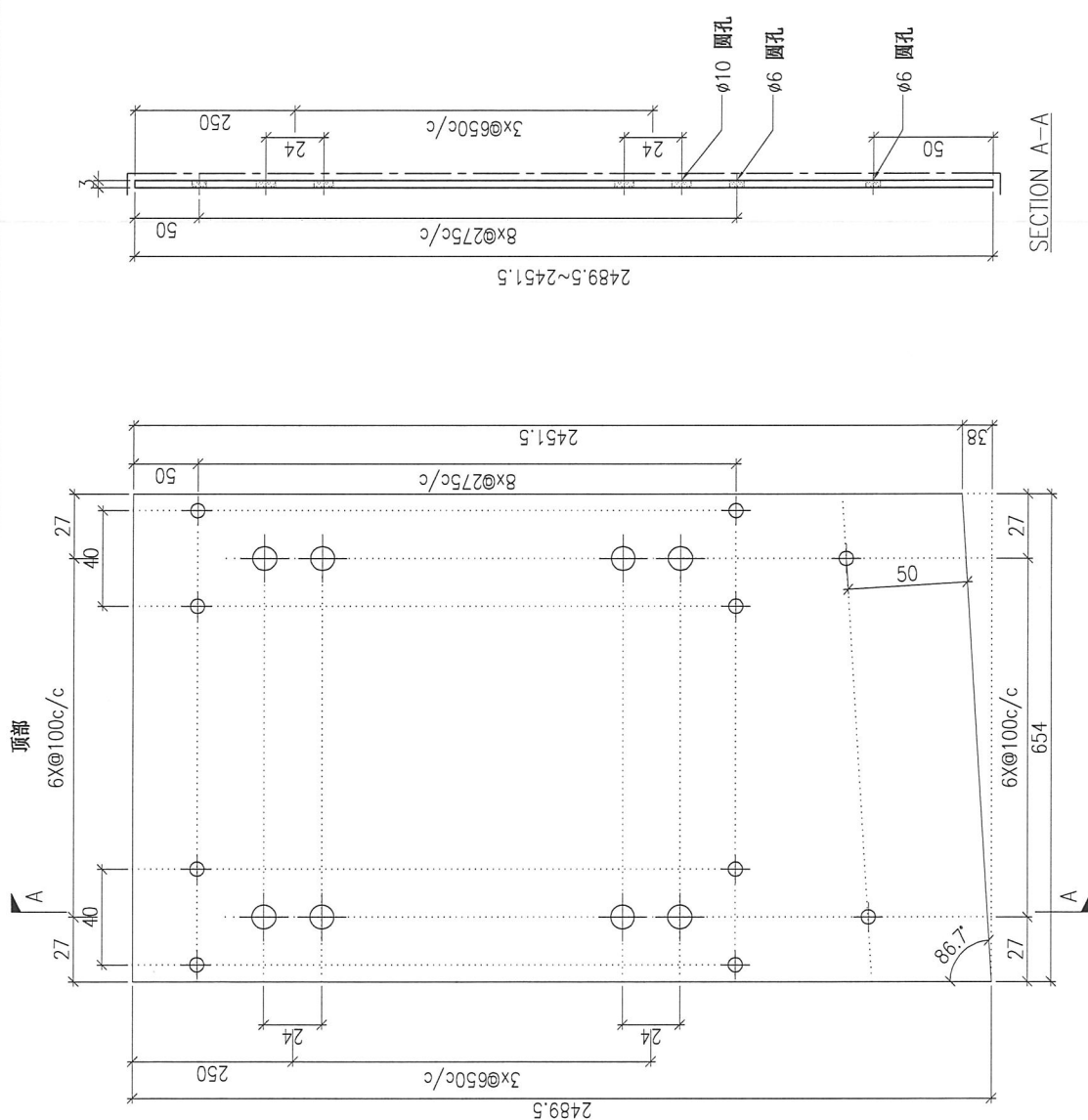
DWG. NO.		P2-AP-A10		REV.		-		SCALE		-		DATE		13-04-2024		DRAWN BY		-		APPROVED BY		-	
----------	--	-----------	--	------	--	---	--	-------	--	---	--	------	--	------------	--	----------	--	---	--	-------------	--	---	--

PROJECT		YIN PING ROAD KOWLOON FEATURE WALL (PHASE 2)				MATERIAL				3mm 铝板				COATING		PVF2		COLOUR		EC-DG-D334232-ZD1(SS-01)		MARK. NO.		-		QTY.		-	
REV.	CHECKED BY	PART NUMBER	Dim. A	Dim. B	Dim. C	Dim. D	Dim. E	Dim. F	Dim. G	Dim. H	QTY.	Inv. Code	ASSEMBLE ON PARTS																
-		P2-AP-A11	-	-	-	-	-	-	-	-	1		注: 工厂用																
																注: 工地复尺													



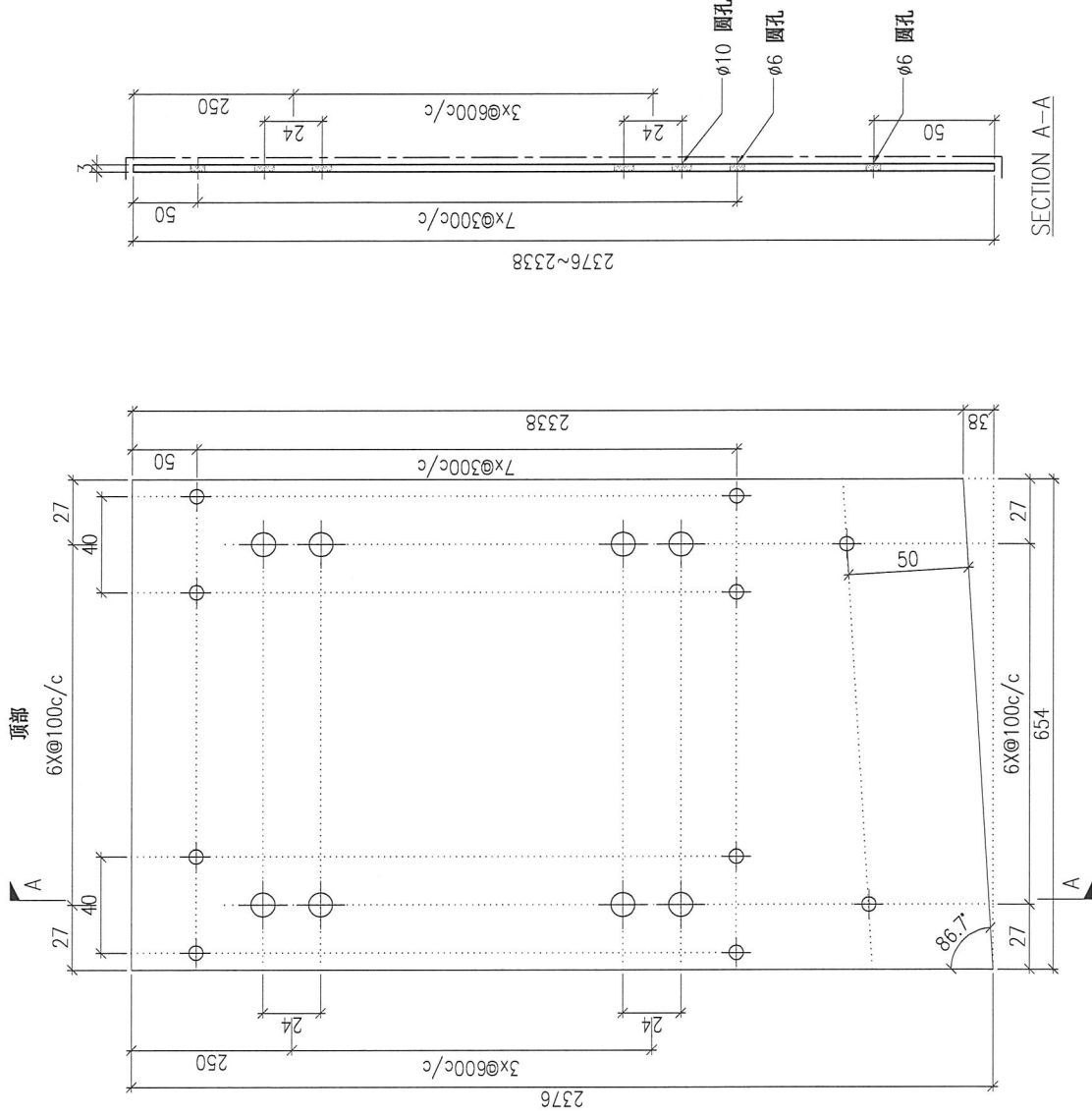
DWG. NO.	P2-AP-A11	REV.	-	SCALE	-	DATE	13-04-2024	DRAWN BY	-	APPROVED BY	-
----------	-----------	------	---	-------	---	------	------------	----------	---	-------------	---

PROJECT		YIN PING ROAD KOWLOON FEATURE WALL (PHASE 2)				MATERIAL				3mm 铝板				COATING				PVF2				COLOUR				EC-DG-D334232-ZD1(SS-01)				MARK. NO.				-				QTY.				-			
REV.	CHECKED BY	PART NUMBER	Dim. A	Dim. B	Dim. C	Dim. D	Dim. E	Dim. F	Dim. G	Dim. H	QTY.	Inv. Code	ASSEMBLE ON PARTS																																
-		P2-AP-A12	-	-	-						1		注: 工厂用																																
																注: 工地复尺																													



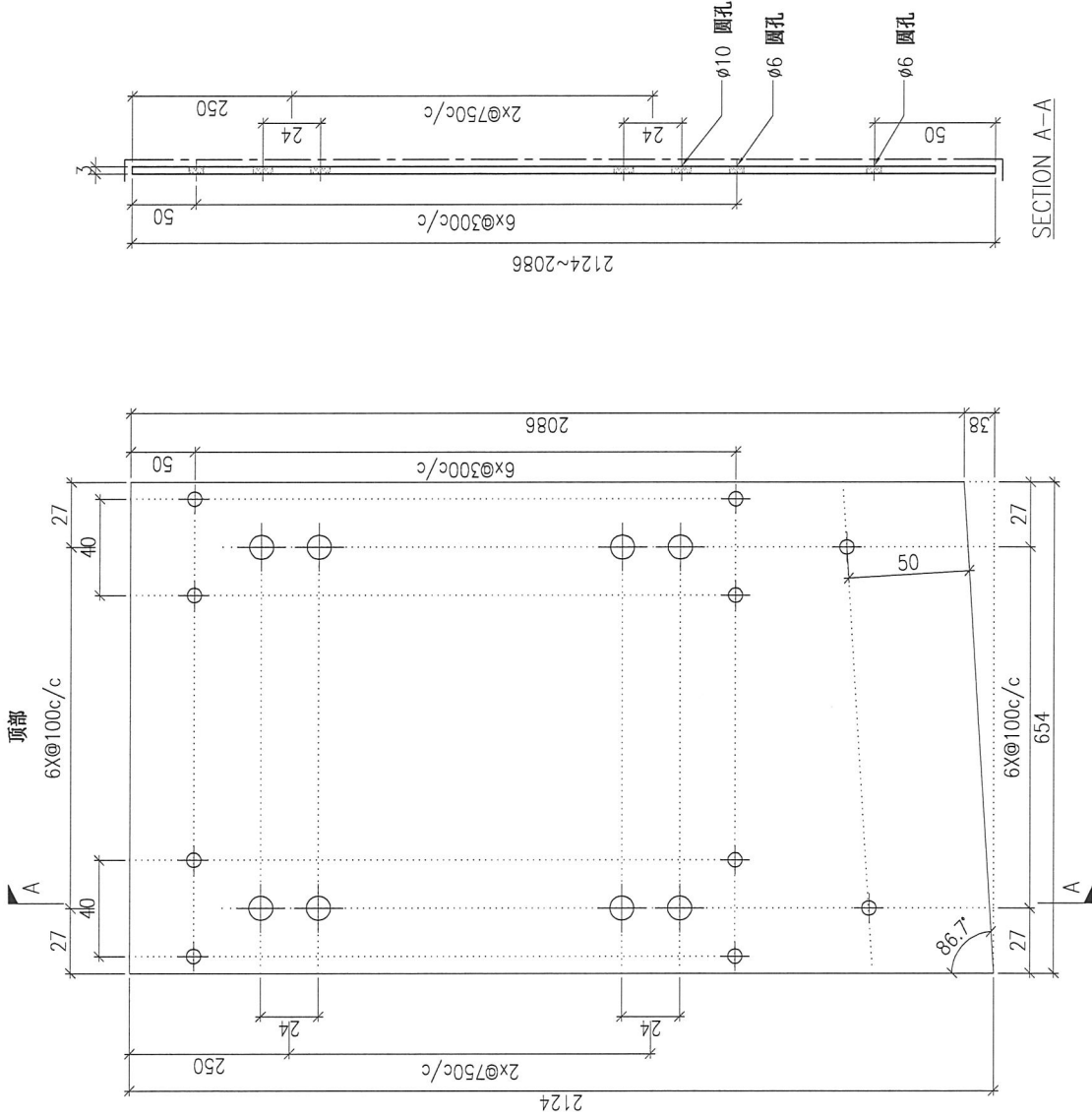
DWG. NO.				P2-AP-A12				REV.				-				SCALE				-				DATE				13-04-2024				DRAWN BY				-				APPROVED BY				-			
----------	--	--	--	-----------	--	--	--	------	--	--	--	---	--	--	--	-------	--	--	--	---	--	--	--	------	--	--	--	------------	--	--	--	----------	--	--	--	---	--	--	--	-------------	--	--	--	---	--	--	--

PROJECT		YIN PING ROAD KOWLOON FEATURE WALL (PHASE 2)				MATERIAL				3mm 铝板				COATING		PVF2		COLOUR		EC-DG-D334232-ZD1(SS-01)		MARK. NO.		-		QTY.		-	
CHECKED	DWG. BY	Dim. A	Dim. B	Dim. C	Dim. D	Dim. E	Dim. F	Dim. G	Dim. H	QTY.	Inv. Code	ASSEMBLE ON PARTS																	
-	-	-	-	-	-	-	-	-	-	1	-	注: 工厂用																	
																注: 工地复尺													



DWG. NO.		P2-AP-A13		REV.		-		SCALE		-		DATE		13-04-2024		DRAWN BY		-		APPROVED BY		-	
----------	--	-----------	--	------	--	---	--	-------	--	---	--	------	--	------------	--	----------	--	---	--	-------------	--	---	--

PROJECT		YIN PING ROAD KOWLOON FEATURE WALL (PHASE 2)				MATERIAL				3mm 铝板				COATING		PVF2		COLOUR		EC-DG-D334232-ZD1(SS-01)		MARK. NO.		-		QTY.		-	
REV.	CHECKED BY	PART NUMBER	Dim. A	Dim. B	Dim. C	Dim. D	Dim. E	Dim. F	Dim. G	Dim. H	QTY.	Inv. Code	ASSEMBLE ON PARTS																
-		P2-AP-A14	-	-	-						1		注: 工厂用																
																注: 工地复尺													



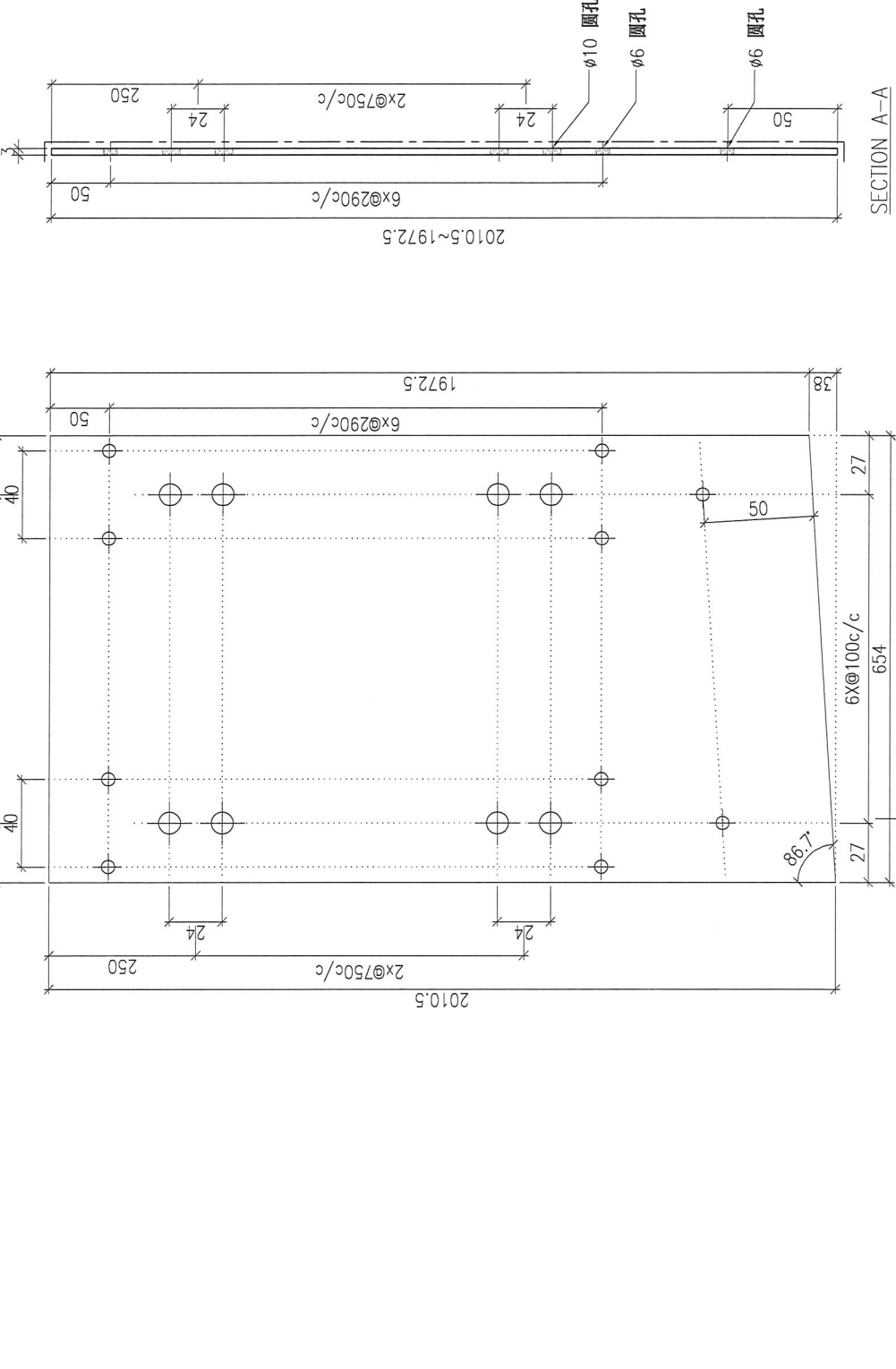
DWG. NO.		P2-AP-A14		REV.		-		SCALE		-		DATE		13-04-2024		DRAWN BY		-		APPROVED BY		-	
----------	--	-----------	--	------	--	---	--	-------	--	---	--	------	--	------------	--	----------	--	---	--	-------------	--	---	--

PROJECT: YIN PING ROAD KOWLOON FEATURE WALL (PHASE 2)

MARK. NO.	COLOUR	COATING	MATERIAL	3mm 铝板						QTY.	QTY.									
-	EC-DG-D334232-ZD1(SS-01)	PVF2	ASSEMBLE ON PARTS	Dim. A	Dim. B	Dim. C	Dim. D	Dim. E	Dim. F	Dim. G	Dim. H	Inv. Code								

注: 工厂用

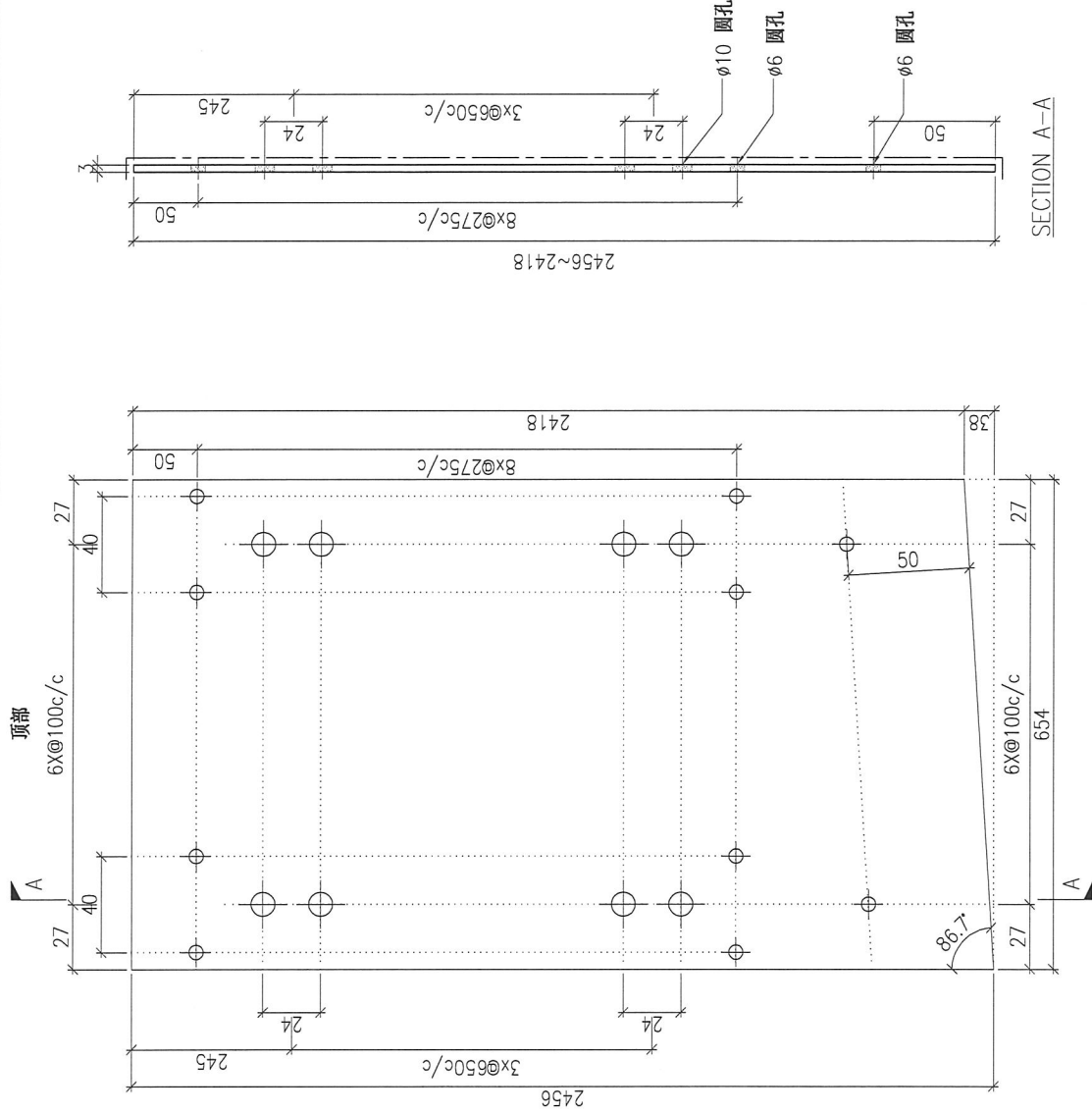
注: 工地复尺



REV.	PART NUMBER	Dim. A	Dim. B	Dim. C	Dim. D	Dim. E	Dim. F	Dim. G	Dim. H	QTY.	Inv. Code	SCALE	DATE	DRAWN BY	APPROVED BY
-	P2-AP-A15	-	-	-	-	-	-	-	-	1		-	13-04-2024	-	-

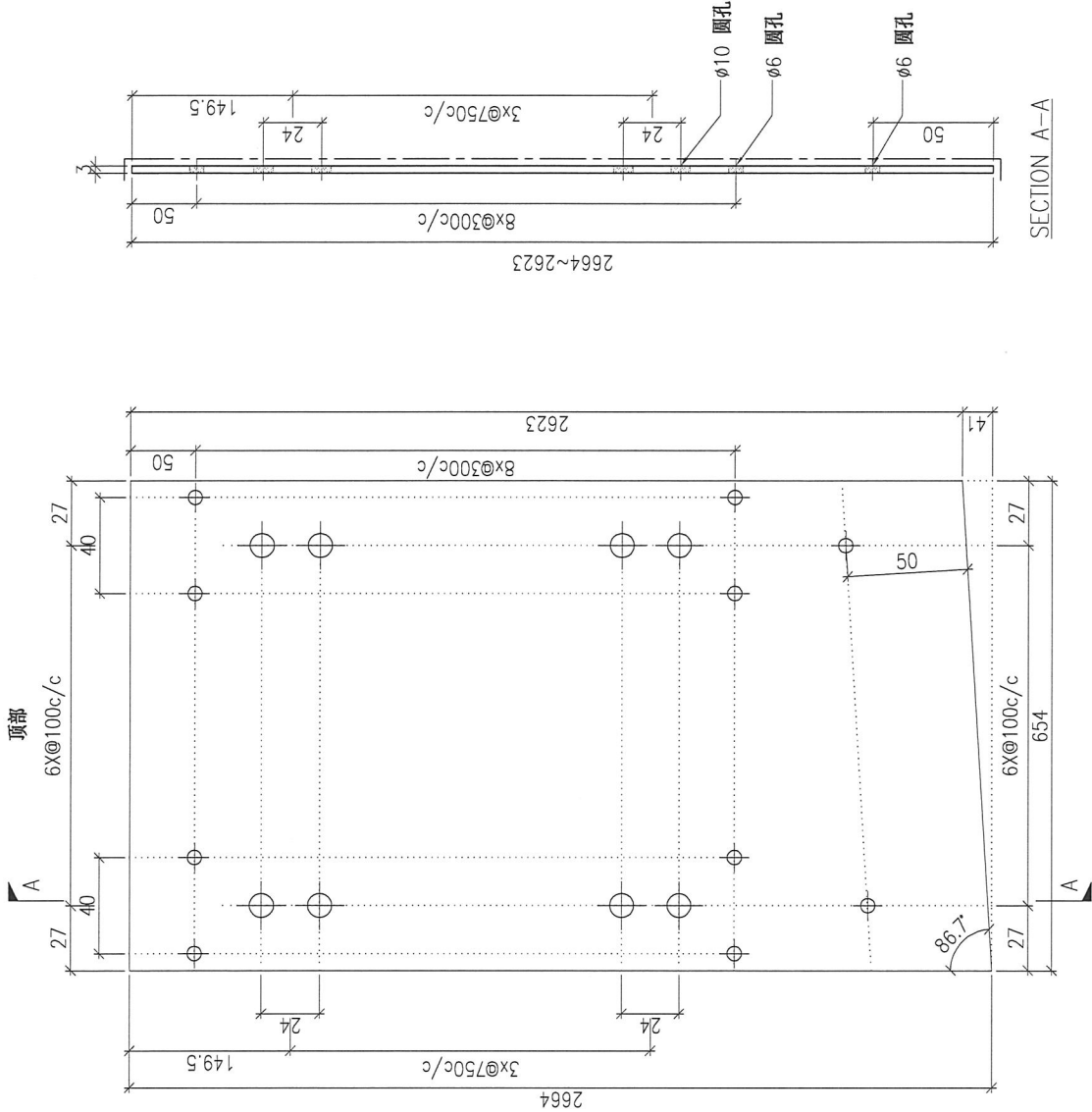
DWG. NO. P2-AP-A15

PROJECT		YIN PING ROAD KOWLOON FEATURE WALL (PHASE 2)				MATERIAL				3mm 铝板				COATING		PVF2		COLOUR		EC-DG-D334232-ZD1(SS-01)		MARK. NO.		-		QTY.		-	
REV.	CHECKED BY	PART NUMBER	Dim. A	Dim. B	Dim. C	Dim. D	Dim. E	Dim. F	Dim. G	Dim. H	QTY.	Inv. Code	ASSEMBLE ON PARTS																
-		P2-AP-A16	-	-	-	-	-	-	-	-	1		注: 工厂用																
																注: 工地复尺													



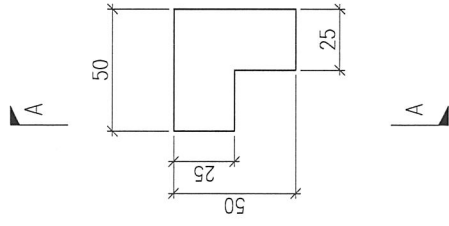
DWG. NO.		P2-AP-A16		REV.		-		SCALE		-		DATE		13-04-2024		DRAWN BY		-		APPROVED BY		-	
----------	--	-----------	--	------	--	---	--	-------	--	---	--	------	--	------------	--	----------	--	---	--	-------------	--	---	--

PROJECT		YIN PING ROAD KOWLOON FEATURE WALL (PHASE 2)						MATERIAL		3mm 铝板		COATING		PVF2		COLOUR		EC-DG-D334232-ZD1(SS-01)		MARK. NO.		-		QTY.		-	
REV.	CHECKED BY	PART NUMBER	Dim. A	Dim. B	Dim. C	Dim. D	Dim. E	Dim. F	Dim. G	Dim. H	QTY.	Inv. Code	ASSEMBLE ON PARTS														
-		P2-AP-A17	-	-	-	-	-	-	-	-	1		注: 工厂用														
															注: 工地复尺												



DWG. NO.		P2-AP-A17		REV.		-		SCALE		-		DATE		13-04-2024		DRAWN BY		-		APPROVED BY		-	
----------	--	-----------	--	------	--	---	--	-------	--	---	--	------	--	------------	--	----------	--	---	--	-------------	--	---	--

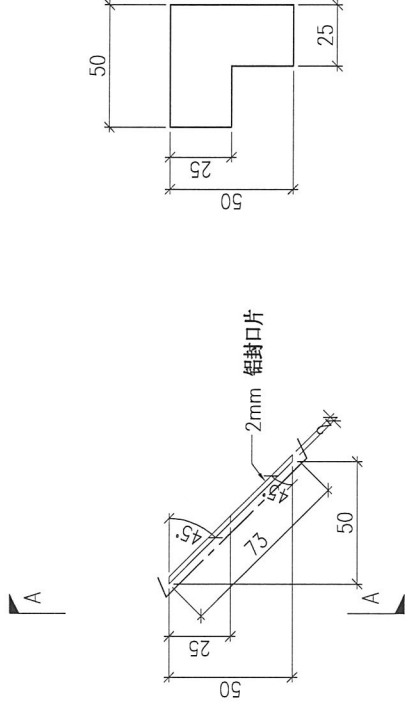
PROJECT										MATERIAL			COATING		COLOUR		MARK. NO.		QTY.	
YIN PING ROAD KOWLOON FEATURE WALL (PHASE 2)										2mm 铝封口片			PVF2		EC-DG-D334232-ZD1 (SS-01)		-		-	
REV.	CHECKED DATE BY	PART NUMBER	Dim. A	Dim. B	Dim. C	Dim. D	Dim. E	Dim. F	Dim. G	Dim. H	QTY.	Inv. Code	ASSEMBLE ON PARTS							
-		FKP-M100L	-	-	-	-	-	-	-	-	105		注: 如图加工							
-		FKP-M100R	-	-	-	-	-	-	-	-	105		注: 相反加工							
													注: 工厂用							



SECTION A-A

DWG. NO.	REV.	SCALE	DATE	DRAWN BY	APPROVED BY
FKP-M100	-	-	13-04-2024	-	-

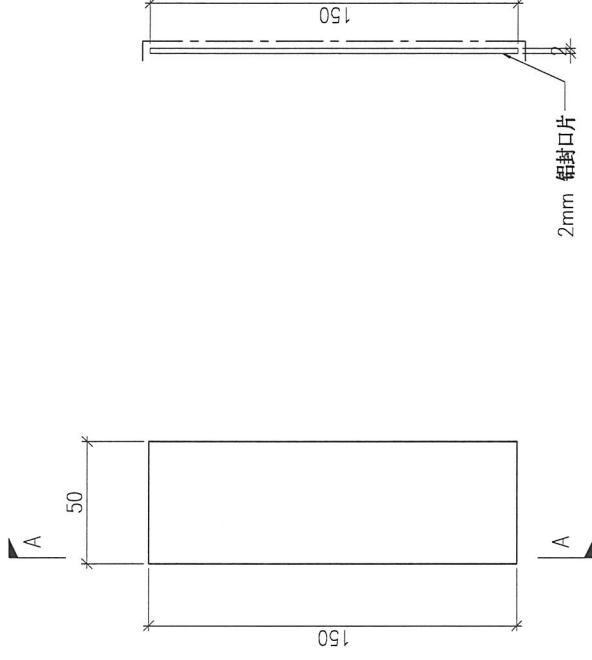
PROJECT		YIN PING ROAD KOWLOON FEATURE WALL (PHASE 2)										MATERIAL		COATING		COLOUR		MARK. NO.		QTY.	
		2mm 铝封口片										PVF2		EC-DG-D334232-ZD1(SS-01)		-		-			
REV.	CHECKED BY	PART NUMBER	Dim. A	Dim. B	Dim. C	Dim. D	Dim. E	Dim. F	Dim. G	Dim. H	QTY.	Inv. Code	ASSEMBLE ON PARTS								
-		FKP-M101L	-	-	-	-	-	-	-	-	12		注: 如图加工								
-		FKP-M101R	-	-	-	-	-	-	-	-	12		注: 相反加工								
												注: 工厂用									



SECTION A-A

DWG. NO.	REV.	SCALE	DATE	DRAWN BY	APPROVED BY
FKP-M100	-	-	13-04-2024	-	-

PROJECT		YIN PING ROAD KOMLOON FEATURE WALL (PHASE 2)										MATERIAL		2mm 铝封口片		COATING		PVF2		COLOUR		EC-DG-D334232-ZD1(SS-01)		MARK. NO.		-		QTY.		-	
REV.	CHECKED BY	PART NUMBER	Dim. A	Dim. B	Dim. C	Dim. D	Dim. E	Dim. F	Dim. G	Dim. H	QTY.	Inv. Code	ASSEMBLE ON PARTS																		
-		FKP-M102	-	-	-						122																				
注: 工厂用																															

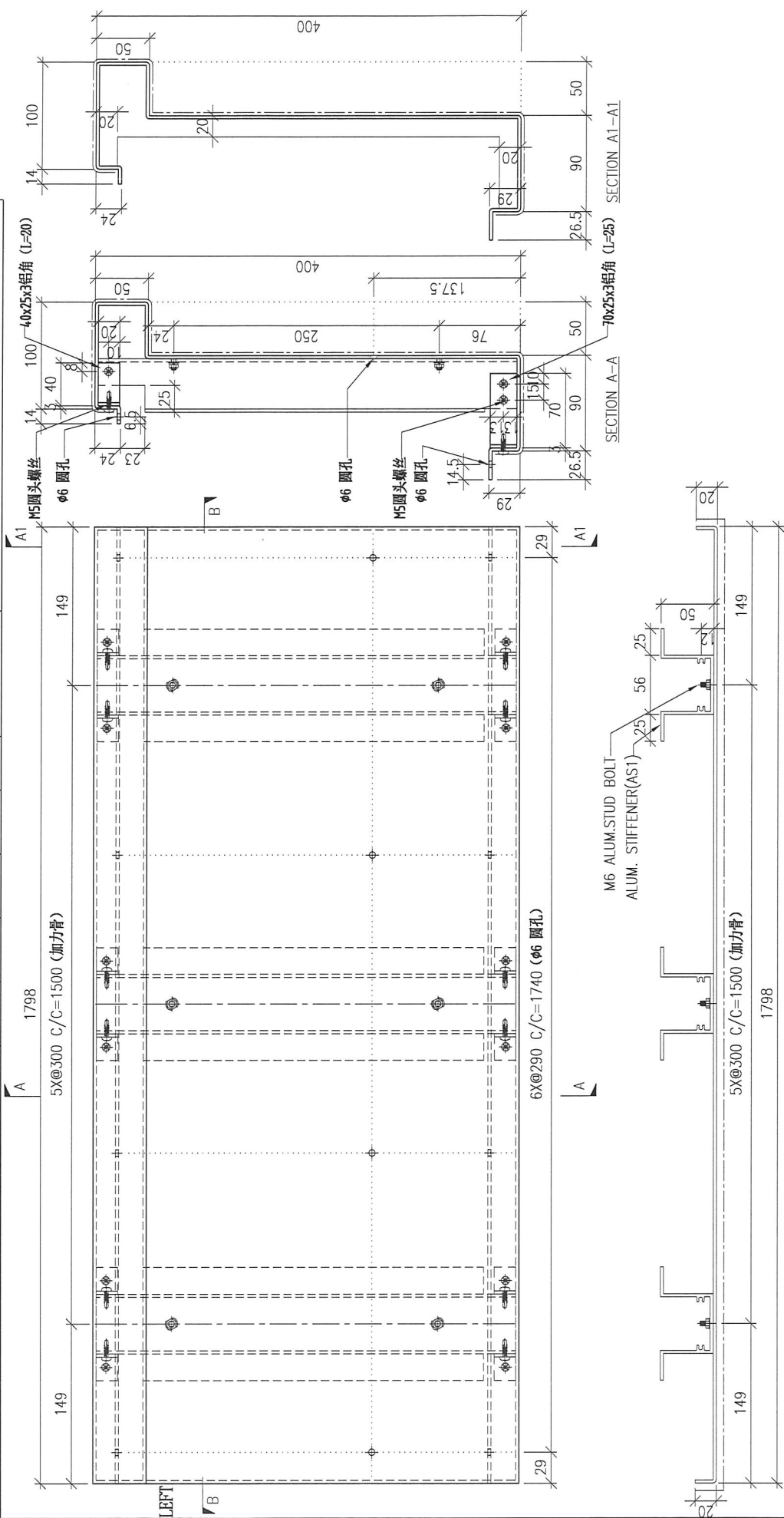


SECTION A-A

DWG. NO.		FKP-M102		REV.		-		SCALE		-		DATE		13-04-2024		DRAWN BY		-		APPROVED BY		-	
----------	--	----------	--	------	--	---	--	-------	--	---	--	------	--	------------	--	----------	--	---	--	-------------	--	---	--

PROJECT		YIN PING ROAD KOWLOON FEATURE WALL (PHASE 2)				MATERIAL				COATING				COLOUR		MARK. NO.		QTY.	
		3mm铝板				PVF2				EC-DG-D334232-ZD1(SS-01)									

REV.	CHECKED DATE BY	PART NUMBER	Dim. A	Dim. B	Dim. C	Dim. D	Dim. E	Dim. F	Dim. G	Dim. H	QTY.	Inv. Code	ASSEMBLE ON PARTS						
-		P2-AP-31	-	-	-	-	-	-	-	-	94		注: 工厂用						



DWG. NO.	REV.	SCALE	DATE	DRAWN BY	APPROVED BY
P2-AP-31	-	-	13-04-2024	-	-

PROJECT: YIN PING ROAD KOWLOON FEATURE WALL (PHASE 2)

MATERIAL: 3mm铝板

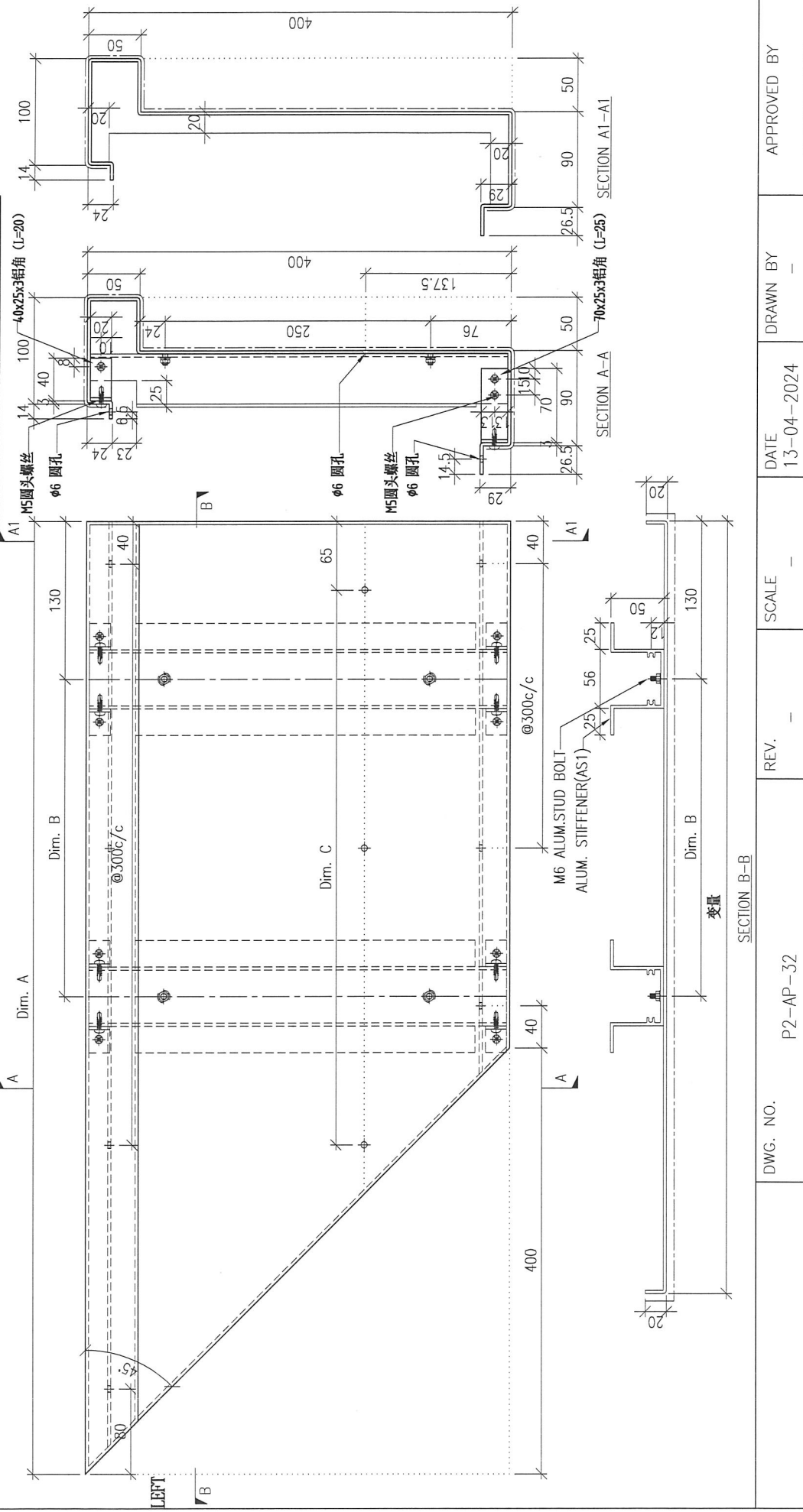
COATING: PVF2

COLOUR: EC-DG-D334232-ZD1(SS-01)

MARK. NO.:

QTY.:

REV.	CHECKED DATE	PART NUMBER	Dim. A	Dim. B	Dim. C	Dim. D	Dim. E	Dim. F	Dim. G	Dim. H	QTY.	Inv. Code	ASSEMBLE ON PARTS	注: 工厂用
-		P2-AP-32A	1123.5	2x@270c/c	3x@250c/c						1			
-		P2-AP-32B	1268.5	2x@300c/c	3x@300c/c						1			
-		P2-AP-32C	856.5	1x@250c/c	2x@250c/c						1			
-		P2-AP-32D	1174	2x@290c/c	3x@270c/c						1			
-		P2-AP-32E	1597.5	4x@250c/c	5x@250c/c						5			
-		P2-AP-32F	1334.5	3x@250c/c	4x@240c/c						1			

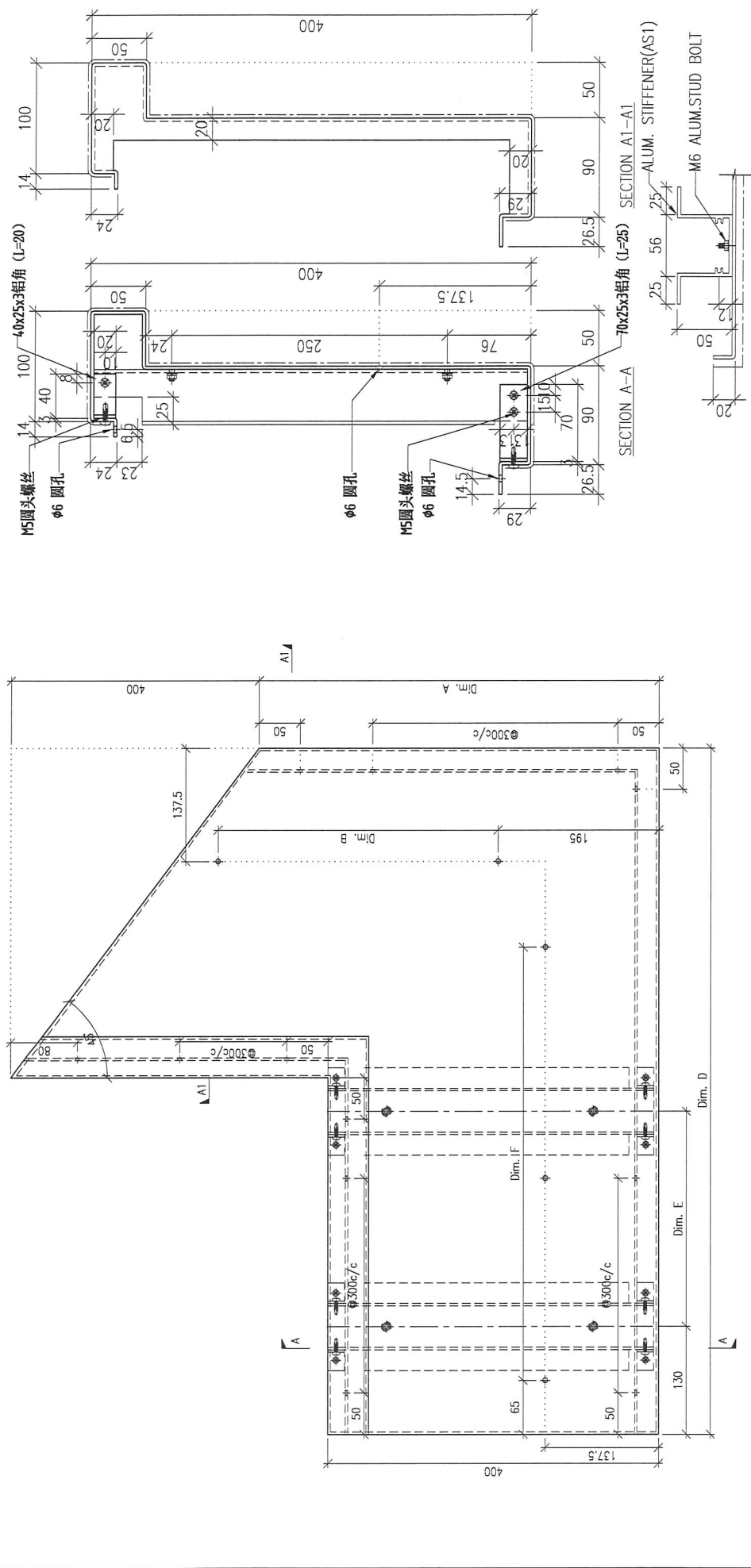


DWG. NO.	REV.	SCALE	DATE	DRAWN BY	APPROVED BY
P2-AP-32	-	-	13-04-2024	-	-

PROJECT: YIN PING ROAD KOWLOON FEATURE WALL (PHASE 2)

REV.	CHECKED BY	PART NUMBER	Dim. A	Dim. B	Dim. C	Dim. D	Dim. E	Dim. F	Dim. G	Dim. H	QTY.	Inv. Code	COATING	MARK. NO.	QTY.
-	-	P2-AP-33A	364	220	-	1120	2x $\phi$ 75c/c	3x $\phi$ 300c/c	-	-	1	-	PVF2	EC-DG-D334232-ZD1(SS-01)	-
-	-	P2-AP-33B	475.5	300	-	858	1x $\phi$ 70c/c	2x $\phi$ 300c/c	-	-	1	-	ASSEMBLE ON PARTS	-	-
-	-	P2-AP-33C	356	220	-	1171	2x $\phi$ 300c/c	3x $\phi$ 300c/c	-	-	1	-	-	-	-
-	-	P2-AP-33D	468.5	300	-	1814.5	4x $\phi$ 300c/c	6x $\phi$ 260c/c	-	-	1	-	-	-	-

注: 工厂用



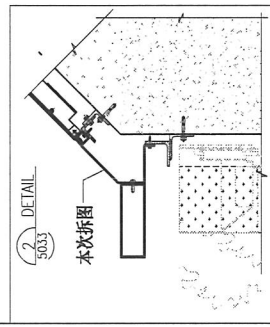
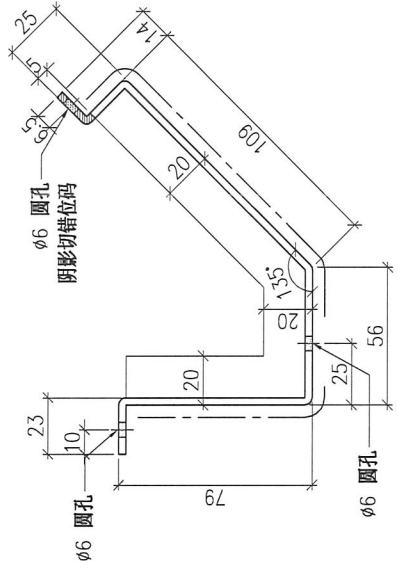
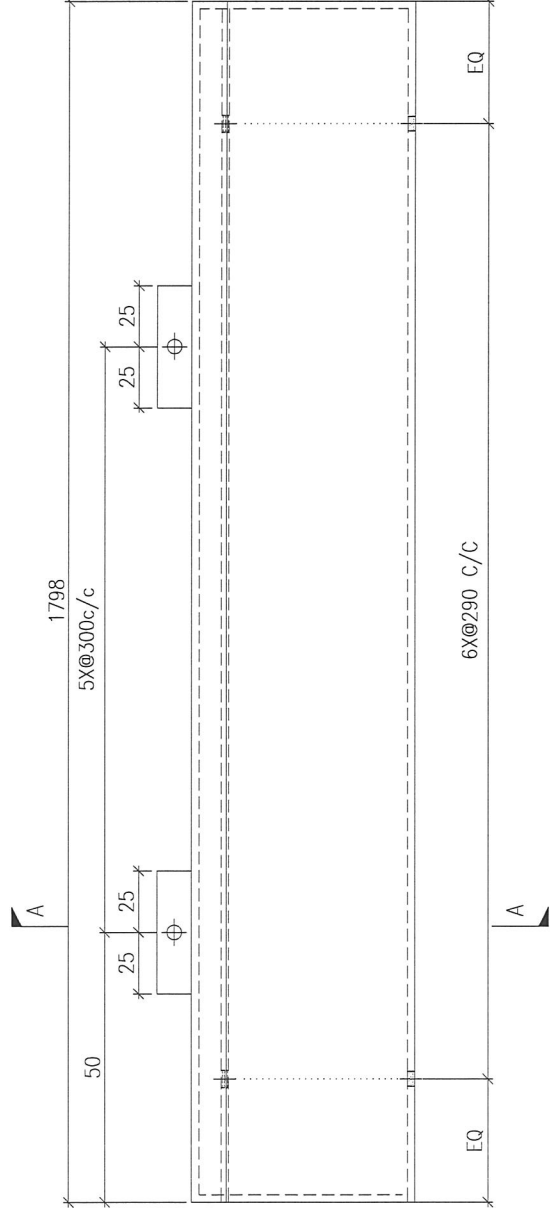
DWG. NO.	P2-AP-33	REV.	-	SCALE	-	DATE	13-04-2024	DRAWN BY	-	APPROVED BY	-
----------	----------	------	---	-------	---	------	------------	----------	---	-------------	---



PROJECT		YIN PING ROAD KOWLOON FEATURE WALL (PHASE 2)				MATERIAL				3mm 铝板		COATING		PVF2		COLOUR		EC-DG-D334232-ZD1(SS-01)		MARK. NO.		-		QTY.		-	
REV.	CHECKED/DATE	Dim. A	Dim. B	Dim. C	Dim. D	Dim. E	Dim. F	Dim. G	Dim. H	QTY.	Inv. Code																
-		-	-	-	-	-	-	-	-	61																	

REV.	CHECKED/DATE	Dim. A	Dim. B	Dim. C	Dim. D	Dim. E	Dim. F	Dim. G	Dim. H	QTY.	Inv. Code														
-		-	-	-	-	-	-	-	-	61															

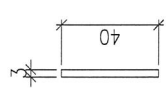
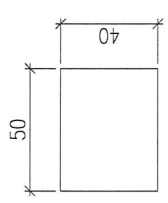
注: 工厂用



DWG. NO.	P2-AP-35	REV.	-	SCALE	-	DATE	13-04-2024	DRAWN BY	-	APPROVED BY	-
----------	----------	------	---	-------	---	------	------------	----------	---	-------------	---

PROJECT										MATERIAL		COATING		COLOUR		MARK. NO.		QTY.	
YIN PING ROAD KOWLOON FEATURE WALL (PHASE 2)										3mm 铝板		铬化		-		-		-	
REV.	CHECKED DATE	PART NUMBER	Dim. A	Dim. B	Dim. C	Dim. D	Dim. E	Dim. F	Dim. G	Dim. H	QTY.	Inv. Code	ASSEMBLE ON PARTS						
-		P2-AP-B01	-	-	-						95		注: 工厂用						

A



A

SECTION A-A

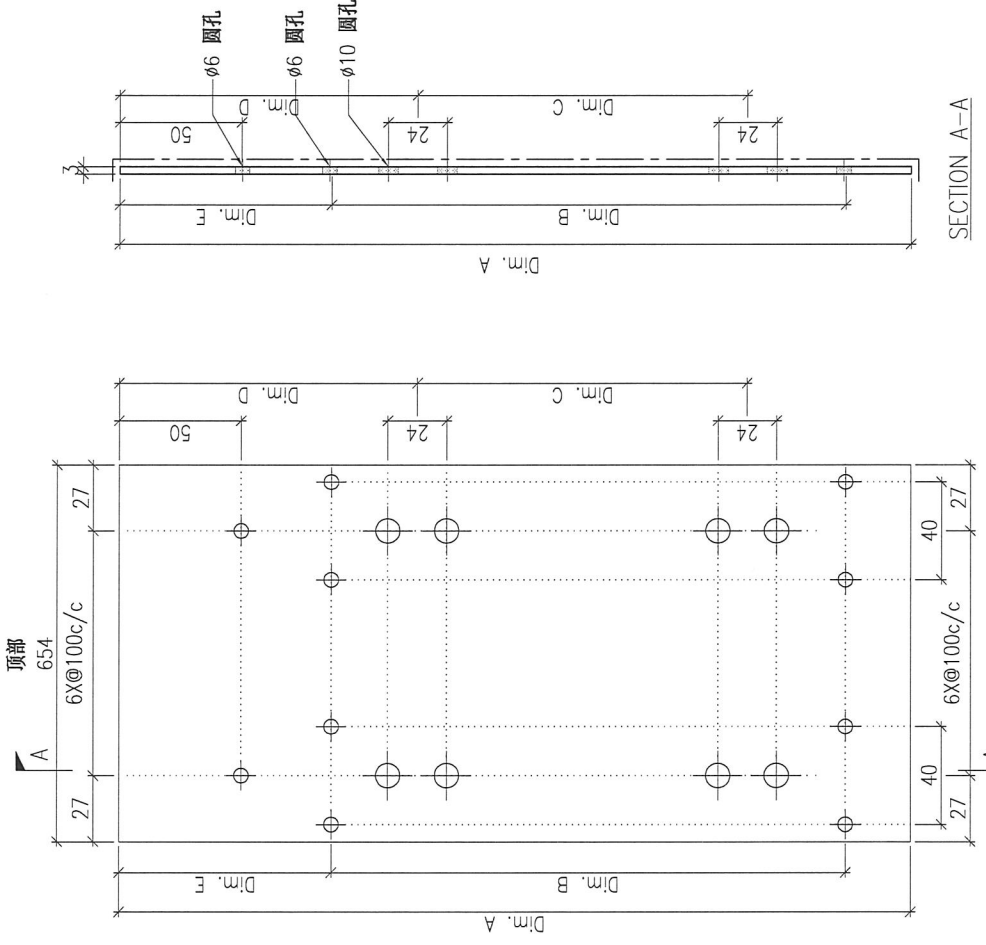
DWG. NO.	REV.	SCALE	DATE	DRAWN BY	APPROVED BY
P2-AP-B01	-	-	13-04-2024	-	-

PROJECT: YIN PING ROAD KOWLOON FEATURE WALL (PHASE 2)

REV.	CHECKED/DRW BY	PART NUMBER	Dim. A	Dim. B	Dim. C	Dim. D	Dim. E	Dim. F	Dim. G	Dim. H	QTY.	Inv. Code	COATING	COLOUR	MARK. NO.	QTY.
-		P2-AP-B02A	2394.5	8X@270c/c	3X@650c/c	245	150				5		PVF2	EC-DG-D334232-ZD1(SS-01)	-	-
-		P2-AP-B02B	2404.5	8X@270c/c	3X@650c/c	245	150				4					
-		P2-AP-B02C	1944.5	6X@285c/c	2X@750c/c	290	150				9					
-		P2-AP-B02D	2434.5	8X@280c/c	3X@650c/c	230	165				2					

ASSEMBLE ON PARTS

注: 工厂用



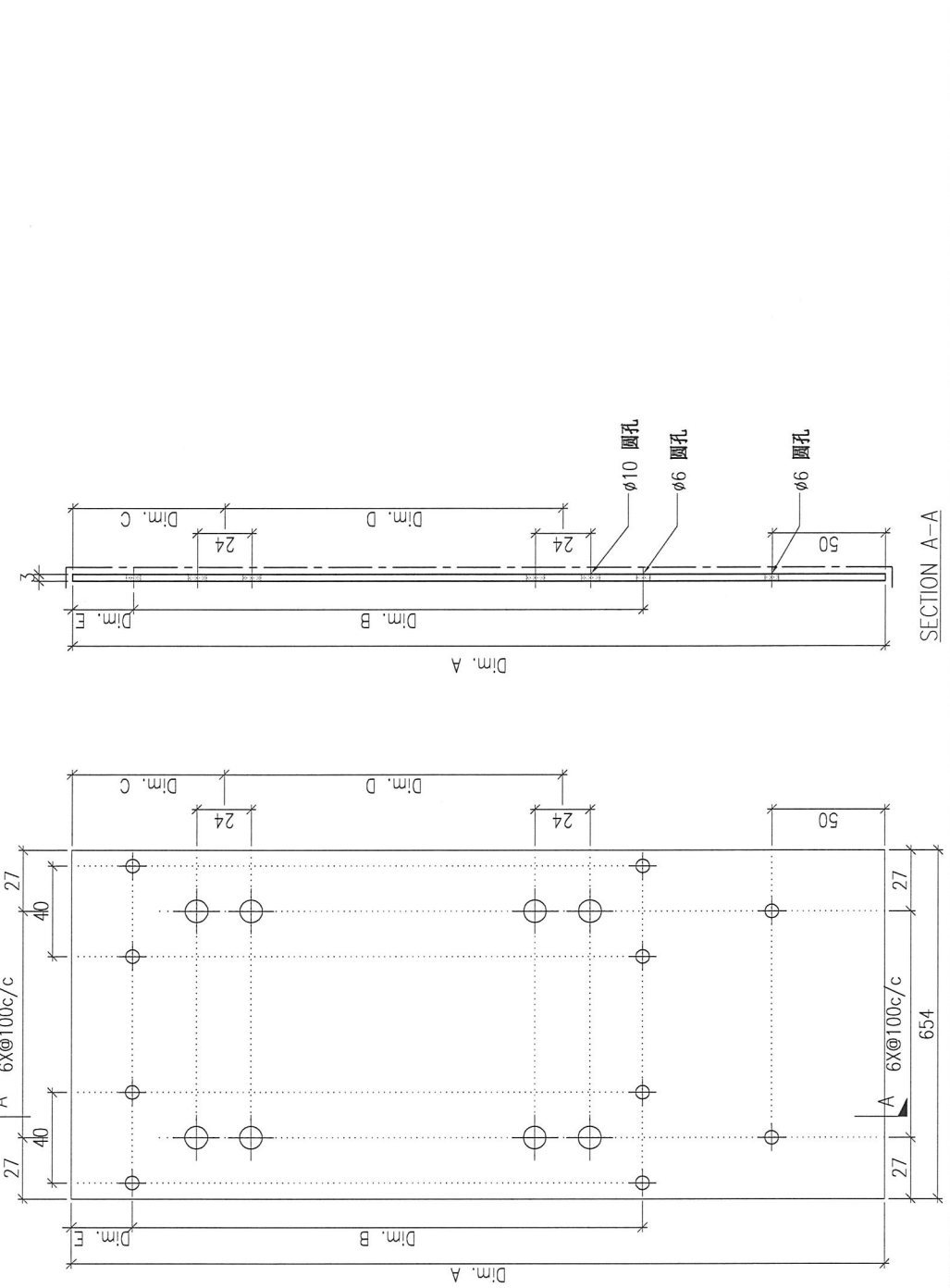
SECTION A-A

DWG. NO.	P2-AP-B02	REV.	-	SCALE	-	DATE	13-04-2024	DRAWN BY	-	APPROVED BY	-
----------	-----------	------	---	-------	---	------	------------	----------	---	-------------	---

PROJECT: YIN PING ROAD KOWLOON FEATURE WALL (PHASE 2)

REV.	CHECKED DATE	PART NUMBER	Dim. A	Dim. B	Dim. C	Dim. D	Dim. E	Dim. F	Dim. G	Dim. H	QTY.	Inv. Code	COLOUR	MARK. NO.	QTY.
-		P2-AP-B03A	2349.5	7X@300c/c	199.5	3X@650c/c	85				3		EC-DG-D334232-ZD1(SS-01)	-	-
-		P2-AP-B03B	2293.5	7X@290c/c	189	3X@650c/c	70				4				
-		P2-AP-B03C	2394.5	7X@300c/c	194	3X@650c/c	80				9				
-		P2-AP-B03D	2740	9X@280c/c	219.5	3X@750c/c	70				2				

注: 工厂用



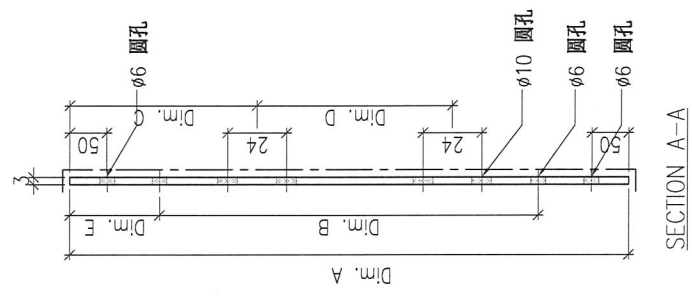
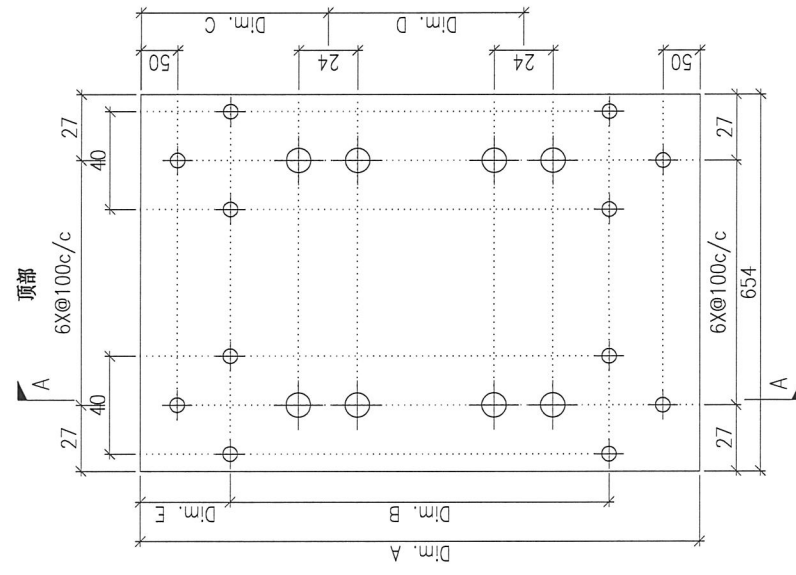
MATERIAL	COATING	COLOUR	MARK. NO.	QTY.
3mm 铝板	PVF2	EC-DG-D334232-ZD1(SS-01)	-	-
DWG. NO.	REV.	SCALE	DATE	APPROVED BY
P2-AP-B03	-	-	13-04-2024	-

PROJECT: YIN PING ROAD KOWLOON FEATURE WALL (PHASE 2)

REV.	CHECKED DATE BY	PART NUMBER	Dim. A	Dim. B	Dim. C	Dim. D	Dim. E	Dim. F	Dim. G	Dim. H	QTY.	Inv. Code	COLOUR	MARK. NO.	QTY.
-		P2-AP-B04A	2030	6X@285c/c	230	2X@750c/c	160				7		EC-DG-D334232-ZD1(SS-01)	-	-
-		P2-AP-B04B	2735.5	8X@300c/c	245	3X@750c/c	155				3				
-		P2-AP-B04C	2535.5	8X@279c/c	245	3X@700c/c	150				4				
-		P2-AP-B04D	3012	9X@290c/c	245	4X@650c/c	200				2				

ASSEMBLE ON PARTS

注: 工厂用



DWG. NO.	P2-AP-B04	REV.	-	SCALE	-	DATE	13-04-2024	DRAWN BY	-	APPROVED BY	-
----------	-----------	------	---	-------	---	------	------------	----------	---	-------------	---

PROJECT: YIN PING ROAD KOWLOON FEATURE WALL (PHASE 2)

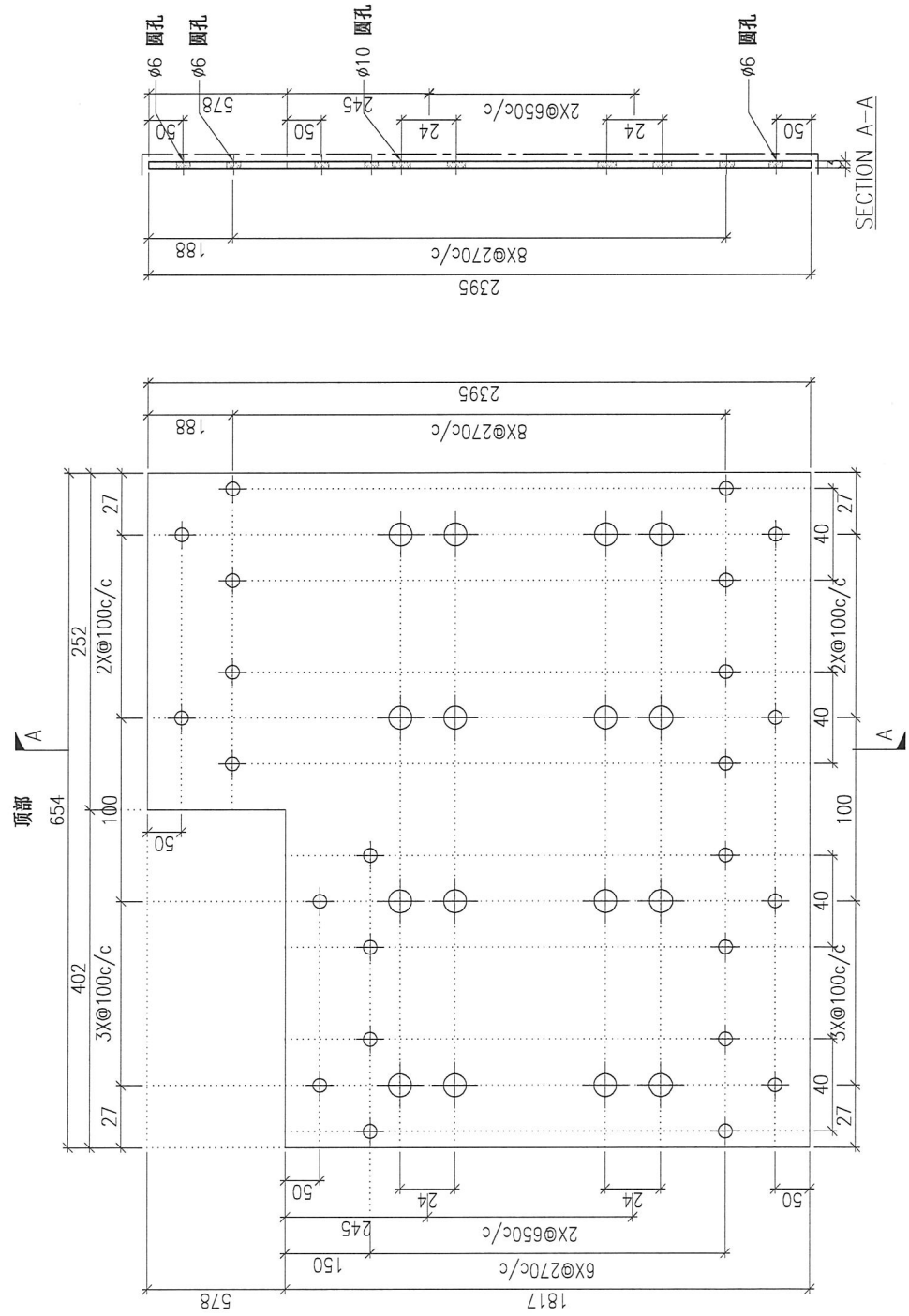
REV.	CHECKED BY	PART NUMBER	Dim. A	Dim. B	Dim. C	Dim. D	Dim. E	Dim. F	Dim. G	Dim. H	QTY.	Inv. Code	COLOUR	MARK. NO.	QTY.
-	-	P2-AP-B05	-	-	-	-	-	-	-	-	1		EC-DG-D334232-ZD1(SS-01)	-	-

MATERIAL: 3mm 铝板

COATING: PVF2

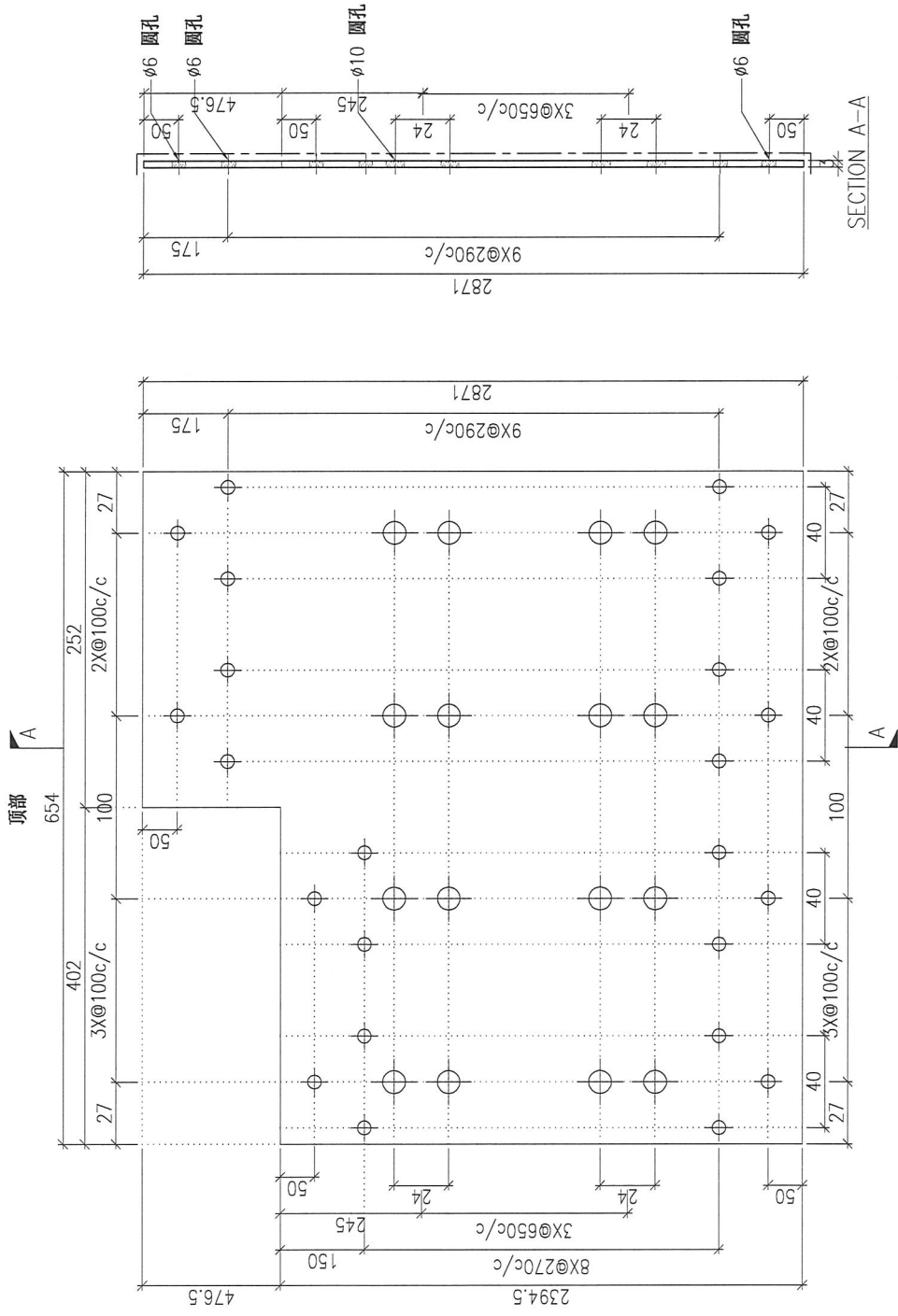
ASSEMBLE ON PARTS

注: 工厂用



DWG. NO.	REV.	SCALE	DATE	DRAWN BY	APPROVED BY
P2-AP-B05	-	-	13-04-2024	-	-

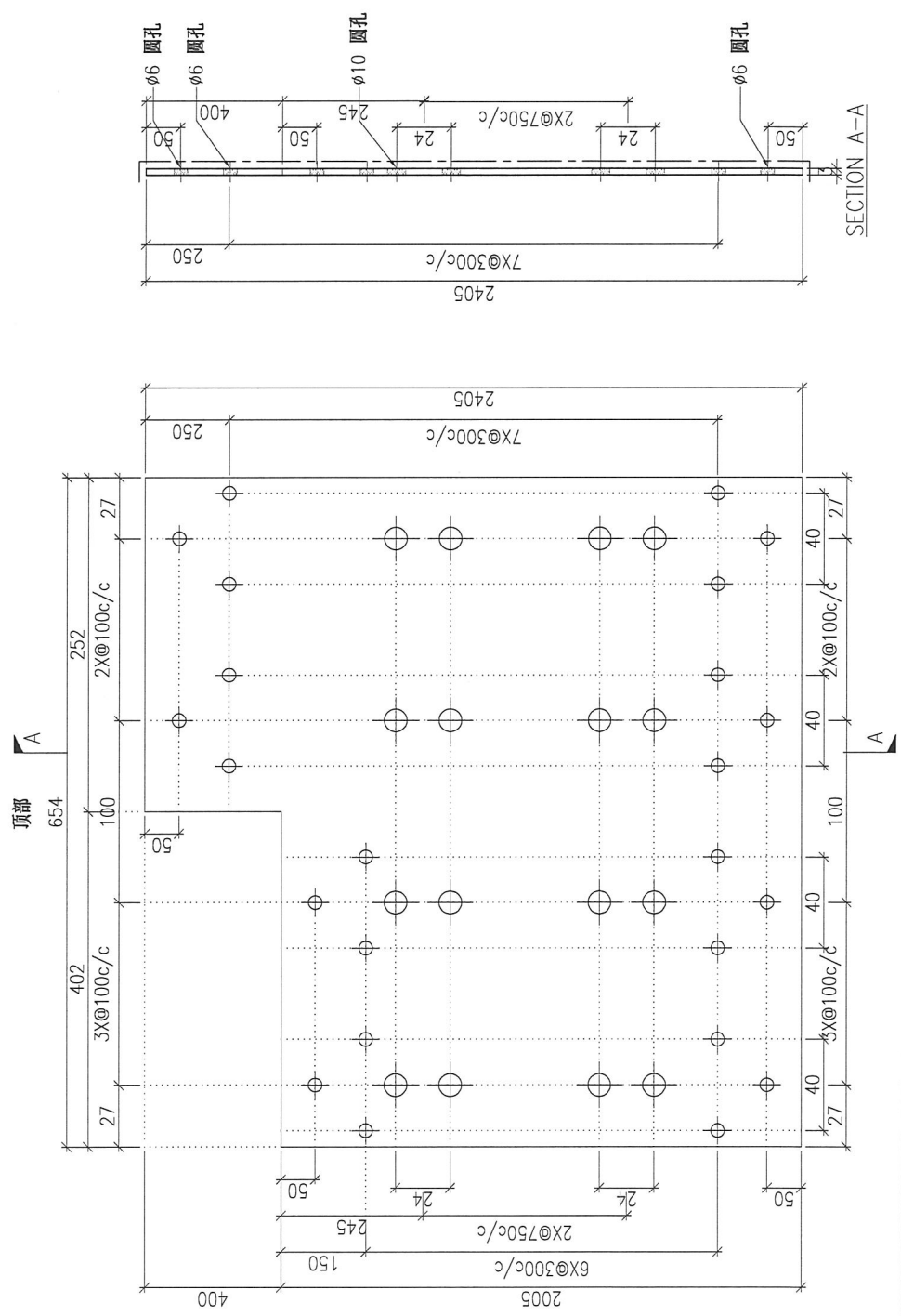
PROJECT		YIN PING ROAD KOWLOON FEATURE WALL (PHASE 2)				MATERIAL				3mm 铝板				COATING		PVF2		COLOUR		EC-DG-D334232-ZD1(SS-01)		MARK. NO.		-		QTY.		-	
REV.	CHECKED DATE BY	Dim. A	Dim. B	Dim. C	Dim. D	Dim. E	Dim. F	Dim. G	Dim. H	QTY.	Inv. Code	ASSEMBLE ON PARTS																	
-	-	-	-	-	-	-	-	-	-	1	-	注: 工厂用																	



DWG. NO.		P2-AP-B06		REV.		-		SCALE		-		DATE		13-04-2024		DRAWN BY		-		APPROVED BY		-	
----------	--	-----------	--	------	--	---	--	-------	--	---	--	------	--	------------	--	----------	--	---	--	-------------	--	---	--

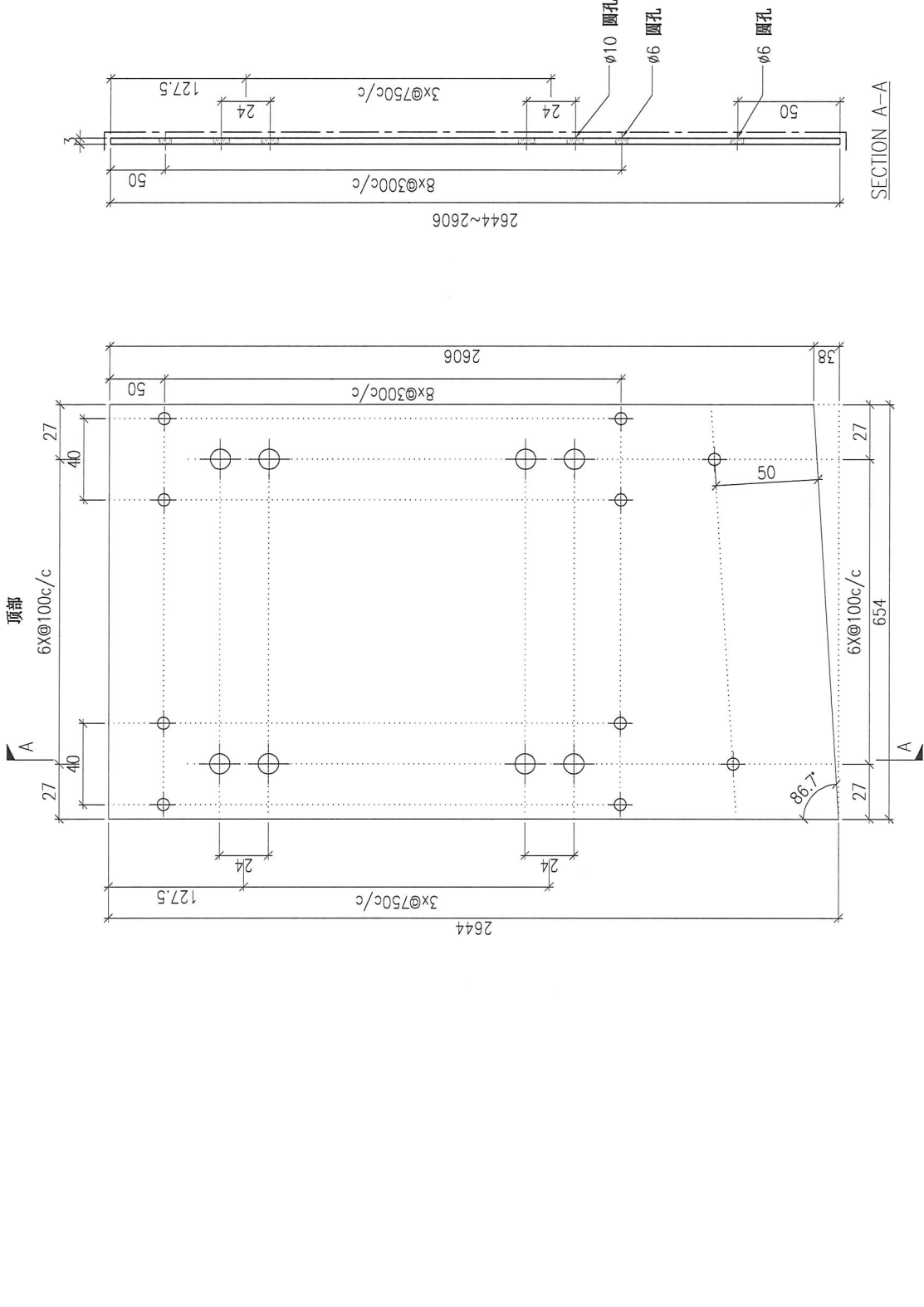
PROJECT		YIN PING ROAD KOWLOON FEATURE WALL (PHASE 2)				MATERIAL				3mm 铝板				COATING		PVF2		COLOUR		EC-DG-D334232-ZD1(SS-01)		MARK. NO.		-		QTY.		-	
REV.	CHECKED DATE	PART NUMBER	Dim. A	Dim. B	Dim. C	Dim. D	Dim. E	Dim. F	Dim. G	Dim. H	QTY.	Inv. Code	ASSEMBLE ON PARTS																
-		P2-AP-B07	-	-	-	-	-	-	-	-	1																		

注: 工厂用															
--------	--	--	--	--	--	--	--	--	--	--	--	--	--	--	--



DWG. NO.		P2-AP-B07		REV.		-		SCALE		-		DATE		13-04-2024		DRAWN BY		-		APPROVED BY		-	
----------	--	-----------	--	------	--	---	--	-------	--	---	--	------	--	------------	--	----------	--	---	--	-------------	--	---	--

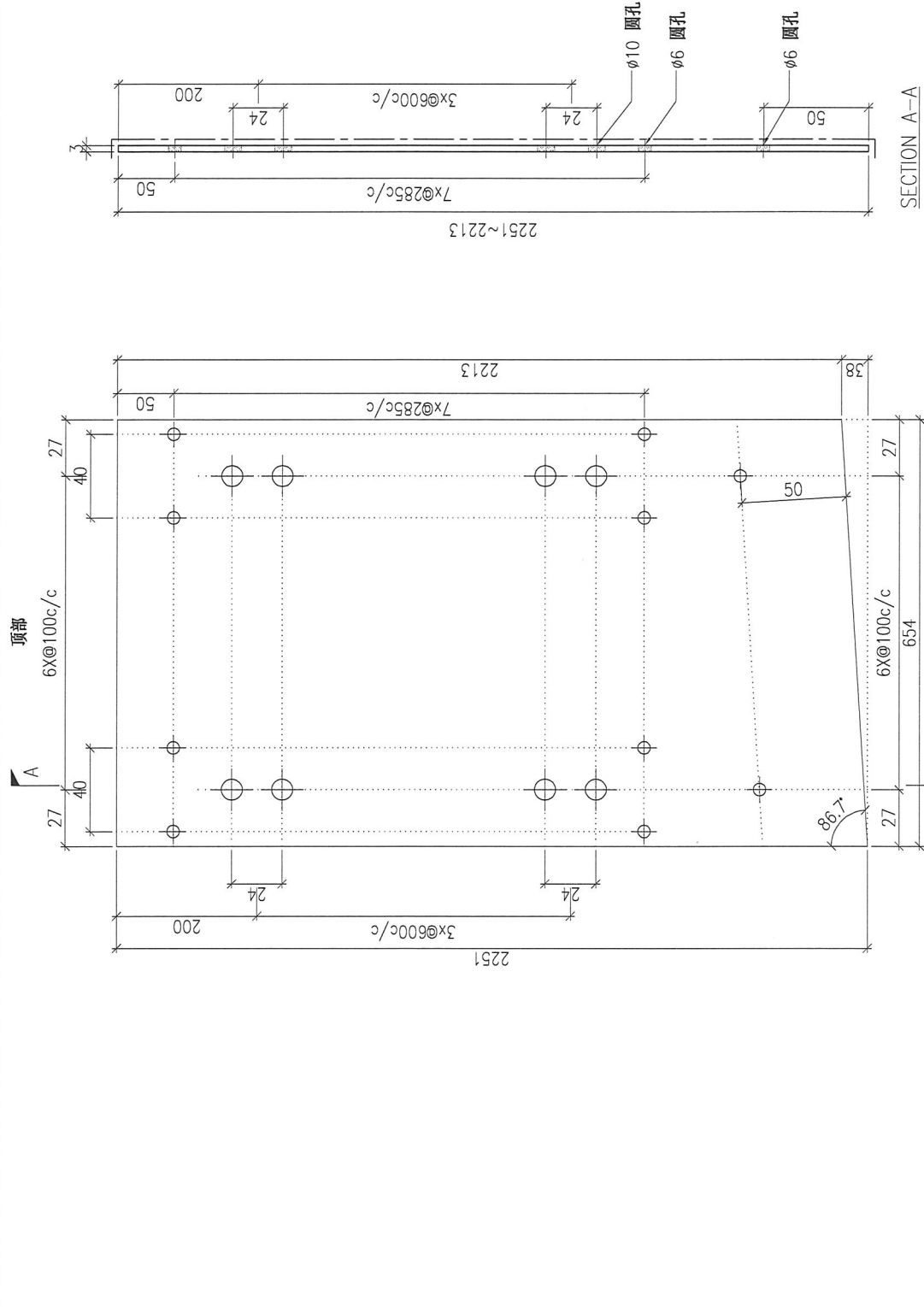
PROJECT		YIN PING ROAD KOWLOON FEATURE WALL (PHASE 2)				MATERIAL				3mm 铝板				COATING				PVF2				COLOUR				EC-DG-D334232-ZD1(SS-01)				MARK. NO.				-				QTY.				-			
REV.	CHECKED DATE BY	PART NUMBER	Dim. A	Dim. B	Dim. C	Dim. D	Dim. E	Dim. F	Dim. G	Dim. H	QTY.	Inv. Code	ASSEMBLE ON PARTS																																
-		P2-AP-B08	-	-	-	-	-	-	-	-	1																																		
注: 工厂用																																													
注: 工地复尺																																													



DWG. NO.				P2-AP-B08				REV.				-				SCALE				-				DATE				13-04-2024				DRAWN BY				-				APPROVED BY				-			
----------	--	--	--	-----------	--	--	--	------	--	--	--	---	--	--	--	-------	--	--	--	---	--	--	--	------	--	--	--	------------	--	--	--	----------	--	--	--	---	--	--	--	-------------	--	--	--	---	--	--	--

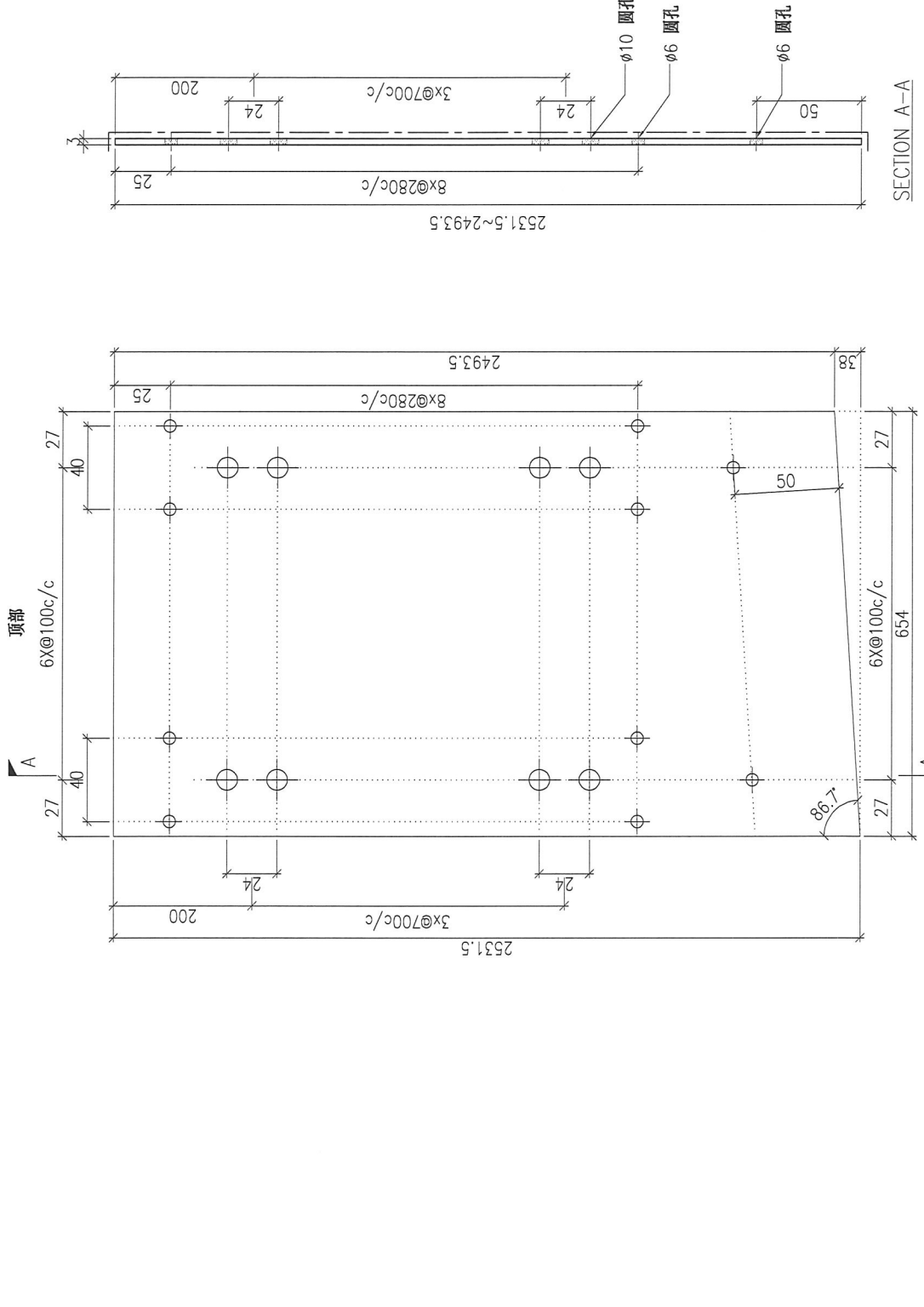
PROJECT		YIN PING ROAD KOWLOON FEATURE WALL (PHASE 2)				MATERIAL				3mm 铝板				COATING				PVF2				COLOUR				EC-DG-D334232-ZD1(SS-01)				MARK. NO.				-				QTY.				-			
REV.	CHECKED DATE	PART NUMBER	Dim. A	Dim. B	Dim. C	Dim. D	Dim. E	Dim. F	Dim. G	Dim. H	QTY.	Inv. Code	ASSEMBLE ON PARTS																																
-		P2-AP-B09	-	-	-	-	-	-	-	-	1																																		

注: 工厂用  
注: 工地复尺



DWG. NO.				P2-AP-B09				REV.				-				SCALE				-				DATE				13-04-2024				DRAWN BY				-				APPROVED BY				-			
----------	--	--	--	-----------	--	--	--	------	--	--	--	---	--	--	--	-------	--	--	--	---	--	--	--	------	--	--	--	------------	--	--	--	----------	--	--	--	---	--	--	--	-------------	--	--	--	---	--	--	--

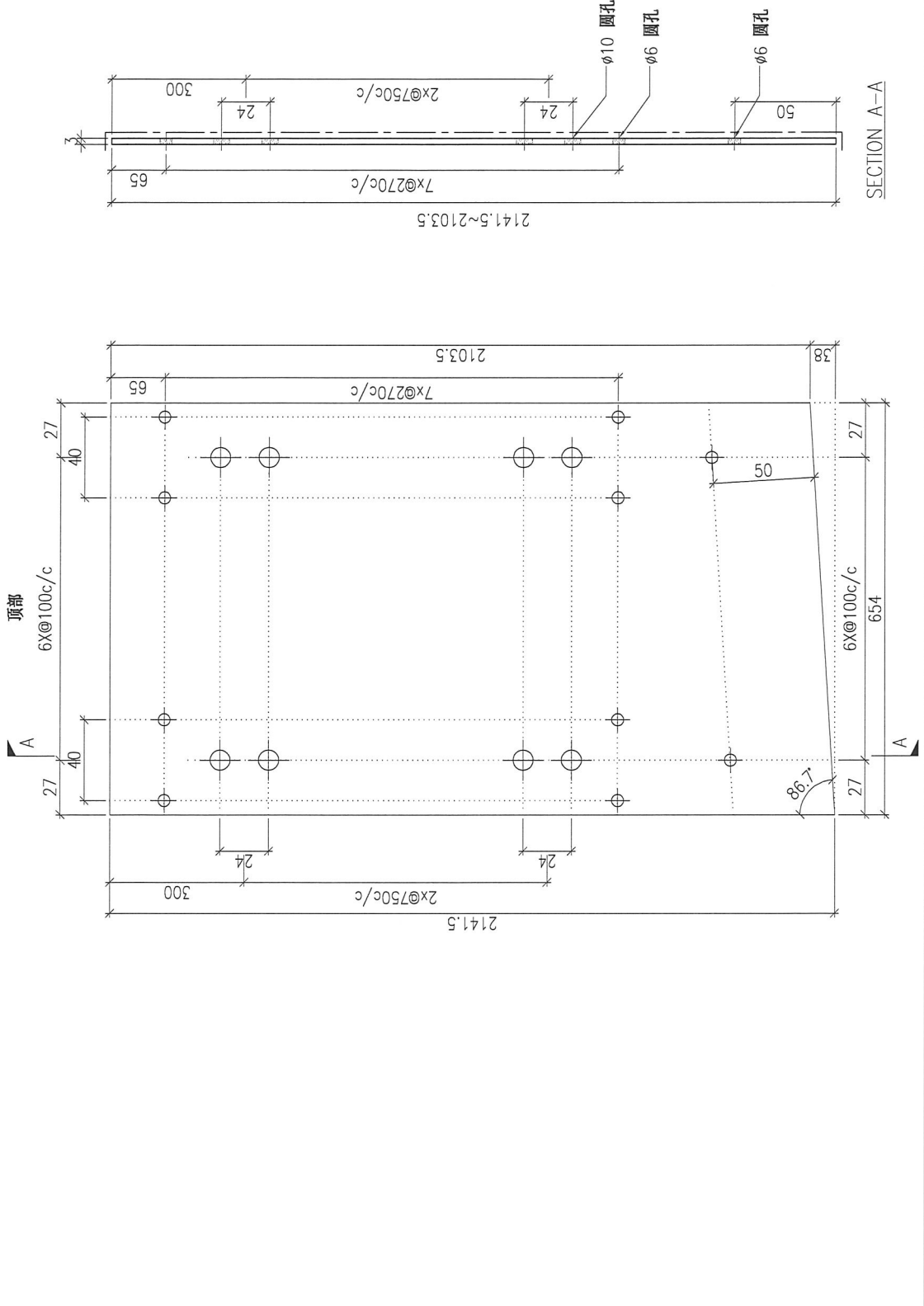
PROJECT		YIN PING ROAD KOWLOON FEATURE WALL (PHASE 2)				MATERIAL				3mm 铝板				COATING		PVF2		COLOUR		EC-DG-D334232-ZD1(SS-01)		MARK. NO.		-		QTY.		-	
REV.	CHECKED DATE	PART NUMBER	Dim. A	Dim. B	Dim. C	Dim. D	Dim. E	Dim. F	Dim. G	Dim. H	QTY.	Inv. Code	ASSEMBLE ON PARTS																
-		P2-AP-B10	-	-	-	-	-	-	-	-	1																		
注: 工厂用																													
注: 工地复尺																													



DWG. NO.		P2-AP-B10		REV.		-		SCALE		-		DATE		13-04-2024		DRAWN BY		-		APPROVED BY		-	
----------	--	-----------	--	------	--	---	--	-------	--	---	--	------	--	------------	--	----------	--	---	--	-------------	--	---	--

PROJECT		YIN PING ROAD KOWLOON FEATURE WALL (PHASE 2)				MATERIAL				3mm 铝板				COATING				PVF2				COLOUR				EC-DG-D334232-ZD1(SS-01)				MARK. NO.				-				QTY.				-			
REV.	CHECKED	PART NUMBER	Dim. A	Dim. B	Dim. C	Dim. D	Dim. E	Dim. F	Dim. G	Dim. H	QTY.	Inv. Code	ASSEMBLE ON PARTS																																
-	-	P2-AP-B11	-	-	-	-	-	-	-	-	1	-	注: 工厂用																																
																注: 工地复尺																													

																注: 工厂用															
																注: 工地复尺															

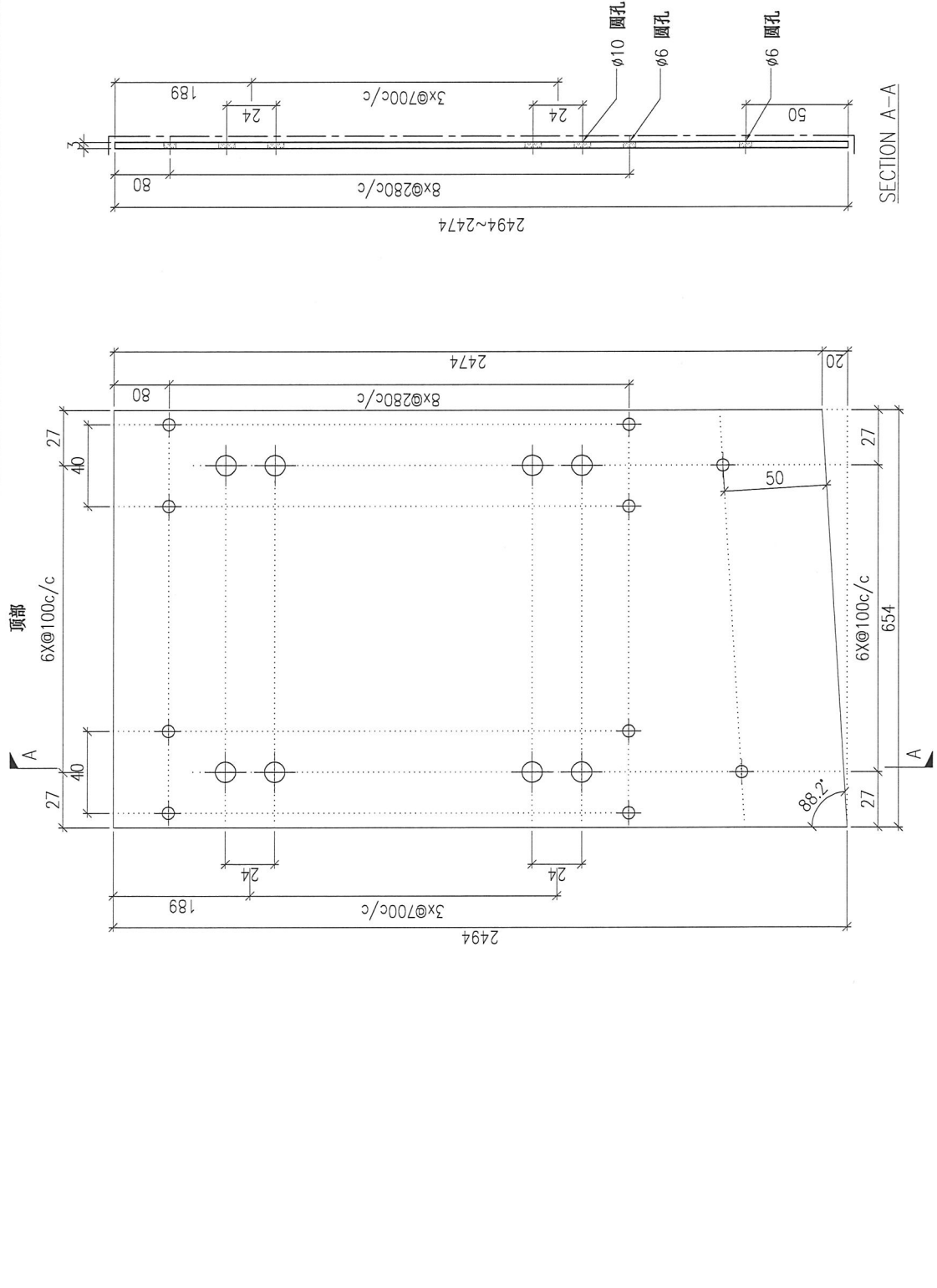


DWG. NO.				P2-AP-B11				REV.				-				SCALE				-				DATE				13-04-2024				DRAWN BY				-				APPROVED BY				-			
----------	--	--	--	-----------	--	--	--	------	--	--	--	---	--	--	--	-------	--	--	--	---	--	--	--	------	--	--	--	------------	--	--	--	----------	--	--	--	---	--	--	--	-------------	--	--	--	---	--	--	--

PROJECT		YIN PING ROAD KOWLOON FEATURE WALL (PHASE 2)						MATERIAL			COATING			COLOUR		MARK. NO.		QTY.									
PART NUMBER		Dim. A		Dim. B		Dim. C		Dim. D		Dim. E		Dim. F		Dim. G		Dim. H		Inv. Code		ASSEMBLE ON PARTS		EC-DG-D334232-ZD1(SS-01)		-		-	
P2-AP-B12		-		-		-		-		-		-		-		-		1		PVF2		-		-		-	

REV.	CHECKED	DATE	BY
-	-	-	-

注: 工厂用  
注: 工地复尺



DWG. NO.		P2-AP-B12		REV.		-		SCALE		-		DATE		13-04-2024		DRAWN BY		-		APPROVED BY		-	
----------	--	-----------	--	------	--	---	--	-------	--	---	--	------	--	------------	--	----------	--	---	--	-------------	--	---	--