

美特鋁質有限公司

MIDI ALUMINIUM FABRICATOR LTD.



工程指示 / 要求簡箋 ENGINEER INSTRUCTIONS(E.I.)

工程指示編號:	EI- 7427	修改版本:	-
	HK- /		
工程編號:	J 853	工程名稱:	延坪道 (第2期)
收件人:	Maggie Lor	發件人:	Joe Chan
工程項目:	Row B (HBI-HB3) 幕牆 地盤用玻璃 (黃色)	日期:	06/03/2024

<input type="checkbox"/> 原合約工程包	<input type="checkbox"/> 原合約工程加 / 減賬 QT-	<input type="checkbox"/> 新工程報價 QT-
---------------------------------	--	------------------------------------

信件批核號碼/圖紙參考編號:	批核模具圖紙編號:
客戶指示附件:	管理內部批簽署:

<input type="checkbox"/> 初步鋁料 B.M.	<input type="checkbox"/> 加工拆圖, 然後生產	<input type="checkbox"/> 尺寸表
<input type="checkbox"/> 正式鋁料 B.M.	<input type="checkbox"/> 技術上資料/指示	<input type="checkbox"/> 報價
<input type="checkbox"/> 配件 B.M.	<input type="checkbox"/> 樣辦或貨品說明書	<input type="checkbox"/> 分判合約
<input type="checkbox"/> 其他:		

內容: 請依附件資料, 生產玻璃, 送地盤.

- 按 BSEN 14179-1:2016 標準熱浸
- 請分屋包裝出貨.

完成上列要求日期: 30/4/2024

國內

<input type="checkbox"/> 生產技術總監	<input type="checkbox"/> 連附件	<input type="checkbox"/> 技術部	<input type="checkbox"/> 連附件	<input type="checkbox"/> 生產部	<input type="checkbox"/> 連附件
<input type="checkbox"/> 採購部	<input type="checkbox"/> 連附件	<input type="checkbox"/> 生產統籌部	<input type="checkbox"/> 連附件	<input type="checkbox"/> 報關組	<input type="checkbox"/> 連附件
<input type="checkbox"/> 質檢部	<input type="checkbox"/> 連附件	<input type="checkbox"/> 會計部	<input type="checkbox"/> 連附件	<input type="checkbox"/> 機械設計部	<input type="checkbox"/> 連附件
<input type="checkbox"/> 香港辦	<input type="checkbox"/> 連附件	<input type="checkbox"/> 其他:			

香港

<input type="checkbox"/> 行政部	<input type="checkbox"/> 連附件	<input type="checkbox"/> 會計部	<input type="checkbox"/> 連附件	<input type="checkbox"/> 統籌部	<input type="checkbox"/> 連附件	<input type="checkbox"/> 工程部	<input type="checkbox"/> 連附件
<input type="checkbox"/> 採購部	<input type="checkbox"/> 連附件	<input type="checkbox"/> QS部	<input type="checkbox"/> 連附件	<input checked="" type="checkbox"/> 地盤管理	<input checked="" type="checkbox"/> 連附件	<input type="checkbox"/> 維修部	<input type="checkbox"/> 連附件

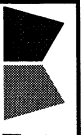
*發件人簽署:		*組別成員批核簽署:	
傳遞編號:		項目經理簽署:	

**J853-香港延坪道(第二期別墅)-Curtain Wall(地盤玻璃)-分棟數量統計表**

**工程： J853-香港延坪道(第二期別墅)**

**日期： 16-Jan-24**

序号	部件图编号				总数量	备注
		HB1	HB2	HB3		
1	J853-CW-GL4-01-004	1	1		2	
2	J853-CW-GL4-01-005	2	2		4	
3	J853-CW-GL4-01-006	2	2		4	
4	J853-CW-GL4-01-007	2	2	2	6	
5	J853-CW-GL4-01-008	2	2		4	
6	J853-CW-GL4-01-009			2	2	
7	J853-CW-GL4-01-010			1	1	
8	J853-CW-GL4-01-011			2	2	
9	J853-CW-GL4-01-012			2	2	
10					0	
		9	9	9	27	



美特鋁質有限公司  
MIDI Aluminium Fabricator Ltd.

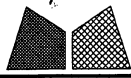
工程號:	J-853	計算:	J. L.	日期:	21/12/2023	送呈:	Joe
地盤名稱:	香港延坪道(第二期別墅)	核對:		日期:		副本:	
項目類別:	Curtain Wall (HB1-HB3)	批准:		日期:		版本:	

地盤用玻璃B. M. 表  
BM編號: A/C Code: 總數量: 27 總面積 (m<sup>2</sup>): 5.36

序號	修改標示	加工圖号	玻璃编号	玻璃名稱	厚度 (mm)	玻璃尺寸		數量 (塊)	面積 (m <sup>2</sup> )		備註
						寬度 (mm)	高度 (mm)		單件	總面積	
1		J853-CW-GL4-01	J853-CW-GL4-01-004	GL4: 12mm THK. CLEAR TEMPERED GLASS	12.00	980	257.5	2	0.25	0.50	
2		J853-CW-GL4-01	J853-CW-GL4-01-005			440	257.5	4	0.11	0.45	
3		J853-CW-GL4-01	J853-CW-GL4-01-006			1013	257.5	4	0.26	1.04	
4		J853-CW-GL4-01	J853-CW-GL4-01-007			940	257.5	6	0.24	1.45	
5		J853-CW-GL4-01	J853-CW-GL4-01-008			825	257.5	4	0.21	0.85	
6		J853-CW-GL4-01	J853-CW-GL4-01-009			340	257.5	2	0.09	0.18	
7		J853-CW-GL4-01	J853-CW-GL4-01-010			475	257.5	1	0.12	0.12	
8		J853-CW-GL4-01	J853-CW-GL4-01-011			813	257.5	2	0.21	0.42	
9		J853-CW-GL4-01	J853-CW-GL4-01-012			660	257.5	2	0.17	0.34	
						總合計:		27	5.36		

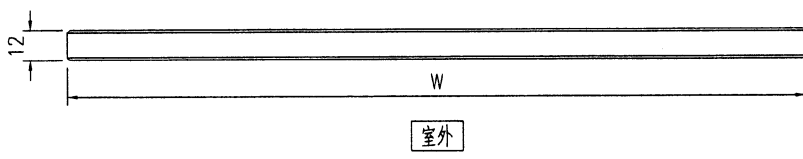
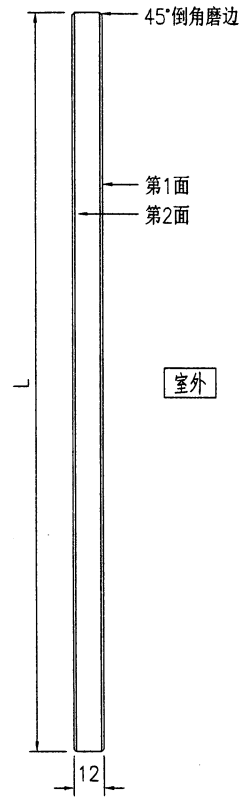
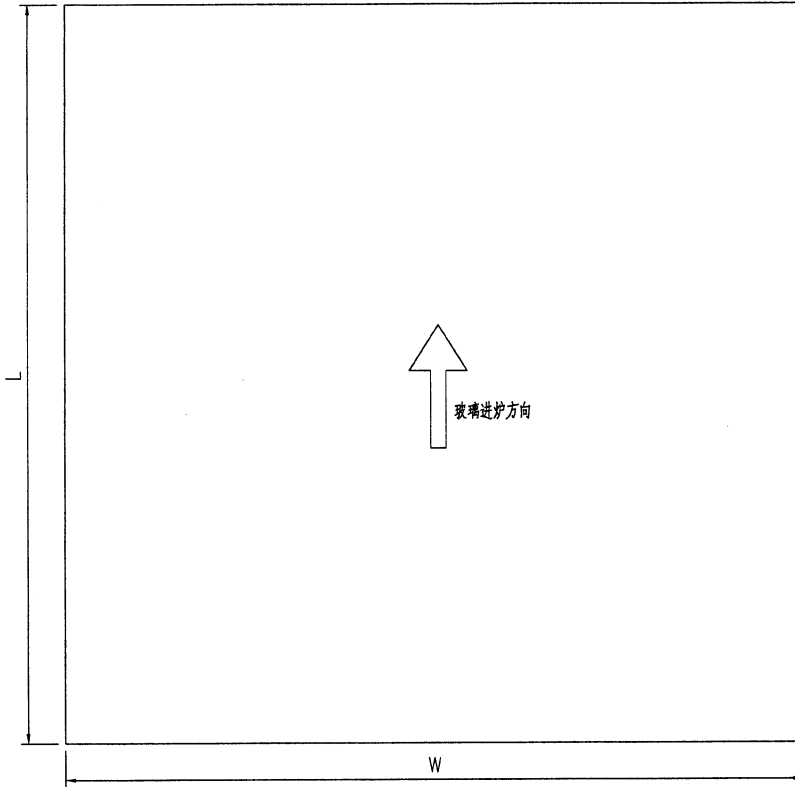
- 1). 本表中所有玻璃對角線尺寸偏差要求不超過正負2mm.
- 2). 本表中所有玻璃要求粗磨邊處理並倒棱角.
- 3). 本表中玻璃要求粗磨邊處理並倒棱角, 攔河玻璃頂底要精磨邊, 而所有玻璃之入爐方向需保持一致.
- 4). 本表中不同種類玻璃參照玻璃加工圖加工.
- 5). 本表中所有強化玻璃均需HEAT SOAK TEST.
- 6). 本表中所有玻璃均需注明室內外面及其玻璃編號, 以便識別.

加工注意事項:



美特铝质有限公司  
MIDI Aluminium Fabricator Ltd.

工程号	J853	制图	J.L.	27/09/23	物料号	详见玻璃BM表	
地盘	香港延坪路	复核	-	-	图号	J853-CW-GL4-01	
版本		名称	玻璃加工图	批准	-	数量	-
日期		材料	GL4:12T	单件面积(m <sup>2</sup> )	-	长度	-
采用	工厂	√	地盘			宽度	-
颜色	-						



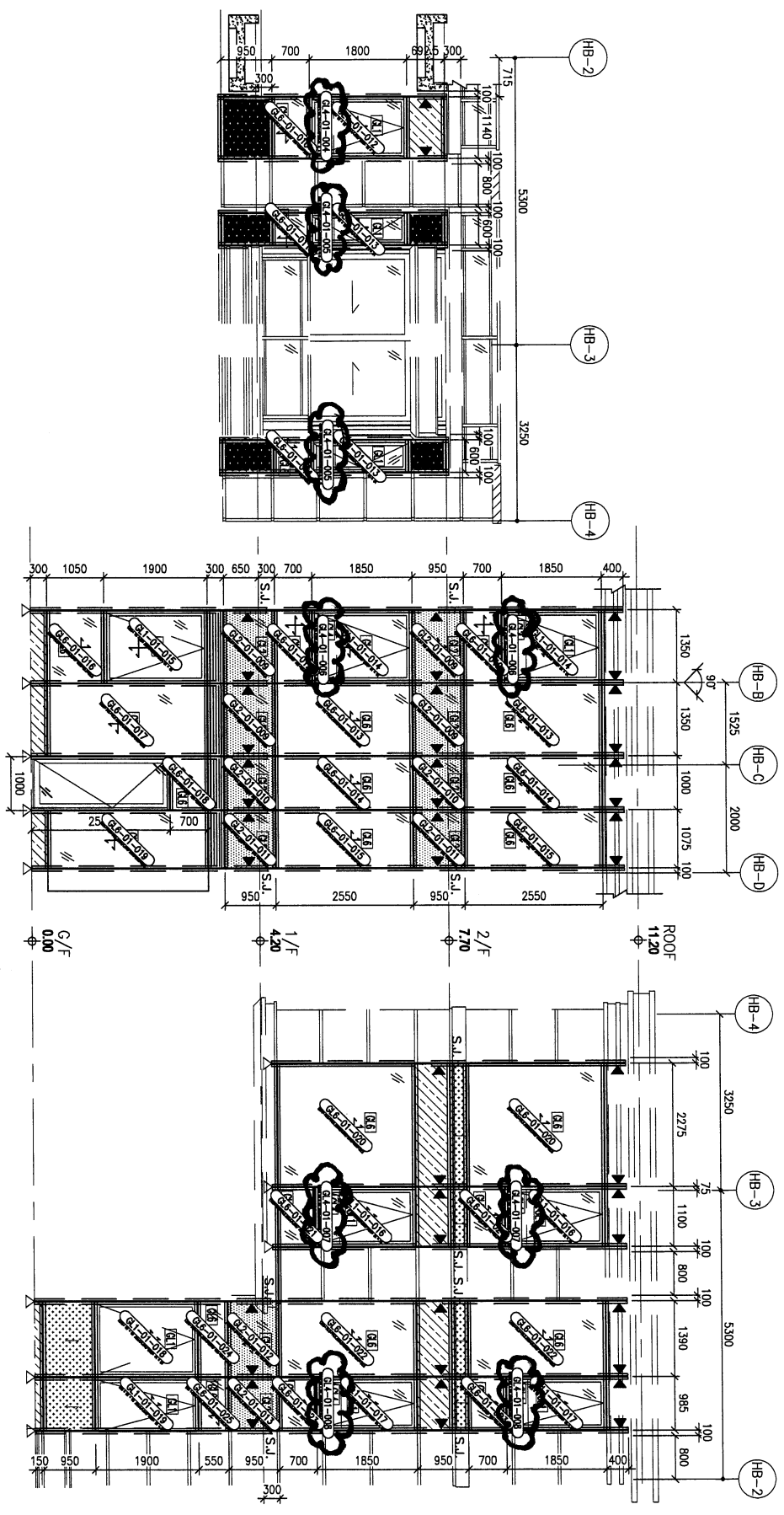
技术说明:

- 1.玻璃为: GL4:12mm THK. CLEAR TEMPERED GLASS
- 2.色号为: -
- 3.中空铝隔条, 两面涂丁基胶涂抹均匀, 内层为铝框本色, 玻璃四周1x45°机磨边;
- 4.玻璃密封胶采用: 聚硫胶, 胶深符合相应规范要求;
- 5.中空玻璃应符合《中空玻璃》GB1194-2002国家标准, 并按《玻璃幕墙工程质量检验标准》JGJ/T139-2001进行质量检验;
- 6.玻璃出厂前必须粘好相应编号及内外标签, 玻璃单边长度超过2m, 所有全钢化玻璃需要热浸处理;
- 7.玻璃钢化波纹方向平行分布; 图中标注尺寸单位为mm, 进炉方向与滚轮垂直。



**LEGEND:**

(A1)	10mm REINFORCED GLASS (RIG) 4mm SPACER (MESH)
(A2)	10mm REINFORCED GLASS (RIG) 4mm SPACER (MESH)
(A3)	10mm REINFORCED GLASS (RIG) 4mm SPACER (MESH)
(A4)	10mm REINFORCED GLASS (RIG) 4mm SPACER (MESH)
(A5)	10mm REINFORCED GLASS (RIG) 4mm SPACER (MESH)
(A6)	10mm REINFORCED GLASS (RIG) 4mm SPACER (MESH)
(A7)	10mm REINFORCED GLASS (RIG) 4mm SPACER (MESH)
(A8)	10mm REINFORCED GLASS (RIG) 4mm SPACER (MESH)
(A9)	10mm REINFORCED GLASS (RIG) 4mm SPACER (MESH)
(A10)	10mm REINFORCED GLASS (RIG) 4mm SPACER (MESH)
(A11)	10mm REINFORCED GLASS (RIG) 4mm SPACER (MESH)
(A12)	10mm REINFORCED GLASS (RIG) 4mm SPACER (MESH)
(A13)	10mm REINFORCED GLASS (RIG) 4mm SPACER (MESH)
(A14)	10mm REINFORCED GLASS (RIG) 4mm SPACER (MESH)
(A15)	10mm REINFORCED GLASS (RIG) 4mm SPACER (MESH)
(A16)	10mm REINFORCED GLASS (RIG) 4mm SPACER (MESH)
(A17)	10mm REINFORCED GLASS (RIG) 4mm SPACER (MESH)
(A18)	10mm REINFORCED GLASS (RIG) 4mm SPACER (MESH)
(A19)	10mm REINFORCED GLASS (RIG) 4mm SPACER (MESH)
(A20)	10mm REINFORCED GLASS (RIG) 4mm SPACER (MESH)
(A21)	10mm REINFORCED GLASS (RIG) 4mm SPACER (MESH)
(A22)	10mm REINFORCED GLASS (RIG) 4mm SPACER (MESH)
(A23)	10mm REINFORCED GLASS (RIG) 4mm SPACER (MESH)
(A24)	10mm REINFORCED GLASS (RIG) 4mm SPACER (MESH)
(A25)	10mm REINFORCED GLASS (RIG) 4mm SPACER (MESH)
(A26)	10mm REINFORCED GLASS (RIG) 4mm SPACER (MESH)
(A27)	10mm REINFORCED GLASS (RIG) 4mm SPACER (MESH)
(A28)	10mm REINFORCED GLASS (RIG) 4mm SPACER (MESH)
(A29)	10mm REINFORCED GLASS (RIG) 4mm SPACER (MESH)
(A30)	10mm REINFORCED GLASS (RIG) 4mm SPACER (MESH)
(A31)	10mm REINFORCED GLASS (RIG) 4mm SPACER (MESH)
(A32)	10mm REINFORCED GLASS (RIG) 4mm SPACER (MESH)
(A33)	10mm REINFORCED GLASS (RIG) 4mm SPACER (MESH)
(A34)	10mm REINFORCED GLASS (RIG) 4mm SPACER (MESH)
(A35)	10mm REINFORCED GLASS (RIG) 4mm SPACER (MESH)
(A36)	10mm REINFORCED GLASS (RIG) 4mm SPACER (MESH)
(A37)	10mm REINFORCED GLASS (RIG) 4mm SPACER (MESH)
(A38)	10mm REINFORCED GLASS (RIG) 4mm SPACER (MESH)
(A39)	10mm REINFORCED GLASS (RIG) 4mm SPACER (MESH)
(A40)	10mm REINFORCED GLASS (RIG) 4mm SPACER (MESH)
(A41)	10mm REINFORCED GLASS (RIG) 4mm SPACER (MESH)
(A42)	10mm REINFORCED GLASS (RIG) 4mm SPACER (MESH)
(A43)	10mm REINFORCED GLASS (RIG) 4mm SPACER (MESH)
(A44)	10mm REINFORCED GLASS (RIG) 4mm SPACER (MESH)
(A45)	10mm REINFORCED GLASS (RIG) 4mm SPACER (MESH)
(A46)	10mm REINFORCED GLASS (RIG) 4mm SPACER (MESH)
(A47)	10mm REINFORCED GLASS (RIG) 4mm SPACER (MESH)
(A48)	10mm REINFORCED GLASS (RIG) 4mm SPACER (MESH)
(A49)	10mm REINFORCED GLASS (RIG) 4mm SPACER (MESH)
(A50)	10mm REINFORCED GLASS (RIG) 4mm SPACER (MESH)
(A51)	10mm REINFORCED GLASS (RIG) 4mm SPACER (MESH)
(A52)	10mm REINFORCED GLASS (RIG) 4mm SPACER (MESH)
(A53)	10mm REINFORCED GLASS (RIG) 4mm SPACER (MESH)
(A54)	10mm REINFORCED GLASS (RIG) 4mm SPACER (MESH)
(A55)	10mm REINFORCED GLASS (RIG) 4mm SPACER (MESH)
(A56)	10mm REINFORCED GLASS (RIG) 4mm SPACER (MESH)
(A57)	10mm REINFORCED GLASS (RIG) 4mm SPACER (MESH)
(A58)	10mm REINFORCED GLASS (RIG) 4mm SPACER (MESH)
(A59)	10mm REINFORCED GLASS (RIG) 4mm SPACER (MESH)
(A60)	10mm REINFORCED GLASS (RIG) 4mm SPACER (MESH)
(A61)	10mm REINFORCED GLASS (RIG) 4mm SPACER (MESH)
(A62)	10mm REINFORCED GLASS (RIG) 4mm SPACER (MESH)
(A63)	10mm REINFORCED GLASS (RIG) 4mm SPACER (MESH)
(A64)	10mm REINFORCED GLASS (RIG) 4mm SPACER (MESH)
(A65)	10mm REINFORCED GLASS (RIG) 4mm SPACER (MESH)
(A66)	10mm REINFORCED GLASS (RIG) 4mm SPACER (MESH)
(A67)	10mm REINFORCED GLASS (RIG) 4mm SPACER (MESH)
(A68)	10mm REINFORCED GLASS (RIG) 4mm SPACER (MESH)
(A69)	10mm REINFORCED GLASS (RIG) 4mm SPACER (MESH)
(A70)	10mm REINFORCED GLASS (RIG) 4mm SPACER (MESH)
(A71)	10mm REINFORCED GLASS (RIG) 4mm SPACER (MESH)
(A72)	10mm REINFORCED GLASS (RIG) 4mm SPACER (MESH)
(A73)	10mm REINFORCED GLASS (RIG) 4mm SPACER (MESH)
(A74)	10mm REINFORCED GLASS (RIG) 4mm SPACER (MESH)
(A75)	10mm REINFORCED GLASS (RIG) 4mm SPACER (MESH)
(A76)	10mm REINFORCED GLASS (RIG) 4mm SPACER (MESH)
(A77)	10mm REINFORCED GLASS (RIG) 4mm SPACER (MESH)
(A78)	10mm REINFORCED GLASS (RIG) 4mm SPACER (MESH)
(A79)	10mm REINFORCED GLASS (RIG) 4mm SPACER (MESH)
(A80)	10mm REINFORCED GLASS (RIG) 4mm SPACER (MESH)
(A81)	10mm REINFORCED GLASS (RIG) 4mm SPACER (MESH)
(A82)	10mm REINFORCED GLASS (RIG) 4mm SPACER (MESH)
(A83)	10mm REINFORCED GLASS (RIG) 4mm SPACER (MESH)
(A84)	10mm REINFORCED GLASS (RIG) 4mm SPACER (MESH)
(A85)	10mm REINFORCED GLASS (RIG) 4mm SPACER (MESH)
(A86)	10mm REINFORCED GLASS (RIG) 4mm SPACER (MESH)
(A87)	10mm REINFORCED GLASS (RIG) 4mm SPACER (MESH)
(A88)	10mm REINFORCED GLASS (RIG) 4mm SPACER (MESH)
(A89)	10mm REINFORCED GLASS (RIG) 4mm SPACER (MESH)
(A90)	10mm REINFORCED GLASS (RIG) 4mm SPACER (MESH)
(A91)	10mm REINFORCED GLASS (RIG) 4mm SPACER (MESH)
(A92)	10mm REINFORCED GLASS (RIG) 4mm SPACER (MESH)
(A93)	10mm REINFORCED GLASS (RIG) 4mm SPACER (MESH)
(A94)	10mm REINFORCED GLASS (RIG) 4mm SPACER (MESH)
(A95)	10mm REINFORCED GLASS (RIG) 4mm SPACER (MESH)
(A96)	10mm REINFORCED GLASS (RIG) 4mm SPACER (MESH)
(A97)	10mm REINFORCED GLASS (RIG) 4mm SPACER (MESH)
(A98)	10mm REINFORCED GLASS (RIG) 4mm SPACER (MESH)
(A99)	10mm REINFORCED GLASS (RIG) 4mm SPACER (MESH)
(A100)	10mm REINFORCED GLASS (RIG) 4mm SPACER (MESH)



HB1-HB2 (TYPE B 屋)

<b>DB REF :</b>	
<b>CLIENT :</b>	SHIMAO GROUP HOLDINGS LIMITED
<b>ARCHITECT :</b>	WONG TUNG & PARTNERS LIMITED
<b>MAIN CONTRACTOR :</b>	協興建築有限公司 HIP HING CONSTRUCTION CO LTD
<b>STRUCTURAL ENGINEER :</b>	C M WONG & ASSOCIATES LTD 黃志明建築工程師有限公司
<b>PROJECT CONSULTANT :</b>	MENHARDT
<b>NOTE :</b>	1. ALL DIMENSIONS ARE IN MM. 2. ALL ELEVATIONS ARE VIEWED FROM OUTSIDE. 3. ALL DIMENSIONS TO BE VERIFIED ON SITE BEFORE FABRICATION.
<b>LEGEND :</b>	(A1) - DETAIL WORK NO. (A2) - REFER SHEET NO. 1. F.F.L. - FINISHED FLOOR LEVEL 2. S.F.L. - STRUCTURAL FLOOR LEVEL 3. R.C. - REVERSED DETAIL R.C. STRUCTURAL ELEMENT C/C / BEAM / S/C/B IS (UNDER SEPARATED SUBMISSION)
<b>DATE :</b>	J-853
<b>PROJECT :</b>	PROPOSED RESIDENTIAL DEVELOPMENT AT N.K.L.L. 8542 YIN PING ROAD KOWLOON
<b>TITLE :</b>	GLASS CURTAIN WALL FOR HOUSE, TYPE B (HOUSE NO. 101 & 102)
<b>DATE :</b>	21-12-23
<b>SCALE :</b>	1:40 (A1)
<b>DRAWN BY :</b>	8Z
<b>CHECKED BY :</b>	
<b>COMPANY :</b>	華特銀質有限公司 MIDI Architectural Production Ltd 610 Che Kwo Ling Road, Kowloon Tel: 23489711-4 Fax: (852) 2777885
<b>ONS NO. :</b>	1853-HW-G-3003
<b>REV. :</b>	-