

工程指示 / 要求簡箋 ENGINEER INSTRUCTIONS(E.I.)

工程指示編號:	EI- 7378	修改版本:	-
	HK- 0353		
工程編號:	J 853	工程名稱:	延坪道 (第2期)
收件人:	生統	發件人:	Joe Chan
工程項目:	RowC (HC1~HC6) 在向 鋁板生產 (藍色)	日期:	01/03/2024

<input type="checkbox"/> 原合約工程包	<input type="checkbox"/> 原合約工程加 / 減賬 QT-	<input type="checkbox"/> 新工程報價 QT-
---------------------------------	--	------------------------------------

信件批核號碼/圖紙參考編號:	批核模具圖紙編號:
客戶指示附件:	管理內部批簽署:

<input type="checkbox"/> 初步鋁料 B.M.	<input type="checkbox"/> 加工拆圖, 然後生產	<input type="checkbox"/> 尺寸表
<input type="checkbox"/> 正式鋁料 B.M.	<input type="checkbox"/> 技術上資料/指示	<input type="checkbox"/> 報價
<input type="checkbox"/> 配件 B.M.	<input type="checkbox"/> 樣辦或貨品說明書	<input type="checkbox"/> 分判合約
<input type="checkbox"/> 其他:		

內容: 請依附件資料, 生產鋁板, 連地盤。
- 請分層包裝出貨
要求 HC5~HC6 20/3/2024 完成
HC1~HC3 10/4/2024 完成

完成上列要求日期:

國內

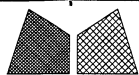
<input type="checkbox"/> 生產技術總監	<input type="checkbox"/> 連附件	<input type="checkbox"/> 技術部	<input type="checkbox"/> 連附件	<input type="checkbox"/> 生產部	<input type="checkbox"/> 連附件
<input type="checkbox"/> 採購部	<input type="checkbox"/> 連附件	<input checked="" type="checkbox"/> 生產統籌部	<input checked="" type="checkbox"/> 連附件	<input type="checkbox"/> 報關組	<input type="checkbox"/> 連附件
<input type="checkbox"/> 質檢部	<input type="checkbox"/> 連附件	<input type="checkbox"/> 會計部	<input type="checkbox"/> 連附件	<input type="checkbox"/> 機械設計部	<input type="checkbox"/> 連附件
<input type="checkbox"/> 香港辦	<input type="checkbox"/> 連附件	<input type="checkbox"/> 其他:			

香港

<input type="checkbox"/> 行政部	<input type="checkbox"/> 連附件	<input type="checkbox"/> 會計部	<input type="checkbox"/> 連附件	<input type="checkbox"/> 統籌部	<input type="checkbox"/> 連附件	<input type="checkbox"/> 工程部	<input type="checkbox"/> 連附件
<input type="checkbox"/> 採購部	<input type="checkbox"/> 連附件	<input type="checkbox"/> QS部	<input type="checkbox"/> 連附件	<input checked="" type="checkbox"/> 地盤管理	<input checked="" type="checkbox"/> 連附件	<input type="checkbox"/> 維修部	<input type="checkbox"/> 連附件

*發件人簽署:	生統	*組別成員批核簽署:	炳哥
傳遞編號:	HK 0353	項目經理簽署:	

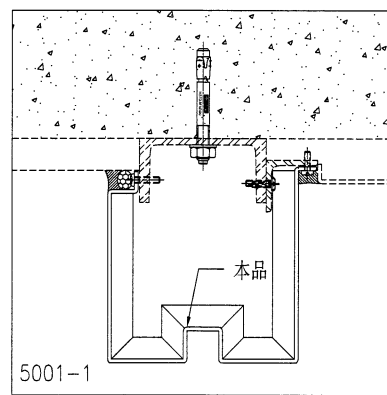
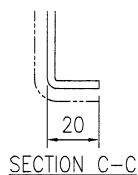
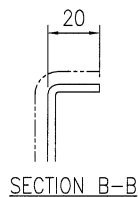
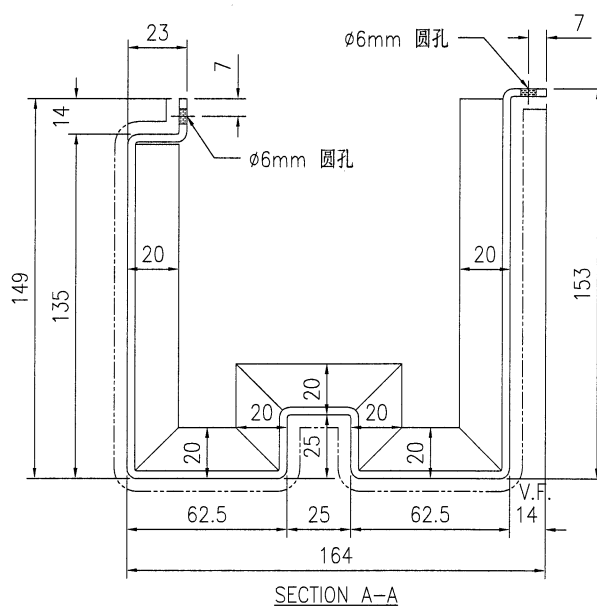
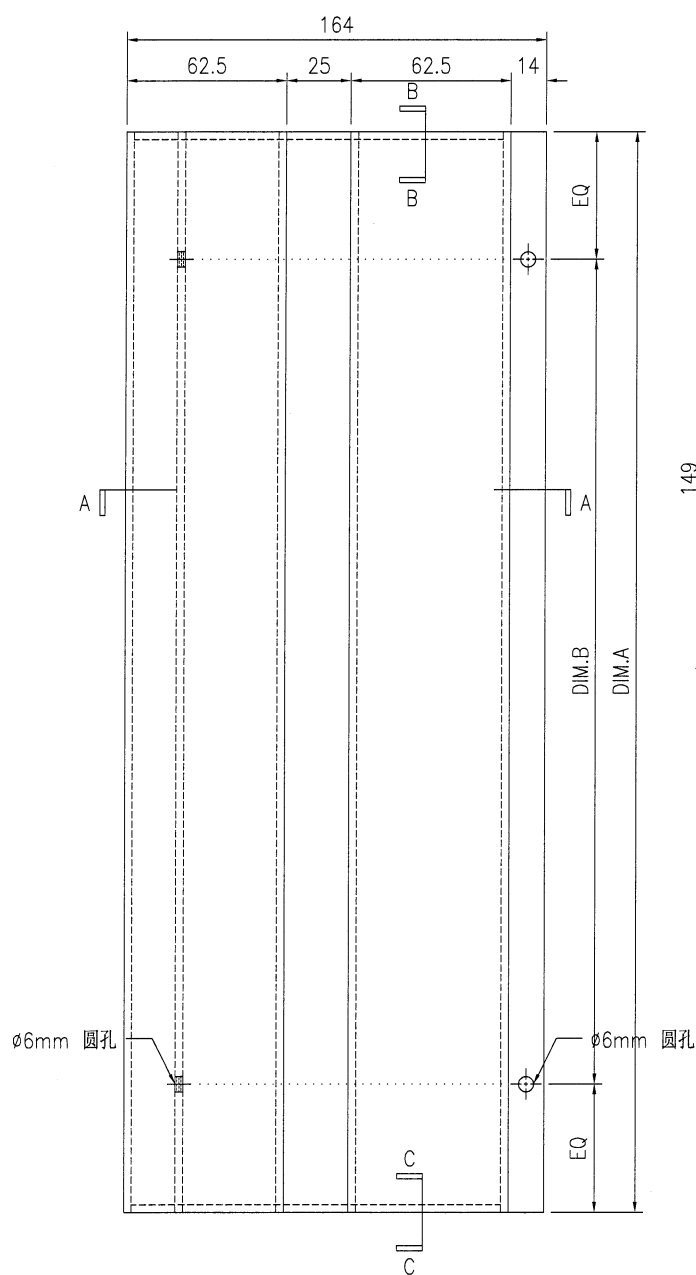
美特鋁質有限公司		工程號:	J-853	計算:	J. L.	日期:	28/2/2024	送呈:	Joe				
MIDI Aluminium Fabricator Ltd.		地盤名稱:	香港延坪道(第二期別墅)	核對:		日期:		副本:					
地盤用鋁板B. M. 表		項目類別:	Vertical Alum. Cladding-HC1~HC6	批准:		日期:		版本:					
BM編號:		A/G Code:		總重量 (Kg):	774.40	總V. F. 面積 (m²):		142.88					
序號	修改標示	加工圖号	鋁板編號	鋁板名稱	顏色	數量(塊)		總重量	展開面積 (m²)		備註		
						實用	後備		單件	總面積		單件	總面積
1		J853-VAC-AC-001	J853-VAC-AC-001E	3mm 厚鋁板 (3003 H14)	EC-DG-D334232-ZD1	4		25.97	1.20	4.79	1.20	4.79	
2		J853-VAC-AC-001	J853-VAC-AC-001F	3mm 厚鋁板 (3003 H14)	EC-DG-D334232-ZD1	4		28.25	1.30	5.21	1.30	5.21	
3		J853-VAC-AC-001	J853-VAC-AC-001G	3mm 厚鋁板 (3003 H14)	EC-DG-D334232-ZD1	4		29.81	1.38	5.50	1.38	5.50	
4		J853-VAC-AC-001	J853-VAC-AC-001H	3mm 厚鋁板 (3003 H14)	EC-DG-D334232-ZD1	4		30.46	1.41	5.62	1.41	5.62	
5		J853-VAC-AC-001	J853-VAC-AC-001J	3mm 厚鋁板 (3003 H14)	EC-DG-D334232-ZD1	4		10.67	0.49	1.97	0.49	1.97	
6		J853-VAC-AC-002	J853-VAC-AC-002E	3mm 厚鋁板 (3003 H14)	EC-DG-D334232-ZD1	4		29.61	1.37	5.46	1.37	5.46	
7		J853-VAC-AC-002	J853-VAC-AC-002F	3mm 厚鋁板 (3003 H14)	EC-DG-D334232-ZD1	4		32.24	1.49	5.95	1.49	5.95	
8		J853-VAC-AC-002	J853-VAC-AC-002G	3mm 厚鋁板 (3003 H14)	EC-DG-D334232-ZD1	4		34.02	1.57	6.28	1.57	6.28	
9		J853-VAC-AC-002	J853-VAC-AC-002H	3mm 厚鋁板 (3003 H14)	EC-DG-D334232-ZD1	4		34.73	1.60	6.41	1.60	6.41	
10		J853-VAC-AC-002	J853-VAC-AC-002J	3mm 厚鋁板 (3003 H14)	EC-DG-D334232-ZD1	4		12.16	0.56	2.24	0.56	2.24	
11		J853-VAC-AC-004	J853-VAC-AC-004E	3mm 厚鋁板 (3003 H14)	EC-DG-D334232-ZD1	3		21.15	1.30	3.90	1.30	3.90	
12		J853-VAC-AC-004	J853-VAC-AC-004F	3mm 厚鋁板 (3003 H14)	EC-DG-D334232-ZD1	3		23.02	1.42	4.25	1.42	4.25	
13		J853-VAC-AC-004	J853-VAC-AC-004G	3mm 厚鋁板 (3003 H14)	EC-DG-D334232-ZD1	3		24.29	1.49	4.48	1.49	4.48	
14		J853-VAC-AC-004	J853-VAC-AC-004H	3mm 厚鋁板 (3003 H14)	EC-DG-D334232-ZD1	3		24.81	1.53	4.58	1.53	4.58	
15		J853-VAC-AC-004	J853-VAC-AC-004J	3mm 厚鋁板 (3003 H14)	EC-DG-D334232-ZD1	3		8.68	0.53	1.60	0.53	1.60	
16		J853-VAC-AC-005	J853-VAC-AC-005E	3mm 厚鋁板 (3003 H14)	EC-DG-D334232-ZD1	3		17.87	1.10	3.30	1.10	3.30	
17		J853-VAC-AC-005	J853-VAC-AC-005F	3mm 厚鋁板 (3003 H14)	EC-DG-D334232-ZD1	3		19.45	1.20	3.59	1.20	3.59	
18		J853-VAC-AC-005	J853-VAC-AC-005G	3mm 厚鋁板 (3003 H14)	EC-DG-D334232-ZD1	3		20.52	1.26	3.79	1.26	3.79	
19		J853-VAC-AC-005	J853-VAC-AC-005H	3mm 厚鋁板 (3003 H14)	EC-DG-D334232-ZD1	3		20.96	1.29	3.87	1.29	3.87	
20		J853-VAC-AC-005	J853-VAC-AC-005J	3mm 厚鋁板 (3003 H14)	EC-DG-D334232-ZD1	3		7.33	0.45	1.35	0.45	1.35	
21		J853-VAC-AC-100	J853-VAC-AC-100E	3mm 厚鋁板 (3003 H14)	EC-DG-D334232-ZD1	6		40.91	1.26	7.55	1.26	7.55	
22		J853-VAC-AC-100	J853-VAC-AC-100F	3mm 厚鋁板 (3003 H14)	EC-DG-D334232-ZD1	6		44.52	1.37	8.21	1.37	8.21	
23		J853-VAC-AC-100	J853-VAC-AC-100G	3mm 厚鋁板 (3003 H14)	EC-DG-D334232-ZD1	6		46.99	1.45	8.67	1.45	8.67	
24		J853-VAC-AC-100	J853-VAC-AC-100H	3mm 厚鋁板 (3003 H14)	EC-DG-D334232-ZD1	6		48.00	1.48	8.86	1.48	8.86	
25		J853-VAC-AC-100	J853-VAC-AC-100J	3mm 厚鋁板 (3003 H14)	EC-DG-D334232-ZD1	6		16.81	0.52	3.10	0.52	3.10	
26		J853-VAC-AC-101	J853-VAC-AC-101E	3mm 厚鋁板 (3003 H14)	EC-DG-D334232-ZD1	4		25.13	1.16	4.64	1.16	4.64	
27		J853-VAC-AC-101	J853-VAC-AC-101F	3mm 厚鋁板 (3003 H14)	EC-DG-D334232-ZD1	4		27.36	1.26	5.05	1.26	5.05	
28		J853-VAC-AC-101	J853-VAC-AC-101G	3mm 厚鋁板 (3003 H14)	EC-DG-D334232-ZD1	4		28.86	1.33	5.32	1.33	5.32	
29		J853-VAC-AC-101	J853-VAC-AC-101H	3mm 厚鋁板 (3003 H14)	EC-DG-D334232-ZD1	4		29.48	1.36	5.44	1.36	5.44	
30		J853-VAC-AC-101	J853-VAC-AC-101J	3mm 厚鋁板 (3003 H14)	EC-DG-D334232-ZD1	4		10.32	0.48	1.90	0.48	1.90	
					總計:		120	774.40		142.88		142.88	



美特铝质有限公司
MIDI Aluminium Fabricator Ltd.

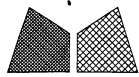
工程号	J853	制图	J.L.	26/02/24	物料号	J853-VAC-AC-001	
地盘	香港延坪路	复核	-	-	图号	J853-VAC-AC-001	
版本		名称	铝板加工图	批准	-	数量	-
日期		材料	3mm 厚铝板 (3003 H14)	单件面积(m ²)	-	长度	-
		颜色	EC-DG-D334232-ZD1			宽度	-

物料编号	DIM.A	DIM.B	DIM.C	DIM.D	DIM.E	数量	单件面积(m ²)
J853-VAC-AC-001E	2207	@300x7				4	1.198
J853-VAC-AC-001F	2405	@300x7				4	1.303
J853-VAC-AC-001G	2540	@300x8				4	1.375
J853-VAC-AC-001H	2595	@300x8				4	1.405
J853-VAC-AC-001J	883	@300x2				4	0.492



技术说明:

1. 板材折弯之前应进行压平调整, 不应有加工变形, 并应去除毛刺;
2. 外形尺寸允许偏差为 $\pm 0.5\text{mm}$, 折弯角度的允许偏差为 $\pm 0.5^\circ$; 孔位的允许偏差为 $\pm 0.3\text{mm}$, 孔距的允许偏差为 $\pm 0.3\text{mm}$, 累计偏差为 $\pm 0.5\text{mm}$;
3. 槽口、豁口的长宽边允许偏差为 $+0.5\text{mm}$, 中心线允许偏差都为 $\pm 0.5\text{mm}$;
4. "-----" 为外露喷涂装饰面, 应贴保护膜, 加工过程中不得破坏装饰面, 加工完毕须标示代号。

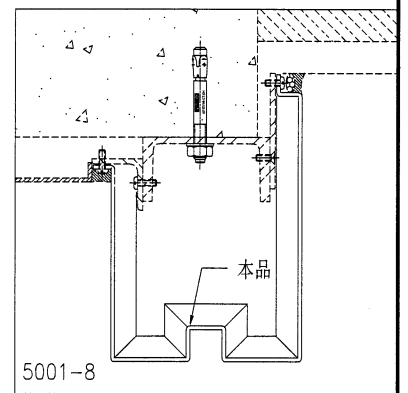
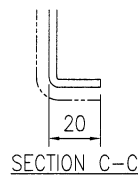
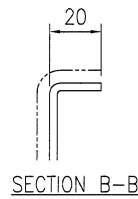
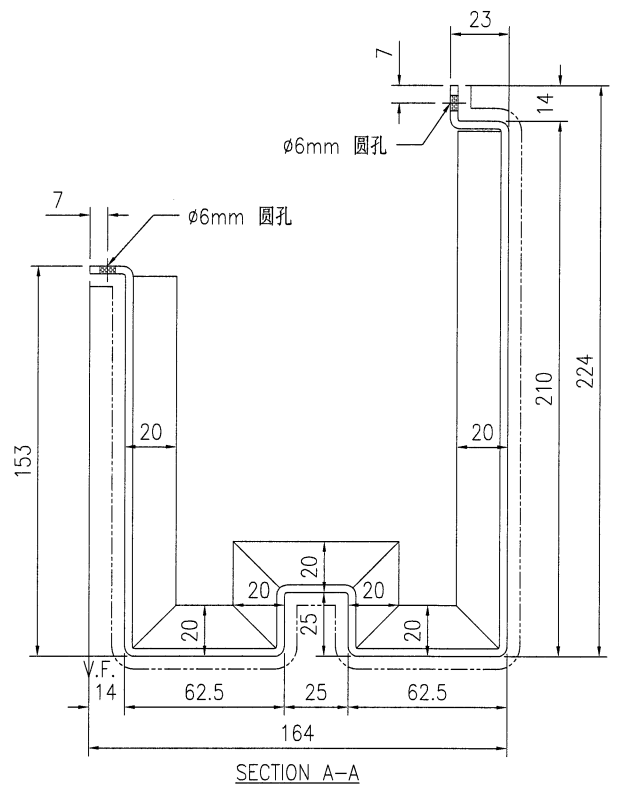
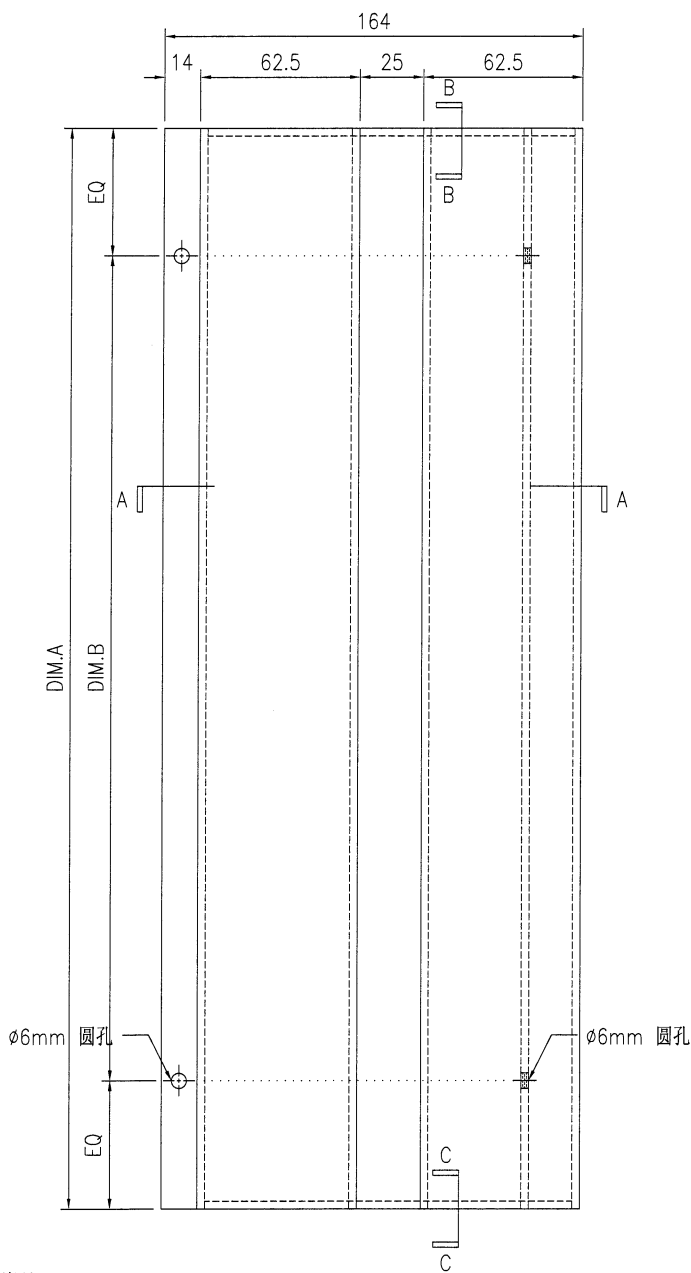


美特铝质有限公司
MIDI Aluminium Fabricator Ltd.

工程号	J853	制图	J.L.	26/02/24	物料号	J853-VAC-AC-002
地盘	香港延坪路	复核	-	-	图号	J853-VAC-AC-002
名称	铝板加工图	批准	-	-	数量	-
材料	3mm 厚铝板 (3003 H14)	单件面积(m ²)	-	-	长度	-
宽度	-					

版本		采用	工厂		地盘	√
日期		颜色	EC-DG-D334232-ZD1			

物料编号	DIM.A	DIM.B	DIM.C	DIM.D	DIM.E	数量	单件面积(m ²)
J853-VAC-AC-002E	2207	@300x7				4	1.366
J853-VAC-AC-002F	2405	@300x7				4	1.487
J853-VAC-AC-002G	2540	@300x8				4	1.569
J853-VAC-AC-002H	2595	@300x8				4	1.602
J853-VAC-AC-002J	883	@300x2				4	0.561

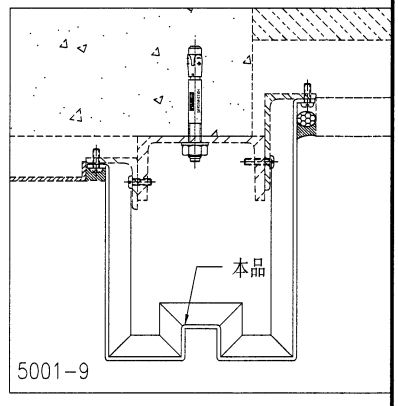
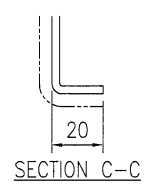
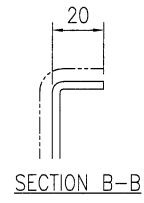
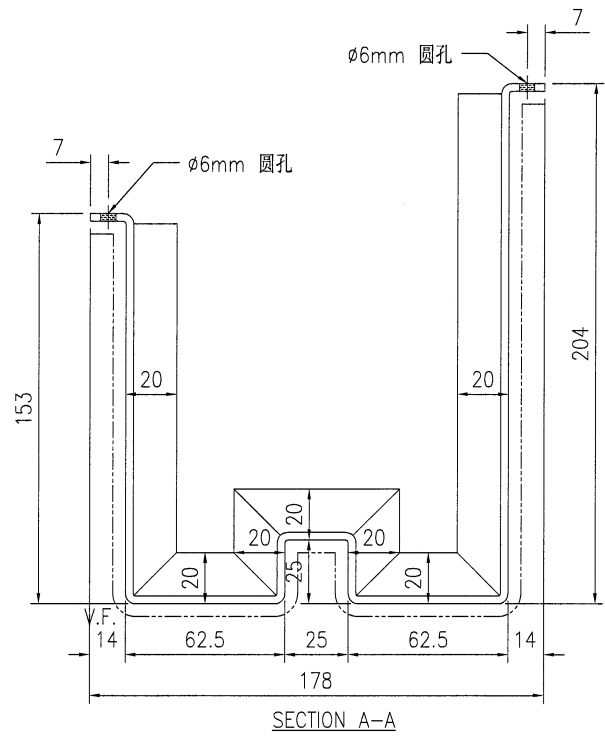
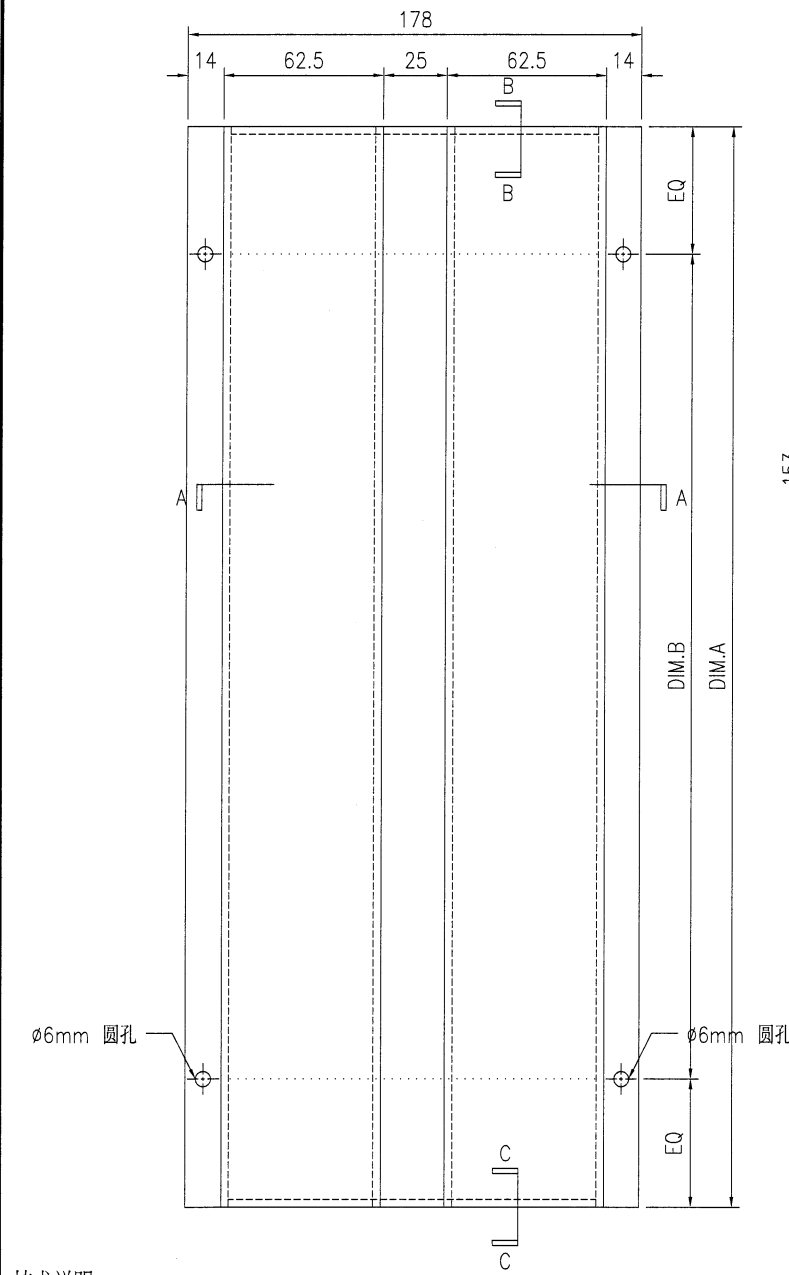


技术说明:

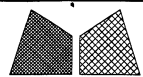
1. 板材折弯之前应进行压平调整, 不应有加工变形, 并应去除毛刺;
2. 外形尺寸允许偏差为 $\pm 0.5\text{mm}$, 折弯角度的允许偏差为 $\pm 0.5^\circ$; 孔位的允许偏差为 $\pm 0.3\text{mm}$, 孔距的允许偏差为 $\pm 0.3\text{mm}$, 累计偏差为 $\pm 0.5\text{mm}$;
3. 槽口、豁口的长宽边允许偏差为 $+0.5\text{mm}$, 中心线允许偏差都为 $\pm 0.5\text{mm}$;
4. "-----" 为外露喷涂装饰面, 应贴保护膜, 加工过程中不得破坏装饰面, 加工完毕须标示代号。

 美特铝质有限公司 MIDI Aluminium Fabricator Ltd.				工程号 J853 地盘 香港延坪路	制图 J.L. 复核 -	26/02/24 -	物料号 J853-VAC-AC-004 图号 J853-VAC-AC-004	
版本 日期	采用 颜色 EC-DG-D334232-ZD1	工厂 EC-DG-D334232-ZD1	地盘 ✓	名称 铝板加工图 材料 3mm 厚铝板 (3003 H14)	批准 单件面积(m ²)	数量 -	长度 -	宽度 -

物料编号	DIM.A	DIM.B	DIM.C	DIM.D	DIM.E	数量	单件面积(m ²)
J853-VAC-AC-004E	2207	@300x7				3	1.301
J853-VAC-AC-004F	2405	@300x7				3	1.416
J853-VAC-AC-004G	2540	@300x8				3	1.494
J853-VAC-AC-004H	2595	@300x8				3	1.526
J853-VAC-AC-004J	883	@300x2				3	0.534



- 技术说明:
1. 板材折弯之前应进行压平调整, 不应有加工变形, 并应去除毛刺;
 2. 外形尺寸允许偏差为 $\pm 0.5\text{mm}$, 折弯角度的允许偏差为 $\pm 0.5^\circ$; 孔位的允许偏差为 $\pm 0.3\text{mm}$, 孔距的允许偏差为 $\pm 0.3\text{mm}$, 累计偏差为 $\pm 0.5\text{mm}$;
 3. 槽口、豁口的长宽边允许偏差为 $+0.5\text{mm}$, 中心线允许偏差都为 $\pm 0.5\text{mm}$;
 4. "-----" 为外露喷涂装饰面, 应贴保护膜, 加工过程中不得破坏装饰面, 加工完毕须标示代号。

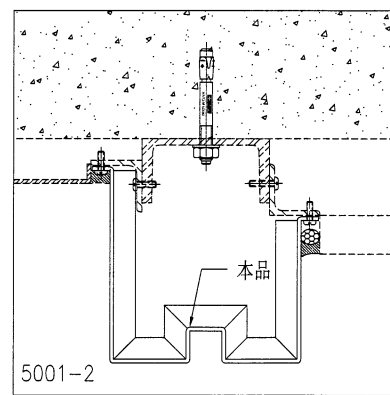
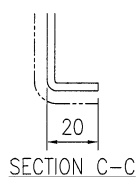
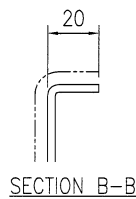
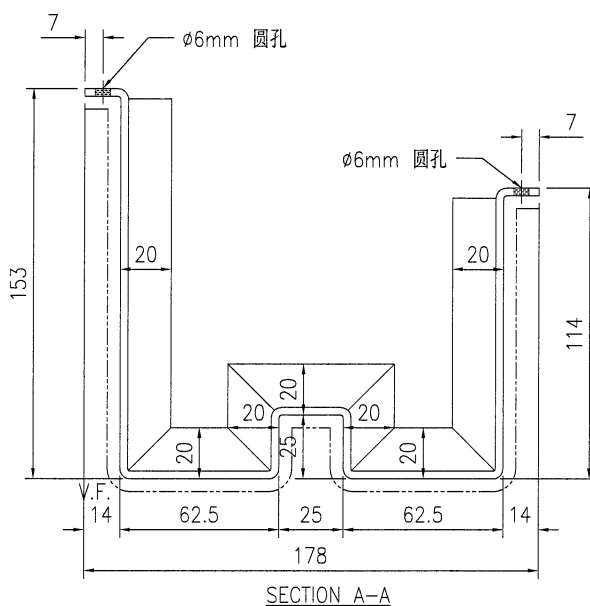
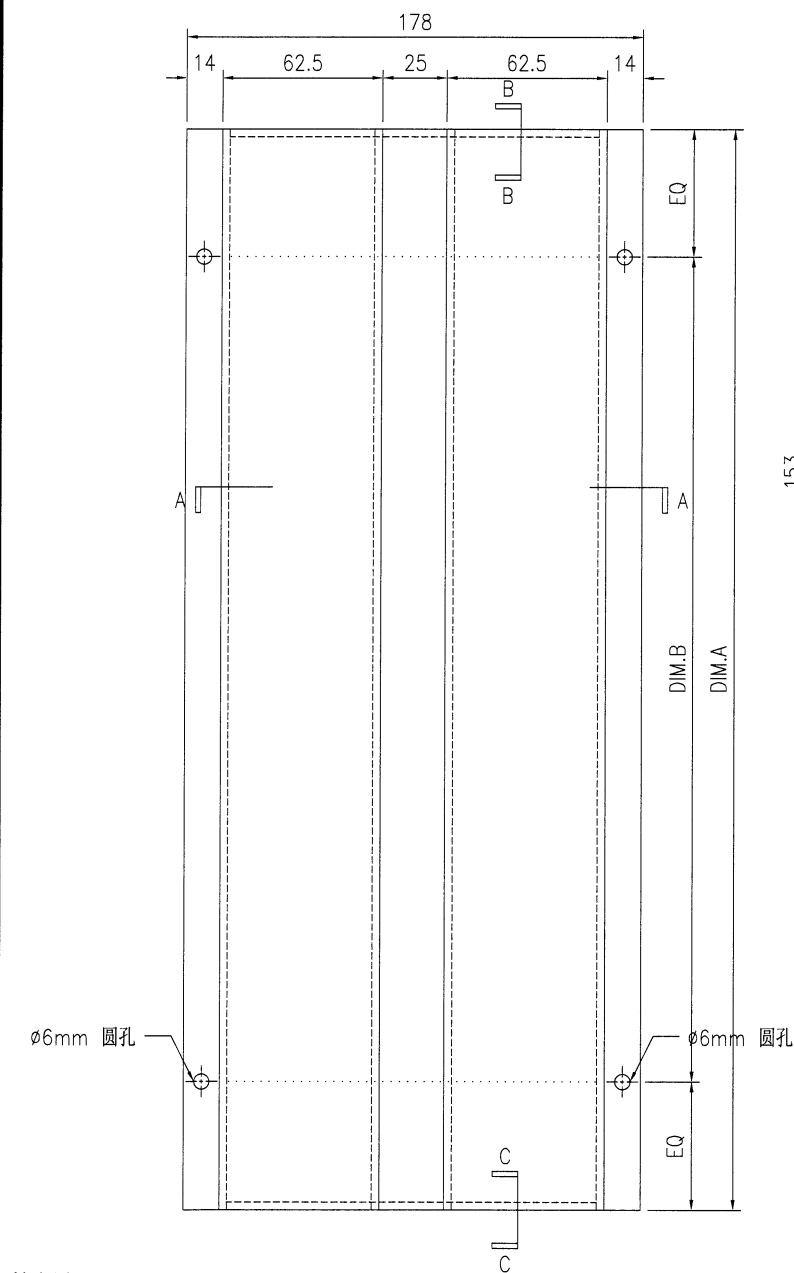


美特铝质有限公司
MIDI Aluminium Fabricator Ltd.

工程号	J853	制图	J.L.	26/02/24	物料号	J853-VAC-AC-005	
地盘	香港延坪路	复核	-	-	图号	J853-VAC-AC-005	
版本		名称	铝板加工图	批准	-	数量	-
日期		材料	3mm 厚铝板 (3003 H14)	单件面积(m ²)	-	长度	-

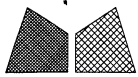
采用	工厂	地盘	√
颜色	EC-DG-D334232-ZD1		

物料编号	DIM.A	DIM.B	DIM.C	DIM.D	DIM.E	数量	单件面积(m ²)
J853-VAC-AC-005E	2207	@300x7				3	1.099
J853-VAC-AC-005F	2405	@300x7				3	1.196
J853-VAC-AC-005G	2540	@300x8				3	1.262
J853-VAC-AC-005H	2595	@300x8				3	1.289
J853-VAC-AC-005J	883	@300x2				3	0.451



技术说明:

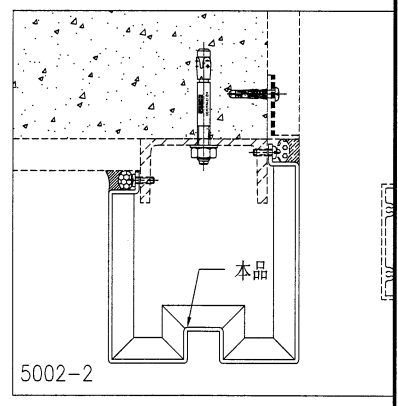
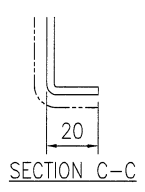
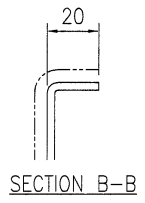
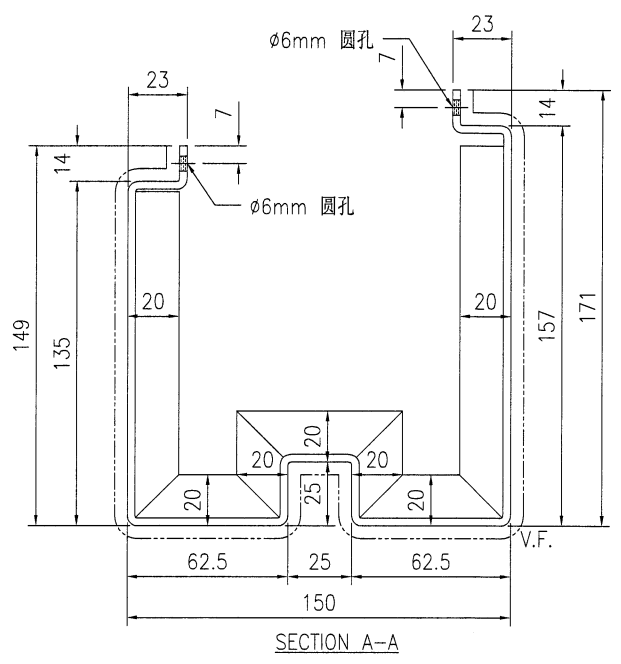
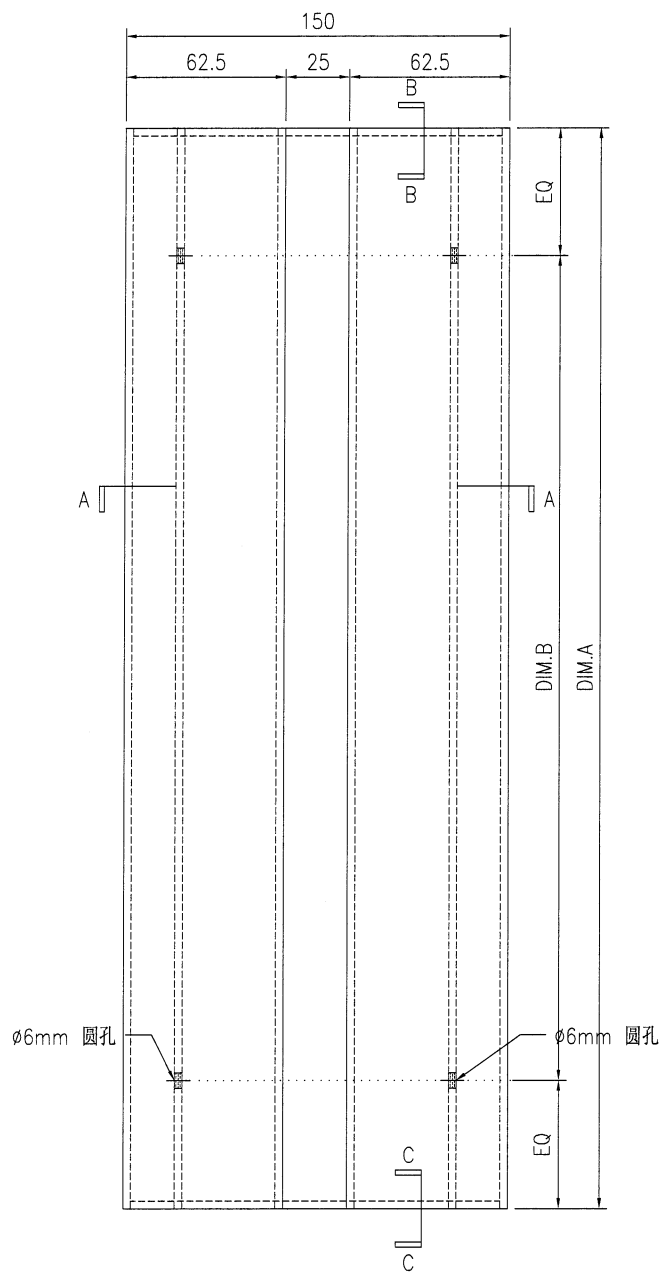
1. 板材折弯之前应进行压平调整, 不应有加工变形, 并应去除毛刺;
2. 外形尺寸允许偏差为 $\pm 0.5\text{mm}$, 折弯角度的允许偏差为 $\pm 0.5^\circ$; 孔位的允许偏差为 $\pm 0.3\text{mm}$, 孔距的允许偏差为 $\pm 0.3\text{mm}$, 累计偏差为 $\pm 0.5\text{mm}$;
3. 槽口、豁口的长宽边允许偏差为 $+0.5\text{mm}$, 中心线允许偏差都为 $\pm 0.5\text{mm}$;
4. "-----" 为外露喷涂装饰面, 应贴保护膜, 加工过程中不得破坏装饰面, 加工完毕须标示代号。



美特铝质有限公司
MIDI Aluminium Fabricator Ltd.

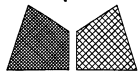
工程号	J853	制图	J.L.	26/02/24	物料号	J853-VAC-AC-100			
地盘	香港延坪路	复核	-	-	图号	J853-VAC-AC-100			
版本	采用 工厂 地盘 ✓	名称	铝板加工图	批准	-	数量	-		
日期	颜色 EC-DG-D334232-ZD1	材料	3mm 厚铝板 (3003 H14)	单件面积(m ²)	-	长度	-	宽度	-

物料编号	DIM.A	DIM.B	DIM.C	DIM.D	DIM.E	数量	单件面积(m ²)
J853-VAC-AC-100E	2207	@300x7				6	1.258
J853-VAC-AC-100F	2405	@300x7				6	1.369
J853-VAC-AC-100G	2540	@300x8				6	1.445
J853-VAC-AC-100H	2595	@300x8				6	1.476
J853-VAC-AC-100J	883	@300x2				6	0.517



技术说明:

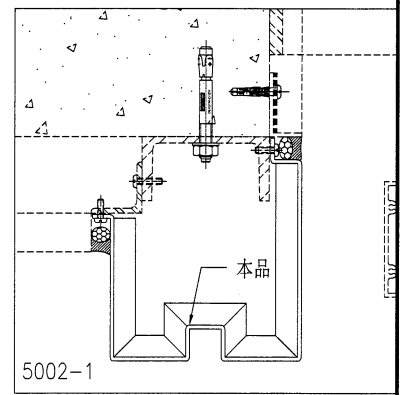
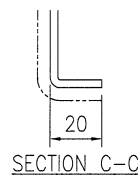
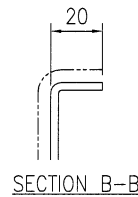
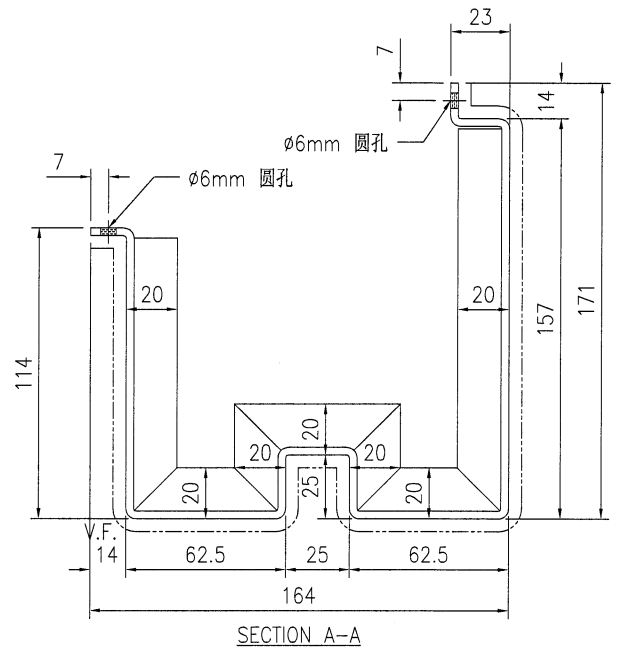
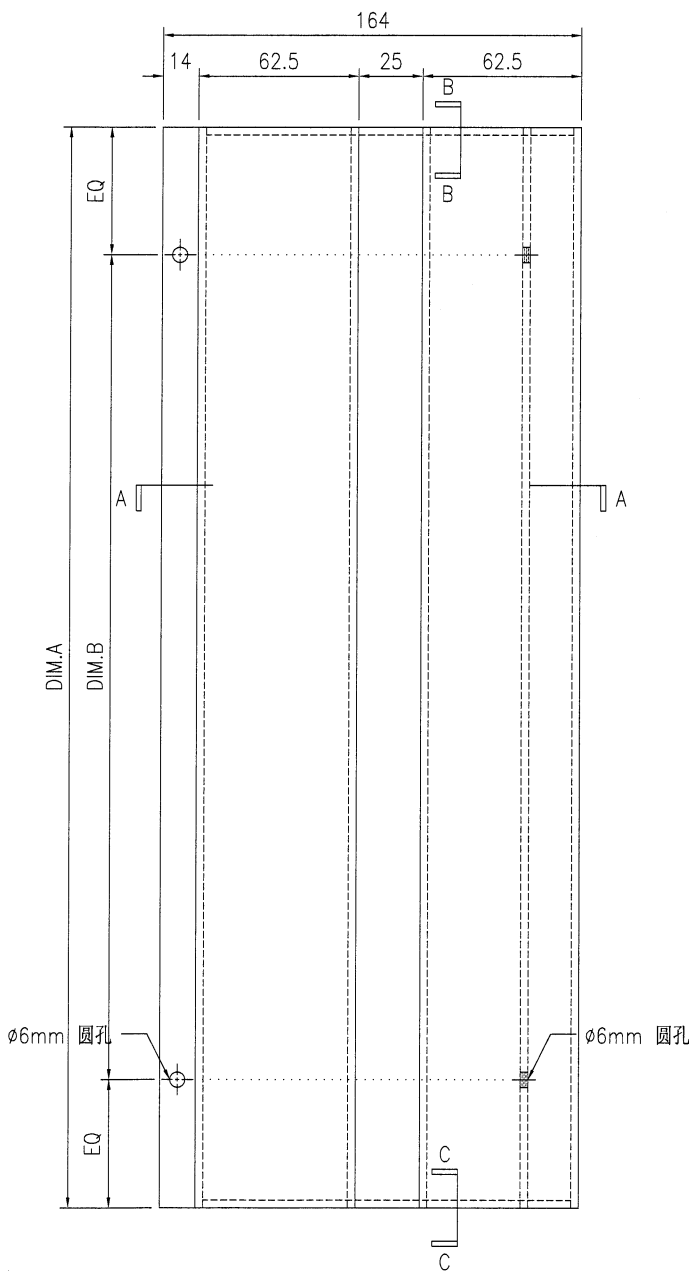
1. 板材折弯之前应进行压平调整, 不应有加工变形, 并应去除毛刺;
2. 外形尺寸允许偏差为±0.5mm, 折弯角度的允许偏差为±0.5°; 孔位的允许偏差为±0.3mm, 孔距的允许偏差为±0.3mm, 累计偏差为±0.5mm;
3. 槽口、豁口的长宽边允许偏差为+0.5mm, 中心线允许偏差都为±0.5mm;
4. "-----" 为外露喷涂装饰面, 应贴保护膜, 加工过程中不得破坏装饰面, 加工完毕须标示代号。



美特铝质有限公司
MIDI Aluminium Fabricator Ltd.

工程号	J853	制图	J.L.	26/02/24	物料号	J853-VAC-AC-101	
地盘	香港延坪路	复核	-	-	图号	J853-VAC-AC-101	
版本		名称	铝板加工图	批准	-	数量	-
日期		材料	3mm 厚铝板 (3003 H14)	单件面积(m ²)	-	长度	-
		颜色	EC-DG-D334232-ZD1			宽度	-

物料编号	DIM.A	DIM.B	DIM.C	DIM.D	DIM.E	数量	单件面积(m ²)
J853-VAC-AC-101E	2207	@300x7				4	1.159
J853-VAC-AC-101F	2405	@300x7				4	1.262
J853-VAC-AC-101G	2540	@300x8				4	1.331
J853-VAC-AC-101H	2595	@300x8				4	1.360
J853-VAC-AC-101J	883	@300x2				4	0.476



技术说明:

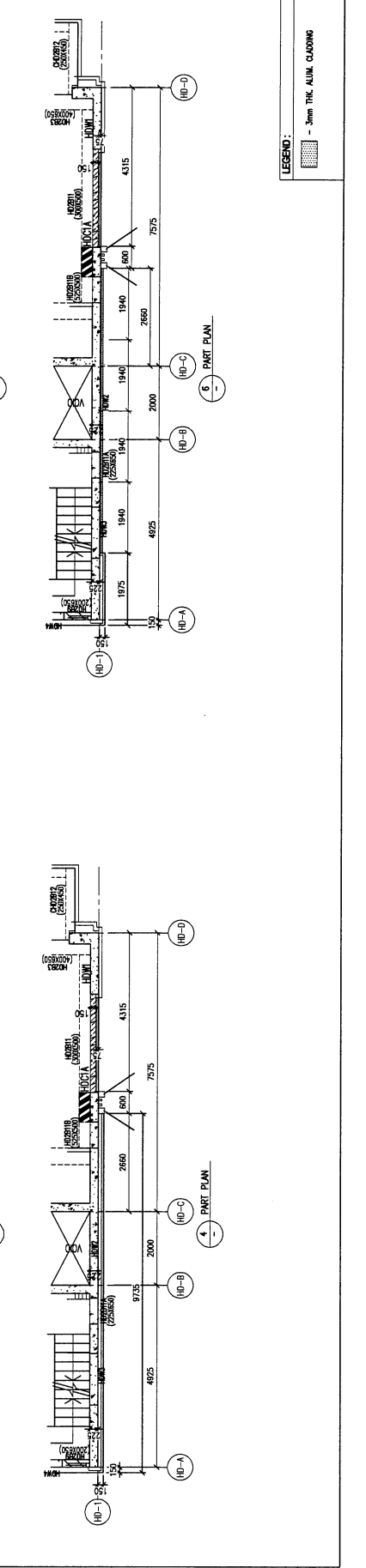
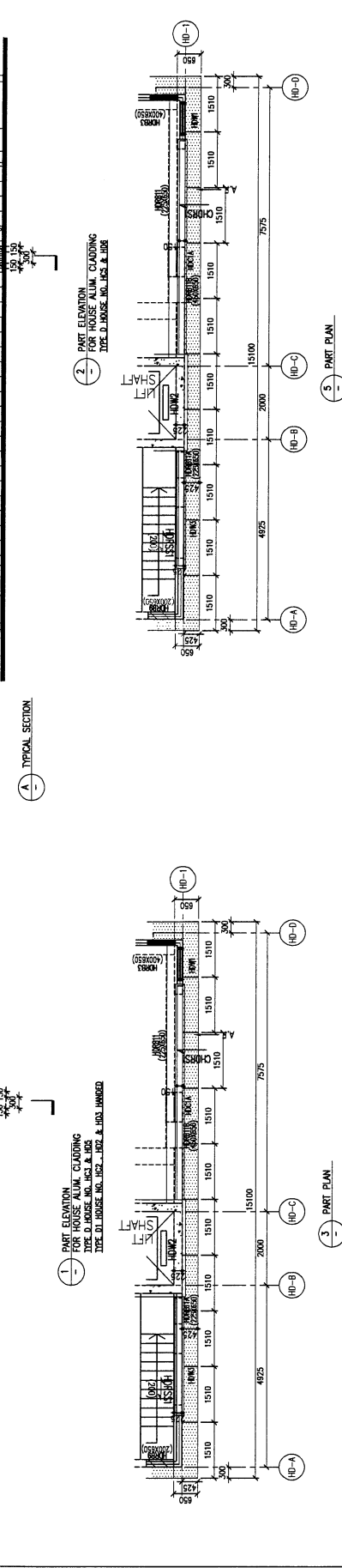
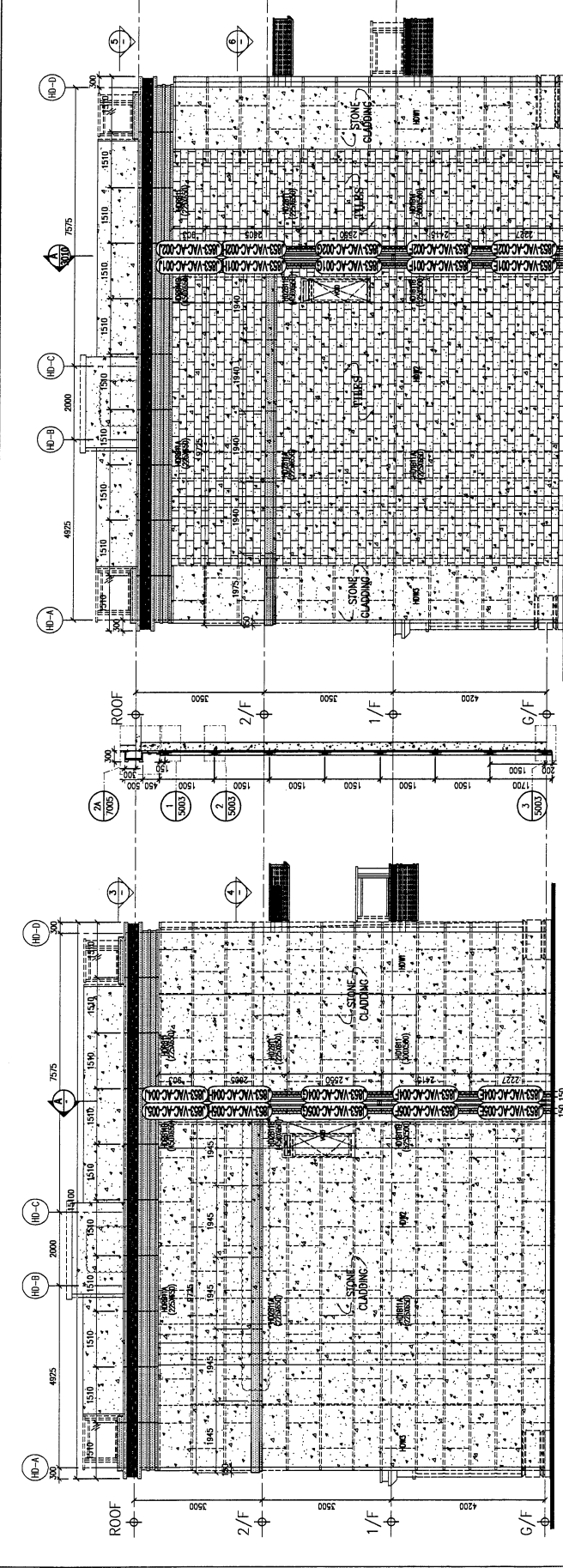
1. 板材折弯之前应进行压平调整, 不应有加工变形, 并应去除毛刺;
2. 外形尺寸允许偏差为 $\pm 0.5\text{mm}$, 折弯角度的允许偏差为 $\pm 0.5^\circ$; 孔位的允许偏差为 $\pm 0.3\text{mm}$, 孔距的允许偏差为 $\pm 0.3\text{mm}$, 累计偏差为 $\pm 0.5\text{mm}$;
3. 槽口、豁口的长宽边允许偏差为 $+0.5\text{mm}$, 中心线允许偏差都为 $\pm 0.5\text{mm}$;
4. "-----" 为外露喷涂装饰面, 应贴保护膜, 加工过程中不得破坏装饰面, 加工完毕须标示代号。

B.D. REF :
 CLIENT : SHIMAO GROUP HOLDINGS LIMITED
 ARCHITECT : WONG TUNG & PARTNERS LIMITED
 MAIN CONTRACTOR : 協興建築有限公司 HIP HING CONSTRUCTION CO LTD
 STRUCTURAL ENGINEER : C M WONG & ASSOCIATES LTD 黃志輝建築工程師有限公司
 FACADE CONSULTANT : MENHARDT

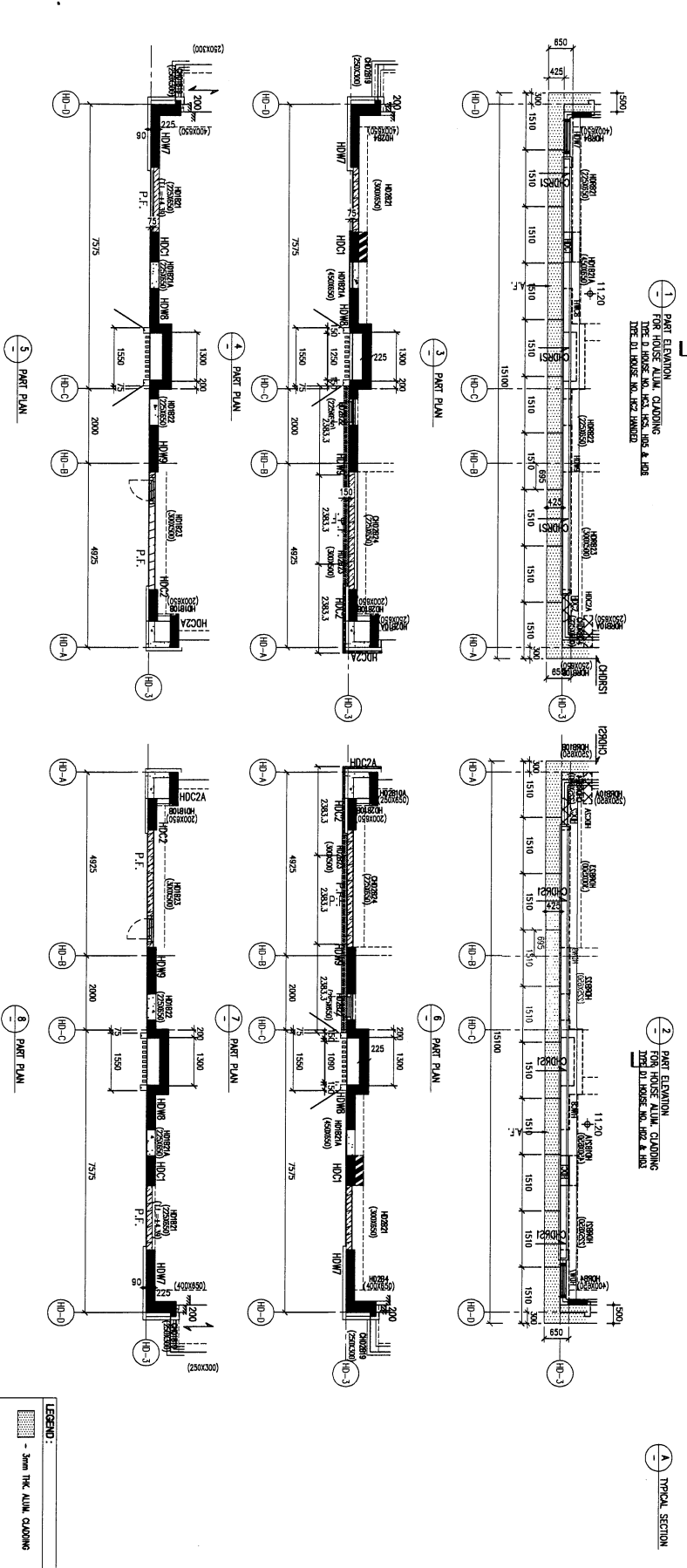
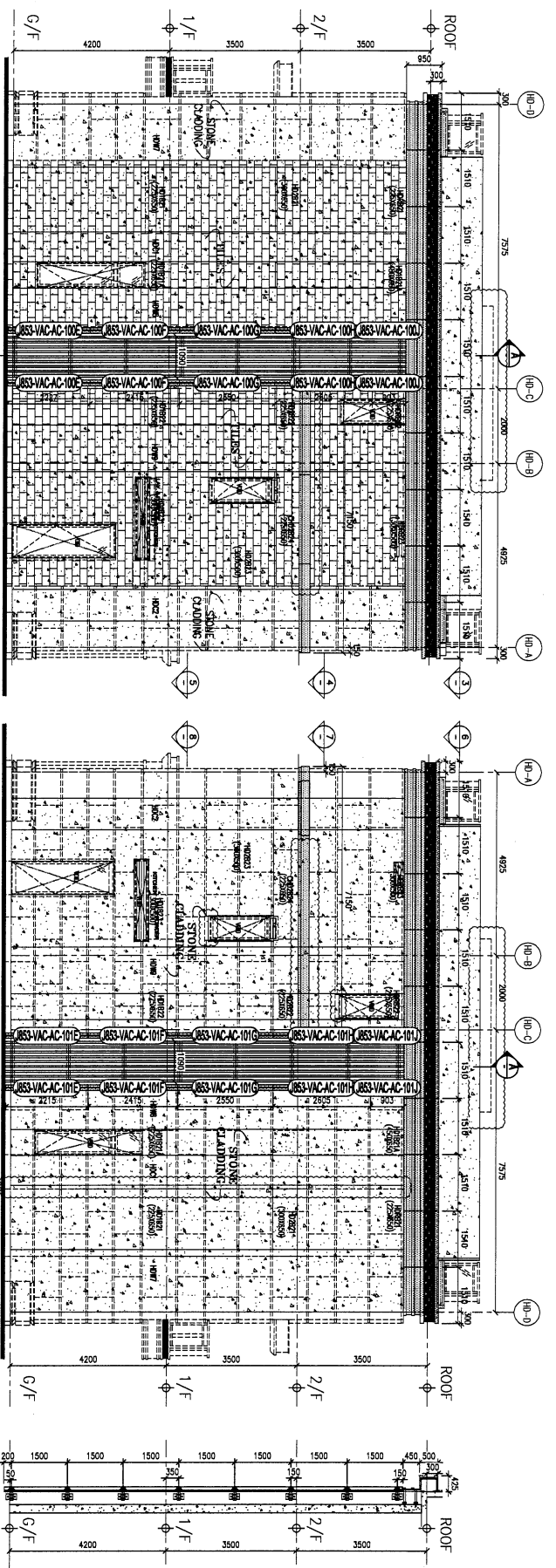
NOTE :
 1. ALL DIMENSIONS ARE IN MM.
 2. ALL ELEVATIONS ARE VIEWED FROM OUTSIDE.
 3. ALL DIMENSIONS TO BE VERIFIED ON SITE BEFORE FABRICATION.
 LEGEND :
 (X) RETAIL MARK NO.
 (Y) REFER SHEET NO.
 1. F.F.L. --- FINISHED FLOOR LEVEL
 2. S.F.L. --- STRUCTURAL FLOOR LEVEL
 3. --- REVERSED DETAIL
 R.C. STRUCTURAL ELEMENT
 COL / BEAM / SLAB
 IS (UNDER SEPARATED SUBMISSION)

C	24/7/2024	GENERAL REVISED
B	5/10/2023	GENERAL REVISED
A	31/7/2023	GENERAL REVISED
DL		REVISED
RF		

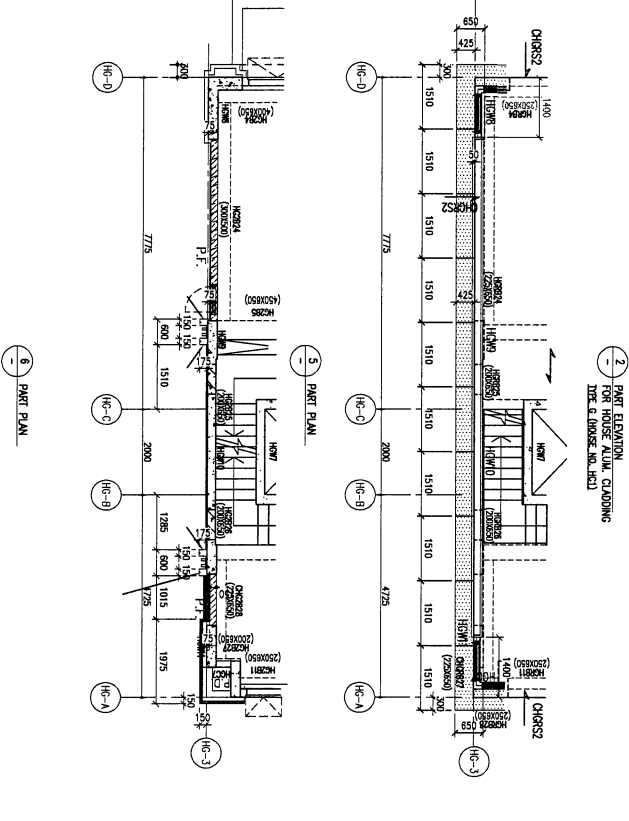
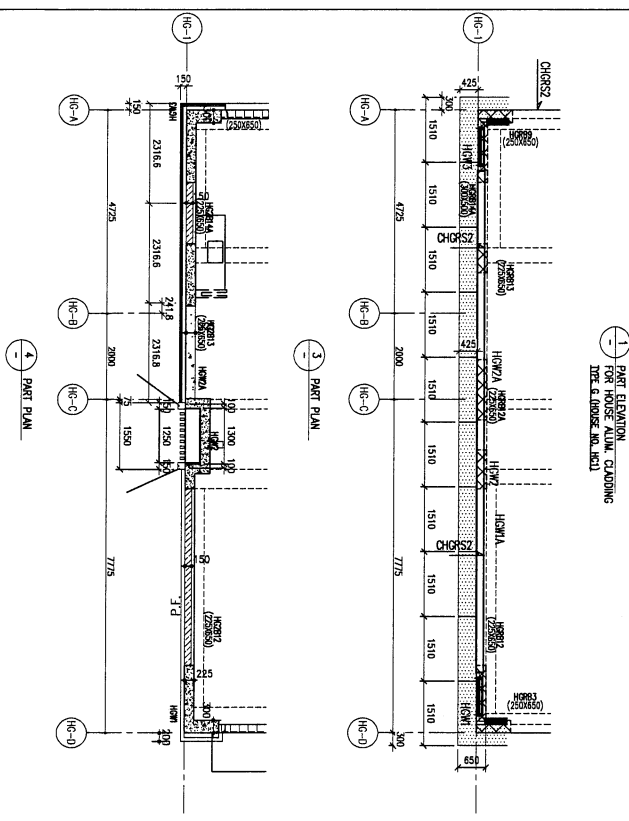
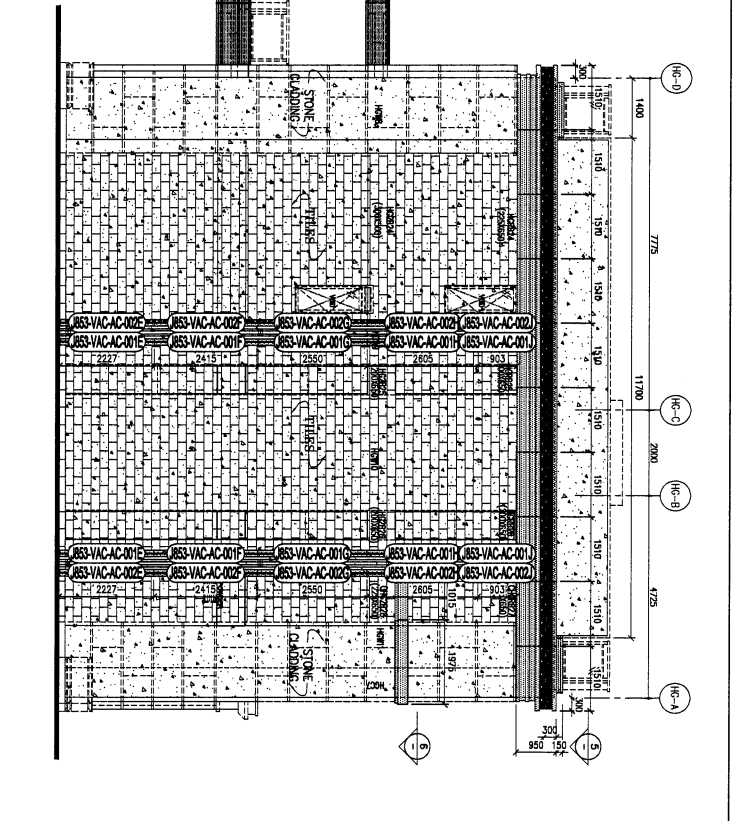
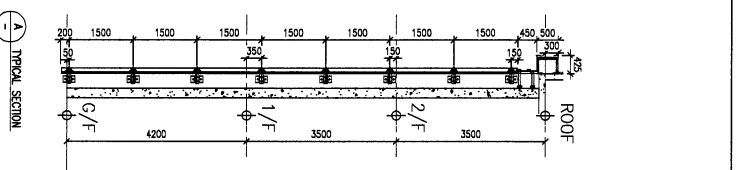
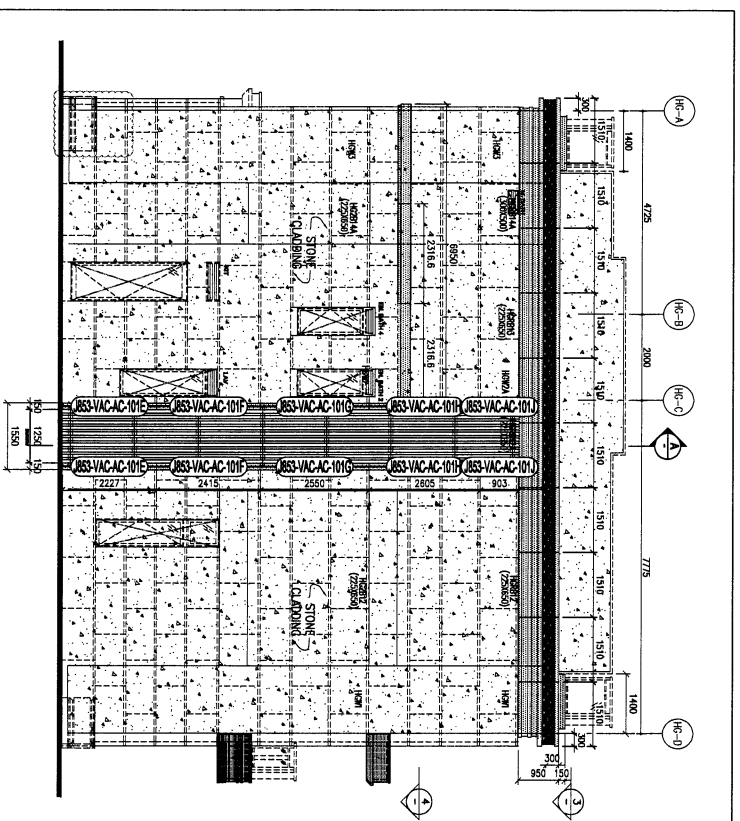
JOB NO. : J-853
 PROJECT : PROPOSED RESIDENTIAL DEVELOPMENT AT N.K.I.L.L. 6542 YIN PING ROAD KOWLOON
 TITLE : PART ELEVATION FOR HOUSE ALUM. CLADDING FOR HOUSE TYPE D, D1 VERTICAL ALUM. CLADDING MARKING DWG
 DATE : 10-08-23 SCALE : 1:60 (A1)
 DRAWN BY : Aisling CHECKED BY :
 黃特銳有限公司 MIDDI Architecture & Interiors Ltd. Units 6-8, Samroy Industrial Centre, 1/F, 610 Chee Kwoong Road, Kowloon Tel: 24889111-4 Fax: (852) 7777886
 DWG NO. : J853-VAC-AC-3013 REV. : -



LEGEND :
 - 3mm THK ALUM. CLADDING



B.A. REF :	
CLIENT : SHIMAO GROUP HOLDINGS LIMITED	
ARCHITECT : WTF WONG TUNG & PARTNERS LIMITED ARCHITECTS & ENGINEERS	
MAIN CONTRACTOR : SHING CONSTRUCTION CO LTD 錦興建築有限公司	
STRUCTURAL ENGINEER : CMA CHONG & ASSOCIATES LTD 黃志明建築工程師有限公司	
FACADE CONSULTANT : WENHART	
1. ALL DIMENSIONS ARE IN MM. 2. ALL ELEVATIONS ARE VIEWED FROM OUTSIDE. 3. ALL DIMENSIONS TO BE VIEWED ON SITE BEFORE FABRICATION.	
LEGEND : (X) DETAIL MARK NO. (R) REFER SHEET NO. 1 FEL - FINISHED FLOOR LEVEL 2 SEL - STRUCTURAL FLOOR LEVEL 3 (R) - RECESSED DECK R.C. STRUCTURAL ELEMENT CO. / BRUM / SLAB / STAIR IS (UNDER SEPARATED SUBMISSION)	
JOB NO. : J-853	PROJECT : PROPOSED RESIDENTIAL DEVELOPMENT AT N.K.I.L. 6542 YIN PING ROAD KOWLOON
TITLE : PART ELEVATION FOR HOUSE ALIUM CLADDING HOUSE TYPE D & D1 VERTICAL ALIUM CLADDING MARKING DWG DATE : 10-08-23 SCALE : 1:80 (A1)	DRAWN BY : Jasin CHECKED BY : 黃志明 MIDJ MIDJ Architectural Fabrication Ltd. 6/F, 5/F, 4/F, 3/F, 2/F, 1/F, G/F, B1/F, B2/F, B3/F, B4/F, B5/F, B6/F, B7/F, B8/F, B9/F, B10/F, B11/F, B12/F, B13/F, B14/F, B15/F, B16/F, B17/F, B18/F, B19/F, B20/F, B21/F, B22/F, B23/F, B24/F, B25/F, B26/F, B27/F, B28/F, B29/F, B30/F, B31/F, B32/F, B33/F, B34/F, B35/F, B36/F, B37/F, B38/F, B39/F, B40/F, B41/F, B42/F, B43/F, B44/F, B45/F, B46/F, B47/F, B48/F, B49/F, B50/F, B51/F, B52/F, B53/F, B54/F, B55/F, B56/F, B57/F, B58/F, B59/F, B60/F, B61/F, B62/F, B63/F, B64/F, B65/F, B66/F, B67/F, B68/F, B69/F, B70/F, B71/F, B72/F, B73/F, B74/F, B75/F, B76/F, B77/F, B78/F, B79/F, B80/F, B81/F, B82/F, B83/F, B84/F, B85/F, B86/F, B87/F, B88/F, B89/F, B90/F, B91/F, B92/F, B93/F, B94/F, B95/F, B96/F, B97/F, B98/F, B99/F, B100/F, B101/F, B102/F, B103/F, B104/F, B105/F, B106/F, B107/F, B108/F, B109/F, B110/F, B111/F, B112/F, B113/F, B114/F, B115/F, B116/F, B117/F, B118/F, B119/F, B120/F, B121/F, B122/F, B123/F, B124/F, B125/F, B126/F, B127/F, B128/F, B129/F, B130/F, B131/F, B132/F, B133/F, B134/F, B135/F, B136/F, B137/F, B138/F, B139/F, B140/F, B141/F, B142/F, B143/F, B144/F, B145/F, B146/F, B147/F, B148/F, B149/F, B150/F, B151/F, B152/F, B153/F, B154/F, B155/F, B156/F, B157/F, B158/F, B159/F, B160/F, B161/F, B162/F, B163/F, B164/F, B165/F, B166/F, B167/F, B168/F, B169/F, B170/F, B171/F, B172/F, B173/F, B174/F, B175/F, B176/F, B177/F, B178/F, B179/F, B180/F, B181/F, B182/F, B183/F, B184/F, B185/F, B186/F, B187/F, B188/F, B189/F, B190/F, B191/F, B192/F, B193/F, B194/F, B195/F, B196/F, B197/F, B198/F, B199/F, B200/F, B201/F, B202/F, B203/F, B204/F, B205/F, B206/F, B207/F, B208/F, B209/F, B210/F, B211/F, B212/F, B213/F, B214/F, B215/F, B216/F, B217/F, B218/F, B219/F, B220/F, B221/F, B222/F, B223/F, B224/F, B225/F, B226/F, B227/F, B228/F, B229/F, B230/F, B231/F, B232/F, B233/F, B234/F, B235/F, B236/F, B237/F, B238/F, B239/F, B240/F, B241/F, B242/F, B243/F, B244/F, B245/F, B246/F, B247/F, B248/F, B249/F, B250/F, B251/F, B252/F, B253/F, B254/F, B255/F, B256/F, B257/F, B258/F, B259/F, B260/F, B261/F, B262/F, B263/F, B264/F, B265/F, B266/F, B267/F, B268/F, B269/F, B270/F, B271/F, B272/F, B273/F, B274/F, B275/F, B276/F, B277/F, B278/F, B279/F, B280/F, B281/F, B282/F, B283/F, B284/F, B285/F, B286/F, B287/F, B288/F, B289/F, B290/F, B291/F, B292/F, B293/F, B294/F, B295/F, B296/F, B297/F, B298/F, B299/F, B300/F, B301/F, B302/F, B303/F, B304/F, B305/F, B306/F, B307/F, B308/F, B309/F, B310/F, B311/F, B312/F, B313/F, B314/F, B315/F, B316/F, B317/F, B318/F, B319/F, B320/F, B321/F, B322/F, B323/F, B324/F, B325/F, B326/F, B327/F, B328/F, B329/F, B330/F, B331/F, B332/F, B333/F, B334/F, B335/F, B336/F, B337/F, B338/F, B339/F, B340/F, B341/F, B342/F, B343/F, B344/F, B345/F, B346/F, B347/F, B348/F, B349/F, B350/F, B351/F, B352/F, B353/F, B354/F, B355/F, B356/F, B357/F, B358/F, B359/F, B360/F, B361/F, B362/F, B363/F, B364/F, B365/F, B366/F, B367/F, B368/F, B369/F, B370/F, B371/F, B372/F, B373/F, B374/F, B375/F, B376/F, B377/F, B378/F, B379/F, B380/F, B381/F, B382/F, B383/F, B384/F, B385/F, B386/F, B387/F, B388/F, B389/F, B390/F, B391/F, B392/F, B393/F, B394/F, B395/F, B396/F, B397/F, B398/F, B399/F, B400/F, B401/F, B402/F, B403/F, B404/F, B405/F, B406/F, B407/F, B408/F, B409/F, B410/F, B411/F, B412/F, B413/F, B414/F, B415/F, B416/F, B417/F, B418/F, B419/F, B420/F, B421/F, B422/F, B423/F, B424/F, B425/F, B426/F, B427/F, B428/F, B429/F, B430/F, B431/F, B432/F, B433/F, B434/F, B435/F, B436/F, B437/F, B438/F, B439/F, B440/F, B441/F, B442/F, B443/F, B444/F, B445/F, B446/F, B447/F, B448/F, B449/F, B450/F, B451/F, B452/F, B453/F, B454/F, B455/F, B456/F, B457/F, B458/F, B459/F, B460/F, B461/F, B462/F, B463/F, B464/F, B465/F, B466/F, B467/F, B468/F, B469/F, B470/F, B471/F, B472/F, B473/F, B474/F, B475/F, B476/F, B477/F, B478/F, B479/F, B480/F, B481/F, B482/F, B483/F, B484/F, B485/F, B486/F, B487/F, B488/F, B489/F, B490/F, B491/F, B492/F, B493/F, B494/F, B495/F, B496/F, B497/F, B498/F, B499/F, B500/F, B501/F, B502/F, B503/F, B504/F, B505/F, B506/F, B507/F, B508/F, B509/F, B510/F, B511/F, B512/F, B513/F, B514/F, B515/F, B516/F, B517/F, B518/F, B519/F, B520/F, B521/F, B522/F, B523/F, B524/F, B525/F, B526/F, B527/F, B528/F, B529/F, B530/F, B531/F, B532/F, B533/F, B534/F, B535/F, B536/F, B537/F, B538/F, B539/F, B540/F, B541/F, B542/F, B543/F, B544/F, B545/F, B546/F, B547/F, B548/F, B549/F, B550/F, B551/F, B552/F, B553/F, B554/F, B555/F, B556/F, B557/F, B558/F, B559/F, B560/F, B561/F, B562/F, B563/F, B564/F, B565/F, B566/F, B567/F, B568/F, B569/F, B570/F, B571/F, B572/F, B573/F, B574/F, B575/F, B576/F, B577/F, B578/F, B579/F, B580/F, B581/F, B582/F, B583/F, B584/F, B585/F, B586/F, B587/F, B588/F, B589/F, B590/F, B591/F, B592/F, B593/F, B594/F, B595/F, B596/F, B597/F, B598/F, B599/F, B600/F, B601/F, B602/F, B603/F, B604/F, B605/F, B606/F, B607/F, B608/F, B609/F, B610/F, B611/F, B612/F, B613/F, B614/F, B615/F, B616/F, B617/F, B618/F, B619/F, B620/F, B621/F, B622/F, B623/F, B624/F, B625/F, B626/F, B627/F, B628/F, B629/F, B630/F, B631/F, B632/F, B633/F, B634/F, B635/F, B636/F, B637/F, B638/F, B639/F, B640/F, B641/F, B642/F, B643/F, B644/F, B645/F, B646/F, B647/F, B648/F, B649/F, B650/F, B651/F, B652/F, B653/F, B654/F, B655/F, B656/F, B657/F, B658/F, B659/F, B660/F, B661/F, B662/F, B663/F, B664/F, B665/F, B666/F, B667/F, B668/F, B669/F, B670/F, B671/F, B672/F, B673/F, B674/F, B675/F, B676/F, B677/F, B678/F, B679/F, B680/F, B681/F, B682/F, B683/F, B684/F, B685/F, B686/F, B687/F, B688/F, B689/F, B690/F, B691/F, B692/F, B693/F, B694/F, B695/F, B696/F, B697/F, B698/F, B699/F, B700/F, B701/F, B702/F, B703/F, B704/F, B705/F, B706/F, B707/F, B708/F, B709/F, B710/F, B711/F, B712/F, B713/F, B714/F, B715/F, B716/F, B717/F, B718/F, B719/F, B720/F, B721/F, B722/F, B723/F, B724/F, B725/F, B726/F, B727/F, B728/F, B729/F, B730/F, B731/F, B732/F, B733/F, B734/F, B735/F, B736/F, B737/F, B738/F, B739/F, B740/F, B741/F, B742/F, B743/F, B744/F, B745/F, B746/F, B747/F, B748/F, B749/F, B750/F, B751/F, B752/F, B753/F, B754/F, B755/F, B756/F, B757/F, B758/F, B759/F, B760/F, B761/F, B762/F, B763/F, B764/F, B765/F, B766/F, B767/F, B768/F, B769/F, B770/F, B771/F, B772/F, B773/F, B774/F, B775/F, B776/F, B777/F, B778/F, B779/F, B780/F, B781/F, B782/F, B783/F, B784/F, B785/F, B786/F, B787/F, B788/F, B789/F, B790/F, B791/F, B792/F, B793/F, B794/F, B795/F, B796/F, B797/F, B798/F, B799/F, B800/F, B801/F, B802/F, B803/F, B804/F, B805/F, B806/F, B807/F, B808/F, B809/F, B810/F, B811/F, B812/F, B813/F, B814/F, B815/F, B816/F, B817/F, B818/F, B819/F, B820/F, B821/F, B822/F, B823/F, B824/F, B825/F, B826/F, B827/F, B828/F, B829/F, B830/F, B831/F, B832/F, B833/F, B834/F, B835/F, B836/F, B837/F, B838/F, B839/F, B840/F, B841/F, B842/F, B843/F, B844/F, B845/F, B846/F, B847/F, B848/F, B849/F, B850/F, B851/F, B852/F, B853/F, B854/F, B855/F, B856/F, B857/F, B858/F, B859/F, B860/F, B861/F, B862/F, B863/F, B864/F, B865/F, B866/F, B867/F, B868/F, B869/F, B870/F, B871/F, B872/F, B873/F, B874/F, B875/F, B876/F, B877/F, B878/F, B879/F, B880/F, B881/F, B882/F, B883/F, B884/F, B885/F, B886/F, B887/F, B888/F, B889/F, B890/F, B891/F, B892/F, B893/F, B894/F, B895/F, B896/F, B897/F, B898/F, B899/F, B900/F, B901/F, B902/F, B903/F, B904/F, B905/F, B906/F, B907/F, B908/F, B909/F, B910/F, B911/F, B912/F, B913/F, B914/F, B915/F, B916/F, B917/F, B918/F, B919/F, B920/F, B921/F, B922/F, B923/F, B924/F, B925/F, B926/F, B927/F, B928/F, B929/F, B930/F, B931/F, B932/F, B933/F, B934/F, B935/F, B936/F, B937/F, B938/F, B939/F, B940/F, B941/F, B942/F, B943/F, B944/F, B945/F, B946/F, B947/F, B948/F, B949/F, B950/F, B951/F, B952/F, B953/F, B954/F, B955/F, B956/F, B957/F, B958/F, B959/F, B960/F, B961/F, B962/F, B963/F, B964/F, B965/F, B966/F, B967/F, B968/F, B969/F, B970/F, B971/F, B972/F, B973/F, B974/F, B975/F, B976/F, B977/F, B978/F, B979/F, B980/F, B981/F, B982/F, B983/F, B984/F, B985/F, B986/F, B987/F, B988/F, B989/F, B990/F, B991/F, B992/F, B993/F, B994/F, B995/F, B996/F, B997/F, B998/F, B999/F, B1000/F



1. ALL DIMENSIONS ARE IN mm.
 2. ALL ELEVATIONS ARE VIEWED FROM OUTSIDE.
 3. BEFORE FABRICATION.

LEGEND:
 - 3mm THK ALUM CLADDING

NOTE:
 1. FEEL - FINISHED FLOOR LEVEL.
 2. S.F.L. - STRUCTURAL FLOOR LEVEL.
 3. Ⓢ - EXPANDED STEEL.
 R.C. STRUCTURAL ELEMENT
 IS (UNDER SEPARATED SUBMISSION)

CLIENT : SHIMAO GROUP HOLDINGS LIMITED		ARCHITECT : WONG TUNG & PARTNERS LIMITED		STRUCTURAL ENGINEER : C.M.WONG & ASSOCIATES LTD 黃志明建築工程師有限公司		FACE CONSULTANT : MENHARDT	
MAIN CONTRACTOR : 協美建築有限公司 HIP HING CONSTRUCTION CO LTD		PROJECT : PROPOSED RESIDENTIAL DEVELOPMENT AT N.K.L.L 6542 YIN PING ROAD KOWLOON		DATE : 10-08-23 SCALE : 1:80 (A1)		JOB NO. : J-853	
DOWN BY : Asing CHECKED BY :		TITLE : PART ELEVATION FOR HOUSE ALUM CLADDING HOUSE TYPE C VERTICAL ALUM. CLADDING MARKING DWG		DATE : 24/7/2024 REV. : 5/10/2023 REV. : 31/7/2023 REV. : GENERAL RENOV REV. : GENERAL RENOV		LEGEND : (M) DETAIL MARK NO. (R) REFER SHEET NO. (S) EXPANDED STEEL	