

工程指示 / 要求簡箋 ENGINEER INSTRUCTIONS(E.I.)

| | | | |
|---------|------------------------------------|-------|------------|
| 工程指示編號: | EI- 7257 | 修改版本: | - |
| | HK- 0133 | | |
| 工程編號: | J 853 | 工程名稱: | 延坪道 (第2期) |
| 收件人: | 生松亮 | 發件人: | Sam Lo |
| 工程項目: | 幕牆 ROW B (HB1~HB8) 地盤用背板生產 (黃色) | 日期: | 20/01/2024 |

| | | |
|---------------------------------|--|------------------------------------|
| <input type="checkbox"/> 原合約工程包 | <input type="checkbox"/> 原合約工程加 / 減賬 QT- | <input type="checkbox"/> 新工程報價 QT- |
|---------------------------------|--|------------------------------------|

| | |
|----------------|-----------|
| 信件批核號碼/圖紙參考編號: | 批核模具圖紙編號: |
| 客戶指示附件: | 管理內部批簽署: |

| | | |
|------------------------------------|-------------------------------------|-------------------------------|
| <input type="checkbox"/> 初步鋁料 B.M. | <input type="checkbox"/> 加工拆圖, 然後生產 | <input type="checkbox"/> 尺寸表 |
| <input type="checkbox"/> 正式鋁料 B.M. | <input type="checkbox"/> 技術上資料 / 指示 | <input type="checkbox"/> 報價 |
| <input type="checkbox"/> 配件 B.M. | <input type="checkbox"/> 樣辦或貨品說明書 | <input type="checkbox"/> 分判合約 |
| <input type="checkbox"/> 其他: | | |

內容: 請依附件資料, 生產背板, 送地盤
- 請分屋包裝出貨

HB5~HB8 要求 28/2/2024 完成
HB1~HB3 要求 31/3/2024 完成

完成上列要求日期:

國內

| | | | | | |
|---------------------------------|------------------------------|---|---|--------------------------------|------------------------------|
| <input type="checkbox"/> 生產技術總監 | <input type="checkbox"/> 連附件 | <input type="checkbox"/> 技術部 | <input type="checkbox"/> 連附件 | <input type="checkbox"/> 生產部 | <input type="checkbox"/> 連附件 |
| <input type="checkbox"/> 採購部 | <input type="checkbox"/> 連附件 | <input checked="" type="checkbox"/> 生產統籌部 | <input checked="" type="checkbox"/> 連附件 | <input type="checkbox"/> 報關組 | <input type="checkbox"/> 連附件 |
| <input type="checkbox"/> 質檢部 | <input type="checkbox"/> 連附件 | <input type="checkbox"/> 會計部 | <input type="checkbox"/> 連附件 | <input type="checkbox"/> 機械設計部 | <input type="checkbox"/> 連附件 |
| <input type="checkbox"/> 香港辦 | <input type="checkbox"/> 連附件 | <input type="checkbox"/> 其他: | | | |

香港

| | | | | | | | |
|------------------------------|------------------------------|------------------------------|------------------------------|--|---|------------------------------|------------------------------|
| <input type="checkbox"/> 行政部 | <input type="checkbox"/> 連附件 | <input type="checkbox"/> 會計部 | <input type="checkbox"/> 連附件 | <input type="checkbox"/> 統籌部 | <input type="checkbox"/> 連附件 | <input type="checkbox"/> 工程部 | <input type="checkbox"/> 連附件 |
| <input type="checkbox"/> 採購部 | <input type="checkbox"/> 連附件 | <input type="checkbox"/> QS部 | <input type="checkbox"/> 連附件 | <input checked="" type="checkbox"/> 地盤管理 | <input checked="" type="checkbox"/> 連附件 | <input type="checkbox"/> 維修部 | <input type="checkbox"/> 連附件 |

| | | | |
|---------|------------|------------|--|
| *發件人簽署: | | *組別成員批核簽署: | |
| 傳遞編號: | HK 0133/24 | 項目經理簽署: | |

圖則登記表
DRAWING REGISTER

| | |
|---------------------|-----------------------|
| 工程名稱 Project Title: | 香港延坪道(第二期別墅) |
| | Curtain Wall(HB) - 鋁板 |
| 工程編號 Project No: | J853 |

分發予 Distributed To

| |
|--|
| |
| |
| |

| 圖則編號 Drg. No. | 圖則名稱 Drawing Title |
|------------------|-----------------------|
| J853-CW-AC-005 | 副框鋁板加工圖 |
| J853-CW-AC-006 | 副框鋁板加工圖 |
| J853-CW-AC-007 | 副框鋁板加工圖 |
| J853-CW-AC-008 | 副框鋁板加工圖 |
| J853-CW-AC-009 | 副框鋁板加工圖 |
| J853-CW-AC-010 | 副框鋁板加工圖 |
| J853-CW-AC-011 | 副框鋁板加工圖 |
| J853-CW-AC-012 | 副框鋁板加工圖 |
| J853-CW-AC-024 | 副框鋁板加工圖 |
| J853-CW-AC-025 | 副框鋁板加工圖 |
| J853-CW-AC-026 | 副框鋁板加工圖 |
| J853-CW-AC-027 | 副框鋁板加工圖 |
| J853-CW-AC-028 | 副框鋁板加工圖 |
| J853-CW-AC-029 | 副框鋁板加工圖 |
| J853-CW-AC-030 | 副框鋁板加工圖 |
| J853-CW-AC-051 | 鏤空板加工圖 |
| J853-CW-AC-052 | 鏤空板加工圖 |
| J853-CW-AC-053 | 鏤空板加工圖 |
| J853-CW-AC-054 | 鏤空板加工圖 |
| J853-CW-AC-055 | 鏤空板加工圖 |
| J853-CW-AC-056 | 鏤空板加工圖 |
| J853-CW-AC-071 | 鏤空板加工圖 |
| J853-CW-AC-072 | 鏤空板加工圖 |
| J853-CW-AC-073 | 鏤空板加工圖 |
| J853-CW-AC-074 | 鏤空板加工圖 |
| J853-CW-AC-075 | 鏤空板加工圖 |
| J853-CW-AC-076 | 鏤空板加工圖 |
| J853-CW-AC-101 | 轉角立柱鋁板加工圖 |

接收日期 Receiving Date (適用於客

| | | | | | | | |
|---|--|--|--|--|--|--|--|
| 年 | | | | | | | |
| 月 | | | | | | | |
| 日 | | | | | | | |

發出日期 Issued Date

| | | | | | | | |
|---|----|----|----|----|--|--|--|
| 年 | 24 | 24 | 24 | 24 | | | |
| 月 | 1 | 1 | 1 | 1 | | | |
| 日 | 5 | 6 | 13 | 19 | | | |

修訂編號
Revision No.

| | | | | | | | |
|----|---|--|---|---|--|--|--|
| 1 | - | | | | | | |
| 2 | - | | | | | | |
| 3 | - | | | | | | |
| 4 | - | | | | | | |
| 5 | - | | | | | | |
| 6 | - | | | | | | |
| 7 | - | | | | | | |
| 8 | - | | | | | | |
| 9 | - | | | | | | |
| 10 | - | | | | | | |
| 11 | - | | | | | | |
| 12 | - | | | | | | |
| 13 | - | | | | | | |
| 14 | - | | | | | | |
| 15 | | | - | | | | |
| 16 | - | | 1 | | | | |
| 17 | - | | 1 | | | | |
| 18 | - | | 1 | | | | |
| 19 | - | | 1 | | | | |
| 20 | - | | 1 | | | | |
| 21 | - | | 1 | | | | |
| 22 | - | | 1 | | | | |
| 23 | - | | 1 | | | | |
| 24 | - | | 1 | | | | |
| 25 | - | | 1 | | | | |
| 26 | - | | 1 | | | | |
| 27 | - | | 1 | | | | |
| 28 | - | | | 1 | | | |

圖則登記表
DRAWING REGISTER

| | |
|---------------------|-----------------------|
| 工程名稱 Project Title: | 香港延坪道(第二期別墅) |
| | Curtain Wall(HB) - 鋁板 |
| 工程編號 Project No: | J853 |

分發予 Distributed To

| |
|--|
| |
| |
| |

| 圖則編號 Drg. No. | 圖則名稱 Drawing Title |
|------------------|-----------------------|
| J853-CW-AC-102 | 转角立柱鋁板加工圖 |
| J853-CW-AC-103 | 转角立柱鋁板加工圖 |
| J853-CW-AC-104 | 转角立柱鋁板加工圖 |
| J853-CW-AC-105 | 转角立柱鋁板加工圖 |
| J853-CW-AC-106 | 转角立柱鋁板加工圖 |
| J853-CW-AC-107 | 转角立柱鋁板加工圖 |
| J853-CW-AC-108 | 转角立柱鋁板加工圖 |
| J853-CW-AC-109 | 转角立柱鋁板加工圖 |
| J853-CW-AC-110 | 转角立柱鋁板加工圖 |
| J853-CW-AC-111 | 转角立柱鋁板加工圖 |
| J853-CW-AC-112 | 转角立柱鋁板加工圖 |
| J853-CW-AC-113 | 转角立柱鋁板加工圖 |
| J853-CW-AC-114 | 转角立柱鋁板加工圖 |
| J853-CW-AC-511 | 背板加工圖 |
| J853-CW-AC-512 | 背板加工圖 |
| J853-CW-AC-513 | 背板加工圖 |
| J853-CW-AC-514 | 背板加工圖 |
| J853-CW-AC-515 | 背板加工圖 |
| J853-CW-AC-516 | 背板加工圖 |
| J853-CW-AC-517 | 背板加工圖 |
| J853-CW-AC-518 | 背板加工圖 |
| J853-CW-AC-519 | 背板加工圖 |
| J853-CW-AC-521 | 转角鋁板加工圖 |
| J853-CW-AC-522 | 转角鋁板加工圖 |
| J853-CW-AC-523 | 转角鋁板加工圖 |
| J853-CW-AC-524 | 隔牆鋁板加工圖 |
| J853-CW-AC-525 | 隔牆鋁板加工圖 |
| J853-CW-AC-904 | 收口鋁板加工圖 |

接收日期 Receiving Date (適用於客

| | | | | | | | |
|---|--|--|--|--|--|--|--|
| 年 | | | | | | | |
| 月 | | | | | | | |
| 日 | | | | | | | |

發出日期 Issued Date

| | | | | | | | |
|---|----|----|----|----|--|--|--|
| 年 | 24 | 24 | 24 | 24 | | | |
| 月 | 1 | 1 | 1 | 1 | | | |
| 日 | 5 | 6 | 13 | 19 | | | |

修訂編號

Revision No.

| | | | | | | | |
|----|---|---|--|---|--|--|--|
| 29 | - | | | 1 | | | |
| 30 | - | | | 1 | | | |
| 31 | - | | | 1 | | | |
| 32 | - | | | 1 | | | |
| 33 | - | | | 1 | | | |
| 34 | - | | | 1 | | | |
| 35 | - | | | 1 | | | |
| 36 | - | | | 1 | | | |
| 37 | - | | | 1 | | | |
| 38 | - | | | 1 | | | |
| 39 | - | | | 1 | | | |
| 40 | - | | | 1 | | | |
| 41 | - | | | 1 | | | |
| 42 | | | | - | | | |
| 43 | | | | - | | | |
| 44 | | | | - | | | |
| 45 | | | | - | | | |
| 46 | | | | - | | | |
| 47 | | | | - | | | |
| 48 | | | | - | | | |
| 49 | | | | - | | | |
| 50 | | | | - | | | |
| 51 | | | | - | | | |
| 52 | | | | - | | | |
| 53 | | | | - | | | |
| 54 | | | | - | | | |
| 55 | | | | - | | | |
| 56 | | - | | | | | |

圖則登記表
DRAWING REGISTER

| | |
|---------------------|-----------------------|
| 工程名稱 Project Title: | 香港延坪道(第二期別墅) |
| | Curtain Wall(HB) - 鋁板 |
| 工程編號 Project No: | J853 |

分發予 Distributed To

| |
|--|
| |
| |
| |

| 圖則編號 Drg. No. | 圖則名稱 Drawing Title |
|-------------------|-----------------------|
| J853-CW-AC-905 | 收口鋁板加工圖 |
| J853-CW-AC-906 | 收口鋁板加工圖 |
| J853-CW-AC-907 | 收口鋁板加工圖 |
| J853-CW-AC-908 | 收口鋁板加工圖 |
| J853-CW-AC-951 | 收口鋁板加工圖 |
| J853-CW-AC-952 | 收口鋁板加工圖 |
| J853-CW-AC-954 | 收口鋁板加工圖 |
| J853-CW-AC-955 | 收口鋁板加工圖 |
| J853-CW-AC-956 | 收口鋁板加工圖 |
| J853-CW-AC-957 | 收口鋁板加工圖 |
| J853-CW-AC-958 | 收口鋁板加工圖 |
| J853-CW-AC-959 | 收口鋁板加工圖 |
| J853-CW-AC-966 | 收口鋁板加工圖 |
| J853-CW-AC-972 | 收口鋁板加工圖 |
| J853-HCW-AL1-3003 | 收口鋁板位置圖 |
| J853-HCW-AL1-3004 | 收口鋁板位置圖 |
| J853-HCW-AL2-3003 | 背板位置圖 |
| J853-HCW-AL2-3004 | 背板位置圖 |
| | |
| | |

接收日期 Receiving Date (適用於客

| | | | | | | | |
|---|--|--|--|--|--|--|--|
| 年 | | | | | | | |
| 月 | | | | | | | |
| 日 | | | | | | | |

發出日期 Issued Date

| | | | | | | | |
|---|----|----|----|----|--|--|--|
| 年 | 24 | 24 | 24 | 24 | | | |
| 月 | 1 | 1 | 1 | 1 | | | |
| 日 | 5 | 6 | 13 | 19 | | | |

修訂編號

Revision No.

| | | | | | | | |
|----|---|--|--|---|--|--|--|
| 57 | - | | | | | | |
| 58 | - | | | | | | |
| 59 | - | | | | | | |
| 60 | - | | | | | | |
| 61 | - | | | | | | |
| 62 | - | | | | | | |
| 63 | - | | | | | | |
| 64 | - | | | | | | |
| 65 | - | | | | | | |
| 66 | - | | | | | | |
| 67 | - | | | | | | |
| 68 | - | | | | | | |
| 69 | - | | | | | | |
| 70 | - | | | | | | |
| 71 | - | | | | | | |
| 72 | - | | | | | | |
| 73 | | | | - | | | |
| 74 | | | | - | | | |
| | | | | | | | |
| | | | | | | | |

J853-香港延坪道(第二期别墅)-Curtain Wall(铝板)-分栋数量统计表

工程: J853-香港延坪道(第二期别墅)

日期: 5-Dec-23

| 序号 | 部件图编号 | | | | | | | | | | | 总数量 | 备注 | |
|----|-----------------|-----|-----|-----|-----|-----|-----|-----|--|--|--|-----|----|--|
| | | HB1 | HB2 | HB3 | HB5 | HB6 | HB7 | HB8 | | | | | | |
| 1 | J853-CW-AC-511A | 1 | 1 | | | | | | | | | | 2 | |
| 2 | J853-CW-AC-511B | 2 | 2 | | | | | | | | | | 4 | |
| 3 | J853-CW-AC-511C | | | 2 | 2 | 2 | 2 | 2 | | | | | 10 | |
| 4 | J853-CW-AC-511D | | | 1 | 1 | 1 | 1 | 1 | | | | | 5 | |
| 5 | J853-CW-AC-512A | 1 | 1 | | | | | | | | | | 2 | |
| 6 | J853-CW-AC-512B | 2 | 2 | | | | | | | | | | 4 | |
| 7 | J853-CW-AC-512C | 2 | 2 | | | | | | | | | | 4 | |
| 8 | J853-CW-AC-512D | 2 | 2 | | | | | | | | | | 4 | |
| 9 | J853-CW-AC-512E | 1 | 1 | | | | | | | | | | 2 | |
| 10 | J853-CW-AC-512F | 1 | 1 | | | | | | | | | | 2 | |
| 11 | J853-CW-AC-513A | | | 2 | 2 | 2 | 2 | 2 | | | | | 10 | |
| 12 | J853-CW-AC-513B | | | 1 | 1 | 1 | 1 | 1 | | | | | 5 | |
| 13 | J853-CW-AC-513C | | | 4 | 4 | 4 | 4 | 4 | | | | | 20 | |
| 14 | J853-CW-AC-513D | | | 1 | 1 | 1 | 1 | 1 | | | | | 5 | |
| 15 | J853-CW-AC-513E | | | 1 | 1 | 1 | 1 | 1 | | | | | 5 | |
| 16 | J853-CW-AC-514A | 1 | 1 | | | | | | | | | | 2 | |
| 17 | J853-CW-AC-514B | 1 | 1 | | | | | | | | | | 2 | |
| 18 | J853-CW-AC-514C | | | 2 | 2 | 2 | 2 | 2 | | | | | 10 | |
| 19 | J853-CW-AC-514D | | | 1 | 1 | 1 | 1 | 1 | | | | | 5 | |
| 20 | J853-CW-AC-515A | 1 | 1 | 1 | 1 | 1 | 1 | 1 | | | | | 7 | |
| 21 | J853-CW-AC-515B | 1 | 1 | 1 | 1 | 1 | 1 | 1 | | | | | 7 | |
| 22 | J853-CW-AC-515C | 1 | 1 | | | | | | | | | | 2 | |
| 23 | J853-CW-AC-515D | 1 | 1 | | | | | | | | | | 2 | |
| 24 | J853-CW-AC-515E | | | 1 | 1 | 1 | 1 | 1 | | | | | 5 | |
| 25 | J853-CW-AC-515F | | | 1 | 1 | 1 | 1 | 1 | | | | | 5 | |
| 26 | J853-CW-AC-516A | 1 | 1 | 1 | 1 | 1 | 1 | 1 | | | | | 7 | |
| 27 | J853-CW-AC-516B | 1 | 1 | 1 | 1 | 1 | 1 | 1 | | | | | 7 | |
| 28 | J853-CW-AC-516C | 1 | 1 | | | | | | | | | | 2 | |
| 29 | J853-CW-AC-516D | 1 | 1 | | | | | | | | | | 2 | |
| 30 | J853-CW-AC-516E | | | 1 | 1 | 1 | 1 | 1 | | | | | 5 | |
| 31 | J853-CW-AC-516F | | | 1 | 1 | 1 | 1 | 1 | | | | | 5 | |
| 32 | J853-CW-AC-517A | 2 | 2 | 2 | 2 | 2 | 2 | 2 | | | | | 14 | |
| 33 | J853-CW-AC-518A | 2 | 2 | | | | | | | | | | 4 | |
| 34 | J853-CW-AC-518B | | | 2 | 2 | 2 | 2 | 2 | | | | | 10 | |
| 35 | J853-CW-AC-519A | | | 1 | 1 | 1 | 1 | 1 | | | | | 5 | |
| 36 | J853-CW-AC-519B | | | 1 | 1 | 1 | 1 | 1 | | | | | 5 | |
| 37 | J853-CW-AC-521 | 1 | 1 | 1 | 1 | 1 | 1 | 1 | | | | | 7 | |
| 38 | J853-CW-AC-522A | 2 | 2 | 2 | 2 | 2 | 2 | 2 | | | | | 14 | |
| 39 | J853-CW-AC-522B | 1 | 1 | 1 | 1 | 1 | 1 | 1 | | | | | 7 | |
| 40 | J853-CW-AC-522C | 1 | 1 | 1 | 1 | 1 | 1 | 1 | | | | | 7 | |
| 41 | J853-CW-AC-522D | | | 1 | 1 | 1 | 1 | 1 | | | | | 5 | |
| 42 | J853-CW-AC-523A | 1 | 1 | | | | | | | | | | 2 | |
| 43 | J853-CW-AC-523B | | | 1 | 1 | 1 | 1 | 1 | | | | | 5 | |
| 44 | J853-CW-AC-524 | | | 1 | 1 | 1 | 1 | 1 | | | | | 5 | |
| 45 | J853-CW-AC-525 | | | 1 | 1 | 1 | 1 | 1 | | | | | 5 | |
| 46 | J853-CW-AC-904A | 2 | 2 | | | | | | | | | | 4 | |
| 47 | J853-CW-AC-904B | 4 | 4 | | | | | | | | | | 8 | |
| 48 | J853-CW-AC-904C | 2 | 2 | | | | | | | | | | 4 | |
| 49 | J853-CW-AC-904D | 2 | 2 | | | | | | | | | | 4 | |
| 50 | J853-CW-AC-904E | 2 | 2 | 2 | 2 | 2 | 2 | 2 | | | | | 14 | |
| 51 | J853-CW-AC-904F | 2 | 2 | 2 | 2 | 2 | 2 | 2 | | | | | 14 | |
| 52 | J853-CW-AC-904G | 3 | 3 | | | | | | | | | | 6 | |
| 53 | J853-CW-AC-904H | 3 | 3 | | | | | | | | | | 6 | |
| 54 | J853-CW-AC-904J | | | 4 | 4 | 4 | 4 | 4 | | | | | 20 | |
| 55 | J853-CW-AC-904K | | | 2 | 2 | 2 | 2 | 2 | | | | | 10 | |

| | | | | | |
|--------------------------------|--|----------------------------------|-----------------|--------------------|---------|
| | | 工程號: J-853 | 計算: J. L. | 日期: 19/1/2024 | 送呈: Joe |
| MIDI Aluminium Fabricator Ltd. | | 地盤名稱: 香港延坪道(第二期別墅) | 核對: | 日期: | 副本: |
| 地盤用鋁板B.M.表 | | 項目類別: J853-Curtain Wall(HB1.2.3) | 批准: | 日期: | 版本: |
| BM編號: | | A/C Code: | 總重量(kg): 299.94 | 總V.F.面積(m²): 54.78 | |

| 序號 | 修改標示 | 加工圖号 | 鋁板編號 | 鋁板名稱 | 顏色 | 數量(塊) | | 總重量 | 展開面積(m²) | | V.F.面積(m²) | | 備註 |
|----|------|----------------|-----------------|--------------------|---------------|-------|----|-------|----------|------|------------|------|----|
| | | | | | | 實用 | 後備 | | 單件 | 總面積 | 單件 | 總面積 | |
| 1 | | J853-CW-AC-511 | J853-CW-AC-511A | 2mm 厚鋁板 (3003 H14) | UCT542049SC-3 | 2 | 2 | 9.08 | 0.56 | 1.12 | 0.56 | 1.12 | |
| 2 | | J853-CW-AC-511 | J853-CW-AC-511B | 2mm 厚鋁板 (3003 H14) | UCT542049SC-3 | 4 | 4 | 5.60 | 0.26 | 1.03 | 0.26 | 1.03 | |
| 3 | | J853-CW-AC-511 | J853-CW-AC-511C | 2mm 厚鋁板 (3003 H14) | UCT542049SC-3 | 2 | 2 | 2.20 | 0.20 | 0.41 | 0.20 | 0.41 | |
| 4 | | J853-CW-AC-511 | J853-CW-AC-511D | 2mm 厚鋁板 (3003 H14) | UCT542049SC-3 | 1 | 1 | 1.51 | 0.28 | 0.28 | 0.28 | 0.28 | |
| 5 | | J853-CW-AC-512 | J853-CW-AC-512A | 2mm 厚鋁板 (3003 H14) | UCT542049SC-3 | 2 | 2 | 8.86 | 0.82 | 1.63 | 0.82 | 1.63 | |
| 6 | | J853-CW-AC-512 | J853-CW-AC-512B | 2mm 厚鋁板 (3003 H14) | UCT542049SC-3 | 4 | 4 | 8.19 | 0.38 | 1.51 | 0.38 | 1.51 | |
| 7 | | J853-CW-AC-512 | J853-CW-AC-512C | 2mm 厚鋁板 (3003 H14) | UCT542049SC-3 | 4 | 4 | 15.25 | 0.70 | 2.81 | 0.70 | 2.81 | |
| 8 | | J853-CW-AC-512 | J853-CW-AC-512D | 2mm 厚鋁板 (3003 H14) | UCT542049SC-3 | 4 | 4 | 16.57 | 0.76 | 3.06 | 0.76 | 3.06 | |
| 9 | | J853-CW-AC-512 | J853-CW-AC-512E | 2mm 厚鋁板 (3003 H14) | UCT542049SC-3 | 2 | 2 | 11.06 | 1.02 | 2.04 | 1.02 | 2.04 | |
| 10 | | J853-CW-AC-512 | J853-CW-AC-512F | 2mm 厚鋁板 (3003 H14) | UCT542049SC-3 | 2 | 2 | 7.49 | 0.69 | 1.38 | 0.69 | 1.38 | |
| 11 | | J853-CW-AC-513 | J853-CW-AC-513A | 2mm 厚鋁板 (3003 H14) | UCT542049SC-3 | 2 | 2 | 3.21 | 0.30 | 0.59 | 0.30 | 0.59 | |
| 12 | | J853-CW-AC-513 | J853-CW-AC-513B | 2mm 厚鋁板 (3003 H14) | UCT542049SC-3 | 1 | 1 | 2.20 | 0.41 | 0.41 | 0.41 | 0.41 | |
| 13 | | J853-CW-AC-513 | J853-CW-AC-513C | 2mm 厚鋁板 (3003 H14) | UCT542049SC-3 | 4 | 4 | 14.14 | 0.65 | 2.61 | 0.65 | 2.61 | |
| 14 | | J853-CW-AC-513 | J853-CW-AC-513D | 2mm 厚鋁板 (3003 H14) | UCT542049SC-3 | 1 | 1 | 3.02 | 0.56 | 0.56 | 0.56 | 0.56 | |
| 15 | | J853-CW-AC-513 | J853-CW-AC-513E | 2mm 厚鋁板 (3003 H14) | UCT542049SC-3 | 1 | 1 | 4.72 | 0.87 | 0.87 | 0.87 | 0.87 | |
| 16 | | J853-CW-AC-514 | J853-CW-AC-514A | 2mm 厚鋁板 (3003 H14) | UCT542049SC-3 | 2 | 2 | 11.06 | 1.02 | 2.04 | 1.02 | 2.04 | |
| 17 | | J853-CW-AC-514 | J853-CW-AC-514B | 2mm 厚鋁板 (3003 H14) | UCT542049SC-3 | 2 | 2 | 7.49 | 0.69 | 1.38 | 0.69 | 1.38 | |
| 18 | | J853-CW-AC-514 | J853-CW-AC-514C | 2mm 厚鋁板 (3003 H14) | UCT542049SC-3 | 2 | 2 | 7.07 | 0.65 | 1.30 | 0.65 | 1.30 | |
| 19 | | J853-CW-AC-514 | J853-CW-AC-514D | 2mm 厚鋁板 (3003 H14) | UCT542049SC-3 | 1 | 1 | 4.72 | 0.87 | 0.87 | 0.87 | 0.87 | |
| 20 | | J853-CW-AC-515 | J853-CW-AC-515A | 2mm 厚鋁板 (3003 H14) | UCT542049SC-3 | 3 | 3 | 5.70 | 0.35 | 1.05 | 0.35 | 1.05 | |
| 21 | | J853-CW-AC-515 | J853-CW-AC-515B | 2mm 厚鋁板 (3003 H14) | UCT542049SC-3 | 3 | 3 | 2.57 | 0.16 | 0.47 | 0.16 | 0.47 | |
| 22 | | J853-CW-AC-515 | J853-CW-AC-515C | 2mm 厚鋁板 (3003 H14) | UCT542049SC-3 | 2 | 2 | 2.23 | 0.21 | 0.41 | 0.21 | 0.41 | |
| 23 | | J853-CW-AC-515 | J853-CW-AC-515D | 2mm 厚鋁板 (3003 H14) | UCT542049SC-3 | 2 | 2 | 1.51 | 0.14 | 0.28 | 0.14 | 0.28 | |
| 24 | | J853-CW-AC-515 | J853-CW-AC-515E | 2mm 厚鋁板 (3003 H14) | UCT542049SC-3 | 1 | 1 | 0.61 | 0.11 | 0.11 | 0.11 | 0.11 | |
| 25 | | J853-CW-AC-515 | J853-CW-AC-515F | 2mm 厚鋁板 (3003 H14) | UCT542049SC-3 | 1 | 1 | 0.95 | 0.18 | 0.18 | 0.18 | 0.18 | |
| 26 | | J853-CW-AC-516 | J853-CW-AC-516A | 2mm 厚鋁板 (3003 H14) | UCT542049SC-3 | 3 | 3 | 17.88 | 1.10 | 3.30 | 1.10 | 3.30 | |
| 27 | | J853-CW-AC-516 | J853-CW-AC-516B | 2mm 厚鋁板 (3003 H14) | UCT542049SC-3 | 3 | 3 | 8.06 | 0.50 | 1.49 | 0.50 | 1.49 | |
| 28 | | J853-CW-AC-516 | J853-CW-AC-516C | 2mm 厚鋁板 (3003 H14) | UCT542049SC-3 | 2 | 2 | 6.99 | 0.64 | 1.29 | 0.64 | 1.29 | |
| 29 | | J853-CW-AC-516 | J853-CW-AC-516D | 2mm 厚鋁板 (3003 H14) | UCT542049SC-3 | 2 | 2 | 4.73 | 0.44 | 0.87 | 0.44 | 0.87 | |
| 30 | | J853-CW-AC-516 | J853-CW-AC-516E | 2mm 厚鋁板 (3003 H14) | UCT542049SC-3 | 1 | 1 | 1.91 | 0.35 | 0.35 | 0.35 | 0.35 | |
| 31 | | J853-CW-AC-516 | J853-CW-AC-516F | 2mm 厚鋁板 (3003 H14) | UCT542049SC-3 | 1 | 1 | 2.98 | 0.55 | 0.55 | 0.55 | 0.55 | |
| 32 | | J853-CW-AC-517 | J853-CW-AC-517A | 2mm 厚鋁板 (3003 H14) | UCT542049SC-3 | 6 | 6 | 29.52 | 0.91 | 5.45 | 0.91 | 5.45 | |

| | | | | | |
|--------------------------------|--|-------------------------------------|-----------------|--------------------|---------|
| 美特鋁質有限公司 | | 工程號: J-853 | 計算: J.L. | 日期: 19/1/2024 | 送呈: Joe |
| MIDI Aluminium Fabricator Ltd. | | 地盤名稱: 香港延坪道(第二期別墅) | 核對: | 日期: | 副本: |
| 地盤用鋁板B.M.表 | | 項目類別: J853-Curtain Wall (HB5.6.7.8) | 批准: | 日期: | 版本: |
| BM編號: | | A/C Code: | 總重量(Kg): 415.27 | 總V.F.面積(m²): 76.62 | |

| 序號 | 修改標示 | 加工圖号 | 鋁板編號 | 鋁板名稱 | 顏色 | 數量(塊) | | 總重量 | 展開面積(m²) | | V.F.面積(m²) | | 備註 |
|----|------|----------------|-----------------|--------------------|-------------------|-------|-----|--------|----------|-------|------------|-------|----|
| | | | | | | 實用 | 後備 | | 總數 | 單件 | 總面積 | 單件 | |
| 1 | | J853-CW-AC-511 | J853-CW-AC-511C | 2mm 厚鋁板 (3003 H14) | UCT542049SC-3 | 8 | | 8.78 | 0.20 | 1.62 | 0.20 | 1.62 | |
| 2 | | J853-CW-AC-511 | J853-CW-AC-511D | 2mm 厚鋁板 (3003 H14) | UCT542049SC-3 | 4 | | 6.02 | 0.28 | 1.11 | 0.28 | 1.11 | |
| 3 | | J853-CW-AC-513 | J853-CW-AC-513A | 2mm 厚鋁板 (3003 H14) | UCT542049SC-3 | 8 | | 12.85 | 0.30 | 2.37 | 0.30 | 2.37 | |
| 4 | | J853-CW-AC-513 | J853-CW-AC-513B | 2mm 厚鋁板 (3003 H14) | UCT542049SC-3 | 4 | | 8.81 | 0.41 | 1.62 | 0.41 | 1.62 | |
| 5 | | J853-CW-AC-513 | J853-CW-AC-513C | 2mm 厚鋁板 (3003 H14) | UCT542049SC-3 | 16 | | 56.54 | 0.65 | 10.43 | 0.65 | 10.43 | |
| 6 | | J853-CW-AC-513 | J853-CW-AC-513D | 2mm 厚鋁板 (3003 H14) | UCT542049SC-3 | 4 | | 12.07 | 0.56 | 2.23 | 0.56 | 2.23 | |
| 7 | | J853-CW-AC-513 | J853-CW-AC-513E | 2mm 厚鋁板 (3003 H14) | UCT542049SC-3 | 4 | | 18.87 | 0.87 | 3.48 | 0.87 | 3.48 | |
| 8 | | J853-CW-AC-514 | J853-CW-AC-514C | 2mm 厚鋁板 (3003 H14) | UCT542049SC-3 | 8 | | 28.27 | 0.65 | 5.22 | 0.65 | 5.22 | |
| 9 | | J853-CW-AC-514 | J853-CW-AC-514D | 2mm 厚鋁板 (3003 H14) | UCT542049SC-3 | 4 | | 18.87 | 0.87 | 3.48 | 0.87 | 3.48 | |
| 10 | | J853-CW-AC-515 | J853-CW-AC-515A | 2mm 厚鋁板 (3003 H14) | UCT542049SC-3 | 4 | | 7.61 | 0.35 | 1.40 | 0.35 | 1.40 | |
| 11 | | J853-CW-AC-515 | J853-CW-AC-515B | 2mm 厚鋁板 (3003 H14) | UCT542049SC-3 | 4 | | 3.43 | 0.16 | 0.63 | 0.16 | 0.63 | |
| 12 | | J853-CW-AC-515 | J853-CW-AC-515E | 2mm 厚鋁板 (3003 H14) | UCT542049SC-3 | 4 | | 2.43 | 0.11 | 0.45 | 0.11 | 0.45 | |
| 13 | | J853-CW-AC-515 | J853-CW-AC-515F | 2mm 厚鋁板 (3003 H14) | UCT542049SC-3 | 4 | | 3.80 | 0.18 | 0.70 | 0.18 | 0.70 | |
| 14 | | J853-CW-AC-516 | J853-CW-AC-516A | 2mm 厚鋁板 (3003 H14) | UCT542049SC-3 | 4 | | 23.84 | 1.10 | 4.40 | 1.10 | 4.40 | |
| 15 | | J853-CW-AC-516 | J853-CW-AC-516B | 2mm 厚鋁板 (3003 H14) | UCT542049SC-3 | 4 | | 10.74 | 0.50 | 1.98 | 0.50 | 1.98 | |
| 16 | | J853-CW-AC-516 | J853-CW-AC-516E | 2mm 厚鋁板 (3003 H14) | UCT542049SC-3 | 4 | | 7.62 | 0.35 | 1.41 | 0.35 | 1.41 | |
| 17 | | J853-CW-AC-516 | J853-CW-AC-516F | 2mm 厚鋁板 (3003 H14) | UCT542049SC-3 | 4 | | 11.91 | 0.55 | 2.20 | 0.55 | 2.20 | |
| 18 | | J853-CW-AC-517 | J853-CW-AC-517A | 2mm 厚鋁板 (3003 H14) | UCT542049SC-3 | 8 | | 39.35 | 0.91 | 7.26 | 0.91 | 7.26 | |
| 19 | | J853-CW-AC-518 | J853-CW-AC-518B | 2mm 厚鋁板 (3003 H14) | UCT542049SC-3 | 8 | | 32.29 | 0.74 | 5.96 | 0.74 | 5.96 | |
| 20 | | J853-CW-AC-519 | J853-CW-AC-519A | 2mm 厚鋁板 (3003 H14) | UCT542049SC-3 | 4 | | 19.68 | 0.91 | 3.63 | 0.91 | 3.63 | |
| 21 | | J853-CW-AC-519 | J853-CW-AC-519B | 2mm 厚鋁板 (3003 H14) | UCT542049SC-3 | 4 | | 16.15 | 0.74 | 2.98 | 0.74 | 2.98 | |
| 22 | | J853-CW-AC-521 | J853-CW-AC-521 | 3mm 厚鋁板 (3003 H14) | EC-DG-D334232-ZD1 | 4 | | 8.90 | 0.41 | 1.64 | 0.41 | 1.64 | |
| 23 | | J853-CW-AC-522 | J853-CW-AC-522A | 3mm 厚鋁板 (3003 H14) | EC-DG-D334232-ZD1 | 8 | | 6.57 | 0.15 | 1.21 | 0.15 | 1.21 | |
| 24 | | J853-CW-AC-522 | J853-CW-AC-522B | 3mm 厚鋁板 (3003 H14) | EC-DG-D334232-ZD1 | 4 | | 8.90 | 0.41 | 1.64 | 0.41 | 1.64 | |
| 25 | | J853-CW-AC-522 | J853-CW-AC-522C | 3mm 厚鋁板 (3003 H14) | EC-DG-D334232-ZD1 | 4 | | 1.00 | 0.05 | 0.18 | 0.05 | 0.18 | |
| 26 | | J853-CW-AC-522 | J853-CW-AC-522D | 3mm 厚鋁板 (3003 H14) | EC-DG-D334232-ZD1 | 4 | | 7.50 | 0.35 | 1.38 | 0.35 | 1.38 | |
| 27 | | J853-CW-AC-523 | J853-CW-AC-523B | 3mm 厚鋁板 (3003 H14) | EC-DG-D334232-ZD1 | 4 | | 3.46 | 0.16 | 0.64 | 0.16 | 0.64 | |
| 28 | | J853-CW-AC-524 | J853-CW-AC-524 | 3mm 厚鋁板 (3003 H14) | 鍍化 | 4 | | 7.14 | 0.33 | 1.32 | 0.33 | 1.32 | |
| 29 | | J853-CW-AC-525 | J853-CW-AC-525 | 3mm 厚鋁板 (3003 H14) | EC-DG-D334232-ZD1 | 4 | | 21.87 | 1.01 | 4.04 | 1.01 | 4.04 | |
| | | | | | 總計: | | 152 | 415.27 | | 76.62 | | 76.62 | |

CLIENT :
SHIMAO GROUP HOLDINGS LIMITED

ARCHITECT :
WTF
 WONG TUNG & PARTNERS LIMITED

MAIN CONTRACTOR :
協興建築有限公司
 HING HING CONSTRUCTION CO. LTD

STRUCTURAL ENGINEER :
C M WONG & ASSOCIATES LTD
 黃志明建築工程師有限公司

FAÇADE CONSULTANT :
MENYHROT

NOTE :
 1. ALL DIMENSIONS ARE IN MM.
 2. ALL DIMENSIONS ARE VIEWED FROM OUTSIDE.
 3. ALL DIMENSIONS TO BE VERIFIED ON SITE BEFORE FABRICATION.

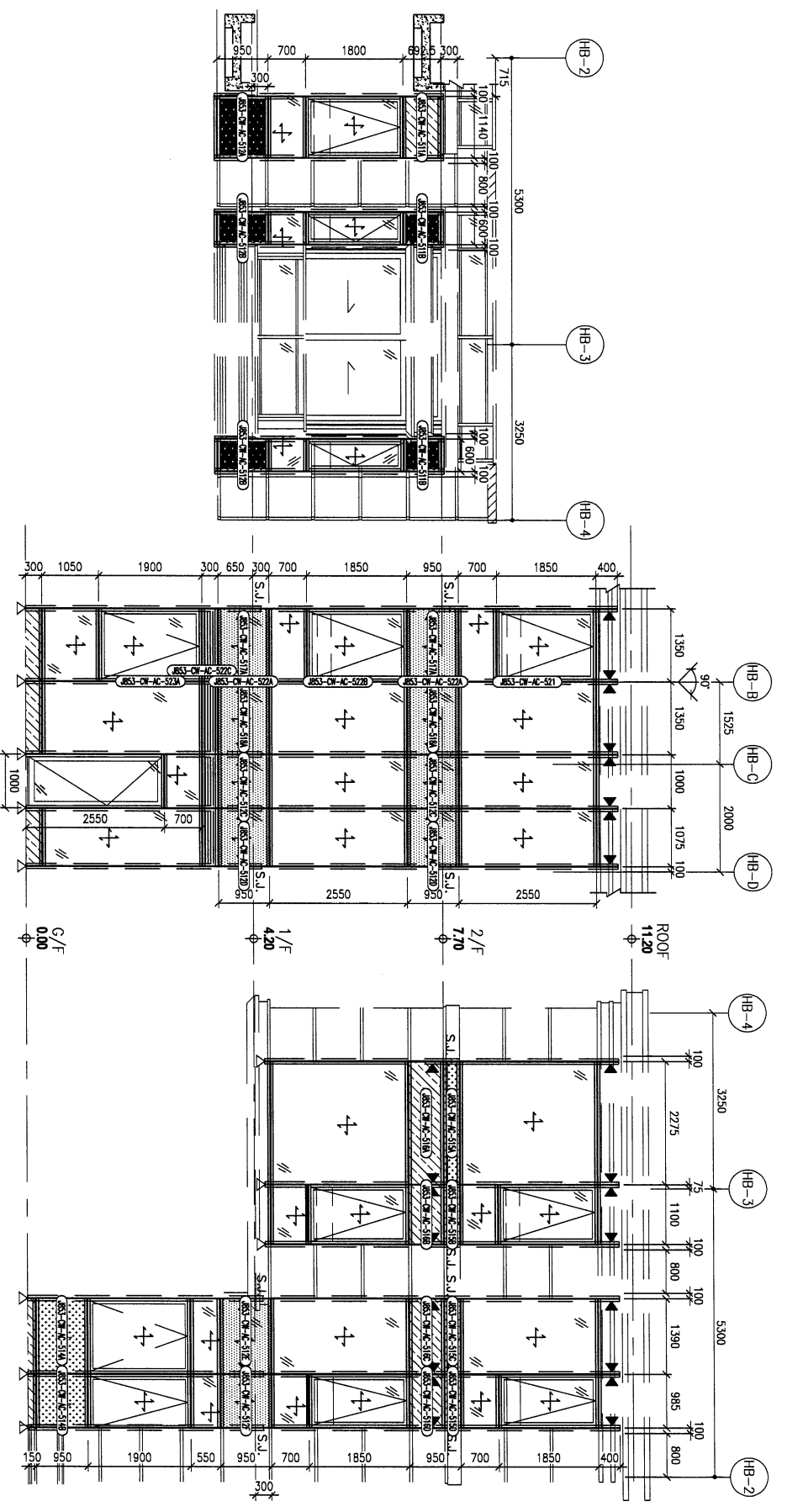
LEGEND :
 (A) DETAIL MARK NO.
 (B) REFER SHEET NO.
 1. F.F.L. -- FINISHED FLOOR LEVEL.
 2. S.F.L. -- STRUCTURAL FLOOR LEVEL.
 3. (R) -- REVERSED DETAIL.
 R.C. STRUCTURE ELEMENT NOT BEING / SLAB IS (UNDER SEPARATED SIMENSION)

| NO. | DATE | REVISION | BY |
|-----|------|----------|----|
| 1 | | | |

JOB NO. : J-853
 PROJECT : PROPOSED RESIDENTIAL DEVELOPMENT AT N.K.I.L. 6542 YIN PING ROAD KOMLOON

TITLE :
 DRAWING TAG DRAWING FOR HOUSE CURTAIN WALL (HOUSE TYPE B) (HOUSE NO. 181 & 182)

DATE : 18-1-24 SCALE : 1:40 (A1)
 DRAWN BY : 18.2 CHECKED BY :
黃特銘有限公司
 H.T.M. ENGINEERING & ARCHITECTURE LTD.
 Suite 6-8, Sunny Industrial Centre, 1/F
 610 Chee Koo Ling Road, Kowloon
 Tel: 242489211-4 Fax: (852) 27272666
 DWG NO. : 1853-HCW-A2-3003 REV : -

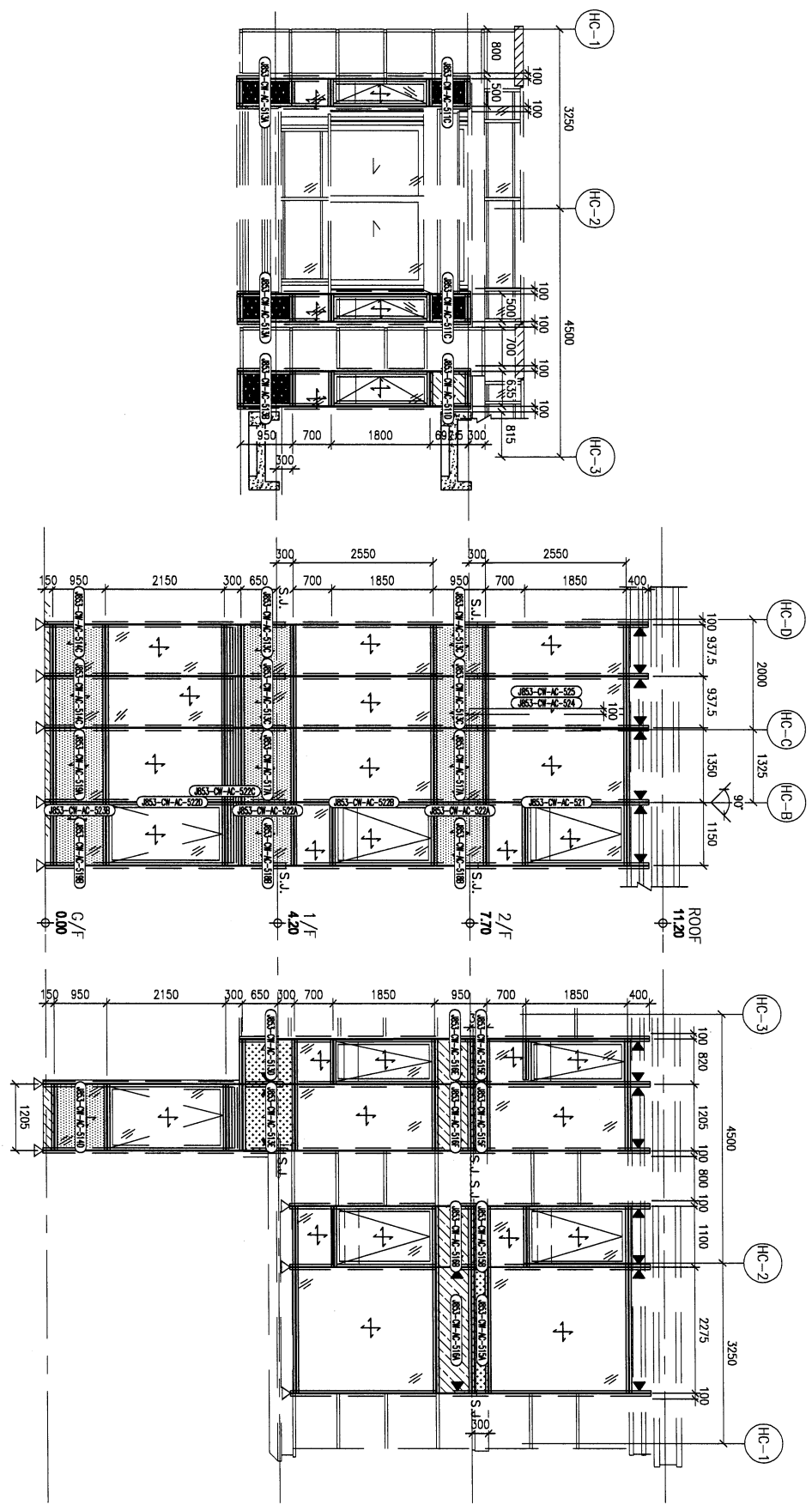


LEGEND:

| | |
|--------|--|
| (A1) | From left strengthened glass (unit) |
| (A2) | From left air gap + 10mm thick tempered glass (unit) |
| (A3) | From right strengthened glass (unit) |
| (A4) | From right air gap + 10mm thick tempered glass (unit) |
| (A5) | From right air gap + 10mm thick tempered glass (unit) & 2mm thick ALUM. BACKSHY (structural cases) |
| (A6) | From the glass tempered glass |
| (A7) | From the glass tempered glass |
| (A8) | From left strengthened glass (unit) |
| (A9) | From left air gap + 10mm thick tempered glass (unit) |
| (A10) | From right strengthened glass (unit) |
| (A11) | From right air gap + 10mm thick tempered glass (unit) |
| (A12) | From right air gap + 10mm thick tempered glass (unit) & 2mm thick ALUM. BACKSHY (structural cases) |
| (A13) | From the glass tempered glass |
| (A14) | From the glass tempered glass |
| (A15) | Underneath the glass 882-U-P ALU. |
| (A16) | Underneath the glass ALU. |
| (A17) | Support panel (two unit) |
| (A18) | Support panel (two unit) |
| (A19) | Support panel (two unit) |
| (A20) | Support panel (two unit) |
| (A21) | Support panel (two unit) |
| (A22) | Support panel (two unit) |
| (A23) | Support panel (two unit) |
| (A24) | Support panel (two unit) |
| (A25) | Support panel (two unit) |
| (A26) | Support panel (two unit) |
| (A27) | Support panel (two unit) |
| (A28) | Support panel (two unit) |
| (A29) | Support panel (two unit) |
| (A30) | Support panel (two unit) |
| (A31) | Support panel (two unit) |
| (A32) | Support panel (two unit) |
| (A33) | Support panel (two unit) |
| (A34) | Support panel (two unit) |
| (A35) | Support panel (two unit) |
| (A36) | Support panel (two unit) |
| (A37) | Support panel (two unit) |
| (A38) | Support panel (two unit) |
| (A39) | Support panel (two unit) |
| (A40) | Support panel (two unit) |
| (A41) | Support panel (two unit) |
| (A42) | Support panel (two unit) |
| (A43) | Support panel (two unit) |
| (A44) | Support panel (two unit) |
| (A45) | Support panel (two unit) |
| (A46) | Support panel (two unit) |
| (A47) | Support panel (two unit) |
| (A48) | Support panel (two unit) |
| (A49) | Support panel (two unit) |
| (A50) | Support panel (two unit) |
| (A51) | Support panel (two unit) |
| (A52) | Support panel (two unit) |
| (A53) | Support panel (two unit) |
| (A54) | Support panel (two unit) |
| (A55) | Support panel (two unit) |
| (A56) | Support panel (two unit) |
| (A57) | Support panel (two unit) |
| (A58) | Support panel (two unit) |
| (A59) | Support panel (two unit) |
| (A60) | Support panel (two unit) |
| (A61) | Support panel (two unit) |
| (A62) | Support panel (two unit) |
| (A63) | Support panel (two unit) |
| (A64) | Support panel (two unit) |
| (A65) | Support panel (two unit) |
| (A66) | Support panel (two unit) |
| (A67) | Support panel (two unit) |
| (A68) | Support panel (two unit) |
| (A69) | Support panel (two unit) |
| (A70) | Support panel (two unit) |
| (A71) | Support panel (two unit) |
| (A72) | Support panel (two unit) |
| (A73) | Support panel (two unit) |
| (A74) | Support panel (two unit) |
| (A75) | Support panel (two unit) |
| (A76) | Support panel (two unit) |
| (A77) | Support panel (two unit) |
| (A78) | Support panel (two unit) |
| (A79) | Support panel (two unit) |
| (A80) | Support panel (two unit) |
| (A81) | Support panel (two unit) |
| (A82) | Support panel (two unit) |
| (A83) | Support panel (two unit) |
| (A84) | Support panel (two unit) |
| (A85) | Support panel (two unit) |
| (A86) | Support panel (two unit) |
| (A87) | Support panel (two unit) |
| (A88) | Support panel (two unit) |
| (A89) | Support panel (two unit) |
| (A90) | Support panel (two unit) |
| (A91) | Support panel (two unit) |
| (A92) | Support panel (two unit) |
| (A93) | Support panel (two unit) |
| (A94) | Support panel (two unit) |
| (A95) | Support panel (two unit) |
| (A96) | Support panel (two unit) |
| (A97) | Support panel (two unit) |
| (A98) | Support panel (two unit) |
| (A99) | Support panel (two unit) |
| (A100) | Support panel (two unit) |

LEGEND:

| | |
|--------|---|
| (H1) | 10mm lead strengthened glass (unit) |
| (H2) | + 10mm air gap + 10mm thick tempered glass (unit) |
| (H3) | 10mm thick lead strengthened glass & 10mm thick alluvium (structural glass) |
| (H4) | 10mm thick clear tempered glass |
| (H5) | 10mm lead strengthened glass (unit) |
| (H6) | + 10mm air gap + 10mm thick tempered glass (unit) |
| (H7) | 10mm thick lead strengthened glass & 10mm thick alluvium (structural glass) |
| (H8) | 10mm thick clear tempered glass |
| (H9) | 10mm lead strengthened glass (unit) |
| (H10) | + 10mm air gap + 10mm thick tempered glass (unit) |
| (H11) | 10mm thick lead strengthened glass & 10mm thick alluvium (structural glass) |
| (H12) | 10mm thick clear tempered glass |
| (H13) | 10mm lead strengthened glass (unit) |
| (H14) | + 10mm air gap + 10mm thick tempered glass (unit) |
| (H15) | 10mm thick lead strengthened glass & 10mm thick alluvium (structural glass) |
| (H16) | 10mm thick clear tempered glass |
| (H17) | 10mm lead strengthened glass (unit) |
| (H18) | + 10mm air gap + 10mm thick tempered glass (unit) |
| (H19) | 10mm thick lead strengthened glass & 10mm thick alluvium (structural glass) |
| (H20) | 10mm thick clear tempered glass |
| (H21) | 10mm lead strengthened glass (unit) |
| (H22) | + 10mm air gap + 10mm thick tempered glass (unit) |
| (H23) | 10mm thick lead strengthened glass & 10mm thick alluvium (structural glass) |
| (H24) | 10mm thick clear tempered glass |
| (H25) | 10mm lead strengthened glass (unit) |
| (H26) | + 10mm air gap + 10mm thick tempered glass (unit) |
| (H27) | 10mm thick lead strengthened glass & 10mm thick alluvium (structural glass) |
| (H28) | 10mm thick clear tempered glass |
| (H29) | 10mm lead strengthened glass (unit) |
| (H30) | + 10mm air gap + 10mm thick tempered glass (unit) |
| (H31) | 10mm thick lead strengthened glass & 10mm thick alluvium (structural glass) |
| (H32) | 10mm thick clear tempered glass |
| (H33) | 10mm lead strengthened glass (unit) |
| (H34) | + 10mm air gap + 10mm thick tempered glass (unit) |
| (H35) | 10mm thick lead strengthened glass & 10mm thick alluvium (structural glass) |
| (H36) | 10mm thick clear tempered glass |
| (H37) | 10mm lead strengthened glass (unit) |
| (H38) | + 10mm air gap + 10mm thick tempered glass (unit) |
| (H39) | 10mm thick lead strengthened glass & 10mm thick alluvium (structural glass) |
| (H40) | 10mm thick clear tempered glass |
| (H41) | 10mm lead strengthened glass (unit) |
| (H42) | + 10mm air gap + 10mm thick tempered glass (unit) |
| (H43) | 10mm thick lead strengthened glass & 10mm thick alluvium (structural glass) |
| (H44) | 10mm thick clear tempered glass |
| (H45) | 10mm lead strengthened glass (unit) |
| (H46) | + 10mm air gap + 10mm thick tempered glass (unit) |
| (H47) | 10mm thick lead strengthened glass & 10mm thick alluvium (structural glass) |
| (H48) | 10mm thick clear tempered glass |
| (H49) | 10mm lead strengthened glass (unit) |
| (H50) | + 10mm air gap + 10mm thick tempered glass (unit) |
| (H51) | 10mm thick lead strengthened glass & 10mm thick alluvium (structural glass) |
| (H52) | 10mm thick clear tempered glass |
| (H53) | 10mm lead strengthened glass (unit) |
| (H54) | + 10mm air gap + 10mm thick tempered glass (unit) |
| (H55) | 10mm thick lead strengthened glass & 10mm thick alluvium (structural glass) |
| (H56) | 10mm thick clear tempered glass |
| (H57) | 10mm lead strengthened glass (unit) |
| (H58) | + 10mm air gap + 10mm thick tempered glass (unit) |
| (H59) | 10mm thick lead strengthened glass & 10mm thick alluvium (structural glass) |
| (H60) | 10mm thick clear tempered glass |
| (H61) | 10mm lead strengthened glass (unit) |
| (H62) | + 10mm air gap + 10mm thick tempered glass (unit) |
| (H63) | 10mm thick lead strengthened glass & 10mm thick alluvium (structural glass) |
| (H64) | 10mm thick clear tempered glass |
| (H65) | 10mm lead strengthened glass (unit) |
| (H66) | + 10mm air gap + 10mm thick tempered glass (unit) |
| (H67) | 10mm thick lead strengthened glass & 10mm thick alluvium (structural glass) |
| (H68) | 10mm thick clear tempered glass |
| (H69) | 10mm lead strengthened glass (unit) |
| (H70) | + 10mm air gap + 10mm thick tempered glass (unit) |
| (H71) | 10mm thick lead strengthened glass & 10mm thick alluvium (structural glass) |
| (H72) | 10mm thick clear tempered glass |
| (H73) | 10mm lead strengthened glass (unit) |
| (H74) | + 10mm air gap + 10mm thick tempered glass (unit) |
| (H75) | 10mm thick lead strengthened glass & 10mm thick alluvium (structural glass) |
| (H76) | 10mm thick clear tempered glass |
| (H77) | 10mm lead strengthened glass (unit) |
| (H78) | + 10mm air gap + 10mm thick tempered glass (unit) |
| (H79) | 10mm thick lead strengthened glass & 10mm thick alluvium (structural glass) |
| (H80) | 10mm thick clear tempered glass |
| (H81) | 10mm lead strengthened glass (unit) |
| (H82) | + 10mm air gap + 10mm thick tempered glass (unit) |
| (H83) | 10mm thick lead strengthened glass & 10mm thick alluvium (structural glass) |
| (H84) | 10mm thick clear tempered glass |
| (H85) | 10mm lead strengthened glass (unit) |
| (H86) | + 10mm air gap + 10mm thick tempered glass (unit) |
| (H87) | 10mm thick lead strengthened glass & 10mm thick alluvium (structural glass) |
| (H88) | 10mm thick clear tempered glass |
| (H89) | 10mm lead strengthened glass (unit) |
| (H90) | + 10mm air gap + 10mm thick tempered glass (unit) |
| (H91) | 10mm thick lead strengthened glass & 10mm thick alluvium (structural glass) |
| (H92) | 10mm thick clear tempered glass |
| (H93) | 10mm lead strengthened glass (unit) |
| (H94) | + 10mm air gap + 10mm thick tempered glass (unit) |
| (H95) | 10mm thick lead strengthened glass & 10mm thick alluvium (structural glass) |
| (H96) | 10mm thick clear tempered glass |
| (H97) | 10mm lead strengthened glass (unit) |
| (H98) | + 10mm air gap + 10mm thick tempered glass (unit) |
| (H99) | 10mm thick lead strengthened glass & 10mm thick alluvium (structural glass) |
| (H100) | 10mm thick clear tempered glass |



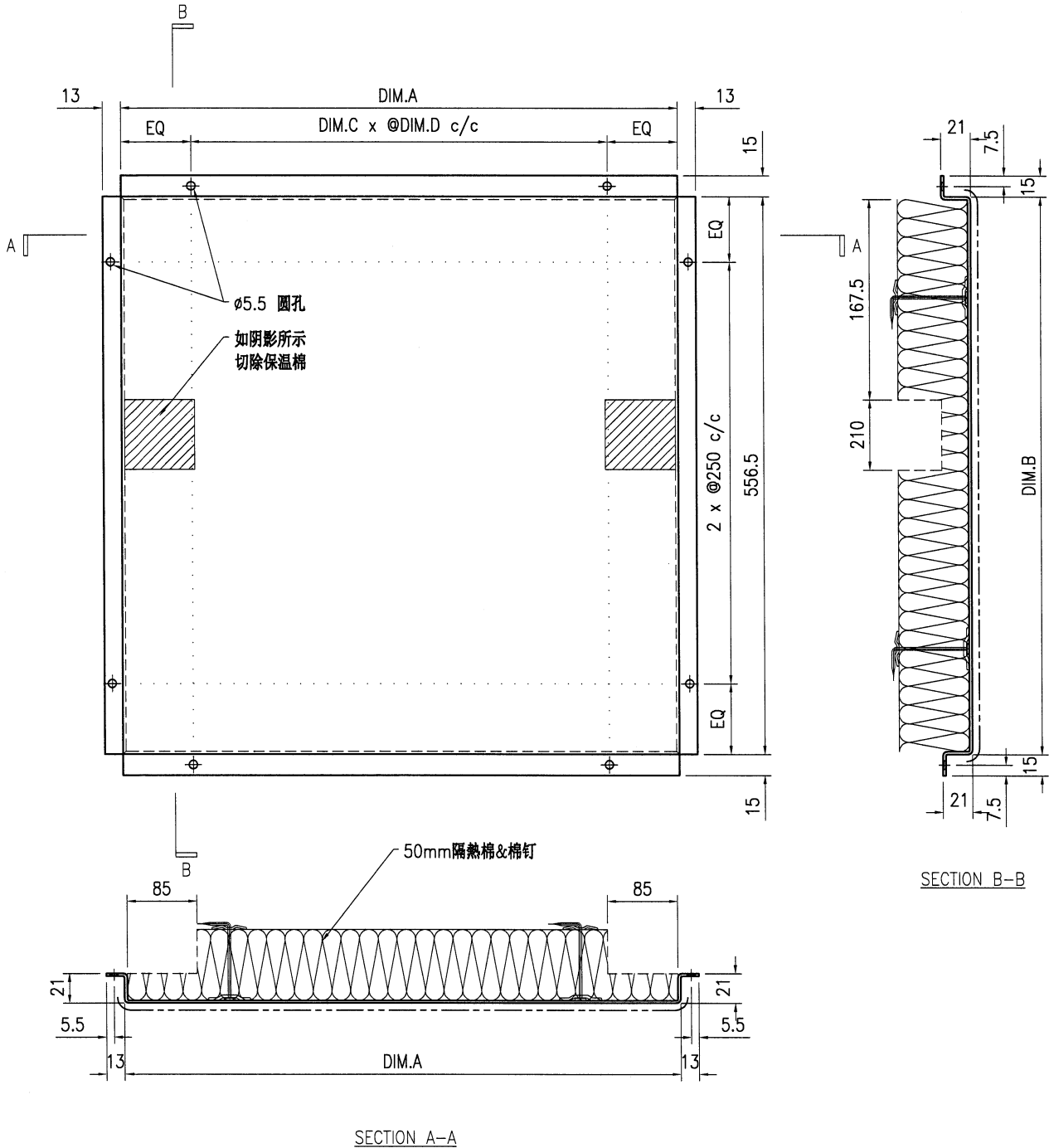
| | |
|---|--|
| RD. REF. : | |
| CLIENT : | SHIMAO GROUP HOLDINGS LIMITED |
| ARCHITECT : | WONG TUNG & PARTNERS LIMITED |
| MAIN CONTRACTOR : | 協興建築有限公司 HP HING CONSTRUCTION CO LTD |
| STRUCTURAL ENGINEER : | C M WONG & ASSOCIATES LTD 黃志勇建築工程師有限公司 |
| FAÇADE CONSULTANT : | MENYARD |
| NOTE : | 1. ALL DIMENSIONS ARE IN mm. 2. ALL ELEVATIONS ARE VIEWED FROM OUTSIDE. 3. ALL DIMENSIONS TO BE VERIFIED ON SITE BEFORE FABRICATION. |
| LEGEND : | (H) DETAIL MARK NO. (D) DOOR SHEET NO. |
| 1. F.F.L. -- FINISHED FLOOR LEVEL. | |
| 2. S.F.L. -- STRUCTURAL FLOOR LEVEL. | |
| 3. (R) -- REVERSED DETAIL. | |
| R.C. STRUCTURAL ELEMENT | |
| CONCRETE SLAB | |
| IS (UNDER SEPARATED SUBMISSION) | |
| JOB NO. : | J-853 |
| PROJECT : | PROPOSED RESIDENTIAL DEVELOPMENT AT N.K.I.L. 6542 YIN PING ROAD KOWLOON |
| TITLE : | DRAWING THE DRAWINGS FOR HOUSE CURTAIN WALL |
| DATE : | 18-1-24 |
| SCALE : | 1:40 (A1) |
| DRAWN BY : | BZ |
| CHECKED BY : | |
| UNIT : | UNITED ARCHITECTS & ENGINEERS LTD. |
| ADDRESS : | Unit 5-8, Sunny Industrial Centre, 17 610 Che Kwo Ling Road, Kowloon |
| TELEPHONE : | 24248921-4 Fax: (852) 2777858 |
| DWG NO. : | HS3-HCW-A2-3004 |
| REV. : | - |



美特铝质有限公司
MIDI Aluminium Fabricator Ltd.

| | | | | | | | |
|-----|-------|----|--------------------|-----------------------|-----|----------------|---|
| 工程号 | J853 | 制图 | J.L. | 18/1/24 | 物料号 | J853-CW-AC-511 | |
| 地盘 | 香港延坪路 | 复核 | - | - | 图号 | J853-CW-AC-511 | |
| 版本 | | 名称 | 铝板加工图 | 批准 | - | 数量 | - |
| 日期 | | 材料 | 2mm 厚铝板 (3003 H14) | 单件面积(m ²) | - | 长度 | - |

| 物料编号 | DIM.A | DIM.B | DIM.C | DIM.D | DIM.E | 数量 | 单件重量(kg) |
|-----------------|-------|-------|-------|-------|-------|----|----------|
| J853-CW-AC-511A | 1004 | 556.5 | 3 | 300 | | 2 | - |
| J853-CW-AC-511B | 464 | 556.5 | 2 | 200 | | 4 | - |
| J853-CW-AC-511C | 364 | 556.5 | 1 | 300 | | 10 | - |
| J853-CW-AC-511D | 499 | 556.5 | 2 | 200 | | 5 | - |

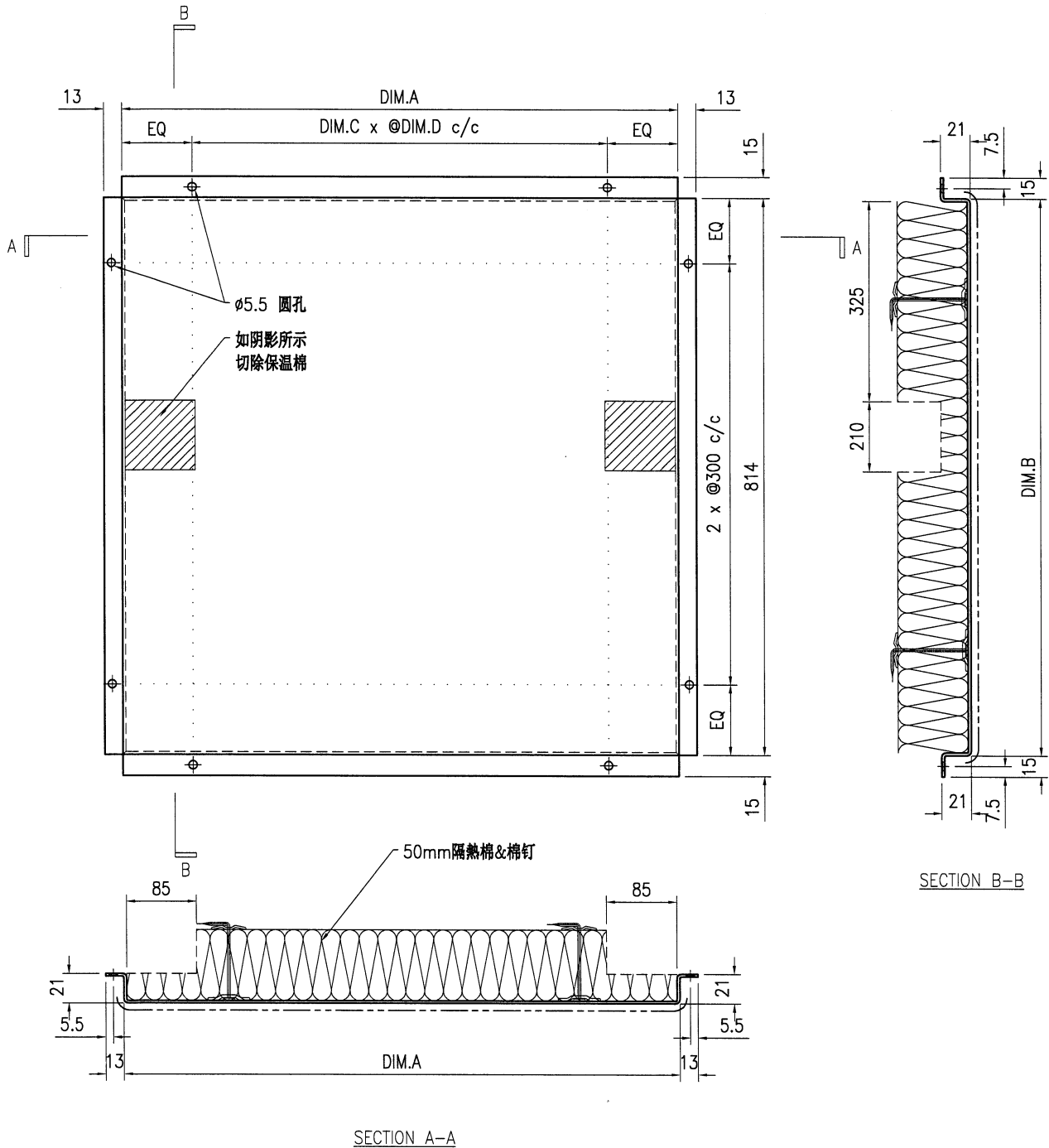




美特铝质有限公司
MIDI Aluminium Fabricator Ltd.

| | | | | | | | |
|-----|-------|----|------------------|-----------------------|-----|----------------|---|
| 工程号 | J853 | 制图 | J.L. | 18/1/24 | 物料号 | J853-CW-AC-512 | |
| 地盘 | 香港延坪路 | 复核 | - | - | 图号 | J853-CW-AC-512 | |
| 版本 | | 名称 | 铝板加工图 | 批准 | - | 数量 | - |
| 日期 | | 材料 | 2mm厚铝板(3003 H14) | 单件面积(m ²) | - | 长度 | - |

| 物料编号 | DIM.A | DIM.B | DIM.C | DIM.D | DIM.E | 数量 | 单件重量(kg) |
|-----------------|-------|-------|-------|-------|-------|----|----------|
| J853-CW-AC-512A | 1004 | 814 | 3 | 300 | | 2 | - |
| J853-CW-AC-512B | 464 | 814 | 2 | 200 | | 4 | - |
| J853-CW-AC-512C | 864 | 814 | 3 | 250 | | 4 | - |
| J853-CW-AC-512D | 939 | 814 | 3 | 250 | | 4 | - |
| J853-CW-AC-512E | 1254 | 814 | 4 | 300 | | 2 | - |
| J853-CW-AC-512F | 849 | 814 | 3 | 250 | | 2 | - |



技术说明:

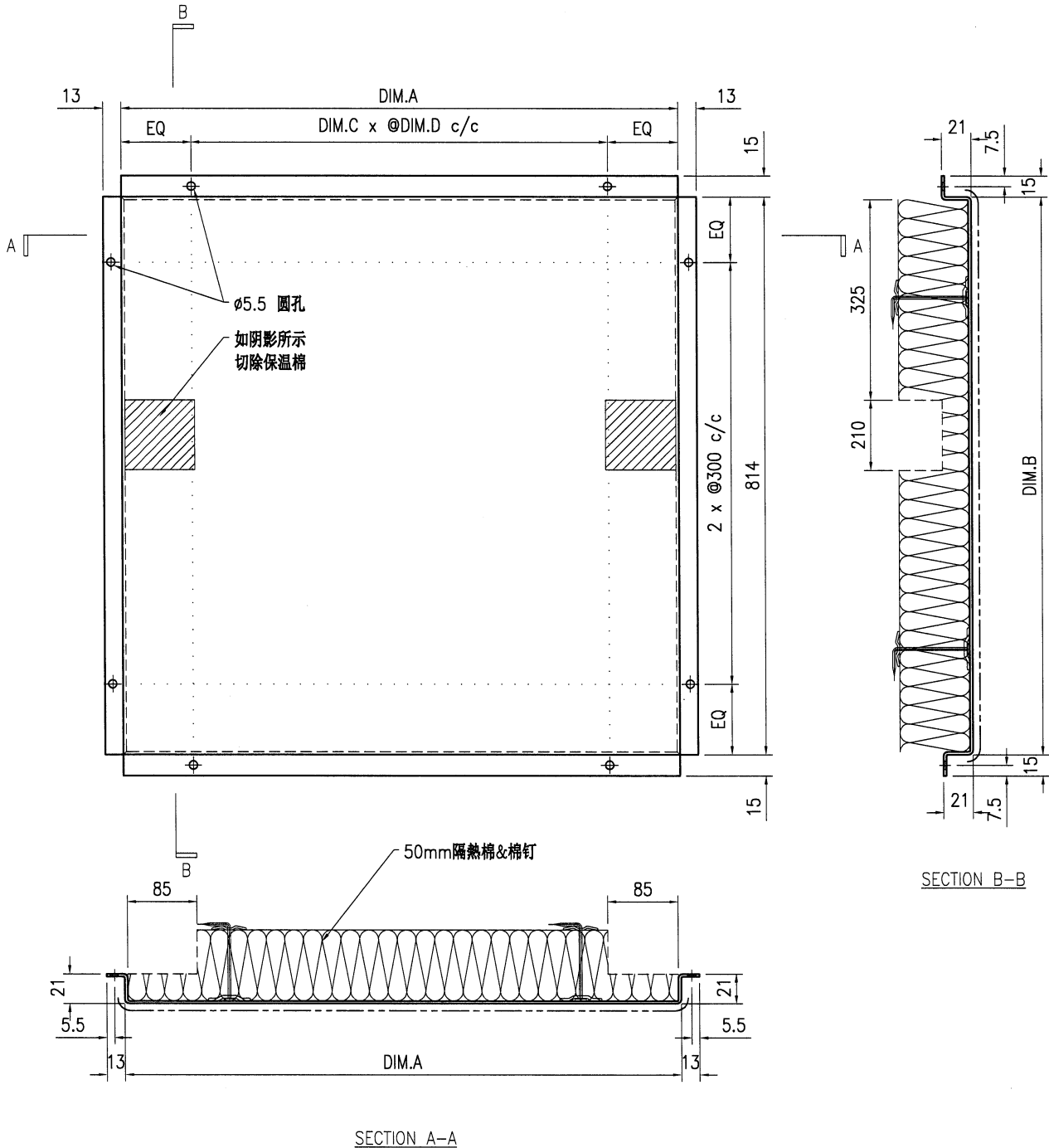
1. 板材折弯之前应进行压平调整, 不应有加工变形, 并应去除毛刺;
2. 外形尺寸允许偏差为 $\pm 0.5\text{mm}$, 折弯角度的允许偏差为 $\pm 0.5^\circ$; 孔位的允许偏差为 $\pm 0.3\text{mm}$, 孔距的允许偏差为 $\pm 0.3\text{mm}$, 累计偏差为 $\pm 0.5\text{mm}$;
3. 槽口、豁口的长宽边允许偏差为 $+0.5\text{mm}$, 中心线允许偏差都为 $\pm 0.5\text{mm}$;
4. " " 为外露喷涂装饰面, 应贴保护膜, 加工过程中不得破坏装饰面, 加工完毕须标示代号。



美特铝质有限公司
MIDI Aluminium Fabricator Ltd.

| | | | | | | | |
|-----|-------|----|--------------------|-----------------------|-----|----------------|---|
| 工程号 | J853 | 制图 | J.L. | 18/1/24 | 物料号 | J853-CW-AC-513 | |
| 地盘 | 香港延坪路 | 复核 | - | - | 图号 | J853-CW-AC-513 | |
| 版本 | | 名称 | 铝板加工图 | 批准 | - | 数量 | - |
| 日期 | | 材料 | 2mm 厚铝板 (3003 H14) | 单件面积(m ²) | - | 长度 | - |

| 物料编号 | DIM.A | DIM.B | DIM.C | DIM.D | DIM.E | 数量 | 单件重量(kg) |
|-----------------|-------|-------|-------|-------|-------|----|----------|
| J853-CW-AC-513A | 364 | 814 | 1 | 300 | | 10 | - |
| J853-CW-AC-513B | 499 | 814 | 2 | 200 | | 5 | - |
| J853-CW-AC-513C | 801 | 814 | 3 | 250 | | 20 | - |
| J853-CW-AC-513D | 684 | 814 | 2 | 300 | | 5 | - |
| J853-CW-AC-513E | 1069 | 814 | 3 | 300 | | 5 | - |



技术说明:

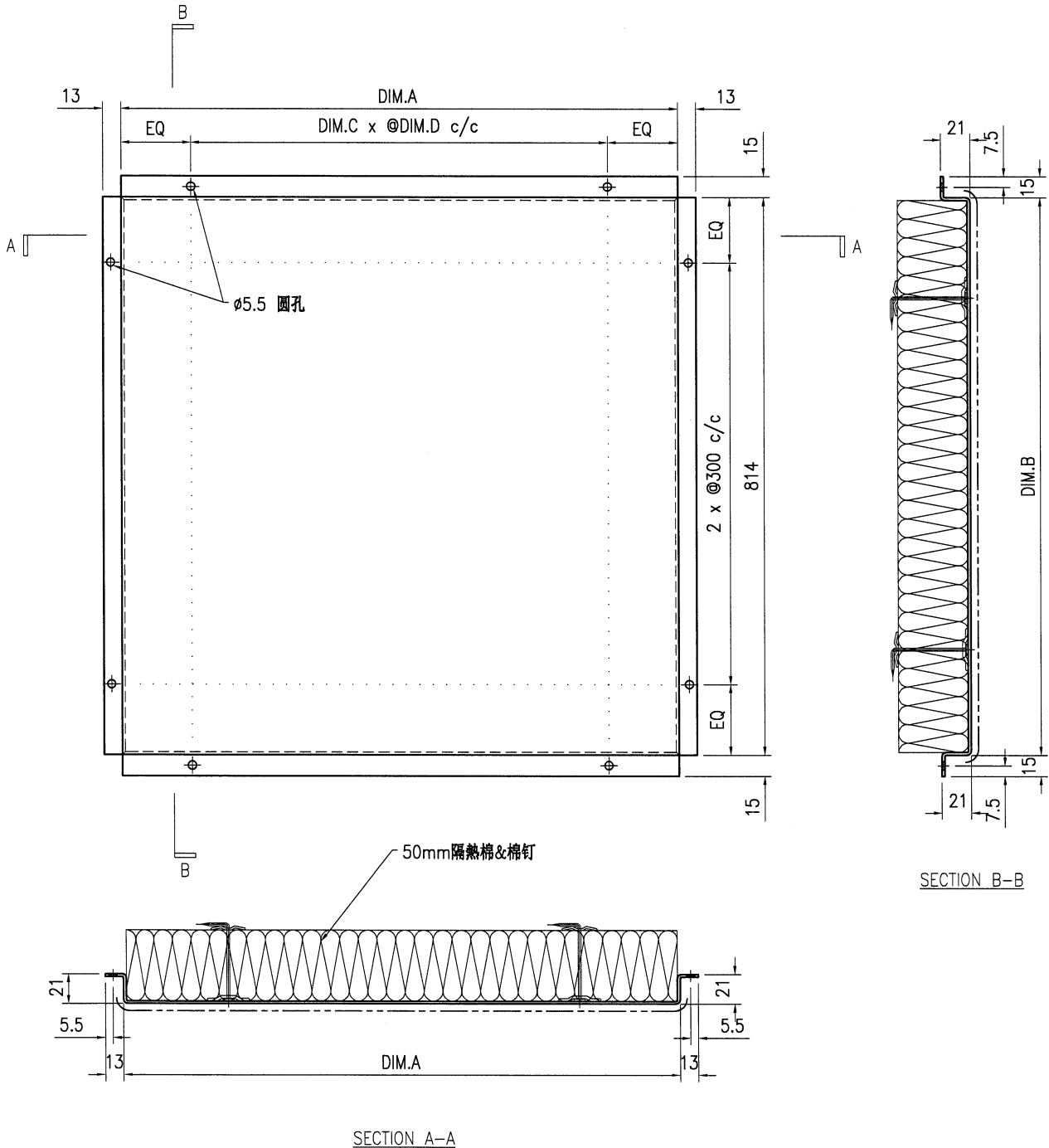
1. 板材折弯之前应进行压平调整, 不应有加工变形, 并应去除毛刺;
2. 外形尺寸允许偏差为±0.5mm, 折弯角度的允许偏差为±0.5°; 孔位的允许偏差为±0.3mm, 孔距的允许偏差为±0.3mm, 累计偏差为±0.5mm;
3. 槽口、豁口的长宽边允许偏差为+0.5mm, 中心线允许偏差都为±0.5mm;
4. "—————" 为外露喷涂装饰面, 应贴保护膜, 加工过程中不得破坏装饰面, 加工完毕须标示代号。



美特铝质有限公司
MIDI Aluminium Fabricator Ltd.

| | | | | | | |
|-----|-------|----|--------------------|---------|-----|----------------|
| 工程号 | J853 | 制图 | J.L. | 18/1/24 | 物料号 | J853-CW-AC-514 |
| 地盘 | 香港延坪路 | 复核 | - | - | 图号 | J853-CW-AC-514 |
| 版本 | | 批准 | - | - | 数量 | - |
| 日期 | | 材料 | 2mm 厚铝板 (3003 H14) | 单件面积(㎡) | - | 长度 - 宽度 - |

| 物料编号 | DIM.A | DIM.B | DIM.C | DIM.D | DIM.E | 数量 | 单件重量(kg) |
|-----------------|-------|-------|-------|-------|-------|----|----------|
| J853-CW-AC-514A | 1254 | 814 | 4 | 300 | | 2 | - |
| J853-CW-AC-514B | 849 | 814 | 3 | 250 | | 2 | - |
| J853-CW-AC-514C | 801 | 814 | 3 | 250 | | 10 | - |
| J853-CW-AC-514D | 1069 | 814 | 3 | 300 | | 5 | - |



技术说明:

1. 板材折弯之前应进行压平调整, 不应有加工变形, 并应去除毛刺;
2. 外形尺寸允许偏差为 $\pm 0.5\text{mm}$, 折弯角度的允许偏差为 $\pm 0.5^\circ$; 孔位的允许偏差为 $\pm 0.3\text{mm}$, 孔距的允许偏差为 $\pm 0.3\text{mm}$, 累计偏差为 $\pm 0.5\text{mm}$;
3. 槽口、豁口的长宽边允许偏差为 $+0.5\text{mm}$, 中心线允许偏差都为 $\pm 0.5\text{mm}$;
4. " " 为外露喷涂装饰面, 应贴保护膜, 加工过程中不得破坏装饰面, 加工完毕须标示代号。

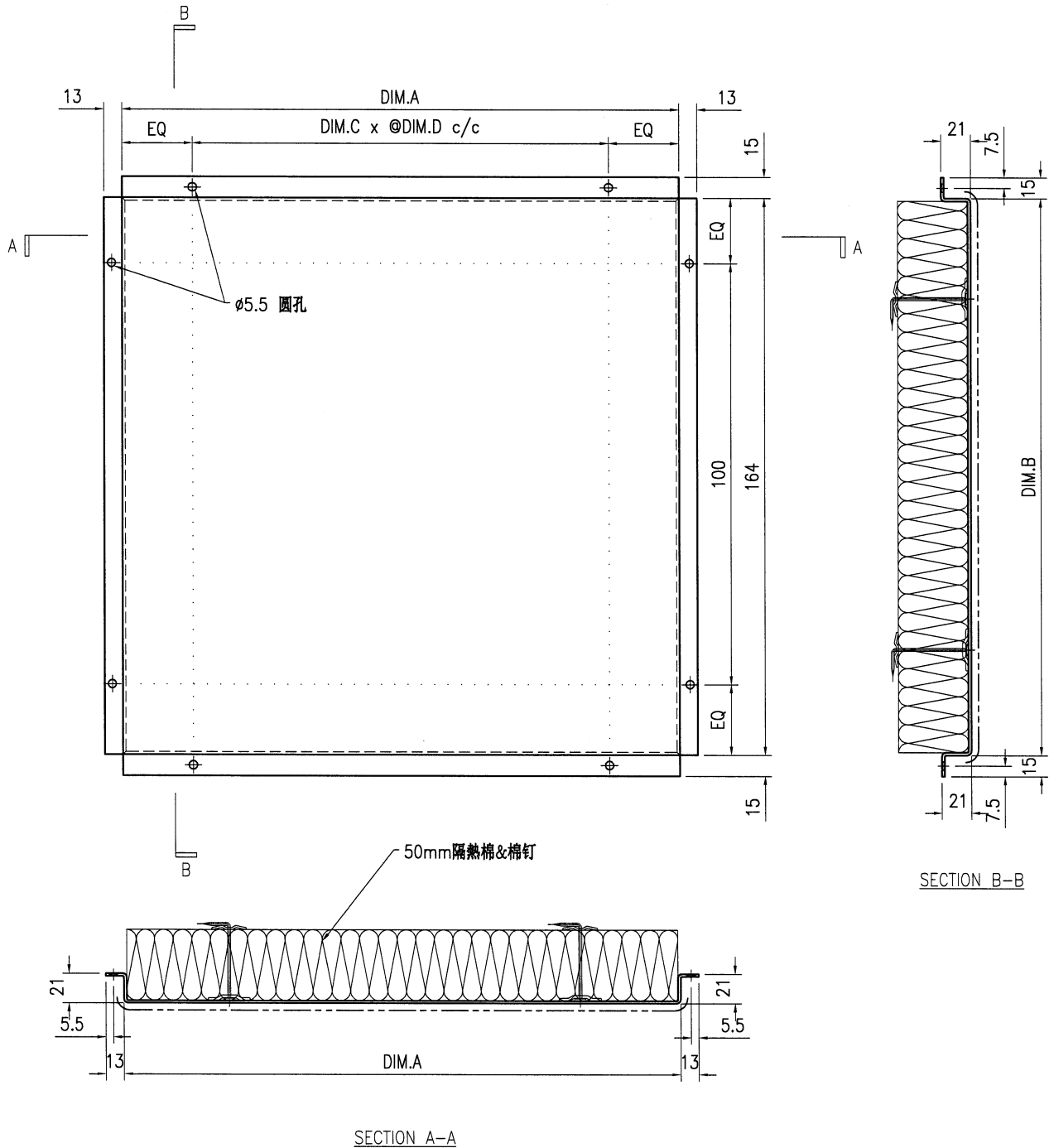


美特铝质有限公司
MIDI Aluminium Fabricator Ltd.

| | | | | | | | |
|-----|-------|----|--------------------|-----------------------|-----|----------------|---|
| 工程号 | J853 | 制图 | J.L. | 18/1/24 | 物料号 | J853-CW-AC-515 | |
| 地盘 | 香港延坪路 | 复核 | - | - | 图号 | J853-CW-AC-515 | |
| 版本 | | 名称 | 铝板加工图 | 批准 | - | 数量 | - |
| 日期 | | 材料 | 2mm 厚铝板 (3003 H14) | 单件面积(m ²) | - | 长度 | - |

| | | | |
|----|---------------|----|---|
| 采用 | 工厂 | 地盘 | √ |
| 颜色 | UCT542049SC-3 | | |

| 物料编号 | DIM.A | DIM.B | DIM.C | DIM.D | DIM.E | 数量 | 单件重量(kg) |
|-----------------|-------|-------|-------|-------|-------|----|----------|
| J853-CW-AC-515A | 2139 | 164 | 7 | 300 | | 7 | - |
| J853-CW-AC-515B | 964 | 164 | 3 | 300 | | 7 | - |
| J853-CW-AC-515C | 1254 | 164 | 4 | 300 | | 2 | - |
| J853-CW-AC-515D | 849 | 164 | 3 | 250 | | 2 | - |
| J853-CW-AC-515E | 684 | 164 | 2 | 300 | | 5 | - |
| J853-CW-AC-515F | 1069 | 164 | 3 | 300 | | 5 | - |



技术说明:

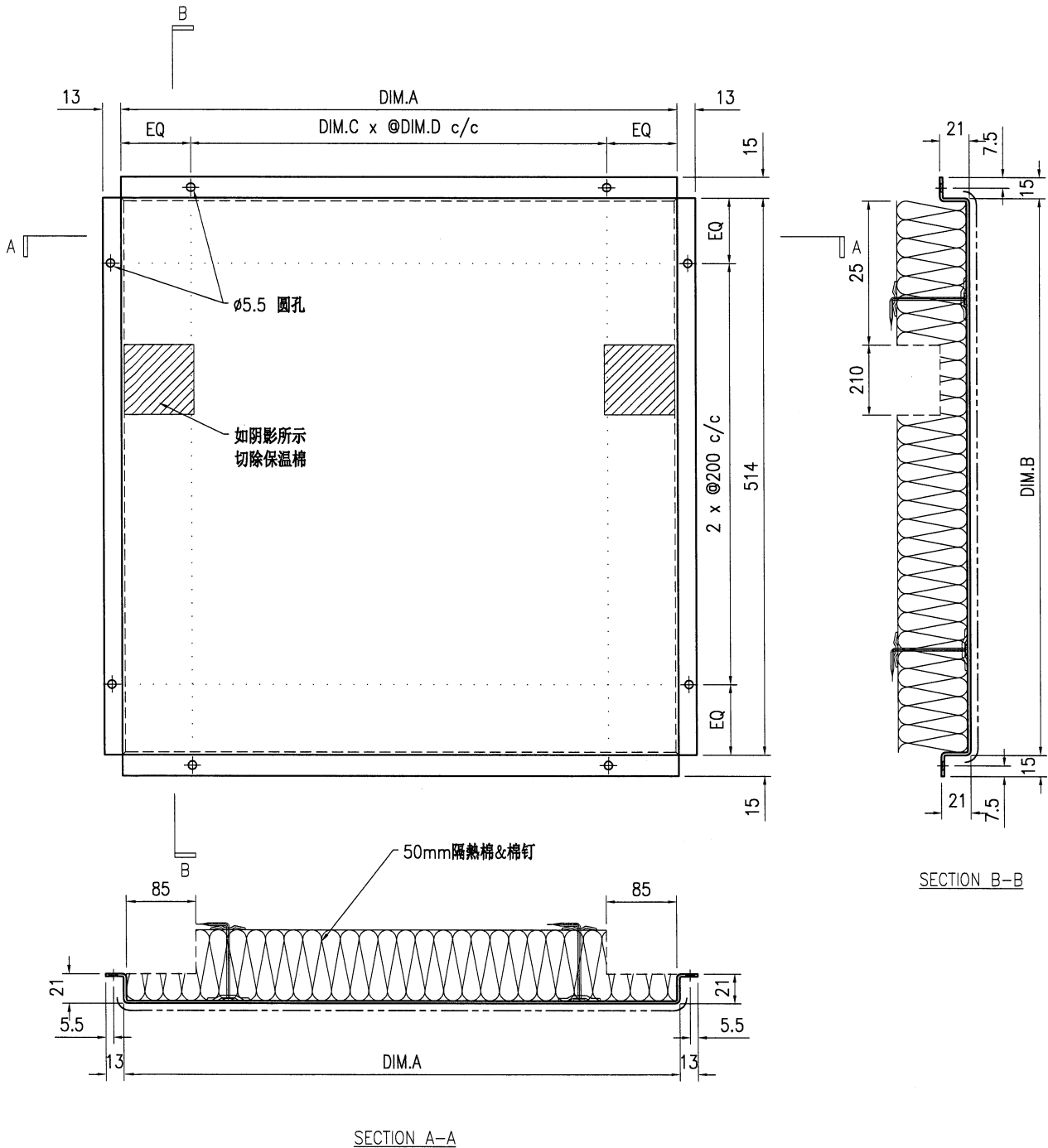
1. 板材折弯之前应进行压平调整, 不应有加工变形, 并应去除毛刺;
2. 外形尺寸允许偏差为 $\pm 0.5\text{mm}$, 折弯角度的允许偏差为 $\pm 0.5^\circ$; 孔位的允许偏差为 $\pm 0.3\text{mm}$, 孔距的允许偏差为 $\pm 0.3\text{mm}$, 累计偏差为 $\pm 0.5\text{mm}$;
3. 槽口、豁口的长宽边允许偏差为 $+0.5\text{mm}$, 中心线允许偏差都为 $\pm 0.5\text{mm}$;
4. " " 为外露喷涂装饰面, 应贴保护膜, 加工过程中不得破坏装饰面, 加工完毕须标示代号。



美特铝质有限公司
MIDI Aluminium Fabricator Ltd.

| | | | | | | |
|-----|-------|----|--------------------|-----------------------|-----|----------------|
| 工程号 | J853 | 制图 | J.L. | 18/1/24 | 物料号 | J853-CW-AC-516 |
| 地盘 | 香港延坪路 | 复核 | - | - | 图号 | J853-CW-AC-516 |
| 版本 | | 批准 | - | - | 数量 | - |
| 日期 | | 材料 | 2mm 厚铝板 (3003 H14) | 单件面积(m ²) | - | 长度 - 宽度 - |

| 物料编号 | DIM.A | DIM.B | DIM.C | DIM.D | DIM.E | 数量 | 单件重量(kg) |
|-----------------|-------|-------|-------|-------|-------|----|----------|
| J853-CW-AC-516A | 2139 | 514 | 7 | 300 | | 7 | - |
| J853-CW-AC-516B | 964 | 514 | 3 | 300 | | 7 | - |
| J853-CW-AC-516C | 1254 | 514 | 4 | 300 | | 2 | - |
| J853-CW-AC-516D | 849 | 514 | 3 | 250 | | 2 | - |
| J853-CW-AC-516E | 684 | 514 | 2 | 300 | | 5 | - |
| J853-CW-AC-516F | 1069 | 514 | 3 | 300 | | 5 | - |



技术说明:

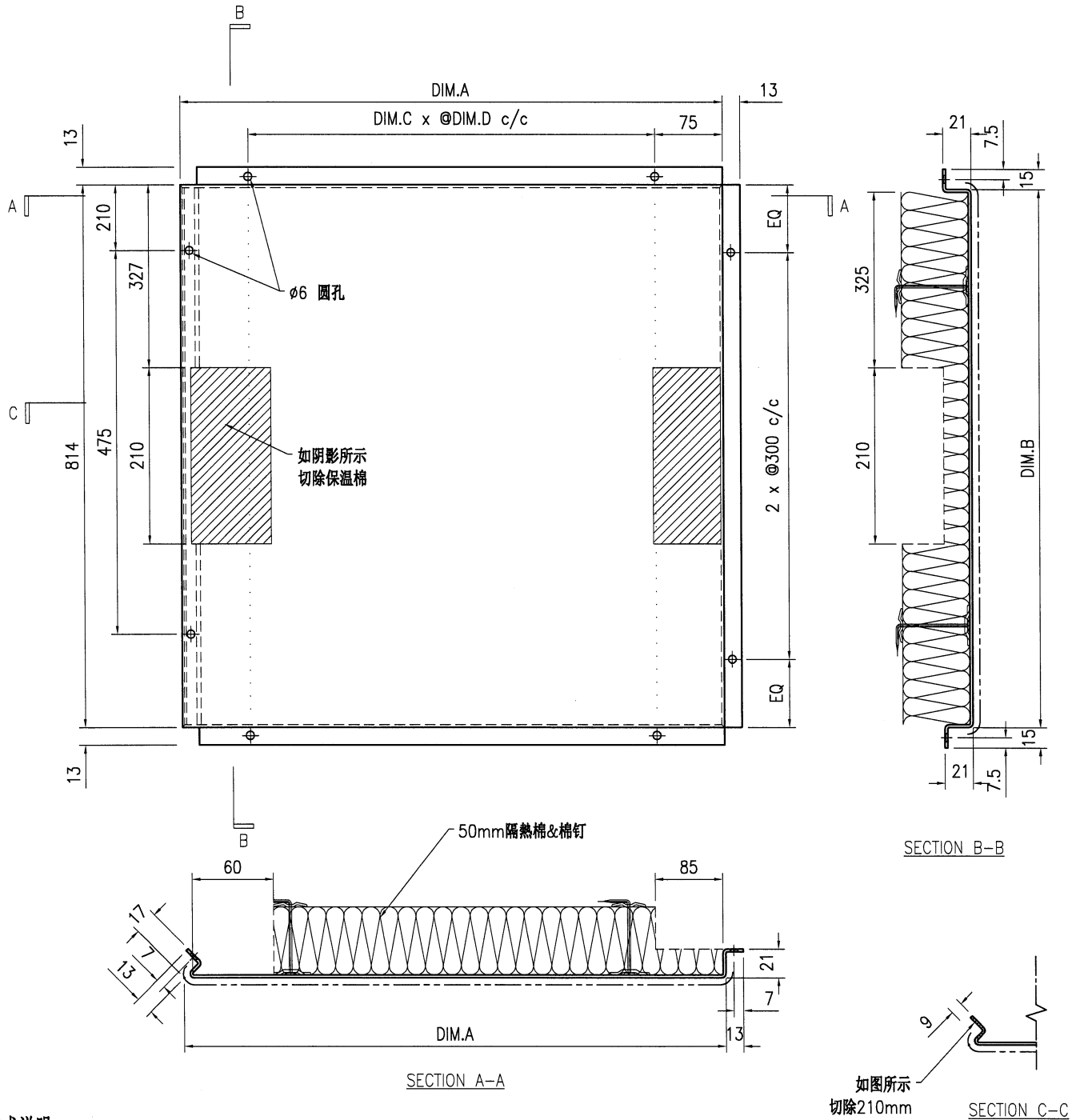
1. 板材折弯之前应进行压平调整, 不应有加工变形, 并应去除毛刺;
2. 外形尺寸允许偏差为 $\pm 0.5\text{mm}$, 折弯角度的允许偏差为 $\pm 0.5^\circ$; 孔位的允许偏差为 $\pm 0.3\text{mm}$, 孔距的允许偏差为 $\pm 0.3\text{mm}$, 累计偏差为 $\pm 0.5\text{mm}$;
3. 槽口、豁口的长宽边允许偏差为 $+0.5\text{mm}$, 中心线允许偏差都为 $\pm 0.5\text{mm}$;
4. " " 为外露喷涂装饰面, 应贴保护膜, 加工过程中不得破坏装饰面, 加工完毕须标示代号。



美特铝质有限公司
MIDI Aluminium Fabricator Ltd.


| | | | | | | | |
|-----|---------------|----|--------------------|---------|-----|----------------|---|
| 工程号 | J853 | 制图 | J.L. | 18/1/24 | 物料号 | J853-CW-AC-518 | |
| 地盘 | 香港延坪路 | 复核 | - | - | 图号 | J853-CW-AC-518 | |
| 版本 | | 名称 | 铝板加工图 | 批准 | - | 数量 | - |
| 日期 | | 材料 | 2mm 厚铝板 (3003 H14) | 单件面积(㎡) | - | 长度 | - |
| 采用 | 工厂 | 地盘 | √ | | | 宽度 | - |
| 颜色 | UCT542049SC-3 | | | | | | |

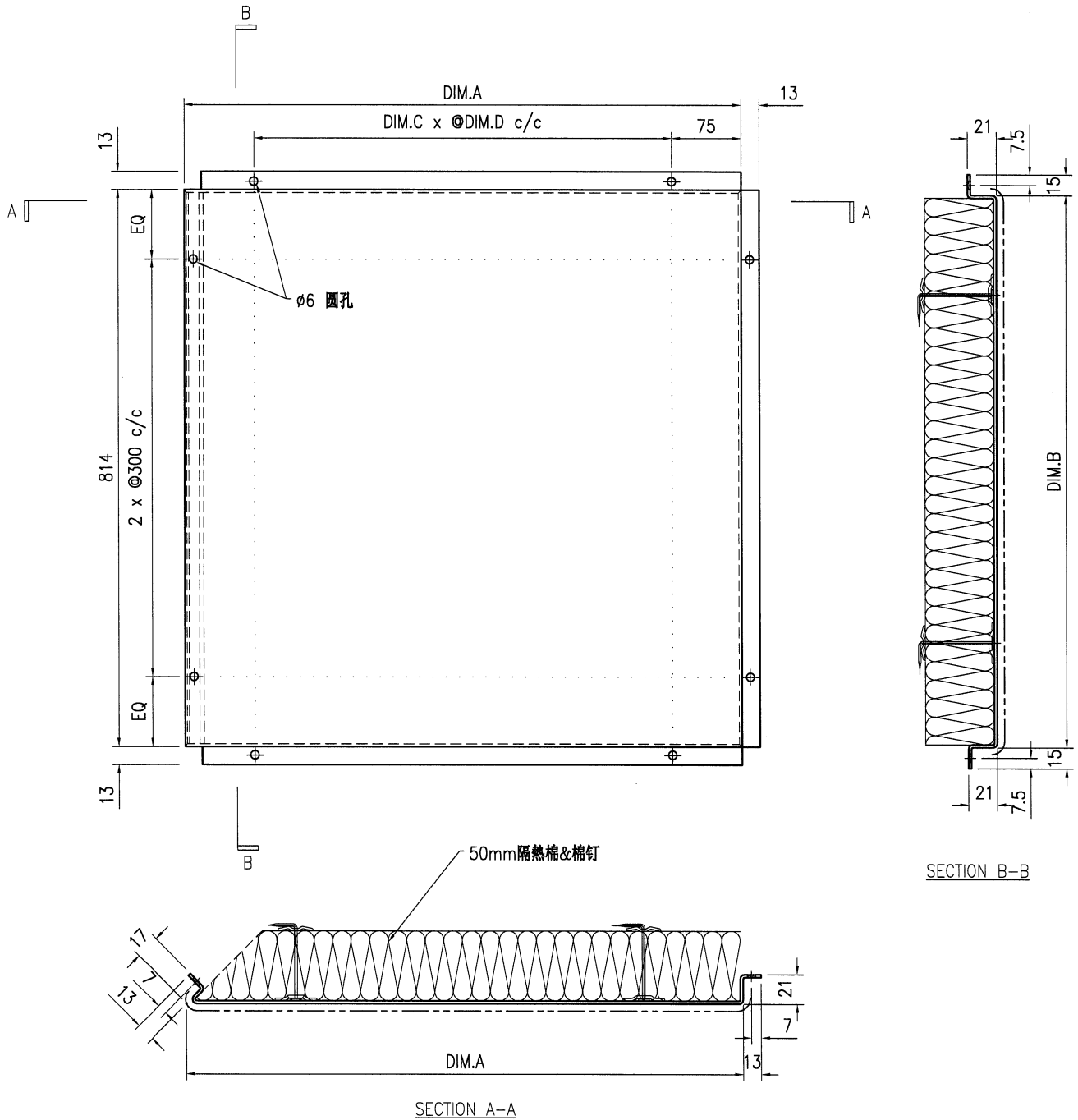
| 物料编号 | DIM.A | DIM.B | DIM.C | DIM.D | DIM.E | 数量 | 单件重量(kg) |
|-----------------|-------|-------|-------|-------|-------|----|----------|
| J853-CW-AC-518A | 1115 | 814 | 3 | 300 | | 4 | - |
| J853-CW-AC-518B | 915 | 814 | 3 | 250 | | 10 | - |



技术说明:

1. 板材折弯之前应进行压平调整, 不应有加工变形, 并应去除毛刺;
2. 外形尺寸允许偏差为 $\pm 0.5\text{mm}$, 折弯角度的允许偏差为 $\pm 0.5^\circ$; 孔位的允许偏差为 $\pm 0.3\text{mm}$, 孔距的允许偏差为 $\pm 0.3\text{mm}$, 累计偏差为 $\pm 0.5\text{mm}$;
3. 槽口、豁口的长宽边允许偏差为 $+0.5\text{mm}$, 中心线允许偏差都为 $\pm 0.5\text{mm}$;
4. "—————" 为外露喷涂装饰面, 应贴保护膜, 加工过程中不得破坏装饰面, 加工完毕须标示代号。

| | | | | | | | | |
|--|----------------------------|---------------------|-----------------|----------------------|-----------------|--------------|---|---------|
|  美特铝质 有限公司 MIDI Aluminium Fabricator Ltd. | | | | 工程号 J853 地盘 香港延坪路 | 制图 J.L. 复核 - | 18/1/24 - | 物料号 J853-CW-AC-519 图号 J853-CW-AC-519 | |
| 版本 日期 | 采用 颜色 | 工厂 UCT542049SC-3 | 地盘 ✓ | 名称 铝板加工图 | 批准 - | 数量 - | 长度 - | 宽度 - |
| 材料 2mm 厚铝板 (3003 H14) | 单件面积(m ²) - | 数量 5 | 单件重量(kg) - | | | | | |
| 物料编号 J853-CW-AC-519A J853-CW-AC-519B | DIM.A 1115 915 | DIM.B 814 814 | DIM.C 3 3 | DIM.D 300 250 | DIM.E - - | 数量 5 5 | 单件重量(kg) - - | |



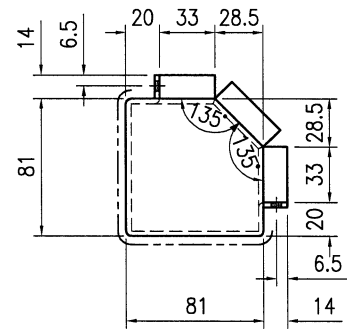
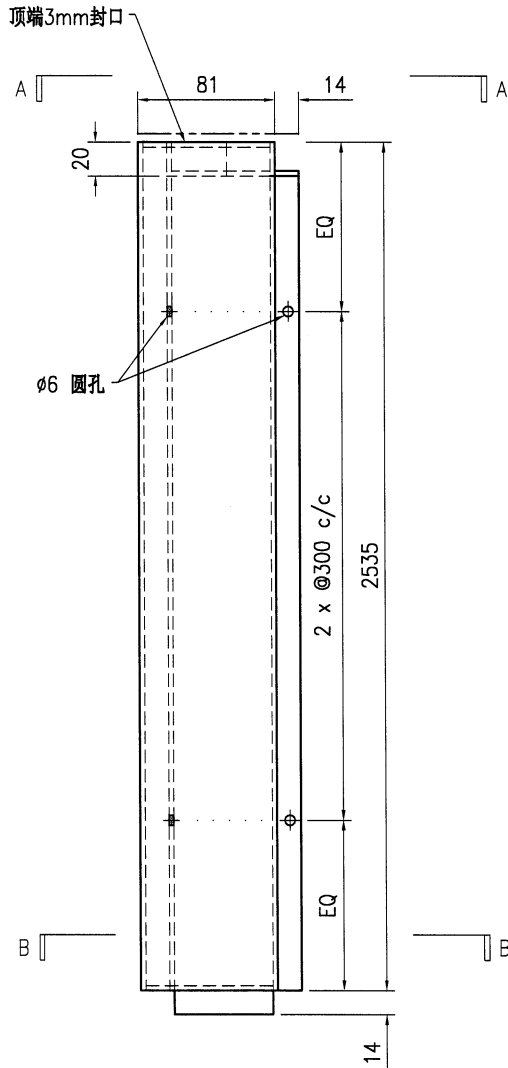
技术说明:

1. 板材折弯之前应进行压平调整, 不应有加工变形, 并应去除毛刺;
2. 外形尺寸允许偏差为 $\pm 0.5\text{mm}$, 折弯角度的允许偏差为 $\pm 0.5^\circ$; 孔位的允许偏差为 $\pm 0.3\text{mm}$, 孔距的允许偏差为 $\pm 0.3\text{mm}$, 累计偏差为 $\pm 0.5\text{mm}$;
3. 槽口、豁口的长宽边允许偏差为 $+0.5\text{mm}$, 中心线允许偏差都为 $\pm 0.5\text{mm}$;
4. "—————" 为外露喷涂装饰面, 应贴保护膜, 加工过程中不得破坏装饰面, 加工完毕须标示代号。

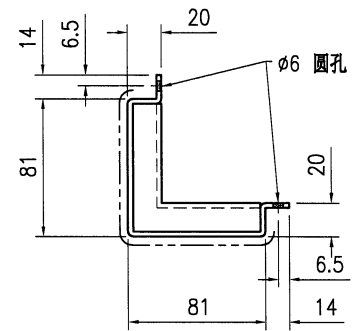


美特铝质有限公司
MIDI Aluminium Fabricator Ltd.

| | | | | | | | | | |
|-----|-------|----|--------------------|---------|-----|----------------|------|----|----|
| 工程号 | J853 | 制图 | J.L. | 18/1/24 | 物料号 | J853-CW-AC-521 | | | |
| 地盘 | 香港延坪路 | 复核 | - | - | 图号 | J853-CW-AC-521 | | | |
| 版本 | | 名称 | 铝板加工图 | 批准 | - | 数量 | 7 | | |
| 日期 | | 材料 | 3mm 厚铝板 (3003 H14) | 单件面积(㎡) | - | 长度 | 2535 | 宽度 | 95 |



SECTION A-A



SECTION B-B

技术说明:

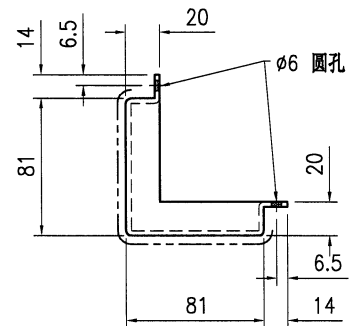
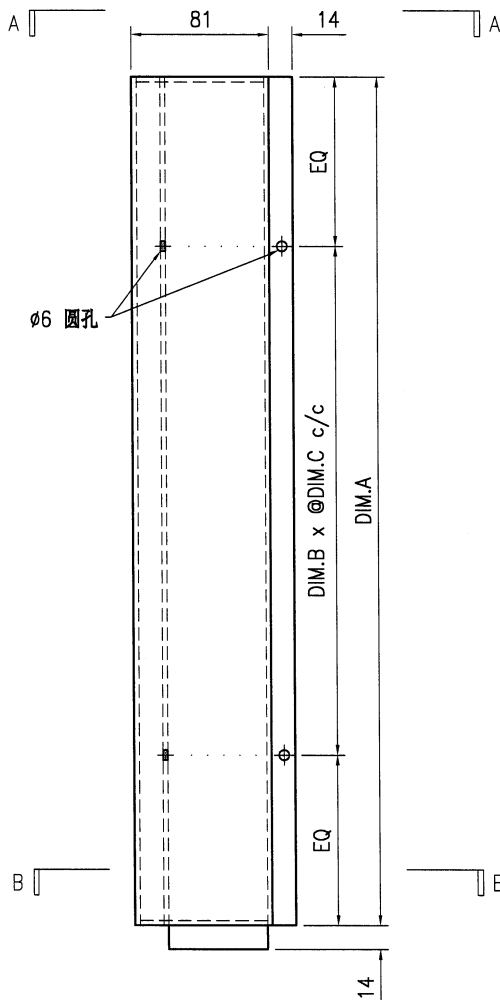
1. 板材折弯之前应进行压平调整, 不应有加工变形, 并应去除毛刺;
2. 外形尺寸允许偏差为 $\pm 0.5\text{mm}$, 折弯角度的允许偏差为 $\pm 0.5^\circ$; 孔位的允许偏差为 $\pm 0.3\text{mm}$, 孔距的允许偏差为 $\pm 0.3\text{mm}$, 累计偏差为 $\pm 0.5\text{mm}$;
3. 槽口、豁口的长宽边允许偏差为 $+0.5\text{mm}$, 中心线允许偏差都为 $\pm 0.5\text{mm}$;
4. " " 为外露喷涂装饰面, 应贴保护膜, 加工过程中不得破坏装饰面, 加工完毕须标示代号。



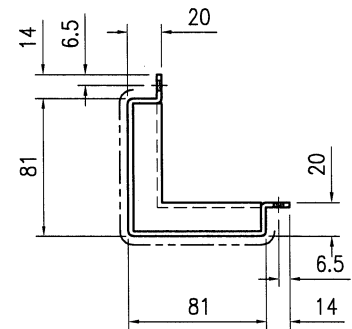
美特铝质有限公司
MIDI Aluminium Fabricator Ltd.

| | | | | | | | |
|-----|-------|----|--------------------|-----------------------|-----|----------------|---|
| 工程号 | J853 | 制图 | J.L. | 18/1/24 | 物料号 | J853-CW-AC-522 | |
| 地盘 | 香港延坪路 | 复核 | - | - | 图号 | J853-CW-AC-522 | |
| 版本 | | 名称 | 铝板加工图 | 批准 | - | 数量 | - |
| 日期 | | 材料 | 3mm 厚铝板 (3003 H14) | 单件面积(m ²) | - | 长度 | - |

| 物料编号 | DIM.A | DIM.B | DIM.C | DIM.D | DIM.E | 数量 | 单件重量(kg) |
|-----------------|-------|-------|-------|-------|-------|----|----------|
| J853-CW-AC-522A | 935 | 2 | 300 | | | 14 | - |
| J853-CW-AC-522B | 2535 | 8 | 300 | | | 7 | - |
| J853-CW-AC-522C | 285 | 1 | 200 | | | 7 | - |
| J853-CW-AC-522D | 2135 | 6 | 300 | | | 5 | - |



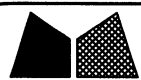
SECTION A-A



SECTION B-B

技术说明:

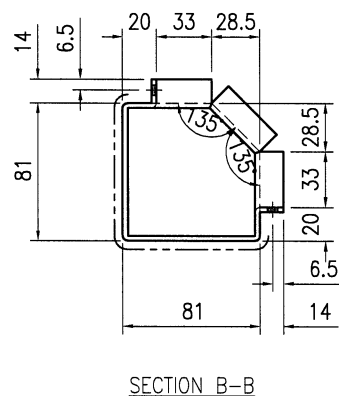
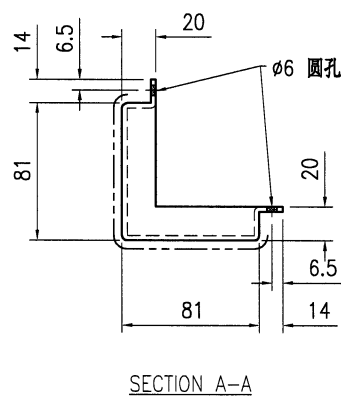
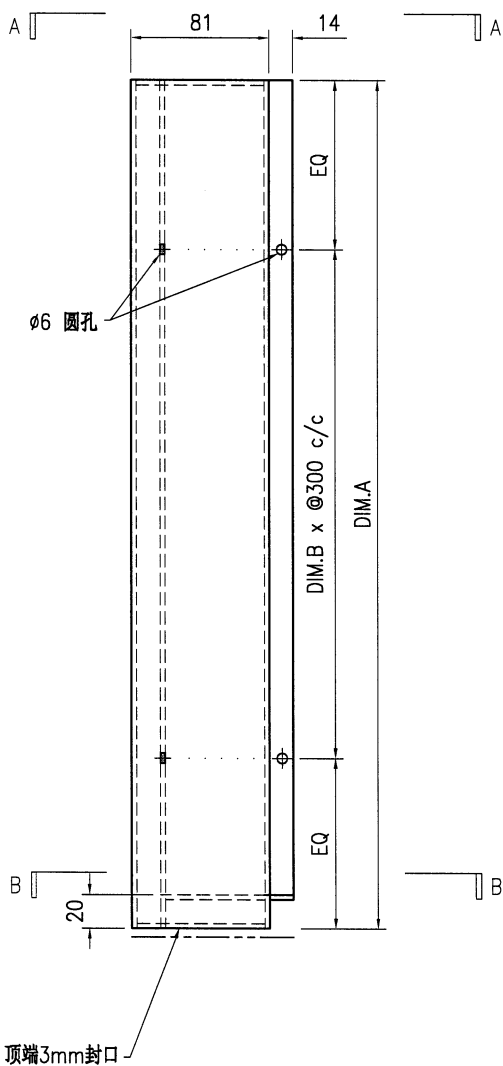
1. 板材折弯之前应进行压平调整, 不应有加工变形, 并应去除毛刺;
2. 外形尺寸允许偏差为±0.5mm, 折弯角度的允许偏差为±0.5°; 孔位的允许偏差为±0.3mm, 孔距的允许偏差为±0.3mm, 累计偏差为±0.5mm;
3. 槽口、豁口的长宽边允许偏差为+0.5mm, 中心线允许偏差都为±0.5mm;
4. " " 为外露喷涂装饰面, 应贴保护膜, 加工过程中不得破坏装饰面, 加工完毕须标示代号。



美特铝质 有限公司
MIDI Aluminium Fabricator Ltd.

| | | | | | | |
|-----|--------------------|-----------------------|------|---------|-----|----------------|
| 版本号 | J853 | 制图 | J.L. | 18/1/24 | 物料号 | J853-CW-AC-523 |
| 地盘 | 香港延坪路 | 复核 | - | - | 图号 | J853-CW-AC-523 |
| 名称 | 铝板加工图 | 批准 | - | - | 数量 | - |
| 材料 | 3mm 厚铝板 (3003 H14) | 单件面积(m ²) | - | - | 长度 | - |
| 宽度 | - | | | | | |

| 物料编号 | DIM.A | DIM.B | DIM.C | DIM.D | DIM.E | 数量 | 单件重量(kg) |
|-----------------|-------|-------|-------|-------|-------|----|----------|
| J853-CW-AC-523A | 2935 | 9 | | | | 2 | - |
| J853-CW-AC-523B | 985 | 3 | | | | 5 | - |



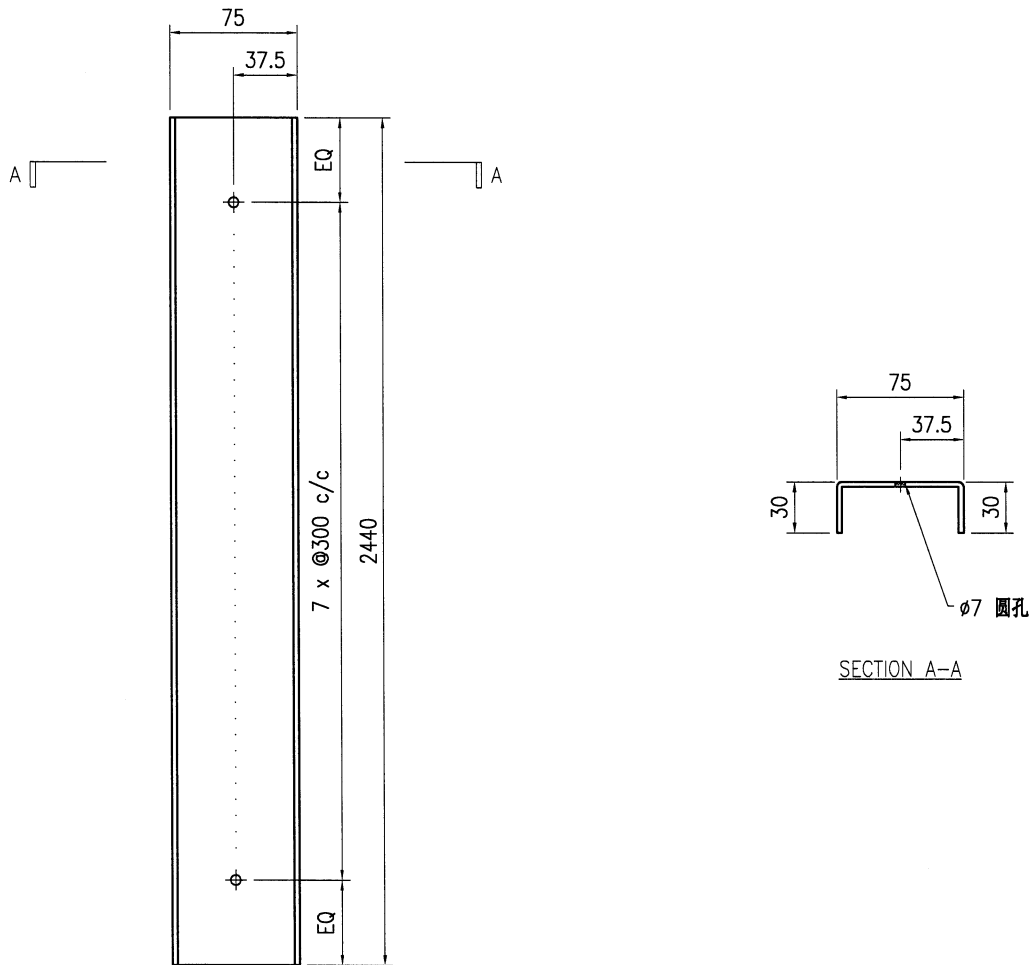
技术说明:

1. 板材折弯之前应进行压平调整, 不应有加工变形, 并应去除毛刺;
2. 外形尺寸允许偏差为 ± 0.5 mm, 折弯角度的允许偏差为 $\pm 0.5^\circ$; 孔位的允许偏差为 ± 0.3 mm, 孔距的允许偏差为 ± 0.3 mm, 累计偏差为 ± 0.5 mm;
3. 槽口、豁口的长宽边允许偏差为 $+0.5$ mm, 中心线允许偏差都为 ± 0.5 mm;
4. " "为外露喷涂装饰面, 应贴保护膜, 加工过程中不得破坏装饰面, 加工完毕须标示代号。




美特铝质有限公司
MIDI Aluminium Fabricator Ltd.

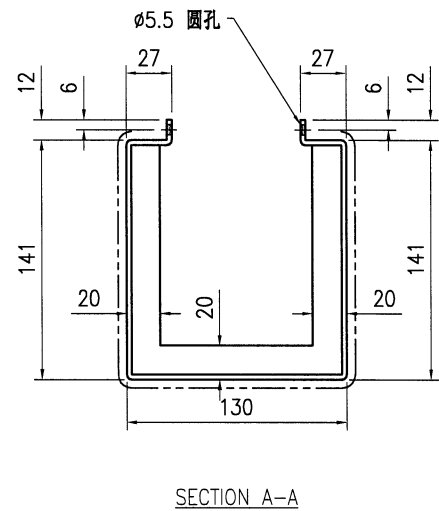
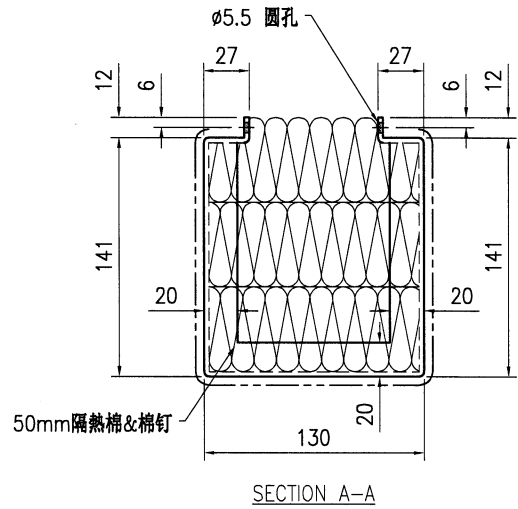
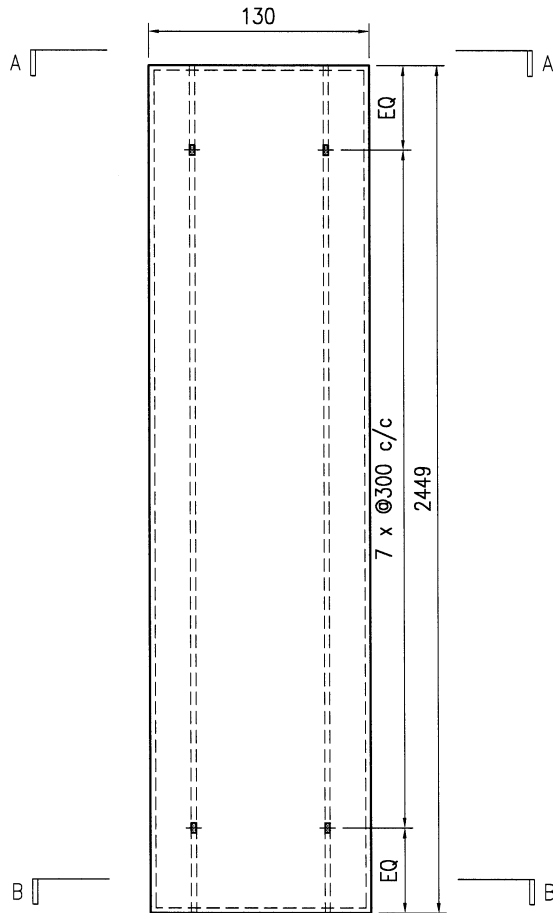
| | | | | | | | | | |
|-----|-------|----|--------------------|-----------------------|-----|----------------|------|----|----|
| 工程号 | J853 | 制图 | J.L. | 18/1/24 | 物料号 | J853-CW-AC-524 | | | |
| 地盘 | 香港延坪路 | 复核 | - | - | 图号 | J853-CW-AC-524 | | | |
| 版本 | | 名称 | 铝板加工图 | 批准 | - | 数量 | 5 | | |
| 日期 | | 材料 | 3mm 厚铝板 (3003 H14) | 单件面积(m ²) | - | 长度 | 2440 | 宽度 | 75 |



技术说明:

1. 板材折弯之前应进行压平调整, 不应有加工变形, 并应去除毛刺;
2. 外形尺寸允许偏差为 $\pm 0.5\text{mm}$, 折弯角度的允许偏差为 $\pm 0.5^\circ$; 孔位的允许偏差为 $\pm 0.3\text{mm}$, 孔距的允许偏差为 $\pm 0.3\text{mm}$, 累计偏差为 $\pm 0.5\text{mm}$;
3. 槽口、豁口的长宽边允许偏差为 $+0.5\text{mm}$, 中心线允许偏差都为 $\pm 0.5\text{mm}$;
4. "—————" 为外露喷涂装饰面, 应贴保护膜, 加工过程中不得破坏装饰面, 加工完毕须标示代号。

| | | | | | | | |
|--|----------|-------------------------|--|-----------------------------------|---------------------------------|-----------------|---|
|  美特铝质 有限公司 MIDI Aluminium Fabricator Ltd. | | | | 工程号 J853 地盘 香港延坪路 | 制图 J.L. 复核 - | 18/1/24 - | 物料号 J853-CW-AC-525 图号 J853-CW-AC-525 |
| 版本 日期 | 采用 颜色 | 工厂 EC-DG-D334232-ZD1 | 地盘 <input checked="" type="checkbox"/> | 名称 铝板加工图 材料 3mm 厚铝板 (3003 H14) | 批准 - 单件面积(m ²) - | 数量 5 长度 2449 | 宽度 130 |



技术说明:

1. 板材折弯之前应进行压平调整, 不应有加工变形, 并应去除毛刺;
2. 外形尺寸允许偏差为 ± 0.5 mm, 折弯角度的允许偏差为 $\pm 0.5^\circ$; 孔位的允许偏差为 ± 0.3 mm, 孔距的允许偏差为 ± 0.3 mm, 累计偏差为 ± 0.5 mm;
3. 槽口、豁口的长宽边允许偏差为 $+0.5$ mm, 中心线允许偏差都为 ± 0.5 mm;
4. "———" 为外露喷涂装饰面, 应贴保护膜, 加工过程中不得破坏装饰面, 加工完毕须标示代号。