

工程指示 / 要求簡箋 ENGINEER INSTRUCTIONS(E.I.)

工程指示編號:	EI- 7205	修改版本:	-
	HK- /		
工程編號:	J 853	工程名稱:	延坪道 (第2期)
收件人:	Maggie Lo	發件人:	Joe Chan
工程項目:	Row A 後裝窗地盤用 玻璃(HA1,3,5,6,7&8) (紅色)	日期:	02/01/2024

<input type="checkbox"/> 原合約工程包	<input type="checkbox"/> 原合約工程加 / 減賬 QT-	<input type="checkbox"/> 新工程報價 QT-
---------------------------------	--	------------------------------------

信件批核號碼/圖紙參考編號:	批核模具圖紙編號:
客戶指示附件:	管理內部批簽署:

<input type="checkbox"/> 初步鋁料 B.M.	<input type="checkbox"/> 加工拆圖, 然後生產	<input type="checkbox"/> 尺寸表
<input type="checkbox"/> 正式鋁料 B.M.	<input type="checkbox"/> 技術上資料/指示	<input type="checkbox"/> 報價
<input type="checkbox"/> 配件 B.M.	<input type="checkbox"/> 樣辦或貨品說明書	<input type="checkbox"/> 分判合約
<input type="checkbox"/> 其他:		

內容: 請依附件資料, 生產玻璃, 送地盤.

- 按 BS EN 14179-1:2016 標準熱浸.
- 請分層包裝出貨
- 標籤要求: ① 玻璃編號, ② 尺寸, ③ 標示室外面, ④ 使用獨立屋編號, ⑤ 使用樓層.

完成上列要求日期: 1/3/2024

國內

<input type="checkbox"/> 生產技術總監	<input type="checkbox"/> 連附件	<input type="checkbox"/> 技術部	<input type="checkbox"/> 連附件	<input type="checkbox"/> 生產部	<input type="checkbox"/> 連附件
<input type="checkbox"/> 採購部	<input type="checkbox"/> 連附件	<input type="checkbox"/> 生產統籌部	<input type="checkbox"/> 連附件	<input type="checkbox"/> 報關組	<input type="checkbox"/> 連附件
<input type="checkbox"/> 質檢部	<input type="checkbox"/> 連附件	<input type="checkbox"/> 會計部	<input type="checkbox"/> 連附件	<input type="checkbox"/> 機械設計部	<input type="checkbox"/> 連附件
<input type="checkbox"/> 香港辦	<input type="checkbox"/> 連附件	<input type="checkbox"/> 其他:			

香港

<input type="checkbox"/> 行政部	<input type="checkbox"/> 連附件	<input type="checkbox"/> 會計部	<input type="checkbox"/> 連附件	<input type="checkbox"/> 統籌部	<input type="checkbox"/> 連附件	<input type="checkbox"/> 工程部	<input type="checkbox"/> 連附件
<input type="checkbox"/> 採購部	<input type="checkbox"/> 連附件	<input type="checkbox"/> QS部	<input type="checkbox"/> 連附件	<input checked="" type="checkbox"/> 地盤管理	<input checked="" type="checkbox"/> 連附件	<input type="checkbox"/> 維修部	<input type="checkbox"/> 連附件

*發件人簽署:		*組別成員批核簽署:	
傳遞編號:		項目經理簽署:	

廠用玻璃B.M.表

工程號:	J853	計算:	劉龍浩	日期:	2023.12.20	送呈:	胡哥
地盤名稱:	延坪道2期	核對:	謝永林	日期:	2023.12.25	副本:	
項目類別:	后裝門窗 (HAF#)	批准:		A/C Code:			

序號	修改內容	玻璃編號	顏色與類型	厚度 (mm)	玻璃尺寸		數量	總面積 平方米	使用位置	樓層
					寬度W (mm)	高度H (mm)				
1		GL01-101	GL01	32	1206	633	2	1.527	J853-SD-HIW-2102	G/F
2		GL01-101	GL01	32	1206	633	4	3.054	J853-SD-HIW-2102	G/F
3		GL01-101	GL01	32	1206	633	2	1.527	J853-SD-HIW-2102	G/F
4		GL01-101	GL01	32	1206	633	4	3.054	J853-SD-HIW-2102	G/F
5		GL01-102	GL01	32	815	3520	4	11.475	J853-SD-HIW-2103	G/F
6		GL01-102	GL01	32	815	3520	8	22.950	J853-SD-HIW-2103	G/F
7		GL01-103	GL01	32	562	2365	1	1.329	J853-SD-HIW-2104	G/F
8		GL01-103	GL01	32	562	2365	1	1.329	J853-SD-HIW-2104	G/F
9		GL01-103a	GL01	32	562	2365	1	1.329	J853-SD-HIW-2104	G/F
10		GL01-103a	GL01	32	562	2365	3	3.987	J853-SD-HIW-2104	G/F
11		GL01-104	GL01	32	548	1964	1	1.076	J853-SD-HIW-2105	1/F
12		GL01-104	GL01	32	548	1964	1	1.076	J853-SD-HIW-2105	1/F
13		GL01-104a	GL01	32	498	1939	1	0.966	J853-SD-HIW-2105	1/F
14		GL01-104a	GL01	32	498	1939	3	2.897	J853-SD-HIW-2105	1/F
15		GL01-105	GL01	32	548	2265.5	1	1.241	J853-SD-HIW-2106	G/F
16		GL01-105	GL01	32	548	2265.5	1	1.241	J853-SD-HIW-2106	G/F
17		GL01-105a	GL01	32	498	2265.5	1	1.128	J853-SD-HIW-2106	G/F
18		GL01-105a	GL01	32	498	2265.5	3	3.385	J853-SD-HIW-2106	G/F
19		GL01-105a	GL01	32	498	2265.5	2	2.256	J853-SD-HIW-2107	G/F
20		GL01-105a	GL01	32	498	2265.5	4	4.513	J853-SD-HIW-2107	G/F

總計玻璃數量 (塊):

234

總計玻璃面積 (平方米):

243.756

正式數

修改版次:

總計玻璃數量(塊):

234

總計玻璃面積(平方米):

243.756

正式數

序號	修改內容	玻璃編號	顏色與類型	厚度 (mm)	玻璃尺寸		數量	總面積		使用位置	樓層
					寬度W (mm)	高度H (mm)		平方米	平方米		
21		GL01-106	GL01	32	548	1915.5	1	1.050		J853-SD-HIW-2111	2/F
22		GL01-106	GL01	32	548	1915.5	1	1.050		J853-SD-HIW-2111	2/F
23		GL01-106a	GL01	32	498	1915.5	1	0.954		J853-SD-HIW-2111	2/F
24		GL01-106a	GL01	32	498	1915.5	3	2.862		J853-SD-HIW-2111	2/F
25		GL01-107	GL01	32	548	1915.5	1	1.050		J853-SD-HIW-2112	2/F
26		GL01-107	GL01	32	548	1915.5	1	1.050		J853-SD-HIW-2112	2/F
27		GL01-107a	GL01	32	498	1915.5	1	0.954		J853-SD-HIW-2112	2/F
28		GL01-107a	GL01	32	498	1915.5	3	2.862		J853-SD-HIW-2112	2/F
29		GL01-108	GL01	32	562	2505	2	2.816		J853-SD-HIW-2113	3/F
30		GL01-108	GL01	32	562	2505	4	5.631		J853-SD-HIW-2113	3/F
31		GL01-109	GL01	32	564.5	2505	4	5.656		J853-SD-HIW-2114	3/F
32		GL01-109	GL01	32	564.5	2505	8	11.313		J853-SD-HIW-2114	3/F
33		GL01-110	GL01	32	562	2090	2	2.349		J853-SD-HIW-2114	R/F
34		GL01-110	GL01	32	562	2090	4	4.698		J853-SD-HIW-2114	R/F
35		GL01-111	GL01	32	548	1915.5	2	2.099		J853-SD-HIW-2121	1/F
36		GL01-111	GL01	32	548	1915.5	2	2.099		J853-SD-HIW-2121	2/F
37		GL01-111	GL01	32	548	1915.5	3	3.149		J853-SD-HIW-2121	1/F
38		GL01-111	GL01	32	548	1915.5	3	3.149		J853-SD-HIW-2121	2/F
39		GL01-112	GL01	32	498	1890.5	1	0.941		J853-SD-HIW-2122	1/F
40		GL01-112	GL01	32	498	1890.5	1	0.941		J853-SD-HIW-2122	2/F
41							合計:	96	128.015		



美特鋁質 有限公司
MDI Aluminium Fabricator Ltd.
廠用玻璃B.M.表

工程號:	J853	計算:	劉龍浩	日期:	2023.12.20	送呈:	胡哥
地盤名稱:	延坪道2期	核對:	謝永林	日期:	2023.12.25	副本:	
項目類別:	后裝門窗 (AA#)	批准:		A/C Code:			

序號	修改內容	玻璃編號	顏色與類型	厚度 (mm)	玻璃尺寸		數量	總面積		使用位置	樓層
					寬度W (mm)	高度H (mm)		平方米	平方米		
修改版次: 總計玻璃數量 (塊): 234 總計玻璃面積 (平方米): 243.756 正式數											
42		GL06-101	GL06	34	1769.5	655	4	4.636		J853-SD-HIW-2101	G/F
43		GL06-101	GL06	34	1769.5	655	8	9.272		J853-SD-HIW-2101	G/F
44		GL06-102	GL06	34	1217	2784.5	2	6.777		J853-SD-HIW-2102	G/F
45		GL06-102	GL06	34	1217	2784.5	4	13.555		J853-SD-HIW-2102	G/F
46		GL06-102	GL06	34	1217	2784.5	2	6.777		J853-SD-HIW-2102	G/F
47		GL06-102	GL06	34	1217	2784.5	4	13.555		J853-SD-HIW-2102	G/F
48		GL06-103	GL06	34	469.5	3709	4	6.966		J853-SD-HIW-2103	G/F
49		GL06-103	GL06	34	469.5	3709	8	13.931		J853-SD-HIW-2103	G/F
50		GL06-104	GL06	34	1819.5	555	4	4.039		J853-SD-HIW-2108	1/F
51		GL06-104	GL06	34	1819.5	555	8	8.079		J853-SD-HIW-2108	1/F
52		GL06-105	GL06	34	1547	2582.5	2	7.990		J853-SD-HIW-2114	3/F
53		GL06-105	GL06	34	1547	2582.5	4	15.981		J853-SD-HIW-2114	3/F
54		GL06-106	GL06	34	548	709	1	0.389		J853-SD-HIW-2106	G/F
55		GL06-106	GL06	34	548	709	1	0.389		J853-SD-HIW-2106	G/F
56		GL06-106a	GL06	34	498	684	1	0.341		J853-SD-HIW-2106	G/F
57		GL06-106a	GL06	34	498	684	3	1.022		J853-SD-HIW-2106	G/F
58		GL06-106a	GL06	34	498	684	2	0.681		J853-SD-HIW-2107	G/F
59		GL06-106a	GL06	34	498	684	4	1.363		J853-SD-HIW-2107	G/F
60						合計:	66	115.742			

工程號:	J853	計算:	劉龍浩	日期:	2023.12.20	送呈:	胡哥
地盤名稱:	延坪道2期	核對:	謝永林	日期:	2023.12.25	副本:	
項目類別:	后裝門窗 (AA排)	批准:				A/C Code:	

修改版本: 總計玻璃數量 (塊): 234 總計玻璃面積 (平方米): 243.756 正式數

序號	修改內容	玻璃編號	顏色與類型	厚度 (mm)	玻璃尺寸		數量	總面積		使用位置	樓層
					寬度W (mm)	高度H (mm)		平方米			
61		PD1-01	PD1	30	808	2400	24	46.541		J853-SD-HIW-2101	G/F
62		PD1-02	PD1	30	1757	2650	12	55.873		J853-SD-HIW-2108	1/F
63		PD1-03	PD1	30	1336	2888	36	138.901		J853-SD-HIW-2115	3/F
64							合計:	72	241.315		

- 加工注意事項/玻璃類型描述:
- (1).本表中玻璃采用三鑫公司產玻璃，樣板代號亦為三鑫產品代號。
 - (2).本表中所有玻璃對角線尺寸偏差要求不超過負2mm。
 - (3).本表中玻璃要求粗磨邊處理並倒棱角，攔河玻璃頂底要精磨邊，而所有玻璃之入爐方向需保持一致。
 - (4).本表中所有玻璃成品均需做雙面保護，用透明靜電膠紙加四周一寸PK白膠紙做雙面加固保護處理。
 - (5).本表中所有玻璃成品均需注明室內外及其玻璃編號/使用位置/樓層，以便識別。

G01: 10mm HS. +12mm AIR GAP+10mm Tempered I.G.U.
 G06: 10mm HS. +12mm AIR GAP+12mm Tempered I.G.U.
 PD1: 10mm Tempered + 12mm AIR GAP + 8mm Tempered IGIU

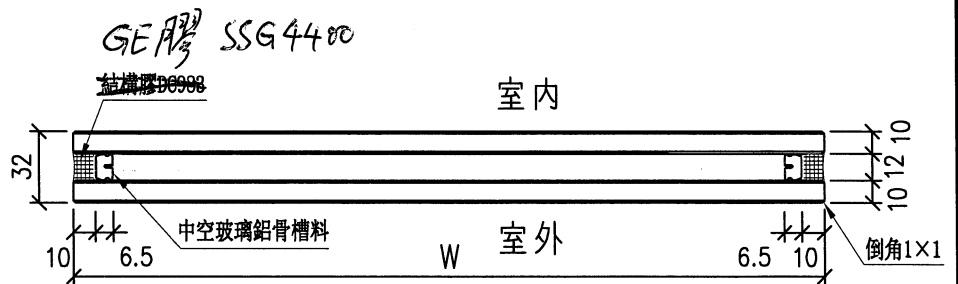
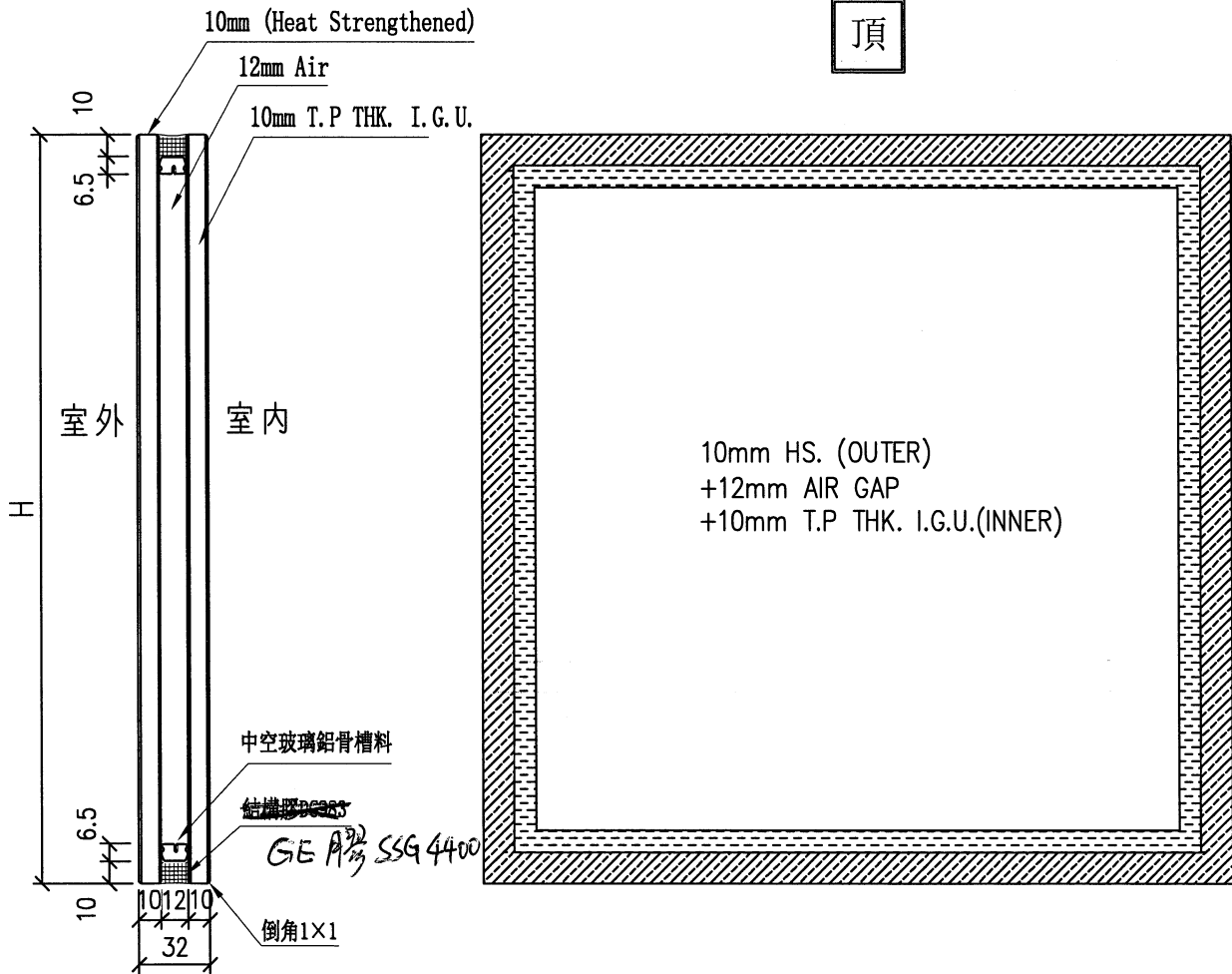


美特鋁質有限公司
MIDI Aluminium Fabricator Ltd.

類別		物料號	
制圖	謝永林	2023.12.21	圖號 GL01
修改			
日期			
復核	謝永林	2023.12.21	數量 見BOM表
批准			位置 見BOM表

Sample no.: D21031909

頂



工程號	J-853	地盤	九龍延坪道	附 件
名稱	玻璃加工圖 (生窗/FD/GD)		採用	
材料			地盤	
顏色	10mm HS. +12mm AIR GAP+10mm T.P THK. I.G.U.		工廠	

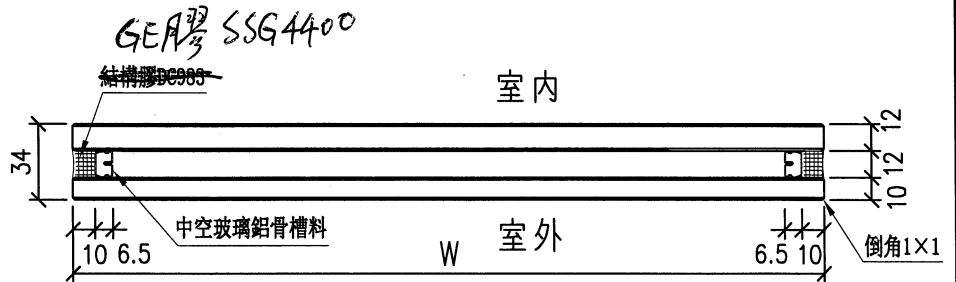
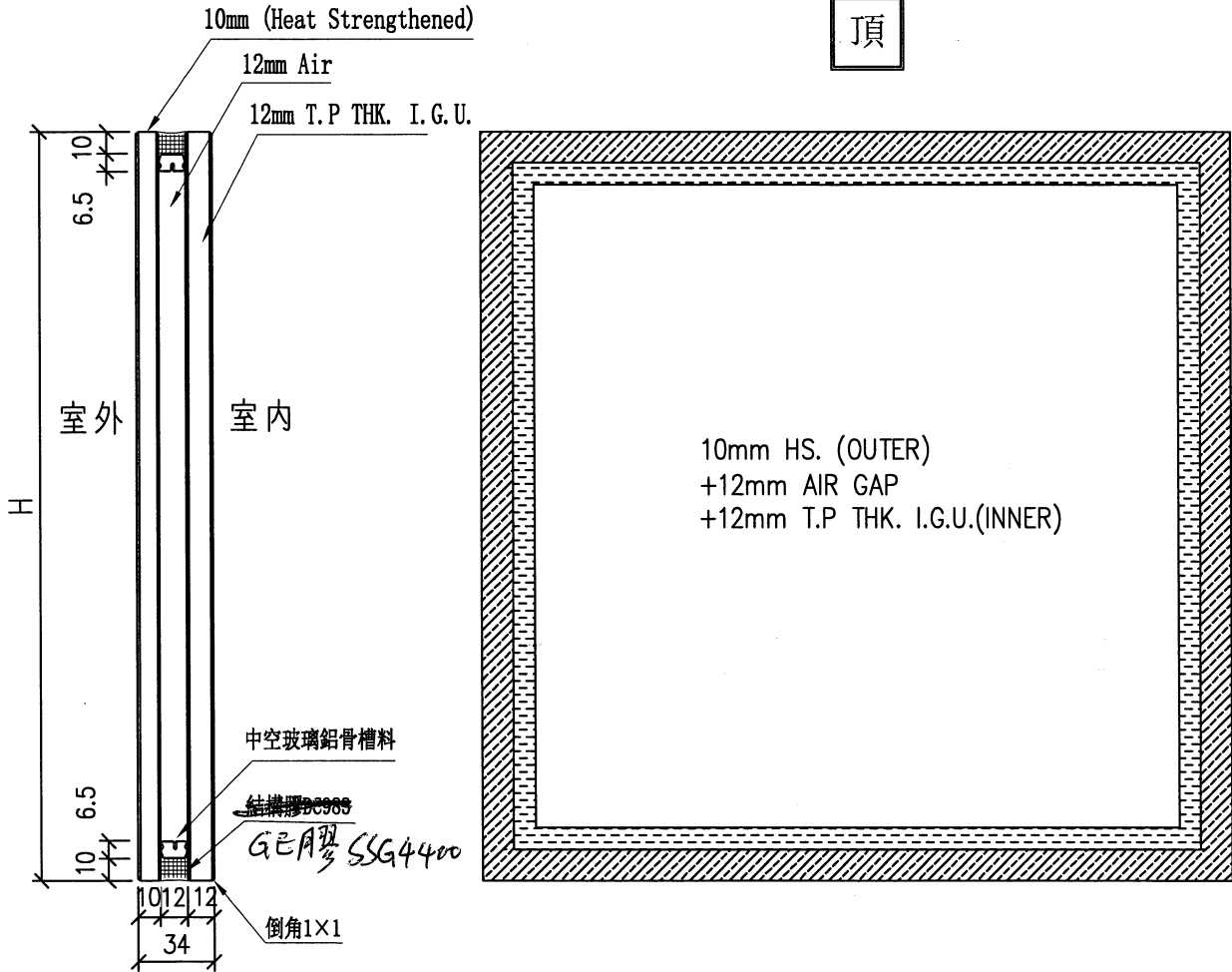


美特鋁質有限公司
MIDI Aluminium Fabricator Ltd.

類別		物料號	
制圖	謝永林	2023.12.21	圖號 GL06
修改		復核	謝永林
日期		批准	
		數量	見BOM表
		位置	見BOM表

Sample no: D21031911

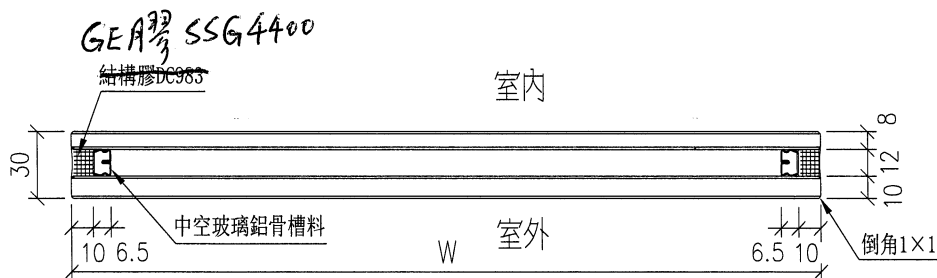
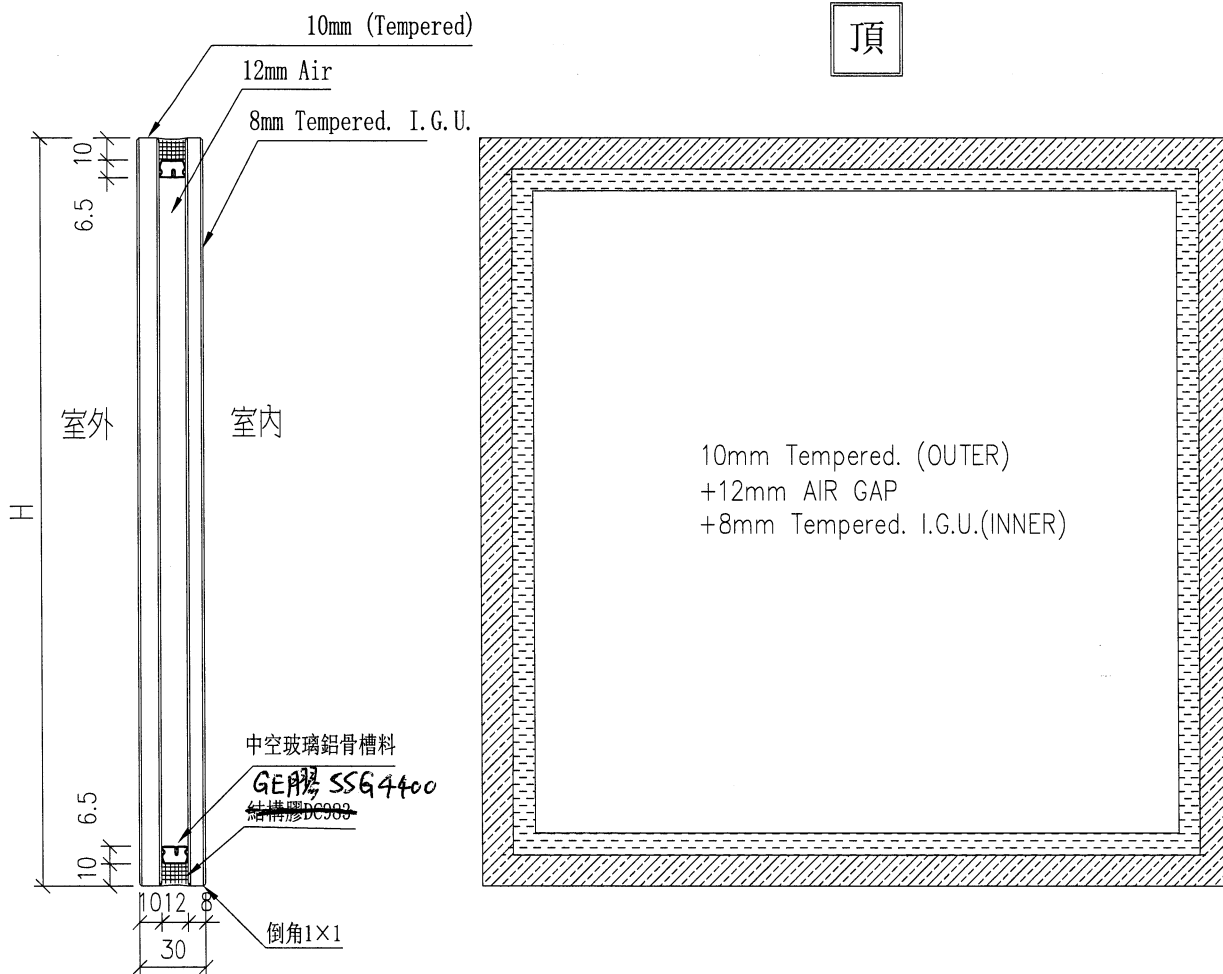
頂




工程號	J-853	地盤	九龍延坪道	附 件
名稱	玻璃加工圖 (大梗窗玻璃+小梗窗玻璃)		採用	
材料			地盤	
顏色	10mm HS. +12mm AIR GAP+12mm T.P THK. I.G.U.		工廠	

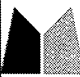
 美特鋁質 有限公司 MIDI Aluminium Fabricator Ltd.				類別		物料號	
修改				制圖	謝永林	2023.12.21	圖號 PD1
日期				復核	謝永林	2023.12.21	數量 見BOM表
				批准			位置 見BOM表

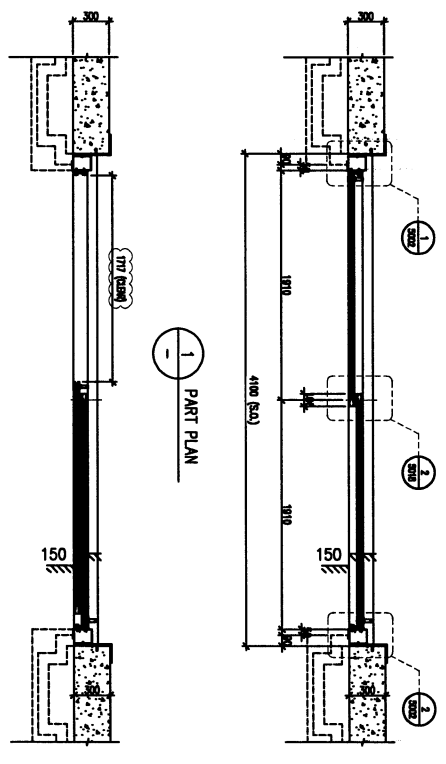
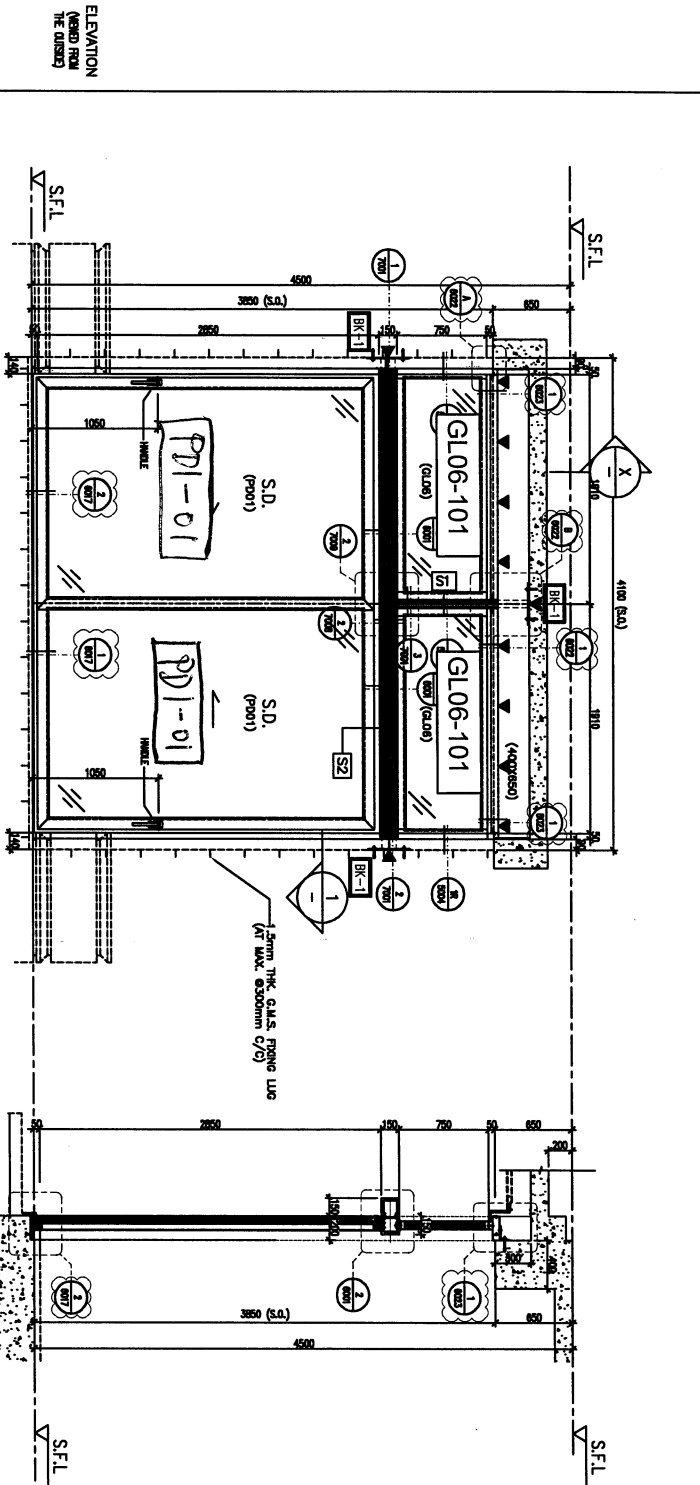
Sample no.: D21040670



工程號	J-853	地盤	九龍延坪道	附 件
名稱	玻璃加工圖(趟門)		採用	
材料			地盤	
顏色	10mm Tempered. +12mm AIR GAP+8mm Tempered I.G.U.		工廠	

 美特鋁質 有限公司 MIDI Aluminium Fabricator Ltd.			胡哥	<h2 style="margin: 0;">分屋數量表</h2>					
廠用玻璃B.M.表									
修改版次：			正式數						
序號	修改內容	玻璃圖號	樓層	HA1	HA3	HA5	HA6	HA7	HA8
1		GL01-101	G/F					1	1
2		GL01-101	G/F	1	1	1	1		
3		GL01-101	G/F					1	1
4		GL01-101	G/F	1	1	1	1		
5		GL01-102	G/F					2	2
6		GL01-102	G/F	2	2	2	2		
7		GL01-103	G/F					1	
8		GL01-103	G/F				1		
9		GL01-103a	G/F						1
10		GL01-103a	G/F	1	1	1			
11		GL01-104	1/F					1	
12		GL01-104	1/F				1		
13		GL01-104a	1/F						1
14		GL01-104a	1/F	1	1	1			
15		GL01-105	G/F					1	
16		GL01-105	G/F				1		
17		GL01-105a	G/F						1
18		GL01-105a	G/F	1	1	1			
19		GL01-105a	G/F					1	1
20		GL01-105a	G/F	1	1	1	1		
21		GL01-106	2/F					1	
22		GL01-106	2/F				1		
23		GL01-106a	2/F						1
24		GL01-106a	2/F	1	1	1			
25		GL01-107	2/F					1	
26		GL01-107	2/F				1		
27		GL01-107a	2/F						1
28		GL01-107a	2/F	1	1	1			
29		GL01-108	3/F					1	1
30		GL01-108	3/F	1	1	1	1		

 美特鋁質 有限公司 MIDI Aluminium Fabricator Ltd. 廠用玻璃B.M.表			胡哥	<h2 style="margin: 0;">分屋數量表</h2>					
修改版次：			正式數						
序號	修改內容	玻璃圖號	樓層						
31		GL01-109	3/F					2	2
32		GL01-109	3/F	2	2	2	2		
33		GL01-110	R/F					1	1
34		GL01-110	R/F	1	1	1	1		
35		GL01-111	1/F					1	1
36		GL01-111	2/F					1	1
37		GL01-111	1/F	1		1	1		
38		GL01-111	2/F	1		1	1		
39		GL01-112	1/F		1				
40		GL01-112	2/F		1				
41		GL06-101	G/F					2	2
42		GL06-101	G/F	2	2	2	2		
43		GL06-102	G/F					1	1
44		GL06-102	G/F	1	1	1	1		
45		GL06-102	G/F					1	1
46		GL06-102	G/F	1	1	1	1		
47		GL06-103	G/F					2	2
48		GL06-103	G/F	2	2	2	2		
49		GL06-104	1/F					2	2
50		GL06-104	1/F	2	2	2	2		
51		GL06-105	3/F					1	1
52		GL06-105	3/F	1	1	1	1		
53		GL06-106	G/F					1	
54		GL06-106	G/F				1		
55		GL06-106a	G/F						1
56		GL06-106a	G/F	1	1	1			
57		GL06-106a	G/F					1	1
58		GL06-106a	G/F	1	1	1	1		
59		PD1-01	G/F	4	4	4	4	4	4
60		PD1-02	1/F	2	2	2	2	2	2
61		PD1-03	3/F	6	6	6	6	6	6



PROVIDED	
GLAZING AREA	11.29 m ²
OPENABLE AREA	4.81 m ²
FREE AREA	- %

- LEGEND:
- BR-1 200x200mm THE GLAZ. FRAME / M
 - BR-2 200x200mm THE GLAZ. FRAME / M
 - BR-3 200x200mm THE GLAZ. FRAME / M
 - BR-4 200x200mm THE GLAZ. FRAME / M
 - BR-5 200x200mm THE GLAZ. FRAME / M
 - BR-6 200x200mm THE GLAZ. FRAME / M
 - BR-7 200x200mm THE GLAZ. FRAME / M
 - BR-8 200x200mm THE GLAZ. FRAME / M
 - BR-9 200x200mm THE GLAZ. FRAME / M
 - BR-10 200x200mm THE GLAZ. FRAME / M

WINDOW MARK	HOUSE TYPE	LOCATION	MATERIALS	GLAZING	QUANTITY	HANDLES
GL06-101	A - G/F LIVING & DINNING	AL1	PD01, GL06	2 NOS. OF SCHUCO HANDLE - MODEL NO. 247224	2 NOS. OF SCHUCO HANDLE - MODEL NO. 247224	
GL06-102	A1 - G/F LIVING & DINNING	AL1	PD01, GL06	5 NOS. OF SCHUCO HANDLE - MODEL NO. 247224	5 NOS. OF SCHUCO HANDLE - MODEL NO. 247224	

CLIENT: SHIMAO GROUP HOLDINGS LIMITED
ARCHITECT: SHIMAO GROUP HOLDINGS LIMITED
STRUCTURAL ENGINEER: C/M WONG & ASSOCIATES LTD
FRAME CONSULTANT: MENYARD
DATE: 30-MAR-23 **SCALE:** 1:40 (A3)
DRAWN BY: Aching **CHECKED BY:** [Signature]
PROJECT: PROPOSED RESIDENTIAL DEVELOPMENT AT N.K.L.L. 6542 YIN PING ROAD KOWLOON
DATE: 30-MAR-23 **SCALE:** 1:40 (A3)
DRAWN BY: Aching **CHECKED BY:** [Signature]

SLA REF :

CLIENT : SHIMAO GROUP HOLDINGS LIMITED

ARCHITECT : 瑞興建築有限公司
RUI HING CONSTRUCTION CO LTD

STRUCTURAL ENGINEER : C/M WONG & ASSOCIATES LTD
黃亞明建築工程師有限公司

FRAME CONSULTANT : MENYARD

NOTE : DIMENSIONS ARE IN MM.
1. ALL DIMENSIONS ARE MEASD FROM OUTSIDE.
2. ALL DIMENSIONS TO BE VERRIED ON SITE BEFORE FOUNDATION.
3. ALL DIMENSIONS TO BE VERRIED ON SITE BEFORE FOUNDATION.

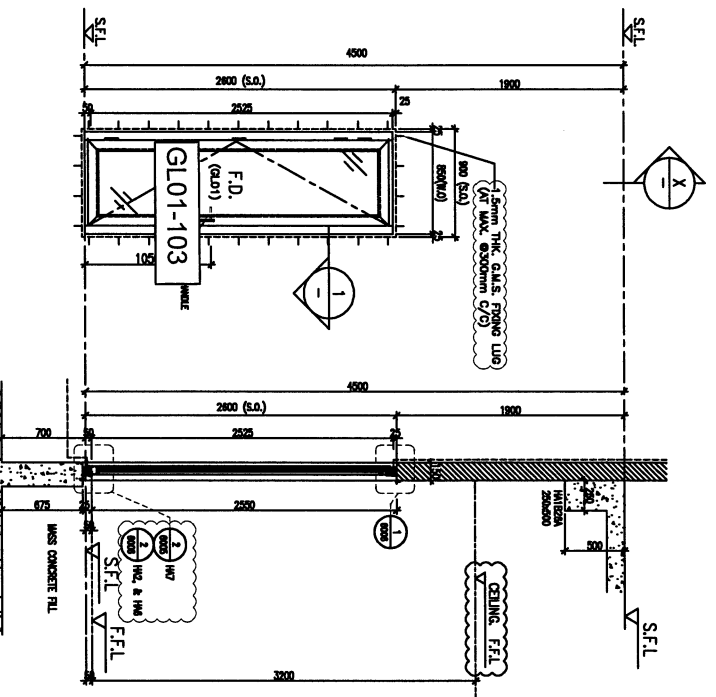
- LEGEND :
- (1) DETAIL MARK NO.
 - (2) BESS SHEET NO.
 - 1. F.F.L. — FINISHED FLOOR LEVEL.
 - 2. S.F.L. — STRUCTURE FLOOR LEVEL.
 - 3. (1) — STOREY LOCATION.
 - 4. (1) — STOREY LOCATION.
 - 5. (1) — STOREY LOCATION.
 - 6. G.L.1 — 15mm IS, 15mm CLEAR OPENING 17" THE G.L.1.
 - 7. G.L.2 — 15mm IS, 15mm CLEAR OPENING 17" THE G.L.2.
 - 8. G.L.3 — 15mm IS, 15mm CLEAR OPENING 17" THE G.L.3.
 - 9. G.L.4 — 15mm IS, 15mm CLEAR OPENING 17" THE G.L.4.
 - 10. G.L.5 — 15mm IS, 15mm CLEAR OPENING 17" THE G.L.5.
 - 11. G.L.6 — 15mm IS, 15mm CLEAR OPENING 17" THE G.L.6.
 - 12. G.L.7 — 15mm IS, 15mm CLEAR OPENING 17" THE G.L.7.
 - 13. G.L.8 — 15mm IS, 15mm CLEAR OPENING 17" THE G.L.8.
 - 14. G.L.9 — 15mm IS, 15mm CLEAR OPENING 17" THE G.L.9.
 - 15. G.L.10 — 15mm IS, 15mm CLEAR OPENING 17" THE G.L.10.
 - 16. G.L.11 — 15mm IS, 15mm CLEAR OPENING 17" THE G.L.11.
 - 17. G.L.12 — 15mm IS, 15mm CLEAR OPENING 17" THE G.L.12.
 - 18. G.L.13 — 15mm IS, 15mm CLEAR OPENING 17" THE G.L.13.
 - 19. G.L.14 — 15mm IS, 15mm CLEAR OPENING 17" THE G.L.14.
 - 20. G.L.15 — 15mm IS, 15mm CLEAR OPENING 17" THE G.L.15.
 - 21. G.L.16 — 15mm IS, 15mm CLEAR OPENING 17" THE G.L.16.
 - 22. G.L.17 — 15mm IS, 15mm CLEAR OPENING 17" THE G.L.17.
 - 23. G.L.18 — 15mm IS, 15mm CLEAR OPENING 17" THE G.L.18.
 - 24. G.L.19 — 15mm IS, 15mm CLEAR OPENING 17" THE G.L.19.
 - 25. G.L.20 — 15mm IS, 15mm CLEAR OPENING 17" THE G.L.20.
 - 26. G.L.21 — 15mm IS, 15mm CLEAR OPENING 17" THE G.L.21.
 - 27. G.L.22 — 15mm IS, 15mm CLEAR OPENING 17" THE G.L.22.
 - 28. G.L.23 — 15mm IS, 15mm CLEAR OPENING 17" THE G.L.23.
 - 29. G.L.24 — 15mm IS, 15mm CLEAR OPENING 17" THE G.L.24.
 - 30. G.L.25 — 15mm IS, 15mm CLEAR OPENING 17" THE G.L.25.
 - 31. G.L.26 — 15mm IS, 15mm CLEAR OPENING 17" THE G.L.26.
 - 32. G.L.27 — 15mm IS, 15mm CLEAR OPENING 17" THE G.L.27.
 - 33. G.L.28 — 15mm IS, 15mm CLEAR OPENING 17" THE G.L.28.
 - 34. G.L.29 — 15mm IS, 15mm CLEAR OPENING 17" THE G.L.29.
 - 35. G.L.30 — 15mm IS, 15mm CLEAR OPENING 17" THE G.L.30.
 - 36. G.L.31 — 15mm IS, 15mm CLEAR OPENING 17" THE G.L.31.
 - 37. G.L.32 — 15mm IS, 15mm CLEAR OPENING 17" THE G.L.32.
 - 38. G.L.33 — 15mm IS, 15mm CLEAR OPENING 17" THE G.L.33.
 - 39. G.L.34 — 15mm IS, 15mm CLEAR OPENING 17" THE G.L.34.
 - 40. G.L.35 — 15mm IS, 15mm CLEAR OPENING 17" THE G.L.35.
 - 41. G.L.36 — 15mm IS, 15mm CLEAR OPENING 17" THE G.L.36.
 - 42. G.L.37 — 15mm IS, 15mm CLEAR OPENING 17" THE G.L.37.
 - 43. G.L.38 — 15mm IS, 15mm CLEAR OPENING 17" THE G.L.38.
 - 44. G.L.39 — 15mm IS, 15mm CLEAR OPENING 17" THE G.L.39.
 - 45. G.L.40 — 15mm IS, 15mm CLEAR OPENING 17" THE G.L.40.
 - 46. G.L.41 — 15mm IS, 15mm CLEAR OPENING 17" THE G.L.41.
 - 47. G.L.42 — 15mm IS, 15mm CLEAR OPENING 17" THE G.L.42.
 - 48. G.L.43 — 15mm IS, 15mm CLEAR OPENING 17" THE G.L.43.
 - 49. G.L.44 — 15mm IS, 15mm CLEAR OPENING 17" THE G.L.44.
 - 50. G.L.45 — 15mm IS, 15mm CLEAR OPENING 17" THE G.L.45.
 - 51. G.L.46 — 15mm IS, 15mm CLEAR OPENING 17" THE G.L.46.
 - 52. G.L.47 — 15mm IS, 15mm CLEAR OPENING 17" THE G.L.47.
 - 53. G.L.48 — 15mm IS, 15mm CLEAR OPENING 17" THE G.L.48.
 - 54. G.L.49 — 15mm IS, 15mm CLEAR OPENING 17" THE G.L.49.
 - 55. G.L.50 — 15mm IS, 15mm CLEAR OPENING 17" THE G.L.50.
 - 56. G.L.51 — 15mm IS, 15mm CLEAR OPENING 17" THE G.L.51.
 - 57. G.L.52 — 15mm IS, 15mm CLEAR OPENING 17" THE G.L.52.
 - 58. G.L.53 — 15mm IS, 15mm CLEAR OPENING 17" THE G.L.53.
 - 59. G.L.54 — 15mm IS, 15mm CLEAR OPENING 17" THE G.L.54.
 - 60. G.L.55 — 15mm IS, 15mm CLEAR OPENING 17" THE G.L.55.
 - 61. G.L.56 — 15mm IS, 15mm CLEAR OPENING 17" THE G.L.56.
 - 62. G.L.57 — 15mm IS, 15mm CLEAR OPENING 17" THE G.L.57.
 - 63. G.L.58 — 15mm IS, 15mm CLEAR OPENING 17" THE G.L.58.
 - 64. G.L.59 — 15mm IS, 15mm CLEAR OPENING 17" THE G.L.59.
 - 65. G.L.60 — 15mm IS, 15mm CLEAR OPENING 17" THE G.L.60.
 - 66. G.L.61 — 15mm IS, 15mm CLEAR OPENING 17" THE G.L.61.
 - 67. G.L.62 — 15mm IS, 15mm CLEAR OPENING 17" THE G.L.62.
 - 68. G.L.63 — 15mm IS, 15mm CLEAR OPENING 17" THE G.L.63.
 - 69. G.L.64 — 15mm IS, 15mm CLEAR OPENING 17" THE G.L.64.
 - 70. G.L.65 — 15mm IS, 15mm CLEAR OPENING 17" THE G.L.65.
 - 71. G.L.66 — 15mm IS, 15mm CLEAR OPENING 17" THE G.L.66.
 - 72. G.L.67 — 15mm IS, 15mm CLEAR OPENING 17" THE G.L.67.
 - 73. G.L.68 — 15mm IS, 15mm CLEAR OPENING 17" THE G.L.68.
 - 74. G.L.69 — 15mm IS, 15mm CLEAR OPENING 17" THE G.L.69.
 - 75. G.L.70 — 15mm IS, 15mm CLEAR OPENING 17" THE G.L.70.
 - 76. G.L.71 — 15mm IS, 15mm CLEAR OPENING 17" THE G.L.71.
 - 77. G.L.72 — 15mm IS, 15mm CLEAR OPENING 17" THE G.L.72.
 - 78. G.L.73 — 15mm IS, 15mm CLEAR OPENING 17" THE G.L.73.
 - 79. G.L.74 — 15mm IS, 15mm CLEAR OPENING 17" THE G.L.74.
 - 80. G.L.75 — 15mm IS, 15mm CLEAR OPENING 17" THE G.L.75.
 - 81. G.L.76 — 15mm IS, 15mm CLEAR OPENING 17" THE G.L.76.
 - 82. G.L.77 — 15mm IS, 15mm CLEAR OPENING 17" THE G.L.77.
 - 83. G.L.78 — 15mm IS, 15mm CLEAR OPENING 17" THE G.L.78.
 - 84. G.L.79 — 15mm IS, 15mm CLEAR OPENING 17" THE G.L.79.
 - 85. G.L.80 — 15mm IS, 15mm CLEAR OPENING 17" THE G.L.80.
 - 86. G.L.81 — 15mm IS, 15mm CLEAR OPENING 17" THE G.L.81.
 - 87. G.L.82 — 15mm IS, 15mm CLEAR OPENING 17" THE G.L.82.
 - 88. G.L.83 — 15mm IS, 15mm CLEAR OPENING 17" THE G.L.83.
 - 89. G.L.84 — 15mm IS, 15mm CLEAR OPENING 17" THE G.L.84.
 - 90. G.L.85 — 15mm IS, 15mm CLEAR OPENING 17" THE G.L.85.
 - 91. G.L.86 — 15mm IS, 15mm CLEAR OPENING 17" THE G.L.86.
 - 92. G.L.87 — 15mm IS, 15mm CLEAR OPENING 17" THE G.L.87.
 - 93. G.L.88 — 15mm IS, 15mm CLEAR OPENING 17" THE G.L.88.
 - 94. G.L.89 — 15mm IS, 15mm CLEAR OPENING 17" THE G.L.89.
 - 95. G.L.90 — 15mm IS, 15mm CLEAR OPENING 17" THE G.L.90.
 - 96. G.L.91 — 15mm IS, 15mm CLEAR OPENING 17" THE G.L.91.
 - 97. G.L.92 — 15mm IS, 15mm CLEAR OPENING 17" THE G.L.92.
 - 98. G.L.93 — 15mm IS, 15mm CLEAR OPENING 17" THE G.L.93.
 - 99. G.L.94 — 15mm IS, 15mm CLEAR OPENING 17" THE G.L.94.
 - 100. G.L.95 — 15mm IS, 15mm CLEAR OPENING 17" THE G.L.95.
 - 101. G.L.96 — 15mm IS, 15mm CLEAR OPENING 17" THE G.L.96.
 - 102. G.L.97 — 15mm IS, 15mm CLEAR OPENING 17" THE G.L.97.
 - 103. G.L.98 — 15mm IS, 15mm CLEAR OPENING 17" THE G.L.98.
 - 104. G.L.99 — 15mm IS, 15mm CLEAR OPENING 17" THE G.L.99.
 - 105. G.L.100 — 15mm IS, 15mm CLEAR OPENING 17" THE G.L.100.

DATE : 20-11-2013 SCALE : 1:40 (A3)

DRAWN BY : Aching CHECKED BY :

PROJECT : PROPOSED RESIDENTIAL DEVELOPMENT AT N.K.I.L. 6942 YIN PING ROAD HONGKONG

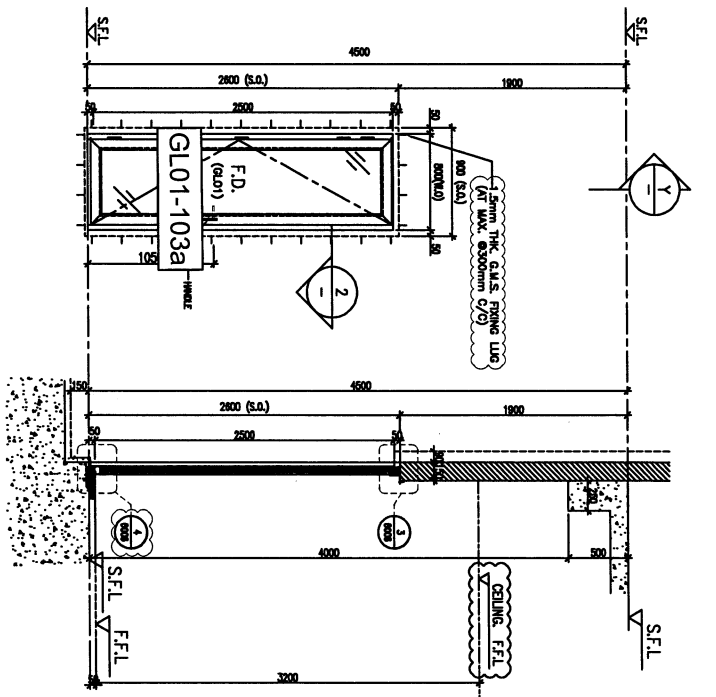
TITLE : 1st-5TH ALUM. WINDOW SCHEDULE FOR HOUSE TYPE A1 & A



PROVIDED

GLAZING AREA	1.24	m ²
OPENABLE AREA	1.625	m ²
FREE AREA	-	%

TILES FINISH



PROVIDED

GLAZING AREA	1.24	m ²
OPENABLE AREA	1.625	m ²
FREE AREA	-	%

STONE CLADDING FINISH

WINDOW MARK	A1/A	A1/A	A1/A
LOCATION	HOUSE TYPE A - G/F KITCHEN	HOUSE TYPE A1 - G/F KITCHEN	HOUSE TYPE A - G/F KITCHEN
MATERIALS	AL1	AL1	AL1
GLAZING	GLO1	GLO1	GLO1
QUANTITY	1 No. (HOUSE NO. HA7)	2 Nos. (HOUSE NO. HA2, & HA6 HANDED)	1 No. (HOUSE NO. HA8)
HANDLES	(MODEL NO. 2018-CX)	(MODEL NO. 2018-CX)	(MODEL NO. 2018-CX)

DATE : 20-11-2013 SCALE : 1:40 (A3)

DRAWN BY : Aching CHECKED BY :

PROJECT : PROPOSED RESIDENTIAL DEVELOPMENT AT N.K.I.L. 6942 YIN PING ROAD HONGKONG

TITLE : 1st-5TH ALUM. WINDOW SCHEDULE FOR HOUSE TYPE A1 & A

SL. NO. :

CLIENT : SHIMAO GROUP HOLDINGS LIMITED

ARCHITECT : 亞細亞建築有限公司
 亞細亞建築有限公司
 APT HING CONSTRUCTION CO LTD

STRUCTURAL ENGINEER : CMA CMA WONG & ASSOCIATES LTD
 英志明建築工程師有限公司

PROJECT CONSULTANT : MENYARD

NOTE :
 1. ALL DIMENSIONS ARE IN mm.
 2. ALL DIMENSIONS ARE MEASD FROM OUTSIDE.
 3. ALL DIMENSIONS TO BE VERIFIED ON SITE BEFORE PROCEEDING.

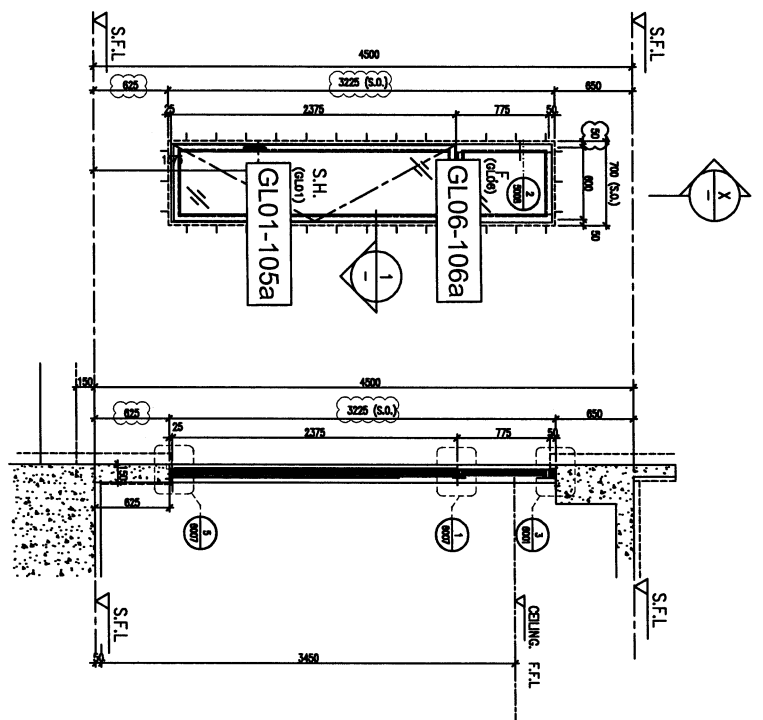
LEGEND :
 1. F.F.L. — FINISHED FLOOR LEVEL
 2. S.F.L. — STRUCTURE FLOOR LEVEL
 3. F.F.L. — FINISHED FLOOR LEVEL
 4. S.F.L. — STRUCTURE FLOOR LEVEL
 5. F.F.L. — FINISHED FLOOR LEVEL
 6. S.F.L. — STRUCTURE FLOOR LEVEL
 7. S.F.L. — STRUCTURE FLOOR LEVEL
 8. S.F.L. — STRUCTURE FLOOR LEVEL
 9. S.F.L. — STRUCTURE FLOOR LEVEL
 10. S.F.L. — STRUCTURE FLOOR LEVEL

DATE : 30-11-2017 SCALE : 1:40 (A3)
 DRAWN BY : Aching CHECKED BY :
 PROJECT : PROPOSED RESIDENTIAL DEVELOPMENT AT N.K.L.L. 6542 YIN PING ROAD HONGKONG

TITLE : IN-SITU ALUM. WINDOW SCHEDULE FOR HOUSE TYPE A1 & A

DATE : 30-11-2017 SCALE : 1:40 (A3)
 DRAWN BY : Aching CHECKED BY :
 PROJECT : PROPOSED RESIDENTIAL DEVELOPMENT AT N.K.L.L. 6542 YIN PING ROAD HONGKONG

DATE : 30-11-2017 SCALE : 1:40 (A3)
 DRAWN BY : Aching CHECKED BY :
 PROJECT : PROPOSED RESIDENTIAL DEVELOPMENT AT N.K.L.L. 6542 YIN PING ROAD HONGKONG



PROVIDED

GLAZING AREA	1.35	m ²
OPENABLE AREA	1.21	m ²
FREE AREA	-	%

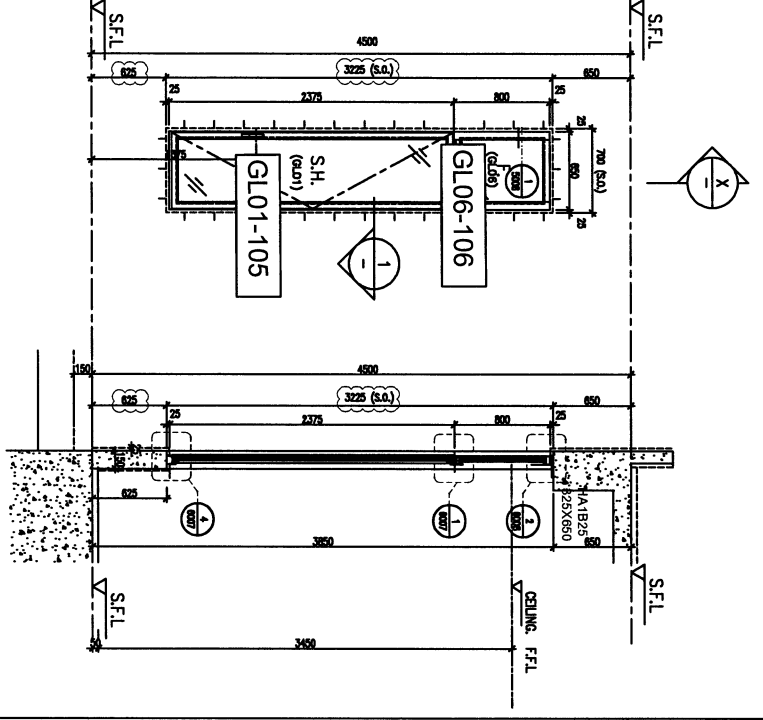
WINDOW MARK : MIRROR

LOCATION : HOUSE TYPE A1 - G/F DINING

MATERIALS : GL01, GL06

QUANTITY : 3 Nos. (HOUSE NO. HA1, HA3, HA5 HANDED)

HANDLES : (MODEL NO. 2017-D2A)



PROVIDED

GLAZING AREA	1.51	m ²
OPENABLE AREA	1.32	m ²
FREE AREA	-	%

WINDOW MARK : MIRROR

LOCATION : HOUSE TYPE A1 - G/F DINING

MATERIALS : GL01, GL06

QUANTITY : 2 Nos. (HOUSE NO. HA2, & HA6 HANDED)

HANDLES : (MODEL NO. 2017-D2A)

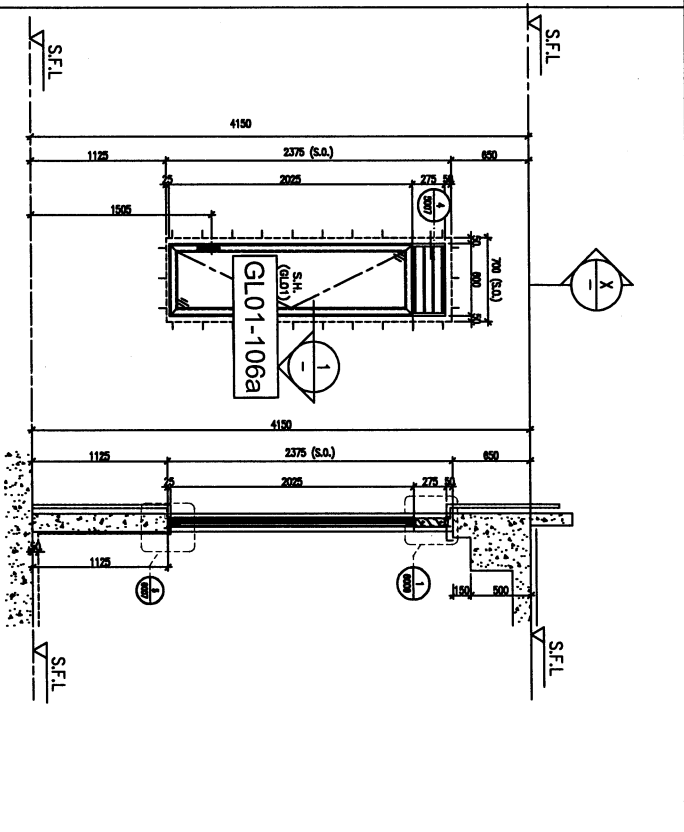
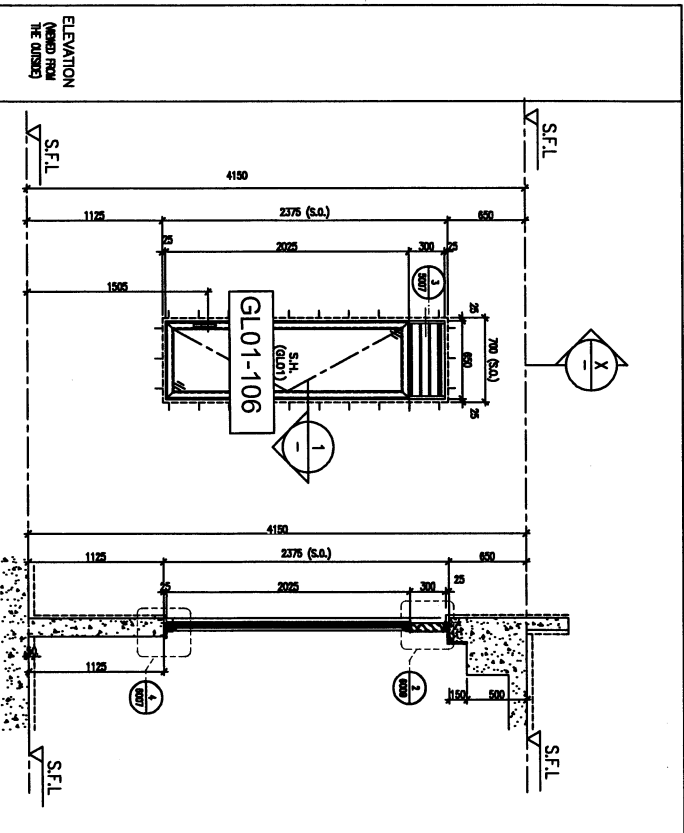
WINDOW MARK : MIRROR

LOCATION : HOUSE TYPE A - G/F DINING

MATERIALS : GL01, GL06

QUANTITY : 1 No. (HOUSE NO. HA7)

HANDLES : (MODEL NO. 2017-D2A)



TILES FINISH

PROVIDED	
GLAZING AREA	0.97 m ²
OPENABLE AREA	1.07 m ²
FREE AREA	58.5 %

STONE CLADDING FINISH

PROVIDED	
GLAZING AREA	0.88 m ²
OPENABLE AREA	0.97 m ²
FREE AREA	58.5 %

WINDOW MARK	GL01	MIRROR	GL01
LOCATION	HOUSE TYPE A - 2/F BATH 1	HOUSE TYPE A1 - 2/F BATH 1	HOUSE TYPE A - 2/F BATH 1
MATERIALS	AL1	AL1	AL1
GLAZING	GL01	GL01	GL01
QUANTITY	1 No. (HOUSE NO. HA7)	2 Nos. (HOUSE NO. HA2, & HA6 HANDED)	1 No. (HOUSE NO. HA8)
HANDLES	(MODEL NO. 2017-02A)	(MODEL NO. 2017-02A)	(MODEL NO. 2017-02A)

WINDOW MARK	GL01	MIRROR	GL01
LOCATION	HOUSE TYPE A - 2/F BATH 1	HOUSE TYPE A1 - 2/F BATH 1	HOUSE TYPE A - 2/F BATH 1
MATERIALS	AL1	AL1	AL1
GLAZING	GL01	GL01	GL01
QUANTITY	1 No. (HOUSE NO. HA7)	3 Nos. (HOUSE NO. HA1, HA3, HA6 HANDED)	1 No. (HOUSE NO. HA8)
HANDLES	(MODEL NO. 2017-02A)	(MODEL NO. 2017-02A)	(MODEL NO. 2017-02A)

DATE: 13-03-2017

PROJECT: PROPOSED RESIDENTIAL DEVELOPMENT AT KUALA BANGSA TOWN, KUALA LUMPUR

CLIENT: SHIMAO GROUP HOLDINGS LIMITED

ARCHITECT: YONG THING & PARTNERS LIMITED

MAIN CONTRACTOR: 裕興建築有限公司 HUI HING CONSTRUCTION CO. LTD.

STRUCTURAL ENGINEER: CMA CH WONG & ASSOCIATES LTD. 榮志的建築工程師有限公司

PROJECT CONSULTANT: MENYARD

REVISIONS:

NO.	DATE	DESCRIPTION
1	06/07/2013	GENERAL REVISION
2	04/08/2013	GENERAL REVISION
3	05/08/2013	GENERAL REVISION

SCALE: 1:40 (A3)

DRAWN BY: Maling

CHECKED BY:

DATE: 13-03-2017

REV: B

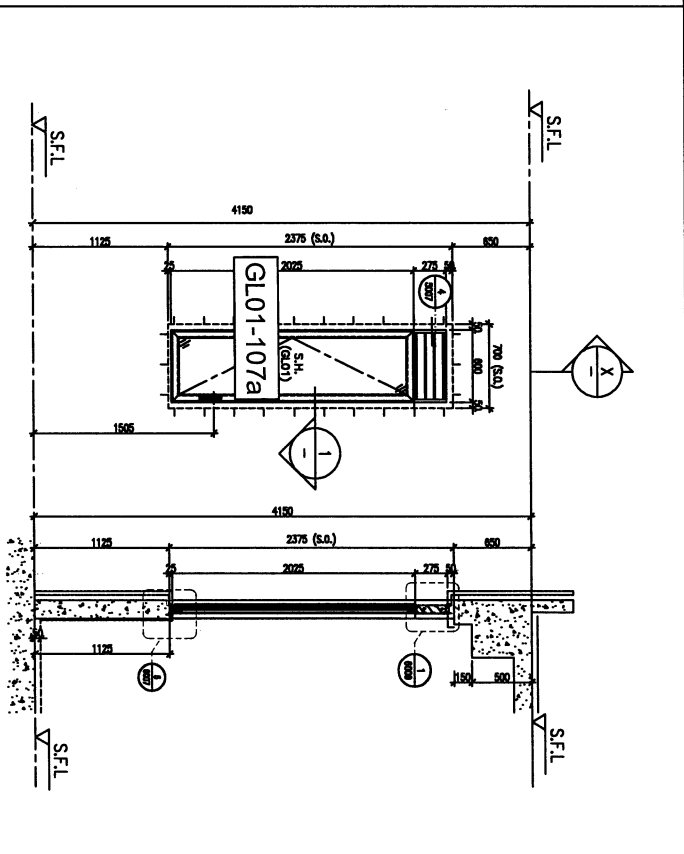
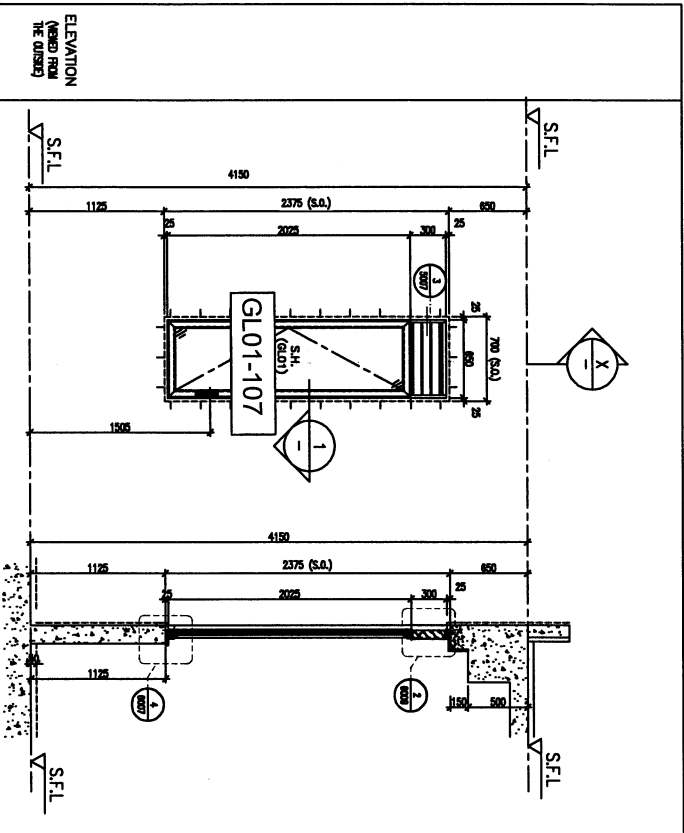
YONG THING & PARTNERS LIMITED

110, Cheong Chee Hong Road, Industrial Park, 17F, Singapore 600110

TEL: +65 6339 7788

FAX: +65 6339 7789

EMAIL: info@yongthing.com



TILES FINISH

PROVIDED		GLAZING AREA	0.97	m ²
		OPENABLE AREA	1.07	m ²
		FREE AREA	58.5	%

STONE CLADDING FINISH

PROVIDED		GLAZING AREA	0.88	m ²
		OPENABLE AREA	0.97	m ²
		FREE AREA	58.5	%

WINDOW MARK	GL01	HOUSE TYPE A - 2/F EN. BATH 3	GL01	HOUSE TYPE A1 - 2/F EN. BATH 3
LOCATION	GL01	HOUSE TYPE A - 2/F EN. BATH 3	GL01	HOUSE TYPE A1 - 2/F EN. BATH 3
MATERIALS	GL01	HOUSE TYPE A - 2/F EN. BATH 3	GL01	HOUSE TYPE A1 - 2/F EN. BATH 3
GLAZING	GL01	HOUSE TYPE A - 2/F EN. BATH 3	GL01	HOUSE TYPE A1 - 2/F EN. BATH 3
QUANTITY	1 No. (HOUSE NO. HA7)	HOUSE TYPE A - 2/F EN. BATH 3	GL01	HOUSE TYPE A1 - 2/F EN. BATH 3
HANDLES	(MODEL NO. 2017-D2A)	HOUSE TYPE A - 2/F EN. BATH 3	GL01	HOUSE TYPE A1 - 2/F EN. BATH 3

WINDOW MARK	GL01	HOUSE TYPE A - 2/F EN. BATH 3	GL01	HOUSE TYPE A1 - 2/F EN. BATH 3
LOCATION	GL01	HOUSE TYPE A - 2/F EN. BATH 3	GL01	HOUSE TYPE A1 - 2/F EN. BATH 3
MATERIALS	GL01	HOUSE TYPE A - 2/F EN. BATH 3	GL01	HOUSE TYPE A1 - 2/F EN. BATH 3
GLAZING	GL01	HOUSE TYPE A - 2/F EN. BATH 3	GL01	HOUSE TYPE A1 - 2/F EN. BATH 3
QUANTITY	1 No. (HOUSE NO. HA9)	HOUSE TYPE A - 2/F EN. BATH 3	GL01	HOUSE TYPE A1 - 2/F EN. BATH 3
HANDLES	(MODEL NO. 2017-D2A)	HOUSE TYPE A - 2/F EN. BATH 3	GL01	HOUSE TYPE A1 - 2/F EN. BATH 3

DA. REF. :

CLIENT : SHIMAO GROUP HOLDINGS LIMITED

ARCHITECT : WFT

MAIN CONTRACTOR : 裕興建築有限公司
YU HING CONSTRUCTION CO. LTD.

STRUCTURAL ENGINEER : C.M. WONG & ASSOCIATES LTD.
CMA 榮志偉建築工程師有限公司

PROJECT CONSULTING : MENHARDT

DATE : 30/10/2023 GENERAL REVISION

PROJECT : PROPOSED RESIDENTIAL DEVELOPMENT AT PING ROAD, HONGKONG

TITLE : IN-SITU ALUM. WINDOW SCHEDULE FOR HOUSE TYPE A1 & A

DATE : 30-10-23 SCALE : 1:40 (A3)

DRAWN BY : A/NO

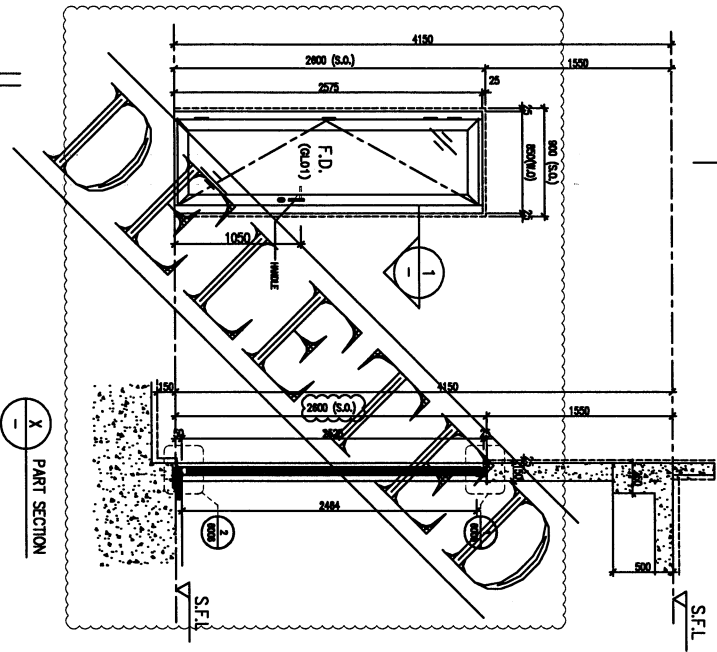
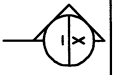
CHECKED BY :

REVISIONS :

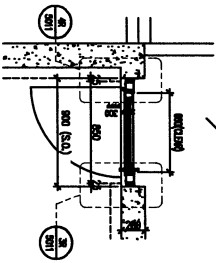
1. ALL DIMENSIONS ARE IN MM.
2. ALL DIMENSIONS ARE MEASD FROM OUTSIDE.
3. ALL DIMENSIONS TO BE MEASD ON SITE BEFORE PROCEEDING.
4. ALL DIMENSIONS TO BE MEASD ON SITE BEFORE PROCEEDING.

LEGEND :

1. F.F.L. - FINISHED FLOOR LEVEL.
2. S.F.L. - STRUCTURAL FLOOR LEVEL.
3. R.F.L. - REVERSED LEVEL.
4. F.F.L. - FINISH LOCATION.
5. GLASS LEAD.
6. GL01 - 12mm CLEAR THERMOGLASS 17 THE LALL.
7. GL01 - 12mm CLEAR THERMOGLASS 17 THE LALL.
8. GL01 - 12mm CLEAR THERMOGLASS 17 THE LALL.
9. GL01 - 12mm CLEAR THERMOGLASS 17 THE LALL.
10. GL01 - 12mm CLEAR THERMOGLASS 17 THE LALL.
11. GL01 - 12mm CLEAR THERMOGLASS 17 THE LALL.
12. GL01 - 12mm CLEAR THERMOGLASS 17 THE LALL.
13. GL01 - 12mm CLEAR THERMOGLASS 17 THE LALL.
14. GL01 - 12mm CLEAR THERMOGLASS 17 THE LALL.
15. GL01 - 12mm CLEAR THERMOGLASS 17 THE LALL.
16. GL01 - 12mm CLEAR THERMOGLASS 17 THE LALL.
17. GL01 - 12mm CLEAR THERMOGLASS 17 THE LALL.
18. GL01 - 12mm CLEAR THERMOGLASS 17 THE LALL.
19. GL01 - 12mm CLEAR THERMOGLASS 17 THE LALL.
20. GL01 - 12mm CLEAR THERMOGLASS 17 THE LALL.
21. GL01 - 12mm CLEAR THERMOGLASS 17 THE LALL.
22. GL01 - 12mm CLEAR THERMOGLASS 17 THE LALL.
23. GL01 - 12mm CLEAR THERMOGLASS 17 THE LALL.
24. GL01 - 12mm CLEAR THERMOGLASS 17 THE LALL.
25. GL01 - 12mm CLEAR THERMOGLASS 17 THE LALL.
26. GL01 - 12mm CLEAR THERMOGLASS 17 THE LALL.
27. GL01 - 12mm CLEAR THERMOGLASS 17 THE LALL.
28. GL01 - 12mm CLEAR THERMOGLASS 17 THE LALL.
29. GL01 - 12mm CLEAR THERMOGLASS 17 THE LALL.
30. GL01 - 12mm CLEAR THERMOGLASS 17 THE LALL.
31. GL01 - 12mm CLEAR THERMOGLASS 17 THE LALL.
32. GL01 - 12mm CLEAR THERMOGLASS 17 THE LALL.
33. GL01 - 12mm CLEAR THERMOGLASS 17 THE LALL.
34. GL01 - 12mm CLEAR THERMOGLASS 17 THE LALL.
35. GL01 - 12mm CLEAR THERMOGLASS 17 THE LALL.
36. GL01 - 12mm CLEAR THERMOGLASS 17 THE LALL.
37. GL01 - 12mm CLEAR THERMOGLASS 17 THE LALL.
38. GL01 - 12mm CLEAR THERMOGLASS 17 THE LALL.
39. GL01 - 12mm CLEAR THERMOGLASS 17 THE LALL.
40. GL01 - 12mm CLEAR THERMOGLASS 17 THE LALL.
41. GL01 - 12mm CLEAR THERMOGLASS 17 THE LALL.
42. GL01 - 12mm CLEAR THERMOGLASS 17 THE LALL.
43. GL01 - 12mm CLEAR THERMOGLASS 17 THE LALL.
44. GL01 - 12mm CLEAR THERMOGLASS 17 THE LALL.
45. GL01 - 12mm CLEAR THERMOGLASS 17 THE LALL.
46. GL01 - 12mm CLEAR THERMOGLASS 17 THE LALL.
47. GL01 - 12mm CLEAR THERMOGLASS 17 THE LALL.
48. GL01 - 12mm CLEAR THERMOGLASS 17 THE LALL.
49. GL01 - 12mm CLEAR THERMOGLASS 17 THE LALL.
50. GL01 - 12mm CLEAR THERMOGLASS 17 THE LALL.
51. GL01 - 12mm CLEAR THERMOGLASS 17 THE LALL.
52. GL01 - 12mm CLEAR THERMOGLASS 17 THE LALL.
53. GL01 - 12mm CLEAR THERMOGLASS 17 THE LALL.
54. GL01 - 12mm CLEAR THERMOGLASS 17 THE LALL.
55. GL01 - 12mm CLEAR THERMOGLASS 17 THE LALL.
56. GL01 - 12mm CLEAR THERMOGLASS 17 THE LALL.
57. GL01 - 12mm CLEAR THERMOGLASS 17 THE LALL.
58. GL01 - 12mm CLEAR THERMOGLASS 17 THE LALL.
59. GL01 - 12mm CLEAR THERMOGLASS 17 THE LALL.
60. GL01 - 12mm CLEAR THERMOGLASS 17 THE LALL.
61. GL01 - 12mm CLEAR THERMOGLASS 17 THE LALL.
62. GL01 - 12mm CLEAR THERMOGLASS 17 THE LALL.
63. GL01 - 12mm CLEAR THERMOGLASS 17 THE LALL.
64. GL01 - 12mm CLEAR THERMOGLASS 17 THE LALL.
65. GL01 - 12mm CLEAR THERMOGLASS 17 THE LALL.
66. GL01 - 12mm CLEAR THERMOGLASS 17 THE LALL.
67. GL01 - 12mm CLEAR THERMOGLASS 17 THE LALL.
68. GL01 - 12mm CLEAR THERMOGLASS 17 THE LALL.
69. GL01 - 12mm CLEAR THERMOGLASS 17 THE LALL.
70. GL01 - 12mm CLEAR THERMOGLASS 17 THE LALL.
71. GL01 - 12mm CLEAR THERMOGLASS 17 THE LALL.
72. GL01 - 12mm CLEAR THERMOGLASS 17 THE LALL.
73. GL01 - 12mm CLEAR THERMOGLASS 17 THE LALL.
74. GL01 - 12mm CLEAR THERMOGLASS 17 THE LALL.
75. GL01 - 12mm CLEAR THERMOGLASS 17 THE LALL.
76. GL01 - 12mm CLEAR THERMOGLASS 17 THE LALL.
77. GL01 - 12mm CLEAR THERMOGLASS 17 THE LALL.
78. GL01 - 12mm CLEAR THERMOGLASS 17 THE LALL.
79. GL01 - 12mm CLEAR THERMOGLASS 17 THE LALL.
80. GL01 - 12mm CLEAR THERMOGLASS 17 THE LALL.
81. GL01 - 12mm CLEAR THERMOGLASS 17 THE LALL.
82. GL01 - 12mm CLEAR THERMOGLASS 17 THE LALL.
83. GL01 - 12mm CLEAR THERMOGLASS 17 THE LALL.
84. GL01 - 12mm CLEAR THERMOGLASS 17 THE LALL.
85. GL01 - 12mm CLEAR THERMOGLASS 17 THE LALL.
86. GL01 - 12mm CLEAR THERMOGLASS 17 THE LALL.
87. GL01 - 12mm CLEAR THERMOGLASS 17 THE LALL.
88. GL01 - 12mm CLEAR THERMOGLASS 17 THE LALL.
89. GL01 - 12mm CLEAR THERMOGLASS 17 THE LALL.
90. GL01 - 12mm CLEAR THERMOGLASS 17 THE LALL.
91. GL01 - 12mm CLEAR THERMOGLASS 17 THE LALL.
92. GL01 - 12mm CLEAR THERMOGLASS 17 THE LALL.
93. GL01 - 12mm CLEAR THERMOGLASS 17 THE LALL.
94. GL01 - 12mm CLEAR THERMOGLASS 17 THE LALL.
95. GL01 - 12mm CLEAR THERMOGLASS 17 THE LALL.
96. GL01 - 12mm CLEAR THERMOGLASS 17 THE LALL.
97. GL01 - 12mm CLEAR THERMOGLASS 17 THE LALL.
98. GL01 - 12mm CLEAR THERMOGLASS 17 THE LALL.
99. GL01 - 12mm CLEAR THERMOGLASS 17 THE LALL.
100. GL01 - 12mm CLEAR THERMOGLASS 17 THE LALL.



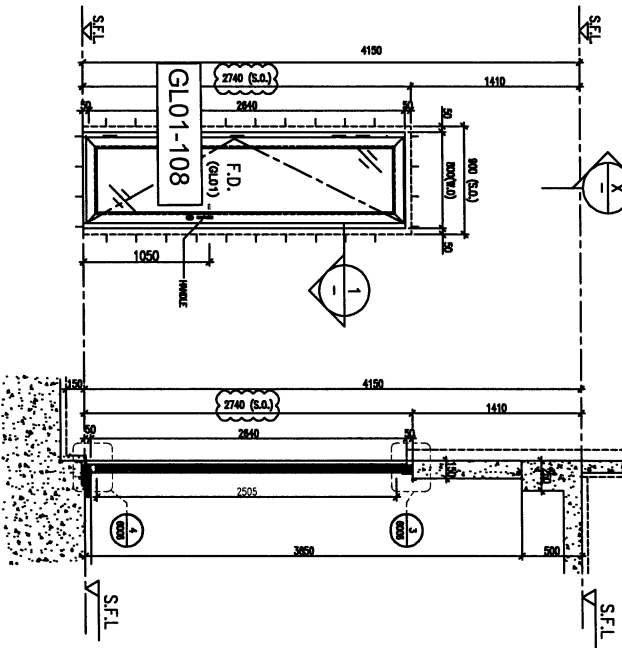
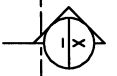
1-1 PART SECTION



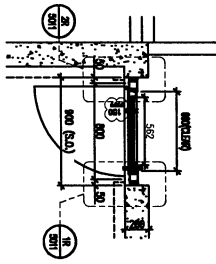
1-1 PART PLAN

TILES FINISH

PROVIDED	
GLAZING AREA	0.77 m ²
OPENABLE AREA	0.99 m ²
FREE AREA	- %



1-1 PART SECTION



1-1 PART PLAN

STONE CLADDING FINISH

PROVIDED	
GLAZING AREA	1.31 m ²
OPENABLE AREA	1.72 m ²
FREE AREA	- %

WINDOW MARK	HOUSE TYPE A - 3/F FOYER	HOUSE TYPE A - 3/F FOYER	MIRROR
GL01	GL01	GL01	GL01
QUANTITY	1 No. (HOUSE NO. HA2)	2 Nos. (HOUSE NO. HA2, & HA6 HANDLED)	2 Nos. (HOUSE NO. HA1, HA2, HA3, HA5 & HA6 HANDLED)
HANDLES	MODEL NO. 2018-CA	MODEL NO. 2018-CA	MODEL NO. 2018-CA

WINDOW MARK	HOUSE TYPE A - 3/F FOYER	HOUSE TYPE A1 - 3/F FOYER	MIRROR
GL01	GL01	GL01	GL01
QUANTITY	2 Nos. (HOUSE NO. HA7 & HA8)	5 Nos. (HOUSE NO. HA1, HA2, HA3, HA5 & HA6 HANDLED)	5 Nos. (HOUSE NO. HA1, HA2, HA3, HA5 & HA6 HANDLED)
HANDLES	MODEL NO. 2018-CA	MODEL NO. 2018-CA	MODEL NO. 2018-CA

DLA REF :

CLIENT : SHIMAO GROUP HOLDINGS LIMITED

ARCHITECT : YIM HING TONG & PARTNERS LIMITED

TEAM COORDINATOR : 協興建築有限公司

STRUCTURAL ENGINEER : C.M. WONG & ASSOCIATES LTD

MECHANICAL ENGINEER : C.M. WONG & ASSOCIATES LTD

MECHANICAL ENGINEER : C.M. WONG & ASSOCIATES LTD

MECHANICAL ENGINEER : C.M. WONG & ASSOCIATES LTD

MECHANICAL ENGINEER : C.M. WONG & ASSOCIATES LTD

MECHANICAL ENGINEER : C.M. WONG & ASSOCIATES LTD

MECHANICAL ENGINEER : C.M. WONG & ASSOCIATES LTD

MECHANICAL ENGINEER : C.M. WONG & ASSOCIATES LTD

MECHANICAL ENGINEER : C.M. WONG & ASSOCIATES LTD

MECHANICAL ENGINEER : C.M. WONG & ASSOCIATES LTD

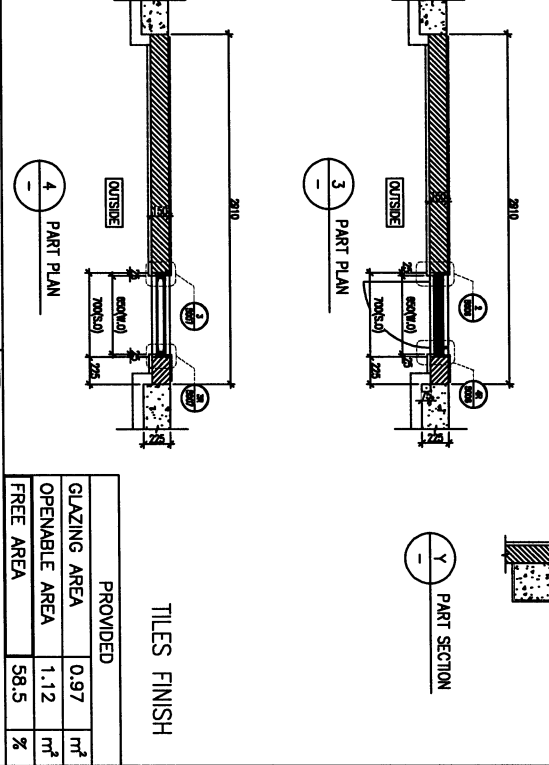
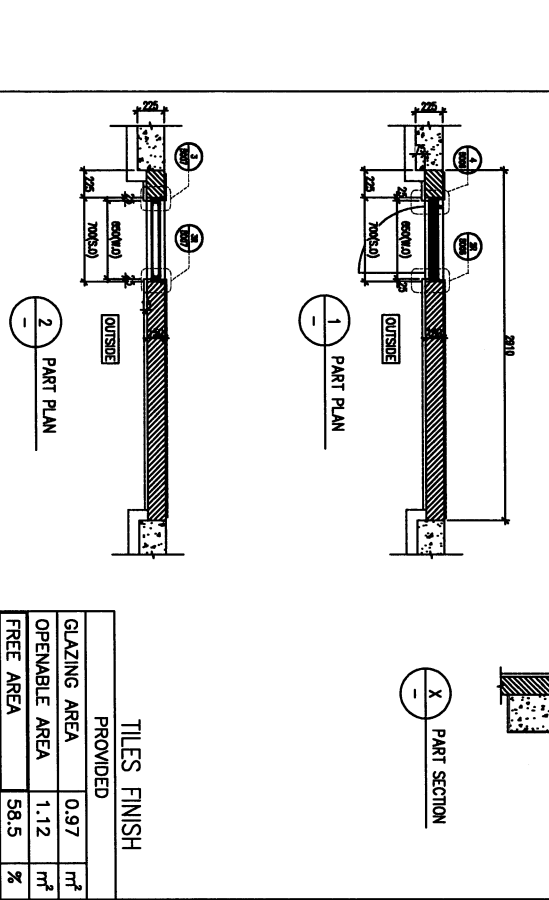
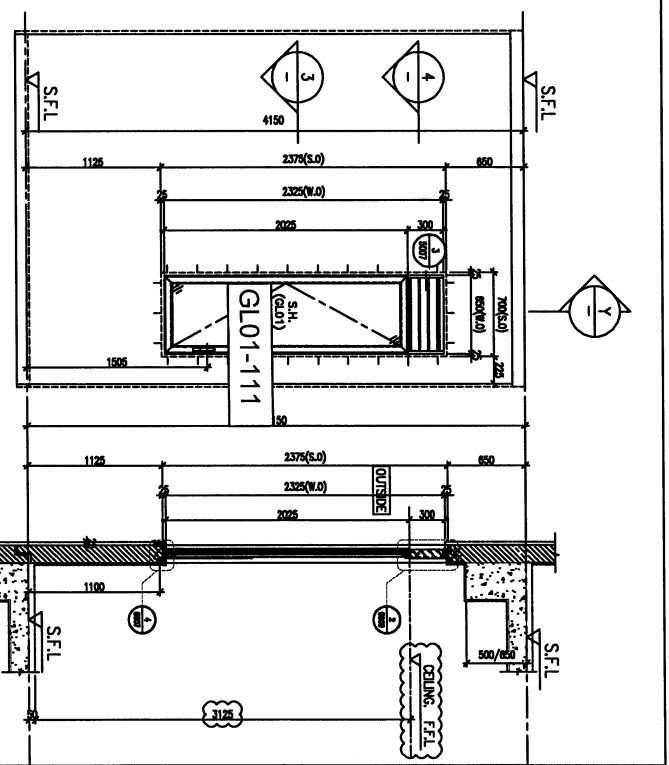
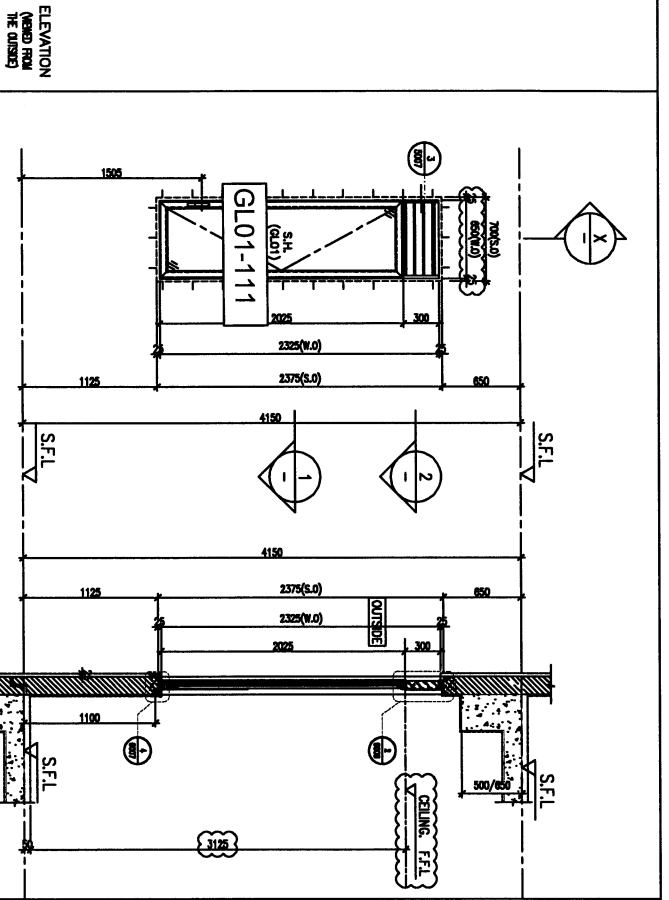
MECHANICAL ENGINEER : C.M. WONG & ASSOCIATES LTD

MECHANICAL ENGINEER : C.M. WONG & ASSOCIATES LTD

MECHANICAL ENGINEER : C.M. WONG & ASSOCIATES LTD

MECHANICAL ENGINEER : C.M. WONG & ASSOCIATES LTD

MECHANICAL ENGINEER : C.M. WONG & ASSOCIATES LTD



WINDOW MARK	GL01	HOUSE TYPE A - 1/F BATH 5
LOCATION	70mm ALUM. SECTION ALI	70mm ALUM. SECTION ALI
MATERIALS	GL01	GL01
GLAZING	2 Nos HOUSE NO. HA7 & HA8	2 Nos HOUSE NO. HA7 & HA8
QUANTITY	(MODEL NO. 2017-D2A)	(MODEL NO. 2017-D2A)
HANDLES		

WINDOW MARK	GL01	HOUSE TYPE A1 - 1/F BATH 5
LOCATION	70mm ALUM. SECTION ALI	70mm ALUM. SECTION ALI
MATERIALS	GL01	GL01
GLAZING	3 Nos HOUSE NO. HA1 & HA5 & HA6	3 Nos HOUSE NO. HA1 & HA5 & HA6
QUANTITY	(MODEL NO. 2017-D2A)	(MODEL NO. 2017-D2A)
HANDLES		

DATE: 12-FEB-23 SCALE: 1:40 (As)

PROJECT: PROPOSED RESIDENTIAL DEVELOPMENT AT NAKUL 6542 THE PROMENADE KOWLOON

CLIENT: SHIMAO GROUP HOLDINGS LIMITED

ARCHITECT: YOUNG TUNG & PARTNERS LIMITED

MAIN CONTRACTOR: 協興建築有限公司 HIP HING CONSTRUCTION CO. LTD.

STRUCTURAL ENGINEER: C.M. WONG & ASSOCIATES LTD. 黃志偉建築工程有限公司

PROJECT CONSULTANT: YENNYOT

DATE: 12-FEB-23 SCALE: 1:40 (As)

PROJECT: PROPOSED RESIDENTIAL DEVELOPMENT AT NAKUL 6542 THE PROMENADE KOWLOON

CLIENT: SHIMAO GROUP HOLDINGS LIMITED

ARCHITECT: YOUNG TUNG & PARTNERS LIMITED

MAIN CONTRACTOR: 協興建築有限公司 HIP HING CONSTRUCTION CO. LTD.

STRUCTURAL ENGINEER: C.M. WONG & ASSOCIATES LTD. 黃志偉建築工程有限公司

PROJECT CONSULTANT: YENNYOT

DATE: 12-FEB-23 SCALE: 1:40 (As)

PROJECT: PROPOSED RESIDENTIAL DEVELOPMENT AT NAKUL 6542 THE PROMENADE KOWLOON

CLIENT: SHIMAO GROUP HOLDINGS LIMITED

ARCHITECT: YOUNG TUNG & PARTNERS LIMITED

MAIN CONTRACTOR: 協興建築有限公司 HIP HING CONSTRUCTION CO. LTD.

STRUCTURAL ENGINEER: C.M. WONG & ASSOCIATES LTD. 黃志偉建築工程有限公司

PROJECT CONSULTANT: YENNYOT

DATE: 12-FEB-23 SCALE: 1:40 (As)

PROJECT: PROPOSED RESIDENTIAL DEVELOPMENT AT NAKUL 6542 THE PROMENADE KOWLOON

CLIENT: SHIMAO GROUP HOLDINGS LIMITED

ARCHITECT: YOUNG TUNG & PARTNERS LIMITED

MAIN CONTRACTOR: 協興建築有限公司 HIP HING CONSTRUCTION CO. LTD.

STRUCTURAL ENGINEER: C.M. WONG & ASSOCIATES LTD. 黃志偉建築工程有限公司

PROJECT CONSULTANT: YENNYOT

