



工程指示 / 要求簡箋(E.I.)

工程指示編號：EI / 4028 / 21 修改版次：-
 工程編號 : J - 852 工程名稱 : 亞皆老街中電
 工程項目 : 平台 Glass Door 地盤用鋁板 (G/F, LG1)(門玉頂橫收口鋁板)
 收件人 : 生統 發件人 : Ant Yeung 日期 : 16/11/2021

要求提供 / 確認 事項：

- | | | |
|------------------------------------|-------------------------------------|-------------------------------|
| <input type="checkbox"/> 初步鋁料 B.M. | <input type="checkbox"/> 加工拆圖，然後生產 | <input type="checkbox"/> 尺寸表 |
| <input type="checkbox"/> 正式鋁料 B.M. | <input type="checkbox"/> 技術上資料 / 指示 | <input type="checkbox"/> 報價 |
| <input type="checkbox"/> 配件 B.M. | <input type="checkbox"/> 樣辦或貨品說明書 | <input type="checkbox"/> 分判合約 |
| <input type="checkbox"/> 其他：_____ | | |

內容：

請按加工圖生產鋁板送地盤安裝

平台 G/F, LG1 位置，門玉頂橫向收口鋁板

謝謝。

請在 2021 / 11 / 30 前完成上列要求。

附： 頁

以上項目為：

- 原合約工程包 原合約工程加 / 減賬 新工程報價

原因：-_____

分發東莞各部門：

- | | | | |
|--|---|--|--|
| <input type="checkbox"/> 生產技術總監 <input type="checkbox"/> 連附件 | <input type="checkbox"/> 技術部 <input type="checkbox"/> 連附件 | <input type="checkbox"/> 生產部 <input type="checkbox"/> 連附件 | <input type="checkbox"/> 機械設計部 <input type="checkbox"/> 連附件 |
| <input type="checkbox"/> 採購部 <input type="checkbox"/> 連附件 | <input checked="" type="checkbox"/> 生產統籌部 <input type="checkbox"/> 連附件 <i>物</i> | <input type="checkbox"/> 小羅 & 清 <input type="checkbox"/> 連附件 | |
| <input type="checkbox"/> 質檢部 <input type="checkbox"/> 連附件 | <input type="checkbox"/> 會計部 <input type="checkbox"/> 連附件 | <input type="checkbox"/> 報關組 <input type="checkbox"/> 連附件 | <input type="checkbox"/> 其他 _____ <input type="checkbox"/> 連附件 |

分發其他分判：

- 水洪 連附件 *口報*

分發香港各部門：

- | | | | |
|---|--|---|--|
| <input type="checkbox"/> 行政部 <input type="checkbox"/> 連附件 | <input type="checkbox"/> 會計部 <input type="checkbox"/> 連附件 | <input type="checkbox"/> 統籌部 <input type="checkbox"/> 連附件 | <input checked="" type="checkbox"/> 工程部地盤科文 <input type="checkbox"/> 連附件 <i>祥哥</i> |
| <input type="checkbox"/> 採購部 <input type="checkbox"/> 連附件 | <input type="checkbox"/> QS 部 <input type="checkbox"/> 連附件 | <input type="checkbox"/> 維修部 <input type="checkbox"/> 連附件 | <input type="checkbox"/> 其他 _____ <input type="checkbox"/> 連附件 |

傳遞編號：

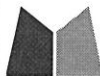
HK 2074 / 21

發件人簽署：

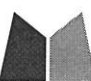
Ant Yeung

項目經理簽署：

PP

 美特鋁質有限公司 MIDI Aluminium Fabricator Ltd.	工程號: J852	計算: ZJP	日期: 2021-11-15	送呈: 胡哥	
	地盤: 亞皆老街	核對:	日期:	副本:	
地盤用鋁板B.M.表	項目類別: GLASS DOOR	批准:	日期:		
BM編號:			總展開面積: 27.12	總V.F.: 27.12	此BM依據

序號	修改標示	鋁板編號	鋁板名稱	噴塗顏色	實用	後備	總數	單位	單件V.F. (M2)	總V.F. (M2)	單件展開 面積(M2)		
1		J852-GDLB90-01	3mm 厚鋁板	UCT201498XL(A)-3	2	0	2	件	0.19	0.37	0.19		
2		J852-GDLB90-02			2	0	2	件	0.18	0.36	0.18		
3		J852-GDLB90-03			2	0	2	件	0.18	0.36	0.18		
4		J852-GDLB91-01			2	0	2	件	0.17	0.34	0.17		
5		J852-GDLB91-02			2	0	2	件	0.16	0.32	0.16		
6		J852-GDLB91-03			2	0	2	件	0.16	0.32	0.16		
7		J852-GDLB92-01			8	0	8	件	0.69	5.49	0.69		
8		J852-GDLB93-01			8	0	8	件	0.74	5.91	0.74		
9		J852-GDLB94-01			2	0	2	件	0.79	1.59	0.79		
10		J852-GDLB95-01			2	0	2	件	0.74	1.48	0.74		
11		J852-GDLB96-01			8	0	8	件	0.64	5.10	0.64		
12		J852-GDLB97-01			8	0	8	件	0.69	5.49	0.69		
13													
14													
15													
16													
17													
18													
19													
20													
21													
22													
23													
93							48	件		27.12			

 美特鋁質有限公司 MIDI Aluminium Fabricator Ltd.	工程號: J852	計算: ZJP	日期: 2021-11-15	送呈: 胡哥
	地盤: 亞皆老街	核對:	日期:	副本:
地盤用鋁板B.M.表	項目類別: GLASS DOOR	批准:	日期:	
BM編號:		總展開面積: 27.12	總V.F.: 27.12	此BM依據

序號	修改標示	鋁板編號	鋁板名稱	噴塗顏色	實用	後備	總數	單位	單件V.F. (M2)	總V.F. (M2)	單件展開面積(M2)	總展開面積 (M2)
1		J852-GDLB90-01	3mm 厚鋁板	UCT201498XL(A)-3	2	0	2	件	0.19	0.37	0.19	0.37
2		J852-GDLB90-02			2	0	2	件	0.18	0.36	0.18	0.36
3		J852-GDLB90-03			2	0	2	件	0.18	0.36	0.18	0.36
4		J852-GDLB91-01			2	0	2	件	0.17	0.34	0.17	0.34
5		J852-GDLB91-02			2	0	2	件	0.16	0.32	0.16	0.32
6		J852-GDLB91-03			2	0	2	件	0.16	0.32	0.16	0.32
7		J852-GDLB92-01			8	0	8	件	0.69	5.49	0.69	5.49
8		J852-GDLB93-01			8	0	8	件	0.74	5.91	0.74	5.91
9		J852-GDLB94-01			2	0	2	件	0.79	1.59	0.79	1.59
10		J852-GDLB95-01			2	0	2	件	0.74	1.48	0.74	1.48
11		J852-GDLB96-01			8	0	8	件	0.64	5.10	0.64	5.10
12		J852-GDLB97-01			8	0	8	件	0.69	5.49	0.69	5.49
13												
14												
15												
16												
17												
18												
19												
20												
21												
22												
23												
93							48	件		27.12		27.12

紅 MIC

圖則登記表
DRAWING REGISTER

工程名稱 Project Title: 亞皆老街 GLASS DOOR 地盤用鋁板加工圖		接收日期 Receiving Date (適用於客戶圖則)	
工程編號 Project No: J-852		年	
分發予 Distributed To		月	
		日	
		發出日期 Issued Date	
		年	21
		月	11
		日	15

圖則編號 Drg. No.	圖則名稱 Drawing Title
J852-GDLB90	鋁板加工圖
J852-GDLB91	鋁板加工圖
J852-GDLB92	鋁板加工圖
J852-GDLB93	鋁板加工圖
J852-GDLB94	鋁板加工圖
J852-GDLB95	鋁板加工圖
J852-GDLB96	鋁板加工圖
J852-GDLB97	鋁板加工圖
J852-PGW-4500	鋁板位置圖
J852-PGW-4501	鋁板位置圖
J852-PGW-4502	鋁板位置圖
J852-PGW-4503	鋁板位置圖
J852-PGW-4504	鋁板位置圖
J852-PGW-4505	鋁板位置圖
J852-PGW-4506	鋁板位置圖
J852-PGW-4507	鋁板位置圖
J852-PGW-4508	鋁板位置圖
J852-PGW-4509	鋁板位置圖
J852-PGW-4510	鋁板位置圖
J852-PGW-4511	鋁板位置圖
J852-PGW-4100	鋁板位置圖

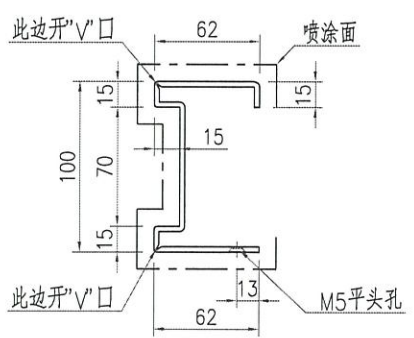
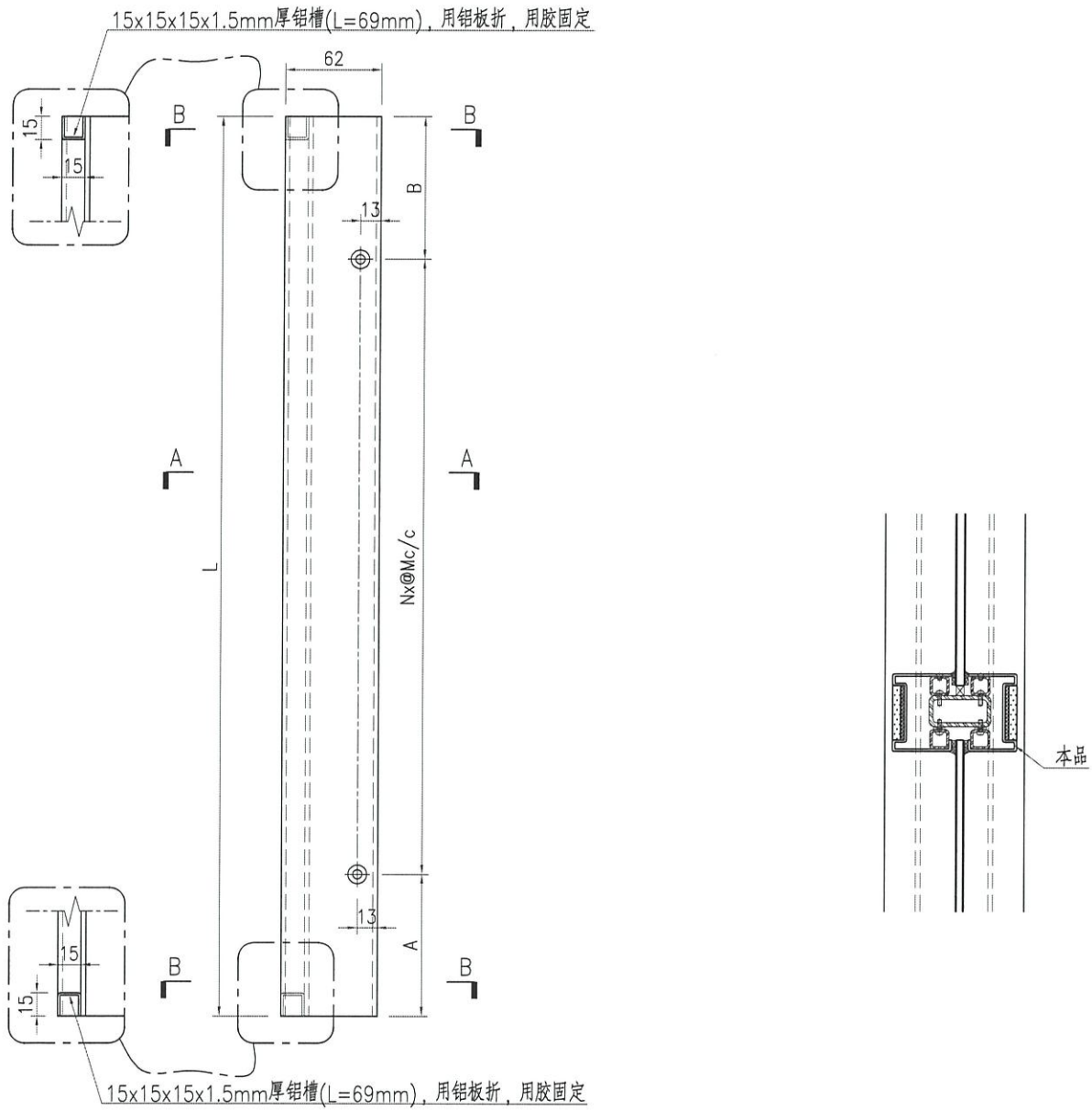
	修訂編號 Revision No.
1	-
2	-
3	-
4	-
5	-
6	-
7	-
8	-
9	-
10	-
11	-
12	-
13	-
14	-
15	-
16	-
17	-
18	-
19	-
20	-
21	-



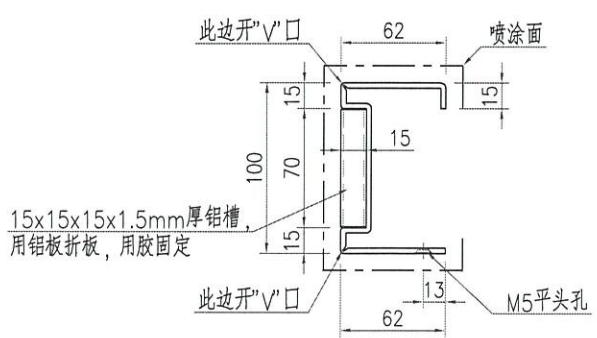
美特鋁質 有限公司
MIDI Aluminium Fabricator Ltd.

产品编号	L(mm)	数量	N	M	A	B	N1	M1	备注
J852-GDLB91-01	624	2	1	400	112	112			
J852-GDLB91-02	598	2	1	400	99	99			
J852-GDLB91-03	601	2	1	400	100.5	100.5			

工程號	J852	地盤	亞皆老街
-----	------	----	------



SECTION A-A



SECTION B-B

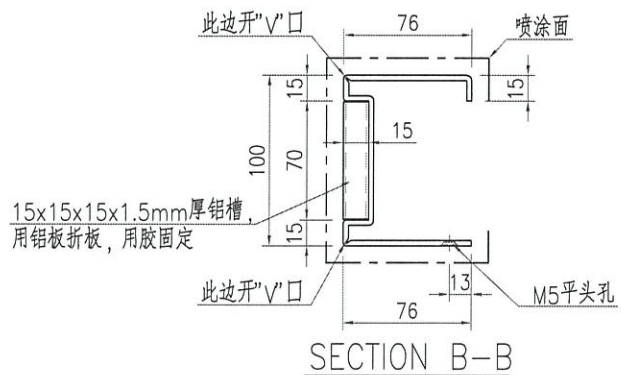
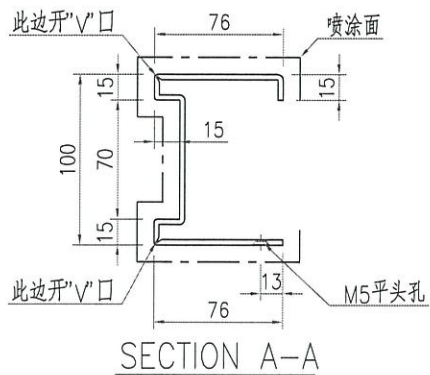
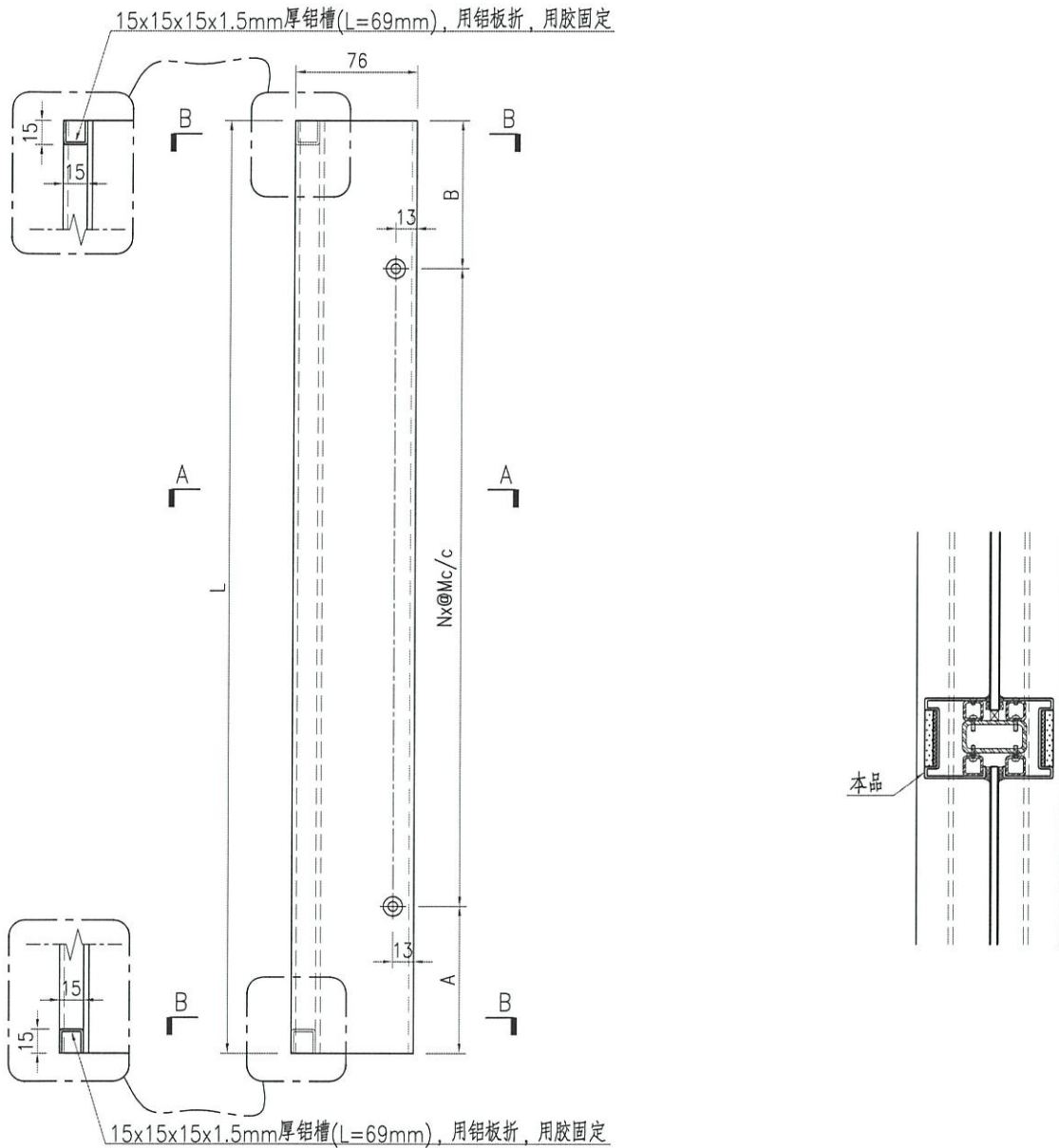
名稱	鋁板加工圖	制圖	ZJP	2021-09-08	修改			
材料	3mm厚鋁板	復核			日期			
顏色	UCT201498XL(A)-3	批准			圖號	J852-GDLB91		



美特鋁質 有限公司
MIDI Aluminium Fabricator Ltd.

产品编号	L(mm)	数量	N	M	A	B	N1	M1	备注
J852-GDLB90-01	624	2	1	400	112	112			
J852-GDLB90-02	598	2	1	400	99	99			
J852-GDLB90-03	601	2	1	400	100.5	100.5			

工程號	J852	地盤	亞皆老街
-----	------	----	------



名稱	鋁板加工圖	制圖	ZJP	2021-09-08	修改			
材料	3mm厚鋁板	復核			日期			
顏色	UCT201498XL(A)-3	批准			圖號	J852-GDLB90		

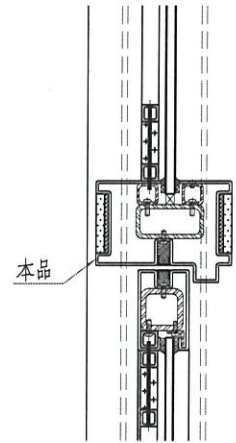
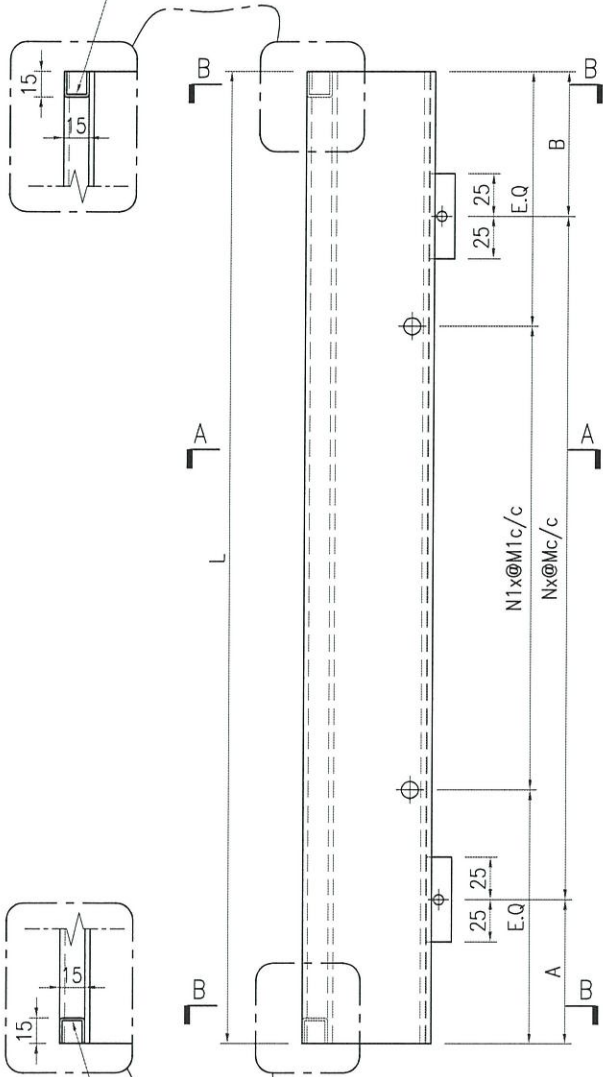


美特鋁質 有限公司
MIDI Aluminium Fabricator Ltd.

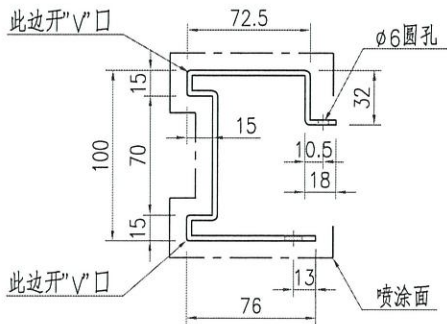
产品编号	L(mm)	数量	N	M	A	B	N1	M1	备注
J852-GDLB92-01	1999	8	6	300	99.5	99.5	2	501	

工程號	J852	地盤	亞皆老街
-----	------	----	------

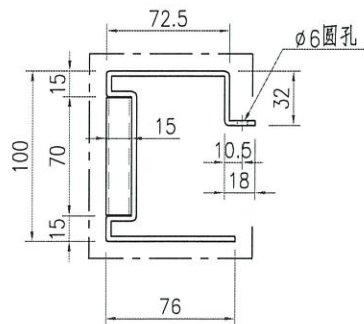
15x15x15x1.5mm厚铝槽(L=69mm), 用铝板折, 用胶固定



15x15x15x1.5mm厚铝槽(L=69mm), 用铝板折, 用胶固定



SECTION A-A



SECTION A-A

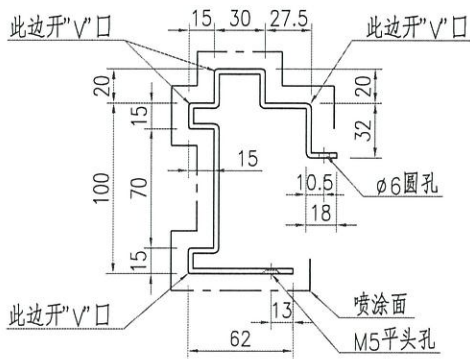
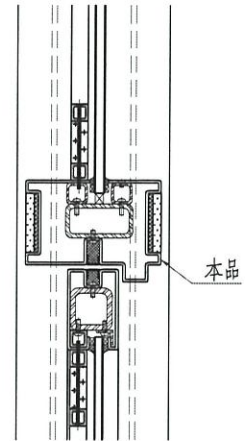
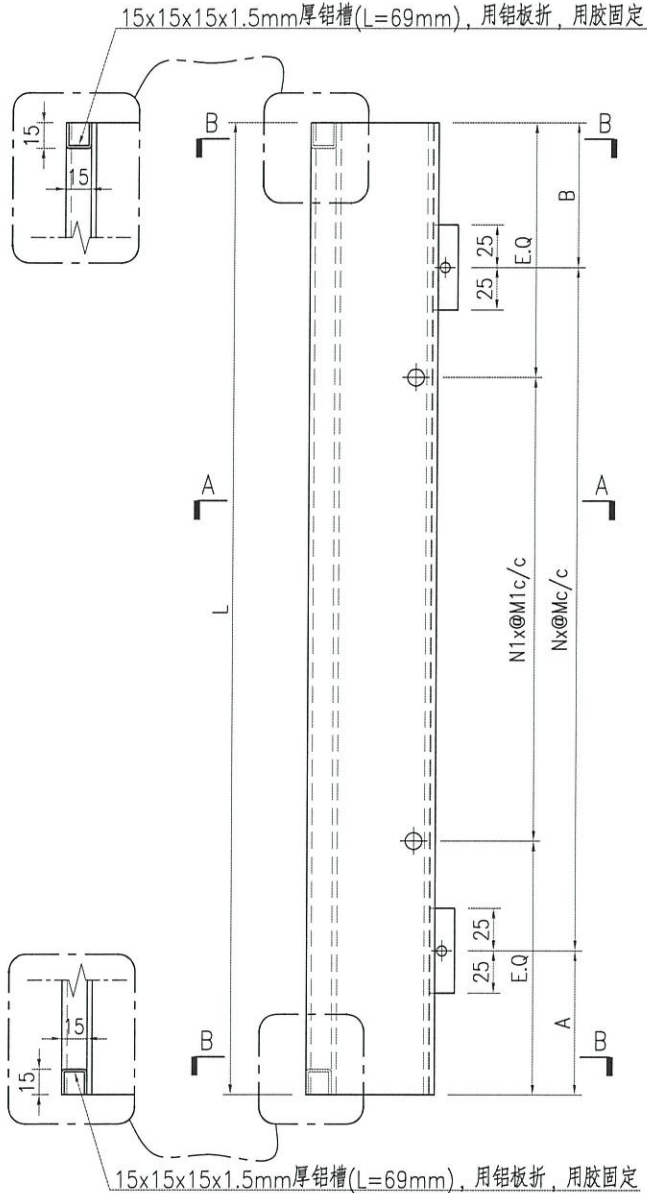
名稱	鋁板加工圖	制圖	ZJP	2021-09-08	修改			
材料	3mm厚鋁板	復核			日期			
顏色	UCT201498XL(A)-3	批准			圖號	J852-GDLB92		



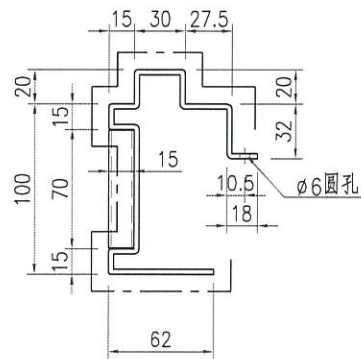
美特鋁質 有限公司
MIDI Aluminium Fabricator Ltd.

产品编号	L(mm)	数量	N	M	A	B	N1	M1	备注
J852-GDLB93-01	1999	8	5	300	249.5	249.5	2	501	

工程號	J852	地盤	亞皆老街
-----	------	----	------



SECTION A-A



SECTION A-A

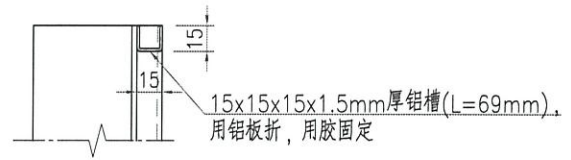
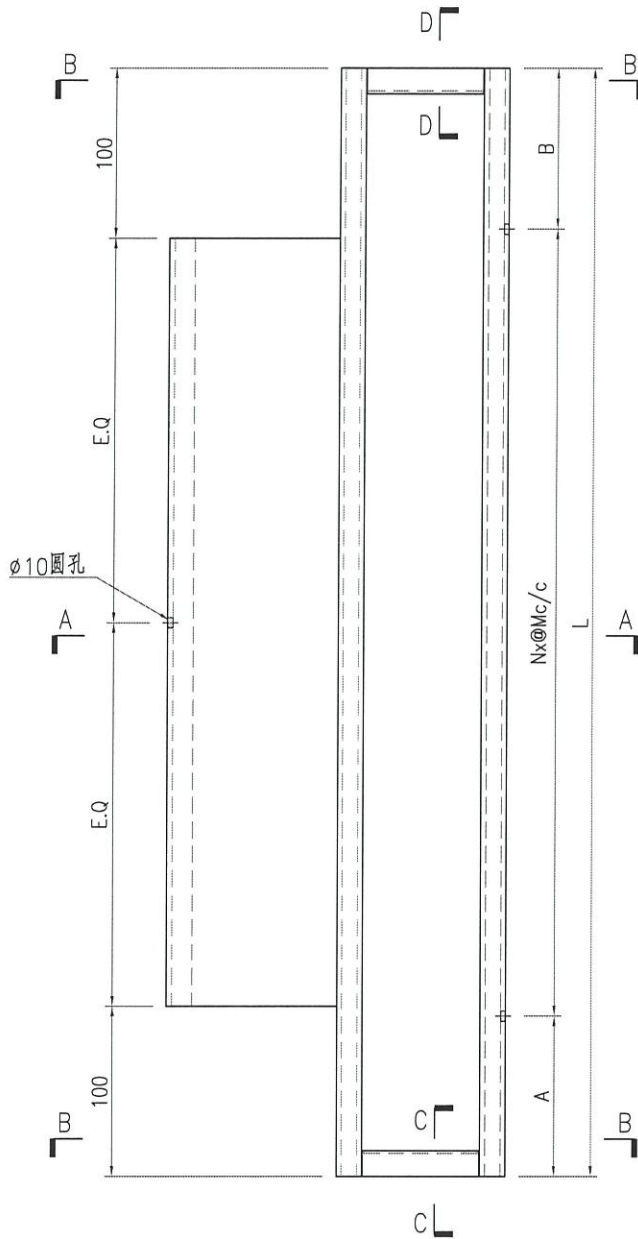
名稱	鋁板加工圖	制圖	ZJP	2021-09-08	修改			
材料	3mm厚鋁板	復核			日期			
顏色	UCT201498XL(A)-3	批准			圖號	J852-GDLB93		



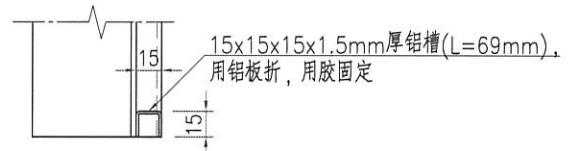
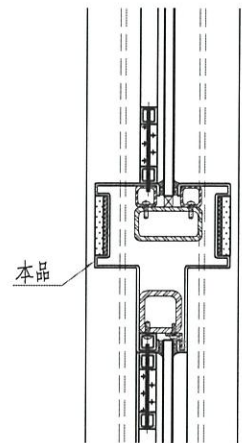
美特鋁質 有限公司
MIDI Aluminium Fabricator Ltd.

产品编号	L(mm)	数量	N	M	A	B	N1	M1	备注
J852-GDLB94-01	1999	2	2	498	501.5	501.5			

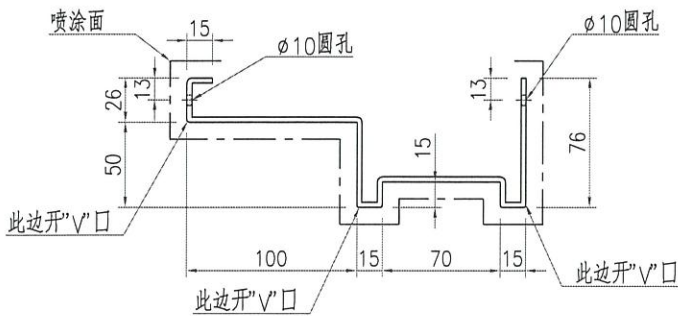
工程號	J852	地盤	亞皆老街
-----	------	----	------



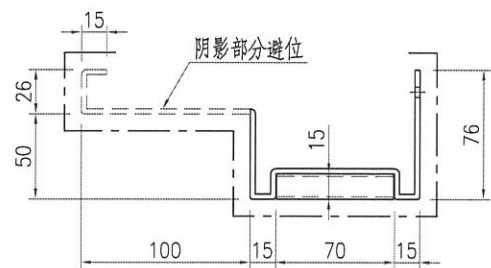
SECTION D-D



SECTION C-C



SECTION A-A



SECTION B-B

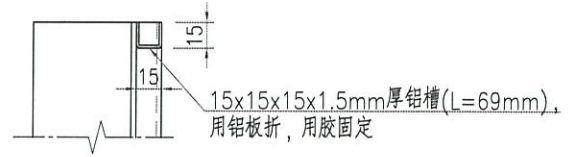
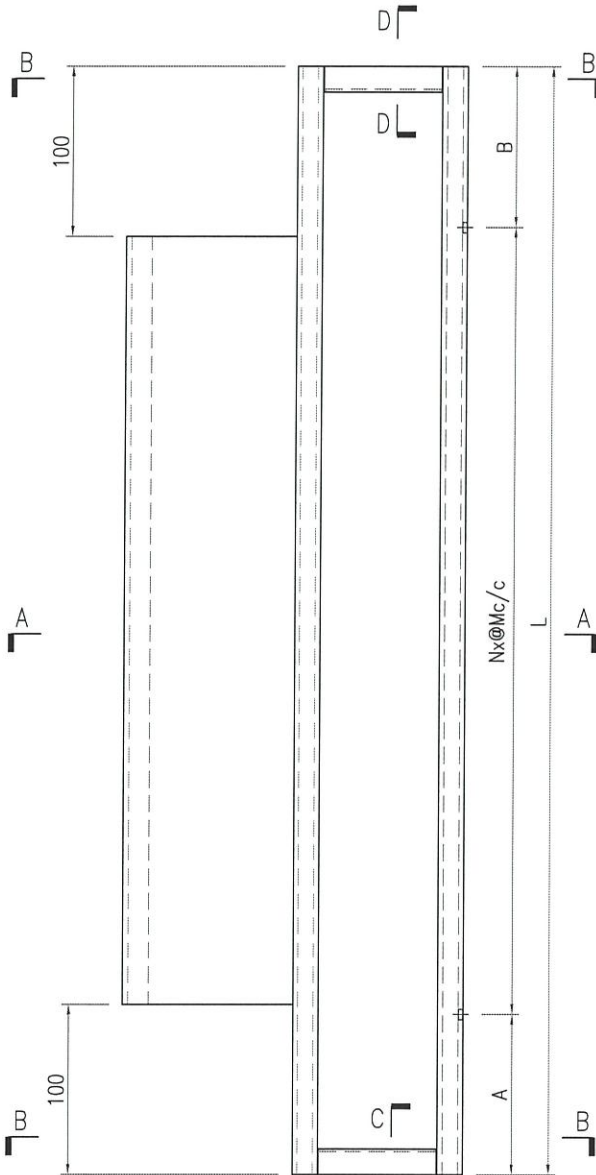
名稱	鋁板加工圖	制圖	ZJP	2021-09-08	修改		
材料	3mm厚鋁板	復核			日期		
顏色	UCT201498XL(A)-3	批准			圖號	J852-GDLB94	



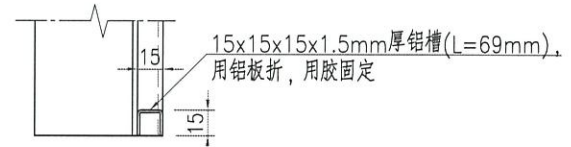
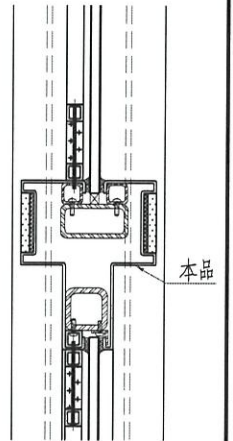
美特鋁質有限公司
MIDI Aluminium Fabricator Ltd.

产品编号	L(mm)	数量	N	M	A	B	N1	M1	备注
J852-GDLB95-01	1999	2	2	498	501.5	501.5			

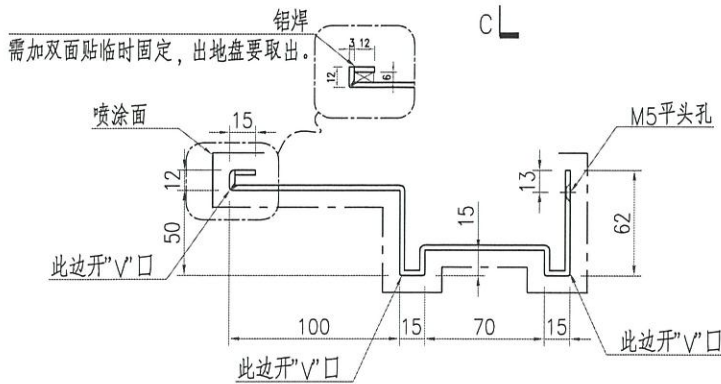
工程號	J852	地盤	亞皆老街
-----	------	----	------



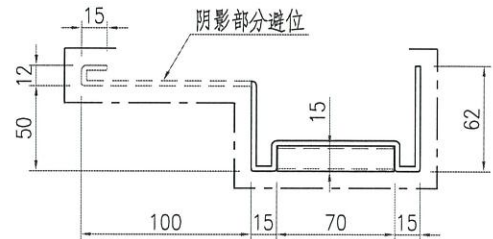
SECTION D-D



SECTION C-C



SECTION A-A



SECTION B-B

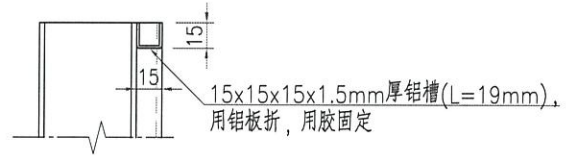
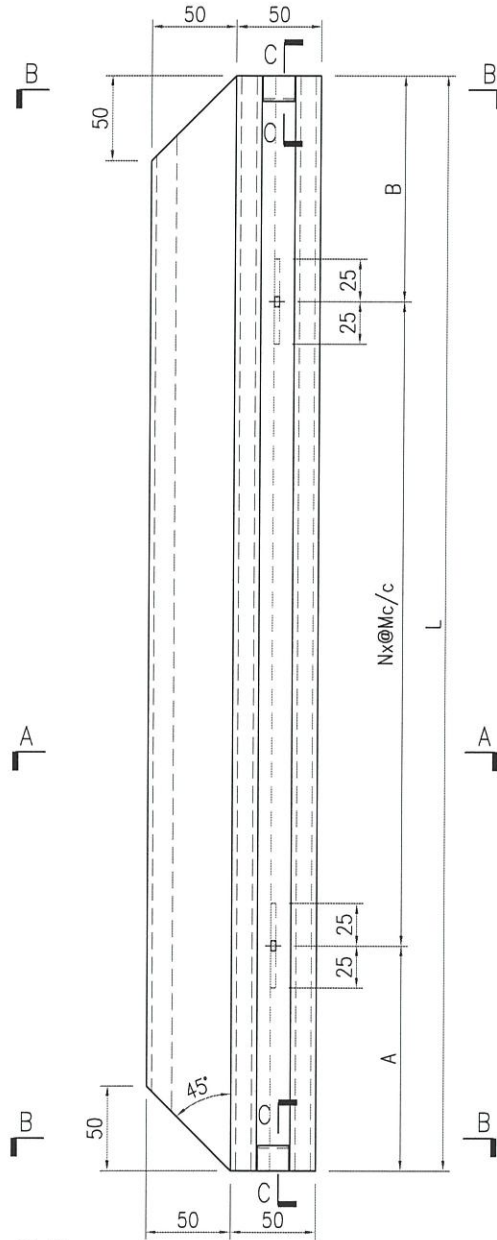
名稱	鋁板加工圖	制圖	ZJP	2021-09-08	修改			
材料	3mm厚鋁板	復核			日期			
顏色	UCT201498XL(A)-3	批准			圖號	J852-GDLB95		



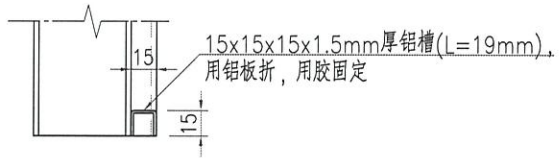
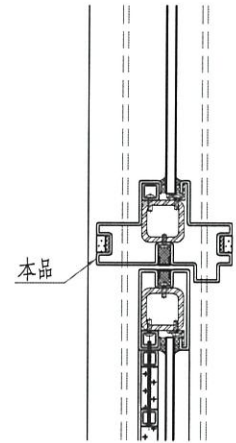
美特鋁質 有限公司
MIDI Aluminium Fabricator Ltd.

产品编号	L(mm)	数量	N	M	A	B	N1	M1	备注
J852-GDLB96-01	1899	8	6	300	49.5	49.5			

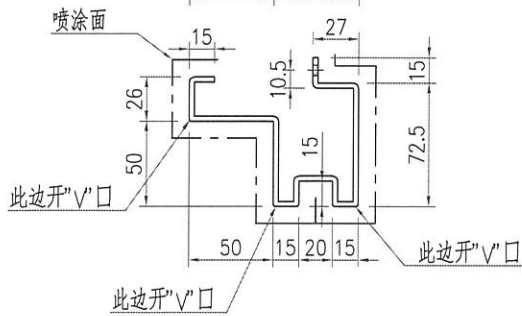
工程號	J852	地盤	亞皆老街
-----	------	----	------



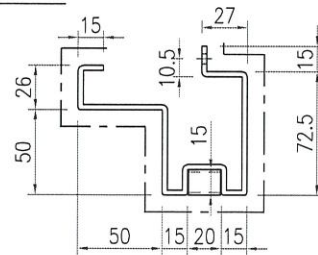
SECTION C-C



SECTION C-C



SECTION A-A

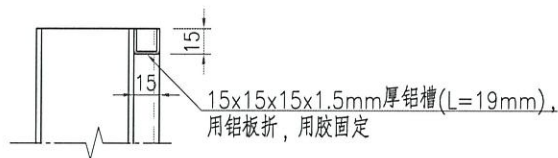
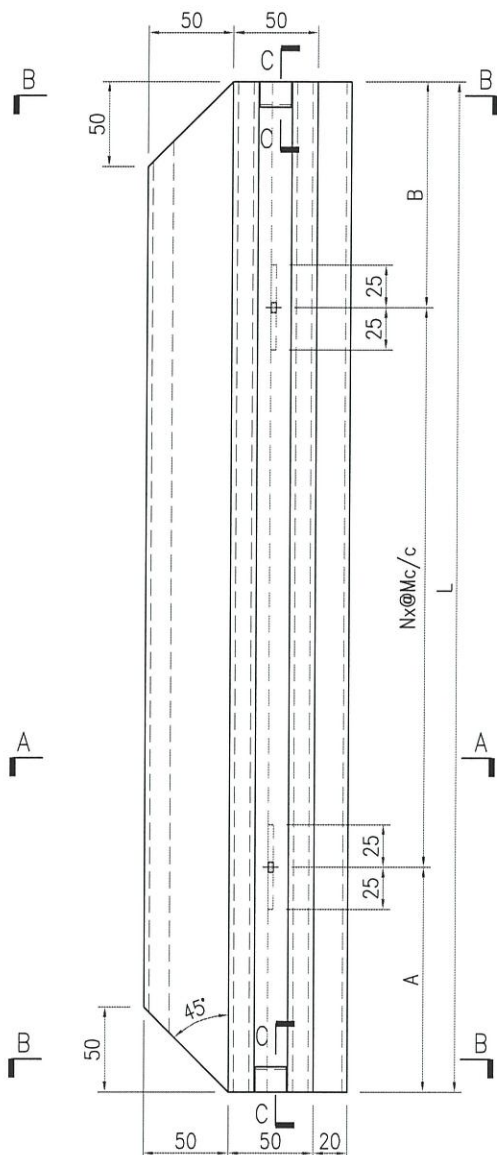


SECTION B-B

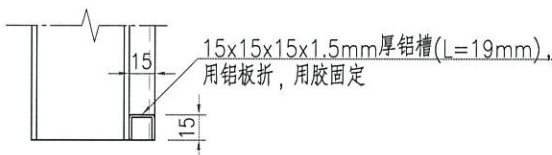
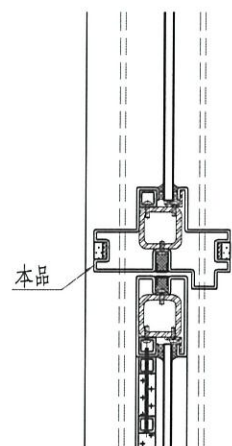
名稱	鋁板加工圖	制圖	ZJP	2021-09-08	修改			
材料	3mm厚鋁板	復核			日期			
顏色	UCT201498XL(A)-3	批准			圖號	J852-GDLB96		

产品编号	L(mm)	数量	N	M	A	B	N1	M1	备注
J852-GDLB97-01	1899	8	5	300	199.5	199.5			

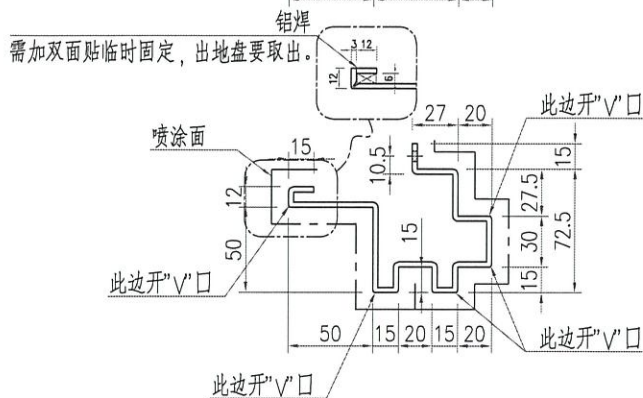
工程號	J852	地盤	亞皆老街
-----	------	----	------



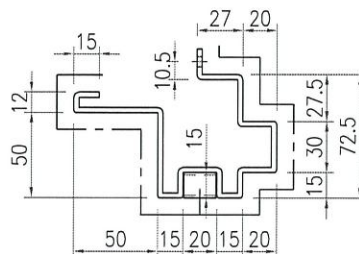
SECTION C-C



SECTION C-C



SECTION A-A



SECTION B-B

名稱	鋁板加工圖	制圖	ZJP	2021-09-08	修改		
材料	3mm厚鋁板	復核			日期		
顏色	UCT201498XL(A)-3	批准			圖號	J852-GDLB97	

BLD. REF. :	
CLIENT :	
PROJECT :	AGC DESIGN LTD AGC DESIGN LTD AGC DESIGN LTD AGC DESIGN LTD AGC DESIGN LTD
MAIN CONTRACTOR :	Gammon
STRUCTURAL ENGINEER :	ARUP
TRACER CONSULTANT :	MEINHARDT
NOTE :	1. ALL DIMENSIONS ARE IN MM. 2. ALL ELEVATIONS ARE VIEWED FROM OUTSIDE. 3. ALL DIMENSIONS TO BE CHECKED ON SITE. 4. BEFORE FINISHING.
LEGEND :	<p>(X1) DETAIL MARK NO. (X201) REFER SHEET NO.</p> <p>1. F.F.L. --- FINISHED FLOOR LEVEL 2. S.F.L. --- STRUCTURAL FLOOR LEVEL 3. (A) --- REVERSED DETAIL 4. [LIT] --- DOWN PINK TINTED GLASS 5. [LIT] --- DOWN PINK TINTED GLASS</p>
REV. NO.	REVISED
DATE	NO.
A	16/07/2011
B	16/07/2011
C	16/07/2011
D	16/07/2011
E	16/07/2011
F	16/07/2011
G	16/07/2011
H	16/07/2011
I	16/07/2011
J	16/07/2011
K	16/07/2011
L	16/07/2011
M	16/07/2011
N	16/07/2011
O	16/07/2011
P	16/07/2011
Q	16/07/2011
R	16/07/2011
S	16/07/2011
T	16/07/2011
U	16/07/2011
V	16/07/2011
W	16/07/2011
X	16/07/2011
Y	16/07/2011
Z	16/07/2011
AA	16/07/2011
AB	16/07/2011
AC	16/07/2011
AD	16/07/2011
AE	16/07/2011
AF	16/07/2011
AG	16/07/2011
AH	16/07/2011
AI	16/07/2011
AJ	16/07/2011
AK	16/07/2011
AL	16/07/2011
AM	16/07/2011
AN	16/07/2011
AO	16/07/2011
AP	16/07/2011
AQ	16/07/2011
AR	16/07/2011
AS	16/07/2011
AT	16/07/2011
AU	16/07/2011
AV	16/07/2011
AW	16/07/2011
AX	16/07/2011
AY	16/07/2011
AZ	16/07/2011
BA	16/07/2011
BB	16/07/2011
BC	16/07/2011
BD	16/07/2011
BE	16/07/2011
BF	16/07/2011
BG	16/07/2011
BH	16/07/2011
BI	16/07/2011
BJ	16/07/2011
BK	16/07/2011
BL	16/07/2011
BM	16/07/2011
BN	16/07/2011
BO	16/07/2011
BP	16/07/2011
BQ	16/07/2011
BR	16/07/2011
BS	16/07/2011
BT	16/07/2011
BU	16/07/2011
BV	16/07/2011
BW	16/07/2011
BX	16/07/2011
BY	16/07/2011
BZ	16/07/2011
CA	16/07/2011
CB	16/07/2011
CC	16/07/2011
CD	16/07/2011
CE	16/07/2011
CF	16/07/2011
CG	16/07/2011
CH	16/07/2011
CI	16/07/2011
CJ	16/07/2011
CK	16/07/2011
CL	16/07/2011
CM	16/07/2011
CN	16/07/2011
CO	16/07/2011
CP	16/07/2011
CQ	16/07/2011
CR	16/07/2011
CS	16/07/2011
CT	16/07/2011
CU	16/07/2011
CV	16/07/2011
CW	16/07/2011
CX	16/07/2011
CY	16/07/2011
CZ	16/07/2011
DA	16/07/2011
DB	16/07/2011
DC	16/07/2011
DD	16/07/2011
DE	16/07/2011
DF	16/07/2011
DG	16/07/2011
DH	16/07/2011
DI	16/07/2011
DJ	16/07/2011
DK	16/07/2011
DL	16/07/2011
DM	16/07/2011
DN	16/07/2011
DO	16/07/2011
DP	16/07/2011
DQ	16/07/2011
DR	16/07/2011
DS	16/07/2011
DT	16/07/2011
DU	16/07/2011
DV	16/07/2011
DW	16/07/2011
DX	16/07/2011
DY	16/07/2011
DZ	16/07/2011
EA	16/07/2011
EB	16/07/2011
EC	16/07/2011
ED	16/07/2011
EE	16/07/2011
EF	16/07/2011
EG	16/07/2011
EH	16/07/2011
EI	16/07/2011
EJ	16/07/2011
EK	16/07/2011
EL	16/07/2011
EM	16/07/2011
EN	16/07/2011
EO	16/07/2011
EP	16/07/2011
EQ	16/07/2011
ER	16/07/2011
ES	16/07/2011
ET	16/07/2011
EU	16/07/2011
EV	16/07/2011
EW	16/07/2011
EX	16/07/2011
EY	16/07/2011
EZ	16/07/2011
FA	16/07/2011
FB	16/07/2011
FC	16/07/2011
FD	16/07/2011
FE	16/07/2011
FF	16/07/2011
FG	16/07/2011
FH	16/07/2011
FI	16/07/2011
FJ	16/07/2011
FK	16/07/2011
FL	16/07/2011
FM	16/07/2011
FN	16/07/2011
FO	16/07/2011
FP	16/07/2011
FQ	16/07/2011
FR	16/07/2011
FS	16/07/2011
FT	16/07/2011
FU	16/07/2011
FV	16/07/2011
FW	16/07/2011
FX	16/07/2011
FY	16/07/2011
FZ	16/07/2011
GA	16/07/2011
GB	16/07/2011
GC	16/07/2011
GD	16/07/2011
GE	16/07/2011
GF	16/07/2011
GG	16/07/2011
GH	16/07/2011
GI	16/07/2011
GJ	16/07/2011
GK	16/07/2011
GL	16/07/2011
GM	16/07/2011
GN	16/07/2011
GO	16/07/2011
GP	16/07/2011
GQ	16/07/2011
GR	16/07/2011
GS	16/07/2011
GT	16/07/2011
GU	16/07/2011
GV	16/07/2011
GW	16/07/2011
GX	16/07/2011
GY	16/07/2011
GZ	16/07/2011
HA	16/07/2011
HB	16/07/2011
HC	16/07/2011
HD	16/07/2011
HE	16/07/2011
HF	16/07/2011
HG	16/07/2011
HH	16/07/2011
HI	16/07/2011
HJ	16/07/2011
HK	16/07/2011
HL	16/07/2011
HM	16/07/2011
HN	16/07/2011
HO	16/07/2011
HP	16/07/2011
HQ	16/07/2011
HR	16/07/2011
HS	16/07/2011
HT	16/07/2011
HU	16/07/2011
HV	16/07/2011
HW	16/07/2011
HX	16/07/2011
HY	16/07/2011
HZ	16/07/2011
IA	16/07/2011
IB	16/07/2011
IC	16/07/2011
ID	16/07/2011
IE	16/07/2011
IF	16/07/2011
IG	16/07/2011
IH	16/07/2011
II	16/07/2011
IJ	16/07/2011
IK	16/07/2011
IL	16/07/2011
IM	16/07/2011
IN	16/07/2011
IO	16/07/2011
IP	16/07/2011
IQ	16/07/2011
IR	16/07/2011
IS	16/07/2011
IT	16/07/2011
IU	16/07/2011
IV	16/07/2011
IW	16/07/2011
IX	16/07/2011
IY	16/07/2011
IZ	16/07/2011
JA	16/07/2011
JB	16/07/2011
JC	16/07/2011
JD	16/07/2011
JE	16/07/2011
JF	16/07/2011
JG	16/07/2011
JH	16/07/2011
JI	16/07/2011
JJ	16/07/2011
JK	16/07/2011
JL	16/07/2011
JM	16/07/2011
JN	16/07/2011
JO	16/07/2011
JP	16/07/2011
JQ	16/07/2011
JR	16/07/2011
JS	16/07/2011
JT	16/07/2011
JU	16/07/2011
JV	16/07/2011
JW	16/07/2011
JX	16/07/2011
JY	16/07/2011
JZ	16/07/2011
KA	16/07/2011
KB	16/07/2011
KC	16/07/2011
KD	16/07/2011
KE	16/07/2011
KF	16/07/2011
KG	16/07/2011
KH	16/07/2011
KI	16/07/2011
KJ	16/07/2011
KK	16/07/2011
KL	16/07/2011
KM	16/07/2011
KN	16/07/2011
KO	16/07/2011
KP	16/07/2011
KQ	16/07/2011
KR	16/07/2011
KS	16/07/2011
KT	16/07/2011
KU	16/07/2011
KV	16/07/2011
KW	16/07/2011
KX	16/07/2011
KY	16/07/2011
KZ	16/07/2011
LA	16/07/2011
LB	16/07/2011
LC	16/07/2011
LD	16/07/2011
LE	16/07/2011
LF	16/07/2011
LG	16/07/2011
LH	16/07/2011
LI	16/07/2011
LJ	16/07/2011
LK	16/07/2011
LL	16/07/2011
LM	16/07/2011
LN	16/07/2011
LO	16/07/2011
LP	16/07/2011
LQ	16/07/2011
LR	16/07/2011
LS	16/07/2011
LT	16/07/2011
LU	16/07/2011
LV	16/07/2011
LW	16/07/2011
LX	16/07/2011
LY	16/07/2011
LZ	16/07/2011
MA	16/07/2011
MB	16/07/2011
MC	16/07/2011
MD	16/07/2011
ME	16/07/2011
MF	16/07/2011
MG	16/07/2011
MH	16/07/2011
MI	16/07/2011
MJ	16/07/2011
MK	16/07/2011
ML	16/07/2011
MM	16/07/2011
MN	16/07/2011
MO	16/07/2011
MP	16/07/2011
MQ	16/07/2011
MR	16/07/2011
MS	16/07/2011
MT	16/07/2011
MU	16/07/2011
MV	16/07/2011
MW	16/07/2011
MX	16/07/2011
MY	16/07/2011
MZ	16/07/2011
NA	16/07/2011
NB	16/07/2011
NC	16/07/2011
ND	16/07/2011
NE	16/07/2011
NF	16/07/2011
NG	16/07/2011
NH	16/07/2011
NI	16/07/2011
NJ	16/07/2011
NK	16/07/2011
NL	16/07/2011
NM	16/07/2011
NN	16/07/2011
NO	16/07/2011
NP	16/07/2011
NQ	16/07/2011
NR	16/07/2011
NS	16/07/2011
NT	16/07/2011
NU	16/07/2011
NV	16/07/2011
NW	16/07/2011
NX	16/07/2011
NY	16/07/2011
NZ	16/07/2011
OA	16/07/2011
OB	16/07/2011
OC	16/07/2011
OD	16/07/2011
OE	16/07/2011
OF	16/07/2011
OG	16/07/2011
OH	16/07/2011
OI	16

NO. 107 :

CLIENT :

PROJECT : **AGC DESIGN LTD**

MAIN CONTRACTOR : **Gammon**

STRUCTURAL ENGINEER : **ARUP**

FACE CONSULTANT : **MEINHARDT**

NOTE :

1. ALL DIMENSIONS ARE IN mm.
2. ALL DIMENSIONS ARE VIEWED FROM OUTSIDE.
3. ALL DIMENSIONS TO BE CHECKED ON SITE.

LEGEND :

(X) DETAIL MARK NO.
(100) REFER SHEET NO.

1. F.F.L. --- FINISHED FLOOR LEVEL
2. S.F.L. --- STRUCTURAL FLOOR LEVEL
3. (R) --- REVERSED DETAIL
4. [L2] --- Down 10K TUMBERED GLASS
5. [L1] --- Down 10K TUMBERED GLASS

NO.	REVISION	DATE
1	REVISION ISSUED TO ARCH CONSULTANT	16/07/2011
2	REVISION ISSUED TO ARCH CONSULTANT	16/07/2011
3	REVISION ISSUED TO ARCH CONSULTANT	16/07/2011
4	REVISION ISSUED TO ARCH CONSULTANT	16/07/2011
5	REVISION ISSUED TO ARCH CONSULTANT	16/07/2011

JOB NO. : J-1052

PROJECT : PROPOSED DEVELOPMENT AT KOWLOON ISLAND LOT Nos. G0308/P, G0308/P, G0308/P, G0308/P, G0308/P, AND LOT No. G0305.

TITLE : ELEVATION & PART PLAN FOR GLASS WALL(G/7)

DATE : 25-Mar-21
SCALE : 1:40
DRAWN BY : C.M.
CHECKED BY : D.W.

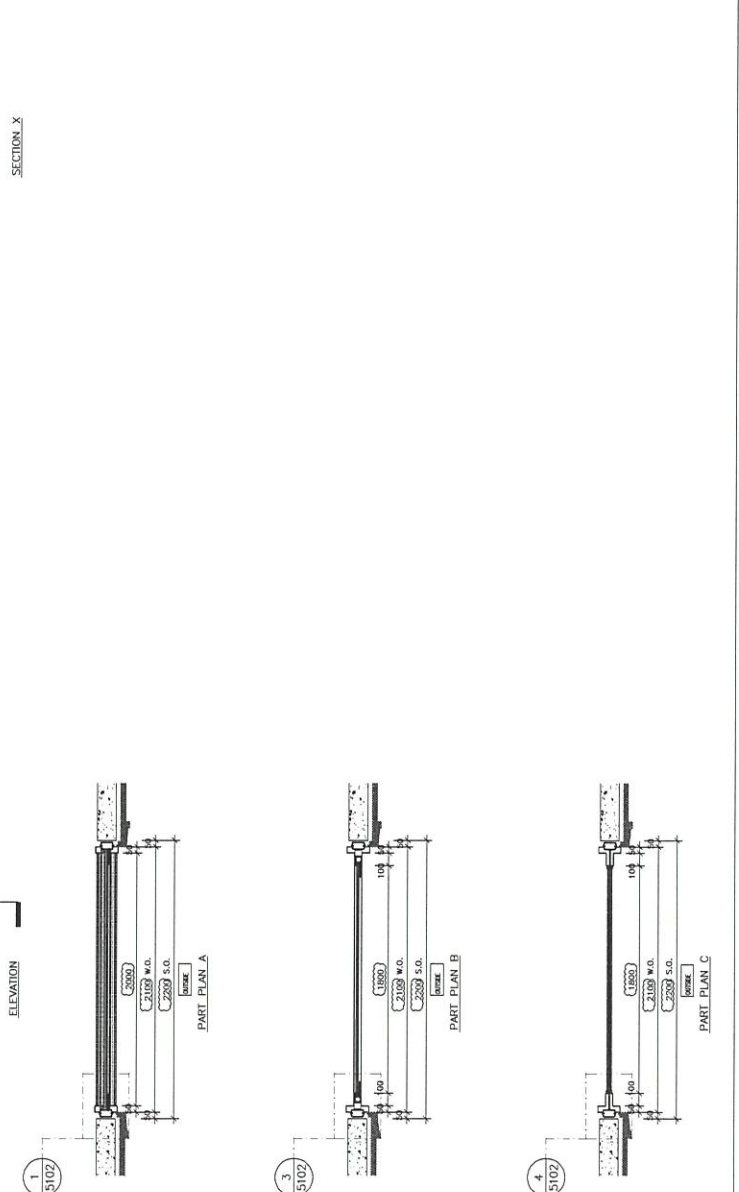
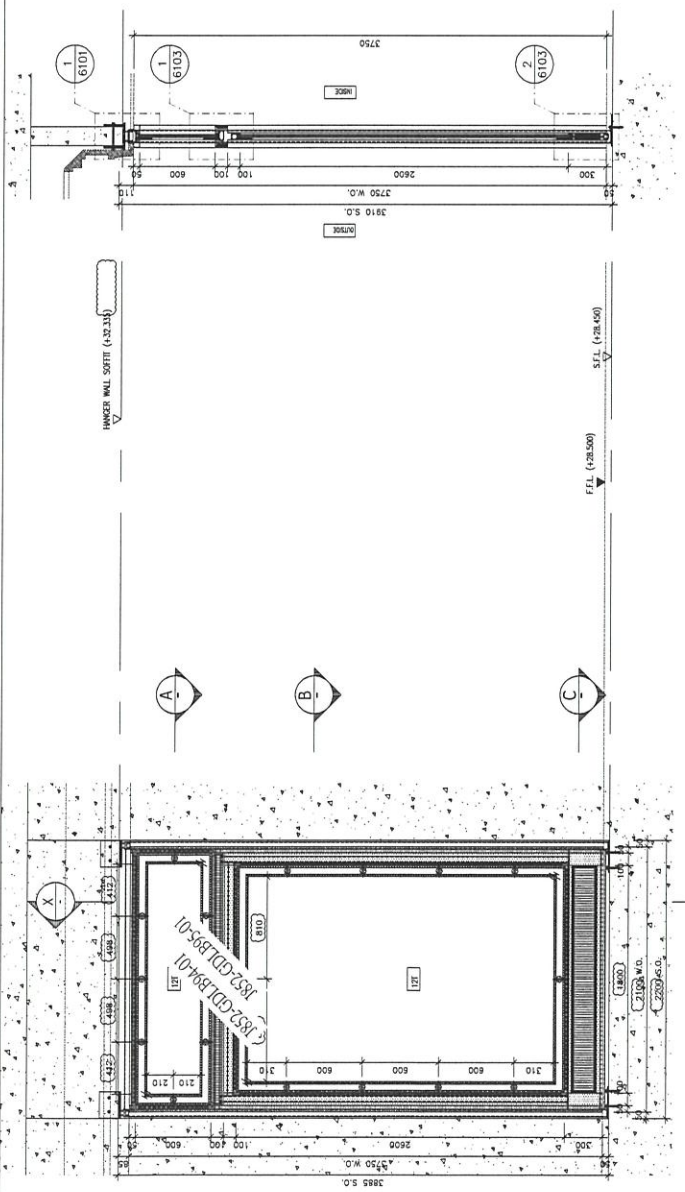
MEINHARDT
MIDI ADVISORY ENGINEERING LTD.
110 Cheong Chee Road, Singapore 439002
Tel: (65) 63727966

MEINHARDT
MIDI ADVISORY ENGINEERING LTD.
110 Cheong Chee Road, Singapore 439002
Tel: (65) 63727966

DATE : 25-Mar-21
SCALE : 1:40
DRAWN BY : C.M.
CHECKED BY : D.W.

MEINHARDT
MIDI ADVISORY ENGINEERING LTD.
110 Cheong Chee Road, Singapore 439002
Tel: (65) 63727966

FLOOR	LOCATION	GLASS WALL	MARK	QTY
G	TOWER 1 LIFT LOBBY	T102/G	1	1



REV. REF. :

DATE :

PROJECT :

MAIN CONTRACTOR :

STRUCTURAL ENGINEER :

FRAME CONSULTANT :

NOTE :

LEGEND :

1. P.F.L. -- FINISHED FLOOR LEVEL

2. S.F.L. -- STRUCTURAL FLOOR LEVEL

3. (A) -- REINFORCED DETAIL

4. (LIT) -- Clear THK. TINTED GLASS

5. (LIT) -- 15mm THK. TINTED GLASS

1	REVISED TO AGC CHANGE
2	REVISED TO AGC CHANGE
3	REVISED TO AGC CHANGE
4	REVISED TO AGC CHANGE
5	REVISED TO AGC CHANGE
6	REVISED TO AGC CHANGE
7	REVISED TO AGC CHANGE
8	REVISED TO AGC CHANGE
9	REVISED TO AGC CHANGE
10	REVISED TO AGC CHANGE
11	REVISED TO AGC CHANGE
12	REVISED TO AGC CHANGE
13	REVISED TO AGC CHANGE
14	REVISED TO AGC CHANGE
15	REVISED TO AGC CHANGE
16	REVISED TO AGC CHANGE
17	REVISED TO AGC CHANGE
18	REVISED TO AGC CHANGE
19	REVISED TO AGC CHANGE
20	REVISED TO AGC CHANGE
21	REVISED TO AGC CHANGE
22	REVISED TO AGC CHANGE
23	REVISED TO AGC CHANGE
24	REVISED TO AGC CHANGE
25	REVISED TO AGC CHANGE
26	REVISED TO AGC CHANGE
27	REVISED TO AGC CHANGE
28	REVISED TO AGC CHANGE
29	REVISED TO AGC CHANGE
30	REVISED TO AGC CHANGE
31	REVISED TO AGC CHANGE
32	REVISED TO AGC CHANGE
33	REVISED TO AGC CHANGE
34	REVISED TO AGC CHANGE
35	REVISED TO AGC CHANGE
36	REVISED TO AGC CHANGE
37	REVISED TO AGC CHANGE
38	REVISED TO AGC CHANGE
39	REVISED TO AGC CHANGE
40	REVISED TO AGC CHANGE
41	REVISED TO AGC CHANGE
42	REVISED TO AGC CHANGE
43	REVISED TO AGC CHANGE
44	REVISED TO AGC CHANGE
45	REVISED TO AGC CHANGE
46	REVISED TO AGC CHANGE
47	REVISED TO AGC CHANGE
48	REVISED TO AGC CHANGE
49	REVISED TO AGC CHANGE
50	REVISED TO AGC CHANGE
51	REVISED TO AGC CHANGE
52	REVISED TO AGC CHANGE
53	REVISED TO AGC CHANGE
54	REVISED TO AGC CHANGE
55	REVISED TO AGC CHANGE
56	REVISED TO AGC CHANGE
57	REVISED TO AGC CHANGE
58	REVISED TO AGC CHANGE
59	REVISED TO AGC CHANGE
60	REVISED TO AGC CHANGE
61	REVISED TO AGC CHANGE
62	REVISED TO AGC CHANGE
63	REVISED TO AGC CHANGE
64	REVISED TO AGC CHANGE
65	REVISED TO AGC CHANGE
66	REVISED TO AGC CHANGE
67	REVISED TO AGC CHANGE
68	REVISED TO AGC CHANGE
69	REVISED TO AGC CHANGE
70	REVISED TO AGC CHANGE
71	REVISED TO AGC CHANGE
72	REVISED TO AGC CHANGE
73	REVISED TO AGC CHANGE
74	REVISED TO AGC CHANGE
75	REVISED TO AGC CHANGE
76	REVISED TO AGC CHANGE
77	REVISED TO AGC CHANGE
78	REVISED TO AGC CHANGE
79	REVISED TO AGC CHANGE
80	REVISED TO AGC CHANGE
81	REVISED TO AGC CHANGE
82	REVISED TO AGC CHANGE
83	REVISED TO AGC CHANGE
84	REVISED TO AGC CHANGE
85	REVISED TO AGC CHANGE
86	REVISED TO AGC CHANGE
87	REVISED TO AGC CHANGE
88	REVISED TO AGC CHANGE
89	REVISED TO AGC CHANGE
90	REVISED TO AGC CHANGE
91	REVISED TO AGC CHANGE
92	REVISED TO AGC CHANGE
93	REVISED TO AGC CHANGE
94	REVISED TO AGC CHANGE
95	REVISED TO AGC CHANGE
96	REVISED TO AGC CHANGE
97	REVISED TO AGC CHANGE
98	REVISED TO AGC CHANGE
99	REVISED TO AGC CHANGE
100	REVISED TO AGC CHANGE

FOR NO. : J-823

PROJECT : PROPOSED DEVELOPMENT AT KOWLOON INLAND

LOT Nos. 6032SP, 6032BP, 6032RP, 6032AP, AND LOT No. 6035

TITLE : ELEVATION & PART PLAN FOR GLASS WALL(G/7)

DWG NO. : 6035-P04-604

SCALE : 1:40

DATE : 25-Mar-21

DESIGNED BY : DW

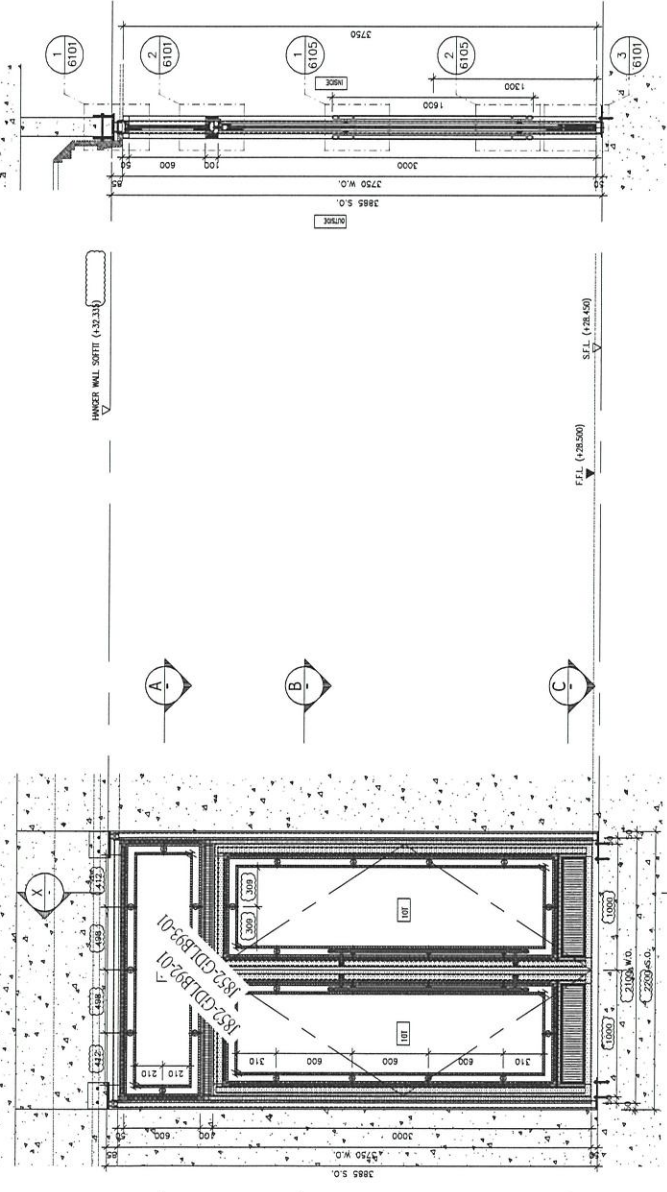
DRAWN BY : CJM

PROJECT : MIDTI AUTOMATION FABRICATOR LTD.

110 Shun Hei Street, Kwai Chung, Y.T.

TEL: 34211141 Fax: 34217266

REV. : E



SECTION X

ELEVATION

PART PLAN A

PART PLAN B

PART PLAN C

FLOOR	LOCATION	GLASS WALL	MARK	QTY
G	TOWER 2 LIFT LOBBY	1202/G		1

REV. REF.:

DATE:

PROJECT:

ARCHITECT:

MARK CONTRACTOR:

AGC
BESTIER LTD

Gammon

STRUCTURAL ENGINEER:

ARUP

FAÇADE CONSULTANT:

MEINHARDT

NOTE:

1. ALL DIMENSIONS ARE IN mm.
2. ALL DIMENSIONS ARE MEASD FROM EXTERIOR.
3. DIMENSIONS TO BE CHECKED ON SITE.

LEGEND:

① DETAIL MARK NO.

② REFER SHEET NO.

1. F.F.L. --- FINISHED FLOOR LEVEL.
2. S.F.L. --- STRUCTURAL FLOOR LEVEL.
3. R.F.L. --- REINFORCED DETAIL.
4. T.T. --- 12mm THK. TEMPERED GLASS.
5. T.T.T. --- 12mm THK. TEMPERED GLASS.

NO.	REVISION	REVISION MADE BY	DATE
1	ISSUED FOR PERMIT	CHM	20-MAR-20
2	ISSUED FOR PERMIT	CHM	20-MAR-20

JOB NO.: J-852

PROJECT: PROPOSED DEVELOPMENT AT KOWLOON INLAND

LOT Nos. 6028/P, 6029/P, 6037/P, 6038/P, AND LOT Nos. 6005

TITLE: ELEVATION & PART PLAN FOR GLASS WALL(G/F)

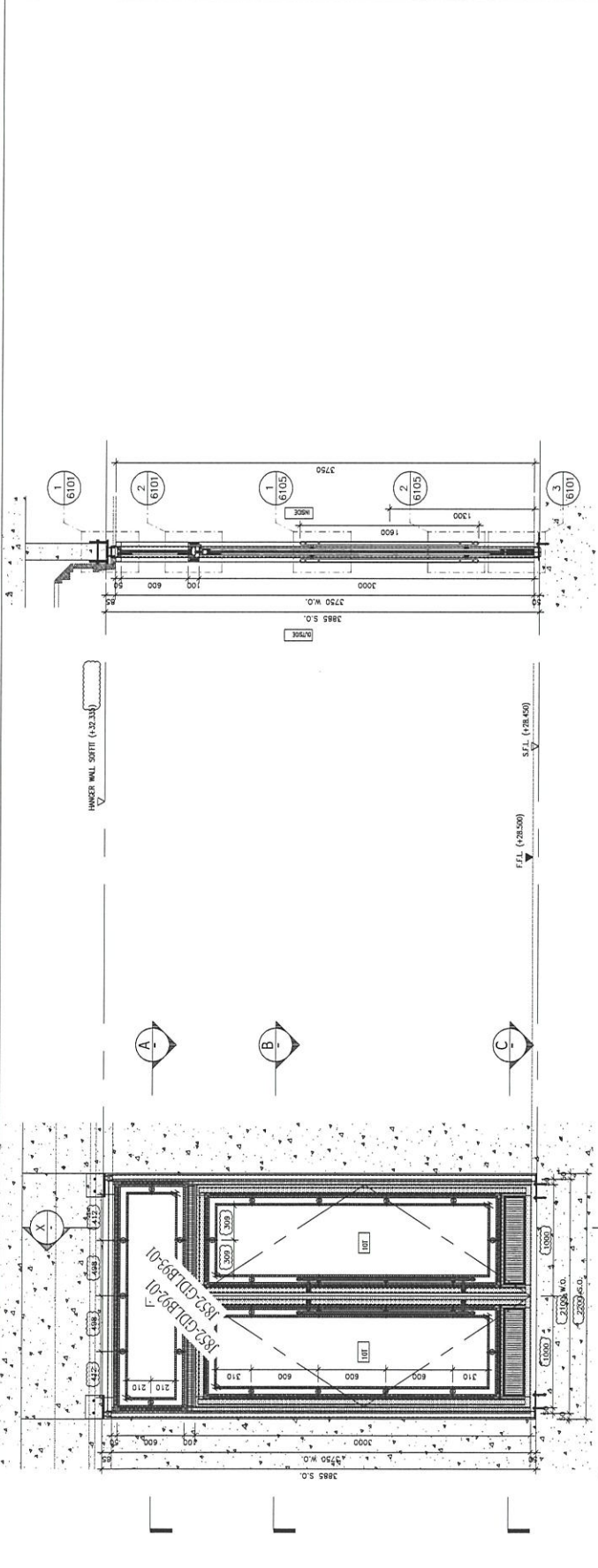
DATE: 20-MAR-20 SCALE: 1:40

DRAWN BY: CHM CHECKED BY: DW

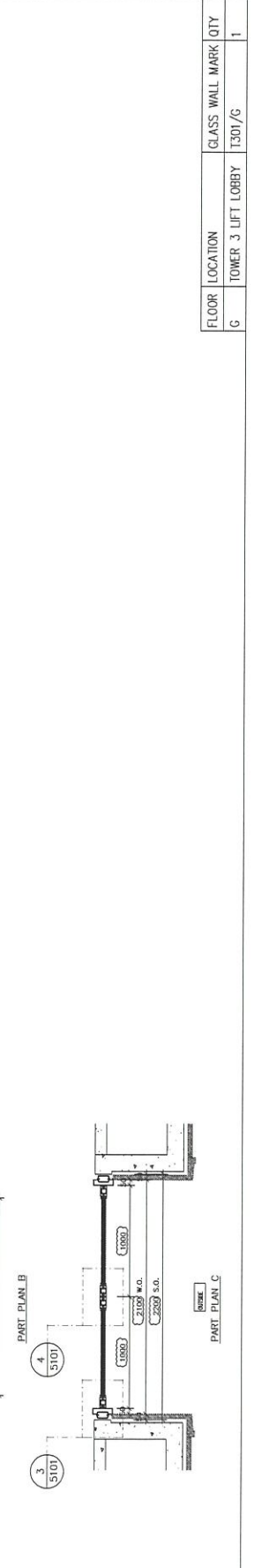
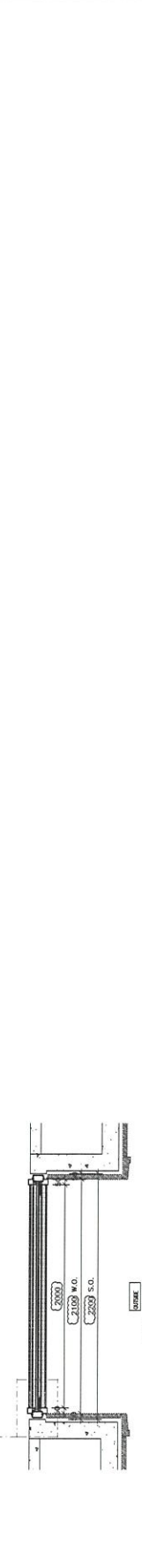
MIDI 美特鋁質有限公司
MIDI ALUMINIUM FABRICATOR LTD.
115 On Yee Lane, Kwun Tong, Kowloon, H.K.
Tel: (852) 23777666
Fax: (852) 23777666

DWG NO.: J852-POP-4508

REV: B



SECTION X



FLOOR	LOCATION	GLASS WALL	MARK	QTY
G	TOWER 3 LIFT LOBBY	1301/C		1

REV. REF.:

CLIENT:

ARCHITECT: **AGC BESIERT LTD**

MAIN CONTRACTOR: **Gammon**

SECTION ENGINEER: **ARUP**

FAÇADE CONSULTANT: **MEINHARDT**

NOTE:

1. ALL DIMENSIONS ARE IN mm.
2. ALL DIMENSIONS ARE VIEWED FROM OUTSIDE.
3. DIMENSIONS TO BE VIEWED ON SEE.

LEGEND:

(X1) DETAIL MARK NO.
(200) REFER SHEET NO.

1. F.F.L. — FINISHED FLOOR LEVEL
2. S.F.L. — STRUCTURAL FLOOR LEVEL
3. (O) — RAISED FLOOR
4. LIT — 12mm THK. LAMINATED GLASS
5. LIT — 10mm THK. TEMPERED GLASS

C	17/01/2018	REVISED BASED TO NEW CLIENT	MC
B	17/01/2018	REVISED BASED TO NEW CLIENT	MC
A	17/01/2018	REVISED BASED TO NEW CLIENT	MC
4	17/01/2018	REVISED BASED TO NEW CLIENT	MC
3	17/01/2018	REVISED BASED TO NEW CLIENT	MC
2	17/01/2018	REVISED BASED TO NEW CLIENT	MC
1	17/01/2018	REVISED BASED TO NEW CLIENT	MC

JOB NO.: J-852

PROJECT: PROPOSED DEVELOPMENT AT KOWLOON ISLAND, LOT Nos. 6038P.P., 6039P.P., 6037B.P., 6038P.P., AND LOT Nos. 6005

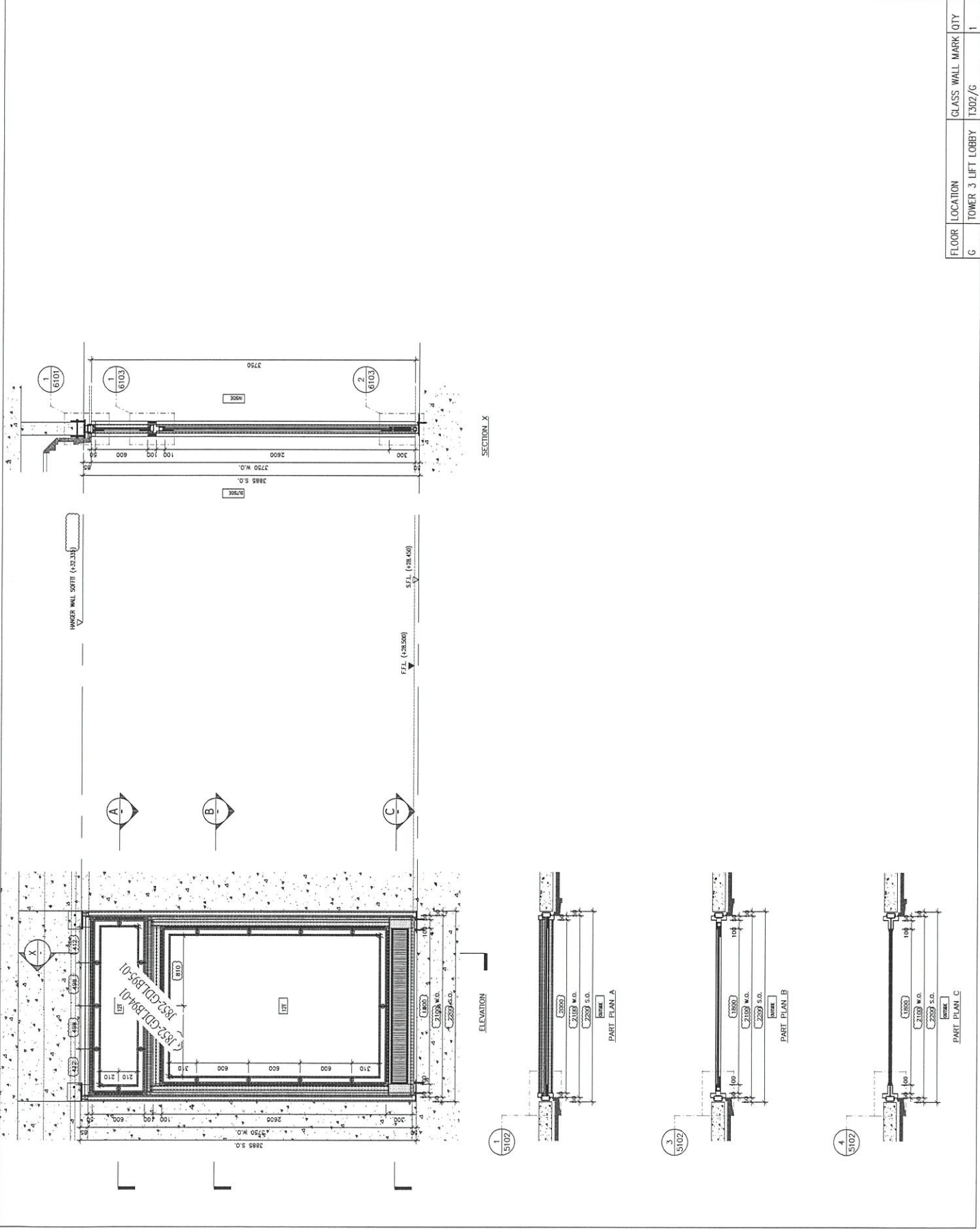
TITLE: ELEVATION & PART PLAN FOR GLASS WALL(G/F)

DATE: 25-Mar-21 SCALE: 1:40 CHECKED BY: DW

DESIGN BY: CJM

美特鋁質有限公司
MIDI ALUMINIUM FABRICATOR LTD.
110 Cheong Cheong Street, #01-01
423489211-4 Fax: (852) 27277666

DWG NO.: 852-20M-406 REV.: E



REV. A/B:

CLIENT:

PROJECT:

MAIN CONTRACTOR:

STRUCTURAL ENGINEER:

FRAME CONSULTANT:

NOTE:

1. ALL DIMENSIONS ARE IN mm.

2. ALL DIMENSIONS ARE WORKED FROM OUTSIDE.

3. ALL DIMENSIONS TO BE CHECKED ON SITE.

4. CLASH TO BE AVOIDED.

5. REFER TO THE FOLLOWING DRAWINGS:

6. REFER TO THE FOLLOWING DRAWINGS:

7. REFER TO THE FOLLOWING DRAWINGS:

8. REFER TO THE FOLLOWING DRAWINGS:

9. REFER TO THE FOLLOWING DRAWINGS:

10. REFER TO THE FOLLOWING DRAWINGS:

11. REFER TO THE FOLLOWING DRAWINGS:

12. REFER TO THE FOLLOWING DRAWINGS:

13. REFER TO THE FOLLOWING DRAWINGS:

14. REFER TO THE FOLLOWING DRAWINGS:

15. REFER TO THE FOLLOWING DRAWINGS:

16. REFER TO THE FOLLOWING DRAWINGS:

17. REFER TO THE FOLLOWING DRAWINGS:

18. REFER TO THE FOLLOWING DRAWINGS:

19. REFER TO THE FOLLOWING DRAWINGS:

20. REFER TO THE FOLLOWING DRAWINGS:

21. REFER TO THE FOLLOWING DRAWINGS:

22. REFER TO THE FOLLOWING DRAWINGS:

23. REFER TO THE FOLLOWING DRAWINGS:

24. REFER TO THE FOLLOWING DRAWINGS:

25. REFER TO THE FOLLOWING DRAWINGS:

26. REFER TO THE FOLLOWING DRAWINGS:

27. REFER TO THE FOLLOWING DRAWINGS:

28. REFER TO THE FOLLOWING DRAWINGS:

29. REFER TO THE FOLLOWING DRAWINGS:

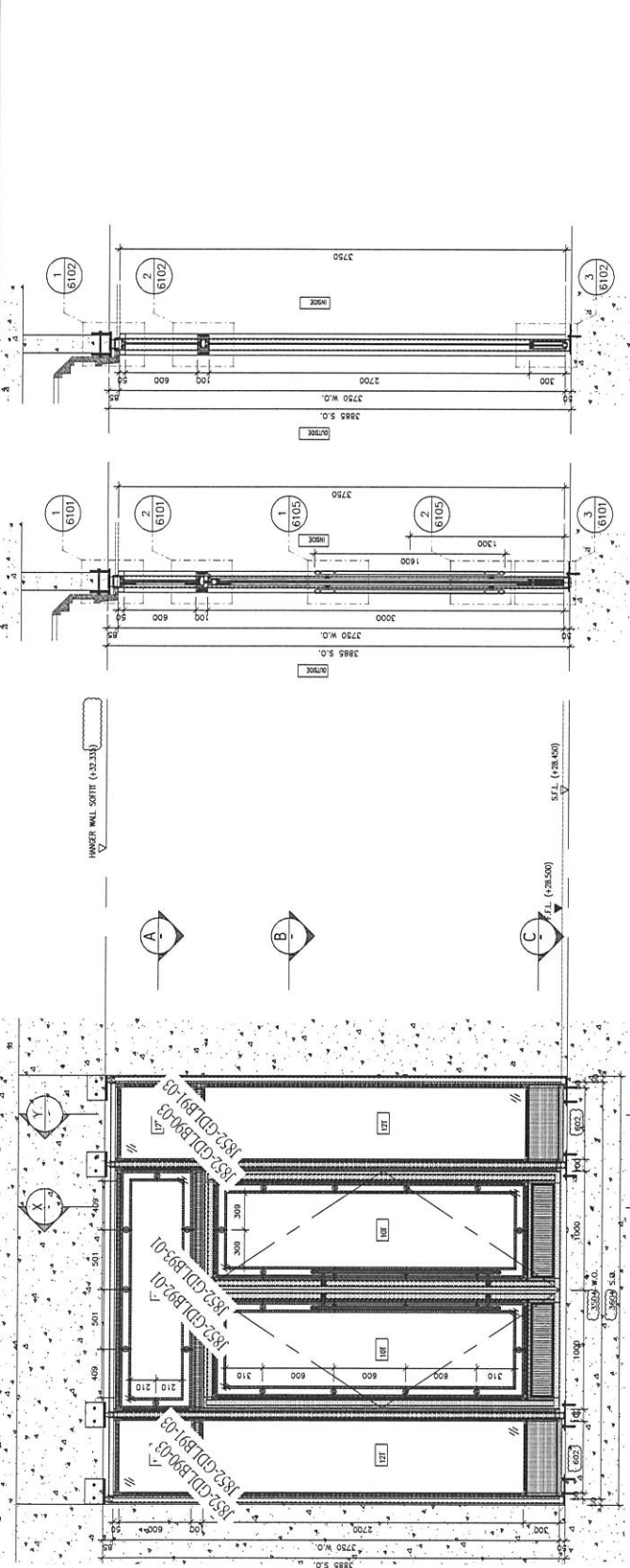
30. REFER TO THE FOLLOWING DRAWINGS:

31. REFER TO THE FOLLOWING DRAWINGS:

32. REFER TO THE FOLLOWING DRAWINGS:

33. REFER TO THE FOLLOWING DRAWINGS:

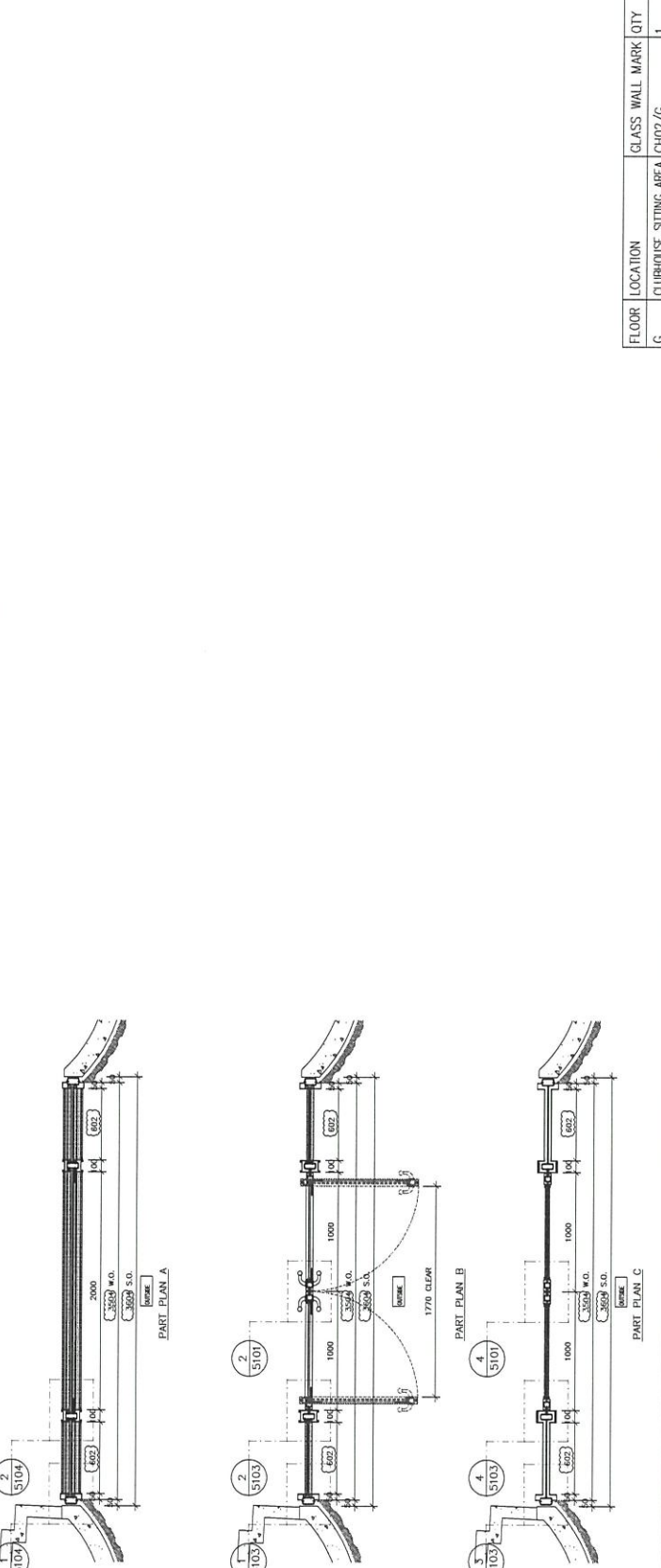
34. REFER TO THE FOLLOWING DRAWINGS:



SECTION Y

SECTION X

ELEVATION



PART PLAN A

PART PLAN B

PART PLAN C

NO.	REVISION	DATE
1	ISSUED FOR PERMIT	15/03/2024
2	ISSUED FOR PERMIT	15/03/2024
3	ISSUED FOR PERMIT	15/03/2024
4	ISSUED FOR PERMIT	15/03/2024
5	ISSUED FOR PERMIT	15/03/2024
6	ISSUED FOR PERMIT	15/03/2024
7	ISSUED FOR PERMIT	15/03/2024
8	ISSUED FOR PERMIT	15/03/2024
9	ISSUED FOR PERMIT	15/03/2024
10	ISSUED FOR PERMIT	15/03/2024
11	ISSUED FOR PERMIT	15/03/2024
12	ISSUED FOR PERMIT	15/03/2024
13	ISSUED FOR PERMIT	15/03/2024
14	ISSUED FOR PERMIT	15/03/2024
15	ISSUED FOR PERMIT	15/03/2024
16	ISSUED FOR PERMIT	15/03/2024
17	ISSUED FOR PERMIT	15/03/2024
18	ISSUED FOR PERMIT	15/03/2024
19	ISSUED FOR PERMIT	15/03/2024
20	ISSUED FOR PERMIT	15/03/2024
21	ISSUED FOR PERMIT	15/03/2024
22	ISSUED FOR PERMIT	15/03/2024
23	ISSUED FOR PERMIT	15/03/2024
24	ISSUED FOR PERMIT	15/03/2024
25	ISSUED FOR PERMIT	15/03/2024
26	ISSUED FOR PERMIT	15/03/2024
27	ISSUED FOR PERMIT	15/03/2024
28	ISSUED FOR PERMIT	15/03/2024
29	ISSUED FOR PERMIT	15/03/2024
30	ISSUED FOR PERMIT	15/03/2024
31	ISSUED FOR PERMIT	15/03/2024
32	ISSUED FOR PERMIT	15/03/2024
33	ISSUED FOR PERMIT	15/03/2024
34	ISSUED FOR PERMIT	15/03/2024
35	ISSUED FOR PERMIT	15/03/2024
36	ISSUED FOR PERMIT	15/03/2024
37	ISSUED FOR PERMIT	15/03/2024
38	ISSUED FOR PERMIT	15/03/2024
39	ISSUED FOR PERMIT	15/03/2024
40	ISSUED FOR PERMIT	15/03/2024
41	ISSUED FOR PERMIT	15/03/2024
42	ISSUED FOR PERMIT	15/03/2024
43	ISSUED FOR PERMIT	15/03/2024
44	ISSUED FOR PERMIT	15/03/2024
45	ISSUED FOR PERMIT	15/03/2024
46	ISSUED FOR PERMIT	15/03/2024
47	ISSUED FOR PERMIT	15/03/2024
48	ISSUED FOR PERMIT	15/03/2024
49	ISSUED FOR PERMIT	15/03/2024
50	ISSUED FOR PERMIT	15/03/2024

JOB NO.: J-852
 PROJECT: PROPOSED DEVELOPMENT AT KOWLOON INLAND, LOT Nos. G03A/P, G03B/P, G03C/P, G03D/P, G03E/P, AND LOT No. G03S
 TITLE: ELEVATION & PART PLAN FOR GLASS WALL(G/F)

DATE: 25-Mar-23
 SCALE: 1:40
 DRAWN BY: CJM
 CHECKED BY: DW
 PROJECT MANAGER: 美特鋁質有限公司
 Unit 6-8, Sunny Industrial Centre, 1/F
 142-144 Kwai Yee Street, Kwai Chung, New Territories, Hong Kong
 TEL: (852) 27272666

REV. 1
 REV. 2
 REV. 3
 REV. 4
 REV. 5
 REV. 6
 REV. 7
 REV. 8
 REV. 9
 REV. 10
 REV. 11
 REV. 12
 REV. 13
 REV. 14
 REV. 15
 REV. 16
 REV. 17
 REV. 18
 REV. 19
 REV. 20
 REV. 21
 REV. 22
 REV. 23
 REV. 24
 REV. 25
 REV. 26
 REV. 27
 REV. 28
 REV. 29
 REV. 30
 REV. 31
 REV. 32
 REV. 33
 REV. 34
 REV. 35
 REV. 36
 REV. 37
 REV. 38
 REV. 39
 REV. 40
 REV. 41
 REV. 42
 REV. 43
 REV. 44
 REV. 45
 REV. 46
 REV. 47
 REV. 48
 REV. 49
 REV. 50

FLOOR	LOCATION	GLASS WALL MARK	QTY
G	CLUBHOUSE SITTING AREA	G102/G	1

AGC BESSEMER
 Gammon
 ARUP
 MEINHARDT

美特鋁質有限公司
 MIDTI ALUMINIUM FABRICATOR LTD.
 Unit 6-8, Sunny Industrial Centre, 1/F
 142-144 Kwai Yee Street, Kwai Chung, New Territories, Hong Kong
 TEL: (852) 27272666

BID. NO. :
 CLIENT :
 ARCHITECT : AGC DESIGN LTD.
 MAIN CONTRACTOR : Gammon
 STRUCTURAL ENGINEER : ARUP
 TRADE CONSULTANT : MENYARDT

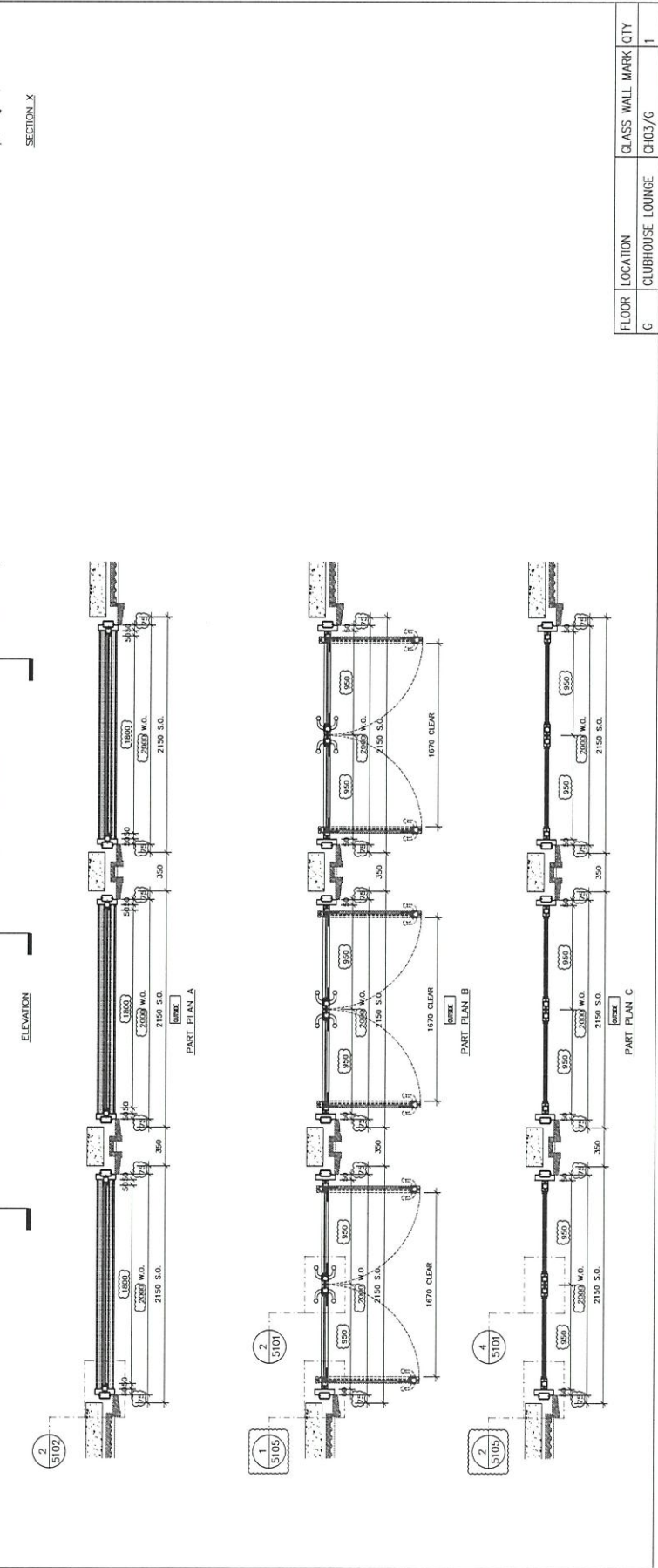
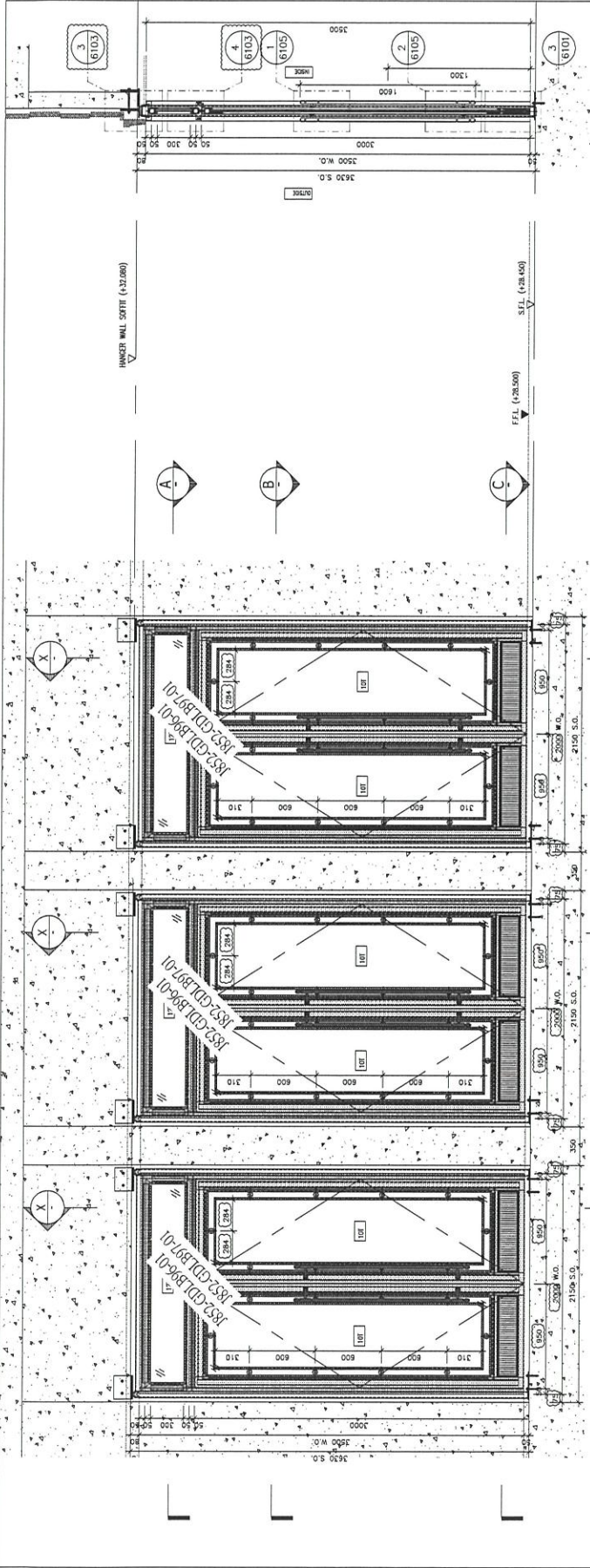
PROJECT : PROPOSED DEVELOPMENT AT KOWLOON BAY, LOT Nos. 6038P, 6039P, 6037P, 6038P, AND LOT No. 6025.
 TITLE : ELEVATION & PART PLAN FOR GLASS WALL(G/F)

DATE : 25-Mar-21
 SCALE : 1:40
 DRAWN BY : CAM
 CHECKED BY : DW
 MTDI LIMITED
 1410 King's Road, Industrial Centre, 1/F
 Tel: 2424 8271-4 Fax: 2422 7786

DWG NO. : 6052-P04-4059
 REV. : E

1	REVISION	REVISION BASED ON AEC CHANGE
2	REVISION	REVISION BASED ON AEC CHANGE
3	REVISION	REVISION BASED ON AEC CHANGE
4	REVISION	REVISION BASED ON AEC CHANGE
5	REVISION	REVISION BASED ON AEC CHANGE

JOB NO. : J-852
 PROJECT : PROPOSED DEVELOPMENT AT KOWLOON BAY, LOT Nos. 6038P, 6039P, 6037P, 6038P, AND LOT No. 6025.



BLD. REF. :

DATE :

PROJECT :

ARCHITECT :

AGC BOSTER LTD

MANUFACTURER :

GAMMON

STRUCTURAL ENGINEER :

ARUP

TRADING COMPANY :

MEYHARDT

NOTE :

1. ALL DIMENSIONS ARE IN mm.
2. ALL DIMENSIONS ARE MEASURED FROM OUTSIDE UNLESS SPECIFIED OTHERWISE.
3. ALL DIMENSIONS TO BE CHECKED ON SITE BEFORE FABRICATION.

LEGEND :

① - DETAIL MARK NO.

② - REFER SHEET NO.

1. FFL --- FINISHED FLOOR LEVEL

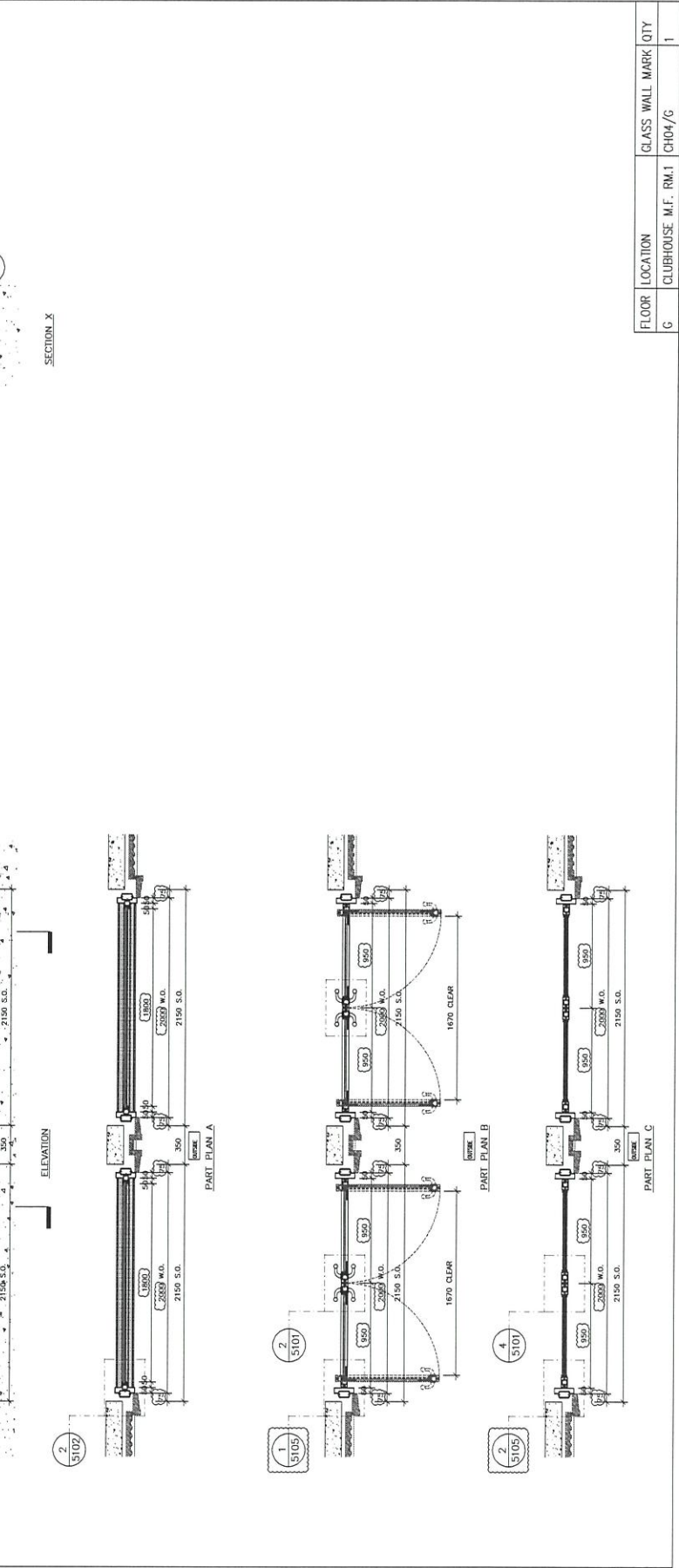
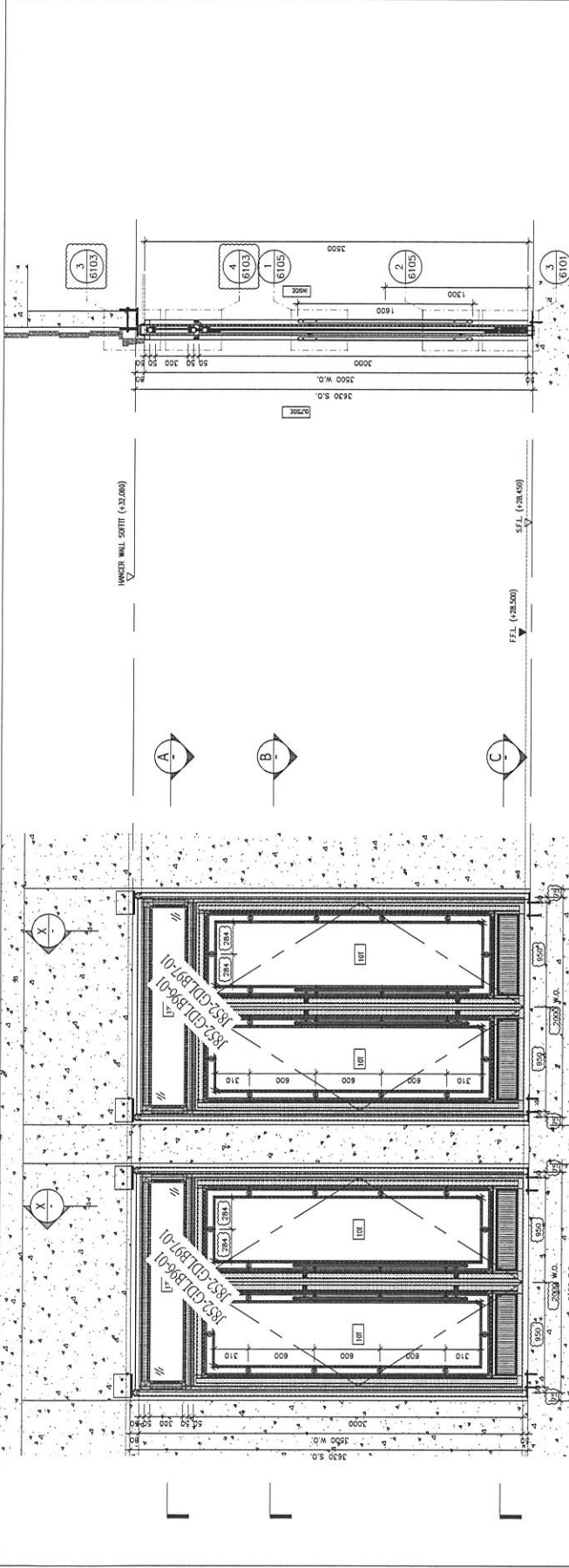
2. SFL --- STRUCTURAL FLOOR LEVEL

3. (A) --- REVERSED DETAIL

4. [L] --- DOWN THK. TUMPERED GLASS

5. [U] --- UPW THK. TUMPERED GLASS

DATE :	25-Mar-21	SCALE :	1:40																		
DRAWN BY :	CAJ	CHECKED BY :	DW																		
PROJECT :	PROPOSED DEVELOPMENT AT KOWLOON INLAND, LOT Nos. 6038/P, 6039/P, 6037/P, 6038/P, AND LOT No. 6005																				
TITLE :	ELEVATION & PART PLAN FOR GLASS WALL(G/T)																				
JOB NO. :	J-852																				
REVISIONS :	<table border="1"> <tr> <th>NO.</th> <th>DATE</th> <th>REVISION</th> </tr> <tr> <td>1</td> <td></td> <td>ISSUED FOR PERMIT</td> </tr> <tr> <td>2</td> <td></td> <td>ISSUED FOR PERMIT</td> </tr> <tr> <td>3</td> <td></td> <td>ISSUED FOR PERMIT</td> </tr> <tr> <td>4</td> <td></td> <td>ISSUED FOR PERMIT</td> </tr> <tr> <td>5</td> <td></td> <td>ISSUED FOR PERMIT</td> </tr> </table>			NO.	DATE	REVISION	1		ISSUED FOR PERMIT	2		ISSUED FOR PERMIT	3		ISSUED FOR PERMIT	4		ISSUED FOR PERMIT	5		ISSUED FOR PERMIT
NO.	DATE	REVISION																			
1		ISSUED FOR PERMIT																			
2		ISSUED FOR PERMIT																			
3		ISSUED FOR PERMIT																			
4		ISSUED FOR PERMIT																			
5		ISSUED FOR PERMIT																			



FLOOR	LOCATION	GLASS WALL MARK	QTY
G	CLUBHOUSE M.F. RM.1	CH04/G	1

UID REF :

DATE :

PROJECT :

MAIN CONTRACTOR :

STRUCTURAL ENGINEER :

FRAME CONSULTANT :

NOTE :

1. ALL DIMENSIONS ARE IN MM.
2. ALL DIMENSIONS ARE VIEWED FROM OUTSIDE.
3. FINISHES AND MATERIALS TO BE CHECKED ON SITE.

LEGEND :


- | | |
|----|-------------------------------|
| ① | DETAIL MARK NO. |
| ② | REFER SHEET NO. |
| 1. | FFL -- FINISHED FLOOR LEVEL |
| 2. | SFL -- STRUCTURAL FLOOR LEVEL |
| 3. | (A) -- REINFORCED DETAIL |
| 4. | LIT -- 12mm THK TINTED GLASS |
| 5. | LIT -- 10mm THK TINTED GLASS |

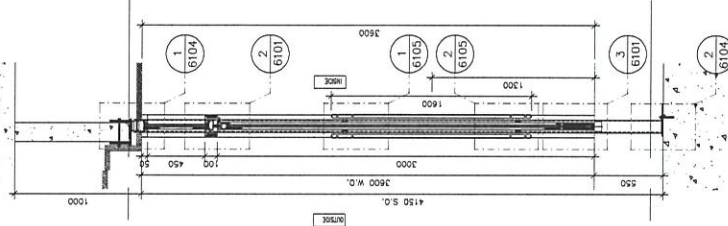
C	REVISION	REVISION MADE BY	DATE
1	ISSUED FOR PERMIT
2	ISSUED FOR TENDER
3	ISSUED FOR CONSTRUCTION

J-852

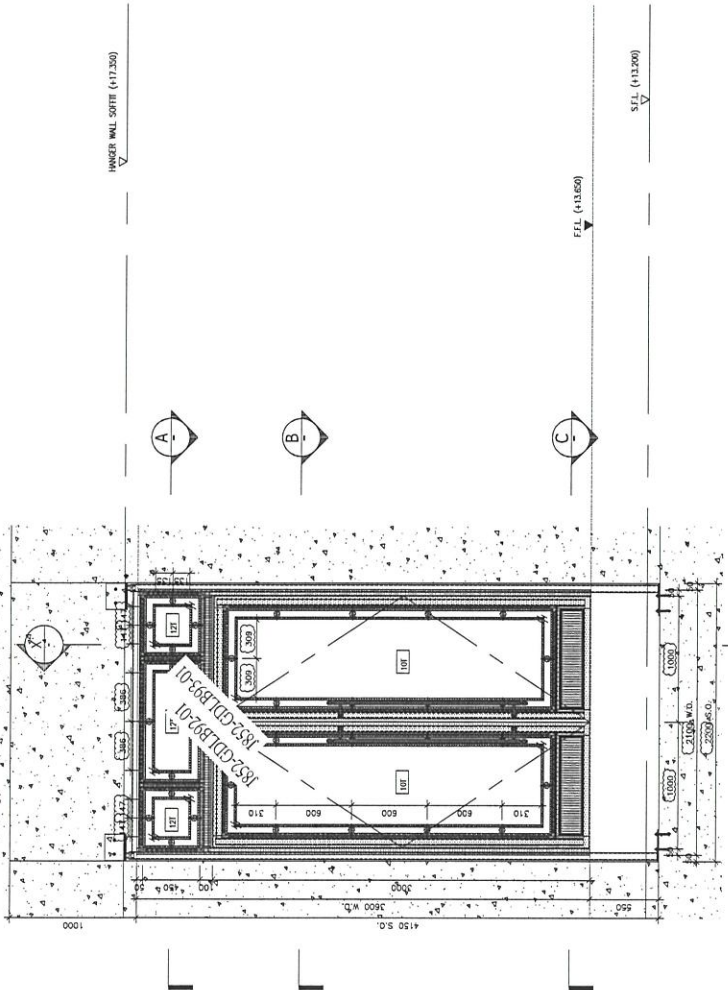
PROJECT : PROPOSED DEVELOPMENT AT KOWLOON INLANDS
LOT Nos. 60386P, 60387P, 60379P, 60388P, AND LOT No. 60205

TITLE : ELEVATION & PART PLAN FOR GLASS WALL(LGT)

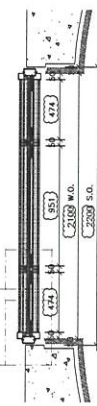
DATE :	25-Mar-20	SCALE :	1:40	
DRAWN BY :	CAH	CHECKED BY :	DW	
 美特銘有限公司 MIDI ARCHITECTURE FIRM 1623 MORTIMER STREET, SUITE 117 SINGAPORE 262714 (Tel: 63527726)				
JOB NO. :	J-852	FORM NO. :	852-FRM-100	
			REV. :	C



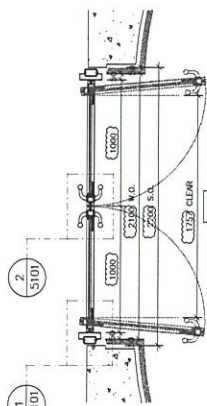
SECTION X



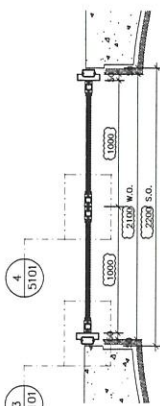
PART PLAN A



ELEVATION



PART PLAN B



PART PLAN C

FLOOR	LOCATION	GLASS WALL	MARK	QTY
LGT	SHUTTLE LIFT LOBBY	S001/LGT		1