

工程指示 / 要求簡箋(E.I.)

工程指示編號：EI / 3190 / 21

修改版次：-

工程編號：J - 852

工程名稱：亞皆老街中電

工程項目：欄河地盤用玻璃 B.M. 大貨 (T1-T3: 1-23/F, R/F) (600 件)

收件人：Maggie

發件人：Ant Yeung

日期：22/03/2021

要求提供 /  確認 事項：

( ) 初步鋁料 B.M.

( ) 加工拆圖，然後生產

( ) 尺寸表

( ) 正式鋁料 B.M.

( ) 技術上資料 / 指示

( ) 報價

( ) 配件 B.M.

( ) 樣辦或貨品說明書

( ) 分判合約

( ) 其他：\_\_\_\_\_

內容：

請按 BM 訂購 T1-T3: 1-23/F, R/F 欄河玻璃 (共 600 件) (T1:210 件, T2: 192 件, T3:198 件)直送地盤。

包裝要分座分層 (包箱)。 T3 優先, T1, T2 同步。 22/F, 23/F 優先

玻璃要做熱浸。

請留意玻璃加工時不要固定的鋼化及熱浸標籤。玻璃出貨時需加上"可移除" 標籤。

LAM 片：標籤在室內外面 (注明半鋼化/ 鋼化)

請在 2021.04.30 前完成上列要求。

附：3 頁 BM + 2 頁 BM 參考 + 25 頁派位圖 + 1 頁加工圖

以上項目為：

原合約工程包

原合約工程加 / 減賬

新工程報價

原因：-

分發東莞各部門：

( ) 生產技術總監口連附件

( ) 技術部

口連附件

( ) 生產部

口連附件

( ) 機械設計部口連附件

( ) 採購部

口連附件

( ) 生產統籌部口連附件

( ) 小羅&清

口連附件

( ) 質檢部

口連附件

( ) 會計部

口連附件

( ) 報關組

口連附件

( ) 其他 楊榮輝口連附件

分發其他分判：

(v) 水洪

口連附件

分發香港各部門：

( ) 行政部口連附件 ( ) 會計部口連附件 ( ) 統籌部口連附件

工程部地盤科文口連附件

祥哥

採購部口連附件 ( ) QS 部口連附件 ( ) 維修部口連附件

( ) 其他 \_\_\_\_\_ 口連附件

傳遞編號：

發件人簽署：

Z

HK / 21

項目經理簽署：

PP Z

	T3						T2						T1							
	A	B	A	B	C	C	A	B	A	B	C	C	A	B	A	B	C	C		
	UP	UP	BAL	BAL	UP	BAL	UP	UP	BAL	BAL	UP	BAL	UP	UP	BAL	BAL	UP	BAL		
R/F			5011 to T2		5010						5010				5011 to T2		5010			
1 23/F			5007A		5001B	5003B			5007		5001B	5003B			5007B		5001B	5003B		
2 22/F	5008A	5009	5010A		5007A		5001B	5003B	5002B	5002B	5005		5001B	5003B	5008	5009A	5010A	5007B	5001B	5003B
3 21/F	5002B	5002B	5005A		5001B	5003B	5002B	5002B	5005		5001B	5003B	5002B	5002B	5005B		5001B	5003B		
4 20/F	5002B	5002B	5005A		5001B	5003B	5002B	5002B	5005		5001B	5003B	5002B	5002B	5005B		5001B	5003B		
5 19/F	5002B	5002B	5006A		5001B	5003B	5002B	5002B	5006		5001B	5003B	5002B	5002B	5006B		5001B	5003B		
6 18/F	5002B	5002B	5006A		5001B	5003B	5002B	5002B	5006		5001B	5003B	5002B	5002B	5006B		5001B	5003B		
7 17/F	5002B	5002B	5006A		5001B	5003B	5002B	5002B	5006		5001B	5003B	5002B	5002B	5006B		5001B	5003B		
8 16/F	5002B	5002B	5006A		5001B	5003B	5002B	5002B	5006		5001B	5003B	5002B	5002B	5006B		5001B	5003B		
9 15/F	5002B	5002B	5006A		5001B	5003B	5002B	5002B	5006		5001B	5003B	5002B	5002B	5006B		5001B	5003B		
10 12/F	5002B	5002B	5006A		5001B	5003B	5002B	5002B	5006		5001B	5003B	5002B	5002B	5006B		5001B	5003B		
11 11/F	5002B	5002B	5006A		5001B	5003B	5002B	5002B	5006		5001B	5003B	5002B	5002B	5006B		5001B	5003B		
12 10/F	5002B	5002B	5006A		5001B	5003B	5002B	5002B	5006		5001B	5003B	5002B	5002B	5006B		5001B	5003B		
13 9/F	5002B	5002B	5006A		5001B	5003B	5002B	5002B	5006		5001B	5003B	5002B	5002B	5006B		5001B	5003B		
14 8/F	5002B	5002B	5006A		5001B	5003B	5002B	5002B	5006		5001B	5003B	5002B	5002B	5006B		5001B	5003B		
15 7/F	5002B	5002B	5006A		5001B	5003B	5002B	5002B	5006		5001B	5003B	5002B	5002B	5006B		5001B	5003B		
16 6/F	5002B	5002B	5006A		5001B	5003B	5002B	5002B	5006		5001B	5003B	5002B	5002B	5006B		5001B	5003B		
17 5/F	5002B	5002B	5006A		5001B	5003B	5002B	5002B	5006		5001B	5003B	5002B	5002B	5006B		5001B	5003B		
18 3/F	5002B	5002B	5006A		5001B	5003B	5002B	5002B	5006		5001B	5003B	5002B	5002B	5006B		5001B	5003B		
19 2/F	5002B	5002B	5005A		5001B	5003B	5002B	5002B	5005		5001B	5003B	5002B	5002B	5005B		5001B	5003B		
20 1/F	5002	5002A	5004A		5001A	5003A	5002A	5002A	5004		5001	5003	5002A	5002A	5004B		5001	5003		
	A	B	A	B	C	C	A	B	A	B	C	C	A	B	A	B	C	C		
	UP	UP	BAL	BAL	UP	BAL	UP	UP	BAL	BAL	UP	BAL	UP	UP	BAL	BAL	UP	BAL		

Glass

美特鋁質有限公司 MTI Aluminium Fabricator Ltd.	工程號: J852	計算: sdc	日期: 18/03/2021	送呈:
地盤名稱: 地盤用玻璃B.M.表	核對:	日期:	副本:	
項目類別: T1 欄河玻璃 (1F-23F, 不包5F)	日期:	A/C Code:		
BM編號:	修改版次:	總計玻璃面積 (平方米): 264.65		

計算參考數值/所屬位置分格

<T1>

派窗表

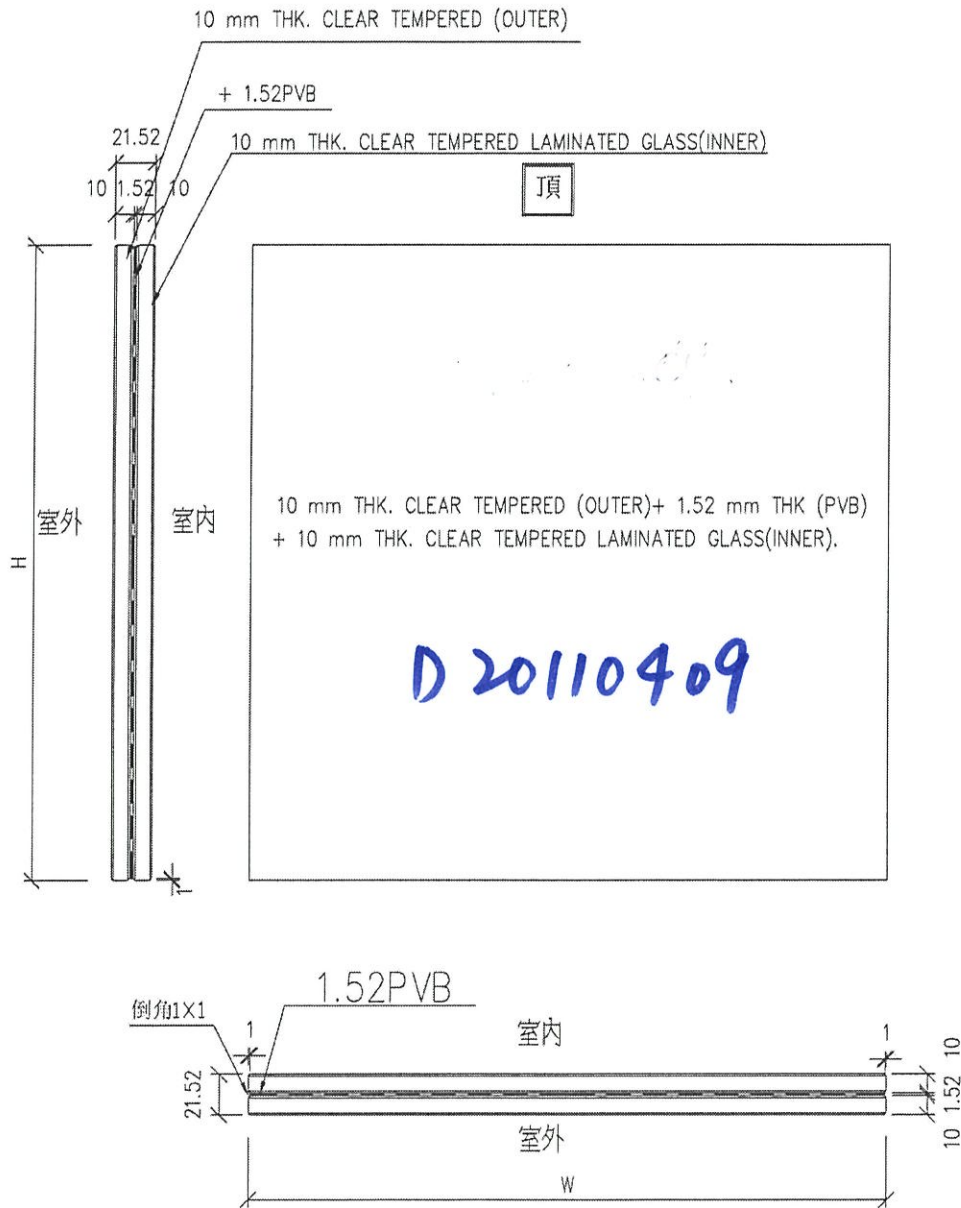
<訂購用>

序號	修改內容	玻璃圖號	顏色與類型	厚度 (mm)	玻璃尺寸		數量 (塊)	總面積 (平方米)	使用位置	座號	單位	分屬類型	樓層	分格闊度	玻璃見光 (闊)	玻璃訂貨尺寸 (闊)	分格高度	玻璃見光 (高)	玻璃訂貨尺寸 (高)	1F	2F	3F	5F	6F	7F	8F	9F	10F	11F	12F	15F	16F	17F	18F	19F	20F	21F	22F	23F	ROOF	合計
					寬度 (W mm)	高度 (H mm)														1F	2F	3F	5F	6F	7F	8F	9F	10F	11F	12F	15F	16F	17F	18F	19F	20F	21F	22F	23F	ROOF	合計
1		G2-53	(G2) 10 mm THK.CLEAR TEMPERED (OUTER)+ 1.52 mm THK(PVB) + 10 mm THK. CLEAR TEMPERED LAMATED GLASS (INNER)		2585.0	820.0	1	2.12	GB5003	T1	C	1F	2835.00	2575.00	2585.00	1200.00	780.00	820.00	1																					1	
2		G2-53-01			560.0	820.0	1	0.46	GB5003	T1	C	1F	810.00	550.00	560.00	1200.00	780.00	820.00	1																				1		
3		G2-53B			2585.0	1010.0	18	47.00	GB5003B	T1	C	2F-3F	2835.00	2575.00	2585.00	1200.00	970.00	1010.00		1	1																		18		
4		G2-53B-01			560.0	1010.0	18	10.18	GB5003B	T1	C	2F-3F	810.00	550.00	560.00	1200.00	970.00	1010.00		1	1																		18		
5		G2-54B			1265.0	650.0	1	0.82	GB5004B	T1	A	1F	1515.00	1255.00	1265.00	1200.00	610.00	650.00	1																				1		
6		G2-54B-1			1221.0	650.0	1	0.79	GB5004B	T1	A	1F	1211.00	1211.00	1221.00	1200.00	610.00	650.00	1																				1		
7		G2-54B-2			2162.0	650.0	1	1.41	GB5004B	T1	A	1F	2152.00	2152.00	2162.00	1200.00	610.00	650.00	1																				1		
8		G2-54B-3			1286.0	650.0	1	0.84	GB5004B	T1	A	1F	1276.00	1276.00	1286.00	1200.00	610.00	650.00	1																				1		
9		G2-54B-4			1174.0	650.0	1	0.76	GB5004B	T1	B	1F	1164.00	1164.00	1174.00	1200.00	610.00	650.00	1																				1		
10		G2-54B-5			1962.0	650.0	1	1.28	GB5004B	T1	B	1F	1952.00	1952.00	1962.00	1200.00	610.00	650.00	1																				1		
11		G2-54B-6			1109.0	650.0	1	0.72	GB5004B	T1	B	1F	1099.00	1099.00	1109.00	1200.00	610.00	650.00	1																				1		
12		G2-54B-7			1265.0	650.0	1	0.82	GB5004B	T1	B	1F	1515.00	1255.00	1265.00	1200.00	610.00	650.00	1																				1		
13		G2-55B			1265.0	840.0	3	3.19	GB5005B	T1	A	2F-20F	1515.00	1255.00	1265.00	1200.00	800.00	840.00			1															1	1		3		
14		G2-55B-1			1221.0	840.0	3	3.08	GB5005B	T1	A	2F-20F	1211.00	1211.00	1221.00	1200.00	800.00	840.00			1																1	1	3		
15		G2-55B-2			2162.0	840.0	3	5.45	GB5005B	T1	A	2F-20F	2152.00	2152.00	2162.00	1200.00	800.00	840.00			1																1	1	3		
16		G2-55B-3			1286.0	840.0	3	3.24	GB5005B	T1	A	2F-20F	1276.00	1276.00	1286.00	1200.00	800.00	840.00			1																	1	1	3	
17		G2-55B-4			1174.0	840.0	3	2.96	GB5005B	T1	B	2F-20F	1164.00	1164.00	1174.00	1200.00	800.00	840.00			1																	1	1	3	
18		G2-55B-5			1962.0	840.0	3	4.94	GB5005B	T1	B	2F-20F	1952.00	1952.00	1962.00	1200.00	800.00	840.00			1																		1	1	3
19		G2-55B-6			1109.0	840.0	3	2.79	GB5005B	T1	B	2F-20F	1099.00	1099.00	1109.00	1200.00	800.00	840.00			1																		1	1	3
20		G2-55B-7			1265.0	840.0	3	3.19	GB5005B	T1	B	2F-20F	1515.00	1255.00	1265.00	1200.00	800.00	840.00			1																		1	1	3
21		G2-56B			1265.0	840.0	13	13.81	GB5006B	T1	A	3F-6F	1515.00	1255.00	1265.00	1200.00	800.00	840.00				1																		13	
22		G2-56B-1			1221.0	840.0	13	13.33	GB5006B	T1	A	3F-6F	1211.00	1211.00	1221.00	1200.00	800.00	840.00				1																		13	
23		G2-56B-2		D20110409	2162.0	840.0	13	23.61	GB5006B	T1	A	3F-6F	2152.00	2152.00	2162.00	1200.00	800.00	840.00				1																		13	
24		G2-56B-3			1286.0	840.0	13	14.04	GB5006B	T1	A	3F-6F	1276.00	1276.00	1286.00	1200.00	800.00	840.00				1																		13	
25		G2-56B-4			1174.0	840.0	13	12.82	GB5006B	T1	B	3F-6F	1164.00	1164.00	1174.00	1200.00	800.00	840.00				1																		13	
26		G2-56B-5			1962.0	840.0	13	21.43	GB5006B	T1	B	3F-6F	1952.00	1952.00	1962.00	1200.00	800.00	840.00				1																		13	
27		G2-56B-6			1109.0	840.0	13	12.11	GB5006B	T1	B	3F-6F	1099.00	1099.00	1109.00	1200.00	800.00	840.00				1																		13	
28		G2-56B-7			1265.0	840.0	13	13.81	GB5006B	T1	B	3F-6F	1515.00	1255.00	1265.00	1200.00	800.00	840.00				1																		13	
29		G2-57B			1265.0	840.0	2	2.13	GB5007B	T1	A	22F-23F	1515.00	1255.00	1265.00	1200.00	800.00	840.00																					1	1	2
30		G2-57B-1			1221.0	840.0	2	2.05	GB5007B	T1	A	22F-23F	1211.00	1211.00	1221.00	1200.00	800.00	840.00																						1	1
31		G2-57B-2		2162.0	840.0	2	3.63	GB5007B	T1	A	22F-23F	2152.00	2152.00	2162.00	1200.00	800.00	840.00																						1	1	2
32		G2-57B-3		3310.0	840.0	2	5.56	GB5007B	T1	A	22F-23F	3300.00	3300.00	3310.00	1200.00	800.00	840.00																						1	1	2
33		G2-57B-5		1962.0	840.0	2	3.30	GB5007B	T1	A	22F-23F	1952.00	1952.00	1962.00	1200.00	800.00	840.00																						1	1	2
34		G2-57B-6		1109.0	840.0	2	1.86	GB5007B	T1	A	22F-23F	1099.00	1099.00	1109.00	1200.00	800.00	840.00																						1	1	2
35		G2-57B-7		1265.0	840.0	2	2.13	GB5007B	T1	A	22F-23F	1515.00	1255.00	1265.00	1200.00	800.00	840.00																						1	1	2
36		G2-58		2400.0	740.0	1	1.78	GB5008	T1	A	22F	2390.00	2390.00	2400.00	1250.00	700.00	740.00																						1	1	
37		G2-59A		2400.0	740.0	1	1.78	GB5009A	T1	A	22F	2390.00	2390.00	2400.00	1250.00	700.00	740.00																						1	1	
38		G2-510-1		1234.0	840.0	1	1.04	GB5010	T1	C	23F	1224.00	1224.00	1234.00	1200.00	800.00	840.00																					1	1		
39		G2-510-2		1116.0	840.0	1	0.94	GB5010	T1	C	23F	1106.00	1106.00	1116.00	1200.00	800.00	840.00																					1	1		
40		G2-510-3		1234.0	840.0	1	1.04	GB5010	T1	C	23F	1224.00	1224.00	1234.00	1200.00	800.00	840.00																						1	1	
41		G2-510A-1		1182.5	840.0	1	0.99	GB5010A	T1	A	22F	1172.50	1172.50	1182.50	1200.00	800.00	840.00																						1	1	
42		G2-510A-2		445.0	840.0	1	0.37	GB5010A	T1	A	22F	435.00	435.00	445.00	1200.00	800.00	840.00																						1	1	
43		G2-510A-3		1000.0	840.0	1	0.84	GB5010A	T1	A	22F	990.00	990.00	1000.00	1																										





 美特鋁質 MIDI Aluminium Fabricator Ltd.	類別		物料斗號		
	制圖	CJM	2020.09.04	圖號	G2
修改				數量	見BOM表
日期				位置	



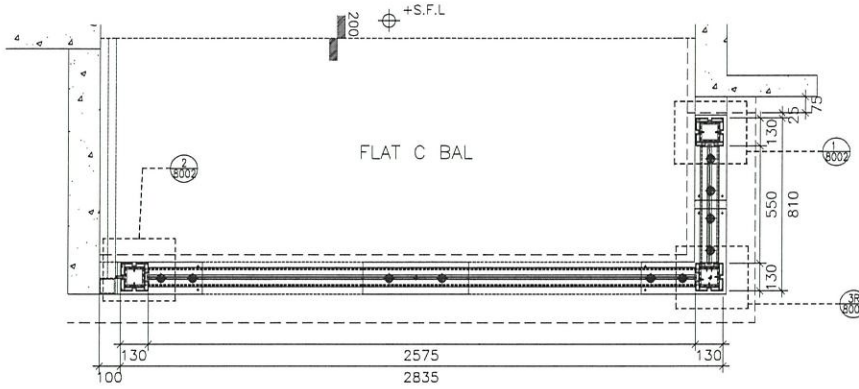
工程號	J-852	地盤	亞皆老街	附 件	②
名稱	玻璃加工圖		採用		
材料			地盤		
顏色	10T+1.52PVB+10T夾膠玻璃		工廠		



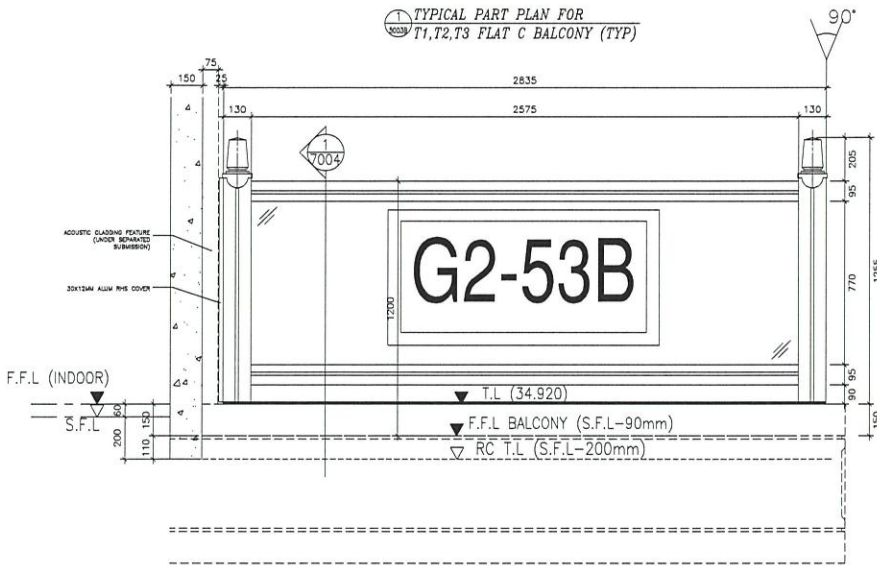


LEGEND:

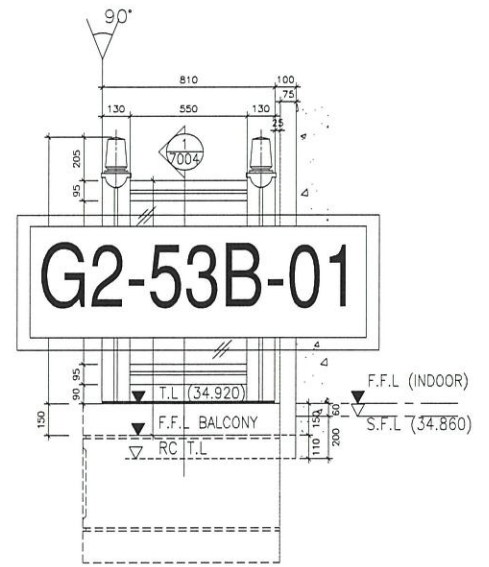
G2 : 10mmT + 1.52mm PVB + 10mmT CLEAR LAM. GLASS



1 TYPICAL PART PLAN FOR  
T1, T2, T3 FLAT C BALCONY (TYP)



2 TYPICAL PART ELEV FOR  
T1, T2, T3 FLAT C BALCONY (TYP)



2B TYPICAL PART ELEV FOR  
T1, T2, T3 FLAT C BALCONY (TYP)

C BAL:

T1, T2, T3:

2, 3, 6 - 23/F

G2-5003B-玻璃位置圖

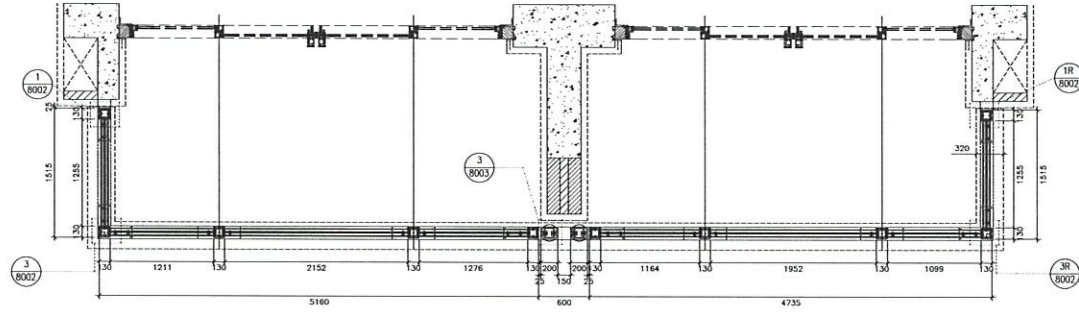
其中5003B=54樁

大貨去除5F

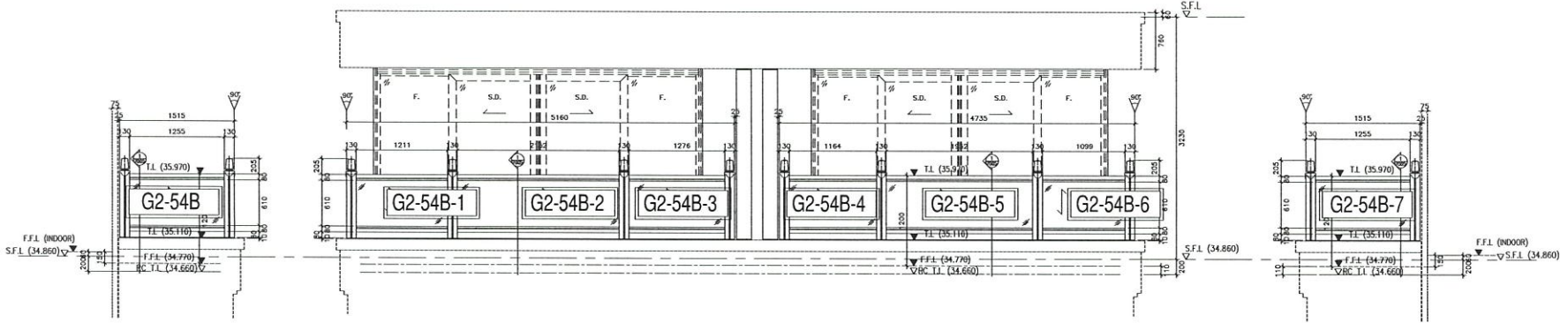
5003B (T1C; T2C; T3C, 2F~3F; 6F~23F) = 18\*3

<p>DATE: 14-FEB-20 SCALE: 1:4</p> <p>DRAWN BY: CF CHECKED BY: LW</p>		<p>PROJECT: PROPOSED RESIDENTIAL DEVELOPMENT</p> <p>17 ANSON STREET, KHL 6005, 6035 RP, 4, 505 RP, 6037 RP, &amp; 6038 RP.</p> <p>TITLE: TYPICAL PART PLAN &amp; PART ELEV T1, T2, T3 FLAT C BALCONY (TYP)</p>		<p>JOB NO.: J-852</p> <p>REV: B</p>		<p>NOTE:</p> <ol style="list-style-type: none"> <li>1. ALL DIMENSIONS ARE IN mm.</li> <li>2. ALL ELEVATIONS ARE VIEWED FROM OUTSIDE.</li> <li>3. ALL DIMENSIONS TO BE VERIFIED ON SITE BEFORE FABRICATION.</li> </ol> <p>LEGEND:</p> <p>21 DETAIL MARK NO.</p> <p>22 HATCH SHEET NO.</p> <p>1. F.F.L. --- FINISHED FLOOR LEVEL</p> <p>2. S.F.L. --- STRUCTURAL FLOOR LEVEL</p> <p>3. (20) --- REVERSED DETAIL</p>		<p>ARCHITECT: AGC DESIGN LTD</p> <p>MAIN CONTRACTOR: Gammont</p> <p>STRUCTURAL ENGINEER: ARUP</p> <p>MECHANICAL ENGINEER: MENHARDT</p>		<p>CLIENT:</p> <p>UNIT 5-8, Sunny Industrial Centre, 1/F</p> <p>610 Cheong Kuo Ling Road, Kwai Tsing</p> <p>1622349211-4 Fax: (852) 27272888</p> <p>DWG NO.: 1852-S0-G9-5003B</p>	
--	--	--	--	-------------------------------------	--	---	--	--	--	---	--

LEGEND:  
 (G2) : 10mmT + 1.52mm PVB + 10mmT CLEAR LAM. GLASS



(1) TYPICAL PART PLAN FOR T1 FLAT A & FLAT B BALCONY (1/F)



(2) TYPICAL PART ELEV (SIDE) FOR T1 FLAT A & FLAT B BALCONY (1/F)

(3) TYPICAL PART ELEV FOR T1 FLAT A & FLAT B BALCONY (1/F)

(4) TYPICAL PART ELEV (SIDE) FOR T1 FLAT A & FLAT B BALCONY (1/F)

G2-5004B-玻璃位置圖  
 其中：5004B=1檔  
 1/F

T1 : 1/F  
 AB BAL

B.D. REF :

CLIENT :

ARCHITECT :  
**AGC DESIGN LTD**

MAIN CONTRACTOR :  
**Gammon**

STRUCTURAL ENGINEER :  
**ARUP**

FAÇADE CONSULTANT :  
**MEINHARDT**

NOTE :  
 1. ALL DIMENSIONS ARE IN mm.  
 2. ALL ELEVATIONS ARE VIEWED FROM OUTSIDE.  
 3. ALL DIMENSIONS TO BE VERIFIED ON SITE BEFORE FABRICATION.

LEGEND :  
 (X1) --- DETAIL MARK NO.  
 (X091) --- REFER SHEET NO.  
 1. F.F.L. --- FINISHED FLOOR LEVEL  
 2. S.F.L. --- STRUCTURAL FLOOR LEVEL  
 3. (R) --- REVERSED DETAIL

NO.	DATE	REVISION	BY

JOB NO. : J-852  
 PROJECT : PROPOSED RESIDENTIAL DEVELOPMENT AT 139 - 147 ARGYLE STREET, NKIL 6005, 6035 R.P., 6036 R.P., 6037 R.P. & 6038 R.P.

TITLE : TYPICAL P.P.LAN & P.ELEV FLAT A/B BALCONY @ T1 (1/F)

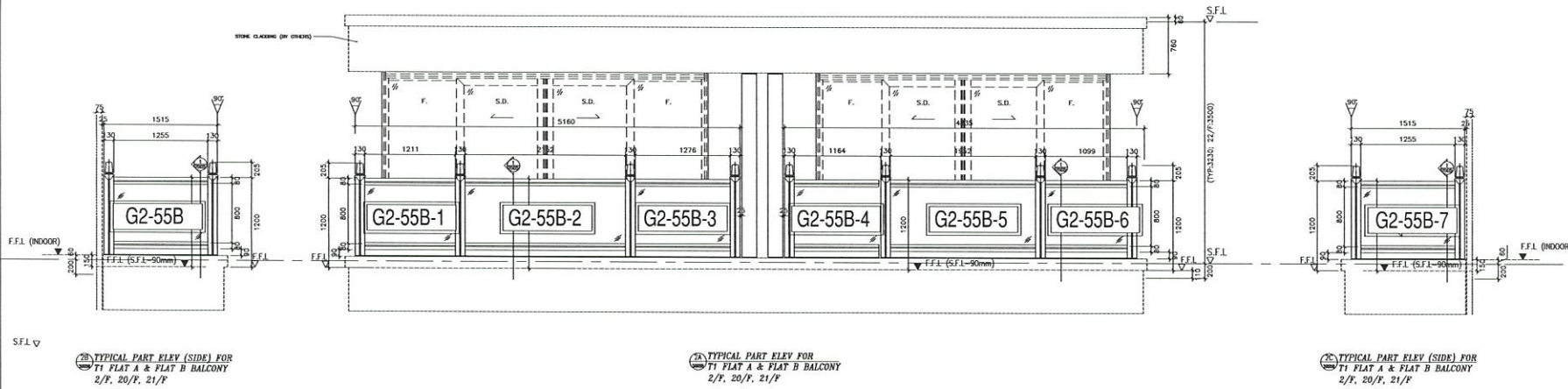
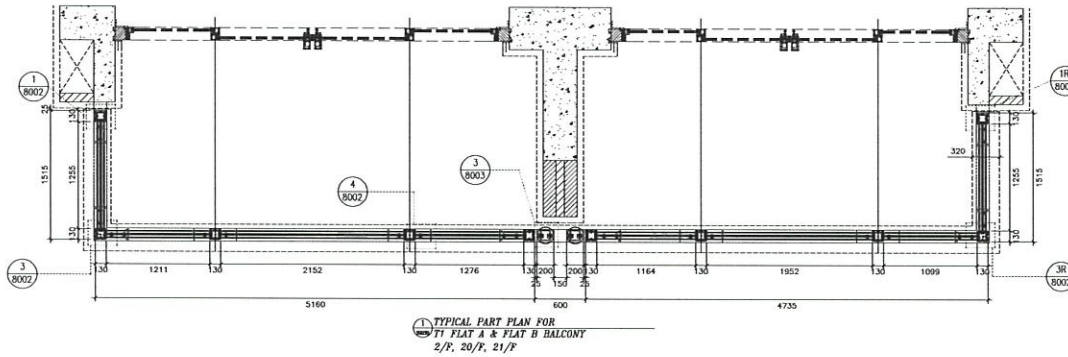
DATE : 14-FEB-20 SCALE : 1:60

DRAWN BY : CF CHECKED BY : DW

**MIDI ALUMINIUM FABRICATOR LTD.**  
 Units 6-8, Sunray Industrial Centre, 1/F  
 610 Cha Kwo Ling Road, Kowloon  
 Tel: 23489211-4 Fax: (852) 27727666  
 DWG NO. : J852-SD-GB-5004B REV. : -

LEGEND:

⊙ : 10mmT + 1.52mm PVB + 10mmT CLEAR LAM. GLASS



G2-5005B-玻璃位置圖  
其中：5005B=3檔  
2/F;21/F;22F

T1: 2, 20, 21/F  
AB BAL

B.D. REF :

CLIENT :

ARCHITECT :

**AGC**  
DESIGN LTD

MAIN CONTRACTOR :

**Gammon**

STRUCTURAL ENGINEER :

**ARUP**

FAÇADE CONSULTANT:

**MEINHARDT**

NOTE :

1. ALL DIMENSIONS ARE IN mm.
2. ALL ELEVATIONS ARE VIEWED FROM OUTSIDE.
3. ALL DIMENSIONS TO BE VERIFIED ON SITE BEFORE FABRICATION.

LEGEND :

- ⊙1 -- DETAIL MARK NO.
- ⊙2001 -- REFER SHEET NO.

1. F.F.L. -- FINISHED FLOOR LEVEL.
2. S.F.L. -- STRUCTURAL FLOOR LEVEL.
3. ⊙ -- REVERSED DETAIL.

NO.	DATE	REVISION	BY

JOB NO. : J-852

PROJECT :  
PROPOSED RESIDENTIAL DEVELOPMENT  
AT 139 - 147 ARCYLE STREET,  
NKIL 6005, 6035 R.P., 6036 R.P.,  
6037 R.P. & 6038 R.P.

TITLE :  
TYPICAL P.PLAN & P.ELEV  
T1 FLAT A & B BALCONY  
⊙T1: 2/F, 20/F, 21/F

DATE : 14-FEB-20 SCALE : 1:60

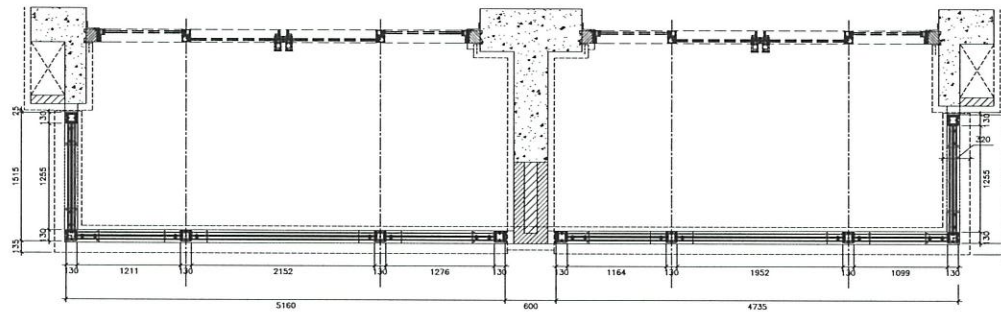
DRAWN BY : CF CHECKED BY : DW

**美特鋁質有限公司**  
MIDI ALUMINIUM FABRICATOR LTD.  
Units 6-8, Sunray Industrial Centre, 1/F  
610 Cha Kwo Ling Road, Kowloon  
Tel:23489211-4 Fax:(852)27727666

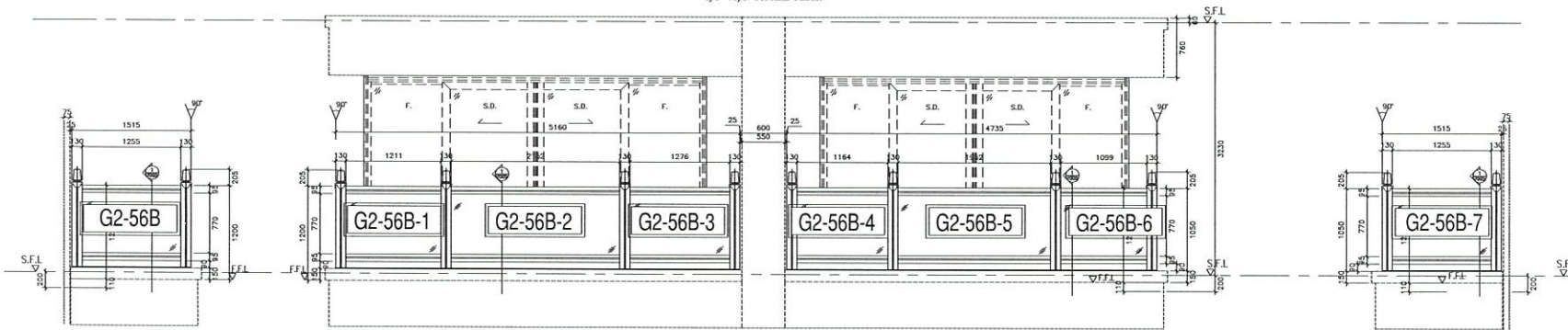
DWG NO. : J852-SD-GB-5005B REV. : -

LEGEND:

⊙2 : 10mmT + 1.52mm PVB + 10mmT CLEAR LAM. GLASS



⊙1 TYPICAL PART PLAN FOR T1 FLAT A & B BALCONY 3/F-19/F TYPICAL FLOOR



⊙20 TYPICAL PART ELEV (SIDE) FOR T1 FLAT A & B BALCONY 3/F-19/F TYPICAL FLOOR

⊙21 TYPICAL PART ELEV FOR T1 FLAT A & B BALCONY 3/F-19/F TYPICAL FLOOR

⊙22 TYPICAL PART ELEV (SIDE) FOR T1 FLAT A & B BALCONY 3/F-19/F TYPICAL FLOOR

G2-5006B-玻璃位置圖

其中：5006B=13檔

3F、6F-19F

AB BAL

T1: 3.6-19/F

B.D. REF :

CLIENT :

ARCHITECT :

**AGC**  
DESIGN LTD

MAIN CONTRACTOR :

**Gammon**

STRUCTURAL ENGINEER :

**ARUP**

FAÇADE CONSULTANT:

**MEINHARDT**

NOTE :

1. ALL DIMENSIONS ARE IN mm.
2. ALL ELEVATIONS ARE VIEWED FROM OUTSIDE.
3. ALL DIMENSIONS TO BE VERIFIED ON SITE BEFORE FABRICATION.

LEGEND :

- ⊙21 — DETAIL MARK NO.
- ⊙2001 — REFER SHEET NO.

1. F.F.L. — FINISHED FLOOR LEVEL
2. S.F.L. — STRUCTURAL FLOOR LEVEL
3. (↔) — REVERSED DETAIL

NO.	DATE	REVISION	BY

JOB NO. : J-852

PROJECT : PROPOSED RESIDENTIAL DEVELOPMENT  
AT 139 - 147 ARGYLE STREET,  
NKIL 6005, 6035 R.P., 6036 R.P.,  
6037 R.P. & 6038 R.P.

TITLE : TYPICAL P.PLAN & P.ELEV  
T1 FLAT A & B BALCONY  
3/F-19/F TYP FL

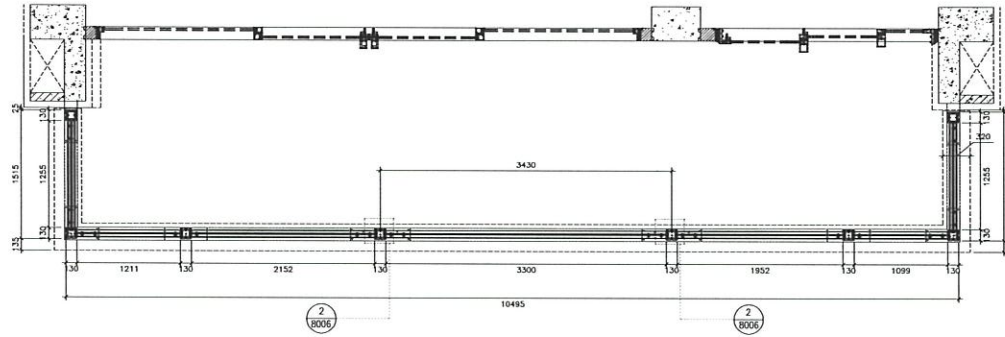
DATE : 14-FEB-20 SCALE : 1:60

DRAWN BY : CF CHECKED BY : DW

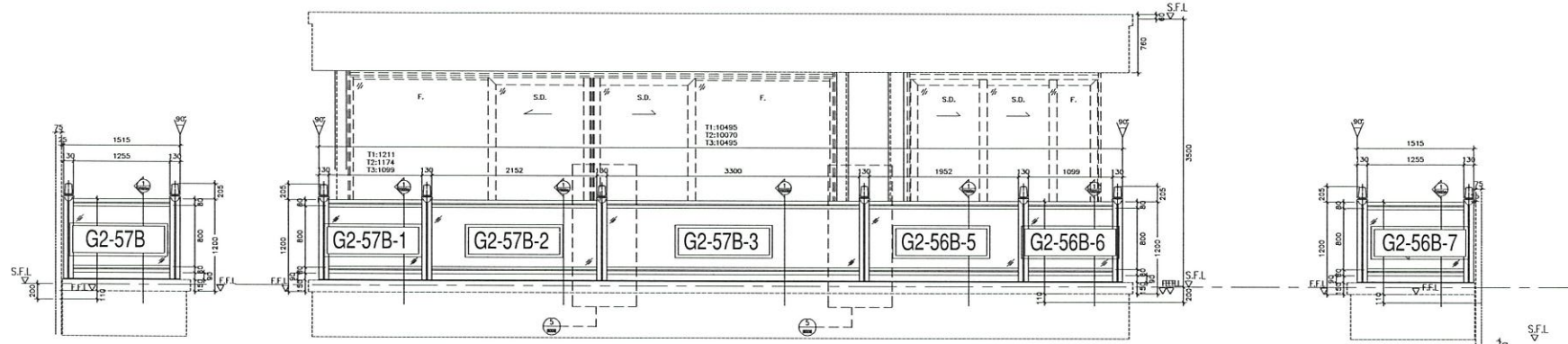
**美特鋁質有限公司**  
MIDI ALUMINIUM FABRICATOR LTD.  
Units 6-8, Sunray Industrial Centre, 1/F  
610 Cha Kwo Ling Road, Kowloon  
Tel:23489211-4 Fax:(852)2727666

DWG NO. : J852-SB-CB-5006B REV. : -

LEGEND:  
 (G2) : 10mmT + 1.52mm PVB + 10mmT CLEAR LAM. GLASS



TYPICAL PART PLAN FOR  
 T1 FLAT A BALCONY @ 22/F, 23/F



TYPICAL PART ELEV (SIDE) FOR  
 T1 FLAT A BALCONY @ 22/F, 23/F

TYPICAL PART ELEV FOR  
 T1 FLAT A BALCONY @ 22/F, 23/F

TYPICAL PART ELEV (SIDE) FOR  
 T1 FLAT A BALCONY @ 22/F, 23/F

G2-5007B-玻璃位置圖  
 其中：5007B=2檔  
 22/F;23/F

T1 = 22, 23/F  
 AB BAL

B.D. REF :  
 CLIENT :  
 ARCHITECT :  
**AGC DESIGN LTD**

MAIN CONTRACTOR :  
**Gammon**

STRUCTURAL ENGINEER :  
**ARUP**

FACADE CONSULTANT:  
**MEINHARDT**

NOTE :  
 1. ALL DIMENSIONS ARE IN mm.  
 2. ALL ELEVATIONS ARE VIEWED FROM OUTSIDE.  
 3. ALL DIMENSIONS TO BE VERIFIED ON SITE BEFORE FABRICATION.

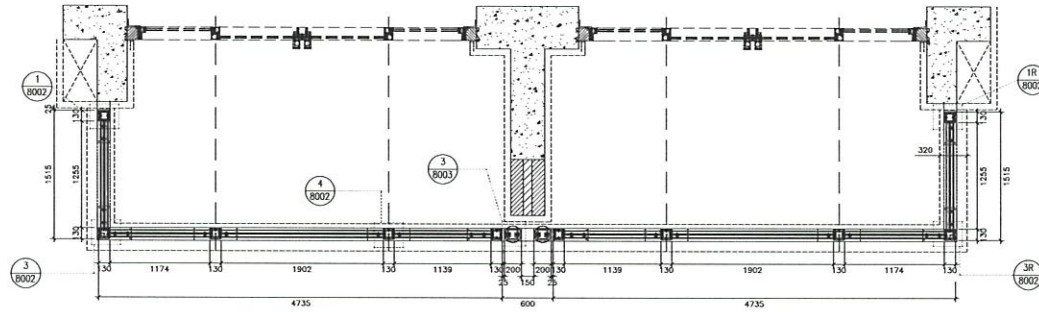
LEGEND :  
 (X1) --- DETAIL MARK NO.  
 (X001) --- REFER SHEET NO.  
 1. F.F.L. --- FINISHED FLOOR LEVEL  
 2. S.F.L. --- STRUCTURAL FLOOR LEVEL  
 3. (Z) --- REVERSED DETAIL

NO.	DATE	REVISION	BY

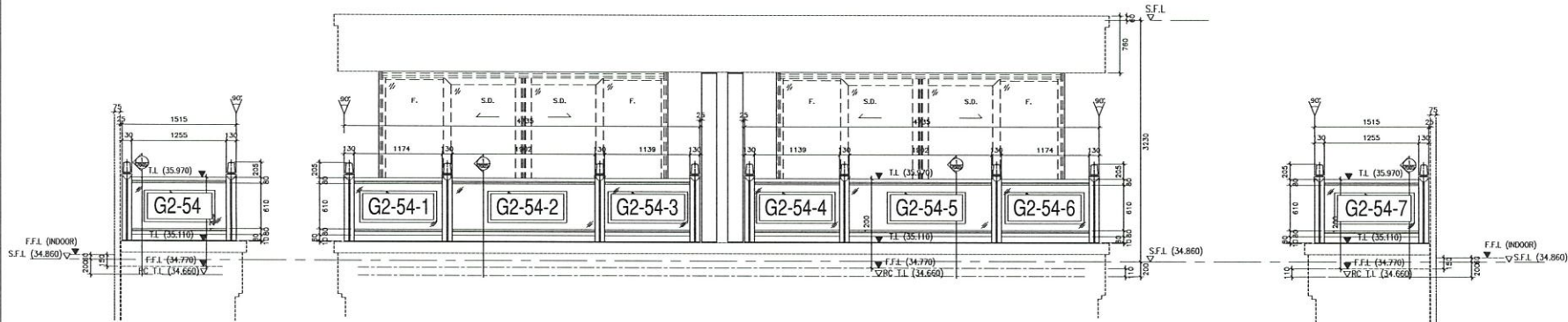
JOB NO. : J-852  
 PROJECT : PROPOSED RESIDENTIAL DEVELOPMENT AT 139 - 147 ARGYLE STREET, NKIL 6005, 6035 R.P., 6036 R.P., 6037 R.P. & 6038 R.P.  
 TITLE : TYPICAL P.PLAN & P.ELEV T1 FLAT A & B BALCONY @22/F, 23/F

DATE : 14-FEB-20 SCALE : 1:60  
 DRAWN BY : CF CHECKED BY : DW

**MIDI ALUMINIUM FABRICATOR LTD.**  
 Units 6-8, Sunray Industrial Centre, 1/F  
 610 Cha Kwo Ling Road, Kowloon  
 Tel:23489211-4 Fax:(852)2727666  
 DWG NO. : J852-SD-GB-5007B REV. : -



1 TYPICAL PART PLAN FOR  
T2 FLAT A & FLAT B BALCONY (1/F)



2 TYPICAL PART ELEV (SIDE) FOR  
T2 FLAT A & FLAT B BALCONY (1/F)

3 TYPICAL PART ELEV FOR  
T2 FLAT A & FLAT B BALCONY (1/F)

4 TYPICAL PART ELEV (SIDE) FOR  
T2 FLAT A & FLAT B BALCONY (1/F)

LEGEND:

5 : 10mmT + 1.52mm PVB + 10mmT CLEAR LAM. GLASS

B.D. REF :

CLIENT :

ARCHITECT :  
**AGC**  
DESIGN LTD

MAIN CONTRACTOR :

**Gammon**

STRUCTURAL ENGINEER :

**ARUP**

FAÇADE CONSULTANT:

**MEINHARDT**

NOTE :

1. ALL DIMENSIONS ARE IN mm.
2. ALL ELEVATIONS ARE VIEWED FROM OUTSIDE.
3. ALL DIMENSIONS TO BE VERIFIED ON SITE BEFORE FABRICATION.

LEGEND :

- X1 — DETAIL MARK NO.
- X001 — REFER SHEET NO.

1. F.F.L. — FINISHED FLOOR LEVEL
2. S.F.L. — STRUCTURAL FLOOR LEVEL
3. (R) — REVERSED DETAIL

NO.	DATE	REVISION	BY

JOB NO. : J-B52  
PROJECT : PROPOSED RESIDENTIAL DEVELOPMENT  
AT 139 - 147 ARGYLE STREET,  
NKIL 6005, 6035 R.P., 6036 R.P.,  
6037 R.P. & 6038 R.P.

TITLE : TYPICAL P.PLAN & P.ELEV  
FLAT A/B BALCONY  
@ T2 (1/F)

DATE : 14-FEB-20 SCALE : 1:60

DRAWN BY : CF CHECKED BY : DW

**MIDI ALUMINIUM FABRICATOR LTD.**  
Units 6-8, Sunray Industrial Centre, 1/F  
610 Che Kwo Ling Road, Kowloon  
Tel:23489211-4 Fax:(852)27727666

DWG NO. : J852-SD-GB-5004 REV. : C

G2-5004-玻璃位置圖

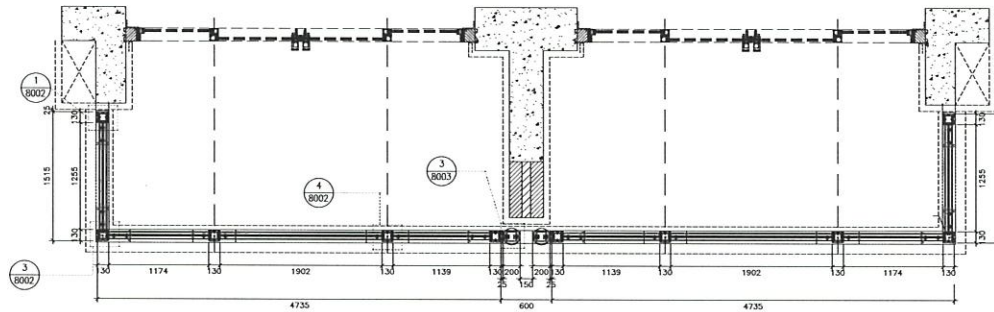
其中：5004=1樞

1/F

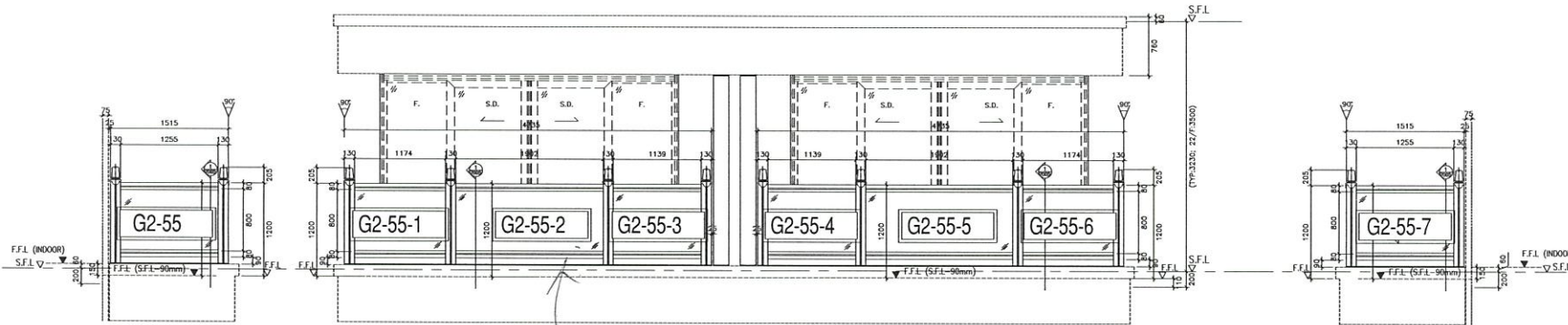
AB BAL T2=11F

LEGEND:

① : 10mmT + 1.52mm PVB + 10mmT CLEAR LAM. GLASS



① TYPICAL PART PLAN FOR  
T2 FLAT A & FLAT B BALCONY  
2/F, 20/F, 21/F, 22/F



②8 TYPICAL PART ELEV (SIDE) FOR  
T2 FLAT A & FLAT B BALCONY  
2/F, 20/F, 21/F, 22/F

②9 TYPICAL PART ELEV FOR  
T2 FLAT A & FLAT B BALCONY  
2/F, 20/F, 21/F, 22/F

③0 TYPICAL PART ELEV (SIDE) FOR  
T2 FLAT A & FLAT B BALCONY  
2/F, 20/F, 21/F, 22/F

G2-5005-玻璃位置圖  
其中：5005=4樞  
2/F;20/F;21F;22/F

T2: 2,20-22/F  
AB BAL

B.D. REF :

CLIENT :

ARCHITECT :  
**AGC DESIGN LTD**

MAIN CONTRACTOR :  
**Gammon**

STRUCTURAL ENGINEER :  
**ARUP**

FAÇADE CONSULTANT:  
**MEINHARDT**

NOTE :  
1. ALL DIMENSIONS ARE IN mm.  
2. ALL ELEVATIONS ARE VIEWED FROM OUTSIDE.  
3. ALL DIMENSIONS TO BE VERIFIED ON SITE BEFORE FABRICATION.

LEGEND :  
①1 --- DETAIL MARK NO.  
①001 --- REFER SHEET NO.  
1. F.F.L. --- FINISHED FLOOR LEVEL  
2. S.F.L. --- STRUCTURAL FLOOR LEVEL  
3. Ⓜ --- REVERSED DETAIL

NO.	DATE	REVISION	BY

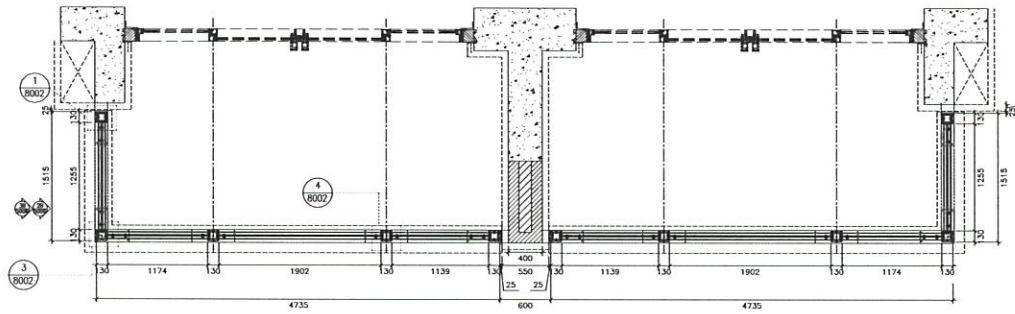
JOB NO. : J-852  
PROJECT : PROPOSED RESIDENTIAL DEVELOPMENT AT 139 - 147 ARGYLE STREET, NKIL, 6005, 6035 R.P., 6036 R.P., 6037 R.P. & 6038 R.P.

TITLE : TYPICAL P.PLAN & P.ELEV T2 FLAT A & B BALCONY  
①T2: 2/F, 20/F, 21/F, 22/F

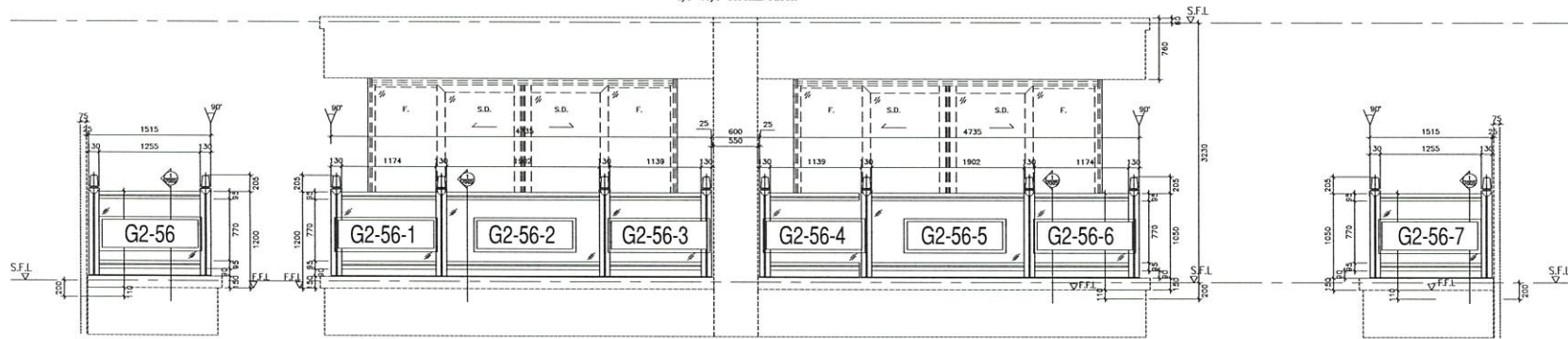
DATE : 14-FEB-20 SCALE : 1:60  
DRAWN BY : CF CHECKED BY : DW

**美特鋁質有限公司**  
MIDI ALUMINIUM FABRICATOR LTD.  
Units 6-8, Sunray Industrial Centre, 1/F  
610 Cha Kwo Ling Road, Kowloon  
Tel:23489211-4 Fax:(852)2727666  
DWG NO. : J852-SD-G8-5005 REV. : C

LEGEND:  
 (1) : 10mmT + 1.52mm PVB + 10mmT CLEAR LAM. GLASS



1 TYPICAL PART PLAN FOR  
 T2 FLAT A & B BALCONY  
 3/F-19/F TYPICAL FLOOR



20 TYPICAL PART ELEV (SIDE) FOR  
 T2 FLAT A & B BALCONY  
 3/F-19/F TYPICAL FLOOR

21 TYPICAL PART ELEV FOR  
 T2 FLAT A & B BALCONY  
 3/F-19/F TYPICAL FLOOR

22 TYPICAL PART ELEV (SIDE) FOR  
 T2 FLAT A & B BALCONY  
 3/F-19/F TYPICAL FLOOR

G2-5006-玻璃位置圖  
 其中：5006=13樁  
 3F、6F-19F

AB BAL  
 T2: 3-19/F

B.D. REF :

CLIENT :

ARCHITECT :  
**AGC DESIGN LTD**

MAIN CONTRACTOR :  
**Gammon**

STRUCTURAL ENGINEER :  
**ARUP**

FACADE CONSULTANT:  
**MEINHARDT**

NOTE :  
 1. ALL DIMENSIONS ARE IN mm.  
 2. ALL ELEVATIONS ARE VIEWED FROM OUTSIDE.  
 3. ALL DIMENSIONS TO BE VERIFIED ON SITE BEFORE FABRICATION.

LEGEND :  
 (X1) — DETAIL MARK NO.  
 (X001) — REFER SHEET NO.  
 1. F.F.L. — FINISHED FLOOR LEVEL  
 2. S.F.L. — STRUCTURAL FLOOR LEVEL  
 3. (R) — REVERSED DETAIL

NO.	DATE	REVISION	BY
-----	------	----------	----

JOB NO. : J-852  
 PROJECT : PROPOSED RESIDENTIAL DEVELOPMENT  
 AT 139 - 147 ARGYLE STREET,  
 NKIL 6005, 6035 R.P., 6036 R.P.,  
 6037 R.P. & 6038 R.P.

TITLE : TYPICAL P.PLAN & P.ELEV  
 T2 FLAT A & B BALCONY  
 3/F-19/F TYP FL

DATE : 14-FEB-20 SCALE : 1:60  
 DRAWN BY : CF CHECKED BY : DW

**美特鋁質有限公司**  
 MIDI ALUMINIUM FABRICATOR LTD.  
 Units 6-8, Sunray Industrial Centre, 1/F  
 610 Cha Kwo Ling Road, Kowloon  
 Tel:23489211-4 Fax:(852)2727666  
 DWG NO. : J852-SB-GB-5006 REV. : C

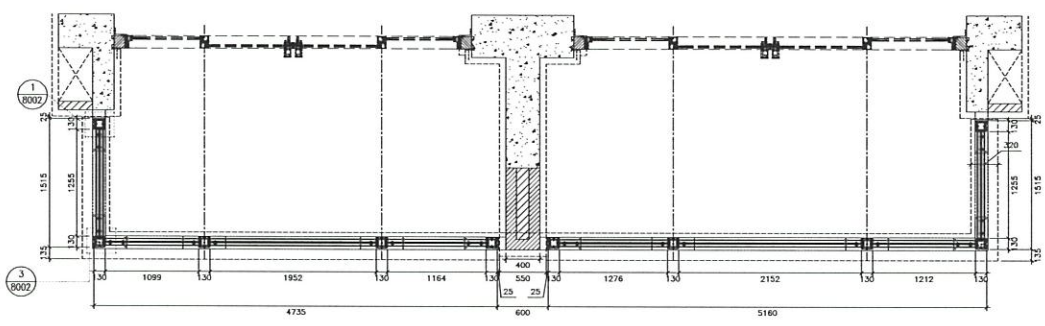




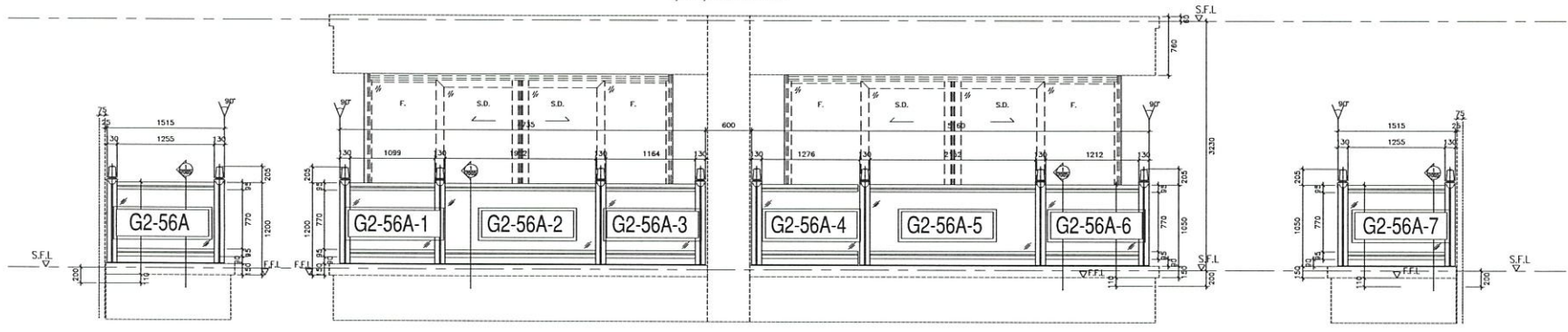


LEGEND:

(22) : 10mmT + 1.52mm PVB + 10mmT CLEAR LAM. GLASS



1 TYPICAL PART PLAN FOR T3 FLAT A & B BALCONY 3/F-19/F TYPICAL FLOOR



23 TYPICAL PART ELEV (SIDE) FOR T3 FLAT A & B BALCONY 3/F-19/F TYPICAL FLOOR

24 TYPICAL PART ELEV FOR T3 FLAT A & B BALCONY 3/F-19/F TYPICAL FLOOR

25 TYPICAL PART ELEV (SIDE) FOR T3 FLAT A & B BALCONY 3/F-19/F TYPICAL FLOOR

G2-5006A-玻璃位置圖  
 其中：5006A=13樁  
 3F、6F-19F

AB BAL  
 T3: 3.6-19/F

B.D. REF :

CLIENT :

ARCHITECT :  
**AGC DESIGN LTD**

MAIN CONTRACTOR :  
**Gammon**

STRUCTURAL ENGINEER :  
**ARUP**

FAÇADE CONSULTANT:  
**MEINHARDT**

NOTE :  
 1. ALL DIMENSIONS ARE IN mm.  
 2. ALL ELEVATIONS ARE VIEWED FROM OUTSIDE.  
 3. ALL DIMENSIONS TO BE VERIFIED ON SITE BEFORE FABRICATION.

LEGEND :  
 (X1) — DETAIL MARK NO.  
 (X201) — REFER SHEET NO.  
 1. F.F.L — FINISHED FLOOR LEVEL  
 2. S.F.L — STRUCTURAL FLOOR LEVEL  
 3. (R) — REVERSED DETAIL

NO.	DATE	REVISED	BY

JOB NO. : J-852  
 PROJECT : PROPOSED RESIDENTIAL DEVELOPMENT AT 139 - 147 ARGYLE STREET, NKIL 6005, 6035 R.P., 6036 R.P., 6037 R.P. & 6038 R.P.

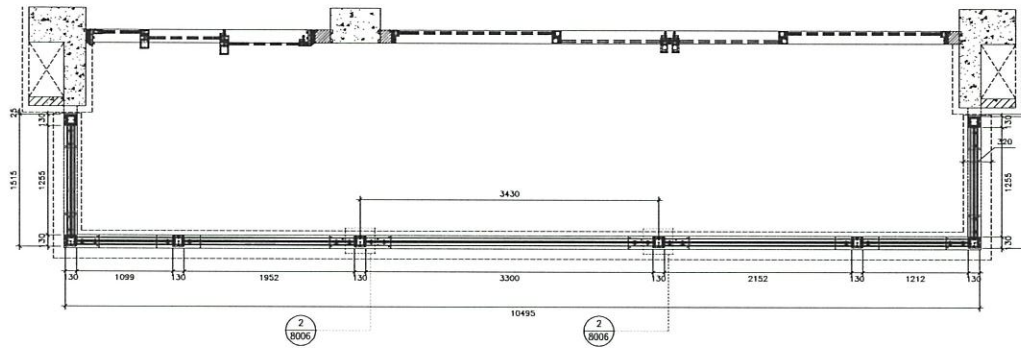
TITLE : TYPICAL P.PLAN & P.ELEV T3 FLAT A & B BALCONY 3/F-19/F TYP FL

DATE : 14-FEB-20 SCALE : 1:60  
 DRAWN BY : CF CHECKED BY : DW

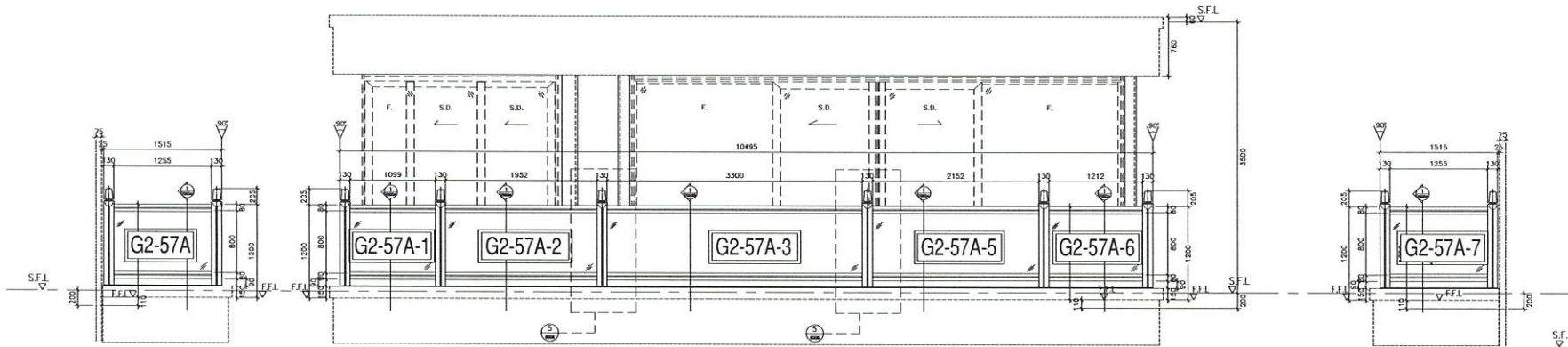
**美特鋁質有限公司**  
 MIDI ALUMINIUM FABRICATOR LTD.  
 Units 6-8, Sunray Industrial Centre, 1/F  
 610 Cha Kwo Ling Road, Kowloon  
 Tel:23489211-4 Fax:(852)2727666  
 DWG NO. : J852-SD-GB-5006A REV. : -

LEGEND:

⊙2 : 10mmT + 1.52mm PVB + 10mmT CLEAR LAM. GLASS



1 TYPICAL PART PLAN FOR  
T3 FLAT A BALCONY @ 22/F, 23/F



20 TYPICAL PART ELEV (SIDE) FOR  
T3 FLAT A BALCONY @ 22/F, 23/F

21 TYPICAL PART ELEV FOR  
T3 FLAT A BALCONY @ 22/F, 23/F

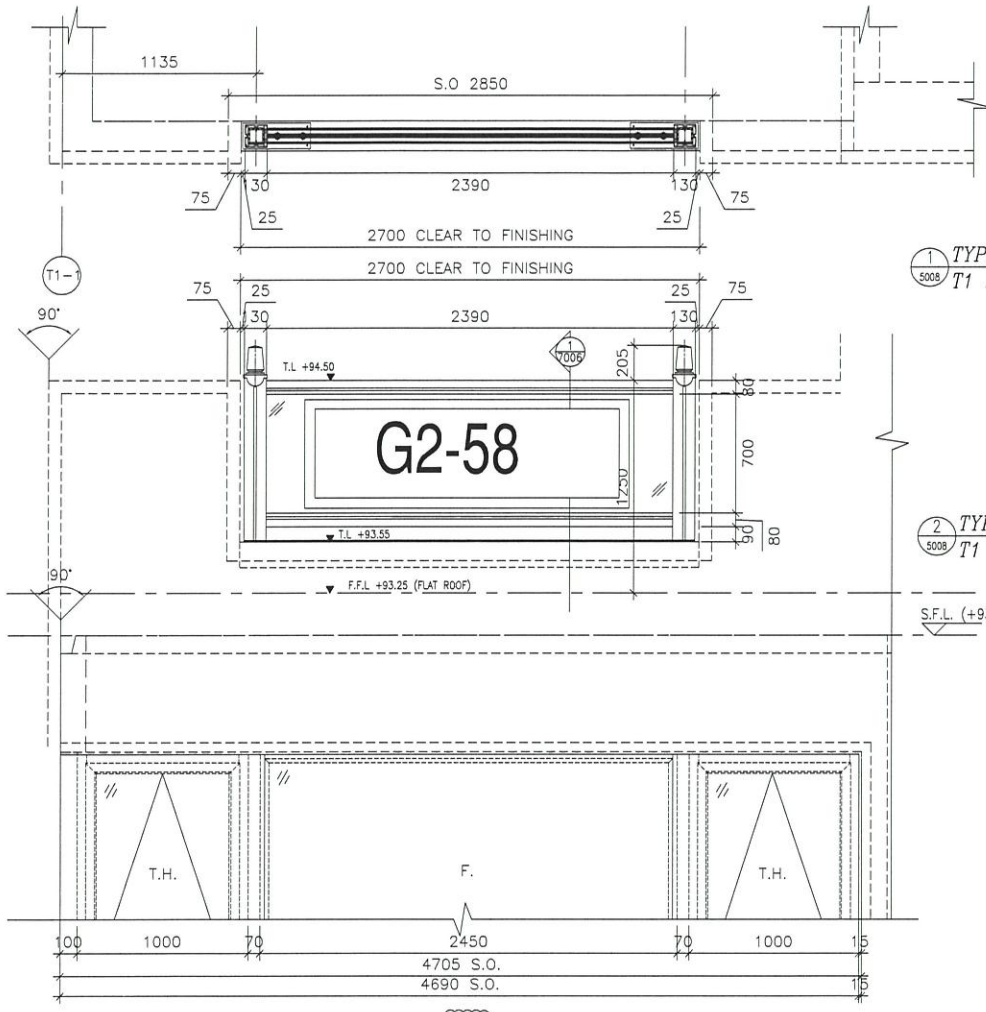
22 TYPICAL PART ELEV (SIDE) FOR  
T3 FLAT A BALCONY @ 22/F, 23/F

G2-5007A-玻璃位置圖  
其中：5007A=2樁  
22/F;23/F

T3: 22, 23/F  
AB BAL

B.D. REF :			
CLIENT :			
ARCHITECT :			
<p><b>AGC</b> DESIGN LTD</p>			
MAIN CONTRACTOR :			
<p><b>Gammon</b></p>			
STRUCTURAL ENGINEER :			
<p><b>ARUP</b></p>			
FACADE CONSULTANT:			
<p><b>MEINHARDT</b></p>			
NOTE :			
1. ALL DIMENSIONS ARE IN mm.			
2. ALL ELEVATIONS ARE VIEWED FROM OUTSIDE.			
3. ALL DIMENSIONS TO BE VERIFIED ON SITE BEFORE FABRICATION.			
LEGEND :			
⊙21 -- DETAIL MARK NO. REFER SHEET NO.			
1. F.F.L -- FINISHED FLOOR LEVEL			
2. S.F.L -- STRUCTURAL FLOOR LEVEL			
3. (R) -- REVERSED DETAIL			
NO.	DATE	REVISION	BY
JOB NO. : J-852			
PROJECT :			
PROPOSED RESIDENTIAL DEVELOPMENT AT 139 - 147 ARGYLE STREET, NKIL 6005, 6035 R.P., 6036 R.P., 6037 R.P. & 6038 R.P.			
TITLE :			
TYPICAL P.PLAN & P.ELEV T3 FLAT A & B BALCONY @22/F, 23/F			
DATE : 14-FEB-20		SCALE : 1:60	
DRAWN BY : CF		CHECKED BY : DW	
<p><b>MIDI 美特鋁質有限公司</b> MIDI ALUMINIUM FABRICATOR LTD.</p>			
Units 6-8, Sunray Industrial Centre, 1/F 610 Cho Kwo Ling Road, Kowloon Tel:23489211-4 Fax:(852)2727666			
DWG NO. : J852-SB-GD-5007A		REV. : -	

LEGEND:  
 (G2) : 10mmT + 1.52mm PVB + 10mmT CLEAR LAM. GLASS



1 TYPICAL PART PLAN FOR BALUSTRADE @ T1 22/F FLAT A (FLAT ROOF)

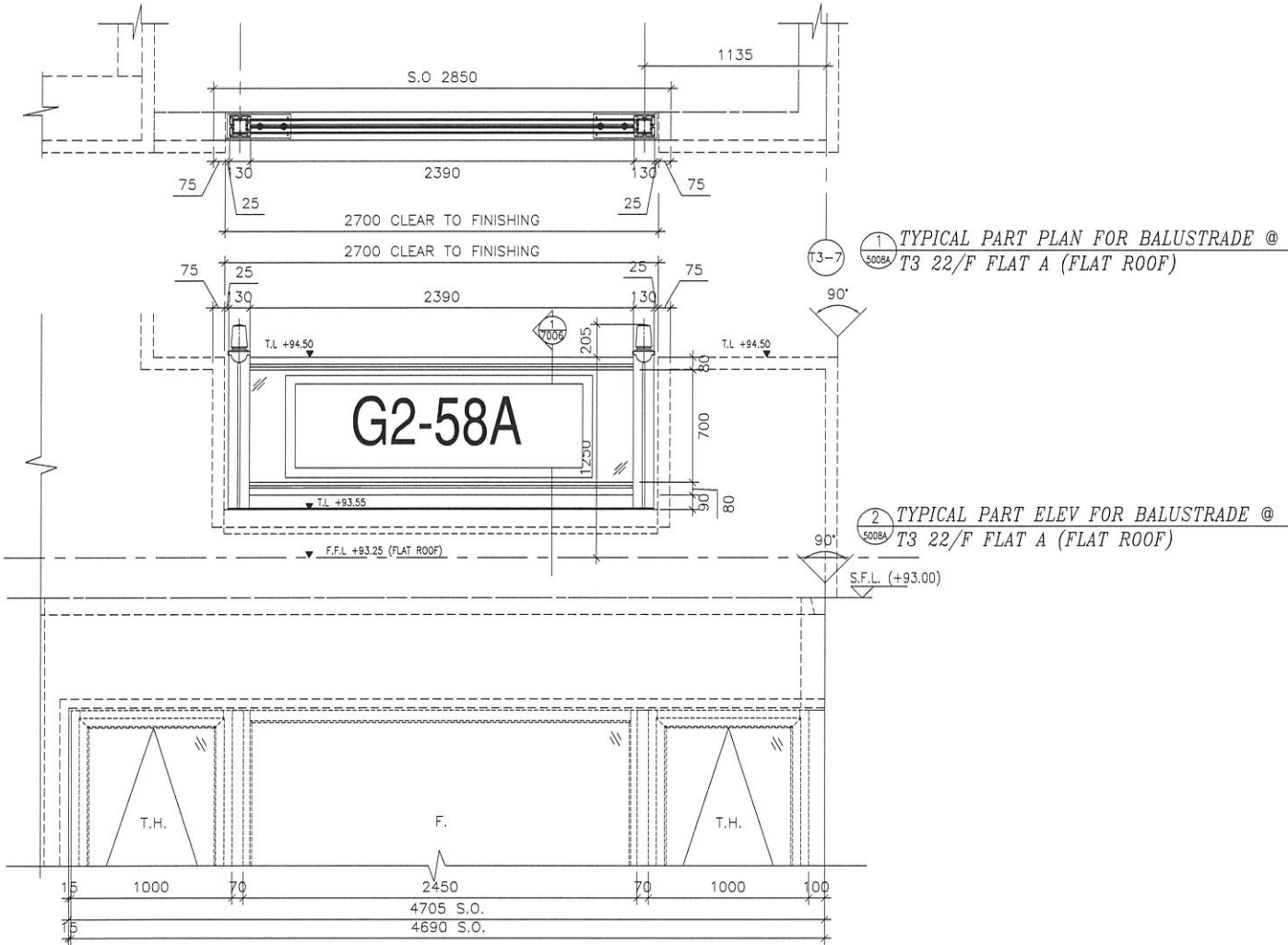
2 TYPICAL PART ELEV FOR BALUSTRADE @ T1 22/F FLAT A (FLAT ROOF)

G2-5008-玻璃位置圖  
 其中5008=1樁  
 T1 22/F

ARCHITECT : <b>AGC</b> DESIGN LTD 11/F, 110 Des Voeux Road West, Kowloon HONG KONG		STRUCTURAL ENGINEER : <b>Gammone</b> 11/F, 110 Des Voeux Road West, Kowloon HONG KONG		FACADE CONSULTANT: <b>ARUP</b> <b>MEINHARDT</b>	
PROJECT : PROPOSED RESIDENTIAL DEVELOPMENT AT 139 - 147 ARCADE STREET, NKIL 6005, 6005 R.P., 6036 R.P., 6037 R.P. & 6038 R.P.		TITLE : TYPICAL PLAN & ELEV @T1 22/F FLAT A (FLAT ROOF)		DATE : 14-FEB-20 DRAWN BY : CF CHECKED BY : DW	
CLIENT :		MAIN CONTRACTOR :		REVISION :	
PROJECT NO. : J-852		SCALE : 1:60		DATE : 14-FEB-20	
ARCHITECT : AGC DESIGN LTD		STRUCTURAL ENGINEER : Gammone		FACADE CONSULTANT: ARUP MEINHARDT	
PROJECT : PROPOSED RESIDENTIAL DEVELOPMENT AT 139 - 147 ARCADE STREET, NKIL 6005, 6005 R.P., 6036 R.P., 6037 R.P. & 6038 R.P.		TITLE : TYPICAL PLAN & ELEV @T1 22/F FLAT A (FLAT ROOF)		DATE : 14-FEB-20 DRAWN BY : CF CHECKED BY : DW	
CLIENT :		MAIN CONTRACTOR :		REVISION :	
PROJECT NO. : J-852		SCALE : 1:60		DATE : 14-FEB-20	
ARCHITECT : AGC DESIGN LTD		STRUCTURAL ENGINEER : Gammone		FACADE CONSULTANT: ARUP MEINHARDT	
PROJECT : PROPOSED RESIDENTIAL DEVELOPMENT AT 139 - 147 ARCADE STREET, NKIL 6005, 6005 R.P., 6036 R.P., 6037 R.P. & 6038 R.P.		TITLE : TYPICAL PLAN & ELEV @T1 22/F FLAT A (FLAT ROOF)		DATE : 14-FEB-20 DRAWN BY : CF CHECKED BY : DW	
CLIENT :		MAIN CONTRACTOR :		REVISION :	

LEGEND:

② : 10mmT + 1.52mm PVB + 10mmT CLEAR LAM. GLASS



G2-5008A-玻璃位置圖

其中5008A=1幢

T3;22/F

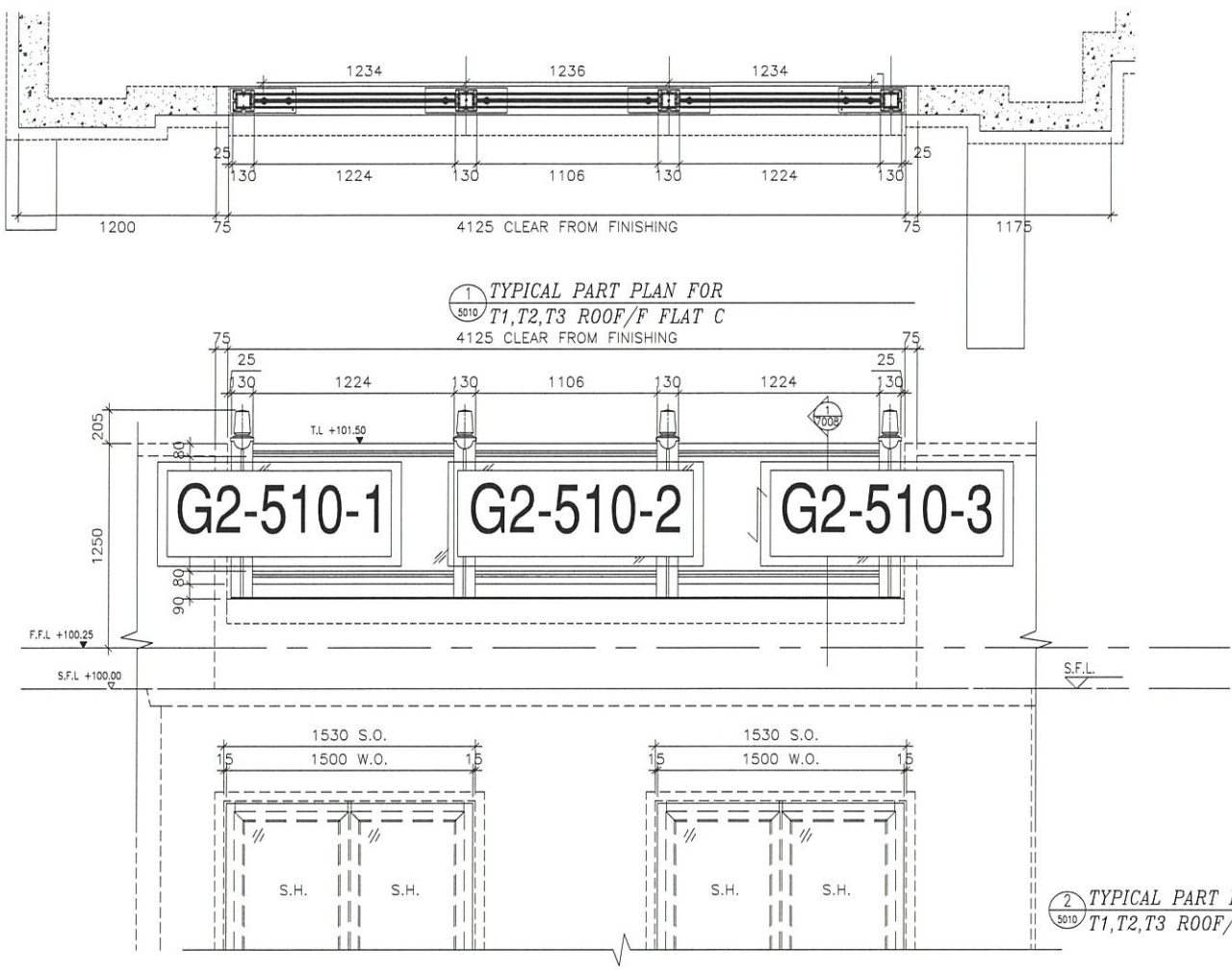
<p>DATE : 14-FEB-20</p> <p>SCALE : 1:40</p> <p>DRAWN BY : CF</p> <p>CHECKED BY : DW</p>	<p>JOB NO. : J-852</p> <p>PROJECT : PROPOSED RESIDENTIAL DEVELOPMENT AT 139 - 147 ARGYLE STREET, NKL 6005, 6035 R.P., 6036 R.P., 6037 R.P. &amp; 6038 R.P.</p> <p>TITLE : TYPICAL P.L. PLAN &amp; P.ELEV</p> <p>① T3 22/F FLAT A (FLAT ROOF)</p>	<p>NOTE :</p> <ol style="list-style-type: none"> <li>1. ALL DIMENSIONS ARE IN mm.</li> <li>2. ALL DIMENSIONS ARE VERIFIED FROM OUTSIDE BEFORE FABRICATION.</li> <li>3. ALL DIMENSIONS TO BE VERIFIED ON SITE BEFORE FABRICATION.</li> </ol> <p>LEGEND :</p> <ul style="list-style-type: none"> <li>⊗ DETAIL MARK NO.</li> <li>⊙ REFER SHEET NO.</li> <li>1. F.F.L. -- FINISHED FLOOR LEVEL</li> <li>2. S.F.L. -- STRUCTURAL FLOOR LEVEL</li> <li>3. ⊖ -- REVERSED DETAIL</li> </ul>	<p>FACE CONSULTANT:</p> <p><b>ARUP</b></p> <p><b>MEINHARDT</b></p>	<p>STRUCTURAL ENGINEER :</p> <p><b>Gammon</b></p>	<p>MAIN CONTRACTOR :</p> <p><b>ABC DESIGN LTD</b></p>	<p>ARCHITECT :</p> <p><b>ABC DESIGN LTD</b></p>	<p>CLIENT :</p>	<p>B.O. REF. :</p>
---	--	---	--	---	---	---	-----------------	--------------------

**MIDI** 美特經貿有限公司  
 Units 6-8, Sunny Industrial Centre, 1/F  
 610 Chee Koo Ling Road, Koooon  
 Tel: 23489211-4 Fax: 65272721866  
 DMC NO. : 1852-SD-CB-5008A REV. : C





LEGEND:  
 (2) : 10mmT + 1.52mm PVB + 10mmT CLEAR LAM. GLASS



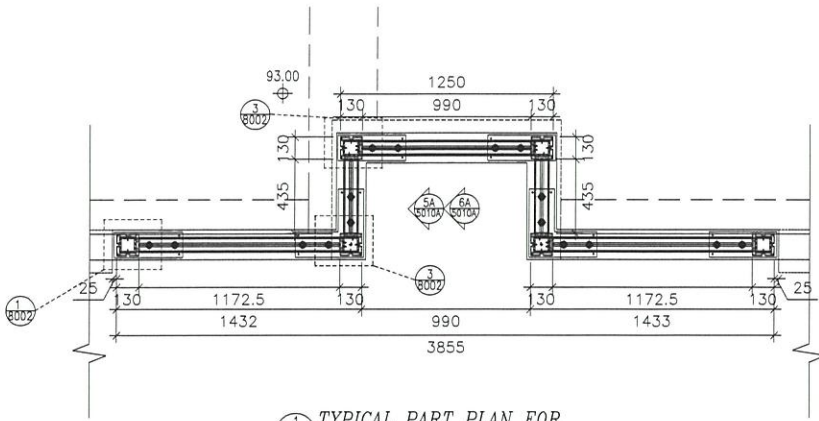
G2-5010-玻璃位置圖  
 其中5010=3樁  
 T1,2,3 ROOF

(2) : 10mmT + 1.52mm PVB + 10mmT CLEAR LAM. GLASS

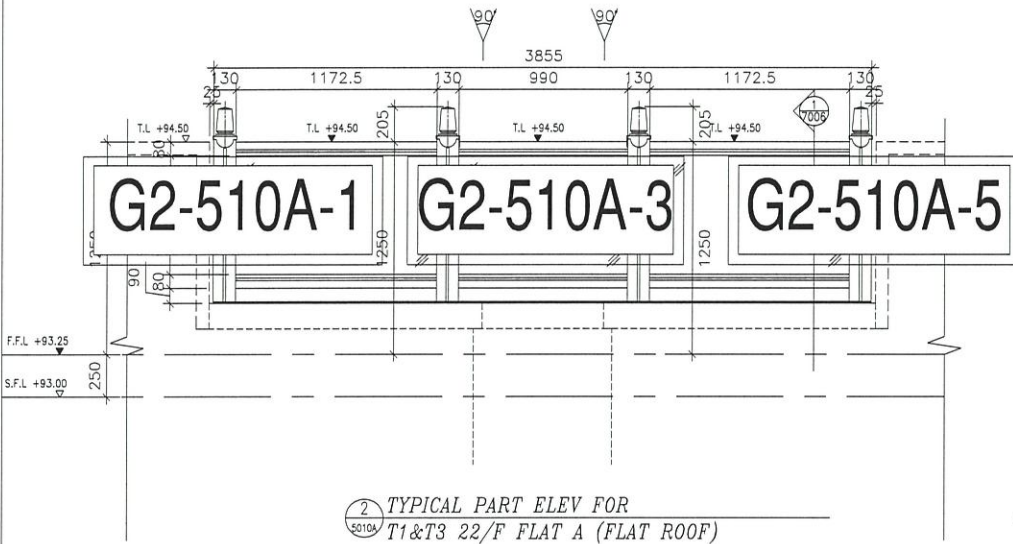
B.D. REF : CLIENT : ARCHITECT : <b>AGC</b> DESIGN LTD MAIN CONTRIBUTOR : STRUCTURAL ENGINEER : <b>Gammion</b> FACADE CONSULTANT : <b>ARUP</b> <b>MEINHARDT</b>	NOTE : 1. ALL DIMENSIONS ARE IN mm. 2. ALL ELEVATIONS ARE VERIFIED FROM OUTSIDE. 3. ALL DIMENSIONS TO BE VERIFIED ON SITE BEFORE FABRICATION. LEGEND : (X) - DETAIL MARK NO. (5010) - REFER SHEET NO. 1. F.F.L. - FINISHED FLOOR LEVEL 2. S.F.L. - STRUCTURAL FLOOR LEVEL 3. (R) - REVERSED DETAIL	PROJECT : PROPOSED RESIDENTIAL DEVELOPMENT NO. 139 447 ARBULE STREET, NINE 6035 6035 RESIDENCE K.F.S., NO. 6037 R.F.P. & 6035B R.F.P.	JOB NO. : J-852	NO.	DATE	REVISION
				DWE : 14-FEB-20 SCALE : 1:80 DRAWN BY : JCF CHECKED BY : LDW TITLE : TYPICAL P/PLAN & P/ELEV @T1,T2,T3 ROOF/F FLAT C	DATE : 14-FEB-20 SCALE : 1:80 DRAWN BY : JCF CHECKED BY : LDW	DWE : 14-FEB-20 SCALE : 1:80 DRAWN BY : JCF CHECKED BY : LDW

MIDT  
 美特堅有限公司  
 610 Chee Koo Ling Road, Kowloon  
 HONG KONG  
 TEL: (852) 2721-1144 FAX: (852) 2721-1888  
 DWE NO. : 852-SS-CB-5010 REV. : C

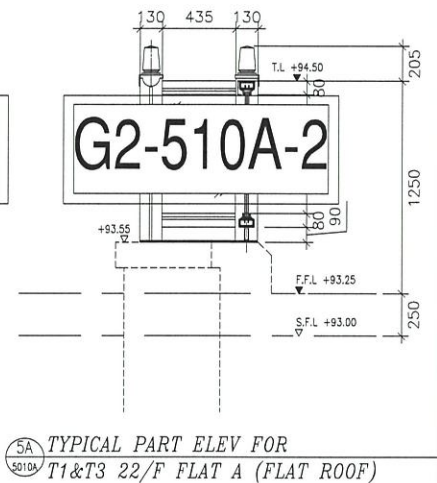
LEGEND:  
 (C2) : 10mmT + 1.52mm PVB + 10mmT CLEAR LAM. GLASS



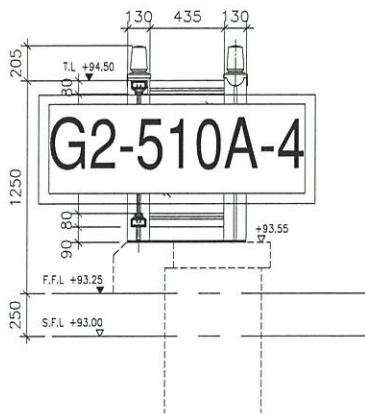
1 TYPICAL PART PLAN FOR  
 (S010A) T1&T3 22/F FLAT A (FLAT ROOF)



2 TYPICAL PART ELEV FOR  
 (S010A) T1&T3 22/F FLAT A (FLAT ROOF)

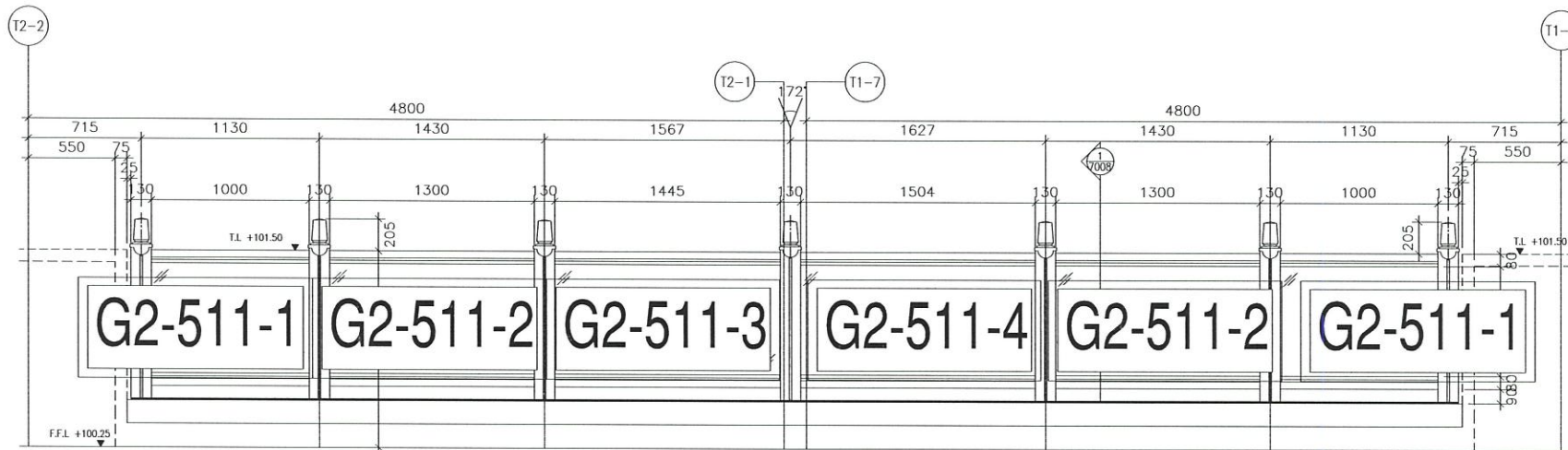
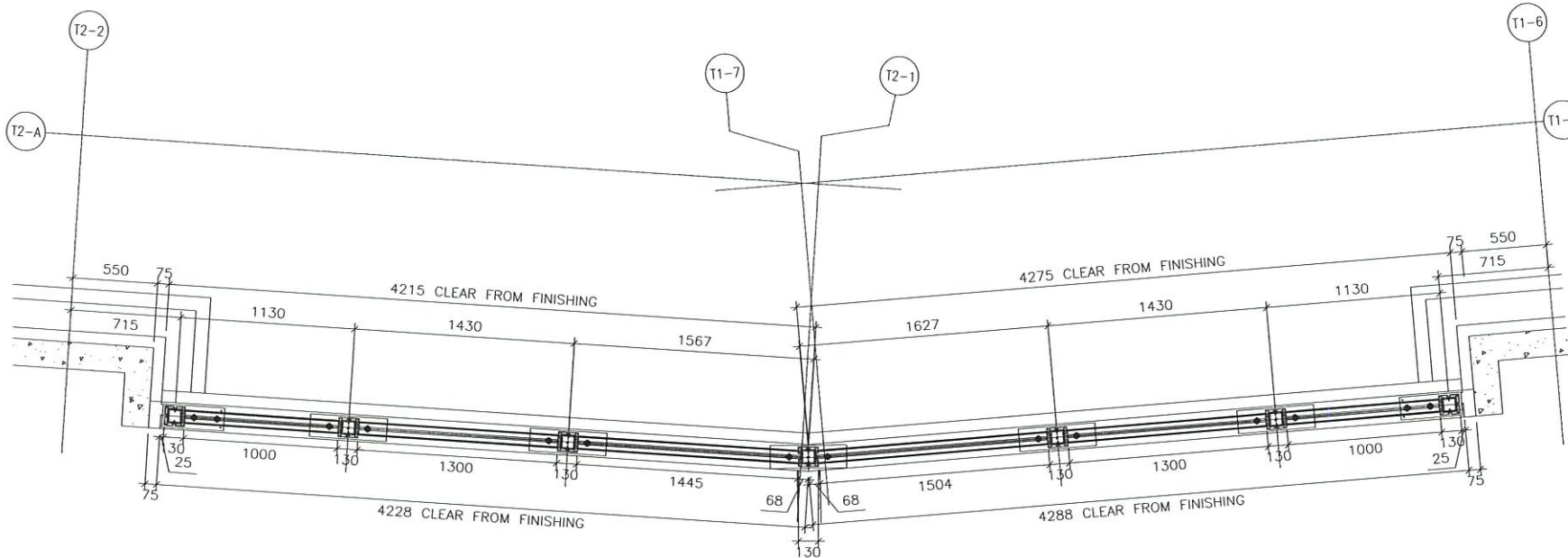


(S010A) TYPICAL PART ELEV FOR  
 (S010A) T1&T3 22/F FLAT A (FLAT ROOF)



G2-5010A-玻璃位置圖  
 其中5010A=2檔  
 T1,2,3 ROOF

<p>PROJECT: PROPOSED RESIDENTIAL DEVELOPMENT AT 139 - 147 ARGYLE STREET, NINGBO, 6005, 6035 R.P., 6036 R.P., 6037 R.P. &amp; 6038 R.P.</p> <p>TITLE: TYPICAL P/PLAN &amp; P/ELEV          T1,13 ROOF/F FLAT C</p>		<p>DATE: 14-FEB-20 SCALE: 1:60          DRAWN BY: JCF CHECKED BY: DJW</p>		<p>JOB NO.: J-852</p>		<p>DATE: 14-FEB-20</p>		<p>REV. NO.: 0552-S0-CB-S010A REV. : C</p>	
<p>CLIENT: AGC OCEANIC DEVELOPMENT LTD.</p>		<p>ARCHITECT: AGC OCEANIC DEVELOPMENT LTD.</p>		<p>STRUCTURAL ENGINEER: Gammion</p>		<p>FAÇADE CONSULTANT: ARUP</p>		<p>MEINHARDT</p>	
<p>NOTE: 1. ALL DIMENSIONS ARE IN mm.          2. ALL ELEVATIONS ARE VIEWED FROM OUTSIDE.          3. ALL DIMENSIONS TO BE VIEWED ON SITE BEFORE FABRICATION.</p>		<p>LEGEND: 1. (X1) FINISHED FLOOR LEVEL          2. (SFL) STRUCTURAL FLOOR LEVEL          3. (R) REVERSED DETAIL</p>		<p>DETAIL MARK NO. (X1) REFER SHEET NO.</p>		<p>PROJECT: PROPOSED RESIDENTIAL DEVELOPMENT AT 139 - 147 ARGYLE STREET, NINGBO, 6005, 6035 R.P., 6036 R.P., 6037 R.P. &amp; 6038 R.P.</p>		<p>DATE: 14-FEB-20 SCALE: 1:60          DRAWN BY: JCF CHECKED BY: DJW</p>	



G2-5011-1 玻璃位置圖

其中5011-1=1檔  
T1, 2 ROOF/F

B.D. REF :

CLIENT :

ARCHITECT :  
**AGC DESIGN LTD**

MAIN CONTRACTOR :  
**Gammon**

STRUCTURAL ENGINEER :  
**ARUP**

FAÇADE CONSULTANT :  
**MEINHARDT**

- NOTE :
1. ALL DIMENSIONS ARE IN mm.
  2. ALL ELEVATIONS ARE VIEWED FROM OUTSIDE.
  3. ALL DIMENSIONS TO BE VERIFIED ON SITE BEFORE FABRICATION.

- LEGEND :
- X1 --- DETAIL MARK NO.
  - X001 --- REFER SHEET NO.

1. F.F.L. --- FINISHED FLOOR LEVEL
2. S.F.L. --- STRUCTURAL FLOOR LEVEL
3. (⊗) --- REVERSED DETAIL

NO.	DATE	REVISED	BY

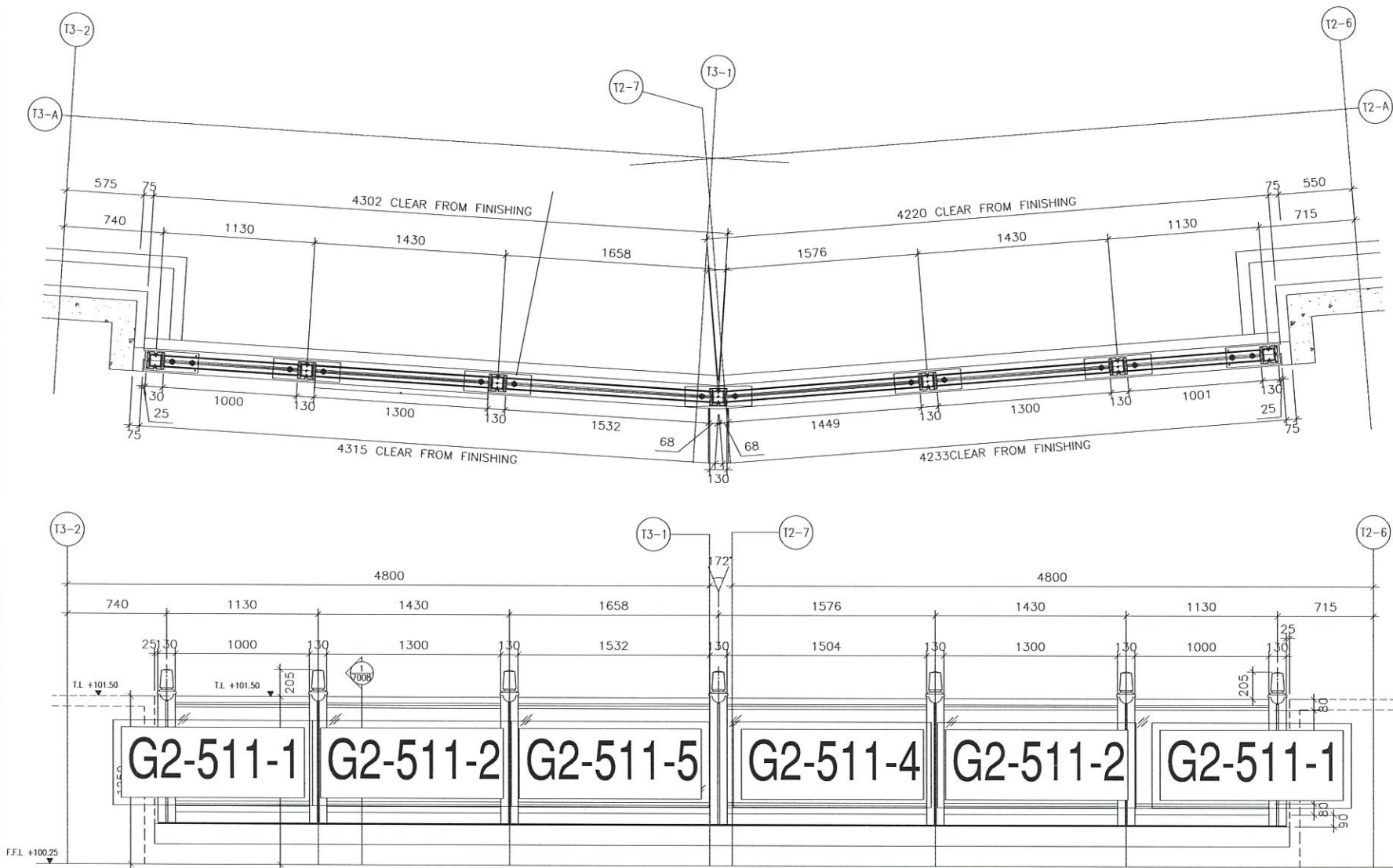
JOB NO. : J-852  
PROJECT : PROPOSED RESIDENTIAL DEVELOPMENT AT 139 - 147 ARCYLE STREET, NKIL 6005, 6035 R.P., 6036 R.P., 6037 R.P. & 6038 R.P.

TITLE : TYPICAL P.PLAN & P.ELEV @T1,T2,T3 ROOF/F (TOWER-TOWER)

DATE : 14-FEB-20 SCALE : 1:60  
DRAWN BY : CF CHECKED BY : DW

**美特鋁質有限公司**  
MIDI ALUMINIUM FABRICATOR LTD.  
Units 6-8, Sunray Industrial Centre, 1/F  
610 Cha Kwo Ling Road, Kowloon  
Tel:23489211-4 Fax:(852)2727666

DWG NO. : J852-SD-GB-5011 REV. : C



G2-5011-2 玻璃位置圖

5011-2=1樁  
T2, T3 ROOF/F

B.D. REF :  
  
CLIENT :

ARCHITECT :  
**AGC DESIGN LTD**

MAIN CONTRACTOR :  
**Gammon**

STRUCTURAL ENGINEER :  
**ARUP**

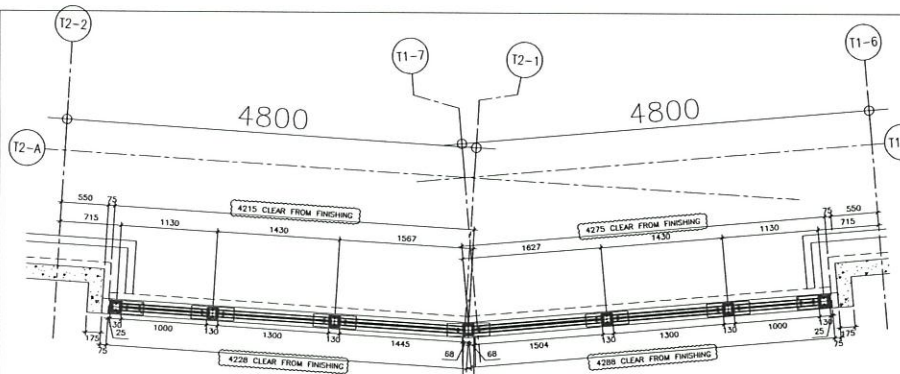
FACADE CONSULTANT :  
**MEINHARDT**

NOTE :  
1. ALL DIMENSIONS ARE IN mm.  
2. ALL ELEVATIONS ARE VIEWED FROM OUTSIDE.  
3. ALL DIMENSIONS TO BE VERIFIED ON SITE BEFORE FABRICATION.

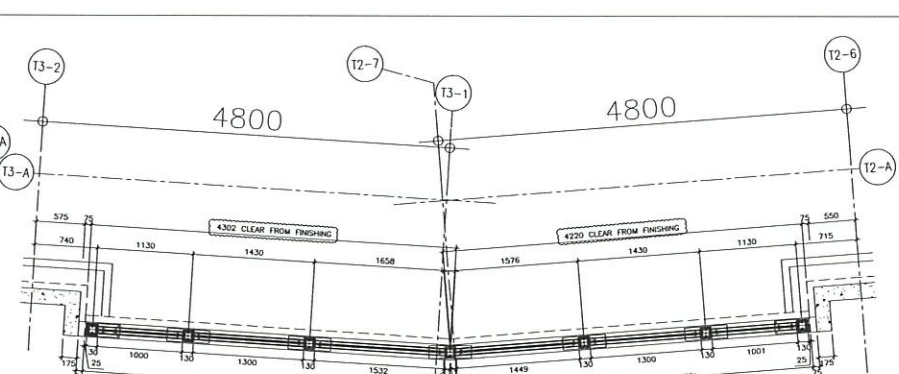
LEGEND :  
 (X1) --- DETAIL MARK NO.  
 (X001) --- REFER SHEET NO.  
 1. F.F.L. --- FINISHED FLOOR LEVEL  
 2. S.F.L. --- STRUCTURAL FLOOR LEVEL  
 3. (⊗) --- REVERSED DETAIL

NO.	DATE	REVISION	BY
JOB NO. :	J-B52		
PROJECT :	PROPOSED RESIDENTIAL DEVELOPMENT AT 139 - 147 ARGYLE STREET, NKIL 6005, 6035 R.P., 6036 R.P., 6037 R.P. & 6038 R.P.		
TITLE :	TYPICAL P.PLAN & P.ELEV @T1,T2,T3 ROOF/F (TOWER-TOWER)		

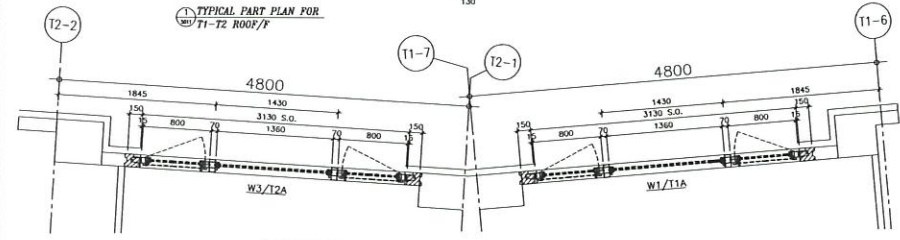
DATE : 14-FEB-20      SCALE : 1:60  
 DRAWN BY : CF      CHECKED BY : DW  
**美特鋁質有限公司**  
 MIDIL ALUMINIUM FABRICATOR LTD.  
 Units 6-8, Sunray Industrial Centre, 1/F  
 610 Chu Kwo Ling Road, Kowloon  
 Tel:23489211-4 Fax:(852)2727666  
 DWG NO. : J852-SD-GB-5011      REV. : C



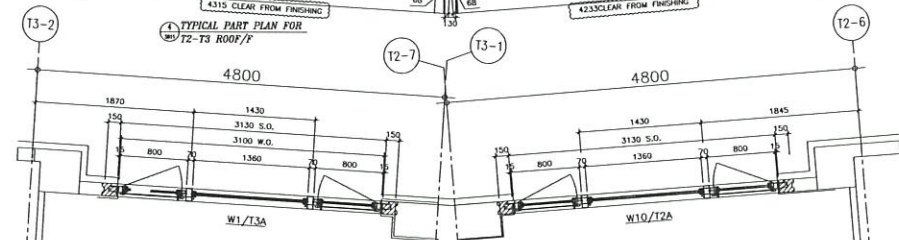
1 TYPICAL PART PLAN FOR T1-T2 ROOF/F



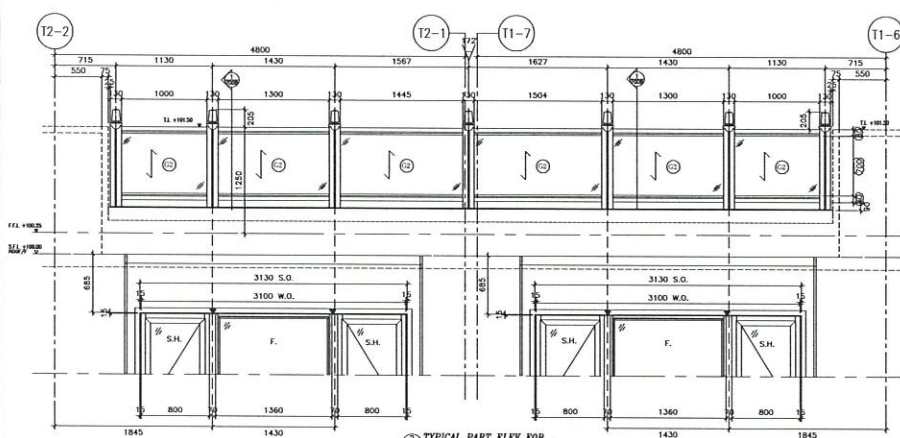
1 TYPICAL PART PLAN FOR T2-T3 ROOF/F



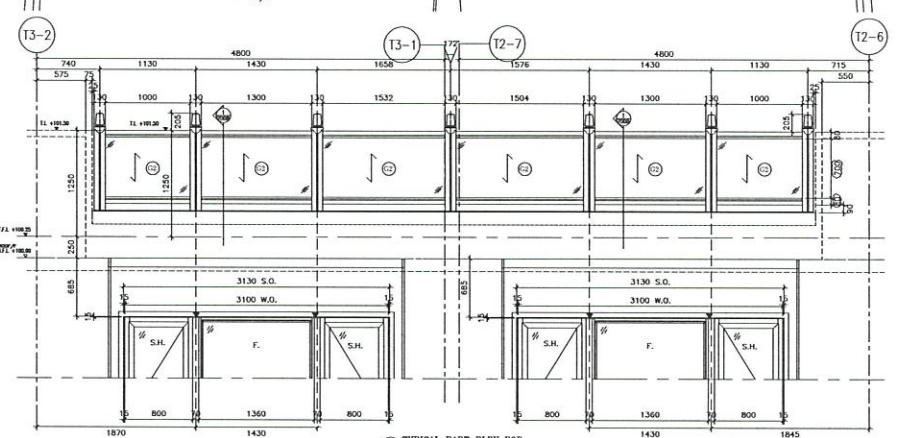
A REFERENCE PART PLAN FOR W3/T2A



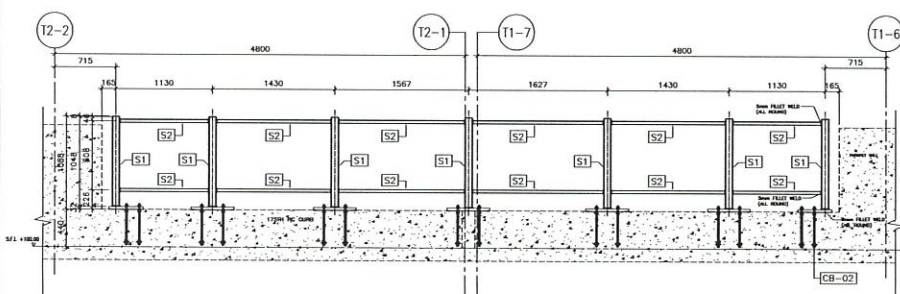
B REFERENCE PART PLAN FOR W1/T3A



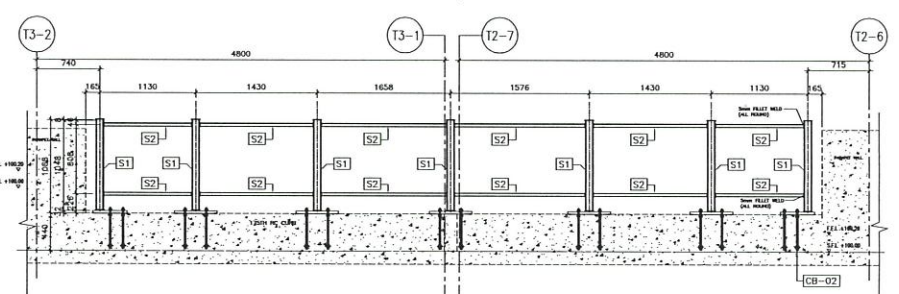
2 TYPICAL PART ELEV FOR T1-T2 ROOF/F



3 TYPICAL PART ELEV FOR T1-T2 ROOF/F



4 TYPICAL PART ELEV FOR T1-T2 ROOF/F



5 TYPICAL PART ELEV FOR T1-T2 ROOF/F

B.D. REF :

CLIENT :

ARCHITECT :  
**AGC DESIGN LTD**  
 10/F, 100, Nathan Road, Kowloon, Hong Kong

MAIN CONTRACTOR :  
**Gammon**


STRUCTURAL ENGINEER :  
**ARUP**

FAÇADE CONSULTANT:  
**MEINHARDT**

NOTE :  
 1. ALL DIMENSIONS ARE IN mm.  
 2. ALL ELEVATIONS ARE VIEWED FROM OUTSIDE.  
 3. ALL DIMENSIONS TO BE VERIFIED ON SITE BEFORE FABRICATION.

LEGEND :  
 (M) - DETAIL MARK NO.  
 (R) - REFER SHEET NO.  
 1. F.F.L. - FINISHED FLOOR LEVEL  
 2. S.F.L. - STRUCTURAL FLOOR LEVEL  
 3. (R) - REVERSED DETAIL

NO.	DATE	REVISED	BY
JOB NO. : J-852			
PROJECT : PROPOSED RESIDENTIAL DEVELOPMENT AT 139 - 147 ARCYLE STREET, NKIL 6005, 6035 R.P., 6036 R.P., 6037 R.P. & 6038 R.P.			
TITLE : TYPICAL P.PLAN & P.ELEV @T1,T2,T3 ROOF/F (TOWER-TOWER)			
DATE : 14-FEB-20		SCALE : 1:60	
DRAWN BY : CF		CHECKED BY : DW	
<b>美特鋁質有限公司</b> MIDI ALUMINUM FABRICATOR LTD. Units 6-8, Sunray Industrial Centre, 1/F 610 Chei Kwo Ling Road, Kowloon Tel:23489211-4 Fax:(852)27727666			
DWG NO. : J852-SD-GB-5011			REV. : C

 美特鋁質 有限公司 MIDI Aluminium Fabricator Ltd.		工程號: J852	計算: CJM	日期: 2021.01.15	送呈:					
地盤名稱: 亞皆老街		核對:	日期:	副本:	參考用					
項目類別: 擱河/大貨 (不包5F樓板層)		日期:	A/C Code:							
BM編號:	修改版次:	總計玻璃面積 (平方米):		750.26						
序號	修改內容	玻璃圖號	顏色與類型	厚度 (mm)	玻璃尺寸		數量 (塊)	總面積 (平方米)	使用位置	加工圖參考
					寬度 (W mm)	高度 (H mm)				
1		G2-53	(G2) 10 mm THK.CLEAR TEMPERED (OUTER)+ 1.52 mm THK(PVB) + 10 mm THK. CLEAR TEMPERED LAMIATED GLASS (INNER)	21.52	2585.0	820.0	2	4.24	GB-5003	GC-G2
2		G2-53-1			560.0	820.0	2	0.92	GB-5003	GC-G2
3		G2-53A			2585.0	820.0	1	2.12	GB-5003A	GC-G2
4		G2-53A-1			560.0	820.0	1	0.46	GB-5003A	GC-G2
5		G2-53B			2585.0	1010.0	54	140.99	GB-5003B	GC-G2
6		G2-53B-1			560.0	1010.0	54	30.54	GB-5003B	GC-G2
7		G2-54A			1265.0	650.0	1	0.82	GB-5004A	GC-G2
8		G2-54A-1			1109.0	650.0	1	0.72	GB-5004A	GC-G2
9		G2-54A-2			1962.0	650.0	1	1.28	GB-5004A	GC-G2
10		G2-54A-3			1174.0	650.0	1	0.76	GB-5004A	GC-G2
11		G2-54A-4			1286.0	650.0	1	0.84	GB-5004A	GC-G2
12		G2-54A-5			2162.0	650.0	1	1.41	GB-5004A	GC-G2
13		G2-54A-6			1222.0	650.0	1	0.79	GB-5004A	GC-G2
14		G2-54A-7			1265.0	650.0	1	0.82	GB-5004A	GC-G2
15		G2-54			1265.0	650.0	1	0.82	GB-5004	GC-G2
16		G2-54-1			1184.0	650.0	1	0.77	GB-5004	GC-G2
17		G2-54-2			1912.0	650.0	1	1.24	GB-5004	GC-G2
18		G2-54-3			1149.0	650.0	1	0.75	GB-5004	GC-G2
19		G2-54-4			1149.0	650.0	1	0.75	GB-5004	GC-G2
20		G2-54-5	1912.0	650.0	1	1.24	GB-5004	GC-G2		
21		G2-54-6	1184.0	650.0	1	0.77	GB-5004	GC-G2		
22		G2-54-7	1265.0	650.0	1	0.82	GB-5004	GC-G2		
23		G2-54B	1265.0	650.0	1	0.82	GB-5004B	GC-G2		
24		G2-54B-1	1221.0	650.0	1	0.79	GB-5004B	GC-G2		
25		G2-54B-2	2162.0	650.0	1	1.41	GB-5004B	GC-G2		
26		G2-54B-3	1286.0	650.0	1	0.84	GB-5004B	GC-G2		
27		G2-54B-4	1174.0	650.0	1	0.76	GB-5004B	GC-G2		
28		G2-54B-5	1962.0	650.0	1	1.28	GB-5004B	GC-G2		
29		G2-54B-6	1109.0	650.0	1	0.72	GB-5004B	GC-G2		
30		G2-54B-7	1265.0	650.0	1	0.82	GB-5004B	GC-G2		
31		G2-55A	1265.0	840.0	3	3.19	GB-5005A	GC-G2		
32		G2-55A-1	1109.0	840.0	3	2.79	GB-5005A	GC-G2		
33		G2-55A-2	1962.0	840.0	3	4.94	GB-5005A	GC-G2		
34		G2-55A-3	1174.0	840.0	3	2.96	GB-5005A	GC-G2		
35		G2-55A-4	1286.0	840.0	3	3.24	GB-5005A	GC-G2		
36		G2-55A-5	2162.0	840.0	3	5.45	GB-5005A	GC-G2		
37		G2-55A-6	1222.0	840.0	3	3.08	GB-5005A	GC-G2		
38		G2-55A-7	1265.0	840.0	3	3.19	GB-5005A	GC-G2		
39		G2-55	1265.0	840.0	4	4.25	GB-5005	GC-G2		
40		G2-55-1	1184.0	840.0	4	3.98	GB-5005	GC-G2		
41		G2-55-2	1912.0	840.0	4	6.42	GB-5005	GC-G2		
42		G2-55-3	1149.0	840.0	4	3.86	GB-5005	GC-G2		
43		G2-55-4	1149.0	840.0	4	3.86	GB-5005	GC-G2		
44		G2-55-5	1912.0	840.0	4	6.42	GB-5005	GC-G2		
45		G2-55-6	1184.0	840.0	4	3.98	GB-5005	GC-G2		
46		G2-55-7	1265.0	840.0	4	4.25	GB-5005	GC-G2		
47		G2-55B	1265.0	840.0	3	3.19	GB-5005B	GC-G2		
48		G2-55B-1	1221.0	840.0	3	3.08	GB-5005B	GC-G2		
49		G2-55B-2	2162.0	840.0	3	5.45	GB-5005B	GC-G2		
50		G2-55B-3	1286.0	840.0	3	3.24	GB-5005B	GC-G2		
51		G2-55B-4	1174.0	840.0	3	2.96	GB-5005B	GC-G2		
52		G2-55B-5	1962.0	840.0	3	4.94	GB-5005B	GC-G2		
53		G2-55B-6	1109.0	840.0	3	2.79	GB-5005B	GC-G2		
54		G2-55B-7	1265.0	840.0	3	3.19	GB-5005B	GC-G2		
55		G2-56A	1265.0	840.0	13	13.81	GB-5006A	GC-G2		
56		G2-56A-1	1109.0	840.0	13	12.11	GB-5006A	GC-G2		
57		G2-56A-2	1962.0	840.0	13	21.43	GB-5006A	GC-G2		
58		G2-56A-3	1174.0	840.0	13	12.82	GB-5006A	GC-G2		
59		G2-56A-4	1286.0	840.0	13	14.04	GB-5006A	GC-G2		
60		G2-56A-5	2162.0	840.0	13	23.61	GB-5006A	GC-G2		

美特鋁質 有限公司 MIDI Aluminium Fabricator Ltd.		工程號: J852	計算: CJM	日期: 2021.01.15	送呈:	參考用				
地盤名稱: 亞皆老街		核對:	日期:	副本:						
項目類別: 擱河/大貨(不包5F樣板層)		日期:	A/C Code:							
BM編號:		修改版次:	總計玻璃面積(平方米): 750.26							
序號	修改內容	玻璃圖號	顏色與類型	厚度(mm)	玻璃尺寸		數量(塊)	總面積(平方米)	使用位置	加工圖參考
					寬度(W mm)	高度(H mm)				
61		G2-56A-6	(G2) 10 mm THK.CLEAR TEMPERED (OUTER)+ 1.52 mm THK(PVB) + 10 mm THK. CLEAR TEMPERED LAMIATED GLASS (INNER)	21.52	1222.0	840.0	13	13.34	GB-5006A	GC-G2
62		G2-56A-7			1265.0	840.0	13	13.81	GB-5006A	GC-G2
63		G2-56			1265.0	840.0	13	13.81	GB-5006	GC-G2
64		G2-56-1			1184.0	840.0	13	12.93	GB-5006	GC-G2
65		G2-56-2			1912.0	840.0	13	20.88	GB-5006	GC-G2
66		G2-56-3			1149.0	840.0	13	12.55	GB-5006	GC-G2
67		G2-56-4			1149.0	840.0	13	12.55	GB-5006	GC-G2
68		G2-56-5			1912.0	840.0	13	20.88	GB-5006	GC-G2
69		G2-56-6			1184.0	840.0	13	12.93	GB-5006	GC-G2
70		G2-56-7			1265.0	840.0	13	13.81	GB-5006	GC-G2
71		G2-56B			1265.0	840.0	13	13.81	GB-5006B	GC-G2
72		G2-56B-1			1221.0	840.0	13	13.33	GB-5006B	GC-G2
73		G2-56B-2			2162.0	840.0	13	23.61	GB-5006B	GC-G2
74		G2-56B-3			1286.0	840.0	13	14.04	GB-5006B	GC-G2
75		G2-56B-4			1174.0	840.0	13	12.82	GB-5006B	GC-G2
76		G2-56B-5			1962.0	840.0	13	21.43	GB-5006B	GC-G2
77		G2-56B-6	(G2) 10 mm THK.CLEAR TEMPERED (OUTER)+ 1.52 mm THK(PVB) + 10 mm THK. CLEAR TEMPERED LAMIATED GLASS (INNER)	21.52	1109.0	840.0	13	12.11	GB-5006B	GC-G2
78		G2-56B-7			1265.0	840.0	13	13.81	GB-5006B	GC-G2
79		G2-57A			1265.0	840.0	2	2.13	GB-5007A	GC-G2
80		G2-57A-1			1109.0	840.0	2	1.86	GB-5007A	GC-G2
81		G2-57A-2			1962.0	840.0	2	3.30	GB-5007A	GC-G2
82		G2-57A-3			3310.0	840.0	2	5.56	GB-5007A	GC-G2
83		G2-57A-5			2162.0	840.0	2	3.63	GB-5007A	GC-G2
84		G2-57A-6			1222.0	840.0	2	2.05	GB-5007A	GC-G2
85		G2-57A-7			1265.0	840.0	2	2.13	GB-5007A	GC-G2
86		G2-57			1265.0	840.0	1	1.06	GB-5007	GC-G2
87		G2-57-1			1184.0	840.0	1	0.99	GB-5007	GC-G2
88		G2-57-2			1912.0	840.0	1	1.61	GB-5007	GC-G2
89		G2-57-3			3148.0	840.0	1	2.64	GB-5007	GC-G2
90		G2-57-5			1912.0	840.0	1	1.61	GB-5007	GC-G2
91		G2-57-6			1184.0	840.0	1	0.99	GB-5007	GC-G2
92		G2-57-7			1265.0	840.0	1	1.06	GB-5007	GC-G2
93		G2-57B			1265.0	840.0	2	2.13	GB-5007B	GC-G2
94		G2-57B-1			1221.0	840.0	2	2.05	GB-5007B	GC-G2
95		G2-57B-2			2162.0	840.0	2	3.63	GB-5007B	GC-G2
96		G2-57B-3			3310.0	840.0	2	5.56	GB-5007B	GC-G2
97		G2-57B-5	1962.0	840.0	2	3.30	GB-5007B	GC-G2		
98		G2-57B-6	1109.0	840.0	2	1.86	GB-5007B	GC-G2		
99		G2-57B-7	1265.0	840.0	2	2.13	GB-5007B	GC-G2		
100		G2-58	2400.0	740.0	1	1.78	GB-5008	GC-G2		
101		G2-58A	2400.0	740.0	1	1.78	GB-5008A	GC-G2		
102		G2-59	2400.0	740.0	1	1.78	GB-5009	GC-G2		
103		G2-59A	2400.0	740.0	1	1.78	GB-5009A	GC-G2		
104		G2-510-1	1234.0	740.0	3	2.74	GB-5010-1	GC-G2		
105		G2-510-2	1116.0	740.0	3	2.48	GB-5010-2	GC-G2		
106		G2-510-3	1234.0	740.0	3	2.74	GB-5010-3	GC-G2		
107		G2-510A-1	1182.5	740.0	2	1.75	GB-5010A-1	GC-G2		
108		G2-510A-2	445.0	740.0	2	0.66	GB-5010A-2	GC-G2		
109		G2-510A-3	1000.0	740.0	2	1.48	GB-5010A-3	GC-G2		
110		G2-510A-4	445.0	740.0	2	0.66	GB-5010A-4	GC-G2		
111		G2-510A-5	1182.5	740.0	2	1.75	GB-5010A-5	GC-G2		
112		G2-511-1	1010.0	740.0	4	2.99	GB-5011	GC-G2		
113		G2-511-2	1310.0	740.0	4	3.88	GB-5011	GC-G2		
114		G2-511-3	1455.0	740.0	1	1.08	GB-5011	GC-G2		
115		G2-511-4	1514.0	740.0	2	2.24	GB-5011	GC-G2		
116		G2-511-5	1542.0	740.0	1	1.14	GB-5011	GC-G2		
					總合計:	600	750.26			
加工注意事項:		1).本表中之所有玻璃顏色待定。 2).本表中所有玻璃對角線尺寸偏差要求不超過負2mm。 3).本表中玻璃要求粗磨邊處理並倒棱角,而所有玻璃之入爐方向需保持一致。 4).本表中所有玻璃成品均需做雙面保護,用透明靜電膠紙加四周一寸FK白膠紙做雙面加固保護處理。 5).本表中所有玻璃成品均需注明室內外及其玻璃編號,以便識別。								