

工程指示 / 要求簡箋(E.I.)

工程指示編號：EI / 2820 / 20

修改版次：-

工程編號：J - 852

工程名稱：亞皆老街中電

工程項目：Glass Cladding Mockup 廠用玻璃 B.M. (T1-T3) (3-5/F) (36 件)

收件人：Maggie 1488

發件人：Ant Yeung

日期：14/12/2020

要求提供 / 確認 事項：

- | | | |
|------------------------------------|-------------------------------------|-------------------------------|
| <input type="checkbox"/> 初步鋁料 B.M. | <input type="checkbox"/> 加工拆圖，然後生產 | <input type="checkbox"/> 尺寸表 |
| <input type="checkbox"/> 正式鋁料 B.M. | <input type="checkbox"/> 技術上資料 / 指示 | <input type="checkbox"/> 報價 |
| <input type="checkbox"/> 配件 B.M. | <input type="checkbox"/> 樣辦或貨品說明書 | <input type="checkbox"/> 分判合約 |
| <input type="checkbox"/> 其他：_____ | | |

內容：

按業主要求，所有 Low-E 玻璃的 SC 為 0.68 (與 EI2782 相同)。所有玻璃尺寸沒有更改。

HS: 70T 反光片 單片

請按 BM 訂購 T1-T3 樣板層 (3-5/F) 廠用玻璃 (36 件)

請在 2020.12.28 前完成上列要求。

附：1 頁 BM + 9 頁

以上項目為：

- 原合約工程包 原合約工程加 / 減賬 新工程報價

原因：-

分發東莞各部門：

- | | | | |
|--|---|--|--|
| <input type="checkbox"/> 生產技術總監 <input type="checkbox"/> 連附件 | <input type="checkbox"/> 技術部 <input type="checkbox"/> 連附件 | <input type="checkbox"/> 生產部 <input type="checkbox"/> 連附件 | <input type="checkbox"/> 機械設計部 <input type="checkbox"/> 連附件 |
| <input type="checkbox"/> 採購部 <input type="checkbox"/> 連附件 | <input checked="" type="checkbox"/> 生產統籌部 <input checked="" type="checkbox"/> 連附件 | <input checked="" type="checkbox"/> 小羅 & 清 <input checked="" type="checkbox"/> 連附件 | |
| <input type="checkbox"/> 質檢部 <input type="checkbox"/> 連附件 | <input type="checkbox"/> 會計部 <input type="checkbox"/> 連附件 | <input type="checkbox"/> 報關組 <input type="checkbox"/> 連附件 | <input type="checkbox"/> 其他 楊榮輝 <input type="checkbox"/> 連附件 |

分發其他分判：

- 水洪 連附件

分發香港各部門：

- | | | | | |
|---|--|---|--|----|
| <input type="checkbox"/> 行政部 <input type="checkbox"/> 連附件 | <input type="checkbox"/> 會計部 <input type="checkbox"/> 連附件 | <input type="checkbox"/> 統籌部 <input type="checkbox"/> 連附件 | <input type="checkbox"/> 工程部地盤科文 <input type="checkbox"/> 連附件 | 祥哥 |
| <input checked="" type="checkbox"/> 採購部 <input checked="" type="checkbox"/> 連附件 | <input type="checkbox"/> QS 部 <input type="checkbox"/> 連附件 | <input type="checkbox"/> 維修部 <input type="checkbox"/> 連附件 | <input type="checkbox"/> 其他 _____ <input type="checkbox"/> 連附件 | |



傳遞編號：

HK 2858 / 20

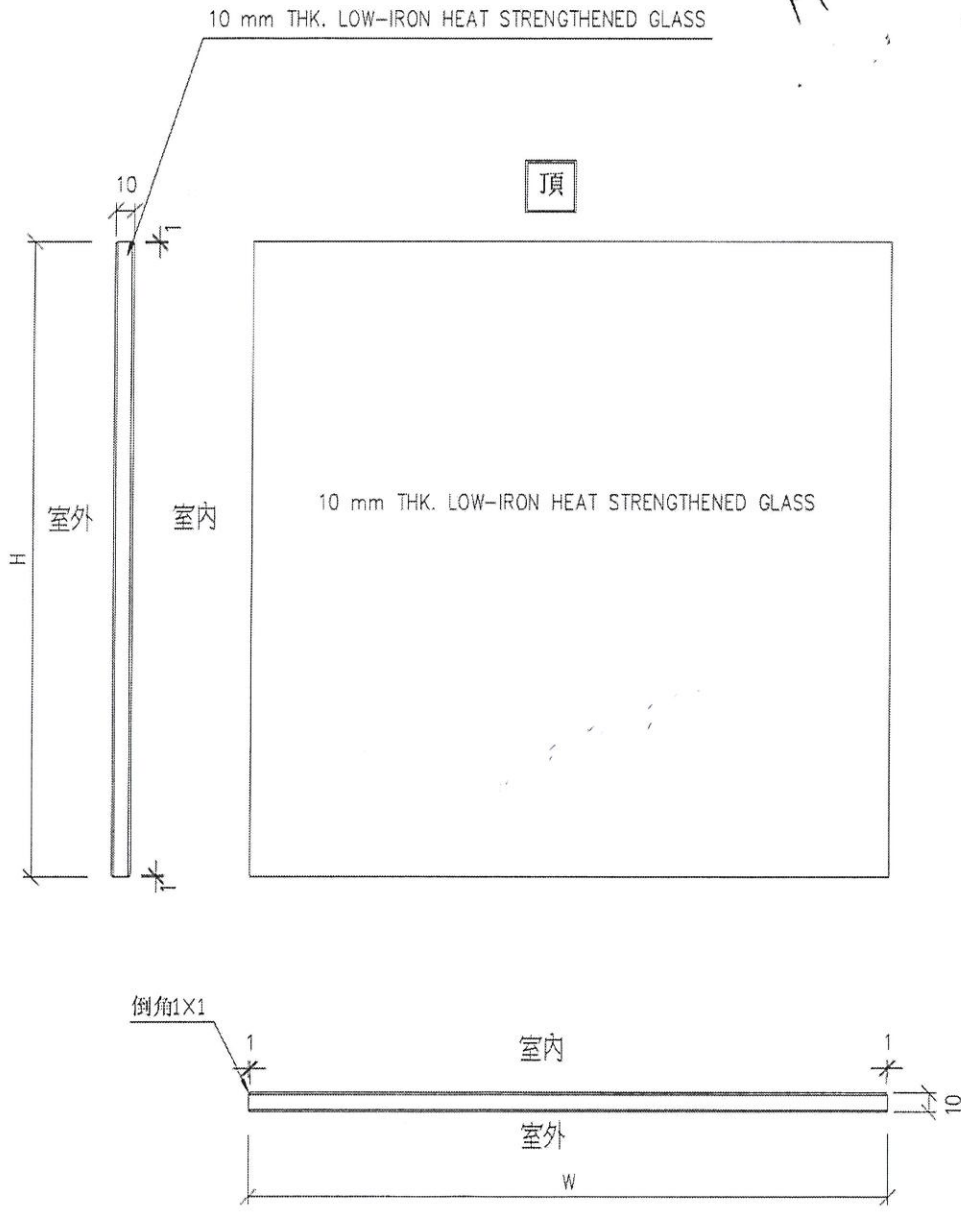
發件人簽署：Ant Yeung

項目經理簽署：K. P. ...

From GI 25JJ

 美特鋁質 有限公司 MIDI Aluminium Fabricator Ltd.		工程號: J852	計算: CJM	日期: 2020.09.12	送呈: 					
廠友用玻璃B.M.表		地盤名稱: GLASS CLDDING/樣辦層	核對: 批准:	日期: 日期:	副本: A/C Code:					
BM編號:		修改版次:	總計玻璃面積 (平方米): 33.24							
序號	修改內容	玻璃圖號	顏色與類型	厚度 (mm)	玻璃尺寸		數量 (塊)	總面積 (平方米)	使用位置	加工圖參考
					寬度 (W mm)	高度 (H mm)				
1		G1-41-1	707 (G1) 10 mm THK. LOW-IRON HEAT STRENGTHENED GLASS.	10.0	598.0	1927.0	9	10.37	SG-4001(3~6F)	GC-G1
2		G1-41-2			598.0	1927.0	9	10.37	SG-4001(3~6F)	GC-G1
3		G1-42-1			348.0	1927.0	6	4.02	SG-4002(3~6F)	GC-G1
4		G1-42-2			348.0	1927.0	6	4.02	SG-4002(3~6F)	GC-G1
5		G1-43-1			813.0	600.0	3	1.46	SG-4003(3~6F)	GC-G1
6		G1-43-2			813.0	1225.0	3	2.99	SG-4003(3~6F)	GC-G1
7										
8										
9			G.C							
10										
					總計:		36	33.24		
1). 本表中之所有玻璃顏色待定。 SC: 0.68 2). 本表中所有玻璃對角線尺寸偏差要求不超過負2mm。 3). 本表中玻璃要求粗磨邊處理並倒棱角，而所有玻璃之入爐方向需保持一致。 4). 本表中所有玻璃成品均需做雙面保護，用透明靜電膠紙加四周一寸PK白膠紙做雙面加固保護處理。 5). 本表中所有玻璃成品均需注明室內外及其玻璃編號，以便識別。										
加工注意事項:										

 美特鋁質 MIDI Aluminium Fabricator Ltd.	類別	物料號		
	制圖	CJM	2020.09.12	圖號 GC-G1
修改		復核		數量 見BOM表
日期		批准		位置



工程號	J-852	地盤	亞答老街/GLASS CLADDING	附件	①
名稱	玻璃加工圖	採用			
材料	LOW	地盤			
顏色	10mm 厚 LOW-IRON H.S 玻璃	工廠			

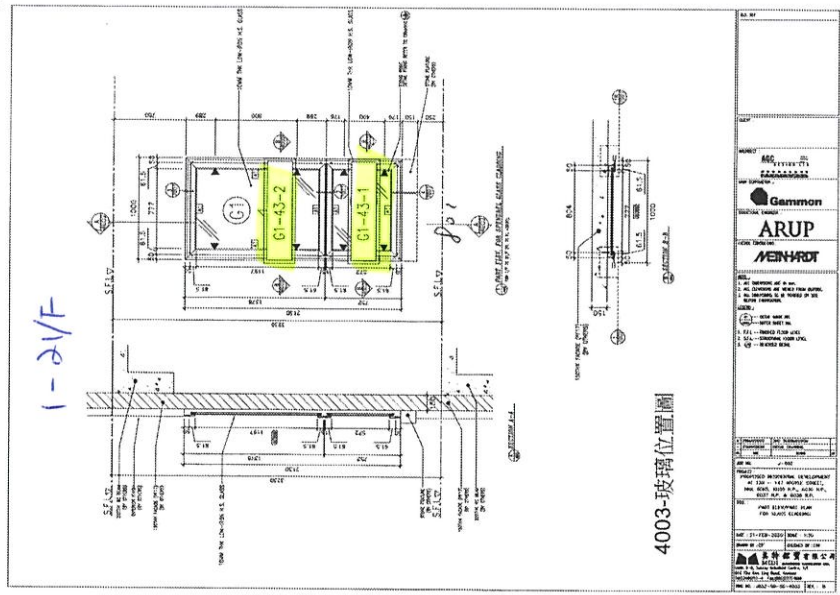
From: "Billy Tang (Development)" <billytang@sino.com>
To: "midi@midiltd.com.hk" <midi@midiltd.com.hk>,
"bessie.lps.midi@gmail.com" <bessie.lps.midi@gmail.com>
Copies to: "Gordon Lee" <gordonlee@sino.com>,
"Jimmy Cheung Ngai Hang" <jimmyhcheung@sino.com>,
"Edwin Chow" <edwinchow@sino.com>,
"KIL6038 (Argyle Street)" <kil6038@sino.com>,
"Jackson Chor Chiu Mok" <Jackson.Mok@gammonconstruction.com>,
"Man Dick Yuen" <ManDick.Yuen@gammonconstruction.com>,
"raymondho@agcdesign.com.hk" <raymondho@agcdesign.com.hk>,
"eliotchan@agcdesign.com.hk" <eliotchan@agcdesign.com.hk>,
"brian.leung@mfacade.com" <brian.leung@mfacade.com>,
"Yoanna Chan" <yoanna.chan@mfacade.com>,
"Peter Chong" <peterchong@sino.com>,
"anthea.ng@wsp.com" <anthea.ng@wsp.com>
Subject: CLP - Confirmation on Glass type / data for production
Date sent: Wed, 2 Dec 2020 04:39:04 +0000

Dear Marco, Bessie,

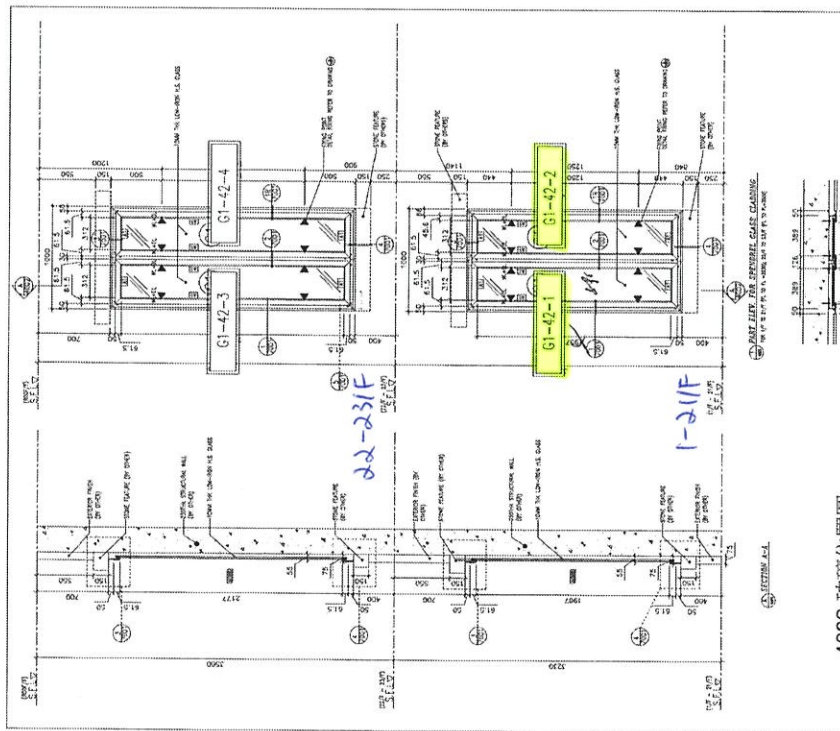
Further to our subsequent discussions regarding the Glass sample (Low Iron IGU, sliver tinted glass (IGU) with SC=0.68, Please formal submit the material submission for approval.

Regards

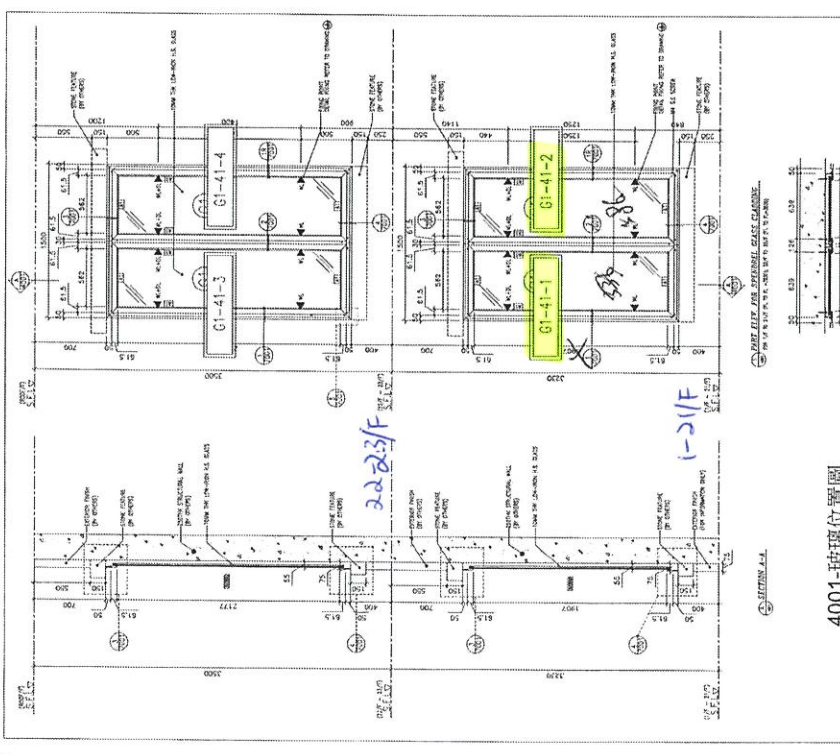
BT



NO. 01	ARC SYSTEMS LTD.
NO. 02	GAMMON
NO. 03	ARUP
NO. 04	MEINHARDT
NO. 05	ARC SYSTEMS LTD.
NO. 06	GAMMON
NO. 07	ARUP
NO. 08	MEINHARDT
NO. 09	ARC SYSTEMS LTD.
NO. 10	GAMMON
NO. 11	ARUP
NO. 12	MEINHARDT
NO. 13	ARC SYSTEMS LTD.
NO. 14	GAMMON
NO. 15	ARUP
NO. 16	MEINHARDT
NO. 17	ARC SYSTEMS LTD.
NO. 18	GAMMON
NO. 19	ARUP
NO. 20	MEINHARDT



NO. 01	ARC SYSTEMS LTD.
NO. 02	GAMMON
NO. 03	ARUP
NO. 04	MEINHARDT
NO. 05	ARC SYSTEMS LTD.
NO. 06	GAMMON
NO. 07	ARUP
NO. 08	MEINHARDT
NO. 09	ARC SYSTEMS LTD.
NO. 10	GAMMON
NO. 11	ARUP
NO. 12	MEINHARDT
NO. 13	ARC SYSTEMS LTD.
NO. 14	GAMMON
NO. 15	ARUP
NO. 16	MEINHARDT
NO. 17	ARC SYSTEMS LTD.
NO. 18	GAMMON
NO. 19	ARUP
NO. 20	MEINHARDT



NO. 01	ARC SYSTEMS LTD.
NO. 02	GAMMON
NO. 03	ARUP
NO. 04	MEINHARDT
NO. 05	ARC SYSTEMS LTD.
NO. 06	GAMMON
NO. 07	ARUP
NO. 08	MEINHARDT
NO. 09	ARC SYSTEMS LTD.
NO. 10	GAMMON
NO. 11	ARUP
NO. 12	MEINHARDT
NO. 13	ARC SYSTEMS LTD.
NO. 14	GAMMON
NO. 15	ARUP
NO. 16	MEINHARDT
NO. 17	ARC SYSTEMS LTD.
NO. 18	GAMMON
NO. 19	ARUP
NO. 20	MEINHARDT

2x3
4x3
6x3

71 4001
72 4001 4002
73 4001 4002 4003

R.D. REF :

CLIENT :

ARCHITECT : AGC
PETERBETS
110, 112, 114, 116, 118, 120, 122, 124, 126, 128, 130, 132, 134, 136, 138, 140, 142, 144, 146, 148, 150, 152, 154, 156, 158, 160, 162, 164, 166, 168, 170, 172, 174, 176, 178, 180, 182, 184, 186, 188, 190, 192, 194, 196, 198, 200, 202, 204, 206, 208, 210, 212, 214, 216, 218, 220, 222, 224, 226, 228, 230, 232, 234, 236, 238, 240, 242, 244, 246, 248, 250, 252, 254, 256, 258, 260, 262, 264, 266, 268, 270, 272, 274, 276, 278, 280, 282, 284, 286, 288, 290, 292, 294, 296, 298, 300, 302, 304, 306, 308, 310, 312, 314, 316, 318, 320, 322, 324, 326, 328, 330, 332, 334, 336, 338, 340, 342, 344, 346, 348, 350, 352, 354, 356, 358, 360, 362, 364, 366, 368, 370, 372, 374, 376, 378, 380, 382, 384, 386, 388, 390, 392, 394, 396, 398, 400, 402, 404, 406, 408, 410, 412, 414, 416, 418, 420, 422, 424, 426, 428, 430, 432, 434, 436, 438, 440, 442, 444, 446, 448, 450, 452, 454, 456, 458, 460, 462, 464, 466, 468, 470, 472, 474, 476, 478, 480, 482, 484, 486, 488, 490, 492, 494, 496, 498, 500, 502, 504, 506, 508, 510, 512, 514, 516, 518, 520, 522, 524, 526, 528, 530, 532, 534, 536, 538, 540, 542, 544, 546, 548, 550, 552, 554, 556, 558, 560, 562, 564, 566, 568, 570, 572, 574, 576, 578, 580, 582, 584, 586, 588, 590, 592, 594, 596, 598, 600, 602, 604, 606, 608, 610, 612, 614, 616, 618, 620, 622, 624, 626, 628, 630, 632, 634, 636, 638, 640, 642, 644, 646, 648, 650, 652, 654, 656, 658, 660, 662, 664, 666, 668, 670, 672, 674, 676, 678, 680, 682, 684, 686, 688, 690, 692, 694, 696, 698, 700, 702, 704, 706, 708, 710, 712, 714, 716, 718, 720, 722, 724, 726, 728, 730, 732, 734, 736, 738, 740, 742, 744, 746, 748, 750, 752, 754, 756, 758, 760, 762, 764, 766, 768, 770, 772, 774, 776, 778, 780, 782, 784, 786, 788, 790, 792, 794, 796, 798, 800, 802, 804, 806, 808, 810, 812, 814, 816, 818, 820, 822, 824, 826, 828, 830, 832, 834, 836, 838, 840, 842, 844, 846, 848, 850, 852, 854, 856, 858, 860, 862, 864, 866, 868, 870, 872, 874, 876, 878, 880, 882, 884, 886, 888, 890, 892, 894, 896, 898, 900, 902, 904, 906, 908, 910, 912, 914, 916, 918, 920, 922, 924, 926, 928, 930, 932, 934, 936, 938, 940, 942, 944, 946, 948, 950, 952, 954, 956, 958, 960, 962, 964, 966, 968, 970, 972, 974, 976, 978, 980, 982, 984, 986, 988, 990, 992, 994, 996, 998, 1000

MAIN CONTRACTOR : Gammon

STRUCTURAL ENGINEER : ARUP

FAÇADE CONSULTANT : MEINHARDT

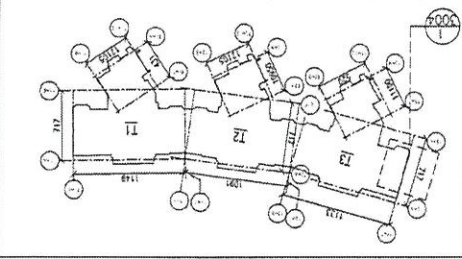
NOTE:
1. ALL DIMENSIONS ARE IN MM.
2. ALL ELEVATIONS ARE VIEWED FROM OUTSIDE.
3. ALL DIMENSIONS TO BE VERIFIED ON SITE BEFORE FABRICATION.

LEGEND:
① REPAIR WORK NO.
② REFER SHEET NO.
③ FINISH -- DIMENSIONED FLOOR LEVEL
④ S.F.E.L. -- STRUCTURAL / 1500R LEVEL
⑤ -- REVERSED DETAIL

NO.	REVISION	DATE	INITIALS	DESCRIPTION
1				

JOB NO. : J-852
PROJECT : PROPOSED RESIDENTIAL DEVELOPMENT AT 139 - 147 ARGYLE STREET, NHIL 6005, 6035 R.P., 6036 R.P., 6037 R.P. & 6038 R.P.
TITLE : PART PLAN FOR TOWER 3 CLASS CLADDING

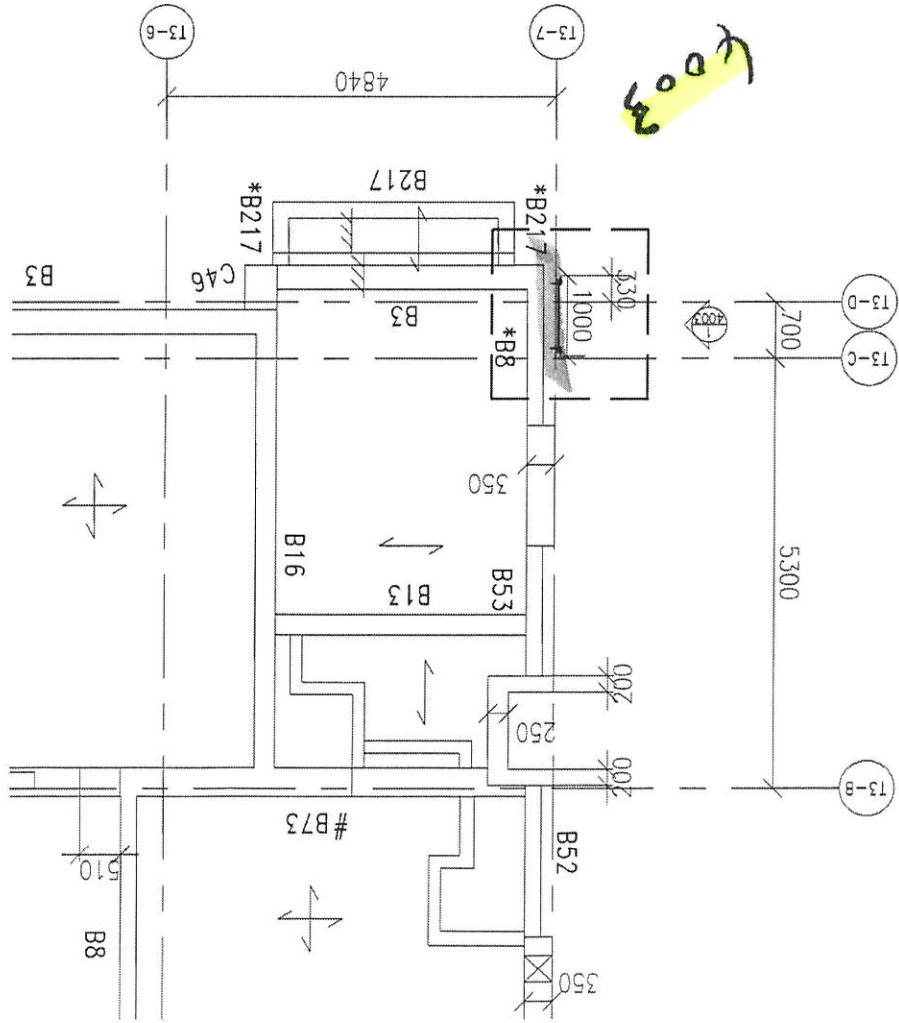
DATE : 21-FEB-2020 SCALE : 1:50
DRAWN BY : CT CHECKED BY : DW
MIDI 美特鋁質有限公司
MIDI Aluminium Fabrication Ltd.
Unit 6-8, Sunny Industrial Centre, 1/F
830 Chuan Chuan Road, Tuen Mun
New Territories, Hong Kong
Tel: (852) 27721144 Fax: (852) 27721866
DWG NO. : 852-30-35-3004 REV. : --



KEY PLAN

MARK	SIZE (3RD)	MARK	SIZE (3RD)	MARK	SIZE (3RD)
B1	1000x300	B18	200x250	B35	550x450
B2	1500x300	B19	200x250	B36	275x450
B3	200x450	B20	200x250	B37	200x450
B4	200x450	B21	200x250	B38	200x450
B5	200x450	B22	200x250	B39	200x450
B6	200x450	B23	200x250	B40	200x450
B7	200x450	B24	200x250	B41	200x450
B8	200x450	B25	200x250	B42	200x450
B9	200x450	B26	200x250	B43	200x450
B10	200x450	B27	200x250	B44	200x450
B11	200x450	B28	200x250	B45	200x450
B12	200x450	B29	200x250	B46	200x450
B13	200x450	B30	200x250	B47	200x450
B14	200x450	B31	200x250	B48	200x450
B15	200x450	B32	200x250	B49	200x450
B16	200x450	B33	200x250	B50	200x450
B17	200x450	B34	200x250	B51	200x450
B18	200x450	B35	200x250	B52	200x450
B19	200x450	B36	200x250	B53	200x450
B20	200x450	B37	200x250	B54	200x450
B21	200x450	B38	200x250	B55	200x450
B22	200x450	B39	200x250	B56	200x450
B23	200x450	B40	200x250	B57	200x450
B24	200x450	B41	200x250	B58	200x450
B25	200x450	B42	200x250	B59	200x450
B26	200x450	B43	200x250	B60	200x450
B27	200x450	B44	200x250	B61	200x450
B28	200x450	B45	200x250	B62	200x450
B29	200x450	B46	200x250	B63	200x450
B30	200x450	B47	200x250	B64	200x450
B31	200x450	B48	200x250	B65	200x450
B32	200x450	B49	200x250	B66	200x450
B33	200x450	B50	200x250	B67	200x450
B34	200x450	B51	200x250	B68	200x450
B35	200x450	B52	200x250	B69	200x450
B36	200x450	B53	200x250	B70	200x450
B37	200x450	B54	200x250	B71	200x450
B38	200x450	B55	200x250	B72	200x450
B39	200x450	B56	200x250	B73	200x450
B40	200x450	B57	200x250	B74	200x450
B41	200x450	B58	200x250	B75	200x450
B42	200x450	B59	200x250	B76	200x450
B43	200x450	B60	200x250	B77	200x450
B44	200x450	B61	200x250	B78	200x450
B45	200x450	B62	200x250	B79	200x450
B46	200x450	B63	200x250	B80	200x450
B47	200x450	B64	200x250	B81	200x450
B48	200x450	B65	200x250	B82	200x450
B49	200x450	B66	200x250	B83	200x450
B50	200x450	B67	200x250	B84	200x450
B51	200x450	B68	200x250	B85	200x450
B52	200x450	B69	200x250	B86	200x450
B53	200x450	B70	200x250	B87	200x450
B54	200x450	B71	200x250	B88	200x450
B55	200x450	B72	200x250	B89	200x450
B56	200x450	B73	200x250	B90	200x450
B57	200x450	B74	200x250	B91	200x450
B58	200x450	B75	200x250	B92	200x450
B59	200x450	B76	200x250	B93	200x450
B60	200x450	B77	200x250	B94	200x450
B61	200x450	B78	200x250	B95	200x450
B62	200x450	B79	200x250	B96	200x450
B63	200x450	B80	200x250	B97	200x450
B64	200x450	B81	200x250	B98	200x450
B65	200x450	B82	200x250	B99	200x450
B66	200x450	B83	200x250	B100	200x450

MARK	SIZE (3RD)	MARK	SIZE (3RD)
B1	1000x300	B18	200x250
B2	1500x300	B19	200x250
B3	200x450	B20	200x250
B4	200x450	B21	200x250
B5	200x450	B22	200x250
B6	200x450	B23	200x250
B7	200x450	B24	200x250
B8	200x450	B25	200x250
B9	200x450	B26	200x250
B10	200x450	B27	200x250
B11	200x450	B28	200x250
B12	200x450	B29	200x250
B13	200x450	B30	200x250
B14	200x450	B31	200x250
B15	200x450	B32	200x250
B16	200x450	B33	200x250
B17	200x450	B34	200x250
B18	200x450	B35	200x250
B19	200x450	B36	200x250
B20	200x450	B37	200x250
B21	200x450	B38	200x250
B22	200x450	B39	200x250
B23	200x450	B40	200x250
B24	200x450	B41	200x250
B25	200x450	B42	200x250
B26	200x450	B43	200x250
B27	200x450	B44	200x250
B28	200x450	B45	200x250
B29	200x450	B46	200x250
B30	200x450	B47	200x250
B31	200x450	B48	200x250
B32	200x450	B49	200x250
B33	200x450	B50	200x250
B34	200x450	B51	200x250
B35	200x450	B52	200x250
B36	200x450	B53	200x250
B37	200x450	B54	200x250
B38	200x450	B55	200x250
B39	200x450	B56	200x250
B40	200x450	B57	200x250
B41	200x450	B58	200x250
B42	200x450	B59	200x250
B43	200x450	B60	200x250
B44	200x450	B61	200x250
B45	200x450	B62	200x250
B46	200x450	B63	200x250
B47	200x450	B64	200x250
B48	200x450	B65	200x250
B49	200x450	B66	200x250
B50	200x450	B67	200x250
B51	200x450	B68	200x250
B52	200x450	B69	200x250
B53	200x450	B70	200x250
B54	200x450	B71	200x250
B55	200x450	B72	200x250
B56	200x450	B73	200x250
B57	200x450	B74	200x250
B58	200x450	B75	200x250
B59	200x450	B76	200x250
B60	200x450	B77	200x250
B61	200x450	B78	200x250
B62	200x450	B79	200x250
B63	200x450	B80	200x250
B64	200x450	B81	200x250
B65	200x450	B82	200x250
B66	200x450	B83	200x250
B67	200x450	B84	200x250
B68	200x450	B85	200x250
B69	200x450	B86	200x250
B70	200x450	B87	200x250
B71	200x450	B88	200x250
B72	200x450	B89	200x250
B73	200x450	B90	200x250
B74	200x450	B91	200x250
B75	200x450	B92	200x250
B76	200x450	B93	200x250
B77	200x450	B94	200x250
B78	200x450	B95	200x250
B79	200x450	B96	200x250
B80	200x450	B97	200x250
B81	200x450	B98	200x250
B82	200x450	B99	200x250
B83	200x450	B100	200x250



① PART PLAN FOR CLASS CLADDING
② TOWER 3

