

工程指示 / 要求簡箋(E.I.)

工程指示編號：EI / 2646 / 20

修改版次：-

工程編號：J - 852

工程名稱：亞皆老街中電

工程項目：後裝窗、門 Mockup 用玻璃 B.M. (5/F) T2

收件人：Maggie

發件人：Ant Yeung

日期：29/10/2020

要求提供 / 確認 事項：

- | | | |
|------------------------------------|-------------------------------------|-------------------------------|
| <input type="checkbox"/> 初步鋁料 B.M. | <input type="checkbox"/> 加工拆圖，然後生產 | <input type="checkbox"/> 尺寸表 |
| <input type="checkbox"/> 正式鋁料 B.M. | <input type="checkbox"/> 技術上資料 / 指示 | <input type="checkbox"/> 報價 |
| <input type="checkbox"/> 配件 B.M. | <input type="checkbox"/> 樣辦或貨品說明書 | <input type="checkbox"/> 分判合約 |
| <input type="checkbox"/> 其他：_____ | | |

內容：

請按 B.M. 訂購用玻璃直送地盆 (T2, 5/F)

請留意：

- 1) 此 B.M. 按第 5 份 SD 大圖 計算
- 2) 以 Ivan 為準，WHS 為參考用
- 3) 玻璃 要做 heat soak，T3 30% 親身 or 50% 視象，T1 100% 需要視察
- 4) IGU 膠用 DC983
- 5) 分門和窗包箱 謝謝！ 窗 = ☆

請在 2021 / 01 / 15 前完成上列要求。

附：2 頁 B.M.，2 頁 B.M 參考，1 頁加工圖，頁位置圖。

以上項目為：

原合約工程包 原合約工程加 / 減賬 新工程報價

分發東莞各部門：

- | | | | |
|--|---|---|---|
| <input type="checkbox"/> 生產技術總監 <input type="checkbox"/> 連附件 | <input type="checkbox"/> 技術部 <input type="checkbox"/> 連附件 | <input type="checkbox"/> 生產部 <input type="checkbox"/> 連附件 | <input type="checkbox"/> 機械設計部 <input type="checkbox"/> 連附件 |
| <input type="checkbox"/> 採購部 <input type="checkbox"/> 連附件 | <input type="checkbox"/> 生產統籌部 <input type="checkbox"/> 連附件 | | |
| <input type="checkbox"/> 質檢部 <input type="checkbox"/> 連附件 | <input type="checkbox"/> 會計部 <input type="checkbox"/> 連附件 | <input type="checkbox"/> 報關組 <input type="checkbox"/> 連附件 | <input type="checkbox"/> 其他 <u>楊榮輝</u> <input type="checkbox"/> 連附件 |

分發香港各部門：

- | | | | |
|---|--|---|---|
| <input type="checkbox"/> 行政部 <input type="checkbox"/> 連附件 | <input type="checkbox"/> 會計部 <input type="checkbox"/> 連附件 | <input type="checkbox"/> 統籌部 <input type="checkbox"/> 連附件 | <input type="checkbox"/> 工程部地盤科文 <input type="checkbox"/> 連附件 <u>祥哥</u> |
| <input type="checkbox"/> 採購部 <input type="checkbox"/> 連附件 | <input type="checkbox"/> QS 部 <input type="checkbox"/> 連附件 | <input type="checkbox"/> 維修部 <input type="checkbox"/> 連附件 | <input type="checkbox"/> 其他 _____ <input type="checkbox"/> 連附件 |

傳遞編號：

HK / 20

發件人簽署：

項目經理簽署：

地盤用玻璃B.M.表

項目類別: T2后裝窗及趟門玻璃

批准:

日期:

A/C Code:

BM編號:

修改版次:

總計玻璃面積 (平方米):

35.39

(Handwritten signature)

序號	修改內容	玻璃圖號	顏色與類型	厚度 (mm)	玻璃尺寸			數量 (塊)	總面積 (平方米)	使用位置	加工圖參考
					寬度 (W mm)	高度 (H mm)					
1		GL03-T2-001	Low Iron Low Iron	24.0	521.0	1228.0	2	1.28	T2后裝窗	GL03-T2-001	
2		GL03-T2-002	6mm+12mm AIR GAP+6mm THK. I.G.U. P20070685	24.0	531.0	1228.0	2	1.30	T2后裝窗	GL03-T2-002	
3		GL03-T2-003			571.0	1203.0	1	0.69	T2后裝窗	GL03-T2-003	
							合計: 5	3.27			
1		GL01-T2-001			1161.0	193.0	2	0.45	T2后裝窗	GL01-T2-001	
2		GL01-T2-002	P20070681		128.0	1599.0	1	0.20	T2后裝窗	GL01-T2-002	
3		GL01-T2-003			240.0	1599.0	1	0.38	T2后裝窗	GL01-T2-003	
4		GL01-T2-004	Low Iron Low Iron		1192.0	2279.0	2	5.43	T2兩趟趟門/生	GL01-T2-004	
4		GL01-T2-005	8mm+12mm AIR GAP+10mm THK. I.G.U.	30.0	793.0	2409.0	4	7.64	T2四趟趟門/梗	GL01-T2-005	
5		GL01-T2-006			883.0	2258.0	4	7.98	T2四趟趟門/生	GL01-T2-006	
6		GL01-T2-007			505.0	2275.0	2	2.30	T2三趟趟門/梗	GL01-T2-007	
7		GL01-T2-008			849.5	2275.0	2	3.87	T2三趟趟門/生	GL01-T2-008	
8		GL01-T2-009			849.5	2275.0	2	3.87	T2三趟趟門/生	GL01-T2-009	
							合計: 20	32.11			
							總計: 25	35.39			

1).本表中之所有玻璃顏色待定。

2).本表中所有玻璃對角線尺寸偏差要求不超過負2mm。

3).本表中玻璃要求粗磨邊處理並倒稜角，而所有玻璃之入爐方向需保持一致。

4).本表中所有玻璃成品均需做雙面保護，用透明靜電膠紙加四周一寸PK白膠紙做雙面加固保護處理。

5).本表中所有玻璃成品均需注明室內外及其玻璃編號，以便識別。

加工注意事項:

工程號: 1852

計算: Wsh

日期: 2020/10/22

送呈:

地盤名稱:

核對:

日期:

副本:

地盤用玻璃B.M.表

項目類別: T2后裝窗及趟門玻璃

批准:

日期:

A/C Code:

B.M.編號:

修改版次:

總計玻璃面積 (平方米):

35.48

Handwritten signature

序號	修改內容	玻璃圖號	顏色與類型	厚度 (mm)	玻璃尺寸		數量 (塊)	總面積 (平方米)	使用位置	加工圖參考
					寬度 (W mm)	高度 (H mm)				
1		GL03-T2-001	6mm+12mm AIR GAP+6mm THK. I.G.U.	24.0	573.0	1203.0	1	0.69	T2后裝窗	GL03-T2-001
2		GL03-T2-002			533.0	1228.0	2	1.31	T2后裝窗	GL03-T2-002
3		GL03-T2-003			523.0	1228.0	2	1.28	T2后裝窗	GL03-T2-003
						合計:	5	3.28		
1		GL01-T2-001	8mm+12mm AIR GAP+10mm THK. I.G.U.	30.0	1163.0	193.0	2	0.45	T2后裝窗	GL01-T2-001
2		GL01-T2-002			130.0	1599.0	1	0.21	T2后裝窗	GL01-T2-002
3		GL01-T2-003			242.0	1599.0	1	0.39	T2后裝窗	GL01-T2-003
4		GL01-T2-004			795.0	2409.0	4	7.66	T2四趟趟門/梗	GL01-T2-004
5		GL01-T2-005			885.0	2258.0	4	7.99	T2四趟趟門/生	GL01-T2-005
6		GL01-T2-006			507.0	2275.0	2	2.31	T2三趟趟門/梗	GL01-T2-006
7		GL01-T2-007			851.5	2275.0	2	3.87	T2三趟趟門/生	GL01-T2-007
8		GL01-T2-008			851.5	2275.0	2	3.87	T2三趟趟門/生	GL01-T2-008
9		GL01-T2-009			1194.0	2279.0	2	5.44	T2兩趟趟門/生	GL01-T2-009
					合計:		20	32.20		
					總合計:		25	35.48		

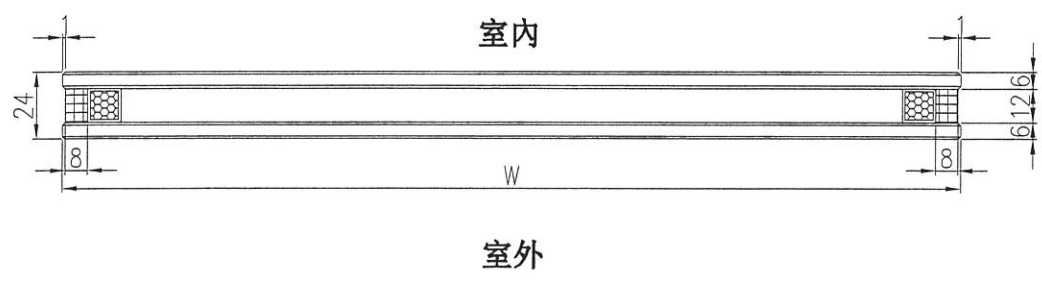
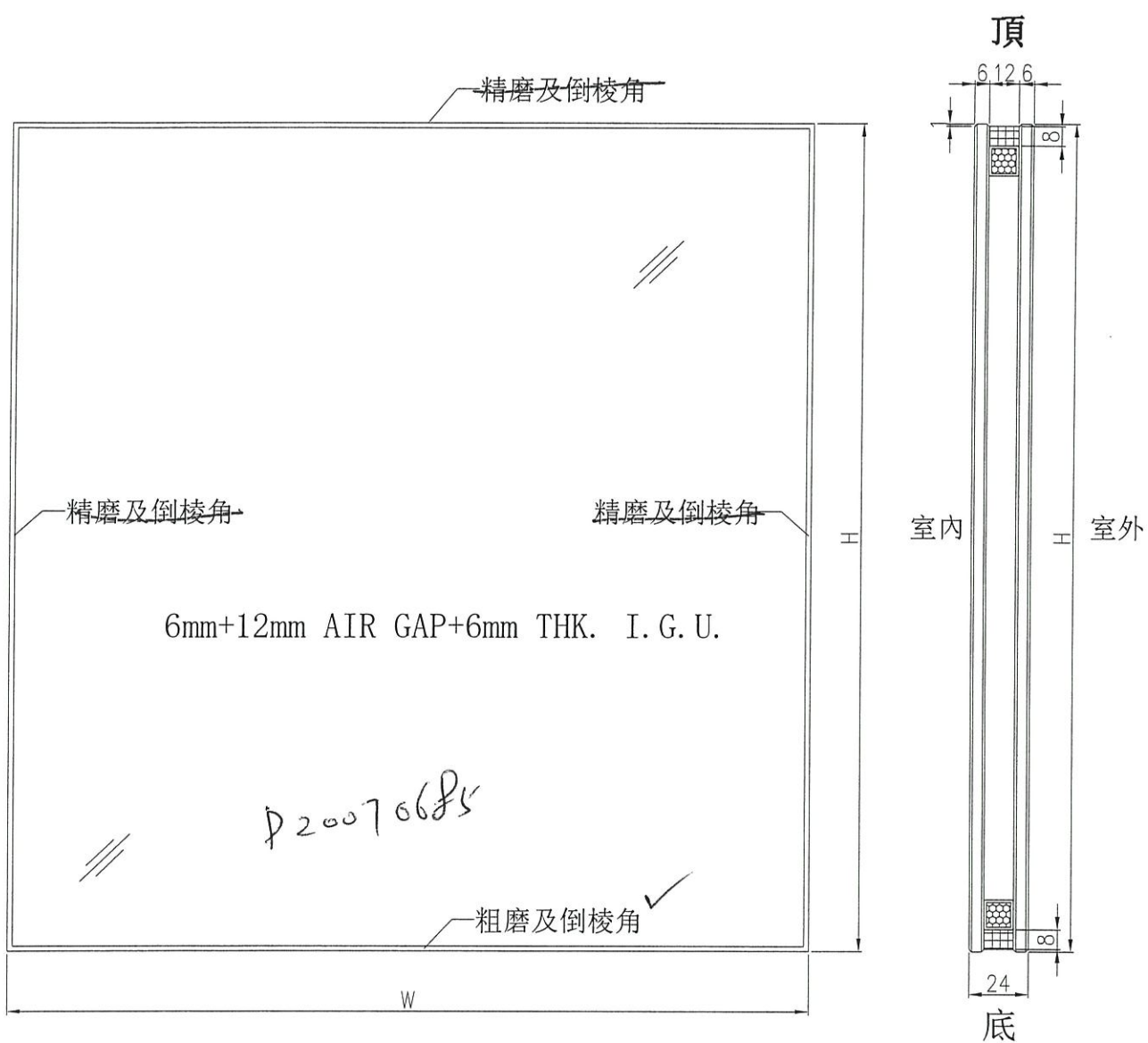
1).本表中之所有玻璃顏色待定。

2).本表中所有玻璃對角線尺寸偏差要求不超過負2mm。

3).本表中玻璃要求粗磨邊處理並倒棱角，而所有玻璃之入爐方向需保持一致。

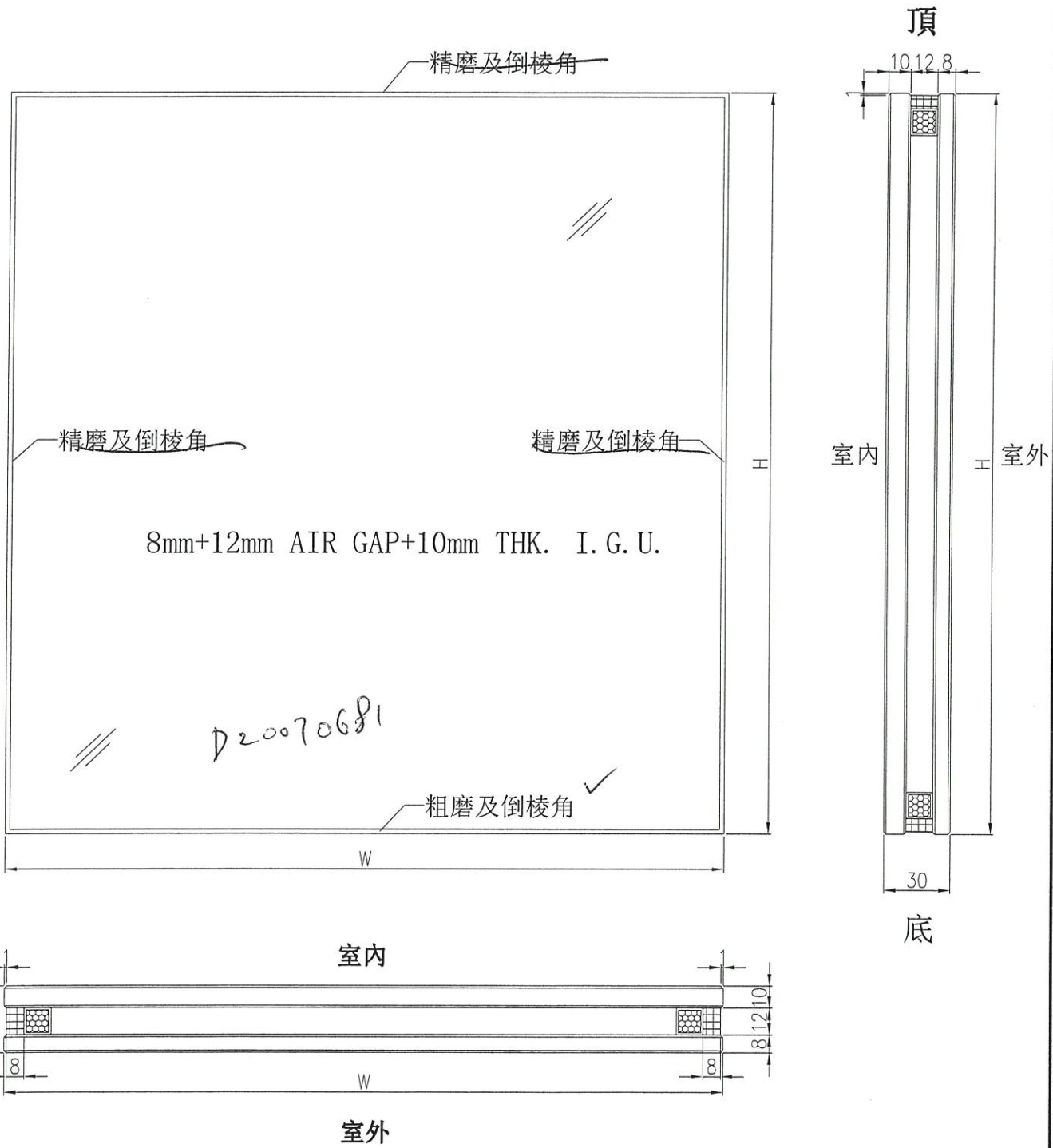
加工注意事項

 美特鋁質 有限公司 MIDI Aluminium Fabricator Ltd.				類別		物料號	
修改				制圖	ivan	2020-09-04	圖號 GL03-001~004
日期				復核			數量 一
				批准			位置 後裝窗用



工程號	J-852	地盤	—	附件
名稱	玻璃加工圖		採用	
材料	6mm+12mm AIR GAP+6mm THK. I.G.U.		地盤	
顏色	—		工廠	

 美特鋁質 有限公司 MIDI Aluminium Fabricator Ltd.				類別		物料號	
修改				制圖	Ivan	2020-09-04	圖號 GL01-001~011.
日期				復核			數量 一
				批准			位置 後裝窗用



工程號	J-852	地盤	—	附件
名稱	玻璃加工圖		採用	
材料	8mm+12mm AIR GAP+10mm THK. I.G.U.		地盤	
顏色	—		工廠 <input checked="" type="checkbox"/>	

B.D. REF :

CLIENT :

ARCHITECT : **AGC**
DESIGN LTD
111, Market Street, Singapore

MAIN CONTRACTOR : **Gammon**

STRUCTURAL ENGINEER : **ARUP**

FRAME CONSULTANT: **MEINHARDT**

NOTE :

1. ALL DIMENSIONS ARE IN mm.
2. ALL ELEVATIONS ARE VIEWED FROM OUTSIDE.
3. ALL DIMENSIONS TO BE KEPT ON SITE BEFORE FABRICATION.

LEGEND :

① - DETAIL MARK NO.
② - REFER SHEET NO.

1. F.F.L. - FINISHED FLOOR LEVEL
2. S.F.L. - STRUCTURAL FLOOR LEVEL
3. Ⓞ - REVERSED DETAIL
4. ▲ - POINT LOCATION
5. △ - POINT LOC LOCATION
6. GLASS LEGEND

GL01 - 6mm+12mm AIR GAP+10mm THK. LGU.
GL02 - 6mm THK THERMO GLASS (SPANDREL GLASS)
GL03 - 6mm+12mm AIR GAP+6mm THK. LGU.
GL04 - 6mm THK THERMO GLASS (FRONTFACE INVERTY)
GL05 - 6mm+12mm AIR GAP+6mm THK. LGU.

B	20/17/20	PERSON SUBJECT TO APPROVALMENT
A	21/14/20	PERSON SUBJECT TO APPROVALMENT
DATE	DATE	DATE
JOB NO. :	J-852	

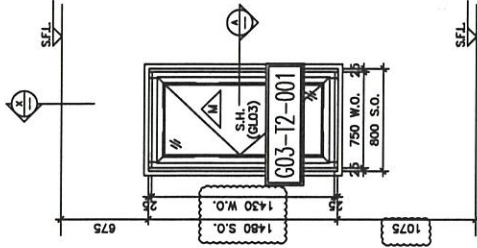
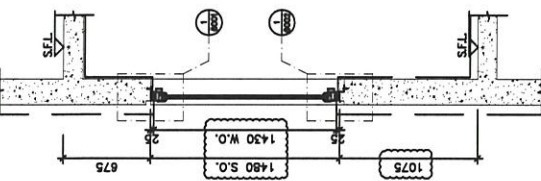
PROJECT : RESIDENTIAL DEVELOPMENT
AT 139 - 147 ARGYLE STREET,
MKL 6005, 6035 R.P., 6036 R.P.,
6037 R.P. & 6038 R.P.

TITLE : WINDOW SCHEDULE FOR
IN-SITU ALUM. WINDOW

DATE : 05-FEB-20 SCALE : 1:100
DRAWN BY : MN CHECKED BY : DW

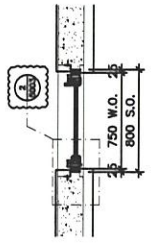
美特鋁業有限公司
MIDI Aluminium Fabrication Sdn. Bhd.
Unit 6-1, Sunny Industrial Centre, 1/F
11, Jalan Puchong, Puchong, Selangor,
47100 MALAYSIA. TEL: (603) 7772868

DRG NO. : J-852-SO-W-4207 REV. : B

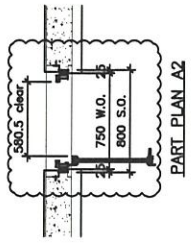


ELEVATION

ELEVATION



PART PLAN A1



PART PLAN A2

TITLE	OPENABLE WINDOW SCHEDULE	(WIDTH)	1430
		(HEIGHT)	1480
NUMBER OF OPENABLE AREA WINDOW			
GLASS AREA			
OPENABLE	WIDTH	750 mm	21'
	HEIGHT	1480 mm	12'
TOTAL	AREA	1100000 mm ²	106.80 m ²
OPENABLE AREA			
WIDTH	750 mm	21'	
HEIGHT	1480 mm	12'	
TOTAL	AREA	1100000 mm ²	106.80 m ²

PROVIDED	
GLAZING AREA	0.671 m ²
OPENABLE AREA	0 m ²

WINDOW MARK	W9 Z9
LOCATION	1/F~21/F ENSUITE AT TOWER 2 FLAT B
SECTION	70mm ALUM. SECTION
GLAZING	GL03
QUANTITY	18
REMARKS	

B.D. REF :

CLIENT :

ARCHITECT :

AGC DESIGN LTD
1101 WILSON AVENUE
SUITE 1000
TORONTO, ONTARIO M6K 3K7

MAIN CONTRACTOR :



STRUCTURAL ENGINEER :

ARUP

FAÇADE CONSULTANT :



NOTE:

1. ALL DIMENSIONS ARE IN mm.
 2. ALL ELEVATIONS ARE VIEWED FROM OUTSIDE.
 3. ALL DIMENSIONS TO BE VERIFIED ON SITE BEFORE FABRICATION.
- LEGEND:
- ① DETAIL MARK NO.
 - ② REFER SHEET NO.
 - 1. F.F.L. — FINISHED FLOOR LEVEL.
 - 2. S.F.L. — STRUCTURAL FLOOR LEVEL.
 - 3. Ⓜ — REVERSED DETAIL.
 - 4. ▲ — FINING LOCATION.
 - 5. △ — FINING LOG LOCATION.
 - 6. GLASS LEGEND
- GL01 — 8mm+12mm AIR GAP+10mm THK. GLAZ.
GL02 — 8mm THK. THERMO GLASS (SPANDREL GLASS)
GL03 — 8mm+12mm AIR GAP+10mm THK. GLAZ.
GL04 — 8mm THK. THERMO GLASS (FRONTFACE WINDOW)
GL05 — 8mm+12mm AIR GAP+10mm THK. GLAZ.

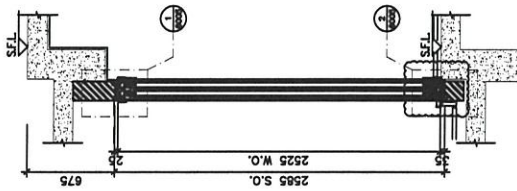
A	2/PAN/210	REVISION SUBJECT TO AMENDMENT	DATE	BY	APP

JOB NO. : J-852

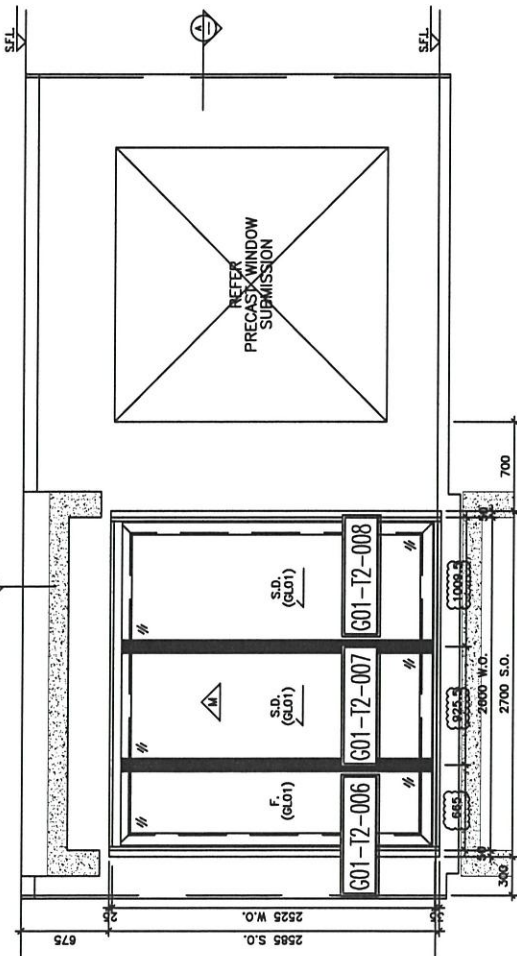
PROJECT :
PROPOSED RESIDENTIAL DEVELOPMENT
AT 139 - 147 ARGYLE STREET,
MKL 6005, 6035 R.P., 6036 R.P.,
6037 R.P. & 6038 R.P.

TITLE : WINDOW SCHEDULE FOR
IN-SITU ALUM. WINDOW

DATE : 05-FEB-20	SOME : 1:100
DOWN BY : JAH	CHECKED BY : DW
 MTDI 1101 WILSON AVENUE SUITE 1000 TORONTO, ONTARIO M6K 3K7 TEL: (416) 593-8211-4 FAX: (416) 593-8211-4	
DATE : 05-FEB-20	SOME : 1:100
DOWN BY : JAH	CHECKED BY : DW
DWG NO. : J852-SU-W-4202 REV. : A	

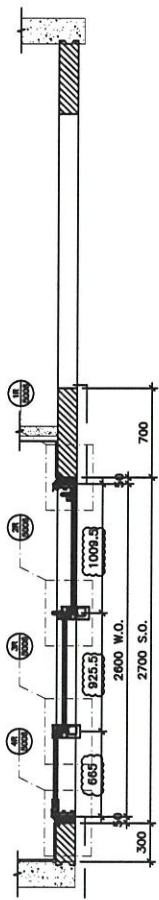


SECTION "X-X"

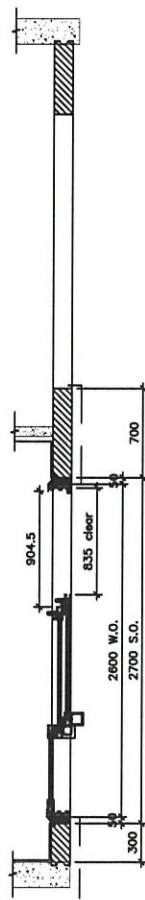


ELEVATION

ELEVATION



PART PLAN A



PART PLAN A

TYPE	GLAZING AREA	GLASS AREA	GLASS WEIGHT	GLASS VOLUME
TYPE 7	1008.3	1008.3	1008.3	1008.3
TYPE 8	1008.3	1008.3	1008.3	1008.3
TYPE 9	1008.3	1008.3	1008.3	1008.3
TYPE 10	1008.3	1008.3	1008.3	1008.3
TYPE 11	1008.3	1008.3	1008.3	1008.3
TYPE 12	1008.3	1008.3	1008.3	1008.3
TYPE 13	1008.3	1008.3	1008.3	1008.3
TYPE 14	1008.3	1008.3	1008.3	1008.3
TYPE 15	1008.3	1008.3	1008.3	1008.3
TYPE 16	1008.3	1008.3	1008.3	1008.3
TYPE 17	1008.3	1008.3	1008.3	1008.3
TYPE 18	1008.3	1008.3	1008.3	1008.3
TYPE 19	1008.3	1008.3	1008.3	1008.3
TYPE 20	1008.3	1008.3	1008.3	1008.3
TYPE 21	1008.3	1008.3	1008.3	1008.3
TYPE 22	1008.3	1008.3	1008.3	1008.3
TYPE 23	1008.3	1008.3	1008.3	1008.3
TYPE 24	1008.3	1008.3	1008.3	1008.3
TYPE 25	1008.3	1008.3	1008.3	1008.3
TYPE 26	1008.3	1008.3	1008.3	1008.3
TYPE 27	1008.3	1008.3	1008.3	1008.3
TYPE 28	1008.3	1008.3	1008.3	1008.3
TYPE 29	1008.3	1008.3	1008.3	1008.3
TYPE 30	1008.3	1008.3	1008.3	1008.3
TYPE 31	1008.3	1008.3	1008.3	1008.3
TYPE 32	1008.3	1008.3	1008.3	1008.3
TYPE 33	1008.3	1008.3	1008.3	1008.3
TYPE 34	1008.3	1008.3	1008.3	1008.3
TYPE 35	1008.3	1008.3	1008.3	1008.3
TYPE 36	1008.3	1008.3	1008.3	1008.3
TYPE 37	1008.3	1008.3	1008.3	1008.3
TYPE 38	1008.3	1008.3	1008.3	1008.3
TYPE 39	1008.3	1008.3	1008.3	1008.3
TYPE 40	1008.3	1008.3	1008.3	1008.3
TYPE 41	1008.3	1008.3	1008.3	1008.3
TYPE 42	1008.3	1008.3	1008.3	1008.3
TYPE 43	1008.3	1008.3	1008.3	1008.3
TYPE 44	1008.3	1008.3	1008.3	1008.3
TYPE 45	1008.3	1008.3	1008.3	1008.3
TYPE 46	1008.3	1008.3	1008.3	1008.3
TYPE 47	1008.3	1008.3	1008.3	1008.3
TYPE 48	1008.3	1008.3	1008.3	1008.3
TYPE 49	1008.3	1008.3	1008.3	1008.3
TYPE 50	1008.3	1008.3	1008.3	1008.3
TYPE 51	1008.3	1008.3	1008.3	1008.3
TYPE 52	1008.3	1008.3	1008.3	1008.3
TYPE 53	1008.3	1008.3	1008.3	1008.3
TYPE 54	1008.3	1008.3	1008.3	1008.3
TYPE 55	1008.3	1008.3	1008.3	1008.3
TYPE 56	1008.3	1008.3	1008.3	1008.3
TYPE 57	1008.3	1008.3	1008.3	1008.3
TYPE 58	1008.3	1008.3	1008.3	1008.3
TYPE 59	1008.3	1008.3	1008.3	1008.3
TYPE 60	1008.3	1008.3	1008.3	1008.3
TYPE 61	1008.3	1008.3	1008.3	1008.3
TYPE 62	1008.3	1008.3	1008.3	1008.3
TYPE 63	1008.3	1008.3	1008.3	1008.3
TYPE 64	1008.3	1008.3	1008.3	1008.3
TYPE 65	1008.3	1008.3	1008.3	1008.3
TYPE 66	1008.3	1008.3	1008.3	1008.3
TYPE 67	1008.3	1008.3	1008.3	1008.3
TYPE 68	1008.3	1008.3	1008.3	1008.3
TYPE 69	1008.3	1008.3	1008.3	1008.3
TYPE 70	1008.3	1008.3	1008.3	1008.3
TYPE 71	1008.3	1008.3	1008.3	1008.3
TYPE 72	1008.3	1008.3	1008.3	1008.3
TYPE 73	1008.3	1008.3	1008.3	1008.3
TYPE 74	1008.3	1008.3	1008.3	1008.3
TYPE 75	1008.3	1008.3	1008.3	1008.3
TYPE 76	1008.3	1008.3	1008.3	1008.3
TYPE 77	1008.3	1008.3	1008.3	1008.3
TYPE 78	1008.3	1008.3	1008.3	1008.3
TYPE 79	1008.3	1008.3	1008.3	1008.3
TYPE 80	1008.3	1008.3	1008.3	1008.3
TYPE 81	1008.3	1008.3	1008.3	1008.3
TYPE 82	1008.3	1008.3	1008.3	1008.3
TYPE 83	1008.3	1008.3	1008.3	1008.3
TYPE 84	1008.3	1008.3	1008.3	1008.3
TYPE 85	1008.3	1008.3	1008.3	1008.3
TYPE 86	1008.3	1008.3	1008.3	1008.3
TYPE 87	1008.3	1008.3	1008.3	1008.3
TYPE 88	1008.3	1008.3	1008.3	1008.3
TYPE 89	1008.3	1008.3	1008.3	1008.3
TYPE 90	1008.3	1008.3	1008.3	1008.3
TYPE 91	1008.3	1008.3	1008.3	1008.3
TYPE 92	1008.3	1008.3	1008.3	1008.3
TYPE 93	1008.3	1008.3	1008.3	1008.3
TYPE 94	1008.3	1008.3	1008.3	1008.3
TYPE 95	1008.3	1008.3	1008.3	1008.3
TYPE 96	1008.3	1008.3	1008.3	1008.3
TYPE 97	1008.3	1008.3	1008.3	1008.3
TYPE 98	1008.3	1008.3	1008.3	1008.3
TYPE 99	1008.3	1008.3	1008.3	1008.3
TYPE 100	1008.3	1008.3	1008.3	1008.3

GLAZING AREA	4.793 m²
OPENABLE AREA	1.931 m²

PROVIDED

WINDOW MARK	W7/2A
LOCATION	2/F~21/F ENSUITE & BR.1 AT TOWER 2 FLAT A
SECTION	50mm ALUM. SECTION
GLAZING	GL01
QUANTITY	17
REMARKS	FAÇADE (PF-20)

B.D. REF :

CLIENT :

ARCHITECT : **AGC DESIGN LTD**
 11/F, 110 QUEEN'S ROAD EAST, HONG KONG
 MAIN CONTRACTOR :

Gammon
 STRUCTURAL ENGINEER :

ARUP
 FACADE CONSULTANT:

MEINHARDT

NOTE:
 1. ALL DIMENSIONS ARE IN MM.
 2. ALL DIMENSIONS ARE VIEWED FROM OUTSIDE.
 3. ALL DIMENSIONS TO BE VERIFIED ON SITE BEFORE FABRICATION.

LEGEND:
 (SFL) DETAIL MARK NO.
 (REF) REFER SHEET NO.

1. F.F.L. — FINISHED FLOOR LEVEL.
 2. S.F.L. — STRUCTURAL FLOOR LEVEL.
 3. (R) — REVERSED DETAIL.
 4. ▲ — FRING LOCATION.
 5. ▲ — FRING LINC LOCATION.
 6. GLASS LEGEND

GL01 — 6mm+12mm AIR GAP+10mm THK. LGL.
 GL02 — 10mm THK. TEMPERED GLASS (PANELE GLASS)
 GL03 — 6mm+12mm AIR GAP+10mm THK. LGL.
 GL04 — 10mm THK. TEMPERED GLASS (PANELE GLASS)
 GL05 — 6mm+12mm AIR GAP+10mm THK. LGL.

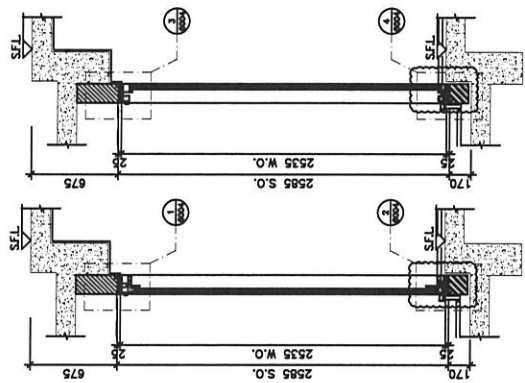
A	DATE/REV	REVISION SUBJECT TO AMENDMENT	BY

JOB NO. : J-852

PROJECT : **PROPOSED RESIDENTIAL DEVELOPMENT**
 AT 139 - 147 MASQUE STREET,
 NKL 6005 6035, P.P. 6030 R.P.,
 6037 R.P. & 6038 R.P.

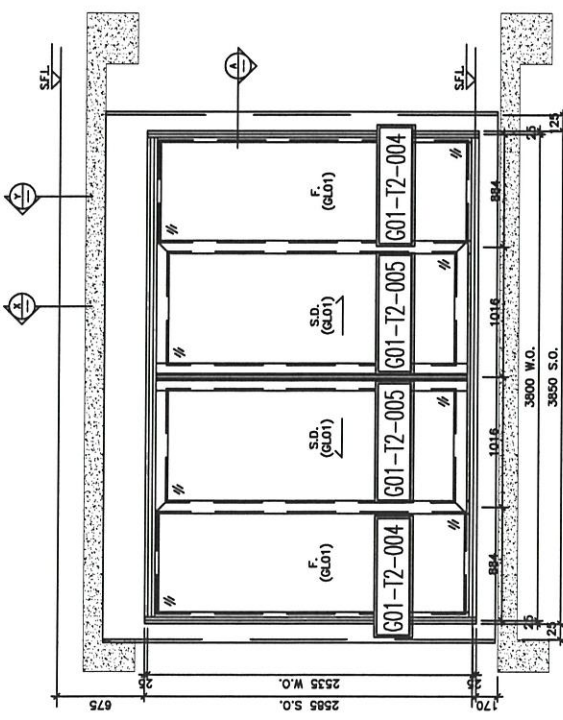
TITLE : **WINDOW SCHEDULE FOR IN-SITU ALUM. WINDOW**

DATE : 05-FEB-20 SCALE : 1:100
 DRAWN BY : JMN CHECKED BY : DW
MIDI
 110 Cheong Cheong Road, #04-01, Singapore 469011
 05-2588211-4 Fax: 05-2727266
 DWG NO. : 4852-W-4205 REV. : A

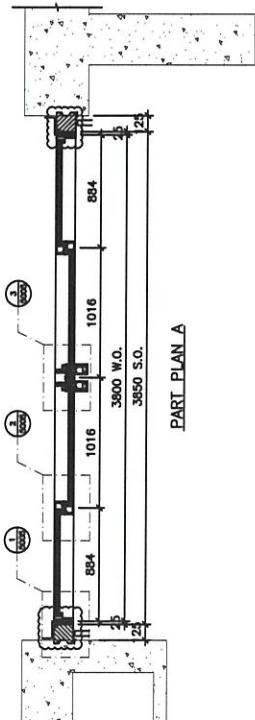


SECTION "X-X"

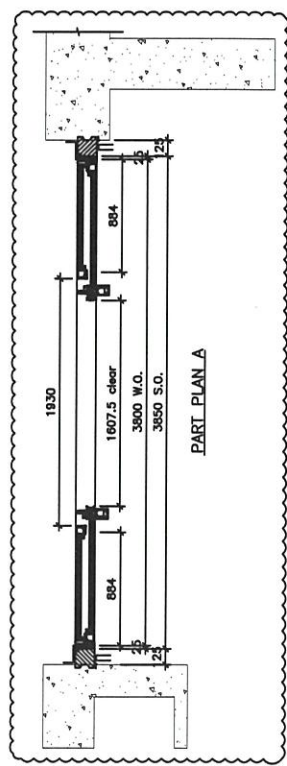
SECTION "Y-Y"



ELEVATION



PART PLAN A



PART PLAN B

TYPE	SLIDING DOOR DIMENSION	WIDTH (mm)	HEIGHT (mm)
FIXED WINDOW DIMENSION <td></td> <td>854.2</td> <td>1515.2</td>		854.2	1515.2
		2335.48	1515.2

NUMBER OF OPENABLE AREA WINDOW	
GLAZING AREA	7.501
OPENABLE AREA	3.818

GLAZING AREA	
WIDTH	1016
HEIGHT	2335.48
PERIMETER	5664.96
AREA	2372.88

OPENABLE AREA	
WIDTH	1607.5
HEIGHT	2335.48
PERIMETER	7880.96
AREA	3818.00

TOTAL	
GLAZING AREA	7.501
OPENABLE AREA	3.818

PROVIDED	GLAZING AREA	OPENABLE AREA
	7.501	3.818

WINDOW MARK : 1/F~21/F LIV./DIN. AT TOWER 2 FLAT B
 SECTION : 67mm ALUM. SECTION
 GLAZING : GL01
 QUANTITY : 18
 REMARKS : FACADE (PF-41)

B.D. REF :

CLIENT :

ARCHITECT : **AGC**
DESIGN LTD
5/F, 110, WING LOK STREET,
HONG KONG

MAIN CONTRACTOR :



STRUCTURAL ENGINEER :

ARUP

FAÇADE CONSULTANT :



NOTE :

1. ALL DIMENSIONS ARE IN MM.
2. ALL ELEVATIONS ARE VIEWED FROM OUTSIDE.
3. ALL DIMENSIONS TO BE VERIFIED ON SITE BEFORE FABRICATION.

LEGEND :

- ① DETAIL MARK NO.
- ② REFER SHEET NO.
- 1. FFL — FINISHED FLOOR LEVEL
- 2. SFL — STRUCTURAL FLOOR LEVEL
- 3. ③ — REVERSED DETAIL
- 4. ▲ — FINING LOCATION
- 5. ▲ — FINING LOC LOCATION
- 6. GLASS LEGEND

- GL01 — 8mm+12mm AIR GAP+10mm THK. LG.L.
- GL02 — 10mm THK. TEMPERED GLASS (SPARKLE GLASS)
- GL03 — 8mm+12mm AIR GAP+10mm THK. LG.L.
- GL04 — 10mm THK. TEMPERED GLASS (PRIVACY BARRIER)
- GL05 — 8mm+12mm AIR GAP+10mm THK. LG.L.

NO.	DATE	REVISION SUBJECT TO APPROVAL/AMEND
1	20/07/2020	REVISION SUBJECT TO APPROVAL/AMEND
2	20/07/2020	REVISION SUBJECT TO APPROVAL/AMEND

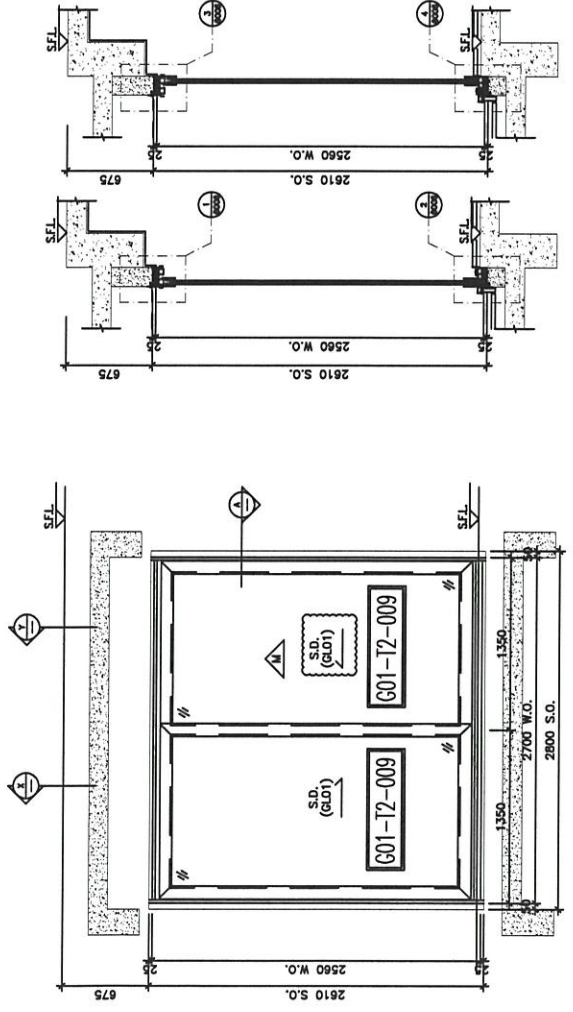
JOB NO. : J-852

PROJECT : PROPOSED RESIDENTIAL DEVELOPMENT
AT 139, 147 ARGYLE STREET,
MKL 6005 6035 R.P., 6036 R.P.,
6037 R.P. & 6038 R.P.

TITLE : WINDOW SCHEDULE FOR
IN-SITU ALUM. WINDOW

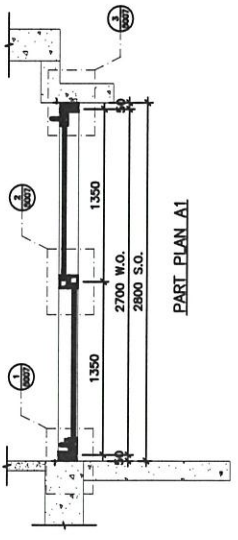
DATE : 05-FEB-20 SCALE : 1:100
DRAWN BY : HAN CHECKED BY : DW

MIDI 美特銘有限公司
Units E-4, Sunny Industrial Centre, 1/F
910 Chee Yee Ling Road, Kowloon
TEL: 2325211-4 FAX: 23252172/866
DWG NO. : J852-SD-W-4210 REV. : B

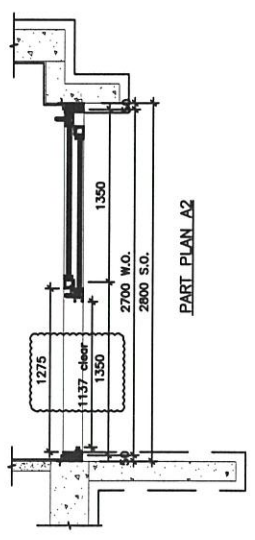


SECTION "X-X"

SECTION "Y-Y"



PART PLAN A1



PART PLAN A2

TYPE	GLAZING AREA (m²)	SLIDING DOOR @ DIMENSION (m²)	NUMBER OF OPENABLE AREA WINDOW
SLIDING DOOR (A) DIMENSION	1350 (WIDTH) x 2560 (HEIGHT) = 3456	1350 (WIDTH) x 2560 (HEIGHT) = 3456	2
SLIDING DOOR @ DIMENSION	1350 (WIDTH) x 2560 (HEIGHT) = 3456	1350 (WIDTH) x 2560 (HEIGHT) = 3456	2
GLAZING AREA	1350 (WIDTH) x 2560 (HEIGHT) = 3456	1350 (WIDTH) x 2560 (HEIGHT) = 3456	2
SLIDING DOOR A	1350 (WIDTH) x 2560 (HEIGHT) = 3456	1350 (WIDTH) x 2560 (HEIGHT) = 3456	2
SLIDING DOOR B	1350 (WIDTH) x 2560 (HEIGHT) = 3456	1350 (WIDTH) x 2560 (HEIGHT) = 3456	2
SLIDING DOOR C	1350 (WIDTH) x 2560 (HEIGHT) = 3456	1350 (WIDTH) x 2560 (HEIGHT) = 3456	2
SLIDING DOOR D	1350 (WIDTH) x 2560 (HEIGHT) = 3456	1350 (WIDTH) x 2560 (HEIGHT) = 3456	2
TOTAL	61862.33	61862.33	24
OPENABLE AREA	1350 (WIDTH) x 2560 (HEIGHT) = 3456	1350 (WIDTH) x 2560 (HEIGHT) = 3456	2
TOTAL	61862.33	61862.33	24

PROVIDED	GLAZING AREA (m²)	OPENABLE AREA (m²)
	5.263	2.935

WINDOW MARK	WT	1/20
LOCATION	1/F~21/F LIV./DIN. AT TOWER 2 FLAT C	
SECTION	67mm ALUM. SECTION	
GLAZING	GL01	
QUANTITY	18	
REMARKS	FAÇADE (PF-49)	