

工程指示 / 要求簡箋(E.I.)

工程指示編號：EI / 1768 / 20

修改版次：

工程編號：J - 852

工程名稱：亞皆老街中電

工程項目：佛沙窗 廠用配件 扇撐 美國撐 (大貨)

收件人：Maggie / 生統 / 楊榮輝

發件人：Bessie Lau

日期：4/5/2020

要求提供 / 確認 事項：

- () 初步鋁料 B.M. () 加工拆圖，然後生產 () 尺寸表
- () 正式鋁料 B.M. () 技術上資料 / 指示 () 報價
- () 配件 B.M. () 樣辦或貨品說明書 () 分判合約
- () 其他：_____

內容：

請按 BM 訂購 扇撐和限位撐供佛沙窗使用。台灣重撐已在 EI 1590 出單

按 3 號圖計算，S.H 窗有 1170 隻 (264 隻窗用美國撐)

T.H 窗有 357 隻 (全用美國撐)

可一次過送貨，如不夠貨才分兩批出貨

預算 貨期 5 月 25 日送第一批 (一半數量)，6 月 25 日送出第二批 (一半數量)

附批板相片 (按 2020.04.29 會議，使用美國撐)

請在 _____ 前完成上列要求。

附有關圖紙 / 文件：

以上項目為：

- 原合約工程包 原合約工程加 / 減賬 新工程報價

原因：-

分發東莞各部門：

- () 生產技術總監 連附件 () 技術部 連附件 () 生產部 連附件 () 機械設計部 連附件
- () 採購部 連附件 () 生產統籌部 連附件
- () 質檢部 連附件 () 會計部 連附件 () 報關組 連附件 () 其他 楊榮輝 連附件

分發其他分判：

- () 水洪 連附件

分發香港各部門：

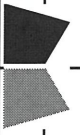
- () 行政部 連附件 () 會計部 連附件 () 統籌部 連附件 () 工程部地盤科文 連附件
- () 採購部 連附件 () QS 部 連附件 () 維修部 連附件 () 其他 _____ 連附件

傳遞編號：

Handwritten: H60740/20

發件人簽署：

項目經理簽署：

		美特鋁質有限公司		工程號: I-852		計算:		Ant		日期: 2020.04.29		送呈: 胡哥	
MIDI Aluminium Fabricator Ltd.		廠用配件B.M.表		地盤 亞皆老街中電		核對:		Ant		日期: 2020.04.29		副本:	
BM編號: 852-PW-001 -USA		廠用配件B.M.表		項目類別: 框架佛沙窗		批准:				日期:			
A/C Code:													
此BM依據3號圖計算BM													
序號	修改標示	配件圖號	物料編號	配件名稱	顏色	實用	後備	總數	單位	備注			
1		Anderberg Truth	美國撐 SS601 重型撐	(S.H) 扇撐14"	不鏽鋼	256	14	270	支	S.H用			
2		Anderberg Truth	美國撐 SS601 重型撐	(S.H) 扇撐16"	不鏽鋼	8	2	10	支	S.H用			
3		Anderberg Truth	美國撐 SS301 重型撐	(T.H) 扇撐24"	不鏽鋼	714	36	750	支	T.H用			
4		立興		立興限位撐 TRST10	不鏽鋼	714	36	750	支	T.H用			

											S.O	S.O	Window	Window	Window	Window			台灣重撐	16寸	16寸	14寸	14寸	14寸	14寸		24寸
美國撐			Window Mark	Tower	Floor	Nos.	Flat	Location	Façade mark	Width	Height	Width	Width	Width	Width	S.H數量/ 每層	S.H數量/ 該柱	台灣重撐 總數	東城扇撐數 量/每隻窗	美國撐 總數	美國撐數 量/每隻 窗	美國撐 總數	美國撐數量/ 每隻窗	美國撐 總數	T.H數量/ 該柱	東城 扇撐總數	
1		台	SD-PW-4101	W3-T1B	T1	1-21/F	18	B	Master	PF-9	3130	2160	775	1410	775		2	36	72	0	0			0	0	0	0
1		台	SD-PW-4102	W2-T1B	T1	1-21/F	18	B	Din	PF-10	2730	2160	775	1010	775		2	36	72	0	0			0	0	0	0
1		台	SD-PW-4103	W2-T1A	T1	1-21/F	18	A	Din	PF-11	3130	2160	775	1410	775		2	36	72	0	0			0	0	0	0
1	24	28	SD-PW-4104	W3-T1A	T1	1-21/F	18	A	Master	PF-12	5820	2160	1000	1000	2450	1000	0	0	0	0	0			0	0	54	108
1	24	28	SD-PW-4105	W4-T1A	T1	1-21/F	18	A	M.Bath	PF-15	1030	2210	1000				0	0	0	0	0			0	0	18	36
1	24	28	SD-PW-4106	W5-T1A	T1	1-21/F	18	A	E.Bath	PF-16	1030	2210	1000				0	0	0	0	0			0	0	18	36
1		台	SD-PW-4107	W8-T1A	T1	1/F	1	A	BR	PF-23	1530	2160	750	750			2	2	4	0	0			0	0	0	0
1		台	SD-PW-4108	W8-T1A	T1	2-21/F	17	A	BR 1	PF-23	1530	2160	750	750			2	34	68	0	0			0	0	0	0
1		台		W9-T1A	T1	2-21/F	17	A	BR 2	PF-23	1530	2160	750	750			2	34	68	0	0			0	0	0	0
1	14	12	SD-PW-4109	W6-T1C	T1	1-21/F	18	C	Kit	PF-31	1030	1610	500	500			2	36	0	0	0			2	72	0	0
1		台	SD-PW-4110	W5-T1C	T1	2-21/F	17	C	BR 2	PF-32	1130	2160	550	550			2	34	68	0	0			0	0	0	0
1		台	SD-PW-4111	W4-T1C	T1	1-21/F	18	C	M.B.R 1	PF-33	1530	2160	750	750			2	36	72	0	0			0	0	0	0
1		台		W3-T1C	T1	1-21/F	18	C	BR 2	PF-33	1530	2160	750	750			2	36	72	0	0			0	0	0	0
1	24	*TH	SD-PW-4112	W5-T1B	T1	1-21/F	18	B	M.Bath	PF-37	520	2210	490				0	0	0	0	0			0	0	18	36
1	24	*TH		W4-T1B	T1	1-21/F	18	B	E.Bath	PF-37	475	2210	445				0	0	0	0	0			0	0	18	36
1	24	28	SD-PW-4113	W6-T1A	T1	1-21/F	18	A	BR	PF-24	1030	2160	1000				0	0	0	0	0			0	0	18	36
1		台	SD-PW-4114	W7-T1B	T1	2-21/F	17	B	BR	PF-22	2180	2160	675	660	675		2	34	68	0	0			0	0	0	0
1		台	SD-PW-4115	22W1-T1A	T1	22/F	1	A	Master	PF-09	3130	2430	775	1410	775		2	2	4	0	0			0	0	0	0
1		台	SD-PW-4116	22W2-T1A	T1	22/F	1	A	EN1	PF-10	2730	2430	775		775		2	2	4	0	0			0	0	0	0
1		台	SD-PW-4117	22W5-T1A	T1	22/F	1	A	Din	PF-11	3930	2430	775	2210	775		2	2	4	0	0			0	0	0	0
1	14	14	SD-PW-4118	22W14-T1A	T1	22/F	1	A	M.Bath	PF-22	1180	2480	575	575			2	2	0	0	0	2	4	0	0	0	0
1	24	28		22W13-T1A	T1	22/F	1	A	EN3	PF-22	975	2280	945				0	0	0	0	0			0	0	1	2
1	14	12	SD-PW-4119	22W6-T1C	T1	22/F	1	C	Kit	PF-31	1030	1880	500	500			2	2	0	0	0			2	4	0	0
1		台	SD-PW-4120	22W5-T1C	T1	22/F	1	C	BR2	PF-32	1130	2430	550	550			2	2	4	0	0			0	0	0	0
1		台	SD-PW-4121	22W4-T1C	T1	22/F	1	C	BR2	PF-33	1530	2430	750	750			2	2	4	0	0			0	0	0	0
1		台		22W3-T1C	T1	22/F	1	C	MBR1	PF-33	1530	2430	750	750			2	2	4	0	0			0	0	0	0
1	24	*TH	SD-PW-4122	22W4-T1A	T1	22/F	1	A	M.EN	PF-37	520	2480	490				0	0	0	0	0			0	0	1	2
1		台	SD-PW-4123	23W1-T1A	T1	23/F	1	A	MBR	PF-09	3130	2430	775	1410	775		2	2	4	0	0			0	0	0	0
1		台	SD-PW-4124	23W2-T1A	T1	23/F	1	A	EN1	PF-10	2730	2430	775	1010	775		2	2	4	0	0			0	0	0	0
1		台	SD-PW-4125	23W5-T1A	T1	23/F	1	A	Din	PF-11	3930	2430	775	2210	775		2	2	4	0	0			0	0	0	0
1	14	14	SD-PW-4126	23W14-T1A	T1	23/F	1	A	M.Bath	PF-22	1180	2480	575	575			2	2	0	0	0	2	4	0	0	0	0
1	24	28		23W13-T1A	T1	23/F	1	A	EN3	PF-22	980	2280	950				0	0	0	0	0			0	0	1	2
1	14	12	SD-PW-4127	23W6-T1C	T1	23/F	1	C	Kit	PF-31	1030	1880	500	500			2	2	0	0	0			2	4	0	0
1		台	SD-PW-4128	23W5-T1C	T1	23/F	1	C	BR	PF-32	1130	2430	550	550			2	2	4	0	0			0	0	0	0
1		台	SD-PW-4129	23W4-T1C	T1	23/F	1	C	BR2	PF-33	1530	2430	750	750			2	2	4	0	0			0	0	0	0
1		台		23W3-T1C	T1	23/F	1	C	MBR1	PF-33	1530	2430	750	750			2	2	4	0	0			0	0	0	0
1	24	*TH	SD-PW-4130	23W4-T1A	T1	23/F	1	C	M.EN	PF-37	520	2480	490				0	0	0	0	0			0	0	1	2

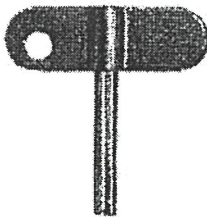
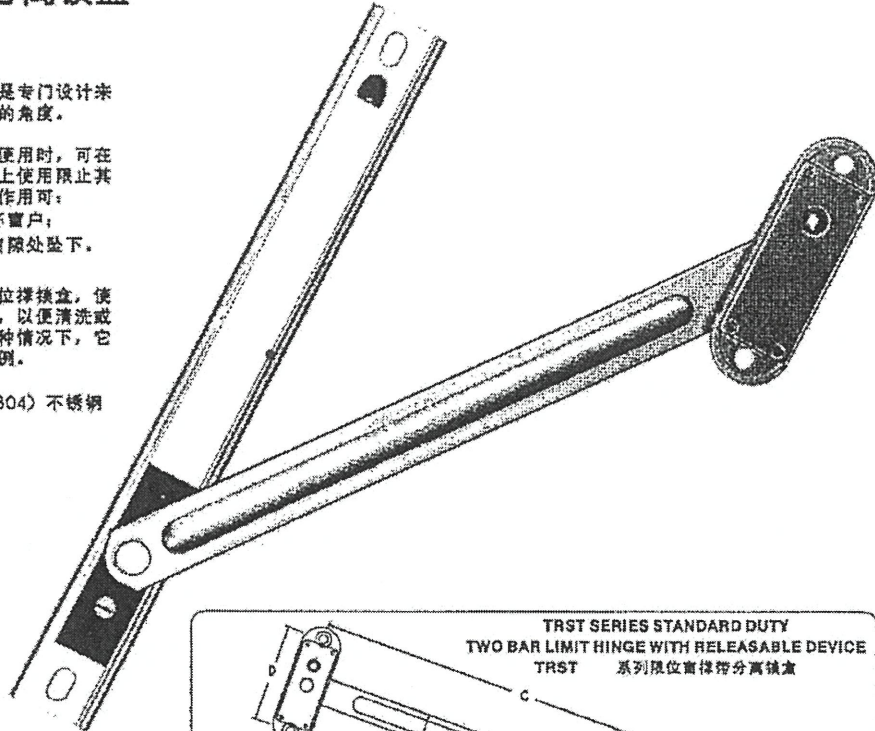
										S.O	S.O	Window	Window	Window	Window			台灣重撐	16寸	16寸	14寸	14寸	14寸	14寸		24寸
美國撐			Window Mark	Tower	Floor	Nos.	Flat	Location	Façade mark	Width	Height	Width	Width	Width	Width	S.H數量/ 每層	S.H數量/ 該柱	台灣重撐 總數	東城扇撐數 量/每隻窗	美國撐 總數	美國撐數 量/每隻 窗	美國撐 總數	美國撐數量/ 每隻窗	美國撐 總數	T.H數量/ 該柱	東城 扇撐總數
1		台	SD-PW-4201	W3-T2A	T2	1-21/F	18	A	Master	PF-05	3130	2160	775	1410	775			72	0	0			0	0	0	0
1		台	SD-PW-4202	W2-T2A	T2	1-21/F	18	A	Din	PF-06	2730	2160	775	1010	775			72	0	0			0	0	0	0
1		台	SD-PW-4203	W2-T2B	T2	1-21/F	18	B	Din	PF-07	2730	2160	775	1010	775			72	0	0			0	0	0	0
1		台	SD-PW-4204	W3-T2B	T2	1-21/F	18	B	Master	PF-08	3130	2160	775	1410	775			72	0	0			0	0	0	0
1	14	12	SD-PW-4205	W6-T2C	T2	1-21/F	18	C	Kit	PF-28	1030	1610	500	500				0	0	0			2	72	0	0
1		台	SD-PW-4206	W5-T2C	T2	2-21/F	17	C	BR2	PF-29	1130	2160	550	550				0	0	0			0	0	0	0
1		台	SD-PW-4207	W4-T2C	T2	1-21/F	18	C	MBR	PF-30	1530	2160	750	750				0	0	0			0	0	0	0
1		台		W3-T2C	T2	1-21/F	18	C	BR2	PF-30	1530	2160	750	750				0	0	0			0	0	0	0
1	24	*TH	SD-PW-4208	W4-T2A	T2	1-21/F	18	A	M.Bath	PF-35	520	2210	490					0	0	0			0	0	18	36
1	24	*TH		W5-T2A	T2	1-21/F	18	A	E.Bath	PF-35	475	2210	445					0	0	0			0	0	18	36
1	24	*TH	SD-PW-4209	W5-T2B	T2	1-21/F	18	B	M.Bath	PF-36	475	2210	450					0	0	0			0	0	18	36
1	24	*TH		W4-T2B	T2	1-21/F	18	B	E.Bath	PF-36	520	2210	490					0	0	0			0	0	18	36
1		台	SD-PW-4210	W7-T2A	T2	2-21/F	17	A	BR	PF-20	2180	2160	675	660	675			68	0	0			0	0	0	0
1		台	SD-PW-4211	W7-T2B	T2	2-21/F	17	B	BR	PF-21	2180	2160	675	600	675			68	0	0			0	0	0	0
1		台	SD-PW-4212	22W3-T2A	T2	22/F	1	A	Master	PF-05	3130	2430	775	1410	775			4	0	0			0	0	0	0
1		台	SD-PW-4213	22W2-T2A	T2	22/F	1	A	Din	PF-06	2730	2430	775	1010	775			4	0	0			0	0	0	0
1		台	SD-PW-4214	22W2-T2B	T2	22/F	1	B	Din	PF-07	2730	2430	775	1010	775			4	0	0			0	0	0	0
1		台	SD-PW-4215	22W3-T2B	T2	22/F	1	B	Master	PF-08	3130	2430	775	1410	775			4	0	0			0	0	0	0
1	14	12	SD-PW-4216	22W6-T2C	T2	22/F	1	C	Kit	PF-28	1030	1880	500	500				0	0	0			2	4	0	0
1		台	SD-PW-4217	22W5-T2C	T2	22/F	1	C	BR2	PF-29	1130	2430	550	550				0	0	0			0	0	0	0
1		台	SD-PW-4218	22W4-T2C	T2	22/F	1	C	Master	PF-30	1530	2430	750	750				0	0	0			0	0	0	0
1		台		22W3-T2C	T2	22/F	1	C	BR2	PF-30	1530	2430	750	750				0	0	0			0	0	0	0
1	24	*TH	SD-PW-4219	22W4-T2A	T2	22/F	1	A	M.Bath	PF-35	520	2480	490					0	0	0			0	0	1	2
1	24	*TH		22W5-T2A	T2	22/F	1	A	E.Bath	PF-35	475	2480	445					0	0	0			0	0	1	2
1	24	*TH	SD-PW-4220	22W5-T2B	T2	22/F	1	B	M.Bath	PF-36	475	2480	445					0	0	0			0	0	1	2
1	24	*TH		22W4-T2B	T2	22/F	1	B	E.Bath	PF-36	520	2480	490					0	0	0			0	0	1	2
1		台	SD-PW-4221	22W7-T2A	T2	22/F	1	A	BR	PF-20	2180	2430	675	660	675			4	0	0			0	0	0	0
1		台	(欠缺圖紙)	22W7-T2B	T2	22/F	1	B	BR1	PF-21	2180	2430	675	660	675			4	0	0			0	0	0	0
1		台	SD-PW-4222	23W10-T2A	T2	23/F	1	A	Master	PF-05	3130	2430	775	1410	775			4	0	0			0	0	0	0
1		台	SD-PW-4223	23W11-T2A	T2	23/F	1	A	EN1	PF-06	2730	2430	775	1010	775			4	0	0			0	0	0	0
1		台	SD-PW-4224	23W2-T2A	T2	23/F	1	A	Din	PF-07	2730	2430	775	1010	775			4	0	0			0	0	0	0
1		台	SD-PW-4225	23W3-T2A	T2	23/F	1	A	Master	PF-08	3130	2430	775	1410	775			4	0	0			0	0	0	0
1		台	SD-PW-4226	23W9-T2A	T2	23/F	1	A	Master	PF-20	1530	2430	750	750				0	0	0			0	0	0	0
1	16	16		23W8-T2A	T2	23/F	1	A	M.Bath	PF-20	1280	2480	625	625				2	4	0			0	0	0	0
1	16	16	SD-PW-4227	23W5-T2A	T2	23/F	1	A	Kit	PF-21	2180	1880	675	660	675			0	2	4			0	0	0	0
1		台		23W4-T2A	T2	23/F	1	A	BR	PF-21	1530	2430	750	750				0	0	0			0	0	0	0
1	14	12	SD-PW-4228	23W6-T2C	T2	23/F	1	C	Kit	PF-28	1030	1880	500	500				0	0	0			2	4	0	0
1		台	SD-PW-4229	23W5-T2C	T2	23/F	1	C	BR2	PF-29	1130	2430	550	550				0	0	0			0	0	0	0
1		台	SD-PW-4230	23W4-T2C	T2	23/F	1	C	Master	PF-30	1530	2430	750	750				0	0	0			0	0	0	0
1		台		23W3-T2C	T2	23/F	1	C	BR2	PF-30	1530	2430	750	750				0	0	0			0	0	0	0
1	24	*TH	SD-PW-4231	23W15-T2A	T2	23/F	1	A	MBR	PF-35	520	2430	490					0	0	0			0	0	1	2
1	24	*TH	SD-PW-4232	23W14-T2A	T2	23/F	1	A	Master	PF-36	475	2480	445					0	0	0			0	0	1	2
1	24	*TH		23W13-T2A	T2	23/F	1	A	Master	PF-36	520	2480	490					0	0	0			0	0	1	2



窗撑系列

限位窗撑带分离锁盒

- ★ 分离式限位窗撑是专门设计来限制顶悬窗打开的角度。
- ★ 分离式限位窗撑使用时，可在顶悬窗或平开窗上使用限制其打开的角度。其作用可：
 - 1) 防止大风损坏窗户；
 - 2) 防止儿童从窗隙处坠下。
- ★ 使用钥匙打开限位撑锁盒，使窗户打开至最大，以便清洗或维修窗户。在某些情况下，它符合消防走火条例。
- ★ 选用优良的 (304) 不锈钢制造。

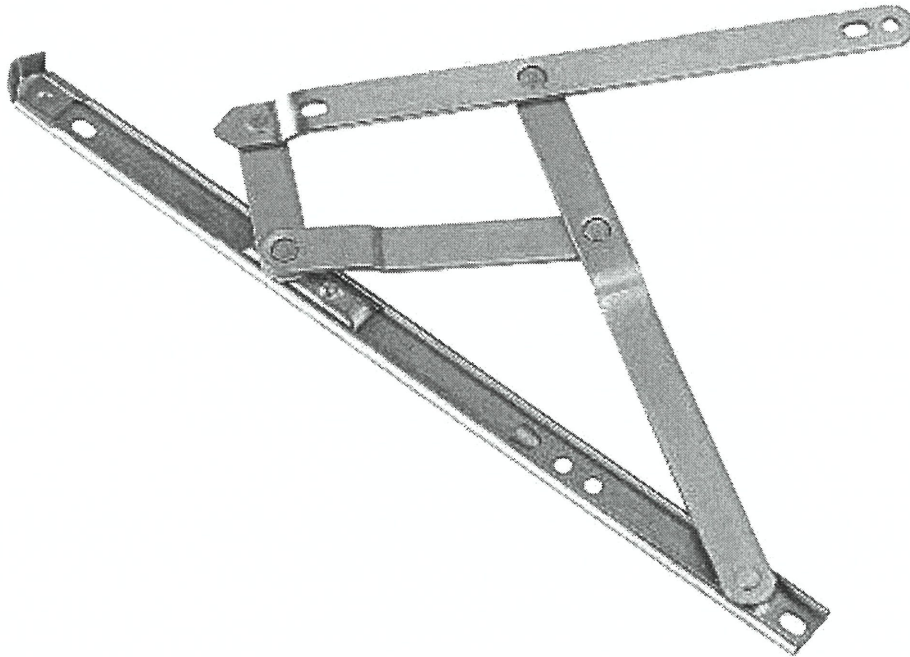


TRST SERIES STANDARD DUTY
TWO BAR LIMIT HINGE WITH RELEASABLE DEVICE
TRST 系列限位窗撑带分离锁盒

型号	A	B	C	D	E	F	G
TRST06	152.00	153.50	335.20	56.80	15.00	23.00	18.00
TRST08	202.00	186.00	188.70	56.80	15.00	23.00	18.00
TRST10	251.00	234.00	238.00	56.80	15.00	23.00	18.00
TRST12	305.00	284.40	279.20	56.80	15.00	23.00	18.00
TRST14	354.00	335.40	335.40	56.80	15.00	23.00	18.00

TRHD SERIES HEAVY DUTY
TWO BAR LIMIT HINGE WITH RELEASABLE DEVICE
TRHD 系列限位窗撑带分离锁盒

型号	A	B	C	D	E	F	G
TRHD08	203.00	184.00	207.30	56.80	16.00	23.00	22.00
TRHD10	254.00	234.00	254.50	56.80	16.00	23.00	22.00
TRHD12	304.80	284.40	299.20	56.80	16.00	23.00	22.00
TRHD14	354.40	334.20	358.00	56.80	16.00	23.00	22.00
TRHD16	406.00	384.00	405.00	56.80	16.00	23.00	22.00



These Truth 34 Series Standard Duty and Heavy Duty Stainless Steel 4-Bar Hinges are similar to the Anderberg 201SS & 301SS styles; however, these hinges also have the capability of producing 90° of window opening. Designed only for casement window applications, these non-handed, 4-Bar Hinges are designed to project the vent out as it pivots to avoid interference between a lipped vent and frame.

WARRANTY:

Protected under the terms of the Truth Warranty for window & Door Manufacturers & Authorized Distributors. For a copy of this warranty, please contact Truth.

MATERIAL: Non-magnetic stainless steel arms and track.

ORDERING INFORMATION & OPTIONS:

1. Choose correct hinge size and style by part number. (Reference 4-Bar Hinge Part Number Guide for the available options).
2. Order two hinges per window.

RECOMMENDED SCREWS:

Standard Duty (401 Series) 6 -- #10 Slotted or #8 Phillips pan head stainless steel screws. Length and thread type to be determined by profile design.

Heavy Duty (601 Series) 6 -- #10 Phillips pan head stainless steel screws. Length and thread type to be determined by profile design. See Truth Tip #11 for additional information on screw selection.

INCLUDE TRUTH SPECS ON YOUR NEXT WINDOW PROJECT

4-bar type window hinge for casement windows, which projects the vent while opening to avoid interference between frame and sash.

Window hinges to be of 4-bar type design, allowing 90° opening and washability access to outside of window glass. Hinges shall be non-handed and constructed of 300 series stainless steel. Hinges used must be certified to AAMA 904.1 specifications.

Window hinges shall be 401/601 series 4-bar, as manufactured by Truth Hardware.

**HEAVY DUTY
4-BAR HINGE**
(601SS Series)

FIG. 3 TRUTH HEAVY DUTY 4-BAR CASEMENT HINGE
(Truth 601SS Series)

TRUTH HEAVY DUTY 4-BAR CASEMENT HINGE W/ 90° STOP

MAT'L	HINGE CALLOUT & ACTUAL LENGTH		PART NUMBER
→ SST	14"	14.50" [368.3 mm]	34.59.00.208
→ SST	16"	16.50" [419.1 mm]	34.60.00.208
SST	18"	18.50" [469.9 mm]	34.61.00.208

PART NUMBERING SYSTEM

PRODUCT NO.	MODEL	FINISH	ASSEMBLY
34	59	00	208
4-BAR HINGE	HEAVY DUTY 14" LENGTH	NO DECORATIVE FINISH	W/ STOP STD. OPEN (HINGE FEATURE)

4-BAR HINGE APPLICATION TABLE FOR CASEMENT HINGES
(SIDE HUNG) (AS CERTIFIED TO AAMA 904.1)

12

HINGE CALLOUT & (ACTUAL LENGTH)		ULTIMATE (SEE NOTE #6)	
		SASH/VENT WIDTH RANGE	MAX SASH VENT WEIGHT
14"	14.52" [368.8 mm]	14"-36" [356mm-914mm]	120 lbs at 36" [54.4 kg at 914mm]
16"	16.52" [419.6 mm]	16"-36" [406mm-914mm]	120 lbs at 36" [54.4 kg at 914mm]
18"	18.52" [470.4 mm]	18"-36" [457mm-914mm]	120 lbs at 36" [54.4 kg at 914mm]

NOTES:

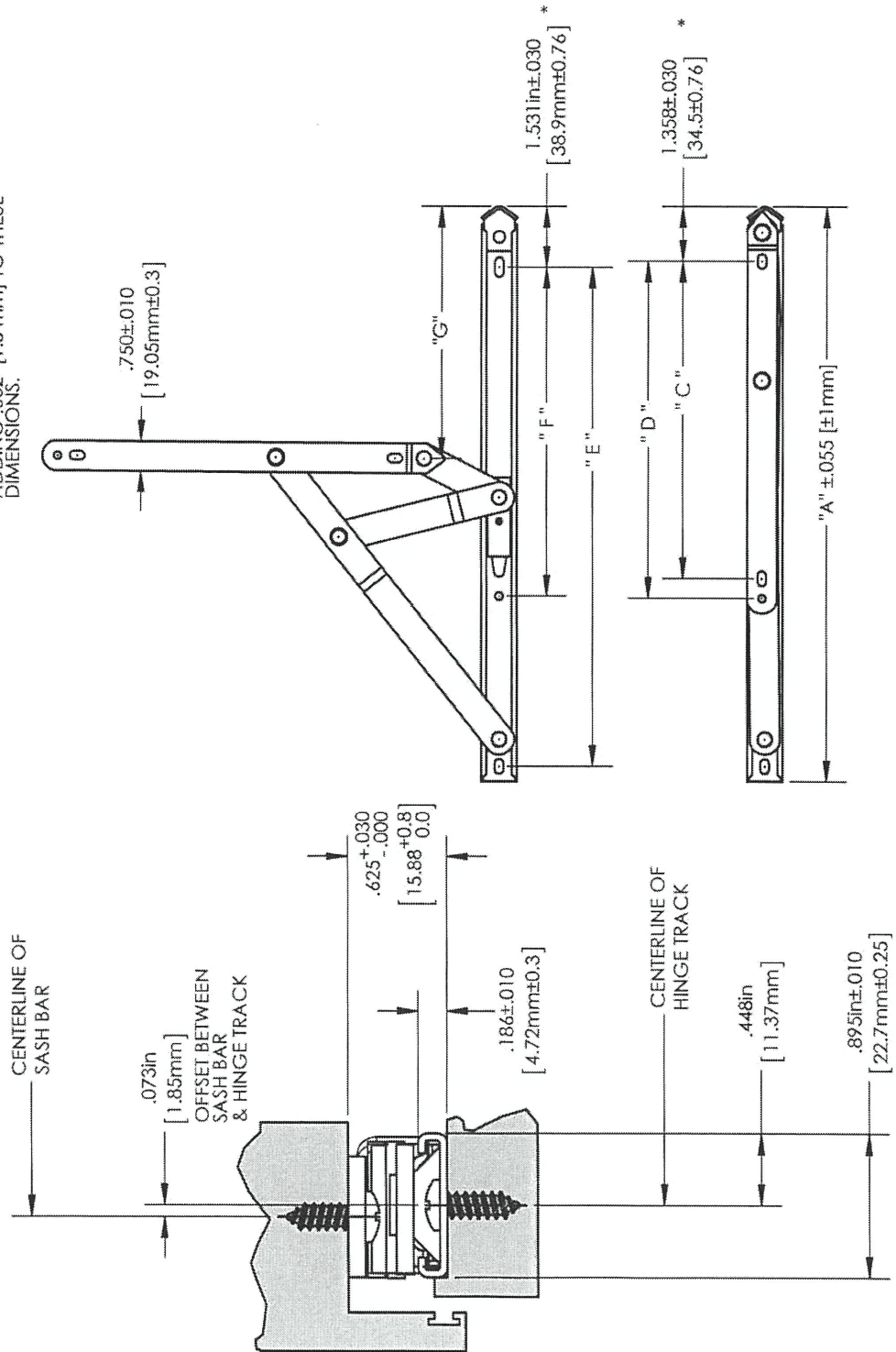
1. THESE HEAVY DUTY HINGES 90° 4-BAR HINGES ARE RECOMMENDED FOR CASEMENT APPLICATIONS ONLY.
2. FOR ADDITIONAL RECOMMENDATIONS REGARDING 4-BAR HINGES, PLEASE REFER TO THE TRUTH TIPS SECTION AND THE TECH NOTES SECTION AT THE END OF THE CATALOG.
3. ALL 601 SERIES HINGES HAVE A BRASS SHOE.
4. THE STANDARD STACK HEIGHT OF A HEAVY DUTY HINGE IS .625 (15.9 mm). IF A SHIM OR WASHER IS USED THE STACK HEIGHT WILL INCREASE BY THE SHIM OR WASHER THICKNESS.
5. ULTIMATE SASH WEIGHT & WIDTH FOR HINGES AS SHOWN IN CHARTS ARE BASED ON AAMA 904.1 "SPECIFICATION FOR MULTI-BAR HINGES IN WINDOW APPLICATIONS". THESE NUMBERS DO NOT APPLY TO WINDOWS BEING TESTED TO ANSI/AMMA/WDMA 101/1.3 2/NAFS-02 "CASEMENT HARDWARE LOAD TEST".



FIG. 4 TRUTH HEAVY DUTY 4-BAR CASEMENT HINGE
(Truth 601SS Series)

RECOMMENDED SCREWS:
#10 PHILLIPS PAN HEAD STAINLESS
STEEL SCREWS (LENGTH AND THREAD
TYPE TO BE DETERMINED BY PROFILE
DESIGN)

NOTE: * IF PREDRILLING, TRUTH RECOMMENDS
ADDING .062" [1.5 mm] TO THESE
DIMENSIONS.

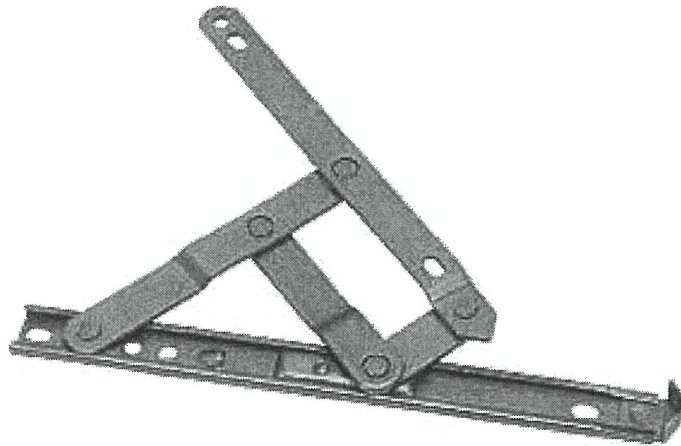


**HEAVY DUTY
4-BAR HINGE
(601SS Series)**

FIG. 5 TRUTH HEAVY DUTY 4-BAR CASEMENT HINGE
(Truth 601SS Series)

HINGE CALL OUT	HINGE PART NUMBER	"A" DIM HINGE LENGTH	"C" DIM	"D" DIM	"E" DIM	"F" DIM	"G" DIM	# OF SCREWS
14"	34.59.00.XXX	14.52" [368.8 mm]	8.01" [203.4 mm]	8.51" [216.1 mm]	12.59" [319.9 mm]	8.30" [210.9 mm]	6.59" [167.4 mm]	7
16"	34.60.00.XXX	16.52" [419.6 mm]	8.01" [203.4 mm]	8.51" [216.1 mm]	14.59" [370.7 mm]	7.75" [196.8 mm]	6.09" [154.7 mm]	7
18"	34.61.00.XXX	18.52" [470.4 mm]	8.01" [203.4 mm]	8.51" [216.1 mm]	16.59" [421.5 mm]	7.51" [190.7 mm]	5.77" [146.6 mm]	7

**STANDARD & HEAVY DUTY
4-BAR HINGES**
(201 - 301 Series) ←



These "non-handed" 4-Bar Hinges are specially designed for casement, awning, and projected vents with a lip on the outside edge. 4-Bar Hinges are designed to project the sash out as it pivots to avoid interference between a lipped vent and frame. In awning and projected window applications, friction adjustment is achieved by adjusting the screw which is located in the sliding shoe. Adjustments made to this screw affect shoe friction as it slides along the hinge track.

Standard Duty 4-Bar Hinges are generally used for residential projects requiring relatively light window sections (projected units up to 40 lbs.). These hinges are normally provided with a stop built into its track -- and is generally used with awning and projected windows. Hinges designed without the stop feature will open to approximately 65° in casement applications.

Heavy Duty 4-Bar Hinges are generally used for commercial projects requiring relatively heavy window sections (projected units up to 200 lbs.).

WARRANTY:

Protected under the terms of the Truth Warranty for Window and Door Manufacturers and Authorized Distributors. Refer to Truth's Terms and Conditions for further details.

MATERIAL:

Standard & Heavy Duty Stainless Steel 4-Bar Hinges: Non-magnetic stainless steel. Manufactured with a brass shoe.

ORDERING INFORMATION:

1. Choose correct hinge size and style by part number. (Reference the 4-Bar Hinge Part Number Guide for the available options).
2. Order two hinges per window.

RECOMMENDED SCREWS:

Stainless Steel 4-Bar Hinges:
6 -- #10 Phillips Pan head screws.
Length and thread type to be determined by profile design.

See Truth Tips for additional screw selection information.

**INCLUDE TRUTH SPECS ON
YOUR NEXT WINDOW PROJECT**

4-bar type window hinge for casement or awning windows, which projects the vent while opening to avoid interference between frame and sash.

Window hinges to be of 4-bar type design, utilizing a screw adjusted brass slide shoe to fine tune hinge to window application. Hinges shall be non-handed and constructed of high quality stamped and roll formed 300 series stainless steel materials. Hinges used must be certified to AAMA 904.1 specifications.

Window hinges shall be 201/301 series 4-bar, as manufactured by Truth Hardware.

FIG. 7 TRUTH HEAVY DUTY 4-BAR HINGE
(ANDERBERG 301SS SERIES)

HEAVY DUTY 4-BAR HINGE PART NUMBER GUIDE

MAT'L	HINGE CALLOUT & (ACTUAL LENGTH)		PART NUMBER	STD. STOP	NO STOP
SST	10"	(10.50") [266.7mm]	34.24.00	.208	.210
SST	12"	(12.50") [317.5mm]	34.25.00	.208	.210
SST	14"	(14.50") [368.3mm]	34.26.00	.208	.210
SST	16"	(16.50") [419.1mm]	34.27.00	.208	.210
SST	18"	(18.50") [469.9mm]	34.28.00	.208	.210
SST	20"	(20.50") [520.7mm]	34.29.00	.208	.210
SST	24"	(24.50") [622.3mm]	34.31.00	.208	.210
SST	28"	(28.50") [723.9mm]	34.86.00	.208	

PART NUMBERING SYSTEM

Product No.	Model	Finish	Assembly
34	24	00	208
4-Bar Hinge	Heavy Duty 10" Length	No Decorative Finish	W/ Stop Std. Open (Hinge Feature)

NOTES:

- *SPECIAL NOTE* A PROPERLY COUNTERBALANCED SASH IS RECOMMENDED IN AN AWNING OPERATION. AN UNBALANCED SASH WHEN USED WITH AN AWNING OPERATOR IS LIKELY TO PRODUCE SASH CHATTER AND AN UNEVEN FEEL DURING OPERATION.
- FOR ADDITIONAL RECOMMENDATIONS REGARDING 4-BAR HINGES, PLEASE REFER TO THE TRUTH TIPS SECTION AND THE TECH NOTES SECTION AT THE END OF THE CATALOG.
- UNLESS OTHERWISE SPECIFIED ALL 301 SERIES HINGES HAVE A BRASS SHOE.
- THE STANDARD STACK HEIGHT OF A HEAVY DUTY HINGE IS .625 (15.9mm). IF A SHIM OR WASHER IS USED THE STACK HEIGHT WILL INCREASE BY THE SHIM OR WASHER THICKNESS.
- ULTIMATE SASH WEIGHT & WIDTH FOR HINGES AS SHOWN IN CHARTS ARE BASED ON AAMA 904.1 "SPECIFICATION FOR MULTI-BAR HINGES IN WINDOW APPLICATIONS". THESE NUMBERS DO NOT APPLY TO WINDOWS BEING TESTED TO ANSI/AMMA/WDMA 101/1.5 2/NAFS-02 "CASEMENT HARDWARE LOAD TEST".

**HEAVY DUTY
4-BAR HINGE
(301SS Series)**

FIG. 8 TRUTH HEAVY DUTY 4-BAR HINGE
(ANDERBERG 301SS SERIES)

4-BAR HINGE APPLICATION TABLE FOR PROJECTED & AWNING HINGES (AS CERTIFIED TO AAMA 904.1)							
HINGE CALL OUT & (ACTUAL LENGTH)		*COUNTERBALANCED		**ULTIMATE (SEE NOTE #2)		DEGREES OF OPENING	
		SASH/VENT HEIGHT RANGE	MAX SASH VENT WEIGHT	SASH/VENT HEIGHT RANGE	MAX SASH VENT WEIGHT	STD. STOP	NO STOP
10"	(10.50") [266.7mm]	12"-20" [305-508 mm]	58 LBS [26.3 KG]	12"-20" [305-508 mm]	58 LBS [26.3 KG]	59°	55°
12"	(12.50") [317.5mm]	20"-25" [508-635 mm]	73 LBS [33.1 KG]	20"-25" [508-635 mm]	73 LBS [33.1 KG]	53°	55°
14"	(14.50") [368.3mm]	23"-29" [584-737 mm]	85 LBS [39.0 KG]	23"-29" [584-737 mm]	85 LBS [39.0 KG]	50°	55°
16"	(16.50") [419.1mm]	25"-34" [635-864 mm]	99 LBS [44.9 KG]	25"-40" [635-1016 mm]	99 LBS [44.9 KG]	50°	55°
18"	(18.50") [469.9mm]	32"-37" [813-940 mm]	108 LBS [49.0 KG]	32"-40" [813-1143 mm]	108 LBS [49.0 KG]	50°	55°
20"	(20.50") [520.7mm]	34"-40" [864-1016 mm]	117 LBS [53.1 KG]	34"-50" [864-1270 mm]	117 LBS [53.1 KG]	49°	55°
24"	(24.50") [622.3mm]	40"-44" [1016-1118 mm]	129 LBS [58.5 KG]	40"-60" [1016-1524 mm] ✓	129 LBS [58.5 KG]	44°	55°
28"	(28.50") [723.9mm]	50"-64" [1270-1626 mm]	175 LBS [79.4 KG]	50"-80" [1270-2032 mm]	234 LBS [106.1 KG]	42°	NA

4-BAR HINGE APPLICATION TABLE FOR CASEMENT (SIDE HUNG) HINGES (AS CERTIFIED TO AAMA 904.1)				
HINGE CALL OUT & (ACTUAL LENGTH)		ULTIMATE (SEE NOTE #2)		DEGREES OF OPENING
		SASH/VENT HEIGHT RANGE	MAX SASH VENT WEIGHT	NO STOP
10"	(10.50") [266.7mm]	12"-36" [305-914 mm]	100 LBS AT 36" [45.36 KG AT 914 mm]	55°
12"	(12.50") [317.5mm]	12"-36" [305-914 mm]	100 LBS AT 36" [45.36 KG AT 914 mm]	55°
14"	(14.50") [368.3mm]	12"-36" [305-914 mm]	100 LBS AT 36" [45.36 KG AT 914 mm]	55°
16"	(16.50") [419.1mm]	12"-36" [305-914 mm]	100 LBS AT 36" [45.36 KG AT 914 mm]	55°

DEFINITIONS:

*COUNTERBALANCED: A PAIR OF HINGES WILL BALANCE OR HOLD OPEN THE VENT/SASH WITH NO ADDED FRICTION AT THE HEIGHTS AND WEIGHTS LISTED IN THE CHART.

**ULTIMATE: A PAIR OF HINGES WILL NOT BALANCE OR HOLD OPEN THE VENT/SASH WITHOUT ADDED FRICTION AT THE HEIGHTS AND WEIGHTS LISTED IN THE CHART.

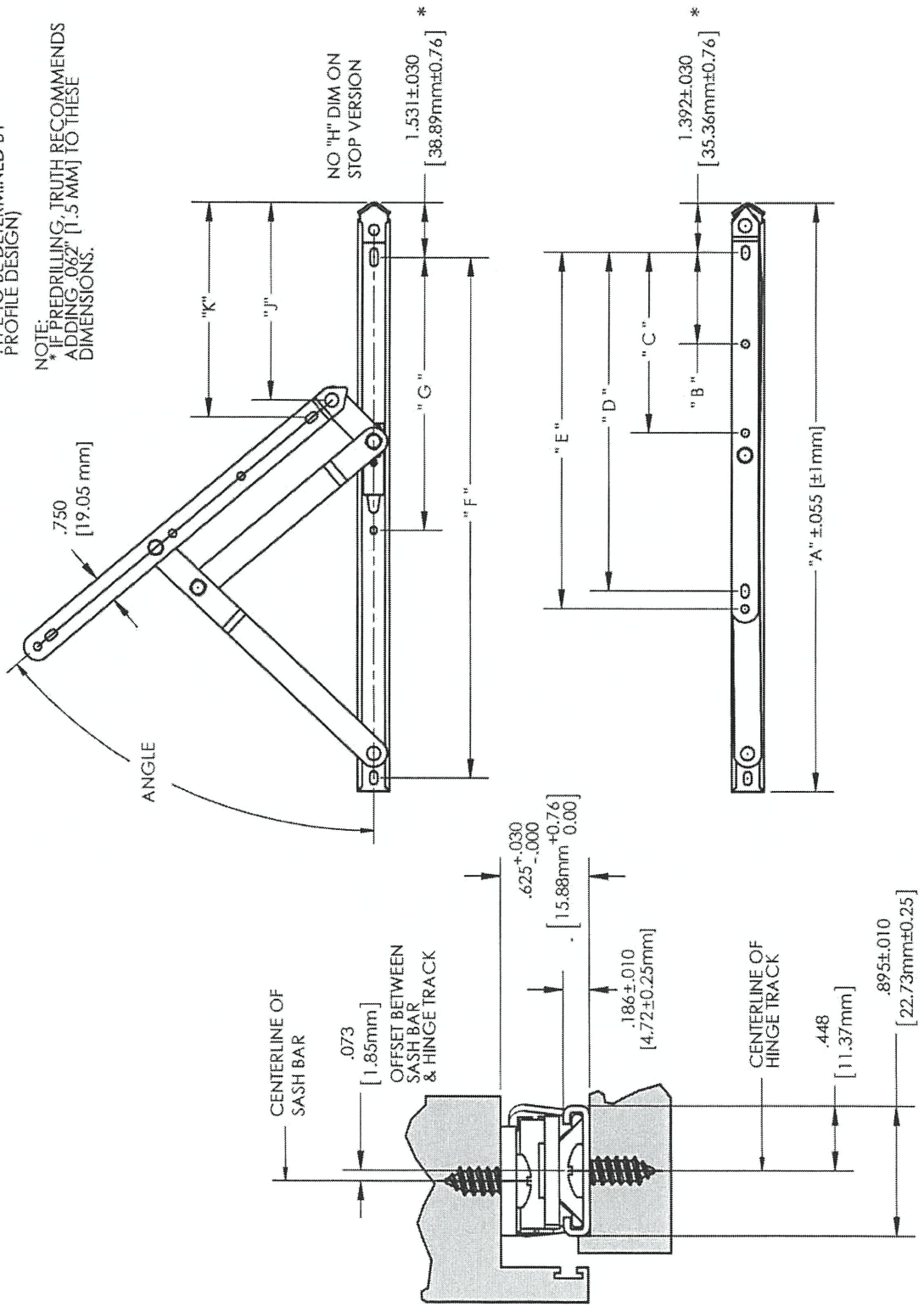
NOTES:

- A PROPERLY COUNTERBALANCED SASH IS RECOMMENDED IN AN AWNING OPERATION. AN UNBALANCED SASH WHEN USED WITH AN AWNING OPERATOR IS LIKELY TO PRODUCE SASH CHATTER AND AN UNEVEN FEEL DURING OPERATION.
- ULTIMATE SASH WEIGHT & WIDTH FOR HINGES, AS SHOWN IN CHARTS ARE BASED ON AAMA 904.1 "SPECIFICATION FOR MULTI-BAR HINGES IN WINDOW APPLICATIONS". THESE NUMBERS DO NOT APPLY TO WINDOWS BEING TESTED TO ANSI/AMMA/WDMA 101/1.5 2/NAFS-02 "CASEMENT HARDWARE LOAD TEST".

FIG. 9 TRUTH HEAVY DUTY 4-BAR HINGE W/STOP
(ANDERBERG 301SS SERIES)

RECOMMENDED SCREWS:
#10 PHILLIPS, PAN HEAD STAINLESS
STEEL SCREWS (LENGTH AND THREAD
TYPE TO BE DETERMINED BY
PROFILE DESIGN)

NOTE:
* IF PREDRILLING, TRUTH RECOMMENDS
ADDING .062" [1.5MM] TO THESE
DIMENSIONS.



**HEAVY DUTY
4-BAR HINGE
(301SS Series)**

FIG. 10 TRUTH HEAVY DUTY 4-BAR HINGE W/STOP
(ANDERBERG 301SS SERIES)

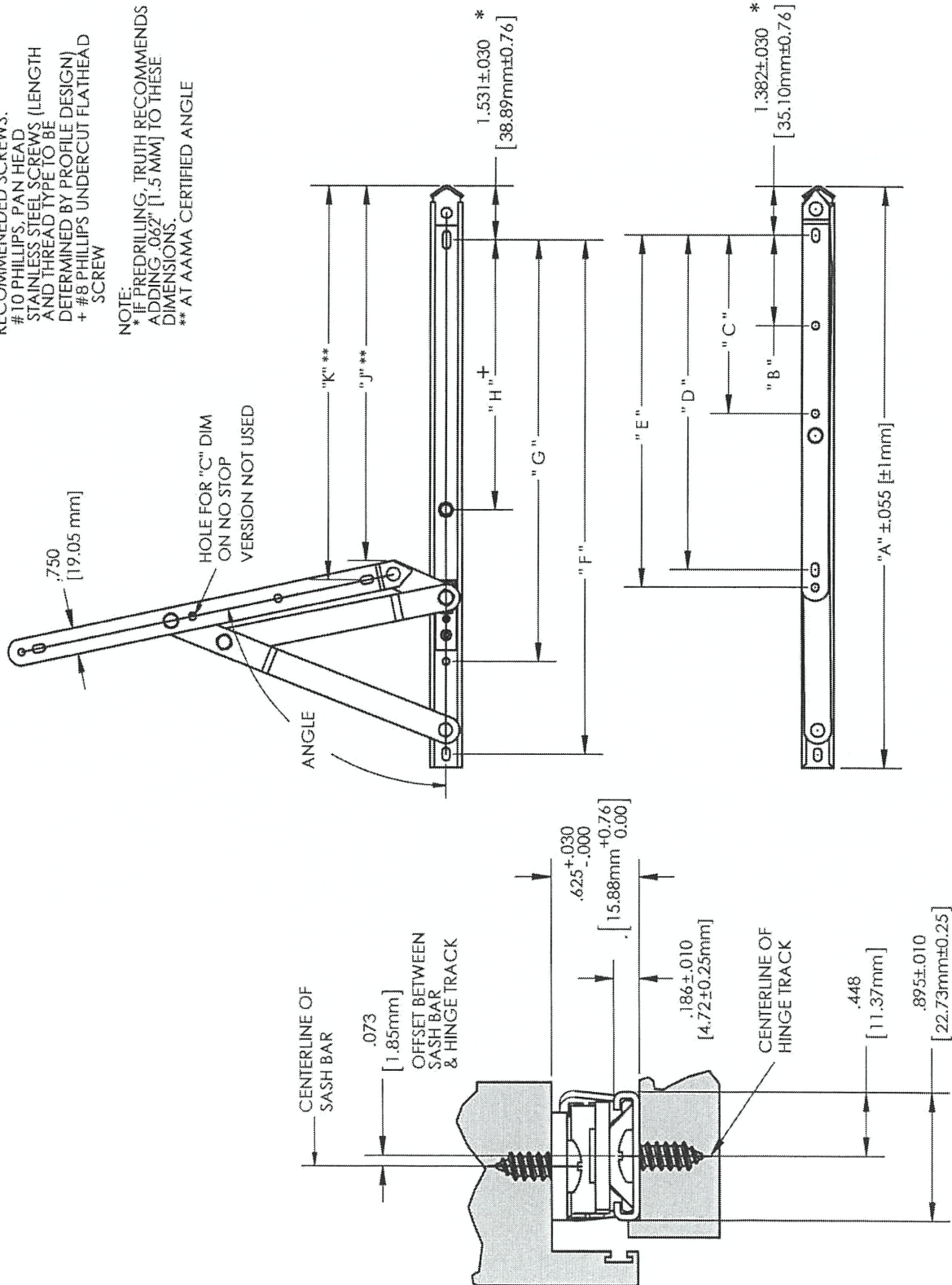
TRUTH HEAVY DUTY 4-BAR HINGE W/STOP													
HINGE CALL OUT	HINGE PART #	"A" HINGE LG	"B"	"C"	"D"	"E"	"F"	"G"	"H"	"J"	"K"	ANGLE	# OF SCREWS
10"	34.24.00.XXX	10.50" [266.7 mm]	NA	NA	6.50" [165.1 mm]	7.00" [177.8 mm]	8.59" [218.2 mm]	6.34" [161.0 mm]	NA	4.38" [111.2 mm]	4.72" [119.9 mm]	59°	7
12"	34.25.00.XXX	12.50" [317.5 mm]	2.56" [65.0 mm]	NA	7.50" [190.5 mm]	8.00" [203.2 mm]	10.59" [269.0 mm]	6.59" [167.4 mm]	NA	4.51" [114.6 mm]	4.96" [126.0 mm]	53°	7
14"	34.26.00.XXX	14.50" [368.3 mm]	2.56" [65.0 mm]	NA	8.50" [215.9 mm]	9.00" [228.6 mm]	12.59" [319.8 mm]	6.94" [176.3 mm]	NA	4.81" [122.2 mm]	5.30" [134.6 mm]	50°	7
16"	34.27.00.XXX	16.50" [419.1 mm]	2.56" [65.0 mm]	5.06" [128.5 mm]	9.50" [241.3 mm]	10.00" [254.0 mm]	14.59" [370.6 mm]	7.66" [194.6 mm]	NA	5.53" [140.5 mm]	6.02" [152.9 mm]	50°	8
18"	34.28.00.XXX	18.50" [469.9 mm]	2.56" [65.0 mm]	6.06" [153.9 mm]	10.50" [266.7 mm]	11.00" [279.4 mm]	16.59" [421.4 mm]	8.28" [210.3 mm]	NA	6.16" [156.5 mm]	6.66" [169.2 mm]	50°	8
20"	34.29.00.XXX	20.50" [520.7 mm]	2.56" [65.0 mm]	7.06" [179.3 mm]	11.50" [292.1 mm]	12.00" [304.8 mm]	18.59" [472.2 mm]	8.97" [227.8 mm]	NA	6.86" [174.2 mm]	7.35" [186.7 mm]	49°	8
24"	34.31.00.XXX	24.50" [622.3 mm]	2.56" [65.0 mm]	9.06" [230.1 mm]	13.50" [342.9 mm]	14.00" [355.6 mm]	22.59" [573.8 mm]	9.09" [230.1 mm]	NA	6.90" [175.3 mm]	7.44" [189.0 mm]	44°	8
28"	34.86.00.XXX	28.50" [723.9 mm]	2.56" [65.0 mm]	11.06" [280.9 mm]	15.50" [393.7 mm]	16.00" [406.4 mm]	26.59" [675.4 mm]	9.59" [243.6 mm]	NA	7.36" [186.9 mm]	7.93" [201.4 mm]	42°	8



FIG. 11 TRUTH HEAVY DUTY 4-BAR HINGE W/O STOP
(ANDERBERG 301SS SERIES)

RECOMMENDED SCREWS:
#10 PHILLIPS, PAN HEAD
STAINLESS STEEL SCREWS (LENGTH
AND THREAD TYPE TO BE
DETERMINED BY PROFILE DESIGN)
+ #8 PHILLIPS UNDERCUT FLATHEAD
SCREW

NOTE:
* IF PREDRILLING, TRUTH RECOMMENDS
ADDING .062" [1.5 MM] TO THESE
DIMENSIONS.
** AT AAMA CERTIFIED ANGLE



**HEAVY DUTY
4-BAR HINGE
(301SS Series)**

FIG. 12 TRUTH HEAVY DUTY 4-BAR HINGE W/O STOP
(ANDERBERG 301SS SERIES)

TRUTH HEAVY DUTY 4-BAR HINGE W/O STOP													
HINGE CALL OUT	HINGE PART #	"A" HINGE LG	"B"	"C"	"D"	"E"	"F"	"G"	"H"	"J"***	"K"***	AAMA CERTIFIED ANGLE	# OF SCREWS
10"	34-24.00.XXX	10.50" [266.7 mm]	NA	NA	6.50" [165.1 mm]	7.00" [177.8 mm]	8.59" [218.2 mm]	7.22" [183.4 mm]	NA	4.98" [126.5 mm]	5.30" [134.6 mm]	55°	7
12"	34-25.00.XXX	12.50" [317.5 mm]	2.56" [65.0 mm]	NA	7.50" [190.5 mm]	8.00" [203.2 mm]	10.59" [269.0 mm]	8.97" [227.8 mm]	NA	6.16" [156.5 mm]	6.48" [164.6 mm]	55°	7
14"	34-26.00.XXX	14.50" [368.3 mm]	2.56" [65.0 mm]	NA	8.50" [215.9 mm]	9.00" [228.6 mm]	12.59" [319.8 mm]	10.47" [265.9 mm]	NA	7.33" [186.2 mm]	7.65" [194.3 mm]	55°	7
16"	34-27.00.XXX	16.50" [419.1 mm]	2.56" [65.0 mm]	5.06" [128.5 mm]	9.50" [241.3 mm]	10.00" [254.0 mm]	14.59" [370.6 mm]	11.97" [304.0 mm]	7.66" [194.6 mm]	8.50" [215.9 mm]	8.83" [224.3 mm]	55°	8
18"	34-28.00.XXX	18.50" [469.9 mm]	2.56" [65.0 mm]	6.06" [153.9 mm]	10.50" [266.7 mm]	11.00" [279.4 mm]	16.59" [421.4 mm]	13.47" [342.1 mm]	8.28" [210.3 mm]	9.66" [245.4 mm]	9.98" [253.5 mm]	55°	8
20"	34-29.00.XXX	20.50" [520.7 mm]	2.56" [65.0 mm]	7.06" [179.3 mm]	11.50" [292.1 mm]	12.00" [304.8 mm]	18.59" [472.2 mm]	14.97" [380.2 mm]	8.97" [227.8 mm]	10.82" [274.8 mm]	11.14" [283.0 mm]	55°	8
24"	34-31.00.XXX	24.50" [622.3 mm]	2.56" [65.0 mm]	9.06" [230.1 mm]	13.50" [342.9 mm]	14.00" [355.6 mm]	22.59" [573.8 mm]	17.97" [456.4 mm]	9.09" [230.9 mm]	13.13" [333.5 mm]	13.45" [341.6 mm]	55°	8

** AT AAMA CERTIFIED ANGLE