



工程指示 / 要求簡箋 (E.I.)

工程指示編號：EI/2450

修改版次：A

工程編號：J851

工程名稱：青衣明翹匯住宅

工程項目：鋁柵格 CAD 電腦圖

收件人：生統

發件人：Leung Hin Wai

日期：18/9-2020 下午

要求提供 / 確認 事項：

- | | | |
|------------------------------------|-------------------------------------|-------------------------------|
| <input type="checkbox"/> 初步鋁料 B.M. | <input type="checkbox"/> 加工拆圖，然後生產 | <input type="checkbox"/> 尺寸表 |
| <input type="checkbox"/> 正式鋁料 B.M. | <input type="checkbox"/> 技術上資料 / 指示 | <input type="checkbox"/> 報價 |
| <input type="checkbox"/> 配件 B.M. | <input type="checkbox"/> 樣辦或貨品說明書 | <input type="checkbox"/> 分判合約 |
| <input type="checkbox"/> 其他：_____ | | |

內容：

請查收鋁柵格 CAD 電腦圖。更改三頁

請在 _____ 前完成上列要求。

附： -

以上項目為：

- 原合約工程包 原合約工程加 / 減賬 新工程報價

原因： -

分發東莞各部門：

- () 生產技術總監 連附件 () 技術部 連附件 () 生產部 連附件 () 機械設計部 連附件
 () 採購部 連附件 (/) 生產統籌部 連附件
 (/) 質檢部 連附件 () 會計部 連附件 () 報關組 連附件 () 其他 _____ 連附件

分發香港各部門：

- () 行政部 連附件 () 會計部 連附件 () 統籌部 連附件 () 工程部地盤科文 連附件
 () 採購部 連附件 () QS 部 連附件 () 維修部 連附件 () 其他 _____ 連附件

傳遞編號：

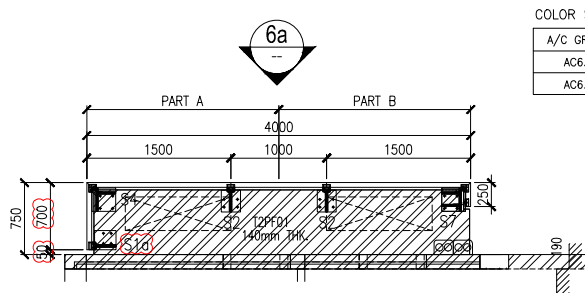
HK 2132

發件人簽署：

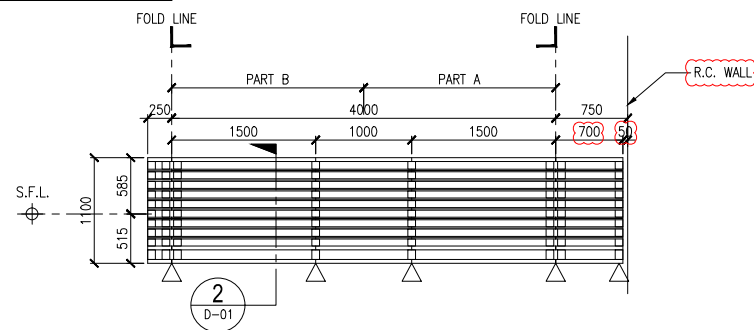
Handwritten signature

項目經理簽署：

Handwritten signature P.P.

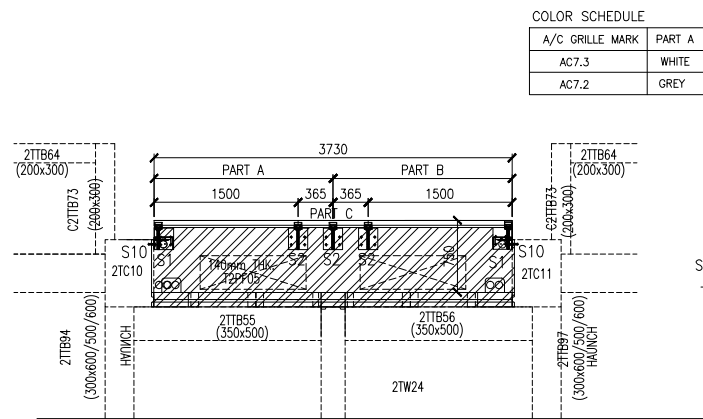


COLOR SCHEDULE				
A/C GRILLE MARK	PART A	PART B	Qty.	
AC6.2	GREY	GREY	15	
AC6.3	WHITE	WHITE	13	

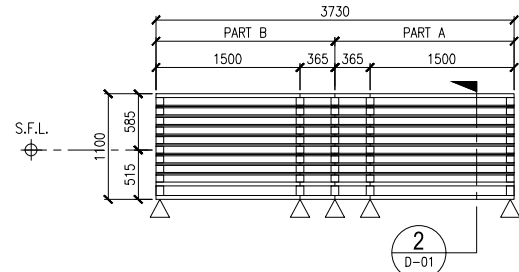


1a ELEVATION (AC6.2&AC6.3)
SCALE: 1 : 40 AC6.2 (AT T2/E/18F~33F)
AC6.3 (AT T2/E/2F~17F)

1 A/C PLATFORM LOCATION PLAN (AC6.2&AC6.3)
SCALE: 1 : 40 AC6.2 (AT T2/E/18F~33F)
AC6.3 (AT T2/E/2F~17F)

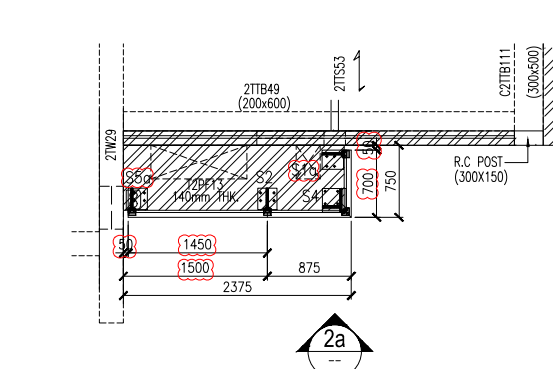


COLOR SCHEDULE				
A/C GRILLE MARK	PART A	PART B	PART C	Qty.
AC7.3	WHITE	WHITE	WHITE	15
AC7.2	GREY	GREY	GREY	13

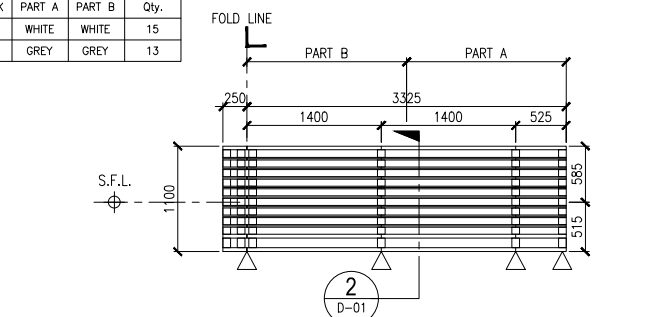


7a ELEVATION (AC7.2&AC7.3)
SCALE: 1 : 40 AC7.3(AT T2/H&G/18F~33F)
AC7.2(AT T2/H&G/1F~17F)

7 A/C PLATFORM LOCATION PLAN (AC7.2&AC7.3)
SCALE: 1 : 40 AC7.3(AT T2/H&G/18F~33F)
AC7.2(AT T2/H&G/1F~17F)

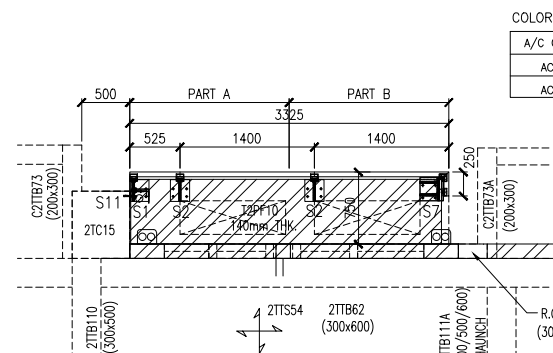


COLOR SCHEDULE				
A/C GRILLE MARK	PART A	PART B	Qty.	
AC11.2	WHITE	WHITE	15	
AC11.3	GREY	GREY	13	

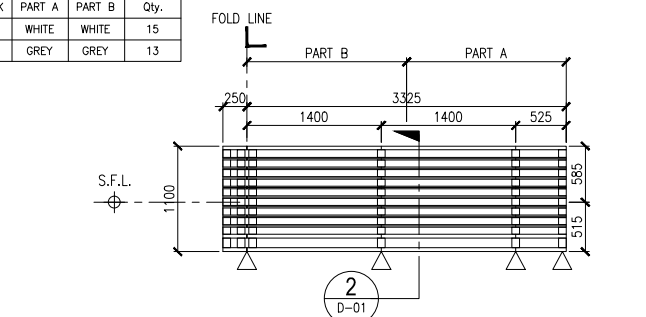


2a ELEVATION (AC10.1)
SCALE: 1 : 40 (AT T2A/B/2F~33F)

2 A/C PLATFORM LOCATION PLAN (AC10.1)
SCALE: 1 : 40 (AT T2A/B/2F~33F)



COLOR SCHEDULE				
A/C GRILLE MARK	PART A	PART B	Qty.	
AC11.2	WHITE	WHITE	15	
AC11.3	GREY	GREY	13	

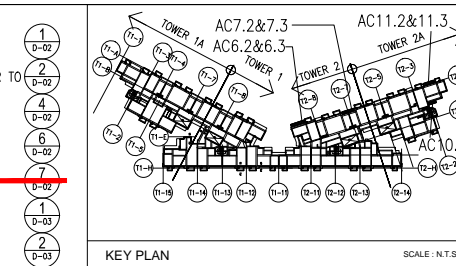


3a ELEVATION (AC11.2&AC11.3)
SCALE: 1 : 40 AC11.2 (AT T2A/B/18F~33F)
AC11.3 (AT T2A/B/2F~17F)

3 A/C PLATFORM LOCATION PLAN (AC11.2&AC11.3)
SCALE: 1 : 40 AC11.2 (AT T2A/B/18F~33F)
AC11.3 (AT T2A/B/2F~17F)

LEGEND:
A/C PLATFORM
ANCHOR BOLT BRACKET

SYMBOL:
S1: ANCHOR BOLT BRACKET REFER TO
S2&S3: ANCHOR BOLT BRACKET REFER TO
S4: ANCHOR BOLT BRACKET REFER TO
S5: ANCHOR BOLT BRACKET REFER TO
~~S6: ANCHOR BOLT BRACKET REFER TO~~
S7: ANCHOR BOLT BRACKET REFER TO
S8: ANCHOR BOLT BRACKET REFER TO
S9: ANCHOR BOLT BRACKET REFER TO
S10: ANCHOR BOLT BRACKET REFER TO
S11: ANCHOR BOLT BRACKET REFER TO



F.S.D. REF :
Note :
1. All dimensions are in mm.
2. All elevations are viewed from outside.
3. All dimensions to be verified on site before fabrication.

GENERAL NOTES
Legend :
1. F.F.L.-- Finished Floor Level
2. S.F.L.-- Structural Floor Level
3. (R) -- Reversed Detail
4. MIR. -- Mirror
X1 -- DETAIL MARK NO.
X001 -- REFER SHEET NO.

STRUCTURAL & FINISH FLOOR LEVEL FOR T1 & T2
1/F~32/F (LOW, HIGH ZONE)

FLOOR	S.F.L.	F.F.L.
1/F	+ 44.45	+ 44.50
2/F	+ 47.60	+ 47.65
3/F	+ 50.75	+ 50.80
5/F	+ 53.90	+ 53.95
6/F	+ 57.05	+ 57.10
7/F	+ 60.20	+ 60.25
8/F	+ 63.35	+ 63.40
9/F	+ 66.50	+ 66.55
10/F	+ 69.65	+ 69.70
11/F	+ 72.80	+ 72.85
12/F	+ 75.95	+ 76.00
15/F	+ 79.10	+ 79.15
16/F	+ 82.25	+ 82.30
17/F	+ 85.40	+ 85.45
18/F	+ 88.55	+ 88.60
19/F	+ 91.70	+ 91.75
20/F	+ 94.85	+ 94.90
21/F	+ 98.00	+ 98.05
22/F	+ 101.15	+ 101.20
23/F	+ 104.30	+ 104.35
25/F	+ 107.45	+ 107.50
26/F	+ 110.60	+ 110.65
27/F	+ 113.75	+ 113.80
28/F	+ 116.90	+ 116.95
29/F	+ 120.05	+ 120.10
30/F	+ 123.20	+ 123.25
31/F	+ 126.35	+ 126.40
32/F	+ 129.50	+ 129.55
33/F	+ 132.65	+ 132.70
35/F	+ 135.80	+ 135.85

NO.	DATE	REVISED	BY
B	21/09/2020	GENERAL REVISED	
A	26/06/2020	GENERAL REVISED	

CLIENT :
佳明集團控股有限公司
GRAND MING GROUP HOLDINGS LIMITED

MAIN CONTRACTOR :
GRAND TECH CONSTRUCTION CO. LTD.

ARCHITECT :
WONG TUNG & PARTNERS LIMITED
ARCHITECTS & PLANNERS

STRUCTURAL ENGINEER :
C M WONG & ASSOCIATES LTD

美特鋁質有限公司
MIDI ALUMINIUM FABRICATOR LTD.
Units 6-8, Sunray Industrial Centre, 1/F
610 Cha Kwo Ling Road, Kowloon
Tel:23489211-4 Fax:(852)27727666

PROJECT :
**RESIDENTIAL DEVELOPMENT AT
TSING YI TOWN LOT 190 SAI SHAN ROAD**

TITLE :
**ALUM. GRILLE FOR A/C PLATFORM
PARTIAL PLAN & PARTIAL ELEVATION
(AC6.2, AC6.3, AC7.2, AC7.3,
AC10.1, AC11, AC11.1)**

JOB NO. : J851

DRAWN BY : TOMMY DATE : 18-11-2019

CHKD BY : SCALE A1: 1 : 40

DWG. NO. : J851-AG-PE04 REV. : B

