

工程指示 / 要求簡箋(E.I.)

工程指示編號：EI / 1628 / 20 修改版次：-  
 工程編號：J851 工程名稱：青衣 明翹匯  
 工程項目：繪畫模圖(柵格位置)  
 收件人：羅小姐 發件人：Leung Hin Wai 日期：27/03/2020

要求提供 /  確認 事項：

- |                                    |                                     |                               |
|------------------------------------|-------------------------------------|-------------------------------|
| <input type="checkbox"/> 初步鋁料 B.M. | <input type="checkbox"/> 加工拆圖，然後生產  | <input type="checkbox"/> 尺寸表  |
| <input type="checkbox"/> 正式鋁料 B.M. | <input type="checkbox"/> 技術上資料 / 指示 | <input type="checkbox"/> 報價   |
| <input type="checkbox"/> 配件 B.M.   | <input type="checkbox"/> 樣辦或貨品說明書   | <input type="checkbox"/> 分判合約 |
| <input type="checkbox"/> 其他：_____  |                                     |                               |

內容：

繪畫模圖。共 9 頁。

請在 \_\_\_\_\_ 前完成上列要求。

附有關圖紙 / 文件： -

以上項目為：

- 原合約工程包                       原合約工程加 / 減賬                       新工程報價

原因：- \_\_\_\_\_

分發東莞各部門：

- ( ) 生產技術總監  連附件    ( ) 技術部     連附件    ( ) 生產部     連附件    ( ) 機械設計部  連附件  
 ( ) 採購部     連附件    ( ) 生產統籌部  連附件  
 ( ) 質檢部     連附件    ( ) 會計部     連附件    ( ) 報關組     連附件    ( ) 其他 \_\_\_\_\_  連附件

分發香港各部門：

- ( ) 行政部  連附件    ( ) 會計部  連附件    ( ) 統籌部  連附件    ( ) 工程部地盤科文     連附件  
 ( ) 採購部  連附件    ( ) QS 部     連附件    ( ) 維修部  連附件    ( ) 其他 \_\_\_\_\_  連附件

傳遞編號：

HK0431

發件人簽署：

項目經理簽署：

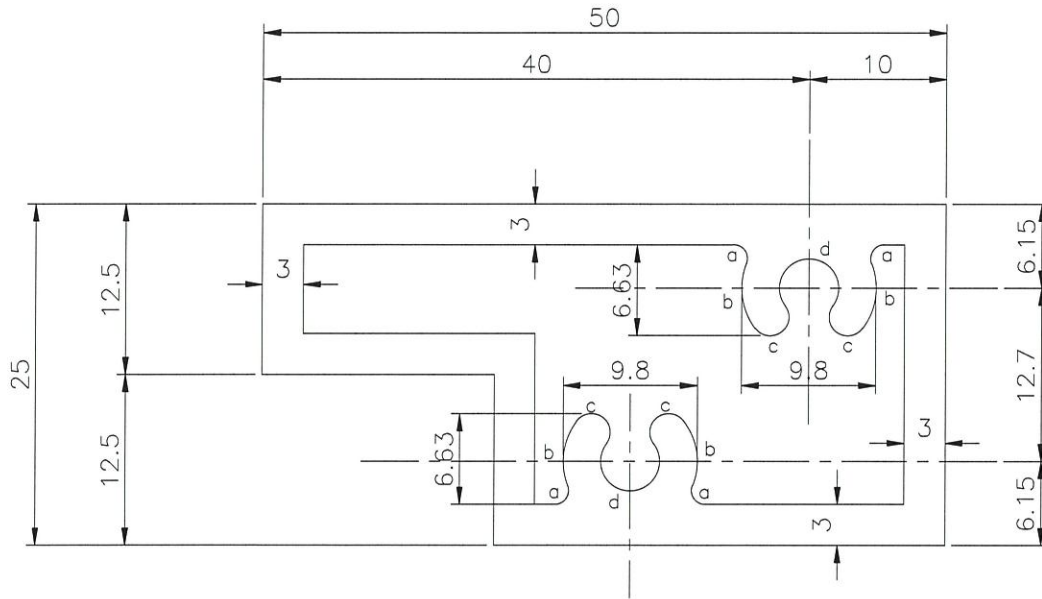


MIDI ALUMINIUM FABRICATOR LTD.

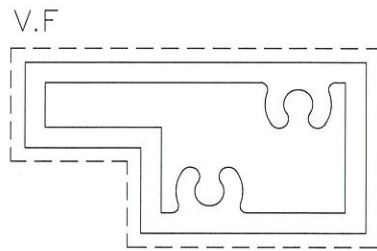
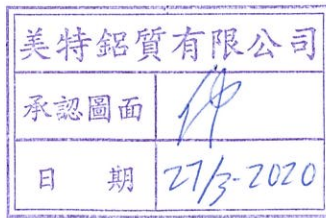
DRAWING NO.  
X85704(1)

REV.  
A

TITLE  
柵格橫A



a=R1  
b=R4.9  
c=R1.375  
d=R2.15



SCALE 1:1

APPROVED :

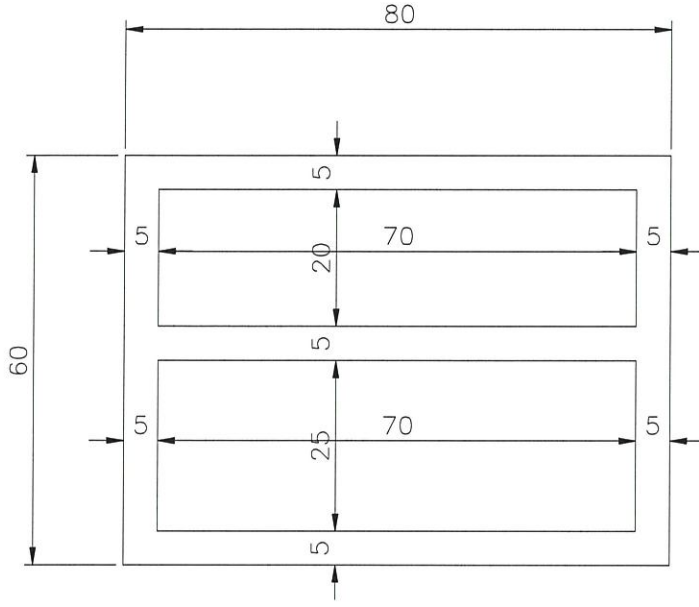
6063-T5

NOTE: Unspecified thickness \_\_\_\_\_ mm  
Radii on unspecified corner (max. 0.3 mm)

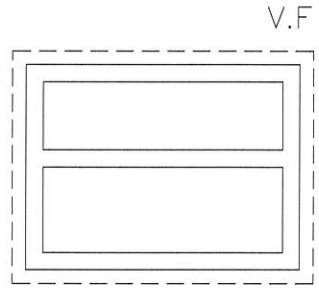
SECTIONAL AREA	mm <sup>2</sup>	ADDITIONAL TOLERANCE	DATE	REVISION			
				NO.	DATE	NAME	DESCRIPTION
496.05		Thickness ± 0.1 mm	04/01/2020	A	26/03	KIN	
WEIGHT	KG/M	Flatness 0.1 /25mm width	SCALE				
1.34		Straightness 0.3 /300mm	2 : 1				
PERIMETER	mm	Twist 0.5° /300 mm max	DRAWN				
318.12		Angularity ± 1.0 degree	-				
V.F.	mm		CHECK				
150							



	MIDI ALUMINIUM FABRICATOR LTD.	DRAWING NO. X85706(1)	REV. A	TITLE 柵格企
--	--------------------------------	--------------------------	-----------	--------------



美特鋁質有限公司  
承認圖面  
日期 27/3-2020



SCALE 1:2

APPROVED :

6063-T5

NOTE: Unspecified thickness \_\_\_\_\_ mm  
Radii on unspecified corner (max. 0.3 mm)

SECTIONAL AREA 1650 mm <sup>2</sup>	ADDITIONAL TOLERANCE Thickness ± 0.1 mm	DATE 04/01/2020	REVISION			
WEIGHT 4.47 KG/M	Flatness 0.1 /25mm width	SCALE 1 : 1	NO. A	DATE 26/03	NAME KIN	DESCRIPTION
PERIMETER 650 mm	Straightness 0.3 /300mm	DRAWN -				
V.F. 280 mm	Twist 0.5° /300 mm max Angularity ± 1.0 degree	CHECK				



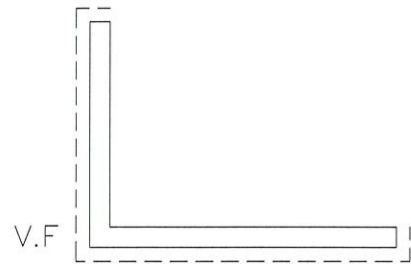
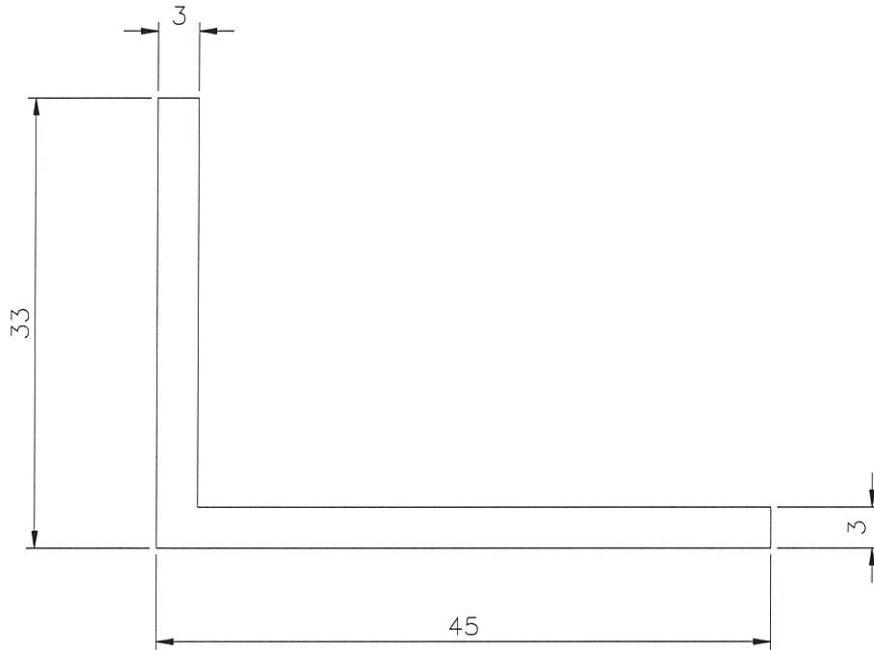


MIDI ALUMINIUM FABRICATOR LTD.

DRAWING NO.  
X85807

REV.  
—

TITLE  
45x33x3mm 鋁角



SCALE 1:1

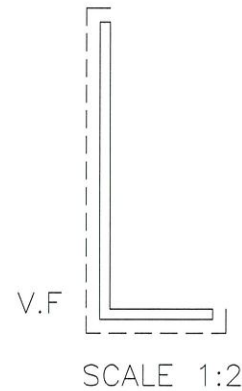
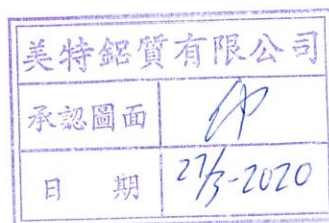
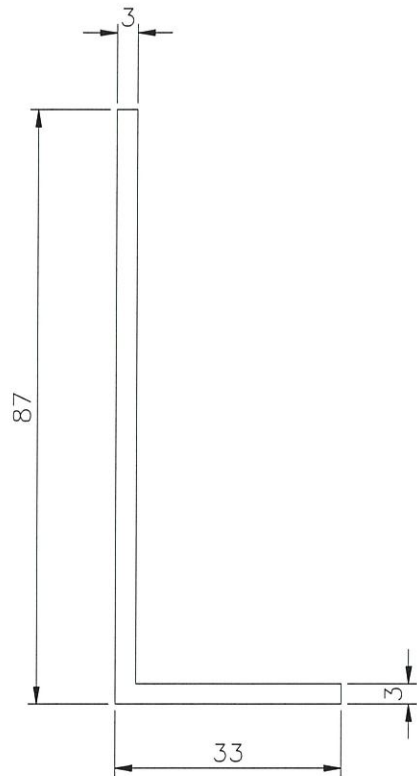
APPROVED :

6063-T5

NOTE: Unspecified thickness \_\_\_\_\_ mm  
Radii on unspecified corner (max. 0.3 mm)

SECTIONAL AREA		ADDITIONAL TOLERANCE		DATE	REVISION			
225	mm <sup>2</sup>	Thickness	± 0.1 mm	04/01/2020	NO.	DATE	NAME	DESCRIPTION
0.61	KG/M	Flatness	0.1 /25mm width	SCALE				
156	mm	Straightness	0.3 /300mm	DRAWN				
84	mm	Twist	0.5° /300 mm max	CHECK				
		Angularity	± 1.0 degree					

	MIDI ALUMINIUM FABRICATOR LTD.	DRAWING NO. X85808	REV. —	TITLE 87x33x3mm 鋁角
--	--------------------------------	-----------------------	-----------	-----------------------



APPROVED :

6063-T5

NOTE: Unspecified thickness \_\_\_\_\_ mm  
Radii on unspecified corner (max. 0.3 mm)

SECTIONAL AREA		ADDITIONAL TOLERANCE		DATE	REVISION			
351	mm <sup>2</sup>	Thickness	± 0.1 mm	04/01/2020	NO.	DATE	NAME	DESCRIPTION
0.95	KG/M	Flatness	0.1 /25mm width	SCALE				
240	mm	Straightness	0.3 /300mm	1 : 1				
V.F.	mm	Twist	0.5° /300 mm max	DRAWN				
126	mm	Angularity	± 1.0 degree	-				
				CHECK				

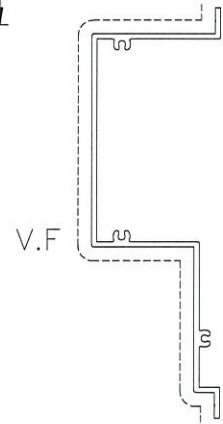
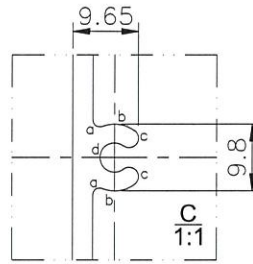
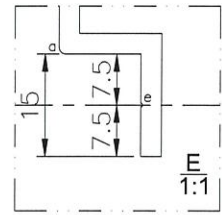
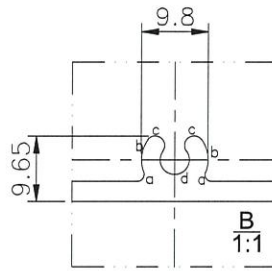
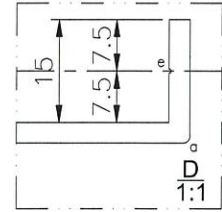
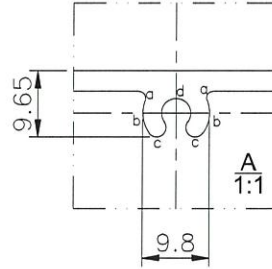
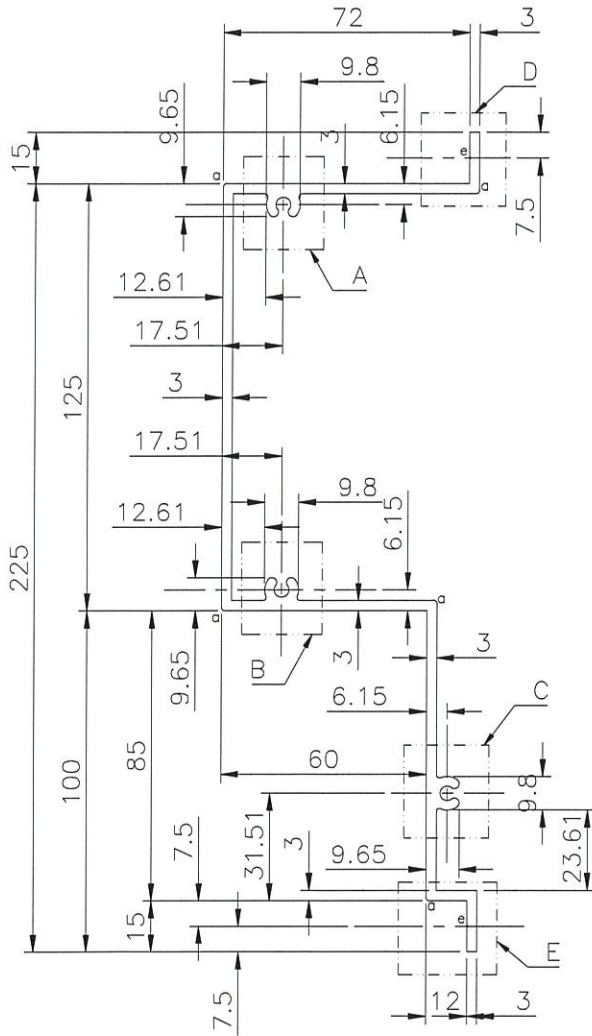


MIDI ALUMINIUM FABRICATOR LTD.

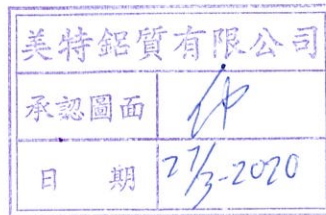
DRAWING NO.  
X85708(1)

REV.  
A

TITLE  
天面鋁板A



- a=R1
- b=R4.9
- c=R1.375
- d=R2.15
- e=R0.3



APPROVED :

SCALE 1:4

6063-T5

NOTE: Unspecified thickness \_\_\_\_\_ mm  
Radii on unspecified corner (max. 0.3 mm)

SECTIONAL AREA		ADDITIONAL TOLERANCE		DATE		REVISION			
1273.69	mm <sup>2</sup>	Thickness	± 0.1 mm	04/01/2020	NO.	DATE	NAME	DESCRIPTION	
3.45	KG/M	Flatness	0.1 /25mm width	SCALE	A	26/03	KIN		
835.76	mm	Straightness	0.3 /300mm	DRAWN					
V.F.	mm	Twist	0.5° /300 mm max	CHECK					
386.71	mm	Angularity	± 1.0 degree						

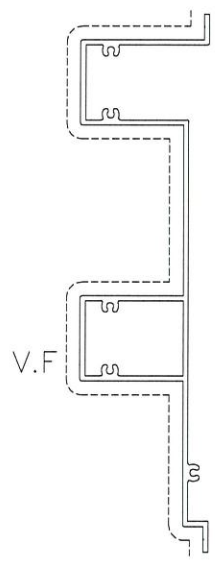
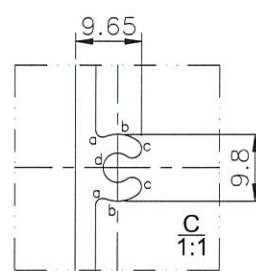
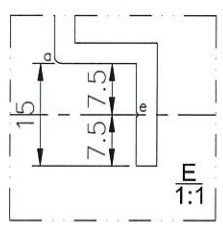
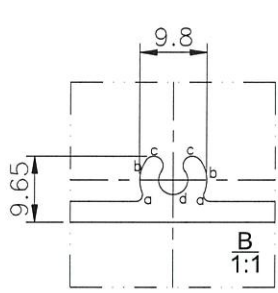
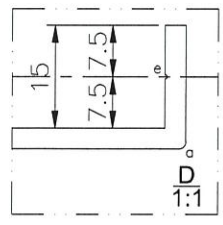
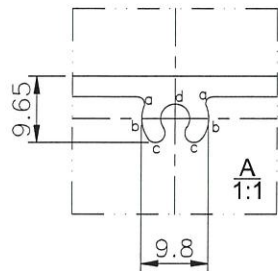
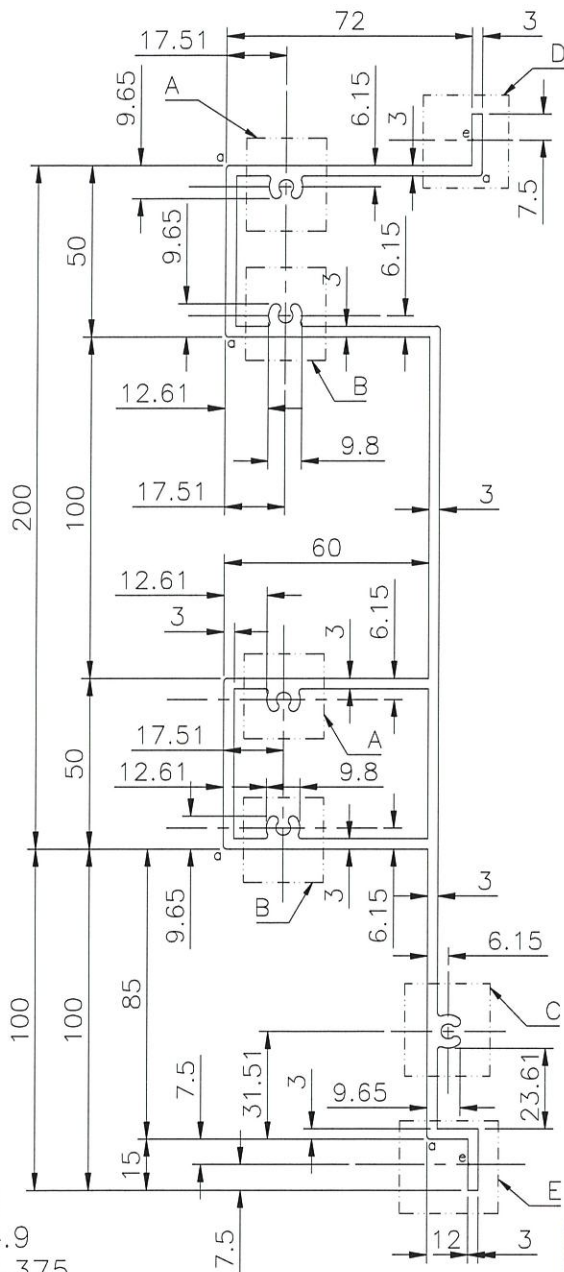


MIDI ALUMINIUM FABRICATOR LTD.

DRAWING NO.  
X85709(1)

REV.  
A

TITLE  
天面鋁板B



a=R1  
b=R4.9  
c=R1.375  
d=R2.15  
e=R0.3

美特鋁質有限公司  
承認圖面  
日期 27/3-2020

APPROVED :

6063-T5

NOTE: Unspecified thickness \_\_\_\_\_ mm  
Radii on unspecified corner (max. 0.3 mm)

SCALE 1:4

SECTIONAL AREA		ADDITIONAL TOLERANCE		DATE	REVISION			
2072.29	mm <sup>2</sup>	Thickness	± 0.1	04/01/2020	NO.	DATE	NAME	DESCRIPTION
5.62	KG/M	Flatness	0.1 /25mm width	SCALE	A	26/03	KIN	
1349.06	mm	Straightness	0.3 /300mm	DRAWN				
V.F.	mm	Twist	0.5° /300 mm max	CHECK				
580.85	mm	Angularity	± 1.0 degree					

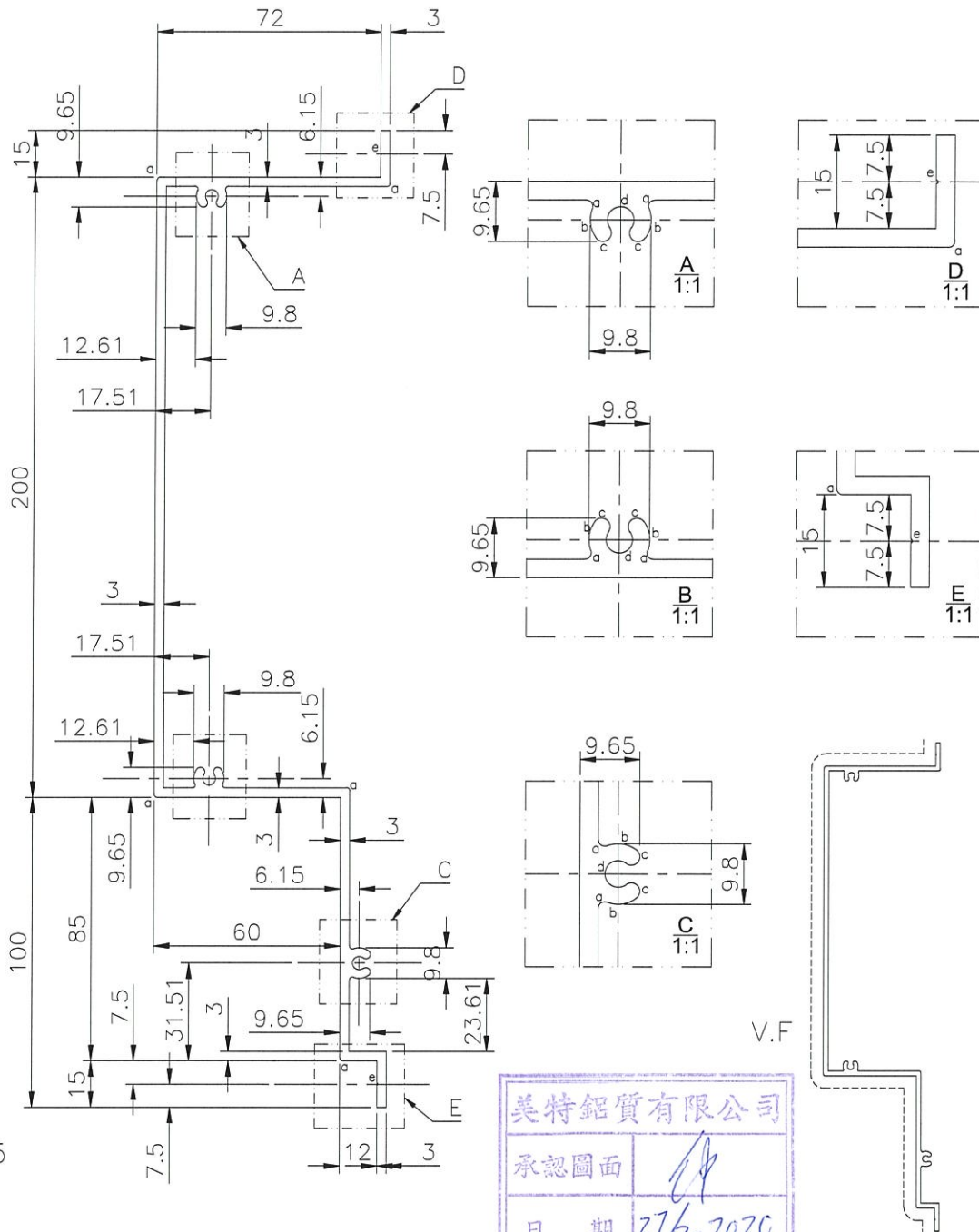


MIDI ALUMINIUM FABRICATOR LTD.

DRAWING NO.  
X85710(1)

REV.  
A

TITLE  
天面鋁板C



a=R1  
b=R4.9  
c=R1.375  
d=R2.15  
e=R0.3

美特鋁質有限公司  
承認圖面  
日期 27/3-2020

SCALE 1:4

APPROVED :

6063-T5

NOTE: Unspecified thickness \_\_\_\_\_ mm  
Radii on unspecified corner (max. 0.3 mm)

SECTIONAL AREA		ADDITIONAL TOLERANCE		DATE	REVISION			
1498.69	mm <sup>2</sup>	Thickness	± 0.1 mm	04/01/2020	NO.	DATE	NAME	DESCRIPTION
4.06	KG/M	Flatness	0.1 /25mm width	SCALE	A	26/03	KIN	
985.76	mm	Straightness	0.3 /300mm	1 : 2				
V.F.	mm	Twist	0.5° /300 mm max	DRAWN				
461.71	mm	Angularity	± 1.0 degree	CHECK				