



工程指示 / 要求簡箋(E.I.)

工程指示編號：EI/1419 / 20

修改版次：-

工程編號：J851

工程名稱：青衣 明翹匯

工程項目：繪畫模圖(預制窗)

收件人：羅小姐

發件人：Leung Hin Wai

日期：04/01/2020

要求提供 / 確認 事項：

- | | | |
|------------------------------------|-------------------------------------|-------------------------------|
| <input type="checkbox"/> 初步鋁料 B.M. | <input type="checkbox"/> 加工拆圖，然後生產 | <input type="checkbox"/> 尺寸表 |
| <input type="checkbox"/> 正式鋁料 B.M. | <input type="checkbox"/> 技術上資料 / 指示 | <input type="checkbox"/> 報價 |
| <input type="checkbox"/> 配件 B.M. | <input type="checkbox"/> 樣辦或貨品說明書 | <input type="checkbox"/> 分判合約 |
| <input type="checkbox"/> 其他：_____ | | |

內容：

請按附頁圖紙繪畫模圖。共 15 頁。

請在 20/1 前完成上列要求。

附：-

以上項目為：

- 原合約工程包 原合約工程加 / 減賬 新工程報價

原因：-

分發東莞各部門：

- () 生產技術總監 連附件 () 技術部 連附件 () 生產部 連附件 () 機械設計部 連附件
 () 採購部 連附件 () 生產統籌部 連附件
 () 質檢部 連附件 () 會計部 連附件 () 報關組 連附件 () 其他 _____ 連附件

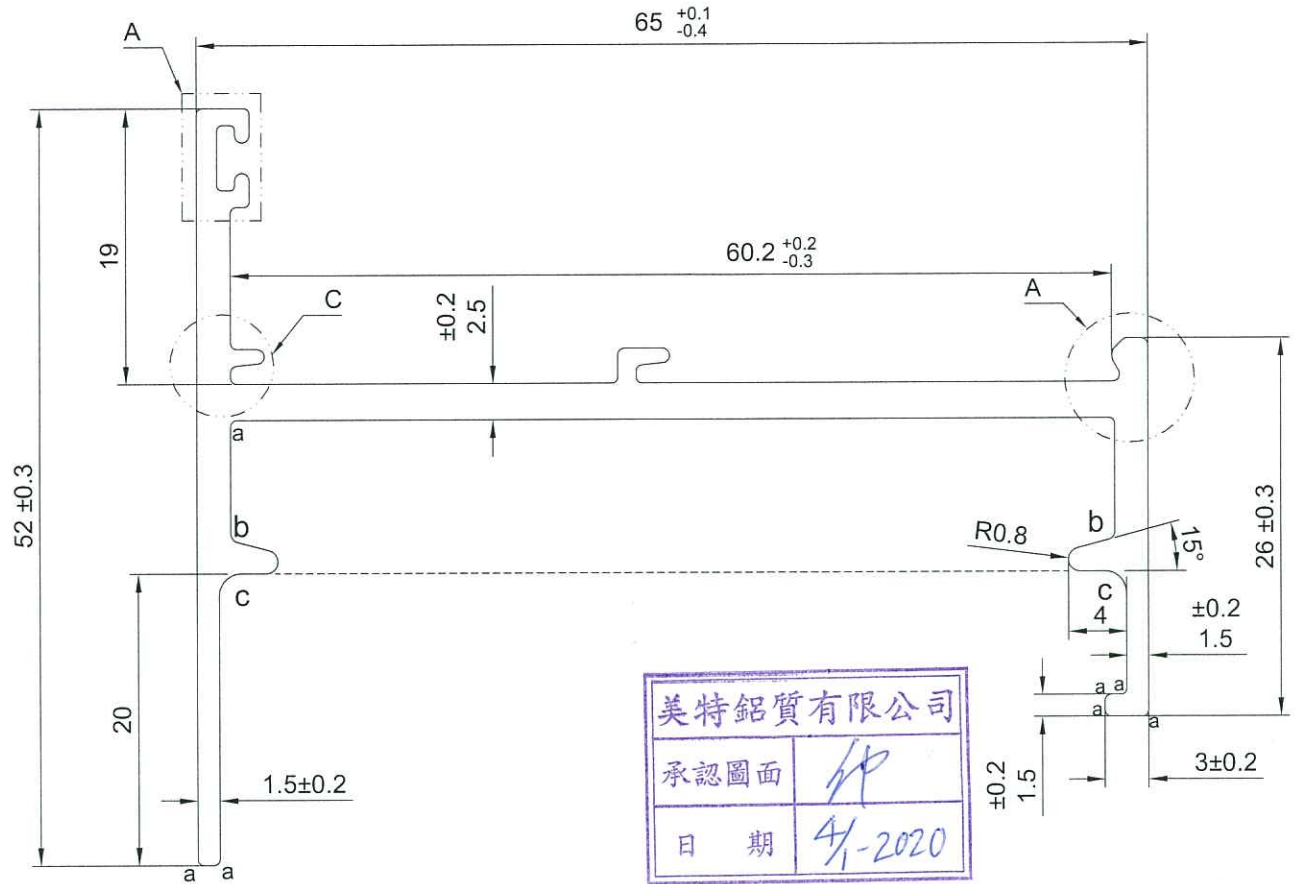
分發香港各部門：

- () 行政部 連附件 () 會計部 連附件 () 統籌部 連附件 () 工程部地盤科文(柄) 連附件
 () 採購部 連附件 () QS 部 連附件 () 維修部 連附件 () 其他 _____ 連附件

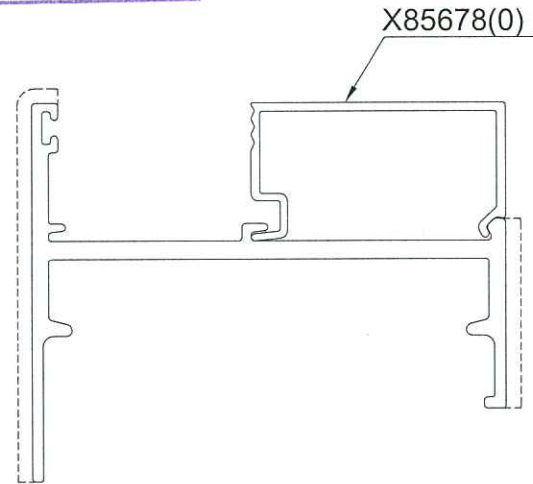
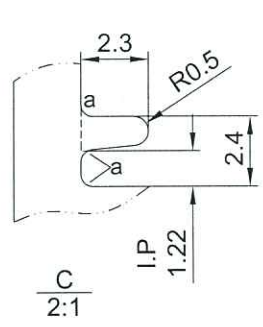
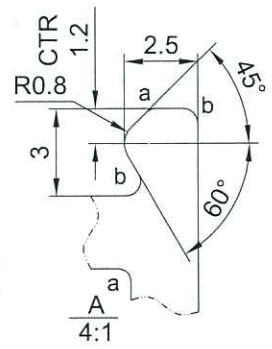
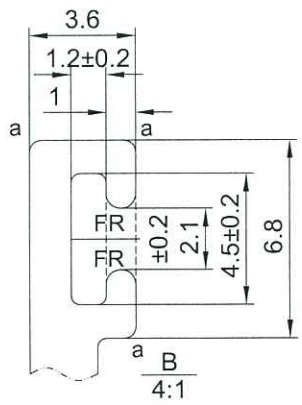
傳遞編號：

發件人簽署：


項目經理簽署：

美特鋁質有限公司
承認圖面
日期 4/1-2020



V.F SCALE 1:1

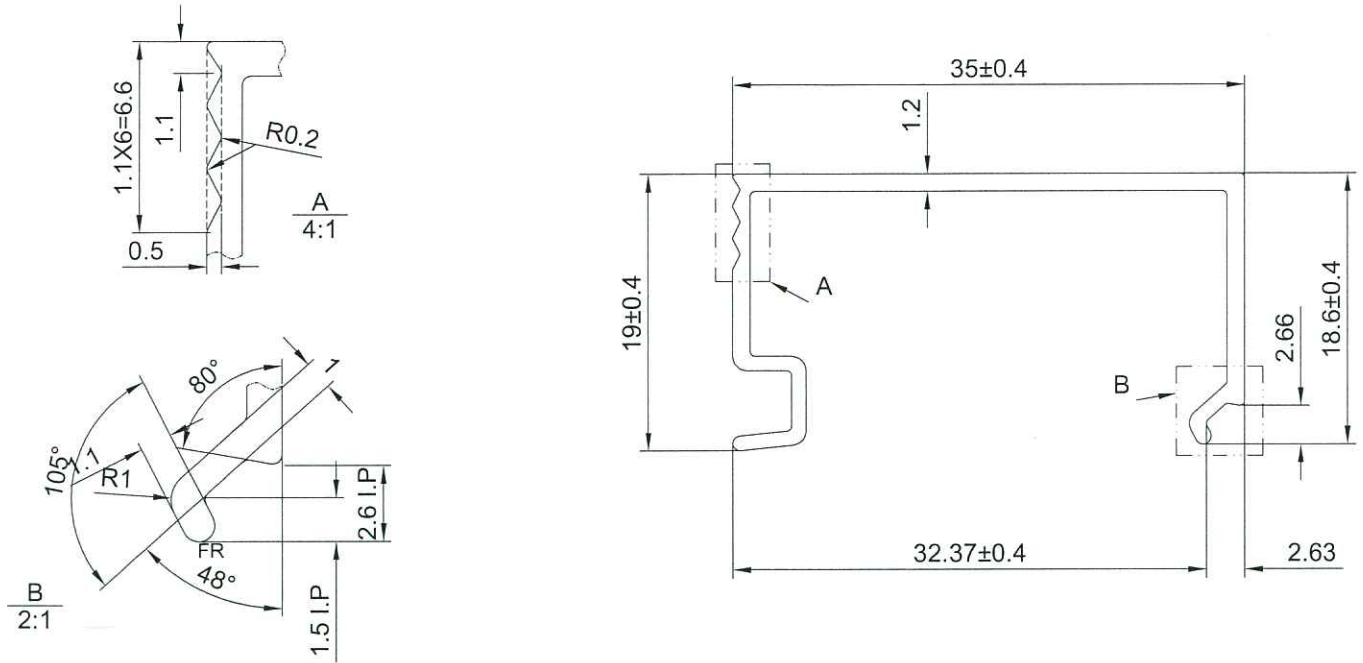
a=R0.4
b=R0.5
c=R1.5

APPROVED :

6063-T6

NOTE: Unspecified thickness $2.3^{+0.2}$ mm
Radii on unspecified corner (max. 0.3 mm)

SECTIONAL AREA	mm ²	329.576	ADDITIONAL TOLERANCE	DATE	REVISION			
					NO.	DATE	NAME	DESCRIPTION
WEIGHT	KG/M	0.893	Thickness ± 0.1 mm	04/01/2020				
PERIMETER	mm	312.476	Flatness 0.1 /25mm width	SCALE 1 : 1				
V.F.	mm	82.40	Straightness 0.3 /300mm	DRAWN				
			Twist 0.5° /300 mm max	CHECK				
			Angularity ± 1.0 degree					



V.F

美特鋁質有限公司	
承認圖面	<i>Handwritten signature</i>
日期	4/1-2020

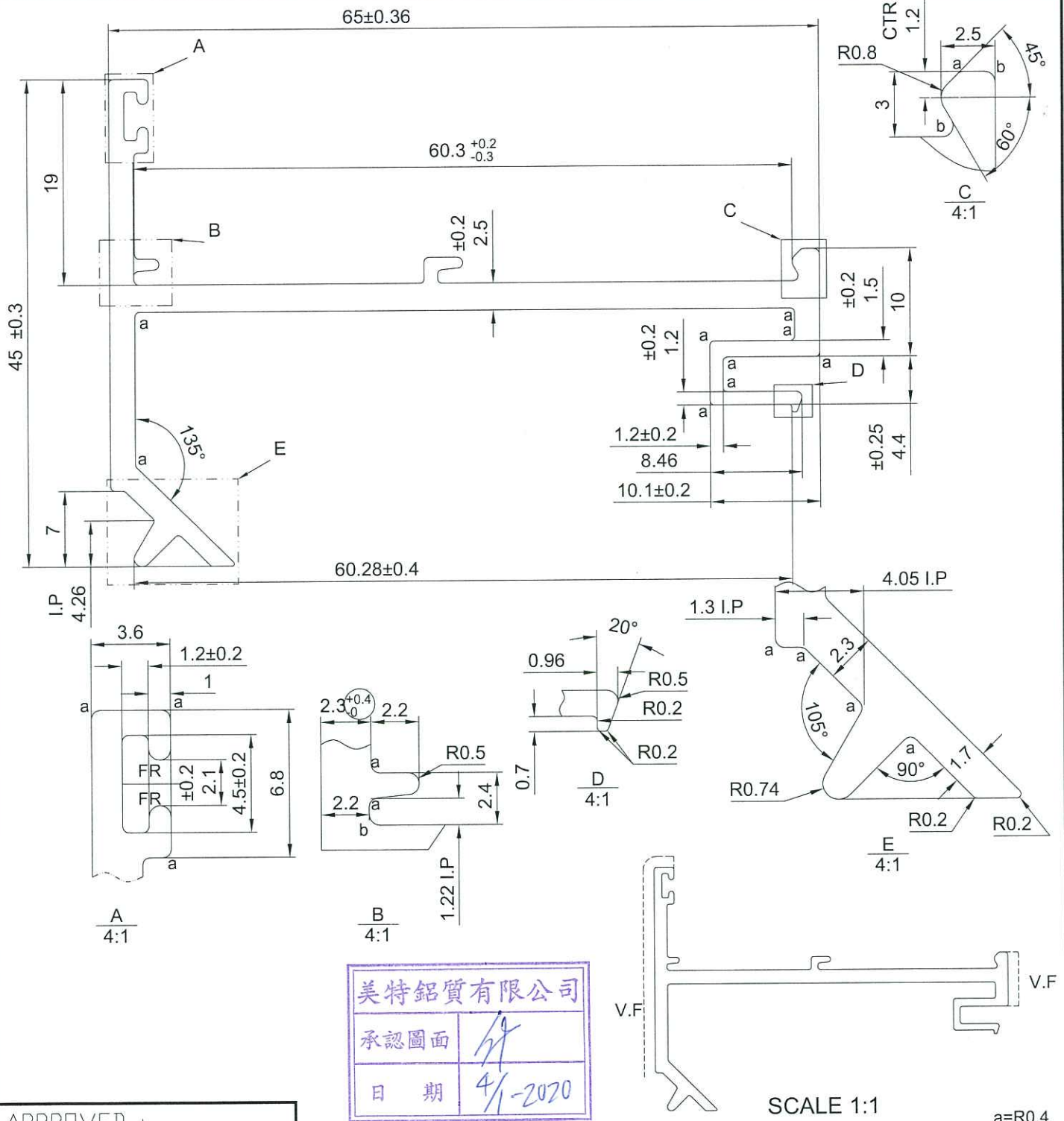


APPROVED :

6063-T5

NOTE: Unspecified thickness 1.2 mm
Radii on unspecified corner (max. 0.3 mm)

SECTIONAL AREA	mm ²	ADDITIONAL TOLERANCE	DATE	REVISION			
				NO.	DATE	NAME	DESCRIPTION
89.579		Thickness ± 0.1 mm	04/01/2020				
WEIGHT	KG/M	Flatness 0.1 /25mm width	SCALE				
0.242		Straightness 0.3 /300mm	1 : 1				
PERIMETER	mm	Twist 0.5° /300 mm max	DRAWN				
158.583		Angularity ± 1.0 degree	-				
V.F.	mm		CHECK				
51.265							

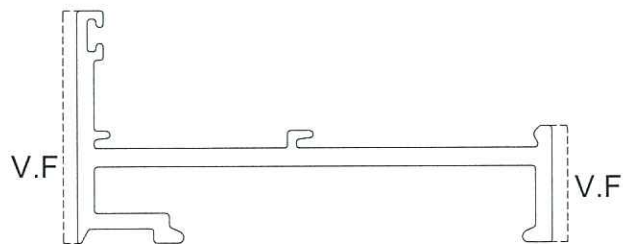
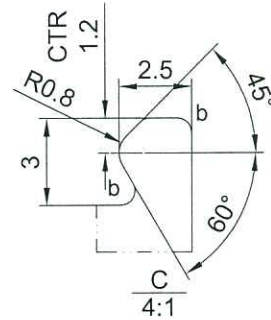
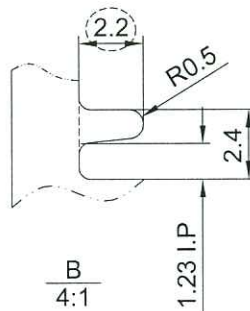
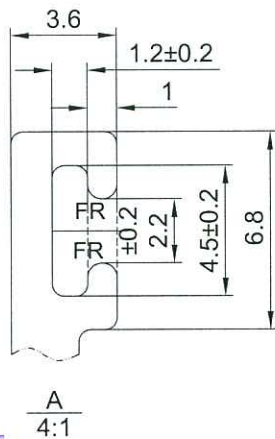
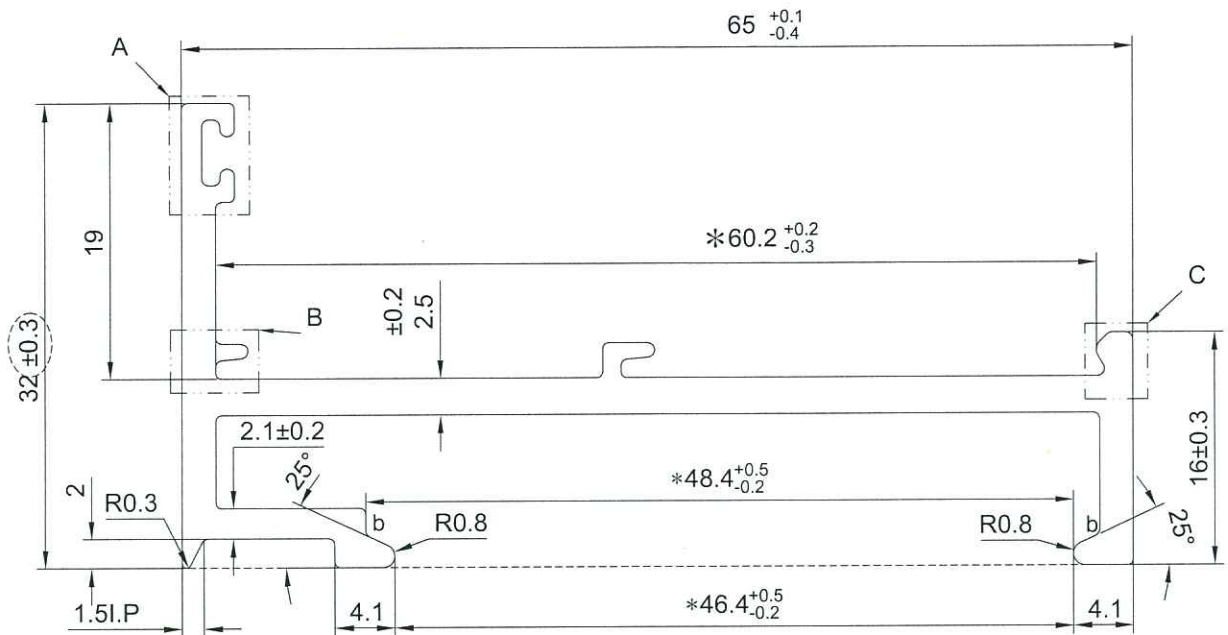


APPROVED :

6063-T6

NOTE: Unspecified thickness $2.3^{+0.2}_0$ mm
Radii on unspecified corner (max. 0.3 mm)

SECTIONAL AREA	mm ²	ADDITIONAL TOLERANCE	DATE	REVISION			
				NO.	DATE	NAME	DESCRIPTION
326.042		Thickness ± 0.1 mm	04/01/2020				
WEIGHT	KG/M	Flatness 0.1 /25mm width	SCALE				
0.883		Straightness 0.3 /300mm	1 : 1				
PERIMETER	mm	Twist 0.5° /300 mm max	DRAWN				
309.290		Angularity ± 1.0 degree	CHECK				
V.F.	mm						
52.10							



SCALE 1:1

b=R0.5

NOTE: Unspecified thickness $2.3^{+0.2}$ mm
Radii on unspecified corner (max. 0.3 mm)

美特鋁質有限公司	
承認圖面	<i>Handwritten signature</i>
日期	4/1-2020

APPROVED :

6063-T6

SECTIONAL AREA	mm ²	ADDITIONAL TOLERANCE	DATE	REVISION			
				NO.	DATE	NAME	DESCRIPTION
299.201		Thickness ± 0.1 mm	04/01/2020				
WEIGHT	KG/M	Flatness 0.1 /25mm width	SCALE				
0.811		Straightness 0.3 /300mm	1 : 1				
PERIMETER	mm	Twist 0.5° /300 mm max	DRAWN				
268.916		Angularity ± 1.0 degree	-				
V.F.	mm		CHECK				
49.244							



MIDI ALUMINIUM FABRICATOR LTD.

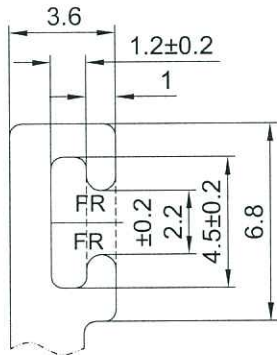
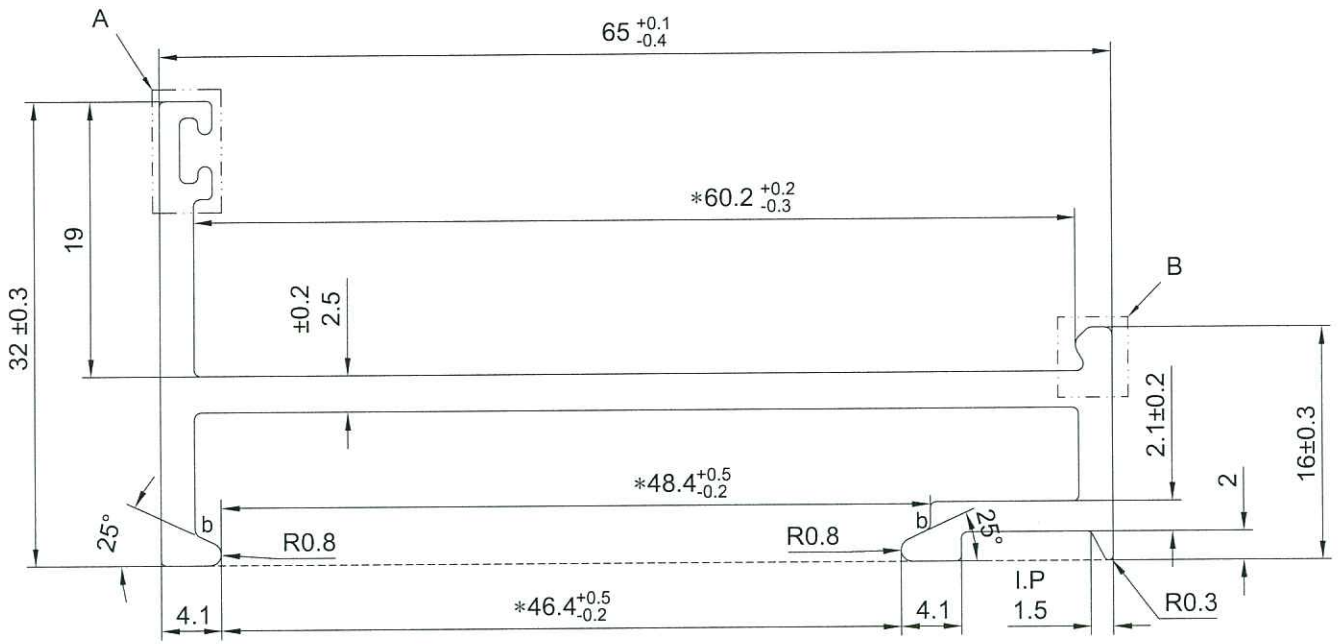
DRAWING NO.

X85683(0)

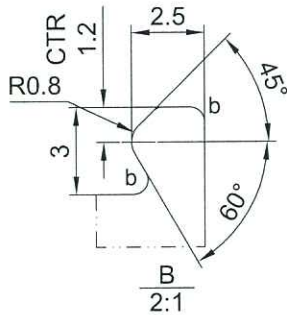
REV.

TITLE

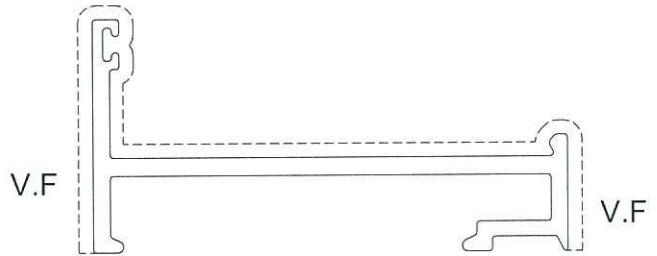
65窗生夾企



A
2:1



美特鋁質有限公司
承認圖面
日期 4/1-2020



SCALE 1:1

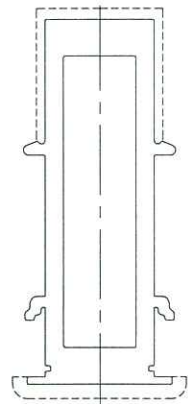
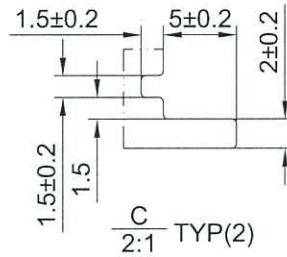
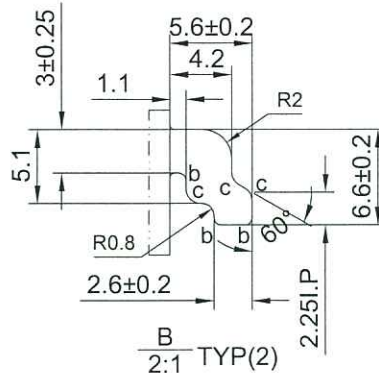
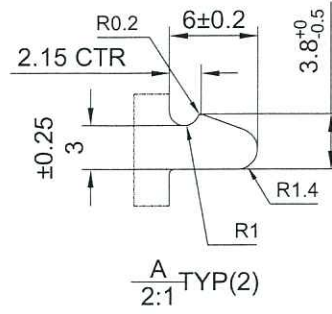
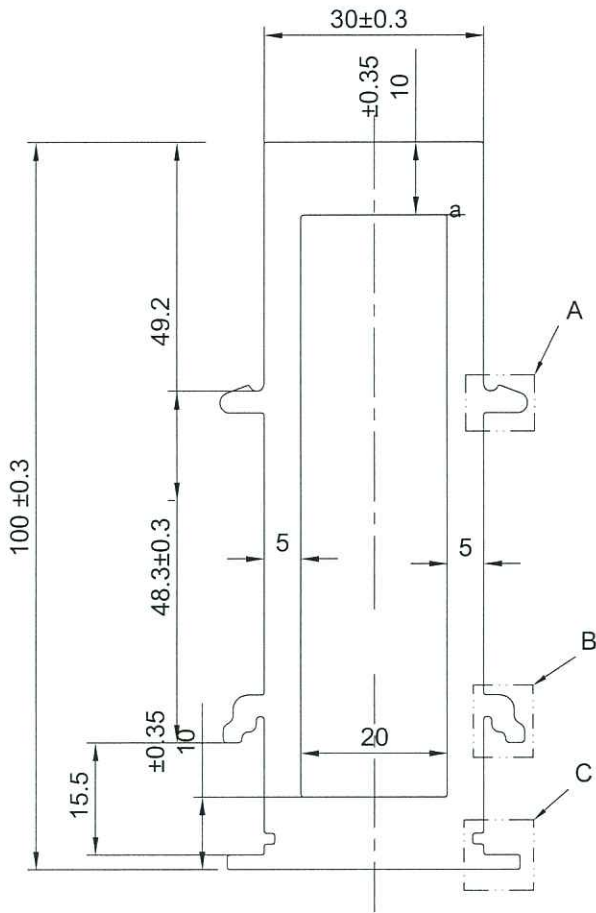
APPROVED :

6063-T6

b=R0.5

NOTE: Unspecified thickness $2.3^{+0.2}$ mm
Radii on unspecified corner (max. 0.3 mm)

SECTIONAL AREA	mm ²	ADDITIONAL TOLERANCE	DATE	REVISION			
				NO.	DATE	NAME	DESCRIPTION
291.481		Thickness ± 0.1 mm	04/01/2020				
WEIGHT	KG/M	Flatness 0.1 /25mm width	SCALE				
0.790		Straightness 0.3 /300mm	1 : 1				
PERIMETER	mm	Twist 0.5° /300 mm max	DRAWN				
257.267		Angularity ± 1.0 degree	-				
V.F.	mm		CHECK				
144.617							



V.F.
SCALE 1:2

美特鋁質有限公司
承認圖面
日期 4/1-2020

APPROVED :

6063-T6

NOTE: Unspecified thickness $2.3^{+0.2}$ mm
Radii on unspecified corner (max. 0.3 mm)

SECTIONAL AREA	mm ²	ADDITIONAL TOLERANCE	DATE	REVISION			
				NO.	DATE	NAME	DESCRIPTION
1499.538		Thickness ± 0.1 mm	04/01/2020				
WEIGHT	KG/M	Flatness 0.1 /25mm width	SCALE				
4.064		Straightness 0.3 /300mm	1 : 1				
PERIMETER	mm	Twist 0.5° /300 mm max	DRAWN				
534.464		Angularity ± 1.0 degree	CHECK				
V.F.	mm						
140.217							



MIDI ALUMINIUM FABRICATOR LTD.

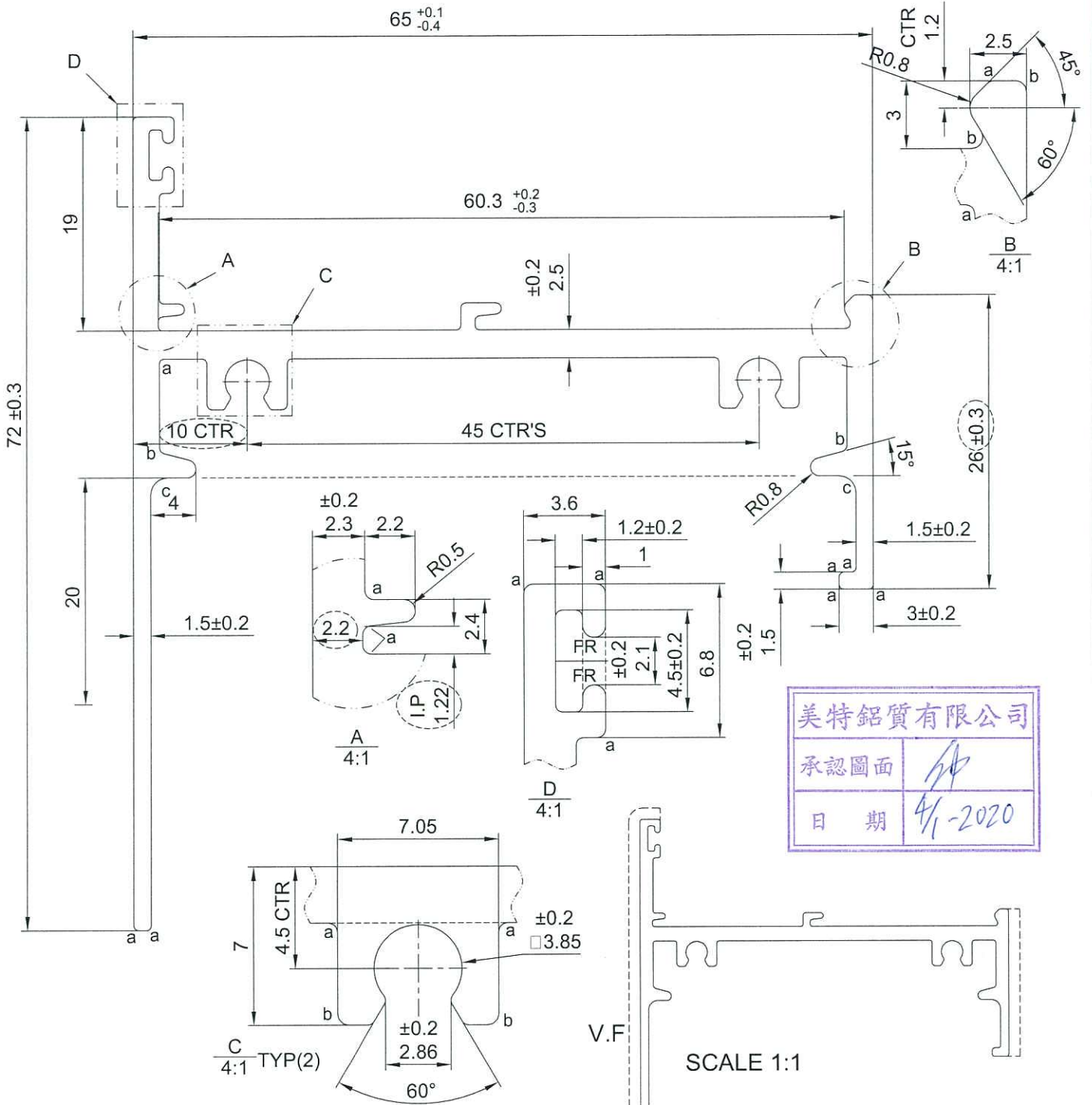
DRAWING NO.

X85686(0)

REV.

TITLE

65窗梗頂橫



美特鋁質有限公司
承認圖面
日期 4/1-2020

V.F.

SCALE 1:1

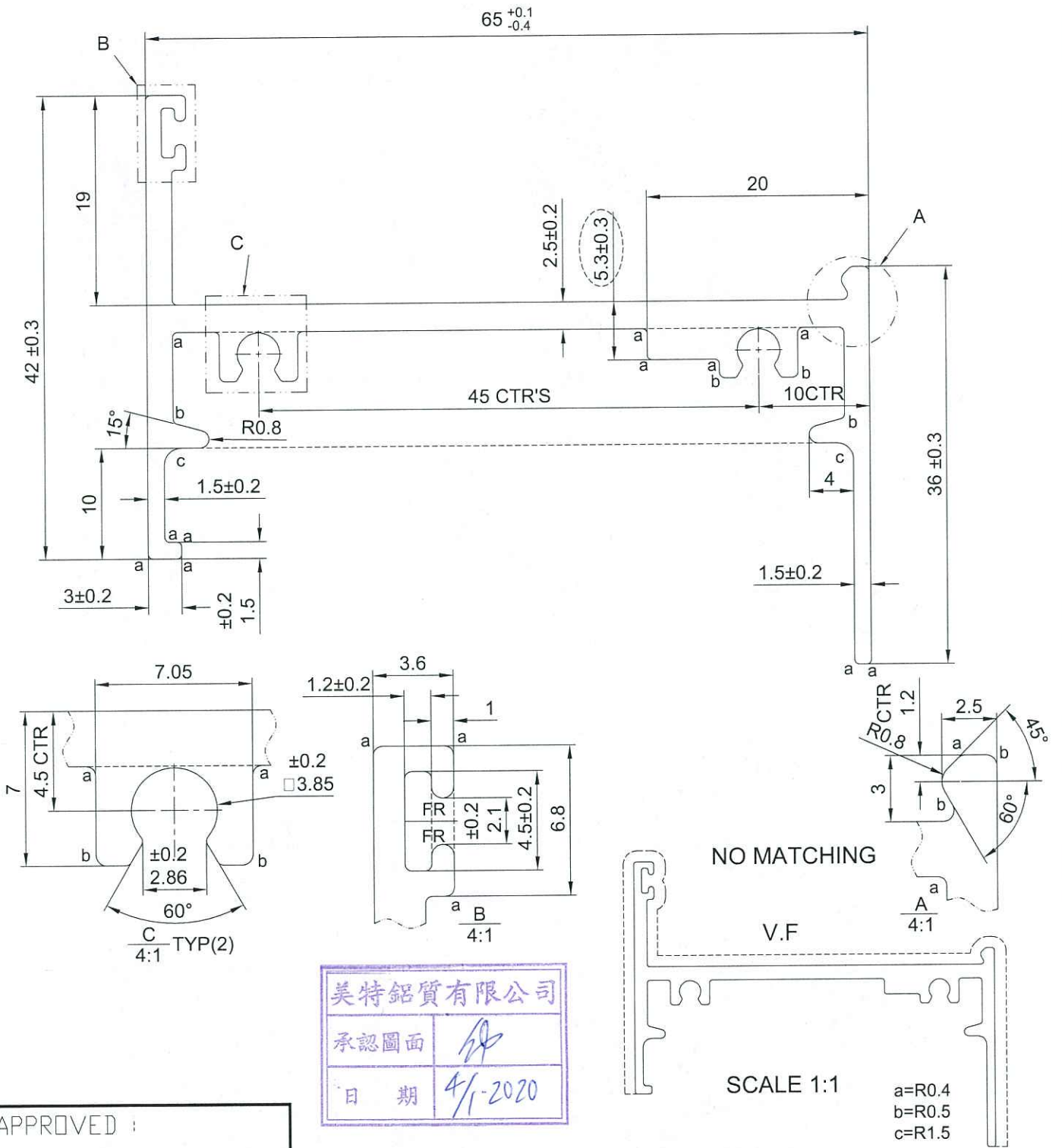
a=R0.4
b=R0.5
c=R1.5

NOTE: Unspecified thickness $2.3^{+0.2}$ mm
Radii on unspecified corner (max. 0.3 mm)

APPROVED :

6063-T6

SECTIONAL AREA	mm ²	ADDITIONAL TOLERANCE	DATE	REVISION			
				NO.	DATE	NAME	DESCRIPTION
393.780		Thickness ± 0.1 mm	04/01/2020				
WEIGHT	KG/M	Flatness 0.1 /25mm width	SCALE				
1.067		Straightness 0.3 /300mm	1 : 1				
PERIMETER	mm	Twist 0.5° /300 mm max	DRAWN				
383.886		Angularity ± 1.0 degree	CHECK				
V.F.	mm						
102.399							



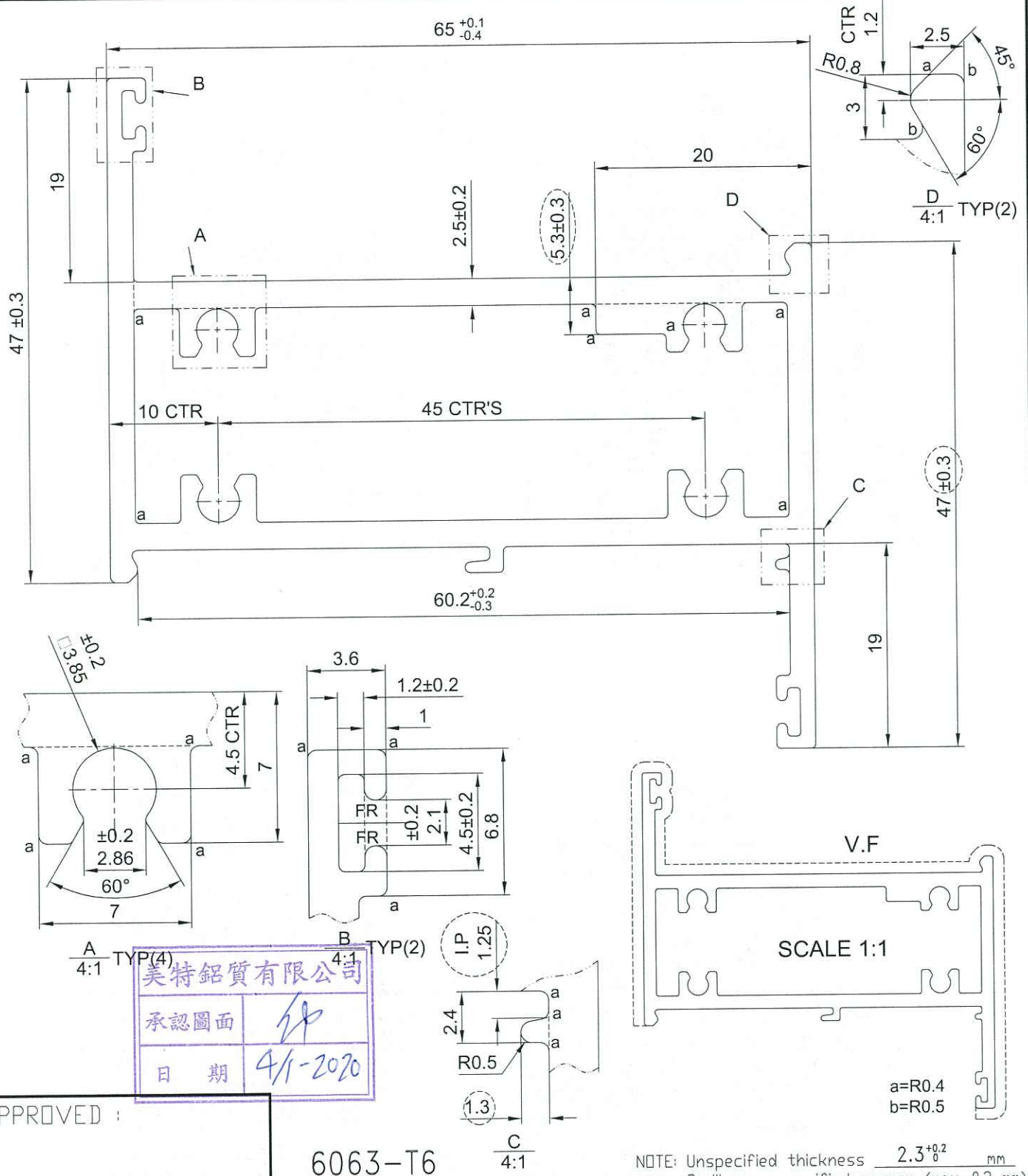
美特鋁質有限公司
承認圖面
日期 4/1-2020

APPROVED :

6063-T6

NOTE: Unspecified thickness $2.3^{+0.2}_0$ mm
Radii on unspecified corner (max. 0.3 mm)

SECTIONAL AREA	mm ²	ADDITIONAL TOLERANCE	DATE	REVISION			
				NO.	DATE	NAME	DESCRIPTION
374.298		Thickness ± 0.1 mm	04/01/2020				
WEIGHT	KG/M	Flatness 0.1 /25mm width	SCALE				
1.014		Straightness 0.3 /300mm	1 : 1				
PERIMETER	mm	Twist 0.5° /300 mm max	DRAWN				
331.745		Angularity ± 1.0 degree	CHECK				
V.F.	mm						
174.759							



美特鋁質有限公司

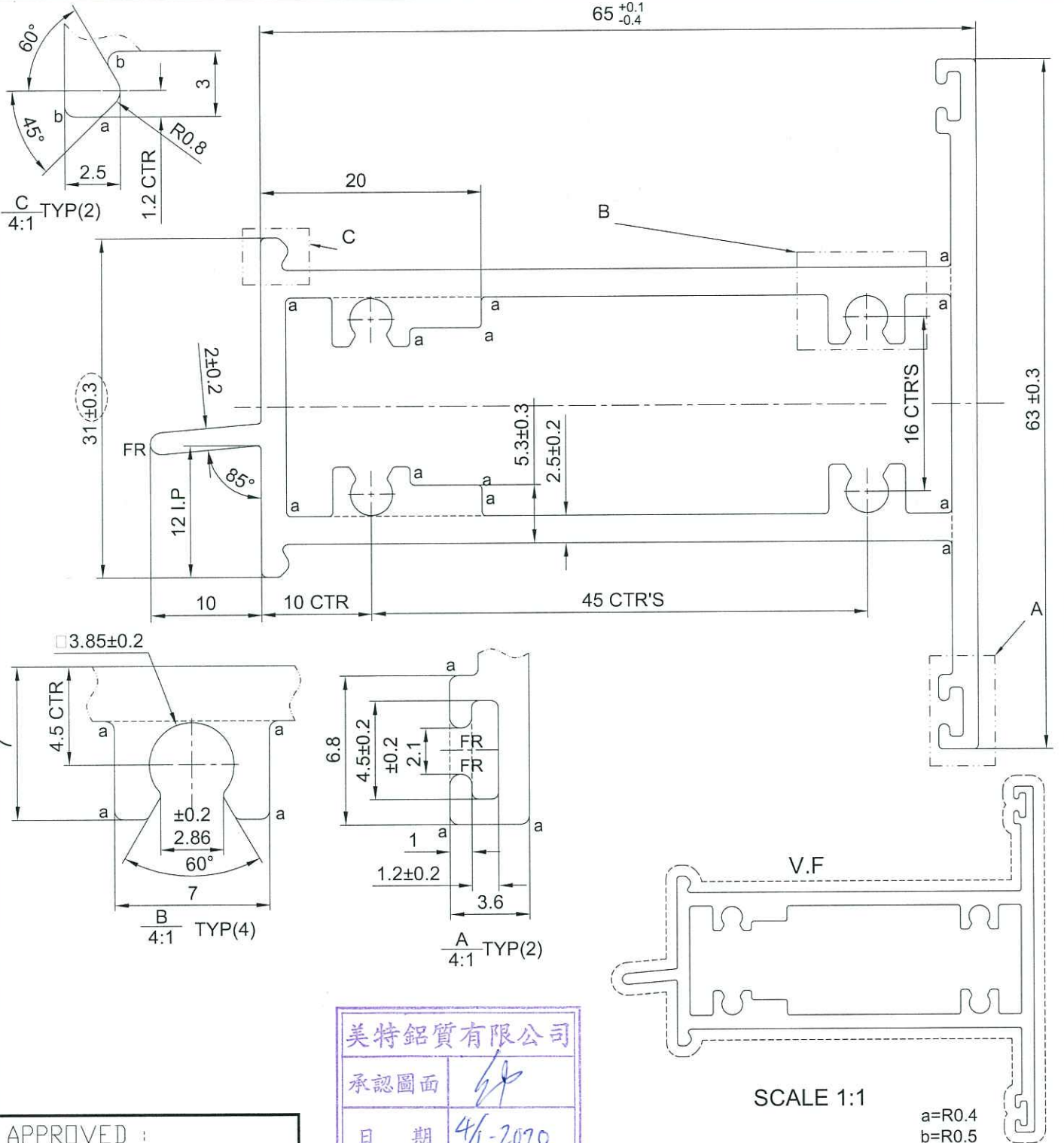
承認圖面

日期 4/1-2020

APPROVED :

6063-T6

SECTIONAL AREA	mm ²	ADDITIONAL TOLERANCE	DATE	REVISION			
				NO.	DATE	NAME	DESCRIPTION
612.947		Thickness ± 0.1 mm	04/01/2020				
WEIGHT	KG/M	Flatness 0.1 /25mm width	SCALE				
1.661		Straightness 0.3 /300mm	1 : 1				
PERIMETER	mm	Twist 0.5° /300 mm max	DRAWN				
519.437		Angularity ± 1.0 degree	CHECK				
V.F.	mm						
194.244							



美特鋁質有限公司
承認圖面
日期 4/1-2020

6063-T6


SCALE 1:1

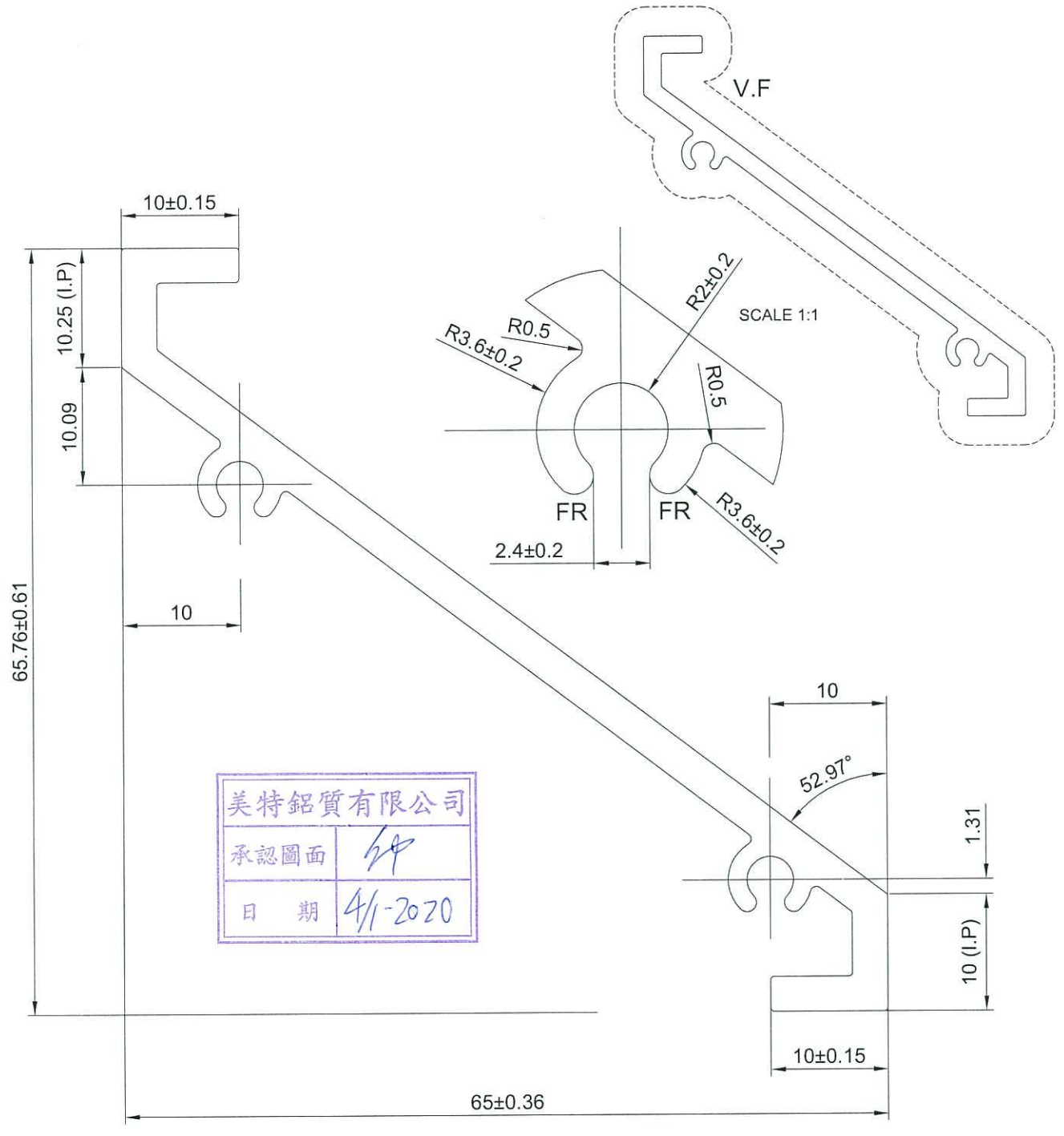
a=R0.4
b=R0.5

NOTE: Unspecified thickness $2.3^{+0.2}_0$ mm
Radii on unspecified corner (max. 0.3 mm)

APPROVED :

SECTIONAL AREA	mm ²	ADDITIONAL TOLERANCE	DATE	REVISION			
				NO.	DATE	NAME	DESCRIPTION
644.059		Thickness ± 0.1 mm	04/01/2020				
WEIGHT	KG/M	Flatness 0.1 /25mm width	SCALE				
1.745		Straightness 0.3 /300mm	1 : 1				
PERIMETER	mm	Twist 0.5° /300 mm max	DRAWN				
528.142		Angularity ± 1.0 degree	CHECK				
V.F.	mm						
305.552							

 MIDI ALUMINIUM FABRICATOR LTD.	DRAWING NO. X85691(0)	REV. TITLE 65窗百葉片
---	-----------------------	----------------------



美特鋁質有限公司	
承認圖面	<i>[Signature]</i>
日期	4/1-2020

APPROVED :

6063-T6

NOTE: Unspecified thickness $2.3^{+0.2}_0$ mm
Radii on unspecified corner (max. 0.3 mm)

SECTIONAL AREA		ADDITIONAL TOLERANCE		DATE	REVISION			
364.759	mm ²	Thickness	± 0.1	04/01/2020	NO.	DATE	NAME	DESCRIPTION
WEIGHT	KG/M	Flatness	0.1 /25mm width	SCALE				
0.988		Straightness	0.3 /300mm	1 : 1				
PERIMETER	mm	Twist	0.5° /300 mm max	DRAWN				
260.006		Angularity	± 1.0 degree	CHECK				
V.F.	mm							
260.006								