

工程指示 / 要求簡箋(E.I.)

工程指示編號：EI / 9853 / 19

修改版次：E

工程編號：J - 837

工程名稱：觀塘裕民坊

工程項目：佛沙窗轉後裝窗 特式層 大圖

收件人：生統 / 永林

發件人：Bessie

日期：01/11/2019

要求提供 / 確認 事項：

- | | | |
|------------------------------------|-------------------------------------|-------------------------------|
| <input type="checkbox"/> 初步鋁料 B.M. | <input type="checkbox"/> 加工拆圖，然後生產 | <input type="checkbox"/> 尺寸表 |
| <input type="checkbox"/> 正式鋁料 B.M. | <input type="checkbox"/> 技術上資料 / 指示 | <input type="checkbox"/> 報價 |
| <input type="checkbox"/> 配件 B.M. | <input type="checkbox"/> 樣辦或貨品說明書 | <input type="checkbox"/> 分判合約 |
| <input type="checkbox"/> 其他：_____ | | |

內容：

煩請提供 特式層佛沙窗轉後裝窗 BM, 因則師未批圖, 暫不用提供拆圖。

煩請先提供鋁料 BM, 謝謝!

附 CAD 檔: 拆圖用 J-837 佛沙窗改後裝窗施工圖 (第 4 次) 2019.10.24

附件 PDF 檔只有特式層佛沙窗轉後裝窗的圖紙

請在 5/11/2019 前完成上列要求。

附： 頁

以上項目為:

- 原合約工程包 原合約工程加 / 減賬 新工程報價

原因：-

分發東莞各部門：

- () 生產技術總監 連附件 技術部 連附件 永林 () 生產部 連附件 () 機械設計部 連附件
 () 採購部 連附件 生產統籌部 連附件 梅姐
 () 質檢部 連附件 () 會計部 連附件 () 報關組 連附件 () 其他 _____ 連附件

分發香港各部門：

- () 行政部 連附件 () 會計部 連附件 () 統籌部 連附件 () 工程部地盤科文 連附件 炳哥
 () 採購部 連附件 () QS 部 連附件 () 維修部 連附件 () 其他 _____ 連附件

傳遞編號： HK 2254 19

發件人簽署：

項目經理簽署：

PROJECT :

MU/3P154/837

4

**URA KWUN TONG TOWN CENTRE
REDEVELOPMENT (AREA 2 & 3) AT NKIL 6514, KWUN TONG, KOWLOON**

**TITLE : SHOP DRAWING FOR PRECAST WINDOW CHANGES TO IN SITU
FOR SPECIAL UNITS**

DATE: 22-OCT- 2019

DRAWING SUBMISSION REGISTER

PROJECT: URA KWUN TONG TOWN CENTRE REDEVELOPMENT (AREA 2 & 3) AT NKIL 6514, KWUN TONG, KOWLOON	DATE OF ISSUE					SUBMISSION STATE (FOR B.D / A.S.D)			SUBMISSION STATE (FOR CLIENT / CONSULTANT)			SUBMISSION STATE (FOR ARCHITECT)			FABRICATION / CONSTRUCTION STATE					
	ISSUE	01	02	03	04	AP - APPROVED			AP - APPROVED			AP - APPROVED			ISSUE TO CHINA OFFICE		ISSUE TO SITE		ISSUE TO SUB-CONTRACTOR	
	DAY	15	7	2	7	AC - APPROVED SUB. TO CONDITION			AC - APPROVED SUB. TO CONDITION			AC - APPROVED SUB. TO CONDITION								
	MONTH	10	1	8	9	NA - NOT APPROVED			NA - NOT APPROVED			NA - NOT APPROVED								
	YEAR	18	19	19	19															
DRAWING TITLE	DWG. NO.	REVISIONS				COMMENT DATE	REV.	STATE	COMMENT DATE	REV.	STATE	COMMENT DATE	REV.	STATE	REV.	DATE	REV.	DATE	REV.	DATE
COVERPAGE	J-837-PIW-0000	-	A	B	C															
DRAWING SUBMISSION REGISTER	J-837-PIW-0001	-	A	B	C															
DRAWING SUBMISSION REGISTER	J-837-PIW-0002	-	A	B	C															
GENERAL NOTE OF ALUM. WINDOW	J-837-PIW-0003																			
GENERAL NOTE OF ALUM. WINDOW	J-837-PIW-0003A	/	/	/	-															
SECTION PROFILE FOR ALUM. WINDOW	J-837-PIW-0004	-	-	A	A															
SECTION PROFILE FOR ALUM. WINDOW	J-837-PIW-0005	-	-	-	-															
TYPICAL ALUM. WINDOW SCHEDULE	J-837-PIW-2101	-	-	-	-															
TYPICAL ALUM. WINDOW SCHEDULE	J-837-PIW-2102	-	-	-	-															
TYPICAL ALUM. WINDOW SCHEDULE	J-837-PIW-2103	-	-	-	-															
TYPICAL ALUM. WINDOW SCHEDULE	J-837-PIW-2104	-	-	-	-															
TYPICAL ALUM. WINDOW SCHEDULE	J-837-PIW-2105	-	-	-	-															
TYPICAL ALUM. WINDOW SCHEDULE	J-837-PIW-2106	-	-	-	-															
TYPICAL ALUM. WINDOW SCHEDULE	J-837-PIW-2107	-	-	-	-															
TYPICAL ALUM. WINDOW SCHEDULE	J-837-PIW-2108	-	-	-	-															
TYPICAL ALUM. WINDOW SCHEDULE	J-837-PIW-2109	-	-	-	-															
TYPICAL ALUM. WINDOW SCHEDULE	J-837-PIW-2110	-	-	-	-															
TYPICAL ALUM. WINDOW SCHEDULE	J-837-PIW-2111	-	-	-	-															
TYPICAL ALUM. WINDOW SCHEDULE	J-837-PIW-2112	-	A	A	A															
TYPICAL ALUM. WINDOW SCHEDULE	J-837-PIW-2113	-	-	-	-															
TYPICAL ALUM. WINDOW SCHEDULE	J-837-PIW-2114	-	-	-	-															
TYPICAL ALUM. WINDOW SCHEDULE	J-837-PIW-2115	-	-	-	-															
TYPICAL ALUM. WINDOW SCHEDULE	J-837-PIW-2116	-	-	-	-															
TYPICAL ALUM. WINDOW SCHEDULE	J-837-PIW-2117	-	-	-	-															
TYPICAL ALUM. WINDOW SCHEDULE	J-837-PIW-2118	-	-	-	-															
TYPICAL ALUM. WINDOW SCHEDULE	J-837-PIW-2119	-	-	-	-															
TYPICAL ALUM. WINDOW SCHEDULE	J-837-PIW-2120	-	-	-	-															
TYPICAL ALUM. WINDOW SCHEDULE	J-837-PIW-2201	-	-	-	-															
TYPICAL ALUM. WINDOW SCHEDULE	J-837-PIW-2202	-	-	-	-															
TYPICAL ALUM. WINDOW SCHEDULE	J-837-PIW-2203	-	-	-	-															
TYPICAL ALUM. WINDOW SCHEDULE	J-837-PIW-2204	-	-	-	-															
TYPICAL ALUM. WINDOW SCHEDULE	J-837-PIW-2205	-	-	-	-															
TYPICAL ALUM. WINDOW SCHEDULE	J-837-PIW-2206	-	-	-	-															
TYPICAL ALUM. WINDOW SCHEDULE	J-837-PIW-2207	-	-	-	-															
TYPICAL ALUM. WINDOW SCHEDULE	J-837-PIW-2209	-	-	-	-															
TYPICAL ALUM. WINDOW SCHEDULE	J-837-PIW-2210	-	-	-	-															
TYPICAL ALUM. WINDOW SCHEDULE	J-837-PIW-2211	-	-	-	A															
TYPICAL ALUM. WINDOW SCHEDULE	J-837-PIW-2301	-	-	-	-															
TYPICAL ALUM. WINDOW SCHEDULE	J-837-PIW-2302	-	-	-	-															
TYPICAL ALUM. WINDOW SCHEDULE	J-837-PIW-2303	-	-	-	-															
TYPICAL ALUM. WINDOW SCHEDULE	J-837-PIW-2304	-	-	-	-															
TYPICAL ALUM. WINDOW SCHEDULE	J-837-PIW-2305	-	-	-	-															
TYPICAL ALUM. WINDOW SCHEDULE	J-837-PIW-2306	-	-	-	-															
TYPICAL ALUM. WINDOW SCHEDULE	J-837-PIW-2307	-	-	-	-															
TYPICAL ALUM. WINDOW SCHEDULE	J-837-PIW-2308	-	-	-	-															

IN-HOUSE DESIGN CHECKER



MIDI ALUMINIUM FABRICATOR LTD.
 Units 6-8, Sunray Industrial Centre, 1/F
 610 Cha Kwo Ling Road, Kowloon
 Tel: 23489211-4 Fax: (852) 2727666

DRAWING SUBMISSION REGISTER

PROJECT: URA KWUN TONG TOWN CENTRE REDEVELOPMENT (AREA 2 & 3) AT NKIL 6514, KWUN TONG, KOWLOON	DATE OF ISSUE					SUBMISSION STATE (FOR B.D / A.S.D)			SUBMISSION STATE (FOR CLIENT / CONSULTANT)			SUBMISSION STATE (FOR ARCHITECT)			FABRICATION / CONSTRUCTION STATE					
	ISSUE	01	02	03	04	AP - APPROVED			AP - APPROVED			AP - APPROVED			ISSUE TO CHINA OFFICE		ISSUE TO SITE		ISSUE TO SUB-CONTRACTOR	
	DAY	30	7	2	7	AC - APPROVED SUB. TO CONDITION			AC - APPROVED SUB. TO CONDITION			AC - APPROVED SUB. TO CONDITION								
	MONTH	10	1	8	9	NA - NOT APPROVED			NA - NOT APPROVED			NA - NOT APPROVED								
	YEAR	18	19	19	19															
DRAWING TITLE	DWG. NO.	REVISIONS				COMMENT DATE	REV.	STATE	COMMENT DATE	REV.	STATE	COMMENT DATE	REV.	STATE	REV.	DATE	REV.	DATE	REV.	DATE
TYPICAL ALUM. WINDOW SCHEDULE	J-837-PIW-2309	-	-	-	-															
TYPICAL ALUM. WINDOW SCHEDULE	J-837-PIW-2310	-	-	-	-															
TYPICAL ALUM. WINDOW SCHEDULE	J-837-PIW-2311	-	-	-	-															
TYPICAL ALUM. WINDOW SCHEDULE	J-837-PIW-2312	-	-	-	A															
TYPICAL ALUM. WINDOW SCHEDULE	J-837-PIW-2501	-	-	-	-															
TYPICAL ALUM. WINDOW SCHEDULE	J-837-PIW-2502	-	-	-	-															
TYPICAL ALUM. WINDOW SCHEDULE	J-837-PIW-2503	-	-	-	-															
TYPICAL ALUM. WINDOW SCHEDULE	J-837-PIW-2504	-	-	-	-															
TYPICAL ALUM. WINDOW SCHEDULE	J-837-PIW-2505	-	-	-	-															
TYPICAL ALUM. WINDOW SCHEDULE	J-837-PIW-2506	-	-	-	-															
TYPICAL ALUM. WINDOW SCHEDULE	J-837-PIW-2507	-	-	-	-															
TYPICAL ALUM. WINDOW SCHEDULE	J-837-PIW-2508	-	-	-	-															
TYPICAL ALUM. WINDOW SCHEDULE	J-837-PIW-2509	-	-	-	-															
FULL PLAN LAYOUT (FOR T1 6/F FLOOR PLAN)	J-837-PIW-3101	-	A	B	B															
FULL PLAN LAYOUT (FOR T1 TYPICAL FLOOR PLAN)	J-837-PIW-3102	-	A	B	B															
FULL PLAN LAYOUT (FOR T2 6/F FLOOR PLAN)	J-837-PIW-3201	-	A	B	B															
FULL PLAN LAYOUT (FOR T2 TYPICAL FLOOR PLAN)	J-837-PIW-3202	-	A	B	B															
FULL PLAN LAYOUT (FOR T2 TYPICAL FLOOR PLAN)	J-837-PIW-3203	-	-	-	-															
FULL PLAN LAYOUT (FOR T3 6/F FLOOR PLAN)	J-837-PIW-3301	-	A	B	B															
FULL PLAN LAYOUT (FOR T3 TYPICAL FLOOR PLAN)	J-837-PIW-3302	-	A	B	B															
FULL PLAN LAYOUT (FOR T3 TYPICAL FLOOR PLAN)	J-837-PIW-3303	-	-	-	-															
FULL PLAN LAYOUT (FOR T5 6/F FLOOR PLAN)	J-837-PIW-3501	-	A	B	B															
LOW ZONE LAYOUT (FOR T5 7/F-21/F FLOOR PLAN)	J-837-PIW-3502	-	A	B	B															
TYPICAL DETAIL FOR ALUM. WINDOW	J-837-PIW-5001	-	-	-	-															
TYPICAL DETAIL FOR ALUM. WINDOW	J-837-PIW-5002	-	-	-	-															
TYPICAL DETAIL FOR ALUM. WINDOW	J-837-PIW-6001	-	-	-	-															
TYPICAL DETAIL FOR ALUM. WINDOW	J-837-PIW-6002	-	-	-	-															
TYPICAL DETAIL FOR ALUM. WINDOW	J-837-PIW-6003	-	-	A	A															
TYPICAL DETAIL FOR ALUM. WINDOW	J-837-PIW-6004	-	-	-	-															
TYPICAL DETAIL FOR ALUM. WINDOW	J-837-PIW-6005	-	-	-	-															
ALUM. WINDOW SECTION FIXING DETAIL	J-837-PIW-8001	-	-	-	-															
ALUM. SIDE HUNG WINDOW TYPICAL LOCK & HINGES DETAIL	J-837-PIW-8002	-	-	-	-															
G.M.S. FIXING LUG TYPICAL DETAIL	J-837-PIW-8003	-	-	-	-															
TYPICAL EARTHING BONDING DETAILS OF PRECAST	J-837-PIW-8004	-	-	-	-															

IN-HOUSE DESIGN CHECKER


美特鋁質有限公司
MIDI ALUMINIUM FABRICATOR LTD.
 Units 6-8, Sunray Industrial Centre, 1/F
 610 Cha Kwo Ling Road, Kowloon
 Tel: 23489211-4 Fax: (852) 2727666

GENERAL NOTES FOR ALUM. WINDOW AT TYPICAL FLOOR

(A) DESIGN LOAD

1.1 DESIGN WIND LOAD SHALL COMPLY WITH THE "CODE OF PRACTICE ON WIND EFFECTS IN HONG KONG 2004", BUILDINGS DEPARTMENT, HONG KONG.

FOR TYPICAL FROM 1/F ~ 55/F

MAX HEIGHT OF BUILDING FOR SITE GROUND LEVEL TO UPPER ROOF = 175 m

MAX DESIGN WIND PRESSURE = $3.13 \text{ kPa} \times 1.4 = 4.382 \text{ kPa}$

TOTAL PRESSURE COEFFICIENT FOR INDIVIDUAL ELEMENTS = -1.4

1.2 HORIZONTAL IMPOSED LOADS ON PROTECTIVE BARRIERS SHALL DESIGN IN ACCORDANCE WITH TABLE 3 OF BUILDING (CONSTRUCTION) REGULATION, 1990.

FOR PLACES OF ASSEMBLY AND ALL PANIC BARRIERS (G/F & 5/F) :

CASE 1 - 3 kN/m AT A HEIGHT OF 1.1m ABOVE FLOOR LEVEL

CASE 2 - 1.5 kPa UNIFORMLY DISTRIBUTED LOAD APPLIED ON THE INFILL BETWEEN FLOOR AND TOP RAIL

CASE 3 - 1.5 kN CONCENTRATED LOAD APPLIED AT TOP RAIL LEVEL

(B) STANDARD AND CODES

- HONG KONG BUILDING (CONSTRUCTION) REGULATION
- CODE OF PRACTICE ON WIND EFFECTS IN HONG KONG 2004
- CODE OF PRACTICE FOR THE STRUCTURAL USE OF STEEL 2011
- CODE OF PRACTICE FOR THE STRUCTURAL USE OF CONCRETE 2013
- BS 8118 : 1991 - STRUCTURAL USE OF ALUMINIUM
- DESIGN OF ALUMINIUM WINDOW SHALL COMPLY WITH PNAP248(APP-116) AND PNPA106(APP-37)
- BS 6262 - GLAZING FOR BUILDING

(C) ALUMINIUM EXTRUSION

- ALUMINIUM ALLOY FOR EXTRUDED STRUCTURAL MEMBER TO BE GRADE 6063-T6 UNLESS OTHERWISE SPECIFIED
MECHANICAL PROPERTIES COMPLY WITH BS EN 755-2 2008
- BENDING AND OVAL YIELDING = 160 MPa
- LOCAL TENSION OR COMPRESSION = 175 MPa
- SHEAR = 95 MPa
- ULTIMATED TENSILE STRENGTH = 215 MPa
- MODULUS OF ELASTICITY = 70000 MPa
- 0.2% TENSILE PROOF STRESS = 170 MPa

(D) ALUMINIUM SHEET

- ALUMINIUM SHEET TO BE GRADE 3003-H14
MECHANICAL PROPERTIES COMPLY WITH BS EN 485-2
- BENDING AND OVAL YIELDING = 125 MPa
- LOCAL TENSION OR COMPRESSION = 135 MPa
- SHEAR = 75 MPa
- ULTIMATED TENSILE STRENGTH = 145 MPa
- MODULUS OF ELASTICITY = 70000 MPa
- 0.2% TENSILE PROOF STRESS = 125 MPa

(E) STAINLESS STEEL FASTENER

- STAINLESS STEEL SCREW / BOLT;
IN ACCORDANCE WITH BS. EN ISO 3506 PART 1& 2: 2009,
MECHANICAL PROPERTIES OF CORROSION RESISTANT STAINLESS STEEL FASTENERS.

	A4-70
1.1. ULTIMATE TENSILE STRENGTH (U _b)	700 MPa
1.2. STRESS AT 0.2% PERMANENT STRAIN (Y _b)	450 MPa
1.3. DESIGN SHEAR STRENGTH : (0.4U _b)	280 MPa
1.4. DESIGN BEARING STRENGTH : 0.7(U _b +Y _b)	450 MPa
1.5. DESIGN TENSION STRENGTH : MIN(0.7U _b ,Y _b)	805 MPa

(F) SEPARATION BETWEEN DISSIMILAR MATERIAL

- CONTACT SURFACE BETWEEN DISSIMILAR MATERIAL WILL BE ISOLATED BY BITUMEN PAINT

(G) SILICONE SEALANT, GASKET & SETTING BLOCK

- ALL SEALANT TO BE APPLIED IN ACCORDANCE WITH MANUFACTURER'S RECOMMENDATIONS
- WEATHER SEALANT TO BE "DOW CORNING 791" (BLACK)
- ALL DISTANCE PIECE SHALL BE 'SANTOPRENE' MATERIAL WITH A DUROMETER HARDNESS OF 65±5 AT SURROUNDING BETWEEN ALUMINIUM FRAME AND GLASS PANEL.
- USE TWO SETTING BLOCK OF 'EPDM' MATERIAL WITH A DUROMETER HARDNESS OF 85±5 AT THE QUARTER, ON EITHER SIDE OF CENTER, AT THE BOTTOM OF THE GLASS.

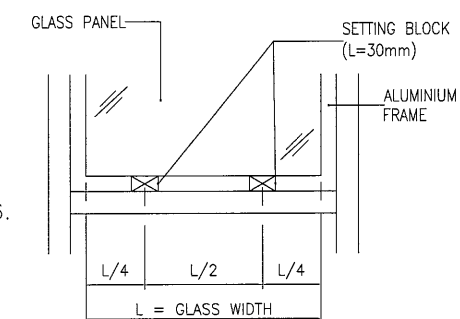
(H) CONCRETE GRADE

- CONCRETE GRADE = 35D (MIN.)

(J) GLASS PANEL

- ALL TEMPERED GLASS PANE SHALL BE COMPLIED WITH B.S. 6206.
 - THE GLAZING OF GLASS SHALL BE COMPLIED WITH B.S. 6262.
 - ALL GLASS SHALL BE COMPLIED WITH B.S. 952, 1995
- TYPE OF GLASS :

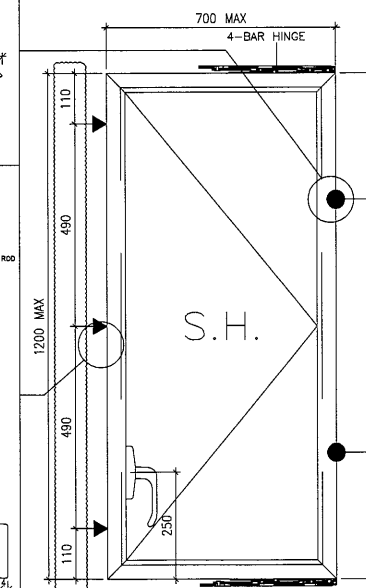
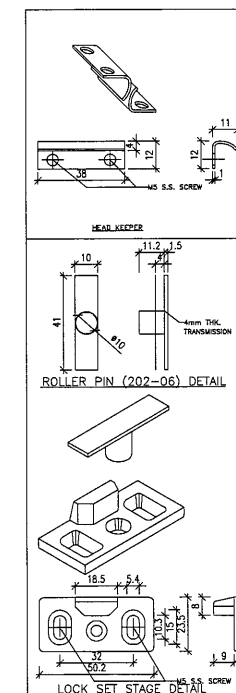
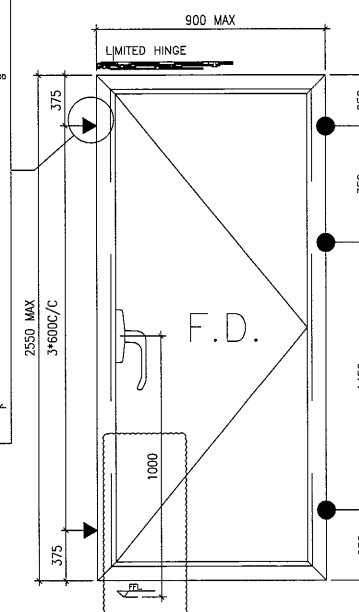
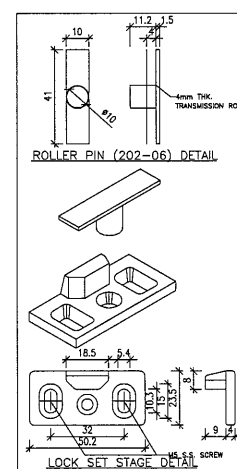
TG11	8mm THK. CLEAR TEMPERED GLASS
TG09	8mm THK ACID ETCHED FROSTED TEMPERED GLASS
	8mm THK ACID ETCHED FROSTED BLUE TINTED GLASS
TG01	8mm THK. BLUE TINTED TEMPERED GLASS



4. PROPERTIES OF GLASS PANEL :

DENSITY	2600 kg/m ³
MODULUS OF ELASTICITY 'E _g '	70000 N/mm ²
ALLOWABLE BENDING STRESS FOR TEMPERED GLASS	50 N/mm ²
FACTOR OF SAFETY	2.5

- ALLOWABLE DEFLECTION OF GLASS = SPAN / 60
- 100% HEAT-SOAK TEST FOR TEMPERED GLASS



B.D. REF :

CLIENT :

信和置業有限公司
Sino Land Company Limited

ARCHITECT :

WONG TUNG & PARTNERS LIMITED
ARCHITECTS & PLANNERS

MAIN CONTRACTOR :

CR Construction Company Limited

STRUCTURAL ENGINEER :

AECOM

FACADE CONSULTANT:

NOTE :

- ALL DIMENSIONS ARE IN mm.
- ALL ELEVATIONS ARE VIEWED FROM OUTSIDE.
- ALL DIMENSIONS TO BE VERIFIED ON SITE BEFORE FABRICATION.

LEGEND :

- X1 - DETAIL MARK NO.
- X001 - REFER SHEET NO.

- F.F.L. -- FINISHED FLOOR LEVEL
- S.F.L. -- STRUCTURAL FLOOR LEVEL
- ⊗ -- REVERSED DETAIL

A	2018/2/13	BY ARCHITECT COMMENT	Zeng
NO.	DATE	REVISED	BY

JOB NO. : J-837

PROJECT :
URA KWUN TONG TOWN CENTRE
REDEVELOPMENT (AREA 2 & 3) AT
NKIL 6514, KWUN TONG, KOWLOON

TITLE :

GENERAL NOTES OF ALUM. WINDOW

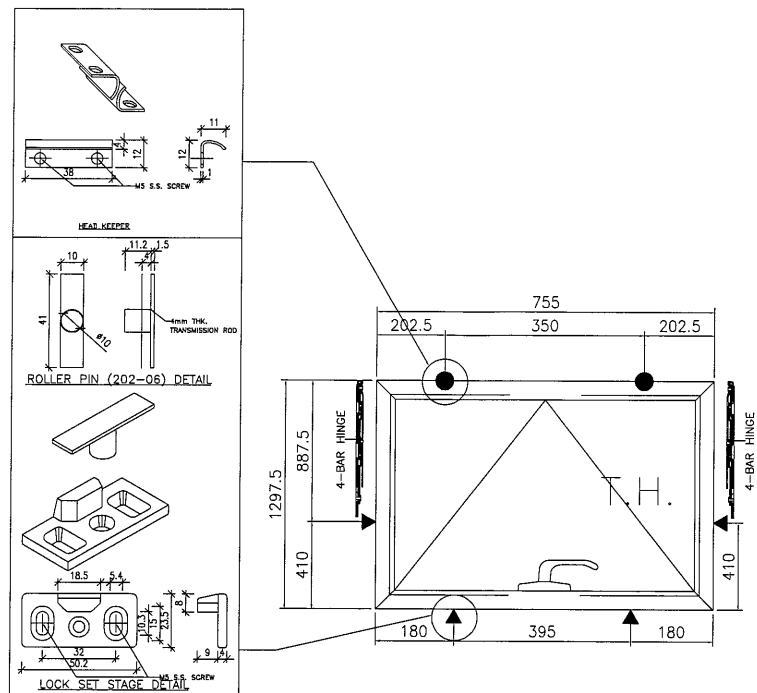
DATE : 30-AUG-18 SCALE : 1:252

DRAWN BY : Zeng CHECKED BY : DW

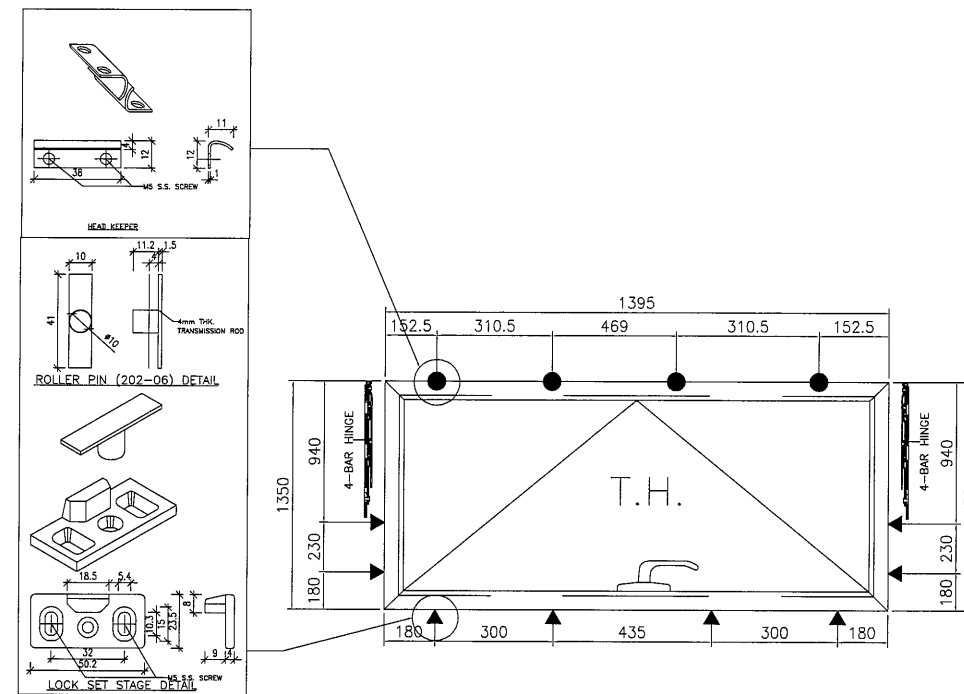
美特鋁質有限公司
MIDI ALUMINIUM FABRICATOR LTD.
Units 6-8, Sunray Industrial Centre, 1/F
610 Cha Kwo Ling Road, Kowloon
Tel:23489211-4 Fax:(852)27727666

DWG NO. : J837-PIW-0003

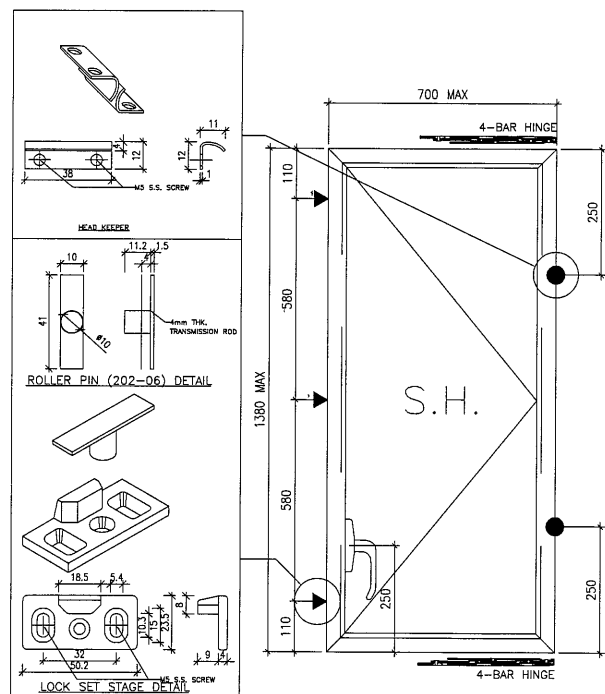
REV. : -



WINDOW SASH FOR T2W/55G-BR3
(Fixing lug provided at each locking pin)



WINDOW SASH FOR T3W/52D-LIV
(Fixing lug provided at each locking pin)



WINDOW SASH FOR SIDE HUNG WINDOW (FOR SPECIAL UNITS)
(Fixing lug provided at each locking pin)

B.D. REF :

CLIENT :

信和置業有限公司
Sino Land Company Limited

ARCHITECT :
WONG TUNG & PARTNERS LIMITED
ARCHITECTS & PLANNERS



MAIN CONTRACTOR :

CR Construction Company Limited

STRUCTURAL ENGINEER :

AECOM

FACADE CONSULTANT:

NOTE :

1. ALL DIMENSIONS ARE IN mm.
2. ALL ELEVATIONS ARE VIEWED FROM OUTSIDE.
3. ALL DIMENSIONS TO BE VERIFIED ON SITE BEFORE FABRICATION.

LEGEND :

- X1 --- DETAIL MARK NO.
- X001 --- REFER SHEET NO.

1. F.F.L. --- FINISHED FLOOR LEVEL
2. S.F.L. --- STRUCTURAL FLOOR LEVEL
3. (R) --- REVERSED DETAIL

NO.	DATE	REVISED	BY

JOB NO. : J-837

PROJECT :
URA KWUN TONG TOWN CENTRE
REDEVELOPMENT (AREA 2 & 3) AT
NKIL 6514, KWUN TONG, KOWLOON

TITLE :

GENERAL NOTES OF ALUM. WINDOW

DATE : 30-AUG-18 SCALE : 1:252

DRAWN BY : Zeng CHECKED BY : DW

美特鋁質有限公司
MIDI ALUMINIUM FABRICATOR LTD.
Units 6-8, Sunray Industrial Centre, 1/F
610 Cha Kwo Ling Road, Kowloon
Tel: 23489211-4 Fax: (852) 2727666

DWG NO. : J837-PIW-0003A REV. : -

A02 --- ALUM. WINDOW FRAME GRADE --- 6063-T5	COATING --- PVF2 COATING X846370	A03 --- ALUM. WINDOW SASH GRADE --- 6063-T5	COATING --- PVF2 COATING X846540	A09 --- ALUM. TRANSOM GRADE --- 6063-T5	COATING --- PVF2 COATING X846100	A38 --- ALUM. ANGLE GRADE --- 6063-T5	COATING --- PVF2 COATING X844890	A06 --- ALUM. GLAZING BEAD GRADE --- 6063-T5	COATING --- PVF2 COATING X846550																																																																																																																																																																
<table border="1"> <tr><th>MASS PROPERTIES (UNIT)</th><th>VALUES</th></tr> <tr><td>Area (mm²)</td><td>270.56</td></tr> <tr><td>Perimeter (mm)</td><td>239.01</td></tr> <tr><td>Bounding Box - X (mm)</td><td>-19.98 to 22.02</td></tr> <tr><td>Bounding Box - Y (mm)</td><td>-27.34 to 22.66</td></tr> <tr><td>Centroid - X (mm)</td><td>0.00</td></tr> <tr><td>Centroid - Y (mm)</td><td>0.00</td></tr> <tr><td>Moments of inertia - X (mm⁴)</td><td>105795.49</td></tr> <tr><td>Moments of inertia - Y (mm⁴)</td><td>18752.42</td></tr> <tr><td>Product of inertia - XY (mm⁴)</td><td>17502.93</td></tr> <tr><td>Radii of gyration - X (mm)</td><td>19.77</td></tr> <tr><td>Radii of gyration - Y (mm)</td><td>8.33</td></tr> <tr><td>Principal moments along X-Y (mm⁴)</td><td>15364.72 along [0.19 0.98]</td></tr> <tr><td>Principal moments along Y-X (mm⁴)</td><td>109183.20 along [-0.98 0.19]</td></tr> <tr><td>Elastic Modulus - Zx (mm²)</td><td>I / y-max= 3869.39</td></tr> <tr><td>Elastic Modulus - Zy (mm²)</td><td>J / x-max= 851.70</td></tr> </table>		MASS PROPERTIES (UNIT)	VALUES	Area (mm ²)	270.56	Perimeter (mm)	239.01	Bounding Box - X (mm)	-19.98 to 22.02	Bounding Box - Y (mm)	-27.34 to 22.66	Centroid - X (mm)	0.00	Centroid - Y (mm)	0.00	Moments of inertia - X (mm ⁴)	105795.49	Moments of inertia - Y (mm ⁴)	18752.42	Product of inertia - XY (mm ⁴)	17502.93	Radii of gyration - X (mm)	19.77	Radii of gyration - Y (mm)	8.33	Principal moments along X-Y (mm ⁴)	15364.72 along [0.19 0.98]	Principal moments along Y-X (mm ⁴)	109183.20 along [-0.98 0.19]	Elastic Modulus - Zx (mm ²)	I / y-max= 3869.39	Elastic Modulus - Zy (mm ²)	J / x-max= 851.70	<table border="1"> <tr><th>MASS PROPERTIES (UNIT)</th><th>VALUES</th></tr> <tr><td>Area (mm²)</td><td>365.44</td></tr> <tr><td>Perimeter (mm)</td><td>331.13</td></tr> <tr><td>Bounding Box - X (mm)</td><td>-24.11 to 23.89</td></tr> <tr><td>Bounding Box - Y (mm)</td><td>-19.66 to 30.34</td></tr> <tr><td>Centroid - X (mm)</td><td>0.00</td></tr> <tr><td>Centroid - Y (mm)</td><td>0.00</td></tr> <tr><td>Moments of inertia - X (mm⁴)</td><td>110220.71</td></tr> <tr><td>Moments of inertia - Y (mm⁴)</td><td>26130.11</td></tr> <tr><td>Product of inertia - XY (mm⁴)</td><td>410.30</td></tr> <tr><td>Radii of gyration - X (mm)</td><td>17.37</td></tr> <tr><td>Radii of gyration - Y (mm)</td><td>8.46</td></tr> <tr><td>Principal moments along X-Y (mm⁴)</td><td>26128.11 along [0.00 1.00]</td></tr> <tr><td>Principal moments along Y-X (mm⁴)</td><td>110222.71 along [-1.00 0.00]</td></tr> <tr><td>Elastic Modulus - Zx (mm²)</td><td>I / y-max= 3632.50</td></tr> <tr><td>Elastic Modulus - Zy (mm²)</td><td>J / x-max= 1083.83</td></tr> </table>		MASS PROPERTIES (UNIT)	VALUES	Area (mm ²)	365.44	Perimeter (mm)	331.13	Bounding Box - X (mm)	-24.11 to 23.89	Bounding Box - Y (mm)	-19.66 to 30.34	Centroid - X (mm)	0.00	Centroid - Y (mm)	0.00	Moments of inertia - X (mm ⁴)	110220.71	Moments of inertia - Y (mm ⁴)	26130.11	Product of inertia - XY (mm ⁴)	410.30	Radii of gyration - X (mm)	17.37	Radii of gyration - Y (mm)	8.46	Principal moments along X-Y (mm ⁴)	26128.11 along [0.00 1.00]	Principal moments along Y-X (mm ⁴)	110222.71 along [-1.00 0.00]	Elastic Modulus - Zx (mm ²)	I / y-max= 3632.50	Elastic Modulus - Zy (mm ²)	J / x-max= 1083.83	<table border="1"> <tr><th>MASS PROPERTIES (UNIT)</th><th>VALUES</th></tr> <tr><td>Area (mm²)</td><td>532.53</td></tr> <tr><td>Perimeter (mm)</td><td>451.29</td></tr> <tr><td>Bounding Box - X (mm)</td><td>-24.66 to 25.34</td></tr> <tr><td>Bounding Box - Y (mm)</td><td>-31.76 to 31.24</td></tr> <tr><td>Centroid - X (mm)</td><td>0.00</td></tr> <tr><td>Centroid - Y (mm)</td><td>0.00</td></tr> <tr><td>Moments of inertia - X (mm⁴)</td><td>90114.79</td></tr> <tr><td>Moments of inertia - Y (mm⁴)</td><td>180076.93</td></tr> <tr><td>Product of inertia - XY (mm⁴)</td><td>41817.33</td></tr> <tr><td>Radii of gyration - X (mm)</td><td>13.01</td></tr> <tr><td>Radii of gyration - Y (mm)</td><td>18.39</td></tr> <tr><td>Principal moments along X-Y (mm⁴)</td><td>73679.36 along [0.93 0.37]</td></tr> <tr><td>Principal moments along Y-X (mm⁴)</td><td>196512.35 along [-0.37 0.93]</td></tr> <tr><td>Elastic Modulus - Zx (mm²)</td><td>I / y-max= 2837.46</td></tr> <tr><td>Elastic Modulus - Zy (mm²)</td><td>J / x-max= 7107.20</td></tr> </table>		MASS PROPERTIES (UNIT)	VALUES	Area (mm ²)	532.53	Perimeter (mm)	451.29	Bounding Box - X (mm)	-24.66 to 25.34	Bounding Box - Y (mm)	-31.76 to 31.24	Centroid - X (mm)	0.00	Centroid - Y (mm)	0.00	Moments of inertia - X (mm ⁴)	90114.79	Moments of inertia - Y (mm ⁴)	180076.93	Product of inertia - XY (mm ⁴)	41817.33	Radii of gyration - X (mm)	13.01	Radii of gyration - Y (mm)	18.39	Principal moments along X-Y (mm ⁴)	73679.36 along [0.93 0.37]	Principal moments along Y-X (mm ⁴)	196512.35 along [-0.37 0.93]	Elastic Modulus - Zx (mm ²)	I / y-max= 2837.46	Elastic Modulus - Zy (mm ²)	J / x-max= 7107.20	<table border="1"> <tr><th>MASS PROPERTIES (UNIT)</th><th>VALUES</th></tr> <tr><td>Area (mm²)</td><td>68.49</td></tr> <tr><td>Perimeter (mm)</td><td>70.60</td></tr> <tr><td>Bounding Box - X (mm)</td><td>-5.26 to 12.74</td></tr> <tr><td>Bounding Box - Y (mm)</td><td>-13.05 to 5.95</td></tr> <tr><td>Centroid - X (mm)</td><td>0.00</td></tr> <tr><td>Centroid - Y (mm)</td><td>0.00</td></tr> <tr><td>Moments of inertia - X (mm⁴)</td><td>2363.75</td></tr> <tr><td>Moments of inertia - Y (mm⁴)</td><td>1945.17</td></tr> <tr><td>Product of inertia - XY (mm⁴)</td><td>1408.79</td></tr> <tr><td>Radii of gyration - X (mm)</td><td>5.87</td></tr> <tr><td>Radii of gyration - Y (mm)</td><td>5.33</td></tr> <tr><td>Principal moments along X-Y (mm⁴)</td><td>730.21 along [0.65 0.76]</td></tr> <tr><td>Principal moments along Y-X (mm⁴)</td><td>3578.71 along [-0.76 0.65]</td></tr> <tr><td>Elastic Modulus - Zx (mm²)</td><td>I / y-max= 181.08</td></tr> <tr><td>Elastic Modulus - Zy (mm²)</td><td>J / x-max= 192.63</td></tr> </table>		MASS PROPERTIES (UNIT)	VALUES	Area (mm ²)	68.49	Perimeter (mm)	70.60	Bounding Box - X (mm)	-5.26 to 12.74	Bounding Box - Y (mm)	-13.05 to 5.95	Centroid - X (mm)	0.00	Centroid - Y (mm)	0.00	Moments of inertia - X (mm ⁴)	2363.75	Moments of inertia - Y (mm ⁴)	1945.17	Product of inertia - XY (mm ⁴)	1408.79	Radii of gyration - X (mm)	5.87	Radii of gyration - Y (mm)	5.33	Principal moments along X-Y (mm ⁴)	730.21 along [0.65 0.76]	Principal moments along Y-X (mm ⁴)	3578.71 along [-0.76 0.65]	Elastic Modulus - Zx (mm ²)	I / y-max= 181.08	Elastic Modulus - Zy (mm ²)	J / x-max= 192.63	<table border="1"> <tr><th>MASS PROPERTIES (UNIT)</th><th>VALUES</th></tr> <tr><td>Area (mm²)</td><td>92.95</td></tr> <tr><td>Perimeter (mm)</td><td>166.49</td></tr> <tr><td>Bounding Box - X (mm)</td><td>-18.48 to 29.22</td></tr> <tr><td>Bounding Box - Y (mm)</td><td>-10.88 to 8.09</td></tr> <tr><td>Centroid - X (mm)</td><td>0.00</td></tr> <tr><td>Centroid - Y (mm)</td><td>0.00</td></tr> <tr><td>Moments of inertia - X (mm⁴)</td><td>4659.96</td></tr> <tr><td>Moments of inertia - Y (mm⁴)</td><td>19179.41</td></tr> <tr><td>Product of inertia - XY (mm⁴)</td><td>-4156.34</td></tr> <tr><td>Radii of gyration - X (mm)</td><td>7.08</td></tr> <tr><td>Radii of gyration - Y (mm)</td><td>14.36</td></tr> <tr><td>Principal moments along X-Y (mm⁴)</td><td>3554.36 along [0.97 -0.26]</td></tr> <tr><td>Principal moments along Y-X (mm⁴)</td><td>20285.02 along [0.26 0.97]</td></tr> <tr><td>Elastic Modulus - Zx (mm²)</td><td>I / y-max= 428.23</td></tr> <tr><td>Elastic Modulus - Zy (mm²)</td><td>J / x-max= 656.46</td></tr> </table>		MASS PROPERTIES (UNIT)	VALUES	Area (mm ²)	92.95	Perimeter (mm)	166.49	Bounding Box - X (mm)	-18.48 to 29.22	Bounding Box - Y (mm)	-10.88 to 8.09	Centroid - X (mm)	0.00	Centroid - Y (mm)	0.00	Moments of inertia - X (mm ⁴)	4659.96	Moments of inertia - Y (mm ⁴)	19179.41	Product of inertia - XY (mm ⁴)	-4156.34	Radii of gyration - X (mm)	7.08	Radii of gyration - Y (mm)	14.36	Principal moments along X-Y (mm ⁴)	3554.36 along [0.97 -0.26]	Principal moments along Y-X (mm ⁴)	20285.02 along [0.26 0.97]	Elastic Modulus - Zx (mm ²)	I / y-max= 428.23	Elastic Modulus - Zy (mm ²)	J / x-max= 656.46
MASS PROPERTIES (UNIT)	VALUES																																																																																																																																																																								
Area (mm ²)	270.56																																																																																																																																																																								
Perimeter (mm)	239.01																																																																																																																																																																								
Bounding Box - X (mm)	-19.98 to 22.02																																																																																																																																																																								
Bounding Box - Y (mm)	-27.34 to 22.66																																																																																																																																																																								
Centroid - X (mm)	0.00																																																																																																																																																																								
Centroid - Y (mm)	0.00																																																																																																																																																																								
Moments of inertia - X (mm ⁴)	105795.49																																																																																																																																																																								
Moments of inertia - Y (mm ⁴)	18752.42																																																																																																																																																																								
Product of inertia - XY (mm ⁴)	17502.93																																																																																																																																																																								
Radii of gyration - X (mm)	19.77																																																																																																																																																																								
Radii of gyration - Y (mm)	8.33																																																																																																																																																																								
Principal moments along X-Y (mm ⁴)	15364.72 along [0.19 0.98]																																																																																																																																																																								
Principal moments along Y-X (mm ⁴)	109183.20 along [-0.98 0.19]																																																																																																																																																																								
Elastic Modulus - Zx (mm ²)	I / y-max= 3869.39																																																																																																																																																																								
Elastic Modulus - Zy (mm ²)	J / x-max= 851.70																																																																																																																																																																								
MASS PROPERTIES (UNIT)	VALUES																																																																																																																																																																								
Area (mm ²)	365.44																																																																																																																																																																								
Perimeter (mm)	331.13																																																																																																																																																																								
Bounding Box - X (mm)	-24.11 to 23.89																																																																																																																																																																								
Bounding Box - Y (mm)	-19.66 to 30.34																																																																																																																																																																								
Centroid - X (mm)	0.00																																																																																																																																																																								
Centroid - Y (mm)	0.00																																																																																																																																																																								
Moments of inertia - X (mm ⁴)	110220.71																																																																																																																																																																								
Moments of inertia - Y (mm ⁴)	26130.11																																																																																																																																																																								
Product of inertia - XY (mm ⁴)	410.30																																																																																																																																																																								
Radii of gyration - X (mm)	17.37																																																																																																																																																																								
Radii of gyration - Y (mm)	8.46																																																																																																																																																																								
Principal moments along X-Y (mm ⁴)	26128.11 along [0.00 1.00]																																																																																																																																																																								
Principal moments along Y-X (mm ⁴)	110222.71 along [-1.00 0.00]																																																																																																																																																																								
Elastic Modulus - Zx (mm ²)	I / y-max= 3632.50																																																																																																																																																																								
Elastic Modulus - Zy (mm ²)	J / x-max= 1083.83																																																																																																																																																																								
MASS PROPERTIES (UNIT)	VALUES																																																																																																																																																																								
Area (mm ²)	532.53																																																																																																																																																																								
Perimeter (mm)	451.29																																																																																																																																																																								
Bounding Box - X (mm)	-24.66 to 25.34																																																																																																																																																																								
Bounding Box - Y (mm)	-31.76 to 31.24																																																																																																																																																																								
Centroid - X (mm)	0.00																																																																																																																																																																								
Centroid - Y (mm)	0.00																																																																																																																																																																								
Moments of inertia - X (mm ⁴)	90114.79																																																																																																																																																																								
Moments of inertia - Y (mm ⁴)	180076.93																																																																																																																																																																								
Product of inertia - XY (mm ⁴)	41817.33																																																																																																																																																																								
Radii of gyration - X (mm)	13.01																																																																																																																																																																								
Radii of gyration - Y (mm)	18.39																																																																																																																																																																								
Principal moments along X-Y (mm ⁴)	73679.36 along [0.93 0.37]																																																																																																																																																																								
Principal moments along Y-X (mm ⁴)	196512.35 along [-0.37 0.93]																																																																																																																																																																								
Elastic Modulus - Zx (mm ²)	I / y-max= 2837.46																																																																																																																																																																								
Elastic Modulus - Zy (mm ²)	J / x-max= 7107.20																																																																																																																																																																								
MASS PROPERTIES (UNIT)	VALUES																																																																																																																																																																								
Area (mm ²)	68.49																																																																																																																																																																								
Perimeter (mm)	70.60																																																																																																																																																																								
Bounding Box - X (mm)	-5.26 to 12.74																																																																																																																																																																								
Bounding Box - Y (mm)	-13.05 to 5.95																																																																																																																																																																								
Centroid - X (mm)	0.00																																																																																																																																																																								
Centroid - Y (mm)	0.00																																																																																																																																																																								
Moments of inertia - X (mm ⁴)	2363.75																																																																																																																																																																								
Moments of inertia - Y (mm ⁴)	1945.17																																																																																																																																																																								
Product of inertia - XY (mm ⁴)	1408.79																																																																																																																																																																								
Radii of gyration - X (mm)	5.87																																																																																																																																																																								
Radii of gyration - Y (mm)	5.33																																																																																																																																																																								
Principal moments along X-Y (mm ⁴)	730.21 along [0.65 0.76]																																																																																																																																																																								
Principal moments along Y-X (mm ⁴)	3578.71 along [-0.76 0.65]																																																																																																																																																																								
Elastic Modulus - Zx (mm ²)	I / y-max= 181.08																																																																																																																																																																								
Elastic Modulus - Zy (mm ²)	J / x-max= 192.63																																																																																																																																																																								
MASS PROPERTIES (UNIT)	VALUES																																																																																																																																																																								
Area (mm ²)	92.95																																																																																																																																																																								
Perimeter (mm)	166.49																																																																																																																																																																								
Bounding Box - X (mm)	-18.48 to 29.22																																																																																																																																																																								
Bounding Box - Y (mm)	-10.88 to 8.09																																																																																																																																																																								
Centroid - X (mm)	0.00																																																																																																																																																																								
Centroid - Y (mm)	0.00																																																																																																																																																																								
Moments of inertia - X (mm ⁴)	4659.96																																																																																																																																																																								
Moments of inertia - Y (mm ⁴)	19179.41																																																																																																																																																																								
Product of inertia - XY (mm ⁴)	-4156.34																																																																																																																																																																								
Radii of gyration - X (mm)	7.08																																																																																																																																																																								
Radii of gyration - Y (mm)	14.36																																																																																																																																																																								
Principal moments along X-Y (mm ⁴)	3554.36 along [0.97 -0.26]																																																																																																																																																																								
Principal moments along Y-X (mm ⁴)	20285.02 along [0.26 0.97]																																																																																																																																																																								
Elastic Modulus - Zx (mm ²)	I / y-max= 428.23																																																																																																																																																																								
Elastic Modulus - Zy (mm ²)	J / x-max= 656.46																																																																																																																																																																								

B.D. REF :

CLIENT :
 信和置業有限公司
 Sino Land Company Limited

ARCHITECT :
 WONG TUNG & PARTNERS LIMITED
 ARCHITECTS & PLANNERS

MAIN CONTRACTOR :
 CR Construction Company Limited

A04 --- ALUM. WINDOW ADAPTER GRADE --- 6063-T5	COATING --- PVF2 COATING X846070	A40 --- ALUM. WINDOW FRAME GRADE --- 6063-T5	COATING --- PVF2 COATING X846420	A17 --- ALUM. WINDOW FRAME GRADE --- 6063-T5	COATING --- PVF2 COATING X846080	A27 --- ALUM. WINDOW FRAME GRADE --- 6063-T5	- X845451	A41 --- ALUM. WINDOW TRANSOM GRADE --- 6063-T5	COATING --- PVF2 COATING X846010																																																																																																																																																																
<table border="1"> <tr><th>MASS PROPERTIES (UNIT)</th><th>VALUES</th></tr> <tr><td>Area (mm²)</td><td>283.14</td></tr> <tr><td>Perimeter (mm)</td><td>271.22</td></tr> <tr><td>Bounding Box - X (mm)</td><td>-22.25 to 22.75</td></tr> <tr><td>Bounding Box - Y (mm)</td><td>-18.91 to 31.09</td></tr> <tr><td>Centroid - X (mm)</td><td>0.00</td></tr> <tr><td>Centroid - Y (mm)</td><td>0.00</td></tr> <tr><td>Moments of inertia - X (mm⁴)</td><td>93810.89</td></tr> <tr><td>Moments of inertia - Y (mm⁴)</td><td>24561.24</td></tr> <tr><td>Product of inertia - XY (mm⁴)</td><td>1093.85</td></tr> <tr><td>Radii of gyration - X (mm)</td><td>18.20</td></tr> <tr><td>Radii of gyration - Y (mm)</td><td>9.31</td></tr> <tr><td>Principal moments along X-Y (mm⁴)</td><td>24543.97 along [0.02 1.00]</td></tr> <tr><td>Principal moments along Y-X (mm⁴)</td><td>93828.16 along [-1.00 0.02]</td></tr> <tr><td>Elastic Modulus - Zx (mm²)</td><td>I / y-max= 3017.04</td></tr> <tr><td>Elastic Modulus - Zy (mm²)</td><td>J / x-max= 1079.53</td></tr> </table>		MASS PROPERTIES (UNIT)	VALUES	Area (mm ²)	283.14	Perimeter (mm)	271.22	Bounding Box - X (mm)	-22.25 to 22.75	Bounding Box - Y (mm)	-18.91 to 31.09	Centroid - X (mm)	0.00	Centroid - Y (mm)	0.00	Moments of inertia - X (mm ⁴)	93810.89	Moments of inertia - Y (mm ⁴)	24561.24	Product of inertia - XY (mm ⁴)	1093.85	Radii of gyration - X (mm)	18.20	Radii of gyration - Y (mm)	9.31	Principal moments along X-Y (mm ⁴)	24543.97 along [0.02 1.00]	Principal moments along Y-X (mm ⁴)	93828.16 along [-1.00 0.02]	Elastic Modulus - Zx (mm ²)	I / y-max= 3017.04	Elastic Modulus - Zy (mm ²)	J / x-max= 1079.53	<table border="1"> <tr><th>MASS PROPERTIES (UNIT)</th><th>VALUES</th></tr> <tr><td>Area (mm²)</td><td>318.68</td></tr> <tr><td>Perimeter (mm)</td><td>284.07</td></tr> <tr><td>Bounding Box - X (mm)</td><td>-20.28 to 29.72</td></tr> <tr><td>Bounding Box - Y (mm)</td><td>-24.04 to 22.96</td></tr> <tr><td>Centroid - X (mm)</td><td>0.00</td></tr> <tr><td>Centroid - Y (mm)</td><td>0.00</td></tr> <tr><td>Moments of inertia - X (mm⁴)</td><td>24494.01</td></tr> <tr><td>Moments of inertia - Y (mm⁴)</td><td>115740.86</td></tr> <tr><td>Product of inertia - XY (mm⁴)</td><td>-3432.34</td></tr> <tr><td>Radii of gyration - X (mm)</td><td>8.77</td></tr> <tr><td>Radii of gyration - Y (mm)</td><td>19.06</td></tr> <tr><td>Principal moments along X-Y (mm⁴)</td><td>24365.08 along [1.00 -0.04]</td></tr> <tr><td>Principal moments along Y-X (mm⁴)</td><td>115869.58 along [0.04 1.00]</td></tr> <tr><td>Elastic Modulus - Zx (mm²)</td><td>I / y-max= 1019.03</td></tr> <tr><td>Elastic Modulus - Zy (mm²)</td><td>J / x-max= 3894.45</td></tr> </table>		MASS PROPERTIES (UNIT)	VALUES	Area (mm ²)	318.68	Perimeter (mm)	284.07	Bounding Box - X (mm)	-20.28 to 29.72	Bounding Box - Y (mm)	-24.04 to 22.96	Centroid - X (mm)	0.00	Centroid - Y (mm)	0.00	Moments of inertia - X (mm ⁴)	24494.01	Moments of inertia - Y (mm ⁴)	115740.86	Product of inertia - XY (mm ⁴)	-3432.34	Radii of gyration - X (mm)	8.77	Radii of gyration - Y (mm)	19.06	Principal moments along X-Y (mm ⁴)	24365.08 along [1.00 -0.04]	Principal moments along Y-X (mm ⁴)	115869.58 along [0.04 1.00]	Elastic Modulus - Zx (mm ²)	I / y-max= 1019.03	Elastic Modulus - Zy (mm ²)	J / x-max= 3894.45	<table border="1"> <tr><th>MASS PROPERTIES (UNIT)</th><th>VALUES</th></tr> <tr><td>Area (mm²)</td><td>569.02</td></tr> <tr><td>Perimeter (mm)</td><td>468.40</td></tr> <tr><td>Bounding Box - X (mm)</td><td>-36.63 to 23.37</td></tr> <tr><td>Bounding Box - Y (mm)</td><td>-31.40 to 31.80</td></tr> <tr><td>Centroid - X (mm)</td><td>0.00</td></tr> <tr><td>Centroid - Y (mm)</td><td>0.00</td></tr> <tr><td>Moments of inertia - X (mm⁴)</td><td>91392.16</td></tr> <tr><td>Moments of inertia - Y (mm⁴)</td><td>195988.27</td></tr> <tr><td>Product of inertia - XY (mm⁴)</td><td>1825.37</td></tr> <tr><td>Radii of gyration - X (mm)</td><td>12.67</td></tr> <tr><td>Radii of gyration - Y (mm)</td><td>18.61</td></tr> <tr><td>Principal moments along X-Y (mm⁴)</td><td>91360.61 along [1.00 0.02]</td></tr> <tr><td>Principal moments along Y-X (mm⁴)</td><td>197019.81 along [-0.02 1.00]</td></tr> <tr><td>Elastic Modulus - Zx (mm²)</td><td>I / y-max= 2892.07</td></tr> <tr><td>Elastic Modulus - Zy (mm²)</td><td>J / x-max= 5377.10</td></tr> </table>		MASS PROPERTIES (UNIT)	VALUES	Area (mm ²)	569.02	Perimeter (mm)	468.40	Bounding Box - X (mm)	-36.63 to 23.37	Bounding Box - Y (mm)	-31.40 to 31.80	Centroid - X (mm)	0.00	Centroid - Y (mm)	0.00	Moments of inertia - X (mm ⁴)	91392.16	Moments of inertia - Y (mm ⁴)	195988.27	Product of inertia - XY (mm ⁴)	1825.37	Radii of gyration - X (mm)	12.67	Radii of gyration - Y (mm)	18.61	Principal moments along X-Y (mm ⁴)	91360.61 along [1.00 0.02]	Principal moments along Y-X (mm ⁴)	197019.81 along [-0.02 1.00]	Elastic Modulus - Zx (mm ²)	I / y-max= 2892.07	Elastic Modulus - Zy (mm ²)	J / x-max= 5377.10	<table border="1"> <tr><th>MASS PROPERTIES (UNIT)</th><th>VALUES</th></tr> <tr><td>Area (mm²)</td><td>28.23</td></tr> <tr><td>Perimeter (mm)</td><td>48.74</td></tr> <tr><td>Bounding Box - X (mm)</td><td>-1.87 to 6.13</td></tr> <tr><td>Bounding Box - Y (mm)</td><td>-6.87 to 10.63</td></tr> <tr><td>Centroid - X (mm)</td><td>0.00</td></tr> <tr><td>Centroid - Y (mm)</td><td>0.00</td></tr> <tr><td>Moments of inertia - X (mm⁴)</td><td>828.53</td></tr> <tr><td>Moments of inertia - Y (mm⁴)</td><td>130.95</td></tr> <tr><td>Product of inertia - XY (mm⁴)</td><td>-210.55</td></tr> <tr><td>Radii of gyration - X (mm)</td><td>5.42</td></tr> <tr><td>Radii of gyration - Y (mm)</td><td>2.15</td></tr> <tr><td>Principal moments along X-Y (mm⁴)</td><td>72.43 along [0.27 -0.96]</td></tr> <tr><td>Principal moments along Y-X (mm⁴)</td><td>887.05 along [0.96 0.27]</td></tr> <tr><td>Elastic Modulus - Zx (mm²)</td><td>I / y-max= 77.98</td></tr> <tr><td>Elastic Modulus - Zy (mm²)</td><td>J / x-max= 21.36</td></tr> </table>		MASS PROPERTIES (UNIT)	VALUES	Area (mm ²)	28.23	Perimeter (mm)	48.74	Bounding Box - X (mm)	-1.87 to 6.13	Bounding Box - Y (mm)	-6.87 to 10.63	Centroid - X (mm)	0.00	Centroid - Y (mm)	0.00	Moments of inertia - X (mm ⁴)	828.53	Moments of inertia - Y (mm ⁴)	130.95	Product of inertia - XY (mm ⁴)	-210.55	Radii of gyration - X (mm)	5.42	Radii of gyration - Y (mm)	2.15	Principal moments along X-Y (mm ⁴)	72.43 along [0.27 -0.96]	Principal moments along Y-X (mm ⁴)	887.05 along [0.96 0.27]	Elastic Modulus - Zx (mm ²)	I / y-max= 77.98	Elastic Modulus - Zy (mm ²)	J / x-max= 21.36	<table border="1"> <tr><th>MASS PROPERTIES (UNIT)</th><th>VALUES</th></tr> <tr><td>Area (mm²)</td><td>379.57</td></tr> <tr><td>Perimeter (mm)</td><td>321.68</td></tr> <tr><td>Bounding Box - X (mm)</td><td>-34.14 to 25.87</td></tr> <tr><td>Bounding Box - Y (mm)</td><td>-24.62 to 27.38</td></tr> <tr><td>Centroid - X (mm)</td><td>0.00</td></tr> <tr><td>Centroid - Y (mm)</td><td>0.00</td></tr> <tr><td>Moments of inertia - X (mm⁴)</td><td>35739.66</td></tr> <tr><td>Moments of inertia - Y (mm⁴)</td><td>154741.21</td></tr> <tr><td>Product of inertia - XY (mm⁴)</td><td>-27691.94</td></tr> <tr><td>Radii of gyration - X (mm)</td><td>9.70</td></tr> <tr><td>Radii of gyration - Y (mm)</td><td>20.19</td></tr> <tr><td>Principal moments along X-Y (mm⁴)</td><td>29611.28 along [0.98 -0.22]</td></tr> <tr><td>Principal moments along Y-X (mm⁴)</td><td>160869.59 along [0.22 0.98]</td></tr> <tr><td>Elastic Modulus - Zx (mm²)</td><td>I / y-max= 1305.31</td></tr> <tr><td>Elastic Modulus - Zy (mm²)</td><td>J / x-max= 4532.92</td></tr> </table>		MASS PROPERTIES (UNIT)	VALUES	Area (mm ²)	379.57	Perimeter (mm)	321.68	Bounding Box - X (mm)	-34.14 to 25.87	Bounding Box - Y (mm)	-24.62 to 27.38	Centroid - X (mm)	0.00	Centroid - Y (mm)	0.00	Moments of inertia - X (mm ⁴)	35739.66	Moments of inertia - Y (mm ⁴)	154741.21	Product of inertia - XY (mm ⁴)	-27691.94	Radii of gyration - X (mm)	9.70	Radii of gyration - Y (mm)	20.19	Principal moments along X-Y (mm ⁴)	29611.28 along [0.98 -0.22]	Principal moments along Y-X (mm ⁴)	160869.59 along [0.22 0.98]	Elastic Modulus - Zx (mm ²)	I / y-max= 1305.31	Elastic Modulus - Zy (mm ²)	J / x-max= 4532.92
MASS PROPERTIES (UNIT)	VALUES																																																																																																																																																																								
Area (mm ²)	283.14																																																																																																																																																																								
Perimeter (mm)	271.22																																																																																																																																																																								
Bounding Box - X (mm)	-22.25 to 22.75																																																																																																																																																																								
Bounding Box - Y (mm)	-18.91 to 31.09																																																																																																																																																																								
Centroid - X (mm)	0.00																																																																																																																																																																								
Centroid - Y (mm)	0.00																																																																																																																																																																								
Moments of inertia - X (mm ⁴)	93810.89																																																																																																																																																																								
Moments of inertia - Y (mm ⁴)	24561.24																																																																																																																																																																								
Product of inertia - XY (mm ⁴)	1093.85																																																																																																																																																																								
Radii of gyration - X (mm)	18.20																																																																																																																																																																								
Radii of gyration - Y (mm)	9.31																																																																																																																																																																								
Principal moments along X-Y (mm ⁴)	24543.97 along [0.02 1.00]																																																																																																																																																																								
Principal moments along Y-X (mm ⁴)	93828.16 along [-1.00 0.02]																																																																																																																																																																								
Elastic Modulus - Zx (mm ²)	I / y-max= 3017.04																																																																																																																																																																								
Elastic Modulus - Zy (mm ²)	J / x-max= 1079.53																																																																																																																																																																								
MASS PROPERTIES (UNIT)	VALUES																																																																																																																																																																								
Area (mm ²)	318.68																																																																																																																																																																								
Perimeter (mm)	284.07																																																																																																																																																																								
Bounding Box - X (mm)	-20.28 to 29.72																																																																																																																																																																								
Bounding Box - Y (mm)	-24.04 to 22.96																																																																																																																																																																								
Centroid - X (mm)	0.00																																																																																																																																																																								
Centroid - Y (mm)	0.00																																																																																																																																																																								
Moments of inertia - X (mm ⁴)	24494.01																																																																																																																																																																								
Moments of inertia - Y (mm ⁴)	115740.86																																																																																																																																																																								
Product of inertia - XY (mm ⁴)	-3432.34																																																																																																																																																																								
Radii of gyration - X (mm)	8.77																																																																																																																																																																								
Radii of gyration - Y (mm)	19.06																																																																																																																																																																								
Principal moments along X-Y (mm ⁴)	24365.08 along [1.00 -0.04]																																																																																																																																																																								
Principal moments along Y-X (mm ⁴)	115869.58 along [0.04 1.00]																																																																																																																																																																								
Elastic Modulus - Zx (mm ²)	I / y-max= 1019.03																																																																																																																																																																								
Elastic Modulus - Zy (mm ²)	J / x-max= 3894.45																																																																																																																																																																								
MASS PROPERTIES (UNIT)	VALUES																																																																																																																																																																								
Area (mm ²)	569.02																																																																																																																																																																								
Perimeter (mm)	468.40																																																																																																																																																																								
Bounding Box - X (mm)	-36.63 to 23.37																																																																																																																																																																								
Bounding Box - Y (mm)	-31.40 to 31.80																																																																																																																																																																								
Centroid - X (mm)	0.00																																																																																																																																																																								
Centroid - Y (mm)	0.00																																																																																																																																																																								
Moments of inertia - X (mm ⁴)	91392.16																																																																																																																																																																								
Moments of inertia - Y (mm ⁴)	195988.27																																																																																																																																																																								
Product of inertia - XY (mm ⁴)	1825.37																																																																																																																																																																								
Radii of gyration - X (mm)	12.67																																																																																																																																																																								
Radii of gyration - Y (mm)	18.61																																																																																																																																																																								
Principal moments along X-Y (mm ⁴)	91360.61 along [1.00 0.02]																																																																																																																																																																								
Principal moments along Y-X (mm ⁴)	197019.81 along [-0.02 1.00]																																																																																																																																																																								
Elastic Modulus - Zx (mm ²)	I / y-max= 2892.07																																																																																																																																																																								
Elastic Modulus - Zy (mm ²)	J / x-max= 5377.10																																																																																																																																																																								
MASS PROPERTIES (UNIT)	VALUES																																																																																																																																																																								
Area (mm ²)	28.23																																																																																																																																																																								
Perimeter (mm)	48.74																																																																																																																																																																								
Bounding Box - X (mm)	-1.87 to 6.13																																																																																																																																																																								
Bounding Box - Y (mm)	-6.87 to 10.63																																																																																																																																																																								
Centroid - X (mm)	0.00																																																																																																																																																																								
Centroid - Y (mm)	0.00																																																																																																																																																																								
Moments of inertia - X (mm ⁴)	828.53																																																																																																																																																																								
Moments of inertia - Y (mm ⁴)	130.95																																																																																																																																																																								
Product of inertia - XY (mm ⁴)	-210.55																																																																																																																																																																								
Radii of gyration - X (mm)	5.42																																																																																																																																																																								
Radii of gyration - Y (mm)	2.15																																																																																																																																																																								
Principal moments along X-Y (mm ⁴)	72.43 along [0.27 -0.96]																																																																																																																																																																								
Principal moments along Y-X (mm ⁴)	887.05 along [0.96 0.27]																																																																																																																																																																								
Elastic Modulus - Zx (mm ²)	I / y-max= 77.98																																																																																																																																																																								
Elastic Modulus - Zy (mm ²)	J / x-max= 21.36																																																																																																																																																																								
MASS PROPERTIES (UNIT)	VALUES																																																																																																																																																																								
Area (mm ²)	379.57																																																																																																																																																																								
Perimeter (mm)	321.68																																																																																																																																																																								
Bounding Box - X (mm)	-34.14 to 25.87																																																																																																																																																																								
Bounding Box - Y (mm)	-24.62 to 27.38																																																																																																																																																																								
Centroid - X (mm)	0.00																																																																																																																																																																								
Centroid - Y (mm)	0.00																																																																																																																																																																								
Moments of inertia - X (mm ⁴)	35739.66																																																																																																																																																																								
Moments of inertia - Y (mm ⁴)	154741.21																																																																																																																																																																								
Product of inertia - XY (mm ⁴)	-27691.94																																																																																																																																																																								
Radii of gyration - X (mm)	9.70																																																																																																																																																																								
Radii of gyration - Y (mm)	20.19																																																																																																																																																																								
Principal moments along X-Y (mm ⁴)	29611.28 along [0.98 -0.22]																																																																																																																																																																								
Principal moments along Y-X (mm ⁴)	160869.59 along [0.22 0.98]																																																																																																																																																																								
Elastic Modulus - Zx (mm ²)	I / y-max= 1305.31																																																																																																																																																																								
Elastic Modulus - Zy (mm ²)	J / x-max= 4532.92																																																																																																																																																																								

STRUCTURAL ENGINEER :
 AECOM

FAÇADE CONSULTANT:

NOTE :
 1. ALL DIMENSIONS ARE IN mm.
 2. ALL ELEVATIONS ARE VIEWED FROM OUTSIDE.
 3. ALL DIMENSIONS TO BE VERIFIED ON SITE BEFORE FABRICATION.

LEGEND :
 X1 --- DETAIL MARK NO.
 X001 --- REFER SHEET NO.

1. F.F.L. --- FINISHED FLOOR LEVEL
 2. S.F.L. --- STRUCTURAL FLOOR LEVEL
 3. (R) --- REVERSED DETAIL

A32 --- ALUM. WINDOW FRAME GRADE --- 6063-T6	COATING --- PVF2 COATING X846390	A14 --- ALUM. WINDOW TRANSOM GRADE --- 6063-T5	COATING --- PVF2 COATING X846400	A18 --- ALUM. LOUVER GRADE --- 6063-T5	COATING --- PVF2 COATING X843331	A08 --- ALUM. WINDOW TRANSOM GRADE --- 6063-T5	COATING --- PVF2 COATING X846090	A13 --- ALUM. WINDOW TRANSOM GRADE --- 6063-T5	COATING --- PVF2 COATING X846160																																																																																																																																																																
<table border="1"> <tr><th>MASS PROPERTIES (UNIT)</th><th>VALUES</th></tr> <tr><td>Area (mm²)</td><td>342.82</td></tr> <tr><td>Perimeter (mm)</td><td>289.03</td></tr> <tr><td>Bounding Box - X (mm)</td><td>-34.70 to 25.30</td></tr> <tr><td>Bounding Box - Y (mm)</td><td>-22.51 to 19.49</td></tr> <tr><td>Centroid - X (mm)</td><td>0.00</td></tr> <tr><td>Centroid - Y (mm)</td><td>0.00</td></tr> <tr><td>Moments of inertia - X (mm⁴)</td><td>19354.31</td></tr> <tr><td>Moments of inertia - Y (mm⁴)</td><td>134266.31</td></tr> <tr><td>Product of inertia - XY (mm⁴)</td><td>-20546.96</td></tr> <tr><td>Radii of gyration - X (mm)</td><td>7.51</td></tr> <tr><td>Radii of gyration - Y (mm)</td><td>19.79</td></tr> <tr><td>Principal moments along X-Y (mm⁴)</td><td>15790.88 along [0.99 -0.17]</td></tr> <tr><td>Principal moments along Y-X (mm⁴)</td><td>137829.73 along [0.17 0.99]</td></tr> <tr><td>Elastic Modulus - Zx (mm²)</td><td>I / y-max= 859.69</td></tr> <tr><td>Elastic Modulus - Zy (mm²)</td><td>J / x-max= 3869.35</td></tr> </table>		MASS PROPERTIES (UNIT)	VALUES	Area (mm ²)	342.82	Perimeter (mm)	289.03	Bounding Box - X (mm)	-34.70 to 25.30	Bounding Box - Y (mm)	-22.51 to 19.49	Centroid - X (mm)	0.00	Centroid - Y (mm)	0.00	Moments of inertia - X (mm ⁴)	19354.31	Moments of inertia - Y (mm ⁴)	134266.31	Product of inertia - XY (mm ⁴)	-20546.96	Radii of gyration - X (mm)	7.51	Radii of gyration - Y (mm)	19.79	Principal moments along X-Y (mm ⁴)	15790.88 along [0.99 -0.17]	Principal moments along Y-X (mm ⁴)	137829.73 along [0.17 0.99]	Elastic Modulus - Zx (mm ²)	I / y-max= 859.69	Elastic Modulus - Zy (mm ²)	J / x-max= 3869.35	<table border="1"> <tr><th>MASS PROPERTIES (UNIT)</th><th>VALUES</th></tr> <tr><td>Area (mm²)</td><td>334.63</td></tr> <tr><td>Perimeter (mm)</td><td>280.08</td></tr> <tr><td>Bounding Box - X (mm)</td><td>-25.63 to 24.37</td></tr> <tr><td>Bounding Box - Y (mm)</td><td>-24.00 to 23.00</td></tr> <tr><td>Centroid - X (mm)</td><td>0.00</td></tr> <tr><td>Centroid - Y (mm)</td><td>0.00</td></tr> <tr><td>Moments of inertia - X (mm⁴)</td><td>24425.84</td></tr> <tr><td>Moments of inertia - Y (mm⁴)</td><td>122970.95</td></tr> <tr><td>Product of inertia - XY (mm⁴)</td><td>23999.62</td></tr> <tr><td>Radii of gyration - X (mm)</td><td>8.54</td></tr> <tr><td>Radii of gyration - Y (mm)</td><td>19.17</td></tr> <tr><td>Principal moments along X-Y (mm⁴)</td><td>18891.77 along [0.97 0.22]</td></tr> <tr><td>Principal moments along Y-X (mm⁴)</td><td>128505.03 along [-0.22 0.97]</td></tr> <tr><td>Elastic Modulus - Zx (mm²)</td><td>I / y-max= 1017.71</td></tr> <tr><td>Elastic Modulus - Zy (mm²)</td><td>J / x-max= 4798.43</td></tr> </table>		MASS PROPERTIES (UNIT)	VALUES	Area (mm ²)	334.63	Perimeter (mm)	280.08	Bounding Box - X (mm)	-25.63 to 24.37	Bounding Box - Y (mm)	-24.00 to 23.00	Centroid - X (mm)	0.00	Centroid - Y (mm)	0.00	Moments of inertia - X (mm ⁴)	24425.84	Moments of inertia - Y (mm ⁴)	122970.95	Product of inertia - XY (mm ⁴)	23999.62	Radii of gyration - X (mm)	8.54	Radii of gyration - Y (mm)	19.17	Principal moments along X-Y (mm ⁴)	18891.77 along [0.97 0.22]	Principal moments along Y-X (mm ⁴)	128505.03 along [-0.22 0.97]	Elastic Modulus - Zx (mm ²)	I / y-max= 1017.71	Elastic Modulus - Zy (mm ²)	J / x-max= 4798.43	<table border="1"> <tr><th>MASS PROPERTIES (UNIT)</th><th>VALUES</th></tr> <tr><td>Area (mm²)</td><td>330.84</td></tr> <tr><td>Perimeter (mm)</td><td>238.46</td></tr> <tr><td>Bounding Box - X (mm)</td><td>-25.07 to 24.93</td></tr> <tr><td>Bounding Box - Y (mm)</td><td>-32.39 to 33.36</td></tr> <tr><td>Centroid - X (mm)</td><td>0.00</td></tr> <tr><td>Centroid - Y (mm)</td><td>0.00</td></tr> <tr><td>Moments of inertia - X (mm⁴)</td><td>131492.97</td></tr> <tr><td>Moments of inertia - Y (mm⁴)</td><td>90239.64</td></tr> <tr><td>Product of inertia - XY (mm⁴)</td><td>105727.93</td></tr> <tr><td>Radii of gyration - X (mm)</td><td>19.94</td></tr> <tr><td>Radii of gyration - Y (mm)</td><td>16.52</td></tr> <tr><td>Principal moments along X-Y (mm⁴)</td><td>3145.12 along [0.64 0.77]</td></tr> <tr><td>Principal moments along Y-X (mm⁴)</td><td>218587.49 along [-0.77 0.64]</td></tr> <tr><td>Elastic Modulus - Zx (mm²)</td><td>I / y-max= 3941.11</td></tr> <tr><td>Elastic Modulus - Zy (mm²)</td><td>J / x-max= 3598.91</td></tr> </table>		MASS PROPERTIES (UNIT)	VALUES	Area (mm ²)	330.84	Perimeter (mm)	238.46	Bounding Box - X (mm)	-25.07 to 24.93	Bounding Box - Y (mm)	-32.39 to 33.36	Centroid - X (mm)	0.00	Centroid - Y (mm)	0.00	Moments of inertia - X (mm ⁴)	131492.97	Moments of inertia - Y (mm ⁴)	90239.64	Product of inertia - XY (mm ⁴)	105727.93	Radii of gyration - X (mm)	19.94	Radii of gyration - Y (mm)	16.52	Principal moments along X-Y (mm ⁴)	3145.12 along [0.64 0.77]	Principal moments along Y-X (mm ⁴)	218587.49 along [-0.77 0.64]	Elastic Modulus - Zx (mm ²)	I / y-max= 3941.11	Elastic Modulus - Zy (mm ²)	J / x-max= 3598.91	<table border="1"> <tr><th>MASS PROPERTIES (UNIT)</th><th>VALUES</th></tr> <tr><td>Area (mm²)</td><td>551.75</td></tr> <tr><td>Perimeter (mm)</td><td>453.07</td></tr> <tr><td>Bounding Box - X (mm)</td><td>-22.16 to 27.84</td></tr> <tr><td>Bounding Box - Y (mm)</td><td>-31.50 to 31.50</td></tr> <tr><td>Centroid - X (mm)</td><td>0.00</td></tr> <tr><td>Centroid - Y (mm)</td><td>0.00</td></tr> <tr><td>Moments of inertia - X (mm⁴)</td><td>91721.96</td></tr> <tr><td>Moments of inertia - Y (mm⁴)</td><td>177487.49</td></tr> <tr><td>Product of inertia - XY (mm⁴)</td><td>0.00</td></tr> <tr><td>Radii of gyration - X (mm)</td><td>12.89</td></tr> <tr><td>Radii of gyration - Y (mm)</td><td>17.94</td></tr> <tr><td>Principal moments along X-Y (mm⁴)</td><td>91721.96 along [1.00 0.00]</td></tr> <tr><td>Principal moments along Y-X (mm⁴)</td><td>177487.49 along [0.00 1.00]</td></tr> <tr><td>Elastic Modulus - Zx (mm²)</td><td>I / y-max= 2911.81</td></tr> <tr><td>Elastic Modulus - Zy (mm²)</td><td>J / x-max= 6374.92</td></tr> </table>		MASS PROPERTIES (UNIT)	VALUES	Area (mm ²)	551.75	Perimeter (mm)	453.07	Bounding Box - X (mm)	-22.16 to 27.84	Bounding Box - Y (mm)	-31.50 to 31.50	Centroid - X (mm)	0.00	Centroid - Y (mm)	0.00	Moments of inertia - X (mm ⁴)	91721.96	Moments of inertia - Y (mm ⁴)	177487.49	Product of inertia - XY (mm ⁴)	0.00	Radii of gyration - X (mm)	12.89	Radii of gyration - Y (mm)	17.94	Principal moments along X-Y (mm ⁴)	91721.96 along [1.00 0.00]	Principal moments along Y-X (mm ⁴)	177487.49 along [0.00 1.00]	Elastic Modulus - Zx (mm ²)	I / y-max= 2911.81	Elastic Modulus - Zy (mm ²)	J / x-max= 6374.92	<table border="1"> <tr><th>MASS PROPERTIES (UNIT)</th><th>VALUES</th></tr> <tr><td>Area (mm²)</td><td>598.70</td></tr> <tr><td>Perimeter (mm)</td><td>496.80</td></tr> <tr><td>Bounding Box - X (mm)</td><td>-33.07 to 26.93</td></tr> <tr><td>Bounding Box - Y (mm)</td><td>-33.80 to 48.20</td></tr> <tr><td>Centroid - X (mm)</td><td>0.00</td></tr> <tr><td>Centroid - Y (mm)</td><td>0.00</td></tr> <tr><td>Moments of inertia - X (mm⁴)</td><td>162416.76</td></tr> <tr><td>Moments of inertia - Y (mm⁴)</td><td>231287.24</td></tr> <tr><td>Product of inertia - XY (mm⁴)</td><td>-65623.30</td></tr> <tr><td>Radii of gyration - X (mm)</td><td>16.50</td></tr> <tr><td>Radii of gyration - Y (mm)</td><td>19.69</td></tr> <tr><td>Principal moments along X-Y (mm⁴)</td><td>122742.60 along [0.86 -0.52]</td></tr> <tr><td>Principal moments along Y-X (mm⁴)</td><td>270961.40 along [0.52 0.86]</td></tr> <tr><td>Elastic Modulus - Zx (mm²)</td><td>I / y-max= 3369.80</td></tr> <tr><td>Elastic Modulus - Zy (mm²)</td><td>J / x-max= 6953.11</td></tr> </table>		MASS PROPERTIES (UNIT)	VALUES	Area (mm ²)	598.70	Perimeter (mm)	496.80	Bounding Box - X (mm)	-33.07 to 26.93	Bounding Box - Y (mm)	-33.80 to 48.20	Centroid - X (mm)	0.00	Centroid - Y (mm)	0.00	Moments of inertia - X (mm ⁴)	162416.76	Moments of inertia - Y (mm ⁴)	231287.24	Product of inertia - XY (mm ⁴)	-65623.30	Radii of gyration - X (mm)	16.50	Radii of gyration - Y (mm)	19.69	Principal moments along X-Y (mm ⁴)	122742.60 along [0.86 -0.52]	Principal moments along Y-X (mm ⁴)	270961.40 along [0.52 0.86]	Elastic Modulus - Zx (mm ²)	I / y-max= 3369.80	Elastic Modulus - Zy (mm ²)	J / x-max= 6953.11
MASS PROPERTIES (UNIT)	VALUES																																																																																																																																																																								
Area (mm ²)	342.82																																																																																																																																																																								
Perimeter (mm)	289.03																																																																																																																																																																								
Bounding Box - X (mm)	-34.70 to 25.30																																																																																																																																																																								
Bounding Box - Y (mm)	-22.51 to 19.49																																																																																																																																																																								
Centroid - X (mm)	0.00																																																																																																																																																																								
Centroid - Y (mm)	0.00																																																																																																																																																																								
Moments of inertia - X (mm ⁴)	19354.31																																																																																																																																																																								
Moments of inertia - Y (mm ⁴)	134266.31																																																																																																																																																																								
Product of inertia - XY (mm ⁴)	-20546.96																																																																																																																																																																								
Radii of gyration - X (mm)	7.51																																																																																																																																																																								
Radii of gyration - Y (mm)	19.79																																																																																																																																																																								
Principal moments along X-Y (mm ⁴)	15790.88 along [0.99 -0.17]																																																																																																																																																																								
Principal moments along Y-X (mm ⁴)	137829.73 along [0.17 0.99]																																																																																																																																																																								
Elastic Modulus - Zx (mm ²)	I / y-max= 859.69																																																																																																																																																																								
Elastic Modulus - Zy (mm ²)	J / x-max= 3869.35																																																																																																																																																																								
MASS PROPERTIES (UNIT)	VALUES																																																																																																																																																																								
Area (mm ²)	334.63																																																																																																																																																																								
Perimeter (mm)	280.08																																																																																																																																																																								
Bounding Box - X (mm)	-25.63 to 24.37																																																																																																																																																																								
Bounding Box - Y (mm)	-24.00 to 23.00																																																																																																																																																																								
Centroid - X (mm)	0.00																																																																																																																																																																								
Centroid - Y (mm)	0.00																																																																																																																																																																								
Moments of inertia - X (mm ⁴)	24425.84																																																																																																																																																																								
Moments of inertia - Y (mm ⁴)	122970.95																																																																																																																																																																								
Product of inertia - XY (mm ⁴)	23999.62																																																																																																																																																																								
Radii of gyration - X (mm)	8.54																																																																																																																																																																								
Radii of gyration - Y (mm)	19.17																																																																																																																																																																								
Principal moments along X-Y (mm ⁴)	18891.77 along [0.97 0.22]																																																																																																																																																																								
Principal moments along Y-X (mm ⁴)	128505.03 along [-0.22 0.97]																																																																																																																																																																								
Elastic Modulus - Zx (mm ²)	I / y-max= 1017.71																																																																																																																																																																								
Elastic Modulus - Zy (mm ²)	J / x-max= 4798.43																																																																																																																																																																								
MASS PROPERTIES (UNIT)	VALUES																																																																																																																																																																								
Area (mm ²)	330.84																																																																																																																																																																								
Perimeter (mm)	238.46																																																																																																																																																																								
Bounding Box - X (mm)	-25.07 to 24.93																																																																																																																																																																								
Bounding Box - Y (mm)	-32.39 to 33.36																																																																																																																																																																								
Centroid - X (mm)	0.00																																																																																																																																																																								
Centroid - Y (mm)	0.00																																																																																																																																																																								
Moments of inertia - X (mm ⁴)	131492.97																																																																																																																																																																								
Moments of inertia - Y (mm ⁴)	90239.64																																																																																																																																																																								
Product of inertia - XY (mm ⁴)	105727.93																																																																																																																																																																								
Radii of gyration - X (mm)	19.94																																																																																																																																																																								
Radii of gyration - Y (mm)	16.52																																																																																																																																																																								
Principal moments along X-Y (mm ⁴)	3145.12 along [0.64 0.77]																																																																																																																																																																								
Principal moments along Y-X (mm ⁴)	218587.49 along [-0.77 0.64]																																																																																																																																																																								
Elastic Modulus - Zx (mm ²)	I / y-max= 3941.11																																																																																																																																																																								
Elastic Modulus - Zy (mm ²)	J / x-max= 3598.91																																																																																																																																																																								
MASS PROPERTIES (UNIT)	VALUES																																																																																																																																																																								
Area (mm ²)	551.75																																																																																																																																																																								
Perimeter (mm)	453.07																																																																																																																																																																								
Bounding Box - X (mm)	-22.16 to 27.84																																																																																																																																																																								
Bounding Box - Y (mm)	-31.50 to 31.50																																																																																																																																																																								
Centroid - X (mm)	0.00																																																																																																																																																																								
Centroid - Y (mm)	0.00																																																																																																																																																																								
Moments of inertia - X (mm ⁴)	91721.96																																																																																																																																																																								
Moments of inertia - Y (mm ⁴)	177487.49																																																																																																																																																																								
Product of inertia - XY (mm ⁴)	0.00																																																																																																																																																																								
Radii of gyration - X (mm)	12.89																																																																																																																																																																								
Radii of gyration - Y (mm)	17.94																																																																																																																																																																								
Principal moments along X-Y (mm ⁴)	91721.96 along [1.00 0.00]																																																																																																																																																																								
Principal moments along Y-X (mm ⁴)	177487.49 along [0.00 1.00]																																																																																																																																																																								
Elastic Modulus - Zx (mm ²)	I / y-max= 2911.81																																																																																																																																																																								
Elastic Modulus - Zy (mm ²)	J / x-max= 6374.92																																																																																																																																																																								
MASS PROPERTIES (UNIT)	VALUES																																																																																																																																																																								
Area (mm ²)	598.70																																																																																																																																																																								
Perimeter (mm)	496.80																																																																																																																																																																								
Bounding Box - X (mm)	-33.07 to 26.93																																																																																																																																																																								
Bounding Box - Y (mm)	-33.80 to 48.20																																																																																																																																																																								
Centroid - X (mm)	0.00																																																																																																																																																																								
Centroid - Y (mm)	0.00																																																																																																																																																																								
Moments of inertia - X (mm ⁴)	162416.76																																																																																																																																																																								
Moments of inertia - Y (mm ⁴)	231287.24																																																																																																																																																																								
Product of inertia - XY (mm ⁴)	-65623.30																																																																																																																																																																								
Radii of gyration - X (mm)	16.50																																																																																																																																																																								
Radii of gyration - Y (mm)	19.69																																																																																																																																																																								
Principal moments along X-Y (mm ⁴)	122742.60 along [0.86 -0.52]																																																																																																																																																																								
Principal moments along Y-X (mm ⁴)	270961.40 along [0.52 0.86]																																																																																																																																																																								
Elastic Modulus - Zx (mm ²)	I / y-max= 3369.80																																																																																																																																																																								
Elastic Modulus - Zy (mm ²)	J / x-max= 6953.11																																																																																																																																																																								

NO. DATE REVISED BY

JOB NO. : J-837

PROJECT :
 URA KWUN TONG TOWN CENTRE
 REDEVELOPMENT (AREA 2 & 3) AT
 NKIL 6514, KWUN TONG, KOWLOON

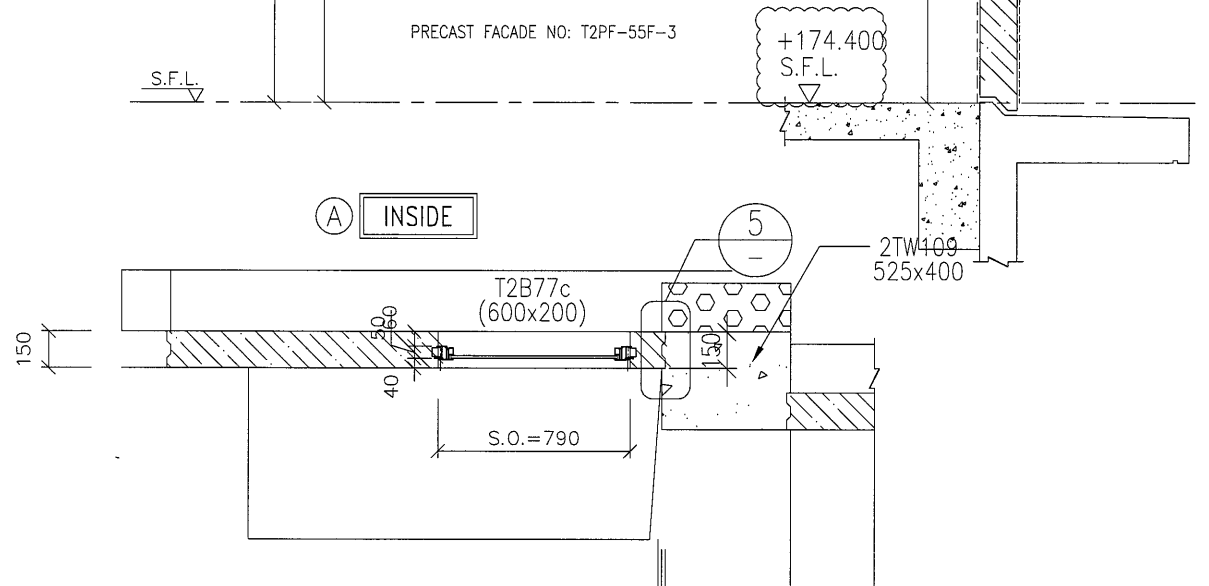
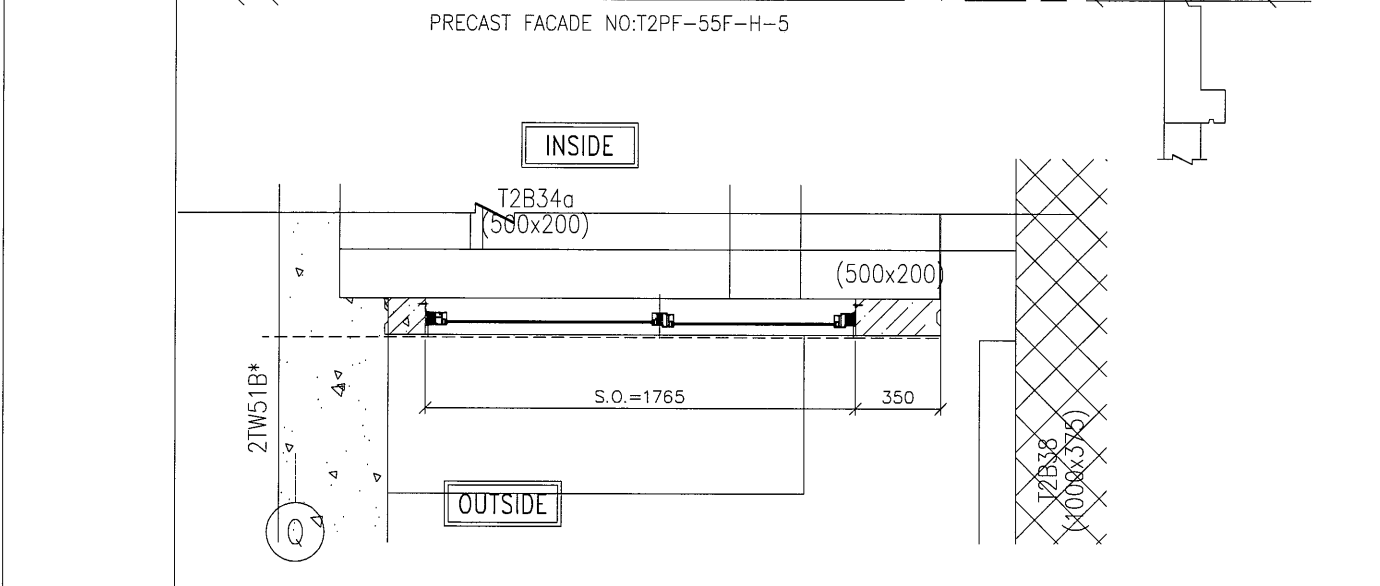
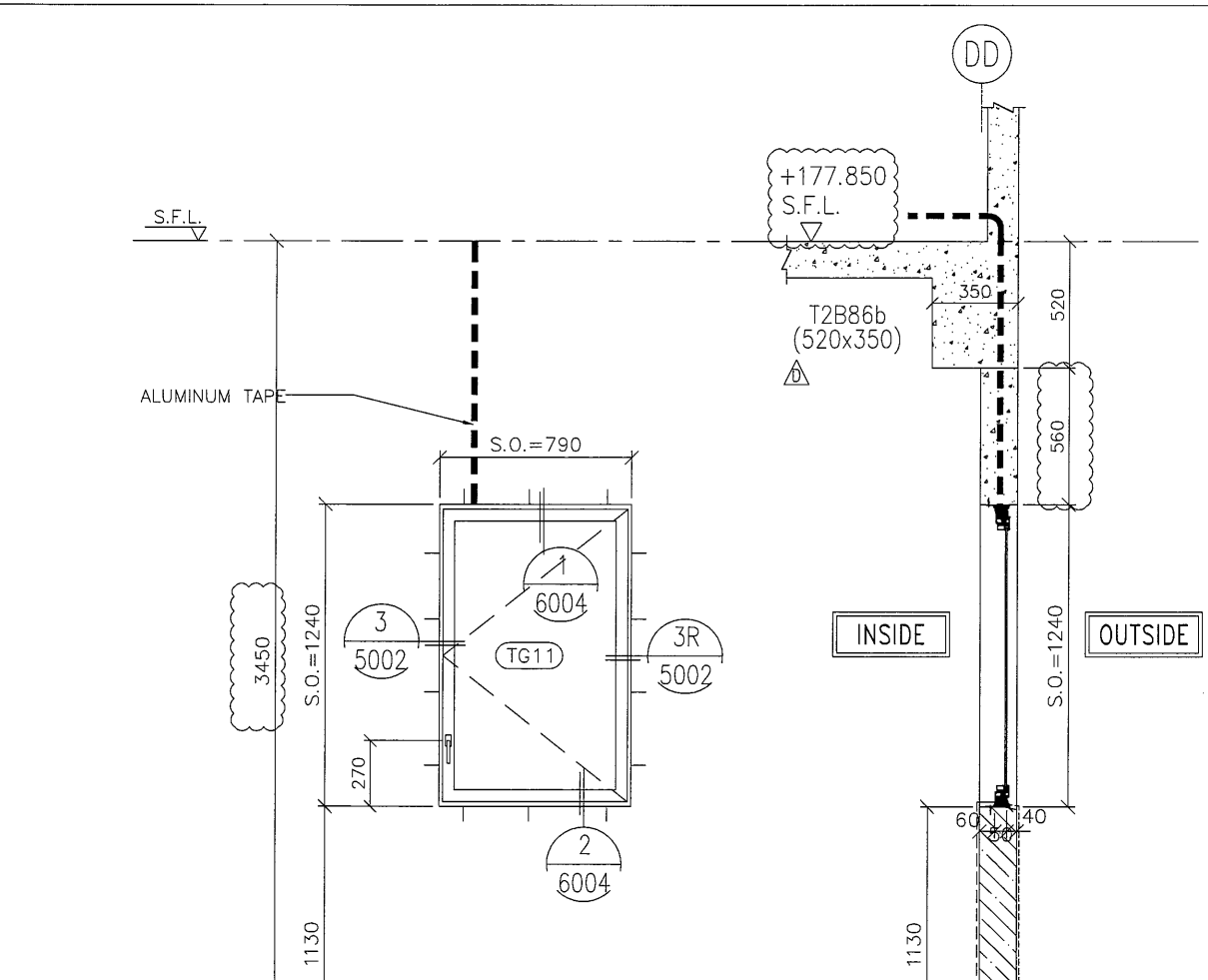
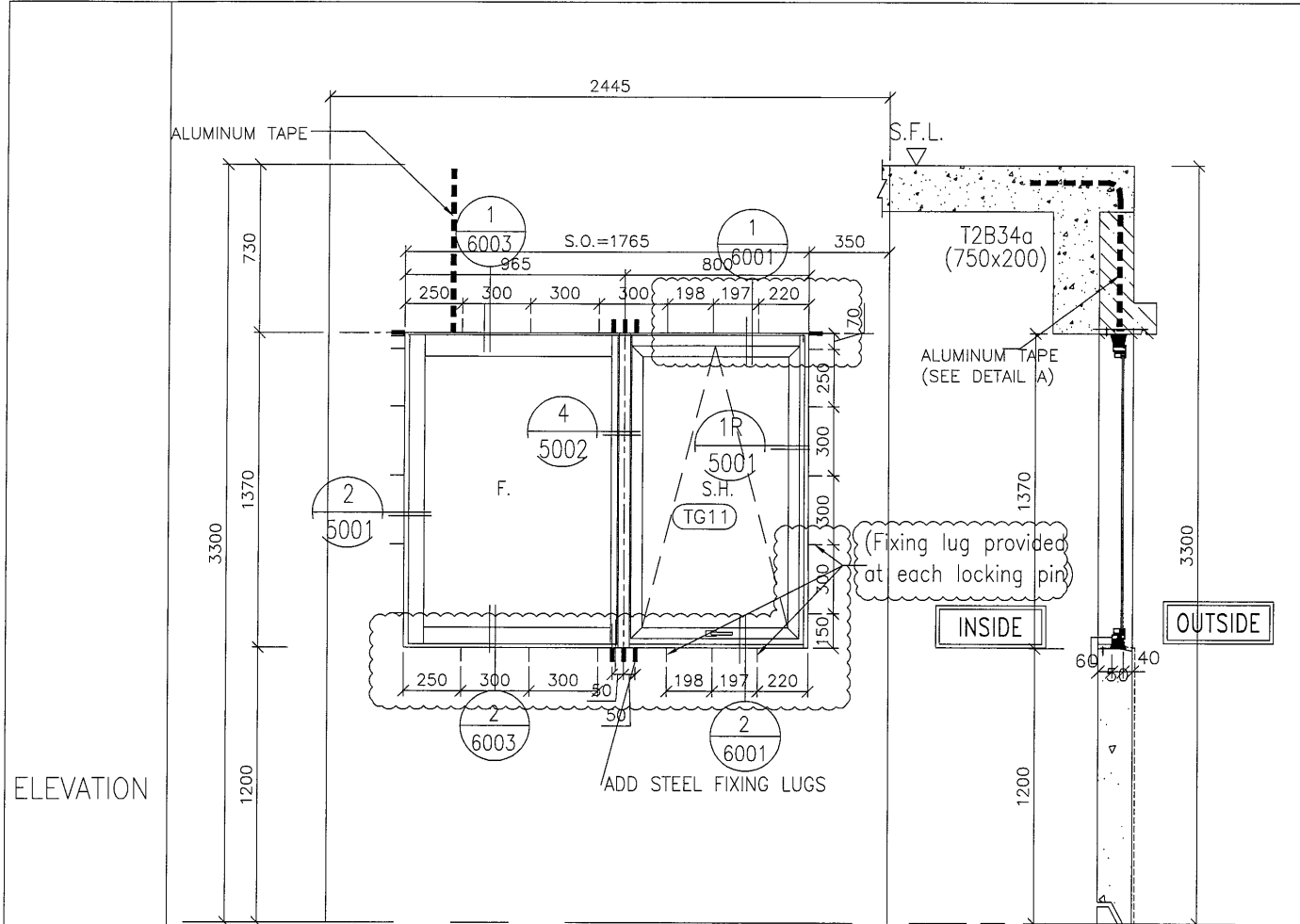
TITLE :
 SECTION PROFILE FOR
 ALUM. WINDOW

DATE : 30-AUG-18 SCALE : 1:2

DRAWN BY : Zeng CHECKED BY : DW

美特鋁質有限公司
 MIDI ALUMINIUM FABRICATOR LTD.
 Units 6-8, Sunray Industrial Centre, 1/F
 810 Cha Kwo Ling Road, Kowloon
 Tel:23489211-4 Fax:(852)2727666

DWG NO. : J837-PIW-0004 REV. : A



GLAZING AREA	Required = 0.83	Provided = 1.94
OPENABLE AREA	Required = 0.855	Provided = 1.35
NEW S.O.	1765(W)*1370(H)	
ORIGINAL S.O.	1725(W)*1330(H)	

GLAZING AREA	Required = 0.552	Provided = 0.552
OPENABLE AREA	Required = 0.635	Provided = 0.635
NEW S.O.	790(W)*1240(H)	
ORIGINAL S.O.	750(W)*1200(H)	

WINDOW MARK	T2W 55G-BR3
SECTION :	50mm ALUM. SECTION
QTY.	1 NOS.
LOCATION :	T2 55/F FLAT G BR3
GLAZING	8mm THK. CLEAR TEMPERED GLASS
REMARK :	

WINDOW MARK	T2W 55F-6
SECTION :	50mm ALUM. SECTION
QTY.	1 NOS. (55F)
LOCATION :	55/F COMMON CORRIDOR(TO BE CONFIRMED)
GLAZING	8mm THK ACID ETCHED FROSTED TEMPERED GLASS
REMARK :	OPENABLE WINDOW

B.D. REF :

CLIENT :
信和置業有限公司
Sino Land Company Limited

ARCHITECT :
WONG TUNG & PARTNERS LIMITED
ARCHITECTS & PLANNERS

MAIN CONTRACTOR :
CR Construction Company Limited

STRUCTURAL ENGINEER :
AECOM

FACADE CONSULTANT :

NOTE :
1. ALL DIMENSIONS ARE IN mm.
2. ALL ELEVATIONS ARE VIEWED FROM OUTSIDE.
3. ALL DIMENSIONS TO BE VERIFIED ON SITE BEFORE FABRICATION.

LEGEND :
X1 --- DETAIL MARK NO.
X001 --- REFER SHEET NO.

1. F.F.L. --- FINISHED FLOOR LEVEL
2. S.F.L. --- STRUCTURAL FLOOR LEVEL
3. (R) --- REVERSED DETAIL

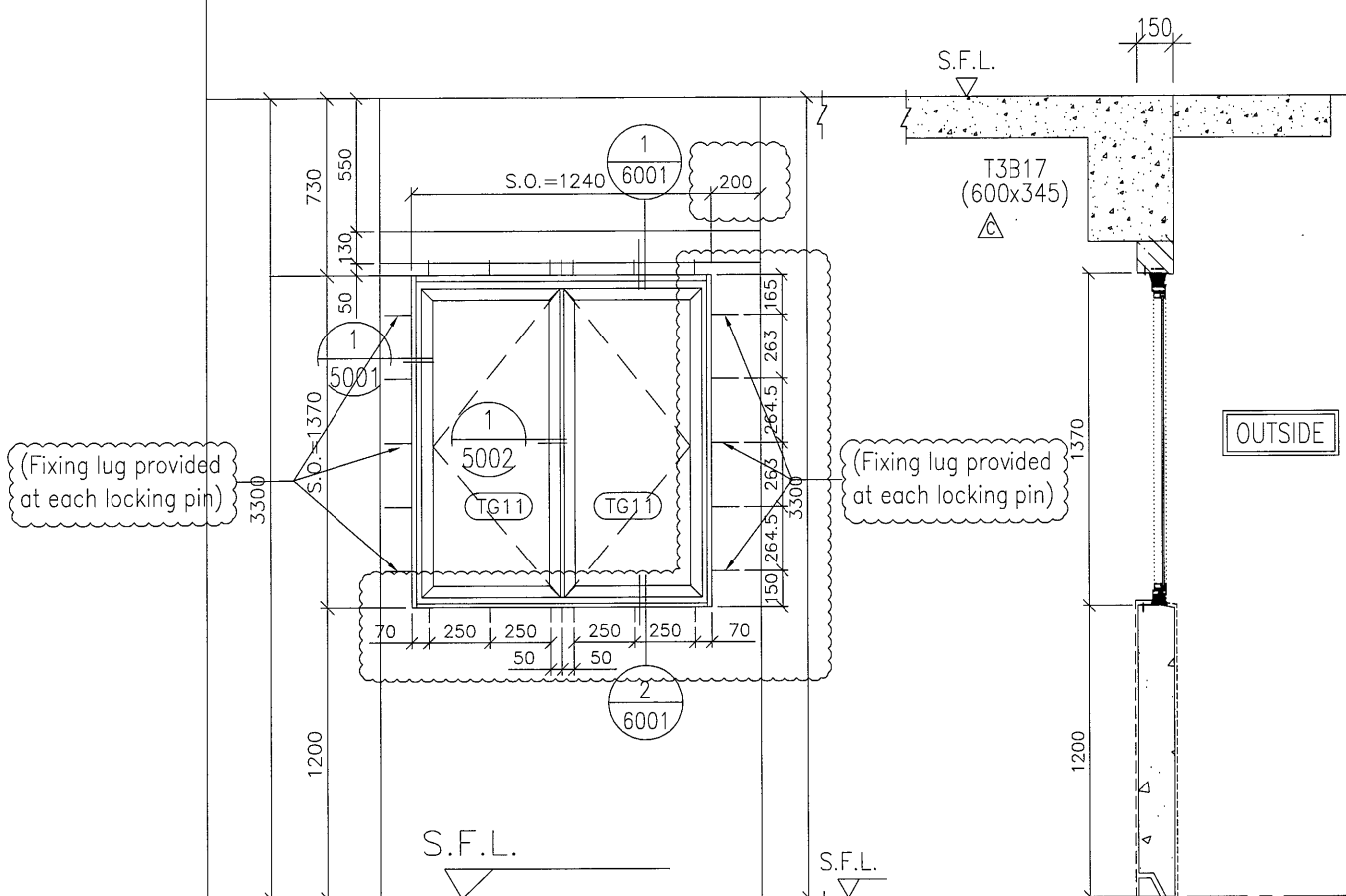
A	2019/10/24	BY ARCHITECT COMMENT	Zeng
NO.	DATE	REVISED	BY

JOB NO. : J-837
PROJECT :
URA KWUN TONG TOWN CENTRE
REDEVELOPMENT (AREA 2 & 3) AT
NKIL 6514, KWUN TONG, KOWLOON

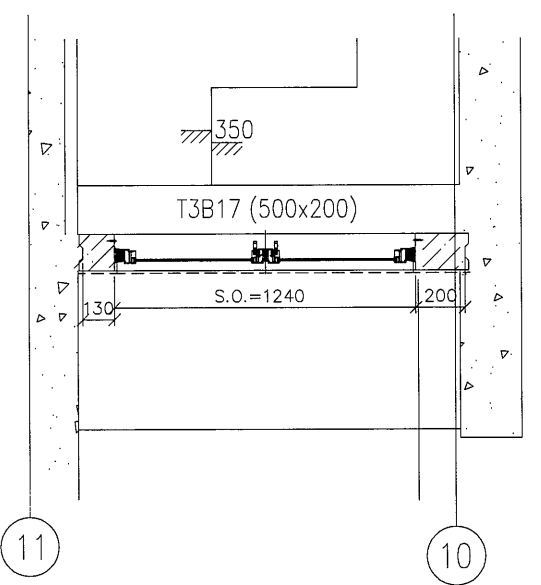
TITLE :
ALUM. WINDOW SCHEDULE
(FOR T2)

DATE : 30-AUG-18 SCALE : 1:30
DRAWN BY : Zeng CHECKED BY : DW

美特鋁質有限公司
MIDI ALUMINIUM FABRICATOR LTD.
Units 6-8, Sunray Industrial Centre, 1/F
610 Cha Kwo Ling Road, Kowloon
Tel:23489211-4 Fax:(852)2727666
DWG NO. : J837-PIW-2211 REV. : A

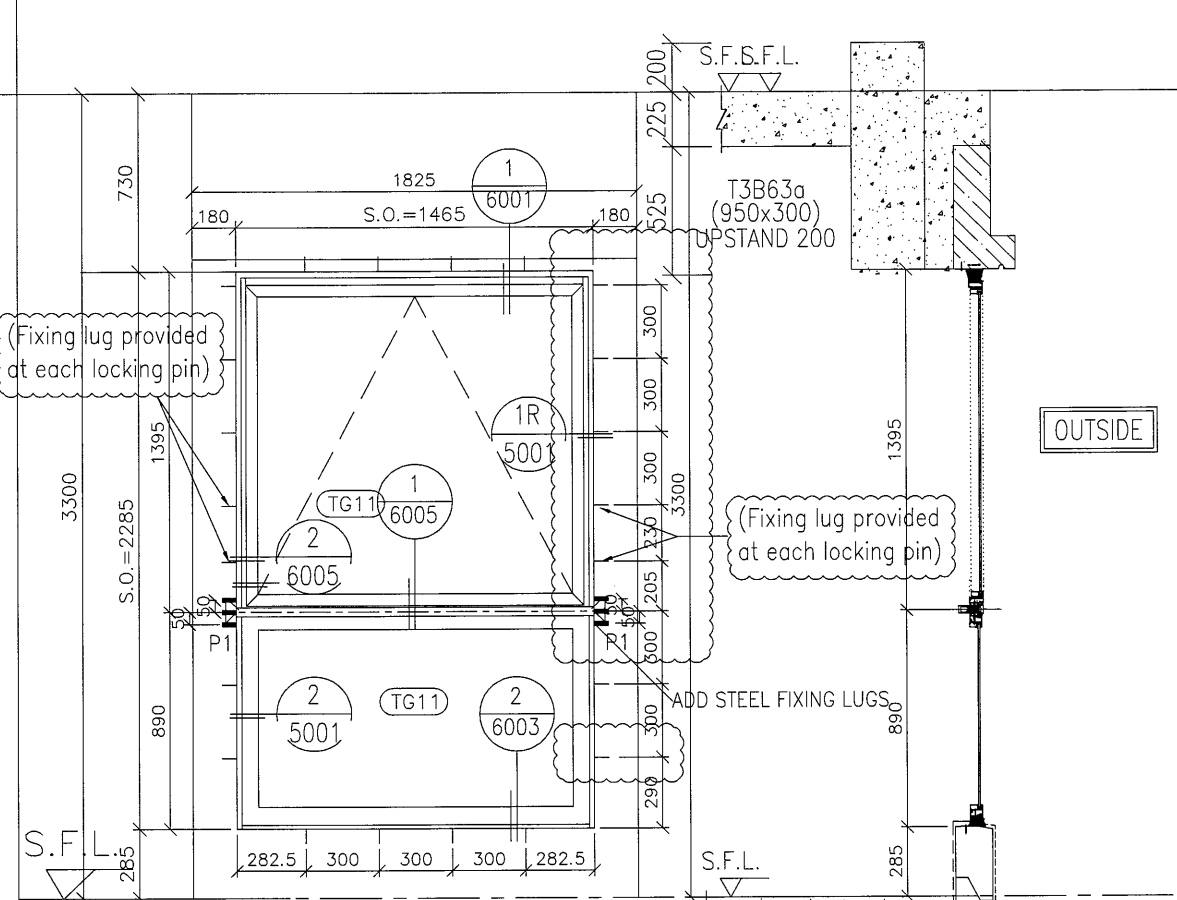


PRECAST FACADE
NO:T3PF-52F-H-1

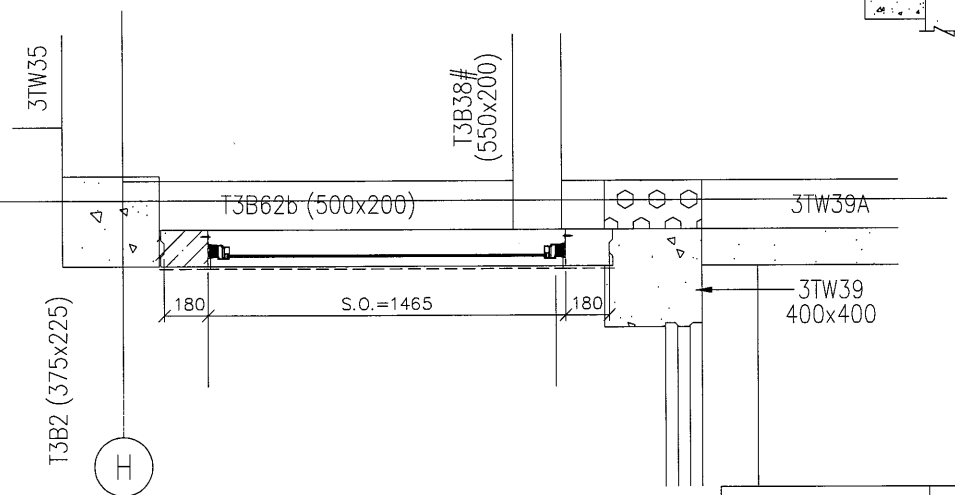


NEW S.O.	1240(W)*1370(H)
ORIGINAL S.O.	1200(W)*1330(H)

GLAZING AREA	Required = 0.616
	Provided = 1.33
OPENABLE AREA	Required = 0.385
	Provided = 1.25



PRECAST FACADE
NO:T3PF-52F-F-3



NEW S.O.	1465(W)*2285(H)
ORIGINAL S.O.	1425(W)*2245(H)

GLAZING AREA	Required = 0.616
	Provided = 1.33
OPENABLE AREA	Required = 0.385
	Provided = 1.25

WINDOW MARK	T3W 52H-BR2
SECTION :	50mm ALUM. SECTION
QTY.	1 NOS.
LOCATION :	T3 52F UNIT H BR2
GLAZING	8mm THK. CLEAR TEMPERED GLASS
REMARK :	

WINDOW MARK	T3W 52D-LIV
SECTION :	50mm ALUM. SECTION
QTY.	1 NOS.
LOCATION :	T3 52F UNIT D LIV.
GLAZING	8mm THK CLEAR TEMPERED GLASS
REMARK :	

B.D. REF :

CLIENT :
信和置業有限公司
Sino Land Company Limited

ARCHITECT :
WONG TUNG & PARTNERS LIMITED
ARCHITECTS & PLANNERS
WT

MAIN CONTRACTOR :
CR Construction Company Limited

STRUCTURAL ENGINEER :
AECOM

FACADE CONSULTANT :

NOTE :

- ALL DIMENSIONS ARE IN mm.
- ALL ELEVATIONS ARE VIEWED FROM OUTSIDE.
- ALL DIMENSIONS TO BE VERIFIED ON SITE BEFORE FABRICATION.

LEGEND :

X1 --- DETAIL MARK NO.
X001 --- REFER SHEET NO.

- F.F.L. --- FINISHED FLOOR LEVEL
- S.F.L. --- STRUCTURAL FLOOR LEVEL
- ⊗ --- REVERSED DETAIL

A	2019/10/24	BY ARCHITECT COMMENT	Zeng
NO.	DATE	REVISED	BY

JOB NO. : J-837

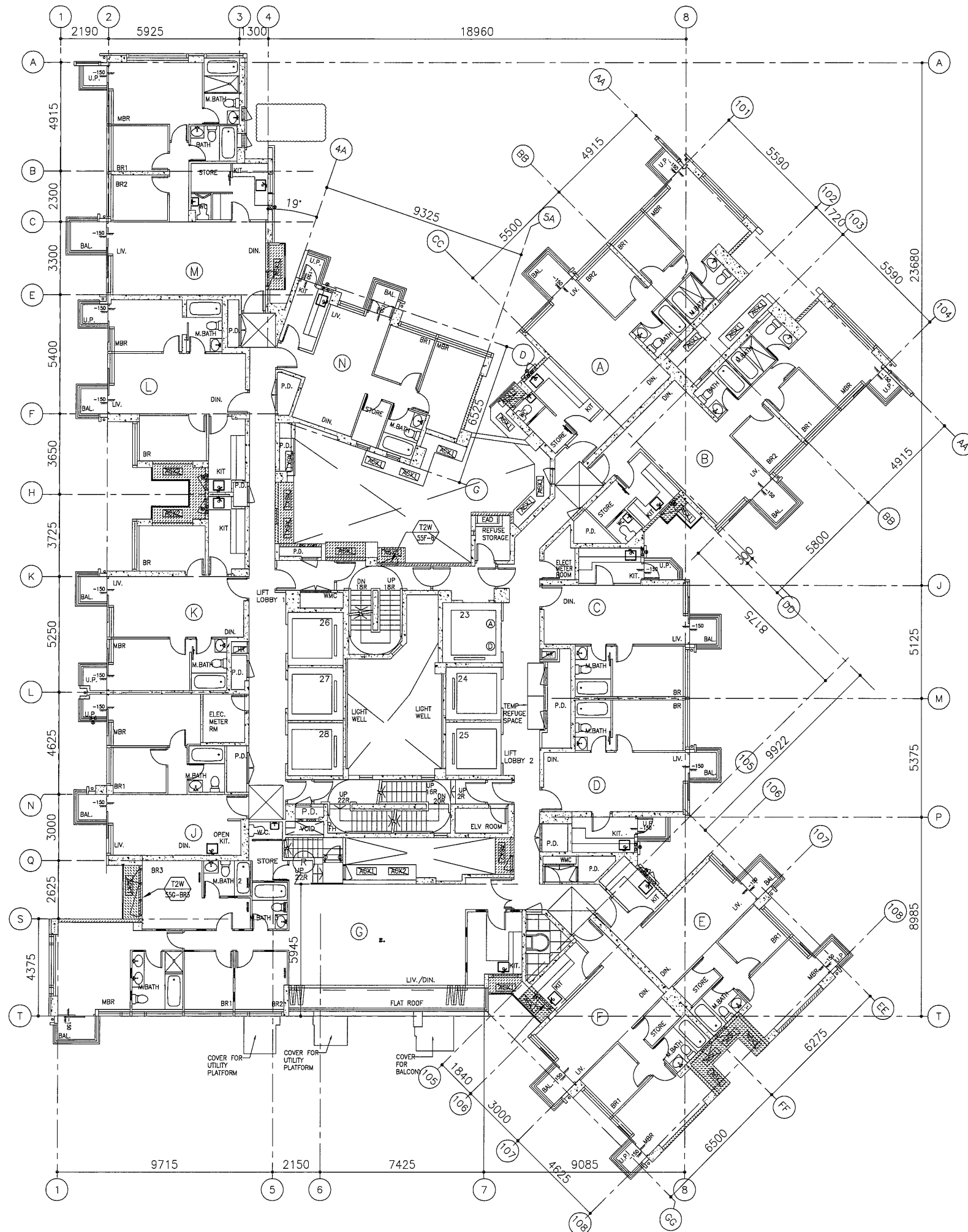
PROJECT :
URA KWUN TONG TOWN CENTRE
REDEVELOPMENT (AREA 2 & 3) AT
NKIL 6514, KWUN TONG, KOWLOON

TITLE :
ALUM. WINDOW SCHEDULE
(FOR T3)

DATE : 30-AUG-18	SCALE : 1:##
DRAWN BY : Zeng	CHECKED BY : DW


美特鋁質有限公司
MIDI ALUMINIUM FABRICATOR LTD.
Units 6-8, Sunray Industrial Centre, 1/F
610 Cha Kwo Ling Road, Kowloon
Tel:23489211-4 Fax:(852)27727666


DWG NO. : J837-PIW-2312 REV. : A





T2 - 55/F FLOOR PLAN

B.D. REF :

CLIENT :
 信和置業有限公司
 Sino Land Company Limited

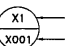
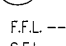
ARCHITECT :
 WONG TUNG & PARTNERS LIMITED
 ARCHITECTS & PLANNERS


MAIN CONTRACTOR :
 CR Construction Company Limited

STRUCTURAL ENGINEER :


FACADE CONSULTANT:

NOTE :
 1. ALL DIMENSIONS ARE IN mm.
 2. ALL ELEVATIONS ARE VIEWED FROM OUTSIDE.
 3. ALL DIMENSIONS TO BE VERIFIED ON SITE BEFORE FABRICATION.

LEGEND :
 — DETAIL MARK NO.
 — REFER SHEET NO.

1. F.F.L. -- FINISHED FLOOR LEVEL
 2. S.F.L. -- STRUCTURAL FLOOR LEVEL
 3. (R) -- REVERSED DETAIL

NO.	DATE	REVISED	BY


JOB NO. : J-837

PROJECT :
 URA KWUN TONG TOWN CENTRE
 REDEVELOPMENT (AREA 2 & 3) AT
 NKIL 6514, KWUN TONG, KOWLOON

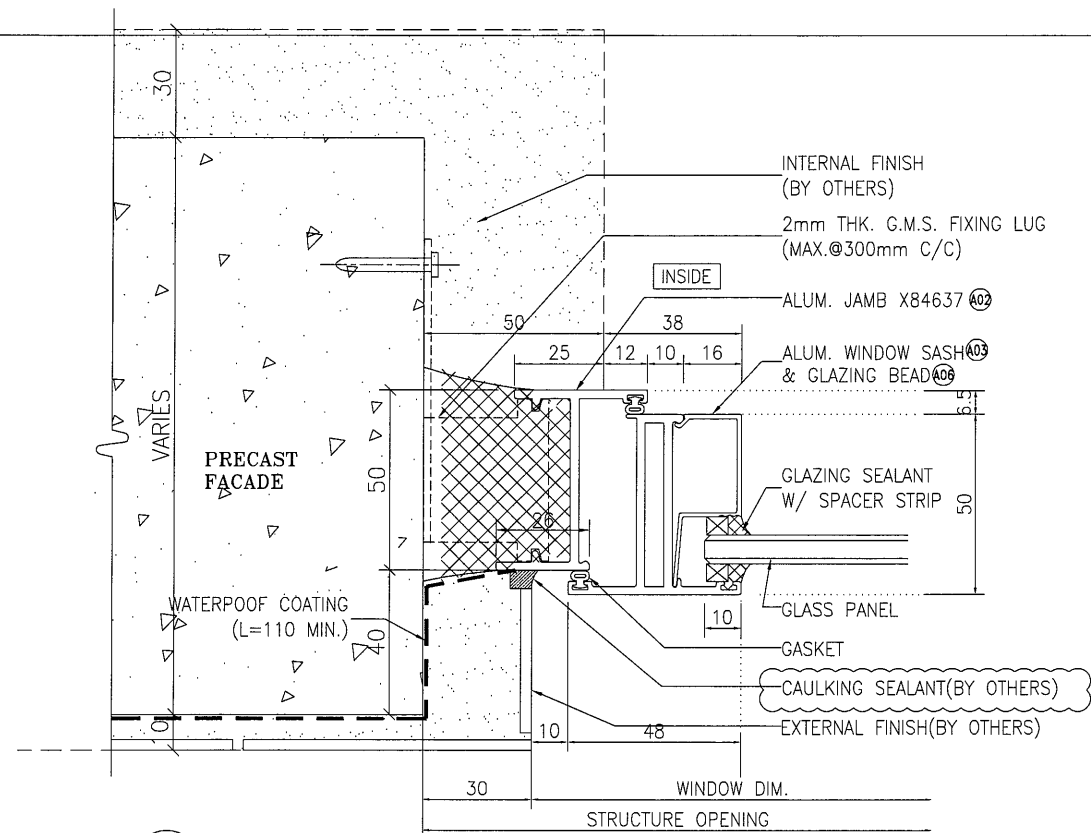
TITLE :
 FULL PLAN LAYOUT
 (FOR T2 55/F FLOOR PLAN)

DATE : 30-AUG-18 SCALE : 1:###

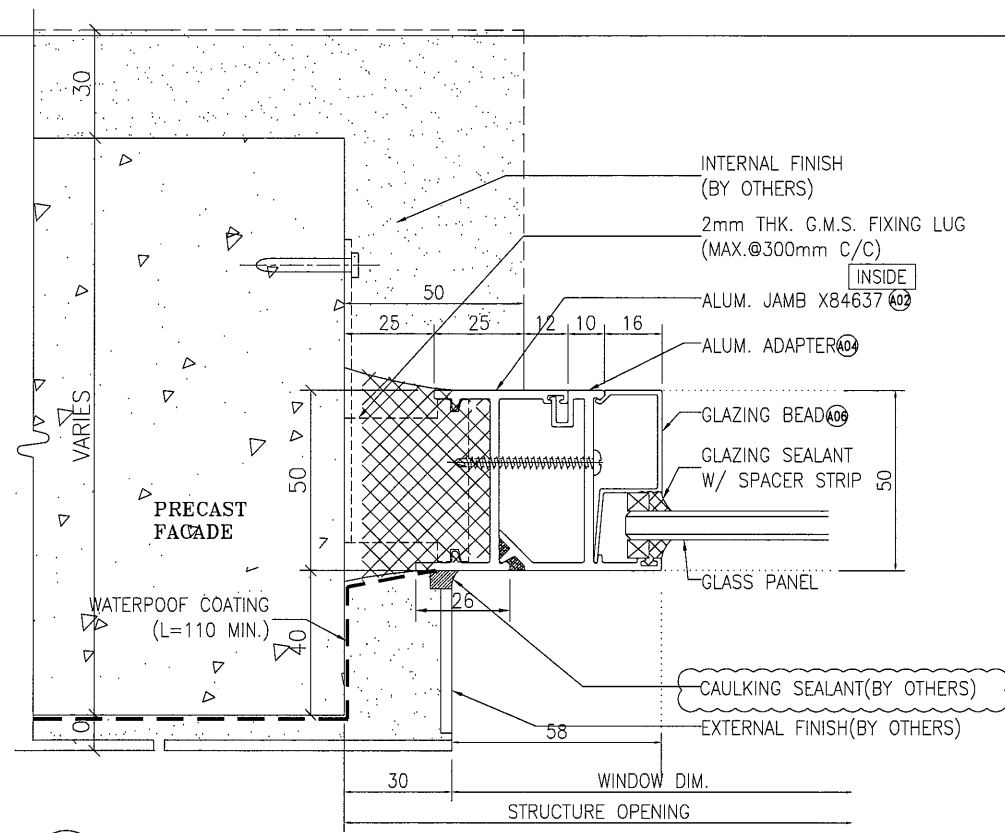
DRAWN BY : Zeng CHECKED BY : DW

 美特鋁質有限公司
 MIDI ALUMINIUM FABRICATOR LTD.
 Units 6-8, Sunray Industrial Centre, 1/F
 610 Cha Kwo Ling Road, Kowloon
 Tel: 23489211-4 Fax: (852) 2727666

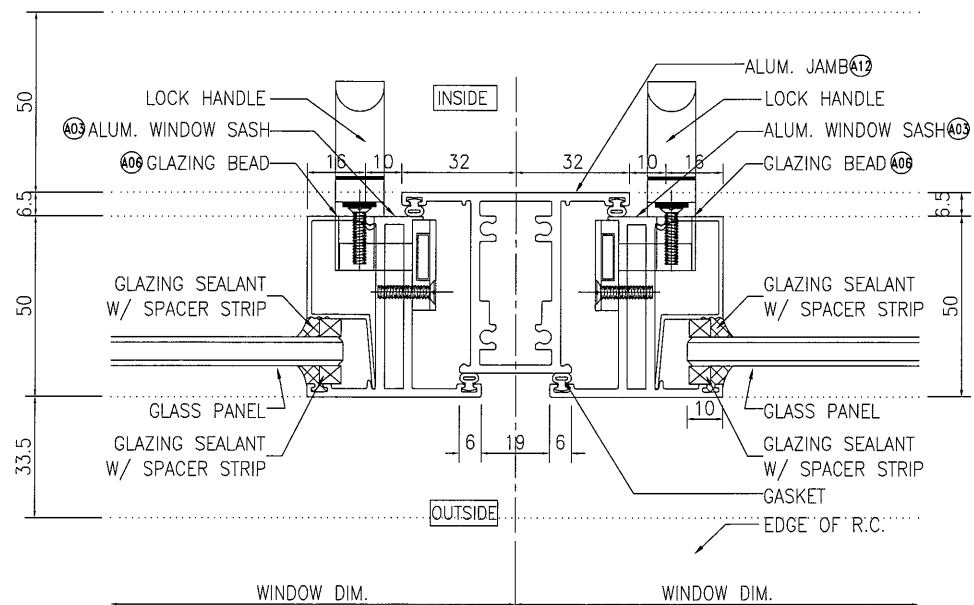
DWG NO. : JB37-PIW-3203 REV. :



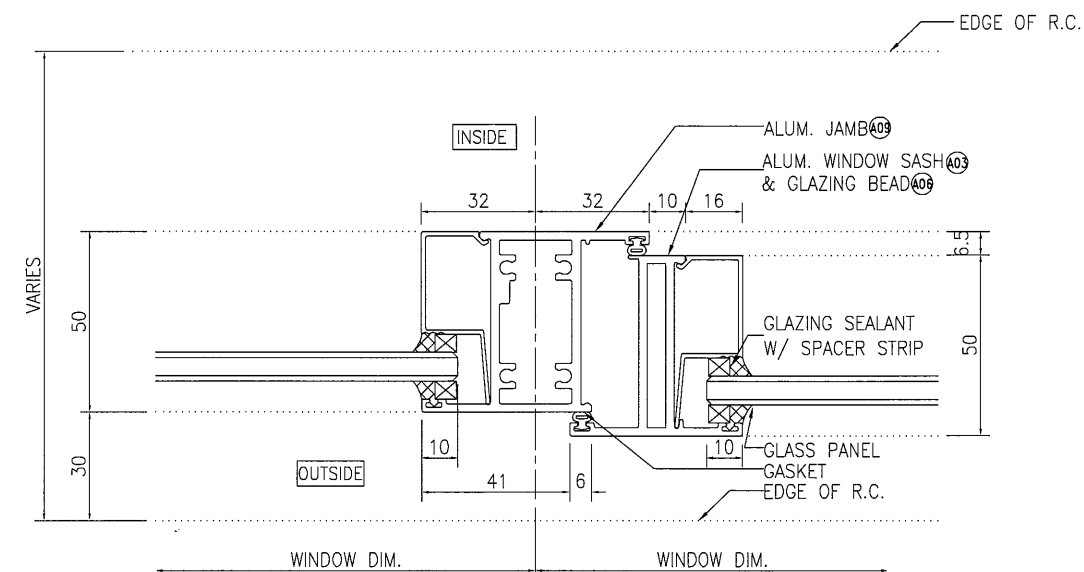
1
5001 HORIZONTAL DETAIL
Operable Window
tiles finish



2
5001 HORIZONTAL DETAIL
Fixed Window



3
5001 HORIZONTAL DETAIL
Mullion Of Fixed Window
And Operable Window
(FOR TYPICAL FLOORS)



4
5001 HORIZONTAL DETAIL
Mullion Of Fixed Window
And Operable Window
(FOR TYPICAL FLOORS)

B.D. REF :

CLIENT :
信和置業有限公司
Sino Land Company Limited

ARCHITECT :
WONG TUNG & PARTNERS LIMITED
ARCHITECTS & PLANNERS
WT

MAIN CONTRACTOR :
CR Construction Company Limited

STRUCTURAL ENGINEER :
AECOM

FACADE CONSULTANT:

NOTE :
1. ALL DIMENSIONS ARE IN mm.
2. ALL ELEVATIONS ARE VIEWED FROM OUTSIDE.
3. ALL DIMENSIONS TO BE VERIFIED ON SITE BEFORE FABRICATION.

LEGEND :
X1 --- DETAIL MARK NO.
X001 --- REFER SHEET NO.
1. F.F.L. --- FINISHED FLOOR LEVEL
2. S.F.L. --- STRUCTURAL FLOOR LEVEL
3. (R) --- REVERSED DETAIL

NO.	DATE	REVISED	BY

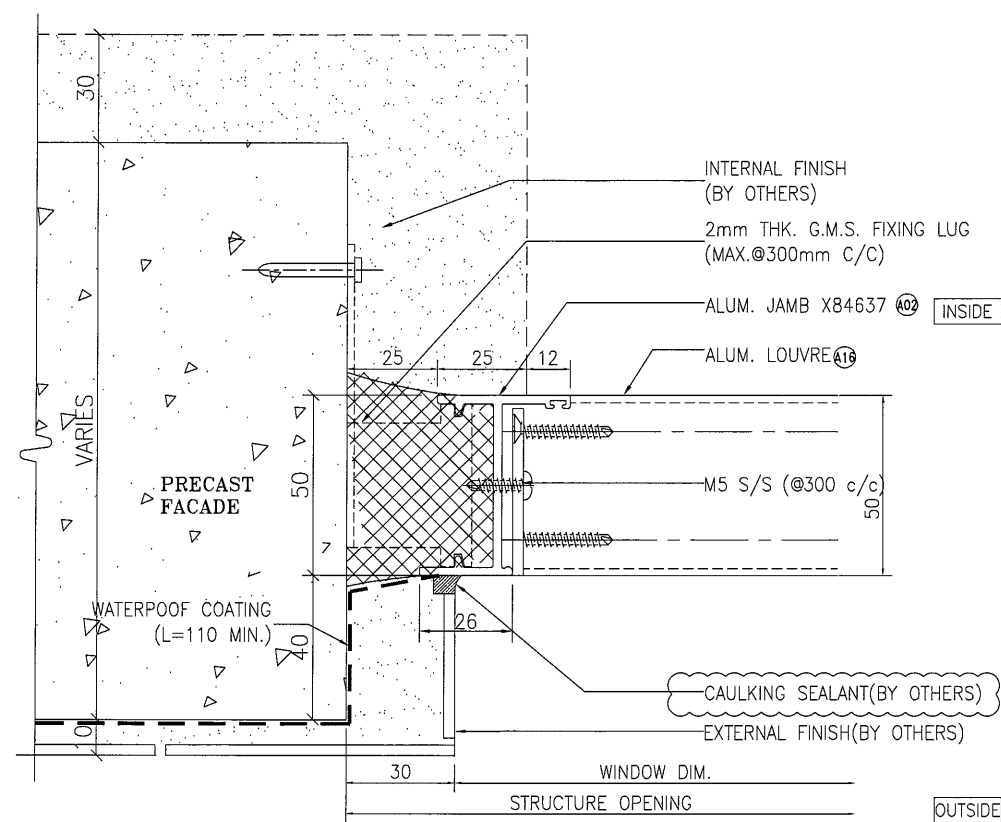
JOB NO. : J-837
PROJECT :
URA KWUN TONG TOWN CENTRE
REDEVELOPMENT (AREA 2 & 3) AT
NKIL 6514, KWUN TONG, KOWLOON

TITLE :
TYPICAL DETAIL FOR
IN-SITU ALUM. WINDOW

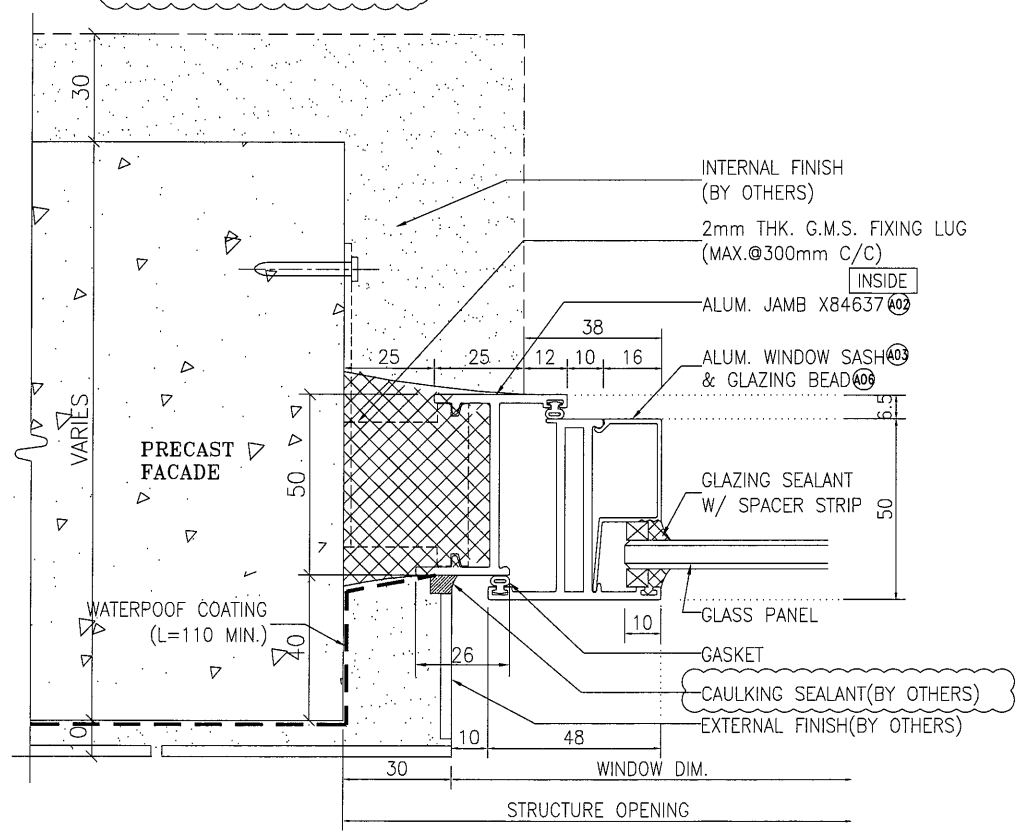
DATE : 30-AUG-18 SCALE : 1:2
DRAWN BY : Zeng CHECKED BY : DW

美特鋁質有限公司
MIDI ALUMINIUM FABRICATOR LTD.
Units 6-8, Sunray Industrial Centre, 1/F
610 Cha Kwo Ling Road, Kowloon
Tel:23489211-4 Fax:(852)27727666

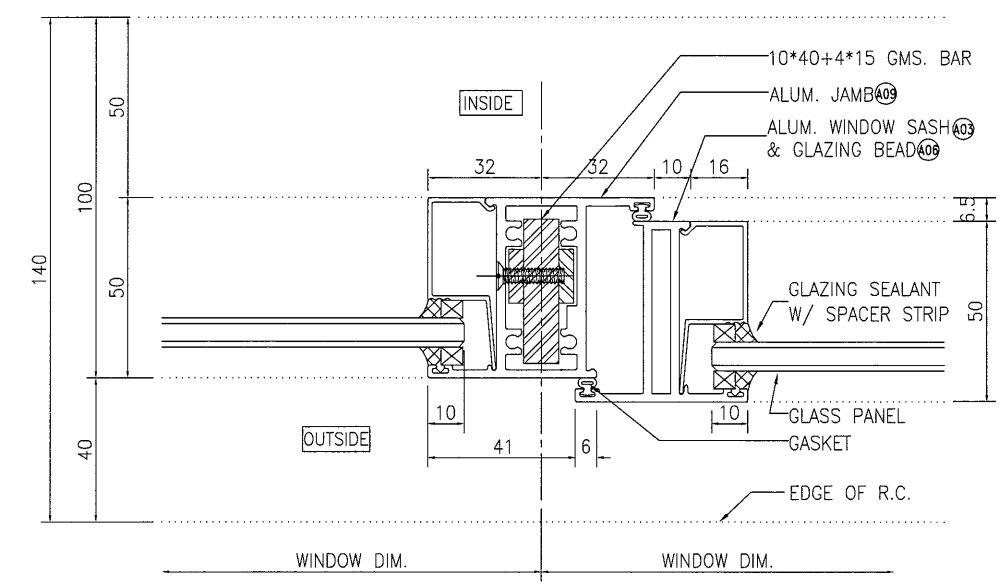
DWG NO. : J837-PIW-5001 REV. : A



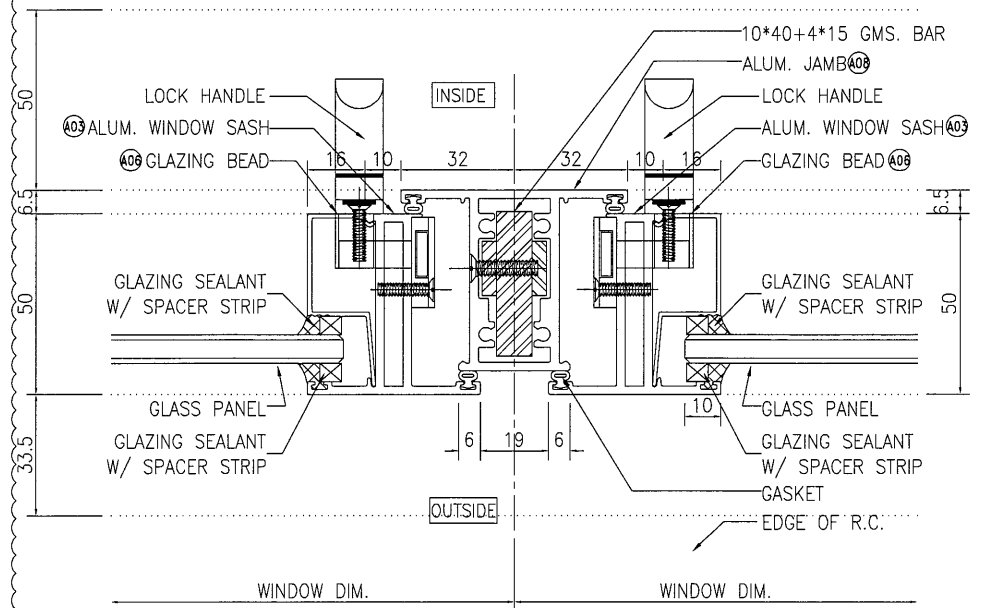
2 HORIZONTAL DETAIL
5002 Fixed Window
(FOR TYPICAL FLOORS)



3 HORIZONTAL DETAIL
5002 Operable Window
tiles finish



4 HORIZONTAL DETAIL
5002 Mullion Of Fixed Window
And Operable Window



1 HORIZONTAL DETAIL
5002 Mullion Of Fixed Window
And Operable Window

B.D. REF :

CLIENT :
信和置業有限公司
Sino Land Company Limited

ARCHITECT :
WONG TUNG & PARTNERS LIMITED
ARCHITECTS & PLANNERS

MAIN CONTRACTOR :
CR Construction Company Limited

STRUCTURAL ENGINEER :
AECOM

FAÇADE CONSULTANT:

NOTE :
1. ALL DIMENSIONS ARE IN mm.
2. ALL ELEVATIONS ARE VIEWED FROM OUTSIDE.
3. ALL DIMENSIONS TO BE VERIFIED ON SITE BEFORE FABRICATION.

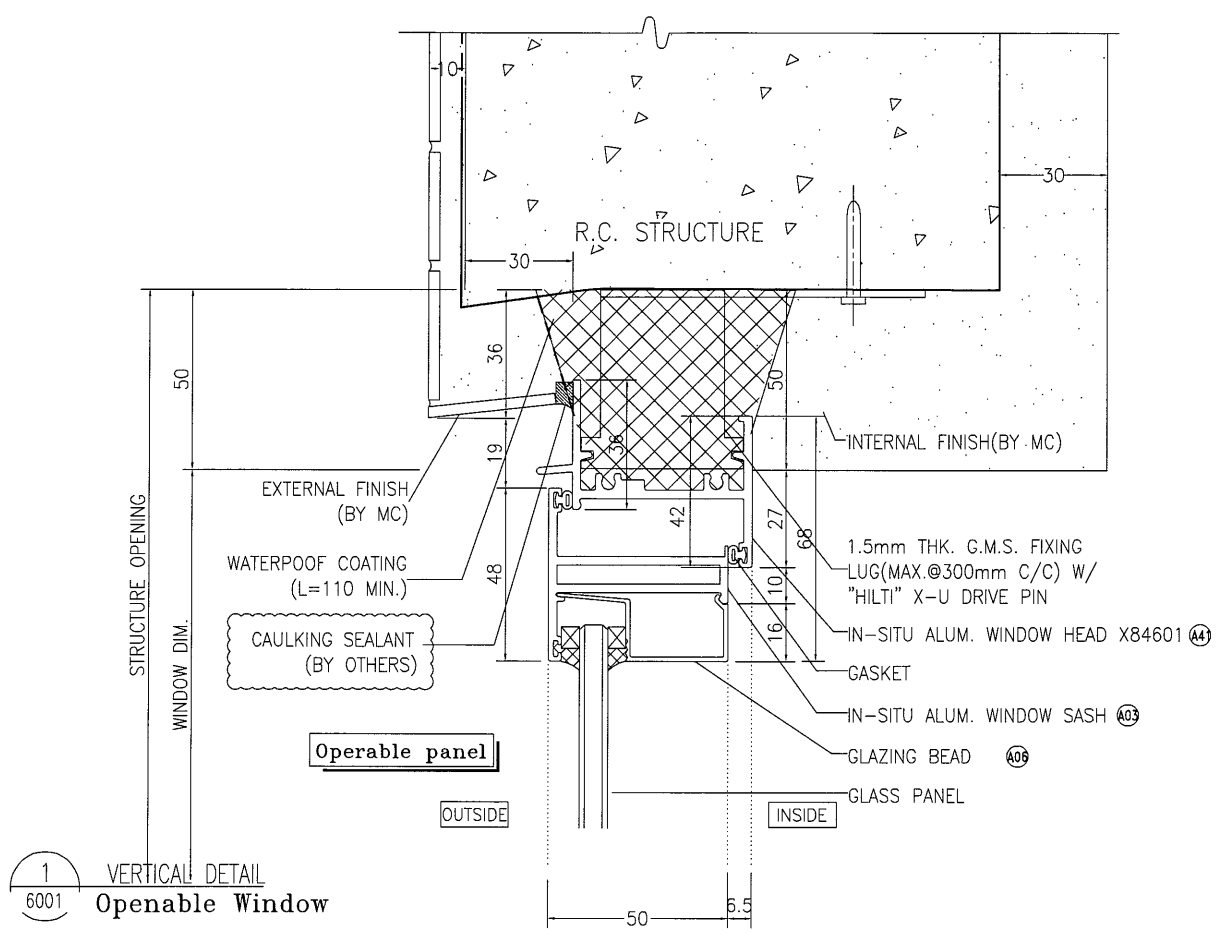
LEGEND :
X1 -- DETAIL MARK NO.
X001 -- REFER SHEET NO.

1. F.F.L. -- FINISHED FLOOR LEVEL
2. S.F.L. -- STRUCTURAL FLOOR LEVEL
3. (R) -- REVERSED DETAIL

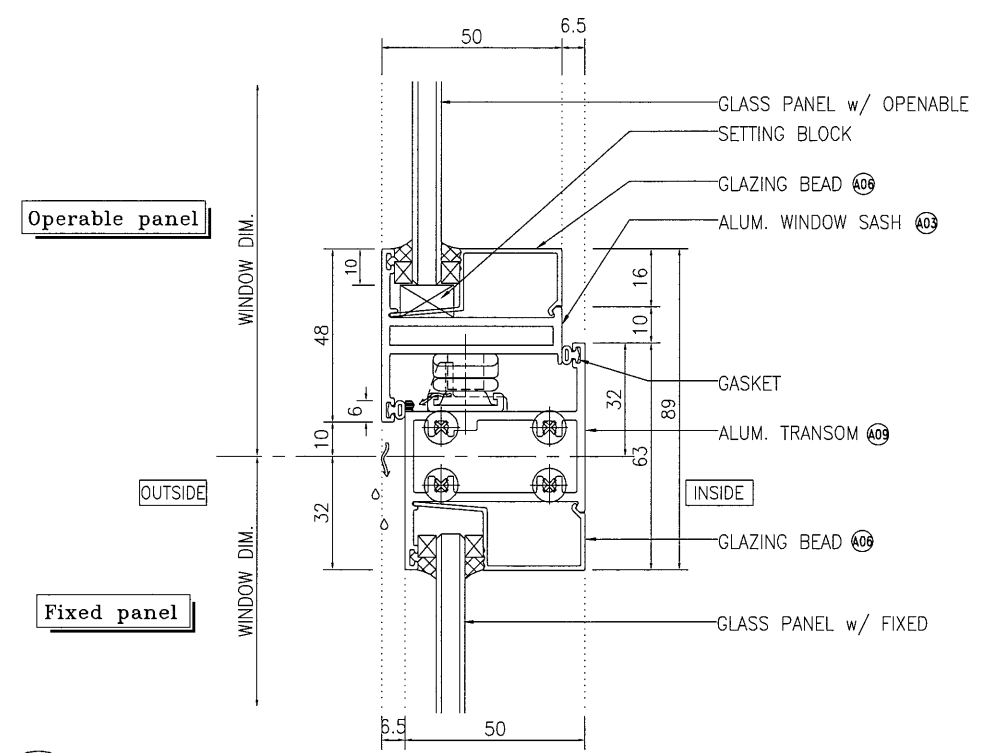
NO.	DATE	REVISED	BY
JOB NO. : J-837			
PROJECT : URA KWUN TONG TOWN CENTRE REDEVELOPMENT (AREA 2 & 3) AT NKIL 6514, KWUN TONG, KOWLOON			
TITLE : TYPICAL DETAIL FOR IN-SITU ALUM. WINDOW			
DATE : 30-AUG-18		SCALE : 1:2	
DRAWN BY : Zeng		CHECKED BY : DW	

美特鋁質有限公司
MIDI ALUMINIUM FABRICATOR LTD.
Units 6-8, Sunray Industrial Centre, 1/F
610 Cha Kwo Ling Road, Kowloon
Tel: 23489211-4 Fax: (852) 27727666

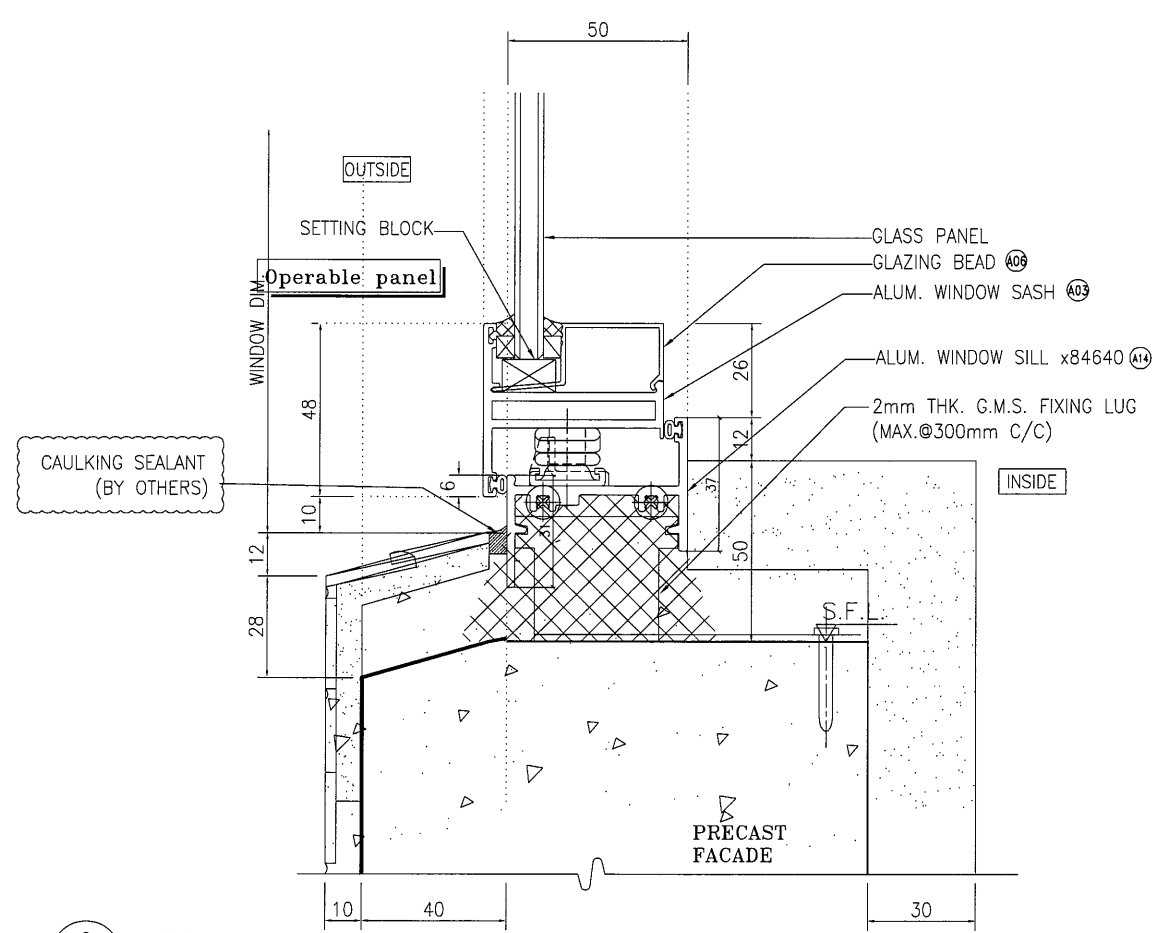
DWG NO. : J837-PIW-5002 REV. : A



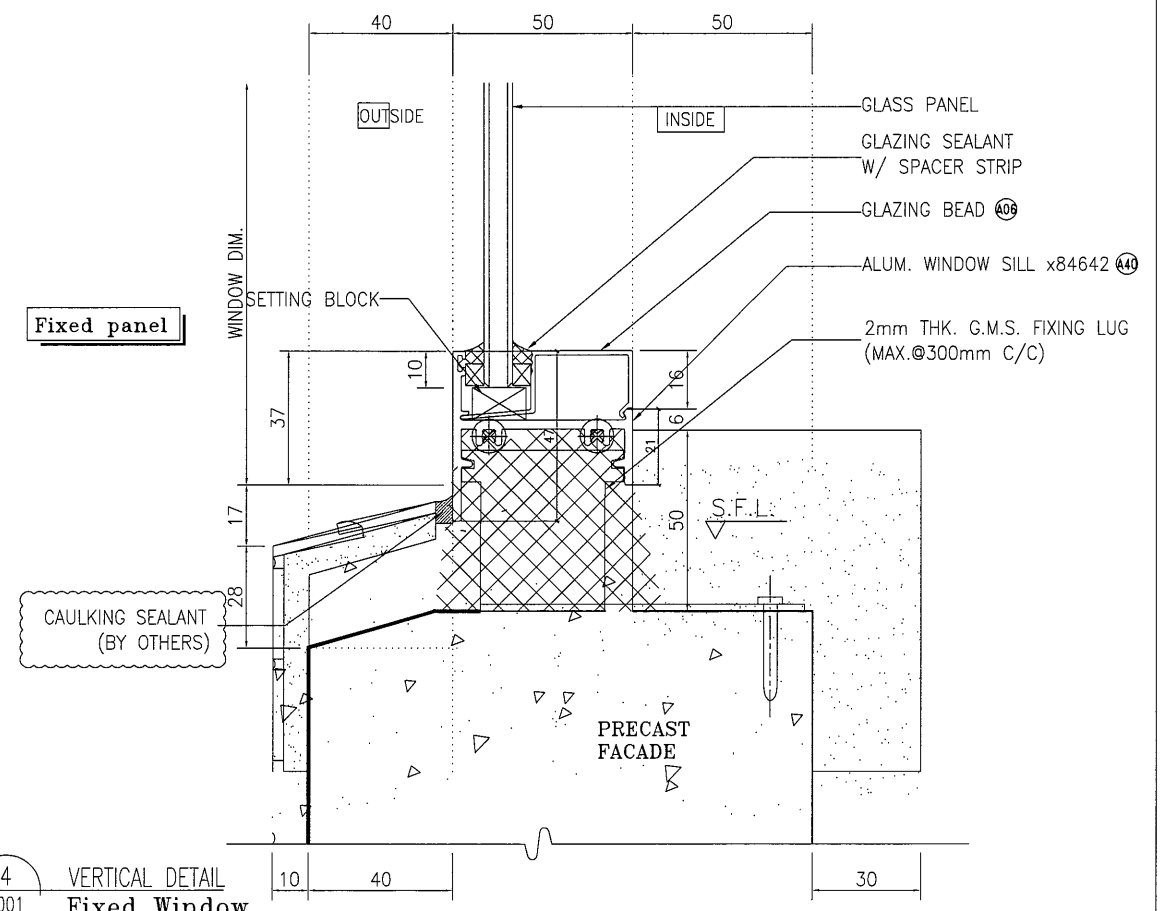
1 VERTICAL DETAIL
6001 Operable Window



3 VERTICAL DETAIL
6001 Mullion Of Fixed Window
And Operable Window
(FOR TYPICAL FLOORS)



2 VERTICAL DETAIL
6001 Operable Window



4 VERTICAL DETAIL
6001 Fixed Window
(FOR TYPICAL FLOORS)

B.D. REF :

CLIENT :
信和置業有限公司
Sino Land Company Limited

ARCHITECT :
WONG TUNG & PARTNERS LIMITED
ARCHITECTS & PLANNERS

MAIN CONTRACTOR :
CR Construction Company Limited

STRUCTURAL ENGINEER :
AECOM

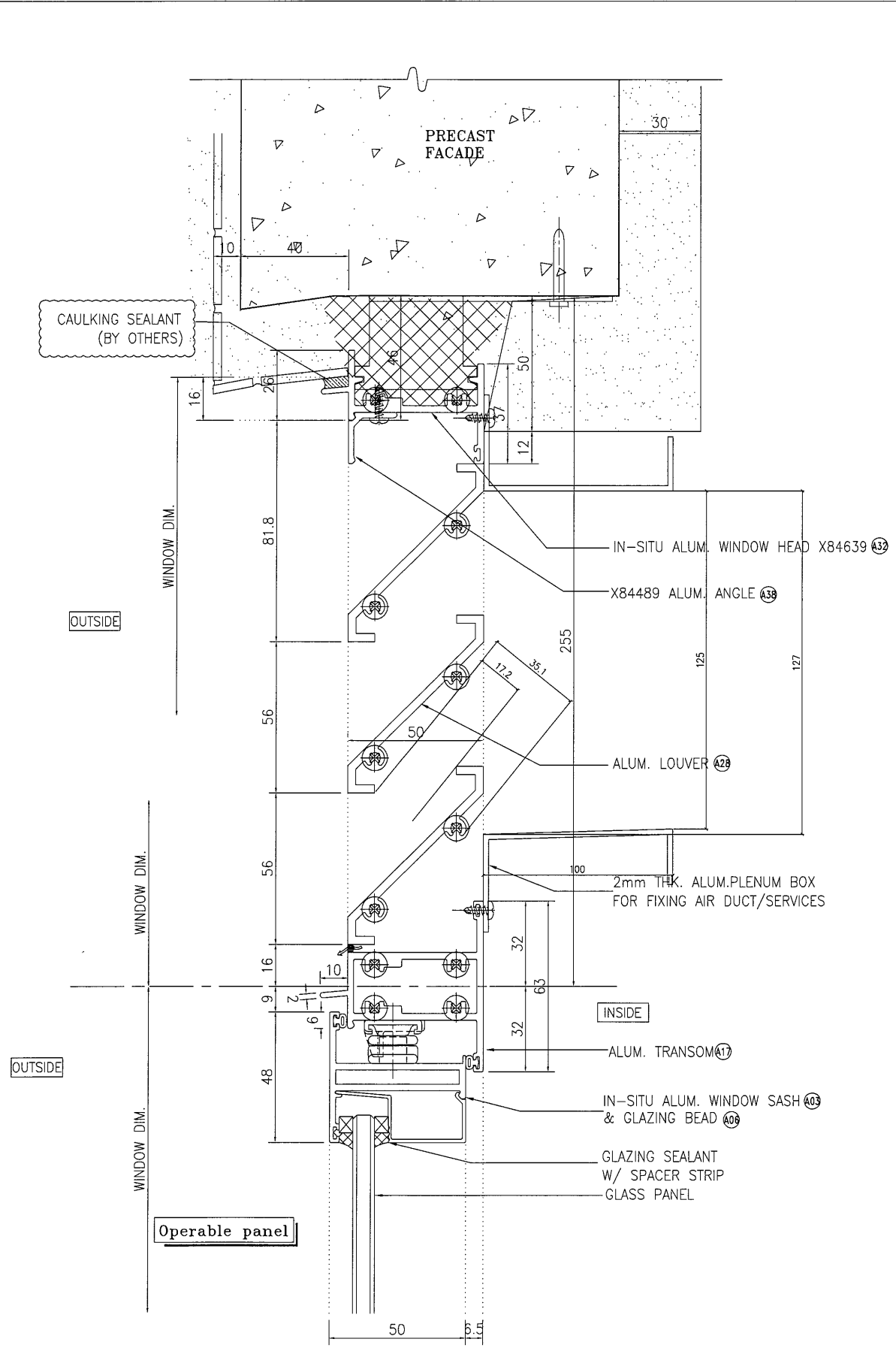
FACADE CONSULTANT:

NOTE :
1. ALL DIMENSIONS ARE IN mm.
2. ALL ELEVATIONS ARE VIEWED FROM OUTSIDE.
3. ALL DIMENSIONS TO BE VERIFIED ON SITE BEFORE FABRICATION.

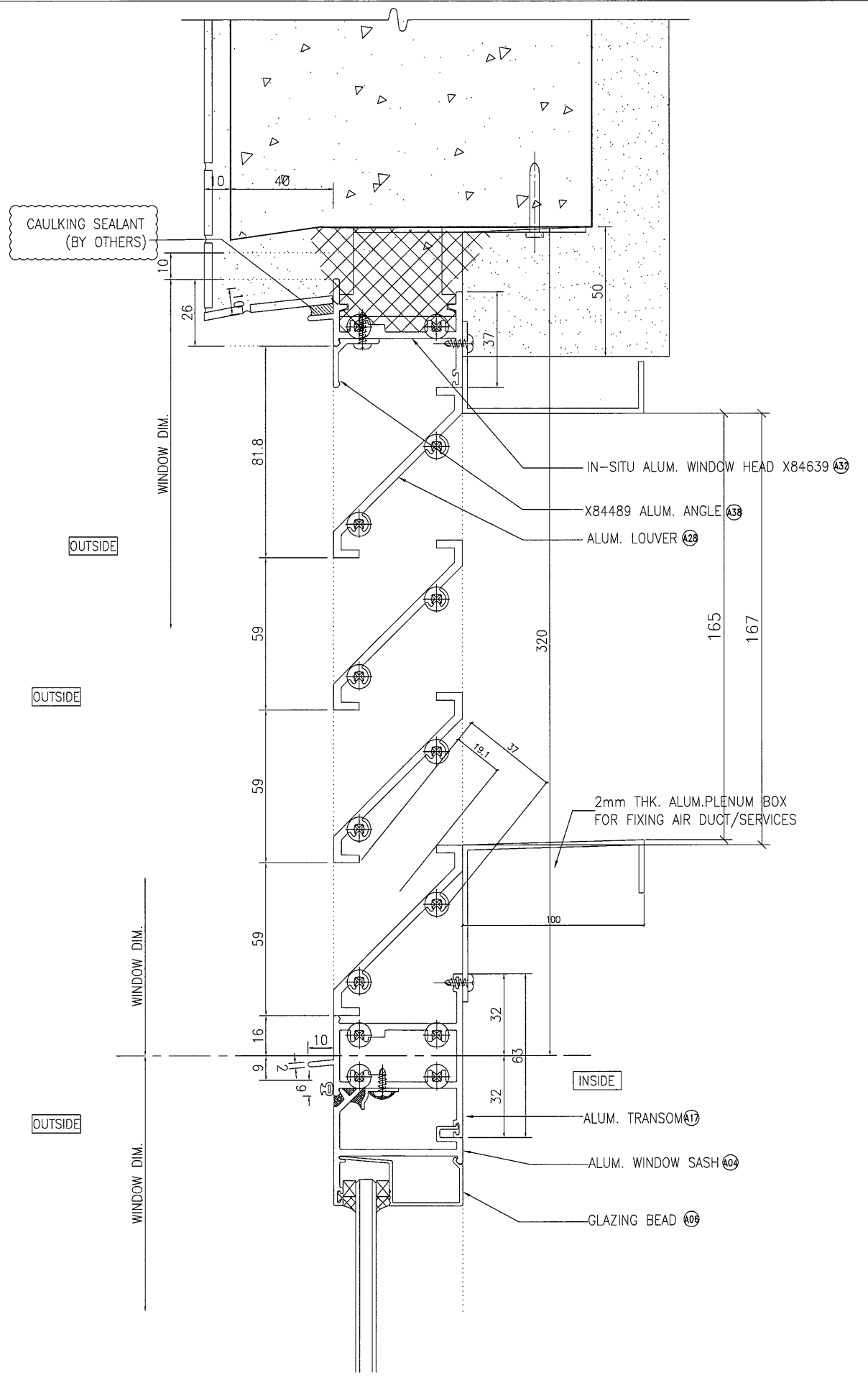
LEGEND :
X1 --- DETAIL MARK NO.
x001 --- REFER SHEET NO.

1. F.F.L. --- FINISHED FLOOR LEVEL
2. S.F.L. --- STRUCTURAL FLOOR LEVEL
3. /R --- REVERSED DETAIL

NO.	DATE	REVISED	BY
JOB NO. : J-837			
PROJECT : URA KWUN TONG TOWN CENTRE REDEVELOPMENT (AREA 2 & 3) AT NKIL 6514, KWUN TONG, KOWLOON			
TITLE : TYPICAL DETAIL FOR ALUM. WINDOW			
DATE : 30-AUG-18		SCALE : 1:2	
DRAWN BY : Zeng		CHECKED BY : DW	
美特鋁質有限公司 MIDI ALUMINIUM FABRICATOR LTD. Units 6-8, Sunray Industrial Centre, 1/F 610 Cha Kwo Ling Road, Kowloon Tel: 23489211-4 Fax: (852) 27727666			
DWG NO. : J837-PIW-6001			REV. : A

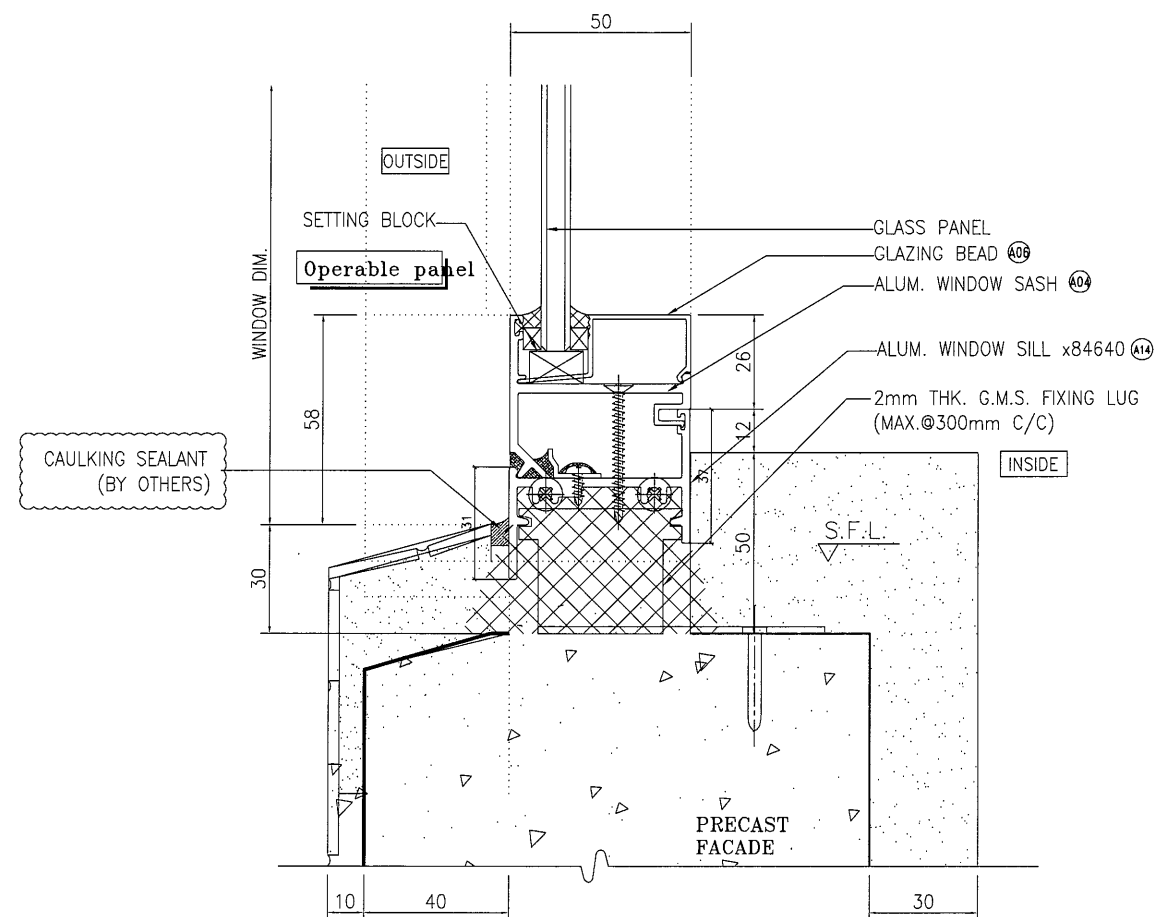
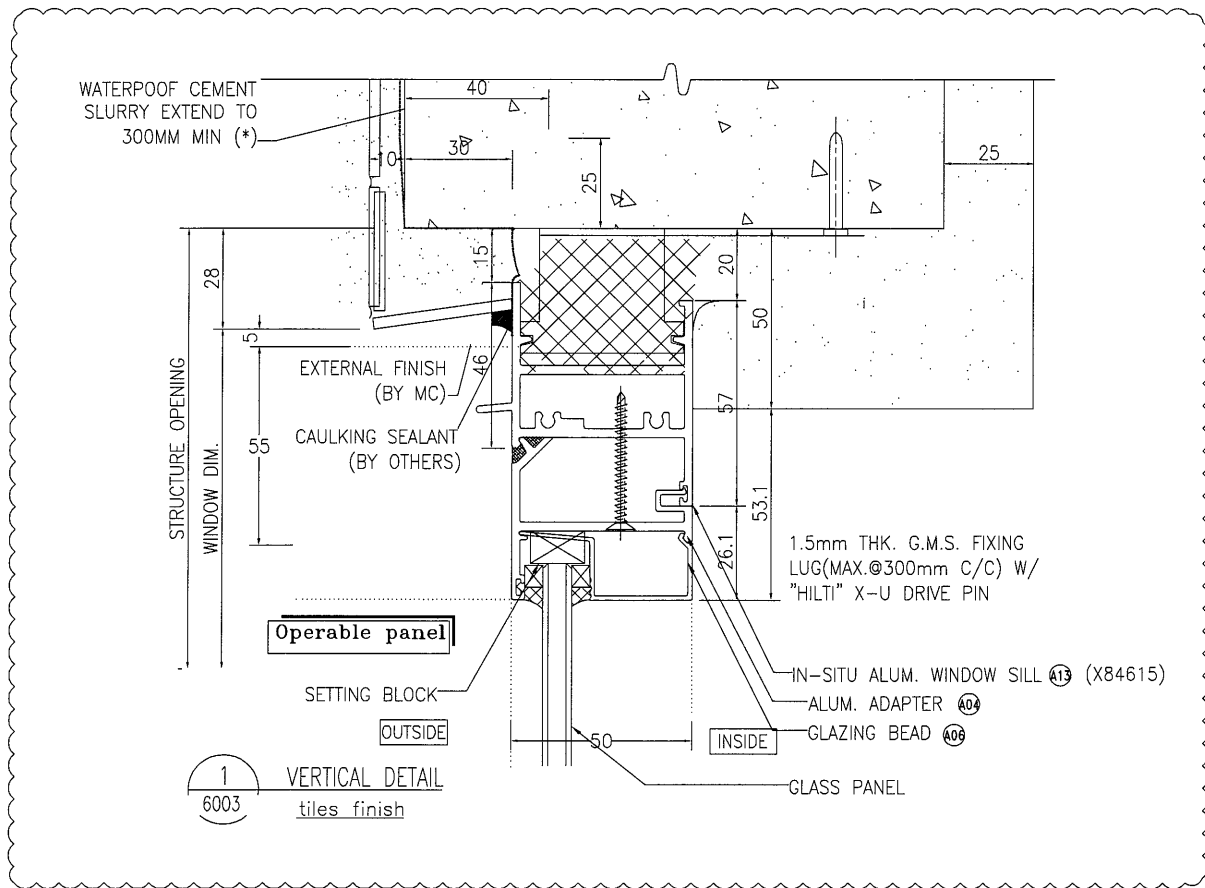


1 VERTICAL DETAIL
6002 For Alum. Louver With 27% Effective Area
(FOR TYPICAL FLOORS)

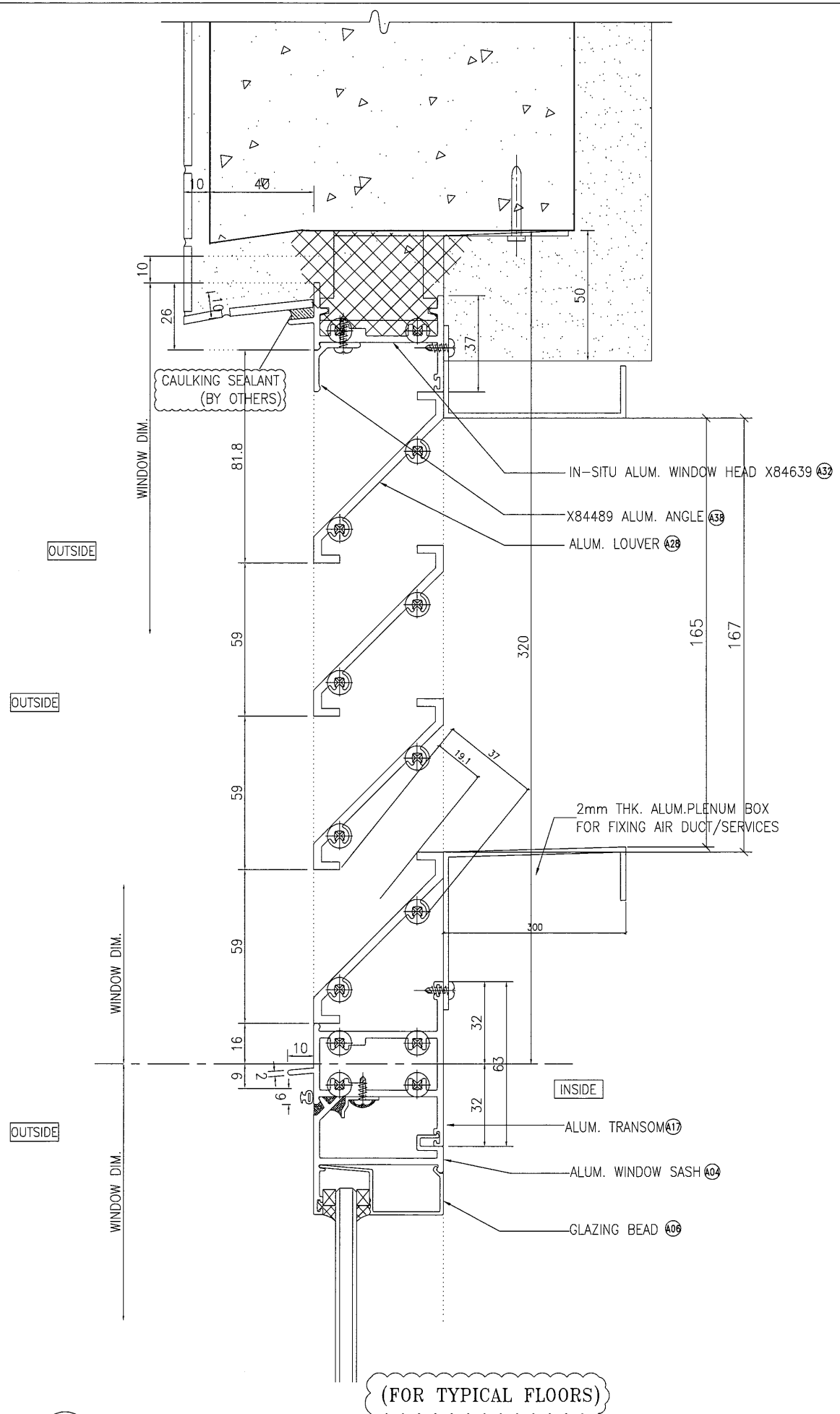


2 VERTICAL DETAIL
6002 For Alum. Louver With 34% Effective Area
(FOR TYPICAL FLOORS)

B.D. REF :			
CLIENT : 信和置業有限公司 Sino Land Company Limited			
ARCHITECT : WONG TUNG & PARTNERS LIMITED ARCHITECTS & PLANNERS 			
MAIN CONTRACTOR : CR Construction Company Limited			
STRUCTURAL ENGINEER : AECOM			
FACADE CONSULTANT:			
NOTE : 1. ALL DIMENSIONS ARE IN mm. 2. ALL ELEVATIONS ARE VIEWED FROM OUTSIDE. 3. ALL DIMENSIONS TO BE VERIFIED ON SITE BEFORE FABRICATION.			
LEGEND : X1 --- DETAIL MARK NO. X001 --- REFER SHEET NO.			
1. F.F.L. --- FINISHED FLOOR LEVEL 2. S.F.L. --- STRUCTURAL FLOOR LEVEL 3. (R) --- REVERSED DETAIL			
NO.	DATE	REVISED	BY
JOB NO. : J-837			
PROJECT : URA KWUN TONG TOWN CENTRE REDEVELOPMENT (AREA 2 & 3) AT NKIL 6514, KWUN TONG, KOWLOON			
TITLE : TYPICAL DETAIL FOR ALUM. WINDOW			
DATE : 30-AUG-18		SCALE : 1:#	
DRAWN BY : Zeng		CHECKED BY : DW	
 MIDI ALUMINIUM FABRICATOR LTD. Units 6-8, Sunray Industrial Centre, 1/F 610 Cha Kwo Ling Road, Kowloon Tel: 23489211-4 Fax: (852) 2727666			
DWG NO. : J837-PIW-6002			REV. : A



2 6003 VERTICAL DETAIL



3 6003 VERTICAL DETAIL For Alum. Louver With 34% Effective Area

B.D. REF :

CLIENT :
信和置業有限公司
Sino Land Company Limited

ARCHITECT :
WONG TUNG & PARTNERS LIMITED
ARCHITECTS & PLANNERS
WT

MAIN CONTRACTOR :
CR Construction Company Limited

STRUCTURAL ENGINEER :
AECOM

FACADE CONSULTANT:

NOTE :
1. ALL DIMENSIONS ARE IN mm.
2. ALL ELEVATIONS ARE VIEWED FROM OUTSIDE.
3. ALL DIMENSIONS TO BE VERIFIED ON SITE BEFORE FABRICATION.

LEGEND :
X1 -- DETAIL MARK NO.
X001 -- REFER SHEET NO.

1. F.F.L. -- FINISHED FLOOR LEVEL
2. S.F.L. -- STRUCTURAL FLOOR LEVEL
3. (R) -- REVERSED DETAIL

A	2019/07/2	BY ARCHITECT COMMENT	Zeng
NO.	DATE	REVISED	BY

JOB NO. : J-837
PROJECT :
URA KWUN TONG TOWN CENTRE
REDEVELOPMENT (AREA 2 & 3) AT
NKIL 6514, KWUN TONG, KOWLOON

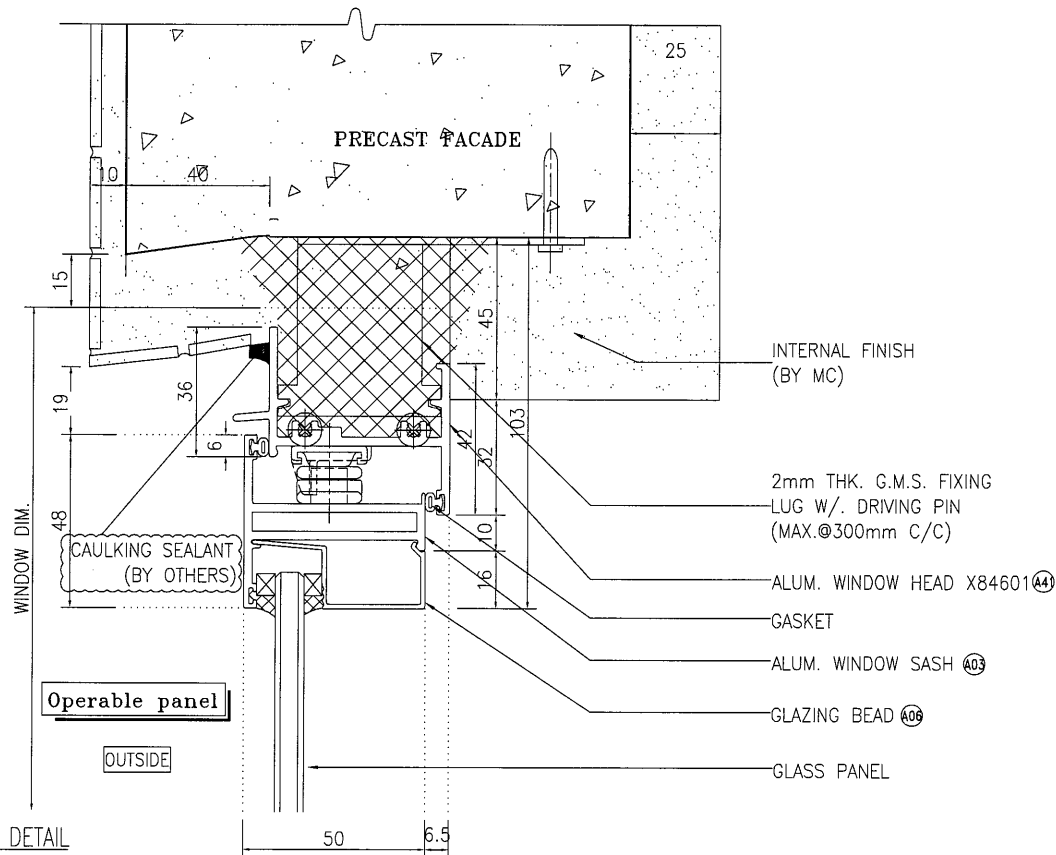
TITLE :
TYPICAL DETAIL FOR
ALUM. WINDOW

DATE : 30-AUG-18 SCALE : 1:#

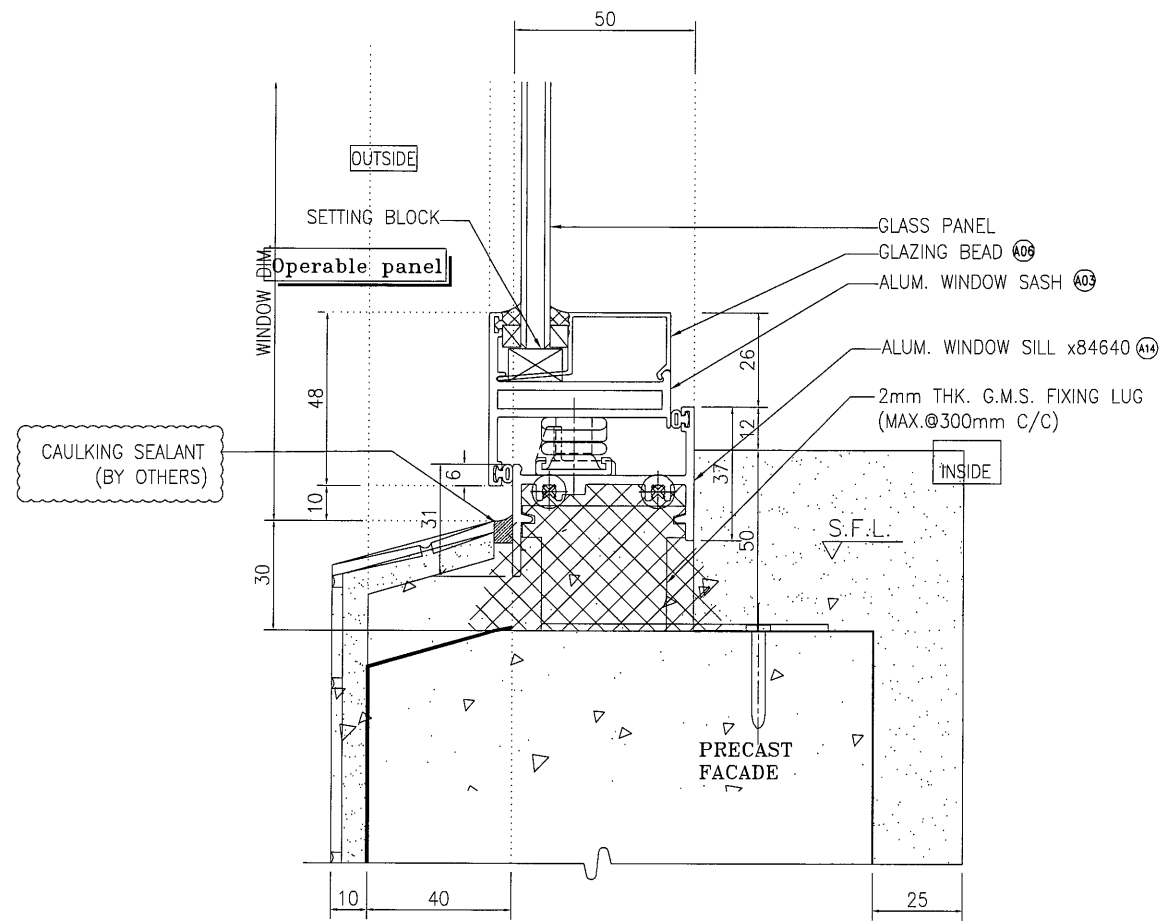
DRAWN BY : Zeng CHECKED BY : DW

美特鋁質有限公司
MIDI ALUMINIUM FABRICATOR LTD.
Units 6-8, Sunray Industrial Centre, 1/F
610 Cha Kwo Ling Road, Kowloon
Tel: 23489211-4 Fax: (852) 27272666

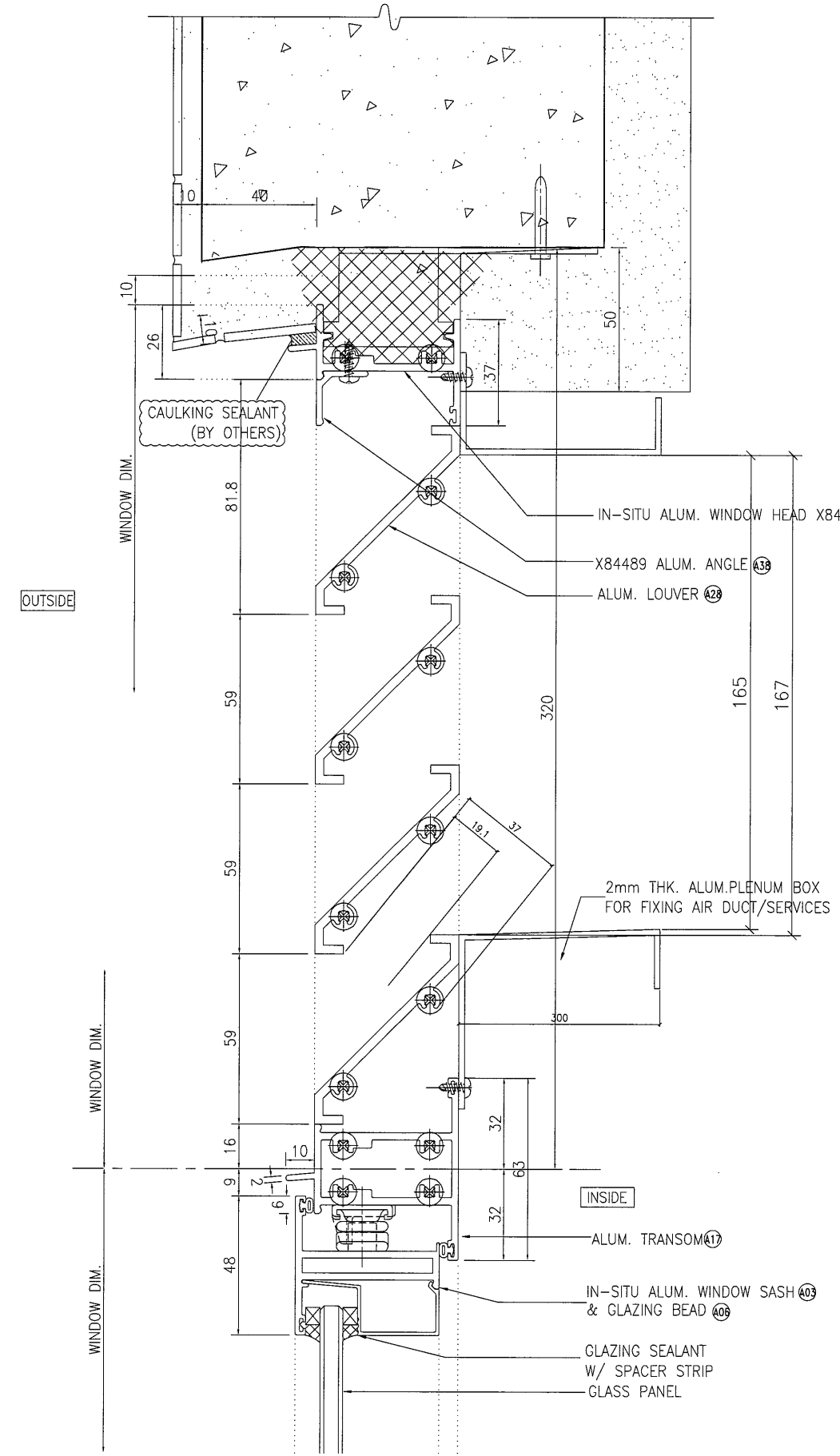
DWG NO. : J837-PIW-6003 REV. : A



1 VERTICAL DETAIL
6004 Operable Window



2 VERTICAL DETAIL
6004 Operable Window



3 VERTICAL DETAIL
6004 For Alum. Louver With 34% Effective Area
(FOR TYPICAL FLOORS)

B.D. REF :

CLIENT :
信和置業有限公司
Sino Land Company Limited

ARCHITECT :
WONG TUNG & PARTNERS LIMITED
ARCHITECTS & PLANNERS

MAIN CONTRACTOR :
CR Construction Company Limited

STRUCTURAL ENGINEER :
AECOM

FACADE CONSULTANT:

NOTE :
1. ALL DIMENSIONS ARE IN mm.
2. ALL ELEVATIONS ARE VIEWED FROM OUTSIDE.
3. ALL DIMENSIONS TO BE VERIFIED ON SITE BEFORE FABRICATION.

LEGEND :
X1 --- DETAIL MARK NO.
X001 --- REFER SHEET NO.

1. F.F.L. --- FINISHED FLOOR LEVEL
2. S.F.L. --- STRUCTURAL FLOOR LEVEL
3. (R) --- REVERSED DETAIL

NO.	DATE	REVISED	BY

JOB NO. : J-837

PROJECT :
URA KWUN TONG TOWN CENTRE
REDEVELOPMENT (AREA 2 & 3) AT
NKIL 6514, KWUN TONG, KOWLOON

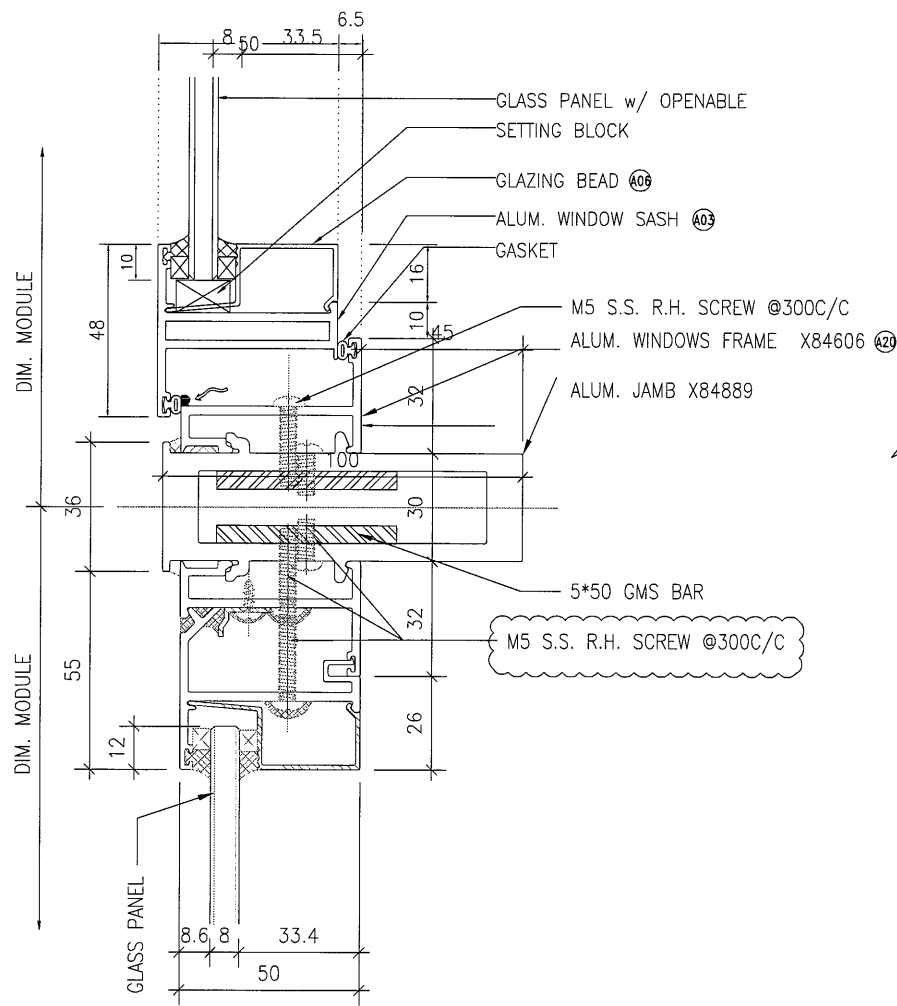
TITLE :
TYPICAL DETAIL FOR
ALUM. WINDOW

DATE : 30-AUG-18 SCALE : 1:2

DRAWN BY : Zeng CHECKED BY : DW

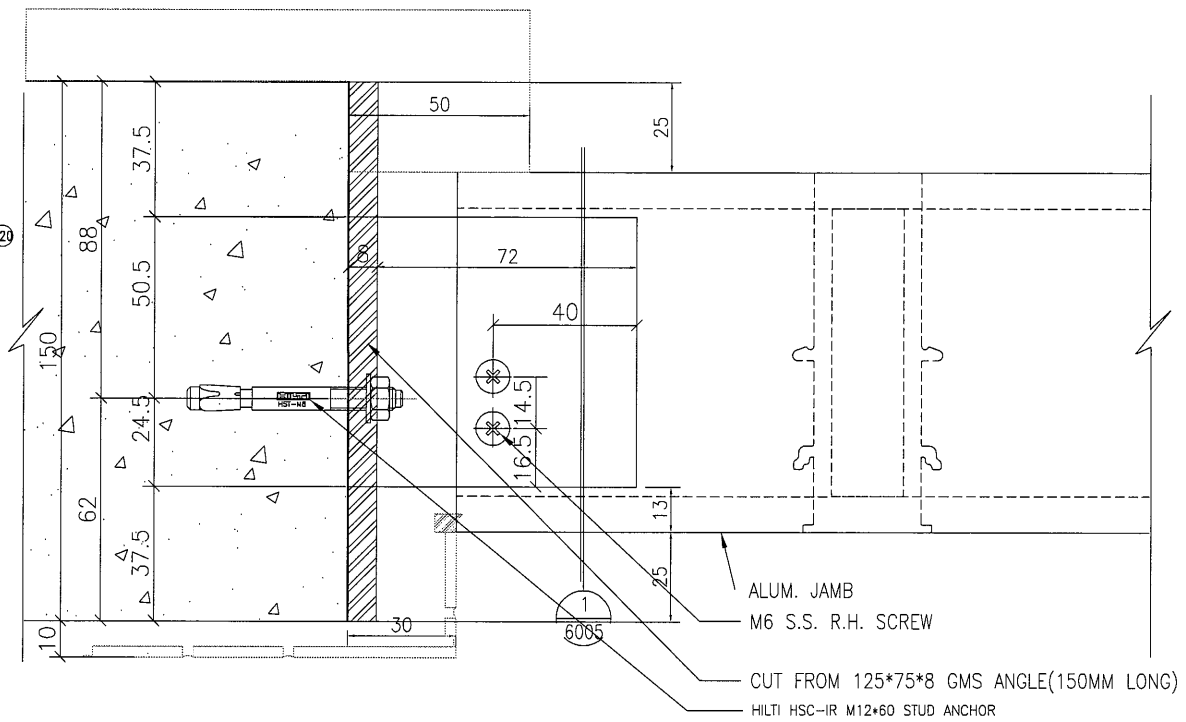
英特鋁質有限公司
MIDI ALUMINIUM FABRICATOR LTD.
Units 6-8, Sunray Industrial Centre, 1/F
610 Cha Kwo Ling Road, Kowloon
Tel:23489211-4 Fax:(852)2727666

DWG NO. : J837-PIW-6004 REV. : A



1
 6005
 VERTICAL DETAIL
 tiles finish

VIEW A



VIEW A

2
 6005
 VERTICAL DETAIL
 tiles finish

P1 FIX DETAIL

B.D. REF :

CLIENT :

信和置業有限公司
 Sino Land Company Limited

ARCHITECT :

WONG TUNG & PARTNERS LIMITED
 ARCHITECTS & PLANNERS

MAIN CONTRACTOR :

CR Construction Company Limited

STRUCTURAL ENGINEER :

AECOM

FACADE CONSULTANT:

NOTE :

1. ALL DIMENSIONS ARE IN mm.
2. ALL ELEVATIONS ARE VIEWED FROM OUTSIDE.
3. ALL DIMENSIONS TO BE VERIFIED ON SITE BEFORE FABRICATION.

LEGEND :

- (X1) --- DETAIL MARK NO.
 (X001) --- REFER SHEET NO.

1. F.F.L. --- FINISHED FLOOR LEVEL
2. S.F.L. --- STRUCTURAL FLOOR LEVEL
3. (R) --- REVERSED DETAIL

NO.	DATE	BY ARCHITECT COMMENT	REVISION	BY
A	2019/10/24			Zeng

JOB NO. : J-837

PROJECT :
 URA KWUN TONG TOWN CENTRE
 REDEVELOPMENT (AREA 2 & 3) AT
 NKIL 6514, KWUN TONG, KOWLOON

TITLE :

TYPICAL DETAIL FOR
ALUM. WINDOW

DATE : 30-AUG-18 SCALE : 1:2

DRAWN BY : Zeng CHECKED BY : DW

美特鋁質有限公司
 MIDI ALUMINIUM FABRICATOR LTD.
 Units 6-8, Sunray Industrial Centre, 1/F
 610 Cha Kwo Ling Road, Kowloon
 Tel:23489211-4 Fax:(852)27727666

DWG NO. : J837-PIW-6005

REV. : -