



工程指示 / 要求簡箋(E.I.)

工程指示編號：EI/9793/18

修改版次：-

工程編號：J-837

工程名稱：觀塘裕民坊

工程項目：分判 安裝試水箱

收件人：Maggie

發件人：Eric Liu

日期：26/09/2018

要求提供 / 確認 事項：

- | | | |
|------------------------------------|-------------------------------------|-------------------------------|
| <input type="checkbox"/> 初步鋁料 B.M. | <input type="checkbox"/> 加工拆圖，然後生產 | <input type="checkbox"/> 尺寸表 |
| <input type="checkbox"/> 正式鋁料 B.M. | <input type="checkbox"/> 技術上資料 / 指示 | <input type="checkbox"/> 報價 |
| <input type="checkbox"/> 配件 B.M. | <input type="checkbox"/> 樣辦或貨品說明書 | <input type="checkbox"/> 分判合約 |
| <input type="checkbox"/> 其他：_____ | | |

內容：

請為試水箱安裝分判

1. 約 11 月中至尾入場

2. 框架式玻璃現場裝

3. 試水場：屯門測試有限公司(TM Testing Company Limited)

地址：香港新界天水圍屏廈路 124 約 612 地段永安居 18 號

謝謝！

請在 2018/ 10 / 05 前完成上列要求。

附：1+ 17頁

以上項目為：

原合約工程包 原合約工程加 / 減賬 新工程報價

原因：-

分發東莞各部門：

- () 生產技術總監 連附件 () 技術部 連附件 () 生產部 連附件 () 機械設計部 連附件
 () 採購部 連附件 () 生產統籌部 連附件
 () 質檢部 連附件 () 會計部 連附件 () 報關組 連附件 () 其他 楊榮輝 連附件

分發其他分判：

() 王禮秋 連附件

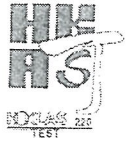
分發香港各部門：

- () 行政部 連附件 () 會計部 連附件 () 統籌部 連附件 () 工程部地盤科文 連附件
 () 採購部 連附件 () QS 部 連附件 () 維修部 連附件 () 其他 _____ 連附件

傳遞編號：

發件人簽署：

項目經理簽署：



Registration No. HOKLAS 220
Page 1 of 2
2 October 2015
Ref: HOKLAS220-6

T M Testing Company Limited
屯門測試有限公司

ADDRESS : DD124, Lot 612, No. 18 Wing On Kui, Ping Ha Road, Tin Shui Wai, N.T.,
地址 Hong Kong
香港新界天水圍屏廈路 124 約 612 地段永安居 18 號
Postal Address: P. O. Box 448, Yuen Long Post Office, New Territories, Hong
Kong
郵寄地址: 香港新界元朗郵政局信箱448號

AUTHORISED REPRESENTATIVE : Mr Wilson FOK Wai-shun,
委任代表 霍偉信先生

ENQUIRY : Mr Willy CHAN Wai-lai
查詢 陳為禮先生

Tel 電話 : 2472 6380
Fax 傳真 : 3905 6158
E-mail 電郵 : tmwindow2010@gmail.com

CLIENTELE : Public
服務對象 公眾

ACCREDITED TEST CATEGORIES : Construction Materials 建築材料
認可測試類別

SCOPE OF ACCREDITATION : Accredited activities are shown on the following pages 認可項目詳見後頁
認可範圍

* * * * *

PROJECT :

**URA KWUN TONG TOWN CENTRE
REDEVELOPMENT (AREA 2 & 3) AT NKIL 6514, KWUN TONG, KWLOON**

1

TITLE : SHOP DRAWING FOR
CURTAIN WALL PERFORMANCE TEST SUBMISSION

DATE: 17 - SEP - 2018

M1 --- ALUMINIUM MULLION GRADE --- 6063 T6	COATING --- PVF2 COATING	M2 --- ALUMINIUM MULLION GRADE --- 6063 T6	COATING --- PVF2 COATING	M3 --- ALUMINIUM MULLION GRADE --- 6063 T6	COATING --- PVF2 COATING	M5 --- ALUMINIUM MULLION GRADE --- 6063 T6	COATING --- PVF2 COATING	M6 --- ALUMINIUM MULLION GRADE --- 6063 T6	COATING --- PVF2 COATING																																																																																																																																																																
<table border="1"> <thead> <tr> <th>MASS PROPERTIES (UNIT)</th> <th>VALUES</th> </tr> </thead> <tbody> <tr><td>Area (mm²):</td><td>2686.6</td></tr> <tr><td>Perimeter (mm):</td><td>1168.9</td></tr> <tr><td>Bounding Box - X (mm):</td><td>-45.0 to 45.0</td></tr> <tr><td>Bounding Box - Y (mm):</td><td>-90.7 to 84.3</td></tr> <tr><td>Centroid - X (mm):</td><td>0.0</td></tr> <tr><td>Centroid - Y (mm):</td><td>0.0</td></tr> <tr><td>Moments of inertia - X (mm⁴):</td><td>8560927.0</td></tr> <tr><td>Moments of inertia - Y (mm⁴):</td><td>3111287.7</td></tr> <tr><td>Product of inertia - XY (mm⁴):</td><td>0.0</td></tr> <tr><td>Radii of gyration - X (mm):</td><td>56.4</td></tr> <tr><td>Radii of gyration - Y (mm):</td><td>34.0</td></tr> <tr><td>Principal moments along X-Y (mm⁴):</td><td>8560927.0 along [1.0 0.0]</td></tr> <tr><td>Principal moments along Y-X (mm⁴):</td><td>3111287.7 along [0.0 1.0]</td></tr> <tr><td>Elastic Modulus - Zx (mm³):</td><td>1 / y-max= 94344.9</td></tr> <tr><td>Elastic Modulus - Zy (mm³):</td><td>J / x-max= 69139.7</td></tr> </tbody> </table>		MASS PROPERTIES (UNIT)	VALUES	Area (mm ²):	2686.6	Perimeter (mm):	1168.9	Bounding Box - X (mm):	-45.0 to 45.0	Bounding Box - Y (mm):	-90.7 to 84.3	Centroid - X (mm):	0.0	Centroid - Y (mm):	0.0	Moments of inertia - X (mm ⁴):	8560927.0	Moments of inertia - Y (mm ⁴):	3111287.7	Product of inertia - XY (mm ⁴):	0.0	Radii of gyration - X (mm):	56.4	Radii of gyration - Y (mm):	34.0	Principal moments along X-Y (mm ⁴):	8560927.0 along [1.0 0.0]	Principal moments along Y-X (mm ⁴):	3111287.7 along [0.0 1.0]	Elastic Modulus - Zx (mm ³):	1 / y-max= 94344.9	Elastic Modulus - Zy (mm ³):	J / x-max= 69139.7	<table border="1"> <thead> <tr> <th>MASS PROPERTIES (UNIT)</th> <th>VALUES</th> </tr> </thead> <tbody> <tr><td>Area (mm²):</td><td>2560.0</td></tr> <tr><td>Perimeter (mm):</td><td>1002.9</td></tr> <tr><td>Bounding Box - X (mm):</td><td>-40.5 to 49.5</td></tr> <tr><td>Bounding Box - Y (mm):</td><td>-102.1 to 72.9</td></tr> <tr><td>Centroid - X (mm):</td><td>0.0</td></tr> <tr><td>Centroid - Y (mm):</td><td>0.0</td></tr> <tr><td>Moments of inertia - X (mm⁴):</td><td>7148090.8</td></tr> <tr><td>Moments of inertia - Y (mm⁴):</td><td>2693592.6</td></tr> <tr><td>Product of inertia - XY (mm⁴):</td><td>-858464.6</td></tr> <tr><td>Radii of gyration - X (mm):</td><td>52.8</td></tr> <tr><td>Radii of gyration - Y (mm):</td><td>32.4</td></tr> <tr><td>Principal moments along X-Y (mm⁴):</td><td>7307806.3 along [1.0 -0.2]</td></tr> <tr><td>Principal moments along Y-X (mm⁴):</td><td>2533877.1 along [0.2 1.0]</td></tr> <tr><td>Elastic Modulus - Zx (mm³):</td><td>1 / y-max= 69979.9</td></tr> <tr><td>Elastic Modulus - Zy (mm³):</td><td>J / x-max= 54419.8</td></tr> </tbody> </table>		MASS PROPERTIES (UNIT)	VALUES	Area (mm ²):	2560.0	Perimeter (mm):	1002.9	Bounding Box - X (mm):	-40.5 to 49.5	Bounding Box - Y (mm):	-102.1 to 72.9	Centroid - X (mm):	0.0	Centroid - Y (mm):	0.0	Moments of inertia - X (mm ⁴):	7148090.8	Moments of inertia - Y (mm ⁴):	2693592.6	Product of inertia - XY (mm ⁴):	-858464.6	Radii of gyration - X (mm):	52.8	Radii of gyration - Y (mm):	32.4	Principal moments along X-Y (mm ⁴):	7307806.3 along [1.0 -0.2]	Principal moments along Y-X (mm ⁴):	2533877.1 along [0.2 1.0]	Elastic Modulus - Zx (mm ³):	1 / y-max= 69979.9	Elastic Modulus - Zy (mm ³):	J / x-max= 54419.8	<table border="1"> <thead> <tr> <th>MASS PROPERTIES (UNIT)</th> <th>VALUES</th> </tr> </thead> <tbody> <tr><td>Area (mm²):</td><td>2904.8</td></tr> <tr><td>Perimeter (mm):</td><td>845.0</td></tr> <tr><td>Bounding Box - X (mm):</td><td>-45.0 to 45.0</td></tr> <tr><td>Bounding Box - Y (mm):</td><td>-70.5 to 60.0</td></tr> <tr><td>Centroid - X (mm):</td><td>0.0</td></tr> <tr><td>Centroid - Y (mm):</td><td>0.0</td></tr> <tr><td>Moments of inertia - X (mm⁴):</td><td>5525541.9</td></tr> <tr><td>Moments of inertia - Y (mm⁴):</td><td>2552618.8</td></tr> <tr><td>Product of inertia - XY (mm⁴):</td><td>0.0</td></tr> <tr><td>Radii of gyration - X (mm):</td><td>43.6</td></tr> <tr><td>Radii of gyration - Y (mm):</td><td>29.6</td></tr> <tr><td>Principal moments along X-Y (mm⁴):</td><td>5525541.9 along [1.0 0.0]</td></tr> <tr><td>Principal moments along Y-X (mm⁴):</td><td>2552618.8 along [0.0 1.0]</td></tr> <tr><td>Elastic Modulus - Zx (mm³):</td><td>1 / y-max= 78397.1</td></tr> <tr><td>Elastic Modulus - Zy (mm³):</td><td>J / x-max= 56724.9</td></tr> </tbody> </table>		MASS PROPERTIES (UNIT)	VALUES	Area (mm ²):	2904.8	Perimeter (mm):	845.0	Bounding Box - X (mm):	-45.0 to 45.0	Bounding Box - Y (mm):	-70.5 to 60.0	Centroid - X (mm):	0.0	Centroid - Y (mm):	0.0	Moments of inertia - X (mm ⁴):	5525541.9	Moments of inertia - Y (mm ⁴):	2552618.8	Product of inertia - XY (mm ⁴):	0.0	Radii of gyration - X (mm):	43.6	Radii of gyration - Y (mm):	29.6	Principal moments along X-Y (mm ⁴):	5525541.9 along [1.0 0.0]	Principal moments along Y-X (mm ⁴):	2552618.8 along [0.0 1.0]	Elastic Modulus - Zx (mm ³):	1 / y-max= 78397.1	Elastic Modulus - Zy (mm ³):	J / x-max= 56724.9	<table border="1"> <thead> <tr> <th>MASS PROPERTIES (UNIT)</th> <th>VALUES</th> </tr> </thead> <tbody> <tr><td>Area (mm²):</td><td>4006.3</td></tr> <tr><td>Perimeter (mm):</td><td>1633.1</td></tr> <tr><td>Bounding Box - X (mm):</td><td>-75.7 to 56.3</td></tr> <tr><td>Bounding Box - Y (mm):</td><td>-100.1 to 115.3</td></tr> <tr><td>Centroid - X (mm):</td><td>0.0</td></tr> <tr><td>Centroid - Y (mm):</td><td>0.0</td></tr> <tr><td>Moments of inertia - X (mm⁴):</td><td>17546808.7</td></tr> <tr><td>Moments of inertia - Y (mm⁴):</td><td>5955158.6</td></tr> <tr><td>Product of inertia - XY (mm⁴):</td><td>-1928247.4</td></tr> <tr><td>Radii of gyration - X (mm):</td><td>66.2</td></tr> <tr><td>Radii of gyration - Y (mm):</td><td>38.6</td></tr> <tr><td>Principal moments along X-Y (mm⁴):</td><td>17859152.5 along [1.0 -0.2]</td></tr> <tr><td>Principal moments along Y-X (mm⁴):</td><td>5642814.9 along [0.2 1.0]</td></tr> <tr><td>Elastic Modulus - Zx (mm³):</td><td>1 / y-max= 152220.1</td></tr> <tr><td>Elastic Modulus - Zy (mm³):</td><td>J / x-max= 78715.3</td></tr> </tbody> </table>		MASS PROPERTIES (UNIT)	VALUES	Area (mm ²):	4006.3	Perimeter (mm):	1633.1	Bounding Box - X (mm):	-75.7 to 56.3	Bounding Box - Y (mm):	-100.1 to 115.3	Centroid - X (mm):	0.0	Centroid - Y (mm):	0.0	Moments of inertia - X (mm ⁴):	17546808.7	Moments of inertia - Y (mm ⁴):	5955158.6	Product of inertia - XY (mm ⁴):	-1928247.4	Radii of gyration - X (mm):	66.2	Radii of gyration - Y (mm):	38.6	Principal moments along X-Y (mm ⁴):	17859152.5 along [1.0 -0.2]	Principal moments along Y-X (mm ⁴):	5642814.9 along [0.2 1.0]	Elastic Modulus - Zx (mm ³):	1 / y-max= 152220.1	Elastic Modulus - Zy (mm ³):	J / x-max= 78715.3	<table border="1"> <thead> <tr> <th>MASS PROPERTIES (UNIT)</th> <th>VALUES</th> </tr> </thead> <tbody> <tr><td>Area (mm²):</td><td>2278.1</td></tr> <tr><td>Perimeter (mm):</td><td>895.8</td></tr> <tr><td>Bounding Box - X (mm):</td><td>-45.0 to 45.0</td></tr> <tr><td>Bounding Box - Y (mm):</td><td>-69.4 to 61.1</td></tr> <tr><td>Centroid - X (mm):</td><td>0.0</td></tr> <tr><td>Centroid - Y (mm):</td><td>0.0</td></tr> <tr><td>Moments of inertia - X (mm⁴):</td><td>4229062.4</td></tr> <tr><td>Moments of inertia - Y (mm⁴):</td><td>2263514.5</td></tr> <tr><td>Product of inertia - XY (mm⁴):</td><td>0.0</td></tr> <tr><td>Radii of gyration - X (mm):</td><td>43.1</td></tr> <tr><td>Radii of gyration - Y (mm):</td><td>31.5</td></tr> <tr><td>Principal moments along X-Y (mm⁴):</td><td>4229062.4 along [1.0 0.0]</td></tr> <tr><td>Principal moments along Y-X (mm⁴):</td><td>2263514.5 along [0.0 1.0]</td></tr> <tr><td>Elastic Modulus - Zx (mm³):</td><td>1 / y-max= 60912.9</td></tr> <tr><td>Elastic Modulus - Zy (mm³):</td><td>J / x-max= 50300.3</td></tr> </tbody> </table>		MASS PROPERTIES (UNIT)	VALUES	Area (mm ²):	2278.1	Perimeter (mm):	895.8	Bounding Box - X (mm):	-45.0 to 45.0	Bounding Box - Y (mm):	-69.4 to 61.1	Centroid - X (mm):	0.0	Centroid - Y (mm):	0.0	Moments of inertia - X (mm ⁴):	4229062.4	Moments of inertia - Y (mm ⁴):	2263514.5	Product of inertia - XY (mm ⁴):	0.0	Radii of gyration - X (mm):	43.1	Radii of gyration - Y (mm):	31.5	Principal moments along X-Y (mm ⁴):	4229062.4 along [1.0 0.0]	Principal moments along Y-X (mm ⁴):	2263514.5 along [0.0 1.0]	Elastic Modulus - Zx (mm ³):	1 / y-max= 60912.9	Elastic Modulus - Zy (mm ³):	J / x-max= 50300.3
MASS PROPERTIES (UNIT)	VALUES																																																																																																																																																																								
Area (mm ²):	2686.6																																																																																																																																																																								
Perimeter (mm):	1168.9																																																																																																																																																																								
Bounding Box - X (mm):	-45.0 to 45.0																																																																																																																																																																								
Bounding Box - Y (mm):	-90.7 to 84.3																																																																																																																																																																								
Centroid - X (mm):	0.0																																																																																																																																																																								
Centroid - Y (mm):	0.0																																																																																																																																																																								
Moments of inertia - X (mm ⁴):	8560927.0																																																																																																																																																																								
Moments of inertia - Y (mm ⁴):	3111287.7																																																																																																																																																																								
Product of inertia - XY (mm ⁴):	0.0																																																																																																																																																																								
Radii of gyration - X (mm):	56.4																																																																																																																																																																								
Radii of gyration - Y (mm):	34.0																																																																																																																																																																								
Principal moments along X-Y (mm ⁴):	8560927.0 along [1.0 0.0]																																																																																																																																																																								
Principal moments along Y-X (mm ⁴):	3111287.7 along [0.0 1.0]																																																																																																																																																																								
Elastic Modulus - Zx (mm ³):	1 / y-max= 94344.9																																																																																																																																																																								
Elastic Modulus - Zy (mm ³):	J / x-max= 69139.7																																																																																																																																																																								
MASS PROPERTIES (UNIT)	VALUES																																																																																																																																																																								
Area (mm ²):	2560.0																																																																																																																																																																								
Perimeter (mm):	1002.9																																																																																																																																																																								
Bounding Box - X (mm):	-40.5 to 49.5																																																																																																																																																																								
Bounding Box - Y (mm):	-102.1 to 72.9																																																																																																																																																																								
Centroid - X (mm):	0.0																																																																																																																																																																								
Centroid - Y (mm):	0.0																																																																																																																																																																								
Moments of inertia - X (mm ⁴):	7148090.8																																																																																																																																																																								
Moments of inertia - Y (mm ⁴):	2693592.6																																																																																																																																																																								
Product of inertia - XY (mm ⁴):	-858464.6																																																																																																																																																																								
Radii of gyration - X (mm):	52.8																																																																																																																																																																								
Radii of gyration - Y (mm):	32.4																																																																																																																																																																								
Principal moments along X-Y (mm ⁴):	7307806.3 along [1.0 -0.2]																																																																																																																																																																								
Principal moments along Y-X (mm ⁴):	2533877.1 along [0.2 1.0]																																																																																																																																																																								
Elastic Modulus - Zx (mm ³):	1 / y-max= 69979.9																																																																																																																																																																								
Elastic Modulus - Zy (mm ³):	J / x-max= 54419.8																																																																																																																																																																								
MASS PROPERTIES (UNIT)	VALUES																																																																																																																																																																								
Area (mm ²):	2904.8																																																																																																																																																																								
Perimeter (mm):	845.0																																																																																																																																																																								
Bounding Box - X (mm):	-45.0 to 45.0																																																																																																																																																																								
Bounding Box - Y (mm):	-70.5 to 60.0																																																																																																																																																																								
Centroid - X (mm):	0.0																																																																																																																																																																								
Centroid - Y (mm):	0.0																																																																																																																																																																								
Moments of inertia - X (mm ⁴):	5525541.9																																																																																																																																																																								
Moments of inertia - Y (mm ⁴):	2552618.8																																																																																																																																																																								
Product of inertia - XY (mm ⁴):	0.0																																																																																																																																																																								
Radii of gyration - X (mm):	43.6																																																																																																																																																																								
Radii of gyration - Y (mm):	29.6																																																																																																																																																																								
Principal moments along X-Y (mm ⁴):	5525541.9 along [1.0 0.0]																																																																																																																																																																								
Principal moments along Y-X (mm ⁴):	2552618.8 along [0.0 1.0]																																																																																																																																																																								
Elastic Modulus - Zx (mm ³):	1 / y-max= 78397.1																																																																																																																																																																								
Elastic Modulus - Zy (mm ³):	J / x-max= 56724.9																																																																																																																																																																								
MASS PROPERTIES (UNIT)	VALUES																																																																																																																																																																								
Area (mm ²):	4006.3																																																																																																																																																																								
Perimeter (mm):	1633.1																																																																																																																																																																								
Bounding Box - X (mm):	-75.7 to 56.3																																																																																																																																																																								
Bounding Box - Y (mm):	-100.1 to 115.3																																																																																																																																																																								
Centroid - X (mm):	0.0																																																																																																																																																																								
Centroid - Y (mm):	0.0																																																																																																																																																																								
Moments of inertia - X (mm ⁴):	17546808.7																																																																																																																																																																								
Moments of inertia - Y (mm ⁴):	5955158.6																																																																																																																																																																								
Product of inertia - XY (mm ⁴):	-1928247.4																																																																																																																																																																								
Radii of gyration - X (mm):	66.2																																																																																																																																																																								
Radii of gyration - Y (mm):	38.6																																																																																																																																																																								
Principal moments along X-Y (mm ⁴):	17859152.5 along [1.0 -0.2]																																																																																																																																																																								
Principal moments along Y-X (mm ⁴):	5642814.9 along [0.2 1.0]																																																																																																																																																																								
Elastic Modulus - Zx (mm ³):	1 / y-max= 152220.1																																																																																																																																																																								
Elastic Modulus - Zy (mm ³):	J / x-max= 78715.3																																																																																																																																																																								
MASS PROPERTIES (UNIT)	VALUES																																																																																																																																																																								
Area (mm ²):	2278.1																																																																																																																																																																								
Perimeter (mm):	895.8																																																																																																																																																																								
Bounding Box - X (mm):	-45.0 to 45.0																																																																																																																																																																								
Bounding Box - Y (mm):	-69.4 to 61.1																																																																																																																																																																								
Centroid - X (mm):	0.0																																																																																																																																																																								
Centroid - Y (mm):	0.0																																																																																																																																																																								
Moments of inertia - X (mm ⁴):	4229062.4																																																																																																																																																																								
Moments of inertia - Y (mm ⁴):	2263514.5																																																																																																																																																																								
Product of inertia - XY (mm ⁴):	0.0																																																																																																																																																																								
Radii of gyration - X (mm):	43.1																																																																																																																																																																								
Radii of gyration - Y (mm):	31.5																																																																																																																																																																								
Principal moments along X-Y (mm ⁴):	4229062.4 along [1.0 0.0]																																																																																																																																																																								
Principal moments along Y-X (mm ⁴):	2263514.5 along [0.0 1.0]																																																																																																																																																																								
Elastic Modulus - Zx (mm ³):	1 / y-max= 60912.9																																																																																																																																																																								
Elastic Modulus - Zy (mm ³):	J / x-max= 50300.3																																																																																																																																																																								

T1 --- ALUMINIUM TRANSOM GRADE --- 6063 T6	COATING --- PVF2 COATING	T2 --- ALUMINIUM TRANSOM GRADE --- 6063 T6	COATING --- PVF2 COATING	A01 --- ALUMINIUM CAP GRADE --- 6063 T5	COATING --- PVF2 COATING	A02 --- ALUMINIUM WINDOW SASH GRADE --- 6063 T6	COATING --- PVF2 COATING	A03 --- ALUMINIUM CAPPING GRADE --- 6063 T6	COATING --- PVF2 COATING																																																																																																																																																																
<table border="1"> <thead> <tr> <th>MASS PROPERTIES (UNIT)</th> <th>VALUES</th> </tr> </thead> <tbody> <tr><td>Area (mm²):</td><td>2283.2</td></tr> <tr><td>Perimeter (mm):</td><td>1446.4</td></tr> <tr><td>Bounding Box - X (mm):</td><td>-88.5 to 95.5</td></tr> <tr><td>Bounding Box - Y (mm):</td><td>-48.5 to 41.5</td></tr> <tr><td>Centroid - X (mm):</td><td>0.0</td></tr> <tr><td>Centroid - Y (mm):</td><td>0.0</td></tr> <tr><td>Moments of inertia - X (mm⁴):</td><td>1841389.3</td></tr> <tr><td>Moments of inertia - Y (mm⁴):</td><td>8107752.5</td></tr> <tr><td>Product of inertia - XY (mm⁴):</td><td>-388294.0</td></tr> <tr><td>Radii of gyration - X (mm):</td><td>28.4</td></tr> <tr><td>Radii of gyration - Y (mm):</td><td>59.6</td></tr> <tr><td>Principal moments along X-Y (mm⁴):</td><td>1817420.4 along [1.0 0.1]</td></tr> <tr><td>Principal moments along Y-X (mm⁴):</td><td>8131721.4 along [-0.1 1.0]</td></tr> <tr><td>Elastic Modulus - Zx (mm³):</td><td>1 / y-max= 37934.0</td></tr> <tr><td>Elastic Modulus - Zy (mm³):</td><td>J / x-max= 84907.9</td></tr> </tbody> </table>		MASS PROPERTIES (UNIT)	VALUES	Area (mm ²):	2283.2	Perimeter (mm):	1446.4	Bounding Box - X (mm):	-88.5 to 95.5	Bounding Box - Y (mm):	-48.5 to 41.5	Centroid - X (mm):	0.0	Centroid - Y (mm):	0.0	Moments of inertia - X (mm ⁴):	1841389.3	Moments of inertia - Y (mm ⁴):	8107752.5	Product of inertia - XY (mm ⁴):	-388294.0	Radii of gyration - X (mm):	28.4	Radii of gyration - Y (mm):	59.6	Principal moments along X-Y (mm ⁴):	1817420.4 along [1.0 0.1]	Principal moments along Y-X (mm ⁴):	8131721.4 along [-0.1 1.0]	Elastic Modulus - Zx (mm ³):	1 / y-max= 37934.0	Elastic Modulus - Zy (mm ³):	J / x-max= 84907.9	<table border="1"> <thead> <tr> <th>MASS PROPERTIES (UNIT)</th> <th>VALUES</th> </tr> </thead> <tbody> <tr><td>Area (mm²):</td><td>1969.2</td></tr> <tr><td>Perimeter (mm):</td><td>1203.5</td></tr> <tr><td>Bounding Box - X (mm):</td><td>-100.8 to 83.2</td></tr> <tr><td>Bounding Box - Y (mm):</td><td>-42.9 to 47.1</td></tr> <tr><td>Centroid - X (mm):</td><td>0.0</td></tr> <tr><td>Centroid - Y (mm):</td><td>0.0</td></tr> <tr><td>Moments of inertia - X (mm⁴):</td><td>1401920.1</td></tr> <tr><td>Moments of inertia - Y (mm⁴):</td><td>6039676.5</td></tr> <tr><td>Product of inertia - XY (mm⁴):</td><td>1059596.3</td></tr> <tr><td>Radii of gyration - X (mm):</td><td>26.7</td></tr> <tr><td>Radii of gyration - Y (mm):</td><td>55.4</td></tr> <tr><td>Principal moments along X-Y (mm⁴):</td><td>1171300.2 along [1.0 0.2]</td></tr> <tr><td>Principal moments along Y-X (mm⁴):</td><td>6270296.4 along [-0.2 1.0]</td></tr> <tr><td>Elastic Modulus - Zx (mm³):</td><td>1 / y-max= 29761.3</td></tr> <tr><td>Elastic Modulus - Zy (mm³):</td><td>J / x-max= 59896.7</td></tr> </tbody> </table>		MASS PROPERTIES (UNIT)	VALUES	Area (mm ²):	1969.2	Perimeter (mm):	1203.5	Bounding Box - X (mm):	-100.8 to 83.2	Bounding Box - Y (mm):	-42.9 to 47.1	Centroid - X (mm):	0.0	Centroid - Y (mm):	0.0	Moments of inertia - X (mm ⁴):	1401920.1	Moments of inertia - Y (mm ⁴):	6039676.5	Product of inertia - XY (mm ⁴):	1059596.3	Radii of gyration - X (mm):	26.7	Radii of gyration - Y (mm):	55.4	Principal moments along X-Y (mm ⁴):	1171300.2 along [1.0 0.2]	Principal moments along Y-X (mm ⁴):	6270296.4 along [-0.2 1.0]	Elastic Modulus - Zx (mm ³):	1 / y-max= 29761.3	Elastic Modulus - Zy (mm ³):	J / x-max= 59896.7	<table border="1"> <thead> <tr> <th>MASS PROPERTIES (UNIT)</th> <th>VALUES</th> </tr> </thead> <tbody> <tr><td>Area (mm²):</td><td>132.6</td></tr> <tr><td>Perimeter (mm):</td><td>194.5</td></tr> <tr><td>Bounding Box - X (mm):</td><td>-44.7 to 45.9</td></tr> <tr><td>Bounding Box - Y (mm):</td><td>-3.1 to 0.8</td></tr> <tr><td>Centroid - X (mm):</td><td>0.0</td></tr> <tr><td>Centroid - Y (mm):</td><td>0.0</td></tr> <tr><td>Moments of inertia - X (mm⁴):</td><td>51.8</td></tr> <tr><td>Moments of inertia - Y (mm⁴):</td><td>96748.1</td></tr> <tr><td>Product of inertia - XY (mm⁴):</td><td>118.1</td></tr> <tr><td>Radii of gyration - X (mm):</td><td>0.6</td></tr> <tr><td>Radii of gyration - Y (mm):</td><td>27.0</td></tr> <tr><td>Principal moments along X-Y (mm⁴):</td><td>51.7 along [1.0 0.0]</td></tr> <tr><td>Principal moments along Y-X (mm⁴):</td><td>96748.3 along [0.0 1.0]</td></tr> <tr><td>Elastic Modulus - Zx (mm³):</td><td>1 / y-max= 16.6</td></tr> <tr><td>Elastic Modulus - Zy (mm³):</td><td>J / x-max= 2107.2</td></tr> </tbody> </table>		MASS PROPERTIES (UNIT)	VALUES	Area (mm ²):	132.6	Perimeter (mm):	194.5	Bounding Box - X (mm):	-44.7 to 45.9	Bounding Box - Y (mm):	-3.1 to 0.8	Centroid - X (mm):	0.0	Centroid - Y (mm):	0.0	Moments of inertia - X (mm ⁴):	51.8	Moments of inertia - Y (mm ⁴):	96748.1	Product of inertia - XY (mm ⁴):	118.1	Radii of gyration - X (mm):	0.6	Radii of gyration - Y (mm):	27.0	Principal moments along X-Y (mm ⁴):	51.7 along [1.0 0.0]	Principal moments along Y-X (mm ⁴):	96748.3 along [0.0 1.0]	Elastic Modulus - Zx (mm ³):	1 / y-max= 16.6	Elastic Modulus - Zy (mm ³):	J / x-max= 2107.2	<table border="1"> <thead> <tr> <th>MASS PROPERTIES (UNIT)</th> <th>VALUES</th> </tr> </thead> <tbody> <tr><td>Area (mm²):</td><td>673.8</td></tr> <tr><td>Perimeter (mm):</td><td>465.0</td></tr> <tr><td>Bounding Box - X (mm):</td><td>-22.3 to 15.2</td></tr> <tr><td>Bounding Box - Y (mm):</td><td>-37.3 to 40.7</td></tr> <tr><td>Centroid - X (mm):</td><td>0.0</td></tr> <tr><td>Centroid - Y (mm):</td><td>0.0</td></tr> <tr><td>Moments of inertia - X (mm⁴):</td><td>287162.6</td></tr> <tr><td>Moments of inertia - Y (mm⁴):</td><td>88704.2</td></tr> <tr><td>Product of inertia - XY (mm⁴):</td><td>-87527.0</td></tr> <tr><td>Radii of gyration - X (mm):</td><td>20.6</td></tr> <tr><td>Radii of gyration - Y (mm):</td><td>11.5</td></tr> <tr><td>Principal moments along X-Y (mm⁴):</td><td>320249.0 along [0.9 -0.4]</td></tr> <tr><td>Principal moments along Y-X (mm⁴):</td><td>55617.8 along [0.4 0.9]</td></tr> <tr><td>Elastic Modulus - Zx (mm³):</td><td>1 / y-max= 7060.2</td></tr> <tr><td>Elastic Modulus - Zy (mm³):</td><td>J / x-max= 3982.3</td></tr> </tbody> </table>		MASS PROPERTIES (UNIT)	VALUES	Area (mm ²):	673.8	Perimeter (mm):	465.0	Bounding Box - X (mm):	-22.3 to 15.2	Bounding Box - Y (mm):	-37.3 to 40.7	Centroid - X (mm):	0.0	Centroid - Y (mm):	0.0	Moments of inertia - X (mm ⁴):	287162.6	Moments of inertia - Y (mm ⁴):	88704.2	Product of inertia - XY (mm ⁴):	-87527.0	Radii of gyration - X (mm):	20.6	Radii of gyration - Y (mm):	11.5	Principal moments along X-Y (mm ⁴):	320249.0 along [0.9 -0.4]	Principal moments along Y-X (mm ⁴):	55617.8 along [0.4 0.9]	Elastic Modulus - Zx (mm ³):	1 / y-max= 7060.2	Elastic Modulus - Zy (mm ³):	J / x-max= 3982.3	<table border="1"> <thead> <tr> <th>MASS PROPERTIES (UNIT)</th> <th>VALUES</th> </tr> </thead> <tbody> <tr><td>Area (mm²):</td><td>304.6</td></tr> <tr><td>Perimeter (mm):</td><td>199.5</td></tr> <tr><td>Bounding Box - X (mm):</td><td>-10.4 to 27.1</td></tr> <tr><td>Bounding Box - Y (mm):</td><td>-14.5 to 25.5</td></tr> <tr><td>Centroid - X (mm):</td><td>0.0</td></tr> <tr><td>Centroid - Y (mm):</td><td>0.0</td></tr> <tr><td>Moments of inertia - X (mm⁴):</td><td>56645.9</td></tr> <tr><td>Moments of inertia - Y (mm⁴):</td><td>36421.8</td></tr> <tr><td>Product of inertia - XY (mm⁴):</td><td>-25163.9</td></tr> <tr><td>Radii of gyration - X (mm):</td><td>13.6</td></tr> <tr><td>Radii of gyration - Y (mm):</td><td>10.9</td></tr> <tr><td>Principal moments along X-Y (mm⁴):</td><td>19414.2 along [0.6 -0.8]</td></tr> <tr><td>Principal moments along Y-X (mm⁴):</td><td>73653.5 along [0.8 0.6]</td></tr> <tr><td>Elastic Modulus - Zx (mm³):</td><td>1 / y-max= 2224.1</td></tr> <tr><td>Elastic Modulus - Zy (mm³):</td><td>J / x-max= 1346.3</td></tr> </tbody> </table>		MASS PROPERTIES (UNIT)	VALUES	Area (mm ²):	304.6	Perimeter (mm):	199.5	Bounding Box - X (mm):	-10.4 to 27.1	Bounding Box - Y (mm):	-14.5 to 25.5	Centroid - X (mm):	0.0	Centroid - Y (mm):	0.0	Moments of inertia - X (mm ⁴):	56645.9	Moments of inertia - Y (mm ⁴):	36421.8	Product of inertia - XY (mm ⁴):	-25163.9	Radii of gyration - X (mm):	13.6	Radii of gyration - Y (mm):	10.9	Principal moments along X-Y (mm ⁴):	19414.2 along [0.6 -0.8]	Principal moments along Y-X (mm ⁴):	73653.5 along [0.8 0.6]	Elastic Modulus - Zx (mm ³):	1 / y-max= 2224.1	Elastic Modulus - Zy (mm ³):	J / x-max= 1346.3
MASS PROPERTIES (UNIT)	VALUES																																																																																																																																																																								
Area (mm ²):	2283.2																																																																																																																																																																								
Perimeter (mm):	1446.4																																																																																																																																																																								
Bounding Box - X (mm):	-88.5 to 95.5																																																																																																																																																																								
Bounding Box - Y (mm):	-48.5 to 41.5																																																																																																																																																																								
Centroid - X (mm):	0.0																																																																																																																																																																								
Centroid - Y (mm):	0.0																																																																																																																																																																								
Moments of inertia - X (mm ⁴):	1841389.3																																																																																																																																																																								
Moments of inertia - Y (mm ⁴):	8107752.5																																																																																																																																																																								
Product of inertia - XY (mm ⁴):	-388294.0																																																																																																																																																																								
Radii of gyration - X (mm):	28.4																																																																																																																																																																								
Radii of gyration - Y (mm):	59.6																																																																																																																																																																								
Principal moments along X-Y (mm ⁴):	1817420.4 along [1.0 0.1]																																																																																																																																																																								
Principal moments along Y-X (mm ⁴):	8131721.4 along [-0.1 1.0]																																																																																																																																																																								
Elastic Modulus - Zx (mm ³):	1 / y-max= 37934.0																																																																																																																																																																								
Elastic Modulus - Zy (mm ³):	J / x-max= 84907.9																																																																																																																																																																								
MASS PROPERTIES (UNIT)	VALUES																																																																																																																																																																								
Area (mm ²):	1969.2																																																																																																																																																																								
Perimeter (mm):	1203.5																																																																																																																																																																								
Bounding Box - X (mm):	-100.8 to 83.2																																																																																																																																																																								
Bounding Box - Y (mm):	-42.9 to 47.1																																																																																																																																																																								
Centroid - X (mm):	0.0																																																																																																																																																																								
Centroid - Y (mm):	0.0																																																																																																																																																																								
Moments of inertia - X (mm ⁴):	1401920.1																																																																																																																																																																								
Moments of inertia - Y (mm ⁴):	6039676.5																																																																																																																																																																								
Product of inertia - XY (mm ⁴):	1059596.3																																																																																																																																																																								
Radii of gyration - X (mm):	26.7																																																																																																																																																																								
Radii of gyration - Y (mm):	55.4																																																																																																																																																																								
Principal moments along X-Y (mm ⁴):	1171300.2 along [1.0 0.2]																																																																																																																																																																								
Principal moments along Y-X (mm ⁴):	6270296.4 along [-0.2 1.0]																																																																																																																																																																								
Elastic Modulus - Zx (mm ³):	1 / y-max= 29761.3																																																																																																																																																																								
Elastic Modulus - Zy (mm ³):	J / x-max= 59896.7																																																																																																																																																																								
MASS PROPERTIES (UNIT)	VALUES																																																																																																																																																																								
Area (mm ²):	132.6																																																																																																																																																																								
Perimeter (mm):	194.5																																																																																																																																																																								
Bounding Box - X (mm):	-44.7 to 45.9																																																																																																																																																																								
Bounding Box - Y (mm):	-3.1 to 0.8																																																																																																																																																																								
Centroid - X (mm):	0.0																																																																																																																																																																								
Centroid - Y (mm):	0.0																																																																																																																																																																								
Moments of inertia - X (mm ⁴):	51.8																																																																																																																																																																								
Moments of inertia - Y (mm ⁴):	96748.1																																																																																																																																																																								
Product of inertia - XY (mm ⁴):	118.1																																																																																																																																																																								
Radii of gyration - X (mm):	0.6																																																																																																																																																																								
Radii of gyration - Y (mm):	27.0																																																																																																																																																																								
Principal moments along X-Y (mm ⁴):	51.7 along [1.0 0.0]																																																																																																																																																																								
Principal moments along Y-X (mm ⁴):	96748.3 along [0.0 1.0]																																																																																																																																																																								
Elastic Modulus - Zx (mm ³):	1 / y-max= 16.6																																																																																																																																																																								
Elastic Modulus - Zy (mm ³):	J / x-max= 2107.2																																																																																																																																																																								
MASS PROPERTIES (UNIT)	VALUES																																																																																																																																																																								
Area (mm ²):	673.8																																																																																																																																																																								
Perimeter (mm):	465.0																																																																																																																																																																								
Bounding Box - X (mm):	-22.3 to 15.2																																																																																																																																																																								
Bounding Box - Y (mm):	-37.3 to 40.7																																																																																																																																																																								
Centroid - X (mm):	0.0																																																																																																																																																																								
Centroid - Y (mm):	0.0																																																																																																																																																																								
Moments of inertia - X (mm ⁴):	287162.6																																																																																																																																																																								
Moments of inertia - Y (mm ⁴):	88704.2																																																																																																																																																																								
Product of inertia - XY (mm ⁴):	-87527.0																																																																																																																																																																								
Radii of gyration - X (mm):	20.6																																																																																																																																																																								
Radii of gyration - Y (mm):	11.5																																																																																																																																																																								
Principal moments along X-Y (mm ⁴):	320249.0 along [0.9 -0.4]																																																																																																																																																																								
Principal moments along Y-X (mm ⁴):	55617.8 along [0.4 0.9]																																																																																																																																																																								
Elastic Modulus - Zx (mm ³):	1 / y-max= 7060.2																																																																																																																																																																								
Elastic Modulus - Zy (mm ³):	J / x-max= 3982.3																																																																																																																																																																								
MASS PROPERTIES (UNIT)	VALUES																																																																																																																																																																								
Area (mm ²):	304.6																																																																																																																																																																								
Perimeter (mm):	199.5																																																																																																																																																																								
Bounding Box - X (mm):	-10.4 to 27.1																																																																																																																																																																								
Bounding Box - Y (mm):	-14.5 to 25.5																																																																																																																																																																								
Centroid - X (mm):	0.0																																																																																																																																																																								
Centroid - Y (mm):	0.0																																																																																																																																																																								
Moments of inertia - X (mm ⁴):	56645.9																																																																																																																																																																								
Moments of inertia - Y (mm ⁴):	36421.8																																																																																																																																																																								
Product of inertia - XY (mm ⁴):	-25163.9																																																																																																																																																																								
Radii of gyration - X (mm):	13.6																																																																																																																																																																								
Radii of gyration - Y (mm):	10.9																																																																																																																																																																								
Principal moments along X-Y (mm ⁴):	19414.2 along [0.6 -0.8]																																																																																																																																																																								
Principal moments along Y-X (mm ⁴):	73653.5 along [0.8 0.6]																																																																																																																																																																								
Elastic Modulus - Zx (mm ³):	1 / y-max= 2224.1																																																																																																																																																																								
Elastic Modulus - Zy (mm ³):	J / x-max= 1346.3																																																																																																																																																																								

B.D. REF :

CLIENT :
 信和置業有限公司
 Sino Land Company Limited

ARCHITECT :
 WONG TUNG & PARTNERS LIMITED
 ARCHITECTS & PLANNERS

MAIN CONTRACTOR :
 CR Construction Company Limited

STRUCTURAL ENGINEER :
 AECOM

FAÇADE CONSULTANT:
 AECOM

NOTE :
 1. ALL DIMENSIONS ARE IN mm.
 2. ALL ELEVATIONS ARE VIEWED FROM OUTSIDE.
 3. ALL DIMENSIONS TO BE VERIFIED ON SITE BEFORE FABRICATION.

LEGEND :

 1. F.F.L. -- FINISHED FLOOR LEVEL
 2. S.F.L. -- STRUCTURAL FLOOR LEVEL
 3. (P) -- REVERSED DETAIL

NO.	DATE	REVISED	BY

JOB NO. : J-837
 PROJECT : URA KWUN TONG TOWN CENTRE REDEVELOPMENT (AREA 2 & 3) AT NKIL 6514, KWUN TONG, KWLOON

TITLE : TYPICAL MULLION DETAIL FOR CURTAIN WALL PERFORMANCE TEST

DATE : 10-SEP-18 SCALE : 1:2 (A1)
 DRAWN BY : ASING CHECKED BY : -

美特鋁質有限公司
 MIDI ALUMINIUM FABRICATOR LTD.
 Units 6-8, Sunray Industrial Centre, 1/F
 610 Cha Kwo Ling Road, Kowloon
 Tel:23489211-4 Fax:(852)2727666

DWG NO. : J837-PTCW-MLO1 REV. : -

AB2--- ALUMINIUM ADAPTER	COATING --- N/A FINISHED	AB3--- ALUMINIUM ADAPTER	COATING --- N/A FINISHED	AB4--- ALUM. ANGLE BRACKET	COATING --- N/A FINISHED
GRADE --- 6061 T6		GRADE --- 6061 T6		GRADE --- 6061 T6	
MASS PROPERTIES (UNIT)	VALUES	MASS PROPERTIES (UNIT)	VALUES	MASS PROPERTIES (UNIT)	VALUES
Area (mm ²) :	589.6	Area (mm ²) :	330.7	Area (mm ²) :	324.0
Perimeter (mm) :	214.3	Perimeter (mm) :	125.1	Perimeter (mm) :	120.0
Bounding Box - X (mm):	-42.5 to 42.5	Bounding Box - X (mm):	-24.0 to 24.0	Bounding Box - X (mm):	-20.3 to 9.7
Bounding Box - Y (mm):	-3.5 to 4.5	Bounding Box - Y (mm):	-3.5 to 4.5	Bounding Box - Y (mm):	-20.3 to 9.7
Centroid - X (mm) :	0.0	Centroid - X (mm) :	0.0	Centroid - X (mm) :	0.0
Centroid - Y (mm) :	0.0	Centroid - Y (mm) :	0.0	Centroid - Y (mm) :	0.0
Moments of inertia - X (mm ⁴) :	2475.2	Moments of inertia - X (mm ⁴) :	1375.9	Moments of inertia - X (mm ⁴) :	25452.0
Moments of inertia - Y (mm ⁴) :	348908.7	Moments of inertia - Y (mm ⁴) :	61880.1	Moments of inertia - Y (mm ⁴) :	25452.0
Product of inertia - XY (mm ⁴) :	0.0	Product of inertia - XY (mm ⁴) :	0.0	Product of inertia - XY (mm ⁴) :	-14400.0
Radii of gyration - X (mm) :	2.0	Radii of gyration - X (mm) :	2.0	Radii of gyration - X (mm) :	8.9
Radii of gyration - Y (mm) :	24.3	Radii of gyration - Y (mm) :	13.7	Radii of gyration - Y (mm) :	8.9
Principal moments along X-Y (mm ⁴) :	2475.2 along [1.0 0.0]	Principal moments along X-Y (mm ⁴) :	1375.9 along [1.0 0.0]	Principal moments along X-Y (mm ⁴) :	11052.0 along [0.7 -0.7]
Principal moments along Y-X (mm ⁴) :	348908.7 along [0.0 1.0]	Principal moments along Y-X (mm ⁴) :	61880.1 along [0.0 1.0]	Principal moments along Y-X (mm ⁴) :	39852.0 along [0.7 0.7]
Elastic Modulus - Zx (mm ³):	I / y-max= 549.5	Elastic Modulus - Zx (mm ³):	I / y-max= 305.1	Elastic Modulus - Zx (mm ³):	I / y-max= 1251.7
Elastic Modulus - Zy (mm ³):	J / x-max= 8209.6	Elastic Modulus - Zy (mm ³):	J / x-max= 2578.3	Elastic Modulus - Zy (mm ³):	J / x-max= 1251.7

B.D. REF :

CLIENT :
 信和置業有限公司
 Sino Land Company Limited

ARCHITECT :
 WONG TUNG & PARTNERS LIMITED
 ARCHITECTS & PLANNERS

MAIN CONTRACTOR :
 CR Construction Company Limited

STRUCTURAL ENGINEER :
 AECOM

FACADE CONSULTANT:
 AECOM

NOTE :
 1. ALL DIMENSIONS ARE IN mm.
 2. ALL ELEVATIONS ARE VIEWED FROM OUTSIDE.
 3. ALL DIMENSIONS TO BE VERIFIED ON SITE BEFORE FABRICATION.

LEGEND :

 1. F.F.L. -- FINISHED FLOOR LEVEL
 2. S.F.L. -- STRUCTURAL FLOOR LEVEL
 3. -- REVERSED DETAIL

NO.	DATE	REVISED	BY

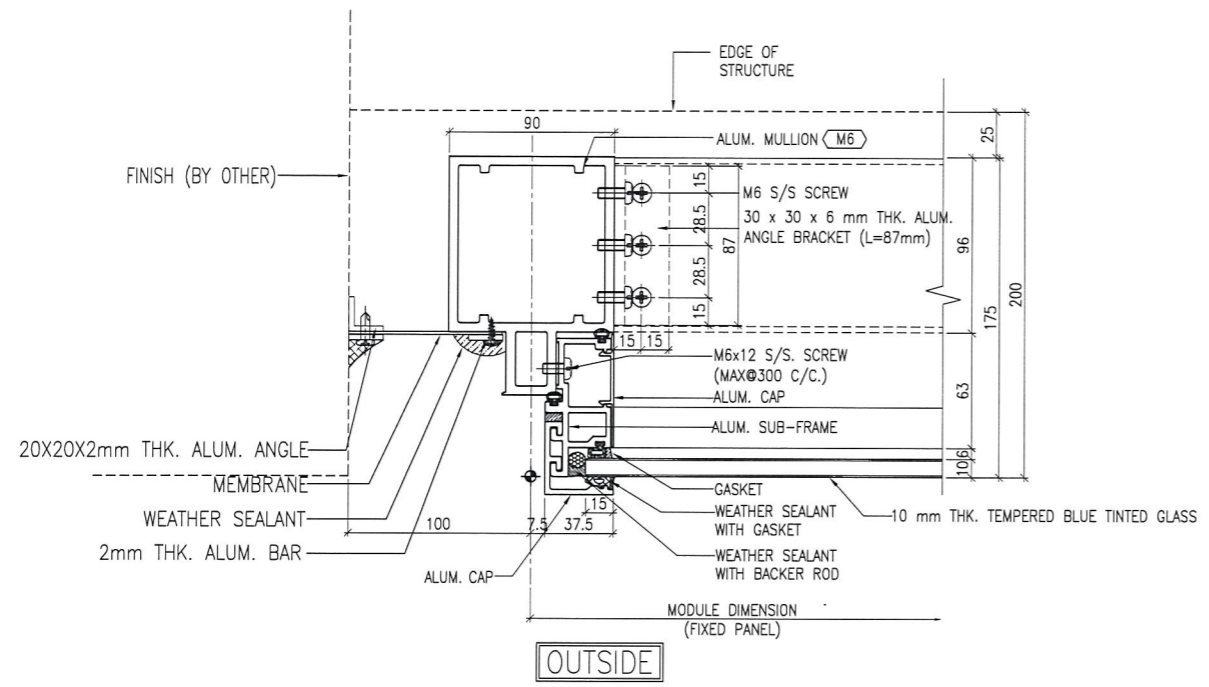
JOB NO. : J-837
 PROJECT :
 URA KWUN TONG TOWN CENTRE
 REDEVELOPMENT (AREA 2 & 3) AT
 NKIL 6514, KWUN TONG, KWLOON

TITLE :
 TYPICAL MULLION DETAIL
 FOR CURTAIN WALL
 PERFORMANCE TEST

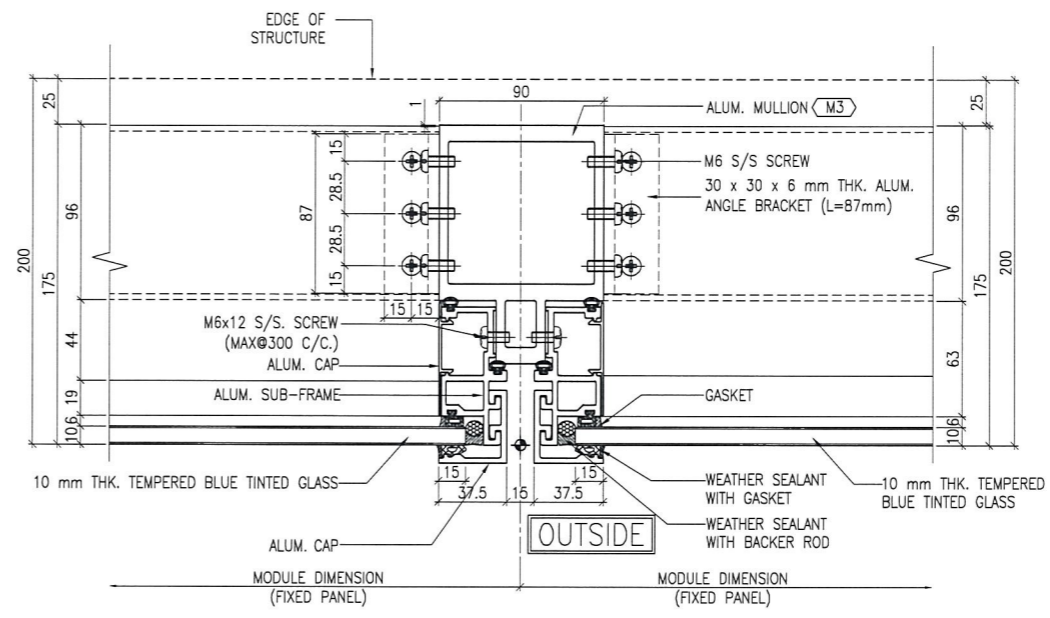
DATE : 10-SEP-18 SCALE : 1:2 (A1)
 DRAWN BY : ASING CHECKED BY : -

英特鋁質有限公司
 MIDI ALUMINIUM FABRICATOR LTD.
 Units 6-8, Sunray Industrial Centre, 1/F
 610 Che Kwo Ling Road, Kowloon
 Tel:23489211-4 Fax:(852)27727666

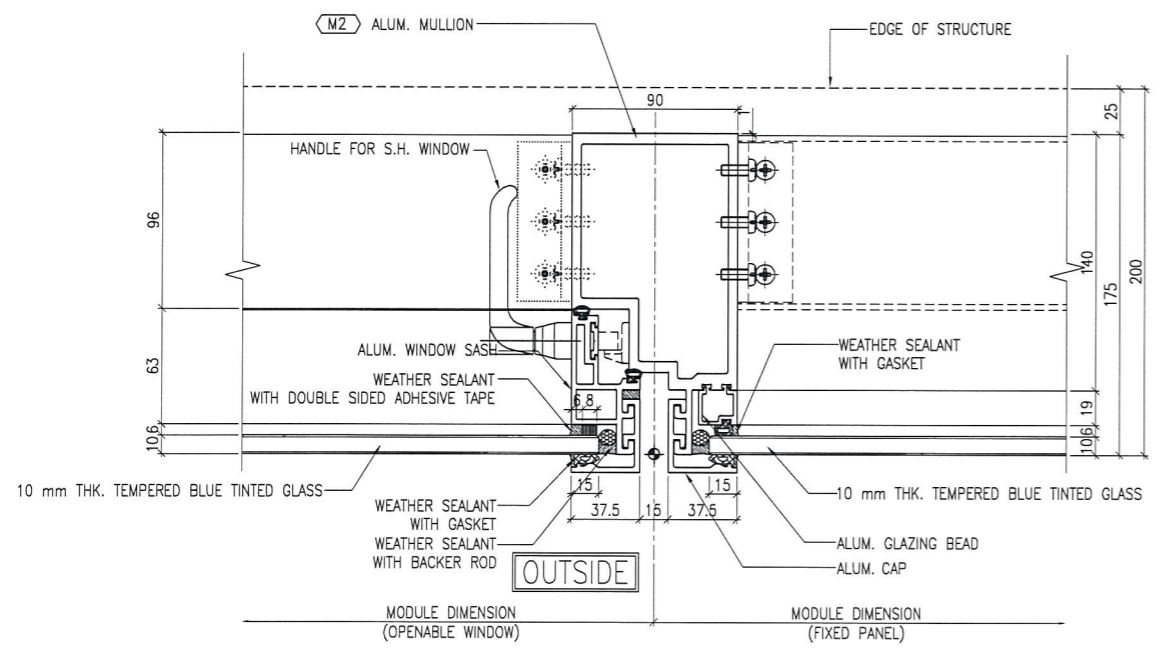
DWG NO. : J837-PTCW-MLO3 REV. : -



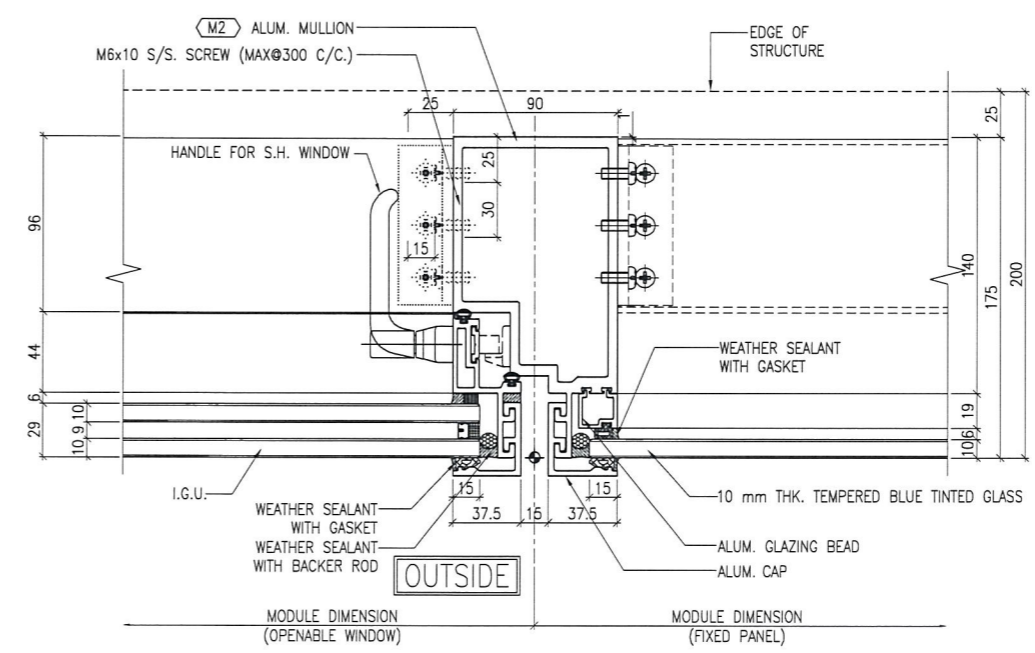
1 TYPICAL MULLION DETAIL
5001 CURTAIN WALL



2 TYPICAL MULLION DETAIL
5001 CURTAIN WALL



3 TYPICAL MULLION DETAIL
5001 CURTAIN WALL



4 TYPICAL MULLION DETAIL
5001 CURTAIN WALL

B.D. REF :

CLIENT :
 信和置業有限公司
 Sino Land Company Limited

ARCHITECT :
 WONG TUNG & PARTNERS LIMITED
 ARCHITECTS & PLANNERS

MAIN CONTRACTOR :
 CR Construction Company Limited

STRUCTURAL ENGINEER :
 AECOM

FACADE CONSULTANT:
 AECOM

NOTE :
 1. ALL DIMENSIONS ARE IN mm.
 2. ALL ELEVATIONS ARE VIEWED FROM OUTSIDE.
 3. ALL DIMENSIONS TO BE VERIFIED ON SITE BEFORE FABRICATION.

LEGEND :
 X1 --- DETAIL MARK NO.
 X001 --- REFER SHEET NO.
 1. F.F.L. --- FINISHED FLOOR LEVEL
 2. S.F.L. --- STRUCTURAL FLOOR LEVEL
 3. (R) --- REVERSED DETAIL

NO.	DATE	REVISED	BY

JOB NO. : J-837
 PROJECT :
 URA KWUN TONG TOWN CENTRE
 REDEVELOPMENT (AREA 2 & 3) AT
 NKIL 6514, KWUN TONG, KWLOON

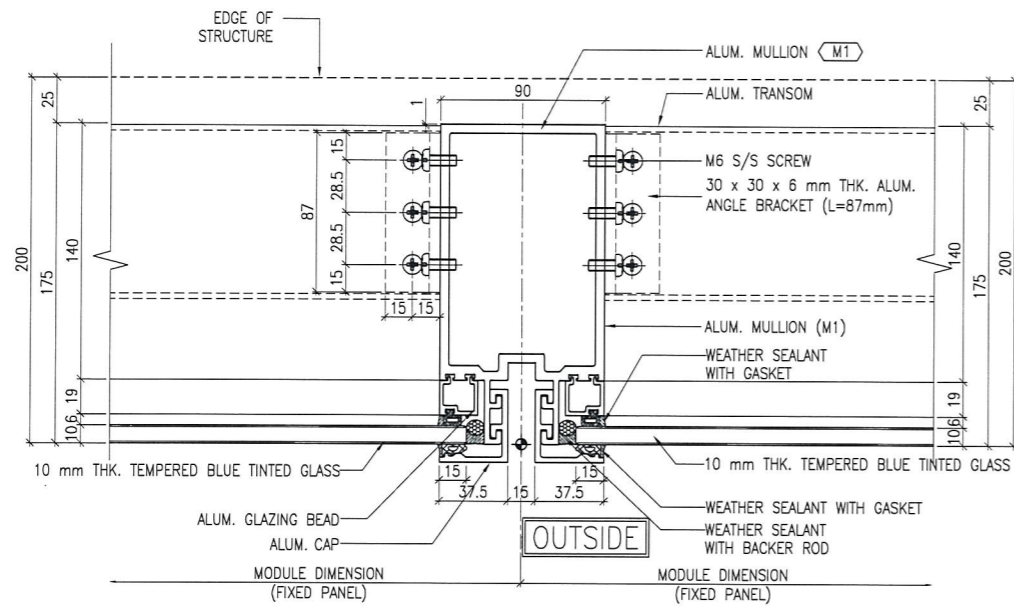
TITLE :
 TYPICAL MULLION DETAIL
 FOR CURTAIN WALL
 PERFORMANCE TEST

DATE : 10-SEP-18 SCALE : 1:2 (A1)

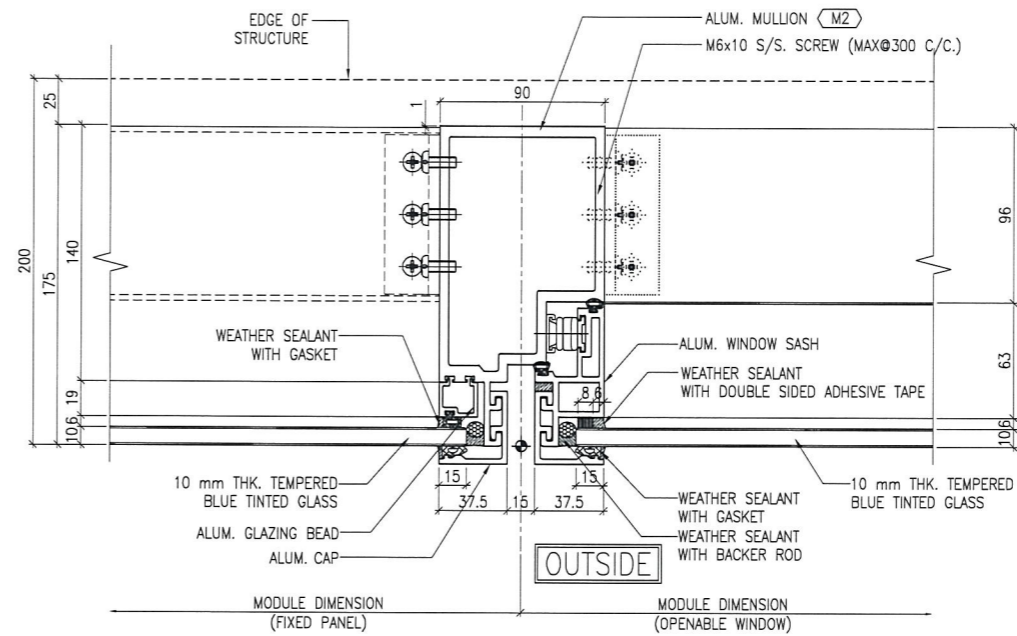
DRAWN BY : ASING CHECKED BY : -

美特鋁質有限公司
 MIDI ALUMINIUM FABRICATOR LTD.
 Units 6-8, Sunray Industrial Centre, 1/F
 610 Cha Kwo Ling Road, Kowloon
 Tel: 23489211-4 Fax: (852) 2727666

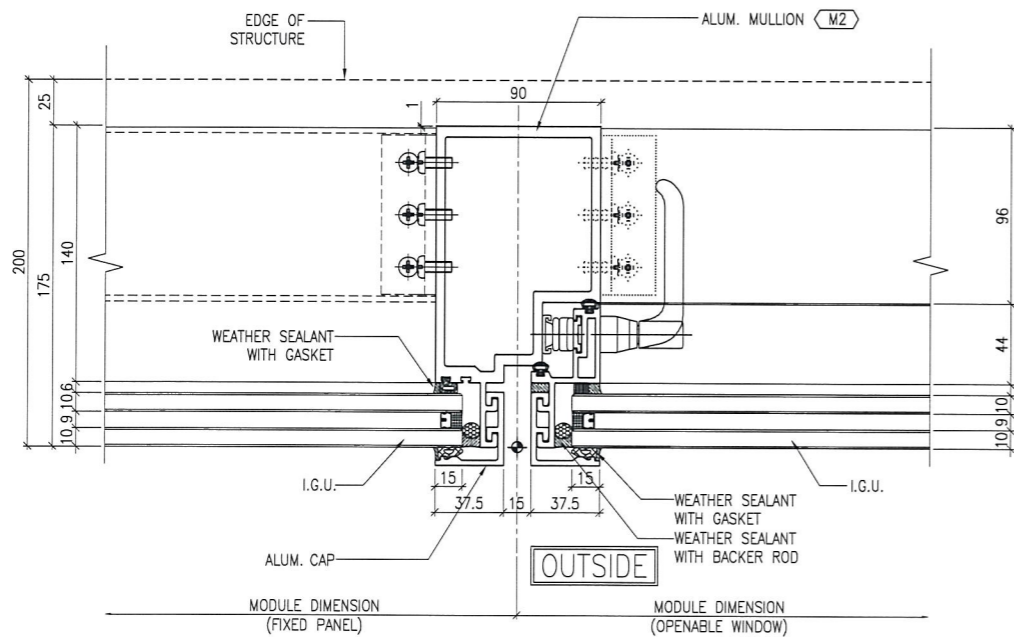
DWG NO. : JB37-PTCW-5001 REV. : -



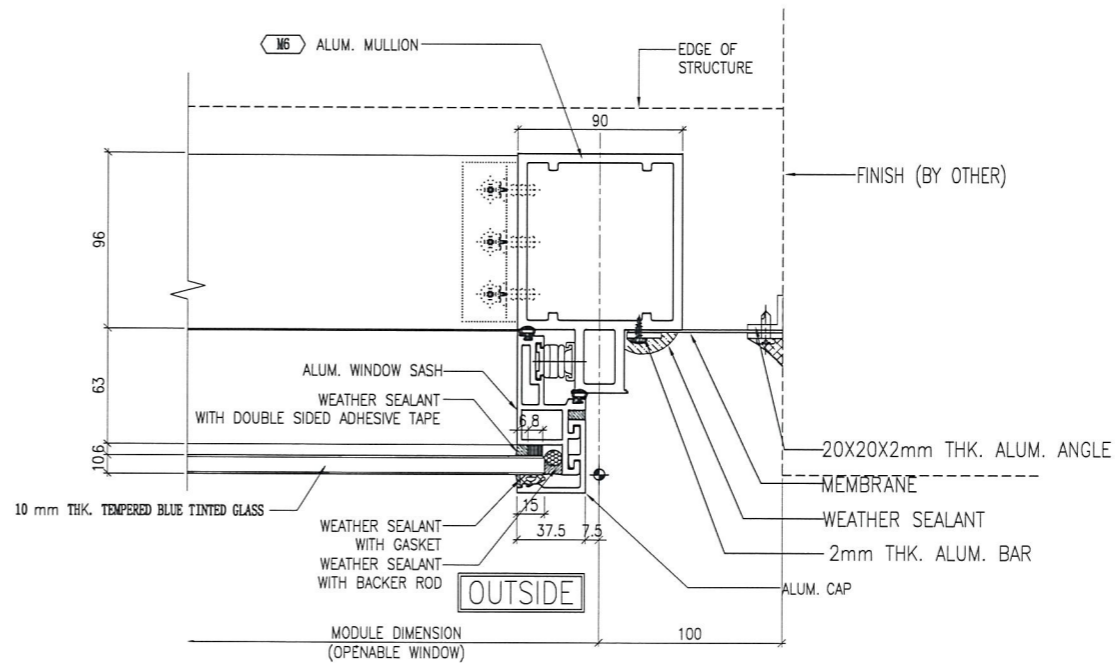
1 TYPICAL MULLION DETAIL
5002 CURTAIN WALL



2 TYPICAL MULLION DETAIL
5002 CURTAIN WALL



3 TYPICAL MULLION DETAIL
5002 CURTAIN WALL



4 TYPICAL MULLION DETAIL
5002 CURTAIN WALL

B.D. REF :

CLIENT :
信和置業有限公司
Sino Land Company Limited

ARCHITECT :
WONG TUNG & PARTNERS LIMITED
ARCHITECTS & PLANNERS

MAIN CONTRACTOR :
CR Construction Company Limited

STRUCTURAL ENGINEER :
AECOM

FACADE CONSULTANT:
AECOM

NOTE :
1. ALL DIMENSIONS ARE IN mm.
2. ALL ELEVATIONS ARE VIEWED FROM OUTSIDE.
3. ALL DIMENSIONS TO BE VERIFIED ON SITE BEFORE FABRICATION.

LEGEND :
X1 --- DETAIL MARK NO.
X001 --- REFER SHEET NO.
1. F.F.L. --- FINISHED FLOOR LEVEL
2. S.F.L. --- STRUCTURAL FLOOR LEVEL
3. (R) --- REVERSED DETAIL

NO.	DATE	REVISED	BY

JOB NO. : J-837
PROJECT :
URA KWUN TONG TOWN CENTRE
REDEVELOPMENT (AREA 2 & 3) AT
NKIL 6514, KWUN TONG, KWLOON

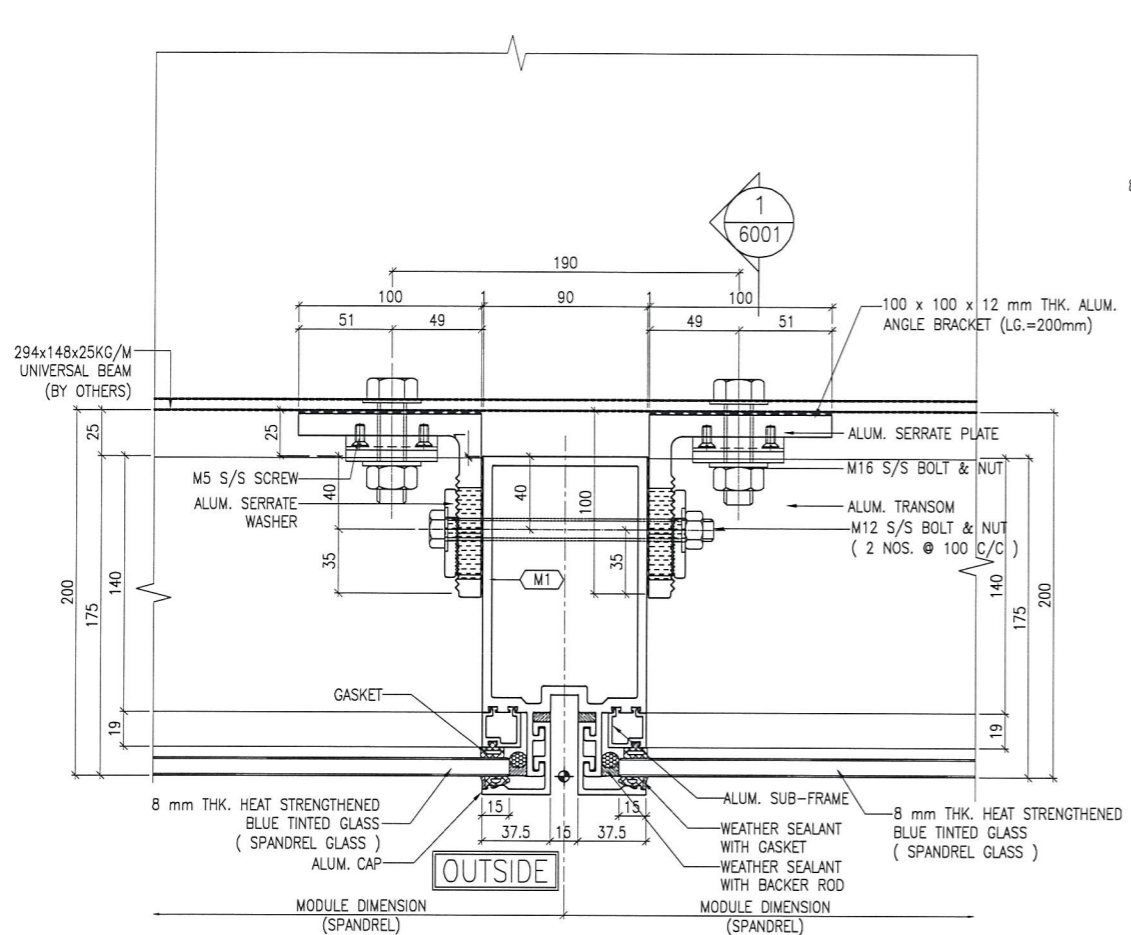
TITLE :
TYPICAL MULLION DETAIL
FOR CURTAIN WALL
PERFORMANCE TEST

DATE : 10-SEP-18 SCALE : 1:2 (A1)

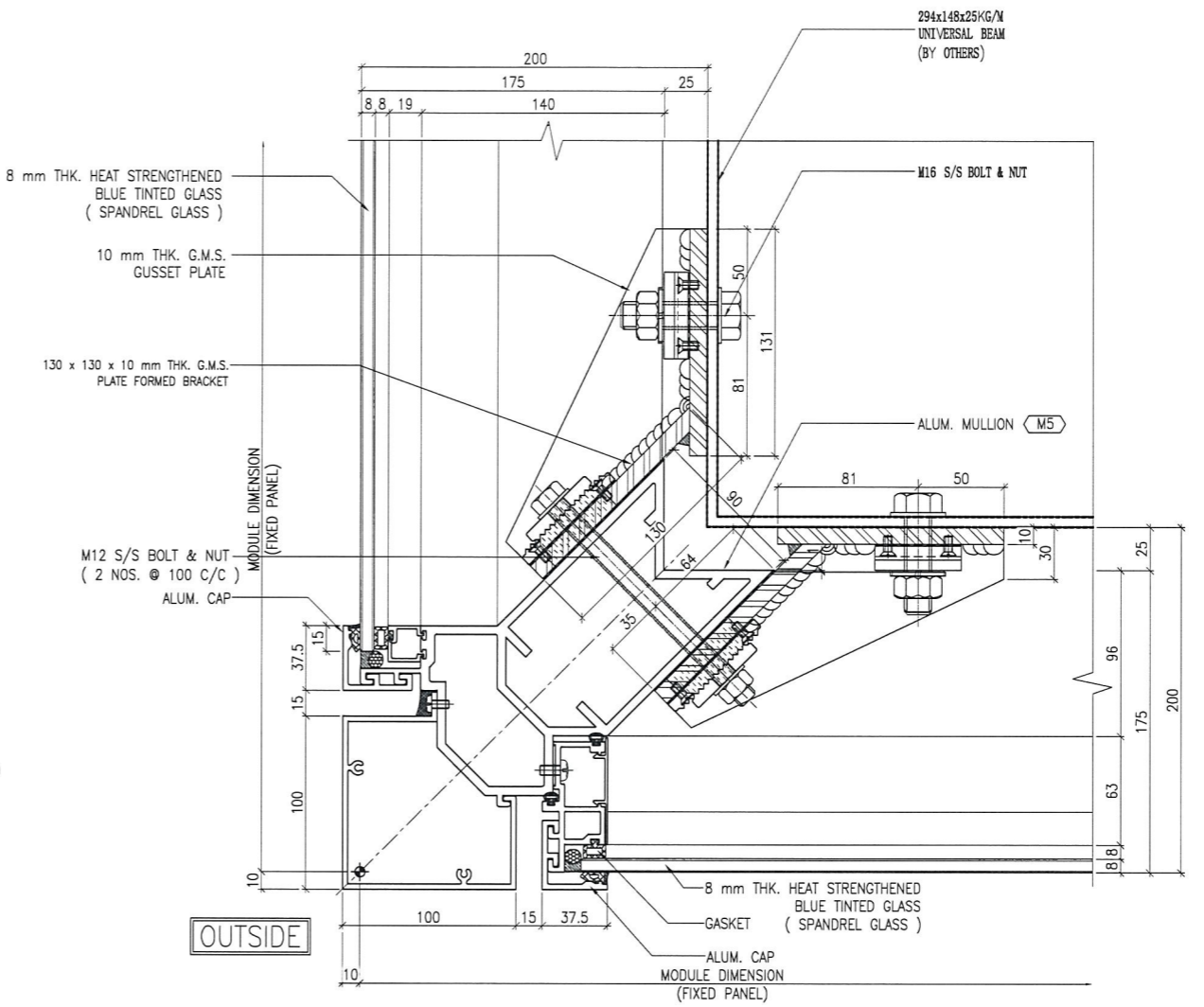
DRAWN BY : ASING CHECKED BY : -

MIDI ALUMINIUM FABRICATOR LTD.
Units 6-8, Sunray Industrial Centre, 1/F
610 Cha Kwo Ling Road, Kowloon
Tel:23489211-4 Fax:(852)2727666

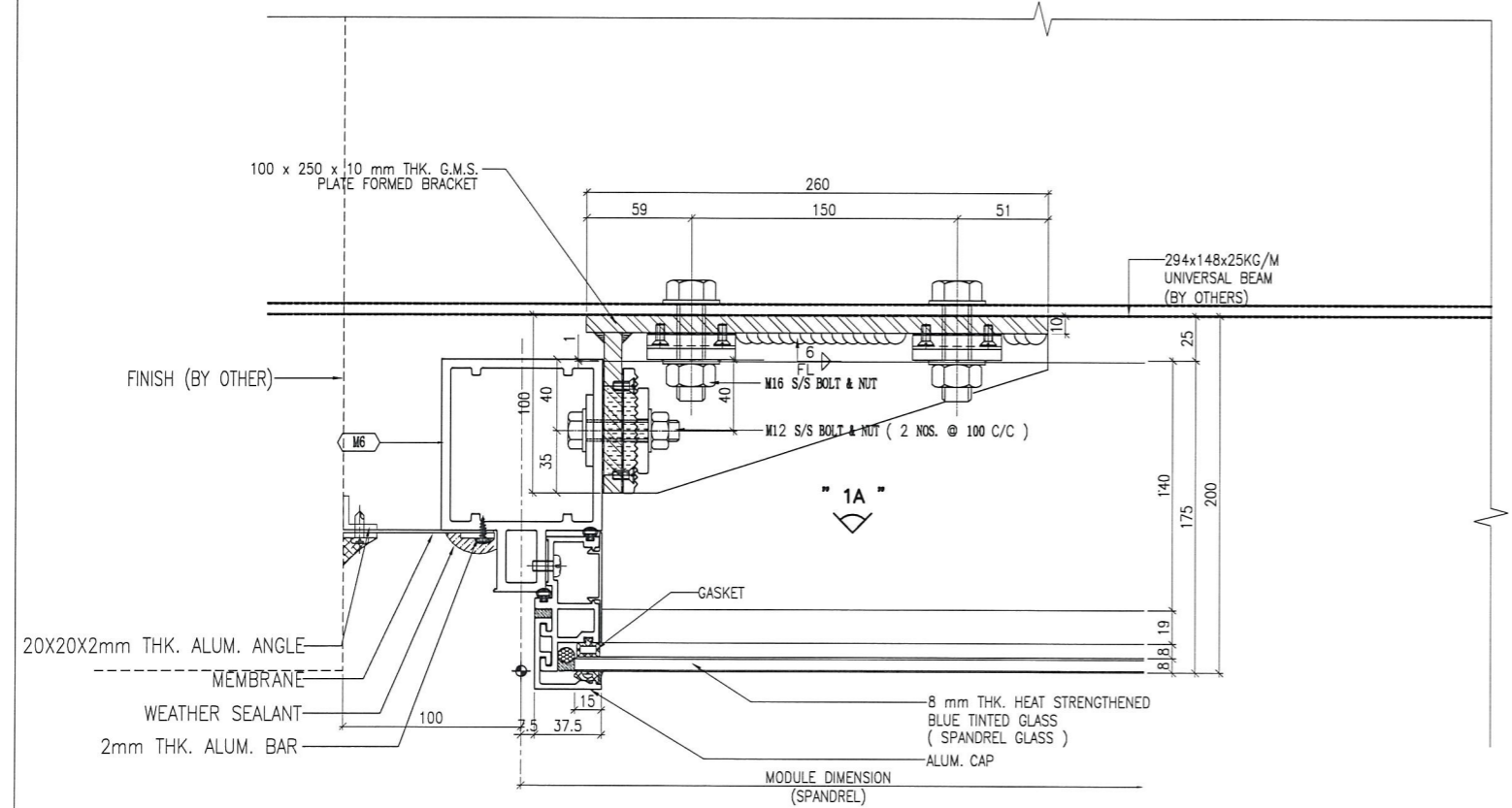
DWG NO. : J837-PTCW-5002 REV. : -



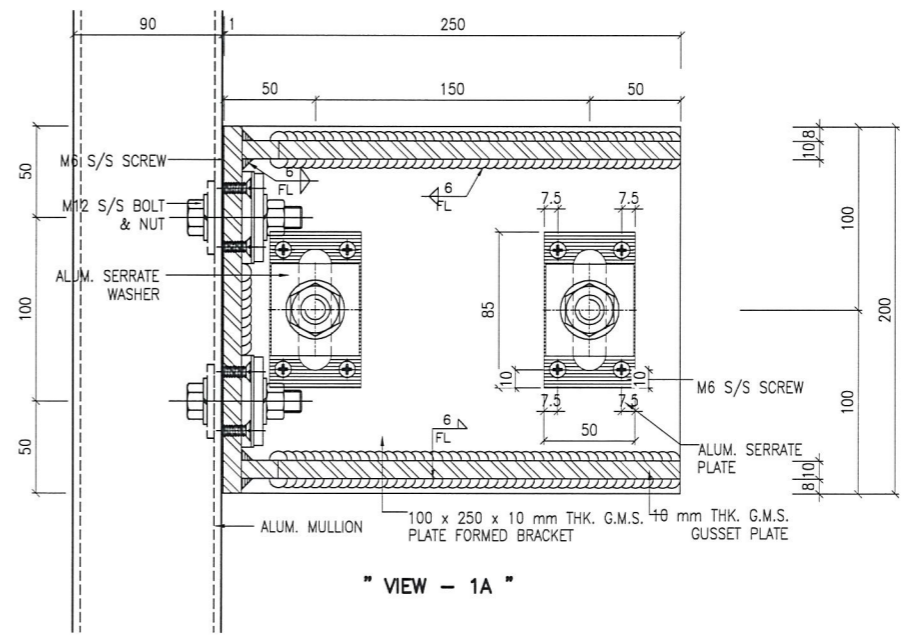
1 TYPICAL MULLION DETAIL
5004 CURTAIN WALL



2 TYPICAL MULLION DETAIL
5004 CURTAIN WALL



3 TYPICAL MULLION DETAIL
5004 CURTAIN WALL



"VIEW - 1A"

B.D. REF :

CLIENT :
信和置業有限公司
Sino Land Company Limited

ARCHITECT :
WONG TUNG & PARTNERS LIMITED
ARCHITECTS & PLANNERS

MAIN CONTRACTOR :
CR Construction Company Limited

STRUCTURAL ENGINEER :
AECOM

FACADE CONSULTANT:
AECOM

NOTE :
1. ALL DIMENSIONS ARE IN mm.
2. ALL ELEVATIONS ARE VIEWED FROM OUTSIDE.
3. ALL DIMENSIONS TO BE VERIFIED ON SITE BEFORE FABRICATION.

LEGEND :
X1 --- DETAIL MARK NO.
X001 --- REFER SHEET NO.
1. F.F.L. --- FINISHED FLOOR LEVEL
2. S.F.L. --- STRUCTURAL FLOOR LEVEL
3. (R) --- REVERSED DETAIL

NO.	DATE	REVISED	BY

JOB NO. : J-837
PROJECT :
URA KWUN TONG TOWN CENTRE
REDEVELOPMENT (AREA 2 & 3) AT
NKIL 6514, KWUN TONG, KWLOON

TITLE :
TYPICAL MULLION DETAIL
FOR CURTAIN WALL
PERFORMANCE TEST


DATE : 10-SEP-18 SCALE : 1:2 (A1)
DRAWN BY : ASING CHECKED BY : -

美特鋁質有限公司
MIDI ALUMINIUM FABRICATOR LTD.
Units 6-8, Sunray Industrial Centre, 1/F
610 Cha Kwo Ling Road, Kowloon
Tel: 23489211-4 Fax: (852) 27727666
DWG NO. : J837-PTCW-5004 REV. : -

B.D. REF :

CLIENT :
 信和置業有限公司
 Sino Land Company Limited

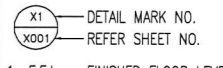
ARCHITECT :
 WONG TUNG & PARTNERS LIMITED
 ARCHITECTS & PLANNERS


MAIN CONTRACTOR :
 CR Construction Company Limited

STRUCTURAL ENGINEER :
 AECOM

FAÇADE CONSULTANT:
 AECOM

NOTE :
 1. ALL DIMENSIONS ARE IN mm.
 2. ALL ELEVATIONS ARE VIEWED FROM OUTSIDE.
 3. ALL DIMENSIONS TO BE VERIFIED ON SITE BEFORE FABRICATION.

LEGEND :

 X1 --- DETAIL MARK NO.
 X001 --- REFER SHEET NO.

1. F.F.L. --- FINISHED FLOOR LEVEL
 2. S.F.L. --- STRUCTURAL FLOOR LEVEL
 3. (R) --- REVERSED DETAIL

NO.	DATE	REVISED	BY

JOB NO. : J-837
 PROJECT :
 URA KWUN TONG TOWN CENTRE
 REDEVELOPMENT (AREA 2 & 3) AT
 NKIL 6514, KWUN TONG, KWLOON

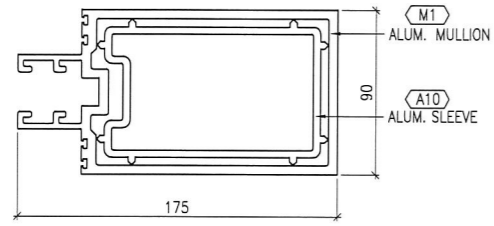
TITLE :
 TYPICAL MULLION DETAIL
 FOR CURTAIN WALL
 PERFORMANCE TEST

DATE : 10-SEP-18 SCALE : 1:2 (A1)

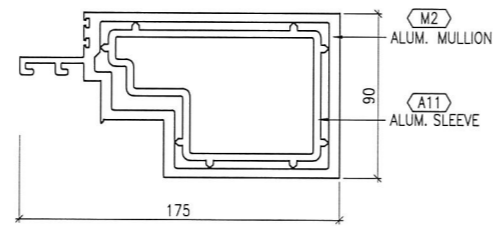
DRAWN BY : ASING CHECKED BY : -

 美特鋁質有限公司
 MIDI ALUMINIUM FABRICATOR LTD.
 Units 6-8, Sunray Industrial Centre, 1/F
 610 Cha Kwo Ling Road, Kowloon
 Tel: 23489211-4 Fax: (852) 2727666

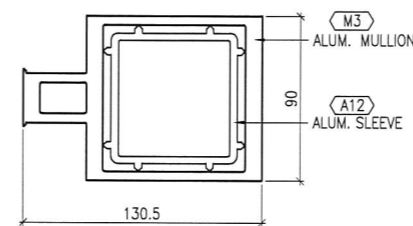
DWG NO. : JB37-PCW-5005 REV. : -



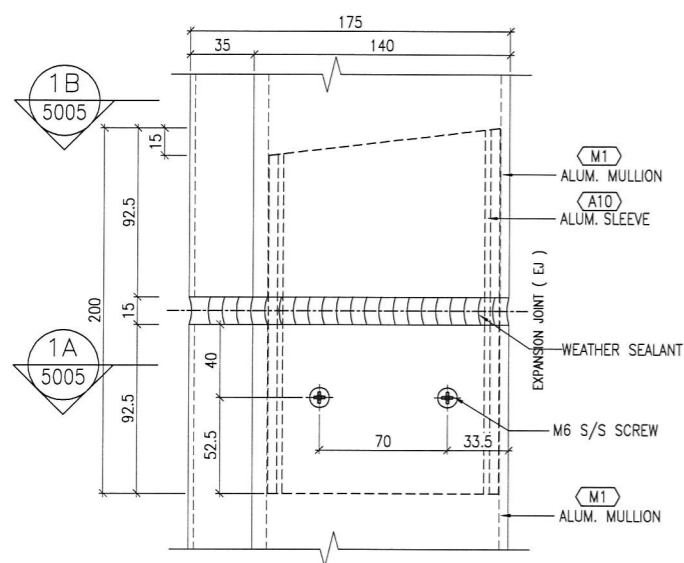
" VIEW - '1B' "



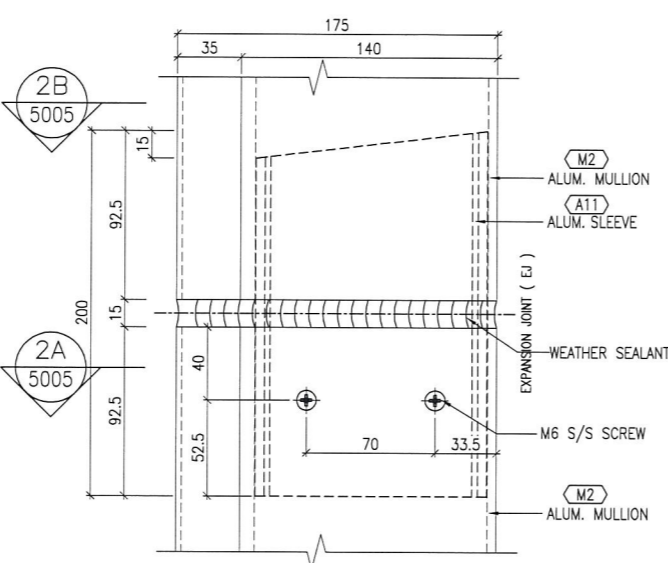
" VIEW - '2B' "



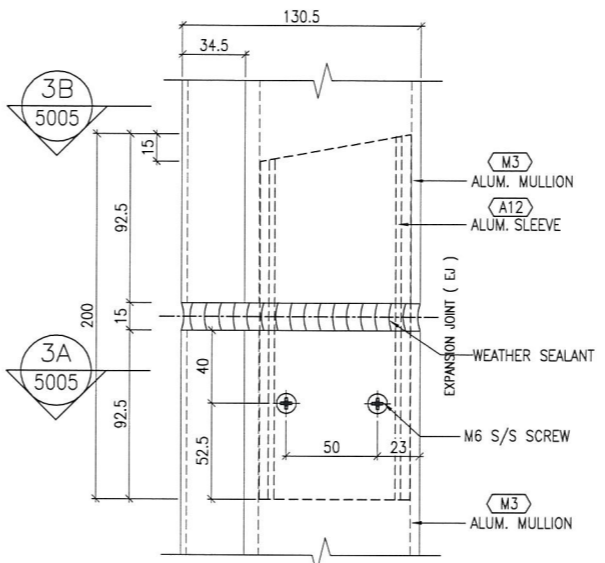
" VIEW - '3B' "



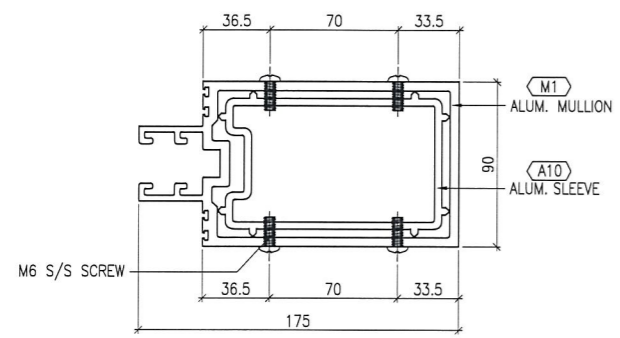
" VIEW - 1A "



" VIEW - 2A "

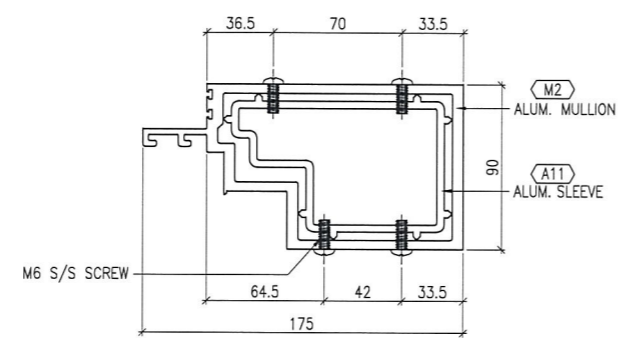


" VIEW - 3A "



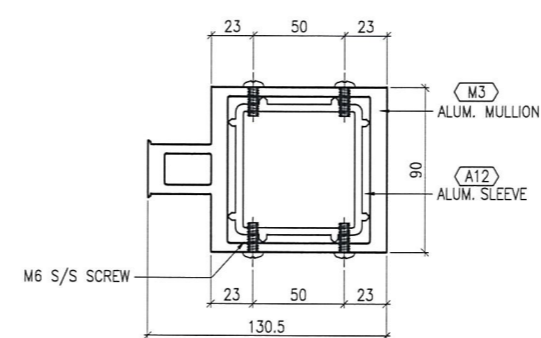
" VIEW - 1A "

" ALUMINIUM CURTAIN WALL SLEEVE "
 - TYPICAL FIXING DETAIL



" VIEW - 2A "

" ALUMINIUM CURTAIN WALL SLEEVE "
 - TYPICAL FIXING DETAIL



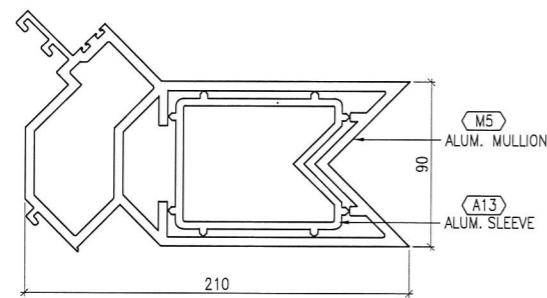
" VIEW - 3A "

" ALUMINIUM CURTAIN WALL SLEEVE "
 - TYPICAL FIXING DETAIL

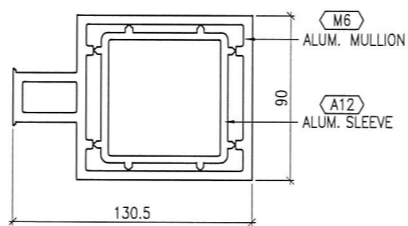
1
 5005 TYPICAL MULLION DETAIL
 CURTAIN WALL

2
 5005 TYPICAL MULLION DETAIL
 CURTAIN WALL

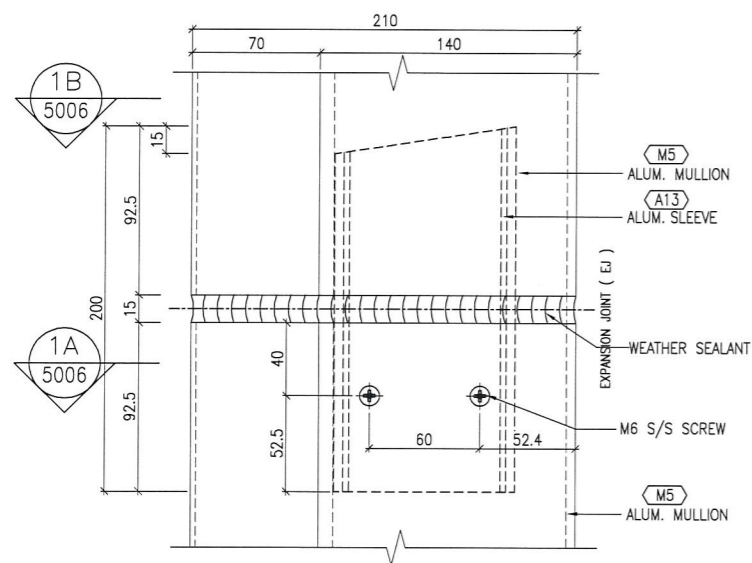
3
 5005 TYPICAL MULLION DETAIL
 CURTAIN WALL



" VIEW - '1B' "

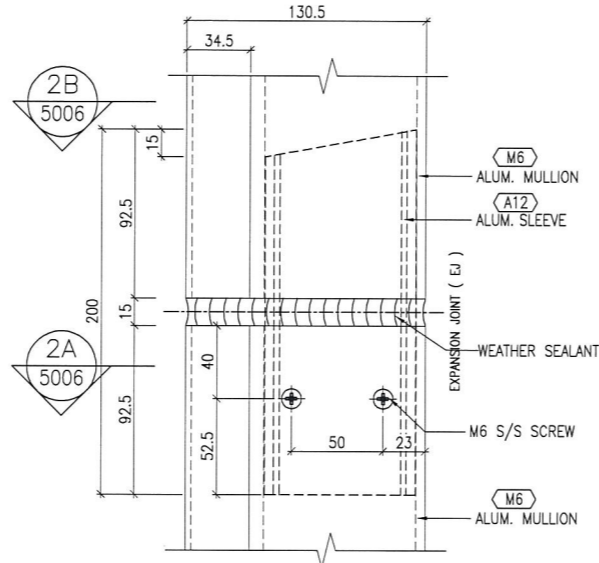


" VIEW - '2B' "



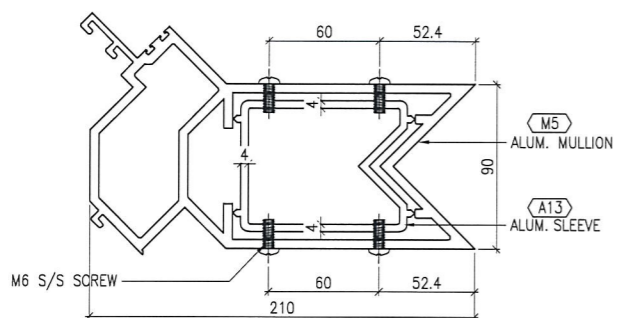
" VIEW - 1A "

" ALUMINIUM CURTAIN WALL SLEEVE "
- TYPICAL FIXING DETAIL



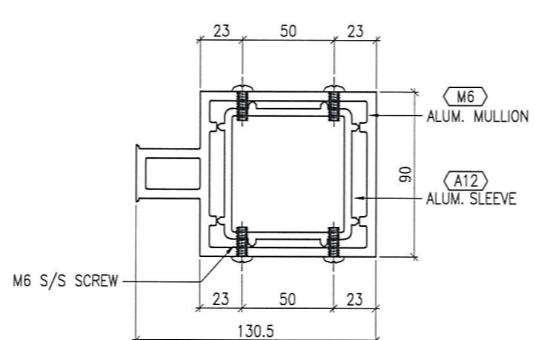
" VIEW - 2A "

" ALUMINIUM CURTAIN WALL SLEEVE "
- TYPICAL FIXING DETAIL



" VIEW - 1A "

" ALUMINIUM CURTAIN WALL SLEEVE "
- TYPICAL FIXING DETAIL



" VIEW - 2A "

" ALUMINIUM CURTAIN WALL SLEEVE "
- TYPICAL FIXING DETAIL

1
5006 TYPICAL MULLION DETAIL
CURTAIN WALL

2
5006 TYPICAL MULLION DETAIL
CURTAIN WALL

B.D. REF :

CLIENT :
信和置業有限公司
Sino Land Company Limited

ARCHITECT :
WONG TUNG & PARTNERS LIMITED
ARCHITECTS & PLANNERS

MAIN CONTRACTOR :
CR Construction Company Limited

STRUCTURAL ENGINEER :
AECOM

FACADE CONSULTANT:
AECOM

NOTE :
1. ALL DIMENSIONS ARE IN mm.
2. ALL ELEVATIONS ARE VIEWED FROM OUTSIDE.
3. ALL DIMENSIONS TO BE VERIFIED ON SITE BEFORE FABRICATION.

LEGEND :
X1 --- DETAIL MARK NO.
X001 --- REFER SHEET NO.
1. F.F.L. --- FINISHED FLOOR LEVEL
2. S.F.L. --- STRUCTURAL FLOOR LEVEL
3. (R) --- REVERSED DETAIL

NO.	DATE	REVISED	BY
-----	------	---------	----

JOB NO. : J-837

PROJECT :
URA KWUN TONG TOWN CENTRE
REDEVELOPMENT (AREA 2 & 3) AT
NKIL 6514, KWUN TONG, KWLOON

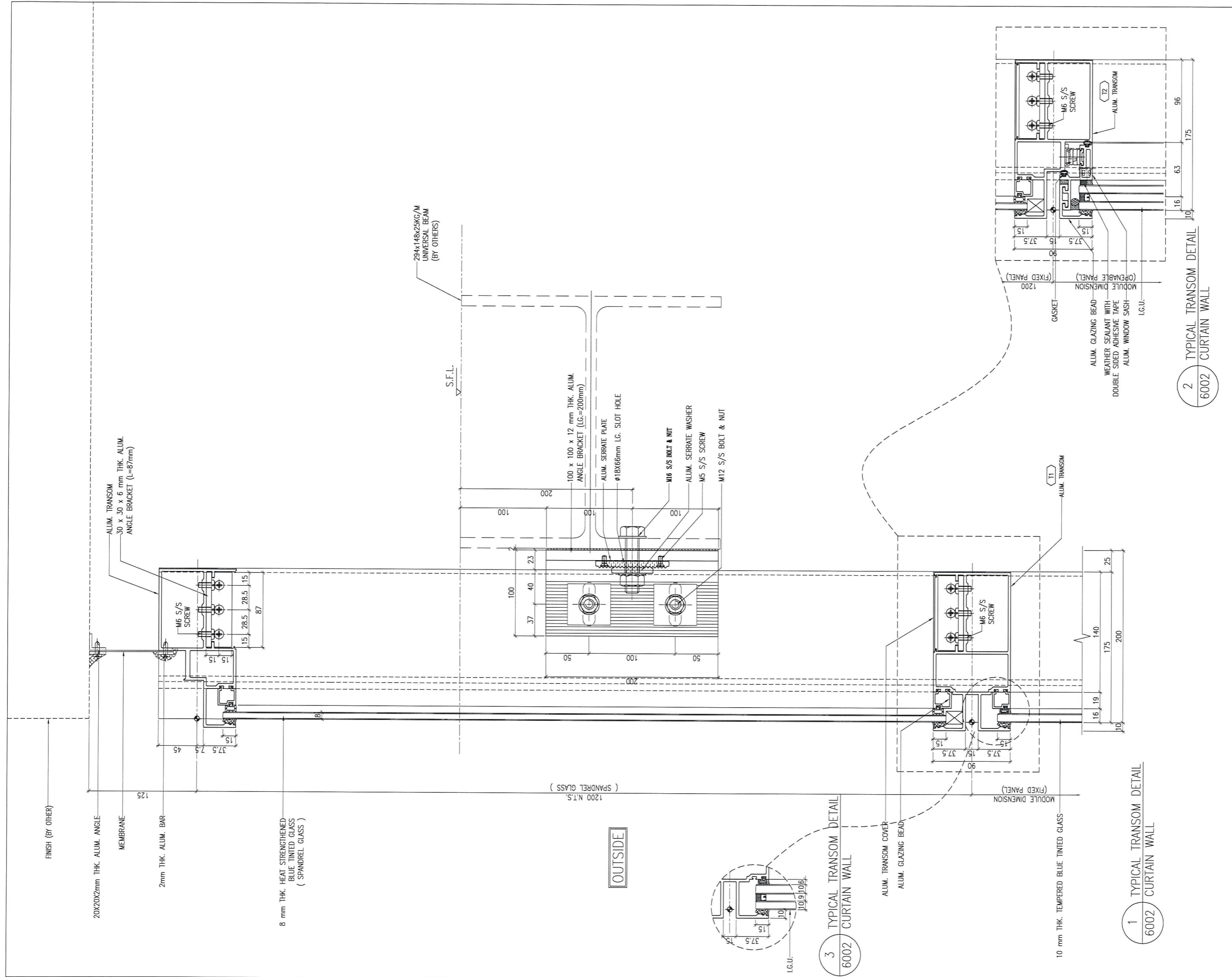
TITLE :
TYPICAL MULLION DETAIL
FOR CURTAIN WALL
PERFORMANCE TEST

DATE : 10-SEP-18 SCALE : 1:2 (A1)

DRAWN BY : ASING CHECKED BY : -

美特鋁質有限公司
MIDI ALUMINIUM FABRICATOR LTD.
Units 6-8, Sunray Industrial Centre, 1/F
610 Cha Kwo Ling Road, Kowloon
Tel: 23489211-4 Fax: (852) 2727666

DWG NO. : JB37-PTCW-5006 REV. : -



B.D. REF :

CLIENT :
 信和置業有限公司
 Sino Land Company Limited

ARCHITECT :
 WONG TUNG & PARTNERS LIMITED
 ARCHITECTS & PLANNERS

MAIN CONTRACTOR :
 CR Construction Company Limited

STRUCTURAL ENGINEER :
 AECOM

FACADE CONSULTANT:
 AECOM

NOTE :
 1. ALL DIMENSIONS ARE IN mm.
 2. ALL ELEVATIONS ARE VIEWED FROM OUTSIDE.
 3. ALL DIMENSIONS TO BE VERIFIED ON SITE BEFORE FABRICATION.

LEGEND :
 X1 --- DETAIL MARK NO.
 X001 --- REFER SHEET NO.
 1. F.F.L. --- FINISHED FLOOR LEVEL
 2. S.F.L. --- STRUCTURAL FLOOR LEVEL
 3. (R) --- REVERSED DETAIL

NO.	DATE	REVISED	BY

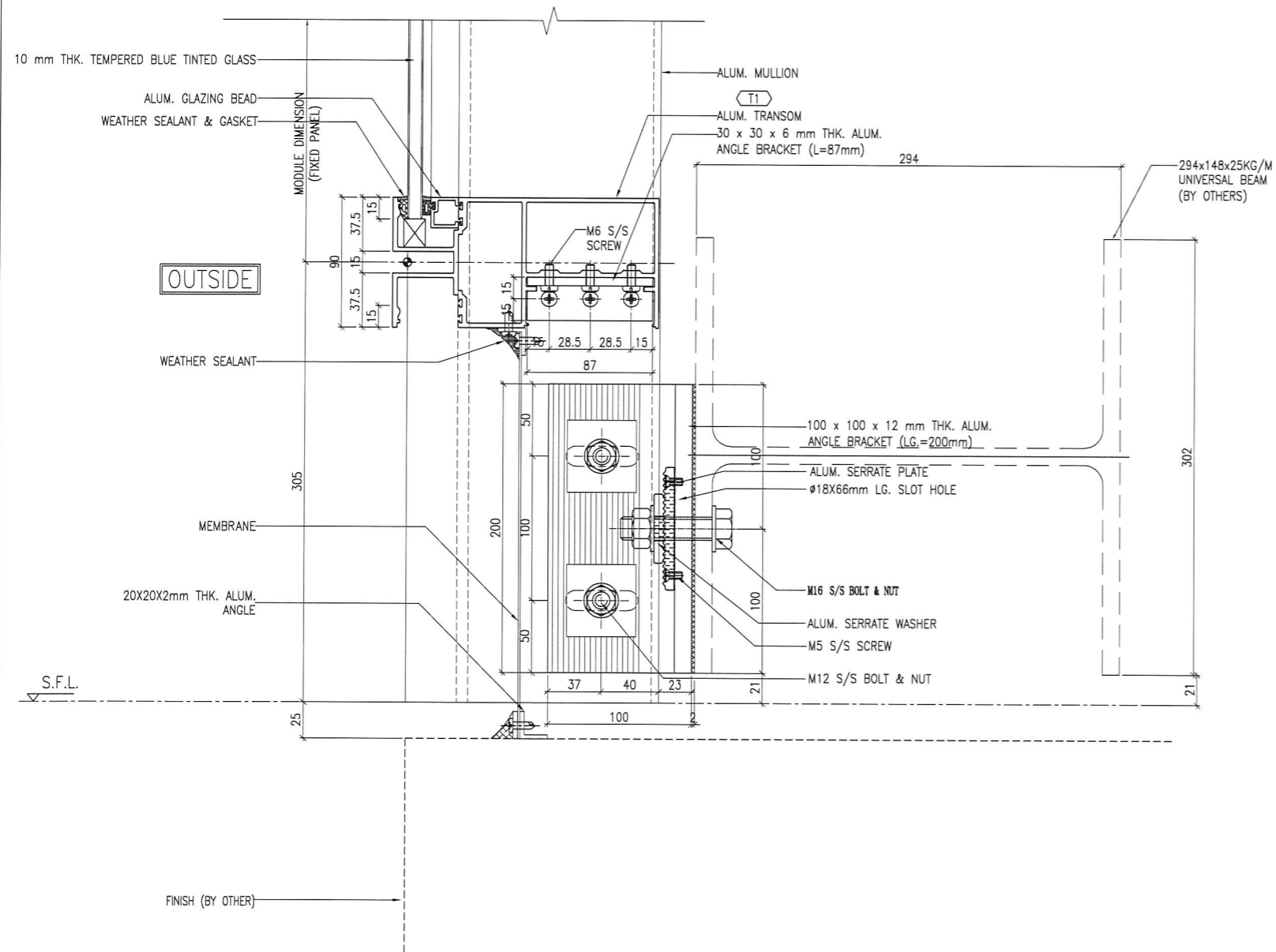
JOB NO. : J-837
 PROJECT :
 URA KWUN TONG TOWN CENTRE
 REDEVELOPMENT (AREA 2 & 3) AT
 NKIL 6514, KWUN TONG, KWLOON

TITLE :
 TYPICAL TRANSOM DETAIL
 FOR CURTAIN WALL
 PERFORMANCE TEST

DATE : 10-SEP-18 SCALE : 1:2 (A1)
 DRAWN BY : ASING CHECKED BY : -

美特鋁質有限公司
 MIDI ALUMINIUM FABRICATOR LTD.
 Units 6-8, Sunray Industrial Centre, 1/F
 610 Cho Kwo Ling Road, Kowloon
 Tel:23489211-4 Fax:(852)27727666

DWG NO. : JB37-PTCW-6002 REV. : -



1 TYPICAL TRANSOM DETAIL
6003 CURTAIN WALL

B.D. REF :

CLIENT :
信和置業有限公司
Sino Land Company Limited

ARCHITECT :
WONG TUNG & PARTNERS LIMITED
ARCHITECTS & PLANNERS

MAIN CONTRACTOR :
CR Construction Company Limited

STRUCTURAL ENGINEER :
AECOM

FACADE CONSULTANT:
AECOM

NOTE :
1. ALL DIMENSIONS ARE IN mm.
2. ALL ELEVATIONS ARE VIEWED FROM OUTSIDE.
3. ALL DIMENSIONS TO BE VERIFIED ON SITE BEFORE FABRICATION.

LEGEND :
X1 -- DETAIL MARK NO.
X001 -- REFER SHEET NO.
1. F.F.L. -- FINISHED FLOOR LEVEL
2. S.F.L. -- STRUCTURAL FLOOR LEVEL
3. (R) -- REVERSED DETAIL

NO.	DATE	REVISED	BY
-----	------	---------	----

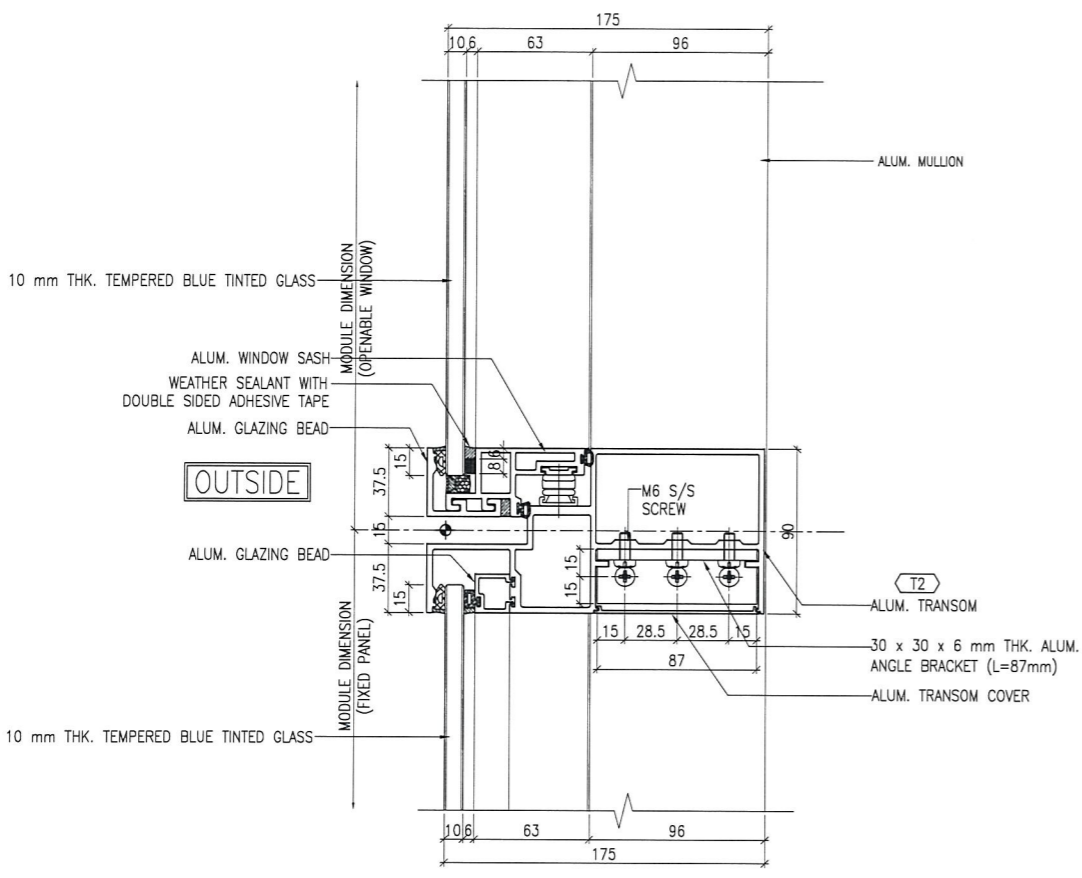
JOB NO. : J-837
PROJECT :
URA KWUN TONG TOWN CENTRE
REDEVELOPMENT (AREA 2 & 3) AT
NKIL 6514, KWUN TONG, KWLOON

TITLE :
TYPICAL TRANSOM DETAIL
FOR CURTAIN WALL
PERFORMANCE TEST

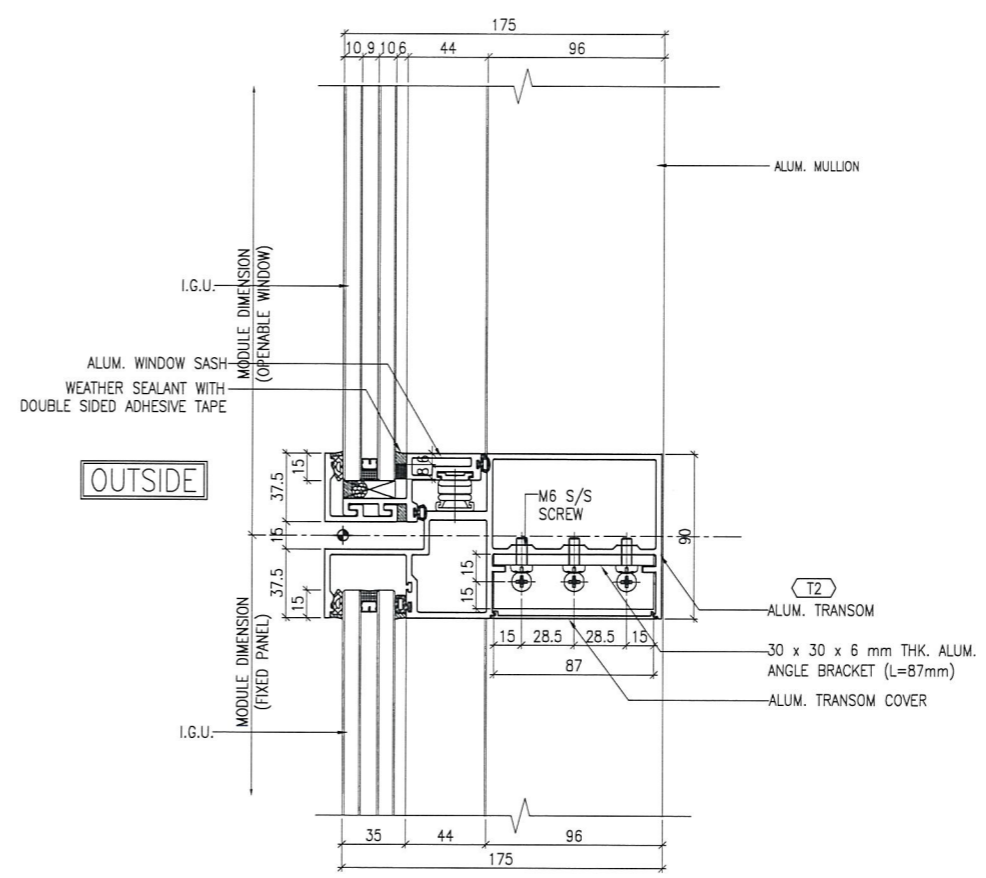
DATE : 10-SEP-18 SCALE : 1:2 (A1)
DRAWN BY : Asing CHECKED BY : -

美特鋁質有限公司
MIDI ALUMINIUM FABRICATOR LTD.
Units 6-8, Sunray Industrial Centre, 1/F
610 Cha Kwo Ling Road, Kowloon
Tel: 23489211-4 Fax: (852) 2727666

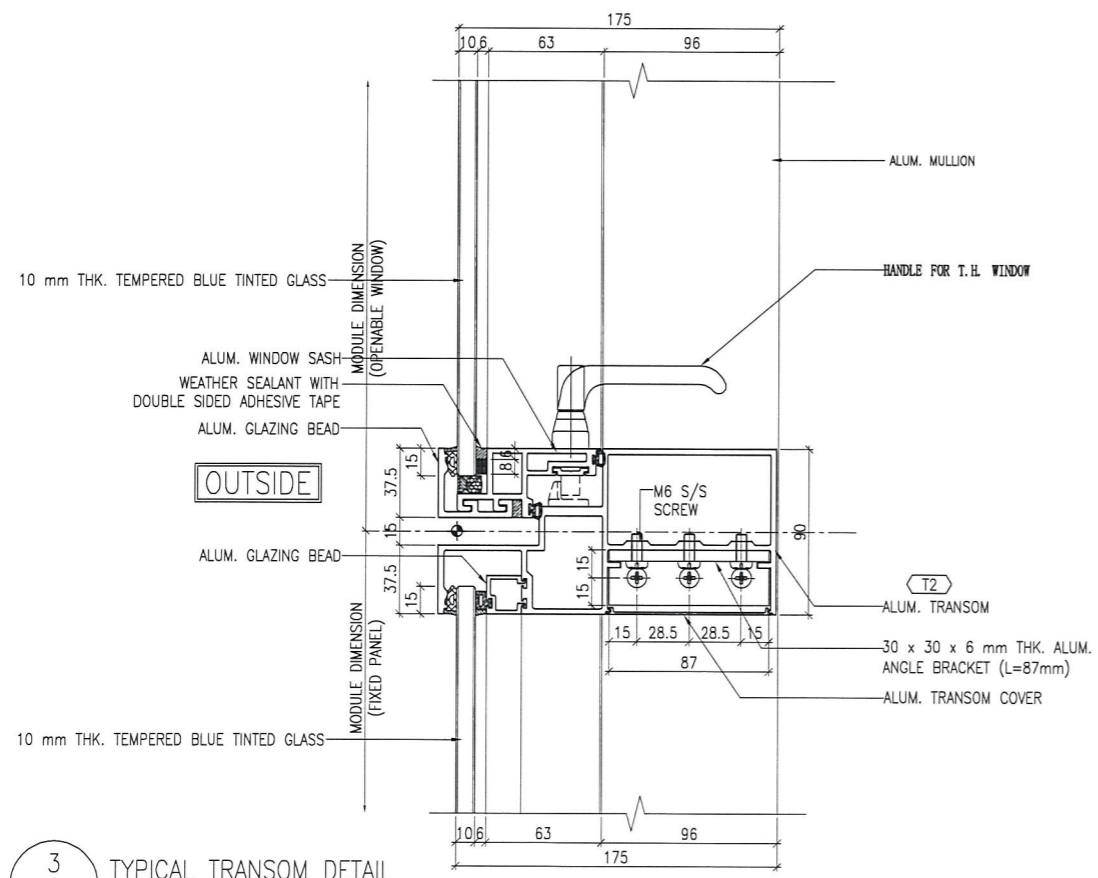
DWG NO. : J837-PTCW-6003 REV. : -



1 TYPICAL TRANSOM DETAIL
6004 CURTAIN WALL



2 TYPICAL TRANSOM DETAIL
6004 CURTAIN WALL



3 TYPICAL TRANSOM DETAIL
6004 CURTAIN WALL

B.D. REF :

CLIENT :
信和置業有限公司
Sino Land Company Limited

ARCHITECT :
WONG TUNG & PARTNERS LIMITED
ARCHITECTS & PLANNERS

MAIN CONTRACTOR :
CR Construction Company Limited

STRUCTURAL ENGINEER :
AECOM

FACADE CONSULTANT:
AECOM

NOTE :
1. ALL DIMENSIONS ARE IN mm.
2. ALL ELEVATIONS ARE VIEWED FROM OUTSIDE.
3. ALL DIMENSIONS TO BE VERIFIED ON SITE BEFORE FABRICATION.

LEGEND :
X1 --- DETAIL MARK NO.
X001 --- REFER SHEET NO.
1. F.F.L. --- FINISHED FLOOR LEVEL
2. S.F.L. --- STRUCTURAL FLOOR LEVEL
3. (R) --- REVERSED DETAIL

NO.	DATE	REVISED	BY

JOB NO. : J-837
PROJECT :
URA KWUN TONG TOWN CENTRE
REDEVELOPMENT (AREA 2 & 3) AT
NKIL 6514, KWUN TONG, KWLOON

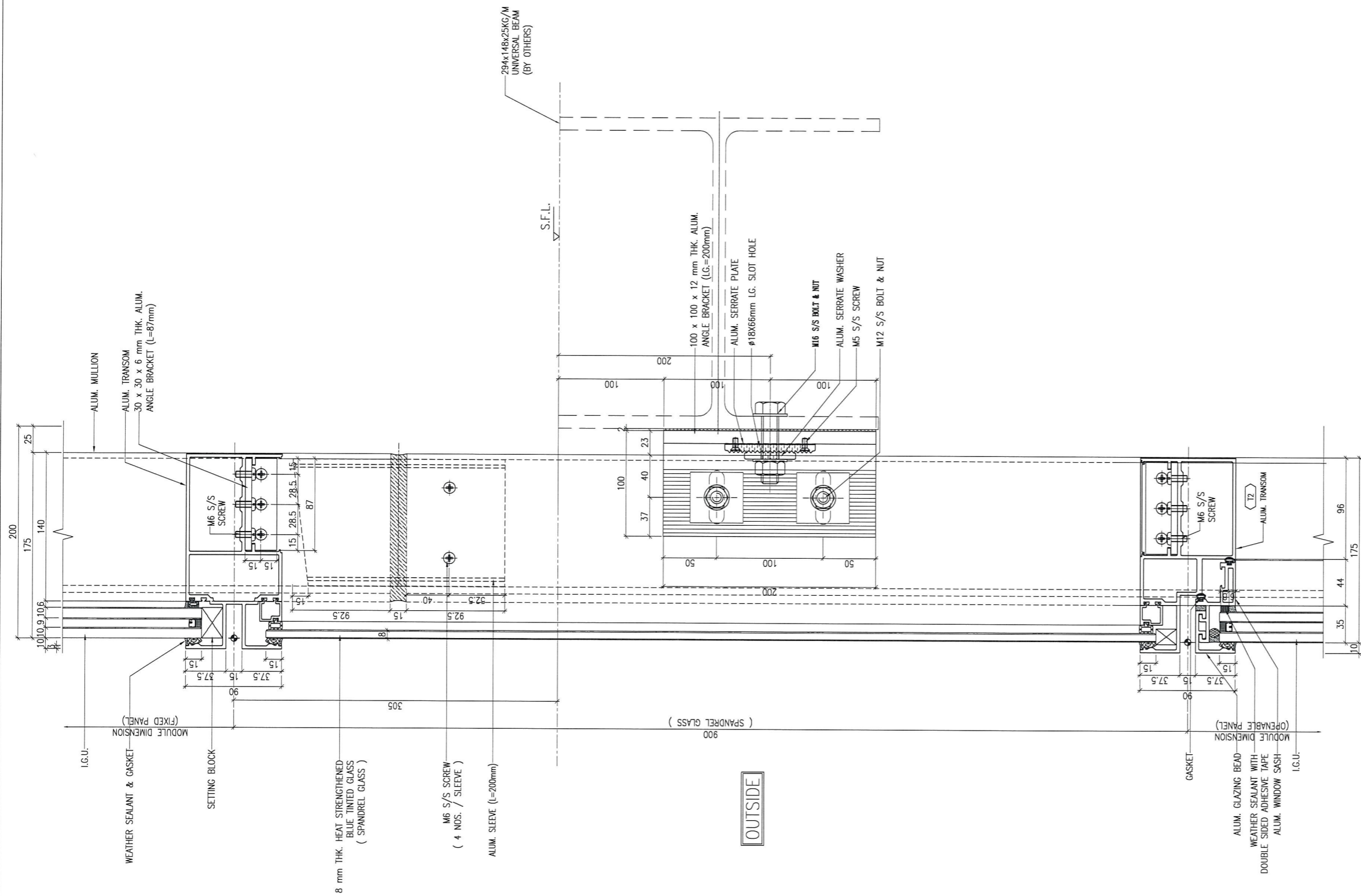
TITLE :
TYPICAL TRANSOM DETAIL
FOR CURTAIN WALL
PERFORMANCE TEST

DATE : 10-SEP-18 SCALE : 1:2 (A1)

DRAWN BY : Aasing CHECKED BY : -

美特鋁質有限公司
MIDI ALUMINIUM FABRICATOR LTD.
Units 6-8, Sunray Industrial Centre, 1/F
610 Cha Kwo Ling Road, Kowloon
Tel: 23489211-4 Fax: (852) 2727666

DWG NO. : J837-PTCW-6004 REV. : -



1 TYPICAL TRANSOM DETAIL
6005 CURTAIN WALL

B.D. REF :

CLIENT :

信和置業有限公司
Sino Land Company Limited

ARCHITECT :
WONG TUNG & PARTNERS LIMITED
ARCHITECTS & PLANNERS



MAIN CONTRACTOR :

CR Construction Company Limited

STRUCTURAL ENGINEER :

AECOM

FAÇADE CONSULTANT:

AECOM

NOTE :

1. ALL DIMENSIONS ARE IN mm.
2. ALL ELEVATIONS ARE VIEWED FROM OUTSIDE.
3. ALL DIMENSIONS TO BE VERIFIED ON SITE BEFORE FABRICATION.

LEGEND :

- X1 DETAIL MARK NO.
- X001 REFER SHEET NO.

1. F.F.L. --- FINISHED FLOOR LEVEL
2. S.F.L. --- STRUCTURAL FLOOR LEVEL
3. (R) --- REVERSED DETAIL

NO.	DATE	REVISED	BY

JOB NO. : J-837

PROJECT :
URA KWUN TONG TOWN CENTRE
REDEVELOPMENT (AREA 2 & 3) AT
NKIL 6514, KWUN TONG, KWLOON

TITLE :
TYPICAL TRANSOM DETAIL
FOR CURTAIN WALL
PERFORMANCE TEST

DATE : 10-SEP-18 SCALE : 1:2 (A1)

DRAWN BY : ASING CHECKED BY : -

美特鋁質有限公司
MIDI ALUMINIUM FABRICATOR LTD.
Units 6-8, Sunray Industrial Centre, 1/F
610 Cha Kwo Ling Road, Kowloon
Tel: 23489211-4 Fax: (852) 2727666

DWG NO. : JB37-PTCW-6005 REV. : -