



工程指示 / 要求簡箋(E.I.)

工程指示編號：EI / 9762 / 18

修改版次：-

工程編號：J - 837

工程名稱：觀塘裕民坊

工程項目：幕牆 試水箱拆圖

收件人：青哥 / 生統 / 永林

發件人：Eric Liu

日期：12/09/2018

要求提供 /  確認 事項：

- |                                    |                                     |                               |
|------------------------------------|-------------------------------------|-------------------------------|
| <input type="checkbox"/> 初步鋁料 B.M. | <input type="checkbox"/> 加工拆圖，然後生產  | <input type="checkbox"/> 尺寸表  |
| <input type="checkbox"/> 正式鋁料 B.M. | <input type="checkbox"/> 技術上資料 / 指示 | <input type="checkbox"/> 報價   |
| <input type="checkbox"/> 配件 B.M.   | <input type="checkbox"/> 樣辦或貨品說明書   | <input type="checkbox"/> 分判合約 |
| <input type="checkbox"/> 其他：_____  |                                     |                               |

內容：

請按 1st 試水箱大圖拆圖

包括：1. 鐵件 2. 鋁料 3. 玻璃 4. 配件

謝謝

請在 2018 / 09 / 25 完成。

附：17 頁大圖+CAD

以上項目為：

- 原合約工程包                       原合約工程加 / 減賬                       新工程報價

原因：-

分發東莞各部門：

- ( ) 生產技術總監  連附件    ( / ) 技術部  連附件 林    ( ) 生產部     連附件    ( ) 機械設計部  連附件  
 ( ) 採購部     連附件    ( / ) 生產統籌部  連附件 梅  
 ( ) 質檢部     連附件    ( ) 會計部     連附件    ( ) 報關組     連附件    ( / ) 其他 青哥  連附件

分發其他分判：

- ( ) 王禮秋  連附件

分發香港各部門：

- ( ) 行政部  連附件    ( ) 會計部  連附件    ( ) 統籌部  連附件    ( ) 工程部地盤科文  連附件  
 ( ) 採購部  連附件    ( ) QS 部  連附件    ( ) 維修部  連附件    ( ) 其他 \_\_\_\_\_  連附件

傳遞編號：

HK 1458 / 18

發件人簽署：  
Eric Liu

項目經理簽署：  
PP

PROJECT :

**URA KWUN TONG TOWN CENTRE  
REDEVELOPMENT (AREA 2 & 3) AT NKIL 6514, KWUN TONG, KWLOON**

1

TITLE : SHOP DRAWING FOR  
CURTAIN WALL PERFORMANCE TEST SUBMISSION

DATE: 10 - SEP - 2018



M1 --- ALUMINIUM MULLION GRADE --- 6063 T6	COATING --- PVF2 COATING	M2 --- ALUMINIUM MULLION GRADE --- 6063 T6	COATING --- PVF2 COATING	M3 --- ALUMINIUM MULLION GRADE --- 6063 T6	COATING --- PVF2 COATING	M5 --- ALUMINIUM MULLION GRADE --- 6063 T6	COATING --- PVF2 COATING	M6 --- ALUMINIUM MULLION GRADE --- 6063 T6	COATING --- PVF2 COATING																																																																																																																																																																
<table border="1"> <thead> <tr><th>MASS PROPERTIES (UNIT)</th><th>VALUES</th></tr> </thead> <tbody> <tr><td>Area (mm<sup>2</sup>):</td><td>2686.6</td></tr> <tr><td>Perimeter (mm):</td><td>1168.9</td></tr> <tr><td>Bounding Box - X (mm):</td><td>-45.0 to 45.0</td></tr> <tr><td>Bounding Box - Y (mm):</td><td>-90.7 to 84.3</td></tr> <tr><td>Centroid - X (mm):</td><td>0.0</td></tr> <tr><td>Centroid - Y (mm):</td><td>0.0</td></tr> <tr><td>Moments of inertia - X (mm<sup>4</sup>):</td><td>8560927.0</td></tr> <tr><td>Moments of inertia - Y (mm<sup>4</sup>):</td><td>3111287.7</td></tr> <tr><td>Product of inertia - XY (mm<sup>4</sup>):</td><td>0.0</td></tr> <tr><td>Radii of gyration - X (mm):</td><td>56.4</td></tr> <tr><td>Radii of gyration - Y (mm):</td><td>34.0</td></tr> <tr><td>Principal moments along X-Y (mm<sup>4</sup>):</td><td>8560927.0 along [1.0 0.0]</td></tr> <tr><td>Principal moments along Y-X (mm<sup>4</sup>):</td><td>3111287.7 along [0.0 1.0]</td></tr> <tr><td>Elastic Modulus - Zx (mm<sup>3</sup>):</td><td>1 / y-max= 94344.9</td></tr> <tr><td>Elastic Modulus - Zy (mm<sup>3</sup>):</td><td>J / x-max= 69139.7</td></tr> </tbody> </table>		MASS PROPERTIES (UNIT)	VALUES	Area (mm <sup>2</sup> ):	2686.6	Perimeter (mm):	1168.9	Bounding Box - X (mm):	-45.0 to 45.0	Bounding Box - Y (mm):	-90.7 to 84.3	Centroid - X (mm):	0.0	Centroid - Y (mm):	0.0	Moments of inertia - X (mm <sup>4</sup> ):	8560927.0	Moments of inertia - Y (mm <sup>4</sup> ):	3111287.7	Product of inertia - XY (mm <sup>4</sup> ):	0.0	Radii of gyration - X (mm):	56.4	Radii of gyration - Y (mm):	34.0	Principal moments along X-Y (mm <sup>4</sup> ):	8560927.0 along [1.0 0.0]	Principal moments along Y-X (mm <sup>4</sup> ):	3111287.7 along [0.0 1.0]	Elastic Modulus - Zx (mm <sup>3</sup> ):	1 / y-max= 94344.9	Elastic Modulus - Zy (mm <sup>3</sup> ):	J / x-max= 69139.7	<table border="1"> <thead> <tr><th>MASS PROPERTIES (UNIT)</th><th>VALUES</th></tr> </thead> <tbody> <tr><td>Area (mm<sup>2</sup>):</td><td>2560.0</td></tr> <tr><td>Perimeter (mm):</td><td>1002.9</td></tr> <tr><td>Bounding Box - X (mm):</td><td>-40.5 to 49.5</td></tr> <tr><td>Bounding Box - Y (mm):</td><td>-102.1 to 72.9</td></tr> <tr><td>Centroid - X (mm):</td><td>0.0</td></tr> <tr><td>Centroid - Y (mm):</td><td>0.0</td></tr> <tr><td>Moments of inertia - X (mm<sup>4</sup>):</td><td>7148090.8</td></tr> <tr><td>Moments of inertia - Y (mm<sup>4</sup>):</td><td>2693592.6</td></tr> <tr><td>Product of inertia - XY (mm<sup>4</sup>):</td><td>-858464.6</td></tr> <tr><td>Radii of gyration - X (mm):</td><td>52.8</td></tr> <tr><td>Radii of gyration - Y (mm):</td><td>32.4</td></tr> <tr><td>Principal moments along X-Y (mm<sup>4</sup>):</td><td>7307806.3 along [1.0 -0.2]</td></tr> <tr><td>Principal moments along Y-X (mm<sup>4</sup>):</td><td>2533877.1 along [0.2 1.0]</td></tr> <tr><td>Elastic Modulus - Zx (mm<sup>3</sup>):</td><td>1 / y-max= 69979.9</td></tr> <tr><td>Elastic Modulus - Zy (mm<sup>3</sup>):</td><td>J / x-max= 54419.8</td></tr> </tbody> </table>		MASS PROPERTIES (UNIT)	VALUES	Area (mm <sup>2</sup> ):	2560.0	Perimeter (mm):	1002.9	Bounding Box - X (mm):	-40.5 to 49.5	Bounding Box - Y (mm):	-102.1 to 72.9	Centroid - X (mm):	0.0	Centroid - Y (mm):	0.0	Moments of inertia - X (mm <sup>4</sup> ):	7148090.8	Moments of inertia - Y (mm <sup>4</sup> ):	2693592.6	Product of inertia - XY (mm <sup>4</sup> ):	-858464.6	Radii of gyration - X (mm):	52.8	Radii of gyration - Y (mm):	32.4	Principal moments along X-Y (mm <sup>4</sup> ):	7307806.3 along [1.0 -0.2]	Principal moments along Y-X (mm <sup>4</sup> ):	2533877.1 along [0.2 1.0]	Elastic Modulus - Zx (mm <sup>3</sup> ):	1 / y-max= 69979.9	Elastic Modulus - Zy (mm <sup>3</sup> ):	J / x-max= 54419.8	<table border="1"> <thead> <tr><th>MASS PROPERTIES (UNIT)</th><th>VALUES</th></tr> </thead> <tbody> <tr><td>Area (mm<sup>2</sup>):</td><td>2904.8</td></tr> <tr><td>Perimeter (mm):</td><td>845.0</td></tr> <tr><td>Bounding Box - X (mm):</td><td>-45.0 to 45.0</td></tr> <tr><td>Bounding Box - Y (mm):</td><td>-70.5 to 60.0</td></tr> <tr><td>Centroid - X (mm):</td><td>0.0</td></tr> <tr><td>Centroid - Y (mm):</td><td>0.0</td></tr> <tr><td>Moments of inertia - X (mm<sup>4</sup>):</td><td>5525541.9</td></tr> <tr><td>Moments of inertia - Y (mm<sup>4</sup>):</td><td>2552618.8</td></tr> <tr><td>Product of inertia - XY (mm<sup>4</sup>):</td><td>0.0</td></tr> <tr><td>Radii of gyration - X (mm):</td><td>43.6</td></tr> <tr><td>Radii of gyration - Y (mm):</td><td>29.6</td></tr> <tr><td>Principal moments along X-Y (mm<sup>4</sup>):</td><td>5525541.9 along [1.0 0.0]</td></tr> <tr><td>Principal moments along Y-X (mm<sup>4</sup>):</td><td>2552618.8 along [0.0 1.0]</td></tr> <tr><td>Elastic Modulus - Zx (mm<sup>3</sup>):</td><td>1 / y-max= 78397.1</td></tr> <tr><td>Elastic Modulus - Zy (mm<sup>3</sup>):</td><td>J / x-max= 56724.9</td></tr> </tbody> </table>		MASS PROPERTIES (UNIT)	VALUES	Area (mm <sup>2</sup> ):	2904.8	Perimeter (mm):	845.0	Bounding Box - X (mm):	-45.0 to 45.0	Bounding Box - Y (mm):	-70.5 to 60.0	Centroid - X (mm):	0.0	Centroid - Y (mm):	0.0	Moments of inertia - X (mm <sup>4</sup> ):	5525541.9	Moments of inertia - Y (mm <sup>4</sup> ):	2552618.8	Product of inertia - XY (mm <sup>4</sup> ):	0.0	Radii of gyration - X (mm):	43.6	Radii of gyration - Y (mm):	29.6	Principal moments along X-Y (mm <sup>4</sup> ):	5525541.9 along [1.0 0.0]	Principal moments along Y-X (mm <sup>4</sup> ):	2552618.8 along [0.0 1.0]	Elastic Modulus - Zx (mm <sup>3</sup> ):	1 / y-max= 78397.1	Elastic Modulus - Zy (mm <sup>3</sup> ):	J / x-max= 56724.9	<table border="1"> <thead> <tr><th>MASS PROPERTIES (UNIT)</th><th>VALUES</th></tr> </thead> <tbody> <tr><td>Area (mm<sup>2</sup>):</td><td>4006.3</td></tr> <tr><td>Perimeter (mm):</td><td>1633.1</td></tr> <tr><td>Bounding Box - X (mm):</td><td>-75.7 to 56.3</td></tr> <tr><td>Bounding Box - Y (mm):</td><td>-100.1 to 115.3</td></tr> <tr><td>Centroid - X (mm):</td><td>0.0</td></tr> <tr><td>Centroid - Y (mm):</td><td>0.0</td></tr> <tr><td>Moments of inertia - X (mm<sup>4</sup>):</td><td>17546808.7</td></tr> <tr><td>Moments of inertia - Y (mm<sup>4</sup>):</td><td>5955158.6</td></tr> <tr><td>Product of inertia - XY (mm<sup>4</sup>):</td><td>-1928247.4</td></tr> <tr><td>Radii of gyration - X (mm):</td><td>66.2</td></tr> <tr><td>Radii of gyration - Y (mm):</td><td>38.6</td></tr> <tr><td>Principal moments along X-Y (mm<sup>4</sup>):</td><td>17859152.5 along [1.0 -0.2]</td></tr> <tr><td>Principal moments along Y-X (mm<sup>4</sup>):</td><td>5642814.9 along [0.2 1.0]</td></tr> <tr><td>Elastic Modulus - Zx (mm<sup>3</sup>):</td><td>1 / y-max= 152220.1</td></tr> <tr><td>Elastic Modulus - Zy (mm<sup>3</sup>):</td><td>J / x-max= 78715.3</td></tr> </tbody> </table>		MASS PROPERTIES (UNIT)	VALUES	Area (mm <sup>2</sup> ):	4006.3	Perimeter (mm):	1633.1	Bounding Box - X (mm):	-75.7 to 56.3	Bounding Box - Y (mm):	-100.1 to 115.3	Centroid - X (mm):	0.0	Centroid - Y (mm):	0.0	Moments of inertia - X (mm <sup>4</sup> ):	17546808.7	Moments of inertia - Y (mm <sup>4</sup> ):	5955158.6	Product of inertia - XY (mm <sup>4</sup> ):	-1928247.4	Radii of gyration - X (mm):	66.2	Radii of gyration - Y (mm):	38.6	Principal moments along X-Y (mm <sup>4</sup> ):	17859152.5 along [1.0 -0.2]	Principal moments along Y-X (mm <sup>4</sup> ):	5642814.9 along [0.2 1.0]	Elastic Modulus - Zx (mm <sup>3</sup> ):	1 / y-max= 152220.1	Elastic Modulus - Zy (mm <sup>3</sup> ):	J / x-max= 78715.3	<table border="1"> <thead> <tr><th>MASS PROPERTIES (UNIT)</th><th>VALUES</th></tr> </thead> <tbody> <tr><td>Area (mm<sup>2</sup>):</td><td>2278.1</td></tr> <tr><td>Perimeter (mm):</td><td>895.8</td></tr> <tr><td>Bounding Box - X (mm):</td><td>-45.0 to 45.0</td></tr> <tr><td>Bounding Box - Y (mm):</td><td>-69.4 to 61.1</td></tr> <tr><td>Centroid - X (mm):</td><td>0.0</td></tr> <tr><td>Centroid - Y (mm):</td><td>0.0</td></tr> <tr><td>Moments of inertia - X (mm<sup>4</sup>):</td><td>4229062.4</td></tr> <tr><td>Moments of inertia - Y (mm<sup>4</sup>):</td><td>2263514.5</td></tr> <tr><td>Product of inertia - XY (mm<sup>4</sup>):</td><td>0.0</td></tr> <tr><td>Radii of gyration - X (mm):</td><td>43.1</td></tr> <tr><td>Radii of gyration - Y (mm):</td><td>31.5</td></tr> <tr><td>Principal moments along X-Y (mm<sup>4</sup>):</td><td>4229062.4 along [1.0 0.0]</td></tr> <tr><td>Principal moments along Y-X (mm<sup>4</sup>):</td><td>2263514.5 along [0.0 1.0]</td></tr> <tr><td>Elastic Modulus - Zx (mm<sup>3</sup>):</td><td>1 / y-max= 60912.9</td></tr> <tr><td>Elastic Modulus - Zy (mm<sup>3</sup>):</td><td>J / x-max= 50300.3</td></tr> </tbody> </table>		MASS PROPERTIES (UNIT)	VALUES	Area (mm <sup>2</sup> ):	2278.1	Perimeter (mm):	895.8	Bounding Box - X (mm):	-45.0 to 45.0	Bounding Box - Y (mm):	-69.4 to 61.1	Centroid - X (mm):	0.0	Centroid - Y (mm):	0.0	Moments of inertia - X (mm <sup>4</sup> ):	4229062.4	Moments of inertia - Y (mm <sup>4</sup> ):	2263514.5	Product of inertia - XY (mm <sup>4</sup> ):	0.0	Radii of gyration - X (mm):	43.1	Radii of gyration - Y (mm):	31.5	Principal moments along X-Y (mm <sup>4</sup> ):	4229062.4 along [1.0 0.0]	Principal moments along Y-X (mm <sup>4</sup> ):	2263514.5 along [0.0 1.0]	Elastic Modulus - Zx (mm <sup>3</sup> ):	1 / y-max= 60912.9	Elastic Modulus - Zy (mm <sup>3</sup> ):	J / x-max= 50300.3
MASS PROPERTIES (UNIT)	VALUES																																																																																																																																																																								
Area (mm <sup>2</sup> ):	2686.6																																																																																																																																																																								
Perimeter (mm):	1168.9																																																																																																																																																																								
Bounding Box - X (mm):	-45.0 to 45.0																																																																																																																																																																								
Bounding Box - Y (mm):	-90.7 to 84.3																																																																																																																																																																								
Centroid - X (mm):	0.0																																																																																																																																																																								
Centroid - Y (mm):	0.0																																																																																																																																																																								
Moments of inertia - X (mm <sup>4</sup> ):	8560927.0																																																																																																																																																																								
Moments of inertia - Y (mm <sup>4</sup> ):	3111287.7																																																																																																																																																																								
Product of inertia - XY (mm <sup>4</sup> ):	0.0																																																																																																																																																																								
Radii of gyration - X (mm):	56.4																																																																																																																																																																								
Radii of gyration - Y (mm):	34.0																																																																																																																																																																								
Principal moments along X-Y (mm <sup>4</sup> ):	8560927.0 along [1.0 0.0]																																																																																																																																																																								
Principal moments along Y-X (mm <sup>4</sup> ):	3111287.7 along [0.0 1.0]																																																																																																																																																																								
Elastic Modulus - Zx (mm <sup>3</sup> ):	1 / y-max= 94344.9																																																																																																																																																																								
Elastic Modulus - Zy (mm <sup>3</sup> ):	J / x-max= 69139.7																																																																																																																																																																								
MASS PROPERTIES (UNIT)	VALUES																																																																																																																																																																								
Area (mm <sup>2</sup> ):	2560.0																																																																																																																																																																								
Perimeter (mm):	1002.9																																																																																																																																																																								
Bounding Box - X (mm):	-40.5 to 49.5																																																																																																																																																																								
Bounding Box - Y (mm):	-102.1 to 72.9																																																																																																																																																																								
Centroid - X (mm):	0.0																																																																																																																																																																								
Centroid - Y (mm):	0.0																																																																																																																																																																								
Moments of inertia - X (mm <sup>4</sup> ):	7148090.8																																																																																																																																																																								
Moments of inertia - Y (mm <sup>4</sup> ):	2693592.6																																																																																																																																																																								
Product of inertia - XY (mm <sup>4</sup> ):	-858464.6																																																																																																																																																																								
Radii of gyration - X (mm):	52.8																																																																																																																																																																								
Radii of gyration - Y (mm):	32.4																																																																																																																																																																								
Principal moments along X-Y (mm <sup>4</sup> ):	7307806.3 along [1.0 -0.2]																																																																																																																																																																								
Principal moments along Y-X (mm <sup>4</sup> ):	2533877.1 along [0.2 1.0]																																																																																																																																																																								
Elastic Modulus - Zx (mm <sup>3</sup> ):	1 / y-max= 69979.9																																																																																																																																																																								
Elastic Modulus - Zy (mm <sup>3</sup> ):	J / x-max= 54419.8																																																																																																																																																																								
MASS PROPERTIES (UNIT)	VALUES																																																																																																																																																																								
Area (mm <sup>2</sup> ):	2904.8																																																																																																																																																																								
Perimeter (mm):	845.0																																																																																																																																																																								
Bounding Box - X (mm):	-45.0 to 45.0																																																																																																																																																																								
Bounding Box - Y (mm):	-70.5 to 60.0																																																																																																																																																																								
Centroid - X (mm):	0.0																																																																																																																																																																								
Centroid - Y (mm):	0.0																																																																																																																																																																								
Moments of inertia - X (mm <sup>4</sup> ):	5525541.9																																																																																																																																																																								
Moments of inertia - Y (mm <sup>4</sup> ):	2552618.8																																																																																																																																																																								
Product of inertia - XY (mm <sup>4</sup> ):	0.0																																																																																																																																																																								
Radii of gyration - X (mm):	43.6																																																																																																																																																																								
Radii of gyration - Y (mm):	29.6																																																																																																																																																																								
Principal moments along X-Y (mm <sup>4</sup> ):	5525541.9 along [1.0 0.0]																																																																																																																																																																								
Principal moments along Y-X (mm <sup>4</sup> ):	2552618.8 along [0.0 1.0]																																																																																																																																																																								
Elastic Modulus - Zx (mm <sup>3</sup> ):	1 / y-max= 78397.1																																																																																																																																																																								
Elastic Modulus - Zy (mm <sup>3</sup> ):	J / x-max= 56724.9																																																																																																																																																																								
MASS PROPERTIES (UNIT)	VALUES																																																																																																																																																																								
Area (mm <sup>2</sup> ):	4006.3																																																																																																																																																																								
Perimeter (mm):	1633.1																																																																																																																																																																								
Bounding Box - X (mm):	-75.7 to 56.3																																																																																																																																																																								
Bounding Box - Y (mm):	-100.1 to 115.3																																																																																																																																																																								
Centroid - X (mm):	0.0																																																																																																																																																																								
Centroid - Y (mm):	0.0																																																																																																																																																																								
Moments of inertia - X (mm <sup>4</sup> ):	17546808.7																																																																																																																																																																								
Moments of inertia - Y (mm <sup>4</sup> ):	5955158.6																																																																																																																																																																								
Product of inertia - XY (mm <sup>4</sup> ):	-1928247.4																																																																																																																																																																								
Radii of gyration - X (mm):	66.2																																																																																																																																																																								
Radii of gyration - Y (mm):	38.6																																																																																																																																																																								
Principal moments along X-Y (mm <sup>4</sup> ):	17859152.5 along [1.0 -0.2]																																																																																																																																																																								
Principal moments along Y-X (mm <sup>4</sup> ):	5642814.9 along [0.2 1.0]																																																																																																																																																																								
Elastic Modulus - Zx (mm <sup>3</sup> ):	1 / y-max= 152220.1																																																																																																																																																																								
Elastic Modulus - Zy (mm <sup>3</sup> ):	J / x-max= 78715.3																																																																																																																																																																								
MASS PROPERTIES (UNIT)	VALUES																																																																																																																																																																								
Area (mm <sup>2</sup> ):	2278.1																																																																																																																																																																								
Perimeter (mm):	895.8																																																																																																																																																																								
Bounding Box - X (mm):	-45.0 to 45.0																																																																																																																																																																								
Bounding Box - Y (mm):	-69.4 to 61.1																																																																																																																																																																								
Centroid - X (mm):	0.0																																																																																																																																																																								
Centroid - Y (mm):	0.0																																																																																																																																																																								
Moments of inertia - X (mm <sup>4</sup> ):	4229062.4																																																																																																																																																																								
Moments of inertia - Y (mm <sup>4</sup> ):	2263514.5																																																																																																																																																																								
Product of inertia - XY (mm <sup>4</sup> ):	0.0																																																																																																																																																																								
Radii of gyration - X (mm):	43.1																																																																																																																																																																								
Radii of gyration - Y (mm):	31.5																																																																																																																																																																								
Principal moments along X-Y (mm <sup>4</sup> ):	4229062.4 along [1.0 0.0]																																																																																																																																																																								
Principal moments along Y-X (mm <sup>4</sup> ):	2263514.5 along [0.0 1.0]																																																																																																																																																																								
Elastic Modulus - Zx (mm <sup>3</sup> ):	1 / y-max= 60912.9																																																																																																																																																																								
Elastic Modulus - Zy (mm <sup>3</sup> ):	J / x-max= 50300.3																																																																																																																																																																								

T1 --- ALUMINIUM TRANSOM GRADE --- 6063 T6	COATING --- PVF2 COATING	T2 --- ALUMINIUM TRANSOM GRADE --- 6063 T6	COATING --- PVF2 COATING	A01 --- ALUMINIUM CAP GRADE --- 6063 T5	COATING --- PVF2 COATING	A02 --- ALUMINIUM CAPPING GRADE --- 6063 T6	COATING --- PVF2 COATING	A03 --- ALUMINIUM CAPPING GRADE --- 6063 T6	COATING --- PVF2 COATING																																																																																																																																																																
<table border="1"> <thead> <tr><th>MASS PROPERTIES (UNIT)</th><th>VALUES</th></tr> </thead> <tbody> <tr><td>Area (mm<sup>2</sup>):</td><td>2283.2</td></tr> <tr><td>Perimeter (mm):</td><td>1446.4</td></tr> <tr><td>Bounding Box - X (mm):</td><td>-88.5 to 95.5</td></tr> <tr><td>Bounding Box - Y (mm):</td><td>-48.5 to 41.5</td></tr> <tr><td>Centroid - X (mm):</td><td>0.0</td></tr> <tr><td>Centroid - Y (mm):</td><td>0.0</td></tr> <tr><td>Moments of inertia - X (mm<sup>4</sup>):</td><td>1841389.3</td></tr> <tr><td>Moments of inertia - Y (mm<sup>4</sup>):</td><td>8107752.5</td></tr> <tr><td>Product of inertia - XY (mm<sup>4</sup>):</td><td>-388294.0</td></tr> <tr><td>Radii of gyration - X (mm):</td><td>28.4</td></tr> <tr><td>Radii of gyration - Y (mm):</td><td>59.6</td></tr> <tr><td>Principal moments along X-Y (mm<sup>4</sup>):</td><td>1817420.4 along [1.0 0.1]</td></tr> <tr><td>Principal moments along Y-X (mm<sup>4</sup>):</td><td>8131721.4 along [-0.1 1.0]</td></tr> <tr><td>Elastic Modulus - Zx (mm<sup>3</sup>):</td><td>1 / y-max= 37934.0</td></tr> <tr><td>Elastic Modulus - Zy (mm<sup>3</sup>):</td><td>J / x-max= 84907.9</td></tr> </tbody> </table>		MASS PROPERTIES (UNIT)	VALUES	Area (mm <sup>2</sup> ):	2283.2	Perimeter (mm):	1446.4	Bounding Box - X (mm):	-88.5 to 95.5	Bounding Box - Y (mm):	-48.5 to 41.5	Centroid - X (mm):	0.0	Centroid - Y (mm):	0.0	Moments of inertia - X (mm <sup>4</sup> ):	1841389.3	Moments of inertia - Y (mm <sup>4</sup> ):	8107752.5	Product of inertia - XY (mm <sup>4</sup> ):	-388294.0	Radii of gyration - X (mm):	28.4	Radii of gyration - Y (mm):	59.6	Principal moments along X-Y (mm <sup>4</sup> ):	1817420.4 along [1.0 0.1]	Principal moments along Y-X (mm <sup>4</sup> ):	8131721.4 along [-0.1 1.0]	Elastic Modulus - Zx (mm <sup>3</sup> ):	1 / y-max= 37934.0	Elastic Modulus - Zy (mm <sup>3</sup> ):	J / x-max= 84907.9	<table border="1"> <thead> <tr><th>MASS PROPERTIES (UNIT)</th><th>VALUES</th></tr> </thead> <tbody> <tr><td>Area (mm<sup>2</sup>):</td><td>1969.2</td></tr> <tr><td>Perimeter (mm):</td><td>1203.5</td></tr> <tr><td>Bounding Box - X (mm):</td><td>-100.8 to 83.2</td></tr> <tr><td>Bounding Box - Y (mm):</td><td>-42.9 to 47.1</td></tr> <tr><td>Centroid - X (mm):</td><td>0.0</td></tr> <tr><td>Centroid - Y (mm):</td><td>0.0</td></tr> <tr><td>Moments of inertia - X (mm<sup>4</sup>):</td><td>1401920.1</td></tr> <tr><td>Moments of inertia - Y (mm<sup>4</sup>):</td><td>6039676.5</td></tr> <tr><td>Product of inertia - XY (mm<sup>4</sup>):</td><td>1059596.3</td></tr> <tr><td>Radii of gyration - X (mm):</td><td>26.7</td></tr> <tr><td>Radii of gyration - Y (mm):</td><td>55.4</td></tr> <tr><td>Principal moments along X-Y (mm<sup>4</sup>):</td><td>1171300.2 along [1.0 0.2]</td></tr> <tr><td>Principal moments along Y-X (mm<sup>4</sup>):</td><td>6270296.4 along [-0.2 1.0]</td></tr> <tr><td>Elastic Modulus - Zx (mm<sup>3</sup>):</td><td>1 / y-max= 29761.3</td></tr> <tr><td>Elastic Modulus - Zy (mm<sup>3</sup>):</td><td>J / x-max= 59896.7</td></tr> </tbody> </table>		MASS PROPERTIES (UNIT)	VALUES	Area (mm <sup>2</sup> ):	1969.2	Perimeter (mm):	1203.5	Bounding Box - X (mm):	-100.8 to 83.2	Bounding Box - Y (mm):	-42.9 to 47.1	Centroid - X (mm):	0.0	Centroid - Y (mm):	0.0	Moments of inertia - X (mm <sup>4</sup> ):	1401920.1	Moments of inertia - Y (mm <sup>4</sup> ):	6039676.5	Product of inertia - XY (mm <sup>4</sup> ):	1059596.3	Radii of gyration - X (mm):	26.7	Radii of gyration - Y (mm):	55.4	Principal moments along X-Y (mm <sup>4</sup> ):	1171300.2 along [1.0 0.2]	Principal moments along Y-X (mm <sup>4</sup> ):	6270296.4 along [-0.2 1.0]	Elastic Modulus - Zx (mm <sup>3</sup> ):	1 / y-max= 29761.3	Elastic Modulus - Zy (mm <sup>3</sup> ):	J / x-max= 59896.7	<table border="1"> <thead> <tr><th>MASS PROPERTIES (UNIT)</th><th>VALUES</th></tr> </thead> <tbody> <tr><td>Area (mm<sup>2</sup>):</td><td>132.6</td></tr> <tr><td>Perimeter (mm):</td><td>194.5</td></tr> <tr><td>Bounding Box - X (mm):</td><td>-44.7 to 45.9</td></tr> <tr><td>Bounding Box - Y (mm):</td><td>-3.1 to 0.8</td></tr> <tr><td>Centroid - X (mm):</td><td>0.0</td></tr> <tr><td>Centroid - Y (mm):</td><td>0.0</td></tr> <tr><td>Moments of inertia - X (mm<sup>4</sup>):</td><td>51.8</td></tr> <tr><td>Moments of inertia - Y (mm<sup>4</sup>):</td><td>96748.1</td></tr> <tr><td>Product of inertia - XY (mm<sup>4</sup>):</td><td>118.1</td></tr> <tr><td>Radii of gyration - X (mm):</td><td>0.6</td></tr> <tr><td>Radii of gyration - Y (mm):</td><td>27.0</td></tr> <tr><td>Principal moments along X-Y (mm<sup>4</sup>):</td><td>51.7 along [1.0 0.0]</td></tr> <tr><td>Principal moments along Y-X (mm<sup>4</sup>):</td><td>96748.3 along [0.0 1.0]</td></tr> <tr><td>Elastic Modulus - Zx (mm<sup>3</sup>):</td><td>1 / y-max= 16.6</td></tr> <tr><td>Elastic Modulus - Zy (mm<sup>3</sup>):</td><td>J / x-max= 2107.2</td></tr> </tbody> </table>		MASS PROPERTIES (UNIT)	VALUES	Area (mm <sup>2</sup> ):	132.6	Perimeter (mm):	194.5	Bounding Box - X (mm):	-44.7 to 45.9	Bounding Box - Y (mm):	-3.1 to 0.8	Centroid - X (mm):	0.0	Centroid - Y (mm):	0.0	Moments of inertia - X (mm <sup>4</sup> ):	51.8	Moments of inertia - Y (mm <sup>4</sup> ):	96748.1	Product of inertia - XY (mm <sup>4</sup> ):	118.1	Radii of gyration - X (mm):	0.6	Radii of gyration - Y (mm):	27.0	Principal moments along X-Y (mm <sup>4</sup> ):	51.7 along [1.0 0.0]	Principal moments along Y-X (mm <sup>4</sup> ):	96748.3 along [0.0 1.0]	Elastic Modulus - Zx (mm <sup>3</sup> ):	1 / y-max= 16.6	Elastic Modulus - Zy (mm <sup>3</sup> ):	J / x-max= 2107.2	<table border="1"> <thead> <tr><th>MASS PROPERTIES (UNIT)</th><th>VALUES</th></tr> </thead> <tbody> <tr><td>Area (mm<sup>2</sup>):</td><td>740.4</td></tr> <tr><td>Perimeter (mm):</td><td>503.4</td></tr> <tr><td>Bounding Box - X (mm):</td><td>-22.4 to 15.1</td></tr> <tr><td>Bounding Box - Y (mm):</td><td>-36.5 to 41.5</td></tr> <tr><td>Centroid - X (mm):</td><td>0.0</td></tr> <tr><td>Centroid - Y (mm):</td><td>0.0</td></tr> <tr><td>Moments of inertia - X (mm<sup>4</sup>):</td><td>291934.6</td></tr> <tr><td>Moments of inertia - Y (mm<sup>4</sup>):</td><td>91599.5</td></tr> <tr><td>Product of inertia - XY (mm<sup>4</sup>):</td><td>86657.5</td></tr> <tr><td>Radii of gyration - X (mm):</td><td>19.9</td></tr> <tr><td>Radii of gyration - Y (mm):</td><td>11.1</td></tr> <tr><td>Principal moments along X-Y (mm<sup>4</sup>):</td><td>59316.8 along [0.3 0.9]</td></tr> <tr><td>Principal moments along Y-X (mm<sup>4</sup>):</td><td>324217.3 along [-0.9 0.3]</td></tr> <tr><td>Elastic Modulus - Zx (mm<sup>3</sup>):</td><td>1 / y-max= 7040.1</td></tr> <tr><td>Elastic Modulus - Zy (mm<sup>3</sup>):</td><td>J / x-max= 4085.5</td></tr> </tbody> </table>		MASS PROPERTIES (UNIT)	VALUES	Area (mm <sup>2</sup> ):	740.4	Perimeter (mm):	503.4	Bounding Box - X (mm):	-22.4 to 15.1	Bounding Box - Y (mm):	-36.5 to 41.5	Centroid - X (mm):	0.0	Centroid - Y (mm):	0.0	Moments of inertia - X (mm <sup>4</sup> ):	291934.6	Moments of inertia - Y (mm <sup>4</sup> ):	91599.5	Product of inertia - XY (mm <sup>4</sup> ):	86657.5	Radii of gyration - X (mm):	19.9	Radii of gyration - Y (mm):	11.1	Principal moments along X-Y (mm <sup>4</sup> ):	59316.8 along [0.3 0.9]	Principal moments along Y-X (mm <sup>4</sup> ):	324217.3 along [-0.9 0.3]	Elastic Modulus - Zx (mm <sup>3</sup> ):	1 / y-max= 7040.1	Elastic Modulus - Zy (mm <sup>3</sup> ):	J / x-max= 4085.5	<table border="1"> <thead> <tr><th>MASS PROPERTIES (UNIT)</th><th>VALUES</th></tr> </thead> <tbody> <tr><td>Area (mm<sup>2</sup>):</td><td>304.6</td></tr> <tr><td>Perimeter (mm):</td><td>199.5</td></tr> <tr><td>Bounding Box - X (mm):</td><td>-10.4 to 27.1</td></tr> <tr><td>Bounding Box - Y (mm):</td><td>-14.5 to 25.5</td></tr> <tr><td>Centroid - X (mm):</td><td>0.0</td></tr> <tr><td>Centroid - Y (mm):</td><td>0.0</td></tr> <tr><td>Moments of inertia - X (mm<sup>4</sup>):</td><td>56645.9</td></tr> <tr><td>Moments of inertia - Y (mm<sup>4</sup>):</td><td>36421.8</td></tr> <tr><td>Product of inertia - XY (mm<sup>4</sup>):</td><td>-25163.9</td></tr> <tr><td>Radii of gyration - X (mm):</td><td>13.6</td></tr> <tr><td>Radii of gyration - Y (mm):</td><td>10.9</td></tr> <tr><td>Principal moments along X-Y (mm<sup>4</sup>):</td><td>19414.2 along [0.6 -0.8]</td></tr> <tr><td>Principal moments along Y-X (mm<sup>4</sup>):</td><td>73653.5 along [0.8 0.6]</td></tr> <tr><td>Elastic Modulus - Zx (mm<sup>3</sup>):</td><td>1 / y-max= 2224.1</td></tr> <tr><td>Elastic Modulus - Zy (mm<sup>3</sup>):</td><td>J / x-max= 1346.3</td></tr> </tbody> </table>		MASS PROPERTIES (UNIT)	VALUES	Area (mm <sup>2</sup> ):	304.6	Perimeter (mm):	199.5	Bounding Box - X (mm):	-10.4 to 27.1	Bounding Box - Y (mm):	-14.5 to 25.5	Centroid - X (mm):	0.0	Centroid - Y (mm):	0.0	Moments of inertia - X (mm <sup>4</sup> ):	56645.9	Moments of inertia - Y (mm <sup>4</sup> ):	36421.8	Product of inertia - XY (mm <sup>4</sup> ):	-25163.9	Radii of gyration - X (mm):	13.6	Radii of gyration - Y (mm):	10.9	Principal moments along X-Y (mm <sup>4</sup> ):	19414.2 along [0.6 -0.8]	Principal moments along Y-X (mm <sup>4</sup> ):	73653.5 along [0.8 0.6]	Elastic Modulus - Zx (mm <sup>3</sup> ):	1 / y-max= 2224.1	Elastic Modulus - Zy (mm <sup>3</sup> ):	J / x-max= 1346.3
MASS PROPERTIES (UNIT)	VALUES																																																																																																																																																																								
Area (mm <sup>2</sup> ):	2283.2																																																																																																																																																																								
Perimeter (mm):	1446.4																																																																																																																																																																								
Bounding Box - X (mm):	-88.5 to 95.5																																																																																																																																																																								
Bounding Box - Y (mm):	-48.5 to 41.5																																																																																																																																																																								
Centroid - X (mm):	0.0																																																																																																																																																																								
Centroid - Y (mm):	0.0																																																																																																																																																																								
Moments of inertia - X (mm <sup>4</sup> ):	1841389.3																																																																																																																																																																								
Moments of inertia - Y (mm <sup>4</sup> ):	8107752.5																																																																																																																																																																								
Product of inertia - XY (mm <sup>4</sup> ):	-388294.0																																																																																																																																																																								
Radii of gyration - X (mm):	28.4																																																																																																																																																																								
Radii of gyration - Y (mm):	59.6																																																																																																																																																																								
Principal moments along X-Y (mm <sup>4</sup> ):	1817420.4 along [1.0 0.1]																																																																																																																																																																								
Principal moments along Y-X (mm <sup>4</sup> ):	8131721.4 along [-0.1 1.0]																																																																																																																																																																								
Elastic Modulus - Zx (mm <sup>3</sup> ):	1 / y-max= 37934.0																																																																																																																																																																								
Elastic Modulus - Zy (mm <sup>3</sup> ):	J / x-max= 84907.9																																																																																																																																																																								
MASS PROPERTIES (UNIT)	VALUES																																																																																																																																																																								
Area (mm <sup>2</sup> ):	1969.2																																																																																																																																																																								
Perimeter (mm):	1203.5																																																																																																																																																																								
Bounding Box - X (mm):	-100.8 to 83.2																																																																																																																																																																								
Bounding Box - Y (mm):	-42.9 to 47.1																																																																																																																																																																								
Centroid - X (mm):	0.0																																																																																																																																																																								
Centroid - Y (mm):	0.0																																																																																																																																																																								
Moments of inertia - X (mm <sup>4</sup> ):	1401920.1																																																																																																																																																																								
Moments of inertia - Y (mm <sup>4</sup> ):	6039676.5																																																																																																																																																																								
Product of inertia - XY (mm <sup>4</sup> ):	1059596.3																																																																																																																																																																								
Radii of gyration - X (mm):	26.7																																																																																																																																																																								
Radii of gyration - Y (mm):	55.4																																																																																																																																																																								
Principal moments along X-Y (mm <sup>4</sup> ):	1171300.2 along [1.0 0.2]																																																																																																																																																																								
Principal moments along Y-X (mm <sup>4</sup> ):	6270296.4 along [-0.2 1.0]																																																																																																																																																																								
Elastic Modulus - Zx (mm <sup>3</sup> ):	1 / y-max= 29761.3																																																																																																																																																																								
Elastic Modulus - Zy (mm <sup>3</sup> ):	J / x-max= 59896.7																																																																																																																																																																								
MASS PROPERTIES (UNIT)	VALUES																																																																																																																																																																								
Area (mm <sup>2</sup> ):	132.6																																																																																																																																																																								
Perimeter (mm):	194.5																																																																																																																																																																								
Bounding Box - X (mm):	-44.7 to 45.9																																																																																																																																																																								
Bounding Box - Y (mm):	-3.1 to 0.8																																																																																																																																																																								
Centroid - X (mm):	0.0																																																																																																																																																																								
Centroid - Y (mm):	0.0																																																																																																																																																																								
Moments of inertia - X (mm <sup>4</sup> ):	51.8																																																																																																																																																																								
Moments of inertia - Y (mm <sup>4</sup> ):	96748.1																																																																																																																																																																								
Product of inertia - XY (mm <sup>4</sup> ):	118.1																																																																																																																																																																								
Radii of gyration - X (mm):	0.6																																																																																																																																																																								
Radii of gyration - Y (mm):	27.0																																																																																																																																																																								
Principal moments along X-Y (mm <sup>4</sup> ):	51.7 along [1.0 0.0]																																																																																																																																																																								
Principal moments along Y-X (mm <sup>4</sup> ):	96748.3 along [0.0 1.0]																																																																																																																																																																								
Elastic Modulus - Zx (mm <sup>3</sup> ):	1 / y-max= 16.6																																																																																																																																																																								
Elastic Modulus - Zy (mm <sup>3</sup> ):	J / x-max= 2107.2																																																																																																																																																																								
MASS PROPERTIES (UNIT)	VALUES																																																																																																																																																																								
Area (mm <sup>2</sup> ):	740.4																																																																																																																																																																								
Perimeter (mm):	503.4																																																																																																																																																																								
Bounding Box - X (mm):	-22.4 to 15.1																																																																																																																																																																								
Bounding Box - Y (mm):	-36.5 to 41.5																																																																																																																																																																								
Centroid - X (mm):	0.0																																																																																																																																																																								
Centroid - Y (mm):	0.0																																																																																																																																																																								
Moments of inertia - X (mm <sup>4</sup> ):	291934.6																																																																																																																																																																								
Moments of inertia - Y (mm <sup>4</sup> ):	91599.5																																																																																																																																																																								
Product of inertia - XY (mm <sup>4</sup> ):	86657.5																																																																																																																																																																								
Radii of gyration - X (mm):	19.9																																																																																																																																																																								
Radii of gyration - Y (mm):	11.1																																																																																																																																																																								
Principal moments along X-Y (mm <sup>4</sup> ):	59316.8 along [0.3 0.9]																																																																																																																																																																								
Principal moments along Y-X (mm <sup>4</sup> ):	324217.3 along [-0.9 0.3]																																																																																																																																																																								
Elastic Modulus - Zx (mm <sup>3</sup> ):	1 / y-max= 7040.1																																																																																																																																																																								
Elastic Modulus - Zy (mm <sup>3</sup> ):	J / x-max= 4085.5																																																																																																																																																																								
MASS PROPERTIES (UNIT)	VALUES																																																																																																																																																																								
Area (mm <sup>2</sup> ):	304.6																																																																																																																																																																								
Perimeter (mm):	199.5																																																																																																																																																																								
Bounding Box - X (mm):	-10.4 to 27.1																																																																																																																																																																								
Bounding Box - Y (mm):	-14.5 to 25.5																																																																																																																																																																								
Centroid - X (mm):	0.0																																																																																																																																																																								
Centroid - Y (mm):	0.0																																																																																																																																																																								
Moments of inertia - X (mm <sup>4</sup> ):	56645.9																																																																																																																																																																								
Moments of inertia - Y (mm <sup>4</sup> ):	36421.8																																																																																																																																																																								
Product of inertia - XY (mm <sup>4</sup> ):	-25163.9																																																																																																																																																																								
Radii of gyration - X (mm):	13.6																																																																																																																																																																								
Radii of gyration - Y (mm):	10.9																																																																																																																																																																								
Principal moments along X-Y (mm <sup>4</sup> ):	19414.2 along [0.6 -0.8]																																																																																																																																																																								
Principal moments along Y-X (mm <sup>4</sup> ):	73653.5 along [0.8 0.6]																																																																																																																																																																								
Elastic Modulus - Zx (mm <sup>3</sup> ):	1 / y-max= 2224.1																																																																																																																																																																								
Elastic Modulus - Zy (mm <sup>3</sup> ):	J / x-max= 1346.3																																																																																																																																																																								

B.D. REF :

CLIENT :  
 信和置業有限公司  
 Sino Land Company Limited

ARCHITECT :  
 WONG TUNG & PARTNERS LIMITED  
 ARCHITECTS & PLANNERS

MAIN CONTRACTOR :  
 CR Construction Company Limited

STRUCTURAL ENGINEER :  
 AECOM

FAÇADE CONSULTANT:  
 AECOM

NOTE :  
 1. ALL DIMENSIONS ARE IN mm.  
 2. ALL ELEVATIONS ARE VIEWED FROM OUTSIDE.  
 3. ALL DIMENSIONS TO BE VERIFIED ON SITE BEFORE FABRICATION.

LEGEND :  
 x1 --- DETAIL MARK NO.  
 x001 --- REFER SHEET NO.

1. F.F.L. --- FINISHED FLOOR LEVEL  
 2. S.F.L. --- STRUCTURAL FLOOR LEVEL  
 3. (P) --- REVERSED DETAIL

JOB NO. : J-837

PROJECT :  
 URA KWUN TONG TOWN CENTRE  
 REDEVELOPMENT (AREA 2 & 3) AT  
 NKIL 6514, KWUN TONG, KWLOON

TITLE :  
 TYPICAL MULLION DETAIL  
 FOR CURTAIN WALL  
 PERFORMANCE TEST

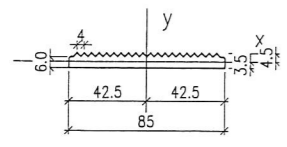
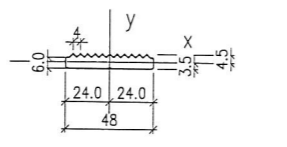
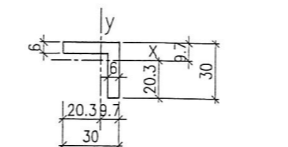
DATE : 10-SEP-18 SCALE : 1:2 (A1)

DRAWN BY : ASING CHECKED BY : -

英特鋁質有限公司  
 MIDI ALUMINIUM FABRICATOR LTD.  
 Units 6-8, Sunray Industrial Centre, 1/F  
 610 Cha Kwo Ling Road, Kowloon  
 Tel:23489211-4 Fax:(852)27727666

DWG NO. : JB37-PTCW-MLO1 REV. : -



AB2--- ALUMINIUM ADAPTER GRADE --- 6061 T6		COATING --- N/A FINISHED		AB3--- ALUMINIUM ADAPTER GRADE --- 6061 T6		COATING --- N/A FINISHED		AB4--- ALUM. ANGLE BRACKET GRADE --- 6061 T6		COATING --- N/A FINISHED	
											
<b>MASS PROPERTIES (UNIT)</b>		<b>VALUES</b>		<b>MASS PROPERTIES (UNIT)</b>		<b>VALUES</b>		<b>MASS PROPERTIES (UNIT)</b>		<b>VALUES</b>	
Area (mm <sup>2</sup> ):		589.6		Area (mm <sup>2</sup> ):		330.7		Area (mm <sup>2</sup> ):		324.0	
Perimeter (mm):		214.3		Perimeter (mm):		125.1		Perimeter (mm):		120.0	
Bounding Box - X (mm):		-42.5 to 42.5		Bounding Box - X (mm):		-24.0 to 24.0		Bounding Box - X (mm):		-20.3 to 9.7	
Bounding Box - Y (mm):		-3.5 to 4.5		Bounding Box - Y (mm):		-3.5 to 4.5		Bounding Box - Y (mm):		-20.3 to 9.7	
Centroid - X (mm):		0.0		Centroid - X (mm):		0.0		Centroid - X (mm):		0.0	
Centroid - Y (mm):		0.0		Centroid - Y (mm):		0.0		Centroid - Y (mm):		0.0	
Moments of inertia - X (mm <sup>4</sup> ):		2475.2		Moments of inertia - X (mm <sup>4</sup> ):		1375.9		Moments of inertia - X (mm <sup>4</sup> ):		25452.0	
Moments of inertia - Y (mm <sup>4</sup> ):		348908.7		Moments of inertia - Y (mm <sup>4</sup> ):		61880.1		Moments of inertia - Y (mm <sup>4</sup> ):		25452.0	
Product of inertia - XY (mm <sup>4</sup> ):		0.0		Product of inertia - XY (mm <sup>4</sup> ):		0.0		Product of inertia - XY (mm <sup>4</sup> ):		-14400.0	
Radii of gyration - X (mm):		2.0		Radii of gyration - X (mm):		2.0		Radii of gyration - X (mm):		8.9	
Radii of gyration - Y (mm):		24.3		Radii of gyration - Y (mm):		13.7		Radii of gyration - Y (mm):		8.9	
Principal moments along X-Y (mm <sup>4</sup> ):		2475.2 along [1.0 0.0]		Principal moments along X-Y (mm <sup>4</sup> ):		1375.9 along [1.0 0.0]		Principal moments along X-Y (mm <sup>4</sup> ):		11052.0 along [0.7 -0.7]	
Principal moments along Y-X (mm <sup>4</sup> ):		348908.7 along [0.0 1.0]		Principal moments along Y-X (mm <sup>4</sup> ):		61880.1 along [0.0 1.0]		Principal moments along Y-X (mm <sup>4</sup> ):		39852.0 along [0.7 0.7]	
Elastic Modulus - Zx (mm <sup>3</sup> ):		I / y-max= 549.5		Elastic Modulus - Zx (mm <sup>3</sup> ):		I / y-max= 305.1		Elastic Modulus - Zx (mm <sup>3</sup> ):		I / y-max= 1251.7	
Elastic Modulus - Zy (mm <sup>3</sup> ):		J / x-max= 8209.6		Elastic Modulus - Zy (mm <sup>3</sup> ):		J / x-max= 2578.3		Elastic Modulus - Zy (mm <sup>3</sup> ):		J / x-max= 1251.7	

B.D. REF :

CLIENT :



ARCHITECT :  
WONG TUNG & PARTNERS LIMITED  
ARCHITECTS & PLANNERS



MAIN CONTRACTOR :



STRUCTURAL ENGINEER :



FACADE CONSULTANT:



NOTE :

1. ALL DIMENSIONS ARE IN mm.
2. ALL ELEVATIONS ARE VIEWED FROM OUTSIDE.
3. ALL DIMENSIONS TO BE VERIFIED ON SITE BEFORE FABRICATION.

LEGEND :

- (X1) --- DETAIL MARK NO.
- (X001) --- REFER SHEET NO.

1. F.F.L. --- FINISHED FLOOR LEVEL
2. S.F.L. --- STRUCTURAL FLOOR LEVEL
3. (P) --- REVERSED DETAIL

NO.	DATE	REVISED	BY

JOB NO. : J-837

PROJECT :  
URA KWUN TONG TOWN CENTRE  
REDEVELOPMENT (AREA 2 & 3) AT  
NKIL 6514, KWUN TONG, KWLOON

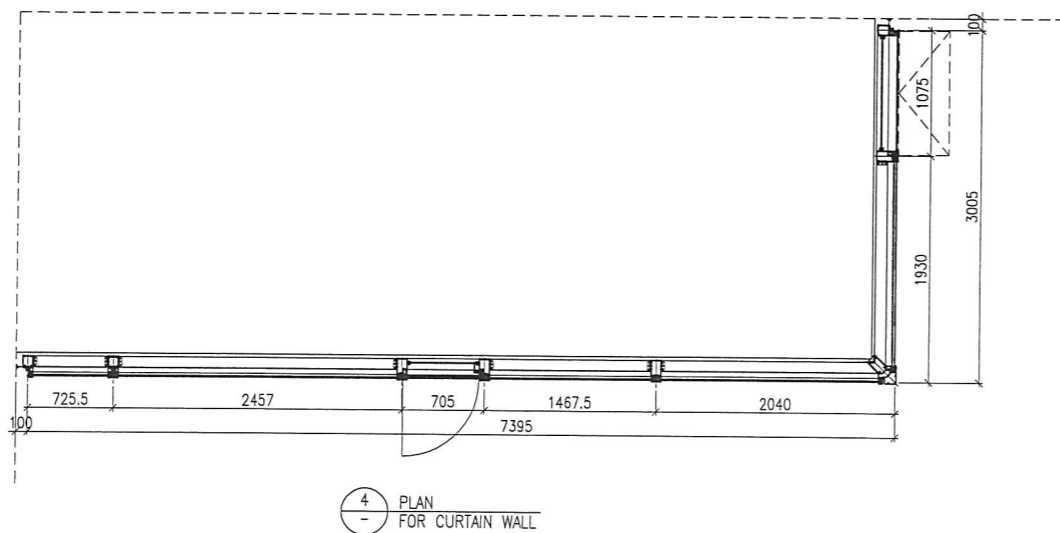
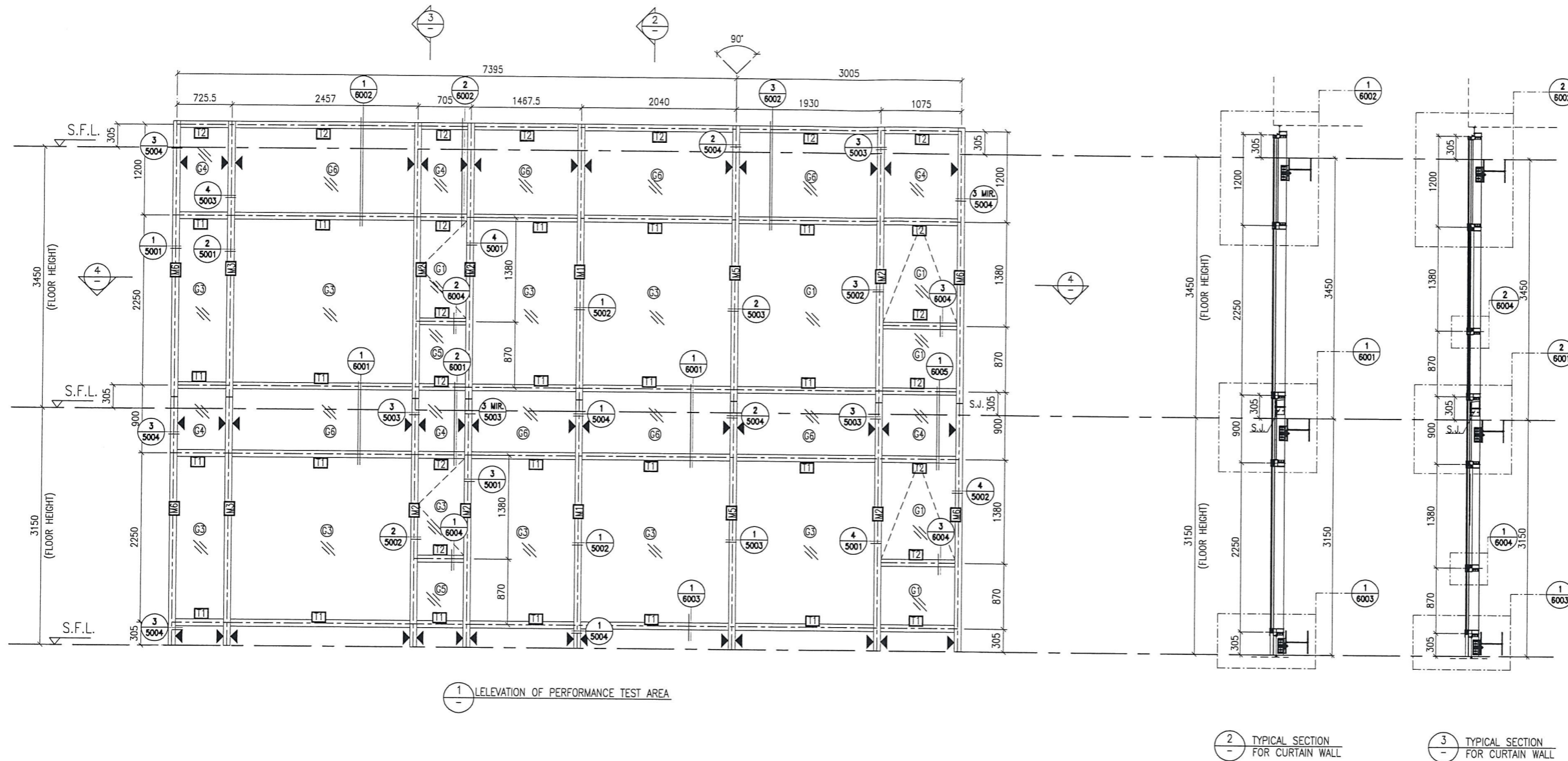
TITLE :  
TYPICAL MULLION DETAIL  
FOR CURTAIN WALL  
PERFORMANCE TEST

DATE : 10-SEP-18 SCALE : 1:2 (A1)

DRAWN BY : ASING CHECKED BY : -

**英特鋁質有限公司**  
MIDI ALUMINIUM FABRICATOR LTD.  
Units 6-8, Sunray Industrial Centre, 1/F  
610 Cha Kwo Ling Road, Kowloon  
Tel:23489211-4 Fax:(852)27727666

DWG NO. : JB37-PTCW-MLO3 REV. : -



- LEGEND:
- 10 mm THK. TEMPERED BLUE GLASS (OUTER) + 9 mm AIR SPACE + 10 mm THK. TEMPERED GLASS (INNER)
  - 10 mm THK. TEMPERED BLUE TINTED GLASS
  - 8 mm THK. HEAT STRENGTHENED BLUE TINTED GLASS (SPANDREL GLASS)
  - 8 mm THK. TEMPERED BLUE TINTED GLASS
  - 8 mm THK. TEMPERED BLUE TINTED GLASS (SPANDREL GLASS)
  - ALUM. EXTRUSION DIE NO.
  - SUPPORT POINT
  - STACK JOINT

B.D. REF :

CLIENT :  
 信和置業有限公司  
 Sino Land Company Limited

ARCHITECT :  
 WONG TUNG & PARTNERS LIMITED  
 ARCHITECTS & PLANNERS

MAIN CONTRACTOR :  
 CR Construction Company Limited

STRUCTURAL ENGINEER :  
 AECOM

FAÇADE CONSULTANT:  
 AECOM

NOTE :  
 1. ALL DIMENSIONS ARE IN mm.  
 2. ALL ELEVATIONS ARE VIEWED FROM OUTSIDE.  
 3. ALL DIMENSIONS TO BE VERIFIED ON SITE BEFORE FABRICATION.

LEGEND :  
 - DETAIL MARK NO.  
 - REFER SHEET NO.  
 1. F.F.L. -- FINISHED FLOOR LEVEL  
 2. S.F.L. -- STRUCTURAL FLOOR LEVEL  
 3. -- REVERSED DETAIL

NO.	DATE	REVISED	BY
-----	------	---------	----

JOB NO. : J-837  
 PROJECT :  
 URA KWUN TONG TOWN CENTRE  
 REDEVELOPMENT (AREA 2 & 3) AT  
 NKIL 6514, KWUN TONG, KWLOON

TITLE :  
 ELEVATION  
 FOR CURTAIN WALL  
 PERFORMANCE TEST

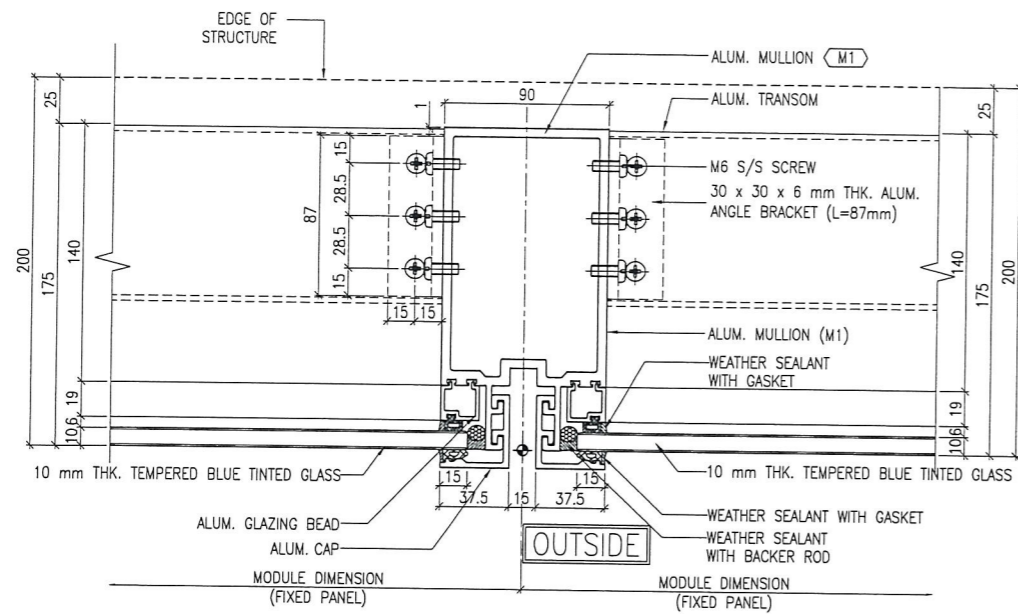
DATE : 10-SEP-18 SCALE : 1:30 (A1)

DRAWN BY : ASING CHECKED BY : -

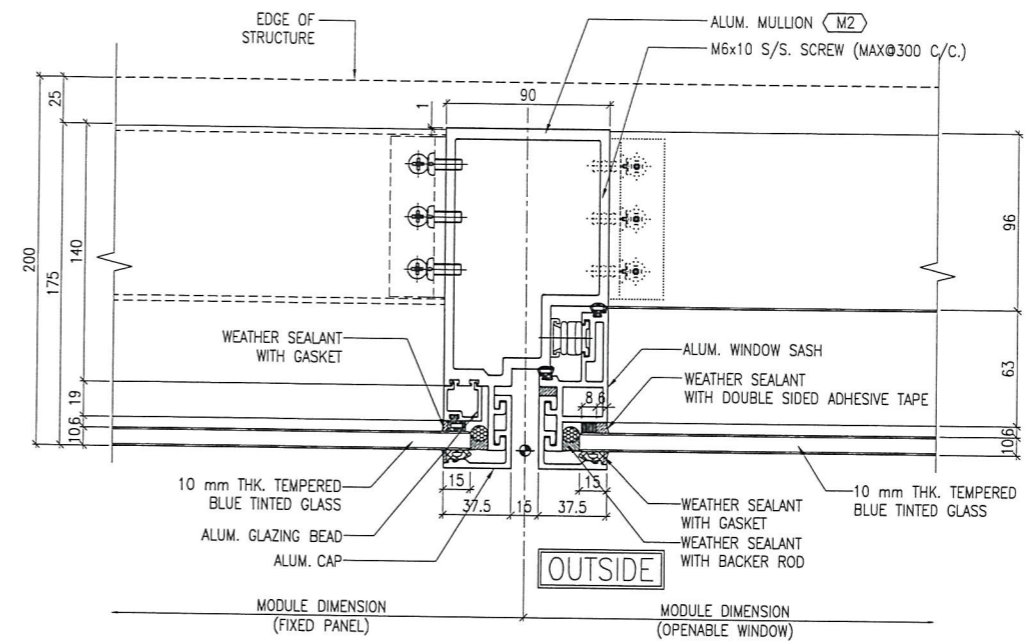
美特鋁質有限公司  
 MIDI ALUMINIUM FABRICATOR LTD.  
 Units 6-8, Sunray Industrial Centre, 1/F  
 610 Cha Kwo Ling Road, Kowloon  
 Tel:23489211-4 Fax:(852)2727666

DWG NO. : J837-PTCW-2101 REV. : -

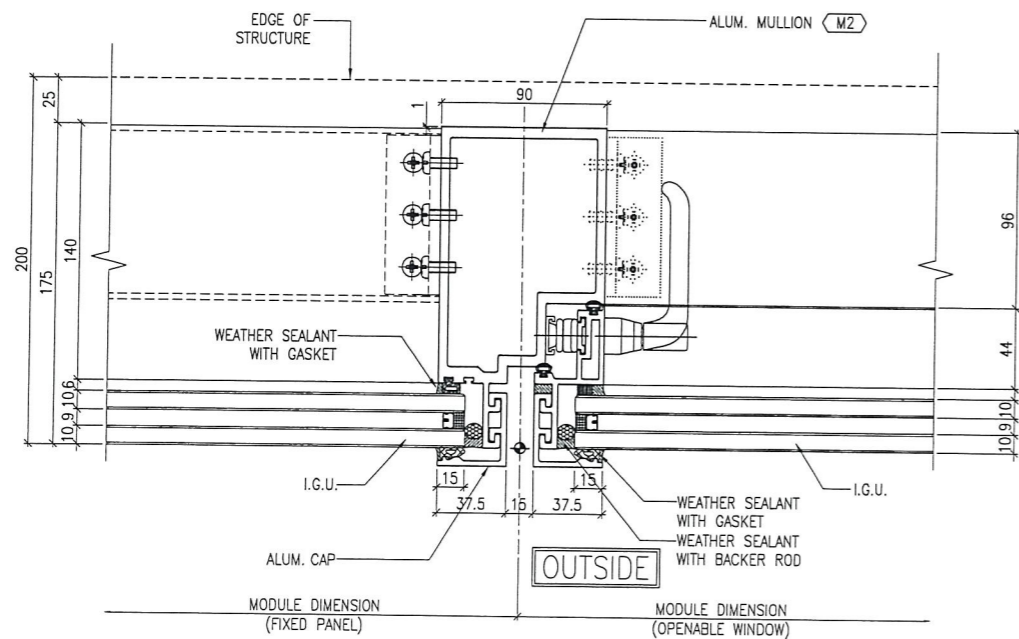




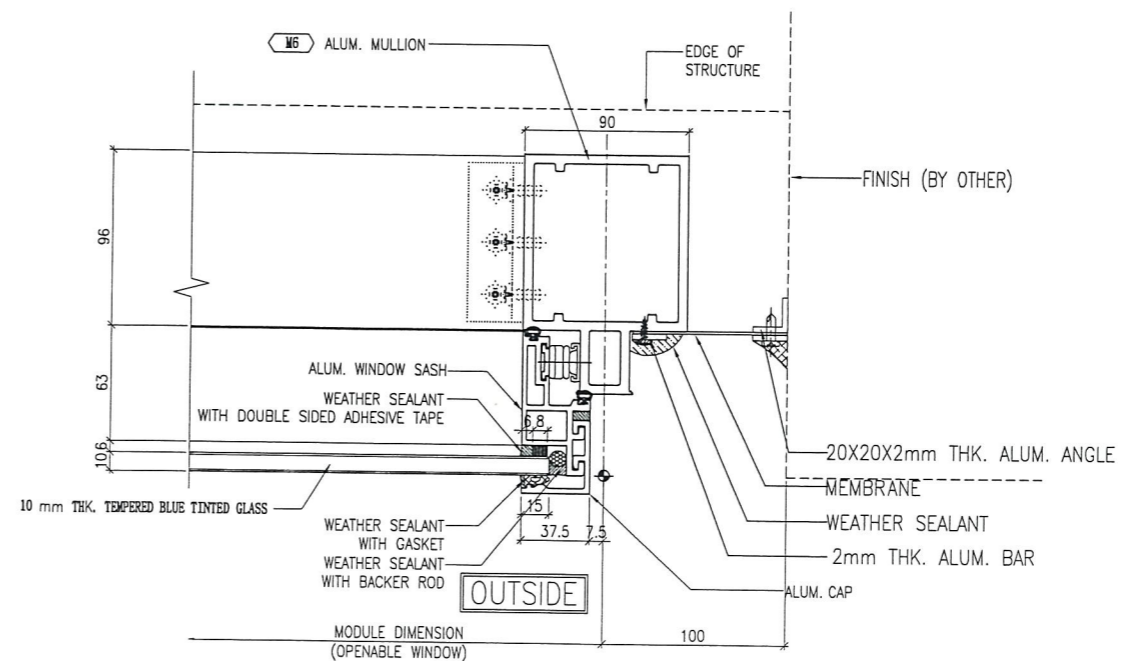
1 TYPICAL MULLION DETAIL  
5002 CURTAIN WALL



2 TYPICAL MULLION DETAIL  
5002 CURTAIN WALL



3 TYPICAL MULLION DETAIL  
5002 CURTAIN WALL



4 TYPICAL MULLION DETAIL  
5002 CURTAIN WALL

B.D. REF :

CLIENT :

信和置業有限公司  
Sino Land Company Limited

ARCHITECT :  
WONG TUNG & PARTNERS LIMITED  
ARCHITECTS & PLANNERS



MAIN CONTRACTOR :

CR Construction Company Limited

STRUCTURAL ENGINEER :

AECOM

FACADE CONSULTANT:

AECOM

NOTE :

1. ALL DIMENSIONS ARE IN mm.
2. ALL ELEVATIONS ARE VIEWED FROM OUTSIDE.
3. ALL DIMENSIONS TO BE VERIFIED ON SITE BEFORE FABRICATION.

LEGEND :

- (X1) — DETAIL MARK NO.
- (X001) — REFER SHEET NO.

1. F.F.L. — FINISHED FLOOR LEVEL
2. S.F.L. — STRUCTURAL FLOOR LEVEL
3. (R) — REVERSED DETAIL

NO.	DATE	REVISED	BY

JOB NO. : J-837

PROJECT :  
URA KWUN TONG TOWN CENTRE  
REDEVELOPMENT (AREA 2 & 3) AT  
NKIL 6514, KWUN TONG, KWLOON

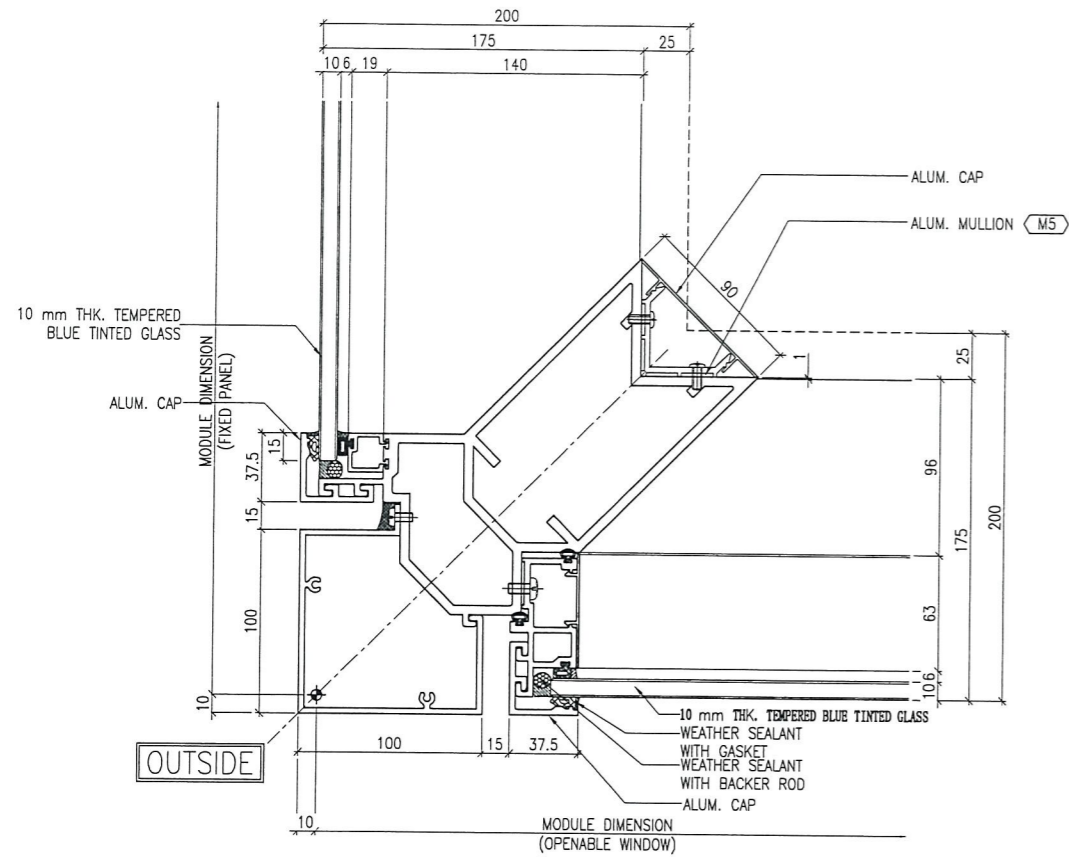
TITLE :  
TYPICAL MULLION DETAIL  
FOR CURTAIN WALL  
PERFORMANCE TEST

DATE : 10-SEP-18 SCALE : 1:2 (A1)

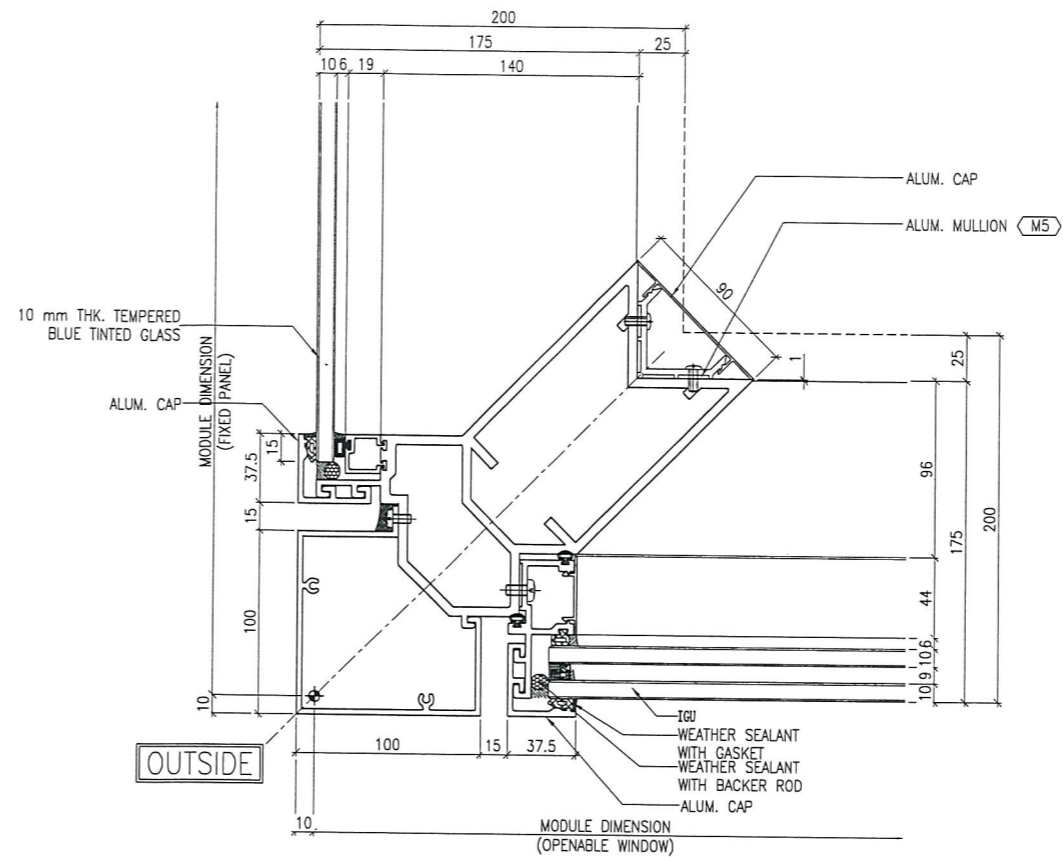
DRAWN BY : ASING CHECKED BY : -

美特鋁質有限公司  
MIDI ALUMINIUM FABRICATOR LTD.  
Units 6-8, Sunray Industrial Centre, 1/F  
610 Cha Kwo Ling Road, Kowloon  
Tel: 23489211-4 Fax: (852) 2727666

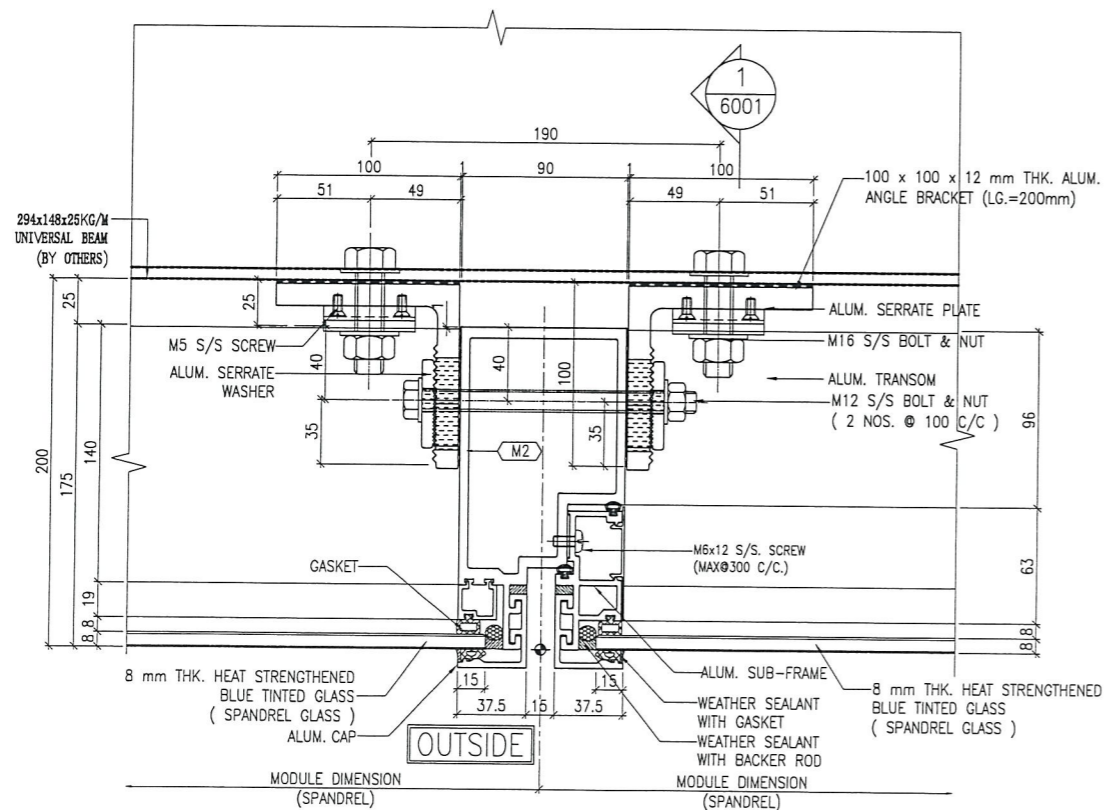
DWG NO. : J837-PTCW-5002 REV. : -



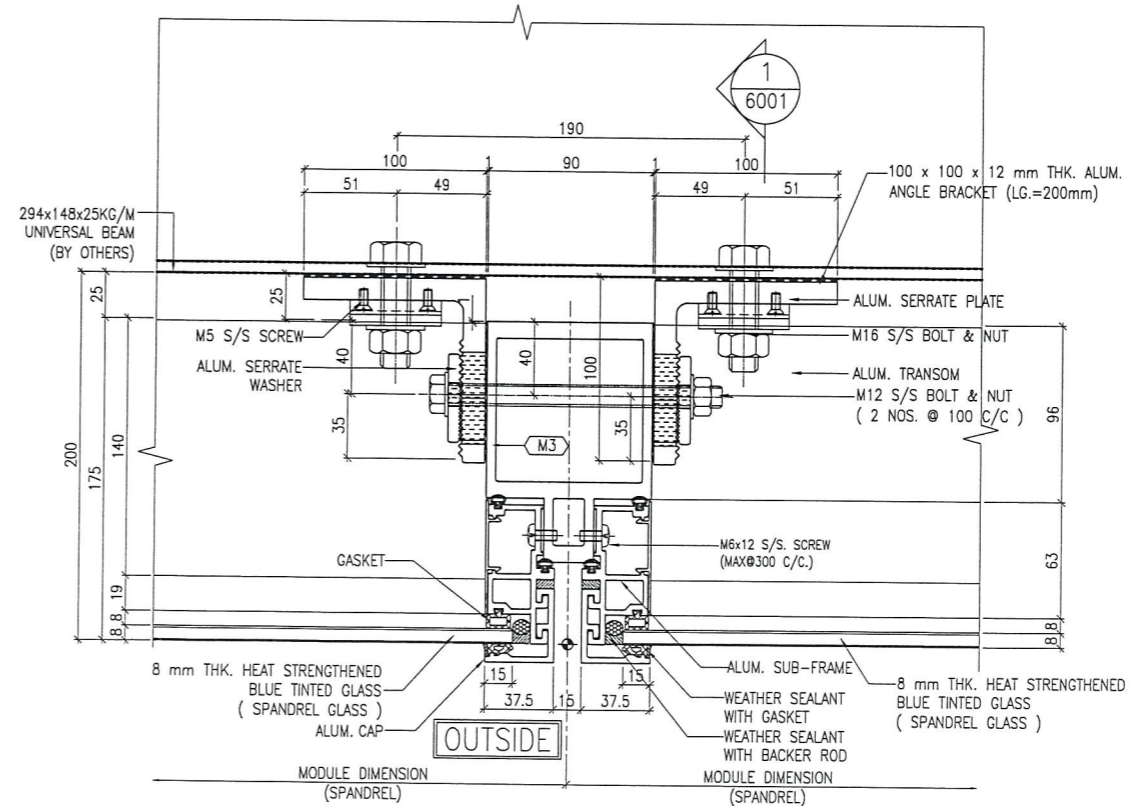
1 TYPICAL MULLION DETAIL  
5003 CURTAIN WALL



2 TYPICAL MULLION DETAIL  
5003 CURTAIN WALL



3 TYPICAL MULLION DETAIL  
5003 CURTAIN WALL



4 TYPICAL MULLION DETAIL  
5003 CURTAIN WALL

B.D. REF :

CLIENT :

信和置業有限公司  
Sino Land Company Limited

ARCHITECT :  
WONG TUNG & PARTNERS LIMITED  
ARCHITECTS & PLANNERS



MAIN CONTRACTOR :

CR Construction Company Limited

STRUCTURAL ENGINEER :

AECOM

FACADE CONSULTANT:

AECOM

NOTE :

1. ALL DIMENSIONS ARE IN mm.
2. ALL ELEVATIONS ARE VIEWED FROM OUTSIDE.
3. ALL DIMENSIONS TO BE VERIFIED ON SITE BEFORE FABRICATION.

LEGEND :

- x1 — DETAIL MARK NO.
- x001 — REFER SHEET NO.

1. F.F.L. — FINISHED FLOOR LEVEL
2. S.F.L. — STRUCTURAL FLOOR LEVEL
3. (R) — REVERSED DETAIL

NO.	DATE	REVISED	BY

JOB NO. : J-B37

PROJECT :  
URA KWUN TONG TOWN CENTRE  
REDEVELOPMENT (AREA 2 & 3) AT  
NKIL 6514, KWUN TONG, KWLOON

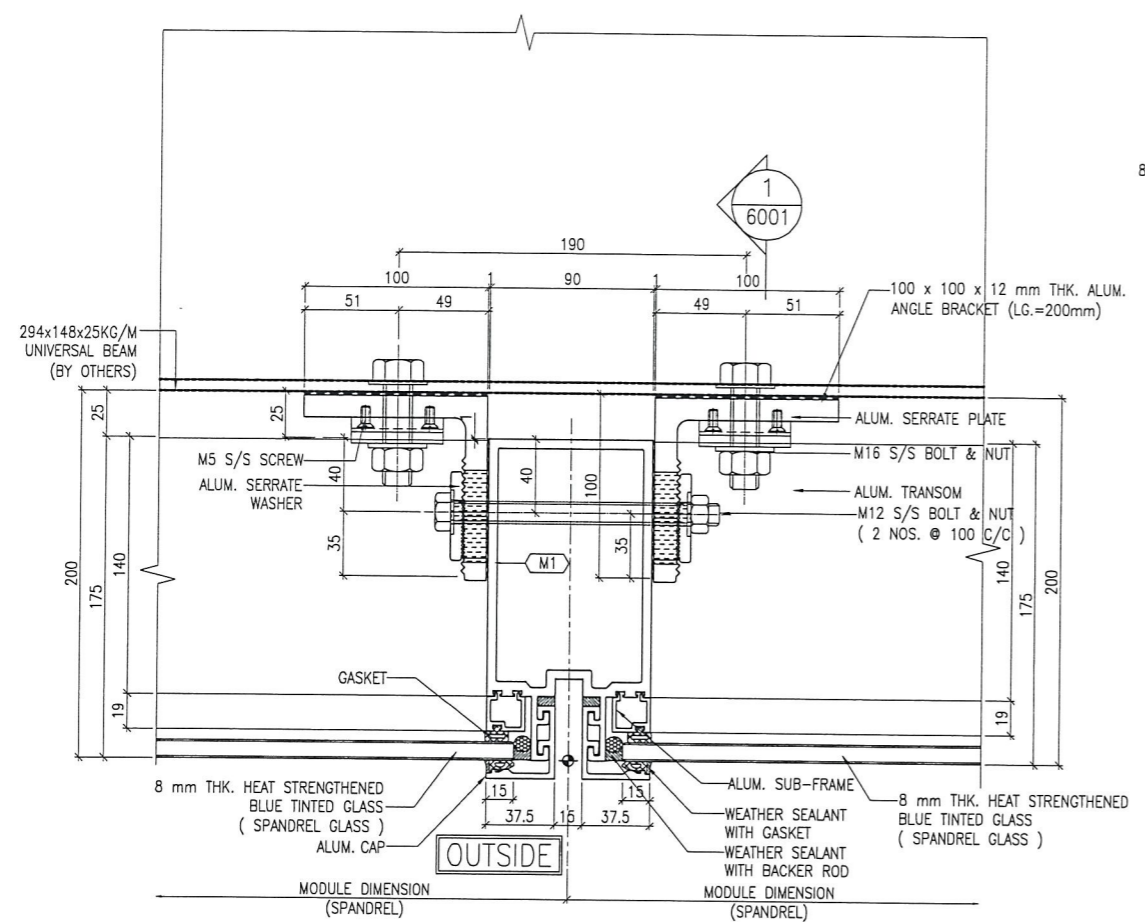
TITLE :  
TYPICAL MULLION DETAIL  
FOR CURTAIN WALL  
PERFORMANCE TEST

DATE : 10-SEP-18 SCALE : 1:2 (A1)

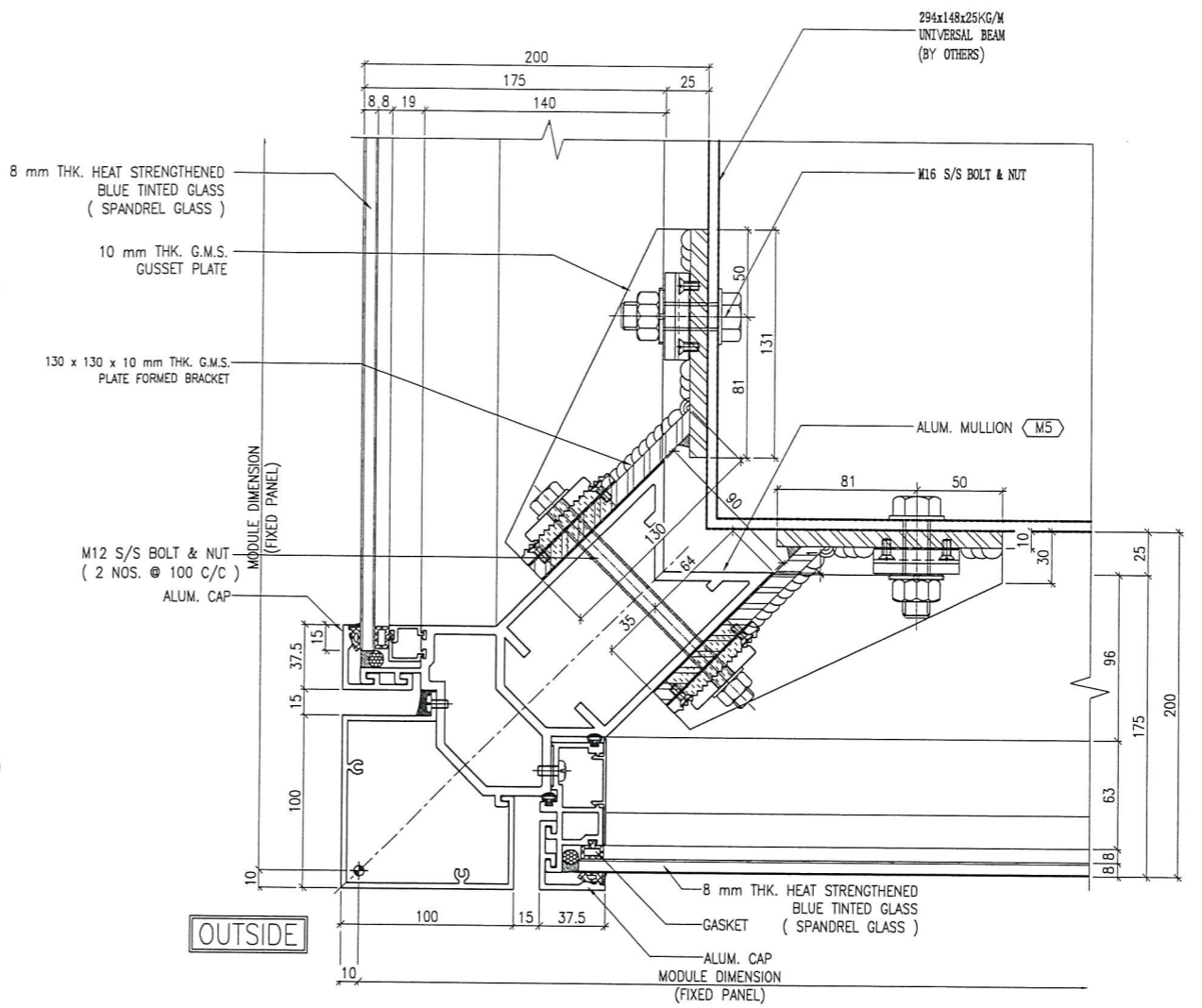
DRAWN BY : ASING CHECKED BY : -

美特鋁質有限公司  
MIDI ALUMINIUM FABRICATOR LTD.  
Units 6-8, Sunray Industrial Centre, 1/F  
610 Cha Kwo Ling Road, Kowloon  
Tel: 23489211-4 Fax: (852) 27727666

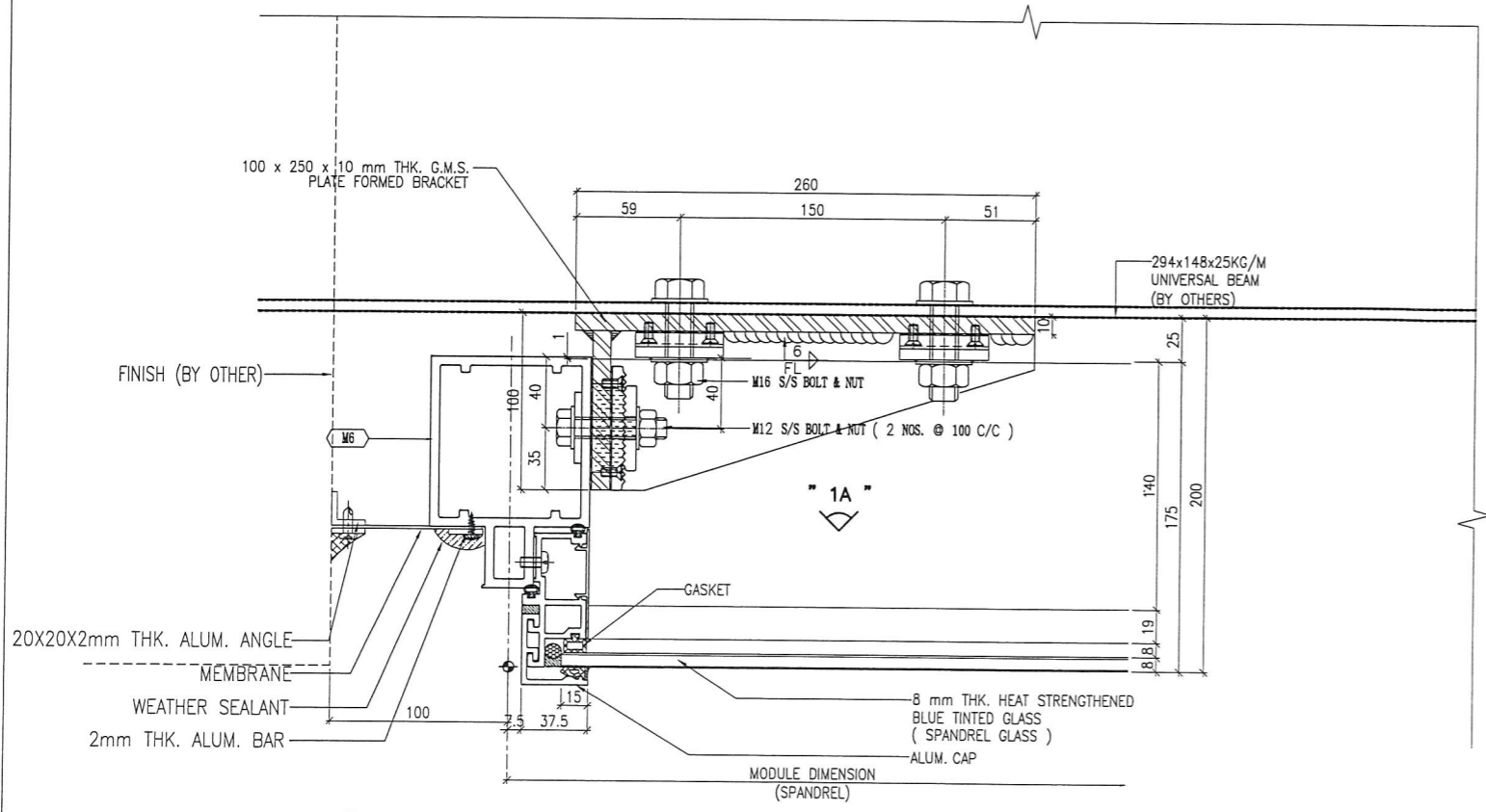
DWG NO. : JB37-PTCW-5003 REV. : -



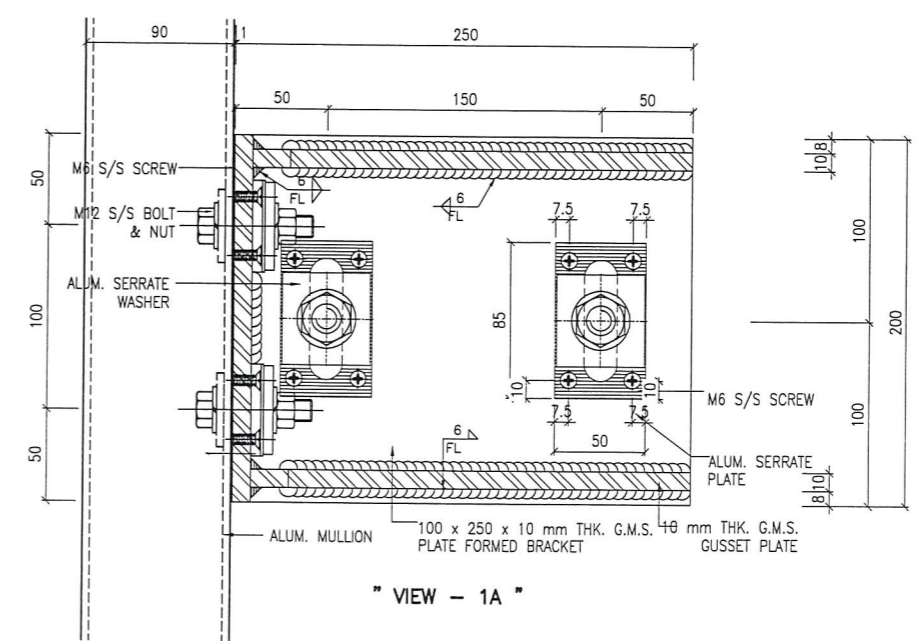
1 TYPICAL MULLION DETAIL  
5004 CURTAIN WALL



2 TYPICAL MULLION DETAIL  
5004 CURTAIN WALL



3 TYPICAL MULLION DETAIL  
5004 CURTAIN WALL



" VIEW - 1A "

B.D. REF :

CLIENT :  
信和置業有限公司  
Sino Land Company Limited

ARCHITECT :  
WONG TUNG & PARTNERS LIMITED  
ARCHITECTS & PLANNERS

MAIN CONTRACTOR :  
CR Construction Company Limited

STRUCTURAL ENGINEER :  
AECOM

FACADE CONSULTANT:  
AECOM

NOTE :  
1. ALL DIMENSIONS ARE IN mm.  
2. ALL ELEVATIONS ARE VIEWED FROM OUTSIDE.  
3. ALL DIMENSIONS TO BE VERIFIED ON SITE BEFORE FABRICATION.

LEGEND :  
x1 --- DETAIL MARK NO.  
x001 --- REFER SHEET NO.

1. F.F.L. --- FINISHED FLOOR LEVEL  
2. S.F.L. --- STRUCTURAL FLOOR LEVEL  
3. (R) --- REVERSED DETAIL

NO.	DATE	REVISED	BY

JOB NO. : J-837  
PROJECT :  
URA KWUN TONG TOWN CENTRE  
REDEVELOPMENT (AREA 2 & 3) AT  
NKIL 6514, KWUN TONG, KWLOON

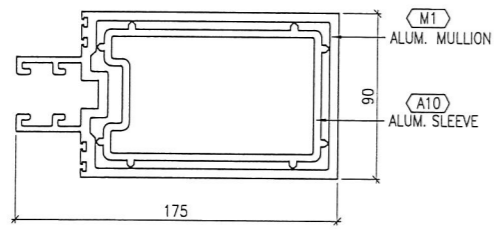
TITLE :  
TYPICAL MULLION DETAIL  
FOR CURTAIN WALL  
PERFORMANCE TEST

DATE : 10-SEP-18 SCALE : 1:2 (A1)

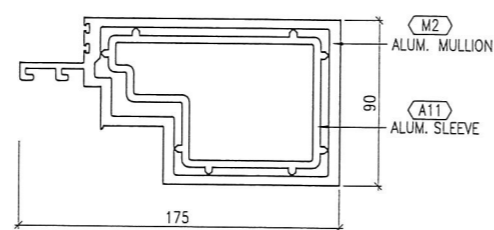
DRAWN BY : ASING CHECKED BY : -

英特鋁質有限公司  
MIDI ALUMINIUM FABRICATOR LTD.  
Units 6-8, Sunray Industrial Centre, 1/F  
610 Cha Kwo Ling Road, Kowloon  
Tel:23489211-4 Fax:(852)27727666

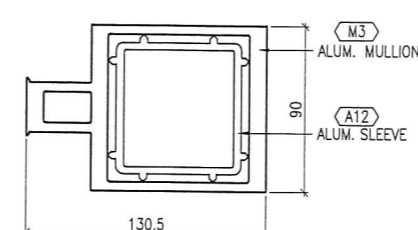
DWG NO. : JB37-PTCW-5004 REV. : -



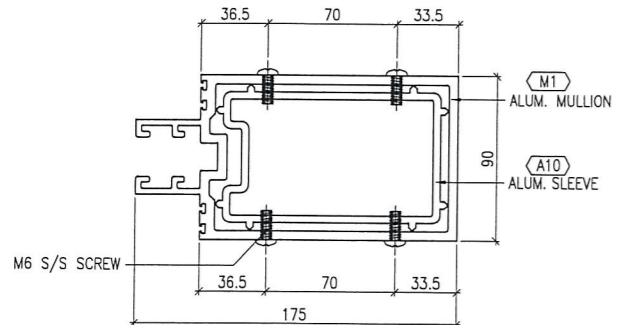
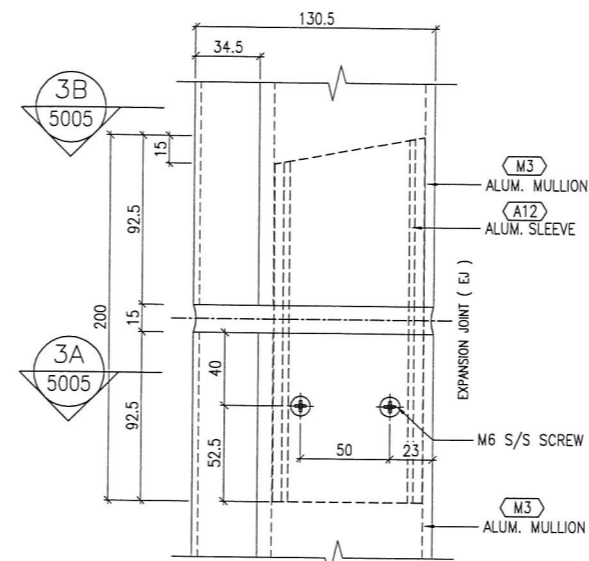
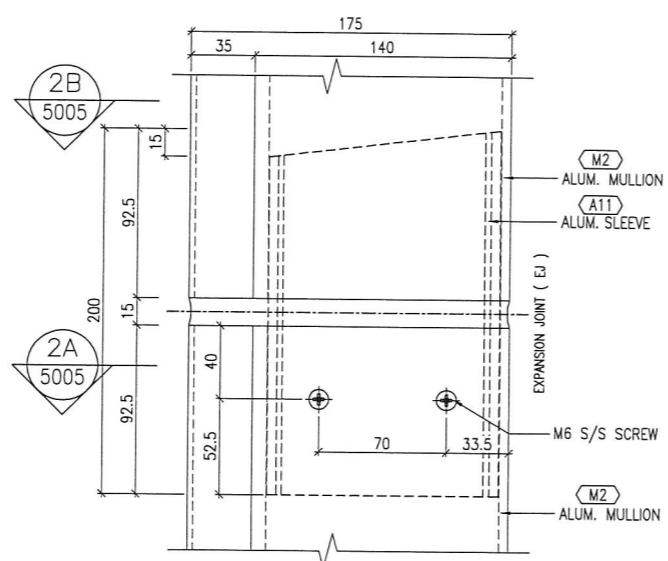
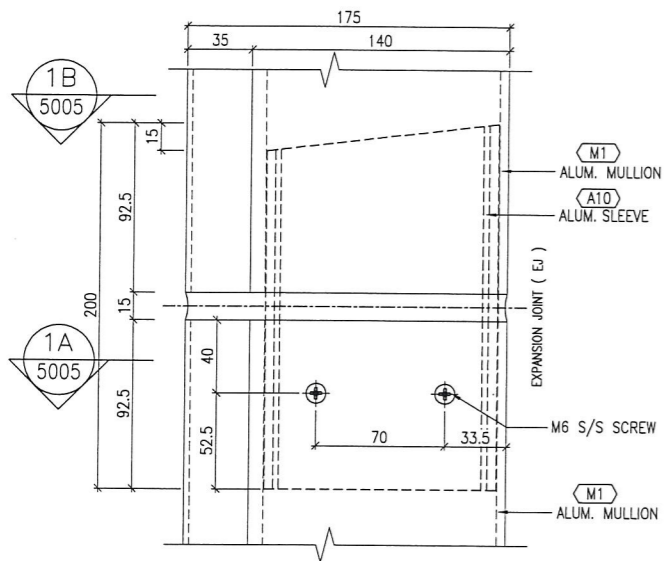
" VIEW - '1B "



" VIEW - '2B "

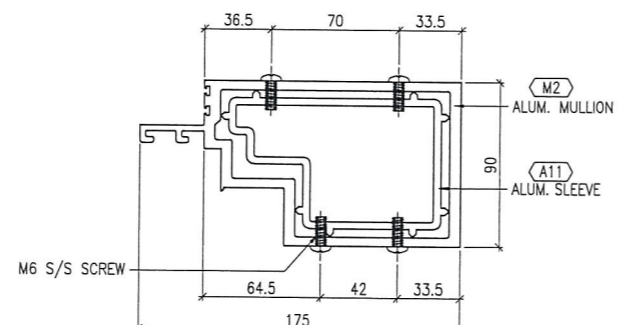


" VIEW - '3B "



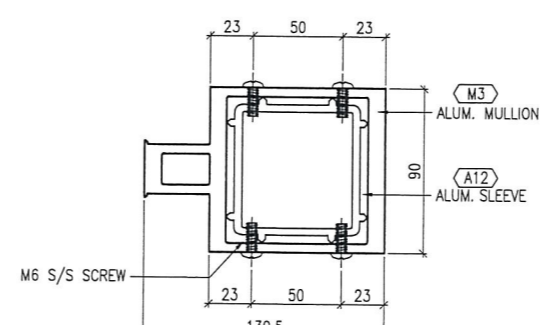
" VIEW - 1A "

" ALUMINIUM CURTAIN WALL SLEEVE "  
- TYPICAL FIXING DETAIL



" VIEW - 2A "

" ALUMINIUM CURTAIN WALL SLEEVE "  
- TYPICAL FIXING DETAIL



" VIEW - 3A "

" ALUMINIUM CURTAIN WALL SLEEVE "  
- TYPICAL FIXING DETAIL

1  
5005 TYPICAL MULLION DETAIL  
CURTAIN WALL

2  
5005 TYPICAL MULLION DETAIL  
CURTAIN WALL

3  
5005 TYPICAL MULLION DETAIL  
CURTAIN WALL

B.D. REF :

CLIENT :

信和置業有限公司  
Sino Land Company Limited

ARCHITECT :

WONG TUNG & PARTNERS LIMITED  
ARCHITECTS & PLANNERS



MAIN CONTRACTOR :

CR Construction Company Limited

STRUCTURAL ENGINEER :

AECOM

FACADE CONSULTANT:

AECOM

NOTE :

1. ALL DIMENSIONS ARE IN mm.
2. ALL ELEVATIONS ARE VIEWED FROM OUTSIDE.
3. ALL DIMENSIONS TO BE VERIFIED ON SITE BEFORE FABRICATION.

LEGEND :

- x1 - DETAIL MARK NO.
- x001 - REFER SHEET NO.

1. F.F.L. -- FINISHED FLOOR LEVEL
2. S.F.L. -- STRUCTURAL FLOOR LEVEL
3. (R) -- REVERSED DETAIL

NO.	DATE	REVISED	BY

JOB NO. : J-837

PROJECT :  
URA KWUN TONG TOWN CENTRE  
REDEVELOPMENT (AREA 2 & 3) AT  
NKIL 6514, KWUN TONG, KWLOON

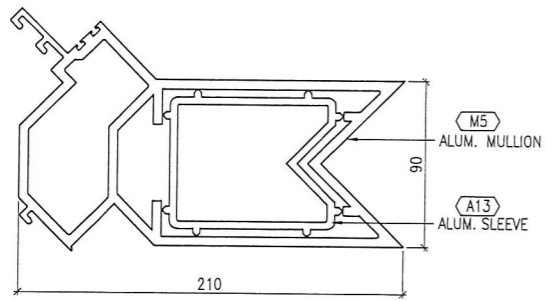
TITLE :  
TYPICAL MULLION DETAIL  
FOR CURTAIN WALL  
PERFORMANCE TEST

DATE : 10-SEP-18 SCALE : 1:2 (A1)

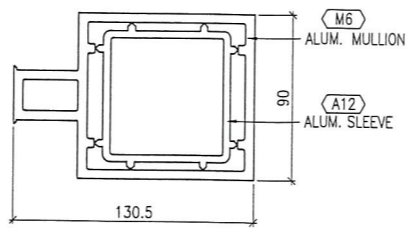
DRAWN BY : ASING CHECKED BY : -

英特鋁質有限公司  
MIDI ALUMINIUM FABRICATOR LTD.  
Units 6-8, Sunray Industrial Centre, 1/F  
610 Cha Kwo Ling Road, Kowloon  
Tel:23489211-4 Fax:(852)27727666

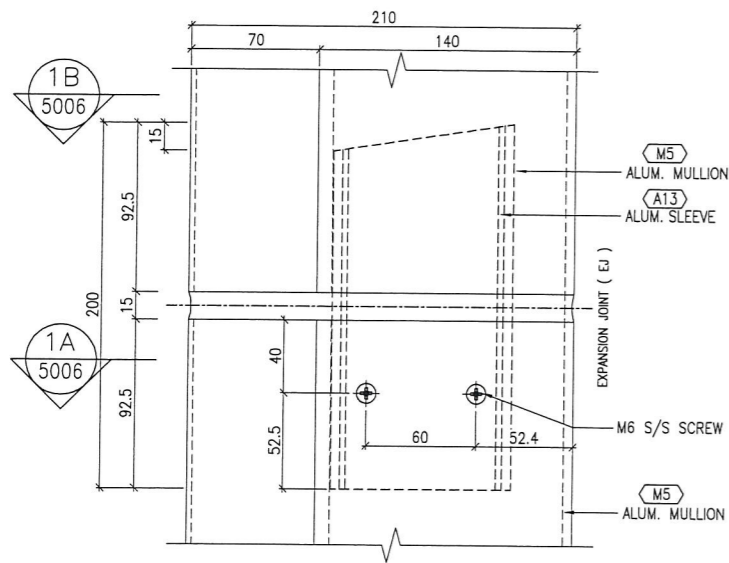
DWG NO. : J837-PTCW-5005 REV. : -



" VIEW - '1B "

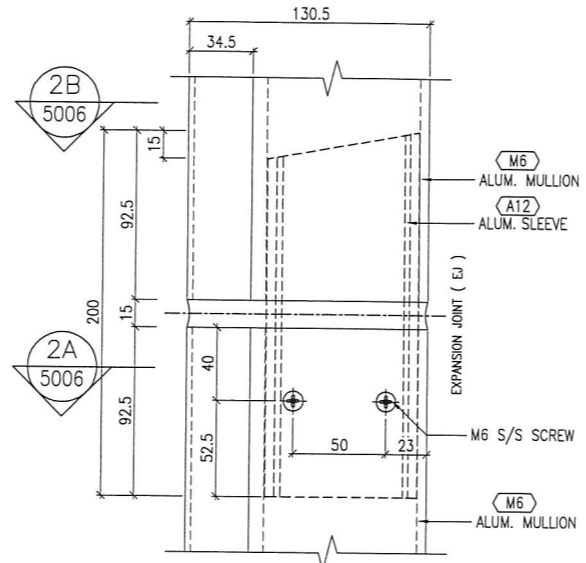


" VIEW - '2B "



" VIEW - 1A "

" ALUMINIUM CURTAIN WALL SLEEVE "  
- TYPICAL FIXING DETAIL



" VIEW - 2A "

" ALUMINIUM CURTAIN WALL SLEEVE "  
- TYPICAL FIXING DETAIL

1 TYPICAL MULLION DETAIL  
5006 CURTAIN WALL

2 TYPICAL MULLION DETAIL  
5006 CURTAIN WALL

B.D. REF :

CLIENT :

信和置業有限公司  
Sino Land Company Limited

ARCHITECT :  
WONG TUNG & PARTNERS LIMITED  
ARCHITECTS & PLANNERS



MAIN CONTRACTOR :

CR Construction Company Limited

STRUCTURAL ENGINEER :

AECOM

FACADE CONSULTANT:

AECOM

NOTE :

1. ALL DIMENSIONS ARE IN mm.
2. ALL ELEVATIONS ARE VIEWED FROM OUTSIDE.
3. ALL DIMENSIONS TO BE VERIFIED ON SITE BEFORE FABRICATION.

LEGEND :

- x1 --- DETAIL MARK NO.
- x001 --- REFER SHEET NO.

1. F.F.L. --- FINISHED FLOOR LEVEL
2. S.F.L. --- STRUCTURAL FLOOR LEVEL
3. (R) --- REVERSED DETAIL

NO.	DATE	REVISED	BY

JOB NO. : J-B37

PROJECT :  
URA KWUN TONG TOWN CENTRE  
REDEVELOPMENT (AREA 2 & 3) AT  
NKIL 6514, KWUN TONG, KWLOON

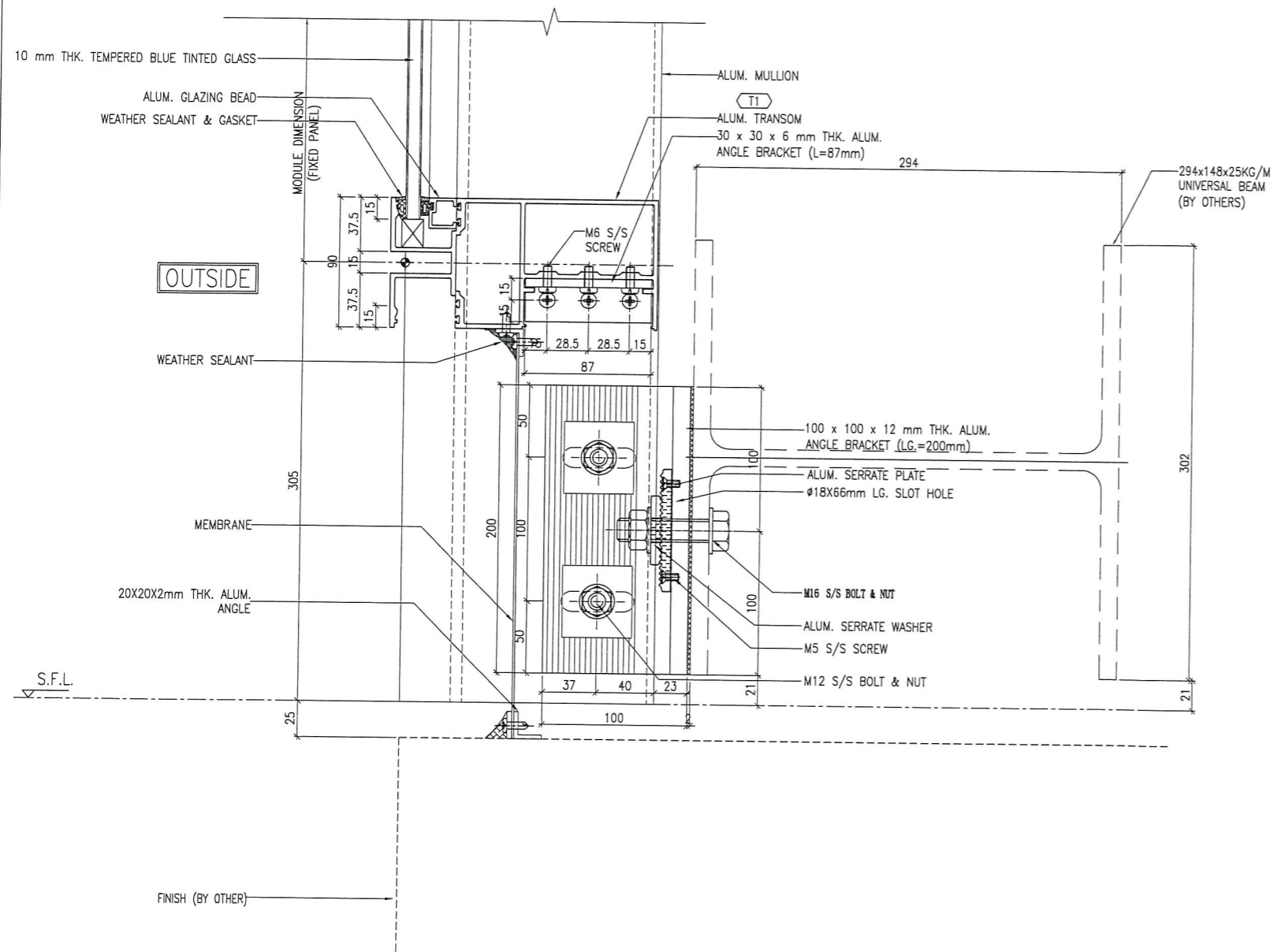
TITLE :  
TYPICAL MULLION DETAIL  
FOR CURTAIN WALL  
PERFORMANCE TEST

DATE : 10-SEP-18 SCALE : 1:2 (A1)

DRAWN BY : ASING CHECKED BY : -

美特鋁質有限公司  
MIDI ALUMINIUM FABRICATOR LTD.  
Units 6-8, Sunray Industrial Centre, 1/F  
610 Cha Kwo Ling Road, Kowloon  
Tel:23489211-4 Fax:(852)2727666

DWG NO. : JB37-PTCW-5006 REV. : -



1 TYPICAL TRANSOM DETAIL  
6003 CURTAIN WALL

B.D. REF :

CLIENT :

信和置業有限公司  
Sino Land Company Limited

ARCHITECT : WONG TUNG & PARTNERS LIMITED  
ARCHITECTS & PLANNERS



MAIN CONTRACTOR :

CR Construction Company Limited

STRUCTURAL ENGINEER :

AECOM

FACADE CONSULTANT:

AECOM

NOTE :

1. ALL DIMENSIONS ARE IN mm.
2. ALL ELEVATIONS ARE VIEWED FROM OUTSIDE.
3. ALL DIMENSIONS TO BE VERIFIED ON SITE BEFORE FABRICATION.

LEGEND :

- (X1) — DETAIL MARK NO.
- (X001) — REFER SHEET NO.

1. F.F.L. — FINISHED FLOOR LEVEL
2. S.F.L. — STRUCTURAL FLOOR LEVEL
3. (R) — REVERSED DETAIL

NO.	DATE	REVISED	BY

JOB NO. : J-837

PROJECT :  
URA KWUN TONG TOWN CENTRE  
REDEVELOPMENT (AREA 2 & 3) AT  
NKIL 6514, KWUN TONG, KWLOON

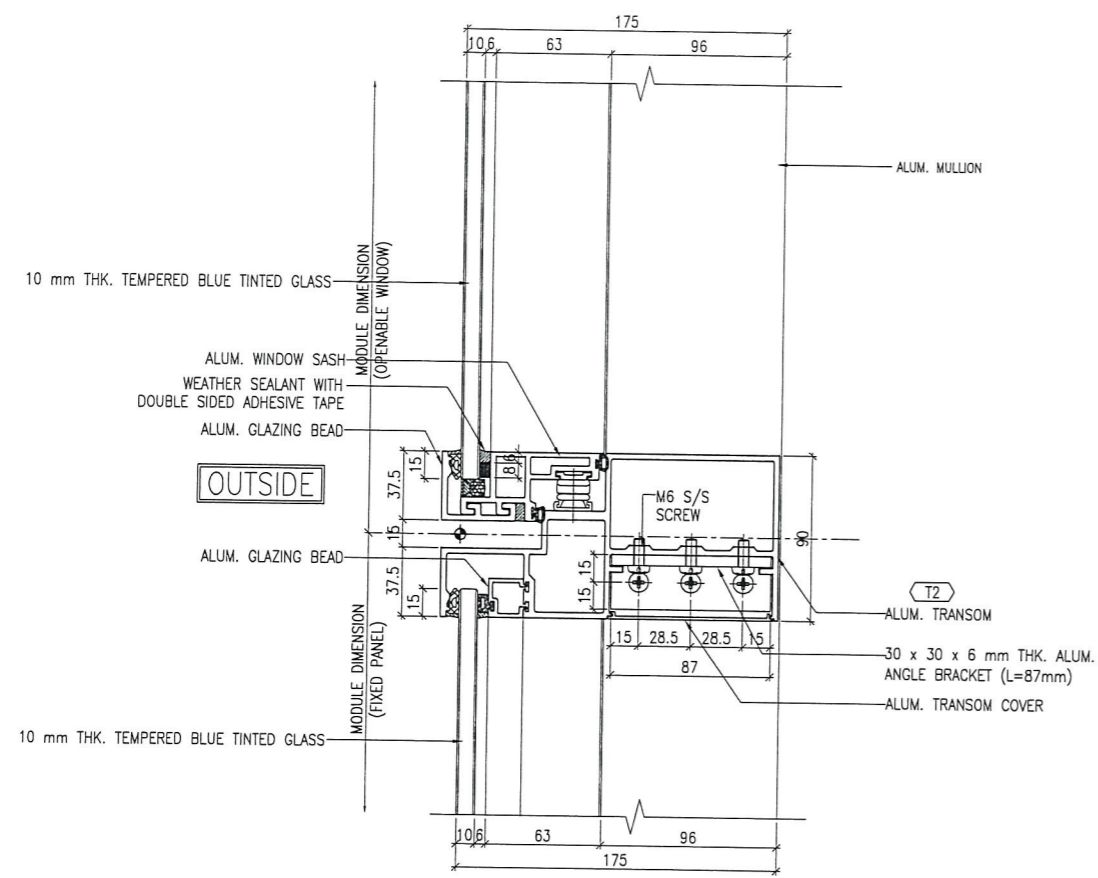
TITLE :  
TYPICAL TRANSOM DETAIL  
FOR CURTAIN WALL  
PERFORMANCE TEST

DATE : 10-SEP-18 SCALE : 1:2 (A1)

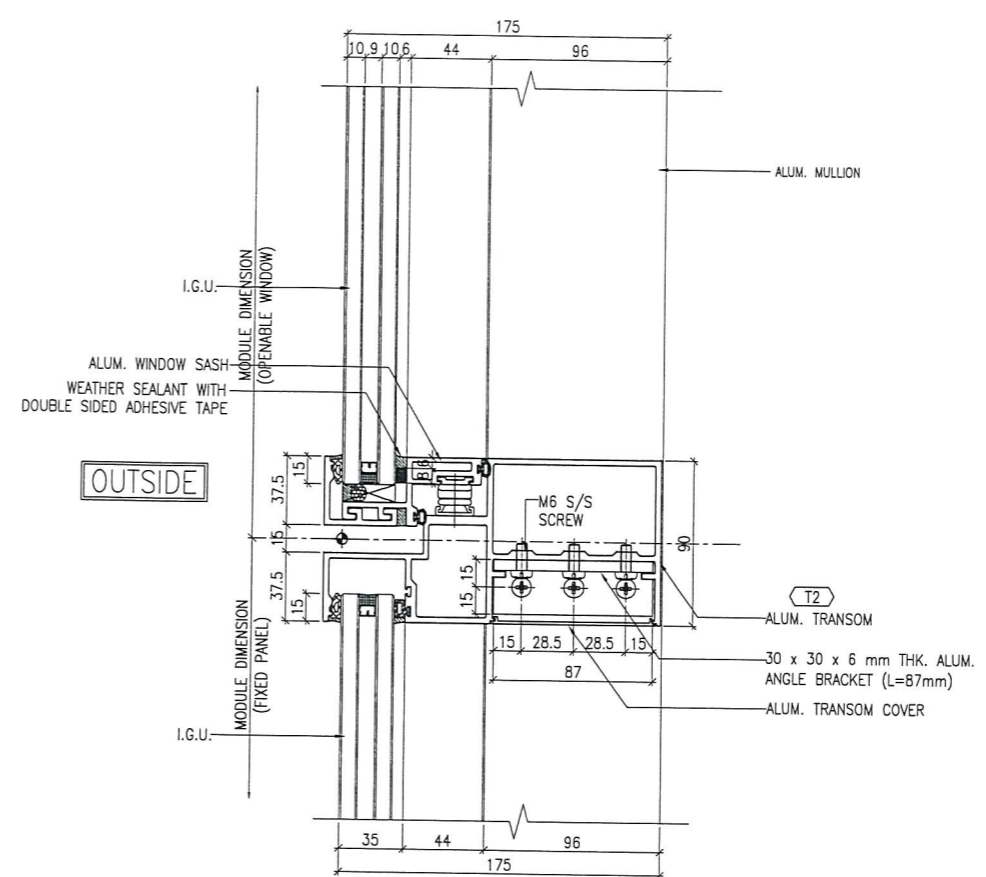
DRAWN BY : Asing CHECKED BY : -

美特鋁質有限公司  
MIDI ALUMINIUM FABRICATOR LTD.  
Units 6-8, Sunray Industrial Centre, 1/F  
610 Cha Kwo Ling Road, Kowloon  
Tel: 23489211-4 Fax: (852) 27727666

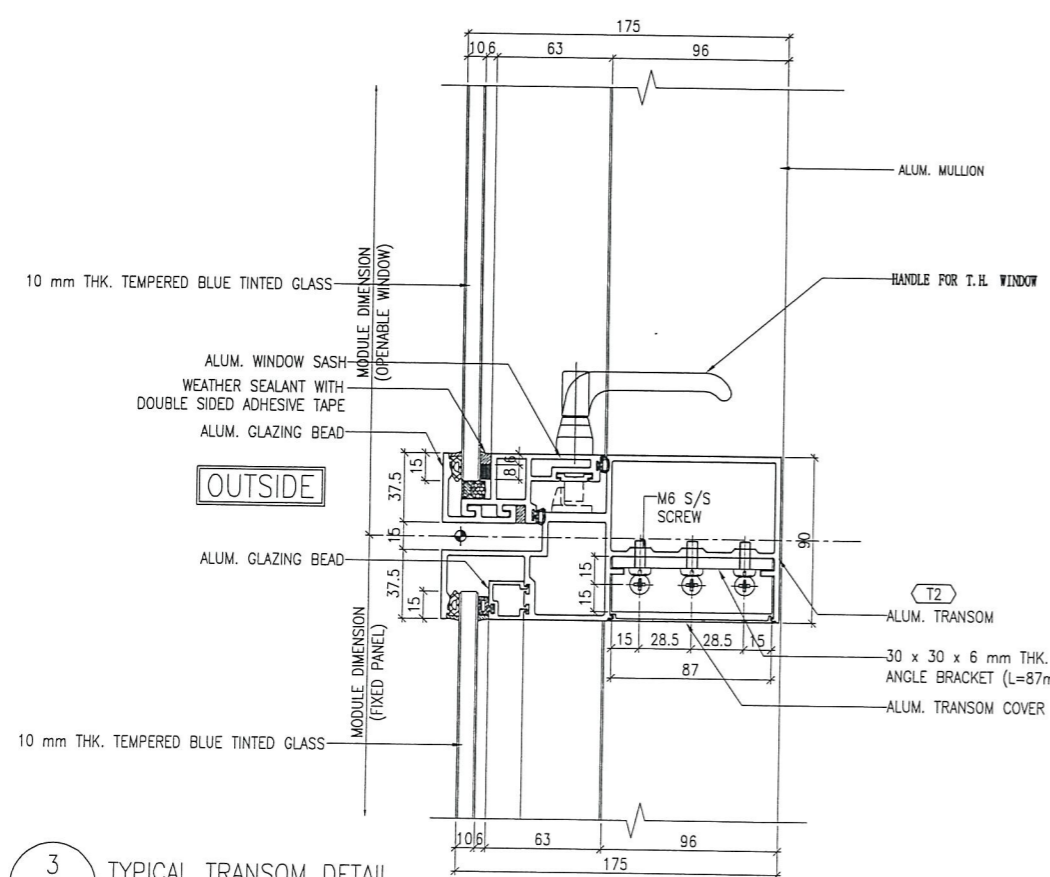
DWG NO. : J837-PTCW-6003 REV. : -



1 TYPICAL TRANSOM DETAIL  
6004 CURTAIN WALL



2 TYPICAL TRANSOM DETAIL  
6004 CURTAIN WALL



3 TYPICAL TRANSOM DETAIL  
6004 CURTAIN WALL

B.D. REF :

CLIENT :  
信和置業有限公司  
Sino Land Company Limited

ARCHITECT :  
WONG TUNG & PARTNERS LIMITED  
ARCHITECTS & PLANNERS

MAIN CONTRACTOR :  
CR Construction Company Limited

STRUCTURAL ENGINEER :  
AECOM

FACADE CONSULTANT:  
AECOM

NOTE :  
1. ALL DIMENSIONS ARE IN mm.  
2. ALL ELEVATIONS ARE VIEWED FROM OUTSIDE.  
3. ALL DIMENSIONS TO BE VERIFIED ON SITE BEFORE FABRICATION.

LEGEND :  
X1 — DETAIL MARK NO.  
X001 — REFER SHEET NO.

1. F.F.L. — FINISHED FLOOR LEVEL  
2. S.F.L. — STRUCTURAL FLOOR LEVEL  
3. (R) — REVERSED DETAIL

NO.	DATE	REVISED	BY
-----	------	---------	----

JOB NO. : J-837  
PROJECT :  
URA KWUN TONG TOWN CENTRE  
REDEVELOPMENT (AREA 2 & 3) AT  
NKIL 6514, KWUN TONG, KWLOON

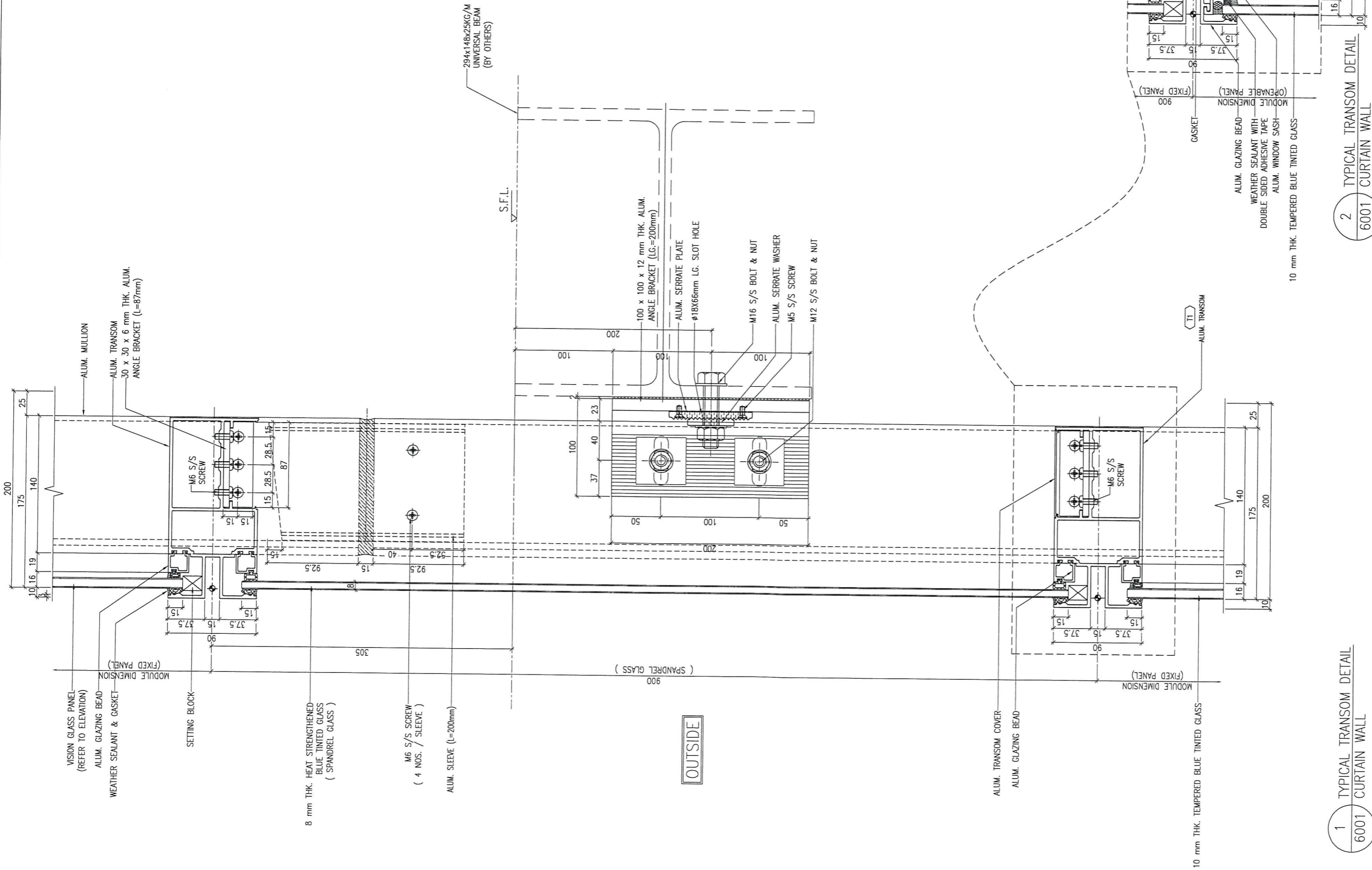
TITLE :  
TYPICAL TRANSOM DETAIL  
FOR CURTAIN WALL  
PERFORMANCE TEST

DATE : 10-SEP-18 SCALE : 1:2 (A1)

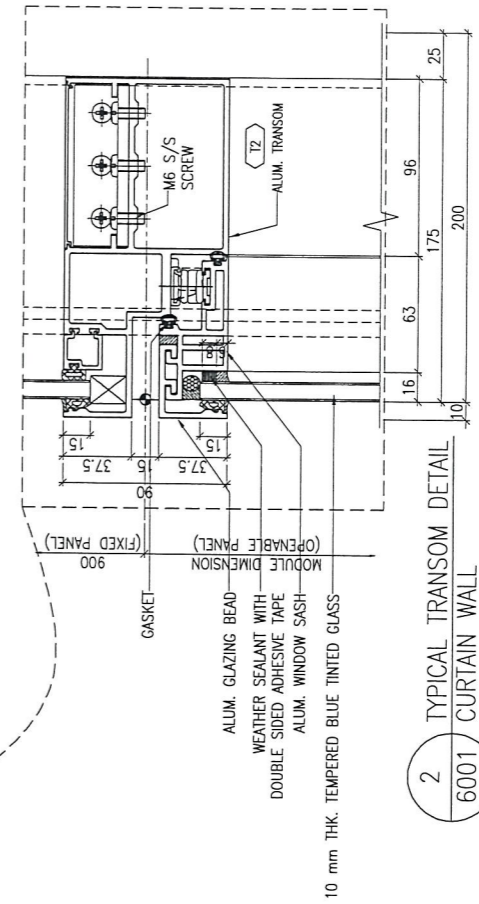
DRAWN BY : Asing CHECKED BY : -

美特鋁質有限公司  
MIDI ALUMINIUM FABRICATOR LTD.  
Units 6-8, Sunray Industrial Centre, 1/F  
610 Cha Kwo Ling Road, Kowloon  
Tel: 23489211-4 Fax: (852) 27272666

DWG NO. : J837-PTCW-6004 REV. : -



1 TYPICAL TRANSOM DETAIL  
6001 CURTAIN WALL



2 TYPICAL TRANSOM DETAIL  
6001 CURTAIN WALL

B.D. REF :

CLIENT :  
 Sino Land Company Limited

ARCHITECT :  
 WONG TUNG & PARTNERS LIMITED  
 ARCHITECTS & PLANNERS

MAIN CONTRACTOR :  
 CR Construction Company Limited

STRUCTURAL ENGINEER :  
 AECOM

FACADE CONSULTANT :  
 AECOM

NOTE :  
 1. ALL DIMENSIONS ARE IN mm.  
 2. ALL ELEVATIONS ARE VIEWED FROM OUTSIDE.  
 3. ALL DIMENSIONS TO BE VERIFIED ON SITE BEFORE FABRICATION.

LEGEND :  
 (X1) -- DETAIL MARK NO.  
 (X001) -- REFER SHEET NO.

1. F.F.L. -- FINISHED FLOOR LEVEL  
 2. S.F.L. -- STRUCTURAL FLOOR LEVEL  
 3. (R) -- REVERSED DETAIL

NO.	DATE	REVISED	BY

JOB NO. : J-837  
 PROJECT :  
 URA KWUN TONG TOWN CENTRE  
 REDEVELOPMENT (AREA 2 & 3) AT  
 NKIL 6514, KWUN TONG, KWLOON

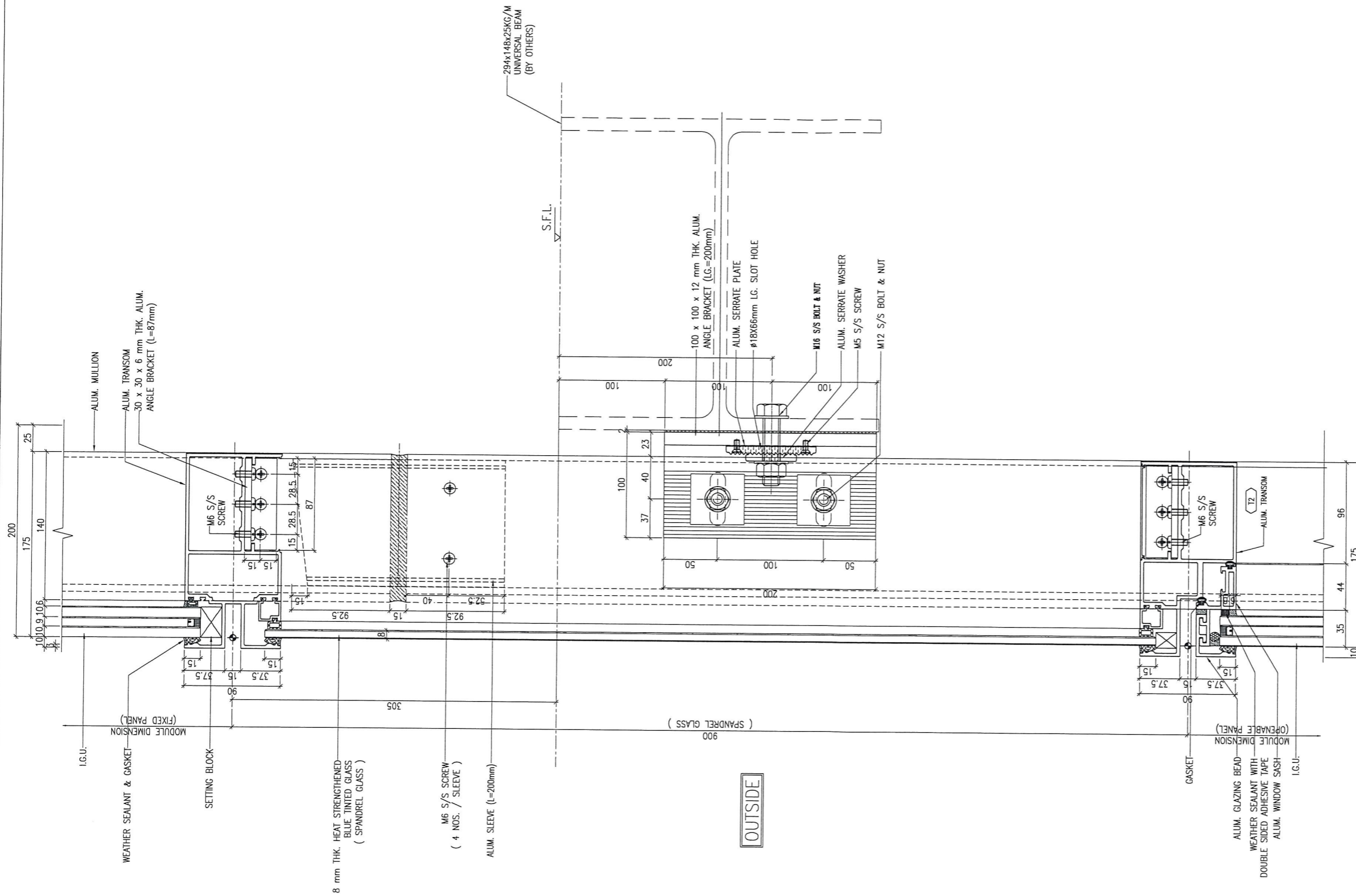
TITLE :  
 TYPICAL TRANSOM DETAIL  
 FOR CURTAIN WALL  
 PERFORMANCE TEST

DATE : 10-SEP-18 SCALE : 1:2 (A1)  
 DRAWN BY : ASING CHECKED BY : -

MIDI ALUMINUM FABRICATOR LTD.  
 Units 6-8, Sunray Industrial Centre, 1/F  
 610 Cha Kwo Ling Road, Kowloon  
 Tel: 23489211-4 Fax: (852) 27727666

DWG NO. : J837-PTCW-6001 REV. : -





1 TYPICAL TRANSOM DETAIL  
6005 CURTAIN WALL

B.D. REF :

CLIENT :  
信和置業有限公司  
Sino Land Company Limited

ARCHITECT :  
WONG TUNG & PARTNERS LIMITED  
ARCHITECTS & PLANNERS  
WT

MAIN CONTRACTOR :  
CR Construction Company Limited

STRUCTURAL ENGINEER :  
AECOM

FACADE CONSULTANT:  
AECOM

NOTE :  
1. ALL DIMENSIONS ARE IN mm.  
2. ALL ELEVATIONS ARE VIEWED FROM OUTSIDE.  
3. ALL DIMENSIONS TO BE VERIFIED ON SITE BEFORE FABRICATION.

LEGEND :  
X1 — DETAIL MARK NO.  
X001 — REFER SHEET NO.  
1. F.F.L. — FINISHED FLOOR LEVEL  
2. S.F.L. — STRUCTURAL FLOOR LEVEL  
3. (R) — REVERSED DETAIL

NO.	DATE	REVISED	BY

JOB NO. : J-837  
PROJECT :  
URA KWUN TONG TOWN CENTRE  
REDEVELOPMENT (AREA 2 & 3) AT  
NKIL 6514, KWUN TONG, KWLOON

TITLE :  
TYPICAL TRANSOM DETAIL  
FOR CURTAIN WALL  
PERFORMANCE TEST

DATE : 10-SEP-18 SCALE : 1:2 (A1)

DRAWN BY : ASING CHECKED BY : -

英特鋁質有限公司  
MIDI ALUMINIUM FABRICATOR LTD.  
Units 6-8, Sunroy Industrial Centre, 1/F  
610 Cha Kwo Ling Road, Kowloon  
Tel:23489211-4 Fax:(852)27727666

DWG NO. : J837-PTCW-6005 REV. : -