



工程指示 / 要求簡箋(E.I.)

工程指示編號：EI / 1551 / 18

修改版次：-

工程編號：J - 837

工程名稱：觀塘裕民坊

工程項目：幕牆 後做位位置

收件人：生統 / 炳哥

發件人：Eric Liu

日期：27/07/2018

要求提供 / 確認 事項：

- ( ) 初步鋁料 B.M.                      ( ) 加工拆圖，然後生產                      ( ) 尺寸表
- ( ) 正式鋁料 B.M.                      ( ) 技術上資料 / 指示                      ( ) 報價
- ( ) 配件 B.M.                              ( ) 樣辦或貨品說明書                      ( ) 分判合約
- ( ) 其他：\_\_\_\_\_

內容：

附上幕牆後做位位置，請留意

註：尚欠狗臂架位置

謝謝！

請在 2018/ 07 / 28 前完成上列要求。

附：4 頁

以上項目為：

- 原合約工程包                       原合約工程加 / 減賬                       新工程報價

原因：-

分發東莞各部門：

- ( ) 生產技術總監  連附件    ( ) 技術部  連附件    ( ) 生產部  連附件    ( ) 機械設計部  連附件
  - ( ) 採購部  連附件    ( ) 生產統籌部  連附件
  - ( ) 質檢部  連附件    ( ) 會計部  連附件    ( ) 報關組  連附件    ( ) 其他 楊榮輝  連附件
- 分發其他分判：

分發香港各部門：

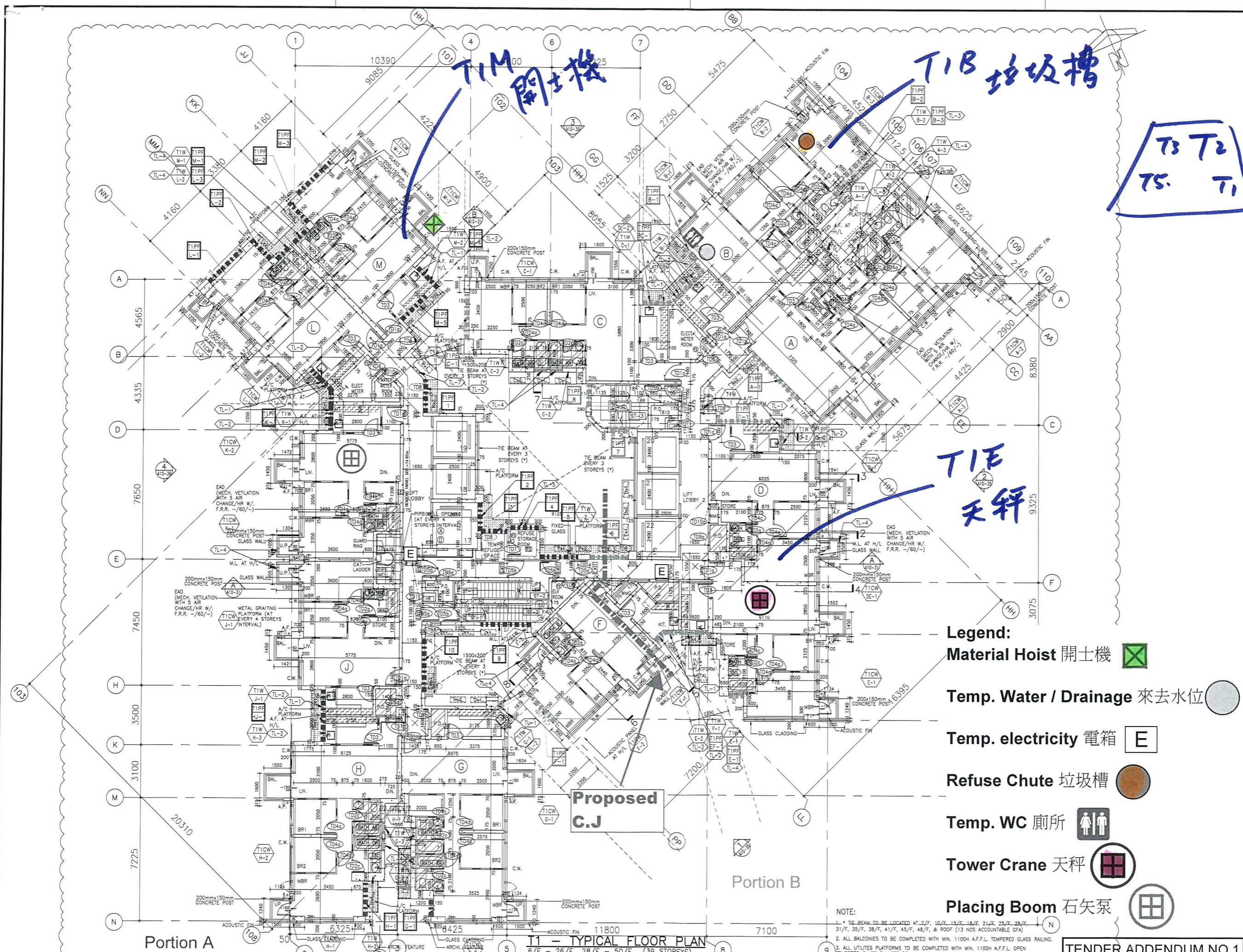
- ( ) 行政部  連附件    ( ) 會計部  連附件    ( ) 統籌部  連附件    ( ) 工程部地盤科文  連附件 炳哥/祥哥
- ( ) 採購部  連附件    ( ) QS 部  連附件    ( ) 維修部  連附件    ( ) 其他 \_\_\_\_\_  連附件

傳遞編號：

HK 1139 / 18

發件人簽署：

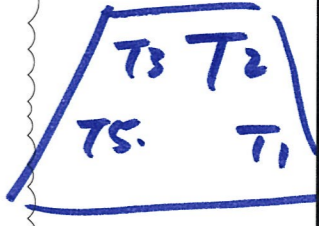
項目經理簽署：



B.D. REFERENCE NUMBER:

**NOTES**  
DO NOT SCALE DRAWING, FIGURED DIMENSIONS ARE TO BE FOLLOWED.  
READ THIS DRAWING IN CONNECTION WITH GENERAL ARCHITECTURAL PLANS, STRUCTURAL PLANS, AND OTHER RELATED DRAWINGS, THE ARCHITECT SHALL BE NOTIFIED IMMEDIATELY OF ANY DISCREPANCY FOUND THEREIN.  
COPYRIGHT OF THIS DRAWING RESERVED BY ARCHITECT.

- LEGEND :**
- TOWER NUMBER  
UNIT NAME
  - TOWER NUMBER  
PRECAST FACIAD (PRECAST FACIAD DRAWING REFER TO THE TOWER NUMBER)
  - DOOR MARK  
(DOOR SCHEDULE REFER TO THE TOWER NUMBER)
  - OUTDOOR A/C UNIT  
(SHAWL AND METAL BY ARCHITECT USE)
  - NO. OF A/C UNITS  
UNIT NAME
  - SUNKEN SLAB 400mm DEPTH FROM S.F.L.
  - SUNKEN SLAB 250mm DEPTH FROM S.F.L.
  - PRECAST FACIAD (P.F.)
  - BLOCK WALL
  - CURTAIN WALL (C.W.)
  - CURB BY TOWER MAIN CONTRACTOR
  - REVERSED TYPE
  - TYPE A
  - BATHROOM MARK
  - TYPE A
  - STORE MARK
  - 1) DENOTES ROOMS WITH SIGNAGE ON DOOR REFER A170 SERIES.  
2) ALL DOORS OR ACCESS PANELS TO P.O.(PIPE DUCT), W.M.(WATER METER CABINET), F.S. (CHECK METER, ELECT. METER, EL./ELV. ROOM OR DUCT WILL ALSO BE PROVIDED WITH SIGNAGE ON DOOR PER A170 SERIES DETAIL.
  - LOUVRE MARK  
(SHAWL DRAWING REFER TO THE TOWER NUMBER)



- Legend:**
- Material Hoist 開士機
  - Temp. Water / Drainage 來去水位
  - Temp. electricity 電箱
  - Refuse Chute 垃圾槽
  - Temp. WC 廁所
  - Tower Crane 天秤
  - Placing Boom 石矢泵

| NO. | DATE       | REVISIONS            | ISSUED | CHECKED | DESIGNED | REVIEWED |
|-----|------------|----------------------|--------|---------|----------|----------|
| 04  | 18/4/2017  | TENDER ADDENDUM NO.1 |        |         |          |          |
| 03  | 21/7/2017  | TENDER               |        |         |          |          |
| 02  | 10/7/2017  | PRE-TENDER           |        |         |          |          |
| 01  | 23/12/2016 | PRE-TENDER           |        |         |          |          |



**WONG TUNG & PARTNERS LIMITED**  
ARCHITECTS & PLANNERS  
18th Floor, Cityplaza 3, Taikoo Shing, Hong Kong  
T 952-2655 9889 F 952-2513 1728 www.wongtung.com

**PROJECT:**  
URA KWUN TONG TOWN CENTRE REDEVELOPMENT (AREA 2 & 3) AT NKIL 6514, KWUN TONG, KOWLOON

**TITLE:**  
T1  
TYPICAL FLOOR PLAN

| DATE    | SCALE |
|---------|-------|
| 12/2016 | 1:100 |

| JOB NO. | DRAWING NO. | REV. NO. |
|---------|-------------|----------|
| 31690   | T/A120/12   | (04)     |

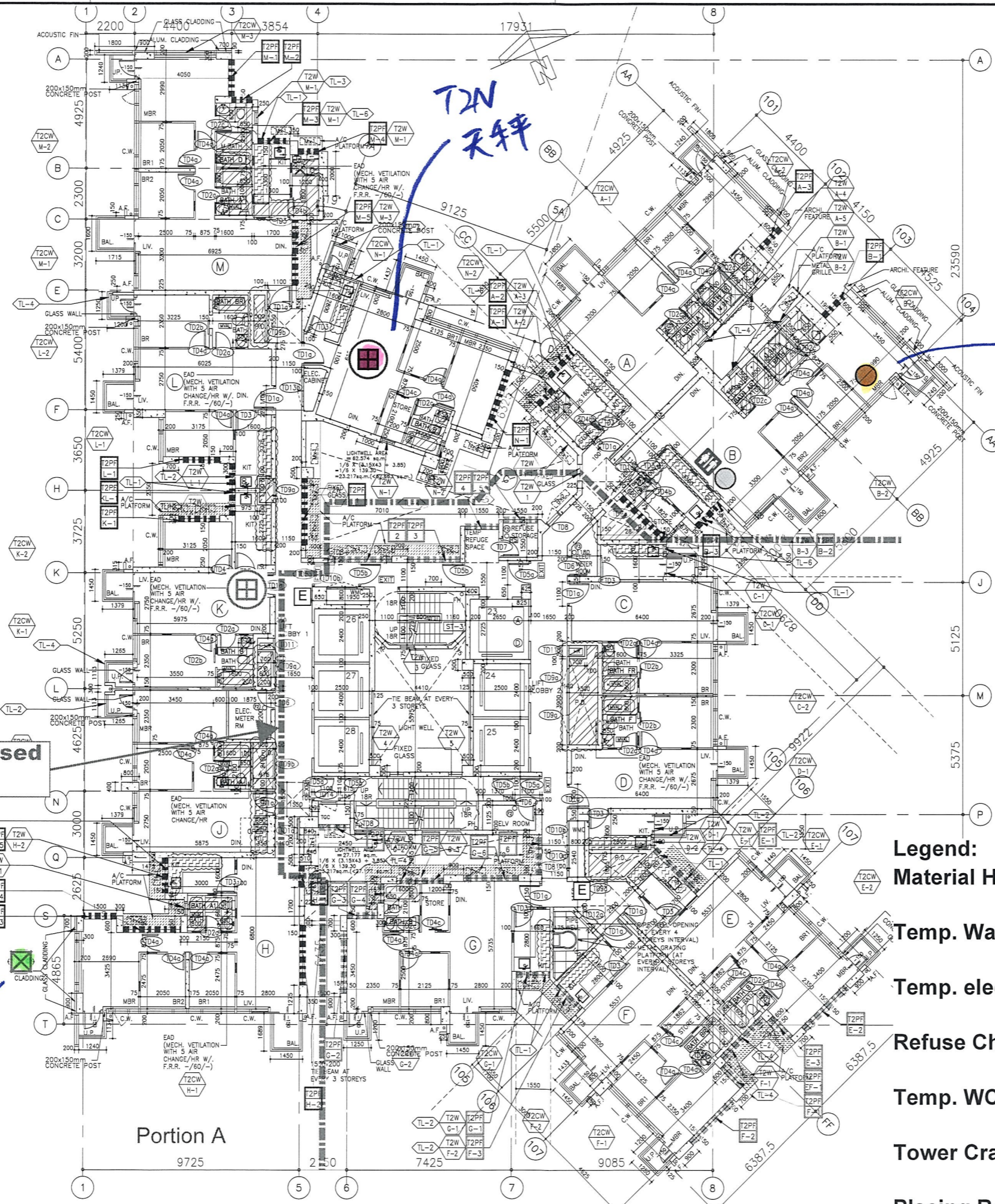
**NOTE:**  
1. TIE-BEAM TO BE LOCATED AT 2/F, 10/F, 15/F, 18/F, 21/F, 25/F, 28/F, 31/F, 35/F, 38/F, 41/F, 45/F, 48/F, & ROOF (13 NOS ACCOUNTABLE GFA)  
2. ALL BALCONIES TO BE COMPLETED WITH MIN. 1100H A.F.F.L. TEMPERED GLASS RAILING.  
3. ALL UTILITIES PLATFORMS TO BE COMPLETED WITH MIN. 1100H A.F.F.L. OPEN TEMPERED GLASS BALUSTRADE.

**TENDER ADDENDUM NO.1**

Portion A

Portion B

**T1 - TYPICAL FLOOR PLAN**  
(FLOOR NOS. 13, 14, 24, 34, 44 NOT USED.)



B.D. REFERENCE NUMBER:

**NOTES**  
DO NOT SCALE DRAWING, FIGURED DIMENSIONS ARE TO BE FOLLOWED.  
READ THIS DRAWING IN CONNECTION WITH GENERAL ARCHITECTURAL PLANS, STRUCTURAL PLANS, AND OTHER RELATED DRAWINGS. THE ARCHITECT SHALL BE NOTIFIED IMMEDIATELY OF ANY DISCREPANCY FOUND THEREIN.  
COPYRIGHT OF THIS DRAWING RESERVED BY ARCHITECT.

- LEGEND :**
- TOWER NUMBER
  - CURTAIN WALL (GLASS CLADDING AND SLIDING DOOR OR FREEDOM DOOR, IF ANY)
  - WINDOW (WHICH SHOULD REFER TO THE 1/16" SERIES)
  - PRECAST FACADE (WHICH SHOULD REFER TO THE 1/16" SERIES)
  - DOOR MARK (WHICH SHOULD REFER TO THE 1/16" SERIES)
  - OUTDOOR A/C UNIT (WHICH SHOULD REFER TO THE 1/16" SERIES)
  - SUNKEN SLAB 400mm DEPTH FROM S.F.L.
  - SUNKEN SLAB 250mm DEPTH FROM S.F.L.
  - PRECAST FACADE (P.F.)
  - BLOCK WALL
  - CURB BY TOWER MAIN CONTRACTOR
  - BATH ROOM (WHICH SHOULD REFER TO THE 1/16" SERIES)
  - STORE MARK
  - LOUVRE MARK (WHICH SHOULD REFER TO THE 1/16" SERIES)

| NO. | DATE       | REVISIONS  |
|-----|------------|------------|
| 03  | 01/2017    | TENDER     |
| 02  | 2017       | PRE-TENDER |
| 01  | 23/12/2016 | PRE-TENDER |



**WONG TUNG & PARTNERS LIMITED**  
ARCHITECTS & PLANNERS  
16th Floor, Cityplaza 3, Tai Koo Shing, Hong Kong  
T 852-2893 9980 F 852-2913 1728 www.wongtung.com

**PROJECT:**  
URA KWUN TONG TOWN CENTRE REDEVELOPMENT (AREA 2 & 3) AT NKIL 6514, KWUN TONG, KOWLOON

**TITLE:**  
T2  
TYPICAL FLOOR PLAN

| DATE    | SCALE |
|---------|-------|
| 12/2016 | 1:100 |

| DRAWN | CHECKED   | DESIGNED | REVIEWED |
|-------|-----------|----------|----------|
| (N/P) | (C/L)     | (P/S)    | (O/T)    |
| 31690 | T/A120/16 |          | (03)     |

- Legend:**
- Material Hoist 開土機
  - Temp. Water / Drainage 來去水位
  - Temp. electricity 電箱
  - Refuse Chute 垃圾槽
  - Temp. WC 廁所
  - Tower Crane 天秤
  - Placing Boom 石矢泵

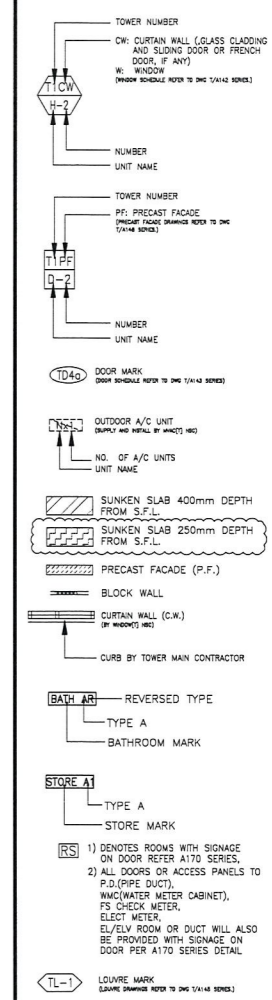
**NOTE:**  
1. \* THE BEAM TO BE LOCATED AT 7/F, 10/F, 15/F, 18/F, 21/F, 25/F, 28/F, 31/F, 35/F, 38/F, 41/F, 45/F, 48/F, 51/F, 55/F (15 NOS ACCOUNTABLE GFA)  
2. ALL BALCONIES TO BE COMPLETED WITH MIN. 1100H A.F.F.L. TEMPERED GLASS RAILING.  
3. ALL UTILITIES PLATFORMS TO BE COMPLETED WITH MIN. 1100H A.F.F.L. OPEN TEMPERED GLASS BALUSTRADE.

**T2 - TYPICAL FLOOR PLAN**  
6/F - 26/F 28/F - 55/F (43 STOREYS)  
(FLOOR NOS. 13, 14, 24, 34, 44, 54 NOT USED.)

B.D. REFERENCE NUMBER:

**NOTES**  
DO NOT SCALE DRAWING, FIGURED DIMENSIONS ARE TO BE FOLLOWED.  
READ THIS DRAWING IN CONNECTION WITH GENERAL ARCHITECTURAL PLANS, STRUCTURAL PLANS, AND OTHER RELATED DRAWINGS. THE ARCHITECT SHALL BE NOTIFIED IMMEDIATELY OF ANY DISCREPANCY FOUND THEREIN.  
COPYRIGHT OF THIS DRAWING RESERVED BY ARCHITECT.

**LEGEND :**



**Legend:**

Material Hoist 開士機

Temp. Water / Drainage 來去水位

Temp. electricity 電箱

Refuse Chute 垃圾槽

Temp. WC 廁所

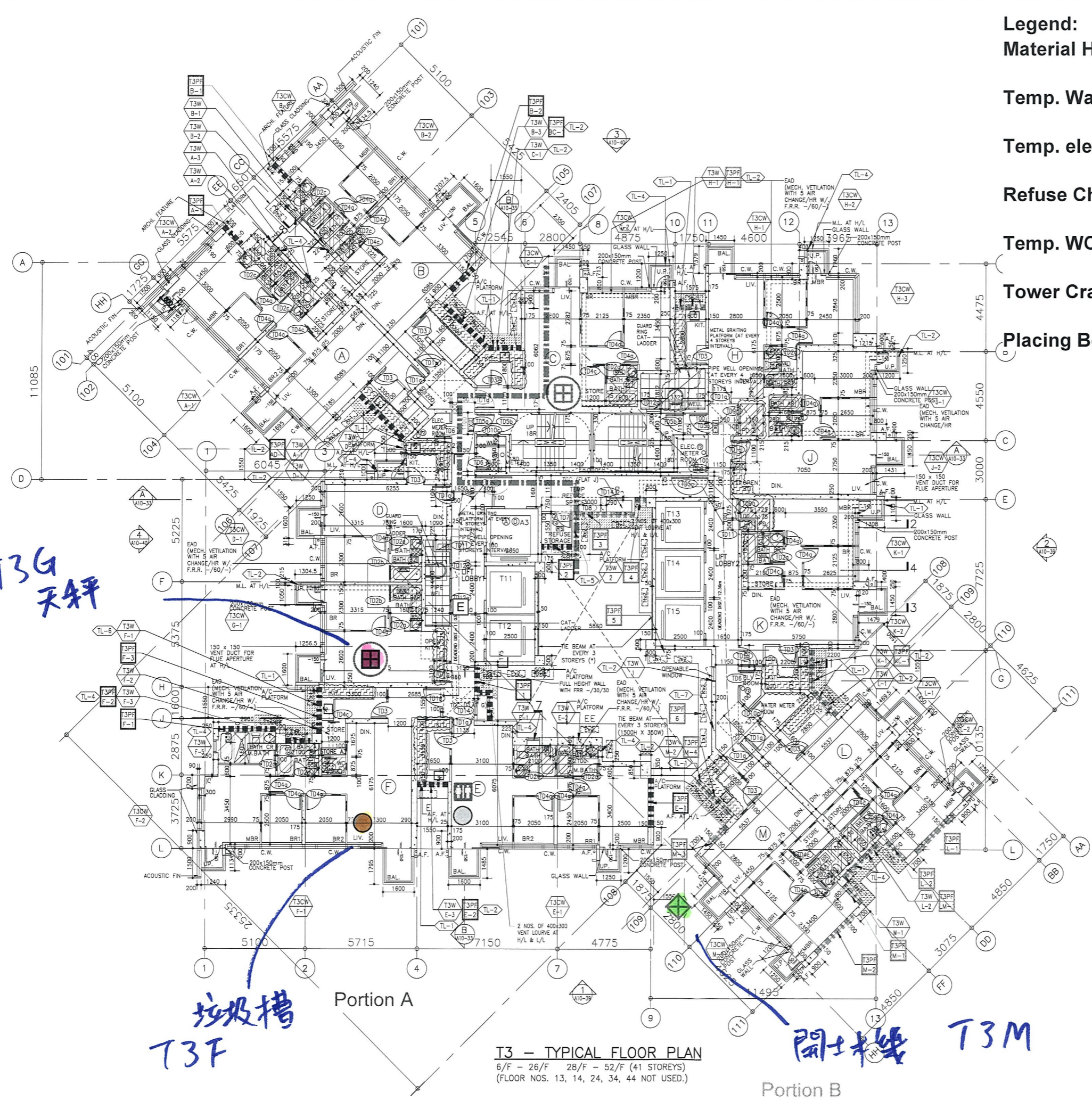
Tower Crane 天秤

Placing Boom 石矢泵

T3G 天秤

垃圾槽 T3F

開士機 T3M



**T3 - TYPICAL FLOOR PLAN**  
6/F - 26/F 28/F - 52/F (41 STOREYS)  
(FLOOR NOS. 13, 14, 24, 34, 44 NOT USED.)

**NOTE:**

- \* THE BEAM TO BE LOCATED AT 7/F, 10/F, 15/F, 18/F, 21/F, 25/F, 28/F, 31/F, 35/F, 38/F, 41/F, 45/F, 48/F, 51/F & ROOF (14 NOS ACCOUNTABLE G/F)
- ALL BALCONIES TO BE COMPLETED WITH MIN. 1100H A.F.F.L. TEMPERED GLASS RAILING
- ALL UTILITIES PLATFORMS TO BE COMPLETED WITH MIN. 1100H A.F.F.L. OPEN TEMPERED GLASS BALUSTRADE.

| NO. | DATE       | REVISIONS  | ISSUED | REVISION |
|-----|------------|------------|--------|----------|
| 03  | 21/2/2017  | TENDER     |        |          |
| 02  | 20/2/2017  | PRE-TENDER |        |          |
| 01  | 23/12/2016 | PRE-TENDER |        |          |



**WONG TUNG & PARTNERS LIMITED**  
ARCHITECTS & PLANNERS  
18th Floor, Cityplaza 3, TaiKoo Shing, Hong Kong  
T 852-2828 8888 F 852-2513 1728 www.wongtung.com

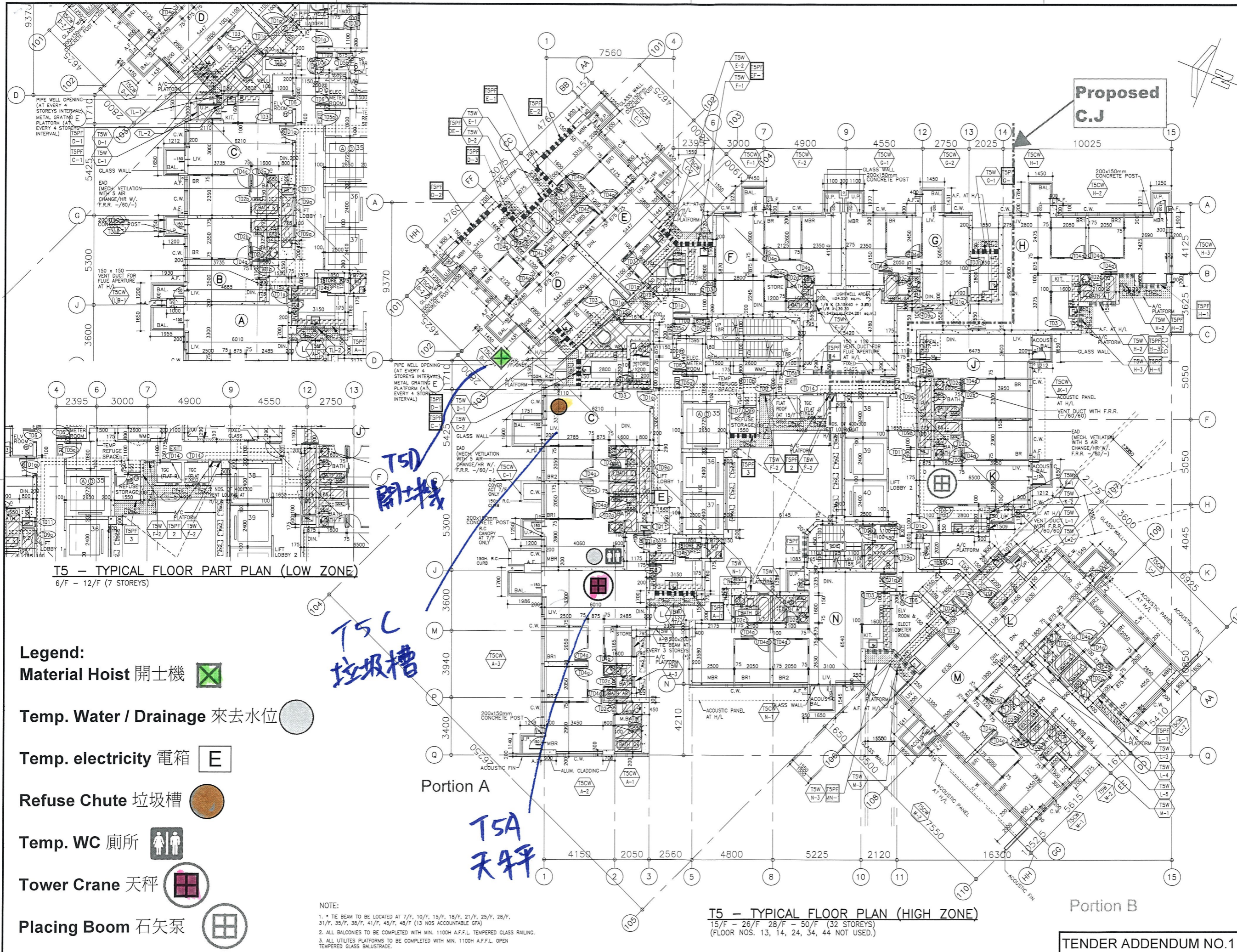
**PROJECT:**  
URA KWUN TONG TOWN  
CENTRE REDEVELOPMENT  
(AREA 2 & 3) AT  
NKIL 6514,  
KWUN TONG, KOWLOON

**TITLE:**  
T3  
TYPICAL FLOOR PLAN

| DATE    | SCALE |
|---------|-------|
| 12/2016 | 1:100 |

| DRAWN (DPC) | CHECKED (CIC) | DESIGNED (PVC) | REVIEWED (COT) |
|-------------|---------------|----------------|----------------|
|             |               |                |                |

| JOB NO. | DRAWING NO. | REV. NO. |
|---------|-------------|----------|
| 31690   | T/A120/19   | (03)     |



T5 - TYPICAL FLOOR PART PLAN (LOW ZONE)  
6/F - 12/F (7 STOREYS)

T5 - TYPICAL FLOOR PLAN (HIGH ZONE)  
15/F - 26/F (32 STOREYS)  
(FLOOR NOS. 13, 14, 24, 34, 44 NOT USED.)

- Legend:**
- Material Hoist 開土機
  - Temp. Water / Drainage 來去水位
  - Temp. electricity 電箱
  - Refuse Chute 垃圾槽
  - Temp. WC 廁所
  - Tower Crane 天秤
  - Placing Boom 石矢泵

NOTE:  
1. \* THE BEAM TO BE LOCATED AT 7/F, 10/F, 15/F, 18/F, 21/F, 25/F, 28/F, 31/F, 35/F, 38/F, 41/F, 45/F, 48/F (13 NOS ACCOUNTABLE GFA)  
2. ALL BALCONIES TO BE COMPLETED WITH MIN. 1100H A.F.F.L. TEMPERED GLASS RAILING.  
3. ALL UTILITIES PLATFORMS TO BE COMPLETED WITH MIN. 1100H A.F.F.L. OPEN TEMPERED GLASS BALUSTRADE.

B.D. REFERENCE NUMBER:

**NOTES**  
DO NOT SCALE DRAWING, FIGURED DIMENSIONS ARE TO BE FOLLOWED.  
READ THIS DRAWING IN CONNECTION WITH GENERAL ARCHITECTURAL PLANS, STRUCTURAL PLANS, AND OTHER RELATED DRAWINGS. THE ARCHITECT SHALL BE NOTIFIED IMMEDIATELY OF ANY DISCREPANCY FOUND THEREIN. COPYRIGHT OF THIS DRAWING RESERVED BY ARCHITECT.

- LEGEND :**
- TOWER NUMBER
  - CH CURTAIN WALL (GLASS CLADDING AND SLIDING DOOR OR FRENCH DOOR, IF ANY)
  - W WOODEN WINDOW (SEE REFER TO DWG T5/HK SERIES)
  - UNIT NAME (L1: LOW ZONE)
  - TOWER NUMBER
  - PF: PRECAST FACADE (SEE REFER TO DWG T5/HK SERIES)
  - NUMBER UNIT NAME
  - DOOR MARK (SEE REFER TO DWG T5/HK SERIES)
  - OUTDOOR A/C UNIT (SEE REFER TO DWG T5/HK SERIES)
  - NO. OF A/C UNITS UNIT NAME
  - SUNKEN SLAB 400mm DEPTH FROM S.F.L.
  - SUNKEN SLAB 250mm DEPTH FROM S.F.L.
  - PRECAST FACADE (P.F.)
  - BLOCK WALL
  - CURTAIN WALL (C.W.)
  - CURB BY TOWER MAIN CONTRACTOR
  - BATH AR REVERSED TYPE
  - TYPE A BATHROOM MARK
  - STORE A1 TYPE A STORE MARK
  - RS 1) DENOTES ROOMS WITH SIGNAGE ON DOOR REFER A170 SERIES, 2) ALL DOORS OR ACCESS PANELS TO P.D.(PIPE DUCT), W.W.(WATER METER CABINET), FS CHECK METER, ELECT METER, ELEVATOR ROOM OR DUCT WILL ALSO BE PROVIDED WITH SIGNAGE ON DOOR PER A170 SERIES DETAIL
  - TL-1 LOUVER MARK (SEE REFER TO DWG T5/HK SERIES)

| NO. | DATE  | REVISIONS  | DRAWN | CHECKED | DESIGNED | REVIEWED |
|-----|-------|------------|-------|---------|----------|----------|
| 04  | 21/12 | TENDER     |       |         |          |          |
| 03  | 12/12 | PRE-TENDER |       |         |          |          |
| 02  | 24/11 | PRE-TENDER |       |         |          |          |
| 01  | 23/11 | PRE-TENDER |       |         |          |          |



**WONG TUNG & PARTNERS LIMITED**  
ARCHITECTS & PLANNERS  
18th Floor, Cityplaza 3, TaiKoo Shing, Hong Kong  
T 852-2803 8888 F 852-2513 1228 www.wongtung.com

PROJECT:  
URA KWUN TONG TOWN CENTRE REDEVELOPMENT (AREA 2 & 3) AT NKIL 6514, KWUN TONG, KOWLOON

TITLE:  
T5 TYPICAL FLOOR PLAN

| DATE    | SCALE |
|---------|-------|
| 12/2016 | 1:100 |

| DRAWN | CHECKED | DESIGNED | REVIEWED |
|-------|---------|----------|----------|
| (DP)  | (ELC)   | (EP)     | (OT)     |

| JOB NO. | DRAWING NO. | REV. NO. |
|---------|-------------|----------|
| 31690   | T/A120/22   | (05)     |

TENDER ADDENDUM NO.1