

工程指示 / 要求簡箋(E.I.)

工程指示編號：EI / 1652 / 20

修改版次：-

工程編號：J - 837

工程名稱：觀塘裕民坊

工程項目：後裝百葉 27/F (T1-T5)

收件人：生統 / 永林

發件人：Eric Liu

日期：01/04/2020

要求提供 / 確認 事項：

- | | | |
|------------------------------------|-------------------------------------|-------------------------------|
| <input type="checkbox"/> 初步鋁料 B.M. | <input type="checkbox"/> 加工拆圖，然後生產 | <input type="checkbox"/> 尺寸表 |
| <input type="checkbox"/> 正式鋁料 B.M. | <input type="checkbox"/> 技術上資料 / 指示 | <input type="checkbox"/> 報價 |
| <input type="checkbox"/> 配件 B.M. | <input type="checkbox"/> 樣辦或貨品說明書 | <input type="checkbox"/> 分判合約 |
| <input type="checkbox"/> 其他：_____ | | |

內容：

請按加工圖生產百葉送地盤安裝(T1-T5)

27/F 位置

請留意: 150SO 百葉按 EI1540A 款式做

謝謝！

請在 2020 / 04 / 10 前完成上列要求。

附：1 頁圖登，8 頁加工圖，4 頁位置圖

以上項目為：

- 原合約工程包 原合約工程加 / 減賬 新工程報價

原因：-

分發東莞各部門：

- () 生產技術總監 連附件 () 技術部 連附件 永林 () 生產部 連附件 () 機械設計部 連附件
 () 採購部 連附件 () 生產統籌部 連附件 梅
 () 質檢部 連附件 () 會計部 連附件 () 報關組 連附件 () 其他 楊榮輝 連附件

分發香港各部門：

- () 行政部 連附件 () 會計部 連附件 () 統籌部 連附件 () 工程部地盤科文 連附件 炳奇/有奇
 () 採購部 連附件 () QS 部 連附件 () 維修部 連附件 () 其他 _____ 連附件


傳遞編號：

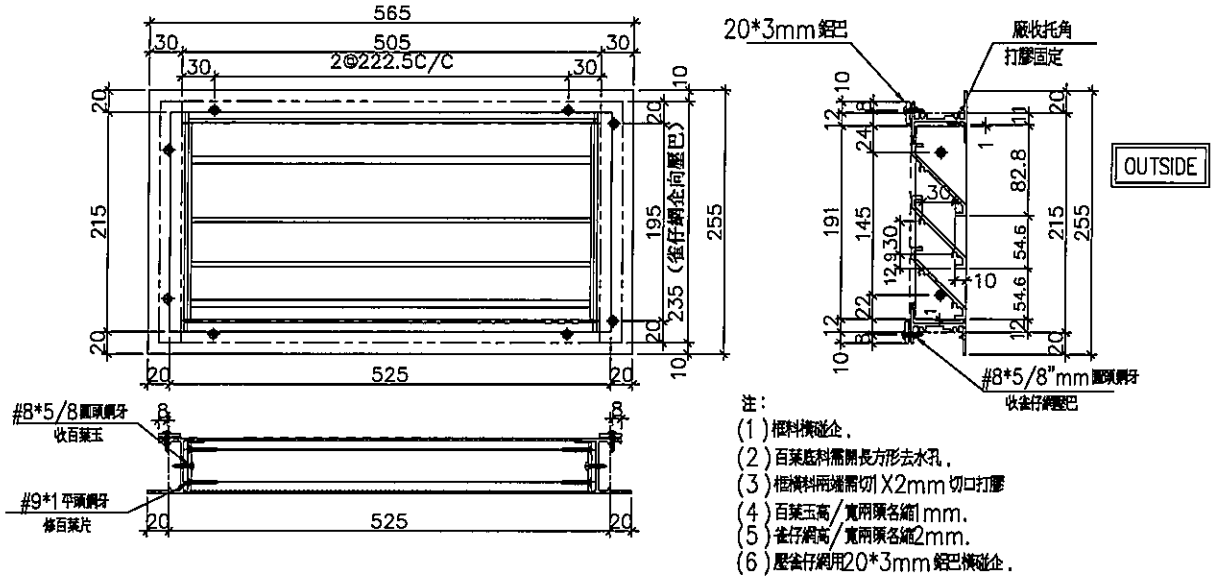
HK 0494 / 20

發件人簽署：


項目經理簽署：

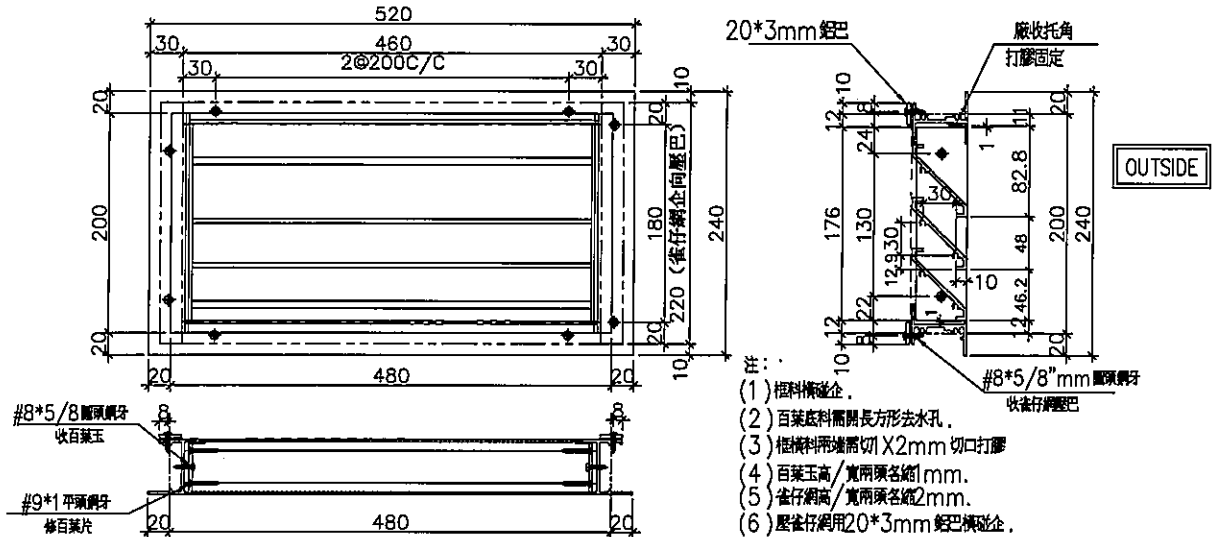
Eric Liu
PPZ

 美特鋁質 有限公司 MIDI Aluminium Fabricator Ltd.	工程號	J837	拆圖	鞠章芳	2020.3.02
	地盤	觀塘裕民坊	復核	謝永林	2020.3.04
名稱	後裝百葉	顏色	EC-DG-S332054 (3塗)	批准	Jason




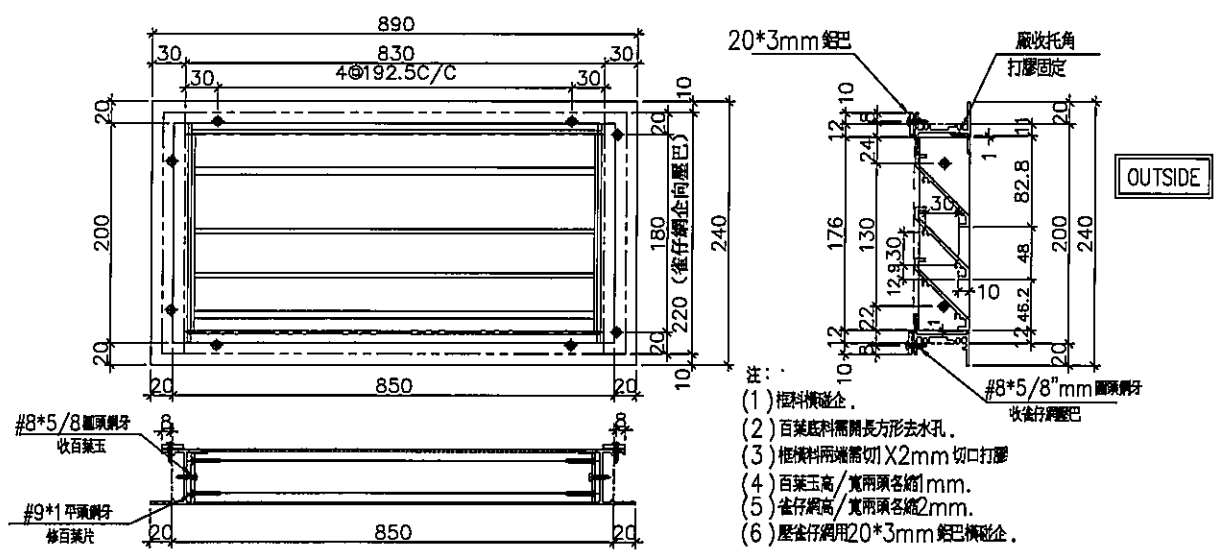
序號	料號	名稱	出荷	長度 (mm)	支/幅	加工說明	加工細則				
1	X845990	邊企料		255.0	2		頂留	20	mm		
2	X846400	窗框頂橫	避位	499	1		底留	20	mm		
3	X846400	窗框底橫	避位	499	1		企料底部開避位		mm		
4	20*3鋁巴	壓巴(橫)	直口	505	2		底橫料防水巴鋸去		mm		
5	20*3鋁巴	壓巴(企)	直口	235	2		水線孔在企料-----	頂	底		
							安裝扣碼				
							多點鎖芯型號:				
							手柄型號:				
							限位撐型號:				
							T窗最大的開度:				
							窗玉搭位數:				
							窗款	寬度	高度	隻/幅	撐長
序號	料號	名稱	寬度 (mm)	長度 (mm)	支/幅	加工說明					
1		雀仔網	541	231	1		大圖版次		本圖版		
		百葉玉用料						日期			
							窗号	寬度 (W)	高度 (H)	幅数	樓層數
序號	料號	名稱	出荷	長度 (mm)	支/幅	加工說明	TL-23	525	215	1	T1-27/F
1	ME0002318	百葉玉鋁巴	避位	191	2						
2	X843331	百葉片	避位	485	3						
3	X844890	百葉托角	直口	485	1						
							圖號	TL-23			

 美特鋁質 有限公司 MIDI Aluminium Fabricator Ltd.	工程號	J837	拆圖	鞠章芳	2020.3.02
	地盤	觀塘裕民坊	復核	謝永林	2020.3.04
名稱	後裝百葉	顏色	EC-DG-S332054 (3塗)	批准	Jason




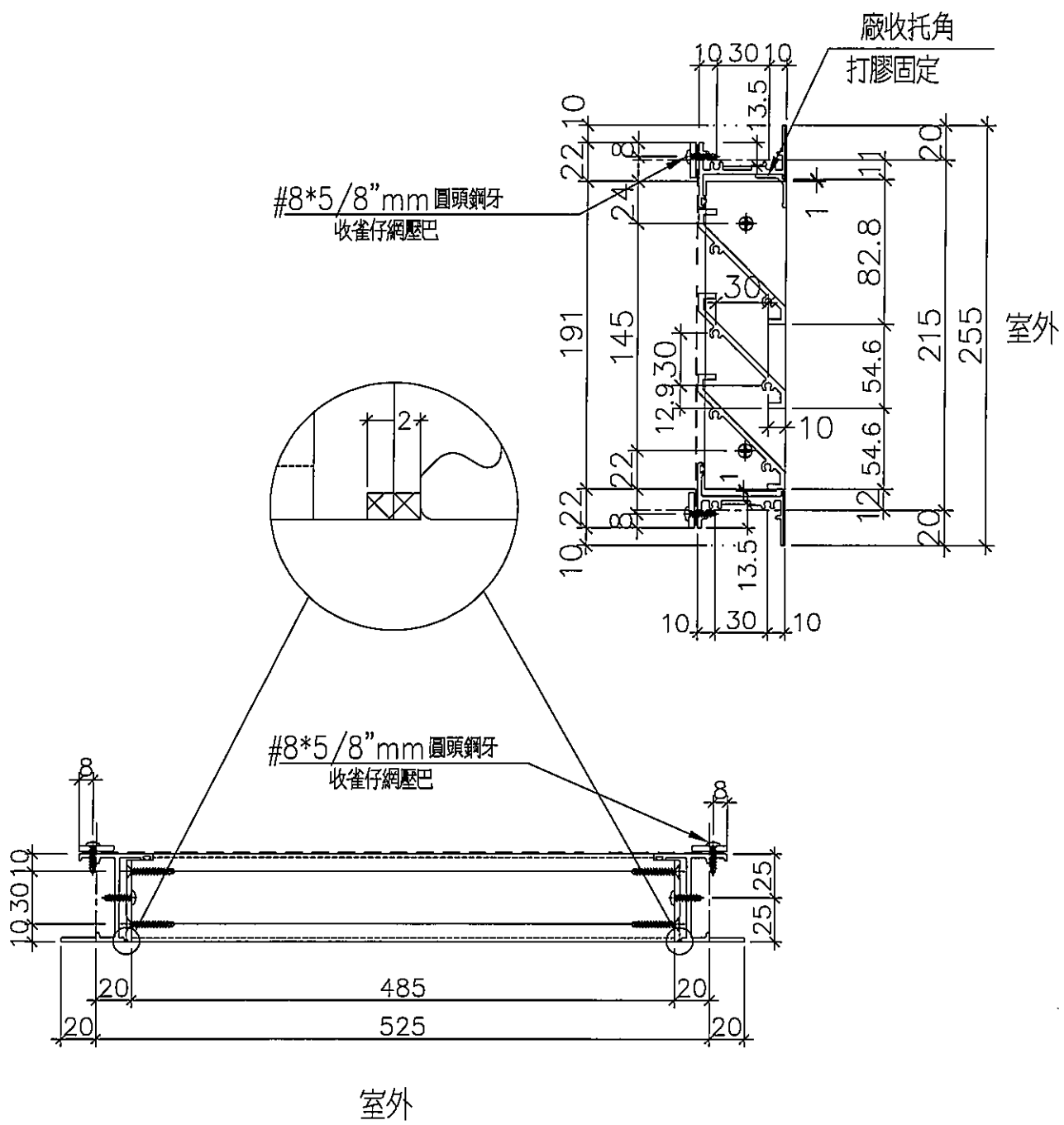
序號	料號	名稱	出荷	長度 (mm)	支/幅	加工說明	加工細則				
1	X845990	邊企料		240.0	2		頂留	20	mm		
2	X846400	窗框頂橫	避位	454	1		底留	20	mm		
3	X846400	窗框底橫	避位	454	1		企料底部開避位		mm		
4	20*3鋁巴	壓巴(橫)	直口	460	2		底橫料防水巴鋸去		mm		
5	20*3鋁巴	壓巴(企)	直口	220	2		水線孔在企料-----	頂	底		
							安裝扣碼				
							多點鎖芯型號:				
							手柄型號:				
							限位撐型號:				
							T窗最大的開度:				
							窗玉搭位數:				
							窗款	寬度	高度	隻/幅	撐長
序號	料號	名稱	寬度 (mm)	長度 (mm)	支/幅	加工說明					
1		雀仔網	496	216	1		大圖版次		本圖版		
									日期		
							窗号	寬度 (W)	高度 (H)	幅数	樓層數
序號	料號	名稱	出荷	長度 (mm)	支/幅	加工說明	TL-28	480	200	1	T3-27/F
1	ME0002318	百葉玉鋁巴	避位	176	2						
2	X843331	百葉片	避位	440	3						
3	X844890	百葉托角	直口	440	1						
							圖號	TL-28			

 美特鋁質 有限公司 MIDI Aluminium Fabricator Ltd.	工程號	J837	拆圖	鞠章芳	2020.3.02
	地盤	觀塘裕民坊	復核	謝永林	2020.3.04
名稱	後裝百葉	顏色	EC-DG-S332054 (3塗)	批准	Jason



序號	料號	名稱	出荷	長度 (mm)	支/幅	加工說明	加工細則				
1	X845990	邊企料		240.0	2		頂留	20	mm		
2	X846400	窗框頂橫	避位	824	1		底留	20	mm		
3	X846400	窗框底橫	避位	824	1		企料底部開避位		mm		
4	20*3鋁巴	壓巴(橫)	直口	830	2		底橫料防水巴鋸去		mm		
5	20*3鋁巴	壓巴(企)	直口	220	2		水線孔在企料-----	頂	底		
							安裝扣碼				
							多點鎖芯型號:				
							手柄型號:				
							限位撐型號:				
							T窗最大的開度:				
							窗玉搭位數:				
							窗款	寬度	高度	隻/幅	撐長
序號	料號	名稱	出荷	長度 (mm)	支/幅	加工說明					
1		雀仔網		866	1		大圖版次		本圖版		
									日期		
							窗號	寬度 (W)	高度 (H)	幅數	樓層數
序號	料號	名稱	出荷	長度 (mm)	支/幅	加工說明	TL-30	850	200	2	T5-27/F
1	ME0002318	百葉玉鋁巴	避位	176	2						
2	X843331	百葉片	避位	810	3						
3	X844890	百葉托角	直口	810	1						
							圖號	TL-30			

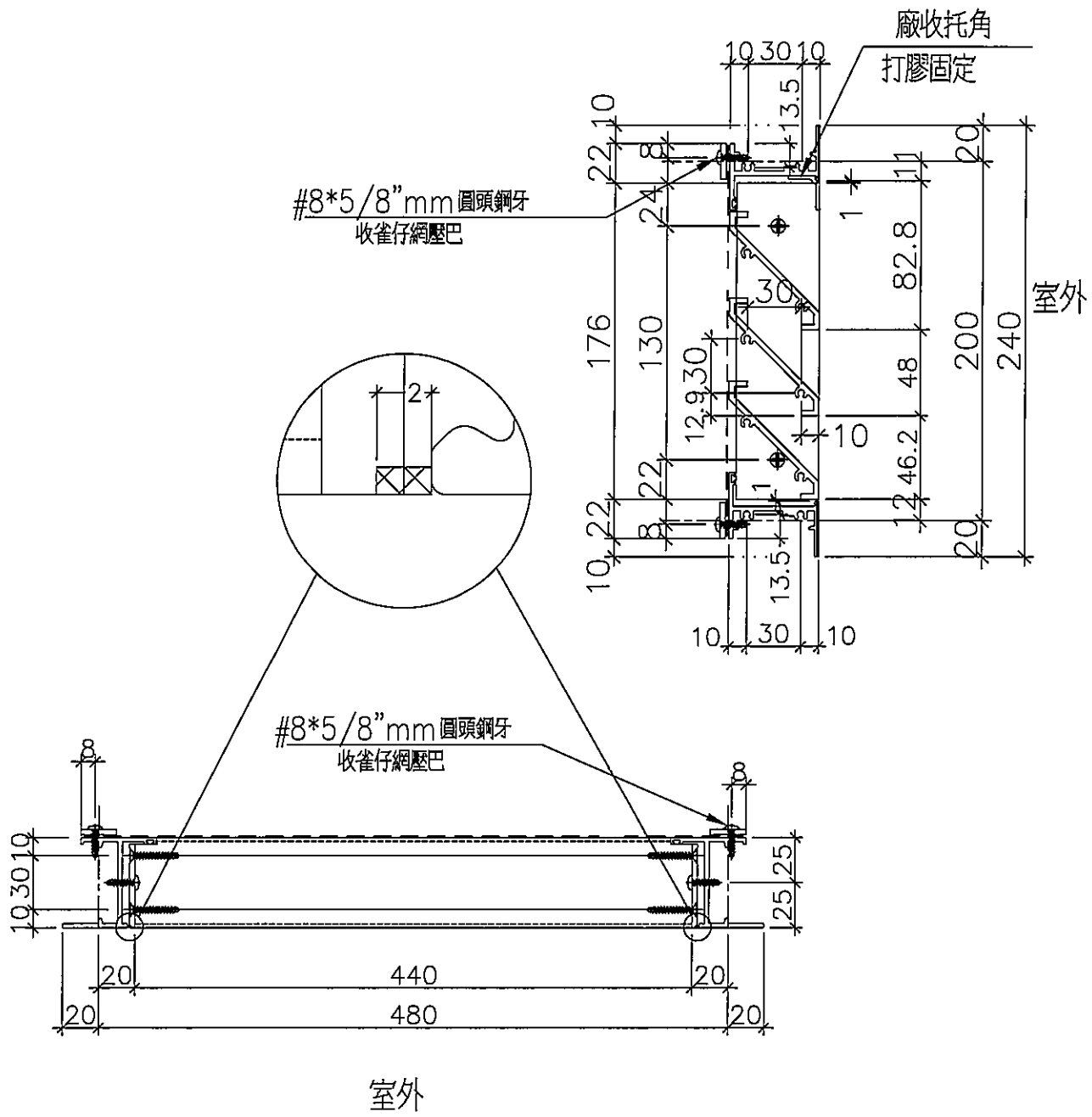
 美特鋁質 有限公司 MIDI Aluminium Fabricator Ltd.				位置	
				TL-23	
工程號	J837	地盤	觀塘裕民坊		



後裝百葉(雀仔網)

名稱	後裝百葉節點示意圖	制圖	鞠章芳	2020.3.02	修改		
材料	—	復核	謝永林	2020.3.04	日期		
顏色	EC-DG-S332054 (3塗)	批准	Jason		圖號	837-WB28	

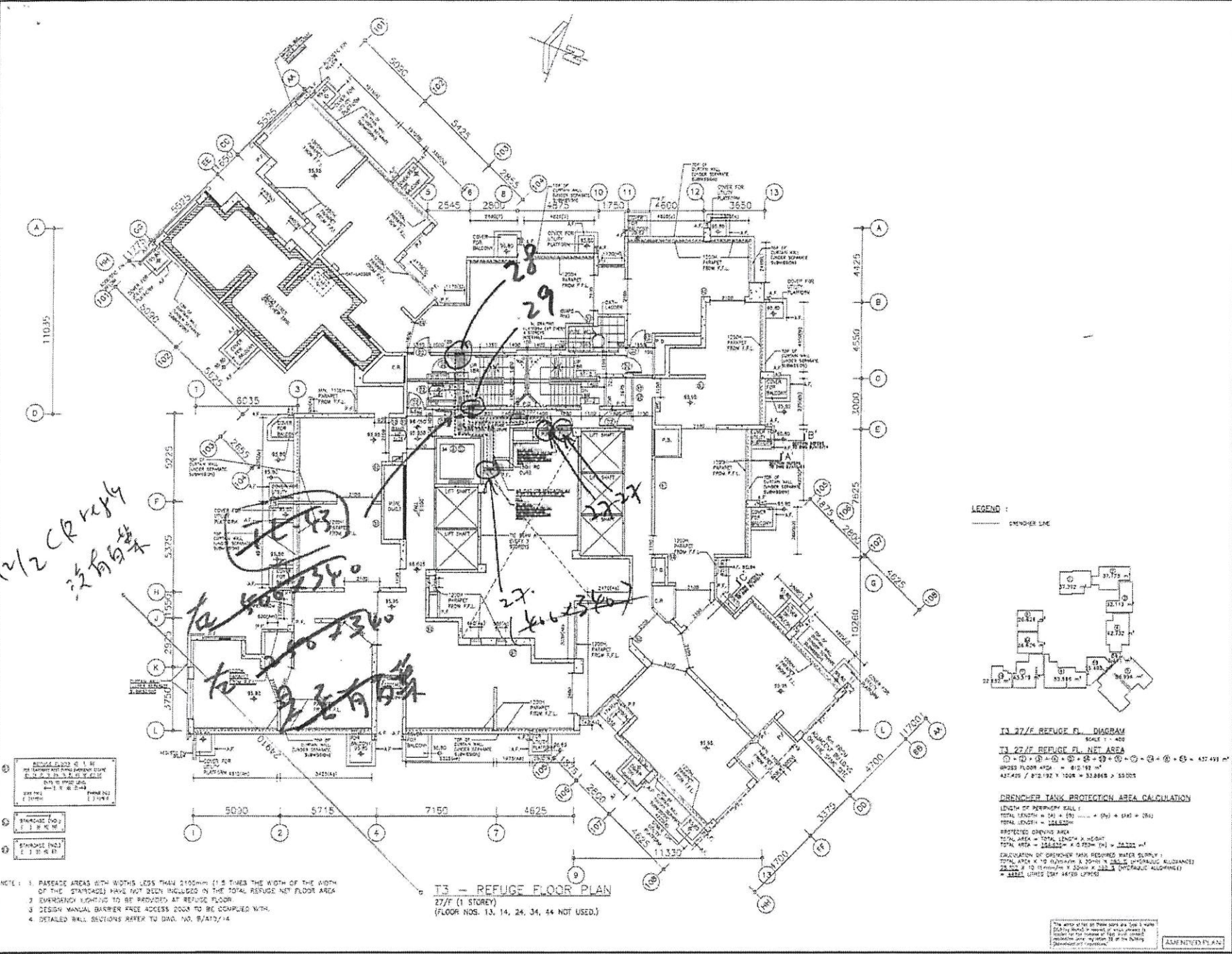
 美特鋁質 有限公司 MIDI Aluminium Fabricator Ltd.	位置		
	TL-28		
工程號	J837	地盤	觀塘裕民坊



後裝百葉(雀仔網)

名稱	後裝百葉節點示意圖	制圖	鞠章芳	2020.3.02	修改		
材料	—	復核	謝永林	2020.3.04	日期		
顏色	EC-DG-S332054 (3塗)	批准	Jason		圖號	837-WB30	

NOTES
DO NOT SCALE DRAWING. FIELD DIMENSIONS ARE TO BE FOLLOWED.
NOTE THE SHADING IN CONNECTION WITH GENERAL ARCHITECTURAL PLANS, STRUCTURAL PLANS AND OTHER RELATED DRAWINGS. THE SHADING SHALL BE KEPT OR MODIFIED BY ANY SUBSEQUENT FLOOR PLANS.
CONTRACTOR TO BE RESPONSIBLE FOR THE SHADING RECEIVED BY ARCHITECT.

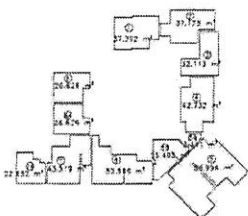


①	STAIRCASE (NO. 1)	1.2 M x 1.2 M
②	STAIRCASE (NO. 2)	1.2 M x 1.2 M
③	STAIRCASE (NO. 3)	1.2 M x 1.2 M

- NOTE 1. PARKING AREAS WITH WIDTHS LESS THAN 2100MM (1/3 TIMES THE WIDTH OF THE STAIRCASE) HAVE NOT BEEN INCLUDED IN THE TOTAL REFUGE NET FLOOR AREA
2. EMERGENCY LIGHTING TO BE PROVIDED AT REFUGE FLOOR
3. DESIGN MANUAL BARRIER FREE ACCESS DOORS TO BE COMPLIED WITH
4. DETAILED WALL SECTIONS REFER TO DWG. NO. B/A10/14

T3 - REFUGE FLOOR PLAN
27/F (1 STOREY)
(FLOOR NOS. 13, 14, 24, 34, 44 NOT USED.)

LEGEND:
--- DIMENSION LINE



T3 27/F REFUGE FLOOR DIAGRAM
T3 27/F REFUGE FLOOR NET AREA
TOTAL LENGTH = (24 + 28 + 29 + 30) = 110.00 M
TOTAL WIDTH = (4.3 + 4.3 + 4.3 + 4.3) = 17.20 M
TOTAL AREA = 1902.00 M²

DRENCHER TANK PROTECTION AREA CALCULATION
LENGTH OF PERIMETER WALL:
TOTAL LENGTH = (24 + 28 + 29 + 30) = 110.00 M
TOTAL WIDTH = 17.20 M
PROTECTED OPENING AREA
TOTAL AREA = TOTAL LENGTH x HEIGHT
TOTAL AREA = 110.00 M x 0.75 M = 82.50 M²
CALCULATION OF DRENCHER TANK REQUIRED WATER SUPPLY:
TOTAL AREA x 10 LITRES/M² x 30 MIN x 1.25 = 412.50 M³

21	NO. 1	NO. 1	NO. 1
22	NO. 2	NO. 2	NO. 2
23	NO. 3	NO. 3	NO. 3
24	NO. 4	NO. 4	NO. 4
25	NO. 5	NO. 5	NO. 5
26	NO. 6	NO. 6	NO. 6
27	NO. 7	NO. 7	NO. 7
28	NO. 8	NO. 8	NO. 8
29	NO. 9	NO. 9	NO. 9
30	NO. 10	NO. 10	NO. 10
31	NO. 11	NO. 11	NO. 11
32	NO. 12	NO. 12	NO. 12
33	NO. 13	NO. 13	NO. 13
34	NO. 14	NO. 14	NO. 14
35	NO. 15	NO. 15	NO. 15
36	NO. 16	NO. 16	NO. 16
37	NO. 17	NO. 17	NO. 17
38	NO. 18	NO. 18	NO. 18
39	NO. 19	NO. 19	NO. 19
40	NO. 20	NO. 20	NO. 20
41	NO. 21	NO. 21	NO. 21
42	NO. 22	NO. 22	NO. 22
43	NO. 23	NO. 23	NO. 23
44	NO. 24	NO. 24	NO. 24
45	NO. 25	NO. 25	NO. 25
46	NO. 26	NO. 26	NO. 26
47	NO. 27	NO. 27	NO. 27
48	NO. 28	NO. 28	NO. 28
49	NO. 29	NO. 29	NO. 29
50	NO. 30	NO. 30	NO. 30
51	NO. 31	NO. 31	NO. 31
52	NO. 32	NO. 32	NO. 32
53	NO. 33	NO. 33	NO. 33
54	NO. 34	NO. 34	NO. 34
55	NO. 35	NO. 35	NO. 35
56	NO. 36	NO. 36	NO. 36
57	NO. 37	NO. 37	NO. 37
58	NO. 38	NO. 38	NO. 38
59	NO. 39	NO. 39	NO. 39
60	NO. 40	NO. 40	NO. 40
61	NO. 41	NO. 41	NO. 41
62	NO. 42	NO. 42	NO. 42
63	NO. 43	NO. 43	NO. 43
64	NO. 44	NO. 44	NO. 44
65	NO. 45	NO. 45	NO. 45
66	NO. 46	NO. 46	NO. 46
67	NO. 47	NO. 47	NO. 47
68	NO. 48	NO. 48	NO. 48
69	NO. 49	NO. 49	NO. 49
70	NO. 50	NO. 50	NO. 50
71	NO. 51	NO. 51	NO. 51
72	NO. 52	NO. 52	NO. 52
73	NO. 53	NO. 53	NO. 53
74	NO. 54	NO. 54	NO. 54
75	NO. 55	NO. 55	NO. 55
76	NO. 56	NO. 56	NO. 56
77	NO. 57	NO. 57	NO. 57
78	NO. 58	NO. 58	NO. 58
79	NO. 59	NO. 59	NO. 59
80	NO. 60	NO. 60	NO. 60
81	NO. 61	NO. 61	NO. 61
82	NO. 62	NO. 62	NO. 62
83	NO. 63	NO. 63	NO. 63
84	NO. 64	NO. 64	NO. 64
85	NO. 65	NO. 65	NO. 65
86	NO. 66	NO. 66	NO. 66
87	NO. 67	NO. 67	NO. 67
88	NO. 68	NO. 68	NO. 68
89	NO. 69	NO. 69	NO. 69
90	NO. 70	NO. 70	NO. 70
91	NO. 71	NO. 71	NO. 71
92	NO. 72	NO. 72	NO. 72
93	NO. 73	NO. 73	NO. 73
94	NO. 74	NO. 74	NO. 74
95	NO. 75	NO. 75	NO. 75
96	NO. 76	NO. 76	NO. 76
97	NO. 77	NO. 77	NO. 77
98	NO. 78	NO. 78	NO. 78
99	NO. 79	NO. 79	NO. 79
100	NO. 80	NO. 80	NO. 80



WONG TUNG & PARTNERS LIMITED
ARCHITECTS & PLANNERS
1101-1102, 1103, 1104, 1105, 1106, 1107, 1108, 1109, 1110, 1111, 1112, 1113, 1114, 1115, 1116, 1117, 1118, 1119, 1120, 1121, 1122, 1123, 1124, 1125, 1126, 1127, 1128, 1129, 1130, 1131, 1132, 1133, 1134, 1135, 1136, 1137, 1138, 1139, 1140, 1141, 1142, 1143, 1144, 1145, 1146, 1147, 1148, 1149, 1150, 1151, 1152, 1153, 1154, 1155, 1156, 1157, 1158, 1159, 1160, 1161, 1162, 1163, 1164, 1165, 1166, 1167, 1168, 1169, 1170, 1171, 1172, 1173, 1174, 1175, 1176, 1177, 1178, 1179, 1180, 1181, 1182, 1183, 1184, 1185, 1186, 1187, 1188, 1189, 1190, 1191, 1192, 1193, 1194, 1195, 1196, 1197, 1198, 1199, 1200

PROJECT:
URA KWUN TONG TOWN
CENTRE REDEVELOPMENT
(AREA 2 & 3) AT
HWL 6514,
KWUN TONG, KOWLOON

TITLE:
T3
REFUGE FLOOR

DATE	12/02/15	SCALE	1:100
PROJECT NO.	31690	DATE	9/A10/20
DESIGNER	WONG TUNG & PARTNERS LIMITED	REVISION	1/12/2015
CLIENT	URA	DATE	12/02/15
PROJECT NO.	31690	DATE	9/A10/20
DESIGNER	WONG TUNG & PARTNERS LIMITED	REVISION	1/12/2015
CLIENT	URA	DATE	12/02/15

THIS DRAWING IS THE PROPERTY OF WONG TUNG & PARTNERS LIMITED. IT IS TO BE USED ONLY FOR THE PROJECT AND SITE SPECIFICALLY MENTIONED HEREIN. IT IS NOT TO BE REPRODUCED, COPIED, OR TRANSMITTED IN ANY FORM OR BY ANY MEANS, ELECTRONIC OR MECHANICAL, INCLUDING PHOTOCOPYING, RECORDING, OR BY ANY INFORMATION STORAGE AND RETRIEVAL SYSTEM, WITHOUT THE WRITTEN PERMISSION OF WONG TUNG & PARTNERS LIMITED.

APPROVED FOR: [Signature]

BALCONY OPEN SIDE CALCULATION

IS.E.A.L.S
 BAL PERIMETER = 3.574 M
 BAL OPEN PERIMETER = 3.174 M
 % OF OPEN PERIMETER = 87.97%

BALCONY DEEN SIDE CALCULATION

IS.E.A.L.S
 BAL PERIMETER = 4.122 M
 BAL OPEN PERIMETER = 4.122 M
 % OF OPEN PERIMETER = 100.00%

BALCONY OPEN SIDE CALCULATION

IS.E.A.L.S
 BAL PERIMETER = 5.502 M
 BAL OPEN PERIMETER = 4.928 M
 % OF OPEN PERIMETER = 89.56%

BALCONY OPEN SIDE CALCULATION

IS.E.A.L.S
 BAL PERIMETER = 4.296 M
 BAL OPEN PERIMETER = 4.296 M
 % OF OPEN PERIMETER = 100.00%

UTILITY PLATFORM OPEN SIDE CALCULATION

IS.E.A.L.S
 U.P. PERIMETER = 4.933 M
 U.P. OPEN PERIMETER = 2.287 M
 % OF OPEN PERIMETER = 46.36%

UTILITY PLATFORM OPEN SIDE CALCULATION

IS.E.A.L.S
 U.P. PERIMETER = 4.932 M
 U.P. OPEN PERIMETER = 3.910 M
 % OF OPEN PERIMETER = 79.27%

UTILITY PLATFORM OPEN SIDE CALCULATION

IS.E.A.L.S
 U.P. PERIMETER = 5.025 M
 U.P. OPEN PERIMETER = 2.080 M
 % OF OPEN PERIMETER = 41.40%

UTILITY PLATFORM OPEN SIDE CALCULATION

IS.E.A.L.S
 U.P. PERIMETER = 4.948 M
 U.P. OPEN PERIMETER = 2.202 M
 % OF OPEN PERIMETER = 44.52%

UTILITY PLATFORM OPEN SIDE CALCULATION

IS.E.A.L.S
 U.P. PERIMETER = 4.902 M
 U.P. OPEN PERIMETER = 3.232 M
 % OF OPEN PERIMETER = 65.93%

UTILITY PLATFORM OPEN SIDE CALCULATION

IS.E.A.L.S
 U.P. PERIMETER = 4.902 M
 U.P. OPEN PERIMETER = 3.232 M
 % OF OPEN PERIMETER = 65.93%

17/2 CR verify from mid;
 GBP 全资料? 白塔

UTILITY PLATFORM OPEN SIDE CALCULATION

IS.E.A.L.S
 U.P. PERIMETER = 4.933 M
 U.P. OPEN PERIMETER = 2.197 M
 % OF OPEN PERIMETER = 44.55%

UTILITY PLATFORM OPEN SIDE CALCULATION

IS.E.A.L.S
 U.P. PERIMETER = 4.933 M
 U.P. OPEN PERIMETER = 2.197 M
 % OF OPEN PERIMETER = 44.55%

UTILITY PLATFORM OPEN SIDE CALCULATION

IS.E.A.L.S
 U.P. PERIMETER = 5.016 M
 U.P. OPEN PERIMETER = 3.238 M
 % OF OPEN PERIMETER = 64.57%

UTILITY PLATFORM OPEN SIDE CALCULATION

IS.E.A.L.S
 U.P. PERIMETER = 4.992 M
 U.P. OPEN PERIMETER = 2.156 M
 % OF OPEN PERIMETER = 43.19%

UTILITY PLATFORM OPEN SIDE CALCULATION

IS.E.A.L.S
 U.P. PERIMETER = 4.933 M
 U.P. OPEN PERIMETER = 2.287 M
 % OF OPEN PERIMETER = 46.36%

UTILITY PLATFORM OPEN SIDE CALCULATION

IS.E.A.L.S
 U.P. PERIMETER = 4.932 M
 U.P. OPEN PERIMETER = 2.287 M
 % OF OPEN PERIMETER = 46.36%

UTILITY PLATFORM OPEN SIDE CALCULATION

IS.E.A.L.S
 U.P. PERIMETER = 4.928 M
 U.P. OPEN PERIMETER = 3.458 M
 % OF OPEN PERIMETER = 70.21%

A.S. REFERENCE NUMBER
 BD 2/4023/12(P1 II)

NOTES

1. DO NOT SCALE DIMENSIONS. FIGURED DIMENSIONS TAKE TO BE FOLLOWED.

2. FOR THE WORK IN CONNECTION WITH DESIGN ARCHITECTURE, PLUMB, STRUCTURAL, MECHANICAL AND ELECTRICAL DRAWINGS, THE ARCHITECT SHALL BE ADVISED IMMEDIATELY OF ANY DISCREPANCY FOUND THEREIN.

3. CHECK THE SET DRAWING PROVIDED BY ARCHITECT.

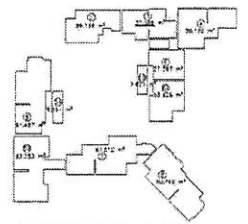
NO.	DATE	REVISIONS
01	15/05/2015	ISSUE FOR APPROVAL
02	15/05/2015	ISSUE FOR APPROVAL
03	15/05/2015	ISSUE FOR APPROVAL
04	15/05/2015	ISSUE FOR APPROVAL
05	15/05/2015	ISSUE FOR APPROVAL
06	15/05/2015	ISSUE FOR APPROVAL
07	15/05/2015	ISSUE FOR APPROVAL
08	15/05/2015	ISSUE FOR APPROVAL
09	15/05/2015	ISSUE FOR APPROVAL
10	15/05/2015	ISSUE FOR APPROVAL
11	15/05/2015	ISSUE FOR APPROVAL
12	15/05/2015	ISSUE FOR APPROVAL
13	15/05/2015	ISSUE FOR APPROVAL
14	15/05/2015	ISSUE FOR APPROVAL
15	15/05/2015	ISSUE FOR APPROVAL

WONG TUNG & PARTNERS LIMITED
 ARCHITECTS & PLANNERS
 11/F, 110, Queen's Road East, Hong Kong
 Tel: (852) 2522 1111 Fax: (852) 2522 1112
 www.wongtung.com

PROJECT:
 LUKA KWUN TONG TOWN
 CENTRE REDEVELOPMENT
 (AREA 2 & 3) AT
 MKL 6514,
 KWUN TONG, KOWLOON

TITLE:
 T5
 REFUGE FLOOR

DATE: 15/05/2015
 SCALE: 1:100
 DRAWN BY: [Signature]
 CHECKED BY: [Signature]
 APPROVED BY: [Signature]
 PROJECT NO.: 31690
 SHEET NO.: B/A10/23
 OF: (09)



T5 27/F REFUGE FL. DIAGRAM
 SCALE: 1:400

T5 27/F REFUGE FL. NET AREA
 (A) + (B) + (C) + (D) + (E) + (F) + (G) + (H) + (I) + (J) + (K) + (L) + (M) + (N) + (O) + (P) + (Q) + (R) + (S) + (T) + (U) + (V) + (W) + (X) + (Y) + (Z) = 83,228 m²

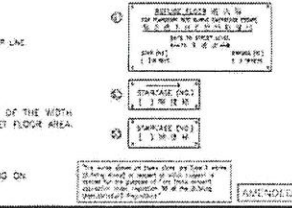
27/F REFUGE FLOOR AREA = 83,228 m²
 450.230 / 458.281 = 100% = 100.00% = 100%

BENCHMARK TANK PROTECTION AREA CALCULATION

LENGTH OF PERIMETER WALL:
 TOTAL LENGTH = (A) + (B) + (C) + (D) + (E) + (F) + (G) + (H) + (I) + (J) + (K) + (L) + (M) + (N) + (O) + (P) + (Q) + (R) + (S) + (T) + (U) + (V) + (W) + (X) + (Y) + (Z) = 1,222

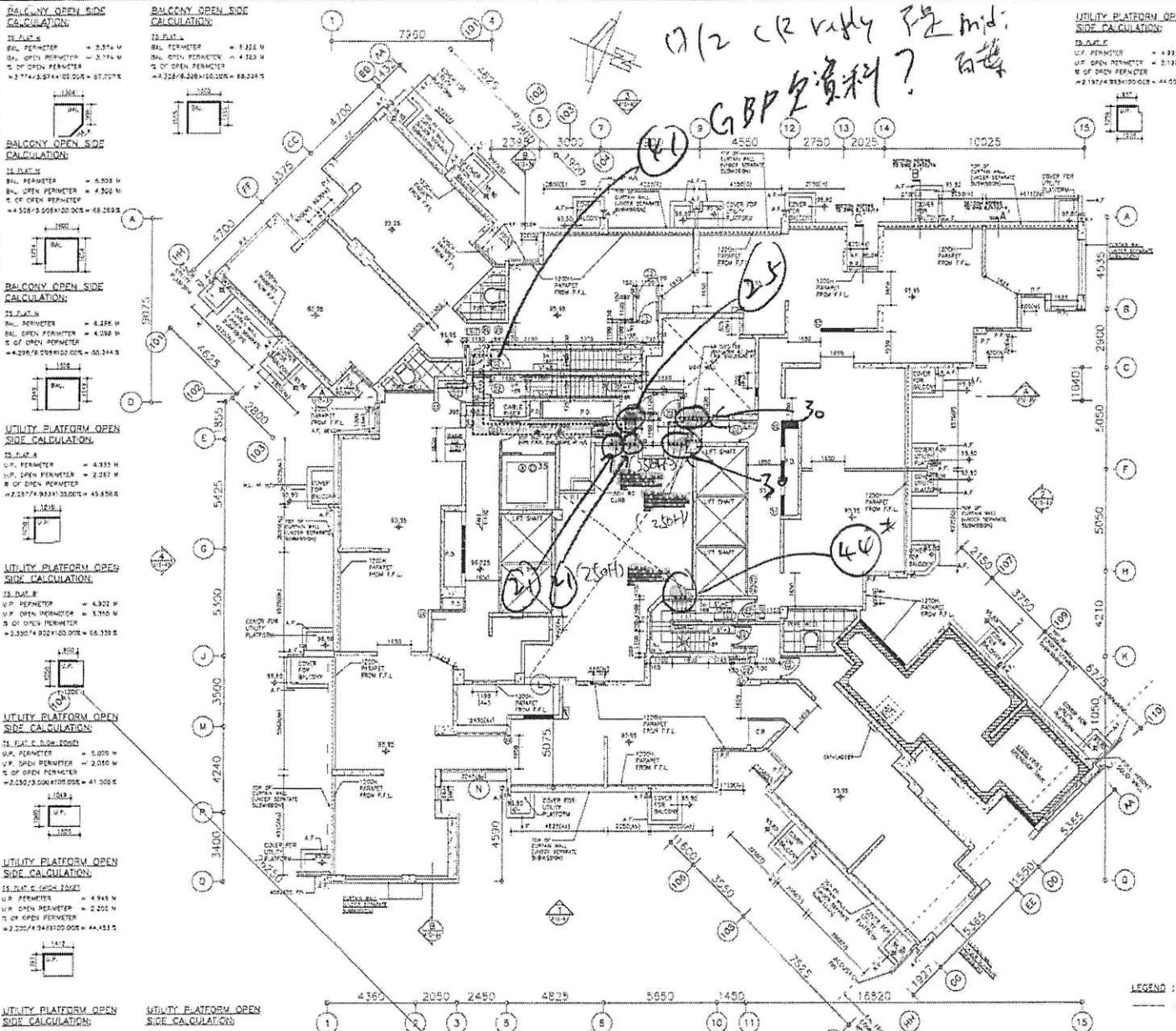
PROTECTED TANKING AREA:
 TOTAL AREA = TOTAL LENGTH X HEIGHT
 1222 X 1.2 = 1,466.4 m²

CALCULATION OF OVERFLOW TANK REQUIRED WATER SUPPLY:
 TOTAL AREA X 10 (mm) = 14,664 m³ (CONSIDERING ALLOWANCE)
 14,664 / 15 (mm) = 977.6 m³ (SPRINKLER ALLOWANCE)
 14,664 / 15 (mm) = 977.6 m³ (TOTAL)



T5 - REFUGE FLOOR PLAN
 27/F (1 STOREY)
 (FLOOR NOS. 13, 14, 24, 34, 44 NOT USED.)

- NOTE:**
- PASSAGE AREAS WITH WIDTHS LESS THAN 1650MM (1.5 TIMES THE WIDTH OF THE STAIRCASES) HAVE NOT BEEN INCLUDED IN THE TOTAL REFUGE NET FLOOR AREA.
 - EMERGENCY EXITING TO BE PROVIDED AT REFUGE FLOOR.
 - DESIGN MANUAL BARRIER FREE ACCESS DOGS TO BE COMPLETED WITH.
 - DETAILED WALL SECTION REFER TO DWG. NO. B/A10/14.
 - ALL R.C. COVER TO BE COMPLETED WITH CEMENT AND CEMENT SAND RENDERING ON WATERPROOFING MEMBRANE LAD TO FALL.



4360 2050 2450 4825 5650 1450 16820 1927 11550 5355 4210 5050 2600 4555 10025 2750 2025 4550 2300 4700 7950 3000 2700 3375 4625 3800 5425 5100 3500 4240 3400 4360 2050 2450 4825 5650 1450 16820 1927 11550 5355 4210 5050 2600 4555 10025 2750 2025 4550 2300 4700 7950 3000 2700 3375 4625 3800 5425 5100 3500 4240 3400