



工程指示 / 要求簡箋(E.I.)

工程指示編號：EI / 1323 / 19      修改版次：-  
 工程編號           ：J - 837                    工程名稱   ：觀塘裕民坊  
 工程項目           ：Glass Cladding 玻璃 BM (T1-T5)(特式層最頂一件)  
 收件人             ：Maggie/ 生統 / 永林      發件人     ：Eric Liu            日期       ：09/12/2019

要求提供 /  確認 事項：

- |                                    |                                     |                               |
|------------------------------------|-------------------------------------|-------------------------------|
| <input type="checkbox"/> 初步鋁料 B.M. | <input type="checkbox"/> 加工拆圖，然後生產  | <input type="checkbox"/> 尺寸表  |
| <input type="checkbox"/> 正式鋁料 B.M. | <input type="checkbox"/> 技術上資料 / 指示 | <input type="checkbox"/> 報價   |
| <input type="checkbox"/> 配件 B.M.   | <input type="checkbox"/> 樣辦或貨品說明書   | <input type="checkbox"/> 分判合約 |
| <input type="checkbox"/> 其他：_____  |                                     |                               |

內容：

請按附件出貨玻璃送廠組裝用(T1-T5)(特式層最頂一件) (共 48 件)  
 因特式層最頂一件位置高度分倉最後確定為 715，需重訂玻璃  
 請先安排生產及做熱浸。  
 請留意: 1) 玻璃送廠，因玻璃數量少，包箱可以不分座不分 mo  
 2) 因玻璃送廠，玻璃不用做保護，  
       在廠組裝鋁料打結構膠後，再廠做保護  
 3) 請留意玻璃加工時不要固定的鋼化及熱浸標籤  
 5) 玻璃出貨時需加上 "可移除" 標籤，標籤在室外面(注明半鋼化/鋼化)  
 6) 王良: 廠完成打結構膠後，每 100 件要抽一件做割膠測試  
       (第一批 100 件抽 3 件做割膠測試)

請在 2019/ 12/ 23 前完成上列要求。

附：4 頁 玻璃 BM，1 頁加工圖，6 頁位置圖

以上項目為：

- 原合約工程包                     原合約工程加 / 減賬                     新工程報價

原因：-

分發東莞各部門：

- ( ) 生產技術總監  連附件    ( / ) 技術部  連附件 *永林*    ( ) 生產部     連附件    ( ) 機械設計部  連附件  
 ( ) 採購部     連附件    ( / ) 生產統籌部  連附件 *永林*  
 ( ) 質檢部     連附件    ( ) 會計部     連附件    ( ) 報關組     連附件    ( ) 其他 楊榮輝  連附件

分發香港各部門：

- ( ) 行政部  連附件    ( ) 會計部  連附件    ( ) 統籌部  連附件    ( ) 工程部地盤科文  連附件  
 ( / ) 採購部  連附件    ( ) QS 部  連附件    ( ) 維修部  連附件    ( ) 其他 \_\_\_\_\_  連附件

傳遞編號：

HK2508 / 19

發件人簽署：  
*[Signature]*

項目經理簽署：  
*[Signature]*

 <b>美特鋁質</b> 有限公司 MID Aluminum Fabricator Ltd.		工程號: J837	計算: JH	日期: 2019.4.11	送呈: 胡哥	計算參考數值/ 所屬位置分格									
<b>廠用玻璃B.M.表</b>		地盤名稱: 觀塘裕民坊	核對: DL	日期: 2019.4.11	副本:										
BM編號: J-837-GC-T1-001		項目類別: Class Cladding	批准: T1特式層用	依據 EI9720F計算BM											
		修改版次:	總計面積 (平方米): 8.13												
序號	修改內容	玻璃圖號	顏色與類型	厚度 (mm)	玻璃尺寸		數量 (塊)	總面積 (平方米)	使用位置	樓層	分格寬度	分格高度	MOS:	合計	每层
					寬度 (W mm)	高度 (H mm)							42-43F, 45-F-50F (8層)		
1		G4-GC004	GC-G4	8.0	702.5	678.0	1	0.48	T1-G	50F	717.5	715	1	1	
2		G4-GC004	GC-G4	8.0	702.5	678.0	1	0.48	T1-H	50F	717.5	715	1	1	
3		G4-GC010	GC-G4	8.0	685.0	678.0	1	0.46	T1-G	50F	700	715	1	1	
4		G4-GC010	GC-G4	8.0	685.0	678.0	1	0.46	T1-H	50F	700	715	1	1	
5		G4-GC024	GC-G4	8.0	1162.5	678.0	1	0.79	T1-E	50F	1177.5	715	1	1	
6		G4-GC028	GC-G4	8.0	1355.0	678.0	1	0.92	T1-E	50F	1370	715	1	1	
7		G4-GC034	GC-G4	8.0	1260.0	678.0	1	0.85	T1-E	50F	1275	715	1	1	
8		G4-GC041	GC-G4	8.0	397.5	678.0	1	0.27	T1-E	50F	412.5	715	1	1	
9		G4-GC048	GC-G4	8.0	682.5	678.0	1	0.46	T1-E	50F	697.5	715	1	1	
10		G4-GC054	GC-G4	8.0	702.5	678.0	1	0.48	T1-E	50F	717.5	715	1	1	
11		G4-GC059	GC-G4	8.0	702.5	678.0	1	0.48	T1-A	50F	717.5	715	1	1	
12		G4-GC059	GC-G4	8.0	702.5	678.0	1	0.48	T1-B	50F	717.5	715	1	1	
13		G4-GC065	GC-G4	8.0	670.0	678.0	1	0.45	T1-A	50F	685	715	1	1	
14		G4-GC070	GC-G4	8.0	735.0	678.0	1	0.50	T1-B	50F	750	715	1	1	
15		G4-GC224	GC-G4	8.0	850.0	678.0	1	0.58	T1-E	50F	865	715	1	1	
16						總計:	15	8							
1).本表中之清片玻璃是 信義 原片, 藍片玻璃是藍欣原片															
2).本表中所有玻璃對角線尺寸偏差要求不超過負2mm。															
3).本表中所有玻璃成品均需注明室內外及其玻璃編號, 以便識別。															
(GC-G4) - 8 mm THK. HEAT STRENGTHENED BLUE TINTED GLASS ( SPANDREL GLASS ) --- (Sample no:D18070395)															
(GC-G5) - 8 mm THK. TEMPERED BLUE TINTED GLASS --- (Sample no:D18070395)															

 <b>美特鋁質</b> 有限公司 MIDT Aluminium Fabricator Ltd.		工程號: J837	計算: JH	日期: 2019.4.11	送呈: 胡哥	計算參考數值/ 所屬位置分格								
廠用玻璃B.M.表		地盤名稱: 靚塘裕民坊	核對: DL	日期: 2019.4.11	副本:									
BM編號: J-837-GC-T2-001		項目類別: Class Cladding	批准: T2特式層用	依據 EI9720F計算BM										
修改版次:		總計面積 (平方米):	9.71											
序號	修改內容	玻璃圖號	顏色與類型	厚度 (mm)	玻璃尺寸		數量 (塊)	總面積 (平方米)	使用位置	樓層	分格寬度	分格高度	MOS:	合計
					寬度 (W mm)	高度 (H mm)							42-43F,45-55F (12層)	
1		G4-GC076	GC-G4	8.0	647.5	678.0	1	0.44	T2-H	55F	662.5	715.0	1	1
2		G4-GC080	GC-G4	8.0	847.5	678.0	1	0.57	T2-H	55F	862.5	715.0	1	1
3		G4-GC085	GC-G4	8.0	702.5	678.0	1	0.48	T2-A	55F	717.5	715.0	1	1
4		G4-GC085	GC-G4	8.0	702.5	678.0	1	0.48	T2-B	55F	717.5	715.0	1	1
5		G4-GC091	GC-G4	8.0	685.0	678.0	1	0.46	T2-A	55F	700.0	715.0	1	1
6		G4-GC091	GC-G4	8.0	685.0	678.0	1	0.46	T2-B	55F	700.0	715.0	1	1
7		G4-GC097	GC-G4	8.0	1073.7	678.0	2	1.46	T2-M	55F	1088.7	715.0	2	2
8		G4-GC104	GC-G4	8.0	995.0	678.0	1	0.67	T2-M	55F	1010.0	715.0	1	1
9		G4-GC110	GC-G4	8.0	1107.5	678.0	1	0.75	T2-M	55F	1122.5	715.0	1	1
10		G4-GC117	GC-G4	8.0	685.0	678.0	1	0.46	T2-M	55F	700.0	715.0	1	1
11		G4-GC123	GC-G4	8.0	1115.8	678.0	3	2.27	T2-M	55F	1130.8	715.0	3	3
12		G4-GC129	GC-G4	8.0	670.0	678.0	1	0.45	T2-M	55F	685.0	715.0	1	1
13		G4-GC134	GC-G4	8.0	702.5	678.0	1	0.48	T2-M	55F	717.5	715.0	1	1
14		G4-GC231	GC-G4	8.0	397.5	678.0	1	0.27	T2-J	55F	412.5	715.0	1	1
15						總計:	17	10						
1).本表中之消片玻璃是 信義 原片, 藍片玻璃是藍欣原片														
2).本表中所有玻璃對角線尺寸偏差要求不超過負2mm。														
3).本表中所有玻璃成品均需注明室內外及其玻璃編號, 以便識別。														
(GC-G4) - 8 mm THK. HEAT STRENGTHENED BLUE TINTED GLASS ( SPANDREL GLASS ) --- (Sample no:D18070395)														
(GC-G5) - 8 mm THK. TEMPERED BLUE TINTED GLASS --- (Sample no:D18070395)														

 <b>美特鋁質</b> 有限公司 MIDI Aluminium Fabricator Ltd.		工程號: J837 地盤名稱: 觀塘裕民坊	計算: JH 核對: DL	日期: 2019.4.11 日期: 2019.4.11	送呈: 胡哥 副本:	計算參考數值/ 所屬位置分格									
<b>廠用玻璃B.M.表</b> BM編號: J-837-GC-T3-001		項目類別: Class Cladding 修改版次:	批准: T3特式層用 總計面積 (平方米): 5.13	依據 EI9720F計算BM											
序號	修改內容	玻璃圖號	顏色與類型	厚度 (mm)	玻璃尺寸		數量 (塊)	總面積 (平方米)	使用位置	樓層	分格寬度	分格高度	MO5 : 42-43F,45-52F (10層)	合計	每层
					寬度 (W mm)	高度 (H mm)									
1		G4-GC139	GC-G4	8.0	702.5	678.0	1	0.48	T3-A	52F	717.5	715	1	1	
2		G4-GC139	GC-G4	8.0	702.5	678.0	1	0.48	T3-B	52F	717.5	715	1	1	
3		G4-GC144	GC-G4	8.0	835.0	678.0	1	0.57	T3-A	52F	850	715	1	1	
4		G4-GC144	GC-G4	8.0	835.0	678.0	1	0.57	T3-B	52F	850	715	1	1	
5		G4-GC150	GC-G4	8.0	811.6	678.0	3	1.65	T3-F	52F	826.6	715	3	3	
6		G4-GC156	GC-G4	8.0	685.0	678.0	1	0.46	T3-F	52F	700	715	1	1	
7		G4-GC162	GC-G4	8.0	670.0	678.0	1	0.45	T3-F	52F	685	715	1	1	
8		G4-GC167	GC-G4	8.0	702.5	678.0	1	0.48	T3-F	52F	717.5	715	1	1	
9						總計:	10	5							
1).本表中之清片玻璃是 信義 原片, 藍片玻璃是藍欣原片 2).本表中所有玻璃對角線尺寸偏差要求不超過負2mm。 3).本表中所有玻璃成品均需注明室內外及其玻璃編號, 以便識別。 (GC-G4) - 8 mm THK. HEAT STRENGTHENED BLUE TINTED GLASS ( SPANDREL GLASS ) --- (Sample no:D18070395) (GC-G5) - 8 mm THK. TEMPERED BLUE TINTED GLASS --- (Sample no:D18070395)															

 美特鋁質有限公司 MID Aluminium Fabricator Ltd. <b>廠用玻璃B.M.表</b>		工程號: J837 地盤名稱: 觀塘裕民坊 項目類別: Class Cladding	計算: JH 核對: DL 批准: T5特式層用	日期: 2019.4.11 日期: 2019.4.11 依據 EI9720F計算BM	送呈: 胡哥 副本:	計算參考數值/ 所屬位置分格									
BM編號: J-837-GC-T5-001		修改版次:	總計面積 (平方米): 3.11												
序號	修改內容	玻璃圖號	顏色與類型	厚度 (mm)	玻璃尺寸		數量 (塊)	總面積 (平方米)	使用位置	樓層	分格寬度	分格高度	MOS:	合計	每层
					寬度 (W mm)	高度 (H mm)							42F-43F,45-51F (9層)		
1		G4-GC184	GC-G4	8.0	702.5	678.0	1	0.48	T5-A	51F	717.5	715.0	1	1	
2		G4-GC191	GC-G4	8.0	670.0	678.0	1	0.45	T5-A	51F	685.0	715.0	1	1	
3		G4-GC197	GC-G4	8.0	801.8	678.0	4	2.17	T5-A	51F	816.8	715.0	4	4	
5					總計:		6	3							
1).本表中之清片玻璃是 信義 原片, 藍片玻璃是藍欣原片 2).本表中所有玻璃對角線尺寸偏差要求不超過負2mm。 3).本表中所有玻璃成品均需做雙面保護, 用透明靜電膠紙加四周一寸FK白膠紙做雙面加固保護處理。 4).本表中所有玻璃成品均需注明室內外及其玻璃編號, 以便識別。 (GC-G4) - 8 mm THK. HEAT STRENGTHENED BLUE TINTED GLASS ( SPANDREL GLASS ) --- (Sample no:D18070395) (GC-G5) - 8 mm THK. TEMPERED BLUE TINTED GLASS --- (Sample no:D18070395)															

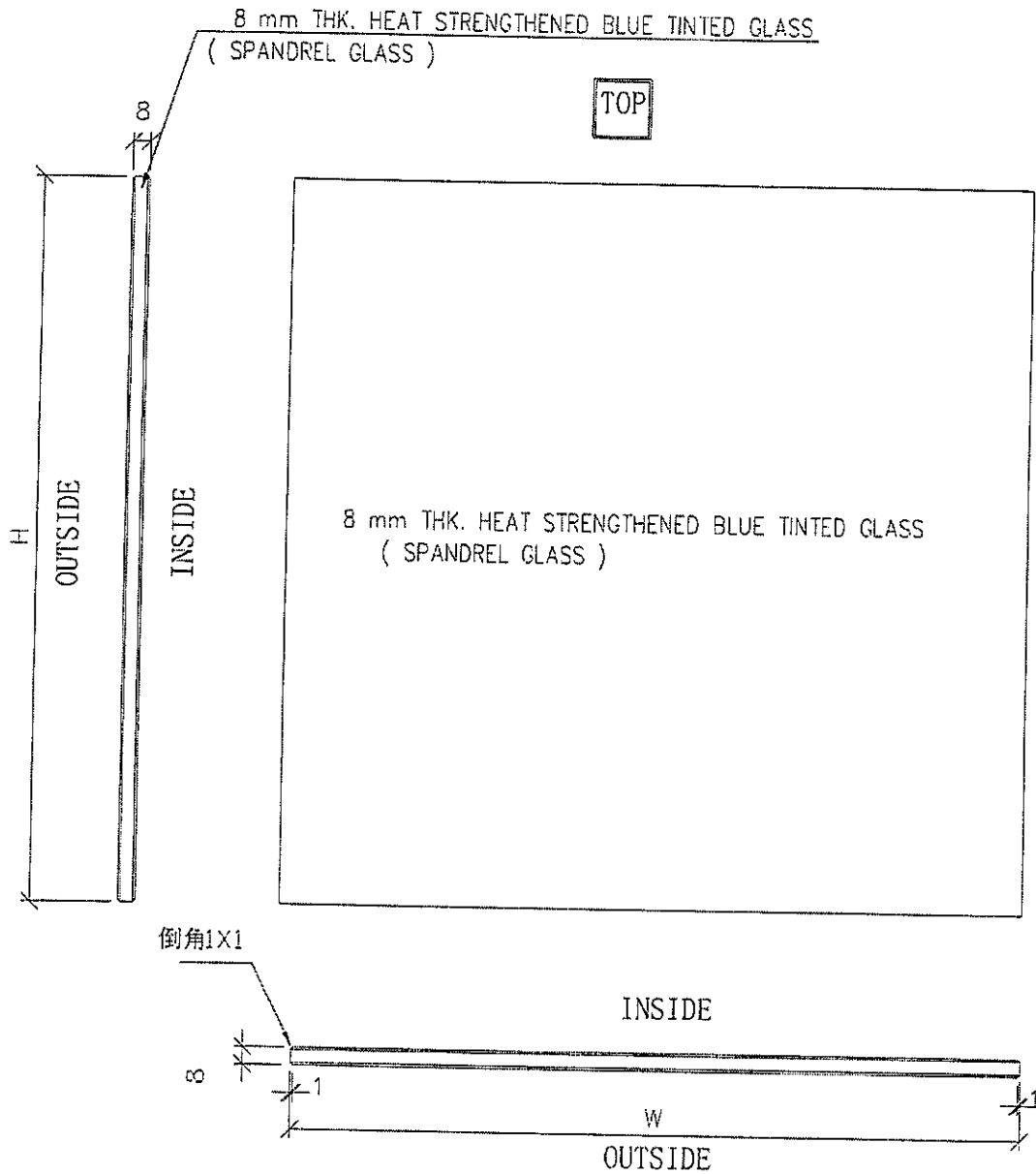
EG-DWG3



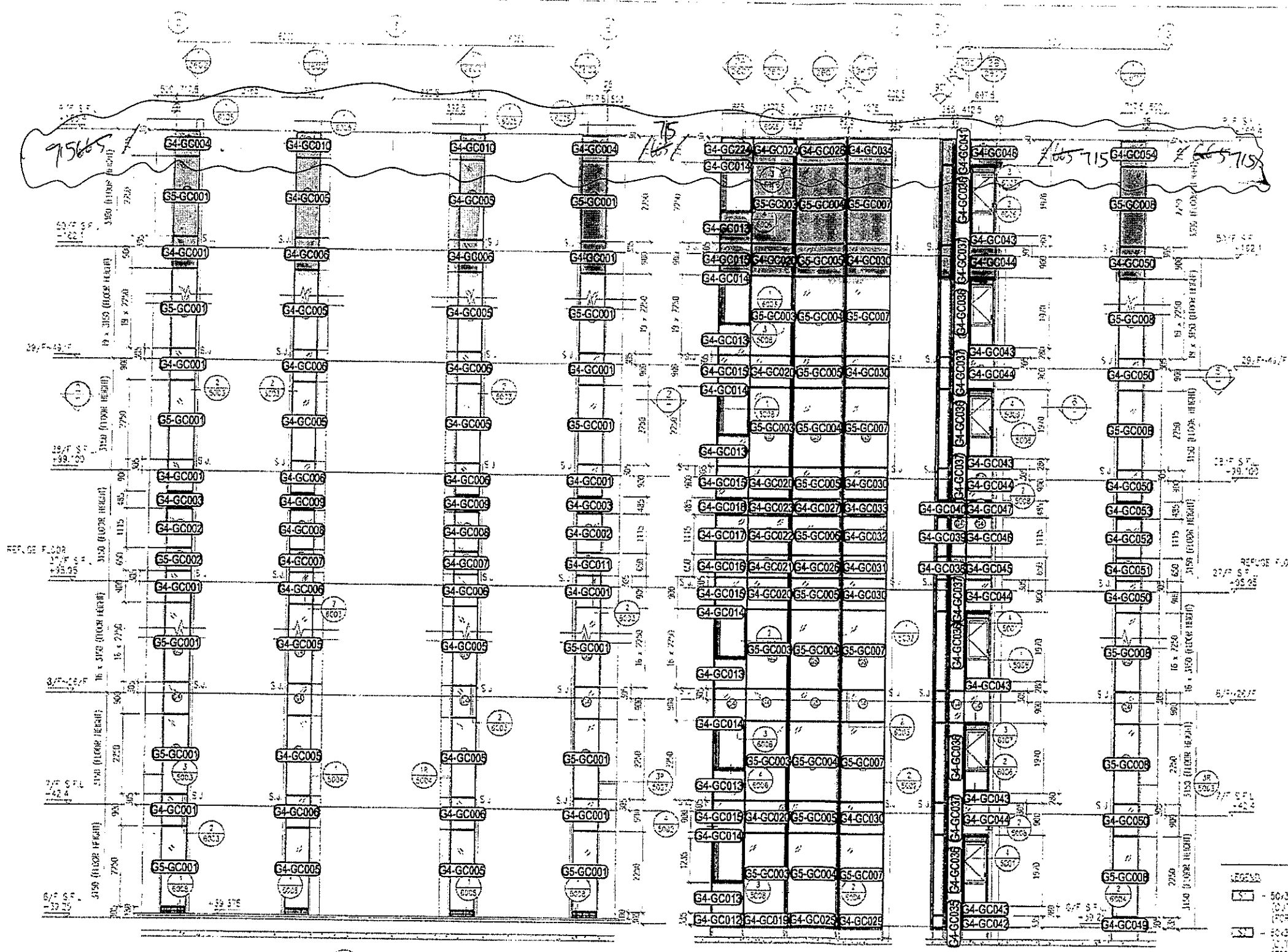
美特铝质有限公司  
MIDI Aluminium Fabricator Ltd.

物料编号	层数	每层数	总数	使用位置	楼层	备注
GL-G4	BM表	BM表	BM表	BM表	BM表	

工程号 J-837 地盘 观塘裕民坊



名称	玻璃加工图	制图	JH	2019.3.19	修改		
材料	8 mm THK. HEAT STRENGTHENED BLUE	复核	DL	2019.3.20	日期		
颜色	TINTED GLASS ( SPANDREL GLASS )	批准			图号	GL-G4	



1114  
~~2344~~  
~~3444~~

信和置業有限公司  
 She Land Company Limited

ARCHITECT  
 WONG TUNG & PARTNERS LIMITED  
 ARCHITECTS & PLANNERS

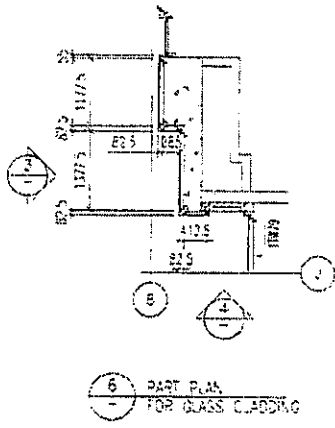
WT

MAIN CONTRACTOR  
 CR Construction Company Limited

STRUCTURAL ENGINEER  
**AZCOM**

FACADE CONSULTANT  
**AZCOM**

- NOTE:
- ALL DIMENSIONS ARE IN mm
  - ALL ELEVATIONS ARE VIEWED FROM OUTSIDE
  - ALL DIMENSIONS TO BE VERIFIED ON SITE BEFORE FABRICATION.
- LEGEND:
- DETAIL MARK NO
  - REFER SHEET NO
- FF - FINISHED FLOOR LEVEL
  - SL - STRUCTURAL FLOOR LEVEL
  - ⊗ REVERSED DETAIL



T11

- LEGEND:
- ① 60x37x6mm THK GMS CHANNEL (OUT FROM 100x50x6mm THK GMS P+S) (FOR LOAD WIDTH < 13')
  - ② 60x37x6mm THK GMS CHANNEL (OUT FROM 100x50x6mm THK GMS P+S) (FOR LOAD WIDTH > 13' < 12'3")
  - ③ 8mm THK HEAT STRENGTHENED BLUE TINTED GLASS (SPANDREL GLASS)
  - ④ 8mm THK TEMPERED BLUE TINTED GLASS
  - ⑤ 100x50x6mm THK GMS ANGLE BRACKET (L=200mm) BY 2NCS ANCHOR W/ 2 ANCHOR BOLTS (MAX #900x10)
  - ⑥ 100x50x6mm THK GMS ANGLE BRACKET (L=200mm) BY 2NCS ANCHOR W/ 2 ANCHOR BOLTS (MAX #900x10)
  - ⑦ 100x50x6mm THK GMS ANGLE BRACKET (L=200mm) BY 2NCS ANCHOR W/ 2 ANCHOR BOLTS (MAX #900x10)
  - ⑧ 100x50x6mm THK GMS ANGLE BRACKET (L=200mm) BY 2NCS ANCHOR W/ 2 ANCHOR BOLTS (MAX #900x10)
  - ⑨ 100x50x6mm THK GMS ANGLE BRACKET (L=200mm) BY 2NCS ANCHOR W/ 2 ANCHOR BOLTS (MAX #900x10)
  - ⑩ 100x50x6mm THK GMS ANGLE BRACKET (L=200mm) BY 2NCS ANCHOR W/ 2 ANCHOR BOLTS (MAX #900x10)
  - ⑪ 100x50x6mm THK GMS ANGLE BRACKET (L=200mm) BY 2NCS ANCHOR W/ 2 ANCHOR BOLTS (MAX #900x10)
  - ⑫ 100x50x6mm THK GMS ANGLE BRACKET (L=200mm) BY 2NCS ANCHOR W/ 2 ANCHOR BOLTS (MAX #900x10)
  - ⑬ 100x50x6mm THK GMS ANGLE BRACKET (L=200mm) BY 2NCS ANCHOR W/ 2 ANCHOR BOLTS (MAX #900x10)
  - ⑭ 100x50x6mm THK GMS ANGLE BRACKET (L=200mm) BY 2NCS ANCHOR W/ 2 ANCHOR BOLTS (MAX #900x10)
  - ⑮ 100x50x6mm THK GMS ANGLE BRACKET (L=200mm) BY 2NCS ANCHOR W/ 2 ANCHOR BOLTS (MAX #900x10)
  - ⑯ 100x50x6mm THK GMS ANGLE BRACKET (L=200mm) BY 2NCS ANCHOR W/ 2 ANCHOR BOLTS (MAX #900x10)
  - ⑰ 100x50x6mm THK GMS ANGLE BRACKET (L=200mm) BY 2NCS ANCHOR W/ 2 ANCHOR BOLTS (MAX #900x10)
  - ⑱ 100x50x6mm THK GMS ANGLE BRACKET (L=200mm) BY 2NCS ANCHOR W/ 2 ANCHOR BOLTS (MAX #900x10)
  - ⑲ 100x50x6mm THK GMS ANGLE BRACKET (L=200mm) BY 2NCS ANCHOR W/ 2 ANCHOR BOLTS (MAX #900x10)
  - ⑳ 100x50x6mm THK GMS ANGLE BRACKET (L=200mm) BY 2NCS ANCHOR W/ 2 ANCHOR BOLTS (MAX #900x10)
  - ㉑ 100x50x6mm THK GMS ANGLE BRACKET (L=200mm) BY 2NCS ANCHOR W/ 2 ANCHOR BOLTS (MAX #900x10)
  - ㉒ 100x50x6mm THK GMS ANGLE BRACKET (L=200mm) BY 2NCS ANCHOR W/ 2 ANCHOR BOLTS (MAX #900x10)
  - ㉓ 100x50x6mm THK GMS ANGLE BRACKET (L=200mm) BY 2NCS ANCHOR W/ 2 ANCHOR BOLTS (MAX #900x10)
  - ㉔ 100x50x6mm THK GMS ANGLE BRACKET (L=200mm) BY 2NCS ANCHOR W/ 2 ANCHOR BOLTS (MAX #900x10)
  - ㉕ 100x50x6mm THK GMS ANGLE BRACKET (L=200mm) BY 2NCS ANCHOR W/ 2 ANCHOR BOLTS (MAX #900x10)
  - ㉖ 100x50x6mm THK GMS ANGLE BRACKET (L=200mm) BY 2NCS ANCHOR W/ 2 ANCHOR BOLTS (MAX #900x10)
  - ㉗ 100x50x6mm THK GMS ANGLE BRACKET (L=200mm) BY 2NCS ANCHOR W/ 2 ANCHOR BOLTS (MAX #900x10)
  - ㉘ 100x50x6mm THK GMS ANGLE BRACKET (L=200mm) BY 2NCS ANCHOR W/ 2 ANCHOR BOLTS (MAX #900x10)
  - ㉙ 100x50x6mm THK GMS ANGLE BRACKET (L=200mm) BY 2NCS ANCHOR W/ 2 ANCHOR BOLTS (MAX #900x10)
  - ㉚ 100x50x6mm THK GMS ANGLE BRACKET (L=200mm) BY 2NCS ANCHOR W/ 2 ANCHOR BOLTS (MAX #900x10)
  - ㉛ 100x50x6mm THK GMS ANGLE BRACKET (L=200mm) BY 2NCS ANCHOR W/ 2 ANCHOR BOLTS (MAX #900x10)
  - ㉜ 100x50x6mm THK GMS ANGLE BRACKET (L=200mm) BY 2NCS ANCHOR W/ 2 ANCHOR BOLTS (MAX #900x10)
  - ㉝ 100x50x6mm THK GMS ANGLE BRACKET (L=200mm) BY 2NCS ANCHOR W/ 2 ANCHOR BOLTS (MAX #900x10)
  - ㉞ 100x50x6mm THK GMS ANGLE BRACKET (L=200mm) BY 2NCS ANCHOR W/ 2 ANCHOR BOLTS (MAX #900x10)
  - ㉟ 100x50x6mm THK GMS ANGLE BRACKET (L=200mm) BY 2NCS ANCHOR W/ 2 ANCHOR BOLTS (MAX #900x10)
  - ㊱ 100x50x6mm THK GMS ANGLE BRACKET (L=200mm) BY 2NCS ANCHOR W/ 2 ANCHOR BOLTS (MAX #900x10)
  - ㊲ 100x50x6mm THK GMS ANGLE BRACKET (L=200mm) BY 2NCS ANCHOR W/ 2 ANCHOR BOLTS (MAX #900x10)
  - ㊳ 100x50x6mm THK GMS ANGLE BRACKET (L=200mm) BY 2NCS ANCHOR W/ 2 ANCHOR BOLTS (MAX #900x10)
  - ㊴ 100x50x6mm THK GMS ANGLE BRACKET (L=200mm) BY 2NCS ANCHOR W/ 2 ANCHOR BOLTS (MAX #900x10)
  - ㊵ 100x50x6mm THK GMS ANGLE BRACKET (L=200mm) BY 2NCS ANCHOR W/ 2 ANCHOR BOLTS (MAX #900x10)
  - ㊶ 100x50x6mm THK GMS ANGLE BRACKET (L=200mm) BY 2NCS ANCHOR W/ 2 ANCHOR BOLTS (MAX #900x10)
  - ㊷ 100x50x6mm THK GMS ANGLE BRACKET (L=200mm) BY 2NCS ANCHOR W/ 2 ANCHOR BOLTS (MAX #900x10)
  - ㊸ 100x50x6mm THK GMS ANGLE BRACKET (L=200mm) BY 2NCS ANCHOR W/ 2 ANCHOR BOLTS (MAX #900x10)
  - ㊹ 100x50x6mm THK GMS ANGLE BRACKET (L=200mm) BY 2NCS ANCHOR W/ 2 ANCHOR BOLTS (MAX #900x10)
  - ㊺ 100x50x6mm THK GMS ANGLE BRACKET (L=200mm) BY 2NCS ANCHOR W/ 2 ANCHOR BOLTS (MAX #900x10)
  - ㊻ 100x50x6mm THK GMS ANGLE BRACKET (L=200mm) BY 2NCS ANCHOR W/ 2 ANCHOR BOLTS (MAX #900x10)
  - ㊼ 100x50x6mm THK GMS ANGLE BRACKET (L=200mm) BY 2NCS ANCHOR W/ 2 ANCHOR BOLTS (MAX #900x10)
  - ㊽ 100x50x6mm THK GMS ANGLE BRACKET (L=200mm) BY 2NCS ANCHOR W/ 2 ANCHOR BOLTS (MAX #900x10)
  - ㊾ 100x50x6mm THK GMS ANGLE BRACKET (L=200mm) BY 2NCS ANCHOR W/ 2 ANCHOR BOLTS (MAX #900x10)
  - ㊿ 100x50x6mm THK GMS ANGLE BRACKET (L=200mm) BY 2NCS ANCHOR W/ 2 ANCHOR BOLTS (MAX #900x10)

JOB NO. T-857

PROJECT  
 18A KOWLOON TOWN CENTRE  
 REDEVELOPMENT AREA 2 & 31A  
 AND 65A, KOWLOON TOWN, KOWLOON

TITLE  
 PART ELEVATION  
 OF GLASS CLADDING  
 AT TOWER 1

SHEET NO. 1 OF 1

SCALE 1:60 A1

DATE DRAWN: 15/05/11

DESIGNED BY: AS/LS

DRWN BY: AS/LS

CHKD BY: AS/LS

APPROVED BY: AS/LS

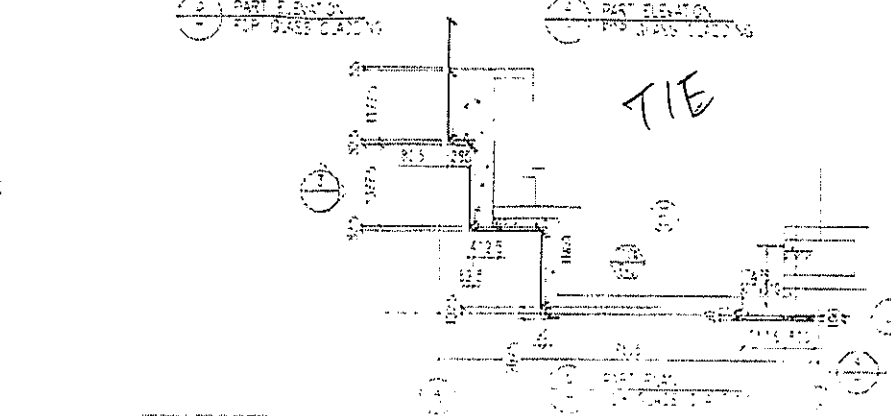
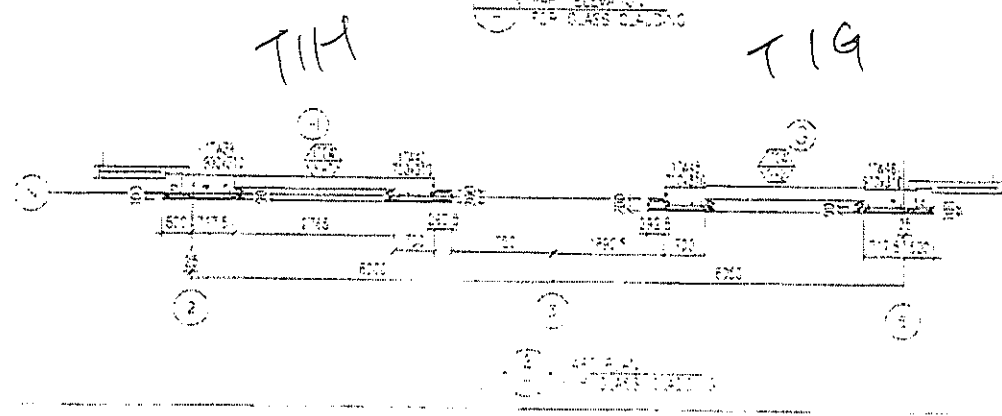
信和置業有限公司  
 She Land Company Limited

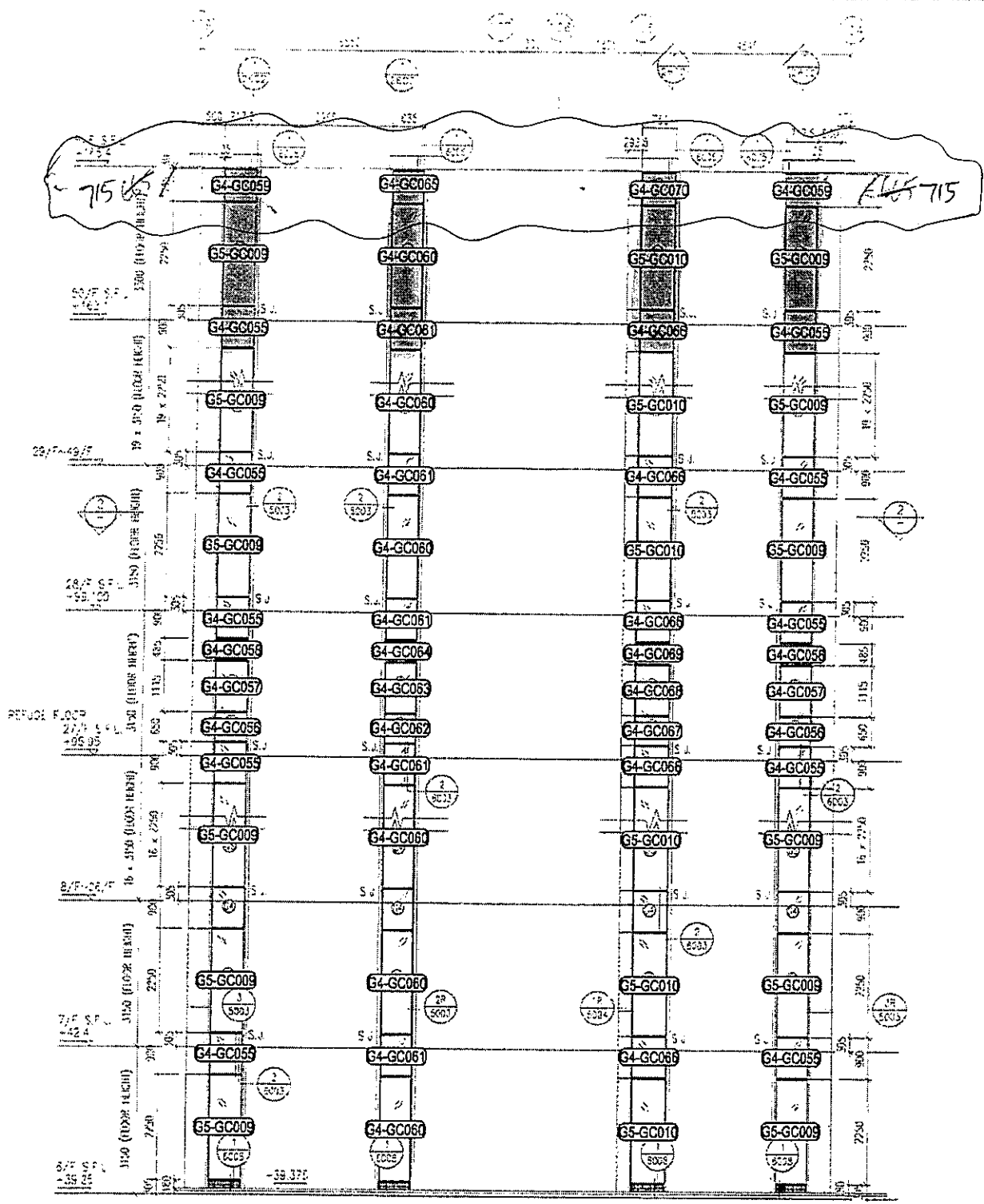
WONG TUNG & PARTNERS LIMITED  
 ARCHITECTS & PLANNERS

CR Construction Company Limited

AZCOM

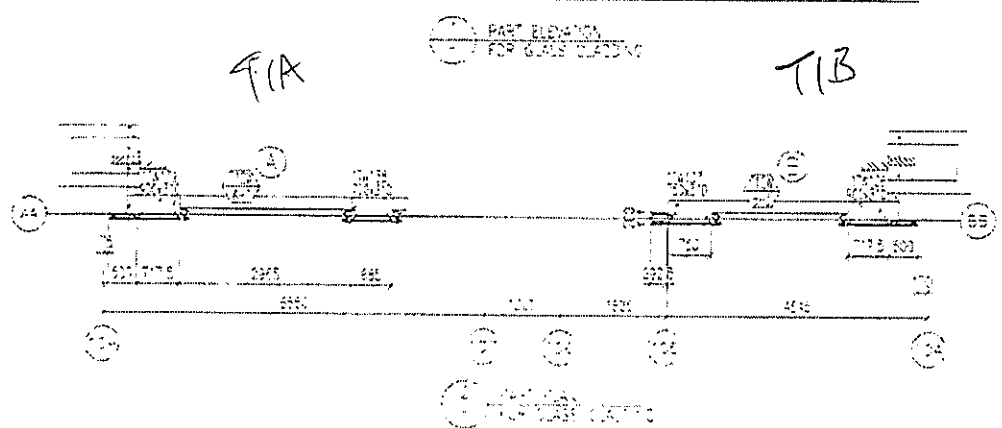
MIDI ALUMINIUM FABRICATOR LTD





41A

~~12/18~~



CLIENT  
 Sino Land Company Limited

ARCHITECT  
 WONG TUNG & PARTNERS LIMITED  
 ARCHITECTS & PLANNERS

MAIN CONTRACTOR  
 CR Construction Company Limited

STRUCTURAL ENGINEER  
 AECOM

FACADE CONSULTANT  
 AECOM

- NOTE:
1. ALL DIMENSIONS ARE IN MM
  2. ALL ELEVATIONS ARE VIEWED FROM OUTSIDE
  3. ALL DIMENSIONS TO BE VERIFIED ON SITE BEFORE FABRICATION
- LEGEND:
- DETAIL MARK NO.
  - REFER SHEET NO.
  - 1. F.F.L. --- FINISHED FLOOR LEVEL
  - 2. S.F.L. --- STRUCTURAL FLOOR LEVEL
  - 3. --- REVERSED DETAIL

T1

NO. DATE REVISION

JOB NO. J-257

PROJECT  
 LRA KWAN TONG TOWN CENTRE  
 REDEVELOPMENT AREA 2 & 3 OF A  
 K.L. 551A, KUAN TONG, HONG KONG

- FINISH
- ELEVATION FINISH CHANGING OUT FROM 1004000mm TO 015 R.H.S.
  - 8mm THK. HEAT STRENGTHENED BLUE TINTED GLASS (GRADE 4 CLASS)
  - 6mm THK. TINTED BLUE TINTED GLASS
  - 100mm THK. T.M.S. ANGLE BRACKET (ASSEMBLY) 7. ENCL. 117 - 1573-158 ANCHOR BOLTS (SEE DETAIL)
  - 100mm THK. T.M.S. ANGLE BRACKET (ASSEMBLY) 7. ENCL. 117 - 1573-158 ANCHOR BOLTS (SEE DETAIL)
  - ANCHOR BOLT
  - 3mm THK. ALUM. ANGLE

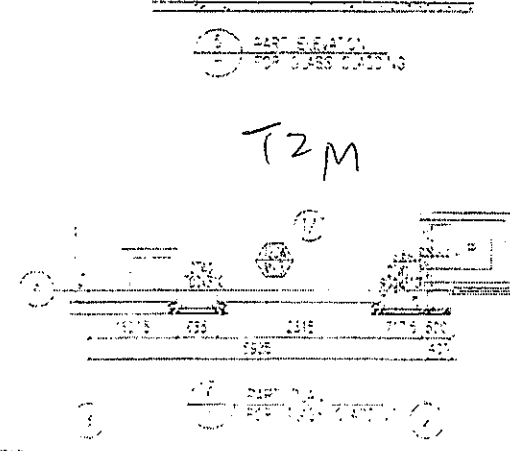
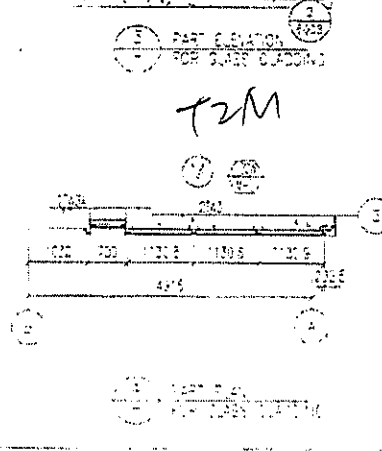
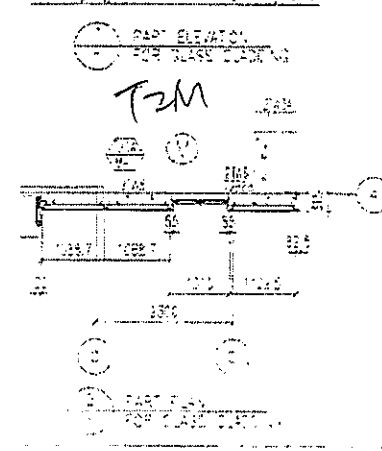
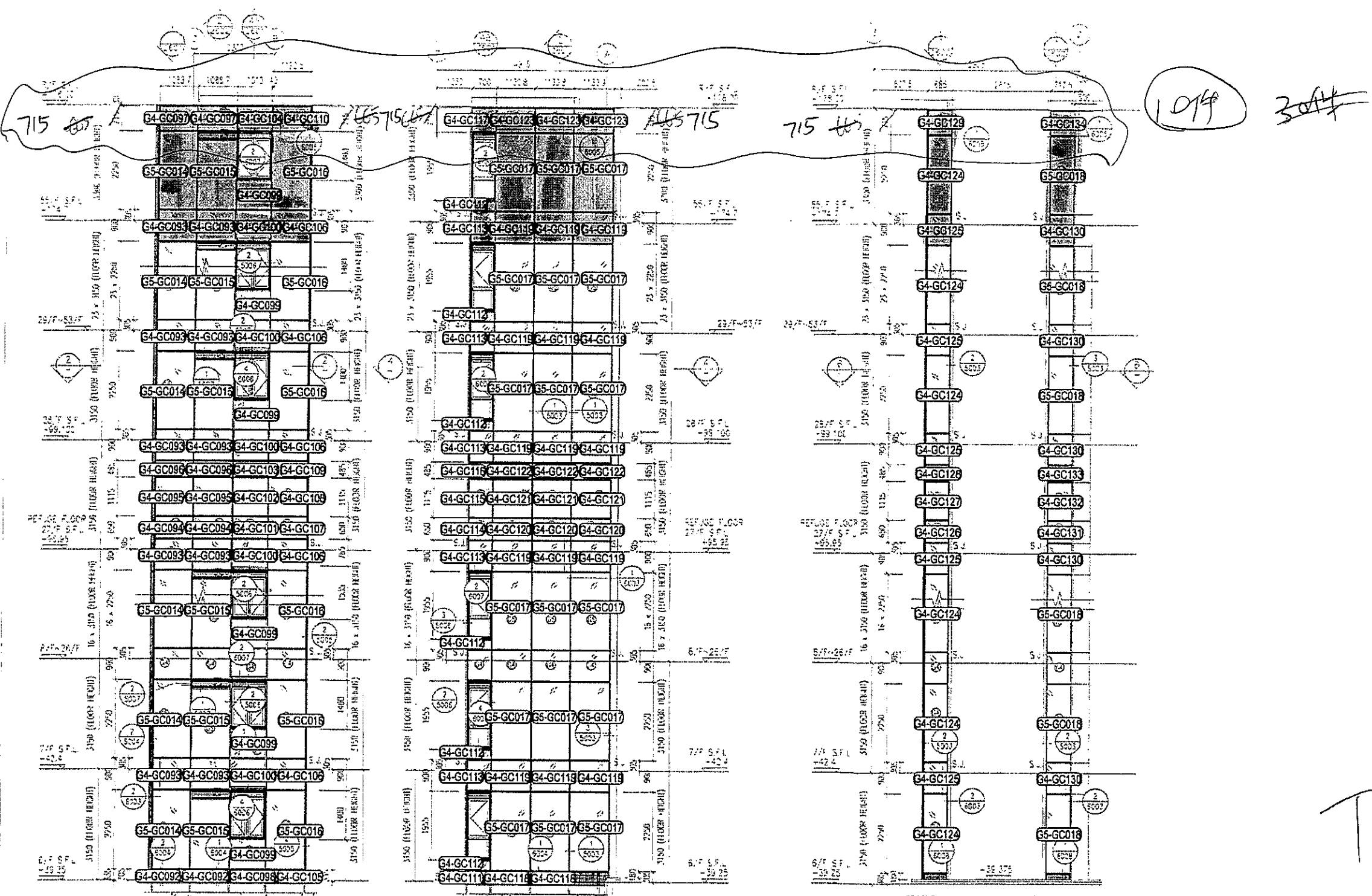
TITLE  
 PART ELEVATION  
 OF GLASS CLADDING  
 AT TOWER 1

DWG. 04-1111-18 SCALE 1:50 (S1)

DRAWN BY: AS110 CHECKED BY: -

MIDI ALUMINIUM FABRICATOR LTD  
 UNIT 5-8, SHUN HING INDUSTRIAL ESTATE,  
 21 CHONG HING ROAD, TAI CHEE,  
 KOWLOON, HONG KONG





信和置業有限公司  
 She Land Company Limited  
 ARCHITECT  
 WONG TUNG & PARTNERS LIMITED  
 ARCHITECTS & PLANNERS  
 MAIN CONTRACTOR  
 CR Construction Company Limited  
 STRUCTURAL ENGINEER  
**AECOM**  
 FACILITY CONSULTANT  
**AECOM**

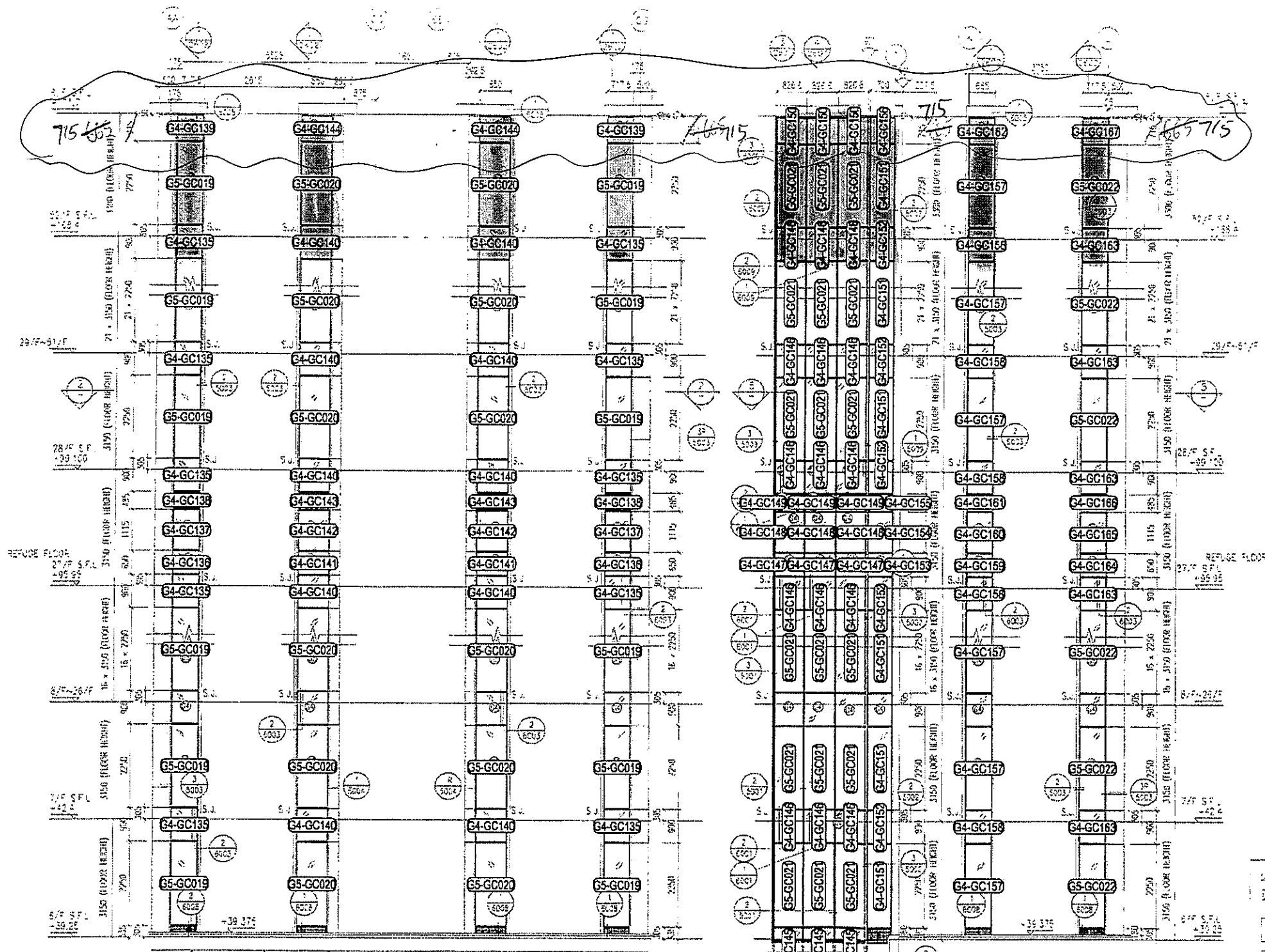
NOTES:  
 1. ALL DIMENSIONS ARE IN MM.  
 2. ALL ELEVATIONS ARE REFERRED FROM OUTSIDE  
 3. ALL DIMENSIONS TO BE VERIFIED ON SITE BEFORE FABRICATION.

LEGEND:  
 (1) - DETAIL MARK NO.  
 (2) - REFER SHEET NO.  
 F.F. - FINISHED FLOOR LEVEL  
 S.L. - STRUCTURAL FLOOR LEVEL  
 (3) - REVERSED DATA

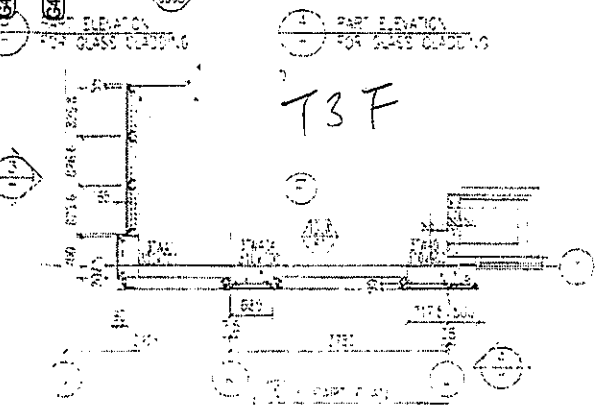
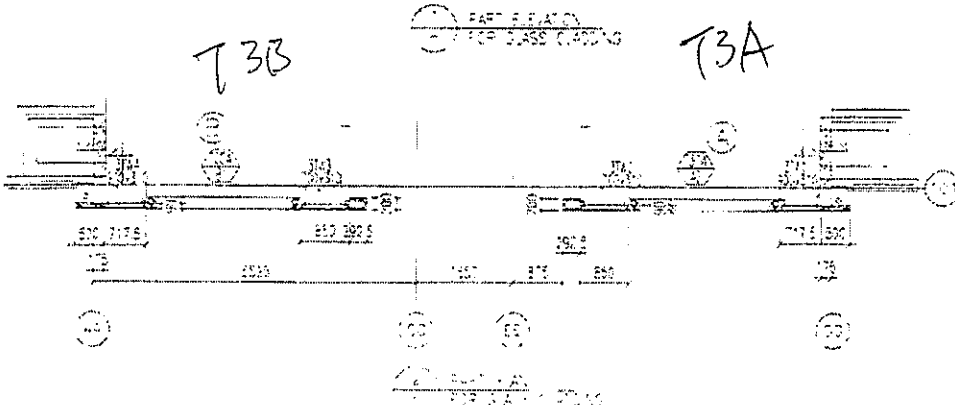
JOB NO: J-537  
 PROJECT: KUN KWAN TONG TOWN CENTRE REDEVELOPMENT (AREA 2 & 3) AT NO. 65-4, KUN TONG, HONG KONG

DRAWN BY: JASING  
 CHECKED BY: [Signature]  
 DATE: 24-11-18  
 SCALE: 1/50 (A1)  
 MIDY 美地建築有限公司  
 MIDY ALUMINIUM FABRICATOR LTD  
 110 Cheung Cheong Street, 11/F  
 Kowloon, HONG KONG

T2



3044  
1017



信和置業有限公司  
Sino Land Company Limited

WONG TUNG & PARTNERS LIMITED  
ARCHITECTS & PLANNERS

CR Construction Company Limited

STRUCTURAL ENGINEER  
**AECOM**

FAÇADE CONSULTANT  
**AECOM**

- NOTE:
1. ALL DIMENSIONS ARE IN mm
  2. ALL ELEVATIONS ARE REFERRED FROM OUTSIDE
  3. ALL DIMENSIONS TO BE VERIFIED ON SITE BEFORE FABRICATION.
- LEGEND:
- ① DETAIL MARK NO
  - ② REFER SHEET NO
  - 1 F.F. -- FINISHED FLOOR LEVEL
  - 2 S.F.L. -- STRUCTURAL FLOOR LEVEL
  - 3 Ⓞ -- REVERSED DETAIL

T3

LEGEND:

- ① 50x125mm THK. GVS CHANNEL (CUT FROM 100x125mm THK GVS PHS)
- ② 8 mm THK. HEAT STRENGTHENED BLUE TINTED GLASS (SPANDREL GLASS)
- ③ 8 mm THK. TEMPERED BLUE TINTED GLASS
- ④ 100x100mm THK. GVS ANGLE BRACKET (L-SECTION) WITH 2x20mm DIA. ANCHOR BOLT (W/ 300mm)
- ⑤ 100x100mm THK. GVS ANGLE BRACKET (L-SECTION) WITH 2x20mm DIA. ANCHOR BOLT (W/ 300mm)
- ⑥ 100x100mm THK. GVS ANGLE BRACKET (L-SECTION) WITH 2x20mm DIA. ANCHOR BOLT (W/ 300mm)
- ⑦ 100x100mm THK. GVS ANGLE BRACKET (L-SECTION) WITH 2x20mm DIA. ANCHOR BOLT (W/ 300mm)
- ⑧ 100x100mm THK. GVS ANGLE BRACKET (L-SECTION) WITH 2x20mm DIA. ANCHOR BOLT (W/ 300mm)
- ⑨ 100x100mm THK. GVS ANGLE BRACKET (L-SECTION) WITH 2x20mm DIA. ANCHOR BOLT (W/ 300mm)
- ⑩ 100x100mm THK. GVS ANGLE BRACKET (L-SECTION) WITH 2x20mm DIA. ANCHOR BOLT (W/ 300mm)

JOB NO: J-R77

PROJECT: LINA KUN TONG TOWN CENTRE REDEVELOPMENT AREA 2 & 3 AT NWL 65-4, KUN TONG, HONG KONG

PART ELEVATION OF GLASS CLADDING AT TOWER 3

DATE: 24-JUL-18 SCALE: 1/20

DRAWN BY: ASND CHECKED BY: -

葵峰鋁業有限公司  
MIDI ALUMINIUM FABRICATOR LTD

