

工程指示 / 要求簡箋(E.I.)

工程指示編號：EI / 1151 / 19 修改版次：
 工程編號：J - 837 工程名稱：觀塘裕民坊
 工程項目：走廊生窗 / 維修窗拉手報價
 收件人：楠哥 發件人：Bessie Lau 日期：22/10/2019

要求提供 / 確認 事項：

- () 初步鋁料 B.M. () 加工拆圖，然後生產 () 尺寸表
- () 正式鋁料 B.M. () 技術上資料 / 指示 () 報價
- () 配件 B.M. () 樣辦或貨品說明書 () 分判合約
- () 其他：_____

內容：

根據則師 16/10/2019 RFI 會議時的指示，走廊生窗 / 維修窗拉手現須作出以下更改：

1. 走廊生窗：改用分離式拉手 (型號不變，都是東城 2017-MD，但因拆散拉手時會刮花拉手，所以重新訂貨)，顏色：EC-DG-S332054(3 塗)，合共：200 隻，價錢：\$15.8/隻

2. 維修窗：改用扁身的提拉式拉手 (有軸芯款)，顏色：EC-DG-S332054(3 塗)，合共：560 隻，價錢：\$10.8/隻

煩請按此提交報價單，謝謝！

(之前已訂的拉手已到廠，須作廢及重訂以上拉手)

請在 _____ 前完成上列要求。

實際後備用

附有關圖紙 / 文件：

以上項目為：

- 原合約工程包 原合約工程加 / 減賬 新工程報價

原因：-

分發東莞各部門：

- () 生產技術總監 連附件 () 技術部 連附件 () 生產部 連附件 () 機械設計部 連附件
- () 採購部 連附件 () 生產統籌部 連附件
- () 質檢部 連附件 () 會計部 連附件 () 報關組 連附件 () 其他 _____ 連附件

分發香港各部門：

- () 行政部 連附件 () 會計部 連附件 () 統籌部 連附件 () 工程部地盤科文 連附件
- () 採購部 連附件 () QS 部 連附件 () 維修部 連附件 () 其他 _____ 連附件

傳遞編號：

發件人簽署：

項目經理簽署：

photo 1

T2-8K 走廊

Removable Handle
(for operable window)

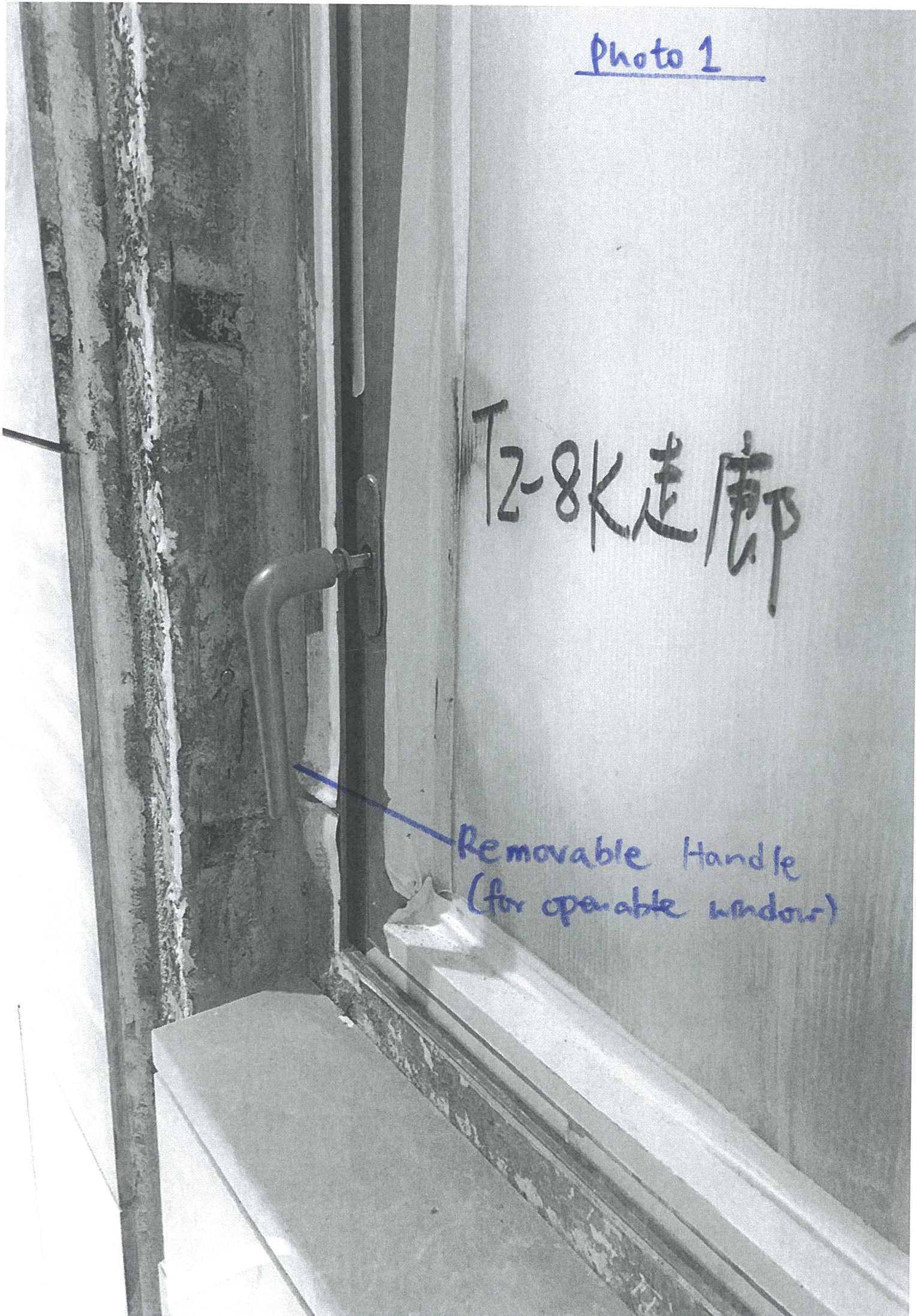
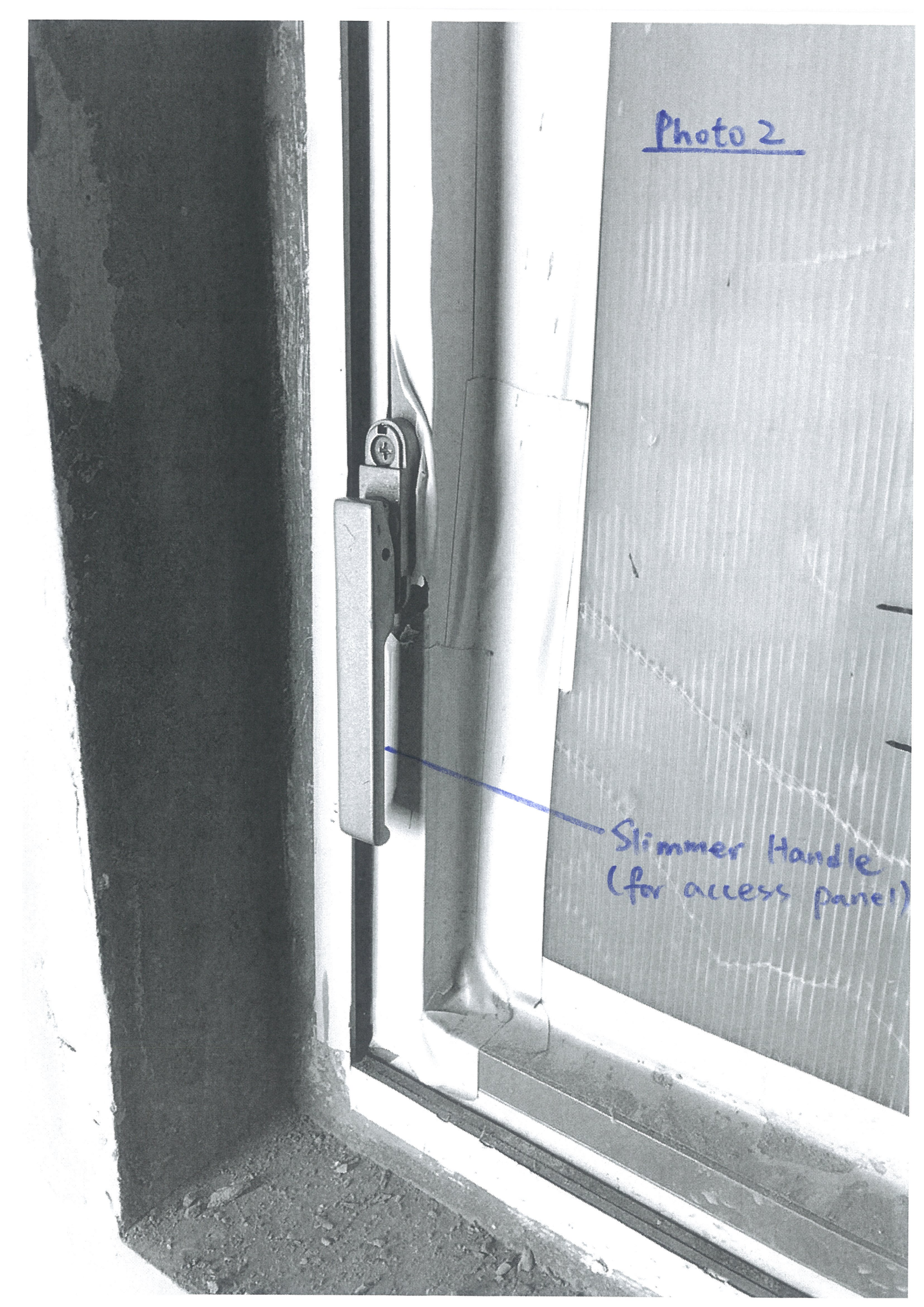


Photo 2

Slimmer Handle
(for access panel)



表格A

MC/38850/837

Precast	Access Panel (Slimmer Handle)	Openable windows (Removable Handle)	Location (Except	Qty.
T1W/ 1		√	7~50 /F	38
T1W/ 6	√		6~50 /F	39
T1W/ 5	√		6~50 /F	39
T1W/ 2	√		6~50 /F	39
T1W/ 4	√		6~49 /F	38
T2W/ 2		√	6~55 /F	43
T2W/ 1	√		6~55 /F	43
T2W/ 6	√		7~55 /F	42
T3W/ 2	√		6~51 /F	40
T3W/ 4	√		6~52 /F	41
T5W/ 1	√		6~50 /F	39
T5W/ 3	√		6~51 /F	40
Total Qty of Handle				481
Slimmer Handle for Precast Access Panel				400
Removable Handle for Precast Openable windows				81

MC/38851/837

In situ	Access Panel (Slimmer Handle)	Openable windows (Removable Handle)	Location (Except	Qty.
T1W/ 7	√		7~50 /F	38
T1W/ 3	√		6~49 /F	38
T2W/ 8	√		6~55 /F	43
T3W/ 1		√	7~51 /F	39
T3W/ 5		√	6~52 /F	41
T3W/ 3	√		6~52 /F	41
T5W/ 2		√	6~50 /F	39
Total Qty of Handle				279
Slimmer Handle for In situ Access Panel				160
Removable Handle for In situ Openable windows				119

Total Qty. for Removable Handle (for openable windows): 200

Total Qty. for Slimmer Handle (for access panel): 560



T1 - TYPICAL FLOOR PLAN
 7/F - 26/F, 28/F - 49/F (37 STOREYS)
 (FLOOR NOS. 13, 14, 24, 34, 44 NOT USED.)

(實際之使用樓層按"表格A"為準)

B.D. REF :

CLIENT :
 信和置業有限公司
 Sino Land Company Limited

ARCHITECT :
 WONG TUNG & PARTNERS LIMITED
 ARCHITECTS & PLANNERS

MAIN CONTRACTOR :
 CR Construction Company Limited

STRUCTURAL ENGINEER :
 AECOM

FACADE CONSULTANT:

NOTE :
 1. ALL DIMENSIONS ARE IN mm.
 2. ALL ELEVATIONS ARE VIEWED FROM OUTSIDE.
 3. ALL DIMENSIONS TO BE VERIFIED ON SITE BEFORE FABRICATION.

LEGEND :
 (X1) --- DETAIL MARK NO.
 (X001) --- REFER SHEET NO.
 --- FINISHED FLOOR LEVEL
 --- STRUCTURAL FLOOR LEVEL
 (R) --- REVERSED DETAIL

C	2019/2/12	BY ARCHITECT COMMENT	Zeng
B	2018/12/11	BY ARCHITECT COMMENT	Zeng
A	2018/07/16	BY ARCHITECT COMMENT	Zeng
NO	DATE	REASON	BY

JOB NO. : J-837

PROJECT :
 LURA KWUN TONG TOWN CENTRE
 REDEVELOPMENT (AREA 2 & 3) AT
 NKIL 6514, KWUN TONG, KOW LOON

TITLE :
 FULL PLAN LAYOUT
 (FOR T1 TYPICAL FLOOR PLAN)

DATE : 04-JUL-18 SCALE : 1:200

DRAWN BY : Zeng CHECKED BY : DW

美特鋁質有限公司
 MIDI ALUMINIUM FABRICATOR LTD.
 Units 6-8, Sunray Industrial Centre, 1/F
 610 Cha Kwo Ling Road, Kowloon
 Tel: 23489211-4 Fax: (852) 2727666

DWG NO. : JB37-FW-3102 REV. : C

Openable window
 分離式扶手

Access Panel
 高身扶手(握拉式)

(P) = Precast
 (I) = In situ



Access Panel
偏身拉手
(提拉式)

Operable windows
分離式拉手

(P) = Precast
(I) = In situ

B.D. REF :

CLIENT :
信和置業有限公司
Sino Land Company Limited

ARCHITECT :
WONG TUNG & PARTNERS LIMITED
ARCHITECTS & PLANNERS
WT

MAIN CONTRACTOR :
CR Construction Company Limited

STRUCTURAL ENGINEER :
AECOM

FACADE CONSULTANT :

NOTE:
1. ALL DIMENSIONS ARE IN mm.
2. ALL ELEVATIONS ARE VIEWED FROM OUTSIDE.
3. ALL DIMENSIONS TO BE VERIFIED ON SITE BEFORE FABRICATION.

LEGEND:
X1 --- DETAIL MARK NO.
XDD1 --- REFER SHEET NO.

1. F.F.L. --- FINISHED FLOOR LEVEL
2. S.F.L. --- STRUCTURAL FLOOR LEVEL
3. (R) --- REVERSED DETAIL

C	2019/2/12	BY ARCHITECT COMMENT	Zeng
B	2018/11/30	BY ARCHITECT COMMENT	Zeng
A	2018/07/19	BY ARCHITECT COMMENT	Zeng
NO	DATE	REVISED	BY

JOB NO. : J-837

PROJECT :
URA KWUN TONG TOWN CENTRE
REDEVELOPMENT (AREA 2 & 3) AT
NKIL 6514, KWUN TONG, KOWLOON

TITLE :
FULL PLAN LAYOUT
(FOR T2 TYPICAL FLOOR PLAN)

DATE : 04-JUL-18 SCALE : 1:200

DRAWN BY : Zeng CHECKED BY : DW

英鋁鋁質有限公司
MIDI ALUMINIUM FABRICATOR LTD.
Units 6-8, Surrey Industrial Centre, 1/F
610 Cha Kwo Ling Road, Kowloon
Tel: 23469211-4 Fax: (852) 2727666

DWG NO. : J837-PW-3202 REV. : C

T2 - TYPICAL FLOOR PLAN
7/F - 28/F 28/F - 33F (41 STOREYS)
(FLOOR NOS. 13, 14, 24, 34, 44, 54 NOT USED.)

實際之使用樓層按"表格A"為準



Openable Windows
 分離式窗手

Access Panel
 窗身字窗手 (埋位)

(P) = precast
 (I) = In situ

B.D. REF :

CLIENT :
 信和置業有限公司
 Sino Land Company Limited

ARCHITECT :
 WONG TUNG & PARTNERS LIMITED
 ARCHITECTS & PLANNERS

MAIN CONTRACTOR :
 CR Construction Company Limited

STRUCTURAL ENGINEER :
 AECOM

FACADE CONSULTANT:

NOTE:
 1. ALL DIMENSIONS ARE IN mm.
 2. ALL ELEVATIONS ARE VIEWED FROM OUTSIDE.
 3. ALL DIMENSIONS TO BE VERIFIED ON SITE BEFORE FABRICATION.

LEGEND:
 (X) --- DETAIL MARK NO.
 (X-1) --- REFER SHEET NO.

1. F.F.L. --- FINISHED FLOOR LEVEL.
 2. S.F.L. --- STRUCTURAL FLOOR LEVEL.
 3. (R) --- REVERSED DETAIL.

D	2018/2/12	BY ARCH-TECH COMMENT	Zeng
C	2018/11/20	BY ARCH-TECH COMMENT	Zeng
B	2018/09/03	BY ARCH-TECH COMMENT	Zeng
A	2018/07/19	BY ARCH-TECH COMMENT	Zeng
NO.	DATE	REVISED	BY

JOB NO. : J-837

PROJECT :
 URA KWUN TONG TOWN CENTRE
 REDEVELOPMENT (AREA 2 & 3) AT
 NK11 65'4, KWUN TONG, KOWLOON

TITLE :
 FULL PLAN LAYOUT
 (FOR T3 TYPICAL FLOOR PLAN)

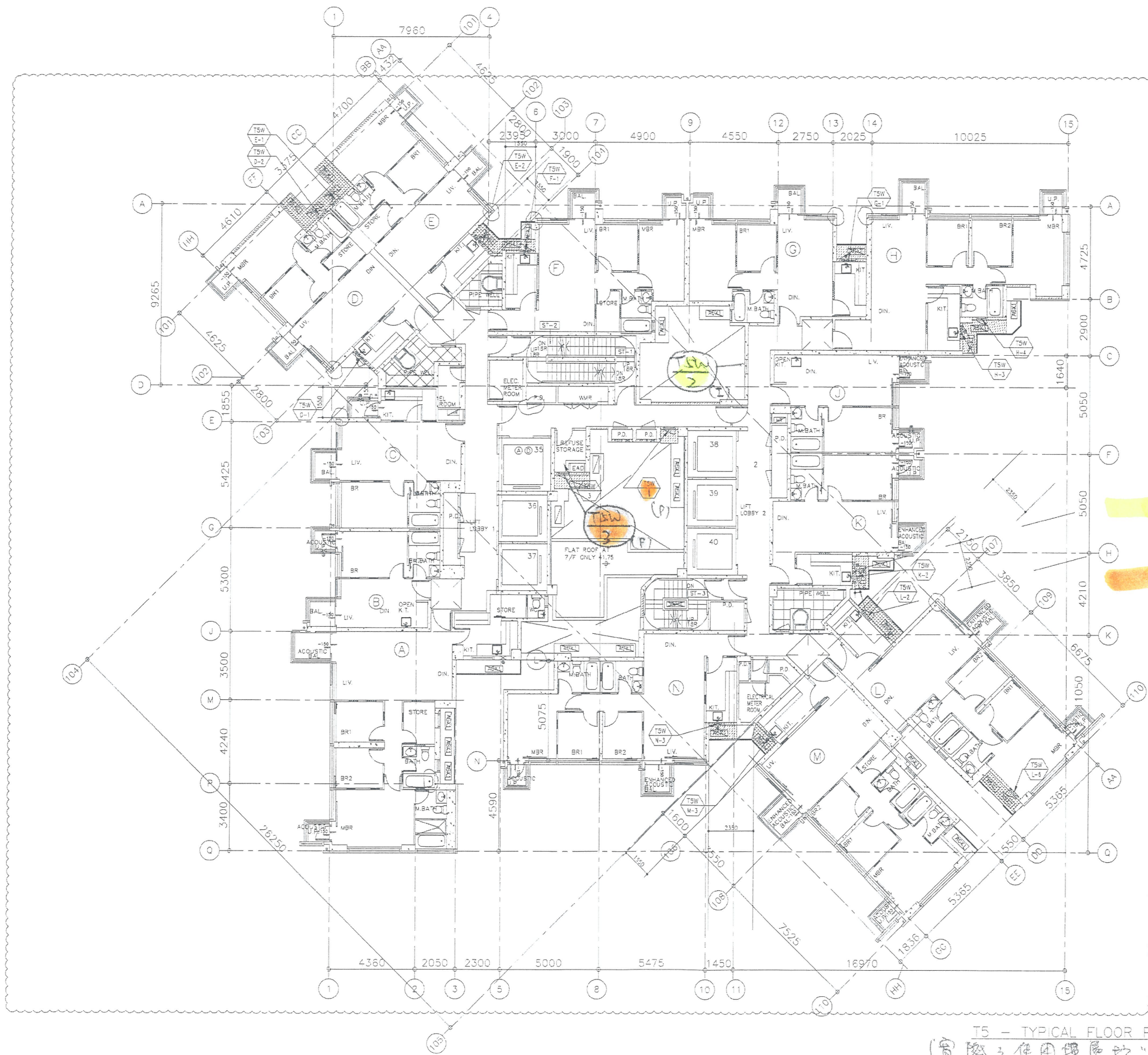
DATE : 04-JUL-18 SCALE : 1:200

DRAWN BY : Zeng CHECKED BY : DW

美特鋁質有限公司
 MIDI ALUMINIUM FABRICATOR LTD.
 Units 6-8, Sunray Industrial Centre, 1/F
 610 Cho Kwong Road, Kowloon
 Tel: 23489211-4 Fax: (852) 27727666

DWG NO. : JB37-PW-3302 REV. : D

T3 - TYPICAL FLOOR PLAN
 7/F - 26/F 28/F - 51/F (39 STOREYS)
 (FLOOR NOS. 13, 14, 24, 34, 44 NOT USED)
 (實際之使用樓層在「表格A」為準)



Openable Window
 分離式拉手

Access Panel
 窗身拉手
 (提拉式)

(P) = Precast
 (Z) = In situ

T5 - TYPICAL FLOOR PLAN
 (實際之使用樓層按"表格A"為準)

B.D. REF :

CLIENT :
 信和置業有限公司
 Sino Land Company Limited

ARCHITECT :
 WONG TUNG & PARTNERS LIMITED
 ARCHITECTS & PLANNERS

MAIN CONTRACTOR :
 CR Construction Company Limited

STRUCTURAL ENGINEER :
 AECOM

FACADE CONSULTANT:

NOTE:
 1. ALL DIMENSIONS ARE IN mm.
 2. ALL ELEVATIONS ARE VIEWED FROM OUTSIDE.
 3. ALL DIMENSIONS TO BE VERIFIED ON SITE BEFORE FABRICATION.

LEGEND:
 (X) --- DETAIL MARK NO.
 (X00) --- REFER SHEET NO.

1. F.F.L. --- FINISHED FLOOR LEVEL
 2. S.F.L. --- STRUCTURAL FLOOR LEVEL
 3. (P) --- REVERSED DETAIL

C	2019/2/12	BY ARCHITECT COMMENT	Zeng
B	2018/11/30	BY ARCHITECT COMMENT	Zeng
A	2018/07/18	BY ARCHITECT COMMENT	Zeng
NO.	DATE	REASON	BY

JOB NO. : J-837

PROJECT :
 URA KWUN TONG TOWN CENTRE
 REDEVELOPMENT (AREA 2 & 3) AT
 NKIL 6514, KWUN TONG, KOWLOON

TITLE :
 (FOR T5 TYPICAL FLOOR PLAN)

DATE : 04-JUL-18 SCALE : 1:200

DRAWN BY : Zeng CHECKED BY : DW

美特鋁質有限公司
 MIDI ALUMINIUM FABRICATOR LTD.
 Units 6-8, Sunray Industrial Centre, 1/F
 610 Cho Kwo Ling Road, Kowloon
 Tel: 23469211-4 Fax: (852) 27727866

DWG NO. : JS37-PW-3502 REV. : C