



工程指示 / 要求簡箋(E.I.)

工程指示編號：EI / 10051 / 18

修改版次：-

工程編號：J - 837

工程名稱：觀塘裕民坊

工程項目：Glass Cladding Mockup 用玻璃 B.M. (8/F 全層及 7/F 轉層位)

收件人：Maggie / 生統

發件人：Eric Liu

日期：18/12/2018

要求提供 /  確認 事項：

- |                                    |                                     |                               |
|------------------------------------|-------------------------------------|-------------------------------|
| <input type="checkbox"/> 初步鋁料 B.M. | <input type="checkbox"/> 加工拆圖，然後生產  | <input type="checkbox"/> 尺寸表  |
| <input type="checkbox"/> 正式鋁料 B.M. | <input type="checkbox"/> 技術上資料 / 指示 | <input type="checkbox"/> 報價   |
| <input type="checkbox"/> 配件 B.M.   | <input type="checkbox"/> 樣辦或貨品說明書   | <input type="checkbox"/> 分判合約 |
| <input type="checkbox"/> 其他：_____  |                                     |                               |

內容：

請按 B.M. 訂購 G.C. Mock up (8/F 全層及 7/F 轉層) 用玻璃

請留意：

- 1) 此 B.M. 按第 3 份 SD G.C. 大圖 (EI9720B) 計算
- 2) 玻璃送廠加工連 棧 出貨
- 3) 包裝分座 (次序: T5 → T1 → T2 → T3)
- 4) 請留意玻璃加工時不要 TEMPER MARK 及 HEAT SOAK MARK
- 5) 要做 heat soak 及保護膠紙
- 6) G4: Heat strengthened Glass: 最大尺寸: 2250H X 700W
- G5: Tempered Glass: 最大尺寸: 2250H X 950W

謝謝！

請在 2019/1/9 前完成上列要求。

附：7 頁 B.M.，3 頁圖登，2 頁加工圖，7 頁位置圖

以上項目為：

原合約工程包  原合約工程加 / 減賬  新工程報價

分發東莞各部門：

- |  |  |   |   |
|--|--|---|---|
| <input type="checkbox"/> 生產技術總監 <input type="checkbox"/> 連附件 | <input checked="" type="checkbox"/> 技術部 <input type="checkbox"/> 連附件 <u>材料</u> | <input type="checkbox"/> 生產部 <input type="checkbox"/> 連附件 | <input type="checkbox"/> 機械設計部 <input type="checkbox"/> 連附件         |
| <input type="checkbox"/> 採購部 <input type="checkbox"/> 連附件    | <input type="checkbox"/> 生產統籌部 <input type="checkbox"/> 連附件 <u>棧</u>           |   |   |
| <input type="checkbox"/> 質檢部 <input type="checkbox"/> 連附件    | <input type="checkbox"/> 會計部 <input type="checkbox"/> 連附件                      | <input type="checkbox"/> 報關組 <input type="checkbox"/> 連附件 | <input type="checkbox"/> 其他 <u>楊榮輝</u> <input type="checkbox"/> 連附件 |

分發香港各部門：

- |  |  |   |  |
|--|--|---|--|
| <input type="checkbox"/> 行政部 <input type="checkbox"/> 連附件            | <input type="checkbox"/> 會計部 <input type="checkbox"/> 連附件  | <input type="checkbox"/> 統籌部 <input type="checkbox"/> 連附件 | <input type="checkbox"/> 工程部地盤科文 <input type="checkbox"/> 連附件  |
| <input checked="" type="checkbox"/> 採購部 <input type="checkbox"/> 連附件 | <input type="checkbox"/> QS 部 <input type="checkbox"/> 連附件 | <input type="checkbox"/> 維修部 <input type="checkbox"/> 連附件 | <input type="checkbox"/> 其他 _____ <input type="checkbox"/> 連附件 |

傳遞編號：

發件人簽署：

HK 1952 / 18

項目經理簽署：

 <b>美特鋁質</b> 有限公司 MIDI Aluminium Fabricator Ltd.		工程號: J837	計算: 羅志光	日期: 2018.11.09	送呈: 胡哥	計算參考數值/所屬位置分格							
廠用玻璃B.M.表		地盤名稱: 觀塘裕民坊	核對: 謝永林	日期: 2018.11.09	副本:								
BM編號: J-837-CW-MO1-F-GP01		項目類別: Class Cladding	批准:	依據 EI9720B計算BM									
		修改版次:	總計面積 (平方米): 176.93										
序號	修改內容	玻璃圖號	顏色與類型	厚度 (mm)	玻璃尺寸		數量 (塊)	總面積 (平方米)	使用位置	樓層	分屬類型	分格寬度	分格高度
					寬度 (W mm)	高度 (H mm)							
1		G5-1001	G5	8.0	702.5	2213.0	1	1.55	T1GC-H	8/F	梗窗	717.5	2250.0
2		G5-1004	G5	8.0	702.5	2213.0	1	1.55	T1GC-G	8/F	梗窗	717.5	2250.0
3		G5-1014	G5	8.0	702.5	2213.0	1	1.55	T1GC-E	8/F	梗窗	717.5	2250.0
4		G5-1017	G5	8.0	735.0	2213.0	1	1.63	T1GC-B	8/F	梗窗	750.0	2250.0
5		G5-1018	G5	8.0	702.5	2213.0	1	1.55	T1GC-B	8/F	梗窗	717.5	2250.0
6		G5-2002	G5	8.0	847.5	2213.0	1	1.88	T2GC-H	8/F	梗窗	862.5	2250.0
7		G5-2003	G5	8.0	702.5	2213.0	1	1.55	T2GC-B	8/F	梗窗	717.5	2250.0
8		G5-2006	G5	8.0	702.5	2213.0	1	1.55	T2GC-A	8/F	梗窗	717.5	2250.0
9		G5-2007	G5	8.0	710.9	2213.0	1	1.57	T2GC-M	8/F	梗窗	725.9	2250.0
10		G5-2008	G5	8.0	710.8	2213.0	1	1.57	T2GC-M	8/F	梗窗	725.8	2250.0
11		G5-2009	G5	8.0	710.8	2213.0	1	1.57	T2GC-M	8/F	梗窗	725.8	2250.0
12		G5-2020	G5	8.0	702.5	2213.0	1	1.55	T2GC-M	8/F	梗窗	717.5	2250.0
13		G5-3001	G5	8.0	702.5	2213.0	1	1.55	T3GC-B	8/F	梗窗	717.5	2250.0
14		G5-3002	G5	8.0	835.0	2213.0	1	1.85	T3GC-B	8/F	梗窗	850.0	2250.0
15		G5-3003	G5	8.0	835.0	2213.0	1	1.85	T3GC-A	8/F	梗窗	850.0	2250.0
16		G5-3004	G5	8.0	702.5	2213.0	1	1.55	T3GC-A	8/F	梗窗	717.5	2250.0
17		G5-3005	G5	8.0	811.8	2213.0	1	1.80	T3GC-F	8/F	梗窗	826.8	2250.0
18		G5-3006	G5	8.0	811.6	2213.0	1	1.80	T3GC-F	8/F	梗窗	826.6	2250.0
19		G5-3007	G5	8.0	811.6	2213.0	1	1.80	T3GC-F	8/F	梗窗	826.6	2250.0
20		G5-3011	G5	8.0	702.5	2213.0	1	1.55	T3GC-F	8/F	梗窗	717.5	2250.0
21		G5-5001	G5	8.0	902.5	2213.0	1	2.00	T5GC-M	8/F	梗窗	917.5	2250.0

 <b>美特鋁質</b> 有限公司 MIDI Aluminium Fabricator Ltd.		工程號: J837	計算: 羅志光	日期: 2018.11.09	送呈: 胡哥	計算參考數值/所屬位置分格							
廠用玻璃B.M.表		地盤名稱: 觀塘裕民坊	核對: 謝永林	日期: 2018.11.09	副本:								
BM編號: J-837-CW-MO1-F-GP01		項目類別: Class Cladding	批准:	依據 EI9720B計算BM									
修改版次:		總計面積 (平方米):	176.93										
序號	修改內容	玻璃圖號	顏色與類型	厚度 (mm)	玻璃尺寸		數量 (塊)	總面積 (平方米)	使用位置	樓層	分屬類型	分格寬度	分格高度
					寬度 (W mm)	高度 (H mm)							
22		G5-5004	G5	8.0	902.5	2213.0	1	2.00	T5GC-L	8/F	梗窗	917.5	2250.0
23		G5-5005	G5	8.0	702.5	2213.0	1	1.55	T5GC-A	8/F	梗窗	717.5	2250.0
24		G5-5007	G5	8.0	801.8	2213.0	1	1.77	T5GC-A	8/F	梗窗	816.8	2250.0
25		G5-5008	G5	8.0	801.9	2213.0	1	1.77	T5GC-A	8/F	梗窗	816.9	2250.0
26		G5-5009	G5	8.0	801.9	2213.0	1	1.77	T5GC-A	8/F	梗窗	816.9	2250.0
27		G5-5010	G5	8.0	801.9	2213.0	1	1.77	T5GC-A	8/F	梗窗	816.9	2250.0
28		G5-5012	G5	8.0	847.5	2213.0	1	1.88	T5GC-H	8/F	梗窗	862.5	2250.0
29		G5-1015	G5	8.0	702.5	2213.0	1	1.55	T1GC-A	8/F	梗窗	717.5	2250.0
30					合計:		29	48.93					
31		G4-1002	G4	8.0	685.0	2213.0	1	1.52	T1GC-H	8/F	梗窗	700.0	2250.0
32		G4-1003	G4	8.0	685.0	2213.0	1	1.52	T1GC-G	8/F	梗窗	700.0	2250.0
33		G4-1005	G4	8.0	573.7	2213.0	1	1.27	T1GC-E	8/F	梗窗	588.7	2250.0
34		G4-1006	G4	8.0	573.7	2213.0	1	1.27	T1GC-E	8/F	轉角邊用梗窗	588.7	2250.0
35		G4-1007	G4	8.0	673.8	2213.0	1	1.49	T1GC-E	8/F	梗窗	696.3	2250.0
36		G4-1008	G4	8.0	681.3	2213.0	1	1.51	T1GC-E	8/F	轉角邊用梗窗	696.3	2250.0
37		G4-1009	G4	8.0	618.7	2213.0	1	1.37	T1GC-E	8/F	梗窗	641.2	2250.0
38		G4-1010	G4	8.0	626.2	2213.0	1	1.39	T1GC-E	8/F	梗窗	641.2	2250.0
39		G4-1011	G4	8.0	850.0	258.0	1	0.22	T1GC-E	8/F	梗窗	865.0	295.0
40		G4-1012	G4	8.0	397.5	2213.0	1	0.88	T1GC-E	8/F	梗窗	412.5	2250.0
41		G4-1013	G4	8.0	682.5	258.0	1	0.18	T1GC-E	8/F	梗窗	697.5	295.0
42		G4-1016	G4	8.0	670.0	2213.0	1	1.48	T1GC-A	8/F	梗窗	685.0	2250.0

 <b>美特鋁質</b> 有限公司 MIDI Aluminium Fabricator Ltd.		工程號: J837	計算: 羅志光	日期: 2018.11.09	送呈: 胡哥	計算參考數值/所屬位置分格							
廠用玻璃B.M.表		地盤名稱: 觀塘裕民坊	核對: 謝永林	日期: 2018.11.09	副本:								
BM編號: J-837-CW-MO1-F-GP01		項目類別: Class Cladding	批准:	依據 EI9720B計算BM									
修改版次:		總計面積 (平方米):	176.93										
序號	修改內容	玻璃圖號	顏色與類型	厚度 (mm)	玻璃尺寸		數量 (塊)	總面積 (平方米)	使用位置	樓層	分屬類型	分格寬度	分格高度
					寬度 (W mm)	高度 (H mm)							
43		G4-2001	G4	8.0	647.5	2213.0	1	1.43	T2GC-H	8/F	梗窗	662.5	2250.0
44		G4-2004	G4	8.0	685.0	2213.0	1	1.52	T2GC-B	8/F	梗窗	700.0	2250.0
45		G4-2005	G4	8.0	685.0	2213.0	1	1.52	T2GC-A	8/F	梗窗	700.0	2250.0
46		G4-2010	G4	8.0	995.0	813.0	1	0.81	T2GC-M	8/F	梗窗	1010.0	850.0
47		G4-2011	G4	8.0	546.2	2213.0	1	1.21	T2GC-M	8/F	梗窗	561.2	2250.0
48		G4-2012	G4	8.0	546.2	2213.0	1	1.21	T2GC-M	8/F	梗窗	561.2	2250.0
49		G4-2013	G4	8.0	685.0	258.0	1	0.18	T2GC-M	8/F	梗窗	700.0	295.0
50		G4-2014	G4	8.0	663.5	2213.0	1	1.47	T2GC-M	8/F	梗窗	678.5	2250.0
51		G4-2015	G4	8.0	663.5	2213.0	1	1.47	T2GC-M	8/F	梗窗	678.5	2250.0
52		G4-2016	G4	8.0	663.5	2213.0	1	1.47	T2GC-M	8/F	梗窗	678.5	2250.0
53		G4-2017	G4	8.0	663.5	2213.0	1	1.47	T2GC-M	8/F	梗窗	678.5	2250.0
54		G4-2018	G4	8.0	663.5	2213.0	1	1.47	T2GC-M	8/F	梗窗	678.5	2250.0
55		G4-2019	G4	8.0	670.0	2213.0	1	1.48	T2GC-M	8/F	梗窗	685.0	2250.0
56		G4-3009	G4	8.0	685.0	2213.0	1	1.52	T3GC-F	8/F	梗窗	700.0	2250.0
57		G4-3010	G4	8.0	670.0	2213.0	1	1.48	T3GC-F	8/F	梗窗	685.0	2250.0
58		G4-5002	G4	8.0	685.0	2213.0	1	1.52	T5GC-M	8/F	梗窗	700.0	2250.0
59		G4-5003	G4	8.0	685.0	2213.0	1	1.52	T5GC-L	8/F	梗窗	700.0	2250.0
60		G4-5006	G4	8.0	670.0	2213.0	1	1.48	T5GC-A	8/F	梗窗	685.0	2250.0
61		G4-5011	G4	8.0	685.0	2213.0	1	1.52	T5GC-H	8/F	梗窗	700.0	2250.0
62		G4-5013	G4	8.0	661.0	2213.0	1	1.46	T5GC-H	8/F	梗窗	676.0	2250.0
63		G4-5014	G4	8.0	661.0	2213.0	1	1.46	T5GC-H	8/F	梗窗	676.0	2250.0

 <b>美特鋁質</b> 有限公司 MIDI Aluminium Fabricator Ltd.		工程號: J837	計算: 羅志光	日期: 2018.11.09	送呈: 胡哥	計算參考數值/所屬位置分格							
廠用玻璃B.M.表		地盤名稱: 觀塘裕民坊	核對: 謝永林	日期: 2018.11.09	副本:								
BM編號: J-837-CW-MO1-F-GP01		項目類別: Class Cladding	批准:	依據 EI9720B計算BM									
		修改版次:	總計面積 (平方米): 176.93										
序號	修改內容	玻璃圖號	顏色與類型	厚度 (mm)	玻璃尺寸		數量 (塊)	總面積 (平方米)	使用位置	樓層	分屬類型	分格寬度	分格高度
					寬度 (W mm)	高度 (H mm)							
64		G4-5015	G4	8.0	661.0	2213.0	1	1.46	T5GC-H	8/F	梗窗	676.0	2250.0
65		G4-5016	G4	8.0	619.0	2213.0	1	1.37	T5GC-H	8/F	梗窗	634.0	2250.0
66		G4-5017	G4	8.0	619.0	2213.0	1	1.37	T5GC-H	8/F	梗窗	634.0	2250.0
67		G4-5018	G4	8.0	619.0	2213.0	1	1.37	T5GC-H	8/F	梗窗	634.0	2250.0
68		G4-1001a	G4	8.0	702.5	863.0	2	1.21	T1GC-H	7/F-8/F	死牆位梗窗	717.5	900.0
69		G4-1002a	G4	8.0	685.0	863.0	2	1.18	T1GC-H	7/F-8/F	死牆位梗窗	700.0	900.0
70		G4-1003a	G4	8.0	685.0	863.0	2	1.18	T1GC-G	7/F-8/F	死牆位梗窗	700.0	900.0
71		G4-1004a	G4	8.0	702.5	863.0	2	1.21	T1GC-G	7/F-8/F	死牆位梗窗	717.5	900.0
72		G4-1005a	G4	8.0	573.7	863.0	2	0.99	T1GC-E	7/F-8/F	死牆位梗窗	588.7	900.0
73		G4-1006a	G4	8.0	573.7	863.0	2	0.99	T1GC-E	7/F-8/F	死牆位梗窗	588.7	900.0
74		G4-1007a	G4	8.0	673.8	863.0	2	1.16	T1GC-E	7/F-8/F	死牆位梗窗	696.3	900.0
75		G4-1008a	G4	8.0	681.3	863.0	2	1.18	T1GC-E	7/F-8/F	死牆位梗窗	696.3	900.0
76		G4-1009a	G4	8.0	618.7	863.0	2	1.07	T1GC-E	7/F-8/F	死牆位梗窗	641.2	900.0
77		G4-1010a	G4	8.0	626.2	863.0	2	1.08	T1GC-E	7/F-8/F	死牆位梗窗	641.2	900.0
78		G4-1011a	G4	8.0	850.0	793.0	2	1.35	T1GC-E	7/F-8/F	死牆位梗窗	865.0	830.0
79		G4-1012a	G4	8.0	397.5	863.0	2	0.69	T1GC-E	7/F-8/F	死牆位梗窗	412.5	900.0
80		G4-1013a	G4	8.0	682.5	793.0	2	1.08	T1GC-E	7/F-8/F	死牆位梗窗	697.5	830.0
81		G4-1014a	G4	8.0	702.5	863.0	2	1.21	T1GC-E	7/F-8/F	死牆位梗窗	717.5	900.0
82		G4-1015a	G4	8.0	702.5	863.0	2	1.21	T1GC-A	7/F-8/F	死牆位梗窗	717.5	900.0
83		G4-1016a	G4	8.0	670.0	863.0	2	1.16	T1GC-A	7/F-8/F	死牆位梗窗	685.0	900.0
84		G4-1017a	G4	8.0	735.0	863.0	2	1.27	T1GC-B	7/F-8/F	死牆位梗窗	750.0	900.0

 <b>美特鋁質</b> 有限公司 MIDI Aluminium Fabricator Ltd.		工程號: J837	計算: 羅志光	日期: 2018.11.09	送呈: 胡哥	計算參考數值/所屬位置分格							
廠用玻璃B.M.表		地盤名稱: 觀塘裕民坊	核對: 謝永林	日期: 2018.11.09	副本:								
BM編號: J-837-CW-MO1-F-GP01		項目類別: Class Cladding	批准:	依據 EI9720B計算BM									
修改版次:		總計面積 (平方米):	176.93										
序號	修改內容	玻璃圖號	顏色與類型	厚度 (mm)	玻璃尺寸		數量 (塊)	總面積 (平方米)	使用位置	樓層	分屬類型	分格寬度	分格高度
					寬度 (W mm)	高度 (H mm)							
85		G4-1018a	G4	8.0	702.5	863.0	2	1.21	T1GC-B	7/F-8/F	死牆位梗窗	717.5	900.0
86		G4-2001a	G4	8.0	647.5	863.0	2	1.12	T2GC-H	7/F-8/F	死牆位梗窗	662.5	900.0
87		G4-2002a	G4	8.0	847.5	863.0	2	1.46	T2GC-H	7/F-8/F	死牆位梗窗	862.5	900.0
88		G4-2003a	G4	8.0	702.5	863.0	2	1.21	T2GC-B	7/F-8/F	死牆位梗窗	717.5	900.0
89		G4-2004a	G4	8.0	685.0	863.0	2	1.18	T2GC-B	7/F-8/F	死牆位梗窗	700.0	900.0
90		G4-2005a	G4	8.0	685.0	863.0	2	1.18	T2GC-A	7/F-8/F	死牆位梗窗	700.0	900.0
91		G4-2006a	G4	8.0	702.5	863.0	2	1.21	T2GC-A	7/F-8/F	死牆位梗窗	717.5	900.0
92		G4-2007a	G4	8.0	710.9	863.0	2	1.23	T2GC-M	7/F-8/F	死牆位梗窗	725.9	900.0
93		G4-2008a	G4	8.0	710.8	863.0	2	1.23	T2GC-M	7/F-8/F	死牆位梗窗	725.8	900.0
94		G4-2009a	G4	8.0	710.8	863.0	2	1.23	T2GC-M	7/F-8/F	死牆位梗窗	725.8	900.0
95		G4-2010a	G4	8.0	995.0	728.0	2	1.45	T2GC-M	7/F-8/F	死牆位梗窗	1010.0	765.0
96		G4-2011a	G4	8.0	546.2	863.0	2	0.94	T2GC-M	7/F-8/F	死牆位梗窗	561.2	900.0
97		G4-2012a	G4	8.0	546.2	863.0	2	0.94	T2GC-M	7/F-8/F	死牆位梗窗	561.2	900.0
98		G4-2013a	G4	8.0	685.0	778.0	2	1.07	T2GC-M	7/F-8/F	死牆位梗窗	700.0	815.0
99		G4-2014a	G4	8.0	663.5	863.0	2	1.15	T2GC-M	7/F-8/F	死牆位梗窗	678.5	900.0
100		G4-2015a	G4	8.0	663.5	863.0	2	1.15	T2GC-M	7/F-8/F	死牆位梗窗	678.5	900.0
101		G4-2016a	G4	8.0	663.5	863.0	2	1.15	T2GC-M	7/F-8/F	死牆位梗窗	678.5	900.0
102		G4-2017a	G4	8.0	663.5	863.0	2	1.15	T2GC-M	7/F-8/F	死牆位梗窗	678.5	900.0
103		G4-2018a	G4	8.0	663.5	863.0	2	1.15	T2GC-M	7/F-8/F	死牆位梗窗	678.5	900.0
104		G4-2019a	G4	8.0	670.0	863.0	2	1.16	T2GC-M	7/F-8/F	死牆位梗窗	685.0	900.0
105		G4-2020a	G4	8.0	702.5	863.0	2	1.21	T2GC-M	7/F-8/F	死牆位梗窗	717.5	900.0

 <b>美特鋁質</b> 有限公司 MIDI Aluminium Fabricator Ltd.		工程號: J837	計算: 羅志光	日期: 2018.11.09	送呈: 胡哥	計算參考數值/所屬位置分格							
廠用玻璃B.M.表		地盤名稱: 觀塘裕民坊	核對: 謝永林	日期: 2018.11.09	副本:								
BM編號: J-837-CW-MO1-F-GP01		項目類別: Class Cladding	批准:	依據 EI9720B計算BM									
修改版次:		總計面積 (平方米):	176.93										
序號	修改內容	玻璃圖號	顏色與類型	厚度 (mm)	玻璃尺寸		數量 (塊)	總面積 (平方米)	使用位置	樓層	分屬類型	分格寬度	分格高度
					寬度 (W mm)	高度 (H mm)							
106		G4-3001a	G4	8.0	702.5	863.0	2	1.21	T3GC-B	7/F-8/F	死牆位梗窗	717.5	900.0
107		G4-3002a	G4	8.0	835.0	863.0	2	1.44	T3GC-B	7/F-8/F	死牆位梗窗	850.0	900.0
108		G4-3003a	G4	8.0	835.0	863.0	2	1.44	T3GC-A	7/F-8/F	死牆位梗窗	850.0	900.0
109		G4-3004a	G4	8.0	702.5	863.0	2	1.21	T3GC-A	7/F-8/F	死牆位梗窗	717.5	900.0
110		G4-3005a	G4	8.0	811.8	863.0	2	1.40	T3GC-F	7/F-8/F	死牆位梗窗	826.8	900.0
111		G4-3006a	G4	8.0	811.6	863.0	2	1.40	T3GC-F	7/F-8/F	死牆位梗窗	826.6	900.0
112		G4-3007a	G4	8.0	811.6	863.0	2	1.40	T3GC-F	7/F-8/F	死牆位梗窗	826.6	900.0
113		G4-3009a	G4	8.0	685.0	863.0	2	1.18	T3GC-F	7/F-8/F	死牆位梗窗	700.0	900.0
114		G4-3010a	G4	8.0	670.0	863.0	2	1.16	T3GC-F	7/F-8/F	死牆位梗窗	685.0	900.0
115		G4-3011a	G4	8.0	702.5	863.0	2	1.21	T3GC-F	7/F-8/F	死牆位梗窗	717.5	900.0
116		G4-5001a	G4	8.0	902.5	863.0	2	1.56	T5GC-M	7/F-8/F	死牆位梗窗	917.5	900.0
117		G4-5002a	G4	8.0	685.0	863.0	2	1.18	T5GC-M	7/F-8/F	死牆位梗窗	700.0	900.0
118		G4-5003a	G4	8.0	685.0	863.0	2	1.18	T5GC-L	7/F-8/F	死牆位梗窗	700.0	900.0
119		G4-5004a	G4	8.0	902.5	863.0	2	1.56	T5GC-L	7/F-8/F	死牆位梗窗	917.5	900.0
120		G4-5005a	G4	8.0	702.5	863.0	2	1.21	T5GC-A	7/F-8/F	死牆位梗窗	717.5	900.0
121		G4-5006a	G4	8.0	670.0	863.0	2	1.16	T5GC-A	7/F-8/F	死牆位梗窗	685.0	900.0
122		G4-5007a	G4	8.0	801.8	863.0	2	1.38	T5GC-A	7/F-8/F	死牆位梗窗	816.8	900.0
123		G4-5008a	G4	8.0	801.9	863.0	2	1.38	T5GC-A	7/F-8/F	死牆位梗窗	816.9	900.0
124		G4-5009a	G4	8.0	801.9	863.0	2	1.38	T5GC-A	7/F-8/F	死牆位梗窗	816.9	900.0
125		G4-5010a	G4	8.0	801.9	863.0	2	1.38	T5GC-A	7/F-8/F	死牆位梗窗	816.9	900.0
126		G4-5011a	G4	8.0	685.0	863.0	2	1.18	T5GC-H	7/F-8/F	死牆位梗窗	700.0	900.0

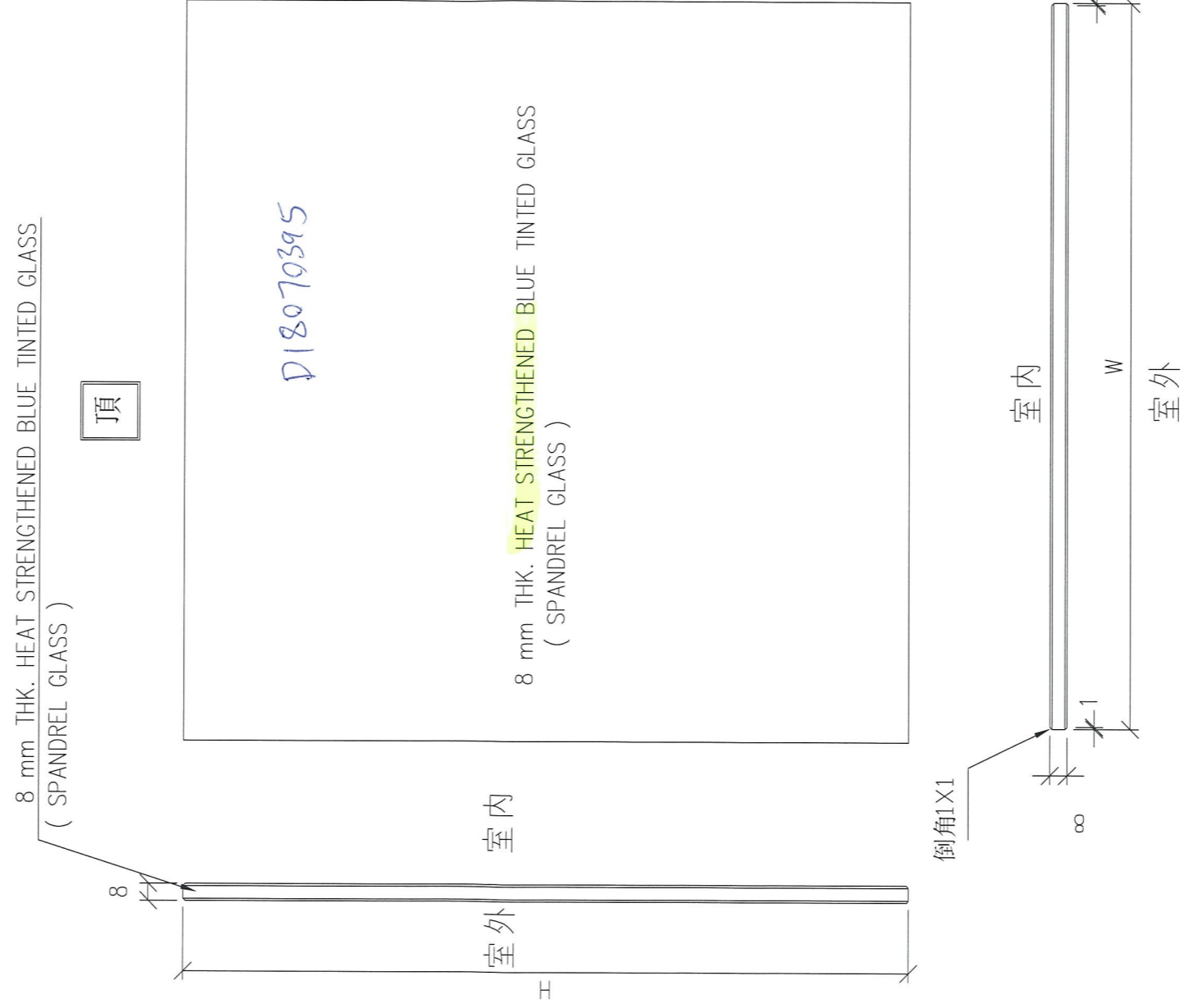
 <b>美特鋁質</b> 有限公司 MIDI Aluminium Fabricator Ltd.		工程號: J837	計算: 羅志光	日期: 2018.11.09	送呈: 胡哥	計算參考數值/所屬位置分格							
廠用玻璃B.M.表		地盤名稱: 觀塘裕民坊	核對: 謝永林	日期: 2018.11.09	副本:								
BM編號: J-837-CW-MO1-F-GP01		項目類別: Class Cladding	批准:	依據 EI9720B計算BM									
		修改版次:	總計面積 (平方米): 176.93										
序號	修改內容	玻璃圖號	顏色與類型	厚度 (mm)	玻璃尺寸		數量 (塊)	總面積 (平方米)	使用位置	樓層	分屬類型	分格寬度	分格高度
					寬度 (W mm)	高度 (H mm)							
127		G4-5012a	G4	8.0	847.5	863.0	2	1.46	T5GC-H	7/F-8/F	死牆位梗窗	862.5	900.0
128		G4-5013a	G4	8.0	661.0	863.0	2	1.14	T5GC-H	7/F-8/F	死牆位梗窗	676.0	900.0
129		G4-5014a	G4	8.0	661.0	863.0	2	1.14	T5GC-H	7/F-8/F	死牆位梗窗	676.0	900.0
130		G4-5015a	G4	8.0	661.0	863.0	2	1.14	T5GC-H	7/F-8/F	死牆位梗窗	676.0	900.0
131		G4-5016a	G4	8.0	619.0	863.0	2	1.07	T5GC-H	7/F-8/F	死牆位梗窗	634.0	900.0
132		G4-5017a	G4	8.0	619.0	863.0	2	1.07	T5GC-H	7/F-8/F	死牆位梗窗	634.0	900.0
133		G4-5018a	G4	8.0	619.0	863.0	2	1.07	T5GC-H	7/F-8/F	死牆位梗窗	634.0	900.0
134						合計:	169	128.00					
135						總計:	198	176.93					
加工注意事項/玻璃類型描述:		1).本表中之清片玻璃是 信義 原片，藍片玻璃是藍欣原片											
		2).本表中所有玻璃對角線尺寸偏差要求不超過負2mm。											
		3).本表中所有玻璃成品均需做雙面保護，用透明靜電膠紙加四周一寸FK白膠紙做雙面加固保護處理。											
		4).本表中所有玻璃成品均需注明室內外及其玻璃編號，以便識別。											
		(G4) - 8 mm THK. HEAT STRENGTHENED BLUE TINTED GLASS ( SPANDREL GLASS ) --- ( Sample no:D 18070395 )											
		(G5) - 8 mm THK. TEMPERED BLUE TINTED GLASS --- ( Sample no:D 18070395 )											



美特鋁質有限公司  
MIDI Aluminium Fabricator Ltd.

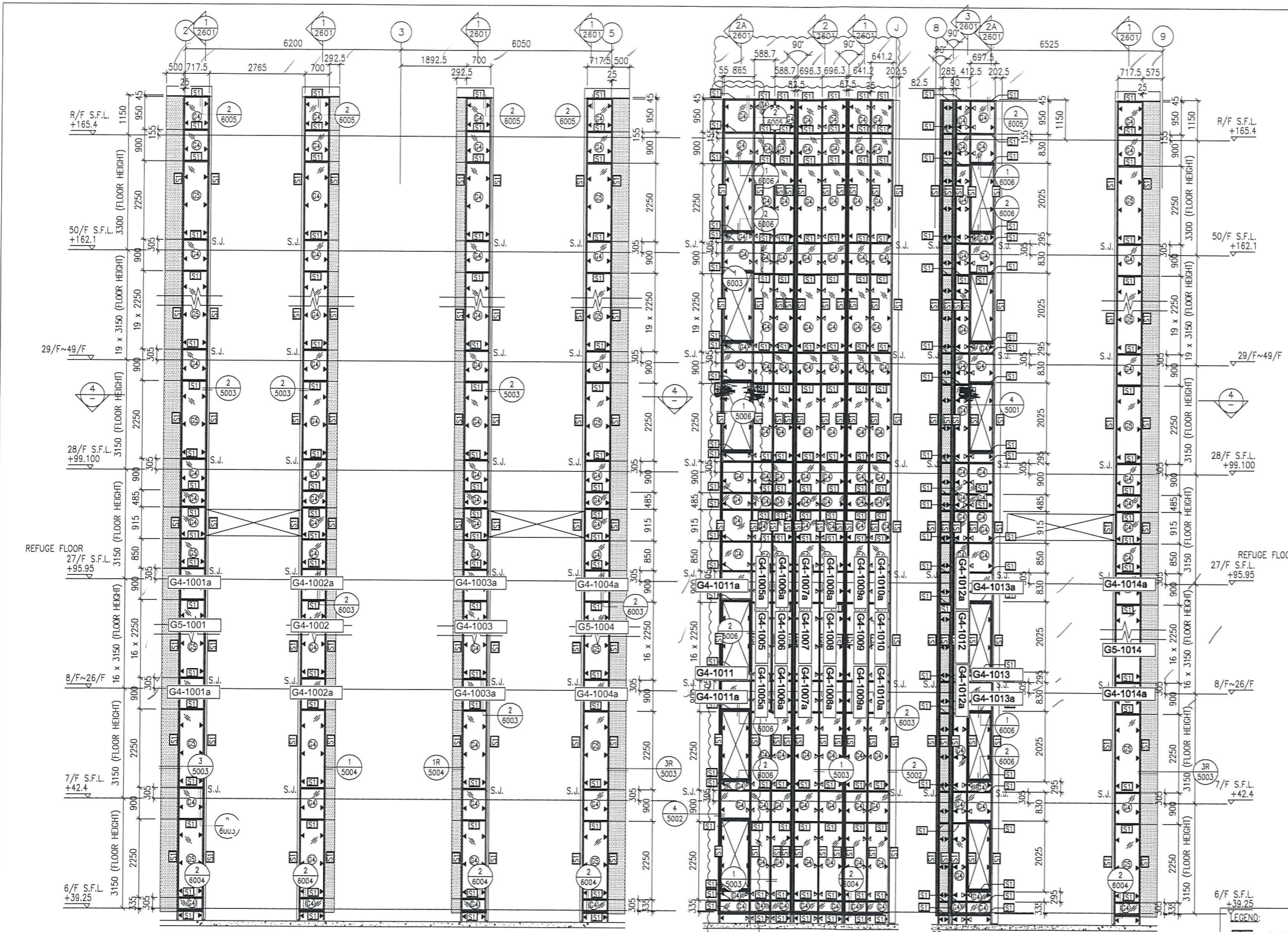
類別	物料號	圖號	
制圖	2018.10.18	數量	G4
復核		位置	見BOM表
批准			

修改  
日期



工程號	J-837	地盤	觀塘裕民坊	附件
名稱	玻璃加工圖	採用		
材料	8 mm THK. HEAT STRENGTHENED BLUE TINTED GLASS ( SPANDREL GLASS )	地盤		
顏色		工廠		

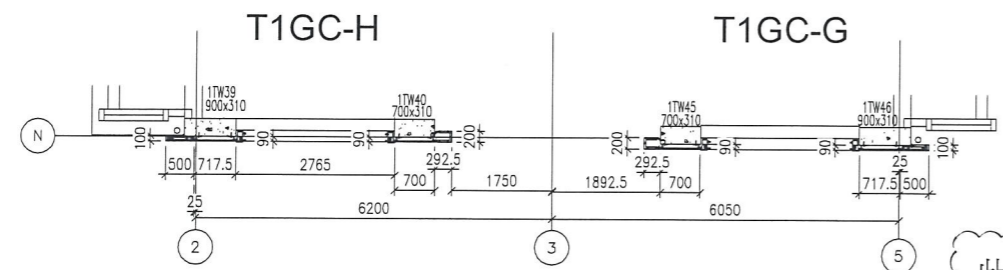




1 PART ELEVATION FOR GLASS CLADDING

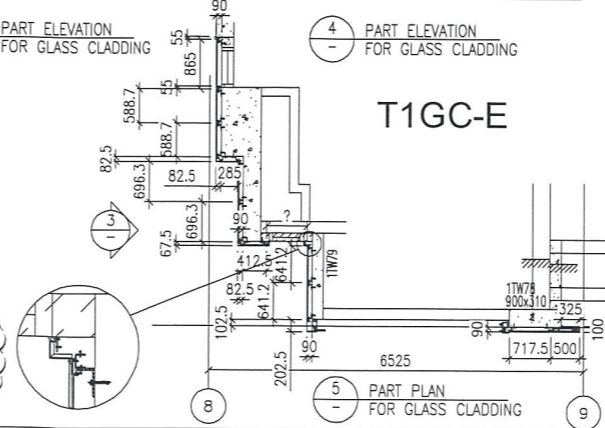
3 PART ELEVATION FOR GLASS CLADDING

4 PART ELEVATION FOR GLASS CLADDING



2 PART PLAN FOR GLASS CLADDING

此位置欠節點!



5 PART PLAN FOR GLASS CLADDING

- LEGEND:
- ST - 50x37x5mm THK. G.M.S. CHANNEL (CUT FROM 100x50x5mm THK. G.M.S. R.H.S.)
  - HT - 8 mm THK. HEAT STRENGTHENED BLUE TINTED GLASS (SPANDREL GLASS)
  - BT - 8 mm THK. TEMPERED BLUE TINTED GLASS
  - AB1 - 100x65x8mm THK. G.M.S. ANGLE BRACKET (L=250mm) W/ 2NOS-HILT HST3-R M8 ANCHOR BOLT (MAX. @900c/c)
  - AB2 - 100x65x8mm THK. G.M.S. ANGLE BRACKET (L=200mm) W/ 2NOS-HILT HST3-R M8 ANCHOR BOLT (MAX. @900c/c)
  - AB3 - 100x50x6mm THK. G.M.S. ANGLE BRACKET (L=250mm) W/ 2NOS-HILT HST3-R M8 ANCHOR BOLT (MAX. @900c/c)
  - AB4 - 100x50x6mm THK. G.M.S. ANGLE BRACKET (L=200mm) W/ 2NOS-HILT HST3-R M8 ANCHOR BOLT (MAX. @900c/c)
  - AB5 - 100x50x6mm THK. G.M.S. ANGLE BRACKET (L=250mm) W/ 2NOS-Y12 STEEL BAR (BOND LENGTH=200mm)
  - AB6 - 100x50x6mm THK. G.M.S. ANGLE BRACKET (L=200mm) W/ 2NOS-Y12 STEEL BAR (BOND LENGTH=200mm)
  - S.J. - STACK JOINT
  - AL - 3 mm THK. ALUM. CLADDING

B.D. REF :

CLIENT :  
 信和置業有限公司  
 Sino Land Company Limited

ARCHITECT :  
 WONG TUNG & PARTNERS LIMITED  
 ARCHITECTS & PLANNERS

MAIN CONTRACTOR :  
 CR Construction Company Limited

STRUCTURAL ENGINEER :  
 AECOM

FAÇADE CONSULTANT:  
 AECOM

NOTE :  
 1. ALL DIMENSIONS ARE IN mm.  
 2. ALL ELEVATIONS ARE VIEWED FROM OUTSIDE.  
 3. ALL DIMENSIONS TO BE VERIFIED ON SITE BEFORE FABRICATION.

LEGEND :  
 X1 - DETAIL MARK NO.  
 X001 - REFER SHEET NO.  
 1. F.F.L. -- FINISHED FLOOR LEVEL  
 2. S.F.L. -- STRUCTURAL FLOOR LEVEL  
 3. (R) -- REVERSED DETAIL

B	17/11/2018	GENERAL REVISED	
A	15/10/2018	GENERAL REVISED	
NO.	DATE	REVISED	BY

JOB NO. : J-837  
 PROJECT :  
 URA KWUN TONG TOWN CENTRE  
 REDEVELOPMENT (AREA 2 & 3) AT  
 NKIL 6514, KWUN TONG, KWLOON

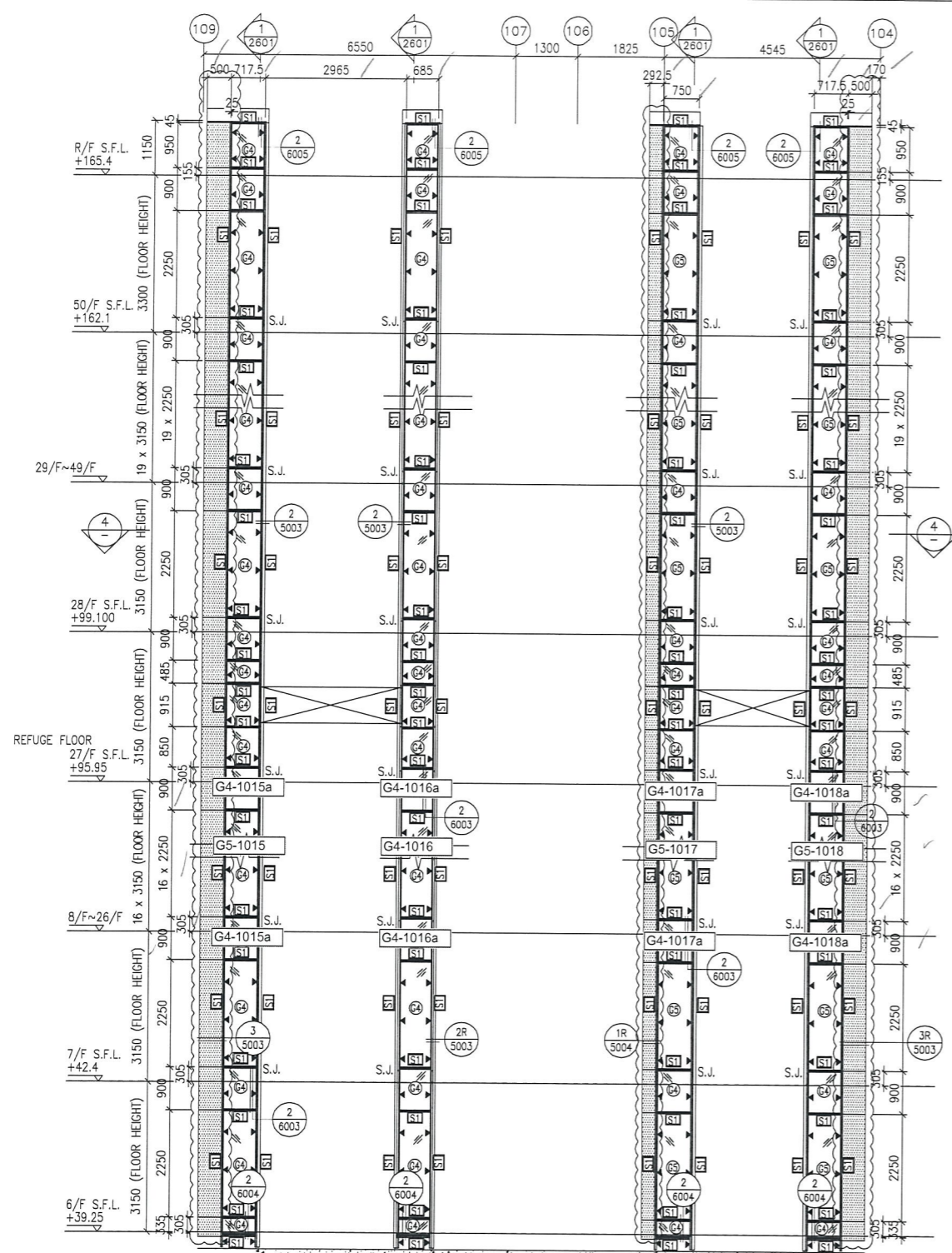
TITLE :  
 PART ELEVATION  
 OF GLASS CLADDING  
 AT TOWER 1

DATE : 04-JUL-18 SCALE : 1:60 (A1)

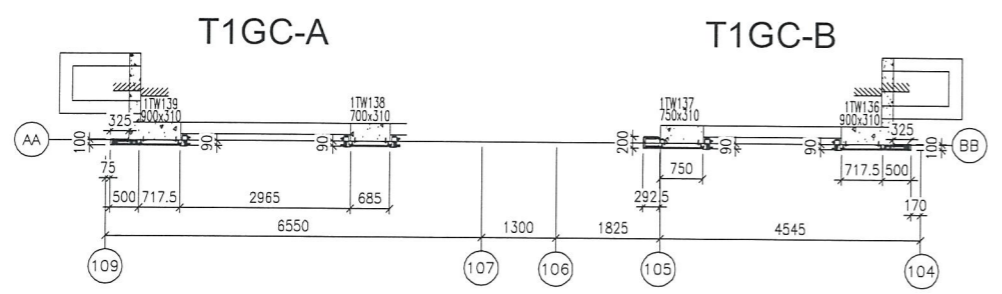
DRAWN BY : ASING CHECKED BY : -

美特鋁質有限公司  
 MIDI ALUMINIUM FABRICATOR LTD.  
 Units 6-8, Sunray Industrial Centre, 1/F  
 610 Cha Kwo Ling Road, Kowloon  
 Tel: 23489211-4 Fax: (852) 27727666

DWG NO. : JB37-GC-2101 REV. : B



1 PART ELEVATION FOR GLASS CLADDING



2 PART PLAN FOR GLASS CLADDING

- LEGEND:**
- ST1 - 50x37x5mm THK. G.M.S. CHANNEL (CUT FROM 100x50x5mm THK. G.M.S. R.H.S.)
  - ST2 - 8 mm THK. HEAT STRENGTHENED BLUE TINTED GLASS (SPANDREL GLASS)
  - ST3 - 8 mm THK. TEMPERED BLUE TINTED GLASS
  - ST4 - 100x65x8mm THK. G.M.S. ANGLE BRACKET (L=250mm) W/ 2NOS-HILTI HST3-R M8 ANCHOR BOLT (MAX. @900c/c)
  - ST5 - 100x65x8mm THK. G.M.S. ANGLE BRACKET (L=200mm) W/ 2NOS-HILTI HST3-R M8 ANCHOR BOLT (MAX. @900c/c)
  - ST6 - 100x50x6mm THK. G.M.S. ANGLE BRACKET (L=250mm) W/ 2NOS-HILTI HST3-R M8 ANCHOR BOLT (MAX. @900c/c)
  - ST7 - 100x50x6mm THK. G.M.S. ANGLE BRACKET (L=250mm) W/ 2NOS-Y12 STEEL BAR (BOND LENGTH=200mm)
  - ST8 - 100x50x6mm THK. G.M.S. ANGLE BRACKET (L=200mm) W/ 1NO-Y12 STEEL BAR (BOND LENGTH=200mm)
  - S.J. - STACK JOINT
  - ALUM - 3 mm THK. ALUM. CLADDING

B.D. REF :

CLIENT :  
 信和置業有限公司  
 Sino Land Company Limited

ARCHITECT :  
 WONG TUNG & PARTNERS LIMITED  
 ARCHITECTS & PLANNERS

MAIN CONTRACTOR :  
 CR Construction Company Limited

STRUCTURAL ENGINEER :  
 AECOM

FACADE CONSULTANT:  
 AECOM

**NOTE :**

1. ALL DIMENSIONS ARE IN mm.
2. ALL ELEVATIONS ARE VIEWED FROM OUTSIDE.
3. ALL DIMENSIONS TO BE VERIFIED ON SITE BEFORE FABRICATION.

**LEGEND :**

- x1 - DETAIL MARK NO.
- x001 - REFER SHEET NO.

1. F.F.L. -- FINISHED FLOOR LEVEL
2. S.F.L. -- STRUCTURAL FLOOR LEVEL
3. (R) -- REVERSED DETAIL

NO.	DATE	REVISED	BY
B	17/11/2018	GENERAL	REVISED
A	15/10/2018	GENERAL	REVISED

JOB NO. : J-837  
 PROJECT :  
 URA KWUN TONG TOWN CENTRE  
 REDEVELOPMENT (AREA 2 & 3) AT  
 NKIL 6514, KWUN TONG, KWLOON

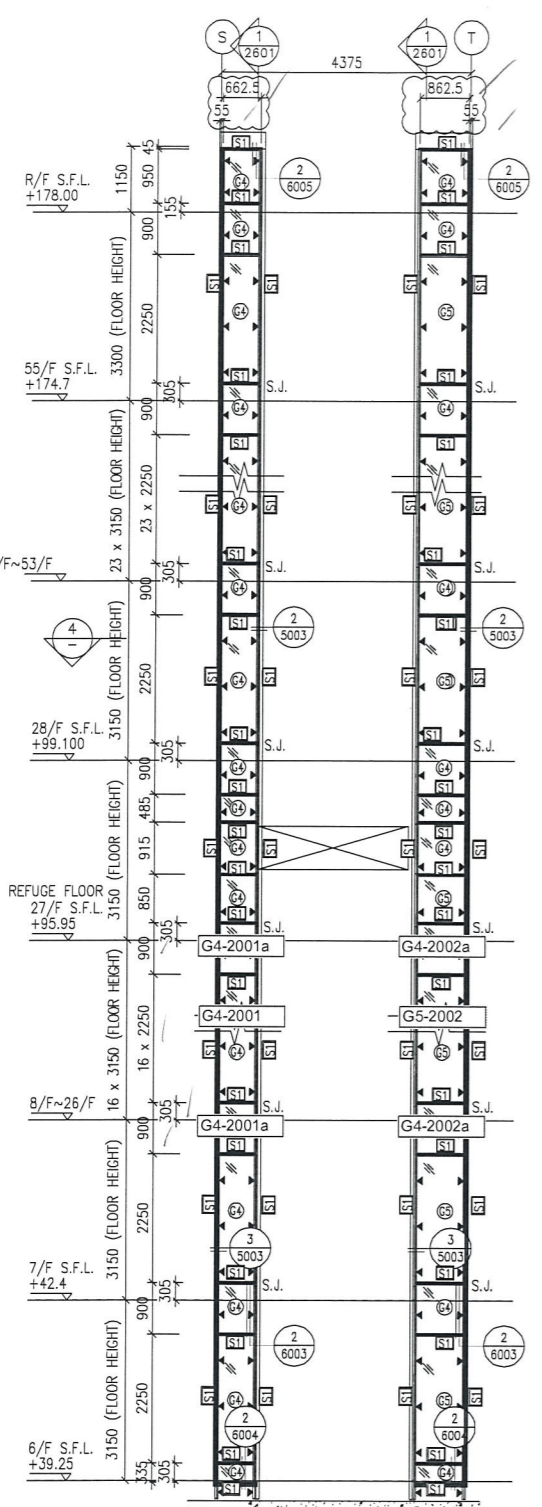
TITLE :  
 PART ELEVATION  
 OF GLASS CLADDING  
 AT TOWER 1

DATE : 04-JUL-18 SCALE : 1:60 (A1)

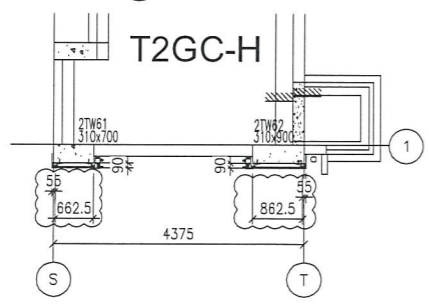
DRAWN BY : ASING CHECKED BY : -

美特鋁質有限公司  
 MIDI ALUMINIUM FABRICATOR LTD.  
 Units 6-8, Sunray Industrial Centre, 1/F  
 610 Cha Kwa Ling Road, Kowloon  
 Tel:23489211-4 Fax:(852)27727666

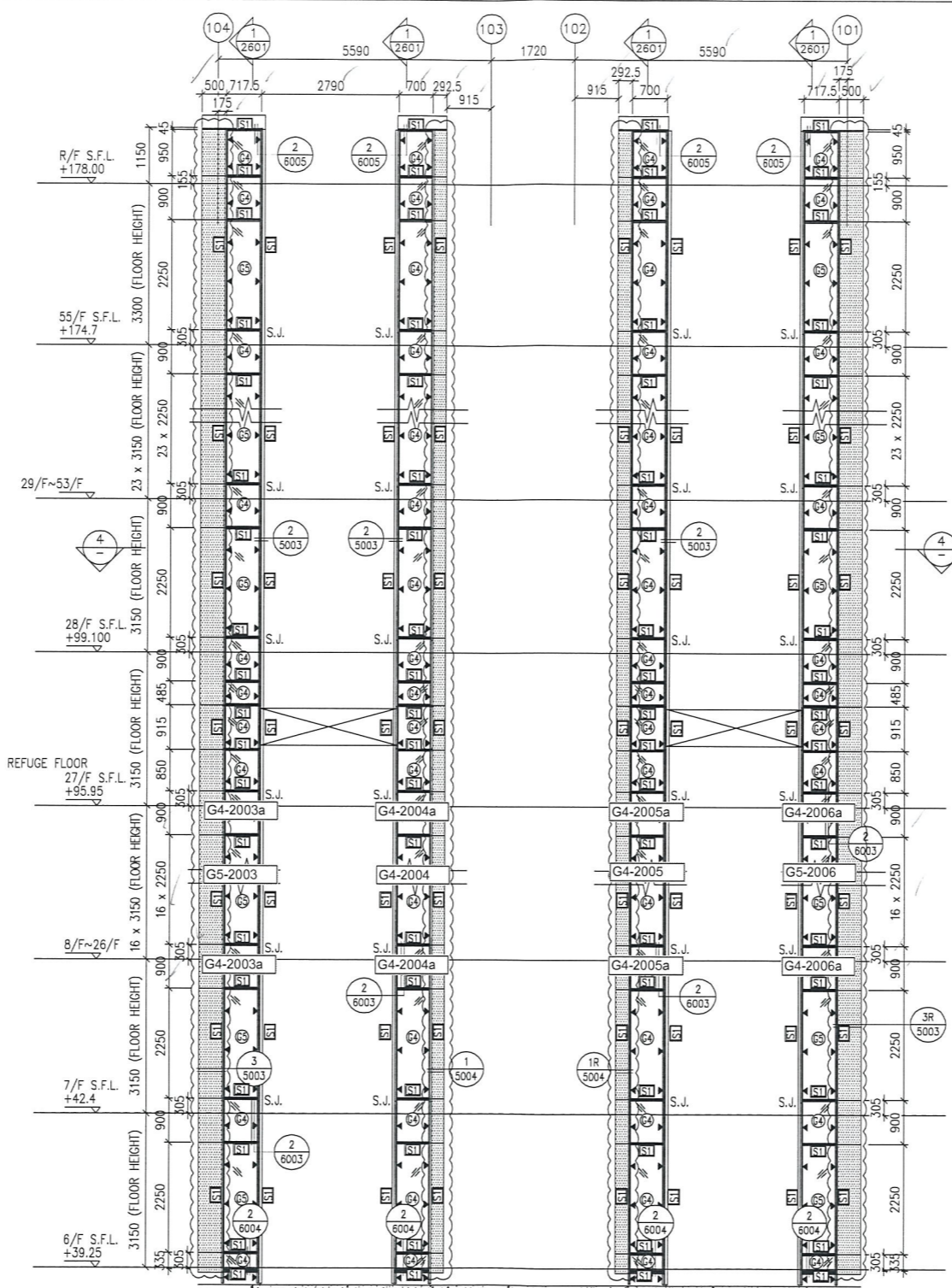
DWG NO. : J837-GC-2102 REV. : B



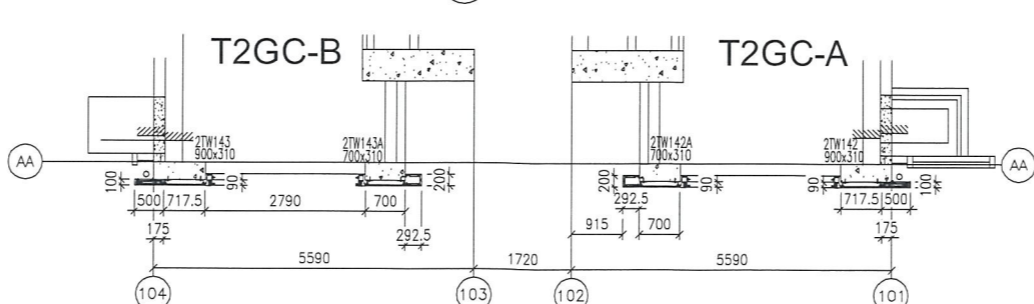
1 PART ELEVATION FOR GLASS CLADDING



2 PART PLAN FOR GLASS CLADDING



3 PART ELEVATION FOR GLASS CLADDING



4 PART PLAN FOR GLASS CLADDING

- LEGEND:**
- 50x37x5mm THK. G.M.S. CHANNEL (CUT FROM 100x50x5mm THK. G.M.S. R.H.S.)
  - 8 mm THK. HEAT STRENGTHENED BLUE TINTED GLASS (SPANDREL GLASS)
  - 8 mm THK. TEMPERED BLUE TINTED GLASS
  - 100x65x8mm THK. G.M.S. ANGLE BRACKET (L=250mm) W/ 2NOS-HILTI HST3-R M8 ANCHOR BOLT (MAX. @900c/c)
  - 100x65x8mm THK. G.M.S. ANGLE BRACKET (L=200mm) W/ 2NOS-HILTI HST3-R M8 ANCHOR BOLT (MAX. @900c/c)
  - 100x50x6mm THK. G.M.S. ANGLE BRACKET (L=250mm) W/ 2NOS-HILTI HST3-R M8 ANCHOR BOLT (MAX. @900c/c)
  - 100x50x6mm THK. G.M.S. ANGLE BRACKET (L=250mm) W/ 2NOS-Y12 STEEL BAR (BOND LENGTH=200mm)
  - 100x50x6mm THK. G.M.S. ANGLE BRACKET (L=200mm) W/ 1NO-Y12 STEEL BAR (BOND LENGTH=200mm)
  - S.J. - STACK JOINT
  - 3 mm THK. ALUM. CLADDING

B.D. REF :

CLIENT :  
 信和置業有限公司  
 Sino Land Company Limited

ARCHITECT :  
 WONG TUNG & PARTNERS LIMITED  
 ARCHITECTS & PLANNERS

MAIN CONTRACTOR :  
 CR Construction Company Limited

STRUCTURAL ENGINEER :  
 AECOM

FACADE CONSULTANT:  
 AECOM

NOTE :  
 1. ALL DIMENSIONS ARE IN mm.  
 2. ALL ELEVATIONS ARE VIEWED FROM OUTSIDE.  
 3. ALL DIMENSIONS TO BE VERIFIED ON SITE BEFORE FABRICATION.

LEGEND :  
 - DETAIL MARK NO.  
 - REFER SHEET NO.  
 1. F.F.L. -- FINISHED FLOOR LEVEL  
 2. S.F.L. -- STRUCTURAL FLOOR LEVEL  
 3. -- REVERSED DETAIL

B	17/11/2018	GENERAL REVISED	
A	15/10/2018	GENERAL REVISED	
NO.	DATE	REVISED	BY

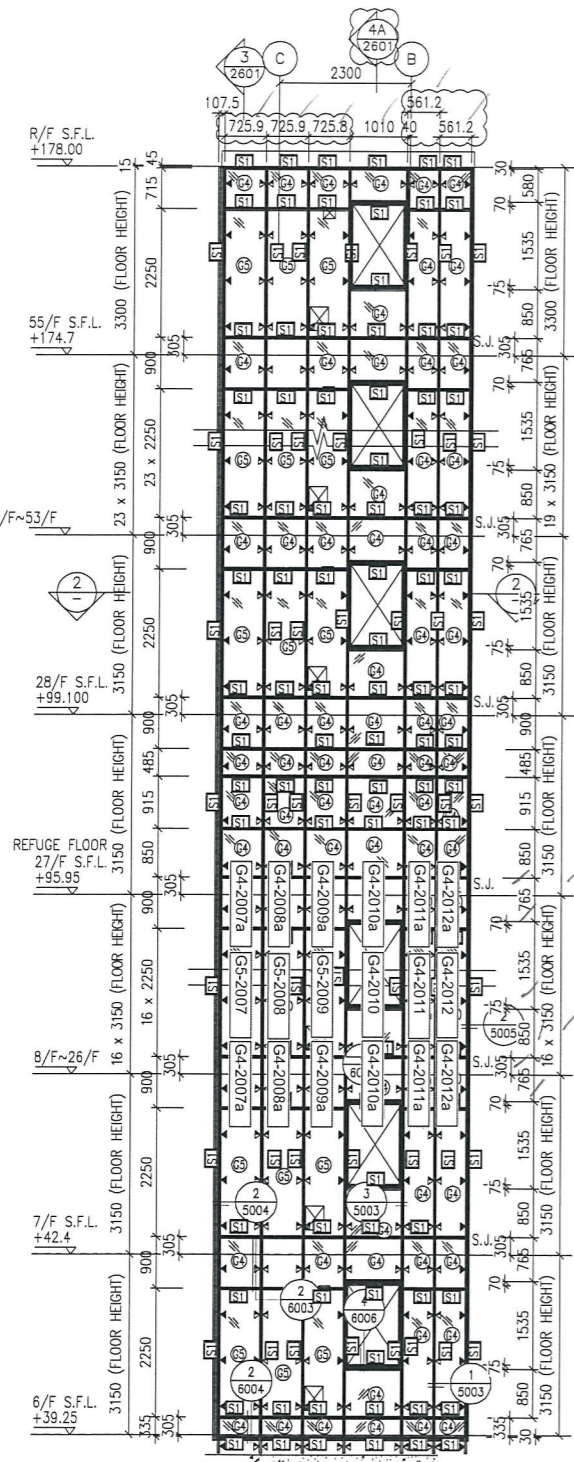
JOB NO. : J-837  
 PROJECT :  
 URA KWUN TONG TOWN CENTRE REDEVELOPMENT (AREA 2 & 3) AT NKIL 6514, KWUN TONG, KWLOON

TITLE :  
 PART ELEVATION OF GLASS CLADDING AT TOWER 2

DATE : 04-JUL-18 SCALE : 1:60 (A1)  
 DRAWN BY : ASING CHECKED BY : -

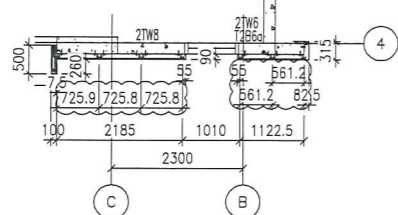
英特鋁質有限公司  
 MIDI ALUMINIUM FABRICATOR LTD.  
 Units 6-8, Sunray Industrial Centre, 1/F  
 610 Cha Kwo Ling Road, Kowloon  
 Tel:23489211-4 Fax:(852)27727666

DWG NO. : JB37-GC-2201 REV. : B

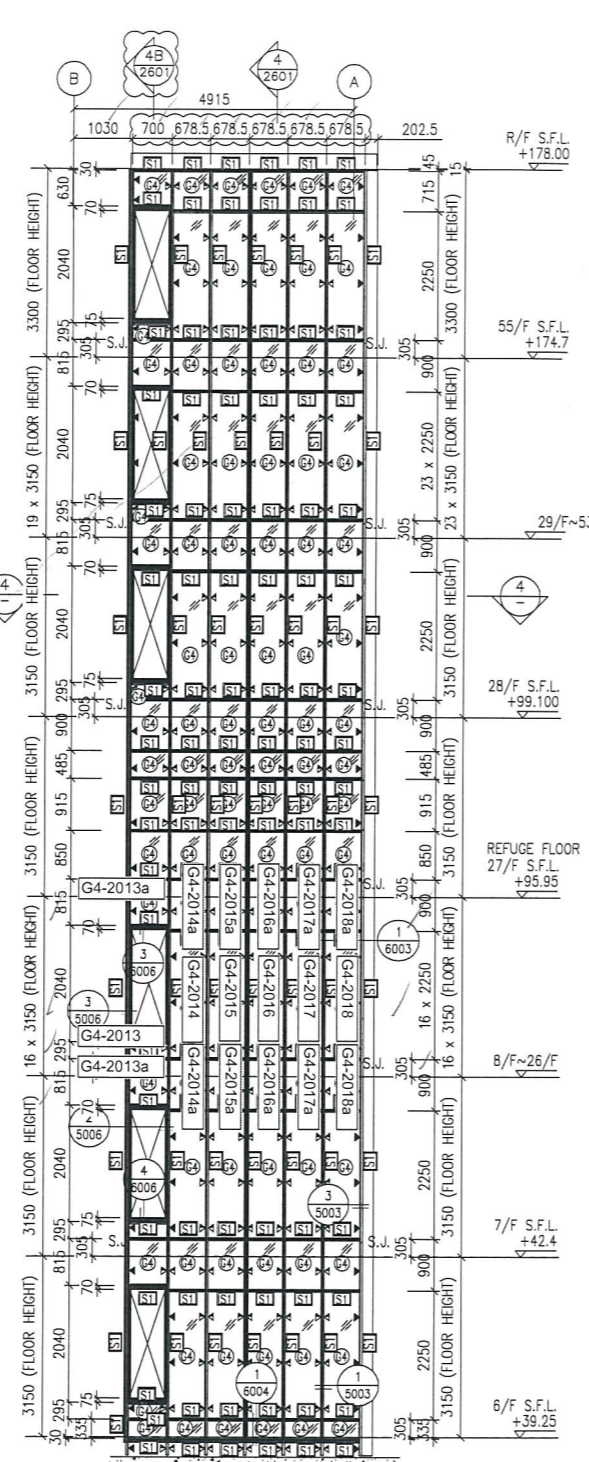


1 PART ELEVATION FOR GLASS CLADDING

T2GC-M

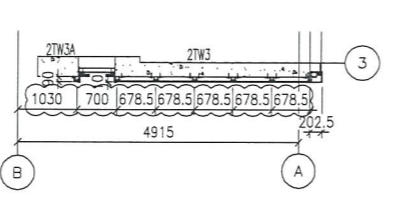


2 PART PLAN FOR GLASS CLADDING

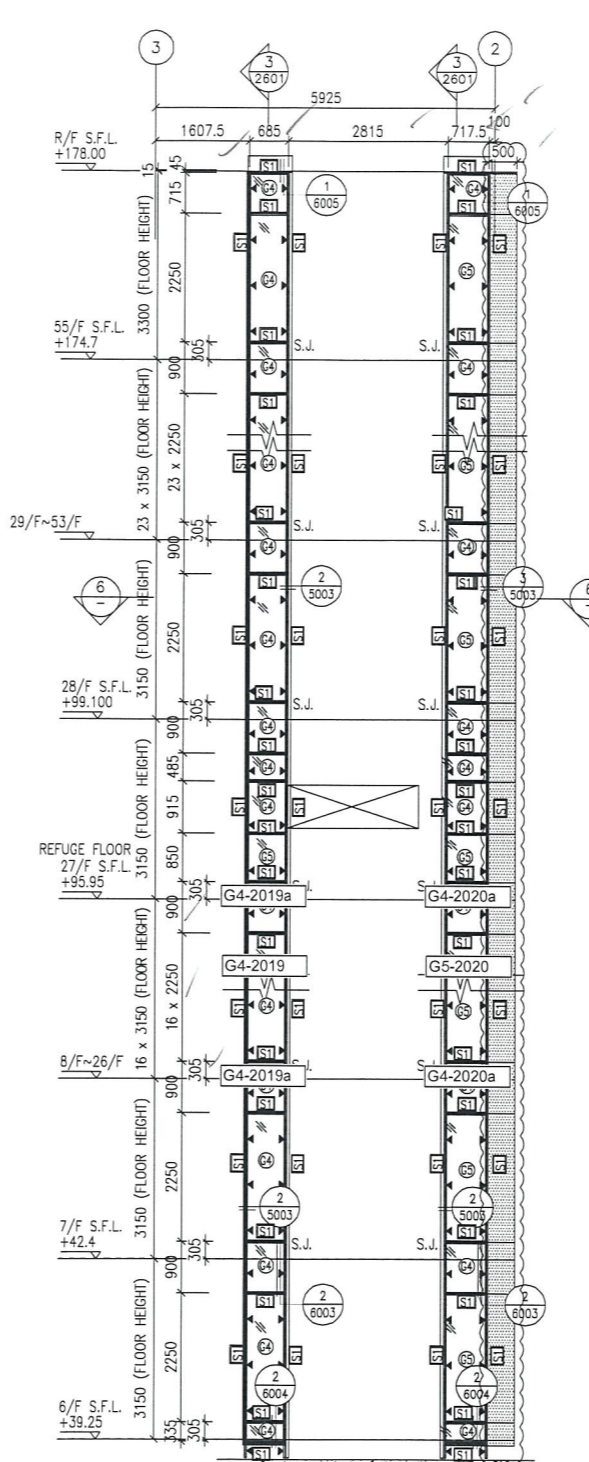


3 PART ELEVATION FOR GLASS CLADDING

T2GC-M

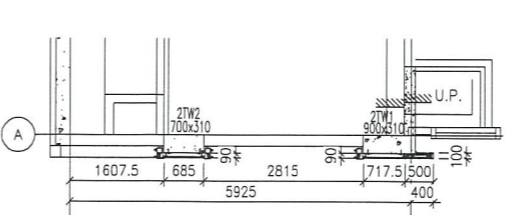


4 PART PLAN FOR GLASS CLADDING



5 PART ELEVATION FOR GLASS CLADDING

T2GC-M



6 PART PLAN FOR GLASS CLADDING

- LEGEND:**
- ST - 50x37x5mm THK. G.M.S. CHANNEL (CUT FROM 100x50x5mm THK. G.M.S. R.H.S.)
  - HT - 8 mm THK. HEAT STRENGTHENED BLUE TINTED GLASS (SPANDREL GLASS)
  - BT - 8 mm THK. TEMPERED BLUE TINTED GLASS
  - AB1 - 100x65x8mm THK. G.M.S. ANGLE BRACKET (L=250mm) W/ 2NOS-HILTI HST3-R MB ANCHOR BOLT (MAX. @900c/c)
  - AB2 - 100x65x8mm THK. G.M.S. ANGLE BRACKET (L=200mm) W/ 2NOS-HILTI HST3-R MB ANCHOR BOLT (MAX. @900c/c)
  - AB3 - 100x50x6mm THK. G.M.S. ANGLE BRACKET (L=250mm) W/ 2NOS-HILTI HST3-R MB ANCHOR BOLT (MAX. @900c/c)
  - AB4 - 100x50x6mm THK. G.M.S. ANGLE BRACKET (L=250mm) W/ 2NOS-Y12 STEEL BAR (BOND LENGTH=200mm)
  - AB5 - 100x50x6mm THK. G.M.S. ANGLE BRACKET (L=200mm) W/ 1NO-Y12 STEEL BAR (BOND LENGTH=200mm)
  - S.J. - STACK JOINT
  - AL - 3 mm THK. ALUM. CLADDING

B.D. REF :

CLIENT :  
 Sino Land Company Limited

ARCHITECT :  
 WONG TUNG & PARTNERS LIMITED ARCHITECTS & PLANNERS

MAIN CONTRACTOR :  
 CR Construction Company Limited

STRUCTURAL ENGINEER :  
 AECOM

FACADE CONSULTANT:  
 AECOM

**NOTE :**  
 1. ALL DIMENSIONS ARE IN mm.  
 2. ALL ELEVATIONS ARE VIEWED FROM OUTSIDE.  
 3. ALL DIMENSIONS TO BE VERIFIED ON SITE BEFORE FABRICATION.

**LEGEND :**  
 X1 - DETAIL MARK NO.  
 X001 - REFER SHEET NO.  
 1. F.F.L. -- FINISHED FLOOR LEVEL  
 2. S.F.L. -- STRUCTURAL FLOOR LEVEL  
 3. (R) -- REVERSED DETAIL

B	17/11/2018	GENERAL REVISED	
A	15/10/2018	GENERAL REVISED	
NO.	DATE	REVISED	BY

JOB NO. : J-837  
 PROJECT : URA KWUN TONG TOWN CENTRE REDEVELOPMENT (AREA 2 & 3) AT NKIL 6514, KWUN TONG, KWLOON

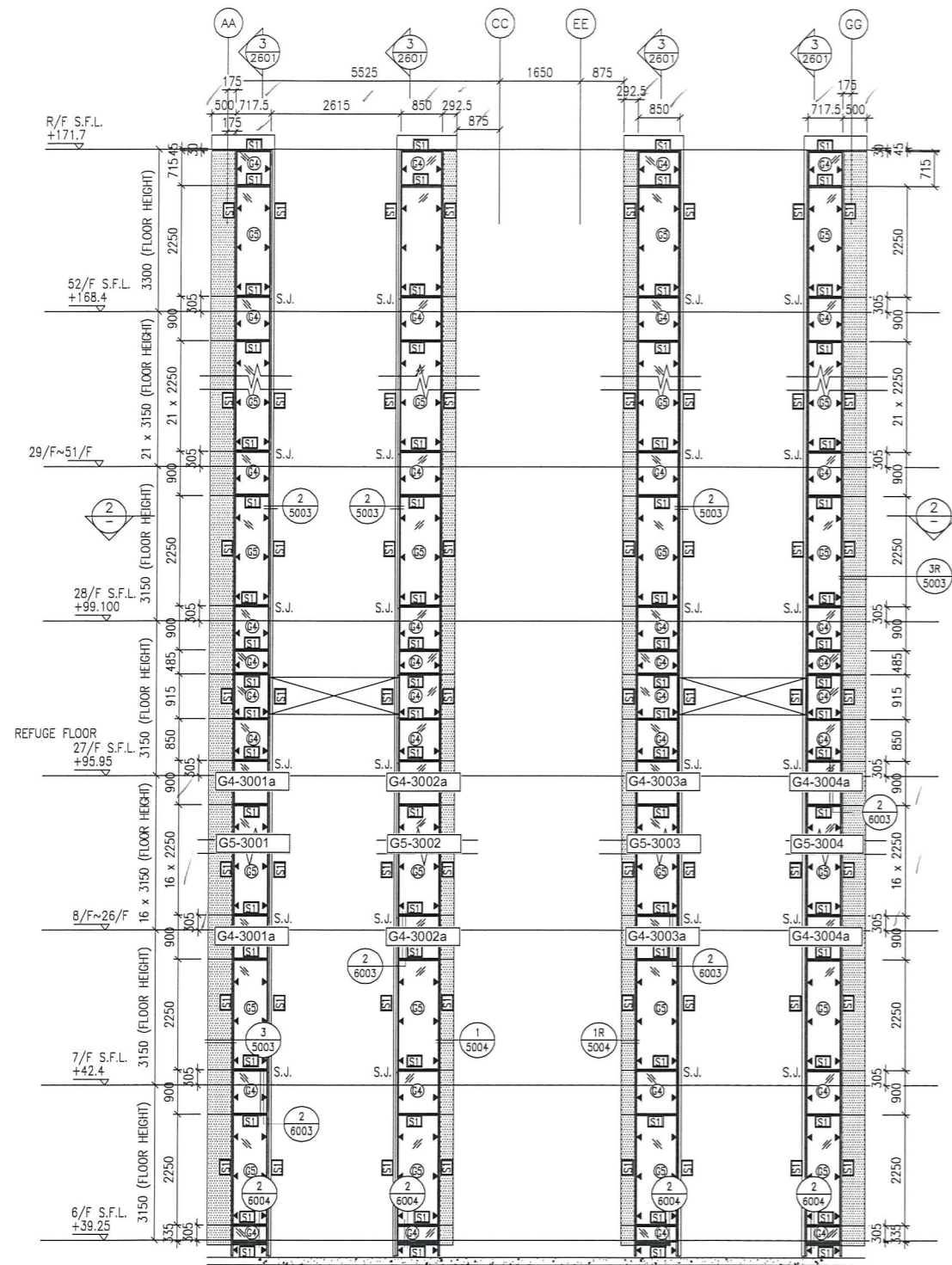
TITLE : PART ELEVATION OF GLASS CLADDING AT TOWER 2

DATE : 04-JUL-18 SCALE : 1:60 (A1)

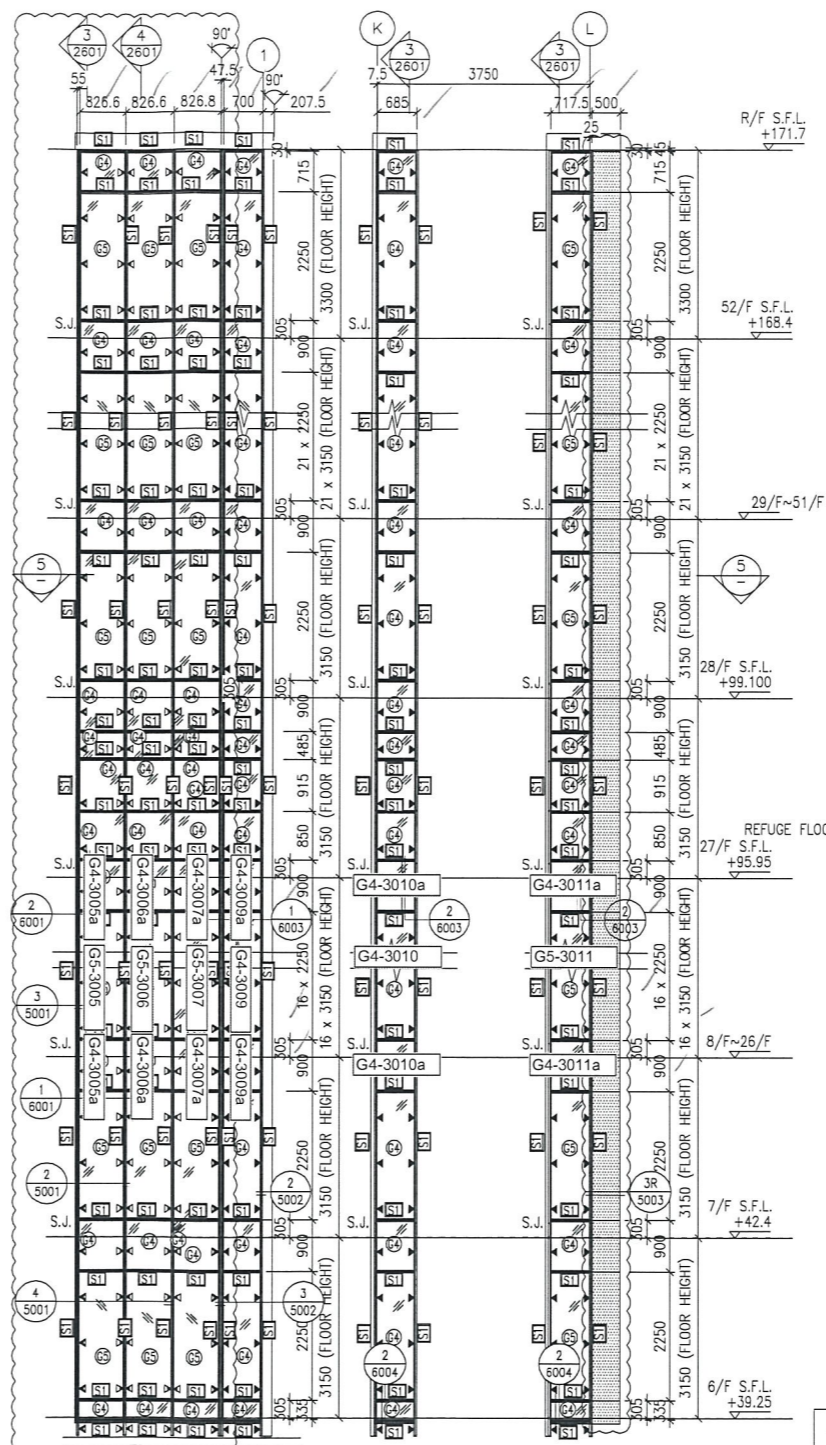
DRAWN BY : ASING CHECKED BY : -

MIDI ALUMINIUM FABRICATOR LTD.  
 Units 6-8, Sunray Industrial Centre, 1/F  
 610 Cha Kwo Ling Road, Kowloon  
 Tel:23489211-4 Fax:(852)27727666

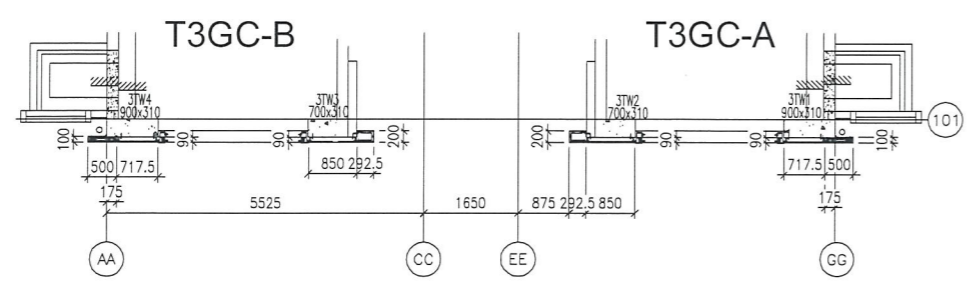
DWG NO. : JB37-GC-2202 REV. : B



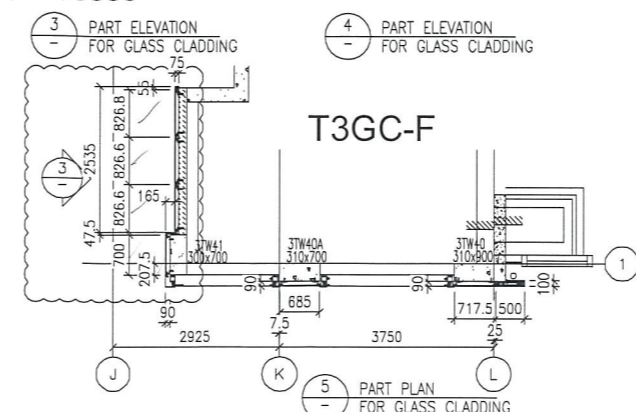
1 PART ELEVATION FOR GLASS CLADDING



4 PART ELEVATION FOR GLASS CLADDING



2 PART PLAN FOR GLASS CLADDING



5 PART PLAN FOR GLASS CLADDING

- LEGEND:**
- ST - 50x37x5mm THK. G.M.S. CHANNEL (CUT FROM 100x50x5mm THK. G.M.S. R.H.S.)
  - G4 - 8 mm THK. HEAT STRENGTHENED BLUE TINTED GLASS (SPANDREL GLASS)
  - G5 - 8 mm THK. TEMPERED BLUE TINTED GLASS
  - ▲ (100x65x8mm) THK. G.M.S. ANGLE BRACKET (L=250mm) W/ 2NOS-HILTI HST3-R M8 ANCHOR BOLT (MAX. @900c/c)
  - ▲ (100x65x8mm) THK. G.M.S. ANGLE BRACKET (L=200mm) W/ 1NOS-HILTI HST3-R M8 ANCHOR BOLT (MAX. @900c/c)
  - ▲ (100x50x6mm) THK. G.M.S. ANGLE BRACKET (L=250mm) W/ 2NOS-HILTI HST3-R M8 ANCHOR BOLT (MAX. @900c/c)
  - ▲ (100x50x6mm) THK. G.M.S. ANGLE BRACKET (L=200mm) W/ 1NOS-HILTI HST3-R M8 ANCHOR BOLT (MAX. @900c/c)
  - S.J. - STACK JOINT
  - - 3 mm THK. ALUM. CLADDING

B.D. REF :

CLIENT : 信和置業有限公司 Sino Land Company Limited

ARCHITECT : WONG TUNG & PARTNERS LIMITED ARCHITECTS & PLANNERS

MAIN CONTRACTOR : CR Construction Company Limited

STRUCTURAL ENGINEER : AECOM

FAÇADE CONSULTANT: AECOM

**NOTE :**

- ALL DIMENSIONS ARE IN mm.
- ALL ELEVATIONS ARE VIEWED FROM OUTSIDE.
- ALL DIMENSIONS TO BE VERIFIED ON SITE BEFORE FABRICATION.

**LEGEND :**

- X1 - DETAIL MARK NO.
- X001 - REFER SHEET NO.

- F.F.L. -- FINISHED FLOOR LEVEL
- S.F.L. -- STRUCTURAL FLOOR LEVEL
- ⊗ -- REVERSED DETAIL

NO.	DATE	REVISED	BY
B	17/11/2018	GENERAL REVISED	
A	15/10/2018	GENERAL REVISED	

JOB NO. : J-837

PROJECT : URA KWUN TONG TOWN CENTRE REDEVELOPMENT (AREA 2 & 3) AT NKIL 6514, KWUN TONG, KWLOON

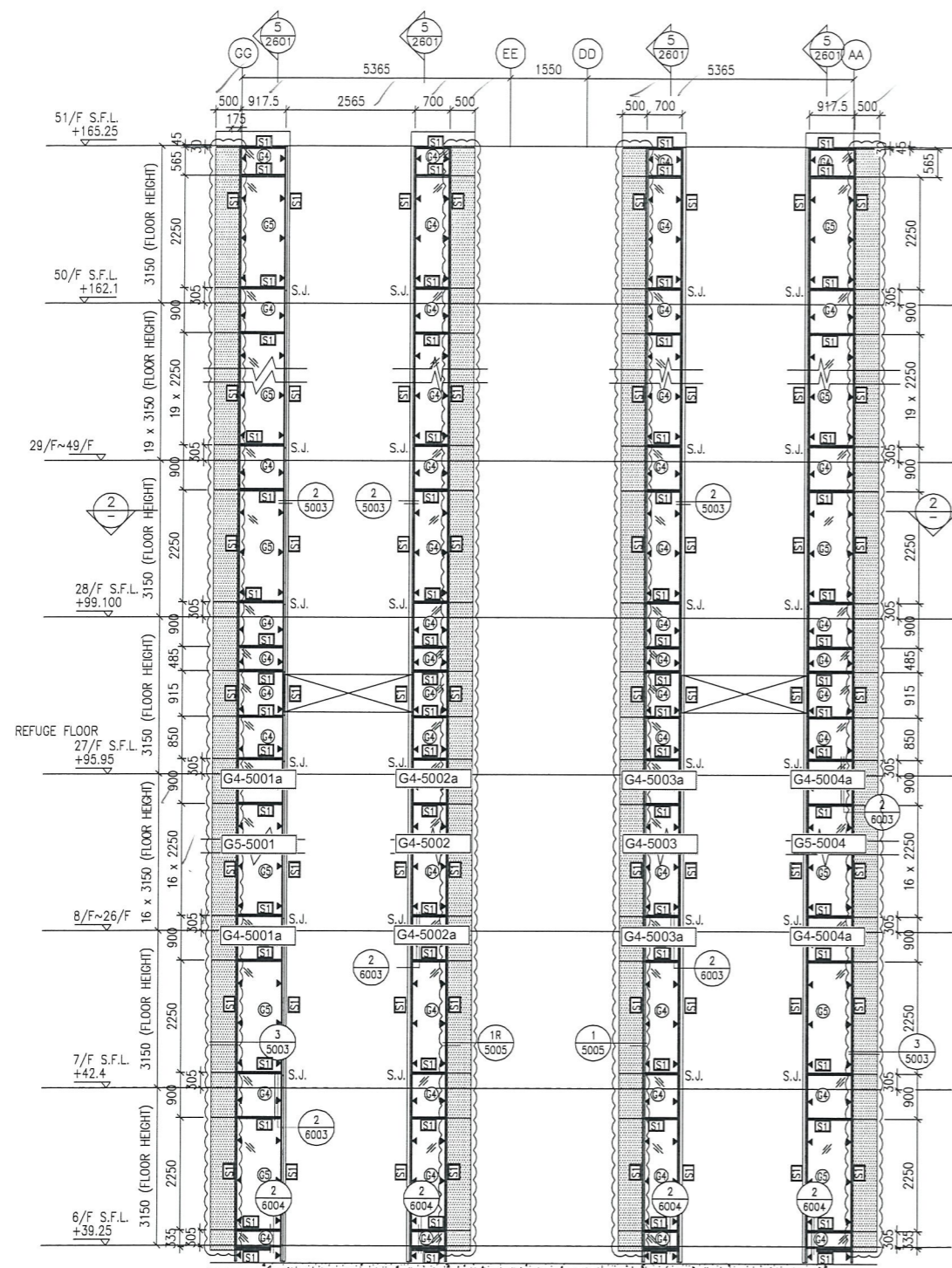
TITLE : PART ELEVATION OF GLASS CLADDING AT TOWER 3

DATE : 04-JUL-18 SCALE : 1:60 (A1)

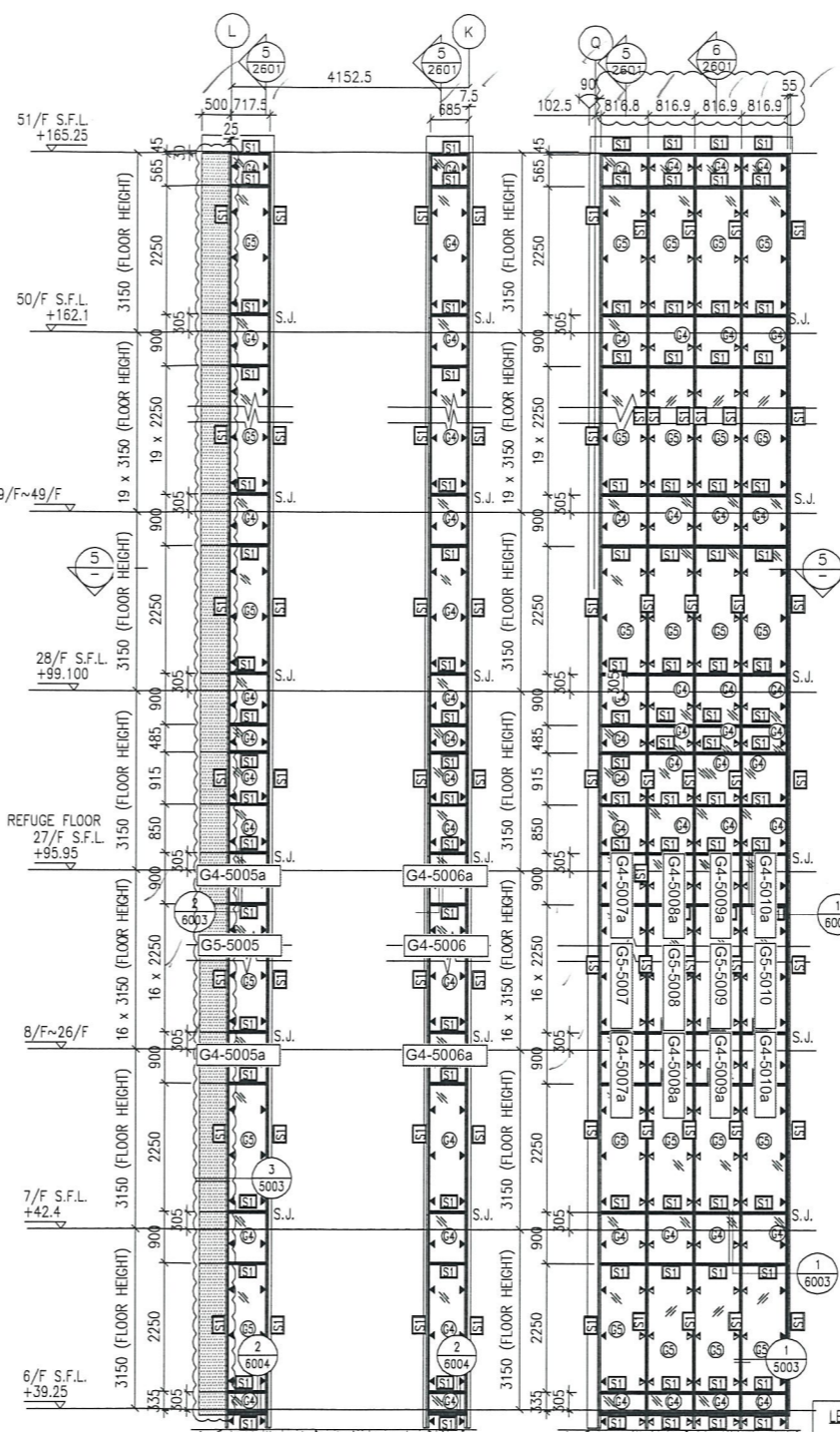
DRAWN BY : ASING CHECKED BY : -

美特鋁質有限公司  
MIDI ALUMINIUM FABRICATOR LTD.  
Units 6-8, Sunray Industrial Centre, 1/F  
610 Cha Kwo Ling Road, Kowloon  
Tel:23489211-4 Fax:(852)2727666

DWG NO. : J837-GC-2301 REV. : B

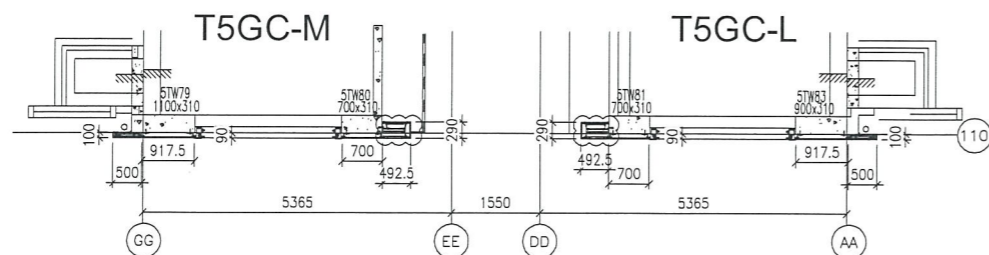


1 PART ELEVATION FOR GLASS CLADDING

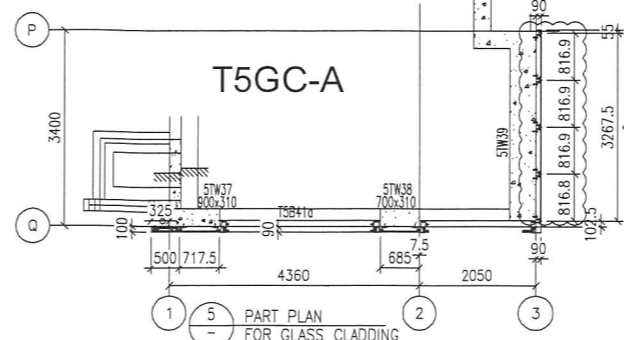


3 PART ELEVATION FOR GLASS CLADDING

4 PART ELEVATION FOR GLASS CLADDING



2 PART PLAN FOR GLASS CLADDING



5 PART PLAN FOR GLASS CLADDING

- LEGEND:**
- 50x37x5mm THK. G.M.S. CHANNEL (CUT FROM 100x50x5mm THK. G.M.S. R.H.S.)
  - 8 mm THK. HEAT STRENGTHENED BLUE TINTED GLASS (SPANDREL GLASS)
  - 8 mm THK. TEMPERED BLUE TINTED GLASS
  - 100x65x8mm THK. G.M.S. ANGLE BRACKET (L=250mm) W/ 2NOS-HILTI HST3-R M8 ANCHOR BOLT (MAX. @900c/c)
  - 100x65x8mm THK. G.M.S. ANGLE BRACKET (L=200mm) W/ 1NO-HILTI HST3-R M8 ANCHOR BOLT (MAX. @900c/c)
  - 100x50x6mm THK. G.M.S. ANGLE BRACKET (L=250mm) W/ 2NOS-HILTI HST3-R M8 ANCHOR BOLT (MAX. @900c/c)
  - 100x50x6mm THK. G.M.S. ANGLE BRACKET (L=250mm) W/ 2NOS-Y12 STEEL BAR (BOND LENGTH=200mm)
  - 100x50x6mm THK. G.M.S. ANGLE BRACKET (L=200mm) W/ 1NO-Y12 STEEL BAR (BOND LENGTH=200mm)
  - STACK JOINT
  - 3 mm THK. ALUM. CLADDING

B.D. REF :

CLIENT :  
 信和置業有限公司  
 Sino Land Company Limited

ARCHITECT :  
 WONG TUNG & PARTNERS LIMITED  
 ARCHITECTS & PLANNERS

MAIN CONTRACTOR :  
 CR Construction Company Limited

STRUCTURAL ENGINEER :  
 AECOM

FAÇADE CONSULTANT:  
 AECOM

NOTE :  
 1. ALL DIMENSIONS ARE IN mm.  
 2. ALL ELEVATIONS ARE VIEWED FROM OUTSIDE.  
 3. ALL DIMENSIONS TO BE VERIFIED ON SITE BEFORE FABRICATION.

LEGEND :  
 - DETAIL MARK NO.  
 - REFER SHEET NO.

1. F.F.L. -- FINISHED FLOOR LEVEL  
 2. S.F.L. -- STRUCTURAL FLOOR LEVEL  
 3. (R) -- REVERSED DETAIL

B	17/11/2018	GENERAL REVISED	
A	15/10/2018	GENERAL REVISED	
NO.	DATE	REVISED	BY

JOB NO. : J-837

PROJECT :  
 URA KWUN TONG TOWN CENTRE  
 REDEVELOPMENT (AREA 2 & 3) AT  
 NKIL 6514, KWUN TONG, KWLOON

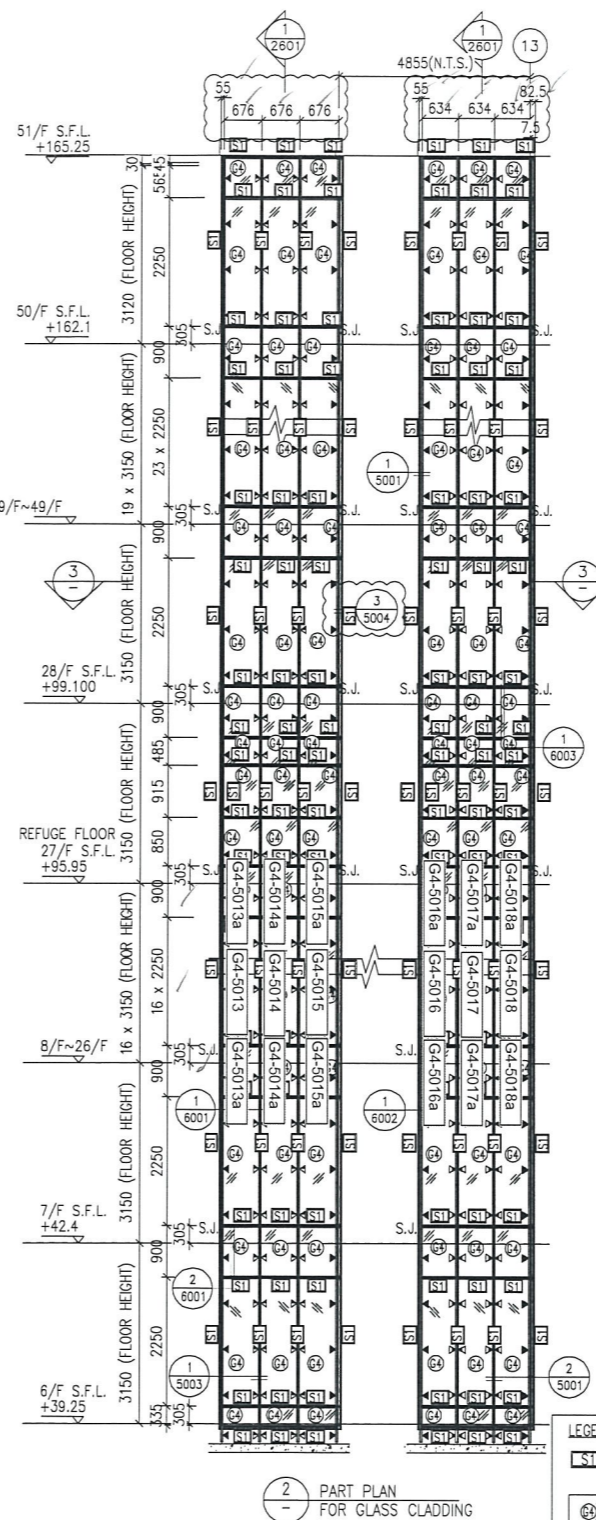
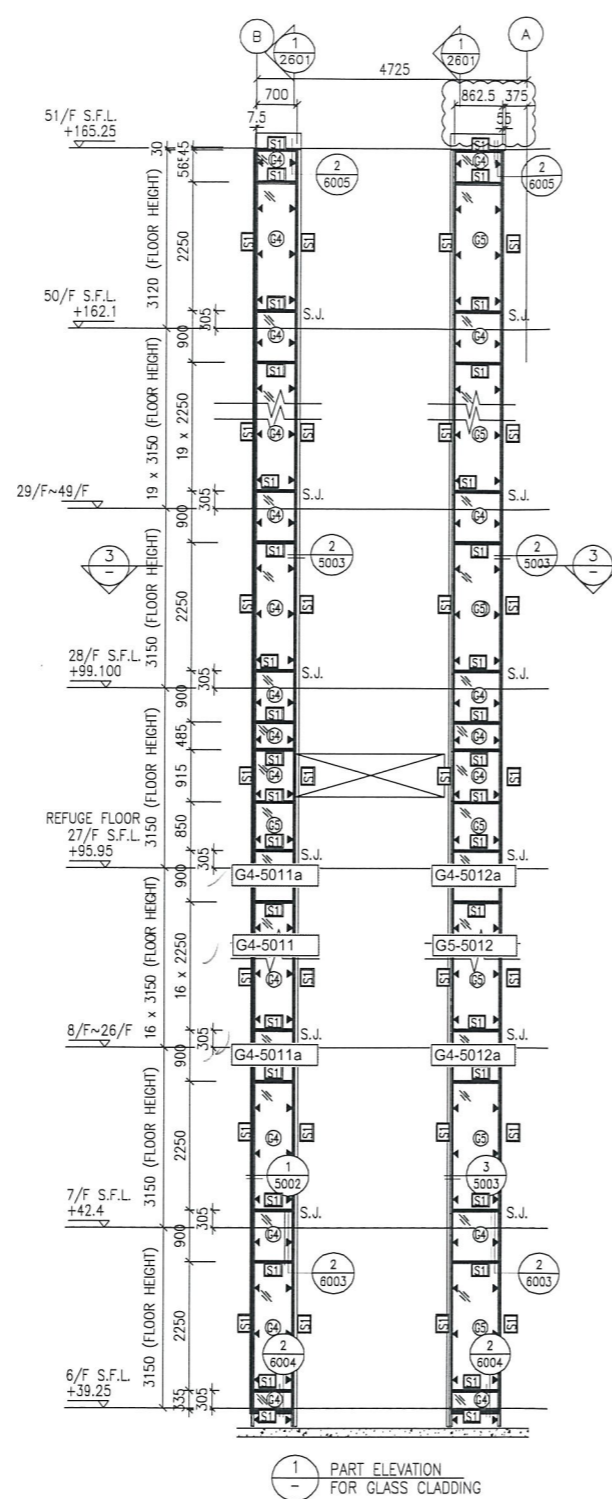
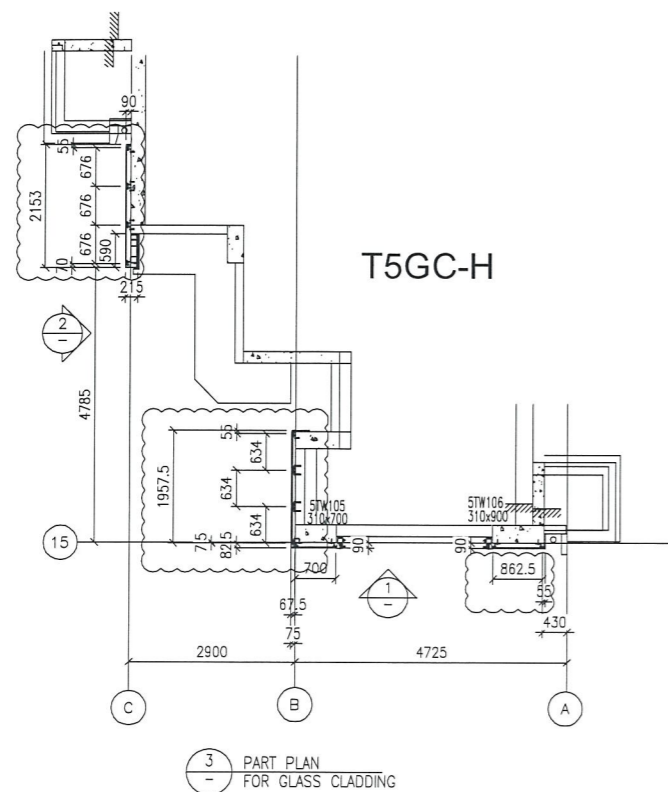
TITLE :  
 PART ELEVATION  
 OF GLASS CLADDING  
 AT TOWER 5

DATE : 04-JUL-18 SCALE : 1:60 (A1)

DRAWN BY : ASING CHECKED BY : -

美特鋁質有限公司  
 MIDI ALUMINUM FABRICATOR LTD.  
 Units 6-8, Sunray Industrial Centre, 1/F  
 610 Cha Kwo Ling Road, Kowloon  
 Tel:23489211-4 Fax:(852)2727666

DWG NO. : J837-GC-2501 REV. : B



- LEGEND:**
- ST - 50x37x5mm THK. G.M.S. CHANNEL (CUT FROM 100x50x5mm THK. G.M.S. R.H.S.)
  - ④ - 8 mm THK. HEAT STRENGTHENED BLUE TINTED GLASS (SPANDREL GLASS)
  - ⑤ - 8 mm THK. TEMPERED BLUE TINTED GLASS
  - ▲ - 100x65x8mm THK. G.M.S. ANGLE BRACKET (L=250mm) W/ 2NOS-HILTI HST3-R M8 ANCHOR BOLT (MAX. @900c/c)
  - ▲ - 100x65x8mm THK. G.M.S. ANGLE BRACKET (L=200mm) W/ 1NO-HILTI HST3-R M8 ANCHOR BOLT (MAX. @900c/c)
  - ▲ - 100x50x6mm THK. G.M.S. ANGLE BRACKET (L=250mm) W/ 2NOS-HILTI HST3-R M8 ANCHOR BOLT (MAX. @900c/c)
  - ▲ - 100x50x6mm THK. G.M.S. ANGLE BRACKET (L=200mm) W/ 1NO-HILTI HST3-R M8 ANCHOR BOLT (MAX. @900c/c)
  - S.J. - STACK JOINT
  - - 3 mm THK. ALUM. CLADDING

B.D. REF :

CLIENT :  
 信和置業有限公司  
 Sino Land Company Limited

ARCHITECT :  
 WONG TUNG & PARTNERS LIMITED  
 ARCHITECTS & PLANNERS

MAIN CONTRACTOR :  
 CR Construction Company Limited

STRUCTURAL ENGINEER :  
 AECOM

FAÇADE CONSULTANT:  
 AECOM

**NOTE :**  
 1. ALL DIMENSIONS ARE IN mm.  
 2. ALL ELEVATIONS ARE VIEWED FROM OUTSIDE.  
 3. ALL DIMENSIONS TO BE VERIFIED ON SITE BEFORE FABRICATION.

**LEGEND :**  
 X1 - DETAIL MARK NO.  
 X001 - REFER SHEET NO.  
 1. F.F.L. -- FINISHED FLOOR LEVEL  
 2. S.F.L. -- STRUCTURAL FLOOR LEVEL  
 3. (R) -- REVERSED DETAIL

B	17/11/2018	GENERAL REVISED	
A	15/10/2018	GENERAL REVISED	
NO.	DATE	REVISED	BY

JOB NO. : J-837  
 PROJECT :  
 URA KWUN TONG TOWN CENTRE  
 REDEVELOPMENT (AREA 2 & 3) AT  
 NKIL 6514, KWUN TONG, KWLOON

TITLE :  
 PART ELEVATION  
 OF GLASS CLADDING  
 AT TOWER 5

DATE : 04-JUL-18 SCALE : 1:60 (A1)  
 DRAWN BY : ASING CHECKED BY : -

美特鋁質有限公司  
 MIDI ALUMINIUM FABRICATOR LTD.  
 Units 6-8, Sunray Industrial Centre, 1/F  
 610 Cha Kwo Ling Road, Kowloon  
 Tel:23489211-4 Fax:(852)27727666  
 DWG NO. : J837-GC-2502 REV. : B