

工程指示 / 要求簡箋(E.I.)

工程指示編號：EI/0863/19

修改版次：-

工程編號：J - 837

工程名稱：觀塘裕民坊

工程項目：室外大貨唧膠事宜 (幕牆、窗仔、Glass Cladding、百葉、門)

收件人：Maggie / 永林

發件人：Eric Liu

日期：23/07/2019

要求提供 / 確認 事項：

- | | | |
|------------------------------------|-------------------------------------|-------------------------------|
| <input type="checkbox"/> 初步鋁料 B.M. | <input type="checkbox"/> 加工拆圖，然後生產 | <input type="checkbox"/> 尺寸表 |
| <input type="checkbox"/> 正式鋁料 B.M. | <input type="checkbox"/> 技術上資料 / 指示 | <input type="checkbox"/> 報價 |
| <input type="checkbox"/> 配件 B.M. | <input type="checkbox"/> 樣辦或貨品說明書 | <input type="checkbox"/> 分判合約 |
| <input type="checkbox"/> 其他：_____ | | |

內容：

按合約內容，請留意以下大貨唧膠事宜 (包括窗仔、幕牆、GLASS CLADDING、百葉、門)

1) 室外，所有牆邊膠碰瓦位置由大判唧膠

2) 室外，所有碰 APEX 位置，由 APEX 唧膠

永林：請覆核膠數量，謝謝！

請在 2019 / 07 / 27 前完成上列要求。

☆☆ 地區 - 請注意 ☆☆

附： 2 頁合約圖，12 頁大圖

以上項目為：

- 原合約工程包 原合約工程加 / 減賬 新工程報價

原因：-

分發東莞各部門：

- () 生產技術總監 連附件 技術部 連附件 永林 () 生產部 連附件 () 機械設計部 連附件
 () 採購部 連附件 () 生產統籌部 連附件 梅
 () 質檢部 連附件 () 會計部 連附件 () 報關組 連附件 () 其他 楊榮輝 連附件

分發香港各部門：

- () 行政部 連附件 () 會計部 連附件 () 統籌部 連附件 () 工程部地盤科文 連附件 炳哥 / 民 / 豪
 採購部 連附件 () QS 部 連附件 () 維修部 連附件 () 其他 _____ 連附件

傳遞編號：

HK 1677 / 19

發件人簽署：

項目經理簽署：

Eric Liu
JPR

NOTES

- 1) ALL ELEVATIONS ARE VIEWED FROM OUTSIDE.
- 2) ALL DIMENSIONS SHOWN ON PART PLANS ARE FINISHED DIMENSIONS UNLESS OTHERWISE STATED.
- 3) THIS SCHEDULE SHOULD BE READ IN CONJUNCTION WITH 1:100 LAYOUT PLAN, MATERIAL SCHEDULE & WINDOW DETAILS.
- 4) GLAZING & OPENABLE AREA TO COMPLY WITH BUILDING REGULATIONS.
- 5) ~~ALL CLEAR GLASS TO BE SELF-CLEANING GLASS UNLESS OTHERWISE SPECIFIED. ALL OBSCURE GLASS TO BE ACID-ETCHED GLASS UNLESS OTHERWISE SPECIFIED.~~
- 6) ALL FIXED ALUMINIUM WINDOW / WINDOW WALL FIXED LIGHT ENTIRELY BELOW 1100MM FFL TO BE HEAT SOAKED TEMPERED/HEAT STRENGTHENED GLASS. ALL OPENABLE ALUMINIUM WINDOW / WINDOW WALL OPERABLE VENT TO BE ANNEALED GLASS.
- 7) THE WINDOW GLASS THICKNESSES ARE INDICATIVE ONLY. CONTRACTOR IS REQUIRED TO CHECK THE ACTUAL REQUIRED THICKNESSES FOR ALL WINDOWS IN THEIR SHOP DRAWING SUBMISSION FOR ARCHITECT'S AND ENGINEER'S APPROVAL.
- 8) ALL ALUMINIUM WINDOWS, ALUMINIUM LOUVERS, CURTAIN WALL SYSTEM (INCLUDING BUT NOT LIMITED TO GLASS FINISH, ALUMINUM FINISH, SPANDREL ETC), FRENCH DOOR, GLASS CLADDING AND INNER SLIDING ACOUSTIC PANEL ARE TO BE COMPLETED BY CURTAIN WALL (TOWER) NSC UNLESS OTHERWISE SPECIFIED.
- 9) ALL ALUMINIUM AC GRILL, BALCONY/UP ALUMINIUM FEATURE , VERTICAL ACOUSTIC PANEL INSIDE BALCONY(REFER TO DWG NO T/A141/303) AND TRANSFER PLATE FEATURE FIN ARE TO BE COMPLETED BY AL CLADDING NSC UNLESS OTHERWISE SPECIFIED.
- 10) ALL GLASS BALUSTRADE AND ASSOCIATED CLADDING INDICATED ON WALL SECTIONS ARE TO BE COMPLETED BY BALUSTRADE NSC
- 11) ALL SUSPENDED CEILING ARE TO BE COMPLETED BY CEILING NSC
- 12) THE DRAWING SHOWS DESIGN INTENT ONLY, CURTAIN WALL (TOWER) NSC/ AL CLADDING NSC/ BALUSTRADE NSC/ CEILING NSC TO SUBMIT SHOP DRAWINGS FOR ARCHITECT'S AND ENGINEER'S APPROVAL.
- 13) SPANDREL MATERIAL REFER TO ELEVATION DWG T/A123 SERIES.
- 14) GLAZING MATERIAL TO BE READ IN CONJUNCTION WITH CURTAIN WALL MATERIAL DEMARCATION DWG T/A166 SERIES.
- 15) THE COLOR OF MATERIALS IS SUBJECT TO ARCHITECT'S APPROVAL
- 16) THE THICKNESS OF GLAZING IS SUBJECT TO THE FINAL CALCULATION OF CURTAIN WALL SUBMISSION FOR ARCHITECT'S APPROVAL
- 17) ACOUSTIC SLIDING PANELS ARE ONLY FOR ACOUSTIC WINDOW, ENHANCED ACOUSTIC BALCONIES & ACOUSTIC UP. LOCATION AND FLOORS WHERE THE ACOUSTIC SLIDING PANEL APPLIED REFER TO DWG T/A166/602.
- 18) CURTAIN WALL (TOWER) NSC, (ALUMINIUM) WINDOW NSC SHALL REFER TO THE SUB-CONTRACTOR FOR DESIGN, SUPPLY AND INSTALLATION OF CURTAIN WALL, ALUMINIUM WINDOW AND DOOR TO TOWER NSC.
- 19) AL CLADDING NSC, BALUSTRADE NSC AND CEILING NSC SHALL REFER TO THE SUB-CONTRACTOR FOR DESIGN, SUPPLY AND INSTALLATION OF ALUMINIUM CLADDING AND GLASS BALUSTRADE TO TOWER NSC.
- 20) FOR ANY OPENABLE WINDOWS AND MAINTENANCE WINDOWS WHICH ARE CONSIDERED AS ACOUSTIC WINDOWS STATED IN THE LAYOUT PLANS (T/A120/12 TO T/A120/25) AND NIA REPORT, PLEASE NOTE THAT TG02A SHALL BE USED. HOWEVER, TG12 SHALL BE APPLIED FOR THE OPENABLE WINDOWS STATED IN THE TABLE OF THE DRAWING NO: T/A166/601. PLEASE ALSO READ IN CONJUNCTION WITH THE CURTAIN WALL DEMARCATION PLANS IN T/A166 SERIES, TG13 SHALL BE APPLIED INSTEAD IF THE FAÇADE ARE DEMARCATED IN IGU.
- 21) WINDOW SCHEDULE AT BALCONY AND UP AREA SHOULD BE READ IN CONJUNCTION WITH DWG T/A141 SERIES, ESP FOR MATERIAL AROUND THE PIPE AREA, ARCHITECTURAL FEATURE & ACOUSTIC FIN , ETC.
- 22) THE SEALANT WITHIN INTERFACING BETWEEN WORK OF CURTAIN WALL (TOWER) NSC AND AL CLADDING NSC/ BALUSTRADE NSC/ CEILING NSC SHOULD BE DONE BY AL CLADDING NSC/ BALUSTRADE NSC/ CEILING NSC.

LEGEND

- F. FIXED GLASS
- M.W. MAINTENANCE WINDOWS
(WINDOWS WITHOUT HANDLE BUT BE OPENED WITH KEY)
- M.D. MAINTENANCE DOOR
(SELF-CLOSING DOOR)
- (XX00) MATERIAL CODE
- B.F. BALANCE FLUE/ FLUE APERTURE

NOTES
DO NOT SCALE DRAWING, FIGURED DIMENSIONS ARE TO BE FOLLOWED.
READ THIS DRAWING IN CONNECTION WITH GENERAL ARCHITECTURAL PLANS, STRUCTURAL PLANS, AND OTHER RELATED DRAWINGS, THE ARCHITECT SHALL BE NOTIFIED IMMEDIATELY OF ANY DISCREPANCY FOUND THEREIN.
COPYRIGHT OF THIS DRAWING RESERVED BY ARCHITECT.

Tender

所有Midi 碰 Apex 叫膠

歸 Apex

Midi

Apex

Apex

NO.	DATE	REVISIONS	DRAFTED	CHECKED	DESIGNED	REVIEWED



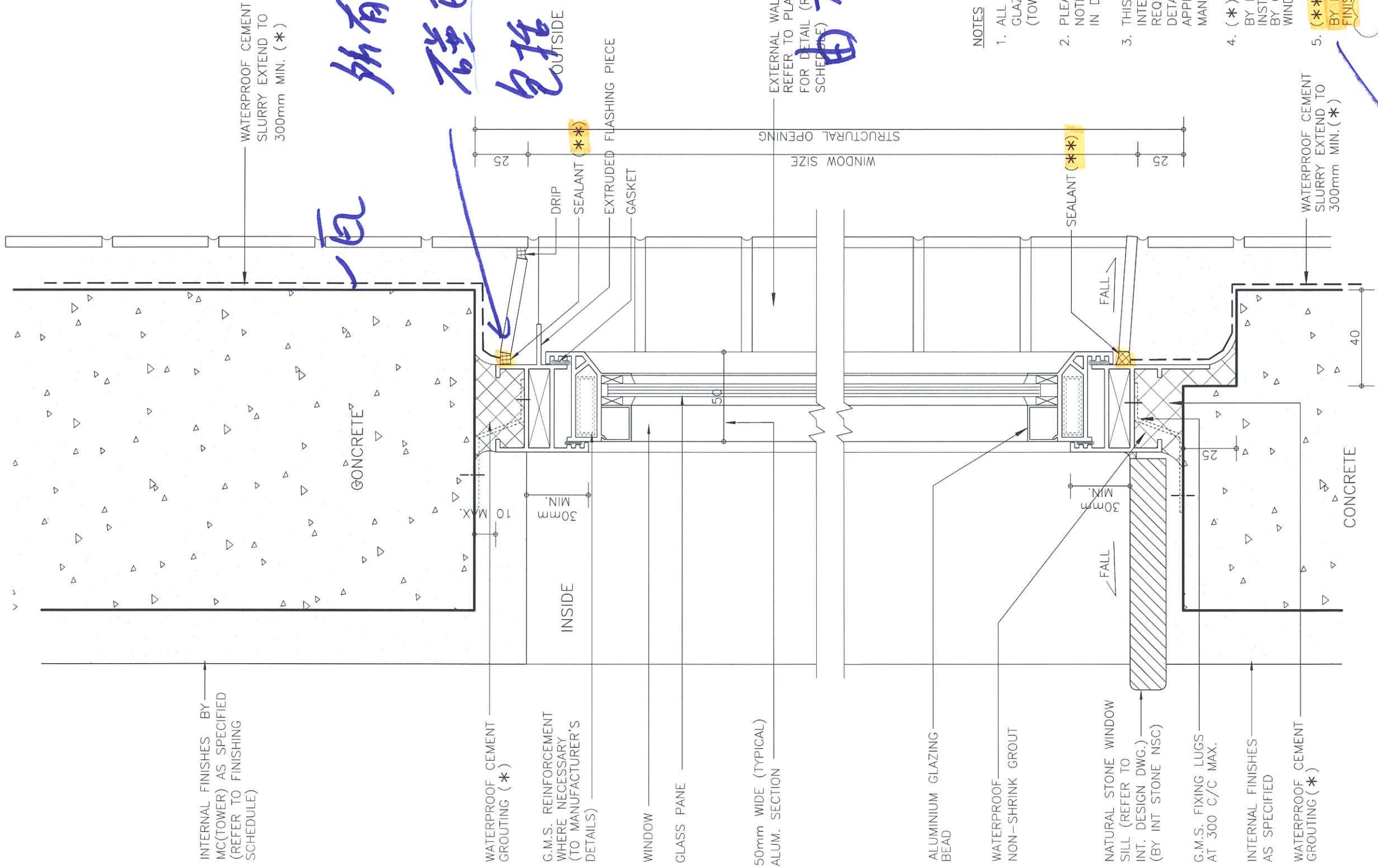
WONG TUNG & PARTNERS LIMITED
ARCHITECTS & PLANNERS
18th Floor, Cityplaza 3, Taikoo Shing, Hong Kong
T 852-2803 9888 F 852-2513 1728 www.wongtung.com

PROJECT:
URA KWUN TONG TOWN CENTRE REDEVELOPMENT (AREA 2 & 3) AT NKIL 6514 KWUN TONG, KOWLOON

TITLE:
LEGEND & NOTES

DATE: 11/2017	SCALE: NTS
DRAFTED: ()	CHECKED: ()
DESIGNED: ()	REVIEWED: ()
JOB NO. 31690	DRAWING NO. T/A142/001
REV. NO. 15	

TENDER ADDENDUM NO.3 (POST-TENDER)



INTERNAL FINISHES BY MC(TOWER) AS SPECIFIED (REFER TO FINISHING SCHEDULE)

WATERPROOF CEMENT SLURRY EXTEND TO 300mm MIN. (*)

所有牆邊膠
一瓦
磁瓦

包括全鋁板收口
F.O門, 趟門
窗百葉

EXTERNAL WALL FINISHES BY MC(TOWER) REFER TO PLANS & ELEVATIONS DWG FOR DETAIL (REFER TO FINISHING SCHEDULE)

NOTES

- ALL ALUMINIUM WINDOWS WITH GLAZING TO BE BY CURTAIN WALL (TOWER) NSC.
- PLEASE REFER TO THE GENERAL NOTES FOR ALUMINIUM WINDOW IN DWG NO. T/A142/01
- THIS DWG INDICATES THE DESIGN INTENT ONLY, MC(TOWER) IS REQUIRED TO SUBMIT FULLY DETAILED SHOP DRAWINGS FOR APPROVAL PRIOR TO THE MANUFACTURING
- (*) = BY MC(TOWER) IF WINDOW FRAME INSTALLED IN PRE-CAST FACADE YARD; BY CURTAIN WALL (TOWER) NSC IF WINDOW FRAME INSTALLED ON SITE.
- (**) = BY MC(TOWER) IF EXTERNAL WALL FINISHES IS TILES

1 WINDOW SECTION DETAIL (OPENABLE SASH)

TENDER ADDENDUM NO.2

NO.	DATE	REVISIONS	DRAFTED	CHECKED	DESIGNED	REVIEWED
01	01/2017	PRE-TENDER				



WONG TUNG & PARTNERS LIMITED
ARCHITECTS & PLANNERS
18th Floor, Cityplaza 3, Taikoo Shing, Hong Kong
T 852-2803 9888 F 852-2513 1728 www.wongtung.com

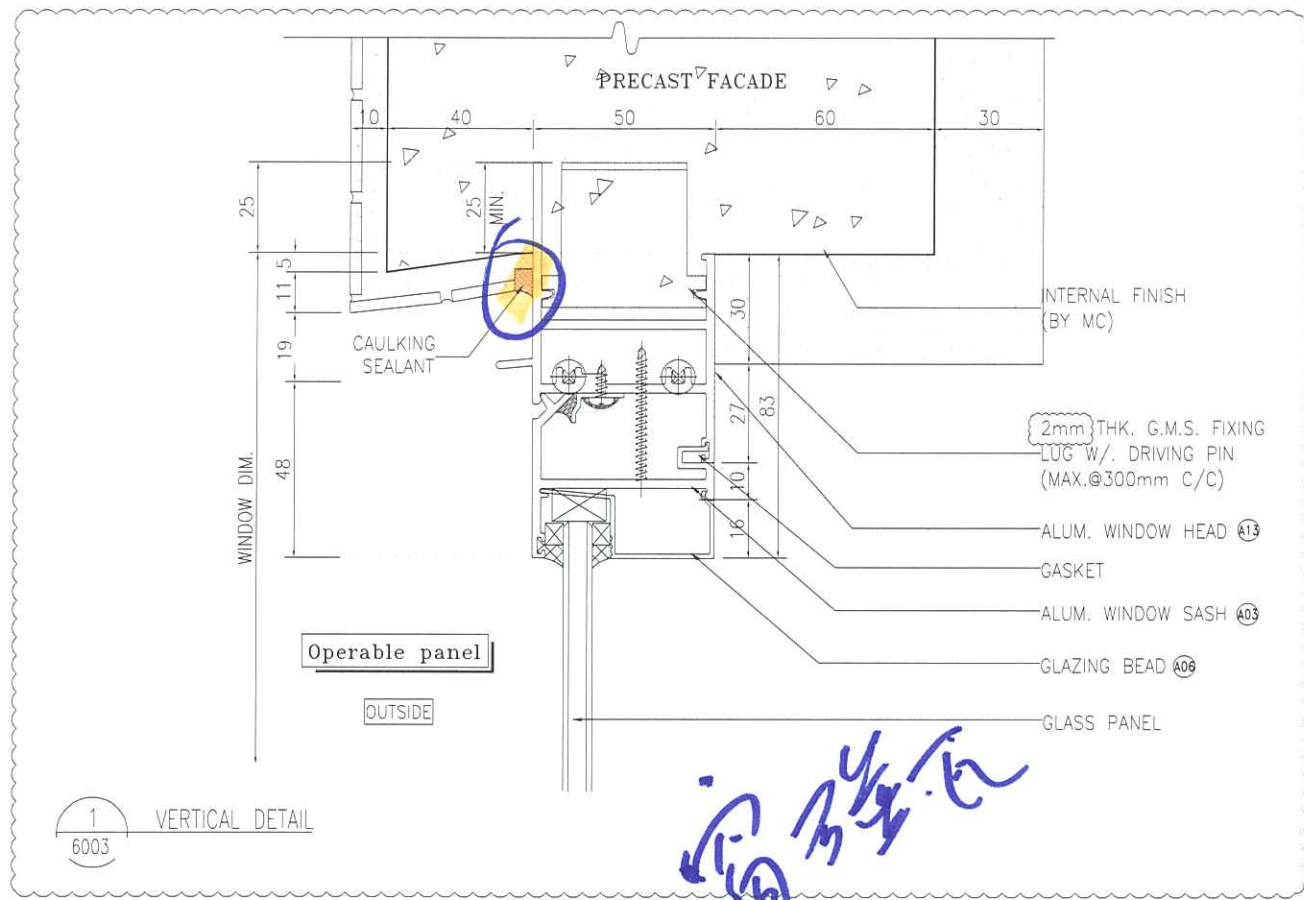
PROJECT:
URA KWUN TONG TOWN CENTRE REDEVELOPMENT (AREA 2 & 3) AT NKIL 6514, KWUN TONG, KOWLOON

TITLE:
DETAILS OF FIXING ALUMINIUM WINDOWS-1

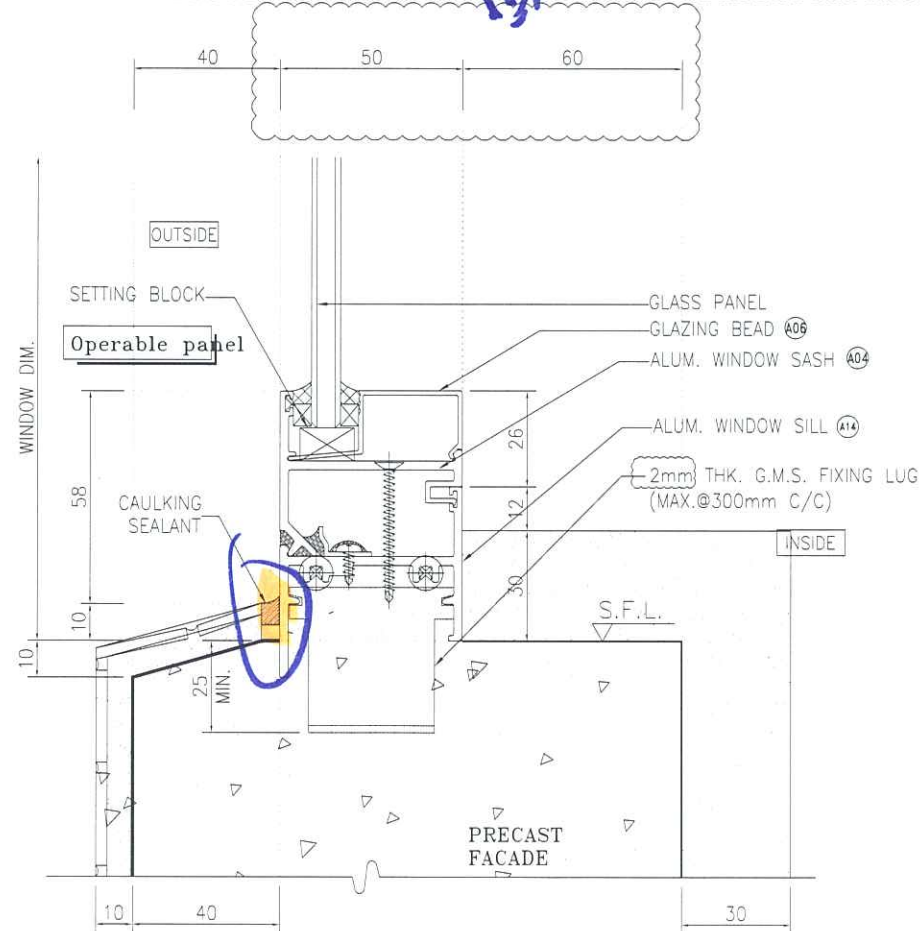
DATE:	12/2016	SCALE:	1:2
DRAFTED:	()	CHECKED:	()
DESIGNED:	()	REVIEWED:	()
JOB NO.	31690	DRAWING NO.	T/A142/601
REV. NO.	(02)		

NOTES
DO NOT SCALE DRAWING, FIGURED DIMENSIONS ARE TO BE FOLLOWED.
READ THIS DRAWING IN CONNECTION WITH GENERAL ARCHITECTURAL PLANS, STRUCTURAL PLANS, AND OTHER RELATED DRAWINGS. THE ARCHITECT SHALL BE NOTIFIED IMMEDIATELY OF ANY DISCREPANCY FOUND THEREIN.
COPYRIGHT OF THIS DRAWING RESERVED BY ARCHITECT.

Tender

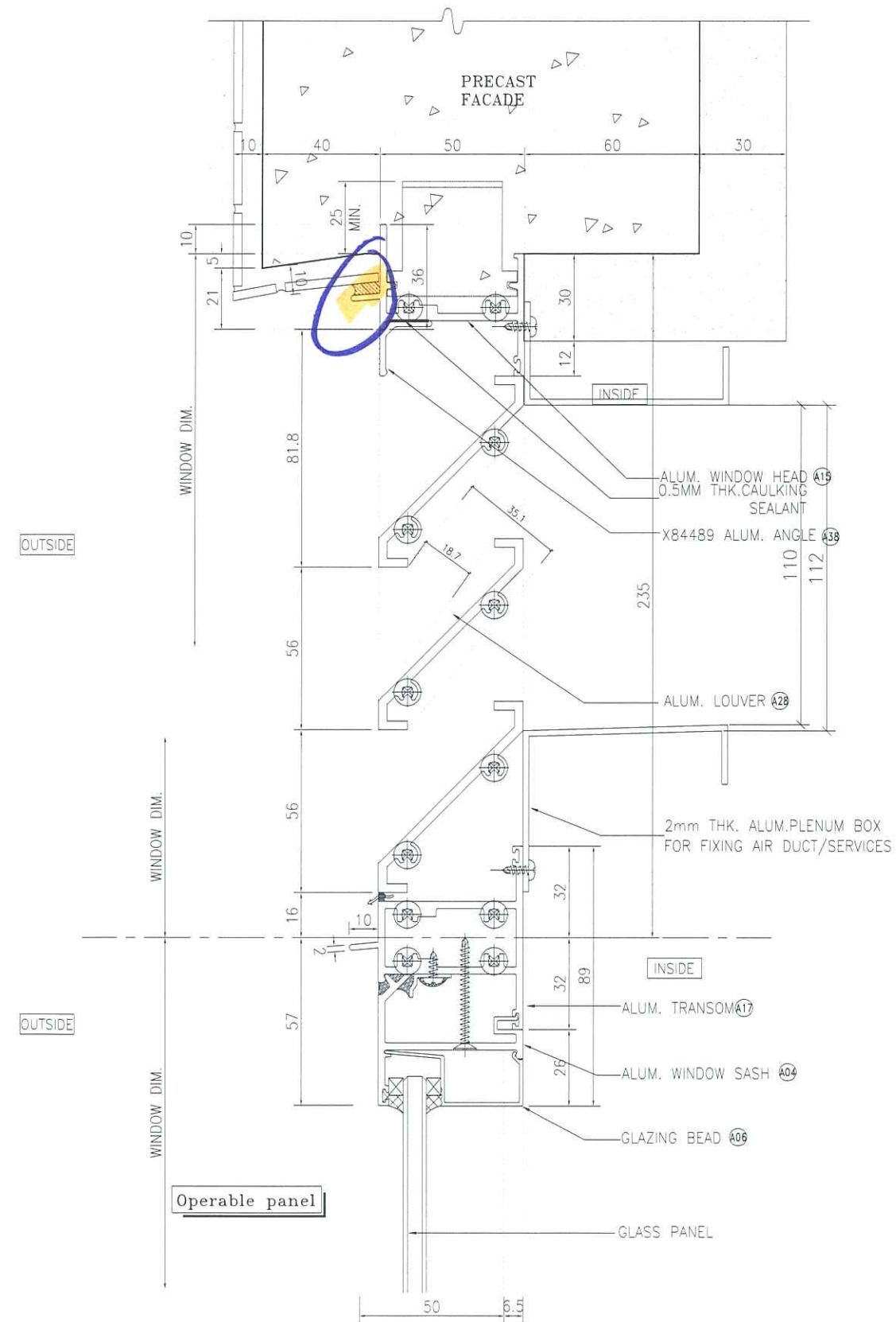


1 VERTICAL DETAIL
6003



2 VERTICAL DETAIL
6003

Handwritten blue notes in Chinese characters: 窗台高度 (Window sill height)



3 VERTICAL DETAIL
6003 For Alum. Louver With 53% Effective Area

B.D. REF :

CLIENT :
信和置業有限公司
Sino Land Company Limited

ARCHITECT :
WONG TUNG & PARTNERS LIMITED
ARCHITECTS & PLANNERS

MAIN CONTRACTOR :
CR Construction Company Limited

STRUCTURAL ENGINEER :
AECOM

FACADE CONSULTANT:

NOTE :
1. ALL DIMENSIONS ARE IN mm.
2. ALL ELEVATIONS ARE VIEWED FROM OUTSIDE.
3. ALL DIMENSIONS TO BE VERIFIED ON SITE BEFORE FABRICATION.

LEGEND :
X1 -- DETAIL MARK NO.
X001 -- REFER SHEET NO.
1. F.F.L. -- FINISHED FLOOR LEVEL
2. S.F.L. -- STRUCTURAL FLOOR LEVEL
3. (R) -- REVERSED DETAIL

NO	DATE	REVISED	BY
D	2016/4/26	BY ARCHITECT COMMENT	Zeng
C	2016/10/20	BY ARCHITECT COMMENT	Zeng
B	2016/09/29	BY ARCHITECT COMMENT	Zeng
A	2016/07/19	BY ARCHITECT COMMENT	Zeng

JOB NO. : J-837
PROJECT :
URA KWUN TONG TOWN CENTRE
REDEVELOPMENT (AREA 2 & 3) AT
NKIL 6514, KWUN TONG, KOWLOON

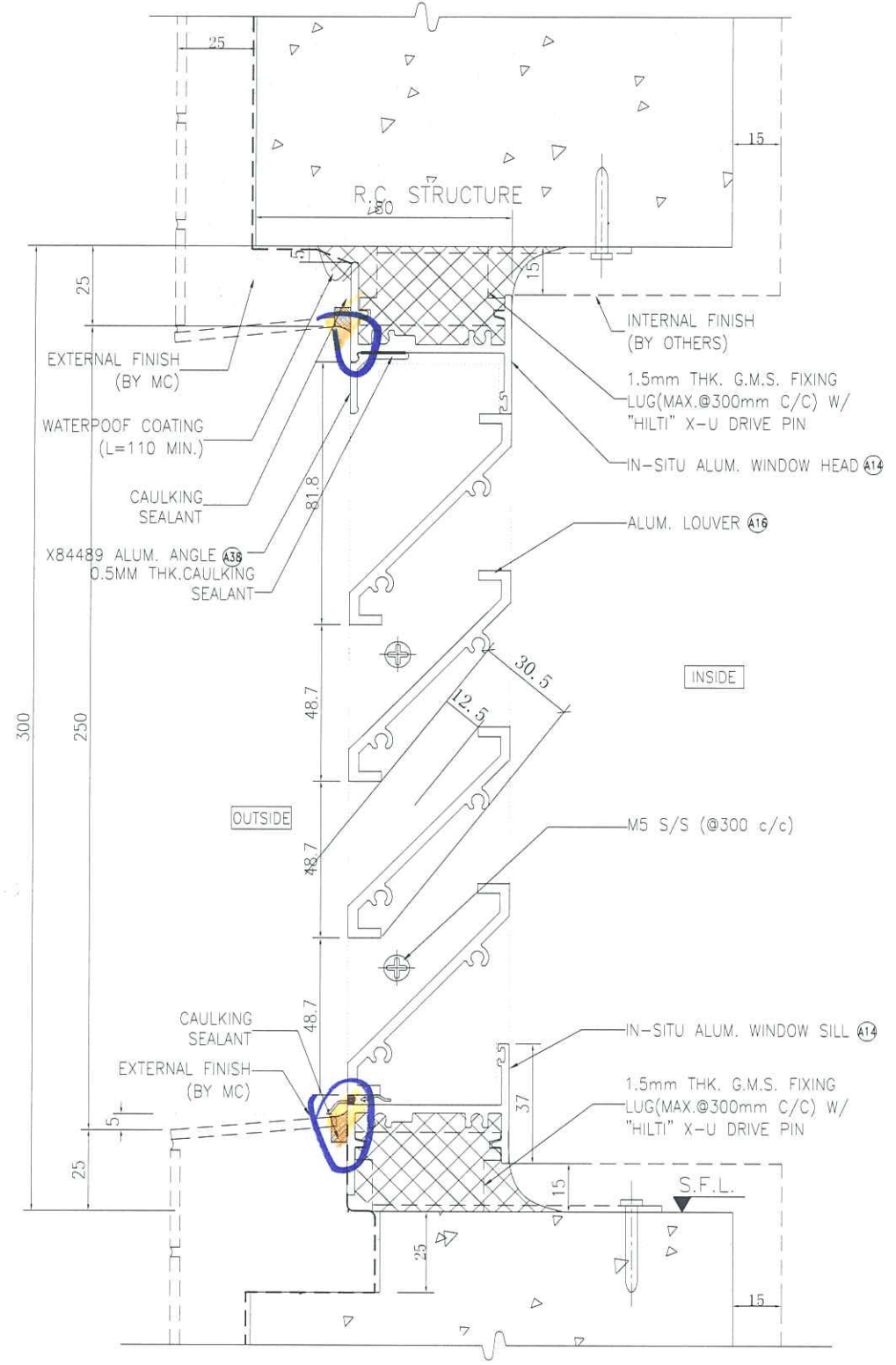
TITLE :
TYPICAL DETAIL FOR
ALUM. WINDOW

DATE : 04-JUL-18 SCALE : 1:1#

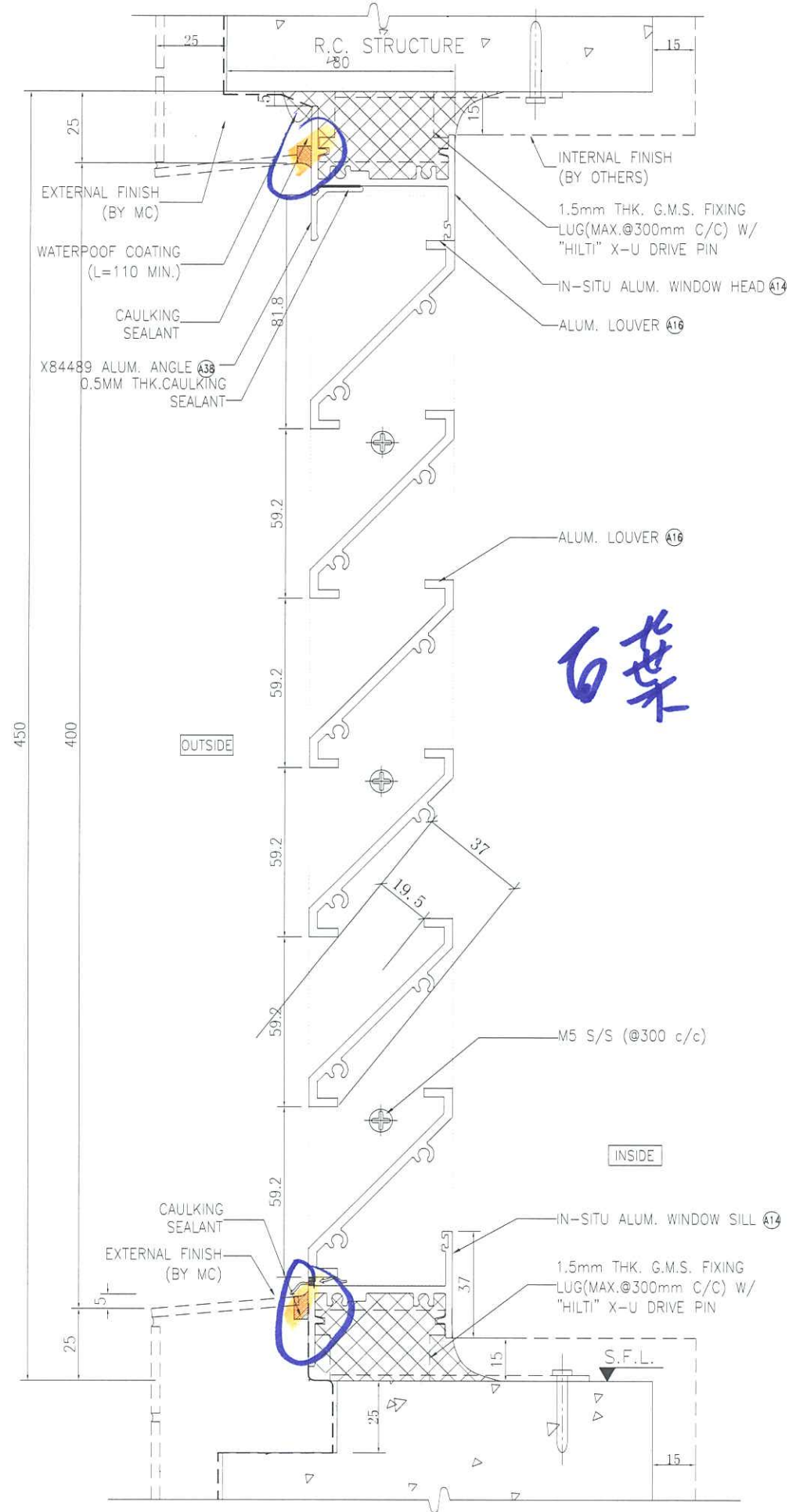
DRAWN BY : Zeng CHECKED BY : DW

美特鋁質有限公司
MIDI ALUMINIUM FABRICATOR LTD.
Units 6-8, Sunray Industrial Centre, 1/F
610 Cha Kwo Ling Road, Kowloon
Tel: 23489211-4 Fax: (852) 27727666

DWG NO. : J837-PW-6003 REV. : D



1 VERTICAL DETAIL
6003 FOR ALUM. LOUVER WITH 41% EFFECTIVE AREA



2 VERTICAL DETAIL
6003 FOR ALUM. LOUVER WITH 52.7% EFFECTIVE AREA

B.D. REF :

CLIENT :
信和置業有限公司
Sino Land Company Limited

ARCHITECT :
WONG TUNG & PARTNERS LIMITED
ARCHITECTS & PLANNERS
WT

MAIN CONTRACTOR :
CR Construction Company Limited

STRUCTURAL ENGINEER :
AECOM

FACADE CONSULTANT:

NOTE :
1. ALL DIMENSIONS ARE IN mm.
2. ALL ELEVATIONS ARE VIEWED FROM OUTSIDE.
3. ALL DIMENSIONS TO BE VERIFIED ON SITE BEFORE FABRICATION.

LEGEND :
X1 -- DETAIL MARK NO.
X001 -- REFER SHEET NO.
1. F.F.L. -- FINISHED FLOOR LEVEL
2. S.F.L. -- STRUCTURAL FLOOR LEVEL
3. (R) -- REVERSED DETAIL

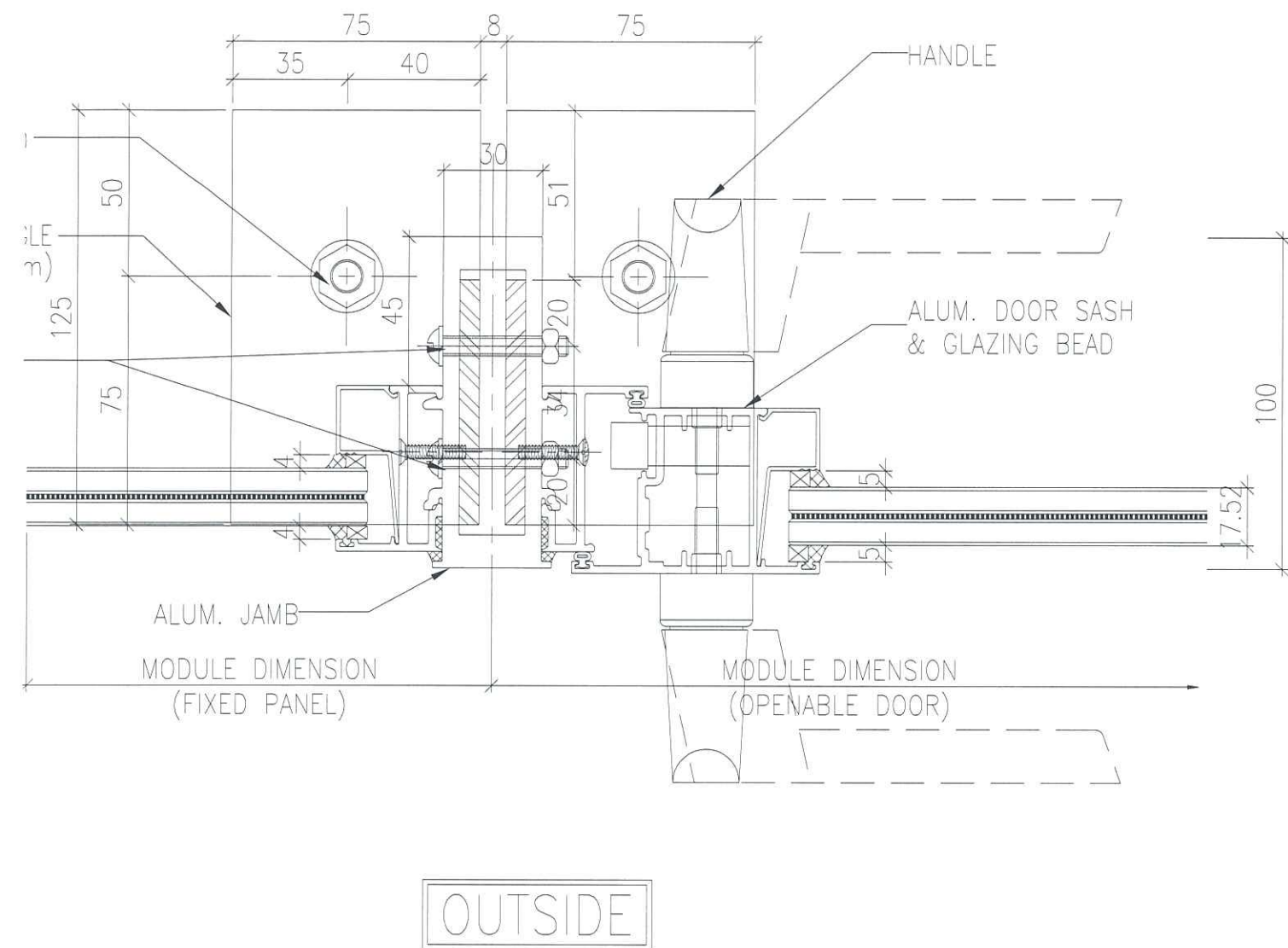
A	2019/1/7	BY GENERAL MODIFY	Zeng
NO.	DATE	REVISED	BY

JOB NO. : J-837
PROJECT :
URA KWUN TONG TOWN CENTRE
REDEVELOPMENT (AREA 2 & 3) AT
NKIL 6514, KWUN TONG, KOWLOON

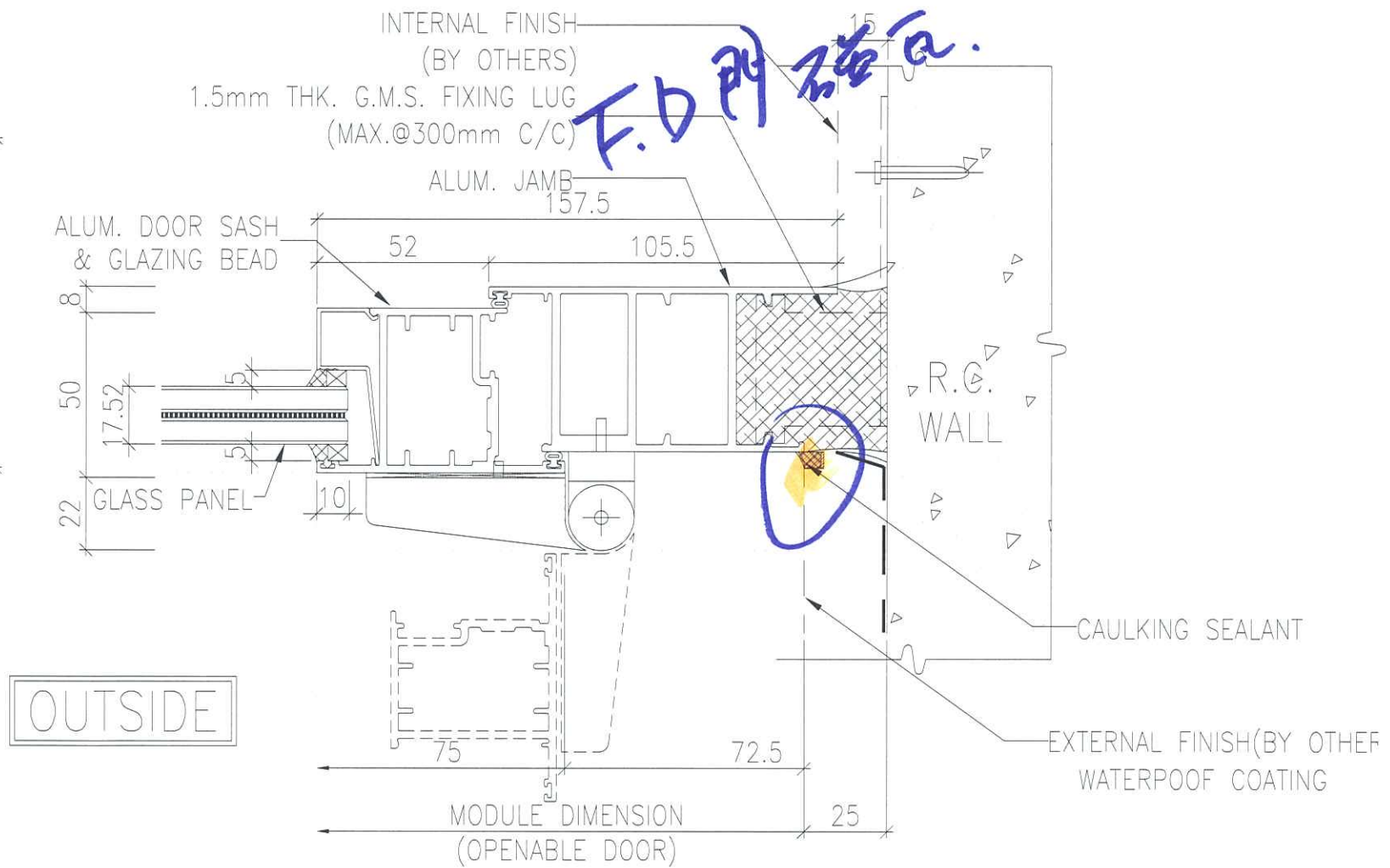
TITLE :
TYPICAL DETAIL FOR
IN-SITU ALUM. LOUVER

DATE : 09-JUL-18 SCALE : 1:2
DRAWN BY : Zeng CHECKED BY : DW

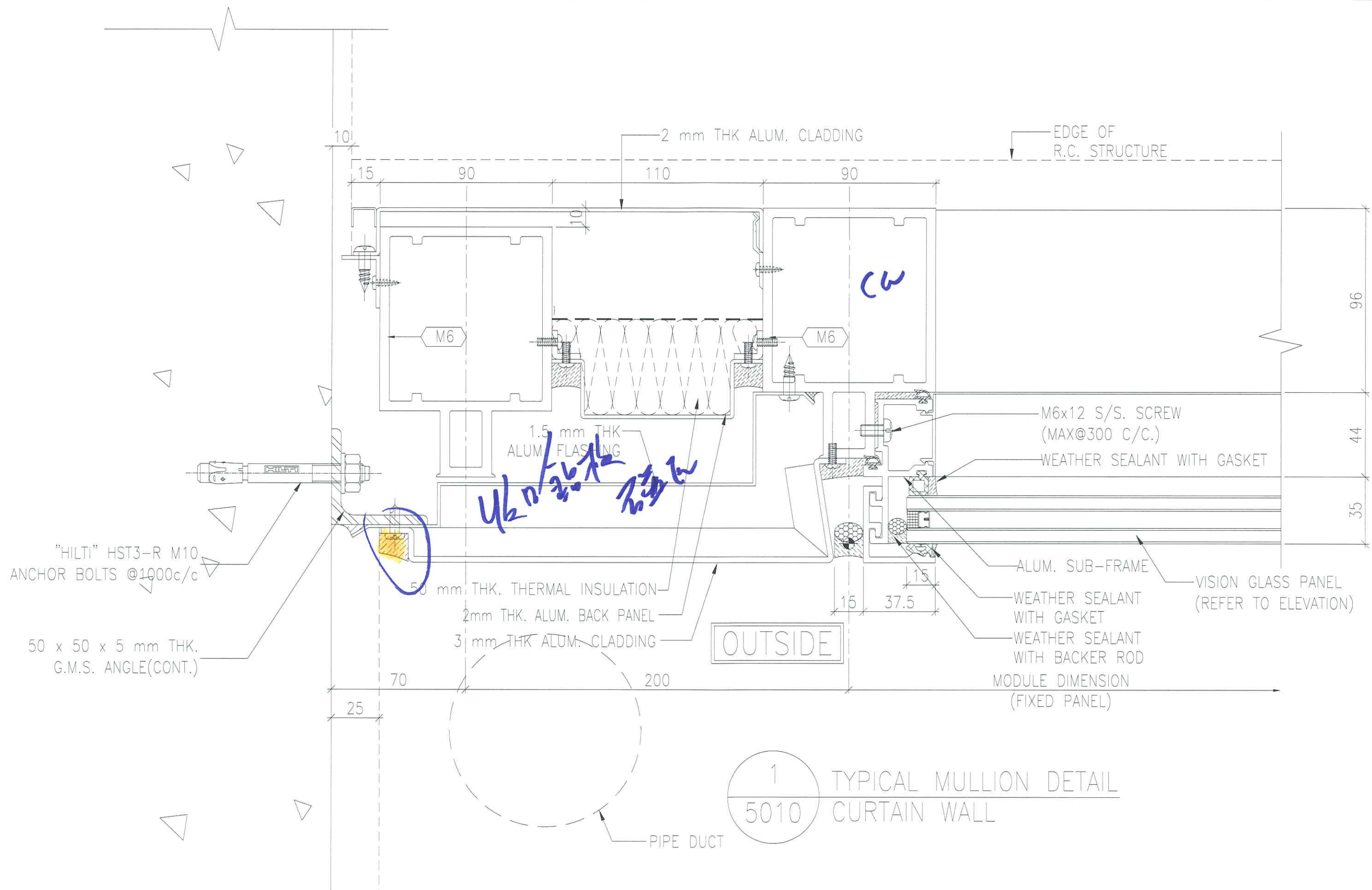
MIDI ALUMINIUM FABRICATOR LTD.
Units 6-8, Sunray Industrial Centre, 1/F
610 Cha Kwo Ling Road, Kowloon.
Tel: 23489211-4 Fax: (852) 27727666
DWG NO. : J837-IAL-6003 REV. : A

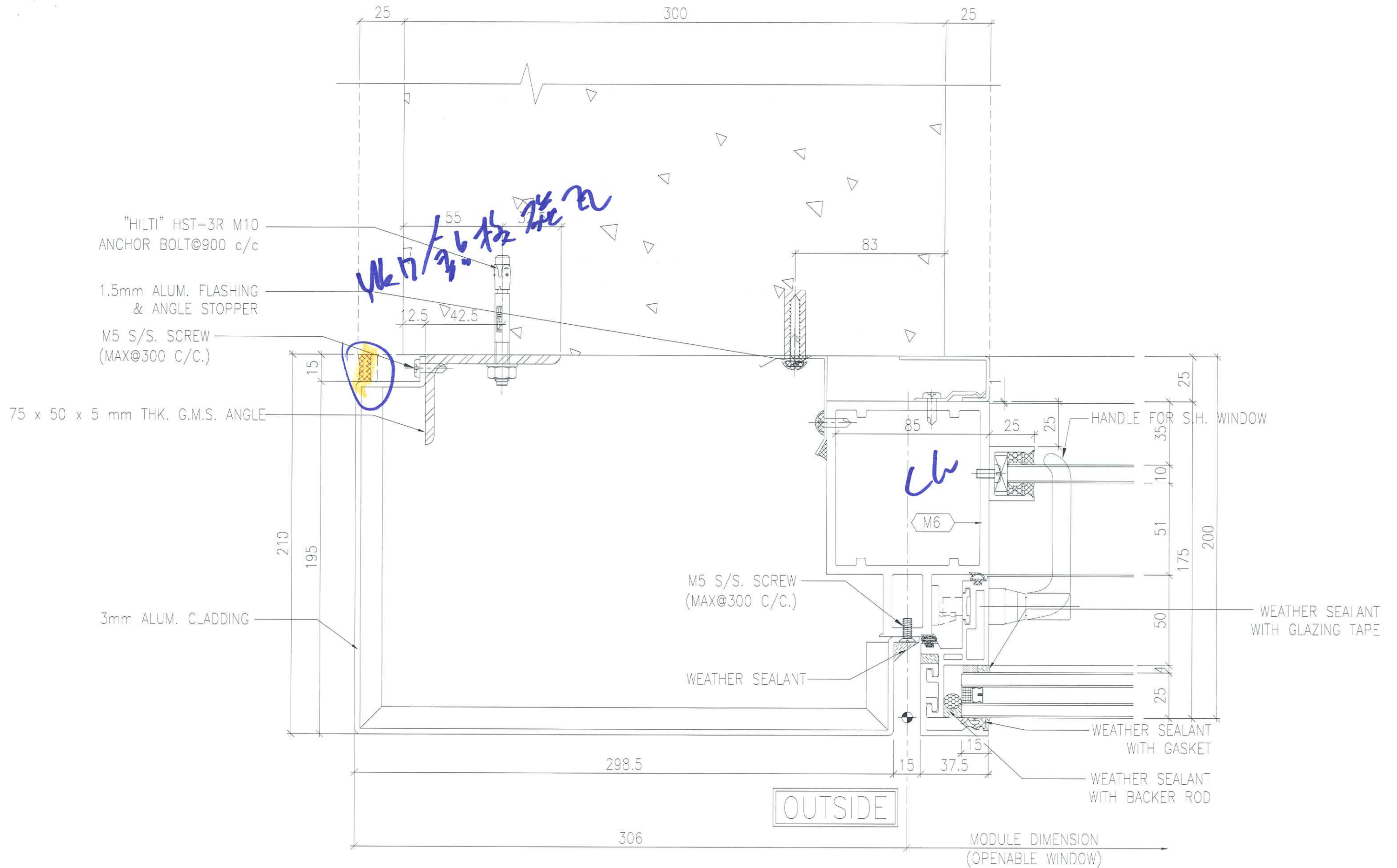


2
5014 TYPICAL MULLION DETAIL
CURTAIN WALL

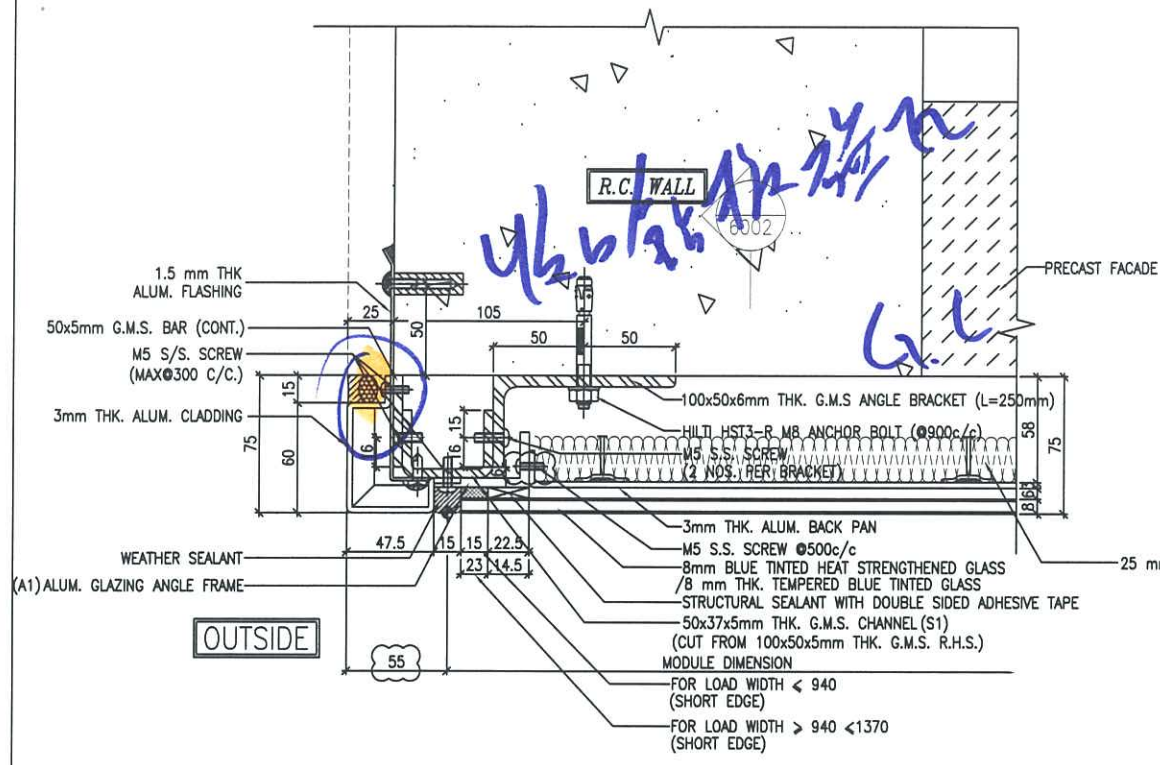


3
5014 TYPICAL MULLION DETAIL
CURTAIN WALL

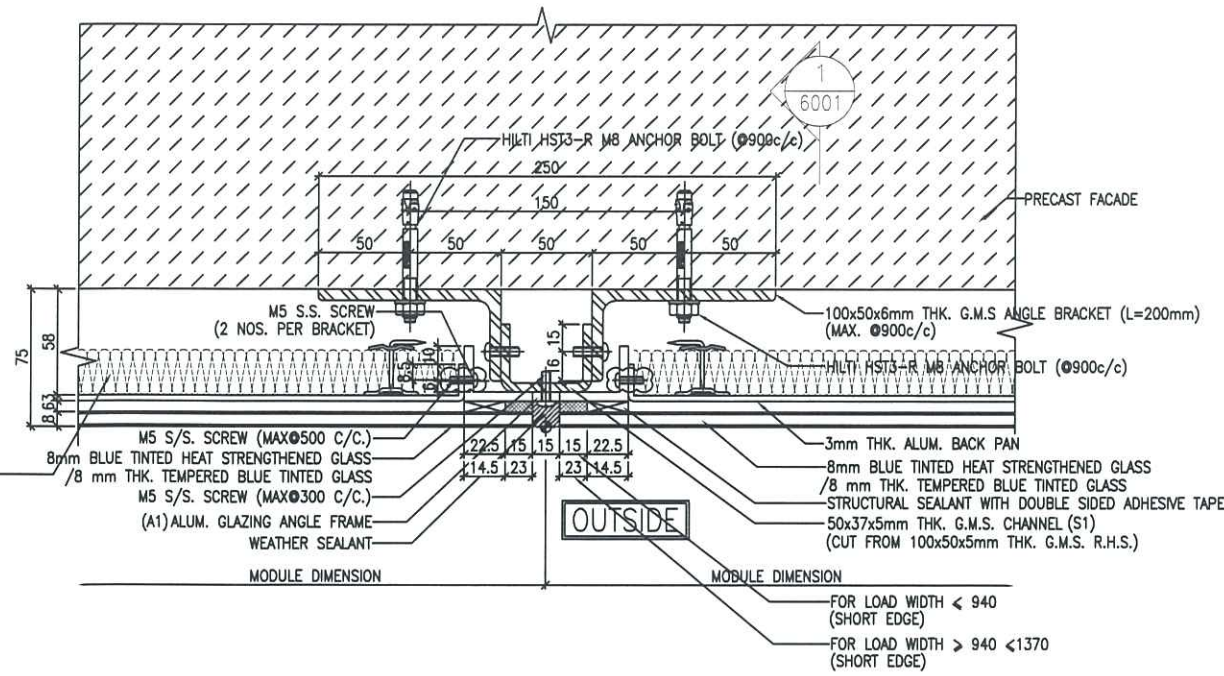




1
5016 TYPICAL MULLION DETAIL(FOR T1F/T2N)
CURTAIN WALL

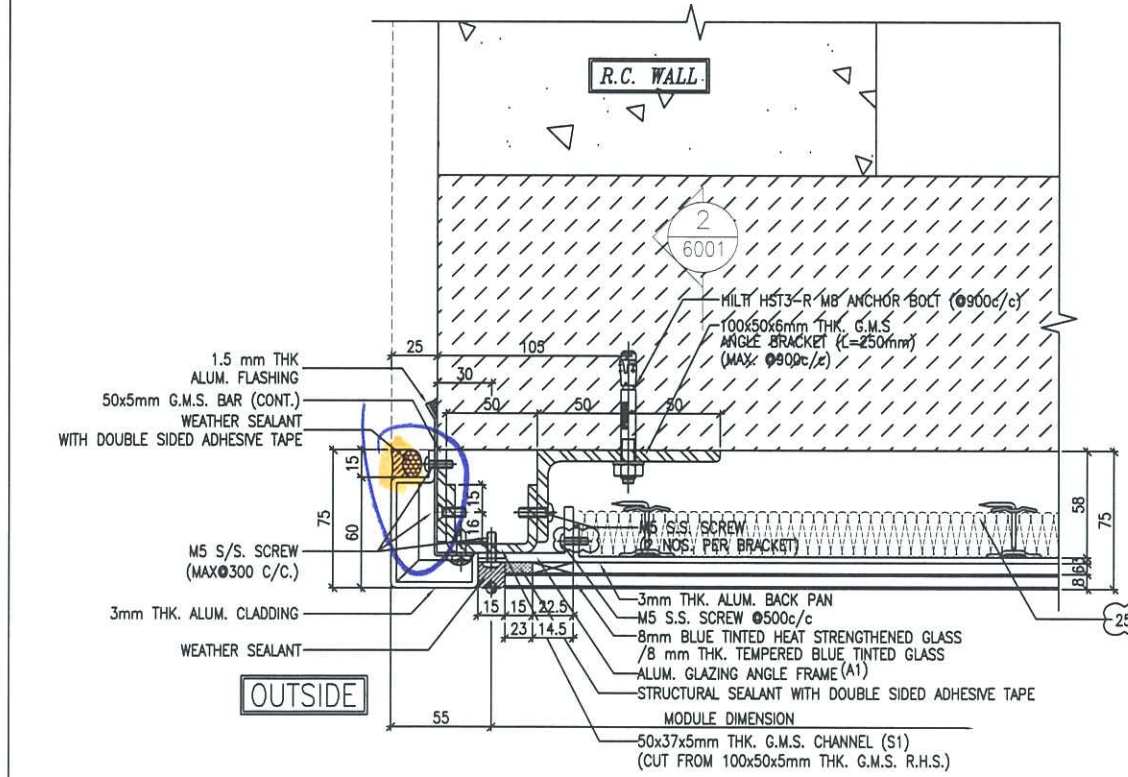


1 TYPICAL MULLION DETAIL
5001 GLASS CLADDING

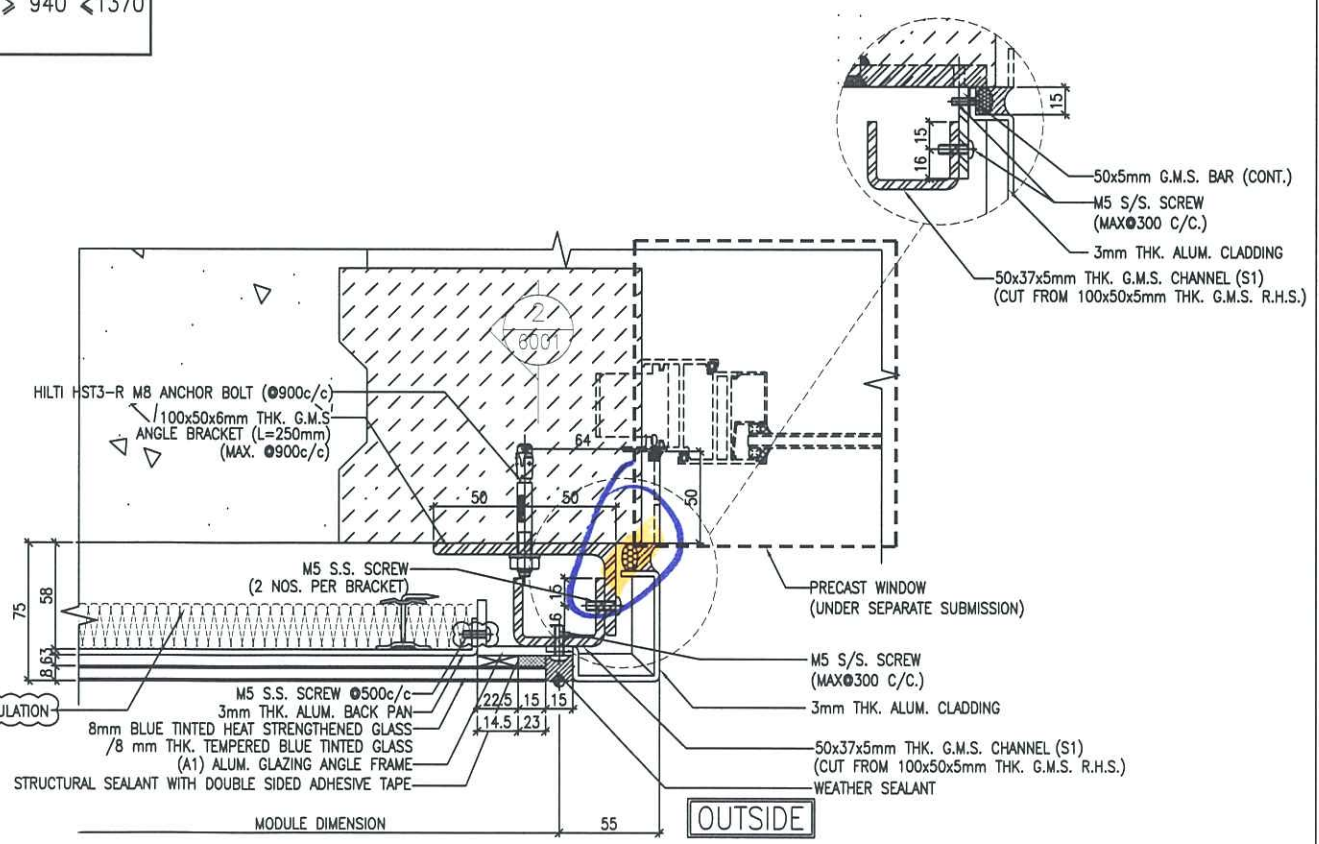


2 TYPICAL MULLION DETAIL
5001 GLASS CLADDING

LEGEND:
STRUCTURAL SEALANT WITH DOUBLE SIDED ADHESIVE TAPE AS FOLLOWS
15mm(W) FOR LOAD WIDTH < 940 (SHORT EDGE)
23mm(W) FOR LOAD WIDTH > 940 < 1370 (SHORT EDGE)



3 TYPICAL MULLION DETAIL
5001 GLASS CLADDING



4 TYPICAL MULLION DETAIL
5001 GLASS CLADDING

B.D. REF :

CLIENT :
信和置業有限公司
Sino Land Company Limited

ARCHITECT :
WONG TUNG & PARTNERS LIMITED
ARCHITECTS & PLANNERS

MAIN CONTRACTOR :
CR Construction Company Limited

STRUCTURAL ENGINEER :
AECOM

FAÇADE CONSULTANT:
AECOM

NOTE :
1. ALL DIMENSIONS ARE IN mm.
2. ALL ELEVATIONS ARE VIEWED FROM OUTSIDE.
3. ALL DIMENSIONS TO BE VERIFIED ON SITE BEFORE FABRICATION.

LEGEND :
X1 --- DETAIL MARK NO.
X001 --- REFER SHEET NO.
1. F.F.L. --- FINISHED FLOOR LEVEL
2. S.F.L. --- STRUCTURAL FLOOR LEVEL
3. (R) --- REVERSED DETAIL

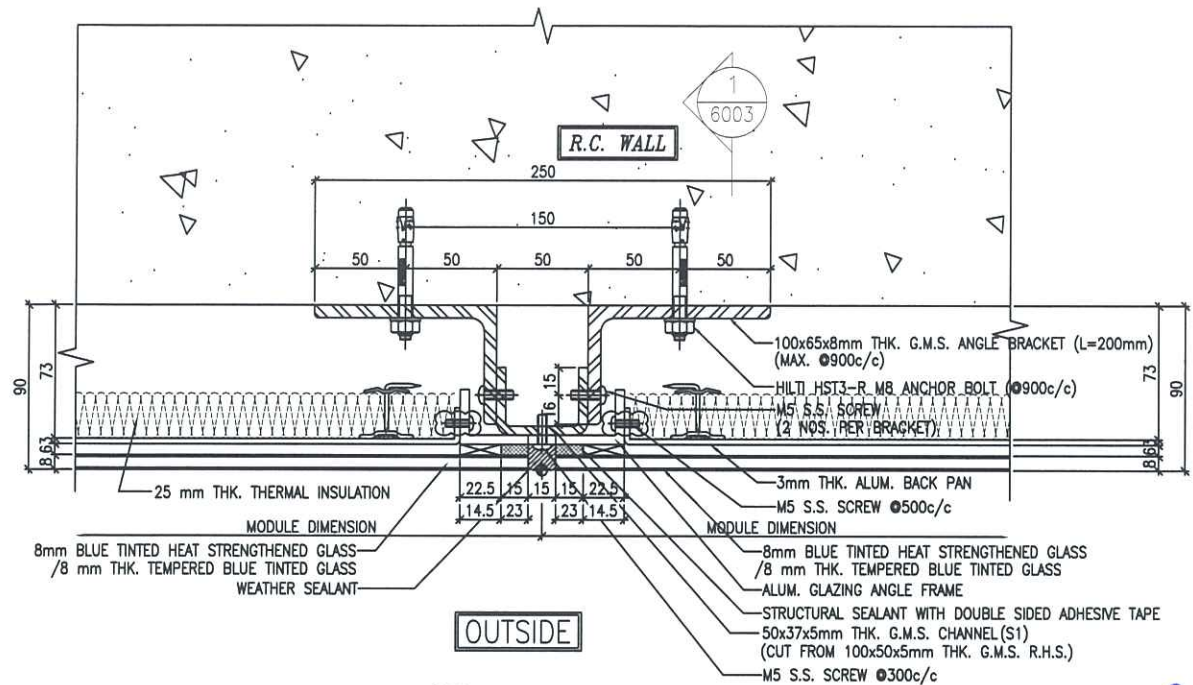
C	12/6/2019	GENERAL REVISED	
B	1/3/2019	GENERAL REVISED	
A	17/11/2018	GENERAL REVISED	
NO.	DATE	REVISED	BY

JOB NO. : J-837
PROJECT :
URA KWUN TONG TOWN CENTRE
REDEVELOPMENT (AREA 2 & 3) AT
NKIL 6514, KWUN TONG, KWLOON

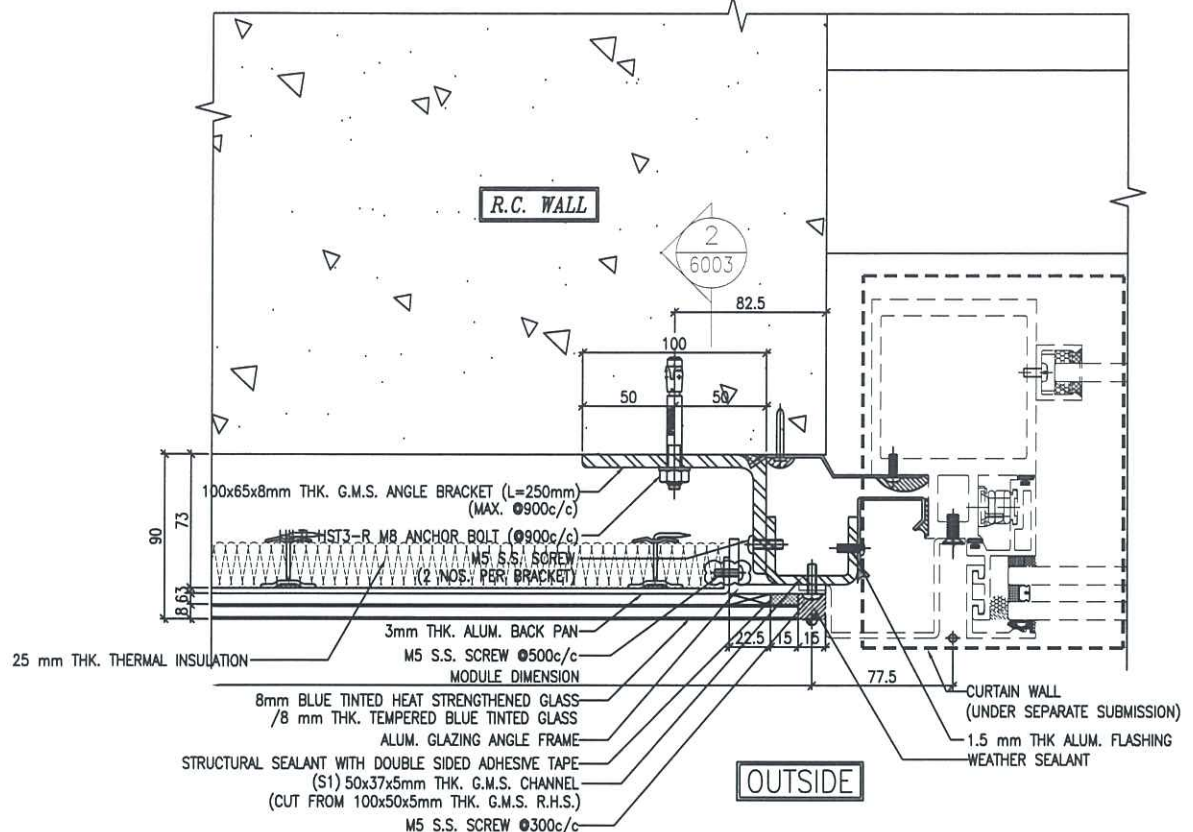
TITLE :
TYPICAL MULLION DETAIL
FOR GLASS CLADDING

DATE : 4-Sep-18 SCALE : 1:2 (A1)
DRAWN BY : ASING CHECKED BY : -

美特鋁質有限公司
MIDI ALUMINIUM FABRICATOR LTD.
Units 6-8, Sunray Industrial Centre, 1/F
610 Cha Kwo Ling Road, Kowloon
Tel:23489211-4 Fax:(852)27727666
DWG NO. : J837-GC-5001 REV. : C

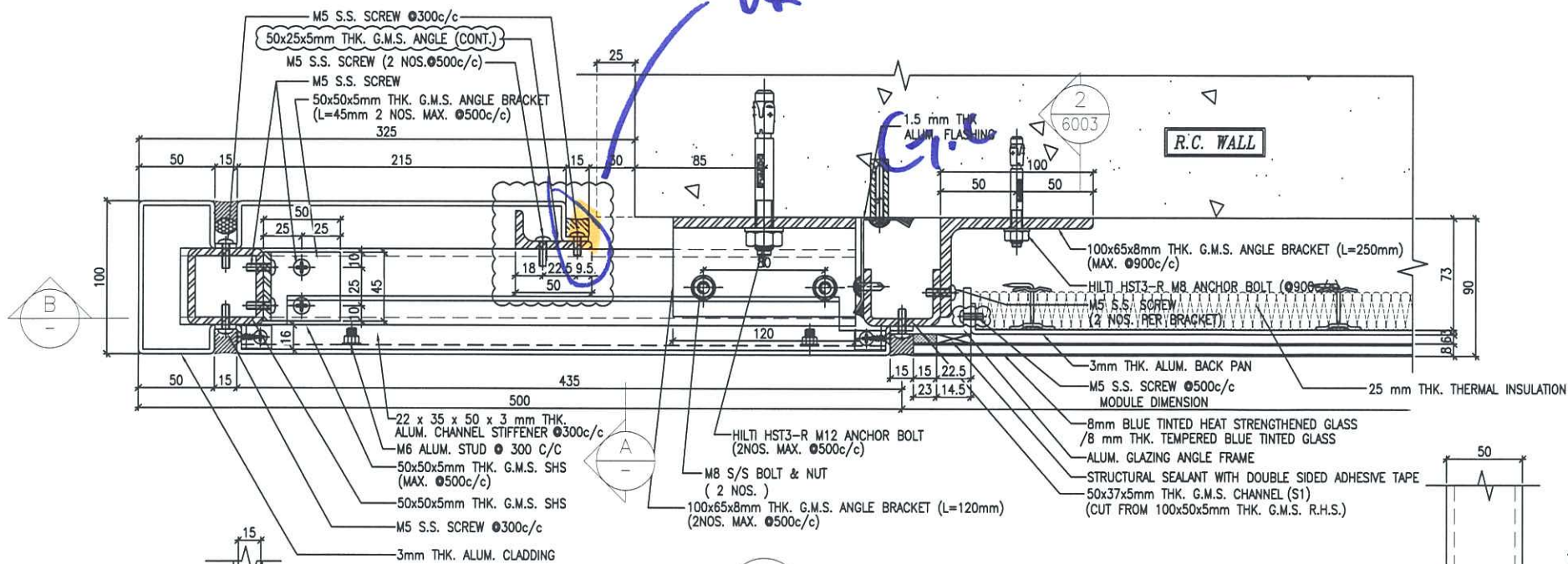


1 TYPICAL MULLION DETAIL
5003 GLASS CLADDING



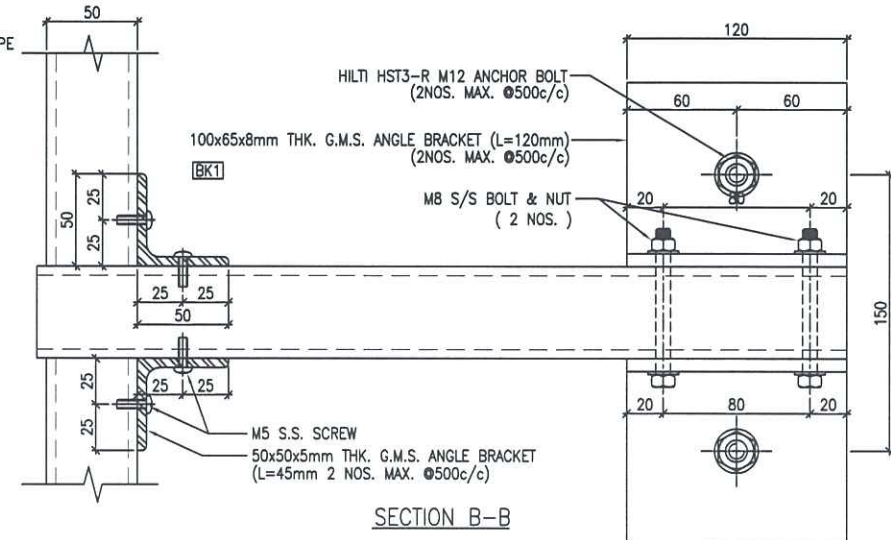
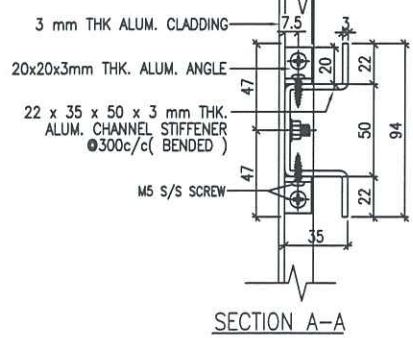
2 TYPICAL MULLION DETAIL
5003 GLASS CLADDING

此圖係根據現場



3 TYPICAL MULLION DETAIL
5003 GLASS CLADDING

LEGEND:
STRUCTURAL SEALANT WITH DOUBLE SIDED ADHESIVE TAPE AS FOLLOWS
15mm(W) FOR LOAD WIDTH < 940 (SHORT EDGE)
23mm(W) FOR LOAD WIDTH > 940 < 1370 (SHORT EDGE)



B.D. REF :
CLIENT :
信和置業有限公司
Sino Land Company Limited

ARCHITECT :
WONG TUNG & PARTNERS LIMITED
ARCHITECTS & PLANNERS

MAIN CONTRACTOR :
CR Construction Company Limited

STRUCTURAL ENGINEER :
AECOM

FAÇADE CONSULTANT:
AECOM

NOTE :
1. ALL DIMENSIONS ARE IN mm.
2. ALL ELEVATIONS ARE VIEWED FROM OUTSIDE.
3. ALL DIMENSIONS TO BE VERIFIED ON SITE BEFORE FABRICATION.

LEGEND :
X1 --- DETAIL MARK NO.
X001 --- REFER SHEET NO.

1. F.F.L. --- FINISHED FLOOR LEVEL
2. S.F.L. --- STRUCTURAL FLOOR LEVEL
3. (R) --- REVERSED DETAIL

C	12/6/2019	GENERAL REVISED	
B	17/11/2018	GENERAL REVISED	
A	15/10/2018	GENERAL REVISED	
NO.	DATE	REVISED	BY

JOB NO. : J-837
PROJECT :
URA KWUN TONG TOWN CENTRE
REDEVELOPMENT (AREA 2 & 3) AT
NKIL 6514, KWUN TONG, KWLOON

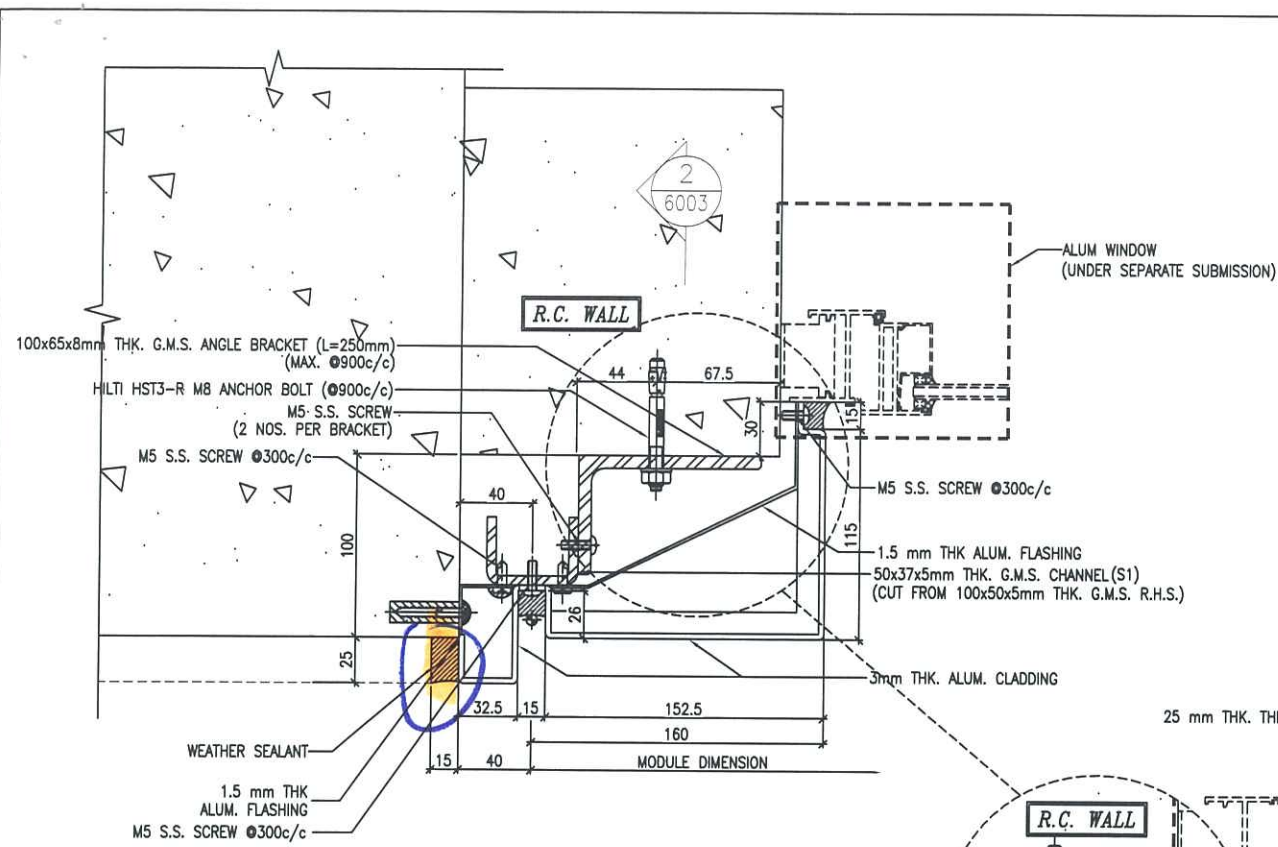
TITLE :
TYPICAL MULLION DETAIL
FOR GLASS CLADDING

DATE : 4-Sep-18 SCALE : 1:2 (A1)

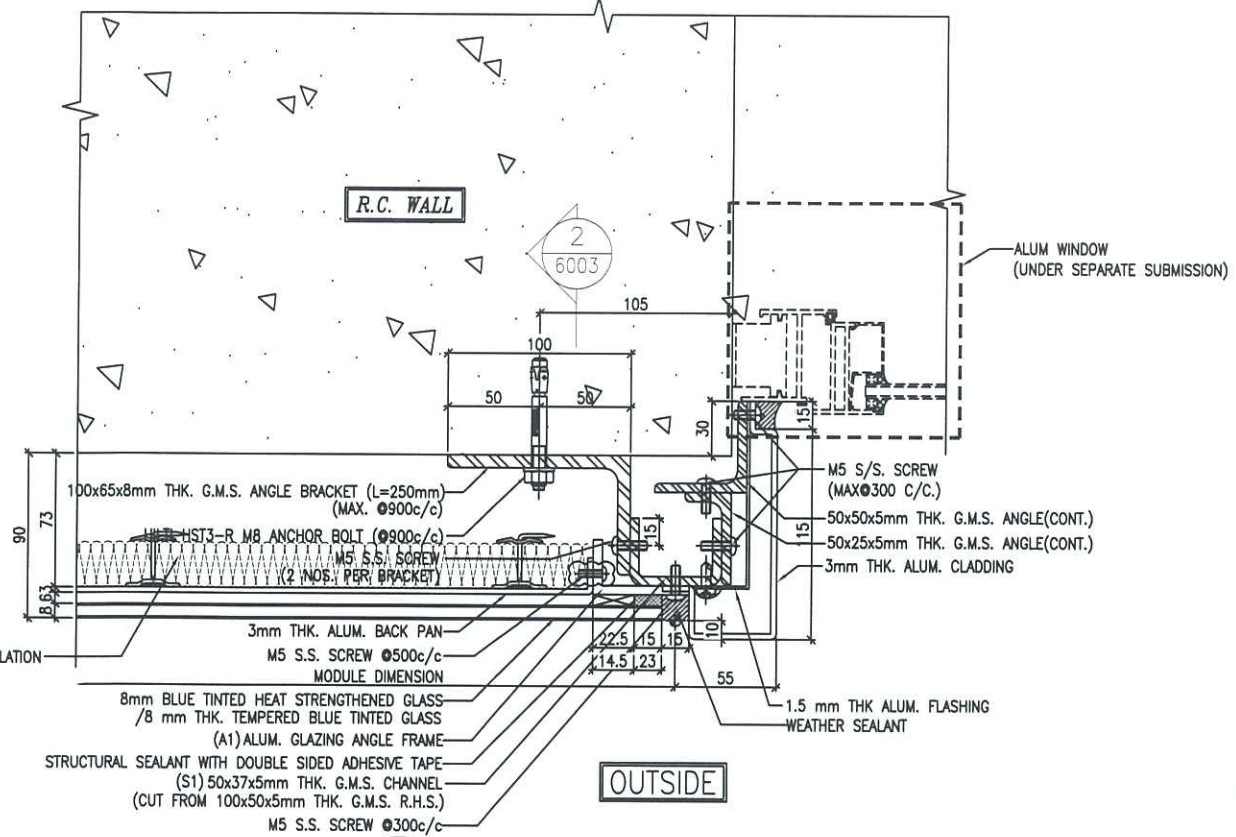
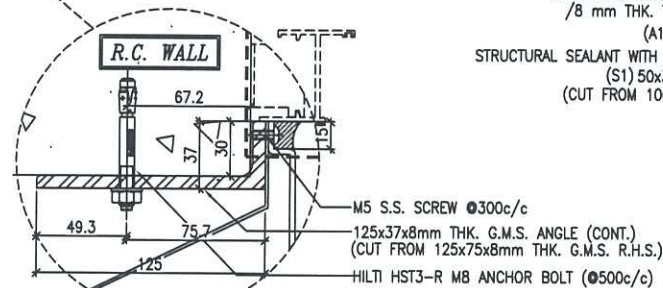
DRAWN BY : ASING CHECKED BY : -

美特鋁質有限公司
MIDI ALUMINIUM FABRICATOR LTD.
Units 6-8, Sunray Industrial Centre, 1/F
610 Cha Kwo Ling Road, Kowloon
Tel:23489211-4 Fax:(852)27727666

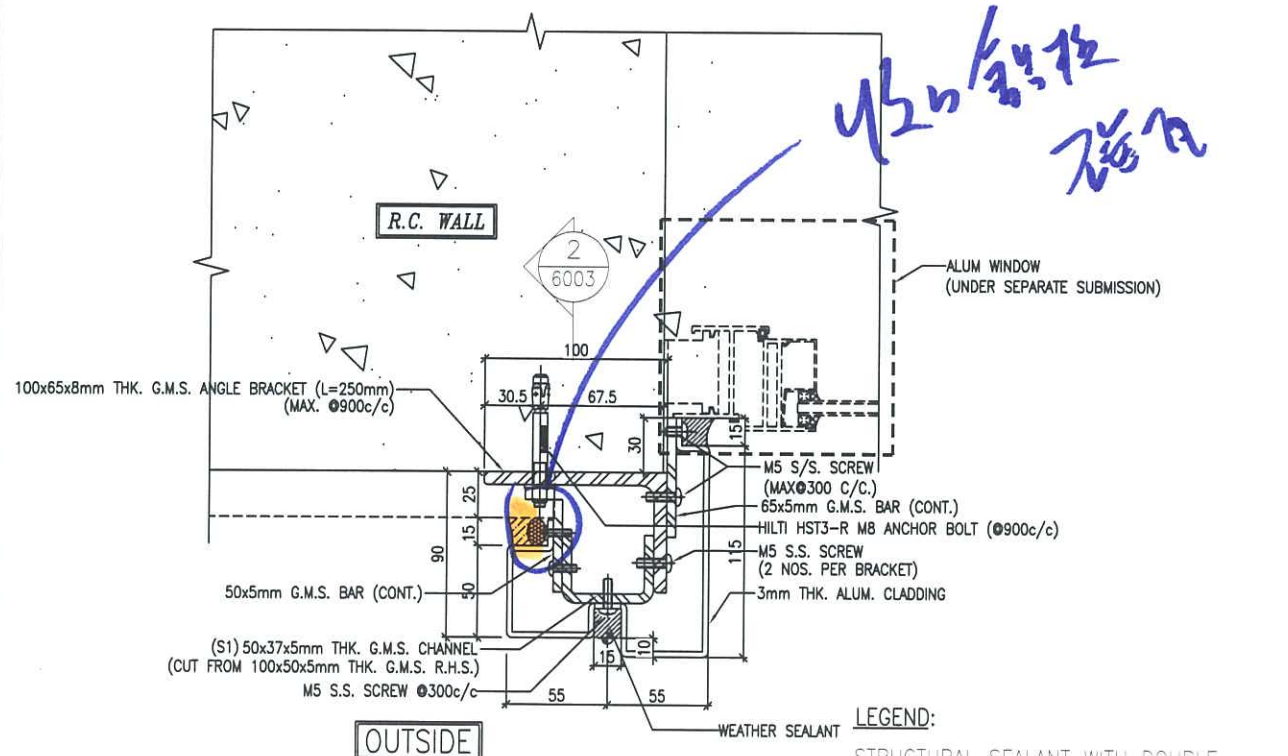
DWG NO. : J837-GC-5003 REV. : C



1 TYPICAL MULLION DETAIL
5006 GLASS CLADDING (ONLY FOR 2101-3)

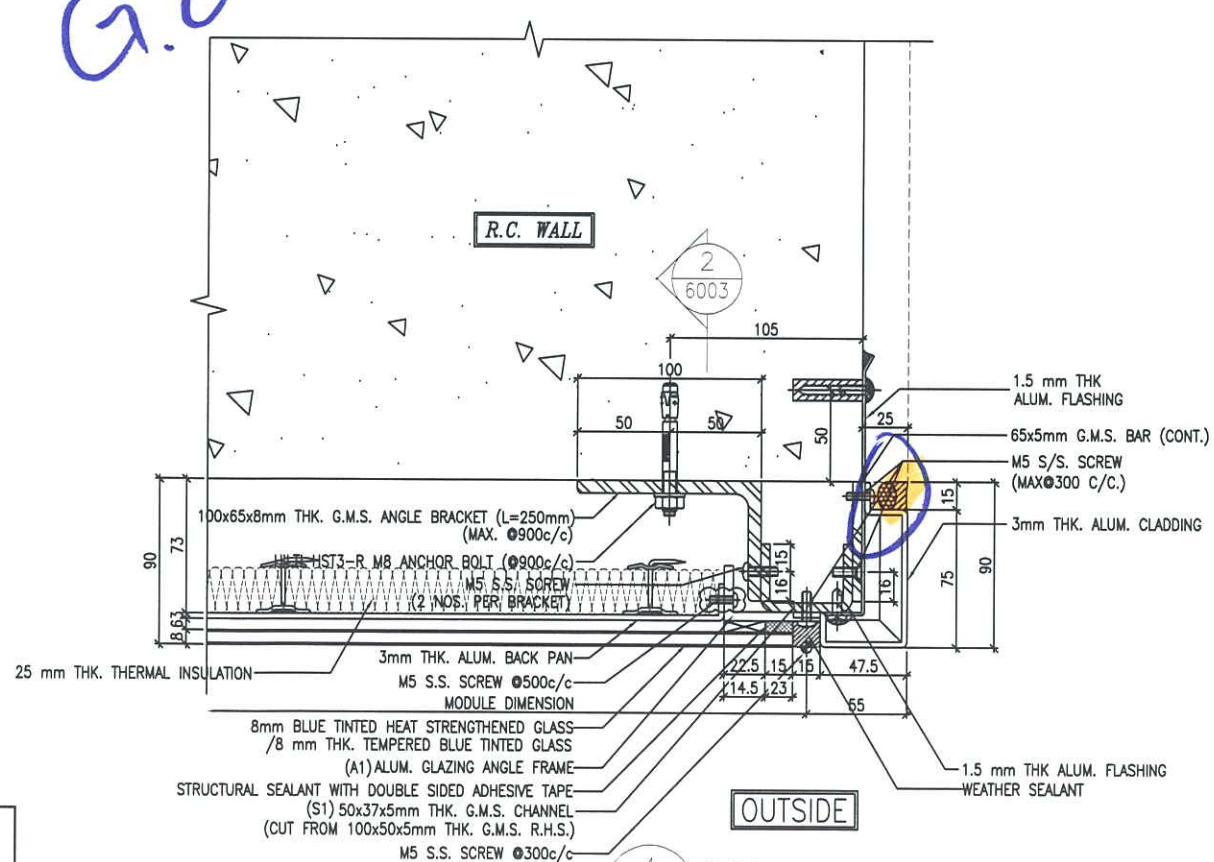


2 TYPICAL MULLION DETAIL
5006 GLASS CLADDING



3 TYPICAL MULLION DETAIL
5006 GLASS CLADDING

LEGEND:
STRUCTURAL SEALANT WITH DOUBLE SIDED ADHESIVE TAPE AS FOLLOWS
15mm(W) FOR LOAD WIDTH ≤ 940 (SHORT EDGE)
23mm(W) FOR LOAD WIDTH > 940 < 1370 (SHORT EDGE)



4 TYPICAL MULLION DETAIL
5006 GLASS CLADDING

B.D. REF :

CLIENT :
信和置業有限公司
Sino Land Company Limited

ARCHITECT :
WONG TUNG & PARTNERS LIMITED
ARCHITECTS & PLANNERS
WT

MAIN CONTRACTOR :
CR Construction Company Limited

STRUCTURAL ENGINEER :
AECOM

FACADE CONSULTANT:
AECOM

NOTE :
1. ALL DIMENSIONS ARE IN mm.
2. ALL ELEVATIONS ARE VIEWED FROM OUTSIDE.
3. ALL DIMENSIONS TO BE VERIFIED ON SITE BEFORE FABRICATION.

LEGEND :
X1 --- DETAIL MARK NO.
X001 --- REFER SHEET NO.
1. F.F.L. --- FINISHED FLOOR LEVEL
2. S.F.L. --- STRUCTURAL FLOOR LEVEL
3. (R) --- REVERSED DETAIL

B	12/6/2019	GENERAL REVISED	
A	1/3/2019	GENERAL REVISED	
NO.	DATE	REVISED	BY

JOB NO. : J-837
PROJECT :
URA KWUN TONG TOWN CENTRE
REDEVELOPMENT (AREA 2 & 3) AT
NKIL 6514, KWUN TONG, KWLOON

TITLE :
TYPICAL MULLION DETAIL
FOR GLASS CLADDING

DATE : 15-Oct-18 SCALE : 1:2 (A1)

DRAWN BY : ASING CHECKED BY : -

MIDI ALUMINIUM FABRICATOR LTD.
Units 6-8, Sunray Industrial Centre, 1/F
610 Cha Kwo Ling Road, Kowloon
Tel: 23489211-4 Fax: (852) 27727666

DWG NO. : J837-GC-5006 REV. : B

