



工程指示 / 要求簡箋(E.I.)

工程指示編號：EI/ 487- HK0945/19 修改版次：

工程編號：J837

工程名稱：觀塘 裕民坊平台

工程項目：平台- 工厂加工 及 地盤安裝進度預算

收件人：生系統

發件人：Johnny

日期：2019/04/23

要求提供 / 確認 事項：

- | | | |
|------------------------------------|-------------------------------------|-------------------------------|
| <input type="checkbox"/> 初步鋁料 B.M. | <input type="checkbox"/> 加工拆圖，然後生產 | <input type="checkbox"/> 尺寸表 |
| <input type="checkbox"/> 正式鋁料 B.M. | <input type="checkbox"/> 技術上資料 / 指示 | <input type="checkbox"/> 報價 |
| <input type="checkbox"/> 配件 B.M. | <input type="checkbox"/> 樣辦或貨品說明書 | <input type="checkbox"/> 分判合約 |
| <input type="checkbox"/> 其他：_____ | | |

內容：

1) 請按附件資料作各項目生產安排(包括-窗幕, 雨棚, 鋁飾線及鋁板 及 天窗)

**雨蓬及窗幕 為優先安排

請在 09/2019 前完成上列要求。

附有關圖紙 / 文件：

請見附件加工圖

1+ 1D

以上項目為：

 原合約工程包
 原合約工程加 / 減賬
 新工程報價

原因：-

分發東莞各部門：

- | | | | |
|--|---|---|--|
| <input type="checkbox"/> 生產技術總監 <input type="checkbox"/> 連附件 | <input type="checkbox"/> 技術部 <input type="checkbox"/> 連附件 | <input type="checkbox"/> 生產部 <input type="checkbox"/> 連附件 | <input type="checkbox"/> 機械設計部 <input type="checkbox"/> 連附件 |
| <input type="checkbox"/> 採購部 <input type="checkbox"/> 連附件 | <input type="checkbox"/> 生產統籌部 <input type="checkbox"/> 連附件 | | |
| <input type="checkbox"/> 質檢部 <input type="checkbox"/> 連附件 | <input type="checkbox"/> 會計部 <input type="checkbox"/> 連附件 | <input type="checkbox"/> 報關組 <input type="checkbox"/> 連附件 | <input type="checkbox"/> 其他 _____ <input type="checkbox"/> 連附件 |

分發香港各部門：

- | | | | |
|---|--|---|--|
| <input type="checkbox"/> 行政部 <input type="checkbox"/> 連附件 | <input type="checkbox"/> 會計部 <input type="checkbox"/> 連附件 | <input type="checkbox"/> 統籌部 <input type="checkbox"/> 連附件 | <input type="checkbox"/> 工程部地盤科文 <input type="checkbox"/> 連附件 |
| <input type="checkbox"/> 採購部 <input type="checkbox"/> 連附件 | <input type="checkbox"/> QS 部 <input type="checkbox"/> 連附件 | <input type="checkbox"/> 維修部 <input type="checkbox"/> 連附件 | <input type="checkbox"/> 其他 _____ <input type="checkbox"/> 連附件 |

傳遞編號：

發件人簽署：Johnny

項目經理簽署：PC. [Signature]

Master Programme

NKIL6514 URA Kwun Tong Town Centre (Development Area 2 & 3)

ID	Task Name	Duration	Start	Finish	2019												2020											
					Jan '19	Feb '19	Mar '19	Apr '19	May '19	Jun '19	Jul '19	Aug '19	Sep '19	Oct '19	Nov '19	Dec '19	Jan '20	Feb '20	Mar '20	Apr '20	May '20	Jun '20	Jul '20	Aug '20				
1	MATERIAL ORDERING & FABRICATION 物料訂購及加工製作	121 days	Sat 16/2/19	Sat 6/7/19	[Summary Bar]																							
2	Podium 平臺	121 days	Sat 16/2/19	Sat 6/7/19	[Summary Bar]																							
3	1. Window Wall 窗幕	90 days	Sat 16/2/19	Fri 31/5/19	[Summary Bar]																							
4	Alum. Extrusion Order 訂購鋁料	45 days	Sat 16/2/19	Tue 9/4/19	[Task Bar]																							
5	Alum. Extrusion Fabrication 鋁料加工	45 days	Wed 10/4/19	Fri 31/5/19	[Task Bar]																							
6	Steel Frame / Bracket Order & Fabrication 訂購鐵料及加工、組裝	45 days	Mon 18/2/19	Wed 10/4/19	[Task Bar]																							
7	Aluminium Flashing Fabrication 加工防水片	14 days	Mon 25/3/19	Tue 9/4/19	[Task Bar]																							
8	Aluminium Cladding Fabrication 鋁飾板加工製作	30 days	Wed 10/4/19	Tue 14/5/19	[Task Bar]																							
9	Glass Order 訂購玻璃	7 days	Tue 5/3/19	Tue 12/3/19	[Task Bar]																							
10	Glass Fabrication 玻璃加工(三鑫)	30 days	Wed 13/3/19	Tue 16/4/19	[Task Bar]																							
11	Glass Units Fabrication 廠玻璃件組裝	30 days	Wed 17/4/19	Tue 21/5/19	[Task Bar]																							
12	2. Skylight 天窗	121 days	Sat 16/2/19	Sat 6/7/19	[Summary Bar]																							
13	Alum. Extrusion Order 訂購鋁料	45 days	Sat 16/2/19	Tue 9/4/19	[Task Bar]																							
14	Alum. Extrusion Fabrication 鋁料加工	30 days	Wed 10/4/19	Tue 14/5/19	[Task Bar]																							
15	Aluminium Flashing Fabrication 加工防水片	14 days	Fri 3/5/19	Sat 18/5/19	[Task Bar]																							
16	Aluminium Cladding Fabrication 鋁飾板加工製作	30 days	Mon 3/6/19	Sat 6/7/19	[Task Bar]																							
17	Steel Frame / Bracket Order & Fabrication 訂購鐵料及加工、組裝	45 days	Mon 11/3/19	Wed 1/5/19	[Task Bar]																							
18	Glass Ordering 訂購玻璃(三鑫)	7 days	Mon 15/4/19	Mon 22/4/19	[Task Bar]																							
19	Glass Fabrication 玻璃加工(三鑫)	30 days	Tue 23/4/19	Mon 27/5/19	[Task Bar]																							
20	Glass Units Fabrication 廠玻璃件組裝	21 days	Tue 28/5/19	Thu 20/6/19	[Task Bar]																							
21	3. Canopy 雨蓬	94 days	Sat 16/2/19	Wed 5/6/19	[Summary Bar]																							
22	Alum. Extrusion Order 訂購鋁料	45 days	Sat 16/2/19	Tue 9/4/19	[Task Bar]																							
23	Alum. Extrusion Fabrication 鋁料加工	30 days	Wed 10/4/19	Tue 14/5/19	[Task Bar]																							
24	Steel Frame / Bracket Order & Fabrication 訂購鐵料及加工、組裝	45 days	Mon 18/2/19	Wed 10/4/19	[Task Bar]																							
25	Aluminium Flashing Fabrication 加工防水片	14 days	Thu 28/3/19	Fri 12/4/19	[Task Bar]																							
26	Aluminium Cladding Fabrication 鋁飾板加工製作	45 days	Mon 15/4/19	Wed 5/6/19	[Task Bar]																							
27	Glass Ordering 訂購玻璃	7 days	Fri 15/3/19	Fri 22/3/19	[Task Bar]																							
28	Glass Fabrication 玻璃加工(三鑫)	30 days	Sat 23/3/19	Fri 26/4/19	[Task Bar]																							
29	Glass Units Fabrication 廠玻璃件組裝	30 days	Sat 27/4/19	Fri 31/5/19	[Task Bar]																							
30	4. Aluminium Cladding / Feature 鋁飾板 / 飾線	75 days	Sat 16/2/19	Tue 14/5/19	[Summary Bar]																							
31	Alum. Extrusion Order 訂購鋁料	45 days	Sat 16/2/19	Tue 9/4/19	[Task Bar]																							
32	Aluminium Extrusion Fabrication 鋁料加工	30 days	Wed 10/4/19	Tue 14/5/19	[Task Bar]																							
33	Steel Frame / Bracket Order & Fabrication 訂購鐵料及加工	30 days	Mon 25/2/19	Sat 30/3/19	[Task Bar]																							
34	Aluminium Flashing Fabrication 加工防水片	14 days	Thu 4/4/19	Fri 19/4/19	[Task Bar]																							
35	Aluminium Cladding Fabrication 鋁飾板加工製作	30 days	Fri 29/3/19	Thu 2/5/19	[Task Bar]																							
36	Material Delivery 物料運送	97 days	Mon 25/3/19	Mon 15/7/19	[Summary Bar]																							
37	Podium 平臺	97 days	Mon 25/3/19	Mon 15/7/19	[Summary Bar]																							
38	1. Window Wall 窗幕	75 days	Mon 25/3/19	Wed 19/6/19	[Summary Bar]																							
39	Steel Mullion / Fixing Bracket 主企鐵料 / 鐵碼件及其配套	30 days	Mon 25/3/19	Sat 27/4/19	[Task Bar]																							
40	Aluminium Transon 橫鋁料及其配套	30 days	Thu 2/5/19	Wed 5/6/19	[Task Bar]																							
41	Aluminium Louvre Frame / Sub - Frame 鋁百葉框 / 副框及其配套	7 days	Wed 22/5/19	Wed 29/5/19	[Task Bar]																							
42	Aluminium Flashing 防水鋁摺件	14 days	Mon 15/4/19	Tue 30/4/19	[Task Bar]																							
43	Aluminium Louvre Sash / Fins 鋁百葉玉連背板 / 鋁飾線及其配套	7 days	Wed 5/6/19	Wed 12/6/19	[Task Bar]																							
44	Glass Units 九字料玻璃單元件	21 days	Mon 27/5/19	Wed 19/6/19	[Task Bar]																							
45	Aluminium Cladding 鋁飾板	21 days	Mon 20/5/19	Wed 12/6/19	[Task Bar]																							
46	2. Skylight 天窗	73 days	Mon 22/4/19	Mon 15/7/19	[Summary Bar]																							
47	Steel Frame / Fixing Bracket 鐵框架 / 鐵碼件及其配套	30 days	Mon 22/4/19	Sat 25/5/19	[Task Bar]																							
48	Aluminium Flashing 防水鋁摺件	7 days	Thu 23/5/19	Thu 30/5/19	[Task Bar]																							
49	Aluminium Sub-Frame / Capping 鋁副框及其配套	7 days	Thu 23/5/19	Thu 30/5/19	[Task Bar]																							
50	Glass Units 九字料玻璃單元件	14 days	Fri 21/6/19	Sat 6/7/19	[Task Bar]																							
51	Aluminium Cladding 鋁飾板	7 days	Mon 8/7/19	Mon 15/7/19	[Task Bar]																							
52	3. Canopy 雨蓬	93 days	Mon 25/3/19	Wed 10/7/19	[Summary Bar]																							
53	Steel Frame / Fixing Bracket 鐵框架 / 鐵碼件及其配套	30 days	Mon 25/3/19	Sat 27/4/19	[Task Bar]																							
54	Aluminium Flashing 防水鋁摺件	14 days	Mon 15/4/19	Tue 30/4/19	[Task Bar]																							
55	Aluminium Sub-Frame 鋁副框及其配套	21 days	Wed 15/5/19	Fri 7/6/19	[Task Bar]																							
56	Aluminium Feature 鋁飾線	21 days	Wed 15/5/19	Fri 7/6/19	[Task Bar]																							
57	Glass Units 九字料玻璃單元件	14 days	Mon 3/6/19	Tue 18/6/19	[Task Bar]																							
58	Aluminium Cladding 鋁飾板	30 days	Thu 6/6/19	Wed 10/7/19	[Task Bar]																							
59	4. Aluminium Cladding / Feature 鋁飾板 / 鋁飾線	58 days	Mon 25/3/19	Thu 30/5/19	[Summary Bar]																							
60	Steel Frame / Fixing Bracket 鐵料 / 鐵碼件及其配套	30 days	Mon 25/3/19	Sat 27/4/19	[Task Bar]																							
61	Aluminium Louvre Frame / Sub - Frame 鋁百葉框 / 副框及其配套	14 days	Wed 1/5/19	Thu 16/5/19	[Task Bar]																							
62	Aluminium Flashing 防水鋁摺件	14 days	Mon 22/4/19	Tue 7/5/19	[Task Bar]																							

Date: Tue 19/2/19
Rev.: 0

Task		Progress		Summary		External Tasks		Deadline	
Split		Milestone		Project Summary		External Milestone			

22/11

1

PROJECT :

**URA KWUN TONG TOWN
CENTRE REDEVELOPMENT
(AREA 2 & 3) AT NKIL 6514
KWUN TONG, KOWLOON**

預算數量及面積參考

鋁件 (4.7mH) (單位)	65支
玻璃 3Am(H)	5 + 4.35 + 4.7 + 4.94 + 4.33 + 4.97 4.81 + 5.13 = 38.23 (L) 門玻璃 1.8 x 8 = 14.40 (L)
AL	8支
玻璃與散 預保溫棉	38.23 + 14.4 = 32.63m

SHOP DRAWING FOR
PODIUM GLASS WALL (RESIDENTIAL LIFT LOBBY)
(FOR TOWER 1 TO TOWER 5)
(FROM 5/F)

DATE : 03 - Nov - 2018



美特鋁質有限公司
MIDI ALUMINIUM FABRICATOR LTD.
Units 6-8, Sunray Industrial Centre, 1/F
810 Cha Kwo Ling Road, Kowloon
Tel: 23489211-4 Fax: (852) 27727666

PROJECT :

**URA KWUN TONG TOWN
CENTRE REDEVELOPMENT
(AREA 2 & 3) AT NKIL 6514
KWUN TONG, KOWLOON**

**DRAWING FOR
PODIUM WINDOW WALL
(FOR TOWER 1 TO TOWER 5)
(FROM 3/F TO 5/F)**

DATE : 20- Nov - 2018

22/11

米爾達 Window Wall 窗幕
百葉裝

①

(參考 Alum. Feature and Cladding
Shop drawing)

預算數量及面積參考

① 鋁企 (套鉄)	204 支 企 x 5m(H)
② 玻璃	8.4m + 17.662 + 31.946 + 15.843 + 28.5 + 28.5 + 37.5 2.75(H) 39m = 207.35m(L) 門 = 1.68 x 20 = 33.6(L)
③ 門	門 = 2 + 3 + 6 + 2 + 5 + 2 = 20 門

④ 玻璃百葉幕 (預有保潔棉) 2.3m(H)	240.95(L)
⑤ 百葉幕 1.7m(H) (Alum Feature Shop) Daig	240.95(L)

美特鋁質有限公司
MIDI ALUMINIUM FABRICATOR LTD.
Units 6-8, Sunray Industrial Centre, 1/F
610 Cha Kwo Ling Road, Kowloon
Tel: 23489211-4 Fax: (852) 27727666

PROJECT :

22/11

①

五葉窗 Window Wall (玻璃牆) 判頭
雙。

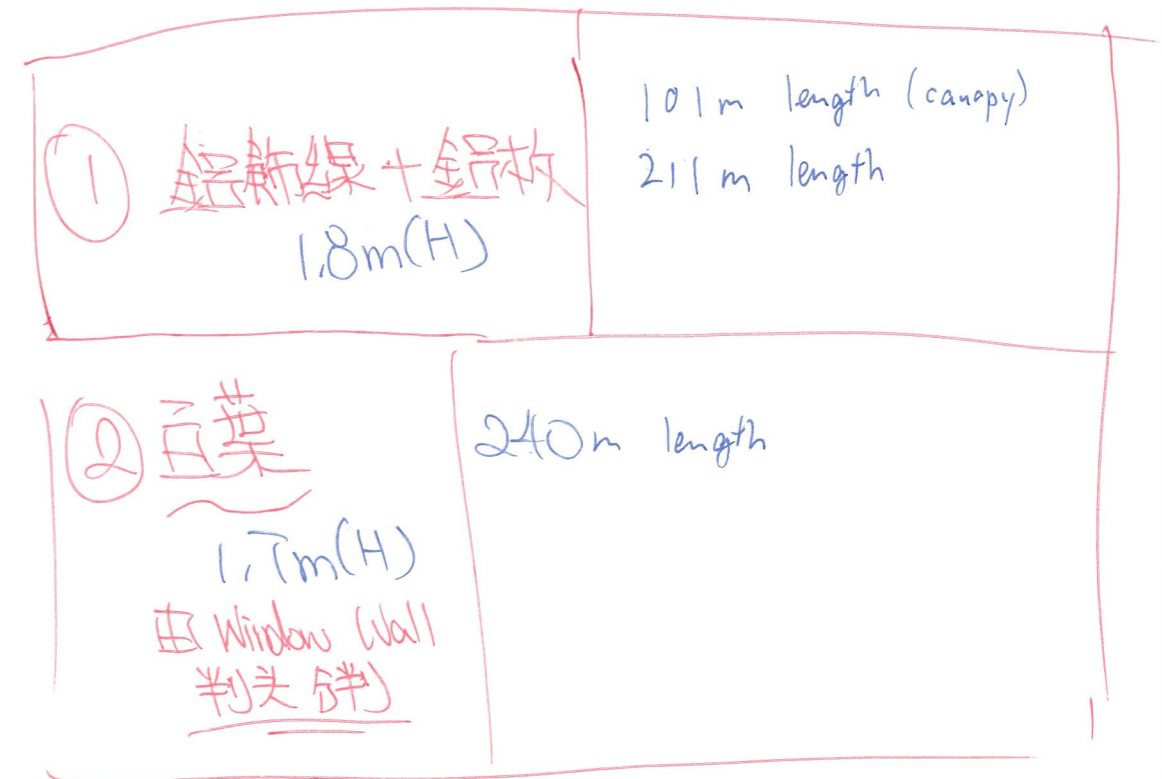
**URA KWUN TONG TOWN
CENTRE REDEVELOPMENT
(AREA 2 & 3) AT NKIL 6514
KWUN TONG, KOWLOON**

預算數量及面積參考

**SHOP DRAWING FOR
PODIUM ALUM. FEATURE AND CLADDING**

(FROM 3/F TOP TO 5/F BOTTOM)

DATE : 16 - NOV - 2018



美特鋁質有限公司

MIDI ALUMINIUM FABRICATOR LTD.

Units 6-8, Sunray Industrial Centre, 1/F
610 Cha Kwo Ling Road, Kowloon
Tel: 23489211-4 Fax: (852) 27727666

PROJECT :

2

**URA KWUN TONG TOWN
CENTRE REDEVELOPMENT
(AREA 2 & 3) AT NKIL 6514
KWUN TONG, KOWLOON**

22/11

預算數量及面積參考

玻璃頂	205 m ²
立圍	175 m ²
鐵廊頂	205 m ²
立圍	175 m ²

SHOP DRAWING FOR
PODIUM SKYLIGHT
(FOR TOWER 1)
(FROM 6/F)

DATE : 01 - NOV - 2018

 美特鋁質有限公司
MIDI ALUMINIUM FABRICATOR LTD.

Units 6-8, Sunray Industrial Centre, 1/F
610 Cha Kwo Ling Road, Kowloon
Tel: 23489211-4 Fax: (852) 27727666

PROJECT :

**URA KWUN TONG TOWN
CENTRE REDEVELOPMENT
(AREA 2 & 3) AT NKIL 6514
KWUN TONG, KOWLOON**

**SHOP DRAWING FOR
PODIUM NOISE BARRIER & CANOPY
(FOR TOWER 1 TO TOWER 5)
(FROM 5/F)**

DATE : 16 - Oct - 2018

22/11

①

粗裝全由 Window Wall 玻璃牆之判夫
承判 (JYC)

預算數量及面積參考

* 留意更新外皮飾線大樣

玻璃 = $83m^2 + 18m^2 = 102m^2$

鋁板 = $\frac{1}{10} \times 291 + 90 = 381m$

美特鋁質有限公司
MIDI ALUMINIUM FABRICATOR LTD.

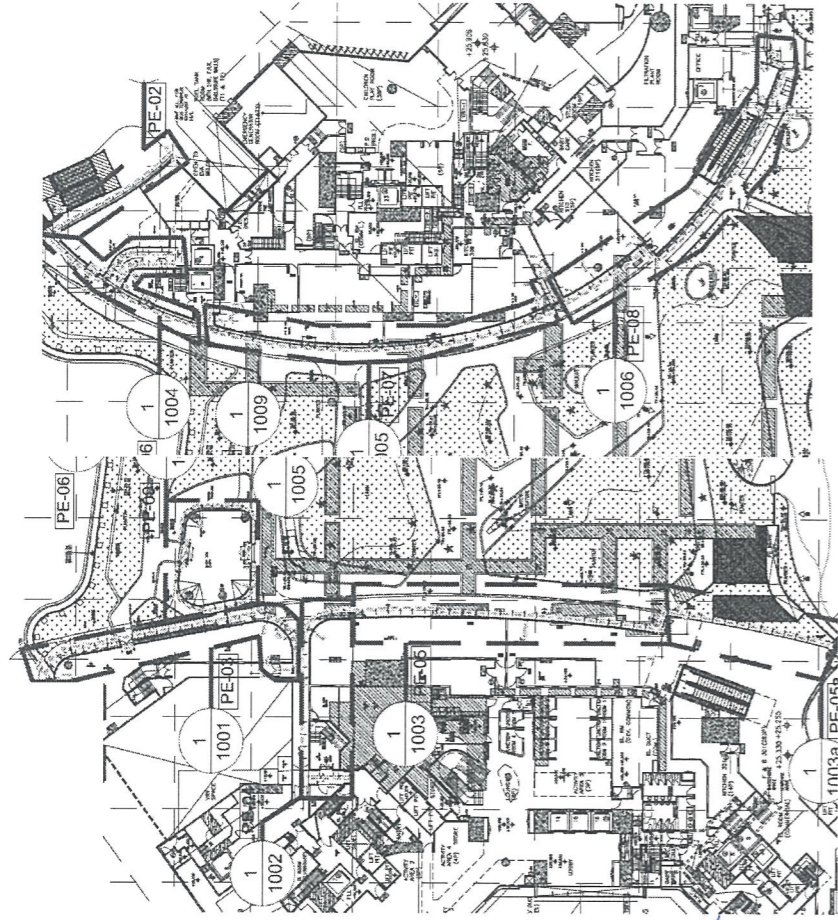
Units 6-8, Sunray Industrial Centre, 1/F
610 Cha Kwo Ling Road, Kowloon
Tel: 23489211-4 Fax: (852) 27727666

3/F Window Wall (Shop front)

(2019.01.16)

(2019.04.10)

3/F Shop Front Plan

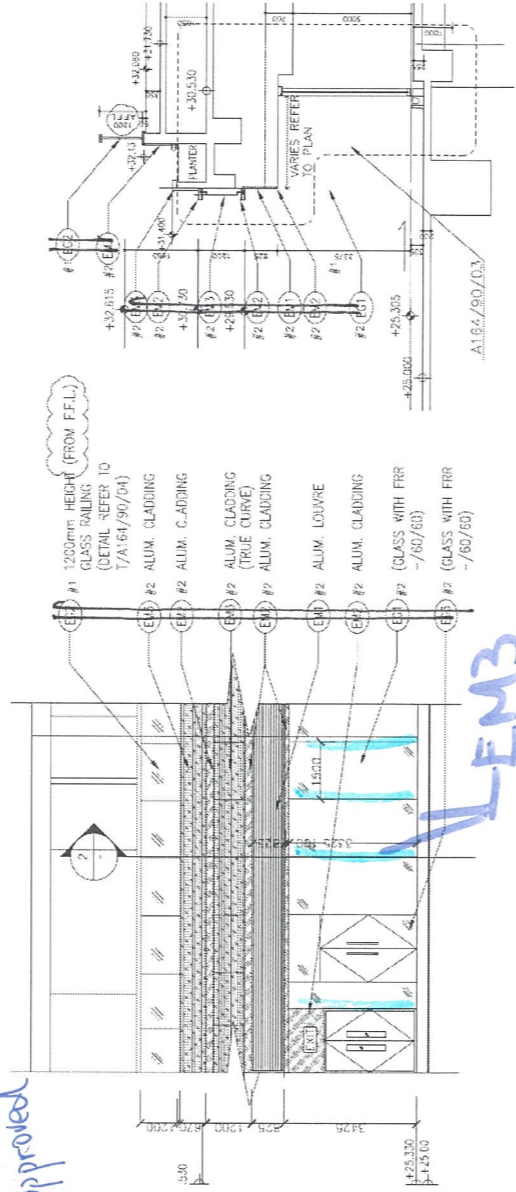


ALUM.

* EM2 (Champagne Gold) - Approved

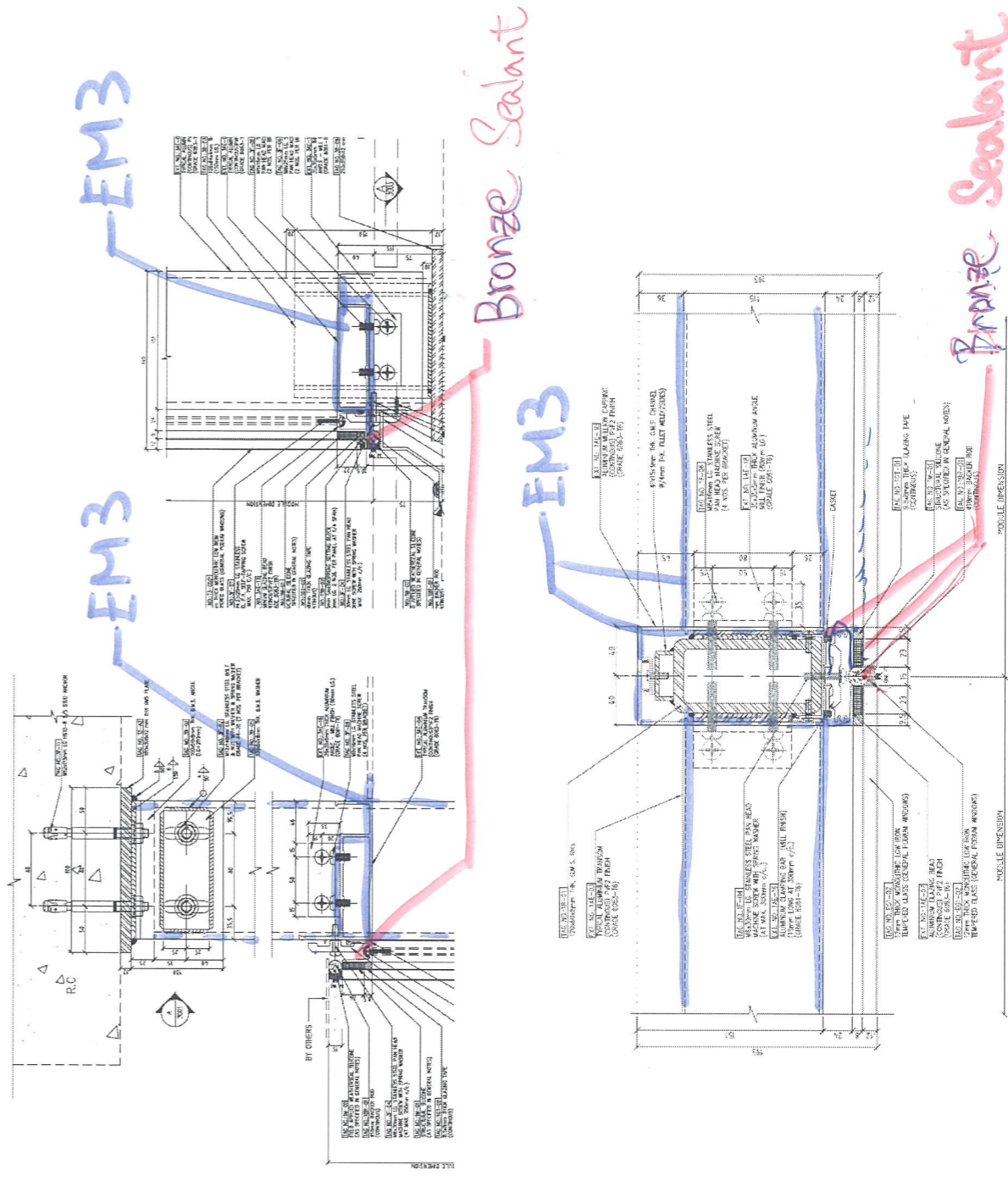
* EM3 (White) - Approved

* EM4 (Golden Orange) - Approved



(1) TYPICAL ELEVATION OF SHOPFRONT AT L3

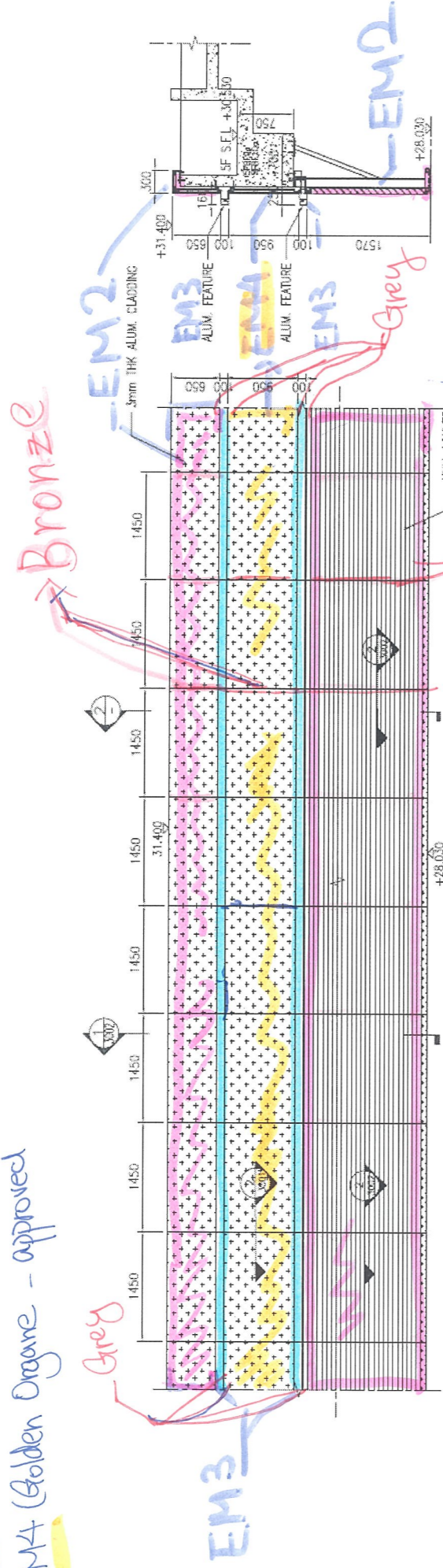
(2) TYPICAL SECTION OF SHOPFRONT AT L3



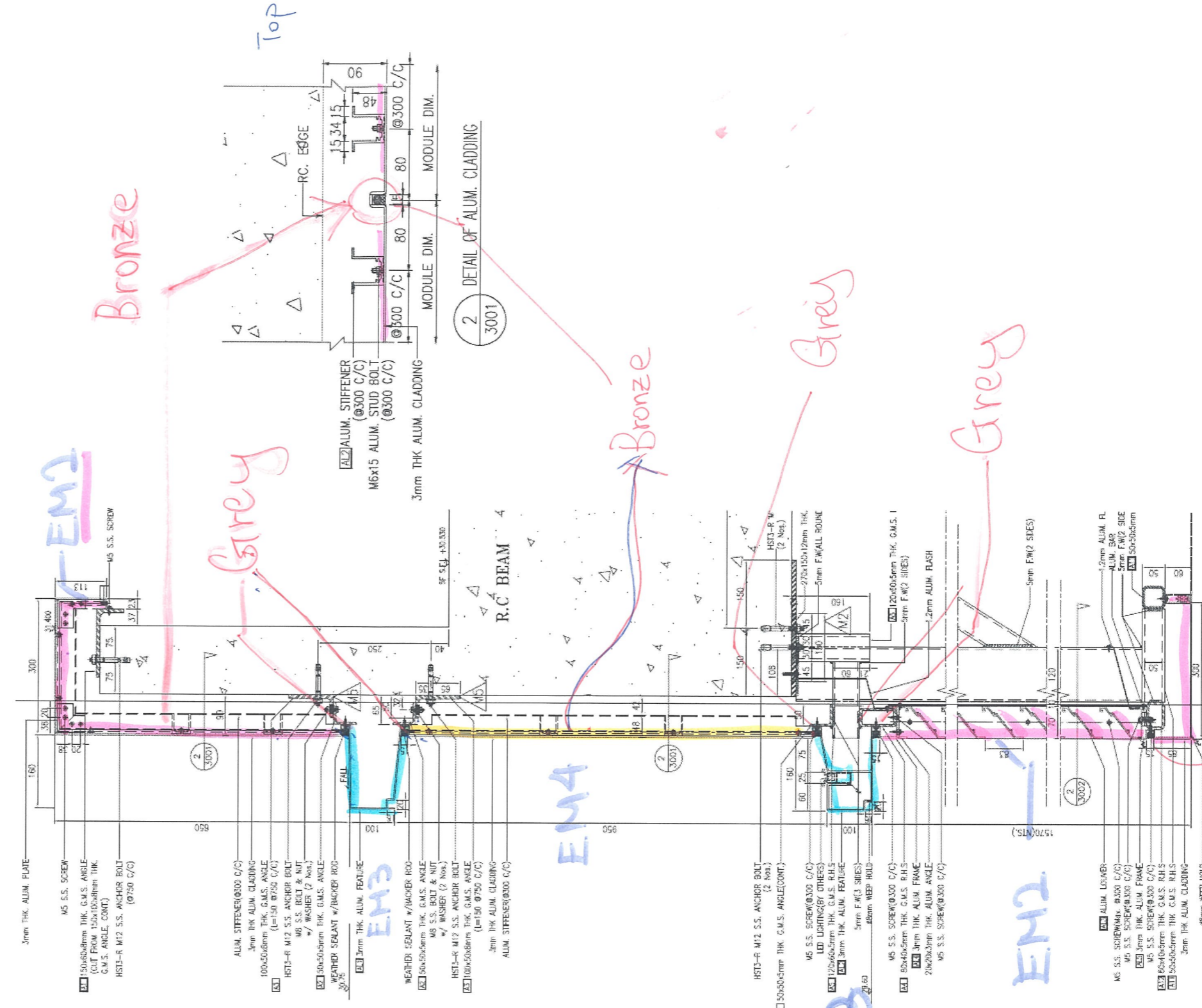
3-5/F ALUM. CLADDING & FEATURE

2019.01.16
2019.04.10

- *EM2 Champagne Gold - approved
- *EM3 (White) - approved
- *EM4 (Golden Orange) - approved

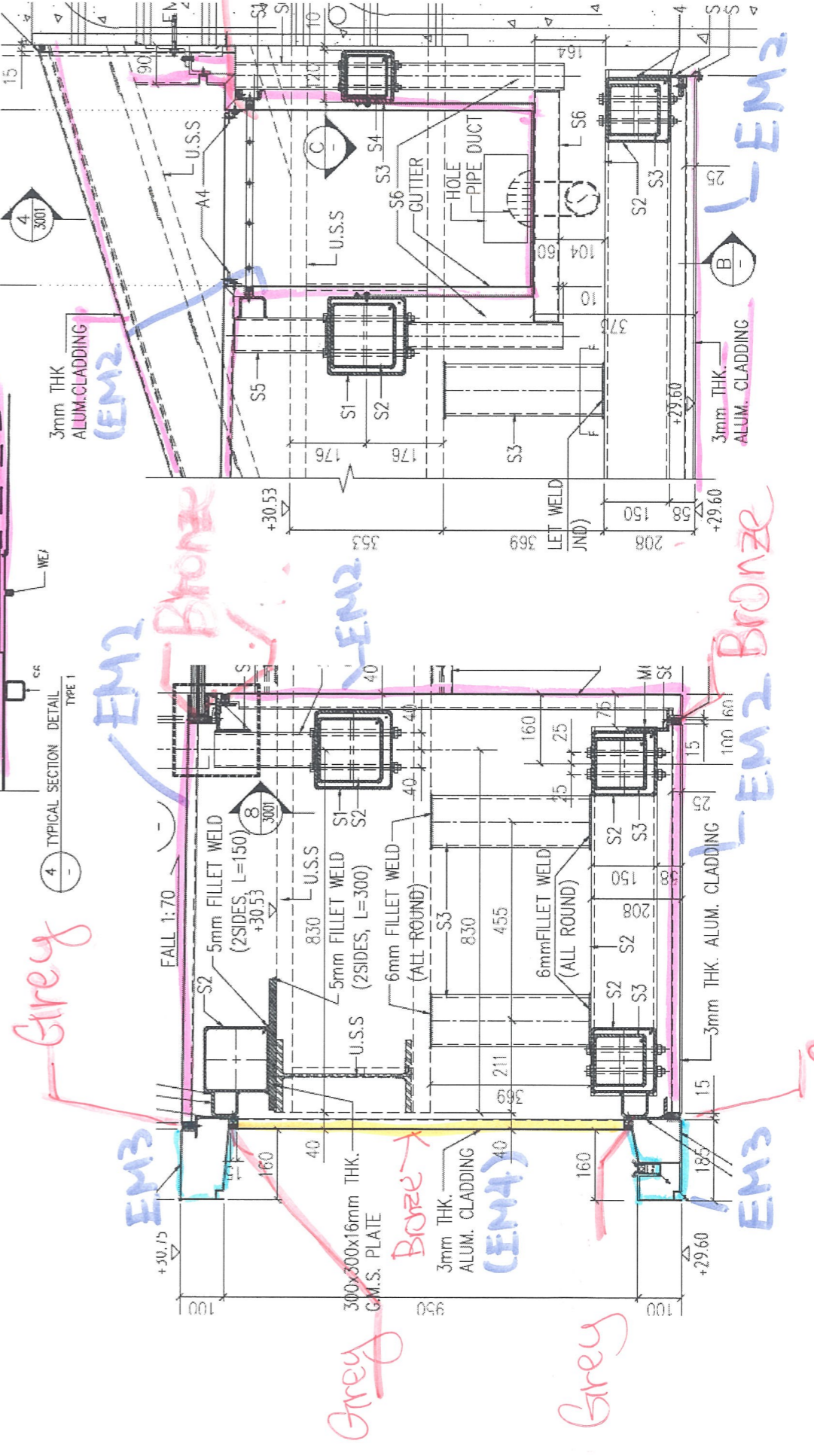
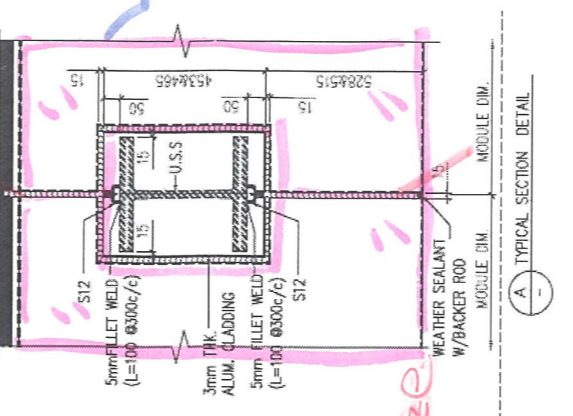
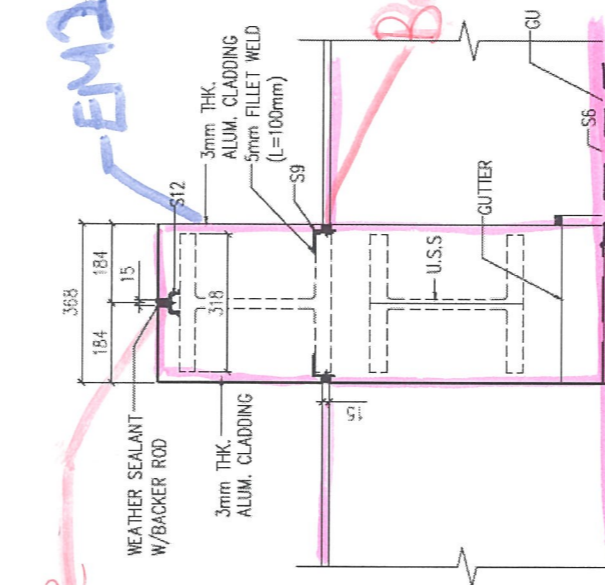
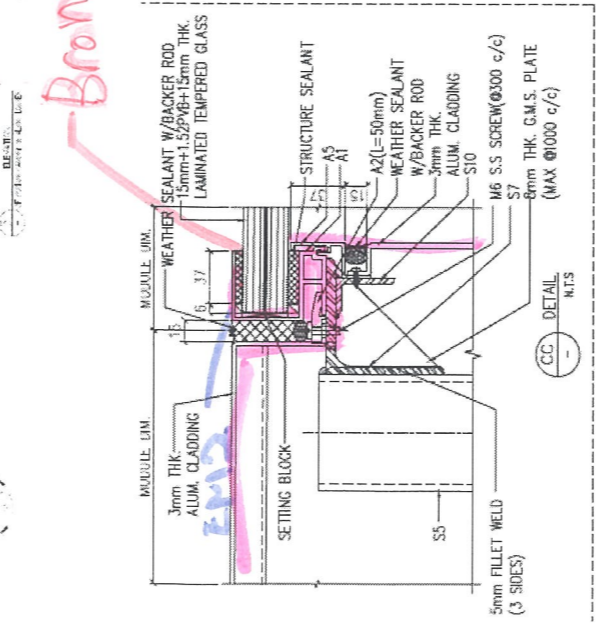
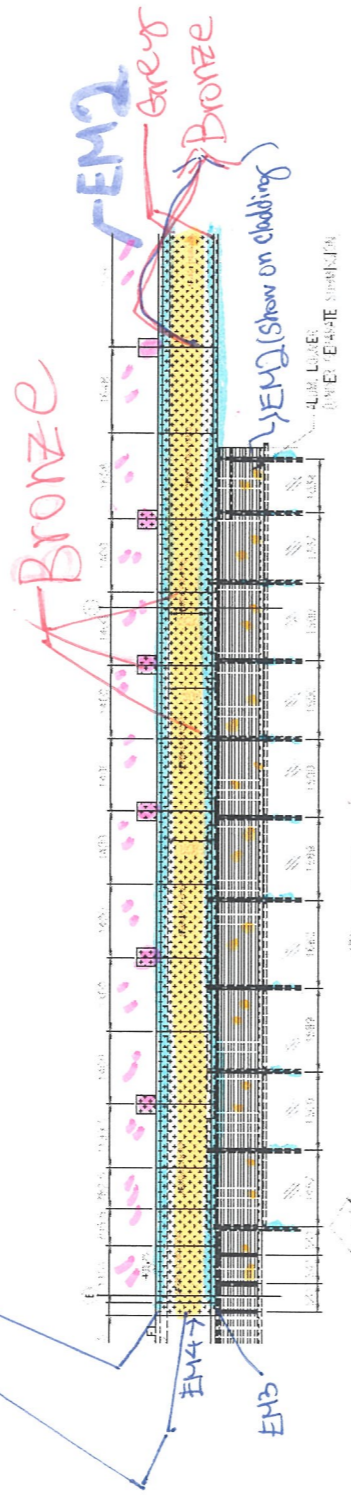
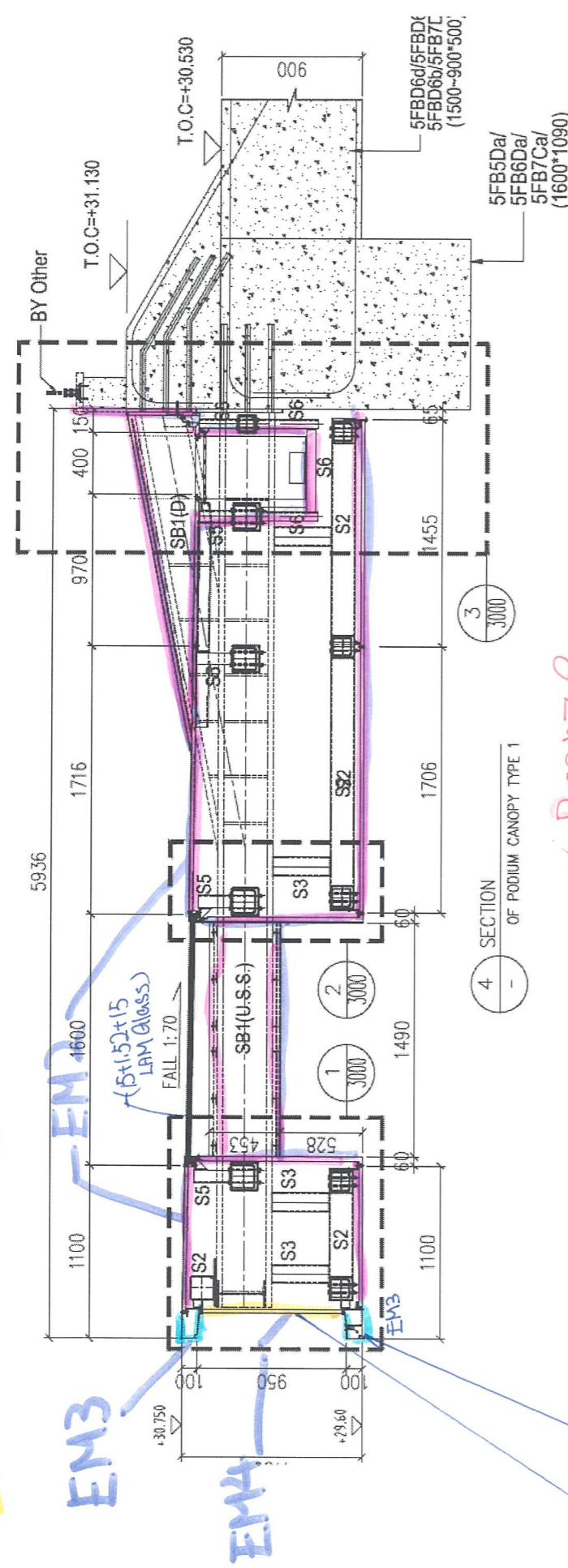


1 ELEVATION OF ALUM FEATURE
2 SECTION OF ALUM FEATURE



1 DETAIL OF ALUM FEATURE AND CLADDING (TYPE 2)
2 DETAIL OF ALUM. CLADDING

ALUM
 EM2 Champagne Gold - Approved
 EM3 - White - Approved
 EM4 - Golden Orange - Approved
 2019.01.16
 2019.04.10



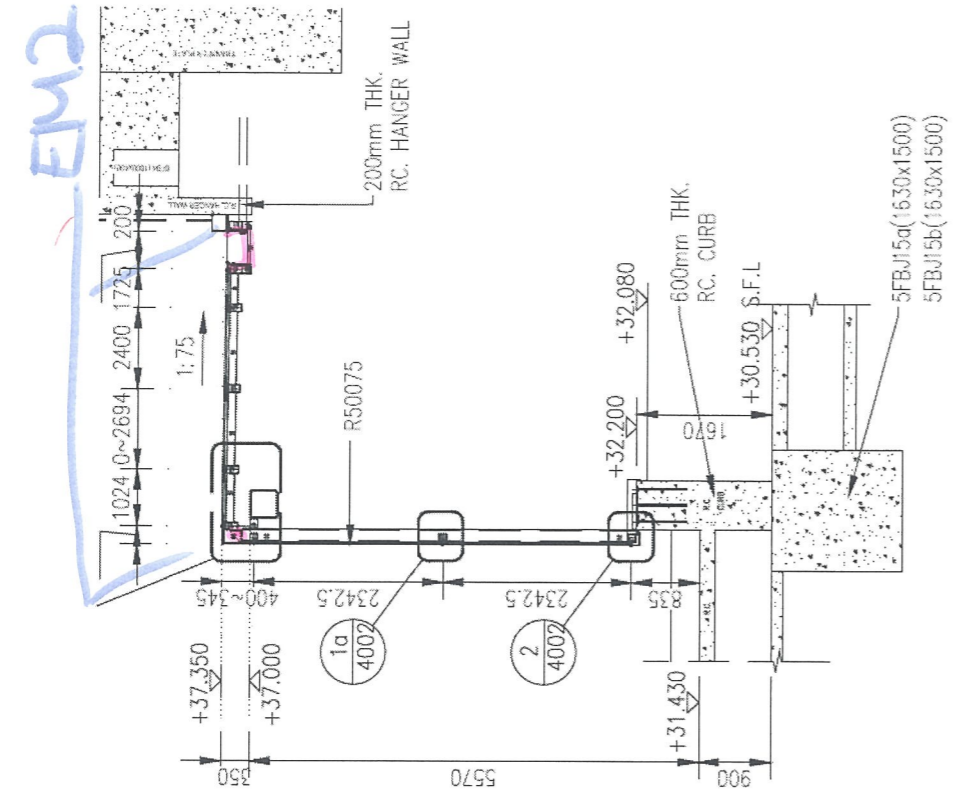
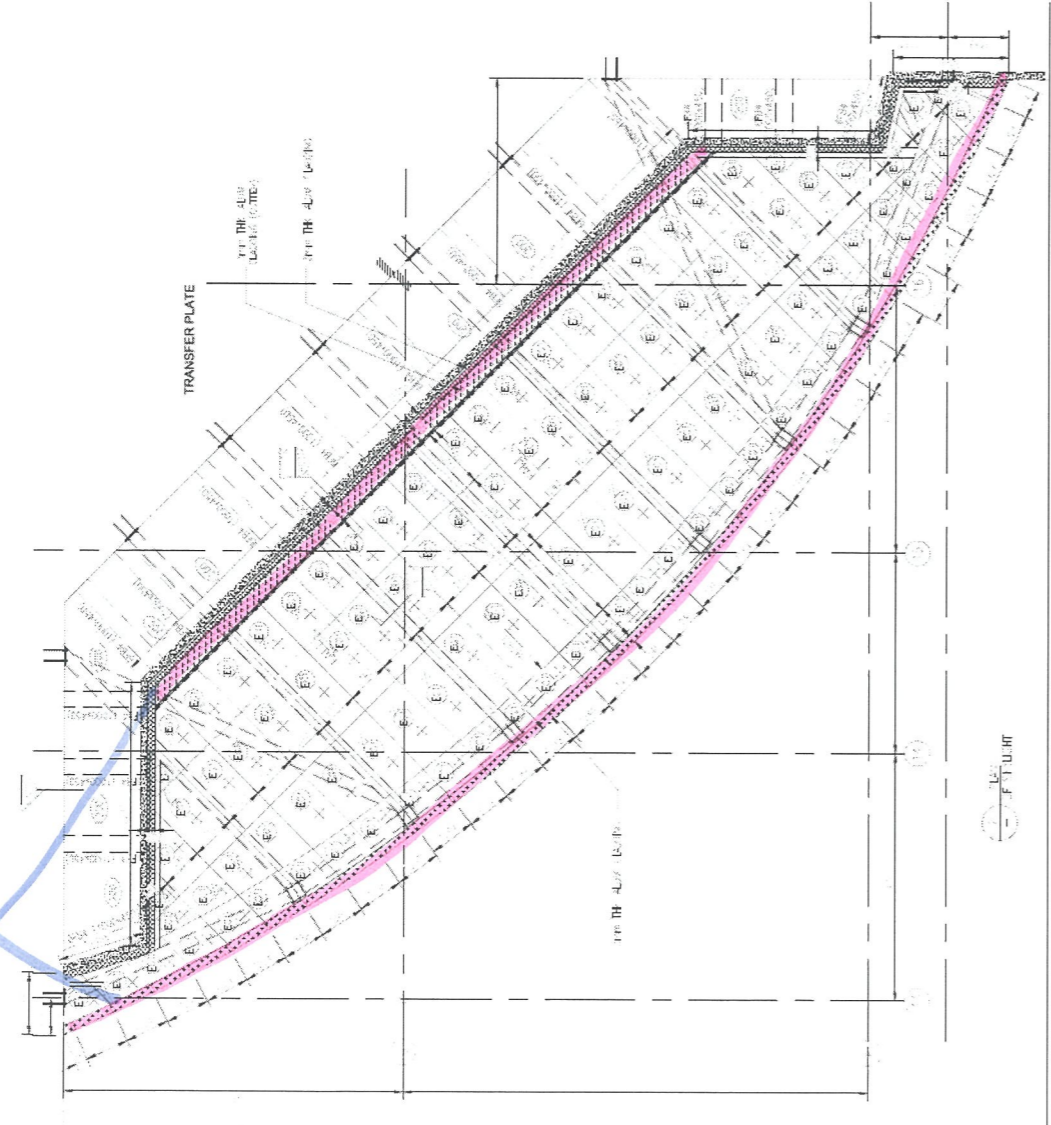
245

EM2 - Champagne Gold - Approved

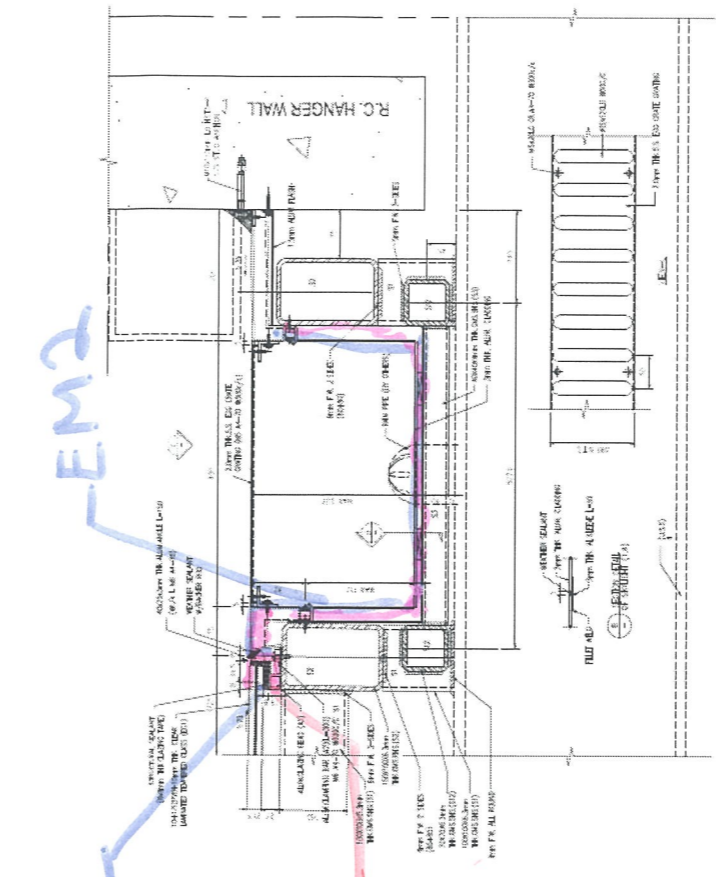
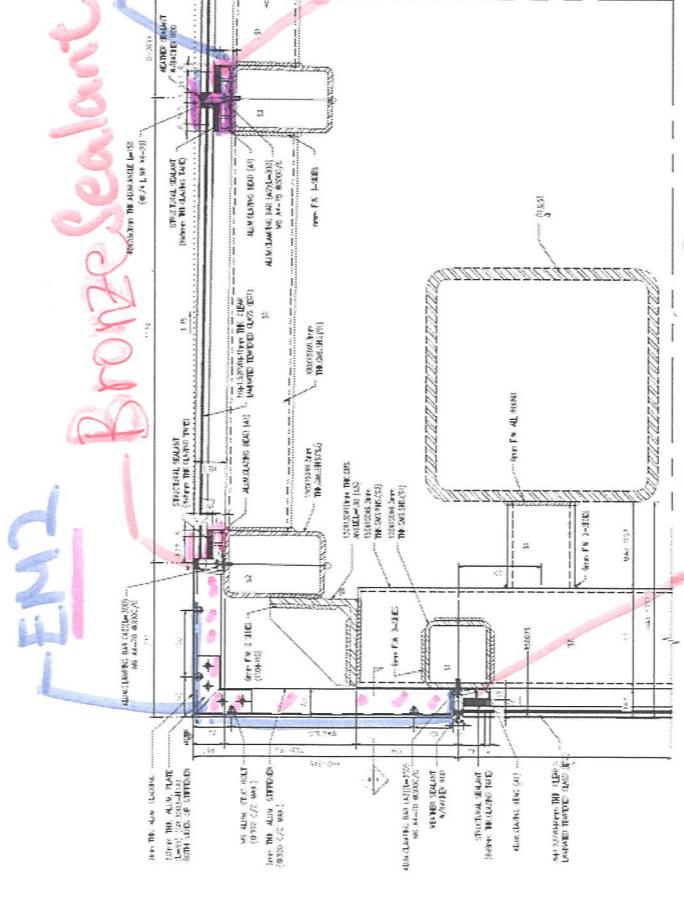
5/F Skylight (Indoor Swimming Pool)

2019.01.16

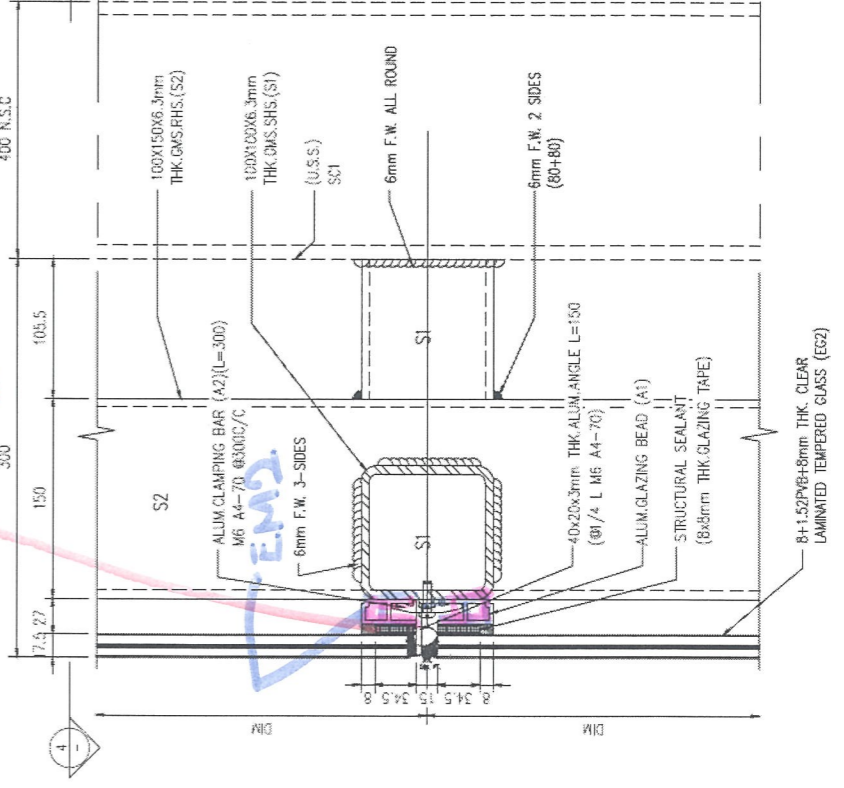
EM2



4 SECTION OF SKYLIGHT



Bronze Sealant



EM2

Bronze Sealant