

工程指示 / 要求簡箋(E.I.)

工程指示編號：EI / 0657 / 19

修改版次：D

工程編號：J - 837

工程名稱：觀塘裕民坊

工程項目：Glass Cladding 鋁料(大貨)(T1-T5)

收件人：生統/ 永林

發件人：Eric Liu

日期：26/10/2019

要求提供 / 確認 事項：

- | | | |
|------------------------------------|-------------------------------------|-------------------------------|
| <input type="checkbox"/> 初步鋁料 B.M. | <input type="checkbox"/> 加工拆圖，然後生產 | <input type="checkbox"/> 尺寸表 |
| <input type="checkbox"/> 正式鋁料 B.M. | <input type="checkbox"/> 技術上資料 / 指示 | <input type="checkbox"/> 報價 |
| <input type="checkbox"/> 配件 B.M. | <input type="checkbox"/> 樣辦或貨品說明書 | <input type="checkbox"/> 分判合約 |
| <input type="checkbox"/> 其他：_____ | | |

內容：

請按加工圖生產 Glass Cladding 用鋁料在廠打膠送地盤安裝

D版: 1) 特式層，最頂一件尺寸修改，由 655 改回 715

請留意：1) 企身打 983 結構膠，橫向打 791 防水膠

2) 結構膠有分 15 厚及 23 厚，按加工圖上已標

- 闊度小於 940，打 15mm 厚 983 結構膠

- 闊度大於或等於 940，打 23mm 厚 983 結構膠

分批生產，每 5 層一批，第一批 6 月中尾到地盤

請在 2019/ 11 / 16 前完成上列要求。

附：2 頁圖登，16 頁加工圖

以上項目為：

- 原合約工程包 原合約工程加 / 減賬 新工程報價

原因：-

分發東莞各部門：

- () 生產技術總監 連附件 () 技術部 連附件 永林 () 生產部 連附件 () 機械設計部 連附件
 () 採購部 連附件 () 生產統籌部 連附件 梅
 () 質檢部 連附件 () 會計部 連附件 () 報關組 連附件 () 其他 楊榮輝 連附件

分發香港各部門：

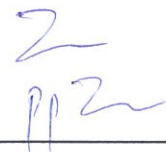
- () 行政部 連附件 () 會計部 連附件 () 統籌部 連附件 () 工程部地盤科文 連附件 炳哥 / 民 / 豪
 () 採購部 連附件 () QS 部 連附件 () 維修部 連附件 () 其他 _____ 連附件

傳遞編號：

HK 2214 /19

發件人簽署：

項目經理簽署：



圖則登記表
DRAWING REGISTER

工程名稱 Project Title: 觀塘裕民坊(6F~7F,9F~RF)
Glass Cladding 死牆小單元拆圖
工程編號 Project No: J-837

接收日期 Receiving Date (適用於客戶圖則)

年										
月										
日										

分發予 Distributed To

發出日期 Issued Date

年	19	19	19	19	19	19				
月	04	05	06	06	07	10				
日	30	28	10	20	23	21				

圖則編號 Drg. No.	圖則名稱 Drawing Title
G4-U001 (1 of 12)	小單元組裝圖
G4-U001 (2 of 12)	小單元組裝圖(數據表)
G4-U001 (3 of 12)	小單元組裝圖(數據表)
G4-U001 (4 of 12)	小單元組裝圖(數據表)
G4-U001 (5 of 12)	小單元組裝圖(數據表)
G4-U001 (6 of 12)	小單元組裝圖(數據表)
G4-U001 (7 of 12)	小單元組裝圖(數據表)
G4-U001 (8 of 12)	小單元組裝圖(數據表)
G4-U001 (9 of 12)	小單元組裝圖(數據表)
G4-U001 (10 of 12)	小單元組裝圖(數據表)
G4-U001 (11 of 12)	小單元組裝圖(數據表)
G4-U001 (12 of 12)	小單元組裝圖(數據表)
G4-U014 (1 of 2)	小單元組裝圖
G4-U014 (2 of 2)	小單元組裝圖(數據表)
G4-U226	小單元組裝圖
G5-U001 (1 of 5)	小單元組裝圖
G5-U001 (2 of 5)	小單元組裝圖(數據表)
G5-U001 (3 of 5)	小單元組裝圖(數據表)
G5-U001 (4 of 5)	小單元組裝圖(數據表)
G5-U001 (5 of 5)	小單元組裝圖(數據表)
AG201 (1 of 4)	角碼拆圖 (固定小單元)
AG201 (2 of 4)	角碼拆圖 (數據表)
AG201 (3 of 4)	角碼拆圖 (數據表)
AG201 (4 of 4)	角碼拆圖 (數據表)
AG202	角碼拆圖 (固定小單元)
AG203	角碼拆圖 (固定小單元)
H292B	底橫拆圖

	修訂編號 Revision No.				
1	-	A			-
2	-			A	B
3	-			A	B
4	-			A	B
5	-			A	B
6	-			A	B
7	-			A	B
8	-			A	B
9	-			A	B
10	-			A	B
11	-			A	B
12	-		A	B	C
13	-				-
14	-				-
15	-				-
16	-	A			-
17	-			A	A
18	-			A	A
19	-			A	A
20	-			A	A
21	-				-
22	-				-
23	-				-
24	-				-
25	-				-
26	-				-
27	-				-

圖則登記表
DRAWING REGISTER

工程名稱 Project Title: 觀塘裕民坊(6F-7F,9F-RF)	年 月 日	接收日期 Receiving Date (適用於客戶圖則)									
Glass Cladding 死牆小單元拆圖											
工程編號 Project No: J-837											

分發予 Distributed To	年 月 日	發出日期 Issued Date									
		19	19	19	19	19	19				
		04	05	06	06	07	10				
		30	28	10	20	23	21				

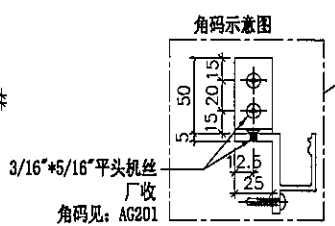
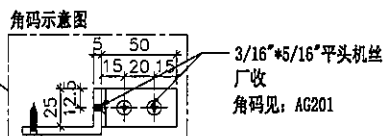
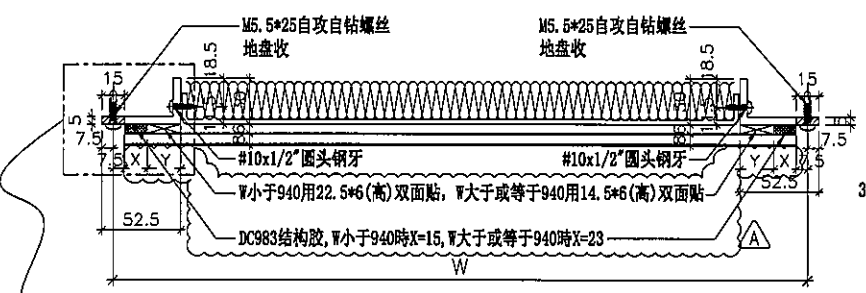
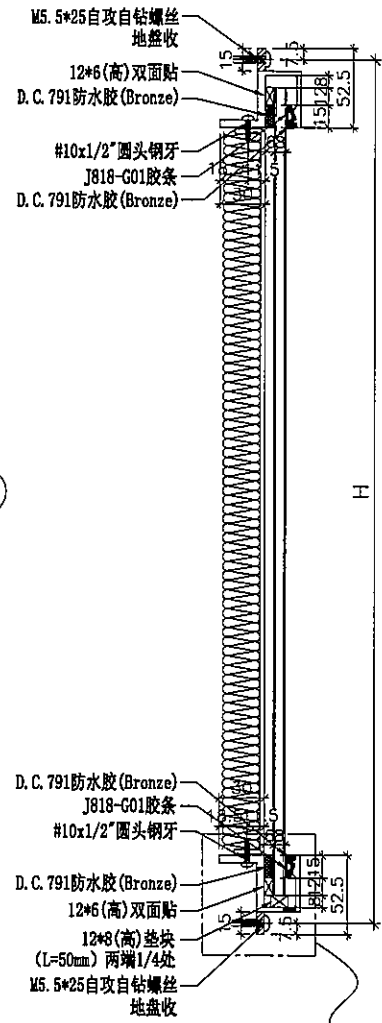
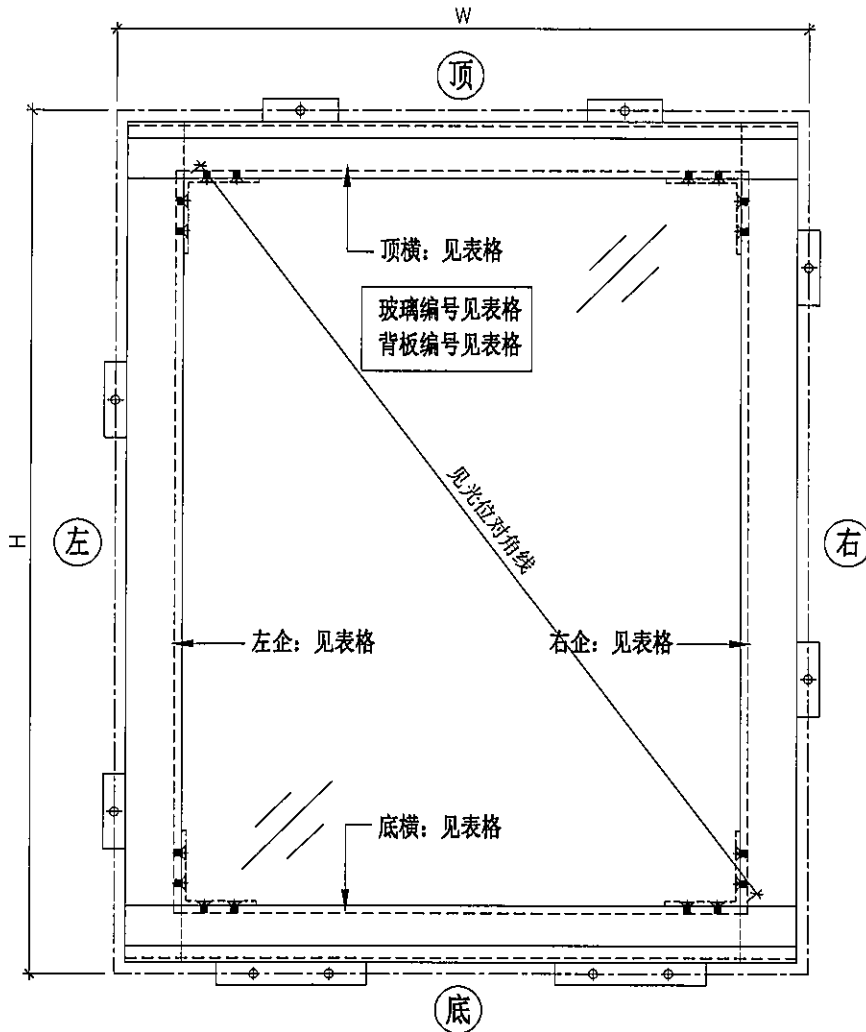
圖則編號 Drg. No.	圖則名稱 Drawing Title		修訂編號 Revision No.											
M295R	右企拆圖	82	-											
M335AL	左企拆圖	83	-											
M335AR	右企拆圖	84	-											
M335L	左企拆圖	85	-											
M335R	右企拆圖	86	-											
M485L (1 of 2)	左企拆圖	87	-											
M485L (2 of 2)	左企拆圖 (數據表)	88	-											
M485R (1 of 2)	右企拆圖	89	-											
M485R (2 of 2)	右企拆圖 (數據表)	90	-											
M565L	左企拆圖	91	-											
M565R	右企拆圖	92	-											
M650L (1 of 2)	左企拆圖	93	-											
M650L (2 of 2)	左企拆圖 (數據表)	94	-											
M650R (1 of 2)	右企拆圖	95	-											
M650R (2 of 2)	右企拆圖 (數據表)	96	-											
M715L (1 of 2)	左企拆圖	97	-					A	B					
M715L (2 of 2)	左企拆圖 (數據表)	98	-						-					
M715R (1 of 2)	右企拆圖	99	-					A	B					
M715R (2 of 2)	右企拆圖 (數據表)	100	-						-					
M850L	左企拆圖	101	-						-					
M850R	右企拆圖	102	-						-					
M862R	右企拆圖	103	-						-					
M900L (1 of 2)	左企拆圖	104	-						-					
M900L (2 of 2)	左企拆圖 (數據表)	105	-						-					
M900R (1 of 2)	右企拆圖	106	-						-					
M900R (2 of 2)	右企拆圖 (數據表)	107	-						-					
M1115L (1 of 2)	左企拆圖	108	-						-					



美特铝质有限公司
MIDI Aluminium Fabricator Ltd.

图纸空间有限, 尺寸数量见附页

工程号 J-837 地盘 观塘裕民坊



名称	小单元组装图	制图	JH	2019.4.22	修改	A	
材料	见组装编号	复核	DL	2019.4.23	日期	2019.5.28	
颜色		批准			图号	G4-U001 (1 of 12)	



美特铝质有限公司
MIDI Aluminium Fabricator Ltd.

依據E11110修改

工程号 J-837 地盘 观塘裕民坊

序号	组装编号	数量	W	H	见光位	对角线	左企编号	右企编号	顶横编号	底横编号	背板编号	玻璃编号	玻璃宽度	玻璃高度	使用位置	楼层
1	G4-U001	1	717.5	900	1024.6		M900L	M900R	H717T	H717B	BP-001	G4-GC001	702.5	863	T1-G	06F
2	G4-U001	1	717.5	900	1024.6		M900L	M900R	H717T	H717B	BP-001	G4-GC001	702.5	863	T1-H	06F
3	G4-U001	15	717.5	900	1024.6		M900L	M900R	H717T	H717B	BP-001	G4-GC001	702.5	863	T1-G	09~26F
4	G4-U001	15	717.5	900	1024.6		M900L	M900R	H717T	H717B	BP-001	G4-GC001	702.5	863	T1-H	09~26F
5	G4-U001	1	717.5	900	1024.6		M900L	M900R	H717T	H717B	BP-001	G4-GC001	702.5	863	T1-G	27F
6	G4-U001	1	717.5	900	1024.6		M900L	M900R	H717T	H717B	BP-001	G4-GC001	702.5	863	T1-H	27F
7	G4-U001	1	717.5	900	1024.6		M900L	M900R	H717T	H717B	BP-001	G4-GC001	702.5	863	T1-G	28F
8	G4-U001	1	717.5	900	1024.6		M900L	M900R	H717T	H717B	BP-001	G4-GC001	702.5	863	T1-H	28F
9	G4-U001	19	717.5	900	1024.6		M900L	M900R	H717T	H717B	BP-001	G4-GC001	702.5	863	T1-G	29~49F
10	G4-U001	19	717.5	900	1024.6		M900L	M900R	H717T	H717B	BP-001	G4-GC001	702.5	863	T1-H	29~49F
11	G4-U002	1	717.5	1115	1201.8		M1115L	M1115R	H717T	H717B	BP-002	G4-GC002	702.5	1078	T1-G	27F
12	G4-U002	1	717.5	1115	1201.8		M1115L	M1115R	H717T	H717B	BP-002	G4-GC002	702.5	1078	T1-H	27F
13	G4-U003	1	717.5	485	741.5		M485L	M485R	H717T	H717B	BP-003	G4-GC003	702.5	448	T1-G	27F
14	G4-U003	1	717.5	485	741.5		M485L	M485R	H717T	H717B	BP-003	G4-GC003	702.5	448	T1-H	27F
15	G4-U004	1	717.5	715	885.7		M715L	M715R	H717T	H717B	BP-004	G4-GC004	702.5	678	T1-G	50F
16	G4-U004	1	717.5	715	885.7	√B	M715L	M715R	H717T	H717B	BP-004	G4-GC004	702.5	678	T1-H	50F
17	G4-U005	1	700	2250	2244.5		M2250L	M2250R	H700T	H700B	BP-005	G4-GC005	685	2213	T1-G	06F
18	G4-U005	1	700	2250	2244.5		M2250L	M2250R	H700T	H700B	BP-005	G4-GC005	685	2213	T1-H	06F
19	G4-U005	1	700	2250	2244.5		M2250L	M2250R	H700T	H700B	BP-005	G4-GC005	685	2213	T1-G	07F
20	G4-U005	1	700	2250	2244.5		M2250L	M2250R	H700T	H700B	BP-005	G4-GC005	685	2213	T1-H	07F
21	G4-U005	15	700	2250	2244.5		M2250L	M2250R	H700T	H700B	BP-005	G4-GC005	685	2213	T1-G	09~26F
22	G4-U005	15	700	2250	2244.5		M2250L	M2250R	H700T	H700B	BP-005	G4-GC005	685	2213	T1-H	09~26F
23	G4-U005	1	700	2250	2244.5		M2250L	M2250R	H700T	H700B	BP-005	G4-GC005	685	2213	T1-G	28F
24	G4-U005	1	700	2250	2244.5		M2250L	M2250R	H700T	H700B	BP-005	G4-GC005	685	2213	T1-H	28F
25	G4-U005	19	700	2250	2244.5		M2250L	M2250R	H700T	H700B	BP-005	G4-GC005	685	2213	T1-G	29~49F
26	G4-U005	19	700	2250	2244.5		M2250L	M2250R	H700T	H700B	BP-005	G4-GC005	685	2213	T1-H	29~49F
27	G4-U005	1	700	2250	2244.5		M2250L	M2250R	H700T	H700B	BP-005	G4-GC005	685	2213	T1-G	50F
28	G4-U005	1	700	2250	2244.5		M2250L	M2250R	H700T	H700B	BP-005	G4-GC005	685	2213	T1-H	50F
29	G4-U006	1	700	900	1014		M900L	M900R	H700T	H700B	BP-006	G4-GC006	685	863	T1-G	06F
30	G4-U006	1	700	900	1014		M900L	M900R	H700T	H700B	BP-006	G4-GC006	685	863	T1-H	06F
31	G4-U006	15	700	900	1014		M900L	M900R	H700T	H700B	BP-006	G4-GC006	685	863	T1-G	09~26F
32	G4-U006	15	700	900	1014		M900L	M900R	H700T	H700B	BP-006	G4-GC006	685	863	T1-H	09~26F
33	G4-U006	1	700	900	1014		M900L	M900R	H700T	H700B	BP-006	G4-GC006	685	863	T1-G	27F
34	G4-U006	1	700	900	1014		M900L	M900R	H700T	H700B	BP-006	G4-GC006	685	863	T1-H	27F
35	G4-U006	1	700	900	1014		M900L	M900R	H700T	H700B	BP-006	G4-GC006	685	863	T1-G	28F
36	G4-U006	1	700	900	1014		M900L	M900R	H700T	H700B	BP-006	G4-GC006	685	863	T1-H	28F
37	G4-U006	19	700	900	1014		M900L	M900R	H700T	H700B	BP-006	G4-GC006	685	863	T1-G	29~49F
38	G4-U006	19	700	900	1014		M900L	M900R	H700T	H700B	BP-006	G4-GC006	685	863	T1-H	29~49F
39	G4-U007	1	700	650	828.1		M650L	M650R	H700T	H700B	BP-007	G4-GC007	685	613	T1-G	27F
40	G4-U007	1	700	650	828.1		M650L	M650R	H700T	H700B	BP-007	G4-GC007	685	613	T1-H	27F
41	G4-U008	1	700	1115	1192.8		M1115L	M1115R	H700T	H700B	BP-008	G4-GC008	685	1078	T1-G	27F
42	G4-U008	1	700	1115	1192.8		M1115L	M1115R	H700T	H700B	BP-008	G4-GC008	685	1078	T1-H	27F
43	G4-U009	1	700	485	726.7		M485L	M485R	H700T	H700B	BP-009	G4-GC009	685	448	T1-G	27F
44	G4-U009	1	700	485	726.7		M485L	M485R	H700T	H700B	BP-009	G4-GC009	685	448	T1-H	27F
45	G4-U010	1	700	715	873.3		M715L	M715R	H700T	H700B	BP-010	G4-GC010	685	678	T1-G	50F
46	G4-U010	1	700	715	873.3	√B	M715L	M715R	H700T	H700B	BP-010	G4-GC010	685	678	T1-H	50F
47	G4-U011	1	717.5	650	841		M650L	M650R	H717T	H717B	BP-011	G4-GC011	702.5	613	T1-G	27F
48	G4-U012	1	865	335	812.8		M335L	M335R	H865T	H865B	BP-012	G4-GC012	850	298	T1-E	06F
49	G4-U013	1	865	850	1085.5		M850L	M850R	H865T	H865B	BP-013	G4-GC013	850	813	T1-E	06F
50	G4-U013	1	865	850	1085.5		M850L	M850R	H865T	H865B	BP-013	G4-GC013	850	813	T1-E	07F
51	G4-U013	15	865	850	1085.5		M850L	M850R	H865T	H865B	BP-013	G4-GC013	850	813	T1-E	09~26F
52	G4-U013	1	865	850	1085.5		M850L	M850R	H865T	H865B	BP-013	G4-GC013	850	813	T1-E	28F
53	G4-U013	19	865	850	1085.5		M850L	M850R	H865T	H865B	BP-013	G4-GC013	850	813	T1-E	29~49F

名称	小单元组装图(数据表)	制图	JH	2019.4.22	修改	A	B
材料	见组装编号	复核	DL	2019.4.23	日期	2019.7.23	2019.10.21
颜色		批准	Jason		图号	G4-U001 (2 of 12)	



美特铝质有限公司
MIDI Aluminium Fabricator Ltd.

依据EI1110修改

工程号 J-837 地盘 观塘裕民坊

序号	组装编号	数量	W	H	见光位对角线	左企编号	右企编号	顶横编号	底横编号	背板编号	玻璃编号	玻璃宽度	玻璃高度	使用位置	楼层
54	G4-U013	1	865	850	1085.5	M850L	M850R	H865T	H865B	BP-013	G4-GC013	850	813	T1-E	50F
55	G4-U015	1	865	900	1121	M900L	M900R	H865T	H865B	BP-015	G4-GC015	850	863	T1-E	06F
56	G4-U015	15	865	900	1121	M900L	M900R	H865T	H865B	BP-015	G4-GC015	850	863	T1-E	09-26F
57	G4-U015	1	865	900	1121	M900L	M900R	H865T	H865B	BP-015	G4-GC015	850	863	T1-E	27F
58	G4-U015	1	865	900	1121	M900L	M900R	H865T	H865B	BP-015	G4-GC015	850	863	T1-E	28F
59	G4-U015	19	865	900	1121	M900L	M900R	H865T	H865B	BP-015	G4-GC015	850	863	T1-E	29-49F
60	G4-U016	1	865	650	956.2	M650L	M650R	H865T	H865B	BP-016	G4-GC016	850	613	T1-E	27F
61	G4-U017	1	865	1115	1285	M1115L	M1115R	H865T	H865B	BP-017	G4-GC017	850	1078	T1-E	27F
62	G4-U018	1	865	485	869.9	M485L	M485R	H865T	H865B	BP-018	G4-GC018	850	448	T1-E	27F
63	G4-U019	1	1177.5	335	1114.8	M335L	M335R	H1177T	H1177B	BP-019	G4-GC019	1162.5	298	T1-E	06F
64	G4-U020	1	1177.5	900	1356	M900L	M900R	H1177T	H1177B	BP-020	G4-GC020	1162.5	863	T1-E	06F
65	G4-U020	15	1177.5	900	1356	M900L	M900R	H1177T	H1177B	BP-020	G4-GC020	1162.5	863	T1-E	09-26F
66	G4-U020	1	1177.5	900	1356	M900L	M900R	H1177T	H1177B	BP-020	G4-GC020	1162.5	863	T1-E	27F
67	G4-U020	1	1177.5	900	1356	M900L	M900R	H1177T	H1177B	BP-020	G4-GC020	1162.5	863	T1-E	28F
68	G4-U020	19	1177.5	900	1356	M900L	M900R	H1177T	H1177B	BP-020	G4-GC020	1162.5	863	T1-E	29-49F
69	G4-U021	1	1177.5	650	1223.2	M650L	M650R	H1177T	H1177B	BP-021	G4-GC021	1162.5	613	T1-E	27F
70	G4-U022	1	1177.5	1115	1494.4	M1115L	M1115R	H1177T	H1177B	BP-022	G4-GC022	1162.5	1078	T1-E	27F
71	G4-U023	1	1177.5	485	1157	M485L	M485R	H1177T	H1177B	BP-023	G4-GC023	1162.5	448	T1-E	27F
72	G4-U024	1	1177.5	715	1254.3	M715L	M715R	H1177T	H1177B	BP-024	G4-GC024	1162.5	678	T1-E	50F
73	G4-U025	1	1370	335	1303.2	M335L	M335R	H1370T	H1370B	BP-025	G4-GC025	1355	298	T1-E	06F
74	G4-U026	1	1370	650	1397.1	M650L	M650R	H1370T	H1370B	BP-026	G4-GC026	1355	613	T1-E	27F
75	G4-U027	1	1370	485	1339.6	M485L	M485R	H1370T	H1370B	BP-027	G4-GC027	1355	448	T1-E	27F
76	G4-U028	1	1370	715	1424.4	M715L	M715R	H1370T	H1370B	BP-028	G4-GC028	1355	678	T1-E	50F
77	G4-U029	1	1275	335	1210.1	M335L	M335R	H1275T	H1275B	BP-029	G4-GC029	1260	298	T1-E	06F
78	G4-U030	1	1275	900	1435.4	M900L	M900R	H1275T	H1275B	BP-030	G4-GC030	1260	863	T1-E	06F
79	G4-U030	15	1275	900	1435.4	M900L	M900R	H1275T	H1275B	BP-030	G4-GC030	1260	863	T1-E	09-26F
80	G4-U030	1	1275	900	1435.4	M900L	M900R	H1275T	H1275B	BP-030	G4-GC030	1260	863	T1-E	27F
81	G4-U030	1	1275	900	1435.4	M900L	M900R	H1275T	H1275B	BP-030	G4-GC030	1260	863	T1-E	28F
82	G4-U030	19	1275	900	1435.4	M900L	M900R	H1275T	H1275B	BP-030	G4-GC030	1260	863	T1-E	29-49F
83	G4-U031	1	1275	650	1310.7	M650L	M650R	H1275T	H1275B	BP-031	G4-GC031	1260	613	T1-E	27F
84	G4-U032	1	1275	1115	1566.8	M1115L	M1115R	H1275T	H1275B	BP-032	G4-GC032	1260	1078	T1-E	27F
85	G4-U033	1	1275	485	1249.1	M485L	M485R	H1275T	H1275B	BP-033	G4-GC033	1260	448	T1-E	27F
86	G4-U034	1	1275	715	1339.7	M715L	M715R	H1275T	H1275B	BP-034	G4-GC034	1260	678	T1-E	50F
87	G4-U035	1	412.5	335	405	M335L	M335R	H412T	H412B	BP-035	G4-GC035	397.5	298	T1-E	06F
88	G4-U036	1	412.5	2250	2183.9	M2250L	M2250R	H412T	H412B	BP-036	G4-GC036	397.5	2213	T1-E	06F
89	G4-U036	1	412.5	2250	2183.9	M2250L	M2250R	H412T	H412B	BP-036	G4-GC036	397.5	2213	T1-E	07F
90	G4-U036	15	412.5	2250	2183.9	M2250L	M2250R	H412T	H412B	BP-036	G4-GC036	397.5	2213	T1-E	09-26F
91	G4-U036	1	412.5	2250	2183.9	M2250L	M2250R	H412T	H412B	BP-036	G4-GC036	397.5	2213	T1-E	28F
92	G4-U036	19	412.5	2250	2183.9	M2250L	M2250R	H412T	H412B	BP-036	G4-GC036	397.5	2213	T1-E	29-49F
93	G4-U036	1	412.5	2250	2183.9	M2250L	M2250R	H412T	H412B	BP-036	G4-GC036	397.5	2213	T1-E	50F
94	G4-U037	1	412.5	900	871.8	M900L	M900R	H412T	H412B	BP-037	G4-GC037	397.5	863	T1-E	06F
95	G4-U037	15	412.5	900	871.8	M900L	M900R	H412T	H412B	BP-037	G4-GC037	397.5	863	T1-E	09-26F
96	G4-U037	1	412.5	900	871.8	M900L	M900R	H412T	H412B	BP-037	G4-GC037	397.5	863	T1-E	27F
97	G4-U037	1	412.5	900	871.8	M900L	M900R	H412T	H412B	BP-037	G4-GC037	397.5	863	T1-E	28F
98	G4-U037	19	412.5	900	871.8	M900L	M900R	H412T	H412B	BP-037	G4-GC037	397.5	863	T1-E	29-49F
99	G4-U038	1	412.5	650	646.2	M650L	M650R	H412T	H412B	BP-038	G4-GC038	397.5	613	T1-E	27F
100	G4-U039	1	412.5	1115	1074.5	M1115L	M1115R	H412T	H412B	BP-039	G4-GC039	397.5	1078	T1-E	27F
101	G4-U040	1	412.5	485	509.9	M485L	M485R	H412T	H412B	BP-040	G4-GC040	397.5	448	T1-E	27F
102	G4-U041	1	412.5	715	703.3	M715L	M715R	H412T	H412B	BP-041	G4-GC041	397.5	678	T1-E	50F
103	G4-U042	1	697.5	335	655	M335L	M335R	H697T	H697B	BP-042	G4-GC042	682.5	298	T1-E	06F
104	G4-U043	1	697.5	280	636.5	M280L	M280R	H697T	H697B	BP-043	G4-GC043	682.5	243	T1-E	06F
105	G4-U043	1	697.5	280	636.5	M280L	M280R	H697T	H697B	BP-043	G4-GC043	682.5	243	T1-E	07F
106	G4-U043	15	697.5	280	636.5	M280L	M280R	H697T	H697B	BP-043	G4-GC043	682.5	243	T1-E	09-26F

名称	小单元组装图(数据表)	制图	JH	2019.4.22	修改	A	B
材料	见组装编号	复核	DL	2019.4.23	日期	2019.7.23	2019.10.21
颜色		批准	Jason		图号	G4-U001 (3 of 12)	



美特铝质有限公司
MIDI Aluminium Fabricator Ltd.

依據E11110修改

工程号 J-837 地盘 观塘裕民坊

序号	组编编号	数量	W	H	见光位对角线	左企编号	右企编号	顶横编号	底横编号	背板编号	玻璃编号	玻璃宽度	玻璃高度	使用位置	楼层
107	G4-U043	1	697.5	280	636.5	M280L	M280R	H697T	H697B	BP-043	G4-GC043	682.5	243	T1-E	28F
108	G4-U043	19	697.5	280	636.5	M280L	M280R	H697T	H697B	BP-043	G4-GC043	682.5	243	T1-E	29-49F
109	G4-U043	1	697.5	280	636.5	M280L	M280R	H697T	H697B	BP-043	G4-GC043	682.5	243	T1-E	50F
110	G4-U044	1	697.5	900	1012.5	M900L	M900R	H697T	H697B	BP-044	G4-GC044	682.5	863	T1-E	06F
111	G4-U044	15	697.5	900	1012.5	M900L	M900R	H697T	H697B	BP-044	G4-GC044	682.5	863	T1-E	09-26F
112	G4-U044	1	697.5	900	1012.5	M900L	M900R	H697T	H697B	BP-044	G4-GC044	682.5	863	T1-E	27F
113	G4-U044	1	697.5	900	1012.5	M900L	M900R	H697T	H697B	BP-044	G4-GC044	682.5	863	T1-E	28F
114	G4-U044	19	697.5	900	1012.5	M900L	M900R	H697T	H697B	BP-044	G4-GC044	682.5	863	T1-E	29-49F
115	G4-U045	1	697.5	650	826.2	M650L	M650R	H697T	H697B	BP-045	G4-GC045	682.5	613	T1-E	27F
116	G4-U046	1	697.5	1115	1191.5	M1115L	M1115R	H697T	H697B	BP-046	G4-GC046	682.5	1078	T1-E	27F
117	G4-U047	1	697.5	485	724.6	M485L	M485R	H697T	H697B	BP-047	G4-GC047	682.5	448	T1-E	27F
118	G4-U048	1	697.5	715	871.6	M715L	M715R	H697T	H697B	BP-048	G4-GC048	682.5	678	T1-E	50F
119	G4-U049	1	717.5	335	673.6	M335L	M335R	H717T	H717B	BP-049	G4-GC049	702.5	298	T1-E	06F
120	G4-U050	1	717.5	900	1024.6	M900L	M900R	H717T	H717B	BP-050	G4-GC050	702.5	863	T1-E	06F
121	G4-U050	15	717.5	900	1024.6	M900L	M900R	H717T	H717B	BP-050	G4-GC050	702.5	863	T1-E	09-26F
122	G4-U050	1	717.5	900	1024.6	M900L	M900R	H717T	H717B	BP-050	G4-GC050	702.5	863	T1-E	27F
123	G4-U050	1	717.5	900	1024.6	M900L	M900R	H717T	H717B	BP-050	G4-GC050	702.5	863	T1-E	28F
124	G4-U050	19	717.5	900	1024.6	M900L	M900R	H717T	H717B	BP-050	G4-GC050	702.5	863	T1-E	29-49F
125	G4-U051	1	717.5	650	841	M650L	M650R	H717T	H717B	BP-051	G4-GC051	702.5	613	T1-E	27F
126	G4-U052	1	717.5	1115	1201.8	M1115L	M1115R	H717T	H717B	BP-052	G4-GC052	702.5	1078	T1-E	27F
127	G4-U053	1	717.5	485	741.5	M485L	M485R	H717T	H717B	BP-053	G4-GC053	702.5	448	T1-E	27F
128	G4-U054	1	717.5	715	885.7	M715L	M715R	H717T	H717B	BP-054	G4-GC054	702.5	678	T1-E	50F
129	G4-U055	1	717.5	900	1024.6	M900L	M900R	H717T	H717B	BP-055	G4-GC055	702.5	863	T1-A	06F
130	G4-U055	1	717.5	900	1024.6	M900L	M900R	H717T	H717B	BP-055	G4-GC055	702.5	863	T1-B	06F
131	G4-U055	15	717.5	900	1024.6	M900L	M900R	H717T	H717B	BP-055	G4-GC055	702.5	863	T1-A	09-26F
132	G4-U055	15	717.5	900	1024.6	M900L	M900R	H717T	H717B	BP-055	G4-GC055	702.5	863	T1-B	09-26F
133	G4-U055	1	717.5	900	1024.6	M900L	M900R	H717T	H717B	BP-055	G4-GC055	702.5	863	T1-A	27F
134	G4-U055	1	717.5	900	1024.6	M900L	M900R	H717T	H717B	BP-055	G4-GC055	702.5	863	T1-B	27F
135	G4-U055	1	717.5	900	1024.6	M900L	M900R	H717T	H717B	BP-055	G4-GC055	702.5	863	T1-A	28F
136	G4-U055	1	717.5	900	1024.6	M900L	M900R	H717T	H717B	BP-055	G4-GC055	702.5	863	T1-B	28F
137	G4-U055	19	717.5	900	1024.6	M900L	M900R	H717T	H717B	BP-055	G4-GC055	702.5	863	T1-A	29-49F
138	G4-U055	19	717.5	900	1024.6	M900L	M900R	H717T	H717B	BP-055	G4-GC055	702.5	863	T1-B	29-49F
139	G4-U056	1	717.5	650	841	M650L	M650R	H717T	H717B	BP-056	G4-GC056	702.5	613	T1-A	27F
140	G4-U056	1	717.5	650	841	M650L	M650R	H717T	H717B	BP-056	G4-GC056	702.5	613	T1-B	27F
141	G4-U057	1	717.5	1115	1201.8	M1115L	M1115R	H717T	H717B	BP-057	G4-GC057	702.5	1078	T1-A	27F
142	G4-U057	1	717.5	1115	1201.8	M1115L	M1115R	H717T	H717B	BP-057	G4-GC057	702.5	1078	T1-B	27F
143	G4-U058	1	717.5	485	741.5	M485L	M485R	H717T	H717B	BP-058	G4-GC058	702.5	448	T1-A	27F
144	G4-U058	1	717.5	485	741.5	M485L	M485R	H717T	H717B	BP-058	G4-GC058	702.5	448	T1-B	27F
145	G4-U059	1	717.5	715	885.7	M715L	M715R	H717T	H717B	BP-059	G4-GC059	702.5	678	T1-A	50F
146	G4-U059	1	717.5	715	885.7	M715L	M715R	H717T	H717B	BP-059	G4-GC059	702.5	678	T1-B	50F
147	G4-U060	1	685	2250	2240.5	M2250L	M2250R	H685T	H685B	BP-060	G4-GC060	670	2213	T1-A	06F
148	G4-U060	1	685	2250	2240.5	M2250L	M2250R	H685T	H685B	BP-060	G4-GC060	670	2213	T1-A	07F
149	G4-U060	15	685	2250	2240.5	M2250L	M2250R	H685T	H685B	BP-060	G4-GC060	670	2213	T1-A	09-26F
150	G4-U060	1	685	2250	2240.5	M2250L	M2250R	H685T	H685B	BP-060	G4-GC060	670	2213	T1-A	28F
151	G4-U060	19	685	2250	2240.5	M2250L	M2250R	H685T	H685B	BP-060	G4-GC060	670	2213	T1-A	29-49F
152	G4-U060	1	685	2250	2240.5	M2250L	M2250R	H685T	H685B	BP-060	G4-GC060	670	2213	T1-A	50F
153	G4-U061	1	685	900	1005	M900L	M900R	H685T	H685B	BP-061	G4-GC061	670	863	T1-A	06F
154	G4-U061	15	685	900	1005	M900L	M900R	H685T	H685B	BP-061	G4-GC061	670	863	T1-A	09-26F
155	G4-U061	1	685	900	1005	M900L	M900R	H685T	H685B	BP-061	G4-GC061	670	863	T1-A	27F
156	G4-U061	1	685	900	1005	M900L	M900R	H685T	H685B	BP-061	G4-GC061	670	863	T1-A	28F
157	G4-U061	19	685	900	1005	M900L	M900R	H685T	H685B	BP-061	G4-GC061	670	863	T1-A	29-49F
158	G4-U062	1	685	650	817.1	M650L	M650R	H685T	H685B	BP-062	G4-GC062	670	613	T1-A	27F
159	G4-U063	1	685	1115	1185.2	M1115L	M1115R	H685T	H685B	BP-063	G4-GC063	670	1078	T1-A	27F

名称	小单元组编图(数据表)	制图	JH	2019.4.22	修改	A	B
材料	见组编编号	复核	DL	2019.4.23	日期	2019.7.23	2019.10.21
颜色		批准	Jason		图号	G4-U001 (4 of 12)	



美特铝质有限公司
MIDI Aluminium Fabricator Ltd.

依据EI1110修改

工程号 J-837 地盘 观塘裕民坊

序号	组裝编号	数量	W	H	见光位对角线	左企编号	右企编号	顶横编号	底横编号	背板编号	玻璃编号	玻璃宽度	玻璃高度	使用位置	楼层
160	G4-U064	1	685	485	714.2	M485L	M485R	H685T	H685B	BP-064	G4-GC064	670	448	T1-A	27F
161	G4-U065	1	685	715	862.9	M715L	M715R	H685T	H685B	BP-065	G4-GC065	670	678	T1-A	50F
162	G4-U066	1	750	900	1044.8	M900L	M900R	H750T	H750B	BP-066	G4-GC066	735	863	T1-B	06F
163	G4-U066	15	750	900	1044.8	M900L	M900R	H750T	H750B	BP-066	G4-GC066	735	863	T1-B	09-26F
164	G4-U066	1	750	900	1044.8	M900L	M900R	H750T	H750B	BP-066	G4-GC066	735	863	T1-B	27F
165	G4-U066	1	750	900	1044.8	M900L	M900R	H750T	H750B	BP-066	G4-GC066	735	863	T1-B	28F
166	G4-U066	19	750	900	1044.8	M900L	M900R	H750T	H750B	BP-066	G4-GC066	735	863	T1-B	29-49F
167	G4-U067	1	750	650	865.6	M650L	M650R	H750T	H750B	BP-067	G4-GC067	735	613	T1-B	27F
168	G4-U068	1	750	1115	1219.1	M1115L	M1115R	H750T	H750B	BP-068	G4-GC068	735	1078	T1-B	27F
169	G4-U069	1	750	485	769.2	M485L	M485R	H750T	H750B	BP-069	G4-GC069	735	448	T1-B	27F
170	G4-U070	1	750	715	909	M715L	M715R	H750T	H750B	BP-070	G4-GC070	735	678	T1-B	50F
171	G4-U071	1	662.5	2250	2234.6	M2250L	M2250R	H662T	H662B	BP-071	G4-GC071	647.5	2213	T2-H	06F
172	G4-U071	1	662.5	2250	2234.6	M2250L	M2250R	H662T	H662B	BP-071	G4-GC071	647.5	2213	T2-H	07F
173	G4-U071	15	662.5	2250	2234.6	M2250L	M2250R	H662T	H662B	BP-071	G4-GC071	647.5	2213	T2-H	09-26F
174	G4-U071	1	662.5	2250	2234.6	M2250L	M2250R	H662T	H662B	BP-071	G4-GC071	647.5	2213	T2-H	28F
175	G4-U071	23	662.5	2250	2234.6	M2250L	M2250R	H662T	H662B	BP-071	G4-GC071	647.5	2213	T2-H	29-53F
176	G4-U071	1	662.5	2250	2234.6	M2250L	M2250R	H662T	H662B	BP-071	G4-GC071	647.5	2213	T2-H	55F
177	G4-U072	1	662.5	900	991.9	M900L	M900R	H662T	H662B	BP-072	G4-GC072	647.5	863	T2-H	06F
178	G4-U072	15	662.5	900	991.9	M900L	M900R	H662T	H662B	BP-072	G4-GC072	647.5	863	T2-H	09-26F
179	G4-U072	1	662.5	900	991.9	M900L	M900R	H662T	H662B	BP-072	G4-GC072	647.5	863	T2-H	27F
180	G4-U072	1	662.5	900	991.9	M900L	M900R	H662T	H662B	BP-072	G4-GC072	647.5	863	T2-H	28F
181	G4-U072	23	662.5	900	991.9	M900L	M900R	H662T	H662B	BP-072	G4-GC072	647.5	863	T2-H	29-53F
182	G4-U073	1	662.5	650	800.8	M650L	M650R	H662T	H662B	BP-073	G4-GC073	647.5	613	T2-H	27F
183	G4-U074	1	662.5	1115	1174	M1115L	M1115R	H662T	H662B	BP-074	G4-GC074	647.5	1078	T2-H	27F
184	G4-U075	1	662.5	485	695.5	M485L	M485R	H662T	H662B	BP-075	G4-GC075	647.5	448	T2-H	27F
185	G4-U076	1	662.5	715	847.6	M715L	M715R	H662T	H662B	BP-076	G4-GC076	647.5	678	T2-H	55F
186	G4-U077	1	862.5	900	1119.3	M900L	M900R	H862T	H862B	BP-077	G4-GC077	847.5	863	T2-H	06F
187	G4-U077	15	862.5	900	1119.3	M900L	M900R	H862T	H862B	BP-077	G4-GC077	847.5	863	T2-H	09-26F
188	G4-U077	1	862.5	900	1119.3	M900L	M900R	H862T	H862B	BP-077	G4-GC077	847.5	863	T2-H	27F
189	G4-U077	1	862.5	900	1119.3	M900L	M900R	H862T	H862B	BP-077	G4-GC077	847.5	863	T2-H	28F
190	G4-U077	23	862.5	900	1119.3	M900L	M900R	H862T	H862B	BP-077	G4-GC077	847.5	863	T2-H	29-53F
191	G4-U078	1	862.5	1115	1283.5	M1115L	M1115R	H862T	H862B	BP-078	G4-GC078	847.5	1078	T2-H	27F
192	G4-U079	1	862.5	485	867.6	M485L	M485R	H862T	H862B	BP-079	G4-GC079	847.5	448	T2-H	27F
193	G4-U080	1	862.5	715	993.7	M715L	M715R	H862T	H862B	BP-080	G4-GC080	847.5	678	T2-H	55F
194	G4-U081	1	717.5	900	1024.6	M900L	M900R	H717T	H717B	BP-081	G4-GC081	702.5	863	T2-A	06F
195	G4-U081	1	717.5	900	1024.6	M900L	M900R	H717T	H717B	BP-081	G4-GC081	702.5	863	T2-B	06F
196	G4-U081	15	717.5	900	1024.6	M900L	M900R	H717T	H717B	BP-081	G4-GC081	702.5	863	T2-A	09-26F
197	G4-U081	15	717.5	900	1024.6	M900L	M900R	H717T	H717B	BP-081	G4-GC081	702.5	863	T2-B	09-26F
198	G4-U081	1	717.5	900	1024.6	M900L	M900R	H717T	H717B	BP-081	G4-GC081	702.5	863	T2-A	27F
199	G4-U081	1	717.5	900	1024.6	M900L	M900R	H717T	H717B	BP-081	G4-GC081	702.5	863	T2-B	27F
200	G4-U081	1	717.5	900	1024.6	M900L	M900R	H717T	H717B	BP-081	G4-GC081	702.5	863	T2-A	28F
201	G4-U081	1	717.5	900	1024.6	M900L	M900R	H717T	H717B	BP-081	G4-GC081	702.5	863	T2-B	28F
202	G4-U081	23	717.5	900	1024.6	M900L	M900R	H717T	H717B	BP-081	G4-GC081	702.5	863	T2-A	29-53F
203	G4-U081	23	717.5	900	1024.6	M900L	M900R	H717T	H717B	BP-081	G4-GC081	702.5	863	T2-B	29-53F
204	G4-U082	1	717.5	650	841	M650L	M650R	H717T	H717B	BP-082	G4-GC082	702.5	613	T2-A	27F
205	G4-U082	1	717.5	650	841	M650L	M650R	H717T	H717B	BP-082	G4-GC082	702.5	613	T2-B	27F
206	G4-U083	1	717.5	1115	1201.8	M1115L	M1115R	H717T	H717B	BP-083	G4-GC083	702.5	1078	T2-A	27F
207	G4-U083	1	717.5	1115	1201.8	M1115L	M1115R	H717T	H717B	BP-083	G4-GC083	702.5	1078	T2-B	27F
208	G4-U084	1	717.5	485	741.5	M485L	M485R	H717T	H717B	BP-084	G4-GC084	702.5	448	T2-A	27F
209	G4-U084	1	717.5	485	741.5	M485L	M485R	H717T	H717B	BP-084	G4-GC084	702.5	448	T2-B	27F
210	G4-U085	1	717.5	715	885.7	M715L	M715R	H717T	H717B	BP-085	G4-GC085	702.5	678	T2-A	55F
211	G4-U085	1	717.5	715	885.7	M715L	M715R	H717T	H717B	BP-085	G4-GC085	702.5	678	T2-B	55F
212	G4-U086	1	700	2250	2244.5	M2250L	M2250R	H700T	H700B	BP-086	G4-GC086	685	2213	T2-A	06F

名称	小单元组裝图(数据表)	制图	JH	2019.4.22	修改	A	B
材料	见组裝编号	复核	DL	2019.4.23	日期	2019.7.23	2019.10.21
颜色		批准	Jason		图号	G4-U001 (5 of 12)	



美特铝质有限公司
MIDI Aluminium Fabricator Ltd.

依据EI1110修改

工程号 J-837 地盘 观塘裕民坊

序号	组编编号	数量	W	H	见光位对角线	左企编号	右企编号	顶横编号	底横编号	背板编号	玻璃编号	玻璃宽度	玻璃高度	使用位置	楼层
213	G4-U086	1	700	2250	2244.5	M2250L	M2250R	H700T	H700B	BP-086	G4-GC086	685	2213	T2-B	06F
214	G4-U086	1	700	2250	2244.5	M2250L	M2250R	H700T	H700B	BP-086	G4-GC086	685	2213	T2-A	07F
215	G4-U086	1	700	2250	2244.5	M2250L	M2250R	H700T	H700B	BP-086	G4-GC086	685	2213	T2-B	07F
216	G4-U086	15	700	2250	2244.5	M2250L	M2250R	H700T	H700B	BP-086	G4-GC086	685	2213	T2-A	09-26F
217	G4-U086	15	700	2250	2244.5	M2250L	M2250R	H700T	H700B	BP-086	G4-GC086	685	2213	T2-B	09-26F
218	G4-U086	1	700	2250	2244.5	M2250L	M2250R	H700T	H700B	BP-086	G4-GC086	685	2213	T2-A	28F
219	G4-U086	1	700	2250	2244.5	M2250L	M2250R	H700T	H700B	BP-086	G4-GC086	685	2213	T2-B	28F
220	G4-U086	23	700	2250	2244.5	M2250L	M2250R	H700T	H700B	BP-086	G4-GC086	685	2213	T2-A	29-53F
221	G4-U086	23	700	2250	2244.5	M2250L	M2250R	H700T	H700B	BP-086	G4-GC086	685	2213	T2-B	29-53F
222	G4-U086	1	700	2250	2244.5	M2250L	M2250R	H700T	H700B	BP-086	G4-GC086	685	2213	T2-A	55F
223	G4-U086	1	700	2250	2244.5	M2250L	M2250R	H700T	H700B	BP-086	G4-GC086	685	2213	T2-B	55F
224	G4-U087	1	700	900	1014	M900L	M900R	H700T	H700B	BP-087	G4-GC087	685	863	T2-A	06F
225	G4-U087	1	700	900	1014	M900L	M900R	H700T	H700B	BP-087	G4-GC087	685	863	T2-B	06F
226	G4-U087	15	700	900	1014	M900L	M900R	H700T	H700B	BP-087	G4-GC087	685	863	T2-A	09-26F
227	G4-U087	15	700	900	1014	M900L	M900R	H700T	H700B	BP-087	G4-GC087	685	863	T2-B	09-26F
228	G4-U087	1	700	900	1014	M900L	M900R	H700T	H700B	BP-087	G4-GC087	685	863	T2-A	27F
229	G4-U087	1	700	900	1014	M900L	M900R	H700T	H700B	BP-087	G4-GC087	685	863	T2-B	27F
230	G4-U087	1	700	900	1014	M900L	M900R	H700T	H700B	BP-087	G4-GC087	685	863	T2-A	28F
231	G4-U087	1	700	900	1014	M900L	M900R	H700T	H700B	BP-087	G4-GC087	685	863	T2-B	28F
232	G4-U087	23	700	900	1014	M900L	M900R	H700T	H700B	BP-087	G4-GC087	685	863	T2-A	29-53F
233	G4-U087	23	700	900	1014	M900L	M900R	H700T	H700B	BP-087	G4-GC087	685	863	T2-B	29-53F
234	G4-U088	1	700	650	828.1	M650L	M650R	H700T	H700B	BP-088	G4-GC088	685	613	T2-A	27F
235	G4-U088	1	700	650	828.1	M650L	M650R	H700T	H700B	BP-088	G4-GC088	685	613	T2-B	27F
236	G4-U089	1	700	1115	1192.8	M1115L	M1115R	H700T	H700B	BP-089	G4-GC089	685	1078	T2-A	27F
237	G4-U089	1	700	1115	1192.8	M1115L	M1115R	H700T	H700B	BP-089	G4-GC089	685	1078	T2-B	27F
238	G4-U090	1	700	485	726.7	M485L	M485R	H700T	H700B	BP-090	G4-GC090	685	448	T2-A	27F
239	G4-U090	1	700	485	726.7	M485L	M485R	H700T	H700B	BP-090	G4-GC090	685	448	T2-B	27F
240	G4-U091	1	700	715	873.3	M715L	M715R	H700T	H700B	BP-091	G4-GC091	685	678	T2-A	55F
241	G4-U091	1	700	715	873.3	M715L	M715R	H700T	H700B	BP-091	G4-GC091	685	678	T2-B	55F
242	G4-U092	2	1088.7	335	1028.3	M335L	M335R	H1088T	H1088B	BP-092	G4-GC092	1073.7	298	T2-M	06F
243	G4-U093	2	1088.7	900	1285.9	M900L	M900R	H1088T	H1088B	BP-093	G4-GC093	1073.7	863	T2-M	06F
244	G4-U093	30	1088.7	900	1285.9	M900L	M900R	H1088T	H1088B	BP-093	G4-GC093	1073.7	863	T2-M	09-26F
245	G4-U093	2	1088.7	900	1285.9	M900L	M900R	H1088T	H1088B	BP-093	G4-GC093	1073.7	863	T2-M	27F
246	G4-U093	2	1088.7	900	1285.9	M900L	M900R	H1088T	H1088B	BP-093	G4-GC093	1073.7	863	T2-M	28F
247	G4-U093	46	1088.7	900	1285.9	M900L	M900R	H1088T	H1088B	BP-093	G4-GC093	1073.7	863	T2-M	53F
248	G4-U094	2	1088.7	650	1145	M650L	M650R	H1088T	H1088B	BP-094	G4-GC094	1073.7	613	T2-M	27F
249	G4-U095	2	1088.7	1115	1431.1	M1115L	M1115R	H1088T	H1088B	BP-095	G4-GC095	1073.7	1078	T2-M	27F
250	G4-U096	2	1088.7	485	1074	M485L	M485R	H1088T	H1088B	BP-096	G4-GC096	1073.7	448	T2-M	27F
251	G4-U097	2	1088.7	715	1178.1	M715L	M715R	H1088T	H1088B	BP-097	G4-GC097	1073.7	678	T2-M	55F
252	G4-U098	1	1010	335	952.1	M335L	M335R	H1010T	H1010B	BP-098	G4-GC098	995	298	T2-M	06F
253	G4-U099	1	1010	850	1193.3	M850L	M850R	H1010T	H1010B	BP-099	G4-GC099	995	813	T2-M	06F
254	G4-U099	1	1010	850	1193.3	M850L	M850R	H1010T	H1010B	BP-099	G4-GC099	995	813	T2-M	07F
255	G4-U099	15	1010	850	1193.3	M850L	M850R	H1010T	H1010B	BP-099	G4-GC099	995	813	T2-M	09-26F
256	G4-U099	1	1010	850	1193.3	M850L	M850R	H1010T	H1010B	BP-099	G4-GC099	995	813	T2-M	28F
257	G4-U099	23	1010	850	1193.3	M850L	M850R	H1010T	H1010B	BP-099	G4-GC099	995	813	T2-M	53F
258	G4-U099	1	1010	850	1193.3	M850L	M850R	H1010T	H1010B	BP-099	G4-GC099	995	813	T2-M	55F
259	G4-U100	1	1010	900	1225.8	M900L	M900R	H1010T	H1010B	BP-100	G4-GC100	995	863	T2-M	06F
260	G4-U100	15	1010	900	1225.8	M900L	M900R	H1010T	H1010B	BP-100	G4-GC100	995	863	T2-M	09-26F
261	G4-U100	1	1010	900	1225.8	M900L	M900R	H1010T	H1010B	BP-100	G4-GC100	995	863	T2-M	27F
262	G4-U100	1	1010	900	1225.8	M900L	M900R	H1010T	H1010B	BP-100	G4-GC100	995	863	T2-M	28F
263	G4-U100	23	1010	900	1225.8	M900L	M900R	H1010T	H1010B	BP-100	G4-GC100	995	863	T2-M	53F
264	G4-U101	1	1010	650	1077	M650L	M650R	H1010T	H1010B	BP-101	G4-GC101	995	613	T2-M	27F
265	G4-U102	1	1010	1115	1377.3	M1115L	M1115R	H1010T	H1010B	BP-102	G4-GC102	995	1078	T2-M	27F

名称	小单元组编图(数据表)	制图	JH	2019.4.22	修改	A	B
材料	见组编编号	复核	DL	2019.4.23	日期	2019.7.23	2019.10.21
颜色		批准	Jason		图号	G4-U001 (6 of 12)	



美特铝质有限公司
MIDI Aluminium Fabricator Ltd.

依据EI1110修改

工程号 J-837 地盘 观塘裕民坊

序号	组装编号	数量	W	H	见光位对角线	左企编号	右企编号	顶横编号	底横编号	背板编号	玻璃编号	玻璃宽度	玻璃高度	使用位置	楼层
266	G4-U103	1	1010	485	1001.2	M485L	M485R	H1010T	H1010B	BP-103	G4-GC103	995	448	T2-M	27F
267	G4-U104	1	1010	715	1112.2	M715L	M715R	H1010T	H1010B	BP-104	G4-GC104	995	678	T2-M	55F
268	G4-U105	1	1122.5	335	1061.2	M335L	M335R	H1122T	H1122B	BP-105	G4-GC105	1107.5	298	T2-M	06F
269	G4-U106	1	1122.5	900	1312.3	M900L	M900R	H1122T	H1122B	BP-106	G4-GC106	1107.5	863	T2-M	06F
270	G4-U106	15	1122.5	900	1312.3	M900L	M900R	H1122T	H1122B	BP-106	G4-GC106	1107.5	863	T2-M	09-26F
271	G4-U106	1	1122.5	900	1312.3	M900L	M900R	H1122T	H1122B	BP-106	G4-GC106	1107.5	863	T2-M	27F
272	G4-U106	1	1122.5	900	1312.3	M900L	M900R	H1122T	H1122B	BP-106	G4-GC106	1107.5	863	T2-M	28F
273	G4-U106	23	1122.5	900	1312.3	M900L	M900R	H1122T	H1122B	BP-106	G4-GC106	1107.5	863	T2-M	53F
274	G4-U107	1	1122.5	650	1174.6	M650L	M650R	H1122T	H1122B	BP-107	G4-GC107	1107.5	613	T2-M	27F
275	G4-U108	1	1122.5	1115	1454.9	M1115L	M1115R	H1122T	H1122B	BP-108	G4-GC108	1107.5	1078	T2-M	27F
276	G4-U109	1	1122.5	485	1105.5	M485L	M485R	H1122T	H1122B	BP-109	G4-GC109	1107.5	448	T2-M	27F
277	G4-U110	1	1122.5	715	1206.9	M715L	M715R	H1122T	H1122B	BP-110	G4-GC110	1107.5	678	T2-M	55F
278	G4-U111	1	700	335	657.4	M335L	M335R	H700T	H700B	BP-111	G4-GC111	685	298	T2-M	06F
279	G4-U112	1	700	295	643.5	M295L	M295R	H700T	H700B	BP-112	G4-GC112	685	258	T2-M	06F
280	G4-U112	1	700	295	643.5	M295L	M295R	H700T	H700B	BP-112	G4-GC112	685	258	T2-M	07F
281	G4-U112	15	700	295	643.5	M295L	M295R	H700T	H700B	BP-112	G4-GC112	685	258	T2-M	09-26F
282	G4-U112	1	700	295	643.5	M295L	M295R	H700T	H700B	BP-112	G4-GC112	685	258	T2-M	28F
283	G4-U112	23	700	295	643.5	M295L	M295R	H700T	H700B	BP-112	G4-GC112	685	258	T2-M	53F
284	G4-U112	1	700	295	643.5	M295L	M295R	H700T	H700B	BP-112	G4-GC112	685	258	T2-M	55F
285	G4-U113	1	700	900	1014	M900L	M900R	H700T	H700B	BP-113	G4-GC113	685	863	T2-M	06F
286	G4-U113	15	700	900	1014	M900L	M900R	H700T	H700B	BP-113	G4-GC113	685	863	T2-M	09-26F
287	G4-U113	1	700	900	1014	M900L	M900R	H700T	H700B	BP-113	G4-GC113	685	863	T2-M	27F
288	G4-U113	1	700	900	1014	M900L	M900R	H700T	H700B	BP-113	G4-GC113	685	863	T2-M	28F
289	G4-U113	23	700	900	1014	M900L	M900R	H700T	H700B	BP-113	G4-GC113	685	863	T2-M	53F
290	G4-U114	1	700	650	828.1	M650L	M650R	H700T	H700B	BP-114	G4-GC114	685	613	T2-M	27F
291	G4-U115	1	700	1115	1192.8	M1115L	M1115R	H700T	H700B	BP-115	G4-GC115	685	1078	T2-M	27F
292	G4-U116	1	700	485	726.7	M485L	M485R	H700T	H700B	BP-116	G4-GC116	685	448	T2-M	27F
293	G4-U117	1	700	715	873.3	M715L	M715R	H700T	H700B	BP-117	G4-GC117	685	678	T2-M	55F
294	G4-U118	2	1130.8	335	1069.2	M335L	M335R	H1130T	H1130B	BP-118	G4-GC118	1115.8	298	T2-M	06F
295	G4-U119	3	1130.8	900	1318.8	M900L	M900R	H1130T	H1130B	BP-119	G4-GC119	1115.8	863	T2-M	06F
296	G4-U119	45	1130.8	900	1318.8	M900L	M900R	H1130T	H1130B	BP-119	G4-GC119	1115.8	863	T2-M	09-26F
297	G4-U119	3	1130.8	900	1318.8	M900L	M900R	H1130T	H1130B	BP-119	G4-GC119	1115.8	863	T2-M	27F
298	G4-U119	3	1130.8	900	1318.8	M900L	M900R	H1130T	H1130B	BP-119	G4-GC119	1115.8	863	T2-M	28F
299	G4-U119	69	1130.8	900	1318.8	M900L	M900R	H1130T	H1130B	BP-119	G4-GC119	1115.8	863	T2-M	53F
300	G4-U120	3	1130.8	650	1181.9	M650L	M650R	H1130T	H1130B	BP-120	G4-GC120	1115.8	613	T2-M	27F
301	G4-U121	3	1130.8	1115	1460.8	M1115L	M1115R	H1130T	H1130B	BP-121	G4-GC121	1115.8	1078	T2-M	27F
302	G4-U122	3	1130.8	485	1113.2	M485L	M485R	H1130T	H1130B	BP-122	G4-GC122	1115.8	448	T2-M	27F
303	G4-U123	3	1130.8	715	1214	M715L	M715R	H1130T	H1130B	BP-123	G4-GC123	1115.8	678	T2-M	55F
304	G4-U124	1	685	2250	2240.5	M2250L	M2250R	H685T	H685B	BP-124	G4-GC124	670	2213	T2-M	06F
305	G4-U124	1	685	2250	2240.5	M2250L	M2250R	H685T	H685B	BP-124	G4-GC124	670	2213	T2-M	07F
306	G4-U124	15	685	2250	2240.5	M2250L	M2250R	H685T	H685B	BP-124	G4-GC124	670	2213	T2-M	09-26F
307	G4-U124	1	685	2250	2240.5	M2250L	M2250R	H685T	H685B	BP-124	G4-GC124	670	2213	T2-M	28F
308	G4-U124	23	685	2250	2240.5	M2250L	M2250R	H685T	H685B	BP-124	G4-GC124	670	2213	T2-M	53F
309	G4-U124	1	685	2250	2240.5	M2250L	M2250R	H685T	H685B	BP-124	G4-GC124	670	2213	T2-M	55F
310	G4-U125	1	685	900	1005	M900L	M900R	H685T	H685B	BP-125	G4-GC125	670	863	T2-M	06F
311	G4-U125	15	685	900	1005	M900L	M900R	H685T	H685B	BP-125	G4-GC125	670	863	T2-M	09-26F
312	G4-U125	1	685	900	1005	M900L	M900R	H685T	H685B	BP-125	G4-GC125	670	863	T2-M	27F
313	G4-U125	1	685	900	1005	M900L	M900R	H685T	H685B	BP-125	G4-GC125	670	863	T2-M	28F
314	G4-U125	23	685	900	1005	M900L	M900R	H685T	H685B	BP-125	G4-GC125	670	863	T2-M	53F
315	G4-U126	1	685	650	817.1	M650L	M650R	H685T	H685B	BP-126	G4-GC126	670	613	T2-M	27F
316	G4-U127	1	685	1115	1185.2	M1115L	M1115R	H685T	H685B	BP-127	G4-GC127	670	1078	T2-M	27F
317	G4-U128	1	685	485	714.2	M485L	M485R	H685T	H685B	BP-128	G4-GC128	670	448	T2-M	27F
318	G4-U129	1	685	715	862.9	M715L	M715R	H685T	H685B	BP-129	G4-GC129	670	678	T2-M	55F

名称	小单元组装图(数据表)	制图	JH	2019.4.22	修改	A	B
材料	见组装编号	复核	DL	2019.4.23	日期	2019.7.23	2019.10.21
颜色		批准	Jason		图号	G4-U001 (7 of 12)	



美特铝质有限公司
MIDI Aluminium Fabricator Ltd.

依据EI1110修改

工程号 J-837 地盘 观塘裕民坊

序号	组装编号	数量	W	H	见光位对角线	左企编号	右企编号	顶横编号	底横编号	背板编号	玻璃编号	玻璃宽度	玻璃高度	使用位置	楼层
319	G4-U130	1	717.5	900	1024.6	M900L	M900R	H717T	H717B	BP-130	G4-GC130	702.5	863	T2-M	06F
320	G4-U130	15	717.5	900	1024.6	M900L	M900R	H717T	H717B	BP-130	G4-GC130	702.5	863	T2-M	09-26F
321	G4-U130	1	717.5	900	1024.6	M900L	M900R	H717T	H717B	BP-130	G4-GC130	702.5	863	T2-M	27F
322	G4-U130	1	717.5	900	1024.6	M900L	M900R	H717T	H717B	BP-130	G4-GC130	702.5	863	T2-M	28F
323	G4-U130	23	717.5	900	1024.6	M900L	M900R	H717T	H717B	BP-130	G4-GC130	702.5	863	T2-M	53F
324	G4-U131	1	717.5	650	841	M650L	M650R	H717T	H717B	BP-131	G4-GC131	702.5	613	T2-M	27F
325	G4-U132	1	717.5	1115	1201.8	M1115L	M1115R	H717T	H717B	BP-132	G4-GC132	702.5	1078	T2-M	27F
326	G4-U133	1	717.5	485	741.5	M485L	M485R	H717T	H717B	BP-133	G4-GC133	702.5	448	T2-M	27F
327	G4-U134	1	717.5	715	885.7	M715L	M715R	H717T	H717B	BP-134	G4-GC134	702.5	678	T2-M	55F
328	G4-U135	1	717.5	900	1024.6	M900L	M900R	H717T	H717B	BP-135	G4-GC135	702.5	863	T3-A	06F
329	G4-U135	1	717.5	900	1024.6	M900L	M900R	H717T	H717B	BP-135	G4-GC135	702.5	863	T3-B	06F
330	G4-U135	15	717.5	900	1024.6	M900L	M900R	H717T	H717B	BP-135	G4-GC135	702.5	863	T3-A	09-26F
331	G4-U135	15	717.5	900	1024.6	M900L	M900R	H717T	H717B	BP-135	G4-GC135	702.5	863	T3-B	09-26F
332	G4-U135	1	717.5	900	1024.6	M900L	M900R	H717T	H717B	BP-135	G4-GC135	702.5	863	T3-A	27F
333	G4-U135	1	717.5	900	1024.6	M900L	M900R	H717T	H717B	BP-135	G4-GC135	702.5	863	T3-B	27F
334	G4-U135	1	717.5	900	1024.6	M900L	M900R	H717T	H717B	BP-135	G4-GC135	702.5	863	T3-A	28F
335	G4-U135	1	717.5	900	1024.6	M900L	M900R	H717T	H717B	BP-135	G4-GC135	702.5	863	T3-B	28F
336	G4-U135	21	717.5	900	1024.6	M900L	M900R	H717T	H717B	BP-135	G4-GC135	702.5	863	T3-A	29-51F
337	G4-U135	21	717.5	900	1024.6	M900L	M900R	H717T	H717B	BP-135	G4-GC135	702.5	863	T3-B	29-51F
338	G4-U136	1	717.5	650	841	M650L	M650R	H717T	H717B	BP-136	G4-GC136	702.5	613	T3-A	27F
339	G4-U136	1	717.5	650	841	M650L	M650R	H717T	H717B	BP-136	G4-GC136	702.5	613	T3-B	27F
340	G4-U137	1	717.5	1115	1201.8	M1115L	M1115R	H717T	H717B	BP-137	G4-GC137	702.5	1078	T3-A	27F
341	G4-U137	1	717.5	1115	1201.8	M1115L	M1115R	H717T	H717B	BP-137	G4-GC137	702.5	1078	T3-B	27F
342	G4-U138	1	717.5	485	741.5	M485L	M485R	H717T	H717B	BP-138	G4-GC138	702.5	448	T3-A	27F
343	G4-U138	1	717.5	485	741.5	M485L	M485R	H717T	H717B	BP-138	G4-GC138	702.5	448	T3-B	27F
344	G4-U139	1	717.5	715	885.7	M715L	M715R	H717T	H717B	BP-139	G4-GC139	702.5	678	T3-A	52F
345	G4-U139	1	717.5	715	885.7	M715L	M715R	H717T	H717B	BP-139	G4-GC139	702.5	678	T3-B	52F
346	G4-U140	1	850	900	1110.7	M900L	M900R	H850T	H850B	BP-140	G4-GC140	835	863	T3-A	06F
347	G4-U140	1	850	900	1110.7	M900L	M900R	H850T	H850B	BP-140	G4-GC140	835	863	T3-B	06F
348	G4-U140	15	850	900	1110.7	M900L	M900R	H850T	H850B	BP-140	G4-GC140	835	863	T3-A	09-26F
349	G4-U140	15	850	900	1110.7	M900L	M900R	H850T	H850B	BP-140	G4-GC140	835	863	T3-B	09-26F
350	G4-U140	1	850	900	1110.7	M900L	M900R	H850T	H850B	BP-140	G4-GC140	835	863	T3-A	27F
351	G4-U140	1	850	900	1110.7	M900L	M900R	H850T	H850B	BP-140	G4-GC140	835	863	T3-B	27F
352	G4-U140	1	850	900	1110.7	M900L	M900R	H850T	H850B	BP-140	G4-GC140	835	863	T3-A	28F
353	G4-U140	1	850	900	1110.7	M900L	M900R	H850T	H850B	BP-140	G4-GC140	835	863	T3-B	28F
354	G4-U140	21	850	900	1110.7	M900L	M900R	H850T	H850B	BP-140	G4-GC140	835	863	T3-A	29-51F
355	G4-U140	21	850	900	1110.7	M900L	M900R	H850T	H850B	BP-140	G4-GC140	835	863	T3-B	29-51F
356	G4-U141	1	850	650	944	M650L	M650R	H850T	H850B	BP-141	G4-GC141	835	613	T3-A	27F
357	G4-U141	1	850	650	944	M650L	M650R	H850T	H850B	BP-141	G4-GC141	835	613	T3-B	27F
358	G4-U142	1	850	1115	1276	M1115L	M1115R	H850T	H850B	BP-142	G4-GC142	835	1078	T3-A	27F
359	G4-U142	1	850	1115	1276	M1115L	M1115R	H850T	H850B	BP-142	G4-GC142	835	1078	T3-B	27F
360	G4-U143	1	850	485	856.5	M485L	M485R	H850T	H850B	BP-143	G4-GC143	835	448	T3-A	27F
361	G4-U143	1	850	485	856.5	M485L	M485R	H850T	H850B	BP-143	G4-GC143	835	448	T3-B	27F
362	G4-U144	1	850	715	984	M715L	M715R	H850T	H850B	BP-144	G4-GC144	835	678	T3-A	52F
363	G4-U144	1	850	715	984	M715L	M715R	H850T	H850B	BP-144	G4-GC144	835	678	T3-B	52F
364	G4-U145	3	826.6	335	776.3	M335L	M335R	H826T	H826B	BP-145	G4-GC145	811.6	298	T3-F	06F
365	G4-U146	3	826.6	900	1094.8	M900L	M900R	H826T	H826B	BP-146	G4-GC146	811.6	863	T3-F	06F
366	G4-U146	45	826.6	900	1094.8	M900L	M900R	H826T	H826B	BP-146	G4-GC146	811.6	863	T3-F	09-26F
367	G4-U146	3	826.6	900	1094.8	M900L	M900R	H826T	H826B	BP-146	G4-GC146	811.6	863	T3-F	27F
368	G4-U146	3	826.6	900	1094.8	M900L	M900R	H826T	H826B	BP-146	G4-GC146	811.6	863	T3-F	28F
369	G4-U146	63	826.6	900	1094.8	M900L	M900R	H826T	H826B	BP-146	G4-GC146	811.6	863	T3-F	29-51F
370	G4-U147	3	826.6	650	925.3	M650L	M650R	H826T	H826B	BP-147	G4-GC147	811.6	613	T3-F	27F
371	G4-U148	3	826.6	1115	1262.2	M1115L	M1115R	H826T	H826B	BP-148	G4-GC148	811.6	1078	T3-F	27F

名称	小单元组装图(数据表)	制图	JH	2019.4.22	修改	A	B
材料	见组装编号	复核	DL	2019.4.23	日期	2019.7.23	2019.10.21
颜色		批准	Jason		图号	G4-U001 (8 of 12)	



美特铝质有限公司
MIDI Aluminium Fabricator Ltd.

依据EI1110修改

工程号 J-837 地盘 观塘裕民坊

序号	组装编号	数量	W	H	见光位对角线	左企编号	右企编号	顶横编号	底横编号	背板编号	玻璃编号	玻璃宽度	玻璃高度	使用位置	楼层
372	G4-U149	3	826.6	485	835.8	M485L	M485R	H826T	H826B	BP-149	G4-GC149	811.6	448	T3-F	27F
373	G4-U150	3	826.6	715	966	M715L	M715R	H826T	H826B	BP-150	G4-GC150	811.6	678	T3-F	52F
374	G4-U151	1	700	2250	2244.5	M2250L	M2250R	H700T	H700B	BP-151	G4-GC151	685	2213	T3-F	06F
375	G4-U151	1	700	2250	2244.5	M2250L	M2250R	H700T	H700B	BP-151	G4-GC151	685	2213	T3-F	07F
376	G4-U151	15	700	2250	2244.5	M2250L	M2250R	H700T	H700B	BP-151	G4-GC151	685	2213	T3-F	09-26F
377	G4-U151	1	700	2250	2244.5	M2250L	M2250R	H700T	H700B	BP-151	G4-GC151	685	2213	T3-F	28F
378	G4-U151	21	700	2250	2244.5	M2250L	M2250R	H700T	H700B	BP-151	G4-GC151	685	2213	T3-F	29-51F
379	G4-U151	1	700	2250	2244.5	M2250L	M2250R	H700T	H700B	BP-151	G4-GC151	685	2213	T3-F	52F
380	G4-U152	1	700	900	1014	M900L	M900R	H700T	H700B	BP-152	G4-GC152	685	863	T3-F	06F
381	G4-U152	15	700	900	1014	M900L	M900R	H700T	H700B	BP-152	G4-GC152	685	863	T3-F	09-26F
382	G4-U152	1	700	900	1014	M900L	M900R	H700T	H700B	BP-152	G4-GC152	685	863	T3-F	27F
383	G4-U152	1	700	900	1014	M900L	M900R	H700T	H700B	BP-152	G4-GC152	685	863	T3-F	28F
384	G4-U152	21	700	900	1014	M900L	M900R	H700T	H700B	BP-152	G4-GC152	685	863	T3-F	29-51F
385	G4-U153	1	700	650	828.1	M650L	M650R	H700T	H700B	BP-153	G4-GC153	685	613	T3-F	27F
386	G4-U154	1	700	1115	1192.8	M1115L	M1115R	H700T	H700B	BP-154	G4-GC154	685	1078	T3-F	27F
387	G4-U155	1	700	485	726.7	M485L	M485R	H700T	H700B	BP-155	G4-GC155	685	448	T3-F	27F
388	G4-U156	1	700	715	873.3	M715L	M715R	H700T	H700B	BP-156	G4-GC156	685	678	T3-F	52F
389	G4-U157	1	685	2250	2240.5	M2250L	M2250R	H685T	H685B	BP-157	G4-GC157	670	2213	T3-F	06F
390	G4-U157	1	685	2250	2240.5	M2250L	M2250R	H685T	H685B	BP-157	G4-GC157	670	2213	T3-F	07F
391	G4-U157	15	685	2250	2240.5	M2250L	M2250R	H685T	H685B	BP-157	G4-GC157	670	2213	T3-F	09-26F
392	G4-U157	1	685	2250	2240.5	M2250L	M2250R	H685T	H685B	BP-157	G4-GC157	670	2213	T3-F	28F
393	G4-U157	21	685	2250	2240.5	M2250L	M2250R	H685T	H685B	BP-157	G4-GC157	670	2213	T3-F	29-51F
394	G4-U157	1	685	2250	2240.5	M2250L	M2250R	H685T	H685B	BP-157	G4-GC157	670	2213	T3-F	52F
395	G4-U158	1	685	900	1005	M900L	M900R	H685T	H685B	BP-158	G4-GC158	670	863	T3-F	06F
396	G4-U158	15	685	900	1005	M900L	M900R	H685T	H685B	BP-158	G4-GC158	670	863	T3-F	09-26F
397	G4-U158	1	685	900	1005	M900L	M900R	H685T	H685B	BP-158	G4-GC158	670	863	T3-F	27F
398	G4-U158	1	685	900	1005	M900L	M900R	H685T	H685B	BP-158	G4-GC158	670	863	T3-F	28F
399	G4-U158	21	685	900	1005	M900L	M900R	H685T	H685B	BP-158	G4-GC158	670	863	T3-F	29-51F
400	G4-U159	1	685	650	817.1	M650L	M650R	H685T	H685B	BP-159	G4-GC159	670	613	T3-F	27F
401	G4-U160	1	685	1115	1185.2	M1115L	M1115R	H685T	H685B	BP-160	G4-GC160	670	1078	T3-F	27F
402	G4-U161	1	685	485	714.2	M485L	M485R	H685T	H685B	BP-161	G4-GC161	670	448	T3-F	27F
403	G4-U162	1	685	715	862.9	M715L	M715R	H685T	H685B	BP-162	G4-GC162	670	678	T3-F	52F
404	G4-U163	1	717.5	900	1024.6	M900L	M900R	H717T	H717B	BP-163	G4-GC163	702.5	863	T3-F	06F
405	G4-U163	15	717.5	900	1024.6	M900L	M900R	H717T	H717B	BP-163	G4-GC163	702.5	863	T3-F	09-26F
406	G4-U163	1	717.5	900	1024.6	M900L	M900R	H717T	H717B	BP-163	G4-GC163	702.5	863	T3-F	27F
407	G4-U163	1	717.5	900	1024.6	M900L	M900R	H717T	H717B	BP-163	G4-GC163	702.5	863	T3-F	28F
408	G4-U163	21	717.5	900	1024.6	M900L	M900R	H717T	H717B	BP-163	G4-GC163	702.5	863	T3-F	29-51F
409	G4-U164	1	717.5	650	841	M650L	M650R	H717T	H717B	BP-164	G4-GC164	702.5	613	T3-F	27F
410	G4-U165	1	717.5	1115	1201.8	M1115L	M1115R	H717T	H717B	BP-165	G4-GC165	702.5	1078	T3-F	27F
411	G4-U166	1	717.5	485	741.5	M485L	M485R	H717T	H717B	BP-166	G4-GC166	702.5	448	T3-F	27F
412	G4-U167	1	717.5	715	885.7	M715L	M715R	H717T	H717B	BP-167	G4-GC167	702.5	678	T3-F	52F
413	G4-U168	1	917.5	900	1158	M900L	M900R	H917T	H917B	BP-168	G4-GC168	902.5	863	T5-L	06F
414	G4-U168	1	917.5	900	1158	M900L	M900R	H917T	H917B	BP-168	G4-GC168	902.5	863	T5-M	06F
415	G4-U168	15	917.5	900	1158	M900L	M900R	H917T	H917B	BP-168	G4-GC168	902.5	863	T5-L	09-26F
416	G4-U168	15	917.5	900	1158	M900L	M900R	H917T	H917B	BP-168	G4-GC168	902.5	863	T5-M	09-26F
417	G4-U168	1	917.5	900	1158	M900L	M900R	H917T	H917B	BP-168	G4-GC168	902.5	863	T5-L	27F
418	G4-U168	1	917.5	900	1158	M900L	M900R	H917T	H917B	BP-168	G4-GC168	902.5	863	T5-M	27F
419	G4-U168	1	917.5	900	1158	M900L	M900R	H917T	H917B	BP-168	G4-GC168	902.5	863	T5-L	28F
420	G4-U168	1	917.5	900	1158	M900L	M900R	H917T	H917B	BP-168	G4-GC168	902.5	863	T5-M	28F
421	G4-U168	19	917.5	900	1158	M900L	M900R	H917T	H917B	BP-168	G4-GC168	902.5	863	T5-L	29-49F
422	G4-U168	19	917.5	900	1158	M900L	M900R	H917T	H917B	BP-168	G4-GC168	902.5	863	T5-M	29-49F
423	G4-U169	1	917.5	650	999.2	M650L	M650R	H917T	H917B	BP-169	G4-GC169	902.5	613	T5-L	27F
424	G4-U169	1	917.5	650	999.2	M650L	M650R	H917T	H917B	BP-169	G4-GC169	902.5	613	T5-M	27F

名称	小单元组装图(数据表)	制图	JH	2019.4.22	修改	A	B
材料	见组装编号	复核	DL	2019.4.23	日期	2019.7.23	2019.10.21
颜色		批准	Jason		图号	G4-U001 (9 of 12)	



美特铝质有限公司
MIDI Aluminium Fabricator Ltd.

依据EI1110修改

工程号		J-837		地盘		观塘裕民坊									
序号	组装编号	数量	W	H	见光位对角线	左企编号	右企编号	顶横编号	底横编号	背板编号	玻璃编号	玻璃宽度	玻璃高度	使用位置	楼层
425	G4-U170	1	917.5	1115	1317.3	M1115L	M1115R	H917T	H917B	BP-170	G4-GC170	902.5	1078	T5-L	27F
426	G4-U170	1	917.5	1115	1317.3	M1115L	M1115R	H917T	H917B	BP-170	G4-GC170	902.5	1078	T5-M	27F
427	G4-U171	1	917.5	485	916.9	M485L	M485R	H917T	H917B	BP-171	G4-GC171	902.5	448	T5-L	27F
428	G4-U171	1	917.5	485	916.9	M485L	M485R	H917T	H917B	BP-171	G4-GC171	902.5	448	T5-M	27F
429	G4-U172	1	917.5	565	954.1	M565L	M565R	H917T	H917B	BP-172	G4-GC172	902.5	528	T5-L	50F
430	G4-U172	1	917.5	565	954.1	M565L	M565R	H917T	H917B	BP-172	G4-GC172	902.5	528	T5-M	50F
431	G4-U173	1	700	2250	2244.5	M2250L	M2250R	H700T	H700B	BP-173	G4-GC173	685	2213	T5-L	06F
432	G4-U173	1	700	2250	2244.5	M2250L	M2250R	H700T	H700B	BP-173	G4-GC173	685	2213	T5-M	06F
433	G4-U173	1	700	2250	2244.5	M2250L	M2250R	H700T	H700B	BP-173	G4-GC173	685	2213	T5-L	07F
434	G4-U173	1	700	2250	2244.5	M2250L	M2250R	H700T	H700B	BP-173	G4-GC173	685	2213	T5-M	07F
435	G4-U173	15	700	2250	2244.5	M2250L	M2250R	H700T	H700B	BP-173	G4-GC173	685	2213	T5-L	09-26F
436	G4-U173	15	700	2250	2244.5	M2250L	M2250R	H700T	H700B	BP-173	G4-GC173	685	2213	T5-M	09-26F
437	G4-U173	1	700	2250	2244.5	M2250L	M2250R	H700T	H700B	BP-173	G4-GC173	685	2213	T5-L	28F
438	G4-U173	1	700	2250	2244.5	M2250L	M2250R	H700T	H700B	BP-173	G4-GC173	685	2213	T5-M	28F
439	G4-U173	19	700	2250	2244.5	M2250L	M2250R	H700T	H700B	BP-173	G4-GC173	685	2213	T5-L	29-49F
440	G4-U173	19	700	2250	2244.5	M2250L	M2250R	H700T	H700B	BP-173	G4-GC173	685	2213	T5-M	29-49F
441	G4-U173	1	700	2250	2244.5	M2250L	M2250R	H700T	H700B	BP-173	G4-GC173	685	2213	T5-L	50F
442	G4-U173	1	700	2250	2244.5	M2250L	M2250R	H700T	H700B	BP-173	G4-GC173	685	2213	T5-M	50F
443	G4-U174	1	700	900	1014	M900L	M900R	H700T	H700B	BP-174	G4-GC174	685	863	T5-L	06F
444	G4-U174	1	700	900	1014	M900L	M900R	H700T	H700B	BP-174	G4-GC174	685	863	T5-M	06F
445	G4-U174	15	700	900	1014	M900L	M900R	H700T	H700B	BP-174	G4-GC174	685	863	T5-L	09-26F
446	G4-U174	15	700	900	1014	M900L	M900R	H700T	H700B	BP-174	G4-GC174	685	863	T5-M	09-26F
447	G4-U174	1	700	900	1014	M900L	M900R	H700T	H700B	BP-174	G4-GC174	685	863	T5-L	27F
448	G4-U174	1	700	900	1014	M900L	M900R	H700T	H700B	BP-174	G4-GC174	685	863	T5-M	27F
449	G4-U174	1	700	900	1014	M900L	M900R	H700T	H700B	BP-174	G4-GC174	685	863	T5-L	28F
450	G4-U174	1	700	900	1014	M900L	M900R	H700T	H700B	BP-174	G4-GC174	685	863	T5-M	28F
451	G4-U174	19	700	900	1014	M900L	M900R	H700T	H700B	BP-174	G4-GC174	685	863	T5-L	29-49F
452	G4-U174	19	700	900	1014	M900L	M900R	H700T	H700B	BP-174	G4-GC174	685	863	T5-M	29-49F
453	G4-U175	1	700	650	828.1	M650L	M650R	H700T	H700B	BP-175	G4-GC175	685	613	T5-L	27F
454	G4-U175	1	700	650	828.1	M650L	M650R	H700T	H700B	BP-175	G4-GC175	685	613	T5-M	27F
455	G4-U176	1	700	1115	1192.8	M1115L	M1115R	H700T	H700B	BP-176	G4-GC176	685	1078	T5-L	27F
456	G4-U176	1	700	1115	1192.8	M1115L	M1115R	H700T	H700B	BP-176	G4-GC176	685	1078	T5-M	27F
457	G4-U177	1	700	485	726.7	M485L	M485R	H700T	H700B	BP-177	G4-GC177	685	448	T5-L	27F
458	G4-U177	1	700	485	726.7	M485L	M485R	H700T	H700B	BP-177	G4-GC177	685	448	T5-M	27F
459	G4-U178	1	700	565	773.1	M565L	M565R	H700T	H700B	BP-178	G4-GC178	685	528	T5-L	50F
460	G4-U178	1	700	565	773.1	M565L	M565R	H700T	H700B	BP-178	G4-GC178	685	528	T5-M	50F
461	G4-U179	1	717.5	900	1024.6	M900L	M900R	H717T	H717B	BP-179	G4-GC179	702.5	863	T5-A	06F
462	G4-U179	15	717.5	900	1024.6	M900L	M900R	H717T	H717B	BP-179	G4-GC179	702.5	863	T5-A	09-26F
463	G4-U179	1	717.5	900	1024.6	M900L	M900R	H717T	H717B	BP-179	G4-GC179	702.5	863	T5-A	27F
464	G4-U179	1	717.5	900	1024.6	M900L	M900R	H717T	H717B	BP-179	G4-GC179	702.5	863	T5-A	28F
465	G4-U179	19	717.5	900	1024.6	M900L	M900R	H717T	H717B	BP-179	G4-GC179	702.5	863	T5-A	29-49F
466	G4-U180	1	717.5	650	841	M650L	M650R	H717T	H717B	BP-180	G4-GC180	702.5	613	T5-A	27F
467	G4-U181	1	717.5	1115	1201.8	M1115L	M1115R	H717T	H717B	BP-181	G4-GC181	702.5	1078	T5-A	27F
468	G4-U182	1	717.5	485	741.5	M485L	M485R	H717T	H717B	BP-182	G4-GC182	702.5	448	T5-A	27F
469	G4-U183	1	717.5	1200	1275.1	M1200L	M1200R	H717T	H717B	BP-183	G4-GC183	702.5	1163	T5-A	50F
470	G4-U184	1	717.5	715	885.7	M715L	M715R	H717T	H717B	BP-184	G4-GC184	702.5	678	T5-A	51F
471	G4-U185	1	685	2250	2240.5	M2250L	M2250R	H685T	H685B	BP-185	G4-GC185	670	2213	T5-A	06F
472	G4-U185	1	685	2250	2240.5	M2250L	M2250R	H685T	H685B	BP-185	G4-GC185	670	2213	T5-A	07F
473	G4-U185	15	685	2250	2240.5	M2250L	M2250R	H685T	H685B	BP-185	G4-GC185	670	2213	T5-A	09-26F
474	G4-U185	1	685	2250	2240.5	M2250L	M2250R	H685T	H685B	BP-185	G4-GC185	670	2213	T5-A	28F
475	G4-U185	19	685	2250	2240.5	M2250L	M2250R	H685T	H685B	BP-185	G4-GC185	670	2213	T5-A	29-49F
476	G4-U185	1	685	2250	2240.5	M2250L	M2250R	H685T	H685B	BP-185	G4-GC185	670	2213	T5-A	50F
477	G4-U185	1	685	2250	2240.5	M2250L	M2250R	H685T	H685B	BP-185	G4-GC185	670	2213	T5-A	51F
名称	小单元组装机(数据表)					制图	JH	2019.4.22		修改	A	B			
材料	见组装机编号					复核	DL	2019.4.23		日期	2019.7.23	2019.10.21			
颜色						批准	Jason			图号	G4-U001 (10 of 12)				



美特铝质有限公司
MIDI Aluminium Fabricator Ltd.

依据EI1110修改

工程号 J-837 地盘 观塘裕民坊

序号	组裝编号	数量	W	H	见光位对角线	左企编号	右企编号	顶横编号	底横编号	背板编号	玻璃编号	玻璃宽度	玻璃高度	使用位置	楼层
478	G4-U186	1	685	900	1005	M900L	M900R	H685T	H685B	BP-186	G4-GC186	670	863	T5-A	06F
479	G4-U186	15	685	900	1005	M900L	M900R	H685T	H685B	BP-186	G4-GC186	670	863	T5-A	09~26F
480	G4-U186	1	685	900	1005	M900L	M900R	H685T	H685B	BP-186	G4-GC186	670	863	T5-A	27F
481	G4-U186	1	685	900	1005	M900L	M900R	H685T	H685B	BP-186	G4-GC186	670	863	T5-A	28F
482	G4-U186	19	685	900	1005	M900L	M900R	H685T	H685B	BP-186	G4-GC186	670	863	T5-A	29~49F
483	G4-U187	1	685	650	817.1	M650L	M650R	H685T	H685B	BP-187	G4-GC187	670	613	T5-A	27F
484	G4-U188	1	685	1115	1185.2	M1115L	M1115R	H685T	H685B	BP-188	G4-GC188	670	1078	T5-A	27F
485	G4-U189	1	685	485	714.2	M485L	M485R	H685T	H685B	BP-189	G4-GC189	670	448	T5-A	27F
486	G4-U190	1	685	1200	1259.4	M1200L	M1200R	H685T	H685B	BP-190	G4-GC190	670	1163	T5-A	50F
487	G4-U191	1	685	715	862.9	M715L	M715R	H685T	H685B	BP-191	G4-GC191	670	678	T5-A	51F
488	G4-U192	4	816.8	900	1088.3	M900L	M900R	H816T	H816B	BP-192	G4-GC192	801.8	863	T5-A	06F
489	G4-U192	60	816.8	900	1088.3	M900L	M900R	H816T	H816B	BP-192	G4-GC192	801.8	863	T5-A	09~26F
490	G4-U192	4	816.8	900	1088.3	M900L	M900R	H816T	H816B	BP-192	G4-GC192	801.8	863	T5-A	27F
491	G4-U192	4	816.8	900	1088.3	M900L	M900R	H816T	H816B	BP-192	G4-GC192	801.8	863	T5-A	28F
492	G4-U192	76	816.8	900	1088.3	M900L	M900R	H816T	H816B	BP-192	G4-GC192	801.8	863	T5-A	29~49F
493	G4-U193	4	816.8	650	917.5	M650L	M650R	H816T	H816B	BP-193	G4-GC193	801.8	613	T5-A	27F
494	G4-U194	4	816.8	1115	1256.5	M1115L	M1115R	H816T	H816B	BP-194	G4-GC194	801.8	1078	T5-A	27F
495	G4-U195	4	816.8	485	827.2	M485L	M485R	H816T	H816B	BP-195	G4-GC195	801.8	448	T5-A	27F
496	G4-U196	4	816.8	1200	1326.8	M1200L	M1200R	H816T	H816B	BP-196	G4-GC196	801.8	1163	T5-A	50F
497	G4-U197	4	816.8	715	958.6	M715L	M715R	H816T	H816B	BP-197	G4-GC197	801.8	678	T5-A	51F
498	G4-U198	1	685	2250	2240.5	M2250L	M2250R	H685T	H685B	BP-198	G4-GC198	670	2213	T5-H	06F
499	G4-U198	1	685	2250	2240.5	M2250L	M2250R	H685T	H685B	BP-198	G4-GC198	670	2213	T5-H	07F
500	G4-U198	15	685	2250	2240.5	M2250L	M2250R	H685T	H685B	BP-198	G4-GC198	670	2213	T5-H	09~26F
501	G4-U198	1	685	2250	2240.5	M2250L	M2250R	H685T	H685B	BP-198	G4-GC198	670	2213	T5-H	28F
502	G4-U198	19	685	2250	2240.5	M2250L	M2250R	H685T	H685B	BP-198	G4-GC198	670	2213	T5-H	29~49F
503	G4-U198	1	685	2250	2240.5	M2250L	M2250R	H685T	H685B	BP-198	G4-GC198	670	2213	T5-H	50F
504	G4-U199	1	685	900	1005	M900L	M900R	H685T	H685B	BP-199	G4-GC199	670	863	T5-H	06F
505	G4-U199	15	685	900	1005	M900L	M900R	H685T	H685B	BP-199	G4-GC199	670	863	T5-H	09~26F
506	G4-U199	1	685	900	1005	M900L	M900R	H685T	H685B	BP-199	G4-GC199	670	863	T5-H	27F
507	G4-U199	1	685	900	1005	M900L	M900R	H685T	H685B	BP-199	G4-GC199	670	863	T5-H	28F
508	G4-U199	19	685	900	1005	M900L	M900R	H685T	H685B	BP-199	G4-GC199	670	863	T5-H	29~49F
509	G4-U201	1	685	1115	1185.2	M1115L	M1115R	H685T	H685B	BP-201	G4-GC201	670	1078	T5-H	27F
510	G4-U202	1	685	485	714.2	M485L	M485R	H685T	H685B	BP-202	G4-GC202	670	448	T5-H	27F
511	G4-U203	1	685	565	761.3	M565L	M565R	H685T	H685B	BP-203	G4-GC203	670	528	T5-H	50F
512	G4-U204	1	862.5	900	1119.3	M900L	M900R	H862T	H862B	BP-204	G4-GC204	847.5	863	T5-H	06F
513	G4-U204	15	862.5	900	1119.3	M900L	M900R	H862T	H862B	BP-204	G4-GC204	847.5	863	T5-H	09~26F
514	G4-U204	1	862.5	900	1119.3	M900L	M900R	H862T	H862B	BP-204	G4-GC204	847.5	863	T5-H	27F
515	G4-U204	1	862.5	900	1119.3	M900L	M900R	H862T	H862B	BP-204	G4-GC204	847.5	863	T5-H	28F
516	G4-U204	19	862.5	900	1119.3	M900L	M900R	H862T	H862B	BP-204	G4-GC204	847.5	863	T5-H	29~49F
517	G4-U206	1	862.5	1115	1283.5	M1115L	M1115R	H862T	H862B	BP-206	G4-GC206	847.5	1078	T5-H	27F
518	G4-U207	1	862.5	485	867.6	M485L	M485R	H862T	H862B	BP-207	G4-GC207	847.5	448	T5-H	27F
519	G4-U208	1	862.5	565	906.9	M565L	M565R	H862T	H862B	BP-208	G4-GC208	847.5	528	T5-H	50F
520	G4-U209	3	676	335	635.2	M335L	M335R	H676T	H676B	BP-209	G4-GC209	661	298	T5-H	06F
521	G4-U210	3	676	2250	2238.1	M2250L	M2250R	H676T	H676B	BP-210	G4-GC210	661	2213	T5-H	06F
522	G4-U210	3	676	2250	2238.1	M2250L	M2250R	H676T	H676B	BP-210	G4-GC210	661	2213	T5-H	07F
523	G4-U210	45	676	2250	2238.1	M2250L	M2250R	H676T	H676B	BP-210	G4-GC210	661	2213	T5-H	09~26F
524	G4-U210	3	676	2250	2238.1	M2250L	M2250R	H676T	H676B	BP-210	G4-GC210	661	2213	T5-H	28F
525	G4-U210	57	676	2250	2238.1	M2250L	M2250R	H676T	H676B	BP-210	G4-GC210	661	2213	T5-H	29~49F
526	G4-U210	3	676	2250	2238.1	M2250L	M2250R	H676T	H676B	BP-210	G4-GC210	661	2213	T5-H	50F
527	G4-U211	3	676	900	999.7	M900L	M900R	H676T	H676B	BP-211	G4-GC211	661	863	T5-H	06F
528	G4-U211	45	676	900	999.7	M900L	M900R	H676T	H676B	BP-211	G4-GC211	661	863	T5-H	09~26F
529	G4-U211	3	676	900	999.7	M900L	M900R	H676T	H676B	BP-211	G4-GC211	661	863	T5-H	27F
530	G4-U211	3	676	900	999.7	M900L	M900R	H676T	H676B	BP-211	G4-GC211	661	863	T5-H	28F

名称	小单元组裝图 (数据表)	制图	JH	2019.4.22	修改	A	B
材料	见组裝编号	复核	DL	2019.4.23	日期	2019.7.23	2019.10.21
颜色		批准	Jason		图号	G4-U001 (11 of 12)	



美特铝质有限公司
MIDI Aluminium Fabricator Ltd.

依据EI1110修改

工程号 J-837 地盘 观塘裕民坊

序号	组装编号	数量	W	H	见光位对角线	左企编号	右企编号	顶横编号	底横编号	背板编号	玻璃编号	玻璃宽度	玻璃高度	使用位置	楼层
531	G4-U211	57	676	900	999.7	M900L	M900R	H676T	H676B	BP-211	G4-GC211	661	863	T5-H	29-49F
532	G4-U212	3	676	650	810.6	M650L	M650R	H676T	H676B	BP-212	G4-GC212	661	613	T5-H	27F
533	G4-U213	3	676	1115	1180.7	M1115L	M1115R	H676T	H676B	BP-213	G4-GC213	661	1078	T5-H	27F
534	G4-U214	3	676	485	706.7	M485L	M485R	H676T	H676B	BP-214	G4-GC214	661	448	T5-H	27F
535	G4-U215	3	676	565	754.3	M565L	M565R	H676T	H676B	BP-215	G4-GC215	661	528	T5-H	50F
536	G4-U216	2	634	335	596.6	M335L	M335R	H634T	H634B	BP-216	G4-GC216	619	298	T5-H	06F
537	G4-U217	3	634	2250	2227.5	M2250L	M2250R	H634T	H634B	BP-217	G4-GC217	619	2213	T5-H	06F
538	G4-U217	3	634	2250	2227.5	M2250L	M2250R	H634T	H634B	BP-217	G4-GC217	619	2213	T5-H	07F
539	G4-U217	45	634	2250	2227.5	M2250L	M2250R	H634T	H634B	BP-217	G4-GC217	619	2213	T5-H	09-26F
540	G4-U217	3	634	2250	2227.5	M2250L	M2250R	H634T	H634B	BP-217	G4-GC217	619	2213	T5-H	28F
541	G4-U217	57	634	2250	2227.5	M2250L	M2250R	H634T	H634B	BP-217	G4-GC217	619	2213	T5-H	29-49F
542	G4-U217	3	634	2250	2227.5	M2250L	M2250R	H634T	H634B	BP-217	G4-GC217	619	2213	T5-H	50F
543	G4-U218	3	634	900	975.7	M900L	M900R	H634T	H634B	BP-218	G4-GC218	619	863	T5-H	06F
544	G4-U218	45	634	900	975.7	M900L	M900R	H634T	H634B	BP-218	G4-GC218	619	863	T5-H	09-26F
545	G4-U218	3	634	900	975.7	M900L	M900R	H634T	H634B	BP-218	G4-GC218	619	863	T5-H	27F
546	G4-U218	3	634	900	975.7	M900L	M900R	H634T	H634B	BP-218	G4-GC218	619	863	T5-H	28F
547	G4-U218	57	634	900	975.7	M900L	M900R	H634T	H634B	BP-218	G4-GC218	619	863	T5-H	29-49F
548	G4-U219	3	634	650	780.7	M650L	M650R	H634T	H634B	BP-219	G4-GC219	619	613	T5-H	27F
549	G4-U220	3	634	1115	1160.4	M1115L	M1115R	H634T	H634B	BP-220	G4-GC220	619	1078	T5-H	27F
550	G4-U221	3	634	485	672.3	M485L	M485R	H634T	H634B	BP-221	G4-GC221	619	448	T5-H	27F
551	G4-U222	3	634	565	722.2	M565L	M565R	H634T	H634B	BP-222	G4-GC222	619	528	T5-H	50F
552	G4-U223	3	816.8	335	767	M335L	M335R	H816T	H816B	BP-223	G4-GC223	801.8	298	T5-A	06F
553	G4-U224	1	865	715	995.6	M715L	M715R	H865T	H865B	BP-224	G4-GC224	850	678	T1-E	50F
554	G4-U225	1	292.5	335	317.9	M335AL	M335AR	H292T	H292B	BP-225	G4-GC225	277.5	298	T2-J	06F
555	G4-U227	1	412.5	900	871.8	M900L	M900R	H412T	H412B	BP-227	G4-GC227	397.5	863	T2-J	06F
556	G4-U227	15	412.5	900	871.8	M900L	M900R	H412T	H412B	BP-227	G4-GC227	397.5	863	T2-J	08-26F
557	G4-U227	1	412.5	900	871.8	M900L	M900R	H412T	H412B	BP-227	G4-GC227	397.5	863	T2-J	27F
558	G4-U227	1	412.5	900	871.8	M900L	M900R	H412T	H412B	BP-227	G4-GC227	397.5	863	T2-J	28F
559	G4-U227	23	412.5	900	871.8	M900L	M900R	H412T	H412B	BP-227	G4-GC227	397.5	863	T2-J	29-53F
560	G4-U228	1	412.5	2250	2183.9	M2250L	M2250R	H412T	H412B	BP-228	G4-GC228	397.5	2213	T2-J	07F
561	G4-U228	15	412.5	2250	2183.9	M2250L	M2250R	H412T	H412B	BP-228	G4-GC228	397.5	2213	T2-J	08-26F
562	G4-U228	1	412.5	2250	2183.9	M2250L	M2250R	H412T	H412B	BP-228	G4-GC228	397.5	2213	T2-J	28F
563	G4-U228	23	412.5	2250	2183.9	M2250L	M2250R	H412T	H412B	BP-228	G4-GC228	397.5	2213	T2-J	29-53F
564	G4-U228	1	412.5	2250	2183.9	M2250L	M2250R	H412T	H412B	BP-228	G4-GC228	397.5	2213	T2-J	55F
565	G4-U229	1	412.5	1115	1074.5	M1115L	M1115R	H412T	H412B	BP-229	G4-GC229	397.5	1078	T2-J	27F
566	G4-U230	1	412.5	485	509.9	M485L	M485R	H412T	H412B	BP-230	G4-GC230	397.5	448	T2-J	27F
567	G4-U231	1	412.5	715	703.3	M715L	M715R	H412T	H412B	BP-231	G4-GC231	397.5	678	T2-J	55F

名称	小单元组装图(数据表)	制图	JH	2019.4.22	修改	A	B	C
材料	见组装编号	复核	DL	2019.4.23	日期	2019.6.10	2019.7.23	2019.10.2
颜色		批准	Jason		图号	G4-U001 (12 of 12)		

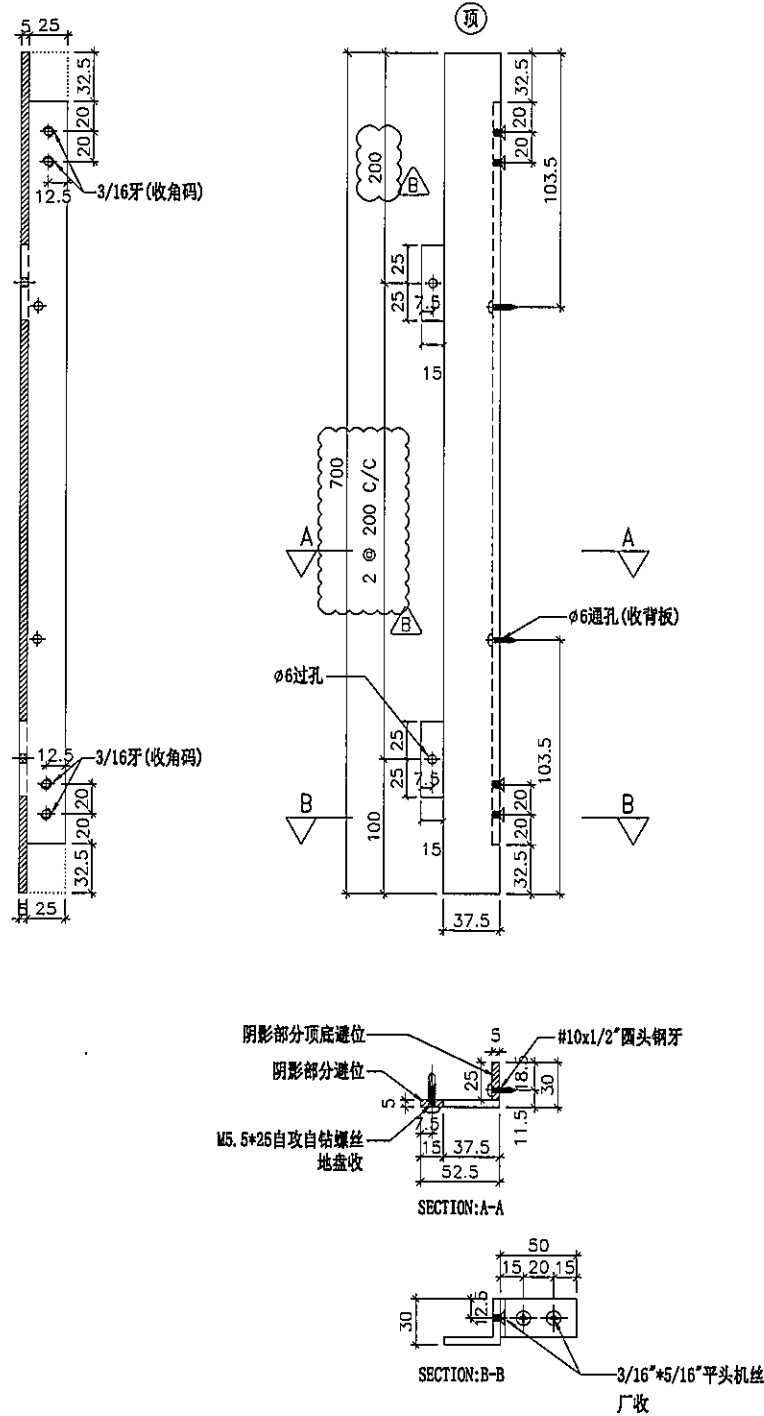


美特铝质有限公司
MIDI Aluminium Fabricator Ltd.

图纸空间有限, 尺寸数量见附页

工程号 J-837 地盘 观塘裕民坊

依据EI1110修改



名称	左企拆图	制图	JH	2019.3.21	修改	A	B	
材料	X85607	复核	DL	2019.3.21	日期	2019.7.23	2019.10.21	
颜色	EC-DG-S332054 (3涂)	批准	Jason		图号	M715L (1 of 2)		

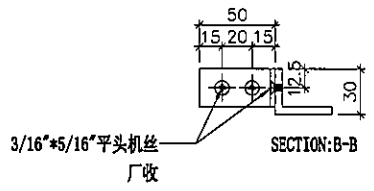
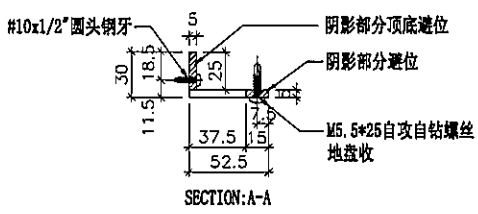
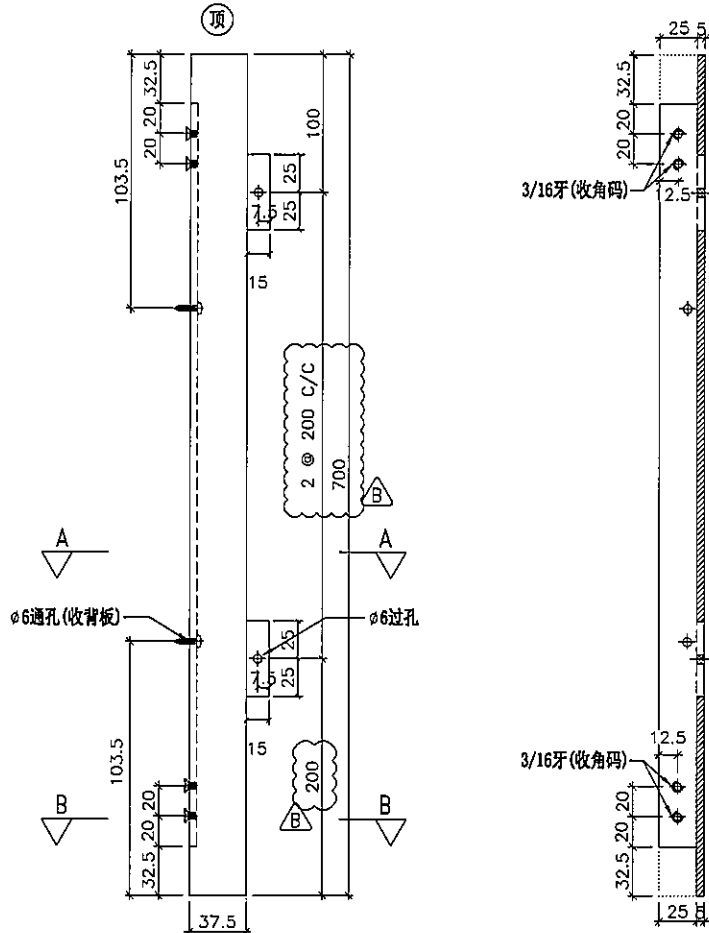


美特铝质有限公司
MIDI Aluminium Fabricator Ltd.

图纸空间有限, 尺寸数量见附页

工程号 J-837 地盘 观塘裕民坊

依据EI1110修改



名称	右企拆图	制图	JH	2019.3.21	修改	A	B	
材料	X85607	复核	DL	2019.3.21	日期	2019.7.23	2019.10.21	
颜色	EC-DG-S332054 (3涂)	批准	Jason		图号	M715R (1 of 2)		

