



工程指示 / 要求簡箋(E.I.)

工程指示編號：EI/0302/1819 修改版次：-
 工程編號：J-837 工程名稱：觀塘裕民坊
 工程項目：幕牆 隔音吊趟及隔音窗(樣板層, 8/F)
 收件人：Maggie 發件人：Eric Liu 日期：12/03/2019

要求提供 / 確認 事項：

- | | | |
|------------------------------------|-------------------------------------|-------------------------------|
| <input type="checkbox"/> 初步鋁料 B.M. | <input type="checkbox"/> 加工拆圖，然後生產 | <input type="checkbox"/> 尺寸表 |
| <input type="checkbox"/> 正式鋁料 B.M. | <input type="checkbox"/> 技術上資料 / 指示 | <input type="checkbox"/> 報價 |
| <input type="checkbox"/> 配件 B.M. | <input type="checkbox"/> 樣辦或貨品說明書 | <input type="checkbox"/> 分判合約 |
| <input type="checkbox"/> 其他：_____ | | |

EI 1000 P. 25-4038

內容：

請按報價訂購隔音吊趟及隔音窗送 廠 (樣板層, 8/F)

隔音吊趟及隔音窗已包括: (1) 隔音膠板

(2) 鋁料(吊趟框連玉, 窗框連玉) 戶咭邊

(3) INFILL 物料(鋁料內藏棉)

(4) 吊趟用配件(吊趟轆)

謝謝!

生統：請留意以上物料收貨，在廠組裝後送地盤

請在 2019/03/22 前完成上列要求。

附：1 頁報價 + 14 頁 tender 資料

以上項目為：

- 原合約工程包 原合約工程加 / 減賬 新工程報價

原因：-

分發東莞各部門：

- () 生產技術總監 連附件 () 技術部 連附件 () 生產部 連附件 () 機械設計部 連附件
 () 採購部 連附件 () 生產統籌部 連附件
 () 質檢部 連附件 () 會計部 連附件 () 報關組 連附件 () 其他 楊榮輝 連附件

分發其他分判：

- () 王禮秋 連附件

分發香港各部門：

- () 行政部 連附件 () 會計部 連附件 () 統籌部 連附件 () 工程部地盤科文 連附件
 () 採購部 連附件 () QS 部 連附件 () 維修部 連附件 () 其他 _____ 連附件

傳遞編號：

HK/0604/19

發件人簽署：

項目經理簽署：

2018.10.29
email from WT

TOWER	FLOORS	FLAT	LOCATION	VERTICAL FIN	SOUND ABSORPTION MATERIAL
T1	6F to 50F	B	UP	1.8M LONG VERTICAL FIN	/
T1	6F to 50F	A	UP	1.8M LONG VERTICAL FIN	/
T1	6F to 50F	E	UP	1.0M LONG VERTICAL FIN	/
T1	6F to 50F	G	UP	1.5M LONG VERTICAL FIN	/
T1	6F to 50F	H	UP	1.5M LONG VERTICAL FIN	/
T2	6F to 55F	A	UP	1.8M LONG VERTICAL FIN	/
T2	6F to 55F	B	UP	1.8M LONG VERTICAL FIN	/
T2	6F to 55F	M	UP	1.5M LONG VERTICAL FIN	/
T3	6F to 52F	A	UP	1.5M LONG VERTICAL FIN	/
T3	6F to 52F	B	UP	1.5M LONG VERTICAL FIN	/
T3	6F to 52F	F	UP	1.5M LONG VERTICAL FIN	/
T5	6F to 50F	A	BAL	1.5M LONG VERTICAL FIN	INNER SIDE OF WALL
T5	51F	A	MBATH 2	1.5M LONG VERTICAL FIN	BOTH SIDES OF WALL
T5	6F to 50F	A	UP	1.5M LONG VERTICAL FIN	/
T5	51F	A	UP	1.5M LONG VERTICAL FIN	/
T5	6F to 21F	B	BAL	1.5M LONG VERTICAL FIN	INNER SIDE OF WALL
T5	22F to 50F	C	UP	1.5M LONG VERTICAL FIN	INNER SIDE OF WALL
T5	6F to 50F	L	UP	1.8M LONG VERTICAL FIN	/
T5	6F to 50F	M	UP	1.8M LONG VERTICAL FIN	/

1. VERTICAL ACOUSTIC FIN

TOWER	FLOORS	FLAT	LOCATION	MPA AT INNER SIDE OF WINDOW
T1	6F to 49F	F	BR1	YES
T1	6F to 49F	F	MBR	YES
T3	7F to 31F	M	BR1	
T3	6F to 37F	E	BR1	
T3	6F to 39F	E	BR2	
T3	6F to 40F	F	BR2	
T3	6F to 39F	F	BR1	
T5	6F to 28F	A	BR2	
T5	7F to 28F	A	BR1	
T5	6F to 50F	L	BR2	
T5	6F to 50F	L	BR1	
T5	6F to 50F	M	BR1	
T5	6F to 50F	M	BR2	
T5	6F to 50F	N	BR2	YES
T5	6F to 50F	N	BR1	YES

(已取消) 2B 室内天花
2A 室内天花
2. ACOUSTIC WINDOW
坐位仔
(T(A)32(105))



1.5mm
吸声板
在坐位

TOWER	FLOORS	FLAT
T3	7F to 31F	M
T3	6F to 40F	E
T3	6F to 40F	F
T5	8F to 26F	A

3. ACOUSTIC BALCONY

T(A)32(105b)

TOWER	FLOORS	FLAT	MPA ON INNER SIDE OF SWING DOOR
T1	6F to 49F	F	
T5	6F to 50F	J	YES
T5	6F to 50F	K	
T5	6F to 50F	L	
T5	6F to 50F	M	
T5	6F to 50F	N	

4. ENHANCED ACOUSTIC BALCONY
4A 室内天花坐位

4B F.D.P. 加 1.5mm 吸声板
4C 室内天花 Infill x

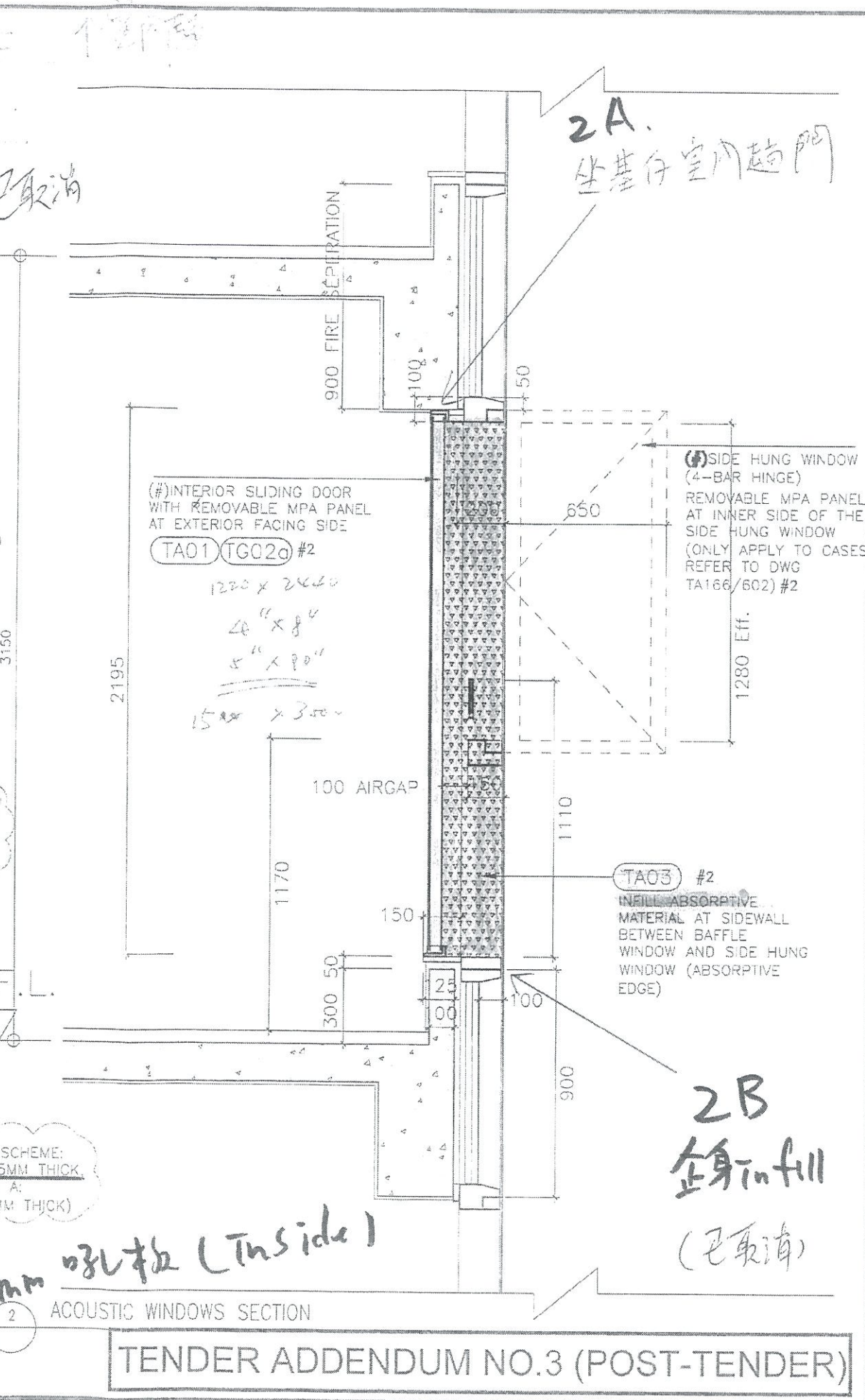
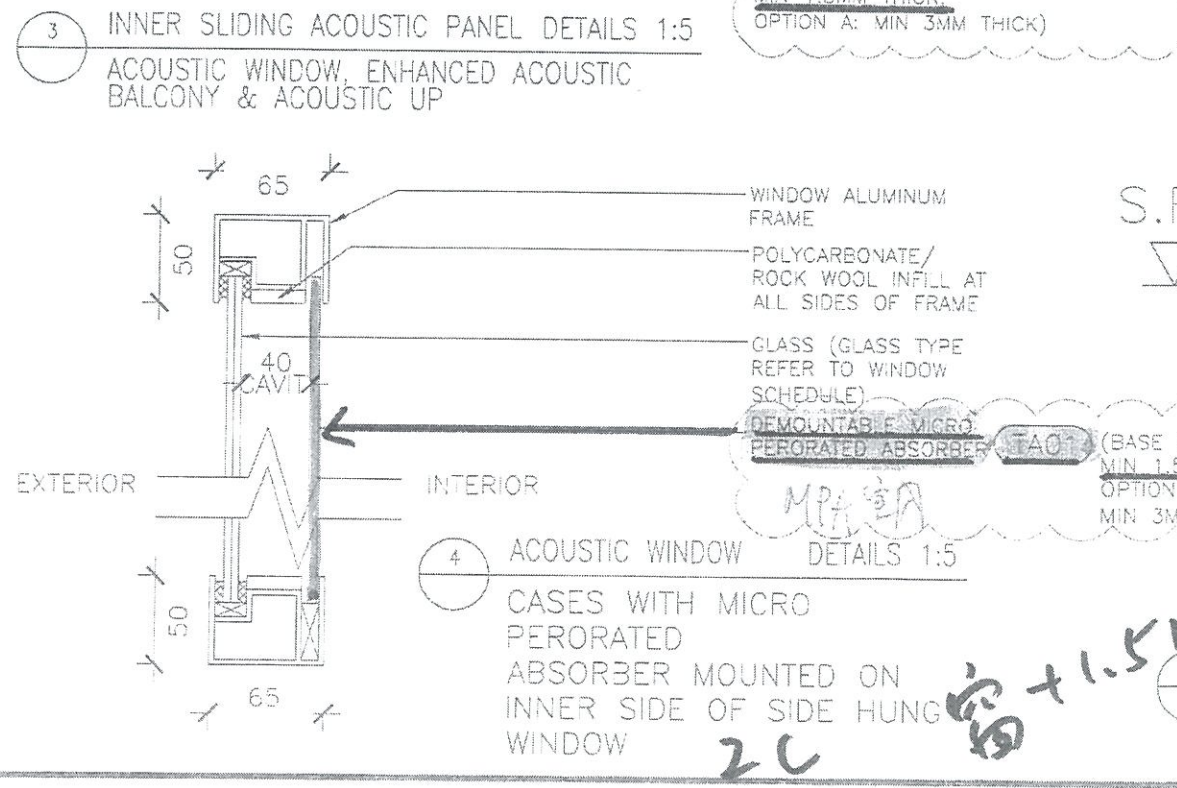
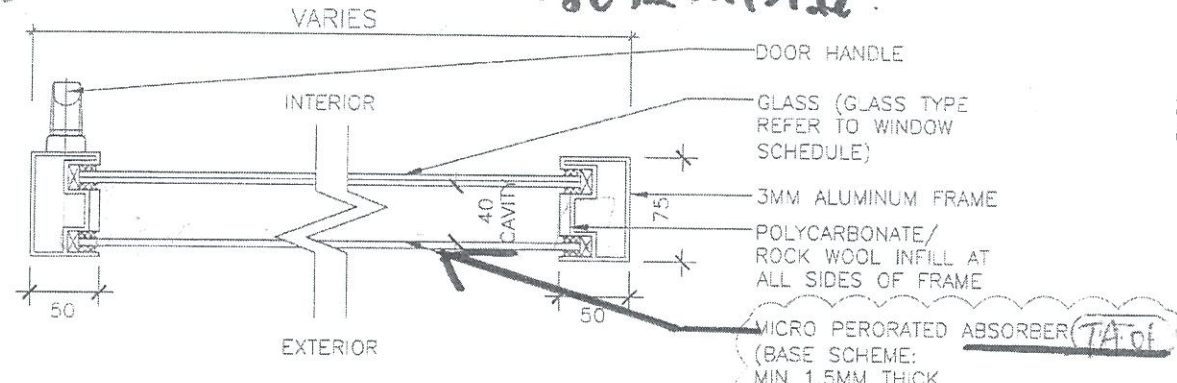
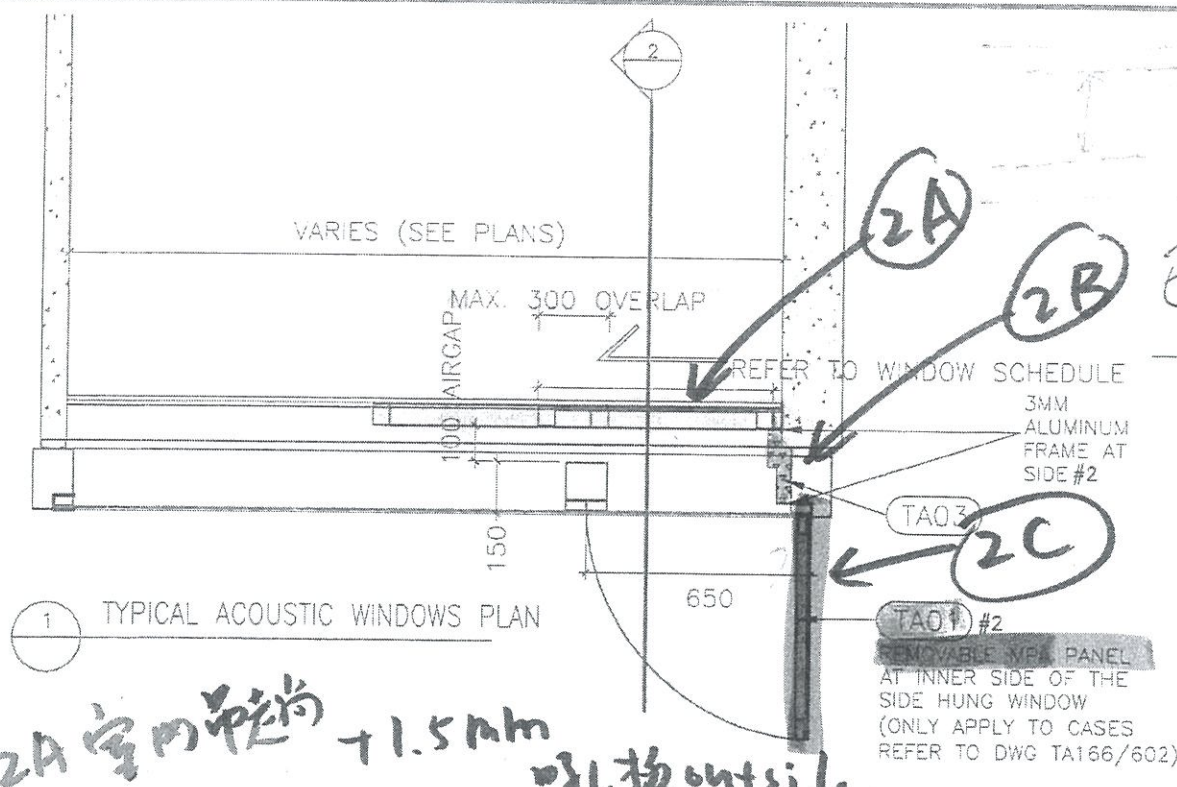
TOWER	FLOORS	FLAT	WITH ABSORPTIVE EDGE BETWEEN INNER SLIDING PANEL AND SWING DOOR
T3	6F to 36F	E	
T3	6F to 28F	F	
T3	7F to 30F	M	
T5	6F to 21F	A	
T5	10F to 21F	B	
T5	6F to 50F	J	
T5	6F to 50F	K	
T5	6F to 50F	L	
T5	6F to 50F	M	YES
T5	6F to 50F	N	YES

5. ACOUSTIC UP
5A 室内天花坐位

已取消

T(A)32(105c)

5B F.D.P. 加 1.5mm 吸声板
5C 室内天花 Infill



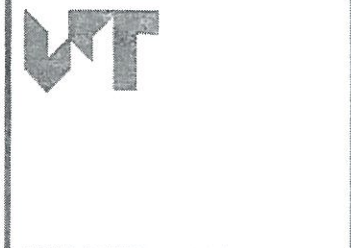
NOTES
DO NOT SCALE DRAWING. FIGURED DIMENSIONS ARE TO BE FOLLOWED.
READ THIS DRAWING IN CONNECTION WITH GENERAL ARCHITECTURAL PLANS, STRUCTURAL PLANS, AND OTHER RELATED DRAWINGS. THE ARCHITECT SHALL BE NOTIFIED IMMEDIATELY OF ANY DISCREPANCY FOUND THEREIN.
COPYRIGHT OF THIS DRAWING RESERVED BY ARCHITECT.

- GENERAL NOTES:
1. THE EXACT LOCATION AND TYPE OF ACOUSTIC WINDOW/BALCONY/UP SHOULD REFER TO DWG T/A166/602.
 2. THE OVERLAPPING LENGTH OF INNER SLIDING DOOR SHALL SUBJECT TO LAB TEST RESULT.
 3. THE SIZE OF GLAZING MATERIALS SHALL REFER TO WINDOW SCHEDULE.
 4. EFFECTIVE OPENING SHALL COMPLY WITH BD STATUTORY REQUIREMENT OF LIGHTING AND VENTILATION.
 5. SHOP DRAWING SHALL BE SUBMITTED FOR ARCHITECT'S APPROVAL.
 6. UNLESS OTHERWISE SPECIFIED, DETAILS SHALL REFER TO TYPICAL WINDOW/BALCONY/UP DWG.

- NOTE:
- #1 BY AL CLADDING/BALUSTRADE/CEILING NSC
 - #2 BY CURTAIN WALL(TOWER) NSC
 - #3 BY MAIN CONTRACTOR
 - #4 BY ELE. NSC

Tender Drawings

NO.	DATE	REVISIONS	DRAWN	CHECKED	APPROVED	BY



WONG TUNG & PARTNERS LIMITED
ARCHITECTS & PLANNERS
18th Floor, Cityplaza 3, Taikoo Shing, Hong Kong
T 852-2803 9253 F 852-2513 1728 www.wongtung.com

PROJECT:
URA KWUN TONG TOWN CENTRE REDEVELOPMENT (AREA 2 & 3) AT NKIL 6514, KWUN TONG, KOWLOON

TITLE:
TOWER EXTERNAL TYPICAL WALL SECTION 5 (ACOUSTIC WINDOW)

DATE: 11/2017	SCALE: 1:20
DRAWN: (APC)	DESIGNED: (CC)
CHECKED: (CC)	APPROVED: (CC)
JOB NO: 31690	DRAWING NO: T/A132/105
REV. NO: (12)	

TENDER ADDENDUM NO.3 (POST-TENDER)

NOTES
DO NOT SCALE DRAWING, FIGURED DIMENSIONS ARE TO BE FOLLOWED.
READ THIS DRAWING IN CONNECTION WITH GENERAL ARCHITECTURAL PLANS, STRUCTURAL PLANS, AND OTHER RELATED DRAWINGS, THE ARCHITECT SHALL BE NOTIFIED IMMEDIATELY OF ANY DISCREPANCY FOUND THEREIN.
COPYRIGHT OF THIS DRAWING RESERVED BY ARCHITECT.

NOTE:
#1 BY AL CLADDING/
BALUSTRADE/ CEILING
NSC
#2 BY CURTAIN
WALL(TOWER) NSC
#3 BY MAIN
CONTRACTOR
#4 BY ELE. NSC

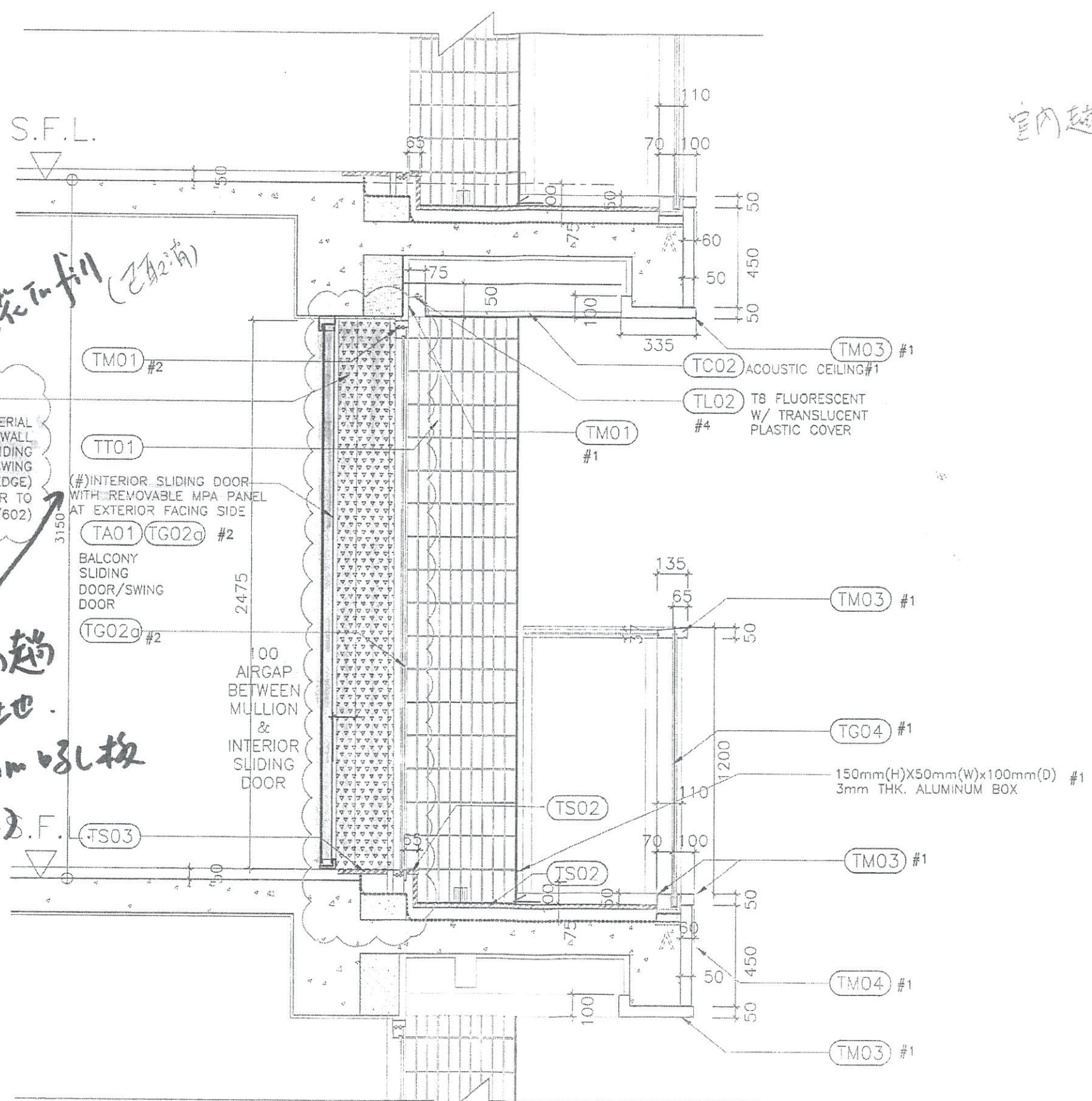
室內趨門

4C 鋼架天花吊架 (已取消)

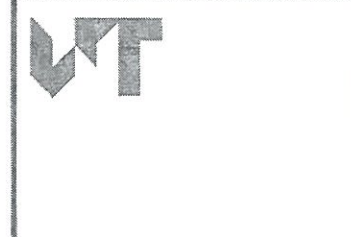
TA03 #2
INFILL ABSORPTIVE MATERIAL
AT TOP AND SIDEWALL
BETWEEN INNER SLIDING
PANAL AND BALCONY SWING
DOOR (ABSORPTIVE EDGE)
(ONLY FOR CASES REFER TO
DWG TA166/602)

4A 室內趨
生土

+1.5mm 穿孔板
(outside) .F.



NO.	DATE	REVISIONS	DESIGNED	CHECKED	REVISION



WONG TUNG & PARTNERS LIMITED
ARCHITECTS & PLANNERS
18th Floor, Cityplaza 3, Taikoo Shing, Hong Kong
T 852-2803 8238 F 852-2513 1728 www.wongtung.com

PROJECT:
URA KWUN TONG TOWN
CENTRE REDEVELOPMENT
(AREA 2 & 3) AT
NKIL 6514,
KWUN TONG, KOWLOON

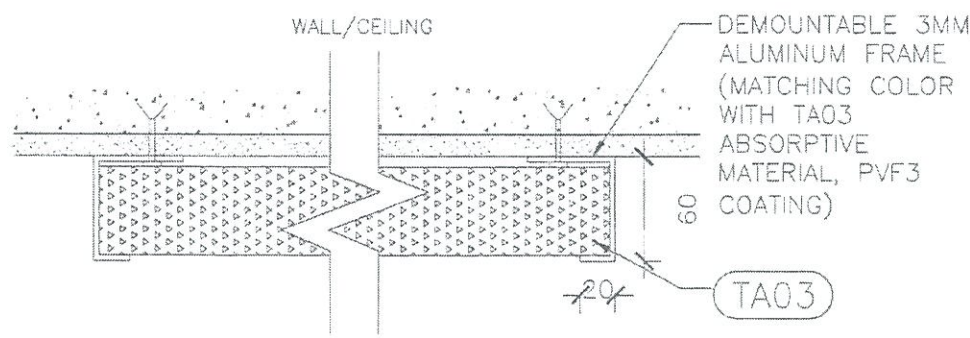
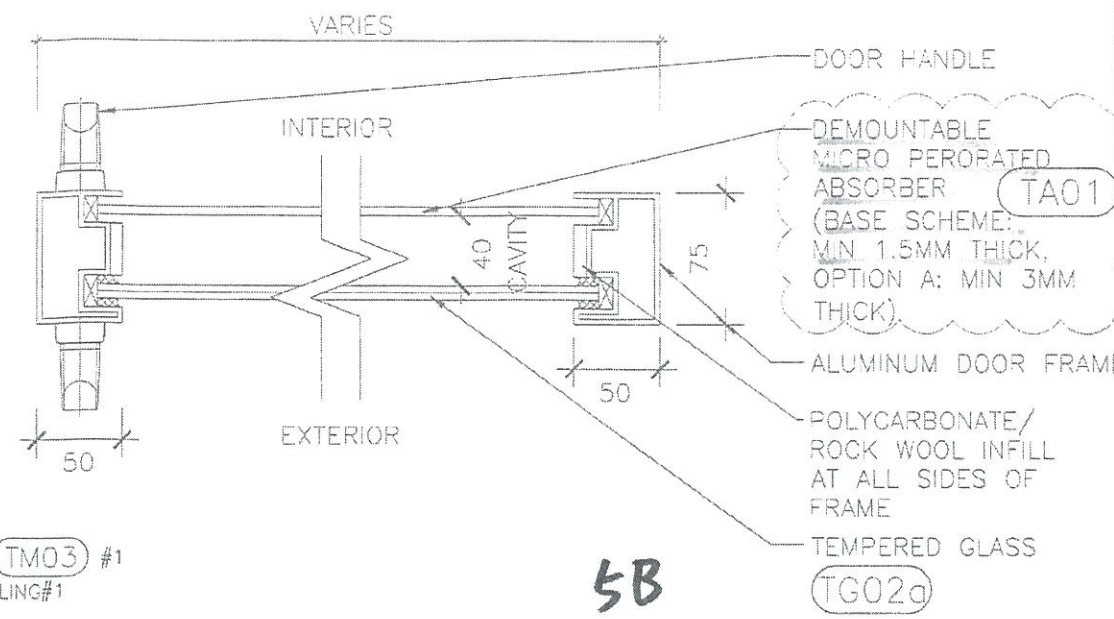
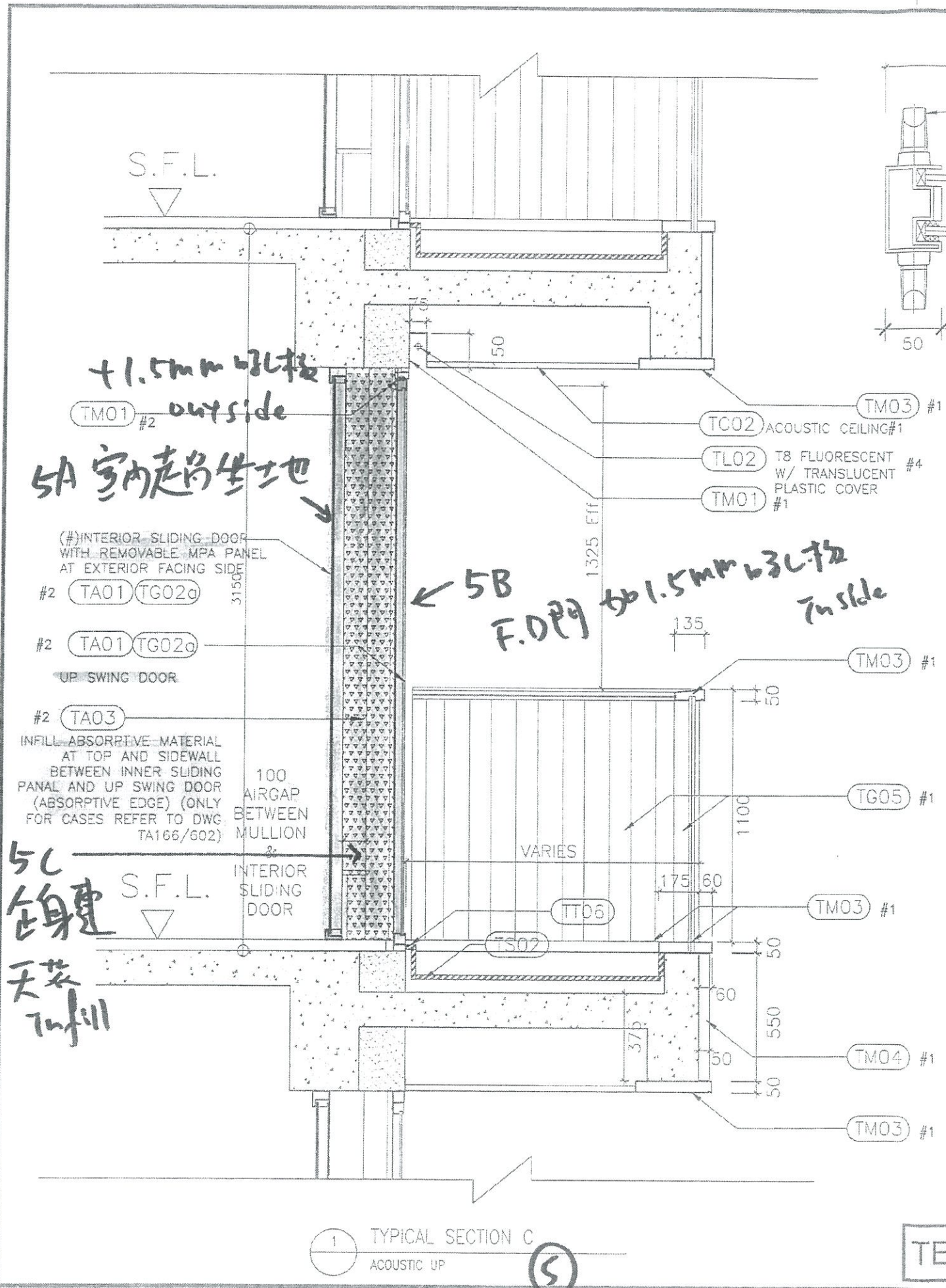
TITLE:
TOWER EXTERNAL WALL
SECTION 5B
(ENHANCED ACOUSTIC
BALCONY)



1 TYPICAL SECTION B
ENHANCED ACOUSTIC BALCONY

TENDER ADDENDUM NO.3
(POST-TENDER)

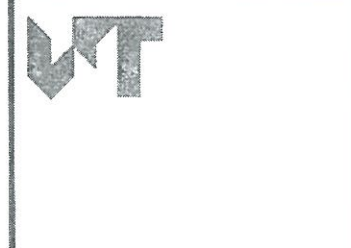
DATE	SCALE
11/2017	1:20
DRAFTED (EPC)	CHECKED (GL)
DESIGNED (EPC)	REVIEWED (GT)
JOB NO. 31690	DRAWING NO. T/A132/105b
REV. NO. (05)	



NOTES
DO NOT SCALE DRAWING, FIGURED DIMENSIONS ARE TO BE FOLLOWED.
READ THIS DRAWING IN CONNECTION WITH GENERAL ARCHITECTURAL PLANS, STRUCTURAL PLANS AND OTHER RELATED DRAWINGS. THE ARCHITECT SHALL BE NOTIFIED IMMEDIATELY OF ANY DISCREPANCY FOUND THEREIN.
COPYRIGHT OF THIS DRAWING RESERVED BY ARCHITECT.

- NOTE:
- #1 BY AL CLADDING/ BALUSTRADE/ CEILING NSC
 - #2 BY CURTAIN WALL (TOWER) NSC
 - #3 BY MAIN CONTRACTOR
 - #4 BY ELE. NSC

NO.	DATE	REVISIONS	BY	CHKD	DATE



WONG TUNG & PARTNERS LIMITED
ARCHITECTS & PLANNERS
18th Floor, Cityplaza 3, Taikoo Shing, Hong Kong
T 852-2503 9868 F 852-2513 1228 www.wongtung.com

PROJECT:
URA KWUN TONG TOWN CENTRE REDEVELOPMENT (AREA 2 & 3) AT NKIL 6514, KWUN TONG, KOWLOON

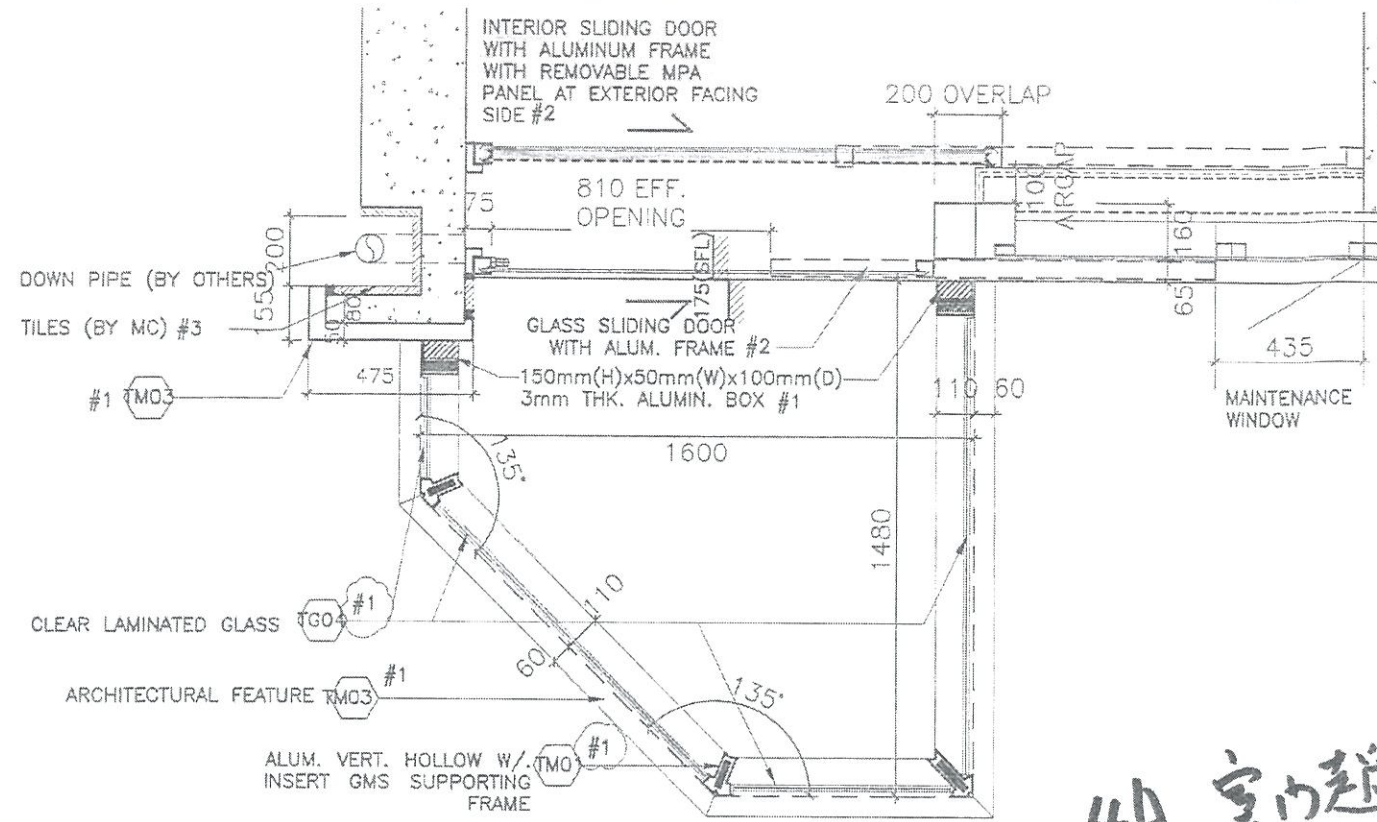
TITLE:
TOWER EXTERNAL TYPICAL WALL SECTION 5C (ACOUSTIC UP)



DATE: 11/2017	SCALE: 1:20
DRAWN: (MPC)	CHECKED: (ELC)
DESIGNED: (PIC)	REVIEWED: (OT)
JOB NO. 31690T/A132/105c	REV. NO. (07)

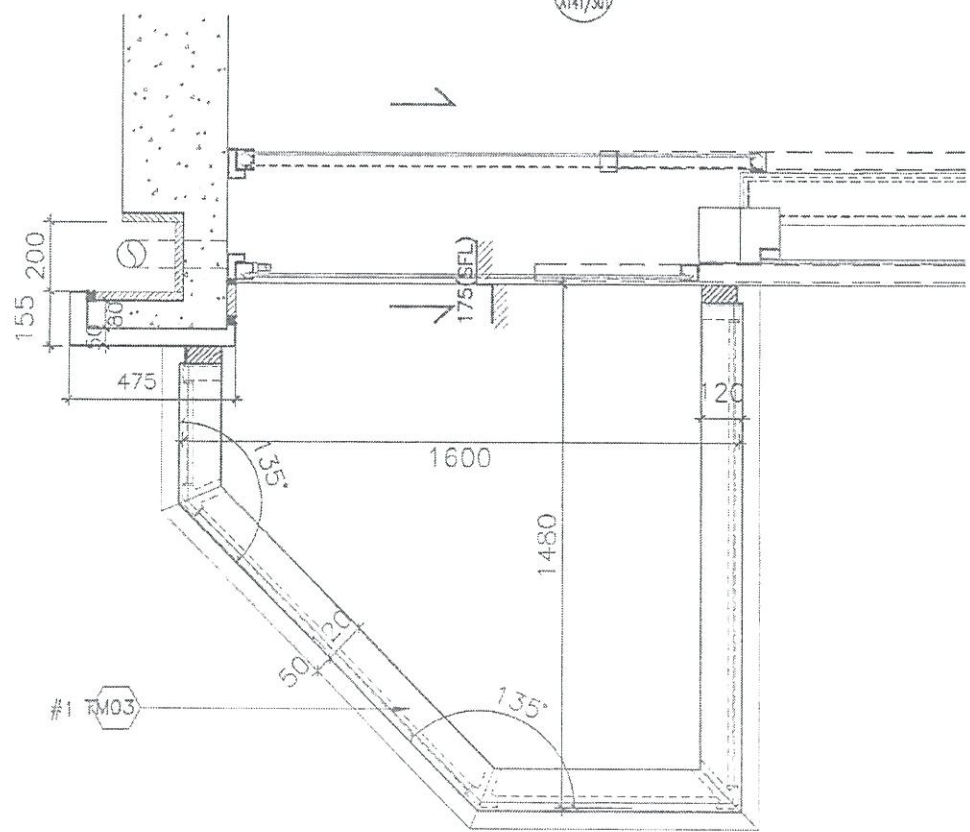
1 TYPICAL SECTION C
ACOUSTIC UP

TENDER ADDENDUM NO.3 (POST-TENDER)

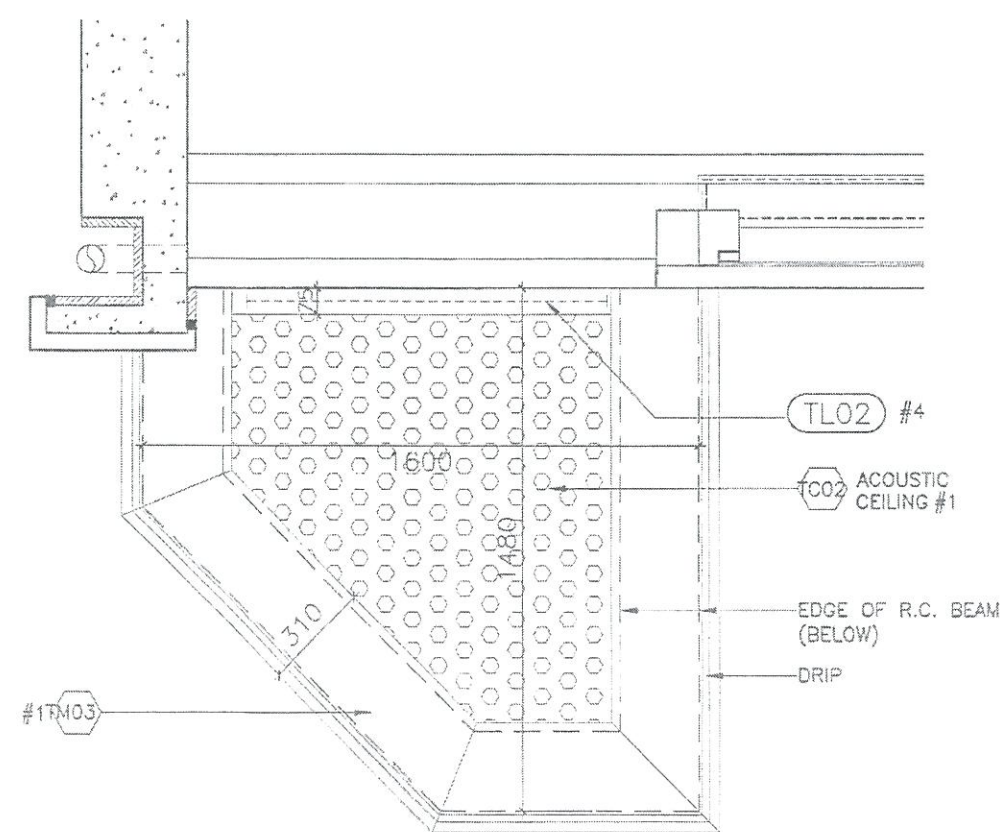


1 ENHANCED ACOUSTIC BALCONY PLAN
T5 UNIT K

4A 室內趨坐地 + 1.5mm 呔板 outside.



2 ENHANCED ACOUSTIC BALCONY TOP PLAN
T5 UNIT K



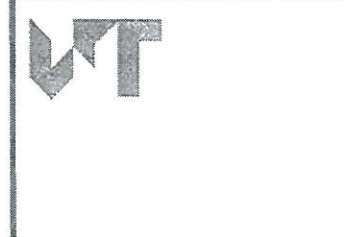
3 ENHANCED ACOUSTIC BALCONY REFLECTED CEILING PLAN
T5 UNIT K

NOTES
DO NOT SCALE DRAWING, FIGURED DIMENSIONS ARE TO BE FOLLOWED.
READ THIS DRAWING IN CONNECTION WITH GENERAL ARCHITECTURAL PLANS, STRUCTURAL PLANS, AND OTHER RELATED DRAWINGS, THE ARCHITECT SHALL BE NOTIFIED IMMEDIATELY OF ANY DISCREPANCY FOUND THEREIN.
COPYRIGHT OF THIS DRAWING RESERVED BY ARCHITECT.

- (NOTE:
- #1 BY AL CLADDING/ BALUSTRADE/ CEILING NSC
 - #2 BY CURTAIN WALL(TOWER) NSC
 - #3 BY MAIN CONTRACTOR
 - #4 BY ELE. NSC

- GENERAL NOTES:
1. THE EXACT LOCATION AND TYPE OF ACOUSTIC WINDOW/BALCONY/UP SHOULD REFER TO DWG T/A166/602.
 2. THE OVERLAPPING LENGTH OF INNER SLIDING DOOR SHALL SUBJECT TO LAB TEST RESULT.
 3. THE SIZE OF GLAZING MATERIALS SHALL REFER TO WINDOW SCHEDULE.
 4. EFFECTIVE OPENING SHALL COMPLY WITH BD STATUTORY REQUIREMENT OF LIGHTING AND VENTILATION.
 5. SHOP DRAWING SHALL BE SUBMITTED FOR ARCHITECT'S APPROVAL.
 6. UNLESS OTHERWISE SPECIFIED, DETAILS SHALL REFER TO TYPICAL WINDOW/BALCONY/UP DWG.

NO.	DATE	REVISIONS	BY	CHECKED	DESIGNED	REVIEWED



WONG TUNG & PARTNERS LIMITED
ARCHITECTS & PLANNERS
18th Floor, Cityplaza 3, Taikoo Shing, Hong Kong
T 852-2803 9888 F 852-2513 1728 www.wongtung.com

PROJECT:
URA KWUN TONG TOWN CENTRE REDEVELOPMENT (AREA 2 & 3) AT NKIL 6514, KWUN TONG, KOWLOON

TITLE:
TYPICAL ENHANCED ACOUSTIC BALCONY 2 DETAILS PART PLAN & ELEVATION

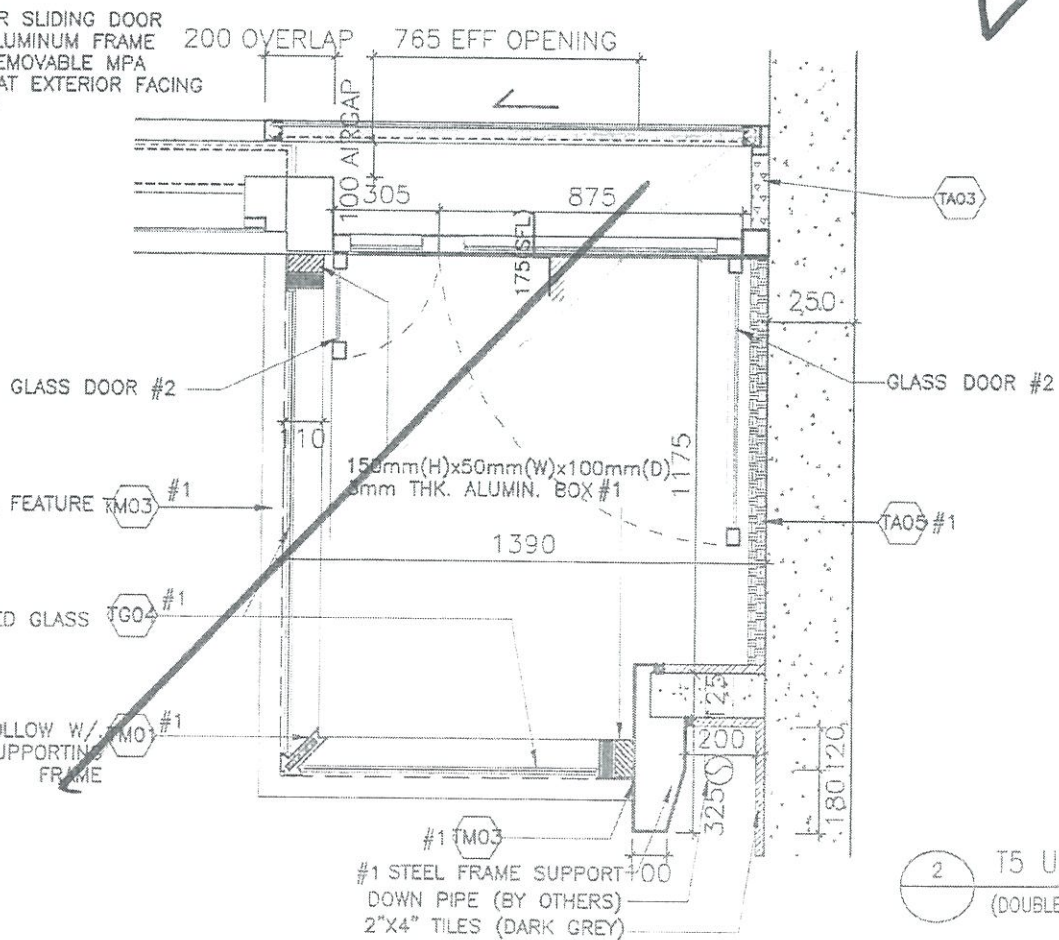
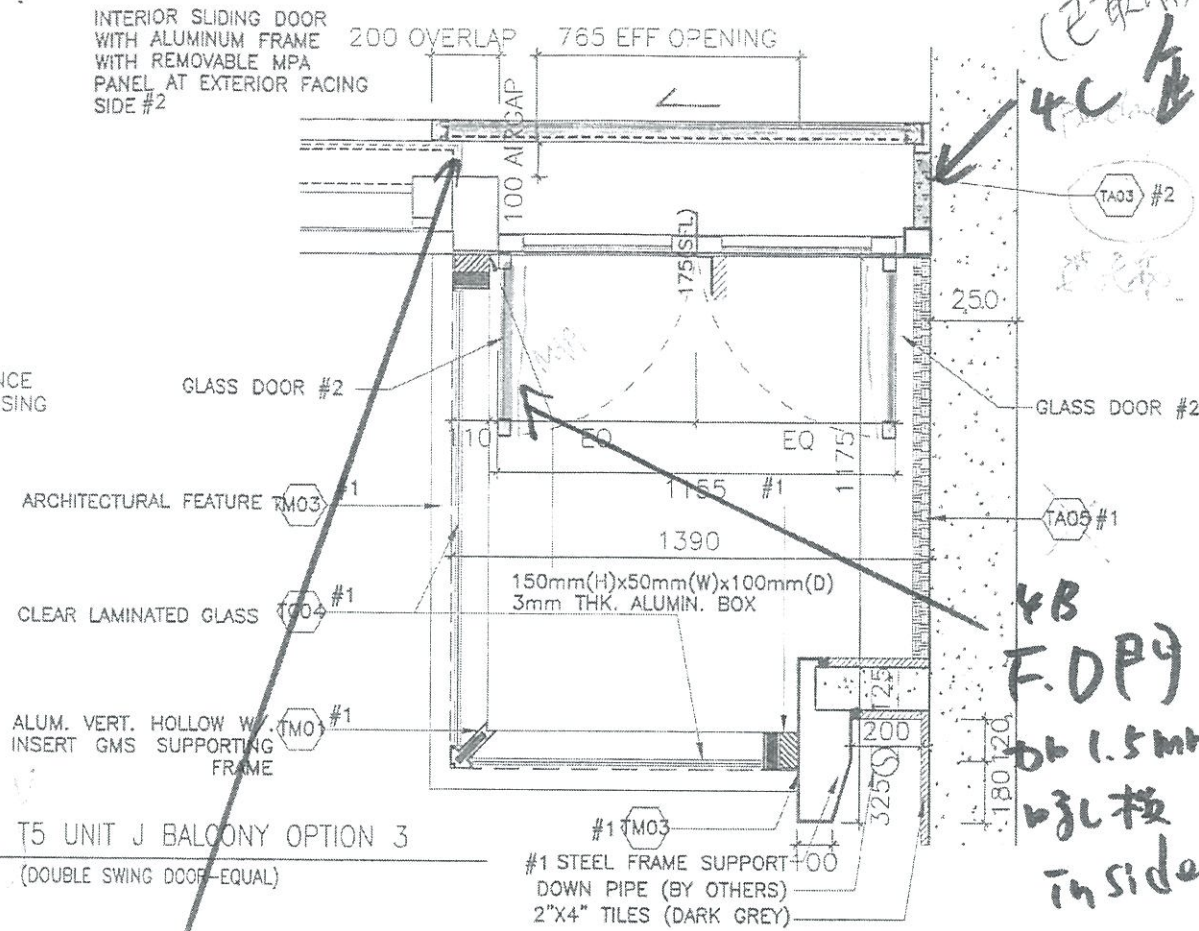
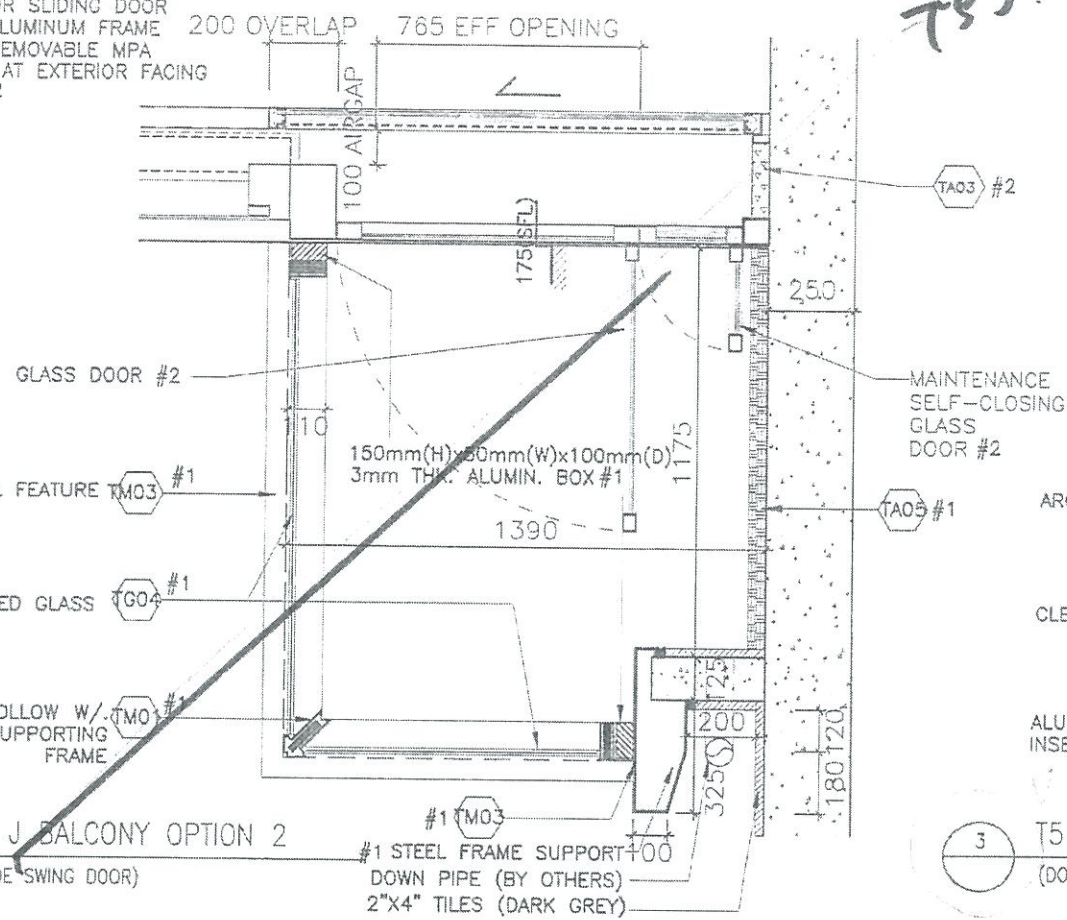
6

DATE: 11/2017	SCALE: 1:20
DRAWN: (HPC)	CHECKER: (CLO)
DESIGNED: (PNC)	REVIEWED: (OT)
JOB NO. 31690	DRAWING NO. T/A141/302
REV. NO. (01)	

INTERIOR SLIDING DOOR WITH ALUMINUM FRAME WITH REMOVABLE MPA PANEL AT EXTERIOR FACING SIDE #2

INTERIOR SLIDING DOOR WITH ALUMINUM FRAME WITH REMOVABLE MPA PANEL AT EXTERIOR FACING SIDE #2

INTERIOR SLIDING DOOR WITH ALUMINUM FRAME WITH REMOVABLE MPA PANEL AT EXTERIOR FACING SIDE #2



2 T5 UNIT J BALCONY OPTION 4 (DOUBLE SWING DOOR-UNEQUAL)

4A 室內起前坐地, 加1.5mm吸板 outside

室內起門

(已取消)
4C
4B
F.D.P.Y
db 1.5mm
吸板 inside

NOTES
DO NOT SCALE DRAWING FIGURED DIMENSIONS ARE TO BE FOLLOWED.
THIS DRAWING IN CONNECTION WITH GENERAL CONTRACT DOCUMENTS AND OTHER PLANS, SHALL BE NOTIFIED IMMEDIATELY OF ANY DISCREPANCY FOUND THEREIN.
COPYRIGHT OF THIS DRAWING RESERVED BY ARCHITECT.

NOTE:
#1 BY AL CLADDING/ BALUSTRADE/ CEILING NSC
#2 BY CURTAIN WALL(TOWER) NSC
#3 BY MAIN CONTRACTOR
#4 BY ELE. NSC

GENERAL NOTES:
1. THE EXACT LOCATION AND TYPE OF ACOUSTIC WINDOW/BALCONY/UP SHOULD REFER TO DWG T/A166/602.
2. THE OVERLAPPING LENGTH OF INNER SLIDING DOOR SHALL SUBJECT TO LAB TEST RESULT.
3. THE SIZE OF GLAZING MATERIALS SHALL REFER TO WINDOW SCHEDULE.
4. EFFECTIVE OPENING SHALL COMPLY WITH BD STATUTORY REQUIREMENT OF LIGHTING AND VENTILATION.
5. SHOP DRAWING SHALL BE SUBMITTED FOR ARCHITECT'S APPROVAL.
6. UNLESS OTHERWISE SPECIFIED, DETAILS SHALL REFER TO TYPICAL WINDOW/BALCONY/UP DWG.

NO.	DATE	REVISIONS	DRAWN	CHECKED	DESIGNED	REVIEWED



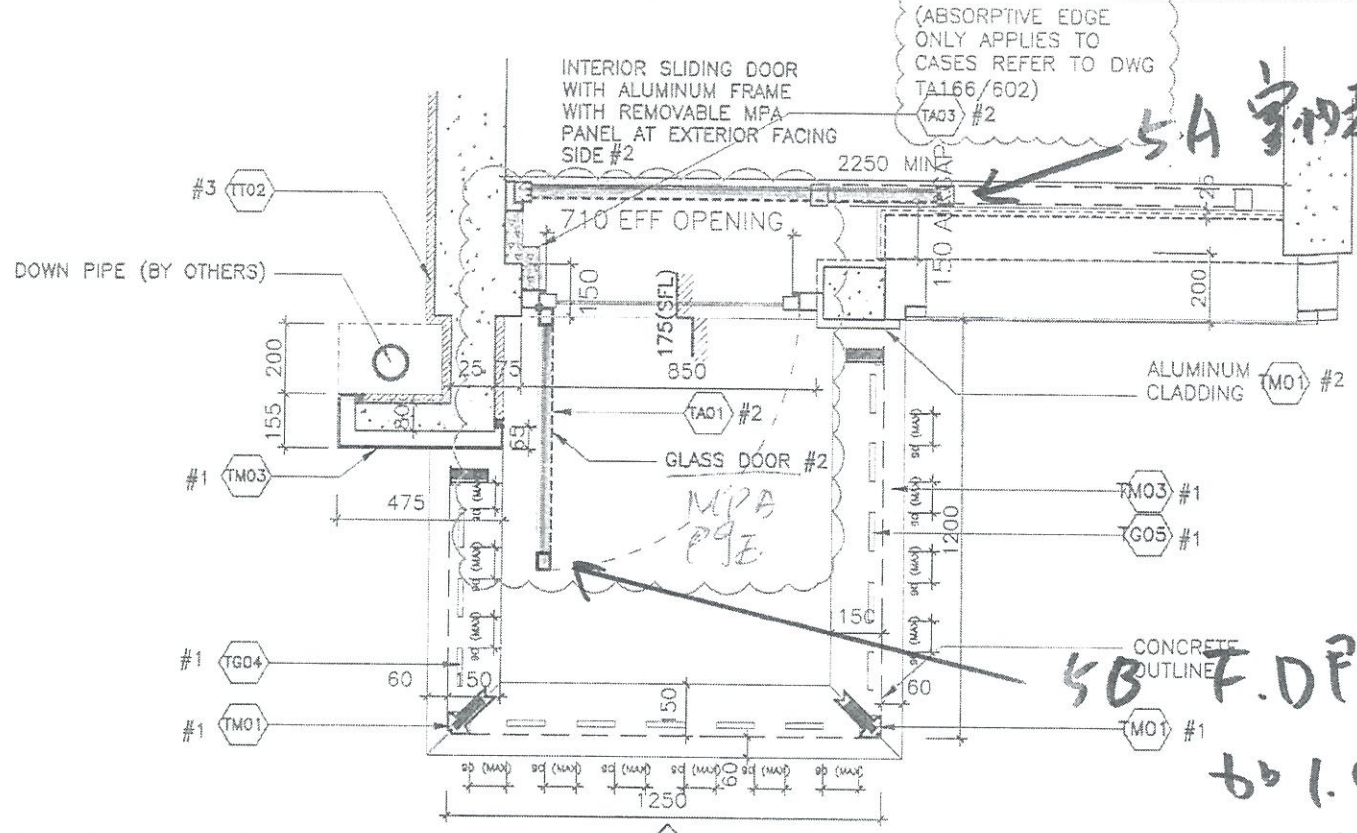
WONG TUNG & PARTNERS LIMITED
ARCHITECTS & PLANNERS
18th Floor, Cityplaza 3, Taikoo Shing, Hong Kong
T 852-2803 9859 F 852-2513 1728 www.wongtung.com

PROJECT:
URA KWUN TONG TOWN CENTRE REDEVELOPMENT (AREA 2 & 3) AT NKIL 6514, KWUN TONG, KOWLOON

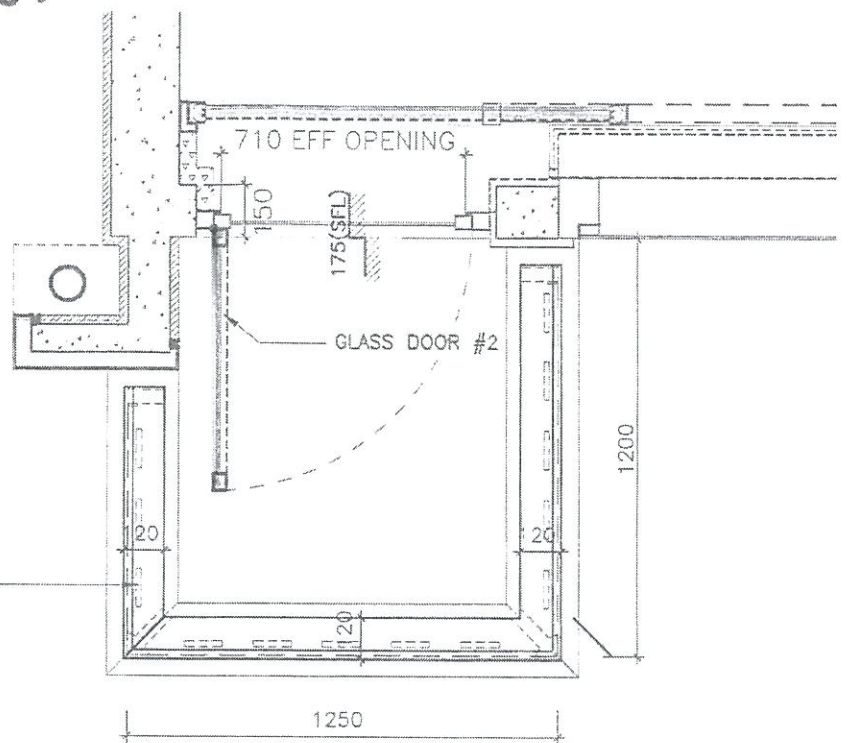
TITLE:
TYPICAL ENHANCED ACOUSTIC BALCONY 3 DETAILS PART PLAN OPTIONS

DATE: 11/2017	SCALE: 1:20
DRAWN: (HPC)	CHECKED: (CLD)
DESIGNED: (MVC)	REVIEWED: (OT)
JOB NO. 31690	DRAWING NO. T/A141/303A
REV. NO. (00)	

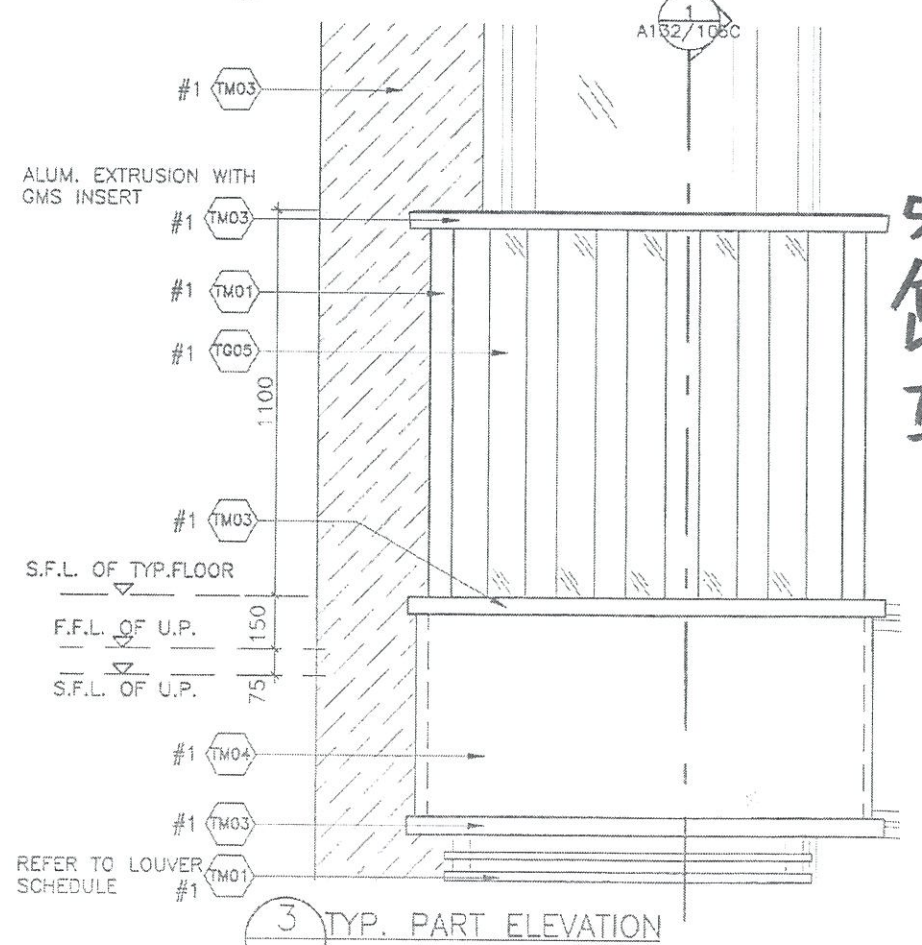
TENDER ADDENDUM NO.3 (POST-TENDER)



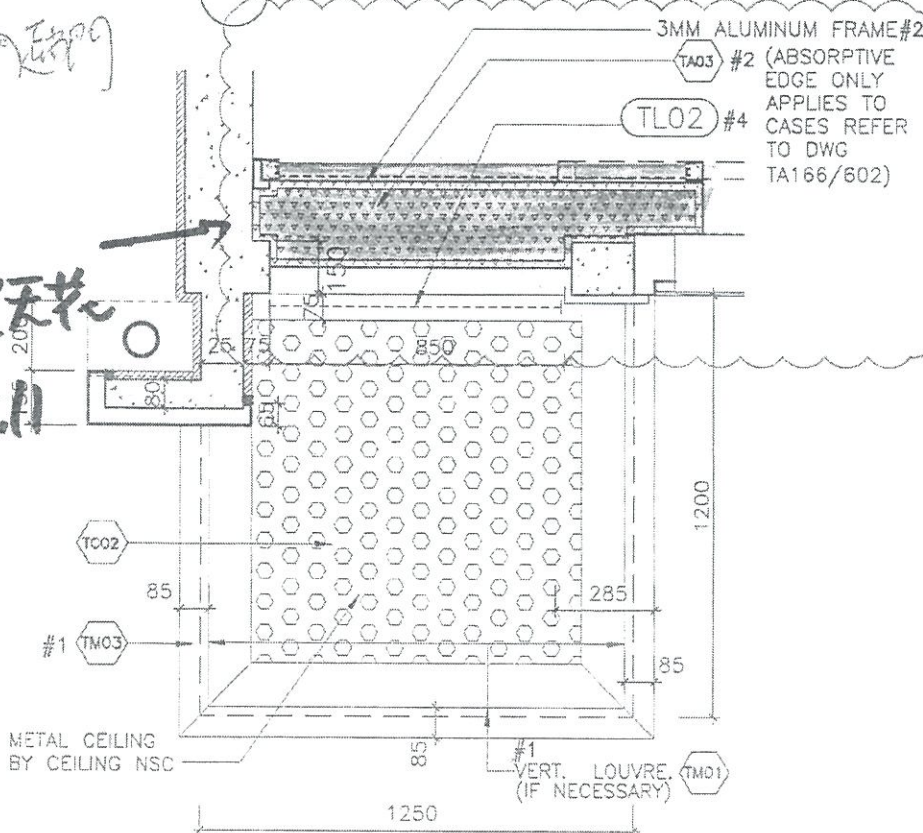
1 TYPICAL ACOUSTIC UP PLAN AT END UNIT



2 TOP PLAN AT END UNIT



3 TYP. PART ELEVATION



4 TYP. REFLECTED CEILING PART PLAN (WITH ACOUSTIC CEILING)

NOTES
DO NOT SCALE DRAWING. FIGURED DIMENSIONS ARE TO BE FOLLOWED.
READ THIS DRAWING IN CONNECTION WITH GENERAL ARCHITECTURAL PLANS, STRUCTURAL PLANS, AND OTHER RELATED DRAWINGS. THE ARCHITECT SHALL BE NOTIFIED IMMEDIATELY OF ANY DISCREPANCY FOUND THEREIN.
COPYRIGHT OF THIS DRAWING RESERVED BY ARCHITECT.

NOTE:
#1 BY AL CLADDING/
BALUSTRADE/ CEILING
NSC
#2 BY CURTAIN
WALL(TOWER) NSC
#3 BY MAIN
CONTRACTOR
#4 BY ELE. NSC

GENERAL NOTES:
1. THE EXACT LOCATION AND TYPE OF ACOUSTIC WINDOW/BALCONY/UP SHOULD REFER TO DWG T/A166/602.
2. THE OVERLAPPING LENGTH OF INNER SLIDING DOOR SHALL SUBJECT TO LAB TEST RESULT.
3. THE SIZE OF GLAZING MATERIALS SHALL REFER TO WINDOW SCHEDULE.
4. EFFECTIVE OPENING SHALL COMPLY WITH BD STATUTORY REQUIREMENT OF LIGHTING AND VENTILATION.
5. SHOP DRAWING SHALL BE SUBMITTED FOR ARCHITECT'S APPROVAL.
6. UNLESS OTHERWISE SPECIFIED, DETAILS SHALL REFER TO TYPICAL WINDOW/BALCONY/UP DWG.

NO.	DATE	REVISIONS	DRAWN	CHECKED	DESIGNED	REVIEWED



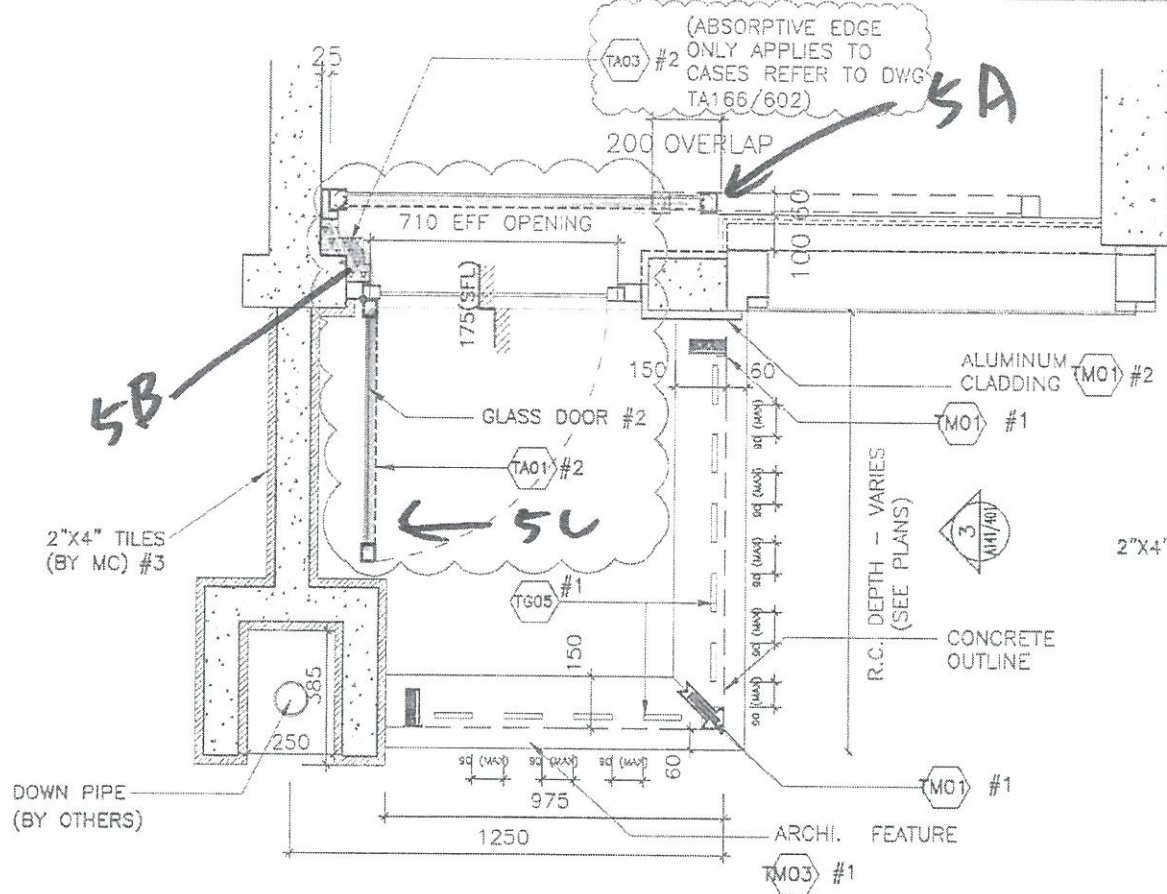
WONG TUNG & PARTNERS LIMITED
ARCHITECTS & PLANNERS
15th Floor, Cityplaza 3, Taikoo Shing, Hong Kong
T 852-2823 9998 F 852-2513 7228 www.wongtung.com

PROJECT:
URA KWUN TONG TOWN CENTRE REDEVELOPMENT (AREA 2 & 3) AT NKIL 6514, KWUN TONG, KOWLOON

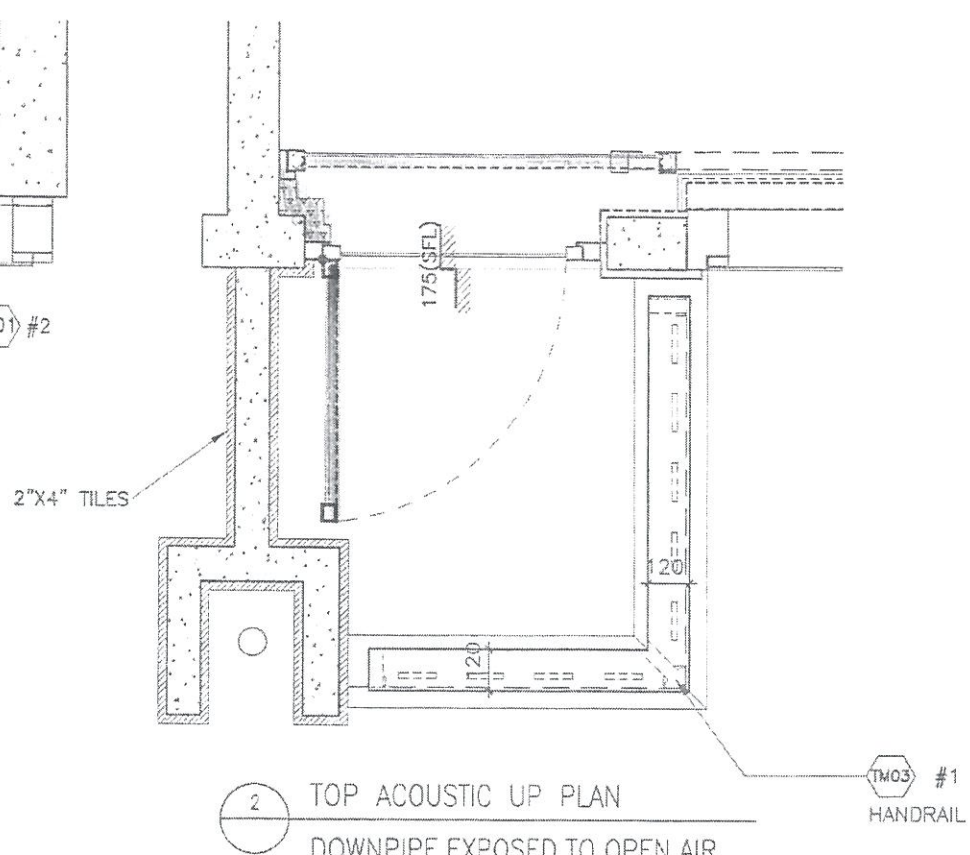
TITLE:
ACOUSTIC UP 1 DETAILS PART PLAN & ELEVATION

DATE: 11/2017	SCALE: 1:20
DRAWN: (HPD)	CHECKED: (CLD)
DESIGNED: (PYC)	REVIEWED: (OT)
JOB NO. 31690	DRAWING NO. T/A141/401
REV. NO. (04)	

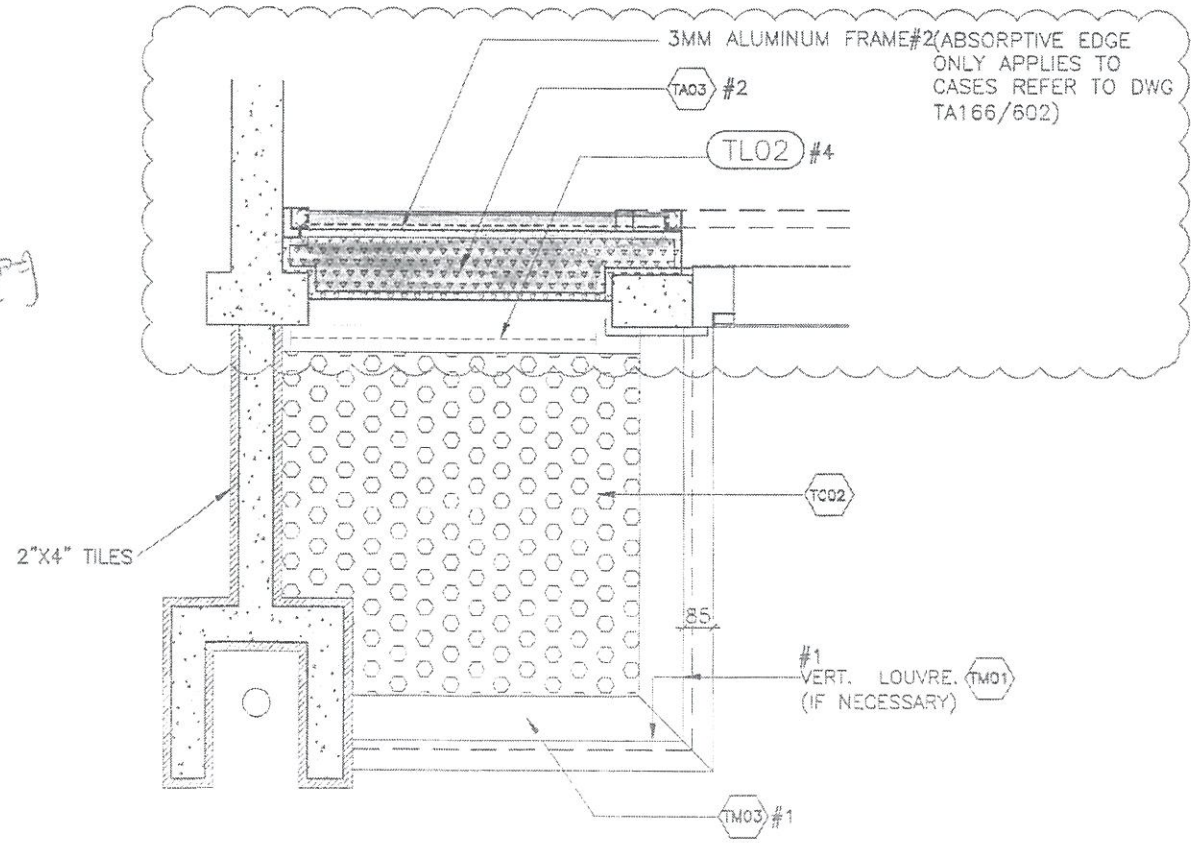
TENDER ADDENDUM NO.2



1 TYPICAL ACOUSTIC UP PLAN
DOWNPIPE EXPOSED TO OPEN AIR



2 TOP ACOUSTIC UP PLAN
DOWNPIPE EXPOSED TO OPEN AIR



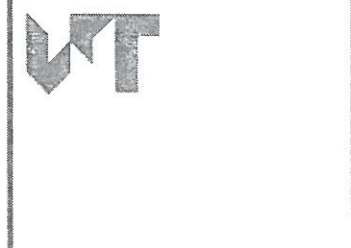
3 ACOUSTIC UP REFLECTED CEILING PLAN
DOWNPIPE EXPOSED TO OPEN AIR

NOTES
DO NOT SCALE DRAWING, FIGURED DIMENSIONS ARE TO BE FOLLOWED.
READ THIS DRAWING IN CONNECTION WITH GENERAL ARCHITECTURAL PLANS, STRUCTURAL PLANS, AND OTHER RELATED DRAWINGS, THE ARCHITECT SHALL BE NOTIFIED IMMEDIATELY OF ANY DISCREPANCY FOUND THEREIN.
COPYRIGHT OF THIS DRAWING RESERVED BY ARCHITECT.

NOTE:
#1 BY AL CLADDING/
BALUSTRADE/ CEILING
NSC
#2 BY CURTAIN
WALL(TOWER) NSC
#3 BY MAIN
CONTRACTOR
#4 BY ELE. NSC

GENERAL NOTES:
1. THE EXACT LOCATION AND TYPE OF ACOUSTIC WINDOW/BALCONY/UP SHOULD REFER TO DWG T/A166/602.
2. THE OVERLAPPING LENGTH OF INNER SLIDING DOOR SHALL SUBJECT TO LAB TEST RESULT.
3. THE SIZE OF GLAZING MATERIALS SHALL REFER TO WINDOW SCHEDULE.
4. EFFECTIVE OPENING SHALL COMPLY WITH BD STATUTORY REQUIREMENT OF LIGHTING AND VENTILATION.
5. SHOP DRAWING SHALL BE SUBMITTED FOR ARCHITECT'S APPROVAL.
6. UNLESS OTHERWISE SPECIFIED, DETAILS SHALL REFER TO TYPICAL WINDOW/BALCONY/UP DWG.

NO.	DATE	REVISIONS	DESIGNED	CHECKED	REVIEWED



WONG TUNG & PARTNERS LIMITED
ARCHITECTS & PLANNERS
18th Floor, Cityplaza 3, Taikoo Shing, Hong Kong
T 852-2803 5542 F 852-2513 1725 www.wongtung.com

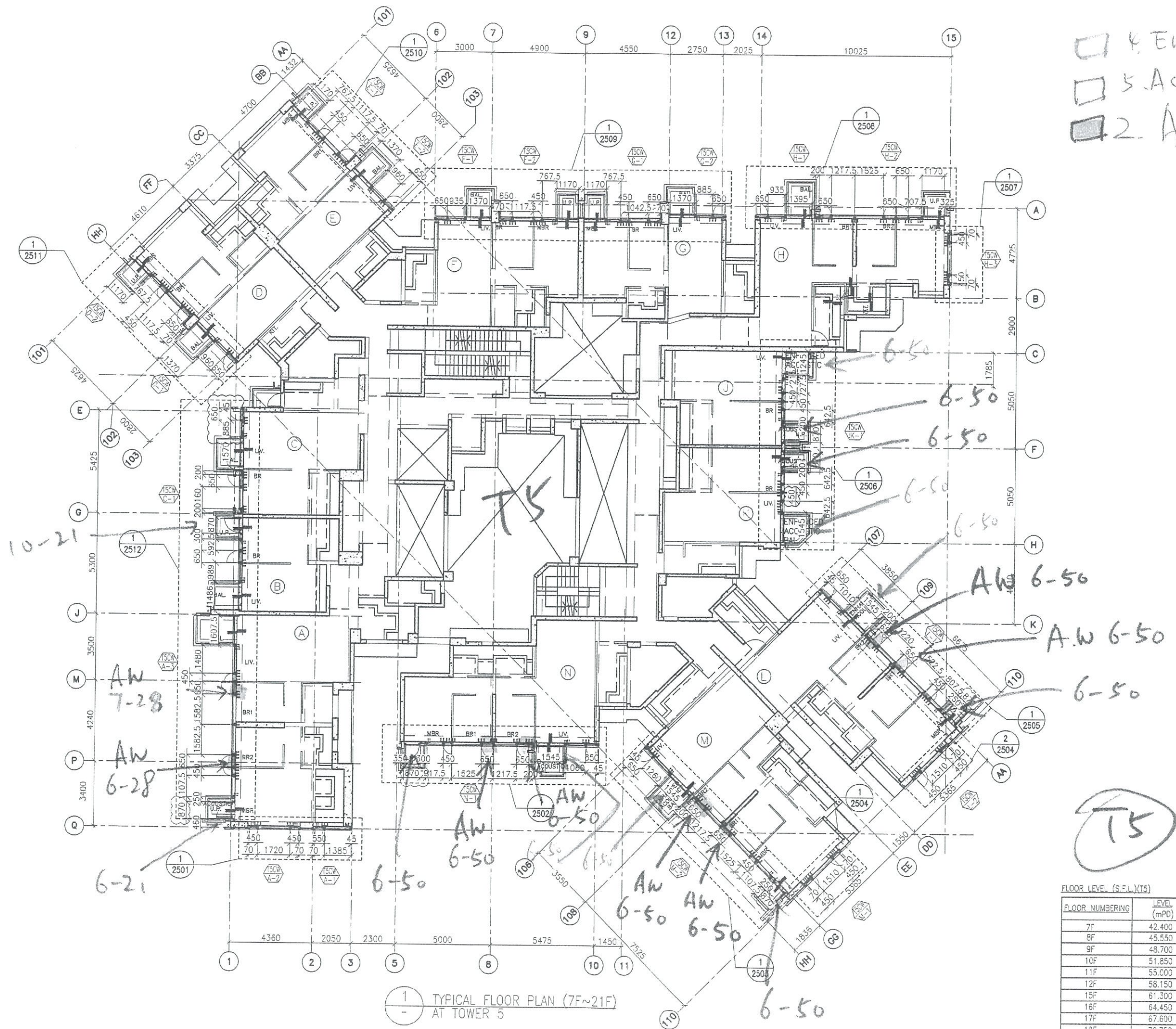
PROJECT:
URA KWUN TONG TOWN
CENTRE REDEVELOPMENT
(AREA 2 & 3) AT
NKIL 6514,
KWUN TONG, KOWLOON

TITLE:
ACOUSTIC UP 3
DETAILS
PART PLAN & ELEVATION

5

DATE: 11/2017	SCALE: 1:20
DRAWN: (MPC)	CHECKED: (ECLD)
DESIGNED: (PHC)	REVIEWED: (OT)
JOB NO. 31690	DRAWING NO. T/A141/403
REV. NO. (03)	

TENDER ADDENDUM NO.2



4 Enhanced Acoustic BAL
 5 Acoustic UP
 2 AW = Acoustic Window

B.D. REF :

CLIENT :
 信和置業有限公司
 Sino Land Company Limited

ARCHITECT :
 WONG TUNG & PARTNERS LIMITED
 ARCHITECTS & PLANNERS

MAIN CONTRACTOR :
 CR Construction Company Limited

STRUCTURAL ENGINEER :
 AECOM

FACADE CONSULTANT :
 AECOM

NOTE :
 1. ALL DIMENSIONS ARE IN mm.
 2. ALL ELEVATIONS ARE VIEWED FROM OUTSIDE.
 3. ALL DIMENSIONS TO BE VERIFIED ON SITE BEFORE FABRICATION.

LEGEND :
 (X1) --- DETAIL MARK NO.
 (X001) --- REFER SHEET NO.
 1. F.F.L. --- FINISHED FLOOR LEVEL
 2. S.F.L. --- STRUCTURAL FLOOR LEVEL
 3. (R) --- REVERSED DETAIL

A	10/9/2018	GENERAL REVISED
NO.	DATE	REVISED BY

JOB NO. : J-837
 PROJECT :
 URA KWUN TONG TOWN CENTRE
 REDEVELOPMENT (AREA 2 & 3) AT
 NKIL 6514, KWUN TONG, KWLOON

TITLE :
 TYPICAL FLOOR PLAN (7F~21F)
 OF CURTAIN WALL
 AT TOWER 5

DATE : 04-JUL-18 SCALE : 1:100 (A1)
 DRAWN BY : ASING CHECKED BY : -

美特鋁質有限公司
 MIDI ALUMINIUM FABRICATOR LTD.
 Units 6-8, Sunray Industrial Centre, 1/F
 610 Cha Kwo Ling Road, Kowloon
 Tel: 23489211-4 Fax: (852) 27727666
 DWG NO. : J837-CW-3502 REV. : A

FLOOR NUMBERING	LEVEL (mPD)
7F	42.400
8F	45.550
9F	48.700
10F	51.850
11F	55.000
12F	58.150
15F	61.300
18F	64.450
17F	67.600
18F	70.750
19F	73.900
20F	77.050
21F	80.200


1 TYPICAL FLOOR PLAN (7F~21F)
 AT TOWER 5

□ 4 Enhanced Acoustic BAL
 □ 5. Acoustic UP
 □ 2. AW = Acoustic Window

BD REF:

CLIENT:
 信和置業有限公司
 Sino Land Company Limited

ARCHITECT:
 WONG TUNG & PARTNERS LIMITED
 ARCHITECTS & PLANNERS


MAIN CONTRACTOR:
 CR Construction Company Limited

STRUCTURAL ENGINEER:
 AECOM

FACADE CONSULTANT:
 AECOM

NOTE:
 1. ALL DIMENSIONS ARE IN mm.
 2. ALL ELEVATIONS ARE VIEWED FROM OUTSIDE.
 3. ALL DIMENSIONS TO BE VERIFIED ON SITE BEFORE FABRICATION.


LEGEND:
 X1 --- DETAIL MARK NO.
 X001 --- REFER SHEET NO.
 1. F.F.L. --- FINISHED FLOOR LEVEL
 2. S.F.L. --- STRUCTURAL FLOOR LEVEL
 3. (⊖) --- REVERSED DETAIL

A	10/9/2018	GENERAL REVISED	
NO.	DATE	REVISED	BY

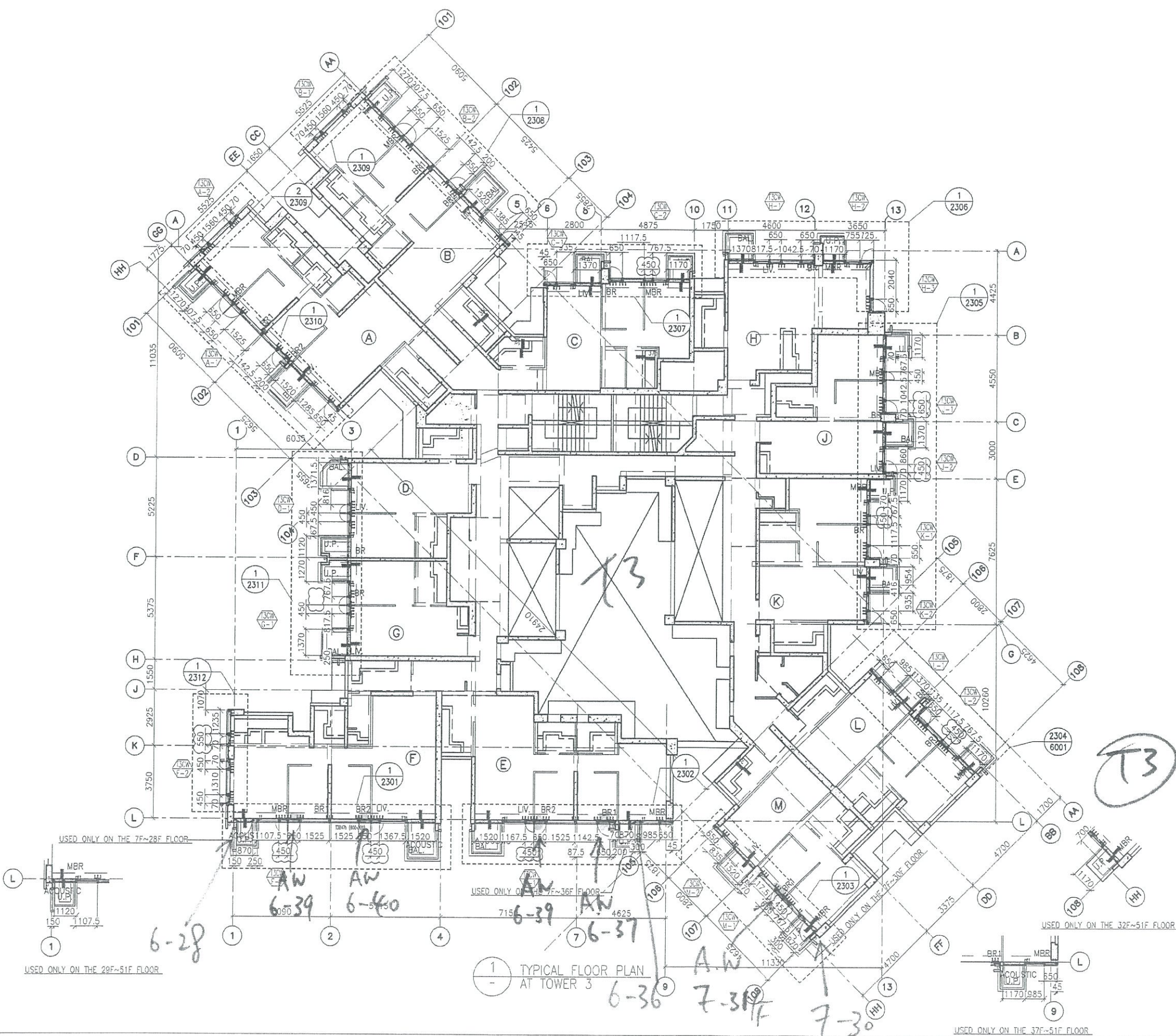
JOB NO.: J-837
 PROJECT:
 URA KWUN TONG TOWN CENTRE
 REDEVELOPMENT (AREA 2 & 3) AT
 NKIL 6514, KWUN TONG, KWLOON

TITLE:
 TYPICAL FLOOR PLAN
 OF CURTAIN WALL
 AT TOWER 3

DATE: 04-JUL-18 SCALE: 1:100 (A1)
 DRAWN BY: ASING CHECKED BY: -

 英特鋁質有限公司
 MIDI ALUMINIUM FABRICATOR LTD.
 Units 6-8, Sunray Industrial Centre, 1/F
 610 Cha Kwo Ling Road, Kwuon
 Tel: 23489211-4 Fax: (852) 2727666
 DWG NO.: JB37-CW-3302 REV: A

FLOOR NUMBERING	LEVEL (mPD)
7F	42.400
8F	45.550
9F	48.700
10F	51.850
11F	55.000
12F	58.150
15F	61.300
16F	64.450
17F	67.600
18F	70.750
19F	73.900
20F	77.050
21F	80.200
22F	83.350
23F	86.500
25F	89.650
26F	92.800
28F	99.250
29F	102.250
30F	105.400
31F	108.550
32F	111.700
33F	114.850
35F	118.000
36F	121.150
37F	124.300
38F	127.450
39F	130.600
40F	133.750
41F	136.900
42F	140.050
43F	143.100
45F	146.350
46F	149.500
47F	152.650
48F	155.800
49F	158.950
50F	162.100
51F	165.250



1 TYPICAL FLOOR PLAN AT TOWER 3

T3

6-28

6-39

6-37

6-36

7-31F

7-30

USED ONLY ON THE 29F~51F FLOOR

USED ONLY ON THE 7F~28F FLOOR

USED ONLY ON THE 1F~36F FLOOR

USED ONLY ON THE 2F~30E FLOOR

USED ONLY ON THE 32F~51F FLOOR

4. Enhanced Acoustic BAL
 5. Acoustic UP
 2. Acoustic Window
 = AW

B.D. REF :

CLIENT :
 信和置業有限公司
 Sino Land Company Limited

ARCHITECT :
 WONG TUNG & PARTNERS LIMITED
 ARCHITECTS & PLANNERS

MAIN CONTRACTOR :
 CR Construction Company Limited

STRUCTURAL ENGINEER :
 AECOM

FACADE CONSULTANT:
 AECOM

NOTE :
 1. ALL DIMENSIONS ARE IN mm.
 2. ALL ELEVATIONS ARE VIEWED FROM OUTSIDE.
 3. ALL DIMENSIONS TO BE VERIFIED ON SITE BEFORE FABRICATION.

LEGEND :
 (X1) --- DETAIL MARK NO.
 (X001) --- REFER SHEET NO.
 1. F.F.L. --- FINISHED FLOOR LEVEL
 2. S.F.L. --- STRUCTURAL FLOOR LEVEL
 3. (R) --- REVERSED DETAIL

FLOOR NUMBERING	LEVEL (mPD)
7F	42.400
8F	45.550
9F	48.700
10F	51.850
11F	55.000
12F	58.150
15F	61.300
16F	64.450
17F	67.600
18F	70.750
19F	73.900
20F	77.050
21F	80.200
22F	83.350
23F	86.500
25F	89.650
26F	92.800
28F	99.250
29F	102.250
30F	105.400
31F	108.550
32F	111.700
33F	114.850
35F	118.000
36F	121.150
37F	124.300
38F	127.450
39F	130.600
40F	133.750
41F	136.900
42F	140.050
43F	143.100
45F	146.350
46F	149.500
47F	152.650
48F	155.800
49F	158.950

NO.	DATE	REVISION	BY
A	10/9/2018	GENERAL REVISED	

JOB NO. : J-837

PROJECT :
 URA KWUN TONG TOWN CENTRE
 REDEVELOPMENT (AREA 2 & 3) AT
 NKIL 6514, KWUN TONG, KWLOON

TITLE :
 TYPICAL FLOOR PLAN
 OF CURTAIN WALL
 AT TOWER 1

DATE : 04-JUL-18 SCALE : 1:100 (A1)

DRAWN BY : ASING CHECKED BY : -

英特鋁質有限公司
 MIDI ALUMINIUM FABRICATOR LTD.
 Units 6-8, Sunray Industrial Centre, 1/F
 610 Cha Kwo Ling Road, Kowloon
 Tel: 23489211-4 Fax: (852) 27727666

DWC NO. : J837-CW-3102 REV. : A

1 TYPICAL FLOOR PLAN AT TOWER 1

