



工程指示 / 要求簡箋(E.I.)

工程指示編號：EI/0302/18

修改版次：-

工程編號：J-837

工程名稱：觀塘裕民坊

工程項目：幕牆 隔音吊趟及隔音窗(樣板層, 8/F)

收件人：Maggie

發件人：Eric Liu

日期：12/03/2019

要求提供 /  確認 事項：

- |                                    |                                     |                               |
|------------------------------------|-------------------------------------|-------------------------------|
| <input type="checkbox"/> 初步鋁料 B.M. | <input type="checkbox"/> 加工拆圖，然後生產  | <input type="checkbox"/> 尺寸表  |
| <input type="checkbox"/> 正式鋁料 B.M. | <input type="checkbox"/> 技術上資料 / 指示 | <input type="checkbox"/> 報價   |
| <input type="checkbox"/> 配件 B.M.   | <input type="checkbox"/> 樣辦或貨品說明書   | <input type="checkbox"/> 分判合約 |
| <input type="checkbox"/> 其他：_____  |                                     |                               |

EI 1000 P. 25-4038

內容：

請按報價訂購隔音吊趟及隔音窗送地盤安裝 (樣板層,8/F)

隔音吊趟及隔音窗已包括: (1) 隔音膠板

(2) 鋁料(吊趟框連玉, 窗框連玉)

(3) INFILL 物料(鋁料內藏棉)

(4) 吊趟用配件(吊趟轆)

謝謝!

請在 2019/ 03 / 22 前完成上列要求。

附：1 頁報價 + 14 頁 tender 資料

以上項目為:

- 原合約工程包                       原合約工程加 / 減賬                       新工程報價

原因：-

分發東莞各部門：

- ( ) 生產技術總監  連附件    ( ) 技術部  連附件    ( ) 生產部  連附件    ( ) 機械設計部  連附件  
 ( ) 採購部  連附件    ( ) 生產統籌部  連附件  
 ( ) 質檢部  連附件    ( ) 會計部  連附件    ( ) 報關組  連附件    ( ) 其他 楊榮輝  連附件

分發其他分判：

- ( ) 王禮秋  連附件

分發香港各部門：

- ( ) 行政部  連附件    ( ) 會計部  連附件    ( ) 統籌部  連附件    ( ) 工程部地盤科文  連附件  
 ( ) 採購部  連附件    ( ) QS 部  連附件    ( ) 維修部  連附件    ( ) 其他 \_\_\_\_\_  連附件

傳遞編號：

發件人簽署：

項目經理簽署：

# SALES CONTRACT

## ARCHITECTURAL ACOUSTICS

LIMITED



SALES CONTRACT NO: <b>Q8329</b>
PLEASE USE THIS NUMBER ON ALL PURCHASE ORDER, LETTER OF CREDIT AND BILLS OF LADING

DATE: <b>11-Mar-19</b>	PROPOSED SHIPMENT:	PACKING:	EXPIRY DATE: <b>10-Apr-19</b>	
<b>TO: Midi Aluminium Fabricator Ltd.</b> Unit 5, 5/F, Sunray Ind. Centre, 610 Cha Kwo Ling Road, Kln. Hong Kong <b>ATTN: Yuen</b> <b>TEL: 2348 9211</b> <b>Email: midi@midiltd.com.hk</b>		<b>TERMS OF PAYMENT:</b> 50% deposit upon confirmation of order Balance payment before delivery of goods  REMARK: CATEGORY:		
DESCRIPTION	QUANTITY	PRICE HKD	PER	AMOUNT HKD
<b>RE: Acoustic Window/ Door for URA Kwun Tong Redevelopment (Mock Up)</b> To supply acoustics material as follows: <i>增加吸音板</i>				
Micro-perforated Plate is protected by Hong Kong Reg. Design No. 1700693.7 M001-4, 1702315.9 M001-2, 1801648.5 M001-4 and Short Term Patent No. 16112657.1 / 16112542.0				
Item 1) <b>Description:</b> To supply Materials for NOISESTOP Acoustics Panel <b>Material:</b> - 1.5mm thick Micro-perforated Plate with gasket - 84 nos. of 2.8m PVF2 Aluminium Frame (for Baffle) - 14 nos. of 3m PVF2 Aluminium Frame (for Window/Fench) - 13 sqm of 25mm thk Fiberglass & waterproof membrane Exclude temper glass, cutting, assembly, wheels, PVF2.	1	\$226,090	lot	\$226,090
Size for Baffle Panel: 850 x 2250 mm x 15 nos 1070 x 2625 mm x 8 nos 1370 - 1400 x 2580 mm x 2 nos 1605 - 1745 x 2580 mm x 5 nos Size for Window/ Fench: 650 x 1380 mm window x 4 nos 870 x 2625 mm door x 2 nos 1200 x 2580 mm x 1 no.				
Item 2) <b>Optional:</b> To change MPP from 1.5mm to 3mm thickness For: 1605 - 1745 x 2580 mm x 5 nos	1	\$18,000	lot	-
Item 3) <b>Description:</b> To supply material of Pomute sound absorptive plate <b>Material:</b> - 2 sheets of PVF2 680 x 3000 x 1mm/ sheet - 3 sqm of 50mm thk Fiberglass & waterproof membrane	1	\$8,500	lot	\$8,500
<b>Description:</b> Wood package & Delivery to Dong Guan, unloading exclud	1	\$3,600	ctn	\$3,600
Item 4) <b>Optional:</b> To supply 30 set of Wheel with 3m length channel each <b>Optional:</b> To apply PVF2 on aluminium extrusion / Pomute plate	1	\$18,000	lot	-
	1	\$24,500	lot	-
<b>Production time:</b> 21 days upon confirmaion of order & receipt of deposit				
** Current width of Perforation Area of MPP is 1200mm, unlimited for Length.				
<b>Remarks:</b> 1. All prices quoted should be subjected to final confirmation of manufacturers / suppliers. 2. By Non-payment we reserve the right to withhold our services. 3. The price quoted is for the above quantity panel size and finish. 4. The above price excluded installation, acoustic infill and fixing accessories. 5. Please notice the terms and conditions of sales. 6. Manufacturing offered from the date of receiving firm order, deposit (within 3 days of confirmed order) and all details confirmed.				
<b>TOTAL:</b>				<b>HK\$238,190</b>

It is understood that the terms and conditions set forth on the reverse side of this form are part of the terms and conditions of any sale between the parties and are to be regarded as binding and as legal conditions

**ARCHITECTURAL ACOUSTICS  
LIMITED**

ACCEPTED & CONFIRMED BY:

BY: **Polly IP - Marketing Manager**  
PERSON-IN-CHARGE

AUTHORIZED SIGNATURE(S) & COMPANY CHOP

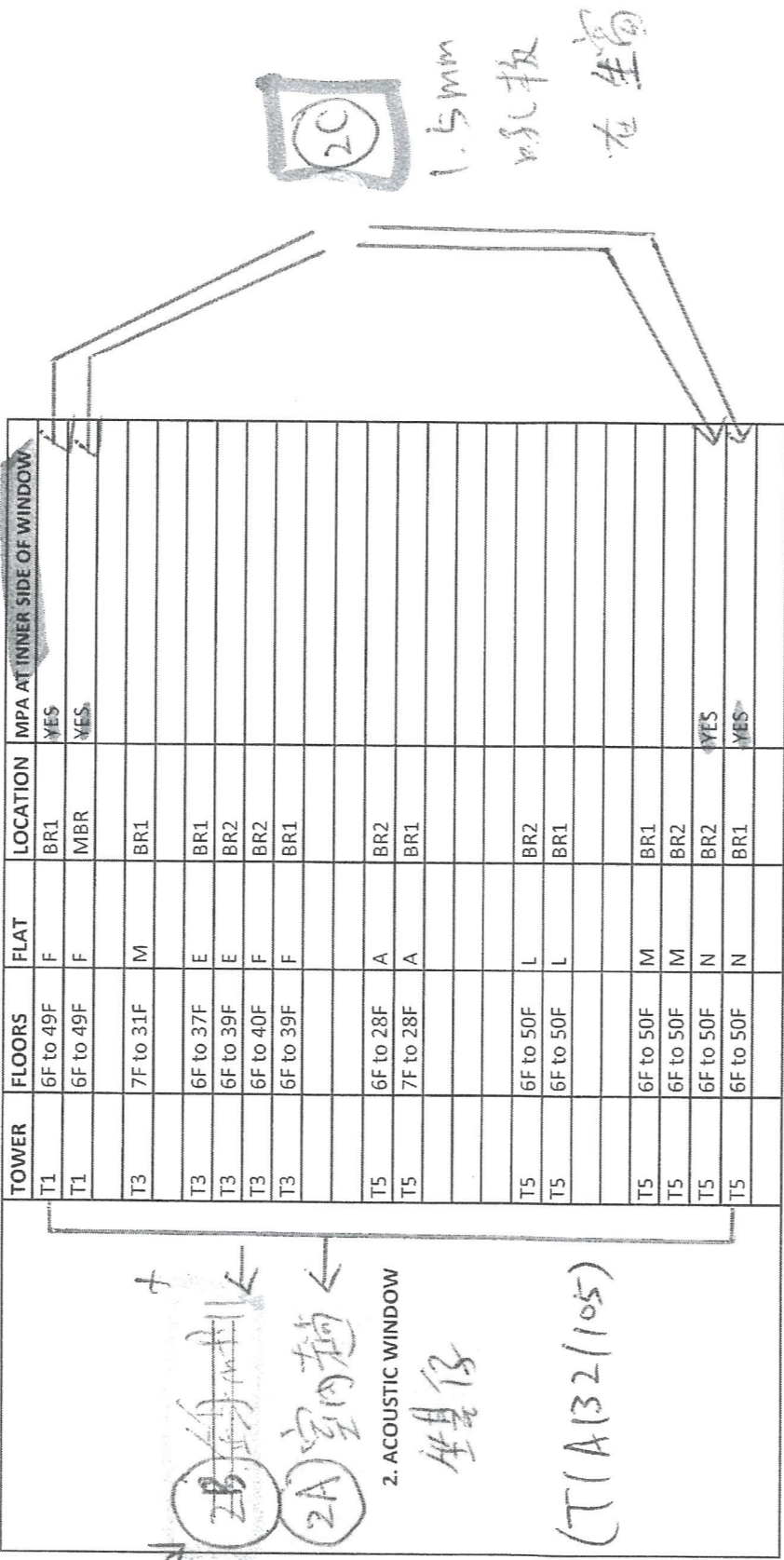
APPROVED: **Stephen Leung - Director**  
GENERAL MANAGER



2018.10.29  
email from WT

TOWER	FLOORS	FLAT	LOCATION	VERTICAL FIN	SOUND ABSORPTION MATERIAL
T1	6F to 50F	B	UP	1.8M LONG VERTICAL FIN	/
T1	6F to 50F	A	UP	1.8M LONG VERTICAL FIN	/
T1	6F to 50F	E	UP	1.0M LONG VERTICAL FIN	/
T1	6F to 50F	G	UP	1.5M LONG VERTICAL FIN	/
T1	6F to 50F	H	UP	1.5M LONG VERTICAL FIN	/
T2	6F to 55F	A	UP	1.8M LONG VERTICAL FIN	/
T2	6F to 55F	B	UP	1.8M LONG VERTICAL FIN	/
T2	6F to 55F	M	UP	1.5M LONG VERTICAL FIN	/
T3	6F to 52F	A	UP	1.5M LONG VERTICAL FIN	/
T3	6F to 52F	B	UP	1.5M LONG VERTICAL FIN	/
T3	6F to 52F	F	UP	1.5M LONG VERTICAL FIN	/
T5	6F to 50F	A	BAL	1.5M LONG VERTICAL FIN	INNER SIDE OF WALL
T5	51F	A	MBATH 2	1.5M LONG VERTICAL FIN	BOTH SIDES OF WALL
T5	6F to 50F	A	UP	1.5M LONG VERTICAL FIN	/
T5	51F	A	UP	1.5M LONG VERTICAL FIN	/
T5	6F to 21F	B	BAL	1.5M LONG VERTICAL FIN	INNER SIDE OF WALL
T5	22F to 50F	C	UP	1.5M LONG VERTICAL FIN	INNER SIDE OF WALL
T5	6F to 50F	L	UP	1.8M LONG VERTICAL FIN	/
T5	6F to 50F	M	UP	1.8M LONG VERTICAL FIN	/

1. VERTICAL ACOUSTIC FIN



(已取消) 2B 室内窗  
2A 室内窗  
2. ACOUSTIC WINDOW  
坐位仔  
(T/A)32(105)

TOWER	FLOORS	FLAT
T3	7F to 31F	M
T3	6F to 40F	E
T3	6F to 40F	F
T5	8F to 26F	A

3. ACOUSTIC BALCONY

TOWER	FLOORS	FLAT	MPA ON INNER SIDE OF SWING DOOR
T1	6F to 49F	F	
T5	6F to 50F	J	YES
T5	6F to 50F	K	
T5	6F to 50F	L	
T5	6F to 50F	M	
T5	6F to 50F	N	

4. ENHANCED ACOUSTIC BALCONY

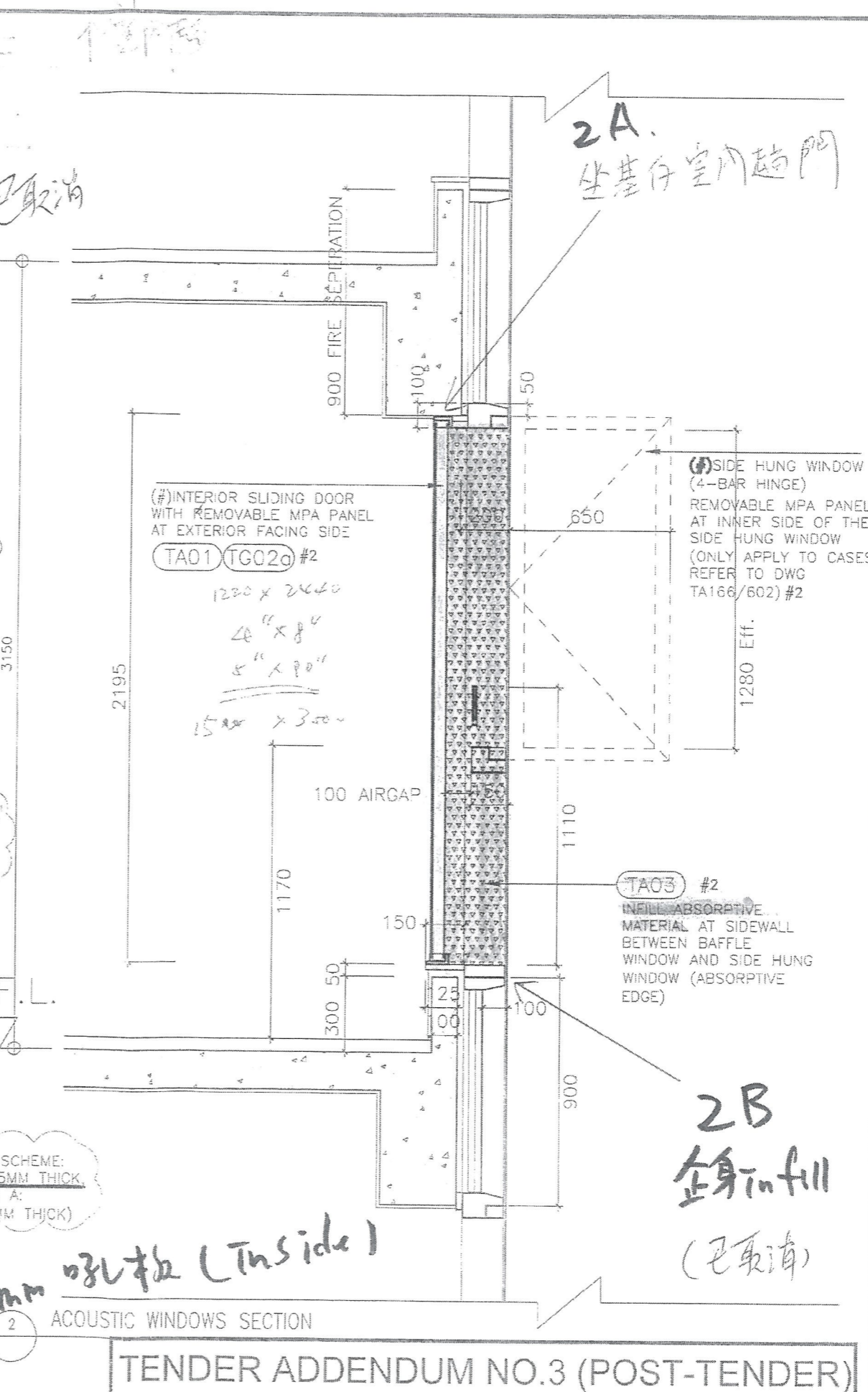
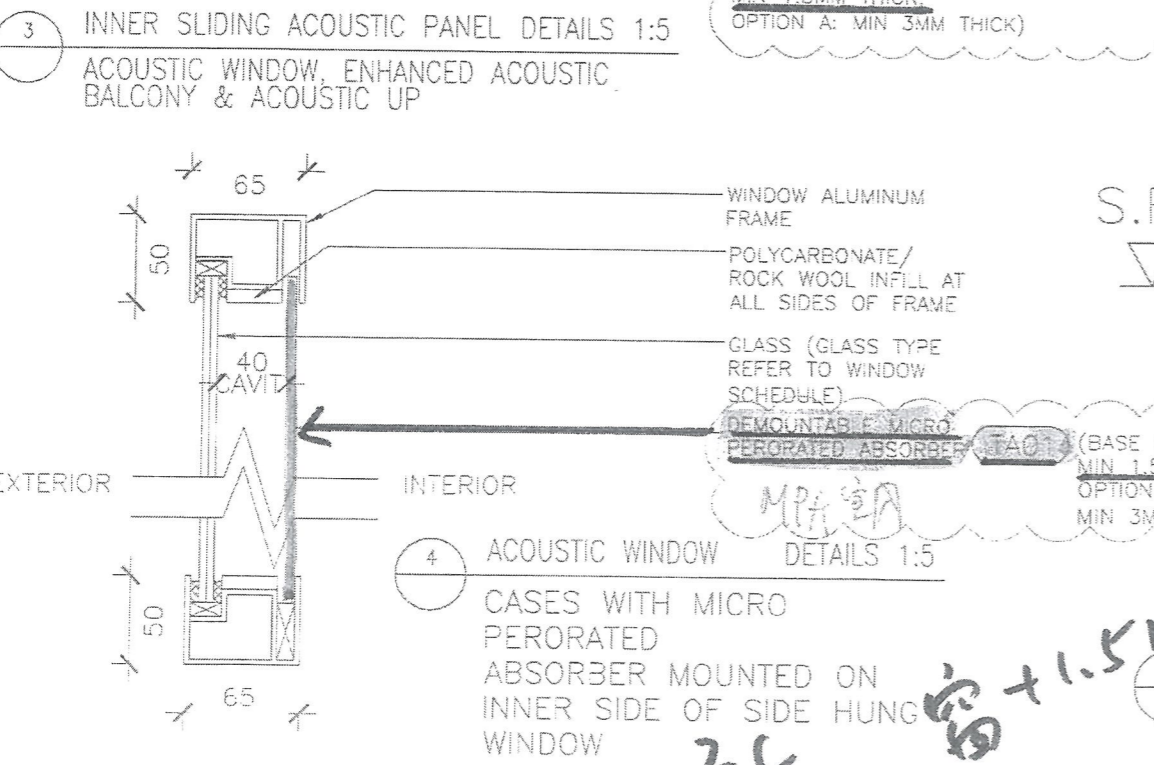
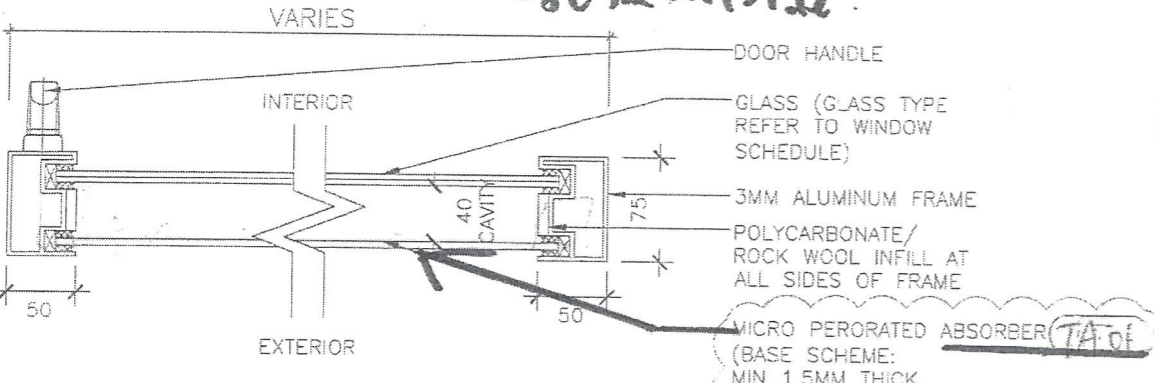
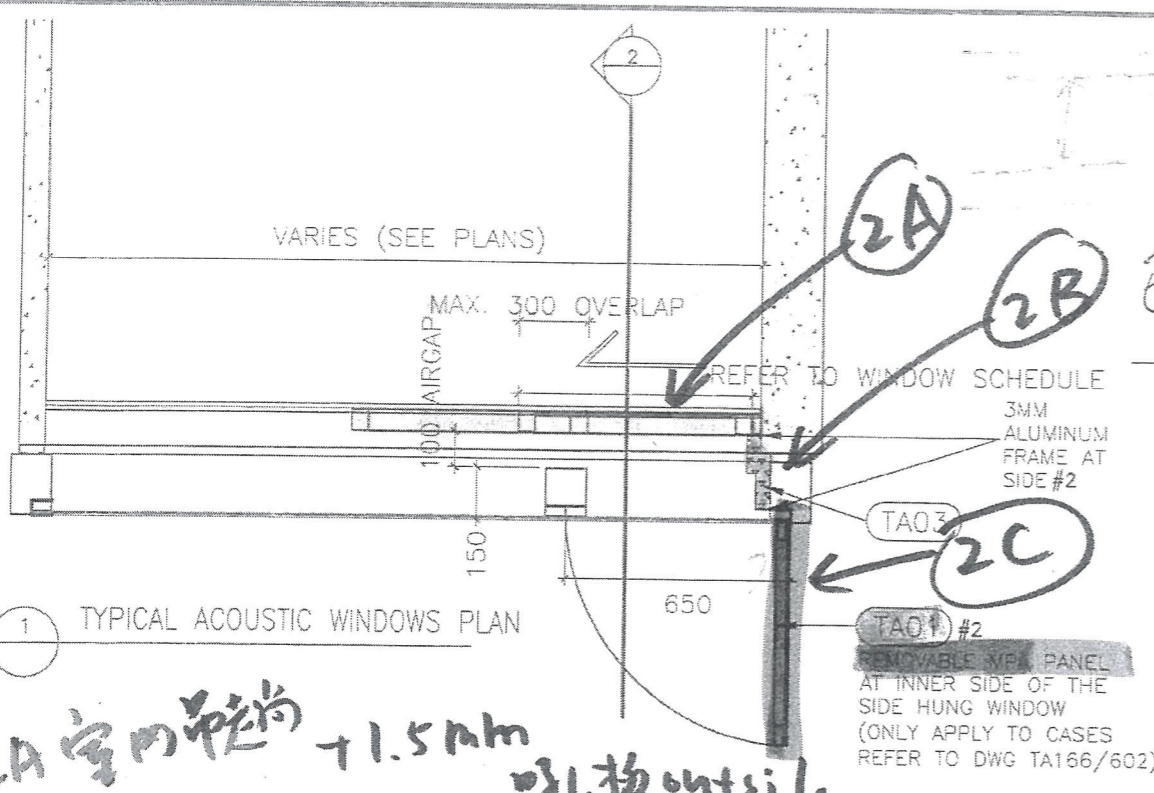
(4A) 室内起声地

TOWER	FLOORS	FLAT	WITH ABSORPTIVE EDGE BETWEEN INNER SLIDING PANEL AND SWING DOOR
T3	6F to 36F	E	
T3	6F to 28F	F	
T3	7F to 30F	M	
T5	6F to 21F	A	
T5	10F to 21F	B	
T5	6F to 50F	J	
T5	6F to 50F	K	
T5	6F to 50F	L	
T5	6F to 50F	M	YES
T5	6F to 50F	N	YES

5. ACOUSTIC UP

(5A) 室内起声地

T/A)32(105b  
(4B) F.D. 加 1.5mm 吸声板  
(4C) 在窗天花 Infill x  
已取消  
T/A)32(105c  
(5B) F.D. 加 1.5mm 吸声板  
(5C) 在窗天花 Infill



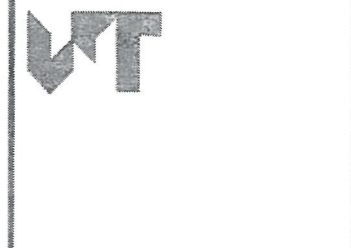
**NOTES**  
DO NOT SCALE DRAWING. FIGURED DIMENSIONS ARE TO BE FOLLOWED.  
READ THIS DRAWING IN CONNECTION WITH GENERAL ARCHITECTURAL PLANS, STRUCTURAL PLANS, AND OTHER RELATED DRAWINGS. THE ARCHITECT SHALL BE NOTIFIED IMMEDIATELY OF ANY DISCREPANCY FOUND THEREIN.  
COPYRIGHT OF THIS DRAWING RESERVED BY ARCHITECT.

- GENERAL NOTES:**
1. THE EXACT LOCATION AND TYPE OF ACOUSTIC WINDOW/BALCONY/UP SHOULD REFER TO DWG T/A165/602.
  2. THE OVERLAPPING LENGTH OF INNER SLIDING DOOR SHALL SUBJECT TO LAB TEST RESULT.
  3. THE SIZE OF GLAZING MATERIALS SHALL REFER TO WINDOW SCHEDULE.
  4. EFFECTIVE OPENING SHALL COMPLY WITH BD STATUTORY REQUIREMENT OF LIGHTING AND VENTILATION.
  5. SHOP DRAWING SHALL BE SUBMITTED FOR ARCHITECT'S APPROVAL.
  6. UNLESS OTHERWISE SPECIFIED, DETAILS SHALL REFER TO TYPICAL WINDOW/BALCONY/UP DWG.

- NOTE:**
- #1 BY AL CLADDING/BALUSTRADE/CEILING NSC
  - #2 BY CURTAIN WALL(TOWER) NSC
  - #3 BY MAIN CONTRACTOR
  - #4 BY ELE. NSC

Tender Drawings

NO.	DATE	REVISIONS	DATE	BY	REVISIONS



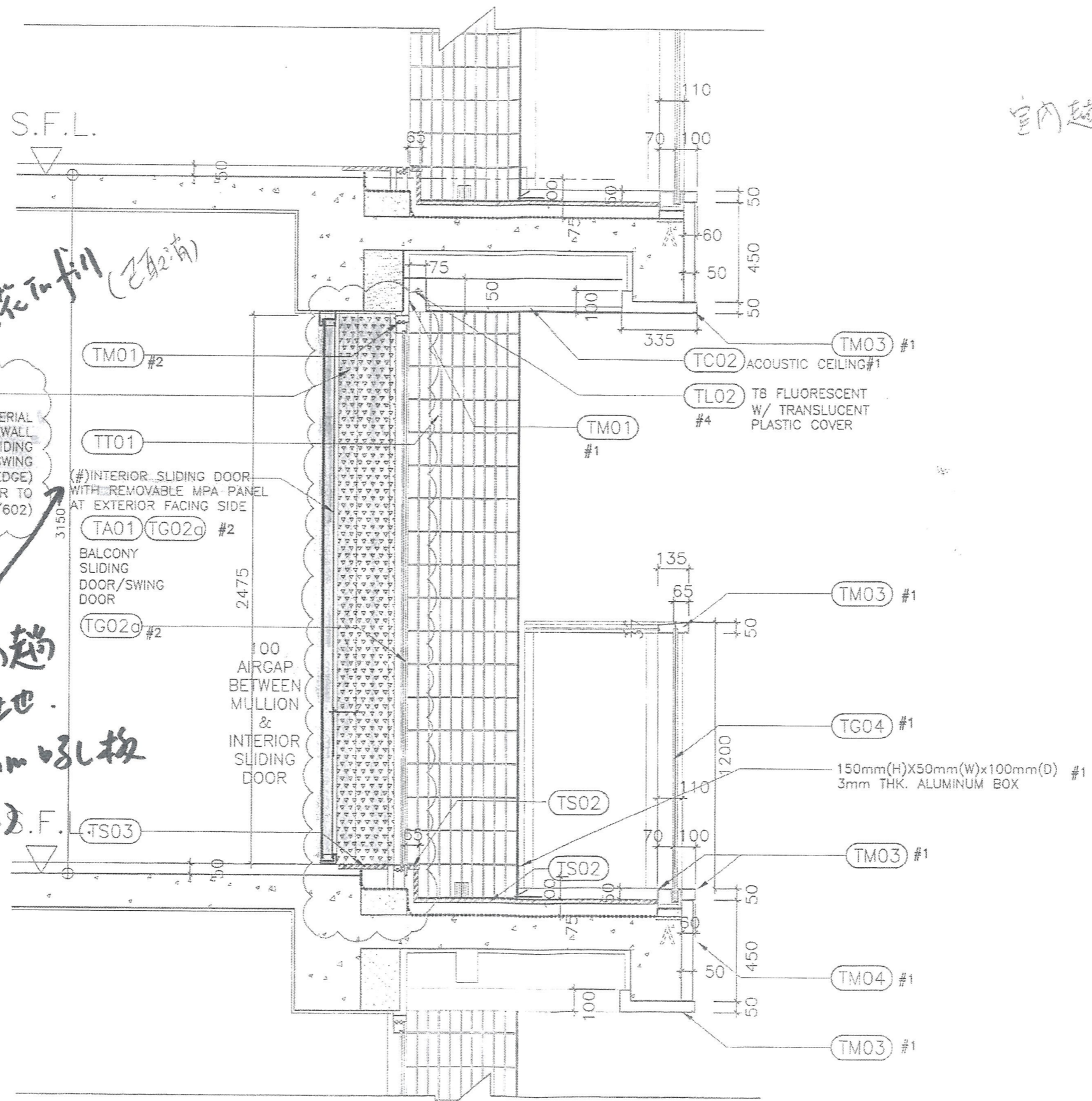
**WONG TUNG & PARTNERS LIMITED**  
ARCHITECTS & PLANNERS  
18th Floor, Cityplaza 3, Taikoo Shing, Hong Kong  
T 852-2803 8853 F 852-2513 1728 www.wongtung.com

**PROJECT:**  
URA KWUN TONG TOWN CENTRE REDEVELOPMENT (AREA 2 & 3) AT NKIL 6514, KWUN TONG, KOWLOON

**TITLE:**  
TOWER EXTERNAL TYPICAL WALL SECTION 5 (ACOUSTIC WINDOW)

DATE: 11/2017	SCALE: 1:20
DRAFTED: (GPH)	CHECKED: (GCL)
DESIGNED: (GPH)	PEREARED: (GPH)
JOB NO. 31690	DRAWING NO. T/A132/105
REV. NO. (12)	

TENDER ADDENDUM NO.3 (POST-TENDER)



4C 鋼骨天花填充 (已註明)

TA03 #2  
INFILL ABSORPTIVE MATERIAL  
AT TOP AND SIDEWALL  
BETWEEN INNER SLIDING  
PANAL AND BALCONY SWING  
DOOR (ABSORPTIVE EDGE)  
(ONLY FOR CASES REFER TO  
DWG TA166/602)

4A 室內牆  
生土也  
+1.5mm 穿孔板  
(outside) S.F.

室內起門

NOTES  
DO NOT SCALE DRAWING. FIGURED DIMENSIONS  
ARE TO BE FOLLOWED.  
READ THIS DRAWING IN CONNECTION WITH GENERAL  
ARCHITECTURAL PLANS, STRUCTURAL PLANS,  
AND OTHER RELATED DRAWINGS. THE ARCHITECT  
SHALL BE NOTIFIED IMMEDIATELY OF ANY  
DISCREPANCY FOUND THEREIN.  
COPYRIGHT OF THIS DRAWING RESERVED BY  
ARCHITECT.

NOTE:  
#1 BY AL CLADDING/  
BALUSTRADE/ CEILING  
NSC  
#2 BY CURTAIN  
WALL(TOWER) NSC  
#3 BY MAIN  
CONTRACTOR  
#4 BY ELE. NSC

NO.	DATE	REVISIONS	ISSUED	REVISION	REVISION

**WT**

WONG TUNG & PARTNERS LIMITED  
ARCHITECTS & PLANNERS  
18th Floor, Cityplaza 3, Takoo Shing, Mong Koo  
T 852-2203 8838 F 852-2513 1728 www.wongtung.com

PROJECT:  
URA KWUN TONG TOWN  
CENTRE REDEVELOPMENT  
(AREA 2 & 3) AT  
NKIL 6514,  
KWUN TONG, KOWLOON

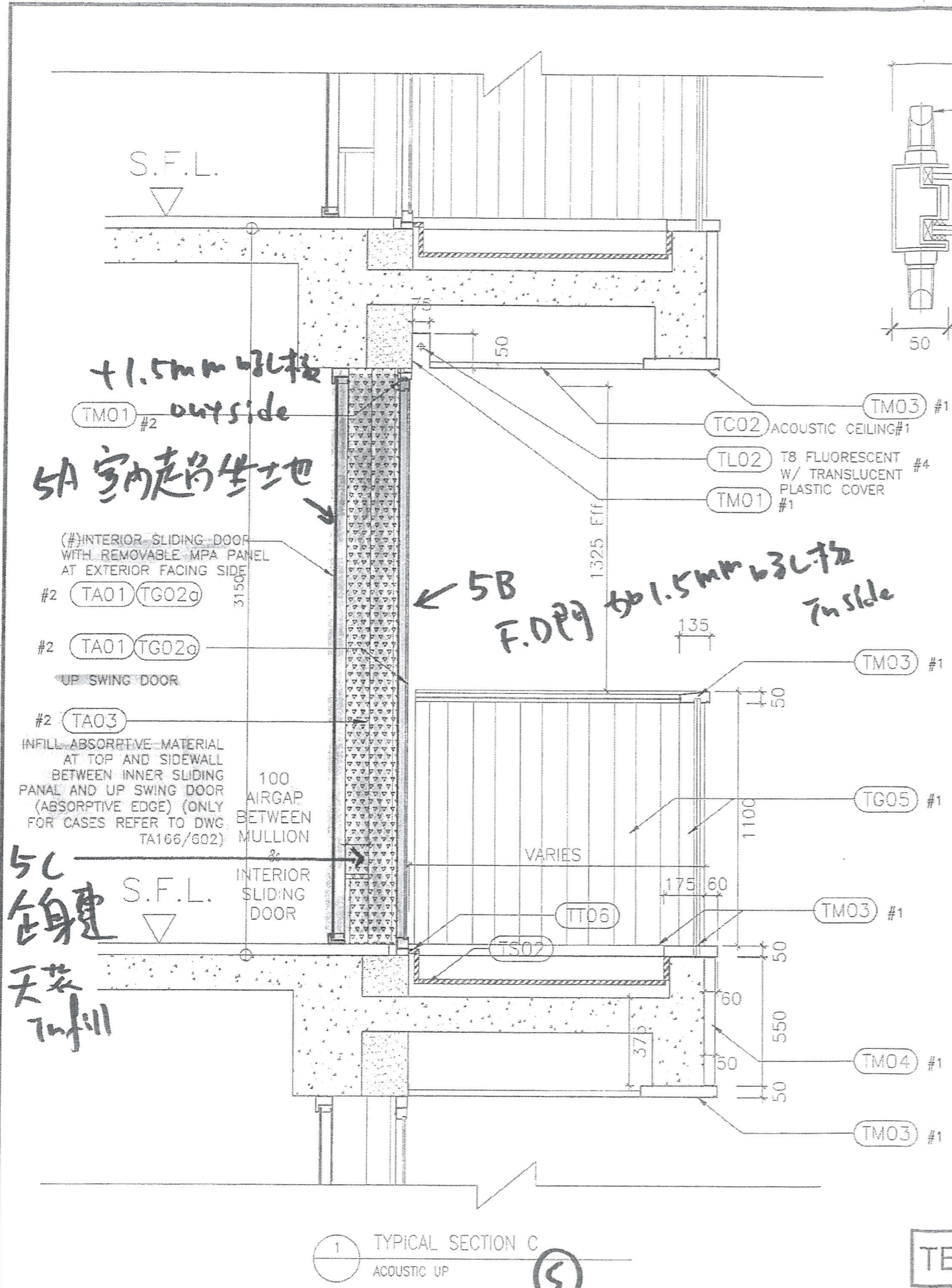
TITLE:  
TOWER EXTERNAL WALL  
SECTION 5B  
(ENHANCED ACOUSTIC  
BALCONY)



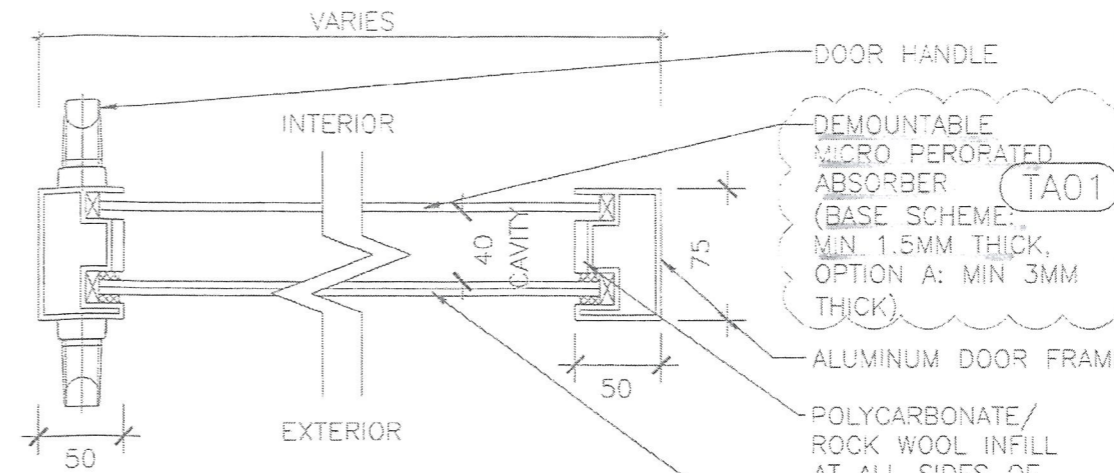
DATE: 11/2017	SCALE: 1:20
DRAFTED: (MPC)	CHECKED: (CLO)
DESIGNED: (PIC)	REVIEWED: (GT)
JOB NO. 31690	DRAWING NO. T/A132/105b
REV. NO. (05)	

1 TYPICAL SECTION B  
ENHANCED ACOUSTIC BALCONY

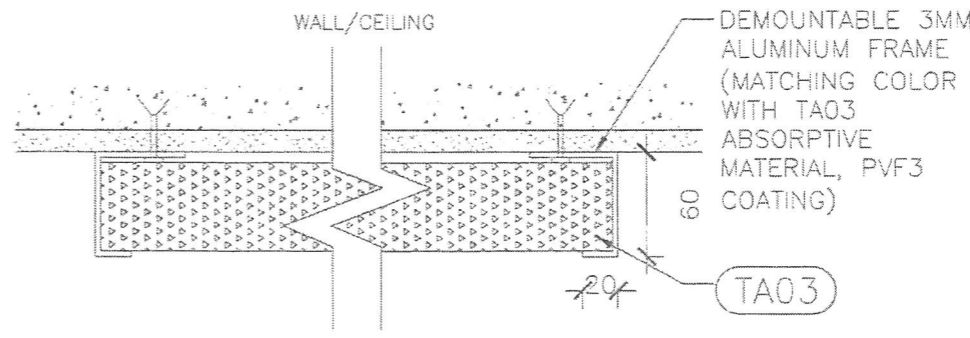
TENDER ADDENDUM NO.3  
(POST-TENDER)



1 TYPICAL SECTION C  
ACOUSTIC UP



2 ACOUSTIC UP SWING DOOR  
DETAILS 1:5



3 ABSORPTIVE MATERIAL FIXING DETAILS  
(ACOUSTIC UP & ACOUSTIC WINDOW)  
DETAILS 1:5

NOTES  
DO NOT SCALE DRAWING, FIGURED DIMENSIONS ARE TO BE FOLLOWED.  
READ THIS DRAWING IN CONNECTION WITH GENERAL ARCHITECTURAL PLANS, STRUCTURAL PLANS AND OTHER RELATED DRAWINGS. THE ARCHITECT SHALL BE NOTIFIED IMMEDIATELY OF ANY DISCREPANCY FOUND THEREIN.  
COPYRIGHT OF THIS DRAWING RESERVED BY ARCHITECT.

- NOTE:
- #1 BY AL CLADDING/ BALUSTRADE/ CEILING NSC
  - #2 BY CURTAIN WALL(TOWER) NSC
  - #3 BY MAIN CONTRACTOR
  - #4 BY ELE. NSC

NO.	DATE	REVISIONS	DRAWN	CHECKED	DESIGNED	REVIEWED



WONG TUNG & PARTNERS LIMITED  
ARCHITECTS & PLANNERS  
18th Floor, Cityplaza 3, Taikoo Shing, Hong Kong  
T 852-2803 9868 F 852-2513 1728 www.wongtung.com

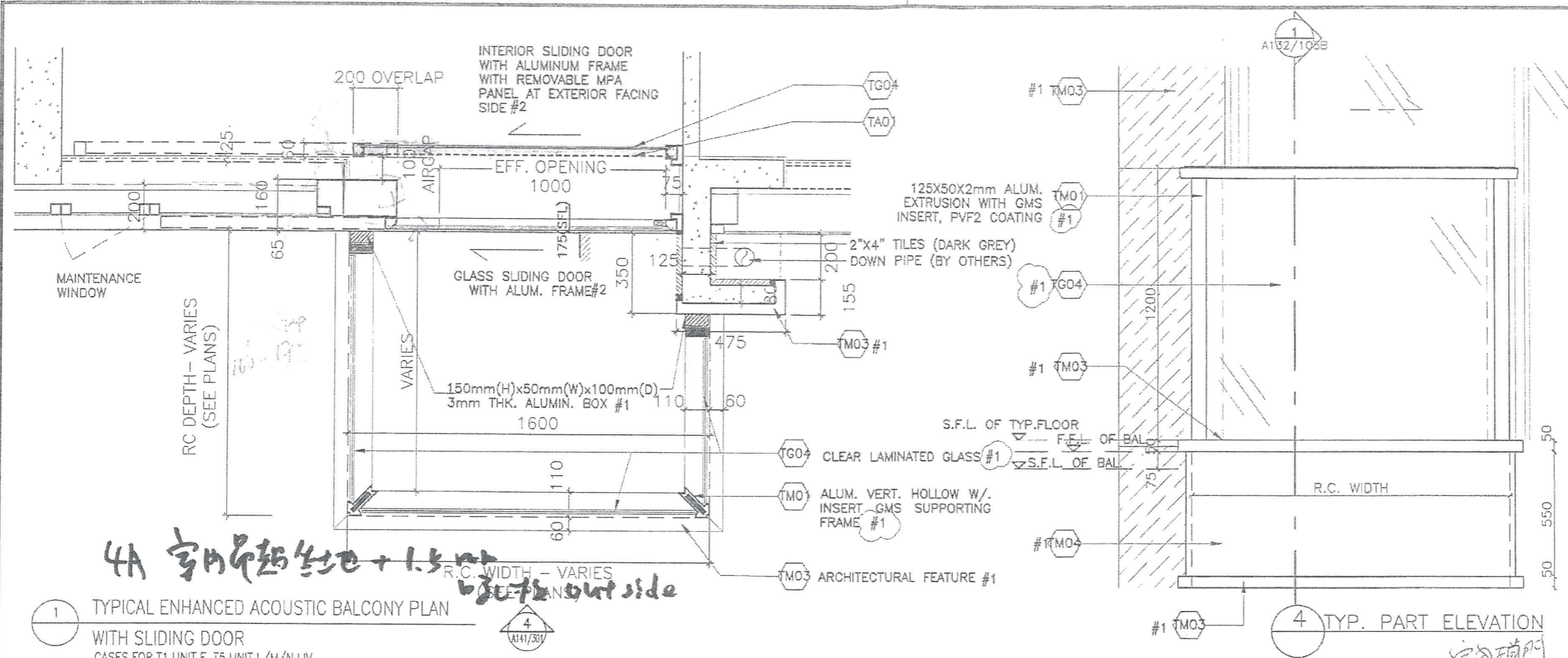
PROJECT:  
URA KWUN TONG TOWN CENTRE REDEVELOPMENT (AREA 2 & 3) AT NKIL 6514, KWUN TONG, KOWLOON

TITLE:  
TOWER EXTERNAL TYPICAL WALL SECTION 5C (ACOUSTIC UP)



DATE: 11/2017	SCALE: 1:20
DRAWN: (MPC)	CHECKED: (ELC)
DESIGNED: (PTC)	REVIEWED: (OT)
JOB NO. 31690	DRAWING NO. T/A132/105c
REV. NO. (07)	

TENDER ADDENDUM NO.3 (POST-TENDER)

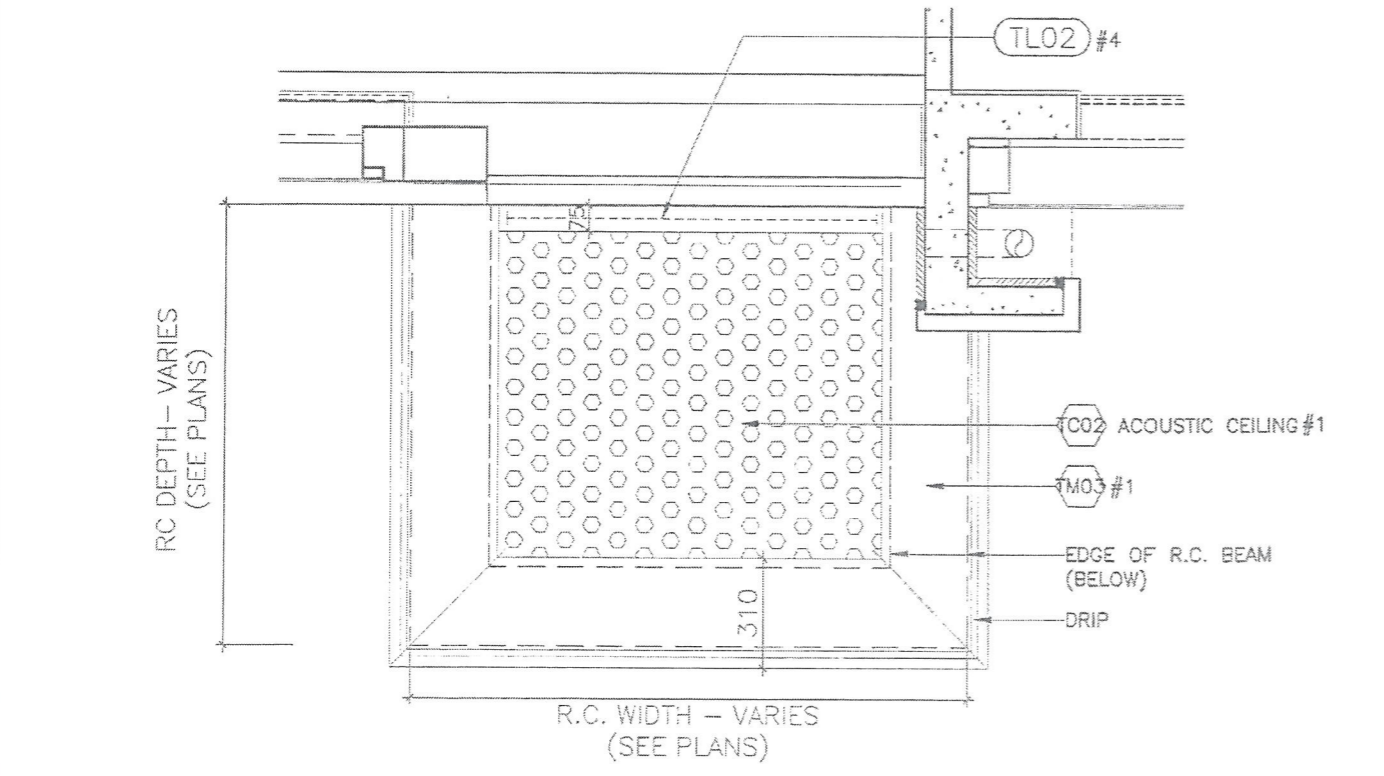


**NOTES**  
DO NOT SCALE DRAWING, FIGURED DIMENSIONS ARE TO BE FOLLOWED.  
READ THIS DRAWING IN CONNECTION WITH GENERAL ARCHITECTURAL PLANS, STRUCTURAL PLANS, AND OTHER RELATED DRAWINGS, THE ARCHITECT SHALL BE NOTIFIED IMMEDIATELY OF ANY DISCREPANCY FOUND THEREIN.  
COPYRIGHT OF THIS DRAWING RESERVED BY ARCHITECT.

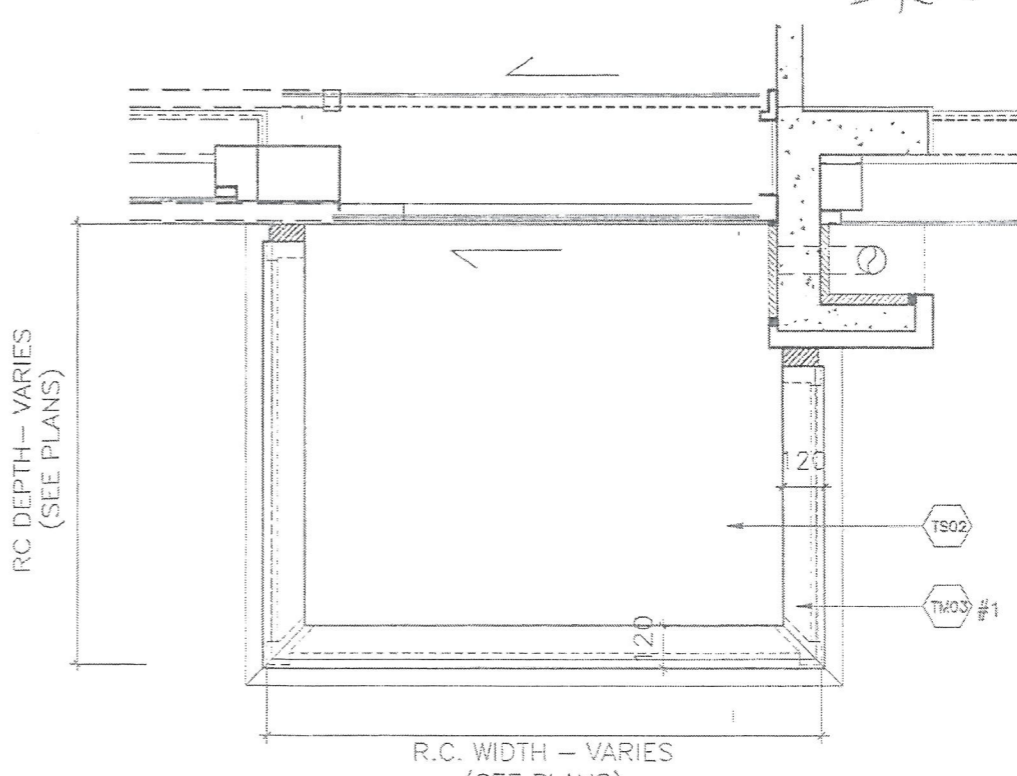
**NOTE:**  
#1 BY AL CLADDING/ BALUSTRADE/ CEILING NSC  
#2 BY CURTAIN WALL(TOWER) NSC  
#3 BY MAIN CONTRACTOR  
#4 BY ELE. NSC

- GENERAL NOTES:**
1. THE EXACT LOCATION AND TYPE OF ACOUSTIC WINDOW/BALCONY/UP SHOULD REFER TO DWG T/A166/602.
  2. THE OVERLAPPING LENGTH OF INNER SLIDING DOOR SHALL SUBJECT TO LAB TEST RESULT.
  3. THE SIZE OF GLAZING MATERIALS SHALL REFER TO WINDOW SCHEDULE.
  4. EFFECTIVE OPENING SHALL COMPLY WITH BD STATUTORY REQUIREMENT OF LIGHTING AND VENTILATION.
  5. SHOP DRAWING SHALL BE SUBMITTED FOR ARCHITECT'S APPROVAL.
  6. UNLESS OTHERWISE SPECIFIED, DETAILS SHALL REFER TO TYPICAL WINDOW/BALCONY/UP DWG.

1 TYPICAL ENHANCED ACOUSTIC BALCONY PLAN WITH SLIDING DOOR  
CASES FOR T1 UNIT F, T5 UNIT L/M/N LIV.



2 TYPICAL ACOUSTIC BALCONY / ENHANCED ACOUSTIC BALCONY REFLECTED CEILING PLAN WITH SLIDING DOOR  
CASES FOR T1 UNIT F, T5 UNIT L/M/N LIV.



3 TYPICAL ENHANCED ACOUSTIC BALCONY TOP PLAN WITH SLIDING DOOR  
CASES FOR T1 UNIT F, T5 UNIT L/M/N LIV.

4 TYP. PART ELEVATION

NO.	DATE	REVISIONS	DESIGNED	CHECKED	APPROVED

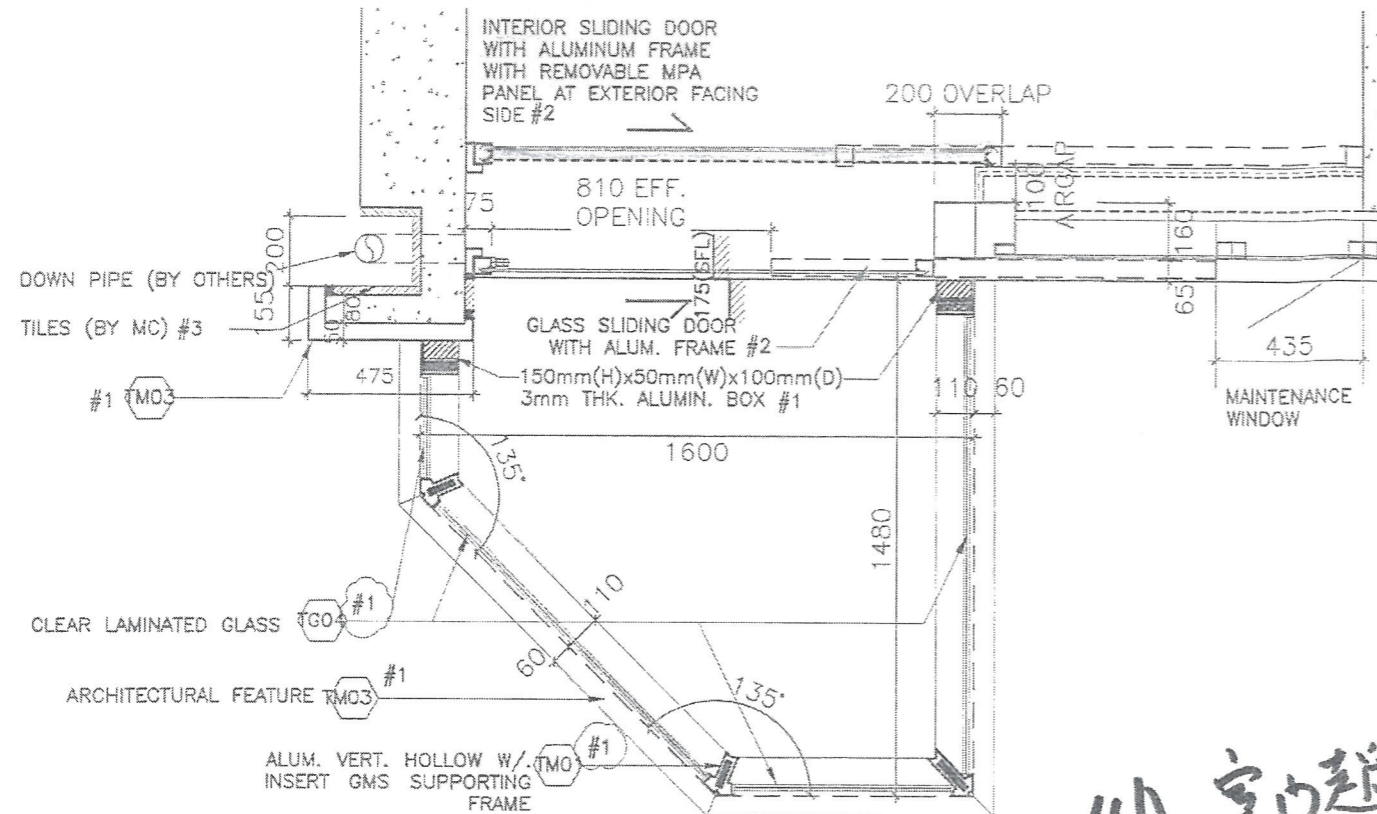


**WONG TUNG & PARTNERS LIMITED**  
ARCHITECTS & PLANNERS  
18th Floor, Cityplaza 3, Taikoo Shing, Hong Kong  
T 252-2805 9888 F 852-2513 1728 www.wongtung.com

**PROJECT:**  
URA KWUN TONG TOWN CENTRE REDEVELOPMENT (AREA 2 & 3) AT NKIL 6514, KWUN TONG, KOWLOON

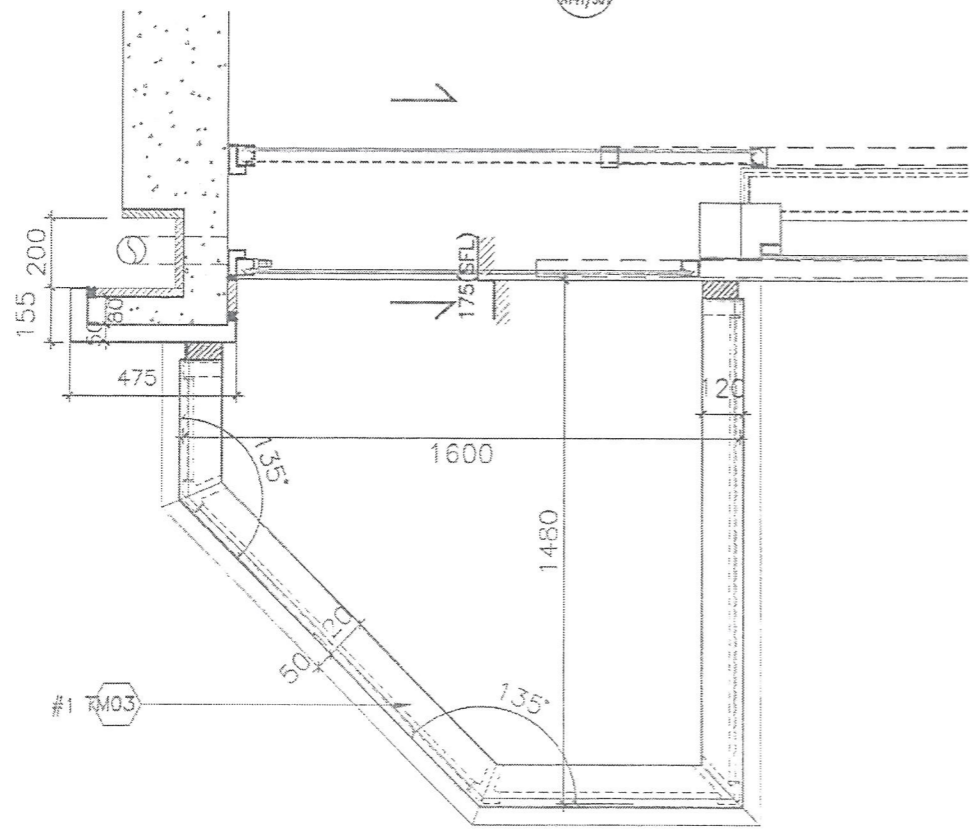
**TITLE:**  
TYPICAL ENHANCED ACOUSTIC BALCONY 1 DETAILS PART PLAN & ELEVATION

DATE: 11/2017	SCALE: 1:20
DRAWN: (MPC)	CHECKED: (CLC)
DESIGNED: (PVC)	REVIEWED: (OT)
JOB NO. 31690	DRAWING NO. T/A141/301
REV. NO. (01)	

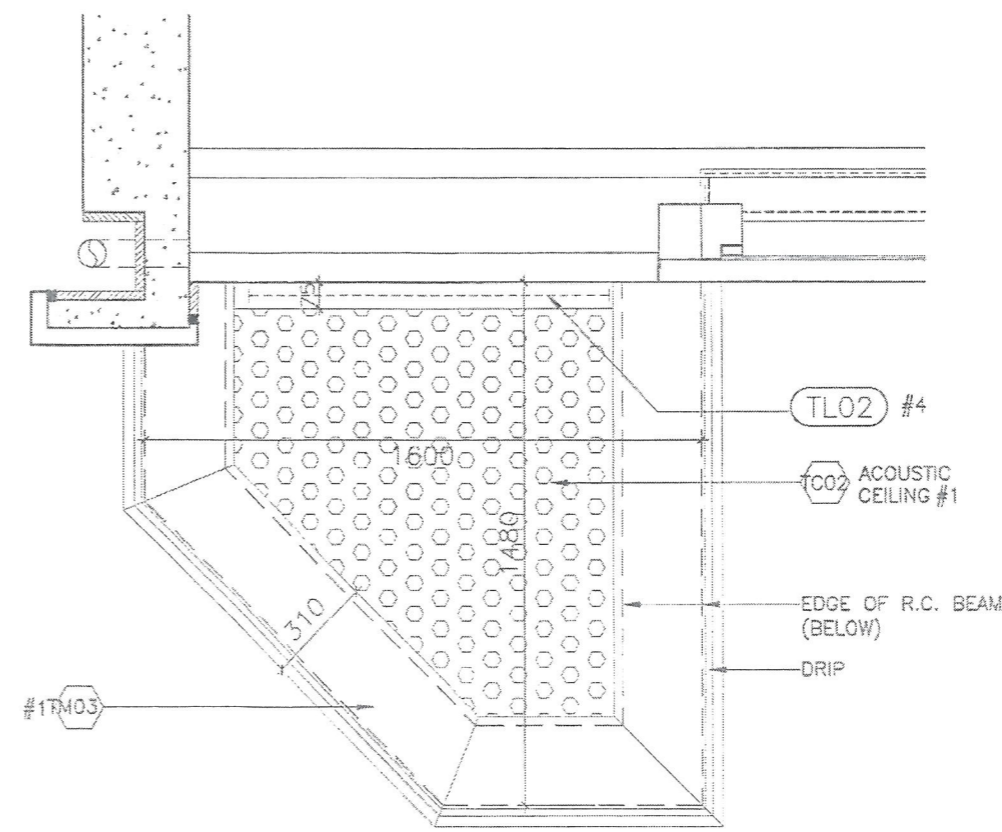


1 ENHANCED ACOUSTIC BALCONY PLAN  
T5 UNIT K

4A 室內趨生地 + 1.5mm 玻璃  
outside.



2 ENHANCED ACOUSTIC BALCONY TOP PLAN  
T5 UNIT K



3 ENHANCED ACOUSTIC BALCONY REFLECTED CEILING PLAN  
T5 UNIT K

NOTES  
DO NOT SCALE DRAWING, FIGURED DIMENSIONS ARE TO BE FOLLOWED.  
READ THIS DRAWING IN CONNECTION WITH GENERAL ARCHITECTURAL PLANS, STRUCTURAL PLANS, AND OTHER RELATED DRAWINGS. THE ARCHITECT SHALL BE NOTIFIED IMMEDIATELY OF ANY DISCREPANCY FOUND THEREIN.  
COPYRIGHT OF THIS DRAWING RESERVED BY ARCHITECT.

NOTE:  
#1 BY AL CLADDING/ BALUSTRADE/ CEILING NSC  
#2 BY CURTAIN WALL (TOWER) NSC  
#3 BY MAIN CONTRACTOR  
#4 BY ELE. NSC

- GENERAL NOTES:
1. THE EXACT LOCATION AND TYPE OF ACOUSTIC WINDOW/BALCONY/UP SHOULD REFER TO DWG T/A166/602.
  2. THE OVERLAPPING LENGTH OF INNER SLIDING DOOR SHALL SUBJECT TO LAB TEST RESULT.
  3. THE SIZE OF GLAZING MATERIALS SHALL REFER TO WINDOW SCHEDULE.
  4. EFFECTIVE OPENING SHALL COMPLY WITH BD STATUTORY REQUIREMENT OF LIGHTING AND VENTILATION.
  5. SHOP DRAWING SHALL BE SUBMITTED FOR ARCHITECT'S APPROVAL.
  6. UNLESS OTHERWISE SPECIFIED, DETAILS SHALL REFER TO TYPICAL WINDOW/BALCONY/UP DWG.

NO.	DATE	REVISIONS	ISSUED	REVISION	APPROVED

**WONG TUNG & PARTNERS LIMITED**  
ARCHITECTS & PLANNERS  
16th Floor, Cityplaza 3, Taikoo Shing, Hong Kong  
T 952-2893 9858 F 952-2513 1728 www.wongtung.com

PROJECT:  
URA KWUN TONG TOWN CENTRE REDEVELOPMENT (AREA 2 & 3) AT NKIL 6514, KWUN TONG, KOWLOON

TITLE:  
TYPICAL ENHANCED ACOUSTIC BALCONY 2 DETAILS PART PLAN & ELEVATION

6

DATE:	11/2017	SCALE:	1:20
DRAFTED:	(HPC)	CHECKED:	(CLO)
DESIGNED:	(PYC)	REVIEWED:	(OT)
JOB NO.	31690	DRAWING NO.	T/A141/302
REV. NO.	(01)		



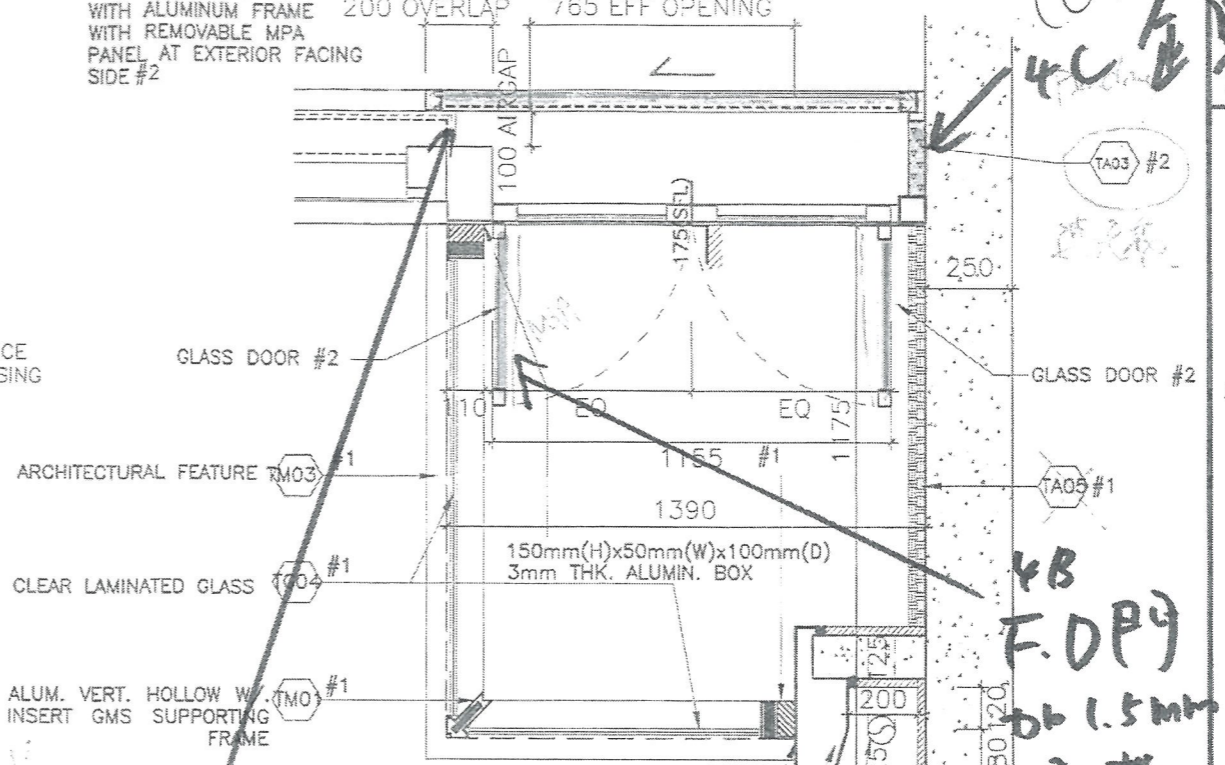
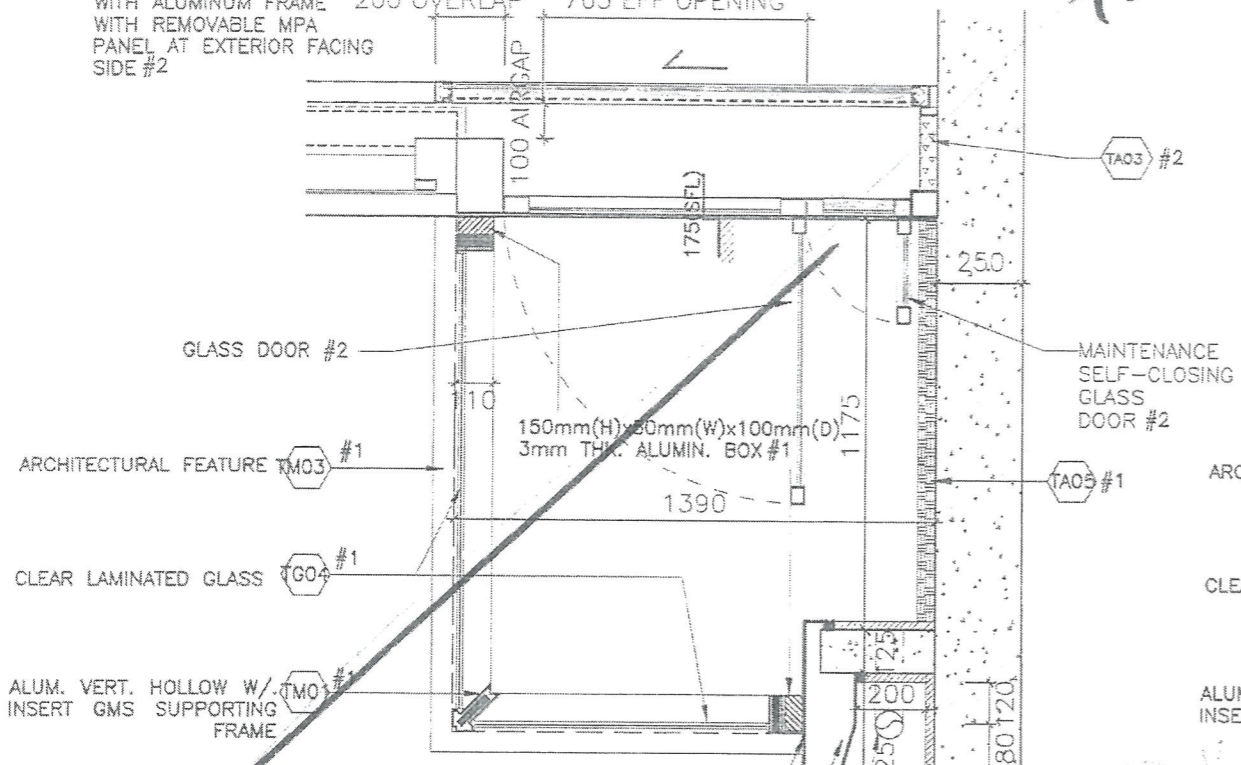
INTERIOR SLIDING DOOR WITH ALUMINUM FRAME 200 OVERLAP 765 EFF OPENING WITH REMOVABLE MPA PANEL AT EXTERIOR FACING SIDE #2

INTERIOR SLIDING DOOR WITH ALUMINUM FRAME 200 OVERLAP 765 EFF OPENING WITH REMOVABLE MPA PANEL AT EXTERIOR FACING SIDE #2

NOTES  
DO NOT SCALE DRAWING FIGURED DIMENSIONS ARE TO BE FOLLOWED.  
IN THIS DRAWING IN CONJUNCTION WITH GENERAL CONTRACT AND STRUCTURAL PLANS, AND OTHER RELEVANT DRAWINGS, THE ARCHITECT SHALL BE NOTIFIED IMMEDIATELY OF ANY DISCREPANCY FOUND THEREIN.  
COPYRIGHT OF THIS DRAWING RESERVED BY ARCHITECT.

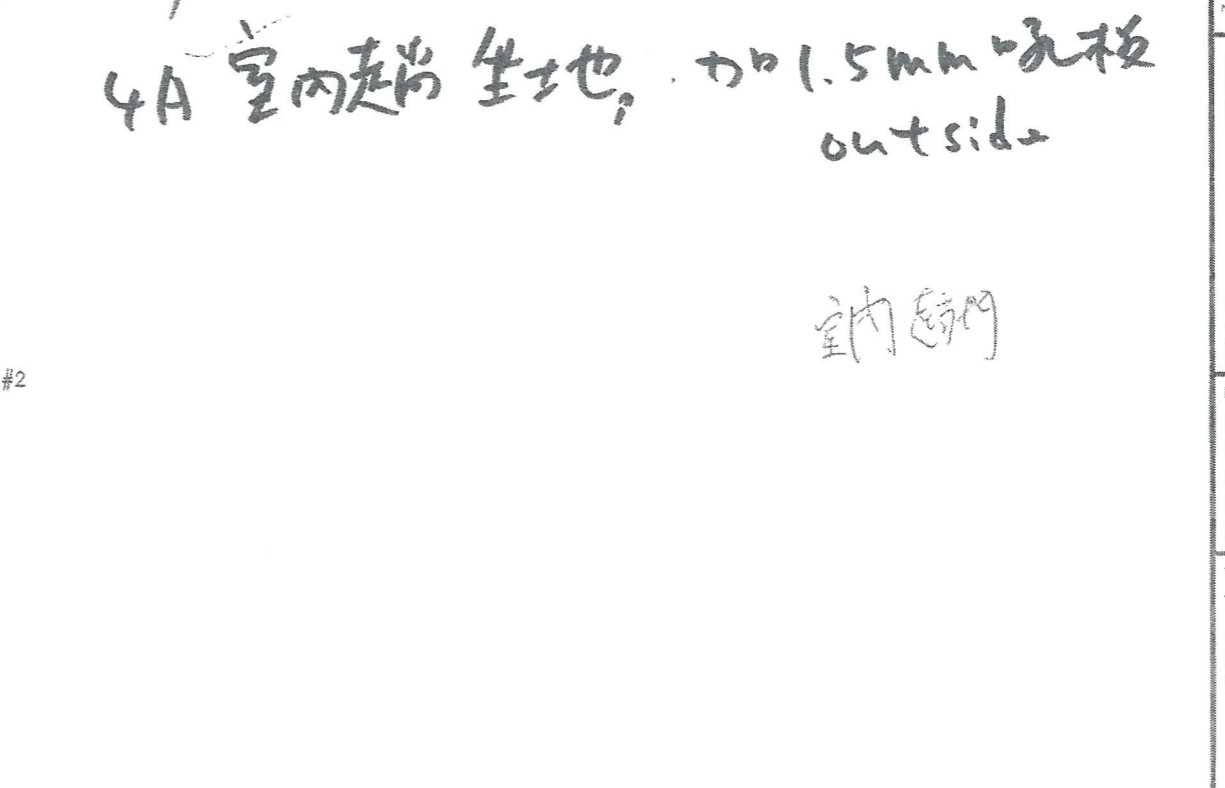
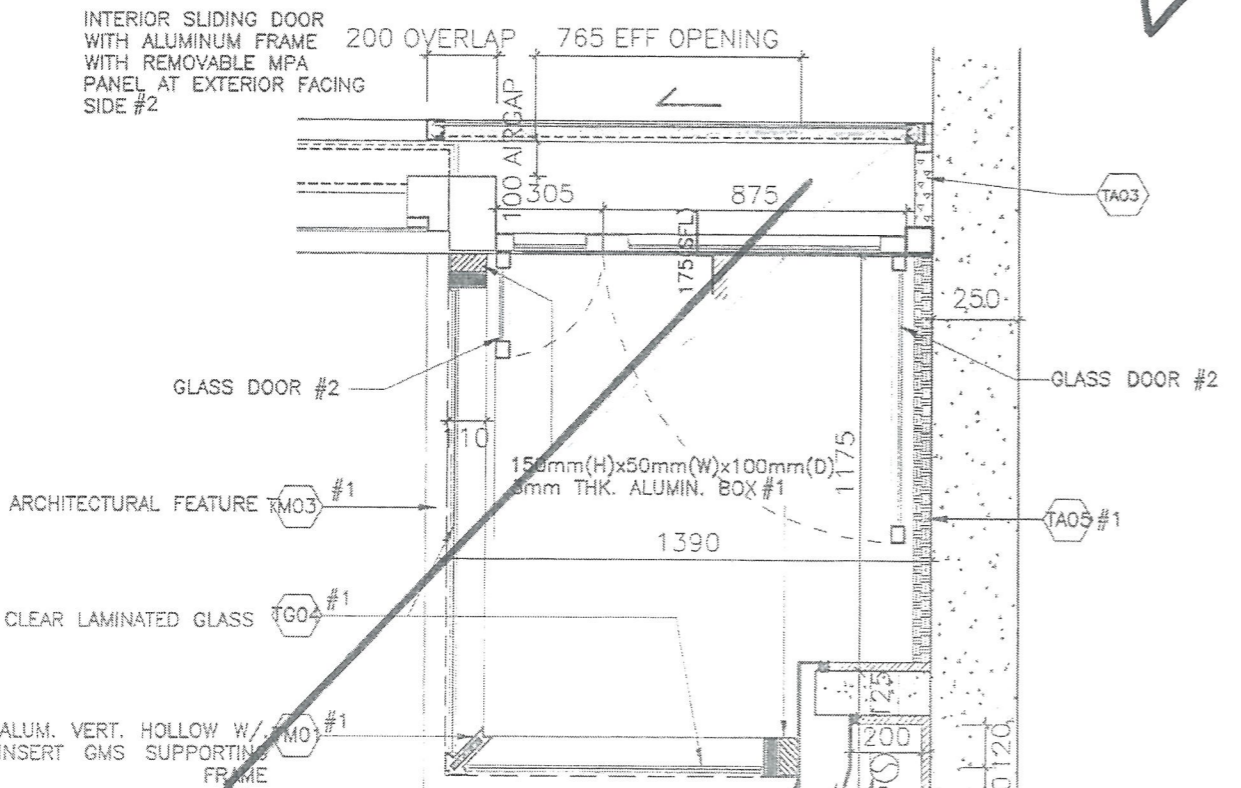
NOTE:  
#1 BY AL CLADDING/BALUSTRADE/ CEILING NSC  
#2 BY CURTAIN WALL(TOWER) NSC  
#3 BY MAIN CONTRACTOR  
#4 BY ELE. NSC

GENERAL NOTES:  
1. THE EXACT LOCATION AND TYPE OF ACOUSTIC WINDOW/BALCONY/UP SHOULD REFER TO DWG T/A166/602.  
2. THE OVERLAPPING LENGTH OF INNER SLIDING DOOR SHALL SUBJECT TO LAB TEST RESULT.  
3. THE SIZE OF GLAZING MATERIALS SHALL REFER TO WINDOW SCHEDULE.  
4. EFFECTIVE OPENING SHALL COMPLY WITH BD STATUTORY REQUIREMENT OF LIGHTING AND VENTILATION.  
5. SHOP DRAWING SHALL BE SUBMITTED FOR ARCHITECT'S APPROVAL.  
6. UNLESS OTHERWISE SPECIFIED, DETAILS SHALL REFER TO TYPICAL WINDOW/BALCONY/UP DWG.



1 T5 UNIT J BALCONY OPTION 2 (FLIPPED SIDE SWING DOOR)  
#1 STEEL FRAME SUPPORT DOWN PIPE (BY OTHERS) 2"x4" TILES (DARK GREY)

3 T5 UNIT J BALCONY OPTION 3 (DOUBLE SWING DOOR-EQUAL)  
#1 STEEL FRAME SUPPORT DOWN PIPE (BY OTHERS) 2"x4" TILES (DARK GREY)



2 T5 UNIT J BALCONY OPTION 4 (DOUBLE SWING DOOR-UNEQUAL)  
#1 STEEL FRAME SUPPORT DOWN PIPE (BY OTHERS) 2"x4" TILES (DARK GREY)

2 T5 UNIT J BALCONY OPTION 4 (DOUBLE SWING DOOR-UNEQUAL)  
#1 STEEL FRAME SUPPORT DOWN PIPE (BY OTHERS) 2"x4" TILES (DARK GREY)

4A 室內起前坐地, 加1.5mm 玻璃 outside

室內起門

(已批) 4C 全  
4B F.D.P. 加 1.5mm 玻璃 inside

NO.	DATE	REVISIONS	DRAWN	CHECKED	DESIGNED	REVIEWED

**WT**  
WONG TUNG & PARTNERS LIMITED  
ARCHITECTS & PLANNERS  
19th Floor, Cityplaza 3, Taikoo Shing, Hong Kong  
T 852-2935 9388 F 852-2513 1728 www.wongtung.com

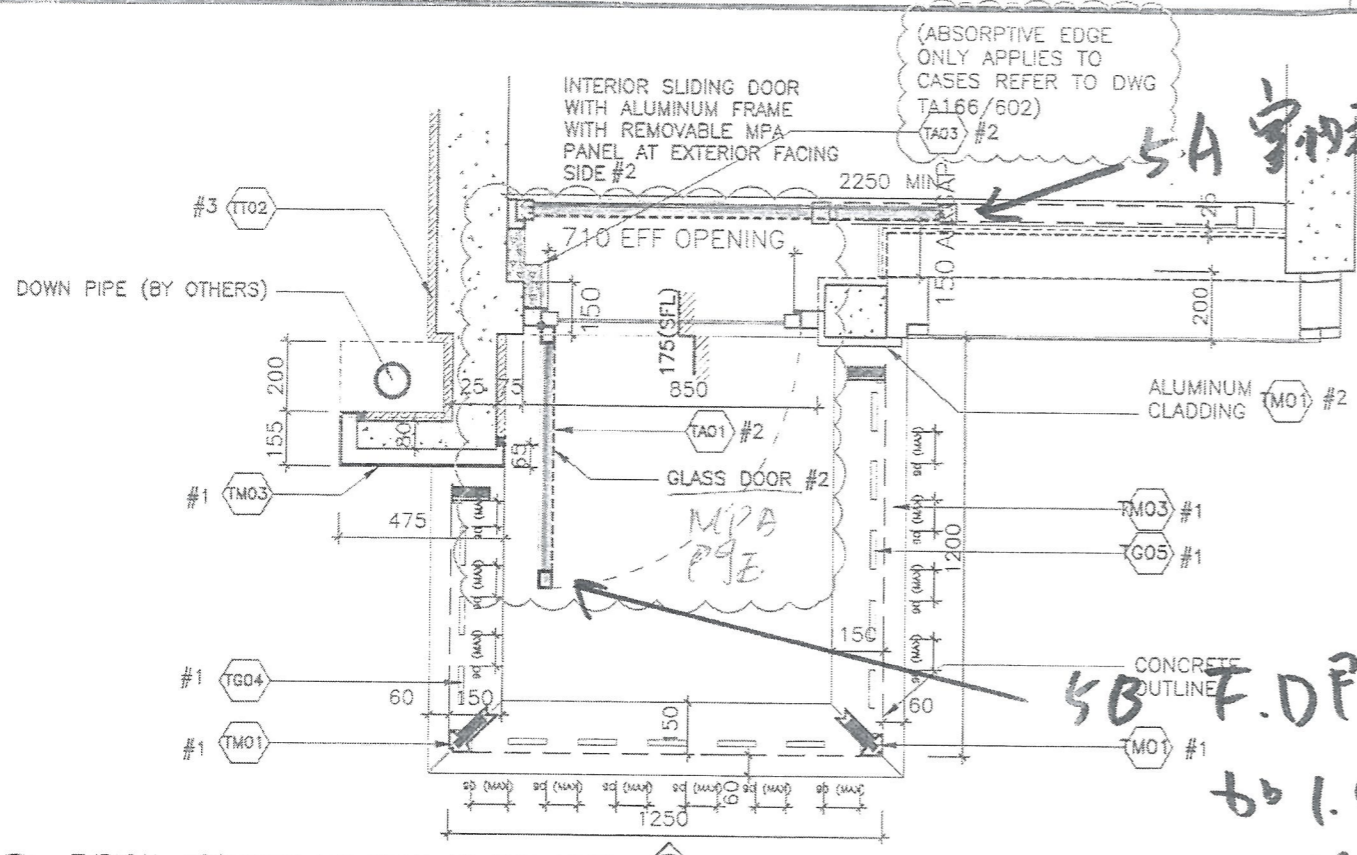
PROJECT:  
URA KWUN TONG TOWN CENTRE REDEVELOPMENT (AREA 2 & 3) AT NKIL 6514, KWUN TONG, KOWLOON

TITLE:  
TYPICAL ENHANCED ACOUSTIC BALCONY 3 DETAILS PART PLAN OPTIONS

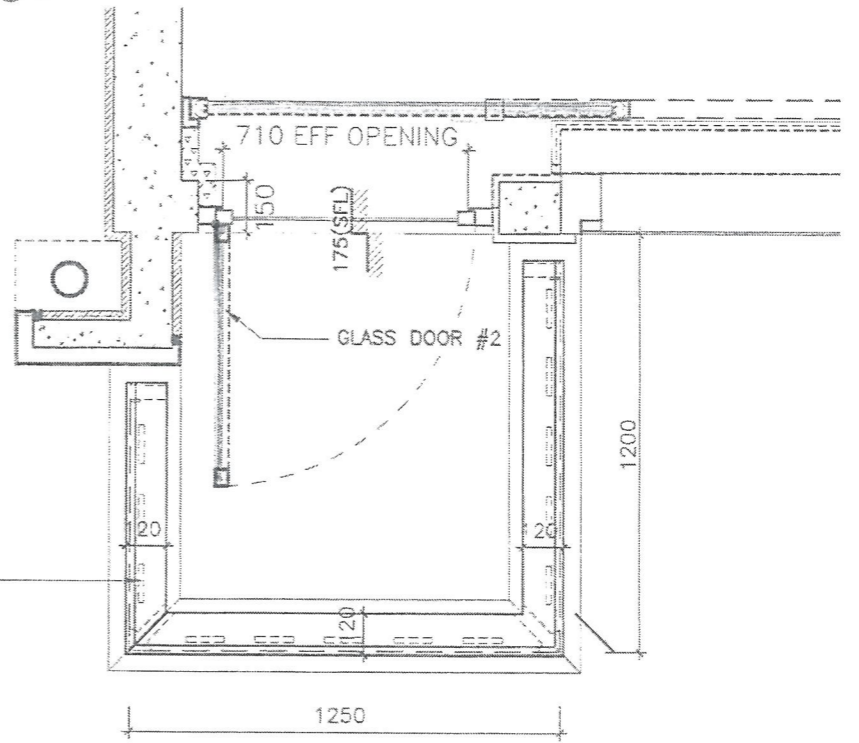
④

DATE:	11/2017	SCALE:	1:20
DRAFTED:	(RPO)	CHECKED:	(CLO)
DESIGNED:	(PYO)	REVIEWED:	(OT)
JOB NO.	31690	DRAWING NO.	T/A141/303A
REV. NO.	(00)		

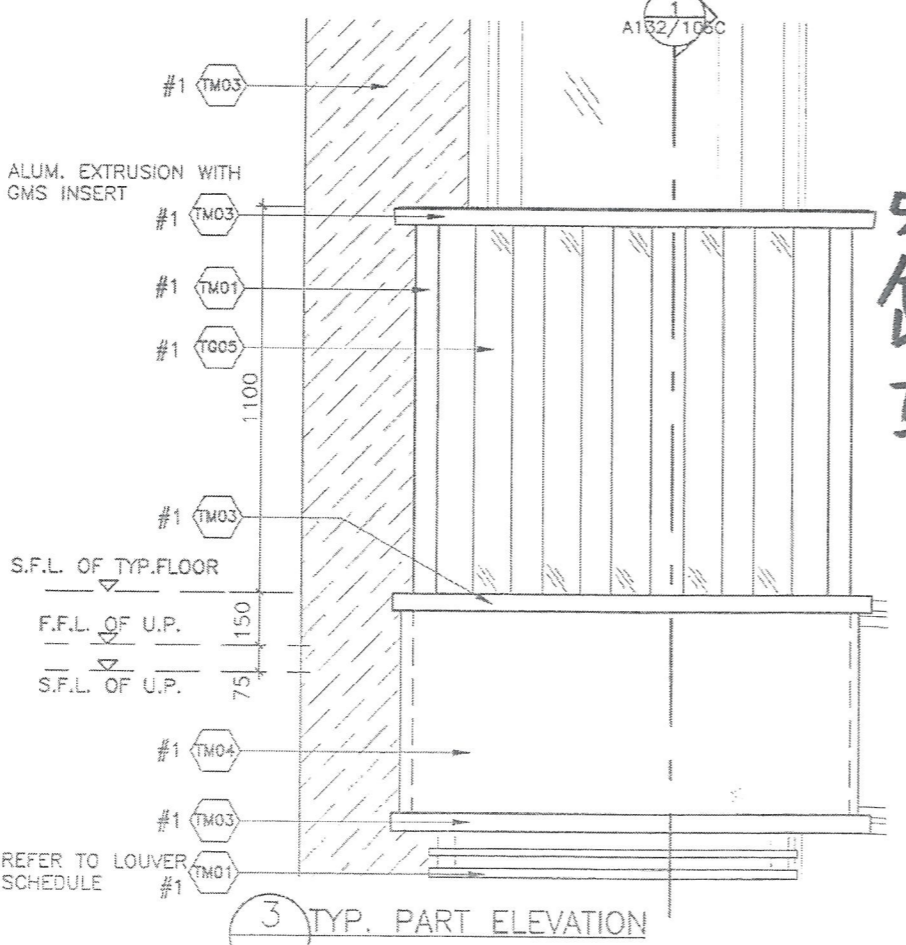
TENDER ADDENDUM NO.3 (POST-TENDER)



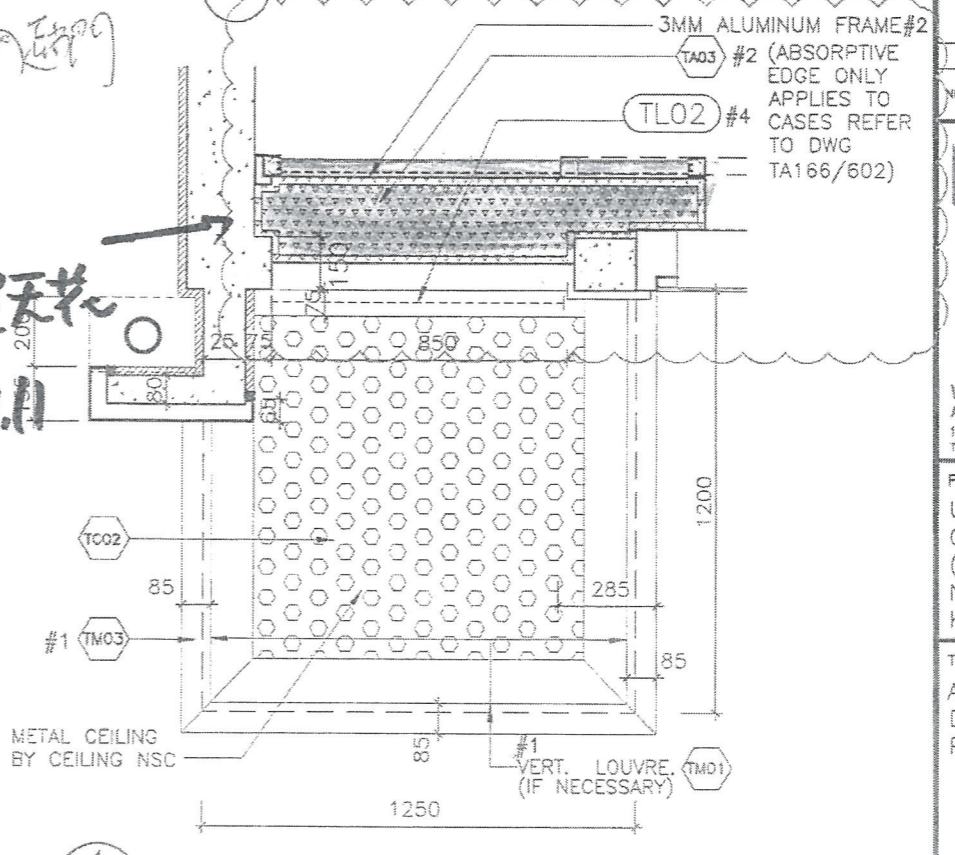
1 TYPICAL ACOUSTIC UP PLAN AT END UNIT



2 TOP PLAN AT END UNIT



3 TYP. PART ELEVATION



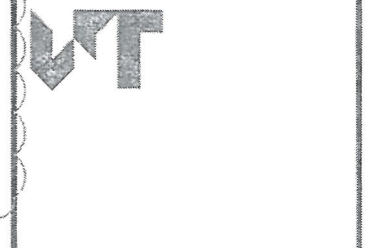
4 TYP. REFLECTED CEILING PART PLAN (WITH ACOUSTIC CEILING)

NOTES  
DO NOT SCALE DRAWING. FIGURED DIMENSIONS ARE TO BE FOLLOWED.  
READ THIS DRAWING IN CONNECTION WITH GENERAL ARCHITECTURAL PLANS, STRUCTURAL PLANS, AND OTHER RELATED DRAWINGS. THE ARCHITECT SHALL BE NOTIFIED IMMEDIATELY OF ANY DISCREPANCY FOUND THEREIN.  
COPYRIGHT OF THIS DRAWING RESERVED BY ARCHITECT.

NOTE:  
#1 BY AL CLADDING/  
BALUSTRADE/ CEILING  
NSC  
#2 BY CURTAIN  
WALL(TOWER) NSC  
#3 BY MAIN  
CONTRACTOR  
#4 BY ELE. NSC

GENERAL NOTES:  
1. THE EXACT LOCATION AND TYPE OF ACOUSTIC WINDOW/BALCONY/UP SHOULD REFER TO DWG T/A166/602.  
2. THE OVERLAPPING LENGTH OF INNER SLIDING DOOR SHALL SUBJECT TO LAB TEST RESULT.  
3. THE SIZE OF GLAZING MATERIALS SHALL REFER TO WINDOW SCHEDULE.  
4. EFFECTIVE OPENING SHALL COMPLY WITH BD STATUTORY REQUIREMENT OF LIGHTING AND VENTILATION.  
5. SHOP DRAWING SHALL BE SUBMITTED FOR ARCHITECT'S APPROVAL.  
6. UNLESS OTHERWISE SPECIFIED, DETAILS SHALL REFER TO TYPICAL WINDOW/BALCONY/UP DWG.

NO.	DATE	REVISIONS	BY	CHKD	REVRD



WONG TUNG & PARTNERS LIMITED  
ARCHITECTS & PLANNERS  
15th Floor, Cityplaza 3, Tai Koo Shing, Hong Kong  
T 852-2803 9888 F 852-2513 7228 www.wongtung.com

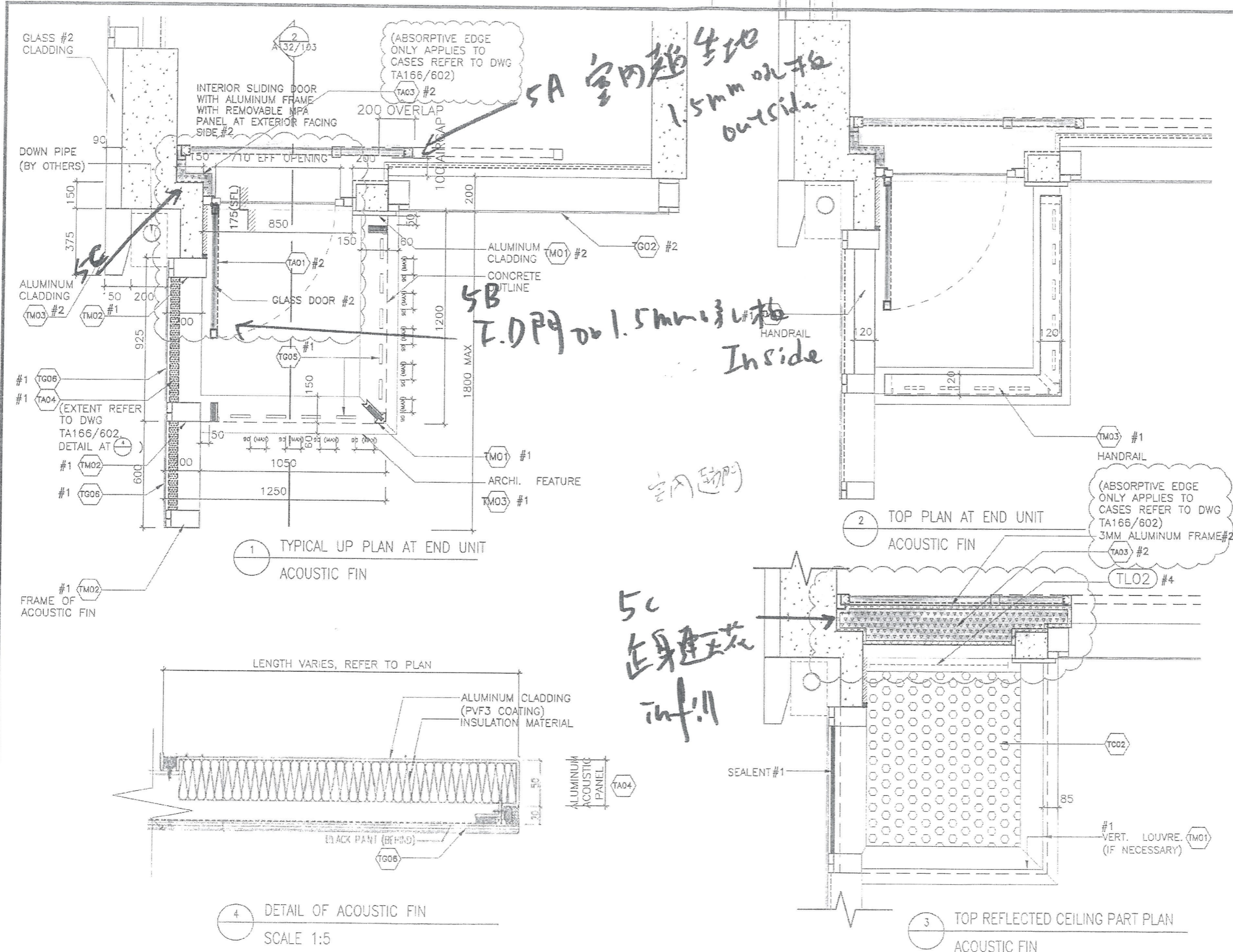
PROJECT:  
URA KWUN TONG TOWN  
CENTRE REDEVELOPMENT  
(AREA 2 & 3) AT  
NKIL 6514,  
KWUN TONG, KOWLOON

TITLE:  
ACOUSTIC UP 1  
DETAILS  
PART PLAN & ELEVATION

DATE: 11/2017	SCALE: 1:20
DRAFTED: (HPD)	CHECKED: (GLD)
DESIGNED: (PYC)	REVIEWED: (OT)

JOB NO.	DRAWING NO.	REV. NO.
31690	T/A141/401	(04)

TENDER ADDENDUM NO.2



NOTES  
 02 NOT SCALE DRAWING, FIGURED DIMENSIONS ARE TO BE FOLLOWED.  
 READ THIS DRAWING IN CONNECTION WITH GENERAL ARCHITECTURAL PLANS, STRUCTURAL PLANS, AND OTHER RELATED DRAWINGS. THE ARCHITECT SHALL BE NOTIFIED IMMEDIATELY OF ANY DISCREPANCY FOUND THEREIN.  
 COPYRIGHT OF THIS DRAWING RESERVED BY ARCHITECT.

- NOTE:
- #1 BY AL CLADDING/ BALUSTRADE/ CEILING NSC
  - #2 BY CURTAIN WALL(TOWER) NSC
  - #3 BY MAIN CONTRACTOR
  - #4 BY ELE. NSC

- GENERAL NOTES:
1. THE EXACT LOCATION AND TYPE OF ACOUSTIC WINDOW/BALCONY/UP SHOULD REFER TO DWG T/A166/602.
  2. THE OVERLAPPING LENGTH OF INNER SLIDING DOOR SHALL SUBJECT TO LAB TEST RESULT.
  3. THE SIZE OF GLAZING MATERIALS SHALL REFER TO WINDOW SCHEDULE.
  4. EFFECTIVE OPENING SHALL COMPLY WITH BD STATUTORY REQUIREMENT OF LIGHTING AND VENTILATION.
  5. SHOP DRAWING SHALL BE SUBMITTED FOR ARCHITECT'S APPROVAL.
  6. UNLESS OTHERWISE SPECIFIED, DETAILS SHALL REFER TO TYPICAL WINDOW/BALCONY/UP DWG.

NO.	DATE	REVISIONS	DRAWN	CHECKED	REVISION	BY/NO.



WONG TUNG & PARTNERS LIMITED  
 ARCHITECTS & PLANNERS  
 18th Floor, Cityplaza 2, Taikoo Shing, Hong Kong  
 T 852-2503 3888 F 852-2512 1728 www.wongtung.com

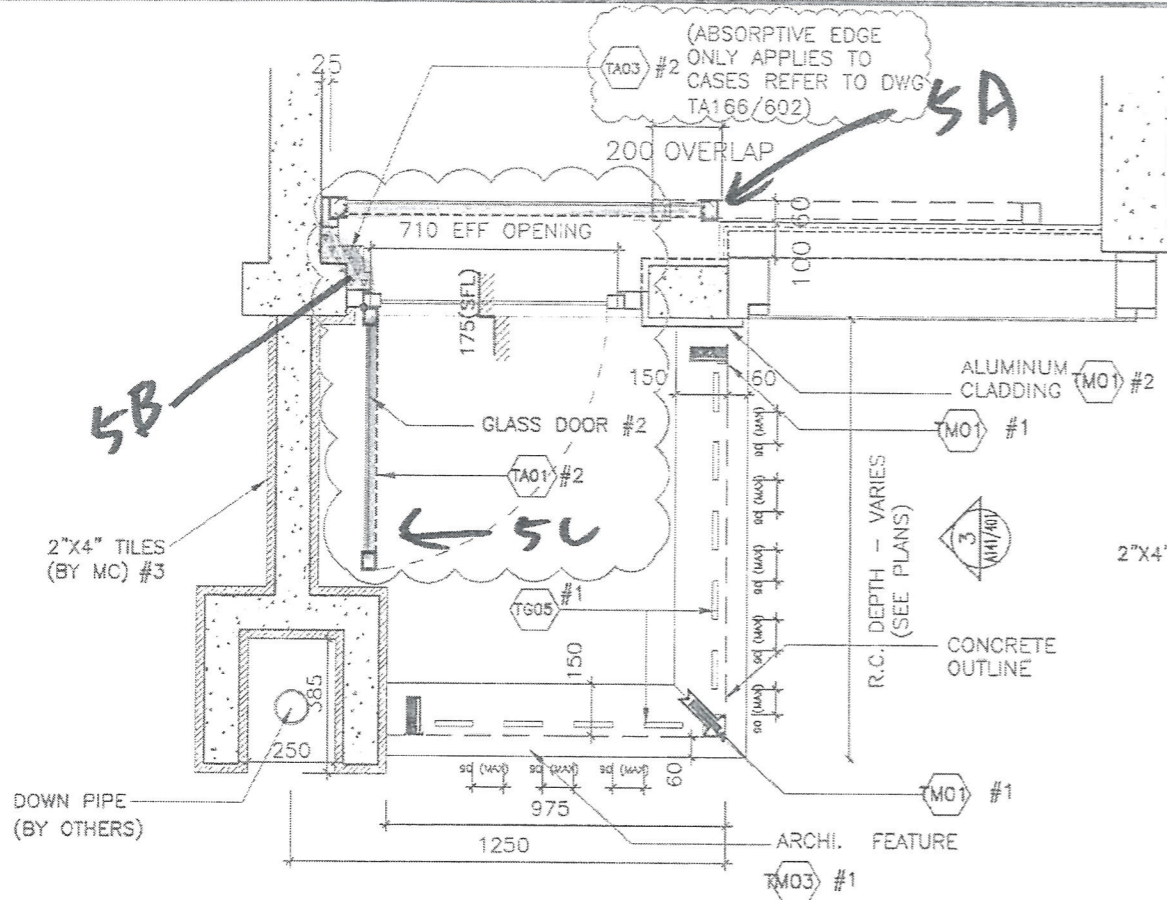
PROJECT:  
 URA KWUN TONG TOWN CENTRE REDEVELOPMENT (AREA 2 & 3) AT NKIL 6514, KWUN TONG, KOWLOON

TITLE:  
 ACOUSTIC UP 2 DETAILS  
 PART PLAN & ELEVATION

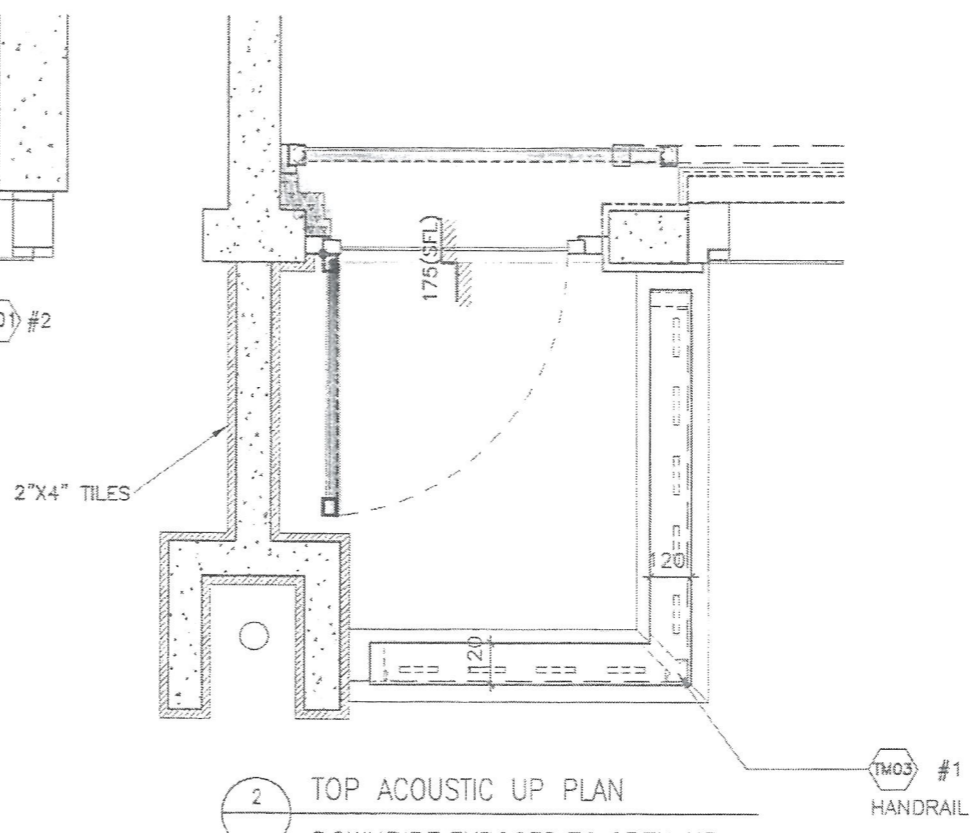
5

DATE	SCALE
11/2017	1:20
DRAWN: (NPK)	CHECKED: (GLC)
DESIGNED: (PYC)	REVIEWED: (GT)
JOB NO. 31690	DRAWING NO. T/A141/402
REV. NO. (03)	

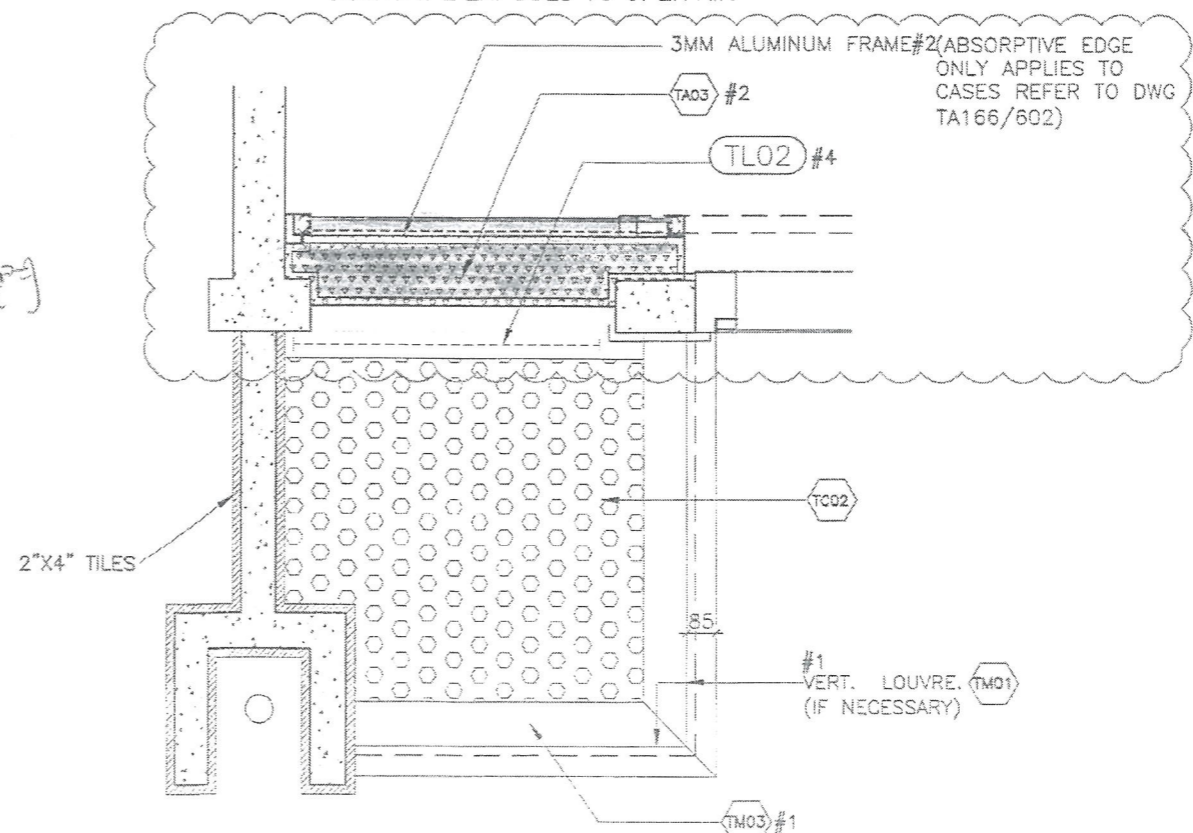
TENDER ADDENDUM NO.2



1 TYPICAL ACOUSTIC UP PLAN  
DOWNPIPE EXPOSED TO OPEN AIR



2 TOP ACOUSTIC UP PLAN  
DOWNPIPE EXPOSED TO OPEN AIR



3 ACOUSTIC UP REFLECTED CEILING PLAN  
DOWNPIPE EXPOSED TO OPEN AIR

NOTES  
DO NOT SCALE DRAWING. FIGURED DIMENSIONS ARE TO BE FOLLOWED.  
READ THIS DRAWING IN CONNECTION WITH GENERAL ARCHITECTURAL PLANS, STRUCTURAL PLANS, AND OTHER RELATED DRAWINGS. THE ARCHITECT SHALL BE NOTIFIED IMMEDIATELY OF ANY DISCREPANCY FOUND THEREIN.  
COPYRIGHT OF THIS DRAWING RESERVED BY ARCHITECT.

- NOTE:
- #1 BY AL CLADDING/BALUSTRADE/ CEILING NSC
  - #2 BY CURTAIN WALL(TOWER) NSC
  - #3 BY MAIN CONTRACTOR
  - #4 BY ELE. NSC

- GENERAL NOTES:
1. THE EXACT LOCATION AND TYPE OF ACOUSTIC WINDOW/BALCONY/UP SHOULD REFER TO DWG T/A166/602.
  2. THE OVERLAPPING LENGTH OF INNER SLIDING DOOR SHALL SUBJECT TO LAB TEST RESULT.
  3. THE SIZE OF GLAZING MATERIALS SHALL REFER TO WINDOW SCHEDULE.
  4. EFFECTIVE OPENING SHALL COMPLY WITH BD STATUTORY REQUIREMENT OF LIGHTING AND VENTILATION.
  5. SHOP DRAWING SHALL BE SUBMITTED FOR ARCHITECT'S APPROVAL.
  6. UNLESS OTHERWISE SPECIFIED, DETAILS SHALL REFER TO TYPICAL WINDOW/BALCONY/UP DWG.

NO.	DATE	REVISIONS	BY	CHECKED	REVISION

**WT**

WONG TUNG & PARTNERS LIMITED  
ARCHITECTS & PLANNERS  
18th Floor, Cityplaza 3, Taikoo Shing, Hong Kong  
T 852-2893 9892 F 852-2513 1728 www.wongtung.com

PROJECT:  
URA KWUN TONG TOWN CENTRE REDEVELOPMENT (AREA 2 & 3) AT NKIL 6514, KWUN TONG, KOWLOON

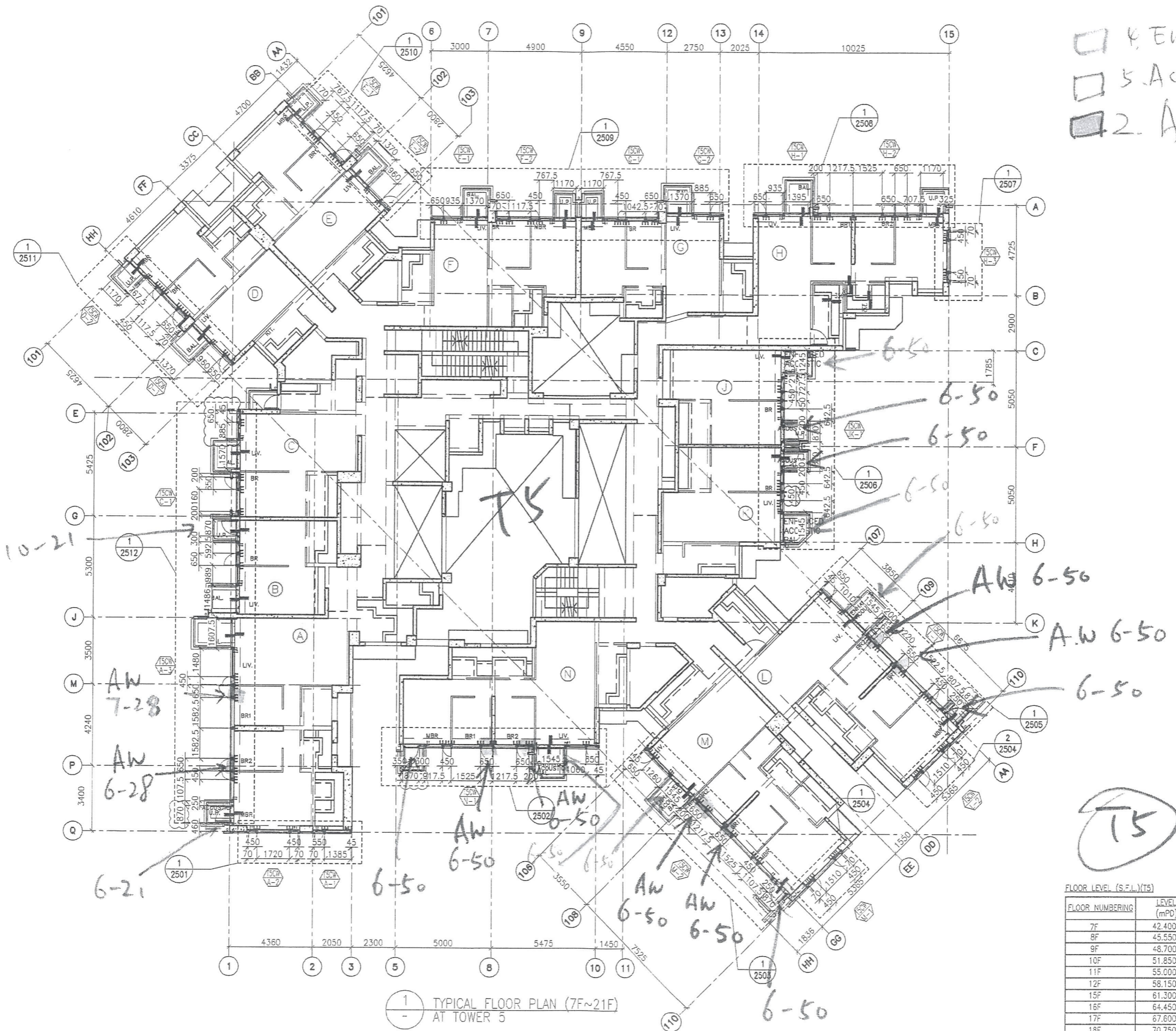
TITLE:  
ACOUSTIC UP 3 DETAILS PART PLAN & ELEVATION

5

DATE: 11/2017	SCALE: 1:20
DRAWN: (MPC)	CHECKED: (CLD)
DESIGNED: (PMC)	REVIEWED: (OT)

JOB NO. 31690	DRAWING NO. T/A141/403	REV. NO. (03)
---------------	------------------------	---------------

TENDER ADDENDUM NO.2



Enhanced Acoustic BAL  
 Acoustic UP  
 AW = Acoustic Window

B.D. REF :

CLIENT :  
 信和置業有限公司  
 Sino Land Company Limited

ARCHITECT :  
 WONG TUNG & PARTNERS LIMITED  
 ARCHITECTS & PLANNERS

MAIN CONTRACTOR :  
 CR Construction Company Limited

STRUCTURAL ENGINEER :  
 AECOM

FACADE CONSULTANT :  
 AECOM

NOTE :  
 1. ALL DIMENSIONS ARE IN mm.  
 2. ALL ELEVATIONS ARE VIEWED FROM OUTSIDE.  
 3. ALL DIMENSIONS TO BE VERIFIED ON SITE BEFORE FABRICATION.

LEGEND :  
 X1 --- DETAIL MARK NO.  
 X001 --- REFER SHEET NO.  
 1. F.F.L. --- FINISHED FLOOR LEVEL  
 2. S.F.L. --- STRUCTURAL FLOOR LEVEL  
 3. (R) --- REVERSED DETAIL

A	10/9/2018	GENERAL REVISED	
NO.	DATE	REVISED	BY

JOB NO. : J-837  
 PROJECT :  
 URA KWUN TONG TOWN CENTRE  
 REDEVELOPMENT (AREA 2 & 3) AT  
 NKIL 6514, KWUN TONG, KWLOON

TITLE :  
 TYPICAL FLOOR PLAN (7F~21F)  
 OF CURTAIN WALL  
 AT TOWER 5

DATE : 04-JUL-18 SCALE : 1:100 (A1)  
 DRAWN BY : ASING CHECKED BY : -

美特鋁質有限公司  
 MIDI ALUMINIUM FABRICATOR LTD.  
 Units 6-8, Sunray Industrial Centre, 1/F  
 610 Cha Kwo Ling Road, Kowloon  
 Tel: 23489211-4 Fax: (852) 27727666  
 DWG NO. : J837-CW-3502 REV. : A


FLOOR NUMBERING	LEVEL (mPD)
7F	42.400
8F	45.550
9F	48.700
10F	51.850
11F	55.000
12F	58.150
15F	61.300
16F	64.450
17F	67.600
18F	70.750
19F	73.900
20F	77.050
21F	80.200



1  
 - TYPICAL FLOOR PLAN (7F~21F)  
 AT TOWER 5

□ 4 Enhanced Acoustic BAL  
 □ 5. Acoustic UP  
 □ 2. AW = Acoustic Window

B.D. REF :  
 CLIENT :  
 信和置業有限公司  
 Sino Land Company Limited

ARCHITECT :  
 WONG TUNG & PARTNERS LIMITED  
 ARCHITECTS & PLANNERS  


MAIN CONTRACTOR :  

 CR Construction Company Limited

STRUCTURAL ENGINEER :  

 AECOM  
 FACADE CONSULTANT:  

 AECOM

NOTE :  
 1. ALL DIMENSIONS ARE IN mm.  
 2. ALL ELEVATIONS ARE VIEWED FROM OUTSIDE.  
 3. ALL DIMENSIONS TO BE VERIFIED ON SITE BEFORE FABRICATION.  
 LEGEND :  
 (X1) --- DETAIL MARK NO.  
 (X001) --- REFER SHEET NO.  
 1. F.F.L. --- FINISHED FLOOR LEVEL  
 2. S.F.L. --- STRUCTURAL FLOOR LEVEL  
 3. (R) --- REVERSED DETAIL


FLOOR NUMBERING	LEVEL (mPD)
7F	42.400
8F	45.550
9F	48.700
10F	51.850
11F	55.000
12F	58.150
15F	61.300
16F	64.450
17F	67.600
18F	70.750
19F	73.900
20F	77.050
21F	80.200
22F	83.350
23F	86.500
25F	89.650
26F	92.800
28F	99.250
29F	102.250
30F	105.400
31F	108.550
32F	111.700
33F	114.850
35F	118.000
36F	121.150
37F	124.300
38F	127.450
39F	130.600
40F	133.750
41F	136.900
42F	140.050
43F	143.100
45F	146.350
46F	149.500
47F	152.650
48F	155.800
49F	158.950
50F	162.100
51F	165.250

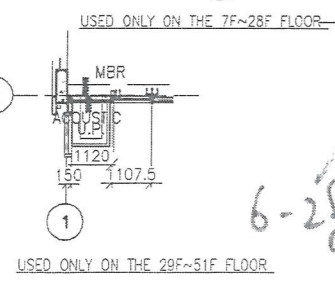
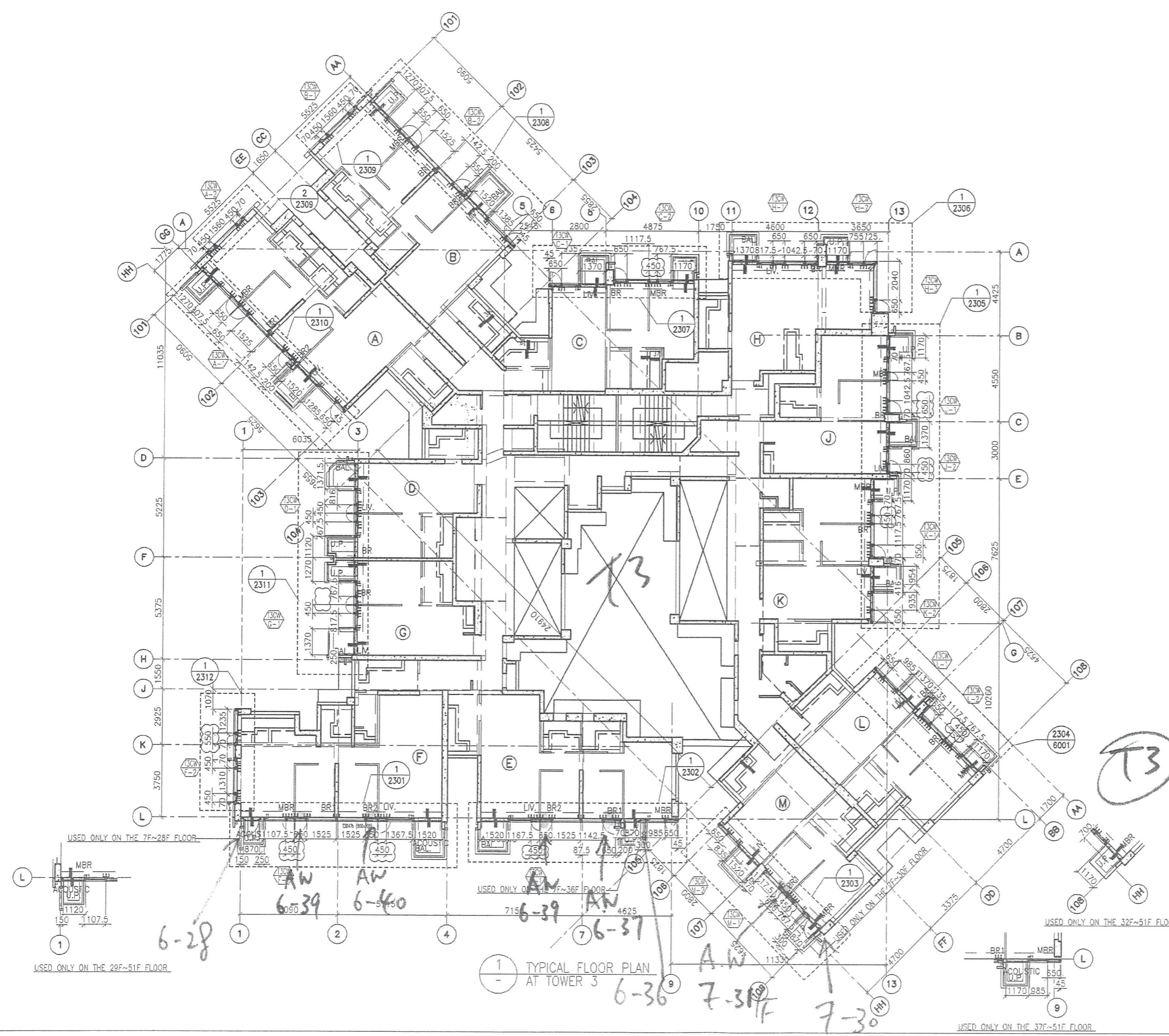
NO.	DATE	REVISION	BY
A	10/9/2018	GENERAL REVISED	

JOB NO. : J-837  
 PROJECT :  
 URA KWUN TONG TOWN CENTRE  
 REDEVELOPMENT (AREA 2 & 3) AT  
 NKIL 6514, KWUN TONG, KWLOON

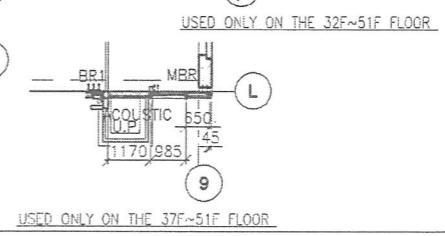
TITLE :  
 TYPICAL FLOOR PLAN  
 OF CURTAIN WALL  
 AT TOWER 3

DATE : 04-JUL-18 SCALE : 1:100 (A1)  
 DRAWN BY : ASING CHECKED BY : -


 英特鋁質有限公司  
 MIDI ALUMINIUM FABRICATOR LTD.  
 Units 6-8, Sunray Industrial Centre, 1/F  
 610 Cha Kwo Ling Road, Kwloon  
 Tel: 23489211-4 Fax: (852) 2727666  
 DWG NO. : J837-CW-3302 REV. : A



1 TYPICAL FLOOR PLAN  
 AT TOWER 3




4. Enhanced Acoustic BAL  
 5. Acoustic UP  
 2. Acoustic Window  
 = AW

B.D. REF :

CLIENT :  
 信和置業有限公司  
 Sino Land Company Limited

ARCHITECT :  
 WONG TUNG & PARTNERS LIMITED  
 ARCHITECTS & PLANNERS  


MAIN CONTRACTOR :  
 CR Construction Company Limited

STRUCTURAL ENGINEER :  


FACADE CONSULTANT:  


NOTE :  
 1. ALL DIMENSIONS ARE IN mm.  
 2. ALL ELEVATIONS ARE VIEWED FROM OUTSIDE.  
 3. ALL DIMENSIONS TO BE VERIFIED ON SITE BEFORE FABRICATION.

LEGEND :  
 (X1) --- DETAIL MARK NO.  
 (X001) --- REFER SHEET NO.  
 1. F.F.L. --- FINISHED FLOOR LEVEL  
 2. S.F.L. --- STRUCTURAL FLOOR LEVEL  
 3. (R) --- REVERSED DETAIL

FLOOR NUMBERING	LEVEL (mPD)
7F	42.400
8F	45.550
9F	48.700
10F	51.850
11F	55.000
12F	58.150
15F	61.300
16F	64.450
17F	67.600
18F	70.750
19F	73.900
20F	77.050
21F	80.200
22F	83.350
23F	86.500
25F	89.650
26F	92.800
28F	99.250
29F	102.250
30F	105.400
31F	108.550
32F	111.700
33F	114.850
35F	118.000
36F	121.150
37F	124.300
38F	127.450
39F	130.600
40F	133.750
41F	136.900
42F	140.050
43F	143.100
45F	146.350
46F	149.500
47F	152.650
48F	155.800
49F	158.950

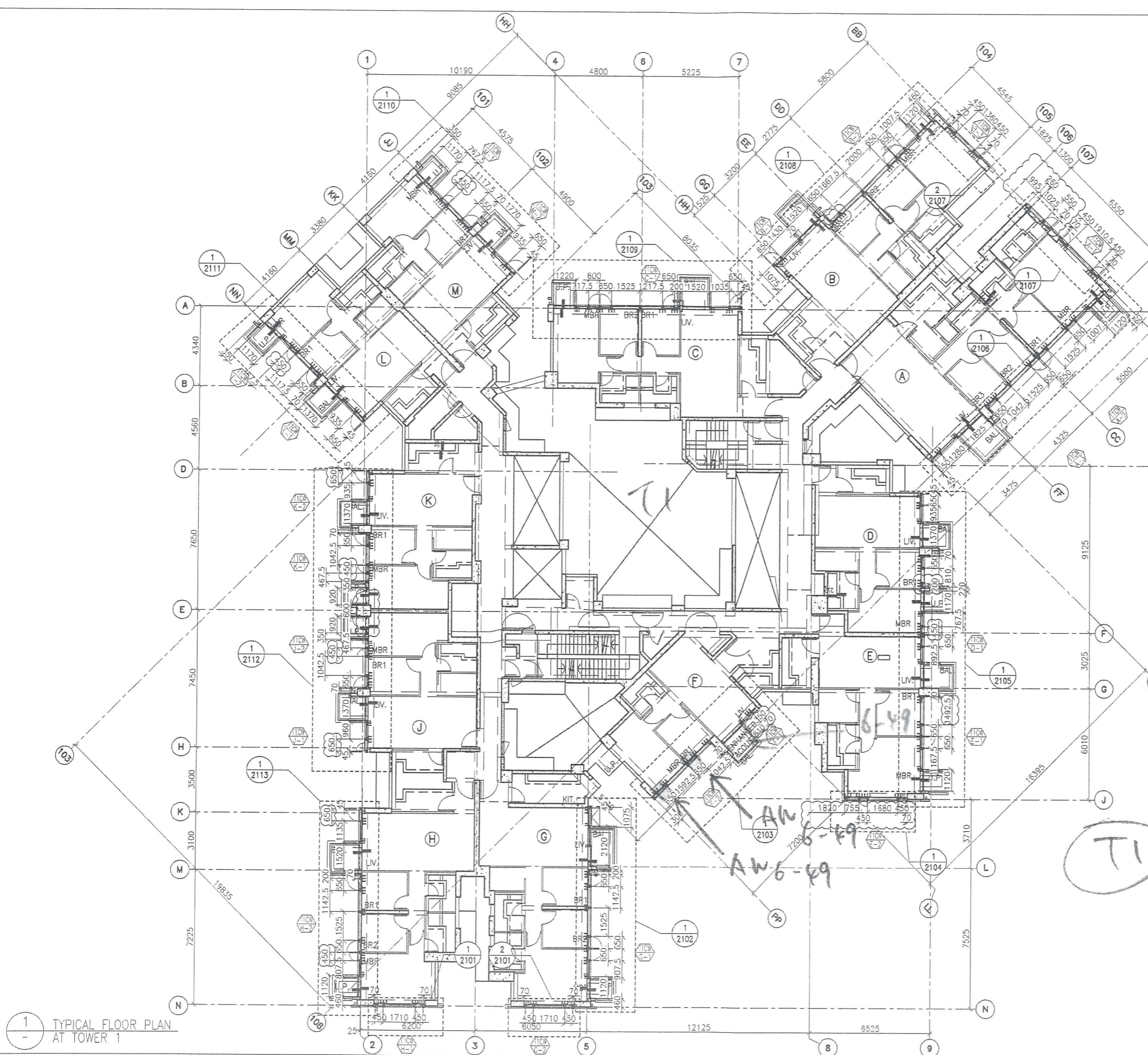
NO.	DATE	REVISION	BY
A	10/9/2018	GENERAL REVISED	

JOB NO. : J-837  
 PROJECT :  
 URA KWUN TONG TOWN CENTRE  
 REDEVELOPMENT (AREA 2 & 3) AT  
 NKIL 6514, KWUN TONG, KWLOON

TITLE :  
 TYPICAL FLOOR PLAN  
 OF CURTAIN WALL  
 AT TOWER 1

DATE : 04-JUL-18 SCALE : 1:100 (A1)  
 DRAWN BY : ASING CHECKED BY : -

 美特鋁質有限公司  
 MIDI ALUMINIUM FABRICATOR LTD.  
 Units 6-8, Sunray Industrial Centre, 1/F  
 610 Cha Kwo Ling Road, Kowloon  
 Tel: 23489211-4 Fax: (852) 27727666  
 DWG NO. : JB37-CW-3102 REV. : A



1 TYPICAL FLOOR PLAN AT TOWER 1