

工程指示 / 要求簡箋(E.I.)

工程指示編號：EI/ 9965 /18

修改版次： A

工程編號： J836

工程名稱：日出康城7期(平台)

工程項目： WW1 鐵件生產修改

收件人： Maggie Lor

發件人： Joe Chan

日期： 21/12/2018

要求提供 / 確認 事項：

- () 初步鋁料 B.M.
- () 加工拆圖，然後生產
- () 尺寸表
- () 正式鋁料 B.M.
- () 技術上資料 / 指示
- () 報價
- () 配件 B.M.
- () 樣辦或貨品說明書
- () 分判合約
- () 其他： _____

內容： 現確認有關鐵件之開孔，請依
附件資料加工相關鐵件。

請在 15/1/2019 前完成上列要求。

附有關圖紙 / 文件：

18頁

以上項目為：

- 原合約工程包
- 原合約工程加 / 減賬
- 新工程報價

原因：-

分發東莞各部門：

- () 生產技術總監 連附件
- () 技術部 連附件
- () 生產部 連附件
- () 機械設計部 連附件
- () 採購部 連附件
- () 生產統籌部 連附件
- () 質檢部 連附件
- () 會計部 連附件
- () 報關組 連附件
- () 其他 _____ 連附件

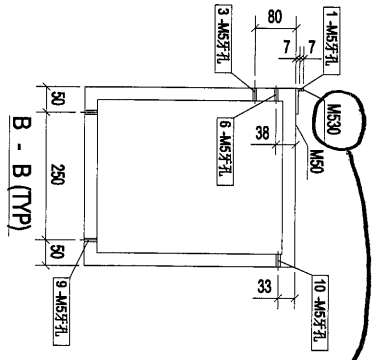
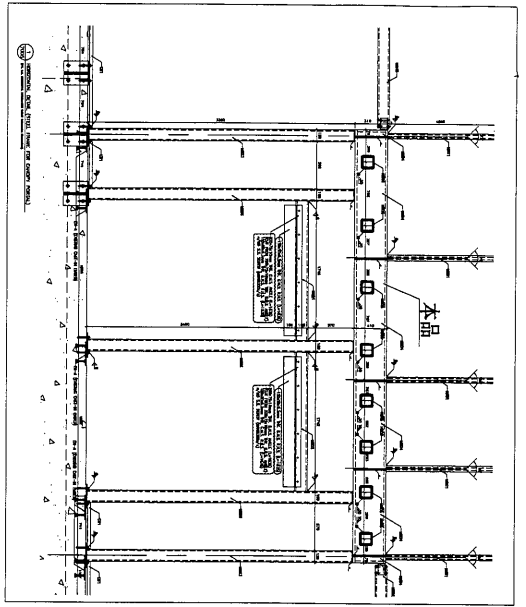
分發香港各部門：

- () 行政部 連附件
- () 會計部 連附件
- () 統籌部 連附件
- () 工程部地盤科文 連附件
- () 採購部 連附件
- () QS 部 連附件
- () 維修部 連附件
- () 其他 _____ 連附件

傳遞編號：

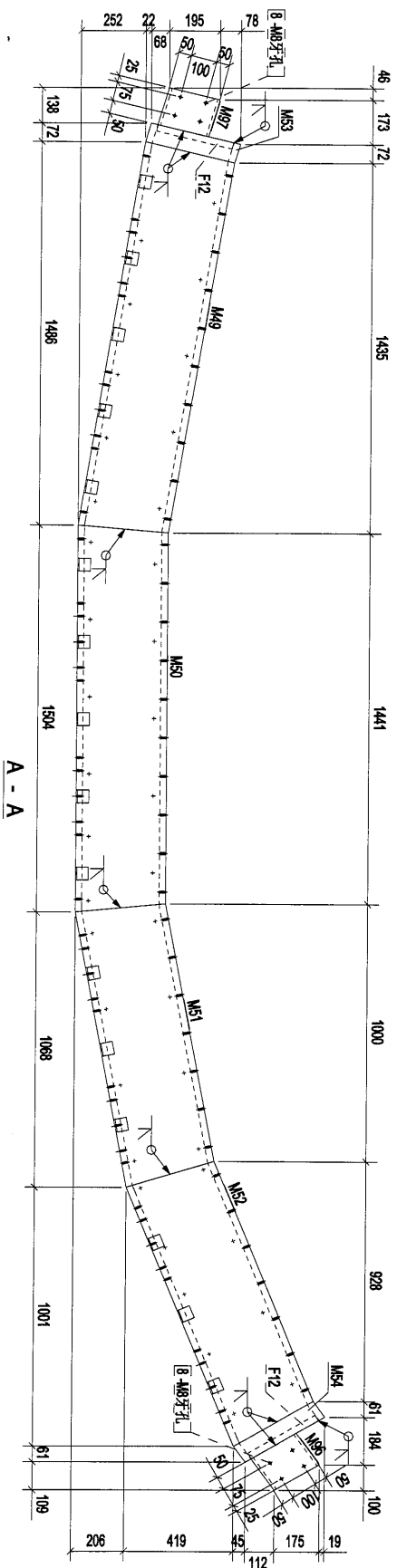
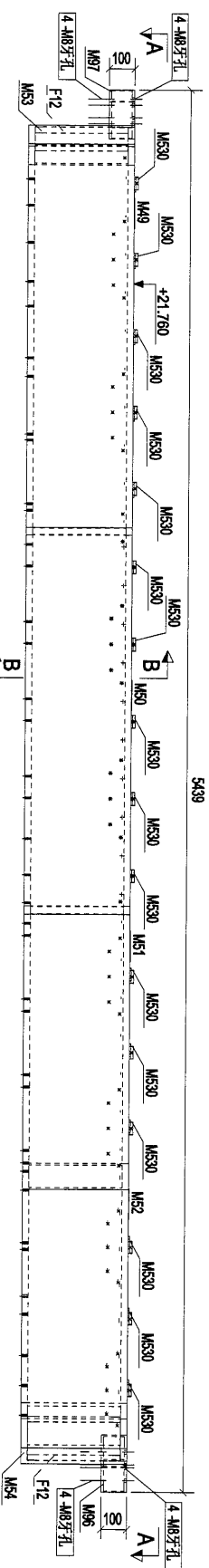
發件人簽署：

項目經理簽署：



②
此角要
一條過
Continue

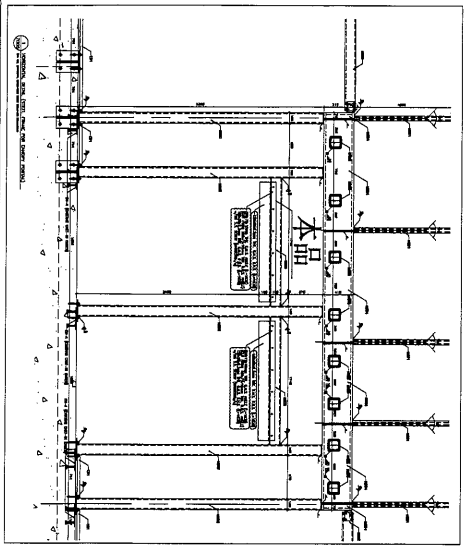
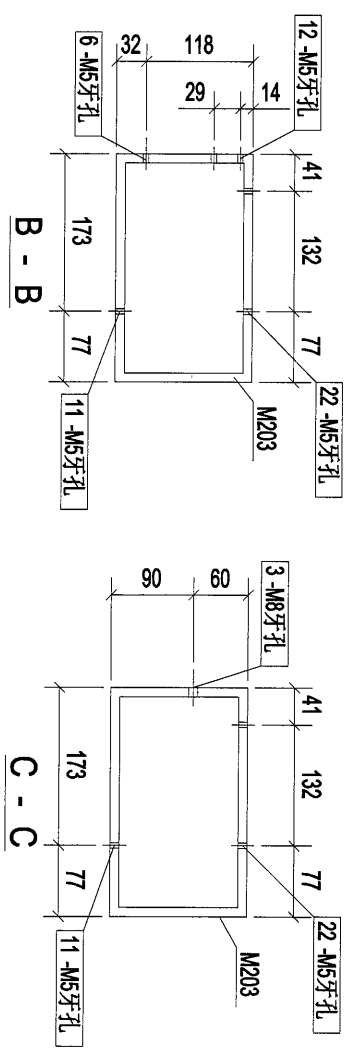
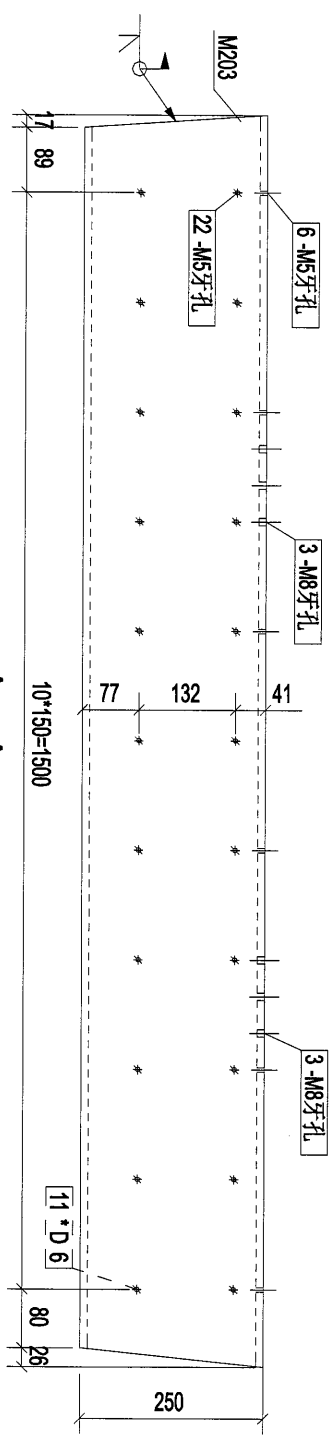
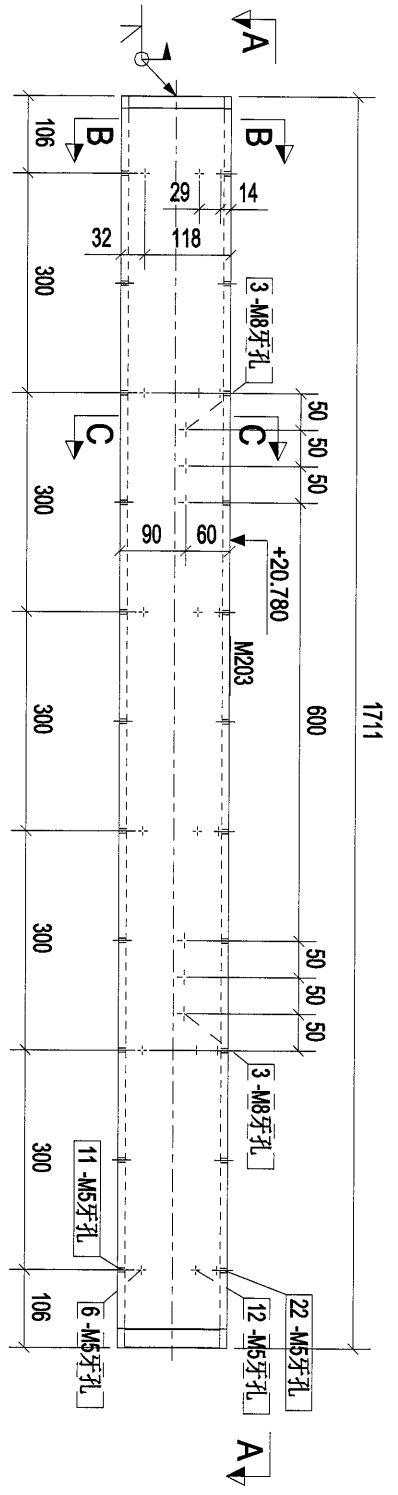
零件编号	规格(mm)	长度(mm)	数量	单重(kg)	共重(kg)	表面面积(m ²)
F12	PLT25*298.2	358	1	20.95	20.95	0.25
F12	PLT25*298.4	358	1	20.96	20.96	0.25
M49	RHS350*410*25	1508	1	412.87	412.87	2.28
M50	RHS350*410*25	1504	1	410.34	410.34	2.28
M51	RHS350*410*25	1088	1	293.55	293.55	1.63
M52	RHS350*410*25	1085	1	291.41	291.41	1.62
M53	RHS350*410*25	98	1	20.94	20.94	0.15
M54	RHS350*410*25	118	1	21.06	21.06	0.15
M56	RHS200*100*10.0	176	1	7.57	7.57	0.10
M57	RHS200*100*10.0	163	1	7.03	7.03	0.09
M530	RSA50*50.5	50	16	0.19	3.03	0.01
合计:				1509.7		



CLIENT:	美特經貿有限公司 MIDT AMINOXY INVESTMENT LTD. Units 6-8, Sunny Industrial Centre, 1/F 610 Chee Koo Ling Road, Kowloon Tel: 23489211-4 Fax: (852) 2727856		
PROJECT:	PROPOSED SITE C1 DEVELOPMENT AT AREA 68, TSOI TONG TSEUNG KWAN O, NEW TERRITORIES		
Rev:	A	第2次提批	2016-12-20
Design by	[Blank]		
Drawn by	[Blank]		
Reviewed by	[Blank]		
Approved by	[Blank]		
Scale	[Blank]		
DWG NO.:	WW1	- [1B4-1-1]	

銀塔有限公司
 Silver Tower Limited

[1B4-1]



构件编号:	1B5-1	构件数量:	1	构件重量:	100.63
部件编号	规格(mm)	长度(mm)	数量	单重(kg)	共重(kg)
M203	RHS250*150*10.0	1711	1	100.63	100.63
合计:				100.63	1.32

A	首次报批	2018-12-20
Rev.	Description	Date

PROJECT: PROPOSED SITE C1 DEVELOPMENT AT ABEA 88, T'KOTI 20/F, TSEUNG KWAN O, NEW TERRITORIES

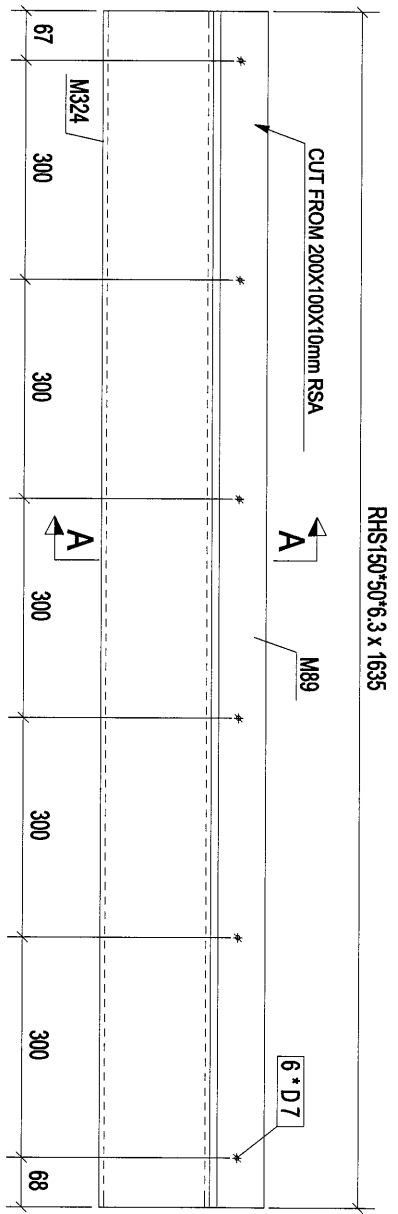
CLIENT: 美特銘實有限公司
 MIDT Aluminium Protection Ltd.
 Units 5-8, Simeg Industrial Centre, 1/F
 610 Chee Koo Ling Road, Kowloon
 Tel: 23489211-4 Fax: (852) 27272656

製圖石崇公司
 謝國石崇公司

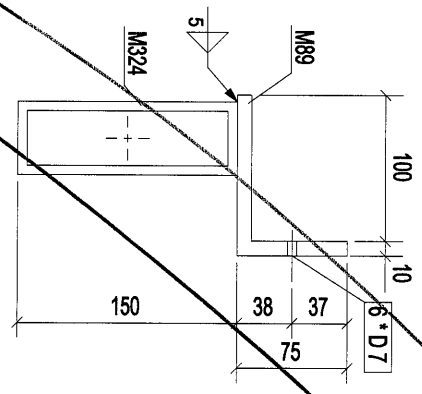
[1B5-1]

Designed by	
Drawn by	
Reviewed by	
Approved by	
Scale	
DWG NO: WW1	- [1B5-1]
REV	A

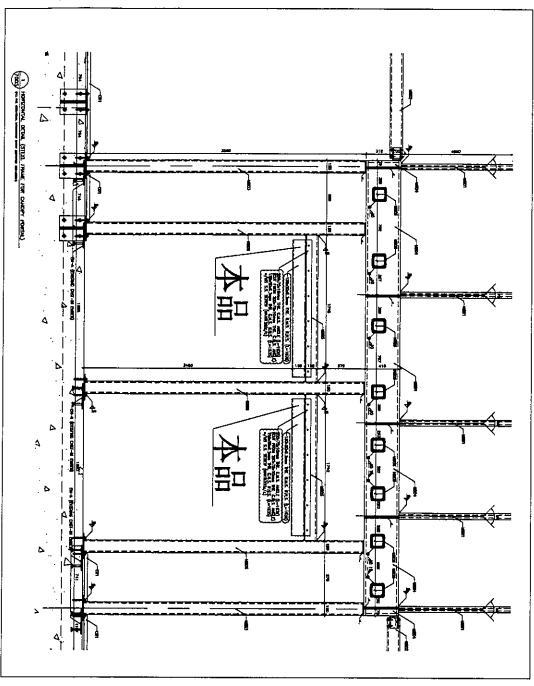
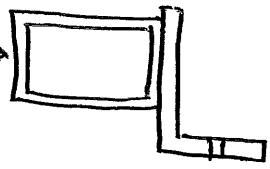
6



构件: 1B-14



125x75 x 6mm



CUT FROM 2000X100X10mm RSA

构件编号	规格(mm)	长度(mm)	数量	单重(kg)	共重(kg)	表面积(m ²)
M89	PL10485	1635	1	23.74	23.74	0.61
M324	RHS150*50*6.3	1635	1	30.31	30.31	0.64
合计:			2		54.05	

RHS125x75x6mm

Rev	Description	Date
A	首次报批	2018-12-20

PROJECT: PROPOSED SITE C1
DEVELOPMENT AT L5EA 88,
TKOIL TOPTRENSING KWAN O,
NEW TERRITORIES

CLIENT: 美特鋁質有限公司
MIDI Aluminium Extrusion Ltd.
Units 5-8, Sunny Industrial Centre, 1/F
610 Choi Kwoi Ling Road, Kowloon
Tel: 23489211-4 Fax: (852) 2727856

美特鋁質有限公司
MIDI Aluminium Extrusion Ltd.

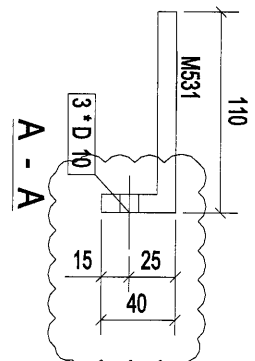
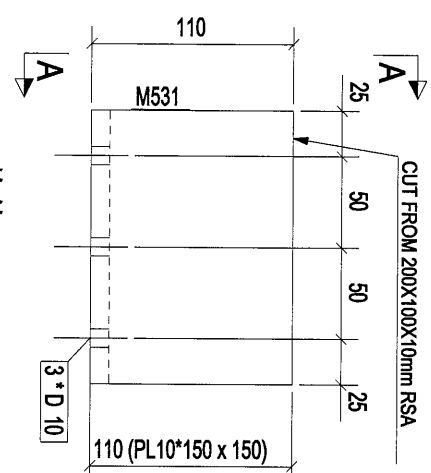
[1B-14]

Designed by	Drawn by	Reviewed by	Approved by

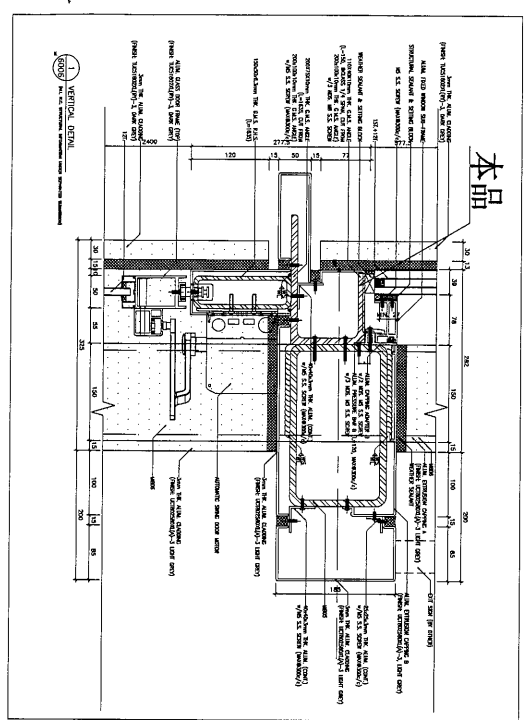
Scale

DMG NO.: WW1 - [1B-14]

2



构/件: 1SJ-7



CUT FROM 200X100X10mm RSA

构件编号	规格(mm)	构件数量	数量	单重(kg)	构件重量	表面面积(m ²)
M531	PL10*150	4	1	1.77	1.77	0.05
合计:					1.77	

Rev.	Description	Date
A	第2次报板	2018-12-20

PROJECT: PROPOSED SITE C1 DEVELOPMENT AT AREA 88, TROLEI OFF-TISERING KINAWO, NEW TERRITORIES

CLIENT: 美特鋁質有限公司
MIDI Aluminium Industries Ltd.
Units 6-8, Sunny Industrial Centre, 1/F
610 Cho Kwo Ling Road, Kowloon
Tel: 23489211-4 Fax: (852) 2727656

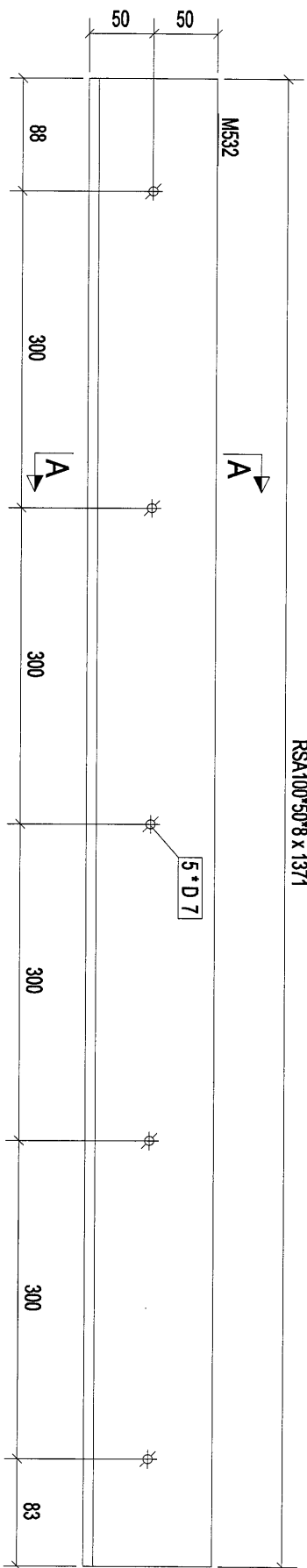


[1SJ-7]

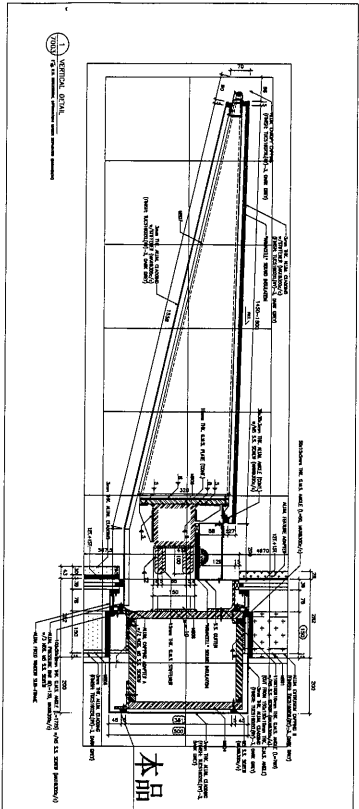
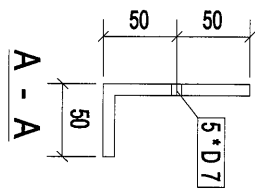
Designated by	Reviewed by
Drawn by	Approved by
	Scale
DWG NO: WMY - [1SJ-7]	
	REV
	A

Ⓟ

RSA100*50*8 x 1371



构件: 1SJ-33



构件编号:	1SJ-33	构件数量:	1	构件重量:	12.22
部件编号	规格(mm)	长度(mm)	数量	单重(kg)	共重(kg)
MS32	RSA100*50*8	1371	1	12.22	12.22
					表面积(m ²)
					0.41
合计:				12.22	

Rev.	0	第一次报数	2016-12-20
Description	PROJECT: PROPOSED SITE C1 DEVELOPMENT AT AREA 88, TROIC LINDU, TSEUNG KWAN O, NEW TERRITORIES		

CLIENT: 美特鋁質有限公司
MIDI Aluminium Industries Ltd.
Units 6-8, Sunny Industrial Centre, 1/F
610 Chu Kuo Ling Road, Kwailoon
Tel: 23468211-4 Fax: (852) 2727685

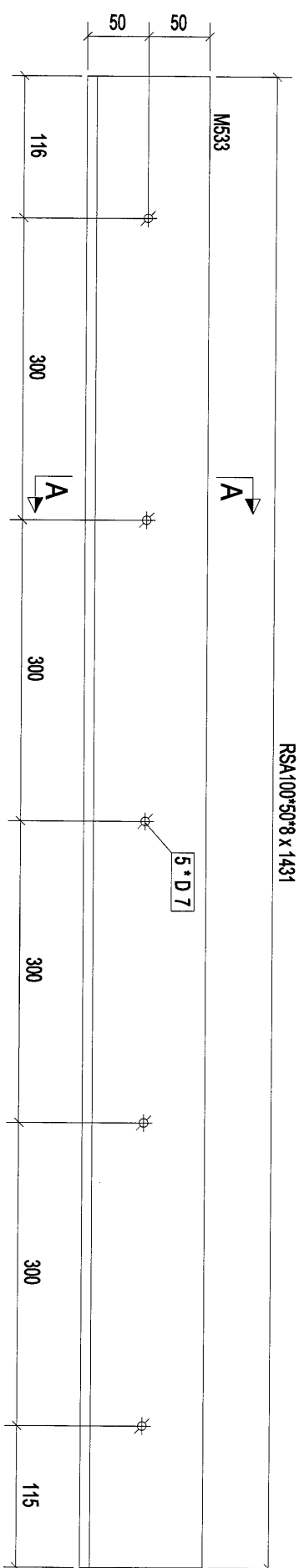


總代理 捷成行有限公司
JETT CHEUNG LIMITED

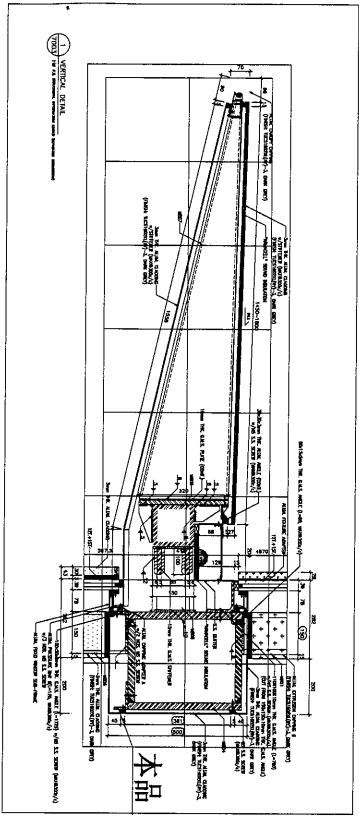
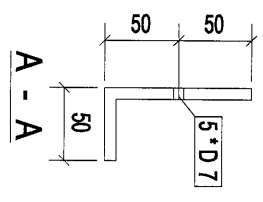
Designed by	
Drawn by	
Reviewed by	
Approved by	
Scale	
DMGNO: WMY1	- [1SJ-33]
REV	0

9

RSA100*50*8 x 1431



构件: 1SJ-34



构件编号	规格(mm)	长度(mm)	数量	单重(kg)	共重(kg)	表面积(m ²)
M533	ISA100*50*8	1431	1	12.76	12.76	0.43
合计:				12.76		

Rev.	Description	Date
0	首次报批	2018-12-20

PROJECT: PROPOSED SITE C1
DEVELOPMENT AT AREA 88,
KOTU TER, TSEUNG KWAN O,
NEW TERRITORIES

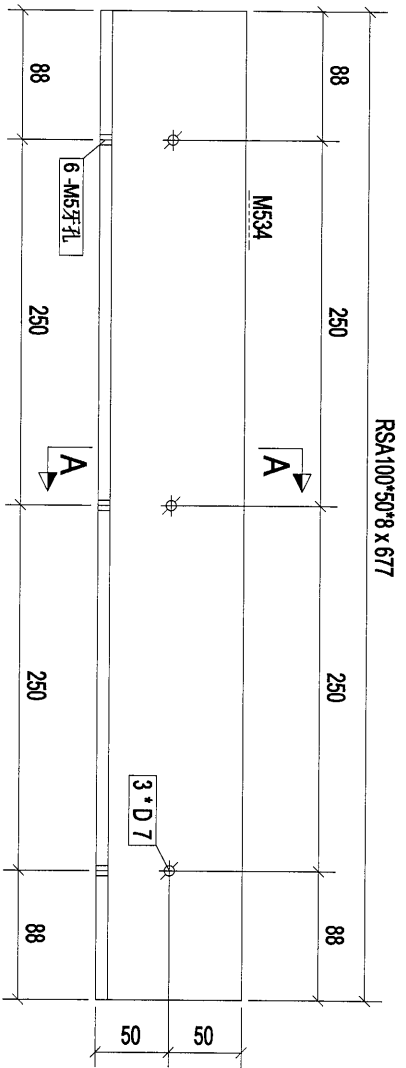
CLIENT: 美特经贸有限公司
MIDI Investment (Hong Kong) Ltd.
Units 6-8, Sunny Industrial Centre, 1/F,
610 Chee Kwoong Road, Kowloon
Tel: 23498211-4 Fax: (852) 27727566

製圖石隆公司
SUN LUNG COMPANY LIMITED

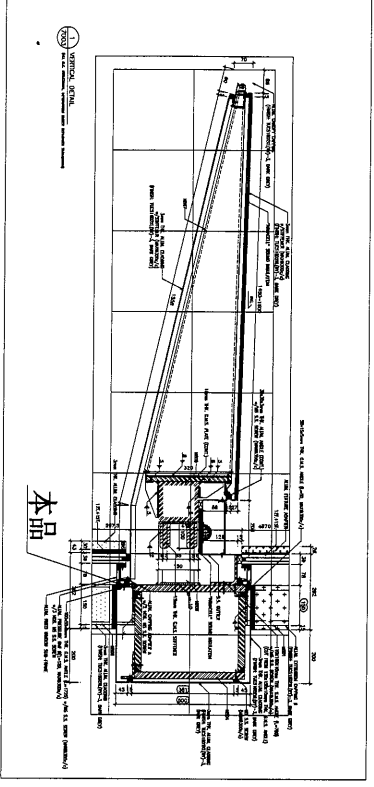
[1SJ-34]

Designed by	
Drawn by	
Reviewed by	
Approved by	
Scale	
DWG NO: WW1	- [1SJ-34]
REV	0

10



构件: 1SJ-35



构件编号:	1SJ-35	构件数量:	1	构件重量:	6.03
部件编号	规格(mm)	长度(mm)	数量	单重(kg)	共重(kg)
MS34	RSA100*50*8	677	1	6.03	6.03
合计:				6.03	0.21

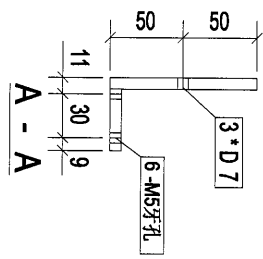
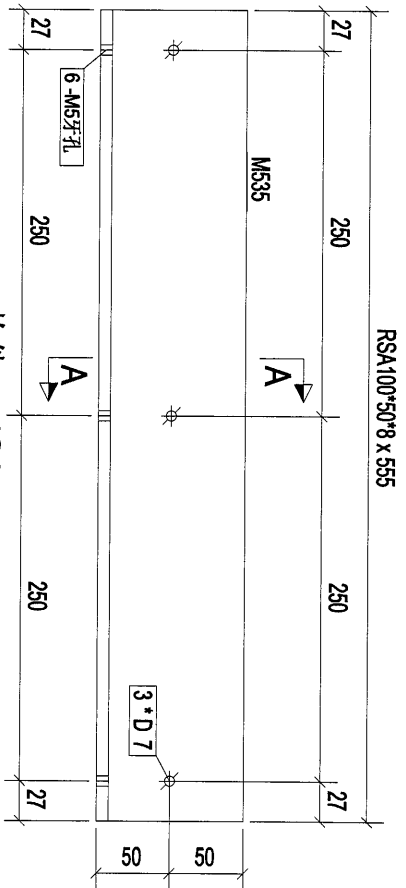
Rev	0	第1次提报	2018-12-20
Description	PROJECT: PROPOSED SITE C1 DEVELOPMENT AT AREA 08, TOLTOH TSEUNG KWAN O, NEW TERRITORIES		

CLIENT: 美特鋁質有限公司
MIDI Aluminium Industries Ltd.
Units 5-8, Sunny Industrial Centre, 1/F,
610 Chee Koo Ling Road, Kowloon
Tel: 23488211-4 Fax: (852) 27727866

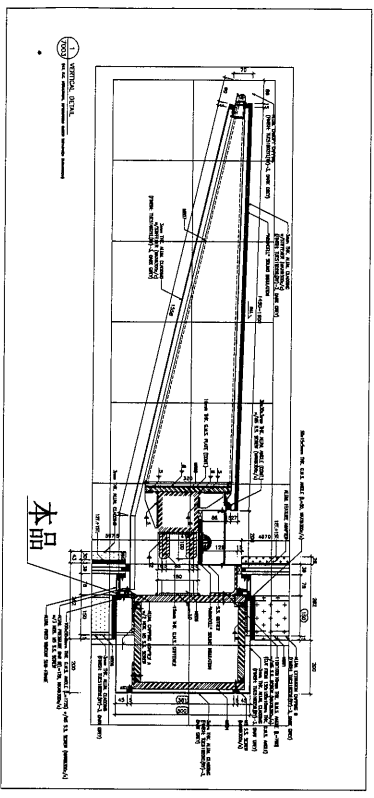


[1SJ-35]

Designed by	
Drawn by	
Reviewed by	
Approved by	
Scale	
DMG NO: WW1	- [1SJ-35]
REV	0



构件: 1SJ-36



构件编号:	1SJ-36	构件数量:	1	构件重量:	4.95
部件编号	规格(mm)	长度(mm)	数量	单重(kg)	共重(kg)
M535	RSA100*50*8	555	1	4.95	4.95
合计:				4.95	0.17

Rev.	0	首次提报	2018-12-20
Description			

PROJECT: PROPOSED SITE C1
DEVELOPMENT AT AREA 88,
KOTLANDIP, TSEUNG KWAN O,
NEW TERRITORIES

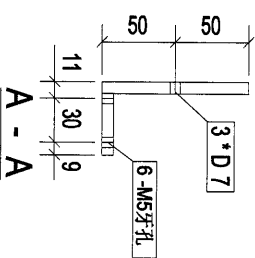
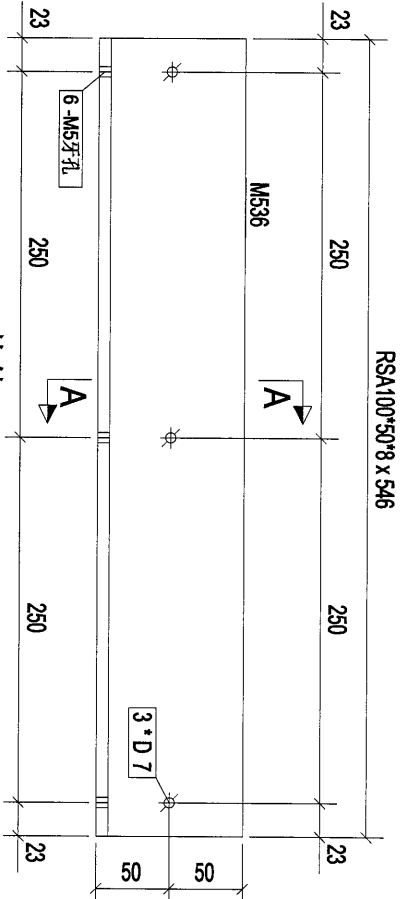
CLIENT: 美特鋁質有限公司
MIDI Aluminium Fabrication Ltd.
Units 6-8, Sunny Industrial Centre, 1/F
67D Chee Koo Ling Road, Kowloon
Tel: 23489211-4 Fax: (852) 27727866



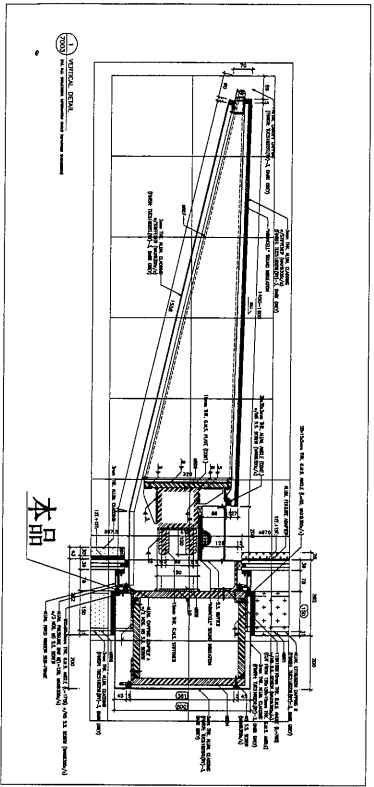
製成有限公司
MIDI Aluminium Fabrication Ltd.
[1SJ-36]

Designed by	
Drawn by	
Reviewed by	
Approved by	
Scale	
DMGNO: WW1	- [1SJ-36]
REV	0

12



构件: 1SJ-37



零件编号	1SJ-37	构件数量	1	构件重量	4.87
规格(mm)	546	数量	1	单重(kg)	4.87
长度(mm)	546	共重(kg)	4.87	表面积(m ²)	0.17
零件编号	1SJ-37	合计:	4.87		

Rev.	Description	Date
0	第一次报数	2018-12-20

PROJECT: PROPOSED SITE C1
DEVELOPMENT AT AREA 88,
KOTLANDIP, SEWONG KINAWA O,
NEW TERRITORIES

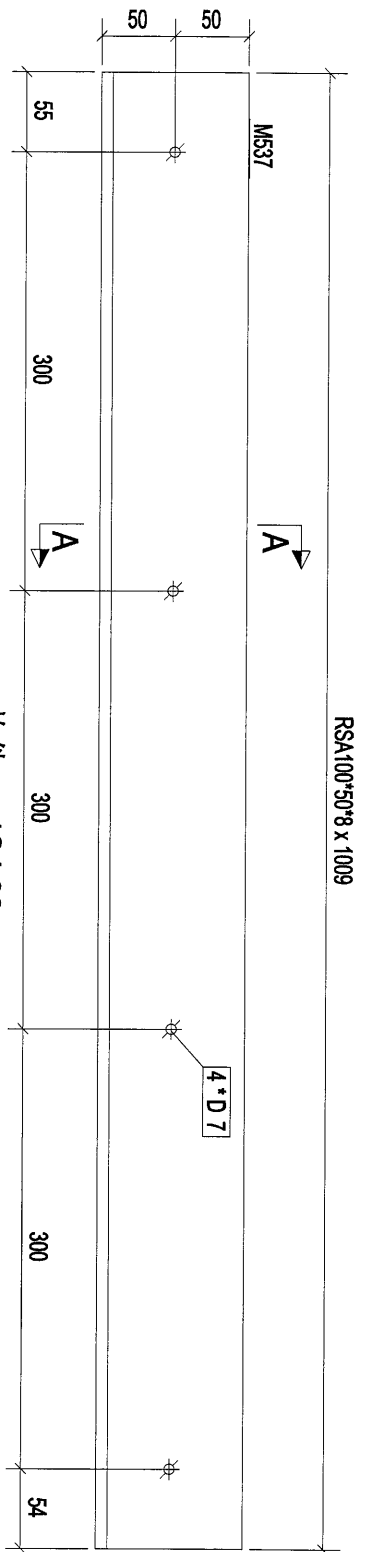
CLIENT: 美特经贸有限公司
MIDI AUTOMOTIVE MANUFACTURE LTD.
Units 6-8, Sunny Industrial Centre, 1/F
510 Cho Kwo Ling Road, Kowloon
Tel: 23489211-4 Fax: (852) 27277666

美特经贸有限公司
MIDI AUTOTECH MANUFACTURE LTD.

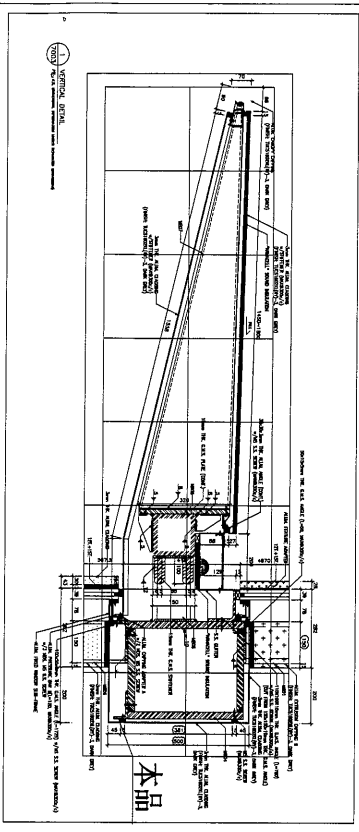
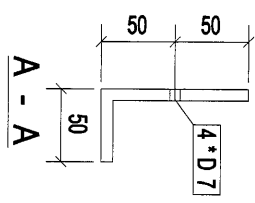
DESIGNED BY: [1SJ-37]
DRAWN BY:
CHECKED BY:
APPROVED BY:

REV.	DESCRIPTION
0	

13



构件: 1SJ-38



构件编号	规格(mm)	长度(mm)	数量	单重(kg)	共重(kg)	表面面积(m ²)
MS37	RSA100*50*8	1009	1	8.99	8.99	0.30
合计:				8.99		

Rev.	Description	Date
0	第一次报数	2016-12-20

PROJECT: PROPOSED SITE C1 DEVELOPMENT AT AFGA 88, KOTU LOR, TASEUNG KAWANO, NEW TERRITORIES

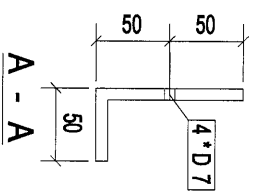
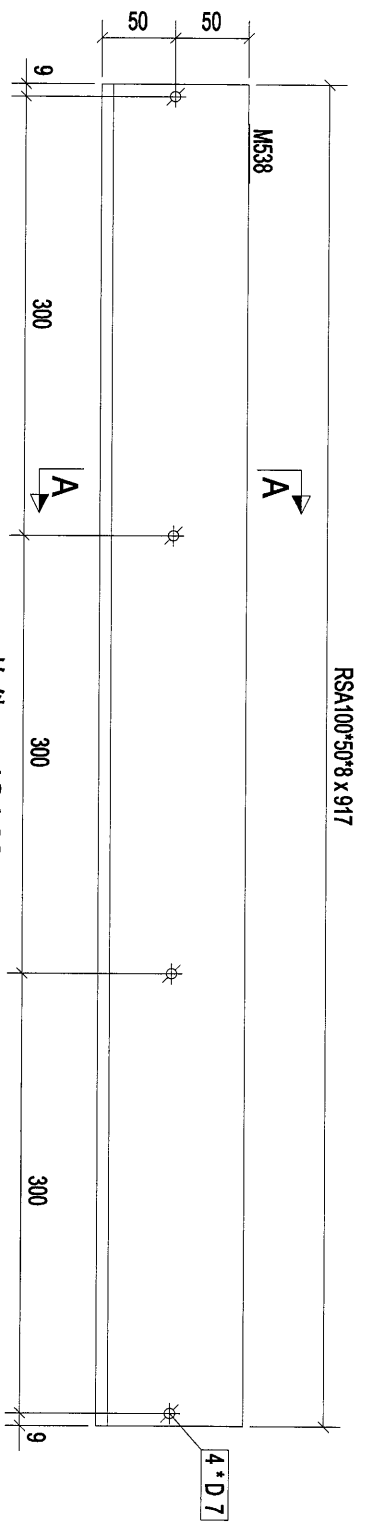
CLIENT: 美特经贸有限公司
MIDI Aluminium Industries Ltd.
Units 5-8, Sanyong Industrial Centre, 1/F
510 Cho Kuo Ling Road, Kowloon
Tel: 23489211-4 Fax: (852) 27277656

设计有限公司
引 10/21/2016/10/21/2016

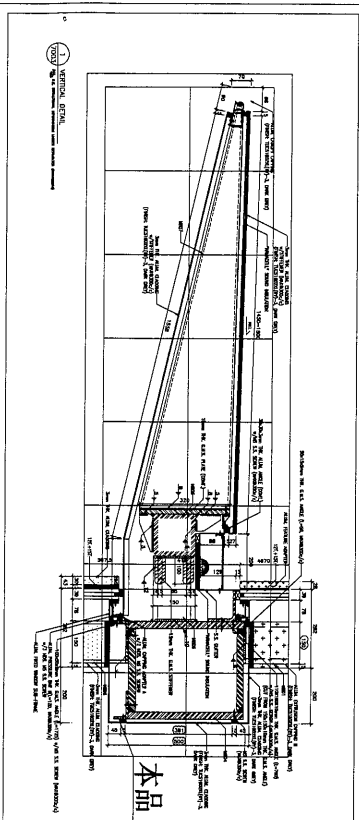
[1SJ-38]

Designed by	
Drawn by	
Reviewed by	
Approved by	
Scale	
DWGNO: WWM1	- [1SJ-38]
REV	0


14



构件: 1SJ-39

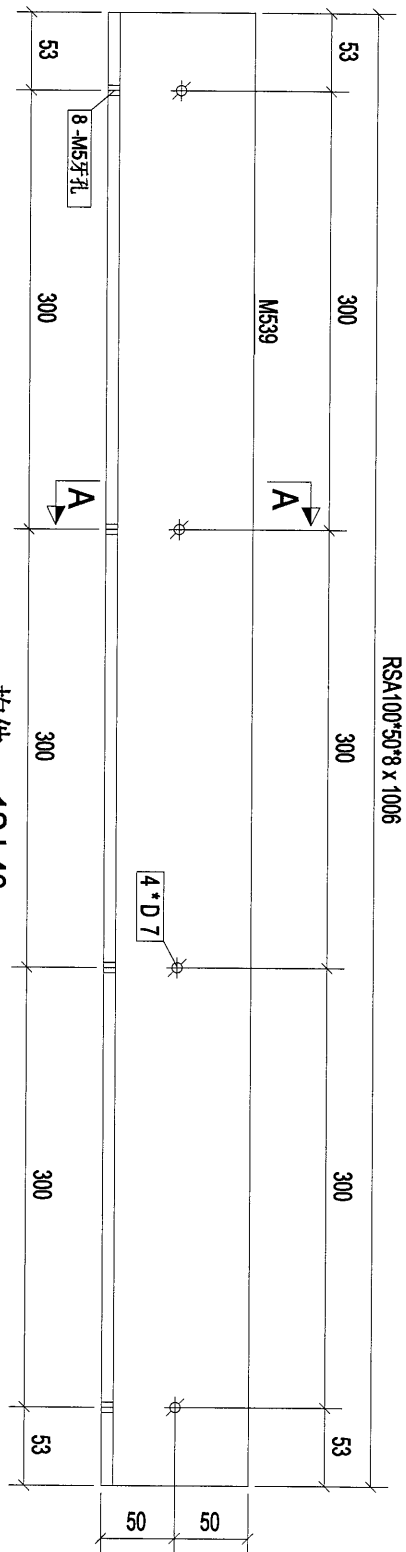


构件编号	规格(mm)	长度(mm)	数量	单重(kg)	共重(kg)	表面面积(m ²)
1SJ-39	RSA100*50*8	917	1	8.18	8.18	0.28
合计:				8.18		

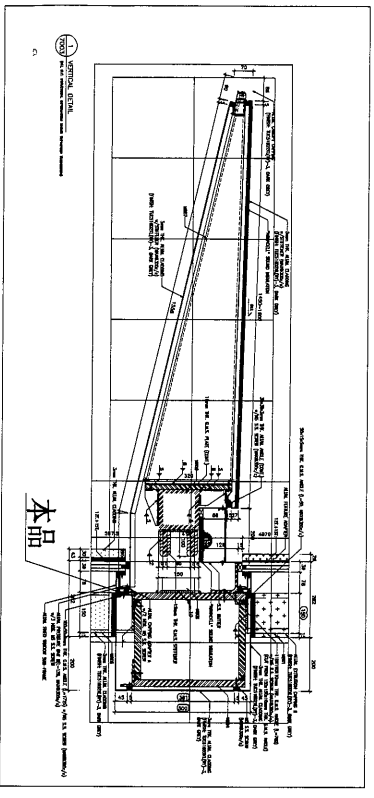
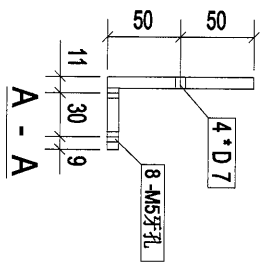
Rev.	0	第一次报数	2016-12-20
PROJECT:	PROPOSED SITE/1 DEVELOPMENT AT AREA 88, TAOULI D'INF, TSEUNG KWANAO, NEW TERRITORIES		
CLIENT:	 美特铝业有限公司 MIDU ALUMINIUM MANUFACTURER LTD. Units 6-8, Sunny Industrial Centre, 1/F 610 Chu Kuo Ling Road, Kowloon Tel: 23489211-4 Fax: (852) 27277665		
Designed by	[1SJ-39]		
Drawn by			
Reviewed by			
Approved by			
Scale			
DWGNO:	WM1	-	[1SJ-39]
REV	0		

15

RSA100*50*8 x 1006



构件: 1SJ-40

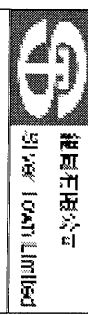


构件编号:	1SJ-40	构件数量:	1	构件重量:	8.97
部件编号	规格(mm)	长度(mm)	数量	单重(kg)	共重(kg)
M539	RSA100*50*8	1006	1	8.97	8.97
合计:				8.97	0.30

Rev.	0	第1次报数	2016-12-20
Description			

PROJECT: PROPOSED SITE C1 DEVELOPMENT AT AREA 66, TOLUEN, TSEUNG KWAN O, NEW TERRITORIES

CLIENT: 美特经贸有限公司
MIDI Commerce Marketing Ltd.
Units 6-8, Sunny Industrial Centre, 1/F
610 Cho Kwo Ling Road, Kowloon
Tel: 23489211-4 Fax: (852) 27779856

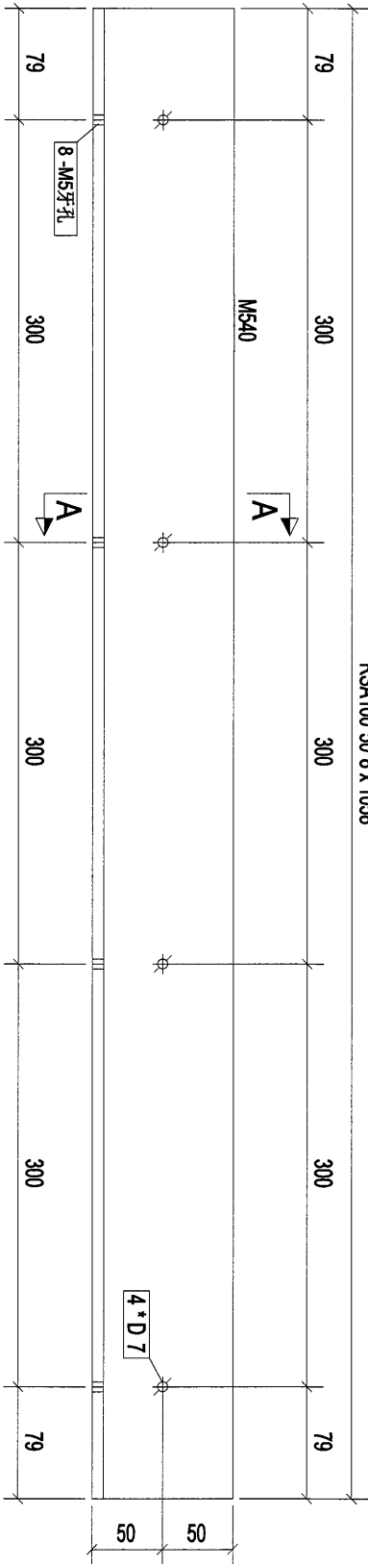


[1SJ-40]

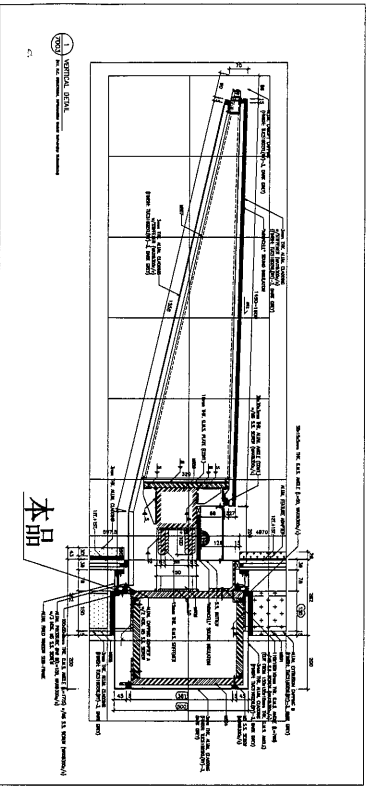
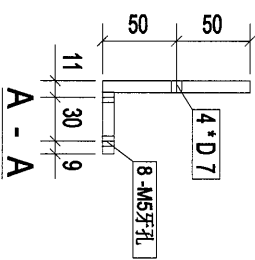
Designed by	
Drawn by	
Reviewed by	
Approved by	
Scale	
DMGNO: WW1	- [1SJ-40]
REV	0

16

RSA100*50*8 x 1058



构件: 1SJ-41



构件编号	1SJ-41	构件数量	1	构件重量	9.44
部件编号	规格(mm)	长度(mm)	数量	单重(kg)	表面积(m ²)
ME540	RSA100*50*8	1058	1	9.44	0.32
合计:		9.44			

0	第一次报批	2016-12-20
Rev.	Description	Date

PROJECT: PROPOSED SITE C1
DEVELOPMENT AT AREA 86
TKOTI TO RP TSEUNG KWAN O,
NEW TERRITORIES

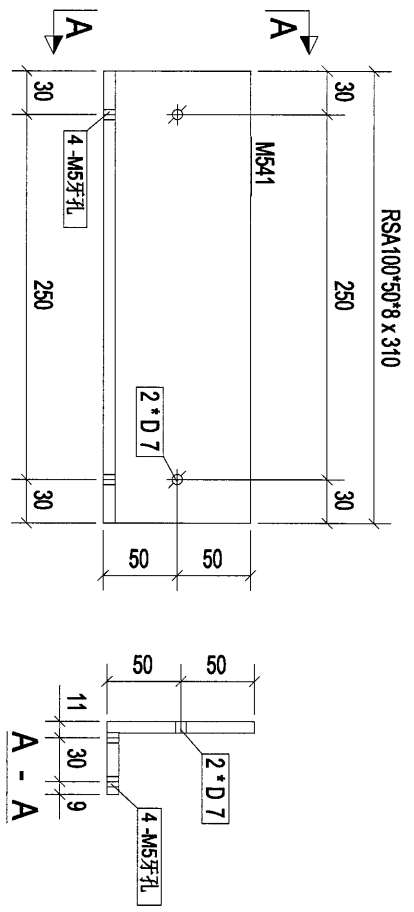
CLIENT: 美特鋁質有限公司
MIDI Aluminium Fabricator Ltd.
Units 6-8, Sunny Industrial Centre, 1/F
610 Cho Kwo Ling Road, Kowloon
Tel: 23489211-4 Fax: (852) 2777686



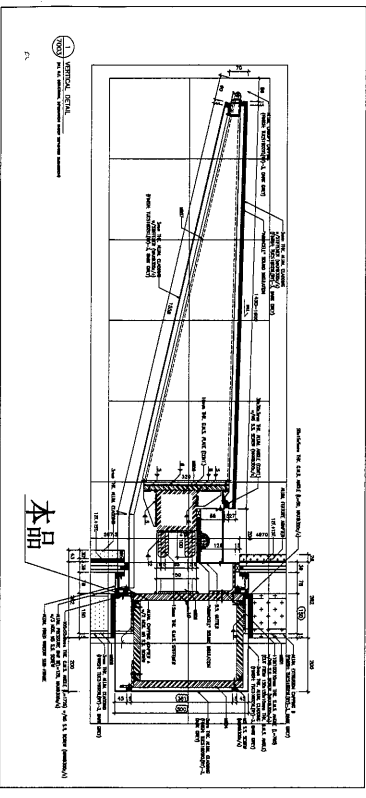
[1SJ-41]

Designed by	
Drawn by	
Reviewed by	
Approved by	
Scale	
DWG NO: WM1	- [1SJ-41]
REV	0



17



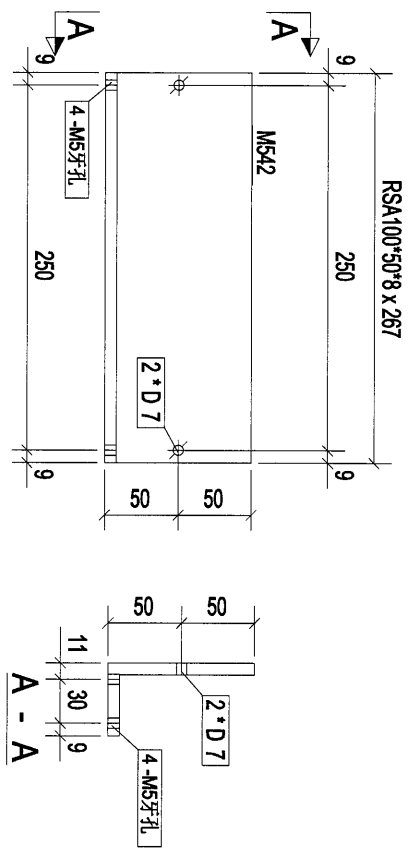
构件: 1SJ42



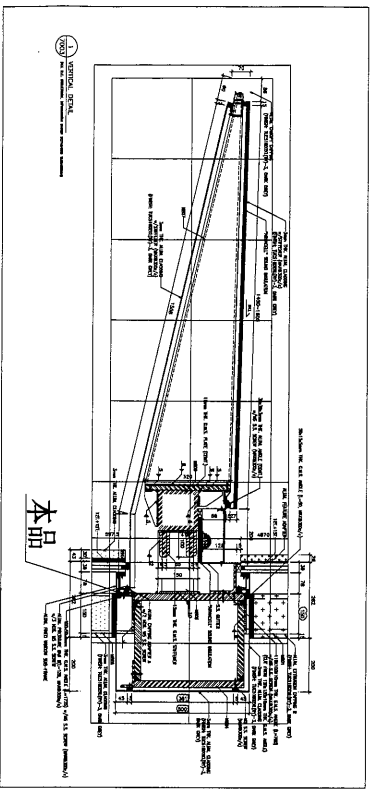
构件编号:	1SJ42	构件数量:	1	构件重量:	2.76
部件编号	规格(mm)	长度(mm)	数量	单重(kg)	共重(kg)
MS41	RSA100*50*8	310	1	2.76	2.76
合计:				2.76	0.10

Rev.	0	第1次报数	2018-12-20
PROJECT:	PROPOSED SITE C1 DEVELOPMENT AT AREA 86 TKOIT TO RP TSEING KWAN O, NEW TERRITORIES		
CLIENT:	 美特鋁質有限公司 MID I Aluminum Fabricator Ltd. Units 6-8, Sunny Industrial Centre, 1/F 810 Chiu Kwo Ling Road, Kwai Tsan Tel: 23489211-4 Fax: (852) 7776556		
DESIGNED BY	 總包工程公司 G E N E R A L CONTRACTORS LIMITED		
DESIGNED BY	[1SJ-42]		
DESIGNED BY	Scale		
DESIGNED BY	DWG NO.: WM1 - [1SJ-42]		
REV	0		

18



构件: 1SJ43



构件编号:	1SJ43	构件数量:	1	构件重量:	2.38
部件编号	规格(mm)	长度(mm)	数量	单重(kg)	共重(kg)
MS42	RSA100*50*8	267	1	2.38	2.38
				表面面积(m ²)	0.08
合计:				2.38	

Rev.	0	第1次报批	2016-12-20
Description			
Date			

PROJECT:
PROPOSED SITE C1
DEVELOPMENT AT AREA 86,
TKOIT TO RP TSEING KWAN O,
NEW TERRITORIES

CLIENT:
美特鋁質有限公司
MIDI Aluminium Industries Ltd.
Units 6-8, Sunny Industrial Centre, 1/F
610 Cho Kwo Ling Road, Kwun Tong
Tel: 23489211-4 Fax: (852) 27277856



[1SJ-43]

Designed by	
Drawn by	
Reviewed by	
Approved by	
Scale	
DMG NO.: WM1	- [1SJ-43]
REV	0