

工程指示 / 要求簡箋(E.I.)

工程指示編號：EI 9687 /18 修改版次：
 工程編號：J836 工程名稱：日出康城7期平台
 工程項目：E1 Canopy & Glass Wall 鋁件拆圖。
 收件人：Maggie Lor 發件人：李耀嫻 日期：2018/8/29

要求提供 / 確認 事項：

- () 初步鋁料 B.M. () 加工拆圖，然後生產 () 尺寸表
- () 正式鋁料 B.M. () 技術上資料 / 指示 () 報價
- () 配件 B.M. () 樣辦或貨品說明書 () 分判合約
- () 其他：_____

內容：

修改字排強記拆圖 E1 & Glass Wall 鋁件
 除 Embed 外，其它鋁全拆
 另提供拆圖，稍露尺批板才進行加工

請在 2018/9/11 前完成上列要求。

附有關圖紙 / 文件：E1 Canopy & Glass Wall 拆工圖 1份 (CAD檔已電郵給李奇)

以上項目為：

- 原合約工程包 原合約工程加 / 減賬 新工程報價

原因：-

分發東莞各部門：

- () 生產技術總監 連附件 () 技術部 連附件 () 生產部 連附件 () 機械設計部 連附件
- () 採購部 連附件 () 生產統籌部 連附件
- () 質檢部 連附件 () 會計部 連附件 () 報關組 連附件 () 其他 _____ 連附件

分發香港各部門：

- () 行政部 連附件 () 會計部 連附件 () 統籌部 連附件 () 工程部地盤科文 連附件
- () 採購部 連附件 () QS 部 連附件 () 維修部 連附件 () 其他 _____ 連附件

傳遞編號：

發件人簽署：

項目經理簽署：

PROJECT :

4

PROPOSED SITE C1
DEVELOPMENT AT AREA 86,
TKOTL 70 RP, TSEUNG KWAN O, N.T.

SHOP SUBMISSION DRAWING For
WINDOW WALL + GLASS CANOPY at ARCADE ENTRANCE E1

DATE: 29-AUG-2018



美特鋁質有限公司
MIDI ALUMINIUM FABRICATOR LTD.
Units 6-8, Sunray Industrial Centre, 1/F
610 Cha Kwo Ling Road, Kowloon
Tel:23489211-4 Fax:(852)27727666

DWG NO. : J836-CP-0000

REV. : -

DRAWING SUBMISSION REGISTER

PROJECT: PROPOSED SITE C1 DEVELOPMENT AT AREA 86, 23 BABINGTON PATH TKOTL 70 RP, TSEUNG KWAN O, N.T.	DATE OF ISSUE										SUBMISSION STATE (FOR B.D / A.S.D)			SUBMISSION STATE (FOR CLIENT / CONSULTANT)			SUBMISSION STATE (FOR ARCHITECT)			FABRICATION / CONSTRUCTION STATE						
	ISSUE	01	02	03	04							AP - APPROVED			AP - APPROVED			AP - APPROVED			ISSUE TO CHINA OFFICE		ISSUE TO SITE		ISSUE TO SUB-CONTRACTOR	
	DAY	30	23	07	29							AC - APPROVED SUB. TO CONDITION			AC - APPROVED SUB. TO CONDITION			AC - APPROVED SUB. TO CONDITION								
	MONTH	11	04	06	08							NA - NOT APPROVED			NA - NOT APPROVED			NA - NOT APPROVED								
	YEAR	17	18	18	18																					
DRAWING TITLE	DWG. NO.	REVISIONS									COMMENT DATE	REV.	STATE	COMMENT DATE	REV.	STATE	COMMENT DATE	REV.	STATE	REV.	DATE	REV.	DATE	REV.	DATE	
COVER PAGE	J836-CP-0000	-	A	B	C																					
DRAWING REGISTER	J836-DL-0001	-	A	B	C																					
GENERAL NOTES	J836-GN-0002	-	A	B	C																					
SECTION PROPERTIES	J836-SP-0003	-	A	B	C																					
ELEVATION FOR WINDOW WALL STEEL MEMBER ONLY	J836-STL-1001	/	/	/	-																					
ELEVATION FOR WINDOW WALL STEEL MEMBER ONLY	J836-STL-1002	/	/	/	-																					
ELEVATION AND PART PLAN FOR WINDOW WALL & GLASS CANOPY	J836-WC-2001	-	A	B	C																					
PART PLAN FOR WINDOW WALL & GLASS CANOPY AT +12.65	J836-WC-3001	/	-	B	C																					
PART PLAN FOR WINDOW WALL & GLASS CANOPY AT +18.00	J836-WC-3002	/	-	B	C																					
SECTION	J836-WC-4001	/	-	A	B																					
SECTION	J836-WC-4002	/	-	A																						
SECTION	J836-WC-4003	/	-	A																						
SECTION DETAILS	J836-DT-5001	-	A	B	C																					
SECTION DETAILS	J836-DT-5002	-	A	B	C																					
SECTION DETAILS	J836-DT-5003	-	A	B	C																					
SECTION DETAILS	J836-DT-5004	/	-	A	B																					
SECTION DETAILS	J836-DT-5005	/	-	A	B																					
TOTAL PAGES : (INCLUDING COVERPAGE AND DRAWING SUBMISSION REGISTER)	16																									

IN-HOUSE DESIGN CHECKER



美特鋁質有限公司
MIDI ALUMINIUM FABRICATOR LTD.

Units 6-8, Sunray Industrial Centre, 1/F
610 Cha Kwo Ling Road, Kowloon
Tel: 23489211-4 Fax: (852) 27727666

DWG NO. : J836-DL-0001 REV. : -

GENERAL NOTES

(A) DESIGN CODES AND STANDARDS :

- BUILDING (CONSTRUCTION) REGULATIONS, CAP 123, 1990
- CODE OF PRACTICE FOR THE STRUCTURAL USE OF STEEL, 2011 HONG KONG
- CODE OF PRACTICE FOR THE STRUCTURAL USE OF CONCRETE, 2013 HONG KONG
- CODE OF PRACTICE ON WIND EFFECTS IN HONG KONG 2004
- BS 8118 - THE STRUCTURAL USE OF ALUMINIUM, PART 1 - 1991
- CODE OF PRACTICE FOR DEAD AND IMPOSED LOADS 2011

(B) DESIGN LOADS :

- WIND LOAD (TOPOGRAPHIC FACTOR = 1) :
THE OVERALL HEIGHT OF THE BUILDING: 33.5 - 5.5 = 28.00m
BASIC WIND LOAD: 2.37 KPa (BELOW 30m)

DESIGN WIND LOAD ($C_p = +2.0$) $2.40 \times (C_p = -2.0) = -4.80$ KPa (FOR CANOPY)

- IMPOSED LOAD : (FOR PROTECTIVE BARRIER)
HORIZONTAL IMPOSED LOAD SHALL BE COMPLIED WITH CODE OF PRACTICE FOR DEAD & IMPOSED LOADS 2011.
AREA WHERE CONGREGATION OF PEOPLE IS NOT EXPECTED:
- CASE 1 : 1.5 kN/m LINE LOAD TO BE APPLIED AT A HEIGHT OF 1.1m ABOVE FLOOR LEVEL
- CASE 2 : 1.5kPa UDL APPLIED ON THE INFILL BETWEEN FLOOR AND TOP RAIL
- CASE 3 : 1.5 kN CONCENTRATED LOAD APPLIED AT TOP RAIL LEVEL

FOR CANOPY :
LIVE LOAD = 0.75kPa

(C) MATERIAL WEIGHT

- DENSITY OF GLASS = 26.0 KN/m³
- DENSITY OF STEEL = 77.0 KN/m³
- DENSITY OF ALUMINIUM ALLOY = 27.2 KN/m³

(D) MATERIAL USED

- STRUCTURAL STEEL
THE STEEL HOLLOW TO BE GRADE S275 JO(CLASS 1) COMPLY WITH BS EN 10210 PART 1:2006.
THE OTHER STEEL TO BE GRADE S275 JO(CLASS 1) COMPLY WITH BS EN 10025:2004.
- MODULUS OF ELASTICITY = 205000 MPa
- DESIGN STRENGTH ($f_d < 16mm$) = 275 MPa
- DESIGN STRENGTH ($16 < T \leq 40mm$) = 265 MPa
ALL STRUCTURAL STEEL TO BE HOT DIP GALVANIZED COMPLY WITH BS EN ISO 1461:2009 (MIN. THICKNESS = 85 MICRONS)

- ALUMINIUM
THE EXTRUDED SECTION TO BE GRADE 6063-T6, (FOR STRUCTURAL USE)
MECHANICAL PROPERTIES TO BE EN 755-2:1997,
CHEMICAL COMPOSITION TO BE EN 573-3:2003,
LIMITING STRESSES (BASED ON TABLE 4.1 OF BS 8118:PART1:1991):-
- FOR BENDING AND OVAL YIELDING (σ_w) = 160 MPa
- FOR LOCAL TENSION OR COMPRESSION (σ_w) = 175 MPa
- FOR SHEAR (ρ_w) = 95 MPa
- 0.2% TENSILE PROOF STRESS = 160 MPa
- MINIMUM TENSILE STRENGTH = 185 MPa

- THE EXTRUDED SECTION TO BE GRADE 6063-T5, (FOR STRUCTURAL USE)
MECHANICAL PROPERTIES TO BE EN 755-2:1997,
CHEMICAL COMPOSITION TO BE EN 573-3:2003,
LIMITING STRESSES (BASED ON TABLE 4.1 OF BS 8118:PART1:1991):-
- FOR BENDING AND OVAL YIELDING (σ_w) = 110 MPa
- FOR LOCAL TENSION OR COMPRESSION (σ_w) = 130 MPa
- FOR SHEAR (ρ_w) = 65 MPa
- 0.2% TENSILE PROOF STRESS = 110 MPa
- MINIMUM TENSILE STRENGTH = 150 MPa

- ALL ALUMINIUM CLADDING TO BE GRADE 3003-H14,
MECHANICAL PROPERTIES TO BE EN485-2:2008,
CHEMICAL COMPOSITION TO BE EN 573-3:2003,
LIMITING STRESSES (BASED ON TABLE 4.1 OF BS 8118:PART1:1991):-
- FOR BENDING AND OVAL YIELDING (σ_w) = 125 MPa
- FOR LOCAL TENSION OR COMPRESSION (σ_w) = 135 MPa
- FOR SHEAR (ρ_w) = 75 MPa
- 0.2% TENSILE PROOF STRESS = 125 MPa
- MINIMUM TENSILE STRENGTH = 145 MPa
MODULUS OF ELASTICITY OF ALUMINIUM = 70000 MPa

(E) STAINLESS STEEL FASTENERS

ALL FASTENERS, BOLTS & NUTS SHALL BE STAINLESS STEEL GRADE A4-70 COMPLYING WITH BS EN ISO 3506.
FOR GRADE A4-70 :

- MINIMUM YIELD STRENGTH, f_y = 450 MPa
ULTIMATE TENSILE STRENGTH, f_u = 700 MPa
SHEAR STRENGTH, p_s = 311 MPa
TENSION STRENGTH, p_t = 374 MPa
BEARING STRENGTH, P_{bb} = 828 MPa

(F) ISOLATION FOR METALS

ALUMINIUM/STEEL CONTACTED SURFACE SHALL BE ISOLATED WITH PVC SHEET & STEEL / CONCRETE INTERFACE SHALL BE APPLIED A LAYER OF BITUMINOUS PAINT FOR PROTECTION AGAINST BI-METALLIC CORROSION.

(G) GLASS

- GLASS USED TO BE:
LAMINATED CLEAR TEMPERED GLASS FOR CANOPY
10mm THK. HEAT STRENGTHENED GLASS +1.52mmPVB + 10mm THK. CLEAR TEMPERED GLASS
LAMINATED CLEAR TEMPERED GLASS FINS FOR CANOPY
19mm THK. CLEAR TEMPERED GLASS + 2.28mmPVB + 19mm THK. CLEAR TEMPERED GLASS + 2.28PNB +19mm THK. CLEAR TEMPERED IGU CLEAR TEMPERED GLASS FOR WINDOW WALL AT 4/F
12mm THK. CLEAR TEMPERED GLASS + 12mm AIR SPACE + 12mm THK. CLEAR TEMPERED GLASS

- DESIGN OF GLASS SHALL COMPLY TO B.S. 6262 , 2005. :
- ALLOWABLE BENDING STRENGTH (TEMPERED) = 50 N/mm² FOR CLEAR GLASS,
- ALLOWABLE BENDING STRENGTH (HEAT STRENGTHENED) = 25 N/mm² FOR CLEAR GLASS,

- YOUNG'S MODULUS = 70,000 N/mm² = DENSITY = 2650 kg/m³
- GLASS MATERIALS SHALL COMPLY TO BS 952.

- ALL GLASS UNDER 1.1m ABOVE FLOOR LEVEL SHALL BE COMPLY IMPACT TEST TO BS 6206 GLASS A.

- RESIDUAL SURFACE COMPRESSION FOR TEMPERED GLASS TO BE NOT LESS THAN 69 MPa.
- FULLY TEMPERED GLASS TO BE 100% HEAT SOAK TESTED IN ACCORDANCE WITH BS EN 14179-1: 2005 & COMPLIED WITH PNAP APP-37.

(H) SILICONE SEALANT

- DOW CORNING 791 TO BE USED AS WEATHER SEALANT BETWEEN MATERIAL OF ALUMINIUM/ALUMINIUM, GLASS/GLASS & ALUMINIUM/GLASS.
- DOW CORNING 983 TO BE USED AS STRUCTURAL SEALANT. (BD REF.: BD-SS-001)

(I) GASKET & SETTING BLOCK

- ALL GASKET USED SHALL BE DENSE EXTRUDED NEOPRENE WITH A HARDNESS OF 60° +/-5° & SHALL BE COMPLIED WITH BS 4255 PART 1; 1986
- SETTING BLOCKS SHALL BE DENSE EXTRUDED NEOPRENE WITH A HARDNESS OF 85° 5' SHORE A, A MIN. LENGTH OF 150 mm & A MIN. WIDTH CORRESPONDING TO THE GLASS THICKNESS & LOCATED AT GLASS QUARTER POINTS.

(J) WELDING

- ALL WELDING SHALL COMPLY TO BS EN 1011-1 : 2009.
- ALL WELD PROCEDURES TO BE COMPLIED WITH BS EN ISO 15614.
- ALL WELD SHALL BE 4mm FILLET WELD UNLESS OTHERWISE SPECIFIED.
- ALL WELDING SHALL BE DONE BY THE QUALIFIED WELDERS COMPLIED WITH BS EN 287-1 : 2009.
- ALL SITE WELDS SHALL BE RECEIVED WITH 2 COATS OF ZINC CHROMATE PRIMER.
DESIGN STRENGTH = 220 N/mm²

(K) CAST-IN EMBED (UNDER SEPARATED SUBMISSION)

- CAST-IN EMBED TYPE "EM-H" MILD STEEL BAR TO BE GRADE 460 CONFORMS TO CS2:1995.
CAST-IN EMBED TYPE "EM-K" MILD STEEL BAR TO BE GRADE 250 CONFORMS TO CS2:1995.

(L) CONCRETE GRADE (FOR INFORMATION ONLY)

- CONCRETE GRADE = 450 (MIN.)

(M) ANCHOR BOLT

- BEFORE INSTALLATION OF HILTI ANCHOR BOLTS, COVERMETER SHALL BE USED TO ENSURE THE LOCATIONS OF ANCHOR BOLTS NOT CLASH WITH EXISTING REINFORCEMENT.
- ALL DRILL-IN ANCHOR BOLT SHALL BE HILTI HST3-R AS SHOWN IN THE DRAWINGS, AND SHALL BE DESIGNED AND INSTALLED IN ACCORDANCE WITH MANUFACTURER'S SPECIFICATION UNLESS NOTES OTHERWISE
- STRENGTH TESTS ON A REPRESENTATIVE NUMBER OF DRILL-IN ANCHOR BOLTS SHOULD BE CARRIED OUT TO VERIFY THE PERFORMANCE AND WORKMANSHIP OF THE AS-BUILT ANCHORS. SAMPLING RATE SHOULD BE AT LEAST 1% OR 5 NOS. ON EACH TYPE AND SIZE OF THE ANCHORS INSTALLED.
- EACH REPRESENTATIVE ANCHOR SHOULD BE TESTED BY MEANS OF EITHER:
i) PULL OUT TEST, OR
ii) EQUIVALENT TIGHTENING TORQUE TEST.
TO DEMONSTRATE THAT ITS PULL OUT CAPACITY IS NOT LESS THAN 1.5 TIMES THE RECOMMENDED TENSILE LOAD AS SPECIFIED BY THE ANCHOR MANUFACTURER. THE TESTED ANCHOR SHOULD NOT SHOW ANY SIGNS OF SEPARATION, PLASTIC DEFORMATION OR DELETERIOUS EFFECT.
- THE REPORTS OF THE ABOVE MENTIONED TESTS SHALL BE KEPT ON SITE AND MADE AVAILABLE FOR INSPECTION BY THE AP/RSE AND BD'S REPRESENTATIVES.
- ACCORDING TO THE HONG KONG BUILDINGS DEPARTMENT REQUIREMENT, THE OVERALL SAFETY FACTOR SHOULD NOT BE LESS THAN 3 i.e. THE PARTIAL SAFETY FACTOR FOR ACTION SHOULD BE GREATER THAN 3

FOR CRACKED CONCRETE TABLE:

ANCHOR TYPE	MINIMUM BASE MATERIAL THICKNESS (mm)	MINIMUM EDGE DISTANCE (mm)	EFFECTIVE ANCHORAGE LENGTH (mm) TO SOUND CONCRETE	MINIMUM SPACING (mm)	DRILL HOLE DEPTH (mm)	RECOMMENDED LOAD (kN) TENSION SHEAR	TEST LOAD w/RC COEFFICIENT (1.342 x (1.5xRECOMMENDED TENSILE LOAD) (kN)	BD REF.
HST3-R M12	140	55	70	50	90	6.7 12.2	1.342x1.5x6.7=13.4871	BD-AF 148
HST3-R M16	160	65	85	65	108	9.4 21.2	1.342x1.5x9.4=18.9	BD-AF 148

* R.C. COEFFICIENT = 1.342

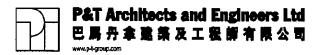
TEST LOAD SHOULD BE 1.5xRECOMMENDED TENSION LOAD.

B.D. REF : 3/7192/97/4 (C1)

CLIENT :



ARCHITECT :



MAIN CONTRACTOR :



STRUCTURAL ENGINEER :

ARUP

KWAN KIN KEI
CEng FStructE MICE FRIIE
REGISTERED STRUCTURAL ENGINEER

FAÇADE CONSULTANT:

MEIN-HARDT

NOTE :

- ALL DIMENSIONS ARE IN mm.
- ALL ELEVATIONS ARE VIEWED FROM OUTSIDE.
- ALL DIMENSIONS TO BE VERIFIED ON SITE BEFORE FABRICATION.

LEGEND :

- (X1) --- DETAIL MARK NO.
(X001) --- REFER SHEET NO.

- F.F.L. --- FINISHED FLOOR LEVEL
- S.F.L. --- STRUCTURAL FLOOR LEVEL
- (R) --- REVERSED DETAIL

NO.	DATE	REVISED	BY
-----	------	---------	----

JOB NO. : J-836

PROJECT :
PROPOSED SITE C1
DEVELOPMENT AT AREA 86,
TKOTL 70 RP, TSEUNG KWAN O,
NEW TERRITORIES

TITLE :
GENERAL NOTES
FOR WINDOW WALL &
GLASS CANOPY

DATE : 10-NOV-17 SCALE : 1:4

DRAWN BY : MN CHECKED BY : DW

英特鋁質有限公司
MIDI ALUMINIUM FABRICATOR LTD.
Units 6-8, Sunray Industrial Centre, 1/F
610 Cha Kwo Ling Road, Kowloon
Tel:23489211-4 Fax:(852)27727666

DWG NO. : J836-GN-0002

REV. : -

PROPERTIES		PROPERTIES		PROPERTIES		PROPERTIES		PROPERTIES		PROPERTIES		PROPERTIES			
MEMBER MARK	200x200x10mm THK. GMS SHS (S2)	MEMBER MARK	250x150x12.5mm THK. GMS RHS (R1)	MEMBER MARK	150x100x6mm THK. GMS RHS (R2)	MEMBER MARK	150x100x10mm THK. GMS RHS (R3)	MEMBER MARK	200x150x10mm THK. GMS RHS (R4)	MEMBER MARK	50x50x5mm THK. GMS SHS (R5)				
AREA (mm ²)	7428	AREA (mm ²)	9106	AREA (mm ²)	2794	AREA (mm ²)	14806	AREA (mm ²)	6428	AREA (mm ²)	857				
Lxx (mm ⁴)	44217204	Lxx (mm ⁴)	72665701	Lxx (mm ⁴)	8517921	Lxx (mm ⁴)	27131950	Lxx (mm ⁴)	35183871	Lxx (mm ⁴)	283164				
Lyy (mm ⁴)	44217204	Lyy (mm ⁴)	32299678	Lyy (mm ⁴)	4517250	Lyy (mm ⁴)	12078162	Lyy (mm ⁴)	22389549	Lyy (mm ⁴)	283164				
Zxx (mm ⁴)	442172	Zxx (mm ⁴)	581326	Zxx (mm ⁴)	113572	Zxx (mm ⁴)	361759	Zxx (mm ⁴)	351839	Zxx (mm ⁴)	11327				
Zyy (mm ⁴)	442172	Zyy (mm ⁴)	430662	Zyy (mm ⁴)	90345	Zyy (mm ⁴)	241563	Zyy (mm ⁴)	298527	Zyy (mm ⁴)	11327				
REMARK	GRADE S275 J0 (CLASS 1)	REMARK	GRADE S275 J0 (CLASS 1)	REMARK	GRADE S275 J0 (CLASS 1)	REMARK	GRADE S275 J0 (CLASS 1)	REMARK	GRADE S275 J0 (CLASS 1)	REMARK	GRADE S275 (CLASS 1)				
PROPERTIES		PROPERTIES		PROPERTIES		PROPERTIES		PROPERTIES		PROPERTIES		PROPERTIES			
MEMBER MARK	50x300x16mm THK. GMS RHS (S1)	MEMBER MARK	ALUM. EXTRUSION (X855.36)	MEMBER MARK	ALUM. EXTRUSION (X855.36)	MEMBER MARK	ALUM. PRESSURE BAR	MEMBER MARK	40x40x4mm THK. GMS ANGLE	MEMBER MARK	50x50x5mm THK. GMS ANGLE	MEMBER MARK	100x75x6mm THK. GMS ANGLE		
AREA (mm ²)	24137	AREA (mm ²)	5401	AREA (mm ²)	421	AREA (mm ²)	223	AREA (mm ²)	300.6	AREA (mm ²)	470	AREA (mm ²)	1028		
Lxx (mm ⁴)	809122120	Lxx (mm ⁴)	22572993	Lxx (mm ⁴)	61085	Lxx (mm ⁴)	1759	Lxx (mm ⁴)	43339	Lxx (mm ⁴)	105809	Lxx (mm ⁴)	505983		
Lyy (mm ⁴)	364902014	Lyy (mm ⁴)	7646273	Lyy (mm ⁴)	74643	Lyy (mm ⁴)	24955	Lyy (mm ⁴)	43339	Lyy (mm ⁴)	105809	Lyy (mm ⁴)	1040921		
Zxx (mm ⁴)	3236488	Zxx (mm ⁴)	183496	Zxx (mm ⁴)	2616	Zxx (mm ⁴)	185	Zxx (mm ⁴)	1504	Zxx (mm ⁴)	2937	Zxx (mm ⁴)	272685		
Zyy (mm ⁴)	2432680	Zyy (mm ⁴)	139022	Zyy (mm ⁴)	3678	Zyy (mm ⁴)	1313	Zyy (mm ⁴)	1504	Zyy (mm ⁴)	2937	Zyy (mm ⁴)	1274220		
REMARK	GRADE S275 J0 (CLASS 1)	REMARK	6063-T6	REMARK	6063-T5	REMARK	6063-T6	REMARK	GRADE S275	REMARK	GRADE S275	REMARK	GRADE S275		
PROPERTIES		PROPERTIES		PROPERTIES		PROPERTIES		PROPERTIES		PROPERTIES		PROPERTIES			
MEMBER MARK	150x150x10mm THK. GMS SHS (R3)	MEMBER MARK	75x75x6mm THK. GMS ANGLE (R3)	MEMBER MARK	125x75x7mm THK. GMS ANGLE	MEMBER MARK	150x150x10mm THK. GMS SHS (R3)	MEMBER MARK	75x75x6mm THK. GMS ANGLE (R3)	MEMBER MARK	125x75x7mm THK. GMS ANGLE	MEMBER MARK	150x150x10mm THK. GMS SHS (R3)	MEMBER MARK	75x75x6mm THK. GMS ANGLE (R3)
AREA (mm ²)	5428	AREA (mm ²)	856	AREA (mm ²)	1340	AREA (mm ²)	5428	AREA (mm ²)	856	AREA (mm ²)	1340	AREA (mm ²)	5428		
Lxx (mm ⁴)	17481216	Lxx (mm ⁴)	446573	Lxx (mm ⁴)	2141383	Lxx (mm ⁴)	17481216	Lxx (mm ⁴)	446573	Lxx (mm ⁴)	2141383	Lxx (mm ⁴)	17481216		
Lyy (mm ⁴)	17481216	Lyy (mm ⁴)	446573	Lyy (mm ⁴)	585796	Lyy (mm ⁴)	17481216	Lyy (mm ⁴)	446573	Lyy (mm ⁴)	585796	Lyy (mm ⁴)	17481216		
Zxx (mm ⁴)	233083	Zxx (mm ⁴)	8197	Zxx (mm ⁴)	25522	Zxx (mm ⁴)	233083	Zxx (mm ⁴)	8197	Zxx (mm ⁴)	25522	Zxx (mm ⁴)	233083		
Zyy (mm ⁴)	233083	Zyy (mm ⁴)	8197	Zyy (mm ⁴)	9978	Zyy (mm ⁴)	233083	Zyy (mm ⁴)	8197	Zyy (mm ⁴)	9978	Zyy (mm ⁴)	233083		
REMARK	GRADE S275 J0	REMARK	GRADE S275	REMARK	GRADE S275	REMARK	GRADE S275 J0	REMARK	GRADE S275	REMARK	GRADE S275	REMARK	GRADE S275		

B.D. REF : 3/7192/97/4 (C1)

CLIENT : **MTR**
VENTURE SMART LIMITED

ARCHITECT : **P&T Architects and Engineers Ltd**
巴丹拿建築及工程師有限公司

MAIN CONTRACTOR : **CHINA OVERSEAS BUILDING CONSTRUCTION LTD.**

STRUCTURAL ENGINEER : **ARUP**

KWAN XIN KEI
CEng FStructE MICE FHKIE
REGISTERED STRUCTURAL ENGINEER

FAÇADE CONSULTANT : **MEINHARDT**

NOTE :
1. ALL DIMENSIONS ARE IN mm.
2. ALL ELEVATIONS ARE VIEWED FROM OUTSIDE.
3. ALL DIMENSIONS TO BE VERIFIED ON SITE BEFORE FABRICATION.

LEGEND :
X1 --- DETAIL MARK NO.
X001 --- REFER SHEET NO.
1. F.F.L. --- FINISHED FLOOR LEVEL
2. S.F.L. --- STRUCTURAL FLOOR LEVEL
3. (R) --- REVERSED DETAIL

NO.	DATE	REVISED	BY
-----	------	---------	----

JOB NO. : J-836
PROJECT : PROPOSED SITE C1 DEVELOPMENT AT AREA 86, TKOTL 70 RP, TSEUNG KWAN O, NEW TERRITORIES

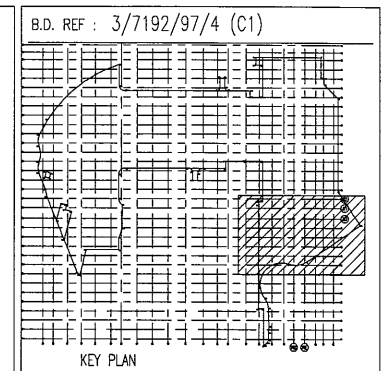
TITLE : SECTION PROPERTIES

DATE : 10-NOV-17 SCALE : 1:4

DRAWN BY : MN CHECKED BY : DW

美特鋁質有限公司
MIDI ALUMINIUM FABRICATOR LTD.
Units 6-8, Sunray Industrial Centre, 1/F
610 Cha Kwo Ling Road, Kowloon
Tel:23489211-4 Fax:(852)27727666

DWG NO. : J836-SP-0003 REV. : --



CLIENT :
 MTR
 VENTURE SMART LIMITED

ARCHITECT :
 P&T Architects and Engineers Ltd
 巴丹丹拿建築及工程師有限公司

MAIN CONTRACTOR :
 CHINA OVERSEAS BUILDING CONSTRUCTION LTD.

STRUCTURAL ENGINEER :
 ARUP
 KWAN KIN KEI
 CE(Eng) P(Struct) MICE FHKIE
 REGISTERED STRUCTURAL ENGINEER
 FACADE CONSULTANT:
 MEINHARDT

NOTE :
 1. ALL DIMENSIONS ARE IN mm.
 2. ALL ELEVATIONS ARE VIEWED FROM OUTSIDE.
 3. ALL DIMENSIONS TO BE VERIFIED ON SITE BEFORE FABRICATION.

LEGEND :
 X1 --- DETAIL MARK NO.
 X001 --- REFER SHEET NO.

1. F.F.L. --- FINISHED FLOOR LEVEL
 2. S.F.L. --- STRUCTURAL FLOOR LEVEL
 3. (R) --- REVERSED DETAIL

NO.	DATE	REVISED	BY
-----	------	---------	----

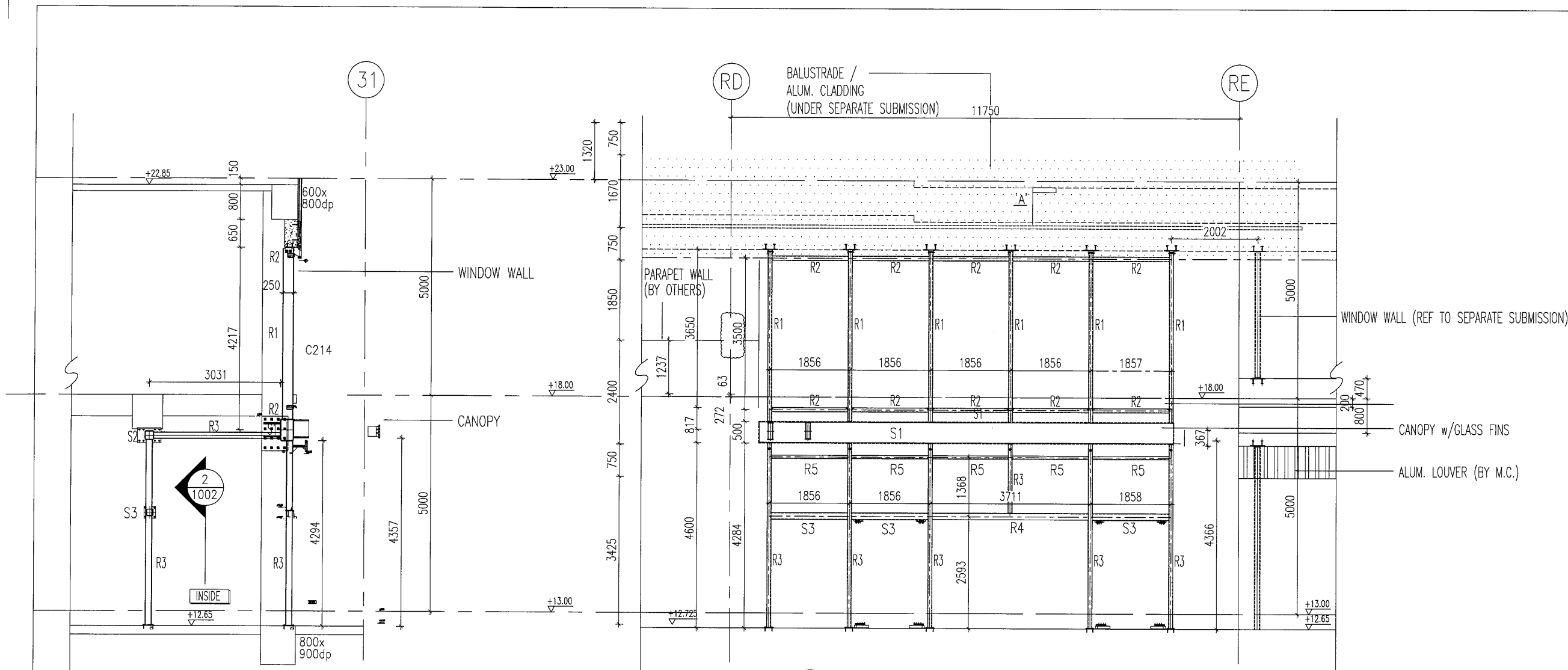
JOB NO. : J-836
 PROJECT : PROPOSED SITE C1 DEVELOPMENT AT AREA 86, TKOTL 70 RP, TSEUNG KWAN O, NEW TERRITORIES

TITLE : ELEVATION FOR WINDOW WALL & GLASS CANOPY AT E1 ENTRANCE

DATE : 10-NOV-17 SCALE : 1:4

DRAWN BY : MN CHECKED BY : DW

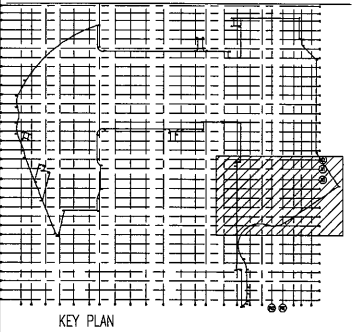
美特鋁質有限公司
 MIDI ALUMINIUM FABRICATOR LTD.
 Units 6-8, Sunray Industrial Centre, 1/F
 610 Cha Kwo Ling Road, Kowloon
 Tel:23489211-4 Fax:(852)27727666
 DWG NO. : J836-STL-1001 REV. : -



1 ELEVATION FOR WINDOW WALL AND CANOPY AT E1 ENTRANCE FOR STEEL MEMBER ONLY

SECTION 'A-A'

- LEGEND :
- S1 = 500x300x16mm THK. GMS RHS
 - S2 = 200x200x10mm THK. GMS SHS
 - S3 = 150x150x10mm THK. GMS SHS
 - R1 = 200x100x10mm THK. GMS RHS
 - R2 = 150x100x6mm THK. GMS RHS
 - R3 = 150x100x10mm THK. GMS RHS
 - R4 = 200x150x12mm THK. GMS ANGLE
 - R5 = 75x75x6mm THK. GMS ANGLE



CLIENT : **MTR**
VENTURE SMART LIMITED

ARCHITECT : **P&T Architects and Engineers Ltd**
巴丹拿建築及工程師有限公司

MAIN CONTRACTOR : **CHINA OVERSEAS BUILDING CONSTRUCTION LTD.**

STRUCTURAL ENGINEER : **ARUP**

KWAN KIN HO
CENG FSIUET MICE FHRIE
REGISTERED STRUCTURAL ENGINEER

FACADE CONSULTANT : **MEINHARDT**

NOTE :
1. ALL DIMENSIONS ARE IN mm.
2. ALL ELEVATIONS ARE VIEWED FROM OUTSIDE.
3. ALL DIMENSIONS TO BE VERIFIED ON SITE BEFORE FABRICATION.

LEGEND :
X1 — DETAIL MARK NO.
X001 — REFER SHEET NO.
1. F.F.L. — FINISHED FLOOR LEVEL
2. S.F.L. — STRUCTURAL FLOOR LEVEL
3. (R) — REVERSED DETAIL

NO.	DATE	REVISED	BY

JOB NO. : J-836
PROJECT : PROPOSED SITE C1
DEVELOPMENT AT AREA 86,
TKOTL 70 RP, TSEUNG KWAN O,
NEW TERRITORIES

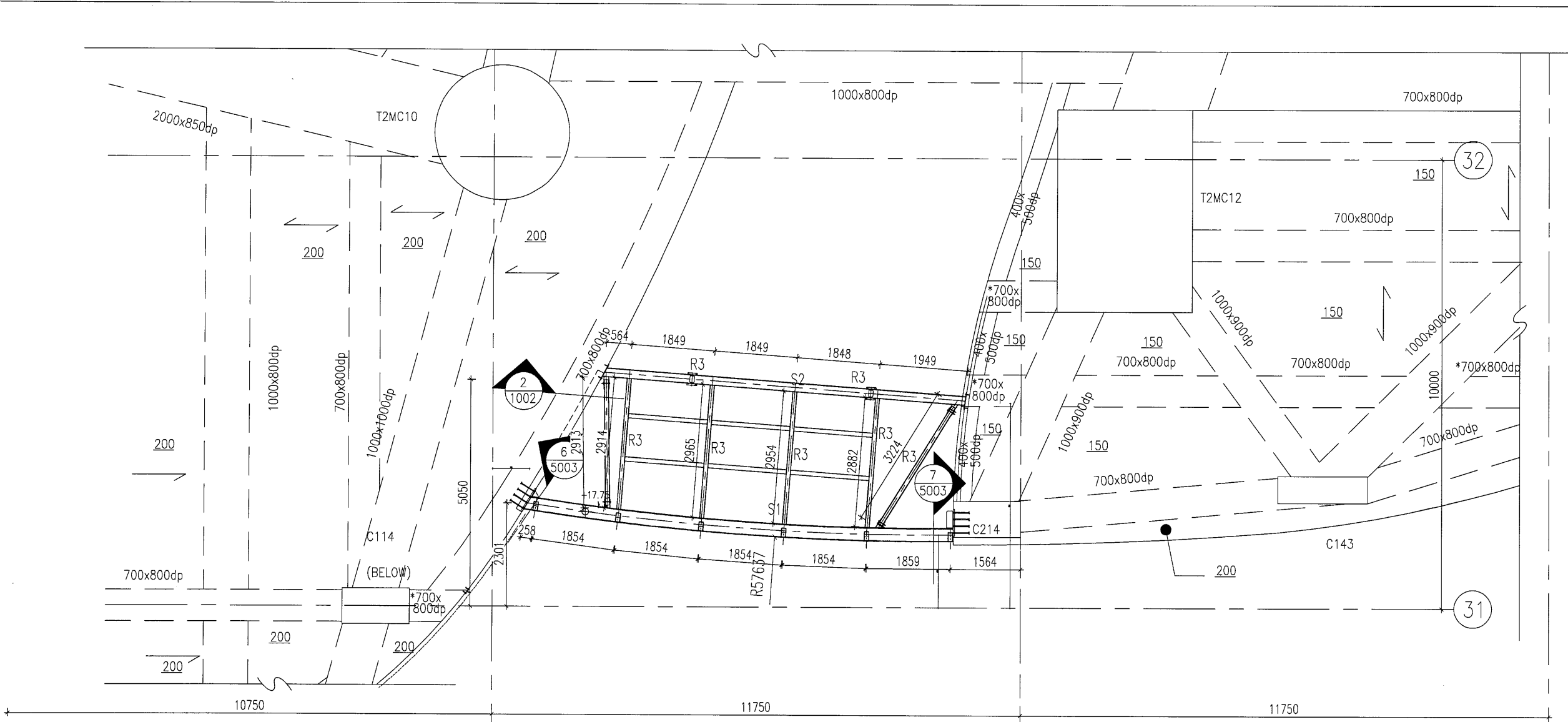
TITLE : PART PLAN
FOR WINDOW WALL & GLASS CANOPY
AT E1 ENTRANCE
AT 3/F +18.00

DATE : 10-NOV-17 SCALE : 1:4

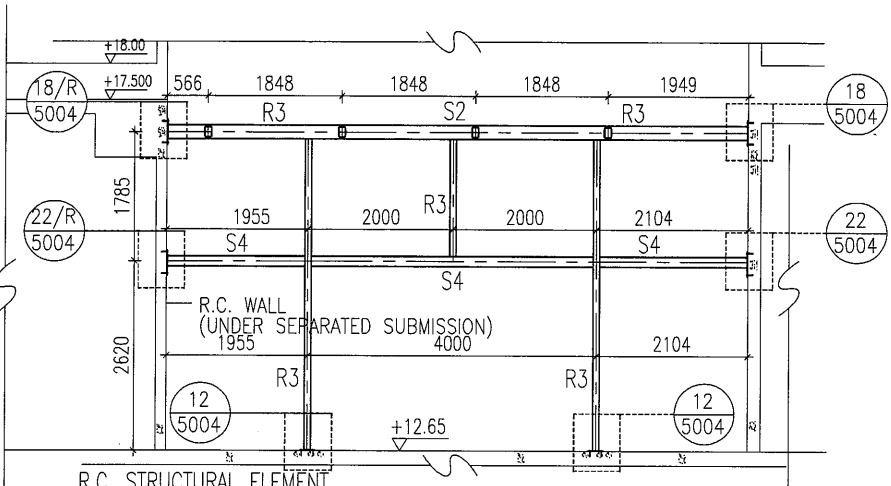
DRAWN BY : MN CHECKED BY : DW

美特鋁質有限公司
MIDI ALUMINUM FABRICATOR LTD.
Units 6-8, Sunray Industrial Centre, 1/F
610 Cho Kwo Ling Road, Kowloon
Tel:23489211-4 Fax:(852)27727666

DWG NO. : J836-STL-1002 REV. : -

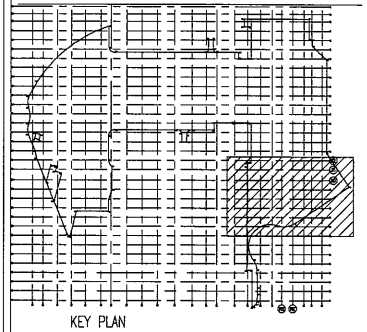


1 3/F PART PLAN
1002 For WINDOW WALL AND CANOPY AT E1 ENTRANCE
FOR STEEL MEMBER ONLY



2 PART PLAN For E1 ENTRANCE INDOOR
1002 FOR STEEL MEMBER ONLY

B.D. REF : 3/7192/97/4 (C1)



CLIENT : **MTR**
VENTURE SMART LIMITED

ARCHITECT : **P&T Architects and Engineers Ltd**
巴丹拿建築及工程師有限公司

MAIN CONTRACTOR : **CHINA OVERSEAS BUILDING CONSTRUCTION LTD.**

STRUCTURAL ENGINEER : **ARUP**

KWAN KIN KEI
C.Eng. F.StrucE. MICE. FHKIE
REGISTERED STRUCTURAL ENGINEER

FACADE CONSULTANT : **MEINHARDT**

NOTE :
1. ALL DIMENSIONS ARE IN mm.
2. ALL ELEVATIONS ARE VIEWED FROM OUTSIDE.
3. ALL DIMENSIONS TO BE VERIFIED ON SITE BEFORE FABRICATION.

LEGEND :
X1 - DETAIL MARK NO.
X001 - REFER SHEET NO.
1. F.F.L. -- FINISHED FLOOR LEVEL
2. S.F.L. -- STRUCTURAL FLOOR LEVEL
3. (R) -- REVERSED DETAIL

NO.	DATE	REVISED	BY

JOB NO. : J-836

PROJECT : PROPOSED SITE C1
DEVELOPMENT AT AREA 86,
TKOTL 70 RP, TSEUNG KWAN O,
NEW TERRITORIES

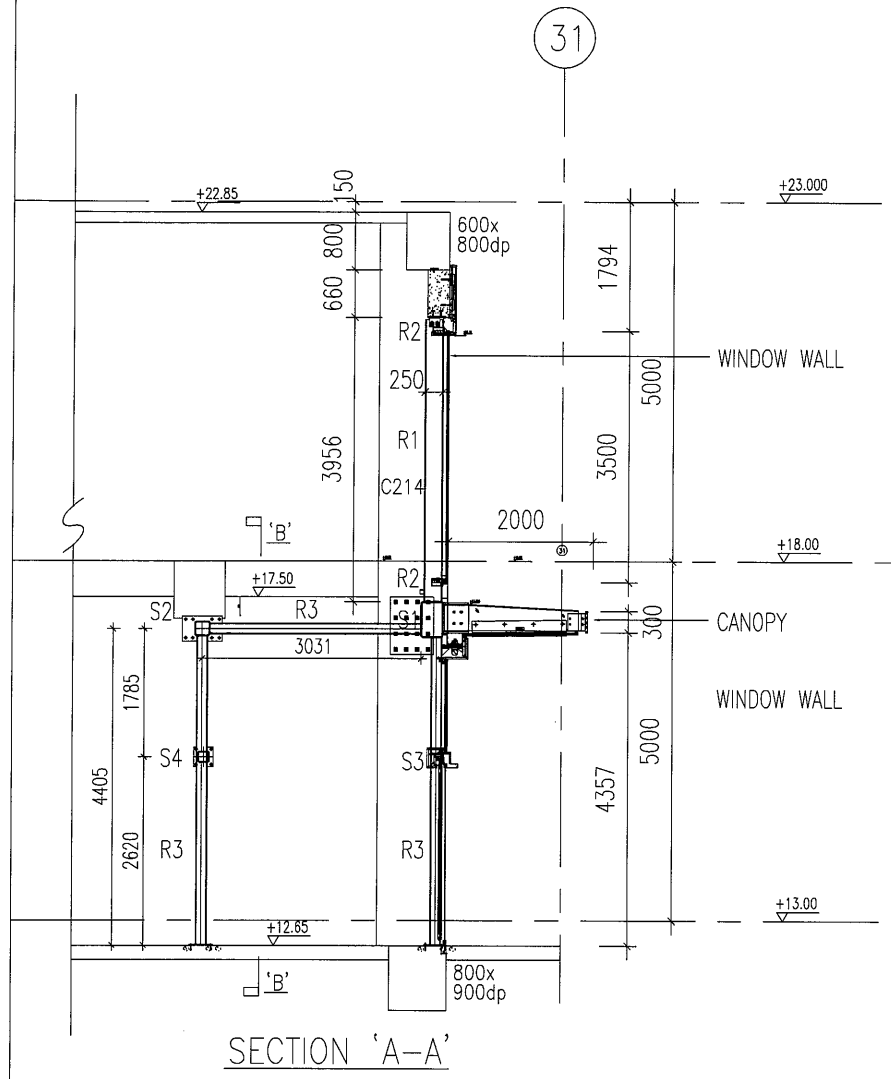
TITLE : ELEVATION
FOR WINDOW WALL & GLASS CANOPY

DATE : 10-NOV-17 SCALE : 1:4

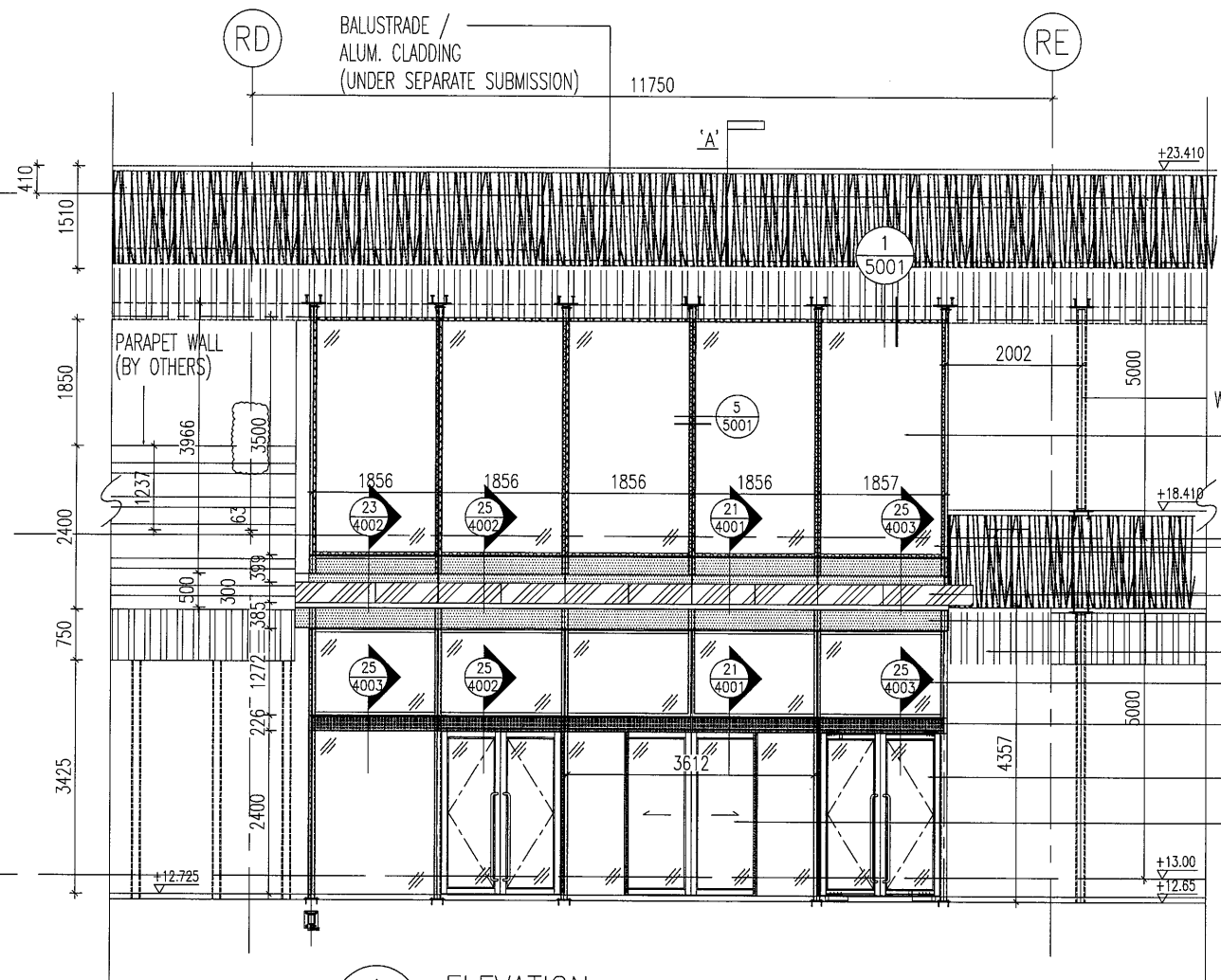
DRAWN BY : MN CHECKED BY : DW

美特鋁質有限公司
MIDI ALUMINIUM FABRICATOR LTD.
Units 6-8, Sunray Industrial Centre, 1/F
610 Cha Kwo Ling Road, Kowloon
Tel:23489211-4 Fax:(852)27727666

DWG NO. : J836-WC-2001 REV. : A



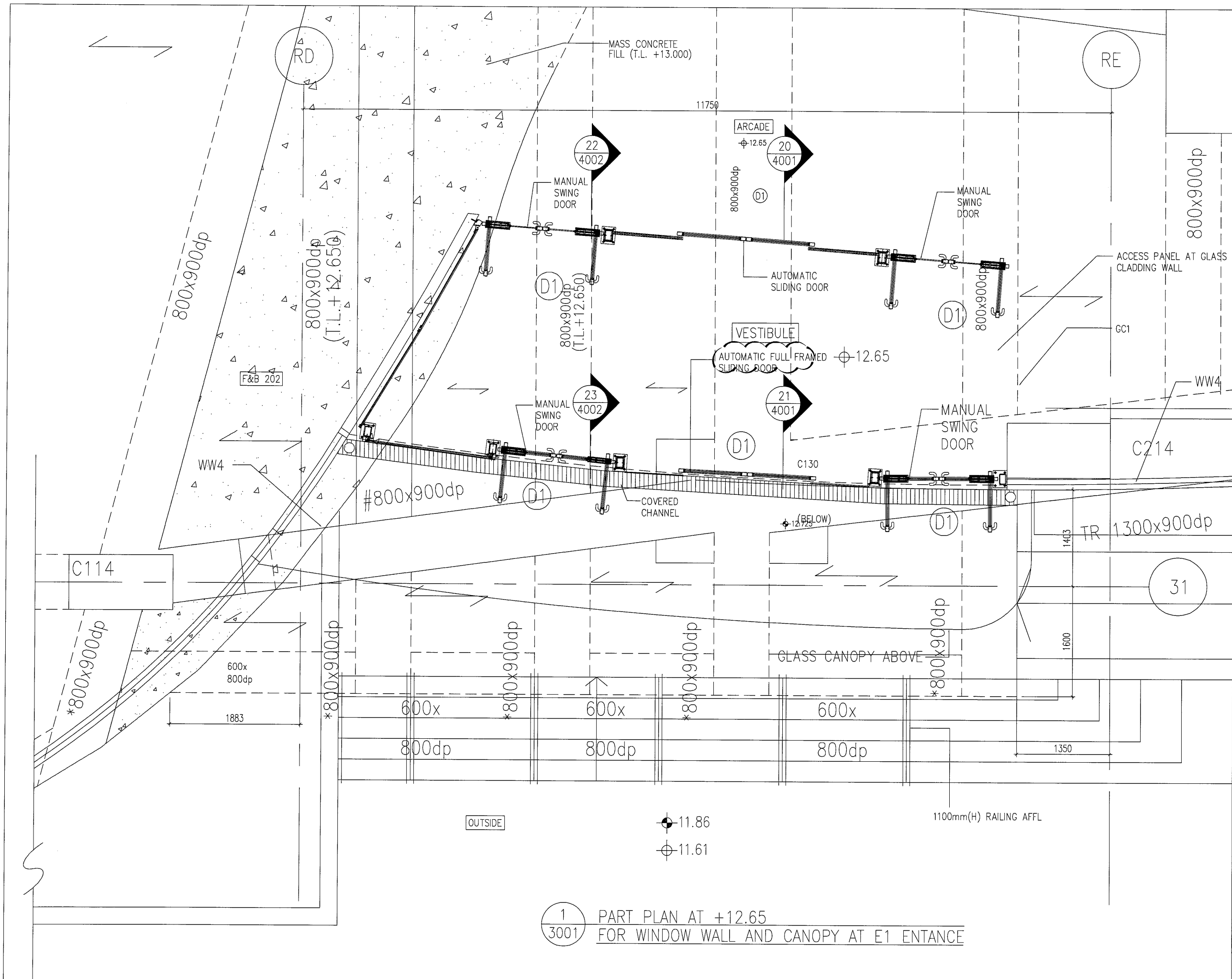
SECTION 'A-A'



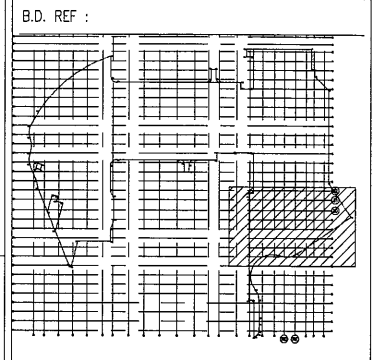
1 ELEVATION
2001 FOR WINDOW WALL AND CANOPY AT E1 ENTRANCE

WINDOW WALL (REF TO SEPARATE SUBMISSION)
WINDOW WALL
3mm THK. ALUM CLADDING
CANOPY w/GLASS FINIS
3mm THK. ALUM CLADDING
ALUM. LOUVER (BY M.C.)
GLAZING PANEL (IGU)
3mm THK. ALUM CLADDING
ALUM. SWING DOOR
AUTOMATIC SLIDING DOOR

LEGEND :
3mm THK. ALUM. CLADDING
12mm THK. CLEAR TEMPERED GLASS + 12mm AIR SPACE + 12mm THK. CLEAR TEMPERED GLASS (IGU)
10mm THK. HEAT STRENGTHENED GLASS + 1.52 PVB + 10mm THK. CLEAR TEMPERED GLASS (LAMINATED GLASS)
S1 = 500x300x16mm THK. GMS RHS
S2 = 200x200x10mm THK. GMS SHS
R1 = 200x100x10mm THK. GMS RHS
R2 = 150x100x10mm THK. GMS RHS



1 PART PLAN AT +12.65
3001 FOR WINDOW WALL AND CANOPY AT E1 ENTRANCE



CLIENT : **MTR**
VENTURE SMART LIMITED

ARCHITECT : **P&T Architects and Engineers Ltd**
巴馬丹拿建築及工程師有限公司

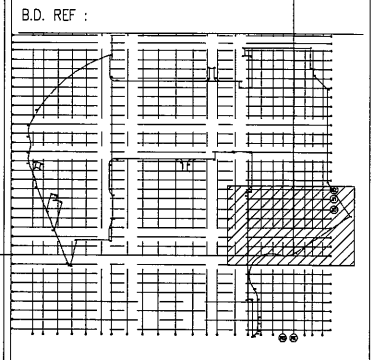
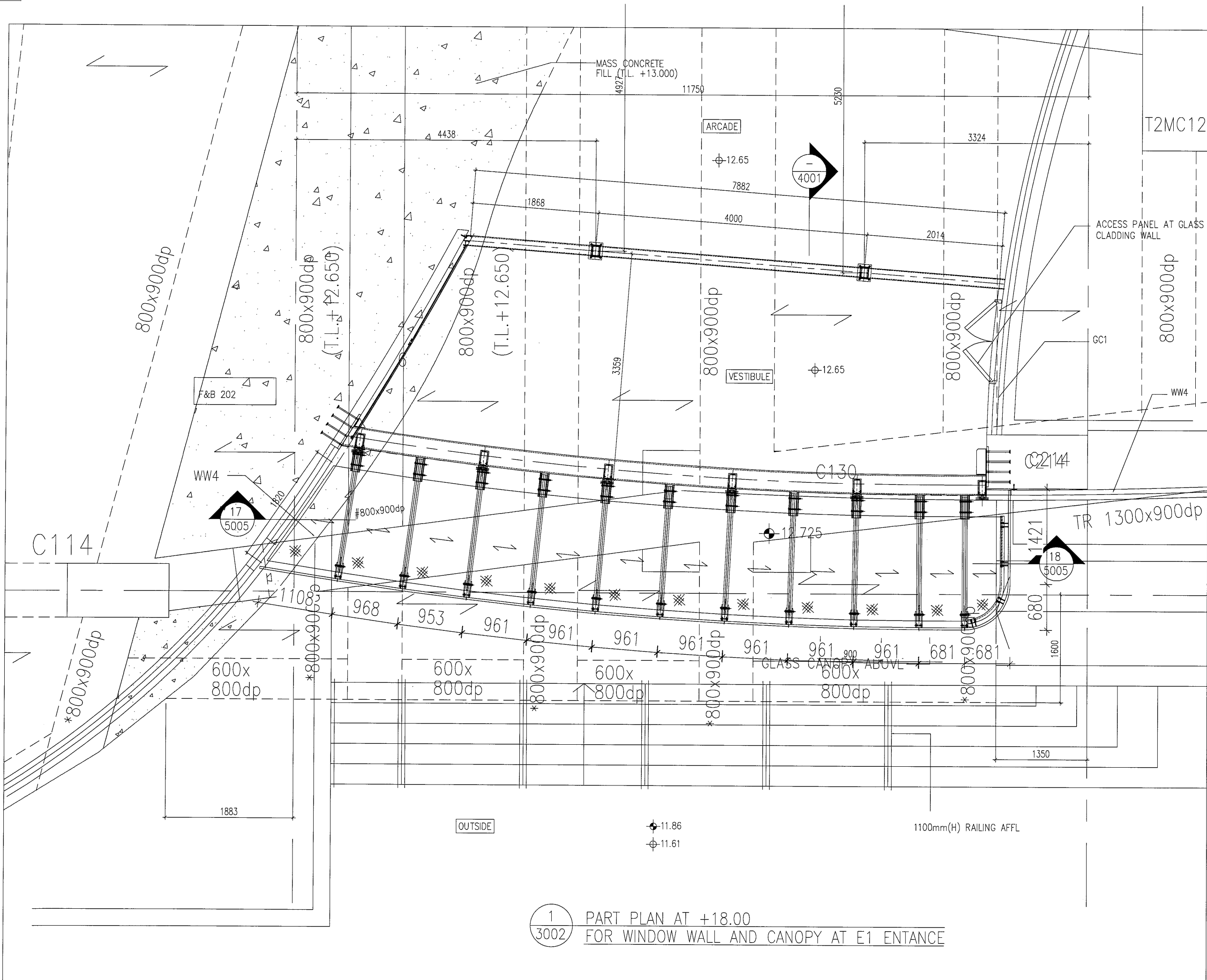
MAIN CONTRACTOR : **CHINA OVERSEAS BUILDING CONSTRUCTION LTD.**

STRUCTURAL ENGINEER : **ARUP**
KWAN KIN KEI
CENG FISTUEE MICE PHIKE
REGISTERED STRUCTURAL ENGINEER
FACADE CONSULTANT : **MEINHARDT**

NOTE :
1. ALL DIMENSIONS ARE IN mm.
2. ALL ELEVATIONS ARE VIEWED FROM OUTSIDE.
3. ALL DIMENSIONS TO BE VERIFIED ON SITE BEFORE FABRICATION.

LEGEND :
X1 - DETAIL MARK NO.
X001 - REFER SHEET NO.
1. F.F.L. -- FINISHED FLOOR LEVEL
2. S.F.L. -- STRUCTURAL FLOOR LEVEL
3. (R) -- REVERSED DETAIL

NO.	DATE	REVISED	BY
JOB NO. : J-836			
PROJECT : PROPOSED SITE C1 DEVELOPMENT AT AREA B6, TKOTL 70 RP, TSEUNG KWAN O, NEW TERRITORIES			
TITLE : PART PLAN AT +12.65 FOR WINDOW WALL & GLASS CANOPY			
DATE : 10-NOV-17		SCALE : 1:4	
DRAWN BY : MN		CHECKED BY : DW	
MIDI ALUMINIUM FABRICATOR LTD. Units 6-8, Sunray Industrial Centre, 1/F 610 Cha Kwo Ling Road, Kowloon Tel:23489211-4 Fax:(852)2727666			
DWG NO. : J836-WC-3001			REV. : -



B.D. REF :

CIENT : **MTR**
VENTURE SMART LIMITED

ARCHITECT : **P&T Architects and Engineers Ltd**
巴丹拿建築及工程師有限公司

MAIN CONTRACTOR : **CHINA OVERSEAS BUILDING CONSTRUCTION LTD.**

STRUCTURAL ENGINEER : **ARUP**

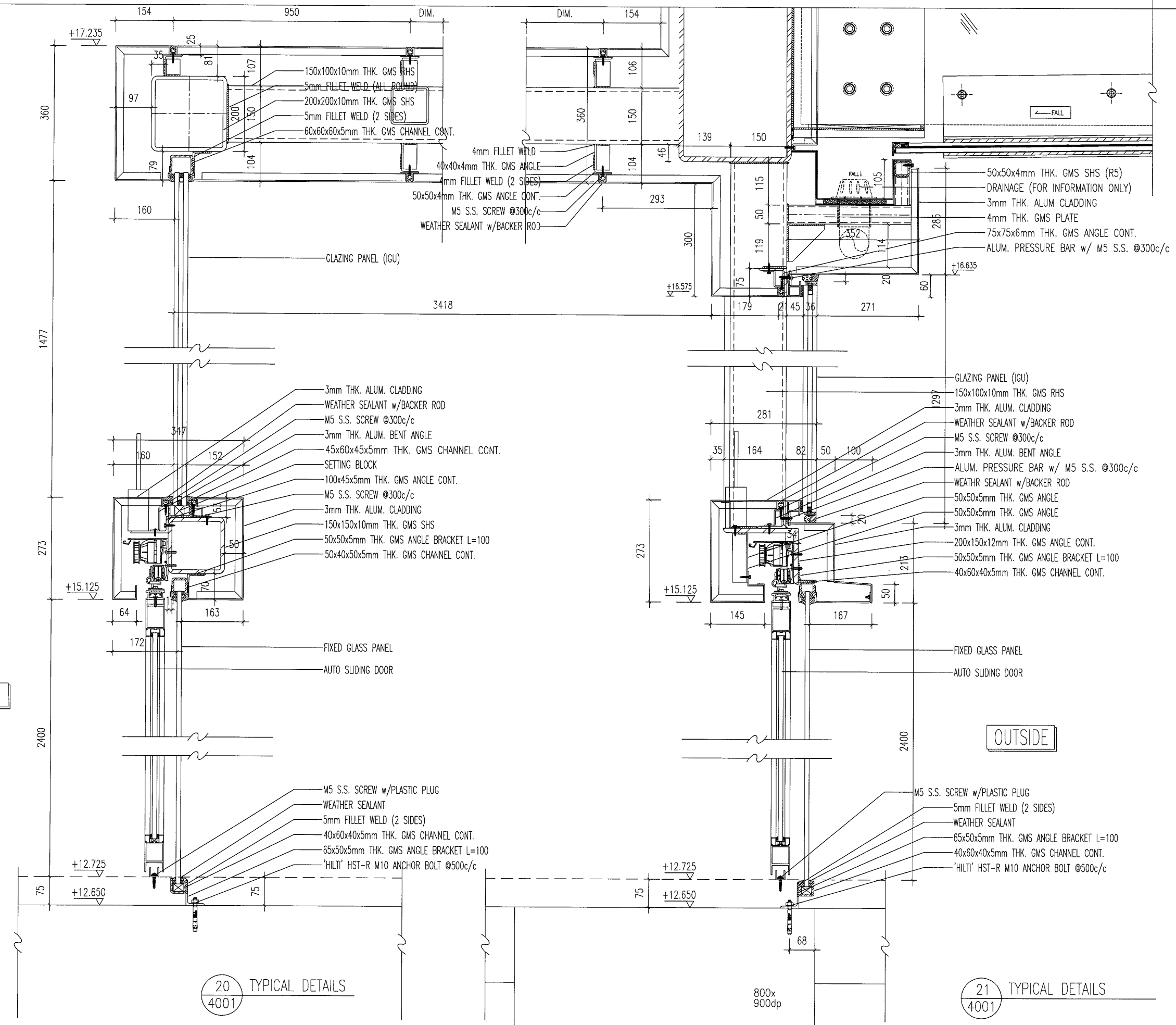
KWAN KIN KEI
CEng FStructE MICE FHKIE
REGISTERED STRUCTURAL ENGINEER

FACADE CONSULTANT : **MEINHARDT**

- NOTE :
1. ALL DIMENSIONS ARE IN mm.
 2. ALL ELEVATIONS ARE VIEWED FROM OUTSIDE.
 3. ALL DIMENSIONS TO BE VERIFIED ON SITE BEFORE FABRICATION.
- LEGEND :
- (X1) -- DETAIL MARK NO.
 - (X001) -- REFER SHEET NO.
1. F.F.L. -- FINISHED FLOOR LEVEL
 2. S.F.L. -- STRUCTURAL FLOOR LEVEL
 3. (R) -- REVERSED DETAIL

NO.	DATE	REVISED	BY
JOB NO. : J-836			
PROJECT : PROPOSED SITE C1 DEVELOPMENT AT AREA 86, TKOTL 70 RP, TSEUNG KWAN O, NEW TERRITORIES			
TITLE : PART PLAN AT +12.65 FOR WINDOW WALL & GLASS CANOPY			
DATE : 10-NOV-17		SCALE : 1:4	
DRAWN BY : MN		CHECKED BY : DW	
 Units 6-8, Sunray Industrial Centre, 1/F 610 Cha Kwo Ling Road, Kowloon Tel:23489211-4 Fax:(852)27727666			
DWG NO. : J836-WC-300			REV. : -

1 PART PLAN AT +18.00
3002 FOR WINDOW WALL AND CANOPY AT E1 ENTRANCE



B.D. REF : 3/7192/97/4 (C1)

CLIENT :

MTR
VENTURE SMART LIMITED

ARCHITECT :

P&T Architects and Engineers Ltd
巴丹丹拿建築及工程師有限公司

MAIN CONTRACTOR :

CHINA OVERSEAS BUILDING CONSTRUCTION LTD.

STRUCTURAL ENGINEER :

ARUP

KWAN KIN KEI
CEng PSEngine MICE FRAE
REGISTERED STRUCTURAL ENGINEER

FACADE CONSULTANT:

MEINHARDT

NOTE :

- ALL DIMENSIONS ARE IN mm.
- ALL ELEVATIONS ARE VIEWED FROM OUTSIDE.
- ALL DIMENSIONS TO BE VERIFIED ON SITE BEFORE FABRICATION.

LEGEND :

(X1) --- DETAIL MARK NO.
(X001) --- REFER SHEET NO.

- F.F.L. --- FINISHED FLOOR LEVEL
- S.F.L. --- STRUCTURAL FLOOR LEVEL
- (R) --- REVERSED DETAIL

NO.	DATE	REVISED	BY

JOB NO. : J-836

PROJECT : PROPOSED SITE C1 DEVELOPMENT AT AREA B6, TKOTL 70 RP, TSEUNG KWAN O, NEW TERRITORIES

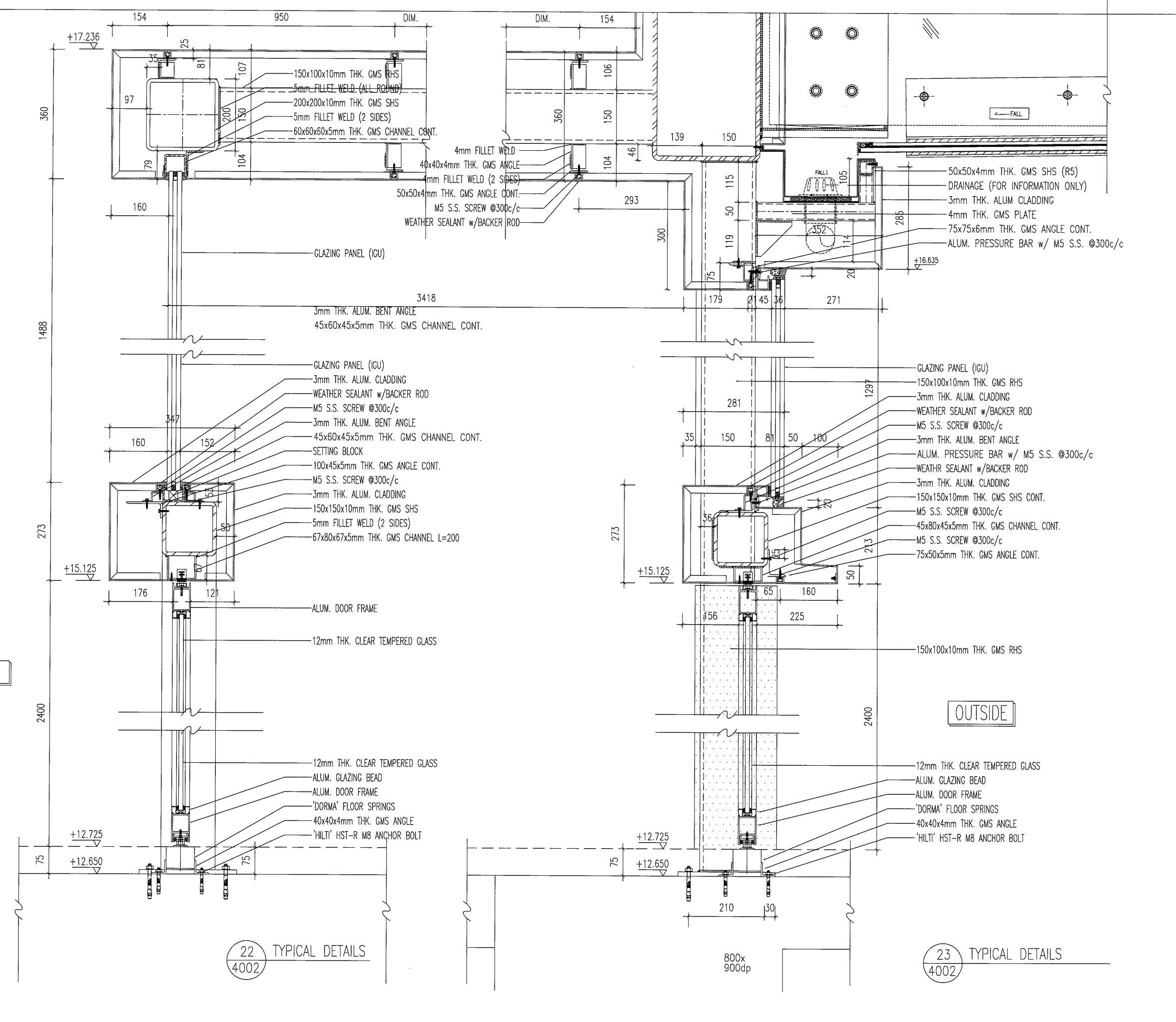
TITLE : SECTION DETAILS

DATE : 10-NOV-17 SCALE : 1:4

DRAWN BY : MN CHECKED BY : DW

美特鋁質有限公司
MIDI ALUMINIUM FABRICATOR LTD.
Units 6-8, Sunray Industrial Centre, 1/F
610 Cha Kwo Ling Road, Kowloon
Tel:23489211-4 Fax:(852)27727666

DWG NO. : J836-SE-4001 REV. : -



22 TYPICAL DETAILS
4002

23 TYPICAL DETAILS
4002

B.D. REF : 3/7192/97/4 (C1)

CLIENT : **MTR**
VENTURE SMART LIMITED

ARCHITECT : **P&T Architects and Engineers Ltd**
巴丹拿建築及工程師有限公司

MAIN CONTRACTOR : **CHINA OVERSEAS BUILDING CONSTRUCTION LTD.**

STRUCTURAL ENGINEER : **ARUP**

KWAN KIN KEI
CEng FStructE MICE FHKIE
REGISTERED STRUCTURAL ENGINEER

FACADE CONSULTANT : **MEINHARDT**

NOTE :
1. ALL DIMENSIONS ARE IN mm.
2. ALL ELEVATIONS ARE VIEWED FROM OUTSIDE.
3. ALL DIMENSIONS TO BE VERIFIED ON SITE BEFORE FABRICATION.

LEGEND :
 (X1) --- DETAIL MARK NO.
 (X001) --- REFER SHEET NO.
 1. F.F.L. --- FINISHED FLOOR LEVEL
 2. S.F.L. --- STRUCTURAL FLOOR LEVEL
 3. (R) --- REVERSED DETAIL

NO.	DATE	REVISED	BY

JOB NO. : J-836

PROJECT : PROPOSED SITE C1 DEVELOPMENT AT AREA 86, TKOTL 70 RP, TSEUNG KWAN O, NEW TERRITORIES

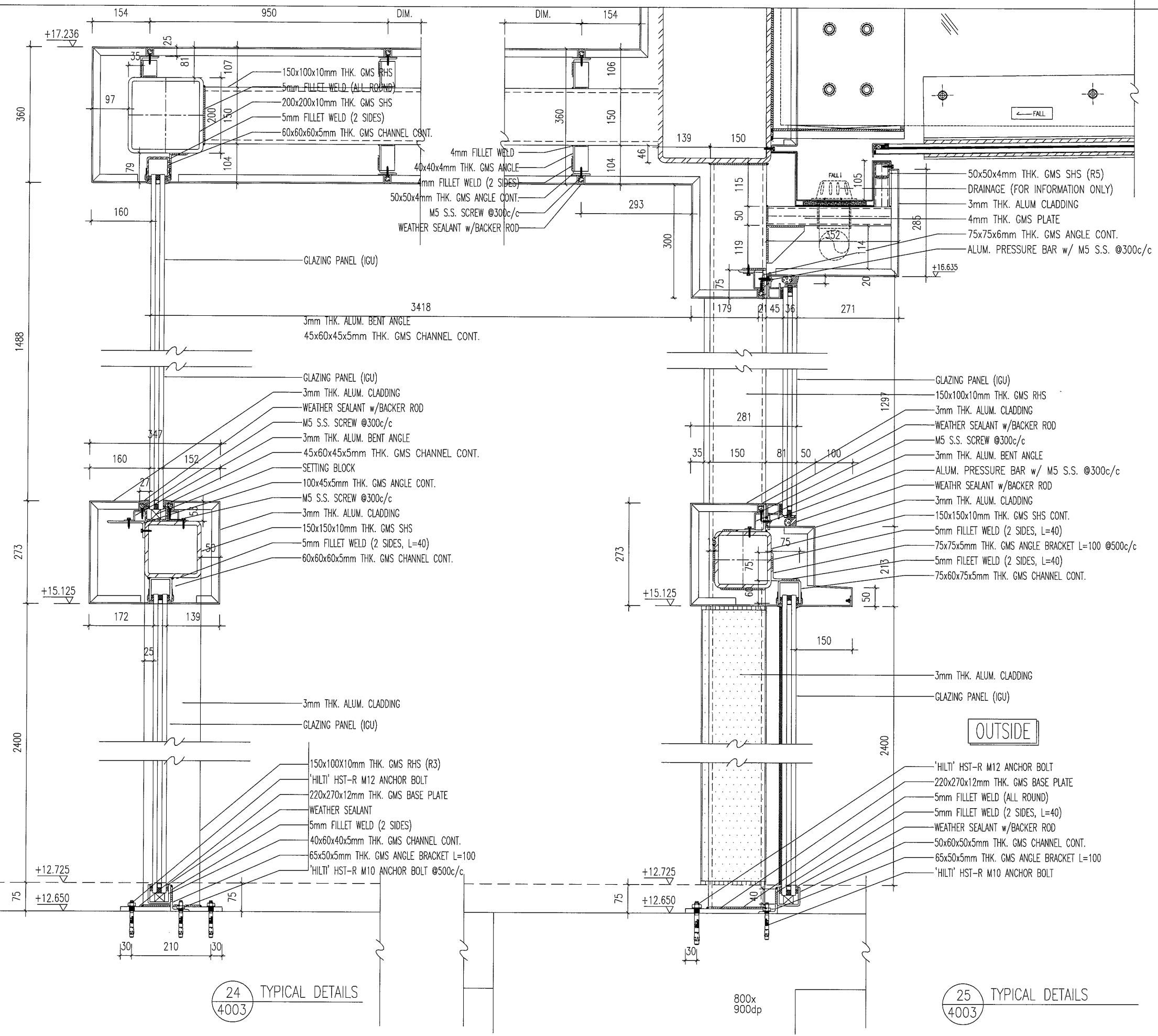
TITLE : SECTION DETAILS

DATE : 10-NOV-17 SCALE : 1:4

DRAWN BY : MN CHECKED BY : DW

美特鋁質有限公司
MIDI ALUMINIUM FABRICATOR LTD.
Units 6-8, Sunray Industrial Centre, 1/F
610 Cha Kwo Ling Road, Kowloon
Tel:23489211-4 Fax:(852)2727666

DWG NO. : J836-SE-4002 REV. : -



B.D. REF : 3/7192/97/4 (C1)

CLIENT : **MTR**
VENTURE SMART LIMITED

ARCHITECT : **P&T Architects and Engineers Ltd**
巴丹丹拿建築及工程師有限公司

MAIN CONTRACTOR : **CHINA OVERSEAS BUILDING CONSTRUCTION LTD.**

STRUCTURAL ENGINEER : **ARUP**

KWAN KIN KEI
CEng F5StructE MICE FHKIE
REGISTERED STRUCTURAL ENGINEER

FACADE CONSULTANT : **MEINHARDT**

NOTE :
1. ALL DIMENSIONS ARE IN mm.
2. ALL ELEVATIONS ARE VIEWED FROM OUTSIDE.
3. ALL DIMENSIONS TO BE VERIFIED ON SITE BEFORE FABRICATION.

LEGEND :
 (X1) --- DETAIL MARK NO.
 (X001) --- REFER SHEET NO.
 1. F.F.L. --- FINISHED FLOOR LEVEL
 2. S.F.L. --- STRUCTURAL FLOOR LEVEL
 3. (R) --- REVERSED DETAIL

NO.	DATE	REVISED	BY

JOB NO. : J-836

PROJECT : PROPOSED SITE C1
DEVELOPMENT AT AREA 86,
TKOTL 70 RP, TSEUNG KWAN O,
NEW TERRITORIES

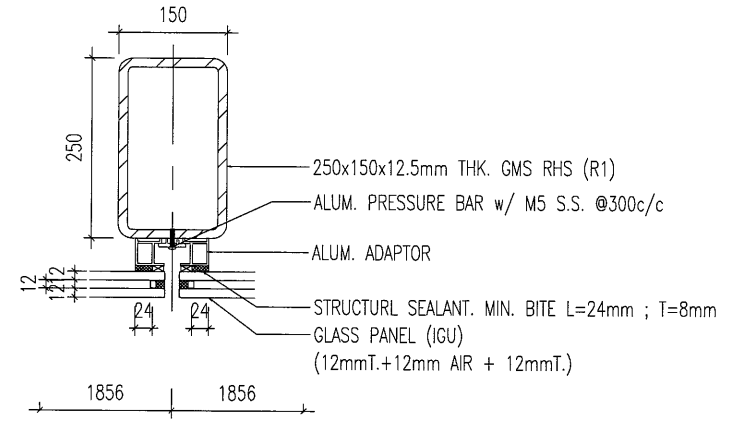
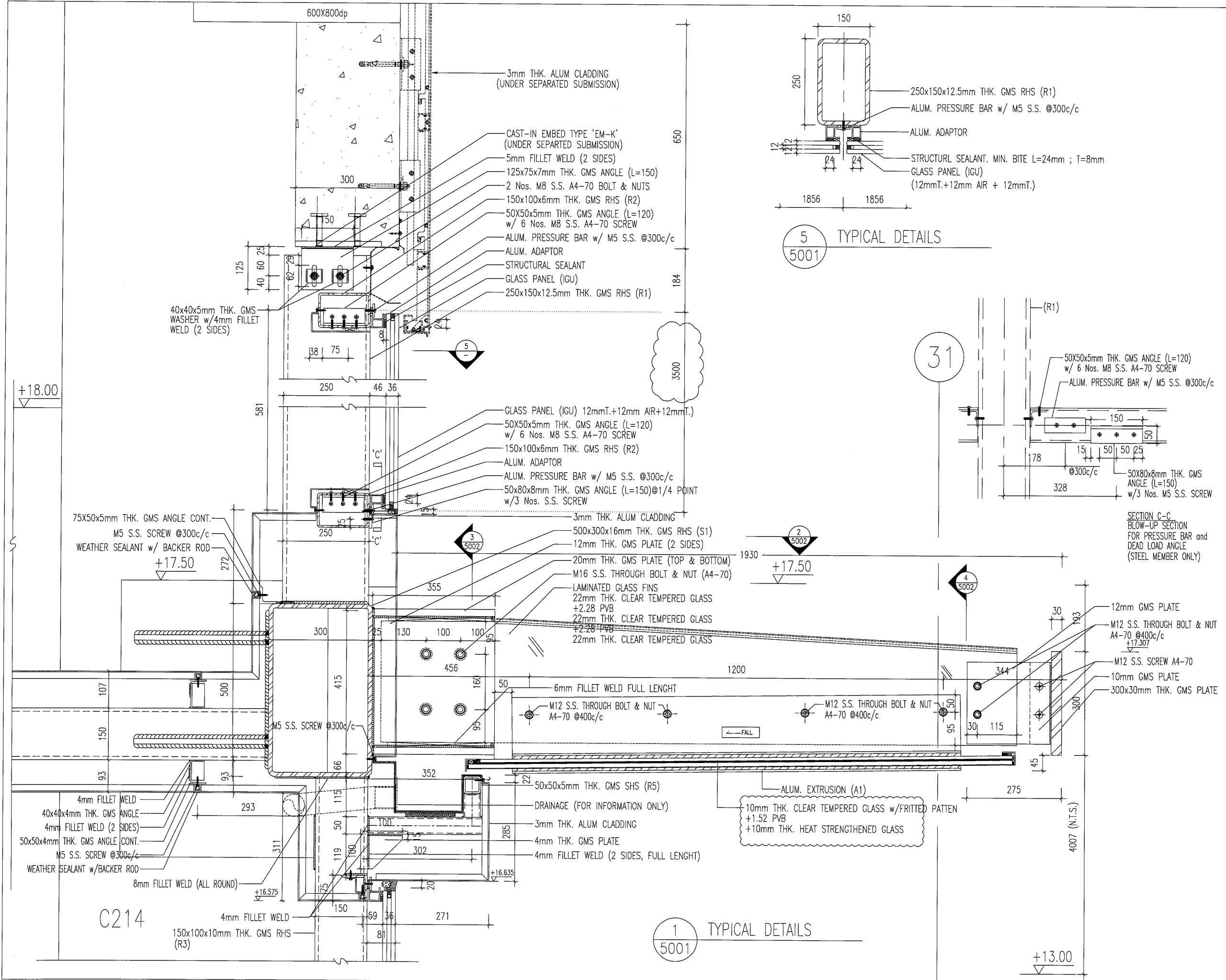
TITLE : SECTION DETAILS

DATE : 10-NOV-17 SCALE : 1:4

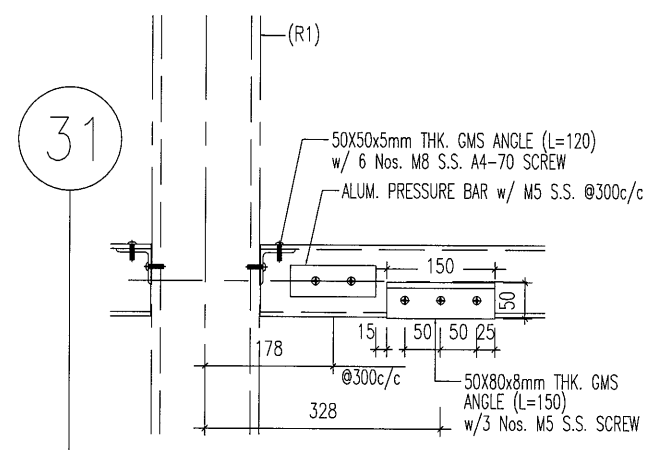
DRAWN BY : MN CHECKED BY : DW

美特鋁質有限公司
MIDI ALUMINIUM FABRICATOR LTD.
Units 6-8, Sunray Industrial Centre, 1/F
610 Cha Kwo Ling Road, Kowloon
Tel:23489211-4 Fax:(852)27727666

DWG NO. : J836-SE-4003 REV. : -



5 TYPICAL DETAILS
5001



SECTION C-C
BLOW-UP SECTION
FOR PRESSURE BAR and
DEAD LOAD ANGLE
(STEEL MEMBER ONLY)

1 TYPICAL DETAILS
5001

B.D. REF :

CLIENT : **MTR**
VENTURE SMART LIMITED

ARCHITECT : **P&T Architects and Engineers Ltd**
巴丹丹拿建築及工程師有限公司

MAIN CONTRACTOR : **CHINA OVERSEAS BUILDING CONSTRUCTION LTD.**

STRUCTURAL ENGINEER : **ARUP**

KWAN KIN KEE
CENG PING WAI
REGISTERED STRUCTURAL ENGINEER

FAÇADE CONSULTANT : **MEINHARDT**

NOTE :

- ALL DIMENSIONS ARE IN mm.
- ALL ELEVATIONS ARE VIEWED FROM OUTSIDE.
- ALL DIMENSIONS TO BE VERIFIED ON SITE BEFORE FABRICATION.

LEGEND :

(X1) --- DETAIL MARK NO.
(X001) --- REFER SHEET NO.

1. F.F.L. --- FINISHED FLOOR LEVEL
2. S.F.L. --- STRUCTURAL FLOOR LEVEL
3. (R) --- REVERSED DETAIL

R1 = 100x200x16mm THK. GMS RHS
R2 = 100x200x10mm THK. GMS RHS
N.T.S. = NOT TO SCALE
R.C. STRUCTURAL ELEMENT
COL. / BEAM / SLAB
IS (UNDER SEPARATED SUBMISSION)

NO.	DATE	REVISED	BY

JOB NO. : J-836

PROJECT : PROPOSED SITE C1
DEVELOPMENT AT AREA 86,
TKOTL 70 RP, TSEUNG KWAN O,
NEW TERRITORIES

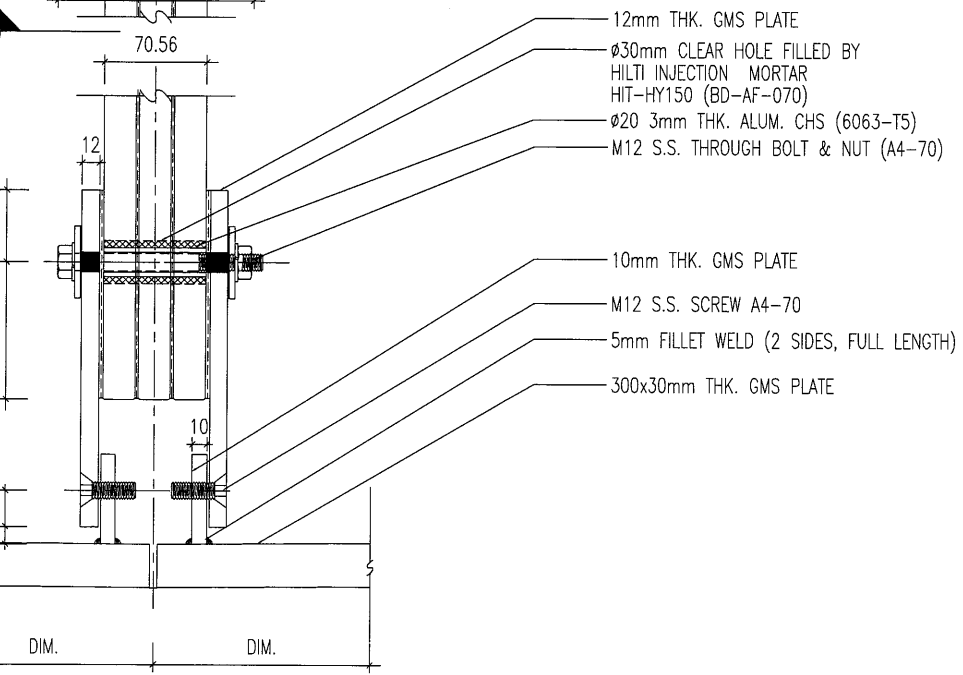
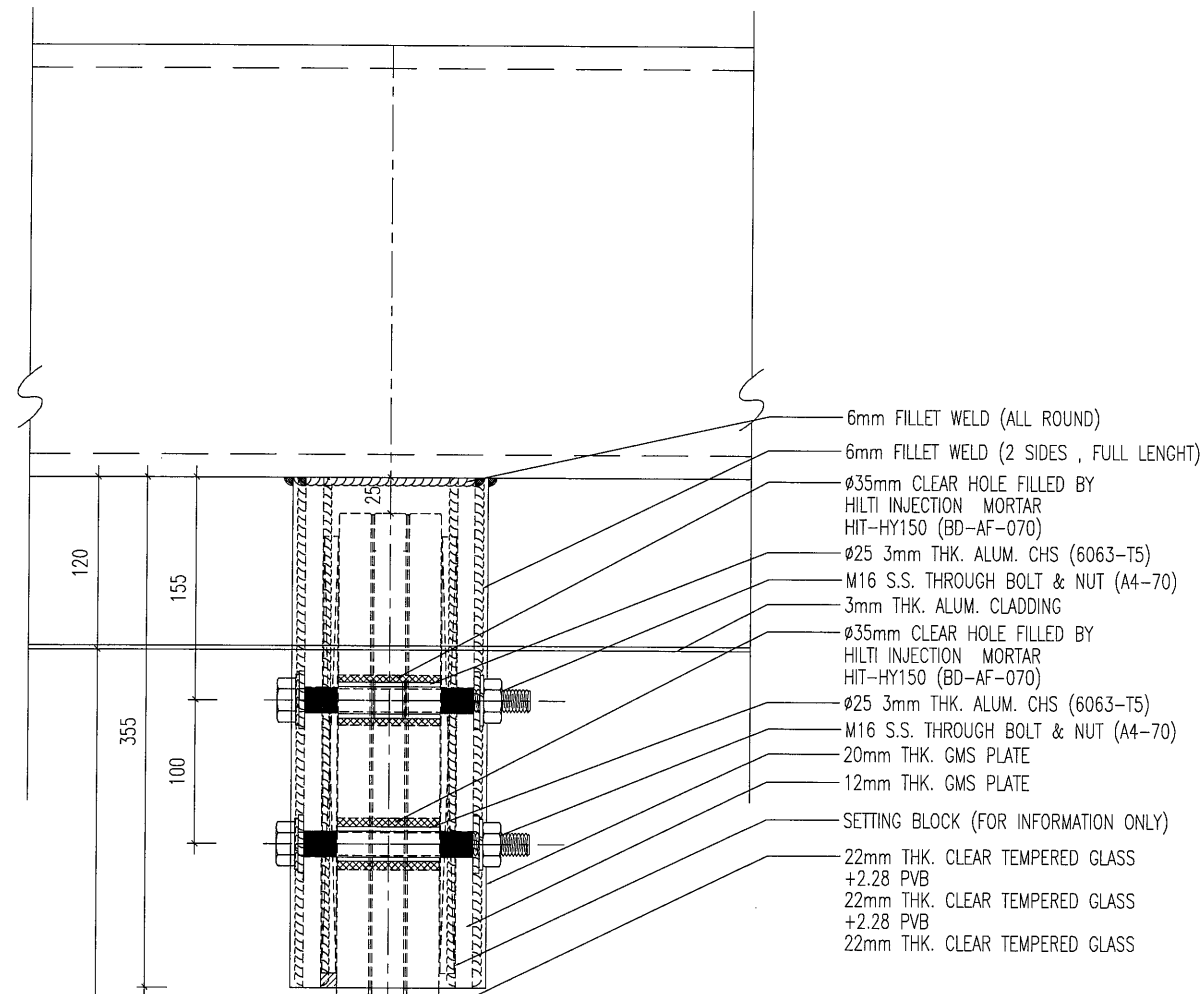
TITLE : SECTION DETAILS
FOR WINDOW WALL &
GLASS CANOPY

DATE : 10-NOV-17 SCALE : 1:4

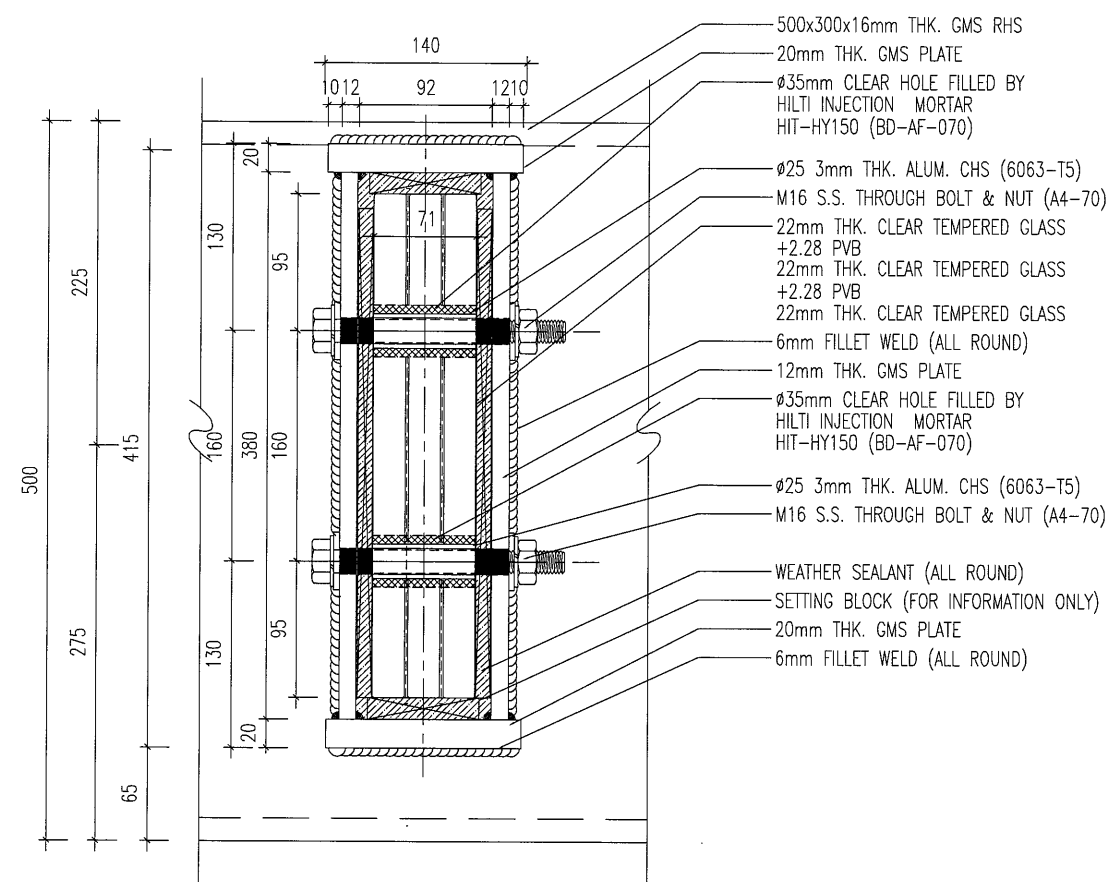
DRAWN BY : MN CHECKED BY : DW

英特鋁質有限公司
MIDI ALUMINIUM FABRICATOR LTD.
Units 6-8, Sunray Industrial Centre, 1/F
610 Cha Kwo Ling Road, Kowloon
Tel: 23489211-4 Fax: (852) 2727666

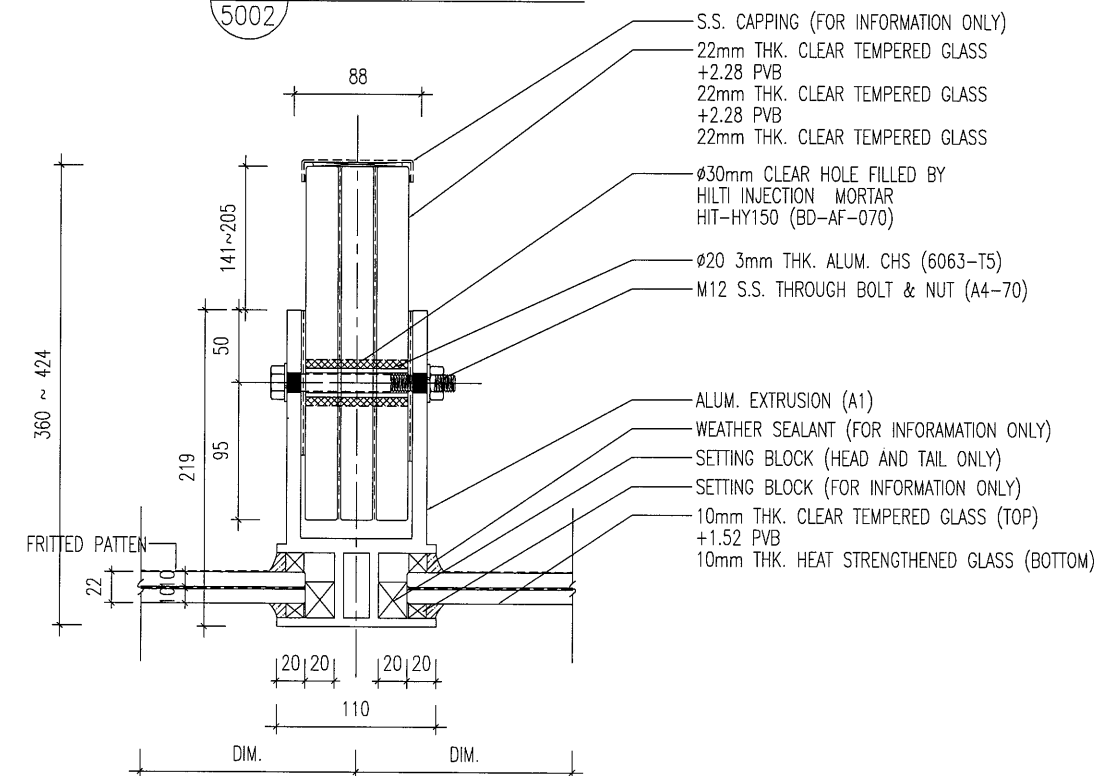
DWG NO. : J836-DT-5001 REV. : A



2 TYPICAL DETAILS
5002



3 TYPICAL DETAILS
5002



4 TYPICAL DETAILS
5002

B.D. REF :

CLIENT : **MTR**
VENTURE SMART LIMITED

ARCHITECT : **P&T Architects and Engineers Ltd**
巴丹拿建築及工程師有限公司

MAIN CONTRACTOR : **CHINA OVERSEAS BUILDING CONSTRUCTION LTD.**

STRUCTURAL ENGINEER : **ARUP**

KWAN XIN KEI
CEng PStructE MICE FHKIE
REGISTERED STRUCTURAL ENGINEER

FACADE CONSULTANT : **MEINHARDT**

NOTE :

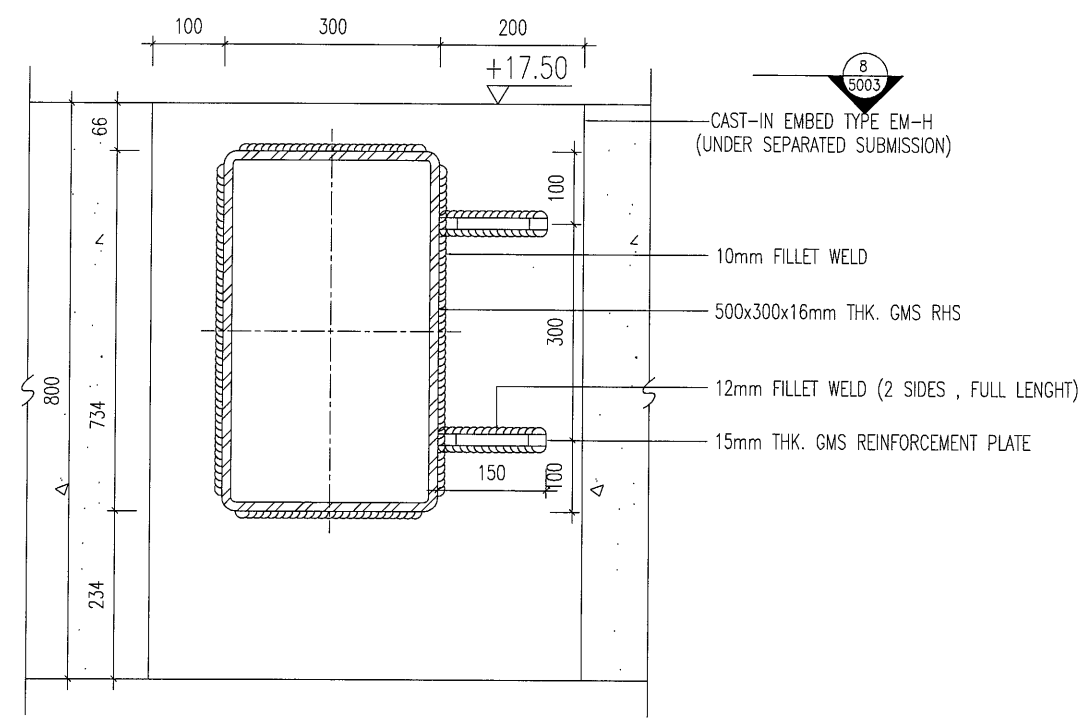
- ALL DIMENSIONS ARE IN mm.
- ALL ELEVATIONS ARE VIEWED FROM OUTSIDE.
- ALL DIMENSIONS TO BE VERIFIED ON SITE BEFORE FABRICATION.

LEGEND :

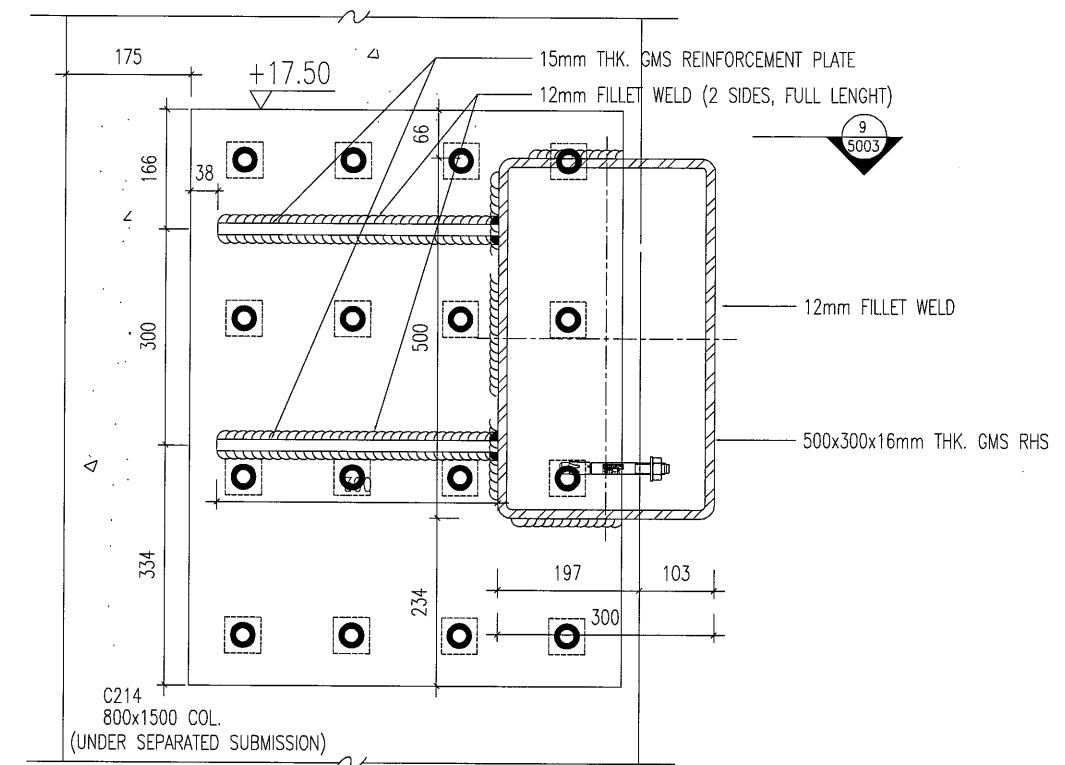
(X1) --- DETAIL MARK NO.
(X001) --- REFER SHEET NO.

- F.F.L. --- FINISHED FLOOR LEVEL
- S.F.L. --- STRUCTURAL FLOOR LEVEL
- (R) --- REVERSED DETAIL

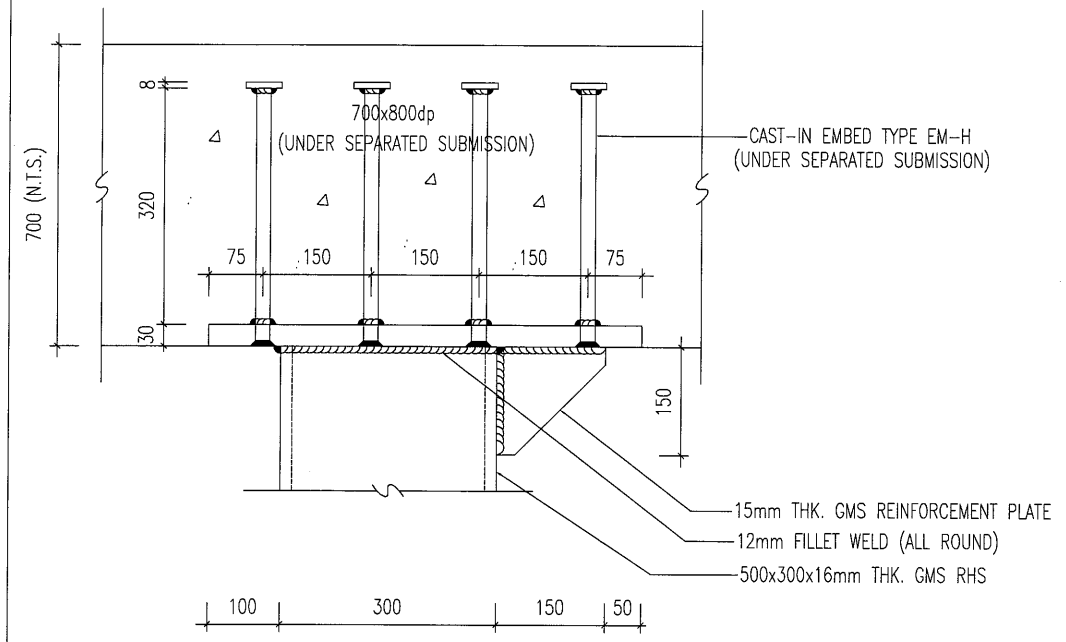
NO.	DATE	REVISED	BY
JOB NO. : J-836			
PROJECT : PROPOSED SITE C1 DEVELOPMENT AT AREA 86, TKOTL 70 RP, TSEUNG KWAN O, NEW TERRITORIES			
TITLE : SECTION PROPERTIES FOR WINDOW WALL & GLASS CANOPY			
DATE : 10-NOV-17		SCALE : 1:4	
DRAWN BY : MN		CHECKED BY : DW	
美特鋁質有限公司 MIDI ALUMINIUM FABRICATOR LTD. Units 6-8, Sunray Industrial Centre, 1/F 610 Cha Kwo Ling Road, Kowloon Tel:23489211-4 Fax:(852)27727666			
DWG NO. : J836-DT-5002			REV. : B



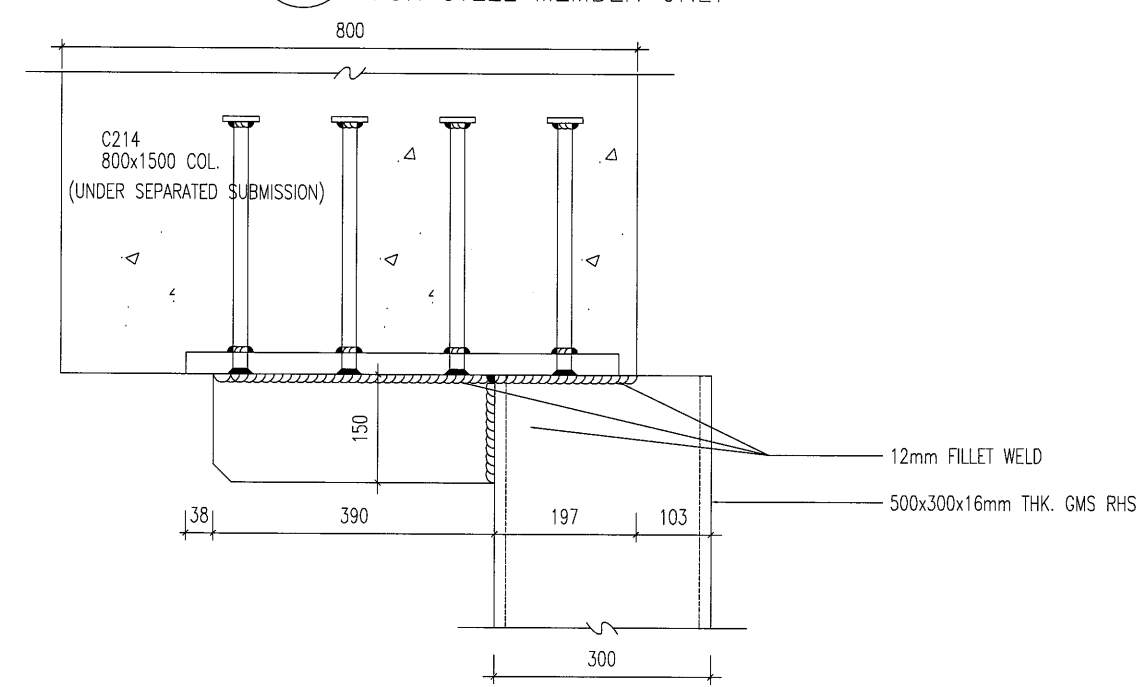
6 TYPICAL DETAILS
5003 FOR STEEL MEMBER ONLY



7 TYPICAL DETAILS
5003 FOR STEEL MEMBER ONLY



8 TYPICAL DETAILS
5003 FOR STEEL MEMBER ONLY



9 TYPICAL DETAILS
5003 FOR STEEL MEMBER ONLY

CLIENT : **MTR**
VENTURE SMART LIMITED

ARCHITECT : **P&T Architects and Engineers Ltd**
巴丹拿建築及工程師有限公司

MAIN CONTRACTOR : **CHINA OVERSEAS BUILDING CONSTRUCTION LTD.**

STRUCTURAL ENGINEER : **ARUP**

KWAN XIN KED
Civil Structural MICE PRINCIPAL
REGISTERED STRUCTURAL ENGINEER

FACADE CONSULTANT : **MEINHARDT**

- NOTE :
1. ALL DIMENSIONS ARE IN mm.
 2. ALL ELEVATIONS ARE VIEWED FROM OUTSIDE.
 3. ALL DIMENSIONS TO BE VERIFIED ON SITE BEFORE FABRICATION.
- LEGEND :
- (X1) --- DETAIL MARK NO.
 - (X001) --- REFER SHEET NO.
1. F.F.L. --- FINISHED FLOOR LEVEL
 2. S.F.L. --- STRUCTURAL FLOOR LEVEL
 3. (R) --- REVERSED DETAIL

NO.	DATE	REVISED	BY

JOB NO. : J-836

PROJECT : PROPOSED SITE C1
DEVELOPMENT AT AREA 86,
TKOTL 70 RP, TSEUNG KWAN O,
NEW TERRITORIES

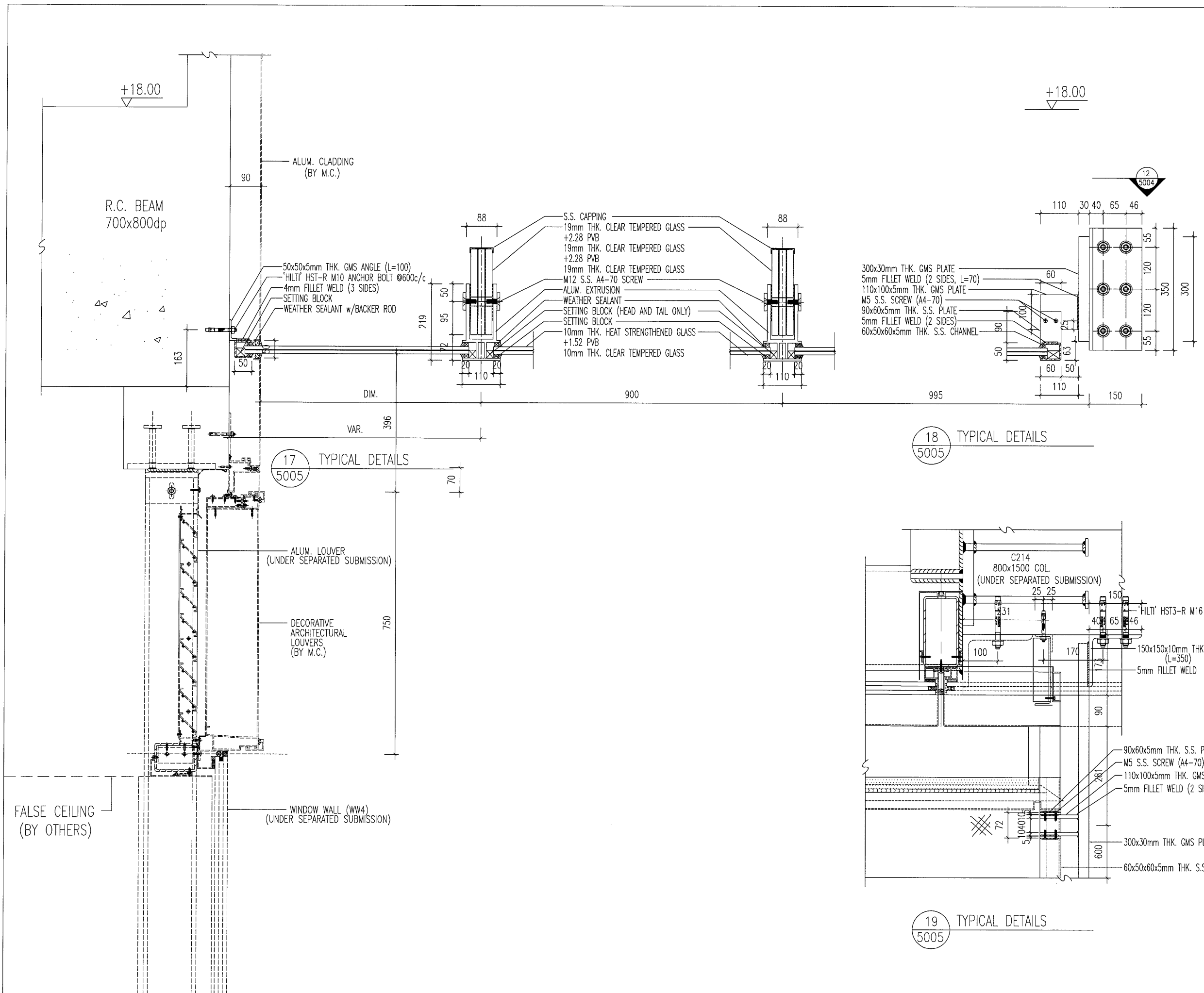
TITLE : SECTION DETAILS
FOR WINDOW WALL &
GLASS CANOPY

DATE : 10-NOV-17 SCALE : 1:4

DRAWN BY : MN CHECKED BY : DW

英特鋁質有限公司
MIDI ALUMINIUM FABRICATOR LTD.
Units 6-8, Sunray Industrial Centre, 1/F
610 Cha Kwo Ling Road, Kowloon
Tel:23489211-4 Fax:(852)27727666

DWG NO. : J836-DT-5003 REV. : A



CLIENT :
MTR
 VENTURE SMART LIMITED

ARCHITECT :
P&T Architects and Engineers Ltd
 巴馬丹拿建築及工程師有限公司

MAIN CONTRACTOR :
CHINA OVERSEAS BUILDING CONSTRUCTION LTD.

STRUCTURAL ENGINEER :
ARUP

KWAN KIN KEI
 關健基
 註冊結構工程師
 REGISTERED STRUCTURAL ENGINEER

FACADE CONSULTANT:
MEINHARDT

- NOTE :
1. ALL DIMENSIONS ARE IN mm.
 2. ALL ELEVATIONS ARE VIEWED FROM OUTSIDE.
 3. ALL DIMENSIONS TO BE VERIFIED ON SITE BEFORE FABRICATION.

- LEGEND :
- (x1) --- DETAIL MARK NO.
 - (x001) --- REFER SHEET NO.
1. F.F.L. --- FINISHED FLOOR LEVEL
 2. S.F.L. --- STRUCTURAL FLOOR LEVEL
 3. (R) --- REVERSED DETAIL

NO.	DATE	REVISED	BY

JOB NO. : J-836
 PROJECT : PROPOSED SITE C1 DEVELOPMENT AT AREA 86, TKOTL 70 RP, TSEUNG KWAN O, NEW TERRITORIES

TITLE : SECTION PROPERTIES FOR WINDOW WALL & GLASS CANOPY

DATE : 10-NOV-17 SCALE : 1:4
 DRAWN BY : MN CHECKED BY : DW

英特鋁質有限公司
MIDI ALUMINIUM FABRICATOR LTD.
 Units 6-8, Sunray Industrial Centre, 1/F
 610 Cha Kwo Ling Road, Kowloon
 Tel: 23489211-4 Fax: (852) 27727666

DWG NO. : J836-DT-5005 REV. : -