



工程指示 / 要求簡箋(E.I.)

工程指示編號：EI/ 9620

修改版次：A

工程編號：J-836

工程名稱：日出康城 7 期 (平台)

工程項目：Skylight 鐵件生產

收件人：Maggie Lor

發件人：大明

日期：20/08/2018

要求提供 / 確認 事項：

- | | | |
|------------------------------------|-------------------------------------|-------------------------------|
| <input type="checkbox"/> 初步鋁料 B.M. | <input type="checkbox"/> 加工拆圖，然後生產 | <input type="checkbox"/> 尺寸表 |
| <input type="checkbox"/> 正式鋁料 B.M. | <input type="checkbox"/> 技術上資料 / 指示 | <input type="checkbox"/> 報價 |
| <input type="checkbox"/> 配件 B.M. | <input type="checkbox"/> 樣辦或貨品說明書 | <input type="checkbox"/> 分判合約 |
| <input type="checkbox"/> 其他：_____ | | |

內容：

煩請 安排生產 Skylight 鐵件後 送地盤.

驗焊：100% 目測, 20% 磁粉

(請補回 BM 表)

請在 30/09/2018 前完成上列要求。

附有關圖紙 / 文件：附 B.M 表 ,圖紙 56 頁

以上項目為:

- 原合約工程包 原合約工程加 / 減賬 新工程報價

原因：-

分發東莞各部門：

- ()生產技術總監 連附件 ()技術部 連附件 ()生產部 連附件 ()機械設計部 連附件
 ()採購部 連附件 ()生產統籌部 連附件
 ()質檢部 連附件 ()會計部 連附件 ()報關組 連附件 ()其他 _____ 連附件

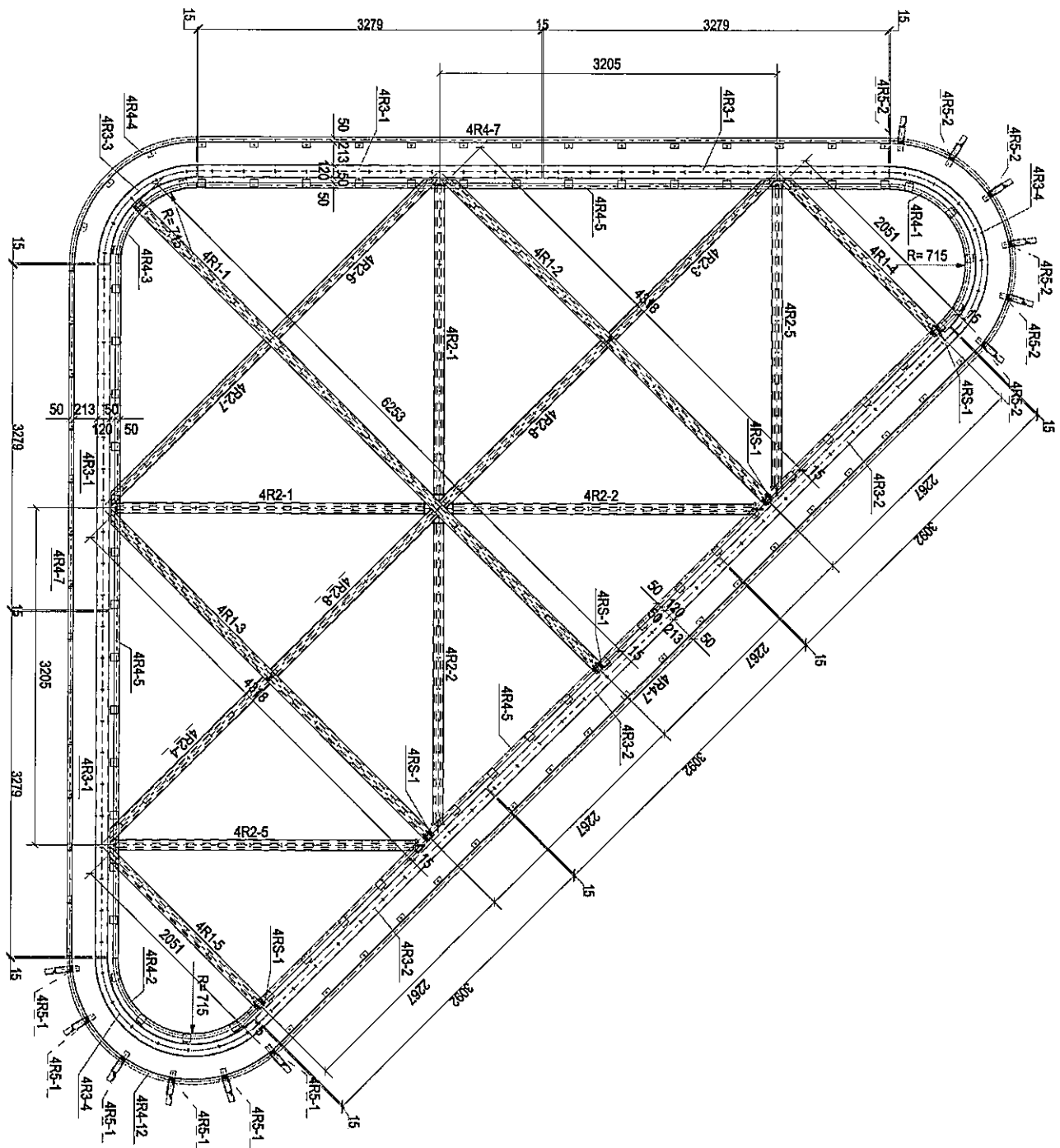
分發香港各部門：

- ()行政部 連附件 ()會計部 連附件 ()統籌部 連附件 ()工程部地盤科文 連附件 積哥
 ()採購部 連附件 ()QS 部 連附件 ()維修部 連附件 ()其他 _____ 連附件

傳遞編號：

發件人簽署：

項目經理簽署：



PART PLAN FOR SKYLIGHT AT 4 F

Rev.	Description	Date
A	第二次提校	2018-08-14

PROJECT: PROPOSED SITE C1
DEVELOPMENT AT AREA 106,
TWO TOWER TOWER TOWER,
NEW TERRITORIES

CLIENT: 華特經貿有限公司
MIDI
Unit 5-8, Sunny Harbour Centre,
610 Chee Koo Ling Road, Kowloon
Tel: 23492111-4 Fax: (852) 27272566

DRAWING TITLE: MARKING PLAN

CAD File Name:

Designed by:

Drawn by:

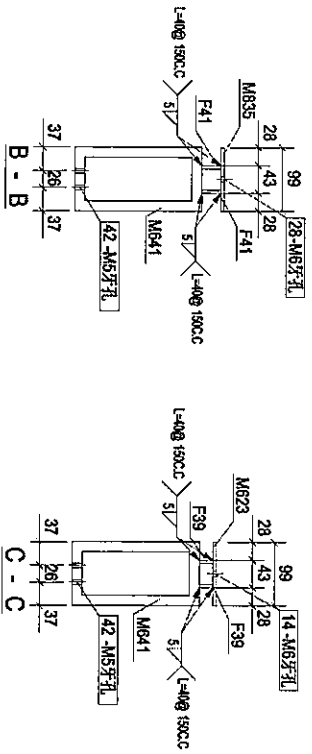
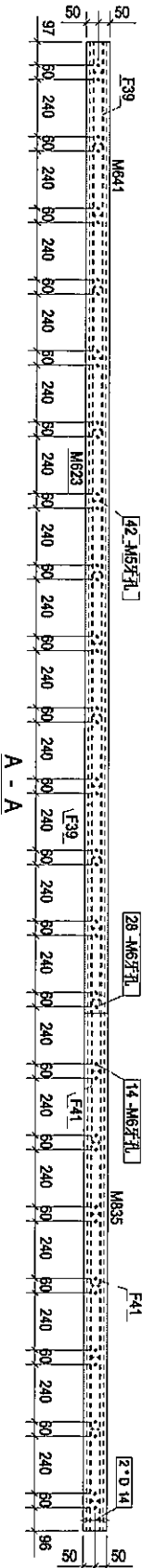
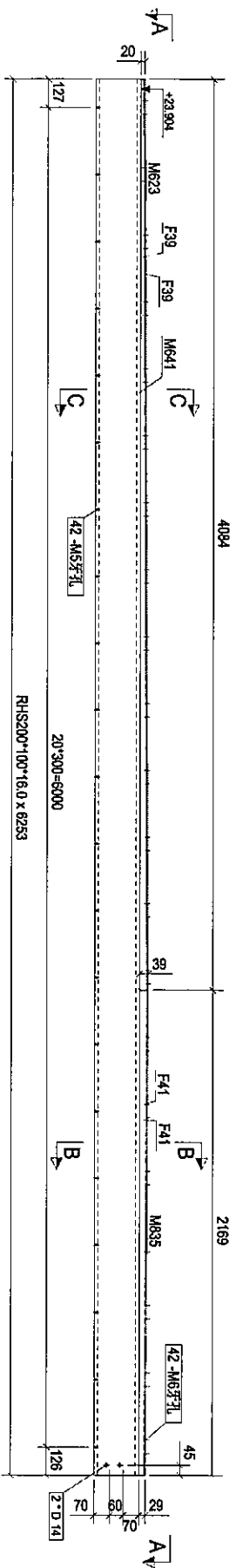
Reviewed by:

Approved by:

Scale:

NO.	REV.
DWGNO: (SK-4/F) - MP01	A

零件编号	规格	数量	单位	重量	共重	备注
F39	PLT393	2	5.29	10.58	0.24	
F41	PLT393.6	2	2.88	5.73	0.15	
M623	PL379	1	15.87	15.87	0.85	
M641	RHS200*100*16.0	1	414.88	414.88	3.56	
M835	PL379	1	8.43	8.43	0.45	
合计:				455.49		



Rev.	Description	Date
B	第3次报批	2018-08-18

PROJECT: PROPOSED SITE C1
DEVELOPMENT AT PASAR
KOTLITUP, SEKONG RUMAH,
NEW TERRITORIES

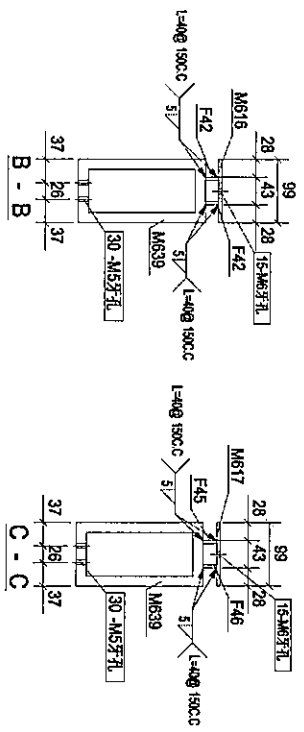
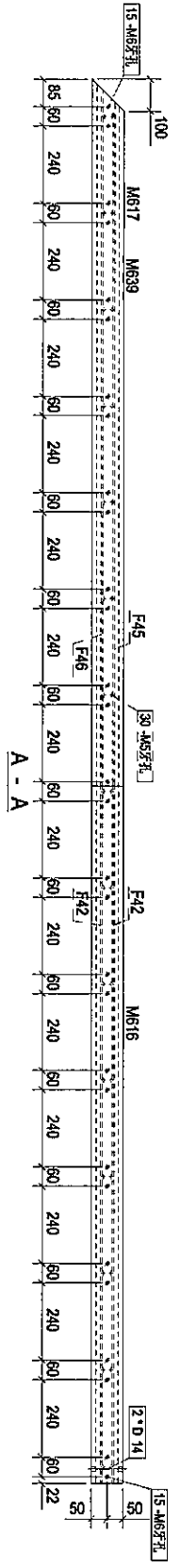
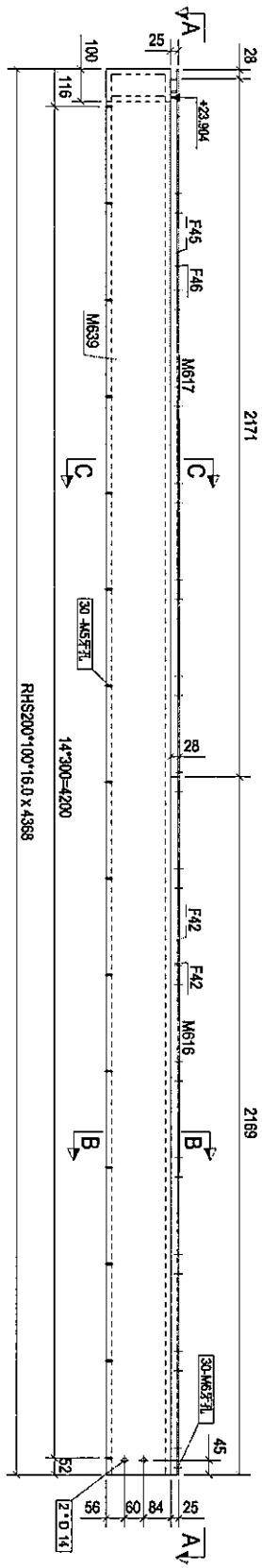
CLIENT: 華特銀寶有限公司
MIDI Advisory Associates Ltd.
Unit 6-5, Sunny Industrial Centre, 1/F
610 Chee Koo Ling Road, Kowloon
Tel: (852) 27272565 Fax: (852) 27272566

S 銀同有限公司
Silver Town Limited
Tel: (852) 4334568 Fax: (852) 4335994
E-MAIL: a002333@silvertown.ltd.com

DRAWING TITLE: [4R1-1]

CAD File Name:	
Designed by:	
Drawn by:	
Reviewed by:	
Approved by:	
Scale:	
DWG NO.:	(SK4/F) - [4R1-1]
REV:	B

零件编号	规格	数量	单位	重量	体积
F42	PL1523.1	2	1.56	3.92	0.12
F45	PL1523.1	1	1.56	1.95	0.11
F46	PL1523.1	1	1.56	1.95	0.11
M616	PL1523.1	1	8.43	8.43	0.45
M617	PL1523.1	1	8.54	8.54	0.45
M639	RHS200*100*16.0	1	289.90	289.90	2.49
合计:				314.59	



Rev.	Description	Date
B	第三次覆批	2016-08-18

PROJECT: PROPOSED SITE C1
DEVELOPMENT AT JASELAR
HOTEL TOWER, JOSEONSYANGNO,
NEW TEANJONGS

CLIENT: 美特鋸質有限公司
MIDI AUTUMN FURNITURE LTD.
Unit 5-E, Sunny Industrial Centre, 1/F
510 Cheong Kwoong Road, Kowloon
Tel: (852) 24092111-4 Fax: (852) 27272666

銀同有限公司
Silver Town Limited
Tel: (852) 24092111-4 Fax: (852) 27272666
E-mail: a09255@silvertown.com.hk

DRAWING TITLE: [AR1-2]

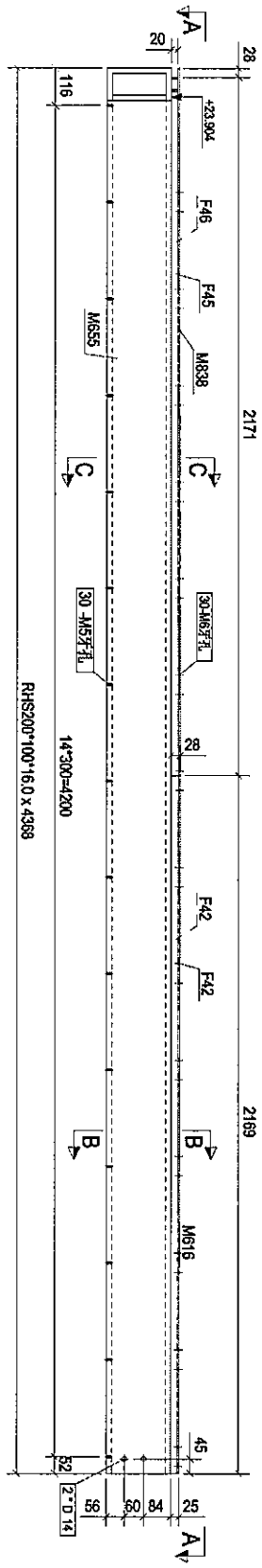
CAD File Name:

Designed by
Drawn by
Reviewed by
Approved by

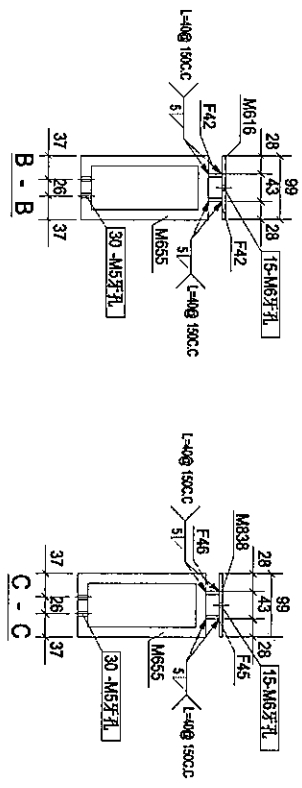
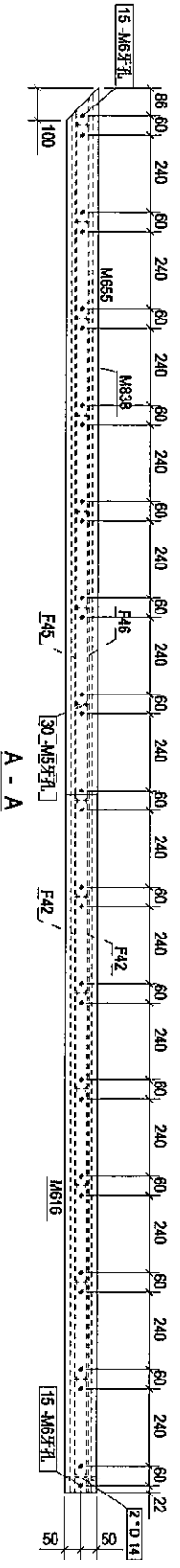
Scale
DWS NO.: (SK-4/F) - [AR1-2]

3

零件编号	规格(mm)	数量	单位	重量(kg)	共重(kg)	备注
F42	PLT5234	2	1.56	3.12	0.12	
F45	PLT5231	1	1.53	1.53	0.11	
F46	PLT5231	1	1.56	1.56	0.11	
M616	PL5299	1	8.43	8.43	0.45	
M655	RHS200*100*16.0	1	289.80	289.80	2.49	
M838	PL5299	1	0.54	0.54	0.05	
合计:				314.59		



构件: 4R1-3



Rev.	Description	Date
B	第三次报批	2018-08-18

PROJECT: PROPOSED SITE C1
DEVELOPER: MTR/CSA/AS
TOTAL DEVELOPER: MTR/CSA/AS
NEW TERRITORIES

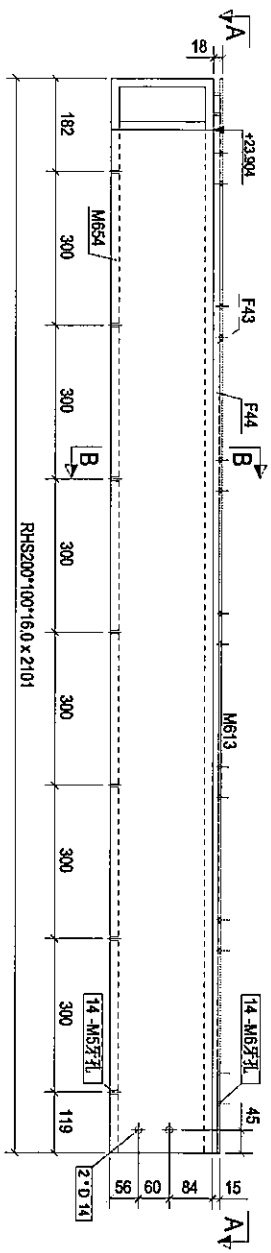
CLIENT: 美特经贸有限公司
MIDI ADVANCY TRANSCO INC.
Unit: 6-8, Sunny Industrial Centre, 1/F
510 Che Kwo Ling Road, Kowloon
Tel: (852) 272711-4 Fax: (852) 27272665

银同有限公司
Silver Town Limited
Tel: (852) 433068 Fax: (852) 433064
E-MAIL: ADDRESS@SILVERTOWN.COM

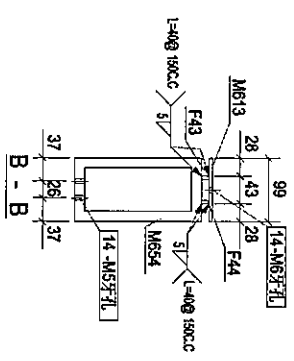
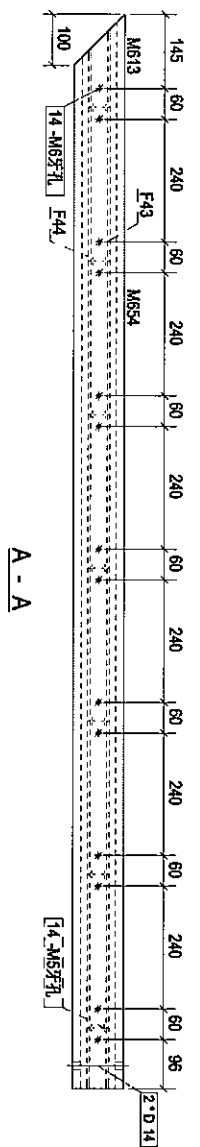
DRAWING TITLE: [4R1-3]

CAD File Name :	
Designed by	
Drawn by	
Reviewed by	
Approved by	
Scale	
DWGS NO. (SK-4/F) - [4R1-3]	REV. B

零件编号	规格	数量	单重(kg)	总重(kg)	备注
F43	PLT513	1	1.06	1.06	0.07
F44	PLT513	1	1.04	1.04	0.07
M613	PLJ599	1	8.16	8.16	0.43
M654	RHS200*100*16.0	1	133.41	133.41	1.20
				合计	149.67



构件: 4R1-5



Rev.	Description	Date
B	第三次更改	2018-08-18

PROJECT: PROPOSED SITE C1
DEVELOPMENT AT AREA 8,
TWO TOWER, ISLANDS RESORT,
NEW TERRITORIES

CLIENT: 榮特鋁質有限公司
MIDI Aluminium Associates Ltd.
Unit 5-4, Sunny Industrial Centre, 1/F,
510 Chee Koo Ling Road, Kowloon
Tel: (852) 4892111-4 Fax: (852) 27273665

DRIVING TITLE: [4R1-5]

CAD File Name:

Designed by:

Down by:

Reviewed by:

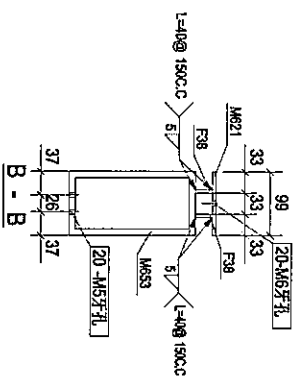
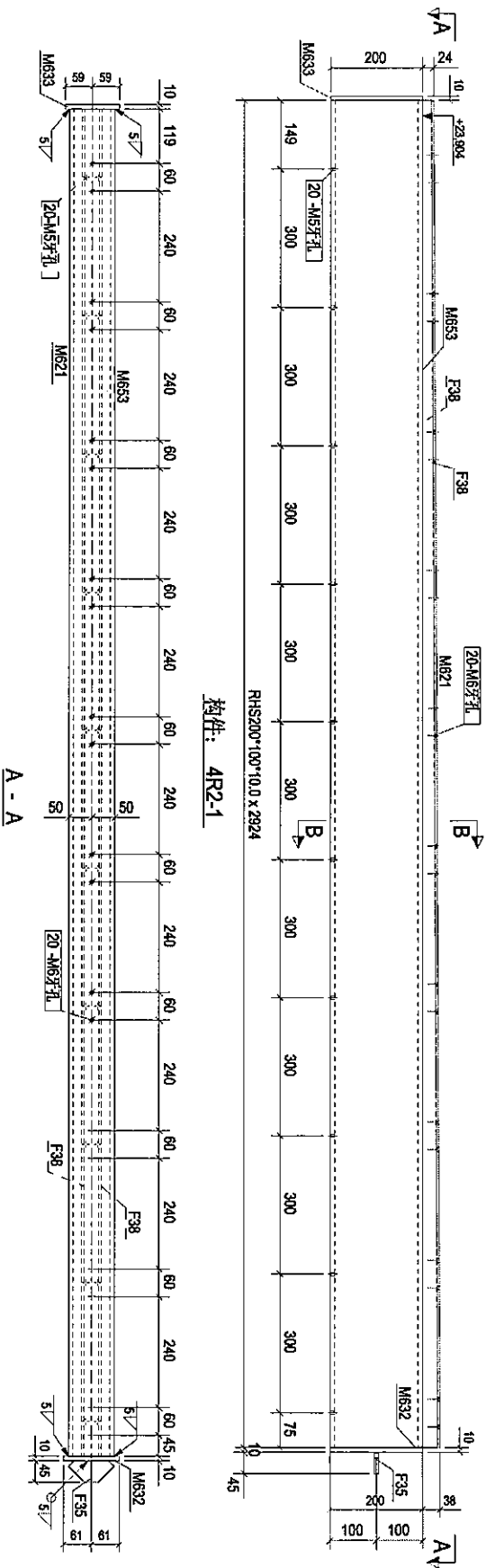
Approved by:

Scale:

DWG NO.: (SK-41F) - [4R1-5]

REV: B

零件编号	4R2-1	零件数量	2	零件重量	149.11
零件型号	规格(mm)	长度(mm)	数量	重量(kg)	长度(m)
F35	PL10*70	70	1	0.38	0.29
F38	PL15*33	2924	2	3.78	7.57
M621	PL5*98	2924	1	11.38	11.38
M632	PL10*121.4	200	1	1.91	1.91
M633	PL10*118.6	200	1	1.88	1.88
M653	RHS200*100*10.0	2924	1	128.02	128.02
				合计	149.11



Rev.	Description	Date
B	架次报竣	2018-08-18

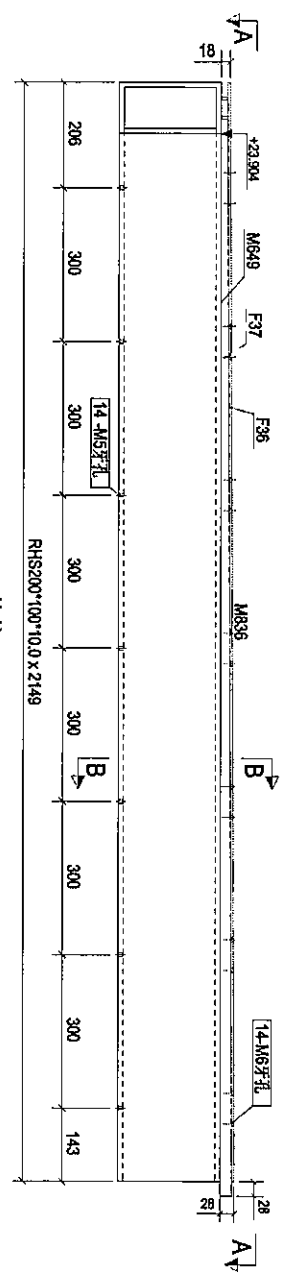
PROJECT: PROPOSED SITE C1
DEVELOPMENT AT RISEBAR,
TWO TOWNS, TSENGSUNNAN, N.O.
NEW TAINAN CITIES

CLIENT: 美特鋁質有限公司
MIDI Aluminum Fabrication Co., Ltd.
Units 6-8, Sunny Industrial Centre, 1/F,
610 Chin Kuo Ling Road, Kaohsiung
Tel: (82)489211-4 Fax: (82)72727665

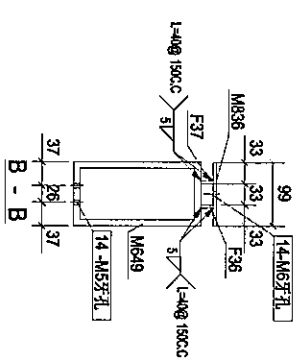
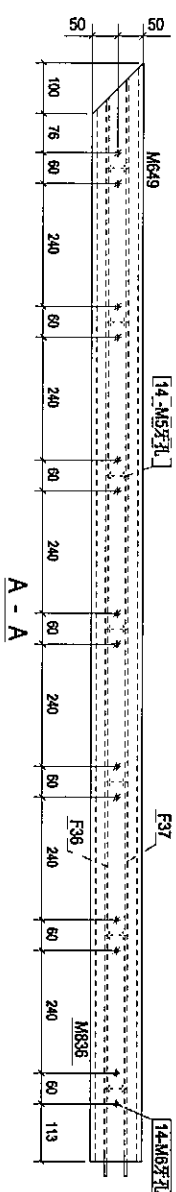
銀同有限公司
Silver Town Limited
Tel: 078-433498 Fax: 078-433954
E-MAIL: 40875534@silvertown.com

DRAWING TITLE: [4R2-1]

CAD File Name:	
Designed by:	
Drawn by:	
Reviewed by:	
Approved by:	
Scale:	
DWG NO: (SK-4F) - [4R2-1]	
REV:	B



构件: 4R2-3



物料编号	规格	数量	单位	重量	体积
4R2-3	1	1	104.84		
F36	PLT5231	2111	1.91	1.91	0.10
F37	PLT5231	2149	1.95	1.95	0.10
M6x9	RS-S200*100*10.0	2149	92.82	92.82	1.23
M8x6	PLS599	2149	8.35	8.35	0.44
合计:				104.84	

Rev.	Description	Date
B	第三次报批	2018-08-18

PROJECT: PROPOSED SITE C1
DEVELOPMENT IN AREA 08,
KOTI TOIP, TSEUNG KWAN O,
NEW TERRIDORIES

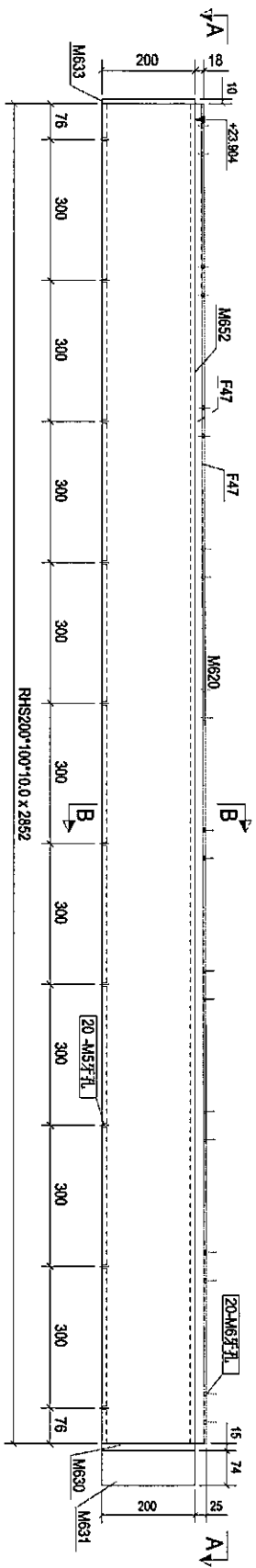
CLIENT: 華特經貿有限公司
MIDI
510 Chee Koo Ling Road, Kowloon
Tel: 23489211-4 Fax: (853) 27272686

S 銀同有限公司
Silver Town Limited
Tel: 33333333 Fax: 33333333
E-mail: 33333333@silvertown.com.hk

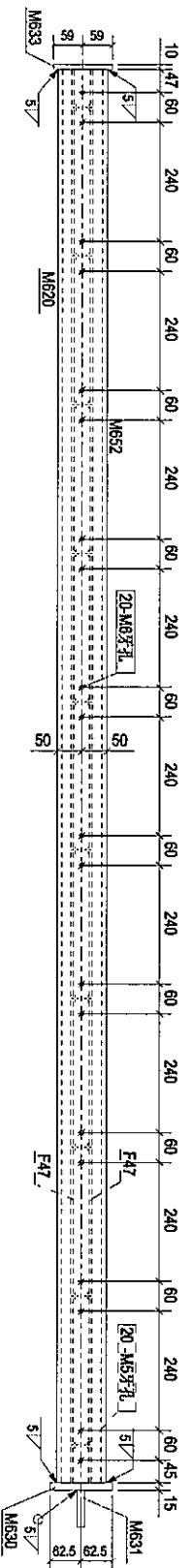
DRAWING TITLE: [4R2-3]

CAD File Name:	
Designed by:	
Drawn by:	
Reviewed by:	
Approval by:	
Scale:	
DWG NO.:	(SK-4F) - [4R2-3]
REV:	B

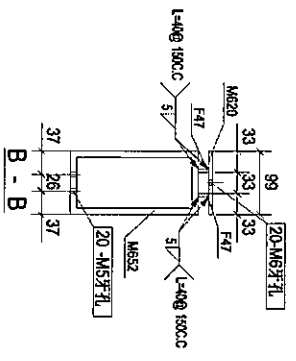
零件编号	规格	数量	单位	重量	共重	备注
F47	PL15*20	2	2.24	4.48	0.12	
M620	PL15*98	1	11.08	11.08	0.59	
M630	PL15*125	1	2.94	2.94	0.05	
M633	PL15*73.7	1	1.74	1.74	0.04	
M631	PL10*118.6	1	1.28	1.28	0.05	
M652	RHS200*100*10.0	1	122.90	122.90	1.94	
合计				145.01		



构件: 4R2-5



A - A



Rev.	Description	Date
B	第三次提批	2018-08-18

PROJECT: PROPOSED SITE C1
DEVELOPMENT AT PASIR PASIR,
TWOLE TOWER, SINGAPORE,
NEW TERRITORIES

CLIENT: 美特登有限公司
MIDI (MIDNIGHT JAWAHER) LTD.
Unit 6-8, Sungei Road, Singapore.
510 Chin Kee Ling Road, Kembangan.
Tel: (65) 62727256
Fax: (65) 27272566

银同有限公司
Silver Town Limited
Incorporated in Singapore.
Tel: (65) 63491079, 63491074
E-mail: admin@silvertown.com.sg

DRAWING TITLE: [4R2-5]

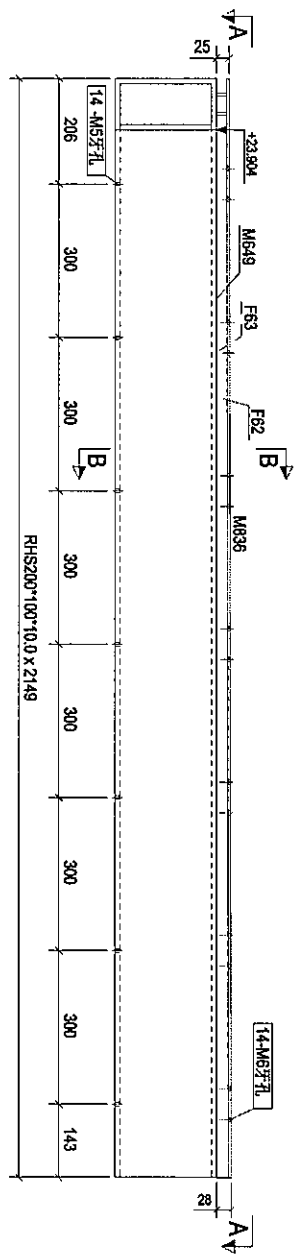
CAD File Name:

Design by	Drawn by	Reviewed by	Approved by	Scale

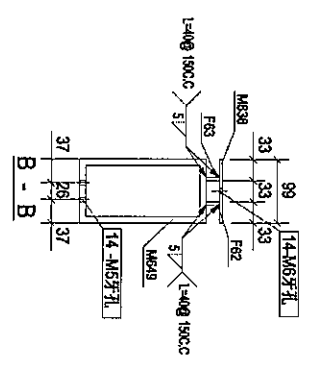
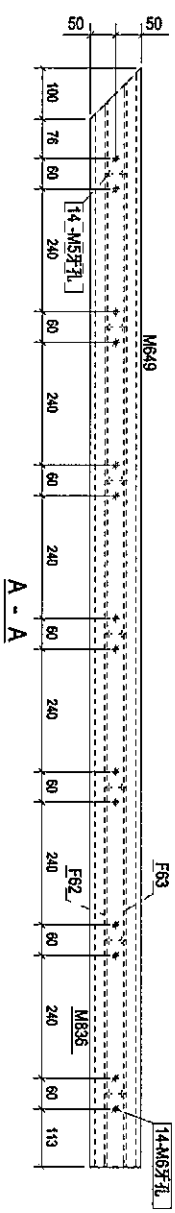
DWG NO.	REV.
(SK-4F) - [4R2-5]	B



零件编号	规格	数量	重量(kg)	长度(m)	厚度(mm)
F62	PL15*23.1	1	1.89	1.89	0.11
F63	PL15*23.1	1	1.92	1.92	0.11
M619	RHS200*100*10.0	1	92.62	92.62	1.23
M636	PL7.99	1	8.35	8.35	0.44
合计:				104.78	



构件: 4R2-6



Rev.	Description	Date
B	首次设计	2018-08-18

PROJECT: PROPOSED SITE C1
 PROJECT: DIRECT AIRCRAFT
 TOLIE TO BE RECONSTRUCTED
 NEW TERRACES

CLIENT: 美特銀寶有限公司
 MID1 AMERICA FINANCIAL USA
 Unit 5-E, Silver Industrial Centre, 1/F
 510 Cho Kwong Road, Kowloon
 Tel: (852) 27777586 Fax: (852) 27777586

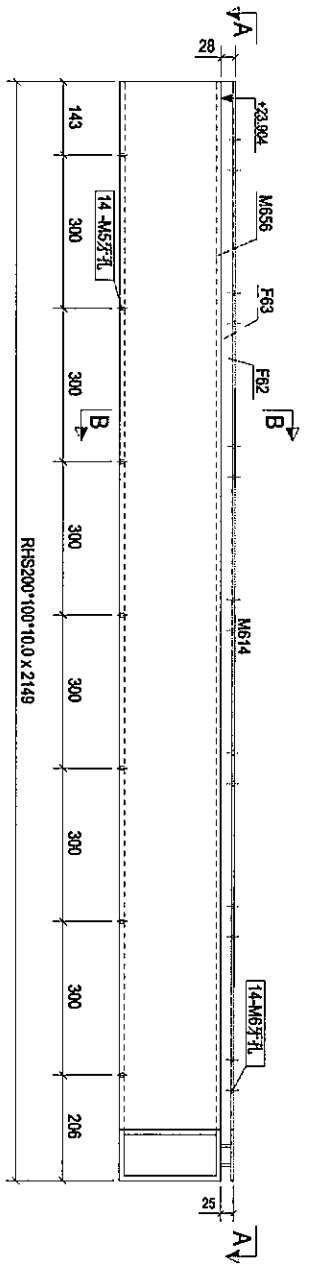
SILVER TOWN Limited
 140778-A150088 Fax: 0085-4155554
 E-MAIL: ADDRESS@SILVERTOWN.HK

DRAWING TITLE: [4R2-6]

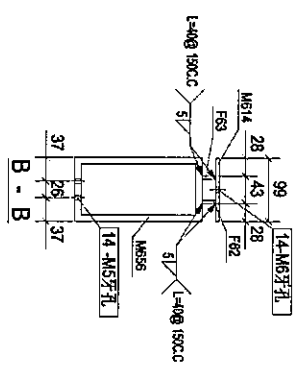
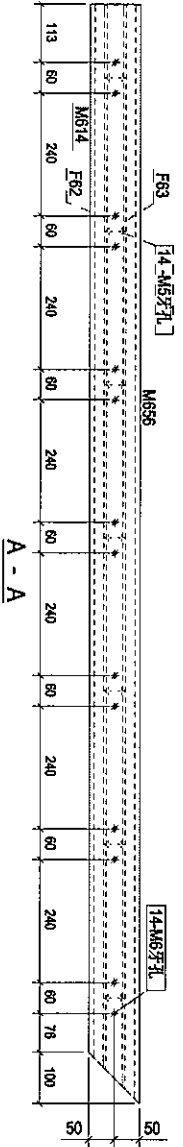
CAD File Name:	
Designed by:	
Drawn by:	
Reviewed by:	
Approved by:	
Scale:	
DWG NO. (SK-APP) - [4R2-6]	REV. B



零件编号	4R2.7	零件数量	1	零件重量	104.78
零件编号	规格(mm)	长度(mm)	数量	重量(kg)	共重(kg)
F82	P-LTY23.1	2083	1	1.89	1.89
F83	P-LTY23.1	2121	1	1.82	1.82
M614	P-LTY99	2149	1	8.35	8.35
M656	RHS200*100*10.0	2149	1	92.82	92.82
				合计	104.78



构件: 4R2.7



Rev.	Description	Date
B	第三次覆批	2018-08-18

PROJECT: PROPOSED SITE C1 DEVELOPMENT AT AREA 86, TJOI TUBE, TSEUNGSHAN O, NEW TERRITORIES

CLIENT: 美特经贸有限公司
 MIDT Midway International Ltd.
 Unit 5-8, Sany Industrial Centre, 1/F
 510 Che Kwo Ling Road, Kowloon
 Tel: (852) 2419 2111-4 Fax: (852) 2772 7666

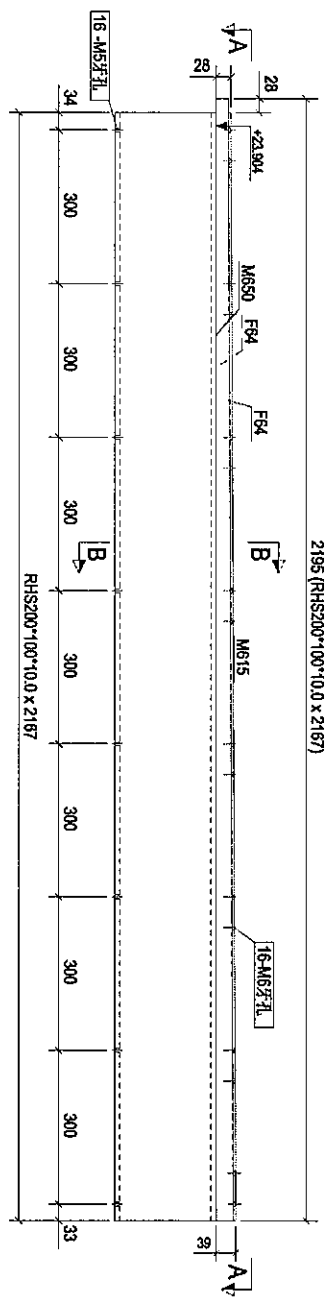
银同有限公司
 Silver Town Limited
 10/F, 435-435A, Tseungshan Road, 18/F, TJOI
 E-mail: k02855@silvertown.com.hk

DRAWING TITLE: [4R2.7]

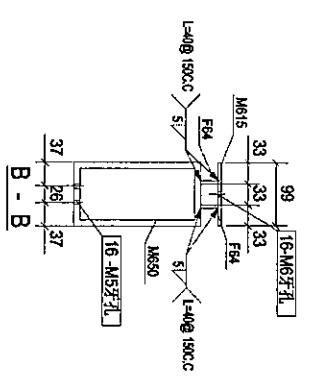
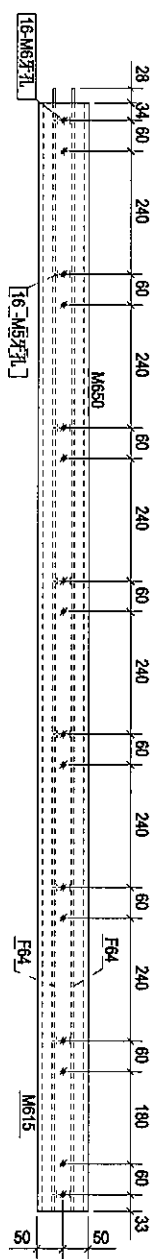
CAD File Name:	
Designed by:	
Drawn by:	
Reviewed by:	
Approved by:	
Scale:	
CHK NO.: (SK-417) - [4R2.7]	REV. B



零件编号	规格	数量	单位	重量	长度(m)	面积	体积
FR4	FR4S36	2	2.50	5.00	0.15		
M615	FR4S99	1	8.42	8.42	0.45		
M650	RHS200*100*10.0	1	63.37	63.37	1.24		
合计				107.59			



构件: 4R2-8



Rev.	Description	Date
B	第三次报批	2018-08-18

PROJECT: PROPOSED SITE C1
DEVELOPER: MTRCBAR,
TWO LORONG BENDIRANNO,
NEW TENDERONES

CLIENT: 美特经贸有限公司
MIDI
Unit 6-8, Sunny Industrial Centre, 1/F,
610 Cheong Kuo Ling Road, Kowloon
Tel: (852) 489211-4 Fax: (852) 27271865

Silver Town Limited
E-mail: ADMIN@silvertown.hk

DRAWING TITLE: [4R2-8]

CAD File Name:

Designed by	
Drawn by	
Reviewed by	
Approved by	
Scale	

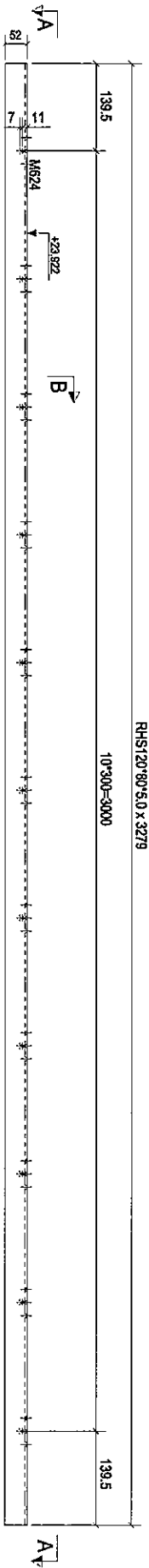
DWG NO.: (SK4F) - [4R2-8]



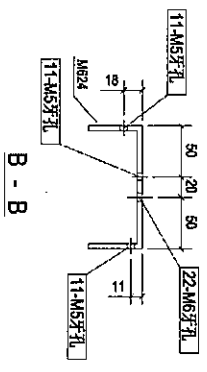
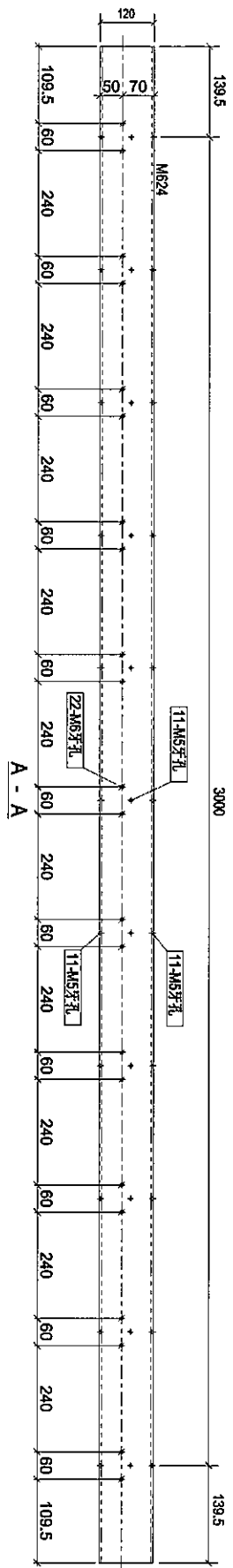
零件编号	4R3-1	零件数量	4	零件重量	96.91
零件编号	规格(mm)	长度(mm)	重量	单重(kg)	重量(kg)
M624	RHS120*60*5.0	3278	1	96.91	2.65
合计:				96.91	

RHS120*60*5.0 X 3278

10*300-3000



构件: 4R3-1



Rev	Description	Date
B	初次报批	2018-08-18

PROJECT: PROPOSED SITE C1 DEVELOPMENT AT PANGKONG TJOI TOWN, ISDONGKAWAN, NEW TERRITORIES

CLIENT: 美特经贸有限公司
MIDI AUTOMOTIVE (HONGKONG) LTD.
Unit 5-8, Sunny Industrial Centre, 1/F
610 Cho Kuo Ling Road, Kowloon
Tel: (852) 27277666 Fax: (852) 27277666

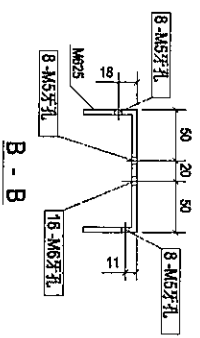
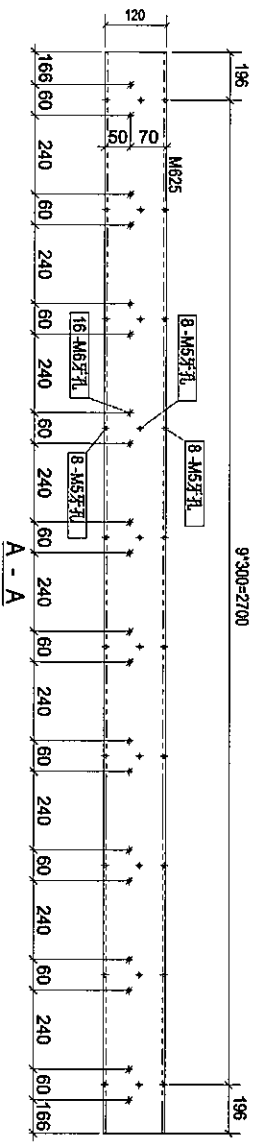
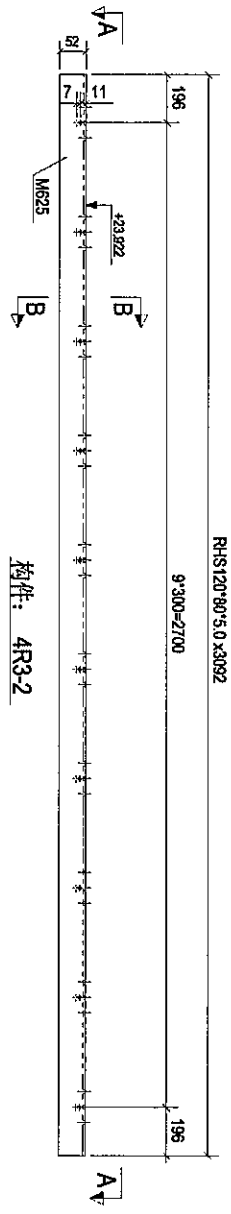
银同有限公司
Silver Town Limited
Tel: (852) 335646 Fax: (852) 335656
E-mail: address@silvertown.hk.com

DRAWING TITLE: [4R3-1]

CAD File Name :	
Designed by :	
Drawn by :	
Reviewed by :	
Approved by :	
Scale :	
DRG NO. (SK-4/F) - [4R3-1]	REV. B



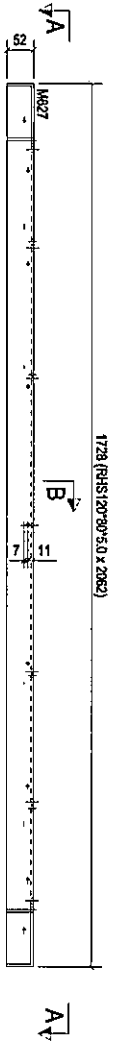
物料编号	4R3-2	构件数量	3	材料重量	137.05
物料编号	规格(mm)	长度(mm)	宽度	单重(kg)	重量(kg)
M25	RHS120*90*5.0	3992	1	137.05	137.05
					3.61
					411. 137.05



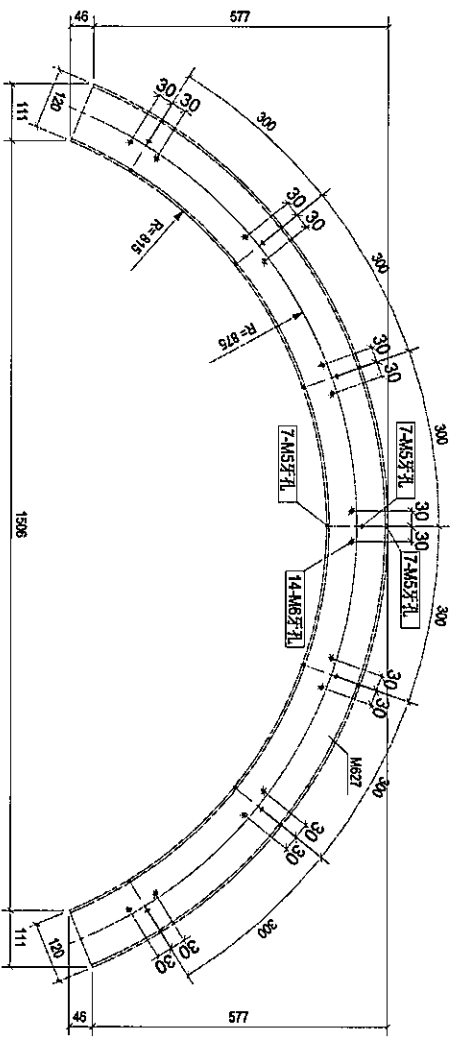
Rev	B	第3次报批	2018-08-18
Rev		Description	Date
PROJECT: PROPOSED SITE C1 DEVELOPMENT AT AREA 08, TAO TAI WAP, TSEUNG KWAN O, NEW TERRITORIES			
CLIENT: 華特鋁質有限公司 MIDI Aluminium Products Ltd. 310, 5-8, Suner Industrial Centre, 1/F 610 Chee Koo Ling Road, Kowloon Tel: 23489211-4 Fax: (852) 27272666			
DRAWING TITLE: Silver Town Limited 14022A-23022A-4-0010A-13705-24 E-MAIL: 402555@silvertown.ltd.com.hk			
CAD File Name: [4R3-2]			
Designed by			
Drawn by			
Reviewed by			
Approved by			
Scale			
DWG NO: (SK-41F) - [4R3-2]	REV.	B	

CS

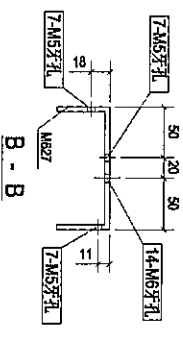
零件号	4R3-4	零件数量	2	零件重量	30.28
零件图号	规格(mm)	长度(mm)	数量	重量(g)	重量(kg)
M827	RH5120*90*5.0	2082	1	30.28	0.80
				合计	30.28



1728 (RH5120*90*5.0 x 2082)
 构件: 4R3-4



A - A



B - B

Rev	Description	Date
A	第2次报批	2018-08-18

PROJECT: PROPOSED SITE C1
 DEVELOPMENT AT AGEN 08,
 KOLITON 2, TSEUNGKWANNO,
 NEW TERRIDORIES

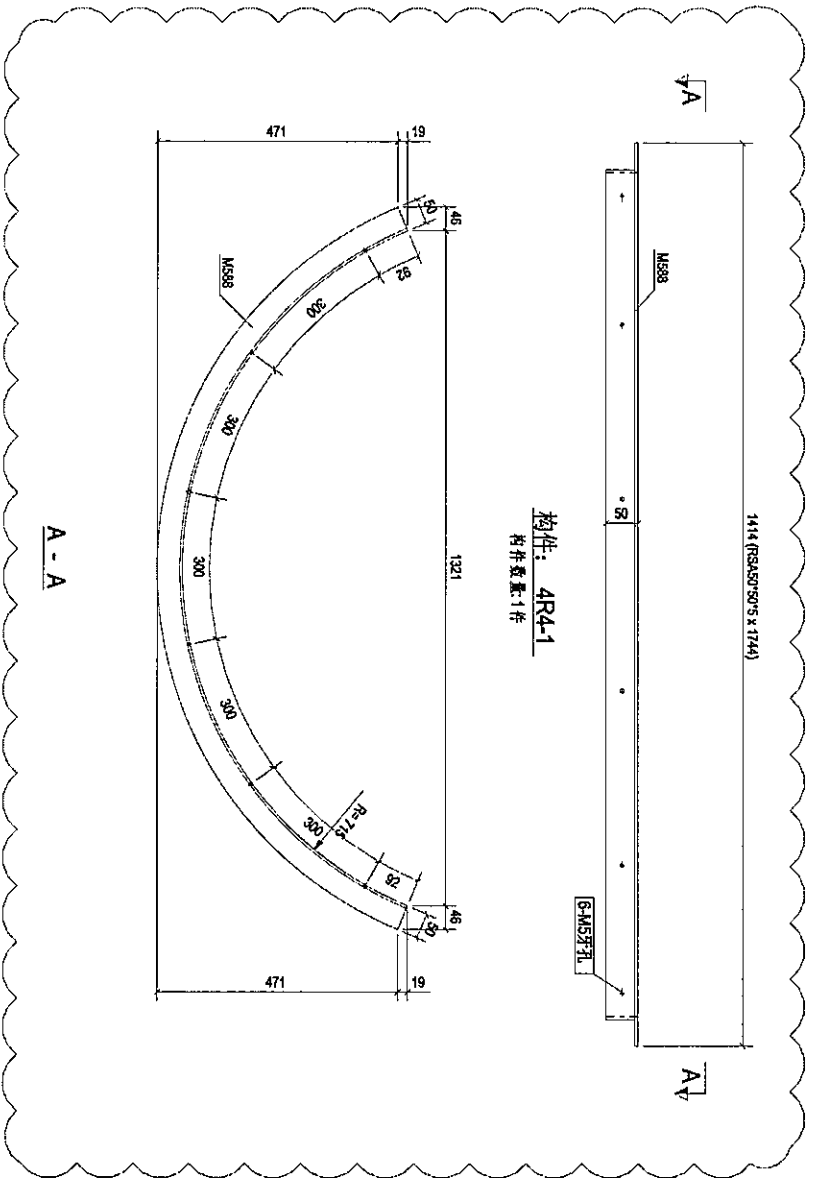
CLIENT: 美特鋁質有限公司
 MIDAL Aluminium Products Ltd.
 Units 5-8 Sunny Industrial Centre, 1/F
 610 Cho Kuo Jing Road, Kwai Tsing
 TSEUNGKWANNO, NEW TERRIDORIES
 Tel: (852) 27277666
 Fax: (852) 27277666

S 銀同有限公司
 Silver Town Limited
 Tel: (852) 23584888 Fax: (852) 23584934
 E-mail: a085555@silvertown.com.hk

DRAWING TITLE :
 [4R3-4]

CAD File Name :	
Designed by	
Drawn by	
Reviewed by	
Approved by	<i>[Signature]</i>
Scale	
DWG NO. (SK-4/F) - [4R3-4]	REV. A

18



构性: 4R4-1
材料数量: 1件

Rev.	Description	Date
A	首次发配	2018-08-14

PROJECT: PROPOSED SITE C1
DEVELOPMENT AT PANGSANG
TOWN, TSEUNGKUNO,
NEW TERRORIES

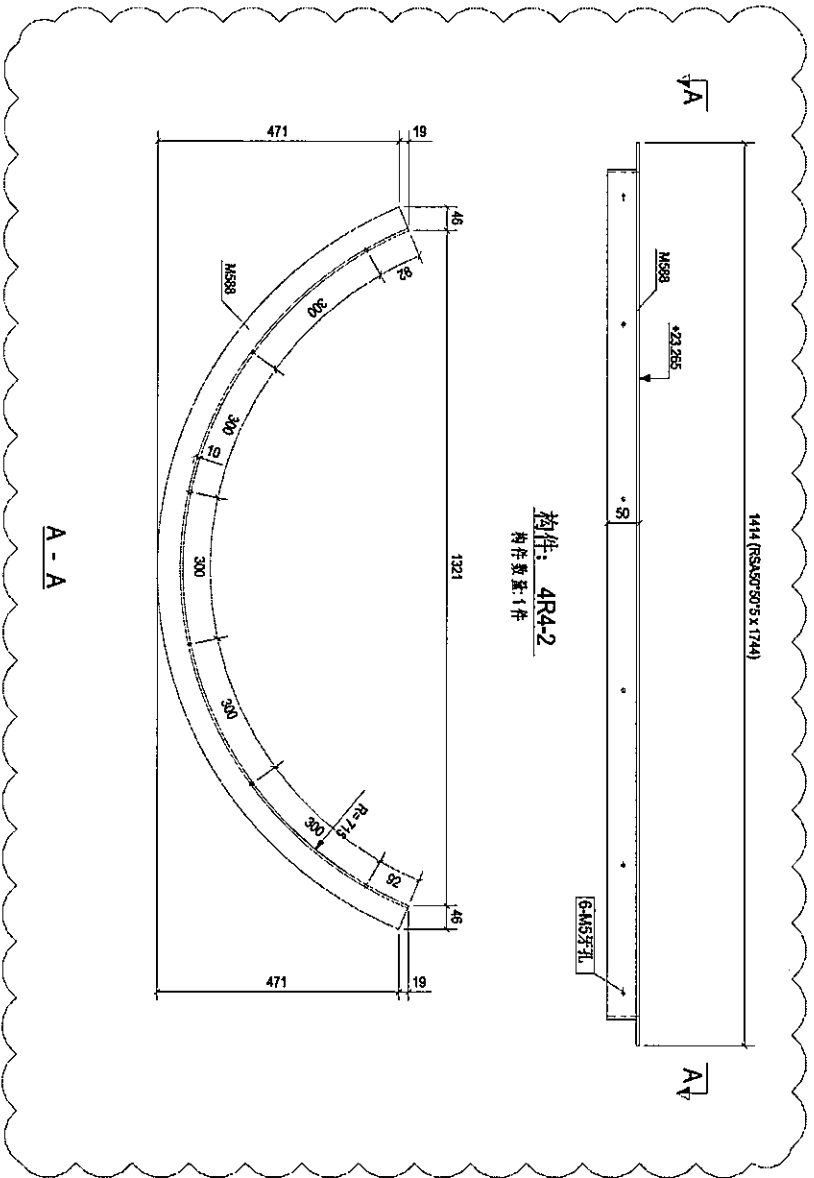
CLIENT: 美特经贸有限公司
Autonomy Investment Ltd.
MIDI
Units 5-8, Sunny Industrial Centre, 1/F
610 Cho Kwo Ling Road, Kowloon
Tel: 23499211-4 Fax: (852) 27272686

DRAWING TITLE: 银同有限公司
Silver Town Limited
Tung Tin, Kowloon, Hong Kong
Tel: 23499211-4 Fax: (852) 27272686

CAD File Name: [4R4-1]

Designed by	
Drawn by	
Reviewed by	
Approved by	
Scale	

DWGNO.: (SK-41F) - [4R4-1] REV: A



Rev.	Description	Date
A	首次报批	2018-08-14

PROJECT: PROPOSED SITE C1
DEVELOPMENT AT AGENS,
TANG LING, TSEUNGKWAN O,
NEW TERRORIES

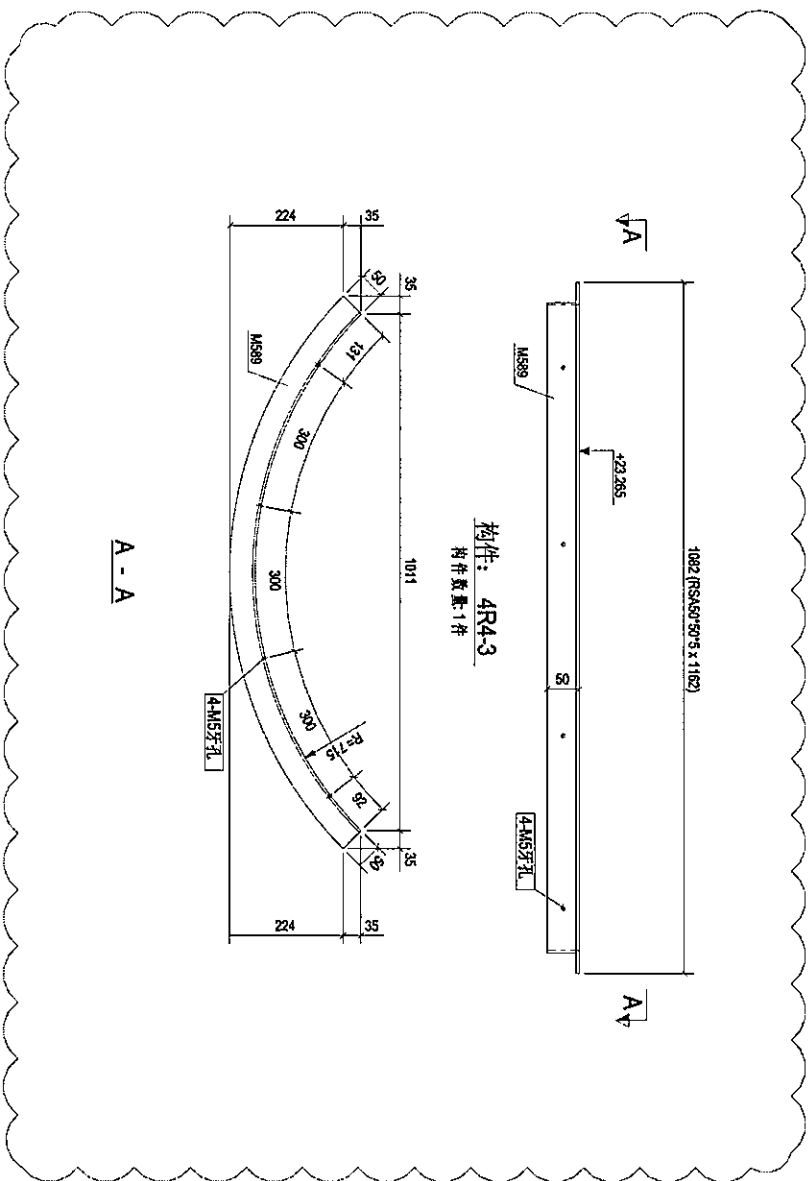
CLIENT: 美特经贸有限公司
MIDI JUMBO TRADING CO. LTD.
Units 6-8, Sunny Industrial Centre, 1/F
510 Che Kwo Ling Road, Kowloon
Tel: 21498211-4 Fax: 6527272566

银同有限公司
Silver Town Limited
INCORPORATED IN HONG KONG
E-MAIL: AGENTS@silvertown.com.hk

DRAWING TITLE: [4R4-2]

CAD File Name:	
Designed by	
Drawn by	
Reviewed by	
Approved by	
Scale	
DWG NO.: (SK-417) - [4R4-2]	REV: A

BD



构件: 4R4-3
 构件数量: 1件

A - A

Rev.	Description	Date
A	首次發批	2018-08-14

PROJECT: PROPOSED SITE C1
 DEVELOPMENT AT AECN 08,
 TAO TAI TOI RD, TSEUNG KUN O,
 NEW TERRITORIES

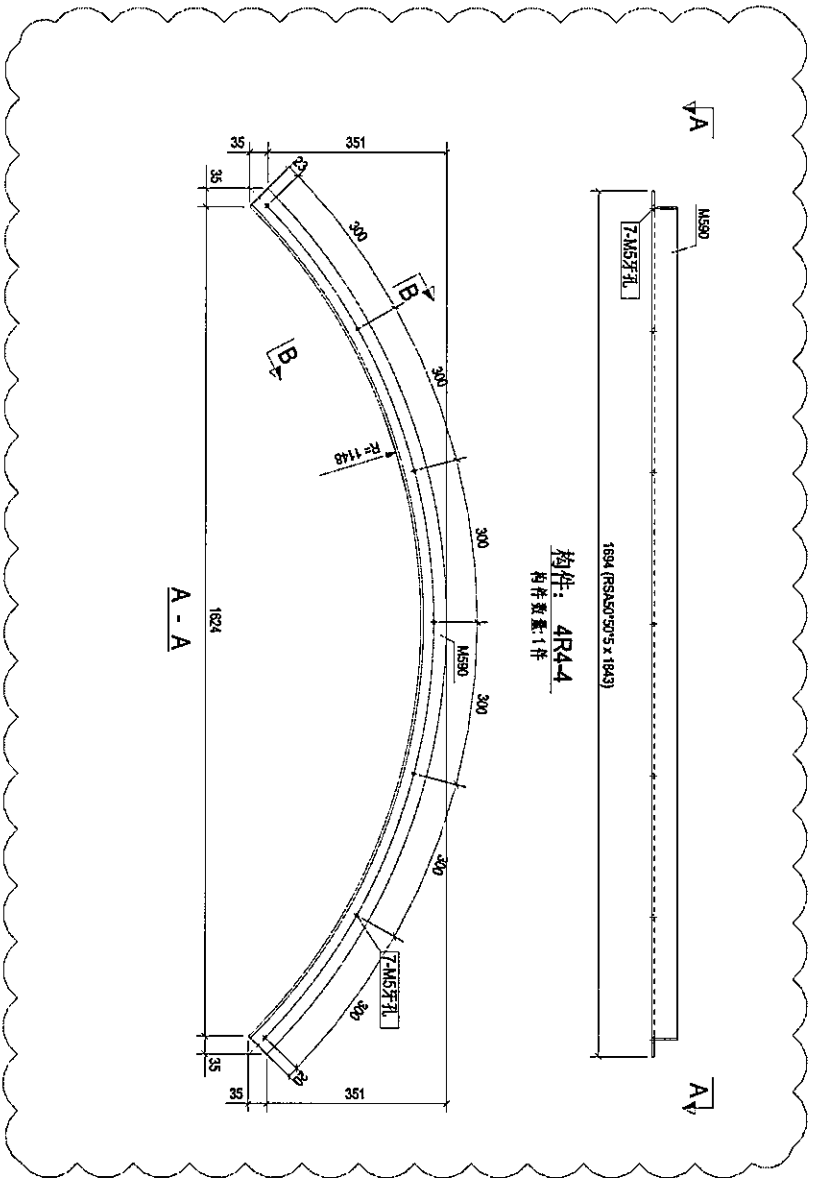
CLIENT: 美特銀寶有限公司
 MIDT Midway Investment Ltd.
 Unit 5-E, Sunny Industrial Centre, 1/F,
 610 Che Kwo Ling Road, Kowloon
 Tel: 23499211-4 Fax: (852) 27272666

銀同有限公司
 Silver Town Limited
 Tel: 23499211-4 Fax: (852) 27272666
 E-mail: a025254@silvertown.hk

DRAWING TITLE :
 [4R4-3]

CAD File Name :	
Designed by	
Drawn by	
Reviewed by	
Approved by	
Scale	
DWG NO. (SK-4F) - [4R4-3]	REV: A





构件: 4R4-4
构件数量: 1件

A - A

Rev.	Description	Date
A	首次覆批	2018-08-14

PROJECT: PROPOSED SITE C1
DEVELOPMENT AT PANGSANG
TWO LOTTES, BEIJINGSHAN QO,
NEW TERRITORIES

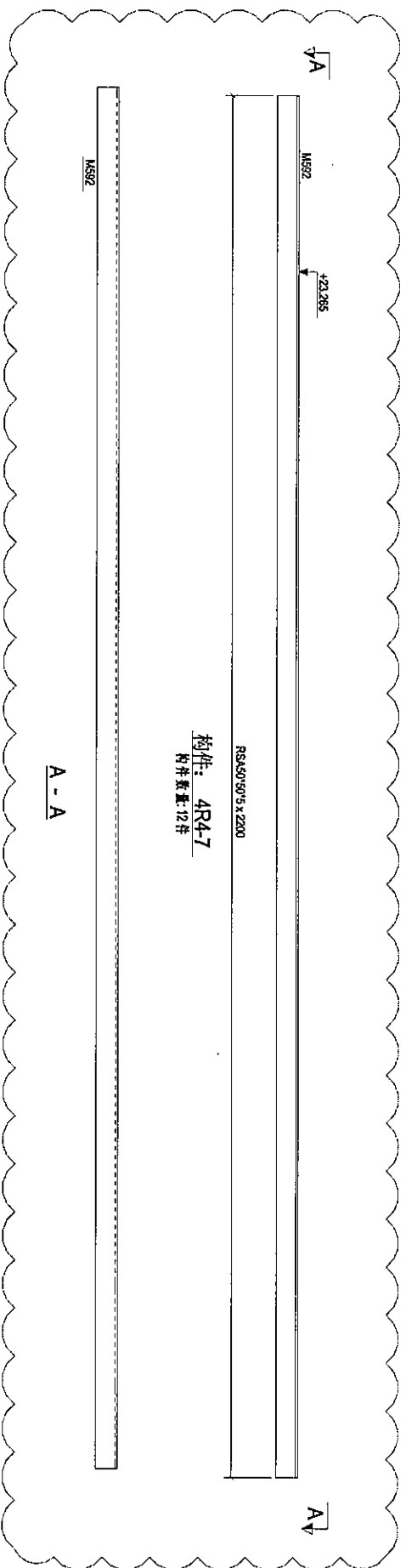
CLIENT: 美特经贸有限公司
MIDI Astromy Trading Company Ltd.
Units 5-8, Sunway Industrial Centre, 1/F
510 Che Kwo Ling Road, Kowloon
Tel: 23409211-4 Fax: (852) 27275656

银同有限公司
Silver Town Limited
Tel: 0755-8356666 Fax: 0755-8356666
E-mail: ad@silvertown.com.hk

DRAWING TITLE :
[4R4-4]

CAD File Name :	
Designed by	
Drawn by	
Reviewed by	
Approved by	
Scale	
DWG NO. : (SK-417) - [4R4-4]	REV. A





规格: 4R4-7
附件数量: 12件

R5A50*90*5*2200

A - A

Rev.	Description	Date
A	首次提报	2018-08-14

PROJECT: PROPOSED SITE C1
DEVELOPMENT AT ANEALAS,
KOKILTONG TISSINS RIVANAO,
NEW TERRITORIES

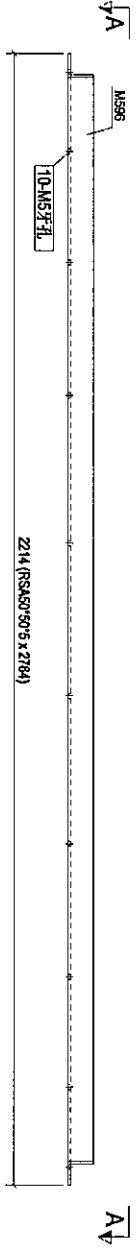
CLIENT: 華特經貿有限公司
MIDI JUMBOY KAWANNA LTD.
Unit 6-8, Sunny Industrial Centre, 1/F,
610 Chee Koo Ling Road, Kowloon
Tel: 23469211-4 Fax: (852) 27272666

Silver Town Limited
Tel: 23469211-4 Fax: (852) 27272666
E-mail: a23233@silvertown.com

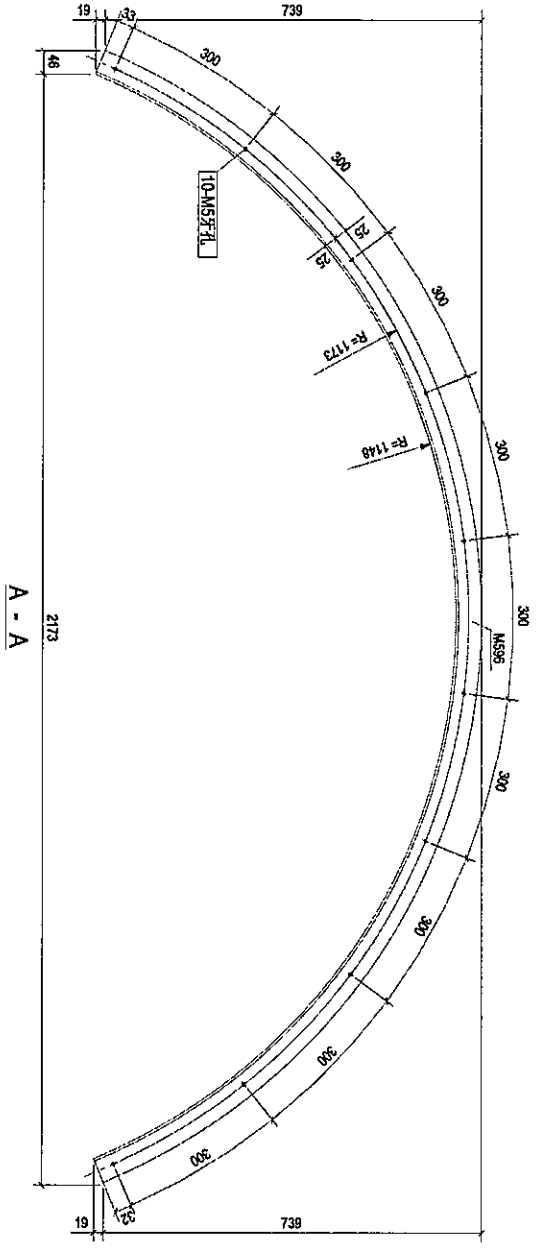
DRAWING TITLE: [4R4-7]

Old File Name:	
Designed by:	
Drawn by:	
Reviewed by:	
Approved by:	
Scale:	
DWG NO: (SK-4/F) - (4R4-7)	REV: A

零件编号:	4R4-11	构作数量:	1	构作重量:	10.48
零件编号:	M595	规格(吨):	2764	重量:	10.48
	RSAS07505	数量:	1	重量:	10.48
				重量:	0.53
合计:				10.48	



构件: 4R4-11



A - A

Rev:	0	第1次报数	2018-08-10
Description:			
Date:			

PROJECT: PROPOSED SITE C1 DEVELOPMENT AT AREA 08, TAOULI TONG, TSEILING KWAN, NEW TERRITORIES

CLIENT: 華特銀質有限公司
MIDI
Unit 5-8, Sunny Industrial Centre, 1/F, 610 Chee Koo Jang Road, Kowloon
Tel: (852) 27272766 Fax: (852) 27272666

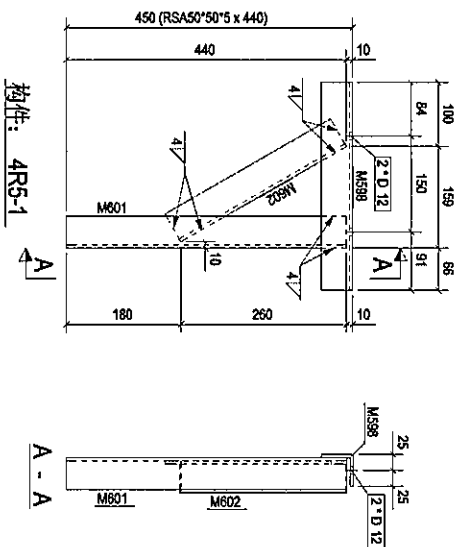
Silver Town Limited
Tel: (852) 23554888 Fax: (852) 23554888
E-Mail: ADP2554888@stl.com.hk

DRAWING TITLE: [4R4-11]

CAD File Name:	
Designed by:	
Drawn by:	
Reviewed by:	
Approved by:	
Scale:	
DMG NO. (SK-4F) - [4R4-11]	
REV:	0

25

零件编号	4RS-1	零件数量	6	零件名称	404
M598	RSAS075075	长度(mm)	325	重量	1.23
M601	RSAS075075	直径(mm)	40	重量	1.87
M602	RSAS075075	直径(mm)	300	重量	1.14
合计:				4.04	



Rev.	Description	Date
0	第一次报数	2018-08-10

PROJECT: PROPOSED SITE C1
DEVELOPMENT AT KEELANG,
KUALA LUMPUR, SELANGOR,
NEW TERRITORIES

CLIENT: 慕特經貿有限公司
MIDI JARDEN ASSOCIATES LTD.
Units 6-8, Sunway Industrial Centre, 1/1
610 Chai Koo Ling Road, Kelantan
Tel: 63489211-4 Fax: 6327272566

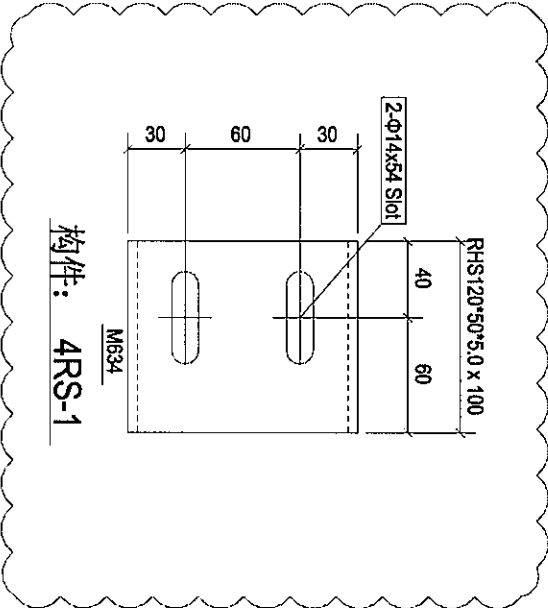
S 銀同有限公司
Silver Town Limited
Tel: 63489211-4 Fax: 6327272566
E-mail: asprecs@silvertown.com

DRAWING TITLE :
[4RS-1]

CAD File Name :	
Designed by	
Drawn by	
Reviewed by	
Approved by	
Scale	
DWG NO. : (SK-41F) - [4RS-1]	REV: 0

27

零件编号	ARS-1	零件数量	5	零件重量	1.28
操作型号	规格(mm)	长度(mm)	数量	重量(g)	重量(kg)
M634	RHS120*50*5.0	100	1	1.28	0.04
			合计	1.28	



构件: 4RS-1

Rev.	Description	Date
A	第一次投板	2010-08-14

PROJECT: PROPOSED SITE/C1
DEVELOPMENT AT AREA B5
TKOIL TO RP TSEUNG KWAN O,
NEW TERRITORIES

CLIENT: 義持經貿有限公司
MIDI JUDENGY TRADING CO. LTD.
Units 5-8, Sunny Industrial Centre, 1/F
610 Chee Koo Ling Road, Kowloon
Tel: 23448211-4 Fax: (852) 27272566

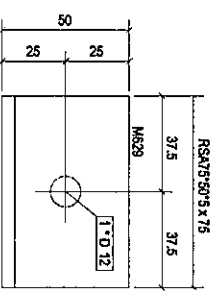
Silver Town Limited
14070-4155468 Fax: 0755-4155494
E-Mail: aspt352@silvertown.com

DRAWING TITLE :
[ARS-1]

CAD File Name :	
Designed by	
Drawn by	
Reviewed by	
Approved by	
Scale	
DWG NO.:	(SK-4RF) - [ARS-1]
REV.	A

29

零件编号	RSAS-1	零件数量	15400	零件重量	0.35
零件编号	规格(mm)	长度(mm)	宽度(mm)	厚度(mm)	重量(kg)
M829	RSAY50*5	75	1	0.35	0.35
					0.02
					0.35



构件: RAS-1
构件数量: 95件

Rev.	Description	Date
0	第一次跟进	2018-08-14

PROJECT: PROPOSED SITE C1
DEVELOPED AT KEAOK
KOTLITOP, NENONG RIVIAN O,
NEW TERRITORIES

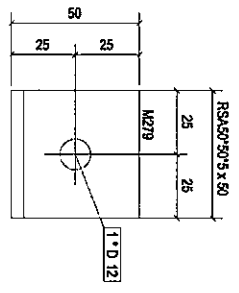
CLIENT: 美特銀有限公司
MIDI ADVANCING FINANCIAL LTD.
Units 6-8, Sanyo Industrial Centre, 1/F
610 Chee Koo Ling Road, Kowloon
Tel: (852) 27272668
Fax: (852) 27272668

S Silver Town Limited
Tel: (852) 41334000 Fax: (852) 41333994
E-MAIL: sbp@silvertown.com.hk

DRAWING TITLE: [RAS-1]

CAD File Name :	
Designed by	
Drawn by	
Reviewed by	
Approved by	
Scale	
DWG NO. : (SK-4/F) - [RAS-1]	REV: 0

零件编号	材料	零件数量	零件重量
M279	RS450*50*5	50	0.19
合计		50	0.19



构件: R4S-2

Rev.	Description	Date
0	第一次建造	2018-08-14

PROJECT: PROPOSED SITE C1
DEVELOPMENT AT AREA 88,
KOLLODIP, SELINGSIRIHAN O,
NEW TERRITORIES

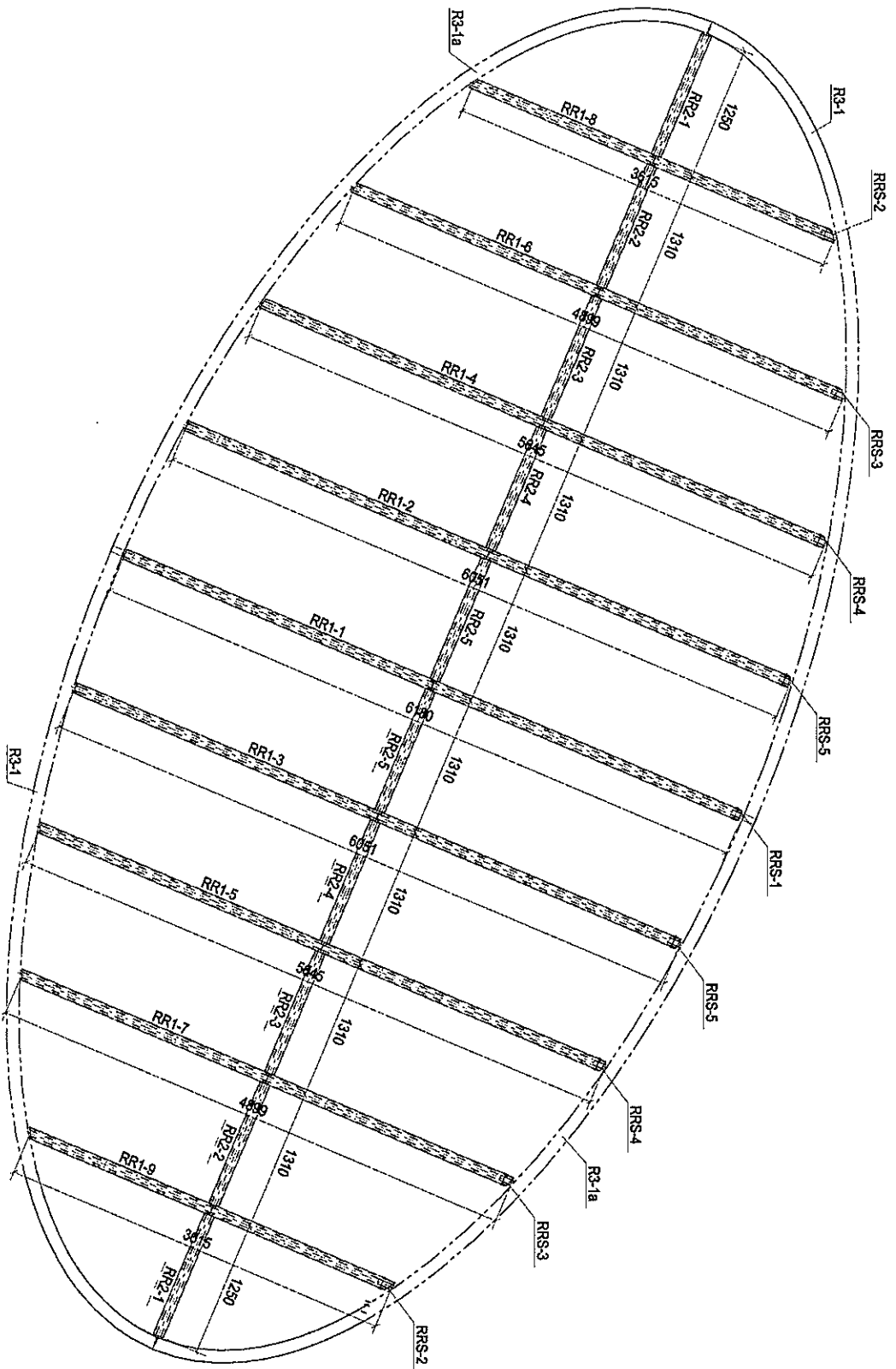
CLIENT: 榮特經貿有限公司
MIDI AUSTRALIA PTY LTD
Units 5-8, Sunray Industrial Centre, 1/F,
610 Chio Kuo Ling Road, Kowloon
Tel: 23448921-4 Fax: (852) 27272566

S 银同有限公司
Silver Town Limited
Tel: 0759-415505 Fax: 61551534
E-MAIL: 40283554@silvertown.com

DRAWING TITLE: [R4S-2]

CAD File Name:	
Designed by	
Drawn by	
Reviewed by	
Approved by	
Scale	
DM3NO: (SK-4F) - [R4S-2]	REV: 0

21



PART PART PLAN FOR SKYLIGHT AT PODIUM ROOF
MAIN STEEL MEMBER ONLY

0	第一次提报	2018-08-11
Rev.	Description	Date

PROJECT: PROPOSED SITE C1
DEVELOPMENT AT TEPA RR
TOLL TOWER TSEUNG KUAN W.O.
NEW TERRITORIES

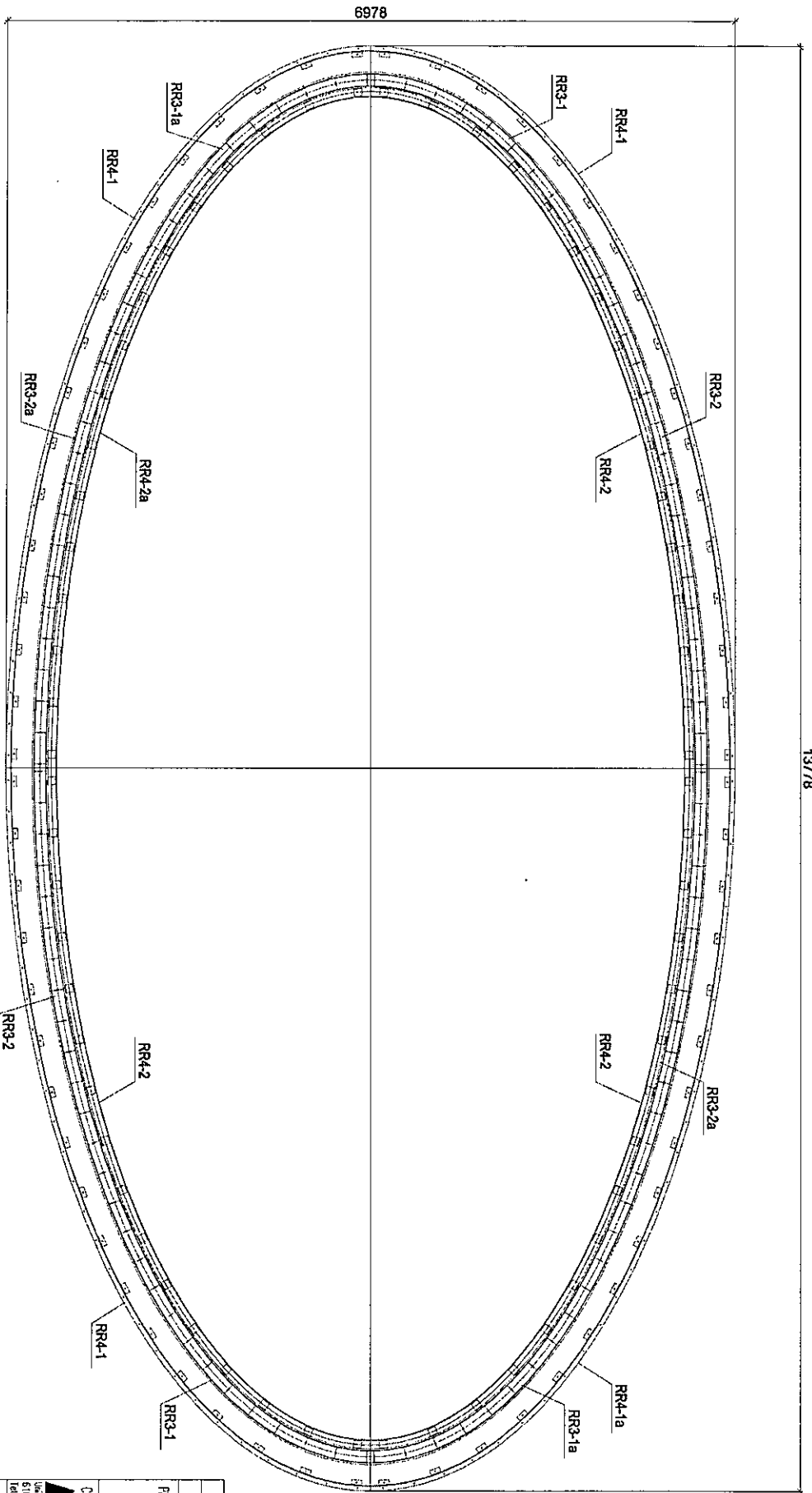
CLIENT: 美特經貿有限公司
MIDI JASONING JASONING LTD.
Units 6-8, Sunny Industrial Centre, 1/F
610 Chee Koo Ling Road, Kowloon
Tel: (852) 27272668
Fax: (852) 27272668

S 銀同有限公司
Silver Town Limited
Tel: (852) 43548888 Fax: (852) 4355954
E-mail: a00555@silvertown.com

DRAWING TITLE: MARKING PLAN

CAD File Name:	
Designed by:	
Drawn by:	
Reviewed by:	
Approved by:	
Scale:	
DWG NO.: (SK-RF7) - MP01	REV: 0

32



PLAN FOR SKYLIGHT AT PODIUM ROOF
SECOND STEEL MEMBER ONLY

Rev.	Description	Date
A	第2次提現	2018-08-14

PROJECT: PROPOSED SITE C1
DEVELOPMENT AT PEARL RIVER
TOWNSHIP, TAIPEI, TAIWAN
NEW TERRITORIES

CLIENT: 華特經貿有限公司
MIDI ARCHITECT ASSOCIATES LTD.
Unit 6-5, Sunny Industrial Centre, 1/F
510 Chai Kao Ling Road, Kowloon
Tel: 33489211-4 Fax: (853)27272665

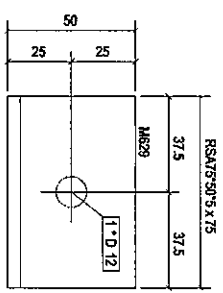
銀同有限公司
Silver Town Limited
Tel: 020-8334432 Fax: 020-8333334
E-MAIL: A09355@silvertown.com.hk

DRAWING TITLE: MARKING PLAN

CAD File Name:	
Designed by:	
Drawn by:	
Reviewed by:	
Approved by:	
Scale:	
DWG NO.:	(SK-RF) - MP02
REV.	A

33

零件编号	RS4S-1	零件数量	40*40	零件重量	0.35
零件编号	规格(mm)	长度(mm)	高度	单重(g)	共重(g)
MS29	RS4S7S7S	75	1	0.35	0.35
合计					0.35



构件: RRS-1
构件数量: 80件

Rev.	Description	Date
0	第一次报数	2018-08-14

PROJECT: PROPOSED SITE C1
DEVELOPMENT AT ANGAOR,
KOKILONG TSEUNG WAI MAN O,
NEW TERRITORIES

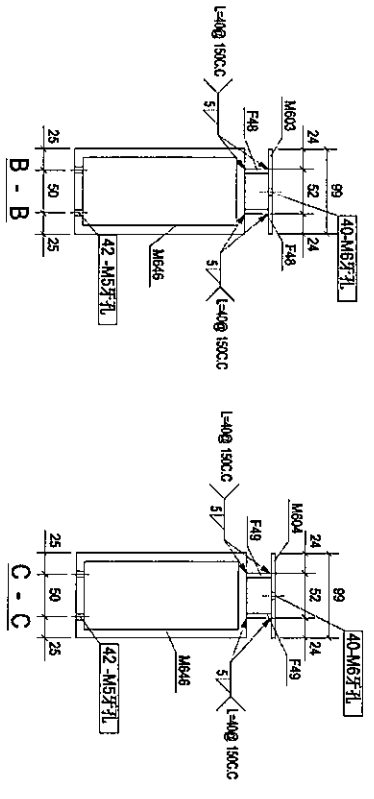
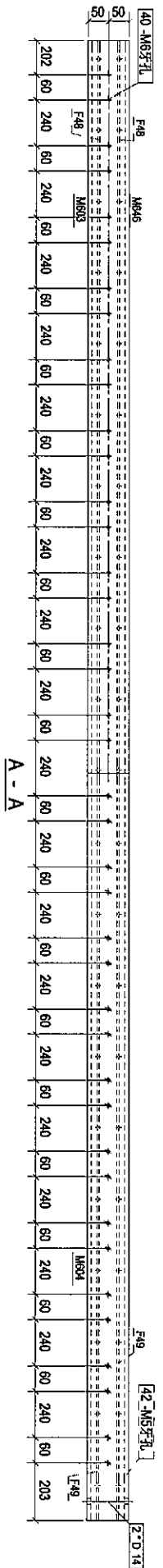
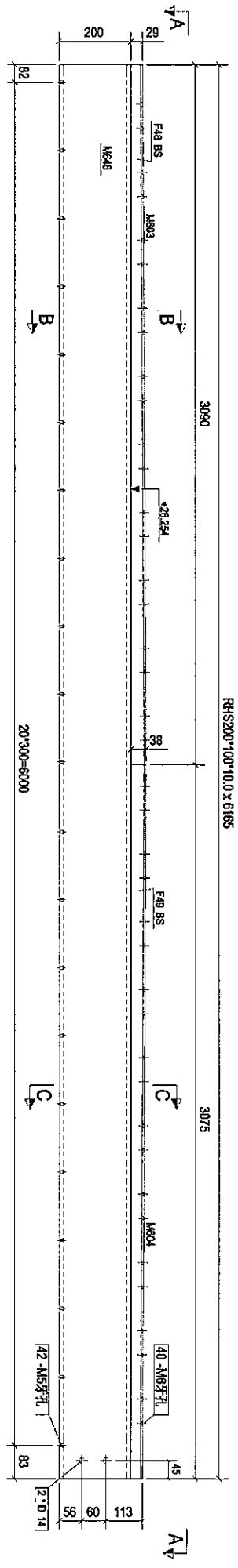
CLIENT: 華特經貿有限公司
MIDI Agency Associates Ltd.
Units 6-8, Sunny Industrial Centre, 1/F,
610 Chee Koo Lang Road, Kowloon
Tel: 23498211-4 Fax: (852) 27272666

DRAWING TITLE: [R4S-1]

CAD File Name :	
Designed by	
Drawn by	
Reviewed by	
Approved by	
Scale	
DWG NO. (SK-4/F) - [R4S-1]	REV. 0

219

零件编号	规格	数量	重量	材料	重量
RR1-1		1			305.61
零件编号	规格	数量 <td>重量</td> <td>材料</td> <td>重量</td>	重量	材料	重量
F49	PLT533	2	4.00	8.00	0.21
F49	PLT533	2	3.86	7.97	0.21
M603	PL5799	1	12.01	12.01	0.64
M604	PL5799	1	11.95	11.95	0.64
M646	RHS200*100*10.0	1	265.69	265.69	3.54
合计:					305.61



Rev.	Description	Date
B	第三次报版	2018-08-18

PROJECT: PROPOSED SITE C1
DEVELOPMENT AT KEA FAR,
TOKYO TOWER STATION AREA,
NEW TERRITORIES

CLIENT: 美特经贸有限公司
MIDI Architecture Limited
Unit 6-5, Sunway Industrial Centre, 1/F
610 Chee Koo Ling Road, Kowloon
Tel: 23489211-4 Fax: (852) 27272666

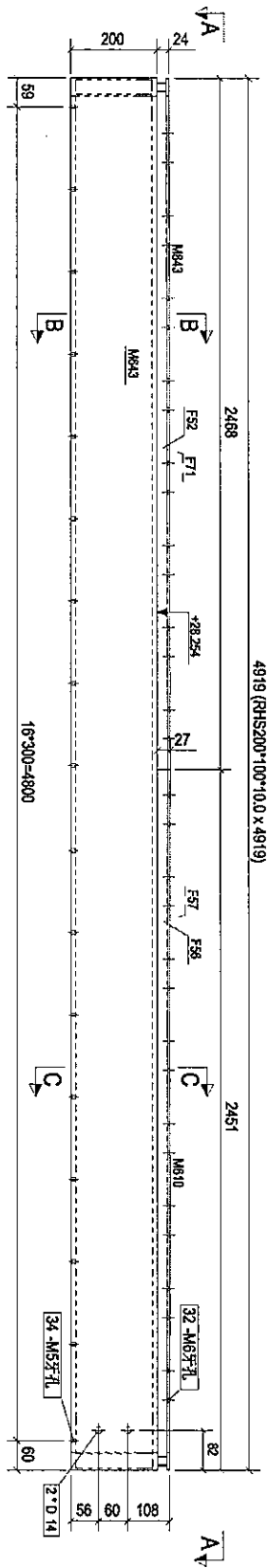
Silver Town Limited
Incorporated in Hong Kong
E-mail: a03555@silvertown.com

DRAWING TITLE: [RR1-1]

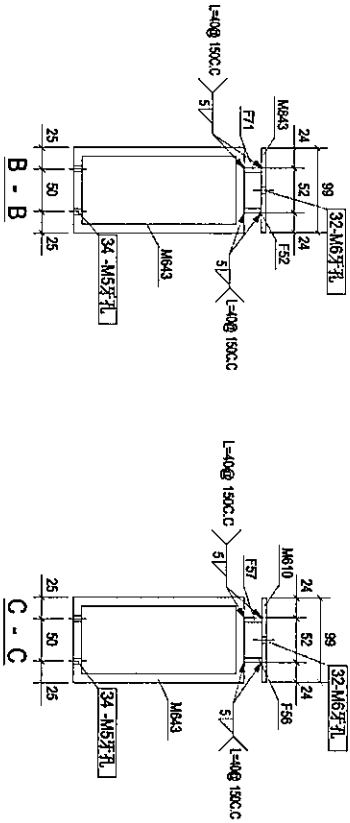
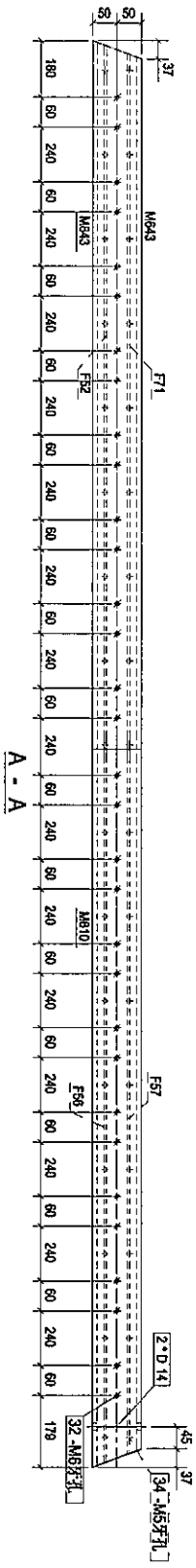
CAD File Name:	
Designed by	
Drawn by	
Reviewed by	
Approved by	
Scale	
DWG NO.:	(SK-RFP) - [RR1-1]
REV:	B

BS

零件编号	RR1-6	零件数量	1	零件重量	238.38
零件编号	规格(mm)	数量	重量(kg)	共重(kg)	重量比例
F52	PL1521.6	2459	2.08	2.08	0.13
F56	PL1521.6	2443	2.07	2.07	0.12
F57	PL1521.6	2435	2.05	2.05	0.12
F71	PL1521.6	2442	2.07	2.07	0.12
M610	PL1521.6	2451	1	9.53	0.51
M643	RHS200*100*10.0	4919	1	212.00	2.82
M643	PL1521.6	2488	1	9.59	0.51
合计				238.38	



构件: RR1-6



Rev.	Description	Date
B	第3次校核	2018-08-18

PROJECT: PROPOSED SITE C1
DEVELOPMENT AT AREA 88,
KOKITONG TSEUNG KWAN O,
NEW TERRITORIES

CLIENT: 基特經貿有限公司
MIDI AUSTRALIA PARTNER LTD.
Units 5-8, Smart Industrial Centre, 1/F,
610 Cheong Koo Ling Road, Kowloon
Tel: 23489211-4 Fax: (852) 27272566

DESIGNING TITLE: [RR1-6]
S 銀同有限公司
Silver Town Limited
Tel: 0750-815505 Fax: 0750-815522
E-MAIL: ADDRESS@SILVERTOWN.COM

CAD File Name:

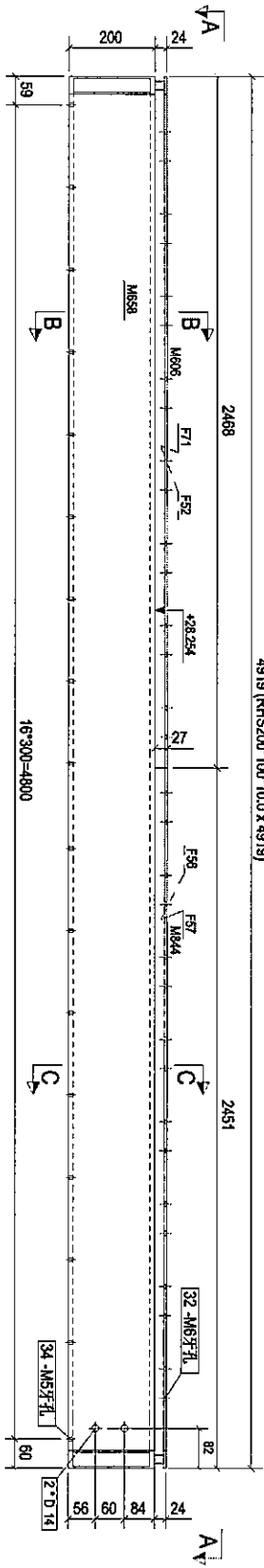
Designed by
Drawn by
Reviewed by
Approved by
Scale

DWG NO.: (SK-R/F) - [RR1-6]

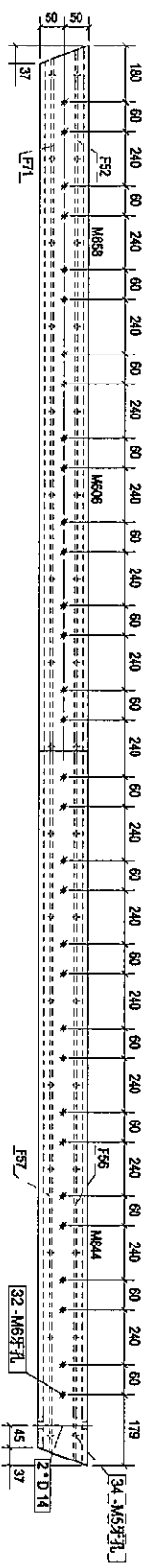
REV
B

零件编号	规格(mm)	数量	单位	重量(kg)	长度(mm)	直径(mm)	厚度(mm)
RR1-7		1		238.38			
FS2	PL15216	1	2.08	2.08	0.13		
FS6	PL18216	1	2.07	2.07	0.12		
FS7	PL18216	1	2.05	2.05	0.12		
F71	PL15216	1	2.07	2.07	0.12		
M68	PL15216	1	9.39	9.39	0.51		
M69	RHS200*100*10.0	1	212.00	212.00	2.82		
M844	PL15216	1	9.33	9.33	0.51		
合计:				238.38			

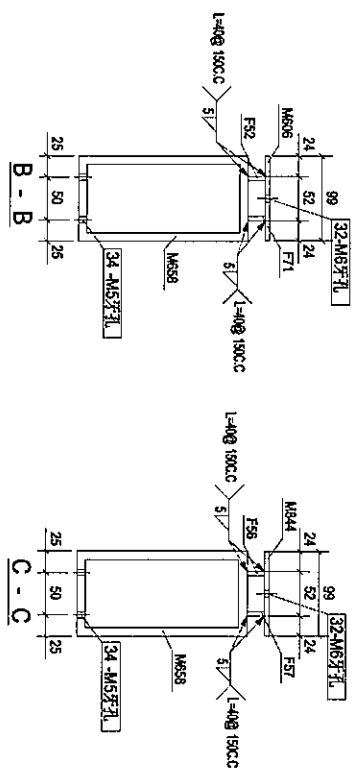
4919 (RHS200*100*10.0 x 4919)



构件: RR1-7



A - A



B - B

C - C

Rev.	Revision Description	Date
B	第三次修改	2018-08-18

PROJECT: PROPOSED SITE C1
DEVELOPMENT AT AREA 88,
KOKIL TOP, TASEUNG KIVAN O,
NEW TERRITORIES

CLIENT: 華特經貿有限公司
MIDI JINWEIYI INVESTMENT LTD.
8th F-8, Sunny Industrial Centre, 1/F
610 Chee Koo Ling Road, Kowloon
Tel: 23448921-4 Fax: (852) 27272956

Silver Town Limited
Tel: 090-4434666 Fax: 090-4135294
E-mail: aspc@silvertown.hk

DRAWING TITLE: [RR1-7]

CAD File Name:

Designed by

Drawn by

Reviewed by

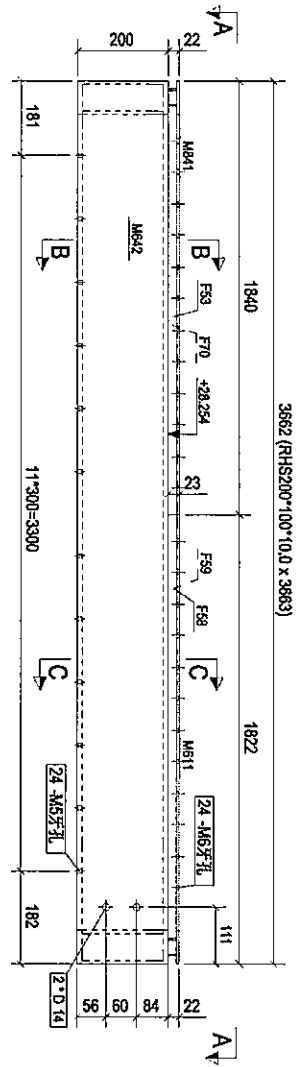
Approved by

Scale

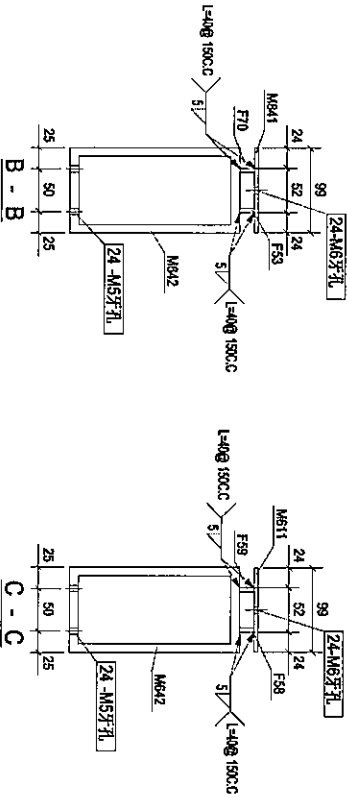
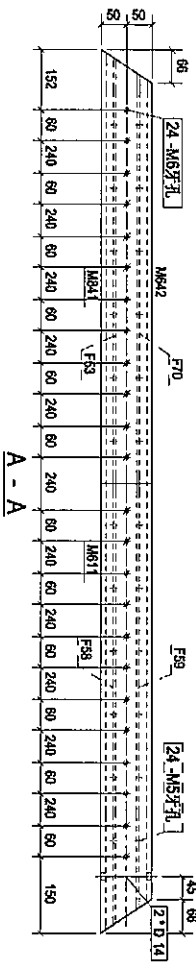
DWG NO.: (SK-R17) - [RR1-7]



零件编号	规格(mm)	数量	单重(kg)	共重(kg)	备注
F53	PL15*17.7	1	1.27	1.27	表面钝化
F58	PL13*17.7	1	1.25	1.25	0.08
F59	PL13*17.7	1	1.23	1.23	0.08
F70	PL13*17.7	1	1.25	1.25	0.08
M611	PL5*9.9	1	7.08	7.08	0.37
M642	RHS200*100*10.0	1	167.04	167.04	2.10
M641	PL5*9.9	1	7.15	7.15	0.38
合计				177.07	



构件: RR1-8



Rev.	Description	Date
B	第三次校版	2018-08-18

PROJECT: PROPOSED SITE C1
DEVELOPMENT AT AREA 88,
TKOIL TOWN, TSEUNG KWAN O,
NEW TERRITORIES

CLIENT: 美特经贸有限公司
MIDI INTERNATIONAL LIMITED
Units 5-8, Sunny Industrial Centre, 1/F,
610 Che Kwo Ling Road, Kowloon
Tel: 23489211-4 Fax: (852) 27272566

Silver Town Limited
160729-422666, 160729-4133524
E-Mail: ADP2552@plb.hk TEL: 2100

DRAWING TITLE: [RR1-8]

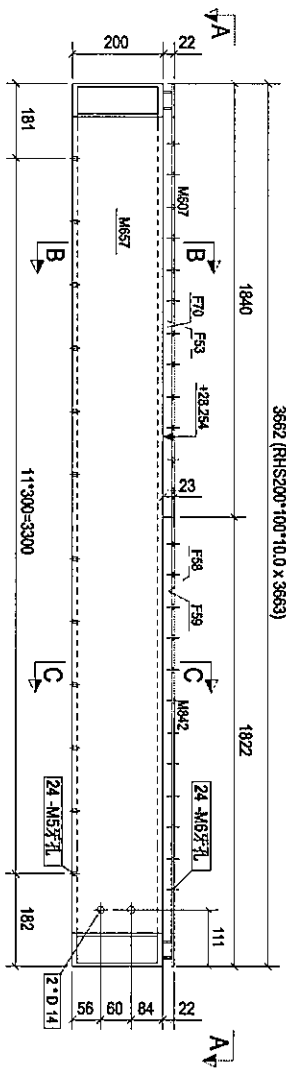
CAD File Name:

Designed by
Drawn by
Reviewed by
Approved by
Scale

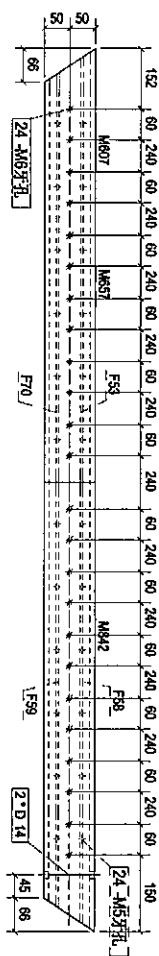
DWG NO.: (SK-RP) - [RR1-8]



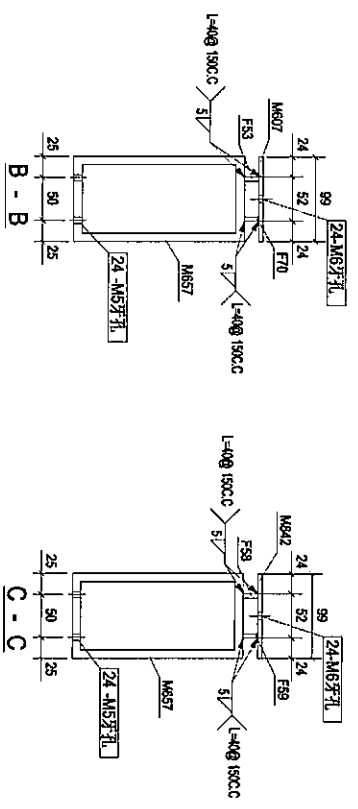
REV B



构件: RR1-9



A - A



零件编号	规格(mm)	数量	单重(kg)	总重(kg)	备注
F53	PL15*17.7	1	1.27	1.27	0.08
F58	PL15*17.7	1	1.25	1.25	0.08
F70	PL15*17.7	1	1.23	1.23	0.08
M807	PL15*99	1	1.25	1.25	0.08
M857	RHS200*100*10.0	1	7.15	7.15	0.38
M842	PL15*99	1	1.67/1.64	1.67/1.64	2.10
		1	7.08	7.08	0.37
合计:				177.07	

Rev.	更改描述	Date
B	第三次修改	2018-09-18

PROJECT: PROPOSED SITE C1
DEVELOPMENT AT AREA B0,
TKO LITTON TSEUNG KUAN O,
NEW TERRITORIES

CLIENT: 華特經貿有限公司
MIDI JADEWAY PARTNER LTD.
Units 6-8, Sunny Industrial Centre, 1/F
810 Chee Koo Road, Kowloon
Tel: 23489211-4 Fax: (852) 27272565

S 銀同有限公司
Silver Town Limited
140709-ATTACHE, FORTRESS, 4133924
E-MAIL: ABBE255@silvertown.com

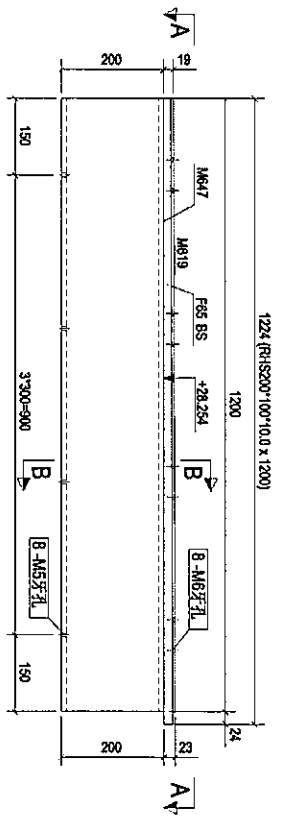
DRAWING TITLE: [RR1-9]

CAD File Name:

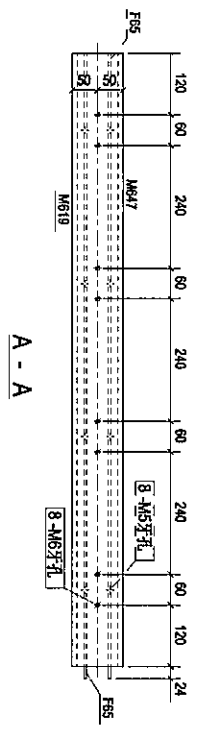
Designed by	
Drawn by	
Reviewed by	
Approved by	
Scale	
DWG NO.:	(SK-RFP) - [RR1-9]
REV.	B



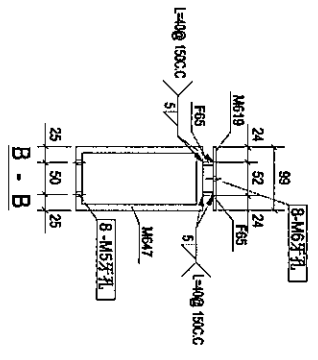
零件编号	RR2-1	零件数量	2	零件重量	53.07
原件编号	规格(单位)	长度(mm)	重量	重量(g)	重量(kg)
F85	PLT5*17.6	1224	0.94	1.89	0.05
M619	PLS*99	1200	1	4.66	0.25
M617	RHS200*100*10.0	1200	1	51.72	0.59
合计:				53.07	



构件: RR2-1



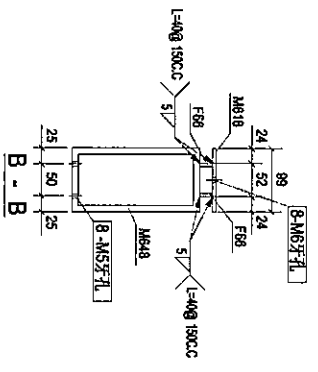
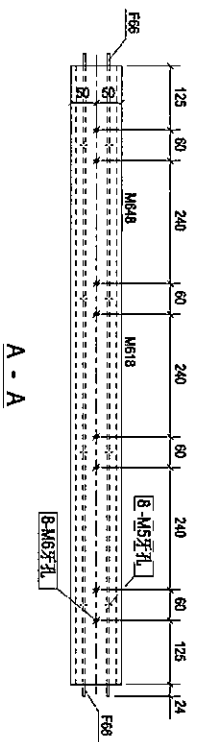
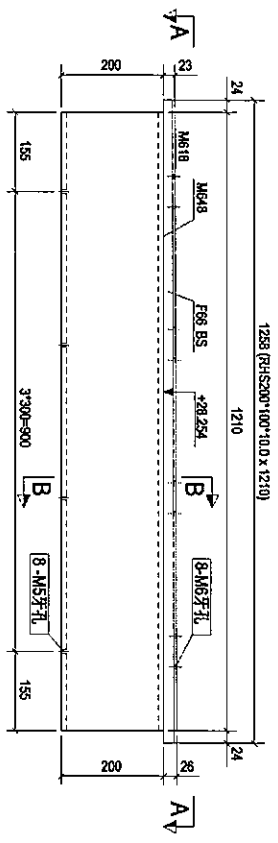
A - A


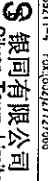



B - B

Rev.	B	第3次修改	2018-08-18
PROJECT:	PROPOSED SITE C1 DEVELOPMENT AT AREA A, KOTILOTI, TESSONG RIVIAN O, NEW TERRITORIES		
CLIENT:	美特 鋸 實 有 限 公 司 MIDI JAPANING ASSOCIATE ENT. Unit 6-5, Sunay Industrial Centre, 1/F 610 Che Kwo Ling Road, Kwai Tsing Tel: 23480211-4 Fax: (852) 27272565 E-mail: ahr3cs@midicorp.com.hk		
DRAWING TITLE:	[RR2-1]		
CAO File Name:			
Designed by			
Drawn by			
Reviewed by			
Approved by			
Scale			
DWG NO.:	(SK-RIF) - [RR2-1]	REV:	B

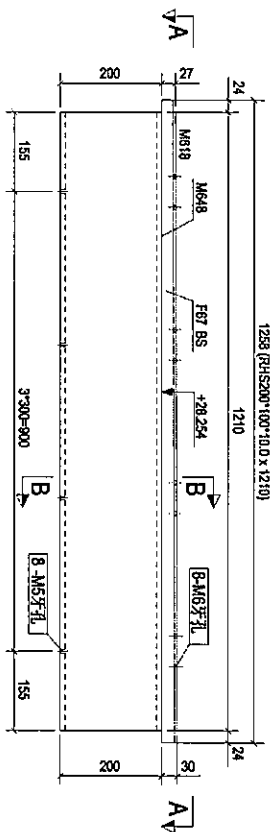
零件编号	物料	数量	重量	共重	备注
FF66	PC1521.5	2	1.06	2.12	0.06
MR18	PC1599	1	4.71	4.71	0.25
MR48	RH1200*100*10.0	1	52.15	52.15	0.99
合计:			58.97		



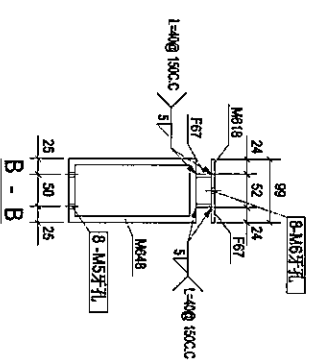
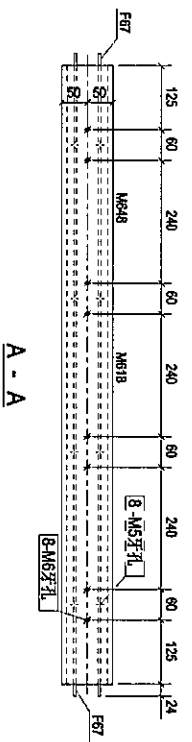
Rev.	B	第3次校版	2018-08-18
PROJECT:	PROPOSED SITE C1 DEVELOPMENT AT AREA 88, KOLITONE, TSEONG KWAN O, NEW TERRITORIES		
CLIENT:	 基特經貿有限公司 MIDI ADVANCED MANUFACTURE LTD. Units 5-8, Sunco Industrial Centre, 1/F 610 Chee Koo Ling Road, Kowloon Tel: 23448921-4 Fax: (852) 27272966		
DRAWING TITLE:	 銀同有限公司 Silver Town Limited Tel: 0752 415558 Fax: 0752 415529 E-Mail: agp@scsilvertown.com.hk		
CAD File Name:	[RR2-2]		
Designed by			
Drawn by			
Reviewed by			
Approved by			
Scale			
DM8NO. (SK-R/F) - [RR2-2]	REV. B		



零件编号	规格	数量	单位	重量	共重	备注
RR2-3		2			59.35	
零件编号	规格	数量	单位	重量	共重	备注
F87	PT15/25.3	2	1.25	2.50	0.07	
M818	PT5/99	1	4.71	4.71	0.25	
M848	RH500*100*10.D	1	52.15	52.15	0.59	
合计:				59.35		



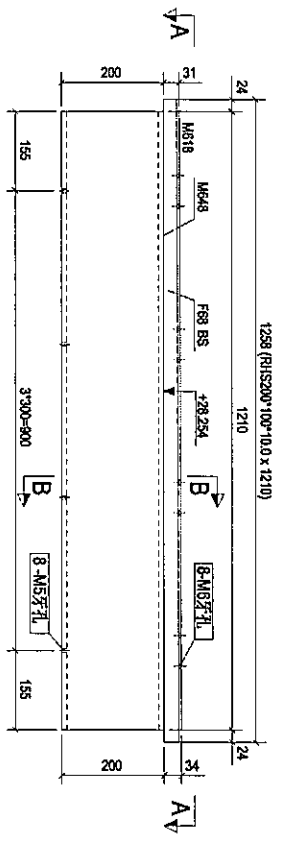
构件: RR2-3



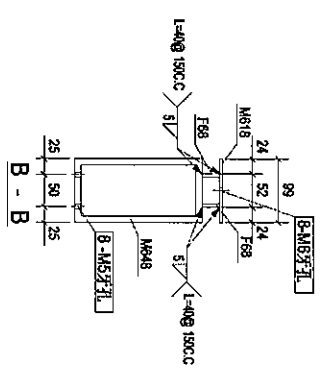
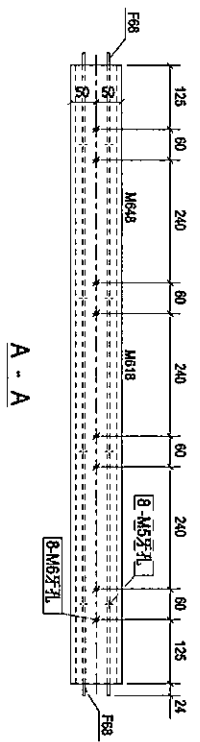
Rev.	B	第3次確認	2018-08-18
Rev.		Description	Date
PROJECT: PROPOSED SITE C1 DEVELOPMENT AT AREA 08, KOKI TOWN, TSEUNG KWAN O, NEW TERRITORIES			
CLIENT: 華特經貿有限公司 MIDI Management / Development Ltd. Units 5-6, Sanyo Industrial Centre, 1/F 610 Chee Koo Ling Road, Kowloon Tel: 33489211-4 Fax: (852) 27272866			
DRAWING TITLE: [RR2-3]			
CADD File Name:			
Designed by:			
Drawn by:			
Reviewed by:			
Approved by:			
Scale:			
DWG NO.: (SK-RFP) - [RR2-3]			
REV.	B		


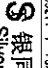
Handwritten signature or initials.

零件编号	规格	数量	单位	重量	备注
F88	PLT5-29.2	2	1.44	2.88	0.08
M618	PL5-99	1	4.71	4.71	0.25
M648	RHS200*100*100	1	52.15	52.15	0.59
合计:				59.74	

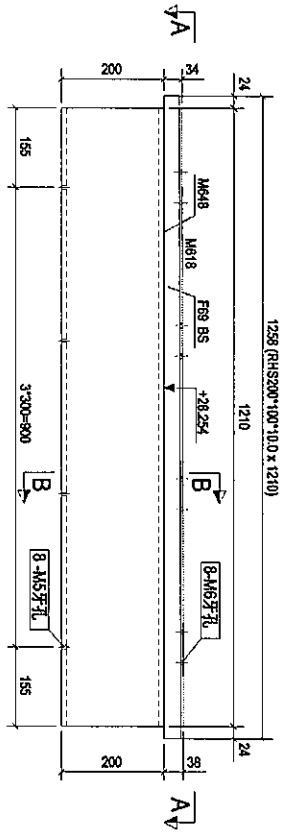


构件: RR2-4

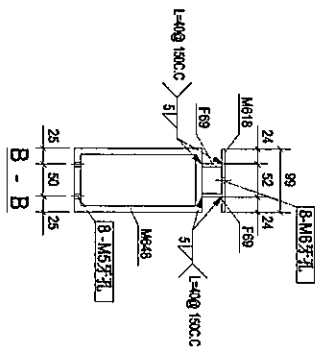
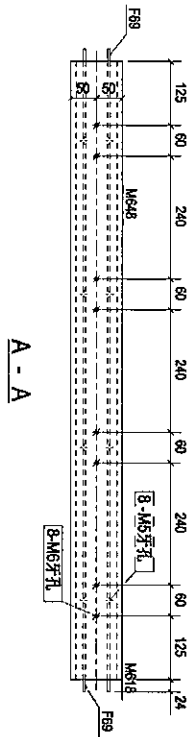


Rev.	B	第3次校核	2010-08-18
PROJECT:	PROPOSED SITE C1 DEVELOPMENT AT SEA 86, TKO LUN TSIKONG SHAN O, NEW TERRITORIES		
CLIENT:	 美特能有限公司 MID I JINSHENYI AMERICAN LN. Unit 6-8, Sanyo Industrial Centre, Y/T 610 Che Kwo Ling Road, Kowloon Tel: 23448921-4 Fax: (852) 27272666  银同有限公司 Silver Town Limited Tel: 2616-8222 Fax: 2616-8222 E-MAIL: AP@SILVERTOWN.LICOM		
DRAWING TITLE:	[RR2-4]		
CAD File Name:			
Designed by			
Drawn by			
Reviewed by			
Approved by			
Scale			
DWG NO.:	(SK-KRF) - [RR2-4]	REV.	B

零件编号	规格	数量	单位	重量	备注
F89	PLT9-33	2	1.63	3.26	0.09
M818	PL5799	1	4.70	4.70	0.25
M848	RHS200*100*10.0	1	52.15	52.15	0.59
合计:				60.11	



构件: RR2-5



Rev.	Description	Date
B	第3次校核	2018-08-18

PROJECT: PROPOSED SITE C1
DRAWING SET AT ASELA RS,
TWO TOWER RESIDENCES IN MANAO,
NEW TIANYUAN VILLES

CLIENT: 泰特經貿有限公司
MTDI Agency Partner in
Unit 5-6, Sunway Industrial Centre, 1/F,
610 Chio Kuo Ling Road, Kowloon
Tel: 23489211-4 Fax: (852) 27272586

Silver Town Limited
14079-Atwater Road, #151594
E-Mail: adoc55@silvertown.com

DRAWING TITLE: [RR2-5]

CAD File Name:

Designed by:

Drawn by:

Reviewed by:

Approved by:

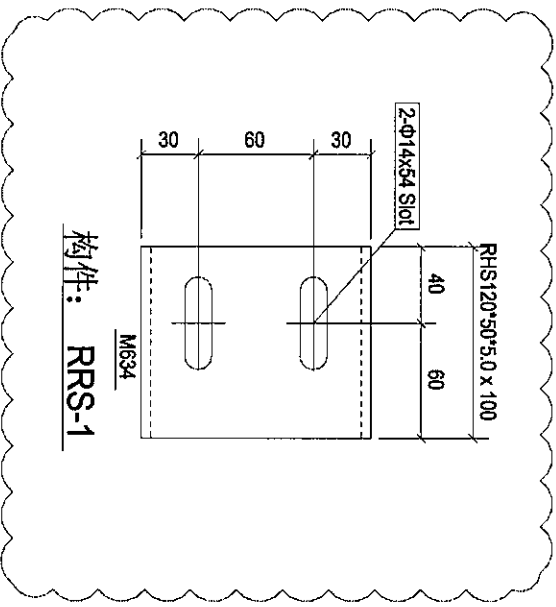
Scale:

DWG NO.: (SK-RF) - [RR2-5]

REV: B

48

零件號	物料	數量	單位	重量	共重	容積
M634	RHS120*90*5.0	100	1	1.26	1.26	0.04
				合計:	1.26	



構件: RRS-1

Rev.	Description	Date
A	首次提單	2018-08-14

PROJECT: PROPOSED SITE C1
OPERATION AT SEA R6,
TKO LIFT STATION, KWAN
MEI TERRACOMES

CLIENT: 華特經貿有限公司
MIDI AUSTRALASIA PTY LTD
Units 5-8, Sunny Industrial Centre, 1/F
610 Che Koo Ling Road, Kowloon
Tel: 23489211-4 Fax: (852) 27272586

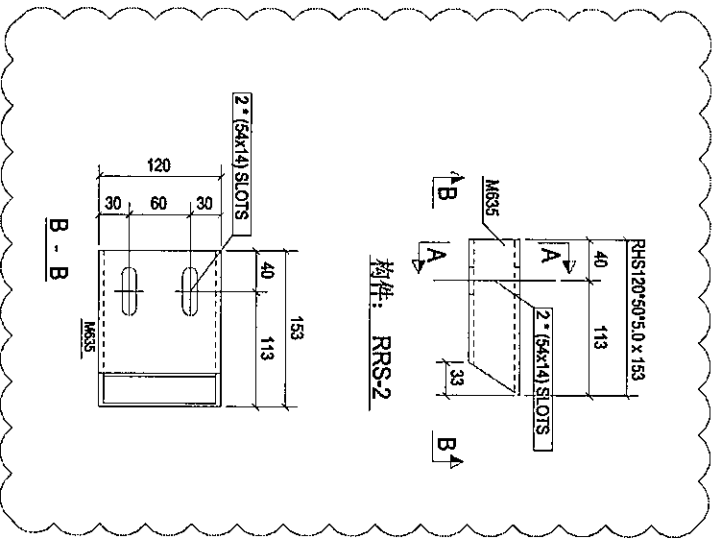
Silver Town Limited
16076-Avenue Road, #1507A, #1507B
L'WAL, AP02554949@pccw.com

DRAWING TITLE: [RRS-1]

Checked by:	
Designed by:	
Drawn by:	
Reviewed by:	
Approved by:	
Scale:	
DWG NO.:	(SK-RIF) - [RRS-1]
REV.	A



料件编号	RRS-2	料件数量	2	料件重量	1.71
规格	RHS120°50°5.0	长度(mm)	153	单重(kg)	1.71
		高度	1	总重(kg)	1.71
				容重(kg)	0.05
合计				1.71	



Rev.	Description	Date
A	第2次投標	2018-08-14

PROJECT: PROPOSED SITE C1
DEVELOPMENT AT AREA 88,
KOTIL TWP, TSEUNGKWAN O,
NEW TERRITORIES

CLIENT: 華特銀質有限公司
MIDJ ADVANCED FABRICATION LTD.
610 Che Koo Ling Road, Kowloon
Tel: 23489211-4 Fax: (852) 27272566

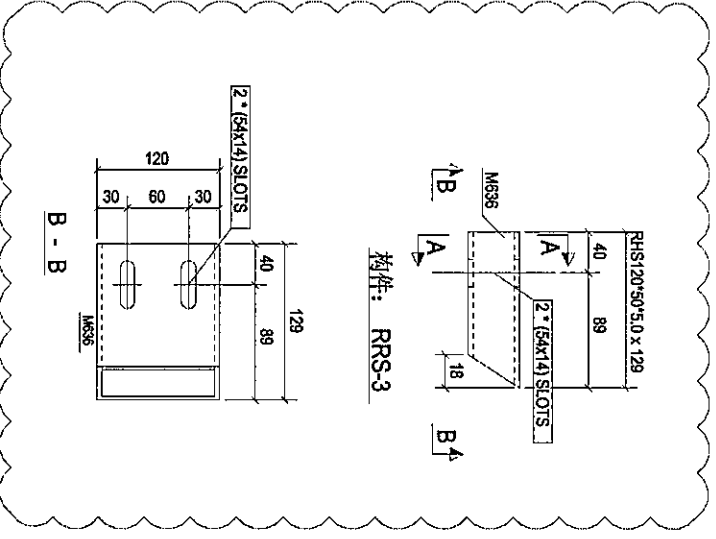
Silver Town Limited
14023A Silver Star Road, Silver Star
E-Mail: 0292323@silvertown.com

DRAWING TITLE: [RRS-2]

CAD File Name:	
Designed by:	
Drawn by:	
Reviewed by:	
Approved by:	
Scale:	
DWG NO.:	(SK-R07) - [RRS-2]
REV:	A

52

零件编号	RRS-3	零件数量	2	零件重量	1.50
零件编号	规格(mm)	长度(mm)	宽度(mm)	高度(mm)	重量(kg)
MKS36	RHS120*50*5.0	129	1	1.50	1.50
合计:					1.50



Rev.	Description	Date
A	第2次改批	2018-08-14

PROJECT: PROPOSED SITE C1
DEVELOPMENT AT ANGA BK.
KOTLUTUP, TESSONG RUMAH,
NEW TERRITORIES

CLIENT: 華特經貿有限公司
MIDI AUTOMATIK MANUFACTURE LTD.
Unit 6-8, Sanyo Industrial Centre, 1/F
610 Chee Koo Ling Road, Kembangan
Tel: 23489211-4 Fax: 6527272666

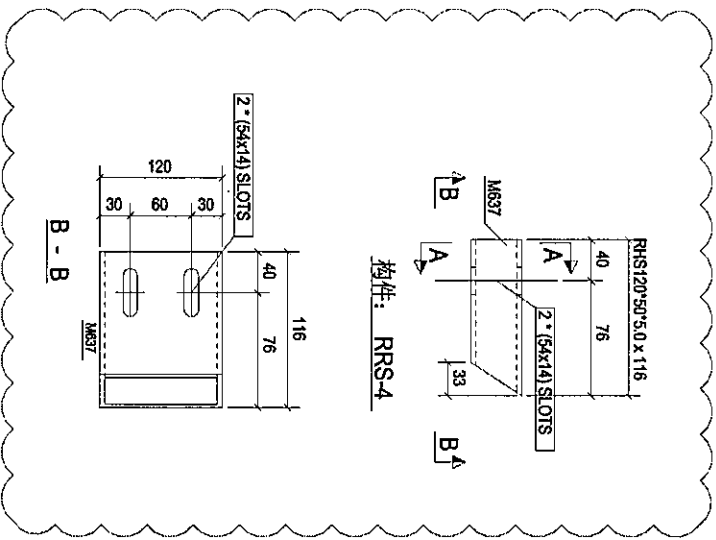
DESIGNED BY: 銀同有限公司
S Silver Town Limited
Tel: 03-8333668 Fax: 03-8333554
E-MAIL: ADP255@silvertown.com.sg

DRAWING TITLE: [RRS-3]

CAD File Name:	
Designed by:	
Drawn by:	
Reviewed by:	
Approved by:	
Scale:	
DWG NO.:	(SK-RPF) - [RRS-3]
REV.	A

51

零件编号	规格(mm)	长度(mm)	数量	重量(g)	共重(g)	表面积(cm ²)
M637	RHS120°50°5.0	116	1	1.40	1.40	0.04
合计				1.40		



Rev.	Description	Date
A	首次核准	2010-08-14

PROJECT: PROPOSED SITE C1
DEVELOPMENT AT AREA 86,
TKOHL TO BE TSEUNG KWAN O,
NEW TERRITORIES

CLIENT: 美特經貿有限公司
MIDI AMUSEMENT ENTERPRISES LTD.
Unit 5-8, Sunny Industrial Centre, 1/F
610 Chee Kwo Ling Road, Kowloon
Tel: (852) 489211-4 Fax: (852) 27272566

Silver Town Limited
Tel: (852) 435488 Fax: (852) 433324
E-Mail: ap@silvertown.com.hk

DRAWING TITLE: [RRS-4]

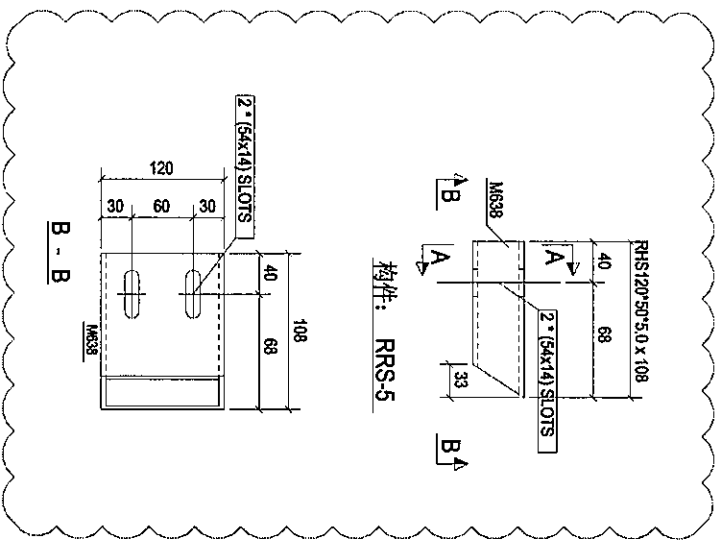
CAD File Name:

Designed by	
Drawn by	
Reviewed by	
Approved by	
Scale	

DWG NO: (SK-RFP) - [RRS-4] RFL A

(52)

零件编号	RRS-5	零件数量	2	零件重量	1.32
零件图号	规格(mm)	长度(mm)	数量	重量(g)	重量(kg)
MS39	RHS120*50*5.0	108	1	1.32	0.04
合计:					1.32



Rev.	A	初次探模	2010-08-14
------	---	------	------------

PROJECT: PROPOSED SITE C1 DEVELOPMENT AT AREA 88, T'KOTI TOWNSHIP, TSEILING, TAIWAN, NEW TERRITORIES

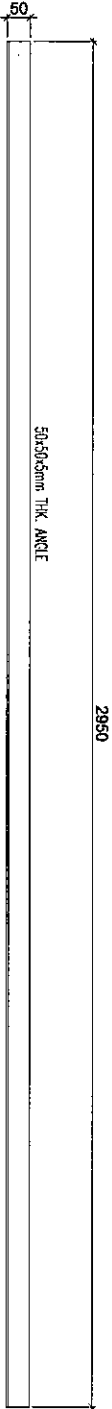
CLIENT: 義特經貿有限公司
 MIDT1 AMERICA'S AMERICA INC.
 Units 5-8, Sunny Industrial Centre, 1/F
 610 Cho Kuo Ling Road, Kowloon
 Tel: 23448921-4 Fax: (852) 27272566

銀同有限公司
 Silver Town Limited
 Tel: 0759-333888 Fax: 0759-333994
 E-MAIL: ADDRESS@SILVERTOWN.COM

DRAWING TITLE: [RRS-5]

Checked by	
Designed by	
Drawn by	
Reviewed by	
Approved by	
Scale	
DWG NO.:	(SK-RIF) - [RRS-5]
REV.	A





构件: RR4-1 (数量: 12 件)

A	第2次確認	2018-08-14
Rev.	Description	Date

PROJECT: PROPOSED SITE C1
DEVELOPMENT AT AREA 08,
KOTLANDIY, TSEUNGKWAN O,
NEW TERRITORIES

CLIENT: 美特經貿有限公司
MIDI AUSTRALIA PARTNERS LLP
Units 5-8, Sanyo Industrial Centre, 1/F,
610 Chee Koo Ling Road, Kowloon
Tel: 33489211-4 Fax: 6527272566

Silver Town Limited
140730-410005 P.O. BOX 410054
E-mail: a00255@silvertown.com.hk

DRAWING TITLE :
[RR4-1]
[RR4-1a]

CAD File Name :

Designed by	
Drawn by	
Reviewed by	
Approved by	
Scale	

DWG NO. : (SK-RF) - [RR4-1]

REV.	A
------	---

(55)



构件: RR4-2 (数量: 12 件)

Rev	Description	Date
A	第一次提批	2019-08-14

PROJECT: PROPOSED SITE C1
DEVELOPMENT AT AREA B5
TKOII TO RE-USE/RE-DEVELOP
NEW TERRORIES

CLIENT: **美特銀寶有限公司**
MIDI ALUMINIUM FABRICATOR LTD.
Units 5-8, Sunny Industrial Centre, 1/F
610 Che Kwo Ling Road, Kowloon
Tel: (852) 48921144 Fax: (852) 27272586

S 银同有限公司
Silver Town Limited
Tel: (852) 41334668 Fax: (852) 4133354
E-mail: A99C5549@silvertown.com

DRAWING TITLE:
[RR4-2]
[RR4-2a]

CAD File Name:	
Designed by	
Drawn by	
Reviewed by	
Approved by	
Scale	
DWG NO.:	(SK-RP) - [RR4-2]
REV.	A

26