

工程指示 / 要求簡箋(E.I.)

工程指示編號：EI/ 94B3 /18 修改版次：
 工程編號：J036 工程名稱：日出康城 7 期平台
 工程項目：Cooling Tower Louver 鐵件拆圖
 收件人：Maggie Lor 發件人：李耀明 日期：2018/7/5

要求提供 / 確認 事項：

- | | | |
|------------------------------------|-------------------------------------|-------------------------------|
| <input type="checkbox"/> 初步鋁料 B.M. | <input type="checkbox"/> 加工拆圖，然後生產 | <input type="checkbox"/> 尺寸表 |
| <input type="checkbox"/> 正式鋁料 B.M. | <input type="checkbox"/> 技術上資料 / 指示 | <input type="checkbox"/> 報價 |
| <input type="checkbox"/> 配件 B.M. | <input type="checkbox"/> 樣辦或貨品說明書 | <input type="checkbox"/> 分判合約 |
| <input type="checkbox"/> 其他：_____ | | |

內容：

請安排強記拆 Cooling Tower Louver 鐵件
 (Embed 不用做，其管鐵全拆)

先提供拆圖，待地盤覆尺及批核後方可進行加工。

請在 2018/7/19 前完成上列要求。

附有關圖紙 / 文件：

Cooling Tower Louver 拆工圖 1 份 (CAD 檔送電鍍)
 浩華哥

以上項目為：

- 原合約工程包 原合約工程加 / 減賬 新工程報價

原因：-

分發東莞各部門：

- () 生產技術總監 連附件 () 技術部 連附件 () 生產部 連附件 () 機械設計部 連附件
 () 採購部 連附件 () 生產統籌部 連附件
 () 質檢部 連附件 () 會計部 連附件 () 報關組 連附件 () 其他 _____ 連附件

分發香港各部門：

- () 行政部 連附件 () 會計部 連附件 () 統籌部 連附件 () 工程部地盤科文 連附件
 () 採購部 連附件 () QS 部 連附件 () 維修部 連附件 () 其他 _____ 連附件

傳遞編號：

發件人簽署：

項目經理簽署：

DEVELOPMENT AT AREA 86,
TKOTL 70 RP, TSEUNG KWAN O, N.T.

ALUM. FEATURE LOUVER at COOLING TOWER 3/F
4th SHOPDRAWING SUBMISSION
04-07-2018

 美特鋁質有限公司
MIDI ALUMINIUM FABRICATOR LTD.

Units 6-8, Sunray Industrial Centre, 1/F
610 Cha Kwo Ling Road, Kowloon
Tel:23489211-4 Fax:(852)27727666

DRAWING SUBMISSION REGISTER

PROJECT: PROPOSED SITE C1, DEVELOPMENT AT AREA 86, TKO TL 70 RP, TSEUNG KWAN O, NEW TERRITORIES	DATE OF ISSUE										SUBMISSION STATE (FOR B.D / A.S.D)			SUBMISSION STATE (FOR CLIENT / CONSULTANT)			SUBMISSION STATE (FOR ARCHITECT)			FABRICATION / CONSTRUCTION STATE						
	ISSUE	01	02	03								AP - APPROVED			AP - APPROVED			AP - APPROVED			ISSUE TO CHINA OFFICE		ISSUE TO SITE		ISSUE TO SUB-CONTRACTOR	
	DAY	06	15	17							AC - APPROVED SUB. TO CONDITION			AC - APPROVED SUB. TO CONDITION			AC - APPROVED SUB. TO CONDITION									
	MONTH	12	01	04							NA - NOT APPROVED			NA - NOT APPROVED			NA - NOT APPROVED									
	YEAR	17	18	18																						
DRAWING TITLE	DWG. NO.	REVISIONS								COmMENT DATE	REV.	STATE	COmMENT DATE	REV.	STATE	COmMENT DATE	REV.	STATE	REV.	DATE	REV.	DATE	REV.	DATE		
COVERPAGE	J836-CP-0000	-	A	B																						
DRAWING SUBMISSION REGISTER	J836-GN-0001	/	-	A																						
GENERAL NOTES	J836-GN-0002	-	A	B																						
SECTION PROPERTIES	J836-GN-0001	-	A	B																						
PART PLAN	J836-AF-1001	-	A	B																						
PART PLAN FOR STEEL MEMBER	J836-AF-1002	-	A	B																						
EMBED PLAN	J836-AF-1003	-	A	B																						
FIXING MEMBER LAYOUT PLAN	J836-AF-1003A	/	/	-																						
EMBED PLAN (BOTTOM)	J836-AF-1004	/	-	A																						
250TH RC CURB LOCATION	J836-AF-1005	/	/	-																						
PART SECTION	J836-SE-2001	/	-	A																						
PART ELEV.	J836-PE-3001	/	-	A																						
TYPICAL DETAIL	J836-DT-5001	-	A	B																						
TYPICAL DETAIL	J836-DT-5002	-	A	B																						
TYPICAL DETAIL	J836-DT-5003	/	-	A																						
TYPICAL DETAIL	J836-DT-5004	/	/	-																						
TYPICAL DETAIL	J836-DT-5005	/	/	-																						

TOTAL PAGES :
(INCLUDING COVERPAGE AND DRAWING SUBMISSION REGISTER)

IN-HOUSE DESIGN CHECKER



美特鋁質有限公司
MIDI ALUMINIUM FABRICATOR LTD.

Units 6-8, Sunray Industrial Centre, 1/F
610 Cha Kwo Ling Road, Kowloon
Tel: 23489211-4 Fax: (852) 27727666

DWG NO. : J836-GN-0001 REV. : B

GENERAL NOTES

(A) DESIGN CODES AND STANDARDS :

- BUILDING (CONSTRUCTION) REGULATIONS, HONG KONG
- CODE OF PRACTICE FOR THE STRUCTURAL USE OF STEEL, 2011 HONG KONG
- CODE OF PRACTICE FOR THE STRUCTURAL USE OF CONCRETE, 2013 HONG KONG
- CODE OF PRACTICE ON WIND EFFECTS IN HONG KONG 2004.
- BS 8118 - THE STRUCTURAL USE OF ALUMINIUM, PART 1 - 1991
- ALL RELEVANT CODES AND STANDARDS AS PER PROJECT TECHNICAL SPECIFICATIONS.
- CODE OF PRACTICE FOR DEAD LOAD AND IMPOSED LOAD 2011.

(B) DESIGN LOADS :

- WIND LOAD (TOPOGRAPHIC FACTOR = 1) :
THE OVERALL HEIGHT OF THE BUILDING: 33.5 - 5.5 = 28.00m
BASIC WIND LOAD: 2.37 KPa (BELOW 30m)

DESIGN WIND LOAD ($C_p = +2.0$) $2.37 \times (C_p = +2.0) = 4.74$ KPa

(C) MATERIAL WEIGHT

- HORIZONTAL IMPOSED LOAD
HORIZONTAL IMPOSED LOAD ON PROTECTIVE BARRIERS SHALL DESIGN IN ACCORDANCE WITH TABLE 3.13 OF CODE OF PRACTICE FOR DEAD & IMPOSED LOADS 2011.
IMPOSED LIVE LOAD -(CROWN LOAD FOR BALUSTRADE)
- CASE 1 : 0.75 kN/m LINE LOAD TO BE APPLIED AT A HEIGHT OF 1.1m ABOVE FLOOR LEVEL
- CASE 2 : 1.0kPa UDL APPLIED ON THE INFILL BETWEEN FLOOR AND TOP RAIL
- CASE 3 : 0.5 kN CONCENTRATED LOAD APPLIED AT TOP RAIL LEVEL

(D) MATERIAL USED

- DENSITY OF GLASS = 26.0 KN/m³
- DENSITY OF STEEL = 77.0 KN/m³
- DENSITY OF ALUMINIUM ALLOY = 27.2 KN/m³

(E) MATERIAL USED

- STRUCTURAL STEEL
THE STEEL HOLLOW TO BE GRADE S275 JO(CLASS 1) COMPLY WITH BS EN 10210 PART 1:2006.
THE OTHER STEEL TO BE GRADE S275 JO(CLASS 1) COMPLY WITH BS EN 10025:2004.
- MODULUS OF ELASTICITY = 205000 MPa
- DESIGN STRENGTH ($T \leq 16mm$) = 275 MPa
- DESIGN STRENGTH ($16mm < T \leq 40mm$) = 265 MPa
ALL STRUCTURAL STEEL TO BE HOT DIP GALVANIZED COMPLY WITH BS EN ISO 1461:1999. GALVANIZED SURFACE THICKNESS = 85um
ALL STRUCTURAL STEEL WORK SHALL APPLY PROPRIETARY POST PAINT, COLOR DETAIL TO BE SPECIFY

- ALUMINIUM
THE EXTRUDED SECTION TO BE GRADE 6063-T5, (FOR STRUCTURAL USE)
MECHANICAL PROPERTIES TO BE EN 755-2:1997,
CHEMICAL COMPOSITION TO BE EN 573-3:2003,
LIMITING STRESSES (BASED ON TABLE 4.1 OF BS 8118:PART1:1991):-
- FOR BENDING AND OVAL YIELDING (σ_b) = 110 MPa
- FOR LOCAL TENSION OR COMPRESSION (σ_c) = 130 MPa
- FOR SHEAR (σ_s) = 65 MPa
- 0.2% TENSILE PROOF STRESS = 110 MPa
- MINIMUM TENSILE STRENGTH = 150 MPa

- ALL ALUMINIUM CLADDING TO BE GRADE 3003-H14,
MECHANICAL PROPERTIES TO BE EN485-2:2008,
CHEMICAL COMPOSITION TO BE EN 573-3:2003,
LIMITING STRESSES (BASED ON TABLE 4.1 OF BS 8118:PART1:1991):-
- FOR BENDING AND OVAL YIELDING (σ_b) = 125 MPa
- FOR LOCAL TENSION OR COMPRESSION (σ_c) = 135 MPa
- FOR SHEAR (σ_s) = 75 MPa
- 0.2% TENSILE PROOF STRESS = 125 MPa
- MINIMUM TENSILE STRENGTH = 145 MPa
MODULUS OF ELASTICITY OF ALUMINIUM = 70000 MPa

ALL ALUMINIUM WORK APPLY PPG PVF2 (3COATING) COLOR IN LIGHT GRAY

(F) STAINLESS STEEL FASTENERS

ALL FASTENERS, BOLTS & NUTS SHALL BE STAINLESS STEEL GRADE A4-70 COMPLYING WITH BS EN ISO 3506.
FOR GRADE A4-70 :

- MINIMUM YIELD STRENGTH, f_y = 450 MPa
ULTIMATE TENSILE STRENGTH, f_u = 700 MPa
SHEAR STRENGTH, p_s = 311 MPa
TENSION STRENGTH, p_t = 374 MPa
BEARING STRENGTH, p_{bb} = 828 MPa

UNLESS OTHER SPECIFIED, ALL SCREWS SHALL BE M5 AT 300 C/C GRADE A4-70 STAINLESS

(F) SEPARATION BETWEEN DISSIMILAR MATERIALS

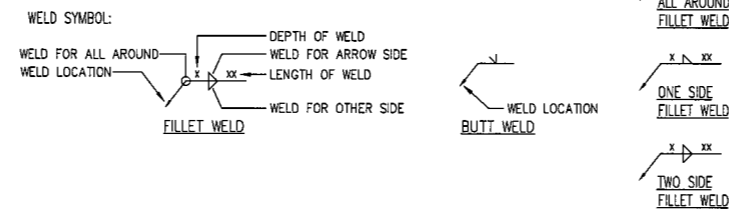
- CONTACT SURFACE BETWEEN DISSIMILAR MATERIALS WILL BE ISOLATED BY A LAYER OF PVC TAPE (FOR VERTICAL SURFACE) /BITUMEN PAINT(FOR HORIZONTAL SURFACE).

(H) SILICONE SEALANT

- DOW CORNING 751 TO BE USED AS WEATHER SEALANT BETWEEN MATERIAL OF ALUMINIUM/ALUMINIUM, GLASS/GLASS & ALUMINIUM/GLASS.

(I) WELDING

- ALL WELDING SHALL COMPLY TO BS EN 1011-1 : 2009.
- ALL WELD PROCEDURES TO BE COMPLIED WITH BS EN ISO 15614.
- ALL WELD SHALL BE 4mm FILLET WELD UNLESS OTHERWISE SPECIFIED.
- ALL WELDING SHALL BE DONE BY THE QUALIFIED WELDERS COMPLIED WITH BS EN 287-1 : 2009.
- ALL SITE WELDS SHALL BE RECEIVED WITH 2 COATS OF ZINC CHROMATE PRIMER.
DESIGN STRENGTH = 220 N/mm²



(K) CAST-IN EMBED

- ALL CAST-IN EMBED WELD STEEL BAR TO BE GRADE S250 REBAR

(L) CONCRETE GRADE (FOR INFORMATION ONLY)

- CONCRETE GRADE = 45D (MIN.)

(M) ANCHOR BOLT

- BEFORE INSTALLATION OF HILTI ANCHOR BOLTS, COVERMETER SHALL BE USED TO ENSURE THE LOCATIONS OF ANCHOR BOLTS NOT CLASH WITH EXISTING REINFORCEMENT.
- ALL DRILL-IN ANCHOR BOLT SHALL BE HILTI HST3-R AS SHOWN IN THE DRAWINGS, AND SHALL BE DESIGNED AND INSTALLED IN ACCORDANCE WITH MANUFACTURER'S SPECIFICATION UNLESS NOTES OTHERWISE
- STRENGTH TESTS ON A REPRESENTATIVE NUMBER OF DRILL-IN ANCHOR BOLTS SHOULD BE CARRIED OUT TO VERIFY THE PERFORMANCE AND WORKMANSHIP OF THE AS-BUILT ANCHORS. SAMPLING RATE SHOULD BE AT LEAST 1% OR 5 NOS. ON EACH TYPE AND SIZE OF THE ANCHORS INSTALLED.
- EACH REPRESENTATIVE ANCHOR SHOULD BE TESTED BY MEANS OF EITHER.
 - PULL OUT TEST, OR
 - EQUIVALENT TIGHTENING TORQUE TEST.
 TO DEMONSTRATE THAT ITS PULL OUT CAPACITY IS NOT LESS THAN 1.5 TIMES THE RECOMMENDED TENSILE LOAD AS SPECIFIED BY THE ANCHOR MANUFACTURER. THE TESTED ANCHOR SHOULD NOT SHOW ANY SIGNS OF SEPARATION, PLASTIC DEFORMATION OR DELETERIOUS EFFECT.
- THE REPORTS OF THE ABOVE MENTIONED TESTS SHALL BE KEPT ON SITE AND MADE AVAILABLE FOR INSPECTION BY THE AP/RSE AND BO'S REPRESENTATIVES.
- ACCORDING TO THE HONG KONG BUILDINGS DEPARTMENT REQUIREMENT, THE OVERALL SAFETY FACTOR SHOULD NOT BE LESS THAN 3 i.e. THE PARTIAL SAFETY FACTOR FOR ACTION SHOULD BE GREATER THAN 3

FOR CRACKED CONCRETE TABLE:

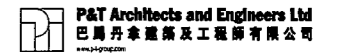
ANCHOR TYPE	MINIMUM BASE MATERIAL THICKNESS (mm)	MINIMUM EDGE DISTANCE (mm)	EFFECTIVE ANCHORAGE LENGTH (mm) TO SOUND CONCRETE	MINIMUM SPACING (mm)	DRILL HOLE DEPTH (mm)	RECOMMENDED LOAD (kN)	TENSION SHEAR	TEST LOAD (1.5xRECOMMENDED TENSILE LOAD) (kN)	BD REF.
HST3-R M10	120	45	60	40	58	12	25.3	1.5x12.0=18.0	

B.D. REF : 3/7192/97/4 (C1)

CLIENT :



ARCHITECT :



MAIN CONTRACTOR :



STRUCTURAL ENGINEER :

ARUP

YIM HAN KEI
CEng FISTRUCTE MICE FHKIE
REGISTERED STRUCTURAL ENGINEER

FACADE CONSULTANT:



NOTE :

- ALL DIMENSIONS ARE IN mm.
- ALL ELEVATIONS ARE VIEWED FROM OUTSIDE.
- ALL DIMENSIONS TO BE VERIFIED ON SITE BEFORE FABRICATION.

LEGEND :

- (X1) --- DETAIL MARK NO.
(X001) --- REFER SHEET NO.

- F.F.L. --- FINISHED FLOOR LEVEL
- S.F.L. --- STRUCTURAL FLOOR LEVEL
- (/R) --- REVERSED DETAIL

B 17/04/2018 3RD SUBMISSION

A 15/01/2018 2ND SUBMISSION

- 06/12/2017 INITIAL DRAWING

NO.	DATE	REVISED	BY

JOB NO. : J-836

PROJECT :
PROPOSED SITE C1
DEVELOPMENT AT AREA B6,
TKOTL 70 RP, TSEUNG KWAN O,
NEW TERRITORIES

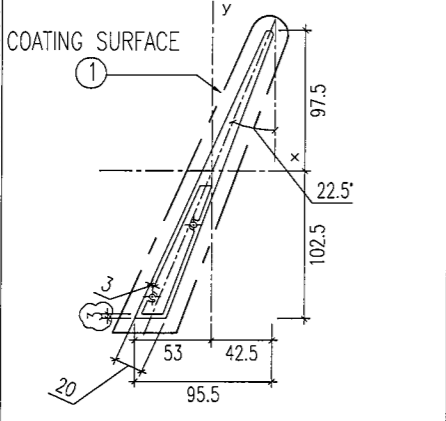
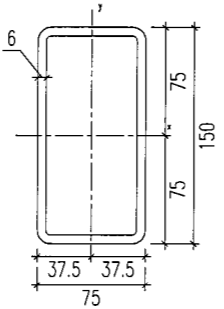
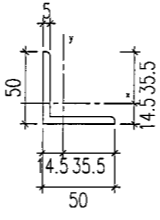
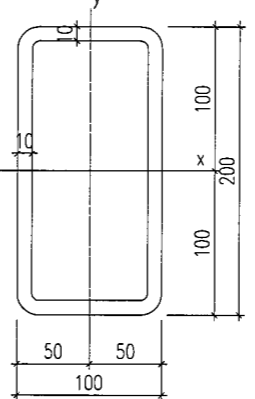
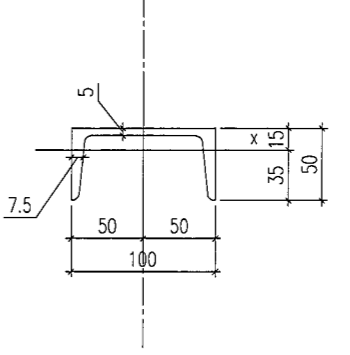
TITLE :
GENERAL NOTES

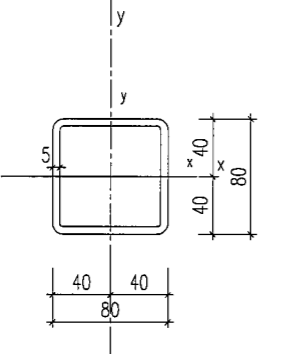
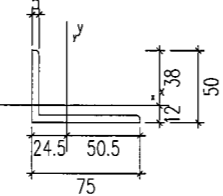
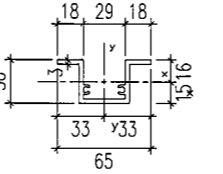
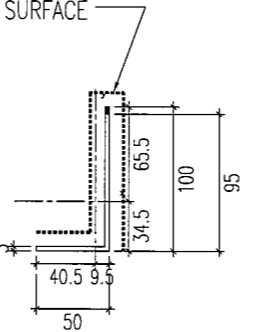
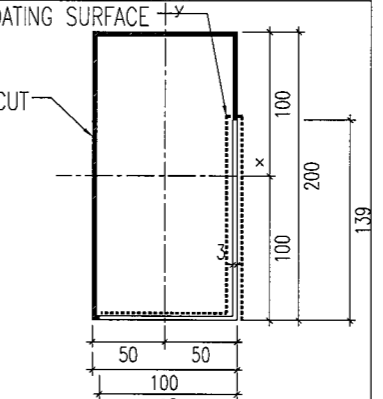
DATE : 17-04-2018 SCALE : 1:4

DRAWN BY : CF CHECKED BY : DW

英特鋁質有限公司
MIDI ALUMINIUM FABRICATOR LTD.
Units 6-8, Sunray Industrial Centre, 1/F
610 Cha Kwo Ling Road, Kowloon
Tel:23489211-4 Fax:(852)2727666


DWG NO. : J836-GN-0002 REV. : B


SECTION	PROPERTIES	PROPERTIES	PROPERTIES	PROPERTIES	PROPERTIES
					
MEMBER MARK	ALUM. EXTRUSION	150x75x6mm THK. GMS	50x50x5mm THK. GMS ANGLE	200x100x10mm THK. GMS RHS (T1)	100x50x5mm THK. GMS CHANNEL(T2)
Area(mm ²):	1797.40	2494.19	472.32	5428.3185	1152.5000
Moments of inertia(mm ⁴):	X: 5419101.57 Y: 983663.62	X: 6961821.37 Y: 2317469.00	X: 110715.86 Y: 110715.86	X: 26150537.96 Y: 8597293.44	X: 244149.8785 Y: 1811765.8626
Product of inertia(mm ⁴):	XY: 2252543.4424	XY: 0.00	XY: -65681.73	XY: 0.00	XY: 0.00
Radii of gyration(mm):	X: 54.91 Y: 23.39	X: 52.83 Y: 30.48	X: 15.31 Y: 15.31	X: 69.4077 Y: 39.7968	X: 14.5549 Y: 39.6488
Principal moments and X-Y directions about centroid(mm ⁴):	I: 40333.81 along [0.3863 0.9224] J: 6362431.38 along [-0.9224 0.3863]	I: 6961821.37 along [1.0000 0.0000] J: 2317469.17 along [0.0000 1.0000]	I: 45034.14 along [0.7071 -0.7071] J: 176397.59 along [0.7071 0.7071]	I: 8597293.4416 along [0.0000 -1.0000] J: 26150537.9593 along [1.0000 0.0000]	I: 244149.8785 along [1.0000 0.0000] J: 1811765.8626 along [0.0000 1.0000]
Elastic Modulus(mm ³):	Zx: I / y-max= 52882 Zy: J / x-max= 18513	Zx: I / y-max= 92824 Zy: J / x-max= 61799	Zx: I / y-max= 3099 Zy: J / x-max= 3099	Zx: I / y-max= 261505 Zy: J / x-max= 171946	Zx: I / y-max= 6980 Zy: J / x-max= 36235
REMARK	MATERIAL GR: 6063-T5 PPG PVF2 (3 COAT) COLOR: LIGHT GRAY	MATERIAL GR: S275	MATERIAL GR: S275	MATERIAL GR: S275	MATERIAL GR: S275


SECTION	PROPERTIES	PROPERTIES	PROPERTIES	PROPERTIES	PROPERTIES
					
MEMBER MARK	80x80x5mm THK. GMS RHS(T3)	75x50x5mm THK. GMS ANGLE	3MM THK ALUM STIFFENER	CUT-FROM 100X50X3mm THK ALUM ANGLE	CUT-FROM 200X100X3mm THK ALUM RHS
Area(mm ²):	1457.0796	597.3175	518.1897	424.1208	1764.000
Moments of inertia(mm ⁴):	X: 1347848.8979 Y: 1347848.8980	X: 124670.3359 Y: 344617.2726	X: 123235.31 Y: 331552.19	X: 412319.75 Y: 84968.57	X: 9472492.00 Y: 3238892.00
Product of inertia(mm ⁴):	XY: 0.0000	XY: 0.00	XY: 0.00	XY: 109065.73	XY: 0.0000
Radii of gyration(mm):	X: 30.4144 Y: 30.4144	X: 14.4470 Y: 24.0196	X: 15.4214 Y: 25.2948	X: 31.1797 Y: 14.1545	X: 73.2796 Y: 42.8498
Principal moments and X-Y directions about centroid(mm ⁴):	I: 1347848.8979 along [0.9994 0.0358] J: 1347848.8979 along [-0.0358 0.9994]	I: 70730.6435 along [0.9140 -0.4056] J: 398556.9650 along [0.4056 0.9140]	I: 123235.3104 along [1.000 0.0000] J: 331552.1916 along [0.0000 1.0000]	I: 51959.0555 along [0.2897 0.9571] J: 445329.2649 along [-0.9571 0.2897]	I: 9472492.00 along [1.0000 0.0000] J: 3238892.00 along [0.0000 1.0000]
Elastic Modulus(mm ³):	Zx: I / y-max= 33696 Zy: J / x-max= 33696	Zx: I / y-max= 3264 Zy: J / x-max= 2798	Zx: I / y-max= 6076 Zy: J / x-max= 7054	Zx: I / y-max= 6588 Zy: J / x-max= 2114	Zx: I / y-max= 94725 Zy: J / x-max= 64778
REMARK	MATERIAL GR: S275	MATERIAL GR: S275	MATERIAL GR: 6063-T5	MATERIAL GR: 6063-T5 PPG PVF2 (3 COAT) COLOR: LIGHT GRAY	MATERIAL GR: 6063-T5 PPG PVF2 (3 COAT) COLOR: LIGHT GRAY


REMARK: COLOR CODE FOR LIGHT GREY: UCTB02580XL(A)-3

B.D. REF :


CLIENT : 

ARCHITECT : 

MAIN CONTRACTOR : 

STRUCTURAL ENGINEER : 

REGISTERED STRUCTURAL ENGINEER
KUAN KIN KEI
CEng PSTRUC MICE FHKE
REGISTERED STRUCTURAL ENGINEER

FACADE CONSULTANT : 

NOTE :
1. ALL DIMENSIONS ARE IN mm.
2. ALL ELEVATIONS ARE VIEWED FROM OUTSIDE.
3. ALL DIMENSIONS TO BE VERIFIED ON SITE BEFORE FABRICATION.

LEGEND :
X1 - DETAIL MARK NO.
X001 - REFER SHEET NO.

1. F.F.L. --- FINISHED FLOOR LEVEL
2. S.F.L. --- STRUCTURAL FLOOR LEVEL
3. (R) --- REVERSED DETAIL

B/17/04/2018 3RD SUBMISSION	
A/15/01/2018 2ND SUBMISSION	
-/06/12/2017 INITIAL DRAWING	
NO.	DATE


JOB NO. : J-836

PROJECT : PROPOSED SITE C1
DEVELOPMENT AT AREA B6,
TKOTL 70 RP, TSEUNG KWAN O,
NEW TERRITORIES

TITLE : SECTION PROPERTIES

DATE : 17-04-2018 SCALE : 1:5

DRAWN BY : CF CHECKED BY : DW


Units 6-8, Sunray Industrial Centre, 1/F
610 Cha Kwo Ling Road, Kowloon
Tel: 23489211-4 Fax: (852) 2727666

DWG NO. : J836-GN-0003 REV. : B



LEGEND FOR STEEL MEMBER

- T1 = 200x100x10mm THK. GMS RHS
- T2 = 100x50xmm THK. GMS CHANNEL
- T3 = 80x80x5mm THK. GMS SHS
- T4 = 150x75x6 GMS RHS (L=150)

B.D. REF :

CLIENT : **MTR**
VENTURE SMART LIMITED

ARCHITECT : **P&T Architects and Engineers Ltd**
巴丹丹拿建築及工程師有限公司
www.p-t-group.com

MAIN CONTRACTOR : **CHINA OVERSEAS BUILDING CONSTRUCTION LTD.**

STRUCTURAL ENGINEER : **ARUP**

KWAN KIN KEI
CEng FRStructE MICE FHKIE
REGISTERED STRUCTURAL ENGINEER

FAÇADE CONSULTANT : **MEINHARDT**

NOTE :

- ALL DIMENSIONS ARE IN mm.
- ALL ELEVATIONS ARE VIEWED FROM OUTSIDE.
- ALL DIMENSIONS TO BE VERIFIED ON SITE BEFORE FABRICATION.

LEGEND :

- X1 - DETAIL MARK NO.
- X001 - REFER SHEET NO.

- F.F.L. -- FINISHED FLOOR LEVEL
- S.F.L. -- STRUCTURAL FLOOR LEVEL
- ⊖ -- REVERSED DETAIL

B 17/04/2018	3RD SUBMISSION		
A 15/01/2018	2ND SUBMISSION		
- 06/12/2017	INITIAL DRAWING		
NO.	DATE	REVISED	BY

JOB NO. : J-836

PROJECT : PROPOSED SITE C1
DEVELOPMENT AT AREA 86,
TKOTL 70 RP, TSEUNG KWAN O,
NEW TERRITORIES

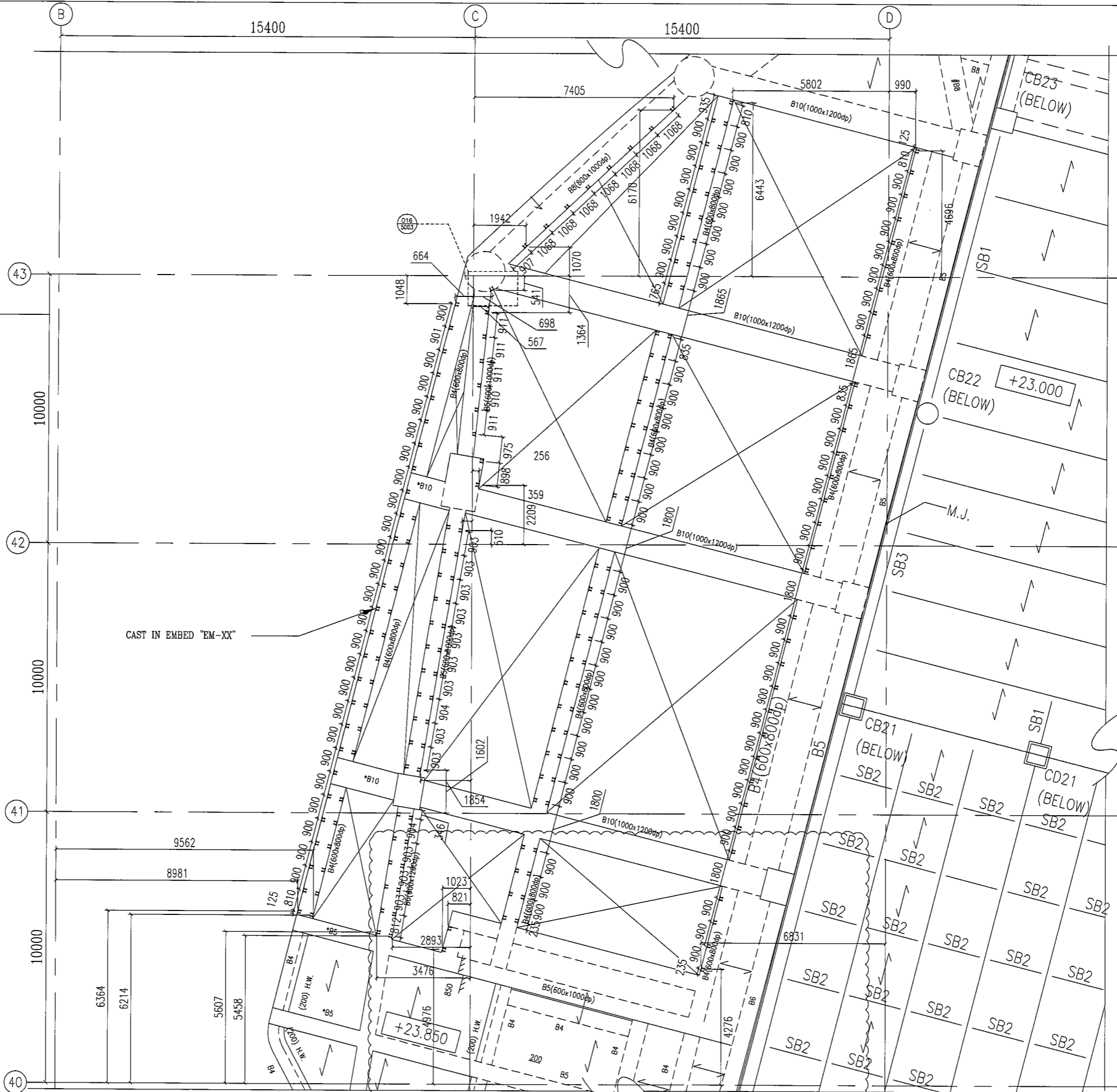
TITLE : PART PLAN
FOR STEEL MEMBER

DATE : 17-04-2018 SCALE : 1:150

DRAWN BY : CF CHECKED BY : DW

美特鋁質有限公司
MIDI ALUMINIUM FABRICATOR LTD.
Units 6-8, Sunray Industrial Centre, 1/F
610 Che Kwo Ling Road, Kowloon
Tel: 23489211-4 Fax: (852) 2727666

DWG NO. : J836-AF-1002 REV. : C

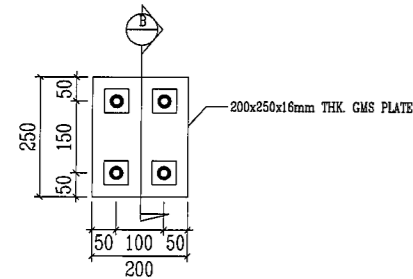


P3A PART PLAN FOR FIXING MEMBER
1003

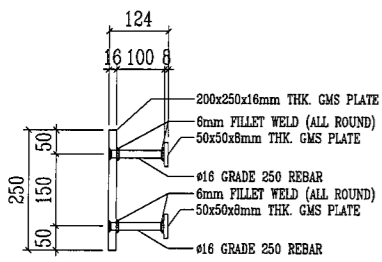
LEGEND FOR EMBED

IT = CAST-IN EMBED "EM-XX"

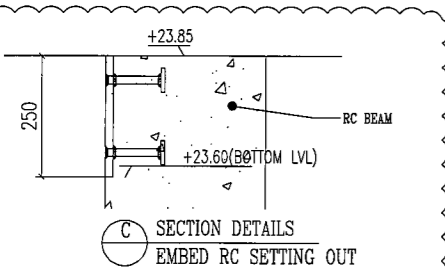
FOR INFORMATION ONLY



A CAST-IN EMBED DETAIL
CAST-IN EMBED "EM-XX"



B SECTION DETAILS



C SECTION DETAILS
EMBED RC SETTING OUT

P3 PART PLAN FOR FIXING MEMBER
1003

B.D. REF :

CLIENT :
MTR
VENTURE SMART LIMITED

ARCHITECT :
P&T Architects and Engineers Ltd
巴丹丹拿建築及工程師有限公司
www.p-t-group.com

MAIN CONTRACTOR :
CHINA OVERSEAS BUILDING CONSTRUCTION LTD.

STRUCTURAL ENGINEER :
ARUP

KWAN KIN KEI
CEng FStrucE MICE FHKE
REGISTERED STRUCTURAL ENGINEER

FACADE CONSULTANT:
MEINHARDT

NOTE :
1. ALL DIMENSIONS ARE IN mm.
2. ALL ELEVATIONS ARE VIEWED FROM OUTSIDE.
3. ALL DIMENSIONS TO BE VERIFIED ON SITE BEFORE FABRICATION.

LEGEND :
X1 --- DETAIL MARK NO.
X001 --- REFER SHEET NO.
1. F.F.L. --- FINISHED FLOOR LEVEL
2. S.F.L. --- STRUCTURAL FLOOR LEVEL
3. (R) --- REVERSED DETAIL

B 17/04/2018	3RD SUBMISSION		
A 15/01/2018	2ND SUBMISSION		
- 06/12/2017	INITIAL DRAWING		
NO.	DATE	REVISED	BY

JOB NO. : J-836
PROJECT : PROPOSED SITE C1 DEVELOPMENT AT AREA 66, TKOTL 70 RP, TSEUNG KWAN O, NEW TERRITORIES

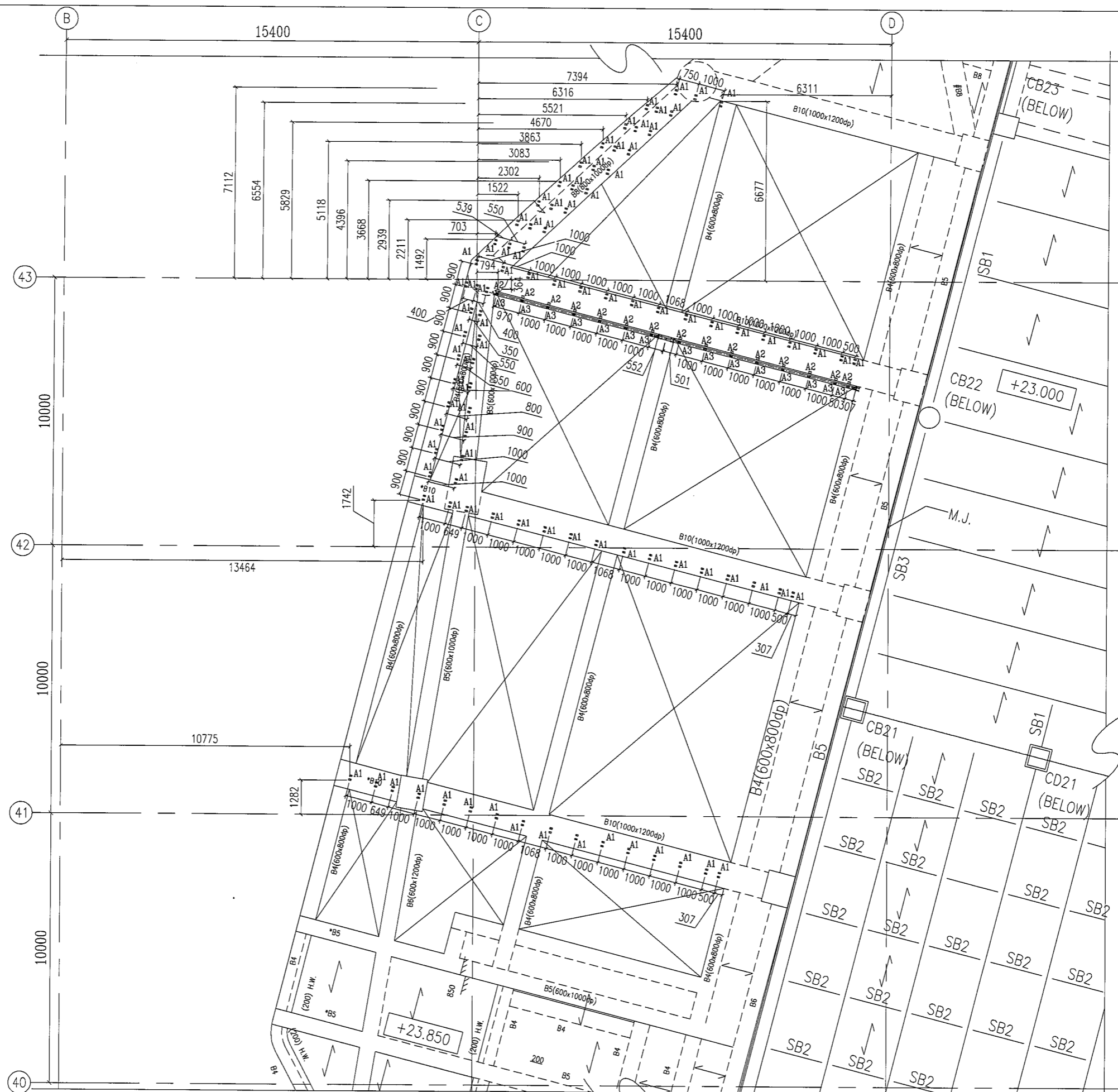
TITLE : EMBED PLAN

DATE : 17-04-2018 SCALE : 1:150

DRAWN BY : CF CHECKED BY : DW

美特鋁質有限公司
MIDI ALUMINIUM FABRICATOR LTD.
Units 6-8, Sunray Industrial Centre, 1/F
610 Cho Kwa Ling Road, Kowloon
Tel: 23489211-4 Fax: (852) 2727666

DWG NO. : J836-AF-1003 REV. : C



LEGEND FOR STEEL MEMBER
 A1 = 50x50x5mm THK. GMS ANGLE (L=100)
 A2 = 75x50x5mm THK. GMS ANGLE (L=100)
 A3 = 50x50x5mm THK. GMS ANGLE (L=100)

REMARK: A3 SITTING ON T1 REFER TO DETAIL D13
5003

P3A PART PLAN FOR FIXING MEMBER
1003A

B.D. REF :

CLIENT : **MTR**
 VENTURE SMART LIMITED

ARCHITECT : **P&T Architects and Engineers Ltd**
 巴丹丹拿建築及工程師有限公司
 www.p-t-group.com

MAIN CONTRACTOR : **CHINA OVERSEAS BUILDING CONSTRUCTION LTD.**

STRUCTURAL ENGINEER : **ARUP**

KWAN KIN KEI
 C.Eng. F.StrucE. MICE FHKE
 REGISTERED STRUCTURAL ENGINEER

FACADE CONSULTANT : **MEINHARDT**

NOTE :
 1. ALL DIMENSIONS ARE IN mm.
 2. ALL ELEVATIONS ARE VIEWED FROM OUTSIDE.
 3. ALL DIMENSIONS TO BE VERIFIED ON SITE BEFORE FABRICATION.

LEGEND :
 X1 --- DETAIL MARK NO.
 X001 --- REFER SHEET NO.

1. F.F.L. --- FINISHED FLOOR LEVEL
 2. S.F.L. --- STRUCTURAL FLOOR LEVEL
 3. (R) --- REVERSED DETAIL

- 17/04/2018 INITIAL DRAWING			
NO.	DATE	REVISED	BY

JOB NO. : J-836

PROJECT : PROPOSED SITE C1
 DEVELOPMENT AT AREA B6,
 TKOTL 70 RP, TSEUNG KWAN O,
 NEW TERRITORIES

TITLE : FIXING MEMBER LAYOUT PLAN

DATE : 17-04-2018 SCALE : 1:150

DRAWN BY : CF CHECKED BY : DW

美特鋁質有限公司
MIDI ALUMINUM FABRICATOR LTD.
 Units 6-8, Sunray Industrial Centre, 1/F
 610 Cha Kwo Ling Road, Kowloon
 Tel: 23489211-4 Fax: (852) 27727666

DWG NO. : J836-AF-1003A REV. : -



250THK RC CURB REQUIRE
(T.L.=+18.000)

B.D. REF :

CLIENT : **MTR**
VENTURE SMART LIMITED

ARCHITECT : **P&T Architects and Engineers Ltd**
巴馬丹拿建築及工程有限公司
www.p-t-group.com

MAIN CONTRACTOR : **CHINA OVERSEAS BUILDING CONSTRUCTION LTD.**

STRUCTURAL ENGINEER : **ARUP**

KWAN YIN KEI
CEng, PStructE, MICE, FHKIE
REGISTERED STRUCTURAL ENGINEER

FAÇADE CONSULTANT: **MEINHARDT**

NOTE :
1. ALL DIMENSIONS ARE IN mm.
2. ALL ELEVATIONS ARE VIEWED FROM OUTSIDE.
3. ALL DIMENSIONS TO BE VERIFIED ON SITE BEFORE FABRICATION.

LEGEND :
 (X1) --- DETAIL MARK NO.
 (X001) --- REFER SHEET NO.
 1. F.F.L. --- FINISHED FLOOR LEVEL
 2. S.F.L. --- STRUCTURAL FLOOR LEVEL
 3. (R) --- REVERSED DETAIL

- 17/04/2018 INITIAL DRAWING			
NO.	DATE	REVISED	BY

JOB NO. : J-836

PROJECT : PROPOSED SITE C1
DEVELOPMENT AT AREA B6,
TKOTL 70 RP, TSEUNG KWAN O,
NEW TERRITORIES

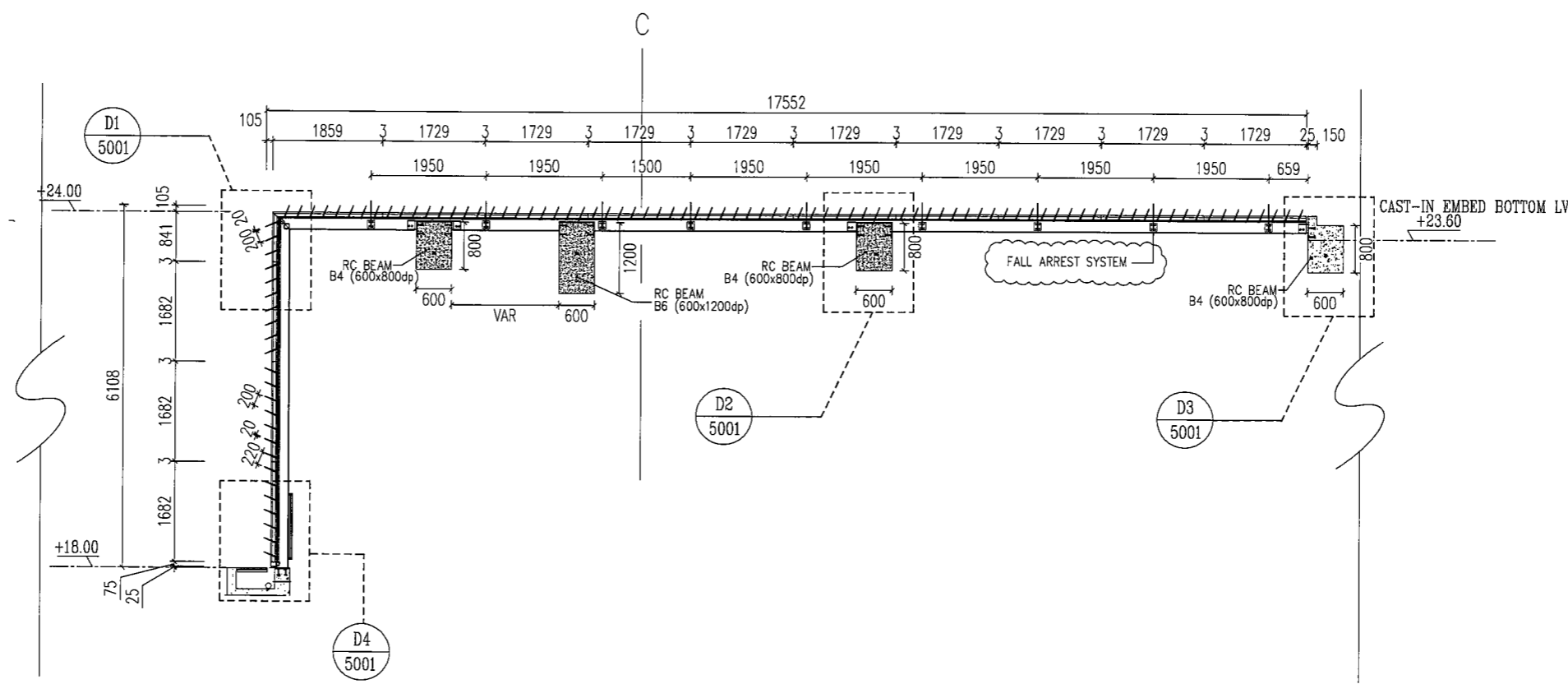
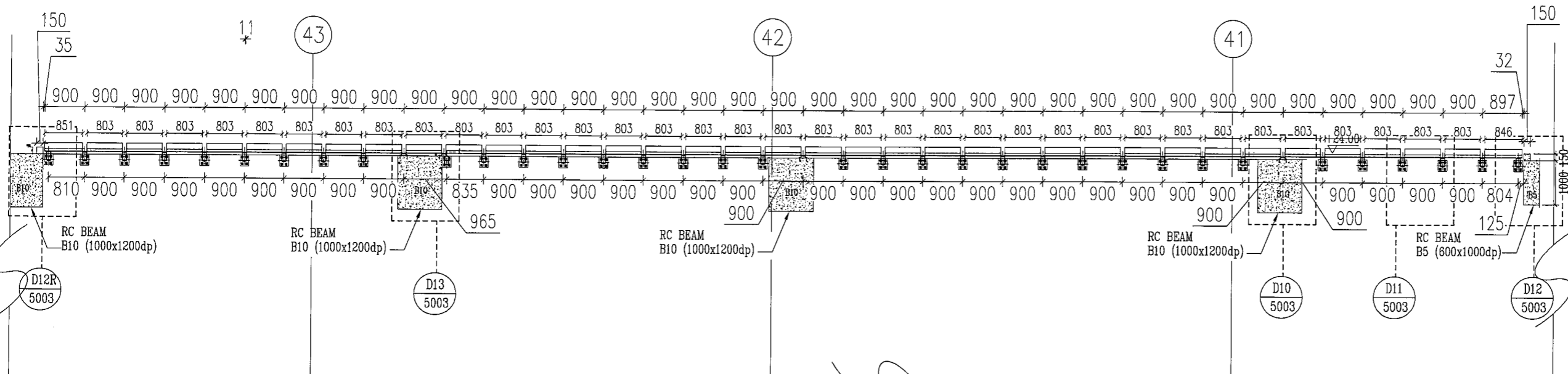
TITLE : 250TH RC CURB LOCATION

DATE : 17-04-2018 SCALE : 1:150

DRAWN BY : CF CHECKED BY : DW

英特鋁質有限公司
MIDI ALUMINIUM FABRICATOR LTD.
Units 6-8, Sunray Industrial Centre, 1/F
610 Cha Kwo Ling Road, Kowloon
Tel: 23489211-4 Fax: (852) 2727666

DWG NO. : J836-AF-1005 REV. : -



(S2) SECTION DETAILS
2001 FOR STEEL ALUM LOUVER

B.D. REF :

CLIENT : **MTR**
VENTURE SMART LIMITED

ARCHITECT : **P&T Architects and Engineers Ltd**
巴丹拿建築及工程師有限公司
www.p-t-group.com

MAIN CONTRACTOR : **CHINA OVERSEAS BUILDING CONSTRUCTION LTD.**

STRUCTURAL ENGINEER : **ARUP**

KWAN KWAN KEI
CEng FIBtructE MICE FHKIE
REGISTERED STRUCTURAL ENGINEER

FACADE CONSULTANT : **MEINHARDT**

NOTE :

1. ALL DIMENSIONS ARE IN mm.
2. ALL ELEVATIONS ARE VIEWED FROM OUTSIDE.
3. ALL DIMENSIONS TO BE VERIFIED ON SITE BEFORE FABRICATION.

LEGEND :

(X1) -- DETAIL MARK NO.
(X001) -- REFER SHEET NO.

1. F.F.L. -- FINISHED FLOOR LEVEL
2. S.F.L. -- STRUCTURAL FLOOR LEVEL
3. (R) -- REVERSED DETAIL

A	17/04/2018	3RD SUBMISSION	
-	15/01/2018	INITIAL DRAWING	
NO.	DATE	REVISED	BY

JOB NO. : J-836

PROJECT : PROPOSED SITE C1
DEVELOPMENT AT AREA 86,
TKOTL 70 RP, TSEUNG KWAN O,
NEW TERRITORIES

TITLE : PART SECTION

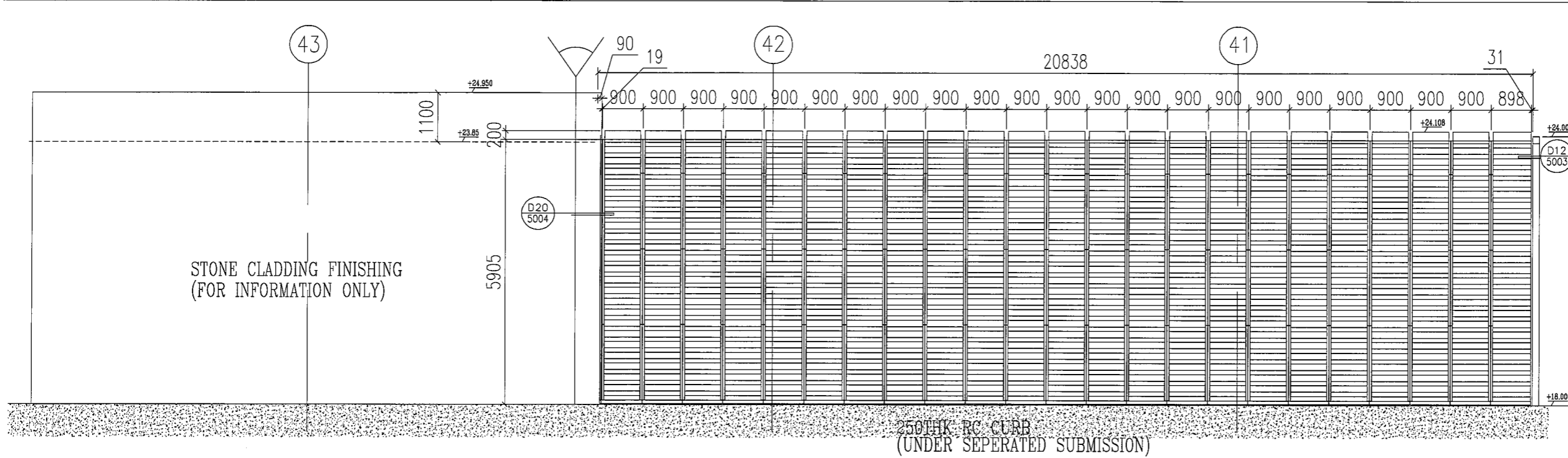
DATE : 17-04-2018 SCALE : 1:100

DRAWN BY : CF CHECKED BY : DW

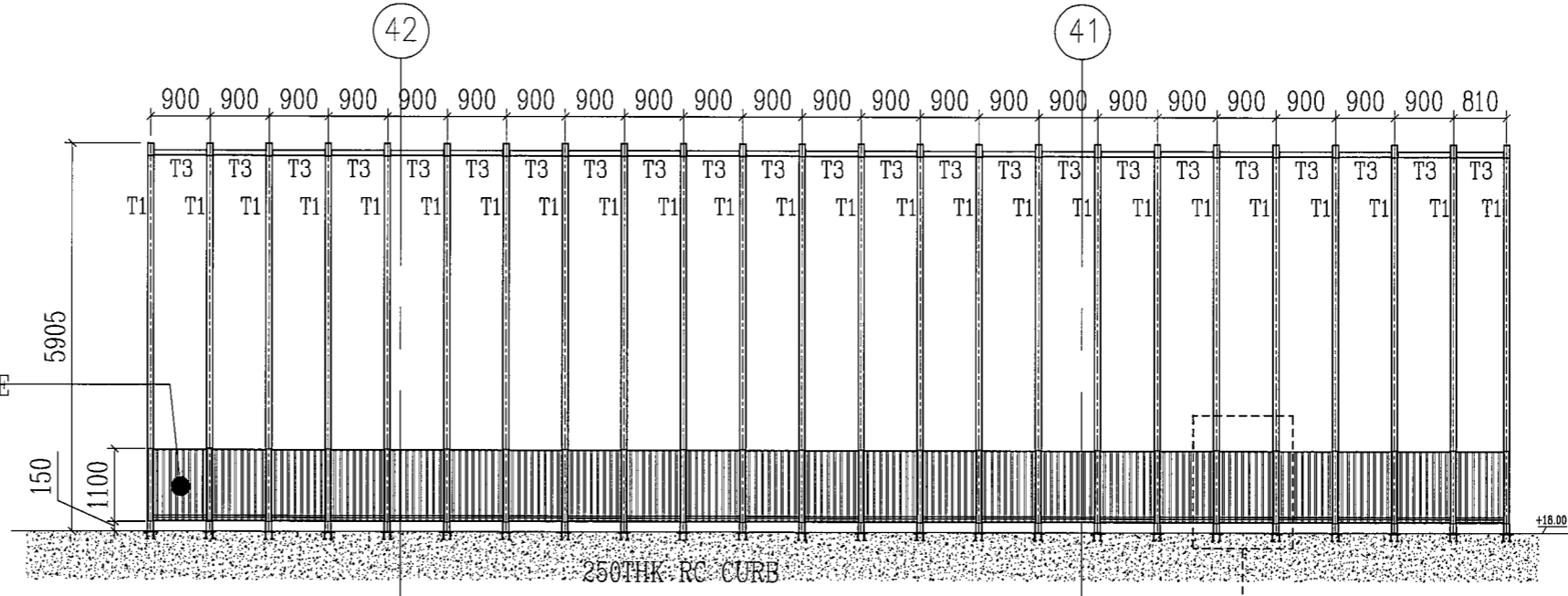
美特鋁質有限公司
MIDI ALUMINIUM FABRICATOR LTD.
Units 6-8, Sunray Industrial Centre, 1/F
610 Cho Kwo Ling Road, Kowloon
Tel: 23489211-4 Fax: (852) 2727666

REMARK: ALL R.C. STRUCTURAL INFORMATION UNDER SEPARATED SUBMISSION

DWG NO. : J836-SE-2001 REV. : A



PE01 PART ELEV. FOR STEEL ALUM LOUVER



PE02 PART ELEV. FOR STEEL MEMBER

LEGEND FOR FIXING MEMBER
 T1 = 200x100x10mm THK. GMS RHS
 T1 = CAST-IN EMBED "EM-XX"
 T3 = 80x80x5mm THK. GMS SHS

B.D. REF :

CLIENT :
MTR
 VENTURE SMART LIMITED

ARCHITECT :
P&T Architects and Engineers Ltd
 巴丹拿建築及工程師有限公司
 www.p-t-group.com

MAIN CONTRACTOR :
CHINA OVERSEAS BUILDING CONSTRUCTION LTD.

STRUCTURAL ENGINEER :
ARUP

KWAN YIN KEI
 CIVIL / STRUCTURE / MICE / FHKE
 REGISTERED STRUCTURAL ENGINEER

FACADE CONSULTANT:
MEIN-HARDT

NOTE:
 1. ALL DIMENSIONS ARE IN mm.
 2. ALL ELEVATIONS ARE VIEWED FROM OUTSIDE.
 3. ALL DIMENSIONS TO BE VERIFIED ON SITE BEFORE FABRICATION.

LEGEND:
 X1 --- DETAIL MARK NO.
 X001 --- REFER SHEET NO.
 1. F.F.L. --- FINISHED FLOOR LEVEL
 2. S.F.L. --- STRUCTURAL FLOOR LEVEL
 3. (R) --- REVERSED DETAIL

A 17/04/2018 3RD SUBMISSION	
- 15/01/2018 INITIAL DRAWING	
NO.	BY
DATE	REVISED

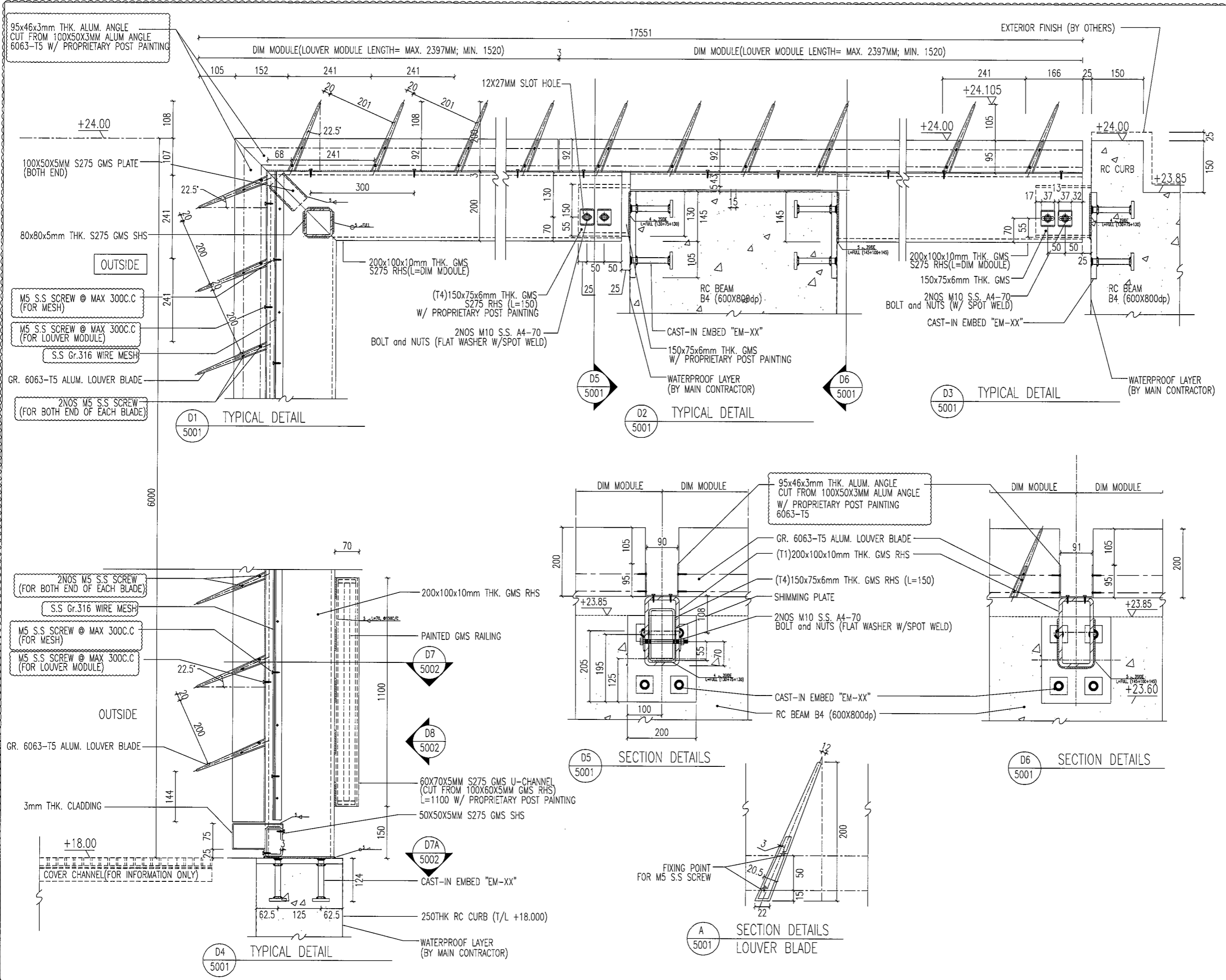
JOB NO. : J-836
 PROJECT : PROPOSED SITE C1 DEVELOPMENT AT AREA 86, TKOTL 70 RP, TSEUNG KWAN O, NEW TERRITORIES

TITLE : PART ELEV.

DATE : 17-04-2018 SCALE : 1:100
 DRAWN BY : CF CHECKED BY : DW

英特鋁質有限公司
MIDI ALUMINIUM FABRICATOR LTD.
 Units 6-8, Sunray Industrial Centre, 1/F
 610 Cha Kwo Ling Road, Kowloon
 Tel: 23489211-4 Fax: (852) 27727666

DWG NO. : J836-PE-3001 REV. : A



B.D. REF :

CLIENT : **MTR**
VENTURE SMART LIMITED

ARCHITECT : **P&T Architects and Engineers Ltd**
巴丹拿建築及工程師有限公司
www.p-t-group.com

MAIN CONTRACTOR : **CHINA OVERSEAS BUILDING CONSTRUCTION LTD.**

STRUCTURAL ENGINEER : **ARUP**

KWAN KWAN KEI
Chief Structural Engineer
REGISTERED STRUCTURAL ENGINEER

FACADE CONSULTANT : **MEIN-HARDT**

NOTE :

- ALL DIMENSIONS ARE IN mm.
- ALL ELEVATIONS ARE VIEWED FROM OUTSIDE.
- ALL DIMENSIONS TO BE VERIFIED ON SITE BEFORE FABRICATION.

LEGEND :

(X1) DETAIL MARK NO.
(X001) REFER SHEET NO.

- F.F.L. --- FINISHED FLOOR LEVEL
- S.F.L. --- STRUCTURAL FLOOR LEVEL
- (R) --- REVERSED DETAIL

B	17/04/2018	3RD SUBMISSION		
A	15/01/2018	2ND SUBMISSION		
	06/12/2017	INITIAL DRAWING		
NO.	DATE	REVISED	BY	

JOB NO. : J-836

PROJECT : PROPOSED SITE C1
DEVELOPMENT AT AREA B6,
TKOTL 70 RP, TSEUNG KWAN O,
NEW TERRITORIES

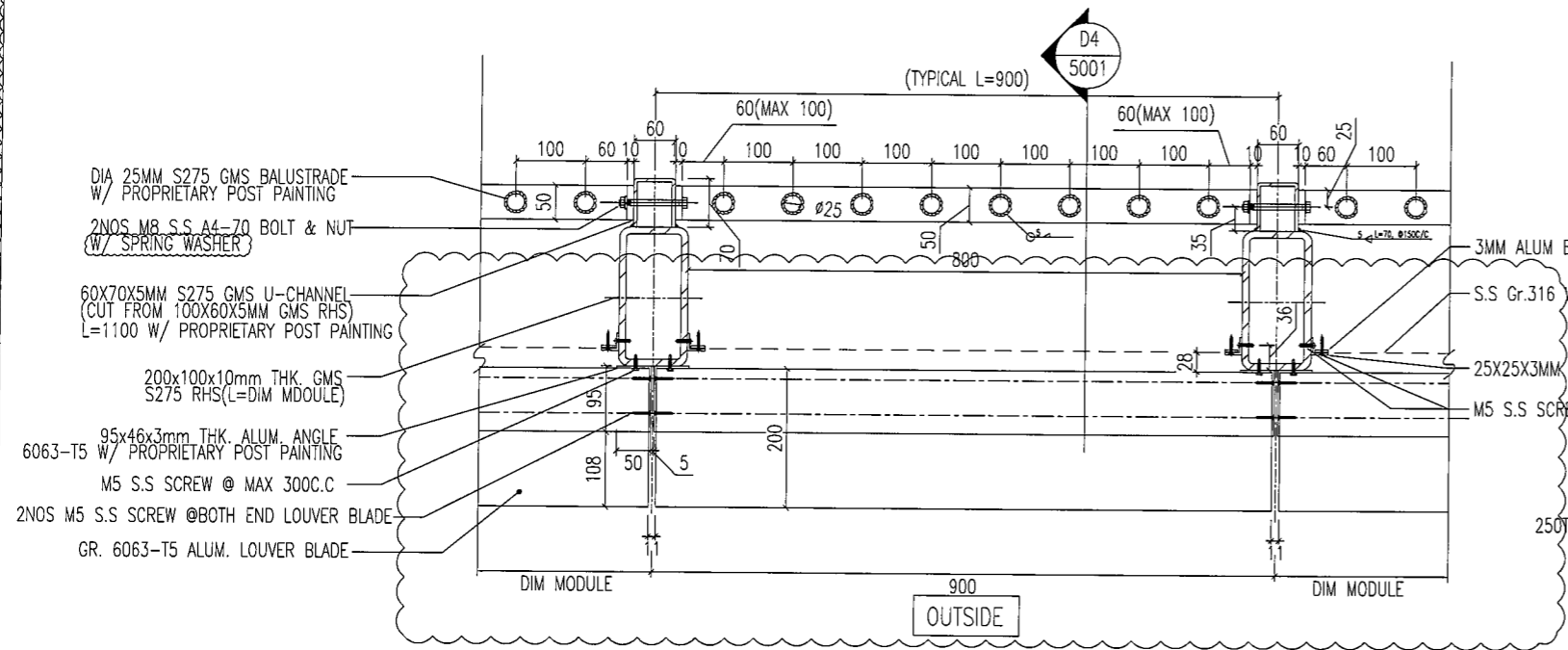
TITLE : TYPICAL DETAIL

DATE : 17-04-2018 SCALE : 1:10

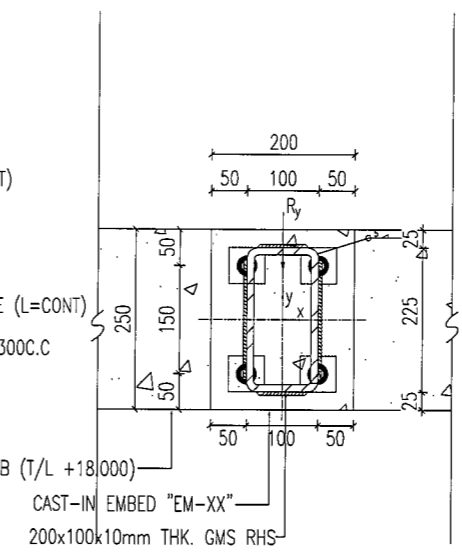
DRAWN BY : CF CHECKED BY : DW

美特鋁質有限公司
MIDI ALUMINIUM FABRICATOR LTD.
Units 6-8, Sunray Industrial Centre, 1/F
610 Cha Kwo Ling Road, Kowloon
Tel: 23489211-4 Fax: (852) 2727666

DWG NO. : J836-DT-5001 REV. : B



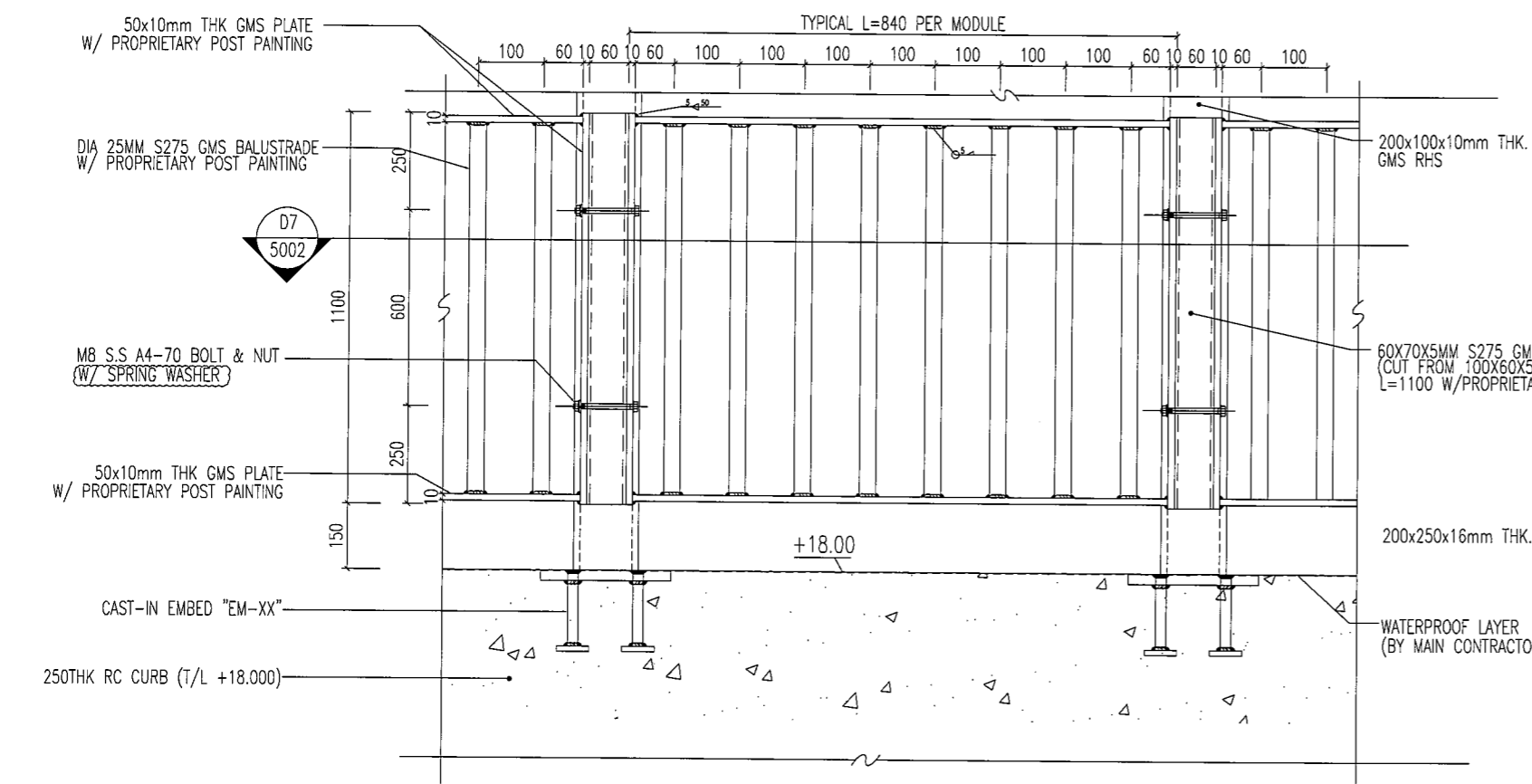
D4
5001
TYPICAL DETAIL



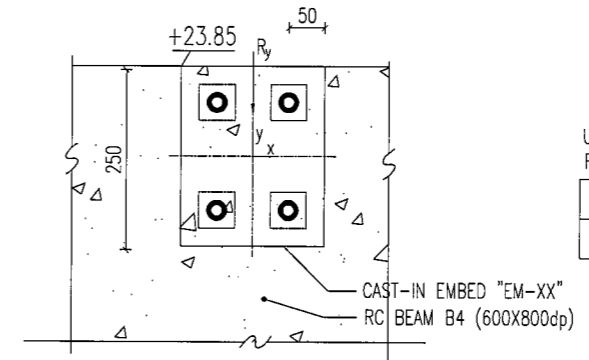
D7A
5002
TYPICAL DETAIL FOR MULLION RC SETTING OUT

UNFACTORED REACTION FOR MULLION BASE

R _y	5.73 KN
R _z	7.65 KN
M _x	0.2 KN.m
M _y	0.12 KN.m



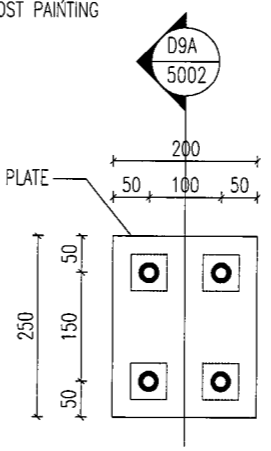
D8
5002
TYPICAL DETAIL



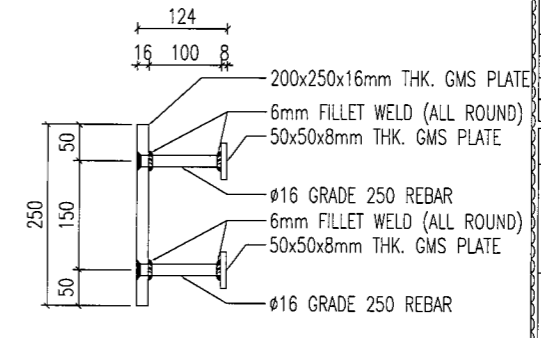
D9B
5002
TYPICAL DETAIL FOR TRANSOM RC SETTING OUT

UNFACTORED REACTION FOR TRANSOM

R _y	8.8 KN
M _x	1.02 KN.m



D9
5002
TYPICAL DETAIL CAST IN EMBED "EM-XX"



D9A
5002
SECTION DETAIL CAST IN EMBED "EM-XX"

B.D. REF :

CLIENT : **MTR**
VENTURE SMART LIMITED

ARCHITECT : **P&T Architects and Engineers Ltd**
巴丹丹拿建築及工程師有限公司

MAIN CONTRACTOR : **CHINA OVERSEAS BUILDING CONSTRUCTION LTD.**

STRUCTURAL ENGINEER : **ARUP**

KWAN KIN KEI
CEng FSIstrucE MICE FRIVE
REGISTERED STRUCTURAL ENGINEER

FACADE CONSULTANT : **MEINHARDT**

NOTE :

- ALL DIMENSIONS ARE IN mm.
- ALL ELEVATIONS ARE VIEWED FROM OUTSIDE.
- ALL DIMENSIONS TO BE VERIFIED ON SITE BEFORE FABRICATION.

LEGEND :

X1 - DETAIL MARK NO.
X001 - REFER SHEET NO.

- F.F.L. -- FINISHED FLOOR LEVEL
- S.F.L. -- STRUCTURAL FLOOR LEVEL
- (R) -- REVERSED DETAIL

B 17/04/2018	3RD SUBMISSION		
A 15/01/2018	2ND SUBMISSION		
- 06/12/2017	INITIAL DRAWING		
NO.	DATE	REVISED	BY

JOB NO. : J-836

PROJECT : PROPOSED SITE C1
DEVELOPMENT AT AREA 86,
TKOTL 70 RP, TSEUNG KWAN O,
NEW TERRITORIES

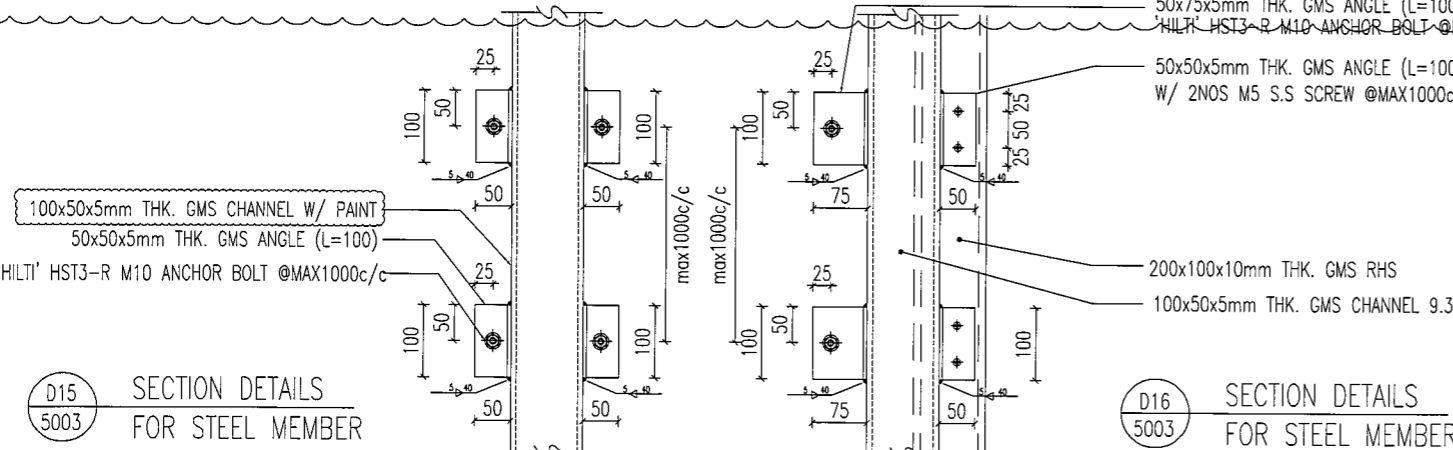
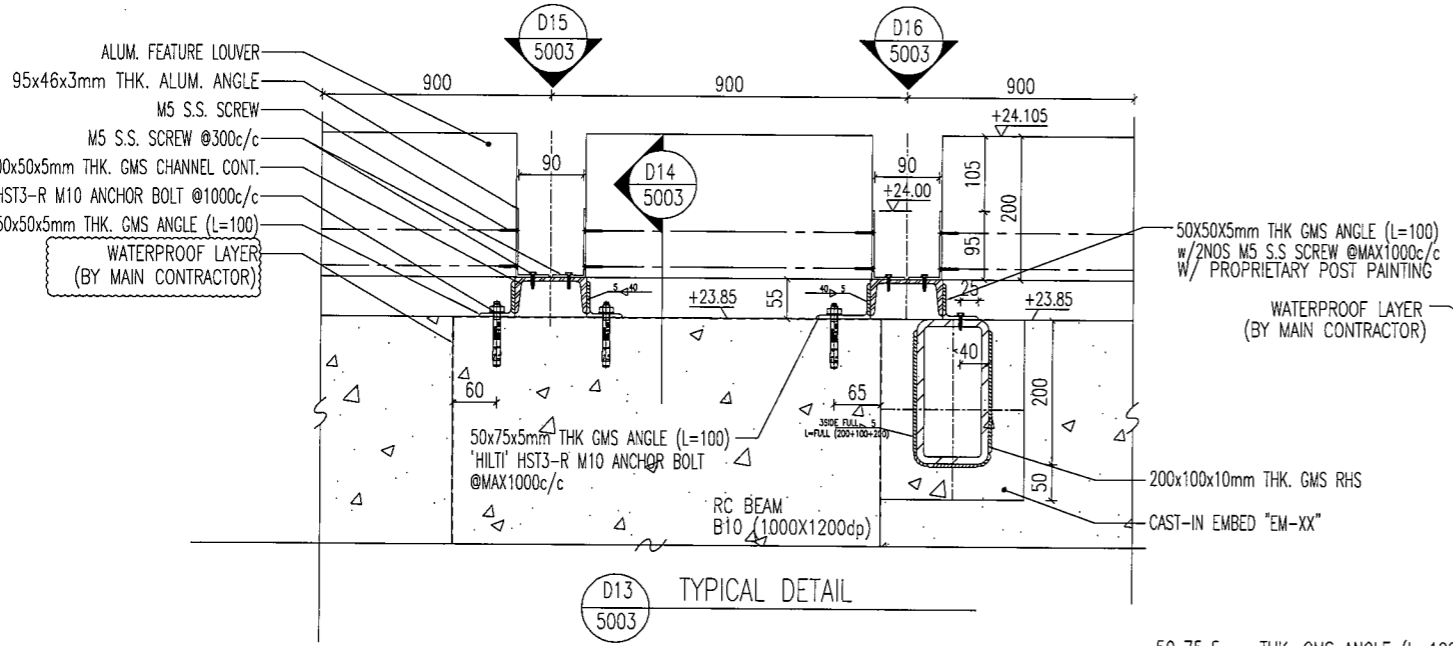
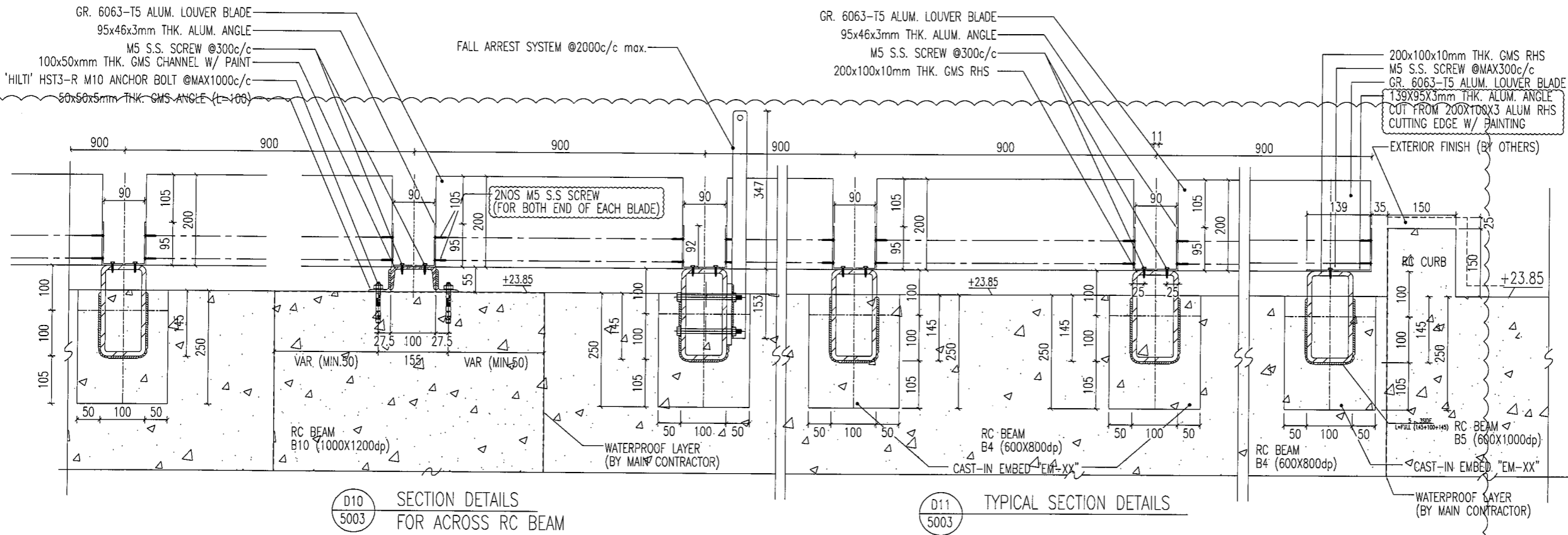
TITLE : TYPICAL DETAIL

DATE : 17-04-2018 SCALE : 1:10

DRAWN BY : CF CHECKED BY : DW

美特鋁質有限公司
MIDI ALUMINIUM FABRICATOR LTD.
Units 6-8, Sunroy Industrial Centre, 1/F
610 Cho Kwo Ling Road, Kowloon
Tel: 23489211-4 Fax: (852) 2772666

DWG NO. : J836-DT-5002 REV. : B



B.D. REF :

CLIENT : **MTR** VENTURE SMART LIMITED

ARCHITECT : **P&T Architects and Engineers Ltd** 巴丹拿建築及工程師有限公司

MAIN CONTRACTOR : **CHINA OVERSEAS BUILDING CONSTRUCTION LTD.**

STRUCTURAL ENGINEER : **ARUP**

KWAN KIN KEI
CEng, FIBRISTE, MICE, FRISTE,
REGISTERED STRUCTURAL ENGINEER

FACADE CONSULTANT : **MEINHARDT**

NOTE:
1. ALL DIMENSIONS ARE IN mm.
2. ALL ELEVATIONS ARE VIEWED FROM OUTSIDE.
3. ALL DIMENSIONS TO BE VERIFIED ON SITE BEFORE FABRICATION.

LEGEND:
X1 - DETAIL MARK NO.
X001 - REFER SHEET NO.

1. F.F.L. -- FINISHED FLOOR LEVEL
2. S.F.L. -- STRUCTURAL FLOOR LEVEL
3. (R) -- REVERSED DETAIL

A/17/04/2018	3RD SUBMISSION		
-15/01/2018	INITIAL DRAWING		
NO.	DATE	REVISED	BY

JOB NO. : J-836

PROJECT : PROPOSED SITE C1 DEVELOPMENT AT AREA 86, TKOTL 70 RP, TSEUNG KWAN O, NEW TERRITORIES

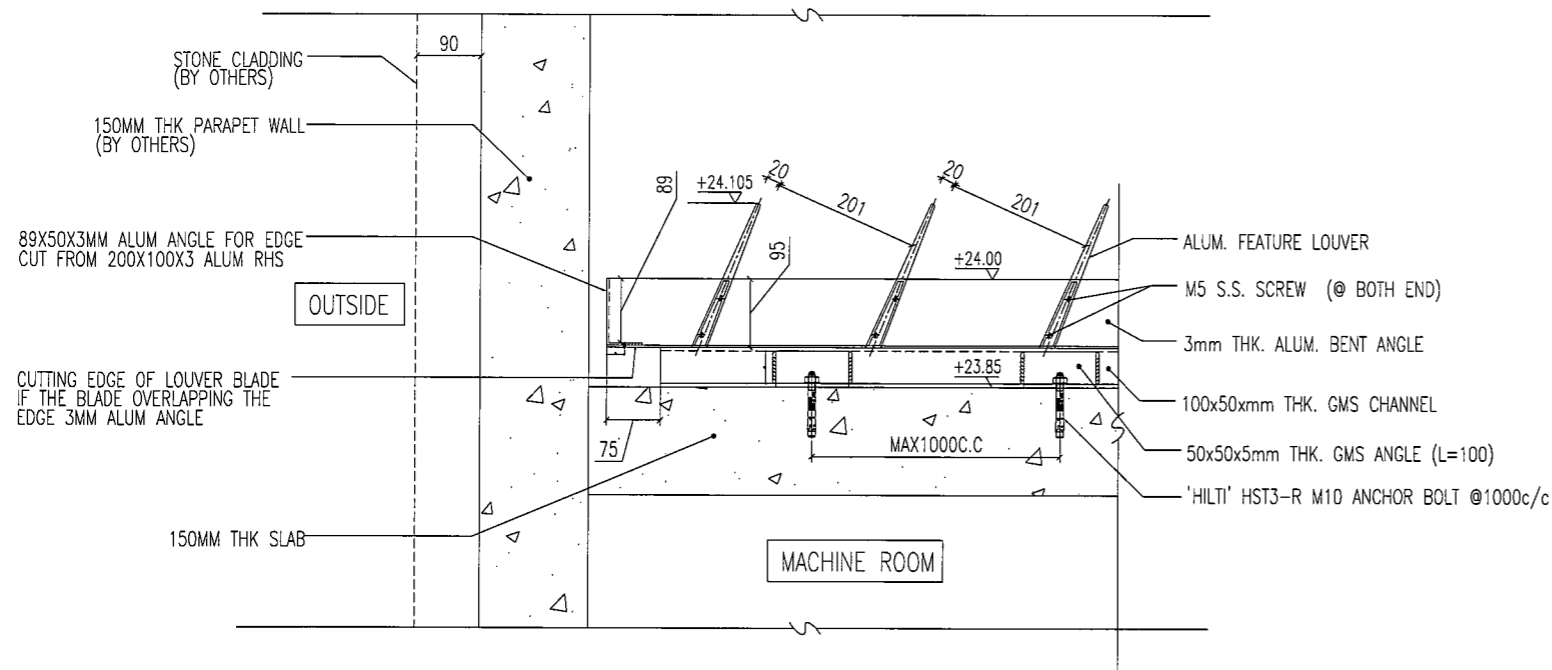
TITLE : TYPICAL DETAIL

DATE : 17-04-2018 SCALE : 1:10

DRAWN BY : CF CHECKED BY : DW

美特鋁質有限公司
MIDI ALUMINIUM FABRICATOR LTD.
Units 6-8, Sunray Industrial Centre, 1/F
610 Cha Kwo Ling Road, Kowloon
Tel: 23489211-4 Fax: (852) 2727666

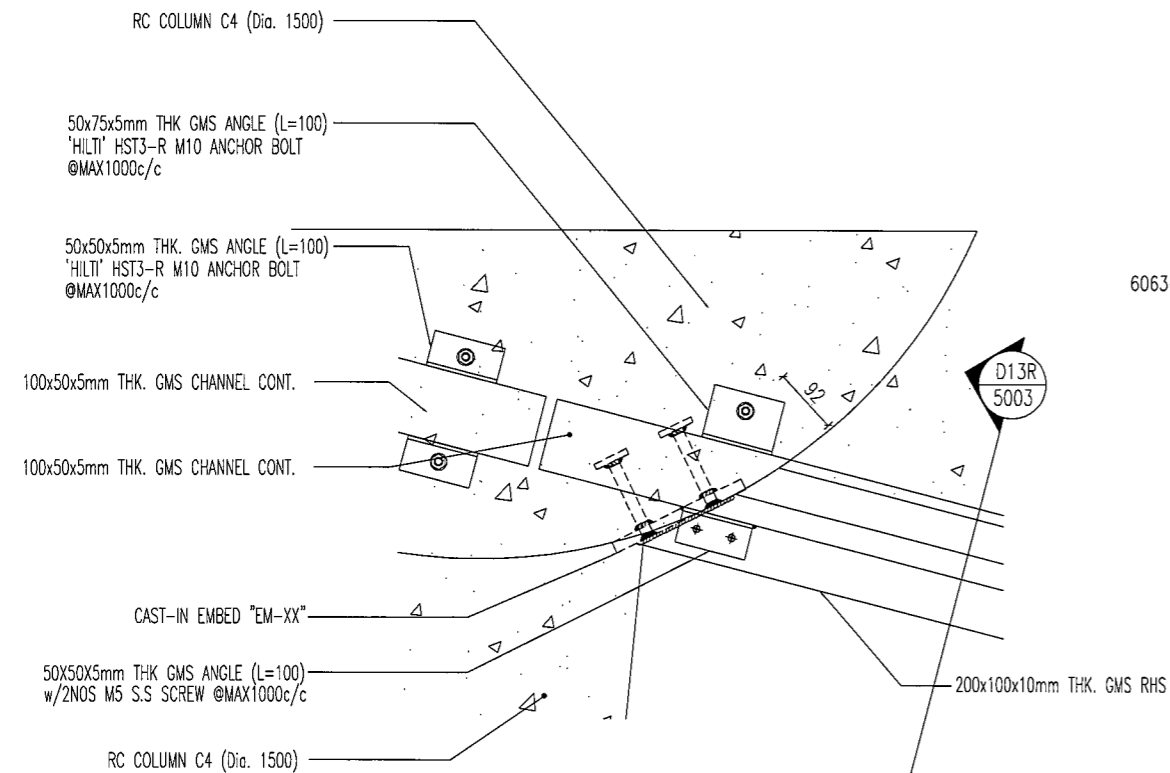
DWG NO. : J836-DT-5003 REV. : A



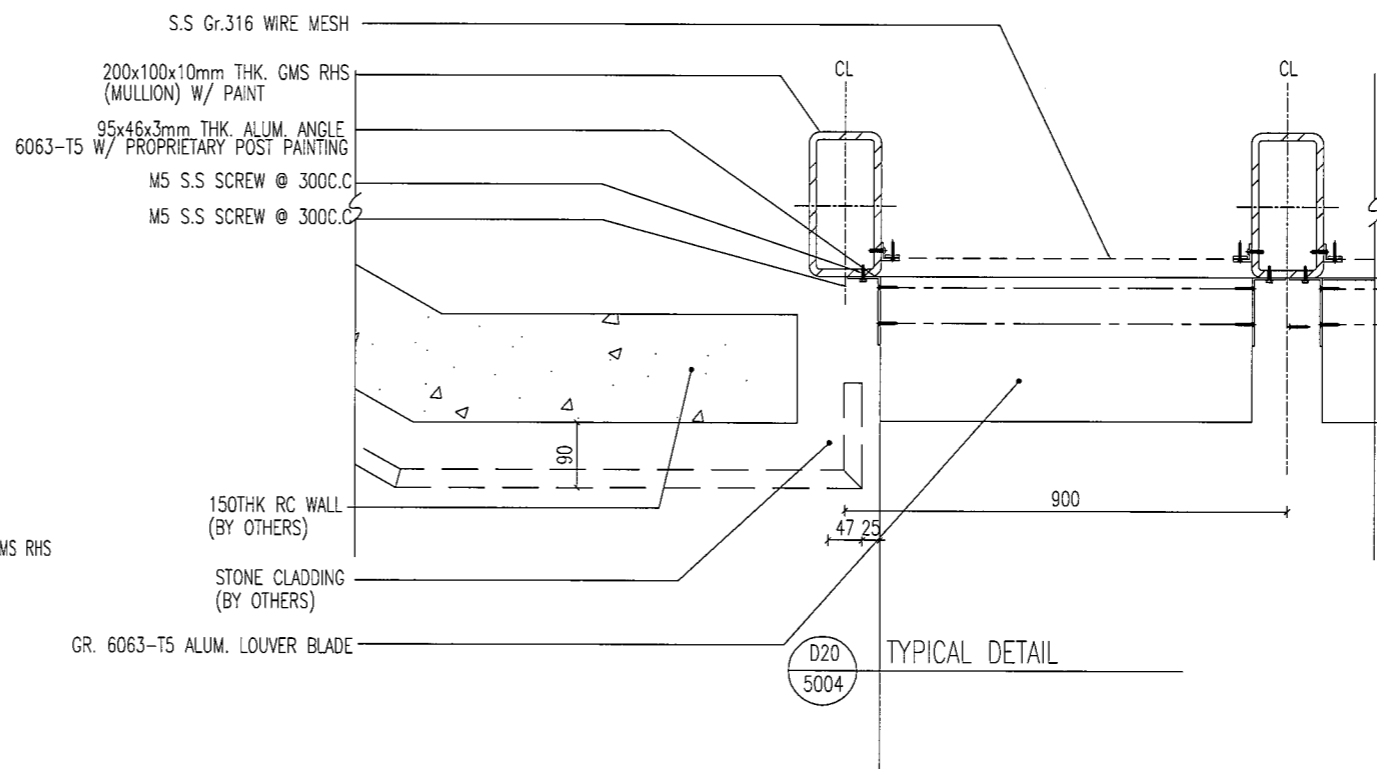
D17
5004
TYPICAL DETAIL

DESIGN NOT TO BE READY SINCE THE WATER LOADING
MAY NOT SATISFY CURRENT DESIGN
FURTHER STUDY MAY REQUIRE

D18
5004
TYPICAL DETAIL
FOR BLANK OFF



D19
5004
TYPICAL DETAIL



D20
5004
TYPICAL DETAIL

B.D. REF :

CLIENT :
MTR
VENTURE SMART LIMITED

ARCHITECT :
P&T Architects and Engineers Ltd
巴丹拿建築及工程師有限公司
www.p-t-group.com

MAIN CONTRACTOR :
CHINA OVERSEAS BUILDING CONSTRUCTION LTD.

STRUCTURAL ENGINEER :
ARUP

KWAN YIM KEI
CEng FSI/StrucE MICE FHKE
REGISTERED STRUCTURAL ENGINEER

FACADE CONSULTANT:
MEIN-HARDT

NOTE :
1. ALL DIMENSIONS ARE IN mm.
2. ALL ELEVATIONS ARE VIEWED FROM OUTSIDE.
3. ALL DIMENSIONS TO BE VERIFIED ON SITE BEFORE FABRICATION.

LEGEND :
X1 --- DETAIL MARK NO.
X001 --- REFER SHEET NO.
1. F.F.L. --- FINISHED FLOOR LEVEL
2. S.F.L. --- STRUCTURAL FLOOR LEVEL
3. (R) --- REVERSED DETAIL

17/04/2018 INITIAL DRAWING			
NO.	DATE	REVISED	BY

JOB NO. : J-836
PROJECT : PROPOSED SITE C1 DEVELOPMENT AT AREA B6, TKOTL 70 RP, TSEUNG KWAN O, NEW TERRITORIES

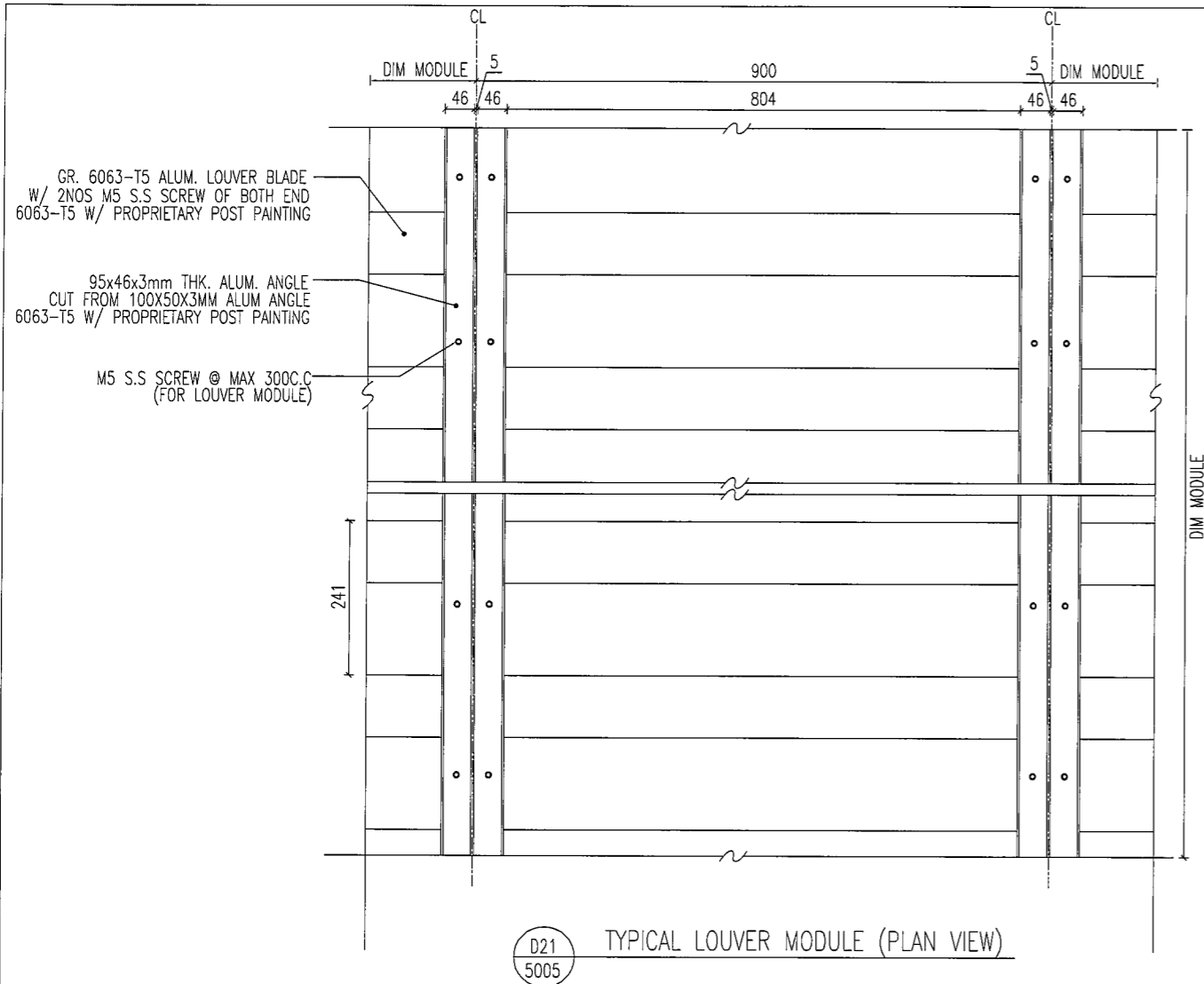
TITLE : TYPICAL DETAIL

DATE : 17-04-2018 SCALE : 1:10

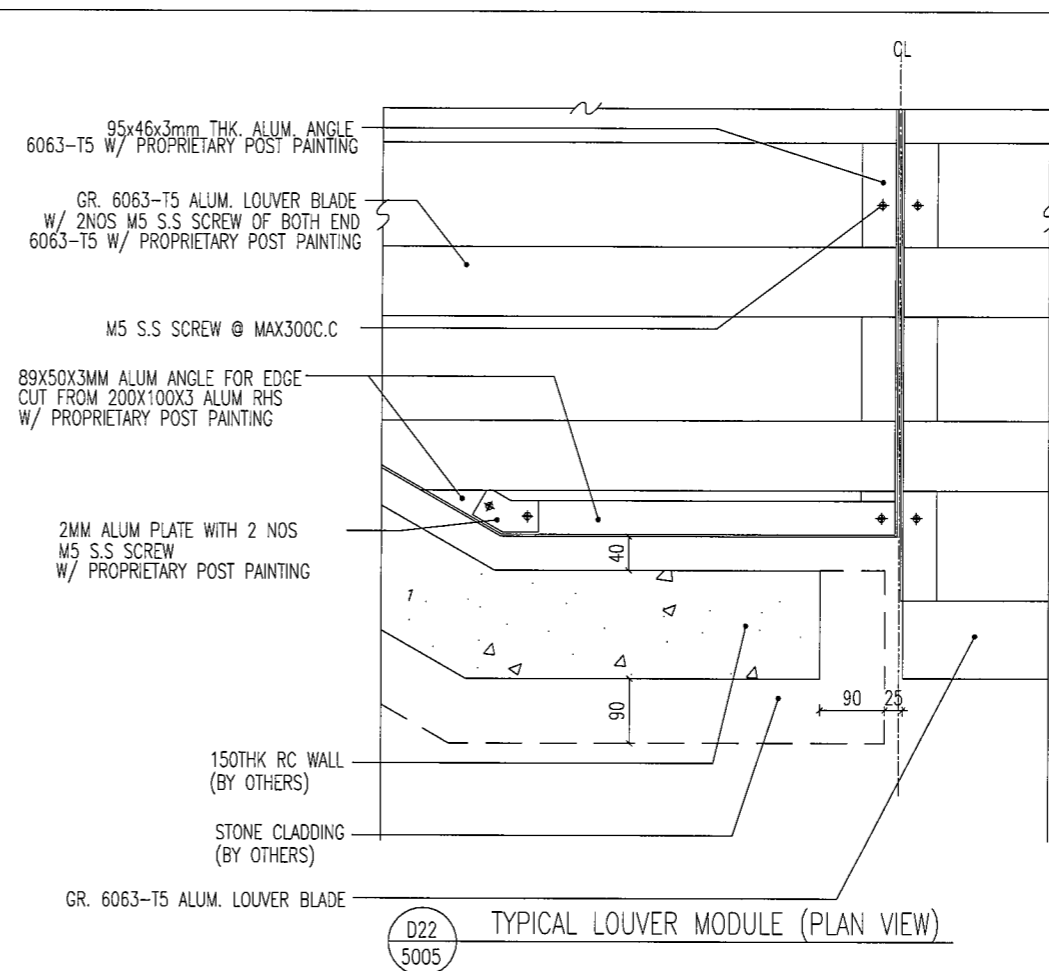
DRAWN BY : CF CHECKED BY : DW

美特鋁質有限公司
MIDI ALUMINIUM FABRICATOR LTD.
Units 6-8, Sunray Industrial Centre, 1/F
610 Cha Kwo Ling Road, Kowloon
Tel:23489211-4 Fax:(852)2727666

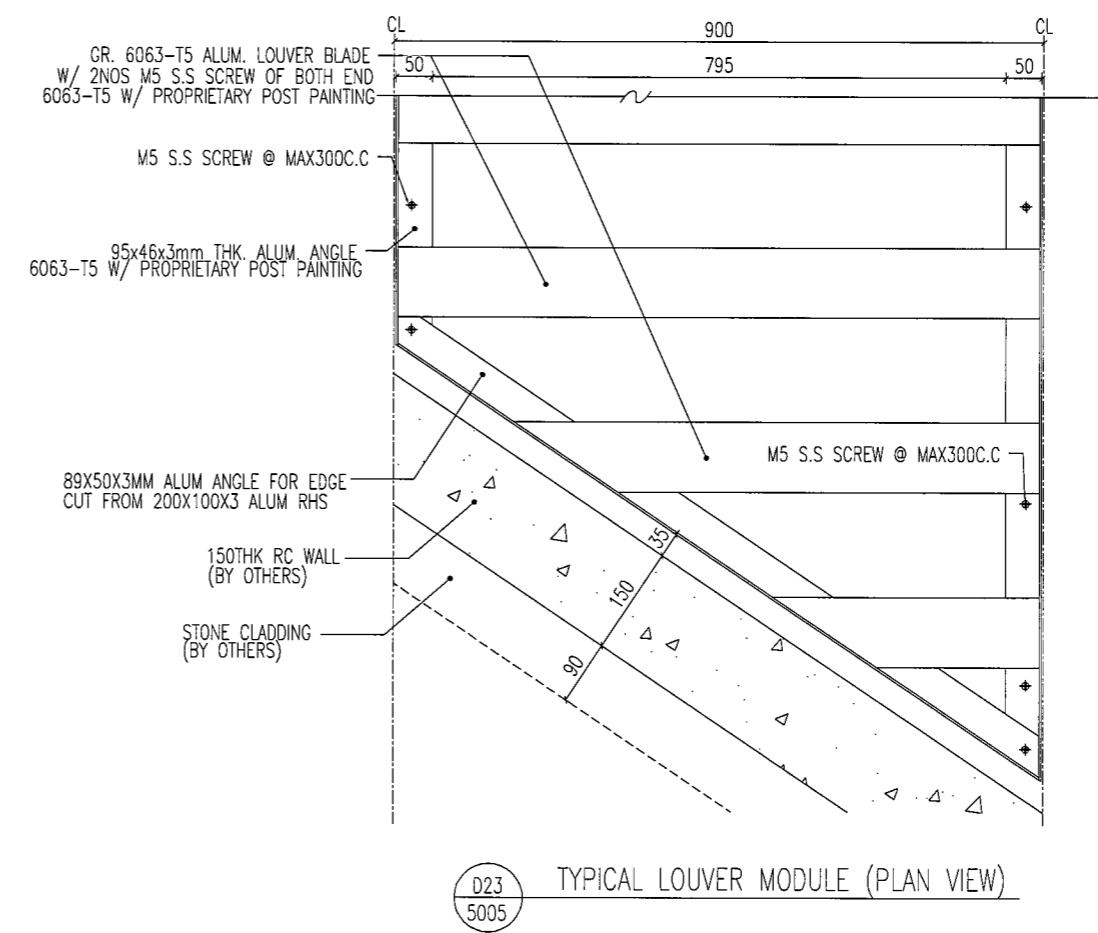
DWG NO. : J836-DT-5004 REV. : -



D21 5005 TYPICAL LOUVER MODULE (PLAN VIEW)



D22 5005 TYPICAL LOUVER MODULE (PLAN VIEW)



D23 5005 TYPICAL LOUVER MODULE (PLAN VIEW)

B.D. REF :

CLIENT : **MTR**
VENTURE SMART LIMITED

ARCHITECT : **P&T Architects and Engineers Ltd**
巴丹拿建築及工程師有限公司
www.p-t-group.com

MAIN CONTRACTOR : **CHINA OVERSEAS BUILDING CONSTRUCTION LTD.**

STRUCTURAL ENGINEER : **ARUP**

KWAN KWAN KEI
CEng, FSI, FICE, MICE, FHKIE
REGISTERED STRUCTURAL ENGINEER

FACADE CONSULTANT : **MEIN-HARDT**

NOTE :
1. ALL DIMENSIONS ARE IN mm.
2. ALL ELEVATIONS ARE VIEWED FROM OUTSIDE.
3. ALL DIMENSIONS TO BE VERIFIED ON SITE BEFORE FABRICATION.

LEGEND :
 (X1) --- DETAIL MARK NO.
 (X001) --- REFER SHEET NO.
 1. F.F.L. --- FINISHED FLOOR LEVEL
 2. S.F.L. --- STRUCTURAL FLOOR LEVEL
 3. (R) --- REVERSED DETAIL

- 17/04/2018 INITIAL DRAWING			
NO.	DATE	REVISED	BY

JOB NO. : J-836

PROJECT : PROPOSED SITE C1 DEVELOPMENT AT AREA 86, TKOTL 70 RP, TSEUNG KWAN O, NEW TERRITORIES

TITLE : TYPICAL DETAIL

DATE : 17-04-2018 SCALE : 1:10

DRAWN BY : CF CHECKED BY : DW

美特鋁質有限公司
MIDI ALUMINIUM FABRICATOR LTD.
Units 6-8, Sunray Industrial Centre, 1/F
610 Cha Kwo Ling Road, Kowloon
Tel: 23489211-4 Fax: (852) 27727666

DWG NO. : J836-DT-5005 REV. : -