



工程指示 / 要求簡箋(E.I.)

工程指示編號：EI/ 9482 /18

修改版次：

工程編號：JB26

工程名稱：日出康城 7期平台

工程項目：Sky light 鐵件拆圖

收件人：Maggie Lor

發件人：李耀鵬

日期：2018/7/5

要求提供 / 確認 事項：

- () 初步鋁料 B.M. () 加工拆圖，然後生產 () 尺寸表
- () 正式鋁料 B.M. () 技術上資料 / 指示 () 報價
- () 配件 B.M. () 樣辦或貨品說明書 () 分判合約
- () 其他：_____

內容：

請安排強記拆 sky light 鐵件
(Embed 不用拆，其它鐵架拆)

先提供拆圖，待地盤覆足及批核後方可進行加工

請在 2018/7/19 前完成上列要求。

附有關圖紙 / 文件：

Sky light 拆工圖 1份 (CAD檔及電郵給華哥)

以上項目為：

- 原合約工程包 原合約工程加 / 減賬 新工程報價

原因：-

分發東莞各部門：

- () 生產技術總監 連附件 () 技術部 連附件 () 生產部 連附件 () 機械設計部 連附件
- () 採購部 連附件 () 生產統籌部 連附件
- () 質檢部 連附件 () 會計部 連附件 () 報關組 連附件 () 其他 _____ 連附件

分發香港各部門：

- () 行政部 連附件 () 會計部 連附件 () 統籌部 連附件 () 工程部地盤科文 連附件
- () 採購部 連附件 () QS 部 連附件 () 維修部 連附件 () 其他 _____ 連附件

傳遞編號：

發件人簽署：

項目經理簽署：

PROJECT :

4

PROPOSED SITE C1
DEVELOPMENT AT AREA 86,
TKOTL 70 RP, TSEUNG KWAN O, N.T.

SHOP DRAWING For SKYLIGHT AT 4/F
SKYLIGHT AT PODIUM ROOF

DATE: 30-May-2018

 美特鋁質有限公司
MIDI ALUMINIUM FABRICATOR LTD.
Units 6-8, Sunray Industrial Centre, 1/F
610 Cha Kwo Ling Road, Kowloon
Tel:23489211-4 Fax:(852)27727666

DWG NO. : J836-CP-0000

REV. : C

DRAWING SUBMISSION REGISTER

PROJECT: PROPOSED SITE C1 DEVELOPMENT AT AREA 86, TKOTL 70 RP, TSEUNG KWAN O, N.T.	DATE OF ISSUE					SUBMISSION STATE (FOR B.D / A.S.D)	SUBMISSION STATE (FOR CLIENT / CONSULTANT)	SUBMISSION STATE (FOR ARCHITECT)	FABRICATION / CONSTRUCTION STATE												
	ISSUE	01	02	03	04	AP - APPROVED AC - APPROVED SUB. TO CONDITION NA - NOT APPROVED	AP - APPROVED AC - APPROVED SUB. TO CONDITION NA - NOT APPROVED	AP - APPROVED AC - APPROVED SUB. TO CONDITION NA - NOT APPROVED	ISSUE TO CHINA OFFICE		ISSUE TO SITE		ISSUE TO SUB-CONTRACTOR								
	DAY	30	05	12	30																
	MONTH	11	12	03	05																
	YEAR	17	17	18	18																
DRAWING TITLE	DWG. NO.	REVISIONS				COMMENT DATE	REV.	STATE	COMMENT DATE	REV.	STATE	COMMENT DATE	REV.	STATE	REV.	DATE	REV.	DATE	REV.	DATE	
COVER PAGE	J836-CP-0000	-	A	B	C																
DRAWING REGISTER	J836-DL-0001	-	A	B	C																
GENERAL NOTES	J836-GN-0002	-	A	B	C																
CAST-IN EMBED FOR SKYLIGHT AT 4/F & PODIUM ROOF	J836-EM-1001	-	A	B	B																
PART PLAN OF SKYLIGHT AT 4/F	J836-SL-2001	-	A	B	C																
PART PLAN OF SKYLIGHT CAST-IN EMBED AT 4/F	J836-SL-2002	-	A	B	C																
PART PLAN OF SKYLIGHT CAST-IN EMBED AT PODIUM ROOF	J836-SL-2003	-	A	B	C																
PART PLAN OF SKYLIGHT CAST-IN EMBED AT PODIUM ROOF	J836-SL-2004	-	A	B	C																
PART PLAN OF SKYLIGHT CAST-IN EMBED (EM-S1 ONLY) AT PODIUM ROOF	J836-SL-2004A	/	/	/	-																
SECTION DETAILS	J836-DT-5001	-	A	B	C																
SECTION DETAILS	J836-DT-5002	-	A	B	C																
SECTION DETAILS	J836-DT-5003	/	-	A	B																
TOTAL PAGES: (INCLUDING COVERPAGE AND DRAWING SUBMISSION REGISTER)		10	11	11	12																

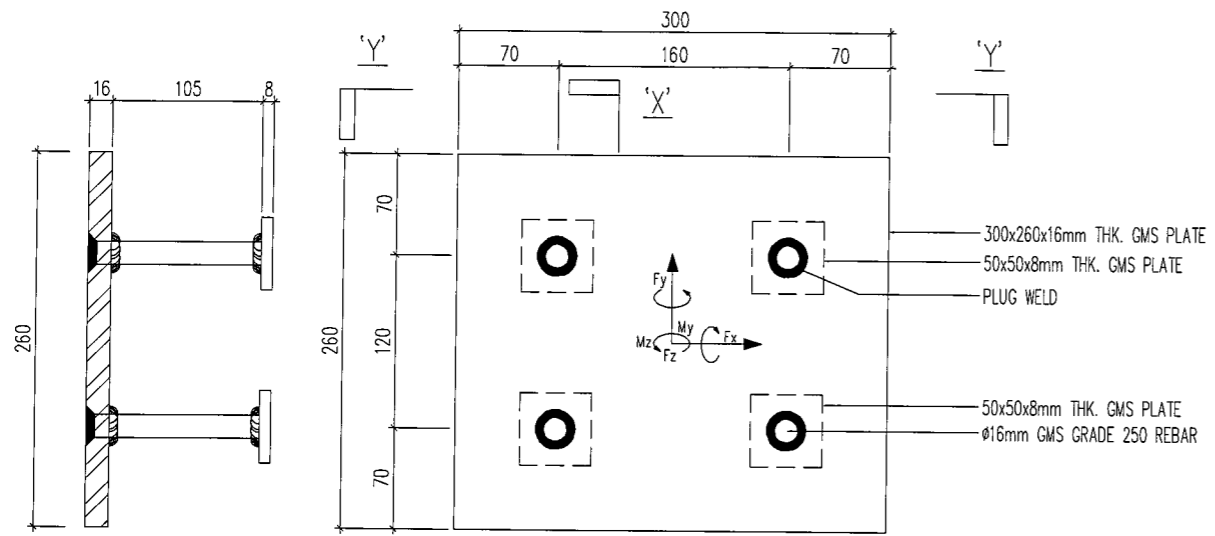
IN-HOUSE DESIGN CHECKER



Units 6-8, Sunray Industrial Centre, 1/F
610 Cha Kwo Ling Road, Kowloon
Tel: 23489211-4 Fax: (852)2727666

DWG NO. : J836-DL-0001 REV. : C

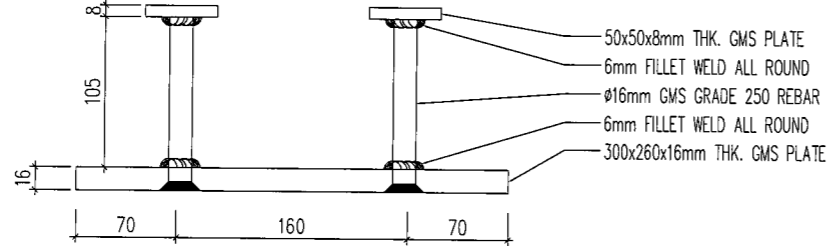
T:\Jobs\J-836\Design Engineer\Shop Drawing\SKYLIGHT\4th Submission\J836-SKYLIGHT\4th SHOP DRAWING_20180530.dwg, Model



SECTION DETAILS 'X-X'

MAXIMUM UNFACTORED LOADING ON CAST-IN EMBED	
Triangle Skylight (4/F)	
F _x (kN)	-
F _y (kN)	64.43
F _z (kN)	-
M _x (kN.m)	0.97
M _y (kN.m)	-
MAXIMUM UNFACTORED LOADING ON CAST-IN EMBED	
Ellipse Skylight (PODIUM ROOF)	
F _x (kN)	-
F _y (kN)	37.74
F _z (kN)	-
M _x (kN.m)	0.57
M _y (kN.m)	-

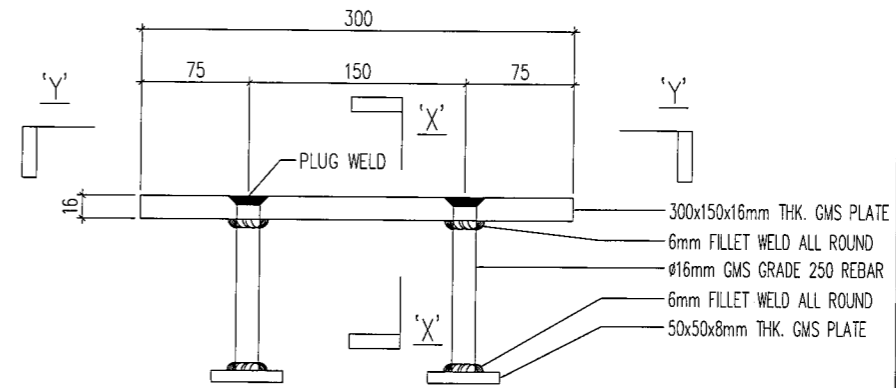
SECTION DETAILS 'Y-Y'



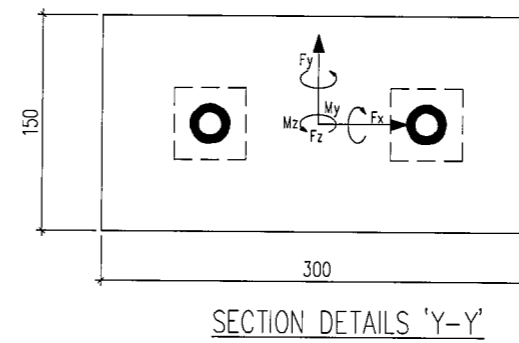
SECTION DETAILS 'Y-Y'

SECTION DETAILS 'X-X'

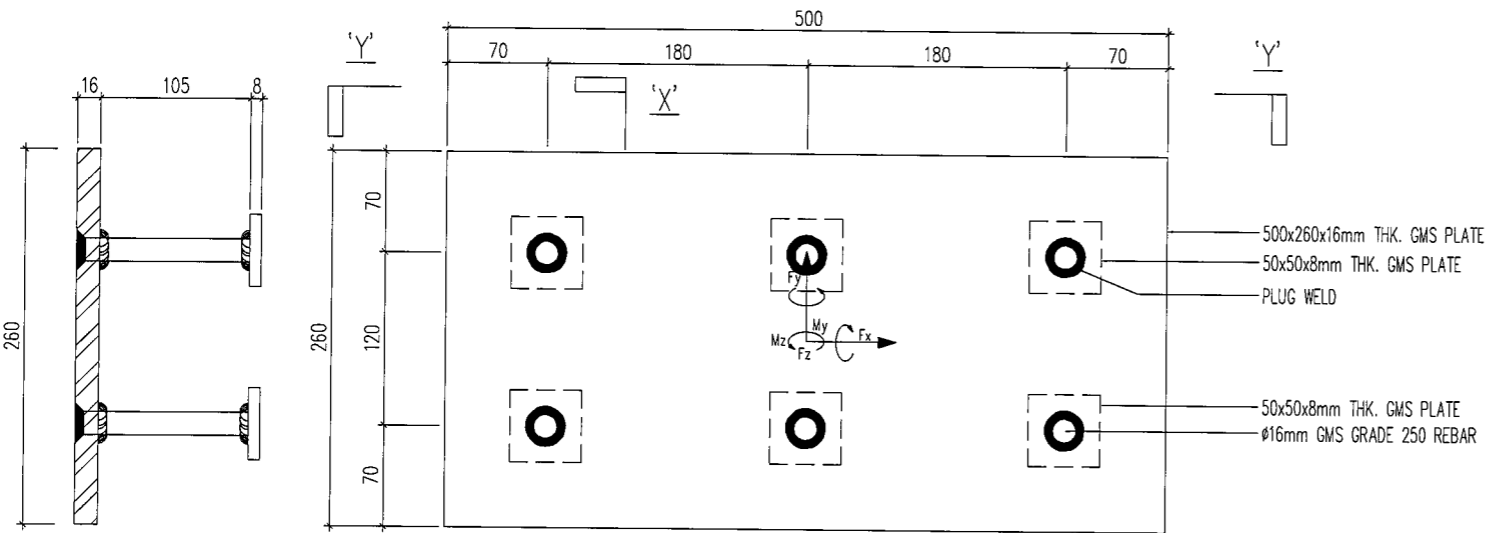
MAXIMUM UNFACTORED LOADING ON CAST-IN EMBED	
F _x (kN)	-
F _y (kN)	-
F _z (kN)	8.24
M _x (kN.m)	0.12
M _y (kN.m)	0.12



CAST-IN EMBED FOR SKYLIGHT TYPE 'EM-S1'



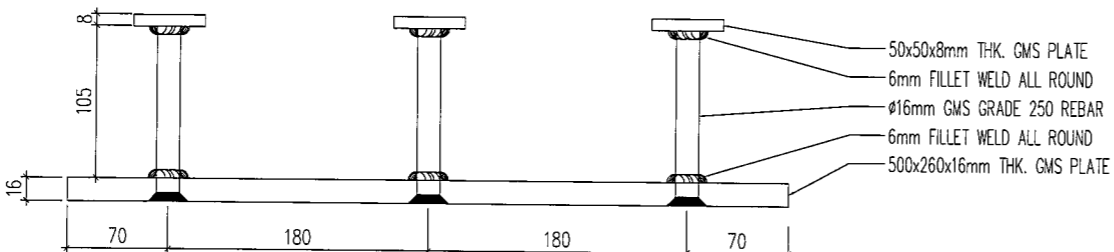
SECTION DETAILS 'Y-Y'



SECTION DETAILS 'X-X'

MAXIMUM UNFACTORED LOADING ON CAST-IN EMBED	
Triangle Skylight (4/F)	
F _x (kN)	-
F _y (kN)	64.43
F _z (kN)	-
M _x (kN.m)	0.97
M _y (kN.m)	-

SECTION DETAILS 'Y-Y'



SECTION DETAILS 'Y-Y'

B.D. REF :

CLIENT : MTR

ARCHITECT : P&T Architects and Engineers Ltd
巴丹拿建築及工程師有限公司

MAIN CONTRACTOR : CHINA OVERSEAS BUILDING CONSTRUCTION LTD.

STRUCTURAL ENGINEER : ARUP

KWAN KIN KEI
Eng PStructE MICE FHKIE
REGISTERED STRUCTURAL ENGINEER

NOTE :
1. ALL DIMENSIONS ARE IN mm.
2. ALL ELEVATIONS ARE VIEWED FROM OUTSIDE.
3. ALL DIMENSIONS TO BE VERIFIED ON SITE BEFORE FABRICATION.

LEGEND :
 X1 --- DETAIL MARK NO.
 X001 --- REFER SHEET NO.
1. F.F.L. --- FINISHED FLOOR LEVEL
2. S.F.L. --- STRUCTURAL FLOOR LEVEL
3. R --- REVERSED DETAIL

NO.	DATE	REVISED	BY

JOB NO. : J-836
PROJECT : PROPOSED SITE C1 DEVELOPMENT AT AREA 86, TKOTL 70 RP, TSEUNG KWAN O, NEW TERRITORIES

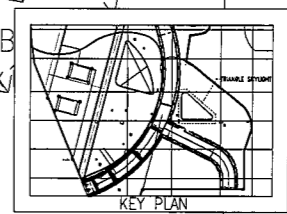
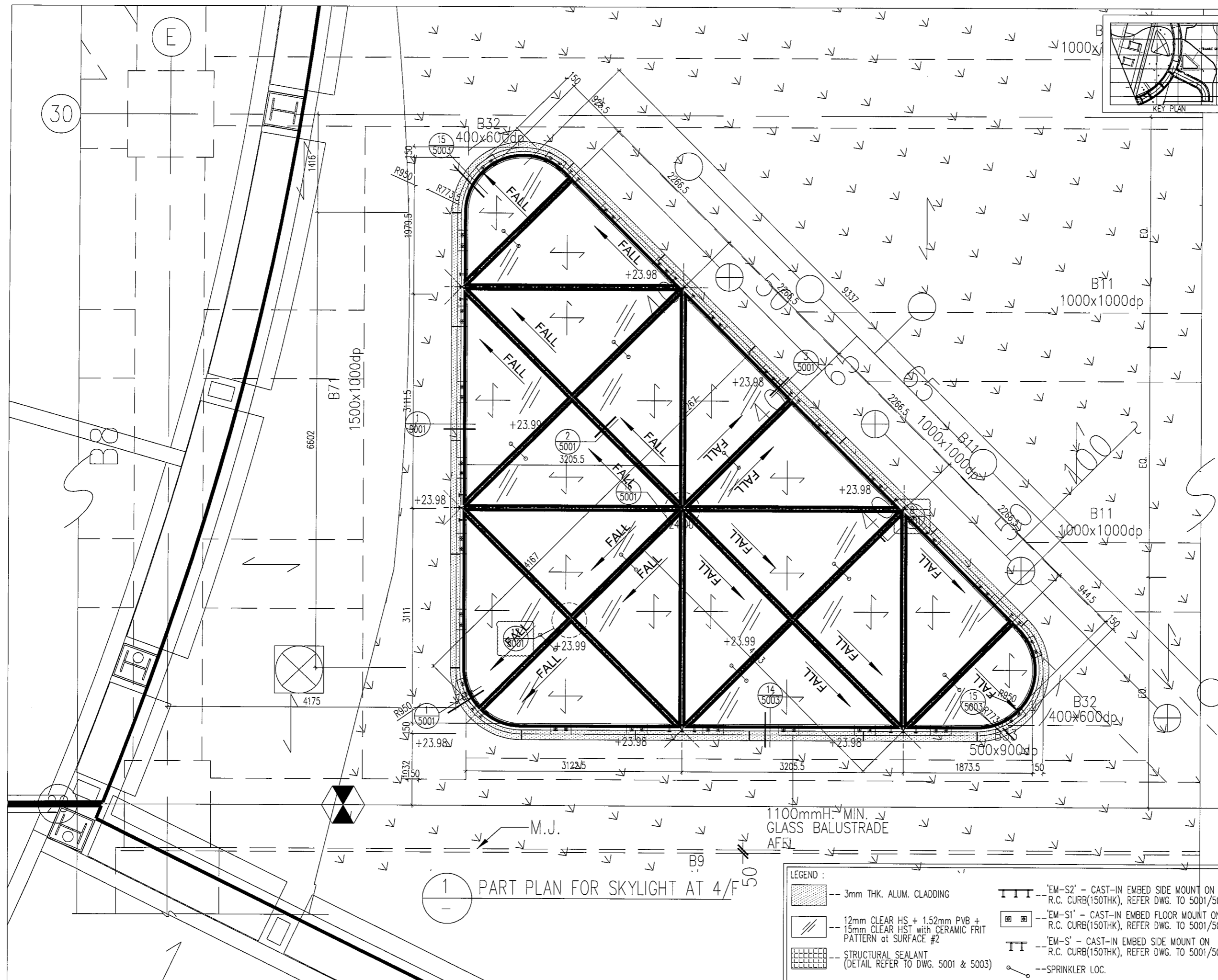
TITLE : CAST-IN EMBED FOR SKYLIGHT AT 4/F & PODIUM ROOF

DATE : 23-OCT-17 SCALE : 1:40

DRAWN BY : MN CHECKED BY : DW

美特鋁質有限公司
MIDI ALUMINIUM FABRICATOR LTD.
Units 6-8, Sunray Industrial Centre, 1/F
610 Cha Kwo Ling Road, Kowloon
Tel: 23489211-4 Fax: (852)2727666

DWG NO. : J836-EM-1001 REV. : B



B.D. REF :

CLIENT : **MTR**

ARCHITECT : **P&T Architects and Engineers Ltd**
 巴丹拿建築及工程師有限公司

MAIN CONTRACTOR : **CHINA OVERSEAS BUILDING CONSTRUCTION LTD.**

STRUCTURAL ENGINEER : **ARUP**

KWAN KIN KEI
 CEng FStructE MICE FWKE
 REGISTERED STRUCTURAL ENGINEER

NOTE :
 1. ALL DIMENSIONS ARE IN mm.
 2. ALL ELEVATIONS ARE VIEWED FROM OUTSIDE.
 3. ALL DIMENSIONS TO BE VERIFIED ON SITE BEFORE FABRICATION.

LEGEND :
 X1 --- DETAIL MARK NO.
 X001 --- REFER SHEET NO.
 1. F.F.L. --- FINISHED FLOOR LEVEL
 2. S.F.L. --- STRUCTURAL FLOOR LEVEL
 3. (R) --- REVERSED DETAIL

NO.	DATE	REVISED	BY

JOB NO. : J-836
 PROJECT : PROPOSED SITE C1 DEVELOPMENT AT AREA 86, TKO7L 70 RP, TSEUNG KWAN O, NEW TERRITORIES

TITLE : PART PLAN FOR SKYLIGHT AT 4/F

DATE : 23-OCT-17 SCALE : 1:40
 DRAWN BY : MN CHECKED BY : DW

英特鋁質有限公司
MIDI ALUMINIUM FABRICATOR LTD.
 Units 6-8, Sunray Industrial Centre, 1/F
 610 Cha Kwo Ling Road, Kowloon
 Tel: 23489211-4 Fax: (852)2727666

DWG NO. : J836-SL-2001 REV. : C

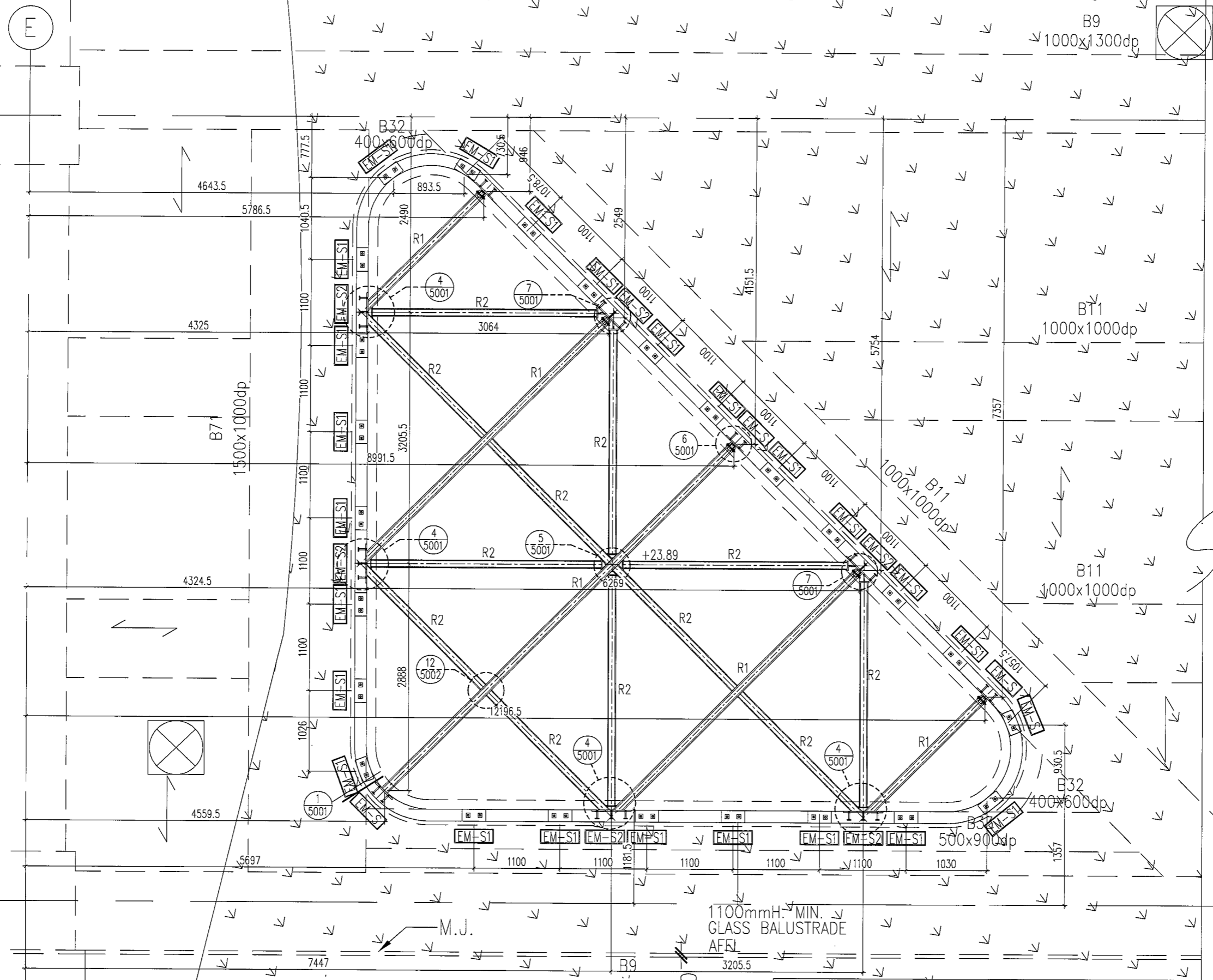
1 PART PLAN FOR SKYLIGHT AT 4/F

LEGEND :

	-- 3mm THK. ALUM. CLADDING		-- 'EM-S2' - CAST-IN EMBED SIDE MOUNT ON R.C. CURB(150THK), REFER DWG. TO 5001/5003
	-- 12mm CLEAR HS + 1.52mm PVB + 15mm CLEAR HST with CERAMIC FRIT PATTERN at SURFACE #2		-- 'EM-S1' - CAST-IN EMBED FLOOR MOUNT ON R.C. CURB(150THK), REFER DWG. TO 5001/5003
	-- STRUCTURAL SEALANT (DETAIL REFER TO DWG. 5001 & 5003)		-- 'EM-S' - CAST-IN EMBED SIDE MOUNT ON R.C. CURB(150THK), REFER DWG. TO 5001/5003
			-- SPRINKLER LOC.

30

29



2 PART PLAN FOR SKYLIGHT AT 4/F
 - CAST-IN EMBED & STEEL MEMBER ONLY

LEGEND :

EM-S2 [---] --- 'EM-S2' - CAST-IN EMBED (DETAIL REFER DWG. TO 1001)

EM-S1 [□] --- 'EM-S1' - CAST-IN EMBED (DETAIL REFER DWG. TO 1001)

EM-S [---] --- 'EM-S' - CAST-IN EMBED (DETAIL REFER DWG. TO 1001)

R1 -- 200x100x16mm THK. GMS RHS R2 -- 200x100x10mm THK. GMS RHS

B.D. REF :

CLIENT :

MTR

ARCHITECT :

P&T Architects and Engineers Ltd
 巴丹拿建築及工程師有限公司

MAIN CONTRACTOR :

CHINA OVERSEAS BUILDING CONSTRUCTION LTD.

STRUCTURAL ENGINEER :

ARUP

KWAN KIN KEI
 Eng. F.S.T.R.U.E. M.C.E. F.H.K.E.
 REGISTERED STRUCTURAL ENGINEER

NOTE :

- ALL DIMENSIONS ARE IN mm.
- ALL ELEVATIONS ARE VIEWED FROM OUTSIDE.
- ALL DIMENSIONS TO BE VERIFIED ON SITE BEFORE FABRICATION.

LEGEND :

X1 --- DETAIL MARK NO.
 X00 --- REFER SHEET NO.

- F.F.L. --- FINISHED FLOOR LEVEL
- S.F.L. --- STRUCTURAL FLOOR LEVEL
- ⊗ --- REVERSED DETAIL

NO.	DATE	REVISED	BY

JOB NO. : J-836

PROJECT : PROPOSED SITE C1 DEVELOPMENT AT AREA 86, TKOTL 70 RP, TSEUNG KWAN O, NEW TERRITORIES

TITLE : PART PLAN FOR SKYLIGHT CAST-IN EMBED AT 4/F

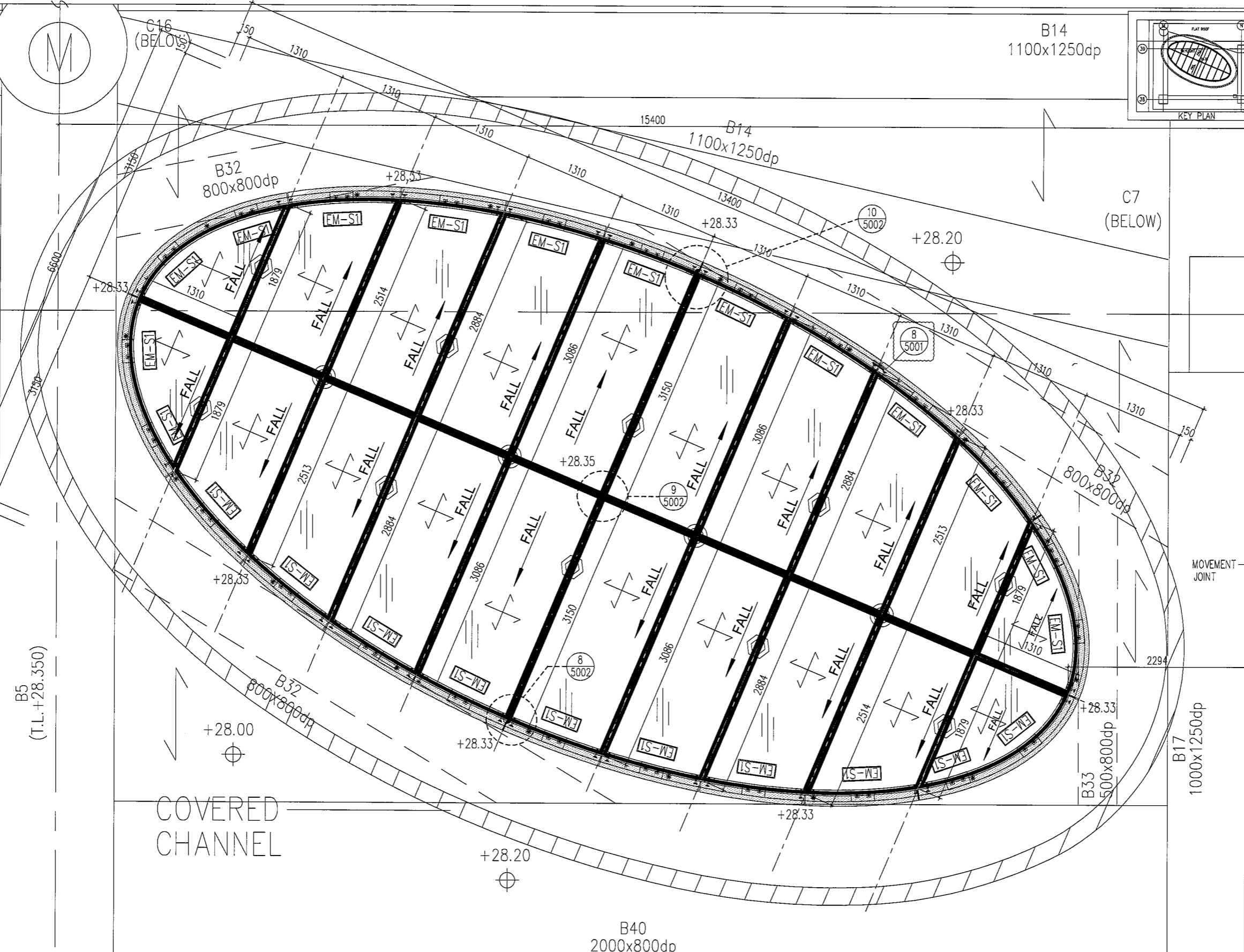
DATE : 23-OCT-17 SCALE : 1:40

DRAWN BY : MN CHECKED BY : DW

美特鋁質有限公司
MIDI ALUMINIUM FABRICATOR LTD.
 Units 6-8, Sunray Industrial Centre, 1/F
 610 Cho Kwo Ling Road, Kowloon
 Tel: 23489211-4 Fax: (852)2727666

DWG NO. : JB36-SL-2002 REV. : C

39



B5
(T.L.+28.350)

COVERED CHANNEL

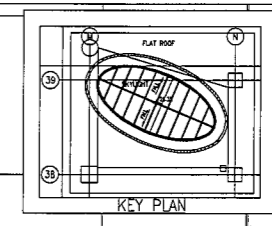
C4
(BELOW)

3 PART PLAN FOR SKYLIGHT AT PODIUM ROOF

LEGEND :	
	-- 3mm THK. ALUM. CLADDING
	-- 12mm CLEAR HS + 1.52mm PVB + 15mm CLEAR HST with CERAMIC FRIT PATTERN at SURFACE #2
	-- STRUCTURAL SEALANT (DETAIL REFER TO DWG. 5002)
	-- 'EM-S2' - CAST-IN EMBED SIDE MOUNT ON R.C. CURB(150THK), REFER DWG. TO 5002
	-- 'EM-S1' - CAST-IN EMBED FLOOR MOUNT ON R.C. CURB(150THK), REFER DWG. TO 5002
	-- SPRINKLER LOC.
	-- EYE BOLT LOC.
	-- RESTRAINT SOCKET LOCATION

B27

C7
(BELOW)



B.Q. REF :

CLIENT : **MTR**

ARCHITECT : **P&T Architects and Engineers Ltd**
巴丹拿建築及工程師有限公司

MAIN CONTRACTOR : **CHINA OVERSEAS BUILDING CONSTRUCTION LTD.**

STRUCTURAL ENGINEER : **ARUP**

KWAN YIM KEI
CENT. FIS/STRUCT. MICE FH/KE
REGISTERED STRUCTURAL ENGINEER

NOTE :

- ALL DIMENSIONS ARE IN mm.
- ALL ELEVATIONS ARE VIEWED FROM OUTSIDE.
- ALL DIMENSIONS TO BE VERIFIED ON SITE BEFORE FABRICATION.

LEGEND :

X1 -- DETAIL MARK NO.
X001 -- REFER SHEET NO.

- F.F.L. -- FINISHED FLOOR LEVEL
- S.F.L. -- STRUCTURAL FLOOR LEVEL
- (R) -- REVERSED DETAIL

NO.	DATE	REVISED	BY

JOB NO. : J-836

PROJECT : PROPOSED SITE C1 DEVELOPMENT AT AREA 86, TKOTL 70 RP, TSEUNG KWAN O, NEW TERRITORIES

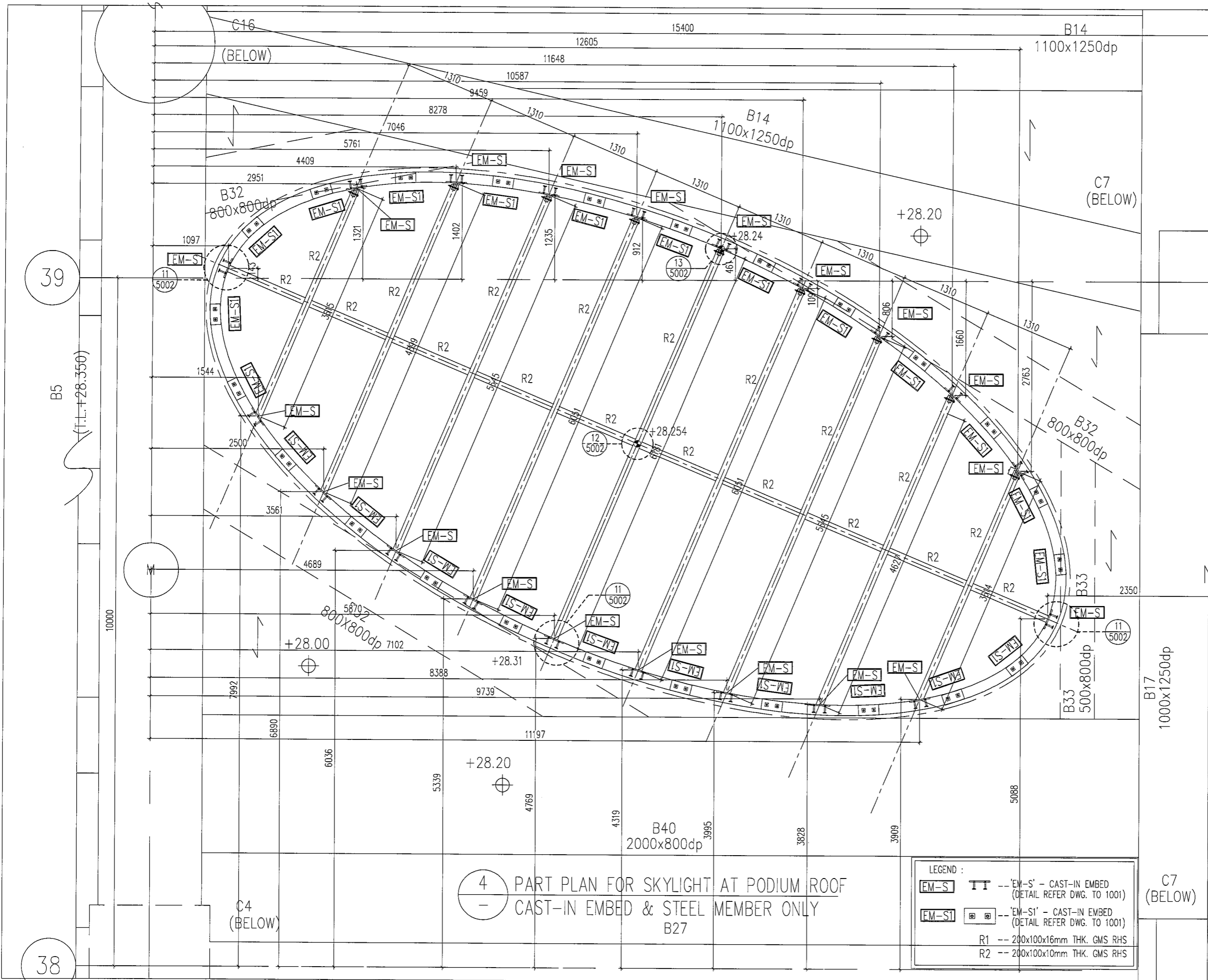
TITLE : PART PLAN FOR SKYLIGHT AT PODIUM ROOF

DATE : 23-OCT-17 SCALE : 1:40

DRAWN BY : MN CHECKED BY : DW

美特鋁質有限公司
MIDI ALUMINIUM FABRICATOR LTD.
Units 6-8, Sunray Industrial Centre, 1/F
610 Cha Kwo Ling Road, Kowloon
Tel: 23489211-4 Fax: (852)27727666

DWG NO. : J836-SL-2003 REV. : C



4 PART PLAN FOR SKYLIGHT AT PODIUM ROOF
 CAST-IN EMBED & STEEL MEMBER ONLY
 B27

LEGEND :

EM-S	II	-- 'EM-S' -- CAST-IN EMBED (DETAIL REFER DWG. TO 1001)
EM-S1	□	-- 'EM-S1' -- CAST-IN EMBED (DETAIL REFER DWG. TO 1001)
R1		-- 200x100x16mm THK. GMS RHS
R2		-- 200x100x10mm THK. GMS RHS

B.D. REF :

CLIENT : **MTR**

ARCHITECT : **P&T Architects and Engineers Ltd**
 巴丹拿建築及工程師有限公司

MAIN CONTRACTOR : **CHINA OVERSEAS BUILDING CONSTRUCTION LTD.**

STRUCTURAL ENGINEER : **ARUP**

KWAN KIN KEI
 CEng 7518766 MICE FHKIE
 REGISTERED STRUCTURAL ENGINEER

NOTE :
 1. ALL DIMENSIONS ARE IN mm.
 2. ALL ELEVATIONS ARE VIEWED FROM OUTSIDE.
 3. ALL DIMENSIONS TO BE VERIFIED ON SITE BEFORE FABRICATION.

LEGEND :
 (X1) -- DETAIL MARK NO.
 (X001) -- REFER SHEET NO.

1. F.F.L. --- FINISHED FLOOR LEVEL
 2. S.F.L. --- STRUCTURAL FLOOR LEVEL
 3. (R) --- REVERSED DETAIL

NO.	DATE	REVISED	BY

JOB NO. : J-836

PROJECT : PROPOSED SITE C1
 DEVELOPMENT AT AREA 86,
 TKOTL 70 RP, TSEUNG KWAN O,
 NEW TERRITORIES

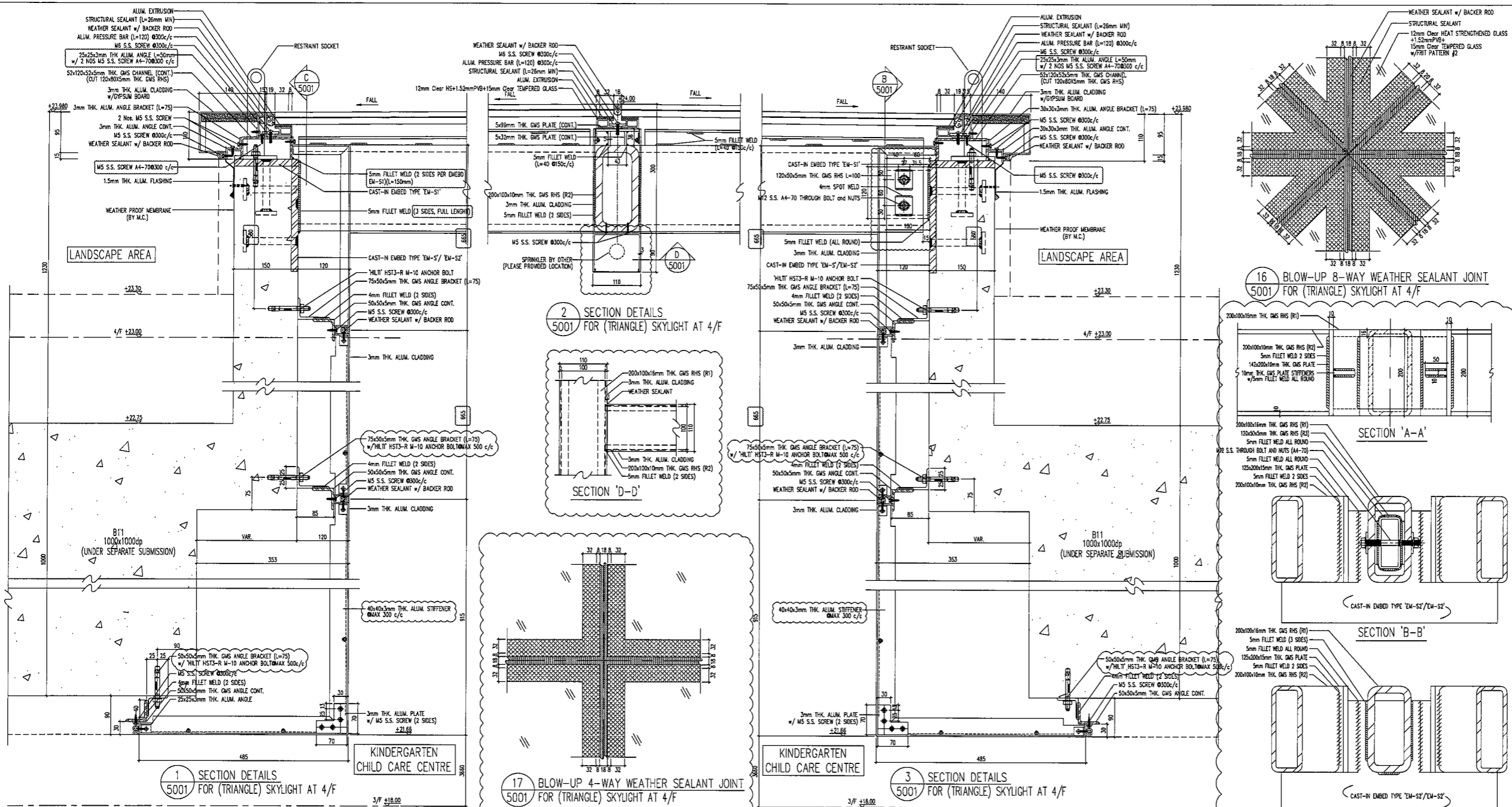
TITLE : PART PLAN
 FOR SKYLIGHT
 CAST-IN EMBED
 AT PODIUM ROOF

DATE : 23-OCT-17 SCALE : 1:40

DRAWN BY : MN CHECKED BY : DW

美特鋁質有限公司
MIDI ALUMINIUM FABRICATOR LTD.
 Units 6-8, Sunray Industrial Centre, 1/F
 610 Cho Kwo Ling Road, Kowloon
 Tel: 23489211-4 Fax: (852) 2727666

DWG NO. : JB.36-SL-2004 REV. : C



B.D. REF : 3/7192/97/4 (C1)

CLIENT : **MTR**
VENTURE SMART LIMITED

ARCHITECT : **P&T Architects and Engineers Ltd**
巴丹拿建築及工程師有限公司

MAIN CONTRACTOR : **CHINA OVERSEAS BUILDING CONSTRUCTION LTD.**

STRUCTURAL ENGINEER : **ARUP**

KHIAN KIN KEI
C.Eng. P.STRUCT. MICE FHKIE
REGISTERED STRUCTURAL ENGINEER

FAÇADE CONSULTANT: **MEIN-HARDT**

NOTE:
1. ALL DIMENSIONS ARE IN mm.
2. ALL ELEVATIONS ARE VIEWED FROM OUTSIDE.
3. ALL DIMENSIONS TO BE VERIFIED ON SITE BEFORE FABRICATION.

LEGEND:
X1 - DETAIL MARK NO.
X001 - REFER SHEET NO.

1. F.F.L. --- FINISHED FLOOR LEVEL
2. S.F.L. --- STRUCTURAL FLOOR LEVEL
3. (R) --- REVERSED DETAIL

R1 = 100x200x16mm THK. GMS RHS
R2 = 100x200x10mm THK. GMS RHS
R.C. STRUCTURAL ELEMENT
COL. / BEAM / SLAB
IS (UNDER SEPARATED SUBMISSION)
HS = HEAT STRENGTHENED GLASS

NO.	DATE	REVISED	BY

JOB NO. : J-836

PROJECT : PROPOSED SITE C1
DEVELOPMENT AT AREA B6,
TKOTL 70 RP, TSEUNG KWAN O,
NEW TERRITORIES

TITLE : SECTION DETAILS
FOR
SKYLIGHT AT 4/F

DATE : 10-NOV-17 SCALE : 1:4

DRAWN BY : MN CHECKED BY : DW

美特鋁質有限公司
MIDI ALUMINIUM FABRICATOR LTD.
Units 6-8, Sunray Industrial Centre, 1/F
610 Cha Kwo Ling Road, Kowloon
Tel: 23489211-4 Fax: (852) 2727666

DWG NO. : J836-DT-5001 REV. : C

T:\Jobs\1-836\Design Engineer\Shop Drawing\SKYLIGHT\4th Submission\836-SKYLIGHT\4th SHOP DRAWING_20180530.dwg, Model

