

工程指示 / 要求簡箋(E.I.)

工程指示編號：EI/ 9452 /18 修改版次： C
 工程編號： J836 工程名稱： 日出康城 7 期 平台
 工程項目： WW2 鐵件修改
 收件人： Maggie Ior 發件人： Joe Chan 日期： 6/19/2018

要求提供 / 確認 事項：

- () 初步鋁料 B.M. () 加工拆圖，然後生產 () 尺寸表
- () 正式鋁料 B.M. () 技術上資料 / 指示 () 報價
- () 配件 B.M. () 樣辦或貨品說明書 () 分判合約
- () 其他： _____

內容： 因應地盤環境，鐵件 SC-1、SC-2 和 SB2-2
 需要修改。請按附件資料加工鐵件。

請在 30/9/2018 前完成上列要求。

附有關圖紙 / 文件：

4 頁

以上項目為：

- 原合約工程包 原合約工程加 / 減賬 新工程報價

原因：-

分發東莞各部門：

- () 生產技術總監 連附件 () 技術部 連附件 () 生產部 連附件 () 機械設計部 連附件
- () 採購部 連附件 () 生產統籌部 連附件 梅, 軍
- () 質檢部 連附件 () 會計部 連附件 () 報關組 連附件 () 其他 _____ 連附件

分發香港各部門：

- () 行政部 連附件 () 會計部 連附件 () 統籌部 連附件 () 工程部地盤科文 連附件 積, 豪, 二寶
- () 採購部 連附件 () QS 部 連附件 () 維修部 連附件 () 其他 _____ 連附件

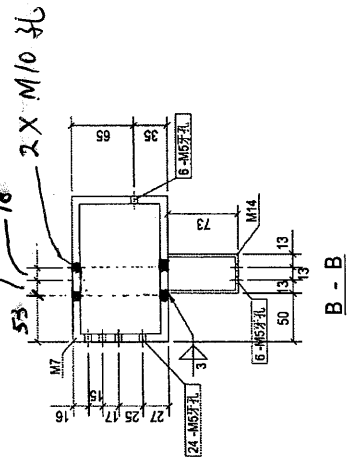
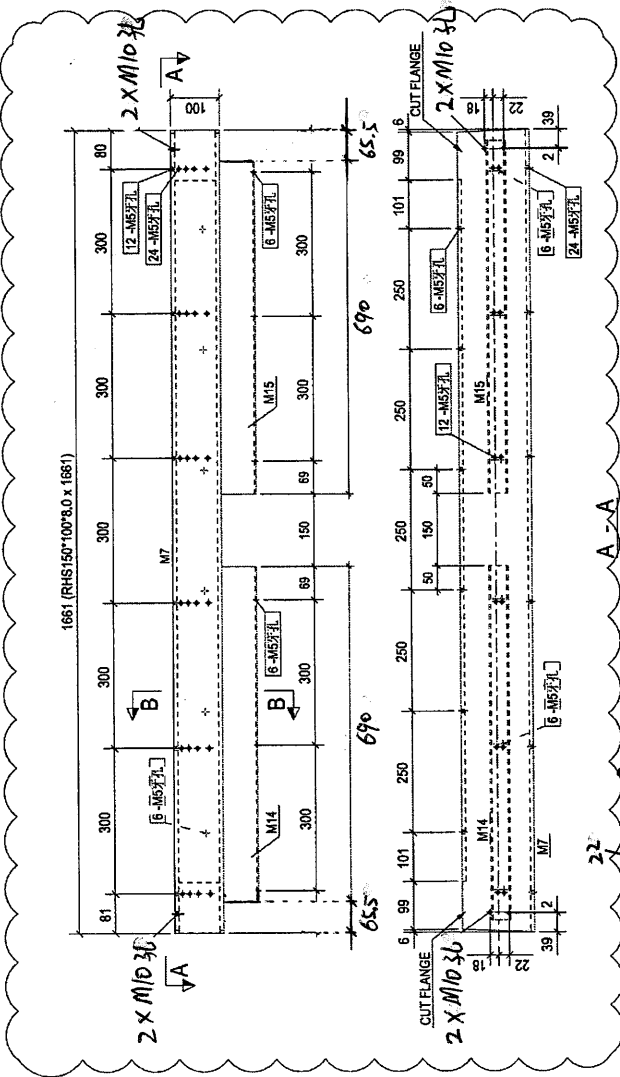
傳遞編號： HK 1409/18

發件人簽署：

項目經理簽署：

美特鋁質有限公司 MIDI Aluminium Fabricator Ltd.		工程號: J836-WW2	計算:	日期: 14/06/2018	送呈:						
地盤名稱: 日出康城7期平台 <th>核對:</th> <td>日期: 14/06/2018 <td colspan="2">副本:</td> </td>		核對:	日期: 14/06/2018 <td colspan="2">副本:</td>	副本:							
項目類別: 幕牆 <th>批准:</th> <td colspan="3">日期:</td>		批准:	日期:								
修改版次: EI/9393 <th>A/C Code:</th> <td colspan="3">鐵件總重量KG: 71835.09</td>		A/C Code:	鐵件總重量KG: 71835.09								
序號	修改內容	鐵件圖號	鐵件名稱	顏色	實用	後備	總數	單位	單件 (kg)	總重量 (kg)	備註
1		P-1	4mm鐵板	GMS+UCT802580XL (A)- 3, LIGHT GREY	828	0	828	件	0.050	41.599	3F/4F
2		SB1-1	200*100*8mm扁通+15*40*3mm鐵槽	GMS+UCT802580XL (A)- 3, LIGHT GREY	56	0	56	件	67.899	3802.344	3F
3		SB2-1	150*100*8mm扁通+25*25*3mm角鐵	GMS+UCT802580XL (A)- 3, LIGHT GREY	22	0	22	件	50.183	1104.026	2F
4	修改	SB2-2	150*100*8mm扁通+73*40*3mm鐵槽	GMS+UCT802580XL (A)- 3, LIGHT GREY	22	0	22	件	56.548	1244.056	2.5F
5		SB2-3	150*100*8mm扁通+15*40*3mm鐵槽	GMS+UCT802580XL (A)- 3, LIGHT GREY	28	0	28	件	50.980	1427.440	4F
6		SB2-4	150*100*8mm扁通+25*25*3mm角鐵	GMS+UCT802580XL (A)- 3, LIGHT GREY	6	0	6	件	50.183	301.098	2F
7		SB2-5	150*100*8mm扁通+73*40*3mm鐵槽	GMS+UCT802580XL (A)- 3, LIGHT GREY	6	0	6	件	56.548	339.288	2.5F
8		SB3-1	300*200*8mm扁通	GMS+UCT802580XL (A)- 3, LIGHT GREY	28	0	28	件	100.672	2818.816	2F
9		SB4-1	60*60*5mm角鐵	GMS+UCT802580XL (A)- 3, LIGHT GREY	28	0	28	件	7.591	212.548	2F
10	修改	SC-1	15mm鐵板+80*80*5方通+120*80*5扁通	GMS+UCT802580XL (A)- 3, LIGHT GREY	1	0	1	件	2042.042	2042.042	4F
11	修改	SC-2	15mm鐵板+80*80*5方通+120*80*5扁通	GMS+UCT802580XL (A)- 3, LIGHT GREY	27	0	27	件	2048.512	55309.824	2F/2.5F/3F/4F
12		SC2-1	150*100*8mm扁通	GMS+UCT802580XL (A)- 3, LIGHT GREY	28	0	28	件	30.613	857.164	2F/2.5F
13		SC-3	15mm鐵板+80*80*5方通+120*80*5扁通	GMS+UCT802580XL (A)- 3, LIGHT GREY	1	0	1	件	2042.042	2042.042	4F
14		SM-1	200*150*10mm角鐵	GMS+UCT802580XL (A)- 3, LIGHT GREY	61	0	61	件	4.800	292.800	4F
合計:					1142			件	合計:	71835.087	

零件编号	规格(mm)	数量	重量(kg)	备注
M7	RHS150*100*8.0	1	46	表重(kg)
M14	RHS80*40*3.0	1	3.24	0.80
M15	RHS80*40*3.0	3	3.24	0.18
合计:			54.09	

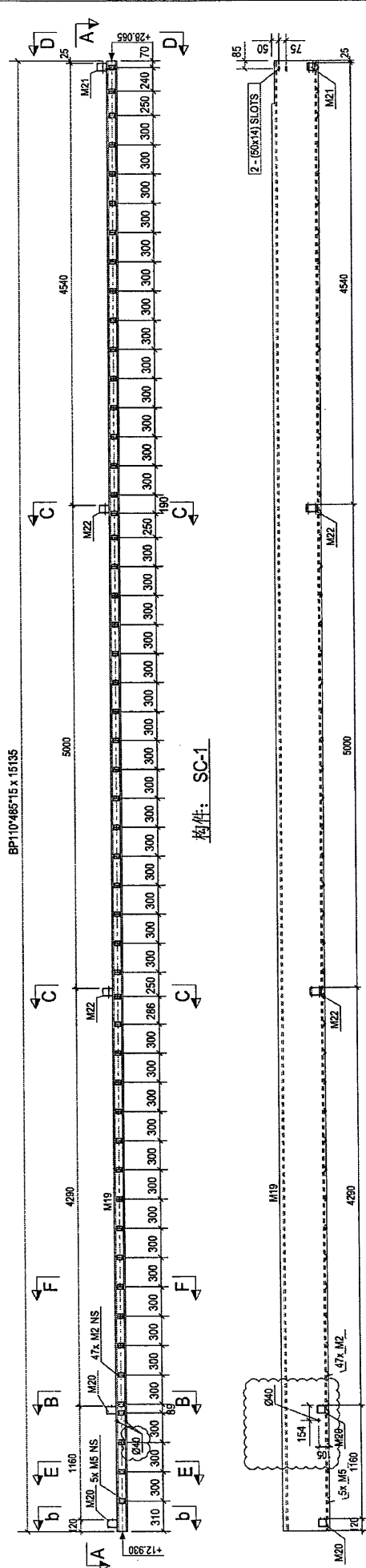


Rev.	第2次推排	Description	Date
A			2018-06-21

PROJECT: PROPOSED SITE C1 DEVELOPMENT AT AREA 88, TKOIL 70 RP, TSEUNG KWAN O, NEW TERRITORIES

CLIENT: 美特铝业有限公司
MIDI Aluminium Corporation Ltd.
1/F, 2/F, 3/F, 4/F, 5/F, 6/F, 7/F, 8/F, 9/F, 10/F, 11/F, 12/F, 13/F, 14/F, 15/F, 16/F, 17/F, 18/F, 19/F, 20/F, 21/F, 22/F, 23/F, 24/F, 25/F, 26/F, 27/F, 28/F, 29/F, 30/F, 31/F, 32/F, 33/F, 34/F, 35/F, 36/F, 37/F, 38/F, 39/F, 40/F, 41/F, 42/F, 43/F, 44/F, 45/F, 46/F, 47/F, 48/F, 49/F, 50/F, 51/F, 52/F, 53/F, 54/F, 55/F, 56/F, 57/F, 58/F, 59/F, 60/F, 61/F, 62/F, 63/F, 64/F, 65/F, 66/F, 67/F, 68/F, 69/F, 70/F, 71/F, 72/F, 73/F, 74/F, 75/F, 76/F, 77/F, 78/F, 79/F, 80/F, 81/F, 82/F, 83/F, 84/F, 85/F, 86/F, 87/F, 88/F, 89/F, 90/F, 91/F, 92/F, 93/F, 94/F, 95/F, 96/F, 97/F, 98/F, 99/F, 100/F, 101/F, 102/F, 103/F, 104/F, 105/F, 106/F, 107/F, 108/F, 109/F, 110/F, 111/F, 112/F, 113/F, 114/F, 115/F, 116/F, 117/F, 118/F, 119/F, 120/F, 121/F, 122/F, 123/F, 124/F, 125/F, 126/F, 127/F, 128/F, 129/F, 130/F, 131/F, 132/F, 133/F, 134/F, 135/F, 136/F, 137/F, 138/F, 139/F, 140/F, 141/F, 142/F, 143/F, 144/F, 145/F, 146/F, 147/F, 148/F, 149/F, 150/F, 151/F, 152/F, 153/F, 154/F, 155/F, 156/F, 157/F, 158/F, 159/F, 160/F, 161/F, 162/F, 163/F, 164/F, 165/F, 166/F, 167/F, 168/F, 169/F, 170/F, 171/F, 172/F, 173/F, 174/F, 175/F, 176/F, 177/F, 178/F, 179/F, 180/F, 181/F, 182/F, 183/F, 184/F, 185/F, 186/F, 187/F, 188/F, 189/F, 190/F, 191/F, 192/F, 193/F, 194/F, 195/F, 196/F, 197/F, 198/F, 199/F, 200/F, 201/F, 202/F, 203/F, 204/F, 205/F, 206/F, 207/F, 208/F, 209/F, 210/F, 211/F, 212/F, 213/F, 214/F, 215/F, 216/F, 217/F, 218/F, 219/F, 220/F, 221/F, 222/F, 223/F, 224/F, 225/F, 226/F, 227/F, 228/F, 229/F, 230/F, 231/F, 232/F, 233/F, 234/F, 235/F, 236/F, 237/F, 238/F, 239/F, 240/F, 241/F, 242/F, 243/F, 244/F, 245/F, 246/F, 247/F, 248/F, 249/F, 250/F, 251/F, 252/F, 253/F, 254/F, 255/F, 256/F, 257/F, 258/F, 259/F, 260/F, 261/F, 262/F, 263/F, 264/F, 265/F, 266/F, 267/F, 268/F, 269/F, 270/F, 271/F, 272/F, 273/F, 274/F, 275/F, 276/F, 277/F, 278/F, 279/F, 280/F, 281/F, 282/F, 283/F, 284/F, 285/F, 286/F, 287/F, 288/F, 289/F, 290/F, 291/F, 292/F, 293/F, 294/F, 295/F, 296/F, 297/F, 298/F, 299/F, 300/F, 301/F, 302/F, 303/F, 304/F, 305/F, 306/F, 307/F, 308/F, 309/F, 310/F, 311/F, 312/F, 313/F, 314/F, 315/F, 316/F, 317/F, 318/F, 319/F, 320/F, 321/F, 322/F, 323/F, 324/F, 325/F, 326/F, 327/F, 328/F, 329/F, 330/F, 331/F, 332/F, 333/F, 334/F, 335/F, 336/F, 337/F, 338/F, 339/F, 340/F, 341/F, 342/F, 343/F, 344/F, 345/F, 346/F, 347/F, 348/F, 349/F, 350/F, 351/F, 352/F, 353/F, 354/F, 355/F, 356/F, 357/F, 358/F, 359/F, 360/F, 361/F, 362/F, 363/F, 364/F, 365/F, 366/F, 367/F, 368/F, 369/F, 370/F, 371/F, 372/F, 373/F, 374/F, 375/F, 376/F, 377/F, 378/F, 379/F, 380/F, 381/F, 382/F, 383/F, 384/F, 385/F, 386/F, 387/F, 388/F, 389/F, 390/F, 391/F, 392/F, 393/F, 394/F, 395/F, 396/F, 397/F, 398/F, 399/F, 400/F, 401/F, 402/F, 403/F, 404/F, 405/F, 406/F, 407/F, 408/F, 409/F, 410/F, 411/F, 412/F, 413/F, 414/F, 415/F, 416/F, 417/F, 418/F, 419/F, 420/F, 421/F, 422/F, 423/F, 424/F, 425/F, 426/F, 427/F, 428/F, 429/F, 430/F, 431/F, 432/F, 433/F, 434/F, 435/F, 436/F, 437/F, 438/F, 439/F, 440/F, 441/F, 442/F, 443/F, 444/F, 445/F, 446/F, 447/F, 448/F, 449/F, 450/F, 451/F, 452/F, 453/F, 454/F, 455/F, 456/F, 457/F, 458/F, 459/F, 460/F, 461/F, 462/F, 463/F, 464/F, 465/F, 466/F, 467/F, 468/F, 469/F, 470/F, 471/F, 472/F, 473/F, 474/F, 475/F, 476/F, 477/F, 478/F, 479/F, 480/F, 481/F, 482/F, 483/F, 484/F, 485/F, 486/F, 487/F, 488/F, 489/F, 490/F, 491/F, 492/F, 493/F, 494/F, 495/F, 496/F, 497/F, 498/F, 499/F, 500/F, 501/F, 502/F, 503/F, 504/F, 505/F, 506/F, 507/F, 508/F, 509/F, 510/F, 511/F, 512/F, 513/F, 514/F, 515/F, 516/F, 517/F, 518/F, 519/F, 520/F, 521/F, 522/F, 523/F, 524/F, 525/F, 526/F, 527/F, 528/F, 529/F, 530/F, 531/F, 532/F, 533/F, 534/F, 535/F, 536/F, 537/F, 538/F, 539/F, 540/F, 541/F, 542/F, 543/F, 544/F, 545/F, 546/F, 547/F, 548/F, 549/F, 550/F, 551/F, 552/F, 553/F, 554/F, 555/F, 556/F, 557/F, 558/F, 559/F, 560/F, 561/F, 562/F, 563/F, 564/F, 565/F, 566/F, 567/F, 568/F, 569/F, 570/F, 571/F, 572/F, 573/F, 574/F, 575/F, 576/F, 577/F, 578/F, 579/F, 580/F, 581/F, 582/F, 583/F, 584/F, 585/F, 586/F, 587/F, 588/F, 589/F, 590/F, 591/F, 592/F, 593/F, 594/F, 595/F, 596/F, 597/F, 598/F, 599/F, 600/F, 601/F, 602/F, 603/F, 604/F, 605/F, 606/F, 607/F, 608/F, 609/F, 610/F, 611/F, 612/F, 613/F, 614/F, 615/F, 616/F, 617/F, 618/F, 619/F, 620/F, 621/F, 622/F, 623/F, 624/F, 625/F, 626/F, 627/F, 628/F, 629/F, 630/F, 631/F, 632/F, 633/F, 634/F, 635/F, 636/F, 637/F, 638/F, 639/F, 640/F, 641/F, 642/F, 643/F, 644/F, 645/F, 646/F, 647/F, 648/F, 649/F, 650/F, 651/F, 652/F, 653/F, 654/F, 655/F, 656/F, 657/F, 658/F, 659/F, 660/F, 661/F, 662/F, 663/F, 664/F, 665/F, 666/F, 667/F, 668/F, 669/F, 670/F, 671/F, 672/F, 673/F, 674/F, 675/F, 676/F, 677/F, 678/F, 679/F, 680/F, 681/F, 682/F, 683/F, 684/F, 685/F, 686/F, 687/F, 688/F, 689/F, 690/F, 691/F, 692/F, 693/F, 694/F, 695/F, 696/F, 697/F, 698/F, 699/F, 700/F, 701/F, 702/F, 703/F, 704/F, 705/F, 706/F, 707/F, 708/F, 709/F, 710/F, 711/F, 712/F, 713/F, 714/F, 715/F, 716/F, 717/F, 718/F, 719/F, 720/F, 721/F, 722/F, 723/F, 724/F, 725/F, 726/F, 727/F, 728/F, 729/F, 730/F, 731/F, 732/F, 733/F, 734/F, 735/F, 736/F, 737/F, 738/F, 739/F, 740/F, 741/F, 742/F, 743/F, 744/F, 745/F, 746/F, 747/F, 748/F, 749/F, 750/F, 751/F, 752/F, 753/F, 754/F, 755/F, 756/F, 757/F, 758/F, 759/F, 760/F, 761/F, 762/F, 763/F, 764/F, 765/F, 766/F, 767/F, 768/F, 769/F, 770/F, 771/F, 772/F, 773/F, 774/F, 775/F, 776/F, 777/F, 778/F, 779/F, 780/F, 781/F, 782/F, 783/F, 784/F, 785/F, 786/F, 787/F, 788/F, 789/F, 790/F, 791/F, 792/F, 793/F, 794/F, 795/F, 796/F, 797/F, 798/F, 799/F, 800/F, 801/F, 802/F, 803/F, 804/F, 805/F, 806/F, 807/F, 808/F, 809/F, 810/F, 811/F, 812/F, 813/F, 814/F, 815/F, 816/F, 817/F, 818/F, 819/F, 820/F, 821/F, 822/F, 823/F, 824/F, 825/F, 826/F, 827/F, 828/F, 829/F, 830/F, 831/F, 832/F, 833/F, 834/F, 835/F, 836/F, 837/F, 838/F, 839/F, 840/F, 841/F, 842/F, 843/F, 844/F, 845/F, 846/F, 847/F, 848/F, 849/F, 850/F, 851/F, 852/F, 853/F, 854/F, 855/F, 856/F, 857/F, 858/F, 859/F, 860/F, 861/F, 862/F, 863/F, 864/F, 865/F, 866/F, 867/F, 868/F, 869/F, 870/F, 871/F, 872/F, 873/F, 874/F, 875/F, 876/F, 877/F, 878/F, 879/F, 880/F, 881/F, 882/F, 883/F, 884/F, 885/F, 886/F, 887/F, 888/F, 889/F, 890/F, 891/F, 892/F, 893/F, 894/F, 895/F, 896/F, 897/F, 898/F, 899/F, 900/F, 901/F, 902/F, 903/F, 904/F, 905/F, 906/F, 907/F, 908/F, 909/F, 910/F, 911/F, 912/F, 913/F, 914/F, 915/F, 916/F, 917/F, 918/F, 919/F, 920/F, 921/F, 922/F, 923/F, 924/F, 925/F, 926/F, 927/F, 928/F, 929/F, 930/F, 931/F, 932/F, 933/F, 934/F, 935/F, 936/F, 937/F, 938/F, 939/F, 940/F, 941/F, 942/F, 943/F, 944/F, 945/F, 946/F, 947/F, 948/F, 949/F, 950/F, 951/F, 952/F, 953/F, 954/F, 955/F, 956/F, 957/F, 958/F, 959/F, 960/F, 961/F, 962/F, 963/F, 964/F, 965/F, 966/F, 967/F, 968/F, 969/F, 970/F, 971/F, 972/F, 973/F, 974/F, 975/F, 976/F, 977/F, 978/F, 979/F, 980/F, 981/F, 982/F, 983/F, 984/F, 985/F, 986/F, 987/F, 988/F, 989/F, 990/F, 991/F, 992/F, 993/F, 994/F, 995/F, 996/F, 997/F, 998/F, 999/F, 1000/F

材料表		SC-1		材料数量		1		构件重量		2041.5	
零件编号	规格(mm)	长度(mm)	数量	重量(kg)	长度(mm)	数量	重量(kg)	重量(kg)	长度(mm)	数量	重量(kg)
M2	SHS50*50*5.0	60	47	0	8.85	0	0.01				
M5	SHS50*50*5.0	60	5	0	0.94	0	0.01				
M19	EP10*485*15 板拼	15135	1	2014	2013.83	35.29					
M20	SHS80*80*5.0	100	2	1	2.36	0.03					
M21	SHS80*80*5.0	100	1	1	1.19	0.03					
M22	RHS120*80*5.0	100	2	1	2.98	0.04					
合计:								2030.1			



C	Rev.	描述	日期
		初次报批	2018-06-23

PROPOSED SITE C1
DEVELOPMENT AT AREA B6,
TKOIL 70 RP, TSEUNG KWAN O,
NEW TERRITORIES

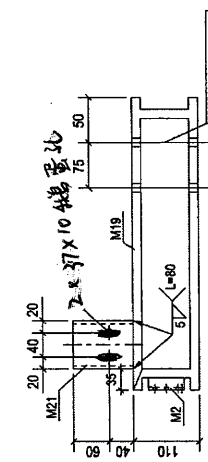
CLIENT:
美特铝业有限公司
MIDI ALUMINUM MANUFACTURE CO.
1005 8-2, Sunny Industrial Centre, 17
810, Chee Chee Road, Kowloon
TEL: 3429211-4 FAX: 3429272-6

银同有限公司
Silver Town Limited
14/F, 143-143B, 143B, 143BEN
1-4/F, 409-409B, 409B, 409BEN

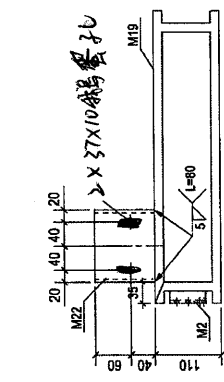
DRAWING TITLE:
[SC-1]

CAD File Name:
Designed by
Drawn by
Reviewed by
Approved by
Scale

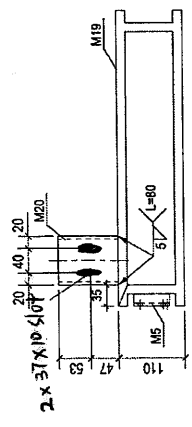
DWG NO.: J-836-WW2-[SC-1]
REV: C



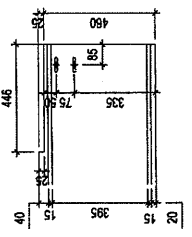
D - D



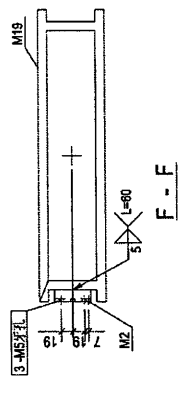
C - C



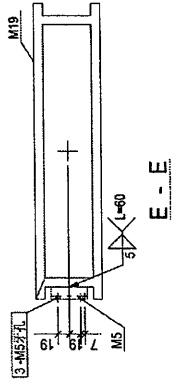
B - B
B-b Similar but no M5



切口示意图



F - F



E - E

