

工程指示 / 要求簡箋(E.I.)

工程指示編號：EI/ 0331/19

修改版次：A

工程編號：J836

工程名稱：日出康城7期(平台)

工程項目：E5, E6, E7 鐵件生產修改

收件人：Maggie Lor

發件人：Joe Chan

日期：27/3/2019

要求提供 / 確認 事項：

- () 初步鋁料 B.M.
- () 加工拆圖，然後生產
- () 尺寸表
- () 正式鋁料 B.M.
- () 技術上資料 / 指示
- () 報價
- () 配件 B.M.
- () 樣辦或貨品說明書
- () 分判合約
- () 其他：_____

內容：請依附件資料，修改鐵通長度。
 - 另新增 18 條角鐵。

請在 15/4/2019 前完成上列要求。

附有關圖紙 / 文件：

14 頁

以上項目為：

- 原合約工程包
- 原合約工程加 / 減賬
- 新工程報價

原因：-

分發東莞各部門：

- () 生產技術總監 連附件 () 技術部 連附件 () 生產部 連附件 () 機械設計部 連附件
- () 採購部 連附件 () 生產統籌部 連附件
- () 質檢部 連附件 () 會計部 連附件 () 報關組 連附件 () 其他 _____ 連附件

分發香港各部門：

- () 行政部 連附件 () 會計部 連附件 () 統籌部 連附件 () 工程部地盤科文 連附件
- () 採購部 連附件 () QS 部 連附件 () 維修部 連附件 () 其他 _____ 連附件

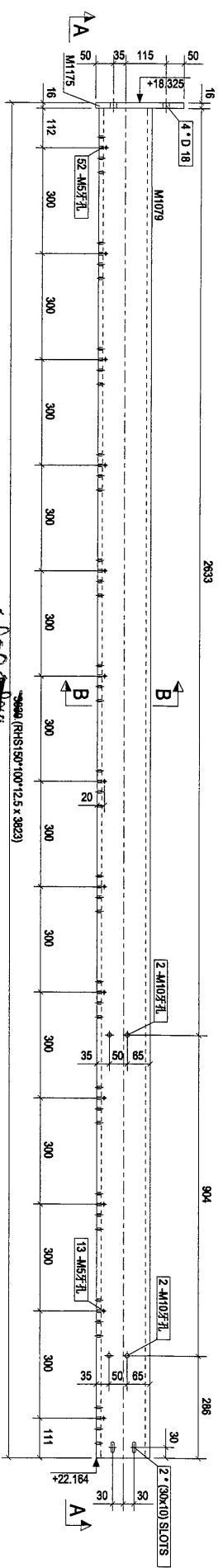
積哥

傳遞編號：

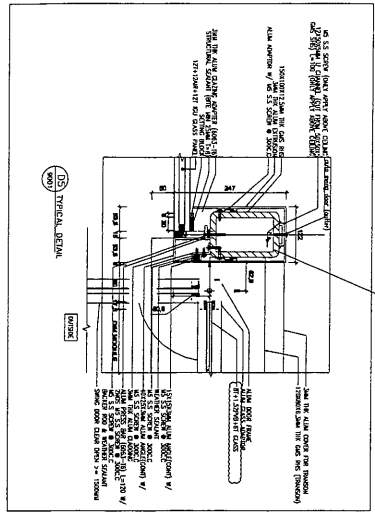
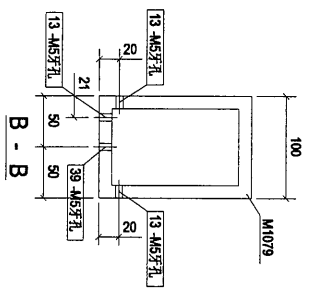
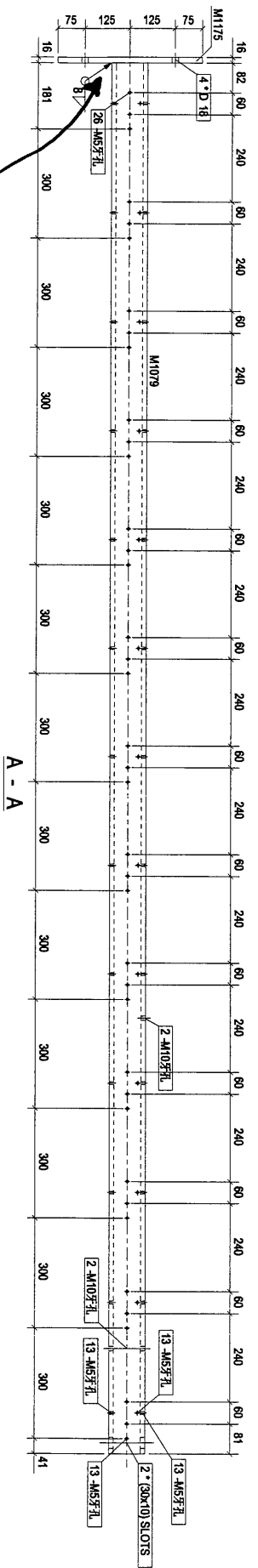
發件人簽署：

項目經理簽署：

构件编号	规格(mm)	长度(mm)	数量	重量(kg)	共重(kg)	表面积(m ²)
M1079	RHS150*100*12.5	3823	1	163.86	163.86	1.79
M1175	PL16*250.2	400	1	12.57	12.57	0.22
合计:			176.42			



488 构件: 5C-2



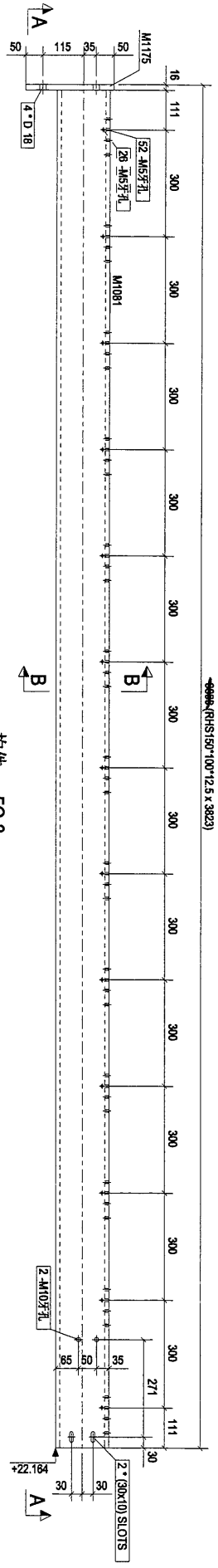
本品

敬出

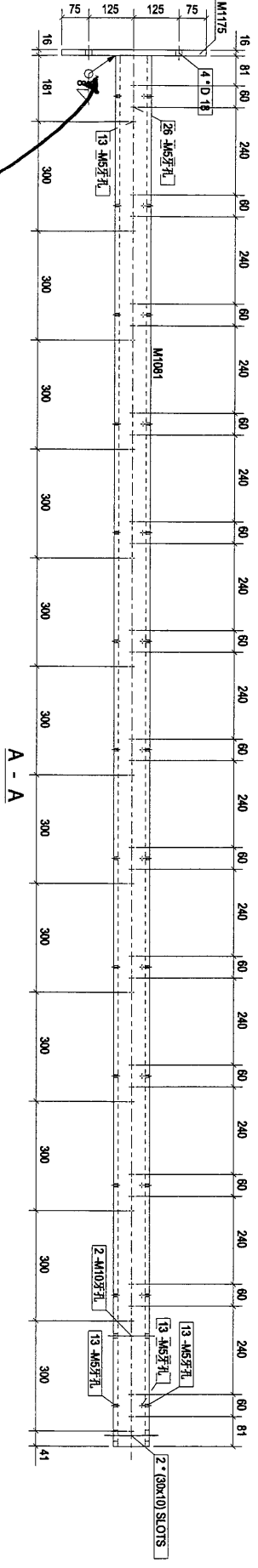
Rev	0	第1次报批	2019-03-14
PROJECT	PROPOSED SITE C1 DEVELOPMENT AT AREA 06, TKOIL 70 RP, TSEUNG KWAN O, NEW TERRITORIES		
CLIENT	美特鋁質有限公司 MIDAL Aluminium Fabricator Ltd. Unit 5-8 Sunny Hill Industrial Estate, 1/F 510 Chee Kwoi Road, Kowloon Tel: 23469211-4 Fax: (852) 27272686		
DESIGNED BY	美特鋁質有限公司		
DRAWN BY	美特鋁質有限公司		
APPROVED BY	美特鋁質有限公司		
SCALE	1:1		
DWG NO.	E5 - [5C-2]		
REV	0		

2930
2465

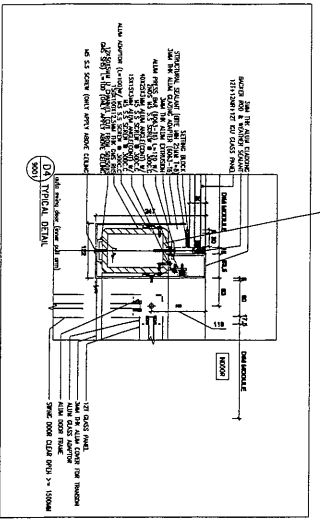
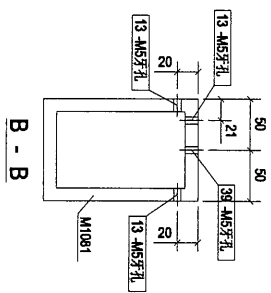
构件编号	规格	数量	单重(kg)	共重(kg)	表面积(m ²)
M1081	RHS150*100*12.5	1	163.86	163.86	1.79
M1175	PL16*250	1	12.56	12.56	0.22
合计:				176.42	



构件: 5C-3



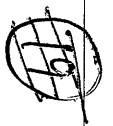
散出



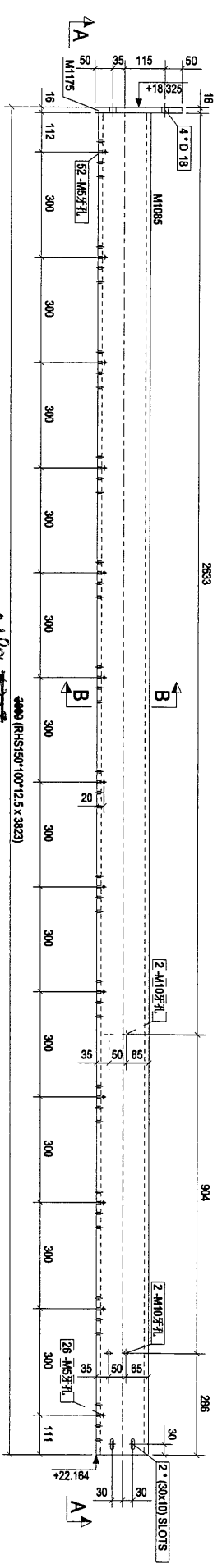
本品

Rev	0	第一次报批	2019-03-14
PROJECT	PROPOSED SITE C1 DEVELOPMENT AT AGEN 88 KOU TO RP, TSEUNG KWAN O, NEW TERRITORIES		
CLIENT	美特銀質有限公司 MIDI Automation / Robotic Ltd. Units 5-8 Sunning Industrial Estate 510 Chee Kwoi Road, Kowloon Tel: 23489211-4 Fax: (852) 27272686		
Designed by	[5C-3]		
Drawn by			
Reviewed by			
Approved by			
Scale			
DWG NO:	E5	-	[5C-3]
REV	0		

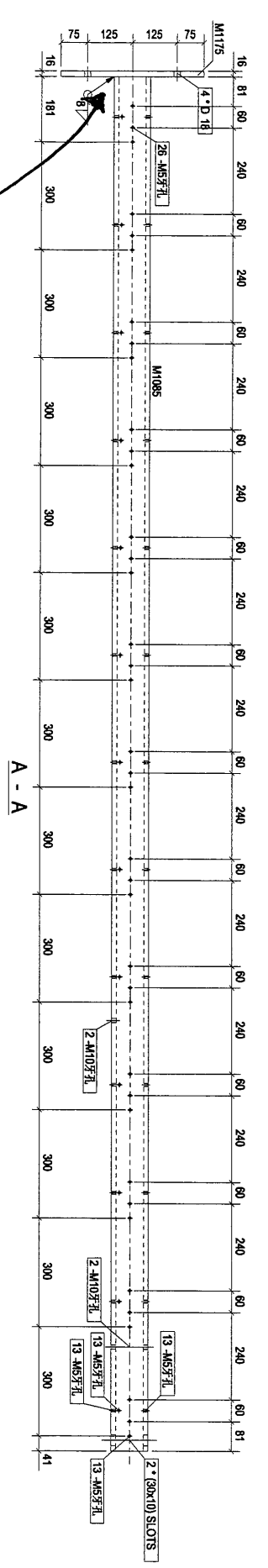
4



零件编号	规格(mm)	长度(mm)	数量	单重(kg)	共重(kg)	表面积(m ²)
M1085	RHS150*100*12.5	3823	1	163.86	163.86	1.79
M1175	PL16250.1	400	1	12.56	12.56	0.22
合计:				176.42		

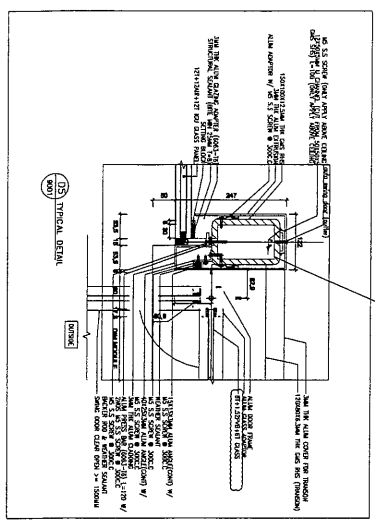
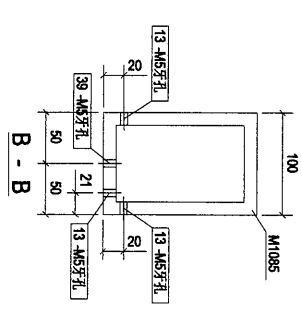


4189
构件: 5C-4



撤出

本品

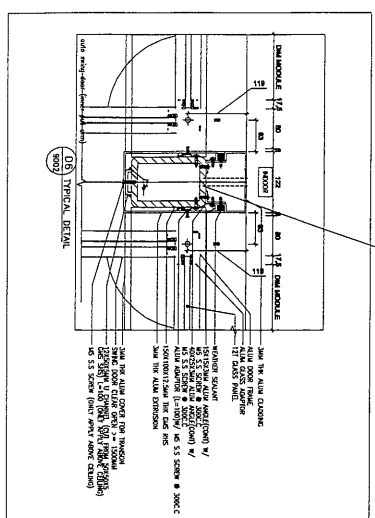
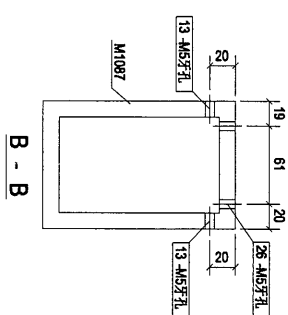
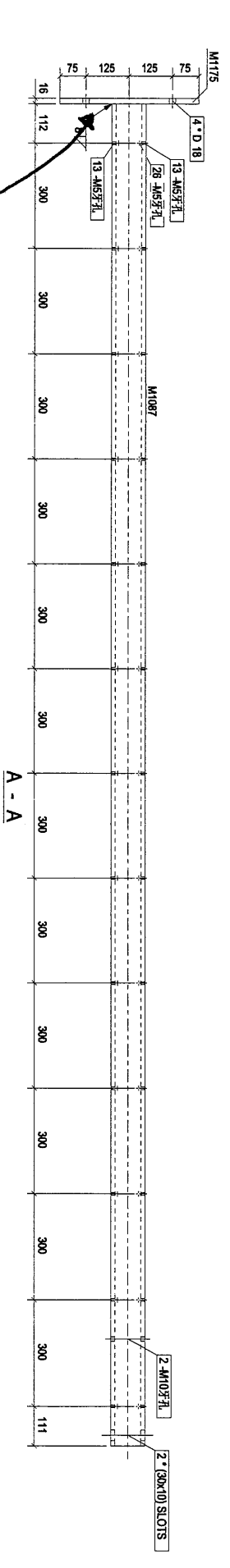
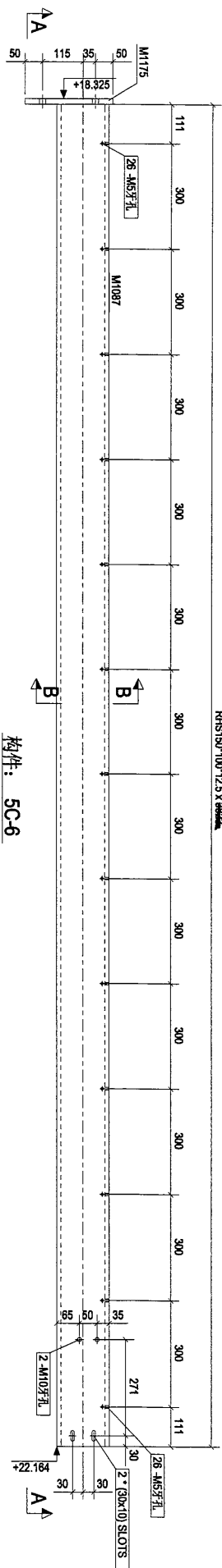


Rev	0	第一次设计	2019-03-14
Project	PROPOSED SITE C1 DEVELOPMENT AT AREA 68, KOTU, T/0/P/ TSEUNG KWAN O, NEW TERRITORIES		
Client	美特鋸質有限公司 MIDAL Construction Products Ltd. Unit 6-8, Sanyang Industrial Centre, 1/F 810 Chee Kwoi Road, Kwai Tsing, 1/F Tel: 23489211-4 Fax: (852) 27272666		
Designer	陈守富有限公司 CHEN SHOU FU LIMITED		
Scale	[5C-4]		
DWG NO.	E5		[5C-4]
REV			0


3943
~~277~~

 6

RHS150*100*12.5 x 9999

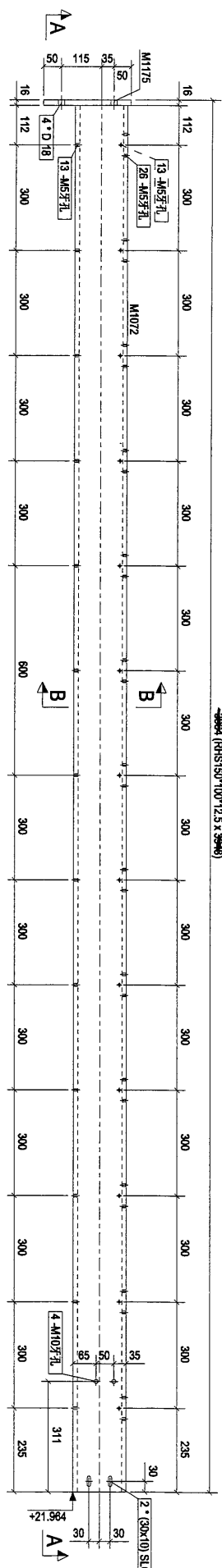


构件编号	规格(mm)	长度(mm)	数量	单重(kg)	共重(kg)	表面积(m ²)
M1087	RHS150*100*12.5	3823	1	163.86	163.86	1.79
M1175	PL16*250	400	1	12.56	12.56	0.22
合计:					176.42	

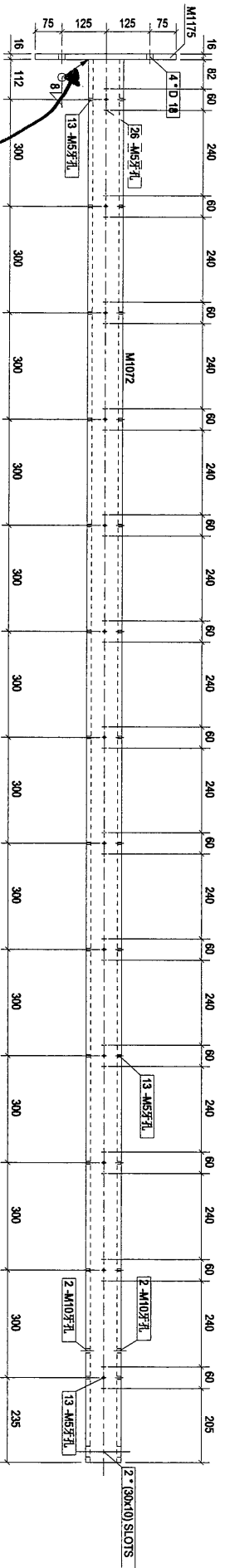
Rev: 0	第一次提批	Date: 2019-03-14
PROJECT: PROPOSED SITE C1 DEVELOPMENT AT PANGSAH, KOTLITOPU, ISERONG NIMANO, NEW TERRITORIES		
CLIENT: 華特鋁質有限公司 MIDT Technology Resource Ltd. Units E-4, Sunny Industrial Centre 1/7, 510 Chee Koo Ling Road, Kowloon. Tel: 23489211-4 Fax: (852) 27272565		
 東河有限公司 Sunway Industrial Centre		
[5C-6]		
Designed by		
Drawn by		
Reviewed by		
Approved by		
Scale		
DWG NO: E5	- [5C-6]	REV: 0

构件编号	规格(mm)	长度(mm)	数量	单重(kg)	共重(kg)	表面积(m ²)
M1072	RHS150*100*12.5	3948	1	169.22	169.22	1.85
M1175	PL16*250	400	1	12.56	12.56	0.22
合计:					181.78	

4830
-8004 (RHS150*100*12.5 X 3948)

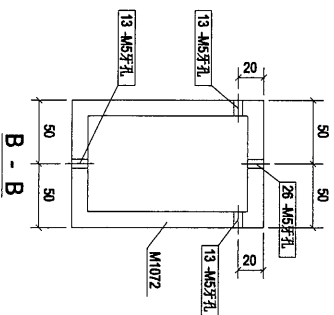


构件: 6C-2

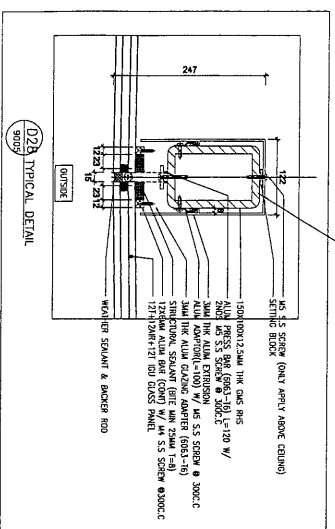


A - A

敬出




B - B



023 TYPICAL DETAIL

本品

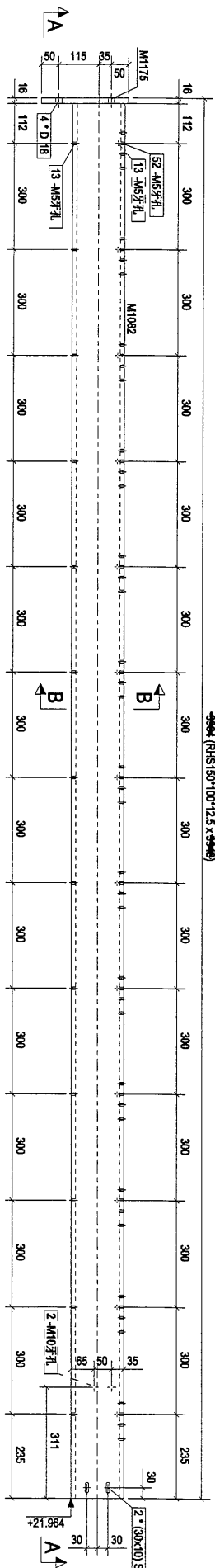
1. 5.5 S.S. SCREW (ONLY APPLY ABOVE EQUINO)
2. 5.5 S.S. SCREW (ONLY APPLY ABOVE EQUINO)
3. 5.5 S.S. SCREW (ONLY APPLY ABOVE EQUINO)
4. 5.5 S.S. SCREW (ONLY APPLY ABOVE EQUINO)
5. 5.5 S.S. SCREW (ONLY APPLY ABOVE EQUINO)
6. 5.5 S.S. SCREW (ONLY APPLY ABOVE EQUINO)
7. 5.5 S.S. SCREW (ONLY APPLY ABOVE EQUINO)
8. 5.5 S.S. SCREW (ONLY APPLY ABOVE EQUINO)
9. 5.5 S.S. SCREW (ONLY APPLY ABOVE EQUINO)
10. 5.5 S.S. SCREW (ONLY APPLY ABOVE EQUINO)
11. 5.5 S.S. SCREW (ONLY APPLY ABOVE EQUINO)
12. 5.5 S.S. SCREW (ONLY APPLY ABOVE EQUINO)
13. 5.5 S.S. SCREW (ONLY APPLY ABOVE EQUINO)
14. 5.5 S.S. SCREW (ONLY APPLY ABOVE EQUINO)
15. 5.5 S.S. SCREW (ONLY APPLY ABOVE EQUINO)
16. 5.5 S.S. SCREW (ONLY APPLY ABOVE EQUINO)
17. 5.5 S.S. SCREW (ONLY APPLY ABOVE EQUINO)
18. 5.5 S.S. SCREW (ONLY APPLY ABOVE EQUINO)
19. 5.5 S.S. SCREW (ONLY APPLY ABOVE EQUINO)
20. 5.5 S.S. SCREW (ONLY APPLY ABOVE EQUINO)
21. 5.5 S.S. SCREW (ONLY APPLY ABOVE EQUINO)
22. 5.5 S.S. SCREW (ONLY APPLY ABOVE EQUINO)
23. 5.5 S.S. SCREW (ONLY APPLY ABOVE EQUINO)
24. 5.5 S.S. SCREW (ONLY APPLY ABOVE EQUINO)
25. 5.5 S.S. SCREW (ONLY APPLY ABOVE EQUINO)
26. 5.5 S.S. SCREW (ONLY APPLY ABOVE EQUINO)
27. 5.5 S.S. SCREW (ONLY APPLY ABOVE EQUINO)
28. 5.5 S.S. SCREW (ONLY APPLY ABOVE EQUINO)
29. 5.5 S.S. SCREW (ONLY APPLY ABOVE EQUINO)
30. 5.5 S.S. SCREW (ONLY APPLY ABOVE EQUINO)
31. 5.5 S.S. SCREW (ONLY APPLY ABOVE EQUINO)
32. 5.5 S.S. SCREW (ONLY APPLY ABOVE EQUINO)
33. 5.5 S.S. SCREW (ONLY APPLY ABOVE EQUINO)
34. 5.5 S.S. SCREW (ONLY APPLY ABOVE EQUINO)
35. 5.5 S.S. SCREW (ONLY APPLY ABOVE EQUINO)
36. 5.5 S.S. SCREW (ONLY APPLY ABOVE EQUINO)
37. 5.5 S.S. SCREW (ONLY APPLY ABOVE EQUINO)
38. 5.5 S.S. SCREW (ONLY APPLY ABOVE EQUINO)
39. 5.5 S.S. SCREW (ONLY APPLY ABOVE EQUINO)
40. 5.5 S.S. SCREW (ONLY APPLY ABOVE EQUINO)
41. 5.5 S.S. SCREW (ONLY APPLY ABOVE EQUINO)
42. 5.5 S.S. SCREW (ONLY APPLY ABOVE EQUINO)
43. 5.5 S.S. SCREW (ONLY APPLY ABOVE EQUINO)
44. 5.5 S.S. SCREW (ONLY APPLY ABOVE EQUINO)
45. 5.5 S.S. SCREW (ONLY APPLY ABOVE EQUINO)
46. 5.5 S.S. SCREW (ONLY APPLY ABOVE EQUINO)
47. 5.5 S.S. SCREW (ONLY APPLY ABOVE EQUINO)
48. 5.5 S.S. SCREW (ONLY APPLY ABOVE EQUINO)
49. 5.5 S.S. SCREW (ONLY APPLY ABOVE EQUINO)
50. 5.5 S.S. SCREW (ONLY APPLY ABOVE EQUINO)
51. 5.5 S.S. SCREW (ONLY APPLY ABOVE EQUINO)
52. 5.5 S.S. SCREW (ONLY APPLY ABOVE EQUINO)
53. 5.5 S.S. SCREW (ONLY APPLY ABOVE EQUINO)
54. 5.5 S.S. SCREW (ONLY APPLY ABOVE EQUINO)
55. 5.5 S.S. SCREW (ONLY APPLY ABOVE EQUINO)
56. 5.5 S.S. SCREW (ONLY APPLY ABOVE EQUINO)
57. 5.5 S.S. SCREW (ONLY APPLY ABOVE EQUINO)
58. 5.5 S.S. SCREW (ONLY APPLY ABOVE EQUINO)
59. 5.5 S.S. SCREW (ONLY APPLY ABOVE EQUINO)
60. 5.5 S.S. SCREW (ONLY APPLY ABOVE EQUINO)
61. 5.5 S.S. SCREW (ONLY APPLY ABOVE EQUINO)
62. 5.5 S.S. SCREW (ONLY APPLY ABOVE EQUINO)
63. 5.5 S.S. SCREW (ONLY APPLY ABOVE EQUINO)
64. 5.5 S.S. SCREW (ONLY APPLY ABOVE EQUINO)
65. 5.5 S.S. SCREW (ONLY APPLY ABOVE EQUINO)
66. 5.5 S.S. SCREW (ONLY APPLY ABOVE EQUINO)
67. 5.5 S.S. SCREW (ONLY APPLY ABOVE EQUINO)
68. 5.5 S.S. SCREW (ONLY APPLY ABOVE EQUINO)
69. 5.5 S.S. SCREW (ONLY APPLY ABOVE EQUINO)
70. 5.5 S.S. SCREW (ONLY APPLY ABOVE EQUINO)
71. 5.5 S.S. SCREW (ONLY APPLY ABOVE EQUINO)
72. 5.5 S.S. SCREW (ONLY APPLY ABOVE EQUINO)
73. 5.5 S.S. SCREW (ONLY APPLY ABOVE EQUINO)
74. 5.5 S.S. SCREW (ONLY APPLY ABOVE EQUINO)
75. 5.5 S.S. SCREW (ONLY APPLY ABOVE EQUINO)
76. 5.5 S.S. SCREW (ONLY APPLY ABOVE EQUINO)
77. 5.5 S.S. SCREW (ONLY APPLY ABOVE EQUINO)
78. 5.5 S.S. SCREW (ONLY APPLY ABOVE EQUINO)
79. 5.5 S.S. SCREW (ONLY APPLY ABOVE EQUINO)
80. 5.5 S.S. SCREW (ONLY APPLY ABOVE EQUINO)
81. 5.5 S.S. SCREW (ONLY APPLY ABOVE EQUINO)
82. 5.5 S.S. SCREW (ONLY APPLY ABOVE EQUINO)
83. 5.5 S.S. SCREW (ONLY APPLY ABOVE EQUINO)
84. 5.5 S.S. SCREW (ONLY APPLY ABOVE EQUINO)
85. 5.5 S.S. SCREW (ONLY APPLY ABOVE EQUINO)
86. 5.5 S.S. SCREW (ONLY APPLY ABOVE EQUINO)
87. 5.5 S.S. SCREW (ONLY APPLY ABOVE EQUINO)
88. 5.5 S.S. SCREW (ONLY APPLY ABOVE EQUINO)
89. 5.5 S.S. SCREW (ONLY APPLY ABOVE EQUINO)
90. 5.5 S.S. SCREW (ONLY APPLY ABOVE EQUINO)
91. 5.5 S.S. SCREW (ONLY APPLY ABOVE EQUINO)
92. 5.5 S.S. SCREW (ONLY APPLY ABOVE EQUINO)
93. 5.5 S.S. SCREW (ONLY APPLY ABOVE EQUINO)
94. 5.5 S.S. SCREW (ONLY APPLY ABOVE EQUINO)
95. 5.5 S.S. SCREW (ONLY APPLY ABOVE EQUINO)
96. 5.5 S.S. SCREW (ONLY APPLY ABOVE EQUINO)
97. 5.5 S.S. SCREW (ONLY APPLY ABOVE EQUINO)
98. 5.5 S.S. SCREW (ONLY APPLY ABOVE EQUINO)
99. 5.5 S.S. SCREW (ONLY APPLY ABOVE EQUINO)
100. 5.5 S.S. SCREW (ONLY APPLY ABOVE EQUINO)

0	第一次报批	2019-03-16
Rev.	Description	Date
PROJECT: PROPOSED SITE C1 DEVELOPMENT AT AREA 06, IKOIL TOWER, ISEUNG KWAN, NEW TERRITORIES		
CLIENT: 華特經貿有限公司 MIDI International Units 6-8, Sunny Industrial Centre, 1/F, 610 Chee Kwo Ling Road, Kowloon. Tel: 23489211-4 Fax: (852) 27272666		
 華特經貿有限公司 MIDI International 137-1377 UNIT 608		
[6C-2]		
Designed by		
Drawn by		
Reviewed by		
Approved by		
Scale		
DWG NO. E6	- [6C-2]	REV. 0

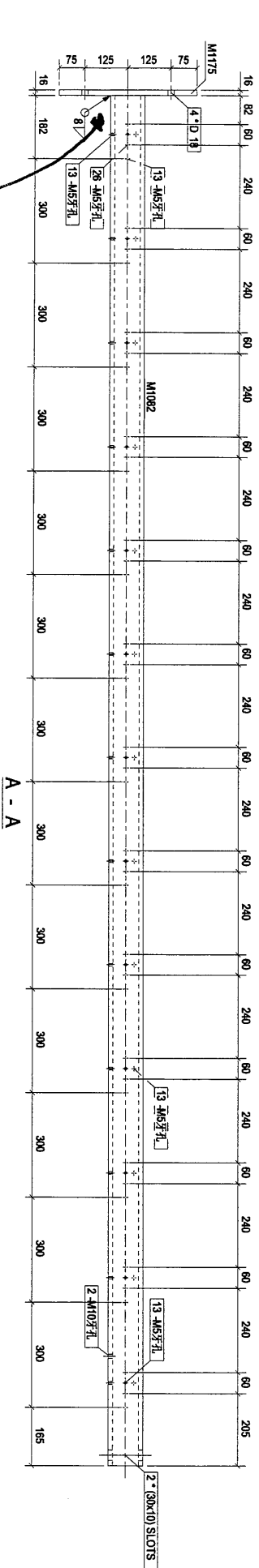
零件编号	规格(mm)	数量	单重(kg)	共重(kg)	表面积(m ²)
M1082	RHS150*100*12.5	3948	169.22	169.22	1.85
M1175	PL16*250	400	12.56	12.56	0.22
合计:				181.78	

4830

9904 (RHS150*100*12.5*3948)

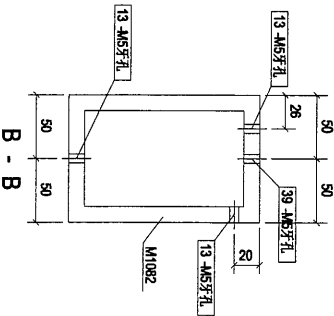


构件: 6C-5

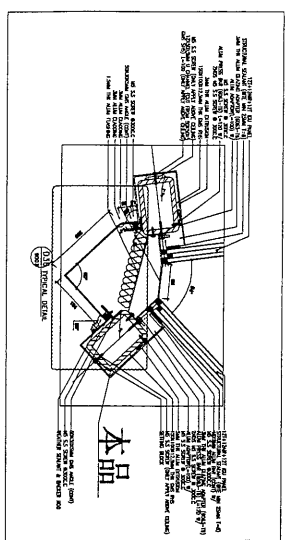


A - A

散出



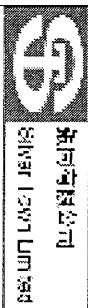
B - B



Rev.	Description	Date
0	第一次仕様	2019-03-16

PROJECT: PROPOSED SITE C1
DEVELOPMENT AT AREA 88,
TKOIL 70 RP TSEUNG KWAN O,
NEW TERRITORIES

CLIENT: 美特鋸質有限公司
MIDI AUTUMN PAPERWORKS LTD.
10/F, 5-18 Sunny Industrial Centre, 1/F
510 Canton Road, Kowloon, Hong Kong
Tel: 2389211-4 Fax: (852) 2727866



[6C-5]

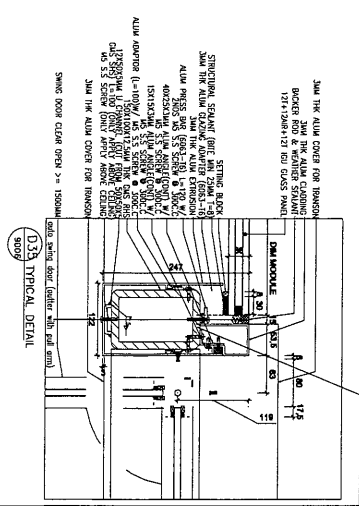
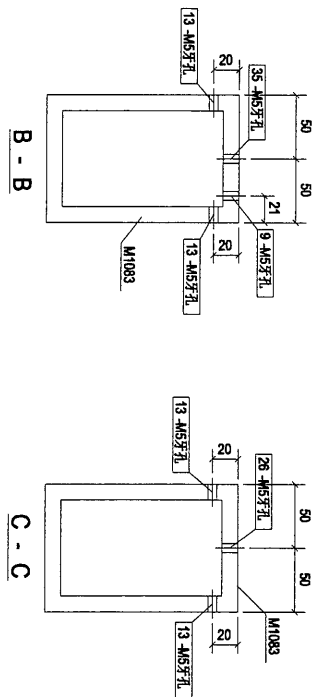
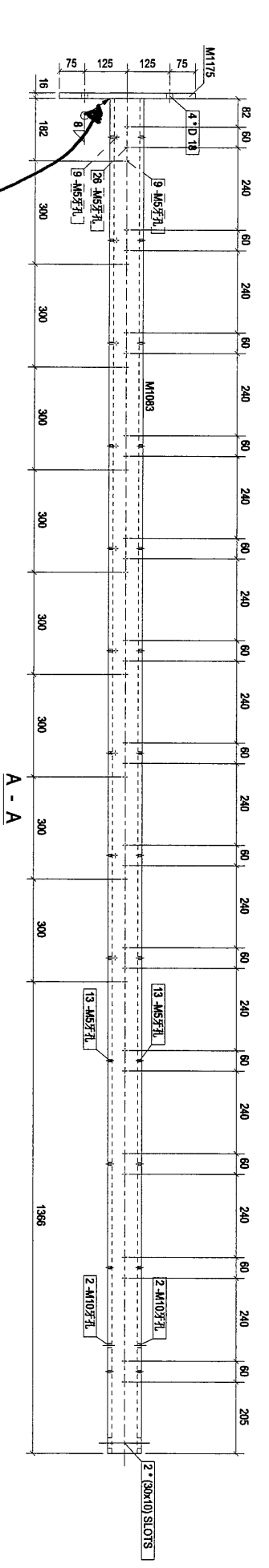
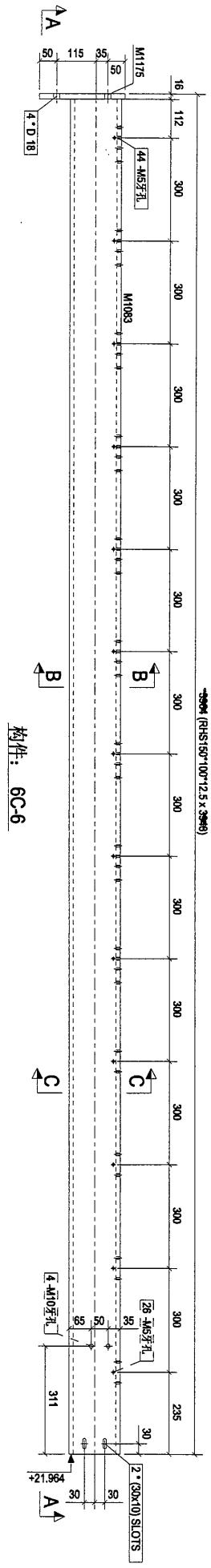
Scale	Scale

DWG NO: E6 - [6C-5] 0

零件编号	规格(mm)	长度(mm)	数量	单重(kg)	共重(kg)	重量(m)
M1083	RHS150*100*12.5	3948	1	169.22	169.22	1.85
M1175	PL16*250	400	1	12.56	12.56	0.22
合计:				181.78		

4830

3948 (RHS150*100*12.5 x 3948)



指出

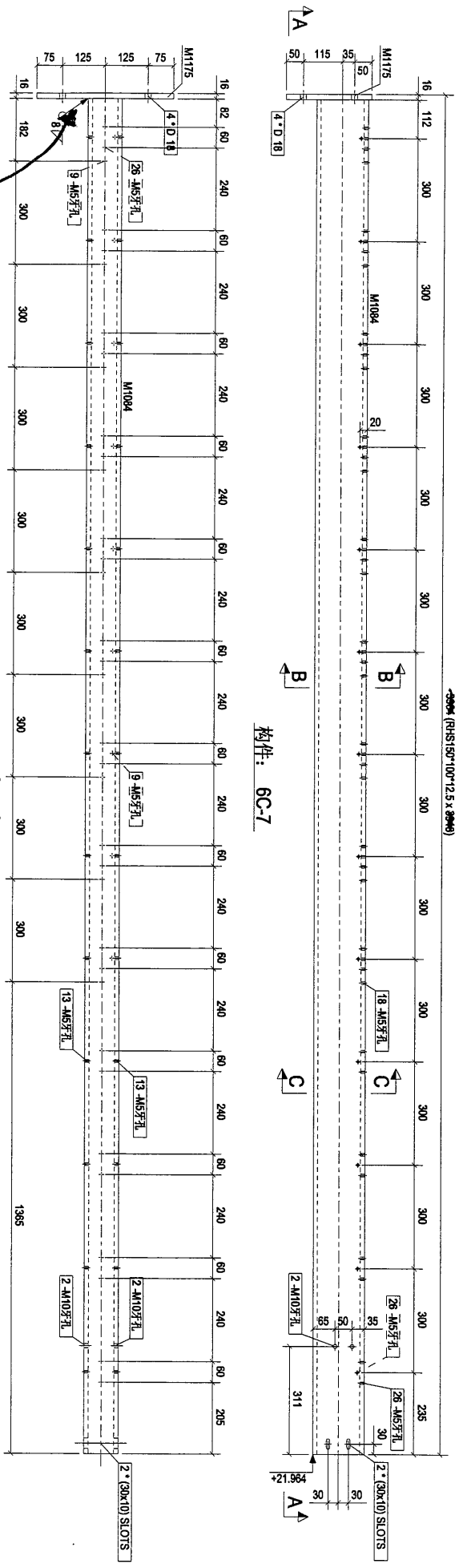
本品

12

Rev.	0	第一次提批	2019-03-16
PROJECT:	PROPOSED SITE C1 DEVELOPMENT AT AREA 86, TROU TONG TSEUNG KWAN O, NEW TERRITORIES		
CLIENT:	美特經貿有限公司 MITSUBISHI KAISHA, LTD. (ASIA PACIFIC) PTE. LTD. Unit 5-4, Sunray Industrial Centre, 1/F 1110, No. 11, Ling Road, Tsimshatsui, Kowloon Tel: 24892114 Fax: (852) 27171868		
Designed by	[6C-6]		
Drawn by			
Reviewed by			
Approved by			
Scale			
DWG NO.:	E6	-	[6C-6]
REV.	0		

构件编号	规格(mm)	长度(mm)	数量	单重(kg)	共重(kg)	表面积(m ²)
M1084	RHS150*100*12.5	3948	1	169.22	169.22	1.85
M1175	PL16250	400	1	12.56	12.56	0.22
合计:					181.78	

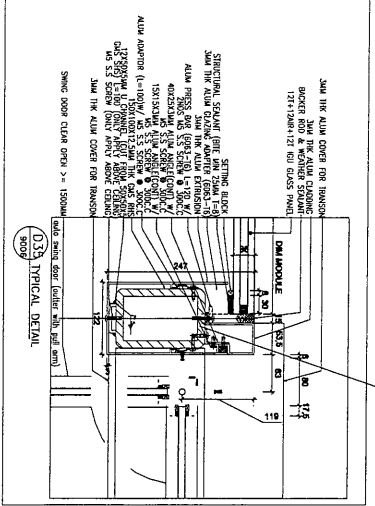
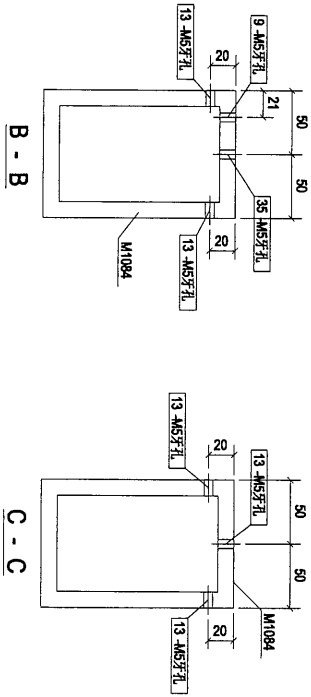
4830
RHS150*100*12.5 x 3948



构件: 6C-7

散出

本品

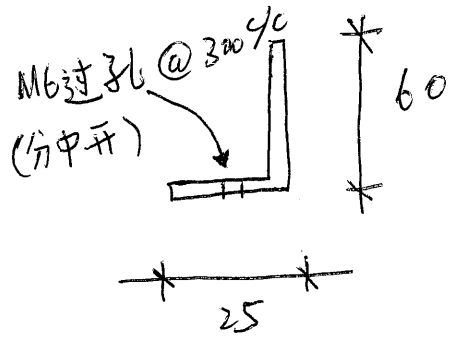


[6C-7]

Rev. 0	第一次报批	Date 2019-03-16
PROJECT:	PROPOSED SITE C1 DEVELOPMENT AT REAR OF KOTILTOP TISSING KWAN O, NEW TERRITORIES	
CLIENT:	美特德有限公司 MIDI Development / Projector Ltd. Units E-8 Sunny Industrial Centre 510 Cheong Kwo Ling Road, Kowloon Tel: 23489211-4 Fax: (852) 27272666	
Designed by	设计有限公司 SHIN YI SWI LHM 2013	
Drawn by		
Reviewed by		
Approved by		
Scale		
DWG NO: E6		REV. 0

新增鐵角

(14)



25 X 60 X 3mm 厚角鐵

每條 2m 長, 18 條

用於雨篷位置, 收垂防水片和
鋁板.